

## Estimating the transmission dynamics of Omicron in Beijing, November to December 2022

Kathy Leung <sup>1,2,3</sup>, Eric H. Y. Lau <sup>1,2</sup>, Carlos K. H. Wong <sup>2,4,5</sup>, Gabriel M. Leung <sup>1,2</sup>, Joseph T. Wu <sup>1,2,3</sup>

<sup>1</sup> WHO Collaborating Centre for Infectious Disease Epidemiology and Control, School of Public Health, LKS Faculty of Medicine, The University of Hong Kong, Hong Kong SAR, China

<sup>2</sup> Laboratory of Data Discovery for Health Limited (D<sup>2</sup>4H), Hong Kong Science Park, Hong Kong SAR, China

<sup>3</sup> The University of Hong Kong – Shenzhen Hospital, Shenzhen, China.

<sup>4</sup> Department of Pharmacology and Pharmacy, LKS Faculty of Medicine, The University of Hong Kong, Hong Kong SAR, China

<sup>5</sup> Department of Family Medicine and Primary Care, School of Clinical Medicine, LKS Faculty of Medicine, The University of Hong Kong, Hong Kong SAR, China

Correspondence: Kathy Leung ([ksmleung@hku.hk](mailto:ksmleung@hku.hk))

## Abstract

We tracked the effective reproduction number  $R_t$  of SARS-CoV-2 Omicron BF.7 in Beijing in November – December 2022 by fitting a transmission dynamic model parameterized with real-time mobility data to (i) the daily number of new symptomatic cases on November 1-11 (when the zero-covid interventions were still strictly enforced) and (ii) the proportion of individuals who participated in online polls on December 10-22 and self-reported to have been previously test-positive since November 1. After the announcement of “20 measures”, we estimated that  $R_t$  increased to 3.44 (95% CrI: 2.82 – 4.14) on November 18 and the infection incidence peaked on December 11. The cumulative infection attack rate (i.e. the proportion of population who have been infected since November 1) was 43.1% (95% CrI: 25.6 – 60.9) on December 14 and 75.7% (95% CrI: 60.7 – 84.4) on December 22. Surveillance programmes should be rapidly set up to monitor the evolving epidemiology and evolution of SARS-CoV-2 across China.

**Word count:** 153

## Main Text

After implementing the “zero-COVID” strategy for more than two years, China has recently begun to adjust its COVID-19 response strategies, notably by announcing the “20 measures” on November 11 and further the “10 measures” on December 7, 2022<sup>1,2</sup>. Since then, Omicron infections spread rapidly in major cities of China, including Beijing, where the Omicron BF.7 epidemic has been putting great pressure on the healthcare system since early December<sup>3,4</sup>.

Regular mass testing and intensive contact tracing were suspended in late November and nucleic acid testing has been conducted on a voluntary basis thereafter<sup>5</sup>. As such, the daily number of confirmed cases reported by Beijing Municipal Health Commission (BMHC, <http://wjw.beijing.gov.cn/>) was no longer an accurate reflection of the epidemic, making it difficult to assess the transmission dynamics. Here we tracked the effective reproduction number of Omicron BF.7 in Beijing in November – December 2022 using our previous epidemic nowcast framework which combined real-time mobility data and case data in the disease transmission models<sup>6</sup>.

### The effective reproduction number $R_t$ of Omicron in Beijing

We categorized the COVID-19 response adjustments in Beijing in three stages:

- i) **Stage 1** (November 1-11): Zero-COVID strategy was strictly implemented with regular mass testing, intensive contact tracing and lockdown of residential buildings or communities once PCR-positive infections and their close contacts were traced.
- ii) **Stage 2** (November 12-25): Although mass testing and contact tracing were maintained after the announcement of “20 measures” on November 11, lockdown was limited to the residential buildings or only the floors or units where PCR-positive infections lived.
- iii) **Stage 3** (after November 25): The requirement of regular mass testing, intensive contact tracing and lockdown were gradually relaxed and finally suspended on November 30. The nucleic acid testing has been conducted only on a voluntary basis after the announcement of “10 measures” on December 7.

We parameterised the disease transmission model with daily number of passengers from Beijing MTR (<https://www.mtr.bj.cn/>) and Beijing Subway (<https://www.bjsubway.com/>), which manage 22 of 27 subway lines in Beijing (**Figure 1** and **Supplementary Table 2**). We fitted the model to two data streams to estimate the effective reproduction number  $R_t$ : i) the daily number of symptomatic cases reported to BMHC between November 1 and 11 (stage 1) when the testing and reporting behaviour were relatively stable; and ii) the proportion of participants who self-reported to be ever positive by polymerase chain reaction (PCR) or rapid antigen test (RAT) since November 1, based on Weibo and WeChat online polls conducted via convenience sampling between December 10 and 22 (**Figure 1**). See **Methods** for details.

Within one week after the announcement of “20 measures”,  $R_t$  increased from 1.04 (95% CrI: 0.84 – 1.29) on November 11 to 3.44 (95% CrI: 2.82 – 4.14) on November 18 (**Figure 2**). In response to the increasing number of cases, public health and social measures (PHSMs) were implemented: residents were urged to stay home over the weekend of November 19-20; 95% of staff were advised to work from home during the week of November 21-25; kindergartens, primary and secondary schools were closed on November 21. Consequently, mobility decreased and  $R_t$  dropped to 0.99 (95% CrI: 0.83 – 1.16) on November 27.

The surge of infections saturated the capacity of PCR testing and quarantine facility in late November. The requirement of regular mass testing, intensive contact tracing and lockdown were gradually relaxed and finally suspended with the announcement of “10 measures”. PHSMs were relaxed and consequently  $R_t$  increased to 2.43 (95% CrI: 2.11 – 2.52) on December 7 (**Figure 2**), which was substantially higher than  $R_t$  of 1.9 under similar PHSMs in the early stage of Hong Kong’s Omicron wave in February – March 2022 <sup>7</sup>.

Omicron infections spread rapidly again starting from early December, and many symptomatic individuals and their close contacts self-isolated. Within one week after the announcement of “10 measures”, Beijing MTR’s mobility dropped to low levels, and we estimated that  $R_t$  dropped below 1 on December 11 and to 0.72 (95% CrI: 0.30 – 0.93) on December 14. The mobility level started to increase in the week of December 17-23, and  $R_t$  increased to 1.04 (95% CrI: 0.39 – 1.96) on December 20.

### **The daily incidence and cumulative infection attack rate**

We estimated the daily incidence and cumulative infection attack rate from the fitted model accordingly (**Figure 2**). On November 30, when regular mass testing was suspended, we estimated the daily number of infections was 94,272 (95% CrI: 52,270 – 160,042). The daily incidence increased rapidly since then and peaked on December 11, with an estimated daily number of infections of 1.03 million (95% CrI: 0.61 – 1.49), i.e. 4.7% of the population.

We estimated that the cumulative infection attack rate (IAR) was 43.1% (95% CrI: 25.6 – 60.9) on December 14. The daily incidence slightly decreased between December 11 and 16 but started to increase again on December 17 due to increased mobility. We estimated the cumulative IAR has reached 75.7% (95% CrI: 60.7 – 84.4) on December 22.

In the base case scenario above, we assumed each participant of the online polls underwent multiple RATs and the ascertainment probability of previous infection was 1 after November 11 (**Figure 2**). As such, the actual IAR was likely to be higher than our base case estimates. As a sensitivity analysis, we included the ascertainment probability in the inference framework (**Supplementary Figure 1**). The resulting estimate of ascertainment probability was 81.5% (95% CrI: 78.9 – 84.2). The corresponding estimated  $R_t$  was slightly higher, e.g. 3.92 (95% CrI: 3.19 - 4.73) vs. 3.44 (95% CrI: 2.82 – 4.14) on November 18, and 3.05 (95% CrI: 2.63 – 3.24) vs. 2.43 (95% CrI: 2.11 – 2.52) on December 7. The estimated cumulative IAR was higher accordingly, reaching 55.1% (95% CrI: 34.3 – 73.5) on December 14 and 88.5% (95% CrI: 80.1 – 93.0) on December 22.

### **Discussion**

Our study tracked  $R_t$  of the Omicron BF.7 epidemic in Beijing by fitting an epidemic transmission model parameterised with mobility data to early-stage case count and recent survey data on cumulative incidence <sup>6</sup>. When mass testing and confirmation of all cases become impossible during the surge of infections, it is important to continuously monitor infection prevalence in the community through various surveillance programmes, e.g. REACT-type studies in the UK and Hong Kong <sup>8,9</sup>, wastewater surveillance <sup>10</sup>, and serological surveillance <sup>11</sup>. Given the roll-out of the second booster vaccines, data from such surveillance studies could also inform the assessment of vaccine effectiveness in real time <sup>9,11</sup>.

By December 22, we estimated that the Omicron epidemic had peaked in Beijing and 76% of the Beijing residents had been infected (**Figure 2**). Assuming no changes in PHSMs nor population behaviour, we anticipated that the number of infections would start dropping towards the end of December and the pressure on the healthcare system would be alleviated. However, vaccination should be ramped up in the coming months in anticipation of upcoming waves that might arise due to importation of different Omicron variants from increased population movement between Beijing and other provinces during the Spring Festival in January 2023.

Our study has several limitations. First, passenger statistics of Beijing MTR and Beijing Subway were the only real-time mobility data we found. But these passengers only account for about 95% of Beijing's subway volume and might not be representative of the population using other transportation means. Second, the subway mobility data might not be the best proxy for changes in contacts and hence  $R_t$ . During the week of December 8-14, most of population stayed home or self-quarantined, and only made contact with their household members. Thus it is difficult to accurately estimate the rapid changes in population mixing and PHSM effectiveness. Third, our estimation relied on IARs inferred from the results of Weibo and WeChat online polls. Since most active Weibo or WeChat users are between 18 and 60 years old, the poll results might not be representative of all age groups. Self-reported infection status or test results can also introduce bias, and the ascertainment probability of infection was uncertain. Future refinements of our framework should include more reliable data to estimate IARs, such as age-specific seroprevalence data <sup>11</sup>.

Given that COVID-19 response strategies have been adjusted nationwide, the number of new infections are expected to surge across China. The epidemics in other major cities and counties might be similar to that of Beijing with multiple incidence peaks, especially when population mixing starts to increase after the first peak which is further exacerbated by the upcoming mass population movement during the Spring Festival. Surveillance programmes should be rapidly set up to monitor the spread and evolution of SARS-CoV-2 infections, and further work should be done to track the transmissibility, incidence and IAR of the epidemics.

**Word count:** 1434 (main text) and 683 (methods)

## Methods

### The transmission model

We used our previous age-structured SIR model to simulate the transmission of Omicron in Beijing<sup>12</sup>:

$$\begin{aligned}\frac{dS_a(t)}{dt} &= -S_a(t) \sum_{b=1}^m \sum_{i=1}^k \beta_{ab}(t) I_{b,i}(t) \\ \frac{dE_a(t)}{dt} &= -\gamma_E E_a(t) + S_a(t) \sum_{b=1}^m \sum_{i=1}^k \beta_{ab}(t) I_{b,i}(t) \\ \frac{dI_{a,1}(t)}{dt} &= -\gamma_I I_{a,1}(t) + \gamma_E E_a(t) \\ \frac{dI_{a,2}(t)}{dt} &= -\gamma_I I_{a,2}(t) + \gamma_I I_{a,1}(t) \\ &\dots \\ \frac{dI_{a,k}(t)}{dt} &= -\gamma_I I_{a,k}(t) + \gamma_I I_{a,k-1}(t) \\ \frac{dR_a(t)}{dt} &= \gamma_I I_{a,k}(t) \\ N_a &= S_a(t) + E_a(t) + \sum_{i=1}^k I_{a,i}(t) + R_a(t)\end{aligned}$$

where

- $m$  was the number of age groups in the population.
- $k = 4$  was the number of infectious states of the model.
- $S_a(t)$ ,  $E_a(t)$  and  $R_a(t)$  were the number of susceptible, exposed and removed individuals in age group  $a$  at time  $t$ .
- $I_{a,i}(t)$  was the number of individuals in the  $i$ -th infectious state of age group  $a$  at time  $t$ .
- $N_a$  was the total number of people in age group  $a$ .
- $1/\gamma_E$  was the duration from exposure to become infectious.
- $k/\gamma_I$  was the duration of being infectious.
- The mean generation time  $T_{GT} = 1/\gamma_E + \frac{k+1}{2\gamma_I}$ , following the formulation of Svensson<sup>13</sup>.

Following our previous framework to parameterise SARS-CoV-2 transmission models with mobility data<sup>6</sup>, we formulated the average rate at which an individual in age group  $a$  made infectious contacts with age group  $b$  at time  $t$ , i.e.,  $\beta_{ab}(t)$  as

$$\beta_{ab}(t) = c_{ab}\gamma(t)(1 - e^{-g(t)})$$

where

- $c_{ab}$  was the contact rates between age group  $a$  and age group  $b$  from Mistry et al<sup>14</sup>.

- $g(t)$  was the normalized number of passengers of subway lines managed by Beijing MTR on day  $t$  (such that  $g(t) = 1$  on November 1, 2022).
- $\gamma(t)$  was the scaling factor for the mobility data proxy  $g(t)$ . Given the changes in PHSMs during the weeks of November 12-25, we assumed  $\gamma(t)$  was  $\gamma_1$  between November 1 and 11, increased linearly between November 12 and 25 from  $\gamma_1$  to  $\gamma_2$ , and remained at  $\gamma_2$  after November 25.  $\gamma_1$  and  $\gamma_2$  were estimated in the parameter inference (**Supplementary Table 3**).

The time-varying next generation matrix for this SIR model was:

$$NGM(t) = T_g \begin{bmatrix} \frac{\beta_{11}(t)S_1(t)}{N_1(t)} & \dots & \frac{\beta_{1m}(t)S_1(t)}{N_1(t)} \\ \vdots & \ddots & \vdots \\ \frac{\beta_{m1}(t)S_m(t)}{N_m(t)} & \dots & \frac{\beta_{mm}(t)S_m(t)}{N_m(t)} \end{bmatrix}$$

where  $T_g$  was the mean generation time.

The effective reproduction number  $R_t$  corresponded to the dominant eigenvalue of  $NGM(t)$  <sup>15,16</sup>.

The incidence rate of infection and reported onsets at time  $t$  were calculated as follows:

$$A_{infection}(t) = \sum_a S_a(t)\pi_a(t)$$

$$A_{onset}(t) = p_{report} \int_0^t f_{incubation}(t-u) \left( \sum_a A_{a,infection}(u) \right) du$$

where  $p_{report}$  was the proportion of infections ascertained and reported as symptomatic cases by Beijing Municipal Health Commission (<http://wjw.beijing.gov.cn/>). Similarly, the cumulative infection attack rate at time  $t$  was calculated as follows:

$$IAR(t) = \int_0^t A_{infection}(u) du$$

We assumed that the epidemic was seeded by  $M$  local infections on November 1, 2022.

### The inference

The set of parameters that were subject to statistical inference, which we denoted by  $\theta$ , included: (i) the seed size  $M$ ; (ii) the scaling factors  $\gamma_1$  and  $\gamma_2$ ; and (iii) the ascertainment proportion  $p_{report}$  between November 1 and 11 (**Supplementary Table 3**). We estimated  $\theta$  from (i) the daily number of symptomatic cases reported to Beijing Municipal Health Commission between November 1 and 11 (**Figure 1**) and (ii) the proportion of participants who reported to be positive by PCR or RAT since November 1 in Weibo or WeChat online polls conducted between December 10 and 22 (**Supplementary Table 1**).

The likelihood function  $L(\theta)$  is a product of the two components  $L_1(\theta)$  and  $L_2(\theta)$ .  $L_1(\theta)$  was formulated as below:

$$L_1(\theta) = \prod_t \left( \frac{A_{onset}(t)!}{n_{case}(t)! (A_{onset}(t) - n_{case}(t))!} p_{report}^{n_{case}(t)} (1 - p_{report})^{A_{onset}(t) - n_{case}(t)} \right)$$

where

- $n_{case}(t)$  was the daily number of symptomatic cases confirmed and reported by Beijing Municipal Health Commission between November 1 and 11.
- $A_{onset}(t)$  was daily number of infections from the model convoluted by the incubation period distribution, assuming no onset-to-confirmation delay under mass testing and intensive contact tracing between November 1 and 11.

Similarly, assuming each participant of the online polls underwent multiple RATs and the ascertainment probability of infection was 100% after November 11,  $L_2(\theta)$  was formulated as below:

$$L_2(\theta) = \prod_i \left( \frac{n_{pol,i}!}{n_{pos,i}! (n_{pol,i} - n_{pos,i})!} IAR(t_{pol,i})^{n_{pos,i}} (1 - IAR(t_{pol,i}))^{n_{pol,i} - n_{pos,i}} \right)$$

where

- $t_{pol,i}$  was the time or date when Weibo or WeChat online poll  $i$  was carried out.
- $n_{pol,i}$  was the number of participants of Weibo or WeChat online poll  $i$ .
- $n_{pos,i}$  was the number of participants of Weibo or WeChat online poll  $i$  who reported to be ever tested positive by PCR or RAT since November 1.

However, the sensitivity of RAT ranges between 70% and 80% for Omicron and thus the ascertainment probability of infection could be less than 100% after November 11<sup>17</sup>. In a sensitivity analysis, we assumed that the ascertainment probability of infection ( $p_{ascertain}$ ) was not 100%, and estimated  $p_{ascertain}$  and other parameters with the updated  $L_2(\theta)$  as below accordingly:

$$L_2(\theta) = \prod_i \left( \frac{n_{pol,i}!}{n_{pos,i}! (n_{pol,i} - n_{pos,i})!} (p_{ascertain} IAR(t_{pol,i}))^{n_{pos,i}} (1 - p_{ascertain} IAR(t_{pol,i}))^{n_{pol,i} - n_{pos,i}} \right)$$

And  $L(\theta)$  was formulated as below:

$$L(\theta) = L_1(\theta) \times L_2(\theta)$$



## **Contributors**

All authors designed the study, developed the model, analysed data, interpreted the results, and wrote the manuscript.

## **Declaration of interests**

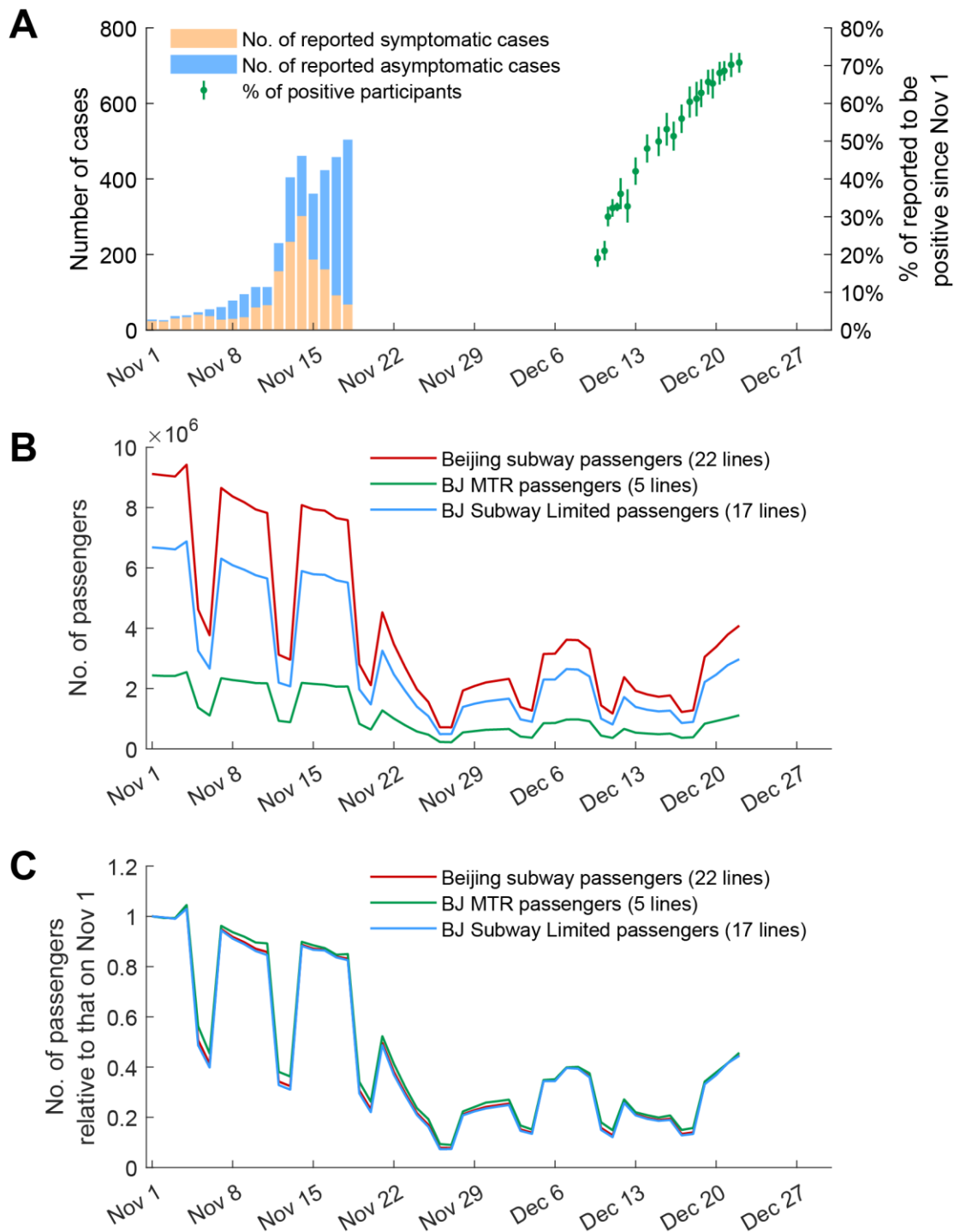
The authors declare no competing interests.

## **Data sharing statement**

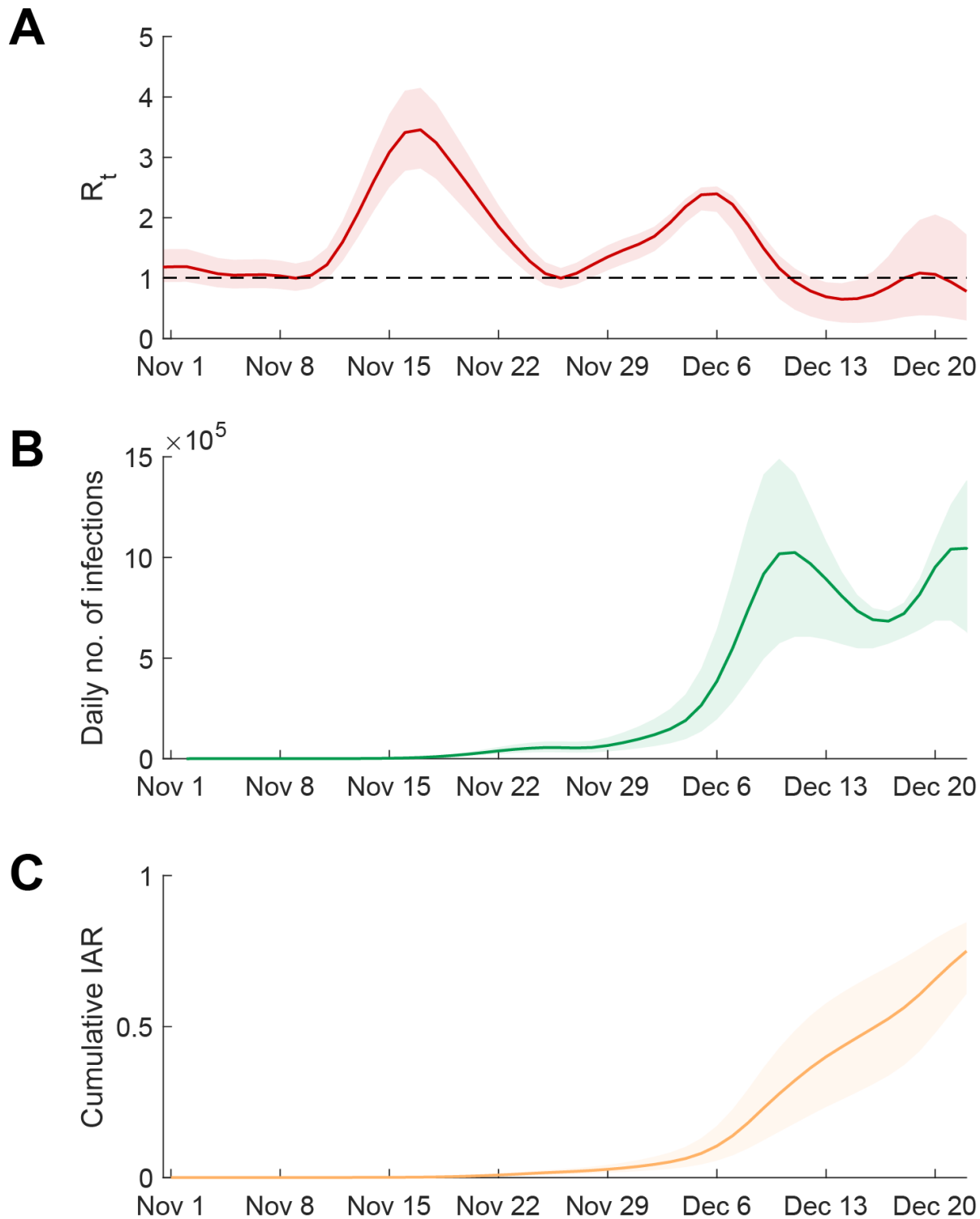
We collated all data from publicly available data sources. All data included in the analyses are available in the main text or the supplementary materials. All data and MATLAB codes are available at [https://github.com/kathyleung/2022\\_12\\_24\\_Beijing\\_Rt\\_Omicron](https://github.com/kathyleung/2022_12_24_Beijing_Rt_Omicron).

## **Funding**

This research was supported by Health and Medical Research Fund (grant no.: 21200122, CID-HKU2 and COVID19F05), Health and Medical Research Fund Research Fellowship Scheme (grant no.: 06200097), General Research Fund (grant no.: 17110020), and the AIR@InnoHK administered by Innovation and Technology Commission of The Government of the Hong Kong Special Administrative Region. KL was supported by the Enhanced New Staff Start-up Research Grant from LKS Faculty of Medicine, The University of Hong Kong. The funders of the study had no role in study design, data collection, data analysis, data interpretation, or writing of the report. The corresponding author had full access to all the data in the study and had final responsibility for the decision to submit for publication.



**Figure 1. Data used in the inference. (A)** The daily number of reported symptomatic cases between November 1 and 18 (orange), the daily number of reported asymptomatic cases between November 1 and 18 (blue), and the proportion of participants of Weibo or WeChat polls who reported to be ever tested positive (PCR or RAT) between December 10 and 22 (green). The details of Weibo or WeChat polls were provided in **Supplementary Table 1**. Bars in green indicate the 95% confidence interval (CI) of the proportions. **(B)** The daily number of passengers of Beijing subway lines managed by Beijing MTR (5 lines, <https://www.mtr.bj.cn/>) and Beijing Subway (17 lines, <https://www.bjsubway.com/>). **(C)** The daily number of subway passengers relative to that on November 1. The daily number of passengers were provided in **Supplementary Table 2**.



**Figure 2. Estimated effective reproduction number  $R_t$ , daily incidence and cumulative infection attack rate in Beijing. (A)** Estimated  $R_t$  between November 1 and December 22. **(B)** Estimated daily number of infections between November 1 and December 22. **(C)** Estimated cumulative infection attack rates between November 1 and December 22. Lines indicate the *maximum a posteriori probability* (MAP) estimates and shades indicate the 95% credible interval (95% CrI).

## Supplementary Material

**Supplementary Table 1. The daily proportion of participants of Weibo or WeChat online polls who reported to be tested positive by PCR or RAT since November 1, 2022, in Beijing**

Date	Proportion of participants who reported to be positive	No. of participants who reported to be positive	No. of participants	Source and Weibo online polls
Dec 10	0.190	211	1110	<a href="https://weibo.com/u/2987102112">https://weibo.com/u/2987102112</a>
Dec 10	0.210	214	1021	<a href="https://weibo.com/u/7126731879">https://weibo.com/u/7126731879</a>
Dec 11	0.300	373	1243	<a href="https://weibo.com/u/2987102112">https://weibo.com/u/2987102112</a>
Dec 11	0.320	524	1622	<a href="https://weibo.com/chinaetfs">https://weibo.com/chinaetfs</a>
Dec 11	0.330	2296	7043	<a href="https://weibo.com/chinaetfs">https://weibo.com/chinaetfs</a>
Dec 12	0.360	199	552	<a href="https://weibo.com/u/2987102112">https://weibo.com/u/2987102112</a>
Dec 12	0.320	150	458	<a href="https://weibo.com/u/7126731879">https://weibo.com/u/7126731879</a>
Dec 13	0.420	311	740	<a href="https://weibo.com/u/2987102112">https://weibo.com/u/2987102112</a>
Dec 14	0.480	345	718	<a href="https://weibo.com/u/2987102112">https://weibo.com/u/2987102112</a>
Dec 15	0.499	331	663	<a href="https://weibo.com/u/2987102112">https://weibo.com/u/2987102112</a>
Dec 16	0.531	285	536	<a href="https://weibo.com/u/2987102112">https://weibo.com/u/2987102112</a>
Dec 16	0.513	348	678	<a href="https://mp.weixin.qq.com/s/PJuDIocTon-WaWTRLldXMw">https://mp.weixin.qq.com/s/PJuDIocTon-WaWTRLldXMw</a>
Dec 17	0.560	389	695	<a href="https://weibo.com/u/2987102112">https://weibo.com/u/2987102112</a>
Dec 18	0.605	342	566	<a href="https://weibo.com/u/2987102112">https://weibo.com/u/2987102112</a>
Dec 18	0.612	281	459	<a href="https://mp.weixin.qq.com/s/PJuDIocTon-WaWTRLldXMw">https://mp.weixin.qq.com/s/PJuDIocTon-WaWTRLldXMw</a>
Dec 19	0.628	430	685	<a href="https://weibo.com/u/2987102112">https://weibo.com/u/2987102112</a>
Dec 19	0.657	555	845	<a href="https://mp.weixin.qq.com/s/PJuDIocTon-WaWTRLldXMw">https://mp.weixin.qq.com/s/PJuDIocTon-WaWTRLldXMw</a>
Dec 20	0.653	391	599	<a href="https://weibo.com/u/2987102112">https://weibo.com/u/2987102112</a>
Dec 20	0.681	656	964	<a href="https://mp.weixin.qq.com/s/PJuDIocTon-WaWTRLldXMw">https://mp.weixin.qq.com/s/PJuDIocTon-WaWTRLldXMw</a>
Dec 21	0.686	857	1249	<a href="https://weibo.com/u/2987102112">https://weibo.com/u/2987102112</a>
Dec 21	0.703	583	830	<a href="https://mp.weixin.qq.com/s/6jSGzWt_kyd6K880gnQ6wA">https://mp.weixin.qq.com/s/6jSGzWt_kyd6K880gnQ6wA</a>
Dec 22	0.708	861	1216	<a href="https://weibo.com/u/2987102112">https://weibo.com/u/2987102112</a>

**Supplementary Table 2. The daily number of passengers of Beijing Subway including 5 lines managed by Beijing MTR Corporation Limited and 17 lines managed by Beijing Mass Transit Railway Operation Corporation Limited ('0000) \***

<b>Date</b>	<b>Passengers of 5 lines managed by Beijing MTR Corporation Limited</b>	<b>Passengers of 17 lines managed by Beijing Mass Transit Railway Operation Corporation Limited</b>
11/1/2022	243.5	668.14
11/2/2022	241.9	665.35
11/3/2022	241.8	661.44
11/4/2022	254.5	688.01
11/5/2022	137	325.2
11/6/2022	110.5	265.85
11/7/2022	234.3	631.04
11/8/2022	228.1	608.73
11/9/2022	223.8	594.07
11/10/2022	218.1	575.84
11/11/2022	217.3	564.99
11/12/2022	92.8	219.41
11/13/2022	88.3	207.25
11/14/2022	218.8	589.57
11/15/2022	215.4	579.04
11/16/2022	212.7	577.11
11/17/2022	206.3	558.94
11/18/2022	206.9	551.43
11/19/2022	83.1	197.43
11/20/2022	63.8	147.13
11/21/2022	127.4	325.61
11/22/2022	100.5	246.89
11/23/2022	77.8	191.41
11/24/2022	57.6	140.05
11/25/2022	46.9	108.3
11/26/2022	22.8	48.77
11/27/2022	21.9	49.33
11/28/2022	54.4	138.99
11/29/2022	58.7	149.52
11/30/2022	63	157.22
12/1/2022	64.3	161.86
12/2/2022	65.8	166.36
12/3/2022	40.8	97.72
12/4/2022	36.9	89.69
12/5/2022	84.9	229.71
12/6/2022	85.6	230
12/7/2022	97.1	264.6
12/8/2022	97.6	262.9
12/9/2022	91.4	239.95
12/10/2022	43.9	100.15

12/11/2022	36.2	80.83
12/12/2022	66.1	171.78
12/13/2022	53.6	138.92
12/14/2022	50.8	129.62
12/15/2022	48.5	124.21
12/16/2022	50.5	126.64
12/17/2022	36.5	85.66
12/18/2022	38.4	89.35
12/19/2022	83.3	221.57
12/20/2022	92.3	246.03
12/21/2022	101.2	277.56
12/22/2022	111.2	297.2

\* Data from <https://weibo.com/u/2125939111>, <https://www.mtr.bj.cn/>, <https://weibo.com/u/2778292197> and <https://www.bjsubway.com/>.

The map of all of the 27 subway lines is available at:

[http://www.bjmoa.cn/indishare/sitemaster.nsf/frmthirdxlt\\_xm?openform&database=bjmtroa/lxt.nsf&view=vwPublicedByCatforsite3\\_xm&path=1code&mkfl=ccfw](http://www.bjmoa.cn/indishare/sitemaster.nsf/frmthirdxlt_xm?openform&database=bjmtroa/lxt.nsf&view=vwPublicedByCatforsite3_xm&path=1code&mkfl=ccfw)

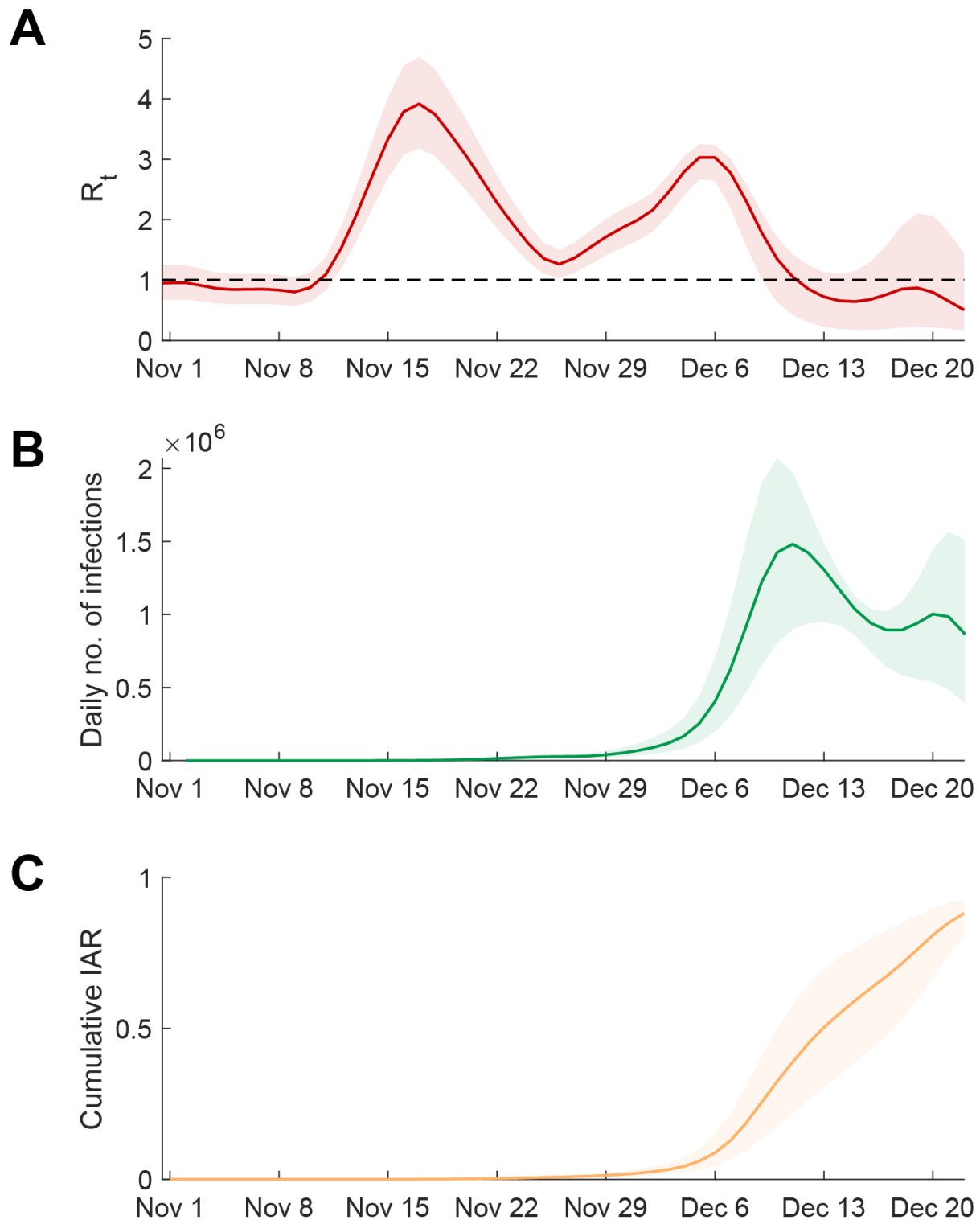
### Supplementary Table 3. Parameters fitted in the transmission model

Parameter	Description	Estimate (95% CrI)
$\gamma_1$	The scaling factor for translating the mobility data proxy into the contact matrix between November 1 and 11 (see methods)	0.0285 (0.0269 – 0.0304)
$\gamma_2$	The scaling factor for translating the mobility data proxy into the contact matrix after November 25 (see methods)	0.0951 (0.0942 – 0.0960)
$M$	The number of local infections on November 1 that might generate community transmission when the simulation was started	1562 (906 – 2292)
$p_{report}$	The proportion of infections ascertained as symptomatic cases by Beijing Municipal Health Commission	8.70% (6.84 – 11.65)

**Supplementary Table 4. Fixed parameters in the transmission model**

Parameter	Description, assumption, and source	Value
$1/\gamma_E$	Duration from exposure to becoming infectious	Assumed to be 1 day
$T_{GT}$	Mean generation time <sup>8</sup>	4.6 days Assumed to be normal distributed with the coefficient of variation of 0.05 when the posterior distributions of $R_t$ and IARs were generated
$VE_S$	Vaccine effectiveness in reducing susceptibility	Assumed to be 0 since most of the vaccinations were given >8 months ago and most of the vaccines were inactivated virus vaccines
$VE_I$	Vaccine effectiveness in reducing infectiousness	Assumed to be 0
$f_{incubation}$	Probability density function of incubation period <sup>18,19</sup>	Gamma distribution Mean: 3.5 days SD: 2.6 days





**Supplementary Figure 1. Estimated  $R_t$ , daily incidence and cumulative infection attack rate in Beijing when the ascertainment probability after November 11 was estimated in the inference. (A)** Estimated  $R_t$  between November 1 and December 22. **(B)** Estimated daily number of infections between November 1 and December 22. **(C)** Estimated cumulative infection attack rates between November 1 and December 22. Lines indicate the *maximum a posteriori probability (MAP)* estimates and shades indicate the 95% credible interval (95% CrI).

## Reference

- 1 Xinhua. *China Focus: China releases measures to optimize COVID-19 response*, <https://english.news.cn/20221111/d4399114a082438eaac32d08a02bf58d/c.html> (2022).
- 2 Xinhua. *China Focus: COVID-19 response further optimized with 10 new measures*, <https://english.news.cn/20221207/ca014c043bf24728b8dcbc0198565fdf/c.html> (2022).
- 3 Xinhua. *Beijing sets up fever clinics in all community health service centers*, <https://english.news.cn/20221213/2e070d9abcdb4362b990b7e8811b5642/c.html> (2022).
- 4 Xinhua. *Chinese vice premier stresses need to ensure smooth transition of COVID-19 response phases*, <https://english.news.cn/20221214/3c1d5934a43d47d4a016194acea7bd1d/c.html> (2022).
- 5 Xinhua. *Chinese mainland reports 2,249 new local confirmed COVID-19 cases*, <http://en.people.cn/n3/2022/1214/c90000-10183940.html> (2022).
- 6 Leung, K., Wu, J. T. & Leung, G. M. Real-time tracking and prediction of COVID-19 infection using digital proxies of population mobility and mixing. *Nature communications* **12**, 1-8 (2021).
- 7 D24H@HKSTP and HKU WHO Collaborating Centre on Infectious Disease Epidemiology and Modelling. Modelling the fifth wave of COVID-19 in Hong Kong.
- 8 Elliott, P. *et al.* Rapid increase in Omicron infections in England during December 2021: REACT-1 study. *Science* **375**, 1406-1411 (2022).
- 9 Tsang, N. N. Y., So, H. C., Cowling, B. J., Leung, G. M. & Ip, D. K. M. Effectiveness of BNT162b2 and CoronaVac COVID-19 vaccination against asymptomatic and symptomatic infection of SARS-CoV-2 omicron BA.2 in Hong Kong: a prospective cohort study. *The Lancet Infectious Diseases* [https://doi.org/10.1016/S1473-3099\(22\)00732-0](https://doi.org/10.1016/S1473-3099(22)00732-0)
- 10 Deng, Y. *et al.* Use of sewage surveillance for COVID-19: a large-scale evidence-based program in Hong Kong. *Environmental Health Perspectives* **130**, 057008 (2022).
- 11 Lau, J. J. *et al.* Population-based sero-epidemiological estimates of real-world vaccine effectiveness against Omicron infection in an infection-naïve population, Hong Kong, January to July 2022. *medRxiv* (2022).
- 12 Wu, J. T. *et al.* Inferring influenza infection attack rate from seroprevalence data. *PLoS pathogens* **10**, e1004054 (2014).
- 13 Svensson, Å. A note on generation times in epidemic models. *Mathematical biosciences* **208**, 300-311 (2007).
- 14 Mistry, D. *et al.* Inferring high-resolution human mixing patterns for disease modeling. *Nature Communications* **12**, 323 (2021). <https://doi.org/10.1038/s41467-020-20544-y>
- 15 Diekmann, O., Heesterbeek, J. & Roberts, M. G. The construction of next-generation matrices for compartmental epidemic models. *Journal of the Royal Society Interface* **7**, 873-885 (2010).
- 16 Diekmann, O. & Heesterbeek, J. A. P. *Mathematical epidemiology of infectious diseases: model building, analysis and interpretation*. Vol. 5 (John Wiley & Sons, 2000).
- 17 Bayart, J.-L. *et al.* Analytical sensitivity of six SARS-CoV-2 rapid antigen tests for omicron versus Delta variant. *Viruses* **14**, 654 (2022).
- 18 Li, Q. *et al.* Early Transmission Dynamics in Wuhan, China, of Novel Coronavirus-Infected Pneumonia. *New England Journal of Medicine* (2020). <https://doi.org/10.1056/NEJMoa2001316>
- 19 Jansen, L. Investigation of a SARS-CoV-2 B. 1.1. 529 (Omicron) Variant Cluster—Nebraska, November–December 2021. *MMWR. Morbidity and Mortality Weekly Report* **70** (2021).