

1 Estimating measures to reduce the 2 transmission of SARS-CoV-2 in Australia to 3 guide a ‘National Plan’ to reopening

4 Gerard E. Ryan^{1,2}, Freya M. Shearer², James M. McCaw^{2,3}, Jodie
5 McVernon^{4,5}, and Nick Golding^{1,6}

6 ¹Telethon Kids Institute, Nedlands, WA, Australia

7 ²Centre for Epidemiology and Biostatistics, Melbourne School of Population and Global
8 Health, The University of Melbourne, VIC, Australia

9 ³School of Mathematics and Statistics, The University of Melbourne, Melbourne, Australia

10 ⁴Department of Infectious Diseases, Melbourne Medical School, University of Melbourne
11 at the Peter Doherty Institute for Infection and Immunity, Melbourne, Australia

12 ⁵Victorian Infectious Diseases Reference Laboratory, The Royal Melbourne Hospital at
13 the Peter Doherty Institute for Infection and Immunity, Melbourne, Australia

14 ⁶Curtin University, Perth, Australia

15 ABSTRACT

16 Background

17 In mid-2021, widespread availability of COVID-19 vaccines with demonstrated impacts on transmission
18 promised relief from the strict public health and social measures (PHSMs) imposed in many countries to
19 limit spread and burden. We were asked to define vaccine coverage thresholds for transition through the
20 stages of Australia’s ‘National Plan’ to easing restrictions and reopening international borders.

21 Methods

22 Using available evidence of vaccine effectiveness against the then-circulating Delta variant, we used a
23 mathematical model to determine vaccine coverage targets. The absence of any COVID-19 infections
24 in many sub-national jurisdictions in Australia posed particular methodological challenges for modelling
25 in this setting. We used a novel metric called Transmission Potential (TP) as a proxy measure of the
26 population-level effective reproduction number. We estimated TP of the Delta variant under a range of
27 PHSMs, test-trace-isolate-quarantine (TTIQ) efficiencies, vaccination coverage thresholds, and age-based
28 vaccine allocation strategies.

29 Findings

30 We found that high coverage of vaccination across all age groups ($\geq 70\%$) combined with ongoing
31 TTIQ and minimal PHSMs was sufficient to avoid strict lockdowns. At lesser coverage ($\leq 60\%$) rapid
32 case escalation risked overwhelming of the health sector and would prompt a need to reimpose strict
33 restrictions, with substantive economic impacts in order to achieve the goals of the National Plan.
34 Maintaining low case numbers was the most beneficial strategy for health and the economy, and at higher
35 coverage levels ($\geq 80\%$) further easing of restrictions was deemed possible.

36 Interpretation

37 These results reinforced recommendations from other modelling groups that some level of PHSMs should
38 be continued to minimise the burden of the Delta variant following achievement of high population vaccine
39 coverage. They directly informed easing of COVID-19 restrictions in Australia.

40 Funding

41 This study was supported by the Australian Government Department of Health and Ageing, and the
42 National Health and Medical Research Council’s Centre of Research Excellence scheme (GNT1170960).

44 Keywords: COVID-19, Australia, transmission potential, vaccination, public health, intervention,
45 economic modelling

47 INTRODUCTION

48 Since early 2020, rapid dissemination of SARS-CoV-2 and subsequent emergence of variants have resulted
49 in multiple rapidly escalating waves of infection with devastating impacts on health, society and the
50 economy [1]. In contrast with the rest of the world, many island nations in the Western Pacific Region
51 remained relatively COVID free through the first two years of the pandemic as a result of strong border
52 controls to prevent importation, and reactive imposition of social restrictions to constrain community
53 transmission (e.g. [2, 3]). These measures enabled enviable social freedoms and ongoing economic
54 activity, but such disconnection from the international community was not a sustainable strategy over the
55 longer term [4].

56 Global concerted efforts to accelerate development and licensure of safe and effective vaccines raised
57 hopes that wide scale population immunisation would enable a return to ‘life as normal’ in high burden
58 settings, given demonstrated impacts on infection acquisition and onward spread [5, 6, 7]. For countries
59 that had pursued a low or zero-COVID strategy, ‘living with COVID’ seemed an achievable goal if
60 vaccines could constrain transmission and mitigate disease outcomes sufficiently to avoid overwhelming
61 the health system following SARS-CoV-2 importation, while maintaining near normal societal functioning
62 [8, 9]. However, anticipating the likely impacts of introducing COVID-19 into an environment without
63 established SARS-CoV-2 transmission is difficult [10].

64 To address this challenge, we developed a Transmission Potential (TP) [10] metric to quantify the
65 likely spread of COVID in populations based on behavioural, social mixing data and available case
66 data. TP is an estimate of the average population-level trend in the effective reproduction number (R_{eff})
67 and is driven by factors that influence transmission from local cases. Relevant considerations include
68 the effectiveness of test-trace-isolate-quarantine (TTIQ) case and contact management [11], as well as
69 changes in personal distancing behaviour and mandated constraints on mixing group sizes, collectively
70 termed public health and social measures (PHSMs) [10]. Demonstrated reductions in TP achieved by
71 these interventions can be incorporated into future scenario projections, along with anticipated impacts
72 of vaccination on transmission [REF vaccination efficacy/TP paper]. International evidence of vaccine
73 effectiveness against acquisition and onward spread of the Delta variant was used to estimate the likely
74 overlaid impact of differing levels of vaccine coverage (by age cohort) on population wide TP.

75 This approach was used in mid-2021 to help inform Australia’s National Plan to transition Australia’s
76 National COVID-19 response[12], by determining target vaccination thresholds for moving between its
77 four phases (table 1), including any ongoing requirement for public health responses and social measures.
78 These methods formed the basis for further collaborative work with the Australian Government Treasury
79 to determine likely economic implications of reopening at alternative thresholds based on the level of
80 adjunct PHSMs needed [13], and constituted part of a broader suite of modelling advice to the Australian
81 Government to inform management of the pandemic and a shift away from strict lockdown measures
82 [14, 15, 16]. From the outset, it was anticipated that reopening targets in populations naïve to COVID-19
83 would be higher than for those with a history of prior circulation resulting in some degree of established
84 immunity to the virus.

85 METHODS

86 Transmission Potential

87 Transmission potential (TP) is a measure of the average potential for a virus to spread at the population
88 level [10]. It can be considered as an estimate of the reproduction number, if transmission were widespread
89 (and therefore not concentrated in one demographic group with non-representative transmission rates). The
90 base model consists of three sub-models involving time to detection and isolation of cases, and two types
91 of physical distancing behaviour: we differentiate “macro-distancing” as the reduction in the average rate
92 of non-household contacts (e.g. in response to lockdown-type restrictions), while “micro-distancing” is the
93 reduction in transmission probability per non-household contact (e.g. adherence to social-distancing and
94 hygiene advice or legislation; [10]). Transmission potential will vary among communities by differential
95 average household size and age structures, and can be modulated by changes to behaviour through public
96 health and social measures, time to detection and isolation of cases, and immunity through infection
97 and vaccination. A full description of the base model can be found in Golding and colleagues [10] and

Table 1. Phases of the “National Plan to transition Australia’s National COVID-19 Response”[12]. Our modelling analysis focuses on the transition from ‘phase A’ in which strong suppression and no community transmission is the goal, to ‘phase B’ where vaccine coverage is high and SARS-CoV-2 infection is allowed to establish in the population. Scenarios therefore examine the epidemic dynamics and clinical consequences of infections following seeding of an epidemic at different vaccination coverage thresholds achieved through alternative age prioritisation strategies.

Phase	Description	Activities
A	Vaccinate, Prepare and Pilot	Continue to strongly suppress the virus for the purpose of minimising community transmission
B	Vaccination Transition	Seek to minimise serious illness, hospitalisation and fatality as a result of COVID-19
C	Vaccination Consolidation	As above
D	Post-Vaccination	Manage COVID-19 consistent with public health management of other infectious diseases

98 below we explain and test how varying and adding components can modulate TP. Whilst an estimate of
99 transmission potential under a given scenario of R_0 , behaviour, and health system performance can never
100 be a perfect predictor of a reproduction number due to epidemic stochasticity and unaccounted sources
101 of variation, it is a measure that enables prediction of the likely ability to control spread in the event of
102 widespread transmission, and has been used as a systematically reported situational assessment metric in
103 Australia since 2020 [17, 18, 19].

104 **Test, Trace, Isolate, and Quarantine**

105 Test-trace-isolate-quarantine (TTIQ) strategies are key non-pharmaceutical interventions used globally
106 to manage infectious disease outbreaks [20, 21] including frequently during the COVID-19 pandemic
107 [22, 23]. TTIQ operates through isolating cases identified by testing, and tracing and pre-emptive
108 quarantining of their close contacts to prevent further onward transmission. We adapted our TP model
109 to include an explicit effect of reducing the time to case isolation achievable through intensive contact
110 tracing, in addition to the time to case detection effect already included [11]. The empirical distribution of
111 times from symptom onset to case isolation under an ‘optimal’ TTIQ capacity (i.e. with a health system
112 that had enough capacity to rapidly contact trace all cases) was estimated using a limited time series of
113 case data from the state of New South Wales between July 2020 and January 2021, for which dates of
114 isolation were known with a high level of data completeness. This distribution was then calibrated to
115 estimate the distribution of times to isolation in other times and states by assuming improvements in TTIQ
116 are proportional to improvements in times to detection. We characterised a second level of ‘partially’
117 efficacious TTIQ based on observations from the state of Victoria on 4 August 2020. This date was the
118 then-peak of daily locally-acquired COVID-19 cases in Australia representing a contact-tracing system
119 under resource constraints. These data were used to estimate the effect of ‘partial’ TTIQ on transmission
120 potential to estimate a baseline TP under community transmission. These estimates of ‘optimal’ and
121 ‘partial’ TTIQ correspond to a 54% and 42% reduction in transmission respectively; the full details of this
122 estimation are found in [11].

123 **Public Health and Social Measures**

124 In the presence of ongoing viral transmission, it is necessary to keep the rate of virus reproduction, R_{eff} ,
125 below or close to 1, as any extended periods where $R_{eff} > 1$ can quickly lead to significant numbers of
126 cases, causing stressors on health systems. So maintenance of R_{eff} near or below 1 is needed both to
127 contain community transmission in the suppression phase, and to prevent cases from exceeding health
128 sector capacity after re-opening. Regulated or advised risk reduction behaviours and constraints on social
129 mixing described collectively as public health and social measures (PHSMs) are the levers that may be
130 employed to manage R_{eff} in response to incursions and outbreaks. Behaviours change over time either
131 spontaneously because of heightened concern or complacency, or in response to mandated public health
132 orders invoking various elements of PHSMs.

133 Here we investigated what level of PHSMs would be required to bring TP to near or below 1 under
134 different scenarios of vaccination coverage. In collaboration with the Australian Government Treasury

135 we defined four ‘bundles’ of PHSM restrictions: baseline, low, medium and high. Each bundle is drawn
136 from a specific time and place in Australia’s pandemic experience, thereby capturing both real-world
137 behavioural responses and the proportional reduction in TP achievable by PHSMs in this context. They
138 therefore represent differing degrees of social constraints for which the impact on TP and economic
139 activity could be defined from historical observations.

140 Full descriptions of measures included in these bundles are in table S1. These bundles are intended to
141 reflect the plausible behavioural consequences of different levels of stringency of PHSM. As such, the
142 ‘Baseline PHSM’ bundle reflects behaviours during a period with minimal restrictions, and a population
143 aware of the risk of COVID-19 (as opposed to behaviour prior to the pandemic). The other bundles reflect
144 the behavioural effects of increasing levels of stringency. We emphasise that the TPs associated with these
145 PHSM bundles reflect state wide population behaviours (numbers of household contacts and adherence to
146 hygiene advice) estimated at these times. TPs are observed to differ substantially over time and between
147 states, even within similar restrictions [? 18]. These periods are therefore intended to reflect achievable
148 levels of reduction in TP via PHSMs, rather than inference about the particular impacts of these sets of
149 restrictions.

Table 2. Description of measures implemented under different ‘bundles’ of public health and social measures (PHSMs). Each bundle relates to a specific time and place in Australia’s pandemic experience up to mid-2021 — thereby capturing behavioural responses and the proportional reduction in TP achievable by PHSMs in the Australian context. The proportional reductions in TP observed at each time and place can therefore be related to similar reductions achieved via other combinations of PHSMs (not limited to the “bundles” in place during the reference period). Similarly, the imposition of any given combination of PHSMs at different times and places may result in variable population responses and thus reductions in TP. More detailed descriptions of the bundles can be found in S1

PHSM bundle	Description
Baseline	Minimal density/capacity restrictions and no major outbreaks as in NSW March 2021
Low	More stringent capacity restrictions compared to baseline (<i>e.g.</i> , hospitality venues limited to 10 customers per booking), as in NSW 23 August 2020
Medium	Stringent capacity restrictions, group size limits (<i>e.g.</i> , fewer than five people outdoors), stay-at-home orders (except work, study, essential purposes), as in NSW 1 July 2021
High	No household visitors, curfew, stay-at-home orders (except essential purposes and permitted work), schools closed (remote learning only), as in VIC 23 August 2020

150 **Age-structured Vaccination Impact on Transmission**

151 In keeping with WHO guidance [24] and many other countries, Australia’s immunisation program initially
152 prioritised health- and aged-care workers, elderly populations and those at increased risk of transmission
153 and/or severe outcomes [25]. When defining overall target coverage thresholds for the eligible population,
154 an important goal was to consider the distribution of doses received across age categories. While older
155 individuals are more likely to experience severe disease outcomes, young and working adults are expected
156 to make a greater contribution to transmission at the population level. So to explore the effect of age-
157 structured vaccination on transmission, we explored four allocation strategies: oldest first, 40+ years first,
158 all adults, and transmission reducing, described in table 3 (the specific percentages of each age-group
159 vaccinated in these strategies can be found in [16]). These strategies were motivated by being the strategy
160 in place at the time (oldest first), and a series of what were considered the only other practical options. The
161 strategies followed the Australian Therapeutic Goods Administration [26, 27] and Australian Technical
162 Advisory Group on Immunisation [28] advice on which vaccines were administered to which age-groups
163 and the dosing interval between first and second doses 4. We also assume a two week delay from
164 administration until a vaccine takes full effect 4.

165 We estimated the percentage reduction in TP that could be expected under different vaccination
166 coverages and distributions by age, vaccine type, and the number of doses received, via static analysis of
167 an age-based transmission matrix, S2, [29]. Age-specific susceptibility and transmissibility estimates [30]

168 are used and transmission rates have been calibrated to a baseline population-wide TP of 3.6. TP will be
 169 influenced by spontaneous and imposed changes in physical distancing behaviours, the number of social
 170 contacts on average between individuals and the timeliness of TTIQ measures. We use a baseline TP of
 171 3.6 for the Delta variant based on averaged observations from the state of New South Wales in March
 172 2021, a period with minimal social restrictions and no major outbreaks.

173 For each vaccination scenario, the reduction in transmission by age-group was calculated from the
 174 average vaccination efficacy against transmission (accounting for the fractions of each vaccine type and
 175 number of doses in that age-group) and the age-group coverage. Proportional reductions in transmission
 176 rates for each age combination were then applied to the original ‘unvaccinated’ transmission matrix to
 177 construct a ‘vaccinated’ matrix. The dominant eigenvalue, representing the population-wide reproduction
 178 number was compared between these pairs of matrices to compute a percentage reduction in TP due to
 179 immunisation.

180 To explore and visualise the effect of different strategies on TP reduction among age categories, we
 181 also calculated an age-group specific TP prior to and after vaccination under a given scenario. These
 182 ‘by-age’ contributions are calculated for a given homogeneous age-group (whereas other TP calculations
 183 use all age groups concurrently S2). Because these age-specific TP calculations exclude interactions with
 184 other age-groups, they are not equivalent to the partial contribution of that age group to the overall TP.

Table 3. Vaccine allocation strategies and allocation sequence by age-group. The specific modelled percentages of each age-group vaccinated in these strategies can be found in [16].

Strategy	Allocation sequence
Oldest first	Vaccinations are prioritised from oldest to youngest. Specifically, prioritization occurs in the following order: 80+, 70-79, 60-69, 50-59, 40-49, 30-39, 20-29, 16-19
40+ years first	Vaccinations are prioritised from 40+ upwards, then 16+. Specifically, prioritization occurs in the following order: 40-49, 50-59, 60-69, 70-79, 80+, 16-19, 20-29, 30-39
All adults	Vaccinations are not prioritised in any particular order by age
Transmission reducing	As for national program, under which all individuals 40+ were eligible as at the 12 th of July 2021. Within the simulation time-frame, the 30-39 years cohort becomes eligible from the 30 th of August 2021, and 16-29 years on the 11 th of October.

185 Time in Lockdown

186 During outbreak suppression in Australia, early and stringent lockdowns were used to bring TP below 1
 187 for the purposes of driving even a handful of local cases from an outbreak to zero, in the context of an
 188 optimal TTIQ response. The goal of transitioning to phase B 1 was to minimise the requirement for such
 189 stringent PHSMs, restricting their use to meet the explicit objective of prevention of overwhelming the
 190 health sector in the face of escalating case loads.

191 Ongoing application of some degree of social measures through this phase to support vaccine impacts
 192 reduces the likelihood for high restrictions and preserves TTIQ effectiveness by keeping case numbers
 193 low. TP estimates with and without stringent PHSM can be used to calculate the approximate proportion
 194 of time those stringent measures would need to be in place to prevent exceedance of health sector capacity
 195 over a defined time frame. This simple static analysis can indicate the plausible societal and economic
 196 impacts of the PHSM required to constrain transmission under each scenario and coverage.

197 Where a vaccination scenario leads to either a $TP_1 > 1$ with one PHSM bundle and $TP_2 < 1$ with
 198 a more stringent bundle, the long-term average TP can be maintained at 1, i.e. with daily case counts

Table 4. Vaccine eligibility, dosing intervals, and assumed delay to efficacy.

Vaccine	Eligible population	Dosing interval	Delay to full efficacy
Vaxzevria (ChAdOx1-S) (AZ) [27]	60+ years [28]	12 weeks	2 weeks
Comirnaty (BNT162b2) (Pf) [26]	16+ years	3 weeks	2 weeks

199 neither growing nor shrinking over the long term, by alternating between the two PHSM bundle states.
200 Whilst the first PHSM bundle is in place cases will grow, and whilst the more stringent bundle is in place
201 cases will shrink, leading to an oscillation of case counts around some average level S_1 . This fraction of
202 time under more stringent PHSMs is independent of the sequence or duration of the periods under more
203 stringent restrictions; a strategy of rapid switching on and off of restrictions, or one of alternating long
204 periods with or without restrictions would both lead to long-term maintenance of $TP = 1$, provided the
205 fraction of time in each condition is the same S_1 .

206 Switching between more and less stringent PHSMs reflects a strategy that might be used to keep cases
207 below a health sector capacity limit in the event that there is long-term community transmission. With the
208 the necessary simplifying assumption that vaccination coverage is static, where one PHSM bundle leads
209 to growing cases numbers ($TP_1 > 1$), and a second bundle leads to contracting case numbers ($TP_2 < 1$),
210 we can calculate the fraction of time necessary under each bundle of PHSMs S_1 . However this strategy
211 will not always be either necessary or possible. When cases under both bundles lead to declining case
212 numbers (i.e. $TP_1 < 1$ and $TP_2 < 1$), the fraction is zero as the more stringent PHSM bundle is not needed.
213 Alternatively, where even the more stringent PHSMs still lead to growing daily case numbers ($TP_2 > 1$)
214 no fraction exists, because even the more stringent PHSM bundle could not control transmission.

215 **Costs of PHSMs**

216 The Australian Government Treasury estimated the direct economic costs of alternative COVID-19
217 management scenarios explored in this analysis. Estimates included the expected average weekly costs
218 of activity restrictions and lockdowns for each of the bundled levels of restrictions, multiplied by their
219 duration of application over the specified timeframe. These figures were derived by analysing the impact
220 on hours worked across the economy during lockdown periods in 2020, compared with the pre-COVID
221 baseline. They did not include indirect confidence effects, labour market impacts, social, fiscal or health
222 economic costs. For all scenarios it was assumed that case numbers would be constrained by social
223 measures to avoid overwhelming the health system. An objective of maintaining low case numbers in this
224 way was to avoid the significant behavioural changes and related economic impacts that were observed
225 in other country settings where severe and widespread outbreaks occurred in the absence of mixing
226 restrictions. [13].

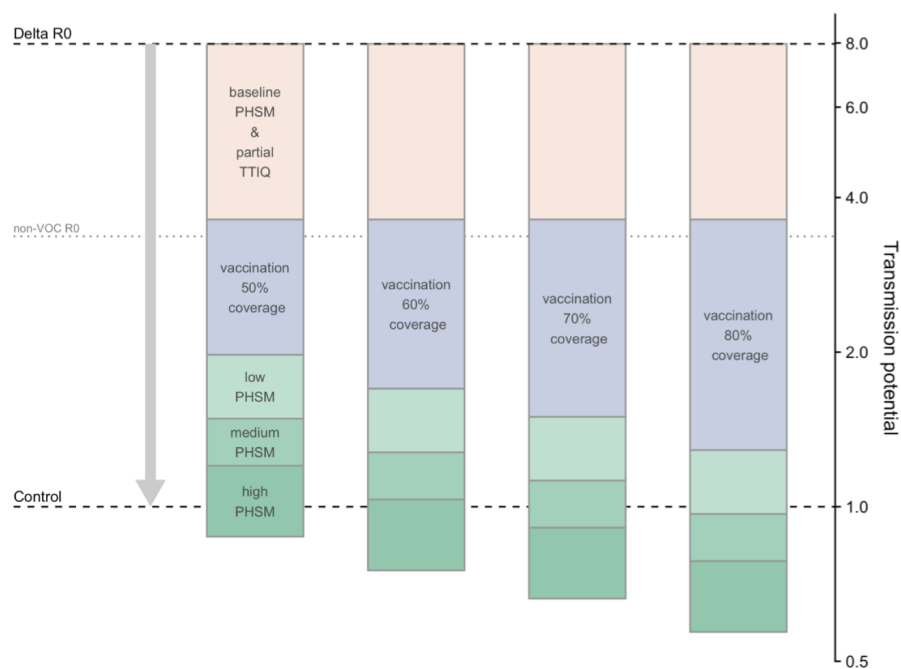
227 **Data Analysis**

228 All data analyses for this work were carried out in R [31]. R code to reproduce these analyses are available
229 at <https://github.com/aus-covid-modelling/NationalCabinetModelling>. This
230 code uses outputs from regular situational assessment work [19, 18] that are conducted using data provided
231 under confidential agreement from the Australian Commonwealth Government (see also statement in
232 Ethics), and that the authors are not authorised to make available. Code to create figures 3 and S1 can be
233 found in [32].

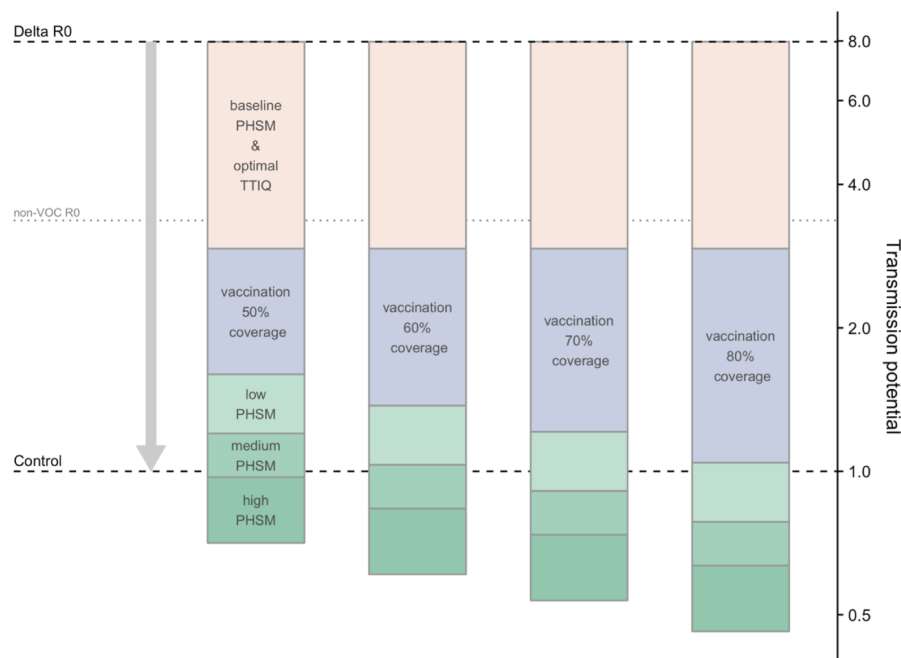
234 **RESULTS**

235 From an R_0 of 8 for the Delta variant, with baseline PHSMs and partial TTIQ in place TP is reduced
236 to 3.6, which serves as a baseline to which other interventions are added 1. The effects of vaccination
237 and more stringent PHSMs on TP are mathematically multiplicative, so the results displayed in figure 1
238 use a logarithmic y-axis in order to easily see the relative magnitude of each intervention. The results
239 demonstrate that as vaccination coverage increases, less stringent PHSMs are required to bring TP
240 below 1 and thus control epidemic activity (figure 1). Maintaining a rapid and highly effective TTIQ
241 response capacity is critical for ongoing epidemic control. Should TTIQ responses become only partially
242 effective due to high caseloads, high PHSM would be needed to curb transmission at the 50% and
243 60% coverage thresholds, whilst low PHSMs may be sufficient for control at 80% coverage (figure
244 1). More optimistically, the combination of 70% vaccine coverage and ongoing low PHSMs would
245 likely be sufficient for control, if optimal TTIQ can be maintained (figure 1). Note that compliance with
246 imposed measures will vary their effectiveness between populations and time-points. This uncertainty is
247 conceptually represented by the upper and lower bounds of each 'box' for each set of restrictions in figure
248 1.

249 The choice of age-structured vaccine allocation strategy has a slight effect on Transmission Potential,
250 though this varies with level of vaccine coverage (table 5). The contribution varies considerably by



(a) Partial TTIQ.



(b) Optimal TTIQ.

Figure 1. Combined effects of vaccination and PHSM scenarios on COVID-19 transmission potential under the ‘Transmission reducing’ vaccination scenario assuming only partial (a) or optimal (b) TTIQ effectiveness, due to high caseloads. (NB the logarithmic scale of the y-axis enables comparison of the multiplicative effect sizes of these measures without depending on the order in which they are plotted.)

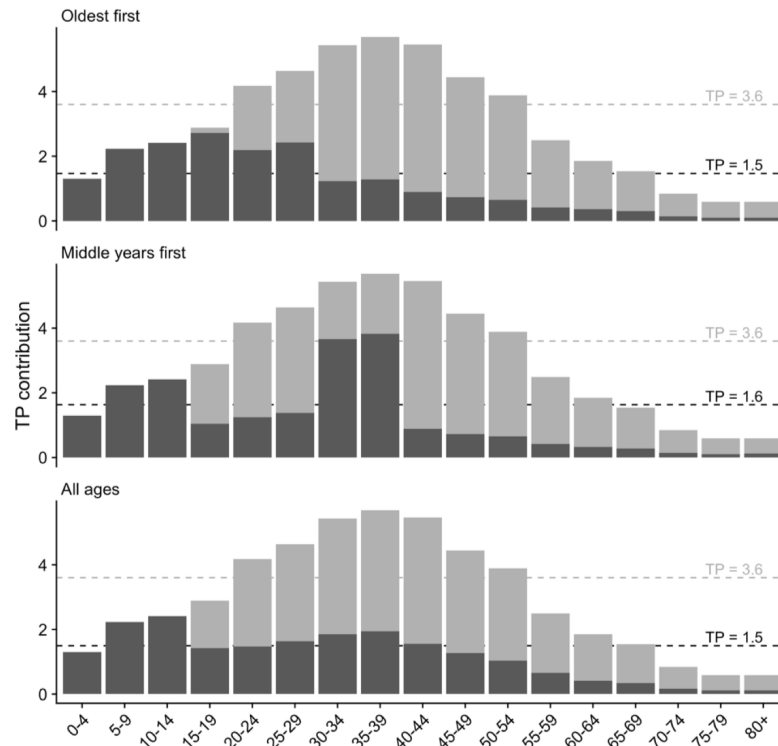


Figure 2. Impact of the four different vaccine allocation strategies on TP by age category, resulting in the overall TP achieved by 70% age eligible population coverage. Dark grey represents TP contribution after vaccination, and light grey in the absence of vaccination. Other coverage levels (50, 60 and 80% are in figures S2a-c). Dashed lines correspond to whole population differences in TP with age-group interactions included.)

251 age-group due to differential mixing rates (figure 2, and figures S3, S4, and S5), and while a transmission
 252 reducing allocation strategy tends to best reduce TP as intended the effect is slight, and the advantage
 253 depends on the overall coverage level of vaccination. Vaccinating the 40+ years first tended to perform
 254 worst at lower levels of coverage, requiring the largest proportion of time under strict PHSMs, however
 255 this became unimportant at higher levels of vaccination.

256 Tables 6 and 7 compare the proportion of time that would need to be spent with high PHSM on top of
 257 ongoing light restrictions to maintain case counts at some level, by vaccine coverage and allocation
 258 strategy. We assume periodic switching between low PHSM and high PHSM over a long period with
 259 the same vaccination coverage. With long-term coverage held at 50%, 60%, or 70%, high PHSM would
 260 be needed for significant fractions of time (18-89%) if caseloads escalate, leading to 'partial' TTIQ
 261 effectiveness. For the 'optimal' TTIQ scenario and an achieved adult population coverage of 70%, high
 262 PHSM would be needed rarely if at all.

Table 5. Scaled values of Delta variant transmission potential (TP) for 50%, 60%, 70% and 80% population vaccination coverage for each allocation strategy, with vaccines delivered per 4. We use a baseline TP of 3.6, which corresponds to TP under baseline PHSMs and partial TTIQ.

Allocation strategy	Eligible population coverage (16+)			
	50%	60%	70%	80%
Oldest first	2.1	1.7	1.5	1.3
40+ years first	2.1	1.9	1.6	1.3
All adults	2	1.7	1.5	1.3
Transmission reducing	2.1	1.8	1.4	1.3

Table 6. Percentage of time high PHSM would need to be in place for long-term control, with reversion to low PHSM at other times, for 50%, 60%, 70% and 80% population coverage achieved under the three age-based allocation strategies. These scenarios assume partial TTIQ effectiveness, under high caseloads. Standard age (60+) and dosing interval (12 weeks) recommendations are assumed for AZ vaccine.

Allocation strategy	Eligible population coverage (16+)			
	50%	60%	70%	80%
Oldest first	82%	49%	18%	0%
40+ years first	89%	67%	39%	2%
All adults	75%	46%	22%	0%
Transmission reducing	87%	52%	10%	0%

Table 7. Percentage of time high PHSM would need to be in place for long-term control, with reversion to low PHSM at other times, for 50%, 60%, 70% and 80% population coverage achieved under the three age-based allocation strategies. These scenarios assume optimal TTIQ effectiveness, under high caseloads. Standard age (60+) and dosing interval (12 weeks) recommendations are assumed for AZ vaccine.

Allocation strategy	Eligible population coverage (16+)			
	50%	60%	70%	80%
Oldest first	42%	9%	0%	0%
40+ years first	49%	27%	0%	0%
All adults	35%	6%	0%	0%
Transmission reducing	47%	12%	0%	0%

263 Figure 3 represents the proportion of time spent under each of the restriction stringency settings
 264 for different levels of vaccine coverage and intensity of case finding and management strategies, with
 265 corresponding costs of these restrictions as estimated by Treasury shown on the right of the figure
 266 [13]. These combined outputs demonstrate the substantive cost savings associated with avoidance of
 267 lockdown and provided additional justification for delaying reopening until achieving 70% threshold
 268 vaccine coverage. The overlay of some degree of social measures at this threshold supported transmission
 269 reduction and helped to maintain the effectiveness of an active case finding strategy focused on minimising
 270 health impacts. At 80% coverage these restrictions could be eased without any envisaged lockdown
 271 requirement.

272 DISCUSSION

273 This work formed the basis of a significant contribution to easing of COVID-19 restrictions in Australia
 274 in late 2021 by providing a structured framework to explore the effect of management decisions on
 275 transmission of SARS-CoV-2 in Australia based on contemporary evidence [13, 14, 15, 16]. Specifically,
 276 it covers the pandemic period up to mid-late 2021, during which time the Delta variant became established
 277 in several eastern Australian states resulting in imposition of stringent lockdowns to manage transmission
 278 and clinical burden, and closure of interstate borders. For those states, our recommendation of a target
 279 vaccination level of at least 70% 1 was a pathway out of restrictions and a way to reconnect with ‘COVID-
 280 zero’ jurisdictions. In the other states, high vaccine coverage provided confidence that COVID-19 impacts
 281 could be mitigated sufficiently to avoid substantive health system and social disruption, and at 80%
 282 coverage only minimal social and behavioural measures would be required to support vaccination 1.

283 The scenarios in this study representing a single national COVID-19 epidemic were clearly (and
 284 deliberately) artificial and served to inform high level policy strategy. Beyond defining threshold vaccine
 285 targets, they highlighted the importance of a combination of timely public health responses (TTIQ)
 286 and ongoing social and behavioural measures (PHSMs) to constrain SARS-CoV-2 transmission. It was
 287 recognised that at high caseloads, maintenance of optimal TTIQ was likely infeasible. In such instances,
 288 jurisdictions retained the flexibility to strengthen PHSMs generally or locally (as envisaged in the National
 289 Plan [12]) to regain local epidemic control 3. The required intensity and duration of measures was to be
 290 informed by ongoing situational assessment of transmission and its related health impacts [19].

291 In August 2021 when these analyses were first reported, evidence of vaccine efficacy against acquisi-
 292 tion and onward spread of infection had raised hopes that equitable vaccine distribution could substantially

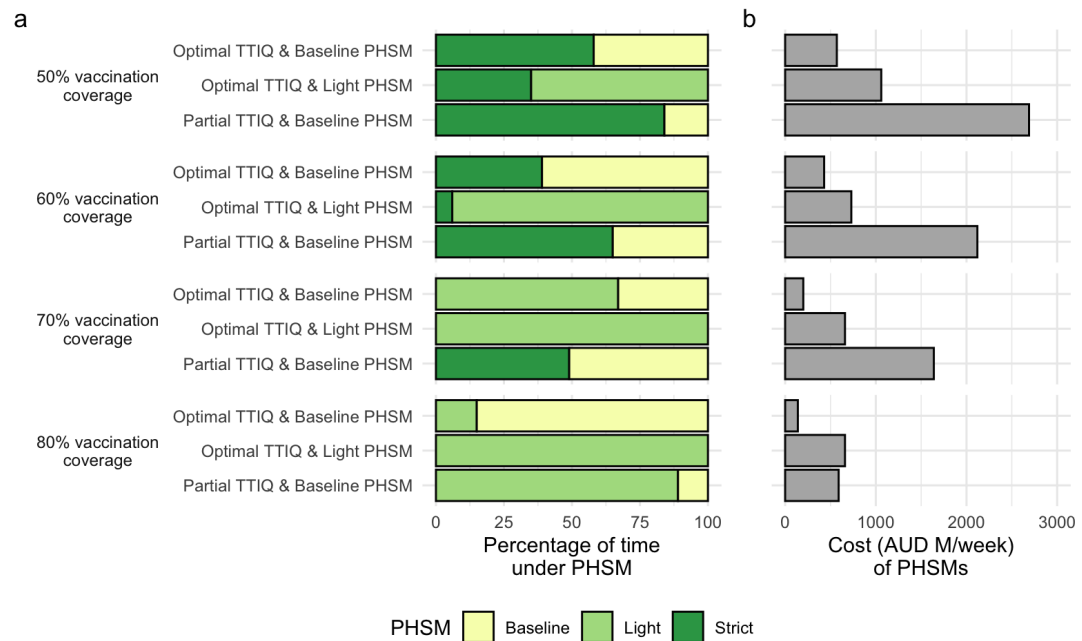


Figure 3. Percentage of time necessary under PHSMs to constrain outbreaks (a) and cost (in millions of Australian dollars per week) of the least expensive PHSM bundle able to constrain outbreaks (b) under each combination of TTIQ effectiveness and ongoing PHSMs, at 50, 60, 70, and 80% vaccination coverage of the 16+ adult population, and an "All adults" vaccine allocation scenario. Data in (a) from S2, S3, S4, and S5, and (b) from [13]

293 limit global transmission and burden of COVID-19 disease [33]. However, studies undertaken by multiple
 294 modelling groups supporting decision making to ease UK lockdowns during the Delta era similarly
 295 cautioned against the lifting of all restrictions ('freedom day') following achievement of vaccine targets,
 296 given imperfect vaccine protection and potential for resurgence [34]. In support of this position, a rapid
 297 rebound of Delta infections following reopening in the Netherlands had necessitated re-imposition of
 298 social measures within only weeks of easing. At that time, global concern about driving emergence
 299 of further variants remained high and strong suppression strategies were favoured by the World Health
 300 Organisation [35].

301 Our findings were aligned with and benchmarked against the UK modelling reports, including the
 302 recommendation for ongoing social constraints, but were novel in two main aspects. For the majority
 303 of Australian jurisdictions, relaxation of border restrictions would allow importation of infections into
 304 'COVID-zero' settings, requiring high confidence in model recommendations. The use of transmission
 305 potential as a novel metric enabled anticipation of case loads in settings where there were presently none
 306 [10]. Given ongoing global discussions about competing health and economic impacts of COVID-19 and
 307 social measures for its control [36], the accompanying Treasury analyses were highly influential in whole
 308 of government decision making. We are unaware of similar publicly available estimates of the costs of
 309 PHSMs under different levels of vaccine coverage from other country settings.

310 The model assumed fixed efficacy of vaccine protection against transmission and disease at a single
 311 time point and did not incorporate waning immunity. At the time of analysis, longevity of population
 312 experience with COVID-19 vaccines was limited and evidence of the rate of loss of protection was sparse.
 313 Israel was the first country to approve booster doses on July 30 2021, initially for individuals aged 60 and
 314 above. This recommendation was prompted by observation of breakthrough infections following primary
 315 vaccination consistent with waning immunity [37]. Booster requirements were then a contentious issue,
 316 with many arguing that broad provision of a third vaccine dose was unnecessary in highly immunised
 317 populations. There were particular concerns about impacts on supply for global vaccine equity, given
 318 persistently low primary vaccine coverage and access in many low and middle income countries [38].

319 Note that the visualisations and metrics presented in this paper were used to evaluate the general
320 viability of different suites of measures, under a very uncertain future epidemiological situation and period
321 of time. These metrics were not sufficient to calculate the likely morbidity and mortality outcomes of
322 COVID-19 under specific rollout strategies and changes given the dynamic nature of vaccination and
323 transmission. Related work extended our initial findings on transmission potential into an agent based
324 model framework to estimate those impacts and is reported elsewhere [39].

325 It was further recognised that the national COVID-19 epidemic had been, and would continue to
326 be, a ‘fire’ fought on multiple fronts across Australia’s geographically distributed population, largely
327 concentrated in coastal urban cities. We recommended that particular attention be paid to groups in whom
328 socioeconomic, cultural and other determinants were anticipated to result in higher transmission and/or
329 disease outcomes. In addition, achievements of vaccination targets at small area level was critical to
330 ensure equity of program impact, as ongoing outbreaks in under-vaccinated populations were considered
331 likely, and would need to be supported by optimisation of localised public health responses. These issues
332 were the focus of subsequent work [11, 39].

333 In reality, the applicability of these defined thresholds to reopening goals was made redundant by im-
334 portation and rapid transmission of the Omicron SARS-CoV-2 variant in December 2021. Dissemination
335 of this and subsequent immune escape variants has led to global reconsideration of the role of vaccination
336 in the control of COVID-19. Moreover, vaccine protection against severe disease appears more robust
337 and sustained than that against transmission, particularly in the context of waning post-immunisation
338 neutralising antibody titres (REF). This emerging understanding has reoriented strategic vaccine use
339 towards promoting population resilience against severe disease outcomes, rather than transmission reduc-
340 tion. Subsequent work focuses on the implications of variant emergence for deployment of vaccines and
341 other control measures in the era of Omicron and beyond.

342 ETHICS

343 The study was undertaken as urgent public health action to support Australia’s COVID-19 pandemic
344 response. The study used data from the Australian National Notifiable Disease Surveillance System
345 (NNDSS) provided to the Australian Government Department of Health under the National Health Security
346 Agreement for the purposes of national communicable disease surveillance. Data from the NNDSS were
347 supplied after de-identification to the investigator team for the purposes of provision of epidemiological
348 advice to government. Contractual obligations established strict data protection protocols agreed between
349 the University of Melbourne and sub-contractors and the Australian Government Department of Health,
350 with oversight and approval for use in supporting Australia’s pandemic response and for publication
351 provided by the data custodians represented by the Communicable Diseases Network of Australia. The
352 ethics of the use of these data for these purposes, including publication, was agreed by the Department of
353 Health with the Communicable Diseases Network of Australia.

354 ACKNOWLEDGEMENTS

355 This work forms part of a wider body of work around supporting Australia’s plan to reopen from COVID-
356 19 restrictions (often known in media as ‘the Doherty modelling’). We thank our many colleagues who,
357 while largely locked in their homes, contributed to this large undertaking with unflinching good grace and
358 humour.

359 We also thank many colleagues at Treasury who helped advise and focus this work, in particular
360 including those contributing to [13].

361 Thanks to David Price for helpful comments on the manuscript.

362 This work was directly funded by the Australian Government Department of Health Office of Health
363 Protection. Additional support was provided by the National Health and Medical Research Council of
364 Australia through its Centres of Research Excellence (SPECTRUM, GNT1170960) and Investigator
365 Grant Schemes (JMcV Principal Research Fellowship, GNT1117140; FMS Emerging Leader Fellowship,
366 2021/GNT2010051).

367 This research was supported by The University of Melbourne’s Research Computing Services and the
368 Petascale Campus Initiative.

REFERENCES

- 369
- 370 [1] World Health Organisation. Weekly epidemiological update on COVID-19 - 10 August 2022.
371 Technical report, August 2022. URL [https://www.who.int/publications/m/item/
372 weekly-epidemiological-update-on-covid-19---10-august-2022](https://www.who.int/publications/m/item/weekly-epidemiological-update-on-covid-19---10-august-2022).
- 373 [2] Ilan Noy, Nguyen Doan, and Tauisi Taupo. The economic risk from COVID-19 in Pacific
374 Island countries: very few infections but lots of pain. *New Zealand Economic Papers*, 56
375 (1):55–66, January 2022. ISSN 0077-9954. doi: 10.1080/00779954.2020.1827016. URL
376 <https://doi.org/10.1080/00779954.2020.1827016>. Publisher: Routledge .eprint:
377 <https://doi.org/10.1080/00779954.2020.1827016>.
- 378 [3] Emeline Han, Melisa Mei Jin Tan, Eva Turk, Devi Sridhar, Gabriel M Leung, Kenji Shibuya,
379 Nima Asgari, Juhwan Oh, Alberto L García-Basteiro, Johanna Hanefeld, Alex R Cook, Li Yang
380 Hsu, Yik Ying Teo, David Heymann, Helen Clark, Martin McKee, and Helena Legido-Quigley.
381 Lessons learnt from easing COVID-19 restrictions: an analysis of countries and regions in Asia
382 Pacific and Europe. *The Lancet*, 396(10261):1525–1534, November 2020. ISSN 0140-6736. doi:
383 10.1016/S0140-6736(20)32007-9. URL [https://www.sciencedirect.com/science/
384 article/pii/S0140673620320079](https://www.sciencedirect.com/science/article/pii/S0140673620320079).
- 385 [4] Kathina Ali, Matthew Iasiello, Joep van Agteren, Teri Mavrangelos, Michael Kyrios, and Daniel B.
386 Fassnacht. A cross-sectional investigation of the mental health and wellbeing among individuals
387 who have been negatively impacted by the COVID-19 international border closure in Australia.
388 *Globalization and Health*, 18(1):12, February 2022. ISSN 1744-8603. doi: 10.1186/s12992-022-
389 00807-7. URL <https://doi.org/10.1186/s12992-022-00807-7>.
- 390 [5] Tung Le, Zacharias Andreadakis, Arun Kumar, Raúl Román, Stig Tollefsen, Melanie Saville, and
391 Stephen Mayhew. The COVID-19 vaccine development landscape. *Nature Reviews Drug Discovery*,
392 April 2020. doi: 10.1038/d41573-020-00073-5.
- 393 [6] Alan D. T. Barrett, Richard W. Titball, Paul A. MacAry, Richard E. Rupp, Veronika von Messling,
394 David H. Walker, and Nicolas V. J. Fanget. The rapid progress in COVID vaccine development and
395 implementation. *npj Vaccines*, 7(1):1–2, February 2022. ISSN 2059-0105. doi: 10.1038/s41541-022-
396 00442-8. URL <https://www.nature.com/articles/s41541-022-00442-8>. Num-
397 ber: 1 Publisher: Nature Publishing Group.
- 398 [7] Seyed M. Moghadas, Pratha Sah, Thomas N. Vilches, and Alison P. Galvani. Can the USA
399 return to pre-COVID-19 normal by July 4? *The Lancet Infectious Diseases*, 21(8):1073–
400 1074, August 2021. ISSN 1473-3099, 1474-4457. doi: 10.1016/S1473-3099(21)00324-
401 8. URL [https://www.thelancet.com/journals/laninf/article/PIIS1473-
402 3099\(21\)00324-8/fulltext](https://www.thelancet.com/journals/laninf/article/PIIS1473-3099(21)00324-8/fulltext). Publisher: Elsevier.
- 403 [8] Grace Ho. Zero-Covid strategy no longer feasible due to highly infectious Delta
404 variant: PM Lee. *The Straits Times*, October 2021. ISSN 0585-3923. URL
405 [https://www.straitstimes.com/singapore/politics/spore-must-press-
406 on-with-strategy-of-living-with-covid-19-and-not-be-paralysed-by](https://www.straitstimes.com/singapore/politics/spore-must-press-on-with-strategy-of-living-with-covid-19-and-not-be-paralysed-by).
- 407 [9] Alicia Blair, Mattia de Pasquale, Valentin Gabeff, Mélanie Rufi, and Antoine Flahault. The End
408 of the Elimination Strategy: Decisive Factors towards Sustainable Management of COVID-19
409 in New Zealand. *Epidemiologia*, 3(1):135–147, March 2022. ISSN 2673-3986. doi: 10.3390/
410 epidemiologia3010011. URL <https://www.mdpi.com/2673-3986/3/1/11>. Number: 1
411 Publisher: Multidisciplinary Digital Publishing Institute.
- 412 [10] Nick Golding, David J Price, Gerard Ryan, Jodie McVernon, James M McCaw, and Freya M Shearer.
413 A modelling approach to estimate the transmissibility of SARS-CoV-2 during periods of high, low,
414 and zero case incidence. *eLife*, 12:e78089, January 2023. ISSN 2050-084X. doi: 10.7554/eLife.78089.
415 URL <https://doi.org/10.7554/eLife.78089>. Publisher: eLife Sciences Publications,
416 Ltd.
- 417 [11] Freya M. Shearer, James M. McCaw, Gerard Ryan, Tianxiao Hao, Nicholas J. Tierney, Michael
418 Lydeamore, Kate Ward, Sally Ellis, James Wood, Jodie McVernon, and Nick Golding. Esti-
419 mating the impact of test-trace-isolate-quarantine systems on SARS-CoV-2 transmission in Aus-
420 tralia, January 2023. URL [https://www.medrxiv.org/content/10.1101/2023.01.
421 10.23284209v1](https://www.medrxiv.org/content/10.1101/2023.01.10.23284209v1). Pages: 2023.01.10.23284209.
- 422 [12] Australian Government. National Plan to transition Australia’s National COVID-19 Response.
423 Technical report, 2021. URL <https://pmtranscripts.pmc.gov.au/sites/default/>

- 424 files/2022-06/national-plan-060821_0.pdf. natplan.
- 425 [13] Department of the Treasury. National Plan to Transition to Australia's National
426 COVID-19 Response: Economic Impact Analysis. Technical report, 2021. URL
427 [https://treasury.gov.au/sites/default/files/2021-08/PDF_Economic_](https://treasury.gov.au/sites/default/files/2021-08/PDF_Economic_Impacts_COVID-19_Response_196731.pdf)
428 [Impacts_COVID-19_Response_196731.pdf](https://treasury.gov.au/sites/default/files/2021-08/PDF_Economic_Impacts_COVID-19_Response_196731.pdf).
- 429 [14] Doherty Modelling Group. DOHERTY MODELLING –FINAL REPORT TO NATIONAL CABI-
430 NET. Technical report, November 2021. URL [https://www.doherty.edu.au/uploads/](https://www.doherty.edu.au/uploads/content_doc/Synthesis_DohertyModelling_FinalReport__NatCab05Nov.pdf)
431 [content_doc/Synthesis_DohertyModelling_FinalReport__NatCab05Nov.](https://www.doherty.edu.au/uploads/content_doc/Synthesis_DohertyModelling_FinalReport__NatCab05Nov.pdf)
432 pdf.
- 433 [15] Doherty Modelling Group. DOHERTY MODELLING INTERIM REPORT TO NATIONAL
434 CABINET. Technical report, September 2021. URL [https://www.doherty.edu.au/](https://www.doherty.edu.au/uploads/content_doc/DOHERTY_MODELLING_INTERIM_REPORT_TO_NATIONAL_CABINET_17TH_SEPTEMBER_2021.pdf)
435 [uploads/content_doc/DOHERTY_MODELLING_INTERIM_REPORT_TO_NATIONAL_](https://www.doherty.edu.au/uploads/content_doc/DOHERTY_MODELLING_INTERIM_REPORT_TO_NATIONAL_CABINET_17TH_SEPTEMBER_2021.pdf)
436 [CABINET_17TH_SEPTEMBER_2021.pdf](https://www.doherty.edu.au/uploads/content_doc/DOHERTY_MODELLING_INTERIM_REPORT_TO_NATIONAL_CABINET_17TH_SEPTEMBER_2021.pdf).
- 437 [16] Doherty Modelling Group. DOHERTY MODELLING REPORT REVISED. Technical re-
438 port, August 2021. URL [http://www.doherty.edu.au/uploads/content_doc/](http://www.doherty.edu.au/uploads/content_doc/DohertyModelling_NationalPlan_and_Addendum_20210810.pdf)
439 [DohertyModelling_NationalPlan_and_Addendum_20210810.pdf](http://www.doherty.edu.au/uploads/content_doc/DohertyModelling_NationalPlan_and_Addendum_20210810.pdf).
- 440 [17] Department of Health and Aged Care. Coronavirus (COVID-19) Common Operating Picture - 24
441 May 2022. Technical report, May 2022. URL [https://www.health.gov.au/resources/](https://www.health.gov.au/resources/publications/coronavirus-covid-19-common-operating-picture-24-may-2022)
442 [publications/coronavirus-covid-19-common-operating-picture-24-may-](https://www.health.gov.au/resources/publications/coronavirus-covid-19-common-operating-picture-24-may-2022)
443 [2022](https://www.health.gov.au/resources/publications/coronavirus-covid-19-common-operating-picture-24-may-2022).
- 444 [18] Nick Golding, Freya M Shearer, Robert Moss, Peter Dawson, Dennis Liu, Joshua V Ross, Rob
445 Hyndman, Pablo Montero-Manso, Gerry Ryan, Tobin South, Jodie McVernon, David J Price, and
446 James M McCaw. Situational assessment of COVID-19 in Australia Technical Report 15 March 2021
447 (released 28 May 2021). Technical report, May 2021.
- 448 [19] James M McCaw, Robert Moss, David J Price, Freya M Shearer, Nick Golding, Tianxiao Hao, Gerry
449 Ryan, Adeshina Adekunle, Peter Dawson, Mingmei Teo, Dylan Morris, Joshua V Ross, Tobin South,
450 Rob Hyndman, Michael Lydeamore, Mitchell O'Hara-Wild, and James Wood. Situational assessment
451 of COVID-19 in Australia Technical Report 22 May 2022 (released 12 August 2022). Technical
452 report, August 2022. URL [https://mspgh.unimelb.edu.au/__data/assets/pdf_](https://mspgh.unimelb.edu.au/__data/assets/pdf_file/0003/4256103/2022-05-22-Technical-report-public-release.pdf)
453 [file/0003/4256103/2022-05-22-Technical-report-public-release.pdf](https://mspgh.unimelb.edu.au/__data/assets/pdf_file/0003/4256103/2022-05-22-Technical-report-public-release.pdf).
- 454 [20] Don Klinkenberg, Christophe Fraser, and Hans Heesterbeek. The Effectiveness of Contact Tracing
455 in Emerging Epidemics. *PLOS ONE*, 1(1):e12, December 2006. ISSN 1932-6203. doi: 10.1371/
456 [journal.pone.0000012](https://journals.plos.org/plosone/article?id=10.1371/journal.pone.0000012). URL [https://journals.plos.org/plosone/article?id=10.](https://journals.plos.org/plosone/article?id=10.1371/journal.pone.0000012)
457 [1371/journal.pone.0000012](https://journals.plos.org/plosone/article?id=10.1371/journal.pone.0000012). Publisher: Public Library of Science.
- 458 [21] Lawrence O. Gostin, Ronald Bayer, and Amy L. Fairchild. Ethical and Legal Challenges Posed
459 by Severe Acute Respiratory Syndrome: Implications for the Control of Severe Infectious Disease
460 Threats. *JAMA*, 290(24):3229–3237, December 2003. ISSN 0098-7484. doi: 10.1001/jama.290.24.
461 [3229](https://doi.org/10.1001/jama.290.24.3229). URL <https://doi.org/10.1001/jama.290.24.3229>.
- 462 [22] Peter Ashcroft, Sonja Lehtinen, and Sebastian Bonhoeffer. Test-trace-isolate-quarantine (TTIQ)
463 intervention strategies after symptomatic COVID-19 case identification. *PLOS ONE*, 17(2):e0263597,
464 February 2022. ISSN 1932-6203. doi: 10.1371/journal.pone.0263597. URL [https://journals.](https://journals.plos.org/plosone/article?id=10.1371/journal.pone.0263597)
465 [plos.org/plosone/article?id=10.1371/journal.pone.0263597](https://journals.plos.org/plosone/article?id=10.1371/journal.pone.0263597). Publisher:
466 Public Library of Science.
- 467 [23] Marcel Salathé, Christian L. Althaus, Richard Neher, Silvia Stringhini, Emma Hodcroft, Jacques
468 Fellay, Marcel Zwahlen, Gabriela Senti, Manuel Battegay, Annelies Wilder-Smith, Isabella Eckerle,
469 Matthias Egger, and Nicola Low. COVID-19 epidemic in Switzerland: on the importance of testing,
470 contact tracing and isolation. *Swiss Medical Weekly*, (11), March 2020. doi: 10.4414/smw.2020.20225.
471 URL <https://smw.ch/article/doi/smw.2020.20225>. Publisher: EMH Media.
- 472 [24] World Health Organisation. WHO SAGE roadmap for prioritizing uses of COVID-19 vaccines in
473 the context of limited supply: an approach to inform planning and subsequent recommendations
474 based on epidemiological setting and vaccine supply scenarios, first issued 20 October 2020, latest
475 update 16 July 2021. Technical report, World Health Organization, July 2021. URL <https://apps.who.int/iris/handle/10665/342917>.
- 476 [25] Department of Health and Aged Care. Op COVID SHIELD National COVID Vaccine Campaign
477 Plan. Technical report, August 2021. URL <https://www.health.gov.au/resources/>
478

- 479 publications/op-covid-shield-national-covid-vaccine-campaign-plan.
480 [26] Therapeutic Goods Administration. AUSTRALIAN PRODUCT INFORMATION –
481 COMIRNATY® (tozinameran) COVID-19 VACCINE [Tris/Sucrose Presentation], 2022.
482 URL [https://www.tga.gov.au/covid-19-vaccine-pfizer-australia-](https://www.tga.gov.au/covid-19-vaccine-pfizer-australia-comirnaty-tozinameran-mrna#documents)
483 [comirnaty-tozinameran-mrna#documents](https://www.tga.gov.au/covid-19-vaccine-pfizer-australia-comirnaty-tozinameran-mrna#documents).
- 484 [27] Therapeutic Goods Administration. AUSTRALIAN PRODUCT INFORMATION VAXZEVRIA®
485 (previously COVID-19 Vaccine AstraZeneca) (ChAdOx1-S) solution for injection, 2022. URL
486 <https://www.tga.gov.au/covid-19-vaccine-astrazeneca-vaxzevria>.
- 487 [28] Australian Technical Advisory Group on Immunisation. ATAGI statement on revised rec-
488 ommendations on the use of COVID-19 Vaccine AstraZeneca, 17 June 2021, June 2021.
489 URL [https://www.health.gov.au/news/atagi-statement-on-revised-](https://www.health.gov.au/news/atagi-statement-on-revised-recommendations-on-the-use-of-covid-19-vaccine-astrazeneca-17-june-2021)
490 [recommendations-on-the-use-of-covid-19-vaccine-astrazeneca-17-](https://www.health.gov.au/news/atagi-statement-on-revised-recommendations-on-the-use-of-covid-19-vaccine-astrazeneca-17-june-2021)
491 [june-2021](https://www.health.gov.au/news/atagi-statement-on-revised-recommendations-on-the-use-of-covid-19-vaccine-astrazeneca-17-june-2021). Publisher: Australian Government Department of Health and Aged Care.
- 492 [29] Kiesha Prem, Alex R. Cook, and Mark Jit. Projecting social contact matrices in 152 countries using
493 contact surveys and demographic data. *PLOS Computational Biology*, 13(9):e1005697, Septem-
494 ber 2017. ISSN 1553-7358. doi: 10.1371/journal.pcbi.1005697. URL [https://journals.](https://journals.plos.org/ploscompbiol/article?id=10.1371/journal.pcbi.1005697)
495 [plos.org/ploscompbiol/article?id=10.1371/journal.pcbi.1005697](https://journals.plos.org/ploscompbiol/article?id=10.1371/journal.pcbi.1005697). Pub-
496 lisher: Public Library of Science.
- 497 [30] Nicholas G. Davies, Petra Klepac, Yang Liu, Kiesha Prem, Mark Jit, and Rosalind M. Eggo. Age-
498 dependent effects in the transmission and control of COVID-19 epidemics. *Nature Medicine*,
499 26(8):1205–1211, August 2020. ISSN 1546-170X. doi: 10.1038/s41591-020-0962-9. URL
500 <https://www.nature.com/articles/s41591-020-0962-9>. Number: 8 Publisher:
501 Nature Publishing Group.
- 502 [31] R Core Team. *R: A Language and Environment for Statistical Computing*. R Foundation for Statistical
503 Computing, Vienna, Austria, 2021. URL <https://www.R-project.org>.
- 504 [32] Gerard Ryan and Nick Golding. `geryan/nat_plan.figs`: Citable version for national plan paper,
505 September 2022. URL <https://doi.org/10.5281/zenodo.7117840>.
- 506 [33] Alexandra B. Hogan, Peter Winskill, Oliver J. Watson, Patrick G. T. Walker, Charles Whittaker, Marc
507 Baguelin, Nicholas F. Brazeau, Giovanni D. Charles, Katy A. M. Gaythorpe, Arran Hamlet, Edward
508 Knock, Daniel J. Laydon, John A. Lees, Alessandra Løchen, Robert Verity, Lilith K. Whittles,
509 Farzana Muhib, Katharina Hauck, Neil M. Ferguson, and Azra C. Ghani. Within-country age-
510 based prioritisation, global allocation, and public health impact of a vaccine against SARS-CoV-2:
511 A mathematical modelling analysis. *Vaccine*, 39(22):2995–3006, May 2021. ISSN 0264-410X.
512 doi: 10.1016/j.vaccine.2021.04.002. URL [https://www.sciencedirect.com/science/](https://www.sciencedirect.com/science/article/pii/S0264410X21004278)
513 [article/pii/S0264410X21004278](https://www.sciencedirect.com/science/article/pii/S0264410X21004278).
- 514 [34] Gareth Iacobucci. Covid-19: “Freedom day” in England could lead to “significant third wave of
515 hospitalisations and deaths,” modelling predicts. *BMJ*, 374:n1789, July 2021. ISSN 1756-1833. doi:
516 10.1136/bmj.n1789. URL <https://www.bmj.com/content/374/bmj.n1789>. Publisher:
517 British Medical Journal Publishing Group Section: News.
- 518 [35] Philip Ball. Why England’s COVID ‘freedom day’ alarms researchers. *Nature*, 595(7868):479–480,
519 July 2021. doi: 10.1038/d41586-021-01938-4. URL [https://www.nature.com/articles/](https://www.nature.com/articles/d41586-021-01938-4)
520 [d41586-021-01938-4](https://www.nature.com/articles/d41586-021-01938-4). Bandiera_abtest: a Cg_type: News Number: 7868 Publisher: Nature
521 Publishing Group Subject_term: Epidemiology, Virology.
- 522 [36] OECD. First lessons from government evaluations of COVID-19 responses: A synthesis.
523 Technical report, Organisation for Economic Co-operation and Development, January 2022. URL
524 [https://www.oecd.org/coronavirus/policy-responses/first-lessons-](https://www.oecd.org/coronavirus/policy-responses/first-lessons-from-government-evaluations-of-covid-19-responses-a-synthesis-483507d6/)
525 [from-government-evaluations-of-covid-19-responses-a-synthesis-](https://www.oecd.org/coronavirus/policy-responses/first-lessons-from-government-evaluations-of-covid-19-responses-a-synthesis-483507d6/)
526 [483507d6/](https://www.oecd.org/coronavirus/policy-responses/first-lessons-from-government-evaluations-of-covid-19-responses-a-synthesis-483507d6/).
- 527 [37] Yinon M. Bar-On, Yair Goldberg, Micha Mandel, Omri Bodenheimer, Laurence Freedman, Nir
528 Kalkstein, Barak Mizrahi, Sharon Alroy-Preis, Nachman Ash, Ron Milo, and Amit Huppert. Protec-
529 tion of BNT162b2 Vaccine Booster against Covid-19 in Israel. *New England Journal of Medicine*,
530 385(15):1393–1400, October 2021. ISSN 0028-4793. doi: 10.1056/NEJMoa2114255. URL
531 <https://doi.org/10.1056/NEJMoa2114255>. Publisher: Massachusetts Medical Society
532 [_eprint: https://doi.org/10.1056/NEJMoa2114255](https://doi.org/10.1056/NEJMoa2114255).
- 533 [38] The Lancet Infectious Diseases. COVID-19 vaccine equity and booster doses. *The Lancet Infec-*

534 *tious Diseases*, 21(9):1193, September 2021. ISSN 1473-3099, 1474-4457. doi: 10.1016/S1473-
535 3099(21)00486-2. URL [https://www.thelancet.com/journals/laninf/article/](https://www.thelancet.com/journals/laninf/article/PIIS1473-3099(21)00486-2/fulltext#coronavirus-linkback-header)
536 [PIIS1473-3099\(21\)00486-2/fulltext#coronavirus-linkback-header](https://www.thelancet.com/journals/laninf/article/PIIS1473-3099(21)00486-2/fulltext#coronavirus-linkback-header). Pub-
537 lisher: Elsevier.

538 [39] Eamon Conway, Camelia Walker, Chris Baker, Michael Lydeamore, Gerard E. Ryan, Trish Camp-
539 bell, Joel C. Miller, Max Yeung, Greg Kabashima, James Wood, Nic Rebuli, James M. Mc-
540 Caw, Jodie McVernon, Nick Golding, David J. Price, and Freya M. Shearer. COVID-19 vaccine
541 coverage targets to inform reopening plans in a low incidence setting, December 2022. URL
542 <https://www.medrxiv.org/content/10.1101/2022.12.04.22282996v1>. Pages:
543 2022.12.04.22282996.

544 SUPPLEMENTARY MATERIALS

545 Fraction of time in lockdown

546 Where a vaccination scenario leads to either a $TP_1 > 1$ with one PHSM bundle and $TP_2 < 1$ with a more
547 stringent bundle, the long-term average TP can be maintained at 1, i.e. with daily case counts neither
548 growing nor shrinking over the long term, by alternating between the two PHSM bundle states. Whilst
549 the first PHSM bundle is in place cases will grow, and whilst the more stringent bundle is in place cases
550 will shrink, leading to an oscillation of case counts around some average level S_1 . This reflects a strategy
551 that might be used to keep cases below a health sector capacity limit in the event that there is long-term
552 community transmission and under the necessary simplifying assumption that vaccination coverage is
553 static.

Where $TP_1 > 1$ and $TP_2 < 1$, we can calculate the fraction of time spent under more stringent PHSMs
as:

$$fraction = -\frac{\log(TP_1)}{\log(TP_2) - \log(TP_1)} \quad (S1)$$

554 Where $TP_1 < 1$ the fraction is zero, and as the more stringent PHSM bundle is not needed. Where $TP_2 > 1$
555 no fraction exists, because even the more stringent PHSM bundle could not control transmission.

556 Note that this fraction of time under more stringent PHSMs is independent of the sequence or duration
557 of the periods under more stringent restrictions; a strategy of rapid switching on and off of restrictions, or
558 one of alternating long periods with or without restrictions would both lead to long-term maintenance
559 of $TP = 1$, provided the fraction of time in each condition is the same and that daily case numbers are
560 either growing or contracting exponentially (i.e., no significant susceptible depletion alters the growth
561 rate), e.g. S_1 . However for practical reasons, a rapid switching between states is unlikely to be used. The
562 overall number of cases (as opposed to the long-term average TP) will however be dependant on the rate
563 of switching, but it is assumed in all calculations in this paper that switching is sufficient to maintain total
564 case numbers below a level which would result in overwhelming of the public healthcare system.

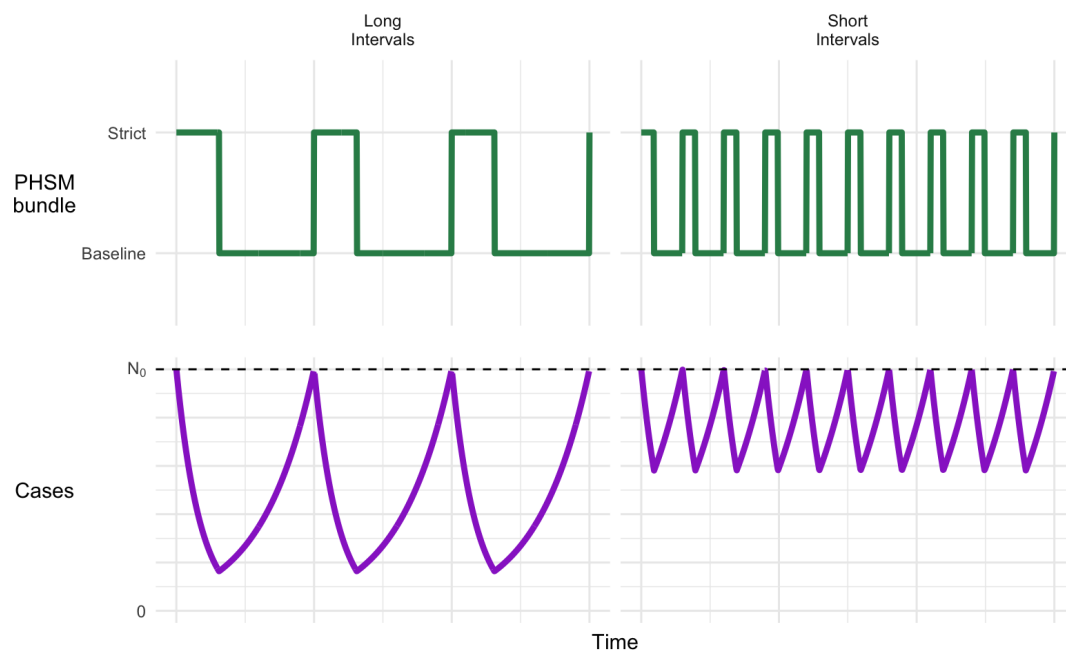


Figure S1. Example of how daily cases may fluctuate over time in response to stringency of PHSMs using 80% vaccination coverage, partial TTIQ and reversion to baseline PHSMs, with either long or short intervals between switching PHSMs. In this example, to maintain a stable $TP \leq 1$ over time requires strict PHSMs for $\geq 31\%$ of the time $3, S2$. Starting with strict PHSMs as here results in cases fluctuating below the initial daily case number (N_0 , dotted line). The length of intervals under respective PHSMs (left vs. right) will not alter the overall average TP (though may affect total case numbers).

565 **Transmission matrix**

566 Population mixing within and between age groups is configured based on widely accepted social contact
567 matrices published by [29]. It has been expanded to include an 80+ age class (assumed to have the same
568 mixing rates as 75-79 years) S2. Age-specific susceptibility and transmissibility estimates from [30] are
569 used and transmission rates have been calibrated to our baseline population-wide TP of 3.6.

570 The greatest mixing intensities are anticipated between individuals aged from 15-24 years, remaining
571 high through adults of working age. While intense school-based mixing is anticipated between children
572 aged 5-14, the transmission matrix accounts for the relatively low observed infectiousness of this age
573 group, associated with a high proportion of asymptomatic infections.

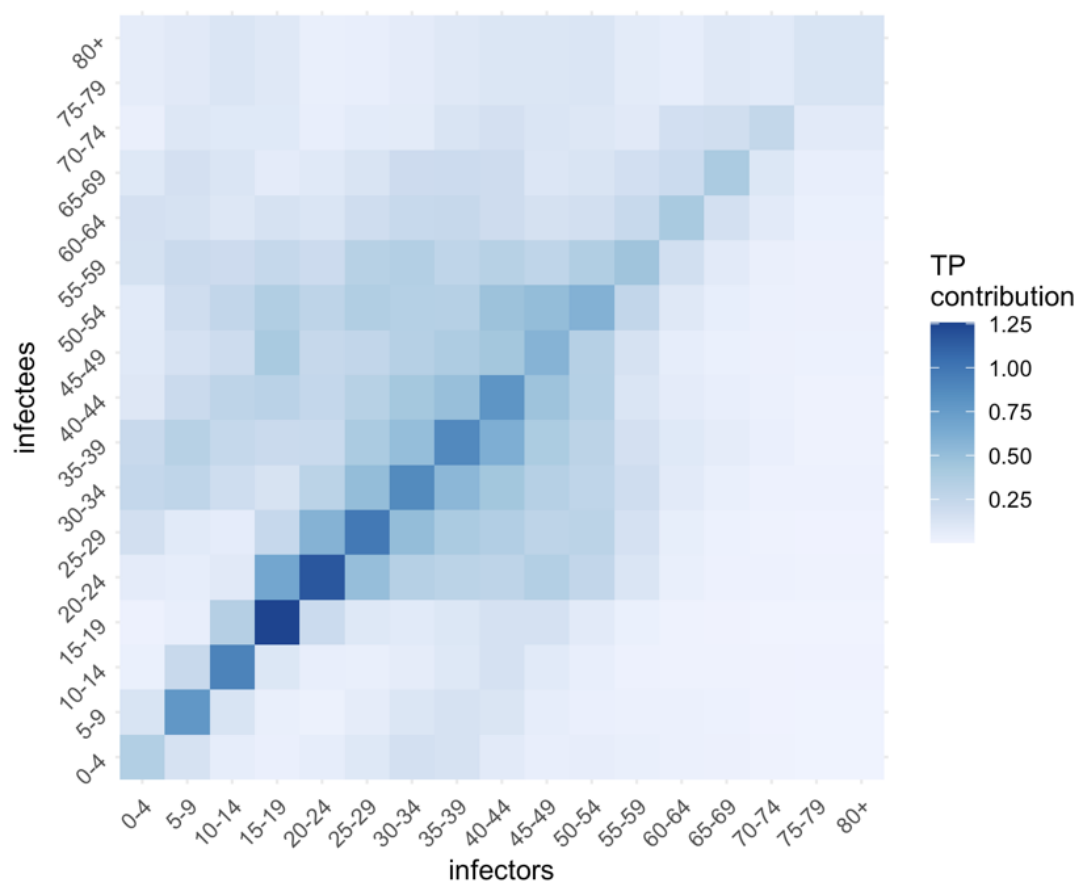


Figure S2. Age-based transmission matrix derived from [29].

574 **Supplementary figures and tables**

Table S1. Detailed description of measures implemented under PHSM ‘bundles’.

	High PHSM	Medium PHSM	Low PHSM	Baseline PHSM
Reference period	VIC 23 August 2020	NSW 1 July 2021	NSW 23 August 2020	NSW March 2021
Stay at home orders	Stay-at-home except essential purposes	Stay-at-home except for work, study and essential purposes	No stay-at-home orders	No stay-at-home orders
Density restrictions	4 m ² rule	2 m ² rule	2 m ² rule	2 m ² rule
Retail trade	Non-essential retailers and venues closed to public. Take away and home delivery only	Increased retail activity, subject to density restrictions. Seated dining for small groups at cafes/restaurants	Social distancing rules apply. Larger groups allowed.	Social distancing rules apply
Work	Only workplaces categorised as permitted work allowed to operate on-site and subject to restrictions	Work from home if possible, capacity limits and restrictions on office space apply	Return to work, but social distancing and capacity restrictions on office space apply	1.5 m ² rule
Schools and childcare	Closed – remote learning only	Closed or graduated return	Open	Open
Capacity restrictions	No gatherings - Non-essential venues etc closed.	Indoor venues closed. Capacity limits restricted to small groups outdoors	Recreational activities allowed and venues open but social distancing and capacity limits apply	Large sporting venues to operate at 70 per cent capacity
Travel restrictions	Essential movements only within 5 or 10 km radius. No intra- or inter-state travel	Non-essential travel limited. No intra- or inter-state travel	No travel restrictions. Interstate travel allowed	No travel restrictions. Interstate travel allowed
Other	Curfew. No household visitors and 2-person limit on exercise	5 visitors to household and limited outdoor gatherings e.g., 10 people	Requirements for record keeping, COVID-safe plans etc.	

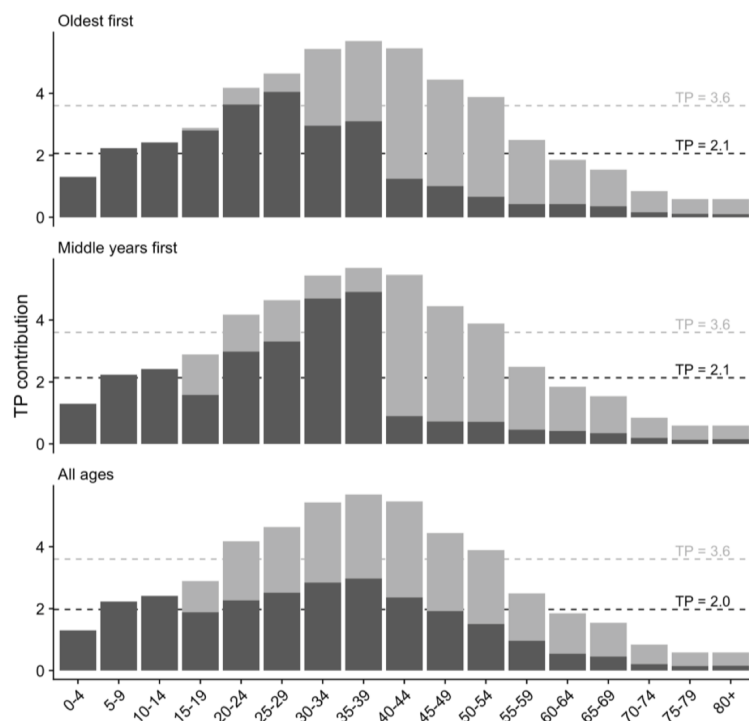


Figure S3. mpact of the four different vaccine allocation strategies on TP by age category, resulting in the overall TP achieved by 50% age eligible population coverage. Dark grey represents TP contribution after vaccination, and light grey in the absence of vaccination. Dashed lines correspond to whole population differences in TP with age-group interactions included (is marginal contribution of each age-group / column sums of transmission matrix)

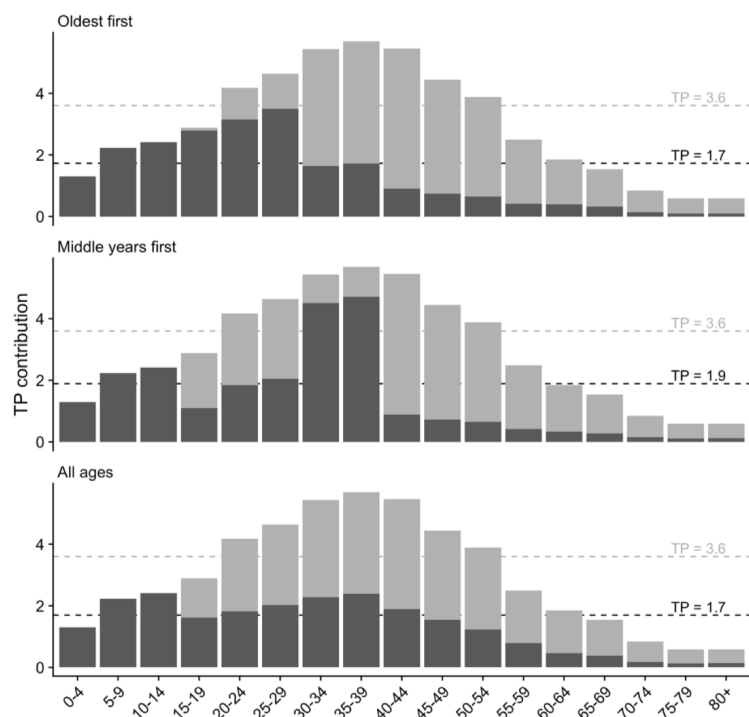


Figure S4. Impact of the four different vaccine allocation strategies on TP by age category, resulting in the overall TP achieved by 60% age eligible population coverage. Dark grey represents TP contribution after vaccination, and light grey in the absence of vaccination. Other coverage levels (50, 60 and 80% are in figures S2a-c). Dashed lines correspond to whole population differences in TP with age-group interactions included (is marginal contribution of each age-group / column sums of transmission matrix)

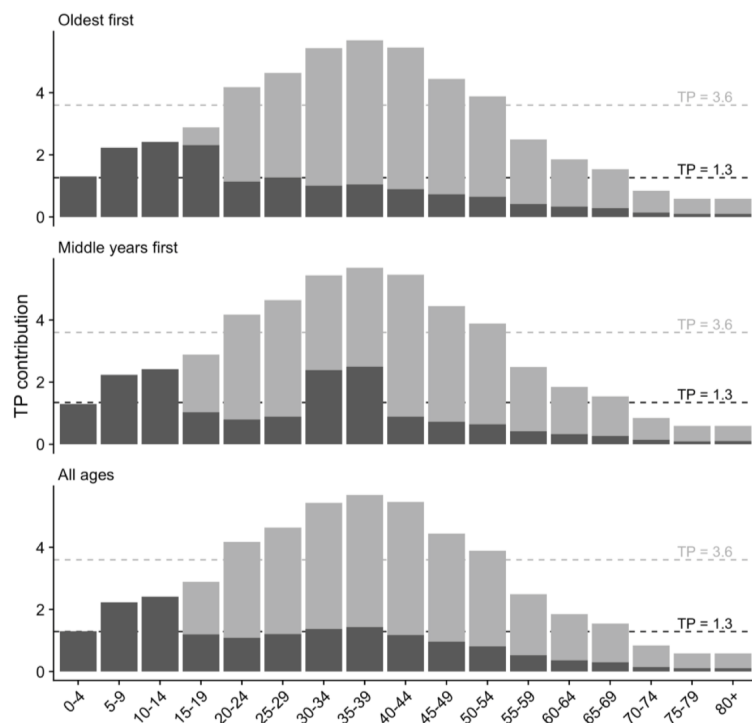


Figure S5. mpact of the four different vaccine allocation strategies on TP by age category, resulting in the overall TP achieved by 80% age eligible population coverage. Dark grey represents TP contribution after vaccination, and light grey in the absence of vaccination. Dashed lines correspond to whole population differences in TP with age-group interactions included (is marginal contribution of each age-group / column sums of transmission matrix)

Table S2. Proportion of time lockdowns are needed to constrain transmission when the TTIQ public health response is only partially effective, due to high caseloads

Vaccine coverage	Allocation Scenario	Light restrictions only	Moderate lockdowns only	Strict lockdowns only
50%	Oldest first	Not possible to constrain outbreak	Not possible to constrain outbreak	89%
	40+ years first	Not possible to constrain outbreak	Not possible to constrain outbreak	93%
	All adults	Not possible to constrain outbreak	Not possible to constrain outbreak	84%
60%	Oldest first	Not possible to constrain outbreak	Not possible to constrain outbreak	67%
	40+ years first	Not possible to constrain outbreak	Not possible to constrain outbreak	78%
	All adults	Not possible to constrain outbreak	Not possible to constrain outbreak	65%
70%	Oldest first	Not possible to constrain outbreak	77%	47%
	40+ years first	Not possible to constrain outbreak	99%	60%
	All adults	Not possible to constrain outbreak	81%	49%
80%	Oldest first	82%	47%	29%
	40+ years first	Not possible to constrain outbreak	59%	36%
	All adults	89%	51%	31%

Table S3. Proportion of time lockdowns are needed to constrain transmission when the TTIQ public health response is optimally effective.

Vaccine coverage	Allocation Scenario	Light restrictions only	Moderate lockdowns only	Strict lockdowns only
50%	Oldest first	Not possible to constrain outbreak	Not possible to constrain outbreak	63%
	40+ years first	Not possible to constrain outbreak	Not possible to constrain outbreak	67%
	All adults	Not possible to constrain outbreak	94%	58%
60%	Oldest first	Not possible to constrain outbreak	67%	41%
	40+ years first	Not possible to constrain outbreak	86%	52%
	All adults	Not possible to constrain outbreak	64%	39%
70%	Oldest first	60%	34%	21%
	40+ years first	97%	56%	34%
	All adults	67%	38%	23%
80%	Oldest first	7%	4%	3%
	40+ years first	29%	17%	10%
	All adults	15%	8%	5%

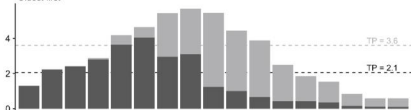
Table S4. Proportion of time lockdowns needed to constrain transmission when the TTIQ public health response is only partially effective, due to high caseloads, and where light restrictions are always in place.

Vaccine coverage	Allocation Scenario	Moderate lockdowns only	Strict lockdowns only
50%	Oldest first	Not possible to constrain outbreak	82%
	40+ years first	Not possible to constrain outbreak	89%
	All adults	Not possible to constrain outbreak	75%
60%	Oldest first	Not possible to constrain outbreak	49%
	40+ years first	Not possible to constrain outbreak	67%
	All adults	Not possible to constrain outbreak	46%
70%	Oldest first	46%	18%
	40+ years first	97%	39%
	All adults	55%	22%
80%	Oldest first	0%	0%
	40+ years first	4%	2%
	All adults	0%	0%

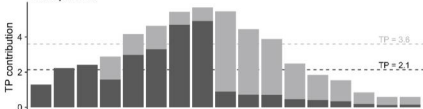
Table S5. Proportion of time lockdowns needed to constrain transmission when the TTIQ public health response is optimally effective and where light restrictions are always in place.

Vaccine coverage	Allocation Scenario	Moderate lockdowns only	Strict lockdowns only
50%	Oldest first	Not possible to constrain outbreak	42%
	40+ years first	Not possible to constrain outbreak	49%
	All adults	87%	35%
60%	Oldest first	23%	9%
	40+ years first	66%	27%
	All adults	15%	6%
70%	Oldest first	0%	0%
	40+ years first	0%	0%
	All adults	0%	0%
80%	Oldest first	0%	0%
	40+ years first	0%	0%
	All adults	0%	0%

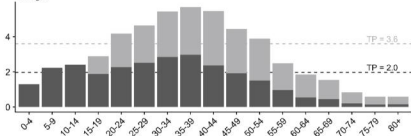
Oldest first

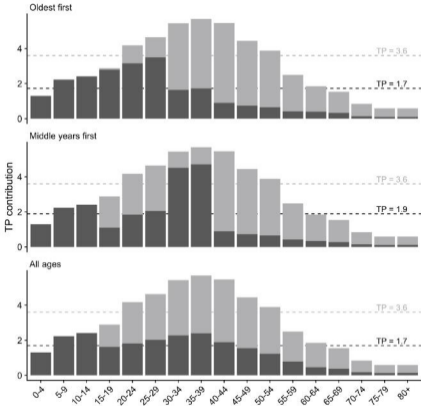


Middle years first

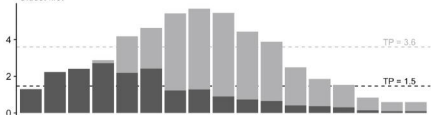


All ages

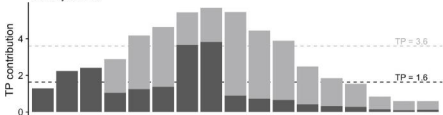




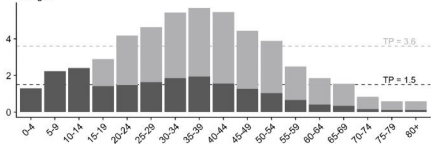
Oldest first

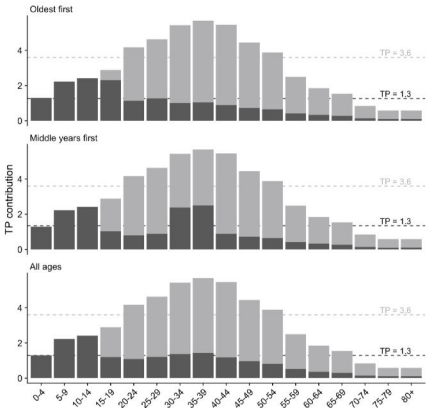


Middle years first

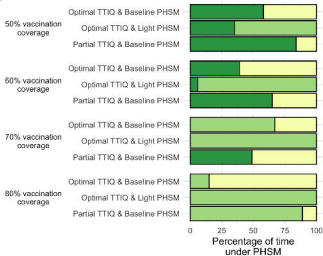


All ages





a



PHSM Baseline Light Strict

b

