

Cerebrospinal fluid CXCL13 identifies a subgroup of people living with HIV with prominent intrathecal synthesis, immune activation, and neurocognitive impairment regardless of effective antiretroviral therapy

Mattia Trunfio 1, Lorenzo Mighetto 2, Laura Napoli 1, Cristiana Atzori 3, Marco Nigra 2, Giulia Guastamacchia 3, Stefano Bonora 1, Giovanni Di Perri 1, Andrea Calcagno 1

Affiliations:

1 Infectious Diseases Unit, Department of Medical Sciences at Amedeo di Savoia Hospital, University of Torino, 10149 Torino, Italy

2 Diagnostic Laboratory Unit, Maria Vittoria Hospital, ASL Città di Torino, 10144 Torino, Italy

3 Unit of Neurology, Maria Vittoria Hospital, ASL Città di Torino, 10144 Torino, Italy

Corresponding author: Mattia Trunfio, Infectious Diseases Unit, Department of Medical Sciences at Amedeo di Savoia Hospital, University of Torino, Torino, Italy. E-mail:

mattia.trunfio@edu.unito.it; phone: +3901143938884.

Keywords: CXCL13; HIV; intrathecal synthesis; blood-brain barrier; humoral response; HIV-associated neurocognitive disorders

Statements and Declarations

Competing interests: the authors declare no competing interests for this work.

Abstract

Background: Plasma C-X-C-motif chemokine ligand-13 (CXCL13) has been linked to disease progression and mortality in people living with HIV (PLWH) and is a candidate target for immune-based strategies for HIV cure. Its role in central nervous system (CNS) of PLWH has not been detailed. We described CSF CXCL13 levels and its potential associations with neurological

NOTE: This preprint reports new research that has not been certified by peer review and should not be used to guide clinical practice.

outcomes.

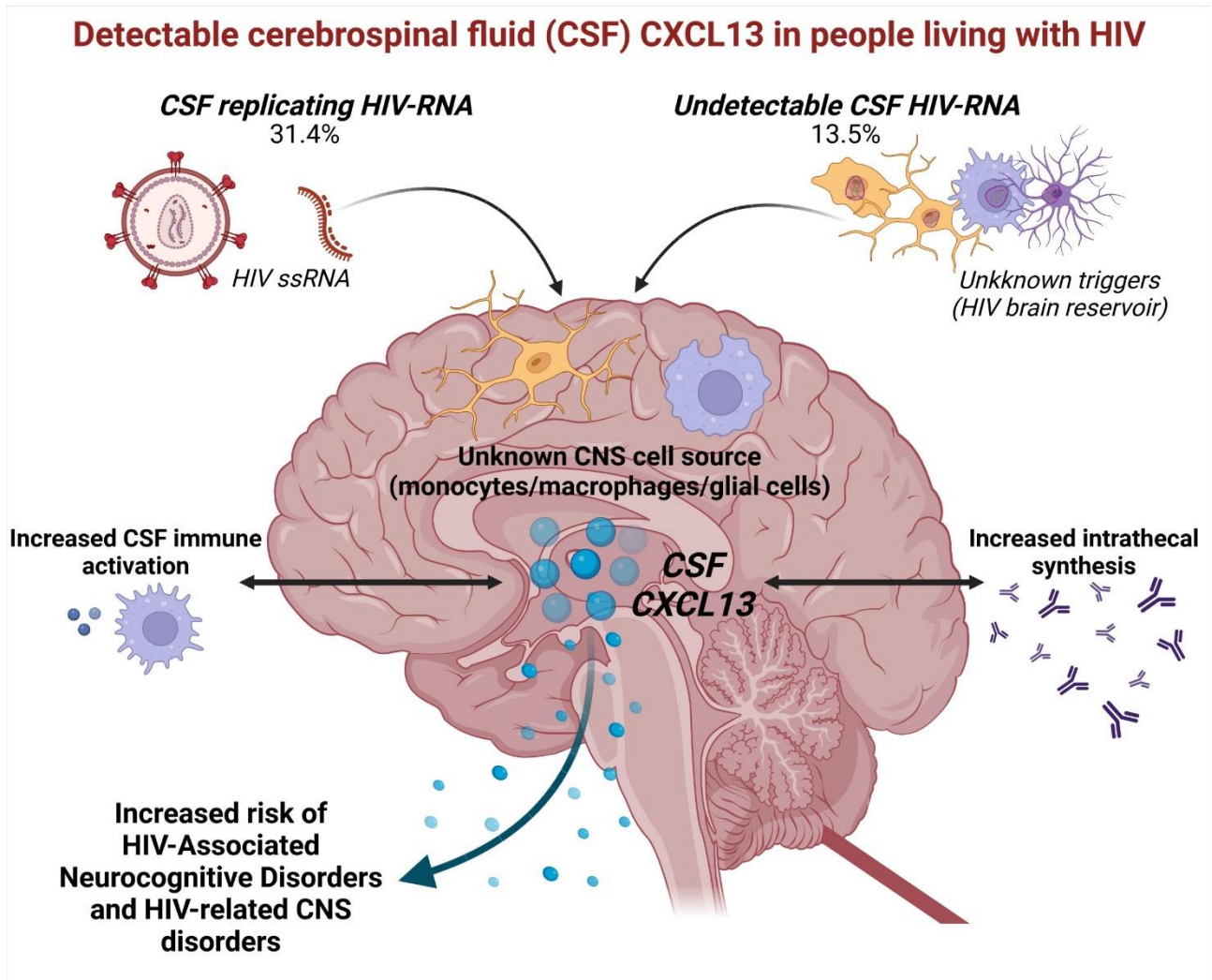
Methods: Cross-sectional study enrolling PLWH without confounding for CXCL13 production.

Subjects were divided according to CSF HIV-RNA in controllers (<20 cp/mL) and viremics. CSF CXCL13, and biomarkers of blood-brain barrier (BBB) impairment, intrathecal synthesis, and immune activation were measured by commercial immunoturbidimetric and ELISA assays. All subjects underwent neurocognitive assessment. Sensitivity analyses were conducted in subjects with intact BBB only.

Results: 175 subjects were included. Prevalence of detectable CSF CXCL13 was higher in viremics (31.4%) compared to controllers (13.5%; OR 2.9 [1.4-6.3], p=0.006), but median CSF levels did not change (15.8 [8.2-91.0] vs 10.0 [8.1-14.2] pg/mL). In viremics (n=86), CXCL13 associated with higher CSF HIV-RNA, proteins, neopterin, Tourtelotte index, and CSF-to-serum albumin ratio. In controllers (n=89), CXCL13 associated with higher CD4+T-cells count, CD4/CD8 ratio, CSF proteins, neopterin, and several intrathecal synthesis markers. Detection of CSF CXCL13 in controllers increased the likelihood of HIV-associated neurocognitive disorders (58.3% vs 28.6%, p=0.041) and HIV-related CNS disorders (8.3% vs 0%, p=0.011). Sensitivity analyses confirmed all these findings.

Conclusions: CSF CXCL13 identified a subgroup of PLWH presenting increased CNS IgG synthesis, and immune activation. In controllers, CSF CXCL13 associated with increased likelihood of neurocognitive impairment and HIV-related CNS disorders.

Graphical abstract



Introduction

Despite the success of combination antiretroviral therapy (cART), people living with HIV (PLWH) still suffer from chronic inflammation and persistent immune activation that eventually can lead to increased risk of mortality and development of non-AIDS events (Boulougoura and Sereti 2016; Sauce et al. 2021; Looby et al. 2022). One of the main driver of such events is represented by the persistence of HIV in cellular and tissue reservoirs, where ongoing viral antigen low-level stimulation takes place with or without residual replication (Ploquin et al. 2016; Avettand-Fènoël et al. 2016). Therefore, therapeutic strategies to tackle residual immune activation through direct or indirect actions on viral reservoirs are needed to improve the life expectancy and the quality of life of PLWH

(Siliciano and Siliciano 2014; Rajasuriar et al. 2015; Hsu and Ananworanich 2018; Board et al. 2021).

Indeed, secondary lymphoid tissues and lymphoid/myeloid cells within them are one of the most important contributors of the whole viral reservoir (Churchill et al. 2016; Cohn et al. 2020). With this perspective, several biomarkers of immune activation/inflammation have been validated, but to date, no single biomarker could account for both lymphoid and myeloid cells activation. Furthermore, humoral immune dysfunction in HIV infection has been partially neglected although HIV-associated B cells perturbations contribute to fuelling immune activation (Moir and Fauci 2014; de Bree and Lynch 2016).

C-X-C motif chemokine ligand 13 (CXCL13) is expressed in all primary, secondary and tertiary lymphoid tissues (such as liver, spleen, lymph nodes, and gut and ectopic lymphoid tissues that develop at sites of chronic inflammation in nonlymphoid organs) by T follicular helper cells (Tfh), follicular dendritic cells, stromal cells, monocytes and macrophages (Legler et al. 1998; Gunn et al. 1998; Carlsen et al. 2004; Cohen-Kaminsky et al. 2014). CXCL13 is the ligand of the 7 transmembrane-domain G protein-coupled chemokine receptor CXCR5, which is expressed by B cells, follicular NK and CD8+ cytotoxic T cells, Tfh, T regulatory, and dendritic cells (Legler et al. 1998; Gunn et al. 1998; Carlsen et al. 2004; Bekele Feyissa et al. 2021). Its main role is regulating the lymphoid tissue development by attracting lymphoid tissue inducer cells during the lymphoid tissue development (Legler et al. 1998; Gunn et al. 1998; Carlsen et al. 2004; Bekele Feyissa et al. 2021). CXCL13 also attracts B cells to these sites and is fundamental for compartmentalization of germinal centers, promoting the localization of Tfh and B cells in the light zone, where several maturation processes for the functioning of these cells occur (Legler et al. 1998; Gunn et al. 1998; Carlsen et al. 2004; Bekele Feyissa et al. 2021). Not surprisingly, this chemokine has been associated with multiple biological processes such as germinal centers activity after infections and vaccination (Masouris et al. 2020; Bekele Feyissa et al. 2021) with eventual antibodies production (Havenar-Daughton et al. 2016; Mabuka et al. 2017; Paris et al. 2017; Dugast et al. 2017), recruitment of cells to inflammatory and cancer sites (Cohen-Kaminsky et al. 2014; Kazanietz et al. 2019), and also with

1 autoimmune diseases (Pan et al. 2022) and hematologic cancers (Hussain et al. 2013). Due to its
2 plethora of activities and effects upon several cell types, CXCL13 can be regarded as a biomarker of
3
4 both lymphoid (humoral and cellular) and myeloid cell activation and networking.
5
6

7
8 In the setting of HIV infection there is growing interest in CXCL13; this chemokine has been linked
9
10 to several HIV-related processes (under investigation for tailored immune-based treatments) and it
11
12 has been involved in predicting vaccine responses (including anti-HIV vaccination in HIV cure
13
14 strategies) (Havenar-Daughton et al. 2016; Mabuka et al. 2017; Dugast et al. 2017; Bekele Feyissa et
15
16 al. 2021; Guo et al. 2022). Compared to healthy HIV-negative controls and HIV-positive elite
17
18 controllers, plasma levels of CXCL13 have been reported higher in HIV acute and chronic stages,
19
20 regardless of cART (Cagigi et al. 2008; Regidor et al. 2011; Mehraj et al. 2019), and they have been
21
22 correlated with disease progression, mortality, microbial translocation, myeloid and lymphoid cell
23
24 activation, and with AIDS-associated B-cells lymphoma development (Hussain et al. 2013; Wada et
25
26 al. 2016; Mehraj et al. 2019; Bekele Feyissa et al. 2021). Despite Tfh seem to represent the largest
27
28 contributor to CXCL13 production, it has been also demonstrated an induction in CXCL13
29
30 production directly made by HIV-1 single strand RNA in monocytes (Cohen et al. 2015).
31
32
33
34
35
36

37
38 As for vaccine responses, higher plasma CXCL13 levels were detected among non-responders
39
40 compared to responders to anti-HBV vaccine with an inverse correlation between CXCL13 and anti-
41
42 HBs levels (Paris et al. 2017), suggesting that chronic hyper-activation of germinal centers could
43
44 impair vaccine responses in PLWH. Furthermore, plasma CXCL13 levels have been correlated with
45
46 anti-HIV broadly neutralizing antibodies development (Havenar-Daughton et al. 2016; Dugast et al.
47
48 2017) and with the expansion of a subset of HIV-specific CD4+ T-helper 1 cells represented by
49
50 circulating Tfh, involved in immunological memory (Niessl et al. 2020). Overall, CXCL13 could
51
52 have a double-faced role: it is involved in potentially protective HIV-specific immunity development,
53
54
55 but it could also drive the hyperinflammatory state, and could contribute to
56
57 hypergammaglobulinemia, to the perturbations in humoral responses, and to the replenishment of
58
59
60
61
62
63
64
65

1 HIV reservoir through the increase in follicular T cells survival and accumulation in lymphoid
2 follicles, the major sanctuary for HIV persistence (Bekele Feyissa et al. 2021).

3
4
5 Immunological responses in different body sites, as well as the HIV reservoirs and immunological
6 sanctuaries, can be compartmentalized (Beck et al. 2016; de Almeida et al. 2016; Stefic et al. 2017).

7
8
9
10 To date, only two studies reported cerebrospinal fluid (CSF) levels of CXCL13 in neurologically
11 healthy PLWH, but HIV infection was used as control group for neuroborreliosis and other central
12 nervous system (CNS) infections and no description of the CXCL13/CXCR5 axis in the CNS of
13 PLWH has been detailed (van Burgel et al. 2011; Bremell et al. 2013). Despite the absence of
14 germinal centers, CNS possess lymphoid cells and monocytes that are able to produce CXCL13
15 (Wang and van de Pavert 2022) together with several cell lines able to silently harbour HIV as cellular
16 reservoir (Wallet et al. 2019). Being CNS an immunological sanctuary, the amount and type of
17 humoral responses within CNS can differ from those that take place in periphery (Beck et al. 2016;
18 de Almeida et al. 2016; Stefic et al. 2017). Therefore, the absence of knowledge about
19 CXCL13/CXCR5 axis within the CNS of PLWH could represent a relevant limitation in the use of
20 this chemokine as therapeutic target or in predictive models for eradication strategies. Furthermore,
21 the assessment of CXCL13 in CSF could inform on several chronic mechanisms underlying the
22 compartmentalized intrathecal synthesis of HIV-specific and -unspecific immunoglobulins. Indeed,
23 despite persistent intrathecal synthesis has been repeatedly observed and associated with clinical and
24 biological unfavourable outcomes, such as blood-brain barrier (BBB) and neurocognitive
25 impairment, its drivers and the antigen targets remain poorly understood in PLWH (Bonnan et al.
26 2015).

27
28
29
30 In the light of this knowledge gap aim of this study was to measure CSF CXCL13 levels in
31 neurologically symptomatic and asymptomatic adult PLWH, both cART-naive and cART-treated,
32 and to describe whether CSF CXCL13 associates with other better known CSF biomarkers of
33
34
35
36
37
38
39
40
41
42
43
44
45
46
47
48
49
50
51
52
53
54
55
56
57
58
59
60
61
62
63
64
65

1
2 inflammation, immune activation, blood-brain barrier (BBB) integrity, and intrathecal synthesis, as
3 well as with viro-immunological parameters.
4

5 **Materials and Methods**

6
7
8 We performed a retrospective cross-sectional study nested in ongoing prospective studies on CSF of
9 HIV-positive patients at our centre, Infectious Diseases Unit, Amedeo di Savoia hospital (Torino,
10 Italy). We enrolled cART-naïve and cART-treated adult patients undergoing lumbar puncture (LP)
11 for clinical or research reasons from January 2010 to January 2020. Inclusion criteria were: age \geq 18
12 years, western-blot confirmed HIV infection, signed written informed consent and the availability of
13 at least 1 mL of stored CSF to allow for CXCL13 measurement. Exclusion criteria were chosen to
14 rule out potential conditions affecting CXCL13 production: LP contraindications, untreated
15 infections by *spirochaetes*, lymphoproliferative disorders with or without CNS involvement,
16 infectious, autoimmune and/or inflammatory CNS disorders, CNS primary or metastatic cancers, and
17 CSF low-level replicating EBV and CMV.
18
19
20
21
22
23
24
25
26
27
28
29
30
31

32
33 The primary objective was to describe CSF CXCL13 concentrations among naïve and on cART HIV-
34 positive adult patients without CNS confounding conditions. Secondary objective were: 1) to assess
35 potential associations of demographic, clinical, and of viro-immunological parameters with CSF
36 CXCL13 levels; 2) to assess potential associations of CSF biomarkers of immune activation, BBB
37 impairment, inflammation and intrathecal synthesis with CSF CXCL13 levels.
38
39
40
41
42
43
44

45
46 Considering CSF HIV-RNA as relevant collider for the relationship between CSF CXCL13 and
47 several of the assessed variables (Cohen et al. 2015; Bonnan et al. 2015; Mehraj et al. 2019), the study
48 population was divided according to the presence (CSF HIV-RNA \geq 20 cp/mL, CSF viremic) or
49 absence (<20 cp/mL, CSF controllers) of replicating HIV within CSF. Furthermore, to reduce
50 potential quantification bias due to passive leakage of plasma CXCL13 (not measured) into CSF,
51 sensitivity analyses were performed in the study population after removing participants with impaired
52
53
54
55
56
57
58
59
60
61
62
63
64
65

1
2
3
4
5
6
7
8
9
10
11
12
13
14
15
16
17
18
19
20
21
22
23
24
25
26
27
28
29
30
31
32
33
34
35
36
37
38
39
40
41
42
43
44
45
46
47
48
49
50
51
52
53
54
55
56
57
58
59
60
61
62
63
64
65

BBB. This was deemed also as a confirmation of the intrathecal origin of the measured immunoglobulin synthesis that was already normalized for BBB permeability.

CXCL13 was measured in CSF samples stored at -80°C and collected between January 2010 to June 2019. The chemokine was measured by standard quantitative sandwich enzyme-linked immunosorbent assay technology (Quantikine ELISA assay; R&D Systems Europe, Ltd. Abingdon, UK). The kit was validated for human fluids and tissue homogenates, including CSF. The assay sensitivity has been estimated by manufacturer to be 1,64 pg/mL and the detection range to be 3,5-10.000 pg/ml. Therefore, all CSF samples with less than 3,5 pg/mL were classified as negative for CXCL13. In terms of assay specificity, the manufacturer tested the assay with several human cytokines and chemokines (CXCL16, ENA-78, GCP-2, GRO α , GRO β , GRO γ , IL-8, IL-8 endothelial cell-derived, IP-10, I-TAC, MIG, NAP-2, SDF-1 α , SDF-1 β); no significant cross-reactivity nor interference was observed.

The remaining CSF analyses were performed immediately after LP collection and consisted of cells, proteins and glucose assessment, HIV-1 RNA quantification by Roche Amplicor assay v2.0 (Hoffman-La Roche, Basel, Switzerland) with a limit of quantification of 20 copies/mL and of the quantitative determination of albumin and immunoglobulin (contemporarily in CSF and serum) by immunoturbidimetric methods (AU 5800, Beckman Coulter, Brea, CA, USA). Reibergram was used to calculate Tourtelotte and Tibbling Index, CSF-to-Serum Albumin ratio (CSAR), IgG Index and the proportion of intrathecal origin of immunoglobulins over the whole amount of CSF immunoglobulins detected (CSF % synthesis), as previously described (Reiber 1995). Reference values were as follows: CSAR <6.5 in subjects of up to 40 years and <8 in patients aged 41 years and above; IgG index <0.7, intrathecal synthesis 0.0%. CSF neopterin and S100 β were measured by validated ELISA methods (DRG Diagnostics, Marburg, Germany and DIAMETRA Srl, Spello, Italy, respectively). Reference values were as follows: neopterin <1.5 ng/ml and S100 β <380 pg/ml.

Demographic, clinical data, and viro-immunological parameters were collected from clinical records.

All the subjects underwent neurocognitive assessment (Trail Making test part A and B, Stroop colour

1 test, Digit Span forward and backward, Digit Symbol, Corsi and Disyllabic Words Serial Repetition
2 tests, Free and Cued Selective Reminding test, Story Recall, Frontal Assessment battery, immediate
3 and delayed recall of Rey-Osterrieth complex figure, phonemic, semantic and alternate verbal fluency
4 and Grooved Pegboard for dominant and non-dominant hand) and 1-Tesla brain magnetic resonance
5 imaging. HIV-associated neurocognitive disorders (HAND) were diagnosed according to Frascati's
6 criteria, as previously detailed (Antinori et al. 2007). At the end of the neurological assessment, the
7 subjects were classified into the following categories: a) asymptomatic: in case of lumbar puncture
8 for research purposes and negative findings at the assessment; b) neurological complaints: in case of
9 reported or objectified neurological signs or symptoms in the absence of CSF, MRI and
10 neurocognitive alterations; c) HAND: in case of altered neurocognitive results compatible with
11 HAND diagnosis and no other alteration found at the end of the assessment; d) HIV-related disorders:
12 in case of symptomatic and asymptomatic CSF viral escape (as previously defined)(Trunfio et al.
13 2019) or HIV meningo-encephalitis.

14 Continuous variables were reported as medians (interquartile range) and discrete variables were
15 reported as absolute number (proportion). Appropriate tests (Mann–Whitney test, Kruskal-Wallis
16 test, Chi-square test, Fisher exact test and Pearson's and Spearman's correlations) were used
17 according to normal and non-normal distribution of the variables assessed by the Shapiro–Wilk
18 statistics. Linear regressions were run to assess co-linearity between CSF CXCL13 levels and
19 variables with significant correlations. The significance threshold to reject the null hypothesis was
20 set at 5% ($\alpha=0.05$, two-tailed predictions). Data analysis was performed using SPSS v27 (IBM Corp.,
21 Armonk, NY, USA).

22 The work has been carried out in accordance with The Code of Ethics of the World Medical
23 Association (Declaration of Helsinki) for experiments involving humans and approved by the Ethics
24 Committee of San Luigi Hospital, Orbassano (PRODIN study, protocol code 103/2015, approved on
25 22 June 2015). Informed consent was obtained from each study participant. This work received

1 funding specifically dedicated to the Department of Medical Sciences from the Italian Ministry for
2 Education, University and Research (Ministero dell'Istruzione, dell'Università e della Ricerca-
3 MIUR) under the programme “Dipartimenti di Eccellenza 2018-2022” (project n.
4 D15D18000410001).
5
6
7
8
9

10 **Results**

11
12
13 Among the 501 LP performed to 364 HIV-positive subjects during the study period, 163 patients
14 were excluded for meeting at least one exclusion criteria; further 26 subjects had no available stored
15 CSF sample. Eventually, 175 patients were included.
16
17
18
19
20

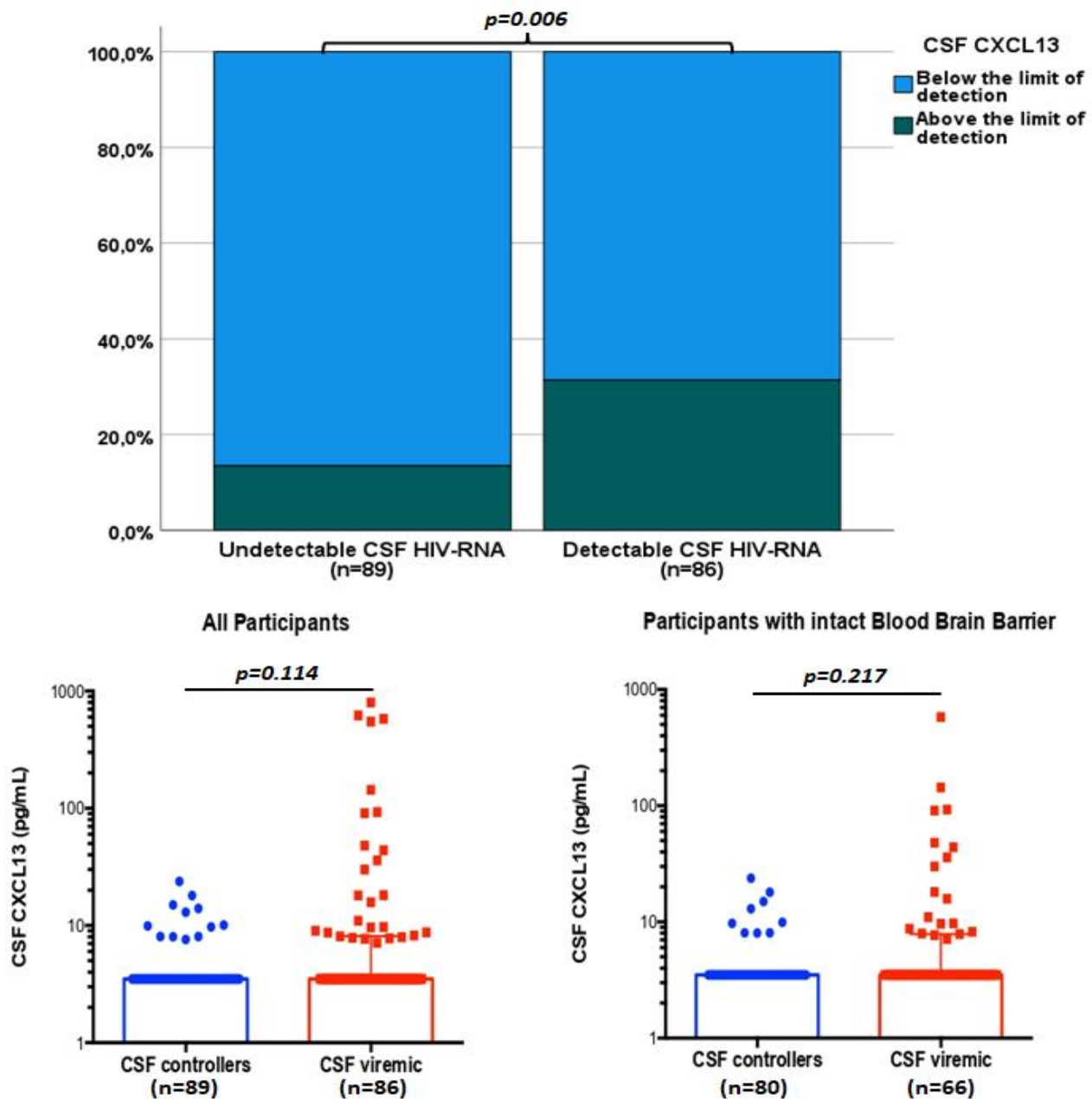
21 **1. CSF CXCL13 in CSF viremic subjects**

22
23
24 Eighty-six subjects had detectable CSF HIV-RNA: 57 were not on cART (66.3%), 20 had
25 compartmentalized or systemic viral failure (23.2%), and 9 started cART since less than 6 months
26 before LP (10.5%). They were mostly Caucasian (82.6%) male (76.7%), with advanced HIV infection
27 despite the relatively recent diagnosis: median CD4+ T cell count and CD4/CD8 ratio were 82 (35-
28 273) cells/mm³ and 0.2 (0.1-0.4). The prevalence of BBB impairment and intrathecal synthesis were
29 23.2% and 54.6%, respectively (as shown in Tab.1).
30
31
32
33
34
35
36
37
38
39

40 Among these, 27 subjects (31.4%) had CSF CXCL13 above the limit of detection of the assay: median
41 CSF CXCL13 level was 15.8 (8.2-91.0) pg/mL (Fig.1). Compared to subjects with undetectable CSF
42 CXCL13, this group presented about two-fold higher CSF HIV-RNA, higher CSF proteins and
43 neopterin levels, an increased CSAR levels (but no significantly larger proportion of BBB
44 impairment), and higher values of Tourtelotte index, as shown in Tab.1. Interestingly, despite more
45 subjects with detectable CSF CXCL13 had intrathecal synthesis (66.7%), the difference was not
46 significant due to the presence of this phenomenon also in 49.1% of subjects with undetectable
47 CXCL13 (Tab.1). At sensitivity analysis, after removing the subjects with altered BBB, those with
48 detectable CSF CXCL13 (19/66, 28.8%; median CSF CXCL13 15.8 (8.2-48.0) pg/mL; Fig.1)
49
50
51
52
53
54
55
56
57
58
59
60
61
62
63
64
65

confirmed to have higher CSF HIV-RNA, neopterin and proteins, as well as higher values of Tourtelotte index (see Suppl.Tab.1). No further demographic, clinical, viro-immunological parameters nor other CSF biomarkers differed between the two groups.

Figure 1. CSF CXCL13 detectability and levels in CSF viremic and controller subjects



CSF CXCL13 were Log10 transformed. Legend: CSF, Cerebrospinal fluid; BBB, Blood-brain barrier. Statistically significant comparisons were highlighted with the respective p-values.

Table 1. Comparison between CSF viremic subjects with versus without detectable CSF CXCL13: demographic, clinical, viro-immunological and CSF biomarkers

Parameter	CSF viremic (n=86)	Detectable CSF CXCL13 (n=27)	Undetectable CSF CXCL13 (n=59)	P
Age, years	45 (38-50)	47 (38-52)	44 (39-50)	0.473
Male sex, n	66 (76.7%)	20 (74.1%)	46 (78.0%)	0.693
Caucasian, n	71 (82.6%)	24 (88.9%)	47 (79.7%)	0.298
Exposure route, n				0.733
MSM	27 (31.4%)	8 (29.6%)	19 (32.2%)	
Heterosexual	30 (34.9%)	11 (40.7%)	19 (32.2%)	
pIVDU	29 (33.7%)	8 (29.6%)	21 (35.5%)	
On cART, n	29 (33.7%)	9 (33.3%)	20 (33.9%)	0.959
Regimen, n				0.498
Dual	5/29 (17.2%)	3/9 (33.3%)	2/20 (10.0%)	
PI-2NRTIs	7/29 (24.1%)	1/9 (11.1%)	6/20 (30.0%)	
nNRTI-2NRTIs	5/29 (17.2%)	1/9 (11.1%)	4/20 (20.0%)	
INI-2NRTIs	5/59 (17.2%)	2/9 (22.2%)	3/20 (15.0%)	
Others	7/29 (24.1%)	2/9 (22.2%)	5/20 (25.0%)	
Plasma HIV-RNA, Log ₁₀ cp/mL	4.99 (2.31-5.83)	4.94 (1.91-5.63)	5.18 (2.38-5.94)	0.829
Undetectable plasma HIV-RNA, n	15 (17.4%)	4 (14.8%)	11 (18.6%)	0.842
CSF HIV-RNA, Log ₁₀ cp/mL	3.21 (2.14-4.41)	4.23 (2.19-4.81)	2.78 (2.11-3.89)	0.025
CSF escape, n	17 (19.8%)	6 (22.2%)	11 (18.6%)	0.701
CD4 count, cells/mm ³	82 (35-273)	72 (34-198)	82 (35-282)	0.962
CD4/CD8 ratio	0.2 (0.1-0.4)	0.2 (0.1-0.3)	0.1 (0.1-0.5)	0.417
CD4 nadir, cells/mm ³	56 (21-159)	70 (26-128)	49 (21-169)	0.579
Time since HIV diagnosis, months	17 (1-151)	31 (1-150)	15 (1-154)	0.666
Clinical category, n				0.959
Neurological complaints	7 (8.1%)	2 (7.4%)	5 (8.4%)	0.850
HAND	15 (17.4%)	4 (14.8%)	11 (18.6%)	0.780
Asymptomatic	38 (44.2%)	12 (44.4%)	26 (44.1%)	0.974
CNS HIV-related	26 (30.2%)	9 (33.3%)	17 (28.8%)	0.709
Previous syphilis, n	10 (11.6%)	1 (3.7%)	9 (15.2%)	0.121
CSF cells	0 (0-1)	0 (0-3)	0 (0-0)	0.837
CSF proteins	47 (35-58)	55 (39-65)	44 (32-55)	0.011
CSF glucose	52 (46-59)	50 (39-58)	54 (48-60)	0.070
Tourtelotte	6.5 (0.1-24.2)	20.4 (4.6-47.1)	5.6 (0.0-16.4)	0.014
Tibbling	0.8 (0.6-1.2)	1.0 (0.6-1.2)	0.8 (0.5-1.1)	0.246
CSAR	5.2 (3.6-7.1)	5.7 (3.8-7.9)	4.8 (3.4-7.1)	0.013
Impaired BBB	20 (23.2%)	8 (29.6%)	12 (20.3%)	0.344
IgG index	0.45 (0.31-0.70)	0.60 (0.34-0.98)	0.40 (0.26-0.62)	0.182
CSF synthesis, n	47 (54.6%)	18 (66.7%)	29 (49.1%)	0.130
CSF % synthesis, %	38.0 (27.0-47.0)	37.5 (28.5-52.0)	38.0 (25.5-46.5)	0.620
Neopterin	1.5 (1.0-3.7)	3.42 (0.95-14.11)	1.32 (0.97-2.69)	<0.001
S100b	127.9 (73.0-206.1)	143.9 (77.6-296.7)	124.1 (73.0-162.3)	0.716

Legend: CXCL13, C-X-C motif chemokine ligand 13; MSM, males who have sex with other males; pIVDU, previous intra-venous drug users; PI, protease inhibitor; NRTIs, nucleoside reverse transcriptase inhibitors; nNRTI, non-nucleoside reverse transcriptase inhibitor; INI, integrase strand transfer inhibitor; CSF, cerebrospinal fluid; HAND, HIV-Associated neurocognitive disorders; CNS, central nervous system; CSAR, cerebrospinal fluid-to-serum albumin ratio; BBB, blood-brain barrier; S100b, S100 beta protein.

1 CSF CXCL13 levels positively correlated with CSF HIV-RNA (ρ 0.470, $p=0.013$; and not with
 2 plasma viremia), Tourtelotte (ρ 0.404, $p=0.037$), CSAR (ρ 0.724, $p<0.001$), IgG index (ρ 0.711,
 3 $p<0.001$), with the proportion of immunoglobulins of intrathecal origin over the whole amount of
 4 CSF immunoglobulins (CSF % synthesis, ρ 0.286, $p=0.046$), CSF S100beta and neopterin levels
 5 (ρ 0.489, $p=0.015$ and 0.803, $p<0.001$, respectively), and with CSF proteins (ρ 0.843, $p<0.001$).
 6
 7 Considering the strong correlation between CSF CXCL13 and CSAR, despite the small sample, we
 8 run the correlations also among the 19 subjects without BBB impairment only. The majority of the
 9 previous findings was confirmed. Specifically, CSF CXCL13 did not correlate anymore with CSAR
 10 and CSF HIV-RNA, but its concentrations were associated with Tourtelotte (ρ 0.832, $p<0.001$),
 11 Tibbling (ρ 0.586, $p=0.008$), IgG index (ρ 0.819, $p<0.001$), CSF % synthesis (ρ 0.321,
 12 $p=0.038$), CSF neopterin (ρ 0.735, $p<0.001$), and CSF cells and proteins (ρ 0.790, $p<0.001$ and
 13 ρ 0.788, $p<0.001$, respectively). We eventually tested the potential co-linearity of these correlations
 14 through bivariate linear regressions. Co-linearity was confirmed between CSF CXCL13 and CSF
 15 HIV-RNA, Tourtelotte, CSAR, IgG index, CSF % synthesis, CSF S100beta, CSF neopterin and CSF
 16 proteins, as shown in Tab.2.
 17
 18
 19
 20
 21
 22
 23
 24
 25
 26
 27
 28
 29
 30
 31
 32
 33
 34
 35
 36

37 **Table 2. Bivariate linear regressions between CSF CXCL13 (pg/mL) and parameters with**
 38 **significant correlations in CSF viremic subjects**

	B (95%CI)	P
CSF HIV-RNA, Log10 cp/mL	76.3 (17.3-135.3)	0.013
Tourtelotte	2.65 (0.18-5.13)	0.037
Tibbling	17.8 (-140.9-176.4)	0.820
CSAR	26.5 (16.1-36.9)	<0.001
IgG index	356.6 (211.3-501.9)	<0.001
CSF % synthesis, %	1.48 (0.024-2.94)	0.046
CSF S100beta, ng/mL	0.99 (0.21-1.77)	0.015
CSF neopterin, pg/mL	15.7 (10.6-20.9)	<0.001
CSF proteins, mg/dL	4.72 (3.4-5.96)	<0.001
CSF cells, cells/mmc	6.24 (-3.06-15.55)	0.179

Legend: CSF, cerebrospinal fluid; CSAR, cerebrospinal fluid-to-serum albumin ratio.

57 **2. CSF CXCL13 in CSF controllers**
 58
 59
 60
 61
 62
 63
 64
 65

1
2
3
4
5
6
7
8
9
10
11
12
13
14
15
16
17
18
19
20
21
22
23
24
25
26
27
28
29
30
31
32
33
34
35
36
37
38
39
40
41
42
43
44
45
46
47
48
49
50
51
52
53
54
55
56
57
58
59
60
61
62
63
64
65

Eighty-nine subjects had undetectable CSF HIV-RNA, of whom 17 (19.1%) with still detectable plasma viremia (median plasma HIV-RNA among them 63 (38-124) cp/mL). They were mostly Caucasian (91.0%) male (69.7%), with a long history of infection (median 10.4 years), valid immunological status (median CD4+T cell count and CD4/CD8 ratio of 475 (336-706) cells/mm³ and 0.8 (0.5-1.2)) and presenting undetectable plasma viremia since a median time of 2.2 years, as shown in Tab.3. The prevalence of BBB impairment and intrathecal synthesis were 10.1% and 28.1%, respectively

Twelve subjects (13.5%) had detectable CSF CXCL13: median CSF CXCL13 level was 10.0 (8.1-14.2) pg/mL and it did not differ significantly compared to the median CSF CXCL13 level in CSF viremic (p=0.114; Fig.1); on the contrary, the proportion of subjects with CSF CXCL13 above the limit of detection of the assay was significantly larger in the presence of CSF replicating virus compared to that of CSF controllers (31.4% vs 13.5%, OR 2.9 (1.4-6.3), p=0.006; Fig.1).

Among CSF controllers, those with detectable CSF CXCL13 presented higher CD4+T cell count and CD4/CD8 ratio, but also higher proportion of HAND and of HIV-related CNS disorders (Fig.2), and higher levels of CSF proteins, neopterin, and of biomarkers of intrathecal synthesis compared to those with undetectable chemokine, as shown in Tab.3. At sensitivity analysis, after removing the subjects with altered BBB, those with detectable CSF CXCL13 (9/80, 11.2%; median CSF CXCL13 of 9.9 (8.0-16.5) pg/mL) confirmed to have higher CD4+T cell count and CD4/CD8 ratio, a higher proportion of HAND (Fig.2), and the same pattern of CSF biomarkers (see Suppl.Tab.2). No further demographic, clinical, viro-immunological parameters nor other CSF biomarkers differed between the two groups.

CSF CXCL13 levels positively correlated with CD4+ T cell count (ρ 0.763, p=0.006), CD4+ T cell nadir (ρ 0.583, p=0.047), and CSF cells (ρ 0.745, p=0.005). Despite the extremely limited sample (n=9), the same correlations were confirmed among subjects with no BBB impairment: CD4+ T cell count (ρ 0.880, p=0.004), CD4+ T cell nadir (ρ 0.688, p=0.041) and CSF cells (ρ 0.768,

p=0.016). We eventually tested the potential co-linearity of these correlations through bivariate linear regressions. Co-linearity was confirmed between CSF CXCL13 and CD4+ T cell count (B 0.009 (95%CI: 0.003-0.015), p=0.006) and CD4+ T cell nadir (B 0.015 (95%CI: 0.0005-0.029), p=0.047), but not with CSF cells (B 4.0 (95%CI: -2.4-10.4), p=0.503).

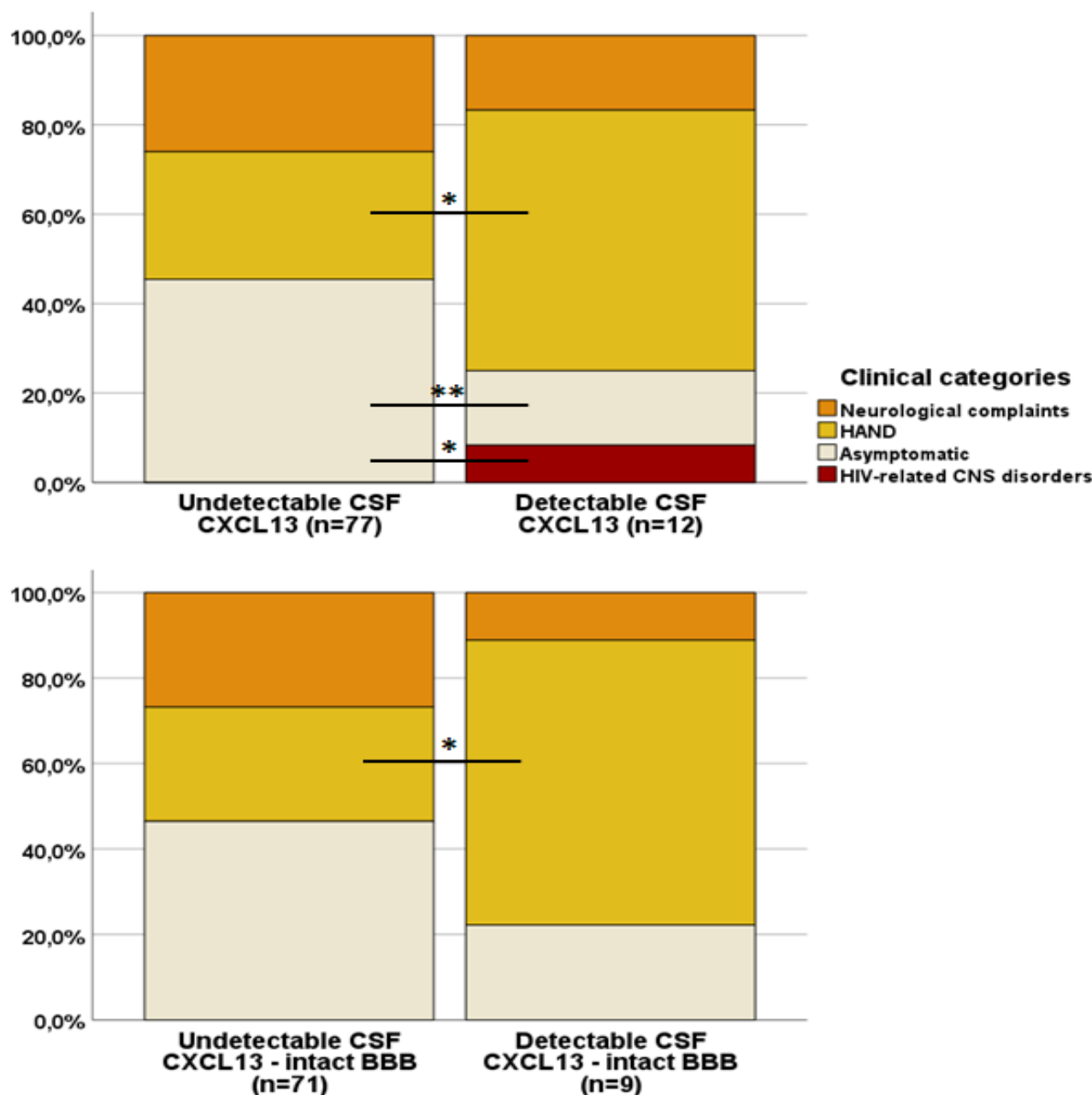
Table 3. Comparison between CSF controllers with versus without detectable CSF CXCL13: demographic, clinical, viro-immunological and CSF biomarkers

Parameter	Subjects with undetectable CSF HIV-RNA (n=89)	Detectable CSF CXCL13 (n=12)	Undetectable CSF CXCL13 (n=77)	P
Age, years	51 (44-57)	54 (45-68)	50 (44-57)	0.600
Male sex, n	62 (69.7%)	8 (66.7%)	54 (70.1%)	0.808
Caucasian, n	81 (91.0%)	12 (100%)	69 (89.6%)	0.242
Exposure route, n				0.310
MSM	39 (43.8%)	5 (41.7%)	34 (44.2%)	
Heterosexual	20 (22.5%)	1 (8.3%)	19 (24.7%)	
pIVDU	30 (33.7%)	6 (50.0%)	24 (31.2%)	
Regimen, n				0.562
Dual	15 (16.8%)	4 (33.3%)	11 (14.3%)	
PI-2NRTIs	31 (34.8%)	3 (25.0%)	28 (36.4%)	
nN-2NRTIs	13 (14.6%)	2 (16.7%)	11 (14.3%)	
INI-2NRTIs	20 (22.5%)	2 (16.7%)	18 (23.4%)	
Others	10 (11.2%)	1 (8.3%)	9 (11.7%)	
Plasma HIV-RNA, Log10 cp/mL	1.28 (0.04-1.28)	1.28 (0.04-1.28)	1.28 (0.04-1.28)	0.558
Detectable plasma HIV-RNA, n	17 (19.1%)	0 (0.0%)	17 (22.1%)	0.070
CD4 count, cells/mm ³	475 (336-706)	560 (394-920)	466 (318-701)	0.019
CD4/CD8 ratio	0.8 (0.5-1.2)	1.2 (0.7-1.9)	0.7 (0.5-1.1)	0.040
CD4 nadir, cells/mm ³	177 (63-263)	201 (48-237)	154 (63-263)	0.509
Length of HIV infection, months	125 (38-225)	59 (38-231)	128 (38-225)	0.793
Length of plasma suppression, months	26 (8-76)	29 (9-49)	26 (8-87)	0.144
Time on last cART regimen, months	12 (8-34)	10 (11-46)	12 (7-25)	0.174
Clinical category, n				0.008
Neurological complaints	22 (24.7%)	2 (16.7%)	20 (25.9%)	0.487
HAND	29 (32.6%)	7 (58.3%)	22 (28.6%)	0.041
Asymptomatic	37 (41.6%)	2 (16.7%)	35 (45.4%)	0.059
CNS HIV-related	1 (1.1%)	1 (8.3%)	0 (0.0%)	0.011
Previous syphilis, n	18 (20.2%)	4 (33.3%)	14 (18.2%)	0.224
CSF cells	0 (0-0)	0 (0-0)	0 (0-0)	0.651
CSF proteins	40 (31-49)	50 (38-58)	39 (30-48)	0.007
CSF glucose	58 (54-64)	63 (54-74)	58 (54-63)	0.066
Tourtelotte	0.0 (0.0-6.4)	1.9 (0.0-10.1)	0.0 (0.0-5.0)	0.027
Tibbling	0.6 (0.4-0.8)	0.8 (0.4-1.4)	0.6 (0.4-0.7)	0.054
CSAR	4.8 (3.8-6.3)	5.5 (3.9-6.2)	4.7 (3.5-6.1)	0.135
Impaired BBB, n	9 (10.1%)	3 (25.0%)	6 (7.8%)	0.065
IgG index	0.30 (0.21-0.45)	0.37 (0.25-0.64)	0.29 (0.19-0.43)	0.021
CSF synthesis, n	25 (28.1%)	7 (58.3%)	18 (23.4%)	0.012
CSF % synthesis, %	34.0 (17.5-51.5)	42.0 (12.0-61.0)	31.0 (19.0-50.7)	0.612

Neopterin	0.6 (0.4-1.2)	1.4 (0.6-2.5)	0.56 (0.36-1.0)	<0.001
S100b	110.2 (77.6-184.6)	136.0 (91.4-207.9)	110.0 (69.1-184.6)	0.088

Legend: CXCL13, C-X-C motif chemokine ligand 13; MSM, males who have sex with other males; pIVDU, previous intra-venous drug users; PI, protease inhibitor; NRTIs, nucleoside reverse transcriptase inhibitors; nNRTI, non-nucleoside reverse transcriptase inhibitor; INI, integrase strand transfer inhibitor; CSF, cerebrospinal fluid; HAND, HIV-Associated neurocognitive disorders; CNS, central nervous system; CSAR, cerebrospinal fluid-to-serum albumin ratio; BBB, blood-brain barrier; S100b, S100 beta protein.

Figure 2. Comparison of the distribution of the neurological clinical categories among CSF controllers with versus without detectable CSF CXCL13



Legend: HAND, HIV-Associated neurocognitive disorders; CNS, Central Nervous system. Statistically significant differences were highlighted: * p<0.05, and **p=0.059.

Discussion

1
2
3 We described for the first time the presence and levels of CSF CXCL13 among cART-naive PLWH
4
5 in advanced stage of infection (31.4%) and among cART-treated PLWH with a long history of
6
7 previously untreated infection but substantial immunological recovery after two years of
8
9 antiretroviral treatment and undetectable CSF HIV-RNA (13.5%). Only two previous studies reported
10
11 CSF CXCL13 in PLWH without evidence of concurrent CNS infections: Bremell et al. detected
12
13 51.8% CSF samples with CXCL13 above the limit of detection of the assay among 27 asymptomatic
14
15 cART-naive subjects (Bremell et al. 2013). The median CSF CXCL13 level was 10 pg/mL, which
16
17 was very similar to the median level we measured in our cART-naive subjects, despite a different
18
19 ELISA assay, higher CD4+T cell count, and lower median CSF HIV-RNA compared to ours (Bremell
20
21 et al. 2013). Van Burgel reported on 7 HIV-positive subjects with no neurological complaints, finding
22
23 extremely low CSF CXCL13 levels (median 1 pg/mL)(van Burgel et al. 2011). The authors concluded
24
25 that CSF CXCL13 increases only during concomitant CNS infections or HIV encephalitis/meningitis,
26
27 as compared to the increased levels they observed in HIV-positive subjects with opportunistic, non-
28
29 opportunistic and HIV-mediated CNS infections (van Burgel et al. 2011) and as described by studies
30
31 on neurosyphilis in PLWH (Marra et al. 2010). While Bremell could not entirely rule out concomitant
32
33 subclinical CNS infections, we extensively assessed our patients excluding even the lowest CSF
34
35 replication of CMV and EBV, that have been previously associated with BBB impairment and
36
37 increased intrathecal synthesis (Bonnar et al. 2015; Caligaris et al. 2021). Therefore, our data do not
38
39 support the necessity of other infections nor of clinically relevant HIV infection of the CNS for the
40
41 intrathecal production of CXCL13. This is also expected considering that human monocytes, which
42
43 are abundant in CNS, have been proved to be able to produce CXCL13 after direct exposure to HIV-
44
45 1 single strand RNA (Cohen et al. 2015).
46
47
48
49
50
51
52
53
54
55
56

57 Among cART-naive subjects, the amount of CSF virus directly correlated with the amount of
58
59 measured CSF CXCL13 demonstrating the strongest increase in CXCL13 per Log10 unit more of
60
61
62
63
64
65

1 HIV-RNA (after IgG index, that is directly linked to intrathecal B and plasma cells activation). It is
2 interesting to note that even in the absence of replicating virus, still 13.5% of PLWH presented
3 detectable CSF CXCL13. Therefore, while our data confirm that replicating HIV-RNA is an
4 important stimulus to CXCL13 production even within CNS, it is not necessary an overt viral
5 replication to induce the production of this chemokine, as already observed for plasma CXCL13
6 (Widney et al. 2005; Regidor et al. 2011; Mehraj et al. 2019). Unfortunately, we were not able to
7 collect any data on CNS reservoir, and due to the invasiveness of CSF collection, we were not able
8 to include an HIV-negative healthy control group to compare prevalence and levels of CSF CXCL13.

9
10
11
12
13
14
15
16
17
18
19
20 Conversely, despite actively replicating virus, 68.6% of cART-naive subjects had no detectable CSF
21 CXCL13. This finding should take into account potential measurement bias, as we did not perform
22 duplicates measurements and some samples remained frozen for up to 10 years before the analysis.
23
24
25
26
27 Indeed, the cell source of CXCL13 within CNS has not been identified yet, the daily recirculation of
28 CXCL13 levels within CSF is unknown (partially limited by performing all the LP in 4-hours span
29 during the morning shift), and CXCL13 polymorphisms may affect CXCL13 levels (Hussain et al.
30 2013). All these considerations may explain the high prevalence of negative CSF CXCL13 despite
31 local viral replication.
32
33
34
35
36
37
38
39

40 Compared to previously reported values of plasma CXCL13 (Widney et al. 2005; Regidor et al. 2011;
41 Mehraj et al. 2019), the CSF levels we detected were significantly lower (of about 1 Log10) both
42 when considering plasma concentrations in cART-naive and in cART-treated PLWH. Indeed, cART
43 seems to reduce but not normalize plasma CXCL13 after up to 2-3 years of follow up (Widney et al.
44 2005; Regidor et al. 2011; Mehraj et al. 2019). The main hypothesis on the persistently increased
45 level of plasma CXCL13 despite viral suppression relies on the potential chronic stimulation of
46 CXCL13-producing cells by HIV proteins within secondary lymphoid tissues. While the observed
47 strength of the correlation between CSF CXCL13 and CSF neopterin, marker of
48 monocyte/macrophages activation, may support the idea that the main cell source of this chemokine
49
50
51
52
53
54
55
56
57
58
59
60
61
62
63
64
65

1 within CNS is represented by monocytes/macrophages, tailored studies should properly address this
2 issue, identifying the cell lines involved in the CNS CXCL13/CXCR5 axis, and clarifying why some
3 subjects do not produce intrathecal CXCL13 despite the presence of an acknowledged trigger such
4 as HIV. This could also help at identifying specific CNS targets for functional cure strategies as it is
5 for peripheral compartments. Recently a subset of CXCR5+ NK located in B cell follicles has been
6 identified (Guo et al. 2022). Their frequency correlated with CXCL13 intensity in lymph nodes of
7 treated PLWH, and, interestingly, an inverse relationship between this NK subset and HIV-
8 DNA/RNA within the follicles was observed, suggesting that these cells may exert an inhibitory
9 activity on HIV reservoir (Guo et al. 2022). Considering our finding and the brain cytoarchitecture,
10 it is likely that the cell sources and the mechanisms underlying CXCL13 production within CNS
11 differ from what has been observed is the periphery. Therapeutic CXCL13 blockade through
12 monoclonal antibodies in animal models of autoimmune diseases has been associated with no evident
13 toxicity, but with outcomes that variably changed from poor to clinically relevant benefit (Henry and
14 Kendall 2010; Wu et al. 2015).

15
16
17
18
19
20
21
22
23
24
25
26
27
28
29
30
31
32
33
34 Another interesting finding consisted in the fact that, despite the presence of CSF CXCL13 was
35 associated with more common and prominent intrathecal synthesis (as median IgG index and as daily
36 intrathecal immunoglobulins synthesis expressed by Tourtelotte index), intrathecal synthesis was
37 recorded even in cART-naive and cART-treated subjects with no detectable CSF CXCL13 (49.1%
38 and 23.4%, respectively). In these cases, the proportion of immunoglobulins directly originating
39 within the CNS over the overall amount of CSF immunoglobulins was also similar to the proportion
40 measured in subjects with CSF CXCL13. B-cell trafficking into CNS and CNS-resident IgG-secreting
41 cells are poorly characterized; most of the intrathecal IgG synthesis associated with the immune
42 response to CNS viral infections appears to be non-specific (up to 95% of the intrathecally produced
43 IgG), including HIV infection (Bonnan et al. 2015). Considering that CSF plasma cells seem to
44 disappear after cART initiation while CSF IgG synthesis is mostly preserved (Bonnan et al. 2015),
45 IgG-secreting cells are probably resident within CNS, but it is still unknown whether these cells are
46
47
48
49
50
51
52
53
54
55
56
57
58
59
60
61
62
63
64
65

1 blood-borne or they mature inside CNS. As we detected intrathecal synthesis even in the absence of
2 CXCL13, which is a B-cells chemoattractant chemokine, it is more likely that plasma cells and IgG-
3
4 secreting cells have been primed, matured and induced to IgG secretion directly within CNS. Further
5
6 studies are warranted to identify also potential alternative pathways involved in CNS homing and
7
8 CSF recirculation of IgG-secreting cells that do not require the activation of CXCL13/CXCR5 axis.
9
10

11
12 The relationship between plasma CXCL13 and CD4+T cell count, CD4/CD8 ratio and CD4+T cells
13
14 nadir is debated, as the plasma levels of this chemokine have been described to be both positively and
15
16 negatively correlated with CD4+T cells (Widney et al. 2005; Mehraj et al. 2019). We observed that
17
18 CSF controllers with detectable CSF CXCL13 had higher CD4+T cells count and higher CD4/CD8
19
20 ratio; our data also suggest that the value of CXCL13 changed according to a positive co-linear
21
22 relationship with current and nadir CD4+ T cell count. The interpretations of this finding could be
23
24 multiple. The association could be a sign of a better immunological functioning, either as higher
25
26 absolute CD4+T cells values, more balanced ratio among T cell subtypes, and chronic humoral
27
28 responses and immuno surveillance perhaps involved in viral control together with antiretroviral
29
30 treatment. Nevertheless the persistence and increased plasma levels of CXCL13 have been associated
31
32 with higher mortality and correlated with other biomarkers of detrimental processes in PLWH, such
33
34 as microbial translocation and immune activation (Wada et al. 2016; Mehraj et al. 2019).
35
36 Furthermore, higher values of CD4+ T cells per sé do not necessarily associate with better
37
38 immunological status, as the relative subsets of circulating CD4+ T cells and their proportion can
39
40 better represent functionality of this cell population. Indeed, CXCR5+ circulating Tfh have been
41
42 reported to be associated with CXCL13 levels and to expand after cART initiation (Niessl et al. 2020);
43
44 despite HIV-specific, this large subset of CD4+ T cells possesses multiple phenotypic and functional
45
46 features less prone to viral suppression than non-circulating HIV-specific Tfh and have been
47
48 correlated with the amount of translation-competent HIV reservoir (Niessl et al. 2020). Interestingly,
49
50 increased presence of CXCR5+CD4+ T cells along with intrathecal CXCL13 elevation has been
51
52 recently described in a broad spectrum of inflammatory CNS diseases, ranging from aseptic
53
54
55
56
57
58
59
60
61
62
63
64
65

1 meningoencephalitis to CNS autoimmune disorders (Harrer et al. 2021). Therefore, another very
2 hypothetical explanation of the observed relationship between the presence of CSF CXCL13 and
3
4 increased CD4+ T cells count could be that this association simply detected the expansion of
5
6 CXCR5+CD4+ T cells that could come along increased levels of the chemokine. It is noteworthy that
7
8 in the study by Harrer et al., increased CSF CXCL13 associated with increased intrathecal
9
10 CXCR5+CD4+ T cell frequencies and absolute number (Harrer et al. 2021). Translating this
11
12 observation to HIV infection, CXCL13/CXCR5 axis could amplify (by a trojan horse mechanism)
13
14 the number of cells harbouring HIV within the CNS, suggesting once more its negative role when
15
16 chronically hyper-activated. CSF controllers with detectable CSF CXCL13 were also characterized
17
18 by increased CSF levels of proteins, neopterin and intrathecal synthesis, all variables related with
19
20 negative CNS outcomes (Bonnan et al. 2015; Motta et al. 2017; Barco et al. 2022). These subjects
21
22 suffered more commonly from HAND compared to subjects with undetectable CSF CXCL13. One
23
24 subject with detectable CSF CXCL13 versus none among those with undetectable chemokine had
25
26 also persistence of HIV-associated dementia and spastic tetraparesis with a brain MRI imaging
27
28 compatible with advanced HIV encephalopathy despite being on effective treatment since more than
29
30 two years. In multiple sclerosis, which shows several overlaps with HIV-related CNS inflammatory
31
32 processes (Bonnan et al. 2015), CSF CXCL13 has been usually reported as moderately higher (20
33
34 pg/mL up to more tha 500 pg/mL) compared to what we measured in our study population (Khademi
35
36 et al. 2011; Alvarez et al. 2013; DiSano et al. 2020; Pitteri et al. 2022). Increased CSF CXCL13 levels
37
38 have been linked with disease activity, relapse rate, number of brain lesions and unfavourable overall
39
40 prognosis (Khademi et al. 2011; Alvarez et al. 2013; DiSano et al. 2020). Interestingly, CSF CXCL13
41
42 levels were used to discriminate mild from severe cognitive impairment in patients suffering from
43
44 multiple sclerosis (Pitteri et al. 2022). In PLWH, increased intrathecal synthesis has been previously
45
46 associated with a worse neurocognitive outcome (Bonnan et al. 2015; De Almeida et al. 2021); herein,
47
48 we have introduced in this relationship a further piece represented by CSF CXCL13 that could be
49
50
51
52
53
54
55
56
57
58
59
60
61
62
63
64
65

1 therefore regarded as a potential biomarker candidate for neurocognition and HAND in this
2 population.
3

4
5 Our study presents different limitations: the small sample size, the retrospective design, the long
6 conservation of frozen CSF samples that may have affected the exact quantification of CXCL13, and
7
8 the large between-subjects variability in CSF CXCL13. Regarding this last issue, while we cannot
9
10 rule out increased variability not limited by repeated measurements per sample, it could also be a sign
11
12 of different physiological and pathological processes involving this chemokine in our sample. Larger
13
14 studies should address this issue stratifying by CSF CXCL13 levels to discriminate potentially
15
16 physiological and favourable levels from pathological concentrations.
17
18
19
20
21

22
23 In conclusion, the presence of detectable CXCL13 CSF concentrations could identify a subgroup of
24
25 HIV-positive subjects presenting increased CNS IgG synthesis, chronic inflammation, and immune
26
27 activation. Among subjects on antiretroviral therapy and undetectable CSF HIV-RNA, the presence
28
29 of CXCL13 in CSF was also associated with increased likelihood of neurocognitive impairment and
30
31 HIV-related CNS disorders. This hypothesis-generating work raises questions that will need to be
32
33 addressed by future prospective studies to identify the cell source of CXCL13 within CNS and its
34
35 potential roles as perpetrator of brain injury and inflammation, as diagnostic biomarker of HAND and
36
37 as target for immune-based therapeutic strategies.
38
39
40
41

42 **References**

43
44 Alvarez E, Piccio L, Mikesell RJ, et al (2013) CXCL13 is a biomarker of inflammation in multiple
45
46 sclerosis, neuromyelitis optica, and other neurological conditions. *Mult Scler* 19:1204–1208.

47
48
49 <https://doi.org/10.1177/1352458512473362>
50

51
52
53 Antinori A, Arendt G, Becker JT, et al (2007) Updated research nosology for HIV-associated
54
55 neurocognitive disorders. *Neurology* 69:1789–1799.

56
57
58
59 <https://doi.org/10.1212/01.WNL.0000287431.88658.8b>
60
61
62
63
64
65

1 Avettand-Fènoël V, Hocqueloux L, Ghosn J, et al (2016) Total HIV-1 DNA, a Marker of Viral
2 Reservoir Dynamics with Clinical Implications. *Clin Microbiol Rev* 29:859–880.
3
4 <https://doi.org/10.1128/CMR.00015-16>
5
6

7
8 Barco A, Orlando S, Stroffolini G, et al (2022) Correlations between cerebrospinal fluid
9 biomarkers, neurocognitive tests, and resting-state electroencephalography (rsEEG) in
10 patients with HIV-associated neurocognitive disorders. *J Neurovirol*.
11
12
13 <https://doi.org/10.1007/s13365-021-01047-y>
14
15
16

17
18
19 Beck SE, Queen SE, Viscidi R, et al (2016) Central nervous system-specific consequences of
20 simian immunodeficiency virus Gag escape from major histocompatibility complex class I-
21 mediated control. *J Neurovirol* 22:498–507. <https://doi.org/10.1007/s13365-015-0420-5>
22
23
24
25

26
27 Bekele Feyissa Y, Chiodi F, Sui Y, Berzofsky JA (2021) The Role of CXCL13 in Antibody
28 Responses to HIV-1 Infection and Vaccination. *Front Immunol* 12:638872.
29
30
31 <https://doi.org/10.3389/fimmu.2021.638872>
32
33
34

35
36 Board NL, Moskovljevic M, Wu F, et al (2021) Engaging innate immunity in HIV-1 cure strategies.
37
38 *Nat Rev Immunol*. <https://doi.org/10.1038/s41577-021-00649-1>
39
40

41
42 Bonnan M, Barroso B, Demasles S, et al (2015) Compartmentalized intrathecal immunoglobulin
43 synthesis during HIV infection - a model of chronic CNS inflammation? *J Neuroimmunol*
44 285:41–52. <https://doi.org/10.1016/j.jneuroim.2015.05.015>
45
46
47
48

49
50 Boulougoura A, Sereti I (2016) HIV infection and immune activation: the role of coinfections. *Curr*
51
52 *Opin HIV AIDS* 11:191–200. <https://doi.org/10.1097/COH.0000000000000241>
53
54

55
56 Bremell D, Mattsson N, Edsbacke M, et al (2013) Cerebrospinal fluid CXCL13 in Lyme
57 neuroborreliosis and asymptomatic HIV infection. *BMC Neurol* 13:2.
58
59
60
61 <https://doi.org/10.1186/1471-2377-13-2>
62
63
64
65

1 Cagigi A, Mowafi F, Phuong Dang LV, et al (2008) Altered expression of the receptor-ligand pair
2 CXCR5/CXCL13 in B cells during chronic HIV-1 infection. *Blood* 112:4401–4410.

3
4
5 <https://doi.org/10.1182/blood-2008-02-140426>
6

7
8 Caligaris G, Trunfio M, Ghisetti V, et al (2021) Blood-Brain Barrier Impairment in Patients Living
9 with HIV: Predictors and Associated Biomarkers. *Diagnostics (Basel)* 11:867.

10
11
12 <https://doi.org/10.3390/diagnostics11050867>
13
14
15

16 Carlsen HS, Baekkevold ES, Morton HC, et al (2004) Monocyte-like and mature macrophages
17 produce CXCL13 (B cell-attracting chemokine 1) in inflammatory lesions with lymphoid
18

19 neogenesis. *Blood* 104:3021–3027. <https://doi.org/10.1182/blood-2004-02-0701>
20
21
22

23
24 Churchill MJ, Deeks SG, Margolis DM, et al (2016) HIV reservoirs: what, where and how to target
25 them. *Nat Rev Microbiol* 14:55–60. <https://doi.org/10.1038/nrmicro.2015.5>
26
27
28

29
30 Cohen KW, Dugast A-S, Alter G, et al (2015) HIV-1 single-stranded RNA induces CXCL13
31 secretion in human monocytes via TLR7 activation and plasmacytoid dendritic cell-derived
32 type I IFN. *J Immunol* 194:2769–2775. <https://doi.org/10.4049/jimmunol.1400952>
33
34
35
36
37
38

39 Cohen-Kaminsky S, Ranchoux B, Perros F (2014) CXCL13 in tertiary lymphoid tissues: sites of
40 production are different from sites of functional localization. *Am J Respir Crit Care Med*
41
42
43
44 189:369–370. <https://doi.org/10.1164/rccm.201307-1389LE>
45
46

47 Cohn LB, Chomont N, Deeks SG (2020) The Biology of the HIV-1 Latent Reservoir and
48 Implications for Cure Strategies. *Cell Host Microbe* 27:519–530.
49

50
51
52 <https://doi.org/10.1016/j.chom.2020.03.014>
53
54
55

56 de Almeida SM, Rotta I, Ribeiro CE, et al (2016) Blood-CSF barrier and compartmentalization of
57 CNS cellular immune response in HIV infection. *J Neuroimmunol* 301:41–48.
58

59
60
61 <https://doi.org/10.1016/j.jneuroim.2016.10.009>
62
63
64
65

1 De Almeida SM, Rotta I, Tang B, et al (2021) IgG intrathecal synthesis in HIV-associated

2 neurocognitive disorder (HAND) according to the HIV-1 subtypes and pattern of HIV RNA
3
4 in CNS and plasma compartments. *J Neuroimmunol* 355:577542.

5
6
7 <https://doi.org/10.1016/j.jneuroim.2021.577542>
8
9

10 de Bree GJ, Lynch RM (2016) B cells in HIV pathogenesis. *Curr Opin Infect Dis* 29:23–30.

11
12 <https://doi.org/10.1097/QCO.0000000000000225>
13
14
15

16 DiSano KD, Gilli F, Pachner AR (2020) Intrathecally produced CXCL13: A predictive biomarker
17
18 in multiple sclerosis. *Mult Scler J Exp Transl Clin* 6:2055217320981396.

19
20
21 <https://doi.org/10.1177/2055217320981396>
22
23
24

25 Dugast A-S, Arnold K, Lofano G, et al (2017) Virus-driven Inflammation Is Associated With the
26
27 Development of bNAbs in Spontaneous Controllers of HIV. *Clin Infect Dis* 64:1098–1104.

28
29
30 <https://doi.org/10.1093/cid/cix057>
31
32

33 Gunn MD, Ngo VN, Ansel KM, et al (1998) A B-cell-homing chemokine made in lymphoid
34
35 follicles activates Burkitt's lymphoma receptor-1. *Nature* 391:799–803.

36
37
38 <https://doi.org/10.1038/35876>
39
40

41 Guo A-L, Jiao Y-M, Zhao Q-W, et al (2022) Implications of the accumulation of CXCR5+ NK
42
43 cells in lymph nodes of HIV-1 infected patients. *EBioMedicine* 75:103794.

44
45
46 <https://doi.org/10.1016/j.ebiom.2021.103794>
47
48
49

50 Harrer C, Otto F, Pilz G, et al (2021) The CXCL13/CXCR5-chemokine axis in neuroinflammation:
51
52 evidence of CXCR5+CD4 T cell recruitment to CSF. *Fluids Barriers CNS* 18:40.

53
54
55 <https://doi.org/10.1186/s12987-021-00272-1>
56
57
58
59
60
61
62
63
64
65

1 Havenar-Daughton C, Lindqvist M, Heit A, et al (2016) CXCL13 is a plasma biomarker of
2 germinal center activity. Proc Natl Acad Sci U S A 113:2702–2707.

3
4 <https://doi.org/10.1073/pnas.1520112113>
5
6
7

8 Henry RA, Kendall PL (2010) CXCL13 blockade disrupts B lymphocyte organization in tertiary
9 lymphoid structures without altering B cell receptor bias or preventing diabetes in nonobese
10 diabetic mice. J Immunol 185:1460–1465. <https://doi.org/10.4049/jimmunol.0903710>
11
12
13
14
15

16 Hsu DC, Ananworanich J (2018) Immune Interventions to Eliminate the HIV Reservoir. Curr Top
17 Microbiol Immunol 417:181–210. https://doi.org/10.1007/82_2017_70
18
19
20
21

22 Hussain SK, Zhu W, Chang S-C, et al (2013) Serum levels of the chemokine CXCL13, genetic
23 variation in CXCL13 and its receptor CXCR5, and HIV-associated non-hodgkin B-cell
24 lymphoma risk. Cancer Epidemiol Biomarkers Prev 22:295–307.
25
26
27
28
29
30
31
32
<https://doi.org/10.1158/1055-9965.EPI-12-1122>

33 Kazanietz MG, Durando M, Cooke M (2019) CXCL13 and Its Receptor CXCR5 in Cancer:
34 Inflammation, Immune Response, and Beyond. Front Endocrinol (Lausanne) 10:471.
35
36
37
38
39
40
41
42
<https://doi.org/10.3389/fendo.2019.00471>

43 Khademi M, Kockum I, Andersson ML, et al (2011) Cerebrospinal fluid CXCL13 in multiple
44 sclerosis: a suggestive prognostic marker for the disease course. Mult Scler 17:335–343.
45
46
47
48
49
50
<https://doi.org/10.1177/1352458510389102>

51 Legler DF, Loetscher M, Roos RS, et al (1998) B cell-attracting chemokine 1, a human CXC
52 chemokine expressed in lymphoid tissues, selectively attracts B lymphocytes via
53 BLR1/CXCR5. J Exp Med 187:655–660. <https://doi.org/10.1084/jem.187.4.655>
54
55
56
57
58
59
60
61
62
63
64
65

1
2
3
4
5
6
7
8
9
10
11
12
13
14
15
16
17
18
19
20
21
22
23
24
25
26
27
28
29
30
31
32
33
34
35
36
37
38
39
40
41
42
43
44
45
46
47
48
49
50
51
52
53
54
55
56
57
58
59
60
61
62
63
64
65

Looby SE, Kantor A, Burdo TH, et al (2022) Factors Associated with Systemic Immune Activation Indices in a Global Primary Cardiovascular Disease Prevention Cohort of People with HIV on Antiretroviral Therapy. *Clin Infect Dis* ciac166. <https://doi.org/10.1093/cid/ciac166>

Mabuka JM, Dugast A-S, Muema DM, et al (2017) Plasma CXCL13 but Not B Cell Frequencies in Acute HIV Infection Predicts Emergence of Cross-Neutralizing Antibodies. *Front Immunol* 8:1104. <https://doi.org/10.3389/fimmu.2017.01104>

Marra CM, Tantalo LC, Sahi SK, et al (2010) CXCL13 as a cerebrospinal fluid marker for neurosyphilis in HIV-infected patients with syphilis. *Sex Transm Dis* 37:283–287. <https://doi.org/10.1097/OLQ.0b013e3181d877a1>

Masouris I, Klein M, Ködel U (2020) The potential for CXCL13 in CSF as a differential diagnostic tool in central nervous system infection. *Expert Rev Anti Infect Ther* 18:875–885. <https://doi.org/10.1080/14787210.2020.1770596>

Mehraj V, Ramendra R, Isnard S, et al (2019) CXCL13 as a Biomarker of Immune Activation During Early and Chronic HIV Infection. *Front Immunol* 10:289. <https://doi.org/10.3389/fimmu.2019.00289>

Moir S, Fauci AS (2014) B-cell exhaustion in HIV infection: the role of immune activation. *Curr Opin HIV AIDS* 9:472–477. <https://doi.org/10.1097/COH.0000000000000092>

Motta I, Allice T, Romito A, et al (2017) Cerebrospinal fluid viral load and neopterin in HIV-positive patients with undetectable viraemia. *Antivir Ther* 22:539–543. <https://doi.org/10.3851/IMP3140>

Niessl J, Baxter AE, Morou A, et al (2020) Persistent expansion and Th1-like skewing of HIV-specific circulating T follicular helper cells during antiretroviral therapy. *EBioMedicine* 54:102727. <https://doi.org/10.1016/j.ebiom.2020.102727>

1 Pan Z, Zhu T, Liu Y, Zhang N (2022) Role of the CXCL13/CXCR5 Axis in Autoimmune Diseases.
2 Front Immunol 13:850998. <https://doi.org/10.3389/fimmu.2022.850998>
3

4
5 Paris RM, Milagres LG, Moysi E, et al (2017) Lower Baseline Germinal Center Activity and
6 Preserved Th1 Immunity Are Associated With Hepatitis B Vaccine Response in Treated
7
8 HIV Infection. Pathog Immun 2:66–88. <https://doi.org/10.20411/pai.v2i1.175>
9

10
11 Pitteri M, Magliozzi R, Nicholas R, et al (2022) Cerebrospinal fluid inflammatory profile of
12 cognitive impairment in newly diagnosed multiple sclerosis patients. Mult Scler 28:768–
13
14 777. <https://doi.org/10.1177/13524585211032510>
15
16

17
18 Ploquin MJ, Silvestri G, Müller-Trutwin M (2016) Immune activation in HIV infection: what can
19 the natural hosts of simian immunodeficiency virus teach us? Curr Opin HIV AIDS 11:201–
20
21 208. <https://doi.org/10.1097/COH.000000000000238>
22
23

24
25 Rajasuriar R, Wright E, Lewin SR (2015) Impact of antiretroviral therapy (ART) timing on chronic
26 immune activation/inflammation and end-organ damage. Curr Opin HIV AIDS 10:35–42.
27
28 <https://doi.org/10.1097/COH.000000000000118>
29
30

31
32 Regidor DL, Detels R, Breen EC, et al (2011) Effect of highly active antiretroviral therapy on
33 biomarkers of B-lymphocyte activation and inflammation. AIDS 25:303–314.
34
35 <https://doi.org/10.1097/QAD.0b013e32834273ad>
36
37

38
39 Reiber H (1995) External quality assessment in clinical neurochemistry: survey of analysis for
40 cerebrospinal fluid (CSF) proteins based on CSF/serum quotients. Clin Chem 41:256–263
41
42

43
44 Sauce D, Pourcher V, Ferry T, et al (2021) Immune activation and chronic inflammation: Is there an
45 additional effect of HIV in a geriatric population? Medicine (Baltimore) 100:e25678.
46
47 <https://doi.org/10.1097/MD.00000000000025678>
48
49
50
51
52
53
54
55
56
57
58
59
60
61
62
63
64
65

1 Siliciano JD, Siliciano RF (2014) Recent developments in the search for a cure for HIV-1 infection:
2 targeting the latent reservoir for HIV-1. *J Allergy Clin Immunol* 134:12–19.

3
4 <https://doi.org/10.1016/j.jaci.2014.05.026>
5
6
7

8 Stefic K, Chaillon A, Bouvin-Pley M, et al (2017) Probing the compartmentalization of HIV-1 in
9 the central nervous system through its neutralization properties. *PLoS One* 12:e0181680.

10
11 <https://doi.org/10.1371/journal.pone.0181680>
12
13
14
15

16 Trunfio M, Pinnetti C, Focà E, et al (2019) Cerebrospinal fluid HIV-1 escape according to different
17 thresholds and underlying comorbidities: is it time to assess the definitions? *AIDS* 33:759–

18
19 762. <https://doi.org/10.1097/QAD.0000000000002091>
20
21
22
23

24 van Burgel ND, Bakels F, Kroes ACM, van Dam AP (2011) Discriminating Lyme Neuroborreliosis
25 from Other Neuroinflammatory Diseases by Levels of CXCL13 in Cerebrospinal Fluid ▽. *J*

26
27 *Clin Microbiol* 49:2027–2030. <https://doi.org/10.1128/JCM.00084-11>
28
29
30
31
32

33 Wada NI, Bream JH, Martínez-Maza O, et al (2016) Inflammatory Biomarkers and Mortality Risk
34 Among HIV-Suppressed Men: A Multisite Prospective Cohort Study. *Clin Infect Dis*

35
36 63:984–990. <https://doi.org/10.1093/cid/ciw409>
37
38
39
40

41 Wallet C, De Rovere M, Van Assche J, et al (2019) Microglial Cells: The Main HIV-1 Reservoir in
42 the Brain. *Front Cell Infect Microbiol* 9:362. <https://doi.org/10.3389/fcimb.2019.00362>
43
44
45
46

47 Wang S, van de Pavert SA (2022) Innate Lymphoid Cells in the Central Nervous System. *Frontiers*
48 in Immunology 13:
49

50
51
52
53 Widney DP, Breen EC, Boscardin WJ, et al (2005) Serum levels of the homeostatic B cell

54 chemokine, CXCL13, are elevated during HIV infection. *J Interferon Cytokine Res* 25:702–

55
56 706. <https://doi.org/10.1089/jir.2005.25.702>
57
58
59
60
61
62
63
64
65

Wu X, Guo J, Ding R, et al (2015) CXCL13 blockade attenuates lupus nephritis of MRL/lpr mice.

Acta Histochem 117:732–737. <https://doi.org/10.1016/j.acthis.2015.09.001>

1
2
3
4
5
6
7
8
9
10
11
12
13
14
15
16
17
18
19
20
21
22
23
24
25
26
27
28
29
30
31
32
33
34
35
36
37
38
39
40
41
42
43
44
45
46
47
48
49
50
51
52
53
54
55
56
57
58
59
60
61
62
63
64
65