

1 COVID-19 Vaccination in Pregnancy: The
2 Impact of Multimorbidity and Smoking Status
3 on Vaccine Hesitancy, a Cohort Study of
4 25,111 Women in Wales, UK.

5 Mhereeg M¹, Jones H¹, Kennedy J¹, Seaborne M¹, Parker M¹, Kennedy N¹, Akbari A²,
6 Zuccolo L³, Azcoaga-Lorenzo A⁴, Davies A⁵, Nirantharakumar K⁶, Brophy S¹

7

8 **Affiliations:**

9 ¹National Centre for Population Health and Wellbeing Research, Swansea University
10 Medical School, Faculty of Medicine, Health and Life Science, Swansea, Wales, UK.

11 ²Population Data Science, Swansea University Medical School, Faculty of Medicine, Health
12 and Life Science, Swansea, Wales, UK

13 ³Health Data Science Centre, Fondazione Human Technopole, Milan, Italy

14 ⁴School of Medicine, University of St Andrews, Scotland, UK and Hospital Rey Juan Carlos.
15 Instituto de Investigación Sanitaria Fundación Jimenez Diaz. Madrid. Spain.

16 ⁵Research and Evaluation Division, Public Health Wales, UK.

17 ⁶Institute of Applied Health Research, Birmingham University, Birmingham, UK.

18

19 Corresponding author: m.r.mhereeg@swansea.ac.uk

20

21

22 **Abstract**

23 **Background**

24 Multimorbidity and pregnancy are two risk factors for more severe outcomes after a
25 SARS-CoV-2 infection, thus vaccination uptake is important for pregnant women
26 living with multimorbidity. This study aimed to examine the impact of multimorbidity,
27 smoking status, and demographics (age, ethnic group, area of deprivation) on
28 vaccine hesitancy among pregnant women in Wales using electronic health records
29 (EHR) linkage.

30 **Methods**

31 This cohort study utilised routinely collected, individual-level, anonymised population-
32 scale linked data within the Secure Anonymised Information Linkage (SAIL)
33 Databank. Pregnant women were identified from 13th April 2021 to 31st December
34 2021. Survival analysis was utilised to examine and compare the length of time to
35 vaccination uptake in pregnancy by multimorbidity and smoking status, as well as
36 depression, diabetes, asthma, and cardiovascular conditions independently.
37 Variation in uptake by; multimorbidity, smoking status, and demographics was
38 examined jointly and separately for the independent conditions using hazard ratios
39 (HR) from the Cox regression model. A bootstrapping internal validation was
40 conducted to assess the performance of the models.

41 **Results**

42 Within the population cohort, 8,203 (32.7%) received at least one dose of the
43 COVID-19 vaccine during pregnancy, with 8,572 (34.1%) remaining unvaccinated

44 throughout the follow-up period, and 8,336 (33.2%) receiving the vaccine
45 postpartum. Women aged 30 years or older were more likely to have the vaccine in
46 pregnancy. Those who had depression were slightly but significantly more likely to
47 have the vaccine compared to those without depression (HR = 1.08, 95% CI 1.03 to
48 1.14, $p = 0.02$). Women living with multimorbidity (> 1 health condition) were 1.12
49 times more likely to have the vaccine compared to those living without multimorbidity
50 (HR = 1.12, 95% CI 1.04 to 1.19, $p = 0.001$). Vaccine uptakes were significantly
51 lower among both current smokers and former smokers compared to never smokers
52 (HR = 0.87, 95% CI 0.81 to 0.94, $p < 0.001$ and HR = 0.92, 95% CI 0.85 to 0.98, $p =$
53 0.015 respectively). Uptake was also lower among those living in the most deprived
54 areas compared to those living in the most affluent areas (HR = 0.89, 95% CI 0.83 to
55 0.96, $p = 0.002$). The validated model had similar performance and revealed that
56 multimorbidity, smoking status, age, and deprivation level together have a significant
57 impact on vaccine hesitancy ($p < 0.05$ for all).

58 Conclusion

59 Younger women, living without multimorbidity (zero or only one health condition),
60 current and former smokers, and those living in the more deprived areas are less
61 likely to have the vaccine, thus, a targeted approach to vaccinations may be required
62 for these groups. Women living with multimorbidity are slightly but significantly less
63 likely to be hesitant about COVID-19 vaccination when pregnant.

64 **keywords:** COVID-19 vaccination, pregnancy, vaccine uptake, vaccine hesitancy, SAIL.

65 Background

66 COVID-19 vaccination is recognised as a successful public health measure [1], and
67 national vaccine strategies were implemented during the COVID-19 pandemic.
68 However, an increasing number of the general population perceive vaccinations as
69 dangerous and not needed [1]. Vaccine hesitancy may be more prevalent in different
70 populations [2]. For example, vaccine hesitancy may be more common in pregnant
71 women as they have additional concerns [3]. During the COVID-19 pandemic, the
72 limited data and changes in advice and recommendations regarding vaccination in
73 pregnancy inevitably led to some hesitancy towards being vaccinated among
74 pregnant women [4]. Despite increasing evidence that COVID-19 vaccines are safe
75 and effective for pregnant women, vaccine hesitancy remains high [5].

76 Research is limited on population-level COVID-19 vaccine uptake in pregnancy in
77 the UK. However, in Scotland, a national, prospective cohort study identifying
78 ongoing pregnancies through extensive electronic health records (EHR) linkages
79 showed vaccination rates in pregnant women to be considerably lower than in the
80 general population; 32.3% in pregnant women compared to 77.4% in all women [6].
81 In England, 22.7% of women giving birth in August 2021 had received at least one
82 dose of vaccine. This increased to 32.3% of women who gave birth in September
83 and rose again to 53.7% in December 2021 [7]. In Wales, a mixed methods study
84 utilising routinely collected linked data from the Secure Anonymised Information
85 Linkage (SAIL) Databank and the Born In Wales Birth Cohort found that only 1 in 3
86 pregnant women would have the COVID-19 vaccine during pregnancy, even though
87 2 in 3 reported they would have the vaccination [5]. Despite the overall increase in

88 coverage, the uptake remains lower amongst pregnant women compared to the
89 general population of the same age group [7].

90 Various factors may influence vaccine acceptance or refusal. Multimorbidity is
91 defined as the co-occurrence of two or more long-term health conditions, which can
92 include defined physical and mental health conditions such as diabetes, depression,
93 asthma, and cardiovascular diseases [8]. Long-term health conditions are those that
94 generally last a year or longer and have a significant impact on a person's life [9]. In
95 the United Kingdom (UK), the COVID-19 pandemic has affected expectant mothers'
96 mental health by increasing the prevalence of depression by 47% [10]. Research has
97 found that having pre-existing illnesses or multimorbidity is associated with a lower
98 rate of vaccine refusal [11,12].

99 Health related behaviours may influence vaccine acceptance, such as smoking
100 habits. Smoking status includes the categories of current smoker, former smoker,
101 never smoked, or smoking status unknown. The differences in negative attitudes
102 towards vaccines in general and intentions to vaccinate against COVID-19,
103 specifically by smoking status, has been examined in a sample of adults in the UK
104 [13]. Relative to never smoked and former smokers, current smokers reported
105 significantly higher mistrust of vaccines and any benefits, were more worried about
106 negative future effects, and had a stronger preference for natural immunity. With a
107 high number of smokers belonging to socially clustered and disadvantaged
108 socioeconomic groups, lower vaccine uptake in this group could also heighten health
109 inequalities [13].

110 The determinants of vaccine hesitancy have been explored previously, aiming to
111 create targeted interventions for the most at-risk groups. From 1,203 young adults

112 aged 18-25 in the United States, vaccine hesitancy was significantly higher among
113 young adults who were current smokers (including electronic cigarettes) when
114 compared to non-current smokers (36% vs. 22%) [14]. Moreover, multivariable
115 regression analysis demonstrated that current smokers, compared to non-current
116 smokers, had more than two times the odds of reporting COVID-19 vaccine
117 hesitancy [14]. In a similar study, the prevalence of COVID-19 vaccine hesitancy in
118 the UK was analysed, which reported again that vaccine hesitancy was higher in
119 younger age groups (26.5% in 16–24-year-olds compared to 4.5% in ages 75+) [15].
120 Vaccine acceptance also varied between ethnic groups. Vaccine hesitancy was
121 higher in Black (71.8%) and Pakistani or Bangladeshi (42.3%) ethnic groups and
122 lowest in the White British or Irish group (15.6%) [15].

123 The Office for National Statistics (ONS) investigated hesitancy towards the COVID-
124 19 vaccine based on the Opinions and Lifestyle Survey (OPN) covering the period
125 from 23rd June to 18th July 2021. It was reported that adults living in the most
126 deprived areas of England (based on the Index of Multiple Deprivation) were more
127 likely to report vaccine hesitancy (8%) than adults living in the least deprived areas
128 (2%) [16].

129 The current study aims to examine the impact of multimorbidity, smoking status, and
130 demographics (age, ethnic group, area of deprivation) on vaccine hesitancy among
131 pregnant women in Wales using electronic health records (EHR) linkage. Identifying
132 groups with higher vaccine hesitancy is critical to develop targeted interventions to
133 enhance vaccine uptake rates.

134 Methods

135 Study design and setting

136 A cohort study utilising routinely collected individual-level, anonymised population-
137 scale linked data within the Secure Anonymised Information Linkage (SAIL)
138 Databank. Data sources include general practitioners (GP), hospital admissions,
139 national community child health, maternal indicators, and vaccination data sources.
140 All women recorded as being pregnant on or after 13th April 2021, aged 18 years or
141 older, and eligible for COVID-19 vaccination were identified. They were linked to the
142 COVID-19 vaccination data for dates up to and including 31st December 2021.

143 Data sources and linkage

144 Analysis was undertaken using anonymised population-scale, individual-level linked
145 routinely collected national-scale data available in the SAIL Databank [17,18], which
146 anonymously links a wide range of person-based data employing a unique personal
147 identifier. The linkage includes primary care data (from Wales Longitudinal General
148 Practice (WLGP)) linked with secondary care data (from inpatient hospital
149 admissions, inpatient from Patient Episode Database for Wales (PEDW) and
150 outpatient from Outpatient Database for Wales (OPDW)), pregnancy and maternity
151 related data (from the National Community Child Health (NCCH) and Maternal
152 Indicators (MIDS)) and vaccination data (from the COVID-19 Vaccination Dataset
153 (CVVD)). The primary care data utilises Read codes, which are predominantly 5-digit
154 codes that relate to diagnosis, medication, and process of care codes. The
155 secondary care data uses International Classification of Diseases version 10 (ICD-
156 10) codes for diagnosis and OPCS Classification of Interventions and Procedures

157 version 4 (OPCS-4) surgical interventions. The NCCH comprises information
158 pertaining to birth registration, monitoring of child health examinations, and
159 immunisations. The MIDS data contains data relating to the woman at initial
160 assessment and to the mother and baby (or babies) for all births. In addition to these
161 data sources, the Welsh Demographic Service Dataset (WDSD) was linked to
162 extract Lower-layer Super Output Area (LSOA) version 2011 information associated
163 with area-level deprivation. In particular, the Welsh Index for Multiple Deprivation
164 (WIMD) version 2019 was employed as a proxy to assess socioeconomic status.
165 These records were linked at the individual level for all women known to be pregnant
166 in Wales between 13th April 2021 and 31st December 2021. Linkage quality has been
167 assessed and reported as 99.9% for WLGP records and 99.3% for PEDW records
168 [19]. All linkage was at the individual level.

169 Study population and key dates

170 Pregnant women were identified as any woman who had pregnancy codes in the
171 WLGP data, in hospital admissions (PEDW) for pregnancy, or mothers in the NCCH
172 or MIDS data with the baby birth date (Pregnancy end date) and gestational age at
173 birth available. The baby's birth date and gestational age enabled the start date of
174 pregnancy to be determined for those who gave birth during the study period. Data
175 collected included vaccination data, maternal age, ethnic group, WIMD 2019,
176 smoking status, depression, diabetes, asthma, and cardiovascular disease. The
177 WIMD 2019 is an official measure for the relative deprivation of areas of Wales. It
178 combines eight separate domains of deprivation, each compiled from a range of
179 different indicators (income, employment, health, education, access to services,
180 housing, community safety, and physical environment) into a single score and is

181 widely utilised to measure deprivation in Wales. Ethnic groups are categorised in
182 SAIL into White, Asian, Mixed, Black, and Other. Smoking status is categorised in
183 SAIL into Current Smoker, Former Smoker, Never Smoker, and Unknown [22]. In
184 cases where women had multiple recorded statuses, the most recent status during
185 or prior to pregnancy was selected.

186 The study start date of 13th April 2021 was selected because phase 2 of the
187 vaccination program, which aimed to provide vaccinations to individuals aged 40 to
188 49, 30 to 39, and 18 to 29 years, commenced on this date. The inclusion criteria
189 were currently pregnant women who had not received the vaccination or had one
190 dose of vaccination before pregnancy, alive, known pregnant on the first day of
191 follow-up, and aged 18 years or older. The exclusion criteria were women who were
192 fully vaccinated (i.e. two vaccinations) before pregnancy, those for whom it was not
193 possible to determine the start date of pregnancy due to unavailability of the
194 gestational age and initial assessment dates in their records or those with
195 miscarriage or stillbirth outcomes. Currently, within SAIL researchers are unable to
196 account for terminations as these are classed as sensitive data and not currently
197 accessible for research purposes.

198 Calculating pregnancy start date

199 Pregnancy start dates were calculated from the following sources:

200 For pregnancies identified from the NCCH and MIDS data, the pregnancy start dates
201 were calculated based on the gestational age and the week of birth data items
202 available in these data sources. In cases where gestational age is missing, a value
203 of 40 weeks was applied as the majority of those with missing data (92%) had birth
204 weights suggestive of full-term infants. Thus, the pregnancy start date (last

205 menstrual period) was simply calculated by subtracting the gestational age at birth
206 (in weeks) from the week of birth. Pregnancies identified from both data sources
207 were compared/matched and duplicate records were removed.

208 For pregnancies identified from the WLGP data, all pregnant women with a
209 pregnancy code and event date that occurred during the study period were extracted
210 (Supplementary Table 1). For those identified from the hospital admissions data
211 (PEDW), all women with a pregnancy diagnosis code and an attendance date
212 occurring during the study period were also extracted (Supplementary Table 2).

213 Identified cases from both the WLGP and PEDW were separately matched to those
214 identified from the NCCH and MIDS data to include only those who are still pregnant.
215 Furthermore, the identified cases from both resources were further matched to
216 remove duplicates and then linked to the initial assessment-related data items in the
217 MIDS data. The gestational age in weeks and initial assessment data items are
218 available in order to calculate the pregnancy start date. In cases where multiple
219 records were found per pregnant woman, only the first occurring record between the
220 study dates of interest was selected. The pregnancy start date for every successfully
221 linked case was then calculated by subtracting the gestational age from the initial
222 assessment date.

223 **Multimorbidity in pregnancy**

224 Multimorbidity was defined by the presence of two or more long-term health
225 conditions, which can include defined physical and mental health conditions [8].
226 Long-term health conditions are those that generally last a year or longer and have a
227 significant impact on a person's life [9]. Four long-term health conditions including
228 depression, diabetes, asthma, and cardiovascular were selected on the following

229 basis: (1) prevalence; (2) potential to impact vaccine uptake; and (3) recorded in the
230 study datasets. These conditions were aggregated to generate a new multimorbidity
231 variable with two distinct categories: Multimorbid and Non-multimorbid. The
232 Multimorbid category comprises those with two or more health conditions, while the
233 Non-multimorbid comprises healthy individuals together with those with only one
234 health condition. Read codes for depression, diabetes, asthma, and cardiovascular
235 can be found in Supplementary Tables 3 to 6 respectively. ICD-10 codes for the
236 same conditions can be found in Supplementary Tables 7 to 10 respectively.

237 Statistical analysis

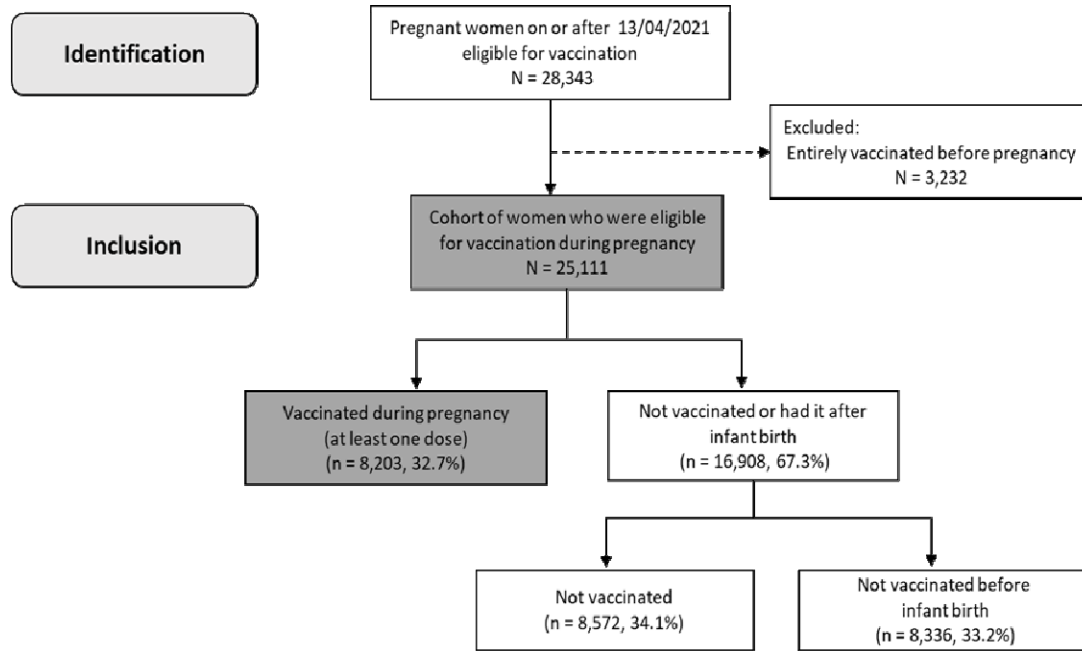
238 Kaplan-Meier survival analysis was employed to examine time to vaccination by
239 depression, diabetes, asthma, and cardiovascular diseases independently, by
240 multimorbidity, as well as by smoking status censored at the birth, death, or moved
241 out of Wales while pregnant. The Log Rank test was used to determine if there were
242 differences in the survival distributions of vaccine uptake times within the diseases
243 independently, multimorbidity, and smoking status. Differences were reported in
244 median times (MD) with 95% confidence intervals and significance level accepted at
245 $p < 0.05$. Multivariate Cox regression hazard models were utilised to examine the
246 impact of depression, diabetes, asthma, and cardiovascular diseases on vaccine
247 acceptance independently with age group, ethnic group, area of deprivation, and
248 smoking status incorporated into the model, as well as the impact of multimorbidity,
249 age group, ethnic group, area of deprivation, and smoking status on vaccine
250 acceptance, reporting hazard ratios (HR) with 95% confidence intervals and
251 significance level accepted at $p < 0.05$. Bootstrapping internal validation was
252 conducted to assess the performance of the model, reporting bootstrapped Beta

253 coefficients (B), standard error, 95% confidence intervals, and significance level
254 accepted at $p < 0.05$. The reference groups were those without multimorbidity, never
255 smokers, aged 25-29, white ethnic group, and those living in the most affluent area.
256 The data handling and preparation for the descriptive statistics, survival analysis,
257 and Cox proportional hazard modelling were performed in an SQL IBM DB2
258 database within the SAIL Databank utilising Eclipse software. Final data preparation
259 specific to these analyses, such as setting the reference groups was performed in
260 IBM SPSS Statistics 28. Descriptive statistics, Survival, and Cox regression analyses
261 were performed in SPSS.

262 Results

263 A total of 28,343 pregnant women were identified from 13th April 2021 through 31st
264 December 2021. After excluding women who were fully vaccinated before pregnancy
265 ($n=3,232$), the cohort comprised 25,111 pregnant women. Those women were
266 followed up, and their records were linked to the COVID-19 vaccination data up to
267 and including 31st December 2021. Over the study period, 8,203 (32.7%) of pregnant
268 women received at least one dose of the COVID-19 vaccine during pregnancy, 8,572
269 (34.1%) were not vaccinated, and 8,336 (33.2%) received the vaccine after giving
270 birth (Figure 1 describes the participants in the cohort). Most of the women were
271 aged between 30-39, and between 25-29 years (48.4% and 29.7% respectively).
272 The majority were White (77.8%). Nearly a quarter were living in the most deprived
273 quintile (23.3%) and 14.4% were in the least deprived quintile. 29.5% of women were
274 diagnosed with depression, 5.8% had diabetes, 23.9% had Asthma, 3.3% had
275 cardiovascular, and 12.9% had two or more health conditions (Table 1).

276 Fig. 1. Flowchart of the cohort identification.



277

278 Table 1. Descriptive summaries of the pregnant women eligible for vaccination

| | | N | % |
|---------------------------|----------------------------------|----------|----------|
| Age group | 18-24 | 4,664 | 18.6 |
| | 25-29 | 7,447 | 29.7 |
| | 30-39 | 12,143 | 48.4 |
| | 40-50 | 857 | 3.4 |
| Ethnic group | White ¹ | 19,547 | 77.8 |
| | Asian ² | 902 | 3.6 |
| | Mixed ³ | 316 | 1.3 |
| | Black ⁴ | 440 | 1.8 |
| | Other ⁵ | 571 | 2.3 |
| | Unknown | 3,335 | 13.3 |
| WIMD Quintile 2019 | 1 st (Most deprived) | 5,840 | 23.3 |
| | 2 nd | 4,795 | 19.1 |
| | 3 rd | 4,157 | 16.6 |
| | 4 th | 3,804 | 15.1 |
| | 5 th (Least deprived) | 3,626 | 14.4 |

| | | | |
|-----------------------|----------------|--------|------|
| | Unknown | 2,889 | 11.5 |
| Smoking Status | Current smoker | 4,441 | 17.1 |
| | Former smoker | 3,150 | 12.5 |
| | Never smoker | 12,418 | 49.5 |
| | Unknown | 5,102 | 20.3 |
| Depression | Yes | 7,419 | 29.5 |
| | No | 17,692 | 70.5 |
| Diabetes | Yes | 1,468 | 5.8 |
| | No | 23,643 | 94.2 |
| Asthma | Yes | 5,999 | 23.9 |
| | No | 19,112 | 76.1 |
| Cardiovascular | Yes | 826 | 3.3 |
| | No | 24,285 | 96.7 |
| Multimorbidity | Yes | 3,247 | 12.9 |
| | No | 21,864 | 87.1 |

279 ¹Comprises of Any White Background, Gypsy or Irish Traveller.

280 ²Comprises of Bangladeshi, Pakistani, Indian, Any Other Asian Background.

281 ³Comprises of Any Other Mixed Background, White and Asian, White and Black African, White and Black Caribbean, Any
282 Other Mixed/Multiple Ethnic Background.

283 ⁴Comprises of African, Any Other Black Background, Caribbean

284 ⁵Comprises of Any Other Ethnic Group, Arab, Chinese.

285 Examining time to vaccination in pregnancy

286 Kaplan-Meier survival analysis indicates that pregnant women living with
287 multimorbidity had a median time to vaccine uptake of 114 days (95% CI 106.6 to
288 121.4). This was lower than those with absence of multimorbidity, which had a
289 median time to vaccine uptake of 126 days (95% CI 123.4 to 128.6). A Log Rank test
290 was conducted to determine if there were significant differences in the survival
291 distributions of vaccine uptake times for the different groups. The survival
292 distributions were statistically significantly different, $X^2(1) = 5.4$, $p=0.02$ (Figure 2a).
293 However, other survival analyses were also conducted to estimate the time to

294 vaccination for depression, diabetes, asthma, and cardiovascular diseases
295 independently. The survival distributions were not significantly different with a
296 significance level >0.05 between the different groups for all the diseases
297 (Supplementary Table 11). Current Smoker women had a median time to vaccine
298 uptake of 142 days (95% CI 132.6 to 151.4). This was longer than Never Smokers
299 and Former Smokers, which had median times to vaccine uptake of 124 days (95%
300 CI 120.9 to 127.1) and 129 days (95% CI 121.7 to 136.3) respectively. The survival
301 distributions between smoking status groups were significantly different, $X^2(3)$
302 $=40.23$, $p<.001$. These differences were significant between the Current Smoker vs.
303 the Never Smoker groups, $X^2(1) = 18$, $p<.001$, and the Former Smoker vs. the Never
304 Smoker group, $X^2(1)=4.74$, $p=0.03$. However, the survival distribution for groups
305 Current Smoker vs. Former Smoker was not significantly different, $X^2(1)=2.43$,
306 $p=0.12$ (Figure 2b).

Fig 2a. Time to vaccine uptake by Multimorbidity

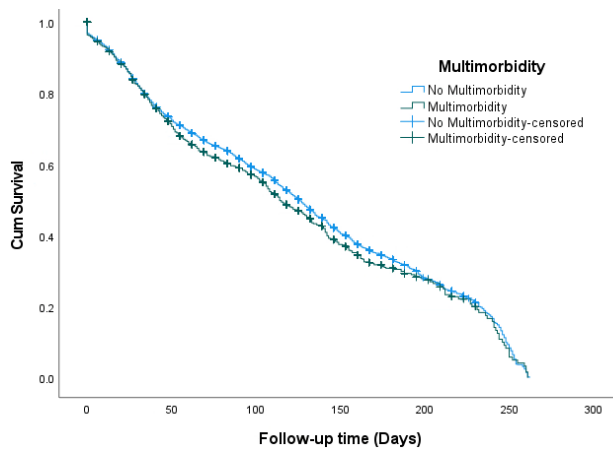
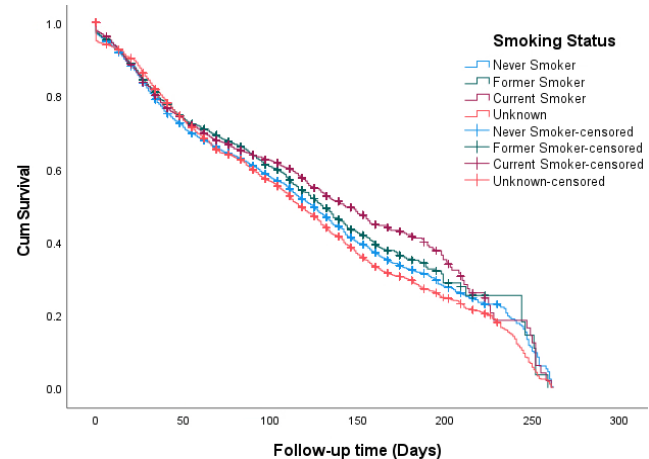


Fig 2b. Time to vaccine uptake by Smoking status



307 Examining the impact of multimorbidity, smoking status, and
308 demographics on vaccine uptake

309 Women who had depression were slightly but significantly more likely to have the
310 vaccine compared to those without depression (HR=1.08, 95% CI 1.03 to 1.14,
311 $p=.002$) (supplementary table 12). Diabetes, asthma, and cardiovascular diseases
312 were not associated with vaccine uptakes ($p>0.05$ for all) (Supplementary Tables 13-
313 15). Results indicate that women living with multimorbidity were 1.12 times more
314 likely to have the vaccine compared to those with no multimorbidity (HR=1.12, 95%
315 CI 1.04 to 1.19, $p=.001$). Vaccine uptakes were significantly lower among both
316 Current Smokers and Former Smokers compared to Never Smokers (HR=.87, 95%
317 CI .81 to .94, $p<.001$) and (HR=.92, 95% CI .85 to .98, $p=.015$) respectively. Those
318 aged 40-50 were 1.33 times more likely to have the vaccine compared to those aged
319 25-29 (HR=1.33, 95% CI 1.18 to 1.49, $p<.001$), also those aged 30-39 were 1.17
320 times more likely to have the vaccine compared to those aged 25-29 (HR=1.17, 95%
321 CI 1.12 to 1.24, $p<.001$). It was also observed that the vaccine uptake was lower
322 among those living in the most deprived areas compared to those living in the most
323 affluent areas (HR=.89, 95% CI 0.83 to 0.96, $p=.002$). (Table 2).

324 Table 2. Cox Regression analysis of factors associated with vaccination uptake among
325 pregnant women eligible for vaccination, adjusted analysis.

| Characteristic | | HR ¹ (95% CI ²) | P value ³ |
|----------------|-------|--|----------------------|
| Age group | 25-29 | Reference | |
| | 18-24 | .99 (0.92 – 1.07) | .788 |
| | 30-39 | 1.17 (1.12 – 1.24) | <.001 |
| | 40-50 | 1.33 (1.18 – 1.49) | <.001 |
| Ethnic groups | White | Reference | |

| | | | |
|---------------------------|----------------------------------|--------------------|-------|
| | Asian | 1.09 (.97 – 1.22) | .140 |
| | Mixed | 1.02 (.81 – 1.28) | .899 |
| | Black | 1.06 (.87 – 1.29) | .577 |
| | Other | 1.16 (1.00 – 1.33) | .050 |
| | Unknown | .94 (.87 – 1.01) | .067 |
| WIMD quintile 2019 | 5 th (Least deprived) | Reference | |
| | 4 th | .90 (.84 – .97) | .005 |
| | 3 rd | .82 (.76 – .88) | <.001 |
| | 2 nd | .92 (0.85 – 0.99) | .018 |
| | 1 st (Most deprived) | .89 (0.83 – 0.96) | .002 |
| Smoking status | Never Smoker | Reference | |
| | Former Smoker | .92 (.85 - .98) | .015 |
| | Current Smoker | .87 (.81 - .94) | <.001 |
| | Unknown | 1.09 (1.03 - 1.15) | .003 |
| Multimorbidity | No Multimorbidity | Reference | |
| | Multimorbidity | 1.12 (1.04 - 1.19) | .001 |

326 ¹Hazard Ratio, ²Confidence Interval (95%), ³significance level accepted at <0.05

327 Internal validation

328 The model was internally validated to estimate its performance more accurately.
329 Bootstrap resampling started with fitting the regression model in a bootstrap sample
330 of 1000 random samples, which were generated with replacement from the original
331 dataset. Bootstrapping analyses were performed on each random sample, and beta
332 coefficient, standard error, and 95% Bias corrected accelerated (BCa) confidence
333 intervals for the primary findings were generated. Bootstrapping estimated the
334 internal validity, providing stable estimates with low bootstrapped bias, low standard
335 errors, and robust confidence intervals for both the multimorbidity and depression
336 models (Table 3, supplementary table 16 respectively).

337 Table 3. Bootstrapping internal validation of factors associated with vaccination uptake
338 among pregnant women eligible for vaccination

| Characteristic | | B ¹ (BCa 95% CI ²) | Bias | Std. Error ³ | P value ⁴ |
|---------------------------|---------------------------------|---|-------|-------------------------|----------------------|
| Age group | 18-24 | -.01 (-.08 – .07) | .000 | .037 | .784 |
| | 30-39 | .06 (.11 – .22) | .001 | .026 | <.001 |
| | 40-50 | .28 (.16 – .40) | .001 | .059 | <.001 |
| Ethnic group | Asian | .09 (-.04 – .19) | .001 | .059 | .149 |
| | Mixed | .02 (-.24 – .24) | -.006 | .120 | .901 |
| | Black | .06 (-.15 – .24) | -.005 | .098 | .595 |
| | Other | .14 (-.003 – .28) | -.001 | .072 | .044 |
| | Unknown | -.07 (-.13 – .01) | .002 | .036 | .063 |
| WIMD quintile 2019 | 4 th | -.11 (-.18 – -.35) | .001 | .036 | .005 |
| | 3 rd | -.20 (-.28 – -.13) | .000 | .038 | <.001 |
| | 2 nd | -.09 (-.16 – -.01) | .000 | .037 | .022 |
| | 1 st (Most deprived) | -.12 (-.19 – -.04) | .000 | .036 | <.001 |
| Smoking status | Former Smoker | -.08 (-.17 – -.02) | -.001 | .04 | .018 |
| | Current Smoker | -.14 (-.21 – -.06) | -.001 | .04 | <.001 |
| | Unknown | .09 (.033 – .14) | -.001 | .03 | .003 |
| Multimorbidity | Multimorbidity | .11 (.04 – .17) | -.001 | .03 | <.001 |

339 ¹ Bootstrapped Beta Coefficient, ² BCa Confidence Interval (95%), ³ Standard Error, ⁴ significance level accepted
340 at <0.05

341

342 Discussion

343 This study investigated the impact of multimorbidity and smoking status on vaccine
344 uptake as well as the impact of depression, diabetes, asthma, and cardiovascular
345 diseases independently during pregnancy in Wales. Women with depression were
346 slightly but significantly more likely to have the vaccine compared to those without
347 depression. Those living with multimorbidity were also more likely to have the
348 vaccine compared to those living with the absence of multimorbidity. Vaccine uptake
349 was lower among those who currently smoke and those former smokers compared

350 to those who have never smoked. Women aged 30 or older were more likely to have
351 the vaccine compared to younger women. Uptake was lower among those living in
352 the most deprived areas compared to those living in the most affluent areas. These
353 findings may help to generate and tailor vaccine strategies to the populations who
354 are more vaccine hesitant. The findings of the study complement previous studies of
355 vaccine hesitancy. The presence of one or more chronic conditions has been found
356 to be associated with the willingness to receive the COVID-19 vaccine [11]; this
357 study supported that those with multimorbidity are more likely to accept the vaccine
358 than non-multimorbid individuals. In previous studies, current smokers reported
359 significantly greater mistrust of vaccines and any benefits and were more worried
360 about future outcomes [13]. Current smokers were more likely to be unwilling to have
361 the vaccine; 21.5% compared to 11.6% of never smokers, (OR=2.12, 95% CI 1.91-
362 2.34, $p<.001$) and compared to 14.7% of former smokers (OR=1.53, 95% CI 1.37-
363 1.71, $p<.001$) [13]. The findings of the study also indicated that current and former
364 smokers were less likely to accept the COVID-19 vaccine. The 'Understanding
365 Society' COVID-19 survey asked participants ($n = 12,035$) their likelihood of vaccine
366 uptake and reason for hesitancy. Vaccine hesitancy was high in Black (71.8%) (OR=
367 13.42, 95% CI 6.86-26.24, $p<.05$) and Pakistani/Bangladeshi (42.3%) OR=2.54,
368 95% CI 1.19-5.44, $p<.05$ ethnic groups (compared to White British/Irish) [15]. The
369 results indicate that those living in more deprived areas in Wales were less likely to
370 accept the vaccine. Similar results were found with adults living in the most deprived
371 areas of England (based on the Index of Multiple Deprivation) were more likely to
372 report vaccine hesitancy (8%) than adults living in the least deprived areas (2%) [16].

373 Strengths and limitations

374 The study has several strengths; it utilises primary and secondary health care data
375 for pregnant women in Wales including the maternity and child health data, it gives a
376 national perspective of COVID-19 vaccine hesitancy, making the findings
377 generalizable due to its total population cohort. Bootstrapping internal validation was
378 performed to estimate the performance of the models with increased accuracy. The
379 study had some limitations, such as not indicating in which trimester pregnant
380 women had the vaccine: it has been reported that pregnant women in the first
381 trimester expressed higher acceptance of COVID-19 vaccination than those in the
382 second and third trimesters [14]. The study excluded miscarriage and stillbirth
383 outcomes as these are classed by SAIL as sensitive data and are not currently
384 accessible for research purposes.

385 Conclusion

386 In conclusion, it is critical to develop tailored strategies to increase the acceptance
387 rates of the COVID-19 vaccine and decrease hesitancy. A more targeted approach
388 to vaccinations may need to be addressed to reach certain groups such as younger
389 people, smokers, healthy individuals, and those living in higher deprivation level
390 areas. Encouraging vulnerable populations including pregnant women is a priority
391 moving forward.

392 List of abbreviations

393 EHR: Electronic Health Records

394 SAIL: Secure Anonymised Information Linkage

395 HR: Hazard Ratios

- 396 SAGE: The Scientific Advisory Group for Emergencies
- 397 JCVI: The UK's Joint Committee on Vaccination and Immunisation
- 398 GP: General Practitioners
- 399 WLGP: Wales Longitudinal General Practice
- 400 PEDW: Patient Episode Database for Wales
- 401 OPDW: Outpatient Database for Wales
- 402 NCCH: National Community Child Health
- 403 MIDS: Maternal Indicators Dataset
- 404 CVVD: COVID-19 Vaccination Data
- 405 WDSD: Welsh Demographic Service Dataset
- 406 WIMD: Welsh Index for Multiple Deprivation
- 407 MD: Median Times
- 408 SQL: Structured Query Language
- 409 SPSS: Statistical Package for Social Sciences
- 410 WHO: The World Health Organisation
- 411 IGRP: Information Governance Review Panel
- 412 HDR: Health Data Research
- 413 BHF: British Heart Foundation
- 414 UK: United Kingdom

415 **Declarations**

416 **Ethical approval and consent to participate**

- 417 The data held in the SAIL (Secure Anonymised Information Linkage) Databank in
- 418 Wales/UK are anonymised. All data contained in SAIL has the permission from the

419 relevant Caldicott Guardian or Data Protection Officer and SAIL-related projects are
420 required to obtain Information Governance Review Panel (IGRP) approval. The
421 IGRP approval number for this study is 0911. The Research Ethics Service approval
422 was also given by the North West Greater Manchester East Research Ethics
423 Committee for the qualitative research. The Ethics Reference Number is RIO 030-
424 20.

425 Consent for publication

426 Not applicable

427 Availability of data and materials

428 The data that support the findings of this study are available from SAIL, but
429 restrictions apply to the availability of these data, which were used under license for
430 the current study, and so are not publicly available. Data are however available from
431 the authors upon reasonable request and with permission of SAIL.

432 Competing interests

433 The authors declare that they have no competing interests.

434 Funding

435 This work was funded by the National Core Studies, an initiative funded by UKRI,
436 NIHR and the Health and Safety Executive. The COVID-19 Longitudinal Health and
437 Wellbeing National Core Study was funded by the Medical Research Council
438 (MC_PC_20030). SVK acknowledges funding from a NRS Senior Clinical Fellowship
439 (SCAF/15/02), the Medical Research Council (MC_UU_00022/2) and the Scottish
440 Government Chief Scientist Office (SPHSU17).

441 Authors' Contributions

442 SB, MM, HJ, and JK conceived the article. MM carried out the quantitative analysis.
443 MM and HJ prepared the first draft of the manuscript. MS, MP, NK, AA, LZ, ALA, AD,
444 KN contributed substantially to the manuscript, writing - reviewing & editing. All
445 authors approved the final version submitted for publication

446 Acknowledgments

447 This study is part of the National Centre for Population Health and Wellbeing, which
448 is funded by Health Care Research Wales. This study makes use of anonymised
449 data held in the Secure Anonymised Information Linkage (SAIL) Databank (17, 20,
450 21). We would like to acknowledge all the data providers who make anonymised
451 data available for research.

452 This work was supported by Health Data Research UK, which receives its funding
453 from HDR UK Ltd (HDR-9006) funded by the UK Medical Research Council,
454 Engineering and Physical Sciences Research Council, Economic and Social
455 Research Council, Department of Health and Social Care (England), Chief Scientist
456 Office of the Scottish Government Health and Social Care Directorates, Health and
457 Social Care Research and Development Division (Welsh Government), Public Health
458 Agency (Northern Ireland), British Heart Foundation (BHF) and the Wellcome Trust.
459 This work was supported by the ADR Wales programme of work. The ADR Wales
460 programme of work is aligned to the priority themes as identified in the Welsh
461 Government's national strategy: Prosperity for All. ADR Wales brings together data
462 science experts at Swansea University Medical School, staff from the Wales Institute
463 of Social and Economic Research, Data and Methods (WISERD) at Cardiff
464 University and specialist teams within the Welsh Government to develop new

465 evidence which supports Prosperity for All by using the SAIL Databank at Swansea
466 University, to link and analyse anonymised data. ADR Wales is part of the Economic
467 and Social Research Council (part of UK Research and Innovation) funded ADR UK
468 (grant ES/S007393/1).

469 This work was additionally supported by funding from the Data and Connectivity
470 National Core Study, led by Health Data Research UK in partnership with the Office
471 for National Statistics and funded by UK Research and Innovation (grant ref
472 MC_PC_20058), with additional support by The Alan Turing Institute via 'Towards
473 Turing 2.0' EPSRC Grant Funding.

474 The responsibility for the interpretation of the information supplied is the authors'
475 alone.

476 References

477 1 McClure CC, Cataldi JR, O'Leary ST. Vaccine Hesitancy: Where We Are and Where We
478 Are Going. Clin. Ther. 2017;39(8): 1550-1562.

479 2 Salomoni MG, Di Valerio Z, Gabrielli E et al. Hesitant or not hesitant? A systematic review
480 on global covid-19 vaccine acceptance in different populations. Vaccines. 2021;9(8).

481 3 Shook LL, Kishkovich TP, Edlow AG. Countering COVID-19 Vaccine Hesitancy in
482 Pregnancy: The 4 Cs. Am. J. Perinatol. 2021.

483 4 Hsu AL, Johnson T, Phillips L et al. Sources of Vaccine Hesitancy: Pregnancy, Infertility,
484 Minority Concerns, and General Skepticism. Open Forum Infect. Dis. 2021; 9(3).

485 5 M. Mhereeg, H. Jones, J. Kennedy, M. Seaborne, M. Parker, N. Kennedy, S. Beeson, A.
486 Akbari, L. Zuccolo, A. Davies and S. Brophy, "COVID-19 vaccination in pregnancy: views

- 487 and vaccination uptake rates in pregnancy, a mixed methods analysis from the Born In
488 Wales study," Research Square, 2022.
- 489 6 Stock SJ, Carruthers J, Calvert C et al. SARS-CoV-2 infection and COVID-19
490 vaccination rates in pregnant women in Scotland. *Nat. Med.* 2022;28:504-512
- 491 7 GOV.UK Coronavirus (COVID-19) in the UK. Vaccination in England. Available from:
492 Vaccinations in England | Coronavirus in the UK (data.gov.uk). (Accessed 25 May 2022).
- 493 8 NICE (National Institute for health and care excellence). Available from [Multimorbidity |](#)
494 [Health topics A to Z | CKS | NICE](#). last revised in May 2018. (Accessed 30th September
495 2022)
- 496 9 NICE guidelines [NG22]. Available from [Context | Older people with social care needs and](#)
497 [multiple long-term conditions | Guidance | NICE](#). Published: 04 November 2015. (Accessed
498 30th September 2022).
- 499 10 Filippetti, M.L., Clarke, A.D.F. & Rigato, S. The mental health crisis of expectant women
500 in the UK: effects of the COVID-19 pandemic on prenatal mental health, antenatal
501 attachment and social support. *BMC Pregnancy Childbirth* 22, 68 (2022).
502 <https://doi.org/10.1186/s12884-022-04387->
- 503 11 Wake AD. The willingness to receive COVID-19 vaccine and its associated factors:
504 "Vaccination Refusal Could Prolong the War of This Pandemic" – a systematic review. *Risk*
505 *Manag Healthc Policy.* (2021) 2021:2609–23. doi: 10.2147/RMHP.S311074
- 506 12 Bergmann M, Hannemann T-V, Bethmann A, Schumacher AT. Determinants of SARS-
507 CoV-2 vaccinations in the 50+ Population. *SSRN Electron J.* (2021). doi:
508 10.2139/ssrn.3938975

- 509 13 Jackson S. E., Paul E., Brown J., Steptoe A., Fancourt D. Negative Vaccine Attitudes and
510 Intentions to Vaccinate Against Covid-19 in Relation to Smoking Status: A Population Survey
511 of UK Adults, *Nicotine & Tobacco Research*. 2021. 23(9),1623–1628,
512 <https://doi.org/10.1093/ntr/ntab039>
- 513 14 Monideepa B. Becerra M. B., & Becerra B. J. COVID-19 Vaccine Hesitancy among
514 Behavioral Risk Takers. *Vaccines* 2022, 10(5), 767;
515 <https://doi.org/10.3390/vaccines10050767>
- 516 15 Robertson E, Reeve KS, Niedzwiedz CL, Moore J, Blake M, Green M, Katikireddi SV,
517 Benzeval MJ. Predictors of COVID-19 vaccine hesitancy in the UK household longitudinal
518 study. *Brain Behav Immun*. 2021 May;94:41-50. doi: 10.1016/j.bbi.2021.03.008. Epub 2021
519 Mar 11. PMID: 33713824; PMCID: PMC7946541.
- 520 16 ONS. 2021. Coronavirus and vaccine hesitancy, Great Britain: 9 August 2021
- 521 17 Jones KH, Ford DV, Thompson S, Lyons RA. A Profile of the SAIL Databank on the UK
522 Secure Research Platform. *IJPDS*. 2019;4(2). <https://doi.org/10.23889/IJPDS.V4I2.1134>
- 523 18 Lyons RA, Ford DV, Moore L et al. Use of data linkage to measure the population health
524 effect of non-health-care interventions. *Lancet*. 2014;383(9927): 1517-1519.
- 525 19 Lyons RA, Jones KH, John G et al. The SAIL databank: Linking multiple health and social
526 care datasets. *BMC Medical Inform. Decis. Mak*. 2009;9(1).
- 527 20 Rodgers SE, Demmler JC, Dsilva, R. Protecting health data privacy while using
528 residence-based environment and demographic data. *Health Place*. 2012;18(2):209-217.
- 529 21 Jones KH, Ford DV, Thompson S et al. A Profile of the SAIL Databank on the UK Secure
530 Research Platform. *IJPDS*. 2020; 4(2).

531 22 Atkinson M., Kennedy J., John A., Lewis K., Lyons R., Brophy S., . . . Akbari A. (2017).
532 Development of an algorithm for determining smoking status and behaviour over the life
533 course from UK electronic primary care records. *BMC Medical Informatics and Decision*
534 *Making*, 17(1), . doi:10.1186/s12911-016-0400-6

535 Additional files

536 Supplementary Tables - Impact of Multimorbidity on COVID-19 Vaccine Hesitancy

537