

1 **Epidemiological transition in Australia: An analysis of immigration patterns in relation to**
2 **circulatory system diseases and all-cause mortality in the mid-twentieth century**

3 **Short title:**

4 **Immigration, circulatory disease and all-cause mortality in Australia**

5 Kelleher, Cecily C cecily.kelleher@ucd.ie

6 Kelly, Gabrielle E² gabrielle.kelly@ucd.ie

7 Segurado, Ricardo¹, ricardo.segurado@ucd.ie

8 Briody, Jonathan^{1,3}, jonathanbriody@rcsi.ie

9 Sellers, Alexander M⁴, alexander.sellers@sa.gov.au

10 McCalman, Janet S⁵, j.mccalman@unimelb.edu.au

11 UCD School of Public Health, Physiotherapy and Sports Science, Belfield, Dublin 4, Republic of
12 Ireland¹, UCD School of Mathematics and Statistics², Belfield, Dublin 4, Royal College of Surgeons
13 in Ireland, Dublin 2, Republic of Ireland³, Royal Adelaide Hospital, Adelaide, Australia⁴. Melbourne
14 School of Population and Global Health, University of Melbourne, Australia⁵

15 Corresponding Author: *cecily.kelleher@uCSD.ie, Telephone: +353 1 7162045 Fax: +353 1 716
16 3421

17 Word Count: 3928

18

19 **Abstract**

20 **Background and Objectives:** Circulatory System Diseases (CSD) patterns vary over time and between
21 countries, related to lifestyle risk factors, associated in turn with socio-economic circumstances. Current
22 global CSD epidemics in developing economies are similar in scale to those observed previously in the
23 USA and Australasia. Australia exhibits an important macroeconomic phenomenon as a rapidly
24 transitioning economy with high immigration throughout the 19th and 20th centuries. We wished to
25 examine how that historical immigration related to CSD patterns subsequently.

26 **Methods and Setting:** We provide a novel empirical analysis employing census-derived place of birth
27 by age bracket and sex from 1891 to 1986, in order to map patterns of immigration against CSD
28 mortality rates from 1907 onwards. Age-specific generalised additive models for both CSD mortality
29 in the general population, and all-cause mortality for the foreign-born (FB) only, from 1910 to 1980
30 were also devised for both males and females.

31 **Results:** The % FB fell from 32% in 1891 to 9.8% in 1947. Rates of CSD rose consistently, particularly
32 from the 1940s onwards, peaked in the 1960s, then declined sharply in the 1980s and showed a strong
33 period effect across age groups and genders. The main effects of age and census year and their
34 interaction were highly statistically significant for CSD mortality for males ($p < 0.001$, each term) and
35 for females ($p < 0.001$, each term). The main effect of age was statistically significant for all-cause
36 mortality minus net migration rates for the FB males ($p = 0.005$) and for FB females, both age ($p <$
37 0.001) and the interaction term ($p = 0.002$) were significant.

38 **Conclusions:** We argue our empirical calculations, supported by historical and socio-epidemiological
39 evidence, employing immigration patterns as a proxy for epidemiological transition, affirm the
40 lifecourse hypothesis that both early life circumstances and later life lifestyle drive CSD patterns.

41 **Keywords:** circulatory diseases, stroke, generalised additive model, epidemiological transition,
42 lifecourse

43

44 **Article Summary:**

45 **Strengths**

- 46 • An original analysis employing census data and immigration patterns to reinterpret historical
47 trends in CSD in Australia
- 48 • Relevant to modern public health policy for population approaches to CSD prevention, also
49 integrates lifecourse and lifestyle drivers of trends

50 **Limitations**

- 51 • Historical databases do not categorise either all cause or CSD mortality according to country
52 of origin.
- 53 • However, data for foreign-born mortality were inferred using novel actuarial type calculations
- 54 • There are no second-generation data by country of origin, unlike in USA.

55

56 **Introduction**

57 Circulatory system diseases (CSD) patterns are known to vary over time and between countries, related
58 to lifestyle risk factors across the life course, associated in turn with underlying socio-economic
59 circumstances¹⁻⁶. Current global epidemics in developing economies are similar in scale to those
60 observed much earlier in the USA and Australia⁷⁻⁸. Since the mid twentieth century in particular,
61 international epidemiological studies have assessed how proximal lifestyle risk factors such as tobacco
62 smoking and diet-related hypertension, obesity and lipoprotein profiles can explain the patterns of heart
63 disease and stroke in given populations⁷⁻¹³.

64 It is well established that in the mid-twentieth century, patterns of heart disease were highest in countries
65 such as the USA, Australia and Finland, intermediate in northern Europe and lowest in Mediterranean
66 countries¹⁴. That pattern shifted, with steep declines observed first in the USA and Australia, followed
67 by falls in all western countries from the early 1980s onwards¹⁴⁻¹⁵. The conventional, primarily period,
68 explanation is that the balance of lifestyle change and introduction of rigorous clinical management
69 protocols, including coronary care and pharmacological management of hypertension and
70 hypercholesterolemia drive these patterns^{5,7,11,16}. The IMPACT models suggest that declining incidence
71 is driven primarily by shifts in risk factors, rather than treatments⁴. However, the “causes of causes”
72 hypothesis suggests that these lifestyle patterns are strongly influenced by socio-economic forces and
73 that in turn a life course perspective is required to understand how cumulative, or trajectory influences
74 occur over time, suggesting cohort variations¹⁷.

75 The concept of epidemiological transition posits that as countries move from patterns of poverty to
76 patterns of affluence, changes in prevailing diseases occur, with first infectious diseases waning,
77 followed by a rise in non-communicable diseases^{1,18,19}. The American Heart Disease Association
78 describes four distinct stages of epidemiological transition at population level, stage 1 being pestilence
79 and famine associated with heart conditions including rheumatic heart disease, stage 2 being receding
80 pandemics which also now include a rise in hypertensive heart disease and haemorrhagic stroke, stage
81 3 being degenerative and man-made diseases with all forms of strokes, ischaemic heart disease at all

82 ages and increasing obesity and diabetes and stage 4 is associated with delayed degenerative diseases
83 with onset of stroke, ischaemic heart disease and heart failure at older ages¹.

84 Harper et al. set out a contextual framework for understanding these trends which takes account of
85 socio-economic position of individuals, lifecourse processes and the macrosocial context¹⁴. The
86 contemporary global burden of disease maps show clearly the shifting patterns downwards in current
87 Western populations and upwards in parts of Asia and Africa²⁰. Barker observed the paradox that while
88 coronary heart disease increases with western prosperity, it is more common in poorer areas of western
89 countries and among poorer peoples²¹. Moreover, in a time of huge global challenge in relation to non-
90 communicable disease and the rise of obesity in recent decades, it is necessary to understand at a
91 mechanistic level how global epidemics occur to intervene effectively in their management^{22, 23,24}. An
92 assessment of how historical patterns of disease occurred, can contribute to modern strategies to prevent
93 non communicable disease⁶.

94 The USA, Australia and New Zealand share an important macroeconomic phenomenon in that they
95 were each rapidly developing transitional economies throughout the nineteenth and twentieth centuries,
96 with large scale immigration as a major driver of population growth and composition^{15, 25-27}. In both
97 continents the original immigrants were predominantly from Europe, initially from Northern and then
98 Central Europe, followed by Southern Europe and then latterly from Asia.

99 An analysis employing historical USA census data, showed a strong temporal association between the
100 patterns of age-adjusted heart disease in both men and women and the proportion of foreign born and
101 of first-generation Americans between thirty-eight and fifty years earlier¹⁵. This was possible because
102 the demographic changes occurring on such a large scale meant that the census recorded country of
103 birth of enumerated householders^{8, 26,27}. Stamler suggested that the foreign-born might exhibit residual
104 features reflecting the influence of their country of origin, i.e., a cohort effect, but their characteristics
105 as Americans were predominant⁸.

106 **Methods**

107 **Data**

108 To examine the transitioning population and its subsequent pattern of CSD we looked at both census
109 data and epidemiological records and constructed a historical dataset based on digitised paper records.
110 Census data on place of birth, age bracket, and sex were retrieved from scanned paper copies from 1891
111 over the subsequent 95 years coming to thirteen in total – every 10 years between 1891 and 1921, 1933,
112 1947, 1954, and then every 5 years from 1961 to 1986²⁸. Prior to 1891 there was not a synchronised
113 census year for all six pre-Federation colonies, however an overall number of foreign-born residents
114 were obtained for 1861, 1871 and 1881 (not by region).

115 We reconciled the country of birth data across changes of political entities into: Commonwealth of
116 Australia (the six colonies/states, External Territories, and New Zealand), UK and Ireland, Northern
117 and Central Europe (including Denmark, Sweden and Norway, Germany, The Netherlands, Belgium,
118 France, Switzerland, Austria/Austria-Hungary, Eastern Europe through to Russia), Southern Europe
119 (all other countries with extensive Mediterranean sea coasts including Spain, Italy, Greece, Malta,
120 Yugoslavia and other Balkan nations, Turkey, and Lebanon, in addition to Portugal, Romania and
121 Bulgaria), with the Americas, Asia, Africa, and Polynesia grouped into the Other group including the
122 small number of persons unknown, or born at sea. The percentage of the total population which were
123 born in each of the world regions was calculated. As the predominant immigrant population of Australia
124 historically has been from the UK and Ireland, we also created an aggregated European and Other
125 region, to include all non-UK/Irish immigration.

126 Age-specific and age-adjusted circulatory system disease (CSD) mortality rates per 100,000 were
127 available from 1907 through to 2016 from online records of the General Record of Incidence of
128 Mortality (GRIM; Australian Institute of Health and Welfare) book 0900²⁹. The GRIM mortality
129 information is obtained from (compulsory) death certificates, certified by a medical practitioner or
130 coroner, and coded by the Australian Bureau of Statistics or precursors to that agency, to International
131 Statistical Classification of Diseases and Related Health Problems (ICD). CSD currently encompasses
132 ICD-10 codes I00-I99 and is aligned with corresponding categories back to ICD-1 (1907-1917).
133 Coronary heart disease deaths specifically (ICD-10 codes I20-I25) were considered but were only
134 available commencing in 1940. We obtained incidence of aggregated cerebrovascular disease (CVD)

135 mortality from GRIM book 0904 (Australian Institute of Health and Welfare), encompassing ICD-10
136 codes I60 to I69. All mortality rates are age-standardised to the 2001 estimated resident Australian
137 population.

138 Analysis

139 Age-specific mortality rates for the whole Australian population are also compared with those foreign-
140 born^{30,31}. CSD mortality rates are available only for the whole Australian population but there is
141 justification that these are indicative of all-cause mortality rates. For each sex/age-group/census year
142 mortality rates due to CSD in the Australian population were calculated by taking the ratio
143 $N_{\text{mort}}/N_{\text{total}}$ in the raw data set.

144 Mortality rates for foreign born due to circulatory disease or all-causes are not readily available either,
145 as country of origin was not recorded at death. However, all-cause mortality rates for foreign born were
146 estimated from numbers of foreign born in different age groups at different census years, using the
147 following actuarial type/analytical method. For example, let fb denote foreign born, and taking a
148 specific age and specific year, then

149 Number fb age 31 in 1948 = (Number fb age 30 in 1947) \times (1 - ($r_1 - r_2$)), where r_1 is the mortality rate for
150 fb age 30 1947 and r_2 is the inward migration rate for age 30 in 1947-1948. Let $r = r_1 - r_2$ then we re-write
151 the above equation as:

$$152 \text{ Number fb age 31 in 1948} = (\text{Number fb age 30 in 1947}) \times (1 - r) \quad (1)$$

153 Thus, r is the mortality rate-inward migration rate for the fb age 30 in 1947.

154 Then

$$155 \text{ Number fb age 32 in 1949} = (\text{Number fb age 31 in 1948}) \times (1 - r) \quad (2)$$

156 where $r = r_1 - r_2$ and r_1 is the mortality rate for fb age 31 1948-1949 and r_2 is the inward migration rate for
157 age 31 in 1948-1949 and we assume these rates are unchanged from the 1947-1948 values.

158 Thus, substituting equation (1) into equation (2), we have

159 Number fb age 32 in 1949 = (Number fb age 30 in 1947) \times (1- r)².

160 Proceeding in this way we have

161 Number fb age 37 in 1954 = (Number fb age 30 in 1947) \times (1- r)⁷

162 Therefore

163 (Number fb age 37 in 1954/ Number fb age 30 in 1947) = (1- r)⁷

164 and therefore $r = 1 - (\text{Number fb age 37 in 1954} / \text{Number fb age 30 in 1947})^{1/7}$ (3)

165 Thus, r is the mortality rate-inward migration rate for the fb age between 30 and 36 per year in the
166 interval 1947-1954.

167 r is estimated from the data by

168 $r = 1 - (\text{N_AllFB age 35-45 in 1954} / \text{N_AllFB age 25-35 in 1947})^{1/7}$ (4)

169 This calculation was repeated for each age-group and census interval. Only raw data by age-group
170 totals are available from the censuses. Note that r can be negative if the inward migration rate exceeds
171 the mortality rate. Thus, for all age-groups r will underestimate the mortality rates but it is used here as
172 a proxy for the mortality rates.

173 The estimates of r were interpolated and smoothed over all ages and census years using a tensor product
174 smooth model³² and are displayed in 3-d plots. This is an extension of a generalized additive model
175 (gam)³³ to 3-dimensions and was fitted using the mgcv package in R with the ti function. This was done
176 separately for males and females. This smooth model was decomposed into a functional ANOVA
177 structure with main effects of age and year and their interaction.

178 The CSD mortality rates per 100,000 for the whole population were also fitted using a tensor smooth
179 model and displayed in 3-d plots.

180 Note that the raw data are very variable both by census year and age-group. For example, the number
181 of foreign-born males age group 30 in 1921 is 74,913 while it is 100,385 in 1933 and for age group 40
182 in 1921 it is 93,089. So, all interpolating models must be interpreted with caution.

183 **Results**

184 The exact population numbers from 1891-1986 from census data by region of origin are presented in
185 Table 1. This shows respectively the population numbers born in Australia or abroad or the birthplace
186 of origin as a percentage of the total population, from 1891 onwards. There are two distinct patterns
187 observed. In 1891 when the population numbered just over three million, the proportion foreign-born
188 was relatively high. The contribution made to the population composition by those UK or Irish-born is
189 initially very considerable but tails off until the 1940s. A new surge in migration beginning after WW2
190 is apparent, initially comprising an increase in European (mostly Southern) immigration. Asian
191 populations in particular were the predominant group in the large “Other” category after the 1970s.

192 The Australian population composition mapped against the age-adjusted circulatory system disease
193 (CSD) mortality is shown in Figure 1a. This illustrates the change in the proportions of the population
194 foreign-born by region of origin (left-hand vertical axis), alongside the change in incident mortality due
195 to all CSD (red line, right-hand vertical axis). This shows firstly that the percentage of the population
196 foreign-born was over 60% in 1861 and declined steeply over the next 80 years so that it was just 10%
197 by the mid nineteen forties. Thereafter there was again a rise in immigration, climbing to over 20% of
198 the population in the early 1980s. The figure also shows the contribution to this pattern made by the
199 UK/Ireland, Northern and Southern European groups. The predominant early group is of UK and Irish
200 origin, dropping steeply by the mid nineteen forties and plateauing at approximately 7%. The other two
201 European groups are much smaller in proportion and reach their peak in the 1960s.

202 The pattern of circulatory diseases shows a steep rise throughout the early twentieth century, and
203 reaches a plateau by 1950-1970, and then declines sharply from then onwards. By 1990 rates had fallen
204 again to those previously seen in 1920 and continued to decline before levelling off currently.

205 Figure 1b shows the contrast between males and females in age-adjusted CSD mortality, this time in
206 relation to the population foreign born of both sexes from UK and Ireland. There is an approximate time
207 lag of forty years in the fall-off of immigration from UK and Ireland and that of age adjusted CSD in
208 the general population. Female and male rates began to diverge in the 1940-50s, with female rates
209 declining earlier, and male rates not beginning to decline until the 1980s. By the late 1990s the rates
210 had converged again. The pattern in Figure 1c showing the cerebrovascular disease mortality by sex,
211 aligns with this, albeit with negligible sex differences: an increase as the late 19th century immigrants
212 reach old age, a plateau from the 1950s to 1970s, followed by steep decline thereafter.

213 Figures 2a and 2b show mortality rates due to circulatory disease in the Australian population by age
214 group and year during the period 1910 to 1990 for males and females separately. Mortality rates
215 increase with age as expected and can be seen from the left scales. In all age groups and in both males
216 and females, rates of circulatory disease rose consistently, particularly from the 1940s onwards, peaked
217 in the late nineteen sixties and then began to decline sharply by the nineteen eighties. An interaction
218 effect between age and year is clearly visible, with differences between ages changing with year. The
219 main effects of age and census year and their interaction were statistically significant in the model for
220 males ($p < 0.001$, each term) and that for females ($p < 0.001$, each term). The adjusted R^2 was 96.4%
221 for the male model and 98% for the female model.

222 Figures 3a and 3b show all-cause mortality-net migration rates for the foreign born only, separately for
223 both males and females. The main effect of age was statistically significant in the model for males (p
224 $=0.005$) and for females both age ($p < 0.001$) and the interaction term ($p=0.002$) were significant. The
225 adjusted R^2 was 35.1% for the male model and 53% for the female model.

226 **Discussion**

227 In this analysis we have examined whether the immigration pattern in Australia, as one form of proxy
228 for epidemiological transition, related to patterns of both CSD and all-cause mortality in the population,
229 as had been observed previously in the USA¹⁵. We demonstrate a temporal association of age-adjusted
230 CSD with immigration approximately a half century earlier from predominantly United Kingdom and

231 Ireland, which changes as the population stabilises economically and newer waves of immigration from
232 lower risk Mediterranean and later Asian countries occur.

233 We also show in age-specific models that assess both CSD and all-cause mortality, a strong age and
234 period effect for the general Australian population and a highly significant interaction between age and
235 census year in CSD mortality. Both foreign born male and female populations showed a strong age
236 effect for all-cause mortality, while for females the interaction term was also highly significant. These
237 novel findings do not contradict the period impact on cardiovascular disease shown in the age-period-
238 cohort analysis by Taylor et al⁵ for the general Australian population but is unlike their analysis in
239 showing a clear interaction effect, and for the first time looks specifically also at the foreign-born
240 population.

241 We demonstrate in essence, for Australia, similar temporal findings to those observed in the USA. In
242 the previous analysis, data were available both for foreign born and native born of foreign parents and
243 that afforded a fit which explained both the rise and fall of the epidemic¹⁵, though we do not have second
244 generation data in this analysis. We acknowledge there are clear limitations to this current analysis in
245 that the historical databases do not categorise either all cause or CSD mortality according to country of
246 origin and there are no available second-generation data by country of origin. However, data for foreign-
247 born were inferred using actuarial type calculations and a three-dimensional model, representing a novel
248 approach. One would expect an impact on foreign-born, but also their children born into a transitioning
249 economic environment, especially urban disadvantage.

250 Our findings can be situated in the earlier history of that transitioning Australian development. To
251 understand any cohort effect, we contend the historical developments influencing early childhood must
252 be considered. Of the three classical risk factors, active individual smoking is strongly period driven^{7,9},
253 whereas dietary intake, which drives both lipoprotein and blood pressure patterns, can be influenced
254 both by short term and longer-term programming factors^{6,23,24}.

255 **Demographic Transition**

256 Borrie provided a comprehensive demographic analysis of the transitioning Australian and New
257 Zealand populations over a two-hundred-year period from 1788-1988³⁴. Those who migrated into
258 Australia from Europe³⁵⁻³⁷ included First Fleeter and other colonists, transported convicts, and Assisted
259 Passage individuals who were supported to emigrate from their countries of origin. The Irish and British
260 were the predominant early migrating group. A total of over 800,000 immigrants came also through
261 Government Assistance programmes established 1861-65 through to 1900, tapering off sharply during
262 that time. Irish assisted emigration to Australia was related to workhouse programmes established
263 during and after the Great Irish famine³⁶⁻³⁷. The impact of historical circumstances, including the famine
264 in Ireland in the 1840s has been examined previously in an Irish context, both at home and in relation
265 to its huge emigrant diaspora³⁸. Irish emigrants in the United Kingdom took at least two generations to
266 reflect integrated patterns of mortality of the prevailing population³⁹. An analysis of birthplace of all
267 brides marrying in Australia between 1908 and 1979 shows the transition to Australian born mothers
268 almost fully completed by 1979³⁴.

269 Whitewell et al conducted a detailed economic and public health review of Australia from 1860-1940
270 which illustrates how and when population changes occurred which might have influenced longer term
271 health outcomes into the twentieth century⁴⁰. Height, as a proxy measure for public health impact of
272 standards of living, was initially high, dipped in the latter period of the nineteenth century, then rose
273 again from the late eighteenth century through to 1918. From 1890 onwards, the sanitary conditions in
274 the booming cities, which initially made for an unhealthy environment in which children were
275 especially vulnerable, greatly improved. Inwood et al show an association between growing incomes
276 and height in Tasmania related to a decline in food cost and increased per capita domestic product⁴¹.
277 Cumpston²⁶ documented the improvements in public health in Australia, that would translate into
278 reduced susceptibility to strokes and heart disease in these individuals as older adults. Taylor et al
279 reviewed both all-cause mortality in Australia from 1788-1990⁴² and more recent cause-specific
280 mortality from 1907-1990⁴³. They showed a precipitous fall in infant mortality from 1900, similar to
281 European countries, but then a stagnation during the mid-twentieth century, attributable to the epidemic
282 in CSD mortality.

283 There is now a strong body of recently assembled historical retrospective cohort studies that afford an
284 opportunity to review social and economic circumstances in the late nineteenth and early twentieth
285 centuries when Australia was becoming established as a modern economy and when cardiovascular
286 diseases incidence and mortality were rising⁴⁴⁻⁴⁹ McCalman et al linked medically validated morbidity
287 and mortality records to original maternity records from the Melbourne lying-in hospital⁴⁴⁻⁴⁶ showing
288 expected demographic predictors of infant mortality. These included reduced odds of that outcome if
289 of higher social group, of Australian birth, and higher odds if a first-born child, younger mother, pre-
290 term and of relatively lower birthweight⁴⁶ Early results from the Victoria Diggers to Veterans
291 longitudinal study of first world war enlisters showed a strong social gradient according to military rank
292 for height and amongst survivors to 1922, farmers were significantly less likely to die compared to
293 others, whereas poorer urban counterparts had greater odds of mortality⁴⁹

294 **Lifestyle Hypothesis**

295 As in the USA, there was considerable research interest in Australia and New Zealand in the aetiology
296 of non-communicable disease from mid-nineteen seventies onwards⁵⁰⁻⁵⁹. Seminal epidemiological
297 analyses document the rising rates of smoking in the population and changes in food availability,
298 exposing a transitioning population to prevailing adverse lifestyle^{7,9}. Those studies at the height of the
299 epidemic focused not primarily on the early British migrants however but on the latterly arrived mainly
300 Southern European immigrants who initially carried the reduced risk associated with their
301 Mediterranean lifestyle into a now economically stable Australian society (Table 2).

302 Italian and Greek immigrants to cities like Melbourne and Sydney initially had lower blood pressure
303 and lipid profiles than their Australian born contemporary neighbours but had higher risk factor profiles
304 than their home countries⁵⁰⁻⁵³. McMichael et al also reviewed cancer rates and there were differences in
305 Northern European and Southern European immigrants⁵⁴⁻⁵⁶. Rates of stomach cancer, like stroke
306 associated with early life experiences, tended to be higher in immigrant groups than native born
307 Australians. Suicide rates were comparable in Northern European immigrants, but higher than in their
308 country of origin⁵⁷⁻⁵⁸. The classical healthy migrant hypothesis posits that immigrants move from low

309 to intermediate to high risk as they transition into a new environment⁶⁰ though migrants usually form a
310 relatively small part of the population, which is more typical of the later immigration patterns seen since
311 the mid twentieth century in Australia. The post WW2 immigrants assume the risk of the prevailing
312 environment as they enter middle and old age. McMichael was an early advocate of the general
313 population drivers of cardiovascular diseases and supply factors underpinned by industrialisation⁵⁹.
314 There is contemporary interest in Australia in the health experiences of latter-day migrants, including
315 in the Melbourne Collaborative Cohort Study⁶¹

316 It is likely that the effect of smoking is underestimated in these early epidemiological analyses. Active
317 smoking in the post WW2 period was extraordinarily high, particularly in men⁶². Exposure to high
318 levels of unrestricted active smoking would increase the risk of passive smoke exposure in public places
319 and in households and transport. The current national population bans placing restrictions on public
320 smoking in many countries have shown that admission rates for cardiovascular and respiratory disease
321 are reduced in areas with effective smoking bans⁶³.

322 **An Integrated Approach**

323 The epidemiological focus has moved more recently to a more integrated lifecourse explanation for
324 development of adult non communicable disease that takes account of early life exposures as well as
325 personal health behaviours^{6, 14, 21-23}. Policy should be directed at underlying drivers of population health
326 as well as individual risk factor modification, as exemplified by current guidelines of management of
327 hypertension⁶. Current rates of CSDs are much lower than in the past but show significant regional
328 variations and inequalities and are now much higher in Aboriginal citizens⁶⁴.

329 Emerging contemporary data from other newer studies support the lifecourse hypothesis also⁶⁵⁻⁶⁹. The
330 West Australian pregnancy cohort shows that adolescent adiposity trajectories are associated with
331 increased risk of raised blood pressure⁶⁷. Roberts and Wood employing data from a historical New
332 Zealand cohort from 1907 to 1922 have modelled the significant effects of birthweight on subsequent
333 adult blood pressure⁶⁸. Taken together, these findings show the influence of lifecourse and the need also
334 to understand the specific social and historical context.

335 In conclusion, this analysis provides a contextual reassessment of the historical drivers of the patterns
336 of CSD in Australia. These different immigrant groups all experienced a period effect in relation to
337 CSD, but also brought with them cohort effects of differing magnitude, which impacted CSD rates in
338 the general population, reflected in the temporal association of age-adjusted CSD rates with
339 immigration that later stabilised and in the age-year interactions in our models. With current global
340 epidemics in developing economies exceeding in scale those in the past, these findings may be
341 particularly relevant to public health policy planning for contemporary movements of peoples.

342 **Author Contributions:**

343 CCK conceived the study design and wrote the first draft. JSMcC contributed the historical
344 economic and public health context for Australia in the 19th and early 20th century. AMS and
345 CCK conducted the literature search for contemporary Australia. JB initiated the construction
346 of the database and RS conducted the temporal analysis. GEK devised and conducted the age
347 period analysis for the general Australian and Foreign-born populations. All authors
348 contributed to the interpretation of findings and to the drafting of the manuscript and agreed to
349 its final content. Data files of these analyses may be provided, upon reasonable request, by the authors.
350 There are no conflicts of interest to declare.

351 **Ethical Approval:**

352 This analysis employed publicly available archived databases with no individual participants
353 so ethical approval was not sought or required.

354 **Funding and Acknowledgements:**

355 This analysis received no specific grant from any funding agency in the public, commercial or not-for-
356 profit sectors. Professor Cecily Kelleher undertook the original research in Australia on which this
357 paper is based with funding from a Miegunyah Fellowship at the University of Melbourne. Dr Jonathan
358 Briody was funded by the Health Research Board SPHERE PhD training programme. Professor Janet

359 McCalman is supported by the ARC, Australian Research Council. The authors wish to thank Ms Emma

360 Coyle for the work on data entry for this analysis.

361

362 References

- 363 1. Yusuf S, Reddy S, Ounpuu S, Anand S. Global Burden of Cardiovascular Diseases. Part 1:
364 General considerations, the epidemiologic transition, risk factors and impact of urbanisation.
365 *Circulation* 2001; 104:2746-2753.
- 366 2. Yusuf S, Hawken, S, Ounpuu S, Dans T, Avezum A, Lanus F et al. Effect of potentially
367 modifiable risk factors associated with myocardial infarction in 52 countries (the
368 INTERHEART Study): Case control study. *Lancet* 2004; 346: 937-752.
- 369 3. Rosengren A, Subramanian SV, Islam S, Chow CK, Avezum A, Kazmi K, et al.
370 INTERHEART Investigators. Education and risk for acute myocardial infarction in 52 high,
371 middle and low-income countries: INTERHEART case-control study. *Heart*. 2009 Dec;
372 95(24):2014-22. doi: 10.1136/hrt.2009.182436. Epub 2009 Oct 12.
- 373 4. Capewell S, O'Flaherty M. What explains declining coronary mortality? Lessons and
374 warnings. *Heart* 2008, 94(9): 1105-1108.
- 375 5. Taylor, R, Page A, Danquah J. The Australian epidemic of cardiovascular mortality 1935-
376 2005: effects of period and birth cohort. *J Epi Commun Health* 2012; 66:e18. Doi:
377 10.1136/jech.2010.10958.
- 378 6. Olsen MH, Angell SY, Asma S, Boutouyrie P, et al. A call to action and a lifecourse strategy
379 to address the global burden of raised blood pressure on current and future generations: the
380 Lancet Commission on hypertension. *The Lancet Commissions*. 2016. Vol 388 November 26,
381 2016.
- 382 7. Dwyer T, Hetzel BS. A comparison of trends of coronary heart disease mortality in Australia,
383 USA and England and Wales with reference to three major risk factors-hypertension, cigarette
384 smoking and diet. *Int J Epidemiol*. 1980 Mar; 9(1):65-71.
- 385 8. Stamler J, Kjelsberg M, Hall Y, Scotch N. Epidemiologic studies on cardiovascular diseases:
386 III. Analysis of Mortality by age-sex-nationality. *J Chronic Diseases* 1960; 12(4): 464-475.
- 387 9. Hetzel BS, Charnock JS, Dwyer T, McLennan PL. Fall in coronary heart disease mortality in
388 U.S.A. and Australia due to sudden death: evidence for the role of polyunsaturated fat. *J Clin*
389 *Epidemiol*. 1989; 42(9):885-93.
- 390 10. Goff DC, Howard G, Russell GB, Labarthe DR. Birth cohort evidence of population
391 influences on blood pressure in the USA, 1887-1994. *Ann Epidemiol* 2001; 11(4): 271-279.

- 392 11. Hetzel BS, Dwyer T. Response to: Tobias et al. on the decline of CHD mortality in New
393 Zealand. *Aust N Z J Public Health*. 2008 Dec; 32(6):579-80. doi: 10.1111/j.1753-
394 6405.2008.00316.x.
- 395 12. Tobias M, Chan WC, Wright C, Jackson R, Mann S, Yeh LC. Can the incidence and
396 prevalence of coronary heart disease be determined from routinely collected national data?
397 Population-based estimates for New Zealand in 2001—03. *Aust N Z J Public Health*. 2008.
398 32(1): 24-7. doi:10.1111/j.1753-6405.2008.00161.
- 399 13. Thompson PL, Hobbs MS, Martin CA. The rise and fall of ischemic heart disease in
400 Australia. *Aust N Z J Med*. 1988. 18(3):327-37.
- 401 14. Harper S, Lynch J, Smith GD. Social Determinants, and the Decline of Cardiovascular
402 Diseases: Understanding the Links. *Annual Reviews* 2011. 32:39-69
- 403 15. Kelleher CC, Lynch JW, Daly L, Harper S, Fitz-Simon N, Bimpeh Y, et al. The
404 "Americanisation" of migrants: evidence for the contribution of ethnicity, social deprivation,
405 lifestyle and life-course processes to the mid-20th century coronary heart disease epidemic in
406 the US. *Soc Sci Med*. 2006 Jul; 63(2):465-84.
- 407 16. Li Y, Pan A, Wang DD, Liu X, Dhana K, Franco OH, et al. Impact of Healthy Lifestyle
408 factors on life Expectancies in the US population. *Circulation* 2018; 137:00-00. DOI
409 10.1161/CIRCULATIONAHA.117.032047.
- 410 17. Rose G. Sick Individuals and Sick Populations. *Int J Epi* 1985; 14(1): 32-38.
- 411 18. McKeown RE. The Epidemiologic Transition: Changing Patterns of Mortality and Population
412 Dynamics. *Am J Lifestyle Med* 2009; 3 (1Suppl): 19s-26S.
- 413 19. Cappuccio, FP. Commentary: Epidemiological transition, migration and cardiovascular
414 disease. *IJE* 2004; 33:387-388.
- 415 20. World Health Organisation. [https://www.who.int/news/item/09-12-2020-who-reveals-](https://www.who.int/news/item/09-12-2020-who-reveals-leading-causes-of-death-and-disability-worldwide-2000-2019)
416 [leading-causes-of-death-and-disability-worldwide-2000-2019](https://www.who.int/news/item/09-12-2020-who-reveals-leading-causes-of-death-and-disability-worldwide-2000-2019) accessed 12th November 2022
- 417 21. Barker DJP. Commentary: birth weight and coronary heart disease in a historical cohort. *IJE*
418 2006; 886-887.
- 419 22. Block T, El-Osta A. Epigenetic programming, early life nutrition and the risk of metabolic
420 disease. *Atherosclerosis*. 2017 Nov; 266:31-40. doi: 10.1016/j.atherosclerosis.2017.09.003.
421 Epub 2017 Sep 5. Review.

- 422 23. Dickinson H, Moss TJ, Gatford KL, Moritz KM, Akison L, Fullston T, et al. A review of
423 fundamental principles for animal models of DOHaD research: an Australian perspective. *J*
424 *Dev Orig Health Dis*. 2016 Oct; 7(5):449-472.
- 425 24. Lindblom R, Ververis K, Tortorella SM, Karagiannis TC. The early life origin theory in the
426 development of cardiovascular disease and type 2 diabetes. *Mol Biol Rep*. 2015 Apr;
427 42(4):791-7. doi: 10.1007/s11033-014-3766-5. Review.
- 428 25. Cumpston, J.H.L. The development of public health in Australia. *Medical Journal of*
429 *Australia*. 1928. 1:332-36
- 430 26. Carpenter, N. Immigrants and their children. A study based on census statistics relative to the
431 foreign born and the native white of foreign or mixed parentage. Census Monographs VII.
432 Washington Department of Commerce, Bureau of the Census. 1927.
- 433 27. Winslow EA, Wang PL. The relation between changes in nationality stock and increasing
434 death rates in adult life. *American Journal Hygiene* 1931; 14:79-88.
- 435 28. Australian Bureau of Statistics.
436 [http://www.abs.gov.au/AUSSTATS/abs@.nsf/ViewContent?readform&view=ProductsbyCat](http://www.abs.gov.au/AUSSTATS/abs@.nsf/ViewContent?readform&view=ProductsbyCatalogue&Action=Expand&Num=2.2)
437 [alogue&Action=Expand&Num=2.2](http://www.abs.gov.au/AUSSTATS/abs@.nsf/ViewContent?readform&view=ProductsbyCatalogue&Action=Expand&Num=2.2) accessed 12th January 2019
- 438 29. Australian Institute of Health and Welfare. [https://www.aihw.gov.au/reports-data/health-](https://www.aihw.gov.au/reports-data/health-conditions-disability-deaths/heart-stroke-vascular-diseases/overview)
439 [conditions-disability-deaths/heart-stroke-vascular-diseases/overview](https://www.aihw.gov.au/reports-data/health-conditions-disability-deaths/heart-stroke-vascular-diseases/overview), accessed 12th January
440 2019.
- 441 30. Cleveland, WS, Grosse E, Shyu WM. Local regression models. Chapter 8 of Statistical
442 Models in J.M. Chambers and T.J. Hastie, (Eds) Wadsworth & Brooks/Cole.1992
- 443 31. R Core Team. R: A language and environment for statistical computing. R Foundation for
444 Statistical Computing, Vienna, Austria. URL: <https://www.R-project.org/> 2017.
- 445 32. Wood, S.N. Low rank scale invariant tensor product smooths for generalized additive mixed
446 models. *Biometrics* 2006. 62(4):1025-1036
- 447 33. Wood S.N. Generalized Additive Models: An Introduction with R (2nd edition). Chapman
448 and Hall/CRC Press 2017
- 449 34. Borrie WD. The European Peopling of Australasia. A Demographic History 1788-1988. The
450 Australian National University, Canberra, 1994.
- 451 35. Hughes R. The Fatal Shore. Vintage Books. Random House. London. 2003.

- 452 36. Caball KM. The Kerry Girls. Emigration and the Earl Grey scheme. *The History Press*
453 *Ireland*. Dublin. 2014.
- 454 37. Reid, RE. Farewell My Children. Irish Assisted Emigration to Australia 1848-1870. Anchor
455 Books, Australia 2011
- 456 38. Kelleher CC, Lynch J, Harper S, Tay JB, Nolan G. Hurling alone? How social capital failed
457 to save the Irish from cardiovascular disease in the USA. *Am J Public Health*. 2004 Dec;
458 94(12):2162-9.
- 459 39. Harding S, Balerajan R. Patterns of mortality in second generation Irish living in England and
460 Wales: Longitudinal Study. *BMJ* 1996; 312: 1389.
- 461 40. Whitewell G, de Souza C, Nicholas S. Height, Health and Economic Growth in Australia,
462 1860-1940. National Bureau of Economic Research. 1997. 0-226-77156-3:379-422
463 <http://www.nber.org/books/stec97-1>
- 464 41. Inwood K, Maxwell-Stewart H, Oxley D, Stankovich J. Growing incomes, growing people in
465 nineteenth-century Tasmania. *Australian Economic History Review*. 2015; 55(2): 187-211.
- 466 42. Taylor R, Lewis M, Powles J. The Australian mortality decline: all-cause mortality 1788-
467 1990. *Aust NZ J Public Health* 1998; 22(1): 27-36.
- 468 43. Taylor R, Lewis M, Powles J. The Australian mortality decline: cause-specific mortality
469 1907-1990. *Aust NZ J Public Health* 1998; 22(1): 37-44
- 470 44. McCalman J, Morley R. Mothers' health and babies' weights: the biology of poverty at the
471 Melbourne Lying-in Hospital, 1857-83. *Soc Hist Med*. 2003 Apr; 16(1):39-56.
- 472 45. Morley R, McCalman J, Carlin JB. Birthweight and coronary heart disease in a cohort born
473 1857-1900 in Melbourne, Australia. *Int J Epidemiol*. 2006 Aug; 35(4):880-5. Epub 2006 Mar
474 8.
- 475 46. McCalman J, Morley R, Mishra G. A health transition: birth weights, households and survival
476 in an Australian working-class population sample born 1857-1900. *Soc Sci Med*. 2008 Mar;
477 66(5):1070-83. doi: 10.1016/j.socscimed.2007.11.040. Epub 2008 Jan 8.
- 478 47. Bradley J, Kippen R, Maxwell-Stewart H, McCalman J, Silcott S. Research note: The
479 Founders and Survivors project. *The History of the Family*, 2010, 15:4, 467-
480 477, DOI: 10.1016/j.hisfam.2010.08.002
- 481 48. McCalman J, Smith L, Silcott S, Kippen R. Koori Health Research Database: Dataset of
482 genealogies and life events of approximately 8,000 Kooris who lived in Victoria and New

- 483 South Wales in the nineteenth and twentieth centuries. *Sch of Rural Health*. 2018.
484 https://figshare.com/articles/Koori_Health_Research_Database/5936884
- 485 49. McCalman J, Kippen R, McMeekan J, Hopper J, Reade M. Early Results from the Diggers to
486 Veterans Longitudinal study of Australian men who served in the First World War. Short and
487 Long-term Mortality of Early Enlisters. *Historical Life Course Studies* 2019; 8: 52-72
- 488 50. Lovell RR, Prineas RJ. Differences in blood pressure measurements and prevalence of
489 hypertension between Australian-born and Italian-born middle-aged men and women in
490 Melbourne. 1974. *Med J Aust*. 21:2(25):893-8.
- 491 51. Ulman R, Abernethy JD. Blood pressure and length of stay in Australia of Italian immigrants
492 in the Australian National Blood Pressure Study. *Int J Epidemiol*. 1975; 4(3):213-5.
- 493 52. Ireland PD, Giles GG. Blood pressure in the Australian-and Italian-born: A Melbourne suburb
494 revisited after 20 years. *Aust NZ J Public Health* 1996; 20(2):143-8.
- 495 53. Armstrong et al. Coronary risk factors in Italian migrants to Australia. *Am J Epidemiol*.
496 1983;118(5):651-8
- 497 54. McMichael AJ, McCall MG, Hartshorne JM, Woodings TL. Patterns of gastro-intestinal
498 cancer in European migrants to Australia: the role of dietary change. *International Journal of*
499 *Cancer*. 1980. 25(4):431-7.
- 500 55. McMichael AJ, Giles GG. Cancer in migrants to Australia: extending the descriptive
501 epidemiological data. *Cancer Research*. 1988. 48(3):751-6 Feb 1.
- 502 56. McMichael AJ, Bonett A, Roder D. Cancer incidence among migrant populations in South
503 Australia. *Medical Journal of Australia*. 1989. 150(8):417-20 Apr 17.
- 504 57. Burvill PW. Migrant suicide rates in Australia and in country of birth. *Psychological*
505 *Medicine*. 1998. 28: (1) 201-208
- 506 58. Burvill PW, McCall MG, Woodings T, Stenhouse NS. Comparison of suicide rates and
507 methods in English, Scots and Irish migrants in Australia. *Social Science and Medicine*. 1983.
508 17(11):705-8
- 509 59. McMichael AJ. Coronary heart disease: interplay between changing concepts of aetiology,
510 risk distribution and social strategies for prevention. *Community Health Studies*. 1989.
511 13(1):5-13.
- 512 60. Fennelly K. The Healthy Migrant Effect. In: *Healthy Generations*. 2005; 5(3): 1-3.

- 513 61. Giles G. The Melbourne Collaborative Cohort Study. Centre for Epidemiology and
514 Biostatistics. Melbourne University 2015.
- 515 62. Greenhalgh, EM, Scollo, MM and Winstanley, MH. Tobacco in Australia: Facts and issues.
516 Melbourne: Cancer Council Victoria; 2022. Available from www.TobaccoInAustralia.org.au
- 517 63. Frazer K, Callinan JE, McHugh J, van Baarsel S, Clarke A, Doherty K, Kelleher C. Legislative
518 smoking bans for reducing harms from secondhand smoke exposure, smoking prevalence
519 and tobacco consumption. *Cochrane Database Syst Rev.* 2016 Feb 4;2(2):CD005992. doi:
520 [10.1002/14651858.CD005992.pub3](https://doi.org/10.1002/14651858.CD005992.pub3).
- 521 64. Hoy WE, Mott SA, McLeod BJ. Transformation of mortality in a remote Australian
522 Aboriginal community: a retrospective observational study. *BMJ Open.* 2017 Aug 11; 7(8):
523 e016094. doi: [10.1136/bmjopen-2017-016094](https://doi.org/10.1136/bmjopen-2017-016094).
- 524 65. Feng X, Wilson A. Getting Bigger Quicker? Gendered Socioeconomic Trajectories in Body
525 Mass Index across the Adult Lifecourse: A Longitudinal Study of 21,403 Australians. 2015.
526 10(10):e0141499.doi:10.1371/journal.pne.0141499.
- 527 66. Najman JM, Aird R, Bor W, O'Callaghan M, Williams GM, Shuttlewood GJ. The generational
528 transmission of socioeconomic inequalities in child cognitive development and emotional
529 health. *Soc Sci Med.* 2004. 58(6):1147-58.
- 530 67. Huang RC, Burrows S, Mori TA, Oddy WH, Beilin LJ. Lifecourse Adiposity and Blood Pressure
531 between Birth and 17 Years Old. *Am J Hypertens.* 2015. 28(8)1056-63 doi:
532 [10.1093/ajh/hpu266](https://doi.org/10.1093/ajh/hpu266)
- 533 68. Roberts E, Wood P. Birth weight and adult health in historical perspective: evidence from a
534 New Zealand cohort, 1907-1922. *Soc Sci Med.* 2014 Apr; 107:154-61. doi:
535 [10.1016/j.socscimed.2014.02.015](https://doi.org/10.1016/j.socscimed.2014.02.015). Epub 2014 Feb 15.
- 536 69. Dancause KN, Mutran D, Elgbeili G, Laplante DP, Kildea S, Stapleton H, et al. Dietary change
537 mediates relationships between stress during pregnancy and infant head circumference
538 measures: the QF2011 study. *Matern Child Nutr.* 2017 Jul; 13(3). doi: [10.1111/mcn.12359](https://doi.org/10.1111/mcn.12359).
539 Epub 2016 Aug 26.
- 540

Table 1. Descriptive statistics of Australian population composition by country of birth, from census data 1891 - 1986

Year	Total	UK/Ireland		Northern Europe		Southern Europe		Other Place of origin		All Foreign Born		Australian Born	
		N	%	N	%	N	%	N	%	N	%	N	%
1891	3,174,392	821,166	26%	75,145	2.4%	5,307	0.2%	113,799	4%	1,015,417	32.0%	2,158,975	68.0%
1901	3,773,801	679,159	18%	67,291	2%	7,382	0%	111,666	3%	865,498	23%	2,908,303	77.0%
1911	4,455,005	591,729	13%	63,594	1.4%	9,348	0.2%	122,664	3%	787,335	17.7%	3,667,670	82.3%
1921	5,435,210	676,387	12%	52,503	1.0%	15,539	0.3%	109,118	2%	853,547	15.7%	4,581,663	84.3%
1933	6,646,905	732,674	11%	48,125	0.7%	44,680	0.7%	94,860	1%	920,339	13.8%	5,726,566	86.2%
1947	7,577,772	542,910	7%	50,180	0.7%	58,516	0.8%	90,995	1%	742,601	9.8%	6,835,171	90.2%
1954	8,894,884	664,205	7%	294,667	3.3%	196,192	2.2%	39,756	0%	1,194,820	13.4%	7,700,064	86.6%
1961	10,504,210	755,402	7%	433,999	4.1%	406,791	3.9%	178,612	2%	1,774,804	16.9%	8,729,406	83.1%
1966	11,550,462	908,664	8%	430,574	3.7%	554,273	4.8%	237,409	2%	2,130,920	18.4%	9,419,542	81.6%
1971	12,755,638	1,088,210	9%	475,095	3.7%	633,173	5.0%	382,840	3%	2,579,318	20.2%	10,176,320	79.8%
1976	13,548,649	1,117,600	8%	460,673	3.4%	632,550	4.7%	508,209	4%	2,719,032	20.1%	10,829,617	79.9%
1981	14,576,330	1,132,599	8%	471,278	3.2%	678,445	4.7%	900,143	6%	3,182,465	21.8%	11,393,865	78.2%
1986	15,602,150	1,127,191	7%	488,825	3.1%	662,124	4.2%	1,213,554	8%	3,491,694	22.4%	12,110,456	77.6%

Table 2: Studies of Lifestyle, Country of Origin and Non-Communicable Disease outcomes in Mid-Twentieth Century Australia

Authors	Journal and Year	Brief Summary of Findings
Lovell and Prineas ⁵⁰	Med J Aust, 1974	Differences in blood pressure and prevalence of hypertension between Australians and Italians born in Melbourne
Ulman and Abernethy ⁵¹	Int J Epidemiol, 1975	Australian National Blood Pressure Study showing lower blood pressure in Italians compared with Australians, age-adjusted rates of rise suggest environmental exposure
Dwyer and Hetzel ⁷	Int J Epidemiol, 1980	Sharp declines in mortality from 1966 in Australia and 1968 in USA with persistent increase in UK, findings do correlate to some extent with changes in diet and smoking
Mc Michael et al. ⁵⁴	Int J Cancer, 1980	All seven migrant source countries in 1970 had higher rates of stomach cancer than Australians, discussed with reference to inter-country dietary differences
Armstrong et al. ⁵³	Am J Epidemiol, 1983	Mortality from Ischemic Heart Disease in Italians in Italy and Migrants 1/3 to 2/3 that of native-born Australians
Burvill et al. ⁵⁸	Soc Sci Med, 1983	Suicide rates in migrants from England & Wales, Scotland and Ireland similar, although greater than in country of origin, especially Ireland
Mc Michael and Giles ⁵⁵	Cancer Research, 1988	Review of cancers in migrants to Australia, suggesting strong evidence of environmental and behavioural influences
Mc Michael ⁵⁹	Community Health Studies, 1989	Asserts that coronary heart disease is a mass disease of 20 th century industrialised society requiring population-based prevention strategies
Hetzel et al. ⁹	J Clin Epi, 1989	Review of epidemiological and experimental studies related to fall in sudden deaths in USA and Australia since 1967 concludes that there is a protective effect of dietary polyunsaturates
Mc Michael et al. ⁵⁶	Med J Aust, 1989	South Australia Cancer Registry data 1977-1986 show British and Irish migrants had higher incidence of all cancer sites combined, whereas Southern Europeans had lower rates
Ireland and Giles ⁵²	Aust NZ J Med, 1996	Melbourne Collaborative Cohort Study 1990-1994, blood pressure higher in Italian-born middle-aged relative to Australian-born, not attributable to changes in diagnosis and treatment of hypertension
Burvill ⁵⁷	Psych Med, 1998	Increased suicide rates in migrants relative to country of origin and importance of pre-migrant social and cultural experiences

Legends to Figures:

Figure 1a: Timeline of foreign-born census respondents 1861-1986 and age-adjusted circulatory system disease mortality for the Total Australian population

Figure 1b: Sex-specific Irish/British-born census respondents and age-adjusted circulatory system disease mortality for both males and females in the Australian population

Figure 1c: Sex-specific Irish/British-born census respondents against age-adjusted cerebrovascular disease mortality for the Total Australian population

Figure 2: Circulatory system disease mortality rates/100,000 by age and census year in the general Australian population, a) males and b) females

Figure 3: All-cause mortality-net migration rates/100,000 by age and census year for Australian foreign-born population, a) males, b) females. Age groups on axis 2-6 refer to ages 20,30,40, 50, 60 respectively.

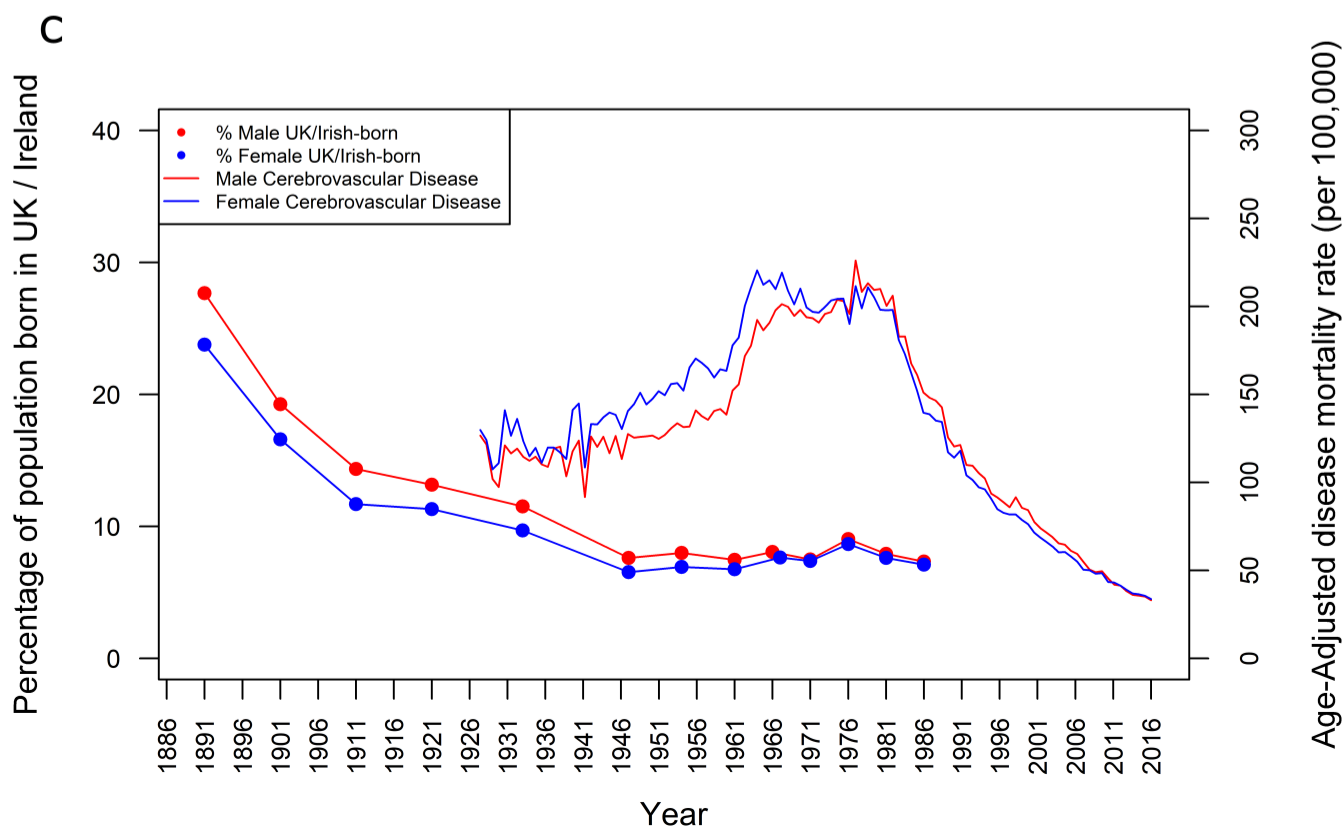
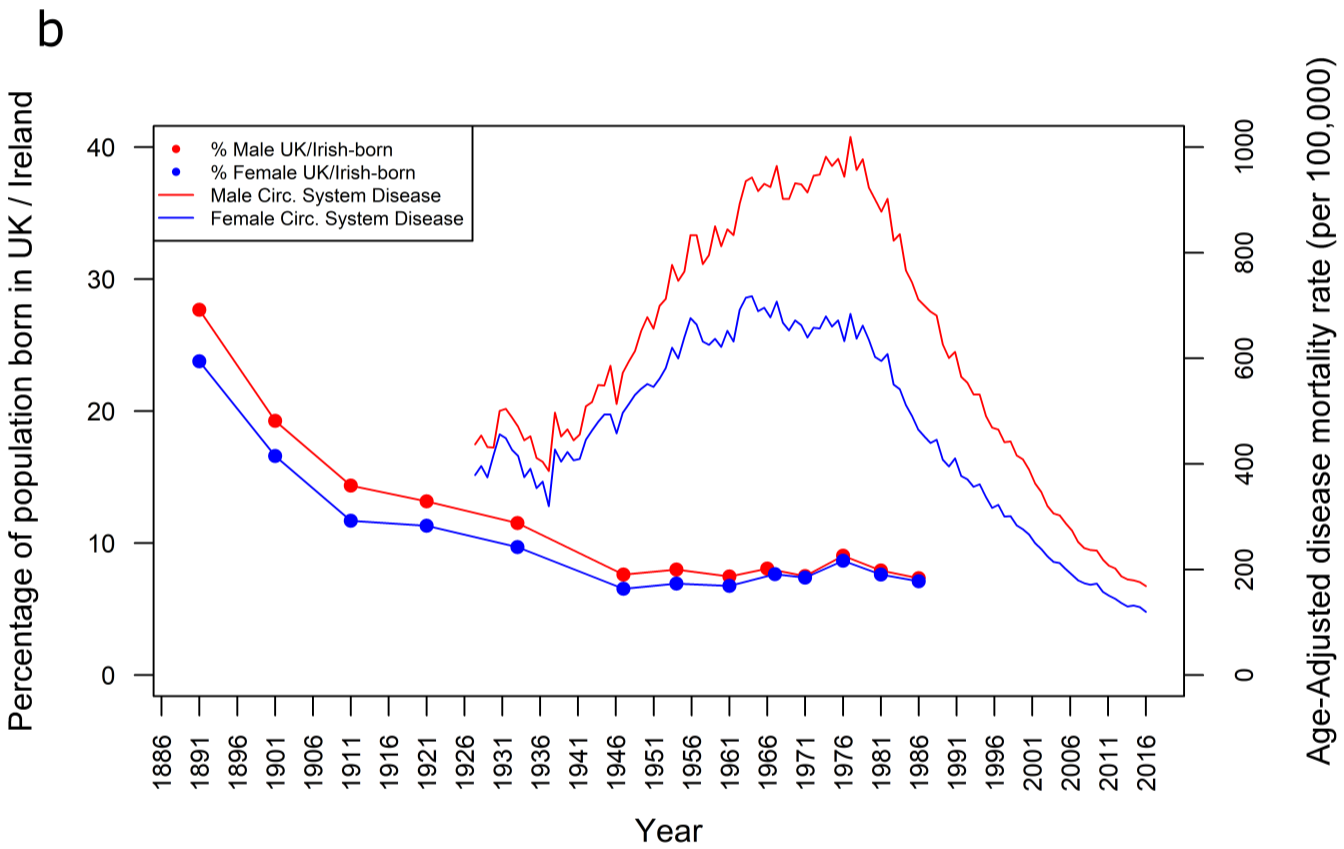
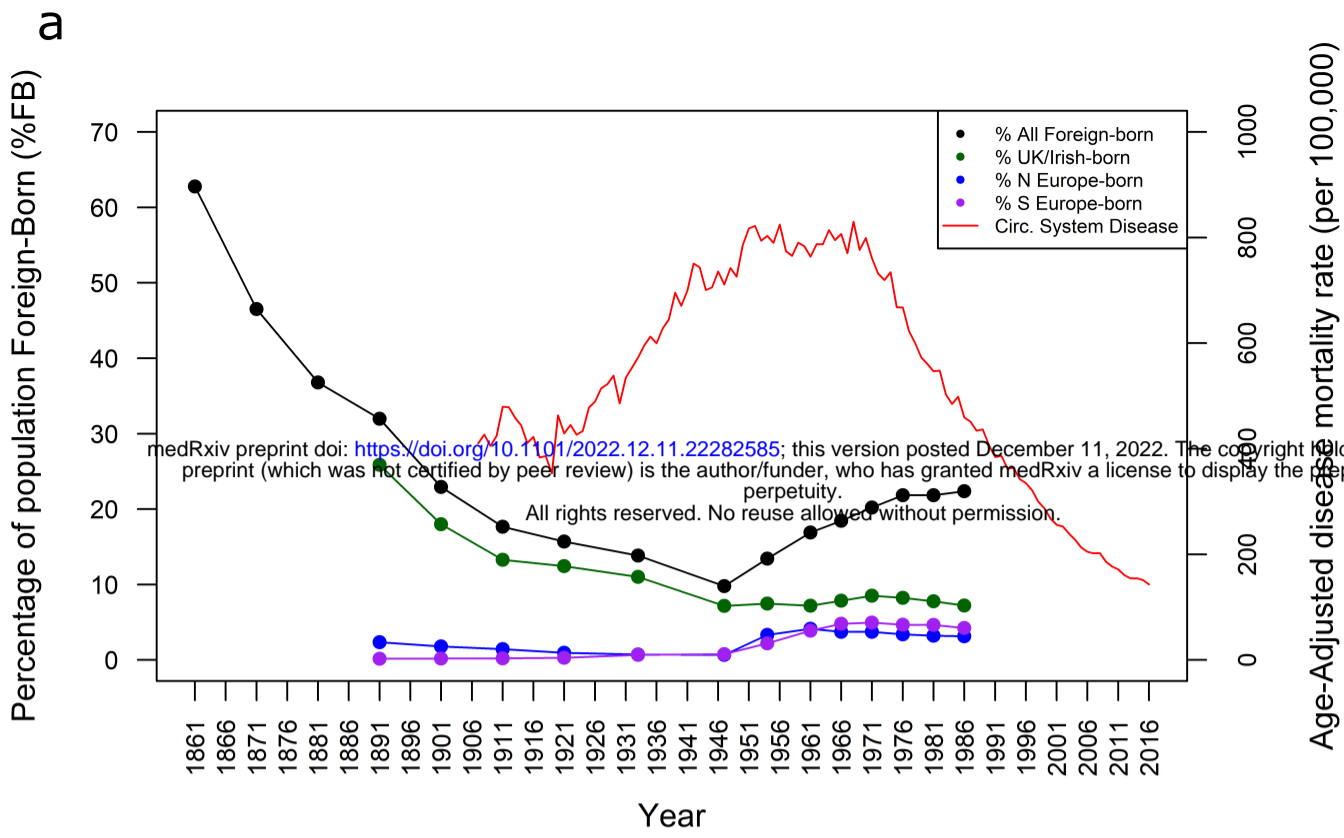


Figure 2. Circulatory system mortality rates per 100,000 by age and year in the general Australian population (a) Males (b) Females. The unlabelled axis is age in both plots.

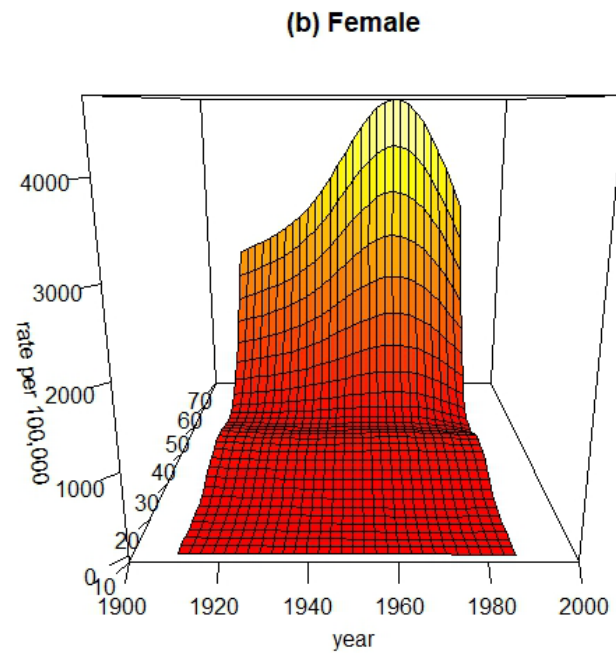
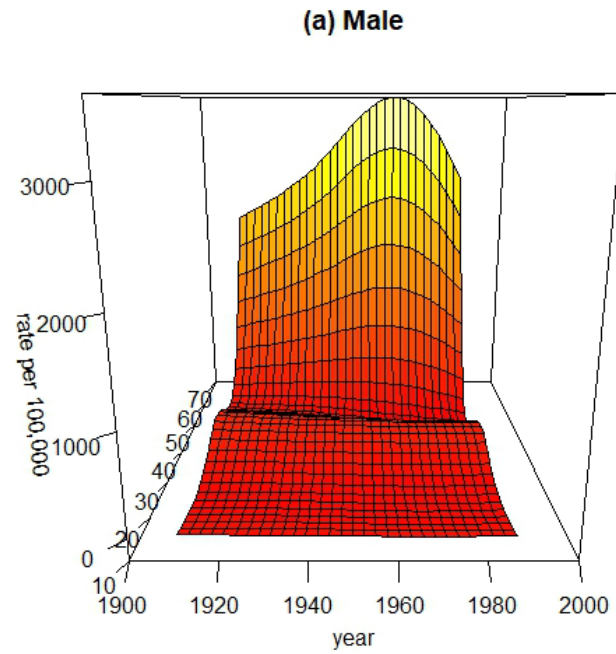


Figure 3. All-cause mortality-net migration rates per 100,000 by age group and year for Australian foreign-born population (a) Males (b) Females. Age groups 2-6 correspond to age midpoints 20,30,40,50,60 years old respectively. Both plots have been rotated with an angle of -35° to permit a better view.

