

Epidemiological transition in Australia: An analysis of immigration patterns in relation to circulatory system diseases and all-cause mortality in the mid-twentieth century

Short title:

Immigration, circulatory disease and all-cause mortality in Australia

Kelleher, Cecily C cecily.kelleher@ucd.ie

Kelly, Gabrielle E² gabrielle.kelly@ucd.ie

Segurado, Ricardo¹, ricarco.segurado@ucd.ie

Briody, Jonathan^{1,3}, jonathanbriody@rcsi.ie

Sellers, Alexander M⁴, alexander.sellers@sa.gov.au

McCalman, Janet S⁵, j.mccalman@unimelb.edu.au

UCD School of Public Health, Physiotherapy and Sports Science, Belfield, Dublin 4, Republic of Ireland¹, UCD School of Mathematics and Statistics², Belfield, Dublin 4, Royal College of Surgeons in Ireland, Dublin 2, Republic of Ireland³, Royal Adelaide Hospital, Adelaide, Australia⁴. Melbourne School of Population and Global Health, University of Melbourne, Australia⁵

Corresponding Author: *cecily.kelleher@uCSD.ie, Telephone: +353 1 7162045 Fax: +353 1 716 3421

Word Count: 3928

Abstract

Background and Objectives: Circulatory System Diseases (CSD) patterns vary over time and between countries, related to lifestyle risk factors, associated in turn with socio-economic circumstances. Current global CSD epidemics in developing economies are similar in scale to those observed previously in the USA and Australasia. Australia exhibits an important macroeconomic phenomenon as a rapidly transitioning economy with high immigration throughout the 19th and 20th centuries. We wished to examine how that historical immigration related to CSD patterns subsequently.

Methods and Setting: We provide a novel empirical analysis employing census-derived place of birth by age bracket and sex from 1891 to 1986, in order to map patterns of immigration against CSD mortality rates from 1907 onwards. Age-specific generalised additive models for both CSD mortality in the general population, and all-cause mortality for the foreign-born (FB) only, from 1910 to 1980 were also devised for both males and females.

Results: The % FB fell from 32% in 1891 to 9.8% in 1947. Rates of CSD rose consistently, particularly from the 1940s onwards, peaked in the 1960s, then declined sharply in the 1980s and showed a strong period effect across age groups and genders. The main effects of age and census year and their interaction were highly statistically significant for CSD mortality for males ($p < 0.001$, each term) and for females ($p < 0.001$, each term). The main effect of age was statistically significant for all-cause mortality minus net migration rates for the FB males ($p = 0.005$) and for FB females, both age ($p < 0.001$) and the interaction term ($p = 0.002$) were significant.

Conclusions: We argue our empirical calculations, supported by historical and socio-epidemiological evidence, employing immigration patterns as a proxy for epidemiological transition, affirm the lifecourse hypothesis that both early life circumstances and later life lifestyle drive CSD patterns.

Keywords: circulatory diseases, stroke, generalised additive model, epidemiological transition, lifecourse

44 **Article Summary:**

45 **Strengths**

- 46 • An original analysis employing census data and immigration patterns to reinterpret historical
- 47 trends in CSD in Australia
- 48 • Relevant to modern public health policy for population approaches to CSD prevention, also
- 49 integrates lifecourse and lifestyle drivers of trends

50 **Limitations**

- 51 • Historical databases do not categorise either all cause or CSD mortality according to country
- 52 of origin.
- 53 • However, data for foreign-born mortality were inferred using novel actuarial type calculations
- 54 • There are no second-generation data by country of origin, unlike in USA.

55

Introduction

Circulatory system diseases (CSD) patterns are known to vary over time and between countries, related to lifestyle risk factors across the life course, associated in turn with underlying socio-economic circumstances¹⁻⁶. Current global epidemics in developing economies are similar in scale to those observed much earlier in the USA and Australia⁷⁻⁸. Since the mid twentieth century in particular, international epidemiological studies have assessed how proximal lifestyle risk factors such as tobacco smoking and diet-related hypertension, obesity and lipoprotein profiles can explain the patterns of heart disease and stroke in given populations⁷⁻¹³.

It is well established that in the mid-twentieth century, patterns of heart disease were highest in countries such as the USA, Australia and Finland, intermediate in northern Europe and lowest in Mediterranean countries¹⁴. That pattern shifted, with steep declines observed first in the USA and Australia, followed by falls in all western countries from the early 1980s onwards¹⁴⁻¹⁵. The conventional, primarily period, explanation is that the balance of lifestyle change and introduction of rigorous clinical management protocols, including coronary care and pharmacological management of hypertension and hypercholesterolemia drive these patterns^{5,7,11,16}. The IMPACT models suggest that declining incidence is driven primarily by shifts in risk factors, rather than treatments⁴. However, the “causes of causes” hypothesis suggests that these lifestyle patterns are strongly influenced by socio-economic forces and that in turn a life course perspective is required to understand how cumulative, or trajectory influences occur over time, suggesting cohort variations¹⁷.

The concept of epidemiological transition posits that as countries move from patterns of poverty to patterns of affluence, changes in prevailing diseases occur, with first infectious diseases waning, followed by a rise in non-communicable diseases^{1,18,19}. The American Heart Disease Association describes four distinct stages of epidemiological transition at population level, stage 1 being pestilence and famine associated with heart conditions including rheumatic heart disease, stage 2 being receding pandemics which also now include a rise in hypertensive heart disease and haemorrhagic stroke, stage 3 being degenerative and man-made diseases with all forms of strokes, ischaemic heart disease at all

ages and increasing obesity and diabetes and stage 4 is associated with delayed degenerative diseases with onset of stroke, ischaemic heart disease and heart failure at older ages¹.

Harper et al. set out a contextual framework for understanding these trends which takes account of socio-economic position of individuals, lifecourse processes and the macrosocial context¹⁴. The contemporary global burden of disease maps show clearly the shifting patterns downwards in current Western populations and upwards in parts of Asia and Africa²⁰. Barker observed the paradox that while coronary heart disease increases with western prosperity, it is more common in poorer areas of western countries and among poorer peoples²¹. Moreover, in a time of huge global challenge in relation to non-communicable disease and the rise of obesity in recent decades, it is necessary to understand at a mechanistic level how global epidemics occur to intervene effectively in their management^{22, 23,24}. An assessment of how historical patterns of disease occurred, can contribute to modern strategies to prevent non communicable disease⁶.

The USA, Australia and New Zealand share an important macroeconomic phenomenon in that they were each rapidly developing transitional economies throughout the nineteenth and twentieth centuries, with large scale immigration as a major driver of population growth and composition^{15, 25-27}. In both continents the original immigrants were predominantly from Europe, initially from Northern and then Central Europe, followed by Southern Europe and then latterly from Asia.

An analysis employing historical USA census data, showed a strong temporal association between the patterns of age-adjusted heart disease in both men and women and the proportion of foreign born and of first-generation Americans between thirty-eight and fifty years earlier¹⁵. This was possible because the demographic changes occurring on such a large scale meant that the census recorded country of birth of enumerated householders^{8, 26,27}. Stamler suggested that the foreign-born might exhibit residual features reflecting the influence of their country of origin, i.e., a cohort effect, but their characteristics as Americans were predominant⁸.

Methods

Data

To examine the transitioning population and its subsequent pattern of CSD we looked at both census data and epidemiological records and constructed a historical dataset based on digitised paper records. Census data on place of birth, age bracket, and sex were retrieved from scanned paper copies from 1891 over the subsequent 95 years coming to thirteen in total – every 10 years between 1891 and 1921, 1933, 1947, 1954, and then every 5 years from 1961 to 1986²⁸. Prior to 1891 there was not a synchronised census year for all six pre-Federation colonies, however an overall number of foreign-born residents were obtained for 1861, 1871 and 1881 (not by region).

We reconciled the country of birth data across changes of political entities into: Commonwealth of Australia (the six colonies/states, External Territories, and New Zealand), UK and Ireland, Northern and Central Europe (including Denmark, Sweden and Norway, Germany, The Netherlands, Belgium, France, Switzerland, Austria/Austria-Hungary, Eastern Europe through to Russia), Southern Europe (all other countries with extensive Mediterranean sea coasts including Spain, Italy, Greece, Malta, Yugoslavia and other Balkan nations, Turkey, and Lebanon, in addition to Portugal, Romania and Bulgaria), with the Americas, Asia, Africa, and Polynesia grouped into the Other group including the small number of persons unknown, or born at sea. The percentage of the total population which were born in each of the world regions was calculated. As the predominant immigrant population of Australia historically has been from the UK and Ireland, we also created an aggregated European and Other region, to include all non-UK/Irish immigration.

Age-specific and age-adjusted circulatory system disease (CSD) mortality rates per 100,000 were available from 1907 through to 2016 from online records of the General Record of Incidence of Mortality (GRIM; Australian Institute of Health and Welfare) book 0900²⁹. The GRIM mortality information is obtained from (compulsory) death certificates, certified by a medical practitioner or coroner, and coded by the Australian Bureau of Statistics or precursors to that agency, to International Statistical Classification of Diseases and Related Health Problems (ICD). CSD currently encompasses ICD-10 codes I00-I99 and is aligned with corresponding categories back to ICD-1 (1907-1917). Coronary heart disease deaths specifically (ICD-10 codes I20-I25) were considered but were only available commencing in 1940. We obtained incidence of aggregated cerebrovascular disease (CVD)

mortality from GRIM book 0904 (Australian Institute of Health and Welfare), encompassing ICD-10 codes I60 to I69. All mortality rates are age-standardised to the 2001 estimated resident Australian population.

Analysis

Age-specific mortality rates for the whole Australian population are also compared with those foreign-born^{30,31}. CSD mortality rates are available only for the whole Australian population but there is justification that these are indicative of all-cause mortality rates. For each sex/age-group/census year mortality rates due to CSD in the Australian population were calculated by taking the ratio $N_{\text{mort}}/N_{\text{total}}$ in the raw data set.

Mortality rates for foreign born due to circulatory disease or all-causes are not readily available either, as country of origin was not recorded at death. However, all-cause mortality rates for foreign born were estimated from numbers of foreign born in different age groups at different census years, using the following actuarial type/analytical method. For example, let fb denote foreign born, and taking a specific age and specific year, then

Number fb age 31 in 1948 = (Number fb age 30 in 1947) \times (1 - ($r_1 - r_2$)), where r_1 is the mortality rate for fb age 30 1947 and r_2 is the inward migration rate for age 30 in 1947-1948. Let $r = r_1 - r_2$ then we re-write the above equation as:

$$\text{Number fb age 31 in 1948} = (\text{Number fb age 30 in 1947}) \times (1 - r) \quad (1)$$

Thus, r is the mortality rate-inward migration rate for the fb age 30 in 1947.

Then

$$\text{Number fb age 32 in 1949} = (\text{Number fb age 31 in 1948}) \times (1 - r) \quad (2)$$

where $r = r_1 - r_2$ and r_1 is the mortality rate for fb age 31 1948-1949 and r_2 is the inward migration rate for age 31 in 1948-1949 and we assume these rates are unchanged from the 1947-1948 values.

Thus, substituting equation (1) into equation (2), we have

159 Number fb age 32 in 1949 = (Number fb age 30 in 1947) \times (1- r)².

160 Proceeding in this way we have

161 Number fb age 37 in 1954 = (Number fb age 30 in 1947) \times (1- r)⁷

162 Therefore

163 (Number fb age 37 in 1954/ Number fb age 30 in 1947) = (1- r)⁷

164 and therefore $r = 1 - (\text{Number fb age 37 in 1954} / \text{Number fb age 30 in 1947})^{1/7}$ (3)

165 Thus, r is the mortality rate-inward migration rate for the fb age between 30 and 36 per year in the
166 interval 1947-1954.

167 r is estimated from the data by

168 $r = 1 - (\text{N_AllFB age 35-45 in 1954} / \text{N_AllFB age 25-35 in 1947})^{1/7}$ (4)

169 This calculation was repeated for each age-group and census interval. Only raw data by age-group
170 totals are available from the censuses. Note that r can be negative if the inward migration rate exceeds
171 the mortality rate. Thus, for all age-groups r will underestimate the mortality rates but it is used here as
172 a proxy for the mortality rates.

173 The estimates of r were interpolated and smoothed over all ages and census years using a tensor product
174 smooth model³² and are displayed in 3-d plots. This is an extension of a generalized additive model
175 (gam)³³ to 3-dimensions and was fitted using the mgcv package in R with the ti function. This was done
176 separately for males and females. This smooth model was decomposed into a functional ANOVA
177 structure with main effects of age and year and their interaction.

178 The CSD mortality rates per 100,000 for the whole population were also fitted using a tensor smooth
179 model and displayed in 3-d plots.

Note that the raw data are very variable both by census year and age-group. For example, the number of foreign-born males age group 30 in 1921 is 74,913 while it is 100,385 in 1933 and for age group 40 in 1921 it is 93,089. So, all interpolating models must be interpreted with caution.

Results

The exact population numbers from 1891-1986 from census data by region of origin are presented in Table 1. This shows respectively the population numbers born in Australia or abroad or the birthplace of origin as a percentage of the total population, from 1891 onwards. There are two distinct patterns observed. In 1891 when the population numbered just over three million, the proportion foreign-born was relatively high. The contribution made to the population composition by those UK or Irish-born is initially very considerable but tails off until the 1940s. A new surge in migration beginning after WW2 is apparent, initially comprising an increase in European (mostly Southern) immigration. Asian populations in particular were the predominant group in the large “Other” category after the 1970s.

The Australian population composition mapped against the age-adjusted circulatory system disease (CSD) mortality is shown in Figure 1a. This illustrates the change in the proportions of the population foreign-born by region of origin (left-hand vertical axis), alongside the change in incident mortality due to all CSD (red line, right-hand vertical axis). This shows firstly that the percentage of the population foreign-born was over 60% in 1861 and declined steeply over the next 80 years so that it was just 10% by the mid nineteen forties. Thereafter there was again a rise in immigration, climbing to over 20% of the population in the early 1980s. The figure also shows the contribution to this pattern made by the UK/Ireland, Northern and Southern European groups. The predominant early group is of UK and Irish origin, dropping steeply by the mid nineteen forties and plateauing at approximately 7%. The other two European groups are much smaller in proportion and reach their peak in the 1960s.

The pattern of circulatory diseases shows a steep rise throughout the early twentieth century, and reaches a plateau by 1950-1970, and then declines sharply from then onwards. By 1990 rates had fallen again to those previously seen in 1920 and continued to decline before levelling off currently.

Figure 1b shows the contrast between males and females in age-adjusted CSD mortality, this time in relation to the population foreign born of both sexes from UK and Ireland. There is an approximate time lag of forty years in the fall-off of immigration from UK and Ireland and that of age adjusted CSD in the general population. Female and male rates began to diverge in the 1940-50s, with female rates declining earlier, and male rates not beginning to decline until the 1980s. By the late 1990s the rates had converged again. The pattern in Figure 1c showing the cerebrovascular disease mortality by sex, aligns with this, albeit with negligible sex differences: an increase as the late 19th century immigrants reach old age, a plateau from the 1950s to 1970s, followed by steep decline thereafter.

Figures 2a and 2b show mortality rates due to circulatory disease in the Australian population by age group and year during the period 1910 to 1990 for males and females separately. Mortality rates increase with age as expected and can be seen from the left scales. In all age groups and in both males and females, rates of circulatory disease rose consistently, particularly from the 1940s onwards, peaked in the late nineteen sixties and then began to decline sharply by the nineteen eighties. An interaction effect between age and year is clearly visible, with differences between ages changing with year. The main effects of age and census year and their interaction were statistically significant in the model for males ($p < 0.001$, each term) and that for females ($p < 0.001$, each term). The adjusted R^2 was 96.4% for the male model and 98% for the female model.

Figures 3a and 3b show all-cause mortality-net migration rates for the foreign born only, separately for both males and females. The main effect of age was statistically significant in the model for males ($p = 0.005$) and for females both age ($p < 0.001$) and the interaction term ($p = 0.002$) were significant. The adjusted R^2 was 35.1% for the male model and 53% for the female model.

Discussion

In this analysis we have examined whether the immigration pattern in Australia, as one form of proxy for epidemiological transition, related to patterns of both CSD and all-cause mortality in the population, as had been observed previously in the USA¹⁵. We demonstrate a temporal association of age-adjusted CSD with immigration approximately a half century earlier from predominantly United Kingdom and

Ireland, which changes as the population stabilises economically and newer waves of immigration from lower risk Mediterranean and later Asian countries occur.

We also show in age-specific models that assess both CSD and all-cause mortality, a strong age and period effect for the general Australian population and a highly significant interaction between age and census year in CSD mortality. Both foreign born male and female populations showed a strong age effect for all-cause mortality, while for females the interaction term was also highly significant. These novel findings do not contradict the period impact on cardiovascular disease shown in the age-period-cohort analysis by Taylor et al⁵ for the general Australian population but is unlike their analysis in showing a clear interaction effect, and for the first time looks specifically also at the foreign-born population.

We demonstrate in essence, for Australia, similar temporal findings to those observed in the USA. In the previous analysis, data were available both for foreign born and native born of foreign parents and that afforded a fit which explained both the rise and fall of the epidemic¹⁵, though we do not have second generation data in this analysis. We acknowledge there are clear limitations to this current analysis in that the historical databases do not categorise either all cause or CSD mortality according to country of origin and there are no available second-generation data by country of origin. However, data for foreign-born were inferred using actuarial type calculations and a three-dimensional model, representing a novel approach. One would expect an impact on foreign-born, but also their children born into a transitioning economic environment, especially urban disadvantage.

Our findings can be situated in the earlier history of that transitioning Australian development. To understand any cohort effect, we contend the historical developments influencing early childhood must be considered. Of the three classical risk factors, active individual smoking is strongly period driven^{7,9}, whereas dietary intake, which drives both lipoprotein and blood pressure patterns, can be influenced both by short term and longer-term programming factors^{6,23,24}.

Demographic Transition

Borrie provided a comprehensive demographic analysis of the transitioning Australian and New Zealand populations over a two-hundred-year period from 1788-1988³⁴. Those who migrated into Australia from Europe³⁵⁻³⁷ included First Fleeter and other colonists, transported convicts, and Assisted Passage individuals who were supported to emigrate from their countries of origin. The Irish and British were the predominant early migrating group. A total of over 800,000 immigrants came also through Government Assistance programmes established 1861-65 through to 1900, tapering off sharply during that time. Irish assisted emigration to Australia was related to workhouse programmes established during and after the Great Irish famine³⁶⁻³⁷. The impact of historical circumstances, including the famine in Ireland in the 1840s has been examined previously in an Irish context, both at home and in relation to its huge emigrant diaspora³⁸. Irish emigrants in the United Kingdom took at least two generations to reflect integrated patterns of mortality of the prevailing population³⁹. An analysis of birthplace of all brides marrying in Australia between 1908 and 1979 shows the transition to Australian born mothers almost fully completed by 1979³⁴.

Whitewell et al conducted a detailed economic and public health review of Australia from 1860-1940 which illustrates how and when population changes occurred which might have influenced longer term health outcomes into the twentieth century⁴⁰. Height, as a proxy measure for public health impact of standards of living, was initially high, dipped in the latter period of the nineteenth century, then rose again from the late eighteenth century through to 1918. From 1890 onwards, the sanitary conditions in the booming cities, which initially made for an unhealthy environment in which children were especially vulnerable, greatly improved. Inwood et al show an association between growing incomes and height in Tasmania related to a decline in food cost and increased per capita domestic product⁴¹. Cumpston²⁶ documented the improvements in public health in Australia, that would translate into reduced susceptibility to strokes and heart disease in these individuals as older adults. Taylor et al reviewed both all-cause mortality in Australia from 1788-1990⁴² and more recent cause-specific mortality from 1907-1990⁴³. They showed a precipitous fall in infant mortality from 1900, similar to European countries, but then a stagnation during the mid-twentieth century, attributable to the epidemic in CSD mortality.

There is now a strong body of recently assembled historical retrospective cohort studies that afford an opportunity to review social and economic circumstances in the late nineteenth and early twentieth centuries when Australia was becoming established as a modern economy and when cardiovascular diseases incidence and mortality were rising⁴⁴⁻⁴⁹ McCalman et al linked medically validated morbidity and mortality records to original maternity records from the Melbourne lying-in hospital⁴⁴⁻⁴⁶ showing expected demographic predictors of infant mortality. These included reduced odds of that outcome if of higher social group, of Australian birth, and higher odds if a first-born child, younger mother, pre-term and of relatively lower birthweight⁴⁶ Early results from the Victoria Diggers to Veterans longitudinal study of first world war enlisters showed a strong social gradient according to military rank for height and amongst survivors to 1922, farmers were significantly less likely to die compared to others, whereas poorer urban counterparts had greater odds of mortality⁴⁹

Lifestyle Hypothesis

As in the USA, there was considerable research interest in Australia and New Zealand in the aetiology of non-communicable disease from mid-nineteen seventies onwards⁵⁰⁻⁵⁹. Seminal epidemiological analyses document the rising rates of smoking in the population and changes in food availability, exposing a transitioning population to prevailing adverse lifestyle^{7,9}. Those studies at the height of the epidemic focused not primarily on the early British migrants however but on the latterly arrived mainly Southern European immigrants who initially carried the reduced risk associated with their Mediterranean lifestyle into a now economically stable Australian society (Table 2).

Italian and Greek immigrants to cities like Melbourne and Sydney initially had lower blood pressure and lipid profiles than their Australian born contemporary neighbours but had higher risk factor profiles than their home countries⁵⁰⁻⁵³. McMichael et al also reviewed cancer rates and there were differences in Northern European and Southern European immigrants⁵⁴⁻⁵⁶. Rates of stomach cancer, like stroke associated with early life experiences, tended to be higher in immigrant groups than native born Australians. Suicide rates were comparable in Northern European immigrants, but higher than in their country of origin⁵⁷⁻⁵⁸. The classical healthy migrant hypothesis posits that immigrants move from low

to intermediate to high risk as they transition into a new environment⁶⁰ though migrants usually form a relatively small part of the population, which is more typical of the later immigration patterns seen since the mid twentieth century in Australia. The post WW2 immigrants assume the risk of the prevailing environment as they enter middle and old age. McMichael was an early advocate of the general population drivers of cardiovascular diseases and supply factors underpinned by industrialisation⁵⁹. There is contemporary interest in Australia in the health experiences of latter-day migrants, including in the Melbourne Collaborative Cohort Study⁶¹

It is likely that the effect of smoking is underestimated in these early epidemiological analyses. Active smoking in the post WW2 period was extraordinarily high, particularly in men⁶². Exposure to high levels of unrestricted active smoking would increase the risk of passive smoke exposure in public places and in households and transport. The current national population bans placing restrictions on public smoking in many countries have shown that admission rates for cardiovascular and respiratory disease are reduced in areas with effective smoking bans⁶³.

An Integrated Approach

The epidemiological focus has moved more recently to a more integrated lifecourse explanation for development of adult non communicable disease that takes account of early life exposures as well as personal health behaviours^{6, 14, 21-23}. Policy should be directed at underlying drivers of population health as well as individual risk factor modification, as exemplified by current guidelines of management of hypertension⁶. Current rates of CSDs are much lower than in the past but show significant regional variations and inequalities and are now much higher in Aboriginal citizens⁶⁴.

Emerging contemporary data from other newer studies support the lifecourse hypothesis also⁶⁵⁻⁶⁹. The West Australian pregnancy cohort shows that adolescent adiposity trajectories are associated with increased risk of raised blood pressure⁶⁷. Roberts and Wood employing data from a historical New Zealand cohort from 1907 to 1922 have modelled the significant effects of birthweight on subsequent adult blood pressure⁶⁸. Taken together, these findings show the influence of lifecourse and the need also to understand the specific social and historical context.

In conclusion, this analysis provides a contextual reassessment of the historical drivers of the patterns of CSD in Australia. These different immigrant groups all experienced a period effect in relation to CSD, but also brought with them cohort effects of differing magnitude, which impacted CSD rates in the general population, reflected in the temporal association of age-adjusted CSD rates with immigration that later stabilised and in the age-year interactions in our models. With current global epidemics in developing economies exceeding in scale those in the past, these findings may be particularly relevant to public health policy planning for contemporary movements of peoples.

Author Contributions:

CCK conceived the study design and wrote the first draft. JSMcC contributed the historical economic and public health context for Australia in the 19th and early 20th century. AMS and CCK conducted the literature search for contemporary Australia. JB initiated the construction of the database and RS conducted the temporal analysis. GEK devised and conducted the age period analysis for the general Australian and Foreign-born populations. All authors contributed to the interpretation of findings and to the drafting of the manuscript and agreed to its final content. Data files of these analyses may be provided, upon reasonable request, by the authors. There are no conflicts of interest to declare.

Ethical Approval:

This analysis employed publicly available archived databases with no individual participants so ethical approval was not sought or required.

Funding and Acknowledgements:

This analysis received no specific grant from any funding agency in the public, commercial or not-for-profit sectors. Professor Cecily Kelleher undertook the original research in Australia on which this paper is based with funding from a Miegunyah Fellowship at the University of Melbourne. Dr Jonathan Briody was funded by the Health Research Board SPHERE PhD training programme. Professor Janet

359 McCalman is supported by the ARC, Australian Research Council. The authors wish to thank Ms Emma
360 Coyle for the work on data entry for this analysis.

361

References

1. Yusuf S, Reddy S, Ounpuu S, Anand S. Global Burden of Cardiovascular Diseases. Part 1: General considerations, the epidemiologic transition, risk factors and impact of urbanisation. *Circulation* 2001; 104:2746-2753.
2. Yusuf S, Hawken, S, Ounpuu S, Dans T, Avezum A, Lanas F et al. Effect of potentially modifiable risk factors associated with myocardial infarction in 52 countries (the INTERHEART Study): Case control study. *Lancet* 2004; 346: 937-752.
3. Rosengren A, Subramanian SV, Islam S, Chow CK, Avezum A, Kazmi K, et al. INTERHEART Investigators. Education and risk for acute myocardial infarction in 52 high, middle and low-income countries: INTERHEART case-control study. *Heart*. 2009 Dec; 95(24):2014-22. doi: 10.1136/hrt.2009.182436. Epub 2009 Oct 12.
4. Capewell S, O'Flaherty M. What explains declining coronary mortality? Lessons and warnings. *Heart* 2008, 94(9): 1105-1108.
5. Taylor, R, Page A, Danquah J. The Australian epidemic of cardiovascular mortality 1935-2005: effects of period and birth cohort. *J Epi Commun Health* 2012; 66:e18. Doi: 10.1136/jech.2010.10958.
6. Olsen MH, Angell SY, Asma S, Boutouyrie P, et al. A call to action and a lifecourse strategy to address the global burden of raised blood pressure on current and future generations: the Lancet Commission on hypertension. *The Lancet Commissions*. 2016. Vol 388 November 26, 2016.
7. Dwyer T, Hetzel BS. A comparison of trends of coronary heart disease mortality in Australia, USA and England and Wales with reference to three major risk factors-hypertension, cigarette smoking and diet. *Int J Epidemiol*. 1980 Mar; 9(1):65-71.
8. Stamler J, Kjelsberg M, Hall Y, Scotch N. Epidemiologic studies on cardiovascular diseases: III. Analysis of Mortality by age-sex-nationality. *J Chronic Diseases* 1960; 12(4): 464-475.
9. Hetzel BS, Charnock JS, Dwyer T, McLennan PL. Fall in coronary heart disease mortality in U.S.A. and Australia due to sudden death: evidence for the role of polyunsaturated fat. *J Clin Epidemiol*. 1989; 42(9):885-93.
10. Goff DC, Howard G, Russell GB, Labarthe DR. Birth cohort evidence of population influences on blood pressure in the USA, 1887-1994. *Ann Epidemiol* 2001; 11(4): 271-279.

11. Hetzel BS, Dwyer T. Response to: Tobias et al. on the decline of CHD mortality in New Zealand. *Aust N Z J Public Health*. 2008 Dec; 32(6):579-80. doi: 10.1111/j.1753-6405.2008.00316.x.
12. Tobias M, Chan WC, Wright C, Jackson R, Mann S, Yeh LC. Can the incidence and prevalence of coronary heart disease be determined from routinely collected national data? Population-based estimates for New Zealand in 2001—03. *Aust N Z J Public Health*. 2008. 32(1): 24-7. doi:10.1111/j.1753-6405.2008.00161.
13. Thompson PL, Hobbs MS, Martin CA. The rise and fall of ischemic heart disease in Australia. *Aust N Z J Med*. 1988. 18(3):327-37.
14. Harper S, Lynch J, Smith GD. Social Determinants, and the Decline of Cardiovascular Diseases: Understanding the Links. *Annual Reviews* 2011. 32:39-69
15. Kelleher CC, Lynch JW, Daly L, Harper S, Fitz-Simon N, Bimpeh Y, et al. The "Americanisation" of migrants: evidence for the contribution of ethnicity, social deprivation, lifestyle and life-course processes to the mid-20th century coronary heart disease epidemic in the US. *Soc Sci Med*. 2006 Jul; 63(2):465-84.
16. Li Y, Pan A, Wang DD, Liu X, Dhana K, Franco OH, et al. Impact of Healthy Lifestyle factors on life Expectancies in the US population. *Circulation* 2018; 137:00-00. DOI 10.1161/CIRCULATIONAHA.117.032047.
17. Rose G. Sick Individuals and Sick Populations. *Int J Epi* 1985; 14(1): 32-38.
18. McKeown RE. The Epidemiologic Transition: Changing Patterns of Mortality and Population Dynamics. *Am J Lifestyle Med* 2009; 3 (1Suppl): 19s-26S.
19. Cappuccio, FP. Commentary: Epidemiological transition, migration and cardiovascular disease. *IJE* 2004; 33:387-388.
20. World Health Organisation. <https://www.who.int/news/item/09-12-2020-who-reveals-leading-causes-of-death-and-disability-worldwide-2000-2019> accessed 12th November 2022
21. Barker DJP. Commentary: birth weight and coronary heart disease in a historical cohort. *IJE* 2006; 886-887.
22. Block T, El-Osta A. Epigenetic programming, early life nutrition and the risk of metabolic disease. *Atherosclerosis*. 2017 Nov; 266:31-40. doi: 10.1016/j.atherosclerosis.2017.09.003. Epub 2017 Sep 5. Review.

23. Dickinson H, Moss TJ, Gatford KL, Moritz KM, Akison L, Fullston T, et al. A review of fundamental principles for animal models of DOHaD research: an Australian perspective. *J Dev Orig Health Dis*. 2016 Oct; 7(5):449-472.
24. Lindblom R, Ververis K, Tortorella SM, Karagiannis TC. The early life origin theory in the development of cardiovascular disease and type 2 diabetes. *Mol Biol Rep*. 2015 Apr; 42(4):791-7. doi: 10.1007/s11033-014-3766-5. Review.
25. Cumpston, J.H.L. The development of public health in Australia. *Medical Journal of Australia*. 1928. 1:332-36
26. Carpenter, N. Immigrants and their children. A study based on census statistics relative to the foreign born and the native white of foreign or mixed parentage. Census Monographs VII. Washington Department of Commerce, Bureau of the Census. 1927.
27. Winslow EA, Wang PL. The relation between changes in nationality stock and increasing death rates in adult life. *American Journal Hygiene* 1931; 14:79-88.
28. Australian Bureau of Statistics.
<http://www.abs.gov.au/AUSSTATS/abs@.nsf/ViewContent?readform&view=ProductsbyCatalogue&Action=Expand&Num=2.2> accessed 12th January 2019
29. Australian Institute of Health and Welfare. <https://www.aihw.gov.au/reports-data/health-conditions-disability-deaths/heart-stroke-vascular-diseases/overview>, accessed 12th January 2019.
30. Cleveland, WS, Grosse E, Shyu WM. Local regression models. Chapter 8 of Statistical Models in J.M. Chambers and T.J. Hastie, (Eds) Wadsworth & Brooks/Cole.1992
31. R Core Team. R: A language and environment for statistical computing. R Foundation for Statistical Computing, Vienna, Austria. URL: <https://www.R-project.org/> 2017.
32. Wood, S.N. Low rank scale invariant tensor product smooths for generalized additive mixed models. *Biometrics* 2006. 62(4):1025-1036
33. Wood S.N. Generalized Additive Models: An Introduction with R (2nd edition). Chapman and Hall/CRC Press 2017
34. Borrie WD. The European Peopling of Australasia. A Demographic History 1788-1988. The Australian National University, Canberra, 1994.
35. Hughes R. The Fatal Shore. Vintage Books. Random House. London. 2003.

36. Caball KM. The Kerry Girls. Emigration and the Earl Grey scheme. *The History Press Ireland*. Dublin. 2014.
37. Reid, RE. Farewell My Children. Irish Assisted Emigration to Australia 1848-1870. Anchor Books, Australia 2011
38. Kelleher CC, Lynch J, Harper S, Tay JB, Nolan G. Hurling alone? How social capital failed to save the Irish from cardiovascular disease in the USA. *Am J Public Health*. 2004 Dec; 94(12):2162-9.
39. Harding S, Balerajan R. Patterns of mortality in second generation Irish living in England and Wales: Longitudinal Study. *BMJ* 1996; 312: 1389.
40. Whitewell G, de Souza C, Nicholas S. Height, Health and Economic Growth in Australia, 1860-1940. National Bureau of Economic Research. 1997. 0-226-77156-3:379-422
<http://www.nber.org/books/stec97-1>
41. Inwood K, Maxwell-Stewart H, Oxley D, Stankovich J. Growing incomes, growing people in nineteenth-century Tasmania. *Australian Economic History Review*. 2015; 55(2): 187-211.
42. Taylor R, Lewis M, Powles J. The Australian mortality decline: all-cause mortality 1788-1990. *Aust NZ J Public Health* 1998; 22(1): 27-36.
43. Taylor R, Lewis M, Powles J. The Australian mortality decline: cause-specific mortality 1907-1990. *Aust NZ J Public Health* 1998; 22(1): 37-44
44. McCalman J, Morley R. Mothers' health and babies' weights: the biology of poverty at the Melbourne Lying-in Hospital, 1857-83. *Soc Hist Med*. 2003 Apr; 16(1):39-56.
45. Morley R, McCalman J, Carlin JB. Birthweight and coronary heart disease in a cohort born 1857-1900 in Melbourne, Australia. *Int J Epidemiol*. 2006 Aug; 35(4):880-5. Epub 2006 Mar 8.
46. McCalman J, Morley R, Mishra G. A health transition: birth weights, households and survival in an Australian working-class population sample born 1857-1900. *Soc Sci Med*. 2008 Mar; 66(5):1070-83. doi: 10.1016/j.socscimed.2007.11.040. Epub 2008 Jan 8.
47. Bradley J, Kippen R, Maxwell-Stewart H, McCalman J, Silcot S. Research note: The Founders and Survivors project. *The History of the Family*, 2010, 15:4, 467-477, DOI: 10.1016/j.hisfam.2010.08.002
48. McCalman J, Smith L, Silcott S, Kippen R. Koori Health Research Database: Dataset of genealogies and life events of approximately 8,000 Kooris who lived in Victoria and New

South Wales in the nineteenth and twentieth centuries. *Sch of Rural Health*. 2018.

https://figshare.com/articles/Koori_Health_Research_Database/5936884

49. McCalman J, Kippen R, McMeekan J, Hopper J, Reade M. Early Results from the Diggers to Veterans Longitudinal study of Australian men who served in the First World War. Short and Long-term Mortality of Early Enlisters. *Historical Life Course Studies* 2019; 8: 52-72
50. Lovell RR, Prineas RJ. Differences in blood pressure measurements and prevalence of hypertension between Australian-born and Italian-born middle-aged men and women in Melbourne. 1974. *Med J Aust*. 21:2(25):893-8.
51. Ulman R, Abernethy JD. Blood pressure and length of stay in Australia of Italian immigrants in the Australian National Blood Pressure Study. *Int J Epidemiol*. 1975; 4(3):213-5.
52. Ireland PD, Giles GG. Blood pressure in the Australian-and Italian-born: A Melbourne suburb revisited after 20 years. *Aust NZ J Public Health* 1996; 20(2):143-8.
53. Armstrong et al. Coronary risk factors in Italian migrants to Australia. *Am J Epidemiol*. 1983;118(5):651-8
54. McMichael AJ, McCall MG, Hartshorne JM, Woodings TL. Patterns of gastro-intestinal cancer in European migrants to Australia: the role of dietary change. *International Journal of Cancer*. 1980. 25(4):431-7.
55. McMichael AJ, Giles GG. Cancer in migrants to Australia: extending the descriptive epidemiological data. *Cancer Research*. 1988. 48(3):751-6 Feb 1.
56. McMichael AJ, Bonett A, Roder D. Cancer incidence among migrant populations in South Australia. *Medical Journal of Australia*. 1989. 150(8):417-20 Apr 17.
57. Burvill PW. Migrant suicide rates in Australia and in country of birth. *Psychological Medicine*. 1998. 28: (1) 201-208
58. Burvill PW, McCall MG, Woodings T, Stenhouse NS. Comparison of suicide rates and methods in English, Scots and Irish migrants in Australia. *Social Science and Medicine*. 1983. 17(11):705-8
59. McMichael AJ. Coronary heart disease: interplay between changing concepts of aetiology, risk distribution and social strategies for prevention. *Community Health Studies*. 1989. 13(1):5-13.
60. Fennelly K. The Healthy Migrant Effect. In: *Healthy Generations*. 2005; 5(3): 1-3.

61. Giles G. The Melbourne Collaborative Cohort Study. Centre for Epidemiology and Biostatistics. Melbourne University 2015.
62. Greenhalgh, EM, Scollo, MM and Winstanley, MH. Tobacco in Australia: Facts and issues. Melbourne: Cancer Council Victoria; 2022. Available from www.TobaccoInAustralia.org.au
63. Frazer K, Callinan JE, McHugh J, van Baarsel S, Clarke A, Doherty K, Kelleher C. Legislative smoking bans for reducing harms from secondhand smoke exposure, smoking prevalence and tobacco consumption. *Cochrane Database Syst Rev*. 2016 Feb 4;2(2):CD005992. doi: 10.1002/14651858. CD005992.pub3.
64. Hoy WE, Mott SA, McLeod BJ. Transformation of mortality in a remote Australian Aboriginal community: a retrospective observational study. *BMJ Open*. 2017 Aug 11; 7(8): e016094. doi: 10.1136/bmjopen-2017-016094.
65. Feng X, Wilson A. Getting Bigger Quicker? Gendered Socioeconomic Trajectories in Body Mass Index across the Adult Lifecourse: A Longitudinal Study of 21,403 Australians. 2015. 10(10):e0141499.doi:10.1371/journal.pne.0141499.
66. Najman JM, Aird R, Bor W, O'Callaghan M, Williams GM, Shuttlewood GJ. The generational transmission of socioeconomic inequalities in child cognitive development and emotional health. *Soc Sci Med*. 2004. 58(6):1147-58.
67. Huang RC, Burrows S, Mori TA, Oddy WH, Beilin LJ. Lifecourse Adiposity and Blood Pressure between Birth and 17 Years Old. *Am J Hypertens*. 2015. 28(8):1056-63 doi: 10.1093/ajh/hpu266
68. Roberts E, Wood P. Birth weight and adult health in historical perspective: evidence from a New Zealand cohort, 1907-1922. *Soc Sci Med*. 2014 Apr; 107:154-61. doi: 10.1016/j.socscimed.2014.02.015. Epub 2014 Feb 15.
69. Dancause KN, Mutran D, Elgbeili G, Laplante DP, Kildea S, Stapleton H, et al. Dietary change mediates relationships between stress during pregnancy and infant head circumference measures: the QF2011 study. *Matern Child Nutr*. 2017 Jul; 13(3). doi: 10.1111/mcn.12359. Epub 2016 Aug 26.

Table 1. Descriptive statistics of Australian population composition by country of birth, from census data 1891 - 1986

Year	Total	UK/Ireland		Northern Europe		Southern Europe		Other Place of origin		All Foreign Born		Australian Born	
		N	%	N	%	N	%	N	%	N	%	N	%
1891	3,174,392	821,166	26%	75,145	2.4%	5,307	0.2%	113,799	4%	1,015,417	32.0%	2,158,975	68.0%
1901	3,773,801	679,159	18%	67,291	2%	7,382	0%	111,666	3%	865,498	23%	2,908,303	77.0%
1911	4,455,005	591,729	13%	63,594	1.4%	9,348	0.2%	122,664	3%	787,335	17.7%	3,667,670	82.3%
1921	5,435,210	676,387	12%	52,503	1.0%	15,539	0.3%	109,118	2%	853,547	15.7%	4,581,663	84.3%
1933	6,646,905	732,674	11%	48,125	0.7%	44,680	0.7%	94,860	1%	920,339	13.8%	5,726,566	86.2%
1947	7,577,772	542,910	7%	50,180	0.7%	58,516	0.8%	90,995	1%	742,601	9.8%	6,835,171	90.2%
1954	8,894,884	664,205	7%	294,667	3.3%	196,192	2.2%	39,756	0%	1,194,820	13.4%	7,700,064	86.6%
1961	10,504,210	755,402	7%	433,999	4.1%	406,791	3.9%	178,612	2%	1,774,804	16.9%	8,729,406	83.1%
1966	11,550,462	908,664	8%	430,574	3.7%	554,273	4.8%	237,409	2%	2,130,920	18.4%	9,419,542	81.6%
1971	12,755,638	1,088,210	9%	475,095	3.7%	633,173	5.0%	382,840	3%	2,579,318	20.2%	10,176,320	79.8%
1976	13,548,649	1,117,600	8%	460,673	3.4%	632,550	4.7%	508,209	4%	2,719,032	20.1%	10,829,617	79.9%
1981	14,576,330	1,132,599	8%	471,278	3.2%	678,445	4.7%	900,143	6%	3,182,465	21.8%	11,393,865	78.2%
1986	15,602,150	1,127,191	7%	488,825	3.1%	662,124	4.2%	1,213,554	8%	3,491,694	22.4%	12,110,456	77.6%

Table 2: Studies of Lifestyle, Country of Origin and Non-Communicable Disease outcomes in Mid-Twentieth Century Australia

Authors	Journal and Year	Brief Summary of Findings
Lovell and Prineas ⁵⁰	Med J Aust, 1974	Differences in blood pressure and prevalence of hypertension between Australians and Italians born in Melbourne
Ulman and Abernethy ⁵¹	Int J Epidemiol, 1975	Australian National Blood Pressure Study showing lower blood pressure in Italians compared with Australians, age-adjusted rates of rise suggest environmental exposure
Dwyer and Hetzel ⁷	Int J Epidemiol, 1980	Sharp declines in mortality from 1966 in Australia and 1968 in USA with persistent increase in UK, findings do correlate to some extent with changes in diet and smoking
Mc Michael et al. ⁵⁴	Int J Cancer, 1980	All seven migrant source countries in 1970 had higher rates of stomach cancer than Australians, discussed with reference to inter-country dietary differences
Armstrong et al. ⁵³	Am J Epidemiol, 1983	Mortality from Ischemic Heart Disease in Italians in Italy and Migrants 1/3 to 2/3 that of native-born Australians
Burvill et al. ⁵⁸	Soc Sci Med, 1983	Suicide rates in migrants from England & Wales, Scotland and Ireland similar, although greater than in country of origin, especially Ireland
Mc Michael and Giles ⁵⁵	Cancer Research, 1988	Review of cancers in migrants to Australia, suggesting strong evidence of environmental and behavioural influences
Mc Michael ⁵⁹	Community Health Studies, 1989	Asserts that coronary heart disease is a mass disease of 20 th century industrialised society requiring population-based prevention strategies
Hetzel et al. ⁹	J Clin Epi, 1989	Review of epidemiological and experimental studies related to fall in sudden deaths in USA and Australia since 1967 concludes that there is a protective effect of dietary polyunsaturates
Mc Michael et al. ⁵⁶	Med J Aust, 1989	South Australia Cancer Registry data 1977-1986 show British and Irish migrants had higher incidence of all cancer sites combined, whereas Southern Europeans had lower rates
Ireland and Giles ⁵²	Aust NZ J Med, 1996	Melbourne Collaborative Cohort Study 1990-1994, blood pressure higher in Italian-born middle-aged relative to Australian-born, not attributable to changes in diagnosis and treatment of hypertension
Burvill ⁵⁷	Psych Med, 1998	Increased suicide rates in migrants relative to country of origin and importance of pre-migrant social and cultural experiences

Legends to Figures:

Figure 1a: Timeline of foreign-born census respondents 1861-1986 and age-adjusted circulatory system disease mortality for the Total Australian population

Figure 1b: Sex-specific Irish/British-born census respondents and age-adjusted circulatory system disease mortality for both males and females in the Australian population

Figure 1c: Sex-specific Irish/British-born census respondents against age-adjusted cerebrovascular disease mortality for the Total Australian population

Figure 2: Circulatory system disease mortality rates/100,000 by age and census year in the general Australian population, a) males and b) females

Figure 3: All-cause mortality-net migration rates/100,000 by age and census year for Australian foreign-born population, a) males, b) females. Age groups on axis 2-6 refer to ages 20,30,40, 50, 60 respectively.

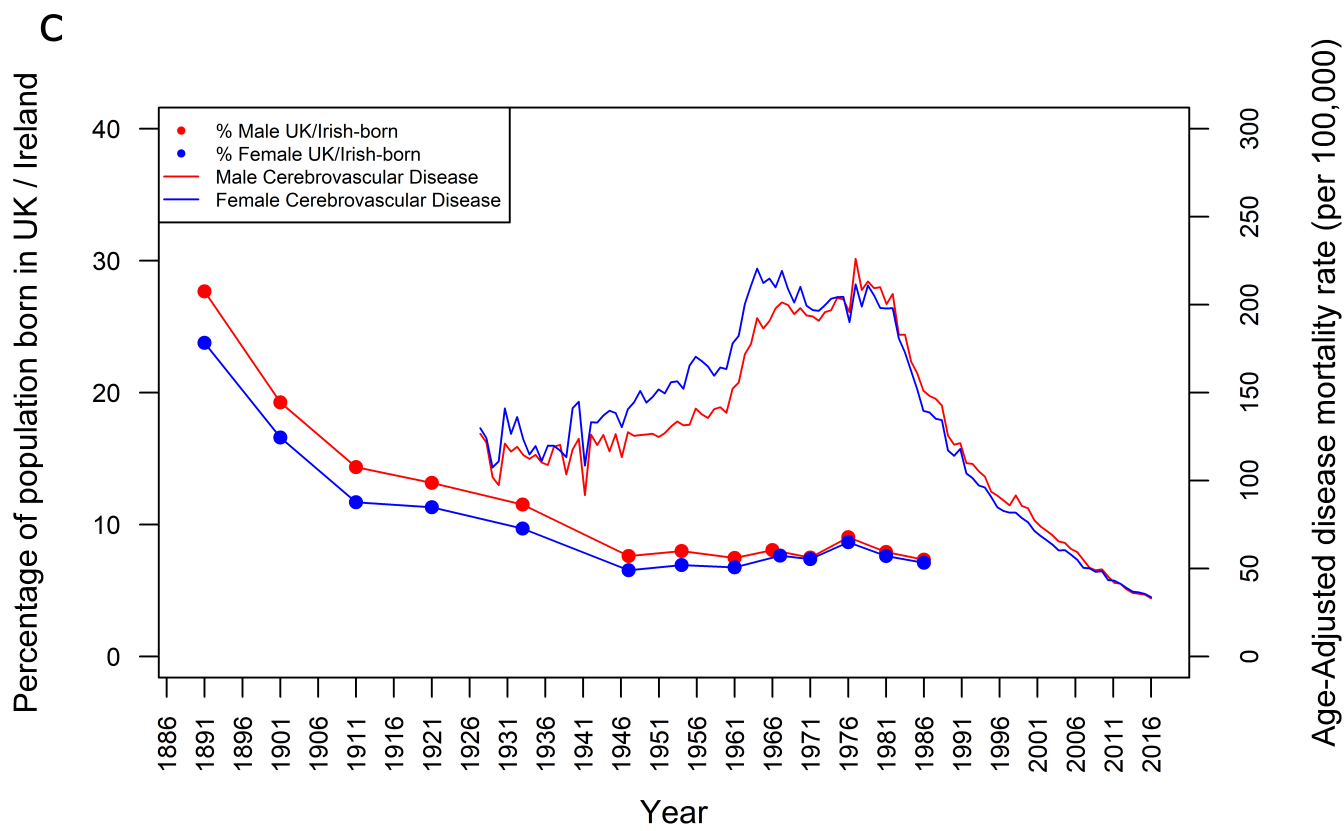
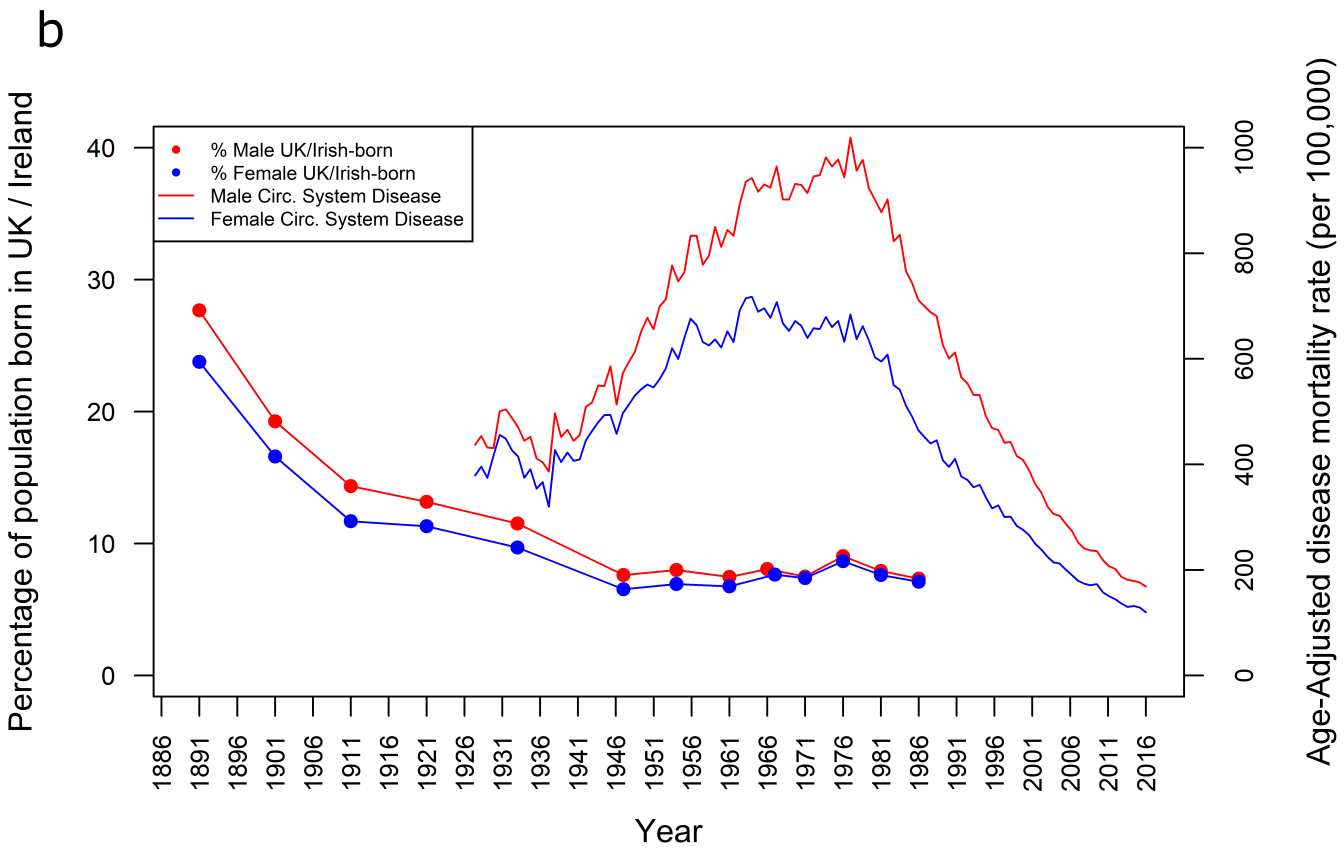
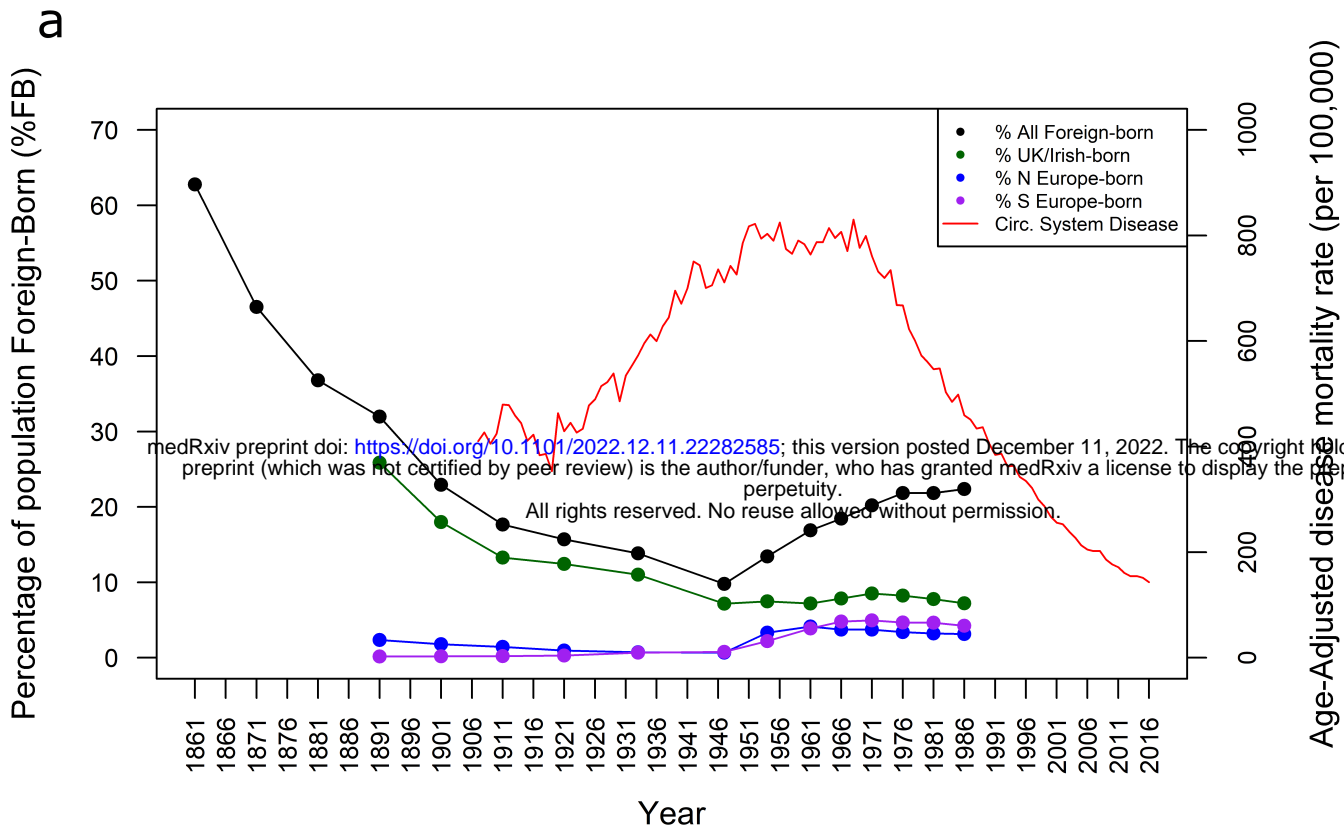


Figure 2. Circulatory system mortality rates per 100,000 by age and year in the general Australian population (a) Males (b) Females. The unlabelled axis is age in both plots.

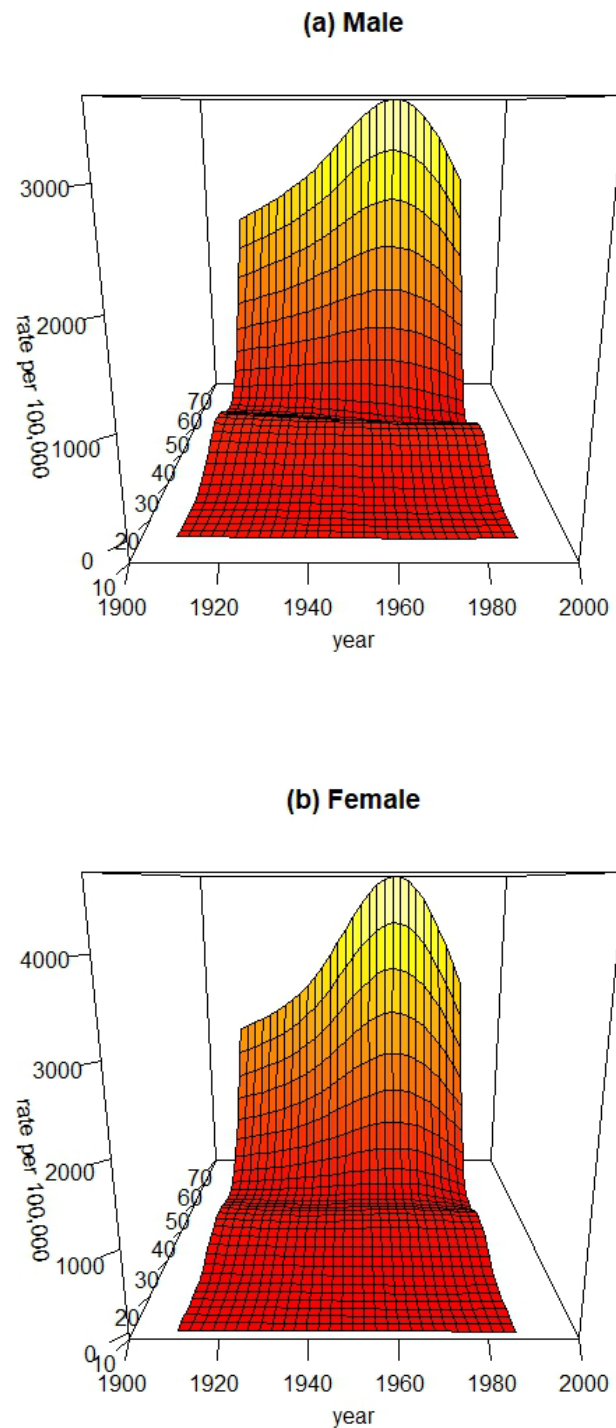


Figure 3. All-cause mortality-net migration rates per 100,000 by age group and year for Australian foreign-born population (a) Males (b) Females. Age groups 2-6 correspond to age midpoints 20,30,40,50,60 years old respectively. Both plots have been rotated with an angle of -35° to permit a better view.

