

1 **Causal Inference of CNS-regulated Hormones in COVID-19: A Bidirectional**
2 **Two-sample Mendelian Randomization Study**

3 **Running title: CNS-regulated hormones and COVID-19**

4

5 Yuxuan Sun^a, Ziyi Ding^b, Yawei Guo^c, Jinqiu Yuan^a, Chengming Zhu^a, Yihang Pan^a,

6 Rui Sun^{a*}

7

8 ^a Scientific Research Center, The Seventh Affiliated Hospital, Sun Yat-sen University,

9 Shenzhen 518107, P. R. China

10 ^b The Herbert Wertheim School of Public Health and Longevity, University of

11 California San Diego, La Jolla, California, United States of America

12 ^c School of Public Health, Sun Yat-sen University, Guangzhou, P.R. China

13

14 **Abstract**

15 **Objectives:** We assessed the causal association of three COVID-19 phenotypes with
16 insulin-like growth factor 1 (IGF-1), estrogen, testosterone, dehydroepiandrosterone
17 (DHEA), thyroid-stimulating hormone (TSH), thyrotropin-releasing hormone (TRH),
18 luteinizing hormone (LH), and follicle-stimulating hormone (FSH).

19 **Methods:** We used a bidirectional two-sample univariate and multivariable
20 Mendelian randomization (MR) analysis to evaluate the direction, specificity, and
21 causality of the association between CNS-regulated hormones and COVID-19
22 phenotypes. Genetic instruments for CNS-regulated hormones were selected from the
23 largest publicly available genome-wide association studies in the European population.
24 Summary-level data on COVID-19 severity, hospitalization, and susceptibility were
25 obtained from the COVID-19 host genetic initiative.

26 **Results:** DHEA was associated with increased risks of very severe respiratory
27 syndrome (OR=4.21, 95% CI: 1.41–12.59), consistent with the results in multivariate
28 MR (OR=3.72, 95% CI: 1.20–11.51), and hospitalization (OR = 2.31, 95% CI:
29 1.13–4.72) in univariate MR. LH was associated with very severe respiratory
30 syndrome (OR=0.83; 95% CI: 0.71–0.96) in univariate MR. Estrogen was negatively
31 associated with very severe respiratory syndrome (OR=0.09, 95% CI: 0.02–0.51),
32 hospitalization (OR=0.25, 95% CI: 0.08–0.78), and susceptibility (OR=0.50, 95% CI:
33 0.28–0.89) in multivariate MR.

34 **Conclusions:** We found strong evidence for the causal relationship of DHEA, LH,
35 and estrogen with COVID-19 phenotypes.

36

37 **Key words:** Mendelian randomization, CNS-regulated hormones, COVID-19

38 Introduction

39 Coronavirus disease 2019 (COVID-19), caused by severe acute respiratory syndrome
40 coronavirus 2 (SARS-CoV-2), has infected more than 452 million individuals and resulted in
41 more than 6 million deaths worldwide as of March 12, 2022 (1). SARS-CoV-2 infection has
42 high variability in susceptibility, hospitalization, and severity, with clinical severity ranging
43 from asymptomatic or mild upper respiratory illness to moderate and severe diseases such as
44 respiratory failure, acute respiratory distress syndrome, and multi-organ failure with fatal
45 outcomes (2). A report on COVID-19 suggests that 80% of infections are mild or
46 asymptomatic, while 20% are moderate to severe (3). At the early infection stage, the innate
47 immune system recognizes SARS-CoV-2 and induces proinflammatory cytokines to remove
48 the viruses (4). However, SARS-CoV-2 disrupts the normal immune response in severely and
49 critically ill patients, leading to an uncontrolled inflammatory response and cytokine storm,
50 resulting in systemic and local damages (4, 5). Understanding the host factors influencing this
51 infectious disease is crucial for elucidating the viral life cycle, identifying risk factors, drug
52 development, and disease prevention.

53 CNS-regulated hormones have received special attention in the context of COVID-19,
54 considering their modulatory effects on cytokines. The gender disparity, with reports that
55 men experience more severe syndromes and have higher mortality than women do, suggests
56 that sex hormones such as estrogen and testosterone may play a role in COVID-19 morbidity
57 and mortality (6) (7). Androgens may be associated with an increased risk of COVID-19 due
58 to their modulatory effects on angiotensin-converting enzyme 2 (ACE2) and transmembrane
59 serine protease 2 (TMPRSS2), the two key factors associated with the entrance of
60 SARS-CoV-2 (8). Indeed, anti-androgen therapy in patients with prostate cancer has
61 reportedly protected them against infection with SARS-CoV-2 (9). A recent study also

62 suggested a causal effect of increased testosterone levels with a higher risk of COVID-19
63 hospitalization and severe disease (10). In contrast, a retrospective study found that older
64 females who received estradiol therapy had a lower fatality risk than older females who did
65 not receive the therapy, indicating a potential immune protective effect of estrogen in females
66 (11). Meanwhile, in a study comparing critically and non-critically ill patients, low insulin
67 growth-like factor-1 (IGF-1) levels showed a potential association with severe forms of
68 COVID-19 (12).

69 Despite the possible effect of CNS-regulated hormones on COVID-19, there appears to
70 be a reverse directional effect of COVID-19 on hormones. A cohort study found that as the
71 severity of COVID-19 increased, the concentration of dehydroepiandrosterone (DHEA)
72 significantly increased (13). However, another observational study of hospitalized patients
73 did not find any difference in DHEA levels between males and females with severe
74 COVID-19 (14). Another study on thyroid function found that thyroid-stimulating hormone
75 (TSH) levels in COVID-19 patients were obviously lower than those in non-COVID-19
76 patients, which suggested the possible effects of COVID-19 on TSH (15).

77 Although observational studies provide some evidence for the conferral of hormonal
78 effects on COVID-19, the liability of these findings is challenged by confounding factors,
79 reverse causation, and other factors (16). Therefore, the causal impact of hormones on
80 COVID-19 risk has not been ascertained. Mendelian randomization (MR) uses genetic
81 variants following Mendel's law of independent assortment as unconfounded proxies of an
82 adjustable exposure to examine whether the exposure has causal effects on an outcome,
83 overcoming the limitations of observational studies (17).

84 In this study, we used two-sample MR univariate and multivariable analyses to examine
85 potential causal associations between three types of COVID-19 (very severe respiratory
86 syndrome, hospitalization, and susceptibility) and eight CNS-regulated hormones [IGF-1,

87 estrogen, testosterone, DHEA, TSH, thyrotropin-releasing hormone (TRH), luteinizing
88 hormone (LH), and follicle-stimulating hormone (FSH)]. We also performed a bidirectional
89 analysis to detect the possible reverse causal relationship between CNS-regulated hormones
90 and COVID-19. By assessing and establishing the causal role of CNS-regulated hormones,
91 possible hormonal therapies could be applied as therapeutics for COVID-19 to reduce
92 mortality and morbidity in COVID-19 infected patients.

93

94 **Materials and Methods**

95 *CNS-regulated hormones*

96 Single-nucleotide polymorphisms (SNPs) associated with the levels of the eight selected
97 hormones were selected based on summary-level data from either the Integrative
98 Epidemiology Unit (IEU) open genome-wide association study (GWAS) project (18, 19) or
99 the largest meta GWAS of thyroid-related traits (20). Strict European samples were selected
100 as exposure sets, part of which were from the UK Biobank. The sample sizes of the exposure
101 set varied from 468,343 to 1,000. Genetic instruments for TSH were extracted from a
102 meta-analysis of thyroid hormones in 26,420 participants of European ancestry (21).
103 Estradiol is the most potent form of estrogen in the human body; thus, it was used to
104 represent the function of estrogens (22). In addition, DHEA-sulfate (DHEA-S) was adopted
105 to represent DHEA because it circulates at a far higher concentration than DHEA in the blood
106 (23). All GWAS summary data were adjusted for age, sex, and other study-specific covariates.
107 Detailed information is provided in **Table S1**.

108 ***COVID-19 severity, hospitalization, and susceptibility***

109 Summary statistics for the three COVID-19 phenotypes were obtained from release 5 of
110 the COVID-19 Host Genetics Initiative (HGI) GWAS meta-analysis (24). The COVID-19
111 HGI is a consortium of scientists from over 54 countries working collaboratively to
112 investigate human genetic variation related with very severe respiratory syndrome (cases:
113 5,582; controls: 709,010), hospitalization (cases: 17,992; controls: 1,810,493), and
114 susceptibility (cases: 87,870; controls: 2,210,804) (**Table S2**). All individuals included in our
115 analysis were of European ancestry. Very severe respiratory syndromes were cases that ended
116 with respiratory support or death from COVID-19. Hospitalizations were cases that involved
117 hospitalized patients. Susceptibility was defined as cases that tested positive, including
118 laboratory-confirmed COVID-19 using reverse transcription-quantitative polymerase chain
119 reaction (RT-qPCR) or serological testing, clinically diagnosed COVID-19 and self-reported
120 COVID-19. In the GWAS meta-analysis, single-variant association analyses of COVID-19
121 traits were performed after adjusting for age, age², sex, age × sex, top principal components
122 for ancestry, and study-specific covariates of each contributing cohort. All studies
123 contributing data to the analyses were approved by the relevant ethics committees.

124 ***Selection of Genetic Instruments for CNS-regulated hormones and COVID-19 traits***

125 Genetic instruments were selected from the exposure data with genome-wide
126 significance ($p < 5 \times 10^{-8}$). SNPs were excluded if (1) they were not present in the outcome
127 GWAS summary data, (2) SNPs in linkage disequilibrium were within 1-Mb genomic
128 distance (R-squares above 0.01) using the 1000 Genome European reference panel and
129 retained the SNP with the lowest p -value, and (3) minor allele frequency was greater than
130 0.02 for non-inferable palindromic alleles. For exposures with a relatively small number of
131 SNPs, such as DHEA-S and TRH, if an SNP was absent in the outcome dataset, an LD proxy

132 SNP was searched using the 1000 Genome European panel to replace the missing SNP (25).
133 Exposure and outcome GWAS summary statistics were harmonized by aligning the effect
134 alleles. The number of genetic instruments used in bidirectional MR analyses is shown in
135 **Table S1**. The proportion of variance was calculated using the sum of the variance explained
136 by individual SNPs divided by the variance of phenotype (26) (**Table S2**).

137 *Bidirectional Two-sample MR and Statistical Analysis*

138 We conducted bidirectional two-sample MR analyses. CNS-regulated hormones were
139 considered exposures in the forward direction, and COVID-19 severity, hospitalization, and
140 susceptibility were the outcomes. Conversely, COVID-19 severity, hospitalization, and
141 susceptibility were exposures, and CNS-regulated hormones were outcomes in the reverse
142 direction. The procedures for genetic instrument selection were similar in both directions of
143 analysis.

144 We applied three MR methods to estimate causal effects: inversed-variance weighted
145 (IVW) regression/Wald ratio, weighted median (WM), and MR-Egger regression. IVW
146 regression was the primary approach used to derive causal estimates, where at least two
147 exposure SNPs were available for analysis. Under the assumption of no horizontal pleiotropy,
148 the IVW approach could generate an unbiased causal estimate (27). The Wald ratio method
149 was used when only one instrumental SNP was available for analysis. When the pleiotropy
150 assumption was not satisfied, the WM method would have a lower bias but a higher type I
151 error rate than the IVW method and was therefore used to further verify the inference effects
152 (27). The MR-Egger test was used to assess the horizontal pleiotropy. The intercept of
153 MR-Egger represents the average horizontal pleiotropic effect across the exposure genetic
154 instruments, where the slope of the regression was the casual estimates (28).

155 Multivariable Mendelian randomization (MVMR) analyses were conducted to account
156 for potential confounding factors due to the possible genetic correlation of sex hormones,
157 including estradiol, testosterone, DHEA-S, LH, and FSH (29). Multivariable lasso was used
158 to perform MVMR analyses, as multivariable lasso is mostly a robust multivariate method,
159 accounting for outliers and pleiotropy caused by invalid instruments (30). After combining
160 SNPs of sex hormones, we clumped SNPs for linkage disequilibrium $r^2 < 0.01$ within a 1-Mb
161 genomic distance, excluded overlapping SNPs, and removed SNPs lacking linkage
162 information. The remaining SNPs were used for MVMR analysis. We also conducted
163 MVMR in the reverse direction to account for possible confounding due to the genetic
164 correlation of three types of COVID-19 on CNS-regulated hormones, showing evidence of
165 univariable MR associations with at least one COVID-19 trait. For traits with insufficient
166 SNPs ($N \leq 3$) to perform MVMR analyses, genetic instruments were selected with a
167 suggestive genome-wide significant p -value threshold ($p < 1 \times 10^{-5}$).
168 Sensitivity analyses were performed to verify the robustness of the results. Heterogeneity
169 among the SNPs included in each analysis was examined using the Cochran's Q test. We
170 used the MR-Egger regression intercept test and MR pleiotropy residual sum and outlier
171 (MR-PRESSO) global test to check for horizontal pleiotropy. The MR-PRESSO method was
172 used to check and correct for outliers (31). I^2_{GX} statistic was used to examine the
173 measurement error in the SNP-exposure association (32). The strength of the selected SNPs
174 was assessed by F-statistic (33) calculated using the total sample size, the number of SNPs
175 used, and the proportion of variance explained.

176 The significance threshold was corrected for multiple testing with each MR analysis
177 using the Bonferroni method (p -value < 0.05 / number of exposures). In the sensitivity
178 analysis, as the p -value evaluated the precision of the effect estimation and given the large
179 number of statistical tests performed, we evaluated each result with a p -value < 0.05

180 individually by considering heterogeneity, pleiotropy, and removal of outliers. All data
181 analyses were performed in R (34) using the *TwoSampleMR* (19), *MendelianRandomization*
182 (35), and *MR-PRESSO* (31) packages.

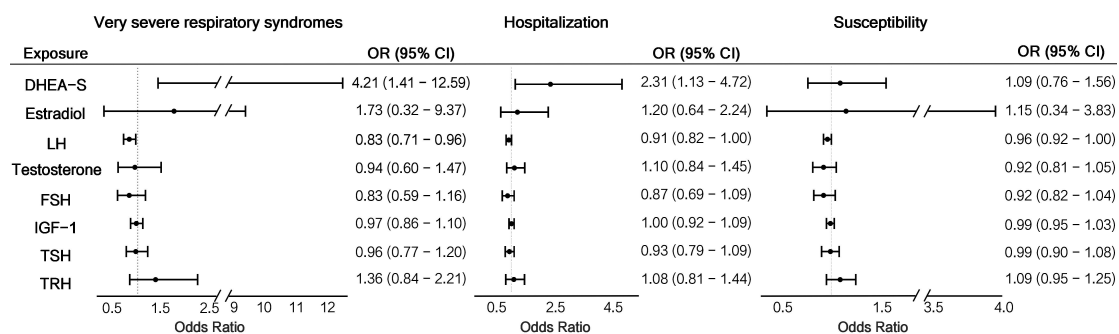
183

184 **Results**

185 ***Forward MR Results: Impact of CNS-regulated hormones on COVID-19***

186 ***Univariable MR Analysis using CNS-regulated hormones as exposures***

187 As shown in Figure 1, genetically predicted DHEA-S concentrations were nominally
188 associated with very severe respiratory syndrome (OR = 4.21, 95% CI: 1.41 – 12.59, $p =$
189 0.010). This means that each standard deviation increase in DHEA-S level would
190 dramatically increase the odds of having very severe respiratory syndrome by 4.21-fold.
191 Additionally, DHEA-S was significantly associated with hospitalization (OR = 2.31, 95% CI:
192 1.13 – 4.72, $p = 0.021$). Along with the insignificant but positive association between
193 DHEA-S and susceptibility (OR = 0.94, 95% CI: 0.67–1.31, $p = 0.703$), the results showed a
194 possible trend between DHEA-S and COVID-19; DHEA-S had an increased OR and
195 significance level for the three COVID-19 phenotypes (susceptibility, hospitalization, and
196 very severe respiratory syndrome). There was evidence of a negative association between LH
197 level and very severe respiratory syndrome (OR = 0.83, 95% CI: 0.71 – 0.96, $p = 0.013$). In
198 the susceptibility analysis, we did not find significant causal effects of CNS-regulated
199 hormones on COVID-19 phenotypes (**Table S3**). The F statistics of all instrument variables
200 were > 10 , with the proportion of variance explained ranging from 0.069% to 17.879%,
201 indicating the absence of weakness in the selected instruments (**Table S2**).



202

203 **Figure 1.** MR analyses the association of CNS-regulated Hormones and COVID-19

204 phenotypes.

205 **Abbreviations:** CNS, central nervous system; COVID-19, coronavirus disease 2019;

206 DHEA-S, dehydroepiandrosterone sulfate; FSH, follicle-stimulating hormone; IGF-1,

207 insulin-like growth factor 1; LH, luteinizing hormone; MR, Mendelian randomization; TRH,

208 thyrotropin-releasing hormone; TSH, thyroid-stimulating hormone

209 ***Multivariable MR analysis with sex hormones***

210 After adjusting for other sex hormones, genetically predicted DHEA-S was still
211 significantly associated with an increased risk of very severe respiratory syndrome at
212 a nominal significance level (OR = 3.72, 95% CI: 1.20 – 11.51, $p = 0.023$) (**Table 1**).
213 Although the association between DHEA-S and hospitalization and susceptibility
214 became insignificant, the trend matched what we found in the univariable analysis;
215 DHEA-S had an increasing effect size and significance level as COVID-19 severity
216 increased. In addition, the effect estimates of LH on very severe respiratory syndrome
217 were invalidated by conditioning the genetic effects of other sex hormones. However,
218 we observed significant associations between estradiol and very severe respiratory
219 syndrome (OR = 0.09, 95% CI: 0.02 – 0.51, $p = 0.006$), hospitalization (OR = 0.25,
220 95% CI: 0.08 – 0.78, $p = 0.016$), and susceptibility (OR = 0.50, 95% CI: 0.28 – 0.89,
221 $p = 0.019$). The different results of LH and estradiol levels between univariate and
222 multivariable analyses indicated that sex hormones interacted with each other during
223 COVID-19. Notably, estradiol consistently increased the effect size and significance
224 level as COVID-19 severity decreased, as in the univariate analysis, which further
225 supported progressive interactions with COVID-19. Other than estradiol and DHEA-S,
226 we did not find any significant associations between CNS-regulated hormones and
227 COVID-19. Meanwhile, in the MVMR analysis, hormones other than testosterone
228 also exhibited a similar increasing OR trend as DHEA-S in the univariate analysis,
229 suggesting possible progressive immune interactive mechanisms during COVID-19.

230 **Table 1. MVMR analysis of CNS-regulated hormone SNPs and COVID-19**
231 **severity and susceptibility**

Very severe respiratory	Hospitalization	Susceptibility
-------------------------	-----------------	----------------

syndrome						
Exposure	OR (95% CI)	<i>p</i> -value	OR (95% CI)	<i>p</i> -value	OR (95% CI)	<i>p</i> -value
DHEA-S	3.72 (1.20–11.51)	0.023	1.69 (0.83–3.42)	0.144	0.94 (0.67–1.31)	0.703
Estradiol	0.09 (0.02–0.51)	0.006	0.25 (0.08–0.78)	0.016	0.50 (0.28–0.89)	0.019
LH	1.23 (0.81–1.86)	0.343	1.16 (0.88–1.52)	0.296	1.08 (0.94–1.24)	0.251
FSH	1.11 (0.84–1.48)	0.464	1.03 (0.85–1.24)	0.751	1.00 (0.91–1.10)	0.947
Testosterone	0.42 (0.17–1.03)	0.058	0.74 (0.41–1.33)	0.312	0.76 (0.56–1.02)	0.067

232 **Abbreviations:** CNS, central nervous system; COVID-19, coronavirus disease 2019;
 233 DHEA-S, dehydroepiandrosterone sulfate; FSH, follicle-stimulating hormone; LH,
 234 luteinizing hormone; MVMR, multivariable Mendelian randomization; SNP,
 235 single-nucleotide polymorphisms

236 **Reverse MR Results: Testing for bidirectionality using COVID-19 traits as**
 237 **exposures**

238 We did not find evidence supporting reverse causality between DHEA and all
 239 three COVID-19 phenotypes. However, there was evidence of the promoting effects
 240 of very severe respiratory syndrome on IGF-1 (OR = 1.01, 95% CI: 1.00 – 1.02, *p* =
 241 0.040), and susceptibility on testosterone (OR = 1.05, 95% CI: 1.03 – 1.06, *p* < 0.001)
 242 after outlier correction (**Table S4**).

243 In MVMR analysis, after adjusting for other COVID-19, very severe respiratory
244 syndrome still had promoting effects on testosterone (OR = 1.11, 95% CI: 1.03 – 1.19,
245 $p = 0.003$) and hospitalization was found to have significant decreasing effects on
246 testosterone (OR = 0.89, 95% CI: 0.84 – 0.94, $p < 0.001$) (**Table S5**).

247 *Sensitivity analysis*

248 *Test for horizontal pleiotropy*

249 In univariate analysis with the COVID-19 phenotype as the outcome, the
250 MR-Egger regression intercept test did not find any horizontal pleiotropy in the
251 association between eight CNS-regulated hormones and three COVID-19 phenotypes
252 (all, $p > 0.05$) (**Table S6**). However, the MR-PRESSO global test suggested
253 horizontal pleiotropy in the association of IGF-1 and testosterone with COVID-19
254 phenotypes (p -value < 0.05).

255 In the bidirectional analysis using CNS-regulated hormones as outcomes, there
256 was no evidence of horizontal pleiotropy in any associations between COVID-19 and
257 hormone traits using the MR-Egger regression intercept test (all p -values > 0.05). The
258 MR-PRESSO global test suggested potential horizontal pleiotropy effects associated
259 with very severe respiratory syndrome COVID-19 and susceptibility to IGF-1 and the
260 three COVID-19 phenotypes with testosterone ($p < 0.05$). Apart from IGF-1 and
261 testosterone, no horizontal pleiotropy effect was found in either direction for any of
262 the three COVID-19 phenotypes, which indicates the validity of the significant
263 findings in the univariable MR analysis (**Table S7**).

264 ***Test for heterogeneity of instruments***

265 As shown in **Table S6**, in the univariate analysis with COVID-19-severity as an
266 outcome, heterogeneity was found in IGF-1 and testosterone estimates. Cochran's Q
267 test indicated heterogeneity in the association of IGF-1 with very severe respiratory
268 syndrome ($p = 0.001$) and susceptibility ($p = 0.007$). Heterogeneity was only
269 associated with very severe respiratory syndrome ($p < 0.001$).

270 For the analysis using COVID-19 as exposure, heterogeneity was found in the
271 association among very severe respiratory syndrome, susceptibility, and IGF-1 and in
272 the association between very severe respiratory syndrome and testosterone ($p < 0.001$
273 for all analyses) (**Table S7**).

274 ***Test for measurement error***

275 In the analysis using COVID-19 severity as an outcome, only TSH was found to
276 have a low I^2_{GX} statistic associated with COVID-19, which indicated a potential bias
277 to MR-Egger estimators (**Table S6**).

278 In the analysis using very severe respiratory syndrome as exposure, only
279 DHEA-S had an I^2_{GX} statistic > 0.900 , which suggested that MR-Egger estimates of
280 all other hormones could be biased by measurement errors (**Table S7**). We did not
281 find any measurement errors in the hospitalization analysis based on the I^2_{GX} statistics.
282 Like very severe respiratory syndrome, almost all the associations between
283 susceptibility and hormones were biased by measurement errors, except for DHEA-S.

284 **Discussion**

285 **Main findings**

286 Bidirectional two-sample MR analyses using large publicly available genomic
287 datasets to analyze the causal association between the genetic liability of
288 CNS-regulated hormones and COVID-19 susceptibility, hospitalization, and severity.
289 We found strong evidence supporting the causal associations of DHEA and LH with
290 very severe respiratory syndrome COVID-19 and the association of DHEA with
291 hospitalization due to COVID-19. We did not find evidence supporting an association
292 between CNS-regulated hormones and COVID-19 susceptibility. In MVMR analyses,
293 we found evidence of a negative association between estradiol and COVID-19
294 susceptibility, hospitalization, and severity, adjusted for other sex-related hormones.
295 In the reverse direction, we found that very severe respiratory syndrome was
296 associated with IGF-1 levels, and COVID-19 susceptibility was associated with
297 testosterone levels. Together with previous observational studies, we revealed
298 possible causal associations between CNS-regulated hormones, especially sex
299 hormones, and COVID-19 severity, suggesting that hormonal therapies could be
300 potential treatments for COVID-19 severe patients.

301 **Hormones and COVID-19**

302 The effects of DHEA on COVID-19 are contradictory. On the one hand, DHEA
303 can exert immunomodulatory and anti-inflammatory functions, which means that
304 DHEA could have potential protective effects. Conversely, as a type of androgen,
305 DHEA is suspected to be associated with an increased risk of COVID-19. Our
306 analysis clearly indicated that DHEA is associated with an increased risk of
307 COVID-19, especially the risk of very severe respiratory syndrome COVID-19. As
308 mentioned before, DHEA, as a type of androgen, has regulatory effects on the ACE-2
309 receptor and TMPRSS2, promoting the fusion of the SARS-CoV-2 virus into host
310 cells, thereby increasing the susceptibility and severity of COVID-19 (36, 37).

311 Besides its androgenic effect, DHEA also acts as a powerful inhibitor of
312 glucose-6-phosphate dehydrogenase (G6PD) (38). G6PD deficiency has been
313 demonstrated to enhance cell infection with human coronavirus 229E (HCoV 229E)
314 (39). Considering that SARS-CoV-2 is also a human coronavirus, DHEA may greatly
315 increase the risk of COVID-19 due to its inhibition of G6PD.

316 In contrast to androgens, estrogen is the main reason why the female immune
317 system responds more efficiently to pathogens (40). In the analysis, when adjusting
318 for all other sex hormones, estrogen was found to have significant decreasing effects
319 on all types of COVID-19, which supports the possible protective effects of estrogen
320 and indicates the potential for the implementation of hormonal therapy (41). In fact,
321 clinical trials are in progress to test the effect of additional estrogen on COVID-19
322 patients (42).

323 Moreover, the effects of DHEA and estrogen all displayed a progressively
324 increasing effect size and significance level as the COVID-19 severity increased. Two
325 possible mechanisms may play a role in this pattern. The first is the difference in viral
326 load between severe and mild cases. A study of the viral load during COVID-19
327 reported that compared with mild cases, patients with severe COVID-19 tend to have
328 higher viral loads (43). Considering the effects of DHEA in enhancing the fusion of
329 viruses into host cells, DHEA might result in a higher risk for people with higher viral
330 loads than those with lower viral loads. Another possible explanation is the
331 mechanism of COVID-19. The key factors affecting severity are an uncontrolled
332 immune response and cytokine storms. Estrogen has powerful anti-inflammatory
333 effects due to its inhibition of proinflammatory cytokines such as IL-1 β , IL-6, and
334 others (44). As COVID-19 severity increases, uncontrolled immune responses
335 produce more proinflammatory cytokines; therefore, the anti-inflammatory effect of

336 estrogen becomes more powerful, which leads to increasing effect size and
337 significance level.

338 We did not find any association between testosterone and the three types of
339 COVID-19. A recent MR study on serum testosterone and bioavailable testosterone
340 found that only bioavailable testosterone level was associated with a higher risk of
341 hospitalization due to COVID-19, indicating that different forms of testosterone may
342 have different effects on COVID-19 (10). Besides, we found the promoting effect of
343 COVID-19 susceptibility on testosterone levels. Some studies have observed
344 decreased testosterone levels in severe cases. However, other studies have also
345 proposed that the inflammatory response caused by SARS-CoV-2 viruses may trigger
346 testosterone secretion to initiate an anti-viral reaction considering the
347 anti-inflammatory and immune-modulatory effects of testosterone (45-47). Besides
348 testosterone levels, we also observed that COVID-19 severity was associated with
349 increased levels of IGF-1. However, a phenome-wide association study (48) found
350 that genetically determined severe COVID-19 was associated with lower IGF-1 levels.
351 The contradiction of the results suggests that further studies and an understanding of
352 IGF-1's mechanisms and pathways are needed.

353 **Additional findings**

354 Our findings also elucidate the possible interactive effects of sex hormones on
355 COVID-19. We found significant effects of LH on very severe respiratory syndrome
356 COVID-19. A recent COVID-19 case-control study involving 89 men with
357 COVID-19 suggested that impaired testosterone in infected males may stimulate LH
358 release to maintain testosterone levels based on negative-feedback regulation(46).
359 Analysis using COVID-19 as exposure indicated that COVID-19 were associated with
360 increased testosterone levels. Combined with the anti-inflammatory function of

361 testosterone, increased LH levels could decrease the risk of severe COVID-19.

362 Another possible reason could be the interaction between LH and estradiol. Univariate
363 analysis did not find a possible causal association between estradiol and COVID-19.

364 In contrast, after adjusting for other hormones in multivariable analysis, estradiol
365 was found to be significantly negatively associated with all three types of COVID-19
366 with alterations in the effect direction and significance level of LH. LH is the
367 upstream hormone of testosterone and estrogen, which controls the secretion and
368 transformation of these hormones based on the negative-feedback loop. The true
369 effect of LH may be influenced by both estrogen and testosterone levels.

370 **Strengths and limitations**

371 The strengths of our study include the integration of univariate, multivariate, and
372 bidirectional MR analyses using genetic instrument variables drawn from the largest
373 GWASs to date. We also included a variety of CNS-regulated hormone levels and
374 COVID-19 phenotypes. Furthermore, follow-up sensitivity analyses such as the
375 MR-Egger intercept test, Cochran's Q test demonstrated the robustness of our
376 findings. The F-statistic of the instrument variables also illustrated the strength of our
377 selected SNPs. Finally, applying multivariable and univariable approaches is an
378 advantage highlighted by the converging findings for COVID-19 phenotypes. We
379 minimized the chances of population stratification between exposure datasets and
380 outcome datasets by using GWAS of the European population for CNS-regulated
381 hormones and by excluding the 23andMe cohort from COVID-19 datasets.

382 Our study has the following limitations. The selected genetic instruments
383 generally explain a small to moderate proportion of the variance in exposure, although
384 well within the typical ranges for complex traits (49). Investigations of genetic
385 variants associated with CNS-regulated hormones are needed. In addition, some

386 exposures had only one or two SNPs, which were not suitable for sensitivity analyses.
387 The use of weak genetic instruments may limit our ability to detect subtle, causal
388 associations. However, the roughly similar pattern between univariate and
389 multivariate analysis, and the high F-statistic, suggested the robustness and reliability
390 of our results. Considering the possible sex effects, we used the UK Biobank
391 sex-stratified data to assess the effects of testosterone, estrogen, IGF-1, and TSH on
392 COVID-19. The results showed an effect direction consistent with that of the
393 univariate two-sample MR analysis (**Table S8**).

394 In conclusion, our study found a possible causal association between
395 CNS-regulated hormones and COVID-19. In contrast to previous observational
396 studies focusing on a single hormone, such as testosterone or estrogen, our study was
397 the first to use MR analysis to investigate the causal association between
398 CNS-regulated hormones and COVID-19 severity, hospitalization, and susceptibility.
399 We found that genetically predicted DHEA and LH had significant causal associations
400 with COVID-19; and that significant effects of estrogen on COVID-19 were observed
401 after adjusting for other hormones, supporting the feasibility of hormonal therapy for
402 COVID-19. Future studies may need to be designed to further understand the
403 mechanisms and pathways underlying the causal relationship between CNS-regulated
404 hormones and COVID-19, with the goal of developing potential therapeutic strategies.

405

406 **Acknowledgements**

407 We thank the COVID-19 Host Genetics Initiative (<https://www.covid19hg.org/>) for
408 making their data publicly available. We thank the IEU open GWAS project

409 (<https://gwas.mrcieu.ac.uk/>) for making the summary statistics of 7 hormones traits
410 publicly available.

411

412 **Ethics approval and consent to participate**

413 The requirement for informed consent was waived because the study analyzed public
414 databases.

415 **Availability of data and materials**

416 GWAS summary data of seven hormone traits are available in IEU open GWAS
417 project (<https://gwas.mrcieu.ac.uk/>) with GWAS ID as ukb-d-30770_irnt for IGF-1,
418 ukb-d-30800_irnt for Estradiol, ukb-d-30850_irnt for Testosterone, met-a-478 for
419 DHEA-S, prot-a-3102 for TRH, prot-a-529 for LH, and prot-c-3032_11_2 for FSH.
420 GWAS summary data of TSH are collected in a GWAS meta-analysis of
421 thyroid-related traits.(20) Summary statistics (release 5) of GWAS meta-analysis for
422 the three COVID-19 phenotypes are available in the COVID-19 Host Genetics
423 Initiative (HGI) at <https://www.covid19hg.org/results/r5/>.

424 **Declaration of interest**

425 All authors declare no conflicts of interest.
426

427 **Funding**

428 This study is supported by Research Start-up Fund of the Seventh Affiliated Hospital,
429 Sun Yat-sen University (Grant No. 392016).

430

431

432

433

434

435

436 **References**

-
- 437 1. COVID W. Dashboard. Geneva: World Health Organization 2020.
- 438 2. Wu Z, McGoogan JM. Characteristics of and important lessons from the
439 coronavirus disease 2019 (COVID-19) outbreak in China: summary of a report of 72
440 314 cases from the Chinese Center for Disease Control and Prevention. *Jama*.
441 2020;323(13):1239-42.
- 442 3. Team E. The epidemiological characteristics of an outbreak of 2019 novel
443 coronavirus diseases (COVID-19)—China, 2020. *China CDC weekly*. 2020;2(8):113.
- 444 4. Yang L, Liu S, Liu J, Zhang Z, Wan X, Huang B, et al. COVID-19:
445 immunopathogenesis and Immunotherapeutics. *Signal Transduct Target Ther*.
446 2020;5(1):128.
- 447 5. Lopez Bernal J, Andrews N, Gower C, Gallagher E, Simmons R, Thelwall S, et al.
448 Effectiveness of Covid-19 vaccines against the B. 1.617. 2 (Delta) variant. *N Engl J*
449 *Med*. 2021:585-94.
- 450 6. Jin JM, Bai P, He W, Wu F, Liu XF, Han DM, et al. Gender Differences in
451 Patients With COVID-19: Focus on Severity and Mortality. *Front Public Health*.
452 2020;8:152.
- 453 7. Papadopoulos V, Li L, Samplaski M. Why does COVID-19 kill more elderly men
454 than women? Is there a role for testosterone? *Andrology*. 2021;9(1):65-72.
- 455 8. Nyce J. Alert to US physicians: DHEA, widely used as an OTC androgen
456 supplement, may exacerbate COVID-19. *Endocrine-Related Cancer*.
457 2021;28(2):R47-R53.
- 458 9. Bhowmick NA, Oft J, Dorff T, Pal S, Agarwal N, Figlin RA, et al. COVID-19
459 and androgen-targeted therapy for prostate cancer patients. *Endocr Relat Cancer*.
460 2020;27(9):R281-R92.
- 461 10. Liu L, Fan X, Guan Q, Yu C. Bioavailable testosterone level is associated with
462 COVID-19 severity in female: A sex-stratified Mendelian randomization study.
463 *Journal of Infection*. 2022.
- 464 11. Seeland U, Coluzzi F, Simmaco M, Mura C, Bourne PE, Heiland M, et al.
465 Evidence for treatment with estradiol for women with SARS-CoV-2 infection. *BMC*
466 *Med*. 2020;18(1):369.
- 467 12. Ilias I, Diamantopoulos A, Botoula E, Athanasiou N, Zacharis A, Tsipilis S, et al.
468 Covid-19 and Growth Hormone/Insulin-Like Growth Factor 1: Study in Critically and
469 Non-Critically Ill Patients. *Front Endocrinol (Lausanne)*. 2021;12:644055.

- 470 13. Vaez Mahdavi MR, Kaboudanian Ardestani S, Rezaei A, Mohammadi S,
471 Rajabnia Chenary M, Gharegozlou B, et al. COVID-19 patients suffer from DHEA-S
472 sufficiency. *Immunoregulation*. 2020;3(2):135-44.
- 473 14. Beltrame A, Salguero P, Rossi E, Conesa A, Moro L, Bettini LR, et al.
474 Association Between Sex Hormone Levels and Clinical Outcomes in Patients With
475 COVID-19 Admitted to Hospital: An Observational, Retrospective, Cohort Study.
476 *Frontiers in immunology*. 2022;13.
- 477 15. Wang W, Su X, Ding Y, Fan W, Zhou W, Su J, et al. Thyroid Function
478 Abnormalities in COVID-19 Patients. *Front Endocrinol (Lausanne)*. 2020;11:623792.
- 479 16. Schuemie MJ, Ryan PB, Hripcsak G, Madigan D, Suchard MA. Improving
480 reproducibility by using high-throughput observational studies with empirical
481 calibration. *Philosophical Transactions of the Royal Society A: Mathematical,*
482 *Physical and Engineering Sciences*. 2018;376(2128):20170356.
- 483 17. Smith GD. Mendelian randomization for strengthening causal inference in
484 observational studies: application to gene \times environment interactions. *Perspectives on*
485 *Psychological Science*. 2010;5(5):527-45.
- 486 18. Elsworth B, Lyon M, Alexander T, Liu Y, Matthews P, Hallett J, et al. The MRC
487 IEU OpenGWAS data infrastructure. *BioRxiv*. 2020.
- 488 19. Hemani G, Zheng J, Elsworth B, Wade KH, Haberland V, Baird D, et al. The
489 MR-Base platform supports systematic causal inference across the human phenome.
490 *Elife*. 2018;7:e34408.
- 491 20. Porcu E, Medici M, Pistis G, Volpato CB, Wilson SG, Cappola AR, et al. A
492 meta-analysis of thyroid-related traits reveals novel loci and gender-specific
493 differences in the regulation of thyroid function. *PLoS Genet*. 2013;9(2):e1003266.
- 494 21. Bos MM, Smit RAJ, Trompet S, van Heemst D, Noordam R. Thyroid Signaling,
495 Insulin Resistance, and 2 Diabetes Mellitus: A Mendelian Randomization Study. *J*
496 *Clin Endocrinol Metab*. 2017;102(6):1960-70.
- 497 22. Salole EG. Estradiol. *Analytical profiles of drug substances*. 15: Elsevier; 1986.
498 p. 283-318.
- 499 23. Prough RA, Clark BJ, Klinge CM. Novel mechanisms for DHEA action. *J Mol*
500 *Endocrinol*. 2016;56(3):R139-55.
- 501 24. Initiative C-HG. The COVID-19 host genetics initiative, a global initiative to
502 elucidate the role of host genetic factors in susceptibility and severity of the
503 SARS-CoV-2 virus pandemic. *European Journal of Human Genetics*. 2020;28(6):715.
- 504 25. Purcell S, Neale B, Todd-Brown K, Thomas L, Ferreira MA, Bender D, et al.
505 PLINK: a tool set for whole-genome association and population-based linkage
506 analyses. *Am J Hum Genet*. 2007;81(3):559-75.
- 507 26. Shim H, Chasman DI, Smith JD, Mora S, Ridker PM, Nickerson DA, et al. A
508 multivariate genome-wide association analysis of 10 LDL subfractions, and their
509 response to statin treatment, in 1868 Caucasians. *PLoS one*. 2015;10(4):e0120758.
- 510 27. Burgess S, Foley CN, Allara E, Staley JR, Howson JMM. A robust and efficient
511 method for Mendelian randomization with hundreds of genetic variants. *Nat Commun*.
512 2020;11(1):376.
- 513 28. Bowden J, Davey Smith G, Burgess S. Mendelian randomization with invalid
514 instruments: effect estimation and bias detection through Egger regression.
515 *International journal of epidemiology*. 2015;44(2):512-25.
- 516 29. Burgess S, Thompson SG. Multivariable Mendelian randomization: the use of
517 pleiotropic genetic variants to estimate causal effects. *Am J Epidemiol*.
518 2015;181(4):251-60.

- 519 30. Grant AJ, Burgess S. Pleiotropy robust methods for multivariable Mendelian
520 randomization. *Stat Med*. 2021;40(26):5813-30.
- 521 31. Verbanck M, Chen C-Y, Neale B, Do R. Detection of widespread horizontal
522 pleiotropy in causal relationships inferred from Mendelian randomization between
523 complex traits and diseases. *Nature genetics*. 2018;50(5):693-8.
- 524 32. Bowden J, Del Greco M F, Minelli C, Davey Smith G, Sheehan NA, Thompson
525 JR. Assessing the suitability of summary data for two-sample Mendelian
526 randomization analyses using MR-Egger regression: the role of the I² statistic.
527 *International journal of epidemiology*. 2016;45(6):1961-74.
- 528 33. Pierce BL, Ahsan H, Vanderweele TJ. Power and instrument strength
529 requirements for Mendelian randomization studies using multiple genetic variants. *Int*
530 *J Epidemiol*. 2011;40(3):740-52.
- 531 34. Team RC. R: A language and environment for statistical computing. 2013.
- 532 35. Yavorska OO, Burgess S. MendelianRandomization: an R package for
533 performing Mendelian randomization analyses using summarized data. *International*
534 *journal of epidemiology*. 2017;46(6):1734-9.
- 535 36. Samuel RM, Majd H, Richter MN, Ghazizadeh Z, Zekavat SM, Navickas A, et al.
536 Androgen signaling regulates SARS-CoV-2 receptor levels and is associated with
537 severe COVID-19 symptoms in men. *Cell Stem Cell*. 2020;27(6):876-89. e12.
- 538 37. Clinckemalie L, Spans L, Dubois V, Laurent M, Helsen C, Joniau S, et al.
539 Androgen regulation of the TMPRSS2 gene and the effect of a SNP in an androgen
540 response element. *Mol Endocrinol*. 2013;27(12):2028-40.
- 541 38. Gordon G, Mackow MC, Levy HR. On the mechanism of interaction of steroids
542 with human glucose 6-phosphate dehydrogenase. *Arch Biochem Biophys*.
543 1995;318(1):25-9.
- 544 39. Vick DJ, editor *Glucose-6-phosphate dehydrogenase deficiency and COVID-19*
545 *infection*. Mayo Clinic Proceedings; 2020: Elsevier.
- 546 40. Al-Lami RA, Urban RJ, Volpi E, Algburi AM, Baillargeon J, editors. *Sex*
547 *hormones and novel corona virus infectious disease (COVID-19)*. Mayo Clinic
548 *Proceedings*; 2020: Elsevier.
- 549 41. Bennink HJC, Foidart J-M, Debruyne FM. Treatment of serious COVID-19 with
550 testosterone suppression and high-dose estrogen therapy. *European Urology*. 2021.
- 551 42. University T. Estradiol and Progesterone in Hospitalized COVID-19 Patients.
552 <https://ClinicalTrials.gov/show/NCT04865029>; 2021.
- 553 43. Liu Y, Yan LM, Wan L, Xiang TX, Le A, Liu JM, et al. Viral dynamics in mild
554 and severe cases of COVID-19. *Lancet Infect Dis*. 2020;20(6):656-7.
- 555 44. Al-Kuraishy HM, Al-Gareeb AI, Faidah H, Al-Maiahy TJ, Cruz-Martins N,
556 Batiha GE-S. The looming effects of estrogen in Covid-19: a rocky rollout. *Frontiers*
557 *in Nutrition*. 2021;8.
- 558 45. Rastrelli G, Di Stasi V, Inglese F, Beccaria M, Garuti M, Di Costanzo D, et al.
559 Low testosterone levels predict clinical adverse outcomes in SARS-CoV-2 pneumonia
560 patients. *Andrology*. 2021;9(1):88-98.
- 561 46. Kadihasanoglu M, Aktas S, Yardimci E, Aral H, Kadioglu A. SARS-CoV-2
562 pneumonia affects male reproductive hormone levels: a prospective, cohort study. *The*
563 *Journal of Sexual Medicine*. 2021;18(2):256-64.
- 564 47. Younis JS, Skorecki K, Abassi Z. The Double Edge Sword of Testosterone's Role
565 in the COVID-19 Pandemic. *Front Endocrinol (Lausanne)*. 2021;12:607179.
- 566 48. Papadopoulou A, Musa H, Sivaganesan M, McCoy D, Deloukas P, Marouli E.
567 COVID-19 susceptibility variants associate with blood clots, thrombophlebitis and
568 circulatory diseases. *PLoS One*. 2021;16(9):e0256988.

569 49. Brion MJ, Shakhbazov K, Visscher PM. Calculating statistical power in
570 Mendelian randomization studies. *Int J Epidemiol.* 2013;42(5):1497-501.
571
