

## **Cholera past and future in Nigeria: are the Global Task Force on Cholera**

### **Control's 2030 targets achievable?**

#### **Achieving the GTFCC 2030 targets in Nigeria**

Gina E C Charnley<sup>1,2\*</sup>, Sebastian Yennan<sup>3</sup>, Chinwe Ochu<sup>3</sup>, Ilan Kelman<sup>4,5,6</sup>, Katy A M Gaythorpe<sup>1,2</sup>,  
Kris A Murray<sup>1,2,7</sup>

1. Department of Infectious Disease Epidemiology, School of Public Health, Imperial College  
London, London, UK
2. MRC Centre for Global Infectious Disease Analysis, School of Public Health, Imperial College  
London, London, UK
3. Surveillance and Epidemiology Department/IM Cholera, Nigeria Centre for Disease Control,  
Abuja, Nigeria
4. Institute for Risk and Disaster Reduction, University College London, London, UK
5. Institute for Global Health, University College London, London, UK
6. University of Agder, Kristiansand, Norway
7. MRC Unit The Gambia at London School of Hygiene and Tropical Medicine, Fajara, The  
Gambia

\*g.charnley19@imperial.ac.uk

#### **Author Contributions**

GECC was part of the conceptualisation of ideas and methodology, curated the data and ran the formal analysis, wrote and finalised the manuscript and incorporated any feedback. SY and CO provided data used to fit the models used and provided expertise on cholera policy in Nigeria. IK, KAMG and KAM assisted in the conceptualisation of ideas and methodology, provided supervision, and revised several drafts. All authors have read and approved the manuscript

**NOTE: This preprint reports new research that has not been certified by peer review and should not be used to guide clinical practice.**

## 1 **Abstract**

### 2 *Background*

3 Understanding and continually assessing the achievability of global health targets is key to  
4 reducing disease burden and mortality. The Global Task Force on Cholera Control (GTFCC)  
5 Roadmap aims to reduce cholera deaths by 90% and eliminate the disease in twenty countries by  
6 2030. The Roadmap has three axes focusing on reporting, response and coordination. Here, we  
7 assess the achievability of the GTFCC targets in Nigeria and identify where the three axes could  
8 be strengthened to reach and exceed these goals.

### 9 *Methodology/Principal Findings*

10 First, historical data were analysed for cholera death rates and a range of well-established cholera  
11 risk factors (particularly those included in the best fit models), using correlation, regression,  
12 autocorrelation function and AutoRegressive Integrated Moving Averages. Next, future scenario  
13 datasets were created (based on varying degrees of socioeconomic development and emission  
14 reductions) and used to project future cholera outbreak occurrence and transmission to 2070. The  
15 two models used were a generalised linear model and a random forest model. The historical data  
16 highlighted the significant cholera burden in Nigeria and its correlation with sanitation access. The  
17 projections suggest that significant reductions in cholera cases could be achieved by 2030,  
18 particularly in the more developed southern states, but increases in cases remain a possibility.  
19 Meeting the 2030 target, nationally, currently looks unachievable and we propose a new 2050  
20 target focusing on reducing regional inequities.

### 21 *Conclusion/Significance*

22 The 2030 targets could potentially be reached by 2030 in some parts of Nigeria, but more effort is  
23 needed to reach these targets at a national level, particularly through access and incentives to  
24 cholera testing, sanitation expansion, poverty alleviation and urban planning. The results highlight  
25 the importance of and how modelling studies can be used to inform cholera policy and the  
26 potential for this to be applied in other contexts.

27

## 28 **Author Summary**

29 By statistically analysing the historical cholera deaths and risk factors data and using future  
30 scenario cholera forecasting, we assessed the achievability of the Global Task Force for Cholera  
31 Control 2030 Roadmap in Nigeria, based on sustainable development and environmental  
32 protection. The results highlighted how regional inequities within Nigeria will likely prevent the  
33 2030 targets being reached. The northern states in Nigeria are more rural, less developed and  
34 have greater levels of insecurity and conflict. Reaching the levels of peace and development  
35 achieved in the south at a national level, along with improving urban planning and access and  
36 incentives to cholera testing, will be fundamental in reaching the Roadmap targets in Nigeria.  
37 Cholera forecasting is understudied and here we present the most in-depth projections available  
38 for Nigeria. Projections provide a snapshot of potential future conditions and show what is  
39 needed going forward to meet and exceed health targets and reduce disease burden. We  
40 highlight how quantitative research can be used to inform policy and the relevance of doing so.  
41 Quantitative research should fundamentally aim to improve global health and by presenting our  
42 work with a strong policy focus, we highlight the relevance and importance of doing so.

43

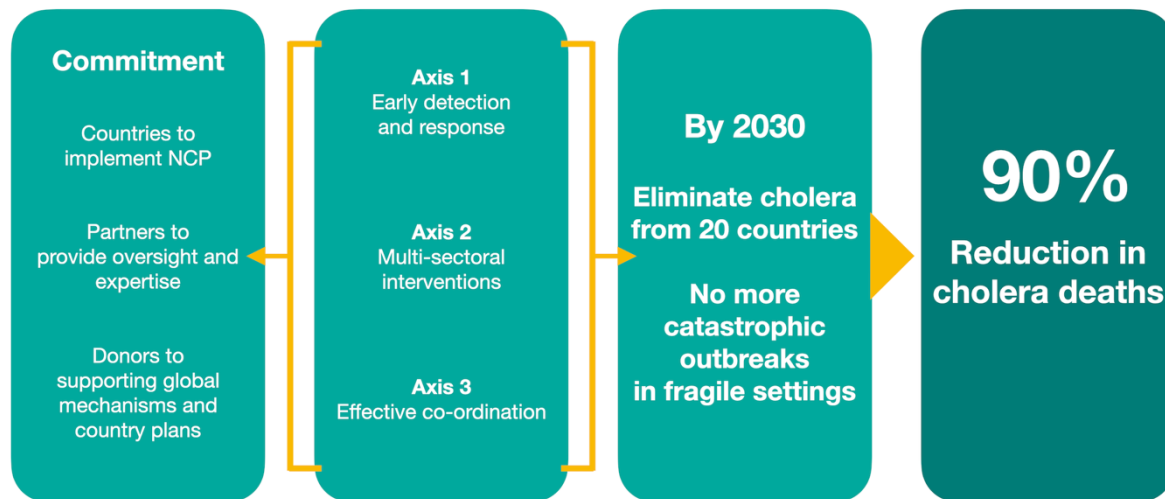
## 44 **Introduction**

45 Global health and development targets are widely used strategies to address international  
46 challenges. In 1992, the Global Task Force on Cholera Control (GTFCC) was established as a  
47 global partnership of more than 50 institutions and in 2017, the GTFCC launched “Ending  
48 Cholera: A Global Roadmap to 2030”. The Roadmap encouraged partner organisations to sign  
49 the Declaration to End Cholera, which focused on three axes: 1. early detection and response, 2.  
50 interventions in cholera hotspots and 3. effective coordination at all levels. The GTFCC aims to  
51 stop country-wide uncontrolled cholera outbreaks by 2030 and eliminate the disease from twenty  
52 countries, resulting in a 90% reduction in cholera deaths (Fig 1) [1].

53

54

55



56 **Fig 1.** The GTFCC theory of change for cholera elimination (adapted from: [1])

57

58 Despite the commitment of governments and organisations to large-scale strategies, many argue  
59 that they fail to produce significant improvements in their goals [2,3]. There have been gains in  
60 cholera control at a local level in recent decades, although this has been minimal at the global  
61 level [4,5]. As the 2030 goal approaches, whether these targets can be achieved given the current  
62 pace of development and progress is highly uncertain [6]. Understanding the achievability of these  
63 targets will help countries and global partnerships to plan for 2030 and beyond, continuing to  
64 make improvements in cholera prevention and control. Goals should be ambitious and encourage  
65 partners to strive for the best outcome possible, but they also need to be clear and have  
66 significant commitment and motivation from governments, non-governmental organisations and  
67 the population.

68

69 There is an estimated 1.3 billion people at risk of cholera globally and approximately 2.86 million  
70 annual cases (1.3-4.0 million) [7,8], the majority of which are in sub-Saharan Africa and the Indian  
71 Subcontinent. Development and health are strongly connected, and several countries and regions  
72 with the lowest levels of development, in terms of poverty, education and health, also overlap with  
73 areas of high cholera burden [9]. Nigeria currently has one of the largest cholera burdens globally  
74 and a significant number of people living in poverty, making it a critical area of study. Nigeria is

75 also one of the largest African economies, has the largest populations, and has made several  
76 gains in socioeconomic development in recent decades [10].

77

78 Here, we aim to understand if the GTFCC 2030 targets are achievable in Nigeria, based on the  
79 current Roadmap and progress. We first illustrate the current situation in terms of historical  
80 cholera and environmental and social risk factors. We then project cholera occurrence and  
81 transmission to 2070 both nationally and sub-nationally (administrative level 1) with varying  
82 degrees of global change using two models [11,12]. Relatively few studies have projected cholera  
83 burden, most of which have taken a climate change focus [13-15] and even fewer studies have  
84 evaluated the likelihood of meeting the 2030 GTFCC targets using forecasting tools [16,17]. The  
85 projection results will be used to inform the three axes outlined in the Roadmap, and we make  
86 suggestions of how to reach the 2030 targets in Nigeria, highlighting both successes and areas  
87 for improvement in the current strategy.

88

## 89 **Methods**

### 90 ***Datasets***

91 The number of reported cholera deaths (from suspected or confirmed cholera cases) were used in  
92 the historical analysis, due to the GTFCC goals largely focusing on reducing mortality (90%  
93 reduction in deaths). However, cholera deaths were transformed from raw numbers to a death  
94 rate (deaths per 100,000 people) to make the results more comparable, as Nigeria is currently the  
95 most populous country in Africa (211 million, compared to the second largest population, Ethiopia  
96 at 118 million [18]). Cholera death data were taken from two open access sources, cholera data  
97 can vary among datasets and using multiple sources allows for greater understanding of over-  
98 reporting, under-reporting and reporting lags. The two widely used sources included: the WHO's  
99 Global Health Observatory (1970-2016) [19] and the Global Health Data Exchange (GHDx) (1990-  
100 2016) [20]. The temporal and spatial scale of both cholera deaths datasets were annual and  
101 national. The historical environmental (meteorological drought, temperature, hydrological drought)

102 and social (poverty, sanitation, conflict) data selected in the best fit models used here (detailed  
103 below) were taken from several data sources detailed in Table 1.

104

105 WorldClim [26] was used for the projected temperature and precipitation data, at administrative  
106 level 1 and a monthly temporal granularity. WorldClim data is from Coupled Model  
107 Intercomparison Project 6 (CMIP6) downscaled future gridded temperature and precipitation  
108 projections (aggregated to administrative level 1), processed for nine global climate models. The  
109 data included minimum temperature and maximum temperature measured in degrees Celsius (°C)  
110 and precipitation (in mm). Projections were single values for 2050 and 2070 using three different  
111 Representative Concentration Pathways (RCPs) (RCP4.5, 6.0 and 8.5 (further explanation of the  
112 RCPs is available in S1 Text).

113

**Table 1.** The environmental and social data fitted to the models and used in the historical analysis

Covariate	Source	Temporal Scale	Spatial Scale
Palmers Drought Severity Index (PDSI)	National Center for Atmospheric Research [21]	Annual, 1895-2014	National
Average Temperature (°C)	European Centre for Medium-Range Weather Forecasts [22]	Annual, 2000-2016	National
Water Withdrawal PerCapita	World Bank [23]	Annual, 1985-2010	National
Poverty headcount at <\$1.25/day	UNDP [24]	Annual, 1985-2018	National
Proportion of the population in extreme poverty	World Bank [23]	Annual, 1981-2019	National
Multi-Dimensional Poverty Index (MPI)	Humanitarian Data Exchange [25]	Annual, 2017-2018	Administrative level 1
Conflict events and fatalities	Humanitarian Data Exchange [25]	Daily, 1997-2020	Administrative level 3
Percentage access to sanitation	Joint Monitoring Programme [5]	Annual, 2003-2017	Administrative level 1

114

### 115 **Historical Analysis**

116 Time-series of the historical cholera deaths per 100,000 and environmental and social data were  
117 used to illustrate how cholera and its associated risk factors have changed through time.

118 Pearson's correlation coefficients of all the environmental and social variables data, based on the

119 covariates included in the best fit models, were calculated to understand how they related to each  
120 other for the full datasets. One data source for each of the cholera and poverty data sources were  
121 selected for the correlations (WHO cholera data and the proportion of the population in extreme  
122 poverty) and were chosen based on the length of the timescale to increase data completeness.  
123 To visualise and analyse the trends, linear regression trend lines and loess curves, autocorrelation  
124 function (ACF) and AutoRegressive Integrated Moving Average (ARIMA) were used for the  
125 historical cholera death data. ACF is a measure of autocorrelation and describes how correlated  
126 the present value of the series is related with its past values. These approaches allow  
127 quantification of both the significance of time and the magnitude and direction of its effect, which  
128 can then be used to inform future conditions (via ARIMA).

129

### 130 **Projections**

131 The national projections were predicted using the best fit model from Charnley *et al.* [11]. In  
132 summary, national annual cholera data were taken from the WHO Global Health Observatory and  
133 transformed to a binary outcome variable of cholera outbreak occurrence (where 1 represented at  
134 least one reported cholera case). Nineteen environmental and social covariates were tested  
135 through a covariate selection process, which removed covariates which were not significantly  
136 associated with the outcome variable at a 10% confidence limit in a univariate model and then  
137 clustered the remaining covariates based on a threshold correlation coefficient of  $r > 0.75$ . The  
138 data were then fit to multivariate generalised linear models using maximum likelihood estimations  
139 and a log-log link function. The best fit model was identified based on Bayesian Information  
140 Criterion and area under the receiver operator characteristic curve. The selected covariates  
141 included Palmers Drought Severity Index (PDSI), average temperature ( $^{\circ}\text{C}$ ), poverty headcount at  
142  $< \$1.25/\text{day}$  and freshwater withdrawal per capita ( $\text{m}^3/\text{person}/\text{year}$ ). To test model robustness,  
143 autocorrelation diagnostics were run using AR1 (autoregressive model of order 1) and leave-one-  
144 out cross validation and found the effect of time and space negligible.

145

146 The sub-national projections were predicted using the best fit model from Charnley *et al.* [12]. In  
147 summary, sub-national cholera surveillance data were acquired from the Nigeria Centre for  
148 Disease Control. Data were available for 2018 and 2019 and the data were subset to only include  
149 cholera cases confirmed by rapid diagnostic tests or laboratory culture. Incidence was calculated  
150 from the confirmed cholera case data and used to model cholera time-varying reproduction  
151 number (R) for states (administrative level 1) which had sufficient cases (>40 cases), to ensure R  
152 was calculated within the time window (monthly sliding windows). Cholera R was then used as the  
153 outcome variable for fitting random forest models, with R values over 1 signifying increased  
154 transmission. Twenty-two covariates were considered for inclusion in the best fit model and were  
155 similarly clustered at the same correlation coefficient threshold ( $r > 0.75$ ), to account for the  
156 potential of multi-collinearity. Possible combinations of covariates were then stepped through,  
157 with random forest variable importance, based on node impurity to guide the process. The best fit  
158 model was identified based on predictive power, evaluated through multiple metrics including  
159 correlation between actual v predicted values,  $R^2$  and root-mean-square error. Random forest  
160 models are easily overfit, to account for this, mean absolute error was used to test for the  
161 presence of overfitting in the model. The best fit model included PDSI, Multidimensional Poverty  
162 Index (MPI), percentage access to improved sanitation and monthly conflict event frequency.

163  
164 The models were used to predict either cholera outbreak occurrence (national) or cholera R (sub-  
165 national) at decadal increments from 2020 to 2070 using the scenario data (described below).  
166 Bootstrap resampling (10,000 samples) was used to obtain 95% confidence intervals for all  
167 projections and all data sources used to fit the models are listed above in Table 1. The projections  
168 were applied to the 2030 Roadmap targets and a new 2050 target delineated. Twenty-fifty was  
169 chosen as the target year, due to it being halfway from the current target (2030) to the end of the  
170 projection period (2070), taking into consideration the full scope of the projections. Additionally,  
171 the two global initiatives the scenarios are based upon, the RCPs and SDGs, have 2050 targets  
172 [27,28].

173



## 174 **Projection Scenarios**

175 Five projection scenarios were created here to project cholera to 2070 using the two models.  
176 Despite 2030 being the target year for the Roadmap, cholera projections were made to the  
177 furthest point the data allowed (2070). The scenarios include several degrees of global change  
178 and are based upon the RCP scenarios and attainment of the Sustainable Development Goals  
179 (SDGs) [29]. By using the RCPs and SDGs, this covered a wide range of environmental and social  
180 scenarios, accounting for varying degrees of emissions reductions and socioeconomic  
181 development. Both the RCPs and SDGs are widely accepted methods and targets for  
182 environmental and socio-economic development in research and policy. The scenarios are briefly  
183 defined as follows, and more details are given below:

184

- 185 1. Scenario 1 (S1) - Best case scenario meeting RCP4.5 and the SDG
- 186 2. Scenario 2 (S2) - Intermediate progress scenario between S1 and S3
- 187 3. Scenario 3 (S3) - Minimal development and emissions reductions but progress is still made  
188 towards to SDGs and the Intergovernmental Panel on Climate Change targets
- 189 4. Scenario 4 (S4) - Some regression from the current levels of sustainable development and  
190 increased emissions
- 191 5. Scenario 5 (S5) - Worst case scenario with significant regression in development and  
192 emissions increases

193

## 194 *National*

195 The national projection scenarios were taken from Charnley *et al.* [11] for S1, S2 and S3. In  
196 summary, PDSI projections related to dataset averages and future conditions following the  
197 historical linear trend (PDSI [21] ~ Year, coefficient -0.014961, p-value 0.000512). Temperature  
198 was based on the WorldClim projections (RCP4.5, 6.0 and 8.5 for 2050 and 2070) and water  
199 withdrawal on varying degrees of meeting SDG6.4 (increase sustainable water-use efficiency  
200 across all sectors to address water scarcity). In terms of water security, Nigeria is a high resource  
201 and low withdraw country (S1 Fig) and therefore has increased water use in its more optimistic

202 scenarios, based on the assumption that more water use means greater access. Poverty  
 203 scenarios were set at varying degrees of achieving SDG1.1 and 1.2, which state a 50% reduction  
 204 in extreme (<1.25/day) poverty by 2030 and poverty eliminated by 2070.  
 205  
 206 For S4 and S5, RCP6.0 and 8.5 temperature values were reached 20 years earlier (2050 by 2030  
 207 and 2070 by 2050). For PDSI, previous literature was used to understand the full extent of drought  
 208 changes across Nigeria, due to the limitations in projecting PDSI (S1 Text). Africa is not projected  
 209 to be significantly drier and historical studies suggest relative stability [30-33]. However, projected  
 210 PDSI changes are spatial heterogeneous and for Nigeria, drought projections suggest both  
 211 stability [34] and drying [35,36]. To account for the full range of projected changes and uncertainty  
 212 stated in the literature, the scenarios include both stability and significant drying to 2070. The  
 213 poverty projections represent a 30% and 50% increase by 2070 for S4 and S5, respectively and  
 214 for water withdrawal, instead of increasing from 2050 as seen in S1-S3, withdrawal would  
 215 decrease by 10% (S4) and 20% (S5). A summary of the national scenarios is shown in Table 2.

**Table 2.** National cholera projection scenarios for 2020-2070 at decadal intervals

Scenario	Year	PDSI	Temperature	Poverty	Water withdrawal	
Scenario 1	2020	Historical average	2016 value	2016 value	2016 value	
Scenario 1	2030			50% decrease		
Scenario 1	2040					
Scenario 1	2050		RCP4.5 2050	Median 2040-2070	20% increase	
Scenario 1	2060					
Scenario 1	2070			RCP4.5 2070	Elimination	
Scenario 2	2020	Median value (S1-S3)	2016 value	2016 value	2016 value	
Scenario 2	2030					
Scenario 2	2040					
Scenario 2	2050		RCP6.0 2050	50% decrease	10% increase	
Scenario 2	2060			Median 2050-2070		
Scenario 2	2070			RCP6.0 2070		Elimination
Scenario 3	2020	((Coefficient*4) + 2016 value)	2016 value	2016 value	2016 value	
Scenario 3	2030	((Coefficient*10) + 2020 value)				
Scenario 3	2040	((Coefficient*10) + 2030 value)				
Scenario 3	2050	((Coefficient*10) + 2040 value)			RCP8.5 2050	5% increase

Scenario 3	2060	((Coefficient*10) + 2050 value)		Median 2050-2070		
Scenario 3	2070	((Coefficient*10) + 2060 value)	RCP8.5 2070	50% decrease		
Scenario 4	2020	Historical average	2016 value	2016 value	2016 value	
Scenario 4	2030		RCP6.0 2050			
Scenario 4	2040			Median 2030-2070		
Scenario 4	2050	Median 2040-2070	RCP6.0 2070		10% decrease	
Scenario 4	2060			50% drier		50% increase
Scenario 5	2020	Historical average	2016 value	2016 value	2016 value	
Scenario 5	2030	Median 2020-2050	RCP8.5 2050			
Scenario 5	2040			Median 2030-2070		
Scenario 5	2050	50% drier	RCP8.5 2070		20% decrease	
Scenario 5	2060					
Scenario 5	2070					50% increase

216

### 217 *Sub-national*

218 As the sub-national projections could account for the known spatial heterogeneity in PDSI  
 219 projections stated above. Sub-national monthly PDSI projections were calculated using the  
 220 projected 2050 and 2070 environmental data. First, potential evapotranspiration (PET) (mm/day)  
 221 was calculated with the temperature data and latitude using the Hargreaves method [37], where  
 222  $R_a$  is the mean extra-terrestrial radiation in mm/day, which is a function of latitude, and  $T$   
 223 represents daily air temperature in °C (package “SPEI” [38]).

224

$$225 \quad PET_{hargreaves} = 0.0023 * R_a * (T_{max} - T_{min})^{0.5} * (T_{mean} + 17.8)$$

226

227 PDSI is the output of a supply-and-demand model of soil moisture, which can be calculated using  
 228 PET and precipitation. A common critique of PDSI is that the behaviour of the index varies by  
 229 location, making spatial comparisons difficult. The self-calibrated (scPDSI) methods accounts for  
 230 this by automatically calibrating the behaviour of the index at any location by replacing empirical  
 231 constants in the index computation with dynamically calculated values [39]. Therefore, scPDSI  
 232 was used to provide PDSI values for 2050 and 2070 for the three RCP scenarios. All calculations  
 233 were completed in R Studio version 4.1.0 (package “scPDSI” [40]).

234

235 The scenarios for temperature and poverty followed the same pattern and targets as those in the  
 236 national scenarios. Sanitation was based on SDG6.2 (achieve access to adequate and equitable  
 237 sanitation and hygiene for all and end open defecation by 2030) and conflict scenarios were guided  
 238 by SDG16.1 (Significantly reduce all forms of violence and related death rates everywhere). The  
 239 SDGs for both sanitation and conflict are particularly ambiguous, regardless of this difficulty, the  
 240 sanitation and conflict targets were based on a similar pattern to MPI, achieving universal access  
 241 to sanitation and conflict elimination by 2070 in S1 and a 50% decrease in sanitation access and  
 242 50% increase in conflict events by 2070 in S5. A summary of the sub-national scenarios is shown  
 243 in Table 3.

**Table 3.** Sub-national cholera projection scenarios for 2020-2070 at decadal intervals

Scenario	Year	PDSI	MPI	Sanitation	Conflict
Scenario 1	2020	2020 value	2020 value	2020 value	2020 value
Scenario 1	2030		50% decrease	50% increase	50% decrease
Scenario 1	2040				
Scenario 1	2050	RCP4.5 2050	Median 2040-2070	Median 2040-2070	Median 2040-2070
Scenario 1	2060	Median 2050-2070			
Scenario 1	2070	RCP4.5 2070	Elimination	100% access	Elimination
Scenario 2	2020	2020 value	2020 value	2020 value	2020 value
Scenario 2	2030			Median 2020-2050	
Scenario 2	2040				
Scenario 2	2050	RCP6.0 2050	50% decrease	50% increase	50% decrease
Scenario 2	2060	Median 2050-2070	Median 2050-2070		Median 2050-2070
Scenario 2	2070	RCP6.0 2070	Elimination		Elimination
Scenario 3	2020	2020 value	2020 value	2020 value	2020 value
Scenario 3	2030				
Scenario 3	2040				
Scenario 3	2050	RCP8.5 2050	Median 2050-2070	Median 2040-2070	Median 2050-2070
Scenario 3	2060	Median 2050-2070			
Scenario 3	2070	RCP8.5 2070	50% decrease	30% increase	50% decrease
Scenario 4	2020	2020 value	2020 value	2020 value	2020 value
Scenario 4	2030	RCP6.0 2050			
Scenario 4	2040		Median 2030-2070	Median 2040-2070	Median 2030-2070
Scenario 4	2050				
Scenario 4	2060	RCP6.0 2070	30% increase	30% decrease	30% increase
Scenario 4	2070				
Scenario 5	2020	2020 value	2020 value	2020 value	2020 value
Scenario 5	2030	RCP8.5 2050			
Scenario 5	2040		Median 2030-2070	Median 2040-2070	Median 2030-2070
Scenario 5	2050				
Scenario 5	2060	RCP8.5 2070			

Scenario 5	2070		50% increase	50% decrease	50% increase
------------	------	--	--------------	--------------	--------------

244

## 245 **Results**

### 246 ***Historical Analysis***

247 Fig 2 shows the time-series for the WHO and GHDx cholera deaths data for 1970-2016,  
248 compared to the mean values for Africa (average of 0.1 cases/100,000). The time-series highlights  
249 the historically high cholera burden in Nigeria, which is particularly evident in the GHDx data.  
250 Comparing the two datasets highlights many differences, showing the importance of considering  
251 multiple cholera data sources for analyses. The GHDx data illustrates a steep decline from 16.0  
252 cases/100,000 in 1991 to 1.8 cases/100,000 in 2017, with some plateauing periods. Whereas for  
253 the WHO data, cholera appears relatively stable over time (average of 0.5 cases/100,000), instead  
254 witnessing large peaks, particularly in 1971 (5.1 cases/100,000), 1991 (7.8 cases/100,000) and  
255 1999 (1.7 cases/100,000). Furthermore, the difference in death rate overall should be noted here,  
256 with the GHDx data reporting much higher deaths per 100,000.

257

258 The linear trends and loess curves for the cholera data illustrates a flat trend in the WHO data,  
259 whereas the GHDx data shows a steady decrease (S2 Fig). ACF for both datasets show a slow  
260 decay (gradual decrease) to within the confidence interval bands (S3 Fig). The ACF decay  
261 suggests that the effect of time is not particularly significant in either of the cholera datasets. The  
262 weak effect of time was also illustrated in the ARIMA analysis, which showed a flat forecast,  
263 predicting at the current rate of cholera deaths.

264

265

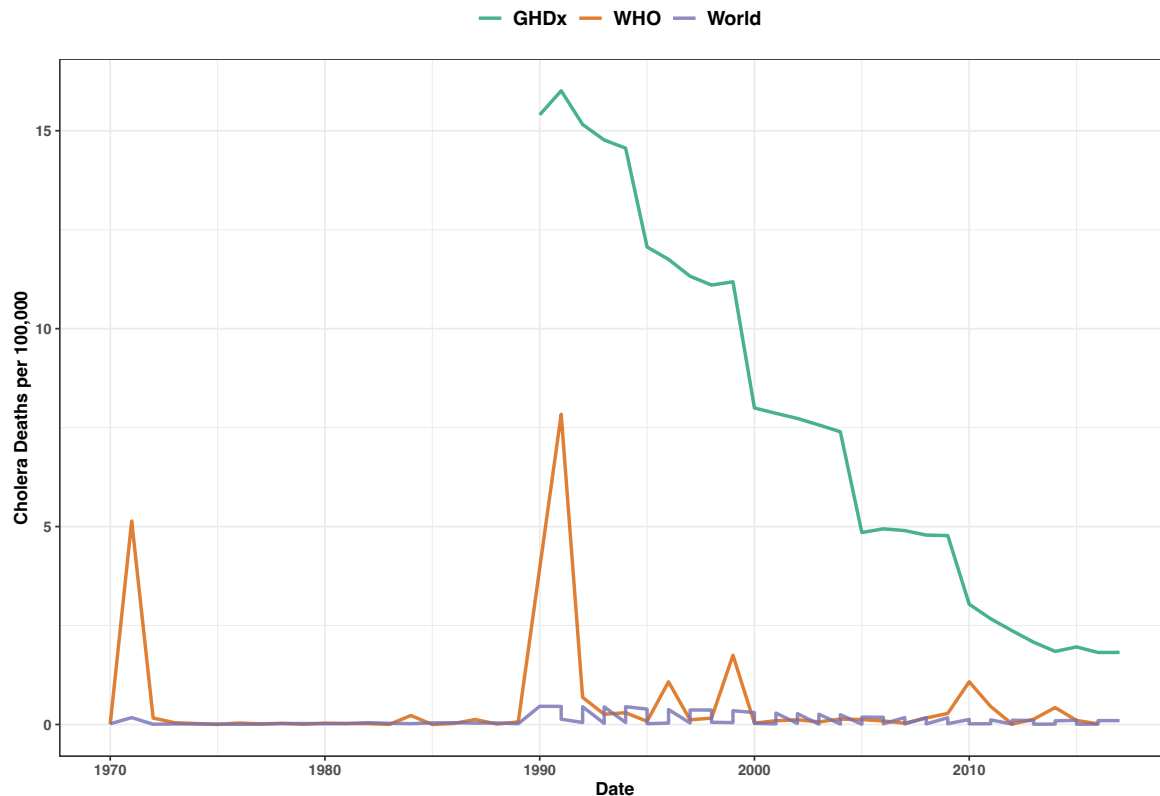
266

267

268

269

270



271 **Fig 2.** Time-series of historical cholera deaths per 100,000 of the population for Nigeria and mean  
272 values for Africa. World cholera data were from the WHO source [19] and population data from  
273 the UN Department of Economic and Social Affairs [18]

274

275 For the environmental and social risk factors analyses here (meteorological drought, temperature,  
276 water withdrawal, poverty, conflict, and sanitation), data incompleteness meant that calculating  
277 correlations were difficult (S4 Fig). Assumptions and averages of the data had to be taken when  
278 fitting the models used here (see S2 Text). Regardless of data limitations, cholera deaths had a  
279 strong negative correlation between sanitation access and a slight positive correlation with  
280 temperature from 1970 to 2016 (Fig 3).

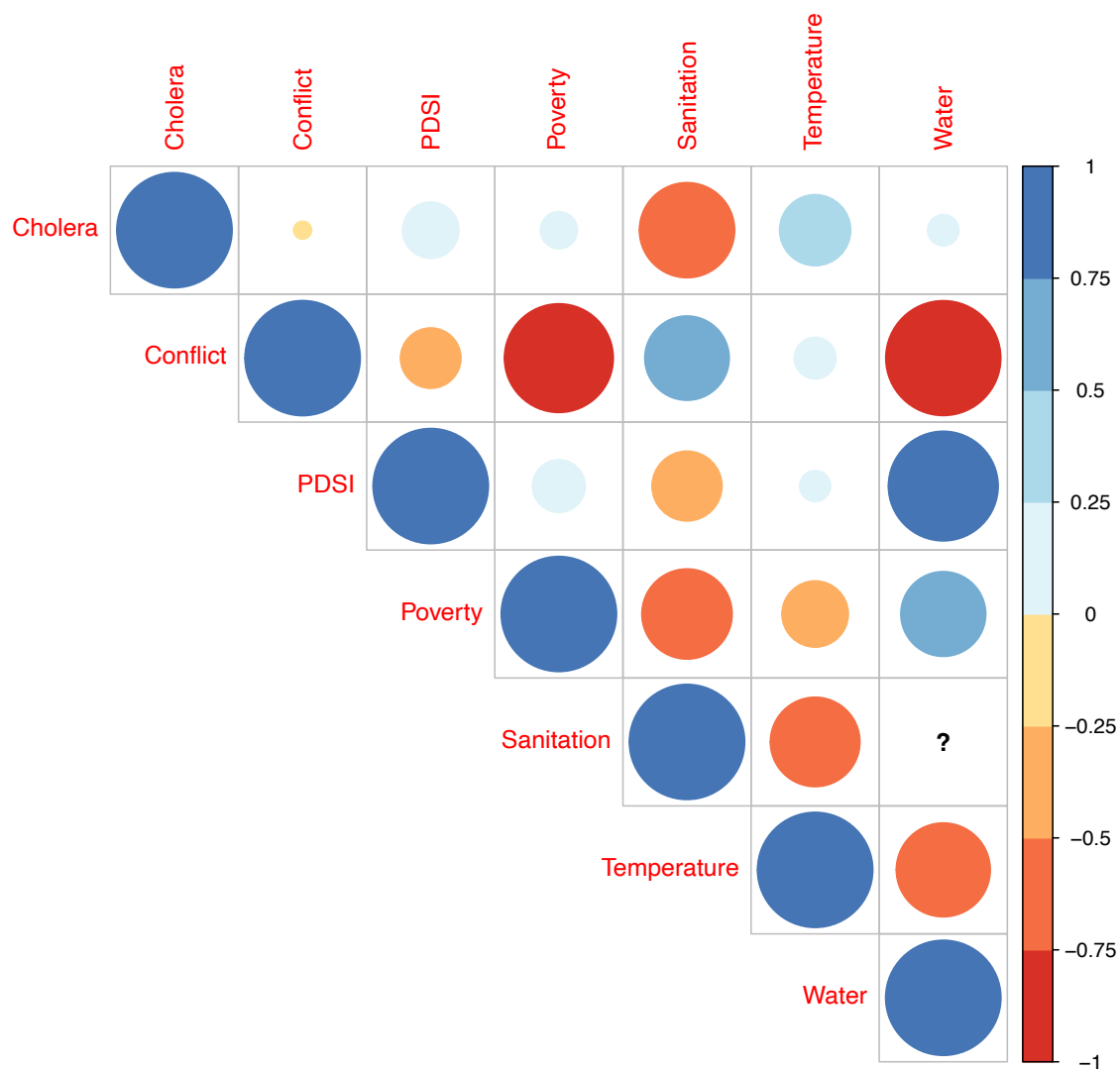
281

282

283

284

285



286 **Fig 3.** Correlation matrix based on Pearson correlation coefficients for the six commonly selected  
 287 covariates analysed here against the WHO cholera deaths data. Positive coefficients are blue  
 288 suggesting a strong positive association between the corresponding row and column and  
 289 negative coefficients are in red, suggesting a negative association. The ? represents a negligible  
 290 value due to data incompleteness

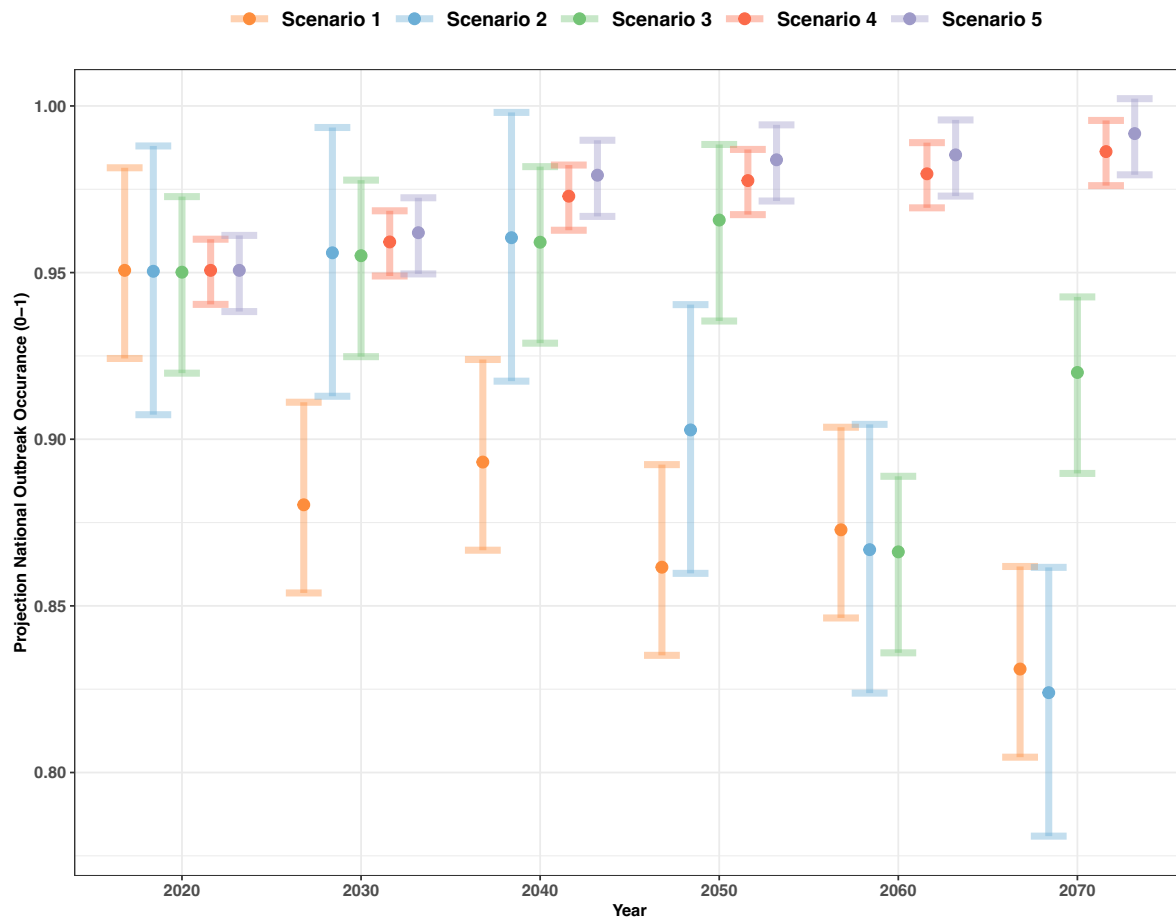
291

### 292 **Scenario Projections**

#### 293 *National*

294 Fig 4 shows the national cholera projections (in cholera outbreak occurrence, 0-1) to 2070 for the  
 295 five scenarios, with 95% confidence intervals. National cholera occurrence for Nigeria decreased  
 296 from S1 to S3, starting at 0.95 for all scenarios to 0.83 for S1 and 0.92 for S3 by 2070. These  
 297 changes were relatively small and several of the confidence intervals overlap (the linear

298 relationship, with standard error is presented in S5 Fig). The decreases to 2070 are minimal,  
299 especially when considering the levels of development in the S1 scenario. For S4 and S5, where  
300 socio-economic and environmental conditions regressed, there was an increase in cholera  
301 outbreak occurrence from 0.95 to 0.98 for S4 and 0.99 for S5.



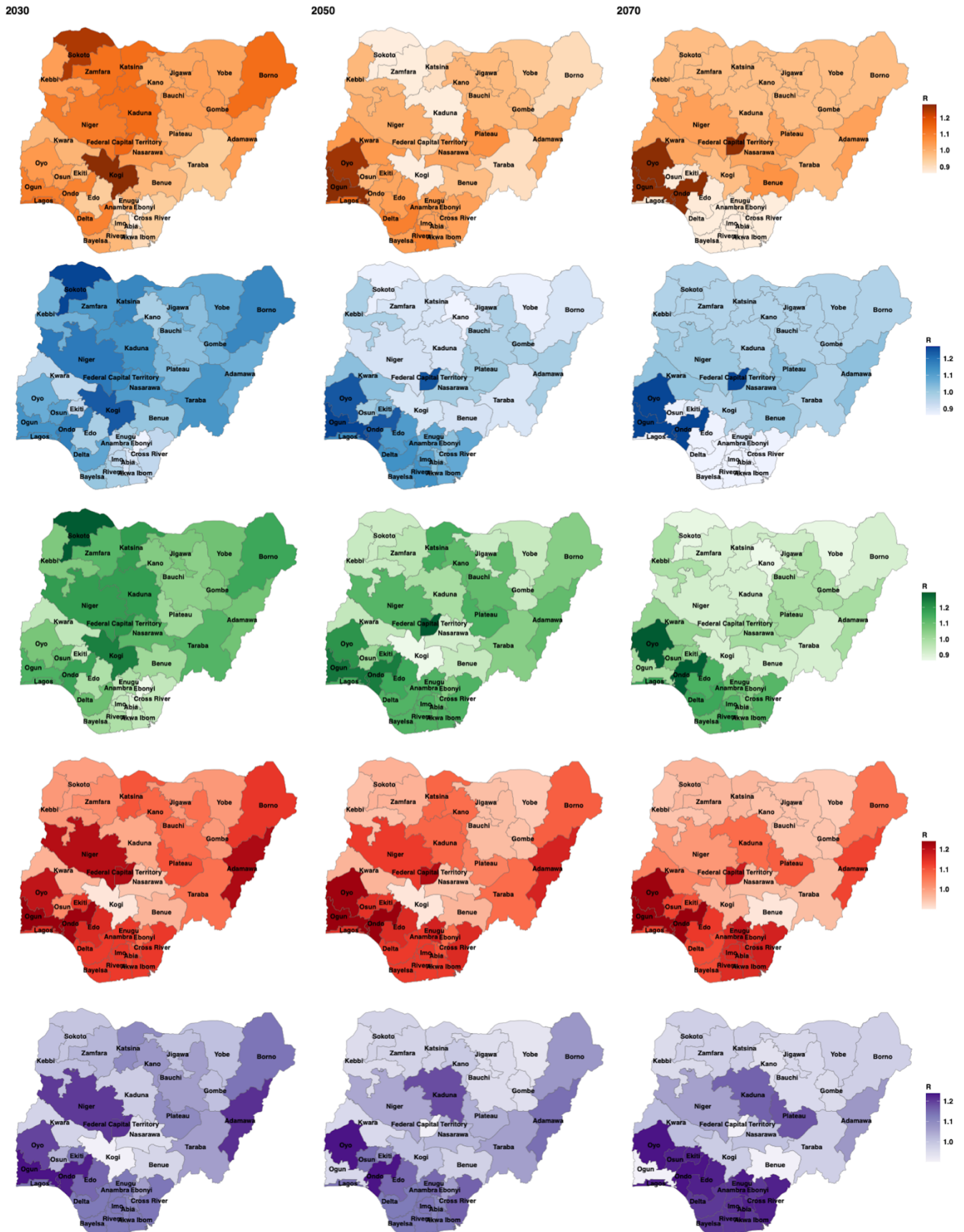
302 **Fig 4.** National cholera projections for Nigeria, in cholera outbreak occurrence (0-1), for the five  
303 scenarios to 2070

304  
305 *Sub-national*

306 For the sub-national projections, measured in terms of cholera R, there were several spatial  
307 heterogeneities, which may help explain some of the uncertainty seen in the national projections.  
308 Generally, R values decreased through the three time points shown (Fig 5) for S1, S2 and S3, with  
309 the number of states with R values over 1 decreasing, particularly for S1 to S3. For S4 and S5, the  
310 changes appear more complex, with some states faring better than others when faced with  
311 worsening social and environmental conditions. The south of the country had particularly high R



312 values in these less optimistic scenarios, whereas the north saw little change and, in some cases,  
313 a slight improvement.



314

315 **Fig 5.** Sub-national cholera projections for Nigeria, in cholera reproduction number (R), for the five  
316 scenarios (S1 - orange, S2 - blue, S3 - green, S4 - red and S5 - purple) at 3 of the decadal time  
317 points (2030, 2050 & 2070)

318

## 319 **Discussion**

320 Using the historical evidence and future projections, this research has shed light on the future of  
321 cholera in Nigeria to 2030 and beyond. The historical data highlighted the historically high cholera  
322 burden in Nigeria, compared to the rest of Africa. The data also showed the wide range of cholera  
323 values that are reported and the importance of evaluating multiple data sources. The cholera  
324 projections provided a more detailed understanding of future trends and if socio-economic  
325 development and climate change mitigation could reduce cholera in Nigeria. Both the national  
326 and sub-national projections showed decreases in cholera burden with the more optimistic  
327 scenarios (S1-S3). Under S4 and S5, the national cholera burden worsened, despite the already  
328 high cholera outbreak occurrence, showing the need for continued development. Further  
329 explanation of the historical and future trends of cholera in Nigeria and how this could inform the  
330 GTFCC Roadmap are provided below.

331

## 332 ***Evidence from the Historical Data***

333 The WHO data presented large outbreaks and peaks through the instrumental period, whereas  
334 the GHDx data steadily decreases but with higher cholera deaths overall. The historical cholera  
335 trends do not suggest a significant increase or decrease based on previous burden. The ARIMA  
336 forecasting and ACF suggested a weak relationship with time in the two datasets analysed. The  
337 results show no clear trend to suggest whether cholera is increasing or decreasing and whether  
338 the 2030 targets can be met from these data alone.

339

340 The lack of relationship between cholera and time found here further highlights the importance of  
341 understanding cholera risk factors and their temporal changes over time. Understanding these  
342 risk factors going forward could help to inform cholera burden and identify hotspots. For example,

343 in 2020 more than half of the population were without access to safe sanitation [41], putting  
344 billions of people at risk of cholera. It is essential to continue monitoring changes in these risks,  
345 identify areas of prioritisation and collect accurate data.

346

347 Sanitation had the strongest correlation with the WHO dataset used here and was selected in  
348 several of the models used over other metrics of WASH, including access to clean water and  
349 hand-washing facilities. Progress has been made in the last 20 years (2000-2020) in terms of  
350 expanding access to WASH services in Nigeria, with the percentage of access to improved  
351 sanitation increasing from 52% to 62% and an expansion in access to improved drinking water by  
352 31% [5]. However, if access to sanitation continues to increase by 10% every 20 years, this would  
353 result in over 87 million Nigerians without access by 2030 and therefore at a high risk of cholera  
354 (based on a 5% increase in access and a population projection of 264 million by 2030 [18].

355

356 In Nigeria, there is a divide in terms of WASH and development between the northern and  
357 southern regions of the country (S6 Fig) [42]. Northern states are generally more rural, which has  
358 potentially resulted in less development. For example, there is a 40% deficit in access to  
359 sanitation in the rural compared to the urban population. Nigeria's rural population comprises  
360 47% (99,895,289, 2021) of the total population, putting millions of people at risk of cholera in  
361 these potentially less developed areas [43]. However, in the last sixty years the rural population  
362 has decreased by 38% and with effective urban planning, this continued trend could significantly  
363 reduce cholera in Nigeria.

364

### 365 ***Evidence from the Scenario Projections***

366 The national scenarios showed clear trends in terms of both improvements from S1 (lowest  
367 cholera occurrence) to S3 and regression in S4 and S5 (highest cholera occurrence). The  
368 projections showed that continued progress towards and beyond the SDGs (in particular SDG1  
369 and 6) and emissions reductions (contributing to PDSI and temperature) would help to improve  
370 global health and particularly cholera. However, by 2030, in all the national projection, cholera

371 was not close to the 2030 targets (90% reduction). By the end of the projection period (2070),  
372 with significant improvements in development and environmental protection, cholera was far from  
373 eliminated and eradication will likely take time, due to the pathogen circulating in the population  
374 and environmental reservoirs and via introductions [44,45].

375

376 The sub-national projections were more optimistic regarding the achievability of the GTFCC  
377 targets. Overall, for the S1 sub-national projections there was a decrease in R values to less than  
378 1 by 2050 and for the southern states all S1 cholera projections were less than 1 by 2030  
379 (compared to the northern states which were all above 1). An explanation for this is that more time  
380 will be needed in the northern states to reach the required development for significant  
381 transmission reductions. Additionally, in the northern states, development was already low and  
382 conflict already high, therefore worsening these conditions did not significantly impact cholera.

383

384 The projections suggest that southern Nigeria could potentially reach the 2030 targets and  
385 eradication may be possible in the future. Whereas the north of the country must be an area of  
386 prioritisation in terms of development, cholera response and conflict resolution. The sub-national  
387 projections additionally highlighted how vital it will be for the development and peace achieved in  
388 the south to continue or at a minimum, remain the same. As previously stated, the worsened  
389 conditions of S4 and S5 had a large impact on the southern states in terms of increasing cholera  
390 transmission. Decreasing levels of peace and development would potentially be catastrophic in  
391 the southern states and overall, to the cholera burden in the country.

392

### 393 ***An Update on the 2030 Targets and Roadmap***

394 Based on the work presented here, the achievability of the GTFCC targets at the current pace of  
395 cholera control and development appears unlikely to be met by 2030 in Nigeria. Despite this,  
396 there has been significant progress in terms of health and development in Nigeria and the  
397 southern states appear far more likely to meet these goals. A new proposed 2050 target, building  
398 on the GTFCC Roadmap and expanding on the three axes will now be delineated. The new

399 targets will aim at bringing the northern states to the same levels of development and peace  
400 achieved in the south.

401

402 *Axis 1*

403 Axis 1 largely focuses on surveillance and data, which are vital in target setting, allocation of  
404 resources and response. Improved surveillance may also help to reduce the cholera data  
405 inconsistencies found here. The axis focuses on early detection, but with cholera this is difficult,  
406 due to a large number of mild infections and several other diarrhoeal pathogens potentially  
407 causing disease (e.g., shigella, typhoid, dysentery), meaning a positive test does not always mean  
408 that cholera is the causative agent.

409

410 A method to help improve reporting in Nigeria, would be to offer incentives to test and report.  
411 Financial incentives have proved effective at improving health outcomes in Nigeria and are often  
412 cost-effective in the long-term as they prevent serious disease and morbidity [46,47]. To reduce  
413 nosocomial transmission and prevent testing hesitancy due to stigmatisation and restrictions [17],  
414 modification and improvements to the highly effective cholera rapid diagnostic test [48], allowing  
415 them to be used at home, may be helpful. The tests would need to be easy to use and report,  
416 inexpensive and widely available.

417

418 Emphasis is needed both at a government and academic level on improving data quantity and  
419 quality. Understanding reporting effort and the accuracy and precision of data are key areas of  
420 future research to fully understand how well the current data are representing cholera burden. At  
421 a global level, a metric of reporting effort would help when comparing disease data that has been  
422 collected across multiple countries and therefore with different methods and uncertainty.

423

424 Furthermore, risk factor data are needed to fully understand disease dynamics and plan for  
425 effective response and interventions. The results here suggest that improvements in tracking  
426 poverty and sanitation are good areas of prioritisation. In Nigeria, benefit could also be gained

427 from testing environmental reservoirs, such as major lakes and rivers, which are known to be used  
428 for washing and drinking and can be fundamental in cholera transmission [49,50]. Better  
429 understanding on the environmental burden would be useful for both research and to understand  
430 local risk factors.

431

432 *Axis 2*

433 Axis 2 (cholera interventions) is arguably the most important area for reaching the GTFCC goals  
434 and several other health targets. The Roadmap highlights the need for long-term sustainable  
435 WASH implementation and strengthening of healthcare systems to anticipate cholera outbreaks  
436 (e.g., capacity building of staff, resources, diagnostics, education and societal engagement and  
437 emergency WASH intervention). However, the GTFCC Roadmap and previous research on  
438 cholera interventions heavily focuses on outbreak response [16], rather than development.

439

440 The Roadmap suggests that interventions should target states most at risk, with the analysis  
441 presented here suggesting northern states as a priority. Additionally, healthcare should be  
442 strengthened more generally, with greater resources and service availability, making healthcare an  
443 attractive career option to ensure sufficient human resources [51,52]. Development planning and  
444 targets must also consider that global crises can cause regression of progress, increasing the  
445 need to strive beyond health targets. For example, COVID-19 is estimated to have erased four  
446 years of progress against poverty and caused disaster-related deaths to rise sixfold [29].

447

448 Designating significant financial resources on outbreak response, is not a cost-effective way of  
449 reaching cholera targets, although fundamental to reducing mortality in outbreaks. More  
450 emphasis needs to be placed on improving peoples' quality of life, lifting them out of poverty,  
451 providing them with basic services and empowering them to improve their own health through  
452 resources and education. In the absence of this development, outbreaks will continue to occur,  
453 spending financial resources in a reactionary way.

454

455 *Axis 3*

456 Axis 3 of the Roadmap involves commitment and coordination on a global level, across several  
457 sectors. Nigeria Centre for Disease Control (NCDC) currently works across multiple levels of the  
458 national systems and has a detailed response plan for diarrhoeal (including cholera) outbreaks  
459 titled, “Preparedness and Response to Acute Watery Diarrhoea Outbreaks” [53]. NCDC have a  
460 designated team working on cholera elimination as a priority within the country. Continued and  
461 increased funding to NCDC will be vital for them to continue their work toward cholera control. At  
462 a global level, a “One World - One Health” approach is needed to prevent pandemics and achieve  
463 the GTFCC targets at this level. Recent pandemics and global outbreaks (e.g., COVID-19 and  
464 monkeypox) have shown the catastrophic results of countries not working together in a joint effort  
465 to control disease [54].

466

467 Nigeria has made several gains in weakening the Boko Haram stronghold in the northeastern  
468 states. However, the conflict continues to threaten Nigeria's security and several previous studies  
469 have suggested the negative impacts of conflict on health [54-57]. Bottom-up stabilisation efforts  
470 are working to address local level drivers of insecurity, including strengthening local conflict  
471 prevention, restoring governance and services and fostering social cohesion. While at a regional  
472 level, the Lake Chad Basin Commission and African Union Commission have highlighted short-,  
473 medium- and long-term stabilisation, resilience and recovery needs [58-60]. Fig 6 illustrates the  
474 current Roadmap and summarises the suggestion made here to improve cholera control beyond  
475 2030 and achieve the GTFCC targets in Nigeria by 2050.

476

477

478

479

480

481

482

<b>Axis 1</b> <b>Early detection and response</b>	<b>Axis 2</b> <b>Multisectoral approach</b>	<b>Axis 3</b> <b>Mechanism of coordination</b>
<ul style="list-style-type: none"> <li>• Early warning surveillance systems</li> <li>• Pre-positioning stocks</li> <li>• Preparedness of WASH systems</li> <li>• Preparedness of the healthcare system</li> <li>• Community engagement</li> </ul>	<ul style="list-style-type: none"> <li>• Identify hotspots and priority areas</li> <li>• Control measures (surveillance, WASH, health care systems, OCV, community engagement and collaboration)</li> </ul>	<ul style="list-style-type: none"> <li>• Nationally-led cross-sectoral programs</li> <li>• GTFCC as a strong coordination platform</li> </ul>
<ul style="list-style-type: none"> <li>• Inventives to report</li> <li>• Rapid at-home tests</li> <li>• Monitoring of the environment and known risk factors</li> </ul>	<ul style="list-style-type: none"> <li>• Shift from outbreak response to long-term sustainable development change</li> <li>• Empower local populations to care for their health through poverty alleviation, services and education</li> <li>• Effective urban planning</li> </ul>	<ul style="list-style-type: none"> <li>• Global commitment and coordination for a “One World - One Health” approach to pandemics</li> <li>• Conflict resolution</li> </ul>
<p style="text-align: center;">2030</p>	<p style="text-align: center;"><b>90% reduction in deaths and no large-scale outbreaks</b></p>	
<p style="text-align: center;">2050</p>	<p style="text-align: center;"><b>Targeting the northern states and continued development in the south</b></p>	

483 **Fig 6.** The 2030 GTFCC Roadmap for cholera elimination (black) with additional suggestions and  
 484 areas of prioritisation (blue) for 2050 in Nigeria

485

486 **Limitations**

487 Data incompleteness and inconsistencies were issues when trying to evaluate the historical data.  
 488 Incomplete data resulted in either the analysis not being completed (e.g., some of the  
 489 correlations) or removing and averaging the data (both used in the data fitted to the models, S2  
 490 Text). As stated above, improving surveillance and a greater effort to collect data on cholera risk  
 491 factors will be very important for target setting and resource allocation and prevent duplication of  
 492 services [61]. Multiple data sources were used here to try and account for this issue, and in future  
 493 cholera research, using sensitivity analysis and testing cholera assumptions across multiple data  
 494 sources is one method to understand these differences.

495

496 All scenario projections have limitations, due to the uncertainty in trying to predict future  
 497 conditions, along with the limitations of models. The wide range of future scenarios helps to  
 498 account for some of this uncertainty but will still not be sufficient in capturing all potential future  
 499 environments. For example, the scenarios here are uni-directional, either getting better or worse  
 500 from current conditions. All social and environmental drivers either getting better or worse is



501 unlikely, with some metrics improving and some worsening. To add further complexity, these  
502 changes could be spatially heterogeneous. Regardless of these limitations, this should not  
503 discourage scenario projection analysis, as it is still useful and valid in terms of understanding  
504 future changes and helping to inform cholera prevention and policy.

505

506 A further limitation is the different outcome variables and methodologies used in the projection  
507 models. It could be argued that two model types (generalised linear models and random forest)  
508 and two outcome variables (outbreak occurrence and R), make the results here difficult to  
509 compare and present different error and limitations (S2 Text). The GTFCC targets largely focus on  
510 reducing cholera deaths, which is why deaths (death rate) were chosen as the cholera metric for  
511 the historical data analyses. Although the discrepancies create difficulties in interpretation, to  
512 reach the 2030 targets and subsequently reduce deaths by 90%, global burden will have to  
513 substantially decrease, regardless of the metric used. Therefore, the projections are still useful in  
514 presenting the required decrease in burden.

515

## 516 **Conclusions**

517 In Nigeria, the GTFCC targets look difficult to achieve by 2030 at a national level, based on these  
518 results. However, the more urban and developed southern states may reach and go beyond these  
519 targets. There is a vital need for continued investment in long-term development, especially to  
520 reduce regional inequity in northern Nigeria. Despite the financial capital needed to improve  
521 healthcare, WASH and education, these interventions are cost-effective due to their wide-  
522 reaching impacts.

523

524 The results presented here highlight the importance of and how modelling studies can be used to  
525 inform cholera policy and the potential for this to be applied to other diseases and countries. The  
526 aim of health research should be to improve global health and quality of life and applying  
527 quantitative research to policy can help achieve this, while increasing the relevance of the  
528 research.

529

530 If the GTFCC targets are met in Nigeria, this will reduce the risk of cholera for hundreds of millions  
531 of people and greatly reduce the global burden of diarrhoeal disease and mortality in children  
532 under 5 years. Progress to go beyond the goals and targets set would be highly beneficial in  
533 combating the impact of global shocks and crisis. Continued progress in development (especially  
534 at an accelerated pace) and sustainable urban planning, could greatly improve Nigeria's cholera  
535 burden and health status in the coming decades.

536

### 537 **Acknowledgements**

538 We would like to thank and acknowledgement all those who collected and curated the datasets  
539 used here, including the Nigeria Centre for Disease Control for their direct involvement. This work  
540 was supported by the Natural Environmental Research Council [NE/S007415/1], as part of the  
541 Grantham Institute for Climate Change and the Environment's (Imperial College London) Science  
542 and Solutions for a Changing Planet Doctoral Training Partnership. We also acknowledge joint  
543 Centre funding from the UK Medical Research Council and Department for International  
544 Development [MR/R0156600/1].

545

### 546 **References**

- 547 1. Global Task Force on Cholera Control. ROADMAP 2030; 2020. Available from:  
548 <https://www.gtfcc.org/about-gtfcc/roadmap-2030/>
- 549 2. Biermann F, Hickmann T, S nit CA, Beisheim M, Bernstein S, Chasek P, et al. Scientific  
550 evidence on the political impact of the Sustainable Development Goals. Nat Sustain. 2022;5:  
551 795-800.
- 552 3. Masood E, Tollefson J. 'COP26 hasn't solved the problem': scientists react to UN climate  
553 deal; 2021. Available from: <https://www.nature.com/articles/d41586-021-03431-4>.
- 554 4. Ebob J. Cholera Prevention and Control Strategies; A Global Overview; 2020. Available from:  
555 <https://pesquisa.bvsalud.org/portal/resource/pt/sea-210228>.

- 556 5. WHO/UNIJoint Monitoring Programme (JMP). Nigeria; 2021. Available from:  
557 <https://washdata.org>
- 558 6. Vos T, Lim SS, Abbafati C, Abbas KM, Abbasi M, Abbasifard M, et al. Global burden of 369  
559 diseases and injuries in 204 countries and territories, 1990–2019: a systematic analysis for the  
560 Global Burden of Disease Study 2019. *Lancet*. 2020;396(10258): 1204-22.
- 561 7. Ali M, Lopez AL, You YA, Kim YE, Sah B, Maskery B, et al. The global burden of cholera. *Bull*  
562 *World Health Organ*. 2012;90(3): 209-218.
- 563 8. Ali M, Nelson AR, Lopez AL, Sack DA. Updated global burden of cholera in endemic  
564 countries. *PLoS Neglect Trop Dis*. 2015;9(6): e0003832.
- 565 9. Bhutta ZA, Sommerfeld J, Lassi ZS, Salam RA, Das JK. Global burden, distribution, and  
566 interventions for infectious diseases of poverty. *Infect Dis Poverty*. 2014;3(1): 1-7.
- 567 10. World Bank. Nigeria; 2021. Available from: <https://data.worldbank.org/country/NG>
- 568 11. Charnley GEC, Kelman I, Green N, Hinsley W, Gaythorpe KAM, Murray KA. Exploring  
569 relationships between drought and epidemic cholera in Africa using generalised linear models.  
570 *BMC Infect Dis*. 2021;21(1): 1-12.
- 571 12. Charnley GEC, Yennan S, Ochu C, Kelman I, Gaythorpe KAM, Murray KA. Investigating the  
572 impact of social and environmental extremes on cholera time varying reproduction number in  
573 Nigeria. *PLoS Glob Public Health*. 2022 Dec 14;.
- 574 13. Abdussalam AF. Potential future risk of cholera due to climate change in northern Nigeria. *Afr*  
575 *Res Rev*. 2017;11(1): 205-18.
- 576 14. Lee EC, Azman AS, Kaminsky J, Moore SM, McKay HS, Lessler J. The projected impact of  
577 geographic targeting of oral cholera vaccination in sub-Saharan Africa: a modeling study.  
578 *PLoS Med*. 2019;16(12): e1003003.
- 579 15. Trærup SL, Ortiz RA, Markandya A. The costs of climate change: a study of cholera in  
580 Tanzania. *Int J Environ Res Public Health*. 2011;8(12): 4386-4405.
- 581 16. Islam MT, Ross AG, Sleigh AC, Chowdhury F, Khan AI, McMillan NA, et al. A blueprint for  
582 eliminating cholera by 2030. *Nat Med*. 2022;28: 1747-1749.

- 583 17. Legros D. Global cholera epidemiology: opportunities to reduce the burden of cholera by  
584 2030. *J Infect Dis*. 2018;218(suppl\_3): S137-40.
- 585 18. United Nations Department for Economic and Social Affairs. Population Dynamics. World  
586 Population Prospectus; 2019. Available from: <https://population.un.org/wpp/>
- 587 19. World Health Organization. The Global Health Observatory; 2020. Available from:  
588 <https://www.who.int/data/gho>.
- 589 20. IHME GHDx. Global Health Data Exchange; 2016. Available from: <https://ghdx.healthdata.org>.
- 590 21. National Center for Atmospheric Research (NCAR). Dai Global Palmer Drought Severity Index  
591 (PDSI); 2020. Available from: <https://rda.ucar.edu/datasets/ds299.0/index.html#!sfol-wl->  
592 [/data/ds299.0](https://rda.ucar.edu/datasets/ds299.0/).
- 593 22. European Centre for Medium-Range Weather Forecasts (ECMWF). ERA5; 2020. Available  
594 from: <https://www.ecmwf.int/en/forecasts/datasets/reanalysis-datasets/era5>
- 595 23. World Bank. World Development Indicators; 2019. Available from:  
596 <https://data.worldbank.org/indicator>
- 597 24. United Nations Development Programme (UNDP). Human Development Data (1990-2018);  
598 2018. Available from: <http://hdr.undp.org/en/data#>
- 599 25. HDX. The Humanitarian Data Exchange; 2020. Available from: <https://data.humdata.org>
- 600 26. WorldClim. Future Climate Data; 2020. Available from:  
601 <https://worldclim.org/data/cmip6/cmip6climate.html>
- 602 27. United Nations. Vision 2045; 2022. Available from: <https://vision2045.com>
- 603 28. Intergovernmental Panel on Climate Change. Global Warming of 1.5°C; 2018. Available from:  
604 <https://www.ipcc.ch/sr15/>
- 605 29. United Nations. THE 17 GOALS; 2015. Available from: <https://sdgs.un.org/goals>.
- 606 30. Touchan R, Anchukaitis KJ, Meko DM, Attalah S, Baisan C, Aloui A. Long term context for  
607 recent drought in northwestern Africa. *Geophys Res Lett*. 2008;35(13): 1-5.
- 608 31. Verschuren D, Laird KR, Cumming BF. Rainfall and drought in equatorial east Africa during the  
609 past 1,100 years. *Nature* 2000;403(6768): 410-414.

- 610 32. Yang Y, Zhang S, Roderick ML, McVicar TR, Yang D, Liu W, et al. Little change in Palmer  
611 Drought Severity Index across global land under warming in climate projections. *Hydrol Earth*  
612 *Syst Sci.* 2020;1-22. Available from: <https://doi.org/10.5194/hess-2019-701>
- 613 33. Sheffield J, Wood EF, Roderick ML. Little change in global drought over the past 60 years.  
614 *Nature* 2012;491(7424): 435-438.
- 615 34. Oloruntade AJ, Mohammad TA, Ghazali AH, Wayayok A. Analysis of meteorological and  
616 hydrological droughts in the Niger-South Basin, Nigeria. *Glob Planet Change.* 2017;115: 225-  
617 233.
- 618 35. Shiru MS, Shahid S, Dewan A, Chung ES, Alias N, Ahmed K, et al. Projection of  
619 meteorological droughts in Nigeria during growing seasons under climate change scenarios.  
620 *Sci Rep.* 2020;10: 1-18
- 621 36. Ogunrinde AT, Oguntunde PG, Akinwumiju AS, Fasinmirin JT. Evaluation of the impact of  
622 climate change on the characteristics of drought in Sahel Region of Nigeria: 1971-2060. *Afr*  
623 *Geogr Rev.* 2021;40(2): 192-210.
- 624 37. Hargreaves GH. Defining and using reference evapotranspiration. *J. Irrig. Drain. Eng.*  
625 1994;120(6):1132–1139.
- 626 38. Beguería S, Vicente-Serrano SM. SPEI: Calculation of the Standardised Precipitation-  
627 Evapotranspiration Index. R package version 1.7; 2017. Available from: [https://CRAN.R-](https://CRAN.R-project.org/package=SPEI)  
628 [project.org/package=SPEI](https://CRAN.R-project.org/package=SPEI)
- 629 39. Wells N, Goddard S, Hayes MJ. A self-calibrating Palmer drought severity index. *J. Clim.*  
630 2004;17(12): 2335-2351
- 631 40. Zhong R, Chen X, Wang Z, Lai C. scPDSI: Calculation of the Conventional and Self-Calibrating  
632 Palmer Drought Severity Index. R package version 0.1.3; 2018. Available from:  
633 <https://CRAN.R-project.org/package=scPDSI>
- 634 41. UNICEF. Water, Sanitation and Hygiene (WASH); 2020. Available from:  
635 <https://www.unicef.org/wash>
- 636 42. Ojo A, Ojewale O. Nigeria's Urbanisation History, Trends, Drivers and Implications. In:  
637 *Urbanisation and Crime in Nigeria.* Palgrave Macmillan, Cham; 2019. pp. 13-58.

- 638 43. World Bank. Urban population (% of total population) – Nigeria; 2021. Available from:  
639 <https://data.worldbank.org/indicator/SP.URB.TOTL.IN.ZS?locations=N>
- 640 44. Islam MS, Zaman MH, Islam MS, Ahmed N, Clemens JD. Environmental reservoirs of *Vibrio*  
641 *cholerae*. *Vaccine* 2020;38: A52-A62.
- 642 45. Almagro-Moreno S, Taylor RK. Cholera: environmental reservoirs and impact on disease  
643 transmission. *Microbiol Spectr*. 2013;1(2): 1-2.
- 644 46. Okeke EN, Abubakar IS, Wagner Z. Reducing Child Deaths in Nigeria Through Contingent  
645 Cash Transfers to Expectant Mothers; 2020. Available from:  
646 [https://www.rand.org/pubs/research\\_briefs/RB10114.html](https://www.rand.org/pubs/research_briefs/RB10114.html)
- 647 47. Ganesan D, Gupta SS, Legros D. Cholera surveillance and estimation of burden of cholera.  
648 *Vaccine* 2020;38: A13-17.
- 649 48. Centres for Disease Control and Prevention. Crystal® VC Rapid Diagnostic Test (RDT)  
650 Procedure; 2021. Available from: <https://www.cdc.gov/cholera/crystal-vc.html>
- 651 49. Bwire G, Debes AK, Orach CG, Kagirita A, Ram M, Komakech H, et al. Environmental  
652 surveillance of *Vibrio cholerae* O1/O139 in the five african great lakes and other major surface  
653 water sources in Uganda. *Front Microbiol*. 2018;9: 1560.
- 654 50. Shapiro RL, Otieno MR, Adcock PM, Phillips-Howard PA, Hawley WA, Kumar L, et al.  
655 Transmission of epidemic *Vibrio cholerae* O1 in rural western Kenya associated with drinking  
656 water from Lake Victoria: an environmental reservoir for cholera? *Am J Trop Med* 1999;60(2):  
657 271-276.
- 658 51. Ughasoro MD, Esangbedo DO, Udorah IM. Health-care workers 'perspectives on  
659 preparedness of health-care facilities for outbreak of communicable diseases in Nigeria: a  
660 qualitative study. *Am J Trop Med Hyg* 2019;100(4):1022.
- 661 52. Ager AK, Lembani M, Mohammed A, Mohammed AG, Abdulwahab A, De Pinho H, et al.  
662 Health service resilience in Yobe state, Nigeria in the context of the Boko Haram insurgency: a  
663 systems dynamics analysis using group model building. *Confl Health*. 2015;9(1) :1-14.
- 664 53. Nigeria Centre for Disease Control. NIGERIA - PREPAREDNESS AND RESPONSE TO ACUTE  
665 WATERY DIARRHOEA OUTBREAKS; 2017. Available from:

- 666 <http://www.platformecholera.info/index.php/country-monitoring/nigeria/152-wca/strategic->  
667 [framework/library-of-national-plans/481-nigeria-preparedness-and-response-to-acute-](http://www.platformecholera.info/index.php/country-monitoring/nigeria/152-wca/strategic-)  
668 [watery-diarrhoea-outbreaks](http://www.platformecholera.info/index.php/country-monitoring/nigeria/152-wca/strategic-)
- 669 54. Calistri P, Iannetti S, Danzetta M, Narcisi V, Cito F, Di Sabatino D, Bruno R, et al. The  
670 components of “one world--one health” approach. *Transbound Emerg Dis.* 2013;60: 4-13.
- 671 55. Gayer M, Legros D, Formenty P, Connolly MA. Conflict and emerging infectious diseases.  
672 *Emerg Infect Dis* 2007;13(11): 1625.
- 673 56. Wells CR, Pandey A, Ndeffo Mbah ML, Gaüzère BA, Malvy D, Singer BH, et al. The  
674 exacerbation of Ebola outbreaks by conflict in the Democratic Republic of the Congo. *PNAS.*  
675 2019;116(48): 24366-24372.
- 676 57. Charnley GEC, Jean K, Kelman I, Gaythorpe KAM, Murray KA. Using self-controlled case  
677 series to understand the relationship between conflict and cholera in Nigeria and the  
678 Democratic Republic of Congo. *Emerg Infect Dis.* 2022;28: 2472-2481.
- 679 58. Bello, M. The Terror Campaign of Boko Haram: Its Transformation and Challenges to Nigeria’s  
680 Security. *Golden Ratio of Social Science and Education* 2021;1(2): 85-94.
- 681 59. Kinsey C, Krieg A. Assembling a Force to Defeat Boko Haram: How Nigeria Integrated the  
682 Market into its Counterinsurgency Strategy. *Def. Secur Anal* 2021;37(2): 232–249
- 683 60. Brechenmacher S. Stabilizing northeast Nigeria after Boko haram. Washington, DC: Carnegie  
684 Endowment for International Peace; 2019 May 3.
- 685 61. Edwards J. Médecins Sans Frontières (MSF). Case Study North-east Nigeria; 2020. Available  
686 from: [https://arhp.msf.es/sites/default/files/MSF-Emergency\%20gap-North-east\%20Nigeria-](https://arhp.msf.es/sites/default/files/MSF-Emergency\%20gap-North-east\%20Nigeria-case\%20study-april\%202017.pdf)  
687 [case\%20study-april\%202017.pdf](https://arhp.msf.es/sites/default/files/MSF-Emergency\%20gap-North-east\%20Nigeria-case\%20study-april\%202017.pdf)

688

689

690

691

692

693

## Supporting information

### S1 Text. Additional information about the scenarios used for the projections

Projected temperature data were available through WorldClim, which gives projections for 2050 and 2070, under the four Representative Concentration Pathways (RCP) emissions scenarios. RCP2.6 requires emissions to start declining by 2020 and reach net zero by 2100, RCP4.5 requires emissions to peak in 2040, RCP6.0 peaks at around 2080 and RCP8.5 assumes emission will continue to rise throughout the century. These four scenarios are projected to have mean global warming by 2081-2100 of 1°C, 1.8°C, 2.2°C and 3.7°C, respectively (IPCC, 2014). RCP2.6 was not used in the projections, as this requires CO<sub>2</sub> emissions to peak in 2020, a goal which has not been reached (NOAA, 2020). The data was presented as a monthly average at the admin 1 level, which was then transformed into a national yearly mean.

Projected PDSI data was difficult to obtain, and previous modelling studies have found spatial heterogeneity, making projecting drought across the continent challenging. There is also disagreement over drought changes in Africa under climate change and how populations will adapt to alterations in water scarcity (Ahmadalipour *et al.*, 2019; Calow *et al.*, 2010; Haile *et al.*, 2020; Shanahan *et al.*, 2009; Touchan *et al.*, 2008; Verschuren *et al.*, 2000). One of the main difficulties in calculating projected PDSI and discrepancies in results is the algorithm used to calculate PET (Tian-Jun and Tao, 2013). PET algorithms do not account for changes in vegetation cover expected due to elevated CO<sub>2</sub>, making the “warming leads to drying” narrative flawed and over-simplistic, causing overestimations (Yang *et al.*, 2020). Several studies which have taken a more critical approach of the methodology found that drought did not significantly change over long periods and changes are likely to be seen on finer spatial scales (Sheffield *et al.*, 2012; Yang *et al.*, 2020). These findings are consistent with tree-ring (Touchan *et al.*, 2008), lake sediment records (Verschuren *et al.*, 2000) and the PDSI dataset used here. This suggests that droughts are neither more severe nor longer now than historically. Despite the large number of projected drought studies, extracting these results and using them here is challenging, as they are on different spatial scales, using different methodology and data. There are also issues with the projected indices used, as these often vary and are potentially not comparable. To account for this, three scenarios were created from historical PDSI data using univariate linear regression models for drought and year. This method used the coefficients for each country to project the future drought data, with scenario 3 continually plotting the coefficient increase until 2070 (or it reached -4 or 4, the extremes of the PDSI scale), scenario 1 accepting the above hypotheses that PDSI is an overestimation and drought will not change over the projected period and scenario 2 as a median value.

Projected population data was based on the United Nation's World Population Prospectus (2019). The projections are based on available data on population size, levels of fertility, mortality and international migration. Data is from censuses, registration of births and deaths, demographic and health surveys, official statistics and population registers. More recently, the data has considered refugee statistics, prevalence of HIV and antiretroviral coverage, infant and under five mortality and migration flows. The projections use the cohort component method using a variety of demographic assumptions concerning fertility, mortality and migration. This considers the past experiences of the country and reflects uncertainty and other countries in similar conditions. The medium variant projection corresponds to the median of several trajectories of each demographic component derived using the probabilistic model of the historical variability over time. Prediction intervals represent the spread in the distribution of outcomes across the projected trajectories and thus provide an assessment of the uncertainty inherent in the medium variant projection. Therefore, only the medium variant projection was included in the model and not as an offset.

Projected poverty headcount at <\$1.90 a day was based on Sustainable Development Goal (SDG) 1 (UN, 2015), which states that by 2030, extreme poverty (<1.25/day) will be eliminated and the population living in poverty will be reduced by >50%. This goal is very ambitious and will require



significant human and economic resources. Several of the terms within the SDGs are also ambiguous, meaning the aims and roadmap to achieve them are not clear. With regards to poverty, the setting used in the SDGs is slightly lower (\$1.25 compared to \$1.90) and it is difficult to distinguish the level of poverty within the data; therefore, the projected scenario will mainly align with the second part of the goal, to halve the population in poverty by 2030. Despite their limitations, the SDGs provide a globally recognised pathway to a sustainable future and what institutions and governments should be aiming to achieve, making their use important in scientific research.

Creating projected freshwater withdrawal per capita data for the scenarios also presented challenges, as this is largely down to human behaviour and therefore hard to predict. While SDG6.4 states that by 2030, water use efficiency will be sustainably increased across all sectors. Projected data is not freely available and may not consider climate change and alterations in societal behaviour, all of which will alter water stress in the future. To maintain sustainable levels of water resources, rates of withdrawal need to be lower than replenishment. Renewable resources come from internal river flows and groundwater from rainfall. To understand the national historical water security, data was plotted for both freshwater withdrawal and freshwater resources (Ritchie, 2017). The figure helps to illustrate that most countries in Africa have both low resources and use, making the likely use of freshwater sustainable in most countries. Exceptions to this are Gabon, Republic of Congo and Liberia which have comparatively high resources and low withdrawal as well as Madagascar, Libya, Sudan, Mauritania and Morocco which have comparatively low resources and high use. Given the relationship between cholera outbreaks and water withdrawal, most countries in Africa could increase their freshwater withdrawal, except for Madagascar, Libya, Sudan, Mauritania and Morocco which should reduce their use, to improve sustainability.

#### Sources:

Intergovernmental Panel on Climate Change, 2014. Climate Change 2014 Synthesis Report Fifth Assessment Report Future Climate Changes, Risks and Impacts. [On-line].

NOAA, 2020. Trends in Atmospheric Carbon Dioxide. [On-line].

Ahmadalipour, A., Moradkhani, H., Castelletti, A. and Magliocca, N., 2019. Future drought risk in Africa: Integrating vulnerability, climate change, and population growth. *Science of the Total Environment*, 662, pp.672-686.

Calow, R.C., MacDonald, A.M., Nicol, A.L. and Robins, N.S., 2010. Ground water security and drought in Africa: linking availability, access, and demand. *Groundwater*, 48(2), pp.246-256.

Haile, G.G., Tang, Q., Hosseini-Moghari, S.M., Liu, X., Gebremicael, T.G., Leng, G., Kebede, A., Xu, X. and Yun, X., 2020. Projected impacts of climate change on drought patterns over East Africa. *Earth's Future*, 8(7), p.e2020EF001502.

Shanahan, T.M., Overpeck, J.T., Anchukaitis, K.J., Beck, J.W., Cole, J.E., Dettman, D.L., Peck, J.A., Scholz, C.A. and King, J.W., 2009. Atlantic forcing of persistent drought in West Africa. *Science*, 324(5925), pp.377-380.

Touchan, R., Anchukaitis, K.J., Meko, D.M., Attalah, S., Baisan, C. and Aloui, A., 2008. Long term context for recent drought in northwestern Africa. *Geophysical Research Letters*, 35(13).

Verschuren, D., Laird, K.R. and Cumming, B.F., 2000. Rainfall and drought in equatorial east Africa during the past 1,100 years. *Nature*, 403(6768), pp.410-414.

Tian-Jun, Z. and Tao, H., 2013. Projected changes of palmer drought severity index under an RCP8.5 scenario. *Atmospheric and Oceanic Science Letters*, 6(5), pp.273-278.

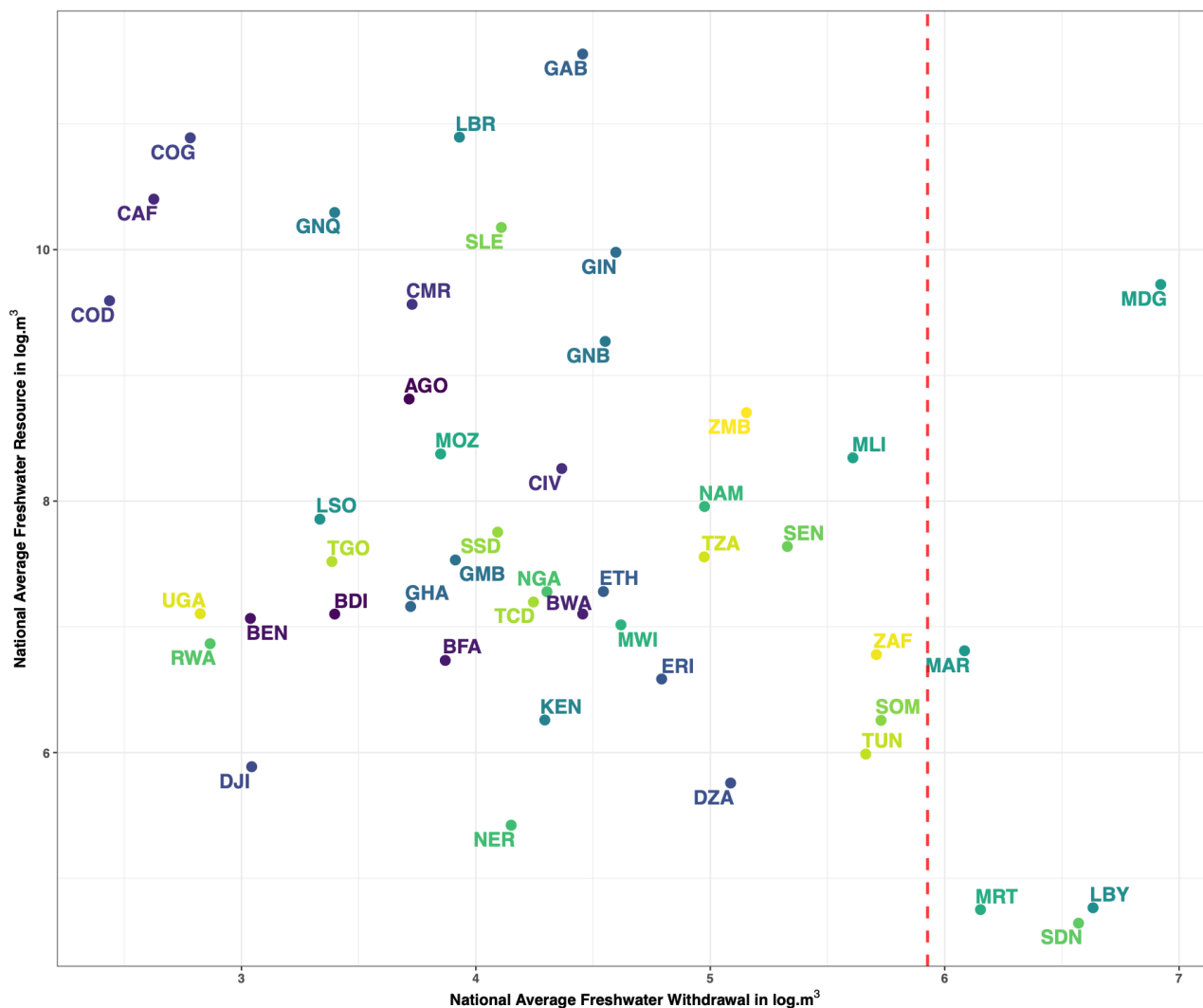
Yang Y., Zhang S., Roderick M. L., McVicar, T. R., Yang D., Liu W. And Li X. 2020. Little change in Palmer Drought Severity Index across global land under warming in climate projections. Hydrology and Earth System Sciences Discussions.

Sheffield, J., Wood, E.F. and Roderick, M.L., 2012. Little change in global drought over the past 60 years. Nature, 491(7424), pp.435-438.

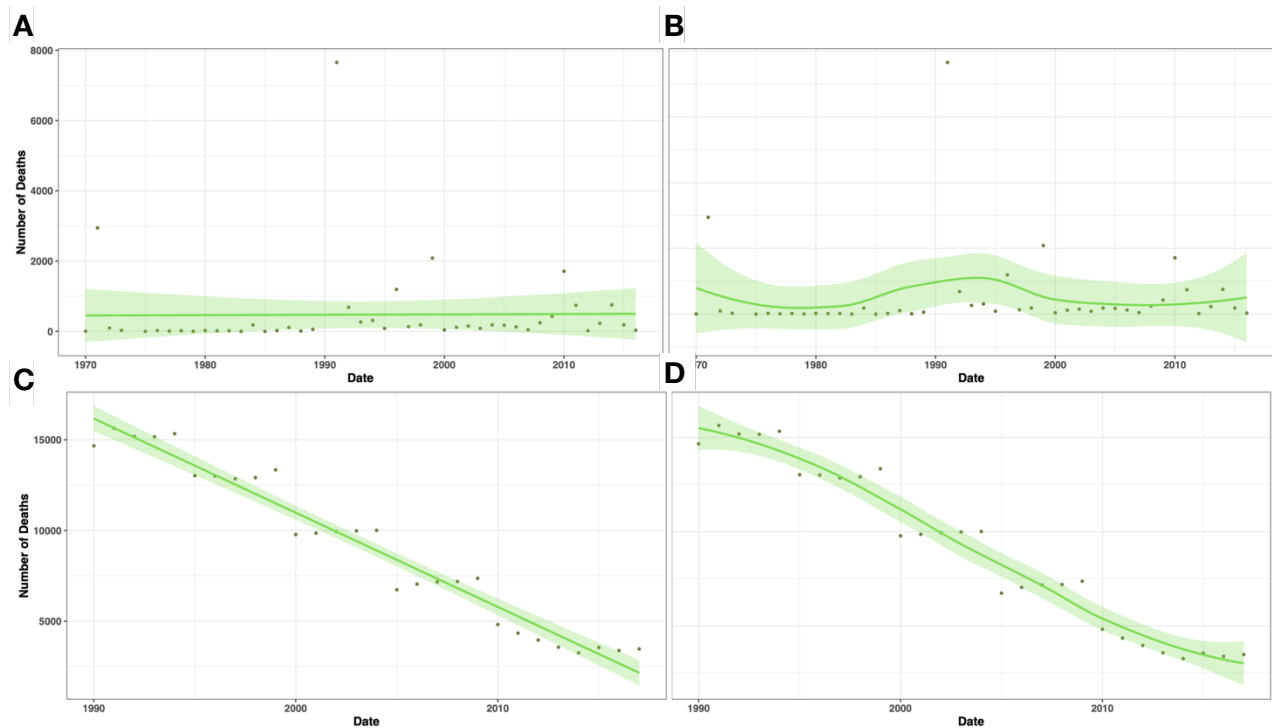
United Nations, 2019. World Population Prospectus 2019. [On-line].

United Nations, 2015. The 17 Goals. [On-line]. United Nations Department for Economic and Social Affairs. Population Dynamics.

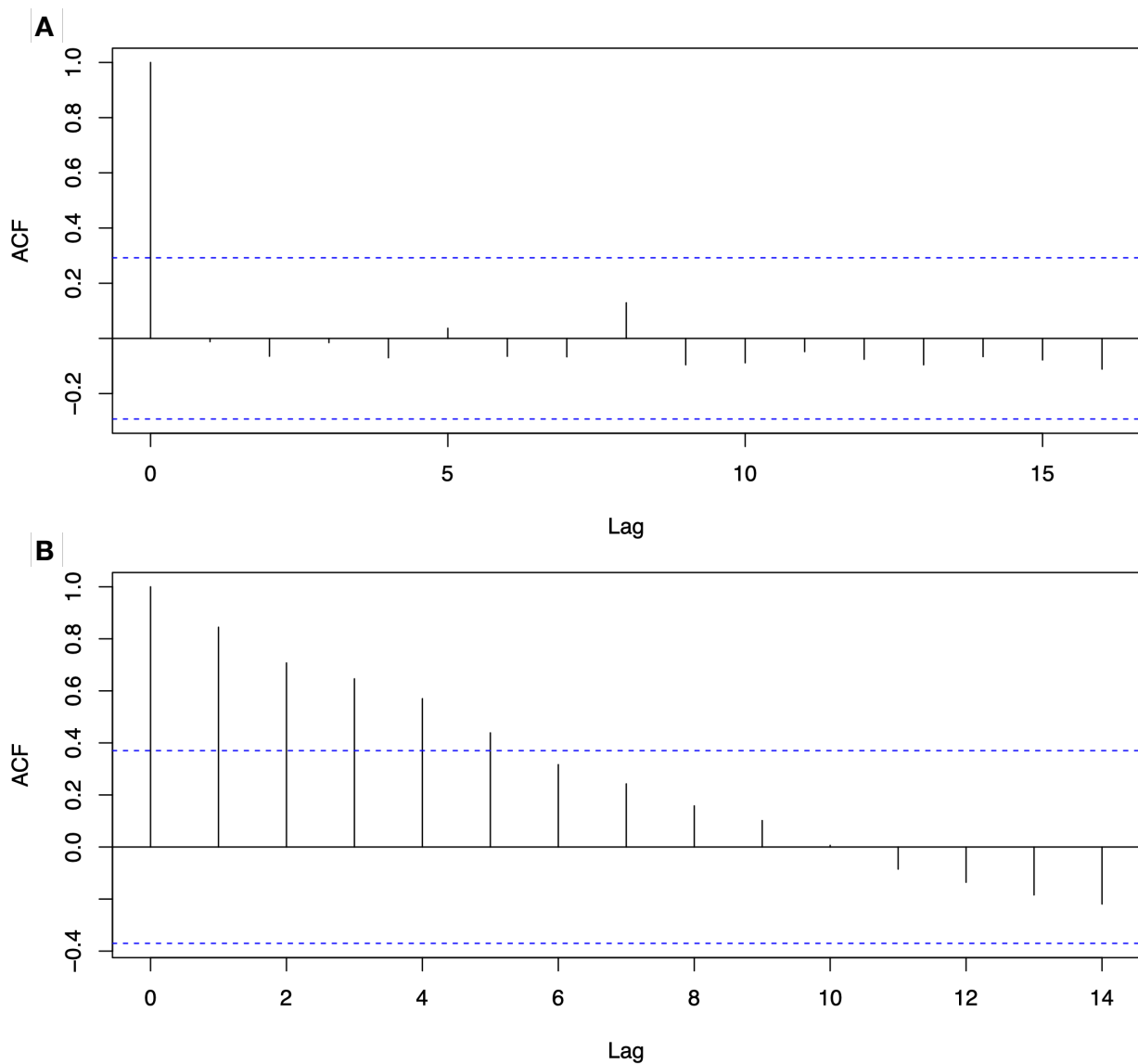
Ritchie, H., 2017. Water Use and Stress. [On-line]. Our World In Data.



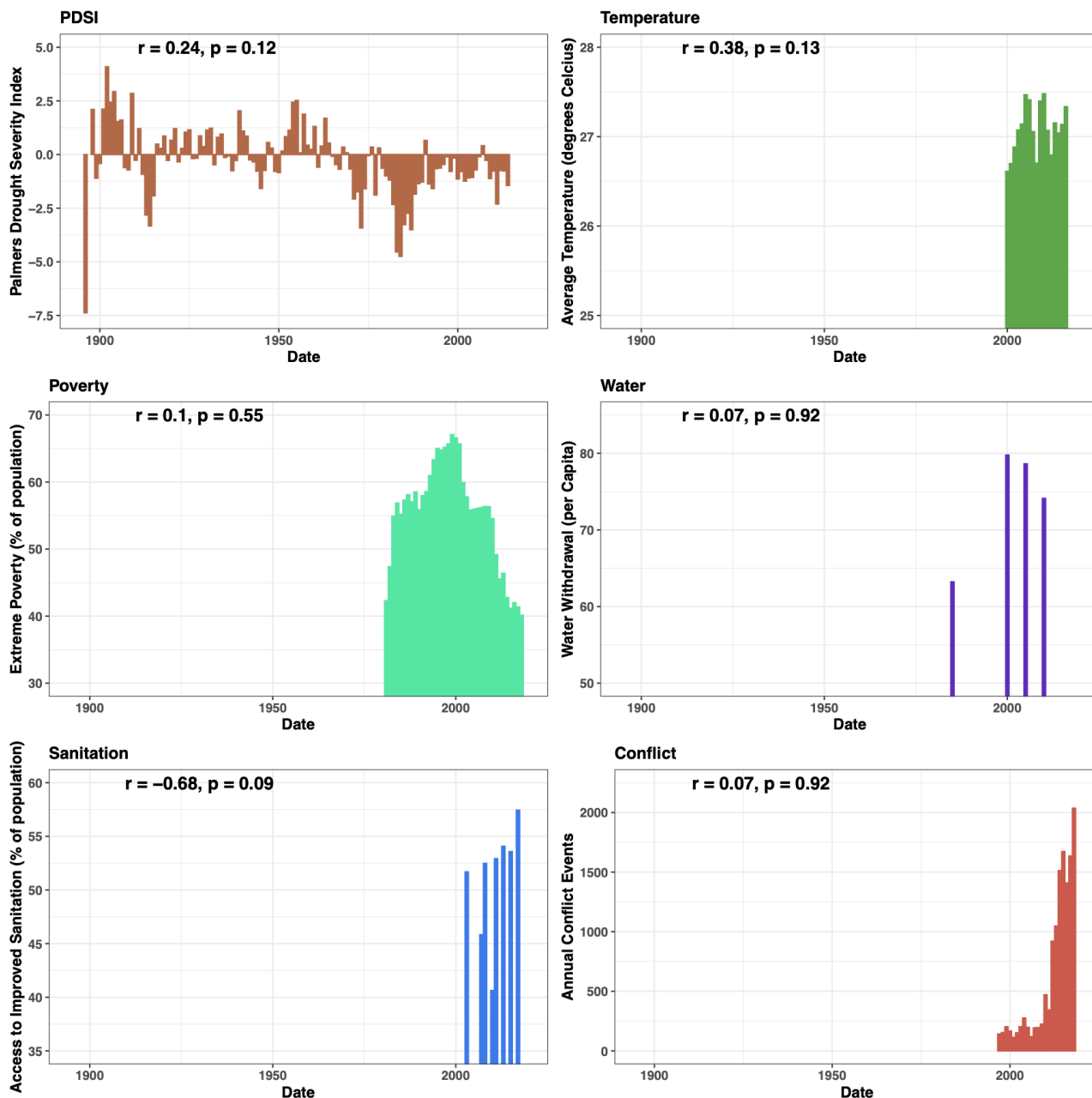
**S1 Fig. Historical water security in Africa as freshwater withdrawal against freshwater resource.** Both are taken as national per capita averages for the full dataset (1985-2014) in  $m^3$  and transformed on a logarithmic scale. The dashed line represents the cutoff for countries to be categorised as high withdraw ( $375m^3$ ) [23]



**S2 Fig. Time-series of cholera deaths.** For **A**, WHO data for 1970 to 2016 [19], with a linear trend line, **B**, with a loess curve and **C**, the GHDx data for 1990-2016 [20], with a linear trend line and **D**, with a loess curve



**S3 Fig. Autocorrelation function (ACF) plots.** For **A**, the WHO data [19] and **B**, the GHDx data [20]. The dashed blue line represents the confidence interval, with ACF measured as the correlation coefficient of the residuals. The lag is set to  $10\log_{10}(N/m)$ , where  $N$  is the number of observations and  $m$  the number of series. ACF plots are bar charts of coefficients of correlation between a time series and its lagged values, with a confidence band



**S4 Fig. Data for the covariates most commonly found as significant in the models fitted.**

Correlation coefficient ( $r$ ) represents the correlation between the covariate and the WHO cholera deaths data [19] and the p-values. Most are not found to be significant, potentially due to a lack of complete data

**S2 Text. Limitations of the models used in the scenario projections.** Including methods of how data incompleteness was handled before model fitting.

**11. Charnley GEC, Kelman I, Green N, Hinsley W, Gaythorpe KAM, Murray KA. Exploring relationships between drought and epidemic cholera in Africa using generalised linear models. BMC Infect Dis. 2021;21(1): 1-12.**

*Data Incompleteness*

Climate, drought and socio-economic data were missing for several countries and years, meaning that data had to be averaged or omitted, potentially introducing error.

Cholera data has issues with underreporting, issues may have arisen from assigning the outcome variable to zero for missing years, as this could have led to the underrepresentation of cholera outbreaks (a sensitivity analysis for this assumption showed this to be the best possible outcome).

Climate data were missing for Côte d'Ivoire and drought data were missing for Rwanda, The Gambia, Guinea-Bissau, Djibouti, Burundi, Benin, Cabo Verde, São Tomé and Príncipe, Comoros, Mauritius and Seychelles. Environmental data for these countries were derived by taking the mean of their neighbouring countries, whereas islands were excluded.

Where a country's socio-economic data were missing for some years, a national average was taken from the available data points and used for all years. If national data were missing for the full instrumental period, these countries were removed from the analysis.

After examining data completeness across the full dataset, we designated the instrumental period for analysis to be 2000–2016 to limit omitting missing data and interpolation.

*Methodological Limitations*

Seasonal changes in cholera and the presence of waterbodies within countries facilitating transmission were not considered in this model.

Generalised linear models assume a monotonic relationship and therefore non-linear effects of several covariates might not be captured and evaluating these non-linear effects are a potential area of future work.

**12. Charnley GEC, Yennan S, Ochu C, Kelman I, Gaythorpe KAM, Murray KA. Investigating the impact of social and environmental extremes on cholera time varying reproduction number in Nigeria. PLoS Glob Public Health. 2022;**

*Data Incompleteness*

The data were subset to only include cases that were confirmed either by rapid diagnostic tests or by laboratory culture, this removed many cases. A sensitivity analysis proved that removing suspected cases did not bias the results.

The drought indices were used to measure relative dryness/wetness, not long-term drought changes, due to the short timescale of the cholera surveillance dataset (2 years).

The relatively short timescale (2 years) and spatial scale (6 states meeting the case threshold) of the cholera data means the results are more accurate at presenting cholera at the current time in Nigeria, rather than historically and caution is needed when making generalisable conclusions.

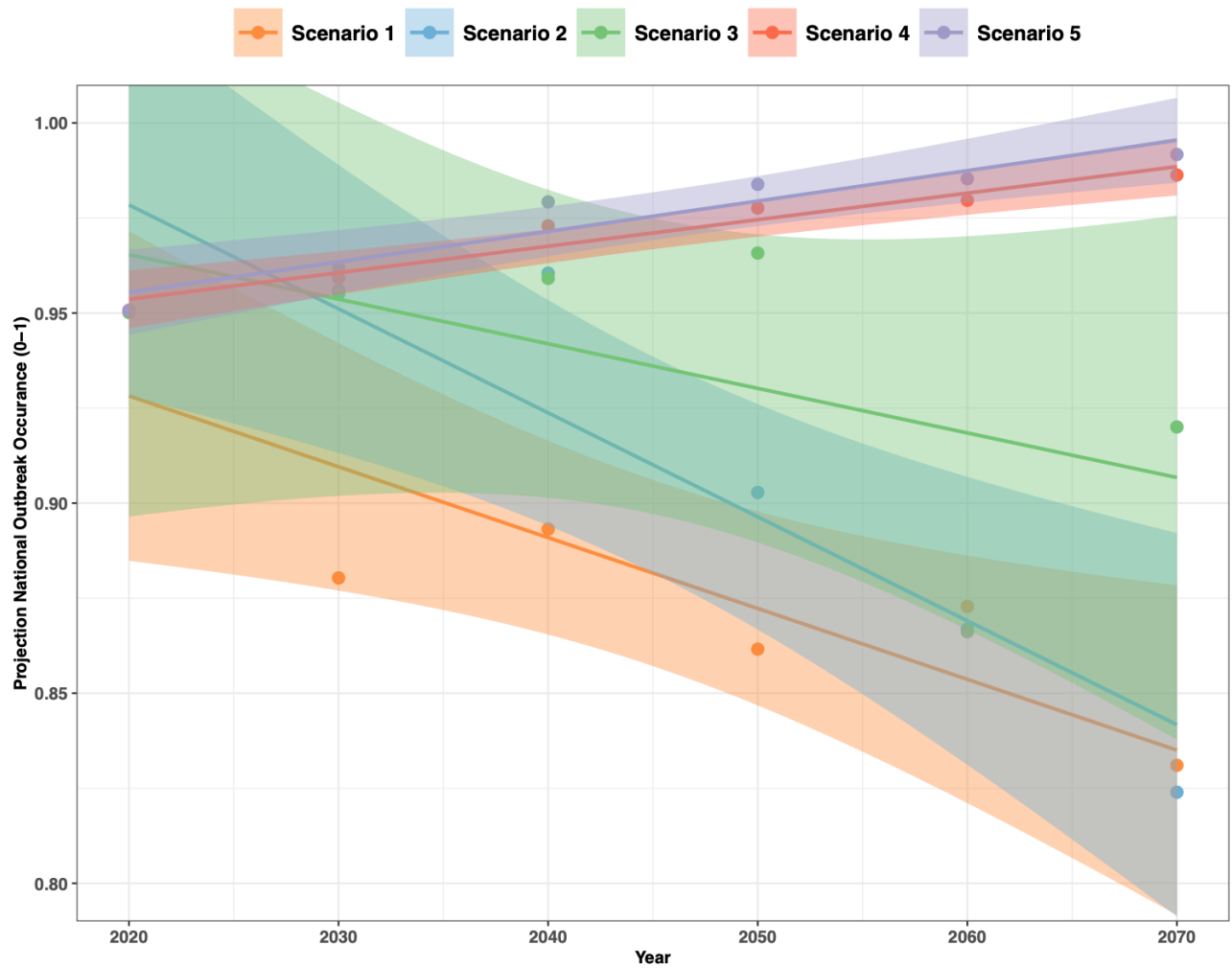
During times of crisis, cholera may also be over-reported or more accurately represent the cholera burden in the area. This is due to the presence of cholera treatment centres, increased awareness

among the population and healthcare workers and external assistance from non-governmental organisation, detecting cases that may have been missed previously.

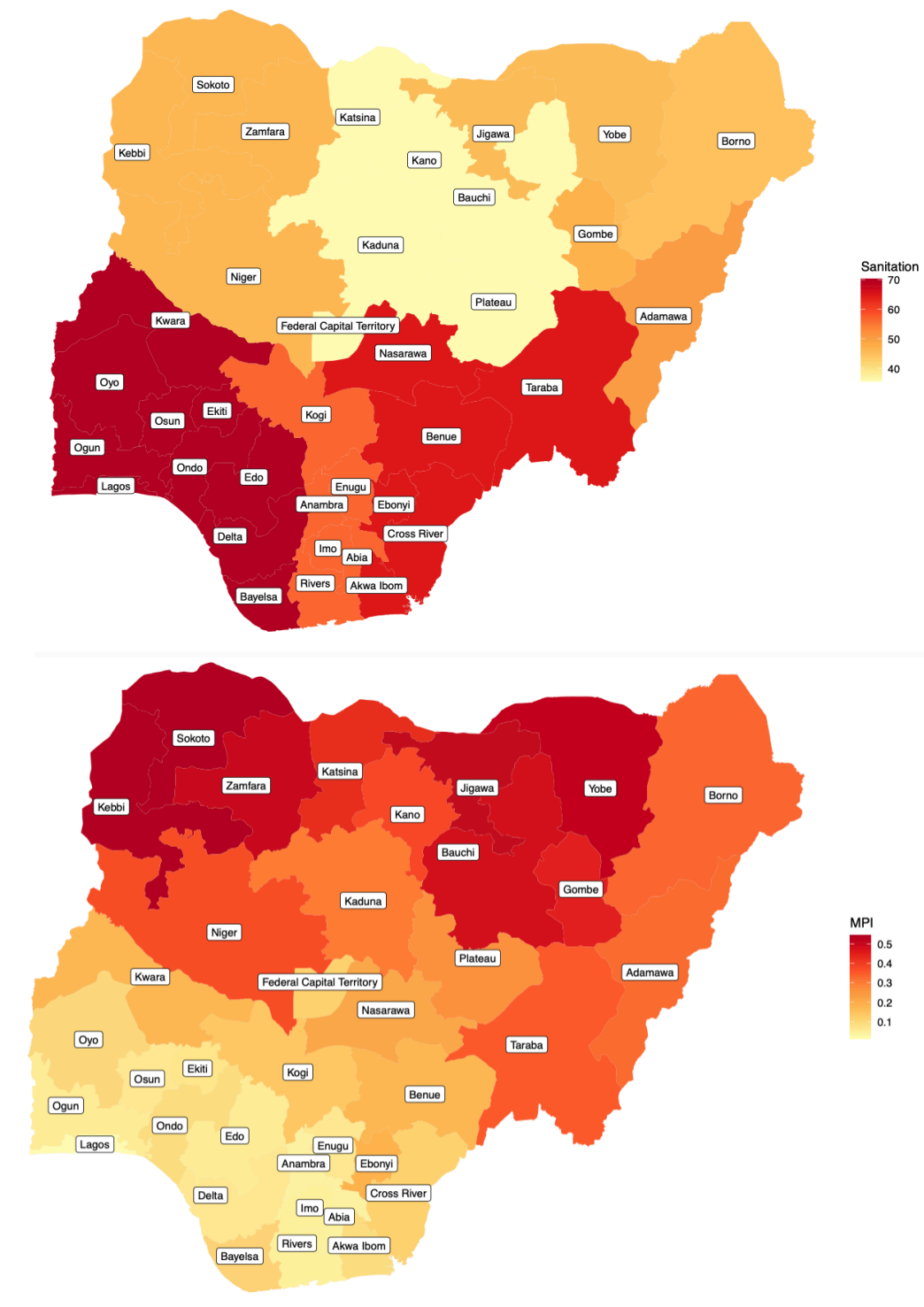
### *Methodological Limitations*

Both long-term and short-term changes to the population may take time before changes in cholera transmission are evident. While some influences may be considered slow-onset or rapid-onset and therefore defining their beginning is subjective. However, calculating R on monthly sliding windows and using monthly covariate data helped to reduce potential lagged effects on the R values.





**S5 Fig. National cholera projections for Nigeria, in cholera outbreak occurrence (0-1) for the five future scenarios, with a linear trend line and standard error**



**S6 Fig. Development indicators in Nigeria.** Average values for the full dataset by state, for **A**, percentage access to sanitation and **B**, Multidimensional Poverty Index (MPI). The sources and timescales of the data are shown in Table 1