

## **Cholera past and future in Nigeria: are the Global Task Force on Cholera**

### **Control's 2030 targets achievable?**

#### **Achieving the GTFCC 2030 targets in Nigeria**

Gina E C Charnley<sup>1,2\*</sup>, Sebastian Yennan<sup>3</sup>, Chinwe Ochu<sup>3</sup>, Ilan Kelman<sup>4,5,6</sup>, Katy A M Gaythorpe<sup>1,2</sup>,  
Kris A Murray<sup>1,2,7</sup>

1. Department of Infectious Disease Epidemiology, School of Public Health, Imperial College  
London, London, UK
2. MRC Centre for Global Infectious Disease Analysis, School of Public Health, Imperial College  
London, London, UK
3. Surveillance and Epidemiology Department/IM Cholera, Nigeria Centre for Disease Control,  
Abuja, Nigeria
4. Institute for Risk and Disaster Reduction, University College London, London, UK
5. Institute for Global Health, University College London, London, UK
6. University of Agder, Kristiansand, Norway
7. MRC Unit The Gambia at London School of Hygiene and Tropical Medicine, Fajara, The  
Gambia

\*g.charnley19@imperial.ac.uk

#### **Author Contributions**

GECC was part of the conceptualisation of ideas and methodology, curated the data and ran the formal analysis, wrote and finalised the manuscript and incorporated any feedback. SY and CO provided data used to fit the models used and provided expertise on cholera policy in Nigeria. IK, KAMG and KAM assisted in the conceptualisation of ideas and methodology, provided supervision, and revised several drafts. All authors have read and approved the manuscript

**NOTE: This preprint reports new research that has not been certified by peer review and should not be used to guide clinical practice.**

## 1 **Abstract**

### 2 *Background*

3 Understanding and continually assessing the achievability of global health targets is key to  
4 reducing disease burden and mortality. The Global Task Force on Cholera Control (GTFCC)  
5 Roadmap aims to reduce cholera deaths by 90% and eliminate the disease in twenty countries by  
6 2030. The Roadmap has three axes focusing on reporting, response and coordination. Here, we  
7 assess the achievability of the GTFCC targets in Nigeria and identify where the three axes could  
8 be strengthened to reach and exceed these goals.

### 9 *Methodology/Principal Findings*

10 Using cholera surveillance data from Nigeria, cholera incidence was calculated and used to model  
11 time-varying reproduction number (R). A best fit random forest model was identified using R as  
12 the outcome variable and several environmental and social covariates were considered in the  
13 model, using random forest variable importance and correlation clustering. Future scenarios were  
14 created (based on varying degrees of socioeconomic development and emission reductions) and  
15 used to project future cholera transmission, nationally and sub-nationally to 2070. The projections  
16 suggest that significant reductions in cholera cases could be achieved by 2030, particularly in the  
17 more developed southern states, but increases in cases remain a possibility. Meeting the 2030  
18 target, nationally, currently looks unlikely and we propose a new 2050 target focusing on reducing  
19 regional inequities, while still advocating for cholera elimination being achieved as soon as  
20 possible.

### 21 *Conclusion/Significance*

22 The 2030 targets could potentially be reached by 2030 in some parts of Nigeria, but more effort is  
23 needed to reach these targets at a national level, particularly through access and incentives to  
24 cholera testing, sanitation expansion, poverty alleviation and urban planning. The results highlight  
25 the importance of and how modelling studies can be used to inform cholera policy and the  
26 potential for this to be applied in other contexts.

27

## 28 **Author Summary**

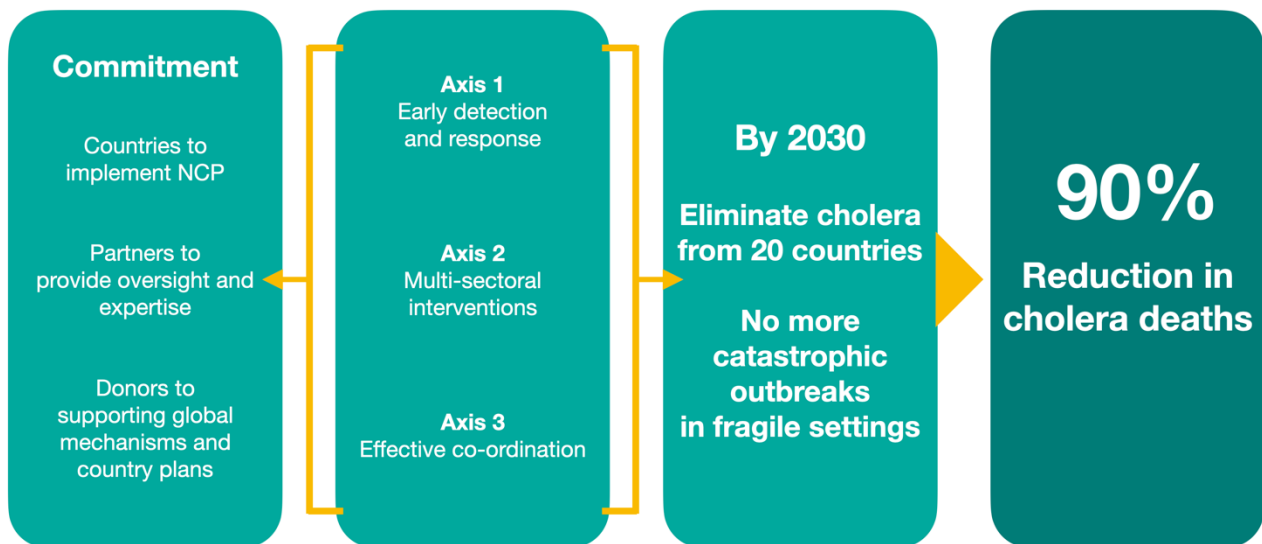
29 Using a random forest model and future scenarios to project cholera risk, we assessed the  
30 achievability of the Global Task Force for Cholera Control 2030 Roadmap in Nigeria, based on  
31 sustainable development and environmental protection. The results highlighted how regional  
32 inequities within Nigeria will likely prevent the 2030 targets being reached. The northern states in  
33 Nigeria are more rural, less developed and have greater levels of insecurity and conflict. Reaching  
34 the levels of peace and development achieved in the south at a national level, along with  
35 improving urban planning and access and incentives to cholera testing, will be fundamental in  
36 reaching the Roadmap targets in Nigeria. Cholera predictions and projections are understudied  
37 and here we present the most in-depth projections currently produced for Nigeria. Projections  
38 provide a snapshot of potential future conditions and show what is needed going forward to meet  
39 and exceed health targets and reduce disease burden. We highlight how quantitative research  
40 can be used to inform policy and the relevance of doing so. Quantitative research should  
41 fundamentally aim to improve global health and by presenting our work with a strong policy focus,  
42 we highlight the relevance and importance of doing so.

43

## 44 **Introduction**

45 Global health and development targets are a set of goals which can be used to identify best  
46 strategies to address challenges and provide a common target or path for governments and  
47 organisations to work towards. In 1992, the Global Task Force on Cholera Control (GTFCC) was  
48 established as a global partnership of more than 50 institutions (including governments, academic  
49 institutions, non-governmental organisation and UN agencies) and in 2017, the GTFCC launched  
50 “Ending Cholera: A Global Roadmap to 2030”. The Roadmap encouraged partner organisations  
51 to sign the Declaration to End Cholera, which focused on three axes: 1. early detection and  
52 response, 2. interventions in cholera hotspots and 3. effective coordination at all levels. The  
53 GTFCC aims to stop country-wide uncontrolled cholera outbreaks by 2030 and eliminate the  
54 disease from twenty countries, resulting in a 90% reduction in cholera deaths (Fig 1) [1].

55



56 **Fig 1.** The GTFCC theory of change for cholera elimination (adapted from: [1]).

57

58 Despite the commitment of governments and organisations to large-scale strategies, many argue  
59 that these goals and targets fail to produce significant improvements [2,3]. There have been gains  
60 in cholera control at a local level in recent decades, through widespread implementation of  
61 cholera prevention and education by sub-national health ministries, although this has been  
62 minimal at the global level [4,5]. As the 2030 goal approaches, whether these targets can be  
63 achieved given the current pace of development and progress is highly uncertain [6].

64 Understanding the achievability of these targets will help countries and global partnerships to plan  
65 for 2030 and beyond, continuing to make improvements in cholera prevention and control. Goals  
66 should be ambitious and encourage partners to strive for the best outcome possible, but they  
67 also need to be clear and have significant commitment and motivation from governments, non-  
68 governmental organisations and the population.

69

70 There is an estimated 1.3 billion people at risk of cholera globally and approximately 2.86 million  
71 annual cases (1.3-4.0 million) [7,8], the majority of which are in sub-Saharan Africa and the Indian  
72 Subcontinent. Development and health are strongly connected, and several countries and regions  
73 with the lowest levels of development, in terms of poverty, education and health, also overlap with  
74 areas of high cholera burden [9]. Nigeria currently has one of the largest cholera burdens globally  
75 and a significant number of people living in poverty, making it a critical area of study. Nigeria is

76 also one of the largest African economies, has the largest populations, and has made several  
77 gains in socioeconomic development in recent decades [10].

78

79 Here, we aim to understand if the GTFCC 2030 targets are achievable in Nigeria, based on the  
80 current Roadmap and progress. To understand if Nigeria is on track to meet these 2030 targets,  
81 we project cholera transmission (using cholera time-varying reproduction number (R)) to 2070  
82 both nationally and sub-nationally (administrative level 1). The projections are based on scenarios  
83 of varying degrees of global change using a random forest model, proved robust at predicting R  
84 in previous studies [11]. Relatively few studies have projected cholera burden, most of which have  
85 taken a climate change focus [12-14] and even fewer studies have evaluated the likelihood of  
86 meeting the 2030 GTFCC targets using model projections [15,16]. The projection results will then  
87 be used to inform the three axes outlined in the Roadmap, highlighting both successes and areas  
88 for improvement. Finally, we make suggestions of how to reach the 2030 targets in Nigeria,  
89 suggesting specific thresholds, triggers and areas for prioritisation.

90

## 91 **Methods**

### 92 *Ethics Statement*

93 The datasets and methods used here were approved by Imperial College Research Ethics  
94 Committee and a data sharing agreement between the Nigeria Centre for Disease Control (NCDC)  
95 and the authors. Formal consent was not obtained for individuals in the data used here, as the data  
96 were anonymised.

97

### 98 *Datasets*

99 Cholera data were obtained from NCDC and contained surveillance data for 2018 and 2019. Each  
100 datapoint represented one case and included information on the date of symptom onset (DD-MM-  
101 YY), location (administrative level 4, village/settlement), if the case was confirmed, age, sex and  
102 outcome of infection (hospitalisation and death/recovered). The data were subset to only include  
103 cases that were confirmed either by rapid diagnostic tests or by laboratory culture and only these

104 confirmed cases were used (which is standard when modelling R [17]). A sensitivity analysis,  
 105 aimed at understanding if removing suspected cases bias the results, is presented in S1  
 106 Information. Additionally, NCDC provided oral cholera vaccination (OCV) data. The data were  
 107 represented by the campaign start and end date, the location (administrative level 1) and the  
 108 coverage. OCV was transformed to an annual binary outcome variable (0-1) for each state (e.g., if  
 109 coverage was 100% in a specific year and state, the data point was assigned 1).

110

111 A range of covariates were considered in the best fit model based on previously understood  
 112 cholera risk factors and are present in Table 1. Multiple drought metrics were used, measured  
 113 across different time windows, this was used to investigate both relative dryness/wetness, not long-  
 114 term drought changes, due to the short timescale of the cholera surveillance dataset. For model  
 115 fitting, administrative level one (state) was set as the spatial granularity (data on a finer spatial  
 116 scale were attributed to administrative level 1) and the finest temporal scale possible for covariate  
 117 selection. The granularity chosen best captured the range in the available data and values were  
 118 repeated where needed for data on a finer temporal scale.

**Table 1.** The environmental and social data considered in the best fit model

Covariate	Source	Temporal Scale	Spatial Scale
Palmer's Drought Severity Index (PDSI)	National Center for Atmospheric Research [18]	Monthly	Administrative level 1
Standardised Precipitation Index	Centre for Environmental Data Analysis [19]	Monthly	Administrative level 1
WASH (improved drinking water, piped water, improved sanitation, open defecation, basic hygiene, annual)	Joint Monitoring Programme [5]	Annual	Geopolitical zone
Internally Displaced Persons (households and individuals)	International Organization for Migration [20]	Annual	National
Healthcare (total facilities, facilitates per 100,000 population)	Humanitarian Data Exchange [21]	Annual	Administrative level 1
Poverty (Multi-Dimensional Poverty Index (MPI), headcount ratio in poverty, intensity of deprivation among the poor, severe poverty)	Humanitarian Data Exchange [21]	Annual	Administrative level 1

and population vulnerable to poverty)			
Conflict events and fatalities	Armed Conflict Location & Event Data Project (ACLED) [22]	Daily, Monthly	Administrative level 3
Population	United Nations Department for Economic and Social Affairs [23]	Annual	Administrative level 1

119

120 WorldClim [24] was used for the projected temperature and precipitation data, at administrative  
121 level 1 and a monthly temporal granularity. WorldClim data is from Coupled Model  
122 Intercomparison Project 6 (CMIP6) downscaled future gridded temperature and precipitation  
123 projections (aggregated to administrative level 1), processed for nine global climate models. The  
124 data included minimum temperature and maximum temperature measured in degrees Celsius (°C)  
125 and precipitation (in mm). Projections were single values for 2050 and 2070 using three different  
126 Representative Concentration Pathways (RCPs) (RCP4.5, 6.0 and 8.5).

127

### 128 ***Cholera Incidence and Reproduction Number***

129 The confirmed cholera surveillance data for 2018 and 2019 were used to calculate daily incidence  
130 by taking the sum of the cases reported by state and date of onset of symptoms. R was calculated  
131 from incidence using a serial interval (SI) of 5 days, with a standard deviation of 8 days [25-29]. R  
132 is a measure of disease transmission and provides information on outbreak evolution e.g., if R is  
133 greater than 1, cases are likely to increase.

134

135 Estimating R when incidence is low over the time window, increases error. Coefficient of variation  
136 (CV), at a threshold of 0.3 (or less) as standard, based on previous work [26], was used to reduce  
137 uncertainty in periods of low incidence. To reach the CV threshold, R values were calculated over  
138 monthly sliding windows, calculation start date for each state was altered where necessary and  
139 states with <40 cases were removed (as states with fewer cases did not have high enough  
140 incidence across the time window to reach the CV threshold) (packages “incidence” [30] &  
141 “EpiEstim” [26]).

142

### 143 ***Covariate Selection and Model Fitting***

144 The 22 covariates in Table 1 were first clustered to prevent multicollinearity in the final model. The  
145 clustering was based on correlations between the covariates meeting an absolute pairwise  
146 correlation of above 0.75. Random forest variable importance was used to rank the clustered  
147 covariates. Variable importance is a measure of the cumulative decreasing mean standard error  
148 each time a variable is used as a node split in a tree.

149

150 Training (70% of data) and testing (30%) datasets were created to train the regression random  
151 forest model and test the model's predictive performance. The parameters for training were set to  
152 repeated cross-validation for the resampling method, with ten resampling interactions and five  
153 complete sets of folds to complete. The model was tuned and estimated an optimal number of  
154 predictors at each split of 2, based on the lowest out-of-bag error rate with Root-Mean-Square  
155 Error (RMSE) used as the evaluation metric (package "caret" [31]).

156

157 A stepwise analysis was used to fit the models to cholera R, taking into consideration the covariate  
158 clustering and variable importance. One covariate was selected from each cluster, and all  
159 combinations of covariates were tested until the best-fit model was found. Models were assessed  
160 based on predictive accuracy using correlations between testing and training, coefficient of  
161 determination ( $R^2$ ) and RMSE. To test for over-fitting (fitting to the testing dataset too closely or  
162 exactly), mean absolute error (MAE) was calculated on the training R values against the predicted  
163 testing R values, little to no error in the predictions are an indication of over-fitting. All analysis was  
164 completed in R version 4.1.0, and additional information on the model, including sensitivity  
165 analyses are available in a complementary paper [11].

166

### 167 ***Scenarios and Projection***



168 Five projection scenarios were created here to project cholera to 2070 using the best fit model.  
169 Despite 2030 being the target year for the Roadmap, cholera projections were made to the  
170 furthest point the data allowed (2070), at decadal time steps. The scenarios include several  
171 degrees of global change and are based upon the RCP scenarios and attainment of the  
172 Sustainable Development Goals (SDGs) [32]. By using the RCPs and SDGs, this covered a wide  
173 range of environmental and social scenarios, accounting for varying degrees of emissions  
174 reductions and socioeconomic development. Both the RCPs and SDGs are widely accepted  
175 methods and targets for environmental and socio-economic development in research and policy.  
176 The scenarios are briefly defined as follows, and more details are given below:

177

- 178 1. Scenario 1 (S1) – “Best-case” scenario meeting RCP4.5 and the SDGs
- 179 2. Scenario 2 (S2) - Intermediate progress scenario between S1 and S3
- 180 3. Scenario 3 (S3) - Minimal development and emissions reductions but progress is still made  
181 towards to SDGs and the Intergovernmental Panel on Climate Change targets (RCPs)
- 182 4. Scenario 4 (S4) - Some regression from the current levels of sustainable development and  
183 increased emissions
- 184 5. Scenario 5 (S5) – “Worst-case” scenario with significant regression in development and  
185 emissions increases

186

187 Sub-national monthly PDSI projections were calculated using the projected 2050 and 2070  
188 environmental data. First, potential evapotranspiration (PET) (mm/day) was calculated with the  
189 temperature data and latitude using the Hargreaves method [33], where  $R_a$  is the mean extra-  
190 terrestrial radiation in mm/day, which is a function of latitude, and T represents daily air  
191 temperature in °C (package “SPEI” [34]). PDSI is the output of a supply-and-demand model of soil  
192 moisture, which can be calculated using PET and precipitation. The calculations provided PDSI  
193 values for 2050 and 2070 for the three RCP scenarios to administrative level 1 (package “scPDSI”  
194 [35]).

195 
$$PET_{hargreaves} = 0.0023 * R_a * (T_{max} - T_{min})^{0.5} * (T_{mean} + 17.8).$$

196

197 Poverty scenarios were set at varying degrees of achieving SDG1.1 and 1.2 in Scenarios 1-3, the  
 198 goal aims for a 50% reduction in extreme (<1.25/day) poverty by 2030 and poverty eliminated by  
 199 2070. Whereas in S4 and S5, there was a 30% and 50% increase in poverty, respectively. The  
 200 sanitation scenarios were based on SDG6.2 (achieve access to adequate and equitable sanitation  
 201 and hygiene for all and end open defecation by 2030) and conflict scenarios were guided by  
 202 SDG16.1 (Significantly reduce all forms of violence and related death rates everywhere). The  
 203 SDGs for both sanitation and conflict are particularly ambiguous, regardless of this difficulty, the  
 204 sanitation and conflict targets were based on a similar pattern to the poverty scenarios (MPI),  
 205 achieving universal access to sanitation and conflict elimination by 2070 in S1 and a 50%  
 206 decrease in sanitation access and 50% increase in conflict events by 2070 in S5. A summary of  
 207 the scenarios are shown in Table 2.

**Table 2.** Cholera projection scenarios for 2030-2070 at decadal intervals

Scenario	Year	PDSI	MPI	Sanitation	Conflict
Scenario 1	2030	2020 value	50% decrease	50% increase	50% decrease
	2040				
	2050	RCP4.5 2050	Median 2040-2070	Median 2040-2070	Median 2040-2070
	2060	Median 2050-2070			
	2070	RCP4.5 2070	Elimination	100% access	Elimination
Scenario 2	2030	2020 value	2020 value	Median 2020-2050	2020 value
	2040				
	2050	RCP6.0 2050	50% decrease	50% increase	50% decrease
	2060	Median 2050-2070	Median 2050-2070		Median 2050-2070
	2070	RCP6.0 2070	Elimination		Elimination
Scenario 3	2030	2020 value	2020 value	2020 value	2020 value
	2040				
	2050	RCP8.5 2050	Median 2050-2070	Median 2040-2070	Median 2050-2070
	2060	Median 2050-2070			
	2070	RCP8.5 2070	50% decrease	30% increase	50% decrease
Scenario 4	2030	RCP6.0 2050	2020 value	2020 value	2020 value
	2040		Median 2030-2070		Median 2040-2070
	2050				
	2060	RCP6.0 2070		30% increase	30% decrease
	2070				
	2030	RCP8.5 2050	2020 value	2020 value	2020 value

Scenario 5	2040	RCP8.5 2070	Median 2030-2070		Median 2030-2070
	2050			Median 2040-2070	
	2060		50% increase	50% decrease	
	2070		50% increase	50% increase	

208

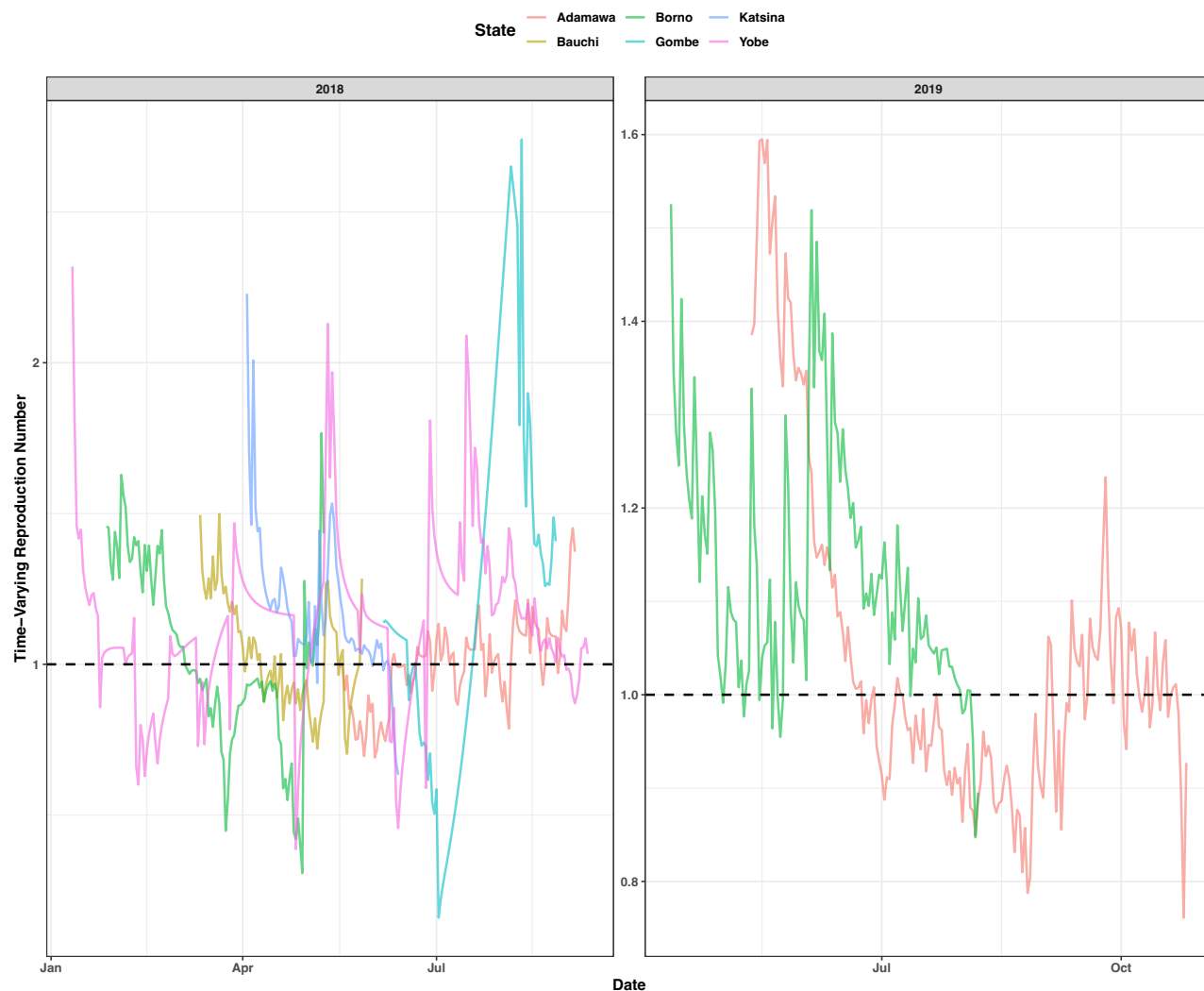
209 Both national and subnational projections were calculated, taking an average of the sub-national  
 210 values for each scenario and year for the national projections (or taking the national value, where  
 211 reported). Bootstrap resampling (10,000 samples) was used to obtain 95% confidence intervals  
 212 for all projections. The projections were applied to the 2030 Roadmap targets and a new 2050  
 213 target delineated. Twenty-fifty was chosen as the new proposed target year, due to it being  
 214 halfway from the current target (2030) to the end of the projection period (2070) and the results  
 215 suggesting that this may be achievable. Additionally, the two global initiatives the scenarios were  
 216 based upon, the RCPs and SDGs, have new mid-century targets [36,37].

217

## 218 **Results**

### 219 ***Covariate Selection and Best fit Model***

220 In Nigeria, 1,401 cholera cases were confirmed in 2018 and 2019 (out of 46,694 suspected and  
 221 confirmed). The results from the sensitivity analysis including confirmed and suspected cases,  
 222 proved model robustness and that the smaller dataset was not biasing the results (S1  
 223 Information). The geographic distribution of confirmed cases was concentrated in the northeast of  
 224 the country, with Adamawa, Borno, Katsina and Yobe having the highest burden. Six states for  
 225 2018 and two states for 2019 had sufficient cases to be included for R calculations (Fig 2),  
 226 including Adamawa (2018 & 2019), Bauchi (2018), Borno (2018 & 2019), Gombe (2018), Katsina  
 227 (2018) and Yobe (2018).



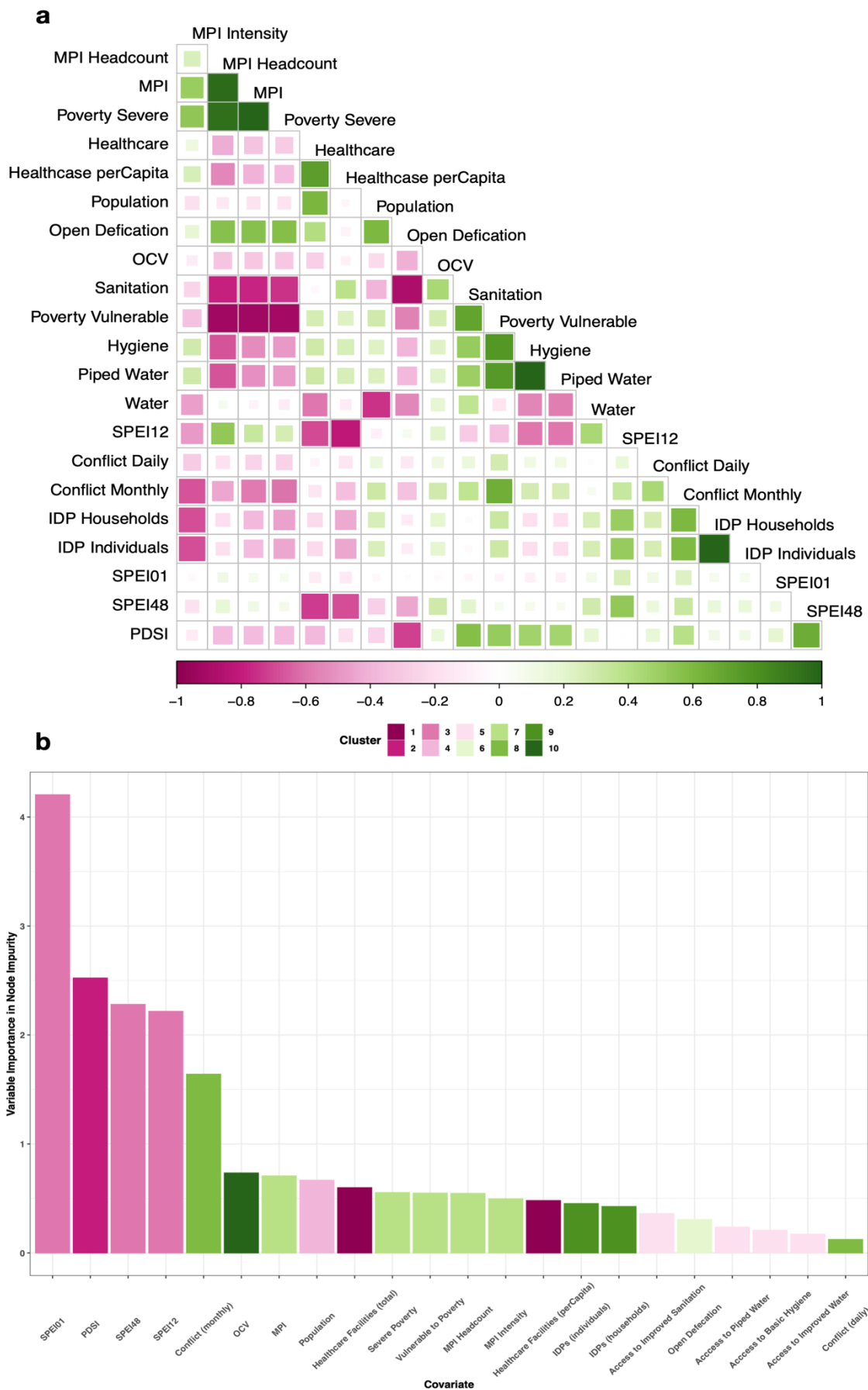
228 **Fig 2.** Cholera time-varying reproduction number (R) for the six states in Nigeria (Adamawa,  
229 Borno, Katsina, Bauchi, Gombe and Yobe) which met the criteria for inclusion in the R  
230 calculations for 2018 and 2019. The black dashed line shows the R threshold for cases increasing  
231 ( $R \geq 1$ ) or cases decreasing ( $R < 1$ ).

232

233 The twenty-two covariates were grouped according to correlation into nine clusters. The clusters  
234 and variable importance (based on reducing node impurity) of each covariate are shown in Fig 3.

235 Stepping through model possibilities of the covariates, the best fit model included number of  
236 monthly conflict events, Multidimensional Poverty Index (MPI) (annual), Palmers Drought Severity  
237 Index (PDSI) (monthly) and improved access to sanitation (annual), fitted to R values with a  
238 correlation of testing predictions to training values of 0.87, RMSE at 0.17 and  $R^2$  of 0.51.

239



240 **Fig 3.** Environmental and social covariates considered in the best fit model. **a**, a correlation matrix  
 241 of the absolute pairwise correlations for the covariates, -1 indicate a negative correlation and +1 a

242 positive correlation. **b**, random forest variable importance based on node impurity of the  
243 covariates and their clusters based on the correlations from **a**.

244

### 245 **Scenario Projections**

246 The national scenario projections saw only marginal changes in R over the projection period  
247 (2030-2070) (Fig 4), potentially due to the national averaged values reducing uncertainty and

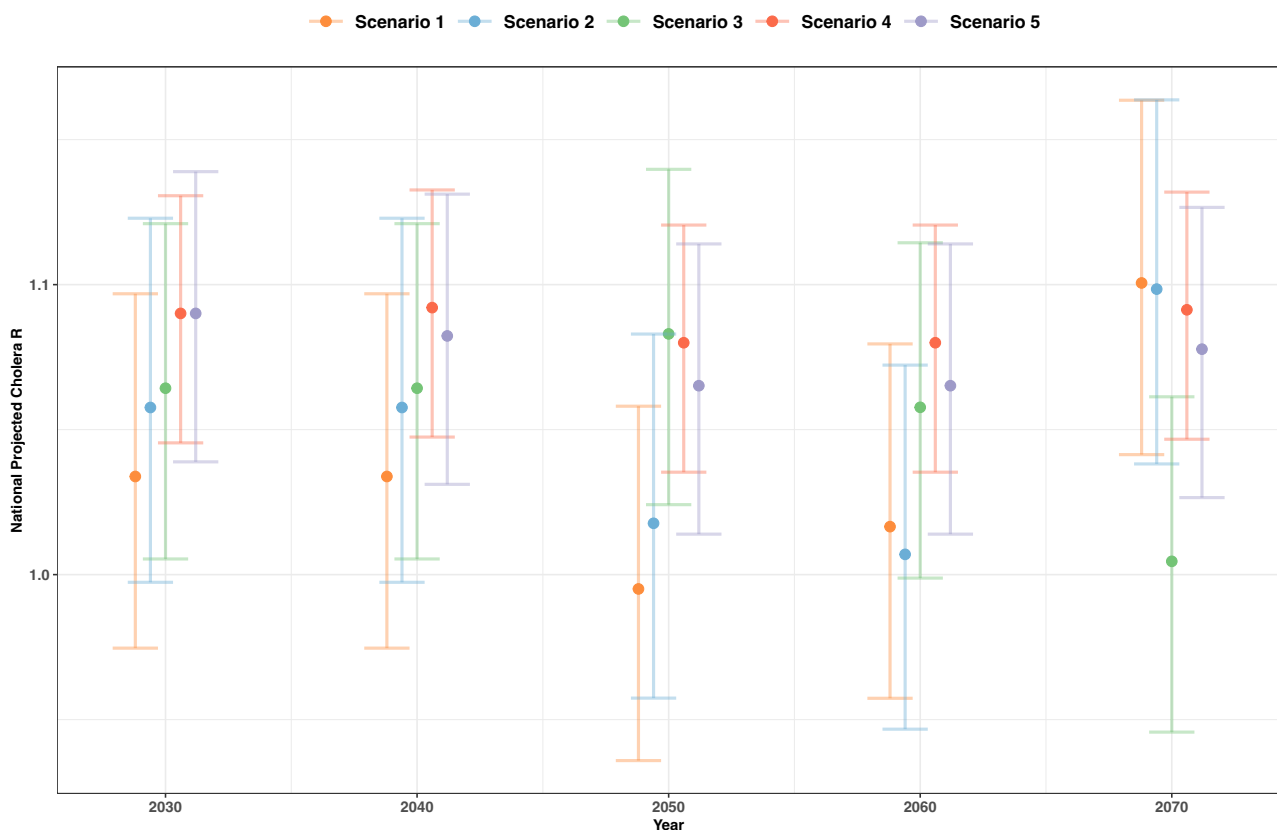
248 therefore smoothing out any heterogeneity. The relatively wide uncertainty overlaps for all

249 scenarios and only Scenario 1 sees R values below 1. The greatest decrease in R was projected in  
250 S1, followed by S2, however values then increased for 2060 and 2070. For S3, there was minimal

251 change with the values fluctuating around the 2030 value. S4 and S5 were similar to S3 with only

252 minimal changes, but there was a slight increase in cholera R with worsening environmental and

253 social conditions.



254 **Fig 4.** National cholera projections for Nigeria, in cholera reproduction number (R), for the five  
255 scenarios (S1 - orange, S2 - blue, S3 - green, S4 - red and S5 - purple) at 3 of the decadal time  
256 points (2030, 2050 & 2070) with 95% confidence intervals.

257

258 For the sub-national projections, measured in terms of cholera R, there were several spatial  
259 heterogeneities, which may help explain some of the uncertainty seen in the national projections.  
260 Generally, R values decreased through the three time points shown (Fig 5) for S1, S2 and S3, with  
261 the number of states with R values over 1 decreasing, particularly for S1 to S3. However, like the  
262 national analysis, some states increased from 2050 to 2070, this is likely due to changing  
263 environmental conditions, which had very high variable importance here (see Fig 3) and therefore  
264 only small differences in PDSI resulted in projection changes. For example, the increase in some  
265 states in S3, from 2050 to 2070, is due to PDSI projections being closer to 0 in 2050 and then  
266 decreasing in 2070, with both extreme wet and dry being important for cholera transmission in the  
267 model [11]. For S4 and S5, some states appeared to fare better than others when faced with  
268 worsening social and environmental conditions. The south of the country had particularly high R  
269 values in these less optimistic scenarios, whereas the north saw little change and, in some cases,  
270 a slight improvement. Despite the heterogeneity, by 2050 average projected R values for most  
271 regions (based on Nigeria's six geopolitical zones) in Nigeria had R value projections of less than  
272 1 in Scenario 1, lending to the new proposed 2050 target (S1 Fig.).

273

274

275

276

277

278

279

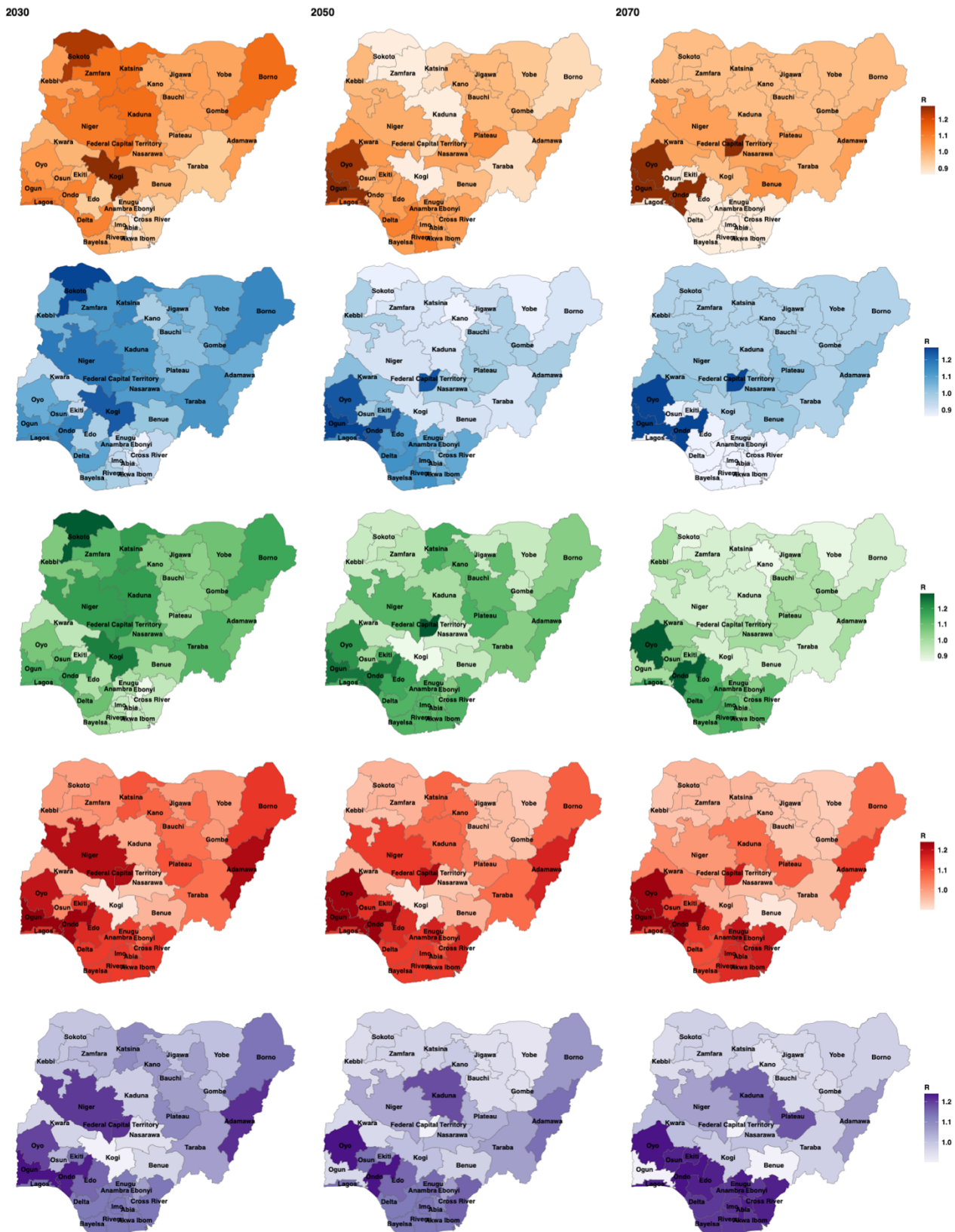
280

281

282

283

284



285

286

287

288

**Fig 5.** Sub-national cholera projections for Nigeria, in cholera reproduction number (R), for the five scenarios (S1 - orange, S2 - blue, S3 - green, S4 - red and S5 - purple) at 3 of the decadal time points (2030, 2050 & 2070). License: CC-BY [38].



289

## 290 **Discussion**

291 The aim of the research presented here was to use a random forest model to make cholera  
292 projections to 2070 and use these projections to understand if and when Nigeria could meet the  
293 GTFCC 2030 targets. Each country committed to the GTFCC Roadmap has their own unique set  
294 of challenges and priorities and here we aimed to use quantitative research to help tailor the  
295 GTFCC Roadmap to Nigeria. The best fit model included conflict event frequency, PDSI, MPI and  
296 percentage access to improved sanitation. The model was then used to make cholera projections  
297 and provided a more detailed understanding of future trends and if socio-economic development  
298 and climate change mitigation could reduce cholera in Nigeria. Both the national and sub-national  
299 projections showed decreases in cholera transmission with the more optimistic scenarios (S1-S3),  
300 however at a national level, these declines in transmission were only marginal and unlikely to  
301 result in the decreased mortality needed to meet the 2030 targets. Under S4 and S5, cholera  
302 transmission worsened, despite the already high levels ( $R \geq 1$ ) in Nigeria, showing the need for  
303 continued development.

304

305 Several poverty and WASH covariates were clustered together during covariate selection and  
306 included in the best fit model. Cholera is considered a disease of inequity and global maps of  
307 cholera burden often track with areas of high poverty. Cholera is a water-borne disease, and  
308 access to sanitation and clean water, which are often lacking in areas of high poverty, is  
309 fundamental in cholera transmission [39]. Progress has been made in the last 20 years (2000-  
310 2020) in terms of expanding access to WASH services in Nigeria, with the percentage of access  
311 to improved sanitation increasing from 52% to 62% and an expansion in access to improved  
312 drinking water by 31% [5]. However, if access to sanitation continues to increase by 10% every  
313 20 years, this would result in over 87 million Nigerians without access by 2030 and therefore at a  
314 high risk of cholera (based on a 5% increase in access and a population projection of 264 million  
315 by 2030 [23]).

316

317 In Nigeria, there is a divide in terms of WASH and development between the northern and  
318 southern regions of the country (S2 Fig) [40]. Northern states are generally more rural, which has  
319 potentially resulted in less development. For example, there is a 40% deficit in access to  
320 sanitation in the rural compared to the urban population. Nigeria's rural population comprises  
321 47% (99,895,289, 2021) of the total population, putting millions of people at risk of cholera in  
322 these potentially less developed areas [41]. In the last sixty years the rural population has  
323 decreased by 38%, if this trend continues, effective urban planning is essential to offset cholera  
324 risk, as densely population urban areas, with poor climate resiliency and provision of services  
325 e.g., sanitation, healthcare, infrastructure, have proved a risk for cholera outbreaks [42]. Further  
326 explanation of the evidence the projections provide in understand if the 2030 targets are currently  
327 achievable and how this could inform the GTFCC Roadmap, particularly in Nigeria, are provided  
328 below.

329

### 330 ***Evidence from the National Projections***

331 The national scenarios showed clear trends in terms of both improvements from S1 (lowest  
332 cholera transmission) to S3 and regression in S4 and S5. However, there was some increases in  
333 cholera R after 2060, with wide ranging uncertainty throughout, potentially due to residual  
334 confounding. The projections showed that continued progress towards and beyond the SDGs (in  
335 particular SDG1, 6 and 16) and emissions reductions (contributing to extreme PDSI and  
336 temperature) would help to improve global health and particularly cholera. However, by 2030, in  
337 all the national projection, cholera was not close to the 2030 targets (90% reduction). By the end  
338 of the projection period (2070), with significant improvements in development and environmental  
339 protection, cholera transmission was still relatively high and far from eliminated. Cholera  
340 eradication will likely take time, due to the pathogen circulating in the population and  
341 environmental reservoirs and via introductions of new cases/strains due to travel [43,44] and  
342 continued global commitment is needed.

343

### 344 ***Evidence from the Sub-national Projections***

345 The sub-national projections were more optimistic regarding the achievability of the GTFCC  
346 targets, due to the heterogeneity across the country. Overall, for the S1 sub-national projections  
347 there was a decrease in R values to less than 1 by 2050 for nearly all regions and for the southern  
348 states all S1 cholera projections were less than 1 by 2030 (compared to the northern states which  
349 were all above 1). An explanation for this is that more time will be needed in the northern states to  
350 reach the required development for a significant decline in transmission. Additionally, in the  
351 northern states, development was already low and conflict already high, therefore worsening  
352 these conditions did not significantly impact cholera.

353

354 The projections suggest that southern Nigeria could potentially reach the 2030 targets and  
355 eradication may be possible in the future. The north of the country must be an area of  
356 prioritisation in terms of development, cholera response and conflict resolution. The sub-national  
357 projections additionally highlighted how vital it will be for the development and peace achieved in  
358 the south to continue or at a minimum, remain the same. As previously stated, the worsened  
359 conditions of S4 and S5 had a large impact on the southern states in terms of increasing cholera  
360 transmission. Decreasing levels of peace and development would potentially be catastrophic in  
361 the southern states and overall, to the cholera burden in the country.

362

### 363 ***An Update on the 2030 Targets and Roadmap***

364 Based on the work presented here, the achievability of the GTFCC targets at the current pace of  
365 cholera control and development appears unlikely to be met by 2030 in Nigeria. Despite this,  
366 there has been significant progress in terms of health and development in Nigeria and the  
367 southern states appear far more likely to meet these goals. A new proposed 2050 target, building  
368 on the GTFCC Roadmap and expanding on the three axes will now be delineated, while still  
369 advocating that the targets are reached as soon as possible. The new targets will aim at bringing  
370 the northern states to the same levels of development and peace achieved in the south.

371

372 *Axis 1*

373 Axis 1 largely focuses on surveillance and data, which are vital in target setting, allocation of  
374 resources and response. Improved surveillance may also help to reduce the lack of cholera data  
375 used here (only two years) and additionally testing would help to improve the validity of the data  
376 available (only 1,401 cholera cases were confirmed out of 46,694 suspected). The axis focuses on  
377 early detection, but with cholera this is difficult, due to a large number of mild infections and  
378 several other diarrhoeal pathogens potentially causing disease (e.g., shigella, typhoid, dysentery),  
379 meaning a positive test does not always mean that cholera is the causative agent.

380

381 A method to help improve reporting in Nigeria, would be to offer incentives to test and report.  
382 Financial incentives have proved effective at improving health outcomes in Nigeria and are often  
383 cost-effective in the long-term as they prevent serious disease and morbidity [45,46]. To reduce  
384 nosocomial transmission and prevent testing hesitancy due to stigmatisation and restrictions [16],  
385 modification and improvements to the highly effective cholera rapid diagnostic test [47], allowing  
386 them to be used at home, may be helpful. The tests would need to be easy to use and report,  
387 inexpensive and widely available.

388

389 Emphasis is needed both at a government and academic level on improving data quantity and  
390 quality. Understanding reporting effort and the accuracy and precision of data are key areas of  
391 future research to fully understand how well the current data are representing cholera burden. At  
392 a global level, a metric of reporting effort would help when comparing disease data that has been  
393 collected across multiple countries and therefore with different methods and uncertainty and  
394 similar metrics have already been developed [48].

395

396 Furthermore, risk factor data are needed to fully understand disease dynamics and plan for  
397 effective response and interventions. The covariates selected in the best fit model here suggest  
398 that improvements in tracking poverty and sanitation are good areas of prioritisation. In Nigeria,  
399 benefit could also be gained from testing environmental reservoirs, such as major lakes and  
400 rivers, which are known to be used for washing and drinking and can be fundamental in cholera

401 transmission [49,50]. Better understanding on the environmental burden would be useful for both  
402 research and to understand local risk factors.

403

404 *Axis 2*

405 Axis 2 (cholera interventions) is arguably the most important area for reaching the GTFCC goals  
406 and several other health targets. The Roadmap highlights the need for long-term sustainable  
407 WASH implementation and strengthening of healthcare systems to anticipate cholera outbreaks  
408 (e.g., capacity building of staff, resources, diagnostics, education and societal engagement and  
409 emergency WASH intervention). However, the GTFCC Roadmap and previous research on  
410 cholera interventions heavily focuses on outbreak response [15], rather than development.

411

412 The Roadmap suggests that interventions should target states most at risk, with the analysis  
413 presented here suggesting northern states as a priority. Additionally, healthcare in Nigeria should  
414 be strengthened more generally, with greater resources and service availability, making healthcare  
415 an attractive career option to ensure sufficient human resources [51,52]. Development planning  
416 and targets must also consider that global crises can cause regression of progress, increasing the  
417 need to strive beyond health targets. For example, COVID-19 is estimated to have erased four  
418 years of progress against poverty and caused disaster-related deaths to rise sixfold [32].

419

420 Designating significant financial resources on outbreak response, is not a cost-effective way of  
421 reaching cholera targets, although fundamental to reducing mortality in outbreaks. More  
422 emphasis needs to be placed on improving peoples' quality of life, lifting them out of poverty,  
423 providing them with basic services and empowering them to improve their own health through  
424 resources and education. For example, healthcare spending in Nigeria is currently at a level not  
425 seen since 2002, at 3.03% of Gross Domestic Product. Only five countries in Africa spend less on  
426 healthcare than Nigeria and health needs to be a greater priority in terms of policy and  
427 government spending [53]. In the absence of this development, outbreaks will continue to occur,  
428 spending financial resources in a reactionary way.

429

430 *Axis 3*

431 Axis 3 of the Roadmap involves commitment and coordination on a global level, across several  
432 sectors. NCDC currently works across multiple levels of the national systems and has a detailed  
433 response plan for diarrhoeal (including cholera) outbreaks titled, “Preparedness and Response to  
434 Acute Watery Diarrhoea Outbreaks” [54]. NCDC have a designated team working on cholera  
435 elimination as a priority within the country. Continued and increased funding to NCDC will be vital  
436 for them to continue their work toward cholera control. At a global level, a “One World - One  
437 Health” approach is needed to prevent pandemics and achieve the GTFCC targets at this level.  
438 Recent pandemics and global outbreaks (e.g., COVID-19 and monkeypox) have shown the  
439 catastrophic results of countries not working together in a joint effort to control disease [55].

440

441 Nigeria has made several gains in weakening the Boko Haram stronghold in the northeastern  
442 states. However, the conflict continues to threaten Nigeria's security and several previous studies  
443 have suggested the negative impacts of conflict on health [56-58]. Bottom-up stabilisation efforts  
444 are working to address local level drivers of insecurity, including strengthening local conflict  
445 prevention, restoring governance and services and fostering social cohesion. At a regional level,  
446 the Lake Chad Basin Commission and African Union Commission have highlighted short-,  
447 medium- and long-term stabilisation, resilience and recovery needs [59-61]. Fig 6 illustrates the  
448 current Roadmap and summarises the suggestion made here to improve cholera control beyond  
449 2030 and achieve the GTFCC targets in Nigeria by 2050.

<b>Axis 1</b> <b>Early detection and response</b>	<b>Axis 2</b> <b>Multisectoral approach</b>	<b>Axis 3</b> <b>Mechanism of coordination</b>
<ul style="list-style-type: none"> <li>• Early warning surveillance systems</li> <li>• Pre-positioning stocks</li> <li>• Preparedness of WASH systems</li> <li>• Preparedness of the healthcare system</li> <li>• Community engagement</li> </ul>	<ul style="list-style-type: none"> <li>• Identify hotspots and priority areas</li> <li>• Control measures (surveillance, WASH, health care systems, OCV, community engagement and collaboration)</li> </ul>	<ul style="list-style-type: none"> <li>• Nationally-led cross-sectoral programs</li> <li>• GTFCC as a strong coordination platform</li> </ul>
<ul style="list-style-type: none"> <li>• Incentives to report</li> <li>• Rapid at-home tests</li> <li>• Monitoring of the environment and known risk factors</li> </ul>	<ul style="list-style-type: none"> <li>• Shift from outbreak response to long-term sustainable development</li> <li>• Empower local populations to care for their health through poverty alleviation, services and education</li> <li>• Effective urban planning</li> </ul>	<ul style="list-style-type: none"> <li>• Global commitment and coordination for a “One World - One Health” approach to pandemics</li> <li>• Conflict resolution</li> <li>• Increase health expenditure</li> </ul>
<p style="text-align: center;">2030</p>	<p style="text-align: center;"><b>90% reduction in deaths and no large-scale outbreaks</b></p>	
<p style="text-align: center;">2050</p>	<p style="text-align: center;"><b>Targeting the northern states and continued development in the south</b></p>	

450

451 **Fig 6.** The 2030 GTFCC Roadmap for cholera elimination (black) with additional suggestions and  
 452 areas of prioritisation (blue) for 2050 in Nigeria.

453

454 **Limitations**

455 Data incompleteness and inconsistencies were issues when finding data sources and fitting the  
 456 models here. Incomplete data resulted in either the analysis not being completed (e.g., data fit to  
 457 models before 2018) or removing and averaging the data (both used in the data fitted to the  
 458 model). As stated above, improving surveillance and a greater effort to collect data on cholera risk  
 459 factors will be very important for target setting and resource allocation and prevent duplication of  
 460 services [62], along with aiding and improving scientific research into cholera dynamics. In future  
 461 cholera research, using sensitivity analysis and testing cholera assumptions across multiple data  
 462 sources is one method to understand these differences.

463

464 All scenario projections have limitations, due to the uncertainty in trying to predict future  
 465 conditions, along with the limitations of models. The wide range of future scenarios helps to  
 466 account for some of this uncertainty but will still not be sufficient in capturing all potential future

467 environments. For example, the scenarios here are uni-directional, either getting better or worse  
468 from current conditions. All social and environmental drivers either getting better or worse is  
469 unlikely, with some metrics improving and some worsening. To add further complexity, these  
470 changes could be spatially heterogeneous. Regardless of these limitations, this should not  
471 discourage scenario projection analysis, as it is still useful and valid in terms of understanding  
472 future changes from previous patterns and relationships and help to inform cholera prevention  
473 and policy.

474

475 A further limitation is the outcome variable of cholera transmission, whereas the GTFCC targets  
476 largely focus on reducing cholera deaths. Although the discrepancies create difficulties in  
477 comparing the projection results to the GTFCC targets, to reach the 2030 targets and  
478 subsequently reduce deaths by 90%, global cholera transmission will have to substantially  
479 decrease, regardless of the metric used. Therefore, the projections are still useful in presenting  
480 the required decrease in cholera needed.

481

## 482 **Conclusions**

483 In Nigeria, the GTFCC targets look difficult to achieve by 2030 at a national level, based on these  
484 results. However, the more urban and developed southern states may reach and go beyond these  
485 targets. There is a vital need for continued investment in long-term development, especially to  
486 reduce regional inequity in northern Nigeria. Despite the financial capital needed to improve  
487 healthcare, WASH and education, these interventions are cost-effective due to their wide-  
488 reaching impacts.

489

490 The results presented here highlight the importance of and how modelling studies can be used to  
491 inform cholera policy and the potential for this to be applied to other diseases and countries. The  
492 aim of health research should be to improve global health and quality of life and applying  
493 quantitative research to policy can help achieve this, while increasing the relevance of the



494 research. Using quantitative research to identify specific thresholds and areas of prioritisation can  
495 help to focus disease control efforts and prevent action fatigue.

496

497 If the GTFCC targets are met in Nigeria, this will reduce the risk of cholera for hundreds of millions  
498 of people and greatly reduce the global burden of diarrhoeal disease and mortality, particularly in  
499 the most vulnerable. Progress to go beyond the goals and targets set would be highly beneficial  
500 in combating the impact of global shocks and crisis. Continued progress in development  
501 (especially at an accelerated pace) and sustainable urban planning, could greatly improve  
502 Nigeria's cholera burden and health status in the coming decades.

503

#### 504 **Acknowledgements**

505 We would like to thank and acknowledge all those who collected and curated the datasets used  
506 here, including the Nigeria Centre for Disease Control for their direct involvement. This work was  
507 supported by the Natural Environmental Research Council [NE/S007415/1], as part of the  
508 Grantham Institute for Climate Change and the Environment's (Imperial College London) Science  
509 and Solutions for a Changing Planet Doctoral Training Partnership. We also acknowledge joint  
510 Centre funding from the UK Medical Research Council and Department for International  
511 Development [MR/R0156600/1].

512

#### 513 **References**

- 514 1. Global Task Force on Cholera Control. ROADMAP 2030; 2020. Available from:  
515 <https://www.gtfcc.org/about-gtfcc/roadmap-2030/>
- 516 2. Biermann F, Hickmann T, S nit CA, Beisheim M, Bernstein S, Chasek P, et al. Scientific  
517 evidence on the political impact of the Sustainable Development Goals. *Nat Sustain.* 2022;5:  
518 795-800.
- 519 3. Masood E, Tollefson J. 'COP26 hasn't solved the problem': scientists react to UN climate  
520 deal; 2021. Available from: <https://www.nature.com/articles/d41586-021-03431-4>.

- 521 4. Ebob J. Cholera Prevention and Control Strategies; A Global Overview; 2020. Available from:  
522 <https://pesquisa.bvsalud.org/portal/resource/pt/sea-210228>.
- 523 5. WHO/UN Joint Monitoring Programme (JMP). Nigeria; 2021. Available from:  
524 <https://washdata.org>
- 525 6. Vos T, Lim SS, Abbafati C, Abbas KM, Abbasi M, Abbasifard M, et al. Global burden of 369  
526 diseases and injuries in 204 countries and territories, 1990–2019: a systematic analysis for the  
527 Global Burden of Disease Study 2019. *Lancet*. 2020;396(10258): 1204-22.
- 528 7. Ali M, Lopez AL, You YA, Kim YE, Sah B, Maskery B, et al. The global burden of cholera. *Bull*  
529 *World Health Organ*. 2012;90(3): 209-218.
- 530 8. Ali M, Nelson AR, Lopez AL, Sack DA. Updated global burden of cholera in endemic  
531 countries. *PLoS Neglect Trop Dis*. 2015;9(6): e0003832.
- 532 9. Bhutta ZA, Sommerfeld J, Lassi ZS, Salam RA, Das JK. Global burden, distribution, and  
533 interventions for infectious diseases of poverty. *Infect Dis Poverty*. 2014;3(1): 1-7.
- 534 10. World Bank. Nigeria; 2021. Available from: <https://data.worldbank.org/country/NG>
- 535 11. Charnley GEC, Yennan S, Ochu C, Kelman I, Gaythorpe KAM, Murray KA. Investigating the  
536 impact of social and environmental extremes on cholera time varying reproduction number in  
537 Nigeria. *PLoS Glob Public Health*. 2022 Dec 14;.
- 538 12. Abdussalam AF. Potential future risk of cholera due to climate change in northern Nigeria. *Afr*  
539 *Res Rev*. 2017;11(1): 205-18.
- 540 13. Lee EC, Azman AS, Kaminsky J, Moore SM, McKay HS, Lessler J. The projected impact of  
541 geographic targeting of oral cholera vaccination in sub-Saharan Africa: a modeling study.  
542 *PLoS Med*. 2019;16(12): e1003003.
- 543 14. Trærup SL, Ortiz RA, Markandya A. The costs of climate change: a study of cholera in  
544 Tanzania. *Int J Environ Res Public Health*. 2011;8(12): 4386-4405.
- 545 15. Islam MT, Ross AG, Sleigh AC, Chowdhury F, Khan AI, McMillan NA, et al. A blueprint for  
546 eliminating cholera by 2030. *Nat Med*. 2022;28: 1747-1749.
- 547 16. Legros D. Global cholera epidemiology: opportunities to reduce the burden of cholera by  
548 2030. *J Infect Dis*. 2018;218(suppl\_3): S137-40.

- 549 17. Cori A, Ferguson NM, Fraser C, Cauchemez S. A new framework and software to estimate  
550 time-varying reproduction numbers during epidemics. *Am. J. Epidemiol.* 2013;178(9):1505-12.
- 551 18. National Center for Atmospheric Research (NCAR). Dai Global Palmer Drought Severity Index  
552 (PDSI); 2020. Available from: <https://rda.ucar.edu/datasets/ds299.0/index.html#!sfol-wl->  
553 [/data/ds299.0](https://rda.ucar.edu/datasets/ds299.0/index.html#!sfol-wl-/data/ds299.0).
- 554 19. CEDA. High resolution Standardized Precipitation Evapotranspiration Index (SPEI) dataset for  
555 Africa 2019. Available from:  
556 <https://catalogue.ceda.ac.uk/uuid/bbdfd09a04304158b366777eba0d2aeb>
- 557 20. IOM. DTM Nigeria. 2021. Available from: <https://displacement.iom.int/nigeria>
- 558 21. HDX. The Humanitarian Data Exchange; 2020. Available from: <https://data.humdata.org>
- 559 22. Armed Conflict Location & Event Data Project (ACLED). Data Export Tool; 2020. Available  
560 from: <https://acleddata.com/data-export-tool/>
- 561 23. United Nations Department for Economic and Social Affairs. Population Dynamics. World  
562 Population Prospectus; 2019. Available from: <https://population.un.org/wpp/>
- 563 24. WorldClim. Future Climate Data; 2020. Available from:  
564 <https://worldclim.org/data/cmip6/cmip6climate.html>
- 565 25. Kamvar ZN, Cai J, Pulliam JRC, Schumacher J, Jombart, T. Epidemic curves made easy using  
566 the R package incidence. 2019. Available from:  
567 <https://doi.org/10.12688/f1000research.18002.1>
- 568 26. Cori, A. EpiEstim: Estimate Time Varying Reproduction Numbers from Epidemic Curves. R  
569 package version 2.2-4. 2021. Available from: <https://CRAN.R-project.org/package=EpiEstim>
- 570 27. Azman AS, Luquero FJ, Rodrigues A, Palma PP, Grais RF, Banga CN, et al. Urban cholera  
571 transmission hotspots and their implications for reactive vaccination: evidence from Bissau  
572 city, Guinea Bissau. *PLoS Neglect Trop. Dis.* 2012;6: e1901.
- 573 28. Azman AS, Rumunu J, Abubakar A, West H, Ciglenecki I, Helderma T, et al. Population-level  
574 effect of cholera vaccine on displaced populations, South Sudan, 2014. *Emerg. Infect. Dis.*  
575 2016;22: 1067.

- 576 29. Kahn R, Peak CM, Fernández-Gracia J, Hill A, Jambai A, Ganda L, et al. Incubation periods  
577 impact the spatial predictability of cholera and Ebola outbreaks in Sierra Leone. PNAS.  
578 2020;117: 5067-73.
- 579 30. Kamvar ZN, Cai J, Pulliam JRC, Schumacher J, Jombart, T. Epidemic curves made easy using  
580 the R package incidence. 2019. Available from:  
581 <https://doi.org/10.12688/f1000research.18002.1>
- 582 31. Kuhn, M. caret: Classification and Regression Training. 2021. Available from: [https://CRAN.R-](https://CRAN.R-project.org/package=caret)  
583 [project.org/package=caret](https://CRAN.R-project.org/package=caret)
- 584 32. United Nations. THE 17 GOALS; 2015. Available from: <https://sdgs.un.org/goals>.
- 585 33. Hargreaves GH. Defining and using reference evapotranspiration. J. Irrig. Drain. Eng.  
586 1994;120(6):1132–1139.
- 587 34. Beguería S, Vicente-Serrano SM. SPEI: Calculation of the Standardised Precipitation-  
588 Evapotranspiration Index. R package version 1.7; 2017. Available from: [https://CRAN.R-](https://CRAN.R-project.org/package=SPEI)  
589 [project.org/package=SPEI](https://CRAN.R-project.org/package=SPEI)
- 590 35. Wells N, Goddard S, Hayes MJ. A self-calibrating Palmer drought severity index. J. Clim.  
591 2004;17(12): 2335-2351
- 592 36. United Nations. Vision 2045; 2022. Available from: <https://vision2045.com>
- 593 37. Intergovernmental Panel on Climate Change. Global Warming of 1.5°C; 2018. Available from:  
594 <https://www.ipcc.ch/sr15/>
- 595 38. HDX. Nigeria - Subnational Administrative Boundaries; 2023. Available from:  
596 <https://data.humdata.org/dataset/cod-ab-nga>
- 597 39. Talavera A, Perez EM. Is cholera disease associated with poverty?. J. Infect. Dev. Countr.  
598 2009;3(06):408-11.
- 599 40. Ojo A, Ojewale O. Nigeria's Urbanisation History, Trends, Drivers and Implications. In:  
600 Urbanisation and Crime in Nigeria. Palgrave Macmillan, Cham; 2019. pp. 13-58.
- 601 41. World Bank. Urban population (% of total population) – Nigeria; 2021. Available from:  
602 <https://data.worldbank.org/indicator/SP.URB.TOTL.IN.ZS?locations=N>

- 603 42. Penrose K, Castro MC, Werema J, Ryan ET. Informal urban settlements and cholera risk in  
604 Dar es Salaam, Tanzania. *PLoS Neglect. Trop. Dis.* 2010;4(3):e631.
- 605 43. Islam MS, Zaman MH, Islam MS, Ahmed N, Clemens JD. Environmental reservoirs of *Vibrio*  
606 *cholerae*. *Vaccine* 2020;38: A52-A62.
- 607 44. Almagro-Moreno S, Taylor RK. Cholera: environmental reservoirs and impact on disease  
608 transmission. *Microbiol Spectr.* 2013;1(2): 1-2.
- 609 45. Okeke EN, Abubakar IS, Wagner Z. Reducing Child Deaths in Nigeria Through Contingent  
610 Cash Transfers to Expectant Mothers; 2020. Available from:  
611 [https://www.rand.org/pubs/research\\_briefs/RB10114.html](https://www.rand.org/pubs/research_briefs/RB10114.html)
- 612 46. Ganesan D, Gupta SS, Legros D. Cholera surveillance and estimation of burden of cholera.  
613 *Vaccine* 2020;38: A13-17.
- 614 47. Centres for Disease Control and Prevention. Crystal VC Rapid Diagnostic Test (RDT)  
615 Procedure; 2021. Available from: <https://www.cdc.gov/cholera/crystal-vc.html>
- 616 48. GHS Index. Welcome to the 2021 Global Health Security Index; 2021. Available from:  
617 <https://www.ghsindex.org>
- 618 49. Bwire G, Debes AK, Orach CG, Kagirita A, Ram M, Komakech H, et al. Environmental  
619 surveillance of *Vibrio cholerae* O1/O139 in the five african great lakes and other major surface  
620 water sources in Uganda. *Front Microbiol.* 2018;9: 1560.
- 621 50. Shapiro RL, Otieno MR, Adcock PM, Phillips-Howard PA, Hawley WA, Kumar L, et al.  
622 Transmission of epidemic *Vibrio cholerae* O1 in rural western Kenya associated with drinking  
623 water from Lake Victoria: an environmental reservoir for cholera? *Am J Trop Med* 1999;60(2):  
624 271-276.
- 625 51. Ughasoro MD, Esangbedo DO, Udorah IM. Health-care workers 'perspectives on  
626 preparedness of health-care facilities for outbreak of communicable diseases in Nigeria: a  
627 qualitative study. *Am J Trop Med Hyg* 2019;100(4):1022.
- 628 52. Ager AK, Lembani M, Mohammed A, Mohammed AG, Abdulwahab A, De Pinho H, et al.  
629 Health service resilience in Yobe state, Nigeria in the context of the Boko Haram insurgency: a  
630 systems dynamics analysis using group model building. *Confl Health.* 2015;9(1) :1-14.

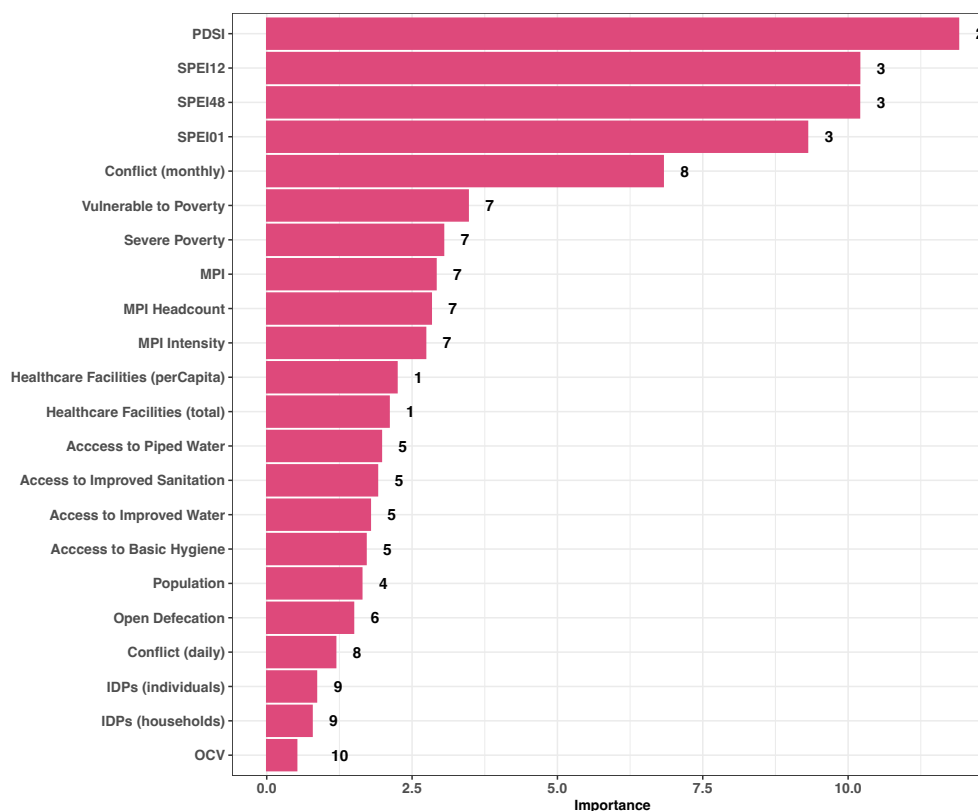
- 631 53. World Bank. Current health expenditure (% of GDP) - Sub-Saharan Africa; 2019. Available  
632 from:  
633 [https://data.worldbank.org/indicator/SH.XPD.CHEX.GD.ZS?end=2019&locations=ZG&most\\_r](https://data.worldbank.org/indicator/SH.XPD.CHEX.GD.ZS?end=2019&locations=ZG&most_recent_value_desc=true&start=2019&view=bar)  
634 [eent\\_value\\_desc=true&start=2019&view=bar](https://data.worldbank.org/indicator/SH.XPD.CHEX.GD.ZS?end=2019&locations=ZG&most_recent_value_desc=true&start=2019&view=bar)
- 635 54. Nigeria Centre for Disease Control. NIGERIA - PREPAREDNESS AND RESPONSE TO ACUTE  
636 WATERY DIARRHOEA OUTBREAKS; 2017. Available from:  
637 [http://www.plateformecholera.info/index.php/country-monitoring/nigeria/152-wca/strategic-](http://www.plateformecholera.info/index.php/country-monitoring/nigeria/152-wca/strategic-framework/library-of-national-plans/481-nigeria-preparedness-and-response-to-acute-watery-diarrhoea-outbreaks)  
638 [framework/library-of-national-plans/481-nigeria-preparedness-and-response-to-acute-](http://www.plateformecholera.info/index.php/country-monitoring/nigeria/152-wca/strategic-framework/library-of-national-plans/481-nigeria-preparedness-and-response-to-acute-watery-diarrhoea-outbreaks)  
639 [watery-diarrhoea-outbreaks](http://www.plateformecholera.info/index.php/country-monitoring/nigeria/152-wca/strategic-framework/library-of-national-plans/481-nigeria-preparedness-and-response-to-acute-watery-diarrhoea-outbreaks)
- 640 55. Calistri P, Iannetti S, Danzetta M, Narcisi V, Cito F, Di Sabatino D, Bruno R, et al. The  
641 components of “one world--one health” approach. *Transbound Emerg Dis.* 2013;60: 4-13.
- 642 56. Gayer M, Legros D, Formenty P, Connolly MA. Conflict and emerging infectious diseases.  
643 *Emerg Infect Dis* 2007;13(11): 1625.
- 644 57. Wells CR, Pandey A, Ndeffo Mbah ML, Gaüzère BA, Malvy D, Singer BH, et al. The  
645 exacerbation of Ebola outbreaks by conflict in the Democratic Republic of the Congo. *PNAS.*  
646 2019;116(48): 24366-24372.
- 647 58. Charnley GEC, Jean K, Kelman I, Gaythorpe KAM, Murray KA. Using self-controlled case  
648 series to understand the relationship between conflict and cholera in Nigeria and the  
649 Democratic Republic of Congo. *Emerg Infect Dis.* 2022;28: 2472-2481.
- 650 59. Bello, M. The Terror Campaign of Boko Haram: Its Transformation and Challenges to Nigeria's  
651 Security. *Golden Ratio of Social Science and Education* 2021;1(2): 85-94.
- 652 60. Kinsey C, Krieg A. Assembling a Force to Defeat Boko Haram: How Nigeria Integrated the  
653 Market into its Counterinsurgency Strategy. *Def. Secur Anal* 2021;37(2): 232-249
- 654 61. Brechenmacher S. Stabilizing northeast Nigeria after Boko haram. Washington, DC: Carnegie  
655 Endowment for International Peace; 2019 May 3.
- 656 62. Edwards J. Médecins Sans Frontières (MSF). Case Study North-east Nigeria; 2020. Available  
657 from: [https://arhp.msf.es/sites/default/files/MSF-Emergency\%20gap-North-east\%20Nigeria-](https://arhp.msf.es/sites/default/files/MSF-Emergency\%20gap-North-east\%20Nigeria-case\%20study-april\%202017.pdf)  
658 [case\%20study-april\%202017.pdf](https://arhp.msf.es/sites/default/files/MSF-Emergency\%20gap-North-east\%20Nigeria-case\%20study-april\%202017.pdf)

## Supplementary Material

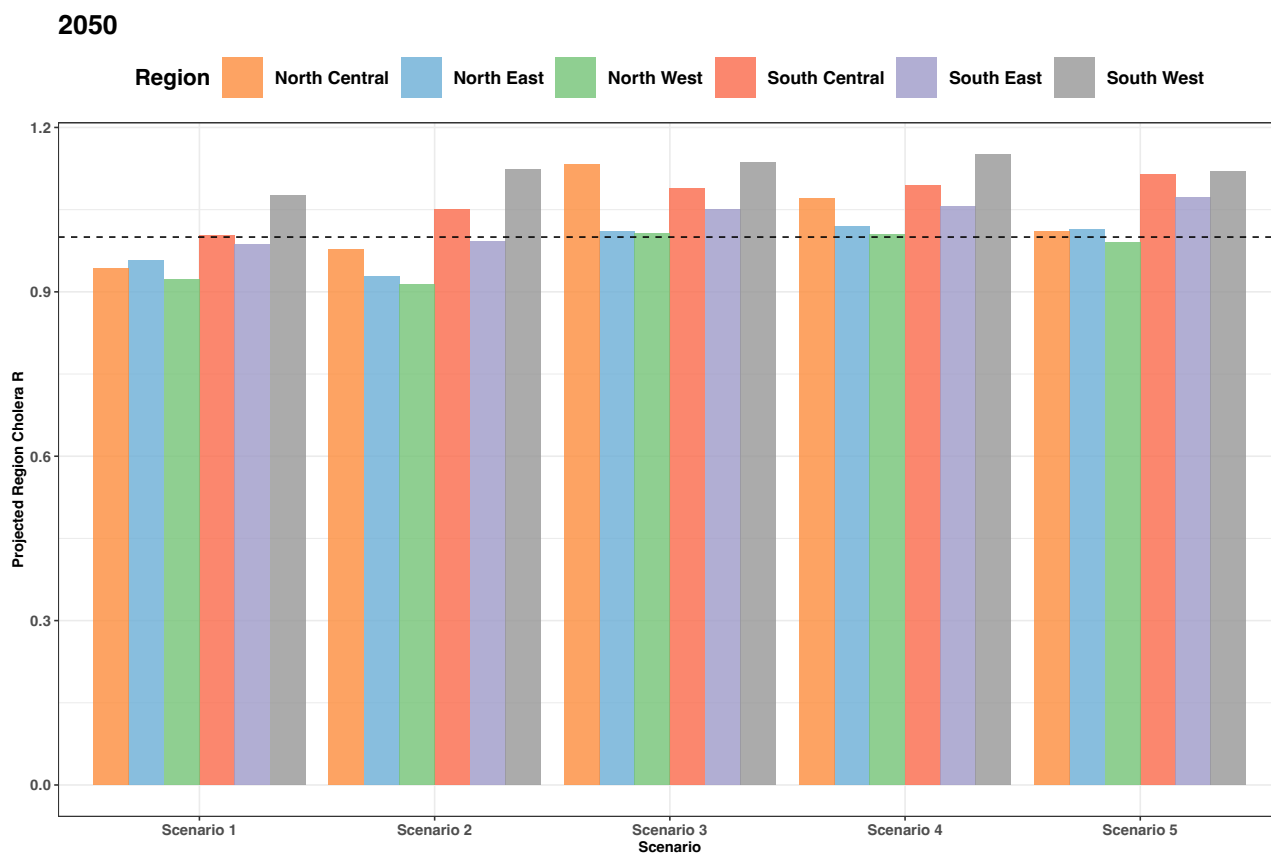
**S1 Information: Sensitivity analysis using confirmed and suspected cholera cases.** The analysis includes R calculations, variable importance and model fitting for the full dataset.

The data for the confirmed and suspected cholera cases had R calculated for 16 states (compared to 6 in the original model), which met the >40 cases thresholds for inclusion. The new dataset consisted of 5,627 data-points for variable importance and model fitting (compared to 279 in the original model). The variable importance plot (shown below) was similar to the variable importance for the original model, with only minimal changes in covariate importance order. This suggested that only small changes would be found in terms of the best fit model to the new dataset.

The new model did not improve model fit in terms of predictive power (shown below) and the same best fit model was selected. Any changes in the performance metrics were negligible (0.001 difference) and there was a slight decrease in correlation (0.71 in the new model), potentially due to the larger dataset creating greater variation. The sensitivity analysis using all the data, proved that the original model was robust, and that the smaller dataset did not bias the results.

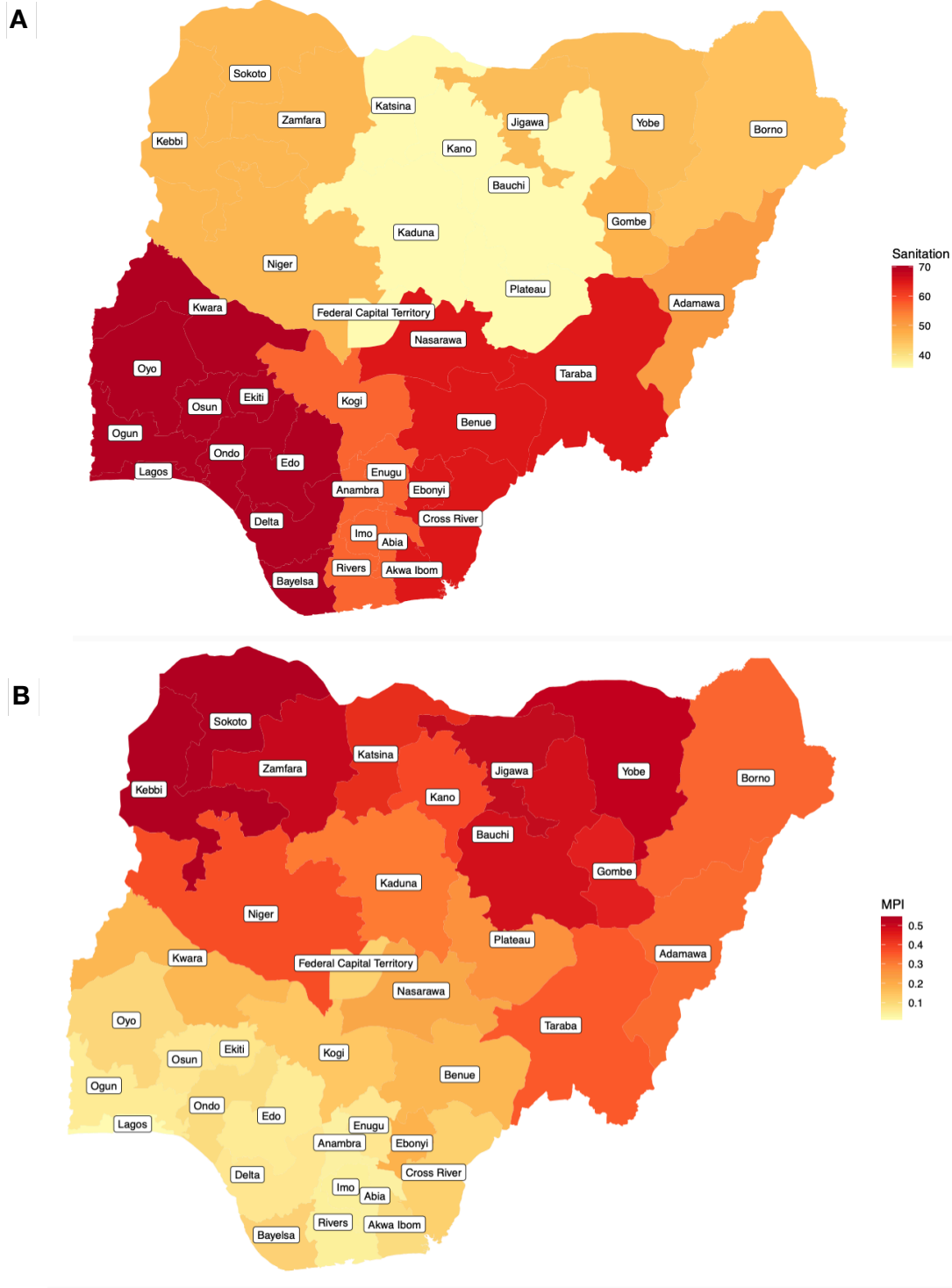


**The variable importance for the twenty-two covariates considered for model inclusion.** A serial interval of 5 days (with 8 days SD) was used and the numbers represent the clusters. SPEI01, 12, 48 - Standardised Precipitation Index calculated on 1, 12 and 48 month scale. PDSI - Palmers Drought Severity Index. MPI - Multidimensional Poverty Index. OCV – Oral cholera vaccination.



**S1 Fig. Sub-national projected changes in cholera transmission (R) for Nigeria.** Average regional  $R_t$  value for each scenario at 2050. The regions are based on the six Nigerian geopolitical zones. North Central : Benue, Kogi, Kwara, Nasarawa, Niger, Plateau, Federal Capital Territory. North East: Adamawa, Bauchi, Borno, Gombe, Taraba, Yobe. North West: Jigawa, Kaduna, Kano, Katsina, Kebbi, Sokoto, Zamfara. South East: Abia, Anambra, Ebonyi, Enugu, Imo. South Central : Akwa Ibom, Bayelsa, Cross River, Delta, Edo, Rivers. South West: Ekiti, Lagos, Ogun, Ondo, Osun, Oyo.





**S2 Fig. Development indicators in Nigeria.** Average values for the full dataset by state, for **A**, percentage access to sanitation and **B**, Multidimensional Poverty Index (MPI). The sources and timescales of the data are shown in Table 1. License: CC-BY, available from: <https://data.humdata.org/dataset/cod-ab-nga>.