

1 ***“It reminds me and motivates me”*: Human-centered design and implementation of an interactive,**
2 **SMS-based digital intervention to improve early retention on antiretroviral therapy: usability and**
3 **acceptability among new initiates in a high-volume, public clinic in Malawi**

4
5 Jacqueline Huwa, MBBS, MSc¹; Hannock Tweya, PhD, MSc²; Maryanne Mureithi, MSc³, Femi Oni, BSc³;
6 Joseph Chintedza, MSc¹; Geldert Chiwaya, BSc¹; Evelyn Waweru PhD-c³, Aubrey Kudzala, MSc¹; Beatrice
7 Wasunna, PhD³, Dumisani Ndhlovu, BSc¹; Pachawo Bisani, BSc¹; Caryl Feldacker, MPH, PhD^{4,5};

8

9 **Affiliations**

10 1 Lighthouse Trust, Lilongwe, Malawi

11 2 International Training and Education Center for Health (I-TECH), Lilongwe, Malawi

12 3 Medic mobile, Nairobi, Kenya

13 4 Department of Global Health, University of Washington, Seattle, WA, United States of America

14 5 International Training and Education Center for Health (I-TECH), Seattle, WA, United States of America

15

16 **Corresponding Author:** jhuwa@lighthouse.org.mw

17

18

19

20

21

22 **Abstract**

23 *Background:* Early retention of people living with HIV (PLHIV) in antiretroviral therapy (ART) programs is
24 critical to improve individual clinical outcomes and viral load suppression. Although many mobile health
25 (mHealth) interventions aim to improve retention in care, there is still lack of evidence on mHealth
26 success or failure, including from patient's perspectives. We describe the human-centered design (HCD)
27 process and assess patient usability and acceptability of a two-way texting (2wT) intervention to
28 improve early retention among new ART initiates at Lighthouse Trust clinic in Lilongwe, Malawi.

29 *Methods:* An iterative HCD approach focused on patient and provider users' needs, incorporating
30 feedback from multidisciplinary teams to adapt 2wT for the local, public clinic context. We present
31 mixed-methods usability and acceptability results from 100 participants, 50 at 3-months and 50 at 6-
32 months, post 2wT enrollment, and observations of these same patients completing core tasks of the
33 2wT system.

34 *Results:* Among the 100 usability respondents, 95% were satisfied with visit reminders, and 88% would
35 recommend reminders and motivational messages to friends; however, 17% were worried about
36 confidentiality. In observation of participant task completion, 94% were able to successfully confirm visit
37 attendance and 73% could request appointment date change. More participants in 4-6 months group
38 completed tasks correctly compared to 1-3 months group, although not significantly different (78% vs.
39 66%, $p=0.181$). Qualitative results were overwhelmingly positive, but patients did note confusion with
40 transfer reporting and concern that 2wT would not reach patients without mobile phones or with lower
41 literacy.

42 *Conclusion:* The 2wT app for early ART retention appears highly usable and acceptable, hopefully
43 creating a solid foundation for lifelong engagement in care. The HCD approach put the local team
44 central in this process, ensuring that both patients' and Lighthouse's priorities, policies, and practices

45 were forefront in 2wT optimization, raising the likelihood of 2wT success in other routine program
46 contexts.

47 Key words: early Retention in HIV care; digital health innovations; usability; acceptability; human-
48 centered design; quality improvement in ART services delivery; routine settings; Malawi

49 Introduction

50 Poor retention of people living with HIV (PLHIV) on antiretroviral therapy (ART) negatively affects
51 individual clinical outcomes and viral load suppression(1). In sub-Saharan Africa (SSA), in particular,
52 suboptimal retention results in missed targets for critical UNAIDS 95-95-95 targets by 2030(2). A
53 systematic review of ART retention in SSA estimated 36-month retention at 65% (3). Early retention,
54 within the first 6 months on ART, can be the most challenging, resulting in concentrated treatment
55 disruptions within the first year on ART(4). Factors influencing retention on ART are complex and
56 dynamic, including individual (e.g., poverty, poor access to care, work or familial obligations;),
57 institutional (e.g. healthcare workers (HCW) shortages) and macro-level factors (e.g., COVID-19; global
58 funding priorities)(1,5–7). However, once patients miss visits or have treatment interruptions, early
59 retention efforts are most likely to successfully return patients to care(8).

60 Digital or mobile health (mHealth) interventions may help reduce retention gaps(9). One-way “blast”
61 educational messages or reminders (pre-defined, no response) modestly improve retention and
62 adherence (10,11). Adding interactive components, such as two-way texting, fosters direct patient to
63 HCW communication and appears more effective at increasing engagement in care (12–14). Still, many
64 retention apps fail (15–18). Across much of SSA, formidable technology, infrastructure, and connectivity
65 challenges continue to stymie mHealth (19,20). Additionally, potentially increased workload or required
66 levels of digital literacy among healthcare workers (HCWs) may limit adoption and potential scale-up
67 (21–23). Policy, governance structures, and changing standards present additional challenges that
68 require additional stakeholder involvement from inception (24). Lastly, the dearth of rigorous mHealth
69 intervention evaluation reduces the evidence base to inform improvements (25). Nonetheless, mHealth
70 shows immense promise to support patients, providers, and programs. Digital health innovations must
71 respond with clearer evidence of success or failure on which to build (26).

72 To accurately reflect the value and fit of innovation to a specific programmatic need, mHealth programs
73 should prioritize assessment of patient usability and acceptability. According to the ISO/IEC 9126–1,
74 *usability* involves understandability, learnability, operability and attractiveness– or how an intended
75 user correctly or incorrectly interacts with a digital innovation (27). Usability is often measured
76 quantitatively. Acceptability is more focused on individual beliefs and practices or their attitude towards
77 using the App and may be assessed qualitatively by asking users how they perceive the App to meet
78 their needs and preferences (28). Usability and acceptability are both essential to designing effective
79 mHealth interventions that may scale successfully(29). To further amplify diverse stakeholder
80 engagement and to ensure that the App matches diverse user demands, incorporation of elements of
81 human-centered design (HCD) – such as iterative user feedback – can also benefit mHealth usability and
82 acceptability (30–33).

83 In 2019, University of Washington’s International Training and Education Center for Health (I-TECH) and
84 technology partner, Medic, pioneered a two-way, text-based (2wT) approach for direct provider-to-
85 patient communication for a randomized control trial (RCT) leveraging the open-source Community
86 Health Toolkit (CHT) (<https://communityhealthtoolkit.org/>) and an HCD approach. The rigorous RCT
87 demonstrated that interactive, hybrid, 2wT between male circumcision (MC) providers and patients
88 during the 14-day post-operative period was as safe as in-person follow-up while significantly reducing
89 provider workload(34). Patients and providers rated the 2wT system highly for usability and
90 acceptability (35), and 2wT lowered costs while improving post-operative care(36). 2wT for MC success
91 was likely due to adherence to many of the core characteristics of mHealth excellence, including
92 prioritizing patient accessibility and acceptance, low technology costs, locally-led adaptation, strong
93 stakeholder collaboration, and government partnership for sustained impact(37,38). 2wT for MC
94 adapted successfully from RCT to routine settings (39), reaching over 22,000 men in post-MC care by
95 mid-2022.

96 Building on the strength of the open-source, CHT-based 2wT and its HCD approach, I-TECH and
97 Lighthouse Trust, the largest public provider of antiretroviral therapy (ART) in Lilongwe, Malawi,
98 partnered with Medic to adapt the 2wT system to improve early ART retention. Lighthouse Trust is a
99 World Health Organization (WHO) recognized centre of excellence, a public Ministry of Health (MoH)
100 provider, and a leading organization in Malawi's HIV/AIDS response (40). Lighthouse has five centers of
101 excellence across the country, including the Martin Preuss Clinic (MPC). MPC is the largest facility with
102 over 25,000 patients on ART. All diagnosed HIV-positive individuals who report to clinic reception are
103 registered in the point of care (POC) electronic medical record system (EMRS). Since 2006, the
104 Lighthouse Trust implemented a Back-to-Care (B2C) program to increase long-term ART retention. The
105 B2C program identifies and traces patients who miss clinic appointment by at least 14 days and supports
106 them to continue ART. Although B2C retention efforts at Lighthouse are robust (41,42) human and
107 financial resource constraints stretch scarce resources, leaving B2C service gaps. In public ART clinics in
108 Malawi like Lighthouse, digital health interventions like 2wT could improve early retention while
109 simultaneously reducing patient tracing workload and costs.

110 Therefore, in 2021, Lighthouse, I-TECH, and Medic developed a 2wT-based intervention to improve ART
111 retention and initiated a quasi-experimental study to determine 12-month retention impact by
112 comparing 500 2wT participants to a historical cohort of 500 new ART initiates at Lighthouse's MPC
113 Clinic in Lilongwe, Malawi. In this process-oriented paper, we describe the HCD process for the 2wT for
114 early ART retention app. We present mixed-methods results on patient usability and acceptability with
115 100 early participants, 50 at 3-months and 50 at 6-months post 2wT enrollment, and report
116 observations of participants interacting with the system. We hypothesized that using an HCD approach
117 and intensive local participation in 2wT optimization would result in high usability and acceptability of
118 2wT from the patient perspective.

119 **Methods**

120 *Study setting*

121 At Lighthouse, patients are initiated on ART following the test and treat strategy, which includes
122 immediate ART initiation for all patients tested HIV positive regardless of clinical or immunological stage
123 (43). All new initiates receive augmented adherence and HIV disclosure counselling as part of ART
124 initiation. New ART patient visits are scheduled monthly during the first six months on ART and then
125 every three- or six-months if the patient is stable and adherent to ART. Ideally, the B2C program
126 identifies and traces patients who miss clinic appointment by at least 14 days; however, delays in tracing
127 patients are not uncommon, and treatment interruptions may continue beyond 2 weeks. At 60 days,
128 patients failing to return are considered lost to follow-up (LTFU). All ART care, including B2C, is provided
129 free to patients as mandated by MoH.

130 *Study population and recruitment:*

131 In the overall, parent quasi-experimental, pre-post study of retention outcomes, eligibility criteria for
132 opt-in 2wT enrolment are: 1) Patients who initiated ART within 6 months; 2) ≥ 18 years; 3) possession of
133 own phone at enrolment; 4) willing to receive/send SMS; 5) informed consent; and 6) receives
134 confirmed 2wT enrolment text to verify enrolment number. Those without cell phones and who did not
135 wish to participate were excluded from the study and received routine B2C retention support.

136 Information about 2wT was disseminated during routine patient care as part of ART initiation
137 counseling. New ART initiates who completed B2C locator forms and had mobile phones with them were
138 requested to enroll in 2wT study. Interested patients were then referred to the 2wT site study
139 coordinator for informed consent and enrollment. Those who successfully received a confirmation text
140 were enrolled. Participants were given a thorough overview of the SMS system, including required
141 replies and instructions on how to confirm a clinic appointment, report a transfer out, or reschedule a

142 clinic visit. A total of 500 participants, including 50 from a 2wT system pilot, were enrolled in 2wT group
143 and 500 in the retrospective comparison group for the parent study.

144 The 100 2wT participants for the usability and acceptability assessment were recruited between August
145 2021 and January 2022 and selected via a purposeful, strategic sampling approach, enrolling the first 50
146 participants to reach 6- and 3-months, post 2wT launch, without overlap participants between groups.

147 **2wT System development**

148 ***Technology background***

149 Since 2008, Medic equipped more than 41,000 health workers to support more than 80 million care
150 activities across 15 countries (44). Medic is the steward of the CHT open source project that currently
151 supports almost 60 apps across 23 unique workflows (44,45), including 2wT-based apps in Malawi,
152 South Africa, and Zimbabwe. Apps built using the CHT work on basic phones, smartphones, tablets, and
153 computers with or without internet connectivity, in any language (46) and are tailored to meet key
154 digital health characteristics recommended by the WHO(33). The core areas of functionality used by the
155 Malawi 2wT system include peer-to-peer and automated interactive messaging, task management
156 features (unread message; message not delivered), longitudinal patient records, routine syncing, and
157 reports for routine monitoring (e.g. patient response rates, referrals, etc.).

158 ***2wT Human-Centered Design***

159 The Medic-led HCD approach for 2wT for early ART retention [30] focused on patient and provider users'
160 needs, working in collaborative, multidisciplinary teams (Figure 1). Before 2wT system adaptation,
161 system developers, healthcare workers (HCWs), monitoring and evaluation (M&E) teams, B2C staff and
162 patients discussed and specified the context use. A brief formative research was conducted to inform
163 adaptation and implementation. Then, a pilot of 50 ART patients solicited end-user experience in

164 message context, optimal message delivery timing and language preferences (Chichewa or English) with
165 the aim to launch a patient-centered, usable, and acceptable app. Formative message research and pilot
166 testing results also ensured participants' privacy and confidentiality were protected, making changes to
167 messaging protocols to improve patient protections. Prior to updating the system messages, text
168 messages were reviewed by expert patients (experienced ART patient mentors) for clarity and
169 understandability. After system deployment, weekly technical feedback meetings were conducted to
170 provide a platform to incorporate the voices and experiences of patient users in further refinement
171 processes.

172 Figure 1: Medic's human-centered design approach adopted in the designing, developing and optimizing
173 2wT for MC post-operative care (30,47) [omitted]

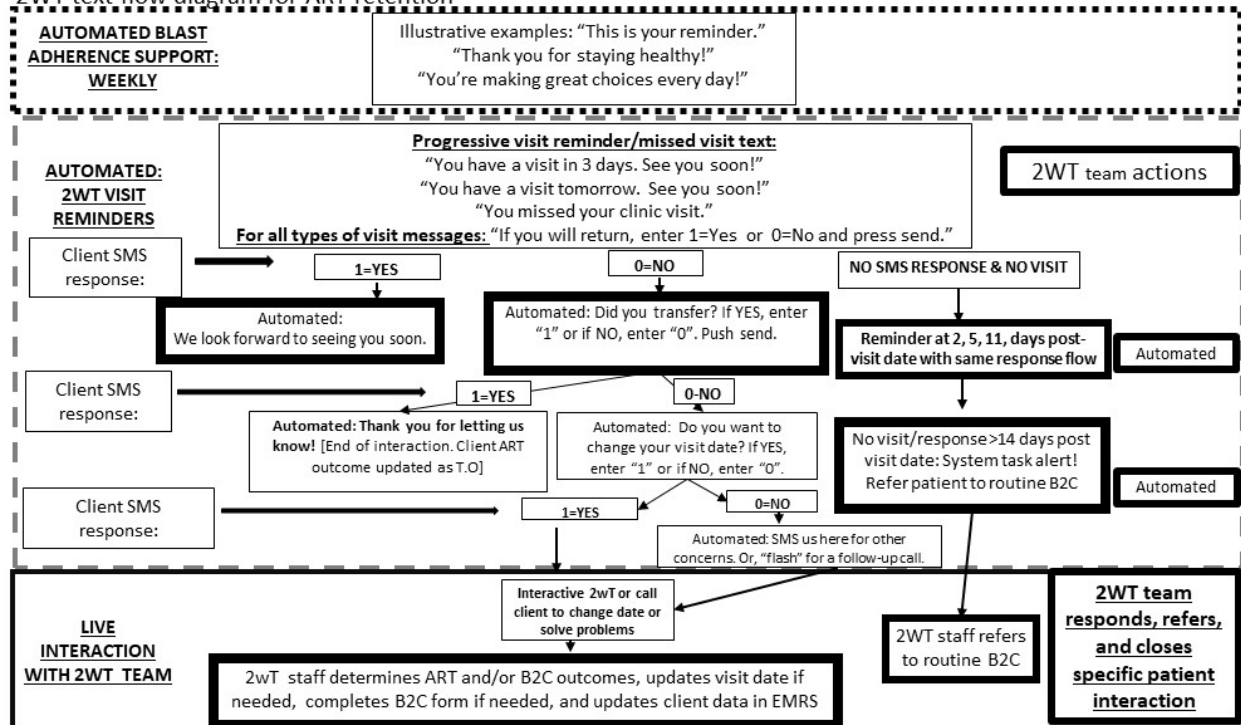
174

175 ***System components and functionalities***

176 The 2wT system (Figure 2) is a hybrid automated and manual texting interaction between patients and
177 healthcare workers. In the 2wT system, weekly motivational messages are sent without a response
178 request. Individually tailored appointment reminders are sent in anticipation of a visit with a response
179 requested. Multiple responses and free text are accepted at any time. Messages are sent either in
180 English or Chichewa according to patients' preferences. Patients can send a message with any content at
181 any time in any language. Generally, the 2wT officer responds to any SMS during routine clinic hours
182 within 1-2 days of any message. Patients can opt out of motivational and/or visit reminder messages at
183 any time.

184 Figure 2: 2wT flow diagram for ART retention

2wT text flow diagram for ART retention



185

186 **2wT Intervention: weekly motivational messages**

187 The 2wT system broadcasts weekly motivation messages with a new health-related message sent each
 188 week; example are shown in Table 1. The messages are sent from the same Lighthouse aggregator
 189 number and contain no information related to HIV or AIDS. Messages repeat after approximately 6
 190 months. For weekly motivational messages, there is no response required nor requested from patients.
 191 Patients may respond if they choose.

192 **Table 1: A sample of motivational messages sent by the 2wT for ART retention**

Category	2wT Messages
Nutrition	Keep making good decisions by eating healthy foods such as fruits, beans, and greens.
	Drink boiled or chlorinated water, 2 to 4 litres a day.
	Try cooking with a little less salt and oil to prevent high blood pressure (BP) and diabetes.

Mental health	Time with friends is a great way to reduce stress. Go chat with a friend!
	Laughter is good medicine. Let yourself laugh and smile!
	A little movement goes a long way for mental health. Take a walk. Be outside. Smile.
Exercise, and General Health	Stay active to keep your body healthy and strong to help prevent high blood pressure (BP), heart problems, diabetes, and stroke.
	Keep your home clean. It will help you have a healthy mind and body.
COVID	Get vaccinated for COVID-19 vaccine. It is free! The vaccine is safe for you, as well as your friends.
	Getting vaccinated for COVID-19 will prevent severe Covid-19 infection.
	COVID-19 is still a threat to our lives. Let us continue to wear mask properly, by covering our nose and mouth.
	COVID-19 is still a threat to our lives. Let us continue to gather with friends and family outside.

193

194 ***2wT Intervention: visit reminders and responses***

195 The 2wT system sends individualized clinic visit reminders with a response requested. Patients are asked
 196 to respond to the visit reminder messages with a single number: 1=yes if confirming clinic attendance or
 197 0=no if they will not attend (Figure 2). A "yes" triggers, "See you soon!" and stops visit reminders for
 198 that specific visit. A "no" triggers automated, scripted texts to determine if someone has transferred or
 199 wants to change their visit date. The system also allows for free text interaction between 2wT staff and
 200 the patient to determine next steps. Patients can request an appointment date change, report transfers,
 201 or request a call. Patients receive automated missed visit alerts on days 2, 5, and 11 post appointment
 202 date when a clinic appointment is missed. Motivational and reminder visit messages are muted if or
 203 when specific ART outcomes are ascertained (stopping ART, transferring to other clinic and death). A

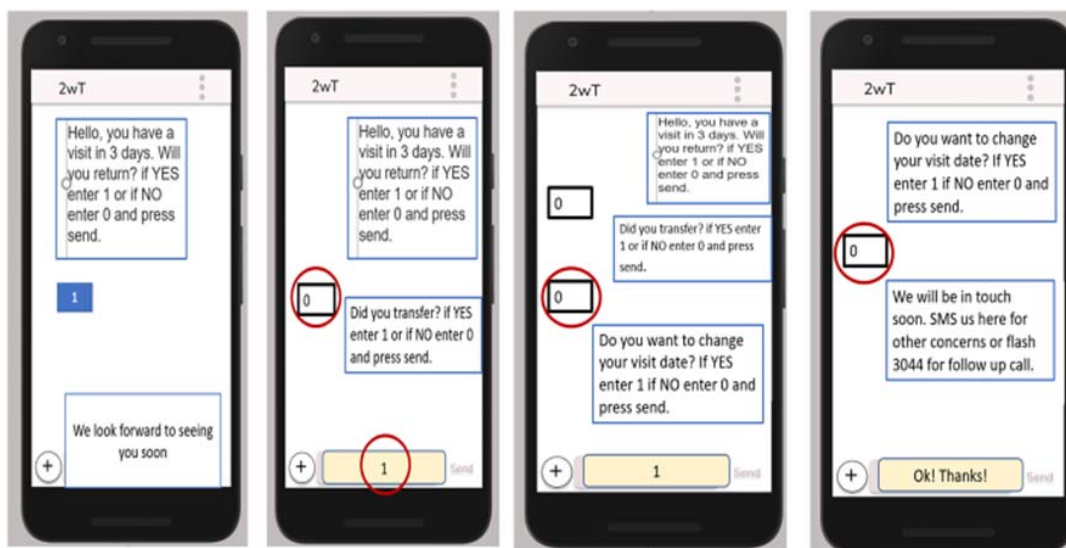
204 2wT officer prompt for B2C tracing is automatically triggered by the system when a patient misses a
205 clinic appointment by 14 days.

206 **Data collection and management**

207 A brief, semi-structured, interviewer-administered questionnaire (Supplement 1) contained 16 closed-
208 ended questions to assess 2wT usefulness, acceptability, perceived benefits, and barriers. In open-ended
209 questions, patients were asked for feedback on the intervention, express concerns and suggest
210 improvements.

211 Participants were also observed completing key 2wT tasks to assess the effectiveness of 2wT education
212 at enrollment and to help improve participant's adherence to 2wT prompts. Participants were shown
213 four pictures of 2wT visit reminder messages and asked to indicate, using words or touching their
214 phone, how they would: (a) confirm visit attendance, (b) transfer out to another clinic, (c) change
215 appointment dates; (d) ask for help with something else (**Figure 3**). Results from assessment methods
216 were combined to understand 2wT usability and acceptability from patient users.

217 **Figure 3: Visit reminders, transfer reporting, and requests for help.**



218

219 *Statistical analysis*

220 Quantitative data analysis was conducted using Stata software version 17.0. For questionnaires on
221 acceptability, frequencies were used to explore closed-ended or partially open-ended responses. Atlas.ti
222 8 was used for qualitative data from open-ended short answers. Qualitative data were entered and
223 coded by one coder using a mix of deductive and inductive approaches guided by the questionnaire and
224 thematic content. Initial thematic content was shared with the study team for feedback and revisions
225 incorporated into final results.

226 **Ethics**

227 The parent study, including the usability and acceptability components, was reviewed and approved by
228 the University of Washington and the Malawi National Health Sciences Research Committee. All
229 participants provided written informed consent.

230 **Results**

231 *Demographic characteristics*

232 One hundred 2wT participants were included in this sub-study (Table 2), including 28 from the pilot
233 period. On average, participants were age 37.1 (SD 9.4) years; almost 40% of participants were under 35
234 years old. The majority ($\geq 67\%$) of the participants started ART with WHO stages 1 or 2.

235 **Table 2. Characteristics of ART patients using 2wT for ART retention in Lilongwe, Malawi**

		Questionnaire group (N=100*)	
		N	%
<u>Sex</u>			
	Male	50	51%

Female	48	49%
<u>Age</u>		
18 – 34	39	40%
35 – 45	38	39%
45+	21	21%
<u>WHO stage at ART initiation</u>		
1 or 2	64	66%
3	22	23%
4	11	11%
<u>Time in 2wT intervention</u>		
1-3 months	50	50%
4-6 months	50	50%

236
237 *2 participants were not correctly matched to baseline data and were omitted from the demographic
238 table, only

239 **2wT app usability**

240 Most participants were satisfied with visit reminders (95%) and the motivational messages (90%) (**Table**
241 **3**). Over 88% would recommend both. However, 9% did not understand the weekly motivational
242 messages schedule, while over 25% expressed challenges responding correctly to reminders. There were
243 also some confidentiality concerns: 17% were worried about breaches.

244

245 **Table 3. 2wT Usability at 3- and 6-month participation**

Question	Time in 2 WT				Total	
	1-3 months		4-6 months		100	%
	50	%	50	%	100	%
Were you satisfied with the visit reminder messages?						
Yes	47	94%	48	96%	95	95%
No	3	6%	2	4%	5	5%
Were you satisfied with the motivational messages?						
Yes	42	84%	48	96%	90	90%
No	6	12%	2	4%	8	8%
DK	2	4%	0	0%	2	2%
Did you understand that an SMS would arrive on your phone each						

week (motivational message)?						
Yes	43	86%	48	96%	91	91%
No	7	14%	2	4%	9	9%
Did you have challenges responding to visit reminders?						
Yes	14	28%	12	24%	26	26%
No	35	70%	37	74%	72	72%
DK	1	2%	1	2%	2	2%
Did you have challenges receiving text messages (SMS)?						
Yes	6	12%	7	14%	13	13%
No	44	88%	43	86%	87	87%
Were you worried about privacy receiving these text messages (SMS)?						
Yes	6	12%	11	22%	17	17%
No	44	88%	39	78%	83	83%
Would you recommend motivational messages to friends?						
Yes	44	88%	46	92%	90	90%
No	5	10%	3	6%	8	8%
DK	1	2%	1	2%	2	2%
Would you recommend visit reminder messages to friends?						
Yes	39	87%	36	88%	75	87%
No	6	13%	4	10%	10	12%
DK	0	0%	1	2%	1	1%

246 **2wT task completion**

247 All 100 participants completed four tasks designed to test their ability to respond to 2 WT messages.

248 Overall, 72% answered correctly to interactive message task: 94% visit attendance confirmation, 72%

249 informing the facility of transferring to another clinic, 73% changing clinic appointment dates task 1, and

250 99% changing clinic appointment date task 2 (**Table 4**). Overall, more participants in the 4-6 months

251 group completed the task correctly compared to those in the 1-3 months group, although not

252 significantly different (78% vs. 66%, $p=0.181$). Both groups had difficulties completing the transfer-out

253 and appointment dates tasks.

254 **Table 4. 2wT task completion**

	Time in 2 WT 1-3 months	4-6 months	Total
--	----------------------------	------------	-------

Total	50		50		100	
All tasks	33	66%	39	78%	72	72%
Visit attendance confirmation						
No	4	8%	2	4%	6	6%
Yes	46	92%	48	96%	94	94%
Transfer out reporting						
No	17	34%	11	22%	28	28%
Yes	33	66%	39	78%	72	72%
Change appointment date						
No	16	32%	11	22%	27	27%
Yes	34	68%	39	78%	73	73%
Request help on something else						
No	1	2%	0	0%	1	1%
Yes	49	98%	50	100%	99	99%

255

256 ***Qualitative responses on acceptability and usability***

257 Of 100 respondents, 95 provided responses to the open-ended questions. Most respondents provided
 258 positive feedback and support for the 2wT Intervention, asking the team to "*continue sending us*
 259 *messages, most people forget their clinic appointment.*" The vast majority (65), noted their appreciation
 260 for the visit reminders, like this patient:

261 "*This system is good and continue offering us this service. We got reminded when we forget the dates. I*
 262 *came on 26 January for consultation, but I didn't get drugs then when my days were coming close, I*
 263 *received the reminder message. I thought in my mind that I had already received the meds. Thank you*
 264 *for reminding me.*"

265 Participants overwhelmingly noted that they felt encouraged and motivated by the messages, appearing
 266 to perceive the messages as coming from a member of the Lighthouse support team. Respondents, like
 267 this person, asked the team to, "*continue sending messages as they are encouraging us to stay healthy.*
 268 *It reminds me and motivates me.*" Another participant noted, "*when I see the messages, I do have the*
 269 *conscious to take the medicine.*" Patients felt cared for and supported by the Lighthouse team, noting

270 feelings of comfort such as, "through these interactions, *we are not afraid as we know you will help us,*"
271 and "*I am very thankful when I receive these messages.*"

272 Patients also liked the weekly SMS health-related message, as one patient reporting: "*I am thankful*
273 *because the messages remind me of my clinic appointment and encourages me to live a healthy life.*"

274 2wT was also received positively as a good alternative to reminder phone calls. One participant
275 expressed that "*SMS visit reminder is better than through phone call because colleagues ask us why*
276 *someone is calling me.*"

277 There were several themes that suggest the need for improvement. A few patients noted confusion with
278 how to stop messages while others noted delays in HCW responses to their visit change or support
279 requests. One patient also requested changes to support lower literacy patients, remarking that, "*the*
280 *messages are good for people who know how to read. You should also prepare something for those who*
281 *cannot read.*" Lastly, a few patients receive missed visit reminders when they attended their visit on
282 time, leaving them frustrated. "*Stop sending messages reminding us that we have missed the visit when*
283 *we already reported.*"

284 Not all responses were in support of 2wT. A few patients noted that even without explicit mention of
285 ART nor the clinic name, they still had concerns about disclosure. One patient noted that they were
286 "*always afraid that someone might see the messages as my phone is always with neighbors. Someone*
287 *who knows the number XXXX might realize that this message is from Lighthouse and might compromise*
288 *with my privacy.*"

289 **Discussion**

290 Likely as a result of the HCD-based adaption of the 2wT model, we found 2wT to be highly usable and
291 acceptable as an early retention intervention for patients at MPC's routine ART program. Although some
292 patients, including those who are older or illiterate, may prefer reminder calls (14), these results

293 indicate that the vast majority appreciated both the visit and motivational messages and would
294 recommend 2wT for their friends. However, a quarter of respondents had trouble responding correctly
295 to messages and there were some who expressed concerns with confidentiality, namely people seeing
296 their messages. Compared to those in the 1-3 months in 2wT group, slightly more participants in the 4-6
297 month group correctly completed the tasks, showing that patient understanding and confidence likely
298 increase over time. Although confirming visit attendance was considered simple, almost 30% found it
299 difficult to report a transfer out or reschedule a clinic visit respectively. These findings suggest several
300 strengths and areas of improvement for 2wT.

301 Iterative, highly-participatory, human-centered design (HCD) was central to App optimization. Routine
302 B2C retention staff helped co-design, develop, test, and optimize 2wT through a series of formative
303 input sessions that also included ART patients, monitoring and evaluation staff. Cycles of optimization
304 strengthened app specifics including: message frequency; motivational message content; timing of
305 delivery; and wording of the automated messages. Pre-testing was also critical: the pilot test conducted
306 among 50 participants prior to the roll-out helped to identify system weaknesses, coding flaws, and bugs
307 which were rectified before study implementation. The hybrid approach, blending automated
308 motivation messages and individually tailored visit reminders with access to direct, interactive,
309 healthcare worker-to-patient messaging, put a human face to the intervention. Although SMS was the
310 primary form of communication, phone calls were made at patient request. This flexibility to respond to
311 patients via SMS or phone also demonstrates prioritization of patient preferences. Patients believed and
312 were assured that a member of the Lighthouse team was supporting them in the manner they
313 preferred, likely contributing to 2wT satisfaction.

314 Multi-method formative assessment of usability also added rich data on which to improve the system
315 for patient users. Quantitative, observational, and qualitative data each provided key information to
316 ensure that 2wT was both easy to use and highly useful to new ART patients, resulting in a system that

317 helped patients attend visits and stay motivated in care. Other research also used multiple methods to
318 help ensure adaptation and optimization for the local context. In South Africa, an app for HIV self-testing
319 showed that nearly all (98.7%) found the app easy to use and reported that 89.0% of participants could
320 follow all the steps on the app without error(48). However, usability does not always indicate
321 usefulness. In another South African app for HIV self-testing, high usability (87.8%) did not lead to
322 participants to log onto the app: only 22% self-reported results (49). In Malawi, assessment of two
323 electronic community case management Apps to support decision making for childhood illnesses found
324 significant differences between the two apps in ease of use (50).

325 There are several areas for improvement in the 2wT system. First, participants received training on
326 responding to the 2wT system messages at enrolment only, which likely contributed to observed
327 differences in usability over time. Practice and repetition, complemented by refresher patient education
328 (in-person or via posters) during subsequent clinic visits may be recommended as patients tend to
329 understand the system over time. Second, similar to other studies (51–53), confidentiality concerns or
330 fear of disclosure of HIV status using SMS for ART reminders, were reported by some participants.
331 Several protections were implemented to reduce confidentiality concerns. 2wT message co-creation and
332 pre-testing with patients attempted to ensure that both motivational and visit reminder messages were
333 neutral and benign, reducing potential associations with HIV-related care or services. 2wT was also
334 implemented only as opt-in: patients were consented after 2wT educational counseling that included a
335 presentation with example messages. Those who self-reported phone sharing were also excluded.
336 However, this may not have been enough as 17% of the participants reported that they were afraid
337 someone else would see the messages. Additional protections should be explored. Lastly, 2wT is limited
338 only to new ART enrollees and those with mobile phones and is intended to contribute to, and not
339 replace, the routine Back to Care retention activities. However, reducing the literacy level required for

340 participation or considerations of how to include those with shared phones would improve access to this
341 retention support.

342 Limitations:

343 As with all interviewer-led questionnaires, it is possible that patients were affected by the interviewer, a
344 bias that could have influenced responses in a more positive or negative direction. Usability could
345 change over time. One hundred patients were included in the usability assessment, but de-identified
346 data linked to study-specific IDs resulted in errors linking usability results to patient demographics,
347 reducing the sample size for demographics from 100 to 98. Lastly, SMS response rates, retention
348 outcomes and cost data is forthcoming. It is expected that these results will shed additional light on
349 whether high usability and acceptability will result in effectiveness of the 2wT approach on retention as
350 expected.

351 Conclusions

352 2wT for early ART retention at Lighthouse Trust was purposefully designed with patients at the
353 forefront. As a result, it appears that the App was highly usable and acceptable to those who chose to
354 enroll in the retention support intervention, perhaps setting them up for a successful start to lifelong
355 engagement in care. Although 2wT is not for all patients in all settings, the 2wT intervention approach
356 has several strengths that are worthy of consideration for other digital health collaborators working to
357 improve early ART retention. The local team led this process, ensuring that needs, priorities, and
358 practices from Lighthouse, and not from international collaborators, were centered in the decision-
359 making (54). 2wT was purposefully built using the open-source Community Health Toolkit (CHT), a
360 global digital good. By leveraging an existing set of tools, and adapting from previous 2wT-based
361 evidence (34), delays with App development were reduced while the potential for sustainability
362 increased. Lastly, as 2wT is implemented in a routine, MoH ART services context, the HCD process

363 reflected the realities of routine, and not research, settings, raising the likelihood of longer-term fidelity
364 and potential scale-up of the 2wT intervention in other LMIC programs.

365 **Acknowledgements**

366 We would like to acknowledge the study participants, the study team (Kondwani Masiye, Harrison
367 Chirwa, Blessings Wandira, Daniel Mwakanema, Madalitso Chawanje, William Maziya, Isaac Nyirenda),
368 colleagues from medic mobile (Edwin Kagereki, Adinan Alhassan, Mourice Barasa), the MPC clinic,
369 M&E, retention team, and MoH staff at Bwaila for their valued contribution to the study.

370 **References**

- 371 1. UNAIDS. IN DANGER: UNAIDS Global AIDS Update 20222022. Available from:
372 https://www.unaids.org/sites/default/files/media_asset/2022-global-aids-update_en.pdf,
373 Search.tb.ask.com [Internet]. Search.tb.ask.com. [cited 2022 Nov 20]. Available from:
374 <https://search.tb.ask.com/web>
- 375 2. UNAIDS. Not there yet on viral suppression [Internet]. [cited 2022 Nov 20]. Available from:
376 https://www.unaids.org/en/resources/presscentre/featurestories/2019/march/20190304_gow_viral_lo
377 ad
- 378 3. Fox MP. Retention of adult patients on antiretroviral therapy in low-and middle-income
379 countries: systematic review and meta-analysis 2008–2013. *J Acquir Immune Defic Syndr* 1999.
380 2015;69(1):98.
- 381 4. Haas AD, Zaniewski E, Anderegg N, Ford N, Fox MP, Vinikoor M, et al. Retention and mortality on
382 antiretroviral therapy in sub-Saharan Africa: collaborative analyses of HIV treatment programmes. *J Int*
383 *AIDS Soc.* 2018;21(2):e25084.

- 384 5. Mukumbang FC, Mwale JC, van Wyk B. Conceptualising the factors affecting retention in care of
385 patients on antiretroviral treatment in Kabwe District, Zambia, using the ecological framework. *AIDS Res*
386 *Treat.* 2017;2017.
- 387 6. Chamberlin S, Mphande M, Phiri K, Kalande P, Dovel K. How HIV Clients Find Their Way Back to
388 the ART Clinic: A Qualitative Study of Disengagement and Re-engagement with HIV Care in Malawi. *AIDS*
389 *Behav.* 2022;26(3):674–85.
- 390 7. Nyoni T, Okumu M. COVID-19-compliant strategies for supporting treatment adherence among
391 people living with HIV in sub-Saharan Africa. *AIDS Behav.* 2020;24(9):2473–6.
- 392 8. Chammartin F, Zürcher K, Keiser O, Weigel R, Chu K, Kiragga AN, et al. Outcomes of patients lost
393 to follow-up in African antiretroviral therapy programs: individual patient data meta-analysis. *Clin Infect*
394 *Dis.* 2018;67(11):1643–52.
- 395 9. Demena BA, Artavia-Mora L, Ouedraogo D, Thiombiano BA, Wagner N. A systematic review of
396 mobile phone interventions (SMS/IVR/calls) to improve adherence and retention to antiretroviral
397 treatment in low-and middle-income countries. *AIDS Patient Care STDs.* 2020;34(2):59–71.
- 398 10. Linde DS, Korsholm M, Katanga J, Rasch V, Lundh A, Andersen MS. One-way SMS and healthcare
399 outcomes in Africa: systematic review of randomised trials with meta-analysis. *PLoS One.*
400 2019;14(6):e0217485.
- 401 11. Jong S, Cuca Y, Thompson LM. Meta-analysis of mobile phone reminders on HIV patients'
402 retention to care. *J Mob Technol Med.* 2017;6(1):5.
- 403 12. Ødegård ES, Langbråten LS, Lundh A, Linde DS. Two-way text message interventions and
404 healthcare outcomes in Africa: Systematic review of randomized trials with meta-analyses on
405 appointment attendance and medicine adherence. *PloS One.* 2022;17(4):e0266717.

- 406 13. Mills EJ, Lester R, Thorlund K, Lorenzi M, Muldoon K, Kanters S, et al. Interventions to promote
407 adherence to antiretroviral therapy in Africa: a network meta-analysis. *Lancet HIV*. 2014;1(3):e104–11.
- 408 14. Amankwaa I, Boateng D, Quansah DY, Akuoko CP, Evans C. Effectiveness of short message
409 services and voice call interventions for antiretroviral therapy adherence and other outcomes: A
410 systematic review and meta-analysis. *PLoS One*. 2018;13(9):e0204091.
- 411 15. Linnemayr S, Huang H, Luoto J, Kambugu A, Thirumurthy H, Haberer JE, et al. Text messaging for
412 improving antiretroviral therapy adherence: no effects after 1 year in a randomized controlled trial
413 among adolescents and young adults. *Am J Public Health*. 2017;107(12):1944–50.
- 414 16. Mbuagbaw L, Thabane L, Ongolo-Zogo P, Lester RT, Mills EJ, Smieja M, et al. The Cameroon
415 Mobile Phone SMS (CAMPS) trial: a randomized trial of text messaging versus usual care for adherence
416 to antiretroviral therapy. *PloS One*. 2012;7(12):e46909.
- 417 17. Kliner M, Knight A, Mamvura C, Wright J, Walley J. Using no-cost mobile phone reminders to
418 improve attendance for HIV test results: a pilot study in rural Swaziland. *Infect Dis Poverty*. 2013;2(1):1–
419 7.
- 420 18. Gross R, Ritz J, Hughes MD, Salata R, Mugenyi P, Hogg E, et al. Two-way mobile phone
421 intervention compared with standard-of-care adherence support after second-line antiretroviral therapy
422 failure: a multinational, randomised controlled trial. *Lancet Digit Health*. 2019;1(1):e26–34.
- 423 19. Kruse C, Betancourt J, Ortiz S, Luna SMV, Bamrah IK, Segovia N. Barriers to the use of mobile
424 health in improving health outcomes in developing countries: systematic review. *J Med Internet Res*.
425 2019;21(10):e13263.

- 426 20. Karlyn A, Odindo S, Onyango R, Mbindyo C, Mberi T, Too G, et al. Testing mHealth solutions at
427 the last mile: insights from a study of technology-assisted community health referrals in rural Kenya.
428 Mhealth. 2020;6.
- 429 21. Krebs P, Duncan DT. Health app use among US mobile phone owners: a national survey. JMIR
430 MHealth UHealth. 2015;3(4):e4924.
- 431 22. Gagnon MP, Ngangue P, Payne-Gagnon J, Desmartis M. m-Health adoption by healthcare
432 professionals: a systematic review. J Am Med Inform Assoc. 2016;23(1):212–20.
- 433 23. Qudah B, Luetsch K. The influence of mobile health applications on patient-healthcare provider
434 relationships: a systematic, narrative review. Patient Educ Couns. 2019;102(6):1080–9.
- 435 24. Desveaux I. overcoming policy-level barriers to the implementation of digital health innovation:
436 Qualitative study. J Med Internet Res. (21).
- 437 25. Guo C, Ashrafian H, Ghafur S, Fontana G, Gardner C, Prime M. Challenges for the evaluation of
438 digital health solutions—A call for innovative evidence generation approaches. NPJ Digit Med.
439 2020;3(1):1–14.
- 440 26. Shaw J, Agarwal P, Desveaux L, Palma DC, Stamenova V, Jamieson T, et al. Beyond
441 “implementation”: digital health innovation and service design. NPJ Digit Med. 2018;1(1):1–5.
- 442 27. Bevan N, Carter J, Harker S. ISO 9241-11 revised: What have we learnt about usability since
443 1998? In Springer; 2015. p. 143–51.
- 444 28. Nadal C, Sas C, Doherty G. Technology acceptance in mobile health: scoping review of
445 definitions, models, and measurement. J Med Internet Res. 2020;22(7):e17256.

- 446 29. Goldberg L, Lide B, Lowry S, Massett HA, O'Connell T, Preece J, et al. Usability and accessibility in
447 consumer health informatics: current trends and future challenges. *Am J Prev Med.* 2011;40(5):S187–97.
- 448 30. Holeman I, Kane D. Human-centered design for global health equity. *Inf Technol Dev.*
449 2020;26(3):477–505.
- 450 31. Göttgens I, Oertelt-Prigione S. The application of human-centered design approaches in health
451 research and innovation: a narrative review of current practices. *JMIR MHealth UHealth.*
452 2021;9(12):e28102.
- 453 32. Johnson T, Das S, Tyler N. Design for health: human-centered design looks to the future. *Glob*
454 *Health Sci Pract.* 2021;9(Supplement 2):S190–4.
- 455 33. World Health Organization. WHO guideline: recommendations on digital interventions for
456 health system strengthening: web supplement 2: summary of findings and GRADE tables [Internet].
457 World Health Organization; 2019. Available from:
458 <https://apps.who.int/iris/bitstream/handle/10665/324998/WHO-RHR-19.7-eng.pdf>.
- 459 34. Feldacker C, Murenje V, Holeman I, Xaba S, Makunike-Chikwinya B, Korir M, et al. Reducing
460 Provider Workload While Preserving Patient Safety: A Randomized Control Trial Using 2-Way Texting for
461 Postoperative Follow-up in Zimbabwe's Voluntary Medical Male Circumcision Program. *J Acquir Immune*
462 *Defic Syndr 1999.* 2020;83(1):16.
- 463 35. Feldacker C, Holeman I, Murenje V, Xaba S, Korir M, Wambua B, et al. Usability and acceptability
464 of a two-way texting intervention for post-operative follow-up for voluntary medical male circumcision
465 in Zimbabwe. *PLOS ONE.* 2020 Jun 16;15(6):e0233234.

- 466 36. Babigumira JB, Barnhart S, Mendelsohn JM, Murenje V, Tshimanga M, Mauhy C, et al. Cost-
467 effectiveness analysis of two-way texting for post-operative follow-up in Zimbabwe's voluntary medical
468 male circumcision program. PLOS ONE. 2020 Sep 30;15(9):e0239915.
- 469 37. Aranda-Jan CB, Mohutsiwa-Dibe N, Loukanova S. Systematic review on what works, what does
470 not work and why of implementation of mobile health (mHealth) projects in Africa. BMC Public Health.
471 2014 Feb 21;14(1):188.
- 472 38. Bauer AM, Hodsdon S, Bechtel JM, Fortney JC. Applying the Principles for Digital Development:
473 Case Study of a Smartphone App to Support Collaborative Care for Rural Patients With Posttraumatic
474 Stress Disorder or Bipolar Disorder. J Med Internet Res. 2018 Jun 6;20(6):e10048.
- 475 39. Marongwe P, Wasunna B, Gavera J, Murenje V, Gwenzi F, Hove J, et al. Transitioning a digital
476 health innovation from research to routine practice: Two-way texting for male circumcision follow-up in
477 Zimbabwe. PLOS Digit Health. 2022 Jun 15;1(6):e0000066.
- 478 40. Phiri S, Neuhann F, Glaser N, Gass T, Chaweza T, Tweya H, et al. The path from a volunteer
479 initiative to an established institution: evaluating 15 years of the development and contribution of the
480 Lighthouse trust to the Malawian HIV response. BMC Health Serv Res. 2017 Aug 9;17(1):548.
- 481 41. Tweya H, Gareta D, Chagwera F, Ben-Smith A, Mwenyemasi J, Chiputula F, et al. Early active
482 follow-up of patients on antiretroviral therapy (ART) who are lost to follow-up: the 'Back-to-Care'
483 project in Lilongwe, Malawi. Trop Med Int Health. 2010;15(s1):82–9.
- 484 42. Tweya H, Oboho IK, Gugsu ST, Phiri S, Rambiki E, Banda R, et al. Loss to follow-up before and
485 after initiation of antiretroviral therapy in HIV facilities in Lilongwe, Malawi. PLOS ONE. 2018 Jan
486 26;13(1):e0188488.

- 487 43. Malawi Clinical HIV Guidelines 2018 (1).pdf [Internet]. [cited 2022 Nov 20]. Available from:
488 [https://differentiatedservicedelivery.org/Portals/0/adam/Content/yb4xSSLvE0SW98_z7wTm_w/File/Ma](https://differentiatedservicedelivery.org/Portals/0/adam/Content/yb4xSSLvE0SW98_z7wTm_w/File/Malawi%20Clinical%20HIV%20Guidelines%202018%20(1).pdf)
489 [lawi%20Clinical%20HIV%20Guidelines%202018%20\(1\).pdf](https://differentiatedservicedelivery.org/Portals/0/adam/Content/yb4xSSLvE0SW98_z7wTm_w/File/Malawi%20Clinical%20HIV%20Guidelines%202018%20(1).pdf)
- 490 44. Medic. 2021 Annual Report [Internet]. Medic. 2022 [cited 2022 Nov 20]. Available from:
491 <https://medic.org/2021-annual-report/>
- 492 45. Medic. Community Health Toolkit [Internet]. Community Health Toolkit. [cited 2022 Nov 20].
493 Available from: <https://communityhealthtoolkit.org>
- 494 46. Jumreornvong O. New Weapon In The War Against AIDS: Your Mobile Phone. Intersect Stanf J
495 Sci Technol Soc [Internet]. 2014 Apr 26 [cited 2022 Nov 20];7(1). Available from:
496 <https://ojs.stanford.edu/ojs/index.php/intersect/article/view/599>
- 497 47. Wasunna B, Holeman I. Digital Health Interventions for Community Health Worker Training,
498 Ongoing Education, and Supportive Supervision. Train Community Health Bridg Glob Health Care Gap.
499 2021;67.
- 500 48. Gous N, Fischer AE, Rhagnath N, Phatsoane M, Majam M, Lalla-Edward ST. Evaluation of a
501 mobile application to support HIV self-testing in Johannesburg, South Africa. South Afr J HIV Med.
502 2020;21(1):1–7.
- 503 49. Fischer AE, Phatsoane M, Majam M, Shankland L, Abrahams M, Rhagnath N, et al. Uptake of the
504 Ithaka mobile application in Johannesburg, South Africa, for human immunodeficiency virus self-testing
505 result reporting. South Afr J HIV Med. 2021;22(1):1197.
- 506 50. Chirambo GB, Muula AS, Thompson M, Hardy VE, Heavin C, O'Connor Y, et al. End-user
507 perspectives of two mHealth decision support tools: Electronic Community Case Management in
508 Northern Malawi. Int J Med Inf. 2021;145:104323.

509 51. Crankshaw T, Corless IB, Giddy J, Nicholas PK, Eichbaum Q, Butler LM. Exploring the patterns of
510 use and the feasibility of using cellular phones for clinic appointment reminders and adherence
511 messages in an antiretroviral treatment clinic, Durban, South Africa. *AIDS Patient Care STDs*.
512 2010;24(11):729–34.

513 52. van der Kop ML, Muhula S, Nagide PI, Thabane L, Gelmon L, Awiti PO, et al. Effect of an
514 interactive text-messaging service on patient retention during the first year of HIV care in Kenya (WelTel
515 Retain): an open-label, randomised parallel-group study. *Lancet Public Health*. 2018;3(3):e143–52.

516 53. Ronen K, Unger JA, Drake AL, Perrier T, Akinyi P, Osborn L, et al. SMS messaging to improve ART
517 adherence: perspectives of pregnant HIV-infected women in Kenya on HIV-related message content.
518 *AIDS Care*. 2018;30(4):500–5.

519 54. Bartels SM, Haider S, Williams CR, Mazumder Y, Ibisomi L, Alonge O, et al. Diversifying
520 Implementation Science: A Global Perspective. *Glob Health Sci Pract* [Internet]. 2022 Aug 30 [cited 2022
521 Nov 20];10(4). Available from: <https://www.ghspjournal.org/content/10/4/e2100757>

522

523

524

525 **Supplemental content 1: B2C 2wT Client Opinion Survey**

526 **Client Satisfaction Survey for SMS follow-up for retention**

527 Section 1: Background

528 1. Study ID# _____

529 2. Patient has been a 2wT client for how long? Circle one: 3-months 6-months

530 3. Date: _____

531 4. Has client received any motivational messages (circle one)? Yes No

532 5. Has client received any visit reminders? (circle one)? Yes No

533 *****IF RESPONSES TO BOTH Q4 AND Q5 ARE “NO,” STOP HERE. THANK CLIENT.

534 **Section 2: 2wT usability assessment**

535 *Hi [client name]. We are trying to make the system better for the patients, like you. To do this, we are*
536 *trying to make sure that the directions and education are as clear as they can be. I want to ask you about*
537 *how to use the system so that I can understand where we can make the system better. I would like to ask*
538 *you now about how you would respond to some messages. I would also like you to please tell me if*
539 *something is not clear. I will listen closely so that we can make the system better.*

540 *I am going to show you 4 pictures. Then, I will ask you what you would do. There is no right or wrong*
541 *answer. Interviewer takes notes on how system is confusing or how it can be improved:*

542 For interviewer, did client complete the following tasks correctly:

543 6. How to confirm visit attendance: picture 1 (circle one)? Yes No

544 7. How to transfer: picture 2 (circle one)? Yes No

545 8. How to change visit date: picture 3 (circle one)? Yes No

546 9. Again: how to change visit date: picture 4 (circle one)? Yes No

547 ***Please note any issues in client’s confusion or suggestions for how to make the system better:

548 _____

549 _____

550 _____
 551 _____
 552 _____
 553 _____

554 **Section 3. 2wT usability and acceptability assessment**

555 *Now, I would like to ask your opinion about the 2wT study and those SMS you received from us. For each*
 556 *of these **questions**, we'd like to respond, "yes" "no" or "Don't know/no response".*

557
 558 **Directions:** Please **CIRCLE ONE** answer for each question.

559
 560 *Hi [client name]. I would like to ask your opinion about the 2wT study and those SMS you*
 561 *received from us. For each of these **questions**, we'd like to respond, "yes" "no" or "Don't know/no*
 562 *response".*

		RESPONSE		
10	Did you understand what SMS would arrive on your phone each week (motivational messages)?	Yes	No	DK/No response
11	Were you clear on how to respond to the visit reminders?	Yes	No	DK/No response
12	Did you like receiving supportive messages each week?	Yes	No	DK/No response
13	Do you think weekly messages helped you take your meds?	Yes	No	DK/No response
14	Did you like the visit reminders?	Yes	No	DK/No response
15	Did you have challenges responding to visit reminders?	Yes	No	DK/No response
16	Did you have challenges receiving texts?	Yes	No	DK/No response
17	Were you afraid someone else would see motivational texts?	Yes	No	DK/No response
18	Were you afraid someone else would see visit reminders?	Yes	No	DK/No response
19	Did you feel that someone at Lighthouse was supporting you?	Yes	No	DK/No response
20	Were you worried about privacy receiving these texts?	Yes	No	DK/No response
21	Did the messages help you remember your visit date?	Yes	No	DK/No response
22	Was it easy to change your visit date using text?	Yes	No	DK/No response
23	Were you satisfied with the motivational messages?	Yes	No	DK/No response
24	Were you satisfied with the visit reminder messages?	Yes	No	DK/No response
25	Would you recommend motivational messages to friends?	Yes	No	DK/No response
26	Would you recommend reminder messages to friends?	Yes	No	DK/No response

563

27	How often would you like to receive motivational or supportive messages?	Daily	Weekly	Never	Other:
28	How could we improve the motivational supportive texts?				

29	How could we improve the visit reminders?	
30	How could the texting follow-up be improved?	
31	Any other comments for the study team?	

564