

Efficacy and Safety of Chinese Herbal Injection Thoracic Perfusion combined with Cisplatin chemotherapy for Lung Cancer Malignant Pleural Effusion: A Systematic Review and Meta-Analysis

Zhong-Ning He^{1†}, Ming-Wan Su^{1†}, Jie-He^{1,2†}, Guang-Hui Zhu^{1†}, Yu-Wei Zhao^{1†}, Shu-Lin He,^{1,2} Yue Li^{1,2}, Bo-Lun Shi¹, Jia-Qi Hu^{1,2}, Shun-Tai Chen^{2*}, Bao-Jin Hua^{1*}

¹Guang'anmen Hospital, China Academy of Chinese Medical Sciences, Beijing, China

²Beijing University of Chinese Medicine, Beijing, China

* Correspondence:

Shun-Tai Chen, Bao-Jin Hua share co-correspondence

qdyc31236@163.com, huabaojinxs@126.com

[†]Zhong-Ning He, Ming-Wan Su, Jie-He Guang-hui Zhu and Yu-Wei Zhao share co-first author.

Purpose To evaluate the efficacy and safety of Chinese herbal injection thoracic perfusion combined with cisplatin chemotherapy for lung cancer patients with MPE.

Method Eight databases were searched for articles published from inception to August 20, 2022 for randomized-controlled trials (RCTs) that are relevant. The included studies were reviewed by two investigators, with relevant data extracted independently. Primary outcome was identified as objective response rate (ORR), while secondary outcomes were identified as quality of life (QOL) and adverse reactions. Quality of the included trials was assessed through risk of bias assessment of the Cochrane risk-of-bias tool. The Revman5.3 and Stata17.0 software were used to calculate risk ratio (RR) at 95% confidence intervals (CI) for binary outcomes.

Results 29 RCTs involving 1887 patients were included in this study. Compared with patients treated with cisplatin thoracic perfusion alone, those with Chinese herbal injection and cisplatin thoracic perfusion had better therapeutic effects (RR=1.44, 95% CI: 1.35~1.53, P = 0.000), higher KPS score (RR = 1.47, 95%CI: 1.34~1.61, P = 0.0000), lower digestive tract reaction(RR = 0.56, 95%CI: 0.48~0.67, P = 0.000) , bone marrow suppression (RR = 0.50, 95% CI: 0.43~0.59, P =0.000) and chest pain reactions (RR = 0.65, 95%CI: 0.47~0.89, P = 0.007).

Conclusion The systematic review indicated that Chinese herbal injection thoracic perfusion combined with cisplatin chemotherapy may improve therapeutic effect, quality of life, and reduce adverse reactions. More large-scale and higher quality RCTs are warranted to support our findings. Systematic Review Registration: PROSPERO, identifier CRD42022347345.

Keywords: Chinese Herbal, lung cancer, malignant pleural effusion, cisplatin , thoracic perfusion, systematic review, meta-analysis

1 Introduction

Lung cancer is one of the most common malignant tumors in the world, with high morbidity and mortality^[1], Malignant Pleural Effusion (MPE) is a common complication in lung cancer patients. and the median survival time is only 5.5 months^[2]. The occurrence of MPE is associated with poor quality of life (QOL) and shorter survival time in lung cancer patients^[3]. Thus, effective treatment for MPE appears very important. The main purpose is to control the effusion from growth, relieve dyspnea, improve the quality of survival, to extend the survival. Currently, management options for MPE includes chest tube drainage and systematic chemotherapy to achieve symptomatic relief and controlling the primary malignancies. Thoracic perfusion of chemotherapeutic is an effective method for the treatment of MPE, and thoracic perfusion of cisplatin has good pharmacodynamics^[4, 5], high economic practicability^[6]. However, the side effects of cisplatin, such as gastrointestinal reactions

and hepatorenal toxicity, cannot be ignored, and will affect the quality of life of patients to a certain extent^[7]. Therefore, current management approach remain palliative. Thus, we seek to find an effective combined treatment for MPE. In recent years, related studies have shown that anti-tumor Chinese herbal injection thoracic perfusion combined with cisplatin chemotherapy in the treatment of MPE have a positive effect in improving efficiency, improve the quality of life, reduce adverse reactions^[8-10]. Although the clinical studies on Chinese herbal injection in the treatment of lung cancer MPE are increasing, the long-term efficacy has not been measured. Lack of high quality, neat standard clinical research, In order to obtain higher evidence data, this study using evidence-based medicine method, comprehensive collection published in Chinese and English literature at present, the systematic evaluation of Chinese herbal injection thoracic perfusion combined with cisplatin chemotherapy of lung cancer MPE, curative effect in order to provide a basis for evidence based medicine in the future clinical treatment.

2 METHODS

This study was conducted following the Preferred Reporting Items for Systematic Reviews and Meta-Analyses (PRISMA) guidelines^[11]. The protocol has been registered in PROSPERO (registration number: CRD42022347345).

3 Search strategy

An independent review of citations was searched for articles published from inception to August 20, 2022, relevant publications evaluating the efficacy and safety of Chinese herbal injection for Lung cancer with MPE were searched in the Chinese National Knowledge Infrastructure (CNKI), Wanfang Database, the VIP Information Database, Chinese Biomedical Literature database (CBM), PubMed, EMBASE, and the Cochrane Library. The following Key words were used: “Lung Neoplasms OR Lung Cancer” AND “Pleural Effusion, Malignant OR Malignant Pleural Effusion” AND “Cisplatin”

AND “Elemene injection OR Kushen injection OR Kanglaite injection OR Brucea Javanica oil emulsion OR Yuxingcao injection OR Aidi injection OR Xiao-ai-ping injection OR Huachansu injection OR Shenqifuzheng injection OR Kang-Ai injection OR Kushenhuangqi injection”. All retrievals were implemented using MeSH and free words (the detailed search strategy is available in Supplementary 1). The languages were restricted to Chinese and English.

4 Study selection and data extraction

Eligible studies were randomized controlled trials of lung cancer adults (≥ 18) with MPE involving Chinese herbal injection thoracic perfusion combined with cisplatin chemotherapy comparing to cisplatin thoracic perfusion alone. We defined intervened injections as Elemene injection, Kushen injection, Kanglaite injection, Brucea Javanica oil emulsion, Yuxingcao injection, Aidi injection, Xiao-ai-ping injection, Huachansu injection, Shenqifuzheng injection, Kang-Ai injection, Kushenhuangqi injection etc. Studies were excluded if patients were treated with other chemotherapy.

Two reviewers Ming-Wan Su and Jie-He independently selected studies based on the inclusion and exclusion criteria described above. Two reviewers independently extracted details for each trial: first author name and year of publication, patient characteristics; Intervention: Chinese herbal injection, Cisplatin ingredients, dose, treatment time; primary and secondary outcome measures. Missing information can be obtained by contacting the author.

5 Data synthesis and analysis

The primary outcome measure is objective remission rate (ORR) of MPE which was defined as CR + PR^[12]. Quality of life (QOL) evaluated with Karnofsky score. Adverse events (digestive tract reactions, bone marrow suppression, chest pain) are second outcome measures. The data were processed and analyzed by Stata 17.0 (Stata Corp, College Station, SE). Random-effects models were

performed to calculate pooled effects. Fixed-effect models were performed if statistical heterogeneity was absent (heterogeneity test, $P \geq 0.10$), dichotomous data were presented as pooled Risk Ratio (RR) with 95% confidence intervals (95% CIs), Assessment of heterogeneity was performed using Cochran's Q test and Higgins's I^2 ; $I^2 > 50\%$ and a P value < 0.10 suggested significant heterogeneity^[13]. Sensitivity analysis was performed by sequentially omitting each study to examine the robustness of the results. Potential publication bias was evaluated using Begg's funnel plot and Egger's test^[14].

6 Risk of Bias Assessment

Two reviewers Zhong-Ning He and Guang-Hui Zhu independently assessed the quality of the selected trials according to the RCT trials tool of the Cochrane Collaboration. Items were divided into three categories: low risk bias, unclear bias and high-risk bias. The following features are random sequence generation (selection bias), concealment of assignment (selection bias), blinding of participants, personnel (performance bias), outcome data were incomplete (attrition bias), selective reporting (reporting bias), and other bias. These assessments are plotted and evaluated using Review Manager 5.3.

7 Result

7.1. Search Result

Initially 281 literatures from 7 electronic databases were identified. After the removal of 98 duplications and 55 irrelevants after screening through the title and abstract, 43 articles were considered potentially appropriate for inclusion. Among which, 14 articles were excluded for the following reasons: not lung cancer patient (n=2), not thoracic perfusion (n=4), Chinese herbal injection intervention alone (n=6), Chinese herbal injection with other chemotherapy (n=2). Eventually, 29

single-centered RCTs met all inclusion criteria,^[8-10, 15-40] as shown in the flow diagram (Locate Figure 1)

Figure 1 | Flow diagram

7.2. Characteristics of the Included Studies

All 29 studies yielded a total of 1,887 patients. The baseline characteristics of each trial are presented in Table 1. The control group was treated with cisplatin thoracic perfusion, on the basis of the control group, the experimental group was infused with chinese herbal injection. 29 trials reported the ORR following WHO guidelines, KPS was reported in 16 studies, and adverse events were reported in 24 studies, Among the 29 citations, intervention of experimental group was Aidi injection in 12 studies^[10, 18, 21, 24, 26, 30-32, 35-38], Kushen injection in 10 studies^[8, 16, 17, 20, 22, 25, 27, 33, 34, 40], Brucea Javanica oil emulsion in 3 studies^[9, 29, 39], and other injections were not included because less than 3 studies. A total of 16 studies reported QOL improvement (the number of patients KPS score 10 points higher or stable after treatment)^[8, 9, 15, 16, 21, 22, 24-27, 29, 33, 34, 36, 37, 39]. 24 studys that included 1,527 patients reported adverse reactions^[8, 9, 16-27, 29, 31-39]. Bone marrow suppression was recorded in 23 studies^[8, 9, 16-21, 23-27, 29-32, 34-39, 41]. 19 studys that included 1,353 patients reported chest pain^[9, 15, 16, 18-24, 26, 29, 31-33, 35, 37-39].

Table1 Characteristics of the Included Studies

						Interv	
First author, year	KP	Years	M/F	E / C	Chinese Herbal Injection	cisplatin (DDP)	entio n time
	S						Outco mes

<hr/>									
3 Brucea Javanica									
Wang,	>			5	oil	20~30mg/m ² ,			
HM.20	5	26~81	45/2		/ emulsion,80~100	5~7d/c,4cycle	30da	O1,2,	
07	0		5		3 ml,5~7d/c,4cycle	s	y	3,4,5	
5 s									
3									
6 Kushenhuangqi									
Hu,JC.	>	65±15		6		40mg/m ² ,7d/c	30da	O1,3,	
2008	5	/62±1	43/2		/ injection,60ml,7	,4cycles	y	4,5	
	0	7	5		3 d/c,4cycles				
5									
2									
3 Aidi									
Yao,Y	≥	38 ~	33/1			30mg/d,7d/c,	28da	O1,2,	
W.200	6				/ injection,100ml/	4cycles	y	3,4,5	
8	0	85	3		2 d,7d/c,4cycles				
3									
3									
0 Kushen									
Li,YP.	-	35~70	49/1		/ injection,20ml,7	40mg,7d/c,4c	28da	O1,3,	
2009			1		3 d/c,4cycles	ycles	ys	4,5	
0									
<hr/>									

<hr/>									
2 Brucea Javanica									
Zhang,	>		35/1	7 oil	20~30mg/m ² ,	30da	O1,2,		
SF.200	5	65~80	5	/ emulsion,50~100	5~7d/c,4cycle	ys	3,4,5		
9	0			2 ml,5~7d/c,4cycle	s				
3 s									
2									
Meng,S	>		28/1	2 Aidi	20~30mg/m ² ,	30da	O1,2,		
L.2009	5	58~79	4	/ injection,50~80	7d/c,4cycles	ys	3,4,5		
	0			2 ml,7d/c,4cycles					
0									
2									
He,L.2			25/1	4 Kushen	40mg/m ² ,7d/c	21da	O1,2,		
010	-	39~75	9	/ injection,40ml,7	,3cycles	ys	4		
2 d/c,3cycles									
0									
3									
Wang,			47/1	0 Aidi	40mg,7d/c,4c	28da			
XH.20	-	20~69	3	/ injection,50ml,7	ycles	ys	O1,4		
10				3 d/c,4cycles					
0									
<hr/>									

				2			
				8 Kushen			
Han,Z	>		35/2	20~40mg,7d/	28da	O1,2,	
Q.2012	5	41~91	/	injection,20mg,7			
			1	c,2~4cycles	ys	3,4,5	
	0		2	d/c,2~4cycles			
				8			
				2			
				1 Aidi			
Sun,SL	>		27/1	20~30mg/m ² ,	28da	O1,2,	
.2012	5	43~74	/	injection,50~80			
			3	7d/c,4cycles	ys	3,4,5	
	0		1	ml,7d/c,4cycles			
				9			
				5			
				6 Aidi			
Liu,CX	>		57/5	30mg,7d/c,4c	28da	O1,2,	
.2013	4	41~82	/	injection,100ml,			
			5	ycles	ys	3,4,5	
	0		5	7d/c,4cycles			
				6			
				3			
				2 Aidi			
Wang,			46/1	60mg,7d/c,4c	28da	O1,3,	
XC.201	-	29~83	/	injection,40ml,7			
4			8	ycles	ys	4,5	
			3	d/c,4cycles			
				2			

				4				
Liu,D.2	>	60.2±	48/4	6 Kushen	40 ~		30da	O1,2,
015	6	8.2	0	/ injection,20ml,7	60mg,7d/c,3c		y	3,5
	0			4 d/c,3cycles	ycles			
				2				
				2				
Yang,D	>		33/1	5 Aidi	25mg/d,7d/c,		35da	O1,2,
F.2015	4	41~76	7	/ injection,75ml/d,	5cycles		ys	3,4
	5			2 7d/c,5cycles				
				5				
				3				
Wang,		64.5±	44/2	5 Kushenhuangqi	40mg/m2,5~7		28da	
HX.20	-	8.7	6	/ injection,60ml,5	d/c,4cycles		ys	O1
16				3 ~7d/c,4cycles				
				5				
				3				
Liu,L.2	≥			0 Kushen	40mg,7d/c,4c		28da	O1,2,
017	5	32~76	-	/ injection,20ml,7	ycles		ys	3,4
	0			3 d/c,4cycles				
				0				

				3			
Liu,SY	>		35/2	2 Huachansu	40mg,7d/c,2c	30da	O1,3,
.2017	6	33~78	9	/ injection,20ml,7	ycles	ys	4,5
	0			3 d/c,2cycles			
				2			
				4			
Shen,S	\geq		52/2	Brucea Javanica	50mg/m ² /d,7	28da	O1,2,
L.2017	6	48~70	8	oil	d/c,4cycles	ys	3,4,5
	0			/ emulsion,50ml,7			
				4 d/c,4cycles			
				0			
				3			
Shi,WJ	\geq		39/2	0 Kushen	40mg,7d/c,4c	28da	O1,2,
.2017	5	34 ~	1	/ injection,20ml,7	ycles	ys	3,4
	0	78		3 d/c,4cycles			
				0			
				4			
Hou,TJ	>		52/3	5 Aidi	30mg,7d/c,4c	28da	O1,3,
,2017	4	18~80	8	/ injection,100ml,	ycles	ys	4,5
	5			4 7d/c,4cycles			
				5			

			1			
Shi,WL	30 ~	20/1	5 Aidi	60mg,7d/c,4c	28da	
-			/ injection,40ml,7			O1
.2017	80	0	1 d/c,4cycles	ycles	ys	
			5			
			3			
Wang,	44 ~	45/1	2 Aidi	20~30mg/m ² ,	28da	O,3,4
-			/ injection,50~80			
Y.2017	72	9	3 ml,7d/c,4cycles	7d/c,4cycles	ys	,5
			2			
			7			
Chen,F	35 ~	76/7	5 Elemene	50mg,1d/c,14	14da	O1,2,
-			/ injection30mg,1d			
.2018	67	4	7 /c,14cycles	cycles	y	5
			5			
			3			
Tang,X	33 ~		0 Kushen	40mg,3d/c,6c	21da	O1,2,
-			/ injection,60ml,3			
Q.2018	77		3 d/c,6cycles	ycles	ys	3,4
			0			

			2				
			5	Kushen			
Zhu,X.		27/2	/	injection,20ml,7	60mg,7d/c,3c	28da	O1
2018	-	36~75	3		ycles	ys	
			2	d/c,3cycles			
			5				
			4				
			5	Kushen	40 ~		
Wang,		49/4	/	injection,20ml,7		21da	O1,2,
Y.2019	-	58~75	1		60mg,7d/c,3c	ys	3,5
			4	d/c,3cycles	ycles		
			5				
			2	Kushen			
Wu,CY		39 ~	5	injection,40~60	40~60mg,7~1	30da	O1,2,
.2019	-	68	0	/	ml,3~7d/c,4cycle	4d/c,4cycles	ys
			2				3,4
			s				
			5				
			1	Aidi			
Wu,M		50 ~	8	injection,50ml/d,	25mg/d,7d/c,	126d	O1,3,
B.2020	-	78	1	/	7d/c,12 ~	12 ~ 18cycles	ay
			1				4,5
			8	18cycles			

			4				
			0	Aidi			
Zeng,J.		43/3				O1,3,	
-	54~74	/	injection,50~80	20~30mg/m2	-		
2021		7				4,5	
			4	ml			
			0				

Note: M/F, male/female; KPS, Karnofsky score; E/C, experimental group/control group; O, outcomes; O1, objective response rate (ORR); O2, Quality of Life (QOL); O3, Digestive tract reaction; O4, Bone marrow suppression; O5, Chest pain

7.3. Study quality and Risk of bias

Among all studies included, 24 used random assignment^[8-10, 15-17, 19-29, 31, 32, 34-36, 38, 39], and seven of them reported the way assignments were hidden^[15, 19, 22, 25, 31, 32, 35]. In terms of blind implementation, none of the studies mentioned it. Two of the included studies may have had incomplete data records, which have no effect on the results of the study^[20, 40], for reasons not explained in the report. In terms of selective reporting of outcomes, all studies reported treatment from two or more aspects, with a low risk of reporting bias. In terms of other biases, 2 treatment methods of the experimental groups were not exclusively described in 2 studies, which may have other biases^[15, 38]. Figure 2 shows more details. (LocateFigure2)

Figure 2 | Risk of bias summary and diagram. (A) Risk of bias summary. (B) Risk of bias diagram.

7.4. Primary outcomes

7.4.1 Objective Remission Rate (ORR)

Comparing to cisplatin thoracic perfusion, the ORR favored Chinese herbal injection group (RR=1.44, 95% CI: 1.35~1.53, $P = 0.000$; $I^2 = 38.4\%$, $P = 0.020$). (LocateFigure 3)

Figure 3 | forest plot of ORR

7.5. Secondary outcomes

7.5.1 Quality of Life (QOL)

Compared with cisplatin thoracic perfusion alone, Chinese herbal injection thoracic perfusion combined with cisplatin chemotherapy could significantly improve the KPS scores ($RR = 1.47$, $95\%CI: 1.34 \sim 1.61$, $P = 0.0000$), with low heterogeneity ($I^2 = 0\%$, $P = 0.943$), and there was a statistical difference between the two groups. (LocateFigure 4)

Figure 4 | Meta-analysis of QOL

7.5.2 Digestive tract reaction

Comparing to cisplatin thoracic perfusion, Chinese herbal injection thoracic perfusion combined with cisplatin chemotherapy significantly reduced the incidence of digestive tract reactions ($RR = 0.56$, $95\%CI: 0.48 \sim 0.67$, $P = 0.000$) with low heterogeneity ($I^2 = 27.5\%$, $P = 0.106$). (LocateFigure 5)

Figure 5 | Meta-analysis of digestive tract reaction

7.5.3 Bone marrow suppression

The incidence of bone marrow depressions in experimental group was significantly lower than that in control group ($RR = 0.50$, $95\% CI: 0.43 \sim 0.59$, $P = 0.000$) with low heterogeneity ($I^2 = 8.9\%$, $P = 0.340$). (LocateFigure 6)

Figure 6 | Meta-analysis of bone marrow suppression

7.5.4 Chest pain

The experimental group significantly reduced the incidence of chest pain reactions ($RR = 0.65$, $95\%CI: 0.47 \sim 0.89$, $P = 0.007$), with low heterogeneity ($I^2 = 0\%$, $P = 0.631$). (LocateFigure 7)

Figure 7 | Meta-analysis of Chest pain

7.6 Subgroup analysis of QOL and Adverse reactions

Among the 5 secondary outcome measures, subgroup analysis was performed according to the difference of Chinese herbal injections. The results of subgroup analysis are shown in Table 2. Compared with cisplatin thoracic perfusion alone, Aidi injection, Kushen injection, Brucea Javanica oil emulsion combined with cisplatin thoracic perfusion in the treatment of MPE has a better therapeutic effect in QOL, digestive tract reaction, and bone marrow suppression outcome, and the differences are statistically significant, the results of subgroup analysis were consistent with the trend of the overall combined results. But there was no statistically significant difference in the outcome index of chest pain, which was different from the overall combined trend. (Table2)

Table 2 results of subgroup analysis

Outcome	Pooled RR(95%CI)	Z	P	Heterogeneity	
				I ² (%)	P _h
Quality of Life (QOL)	1.52(1.37,1.69)	8.05	0.000	0%	0.998
Digestive tract reaction	0.53(0.43,0.64)	6.37	0.000	27.9%	0.111

Bone marrow suppression	0.52(0.44,0.61)	7.60	0.000	8.6%	0.346
Chest pain	0.82(0.54,1.25)	0.93	0.35	0%	0.729

178 7.7 Moderator effects

179 To investigate the sources of potential heterogeneity, we conducted subgroup analysis with
180 moderator variables include injection categories, According to the results of subgroup analysis in
181 Figure 8, it can be concluded that Aidi injection combined with cisplatin thoracic perfusion
182 (RR=1.37, 95%CI: 1.25~1.50, $P = 0.000$, $I^2 = 58.3\%$, $P=0.006$), Kushen injection combined with
183 cisplatin thoracic perfusion (RR = 1.48, 95%CI: 1.32~1.66, $P = 0.000$, $I^2 = 0\%$, $P=0.813$). Brucea
184 Javanica oil emulsion combined with cisplatin thoracic perfusion was infused into the chest (RR =
185 1.68, 95%CI: 1.34~2.09, $P = 0.000$, $I^2 = 0\%$, $P=0.964$). Compared with cisplatin thoracic perfusion
186 alone, all of them have more effective rate in the treatment of MPE, and the difference is statistically
187 significant. Therefore, the results of the subgroup analysis on ORR, the primary outcome measure,
188 were trend consistent with the overall pooled results (RR = 1.45, 95%CI: 1.35~1.55, $P = 0.000$, $I^2 =$
189 45.2%, $P=0.008$). (LocateFigure8)

190 Figure 8 | Subgroup analysis of ORR

191 7.8 Sensitivity analysis

In this study, sensitivity analysis was conducted leave-one-out method, revealing that Hou TJ^[18] had a rather great impact on heterogeneity. After the elimination, I^2 decreased from 38.4% to 0%, but had little effect on the final results (RR=1.44, 95% CI: 1.35~1.53, $P = 0.000$ vs RR:1.47, 95%CI: 1.37~1.56, $P = 0.0000$). There was a certain heterogeneity in subgroup analysis of ORR ($I^2 = 45.2\%$). After deleting the study of Hou TJ^[18], I^2 decreased from 45.2% to 0%, but had little effect on the final results (RR = 1.42, 95%CI: 1.30~1.55, $P = 0.000$ vs RR:1.40, 95%CI: 1.31~1.50, $P = 0.0000$). (Figure 9A-B). Compared with other research, Hou TJ had a relatively high response rate, so as to tilting the heterogeneity much heavier. For second outcome: Quality of life (QOL), digestive tract reaction, bone marrow suppression and chest pain, outcome indicators found that the heterogeneity among studies was small ($I^2 < 30\%$), and the inclusion of one study by one had little impact on the results, so these results were stable (LocateFigure 9).

Figure 9 | (A) sensitivity analysis of ORR; (B) sensitivity analysis of Subgroup analysis of ORR; (C) sensitivity analysis of QOL; (D) sensitivity analysis of digestive tract reaction; (E) sensitivity analysis of bone marrow suppression; (F) sensitivity analysis of chest pain

7.9 Publication bias

Funnel plots were drawn according to the primary outcome measure ORR, we noticed that the included study was distributed asymmetrically on both sides of the funnel chart (Figures 10A–C), indicating that there was significant publication bias in the meta-analysis. The Begg ($p=0.003$) and Egger ($p=0.000$) test was used to test the publication bias of 29 studies included in this meta-analysis, and the results showed that this study had obvious publication bias ($P<0.05$). The 29 articles included in this study were analyzed by the trim-fill method, and the results showed that after the inclusion of 14 virtual studies, Meta-analysis was conducted again, using the fixed effect model, and the combined results of effect indicators RR=1.229, 95%CI :1.171~1.289, although some small sample

studies were added to correct the publication bias, which did not have a significant impact on the results. (LocateFigure10)

Figure 10 | (A) Funnel plot of ORR; (B) Egger test of ORR; (C) Begg test of ORR; (D) trim-fill method of ORR

8 Discussion

The aim of this meta-analysis is to evaluate the efficacy and safety of Chinese herbal injection thoracic perfusion combined with cisplatin chemotherapy in the treatment of lung cancer MPE. Compared with the published meta-analysis^[42], our study is the first to control the administration mode of traditional Chinese herbal injection as thoracic perfusion, using thoracic perfusion of cisplatin as the control group, which ensures the consistency of intervention measures and can reduce clinical heterogeneity to a certain extent. Our results demonstrated that Chinese herbal injection thoracic perfusion combined with cisplatin chemotherapy can improve the ORR of lung cancer patients with MPE (RR=1.44, 95% CI: 1.35~1.53, $P = 0.000$). In addition, we also performed subgroup analysis according to different Chinese herbal injection. The results showed that compared with cisplatin thoracic perfusion alone, Aidi injection, Kushen injection and Brucea Javanica oil emulsion could improve the ORR of lung cancer patients with MPE.

As we all know, lung cancer patients with MPE will have symptoms of chest pain due to poor water circulation. Chemotherapy drugs will inhibit the hematopoietic function of bone marrow, and also affect the digestive function of patients, with vomiting, diarrhea and other digestive tract reactions, further affecting the quality of life of patients. In terms of quality of life, our results showed that Chinese herbal injection could effectively improve the quality of life of patients with lung cancer MPE, and the results of subgroup analysis were consistent with the total results. In addition, Chinese herbal injection thoracic perfusion combined with cisplatin chemotherapy can effectively improve the

digestive tract reaction and bone marrow suppression of patients, and the results are statistically significant and consistent with the results of subgroup analysis. Chinese herbal injection thoracic perfusion combined with cisplatin chemotherapy can alleviate chest pain in patients, but the results of subgroup analysis showed no statistical significance, which may be related to the small sample size included in the study. We should consider focusing on this adverse reaction in the future.

Although funnel plots for the 29 studys showed that there was significant publication bias in the meta-analysis, there is no significant difference between the results of trim-fill method and the original data, which is favorable to our existing results

Our study also have certain limitations, which increase the risk of bias in the outcome indicators of this study. First of all, although this study adopted a relatively extensive search strategy, some conference papers, supplements and grey literature may not be fully obtained, so potential publication bias cannot be excluded. The funnel plot and Begg and Egger test results also reflect some potential publication bias. Among the 29 included studies, only 7 studies described the method of randomization, while the remaining studies did not explain the method of randomization and allocation concealment, and no study mentioned the blinding method, which may lead to potential performance bias and selection bias. Secondly, the sample size of all the included studies was generally small, and the efficacy of the subjects was not tracked. The intervention measures, intervention time and drug administration plan of all the studies were not completely unified, and the forms and effectiveness of the intervention mechanisms could not be clarified. It may increase the imprecision of the outcome indicators and make the evidence strength of the outcome indicators low. Finally, important clinical survival outcomes such as overall survival, progression-free survival, and 5-year survival were not fully reported in the included studies. Therefore, high quality and large sample clinical studies are needed in the future to further evaluate the efficacy and safety of Chinese

herbal injection thoracic perfusion combined with cisplatin chemotherapy in the treatment of lung cancer MPE, and provide more evidence to support our findings.

9 Conclusion

Our study demonstrated the potencies of Chinese herbal injection thoracic perfusion combined with cisplatin chemotherapy to enhance the efficacy and safety for lung cancer MPE patients, improve quality of life and decrease adverse reactions. Furthermore, the long-term efficacy of Chinese herbal injection in Lung cancer MPE treatment still needs to be verified in future well-designed clinical trials that adhere to CONSORT guidelines. More efforts are needed to promote the application of Chinese herbal injection in the clinic.

Acknowledgments

We sincerely thank all support from all authors.

Funding Statement

This study was supported by National Natural Science Foundation of China (82174465).

Data Availability

The datasets generated during and/or analysed during the current study are available from the corresponding author on reasonable request

Reference

1. Sung H, Ferlay J, Siegel RL, Laversanne M, Soerjomataram I, Jemal A, et al. Global Cancer Statistics 2020: GLOBOCAN Estimates of Incidence and Mortality Worldwide for 36 Cancers in 185 Countries. *CA Cancer J Clin.* 2021;71(3):209-49. Epub 2021/02/05. doi: 10.3322/caac.21660. PubMed PMID: 33538338.
2. Porcel JM, Gasol A, Bielsa S, Civit C, Light RW, Salud A. Clinical features and survival of lung cancer patients with pleural effusions. *Respirology.* 2015;20(4):654-9. Epub 2015/02/24. doi: 10.1111/resp.12496.

283 PubMed PMID: 25706291.

284 3. Ryu JS, Ryu HJ, Lee SN, Memon A, Lee SK, Nam HS, et al. Prognostic impact of minimal pleural
285 effusion in non-small-cell lung cancer. *J Clin Oncol*. 2014;32(9):960-7. Epub 2014/02/20. doi:
286 10.1200/jco.2013.50.5453. PubMed PMID: 24550423.

287 4. Lerza R, Vannozzi MO, Tolino G, Viale M, Bottino GB, Bogliolo G, et al. Carboplatin and cisplatin
288 pharmacokinetics after intrapleural combination treatment in patients with malignant pleural effusion. *Ann Oncol*.
289 1997;8(4):385-91. Epub 1997/04/01. doi: 10.1023/a:1008203100410. PubMed PMID: 9209670.

290 5. Sakaguchi H, Ishida H, Nitanda H, Yamazaki N, Kaneko K, Kobayashi K. Pharmacokinetic evaluation
291 of intrapleural perfusion with hyperthermic chemotherapy using cisplatin in patients with malignant pleural
292 effusion. *Lung Cancer*. 2017;104:70-4. Epub 2017/02/19. doi: 10.1016/j.lungcan.2016.12.015. PubMed PMID:
293 28213004.

294 6. Xia Y, Fang P, Zhang X, Su G, Shen A. The efficacy of Endostar combined with platinum pleural infusion
295 for malignant pleural effusion in tumor patients is significantly better than that of monotherapy, but the economy
296 is lower: a systematic review, network meta-analysis and cost-effectiveness analysis. *Ann Transl Med*.
297 2022;10(10):604. Epub 2022/06/21. doi: 10.21037/atm-22-2091. PubMed PMID: 35722417; PubMed Central
298 PMCID: PMC9201148.

299 7. Zhong LZ, Xu HY, Zhao ZM, Zhang GM, Lin FW. Comparison of efficacy and toxicity between nedaplatin
300 and cisplatin in treating malignant pleural effusion. *Onco Targets Ther*. 2018;11:5509-12. Epub 2018/09/21. doi:
301 10.2147/ott.S168391. PubMed PMID: 30233211; PubMed Central PMCID: PMC6134960.

302 8. Liu LZ, SS. Li,GM. Effects and safety of compound Kushen injection combined with cisplatin on
303 malignant pleural effusion. *J Mod Oncol Mod Oncol Hsien Tai Chung Liu Hsueh*. 2017;25(02):230-3. doi:
304 10.3969/j.issn.1672-4992.2017.02.018.

305 9. Shen S. Clinical Effect of Cisplatin Combined with Brucea Javanica Oil Emulsion in Treating Malignant
306 Pleural Effusion Caused by Lung Cancer. *Chinese Journal of Clinical Rational Drug Use*. 2017;10(30). doi: 10.
307 15887 /j. cnki. 13-1389 /r. 2017. 30. 005.

308 10. Shi W. Effect of Intrapleural Injection of Addie and Cisplatin in the Treatment of Malignant Pleural
309 Effusion and Malignant Pleural Effusion. *China Continuing Medical Education*. 2017;9(20):187-9. doi:
310 10.3969/j.issn.1674-9308.2017.20.100.

311 11. Moher D, Shamseer L, Clarke M, Gherzi D, Liberati A, Petticrew M, et al. Preferred reporting items for
312 systematic review and meta-analysis protocols (PRISMA-P) 2015 statement. *Syst Rev*. 2015;4(1):1. Epub
313 2015/01/03. doi: 10.1186/2046-4053-4-1. PubMed PMID: 25554246; PubMed Central PMCID:
314 PMC4320440.

315 12. Miller AB, Hoogstraten B, Staquet M, Winkler A. Reporting results of cancer treatment. *Cancer*.
316 1981;47(1):207-14. Epub 1981/01/01. doi: 10.1002/1097-0142(19810101)47:1<207::aid-
317 cncr2820470134>3.0.co;2-6. PubMed PMID: 7459811.

318 13. Egger M, Davey Smith G, Schneider M, Minder C. Bias in meta-analysis detected by a simple, graphical
319 test. *Bmj*. 1997;315(7109):629-34. Epub 1997/10/06. doi: 10.1136/bmj.315.7109.629. PubMed PMID: 9310563;
320 PubMed Central PMCID: PMC2127453.

14. Higgins JP, Thompson SG, Deeks JJ, Altman DG. Measuring inconsistency in meta-analyses. *Bmj*. 2003;327(7414):557-60. Epub 2003/09/06. doi: 10.1136/bmj.327.7414.557. PubMed PMID: 12958120; PubMed Central PMCID: PMC192859.
15. Chen FY, HS. Cheng,D. Li,J. Clinical Efficacy and Prognosis of Kingkong Elemene Liposomal Imection Combined with Cisplatin for Malignant Pleural Effusion of Lung Cancer. *The Practical Journal of Cancer*. 2018;33(07):1169-71. doi: 10.3969/j.issn.1001-5930.2018.07.036.
16. Han ZT, MQ. Chen,XP. Shi,F. Effect of Closed Drainage Combined with Compound Kushen Injection and Cisplatin on Malignant Pleural Effusion of Lung Cancer. *Zhejiang Journal of Integrated Traditional Chinese and Western Medicine*. 2012;22(07):524-6. doi: 10.3969/j.issn.1005-4561.2012.07.011.
17. He L, Chen Z, Wen S, Ren D, Chen H. Compound Kushen Injection as a Local Therapy for Patients with Advanced Lung CancerAssociated with Malignant Pleural Effusion. *Evaluation and Analysis of Drug-Use in Hospitals of China*. 2010;10(11):1025-7. doi: 10.14009/j.issn.1672-2124.2010.11.012.
18. Hou T. Clinical Effect Analysis of Aidi Injection and Cisplatin in the Treatment of Lung Cancer MalignantPleural Effusion. *Journal of North Pharmacy*. 2017;14(01):178-9. doi: 10.3969/j.issn.1672-8351.2017.01.152.
19. Hu JL, QQ. Xie,YS. Intrathoracic administration of Kushenhuangqi Injection combined with cisplatin in treatment of malignant pleural effusion. *Chinese Journal of General Practitioners*. 2008;7(8). doi: 10.3760/cma.j.issn.1671-7368.2008.08.027.
20. Li YC, Cp. Li,Qy. Treatment of Lung Cancer Malignant Pleural Effusion with Compound Kushen Injection Combined with Cisplatin. *China's Naturopathy*. 2009;17(04):42. doi: 10.19621/j.cnki.11-3555/r.2009.04.043.
21. Liu CP, LY. Zhou,B. The Curative Effect of Addie Injection of Traditional Chinese Medicine combined with Cisplatin on the Treatment of Lung Cancer with Hydrothorax. *World Chin Med Shih Chieh Chung I Yao*. 2013;8(12):1425-7. doi: 10.3969/j.issn.1673-7202.2013.12.014.
22. Llu D, LI D. Curative effect and nursing of thoracic cavity drainage and compound kushen injection combined with cisplatin in the treatment of lung cancer patients companying with malignant pleural effusion. *J Clin Med Pract Shih Yung Lin Ch'uang I Yao Tsa Chih*. 2015;19(08):21-4. doi: 10.7619/jcmp.201508007.
23. Liu SM, XJ, Shan B, Li Y, Wang S, Chang N, Fu W. Observation of Clinical Efficacy on Malignant Pleural Effusion Treated with Cinobufacini Injection and Cisplatin by Intracavitary Perfusion. *Chinese Journal of Coal Industry Medicine*. 2017;20(07):791-4. doi: 10.11723/mtgyyx 1007-9564 201707010.
24. Meng S. Clinical Study of Aidi Injection Combined with Cisplatin in the Treatment of Lung Cancer Malignant Pleural Effusion. *China Practical Medicine*. 2009;4(21):167-8. doi: 10.3969/j.issn.1673-7555.2009.21.119.
25. Shi W. Clinical Eficacy and Safety of Compound Matrine Injection Combined with Cisplatin in the Treatment of Malignant Pleural Effusion Caused by Lung Cancer. *Chinese Journal of Convalescent Medicine*. 2017;26(08):857-9. doi: 10.13517/j.cnki.ccm.2017.08.032.
26. Sun SL, M. Clinical Study of Aidi injection Combined with Cisplatin in the Treatment of Lung Cancer Malignant Pleural Effusion. *Mod J Integr Tradit Chin West Med Hsien Tai Chung Hsi I Chieh Ho Tsa Chih*. 2012;21(21):2317-8. doi: 10.3969/j.issn.1008-8849.2012.21.018.

- 359 27. Tang XJ, MH. Li,JP. Luo,BP. Cinical Objective on Sixty Cases of Compound Kushen Injection Combined
360 withCisplatin in Treatment of Lung Cancer Pleural Effusion. Liaoning Journal of Traditional Chinese Medicine.
361 2018;45(08):1668-70. doi: 10.13192/j.issn.1000-1719.2018.08.036.
- 362 28. Wang H. Intrathoracic administration of Kushenhuangqi Injection combined with cisplatin in treatment
363 of malignant pleural effusion. Clinical Research. 2016;24(6).
- 364 29. Wang HL, GQ. Liu,PH. Qu,YM. Xie,GQ. Liu,SX. Brucea Javanica Oil Emulsion Injection Combined with
365 Chain in the Treatment of Lung Cancer Malignant Pleural Effusion. Mod Chin Med Chung-kuo Hsien Tai Chung
366 Yao. 2007;9(2). Epub 20131012. doi: 10.3969/j.issn.1673-4890.2007.02.009.
- 367 30. Wang X. Clinical Observation of Aidi Injectio Combined with Cisplatin in the Treatment of Lung Cancer
368 Malignant Pleural Effusion. China Health Care. 2010;(3). Epub 20101130.
- 369 31. Wang X. Effect of Aidi Injection Combined with Cisplatin on Intrathoracic Perfusion in Patients with Lung
370 Cancer Complicated with Malignant Pleural Effusion. Contemporary Medical Symposium. 2014;12(19):255-6.
371 doi: 10.3969/j.issn.2095-7629.2014.19.221.
- 372 32. Wang Y, Yang H. Effect of Aidi Injection Combined with Cisplatin on Lung Cancer Malignant Pleural
373 Effusion. Psychological Doctor. 2017;23(4):136-7.
- 374 33. Wang YF, SW. Luo,Q. Bai,CF. Li,T. Short-term Effect of Pleural Cavity Drainage and Infusion of
375 Compound Kushen Injection Combined with Cisplatin in the Treatment of Malignant Pleural Effusion of Lung
376 Cancer. World Latest Medicine Information. 2019;19(02):116+21. doi: 10.19613/j.cnki.1671-3141.2019.02.075.
- 377 34. Wu CL, J. Wu,XY. Cheng,DW. Clinical study of Compound Radix Sophorae Flavescentis Injection
378 Combined withCisplatin in Treatment of Malignant Pleural Effusion. Liao-ning Chung I Tsa Chih Liaoning J Tradit
379 Chin Med. 2019;46(01):85-7. doi: 10.13192/j.issn.1000-1719.2019.01.029.
- 380 35. Wu MC, YC. Xie,JL. Xie,WM. Effect of intrapleural injection of different drugs in the treatment of pleural
381 effusion in patients with lung cancer. Chinese Community Doctors. 2020;36(12):83+5. doi: 10.13192/j. issn.
382 1000-1719. 2019. 01. 029.
- 383 36. Yang D. Efficacy Analysis of Cisplatin Chemotherapy Combined with Aidi Injection in the Treatment of
384 Lung Cancer Malignant Pleural Effusion. The Medical Forum. 2015;19(28):3937-8.
- 385 37. Yao Y, Xu H. Treatment of 23 Cases of Malignant Pleural Effusion with Central Venous Catheter
386 Drainage Combined with Aidi Injection and Cisplatin. Che-chiang I Hsueh Zhejiang Med J. 2008;(08):884-6. doi:
387 10.3969/j.issn.1006-2785.2008.08.040.
- 388 38. Zeng JL, SJ. Effect of Chinese Herbal injection Aidi Injection Combined with Cisplatin on Lung Cancer
389 MalignantPleural Effusion. Special Health. 2021;(12):61-2.
- 390 39. Zhang SC, WL. Meng,SL. Brucea Javanica Oil Emulsion Combined with Chemotherapy Drugs for the
391 Treatment of Malignant Pleural Effusion in Elderly Patients with Lung Cancer. Mod J Integr Tradit Chin West
392 Med Hsien Tai Chung Hsi I Chieh Ho Tsa Chih. 2009;18(15):1749-50. doi: 10.3969/j.issn.1008-
393 8849.2009.15.026.
- 394 40. Zhu X. Short-term Efficacy and Nursing Strategies of Pleural Cavity Drainage and Infusion of Compound
395 Kushen Injection Combined with Cisplatin in the Treatment of Malignant Pleural Effusion of Lung Cancer.
396 Electronic Journal of Practical Clinical Nursing Science. 2018;3(30):151+3. doi: 10.3969/j.issn.2096-

397 2479.2018.30.123.
398 41. Wang, XH. Clinical Observation of Aidi Injectio Combined with Cisplatin in the Treatment of Lung Cancer
399 Malignant Pleural Effusion. China Health Care. 2019;18(3):116-117.
400 42. Xu YF, Chen YR, Bu FL, Huang YB, Sun YX, Li CY, et al. Chinese herbal injections versus intrapleural
401 cisplatin for lung cancer patients with malignant pleural effusion: A Bayesian network meta-analysis of
402 randomized controlled trials. Front Oncol. 2022;12:942941. Epub 2022/10/08. doi: 10.3389/fonc.2022.942941.
403 PubMed PMID: 36203451; PubMed Central PMCID: PMC9531116.

405

406

407

408

409

410

411

412

413

414

415

416

417

418

419

420

421

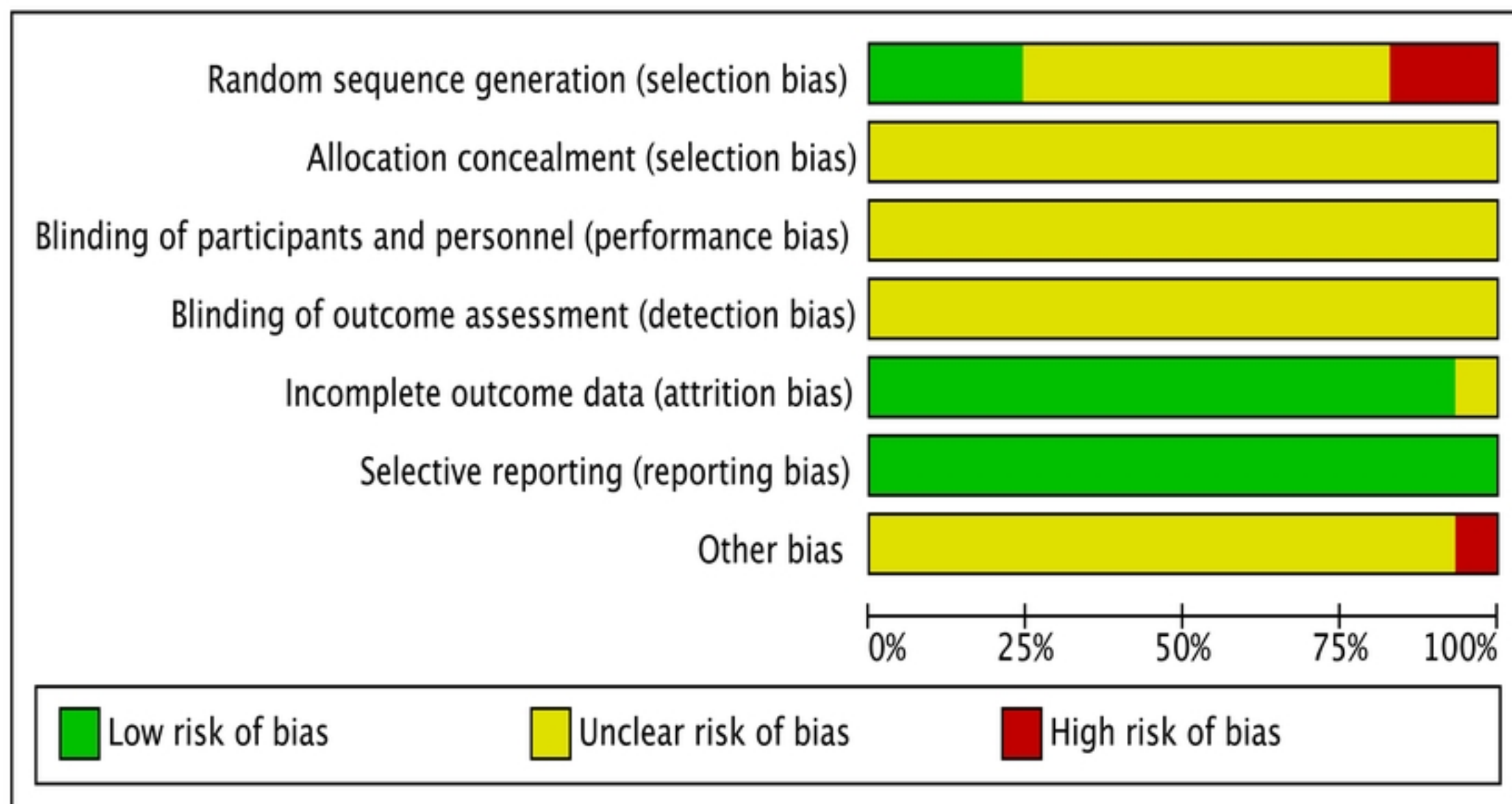
422

423

A

Chen,F,2018	+	?	?	?	+	+	?
Han,ZQ,2012	?	?	?	?	+	+	?
He,L,2010	?	?	?	?	+	+	?
Hou,TJ,2017	●	?	?	?	+	+	?
HuJC,2008	+	?	?	?	+	+	?
LI,YF,2009	?	?	?	?	?	+	?
Liu,CX,2013	?	?	?	?	+	+	?
Liu,D,2015	+	?	?	?	+	+	?
Liu,L,2017	?	?	?	?	+	+	?
Liu,SY,2017	?	?	?	?	+	+	?
Meng,SL,2009	?	?	?	?	+	+	?
Shen,SL,2017	?	?	?	?	+	+	?
Shi,WJ,2017	+	?	?	?	+	+	?
Shi,WL,2017	?	?	?	?	+	+	?
Sun,SL,2012	?	?	?	?	+	+	?
Tang,XQ,2018	?	?	?	?	+	+	?
Wang,HM,2007	?	?	?	?	+	+	?
Wang,HX,2016	?	?	?	?	+	+	?
Wang,XC,2014	+	?	?	?	+	+	?
Wang,XH,2010	●	?	?	?	+	+	?
Wang,Y,2017	+	?	?	?	+	+	?
Wang,Y,2019	●	?	?	?	+	+	?
Wu,CY,2019	?	?	?	?	+	+	?
Wu,MB,2020	+	?	?	?	+	+	?
Yang,DF,2015	?	?	?	?	+	+	?
Yao,YW,2008	●	?	?	?	+	+	?
Zeng,J,2021	?	?	?	?	+	+	●
Zhang,SF,2009	?	?	?	?	+	+	?
Zhu,X,2018	●	?	?	?	+	?	?
Random sequence generation (selection bias)							
Allocation concealment (selection bias)							
Blinding of participants and personnel (performance bias)							
Blinding of outcome assessment (detection bias)							
Incomplete outcome data (attrition bias)							
Selective reporting (reporting bias)							
Other bias							

B

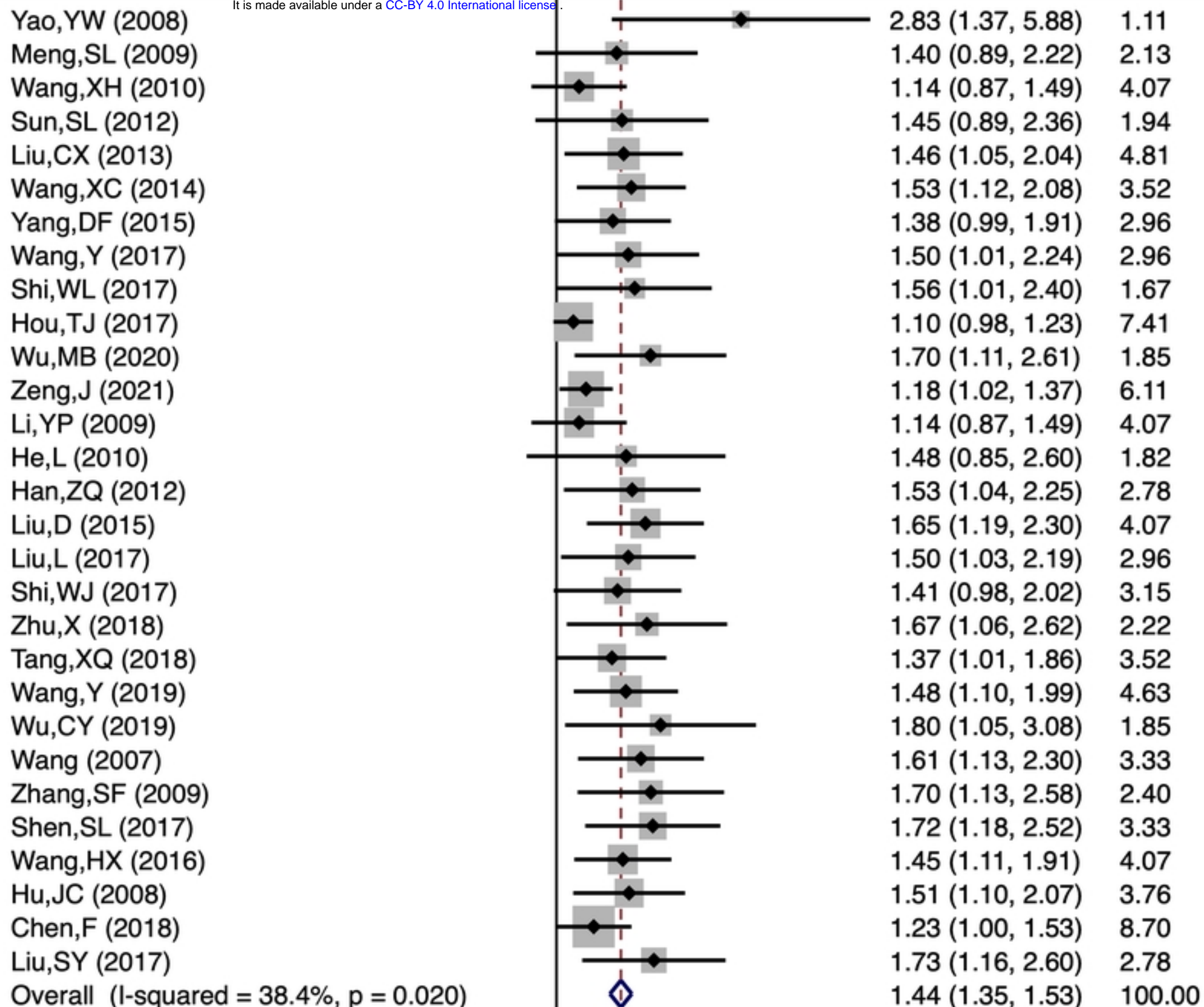


Study ID

RR (95% CI)

% Weight

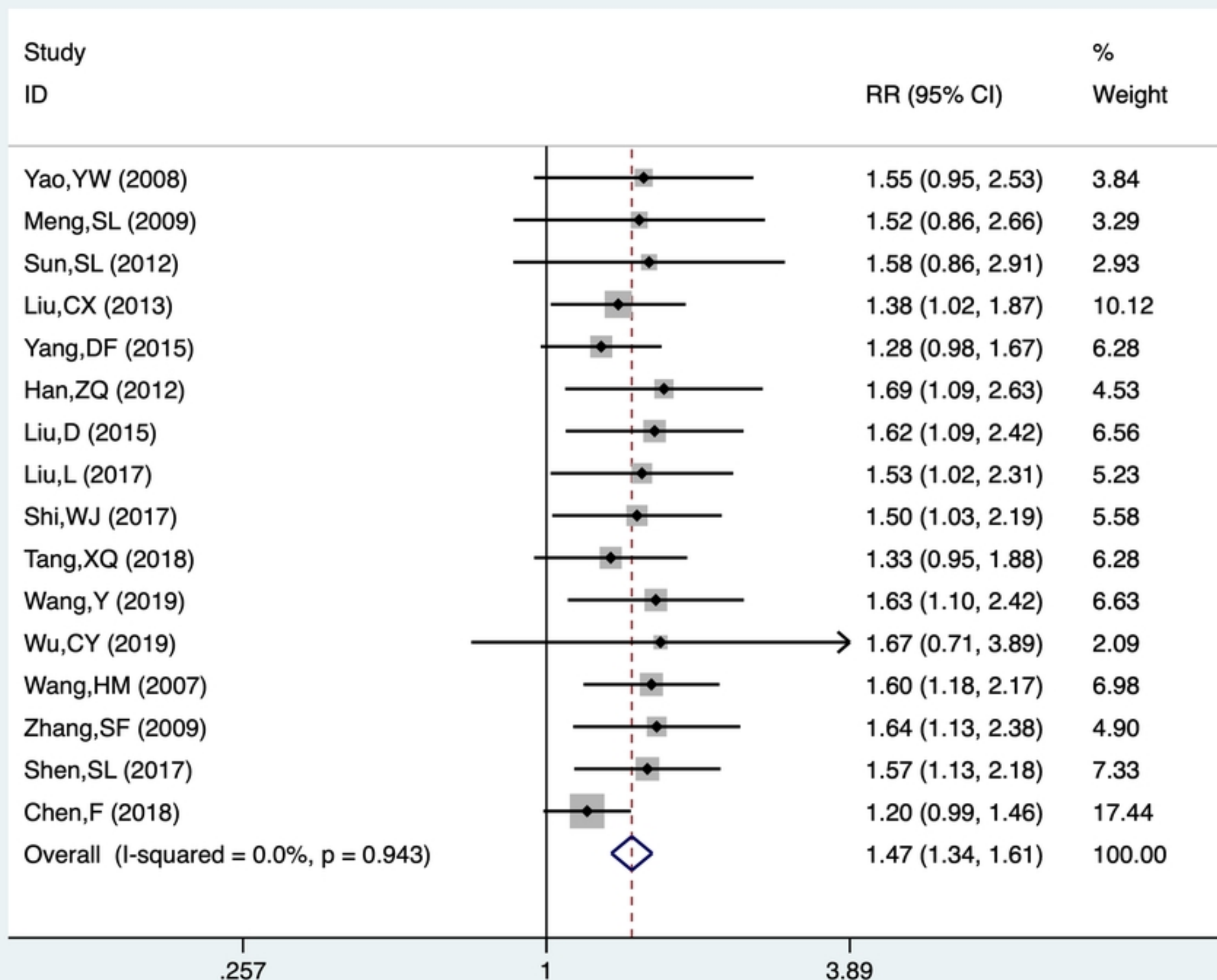
medRxiv preprint doi: <https://doi.org/10.1101/2022.12.01.22283004>; this version posted December 6, 2022. The copyright holder for this preprint (which was not certified by peer review) is the author/funder, who has granted medRxiv a license to display the preprint in perpetuity. It is made available under a CC-BY 4.0 International license.

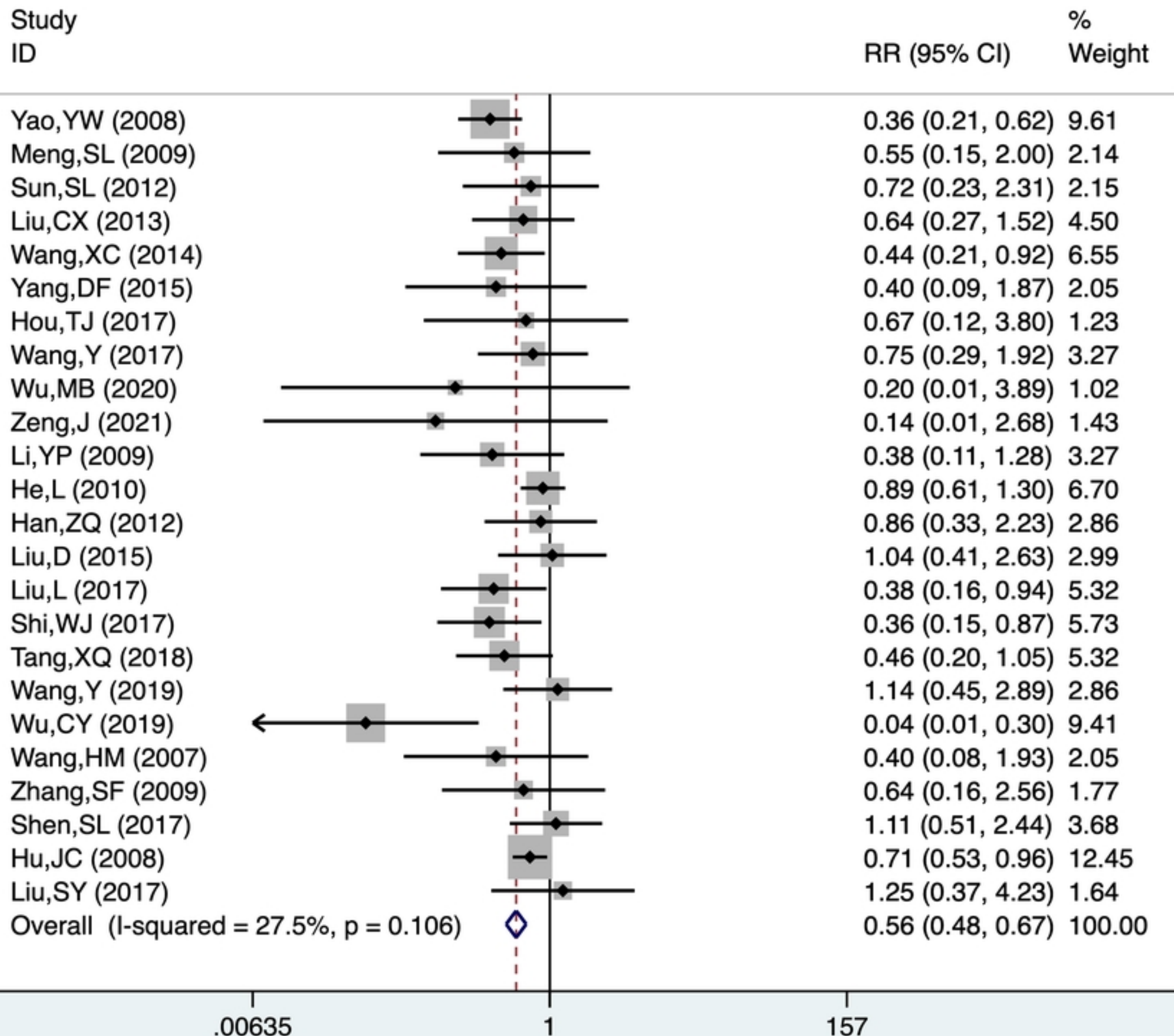


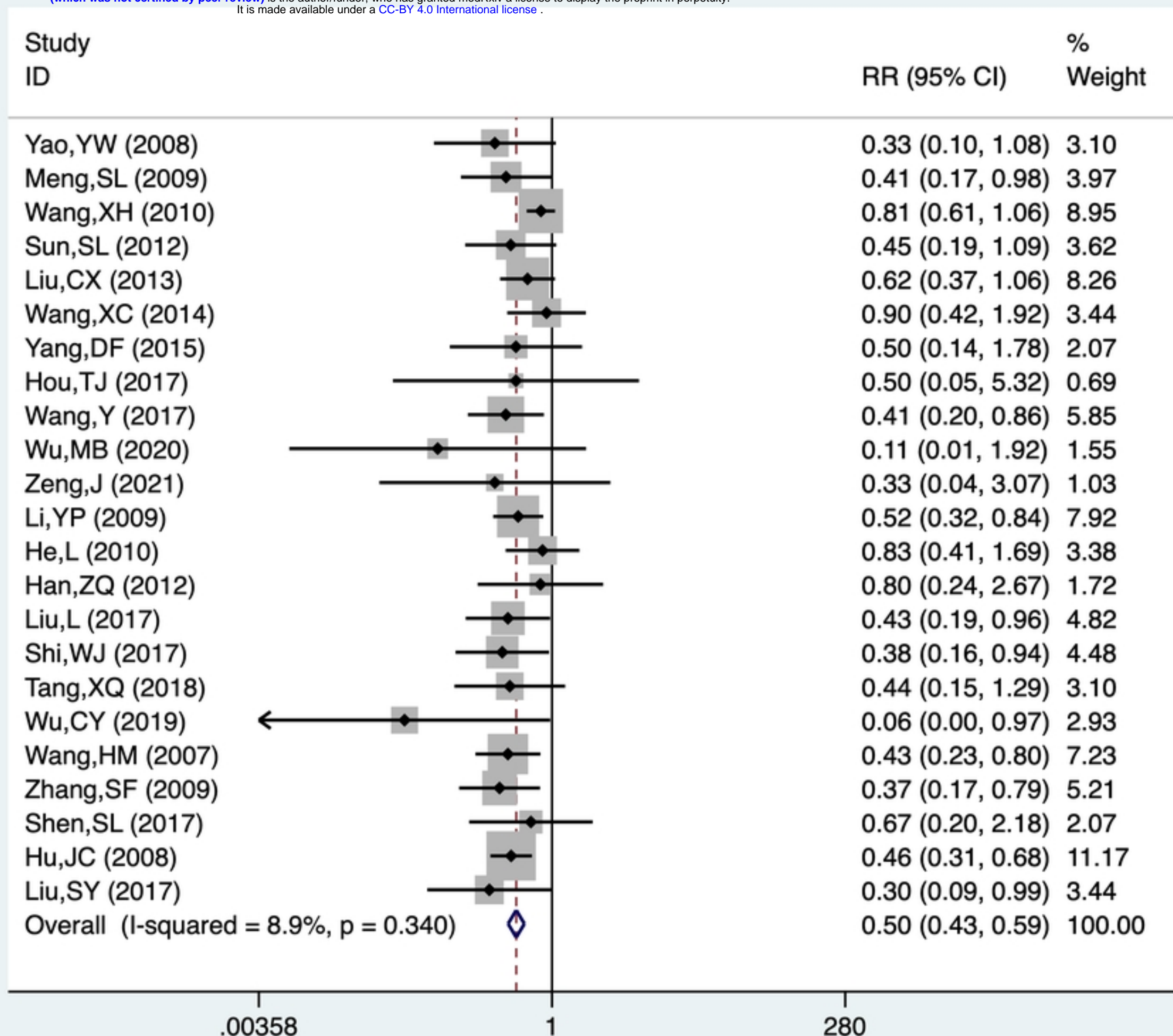
.17

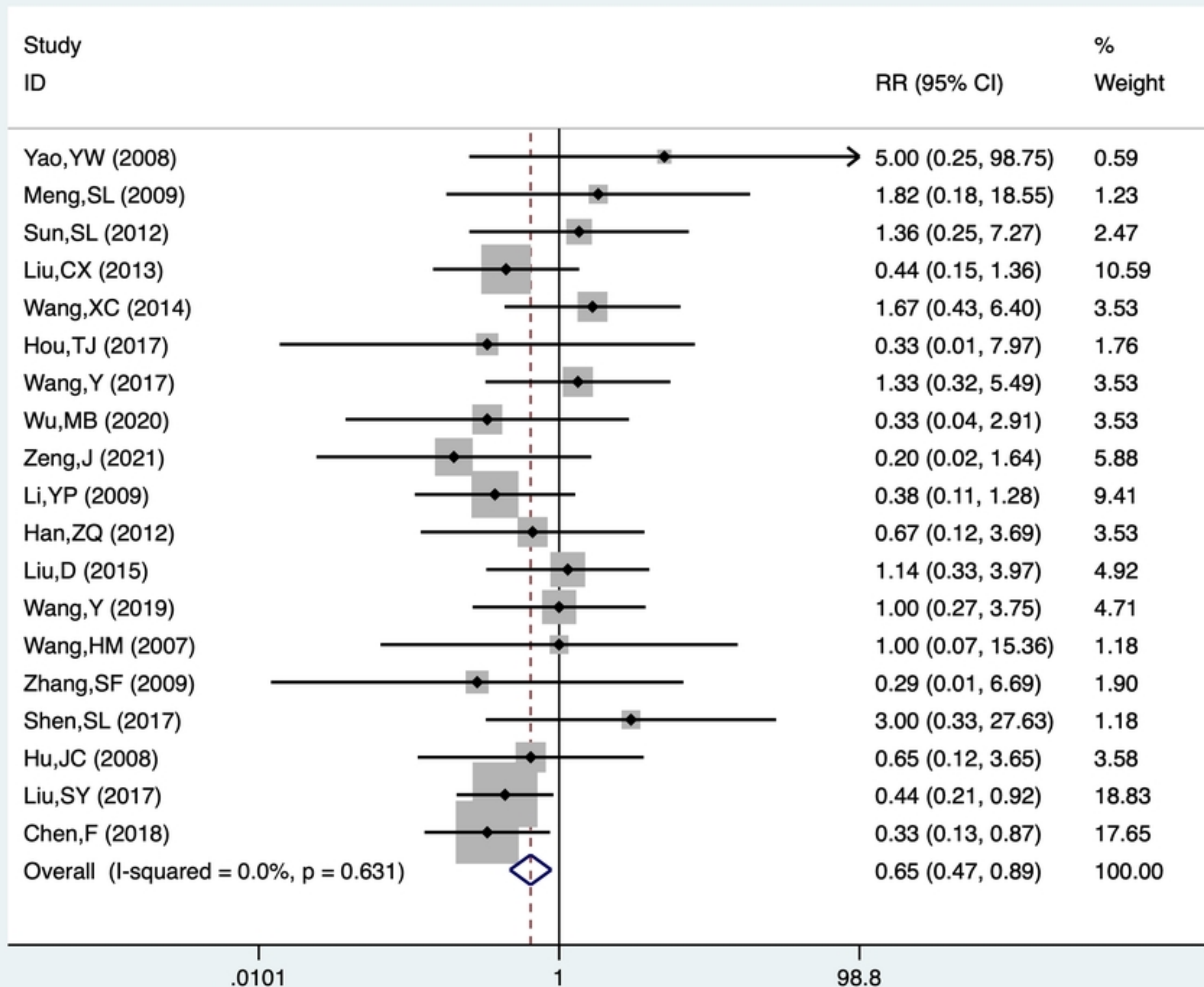
1

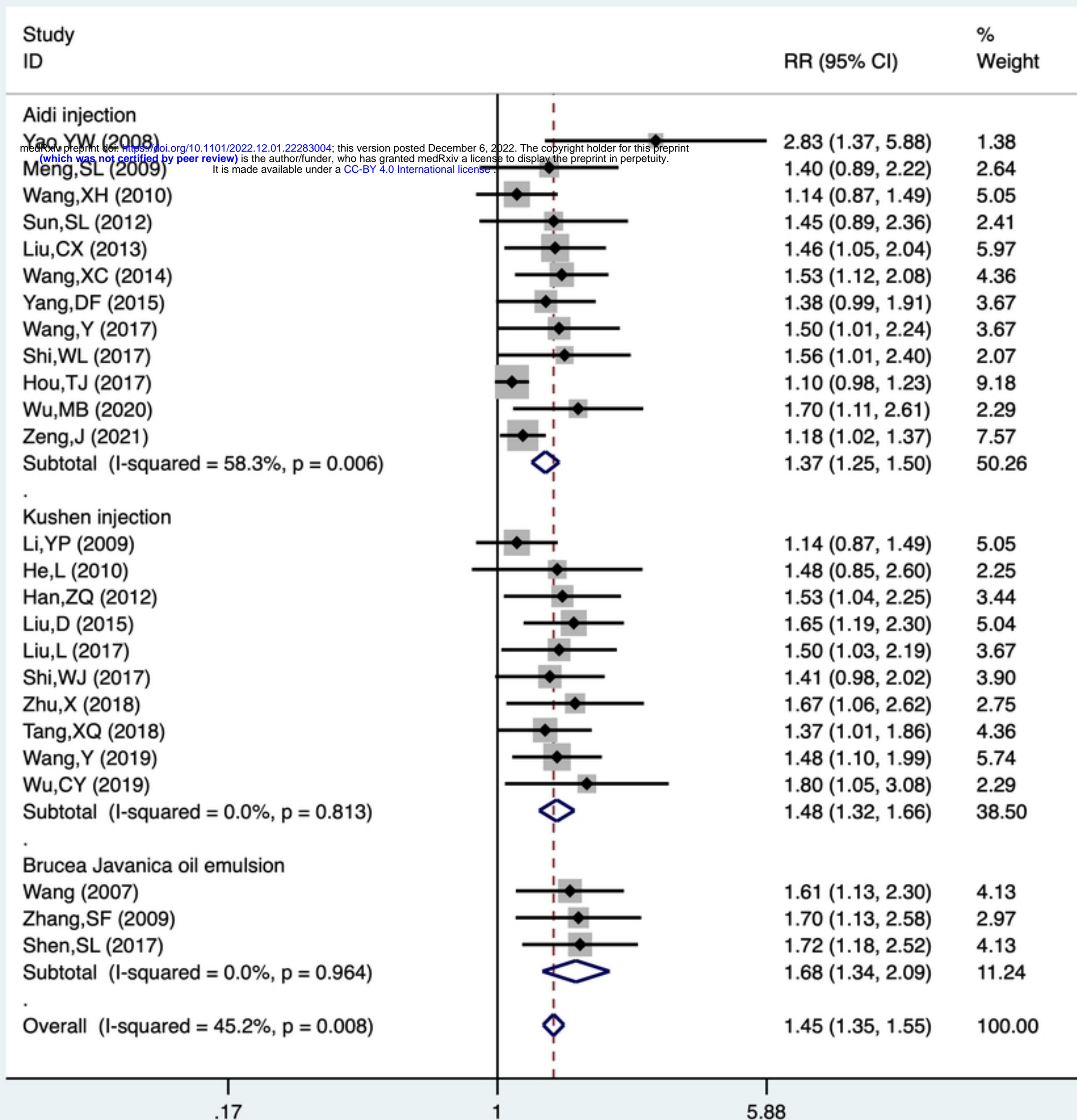
5.88



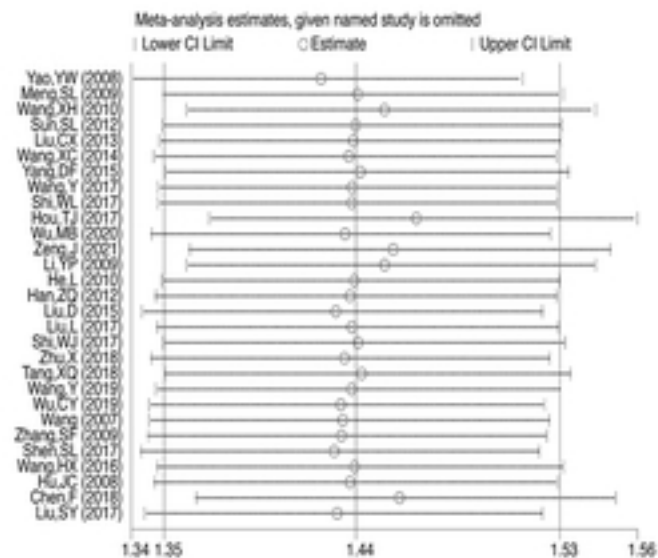




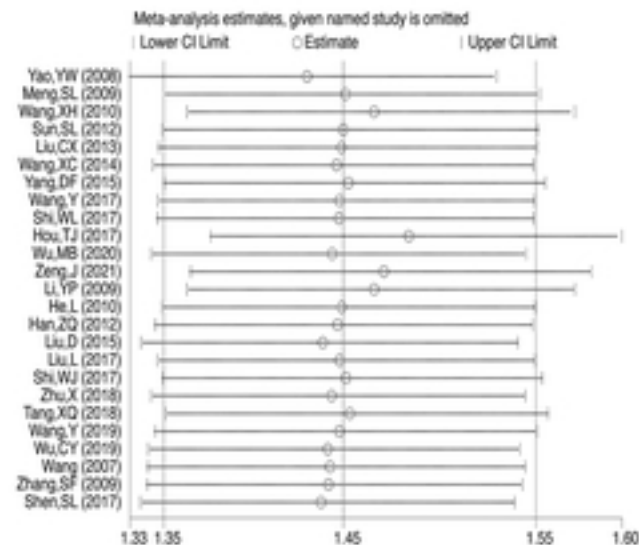




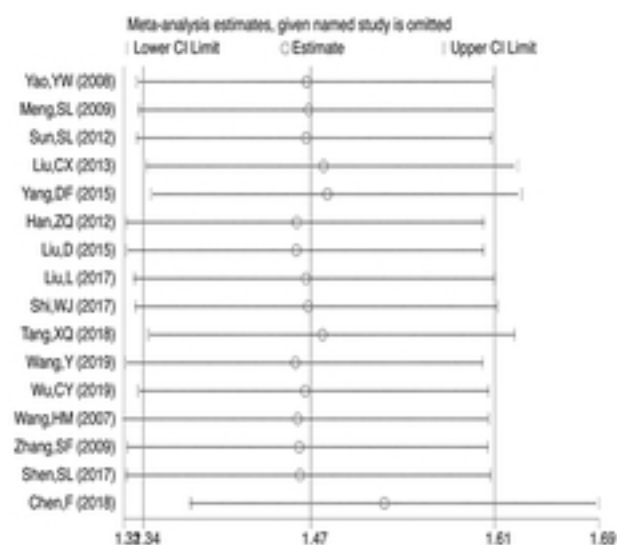
A



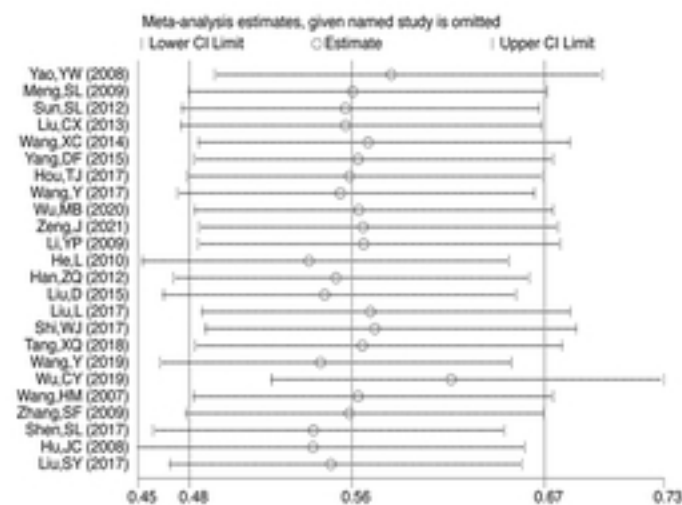
B



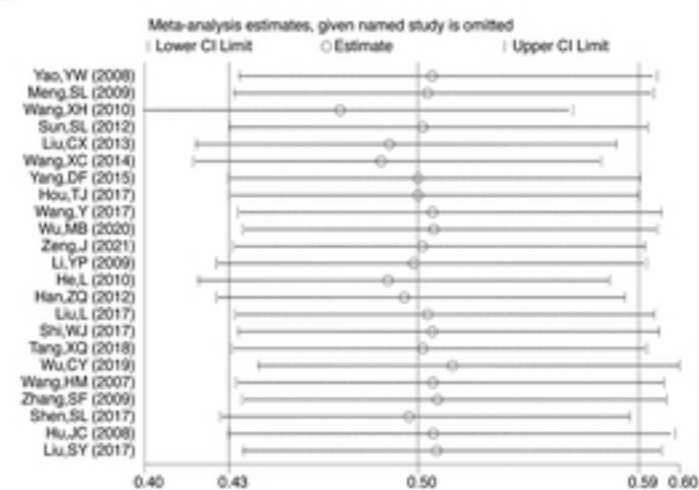
C



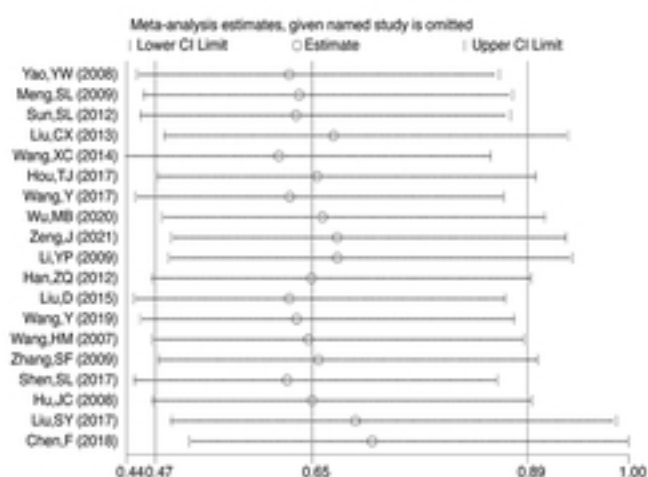
D



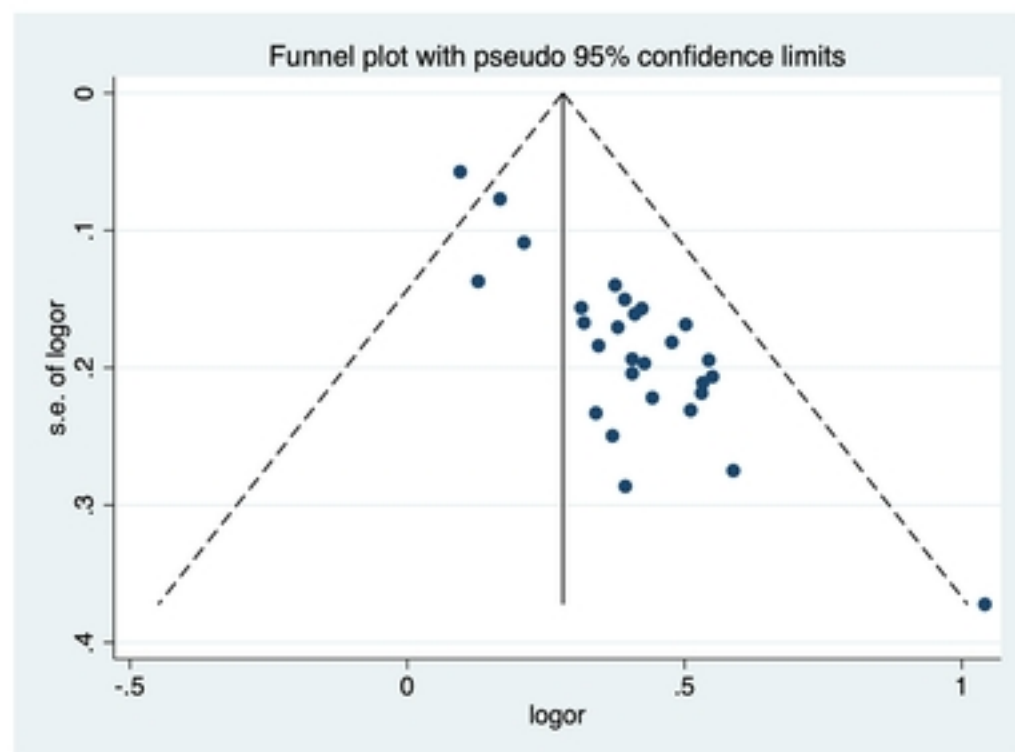
E



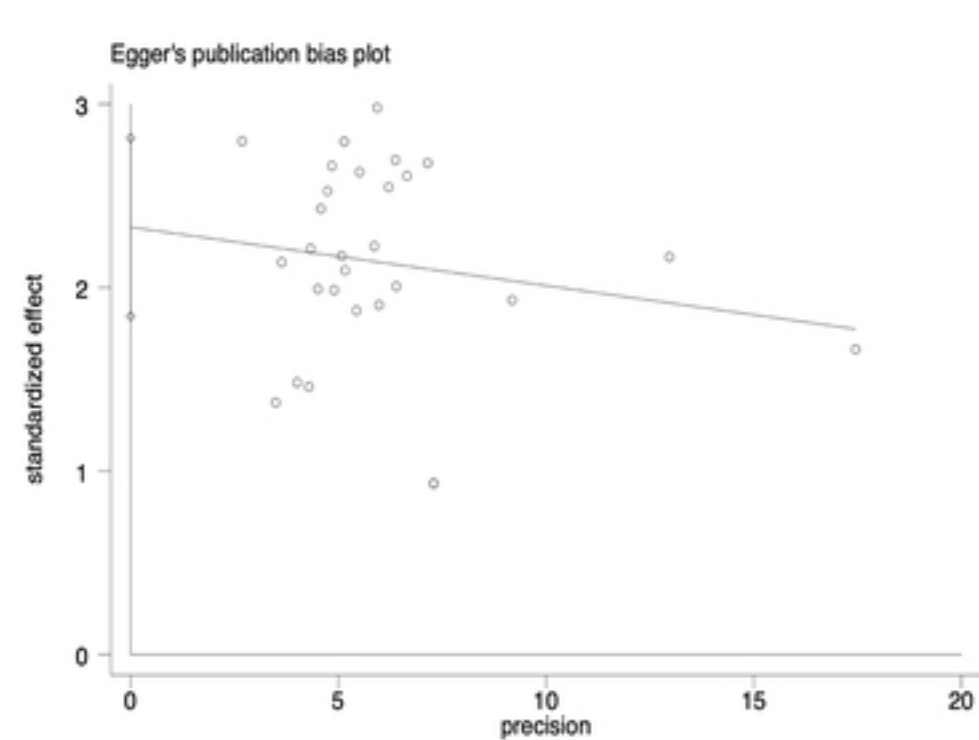
F



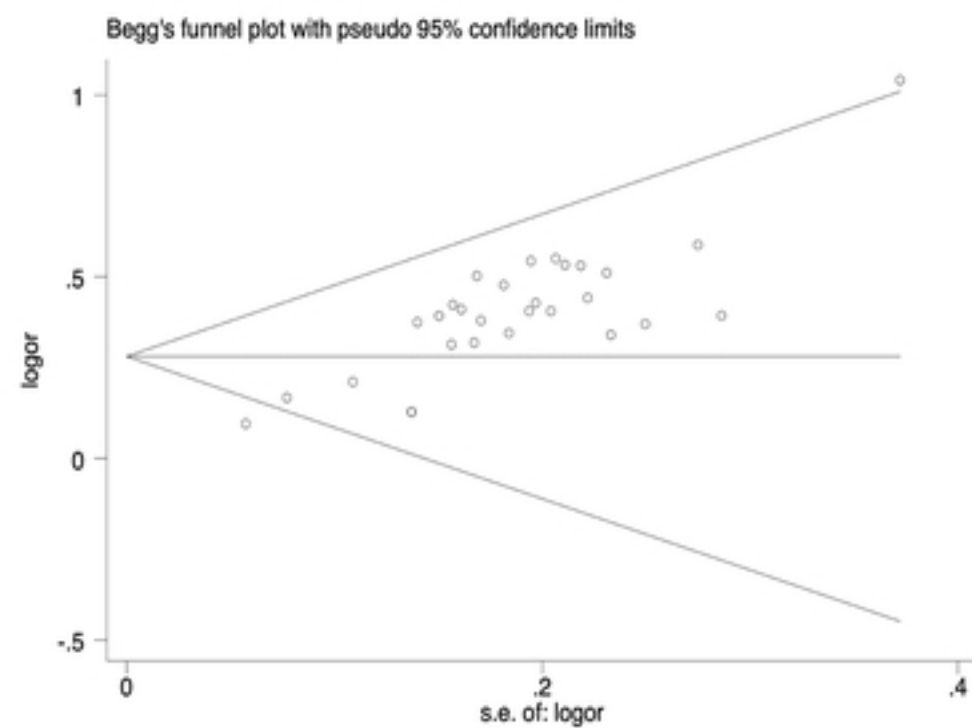
A



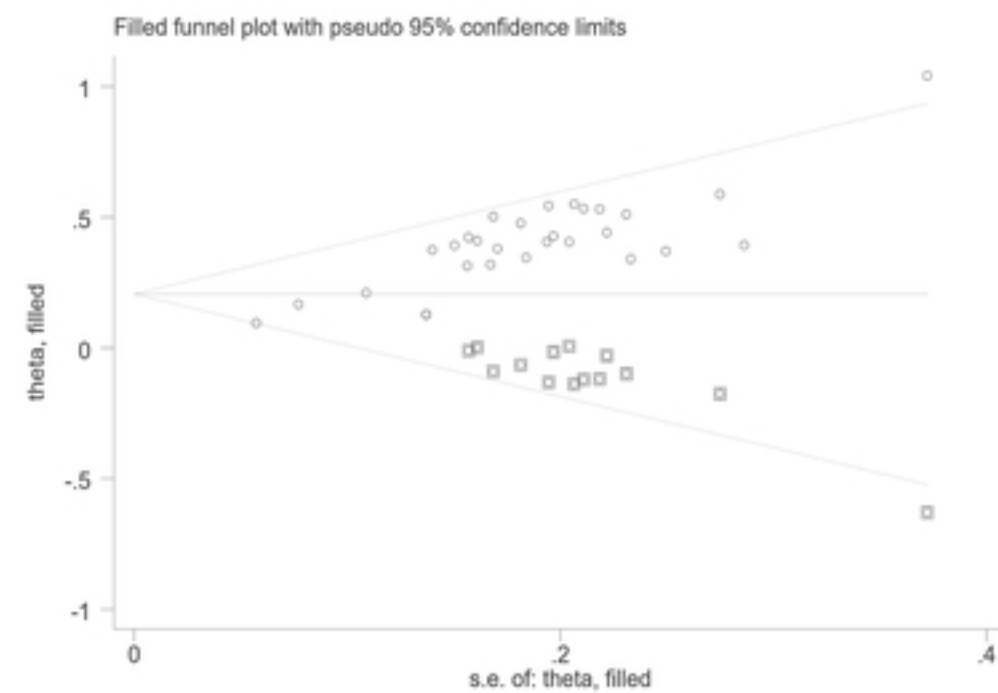
B



C



D



Identification of studies via databases and registers

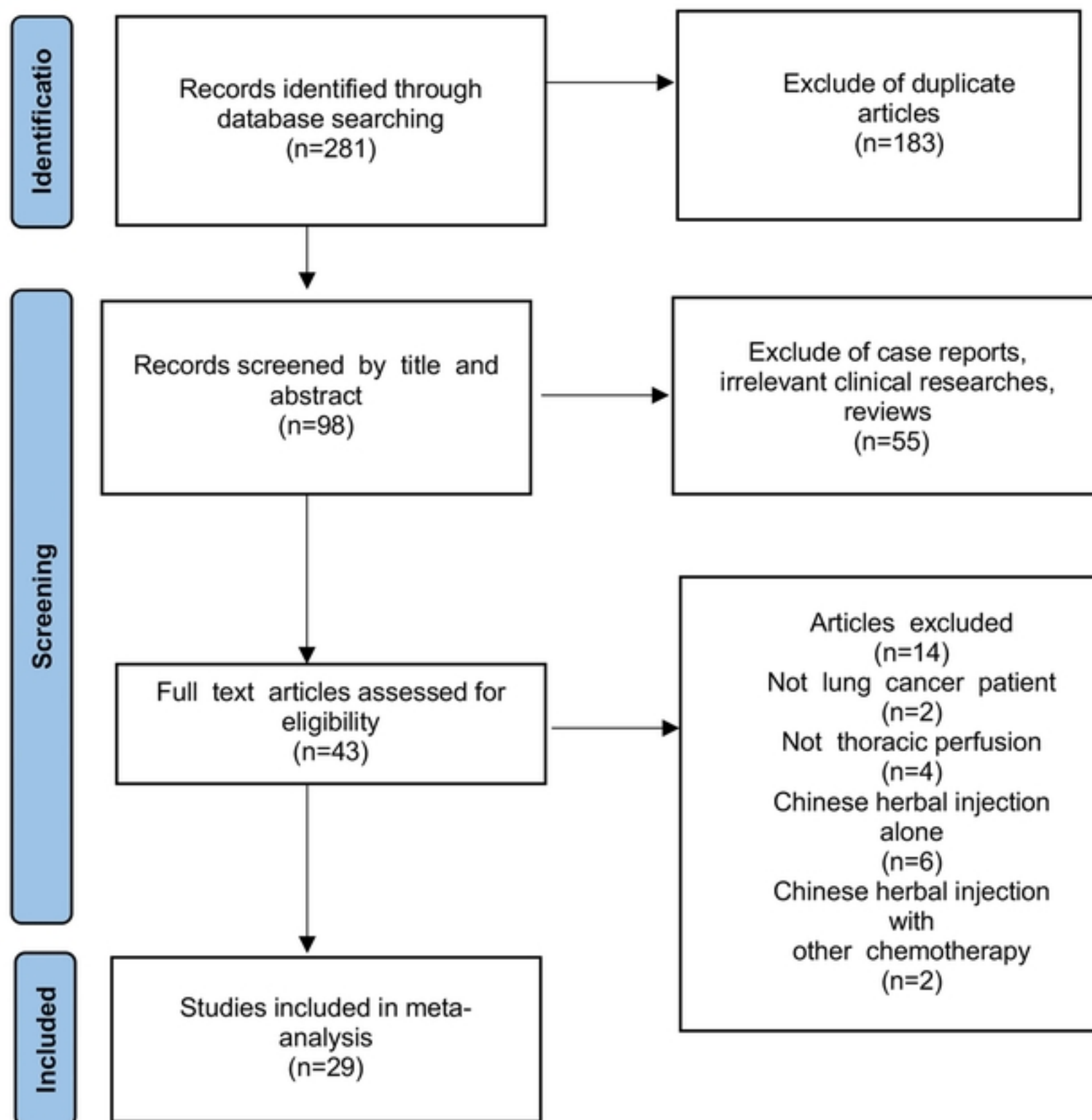


Figure.1