

1 **Research Article**

2

3 **An herbal drug combination identified by knowledge graph alleviates the clinical**
4 **symptoms of plasma cell mastitis patients: a nonrandomized controlled trial**

5

6 Caigang Liu^{1,*}, Hong Yu^{1,#}, Guanglei Chen^{1,#}, Qichao Yang², Nan Niu¹, Ling Han³,
7 Dongyu Zhao⁴, Manji Wang^{5,*}, Yuanyuan Liu⁶, Yongliang Yang^{2,*},

8

9 ¹*Cancer Stem Cell and Translation Medicine Lab, Innovative Cancer Drug Research*
10 *and Development Engineering Center of Liaoning Province, Department of Oncology,*
11 *Shengjing Hospital of China Medical University, Shenyang, 110004, China;*

12 ²*School of Bioengineering, Dalian University of Technology, Dalian, 116023, China;*

13 ³*National Engineering Research Center of Pharmaceuticals of Traditional Chinese*
14 *Medicine, China Resources Sanjiu Medical & Pharmaceutical Co., Ltd, Shenzhen,*
15 *China;*

16 ⁴*International Cancer Institute, Peking University Health Science Center, Peking*
17 *University, Beijing, 100191, China;*

18 ⁵*Shanghai BeautMed Corporation, Shanghai, 200030, China;*

19 ⁶*Department of Biology, University of Copenhagen, Denmark.*

20

21 **Word count of the manuscript text: 3,645**

22

23 [#]These authors contributed equally to the work.

24 ^{*}To whom correspondence may be addressed:

25 **Caigang Liu**, E-mail: angel-s205@163.com; **Address:** Department of Oncology,
26 Shengjing Hospital of China Medical University, Shenyang, 110004, China (**lead**
27 **contact**)

28 **Manji Wang**, E-mail: 147304368@qq.com

29 **Yongliang Yang**, E-mail: everbright99@foxmail.com

30

31

32 **Abstract**

33 ***Background***

34 Plasma cell mastitis (PCM) is a nonbacterial breast inflammation with severe and
35 intense clinical manifestation yet treatment methods for PCM are still rather limited.
36 Although the mechanism of PCM remains unclear, mounting evidences suggest that
37 the dysregulation of immune system is closely associated with the pathogenesis of
38 PCM. Drug combinations or combination therapy could exert improved efficacy and
39 reduced toxicity through hitting multiple discrete cellular targets.

40 ***Methods***

41 We have developed a knowledge graph architecture towards immunotherapy and
42 systematic immunity that consists of herbal drug-target interactions with a novel
43 scoring system to select drug combinations based on target-hitting rates and
44 phenotype relativeness. To this end, we employed this knowledge graph to identify an
45 herbal drug combination for PCM and we subsequently evaluated the efficacy of the
46 herbal drug combination in clinical trial

47 ***Results***

48 Our clinical data suggests that the herbal drug combination could significantly reduce
49 the serum level of various inflammatory cytokines, downregulate serum IgA and IgG
50 level, reduce the recurrence rate and reverse the clinical symptoms of PCM patients
51 with improvements of general health status.

52 ***Conclusions***

53 In summary, we reported that an herbal drug combination identified by knowledge
54 graph can alleviate the clinical symptoms of plasma cell mastitis patients. We
55 demonstrated that the herbal drug combination holds great promise as an effective
56 remedy for PCM, acting through the regulation of immunoinflammatory pathways
57 and improvement of systematic immune level. In particular, the herbal drug
58 combination could significantly reduce the recurrence rate of PCM, a major obstacle
59 for PCM treatment. Our data suggests that the herbal drug combination is expected to
60 feature prominently in future PCM treatment.

61 ***Funding***

62 C. Liu's lab was supported by grants from the Public Health Science and Technology
63 Project of Shenyang (Grant: 22-321-32-18); Y. Yang's laboratory was supported by
64 the National Natural Science Foundation of China (Grant: 81874301), the
65 Fundamental Research Funds for Central University (Grant: DUT22YG122) and the
66 Key Research project of 'be Recruited and be in Command' in Liaoning Province
67 (Personal Target Discovery for Metabolic Diseases).

68 ***Clinical trial number***

69 ClinicalTrials.gov: NCT05530226

70 **Key Words:** Plasma cell mastitis; knowledge graph; traditional herbal medicine; drug
71 combination; clinical trial

72 **Introduction**

73 Plasma cell mastitis (PCM) represents as a serious inflammatory condition of
74 breast that occurs in young and middle-aged females at non-pregnant and non-
75 lactating period¹. The main histopathological characteristics of PCM is the infiltration
76 of plasma cells and lymphocytes in breast tissue². Interestingly, PCM shares similarity
77 with breast cancer in the perspective of macroscopical or microscopical
78 characteristics³. On the other hand, mounting evidences suggest that the dysregulation
79 of immune system is closely associated with the pathogenesis of PCM. Recently, the
80 incidence rate of PCM is quickly rising yet the treatment methods for PCM are still
81 rather limited. In clinical practice, surgical resection and hormone therapy remains as
82 two major treatments for PCM. Unfortunately, neither surgical resection nor hormone
83 therapy could prevent recurrence of PCM. Moreover, the serious side effects for
84 hormone therapy are still problematic⁴. Therefore, the discovery of effective PCM
85 treatment or therapeutics with minimal side effects is clearly warranted.

86 Traditional Chinese Medicine (TCM) has a rather long history for the prevention
87 and treatment of complex diseases in eastern Asia⁵⁻⁷. Moreover, for decades, TCM
88 has been often used as alternative or complementary medicine in the west. Indeed,
89 Chinese herbal compounds has been successfully applied in the treatment of plasma
90 cell mastitis (PCM) in conjunction with western medicine⁸. In clinical practice, TCM
91 refers to herbal entity prescription or formulae (also called as ‘Fangji’) which may
92 exhibit coordinating or synergistic effects through the combination of multiple herb
93 drugs⁹. However, the design of formulae in TCM is solely based on the principle of

94 ‘syndrome differentiation’ according to the medicinal properties of herbal entities.

95 Moreover, the molecular mechanisms for the ‘formulae’ in TCM remains rather

96 elusive.

97 Knowledge graph has emerged as an advanced technology in the field of artificial

98 intelligence which is able to connect entities in a graph based on their existing

99 intricate relationships¹⁰. In particular, knowledge graph can enable the rational design

100 and identification of combination therapies for a specific disease or phenotypes¹¹.

101 Recently, we developed and constructed a knowledge graph for the discovery of

102 herbal drug combination towards immunotherapy and systematic immunity.

103 Subsequently, we identified a synergistic combination of herbal drugs for PCM via a

104 scoring system based on target hitting rates and phenotype relativeness. To verify our

105 concept of design, we conducted a clinical trial experiment for the drug combination

106 of herbal compounds mentioned above (ClinicalTrials.gov Registration:

107 NCT05530226). Strikingly, our clinical results demonstrated that the herbal drug

108 combination identified by knowledge graph can markedly suppress various

109 inflammatory cytokines in serum, restore clinical symptoms and reduce the recurrence

110 rates of PCM patients with improved global health status.

111 **Results and Discussion**

112 In previous study, we collected and compiled 240 targets for immunotherapy and

113 systematic immunity from literature data¹². Recently, we collected 345 entities of

114 herbal drugs documented in TCM books and herbal drugs announced by National

115 Administration of Traditional Chinese Medicine through advanced text-mining
116 techniques. The existing intricate relationships between the herbal drugs and
117 immunotherapy targets were also extracted and compiled via advanced text-mining
118 techniques and manual curation for the construction of knowledge graph. We defined
119 an ontology list consisting of 13 ontology terms describing the relations (edges)
120 between herbal drug entities and the immunotherapy targets based on manual curation
121 of literature data (**Supplemental Materials, Edge_ontology_terms**). Moreover, we
122 collected the attributes of the medicinal properties for each herbal compound from
123 Pharmacopoeia of China¹³. Totally, we compiled and integrated 64 attributes of the
124 medicinal properties for herbal drug entities into the knowledge graph (**Supplemental**
125 **Materials**, attributes of the medicinal properties). These medicinal properties are
126 useful throughout the design of herbal drug combination. Finally, we built the
127 knowledge graph via Neo4j and Py2Neo tools which consists of 895 nodes and 2197
128 edges (**Figure 1** and **Figure supplement 1**), which can be visited online
129 (<http://www.ikgg.org/>).

130 Subsequently, we employed a scoring system (or so-called recommendation
131 system) to assess and predict synergistic herbal drug combination from the knowledge
132 graph. Of note, the scoring function is able to identify those herbal drug combinations
133 that are most related with specific phenotypes as well as herbal drug combinations
134 that are able to hit most discrete cellular targets, yet still following the principle of
135 ‘syndrome differentiation’ as described in Pharmacopoeia of China (**Materials and**

136 **Methods**). To this end, we used this scoring function to select herbal drug
137 combinations consisting of eight herbal entities. We chose to identify drug
138 combinations with eight entities because ‘formulae’ consisting of eight drugs are
139 regarded as ‘essence combination’ in TCM community. In short, we employed a
140 combination generator that is able to randomly generate drug combinations with eight
141 herbal drug entities for ten rounds, each of which consists of 1,000 random drug
142 combinations. All the generated drug combinations from the ten rounds were further
143 ranked and evaluated. Noteworthy, the scoring results of the ten rounds presented as
144 normal distributions (**Figure 2**). The top twenty combinations from each round ranked
145 by the scoring function were further curated and inspected by experts in TCM.
146 Remarkably, we identified a specific drug combination which was ranked among top
147 twenty choices in all ten rounds of calculation. The combination consists of eight
148 herbal drug entities including ‘Fructus forsythiae’, ‘Herba violae’, ‘Uniflower
149 swisscentaury root’, ‘Danshen’, ‘Astragalus’, ‘Taraxacum’, ‘Liquorice’ and
150 ‘Honeysuckle’ (see **Figure 2**).

151 Next, we extracted the subgraph for the herbal drug combination mentioned
152 above and created a network diagram for the drug combination via Cytoscape tools¹⁴
153 (**Figure 3**). In total, the eight herbal drug entities in the combination regulate 46
154 cellular targets related to immunotherapy and systematic immunity such as HIF-1,
155 iNOS, IL-17, IL-6, IL-1 β , mTOR, NLRP3, PD-L1, STAT3, TGF- β , TLR2 and TLR4
156 etc. (**Figure 3**). Noteworthy, the medicinal properties of the eight drug entities could

157 be classified into three major categories of ‘Heat-clearing and detoxicating’, ‘Qi-
158 tonifying’ and ‘Blood-activating menstruation regulating’. Moreover, we conducted
159 pathway analysis for the herbal drug combination for plasma cell mastitis.
160 Interestingly, we revealed that the herbal drug combination may modulate a few
161 pathways related to systematic immunity including ‘Toll-like receptors cascades’,
162 ‘MAP kinase activation’, Adaptive immune system’, ‘Growth hormone receptor
163 signaling’, ‘Cytokine signaling in immune system’ and ‘Innate immune system’ via
164 reactome knowledgebase¹⁵ (**Figure 4 and Supplemental Materials**). We believe all
165 these may account for the therapeutic profiles of the herbal drug combination towards
166 PCM.

167 Subsequently, we want to evaluate the efficacy of herbal drug combination in
168 clinical trial for PCM patients (Clinicaltrials.gov number: NCT05530226). The ‘Jun-
169 Chen-Zuo-Shi’ principle was examined for the herbal drug combination (‘Formulae’)
170 by TCM experts and the dosage for each drug entity from the drug combination was
171 adjusted by TCM experts. The clinical trial is a unrandomized, open label single arm
172 study investigating the efficacy and safety of the herbal drug combination. To reveal
173 the therapeutic effects of TCM drug combination, we selected patients who were
174 treated with western medicine in the real world as comparison. Therefore, the two
175 groups of patients were divided into TCM treatment group (experimental group) and
176 western medicine treatment group (control group). All patients were diagnosed with
177 PCM by biopsy of breast tissue before recruited into the clinical trial. Patients in the

178 CG group (the control group) were orally treated with methylprednisolone whereas
179 the patients in the EG group (the experimental or treatment group) were orally treated
180 with herbal drug combination (**Materials and Methods**). Of note,
181 methylprednisolone is a standard corticosteroid for the treatment of inflammatory
182 conditions in clinical practice¹⁶ and therefore methylprednisolone is used in the CG
183 group.

184 Efficacy was assessed every 2 cycles and the results were summarized after six
185 months of treatment. The baseline characteristics are shown in **Table S1**. Strikingly,
186 our results demonstrated that a few inflammatory cytokines in the serum including IL-
187 2, IL-4, IL-6, IFN- γ , IL-1 β and TNF- α were significantly downregulated in PCM
188 patients after treatment of herbal drug combination as compared to the CG group
189 treated with methylprednisolone (**Figure 5**). We chose to measure these cytokines in
190 the experiments because they are often regarded as serum cytokine markers during the
191 pathogenic development of PCM¹⁷. In addition, we found that serum level of IgA and
192 IgG level were markedly suppressed in the treatment group of herbal drug
193 combination as compared to the control group (**Figure 6**). Of note, both IgA and IgG
194 have been found to be crucial diagnostic serum markers for PCM patients¹⁸. Moreover,
195 IgA is regarded as a major component of mucosal immunity which is closely related
196 to the pathogenesis of PCM^{19,20}. Therefore, our data suggests that the herbal drug
197 combination may enable the regulation of mucosal immunity and consequently
198 downregulate IgA and IgG serum level. Furthermore, we conducted the standard

199 Quality of Life questionnaire studies for PCM patients in the clinical experiment. Our
200 results implicated that symptom score, pain score and global health status of PCM
201 patients are significantly improved after treatment of the herbal drug combination as
202 compared to the control group (**Figure 7**). Noteworthy, our results demonstrated that
203 the recurrence rate of PCM patients in the treatment group were reduced to 3.75% as
204 compared to the recurrence rate of 12.5% in the control group (**Table 1**). Moreover,
205 the incidence rate of adverse events of PCM patients in the treatment group were
206 reduced to 6.25% as compared to the recurrence rate of 11.25% in the control group
207 (**Table 1**). In addition, we observed that the clinical symptoms of PCM patients in the
208 EG group such as swelling, abscess and fistula were reversed (**Figure 8, Table_S2 in**
209 **Supplemental File**) after treatment of herbal drug combinations. The clinical
210 symptom score in the EG group is ~4.68 as compared to the clinical symptom score of
211 ~5.98 in the CG group (**Table 2**). These results suggest that the herbal drug
212 combination may achieve better efficacy for the treatment of PCM as compared to
213 methylprednisolone.

214 With the increasing amount of biomedical data, the traditional drug discovery
215 campaign has been revolutionized with the aid of artificial intelligence techniques to
216 accelerate the process and reduce the cost²¹. In recent years, knowledge graph, a
217 technique that can provide structured relations among entities and unstructured
218 semantic relations associated with entities, has been introduced into the domain of
219 drug discovery¹¹. Although the pathogenesis of PCM remains largely unclear, there

220 have been numerous reports implicating that the overactivation of
221 immunoinflammatory pathways play an important role in the development of PCM²².
222 The major advantage of using Traditional Chinese Medicine is that herbal drug
223 combination can hit multiple discrete targets related to immunoinflammatory
224 pathways with improved efficacy and reduced toxicity. Herein, for the first time, we
225 showcase an example that identifies an herbal drug combination via knowledge graph
226 towards PCM. In contrast to using the conventional principle of ‘syndrome
227 differentiation’, our knowledge graph consisting of intricate relations between herbal
228 drug entities and immunotherapy targets coupled with scoring functions are able to
229 automatically identify novel herbal drug combinations which can hit most discrete
230 targets, making this strategy unique in the TCM community. Although we
231 acknowledge that the inclusion of chemical ingredients from the herbal drugs may
232 impact the outcome of our analysis and design, unfortunately, the inclusion of
233 chemical ingredients in the knowledge graph is rather technically difficult due to the
234 limited and incomplete datasets for the herbal drugs in the field of TCM. Nevertheless,
235 our strategy captures the prominent feature of design for drug combinations towards a
236 complex disease such as PCM. In the future, we plan to include multiple types of
237 omics data such as genomic, transcriptomic, proteomic, metagenomic or
238 metabolomics data into the knowledge graph to reveal novel targets and enable novel
239 drug discovery.

240 In the present study, our results revealed that the herbal drug combination
241 identified by knowledge graph could suppress a few key immunoinflammatory
242 cytokines, enhance the systematic immune levels and significantly reduce the
243 recurrence rates of PCM patients. Of note, recurrence has become one major obstacle
244 after surgical resection for PCM treatment in clinical practice. On the other hand,
245 hormone therapy may increase the risk of side effects for PCM patients. Therefore,
246 our approach of herbal drug combination may provide a new avenue for PCM
247 treatment with less recurrence rate and reduced incidence rate of adverse events.

248 **Conclusion**

249 In summary, we report the identification and clinical assessment of an herbal drug
250 combination towards Plasma cell mastitis (PCM). We demonstrated that the herbal
251 drug combination holds great promise as an effective remedy for PCM, acting through
252 the regulation of immunoinflammatory pathways and improvement of systematic
253 immune level. In particular, the herbal drug combination could significantly reduce
254 the recurrence rate of PCM, a major obstacle for PCM treatment. Our data suggests
255 that the herbal drug combination is expected to feature prominently in the future PCM
256 treatment. Moreover, these promising results underscore the potential of knowledge
257 graph to identify drug combinations or other novel therapeutics across multiple types
258 of human disorders.

259 **Acknowledgments**

260 Y. Yang's laboratory was supported by the National Natural Science Foundation of
261 China (Grant: 81874301), the Fundamental Research Funds for Central University
262 (Grant: DUT22YG122) and the Key Research project of 'be Recruited and be in
263 Command' in Liaoning Province (Personal Target Discovery for Metabolic Diseases);
264 C. Liu's lab was supported by grants from the National Natural Science Foundation of
265 China (No. 81572609), China Medical University Major Construction Project (No.
266 2017ZDZX05) and Liaoning Colleges Innovative Talent Support Program (Cancer
267 Stem Cell Origin and Biological Behavior).

268 **Conflict of interest statement**

269 Ling Han is an employee of China Resources Sanjiu Medical & Pharmaceutical;
270 Manji Wang is an employee of Shanghai BeautMed Corporation.

271 **Author Contributions**

272 Q.Y., and G.C. performed data mining and data curation and constructed the
273 knowledge graph; Q.Y., Y.L. and Y.Y. designed the scoring system for the
274 knowledge graph; Q.Y., and Y.Y. participated in the design and styling of the web
275 interface; D.Z. helped to collect and analyze the medicinal properties of the herbal
276 drug entities; L.H. and N.N. participated in the design of herbal drug combination
277 product; M.W. and G.C. conducted analysis of clinical data and clinical pictures of
278 the PCM patients; H.Y. and N.N. coordinated the clinical trial experiments and

279 registration; C. L. and Y.Y. provided funding for the project; Y.Y. and C.L. initiated,
280 coordinated the whole project; Y.Y. wrote the manuscript.

281 **Declaration of Ethics**

282 The protocol was approved by the Institutional Review Board (IRB) of the China
283 Medical University (approval number: 2021PS024T). This study was registered with
284 ClinicalTrials.gov: NCT05530226. All patients provided written informed consent.

285

286 **Materials and Methods**

287 *Construction of knowledge graph towards immunotherapy*

288 We employed data mining techniques to collect and compile 240 targets of
289 immunotherapy and systematic immunity from PubMed database. Next, we collected
290 and compiled 345 herbal drug entities officially released by the National Health
291 Commission of China and National Administration of Traditional Chinese Medicine.
292 The intricate relations between the herbal drug entities and the immunotherapy targets
293 were extracted from the PubMed database. These intricate relations were subjected to
294 further manual curation. We used thirteen ontology terms (see **Supplemental**
295 **Materials**) to describe the intricate relations (edges) in the knowledge graph.
296 Moreover, 64 attributes of the medicinal properties for the herbal drug entities were
297 collected and compiled from Pharmacopoeia of China. Finally, we built the

298 knowledge graph via Neo4j and Py2Neo tools which consists of 895 nodes and 2197
299 edges.

300 *Scoring system of the knowledge graph*

301 To this end, we developed a scoring system to assess and predict synergistic drug
302 combination of herbal drug entities (number of drugs, n) as below,

$$303 \quad \text{Score} = f(x) * g(x) * \sum_{i=1}^x \left\| \begin{pmatrix} h_1 \\ h_2 \\ h_3 \end{pmatrix} \right\| \quad [1]$$

304 Herein, $f(x)$ represents as the penalty function. $f(x)$ value will be set to 0 if the
305 medicinal properties of the drug combination fall into the contraindication rules in
306 Pharmacopoeia of China. Otherwise, $f(x)$ value will be set to 1.

$$307 \quad g(x) = 1 - p_i \quad [2]$$

308 $g(x)$ is the target diversity function as above and p_i is calculated as $p_i = w/t$; t
309 refers to the total number of targets within the knowledge graph, w refers to the total
310 number of overlapping targets that the drug combination may hit. Hence, the target
311 diversity function can be used as a measure to assess the diversity of the targets that
312 the drug combination may hit. In another word, if each drug entity in the combination
313 hits distinct targets, the $g(x)$ value will be set to 1. The last term of the scoring
314 system is used as a measure to assess the relativeness of each drug entity in the
315 combination and calculated as follows,

$$316 \quad \sum_{i=1}^x \left\| \begin{pmatrix} h_1 \\ h_2 \\ h_3 \end{pmatrix} \right\| \quad [3]$$

317 In brief, h_1 represents the target hitting rates of each drug entity in the combination
318 and was calculated as follows, $h_1 = n_i/t$; n_i is the number of hitting targets for each
319 drug entity in the combination; Again, t refers to the total number of targets
320 constituting the knowledge graph for the disease; Noteworthy, the concept of hitting
321 rates towards discrete targets has been used in the scoring function for the selection of
322 synergistic drug combinations²³. h_2 represents the phenotype relativeness of each
323 drug entity in the combination and $h_2 = c_2 * 1/x$, where x is the number of drug
324 entities in the combination and c_2 is the parameter; Namely, if the drug entity is
325 related to the phenotype of the disease (co-occurrence with the disease phenotype in
326 the literature), then c_2 value is set to 1 otherwise c_2 value is set to 0; h_3 represents the
327 literature relativeness or confidence of each drug entity in the combination and
328 calculated as follows,

$$329 \quad h_3 = c_3 * \log \sqrt{\sum_{i=1}^x l \times (j + k)} \quad [4]$$

330 in which l is the number of studies/publications that validated the association of drug
331 entity with the specific disease (herein in the knowledge graph refers to cancer
332 immunotherapy), j and k refer to if the relations of the drug entity with the disease
333 have been validated in cell lines or patient (or animal) tissues, respectively. Namely, if
334 the drug entity was validated in cancer cell lines or patient tissues, the j or k value will
335 be set to 1, respectively. Otherwise, the j or k value will be set to 0; c_3 is the parameter
336 and set to 1 here. Therefore, herein, a high score of h_3 implicates that the drug
337 combination is more relevant to cancer immunotherapy with high confidence of

338 literature relativeness. Collectively, our scoring system can be used to select those
339 drug combinations that are most relevant with disease phenotypes and those drug
340 combinations that are able to hit most discrete targets related to immunotherapy.

341 *Design of the clinical trial*

342 In brief, 160 female patients diagnosed as plasma cell mastitis (PCM) in Shengjing
343 Hospital Affiliated to China Medical University were recruited in the clinical trial
344 between January 2021 to February 2022. Patients were randomly 1:1 divided into
345 experimental group (EG) and control group (CG). Noteworthy, in order to
346 demonstrate the therapeutic effect of TCM drug combination, we selected patients
347 who were treated with western medicine in the real world during the same period.
348 Therefore, the two groups of patients were divided into TCM treatment group
349 (experimental group) and western medicine treatment group (control group). There
350 was no significant difference in baseline data such as age, body mass index, clinical
351 classification, marriage and child-bearing history between the two groups
352 (**Supplemental File, Table_S1**). Patients in the CG group were orally treated with
353 methylprednisolone tablets, 20mg/ day once a day. The patients in the EG group were
354 orally treated with 20g/bag of herbal drug combination twice a day, once in the
355 morning and once in the evening for 2 months. The herbal drug combination was
356 prepared as granules in the following formulae: Taraxacum 15g, Fructus forsythiae
357 15g, Honeysuckle 10g, Uniflower swisscentaury root 8g, Herba violae 20g, Danshen
358 10g, Astragalus 20g, Liquorice 8g. The herbal drug combination in the form of

359 granules was provided and prepared by Shengjing Hospital Affiliated to China
360 Medical University.

361 ***Clinical trial protocol***

362 The clinical trial for the herbal drug combination was registered at ClinicalTrials.gov
363 and entitled as “A Single Arm Study of Traditional Chinese Medicine for Plasma Cell
364 Mastitis” with registration code of NCT05530226. The detailed clinical trial protocol
365 has been provided a separate document in the Supplemental Files named as
366 ‘PCM_Clinical_Protocol’.

367 ***Measurement of serum inflammatory cytokines by ELSIA assay***

368 Venous blood of the CG and EG groups were collected in sterile non-anticoagulant
369 test tube before and after treatment. The immune transmission turbidimetry was used
370 according to the procedure of CRP kit and automatic biochemical analyzer was used
371 to detect the level of CRP. The levels of serum cytokines were measured by ELISA
372 (Elabscience) according to the manufacturer’s instructions.

373 ***Measurement of serum immunoglobulin level***

374 The venous blood of PCM patients in the two groups were collected in sterile non-
375 anticoagulant tube before and after treatment. The serum IgG and IgA were measured
376 by rate scattering turbidimetry using Array 360 System automatic specific protein
377 analyzer (Beckman Company, USA).

378 ***Assessment of clinical symptoms of PCM patients***

379 The clinical symptoms were evaluated by attending physician with board certification
380 in pathology. The patients were scored before and after treatment according to the
381 standard rating scale for PCM (see **Supplemental Materials**).

382 ***Statistics***

383 All data were evaluated as mean \pm SEM. Statistical analysis of the quantitative
384 multiple group comparisons was performed using the one-way analysis of variance
385 (ANOVA) followed by Tukey's test; whereas pairwise comparisons were performed
386 using the t test by GraphPad Prism 8 (Graph Pad Software, La Jolla, CA, USA).
387 Results were considered to be statistically significant with $p < 0.05$.

388 **Figures**

389

390

391

392

393

394

395

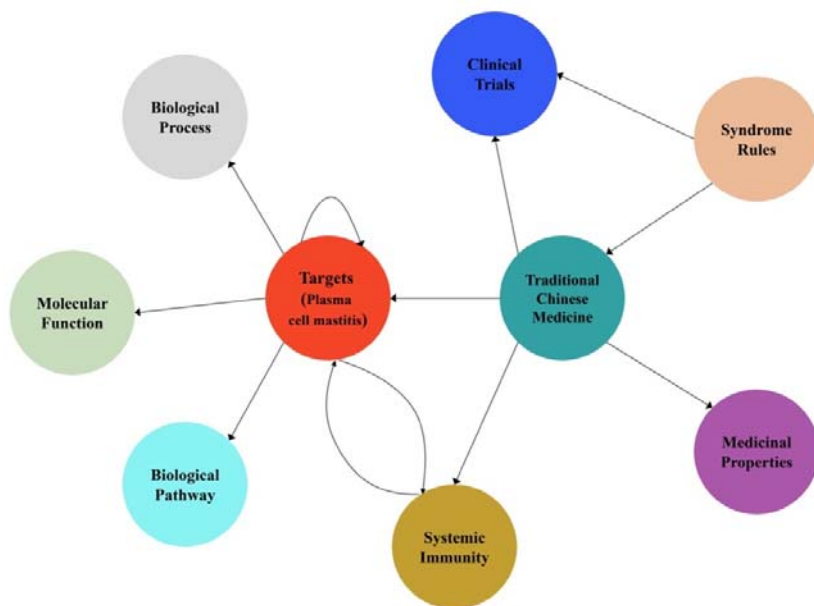
396

397

398

399 **Figure 1.** Schematic diagram of the knowledge graph for the drug discovery of
400 plasma cell mastitis in the present work.

401



402

403

404

405

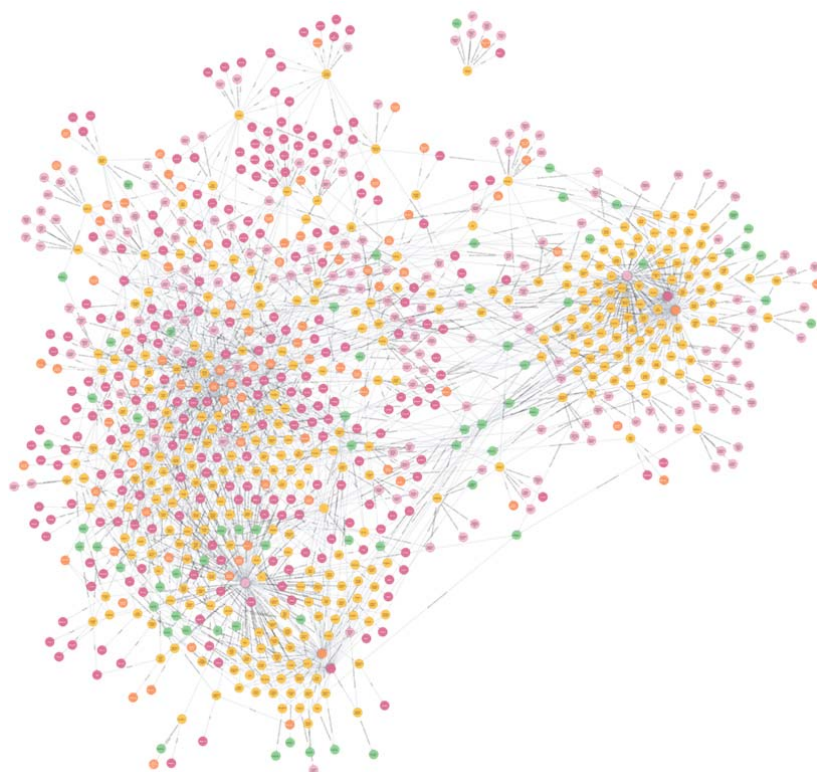
406

407

408

409

410



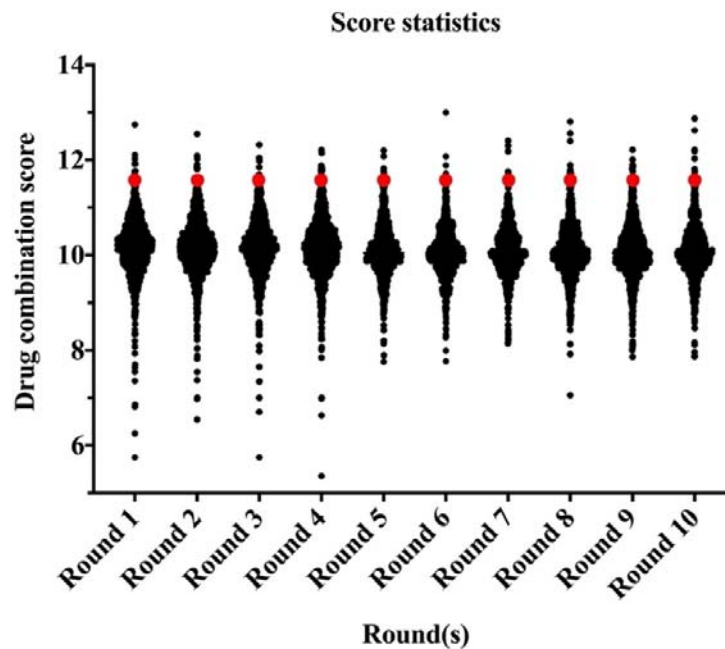
411

412 **Figure 1 - Figure supplement 1.** Snapshot of the medical knowledge graph towards

413 immunotherapy. The knowledge graph was constructed by Neo4j and Python tools

414 (<http://www.ikgg.org/kghti>).

415



416

417

418

419 **Figure 2.** The score statistics of ten rounds of random herbal drug combinations

420 (1,000 random combination from each round) for the treatment of plasma cell mastitis.

421 Noteworthy, the scoring results of the ten rounds presented as normal distributions.

422 The herbal drug combination identified for the clinical trial was among the top twenty

423 choices in all the ten rounds and marked in red dots.

424

425
426
427
428
429
430
431
432
433
434
435
436
437
438
439
440
441
442
443

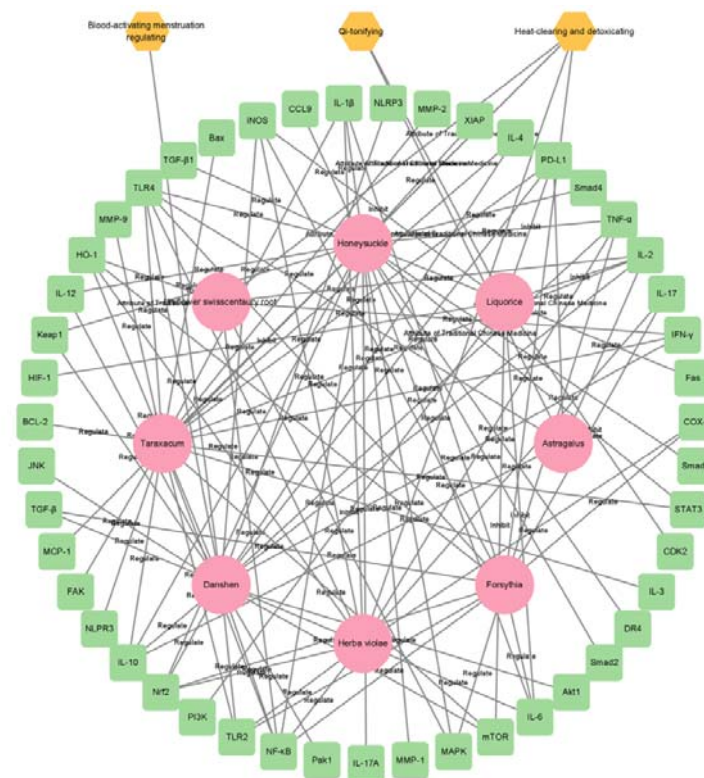


Figure 3. Network diagram of the herbal drug combination consisting of eight entities including ‘Honeysuckle’, ‘Taraxacum’, ‘Astragalus’, ‘Danshen’, ‘Forsythia’, ‘Herba violae’, ‘Liquorice’ and ‘Uniflower swisscentaury root’ displayed in red circles. In total, 46 cellular targets related to systemic immunity were hit by the drug combination such as NLRP3, IL-17, TLR4, STAT3, IL-6, iNOS and TLR2 et al which were displayed in green box model. Three major medicinal attributes (properties) were identified for these herbal drug entities including ‘Heat-clearing and detoxicating’, ‘Qi-tonifying’ and ‘Blood-activating menstruation regulation’.

444

445

446

447

448

449

450

451

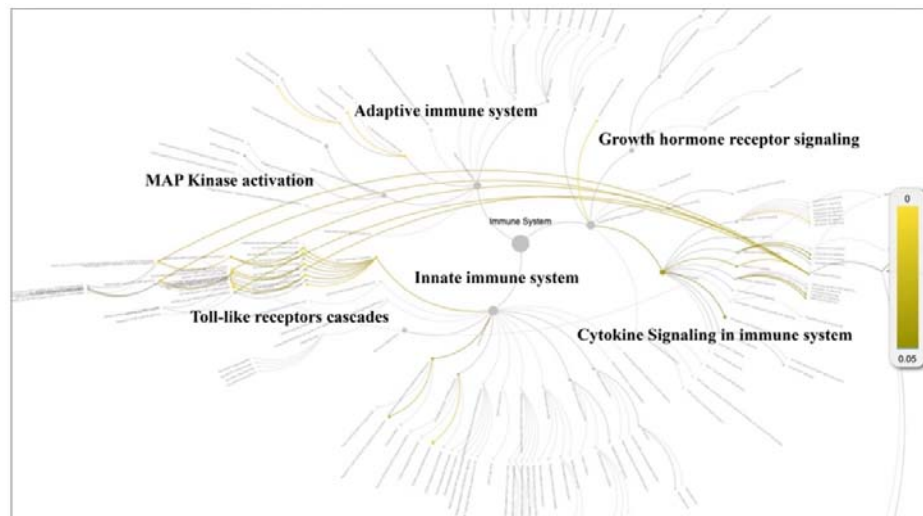
452

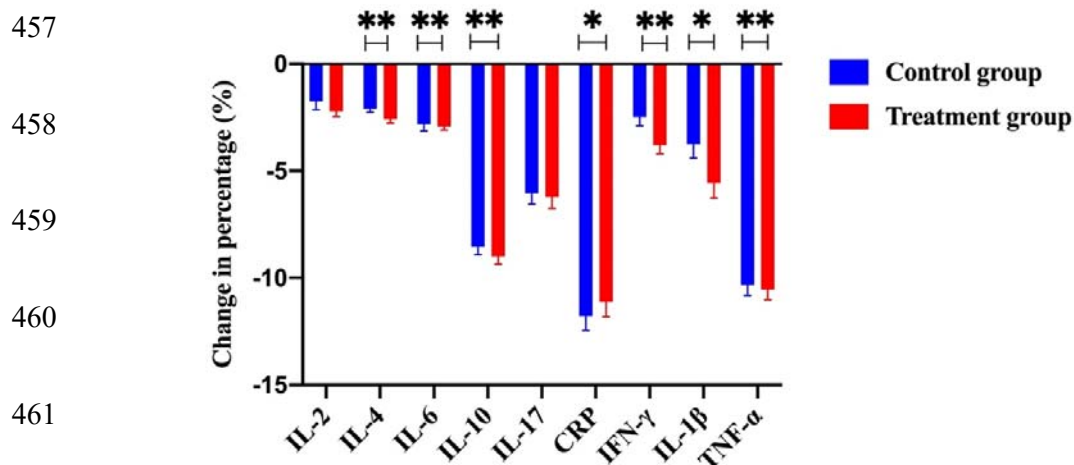
453 **Figure 4.** Pathway analysis for the potential cellular targets of the herbal drug

454 combination via reactome knowledgebase. The statistically significant pathways were

455 highlighted and displayed in yellow color ($P < 0.05$).

456





462

463 **Figure 5.** The change of percentage for numerous immunological cytokines including
464 IL-2, IL-4, IL-6, IL-10, IL-17, CRP, IFN- γ , IL-1 β and TNF- α from the control group
465 and the treatment group (with TCM treatment). Notably, a few key cytokines such as
466 IL-2, IL-4, IFN- γ , IL-1 β and TNF- α were significantly downregulated in the
467 treatment group as compared to the control group.

468

469 **Figure 5 – source data.** Patients' raw data of serum cytokines from the control group
470 (without TCM treatment) and the treatment group (with TCM treatment) in the
471 clinical trial (ClinicalTrials.gov: NCT05530226).

472

473

474

475

476

477

478

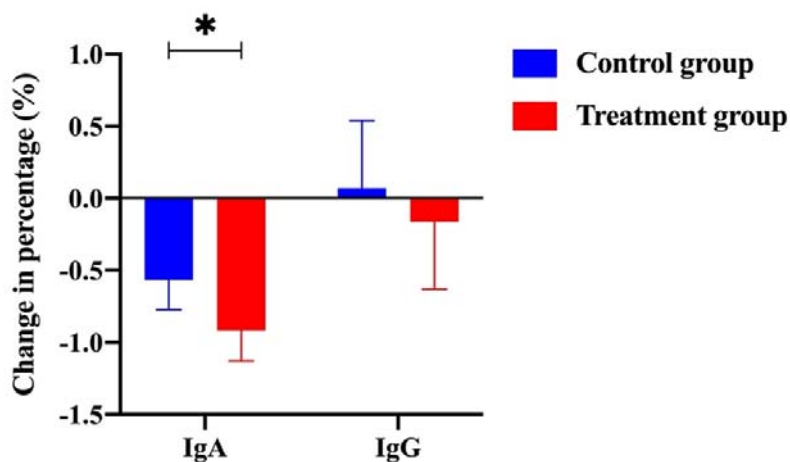
479

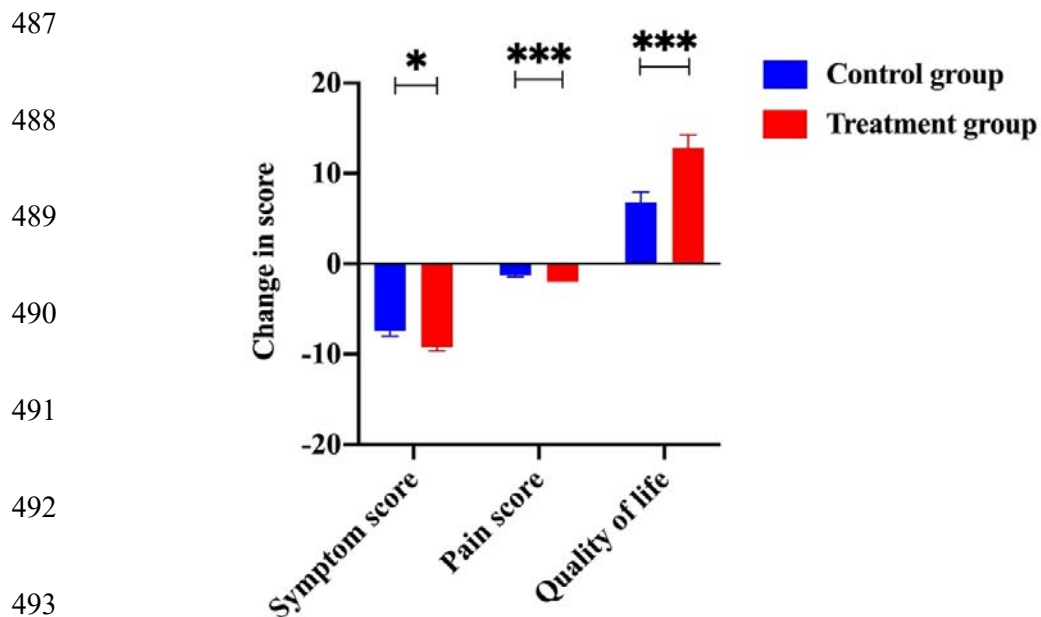
480 **Figure 6.** The change of percentage for IgA level and IgG level from the control
481 group and the treatment group (with TCM treatment).

482

483 **Figure 6 – source data.** Patients' raw data of serum IgA and IgG level from the
484 control group (without TCM treatment) and the treatment group (with TCM treatment)
485 in the clinical trial (ClinicalTrials.gov: NCT05530226).

486





487
488
489
490
491
492
493
494
495 **Figure 7.** The change of scores from items including symptom, pain and living
496 quality. The scores of symptoms, pain and living quality from the treatment group
497 were significantly improved as compared to the control group.

498
499 **Figure 7 – source data 1.** Patients’ raw data of symptom scores from the control
500 group (without TCM treatment) and the treatment group (with TCM treatment) in the
501 clinical trial (ClinicalTrials.gov: NCT05530226).

502 **Figure 7 – source data 2.** Patients’ raw data of pain scores from the control group
503 (without TCM treatment) and the treatment group (with TCM treatment) in the
504 clinical trial (ClinicalTrials.gov: NCT05530226).

505 **Figure 7 – source data 3.** Patients’ raw data of quality of life from the control group
506 (without TCM treatment) and the treatment group (with TCM treatment) in the
507 clinical trial (ClinicalTrials.gov: NCT05530226).

508

509

510

511

512

513

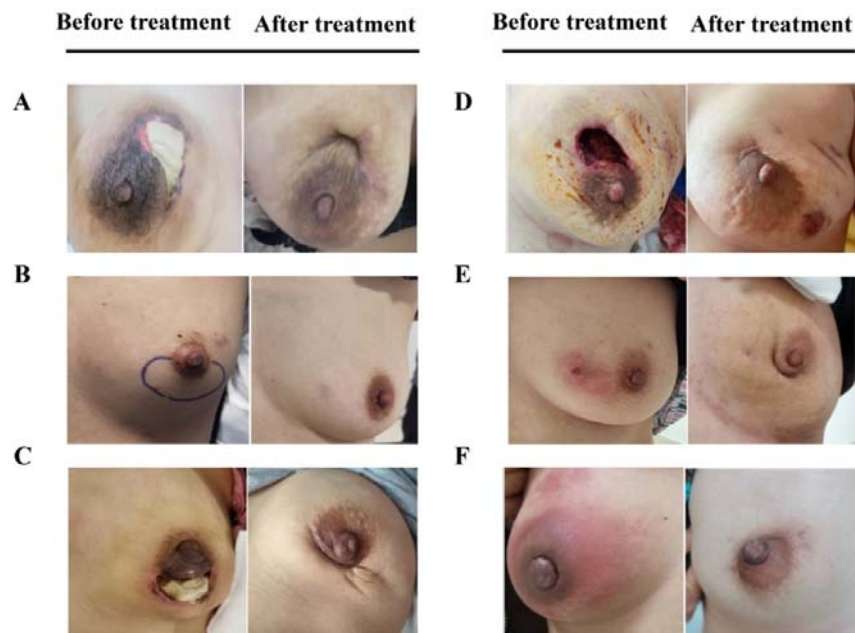
514

515

516

517

518 **Figure 8.** The comparison of whole breast for six representative PCM patients in the
519 EG group before treatment and after treatment (written informed consents have been
520 provided from all the patients).
521



522 **Table 1.** Comparison of operation rate, recurrence rate and incidence of adverse

523 reactions between the two groups (EG: experimental group; CG: control group).

524

Groups	N (Patients)	Operation	Recurrence	Incidence of adverse events
EG	80	25 (31.25%)	3 (3.75%)	5 (6.25%)
CG	80	47 (58.75%)	10 (12.5%)	9 (11.25%)
X²		12.22	4.103	1.252
p		<0.001	0.043	0.263

525

526 **Table 2.** Clinical symptom scores between the two groups in the clinical trial (EG:
527 experimental group; CG: control group; The clinical symptom rating scale for PCM
528 was displayed in Table_S2 in the Supplemental File).

529

530

Groups	N (Patients)	Baseline	Treated	t	p
EG	80	13.90±2.37	4.68±3.40	22.19	<0.001
CG	80	13.423±2.70	5.98±3.68	14.282	<0.001
t		1.189	2.323		
p		0.236	0.021		

531

532

533 **References**

534

- 535 1. Cutler, M. Plasma-cell mastitis; report of a case with bilateral involvement. *Br*
536 *Med J* **1**, 94-96 (1949).
- 537 2. Yu, J.J., *et al.* Mouse model of plasma cell mastitis. *J Transl Med* **10 Suppl 1**,
538 S11 (2012).
- 539 3. Cheng, L., *et al.* Mastitis, a Radiographic, Clinical, and Histopathologic
540 Review. *Breast J* **21**, 403-409 (2015).
- 541 4. Fleming, L., *et al.* The impact of medication side effects on adherence and
542 persistence to hormone therapy in breast cancer survivors: A quantitative
543 systematic review. *Breast* **64**, 63-84 (2022).
- 544 5. Tu, Y. The discovery of artemisinin (qinghaosu) and gifts from Chinese
545 medicine. *Nat Med* **17**, 1217-1220 (2011).
- 546 6. Tu, Y. Artemisinin-A Gift from Traditional Chinese Medicine to the World
547 (Nobel Lecture). *Angew Chem Int Ed Engl* **55**, 10210-10226 (2016).
- 548 7. Yin, X., *et al.* Effect of Electroacupuncture on Insomnia in Patients With
549 Depression: A Randomized Clinical Trial. *JAMA Netw Open* **5**, e2220563
550 (2022).
- 551 8. Zhang, J., Xu, J., Zhang, J. & Ren, Y. Chinese herbal compound combined
552 with western medicine therapy in the treatment of plasma cell mastitis: A
553 protocol for systematic review and meta-analysis. *Medicine (Baltimore)* **99**,
554 e22858 (2020).
- 555 9. Li, S., Zhang, B., Jiang, D., Wei, Y. & Zhang, N. Herb network construction
556 and co-module analysis for uncovering the combination rule of traditional
557 Chinese herbal formulae. *BMC Bioinformatics* **11 Suppl 11**, S6 (2010).
- 558 10. Ye, Q., *et al.* A unified drug-target interaction prediction framework based on
559 knowledge graph and recommendation system. *Nat Commun* **12**, 6775 (2021).
- 560 11. Zeng, X., Tu, X., Liu, Y., Fu, X. & Su, Y. Toward better drug discovery with
561 knowledge graph. *Curr Opin Struct Biol* **72**, 114-126 (2022).
- 562 12. Zhang, Y., *et al.* Checkpoint therapeutic target database (CKTTD): the first
563 comprehensive database for checkpoint targets and their modulators in cancer
564 immunotherapy. *J Immunother Cancer* **8**(2020).
- 565 13. Hao, Y.F. & Jiang, J.G. Origin and evolution of China Pharmacopoeia and its
566 implication for traditional medicines. *Mini Rev Med Chem* **15**, 595-603 (2015).
- 567 14. Reimand, J., *et al.* Pathway enrichment analysis and visualization of omics
568 data using g:Profiler, GSEA, Cytoscape and EnrichmentMap. *Nat Protoc* **14**,
569 482-517 (2019).
- 570 15. Jassal, B., *et al.* The reactome pathway knowledgebase. *Nucleic Acids Res* **48**,
571 D498-D503 (2020).
- 572 16. Lv, J., *et al.* Effect of Oral Methylprednisolone on Clinical Outcomes in
573 Patients With IgA Nephropathy: The TESTING Randomized Clinical Trial.
574 *JAMA* **318**, 432-442 (2017).

- 575 17. Liu, Y., *et al.* Activation of the IL-6/JAK2/STAT3 pathway induces plasma
576 cell mastitis in mice. *Cytokine* **110**, 150-158 (2018).
- 577 18. Xing, M., Zhang, S., Zha, X. & Zhang, J. Current Understanding and
578 Management of Plasma Cell Mastitis: Can We Benefit from What We Know?
579 *Breast Care (Basel)* **17**, 321-329 (2022).
- 580 19. Betts, C.B., *et al.* Mucosal Immunity in the Female Murine Mammary Gland.
581 *J Immunol* **201**, 734-746 (2018).
- 582 20. Bharathan, M. & Mullarky, I.K. Targeting mucosal immunity in the battle to
583 develop a mastitis vaccine. *J Mammary Gland Biol Neoplasia* **16**, 409-419
584 (2011).
- 585 21. Yang, Y., Adelstein, S.J. & Kassis, A.I. Target discovery from data mining
586 approaches. *Drug Discov Today* **14**, 147-154 (2009).
- 587 22. Liu, Y., *et al.* IL-6/STAT3 signaling pathway is activated in plasma cell
588 mastitis. *Int J Clin Exp Pathol* **8**, 12541-12548 (2015).
- 589 23. Jin, W., *et al.* Deep learning identifies synergistic drug combinations for
590 treating COVID-19. *Proc Natl Acad Sci U S A* **118**(2021).
591
592