

Big Five, depression and anxiety are predictive for AD

## **Big Five, self-reported depression, and anxiety are predictive for Alzheimer's disease**

Konrad F. Waschkies<sup>1,2</sup>, Joram Soch<sup>1,3</sup>, Margarita Darna<sup>1,4</sup>, Anni Richter<sup>4</sup>, Slawek Altenstein<sup>5,6</sup>, Aline Beyle<sup>7,31</sup>, Frederic Brosseron<sup>7</sup>, Friederike Buchholz<sup>5,9</sup>, Michaela Butryn<sup>10,32</sup>, Laura Dobisch<sup>10</sup>, Michael Ewers<sup>11,12</sup>, Klaus Fliessbach<sup>7,8</sup>, Tatjana Gabelin<sup>9</sup>, Wenzel Glanz<sup>10,32</sup>, Doreen Goerss<sup>13,14</sup>, Daria Gref<sup>9</sup>, Daniel Janowitz<sup>12</sup>, Ingo Kilimann<sup>13,14</sup>, Andrea Lohse<sup>6</sup>, Matthias H. Munk<sup>15,16</sup>, Boris-Stephan Rauchmann<sup>17,18,19</sup>, Ayda Rostamzadeh<sup>20</sup>, Nina Roy<sup>7</sup>, Eike Jakob Spruth<sup>5,6</sup>, Peter Dechent<sup>21</sup>, Michael T. Heneka<sup>7</sup>, Stefan Hetzer<sup>22</sup>, Alfredo Ramirez<sup>7,8, 23,24,25</sup>, Klaus Scheffler<sup>26</sup>, Katharina Buerger<sup>11,12</sup>, Christoph Laske<sup>15,16</sup>, Robert Perneczky<sup>11,17,18,27,28</sup>, Oliver Peters<sup>5, 9</sup>, Josef Priller<sup>5,6,29,30</sup>, Anja Schneider<sup>7,8</sup>, Annika Spottke<sup>7, 31</sup>, Stefan Teipel<sup>13,14</sup>, Emrah Düzel<sup>10,32</sup>, Frank Jessen<sup>7, 20,33</sup>, Jens Wiltfang<sup>1,2,34</sup>, Björn H. Schott<sup>#1,2,4</sup>, & Jasmin M. Kizilirmak<sup>#1,35</sup>

<sup>1</sup>) German Center for Neurodegenerative Diseases (DZNE), Göttingen, Germany

<sup>2</sup>) Department of Psychiatry and Psychotherapy, University Medical Center Göttingen, Göttingen, Germany

<sup>3</sup>) Bernstein Center for Computational Neuroscience, Berlin, Germany

<sup>4</sup>) Leibniz Institute for Neurobiology, Magdeburg, Germany

<sup>5</sup>) German Center for Neurodegenerative Diseases (DZNE), Berlin, Germany

<sup>6</sup>) Department of Psychiatry and Psychotherapy, Charité, Berlin, Germany

<sup>7</sup>) German Center for Neurodegenerative Diseases (DZNE), Bonn, Germany

<sup>8</sup>) University of Bonn Medical Center, Dept. of Neurodegenerative Disease and Geriatric Psychiatry/Psychiatry, Bonn, Germany

<sup>9</sup>) Charité – Universitätsmedizin Berlin, corporate member of Freie Universität Berlin and Humboldt-Universität zu Berlin-Institute of Psychiatry and Psychotherapy

<sup>10</sup>) German Center for Neurodegenerative Diseases (DZNE), Magdeburg, Germany

<sup>11</sup>) German Center for Neurodegenerative Diseases (DZNE), Munich, Germany

<sup>12</sup>) Institute for Stroke and Dementia Research (ISD), University Hospital, LMU Munich, Munich, Germany

<sup>13</sup>) German Center for Neurodegenerative Diseases (DZNE), Rostock, Germany

<sup>14</sup>) Department of Psychosomatic Medicine, Rostock University Medical Center, Rostock, Germany

<sup>15</sup>) German Center for Neurodegenerative Diseases (DZNE), Tübingen, Germany

<sup>16</sup>) Section for Dementia Research, Hertie Institute for Clinical Brain Research and Department of Psychiatry and Psychotherapy, University of Tübingen, Tübingen, Germany

<sup>17</sup>) Department of Psychiatry and Psychotherapy, University Hospital, LMU Munich, Munich, Germany

<sup>18</sup>) Sheffield Institute for Translational Neuroscience (SITraN), University of Sheffield, Sheffield, UK

<sup>19</sup>) Department of Neuroradiology, University Hospital LMU, Munich, Germany

<sup>20</sup>) Department of Psychiatry, University of Cologne, Medical Faculty, Cologne, Germany

<sup>21</sup>) ~~NOVER~~ This preprint reports new research that has not been certified by peer review and should not be used to guide clinical practice, Germany

## Big Five, depression and anxiety are predictive for AD

- <sup>22)</sup> Berlin Center for Advanced Neuroimaging, Charité – Universitätsmedizin Berlin, Berlin, Germany
- <sup>23)</sup> Excellence Cluster on Cellular Stress Responses in Aging-Associated Diseases (CECAD), University of Cologne, Cologne, Germany
- <sup>24)</sup> Division of Neurogenetics and Molecular Psychiatry, Department of Psychiatry and Psychotherapy, Faculty of Medicine and University Hospital Cologne, University of Cologne, Cologne, Germany
- <sup>25)</sup> Department of Psychiatry & Glenn Biggs Institute for Alzheimer’s and Neurodegenerative Diseases, San Antonio, TX, USA
- <sup>26)</sup> Department for Biomedical Magnetic Resonance, University of Tübingen, 72076 Tübingen, Germany
- <sup>27)</sup> Munich Cluster for Systems Neurology (SyNergy) Munich, Munich, Germany
- <sup>28)</sup> Ageing Epidemiology Research Unit (AGE), School of Public Health, Imperial College London, London, UK
- <sup>29)</sup> School of Medicine, Technical University of Munich; Department of Psychiatry and Psychotherapy, Munich, Germany
- <sup>30)</sup> University of Edinburgh and UK DRI, Edinburgh, United Kingdom
- <sup>31)</sup> Department of Neurology, University of Bonn, Bonn, Germany
- <sup>32)</sup> Institute of Cognitive Neurology and Dementia Research (IKND), Otto-von-Guericke University, Magdeburg, Germany
- <sup>33)</sup> Excellence Cluster on Cellular Stress Responses in Aging-Associated Diseases (CECAD), University of Cologne, Cologne, Germany
- <sup>34)</sup> Neurosciences and Signaling Group, Institute of Biomedicine (iBiMED), Department of Medical Sciences, University of Aveiro, Aveiro, Portugal
- <sup>35)</sup> Neurodidactics and NeuroLab, Institute for Psychology, University of Hildesheim, Hildesheim, Germany

# Correspondence shall be addressed to JMK ([jasmin.kizilirmak@dzne.de](mailto:jasmin.kizilirmak@dzne.de)) and BHS ([bjorn-hendrik.schott@dzne.de](mailto:bjorn-hendrik.schott@dzne.de)).

### Email addresses

[k.waschkies@stud.uni-goettingen.de](mailto:k.waschkies@stud.uni-goettingen.de), [Joram.Soch@dzne.de](mailto:Joram.Soch@dzne.de), [margarita.darna@lin-magdeburg.de](mailto:margarita.darna@lin-magdeburg.de), [Anni.Richter@lin-magdeburg.de](mailto:Anni.Richter@lin-magdeburg.de), [slawek.altenstein@charite.de](mailto:slawek.altenstein@charite.de), [Aline.Beyle@dzne.de](mailto:Aline.Beyle@dzne.de), [Frederic.Brosseron@dzne.de](mailto:Frederic.Brosseron@dzne.de), [andrea.lohse@charite.de](mailto:andrea.lohse@charite.de), [Michaela.Butryn@dzne.de](mailto:Michaela.Butryn@dzne.de), [laura.dobisch@dzne.de](mailto:laura.dobisch@dzne.de), [michael.ewers@med.uni-muenchen.de](mailto:michael.ewers@med.uni-muenchen.de), [Klaus.Fliessbach@ukbonn.de](mailto:Klaus.Fliessbach@ukbonn.de), [tatjana.gabelin@charite.de](mailto:tatjana.gabelin@charite.de), [Wenzel.Glanz@dzne.de](mailto:Wenzel.Glanz@dzne.de), [doreen.goerss@dzne.de](mailto:doreen.goerss@dzne.de), [daria.gref@charite.de](mailto:daria.gref@charite.de), [Daniel.Janowitz@med.uni-muenchen.de](mailto:Daniel.Janowitz@med.uni-muenchen.de), [Ingo.Kilimann@dzne.de](mailto:Ingo.Kilimann@dzne.de), [friederike.buchholz@charite.de](mailto:friederike.buchholz@charite.de), [Matthias.Munk@med.uni-tuebingen.de](mailto:Matthias.Munk@med.uni-tuebingen.de), [boris.rauchmann@med.uni-muenchen.de](mailto:boris.rauchmann@med.uni-muenchen.de), [ayda.rostamzadeh@uk-koeln.de](mailto:ayda.rostamzadeh@uk-koeln.de), [nina.roy@dzne.de](mailto:nina.roy@dzne.de), [eike.spruth@charite.de](mailto:eike.spruth@charite.de), [pdechen@gwdg.de](mailto:pdechen@gwdg.de), [Michael.Heneka@dzne.de](mailto:Michael.Heneka@dzne.de), [stefan.hetzer@charite.de](mailto:stefan.hetzer@charite.de), [alfredo.ramirez-zuniga@uk-koeln.de](mailto:alfredo.ramirez-zuniga@uk-koeln.de), [2](mailto:klaus.scheffler@med.uni-</a></p></div><div data-bbox=)

## Big Five, depression and anxiety are predictive for AD

tuebingen.de, katharina.buerger@med.uni-muenchen.de, Christoph.Laske@med.uni-tuebingen.de, Robert.Perneczky@med.uni-muenchen.de, oliver.peters@charite.de, josef.priller@charite.de, anja.schneider@dzne.de, annika.spottke@dzne.de, stefan.teipel@med.uni-rostock.de, emrah.duezel@dzne.de, frank.jessen@uk-koeln.de, jens.wiltfang@med.uni-goettingen.de, [Bjoern-Hendrik.Schott@dzne.de](mailto:Bjoern-Hendrik.Schott@dzne.de), [Jasmin.Kizilirmak@dzne.de](mailto:Jasmin.Kizilirmak@dzne.de)

### **Data availability statement**

All scripts (<https://github.com/jmkizilirmak/DELCODE162>) and the machine learning toolbox for Matlab (<https://github.com/JoramSoch/ML4ML>) are provided online. Data, study protocol, and biomaterials can be shared with cooperation partners based on individual data and biomaterial transfer agreements with the DZNE.

### **Funding statement**

The study was funded by the German Center for Neurodegenerative Diseases (Deutsches Zentrum für Neurodegenerative Erkrankungen [DZNE]), reference number BN012.

### **Conflict of interest disclosure**

F. Jessen received fees for consultations and presentations between 2019 and 2022 from AC Immune, Biogen, Danone/Nutricia, Eisai, GE Healthcare, Grifols, Janssen, Lilly, MSD, Novo Nordisk, and Roche. E. Düzel is cofounder of neotiv GmbH. The remaining authors report no disclosures relevant to the manuscript.

### **Ethics approval statement**

The study protocol was approved by Institutional Review Boards of all participating study centers of the DZNE. The process was led and coordinated by the ethical committee of the medical faculty of the University of Bonn (registration number 117/13).

### **Patient consent statement**

All participants provided written informed consent.

### **Permission to reproduce material from other sources**

Not applicable.

### **Clinical trial registration**

The DELCODE study was registered as a clinical trial under study acronym "DELCODE", ID DRKS00007966 at the German Clinical Trials Register.

## Big Five, depression and anxiety are predictive for AD

### **Abstract (max. 250 words)**

**Objectives:** The main goal of machine learning approaches to classify people into healthy, increased Alzheimer’s disease (AD) risk, and AD is the identification of valuable predictors for valid classification, prediction of conversion, and automatization of the process. While biomarkers from cerebrospinal fluid (CSF) are the best-established predictors for AD, other less invasive, easy-to-assess candidate predictors have been identified. Here, we evaluated the predictive value of such less invasive, predictors separately and in different combinations for classification of healthy controls (HC), subjective cognitive decline (SCD), mild cognitive impairment (MCI), and mild AD.

**Methods:** We evaluated the predictive value of personality scores, geriatric anxiety and depression scores, a resting-state functional magnetic resonance imaging (fMRI) marker (mPerAF), apolipoprotein E (ApoE), and CSF markers (tTau, pTau181, A $\beta$ 42/40 ratio) separately and in different combinations in multi-class support vector machine classification. Participants (189 HC, 338 SCD, 132 MCI, 74 mild AD) were recruited from the multi-center DZNE-Longitudinal Cognitive Impairment and Dementia Study (DELCODE).

**Results:** HC were best predicted by a feature set comprised of personality, anxiety, and depression scores, while participants with AD were best predicted by a feature set containing CSF markers. Both feature sets had equally high overall decoding accuracy. However, all assessed feature sets performed relatively poorly in the classification of SCD and MCI.

**Conclusion:** Our results highlight that SCD and MCI are heterogeneous groups, pointing out the importance of optimizing their diagnosis criteria. Moreover, CSF biomarkers, personality, depression, and anxiety indicate complementary value for class prediction, which should be followed up on in future studies.

**Keywords:** Alzheimer’s disease, subjective cognitive decline, mild cognitive impairment, biomarker, cerebrospinal fluid, personality, fMRI, resting-state, support vector machine, machine learning

## Big Five, depression and anxiety are predictive for AD

### Key Points

- Using multi-class support vector machine , we compared the predictive value of well-established versus non-invasive, easy-to-assess candidate variables for classification of participants with healthy cognition, subjective cognitive decline, mild cognitive impairment, and mild Alzheimer’s disease.
- Personality traits, geriatric anxiety and depression scores, resting-state mPerAF, ApoE genotype, and CSF markers were comparatively evaluated both separately and in different combinations.
- Predictive accuracy was similarly high for a combination of personality, anxiety and depression scores as for CSF markers.
- Both established as well as candidate variables performed poorly in classifying SCD and MCI, highlighting heterogenous causes of those cognitive states.
- CSF biomarkers and extended personality measures show complementary value for class prediction, which should be followed up on in future studies.

## Big Five, depression and anxiety are predictive for AD

### Outline

1	Introduction.....	7
2	Materials and Methods.....	10
2.1	Participants .....	10
2.2	MRI data acquisition .....	12
2.3	fMRI data preprocessing and analysis.....	12
2.4	Predictor variables and evaluated predictor sets for classification.....	13
2.5	Handling of missing values and unbalanced class sizes.....	14
2.6	Prediction of outcome from predictor variables and performance assessment .....	15
3	Results.....	16
3.1	Base model: Low predictive value of age, gender, and site .....	16
3.2	mPerAF: Low but above-chance performance of resting-state amplitude .....	17
3.3	Personality: Highest prediction accuracy combined with depression and anxiety scores 17	
3.4	ApoE: Third best predictive ability .....	17
3.5	Relatively poor performance of combined predictors without CSF markers .....	17
3.6	CSF biomarkers predict AD best, but perform poorly for HC .....	17
3.7	Comparison of feature sets and summary.....	17
3.8	Comparison of feature sets and summary.....	20
4	Discussion.....	21
4.1	Inferiority of the combined predictor and poor prediction accuracy of resting-state mPerAF .....	21
4.2	Personality, anxiety, and depression scores yield relatively high prediction accuracy 22	
4.3	Poor classification accuracy for SCD and MCI with any feature set .....	22
4.4	Limitations.....	23
4.5	Conclusions .....	23
5	List of Abbreviations .....	24
6	Acknowledgments.....	24
7	References.....	25

## Big Five, depression and anxiety are predictive for AD

### 1 Introduction

Alzheimer's disease (AD) is characterized by the formation of extracellular plaques of amyloid beta ( $A\beta$ ) and intracellular neurofibrillary tangles of hyperphosphorylated tau proteins, ultimately resulting in progressive neurodegeneration and cognitive decline (Li et al. 2015; Hansson et al. 2018; Leuzy et al. 2021). Subjective Cognitive Decline (SCD) refers to a self-perceived, but not clinically relevant decline in cognitive performance as assessed by neuropsychological testing, whereas the diagnosis of Mild Cognitive Impairment (MCI) requires a measurable deviation from normal cognitive performance (Jessen et al. 2014). Both SCD and MCI can be caused by various conditions, including AD. Early intervention in AD – preferably before the begin of neurodegeneration – is considered a crucial prerequisite for effective treatment (Blennow et al. 2010; Sperling et al. 2011; Binnewijzend et al. 2012; Buchhave et al. 2012; Jessen et al. 2014; Badhwar et al. 2017; Jessen et al. 2018).

Established markers for diagnosing AD and associated risk stages are altered levels of amyloid beta ( $A\beta_{1-42}$ ), total tau (tTau) and phosphorylated tau (pTau181) in cerebrospinal fluid (CSF; Blennow et al. 2010; Olsson et al. 2016; Badhwar et al. 2017). However, obtaining CSF probes requires an invasive lumbar puncture and is therefore typically only performed in cases of clinically suspected dementia or substantially elevated risk. To allow for a broader, potentially population-wide screening for AD and its risk states SCD and MCI, less invasive measures are required. Here, we assessed multiple candidates and compared their predictive values: resting-state functional activity, personality traits, depression, anxiety, and apolipoprotein E (ApoE) genotype.

Changes in personality traits (based on the Big Five model; McCrae und Costa 1987) can be observed during both the development of dementia (Duchek et al. 2007; Yoneda et al. 2016; Terracciano et al. 2017) and in pre-clinical AD (Mendez Rubio et al. 2013; Caselli et al. 2018). Compared to healthy controls (HC), AD patients were observed to score higher on neuroticism in both self-reports and informant ratings, while they scored lower in agreeableness, extraversion, and especially conscientiousness and openness (Duchek et al. 2007). Higher levels of neuroticism have also been observed in stages preceding AD, i.e. during the transition from normal cognition to MCI, while extraversion, openness, and conscientiousness decreased, with rather sparse evidence indicating lower agreeableness as well (Caselli et al. 2018). Depression and anxiety, two core facets of neuroticism (Soto & John 2009; Rammstedt & Danner 2017), have also been linked to MCI and AD. Prevalence of depression is reportedly increased in individuals with MCI (Orgeta et al. 2015) and AD (Zhao et al. 2015). With higher

## Big Five, depression and anxiety are predictive for AD

levels of anxiety, an increased relative risk of 1.45 for developing AD was found in a meta-analysis (Santabárbara et al. 2019).

The default mode network (DMN; Raichle et al. 2001) is typically engaged in self-generated or self-related (e.g., autobiographical) thought, social cognition, episodic and semantic memory retrieval (Buckner et al. 2008; Soch et al. 2016; Smallwood et al. 2021) and can be measured using resting-state fMRI (Andrews-Hanna et al. 2014). Changes in resting-state fMRI have been observed in both SCD (Sun et al. 2016) and MCI (Lau et al. 2016). Patterns of A $\beta$  plaques and disturbances in functional connectivity of the DMN show considerable overlap, and DMN functional changes have been observed in individuals with AD as well as those at increased risk (Lau et al. 2016; Mohan et al. 2016). Since DMN functional alterations in individuals with MCI and AD (Hafkemeijer et al. 2012) have repeatedly been described for a bandwidth of measures, such as global and regional connectivity, task-related deactivation, or amplitude of low frequency fluctuation, they may also be of diagnostic value in identifying AD and its risk states (Blennow et al. 2010; Mevel et al. 2011; Cha et al. 2013; Badhwar et al. 2017).

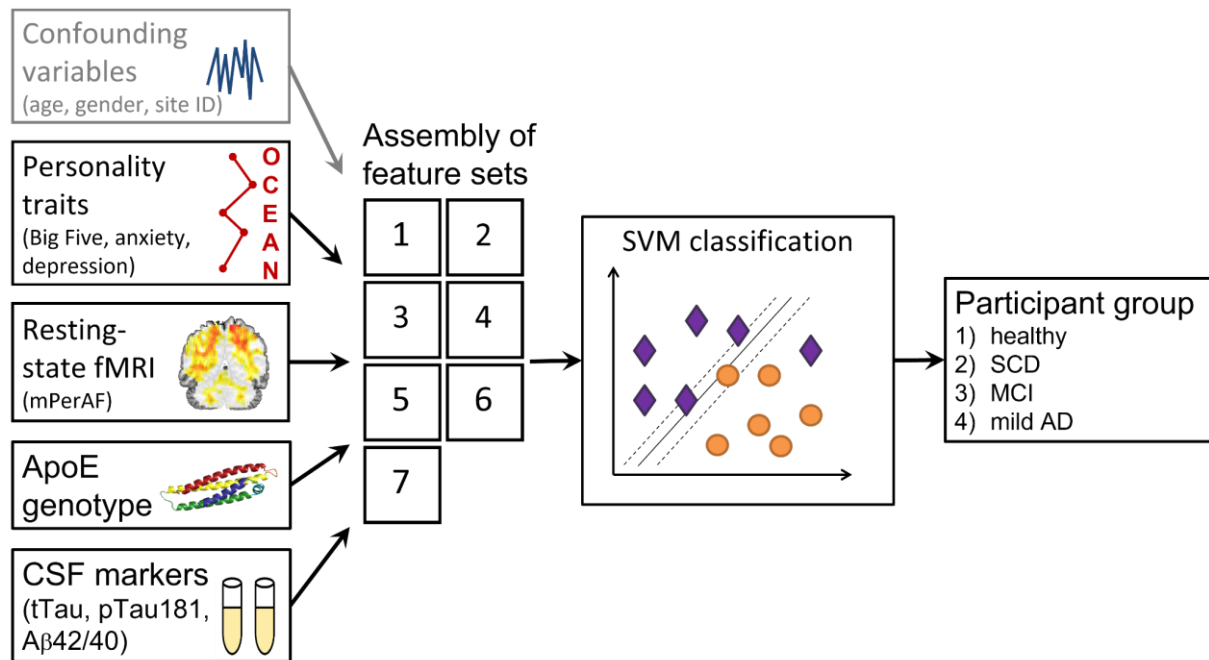
The  $\epsilon$ 4 allele in apolipoprotein E (ApoE) is a well-documented genetic risk factor of AD (Blennow et al. 2010; Sperling et al. 2011; Dubois et al. 2014; Jansen et al. 2015; Hansson et al. 2018; Jessen et al. 2018; Leuzy et al. 2021). A 2011 meta-analysis found increased risk in ApoE  $\epsilon$ 4-carriers for progression from MCI to AD, with a reported odds ratio of 2.29 (Elias-Sonnenschein et al. 2011).

In previous research, aforementioned predictors have mostly been tested individually in differentiating cognitively healthy individuals from individuals at risk and/or individuals with AD. Here, we aimed to assess their predictive value individually *and* in combinations (Figure 1). Importantly, instead of performing only binary classifications (e.g. HC vs. MCI or MCI vs. AD) (Khazaei et al. 2015; Schouten et al. 2016; Bi et al. 2018; Duchek et al. 2020), we assessed prediction accuracies in a multi-class classification approach (Ramzan et al. 2019) including all four potential diagnostic groups at once—akin to a fully automated diagnosis.

We hypothesized that a feature set of resting-state DMN activity, personality, depression, anxiety scores, and ApoE would outperform or be equal to CSF biomarkers (tTau, pTau181, and A $\beta$ 42/40 ratio). Additionally, we hypothesized that personality alone would yield class accuracies above chance level. Lastly, we hypothesized that combining personality with depression and anxiety scores would yield higher prediction accuracy than personality alone.



## Big Five, depression and anxiety are predictive for AD



**Figure 1. Study design.** Predictor variables were assembled into feature sets which were used in SVM classification to predict participant groups. The feature set "confounding variables" was included in all other feature sets and also served as a base model.

## Big Five, depression and anxiety are predictive for AD

## 2 Materials and Methods

### 2.1 Participants

Participants were recruited as part of DELCODE (Jessen et al. 2018). For our study, we used baseline data sets, which comprised a total of 843 participants and yielded 733 useable data sets after exclusion based on missing or low-quality data.

Based on diagnosis at the time of enrolment, participants were split into four groups: HC, SCD, MCI, and AD (Table 1). It should be noted that only participants with mild, early stages of AD were included. Participants were assigned to the SCD group when they reported a subjectively perceived decline in cognitive performance within at least the last six months and at most the last five years in a clinical interview. In addition, they had to have normal performance ( $<1.5$  SD) in all subcategories of the CERAD-plus administered for screening. Subjects were assigned to the MCI group, if their performance on the CERAD was worse than average ( $>1.5$  SD) on the “recall word list” subtest, and they reported decreased cognitive performance, and, at the same time, did not meet dementia criteria. By selecting a memory-related subtest, primarily amnesic MCI (aMCI) patients were included in the study. Frequently, subjects with aMCI were also conspicuous in other subcategories of the CERAD, but non-amnesic MCI individuals were specifically screened out. Assignment to the AD group was based on Mini Mental Status Examination (MMSE) and only subjects with mild dementia ( $>18$  points and  $<26$  points on the MMSE) were included. Participants were defined as healthy if they showed memory test performances within 1.5 SD of the age-, gender-, and education-adjusted normal performance on all subtests of the CERAD and did not meet the SCD criteria.

Big Five, depression and anxiety are predictive for AD

**Table 1. Descriptive statistics of predictor variables**

	<b>HC</b>	<b>SCD</b>	<b>MCI</b>	<b>AD</b>	<b>Statistics</b>
<b>N</b>	189	338	132	74	-
<b>age range</b>	60 – 87 yrs	59 – 87 yrs	61 – 86 yrs	60 – 89 yrs	-
<b>mean age ± SD</b>	69.09 ± 5.42 yrs	70.72 ± 6.05 yrs	72.86 ± 5.61 yrs	74.09 ± 6.26 yrs	$H(3) = 52.653,$ $p < .001$
<b>gender ratio</b>	81/108 m/f	183/155 m/f	71/61 m/f	33/41 m/f	$\chi^2(3, N = 733)$ $= 7,79, p = .051$
<b>ApoE risk alleles</b>	N (0/1/2): 146/36/3	N (0/1/2): 220/102/10	N (0/1/2): 69/50/9	N (0/1/2): 27/31/15	$\chi^2(6, N = 718)$ $= 72,74, p < .001$
<b>mean O score*</b>	3.161 ± .7284	2.888 ± .7872	3.012 ± .7421	2.948 ± .8263	$H(3) = 14.249,$ $p = .003$
<b>mean C score*</b>	3.196 ± .6841	3.196 ± .6645	3.153 ± .6539	2.910 ± .7067	$H(3) = 11.917,$ $p = .008$
<b>mean E score*</b>	3.175 ± .5097	3.076 ± .6439	3.129 ± .6744	3.142 ± .8868	$H(3) = 4.766,$ $p = .190$
<b>mean A score*</b>	3.083 ± .7849	3.148 ± .7328	3.056 ± .7678	2.758 ± .7708	$H(3) = 13.769,$ $p = .003$
<b>mean N score*</b>	2.825 ± .6475	2.885 ± .6643	3.077 ± .8166	3.045 ± .7474	$H(3) = 10.876,$ $p = .012$
<b>GDS mean / median score*</b>	0.66 / 0.00	2.04 / 1.00	2.02 / 2.00	2.39 / 2.00	$H(3) = 124.69,$ $p < .001$
<b>GAI-SF mean / median score*</b>	0.65 / 0.00	1.19 / 1.00	1.05 / 1.00	1.05 / 1.00	$H(3) = 24.348,$ $p < .001$
<b>mean tTau (pg/ml)</b>	369.47 ± 148.70	374.20 ± 185.04	555.61 ± 318.78	791.96 ± 399.94	$H(3) = 62.974,$ $p < .001$

## Big Five, depression and anxiety are predictive for AD

<b>mean pTau181</b>	49.70 ± 16.03	54.03 ± 23.92	70.74 ± 43.02	95.89 ± 47.64	$H(3) = 53.933,$
<b>(pg/ml)</b>					$p < .001$
<b>mean Aβ42/40</b>	0.09650 ± 0.092397	± 0.073111	± 0.050423	±	$H(3) = 77.923,$
<b>ratio</b>	0.02214	0.027371	0.030570	0.019247	$p < .001$

*Note:* Demographic information along with statistics from a chi-squared test (gender ratio) and Kruskal-Wallis tests (other metrics). Abbreviations: N = sample size; f = female; m = male; O = Openness; C = Conscientiousness; E = Extraversion; A = Agreeableness; N = Neuroticism; GDS = Geriatric Depression Scale; GAI-SF = Geriatric Anxiety Index, Short Form; pg = picogram; ml = milliliter. \*see Figure S1 in Supplementary Results

### 2.2 MRI data acquisition

Structural and functional MRI data were acquired on 3T Siemens scanners according to the DELCODE study protocol (Jessen et al. 2018; Düzel et al. 2019). A T1-weighted MPRAGE image (TR = 2.5 s, TE = 4.37 ms, flip- $\alpha$  = 7°; 192 slices, 256 x 256 in-plane resolution, voxel size = 1 x 1 x 1 mm) was acquired for co-registration and improved spatial normalization. Phase and magnitude fieldmap images were acquired to improve correction for artifacts resulting from magnetic field inhomogeneities.

The MPRAGE was followed by a 7:54 min resting-state fMRI (rs-fMRI) acquisition, during which T2\*-weighted echo-planar images (EPI; TR = 2.58 s, TE = 30 ms, flip- $\alpha$  = 80°; 47 axial slices, 64 x 64 in-plane resolution, voxel size = 3.5 x 3.5 x 3.5 mm) were acquired in odd-even interleaved-ascending slice order. Participants were instructed to lie inside the scanner with eyes closed, but without falling asleep. Directly after, phase and magnitude fieldmap images were acquired to improve correction for artifacts resulting from magnetic field inhomogeneities via unwarping. This was followed by brief co-planar T1-weighted inversion recovery EPIs.

The complete study protocol also included additional scanning sequences (T2-weighted images, T2\*-weighted EPIs for task-based fMRI, fast low angle shot, fluid attenuated inversion recovery, susceptibility-weighted imaging) not used in the analyses reported here (Jessen et al. 2018).

### 2.3 fMRI data preprocessing and analysis

Data preprocessing and computation of mPerAF maps were performed using Statistical Parametric Mapping (SPM12; Wellcome Trust Center for Neuroimaging, University College London, London, UK) and the RESTplus toolbox (Jia et al. 2019), following a recently described protocol (Kizilirmak et al. 2022). EPIs were corrected for acquisition time delay (*slice timing*), head motion (*realignment*), and magnetic field inhomogeneities (*unwarping*), using

## Big Five, depression and anxiety are predictive for AD

voxel-displacement maps (VDMs) derived from the fieldmaps. The MPRAGE image was spatially co-registered to the mean unwarped image and *segmented* into six tissue types, using the unified segmentation and normalization algorithm implemented in SPM12. The resulting forward deformation parameters were used to *normalize unwarped* EPIs into a standard stereotactic reference frame (Montreal Neurological Institute, MNI; voxel size = 3 x 3 x 3 mm). Normalized images were spatially *smoothed* using an isotropic Gaussian kernel of 6 mm full width at half maximum.

PerAF is a scale-independent measure of the percentage of BOLD fluctuations relative to the mean BOLD signal intensity for each time point, which has been averaged across the whole time series (Jia et al. 2020). PerAF was computed from rs-fMRI using an adapted version<sup>1</sup> of the “RESTplus” toolbox (Jia et al. 2019). It was computed for BOLD variations in the range of 0.01-0.08 Hz. We used mean PerAF (mPerAF), that is, the global-mean-adjusted PerAF. A DMN mask was applied that represented a composite of functionally defined regions of interest (ROIs) created by (Shirer et al. 2012); mPerAF of the DMN was included as a voxel-wise mean-centered predictor variable.

### 2.4 Predictor variables and evaluated predictor sets for classification

For each subject, the following predictor variables were extracted (for overview, see Supplementary Table S1).

- (1) **Chronological age:** Chronological age was included as a standardized (mean = 0, SD = 1) predictor.
- (2) **Acquisition site:** Participants were scanned at ten different DZNE sites across Germany which were included as a dummy-coded predictors (ten binary predictors).
- (3) **Gender:** Gender was added as a dummy-coded predictor (two binary predictors).
- (4) **Resting-state mPerAF of the DMN:** for details, see Section 2.3.
- (5) **Personality traits:** Personality was assessed using the 10-item short form of the Big Five Inventory (BFI-10; Rammstedt und John 2007; Rammstedt et al. 2017). Scores of the five personality scales (each computed as the mean of both respective items) were included as five standardized predictors.

---

<sup>1</sup> Since the “RESTplus” toolbox only provides 4 default masks, a group-level mask fitting the dimensions and voxel sizes of our preprocessed task-based fMRI was generated and added to the mask directory. Additionally, the parallel processing mode using outdated MATLAB commands had to be switched off.

## Big Five, depression and anxiety are predictive for AD

- (6) **Depression and Anxiety:** Depression was assessed using the Geriatric Depression Scale (GDS; Sheikh & Yesavage 1986). Anxiety was assessed using the short form of the Geriatric Anxiety Inventory (GAI-SF; Byrne and Pachana 2011). GDS and GAI-SF sum scores were included as two standardized predictors.
- (7) **ApoE genotype:** ApoE genotyping was performed with three alleles possible:  $\epsilon 2$ ,  $\epsilon 3$ , and  $\epsilon 4$  (Jessen et al. 2018). Genotypes with no  $\epsilon 4$  allele ( $\epsilon 2/\epsilon 2$ ,  $\epsilon 2/\epsilon 3$ ,  $\epsilon 3/\epsilon 3$ ) were coded as 0, genotypes with one  $\epsilon 4$  allele ( $\epsilon 2/\epsilon 4$ ,  $\epsilon 3/\epsilon 4$ ) were coded as 1, and genotypes with two  $\epsilon 4$  alleles ( $\epsilon 4/\epsilon 4$ ) were coded as 2.
- (8) **CSF biomarkers:** AD biomarkers (tTau, pTau181, and A $\beta$ 42/40 ratio; collectively referred to as CSF biomarkers) were determined using commercially available kits according to vendor specifications: V-PLEX A $\beta$  Peptide Panel 1 (6E10) Kit (K15200E) and V-PLEX Human Total Tau Kit (K151LAE) (Mesoscale Diagnostics LLC, Rockville, USA), and Innostest Phospho-Tau(181P) (81581; Fujirebio Germany GmbH, Hannover, Germany). For further CSF analyses DELCODE study data, see (Düzel et al. 2022; Jessen et al. 2022).

To assess the combined value of the predictors for AD risk estimation, we evaluated SVM classification accuracy using the following feature sets:

1. **Base model:** age, gender, site
2. **mPerAF:** base model + mPerAF maps
3. **Personality:** base model + BFI scores
4. **Personality extended:** base model + BFI + depression + anxiety scores
5. **ApoE:** base model + ApoE
6. **All without CSF:** base model + mPerAF + BFI + depression + anxiety + ApoE
7. **CSF:** base model + CSF markers

### 2.5 Handling of missing values and unbalanced class sizes

For feature sets 1 to 6, participants were excluded based on missing values in any of the following predictors: chronological age, gender, site, DMN, personality, depression, anxiety, and ApoE genotype (N = 663; 179 HC, 308 SCD, 113 MCI, 63 AD). For feature set 7, participants were excluded based on missing values in any of the aforementioned predictors as well as CSF markers (N = 341; 75 HC, 155 SCD, 71 MCI, 40 AD). This led to lower sample size for feature set 7 since only about half of all participants assented to liquor extraction. To maintain statistical power in feature sets 1-6, divergent sample sizes were kept, at the expense of feature set 7 not being included in inferential comparisons (Table 3). A variant with equal sample sizes (N = 311) across all feature sets is reported in the supplement (Table S4). Another

## Big Five, depression and anxiety are predictive for AD

variant with SCD and MCI merged as a common risk group is reported in the supplement (Table S2).

Subsampling was used to ensure equal number of subjects in each participant group when performing Support Vector Classification (SVC). The size of each group in subsampling was based on the smallest group (rounded off to the nearest tens). A total of 30 subsamples was created, with each subsample undergoing 1000 permutations of group membership to establish a null distribution. Permutations were performed to calculate the p-value of the prediction accuracy.

### **2.6 Prediction of outcome from predictor variables and performance assessment**

For prediction of the outcome variable (participant class) from feature sets, we used SVC using linear SVMs with soft-margin parameter  $C = 1$  and 10-fold cross-validation (CV). All SVM analyses were implemented using LibSVM in MATLAB via in-house scripts available from GitHub (<https://github.com/JoramSoch/ML4ML>).

Predictive performance of predicting participant classes was assessed using decoding accuracy (DA) and class accuracy (CA; each ranging between 0 and 1).

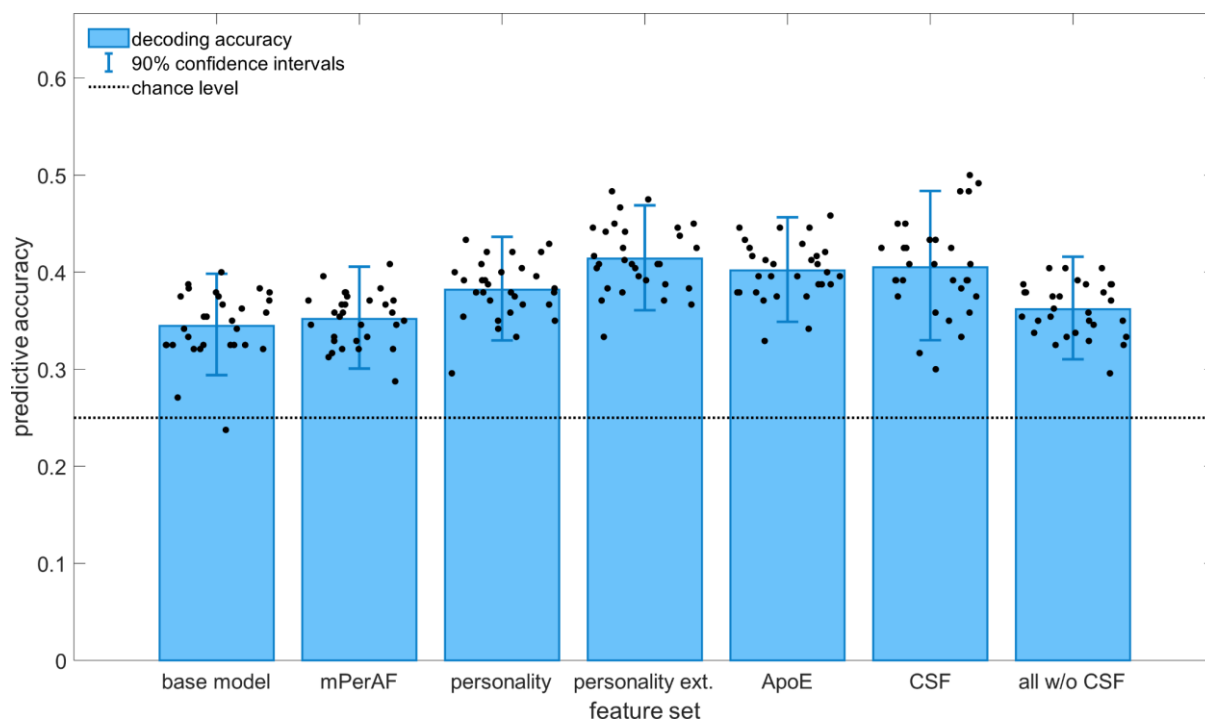
For each feature set, significant difference from chance-level prediction for DA and CAs was tested and pair-wise comparisons of each feature set against the base model were performed. This was done via one-sided paired *t*-tests for each feature set's classification performance against that of the base model, where each pair consists of a subsample assessed using both feature sets. Additionally, a subsample-by-subsample correlation matrix from DAs across all permutations was calculated and incorporated into a general linear model of the pair-wise accuracy differences across all subsamples.

All scripts used to perform analyses are available under <https://github.com/jmkizilirmak/DELCODE162>.

## Big Five, depression and anxiety are predictive for AD

### 3 Results

The top three performing feature sets were “Personality extended”, “CSF markers”, and “ApoE” (Figure 2; for direct inferential statistical comparisons, see Section 3.7). Across all feature sets, overall prediction accuracy was highest for classes of HC and mild AD (Figure 3). Class accuracies for SCD and MCI were never significantly above chance, even when using CSF markers as predictors (Table 2). However, respective CAs from different feature sets showed large variation.



**Figure 2. Decoding accuracies of the assessed feature sets.** The 90% confidence intervals were obtained from averaging the confidence intervals of the 30 subsamples (single dots) on which SVCs were performed.

#### 3.1 Base model: Low predictive value of age, gender, and site

The base model yielded the lowest DA across all feature sets (Figure 2) and no statistically significant CAs for any group (Figure 3), but DA was statistically significantly different from chance level (Table 2). CA was highest for HC (CA = .48,  $p = .051$ ), but not significantly above chance (Figure 3 and Table 3). This trend can be explained by age being the strongest overall risk factor for dementia in general (Terracciano & Sutin 2019). On average, AD participants were significantly older than HC and SCD (Table 1), highlighting the importance of including age for the purpose of avoiding misattribution to other predictors.



Big Five, depression and anxiety are predictive for AD

### **3.2 mPerAF: Low but above-chance performance of resting-state amplitude**

Feature set “mPerAF” showed statistically significant above-chance prediction accuracy (mean DA = .35, mean  $p = .010$ , Table 2). CAs were above chance for HC (CA = .42,  $p = .026$ ) and AD (CA = .45,  $p = .016$ ), but not for SCD (CA = .29,  $p = .299$ ) and MCI (CA = .26,  $p = .419$ ).

### **3.3 Personality: Highest prediction accuracy combined with depression and anxiety scores**

Feature set 3 “Personality” had higher CAs than feature set 2 “mPerAF” for all classes (Table 2) while in turn being outperformed by feature set 4 “Personality extended” which yielded the overall highest CAs for both HC (.56) and MCI (.30). Regarding overall performance, feature sets 4 and 7 produced the highest DAs significantly above chance.

### **3.4 ApoE: Third best predictive ability**

The presence of no, one, or two  $\epsilon 4$  allele(s) yielded the second-best predictive performance (DA = .40,  $p = .002$ ). It also yielded statistically significant CAs for HC (CA = .52,  $p = .021$ ) and AD (CA = .52,  $p = .023$ ) above chance, but performances for SCD and MCI were not significantly above chance.

### **3.5 Relatively poor performance of combined predictors without CSF markers**

CAs of feature set 6 were consistently lower compared to those of feature sets 3, 4, and 5 (Table 2). In fact, feature set 6 was never in the top three CAs for any participant class (see Table 3). Although DA was rather low, predictive performance was relatively stable above chance, as indicated by the narrow confidence interval (DA = .36, 90% CI = [.31, .42],  $p = .006$ ).

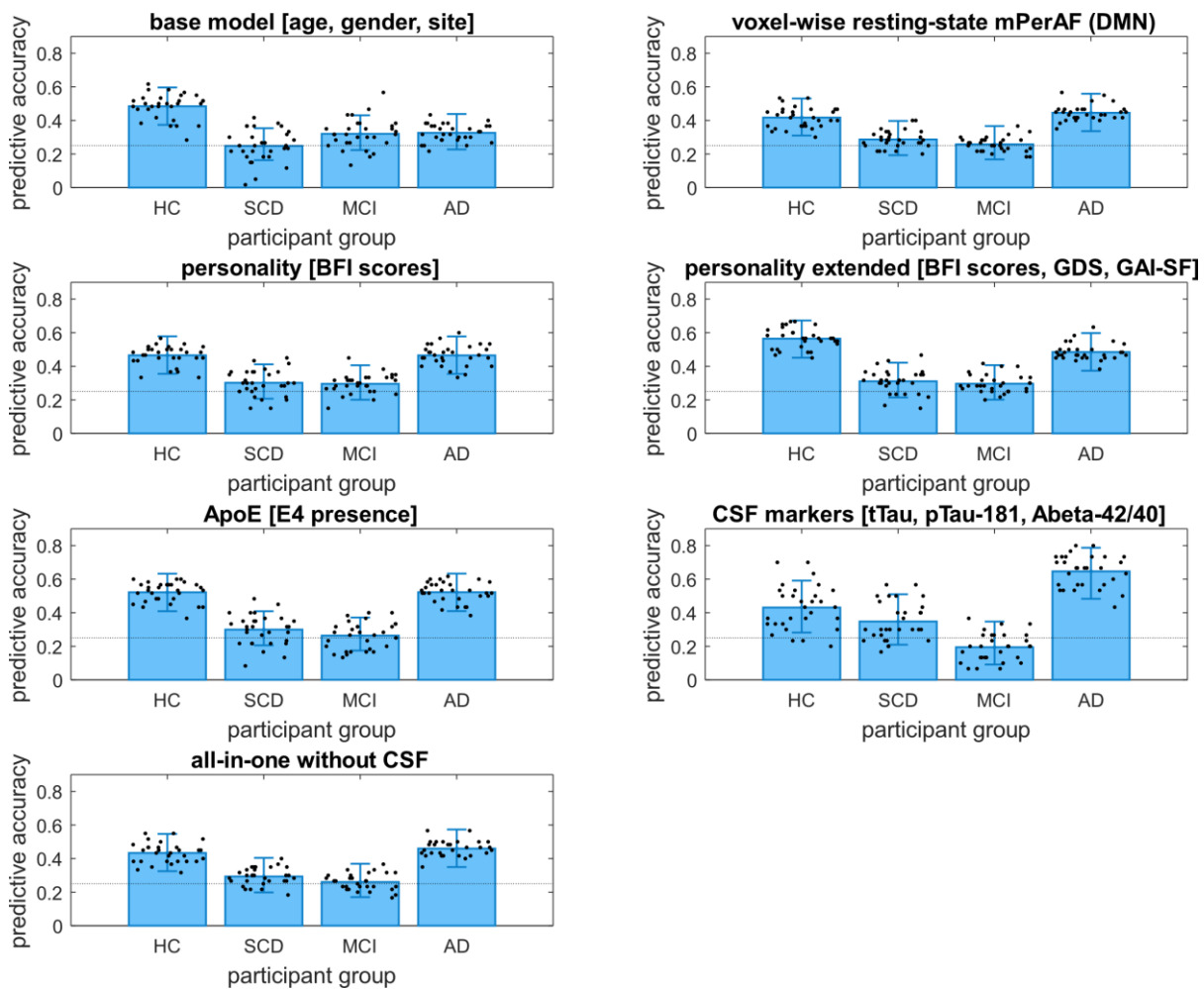
### **3.6 CSF biomarkers predict AD best, but perform poorly for HC**

Feature set 7 “CSF” yielded the highest CAs for SCD (CA = .35,  $p = .301$ ) and AD (CA = .65,  $p = .009$ ) (Table 2). However, CAs for HC (CA = .43,  $p = .156$ ) and MCI (CA = .19,  $p = .675$ ) were comparatively low and non-significant (Table 3). Only the base model and feature set 7 “CSF” did not achieve significant prediction accuracy for HC. Moreover, feature set 7 “CSF” yielded the overall lowest CA for MCI.

### **3.7 Comparison of feature sets and summary**

Best DAs yielded feature sets 4 “Personality extended” and 7 “CSF” with equally high overall accuracy (DA = .41), followed by “ApoE” (DA = .40). All feature sets—except feature set 2 “mPerAF”—performed significantly better than the base model in predicting class membership (see Table 3). Results of other variants of analysis are provided in the supplement.

## Big Five, depression and anxiety are predictive for AD



**Figure 3. Class accuracies of the assessed feature sets.** The dotted line represents chance level, and error bars represent the average 90% confidence interval across all 30 subsamples. A very prominent finding is that CSF markers outperform all other feature sets in classifying AD patients correctly, but they perform worst in the classification of MCI.

Big Five, depression and anxiety are predictive for AD

**Table 2. SVM classification results**

Feature set	value	DA	HC	SCD	MCI	AD
<b>1. Base model</b>	mean accuracy	.34	.48	.25	.32	.33
	90% CI	[.29, .40]	[.37, .60]	[.16, .35]	[.22, .43]	[.23, .44]
	mean <i>p</i>	.047	.051	.487	.300	.316
<b>2. mPerAF</b>	mean accuracy	.35	.42	.29	.26	.45
	90% CI	[.30, .41]	[.31, .53]	[.19, .40]	[.17, .37]	[.34, .56]
	mean <i>p</i>	.010	.026	.299	.419	.016
<b>3. Personality</b>	mean accuracy	.38	.47	.30	.30	.47
	90% CI	[.33, .44]	[.36, .58]	[.21, .41]	[.20, .41]	[.35, .58]
	mean <i>p</i>	.006	.024	.309	.300	.041
<b>4. Personality extended</b>	mean accuracy	.41	.56	.31	.30	.49
	90% CI	[.36, .47]	[.45, .67]	[.21, .42]	[.20, .41]	[.37, .60]
	mean <i>p</i>	.001	.002	.258	.292	.014
<b>5. ApoE</b>	mean accuracy	.40	.52	.30	.26	.52
	90% CI	[.35, .46]	[.41, .63]	[.21, .41]	[.17, .37]	[.41, .63]
	mean <i>p</i>	.002	.021	.342	.445	.023
<b>6. All w/o CSF</b>	mean accuracy	.36	.43	.29	.26	.46
	90% CI	[.31, .42]	[.32, .55]	[.20, .40]	[.17, .37]	[.35, .57]
	mean <i>p</i>	.006	.016	.265	.416	.012
<b>7. CSF</b>	mean accuracy	.41	.43	.35	.19	.65
	90% CI	[.33, .48]	[.28, .59]	[.21, .51]	[.09, .35]	[.48, .79]
	mean <i>p</i>	.017	.156	.301	.675	.009

*Note.* As four groups were included, chance performance was at .25. Mean accuracy, 90% CI and mean *p* correspond to the average across 30 subsamples. Each subsample's *p*-value was obtained by comparing the accuracy value against the null distribution generated from 1000 permutations.

Big Five, depression and anxiety are predictive for AD

### 3.8 Comparison of feature sets and summary

Best predictive performances were yielded by feature sets 4 “Personality extended” and 7 “CSF” with equally high overall accuracy (DA = .41), followed by “ApoE” (DA = .40). All feature sets – except feature set 2 “mPerAF” – performed significantly better than the base model in predicting class membership (Table 3).

To perform inferential statistical comparisons with feature set 7 “CSF”, we reran the same analysis with a reduced, but equal sample size of  $N = 311$  participants (Supplementary Results). Our supplementary analyses show that feature set CSF yielded significantly higher DA than other feature sets, but class accuracies for HC and SCD were not significantly different from chance. The highest CA for HC was achieved by feature set 5 “personality extended”. Overall, our results indicated poor performance of all assessed feature sets in predicting class membership for SCD and MCI, with no feature set performing significantly above chance for any of the two classes. Therefore, we merged classes of SCD and MCI to create a “risk class” and reran SVM classifications (see Supplementary Results, subsection 2.1). Overall prediction accuracy did not improve, given that chance level was now at  $1/3$  instead of  $1/4$ . Importantly, no feature set achieved statistically significant above chance class accuracy for the risk class.

**Table 3. Inferential statistical comparisons of decoding accuracy between feature sets**

<b>base model vs.</b>	<b><i>t</i></b>	<b><i>p</i></b>	<b>CI</b>	<b>adjusted <i>p</i></b>
<b>all w/o CSF</b>	2.41	0.011	[0.00, 0.03]	0.022
<b>mPerAF</b>	1.02	0.157	[-0.01, 0.02]	0.157
<b>personality</b>	5.49	< 0.001	[0.02, 0.05]	< 0.001
<b>personality extended</b>	8.44	< 0.001	[0.05, 0.08]	< 0.001
<b>ApoE</b>	9.48	< 0.001	[0.04, 0.07]	< 0.001

*Note.* Reported are one-sided *t*-test results for the difference of each model’s classification performance from the base model’s performance. The column “CI” reports the confidence interval for the mean decoding accuracy difference. The column “p adjusted” reports p values corrected for multiple comparisons according to the Bonferroni-Holm procedure (Holm 1979).

## Big Five, depression and anxiety are predictive for AD

### 4 Discussion

In this study, we set out to assess the diagnostic value of several feature sets for AD, associated risk states (SCD, MCI), and healthy controls, with a focus on performance of combining personality, depression, and anxiety scores as well as resting-state fMRI and ApoE genotype, which each on their own have shown differences in MCI and AD (Mendez Rubio et al. 2013; Lau et al. 2016; Yoneda et al. 2016; Ikeda et al. 2017; Terracciano et al. 2017; Caselli et al. 2018).

All feature sets performed significantly above chance regarding their predictive accuracy (Table 2) and all, except feature set 2, performed significantly better than the base model (Table 3). Moreover, there were clear performance differences for HC, SCD, MCI, and AD. Feature sets with the highest decoding accuracy were (i) feature set 4 “personality extended”, containing the five personality scales’ scores of the BFI-10 in combination with the sum score of the geriatric anxiety inventory and that of the geriatric depression scale, (ii) feature set 7 “CSF”, containing three established CSF biomarkers for AD (tTau, pTau181, and A $\beta$ 42/40 ratio), and feature set 5 “ApoE”. Descriptively, feature sets CSF and personality extended performed equally well, yielding 41% DA in multi-class SVM classification. An inferential statistical comparison of the feature sets’ performances was only possible with a substantially reduced sample size (Supplementary Results 2.2). That supplementary analysis showed that with smaller sample sizes (N = 311 instead of N = 663), overall predictive accuracy was significantly higher for CSF compared to all other feature sets, as one would expect from the literature (Olsson et al. 2016; Düzel et al. 2022). However, CA of “CSF” for HC was not significantly different from chance.

#### 4.1 Inferiority of the combined predictor and poor prediction accuracy of resting-state mPerAF

One of our central hypotheses posed that a combined set of relevant predictors would yield higher or equal prediction accuracies compared to CSF markers. This hypothesis was not supported by our data. CAs of the combined predictor were similar to those of the mPerAF predictor, suggesting that inclusion of mPerAF reduced mean prediction accuracy. On average, resting-state mPerAF of the DMN performed better than chance, but not significantly better than the base model, which contained only age, gender and acquisition site. This finding contradicts prior reports on the DMN (Mevel et al. 2011; Schouten et al. 2016; Ramzan et al. 2019), however, most studies on DMN used functional connectivity as opposed to voxel-wise amplitude of low-frequency fluctuation.

## Big Five, depression and anxiety are predictive for AD

One potential explanation for the diverging results may be that we entered all classes at once, akin to a fully automated diagnosis process, instead of performing several binary decisions between two very different classes like HC and AD. The latter is a common approach in classification studies for research purpose (for review, see Jo et al. 2019), resulting in higher accuracies since the chance level lies at 50 % (instead of e.g. 25 % with four classes). The DAs will be even higher when sample sizes of groups are unbalanced. Unequal class sizes introduce bias in classification, which is well known, and several approaches have been proposed to counter the problem (e.g. Brodersen et al. 2010; Mathew et al. 2018). In contrast to the current study, not all authors take this problem actively into account and thus fail to account for said bias (Jo et al. 2019).

### **4.2 Personality, anxiety, and depression scores yield relatively high prediction accuracy**

Personality alone yielded class accuracies significantly above chance level, confirming our hypothesis. Nonetheless, personality alone was consistently outperformed by feature set 5 “personality extended” . These results suggest additional predictive value of both depression and anxiety. A more extensive questionnaire assessing facets of the Big Five might offer higher predictive value than the economic BFI-10. Depression and anxiety may be viewed as proxies for personality, leading to a more comprehensive assessment of personality and thus higher prediction performance. Our finding is in line with previous research showing that patients with MCI show changes in various personality traits in addition to apathy and other affective symptoms (Mendez Rubio et al. 2013; Terracciano et al. 2017; Caselli et al. 2018). First-onset depression in older age has been proposed to represent an early manifestation of clinical dementia (Panza et al. 2010) and a more recent meta-analysis found that depression has high prevalence in MCI (Ismail et al. 2017). Moreover, anxiety has been associated with amyloid positivity in AD (Mendez 2021) and predictive value of conversion from MCI to AD (Palmer et al. 2007).

### **4.3 Poor classification accuracy for SCD and MCI with any feature set**

No feature set yielded CAs significantly above chance for SCD and MCI. This trend remained after merging SCD and MCI to an “increased AD risk” group (Table S2). Group membership was assigned based on entry diagnosis and etiologies of SCD and MCI were not assessed (see Section 2.1). Only a limited share of individuals diagnosed with SCD and MCI will convert to AD, and reported annual conversion rates vary considerably, depending on diagnostic criteria (Chételat et al. 2005; Johns et al. 2012; Bessi et al. 2018). Thus, participants diagnosed with SCD and MCI represent heterogeneous study groups, which obfuscates prediction accuracy.

## Big Five, depression and anxiety are predictive for AD

This points out the necessity of application of clear multifaceted diagnostic criteria (Morris 2012; Jessen et al. 2014; Jack et al. 2016; Petersen 2016).

### **4.4 Limitations**

While sample sizes of most feature sets are identical, sample size of feature set 7 “CSF” differs (section 2.4), since only about half of all participants underwent CSF biomarker assessments. Reduction of sample sizes (311 versus 663) for all feature sets leads to better comparability, but at the expense of statistical power. Such a variant is reported in the supplement.

### **4.5 Conclusions**

Our results show that there is no feature set that yields superior CAs for all assessed groups. They further suggest that CSF biomarkers and extended personality measures show complementary value for class prediction, which should be followed up on in future studies and extended by assessing the predictive value for conversion rates. Lastly, we showed that SCD and MCI remain heterogeneous groups that are hard to classify by machine learning approaches when more than a dichotomous classification is required, pointing out the need for coherent multi-modal diagnosis criteria.

## Big Five, depression and anxiety are predictive for AD

### 5 List of Abbreviations

A $\beta$ : Amyloid beta; AD: Alzheimer's disease; aMCI: amnesic mild cognitive impairment; ANOVA: analysis of variance; BFI: Big Five Inventory; BFI-10: Big Five Inventory 10-item short form; BOLD: blood oxygenation level-dependent; CERAD: Consortium to Establish a Registry for Alzheimer's Disease; CA: class accuracy; CI: confidence interval; CSF: cerebrospinal fluid; CV: cross-validation; DA: decoding accuracy; DMN: default mode network; DELCODE: DZNE-Longitudinal Cognitive Impairment and Dementia Study; DZNE: Deutsches Zentrum für neurodegenerative Erkrankungen; EPI: echo-planar imaging; fMRI: functional magnetic resonance imaging; FWHM: full width at half maximum; GAI-SF: Geriatric Anxiety Inventory, Short Form; GDS: Geriatric Depression Scale; HC: healthy controls; Hz: Hertz; MCI: mild cognitive impairment; NIA: National Institute on Aging; MMSE: Mini Mental Status Examination; MNI: Montreal Neurological Institute; mPerAF: mean percent amplitude of fluctuation; MPAGE: Magnetization Prepared Rapid Gradient Echo; MRI: magnetic resonance imaging; NEO PI-R: Revised NEO Personality Inventory; PerAF: percent amplitude of fluctuation; pTau181: phosphorylated tau181; ROI: region of interest; rs-fMRI: resting-state functional magnetic resonance imaging; SCD: subjective cognitive decline; SD: standard deviation; SPM: Statistical Parametric Mapping; SVC: support vector classification; SVM: support vector machine; TE: echo time; TR: time to repetition; tTau: total tau; VDM: voxel-displacement map; yrs: years

### 6 Acknowledgments

We would like to express our gratitude to all the participants of the DELCODE study, and all technical, medical, and psychological staff without whom this study would not have been possible. Special thanks go to the MRI centers at Max-Delbrück-Center for Molekulare Medizin of the Helmholtz society (MDC), at the Freie Universität Berlin Center for Cognitive Neuroscience Berlin (CCNB), and at the Bernstein Center für Computational Neuroscience, Berlin.



## Big Five, depression and anxiety are predictive for AD

### 7 References

- Andrews-Hanna JR, Smallwood J, Spreng RN (2014): The default network and self-generated thought: component processes, dynamic control, and clinical relevance. *Ann N Y Acad Sci* 1316, 29–52
- Badhwar A, Tam A, Dansereau C, Orban P, Hoffstaedter F, Bellec P (2017): Resting-state network dysfunction in Alzheimer’s disease: A systematic review and meta-analysis. *Alzheimer’s & Dementia: Diagnosis, Assessment & Disease Monitoring* 8, 73–85
- Bessi V, Mazzeo S, Padiglioni S, Piccini C, Nacmias B, Sorbi S, Bracco L (2018): From Subjective Cognitive Decline to Alzheimer’s Disease: The Predictive Role of Neuropsychological Assessment, Personality Traits, and Cognitive Reserve. A 7-Year Follow-Up Study. *JAD* 63, 1523–1535
- Bi X, Shu Q, Sun Q, Xu Q (2018): Random support vector machine cluster analysis of resting-state fMRI in Alzheimer’s disease. *PLOS ONE* 13, e0194479
- Binnewijzend MAA, Schoonheim MM, Sanz-Arigitia E, Wink AM, van der Flier WM, Tolboom N, Adriaanse SM, Damoiseaux JS, Scheltens P, van Berckel BNM, Barkhof F (2012): Resting-state fMRI changes in Alzheimer’s disease and mild cognitive impairment. *Neurobiology of Aging* 33, 2018–2028
- Blennow K, Hampel H, Weiner M, Zetterberg H (2010): Cerebrospinal fluid and plasma biomarkers in Alzheimer disease. *Nat Rev Neurol* 6, 131–144
- Brodersen KH, Ong CS, Stephan KE, Buhmann JM: The Balanced Accuracy and Its Posterior Distribution. In: 2010 20th International Conference on Pattern Recognition. IEEE, Istanbul, Turkey 2010, 3121–3124
- Buchhave P, Minthon L, Zetterberg H (2012): Cerebrospinal Fluid Levels of  $\beta$ -Amyloid 1-42, but Not of Tau, Are Fully Changed Already 5 to 10 Years Before the Onset of Alzheimer Dementia. *ARCH GEN PSYCHIATRY* 69, 9
- Buckner RL, Andrews-Hanna JR, Schacter DL (2008): *The Brain’s Default Network: Anatomy, Function, and Relevance to Disease*. *Annals of the New York Academy of Sciences* 1124, 1–38
- Byrne GJ, Pachana NA (2011): Development and validation of a short form of the Geriatric Anxiety Inventory – the GAI-SF. *Int Psychogeriatr* 23, 125–131
- Caselli RJ, Langlais BT, Dueck AC, Henslin BR, Johnson TA, Woodruff BK, Hoffman-Snyder C, Locke DEC (2018): Personality Changes During the Transition from Cognitive Health to Mild Cognitive Impairment. *J Am Geriatr Soc* 66, 671–678
- Cha J, Jo HJ, Kim HJ, Seo SW, Kim H-S, Yoon U, Park H, Na DL, Lee J-M (2013): Functional alteration patterns of default mode networks: comparisons of normal aging, amnesic mild cognitive impairment and Alzheimer’s disease. *Eur J Neurosci* 37, 1916–1924

## Big Five, depression and anxiety are predictive for AD

- Chételat G, Landeau B, Eustache F, Mézenge F, Viader F, de la Sayette V, Desgranges B, Baron J-C (2005): Using voxel-based morphometry to map the structural changes associated with rapid conversion in MCI: A longitudinal MRI study. *NeuroImage* 27, 934–946
- Dubois B, Feldman HH, Jacova C, Hampel H, Molinuevo JL, Blennow K, DeKosky ST, Gauthier S, Selkoe D, Bateman R, et al. (2014): Advancing research diagnostic criteria for Alzheimer’s disease: the IWG-2 criteria. *The Lancet Neurology* 13, 614–629
- Duchek JM, Balota DA, Storandt M, Larsen R (2007): The Power of Personality in Discriminating Between Healthy Aging and Early-Stage Alzheimer’s Disease. *The Journals of Gerontology: Series B* 62, P353–P361
- Duchek JM, Aschenbrenner AJ, Fagan AM, Benzinger TLS, Morris JC, Balota DA (2020): The Relation Between Personality and Biomarkers in Sensitivity and Conversion to Alzheimer-Type Dementia. *J Int Neuropsychol Soc* 26, 596–606
- Düzel E, Acosta-Cabronero J, Berron D, Biessels GJ, Björkman-Burtscher I, Bottlaender M, Bowtell R, Buchem M v, Cardenas-Blanco A, Boumezbeur F, et al. (2019): European Ultrahigh-Field Imaging Network for Neurodegenerative Diseases (EUFIND). *Alzheimer’s & Dementia: Diagnosis, Assessment & Disease Monitoring* 11, 538–549
- Düzel E, Ziegler G, Berron D, Maass A, Schütze H, Cardenas-Blanco A, Glanz W, Metzger C, Dobisch L, Reuter M, et al. (2022): Amyloid pathology but not APOE  $\epsilon$ 4 status is permissive for tau-related hippocampal dysfunction. *Brain* 145, 1473–1485
- Elias-Sonnenschein LS, Viechtbauer W, Ramakers IHGB, Verhey FRJ, Visser PJ (2011): Predictive value of APOE- 4 allele for progression from MCI to AD-type dementia: a meta-analysis. *Journal of Neurology, Neurosurgery & Psychiatry* 82, 1149–1156
- Hafkemeijer A, van der Grond J, Rombouts SARB (2012): Imaging the default mode network in aging and dementia. *Biochimica et Biophysica Acta (BBA) - Molecular Basis of Disease* 1822, 431–441
- Hansson O, Seibyl J, Stomrud E, Zetterberg H, Trojanowski JQ, Bittner T, Lifke V, Corradini V, Eichenlaub U, Batrla R, et al. (2018): CSF biomarkers of Alzheimer’s disease concord with amyloid- $\beta$  PET and predict clinical progression: A study of fully automated immunoassays in BioFINDER and ADNI cohorts. *Alzheimer’s & Dementia* 14, 1470–1481
- Holm S (1979): A Simple Sequentially Rejective Multiple Test Procedure. *Scandinavian Journal of Statistics* 6, 65–70
- Ikeda S, Takeuchi H, Taki Y, Nouchi R, Yokoyama R, Kotozaki Y, Nakagawa S, Sekiguchi A, Iizuka K, Yamamoto Y, et al. (2017): A Comprehensive Analysis of the Correlations between Resting-State Oscillations in Multiple-Frequency Bands and Big Five Traits. *Front Hum Neurosci* 11, 321
- Ismail Z, Elbayoumi H, Fischer CE, Hogan DB, Millikin CP, Schweizer T, Mortby ME, Smith EE, Patten SB, Fiest KM (2017): Prevalence of Depression in Patients With Mild Cognitive Impairment: A Systematic Review and Meta-analysis. *JAMA Psychiatry* 74, 58–67

## Big Five, depression and anxiety are predictive for AD

- Jack CR, Bennett DA, Blennow K, Carrillo MC, Feldman HH, Frisoni GB, Hampel H, Jagust WJ, Johnson KA, Knopman DS, et al. (2016): A/T/N: An unbiased descriptive classification scheme for Alzheimer disease biomarkers. *Neurology* 87, 539–547
- Jansen WJ, Ossenkoppele R, Knol DL, Tijms BM, Scheltens P, Verhey FRJ, Visser PJ, Aalten P, Aarsland D, Alcolea D, et al. (2015): Prevalence of Cerebral Amyloid Pathology in Persons Without Dementia: A Meta-analysis. *JAMA* 313, 1924
- Jessen F, Amariglio RE, Boxtel M, Breteler M, Ceccaldi M, Chételat G, Dubois B, Dufouil C, Ellis KA, Flier WM, et al. (2014): A conceptual framework for research on subjective cognitive decline in preclinical Alzheimer’s disease. *Alzheimer’s & Dementia* 10, 844–852
- Jessen F, Spottke A, Boecker H, Brosseron F, Buerger K, Catak C, Fliessbach K, Franke C, Fuentes M, Heneka MT, et al. (2018): Design and first baseline data of the DZNE multicenter observational study on predementia Alzheimer’s disease (DELCODE). *Alzheimer’s Research & Therapy* 10, 15
- Jessen F, Wolfsgruber S, Kleineindam L, Spottke A, Altenstein S, Bartels C, Berger M, Brosseron F, Daamen M, Dichgans M, et al. (2022): Subjective cognitive decline and stage 2 of Alzheimer disease in patients from memory centers. *Alzheimers Dement*
- Jia X-Z, Wang J, Sun HY, Zhang H, Liao W, Wang Z, Yan CG, Song XW, Zang YF (2019): RESTplus: an improved toolkit for resting-state functional magnetic resonance imaging data processing. *Science Bulletin* 64, 953–954
- Jia X-Z, Sun J-W, Ji G-J, Liao W, Lv Y-T, Wang J, Wang Z, Zhang H, Liu D-Q, Zang Y-F (2020): Percent amplitude of fluctuation: A simple measure for resting-state fMRI signal at single voxel level. *PLOS ONE* 15, e0227021
- Jo T, Nho K, Saykin AJ (2019): Deep Learning in Alzheimer’s Disease: Diagnostic Classification and Prognostic Prediction Using Neuroimaging Data. *Front Aging Neurosci* 11, 220
- Johns EK, Phillips NA, Belleville S, Goupil D, Babins L, Kelner N, Ska B, Gilbert B, Massoud F, Boysson C de, et al. (2012): The Profile of Executive Functioning in Amnesic Mild Cognitive Impairment: Disproportionate Deficits in Inhibitory Control. *Journal of the International Neuropsychological Society* 18, 541–555
- Khazae A, Ebrahimzadeh A, Babajani-Feremi A (2015): Identifying patients with Alzheimer’s disease using resting-state fMRI and graph theory. *Clinical Neurophysiology* 126, 2132–2141
- Kizilirmak JM, Soch J, Schütze H, Düzel E, Feldhoff H, Fischer L, Knopf L, Maass A, Raschick M, Schult A, et al. (2022): The relationship between resting-state amplitude fluctuations and memory-related deactivations of the Default Mode Network in young and older adults.
- Lau WKW, Leung M-K, Lee TMC, Law ACK (2016): Resting-state abnormalities in amnesic mild cognitive impairment: a meta-analysis. *Transl Psychiatry* 6, e790–e790

## Big Five, depression and anxiety are predictive for AD

- Leuzy A, Ashton NJ, Mattsson-Carlgrén N, Dodich A, Boccardi M, Corre J, Drzezga A, Nordberg A, Ossenkoppele R, Zetterberg H, et al. (2021): 2020 update on the clinical validity of cerebrospinal fluid amyloid, tau, and phospho-tau as biomarkers for Alzheimer's disease in the context of a structured 5-phase development framework. *Eur J Nucl Med Mol Imaging* 48, 2121–2139
- Li H-J, Hou X-H, Liu H-H, Yue C-L, He Y, Zuo X-N (2015): Toward systems neuroscience in mild cognitive impairment and Alzheimer's disease: A meta-analysis of 75 fMRI studies: Neural Networks in MCI and AD. *Hum Brain Mapp* 36, 1217–1232
- Mathew J, Pang CK, Luo M, Leong WH (2018): Classification of Imbalanced Data by Oversampling in Kernel Space of Support Vector Machines. *IEEE Transactions on Neural Networks and Learning Systems* 29, 4065–4076
- McCrae RR, Costa PT (1987): Validation of the five-factor model of personality across instruments and observers. *Journal of Personality and Social Psychology* 52, 81–90
- Mendez MF (2021): The Relationship Between Anxiety and Alzheimer's Disease. *Journal of Alzheimer's Disease Reports* 5, 171–177
- Mendez Rubio M, Antonietti JP, Donati A, Rossier J, von Gunten A (2013): Personality Traits and Behavioural and Psychological Symptoms in Patients with Mild Cognitive Impairment. *Dement Geriatr Cogn Disord* 35, 87–97
- Mevel K, Chételat G, Eustache F, Desgranges B (2011): The Default Mode Network in Healthy Aging and Alzheimer's Disease. *International Journal of Alzheimer's Disease* 2011, 1–9
- Mohan Akansha, Roberto AJ, Mohan Abhishek, Lorenzo A, Jones K, Carney MJ, Liogier-Weyback L, Hwang S, Lapidus KAB (2016): The Significance of the Default Mode Network (DMN) in Neurological and Neuropsychiatric Disorders: A Review. *Yale J Biol Med* 89, 49–57
- Morris JC (2012): Revised Criteria for Mild Cognitive Impairment May Compromise the Diagnosis of Alzheimer Disease Dementia. *Archives of Neurology* 69, 700–708
- Olsson B, Lautner R, Andreasson U, Öhrfelt A, Portelius E, Bjerke M, Hölttä M, Rosén C, Olsson C, Strobel G, et al. (2016): CSF and blood biomarkers for the diagnosis of Alzheimer's disease: a systematic review and meta-analysis. *The Lancet Neurology* 15, 673–684
- Orgeta V, Qazi A, Spector A, Orrell M (2015): Psychological treatments for depression and anxiety in dementia and mild cognitive impairment: Systematic review and meta-analysis. *Br J Psychiatry* 207, 293–298
- Palmer K, Berger AK, Monastero R, Winblad B, Bäckman L, Fratiglioni L (2007): Predictors of progression from mild cognitive impairment to Alzheimer disease. *Neurology* 68, 1596
- Panza F, Frisardi V, Capurso C, D'Introno A, Colacicco AM, Imbimbo BP, Santamato A, Vendemiale G, Seripa D, Pilotto A, et al. (2010): Late-Life Depression, Mild Cognitive

## Big Five, depression and anxiety are predictive for AD

- Impairment, and Dementia: Possible Continuum? *The American Journal of Geriatric Psychiatry* 18, 98–116
- Petersen RC (2016): Mild Cognitive Impairment. *CONTINUUM: Lifelong Learning in Neurology* 22, 404
- Raichle ME, MacLeod AM, Snyder AZ, Powers WJ, Gusnard DA, Shulman GL (2001): A default mode of brain function. *Proceedings of the National Academy of Sciences* 98, 676–682
- Rammstedt B, John OP (2007): Measuring personality in one minute or less: A 10-item short version of the Big Five Inventory in English and German. *Journal of Research in Personality* 41, 203–212
- Rammstedt B, Danner D (2017): Die Facettenstruktur des Big Five Inventory (BFI): Validierung für die deutsche Adaptation des BFI. *Diagnostica* 63, 70–84
- Rammstedt B, Kemper CJ, Klein MC, Beierlein C, Kovaleva A (2017): A Short Scale for Assessing the Big Five Dimensions of Personality: 10 Item Big Five Inventory (BFI-10). *methods data*, 17 Pages
- Ramzan F, Khan MUG, Rehmat A, Iqbal S, Saba T, Rehman A, Mehmood Z (2019): A Deep Learning Approach for Automated Diagnosis and Multi-Class Classification of Alzheimer's Disease Stages Using Resting-State fMRI and Residual Neural Networks. *Journal of Medical Systems* 44, 37
- Santabárbara J, Lipnicki D, Bueno-Notivol J, Olaya B, Villagrana B, Lopez-Anton R (2019): Updating the evidence for an association between anxiety and risk of Alzheimer's disease: A meta-analysis of prospective cohort studies. *Journal of Affective Disorders* 262
- Schouten TM, Koini M, de Vos F, Seiler S, van der Grond J, Lechner A, Hafkemeijer A, Möller C, Schmidt R, de Rooij M, Rombouts SARB (2016): Combining anatomical, diffusion, and resting state functional magnetic resonance imaging for individual classification of mild and moderate Alzheimer's disease. *NeuroImage: Clinical* 11, 46–51
- Sheikh JI, Yesavage JA (1986): Geriatric Depression Scale (GDS): recent evidence and development of a shorter version. *Clinical Gerontologist: The Journal of Aging and Mental Health*
- Shirer WR, Ryali S, Rykhlevskaia E, Menon V, Greicius MD (2012): Decoding Subject-Driven Cognitive States with Whole-Brain Connectivity Patterns. *Cerebral Cortex* 22, 158–165
- Smallwood J, Bernhardt BC, Leech R, Bzdok D, Jefferies E, Margulies DS (2021): The default mode network in cognition: a topographical perspective. *Nat Rev Neurosci* 22, 503–513
- Soch J, Deserno L, Assmann A, Barman A, Walter H, Richardson-Klavehn A, Schott BH (2016): Inhibition of Information Flow to the Default Mode Network During Self-Reference Versus Reference to Others. *Cereb Cortex* cercor;bhw206v1
- Soto CJ, John OP (2009): Ten facet scales for the Big Five Inventory: Convergence with NEO PI-R facets, self-peer agreement, and discriminant validity. *Journal of Research in Personality* 43, 84–90

## Big Five, depression and anxiety are predictive for AD

- Sperling RA, Aisen PS, Beckett LA, Bennett DA, Craft S, Fagan AM, Iwatsubo T, Jack CR, Kaye J, Montine TJ, et al. (2011): Toward defining the preclinical stages of Alzheimer's disease: Recommendations from the National Institute on Aging-Alzheimer's Association workgroups on diagnostic guidelines for Alzheimer's disease. *Alzheimer's & Dementia* 7, 280–292
- Sun Y, Dai Z, Li Y, Sheng C, Li H, Wang X, Chen X, He Y, Han Y (2016): Subjective Cognitive Decline: Mapping Functional and Structural Brain Changes-A Combined Resting-State Functional and Structural MR Imaging Study. *Radiology* 281, 185–192
- Terracciano A, Sutin AR (2019): Personality and Alzheimer's disease: An integrative review. *Personality Disorders: Theory, Research, and Treatment* 10, 4–12
- Terracciano A, Stephan Y, Luchetti M, Albanese E, Sutin AR (2017): Personality traits and risk of cognitive impairment and dementia. *J Psychiatr Res* 89, 22–27
- Yoneda T, Rush J, Berg AI, Johansson B, Piccinin AM (2016): Trajectories of Personality Traits Preceding Dementia Diagnosis. *GERONB* gbw006
- Zhao Q-F, Tan Lan, Wang H-F, Jiang T, Tan M-S, Tan Lin, Xu W, Li J-Q, Wang J, Lai T-J, Yu J-T (2015): The Prevalence of Neuropsychiatric Symptoms in Alzheimer's Disease: Systematic Review and Meta-analysis. *Journal of Affective Disorders*