

1 **Genome-wide meta-analysis identifies novel maternal risk variants and enables**
2 **polygenic prediction of preeclampsia and gestational hypertension**
3

4 Michael C. Honigberg^{1-3*}, Buu Truong^{2,3*}, Raiyan R. Khan⁴, Brenda Xiao⁵, Laxmi Bhatta^{6,7}, Thi
5 Ha Vy⁸, Rafael F. Guerrero⁹, Art Schuermans^{2,3,10}, Margaret Sunitha Selvaraj^{2,3}, Aniruddh P.
6 Patel¹⁻³, Satoshi Koyama^{2,3}, So Mi Jemma Cho^{2,3,11}, Shamsudheen Karuthedath Vellarikkal^{3,12},
7 Mark Trinder^{3,13}, Sarah M. Urbut¹⁻³, Kathryn J. Gray^{14,15}, Ben M. Brumpton^{6,7}, Snehal Patil¹⁶,
8 Sebastian Zöllner¹⁶, Mariah C. Antopia¹⁷, Genes & Health Research Team, Estonian Biobank
9 Research Team, nuMoM2b Research Team, Richa Saxena^{3,15}, Girish N. Nadkarni⁸, Ron Do⁸, Qi
10 Yan¹⁸, Itsik Pe'er⁴, Shefali Setia Verma⁵, Rajat M. Gupta^{3,12}, David M. Haas¹⁹, Hilary C. Martin²⁰,
11 David A. van Heel²¹, Triin Laisk²², Pradeep Natarajan^{1-3,15}
12

13 ¹Cardiology Division, Department of Medicine, Massachusetts General Hospital, Boston, MA,
14 USA

15 ²Cardiovascular Research Center, Massachusetts General Hospital, Harvard Medical School,
16 Boston, MA, USA

17 ³Program in Medical and Population Genetics, Broad Institute of Harvard and MIT, Cambridge,
18 MA, USA

19 ⁴Department of Computer Science, Columbia University, New York, NY, USA

20 ⁵University of Pennsylvania, Philadelphia, PA, USA

21 ⁶K.G. Jebsen Center for Genetic Epidemiology, Department of Public Health and Nursing,
22 NTNU, Norwegian University of Science and Technology, Trondheim, Norway

23 ⁷HUNT Research Centre, Department of Public Health and Nursing, NTNU, Norwegian
24 University of Science and Technology, Levanger, Norway

25 ⁸The Charles Bronfman Institute for Personalized Medicine, Icahn School of Medicine at Mount
26 Sinai, New York, NY, USA

27 ⁹Department of Biological Sciences, North Carolina State University, Raleigh, NC, USA

28 ¹⁰Faculty of Medicine, KU Leuven, Leuven, Belgium

29 ¹¹Integrative Research Center for Cerebrovascular and Cardiovascular Diseases, Seoul,
30 Republic of Korea

31 ¹²Cardiovascular Division, Department of Medicine, Brigham and Women's Hospital, Boston,
32 MA, USA

33 ¹³Centre for Heart Lung Innovation, University of British Columbia, Vancouver, BC, Canada

34 ¹⁴Department of Obstetrics and Gynecology, Brigham and Women's Hospital, Boston, MA, USA

35 ¹⁵Center for Genomic Medicine, Massachusetts General Hospital, Boston, MA, USA

36 ¹⁶Department of Biostatistics and Center for Statistical Genetics, University of Michigan School
37 of Public Health, Ann Arbor, MI, USA

38 ¹⁷Department of Integrative Biology, University of Texas at San Antonio, San Antonio, TX, USA

39 ¹⁸Department of Obstetrics and Gynecology, Columbia University, New York, NY, USA

40 ¹⁹Indiana University School of Medicine, Indianapolis, IN, USA

41 ²⁰Department of Human Genetics, Wellcome Sanger Institute, Cambridge, UK

42 ²¹Blizard Institute, Barts and The London School of Medicine and Dentistry, Queen Mary
43 University of London, London, UK

44 ²²Estonian Genome Centre, Institute of Genomics, University of Tartu, Tartu, Estonia
45

46 *These authors contributed equally.
47
48

49 **Corresponding Authors:**

50

51 Michael C. Honigberg, MD MPP

52 Massachusetts General Hospital

53 185 Cambridge Street, CPZN 3.187

54 Boston, MA 02114

55 Phone: 617-726-1843

56 Fax: 617-726-2203

57 Email: mhonigberg@mgh.harvard.edu

58 Twitter: @mchonig

59

60 Pradeep Natarajan, MD MMSc

61 Massachusetts General Hospital

62 185 Cambridge Street, CPZN 3.184

63 Boston, MA 02114

64 Phone: 617-726-1843

65 Fax: 617-726-2203

66 Email: pnatarajan@mgh.harvard.edu

67 Twitter: @pnatarajanmd

68 **Abstract**

69 Preeclampsia and gestational hypertension are common pregnancy complications
70 associated with adverse maternal and offspring outcomes. Current tools for prediction,
71 prevention, and treatment are limited. We tested the association of maternal DNA sequence
72 variants with preeclampsia in 20,064 cases and 703,117 controls and with gestational
73 hypertension in 11,027 cases and 412,788 controls across discovery and follow-up cohorts
74 using multi-ancestry meta-analysis. Altogether, we identified 18 independent loci associated
75 with preeclampsia/eclampsia and/or gestational hypertension, 12 of which are novel (e.g.,
76 *MTHFR-CLCN6*, *WNT3A*, *NPR3*, *PGR*, and *RGL3*), including two loci (*PLCE1*, *FURIN*)
77 identified in multi-trait analysis. Identified loci highlight the role of natriuretic peptide signaling,
78 angiogenesis, renal glomerular function, trophoblast development, and immune dysregulation.
79 We derived genome-wide polygenic risk scores that predicted preeclampsia/eclampsia and
80 gestational hypertension in external datasets, independent of first trimester risk markers.
81 Collectively, these findings provide mechanistic insights into the hypertensive disorders of
82 pregnancy and advance pregnancy risk stratification.

83 The hypertensive disorders of pregnancy (HDPs) represent a leading global cause of
84 maternal and neonatal morbidity and mortality and account for approximately 14% of maternal
85 deaths worldwide^{1,2}. Up to 15% of child-bearing women experience an HDP in at least one
86 pregnancy^{3,4}. The HDPs include preeclampsia, defined as new-onset hypertension or worsening
87 hypertension after 20 weeks' gestation plus proteinuria or other evidence of end-organ
88 dysfunction; gestational hypertension, defined as new-onset hypertension without
89 accompanying features of preeclampsia; and eclampsia, defined as progression of
90 preeclampsia to maternal seizures^{5,6}. In addition to short-term risks of end-organ failure and
91 death in the absence of prompt recognition and treatment, those who develop HDPs have
92 roughly two-fold long-term risk of cardiovascular disease events and premature cardiovascular
93 mortality compared with those who experience only normotensive pregnancies for reasons that
94 remain incompletely understood^{7,8}.

95 The pathophysiology of the HDPs is increasingly recognized to be heterogeneous with
96 both maternal and fetal contributions. In the contemporary model of preeclampsia
97 pathophysiology, defective trophoblast invasion in early placental development and incomplete
98 remodeling of the maternal spiral arteries lead to placental ischemia later in gestation^{1,9,10}. The
99 distressed placenta secretes an excess of circulating anti-angiogenic proteins (e.g., soluble fms-
100 like tyrosine kinase receptor 1 [sFlt-1] and soluble endoglin) which induce the systemic maternal
101 endothelial dysfunction and vasoconstriction that drive the clinical manifestations of
102 preeclampsia (hypertension and proteinuria)¹¹. In addition, maternal cardiometabolic risk factors
103 (e.g., pre-pregnancy chronic hypertension, diabetes, obesity) and pre-pregnancy kidney and
104 autoimmune disease strongly predict preeclampsia^{1,12} and influence early placentation as well
105 as maternal vascular adaptation to pregnancy^{10,13}.

106 Genetic analysis may yield novel mechanistic insights into the pathophysiology of the
107 HDPs and may also help improve pregnancy risk prediction. An estimated 31-35% of
108 preeclampsia predisposition has been attributed to maternal genetics using familial aggregation-

109 based approaches^{14,15}. However, few genetic loci linked to preeclampsia have been identified
110 and robustly validated to date. Several fetal variants near the *FLT1* gene, which encodes
111 placenta-derived sFlt-1, have been reported to associate with preeclampsia^{16,17}. Steinthorsdottir
112 et al. recently performed the largest maternal GWAS of preeclampsia to date and identified
113 associations near *FTO* (the first reported obesity-associated locus)¹⁸, *ZNF831*, and several
114 other blood pressure-associated genes (*MECOM*, *FGF5*, and *SH2B3*) in combined meta-
115 analysis of 12,150 cases and 164,098 controls¹⁷. In addition, several studies have now reported
116 that increased maternal polygenic risk of hypertension associates with risk of HDPs^{17,19-22}.

117 In this work, we performed expanded multi-ancestry GWAS meta-analysis for
118 preeclampsia/eclampsia and separately performed GWAS for gestational hypertension. We
119 then used these results to train and test polygenic risk scores (PRS) for each outcome in
120 independent datasets (**Extended Data Fig. 1**).

121

122 **Results**

123 *Association of common genetic variants with preeclampsia/eclampsia and gestational*
124 *hypertension.*

125 We tested the association of common variants (minor allele frequency [MAF] $\geq 1\%$) with
126 preeclampsia/eclampsia among 17,150 cases and 451,241 controls in discovery analysis
127 (78.0% European, 21.2% Asian, 0.5% admixed American, and 0.3% African ancestry;
128 **Supplementary Table 1**) using multi-ancestry fixed-effects meta-analysis in METAL²³. Cases
129 were identified principally using *International Classification of Diseases* (ICD) codes and
130 phecodes corresponding to preeclampsia and, where available, eclampsia (**Supplementary**
131 **Tables 1-3**); controls were generally either women with exclusively normotensive pregnancies
132 or all women without codes corresponding to hypertension in pregnancy¹⁷. In discovery
133 analysis, we identified 12 independent loci at the commonly used statistical significance
134 threshold of $P < 5 \times 10^{-8}$, including 6 previously nominated by Steinthorsdottir et al. in maternal or

135 fetal GWAS (*MECOM* [3q26], *FGF5* [4q21], *SH2B3* [12q22], *FLT1* [13q12], *FTO* [16q12], and
136 *ZNF831* [20q13])¹⁷ and 6 additional loci (*MTHFR-CLCN6* [1p36], *WNT3A* [1q42], *MICA* [6p21],
137 *LINC00484* [9q22], *PGR* [11q22], and *RGL3* [19p13]; **Table 1, Supplementary Fig. 2a,**
138 **Supplementary Table 4**).

139 We pursued replication of these GWAS results in 4 follow-up cohorts that collectively
140 included 2,914 preeclampsia/eclampsia cases and 251,876 controls (96.7% European, 3.1%
141 African, and 0.3% admixed American ancestry). We replicated 7 of 12 associations from
142 discovery analysis with $P < 0.05$ and consistent direction of effect, including the novel
143 associations at *MTHFR-CLCN6*, *PGR*, and *RGL3* (**Table 1**). Ten associations had consistent
144 direction of effect in follow-up cohorts, and 11 of 12 associated loci retained genome-wide
145 significance in combined meta-analysis of preeclampsia/eclampsia discovery and follow-up
146 cohorts. In meta-analysis of discovery and follow-up cohorts, 2 additional loci attained genome-
147 wide significance (*FGL1* [8p22] and *UPB1* [22q11]), yielding a total of 13 loci associated with
148 preeclampsia/eclampsia with genome-wide significance in combined meta-analysis (**Fig. 1a**).
149 We did not observe inflation in test statistics (lambda genomic inflation factor: 1.038,
150 **Supplementary Fig. 1a**). There was no discernible heterogeneity of these associations across
151 ancestries (**Supplementary Table 5**). Conditional analysis in GCTA-COJO²⁴ identified a second
152 independent association on chromosome 20 near *ZBTB46* (lead variant rs4809370, OR 1.08,
153 $P = 1.4 \times 10^{-8}$).

154 We next tested the association of common variants with gestational hypertension among
155 8,961 cases and 184,925 controls in discovery analysis (91.3% European, 6.7% Asian, 0.7%
156 African, 1.3% admixed American) and among 2,066 cases and 227,863 controls in follow-up
157 cohorts (96.3% European, 3.4% African, 0.3% admixed American, **Supplementary Tables 1-2**).
158 Gestational hypertension cases were identified primarily based on qualifying ICD codes for
159 gestational hypertension and an absence of qualifying codes for preeclampsia/eclampsia. In
160 discovery analysis, we identified 7 independent genome-wide significant loci associated with

161 gestational hypertension, including 4 also associated with preeclampsia/eclampsia (*MECOM*,
162 *FGF5*, *RGL3*, and *ZNF831*) and 3 additional associations (*NPR3* [5p13], *TNS2-CSAD* [12q13],
163 and *PREX1* [20q13]; **Table 2**). Four of 7 significant associations replicated with $P < 0.05$ in
164 follow-up cohorts (*FGF5*, *RGL3*, *PREX1*, and *ZNF831*), and all 7 loci had consistent direction of
165 effect in follow-up cohorts. In combined meta-analysis of discovery and follow-up cohorts, 6 of 7
166 loci retained genome-wide significance, and the *MTHFR-CLCN6* locus (1p36) additionally
167 reached genome-wide significance, yielding a total of 7 loci associated with gestational
168 hypertension in combined meta-analysis (**Fig. 1b**). As with preeclampsia/eclampsia, we did not
169 observe inflation in test statistics (lambda genomic inflation factor: 0.976, **Supplementary Fig.**
170 **1b**). Stratified analyses suggested potential heterogeneity of association by ancestry
171 ($P_{\text{heterogeneity}} = 0.001$) at the *MECOM* locus, with an inverse association with the lead risk variant
172 observed in those with admixed American ancestry (**Supplementary Table 5**).

173

174 *Genetic correlation across hypertension-related phenotypes.*

175 We used cross-trait LD score regression²⁵ to assess genetic correlations among
176 preeclampsia/eclampsia, gestational hypertension, systolic blood pressure (SBP), and diastolic
177 blood pressure (DBP)²⁶. Preeclampsia/eclampsia and gestational hypertension were strongly
178 genetically correlated ($r_g = 0.71$, SE = 0.08). SBP demonstrated stronger genetic correlation with
179 gestational hypertension ($r_g = 0.73$, SE = 0.06) vs. preeclampsia/eclampsia ($r_g = 0.52$, SE =
180 0.05). Of note, correlation of SBP with gestational hypertension ($r_g = 0.73$) was larger than that
181 of SBP with DBP ($r_g = 0.62$, SE = 0.03, in the Million Veteran Program²⁶, with similar genetic
182 correlation between SBP and DBP observed previously in the UK Biobank²⁷). Genetic
183 correlations with the HDPs were stronger for SBP vs. DBP (**Supplementary Table 6**).

184

185

186 *Multi-trait analysis of GWAS*

187 Given the high degree of genetic correlation observed between preeclampsia/eclampsia
188 and gestational hypertension noted earlier, we used multi-trait analysis of genome-wide
189 association summary statistics (MTAG)²⁸ to boost power to identify additional associated
190 variants. Consistent with this high degree of correlation, MTAG yielded very similar results for
191 each trait (displayed for preeclampsia/eclampsia in **Extended Data Fig. 2**). MTAG identified 2
192 additional loci with genome-wide significance (**Supplementary Table 7**): *PLCE1* (10q23), a
193 blood pressure-associated gene involved in glomerular podocyte development²⁹, which also
194 narrowly missed statistical significance in combined meta-analysis of gestational hypertension
195 discovery and follow-up cohorts ($P=6.0\times 10^{-8}$); and *FURIN* (15q26), whose product is a protein
196 convertase involved in processing pro-natriuretic peptides³⁰ and whose expression is decreased
197 in preeclamptic placentas³¹.

198

199 *Gene prioritization at preeclampsia/eclampsia and gestational hypertension risk loci.*

200 To prioritize causal genes, we first performed colocalization analysis with expression
201 quantitative trait loci (eQTLs) within ± 500 kilobases of lead variants across 52 tissues in the
202 Genotype-Tissue Expression project (GTEx) (**Supplementary Tables 8-9**)³². Colocalization
203 analyses implicated *FGF5* and *NPR3* as causal genes at their respective loci. The lead variant
204 at the *MTHFR-CLCN6* locus colocalized with *CLCN6* eQTLs as well as expression of *NPPA*
205 (which encodes the precursor to atrial natriuretic peptide [ANP]). The lead
206 preeclampsia/eclampsia variant at the *ZNF831* locus colocalized with multiple genes but most
207 strongly with *ZBTB46* expression, including in arterial tissue. We also observed multiple
208 colocalizations with *WNT3A* (*WNT3A*, *GJC2*, and mitochondrial proteins *IBA57* and *MPRL55*),
209 *MICA* (*CLIC1* and psoriasis-associated genes *TCF19*, *CCHCR1*, and *PSORS1C1*), and *RGL3*
210 (*ZNF627* and *EPOR*). We observed no strong colocalizations with lead variants at *LINC00484*,
211 *PGR*, *SH2B3*, *FLT1*, *FTO*, or *TNS2-CSAD*.

212 Next, we queried variant-to-gene evidence in Open Targets Genetics v7
213 **(Supplementary Tables 10-11)**³³ and generated polygenic priority scores (PoPS,
214 **Supplementary Table 12)**³⁴ for lead variants. Both approaches nominated *MECOM*, *FGF5*,
215 *SH2B3*, *FTO*, and *NPR3* as the most likely causal gene and their respective loci. PoPS
216 prioritized *NPPA* as the most likely causal gene at the *MTHFR-CLCN6* locus and *TRPC6* as the
217 most likely causal gene at the *PGR* locus.

218 To further understand how identified genes might influence HDP risk, we queried lead
219 maternal variants in the fetal GWAS for maternal preeclampsia from Steinthorsdottir et al.¹⁷
220 **(Supplementary Table 13)**. As published previously^{16,17}, the lead *FLT1* variant was strongly
221 associated with preeclampsia ($P=3.9 \times 10^{-11}$); all other lead variants had $P > 10^{-4}$ in the fetal
222 GWAS. In addition, we queried nearest genes and those prioritized by colocalization, variant-to-
223 gene scores, and/or PoPS in a publicly available database of the human placental transcriptome
224 including preeclampsia cases and controls **(Supplementary Table 14)**³⁵. Consistent with the
225 correlation of increased circulating placental sFlt-1 with preeclampsia incidence^{11,36}, *FLT1* gene
226 expression was increased in preeclamptic placentas ($\log_2(\text{fold change})$ 0.39, false discovery
227 rate-adjusted $P=0.003$). Expression of *WNT3A*, which occurs almost exclusively in the
228 placenta³⁷, was increased in preeclamptic placentas vs. healthy controls ($\log_2(\text{fold change})$ 0.21,
229 adjusted $P=0.029$), in line with another recent study³⁸. *OBSCN*, which was most strongly
230 prioritized by PoPS at the *WNT3A* locus, was also overexpressed in preeclamptic vs. control
231 placentas ($\log_2(\text{fold change})$ 0.18, adjusted $P=0.037$). Furthermore, preeclamptic placentas
232 demonstrated lower expression of *ARHGAP42*—which sits adjacent to *PGR* and encodes Rho
233 GTP-ase activating protein 42, a known regulator of vascular tone and blood pressure
234 expressed selectively in smooth muscle cells³⁹—compared with controls ($\log_2(\text{fold change})$
235 -0.18, adjusted $P=0.004$).

236 We analyzed expression of prioritized genes in a dataset of single-nuclei RNA
237 sequencing (snRNA-seq) from non-atherosclerotic human aortic tissue. SnRNA-seq identified

238 subpopulations of vascular smooth muscle cells, fibromyocytes, fibroblasts, endothelial cells,
239 macrophages, natural killer T cells, and neuronal cells. The greatest enrichment was seen in the
240 two endothelial cell (EC) populations and in macrophages (**Extended Data Fig. 3**). The EC1
241 subpopulation is enriched for genes in angiogenesis and lipoprotein assembly and clearance,
242 while the EC2 subpopulation is enriched for genes in extracellular matrix production and integrin
243 expression⁴⁰. Relative expression in ECs vs. other cell types was strongest for *FLT1* (EC1/EC2),
244 *ZBTB46* (EC1), and *MECOM* (EC2).

245

246 *Training and testing polygenic risk scores for preeclampsia/eclampsia and gestational*
247 *hypertension.*

248 We used PRS-CS⁴¹ to construct genome-wide PRS for preeclampsia/eclampsia
249 (PRS_{preeclampsia}) and gestational hypertension (PRS_{GH}) from our corresponding discovery GWAS
250 summary statistics. In addition, since blood pressure polygenic risk has previously been
251 associated with HDPs^{17,19,20}, we used PRS-CS to derive a PRS for SBP (PRS_{SBP}) using the SBP
252 GWAS from the Million Veteran Program²⁶ to compare prediction across scores and determine
253 whether a linear combination of each HDP PRS and PRS_{SBP} improves performance.

254 We tuned polygenic scores among 423 women with a history of
255 preeclampsia/eclampsia, 482 women with a history of gestational hypertension only, and
256 211,129 parous women without a reported history of HDPs in the UK Biobank. The global
257 shrinkage parameter of 1×10^{-4} was chosen for PRS_{preeclampsia} and PRS_{SBP} and of 1×10^{-6} for
258 PRS_{GH} as these values generated the highest R^2 (**Supplementary Table 15**). A linear
259 combination of PRS_{preeclampsia} and PRS_{SBP} (PRS_{preeclampsia+SBP}) improved performance vs. each
260 score individually for the outcome of preeclampsia (**Supplementary Table 16**).

261 The individual and combination PRS tuned in the UK Biobank were carried forward for
262 external validation in two complementary datasets: a Norwegian population-based cohort linked
263 to the Medical Birth Register of Norway (HUNT, preeclampsia/eclampsia only) and a

264 prospective U.S. pregnancy cohort (nuMoM2b). Among 25,582 Norwegian women in HUNT
265 (1,569 [6.1%] with preeclampsia/eclampsia), the prevalence of preeclampsia/eclampsia ranged
266 from ~4% among women in the bottom decile of $PRS_{\text{preeclampsia+SBP}}$ to ~10% among the top decile
267 of $PRS_{\text{preeclampsia+SBP}}$ (**Fig. 2a**). After adjustment for age at birth, age², and the first 10 principal
268 components (PC) of ancestry, the OR corresponding to the top 10%vs. bottom 90% of
269 $PRS_{\text{preeclampsia+SBP}}$ was 1.85 (95% CI 1.61-2.13, $P=6.3 \times 10^{-18}$). $PRS_{\text{preeclampsia+SBP}}$ increased
270 Nagelkerke's R^2 by 28.5% compared with the $PRS_{\text{preeclampsia}}$ alone and by 79.3% compared with
271 PRS_{SBP} alone (**Supplementary Table 17**).

272 We next tested PRS performance in the prospective, multi-ancestry nuMoM2b cohort of
273 U.S. women recruited in the first trimester of their first pregnancy, including 481 (6.4%) who
274 developed preeclampsia, 1,319 (17.5%) who developed gestational hypertension, and 5,744
275 with normotensive pregnancies (overall 73.6% European, 16.5% African, and 1.0% admixed
276 American ancestry). Rates of preeclampsia/eclampsia ranged from ~4% among women in the
277 bottom decile of $PRS_{\text{preeclampsia+SBP}}$ to ~10% among the top decile of $PRS_{\text{preeclampsia+SBP}}$ (**Fig. 2b**).
278 Rates of gestational hypertension ranged from ~9% among women in the bottom decile of
279 $PRS_{\text{GH+SBP}}$ to ~24% among the top decile of $PRS_{\text{GH+SBP}}$ (**Fig. 2c**). As in HUNT, incorporating
280 SBP PRS in linear combination boosted PRS performance for HDPs, especially for gestational
281 hypertension, although PRS performance was better for European ancestry vs. other women
282 (**Supplementary Table 18**). After adjustment for age, PC 1-10, and self-reported race/ethnicity,
283 $PRS_{\text{preeclampsia+SBP}}$ and $PRS_{\text{GH+SBP}}$ each predicted their respective outcomes
284 (preeclampsia/eclampsia: OR 1.78, 95% CI 1.35-2.31, for top 10% vs. bottom 90%
285 $PRS_{\text{preeclampsia+SBP}}$, $P=2.6 \times 10^{-5}$; gestational hypertension: OR 1.52, 95% CI 1.26-1.84, for top 10%
286 vs. bottom 90% $PRS_{\text{GH+SBP}}$, $P=1.0 \times 10^{-5}$). As pre-pregnancy hypertension and obesity are
287 established clinical predictors of HDPs, we performed further adjustment for first trimester SBP,
288 antihypertensive medication use (as a marker of chronic hypertension), and body mass index
289 (BMI). After this additional adjustment, the scores both remained predictive

290 (preeclampsia/eclampsia: OR 1.64, 95% CI 1.23-2.15, for top 10% vs. bottom 90%
291 $PRS_{\text{preeclampsia+SBP}}$, $P=5.1 \times 10^{-4}$; gestational hypertension: OR 1.53, 95% CI 1.26-1.85, for top 10%
292 vs. bottom 90% $PRS_{\text{GH+SBP}}$, $P=1.0 \times 10^{-5}$). Compared with a model including age, PC 1-10, self-
293 reported race/ethnicity, first trimester SBP, antihypertensive medication use, and first trimester
294 BMI, addition of $PRS_{\text{preeclampsia+SBP}}$ improved the C-statistic for preeclampsia/eclampsia from
295 0.690 to 0.701 (+0.011, 95% CI 0.001-0.021, Delong's $P=3.7 \times 10^{-2}$). Similarly, addition of
296 $PRS_{\text{GH+SBP}}$ improved the C-statistic for gestational hypertension from 0.649 to 0.659 (+0.010,
297 95% CI 0.003-0.018, Delong's $P=5.7 \times 10^{-3}$).

298 Low-dose aspirin starting after 12 weeks' gestation represents an evidence-based but
299 underutilized⁴² strategy to reduce risk of preeclampsia. To further probe the potential clinical
300 impact of incorporating PRS to guide aspirin allocation, we examined aspirin eligibility according
301 to current U.S. Preventive Service Task Force major criteria⁴³ with and without addition of
302 $PRS_{\text{preeclampsia+SBP}}$ as an additional eligibility criterion in the nuMoM2b cohort. Among singleton,
303 nulliparous women (i.e., the population enrolled in nuMoM2b), major criteria for aspirin eligibility
304 are chronic pre-pregnancy hypertension, pre-gestational diabetes, kidney disease, and
305 autoimmune disease.⁴³ Major risk factors identified only a small proportion of the cohort that
306 developed HDPs (**Table 3**), and aspirin would have been recommended in only 17.5% of
307 women who developed preeclampsia/eclampsia (i.e., sensitivity of major risk factors alone was
308 17.5%), with a positive predictive value of 12.8%. Incorporating the top 10% of $PRS_{\text{preeclampsia+SBP}}$
309 increased identification of the aspirin-eligible proportion to 30.4% of women with
310 preeclampsia/eclampsia (i.e., sensitivity 30.4% [95% CI 26.2-34.5%]) with specificity of 83.3%
311 (95% CI 82.5-84.2%), positive predictive value of 11.0% (95% CI 9.3-12.7%), and negative
312 predictive value of 94.6% (95% CI 94.1-95.2%; **Table 3**). Expanding aspirin eligibility further to
313 include the top 25% of $PRS_{\text{preeclampsia+SBP}}$ captured nearly half (47.0%) of women who developed
314 preeclampsia/eclampsia. Addition of high $PRS_{\text{preeclampsia+SBP}}$ to major risk factors to up-classify
315 risk of preeclampsia/eclampsia vs. other pregnancies yielded net reclassification of +1.8% (95%

316 CI -0.3 to +4.0%) for top 5% $PRS_{\text{preeclampsia+SBP}}$, +4.3% (95% CI 1.3-7.3%) for top 10%
317 $PRS_{\text{preeclampsia+SBP}}$, and +8.3% (95% CI 3.9-12.6%) for top 25% $PRS_{\text{preeclampsia+SBP}}$ (**Table 3**).

318
319 *Phenome-wide associations with preeclampsia/eclampsia and gestational hypertension*
320 *polygenic risk.*

321 We performed sex-stratified phenome-wide association analysis (pheWAS) for
322 $PRS_{\text{preeclampsia}}$ and PRS_{GH} across 1,445 phecode-based phenotypes in the UK Biobank.
323 $PRS_{\text{preeclampsia}}$ was significantly associated with 36 phenotypes in women and 37 phenotypes in
324 men with Bonferroni-corrected statistical significance ($P < 0.05/1,445 = 3.5 \times 10^{-5}$); PRS_{GH} was
325 significantly associated with 25 and 32 phenotypes in women and men, respectively (**Fig. 3**).
326 $PRS_{\text{preeclampsia}}$ and PRS_{GH} were most strongly associated with hypertension in both sexes
327 ($PRS_{\text{preeclampsia}}$: OR_{women} 1.15 per SD, 95% CI 1.14-1.16, $P = 1.4 \times 10^{-175}$; OR_{men} 1.12 per SD, 95%
328 CI 1.11-1.13, $P = 7.5 \times 10^{-112}$; PRS_{GH} : OR_{women} 1.15 per SD, 95% CI 1.14-1.16, $P = 5.1 \times 10^{-184}$; OR_{men}
329 1.13 per SD, 95% CI 1.11-1.14, $P = 1.3 \times 10^{-133}$). Other strong phenotypic associations included
330 hypercholesterolemia, type 2 diabetes, obesity, and atherosclerotic cardiovascular disease
331 (**Supplementary Tables 19-20**). $PRS_{\text{preeclampsia}}$ predicted ischemic heart disease in women (OR
332 1.09 per SD, 95% CI 1.07-1.11, $P = 4.4 \times 10^{-27}$) and men (OR 1.09 per SD, 95% CI 1.07-1.10,
333 $P = 2.6 \times 10^{-40}$), as did PRS_{GH} (OR_{women} 1.07 per SD, 95% CI 1.05-1.08, $P = 4.4 \times 10^{-16}$; OR_{men} 1.08
334 per SD, 95% CI 1.07-1.09, $P = 1.4 \times 10^{-35}$). These similar associations between sexes suggest that
335 most genes identified are not pregnancy-specific, but rather that pregnancy likely unmasks
336 underlying risk. $PRS_{\text{preeclampsia}}$ was also associated with several autoimmune phenotypes,
337 including celiac disease, type 1 diabetes, hypothyroidism (in women), and a suggestive
338 association with rheumatoid arthritis in women ($P = 5.7 \times 10^{-6}$), whereas type 1 diabetes and celiac
339 disease were not significantly associated with PRS_{GH} in either sex.

340
341

342 Discussion

343 We present an expanded multi-ancestry maternal genome-wide association analysis of
344 preeclampsia/eclampsia and, to our knowledge, the first distinct GWAS of gestational
345 hypertension, two pregnancy complications on the spectrum of HDPs with substantial
346 associated public health impact. Altogether, we identified 18 independent genomic loci
347 associated with preeclampsia/eclampsia and/or gestational hypertension: 13 loci associated
348 with preeclampsia/eclampsia; 7 loci associated with gestational hypertension, of which 4 overlap
349 with preeclampsia/eclampsia; and 2 additional loci associated with both phenotypes in multi-trait
350 analysis. Identified loci highlight the role of angiogenesis and endothelial cell function (*FLT1*,
351 *ZBTB46*), natriuretic peptide signaling (*NPPA*, *NPR3*, *FURIN*), renal glomerular function
352 (*TRPC6*, *TNS2*, *PLCE1*), and immune dysregulation (*MICA*, *SH2B3*) in the pathogenesis of
353 these conditions, with some loci (*FLT1*^{16,17,36}, *WNT3A*^{38,44}) previously described to influence risk
354 via the fetal genome. Furthermore, we demonstrated that an HDP PRS augmented by a systolic
355 blood pressure PRS stratified risk of HDP. Polygenic risk scores predicted HDP risk among
356 nulliparous women independent of first trimester blood pressure and BMI, indicating potential
357 clinical utility of these scores risk for pregnancy risk stratification. Collectively, these findings
358 may have implications for advancing HDP prediction, prevention, and treatment.

359 First, our findings provide insights into mechanisms of HDP pathogenesis and
360 underscore the causal role of blood pressure. As in previous GWAS of preeclampsia¹⁷, most
361 genetic associations we identified were also associated with blood pressure²⁹, and genetic
362 correlation between blood pressure and the HDPs, especially gestational hypertension, was
363 high. These findings align with prior work demonstrating heightened polygenic BP risk in those
364 with HDPs^{17,19,20}. Indeed, we observed that integrating SBP PRS with HDP PRS in linear
365 combination further improved predictive performance for both preeclampsia/eclampsia and
366 gestational hypertension. The recently published randomized CHAP trial of treatment for mild
367 chronic hypertension in pregnancy demonstrated that lowering blood pressure

368 pharmacologically reduced risk of progression to preeclampsia⁴⁵, supporting the notion that
369 elevated blood pressure is not merely a clinical manifestation of the HDPs but also plays a
370 causal role in disease pathogenesis.

371 Second, our GWAS findings suggest a key role of natriuretic peptide signaling in the
372 pathogenesis of the HDPs. The natriuretic peptides (e.g., ANP, B-type natriuretic peptide [BNP])
373 promote renal sodium excretion and counteract renin-angiotensin and sympathetic nervous
374 system activation⁴⁶. The lead variant at the *MTHFR-CLCN6* locus colocalized with *NPPA*
375 expression in atrial tissue, its primary site of expression. ANP (the protein product of *NPPA*)
376 also plays a role in uterine decidualization and spiral artery remodeling⁴⁷, a process known to be
377 impaired in the early pathogenesis of preeclampsia^{1,10}. Furthermore, ANP is cleared from the
378 circulation by the protein product of *NPR3*⁴⁸, which was identified in the GWAS of gestational
379 hypertension. Human data also support accelerated ANP clearance in the setting of
380 preeclampsia⁴⁹. Of note, our lead risk variant at the *MTHFR-CLCN6* locus has been previously
381 associated with reduced levels of circulating N-terminal pro-BNP⁵⁰. A recent analysis from the
382 nuMoM2b cohort found that first trimester levels of N-terminal pro-BNP were unexpectedly lower
383 among women who subsequently developed HDPs later in pregnancy after adjustment for race
384 and BMI⁵¹. Collectively, these findings suggest that a relative deficiency in endogenous
385 natriuretic peptide signaling may predispose to HDPs. Synthetic natriuretic peptides have been
386 developed previously (e.g., nesiritide), and the natriuretic peptides may represent a future
387 therapeutic target for direct or indirect modulation toward HDP prevention and/or treatment.

388 Third, our findings suggest several other potential novel mechanisms underlying HDP
389 risk. Although *ZNF831* has been previously associated with hypertension, the mechanisms by
390 which risk variants increase blood pressure have been unclear. In our conditional analysis at the
391 *ZNF831* locus, we detected a second independent association with *ZBTB46*, which was also
392 strongly colocalized with the lead *ZNF831* variant in multiple tissues, including arterial tissue.
393 *ZBTB46* is a transcription factor expressed in dendritic cells^{52,53} and in vascular endothelial

394 cells, consistent with our observed expression in aortic endothelial cells, and *ZBTB46*
395 overexpression suppresses endothelial cell proliferation and angiogenesis *in vitro*⁵⁴.
396 Furthermore, *ZBTB46* is sensitive to shear stress⁵⁴, which may have relevance to the
397 hyperdynamic hemodynamic state of pregnancy.

398 In addition, we identified and replicated a novel association in the intergenic region
399 between *PGR* and *TRPC6* (rs2508372), which has several plausible mechanistic links to the
400 HDPs. Along with other newly identified HDP-associated loci (*TNS2*⁵⁵ and *PLCE1*²⁹), *TRPC6*
401 has also been linked to glomerular function. It has been implicated in focal segmental
402 glomerulosclerosis and diabetic nephropathy⁵⁶ and mediates the proteinuria and renal
403 dysfunction induced by exposure to hypertension and diabetes⁵⁷. In addition, the progesterone
404 receptor mediates the physiologic response to progesterone, including pregnancy-associated
405 vasodilation⁵⁸. As noted, *ARHGAP42* (adjacent to *PGR*), which was found to have reduced
406 expression in preeclamptic placentas, regulates vascular tone and blood pressure³⁹.
407 Furthermore, this same intergenic lead variant has been associated with reduced circulating
408 levels of matrix metalloproteinase-10⁵⁹, which mediates vascular endothelial growth factor
409 (VEGF)-induced angiogenesis⁶⁰. Further research is necessary to clarify which of these
410 potential mechanisms primarily mediate the preeclampsia/eclampsia risk associated with the
411 *PGR/TRPC6* locus.

412 Fourth, associations at *MICA* and *SH2B3* highlight the role of immune function in
413 preeclampsia pathogenesis. Differences in T-cell phenotypes and circulating pro- and anti-
414 inflammatory cytokines in preeclampsia are well described^{9,10}. We detected an association near
415 *MICA* (encoding major histocompatibility complex class I polypeptide-related sequence A) within
416 the *HLA* region, which has also been linked to multiple autoimmune diseases and may reflect
417 the importance of maternal immune tolerance of fetal cells at the maternal-fetal interface in early
418 placentation¹⁰. Indeed, we found that preeclampsia/eclampsia PRS predicted type 1 diabetes,
419 celiac disease, and hypothyroidism. Subclinical thyroid dysfunction has been associated with

420 increased risk for preeclampsia⁶¹, and previous Finnish data suggested term preeclampsia
421 predicts incident hypothyroidism later in life⁶². SH2B3 (also known as LNK) is expressed
422 primarily in endothelial and hematopoietic cells and negatively regulates cytokine signaling;
423 reduced SH2B3 function has been linked to atherosclerosis as well as several autoimmune
424 diseases⁶³. The lead variant in our preeclampsia/eclampsia GWAS at *SH2B3* is in linkage
425 disequilibrium ($D'=0.96$, $R^2=0.91$)⁶⁴ with the well-described coronary artery disease risk allele at
426 this locus (rs3184504)⁶⁵. Our lead *SH2B3* variant was also associated with increased leukocyte,
427 red cell blood, and platelet counts in the UK Biobank (nealelab.is/uk-biobank) and with
428 heightened levels of vascular cell adhesion protein 1, platelet glycoprotein IB alpha chain,
429 interleukin-2 receptor, and lymphocyte activation gene 3 protein, among other immune-related
430 proteins⁵⁰. Recent data indicate that reduced SH2B3 function promotes neutrophil extracellular
431 trap formation, a process implicated in preeclampsia pathogenesis^{66,67}, and arterial
432 thrombosis⁶⁸. This process was dependent on the presence of oxidized phospholipids⁶⁸, which
433 are increased in the setting of preeclampsia vs. normotensive pregnancy^{69,70}.

434 Fifth, we observed that polygenic risk scores for preeclampsia/eclampsia and gestational
435 hypertension were predictive in multiple external test cohorts and independent of first trimester
436 risk indicators (blood pressure and BMI), with women in the top PRS decile demonstrating 65-
437 85% greater risk of preeclampsia/eclampsia vs. other women. Predictive accuracy of clinical risk
438 factors for HDPs is modest^{71,72}. Meta-analysis indicates that personal history of preeclampsia,
439 pre-pregnancy chronic hypertension, and pre-pregnancy diabetes are associated with relative
440 risks of 8.4, 5.1, and 3.7, respectively, for development of preeclampsia. However, nulliparity
441 carries the largest population attributable fraction of associated risk for preeclampsia
442 (approximately one-third)¹², and most affected women lack any overt pre-pregnancy risk factors
443 other than nulliparity⁶. Low-dose aspirin after 12 weeks' gestation represents one evidence-
444 based strategy to mitigate risk of preeclampsia and preterm birth in women at increased risk for
445 preeclampsia⁴³. Improving pregnancy risk prediction, especially in the first pregnancy, therefore

446 remains a pressing clinical need to optimize HDP prevention^{43,73}. First trimester screening
447 algorithms have been developed, with the UK Fetal Medicine Foundation combined prediction
448 model⁷⁴ incorporating clinical factors, mean arterial pressure, uterine artery pulsatility index, and
449 maternal serum pregnancy-associated plasma protein A and placental growth factor being most
450 extensively validated to date⁷⁵, although not currently endorsed by UK or US care guidelines⁴³.
451 Future studies are required to ascertain whether PRS may augment existing risk algorithms. In
452 contrast with markers measured during pregnancy, PRS can be calculated anytime from birth,
453 including preconception, and may therefore also inform preconception counseling and health
454 optimization.

455 Although our GWAS included substantially more non-European individuals than prior
456 GWAS, >80% of individuals were European, and as such, the preeclampsia/eclampsia and
457 gestational hypertension PRS generally performed better in European ancestry women vs.
458 others, consistent with many prior published PRS and a well-recognized challenge in
459 contemporary genetics⁷⁶. Ongoing efforts to include accurate, detailed pregnancy and
460 reproductive history phenotypes in diverse genetic datasets and increase representation of non-
461 European individuals will be critical to improve genetic discovery and cross-ancestry polygenic
462 prediction and to achieve genomic equity^{76,77}.

463 This study should be considered in the context of other limitations. Due to HDP
464 phenotyping limitations in large datasets using ICD code-based ascertainment, some
465 participants may have had preeclampsia superimposed on chronic hypertension rather than *de*
466 *novo* preeclampsia, which may enrich genetic associations for hypertension predilection. In a
467 subset of cohorts, however, the control group included women with chronic hypertension in
468 pregnancy. Validation studies of ICD codes and registry diagnoses demonstrate that these
469 approaches have modest sensitivity but high specificity and positive predictive value (>80%) in
470 comparison with adjudicated HDP diagnoses⁷⁸⁻⁸⁰ and that accuracy may be higher for severe vs.
471 mild preeclampsia⁸¹. We were unable to examine more granular HDP subtypes such as

472 preeclampsia with severe features, HELLP (hemolysis, elevated liver enzymes, and low
473 platelets) syndrome, preterm vs. term vs. postpartum onset, or HDP with vs. without
474 accompanying fetal growth restriction. The underlying pathophysiology of the HDPs is
475 heterogeneous and may vary across these subtypes; future adequately powered studies should
476 examine these subtypes separately as implications for pregnancy care and long-term maternal
477 health risk may differ⁸². In addition, we lacked paired maternal-fetal samples to condition
478 maternal risk variants on fetal genotype, although other complementary analyses such as
479 placental transcriptomics indicated particular variants more likely to be influencing risk via the
480 fetal genome. Finally, snRNA-seq analyses were performed in male aortic tissue; while findings
481 are consistent with current understanding of HDPs, future work is needed to verify that these
482 results are consistent in women and determine whether additional insights may be apparent in
483 women.

484 Overall, multi-ancestry genome-wide meta-analysis of preeclampsia/eclampsia and
485 gestational hypertension revealed novel distinct and overlapping risk loci and enabled polygenic
486 prediction of the HDPs, with implications for HDP prediction, prevention, and treatment.

487

488 **Methods**

489 *Study cohorts, phenotypes, genotyping, and association analysis.*

490 Preeclampsia/eclampsia and gestational hypertension case and control counts and
491 definitions for each cohort are summarized in Supplementary Tables 1-3. If an individual had
492 qualifying codes for both preeclampsia/eclampsia and gestational hypertension, she was
493 designated as having preeclampsia/eclampsia. In multi-ancestry cohorts, association analyses
494 were performed within each ancestry group separately and subsequently meta-analyzed.

495 *FinnGen:* Cases were identified using ICD-8, -9, and -10 codes; controls were women in
496 FinnGen without codes corresponding to hypertension and/or proteinuria during pregnancy
497 (ICD-10 O10-O16). Sample genotyping in FinnGen was performed using Illumina (Illumina Inc.,

498 San Diego, CA) and Affymetrix (Thermo Fisher Scientific, Santa Clara, CA, USA) arrays.
499 Genotype calls were made using GenCall or zCall for Illumina and AxiomGT1 algorithm for
500 Affymetrix data as described previously^{83,84}. Individuals were removed for ambiguous sex,
501 genotype missingness >5%, heterozygosity >±4 SD, and non-Finnish ancestry. Variants were
502 removed for missingness >2%, Hardy-Weinberg equilibrium (HWE) $P < 1 \times 10^{-6}$, and minor allele
503 count (MAC) <3. Pre-phasing was performed with Eagle v2.3.5 using 20,000 conditioning
504 haplotypes. Genotypes were imputed with Beagle 4.1 using the population-specific Sequencing
505 Initiative Suomi v3 imputation reference panel. Association analyses were performed using
506 SAIGE⁸⁵ with adjustment for age, genotyping batch, and PC 1-10.

507 *Estonian Biobank:* The Estonian Biobank is a population-based biobank with over
508 200,000 participants⁸⁶. Preeclampsia/eclampsia cases were identified using ICD-10 O14-O15.
509 Gestational hypertension cases were defined using ICD-10 O13. Controls were defined using
510 ICD-10 O80-O84 and no codes for HDPs. All Estonian Biobank participants have been
511 genotyped at the Core Genotyping Lab of the Institute of Genomics, University of Tartu, using
512 the Illumina Global Screening Array v1.0, v2.0, and v2.0_EST arrays. Samples were genotyped
513 and PLINK format files were created using Illumina GenomeStudio v2.0.4. Individuals were
514 excluded from the analysis if their call-rate was <95% or if sex defined based on heterozygosity
515 of X chromosome did not match sex in phenotype data. Before imputation, variants were filtered
516 by call-rate <95%, HWE $P < 1 \times 10^{-4}$, and MAF <1%. We also used the MAC filter --minMAC=5.
517 Variant positions were updated to genome build 37 and all variants were changed to be from
518 TOP strand using GSAMD-24v1-0_20011747_A1-b37.strand.RefAlt.zip files from
519 <https://www.well.ox.ac.uk/~wrayner/strand/>. Pre-phasing was performed with Eagle v2.3
520 software using 20,000 conditioning haplotypes, and imputation was done using Beagle
521 v.28Sep18.793 with effective population size $n_e=20,000$. Population specific imputation
522 reference of 2297 WGS samples was used. Analyses were carried out with SAIGE⁸⁵, adjusting
523 for year of birth and PC 1-10.

524 *Genes & Health*: Genes & Health is a cohort of British Pakistani and Bangladeshi
525 individuals recruited primarily in East London, England⁸⁷. Cases and parous controls were
526 identified using qualifying ICD-10 and SNOMED codes (Supplementary Tables 1-2). Genotyping
527 was performed using the Illumina Infinium Global Screening Array v3.0, and quality control was
528 performed using Illumina GenomeStudio and PLINK v1.9. Individuals were removed who did not
529 have Pakistani or Bangladeshi ancestry defined as $>\pm 3$ SD from the mean of PC1 and those
530 who self-reported another ethnicity. Variants with call rate <0.99 , MAF $<1\%$, and HWE $P < 1 \times 10^{-6}$
531 were removed. Imputation was performed using the Michigan Imputation Server with the
532 GenomeAsia reference panel. Association analyses were performed using SAIGE⁸⁵ with
533 adjustment for age, age², and PC 1-10.

534 *Michigan Genomics Initiative*: The Michigan Genomics Initiative enrolls participants
535 receiving care at Michigan Medicine and links biospecimen data to electronic health record
536 (EHR) data. Preeclampsia cases were identified in the freeze 3 dataset using phecode 642.1
537 and its corresponding ICD codes⁸⁸, and women lacking this phecode served as controls.
538 Genotyping was performed using one of two versions of the Illumina Infinium CoreExome-24
539 bead array platform. Relatedness within the cohort was estimated using KING v2.1.3.
540 Individuals were removed for discordant, missing, or ambiguous sex, kinship coefficient >0.45
541 with another participant, call rate $<99\%$, estimated contamination $>2.5\%$, or missingness on any
542 chromosome $>5\%$. Variants were excluded with poor intensity separation based on metrics from
543 GenomeStudio (GenTrain score <0.15 or Cluster Separation score <0.3), overall call rate $<99\%$,
544 or HWE P -value $< 1 \times 10^{-4}$. Genotypes were phased using EAGLE v2.4.1 and imputed using the
545 TOPMed reference panel. Association analysis was conducted using SAIGE⁸⁵ with adjustment
546 for age, genotype array, and PC 1-10.

547 *Mass General Brigham Biobank*: The Mass General Brigham Biobank is a health
548 system-based biobank linking genomic data to EHR data. Preeclampsia/eclampsia cases were
549 identified using ICD-10 O14-O15, gestational hypertension cases were identified using ICD-10

550 O13, and controls were identified using ICD-10 O80-O82. Variants with MAF <1%, missingness
551 per variant >1%, and HWE P -value <10⁻⁶ were removed. Imputation was performed using the
552 TOPMed reference panel. Association analysis was performed with variants filtered by MAC
553 ≥50 and INFO score ≥0.6 using REGENIE⁸⁹ with adjustment for age, genotype batch, and PC 1-
554 10.

555 *Biobank Japan*: Biobank Japan is a biobank of approximately 200,000 Japanese adults.
556 Preeclampsia cases were identified using phecode 642 and its corresponding ICD codes, and
557 other women constituted the control group⁹⁰. Genotyping was performed using the Illumina
558 HumanOmniExpressExome BeadChip or a combination of the Illumina HumanOmniExpress
559 and HumanExome BeadChip. Individuals with call rates <98% or closely related individuals
560 (PI_HAT >0.175 in PLINK) were excluded. Variants with call rate <99%, HWE P <1.0x10⁻⁶, and
561 number of heterozygotes <5 were excluded. Genotype data were imputed with 1000 Genomes
562 Project Phase 3 v5 genotype data and Japanese whole-genome sequencing data. Association
563 analysis was performed using SAIGE⁸⁵ with adjustment for age, age², and PC 1-20.

564 *BioMe*: BioMe is a health system-based biobank at the Icahn School of Medicine at
565 Mount Sinai in New York, NY, USA. Preeclampsia/eclampsia and gestational hypertension
566 cases were identified using ICD-10 codes O14-O15 and O13, respectively. Controls were other
567 women enrolled in BioMe who indicated a history of childbirth on their intake questionnaire.
568 Genotyping was performed using the Illumina Global Screening Array. Individuals with ethnicity-
569 specific heterozygosity rate that surpassed ±3 SD of the population-specific mean, those with a
570 call rate of ≤95%, and those with discordance between EHR-recorded and genetic sex were
571 removed. For variant-level quality control, sites with a call rate below 95% and sites with HWE
572 P <1x10⁻⁸ were excluded. Imputation of variants was then performed with the Michigan
573 Imputation Server pipeline using the TOPMed reference panel. Association analysis was
574 performed separately in African, admixed American, and European ancestry women using
575 SAIGE⁸⁵ with adjustment for age, age², and PC 1-10.

576 *InterPregGen consortium:* We incorporated summary statistics for preeclampsia from the
577 discovery GWAS meta-analyses of European cohorts and Central Asian cohorts from the
578 InterPregGen consortium¹⁷. European-ancestry discovery cohorts included GOPEC (United
579 Kingdom), deCODE (Iceland), the Avon Longitudinal Study of Parents and Children (United
580 Kingdom), MoBa (Norway), SSI (Denmark), and FINRISK (Finland) (7,219 cases and 155,620
581 controls). Central Asian cohorts included two Kazakh cohorts and one Uzbek cohort (2,296
582 cases and 2,059 controls). Cohort-specific preeclampsia and control definitions are summarized
583 in Supplementary Table 3¹⁷. Fixed-effects inverse variance-weighted meta-analysis was
584 performed in METAL²³.

585 *HUNT:* The HUNT study is a population-based cohort study in Nord-Trøndelag County,
586 Norway. Genotyped, parous, European-ancestry women were included in the present analysis.
587 Preeclampsia/eclampsia was ascertained by linkage to the Medical Birth Registry of Norway,
588 which defines preeclampsia as systolic blood pressure ≥ 140 mmHg and/or diastolic blood
589 pressure ≥ 90 mmHg accompanied by proteinuria >0.3 g/24 h or $>1+$ on urine dipstick⁹¹. The
590 current analysis includes genetic data from approximately 90% of participants from HUNT2
591 (1995-1997) and HUNT3 (2006-2008) who were genotyped by genome-wide SNP arrays in
592 2015^{92,93}. Genotyping, quality control metrics, and imputation have been described previously⁹².
593 Briefly, one of three different Illumina HumanCoreExome arrays (HumanCoreExome12 v1.0,
594 HumanCoreExome12 v1.1, and UM HUNT Biobank v1.0) were used for genotyping the HUNT2
595 and HUNT3 samples⁹². Samples and variants with call rate $<99\%$ were excluded. Imputation
596 was performed using 2,201 HUNT samples with whole genome sequencing, the Haplotype
597 Reference Consortium, and TOPMed imputation panel (MAC >10). Association analysis was
598 performed using SAIGE⁸⁵ with adjustment for age, age², and PC 1-10.

599 *UK Biobank:* The UK Biobank is a population-based cohort study of adult residents of
600 the UK aged 40-69 years at the time of recruitment between 2006-2010.
601 Preeclampsia/eclampsia and gestational hypertension cases were identified using qualifying

602 ICD codes (Supplementary Table 1); controls were women self-reporting a history of at least
603 one live birth at the time of study enrollment without qualifying ICD codes for
604 preeclampsia/eclampsia or gestational hypertension or any self-reported history of HDPs.
605 Genotyping was performed using the UK BiLEVE Axiom Array or the UK Biobank Axiom Array
606 (both Affymetrix, Santa Clara, CA). Individuals with single nucleotide variant missingness $\geq 10\%$
607 were excluded. Imputation was performed centrally using the Haplotype Reference Consortium,
608 UK10K, and 1000 Genome reference panels⁹⁴. Variants were required to pass the following
609 quality control filters: MAF $\geq 1\%$, single nucleotide variant missingness $< 10\%$, and HWE $P \geq 10^{-15}$,
610 MAC ≥ 50 , and INFO score ≥ 0.6 . Association analysis was performed in European-ancestry
611 participants using REGENIE⁸⁹ with adjustment for age, genotyping array, and PC 1-10.

612 *Penn Medicine Biobank (PMBB)*: PMBB is a health system-based biobank at the
613 University of Pennsylvania, Philadelphia, PA, USA. Preeclampsia/eclampsia cases were
614 identified using ICD-10 codes O14-O15 or phecode 642.1. Gestational hypertension cases were
615 identified using ICD-10 code O13. Controls were other women enrolled in PMBB. Genotyping
616 was performed using the Illumina Global Sequencing Array v2.0; genotype data were imputed to
617 the TOPMed reference panel using the Michigan Imputation Server. Variants with MAF $< 1\%$,
618 missing rate $> 10\%$, and HWE $P < 10^{-8}$ were filtered from the GWAS. Association analysis was
619 performed in REGENIE separately for African-ancestry and European-ancestry women with
620 adjustment for age, age², and PC 1-5.

621 *nuMoM2b*: The nuMoM2b study is a prospective U.S. pregnancy cohort of nulliparous
622 women enrolled in the first trimester of pregnancy between 2012-2015. HDPs were determined
623 by chart abstraction and adjudication according to previously published definitions⁹⁵.
624 Gestational hypertension was defined as SBP ≥ 140 mmHg or DBP ≥ 90 mmHg on two
625 occasions ≥ 6 hours apart or one occasion with subsequent antihypertensive therapy after 20
626 weeks' gestation, excluding blood pressures recorded during the second stage of labor, without
627 other qualifying features for preeclampsia or eclampsia. Preeclampsia was defined according to

628 the same blood pressure criteria plus proteinuria or other findings meeting criteria for severe
629 features, including HELLP syndrome⁹⁵. Women documented as meeting these same blood
630 pressure criteria before 20 weeks' gestation were designated as having chronic hypertension.
631 All women were at risk for development of preeclampsia/eclampsia; only those without chronic
632 hypertension were at risk for the outcome of gestational hypertension. Blood pressure and BMI
633 were recorded at the first trimester study visit, which occurred at a mean (SD) 11.6 (1.5) weeks'
634 gestation. Genotyping was performed using the Illumina Infinium Multi-Ethnic Global D2
635 BeadChip. Individuals related within two degrees by the KING algorithm were removed. Variants
636 with MAF <1%, genotyping rate <95%, and HWE $P < 5 \times 10^{-6}$ were removed⁹⁶. After phasing with
637 EAGLE, imputation was performed for European, African, and admixed American ancestry
638 subjects using the TOPMed reference panel via the TOPMed Imputation Server. Association
639 analysis was performed in REGENIE separately by ancestry group (European, African, and
640 admixed American) with adjustment for age and PC 1-10. The same women in nuMoM2b with
641 imputed genotypes were used for external testing of optimized PRS (described below).

642

643 *Genome-wide meta-analysis and replication.*

644 Variants from GWAS summary statistics were matched by genome build 38 position and
645 alleles. GWAS summary statistics that were in genome build 37 were lifted to genome build 38
646 using UCSC liftOver (<https://genome.ucsc.edu/cgi-bin/hgLiftOver>). We used METAL²³ to
647 perform fixed-effect inverse variance-weighted meta-analysis. Correction for genomic inflation
648 factor was carried out prior to meta-analysis. Meta-analyses were conducted among discovery
649 cohorts, among follow-up cohorts, and across all cohorts. Given the potential overlap of 400
650 preeclampsia/eclampsia cases from FINRISK between the InterPregGen meta-analysis and
651 FinnGen (8.4% of FinnGen cases and 2.3% of overall discovery cases) and 7,805 controls
652 (5.7% of FinnGen controls and 1.7% of overall discovery controls), we conducted a sensitivity
653 analysis excluding FinnGen (Supplementary Table 4).

654 Lead variants for preeclampsia/eclampsia and gestational hypertension were
655 interrogated in multi-ancestry meta-analysis of follow-up cohorts using METAL: HUNT
656 (preeclampsia/eclampsia only), UK Biobank, PMBB (European- and African-ancestry women),
657 and nuMoM2b (European-, African-, and admixed American-ancestry women). $P < 0.05$ in follow-
658 up cohorts, consistent direction of effect in follow-up cohorts, and genome-wide significance
659 ($P < 5 \times 10^{-8}$) in combined meta-analysis of discovery and follow-up cohorts indicated replication.

660

661 *Conditional and joint analysis.*

662 We conducted conditional analysis using GCTA-COJO²⁴ on the multi-ancestry meta-
663 analyses of preeclampsia/eclampsia and gestational hypertension to identify additional
664 association signals at the genome-wide significant loci. We used the European LD reference
665 from a randomly selected set of 10,000 unrelated individuals. The LD panel included variants
666 with $MAF > 1\%$ and $INFO \geq 0.3$. The analysis was restricted to variants within ± 1 Mb from lead
667 variants ($P < 5 \times 10^{-8}$). In COJO, the lead variants were conditioned from each chromosome and
668 independent variants were iteratively included. All variants were then simultaneously fitted in the
669 joint analysis. Variants with $P < 2 \times 10^{-7}$ were considered genome-wide significant. One additional
670 variant with conditional $P < 2 \times 10^{-7}$ for association with preeclampsia/eclampsia was identified on
671 chromosome 20 ($P = 1.4 \times 10^{-8}$).

672

673 *Genetic correlation.*

674 We used LD score regression (LDSC, <https://github.com/bulik/ldsc>)²⁵ with pre-computed
675 LD scores for 1.2 million HapMap3 variants after excluding MHC region in the European
676 population (https://data.broadinstitute.org/alkesgroup/LDSCORE/eur_w_ld_chr.tar.bz2) to
677 calculate genetic correlation between preeclampsia/eclampsia and gestational hypertension and
678 correlation of each HDP with systolic and diastolic blood pressure. In addition, the LDSC
679 intercept indicates potential confounding due to potential population stratification and cryptic

680 relatedness. In combined meta-analysis of discovery and follow-up cohorts, we observed
681 intercepts of 1.03 for preeclampsia/eclampsia and 0.95 for gestational hypertension.

682

683 *Colocalization analysis.*

684 We obtained the tissue-specific gene expression from GTEx data portal for 52 tissues³².
685 We used marginal effect sizes, standard errors, and MAF for all SNPs within ± 500 of lead
686 variants from discovery analysis ($P < 5 \times 10^{-8}$) as the input. We performed colocalization using the
687 `coloc.abf()` function in R package `coloc v4`. The H_4 test statistic estimates the posterior
688 probability of a shared causal variant between preeclampsia/eclampsia or gestational
689 hypertension and expression of a particular gene. $H_4 > 0.7$ indicated strong evidence of
690 colocalization, $H_4 0.5 < 0.7$ indicated weak evidence of colocalization, and $H_4 < 0.5$ indicated no
691 colocalization.

692

693 *Polygenic prioritization of causal genes.*

694 We performed additional causal gene prioritization using the PoPS method³⁴. Briefly,
695 PoPS integrates GWAS summary statistics with gene expression, biology pathways, and
696 predicted protein-protein interaction data to identify likely causal genes at genome-wide
697 significant loci. A linear model was trained to predict gene-level association scores and estimate
698 Z-scores indicating the confidence of the causal role at a given locus. In total, PoPS scores
699 were calculated for 18,000 genes. The top 5 available prioritized genes within 500 kilobases of
700 lead preeclampsia/eclampsia and gestational hypertension variants were extracted and
701 compared with the results of other *in silico* analyses.

702

703 *Placental transcriptome data.*

704 Genes nearest to lead variants, colocalization hits, and genes prioritized within the top 5
705 by either Open Targets variant-to-gene score or PoPS score were queried in a publicly available

706 database of placental gene expression (<https://www.obgyn.cam.ac.uk/placentome/>)³⁵. Samples
707 were obtained from a prospective cohort of nulliparous women in Cambridge, United Kingdom.
708 Differential expression analysis for preeclampsia included 82 preeclampsia cases and 82
709 controls samples matched on presence of labor, Cesarean section, gestational age, fetal sex,
710 smoking status, maternal BMI, and maternal age. RNA sequencing was performed on placental
711 biopsy specimens with a median sequencing depth of 101 million reads per sample. Differential
712 expression (in log₂-fold change) and corresponding *P*-values were generated using DESeq2; *P*-
713 values were then adjusted for multiple comparisons using the Benjamini-Hochberg method. We
714 report differentially expressed prioritized genes with adjusted *P* < 0.05 (Supplementary Table
715 14).

716

717 *Gene expression in human aortic tissue.*

718 We queried expression of prioritized genes in subpopulations of vascular smooth muscle
719 cells, fibromyocytes, fibroblasts, endothelial cells, macrophages, natural killer T cells, and
720 neuronal cells in a dataset of single-nuclei RNA sequencing from human aortic tissue. In total,
721 1,114 unique molecular identifiers were obtained per cell. Prioritized genes were nearest genes,
722 genes with strong colocalization, genes with weak colocalization plus prioritization by another
723 method (top 5 Open Targets variant-to-gene score or PoPS), and genes prioritized by another
724 method plus statistically significant differential placental transcription in the human placental
725 transcriptome browser³⁵; of these genes, 24 were available in the single-nuclei RNA
726 sequencing dataset (Extended Data Fig. 3). Single-nuclei RNA sequencing was performed on
727 non-atherosclerotic aortic root tissue from two individuals obtained during coronary artery
728 bypass graft surgery. Both individuals contributing aortic tissue specimens were European-
729 ancestry men, aged 49 and 51 years, with hypertension, hypercholesterolemia, and coronary
730 artery disease. Both were using aspirin and a statin preoperatively. A total of 4,537 nuclei were
731 obtained for downstream analysis. Cell types and subtypes were defined using top marker

732 genes and pathway enrichment scores. Raw *Cellranger* output data were filtered for removal of
733 ambient RNA using *cellbender* in ‘full’ running mode. The resultant filtered cell-gene matrix was
734 used for quality control and downstream analysis. All preliminary quality-control and clustering
735 were performed using *scanpy*. Any cells with fewer than 300 genes captured or greater than
736 0.1% mitochondrial reads were excluded from the analysis. Each sample was processed
737 with *Scrublet* to exclude doublets. The top 10,000 variable genes were used for
738 analysis. Relative expression of queried genes in each cell type against other cell types in
739 normal aortic tissue was quantified as Z-scores.

740

741 *Derivation and testing of genome-wide polygenic risk scores.*

742 We used PRS-CS to derive genome-wide PRS for preeclampsia/eclampsia and
743 gestational hypertension from the corresponding discovery GWAS summary statistics and for
744 systolic blood pressure from the Million Veteran Program GWAS summary statistics²⁶. PRS-CS
745 is a Bayesian approach that estimates posterior effect sizes by placing a continuous shrinkage
746 prior on variant effect sizes⁴¹. The preeclampsia/eclampsia PRS included 1,087,033 HapMap3
747 variants, the gestational hypertension PRS included 1,087,916 HapMap3 variants, and the SBP
748 PRS included 1,064,898 HapMap3 variants. PRS were trained on the UK Biobank European LD
749 panel. Individual-level polygenic scores were generated in the tuning and test datasets as the
750 sum of genotypes*weights using PLINK. We used logistic regression to test the association of
751 each PRS with preeclampsia/eclampsia and gestational hypertension with adjustment for age,
752 age², and PC 1-10. PRS were tuned in the UK Biobank. Specifically, we used a small-scale grid
753 search of global shrinkage parameter λ values (1, 1×10^{-2} , 1×10^{-4} , and 1×10^{-6}) for each PRS as
754 recommended to identify the λ that produced the best predictive performance as measured by
755 R^2 in the tuning dataset. We then fitted a linear combination of optimized
756 preeclampsia/eclampsia PRS and SBP PRS for the outcome of preeclampsia/eclampsia and a
757 linear combination of gestational hypertension PRS and SBP PRS for the outcome of

758 gestational hypertension. The optimal linear combination derived for preeclampsia/eclampsia
759 was $0.1889 * Z_{\text{preeclampsia/eclampsia}} + 0.1864 * Z_{\text{SBP}}$, and the linear combination derived for gestational
760 hypertension was $0.1662 * Z_{\text{gestational_hypertension}} + 0.3050 * Z_{\text{SBP}}$. We then carried these weighed
761 linear combination scores forward for final testing in nuMoM2b (European, African, and admixed
762 American ancestry groups) and HUNT (European ancestry). PRS performance was evaluated
763 using the OR for top decile vs. bottom 90% of PRS, the OR per SD of PRS, and Nagelkerke's
764 R^2 .

765 We tested whether PRS correctly re-classified nuMoM2b participants with HDPs as
766 aspirin-eligible in comparison with the major criteria endorsed by the U.S. Preventive Services
767 Task Force⁴³. Major criteria include: history of preeclampsia, which does not apply in nuMoM2b
768 as all women were nulliparous; multifetal gestation, which does not apply in nuMoM2b as all
769 women had singleton pregnancies; chronic hypertension, defined as a diagnosis of
770 hypertension before pregnancy or blood pressure $\geq 140/90$ mmHg on two occasions at least 6
771 hours apart prior to 20 weeks' gestation; pre-gestational diabetes type 1 or type 2; any pre-
772 pregnancy kidney disease; and autoimmune disease, defined here as antiphospholipid antibody
773 syndrome, systemic lupus erythematosus, rheumatoid arthritis, inflammatory bowel disease
774 (Crohn's disease or ulcerative colitis), or "other collagen vascular or autoimmune disease." We
775 calculated sensitivity, specificity, positive predictive value, and negative predictive value for
776 major risk factors with or without different thresholds for $\text{PRS}_{\text{preeclampsia+SBP}}$ for the prediction of
777 preeclampsia/eclampsia, as well as net reclassification for composite HDPs vs. normotensive
778 pregnancy and for preeclampsia/eclampsia vs. all other pregnancies. Confidence intervals for
779 sensitivity, specificity, positive predictive value, and negative predictive value were calculated
780 using the normal approximation. Given use of PRS to up-classify risk, net reclassification was
781 calculated as $P(\text{up}|\text{case}) - P(\text{up}|\text{non-case})$. Bootstrap resampling performed 1,000 times was
782 used to estimate 95% confidence intervals for net reclassification.

783

784 *Phenome-wide association analysis.*

785 We tested the association of preeclampsia/eclampsia PRS and gestational hypertension
786 PRS with 1,445 phecode-based combined prevalent and incident phenotypes⁹⁷ in sex-stratified
787 fashion among genotyped UK Biobank participants with adjustment for age and PC 1-5 using
788 the PheWAS package⁹⁸ in R 3.6.0 (<https://github.com/PheWAS/PheWAS>). Bonferroni-corrected
789 $P < 0.05/1,445 = 3.5 \times 10^{-5}$ indicated statistical significance.

790

791 *Ethics approval.*

792 FinnGen was approved by the Coordinating Ethics Committee of the Helsinki and Uusimaa
793 Hospital District. The Estonian Committee on Bioethics gave ethical approval for the work
794 conducted in the Estonian Biobank. The South East Research Ethics Committee gave ethical
795 approval for the work conducted in Genes & Health. The University of Michigan Medical School
796 Institutional Review Board gave ethical approval for the analyses conducted in the Michigan
797 Genomics Initiative. The Mass General Brigham Institutional Review Board gave ethical
798 approval for the work conducted in the Mass General Brigham Biobank. Biobank Japan
799 received ethics approval from the Institute of Medical Science, the University of Tokyo, the
800 RIKEN Yokohama Institute, and all participating hospitals. BioMe received ethics approval from
801 the Icahn School of Medicine at Mt. Sinai Institutional Review Board. We used publicly available
802 summary statistics for discovery GWAS from the InterPregGen consortium; all contributing
803 studies received ethics approval as reported previously¹⁷. The work conducted in HUNT was
804 approved by the Regional Committee for Ethics in Medical Research, Norway (2018/2488). The
805 Penn Medicine Biobank received ethics approval from the University of Pennsylvania
806 Institutional Review Board. The North West Multi-centre Research Ethics Committee approved
807 the UK Biobank; the Mass General Brigham Institutional Review Board approved secondary
808 data analyses of the UK Biobank (application #7089). The nuMoM2b study was approved by the

809 institutional review boards of each participating site. All participants in all studies contributing
810 data for this study signed informed consent for participation and the use of data in research.

811 References

- 812 1. Burton GJ, Redman CW, Roberts JM, Moffett A. Pre-eclampsia: pathophysiology and
813 clinical implications. *BMJ*. **366**, l2381 (2019)
- 814 2. Jiang L, et al. A global view of hypertensive disorders and diabetes mellitus during
815 pregnancy. *Nat Rev Endocrinol*. **18**, 760-775 (2022).
- 816 3. Garovic VD, et al. Incidence and Long-Term Outcomes of Hypertensive Disorders of
817 Pregnancy. *J Am Coll Cardiol*. **18**, 2323-2334 (2020).
- 818 4. Fraser A, et al. Associations of pregnancy complications with calculated cardiovascular
819 disease risk and cardiovascular risk factors in middle age: the Avon Longitudinal Study of
820 Parents and Children. *Circulation*. **125**, 1367-1380 (2012).
- 821 5. Magee LA, et al. The 2021 International Society for the Study of Hypertension in
822 Pregnancy classification, diagnosis & management recommendations for international practice.
823 *Pregnancy Hypertens*. **27**, 148-169 (2022).
- 824 6. ACOG Practice Bulletin No. 202: Gestational Hypertension and Preeclampsia. *Obstet*
825 *Gynecol*. **133**, e1-e25 (2019).
- 826 7. Honigberg MC, et al. Long-Term Cardiovascular Risk in Women With Hypertension
827 During Pregnancy. *J Am Coll Cardiol*. **74**, 2743-2754 (2019).
- 828 8. Wang YX, et al. Hypertensive Disorders of Pregnancy and Subsequent Risk of
829 Premature Mortality. *J Am Coll Cardiol*. **77**, 1302-1312 (2021).
- 830 9. Ives CW, Sinkey R, Rajapreyar I, Tita ATN, Oparil S. Preeclampsia-Pathophysiology and
831 Clinical Presentations: JACC State-of-the-Art Review. *J Am Coll Cardiol*. **76**, 1690-1702 (2020).
- 832 10. Rana S, Lemoine E, Granger J, Karumanchi SA. Preeclampsia. *Circ Res*. **124**, 1094-
833 1112 (2019).
- 834 11. Levine RJ, et al. Circulating angiogenic factors and the risk of preeclampsia. *N Engl J*
835 *Med*. **350**, 672-683 (2004).
- 836 12. Bartsch E, Medcalf KE, Park AL, Ray JG. Clinical risk factors for pre-eclampsia
837 determined in early pregnancy: systematic review and meta-analysis of large cohort studies.
838 *BMJ*. **353**, i1753 (2016).
- 839 13. Jung E, et al. The etiology of preeclampsia. *Am J Obstet Gynecol*. **226**, S844-S866
840 (2022).
- 841 14. Cnattingius S, Reilly M, Pawitan Y, Lichtenstein P. Maternal and fetal genetic factors
842 account for most of familial aggregation of preeclampsia: a population-based Swedish cohort
843 study. *Am J Med Genet A*. **130**, 365-371 (2004).
- 844 15. Nilsson E, Salonen Ros H, Cnattingius S, Lichtenstein P. The importance of genetic and
845 environmental effects for pre-eclampsia and gestational hypertension: a family study. *BJOG*.
846 **111**, 200-206 (2004).
- 847 16. McGinnis R, et al. Variants in the fetal genome near FLT1 are associated with risk of
848 preeclampsia. *Nat Genet*. **49**, 1255-1260 (2017).
- 849 17. Steinthorsdottir V, et al. Genetic predisposition to hypertension is associated with
850 preeclampsia in European and Central Asian women. *Nat Commun*. **11**, 5976 (2020).
- 851 18. Dina C, et al. Variation in FTO contributes to childhood obesity and severe adult obesity.
852 *Nat Genet*. **39**, 724-726 (2007).
- 853 19. Honigberg MC, et al. Genetic Variation in Cardiometabolic Traits and Medication Targets
854 and the Risk of Hypertensive Disorders of Pregnancy. *Circulation*. **142**, 711-713 (2020).
- 855 20. Gray KJ, et al. Risk of pre-eclampsia in patients with a maternal genetic predisposition to
856 common medical conditions: a case-control study. *BJOG*. **128**, 55-65 (2021).
- 857 21. O'Kelly AC, et al. Pregnancy and Reproductive Risk Factors for Cardiovascular Disease
858 in Women. *Circ Res*. **130**, 652-672 (2022).
- 859 22. Kivioja A, Toivonen E, Tyrmi J, et al. Increased Risk of Preeclampsia in Women With a
860 Genetic Predisposition to Elevated Blood Pressure. *Hypertension*. **79**, 2008-2015 (2022).

- 861 23. Willer CJ, Li Y, Abecasis GR. METAL: fast and efficient meta-analysis of genomewide
862 association scans. *Bioinformatics*. **26**, 2190-2191 (2010).
- 863 24. Yang J, Lee SH, Goddard ME, Visscher PM. GCTA: a tool for genome-wide complex
864 trait analysis. *Am J Hum Genet*. **88**, 76-82 (2011).
- 865 25. Bulik-Sullivan BK, et al. LD Score regression distinguishes confounding from
866 polygenicity in genome-wide association studies. *Nat Genet*. **47**, 291-295, 2015.
- 867 26. Giri A, et al. Trans-ethnic association study of blood pressure determinants in over
868 750,000 individuals. *Nat Genet*. **51**, 51-62 (2019).
- 869 27. Bulik-Sullivan B, et al. An atlas of genetic correlations across human diseases and traits.
870 *Nat Genet*. **47**, 1236-1241 (2015).
- 871 28. Turley P, et al. Multi-trait analysis of genome-wide association summary statistics using
872 MTAG. *Nat Genet*. **50**, 229-237 (2018).
- 873 29. Padmanabhan S, Caulfield M, Dominiczak AF. Genetic and molecular aspects of
874 hypertension. *Circ Res*. **116**, 937-959 (2015).
- 875 30. Rubattu S, Forte M, Marchitti S, Volpe M. Molecular Implications of Natriuretic Peptides
876 in the Protection from Hypertension and Target Organ Damage Development. *Int J Mol Sci*. **20**,
877 798 (2019).
- 878 31. Ohwaki A, Nishizawa H, Kato A, et al. Altered serum soluble furin and prorenin receptor
879 levels in pregnancies with pre-eclampsia and fetal growth restriction. *J Gynecol Obstet Hum*
880 *Reprod*. **50**, 102198 (2021).
- 881 32. Battle A, et al. Genetic effects on gene expression across human tissues. *Nature*. **550**,
882 204-213 (2017).
- 883 33. Ghousaini M, et al. Open Targets Genetics: systematic identification of trait-associated
884 genes using large-scale genetics and functional genomics. *Nucleic Acids Res*. **49**, D1311-
885 D1320 (2021).
- 886 34. Weeks EM, et al. Leveraging polygenic enrichments of gene features to predict genes
887 underlying complex traits and diseases. Preprint at
888 <https://www.medrxiv.org/content/10.1101/2020.09.08.20190561v1> (2020).
- 889 35. Gong S, et al. The RNA landscape of the human placenta in health and disease. *Nat*
890 *Commun*. **12**, 2639 (2021).
- 891 36. Maynard SE, et al. Excess placental soluble fms-like tyrosine kinase 1 (sFlt1) may
892 contribute to endothelial dysfunction, hypertension, and proteinuria in preeclampsia. *J Clin*
893 *Invest*. **111**, 649-658 (2003).
- 894 37. Tekola-Ayele F, et al. Placental multi-omics integration identifies candidate functional
895 genes for birthweight. *Nat Commun*. **13**, 2384 (2022).
- 896 38. Zhang Z, Wang X, Zhang L, Shi Y, Wang J, Yan H. Wnt/ β -catenin signaling pathway in
897 trophoblasts and abnormal activation in preeclampsia (Review). *Mol Med Rep*. **16**, 1007-1013
898 (2017).
- 899 39. Bai X, Lenhart KC, Bird KE, et al. The smooth muscle-selective RhoGAP GRAF3 is a
900 critical regulator of vascular tone and hypertension. *Nat Commun*. **4**, 2910 (2013).
- 901 40. Kalluri AS, et al. Single-Cell Analysis of the Normal Mouse Aorta Reveals Functionally
902 Distinct Endothelial Cell Populations. *Circulation*. **140**, 147-163 (2019).
- 903 41. Ge T, Chen CY, Ni Y, Feng YA, Smoller JW. Polygenic prediction via Bayesian
904 regression and continuous shrinkage priors. *Nat Commun*. **10**, 1776 (2019).
- 905 42. Ray JG, Abdulaziz KE, Berger H. Aspirin Use for Preeclampsia Prevention Among
906 Women With Prepregnancy Diabetes, Obesity, and Hypertension. *JAMA*. **327**, 388-390 (2022).
- 907 43. Davidson KW, et al. Aspirin Use to Prevent Preeclampsia and Related Morbidity and
908 Mortality: US Preventive Services Task Force Recommendation Statement. *JAMA*. **326**, 1186-
909 1191 (2021).
- 910 44. Pollheimer J, et al. Activation of the canonical wntless/T-cell factor signaling pathway
911 promotes invasive differentiation of human trophoblast. *Am J Pathol*. **168**, 1134-1147 (2006).

- 912 45. Tita AT, et al. Treatment for Mild Chronic Hypertension during Pregnancy. *N Engl J Med.*
913 **386**, 1781-1792 (2002).
- 914 46. Daniels LB, Maisel AS. Natriuretic peptides. *J Am Coll Cardiol.* **50**, 2357-2368 (2007).
- 915 47. Zhang W, et al. Atrial natriuretic peptide promotes uterine decidualization and a TRAIL-
916 dependent mechanism in spiral artery remodeling. *J Clin Invest.* **131**, e151053 (2021).
- 917 48. Maack T, et al. Physiological role of silent receptors of atrial natriuretic factor. *Science.*
918 **238**, 675-678 (1987).
- 919 49. Gu Y, et al. Aberrant pro-atrial natriuretic peptide/corin/natriuretic peptide receptor
920 signaling is present in maternal vascular endothelium in preeclampsia. *Pregnancy Hypertens.*
921 **11**, 1-6 (2018).
- 922 50. Sun BB, et al. Genomic atlas of the human plasma proteome. *Nature.* **558**, 73-79 (2018).
- 923 51. Hauspurg A, et al. Association of N-Terminal Pro-Brain Natriuretic Peptide Concentration
924 in Early Pregnancy With Development of Hypertensive Disorders of Pregnancy and Future
925 Hypertension. *JAMA Cardiol.* **7**, 268-276 (2022).
- 926 52. Satpathy AT, et al. Zbtb46 expression distinguishes classical dendritic cells and their
927 committed progenitors from other immune lineages. *J Exp Med.* **209**, 1135-1152 (2012).
- 928 53. Meredith MM, et al. Zinc finger transcription factor zDC is a negative regulator required
929 to prevent activation of classical dendritic cells in the steady state. *J Exp Med.* **209**, 1583-1593
930 (2012).
- 931 54. Wang Y, Sun HY, Kumar S, Puerta MDM, Jo H, Rezvan A. ZBTB46 is a shear-sensitive
932 transcription factor inhibiting endothelial cell proliferation via gene expression regulation of cell
933 cycle proteins. *Lab Invest.* **99**, 305-318 (2019).
- 934 55. Ashraf S, et al. Mutations in six nephrosis genes delineate a pathogenic pathway
935 amenable to treatment. *Nat Commun.* **9**, 1960 (2018).
- 936 56. Hall G, Wang L, Spurney RF. TRPC Channels in Proteinuric Kidney Diseases. *Cells.* **9**,
937 44 (2019).
- 938 57. Wang Z, et al. Transient receptor potential cation channel 6 contributes to kidney injury
939 induced by diabetes and hypertension. *Am J Physiol Renal Physiol.* **322**, F76-F88 (2022).
- 940 58. Pang Y, Dong J, Thomas P. Progesterone increases nitric oxide synthesis in human
941 vascular endothelial cells through activation of membrane progesterone receptor- α . *Am J*
942 *Physiol Endocrinol Metab.* **308**, E899-911 (2015).
- 943 59. Folkersen L, et al. Genomic and drug target evaluation of 90 cardiovascular proteins in
944 30,931 individuals. *Nat Metab.* **2**, 1135-1148 (2020).
- 945 60. Heo SH, Choi YJ, Ryoo HM, Cho JY. Expression profiling of ETS and MMP factors in
946 VEGF-activated endothelial cells: role of MMP-10 in VEGF-induced angiogenesis. *J Cell*
947 *Physiol.* **224**, 734-742 (2010).
- 948 61. Toloza FJK, et al. Association between maternal thyroid function and risk of gestational
949 hypertension and pre-eclampsia: a systematic review and individual-participant data meta-
950 analysis. *Lancet Diabetes Endocrinol.* **10**, 243-252 (2022).
- 951 62. Männistö T, et al. Preeclampsia, gestational hypertension and subsequent
952 hypothyroidism. *Pregnancy Hypertens.* **3**, 21-27 (2013).
- 953 63. Wang W, et al. LNK/SH2B3 Loss of Function Promotes Atherosclerosis and Thrombosis.
954 *Circ Res.* **119**, e91-e103 (2016).
- 955 64. Machiela MJ, Chanock SJ. LDlink: a web-based application for exploring population-
956 specific haplotype structure and linking correlated alleles of possible functional variants.
957 *Bioinformatics.* **31**, 3555-3557 (2015).
- 958 65. Deloukas P, et al. Large-scale association analysis identifies new risk loci for coronary
959 artery disease. *Nat Genet.* **45**, 25-33 (2013).
- 960 66. Gupta AK, Hasler P, Holzgreve W, Hahn S. Neutrophil NETs: a novel contributor to
961 preeclampsia-associated placental hypoxia? *Semin Immunopathol.* **29**, 163-167 (2007).

- 962 67. Palomo M, et al. Differences and similarities in endothelial and angiogenic profiles of
963 preeclampsia and COVID-19 in pregnancy. *Am J Obstet Gynecol.* **227**, e1-e16 (2022).
- 964 68. Dou H, et al. Oxidized Phospholipids Promote NETosis and Arterial Thrombosis in
965 LNK(SH2B3) Deficiency. *Circulation.* **144**, 1940-1954 (2021).
- 966 69. Anand S, et al. Detection and confirmation of serum lipid biomarkers for preeclampsia
967 using direct infusion mass spectrometry. *J Lipid Res.* **57**, 687-696 (2016).
- 968 70. He B, Liu Y, Maurya MR, et al. The maternal blood lipidome is indicative of the
969 pathogenesis of severe preeclampsia. *J Lipid Res.* **62**, 100118 (2021).
- 970 71. Wright D, Syngelaki A, Akolekar R, Poon LC, Nicolaides KH. Competing risks model in
971 screening for preeclampsia by maternal characteristics and medical history. *Am J Obstet*
972 *Gynecol.* **213**, e1-e10 (2015).
- 973 72. Al-Rubaie ZTA, et al. Prediction of pre-eclampsia in nulliparous women using routinely
974 collected maternal characteristics: a model development and validation study. *BMC Pregnancy*
975 *Childbirth.* **20**, 23 (2020).
- 976 73. Myatt L. The prediction of preeclampsia: the way forward. *Am J Obstet Gynecol.* **226**,
977 S1102-S1107 (2022).
- 978 74. Akolekar R, Syngelaki A, Poon L, Wright D, Nicolaides KH. Competing risks model in
979 early screening for preeclampsia by biophysical and biochemical markers. *Fetal Diagn Ther.* **33**,
980 8-15 (2013).
- 981 75. Chaemsaitong P, Sahota DS, Poon LC. First trimester preeclampsia screening and
982 prediction. *Am J Obstet Gynecol.* **226**, S1071-S1097 (2022)
- 983 76. Martin AR, Kanai M, Kamatani Y, Okada Y, Neale BM, Daly MJ. Clinical use of current
984 polygenic risk scores may exacerbate health disparities. *Nat Genet.* **51**, 584-591 (2019).
- 985 77. Graham SE, Clarke SL, Wu KH, et al. The power of genetic diversity in genome-wide
986 association studies of lipids. *Nature.* **600**, 675-679 (2021).
- 987 78. Angras K, Boyd VE, Gray C, Young AJ, Paglia MJ, Mackeen AD. Retrospective
988 application of algorithms to improve identification of pregnancy outcomes from the electronic
989 health record. *J Perinatol.* **43**, 10-14 (2023).
- 990 79. Klungsoyr K, Harmon QE, Skard LB, et al. Validity of pre-eclampsia registration in the
991 medical birth registry of Norway for women participating in the Norwegian mother and child
992 cohort study, 1999-2010. *Paediatr Perinat Epidemiol.* **28**, 362-371 (2014).
- 993 80. Klemmensen AK, Olsen SF, Osterdal ML, Tabor A. Validity of preeclampsia-related
994 diagnoses recorded in a national hospital registry and in a postpartum interview of the women.
995 *Am J Epidemiol.* **166**, 117-124 (2007).
- 996 81. Geller SE, Ahmed S, Brown ML, Cox SM, Rosenberg D, Kilpatrick SJ. International
997 Classification of Diseases-9th revision coding for preeclampsia: how accurate is it? *Am J Obstet*
998 *Gynecol.* **190**, 1629-1633 (2004).
- 999 82. Roberts JM, Rich-Edwards JW, McElrath TF, Garmire L, Myatt L. Subtypes of
1000 Preeclampsia: Recognition and Determining Clinical Usefulness. **77**, 1430-1441 (2021).
- 1001 83. Kurki MI, et al. FinnGen provide genetic insights from a well-phenotyped isolated
1002 population. *Nature.* **613**, 508-518 (2023).
- 1003 84. Sun BB, et al. Genetic associations of protein-coding variants in human disease. *Nature.*
1004 **603**, 95-102 (2022).
- 1005 85. Zhou W, et al. Efficiently controlling for case-control imbalance and sample relatedness
1006 in large-scale genetic association studies. *Nat Genet.* **50**, 1335-1341 (2018).
- 1007 86. Leitsalu L, et al. Cohort Profile: Estonian Biobank of the Estonian Genome Center,
1008 University of Tartu. *Int J Epidemiol.* **44**, 1137-1147 (2015).
- 1009 87. Finer S, et al. Cohort Profile: East London Genes & Health (ELGH), a community-based
1010 population genomics and health study in British Bangladeshi and British Pakistani people. *Int J*
1011 *Epidemiol.* **49**, 20-21 (2020).

- 1012 88. Wei WQ, et al. Evaluating phecodes, clinical classification software, and ICD-9-CM
1013 codes for phenome-wide association studies in the electronic health record. *PLoS One*. **12**,
1014 e0175508 (2017).
- 1015 89. Mbatchou J, et al. Computationally efficient whole-genome regression for quantitative
1016 and binary traits. *Nat Genet*. **53**, 1097-1103 (2021).
- 1017 90. Sakaue S, et al. A cross-population atlas of genetic associations for 220 human
1018 phenotypes. *Nat Genet*. **53**, 1415-1424 (2021).
- 1019 91. Honigberg MC, et al. Heart Failure in Women With Hypertensive Disorders of
1020 Pregnancy: Insights From the Cardiovascular Disease in Norway Project. *Hypertension*. **76**,
1021 1506-1513 (2020).
- 1022 92. Brumpton BM, et al. The HUNT study: A population-based cohort for genetic research.
1023 *Cell Genomics*. **2**, 100193 (2022).
- 1024 93. Åsvold BO, et al. Cohort Profile Update: The HUNT Study, Norway. *International Journal*
1025 *of Epidemiology*. **52**, e80-e91 (2023).
- 1026 94. Bycroft C, et al. The UK Biobank resource with deep phenotyping and genomic data.
1027 *Nature*. **562**, 203-209 (2018).
- 1028 95. Facco FL, et al. Association Between Sleep-Disordered Breathing and Hypertensive
1029 Disorders of Pregnancy and Gestational Diabetes Mellitus. *Obstet Gynecol*. **129**, 31-41 (2017).
- 1030 96. Guerrero RF, et al. Genetic Polymorphisms Associated with Adverse Pregnancy
1031 Outcomes in Nulliparas. Preprint available at
1032 <https://www.medrxiv.org/content/10.1101/2022.02.28.22271641v1>.
- 1033 97. Denny JC, et al. PheWAS: demonstrating the feasibility of a phenome-wide scan to
1034 discover gene-disease associations. *Bioinformatics*. **26**, 1205-1210 (2010).
- 1035 98. Carroll RJ, Bastarache L, Denny JC. R PheWAS: data analysis and plotting tools for
1036 phenome-wide association studies in the R environment. *Bioinformatics*. **30**, 2375-2376 (2014).
1037

1038 **Data availability**

1039 Upon publication, GWAS summary statistics for preeclampsia/eclampsia and gestational
1040 hypertension will be made publicly available through the Broad Institute CVDi portal, and
1041 corresponding genome-wide polygenic scores will be posted to the PGS Catalog. Summary
1042 statistics used in this meta-analysis are publicly available for FinnGen r6
1043 (https://www.finnngen.fi/en/access_results) and for BioBank Japan
1044 (<https://pheweb.jp/pheno/PreEclampsia>). Summary statistics from the InterPregGen consortium
1045 are available at <https://ega-archive.org>. Placental transcriptome data are publicly available at
1046 <https://www.obgyn.cam.ac.uk/placentome/>.

1047

1048 **Code availability**

1049 The code used to conduct these analyses is available at <https://github.com/buutrg/HDP>.

1050

1051 **Acknowledgements**

1052 This work was supported by grants from the U.S. National Heart Lung and Blood Institute
1053 K08HL166687 (M.C.H.), K08HL146963 (K.J.G.), R01 HL163234 (R.S., K.J.G.), R01HL139865
1054 (R.D.), R01HL155915 (R.D.), DP2HL152423 (R.M.G.), U01HL166060 (R.M.G.), R03HL148483
1055 (R.M.G.), R01HL142711 (P.N.), R01HL127564 (P.N.), R01HL148050 (P.N.), R01HL151283
1056 (P.N.), R01HL148565 (P.N.), R01HL135242 (P.N.), R01HL151152 (P.N.); the American Heart
1057 Association 940166 (M.C.H.), 979465 (M.C.H.); the Korea Health Industry Development
1058 Institute HI19C1330 (S.M.J.C.); Harvard Catalyst Medical Research Investigator Training
1059 Program (A.P.P.); National Human Genome Research Institute U01HG011719 (A.P.P. and
1060 P.N.); the Belgian American Educational Foundation (A.S.); the U.S. National Institute of
1061 General Medical Sciences R35GM147197 (R.F.G.), R35GM124836 (R.D.); National Institute of
1062 Diabetes and Digestive and Kidney Diseases R01DK125782 (P.N.); National Institute of Child
1063 Health and Human Development R01HD101246 (D.M.H.); Preeclampsia Foundation (K.J.G.,

1064 R.S.); Fondation Leducq TNE-18CVD04 (P.N.); and the Massachusetts General Hospital Paul
1065 and Phyllis Fireman Endowed Chair in Vascular Medicine (P.N.).
1066
1067 The work was conducted under UK Biobank application 7089. The Trøndelag Health Study
1068 (HUNT) is a collaboration between HUNT Research Centre (Faculty of Medicine and Health
1069 Sciences, NTNU, Norwegian University of Science and Technology), Trøndelag County Council,
1070 Central Norway Regional Health Authority, and the Norwegian Institute of Public Health. The
1071 genotyping in HUNT was financed by the National Institutes of Health; University of Michigan;
1072 the Research Council of Norway; the Liaison Committee for Education, Research and
1073 Innovation in Central Norway; and the Joint Research Committee between St Olavs hospital
1074 and the Faculty of Medicine and Health Sciences, NTNU. The genetic investigations of the
1075 HUNT Study is a collaboration between researchers from the K.G. Jebsen Center for Genetic
1076 Epidemiology, NTNU and the University of Michigan Medical School and the University of
1077 Michigan School of Public Health. The K.G. Jebsen Center for Genetic Epidemiology is financed
1078 by Stiftelsen Kristian Gerhard Jebsen; Faculty of Medicine and Health Sciences, NTNU,
1079 Norway. DNA extraction and genotyping of nuMoM2b was supported by the Indiana University
1080 Precision Health Initiative. The authors thanks other members of the Estonian Biobank research
1081 team: Lili Milani, Andres Metspalu, Tõnu Esko, Mari Nelis, Reedik Mägi, and Georgi Hudjashov.
1082 Genes & Health is/has recently been core-funded by Wellcome (WT102627, WT210561), the
1083 Medical Research Council (UK) (M009017, MR/X009777/1, MR/X009920/1), Higher Education
1084 Funding Council for England Catalyst, Barts Charity (845/1796), Health Data Research UK (for
1085 London substantive site), and research delivery support from the NHS National Institute for
1086 Health Research Clinical Research Network (North Thames). Genes & Health is/has recently
1087 been funded by Alnylam Pharmaceuticals, Genomics PLC; and a Life Sciences Industry
1088 Consortium of Astra Zeneca PLC, Bristol-Myers Squibb Company, GlaxoSmithKline Research
1089 and Development Limited, Maze Therapeutics Inc, Merck Sharp & Dohme LLC, Novo Nordisk

1090 A/S, Pfizer Inc, Takeda Development Centre Americas Inc. The authors thank Social Action for
1091 Health, Centre of The Cell, members of our Community Advisory Group, and staff who have
1092 recruited and collected data from volunteers. We thank the NIHR National Biosample Centre
1093 (UK Biocentre), the Social Genetic & Developmental Psychiatry Centre (King's College London),
1094 Wellcome Sanger Institute, and Broad Institute for sample processing, genotyping, sequencing
1095 and variant annotation. We thank: Barts Health NHS Trust, NHS Clinical Commissioning Groups
1096 (City and Hackney, Waltham Forest, Tower Hamlets, Newham, Redbridge, Havering, Barking
1097 and Dagenham), East London NHS Foundation Trust, Bradford Teaching Hospitals NHS
1098 Foundation Trust, Public Health England (especially David Wyllie), Discovery Data
1099 Service/Endeavour Health Charitable Trust (especially David Stables), NHS Digital for GDPR-
1100 compliant data sharing backed by individual written informed consent. Most of all, we thank all
1101 of the volunteers participating in Genes & Health. Current Genes & Health Research Team (in
1102 alphabetical order by surname): Shaheen Akhtar, Mohammad Anwar, Elena Arciero, Omar
1103 Asgar, Samina Ashraf, Saeed Bibi, Gerome Breen, Raymond Chung, Charles J Curtis, Shabana
1104 Chaudhary, Maharun Chowdhury, Grainne Colligan, Panos Deloukas, Ceri Durham, Faiza
1105 Durrani, Fabiola Eto, Sarah Finer, Joseph Gafton, Ana Angel Garcia, Chris Griffiths, Joanne
1106 Harvey, Teng Heng, Sam Hodgson, Qin Qin Huang, Matt Hurles, Karen A Hunt, Shapna
1107 Hussain, Kamrul Islam, Vivek Iyer, Ben Jacobs, Ahsan Khan, Cath Lavery, Sang Hyuck Lee,
1108 Robin Lerner, Daniel MacArthur, Daniel Malawsky, Hilary Martin, Dan Mason, Rohini Mathur,
1109 Mohammed Bodrul Mazid, John McDermott, Shefa Miah, Caroline Morton, Bill Newman,
1110 Elizabeth Owor, Asma Qureshi, Samiha Rahman, Nishat Safa, Miriam Samuel, John Solly,
1111 Daniel Stow, Farah Tahmasebi, Richard C Trembath, Karen Tricker, Nasir Uddin, David A van
1112 Heel, Klaudia Walter, Caroline Winckley, John Wright, Julia Zollner.

1113

1114

1115 **Ethics declarations**

1116 M.C.H. reports consulting fees from CRISPR Therapeutics, advisory board service for Miga
1117 Health, and grant support from Genentech, all unrelated to this work. K.J.G. has served as a
1118 consultant for BillionToOne, Aetion, and Roche for projects unrelated to this work. R.S. is a co-
1119 founder of Magnet Biomedicine, unrelated to this work. R.D. reports receiving grants from
1120 AstraZeneca, grants and nonfinancial support from Goldfinch Bio, being a scientific co-founder,
1121 consultant, and equity holder for Pensieve Health (pending), and being a consultant for Variant
1122 Bio, all unrelated to this work. P.N. reports grant support from Amgen, Apple, AstraZeneca,
1123 Boston Scientific, and Novartis, spousal employment and equity at Vertex, consulting income
1124 from Apple, AstraZeneca, Novartis, Genentech / Roche, Blackstone Life Sciences, Foresite
1125 Labs, and TenSixteen Bio, and is a scientific advisor board member and shareholder of
1126 TenSixteen Bio and geneXwell, all unrelated to this work.

Table 1. Maternal sequence variants associated with preeclampsia/eclampsia.

Nearest gene	Lead variant	CHR	POS	Effect allele / other allele	Discovery analysis (17,150 cases / 451,241 controls)				Follow-up analysis (2,914 cases / 251,876 controls)		Combined discovery and follow-up meta-analysis (20,064 cases / 703,117 controls)	
					Weighted average EAF	OR	P-value	P(het)*	OR	P-value	OR	P-value
<i>Loci with genome-wide significance in discovery analysis</i>												
<i>MTHFR / CLCN6</i>	rs149764880	1	11820674	G / T	0.85	1.11	1.8e-8	0.30	1.17	6.8e-4	1.12	8.8e-11
<i>WNT3A</i>	rs708119	1	228015567	C / G	0.67	1.08	2.3e-8	0.92	1.05	0.10	1.08	7.8e-9
<i>MECOM</i>	rs9855086	3	169413542	A / T	0.53	1.08	5.7e-10	0.21	1.08	8.3e-3	1.08	1.6e-11
<i>FGF5</i>	rs16998073	4	80263187	T / A	0.32	1.11	3.1e-14	0.15	1.08	1.6e-2	1.11	2.3e-15
<i>MICA</i>	rs2442752	6	31383987	C / T	0.36	1.08	2.3e-9	0.57	0.99	0.84	1.07	3.8e-8
<i>LINC00484</i>	rs5899121	9	91145498	TG / T	0.85	1.12	4.6e-8	0.31	0.86	0.31	1.12	1.4e-7
<i>PGR</i>	rs2508372	11	101397592	A / G	0.79	1.10	1.3e-9	0.14	1.11	7.5e-3	1.11	3.4e-11
<i>SH2B3</i>	rs10774624	12	111395984	G / A	0.47	1.10	2.9e-12	0.40	1.03	0.29	1.09	1.0e-11
<i>FLT1</i>	rs7318880	13	28564148	T / C	0.48	1.09	6.7e-12	0.79	1.06	5.8e-2	1.09	1.6e-12
<i>FTO</i>	rs1421085	16	53767042	C / T	0.40	1.10	4.7e-12	0.61	1.07	1.8e-2	1.09	3.3e-13
<i>RGL3</i>	rs167479	19	11416089	G / T	0.55	1.10	7.6e-10	0.20	1.09	6.8e-3	1.10	1.8e-11
<i>ZNF831</i>	rs259983	20	59160402	C / A	0.16	1.13	1.0e-12	0.40	1.15	2.8e-4	1.14	1.3e-15
<i>Additional loci identified in combined discovery and follow-up meta-analysis</i>												
<i>FGL1</i>	rs2653414	8	17868560	A / C	0.02	1.27	1.0e-6	0.44	2.18	4.4e-9	1.36	3.4e-11
<i>UPB1</i>	rs17572606	22	24472204	T / C	0.02	1.45	1.9e-7	0.33	1.28	6.0e-2	1.41	4.6e-8

*P(het) indicates P-value for heterogeneity across discovery cohorts.

CHR indicates chromosome. POS indicates position (genome build 38). EAF indicates effect allele frequency. OR indicates odds ratio.

Table 2. Maternal sequence variants associated with gestational hypertension.

Nearest gene	Lead variant	CHR	POS	Effect allele / other allele	Discovery analysis (8,961 cases / 184,925 controls)				Follow-up analysis (2,066 cases / 227,863 controls)		Combined discovery and follow-up meta-analysis (11,027 cases / 412,788 controls)	
					Weighted average EAF	OR	P-value	P(het)*	OR	P-value	OR	P-value
<i>Loci with genome-wide significance in discovery analysis</i>												
<i>MECOM</i>	rs9855086	3	169413542	A / T	0.54	1.10	1.4e-9	0.51	1.04	0.28	1.08	6.6e-8
<i>FGF5</i>	rs16998073	4	80263187	T / A	0.32	1.12	4.6e-11	0.54	1.09	4.0e-2	1.12	1.5e-11
<i>NPR3</i>	rs13154066	5	32831564	C / T	0.58	1.11	6.1e-10	0.60	1.05	0.14	1.10	4.5e-10
<i>TNS2 / CSAD</i>	rs7139122	12	53173006	A / G	0.02	1.46	1.1e-9	0.13	1.05	0.65	1.37	8.3e-9
<i>RGL3</i>	rs167479	19	11416089	G / T	0.56	1.11	6.9e-9	0.76	1.12	4.6e-3	1.11	2.5e-10
<i>PREX1</i>	rs2208589	20	48791877	G / A	0.84	1.15	2.3e-8	0.17	1.11	2.8e-2	1.14	2.9e-9
<i>ZNF831</i>	rs260017	20	59141918	A / G	0.18	1.16	7.0e-13	0.32	1.14	5.4e-3	1.16	1.2e-13
<i>Additional loci identified in combined discovery and follow-up meta-analysis</i>												
<i>MTHFR / CLCN6</i>	rs17367504	1	11802721	A / G	0.85	1.13	1.7e-7	0.63	1.19	4.6e-4	1.14	4.9e-10

*P(het) indicates P-value for heterogeneity across discovery cohorts.

CHR indicates chromosome. POS indicates position (genome build 38). EAF indicates effect allele frequency. OR indicates odds ratio.

Table 3. Aspirin eligibility to prevent preeclampsia using major clinical risk factors and polygenic risk. This Table reports the proportion of participants in nuMoM2b (nulliparous women with singleton gestations recruited in the first trimester of pregnancy) who experienced each pregnancy outcome in the index pregnancy (normotensive pregnancy, gestational hypertension, or preeclampsia/eclampsia) who would have been identified as candidates for low-dose aspirin to prevent preeclampsia according to U.S. Preventive Services Task Force major criteria, with or without addition of preeclampsia/eclampsia and systolic blood pressure combination polygenic risk score (PRS_{preeclampsia+SBP}) as an additional criterion for aspirin eligibility. Net reclassification analyses reflect use of PRS_{preeclampsia+SBP} to up-classify risk for composite hypertensive disorders of pregnancy (HDPs) vs. normotensive pregnancy and for preeclampsia/eclampsia vs. other pregnancies when added to major risk factors.

Total N=7,544	Normo- tensive pregnancy (n=5,744)	Gestational hypertension (n=1,319)	Preeclampsia/ eclampsia (n=481)	Net re- classification, HDPs vs. normotensive pregnancy (95% CI)	Net re- classification, preeclampsia vs. other pregnancy (95% CI)	Preeclampsia vs. other pregnancy			
						Sensitivity (95% CI)	Specificity (95% CI)	Positive predictive value (95% CI)	Negative predictive value (95% CI)
Major risk factors only (n=656 [8.7%])	476 (8.3%)	96 (7.3%)	84 (17.5%)	Ref.	Ref.	17.5% (14.1-20.9%)	91.9% (91.3-92.5%)	12.8% (10.2- 15.4%)	94.2% (93.7-94.8%)
Major risk factors or top 5% PRS (n=997 [13.2%])	699 (12.2%)	184 (13.9%)	114 (23.7%)	+2.7% (1.4 to 4.0%)	+1.8% (-0.3 to 4.0%)	23.7% (19.9-27.5%)	87.5% (86.7-88.3%)	11.4% (9.5- 13.4%)	94.4% (93.8-95.0%)
Major risk factors or top 10% PRS (n=1,324 [17.6%])	928 (16.2%)	250 (19.0%)	146 (30.4%)	+4.1% (2.5 to 5.8%)	+4.3% (1.3 to 7.3%)	30.4% (26.2-34.5%)	83.3% (82.5-84.2%)	11.0% (9.3- 12.7%)	94.6% (94.1-95.2%)
Major risk factors or top 25% PRS (n=2,298 [30.5%])	1,612 (28.1%)	460 (34.9%)	226 (47.0%)	+8.3% (6.0 to 10.7%)	+8.3% (3.9 to 12.6%)	47.0% (42.5-51.4%)	70.7% (69.6-71.7%)	9.8% (8.6- 11.1%)	95.1% (94.6-95.7%)

Figure 1. Manhattan plots of preeclampsia/eclampsia and gestational hypertension in combined discovery and follow-up meta-analysis. Manhattan plots (chromosomal position on the X-axis and $-\log_{10}$ of the P-value on the Y-axis) are displayed for **(A)** preeclampsia/eclampsia in 20,064 cases and 703,117 controls and **(B)** gestational hypertension in 11,027 cases and 412,788 controls. Analyses included multi-ancestry meta-analysis of common variants (minor allele frequency $\geq 1\%$). Loci are labeled by the gene nearest to the lead variant.

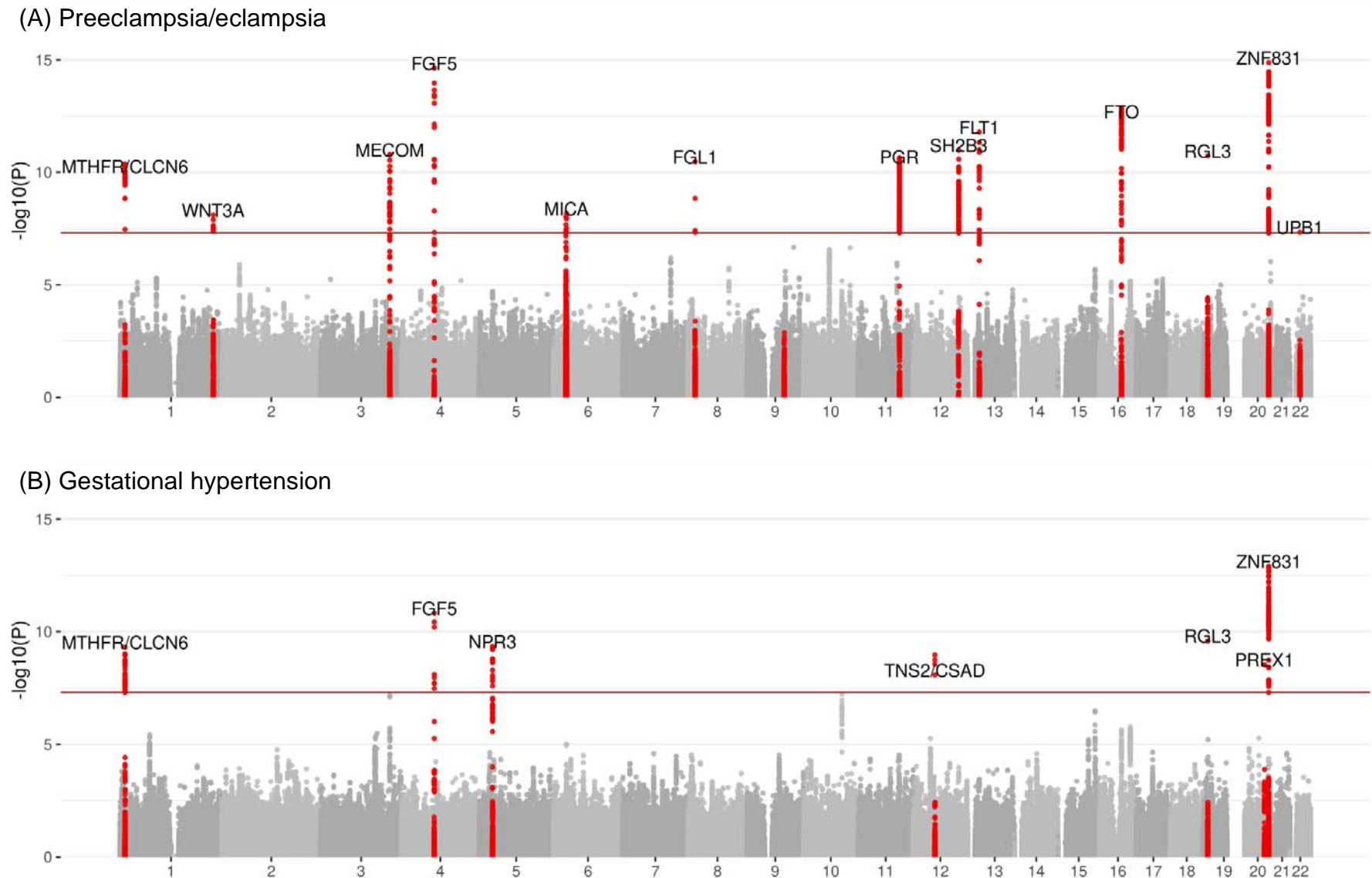


Figure 2. Polygenic prediction of preeclampsia/eclampsia and gestational hypertension in test cohorts. Polygenic risk scores (PRS) for preeclampsia/eclampsia and gestational hypertension were derived from our discovery genome-wide meta-analyses, tuned in the UK Biobank, and carried forward for testing in independent cohorts. Prevalence of preeclampsia/eclampsia vs. percentile of PRS_{preeclampsia+SBP} in (A) HUNT and (B) nuMoM2b. (C) Prevalence of gestational hypertension vs. percentile of PRS_{GH+SBP} in nuMoM2b. Distribution of PRS_{preeclampsia+SBP} by preeclampsia/eclampsia status in (D) HUNT and (E) nuMoM2b. (F) Distribution of PRS_{GH+SBP} by gestational hypertension status in nuMoM2b. Within each boxplot, horizontal lines reflect the median, top and bottom of the box reflect the interquartile range, and whiskers reflect the maximum and minimum value within each grouping.

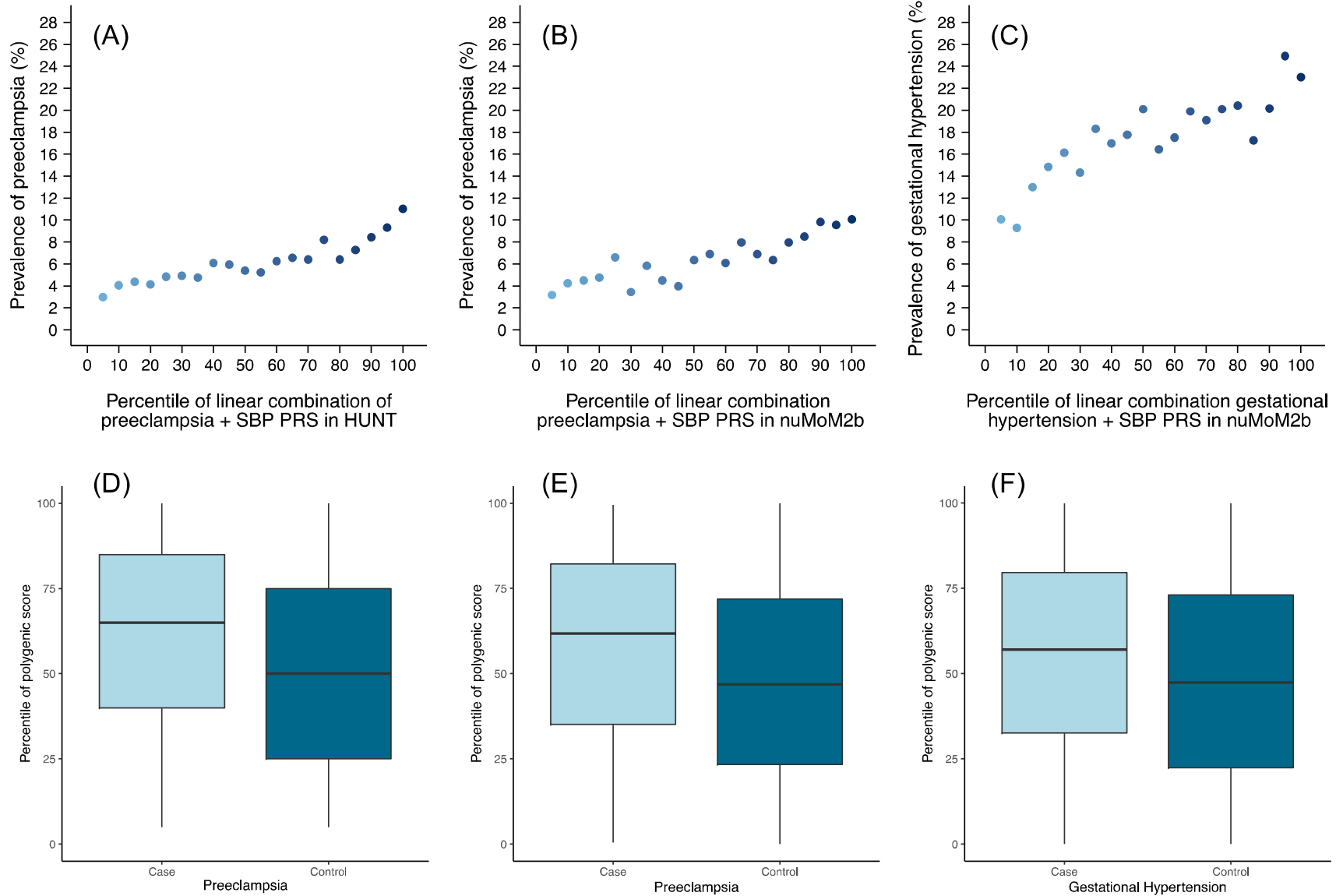
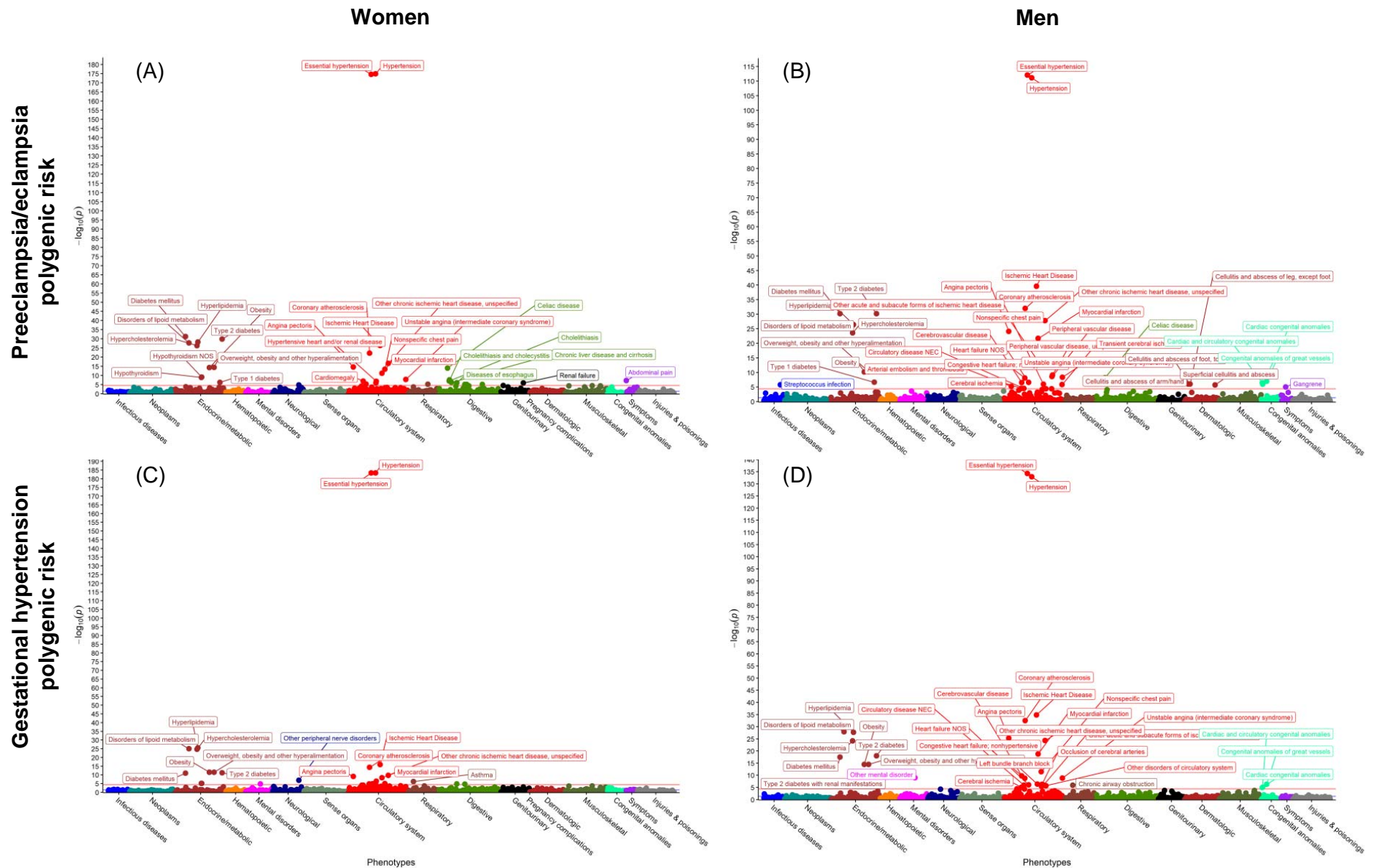
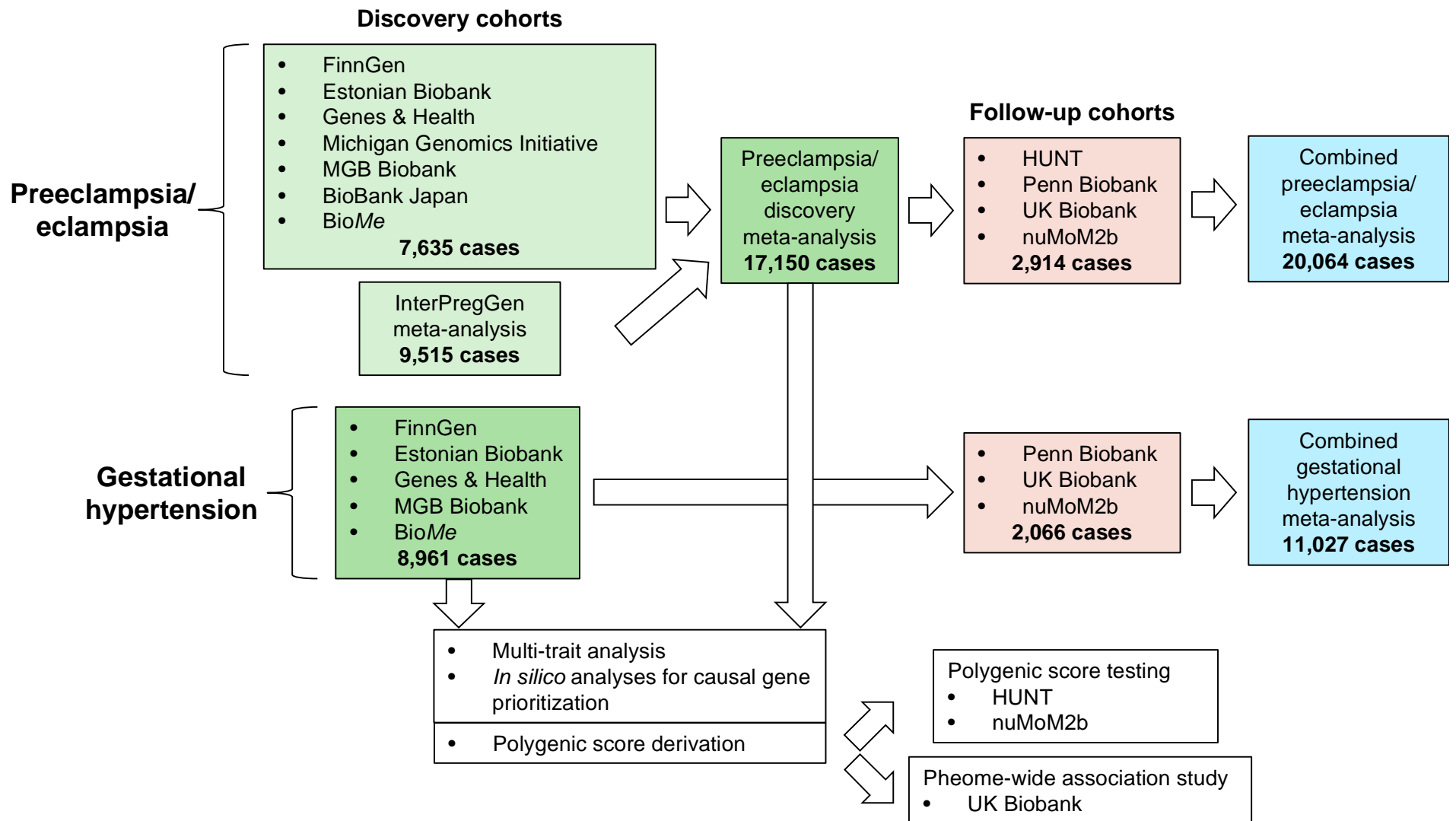


Figure 3. Sex-stratified phenome-wide association study of preeclampsia/eclampsia and gestational hypertension polygenic risk in the UK Biobank. Preeclampsia/eclampsia polygenic risk (A-B) and gestational hypertension polygenic risk (C-D) were associated with 1,445 phenotypes among women (A, C) and men (B, D) in the UK Biobank. Associations with phenotypes were tested using logistic regression with adjustment for age and PC 1-5.

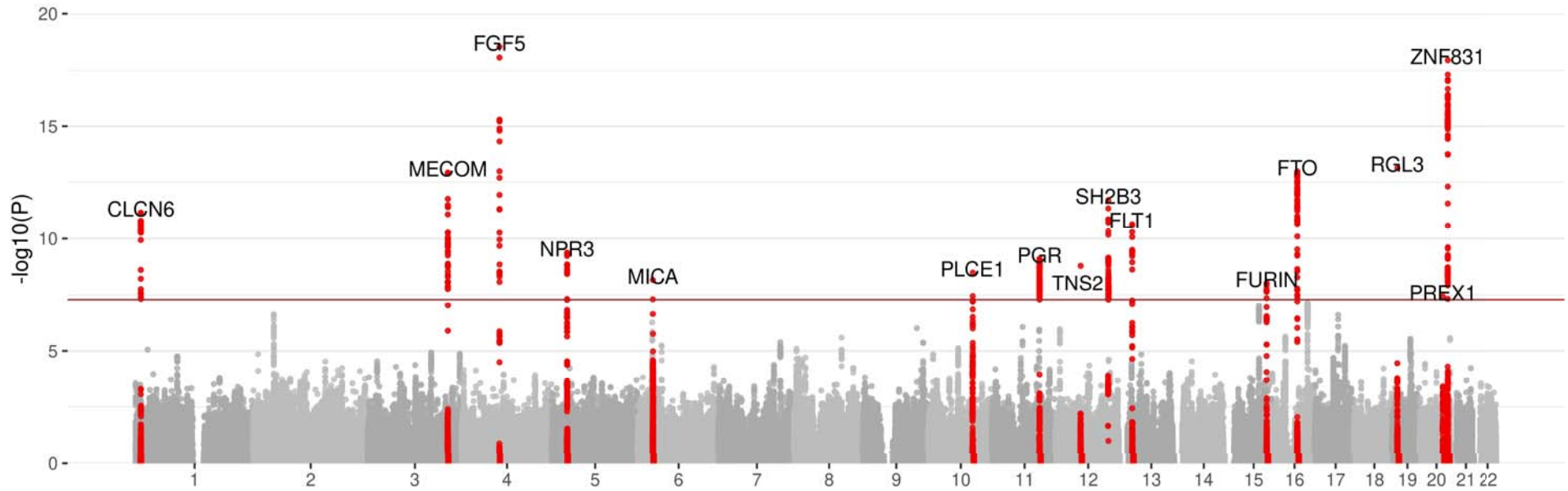


Extended Data

Extended Data Figure 1. Flow chart summarizing the study design and contributing cohorts.



Extended Data Figure 2. Results of multi-trait analysis of genome-wide summary statistics (MTAG) for preeclampsia/eclampsia from joint analysis of summary statistics for preeclampsia/eclampsia and gestational hypertension in discovery cohorts. The plot displays chromosomal position on the X-axis and $-\log_{10}(P)$ on the Y-axis.



Extended Data Figure 3. Relative expression of prioritized genes in human aortic cells with single-nuclei RNA sequencing. We analyzed expression of genes prioritized by genome-wide meta-analysis of preeclampsia/eclampsia and gestational hypertension and secondary *in silico* analyses in a dataset of single-nuclei RNA sequencing from two normal human flash-frozen aortic specimens. Most prioritized genes were enriched in endothelial cell populations and/or macrophages.

