

1 **Accuracy of upper respiratory tract samples to diagnose Mycobacterium tuberculosis: a**  
2 **systematic review and meta-analysis**

3

4 Helen R. Savage, Hannah M Rickman, Rachael M Burke, Maria Lisa Odland, Martina Savio,  
5 Beate Ringwald, Luis E Cuevas\*, Peter MacPherson.

6 Department of Clinical Sciences, Liverpool School of Tropical Medicine, Liverpool, United  
7 Kingdom (HR Savage MBChB, Prof LE Cuevas MTropMed, DSc, P MacPherson PhD)

8 London School of Hygiene & Tropical Medicine, London, United Kingdom (HM Rickman  
9 MBBChir, RM Burke MRCP, P MacPherson PhD)

10 Malawi-Liverpool-Wellcome Programme, Blantyre, Malawi (HM Rickman MBBChir, RM  
11 Burke MRCP, ML Odland PhD, P MacPherson PhD)

12 The Department of Public Health and Nursing, The Norwegian University of Science and  
13 Technology (ML Odland PhD)

14 The LIGHT Consortium, Liverpool School of Tropical Medicine, Liverpool, United  
15 Kingdom (M Savio MPhil, B Ringwald PhD)

16 School of Health and Wellbeing, University of Glasgow, United Kingdom (P MacPherson  
17 PhD)

18 \*Deceased

19

20 **Corresponding author:** Dr Helen R Savage, Department of Clinical Sciences, Liverpool  
21 School of Tropical Medicine, Liverpool, L3 5QA, United Kingdom.  
22 [Helen.savage@lstmed.ac.uk](mailto:Helen.savage@lstmed.ac.uk)

23

24 **Keywords:** Tuberculosis, diagnosis, systematic review, upper respiratory tract, swab, oral

25 **Word count:** Abstract, 312; Manuscript, 3374

## 26 **Structured summary**

### 27 Background

28 Pulmonary tuberculosis (PTB) due to *Mycobacterium tuberculosis* (Mtb) can be challenging  
29 to diagnose because of difficulty obtaining samples, and suboptimal sensitivity of existing  
30 tests. We investigated the performance characteristics and diagnostic accuracy of upper  
31 respiratory tract tests for diagnosing PTB and hypothesised they would have sufficient  
32 accuracy and utility to improve PTB diagnosis.

### 33 Methods

34 A systematic review and meta-analysis was conducted by searching MEDLINE, Cinahl, Web  
35 of Science, Global Health, and Global Health Archive databases up to 31/01/2021, a second  
36 search was conducted for the period 1/1/2021 - 27/5/2022 (subsequently extended to  
37 6/12/2022) to identify studies that reported on the accuracy of upper respiratory tract  
38 sampling for TB diagnosis compared to microbiological reference standards. We used a  
39 random-effects meta-analysis with a bivariate hierarchical model to estimate pooled  
40 sensitivity and specificity, stratified by sampling method. Bias was assessed using QUADAS-  
41 2 criteria. Study registered with PROSPERO (CRD42021262392).

### 42 Findings

43 10,159 titles were screened for inclusion, 274 studies were assessed for full text review, and  
44 71, comprising 119 test comparisons published between 1933 and 2022 were included in the  
45 systematic review (53 in meta-analysis). For laryngeal swabs, pooled sensitivity was 57.8%  
46 (95% CI 50.5-65.0%), specificity was 93.8% (95% CI 88.4-96.8%) and diagnostic odds ratio  
47 (DOR) was 20.7 (95% CI 11.1-38.8). Nasopharyngeal aspirate sensitivity was 65.2% (95%  
48 CI 52.0-76.4%), specificity was 97.9% (95% CI 96.0-99.0%) and DOR was 91.0 (95% CI  
49 37.8-218.8). Oral swabs sensitivity was 56.7% (95% CI 44.3-68.2%), specificity was 91.3%  
50 (95% CI 81.0-96.3%), and DOR was 13.8 (95% CI 5.6-34.0).

51 Interpretation

52 Upper respiratory tract sampling holds promise to expand access to TB diagnosis, including

53 for people who can't produce sputum. Exploring historical methods using modern

54 microbiological techniques may further increase the options for alternative sample types.

55 Prospective studies are needed to optimise accuracy and utility of sampling methods in

56 clinical practice.

57 Funding

58 HRS is funded by the MRC through the MRC DTP programme at LSTM [Grant number

59 MR/N013514/1].

60

61

62 **Research in context**

63 *Evidence before this study*

64 Globally in 2021, an estimated 4.2 million of 10.6 million people with incident tuberculosis  
65 (TB) disease went undiagnosed, emphasising the urgent need for new diagnostic  
66 methodologies. Most TB diagnostics are performed on sputum samples, but people who need  
67 TB tests are often unable to produce sputum. Upper respiratory tract sampling for TB  
68 diagnosis was widely used historically and holds promise to expand non-sputum-based  
69 diagnosis.

70 *Added value of this study*

71 We systematically reviewed and synthesised through meta-analysis diagnostic accuracy  
72 evaluations of upper respiratory tract sampling for TB. Historically, upper respiratory tract  
73 sampling for TB diagnosis was commonly used, with 39/71 studies conducted before 1970,  
74 although in recent years there has been a resurgence of interest in oral sampling. We show  
75 that upper respiratory tract samples have acceptable sensitivity and specificity compared to  
76 sputum culture, and, if testing is optimised using newer molecular and culture-based  
77 methods, may be capable of meeting WHO target produce profiles.

78 *Implications of all the available evidence*

79 Upper respiratory tract sampling methodologies for TB (oral sampling, and sampling from  
80 the larynx and nasopharynx) may hold promise to expand access to TB diagnosis, including  
81 for people who can't produce sputum. These sampling strategies can be optimised using  
82 modern microbiological techniques to increase access to diagnostics for TB.

83

## 84 **Introduction**

85 Pulmonary disease due to *Mycobacterium tuberculosis* (*Mtb*) can be challenging to diagnose  
86 because of lack of access to testing services, difficulty obtaining samples, and suboptimal  
87 sensitivity of tests. In 2021, of the estimated 10.6 million people with incident tuberculosis  
88 (TB) over 4.2 million went undiagnosed (1), and of those diagnosed with pulmonary TB  
89 (PTB) only 63% were bacteriologically confirmed. Bacterial confirmation is important to  
90 ensure correct diagnosis and for identification of drug resistance, so that the most effective  
91 treatment regime can be identified (1).

92 The most common sample used for PTB diagnosis is sputum, which can be tested by smear  
93 microscopy, culture, or using nucleic acid amplification tests (NAAT) such as Xpert  
94 (Cepheid) or Truenat (Molbio). These methods rely on people producing a sputum sample for  
95 analysis. However not everyone being investigated for PTB can produce sputum. For adults  
96 in the WHO consolidated guidelines on TB (2) sputum or induced sputum are the  
97 recommended sample types for diagnosis of PTB and, if HIV positive, urine using the  
98 ALERE-LAM. No alternative non-sputum options are recommended for a microbiological  
99 diagnosis of PTB to allow confirmation and resistance testing.

100 Children commonly do not produce sputum and therefore the WHO recommends alternative  
101 sample types for diagnosis of PTB, these include induced sputum, gastric aspirate, gastric  
102 lavage, nasopharyngeal aspirate (NPA) and stool (3). Gastric aspirate has a sensitivity of 73%  
103 (Xpert MTB/RIF) compared to microbiological reference standard (32% compared to  
104 composite reference standard), but is invasive, requires fasting and early morning testing with  
105 low caregiver acceptability (2,3). NPA is less invasive however still requires specialist  
106 equipment (for suction) and has moderate caregiver acceptability, sensitivity against a  
107 microbiological reference standard is 46% (Xpert MTB/RIF, based on four studies) (2,3).

108 Stool is a newly recommended specimen type in the 2021 update, has high acceptability, and  
109 is non-invasive; sensitivity of stool Xpert MTB/RIF is 61% against microbiological reference  
110 standard (16% against clinical reference standard) (2,3). However stool testing requires  
111 waiting for a bowel movement.

112 Alternative accessible sample types that can be processed with both existing and novel tests,  
113 are patient-centred, and can be collected at the time of consultation, are urgently required.

114 WHO Target Product Profiles (TPPs) have defined the minimal and optimal diagnostic  
115 accuracy standards for tests to diagnose TB in clinical settings, as well as defining desirable  
116 characteristics, including using non-sputum samples such as urine, stool, oral mucosal  
117 transudates, saliva, exhaled air, or blood from a fingerstick (4). Apart from stool, currently  
118 available alternative sample types, such as gastric aspirate or in adults broncho-alveolar  
119 lavage are invasive, need fasting and often admission to a hospital with specialist equipment.  
120 This can be a barrier to microbiological diagnosis both in terms of availability of the tests,  
121 costs, and accessibility.

122 In Europe in the early 1900s, physicians investigating patients for TB encountered similar  
123 concerns and laryngeal swabs were investigated as an alternative sample type for diagnosis of  
124 PTB (5–7); however with the decline of TB in Europe this practice fell out of use. More  
125 recently, when looking for alternatives to sputum in children, NPA (a procedure where a  
126 catheter is inserted into the nostril and suction applied to produce a sample) has been used,  
127 and oral mucosa specimens (samples taken by swabbing either the inside of the cheek or the  
128 tongue) from South Africa, Moldova and Kenya have successfully been used to diagnose TB  
129 (8–10). Sampling of the upper respiratory tract (from the mouth and nose, tonsils, down to the  
130 level of the larynx/vocal cords) which is non/minimally invasive, and can be performed

131 quickly as an outpatient, offers a potential alternative to expand access to microbiological TB  
132 diagnosis in those that cannot produce sputum.

133 We therefore set out to systematically appraise the evidence for the performance  
134 characteristics and diagnostic accuracy of upper respiratory tract sampling for diagnosing  
135 active PTB disease. We hypothesised that upper respiratory tract tests would have sufficient  
136 accuracy and utility to increase access to TB diagnosis.

### 137 **Methods**

138 We undertook a systematic review and meta-analysis; the published protocol is available  
139 online ([https://www.crd.york.ac.uk/prospero/display\\_record.php?RecordID=262392](https://www.crd.york.ac.uk/prospero/display_record.php?RecordID=262392)). We  
140 developed a search strategy with information specialists at the Liverpool School of Tropical  
141 Medicine library (Supplemental Table S1). We searched the following databases up to  
142 31/01/2022, then a further search was carried out for the period 1/1/2021 - 27/5/2022  
143 (subsequently extended to (6/12//2022): MEDLINE; Cinahl; Web of Science; Global Health;  
144 and Global Health Archive.

145 We included studies that evaluated the accuracy of upper respiratory tract sampling (index  
146 tests) for a microbiological (culture and nucleic acid amplification tests [NAAT] including  
147 automated platforms and laboratory PCR) diagnosis of TB disease, compared to a  
148 microbiological reference standard using either sputum or gastric lavage. We included cohort,  
149 cross-sectional, and randomised controlled studies (either published in peer-reviewed  
150 manuscripts, or as pre-prints) that recruited participants from any community or clinical  
151 setting; we placed no restrictions on publication language. We excluded: studies where the  
152 index or reference standard used histological or biomarker-based testing; post-mortem

153 studies; studies in non-human animal species; case reports; clinical guidelines; and studies  
154 testing for latent TB infection (where active TB disease was not tested for).

155 Titles and abstracts were imported into a Rayyan.ai database(11), and screened by one  
156 reviewer (HRS), with a random subset of 10% checked for agreement by a blinded second  
157 reviewer (HMR or RMB). The full text of selected manuscripts was then independently  
158 assessed by two reviewers (two of HRS, HMR, RMB) for inclusion; in cases of  
159 disagreement, the third reviewer acted as an arbitrator. Risk of bias was assessed using the  
160 QUADAS-2 tool (12).

161 Data were extracted using a piloted extraction form into a study database. Manuscripts  
162 published in languages other than English were translated prior to full text review and data  
163 extraction.

164 For each included manuscript, we extracted data on: year; author; country; type of  
165 publication; original language; report variable if multiple data sets; study design; setting;  
166 population; swab/device used; technique of sampling; site of sampling; number of samples  
167 per participant; timing of swabs; swab preparation; transport; storage; method of testing; test  
168 cut-off; participants; inclusion criteria; number of samples sets taken; number included in  
169 analysis; sex; HIV status; median age; index test positive; index test negative; missing result;  
170 reference test positive; reference test negative; missing result; true positive; control  
171 population; number of samples sets taken, index test positive, and index test negative.

172 If a manuscript contained multiple index tests, reference tests or cohorts of patients, each data  
173 set was included as a separate report. As participants within a particular study may have been  
174 included in more than one index test comparison, we reported the number of sample sets  
175 included in the analysis for each test comparison undertaken.



176 **Data synthesis and analysis**

177 We summarised study characteristics and, separately for each upper respiratory tract  
178 sampling methodology, graphed forest plots and calculated the pooled sensitivity and  
179 specificity of the index test compared to reference standards using a bivariate hierarchical  
180 random effects model, fitted using the lme4 package in R (version 4.2.1) based on the  
181 Cochrane handbook for Systematic Reviews of Diagnostic Test Accuracy (13). If studies  
182 were of children a second model, using a composite reference standard, including  
183 microbiological and clinical cases of PTB was performed (as in the recent WHO consolidated  
184 guidelines (2,3)). Definitions of how clinical cases were defined are provided in the  
185 Supplementary Material. Data and code to reproduce analysis are available at:  
186 <https://osf.io/9nuvq/>. This study was registered in PROSPERO (CRD42021262392).

187 **Funding source**

188 HRS is funded by the MRC through the MRC DTP programme at LSTM [Grant number  
189 MR/N013514/1]. This research was funded in whole, or in part, by the Wellcome Trust  
190 [Grant number 200901/Z/16/Z]. This work was supported by UK Foreign, Commonwealth  
191 and Development Office (“Leaving no-one behind: transforming gendered pathways to health  
192 for TB”) and partially funded by UK aid from the UK government (to MS, BR, LEC, and  
193 PM); however, the views expressed do not necessarily reflect the UK government’s official  
194 policies. RMB and HMR are supported by Wellcome PhD Fellowships (203905/Z/16/Z and  
195 225482/Z/22/Z). For the purpose of open access, the author has applied a CC BY public  
196 copyright license to any Author Accepted Manuscript version arising from this submission.

197 The funder of the study had no role in study design, data collection, data analysis, data  
198 interpretation, or writing of the report.

199 **Results**

200 9680 studies were identified during the initial search period up to 31/01/2021, and a further  
201 1364 when extended to 6/12/2022 (Figure 1). We removed 885 duplicates, leaving 10,159  
202 studies that were screened for inclusion. We reviewed the full text of 274 manuscripts.  
203 Overall, 71 studies were included in the systematic review, comprising 119 reports on index  
204 test comparisons; 53 were included in meta-analyses. Full details of excluded studies and  
205 reasons for exclusion are in Supplemental Table S2.

206

207 **Figure 1: PRISMA 2020 Flow diagram for systematic review.**

208

209 From included manuscripts (Table 1; Supplementary Table S3 includes full methodological  
210 details and results for each study), we classified types of upper respiratory tract sampling into  
211 four groups: laryngeal swabs (32 studies); NPAs (ten studies); oral swabs (18 studies); and  
212 other (mouthwash: three studies; nasal swabs: one study; saliva: four studies; other  
213 mucosa/dental samples: three studies). Studies were published between 1933 and 2022 from  
214 South Africa (eleven studies), Norway (seven studies), UK (seven studies), Peru (four  
215 studies), Uganda (seven studies), Canada (three studies), India (three studies), USA (three  
216 studies), Australia (two studies), Germany (two studies), Kenya (two studies), and one study  
217 from each of Brazil, Chile, China, Czechoslovakia, Denmark, Finland, France, Hungary,  
218 Italy, Japan, Malawi, Moldova, Mozambique, Republic of Korea, Spain, South East Asia (not  
219 specified), Sweden, Taiwan, Turkey, and Yemen.

220

221 Overall, we included data on 24,899 index test samples from participants in hospitals (29  
222 studies); TB sanatoria (nine studies); Chest clinics (nine studies); TB hospitals (eight studies),  
223 hospital outpatients (seven studies); primary care clinics (three studies); mass

224 screening/asymptomatic/contact interventions (two studies); outpatient treatment centres (one  
225 study), prisons (one study) and studies where the setting was unknown (five studies). Eleven  
226 studies were in children aged 16 years or younger. In studies that reported demographic data,  
227 58.2% of participants were male (data from 24 studies) and 19.5% were HIV-positive (with  
228 22 out of 39 studies conducted after 1981 presenting data on HIV prevalence in study  
229 participants).

230 **Table 1: Study Characteristics**

Year	Author	Country	Study design	Setting	Technique and Device	Site of sampling	Participants	Index test analysis	Reference test	Included in analysis	Male	HIV positive (if study after 1981)
<b>Laryngeal swab</b>												
1933	Kereszturi (14)	USA	Diagnostics evaluation	Hospital	Throat swab		Children with TB	Culture	Gastric lavage culture	10	NR	
1937	Allodi (15)	Italy	Diagnostics evaluation	Clinic	Nichrome swab passed to larynx with 'fenestrated' cannula using a mirror.		Clinic patients	Culture	Gastric lavage culture	40	NR	
1941	Nassau (6)	UK	Diagnostics evaluation	Sanatorium	Sterilised angulated swab with cotton wool, passed to larynx and cough.		Discharged 1940 – unable to expectorate	Culture	Sputum culture culture	166	NR	
1948	Forbes (16)	UK	Diagnostics evaluation	Tuberculosis Hospital	Sterilised angulated nichrome swab with cotton wool, passed to larynx and cough.		Inpatient sputum culture negative	Culture	Gastric lavage culture	100	100	
1948	Hounslow (7)	UK	Diagnostics evaluation	Tuberculosis Hospital	Sterilised angulated nichrome swab with cotton wool, passed to larynx and cough.		Hospital patients – unable to expectorate	Culture	Gastric lavage culture	193	NR	
1950	Duggan(17)	Canada	Diagnostics evaluation	Sanatorium	Sterilised angulated swab with cotton wool, passed to larynx and cough.		Inpatients and Outpatients both adults and children	Culture	Gastric lavage culture	100	NR	
1950	Renoux(18)	France	Diagnostics evaluation	Sanatorium	Sterilised angulated nichrome swab with cotton wool, passed to larynx and cough.		Sanatorium patients – sputum negative	Culture	Gastric lavage culture	56	NR	
1951	Armstrong (19)	Canada	Diagnostics evaluation	Hospital	Sterilised angulated swab with cotton wool, passed to larynx and cough.		Hospital patients on TB treatment	Culture	Gastric lavage culture	1024	NR	
1951	Szabo(20)	Hungary	Diagnostics evaluation	Not stated	Not described		Smear negative TB patients	Culture	NR	2174	NR	
1953	Chaves (21)	USA	Diagnostics evaluation	Chest clinic	Sterilised angulated nichrome swab with cotton wool, passed to larynx and cough.		Clinic patients presumptive TB	Culture	Gastric lavage culture	1418	NR	
1954	Frostad	Norway	Diagnostics	TB Hospital	Not described		TB hospital patients	Culture	Gastric	1500	NR	

	(22)		evaluation					lavage culture			
1955	Campbell (23)	Australia	Diagnostics evaluation	Chest clinic	Sterilised angulated swab with cotton wool, passed to larynx and cough.	Chest clinic – unable to expectorate	Culture	Sputum culture	578	NR	
1955	Lees (24)	UK	Diagnostics evaluation	Mass screening/asymptomatic	Not described	Mass screening admitted for swabs	Culture	Bronchial lavage culture	144	NR	
1955	Lind (25)	Sweden	Diagnostics evaluation	Not stated	Stainless wire with calcium alginate advanced to glottis and cough	Patients with lesions on XR	Culture	Gastric lavage culture	121	NR	
1955	Wallace(26)	UK	Diagnostics evaluation	Hospital	Either cotton wool AC or alginate BDE	Inpatients on TB treatment	Culture	Sputum culture	163	NR	
1956	Edwards (27)	English	Diagnostics evaluation	Chest clinic	Not described	Outpatients – presumptive TB	Culture	NR	1019	NR	
1956	Engbaek (28)	Denmark	Diagnostics evaluation	Hospital	Sterilised angulated swab with cotton wool, passed to larynx and cough.	Outpatients – unable to expectorate	Culture	Gastric lavage culture	1231	NR	
1956	Tonge (29)	Australia	Diagnostics evaluation	Chest clinic	Sterilised angulated swab with cotton wool, passed to larynx and cough.	Outpatients – presumed and known TB, unable to expectorate	Culture	Gastric lavage culture	465	NR	
1962	Hsing (30)	Taiwan	Diagnostics evaluation	Hospital	Sterilised angulated swab with cotton wool, passed to larynx and cough.	Hospital patients	Culture	Gastric lavage culture	1320	NR	
1962	Velu (31)	India	Diagnostics evaluation	Outpatient treatment study	Sterilised angulated swab with cotton wool, passed to larynx and cough.	Outpatients – bacteriologically confirmed TB	Culture	Sputum culture	2809	NR	
1962	Kertay(32)	Germany	Diagnostics evaluation	State TB institute	Not described	TB hospital patients treated for TB	Culture	Sputum culture	212	NR	
1965	Hauge (33)	Norway	Diagnostics evaluation	Hospital	Not described	Hospital patients – PTB on XR and clinical	Culture	NR	157	NR	
1966	Pechacek (5)	Czech republic	Diagnostics evaluation	TB hospital	Not described	TB hospital patients – referred as PTB some already treated	Culture	Sputum culture	525	NR	
1968	Lloyd (34)	English	Diagnostics evaluation	Hospital	Stainless steel wire, wet cotton wool, bent to angle	Paediatric inpatients with PTB	Culture	Gastric lavage culture	60	NR	

1970	Mankiewicz (35)	Canada	Diagnostics evaluation	Screening/Cont acts/Asymptomatic	Alginate wool sterilised angulated swab, into larynx and cough		Outpatients – unable to expectorate	Culture	NR	1199	NR	
1999	Thakur (36)	India	Diagnostics evaluation	Hospital outpatients	Sterilised angulated swab, passed to larynx and cough.		Outpatients – children under 14 probable TB	Culture	NR	51	33	
1948	Gilje(37)	Norway	Diagnostics evaluation	Sanitorium	Sterilised angulated swab with cotton wool, passed to larynx and cough (Laryngeal streak)		Inpatients – unable to expectorate	Culture	Gastric lavage culture	400	NR	
1950	Lundar (38)	Norway	Diagnostics evaluation	Sanitorium	Sterilised angulated swab with cotton wool, passed to larynx and cough (Laryngeal streak)		Inpatients – unable to expectorate	Culture	Gastric lavage culture	304	NR	
1951	Gilje(39)	Norway	Diagnostics evaluation	Sanitorium	Sterilised angulated swab with cotton wool, passed to larynx and cough (Laryngeal streak)		Inpatients – unable to expectorate	Culture	Gastric lavage culture	863	NR	
1952	Roald (40)	Norway	Diagnostics evaluation	Sanitorium	Sterilised angulated swab with cotton wool, passed to larynx and cough (Laryngeal streak)		Inpatients	Culture	Gastric lavage culture	483	NR	
1952	Smedsrud (41)	Norway	Diagnostics evaluation	Sanitorium	Sterilised angulated swab with cotton wool, passed to larynx and cough (Laryngeal streak)		Inpatients	Culture	Sputum culture	71	NR	
1953	Laes (42)	Finland	Diagnostics evaluation	Sanitorium	Sterilised angulated swab with cotton wool, passed to larynx and cough (Laryngeal streak)		Inpatients – negative Ziehl-Nielson	Culture	Gastric lavage culture	232	NR	
Nasopharyngeal aspirate												
1998	Franchi (43)	Peru	Diagnostic evaluation	Hospital	Feeding catheter	Oropharynx	Children presumptive TB	Culture /PCR	Gastric aspirate culture	64	NR	0
2007	Owens (44)	Uganda	Diagnostic evaluation	Hospital	Graduated suction catheter	Oropharynx	Children presumptive TB	Culture	Induced sputum culture	94	57	44
2018	Cakir (45)	Turkey	Diagnostic evaluation	Hospital	Suction catheter	Oropharynx	Children presumptive TB	Culture	Gastric aspirate culture	40	18	NR
2012	Zar (46)	South Africa	Diagnostic evaluation	Hospital	Sterile catheter with mucus trap	Nasopharynx	Children presumptive TB	Culture /Xpert MTB/RIF	Induced sputum culture	535	NR	117

2013	Zar (47)	South Africa	Diagnostic evaluation	Primary care clinic	Sterile catheter with mucus trap	Nasopharynx	Children presumptive TB	Xpert MTB/RIF	Induced sputum culture	384	181	31
2018	Hanrahan (48)	South Africa	Diagnostic evaluation	Primary care clinic	Fasted 2 hours sterile catheter and mucus trap	Nasopharynx	Children presumptive TB	Culture /Xpert MTB/RIF	Induced sputum culture	105	63	21
2019	Zar (49)	South Africa	Diagnostic evaluation	Hospital	Sterile catheter with mucus trap	Nasopharynx	Hospitalised presumptive PTB	Xpert Ultra	Induced sputum culture	195	NR	32
2021	Song (50)	Kenya	Cross sectional	Inpatient and Outpatient	French tubing and mucus trap	Nasopharynx	Children presumptive TB	Xpert MTB/RIF / MGIT	Gastric aspirate MGIT	294	149	73
2020	Osorio (51)	Mozambique	Retrospective cross-sectional	Hospital	Not stated	Nasopharynx	Children with severe acute malnutrition	Xpert MTB/RIF / MGIT	NR	45	24	10
2009	Al-Aghbari (52)	Yemen	Cohort	Hospital	Aspiration via a mucus trap connected to a suction device	Nasopharynx	Children suspected TB	Culture	n/a	213	NR	NR
Oral swab												
2014	Wood (53)	South East Asia	Conference abstract	NR	NR	NR	NR	NR	NR	54	NR	NR
2015	Wood (54)	South Africa	Case control	TB clinic	Omniswab	Inside of cheek 10 seconds	TB clinic patients	PCR	Sputum Xpert MTB/RIF	20	8	0
2019	Luabeya (8)	South Africa	Case control	TB Clinic	Omniswab x 3, Puritan Purflock Ultra x 1 cheek	Tongue swabs	TB clinic patients	PCR	Sputum Xpert MTB/RIF	130	NR	NR
2019	Mesman (55)	Peru	Case control	TB clinic	Omniswab in lysis buffer, Omniswab in PBS, FTA card	Cheek	TB clinic patients	Xpert MTB/RIF	Sputum MGIT	33	NR	NR
2019	Nicol (56)	South Africa	Prospective diagnostic	Hospital	Omniswab/Puritan Purflock	Cheek (right and left)	Presumptive pulmonary TB	PCR	Induced	165	78	18

			evaluation						sputum Xpert MTB/RIF			
2020	Flores (57)	Peru	Prospective diagnostic evaluation	Not stated	Omniswab in sterile lysis buffer or EasiCollect FTA card	Inside of both cheeks 10 seconds	Presumptive pulmonary TB	PCR	Bacteriologically confirmed	288	NR	0
2020	Mesman (58)	Peru	Case control	Health centres	Omniswab, Easicollect FTA card	Inside of each cheek 10 seconds	Culture confirmed TB	PCR	Sputum culture	123	82	4
2020	Molina-Moya (59)	Moldova	Cross sectional	Hospital	Primeswab	Swab cheek 7-8 seconds	Clinical diagnosis presumptive TB	PCR	Sputum culture	266	157	NR
2020	Lima (60)	Brazil	Case control	Prison	Not stated	Tongue 10 seconds	Sputum Xpert positive	Xpert Ultra	Sputum Xpert Ultra	128	NR	NR
2021	Ealand (61)	South Africa	Case control	Hospital	Copan swab	Tongue 6-8 seconds	Young children less than equal 5 clinically diagnosed with TB	Culture, Auramine/spo gliotyping.MTBC DNA	Gastric aspirate culture/Xpert	35	25	6
2021	Song (62)	China	Prospective diagnostic evaluation	TB Hospital	Swab	Dorsum tongue 7-8 times	> 16 years symptoms suggestive pulmonary TB	TB-LAMP	MGIT/Xpert MTB/RIF	101	69	0
2021	Wood (63)	Uganda	Prospective diagnostic evaluation	TB Hospital and Outpatient	Copan FLOQSwab	Front 2/3 tongue 15-20seconds	Presumptive TB	qPCR/Culture	Sputum culture/Xpert Ultra	103	NR	NR
2022	LaCourse (10)	Kenya	Cross-sectional	Outpatient Clinic	OmniSwab	Left and Right buccal surface	Presumptive TB	qPCR	Sputum culture/Xpert MTB/RIF	100	52	54



2022	Andama (64)	Uganda	Cross-sectional	Outpatient Clinic	COPAN FLOQswab	2 tongue swabs	Adults cough for greater than 2 weeks	Xpert Ultra	Xpert Ultra sputum	183	107	58
2022	Chang (65)	Uganda	Cohort	Outpatient Clinic	COPAN FLOQswab	15 sec dorsum of tongue	Symptoms of respiratory illness	Metagenomic sequencing assay	n/a	42	NR	NR
2022	Kang (66)	Republic of Korea	Prospective diagnostic evaluation	Hospital	OMNIGene.ORA L OMR-110 kit	Palate, gum line and tongue dorsum	Clinically suspected of active PTB	SLIM assay	Culture positive (sputum, BAL)	272	174	1
2022	Shapiro (67)	South Africa	Prospective diagnostic evaluation	Hospital/Clinic	COPAN FLOQswab	Dorsum of tongue 15-20 seconds	Adult over 16 with TB symptoms	PCR	Sputum Xpert Ultra/Culture	131	72	120
2022	Cox (68)	South Africa	Prospective diagnostic evaluation	Hospital	Purflock or COPAN FLOQswab	Swab tongue or inside of both cheeks	Children <15 presumptive PTB	Xpert Ultra	Induced sputum Xpert and culture	291	158	57
<b>Mouth wash</b>												
1955	Rogers (69)	USA	Diagnostic evaluation	Hospital	Mouthwash	Pharynx	Proven or presumptive TB	Culture	Sputum culture	43	NR	
1994	Evans (70)	UK	Case control	Outpatient clinic	Mouthwash	Pharynx	Active TB and controls	Lysed rRNA PCR	Sputum culture	39	NR	NR
2009	Davis (71)	Uganda	Diagnostic evaluation	Hospital	Mouthwash	Pharynx	Outpatients and inpatients	PCR	Sputum culture	127	NR	58
<b>Nasal swab</b>												
1996	Warndorff (72)	Malawi	Case control	Hospital	Cotton wool nasal swab	Nose	Inpatients and contacts	PCR	Sputum culture	52	NR	NR
<b>Saliva</b>												
2013	Shenai (73)	South	Diagnostic	Hospital	Salivette saliva	Mouth	Adult PTB diagnosed	Xpert	Sputum	26	NR	0

		Africa/Korea	evaluation		collector		patients	MTB/ RIF	m culture			
2015	Gonzalez (74)	Spain	Case control	Hospital	Spitting method into sterile container	Mouth	Adult presumptive TB	Culture	Sputum culture	32	21	NR
2022	Byanyima (75)	Uganda	Cohort	Hospital	Spitting method into sterile container	Mouth	Sputum Xpert Ultra positive for TB	Xpert Ultra	Sputum culture	82	50	18
2022	Hansen (76)	Germany	Case control	n/a	NR	Mouth	Patients with TB	qPCR	NR	17	NR	NR
<b>Other</b>												
2003	Eguchi (77)	Japan	Case control	Hospital	Unstimulated saliva in test tube	Mouth	Patients with TB	Culture/PCR	Culture	75	67	0
2012	Palakuru (78)	India	Case control	Outpatient clinic	Unstimulated saliva in sterile vial	Mouth	Pulmonary TB	PCR	Acid-fast bacilli positive	25	NR	0
2016	Balcells (79)	Chile	Cross sectional	Outpatient clinic	Bilateral nasopharyngeal COPAN FLOQswab	Nasopharyngeal	Adult contacts of smear positive cases	Xpert MTB/TIF	N/A	77	34	NR

231

232 **NR:** Not reported

### 233 **Laryngeal swabs**

234 Forty-one reports that evaluated the accuracy of laryngeal swabs were included, of which 23  
235 contributed data to the meta-analysis (Supplementary Table S4). Studies were published  
236 between 1941 and 1968, with sample sizes ranging from 10 to 2809. A variety of angulated  
237 metal swabs with cotton wool or other absorbent materials were used to sample from the  
238 larynx, and processed using acidic preparations (Table 1 and Supplemental Table S3).  
239 Samples (both index and reference) were then cultured using methodologies available at the  
240 time of the study including modified Petraghani's medium, Lowenstein-Jensen solid medium,  
241 liquid oleic acid albumin media and guinea pig inoculation. In all studies, the reference test  
242 used was culture of sputum or gastric lavage fluid (using either expectorated sputum [eight  
243 studies] or gastric lavage [15 studies]). Random-effects model estimated sensitivity was  
244 57.8% (95% CI: 50.5-65.0%), specificity 93.8% (95% CI: 88.4-96.8%), diagnostics odds  
245 ratio (DOR) 20.7 (95% CI: 11.1-38.8), positive likelihood ratio (PLR) 9.3 (95% CI: 5.1-  
246 17.0), and negative likelihood ratio 0.45 (95%CI 0.38-0.53) – Figure 2 (SROC  
247 Supplementary Figure S1).

248

### 249 **Figure 2: Sensitivity and specificity of laryngeal sampling for active pulmonary** 250 **tuberculosis, with random effects meta-analysis**

251

### 252 **Nasopharyngeal aspirates**

253 Nine studies that included data on the accuracy of NPA were included, providing 17 test  
254 comparisons, of which 10 were included in the meta-analysis. All studies were conducted  
255 among children and published between 1998 and 2021, with the number of sample sets  
256 ranging from 64 to 535. Multiple index testing methodologies (non-automated culture [four  
257 reports], MGIT [one report], Xpert MTB/RIF [three reports], Xpert Ultra [one report], PCR

258 [one report]) were carried out on samples and each was included as a separate comparison.  
259 For the microbiological reference test induced sputum culture (6 reports) or gastric aspirate  
260 culture (4 reports) were used – Supplementary Table S5. The proportion of children with a  
261 microbiologically confirmed diagnosis of PTB ranged from 3% (48) to 38% (43) within the  
262 included studies. Model-estimated sensitivity was 65.2% (95%CI 52.0-76.4%), specificity  
263 97.9% (95% CI 96.0-99.0%), DOR 91.0 (95%CI 37.8-218.8), PLR 32.2 (95% CI 15.8-66.1)  
264 and NLR 0.35 (95%CI 0.25-0.51) – Figure 3 (SROC, Supplementary Figure 2).

265

266 **Figure 3: Sensitivity and specificity of nasopharyngeal aspirate for active pulmonary**  
267 **tuberculosis with microbiological reference standard, with random effects meta-analysis**

268

269 A second model was calculated of reports that included study data of a composite reference  
270 standard (both microbiological and clinical diagnosis of PTB, see Supplementary Table 6 for  
271 inclusion criteria), with 12 comparisons included in the analysis (Supplementary Table S7).

272 The random effects model gave an estimate of sensitivity 9.1% (95%CI 5.6-14.6%),  
273 specificity 99.9% (95% CI 93.6-99.9%), DOR 168.4 (95%CI 1.57-17959.1), PLR 153.1 (95%  
274 CI 1.43-16343.5) and NLR 0.91 (95%CI 0.87-0.95) – Figure 4 (SROC, Supplementary  
275 Figure 3).

276

277 **Figure 4: Sensitivity and specificity of nasopharyngeal aspirate for active pulmonary**  
278 **tuberculosis when clinical diagnosis used as a reference standard, with random effects**  
279 **meta-analysis.**

280 **Oral swab**

281 Eighteen studies, with 29 comparisons of oral swab samplings to microbiological reference  
282 standards were identified; of these twenty (2015-2022) were included in the meta-analysis.

283 Ten used PCR for analysis, three used Xpert Ultra, two used culture and one comparison each  
284 used Xpert MTB/RIF, TB-LAMP, spoligotyping, auramine smear and SLIM assay. Eight  
285 comparisons had sputum culture as reference standard, five used sputum culture and Xpert,  
286 two used sputum Xpert alone, four used gastric lavage culture and Xpert and one used  
287 sputum or bronchiolar lavage culture (Supplementary Table S8). Seven comparisons included  
288 children as participants and thirteen included adults. Pooled sensitivity of oral swab samples  
289 was 56.7% (95%CI 44.3-68.2%), specificity 91.3% (95% CI 81.0-96.3%), DOR 13.8 (95%CI  
290 5.6-34.0), PLR 6.54 (95% CI 3.0-14.5) and NLR 0.47 (95%CI 0.36-0.62) – Figure 5.

291

292 **Figure 5: Sensitivity and specificity of oral swab for active pulmonary tuberculosis, with**  
293 **random effects meta-analysis**

294

### 295 **Other sample types**

296 We identified only a small number of studies of alternative sample types, so meta-analysis  
297 was not undertaken. Of these three studies compared the accuracy of mouthwash samples,  
298 saliva (four studies), oral cavity samples (two studies) and nasopharyngeal swabs (one study)  
299 - Supplementary Table S9. A further study on nasal swabs and one on saliva did not contain  
300 sufficient information to permit summary of results.

301

### 302 **Risk of bias assessment**

303

304 The QUADAS-2 tool was used to assess the risk of bias for each study included (Figure 6,  
305 and for individual studies - Supplementary Figures S5 and S6). Overall, studies performed  
306 before the 1950s did not report on multiple domains, especially participant selection and use  
307 of index tests. In newer studies there was a high risk of bias in Domain 1 (participant

308 selection) due to case control designs and variability in reference standards used, with some  
309 reference standards less likely to correctly classify true TB status.

310

### 311 **Figure 6: Risk of bias assessment**

312

### 313 **Discussion**

314 Diagnosing PTB is challenging, and new, accurate sampling approaches that utilise easier-to-  
315 obtain specimens are urgently required. In this systematic review and meta-analysis, which  
316 included data on 24,899 sample comparisons from studies conducted over an 89-year period  
317 between 1933 and 2022, we found that three upper respiratory tract sample types show  
318 promise for accurately diagnosing PTB: laryngeal swabs with a pooled sensitivity of 57.8%  
319 and a specificity of 93.8%; NPA with a pooled sensitivity and specificity of 65.2% and  
320 97.9%; and oral swabs with 56.7% and 91.3% against microbiological reference standards.  
321 These accuracy estimates are similar to currently approved TB diagnostic tools on non-  
322 sputum samples such as urine lateral flow lipoarabinomannan assays in those who are HIV-  
323 positive (80) and stool in children (3).

324 Studies that used laryngeal swabs as a sample type were mostly from Europe in the early 20<sup>th</sup>  
325 century and gave a pooled sensitivity of 57.8% against microbiological reference standards  
326 (gastric lavage or sputum culture), here there was large variation in swabbing and culture  
327 methodologies used over time as new medias and techniques were invented, and all were  
328 conducted before the advent of molecular diagnostics. The studies were mostly carried out  
329 among outpatients being investigated for TB, who were unable to produce sputum, with the  
330 predominant reference standard being culture of gastric lavage. Use of laryngeal swab testing  
331 was discontinued with the advent of chemotherapy and the rapid decline of TB cases in  
332 Northern Europe and the closure of sanatoria (81,82), however the original rationale for

333 investigating this sample type, needing an outpatient test that was quick and well-tolerated,  
334 reflects similar diagnostic challenges still being faced in high burden countries and the  
335 requirements of the WHO TPP (4). Laryngeal swabs may hold promise as an alternative to  
336 expand access to TB diagnosis if re-evaluated in prospective studies using modern diagnostic  
337 platforms and culture.

338 The second sample type reviewed was NPA, which were mostly studied in children. NPAs  
339 had a sensitivity 65.5% compared to culture of gastric aspirate or induced sputum samples.  
340 However as microbiological tests of TB in children have a low sensitivity(83) we also  
341 compared NPA to a clinical reference standard for TB, where sensitivity fell to 9%. This  
342 reflects the very high proportion of children who were clinically diagnosed with TB in the  
343 absence of any positive microbiological test: a common occurrence in clinical practice which  
344 reflects the urgent need for improved diagnostic strategies in children. NPA and laryngeal  
345 swabs have the benefit of being able to be performed as an outpatient test rather than  
346 requiring admission, which could make them a viable alternative in settings where access to  
347 hospital services and admission are limited due to cost, distance, and availability. Further  
348 research is needed to investigate whether sensitivity can be improved by optimising sample  
349 preparation, collection or analysis, how NPA performs in adults, and how NPA could be used  
350 within diagnostic algorithms to increase microbiological diagnosis (50).

351 Oral swabs gave a pooled sensitivity of 56.7% against microbiological reference standards.  
352 However, many of the studies that evaluated oral swabs were case control studies with small  
353 numbers which have a high risk of bias and would be expected to over-estimate sensitivity.  
354 There was also a wide variability in the swab types, sampling methodologies, and specimen  
355 processing and analysis. Nevertheless, oral swabs do offer an easy option for sample  
356 collection and transport, potentially widening access to TB diagnosis. Further research is

357 needed including prospective diagnostic evaluations to find standardised methodologies and  
358 assess its accuracy in a wide range of populations, including children.

359 Limitations for this systematic review and meta-analysis include the variability of the  
360 methods of sample collection and analysis. We mitigated against this by stratifying studies  
361 into groups of sample types for meta-analysis; however, some within-group variability  
362 remains. For some studies from the early 20<sup>th</sup> century, we were unable to identify the full text  
363 despite extensive searches with librarians, and especially if they were published in a language  
364 other than English; this may have biased results to studies in more prominent journals that  
365 were more likely to be archived in libraries and those in English. Newer studies, particularly  
366 those that examined the accuracy of oral swabs, mainly used case control designs, and had  
367 small sample sizes.

368 Although upper respiratory tract sampling seems a promising avenue for improving access to  
369 TB diagnostic testing, further prospective studies are needed to optimise sampling and  
370 microbiological methodologies to maximise sensitivity. In children, where novel diagnostics  
371 are urgently needed NPA, potentially laryngeal swabs, and a combination of sample sites  
372 may offer an alternative sampling methodology that can be used in outpatient settings to  
373 widen access. Historical methods using laryngeal swabs showed similar sensitivity and  
374 higher specificity than modern studies using oral swabbing in much larger numbers of  
375 patients, some of whom were unable to expectorate. Updated evaluations of laryngeal  
376 swabbing is required to determine whether these findings are replicated in modern diagnostic  
377 accuracy evaluations and across a range of populations. Oral swabs are simple to collect and  
378 transport, however this review has shown that more prospective study data is needed to  
379 understand whether sensitivity is sufficient for use in clinical practice. If so, this may give a  
380 sample type that could be used in outpatient settings in children and adults who are unable to  
381 expectorate or in an inpatient setting in those too unwell to produce a sample. Overall upper



382 respiratory tract sampling may offer an alternative non-invasive sample type that can be used  
383 to increase access to microbiological diagnosis for Mtb.

384 **Contributors:** The study was conceived by HRS and LEC. The study design was developed  
385 by HRS, LEC and PMP. Data extraction was conducted by HRS, MLO, MS and BR. Data  
386 analysis and interpretation were conducted by HRS, PMP, HMR and RMB. The initial  
387 manuscript was prepared by HRS and PMP. All authors edited and approved the final  
388 manuscript (HRS, HMR, RMB, MLO, MS, BR, LEC and PMP).

389 **Declaration of interests:** We declare no competing interests.

390 **Data sharing:**

391 Data of studies and analytical code available at: <https://osf.io/9nuvq/>

392

## 393 **References**

- 394 1. World Health Organization. Global tuberculosis report 2022 [Internet]. Geneva: World Health  
395 Organization; 2022 [cited 2022 Nov 2]. Available from:  
396 <https://apps.who.int/iris/handle/10665/363752>
- 397 2. World Health Organization. WHO consolidated guidelines on tuberculosis: Module 3: Diagnosis:  
398 Rapid diagnostics for tuberculosis detection [Internet]. Geneva: World Health Organization;  
399 2022 [cited 2022 Nov 17]. Available from: <https://apps.who.int/iris/handle/10665/363752>
- 400 3. World Health Organization. WHO operational handbook on tuberculosis: Module 5:  
401 Management of tuberculosis in children and adolescents [Internet]. Geneva: World Health  
402 Organization; 2022 [cited 2022 Nov 17]. Available from:  
403 <https://apps.who.int/iris/handle/10665/359147>
- 404 4. World Health Organization. High-priority target product profiles for new tuberculosis  
405 diagnostics: report of a consensus meeting. 2014;(April):1–96.
- 406 5. PechÁcek M. Comparative Study on Cultivation of Mycobacterium tuberculosis from Sputum,  
407 Bronchial Washout and Laryngeal Swabs. / Srovnávací studie o kultivaci Myco the ze sputa,  
408 bronchiálních výplachu a laryngeálních výteru. *Rozhledy v Tuberkulose*. 1966;26(8):537–40.
- 409 6. Nassau E. The Culture of Tubercle Bacilli from Laryngeal Swabs. *Proceedings of the Royal Society*  
410 *of Medicine*. 1941;34(7):397–400.
- 411 7. Hounslow AG, Usher G. Examination for tubercle bacilli by gastric lavage and by laryngeal swab:  
412 a comparative study. *Tubercle*. 1948 Feb;29(2):25–31.
- 413 8. Luabeya AK, Wood RC, Shenje J, Filander E, Ontong C, Mabwe S, et al. Noninvasive Detection of  
414 Tuberculosis by Oral Swab Analysis. Miller MB, editor. *J Clin Microbiol*. 2019 Mar;57(3):e01847-  
415 18.
- 416 9. Molina-Moya J B: Ciobanu, N: Hernandez, M: Prat Aymerich, C: Crudu, V: Adams, ER: Codreanu,  
417 A: Sloan, DJ: Cuevas, LE: Dominguez. Molecular Detection of Mycobacterium tuberculosis in Oral  
418 Mucosa from Patients with Presumptive Tuberculosis. *Journal of Clinical Medicine* [Internet].  
419 2020;9(12). Available from: <Go to ISI>://WOS:000601933600001
- 420 10. LaCourse SM, Seko E, Wood R, Bundi W, Ouma GS, Agaya J, et al. Diagnostic performance of oral  
421 swabs for non-sputum based TB diagnosis in a TB/HIV endemic setting. Hasnain SE, editor. *PLoS*  
422 *ONE*. 2022 Jan 13;17(1):e0262123.
- 423 11. Ouzzani M, Hammady H, Fedorowicz Z, Elmagarmid A. Rayyan—a web and mobile app for  
424 systematic reviews. *Syst Rev*. 2016 Dec;5(1):210.
- 425 12. University of Bristol. QUADAS-2 [Internet]. University of Bristol; 2022 [cited 2022 Nov 14].  
426 Available from: [https://www.bristol.ac.uk/population-health-sciences/projects/quadas/quadas-  
427 2/](https://www.bristol.ac.uk/population-health-sciences/projects/quadas/quadas-2/)
- 428 13. Takwoingi Y, Dendukuri N, Schiller I, Rücker G, Jones HE, Partlett C, et al. Supplementary  
429 material 1 to Chapter 10: Code for undertaking meta-analysis. 2022;83.
- 430 14. Kereszturi C. ACID-FAST BACILLI IN THE STOMACH LAVAGE AND FECES OF TUBERCULOUS  
431 CHILDREN. *JAMA*. 1933 May 13;100(19):1481.

- 432 15. Allodi A, Silorata AB, Marpillero P. 1937 Allodi et al PDF.pdf. Pubblicazione mensile dell'Ospedale  
433 Maria Vittoria di Torino. 1937 Dec;19(6):721.
- 434 16. Forbes VH GB: Hurford, JV: Smith, BJD: Springett. The Laryngeal Swab in Early and Convalescent  
435 Cases of Pulmonary Tuberculosis. *Lancet*. 1948;141-3.
- 436 17. Duggan L M: Delamater. Laryngeal vs. gastric cultures in the detection of tubercle bacilli.  
437 *Canadian Medical Association journal*. 1950;62(1):54-6.
- 438 18. Renoux A GE: Francais. [Detection of the tubercle bacillus by culture of the laryngeal swab;  
439 comparison with the results of slide examinations and culture of gastric lavage fluid]. *La Presse*  
440 *medicale*. 1950;58(22):392-3.
- 441 19. Armstrong AR. The Laryngeal Swab Specimen in the Cultural Diagnosis of Pulmonary  
442 Tuberculosis. *Canadian Medical Association Journal*. 1951;65(6):575-8.
- 443 20. Szabo I. Experiences with the Cultivation of Tubercle Bacilli in Sula's Fluid Ascitic Medium. / Nase  
444 zkusenosti s kultivaci myco tbc v tekute ascitove pude podle Suly. *Casopis Lekaru Ceskych*.  
445 1951;90(26):811-3.
- 446 21. Chaves D AD: Peizer, LR: Widelock. A Comparative Study of the Effectiveness of Laryngeal Swabs  
447 and Gastric Aspiration for the Detection of M. tuberculosis in Chest Clinic Patients. *American*  
448 *Review of Tuberculosis and Pulmonary Diseases*. 1953;67(5):598-603.
- 449 22. Frostad S. On the Reliability of the Laryngeal Swab Method and the Gastric Lavage Method for  
450 Tubercle Bacilli Demonstration. *Acta Tuberculosea Scandinavica*. 1954;29(3):214-22.
- 451 23. Campbell J AH: Kelly, JH: Banks. Laryngeal Swabs for the Detection of Tubercle Bacilli in Patients  
452 without Sputum. *Medical Journal of Australia*. 1955;2(21):852-4.
- 453 24. Lees AW, Miller TJR, Roberts GBS. BRONCHIAL LAVAGE FOR THE RECOVERY OF THE TUBERCLE  
454 BACILLUS. *The Lancet*. 1955 Oct;266(6894):800-1.
- 455 25. Lind A A: Lundin. The Laryngeal Swab Method for Detection of Tubercle Bacilli in Pulmonary  
456 Tuberculosis. A Comparison between Inoculation and Cultivation from Gastric Lavage, Sputum  
457 and Laryngeal Swab Specimens. *Acta Tuberculosea Scandinavica*. 1955;31(2):178-84.
- 458 26. Wallace AT, Ross JD, Schiller E. Laryngeal swabs for isolation of tubercle bacilli. *British Journal of*  
459 *Tuberculosis and Diseases of the Chest*. 1955 Jul;49(3):225-30.
- 460 27. Edwards JMB. The Storage of Laryngeal Swabs. *Monthly Bull Ministry of Health & Pub Health Lab*  
461 *Service (directed by Med Res Council)*. 1956;15:95-8.
- 462 28. Engbaek V HC: Holm, S: Melton. Examination for Tubercle Bacilli by the Gastric Lavage and  
463 Laryngeal Swab Methods. A Gomparritive Study. *Acta Tuberculosea Scandinavica*.  
464 1956;32(3):315-21.
- 465 29. Tonge PG JI: Hughes. A Comparative Study of Laryngeal Swabs and Gastric Lavage, in the  
466 Detection of Tubercle Bacilli. *American Review of Tuberculosis and Pulmonary Diseases*.  
467 1956;73(6):930-9.

- 468 30. Hsing YT CT: Ma. A Comparative Study of the Efficacy of the Laryngeal Swab, Bronchial Lavage,  
469 Gastric Lavage, and Direct Sputum Examination Methods in detecting Tubercle Bacilli in a Series  
470 of 1,320 Patients. *American Review of Respiratory Disease*. 1962;86(1):16–20.
- 471 31. Velu TV S: Narayana, ASL: Subbaiah. A Comparison of the Results of Bacteriological Examination  
472 of a Sputum Collection and a Pair of Laryngeal Swab Specimens in Patients receiving  
473 Chemotherapy for Pulmonary Tuberculosis. *Tubercle*. 1962;43(1):1–10.
- 474 32. Kertay N, Marton S. [Comparative bacteriological investigations of the detection of  
475 *Mycobacterium tuberculosis*, using bronchial secretions obtained with the Marton method].  
476 *Acta Tuberc Pneumol Scand*. 1962;41:161–8.
- 477 33. Hauge J HE: Schaanning. The Value of Repeated Laryngeal Swab Examinations during the Day.  
478 *Acta Tuberculosea et Pneumol Scandinavica*. 1965;46(2):141–3.
- 479 34. Lloyd AVC. Bacteriological diagnosis of tuberculosis in children. A comparative study of gastric  
480 lavage and laryngeal swab methods. *East African Medical Journal*. 1968;45(3):140–3.
- 481 35. Mankiewi.E I : Shimro. LARYNGEAL SWAB METHOD FOR DETECTION OF TUBERCLE BACILLI IN  
482 PULMONARY TUBERCULOSIS. *European Journal of Clinical and Biological Research*.  
483 1970;15(3):328-.
- 484 36. Thakur CA A: Coulter, JB: Zutshi, K: Pande, HK: Sharma, M: Banerjee, A: Richardson, K: Hart.  
485 Laryngeal swabs for diagnosing tuberculosis. *Annals of tropical paediatrics*. 1999;19(4):333–6.
- 486 37. Gilje A. Cultural Demonstration of Tubercle Bacilli by Laryngeal Swabbing. / Dyrking av  
487 larynxavstryk for påvising av tuberkelbasiller. *Nordisk Medicin*. 1948;40(44):1995–6.
- 488 38. Lundar J. [A comparison of laryngeal swabbing and gastric lavage as methods of demonstrating  
489 the tubercle bacillus]. *Nordisk medicin*. 1950;44(33):1306–7.
- 490 39. Gilje A. Demonstration of Tubercle Bacilli in Cultures: Comparison between Laryngeal Swabbing  
491 and Gastric Lavage. *Nordisk Medecin*. 1951;45(4):129–30.
- 492 40. Roald OK S: Thomassen. Reliability of the Laryngeal Swab Method for Tubercle Bacilli Cultures. /  
493 Larynxkulturers pålitelighet for påvising av tuberkelbasiller. *Nordisk Medicin*. 1952;48(47):1619–  
494 20.
- 495 41. Smedsrud K. Cultures from Laryngeal Swabs as a Method of assessing the Quantity of Bacilli in  
496 Pulmonary Tuberculosis. / Larynxkultur til kvantitativ vurdering av basillutskillelsen ved  
497 tuberkulose. Deres betydning i det praktiske tuberkulosear-beid. *Nordisk Medicin*.  
498 1952;47(19):623–6.
- 499 42. Laes T. Comparison of Tubercle Bacilli Cultivation from Throat Swabs and from Gastric Washings.  
500 *Nordisk Medecin*. 1953;49(8):289–90.
- 501 43. Franchi P LM: Cama, RI: Gilman, RH: Montenegro James, S: Sheen. Detection of *Myobacterium*  
502 *tuberculosis* in nasopharyngeal aspirate samples in children. *Lancet (British edition)*.  
503 1998;352(9141):1681–2.
- 504 44. Owens S, Abdel-Rahman IE, Balyejusa S, Musoke P, Cooke RPD, Parry CM, et al. Nasopharyngeal  
505 aspiration for diagnosis of pulmonary tuberculosis. *Archives of Disease in Childhood*. 2007 Apr  
506 11;92(8):693–6.

- 507 45. Cakr M E: Özdemir, A: Daskaya, H: Umutoglu, T: Yüksel. The value of nasopharyngeal aspirate,  
508 gastric aspirate and bronchoalveolar lavage fluid in the diagnosis of childhood tuberculosis.  
509 Turkish Journal of Pediatrics. 2018;60(1):10–3.
- 510 46. Zar MP Heather J: Workman, Lesley: Isaacs, Washiefa: Munro, Jacinta: Black, Faye: Eley, Brian:  
511 Allen, Veronica: Boehme, Catharina C: Zemanay, Widaad: Nicol. Rapid molecular diagnosis of  
512 pulmonary tuberculosis in children using nasopharyngeal specimens. Clinical infectious  
513 diseases: an official publication of the Infectious Diseases Society of America. 2012;55(8):1088–  
514 95.
- 515 47. Zar MP Heather J: Workman, Lesley: Isaacs, Washiefa: Dheda, Keertan: Zemanay, Widaad: Nicol.  
516 Rapid diagnosis of pulmonary tuberculosis in African children in a primary care setting by use of  
517 Xpert MTB/RIF on respiratory specimens: a prospective study. The Lancet Global health.  
518 2013;1(2):e97–104.
- 519 48. Hanrahan CF, Dansey H, Mutunga L, France H, Omar SV, Ismail N, et al. Diagnostic strategies for  
520 childhood tuberculosis in the context of primary care in a high burden setting: the value of  
521 alternative sampling methods. Paediatrics and International Child Health. 2019 Apr 3;39(2):88–  
522 94.
- 523 49. Zar MP HJ: Workman, LJ: Prins, M: Bateman, LJ: Mbhele, SP: Whitman, CB: Denkinge, CM: Nicol.  
524 Tuberculosis diagnosis in children using Xpert ultra on different respiratory specimens. American  
525 Journal of Respiratory and Critical Care Medicine. 2019;200(12):1531–8.
- 526 50. Song R, Click ES, McCarthy KD, Heilig CM, Mchembere W, Smith JP, et al. Sensitive and Feasible  
527 Specimen Collection and Testing Strategies for Diagnosing Tuberculosis in Young Children. JAMA  
528 Pediatr. 2021 May 3;175(5):e206069.
- 529 51. Osório DV, Munyangaju I, Muhiwa A, Nacarapa E, Nhangave AV, Ramos JM. Lipoarabinomannan  
530 Antigen Assay (TB-LAM) for Diagnosing Pulmonary Tuberculosis in Children with Severe Acute  
531 Malnutrition in Mozambique. Journal of Tropical Pediatrics. 2021 Jul 2;67(3):fmaa072.
- 532 52. Al-Aghbari N, Al-Sonboli N, Yassin MA, Coulter JBS, Atef Z, Al-Eryani A, et al. Multiple Sampling in  
533 One Day to Optimize Smear Microscopy in Children with Tuberculosis in Yemen. Pai M, editor.  
534 PLoS ONE. 2009 Apr 9;4(4):e5140.
- 535 53. Wood G R: Luabeya, A: Wilbur, A: Jones Engel, L: Filander, E: Hatherill, M: Cangelosi. Analysis of  
536 prevalent tuberculosis by using oral swab PCR. International Journal of Infectious Diseases.  
537 2014;21:263–263.
- 538 54. Wood RC, Luabeya AK, Weigel KM, Wilbur AK, Jones-Engel L, Hatherill M, et al. Detection of  
539 Mycobacterium tuberculosis DNA on the oral mucosa of tuberculosis patients. Sci Rep. 2015  
540 Aug;5(1):8668.
- 541 55. Mesman AW, Calderon R, Soto M, Coit J, Aliaga J, Mendoza M, et al. Mycobacterium  
542 tuberculosis detection from oral swabs with Xpert MTB/RIF ULTRA: a pilot study. BMC Res  
543 Notes. 2019 Dec;12(1):349.
- 544 56. Nicol MP, Wood RC, Workman L, Prins M, Whitman C, Ghebrekristos Y, et al. Microbiological  
545 diagnosis of pulmonary tuberculosis in children by oral swab polymerase chain reaction.  
546 Scientific Reports. 2019;9(1):1–5.

- 547 57. Flores JA, Calderón R, Mesman AW, Soto M, Coit J, Aliaga J, et al. Detection of Mycobacterium  
548 Tuberculosis DNA in Buccal Swab Samples from Children in Lima, Peru. *Pediatric Infectious*  
549 *Disease Journal*. 2020 Nov;39(11):e376–80.
- 550 58. Mesman MF AW: Calderon, RI: Pollock, NR: Soto, M: Mendoza, M: Coit, J: Zhang, ZB: Aliaga, J:  
551 Lecca, L: Holmberg, RC: Franke. Molecular detection of Mycobacterium tuberculosis from buccal  
552 swabs among adult in Peru. *Scientific Reports [Internet]*. 2020;10(1). Available from: <Go to  
553 ISI>://WOS:000603258300040
- 554 59. Molina-Moya B, Ciobanu N, Hernandez M, Prat-Aymerich C, Crudu V, Adams ER, et al. Molecular  
555 Detection of Mycobacterium tuberculosis in Oral Mucosa from Patients with Presumptive  
556 Tuberculosis. *JCM*. 2020 Dec 21;9(12):4124.
- 557 60. Lima F, Santos AS, Oliveira RD, Silva CCR, Gonçalves CCM, Andrews JR, et al. Oral swab testing by  
558 Xpert® MTB/RIF Ultra for mass tuberculosis screening in prisons. *Journal of Clinical Tuberculosis*  
559 *and Other Mycobacterial Diseases*. 2020 May;19:100148.
- 560 61. Ealand C, Peters J, Jacobs O, Sewcharran A, Ghoor A, Golub J, et al. Detection of Mycobacterium  
561 tuberculosis Complex Bacilli and Nucleic Acids From Tongue Swabs in Young, Hospitalized  
562 Children. *Front Cell Infect Microbiol*. 2021 Jun 14;11:696379.
- 563 62. Song Y, Ma Y, Liu R, Shang Y, Ma L, Huo F, et al. Diagnostic Yield of Oral Swab Testing by TB-  
564 LAMP for Diagnosis of Pulmonary Tuberculosis. *IDR*. 2021 Jan;Volume 14:89–95.
- 565 63. Wood RC, Andama A, Hermansky G, Burkot S, Asege L, Job M, et al. Characterization of oral  
566 swab samples for diagnosis of pulmonary tuberculosis. *PLoS ONE*. 2021;16(5 May 2021):1–13.
- 567 64. Andama A, Whitman GR, Crowder R, Reza TF, Jaganath D, Mulondo J, et al. Accuracy of Tongue  
568 Swab Testing Using Xpert MTB-RIF Ultra for Tuberculosis Diagnosis. *Journal of clinical*  
569 *microbiology*. 2022 Jul 20;60(7):e0042122.
- 570 65. Chang A, Mzava O, Djomnang LAK, Lenz JS, Burnham P, Kaplinsky P, et al. Metagenomic DNA  
571 sequencing to quantify Mycobacterium tuberculosis DNA and diagnose tuberculosis. *Scientific*  
572 *reports*. 2022 Oct 10;12(1):16972.
- 573 66. Kang YA, Koo B, Kim OH, Park JH, Kim HC, Lee HJ, et al. Gene-Based Diagnosis of Tuberculosis  
574 from Oral Swabs with a New Generation Pathogen Enrichment Technique. Singh A, editor.  
575 *Microbiol Spectr*. 2022 Jun 29;10(3):e00207-22.
- 576 67. Shapiro AE, Olson AM, Kidoguchi L, Niu X, Ngcobo Z, Magcaba ZP, et al. Complementary  
577 Nonsputum Diagnostic Testing for Tuberculosis in People with HIV Using Oral Swab PCR and  
578 Urine Lipoarabinomannan Detection. Turenne CY, editor. *J Clin Microbiol*. 2022 Aug  
579 17;60(8):e00431-22.
- 580 68. Cox H, Workman L, Bateman L, Franckling-Smith Z, Prins M, Luiz J, et al. Oral Swab Specimens  
581 Tested With Xpert MTB/RIF Ultra Assay for Diagnosis of Pulmonary Tuberculosis in Children: A  
582 Diagnostic Accuracy Study. *Clinical Infectious Diseases*. 2022 Dec 19;75(12):2145–52.
- 583 69. ROGERS DE, COOKE GM, MEYERS CE. The detection of tubercle bacilli in mouth wash specimens  
584 by the use of membrane filter cultures. *American review of tuberculosis*. 1955;71(3, Part 1):371–  
585 81.

- 586 70. Evans D, Goyal M, Taylor IK, Shaw RJ. Identification of *M. tuberculosis* ribosomal RNA in  
587 mouthwash samples from patients with tuberculosis. *Respiratory Medicine*. 1994  
588 Oct;88(9):687–91.
- 589 71. Davis JL, Huang L, Kovacs JA, Masur H, Murray P, Havlir DV, et al. Polymerase Chain Reaction of  
590 *secA1* on Sputum or Oral Wash Samples for the Diagnosis of Pulmonary Tuberculosis. *CLIN*  
591 *INFECT DIS*. 2009 Mar 15;48(6):725–32.
- 592 72. Warndoff D, Glynn J, Fine P, Jamil S, de Wit M, Munthali M, et al. Polymerase chain reaction of  
593 nasal swabs from Tuberculosis patients and their contacts. *International Journal of Leprosy*.  
594 1996;64(4):404–8.
- 595 73. Shenai S, Amisano D, Ronacher K, Kriel M, Banada PP, Song T, et al. Exploring Alternative  
596 Biomaterials for Diagnosis of Pulmonary Tuberculosis in HIV-Negative Patients by Use of the  
597 GeneXpert MTB/RIF Assay. *J Clin Microbiol*. 2013 Dec;51(12):4161–6.
- 598 74. González Mediero P G: Vázquez Gallardo, R: Pérez Del Molino, ML: Diz Dios. Evaluation of two  
599 commercial nucleic acid amplification kits for detecting *Mycobacterium tuberculosis* in saliva  
600 samples. *Oral diseases*. 2015;21(4):451–5.
- 601 75. Byanyima P, Kaswabuli S, Musisi E, Nabakiibi C, Zawedde J, Sanyu I, et al. Feasibility and  
602 Sensitivity of Saliva GeneXpert MTB/RIF Ultra for Tuberculosis Diagnosis in Adults in Uganda.  
603 *Microbiology spectrum*. 2022 Oct 26;10(5):e0086022.
- 604 76. Hansen J, Kolbe K, König IR, Scherließ R, Hellfritzsch M, Malm S, et al. Lipobiotin-capture  
605 magnetic bead assay for isolation, enrichment and detection of *Mycobacterium tuberculosis*  
606 from saliva. *PloS one*. 2022 Jul 15;17(7):e0265554.
- 607 77. Eguchi J, Ishihara K, Watanabe A, Fukumoto Y, Okuda K. PCR method is essential for detecting  
608 *Mycobacterium tuberculosis* in oral cavity samples. *Oral Microbiology and Immunology*.  
609 2003;18(3):156–9.
- 610 78. Palakuru SK, Lakshman VK, Bhat KG. Microbiological analysis of oral samples for detection of  
611 *Mycobacterium tuberculosis* by nested polymerase chain reaction in tuberculosis patients with  
612 periodontitis. *Dental Research Journal*. 2012;9(6):6.
- 613 79. Balcells ME, Huilcaman M, Pena C, Castillo C, Carvajal C, Scioscia N, et al. *M. tuberculosis* DNA  
614 detection in nasopharyngeal mucosa can precede tuberculosis development in contacts.  
615 *International Journal of Tuberculosis and Lung Disease*. 2016;20(6):848–52.
- 616 80. Bulterys MA, Wagner B, Redard-Jacot M, Suresh A, Pollock NR, Moreau E, et al. Point-Of-Care  
617 Urine LAM Tests for Tuberculosis Diagnosis: A Status Update. *JCM*. 2019 Dec 31;9(1):111.
- 618 81. Murray JF. A Century of Tuberculosis. *Am J Respir Crit Care Med*. 2004 Jun 1;169(11):1181–6.
- 619 82. Glaziou P, Floyd K, Raviglione M. Trends in tuberculosis in the UK. *Thorax*. 2018 Aug;73(8):702–  
620 3.
- 621 83. Zar HJ, Hanslo D, Apolles P, Swingler G, Hussey G. Induced sputum versus gastric lavage for  
622 microbiological confirmation of pulmonary tuberculosis in infants and young children: a  
623 prospective study. *The Lancet*. 2005 Jan;365(9454):130–4.

624

- 625 List of tables
- 626 Table 1: Study details included studies.
- 627 List of figures
- 628 Figure 1: PRISMA 2020 Flow diagram
- 629 Figure 2: Sensitivity and specificity of laryngeal sampling for active pulmonary tuberculosis,  
630 with random effects meta-analysis
- 631 Figure 3: Sensitivity and specificity of nasopharyngeal aspirate for active pulmonary  
632 tuberculosis, with random effects meta-analysis
- 633 Figure 4: Sensitivity and specificity of nasopharyngeal aspirate for active pulmonary  
634 tuberculosis when clinical diagnosis used as a reference standard, with random effects meta-  
635 analysis
- 636 Figure 5: Sensitivity and specificity of oral swab for active pulmonary tuberculosis, with  
637 random effects meta-analysis
- 638 Figure 6: A bar chart to show the percentage of studies with High, Low or unclear bias for  
639 each domain.
- 640 Supplementary Table
- 641 S1: Search strategy
- 642 S2: Excluded studies
- 643 S3: Full study information
- 644 S4: Table of data from laryngeal swab reports used in meta-analysis.
- 645 S5: Table of data from naso-pharyngeal aspirate reports used in meta-analysis.
- 646 S6: Table to show definition of confirmed, probable or not PTB by study.
- 647 S7: Table of data from naso-pharyngeal aspirate reports and clinical diagnosis as a reference  
648 standard used in the meta-analysis.
- 649 S8: Data table to show analysis of reports of oral swabs as sample type.



650 S9: Data table to show analysis of reports of other sample type data.

651 Supplementary Figures:

652 SF1: Sensitivity and specificity of laryngeal sampling for active pulmonary tuberculosis, with

653 random effects meta-analysis

654 SF2: Sensitivity and specificity of nasopharyngeal aspirate for active pulmonary tuberculosis,

655 with random effects meta-analysis

656 SF3: Sensitivity and specificity of nasopharyngeal aspirate for active pulmonary tuberculosis

657 when clinical diagnosis used as a reference standard, with random effects meta-analysis

658 SF4: Sensitivity and specificity of oral swab for active pulmonary tuberculosis, with random

659 effects meta-analysis

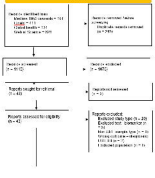
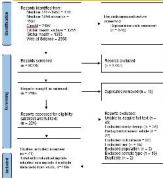
660 SF5: Bias of individual studies presented via each domain question and overall rating.

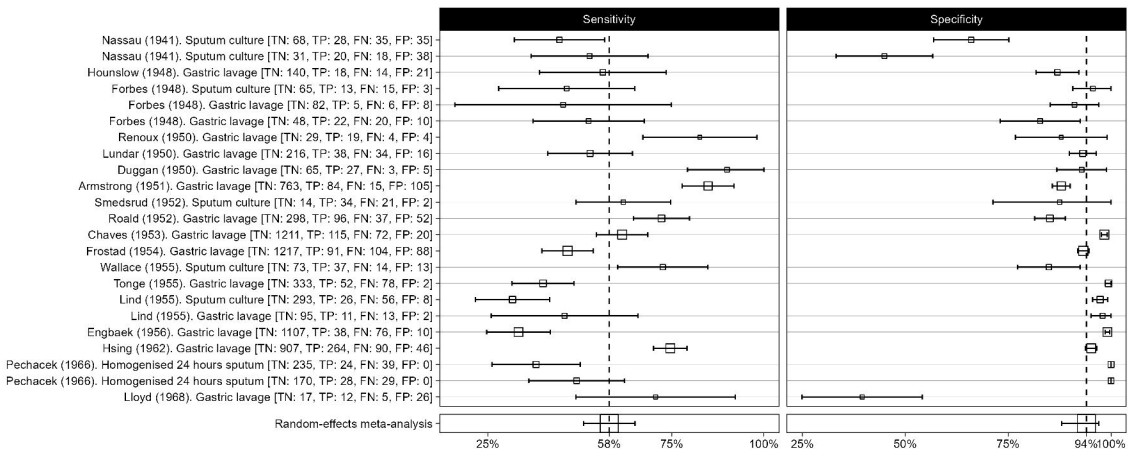
661 SF6: Bias of individual studies presented by domain.

662

**Search 1: Identification of studies search date 21/04/2024**

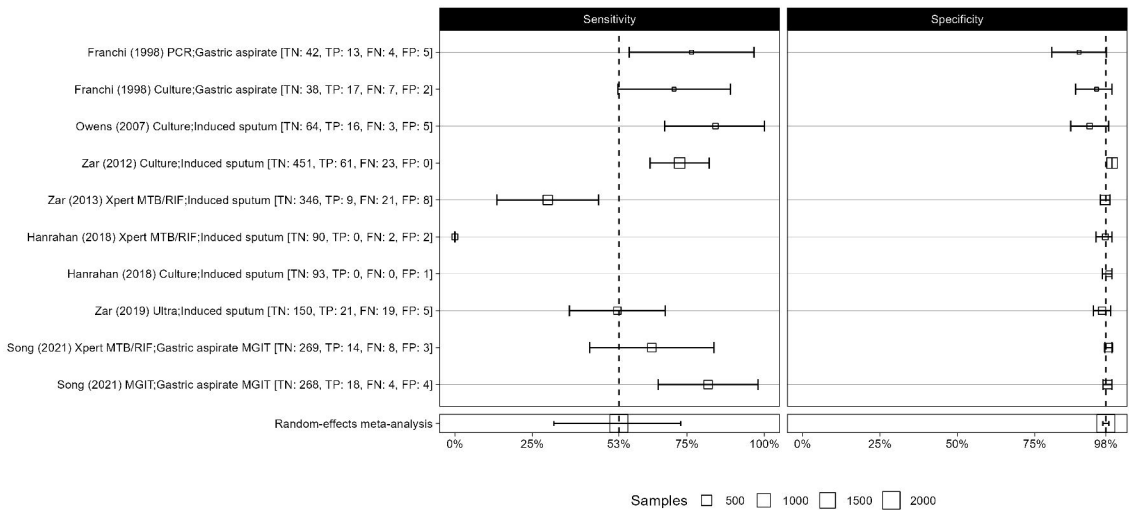
**Search 2: Identification of studies 25/12/2024 21/02/2024 extended to 2024/2025**

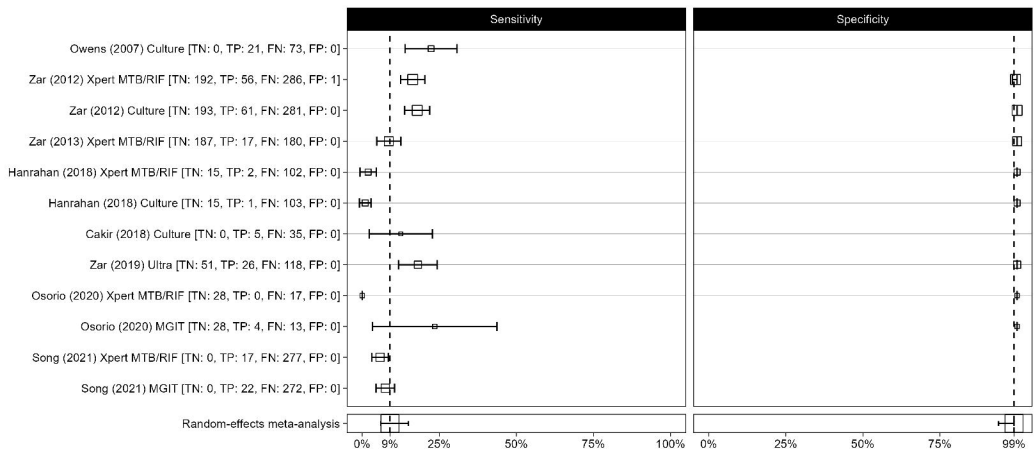


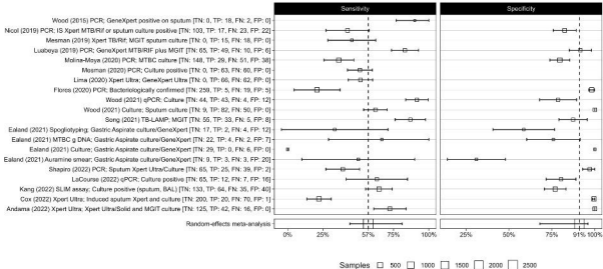


Samples □ 2500 □ 5000 □ 7500

For each study: (Year). Reference test







For each study: (Year), Index testing method; Reference test

