

It is made available under a [CC-BY-NC-ND 4.0 International license](#).

Women's mortality following pregnancy affected by vaginal bleeding due to threatened miscarriage: a Danish cohort study

Title: Women's mortality following pregnancy affected by vaginal bleeding due to threatened miscarriage: a Danish cohort study

Authors: Elena Dudukina,¹ Erzsébet Horváth-Puhó,¹ Henrik Toft Sørensen,¹ Vera Ehrenstein¹

Author Affiliations:

¹Department of Clinical Epidemiology, Aarhus University and Aarhus University Hospital,
Aarhus, Denmark

Corresponding author:

Elena Dudukina

Olof Palmes Alle 43-45

8200

Aarhus N

Email: e.dudukina@clin.au.dk

Phone: +45 87 16 72 12

Word count: 3366

Abstract word count: 250

Abstract (240 of max 250)

Background: Women with only pregnancy terminations or only miscarriages have an increased mortality risk. We investigated the association between vaginal bleeding (VB) in pregnancy ending in childbirth and women's mortality.

Methods: We conducted a cohort study in Denmark, which included 1,354,181 women and their 3,162,317 pregnancies (1979-2017) followed through 2018. We ascertained 70,835 VB-affected pregnancies and comparators: 2,236,359 VB-unaffected pregnancies ending in childbirth; 589,697 terminations; and 265,940 miscarriages. We computed all-cause and cause-specific mortality rates per 10,000 person-years (PY) and hazard ratios (HRs) with 95% confidence intervals (CIs) using Cox proportional hazards regression adjusted for age, calendar year, preexisting conditions, and socioeconomic factors.

Results: There were 2,320 deaths from any cause among women following VB-affected pregnancy (mortality rate: 15.2, 95% CI: 14.6-15.9 per 10,000 PY); 55,030 deaths following VB-unaffected pregnancy (12.7, 12.6-12.8); 27,500 deaths following a termination (21.9, 21.6-22.1), and 10,865 deaths following a miscarriage (19.2, 18.8-19.6).

For comparison of VB-affected vs VB-unaffected pregnancies, associations with all-cause (HR: 1.14, 95% CI: 1.09-1.19), natural-causes (HR: 1.15, 95% CI: 1.09-1.22) and non-natural causes (HR: 1.27, 95% CI: 1.08-1.48) mortality attenuated in a sensitivity analysis of pregnancies recorded in 1994-2017 (HR: 1.00, 95% CI: 0.90-1.12, HR: 0.98, 95% CI: 0.85-1.14, and HR: 1.04, 95% CI: 0.71-1.51, respectively). Contrasts with remaining comparators did not suggest increased risks of all-cause, natural, or non-natural mortality causes.

Conclusions: We found no evidence of an increased risk of mortality in women following VB-affected vs VB-unaffected pregnancy, termination, or miscarriage.

Keywords: cohort study, pregnancy, vaginal bleeding, termination, miscarriage, mortality

Key Messages

- Previous studies mostly focused on short-term outcomes of the newborns and mothers following the vaginal bleeding-affected pregnancy. This study investigated the association between vaginal bleeding in pregnancy ending in childbirth and women's mortality.
- This registry-based cohort study found no evidence of an increased risk of all-cause or cause-specific mortality from natural or non-natural causes in women following vaginal bleeding-affected pregnancy compared with vaginal bleeding-unaffected pregnancy, termination, or miscarriage

Introduction

Previous studies showed an association between women's reproductive health and mortality risk. A Danish study in 1973-2004 reported that a miscarriage or a pregnancy termination was associated with 3-4-fold greater mortality odds compared with a childbirth.¹ In the same study, women with a history of discordant pregnancy outcomes (childbirths, terminations, and miscarriages) had 1.6-fold greater mortality than women with childbirth only; however, this study did not use time-to-event analysis.¹ Another Danish study, in 1980-2004, showed that miscarriage of the first pregnancy compared with a childbirth of the first pregnancy was associated with 1.3 and 18.4 additional deaths per 10,000 women at 1 and 10 years of follow-up, respectively.² Recurrent miscarriages are associated with both all-cause and cause-specific mortality in women³ possibly via the development of post-traumatic stress disorder, depression, and anxiety.⁴

Threatened miscarriage is a common pregnancy complication⁵ affecting up to 20-30% of clinically recognized pregnancies. Clinically threatened miscarriage manifests as a vaginal bleeding (VB) before 20 gestational weeks in a presence of a viable intrauterine pregnancy.⁶ Potential shared biologic pathways of threatened miscarriage and completed spontaneous miscarriage include low progesterone levels^{4,7-13} and elevated levels of pro-inflammatory cytokines.¹⁴⁻¹⁸ Although an association between VB and cardiovascular diseases was previously reported,¹⁹ little is known regarding the association between having a VB-affected pregnancy and women's mortality.

In this registry-based cohort study, we investigated whether a VB-affected pregnancy ending in childbirth was associated with the woman's all-cause and cause-specific mortality using three comparators: 1) VB-unaffected pregnancies ending in childbirth, 2) pregnancies ending in a termination, or 3) pregnancies ending in a miscarriage.

Methods

Setting, data sources and data linkage

We conducted this study using data linked from health and administrative registries of Denmark, a country with a 2.9 million population of women and universal healthcare access to all its residents. Danish registries collect data prospectively and at an individual level.²⁰ The Danish Civil Registration System (CRS) contains the date of birth; vital, civil, and migration

status; and a civil registration number, which serves as a unique personal identifier for data linkage and is updated daily.²¹ The data for research are anonymised and stored on the servers of Statistics Denmark.²²

Information on maternal (age, parity) and pregnancy characteristics (delivery date, gestational age, singleton vs multifetal pregnancy, still- vs live birth) for all deliveries are available in the Danish Medical Birth Registry (MBR) starting from 1973.²³ Maternal smoking recorded at a first prenatal visit and the body-mass index (BMI) became available in the MBR from 1991 and 2004, respectively.²³ Data on hospital encounters are available in the Danish National Patient Registry (DNPR), which tracks admission and discharge diagnoses according to the International Classification of Diseases, 10th Revision (ICD-10) starting in 1994 and ICD-8 earlier (1977-1993), procedures, data on outpatient specialist clinics and emergency room visits (from 1995 onwards).²⁴ In the DNPR, primary discharge diagnoses reflect the main reason for the visit, while secondary discharge diagnoses give information on other conditions related to the patient visit. The Psychiatric Central Research Register encompasses psychiatric hospital encounters since 1969 and outpatient specialist clinic encounters since 1995 (the latter was available in this study).²⁵ The information on medication use including the date of prescription redemption and Anatomical Therapeutic Classification (ATC) code of the prescribed drug is available since 1995 in the Danish National Prescription Registry.^{26,27} Data on the highest completed level of education are captured by the Danish education registers from 1981.²⁸ Year-specific personal income at an individual level is available starting in 1980 from the Danish Income Registries.²⁹ Danish registers on personal labour market affiliation contain data on employment status from 1980.³⁰

Study population

The study population consisted of pregnancies ending in a delivery, termination, or miscarriage. We ascertained all stillbirths and live births recorded in the MBR between 1979 and 2017. Pregnancies ending in the birth of twins or triplets were analysed as one observation. The exposure to VB due to threatened miscarriage within 20 weeks of gestation ending in delivery was identified using primary and secondary diagnoses recorded in the DNPR³¹ at any hospital encounter (Table 1, available as Supplementary data). When several vaginal bleeding episodes were recorded during the first 20 gestational weeks of the same pregnancy, we included the earliest. Pregnancies ending in a childbirth without a record of VB during 20 gestational weeks in the DNPR formed the comparison cohort of VB- unaffected pregnancies. We followed cohorts of VB-affected and VB-unaffected pregnancies from the date of delivery.

We identified primary and secondary diagnoses as well as procedure codes for pregnancy termination and miscarriage between 1979 and 2017 at all hospital encounters from the DNPR. Women with multiple records of identical diagnostic or procedure codes for pregnancy termination or miscarriage on different dates could re-enter the respective population of terminated or miscarried pregnancies 180 days after the previous episode, whereby it was considered to represent a different pregnancy. When multiple dates characterised a hospital-based encounter for pregnancy termination or miscarriage, the earliest of them was the index date. This algorithm was introduced to avoid including hospital visits possibly related to a previous termination or miscarriage complications. We initiated the follow-up from the date of the woman's hospital encounter (Table 1, available as Supplementary data) for termination or miscarriage. The observations with missing age or

age <12 years, unknown gestational age for pregnancies ending in childbirth, two or more reproductive events (delivery, miscarriage, termination) recorded on the same date, or personal identifiers not found in the CRS were excluded from the final study population (<2% of all eligible observations; Figure 1). We also ascertained a population of women at the end of the first identifiable pregnancy for a separate set of analyses. In this data subset, each pregnancy observation corresponded to one unique woman whose index date was the end of her first pregnancy.

Outcomes

We ascertained deaths from any cause using the vital status stored in the CRS.²¹ Specific causes of death were identified from the Danish Register of Causes of Death (DRCD),³² which records underlying, immediate, and several contributory causes of death along with the manner of death such as the death of natural causes, accident, suicide, or an act of violence. We used the underlying causes of death from the DRCD and classified them as natural causes when death was related to an underlying medical condition and as non-natural causes when the death occurred due to an accident, suicide, or violence. We further examined mortality due to several specific natural (cardiovascular disease, including stroke and myocardial infarction; any cancer; respiratory disease; endocrine, nutritional, and metabolic conditions, and nervous system disorders), non-natural (motor; non-motor vehicle accidents and violence; suicides), and all other causes (Table 1, available in the Supplementary data).

Covariables

We used a directed acyclic graph to depict the relations between the variables in this study, both measured and unmeasured (Figure 1, available in the Supplementary data). We ascertained the following potential confounding factors and mortality risk factors before the index date: reproductive history (parity, number of previous pregnancies, history of at least one pregnancy termination or miscarriage, hypertensive disorders of pregnancy, placenta praevia, abruptio placentae), a woman's age, calendar year at pregnancy end, socioeconomic factors (civil status, highest completed education level, employment status, and personal year-specific income in quartiles), history of chronic conditions (obesity, polycystic ovary syndrome, thyroid disorders, rheumatic disorders with heart involvement, chronic obstructive pulmonary disease, chronic liver and kidney diseases, hyperlipidemia, any cardiovascular or metabolic conditions [diabetes mellitus type 1 and 2, hypertension, deep vein thrombosis, pulmonary embolism, stroke, ischaemic heart disease, atrial fibrillation or flutter, heart failure], any cancer), and history of psychiatric conditions.

We ascertained women's smoking status and BMI as potential confounders; these were only available for the subset of pregnancies ending in childbirth. For pregnancies with an index date after 1995, we ascertained the medication use history before the index date (non-steroid anti-inflammatory drugs including aspirin, steroids for systemic use, anti-infectives, antipsychotics, antidepressants, antiepileptics, and attention-deficit/hyperactivity disorder medication) as a proxy of healthcare-seeking behaviour and overall health beyond chronic conditions identified via hospital-based encounters (Table 1, available in the Supplementary data).

Statistical analyses

We followed the pregnancies until the earliest of death, emigration, or study end, on 31 December 2018 for all-cause mortality and 31 December 2017 for cause-specific mortality according to the last available data source update. We computed mortality rates per 10,000 person-years (PY) and cumulative mortality at 10, 20, 30, and 40 years of follow-up treating death from other causes and emigration as competing events (Table 2, available in the Supplementary data). We used the Kaplan-Meier estimator to construct cumulative incidence curves for all-cause mortality.^{33,34} We computed adjusted hazard ratios (HRs) with 95% confidence intervals (CIs) for all-cause and cause-specific mortality using cause-specific Cox proportional hazards regression with stabilized inverse probability of treatment weights (IPTWs).^{35–37} The weights were truncated at the 99th percentile.^{38,39} The covariables included in the propensity score models were age at the pregnancy end, the calendar year of pregnancy end, reproductive history, socioeconomic factors, and pre-existing somatic and psychiatric conditions as described earlier. Analyses of pregnancies ending in childbirth were additionally adjusted for placenta-related conditions (hypertensive disorders of pregnancy including preeclampsia-eclampsia, placenta praevia, and abruptio placentae) in the current pregnancy. To allow comparability with earlier literature, we computed HRs adjusted for the same set of covariables as IPTW-adjusted models using multivariable Cox proportional hazards regression. Evaluation of log-minus-log plots showed no violations of hazards proportionality assumption for conducted analyses.

We conducted analyses of all identifiable pregnancies of a woman. In these analyses, we estimated robust standard errors to account for repeated observations of the same woman.^{34,40} We did not stop the follow-up of the observations at the subsequent pregnancy occurrence to avoid informative censoring. We accounted to the reproductive history and history of previous exposure at each subsequent pregnancy of a woman. In a separate set of analyses, we used only the first identifiable pregnancy of a woman.

We conducted several sensitivity analyses. First, we used a data subset of all pregnancies with the index date in 1994–2017 and the most complete health data while additionally controlling for the history of medication use before the index date as a proxy of overall women's health. In the analyses of pregnancies ending in a childbirth, we additionally adjusted for smoking status. Second, we investigated all-cause, natural and non-natural causes of mortality among women whose last identifiable pregnancy was recorded at the age of 35 years or later.

We used RStudio⁴¹ and R⁴² 3.6.0–4.1.0 with the following packages: tidyverse,⁴³ survival,³⁴ cmprsk,⁴⁴ epiR⁴⁵, and WeightIt³⁹ for statistical analyses. Data were accessed, managed, and analysed on Statistics Denmark servers.²² To prevent the identification of individuals, counts were masked to comply with Statistics Denmark data security rules.

This study was conducted according to Danish legislation, which does not require individuals' consent or ethical approval for registry-based research. This study was reported to the Danish Data Protection Agency⁴⁶ and registered at Aarhus University with project nr. 2016-051-000001, sequential number 605.

Results

Descriptive characteristics

Among 1,354,181 women, we identified 3,162,317 eligible pregnancies between 1979 and 2017. Of these, 2.2% (N=70,835) were pregnancies VB-affected within 20 gestational weeks and ending in childbirth, 70.7% (N=2,236,359) were pregnancies VB-unaffected within 20 gestational weeks and ending in childbirth, 18.7% (N=589,969) were pregnancies ending in a termination, and 8.4% (N=265,940) pregnancies ending in a miscarriage. Age distribution was similar for women with VB-affected and VB-unaffected pregnancies and pregnancies ending in a miscarriage, while pregnancies ending in a termination were more prevalent in younger women. Women with pregnancies ending in a termination were less likely to be married or employed, to have completed higher education, or to belong to the highest year-specific income quartile than women with pregnancies ending in a childbirth or a miscarriage (Table 1). Women with a VB-affected pregnancy were as likely as women with a miscarriage to have a history of VB (11.0%). Compared with VB-unaffected pregnancies (6.8%), VB-affected pregnancies (8.5%) and pregnancies ending in a termination (11.0%) were more likely to be of a woman with a history of any psychiatric condition. In analyses of all identifiable pregnancies, the history of at least one miscarriage was most prevalent among VB-affected pregnancies (26.0%) and in pregnancies ending in a miscarriage (16.0%). Chronic comorbidities were rare and similarly distributed across the cohorts (Table 1).

All-cause and cause-specific mortality

The median follow-up for all pregnancies was 20 years (25th-75th percentile, 10.8-28.9 years). At the end of follow-up, there were 2,320 deaths from any cause following VB-affected pregnancy (mortality rate: 15.2, 95% CI: 14.6-15.9 per 10,000 PY), 55,030 deaths following VB-unaffected pregnancy (mortality rate: 12.7, 95% CI: 12.6-12.8), 27,500 deaths following a termination (mortality rate: 21.9, 95% CI: 21.6-22.1) and 10,865 deaths following a miscarriage (mortality rate: 19.2, 95% CI: 18.8-19.6). Mortality rates per 10,000 PY for death from natural causes were 10.6 (95% CI: 10.1-11.1) following VB-affected pregnancy and 9.0, 95% CI: 8.9-9.1 following VB-unaffected pregnancy. Mortality rate from natural causes was 14.8 (95% CI: 14.6-15.0) per 10,000 PY following a termination and 13.2 (95% CI: 12.9-13.5) per 10,000 PY following a miscarriage (Table 2). Results were similar in a subset restricted to women with the last identifiable delivery at the age of 35 years or later (Table 3, available in the Supplementary data). Irrespective of the type of pregnancy end, mortality from any cancer was the leading natural cause of death, followed by cardiovascular mortality and mortality due to respiratory conditions (Table 2). These patterns were consistent when we used a subset of the first identifiable pregnancy of a woman.

All-cause mortality risks were similar for women with VB-affected and VB-unaffected pregnancy throughout the follow-up of up to 40 years and were marginally increased for the VB-affected cohort at the end of follow-up (11.9% vs 10.3%, respectively). Following a pregnancy ending in a termination or miscarriage, women's all-cause mortality risk at the end of follow-up was 15.2% and 14.3%, respectively. At the end of follow-up, the cumulative mortality of natural causes was 8.2% for women with VB-affected pregnancy and 7.2% for women with VB-unaffected pregnancy; the cumulative mortality of non-natural causes was

0.5% following VB-affected and 0.3% following VB-unaffected pregnancy (Table 2, available in the Supplementary data).

Hazard ratios for the associations between vaginal bleeding in pregnancy and women's all-cause and cause-specific mortality

In the main IPTW-adjusted analyses, contrasts of VB-affected vs VB-unaffected pregnancies resulted in a HR (95% CI) for all-cause mortality of 1.14 (1.09-1.19). However, in the sensitivity analysis using the data subset with more data on potential confounders starting from 1994 onwards, the HR for all-cause mortality following VB-affected vs VB-unaffected pregnancy was 1.00, 95% CI: 0.90-1.12. Similarly, associations with mortality from natural causes (1.15, 95% CI: 1.09-1.22), including cardiovascular diseases overall (1.15, 95% CI: 0.99-1.34), stroke (1.29, 95% CI: 0.93-1.80), myocardial infarction (1.15, 95% CI: 0.80-1.65), and nervous system conditions (1.19, 95% CI: 0.89-1.61) attenuated in the sensitivity analyses (Table 4). Associations with mortality from respiratory disease and endocrine, nutritional, and metabolic conditions were not attenuated in the sensitivity analyses, but the estimates were imprecise. There was no evidence for an association of VB-affected pregnancy with mortality from cancer in either main (HR: 1.07, 95% CI: 1.00-1.15) or sensitivity analyses. An association between VB-affected pregnancy and mortality from non-natural causes (1.27, 95% CI: 1.08-1.48) also attenuated in the sensitivity analysis (1.04, 95% CI: 0.72-1.51). There was no association with death in motor vehicle accidents (1.00, 95% CI: 0.71-1.41), while associations with mortality from non-motor vehicle accidents or violence and with suicide meaningfully reduced in magnitude or disappeared in the sensitivity analysis (Table 4). Comparisons of VB-affected pregnancies ending in childbirth with pregnancies ending in a termination or miscarriage showed slightly decreased risks of all-cause and natural causes mortality, including cancer and cardiovascular mortality. The HRs for non-natural mortality, in general, were compatible with no association for comparisons of VB-affected pregnancy vs pregnancy ending in a termination or miscarriage (Table 4).

The associations in the analyses of the first identifiable pregnancy of a woman were similar in magnitude to and less precise than the estimates from main analyses of all identifiable pregnancies (Table 3). Conventional multivariable Cox proportional hazards regression for adjusted analyses was in agreement with IPTW-adjusted results (Table 4, available in the Supplementary data). The analyses of the last identifiable pregnancy in women aged 35 years or later did not suggest a pattern of increased mortality risks associated with VB-affected pregnancy vs VB-unaffected pregnancy or remaining comparators (Table 5, available in the Supplementary data).

Discussion

In this registry-based cohort study, we found no strong evidence of an increased risk of all-cause mortality, mortality from natural or non-natural causes following pregnancies affected by VB within 20 gestational weeks when compared with VB-unaffected pregnancies. The 15-27% increased risks of all-cause and cause-specific mortality attenuated towards the null value in the sensitivity analyses with more complete recent data and more strenuous confounding control. When contrasted with a termination or a miscarriage, VB-affected pregnancy ending in a childbirth was associated with a 15% reduced all-cause mortality and 10-17% reduced mortality risk from natural causes in main and sensitivity analyses; however,

the residual confounding is of concern. HRs for non-natural causes of mortality were close to the null value with a miscarriage cohort as a comparator.

Previous studies of sequelae of VB in pregnancy mostly focused on short-term outcomes of newborns and mothers.⁵ This is the first study to specifically investigate the long-term mortality following VB-affected pregnancy ending in a childbirth. All-cause mortality rates in the present study were similar to previously reported mortality among women who gave birth.⁴⁷

We conducted a registry-based study with essentially complete capture of deliveries in Denmark²³ and women's follow-up until death or emigration in routinely collected data at an individual level. The risk of selection bias due to differential loss-to-follow-up is expected to be low in this study. Of all pregnancies ending in childbirth, the prevalence of VB-affected pregnancies was 3% in this study. Other research suggests VB prevalence of up to 20-30% among all clinically recognised pregnancies.⁴⁸⁻⁵³ In a Danish study, 19% of women self-reported having had a VB during pregnancy, and 14% of these women had a hospital admission due to VB. This results in a point prevalence of 3-4% of hospital admissions due to VB among all pregnancies, which is consistent with our data.⁴⁸ Although VB diagnosis due to threatened miscarriage was not validated in the DNPR, we expect it to be accurate since most pregnant women receive an ultrasound to establish foetal heartbeat upon VB presentation.⁴⁸ We assume few false positives among VB-affected pregnancies are present. In support of that assumption, the records of miscarriage diagnoses in the DNPR have a positive predictive value (PPV) of >97%.⁵⁴

The vital status from the CRS used for all-cause mortality ascertainment has very high accuracy and is continuously updated.^{20,21,55} Cause-specific mortality may be misclassified in a non-differential manner in regard to pregnancy status. Autopsies are not routinely performed in Denmark.^{32,56} One Danish study found 30% of the causes of death were different from the ones initially recorded after autopsies were conducted.^{32,57} If there was a true non-null association between VB-affected childbirths and subsequent increased women's risk of cardiovascular death in comparison with VB-unaffected childbirths, non-differential misclassification could explain the null finding in the sensitivity analyses.

Lifestyle characteristics implicated as risk factors of both VB^{58-60,6} and mortality were smoking⁶¹⁻⁶³ and BMI,^{64,65} however, their availability in this study was limited to pregnancies ending in childbirth. Although BMI was not a major confounding factor according to our data, attenuation of HRs in sensitivity analyses may partly be explained by more efficient confounding control in 1994-2017 calendar period and additional adjustment for comedications and smoking. In support of that, according to E-value analysis,⁶⁶ a confounder or a set of confounders leading to bias in the same direction and associated 1.7 to 1.8-fold with the exposure and the outcome beyond the measured covariables would explain the associations with cause-specific mortality in analyses of VB-affected vs VB-unaffected pregnancies in 1979-2017. We did not model the joint effect of VB-affected pregnancy ending in a childbirth and miscarriages of subsequent pregnancies. We, thus, cannot rule out that the associations for the contrast of VB-affected vs VB-unaffected pregnancies found in main analyses in 1979-2017 can be explained by development of post-traumatic stress disorder, depression, anxiety following the occurrence of a miscarriage of a subsequent pregnancy.⁴ Other explanations for estimates' attenuation to the null value in a sensitivity analysis is too few accrued events to detect associations. For comparisons of women with

It is made available under a [CC-BY-NC-ND 4.0 International license](#) .

Women's mortality following pregnancy affected by vaginal bleeding due to threatened miscarriage: a Danish cohort study

VB-affected pregnancy vs termination, the residual confounding by reproductive and socioeconomic factors beyond education, employment, and woman's income at baseline is possible and may explain HRs below the null value for all-cause and cause-specific mortality.

Conclusion

In this study, we found no evidence of increased all-cause or cause-specific mortality following vaginal bleeding-affected pregnancy when compared with pregnancies unaffected by vaginal bleeding or pregnancies interrupted by termination or miscarriage.

It is made available under a [CC-BY-NC-ND 4.0 International license](#) .

Women's mortality following pregnancy affected by vaginal bleeding due to threatened miscarriage: a Danish cohort study

Supplementary data

Supplementary data are available at *IJE* online.

Women's mortality following pregnancy affected by vaginal bleeding due to threatened miscarriage: a Danish cohort study

Funding: Department of Clinical Epidemiology, Aarhus University participate in studies with institutional funding from regulators and pharmaceutical companies, given as research grants to and administered by Aarhus University. None of these projects is related to the current study.

Contributors: ED, EHP, HTS, VE participated in designing the study. HTS organized and facilitated the data application. ED designed the statistical analysis plan under supervision of VE and EHP. ED analysed the data, EPH provided expertise and supervision in data analyses. All authors participated in the discussion of the findings and critical interpretation of the results. ED drafted the manuscript and led the writing. All authors participated in the critical revision of the manuscript and approved its final version. HTS is the guarantor.

Conflict of interests: All authors declare no competing interests.

Ethics approval: Not required for registry-based research in Denmark. This study was reported to the Danish Data Protection Agency and registered at Aarhus University with project nr. 2016-051-000001, sequential number 605.

Data sharing: Personal data are not available for public sharing to protect the identity of participants according to Danish legislation. The data sharing in aggregated form as presented in this publication is permitted. Source data are accessible to authorised researchers after application to Statistics Denmark. The corresponding author (ED) affirms that the manuscript is an honest, accurate, and transparent account of the study being report; that no important aspects of the study have been omitted; and that any discrepancies from the study as planned and registered have been explained.

References

1. Coleman PK, Reardon DC, Calhoun BC. Reproductive history patterns and long-term mortality rates: a Danish, population-based record linkage study. *European Journal of Public Health*. 2013 Aug 1;**23**(4):569–574.
2. Reardon DC, Coleman PK. Short and long term mortality rates associated with first pregnancy outcome: Population register based study for Denmark 1980–2004. *Medical Science Monitor*. 2012;**18**(9):PH71–PH76.
3. Wang Y-X, Mínguez-Alarcón L, Gaskins AJ, et al. Association of spontaneous abortion with all cause and cause specific premature mortality: prospective cohort study. *BMJ*. British Medical Journal Publishing Group; 2021 Mar 24;**372**:n530.
4. Quenby S, Gallos ID, Dhillon-Smith RK, et al. Miscarriage matters: the epidemiological, physical, psychological, and economic costs of early pregnancy loss. *The Lancet*. Elsevier; 2021 May 1;**397**(10285):1658–1667.
5. Saraswat L, Bhattacharya S, Maheshwari A, Bhattacharya S. Maternal and perinatal outcome in women with threatened miscarriage in the first trimester: a systematic review. *BJOG*. 2010 Feb;**117**(3):245–57.
6. Overview of the etiology and evaluation of vaginal bleeding in pregnant women - UpToDate [Internet]. [cited 2020 Sep 23]. Available from: https://www.uptodate.com/contents/overview-of-the-etiology-and-evaluation-of-vaginal-bleeding-in-pregnant-women?topicRef=5439&source=see_link
7. García-Enguñados A, Calle ME, Valero J, Luna S, Domínguez-Rojas V. Risk factors in miscarriage: a review. *European Journal of Obstetrics & Gynecology and Reproductive Biology*. Elsevier; 2002;**102**(2):111–119.
8. Larsen EC, Christiansen OB, Kolte AM, Macklon N. New insights into mechanisms behind miscarriage. *BMC Med*. 2013 Jun 26;**11**:154.
9. Xian Yeap VS, Tan TC, Ku CW, Lek SM, Allen JJ, Tan NS. Is Progesterone Deficiency Associated With Early Pregnancy Loss? A Study of 718 High-Risk and Normal Pregnancies [23P]. *Obstetrics & Gynecology*. 2017 May;**129**(5):S169.
10. Ku CW, Allen JC, Lek SM, Chia ML, Tan NS, Tan TC. Serum progesterone distribution in normal pregnancies compared to pregnancies complicated by threatened miscarriage from 5 to 13 weeks gestation: a prospective cohort study. *BMC Pregnancy Childbirth*. 2018 Sep 5;**18**(1):360.
11. Lek SM, Ku CW, Allen JC, et al. Validation of serum progesterone <35nmol/L as a predictor of miscarriage among women with threatened miscarriage. *BMC Pregnancy Childbirth*. 2017 Mar 6;**17**(1):78.

12. Coomarasamy A, Harb HM, Devall AJ, et al. Progesterone to prevent miscarriage in women with early pregnancy bleeding: the PRISM RCT. *Health Technol Assess*. 2020 Jun;**24**(33):1–70.
13. Prager S, Micks E, Dalton VK. Pregnancy loss (miscarriage): Risk factors, etiology, clinical manifestations, and diagnostic evaluation - UpToDate [Internet]. 2021 [cited 2021 Jun 30]. Available from: <https://www.uptodate.com/contents/pregnancy-loss-miscarriage-risk-factors-etiology-clinical-manifestations-and-diagnostic-evaluation>
14. Furman D, Campisi J, Verdin E, et al. Chronic inflammation in the etiology of disease across the life span. *Nature Medicine*. Nature Publishing Group; 2019 Dec;**25**(12):1822–1832.
15. Calleja-Agius J, Muttukrishna S, Pizzey AR, Jauniaux E. Pro- and antiinflammatory cytokines in threatened miscarriages. *American Journal of Obstetrics and Gynecology*. 2011 Jul;**205**(1):83.e8–16.
16. Vives A, Balasch J, Yagüe J, Quintó L, Ordi J, Vanrell JA. Type-1 and Type-2 Cytokines in Human Decidual Tissue and Trophoblasts from Normal and Abnormal Pregnancies Detected by Reverse Transcriptase Polymerase Chain Reaction (RT-PCR). *American Journal of Reproductive Immunology*. 1999;**42**(6):361–368.
17. Alijotas-Reig J, Esteve-Valverde E, Ferrer-Oliveras R, Llurba E, Gris JM. Tumor Necrosis Factor-Alpha and Pregnancy: Focus on Biologics. An Updated and Comprehensive Review. *Clin Rev Allergy Immunol*. 2017 Aug;**53**(1):40–53.
18. Gücer F, Balkanli-Kaplan P, Yüksel M, Sayin NC, Yüce MA, Yardim T. Maternal serum levels of tumor necrosis factor- α and interleukin-2 receptor in threatened abortion: a comparison with normal and pathologic pregnancies. *Fertility and Sterility*. Elsevier; 2001 Oct 1;**76**(4):707–711.
19. Dudukina E, Horváth-Puhó E, Sørensen HT, Ehrenstein V. Risk of diabetes and cardiovascular diseases in women with pregnancies complicated by vaginal bleeding: Danish population-based cohort study [Internet]. medRxiv; 2022 [cited 2022 Sep 6]. p. 2022.03.18.22272466. Available from: <https://www.medrxiv.org/content/10.1101/2022.03.18.22272466v1>
20. Laugesen K, Ludvigsson JF, Schmidt M, et al. Nordic Health Registry-Based Research: A Review of Health Care Systems and Key Registries. *CLEP*. Dove Press; 2021 Jul 19;**13**:533–554.
21. Schmidt M, Pedersen L, Sørensen HT. The Danish Civil Registration System as a tool in epidemiology. *Eur J Epidemiol*. 2014 Aug;**29**(8):541–9.
22. Statistics Denmark [Internet]. 2021 [cited 2021 Jun 30]. Available from: <https://www.dst.dk/en>
23. Bliddal M, Broe A, Pottegård A, Olsen J, Langhoff-Roos J. The Danish Medical Birth Register. *Eur J Epidemiol*. 2018 Jan;**33**(1):27–36.

Women's mortality following pregnancy affected by vaginal bleeding due to threatened miscarriage: a Danish cohort study

24. Schmidt M, Schmidt SA, Sandegaard JL, Ehrenstein V, Pedersen L, Sorensen HT. The Danish National Patient Registry: a review of content, data quality, and research potential. *Clin Epidemiol*. 2015;**7**:449–90.
25. Mors O, Perto GP, Mortensen PB. The Danish Psychiatric Central Research Register. *Scand J Public Health*. 2011 Jul;**39**(7 Suppl):54–7.
26. Kildemoes HW, Sorensen HT, Hallas J. The Danish National Prescription Registry. *Scand J Public Health*. 2011 Jul;**39**(7 Suppl):38–41.
27. Pottegard A, Schmidt SAJ, Wallach-Kildemoes H, Sorensen HT, Hallas J, Schmidt M. Data Resource Profile: The Danish National Prescription Registry. *Int J Epidemiol*. 2017 Jun 1;**46**(3):798–798f.
28. Jensen VM, Rasmussen AW. Danish Education Registers. *Scand J Public Health*. 2011 Jul;**39**(7 Suppl):91–4.
29. Petersson F, Baadsgaard M, Thygesen LC. Danish registers on personal labour market affiliation. *Scand J Public Health*. SAGE Publications Ltd STM; 2011 Jul 1;**39**(7_suppl):95–98.
30. Baadsgaard M, Quitzau J. Danish registers on personal income and transfer payments. *Scand J Public Health*. SAGE Publications Ltd STM; 2011 Jul;**39**(7 Suppl):103–5.
31. Norwitz ER, Park JS, Lockwood CJ, Barss V. Overview of the etiology and evaluation of vaginal bleeding in pregnancy - UpToDate [Internet]. 2021 [cited 2021 Aug 30]. Available from: <https://www.uptodate.com/contents/overview-of-the-etiology-and-evaluation-of-vaginal-bleeding-in-pregnancy>
32. Helweg-Larsen K. The Danish Register of Causes of Death. *Scand J Public Health*. 2011 Jul;**39**(7 Suppl):26–9.
33. Therneau T, Grambsch P. Modeling Survival Data: Extending the Cox Model. New York: Springer; 2000. New York: Springer; 2000.
34. Therneau TM, Thomas L, Elizabeth A, Cynthia C. survival: Survival Analysis [Internet]. 2021 [cited 2021 Apr 6]. Available from: <https://CRAN.R-project.org/package=survival>
35. Hernán M, Robins JM. Causal inference [Internet]. 2021 [cited 2021 Jul 29]. Available from: <https://www.hsph.harvard.edu/miguel-hernan/causal-inference-book/#:~:text=To%20cite%20the%20book%2C%20please,Chapman%20%26%20Hall%2FCRC.%E2%80%9D>
36. Austin PC, Stuart EA. Moving towards best practice when using inverse probability of treatment weighting (IPTW) using the propensity score to estimate causal treatment effects in observational studies. *Stat Med*. 2015 Dec 10;**34**(28):3661–79.
37. Austin PC. Variance estimation when using inverse probability of treatment weighting (IPTW) with survival analysis. *Stat Med*. 2016 Dec 30;**35**(30):5642–5655.

Women's mortality following pregnancy affected by vaginal bleeding due to threatened miscarriage: a Danish cohort study

38. Cole SR, Hernan MA. Constructing inverse probability weights for marginal structural models. *Am J Epidemiol*. 2008 Sep 15;**168**(6):656–64.
39. Using WeightIt to Estimate Balancing Weights [Internet]. [cited 2022 Feb 17]. Available from: <https://ngreifer.github.io/WeightIt/articles/WeightIt.html>
40. Efron B. Nonparametric Estimates of Standard Error: The Jackknife, the Bootstrap and Other Methods. *Biometrika*. [Oxford University Press, Biometrika Trust]; 1981;**68**(3):589–599.
41. RStudio Team. RStudio: Integrated Development for R [Internet]. Boston, MA: RStudio, PBC; 2020. Available from: <http://www.rstudio.com/>
42. R Core Team. R: A language and environment for statistical computing [Internet]. Vienna, Austria; 2013. Available from: <http://www.R-project.org/>
43. Wickham H, Averick M, Bryan J, et al. Welcome to the Tidyverse. *Journal of Open Source Software*. 2019 Nov 21;**4**(43):1686.
44. Gray B. cmprsk: Subdistribution Analysis of Competing Risks [Internet]. 2020 [cited 2021 Mar 31]. Available from: <https://CRAN.R-project.org/package=cmprsk>
45. Nunes MS and ES with contributions from T, Heuer C, Marshall J, et al. epiR: Tools for the Analysis of Epidemiological Data [Internet]. 2021 [cited 2021 Jul 29]. Available from: <https://CRAN.R-project.org/package=epiR>
46. Datatilsynet. Datatilsynet/The Danish Data Protection Agency [Internet]. *Datatilsynet/The Danish Data Protection Agency* [cited 2020 Sep 16]. Available from: <http://www.datatilsynet.dk/english>
47. Cohen E, Horvath-Puho E, Ray JG, et al. Association Between the Birth of an Infant With Major Congenital Anomalies and Subsequent Risk of Mortality in Their Mothers. *JAMA*. 2016 Dec 20;**316**(23):2515–2524.
48. Axelsen SM, Henriksen TB, Hedegaard M, Secher NJ. Characteristics of vaginal bleeding during pregnancy. *European Journal of Obstetrics & Gynecology and Reproductive Biology*. 1995 Dec 1;**63**(2):131–134.
49. Everett C. Incidence and outcome of bleeding before the 20th week of pregnancy: prospective study from general practice. *BMJ*. 1997 Jul 5;**315**(7099):32–34.
50. Wijesiriwardana A, Bhattacharya S, Shetty A, Smith N, Bhattacharya S. Obstetric Outcome in Women With Threatened Miscarriage in the First Trimester. *Obstetrics & Gynecology*. 2006 Mar;**107**(3):557–562.
51. Hasan R, Baird DD, Herring AH, Olshan AF, Jonsson Funk ML, Hartmann KE. Patterns and Predictors of Vaginal Bleeding in the First Trimester of Pregnancy. *Annals of Epidemiology*. 2010 Jul 1;**20**(7):524–531.

Women's mortality following pregnancy affected by vaginal bleeding due to threatened miscarriage: a Danish cohort study

52. Smits LJM, North RA, Kenny LC, Myers J, Dekker GA, Mccowan LME. Patterns of vaginal bleeding during the first 20 weeks of pregnancy and risk of pre-eclampsia in nulliparous women: results from the SCOPE study. *Acta Obstetrica et Gynecologica Scandinavica*. 2012;**91**(11):1331–1338.
53. DeVilbiss EA, Naimi AI, Mumford SL, et al. Vaginal bleeding and nausea in early pregnancy as predictors of clinical pregnancy loss. *American Journal of Obstetrics and Gynecology*. 2020 Oct 1;**223**(4):570.e1-570.e14.
54. Lohse SR, Farkas DK, Lohse N, et al. Validation of spontaneous abortion diagnoses in the Danish National Registry of Patients. *Clin Epidemiol*. 2010 Oct 27;**2**:247–50.
55. Pedersen CB. The Danish Civil Registration System. *Scandinavian Journal of Public Health*. SAGE Publications Ltd STM; 2011;**39**(7_suppl):22–25.
56. Ylijoki-Sørensen S, Sajantila A, Lalu K, Bøggild H, Boldsen JL, Boel LWT. Coding ill-defined and unknown cause of death is 13 times more frequent in Denmark than in Finland. *Forensic Science International*. 2014 Nov 1;**244**:289–294.
57. Asnaes S. Uncertainty of determining mode and cause of death without autopsy: An autopsy study of medically unattended non-medicolegal deaths. *Forensic Science International*. 1980 May 1;**15**(3):191–196.
58. Metwally M, Ong KJ, Ledger WL, Li TC. Does high body mass index increase the risk of miscarriage after spontaneous and assisted conception? A meta-analysis of the evidence. *Fertil Steril*. 2008 Sep;**90**(3):714–726.
59. Metwally M, Saravelos SH, Ledger WL, Li TC. Body mass index and risk of miscarriage in women with recurrent miscarriage. *Fertil Steril*. 2010 Jun;**94**(1):290–5.
60. Hahn KA, Hatch EE, Rothman KJ, et al. Body size and risk of spontaneous abortion among danish pregnancy planners. *Paediatr Perinat Epidemiol*. 2014 Sep;**28**(5):412–23.
61. Zhu D, Zhao G, Wang X. Association of Smoking and Smoking Cessation With Overall and Cause-Specific Mortality. *American Journal of Preventive Medicine*. Elsevier; 2021 Apr 1;**60**(4):504–512.
62. Lariscy JT, Hummer RA, Rogers RG. Cigarette Smoking and All-Cause and Cause-Specific Adult Mortality in the United States. *Demography*. 2018 Oct;**55**(5):1855–1885.
63. Taghizadeh N, Vonk JM, Boezen HM. Lifetime Smoking History and Cause-Specific Mortality in a Cohort Study with 43 Years of Follow-Up. *PLOS ONE*. Public Library of Science; 2016 Apr 7;**11**(4):e0153310.
64. Angelantonio ED, Bhupathiraju SN, Wormser D, et al. Body-mass index and all-cause mortality: individual-participant-data meta-analysis of 239 prospective studies in four continents. *The Lancet*. Elsevier; 2016 Aug 20;**388**(10046):776–786.
65. Bhaskaran K, Silva I dos-Santos-, Leon DA, Douglas IJ, Smeeth L. Association of BMI with overall and cause-specific mortality: a population-based cohort study of 3.6 million

It is made available under a [CC-BY-NC-ND 4.0 International license](#).

Women's mortality following pregnancy affected by vaginal bleeding due to threatened miscarriage: a Danish cohort study

adults in the UK. *The Lancet Diabetes & Endocrinology*. Elsevier; 2018 Dec 1;**6**(12):944–953.

66. Mathur MB, Ding P, Riddell CA, VanderWeele TJ. Web Site and R Package for Computing E-values. *Epidemiology*. 2018 Sep;**29**(5):e45.

It is made available under a [CC-BY-NC-ND 4.0 International license](#) .

Women's mortality following pregnancy affected by vaginal bleeding due to threatened miscarriage: a Danish cohort study

Figure 1. Flow chart depicting ascertainment of observations

Standalone figure

Figure 2. All-cause mortality following VB-affected and VB-unaffected pregnancies, pregnancies ending in a miscarriage, and pregnancies ending in a termination

Standalone figure

Table 1. Descriptive characteristics of women with vaginal bleeding (VB)-affected and VB-unaffected pregnancies ending in childbirth, pregnancies ending in a termination or miscarriage, Denmark, 1979-2017

	VB-affected pregnancy, N=70,835	VB-unaffected pregnancy, N=2,236,360	Termination, N=589,700	Miscarriage, N=265,430
Distinct women	N=66,881	N=1,198,206	N=424,834	N=225,103
Characteristic	n (%)^a	n (%)^a	n (%)^a	n (%)^a
Calendar year of pregnancy end				
1979-1987	13,650 (19.0)	383,605 (17.0)	142,790 (24.0)	52,995 (20.0)
1988-1994	19,845 (28.0)	479,240 (21.0)	120,210 (20.0)	74,335 (28.0)
1995-2002	17,450 (25.0)	433,245 (19.0)	122,125 (21.0)	46,450 (18.0)
2003-2009	12,205 (17.0)	487,340 (22.0)	117,835 (20.0)	54,365 (20.0)
2010-2017	7,685 (11.0)	452,930 (20.0)	86,735 (15.0)	37,280 (14.0)
Age at the index date, years				
<20	1,460 (2.1)	49,345 (2.2)	89,560 (15.0)	10,370 (3.9)
20-24	12,495 (18.0)	379,360 (17.0)	140,655 (24.0)	45,045 (17.0)
25-29	25,390 (36.0)	814,095 (36.0)	123,745 (21.0)	79,945 (30.0)
30-34	20,975 (30.0)	680,405 (30.0)	112,320 (19.0)	69,845 (26.0)
35-39	8,910 (13.0)	267,135 (12.0)	85,020 (14.0)	42,180 (16.0)
40+	1,610 (2.3)	46,015 (2.1)	38,390 (6.5)	18,035 (6.8)
Parity at the index date				
Nulliparous	-	-	418,295 (71.0)	226,025 (85.0)
Primiparous	33,450 (47.0)	1,051,970 (47.0)	47,150 (8.0)	16,240 (6.1)
Multiparous	37,385 (53.0)	1,184,385 (53.0)	124,255 (21.0)	23,160 (8.7)
Number of pregnancies at the index date				
1	22,665 (32.0)	961,345 (43.0)	264,630 (45.0)	103,745 (39.0)
2	22,970 (32.0)	713,415 (32.0)	115,695 (20.0)	77,940 (29.0)
3	13,380 (19.0)	337,440 (15.0)	90,000 (15.0)	43,415 (16.0)
3+	11,820 (17.0)	224,160 (10.0)	119,370 (20.0)	40,325 (15.0)
Civil status				
Married or in partnership	41,555 (59.0)	1,332,090 (60.0)	201,520 (34.0)	136,070 (51.0)
Not married	25,000 (35.0)	759,990 (34.0)	252,485 (43.0)	75,630 (28.0)
Missing	4,280 (6.0)	144,275 (6.5)	135,690 (23.0)	53,725 (20.0)
Employment status				
Employed	49,910 (70.0)	1,597,800 (71.0)	340,660 (58.0)	183,785 (69.0)
Retirement or state pension	6,455 (9.1)	170,730 (7.6)	71,930 (12.0)	24,785 (9.3)
Unemployed	10,680 (15.0)	333,615 (15.0)	128,230 (22.0)	39,085 (15.0)
Missing	3,785 (5.3)	134,210 (6.0)	48,870 (8.3)	17,770 (6.7)
Highest achieved education				
Basic education	21,965 (31.0)	547,675 (24.0)	253,135 (43.0)	78,030 (29.0)
High school or similar	25,590 (36.0)	840,030 (38.0)	170,275 (29.0)	92,675 (35.0)
Higher education	16,575 (23.0)	625,140 (28.0)	75,020 (13.0)	64,185 (24.0)
Missing	6,705 (9.5)	223,510 (10.0)	91,265 (15.0)	30,535 (12.0)
Yearly income, quartiles				
Q1	16,030 (23.0)	440,100 (20.0)	219,415 (37.0)	59,630 (22.0)
Q2	16,890 (24.0)	523,855 (23.0)	130,905 (22.0)	61,850 (23.0)
Q3	16,655 (24.0)	566,255 (25.0)	90,490 (15.0)	60,465 (23.0)
Q4	17,585 (25.0)	563,695 (25.0)	87,320 (15.0)	63,855 (24.0)
Missing	3,665 (5.2)	142,455 (6.4)	61,565 (10.0)	19,625 (7.4)
Origin				
Danish	62,015 (88.0)	1,969,725 (88.0)	520,870 (88.0)	233,935 (88.0)
non-Danish	8,745 (12.0)	263,905 (12.0)	68,830 (12.0)	31,490 (12.0)
Missing	75 (0.1)	2,730 (0.1)	-	-
Reproductive factors				

Women's mortality following pregnancy affected by vaginal bleeding due to threatened miscarriage: a Danish cohort study

	VB-affected pregnancy, N=70,835	VB-unaffected pregnancy, N=2,236,360	Termination, N=589,700	Miscarriage, N=265,430
Distinct women	N=66,881	N=1,198,206	N=424,834	N=225,103
Characteristic	n (%)^a	n (%)^a	n (%)^a	n (%)^a
Previous vaginal bleeding diagnosis irrespective of pregnancy end	8,145 (11.0)	92,455 (4.1)	33,625 (5.7)	29,665 (11.0)
Previous vaginal bleeding within 20 gw of a pregnancy ending in delivery	3,990 (5.6)	42,270 (1.9)	17,300 (2.9)	8,655 (3.3)
History of ≥ 1 termination	16,250 (23.0)	350,845 (16.0)	170,700 (29.0)	53,520 (20.0)
History of ≥ 1 miscarriage	18,315 (26.0)	269,910 (12.0)	57,425 (9.7)	41,290 (16.0)
Hypertensive disorders of pregnancy	2,490 (3.5)	73,355 (3.3)	18,955 (3.2)	10,150 (3.8)
Placenta praevia	125 (0.2)	4,255 (0.2)	1,350 (0.2)	610 (0.2)
Abruptio placentae	445 (0.6)	9,000 (0.4)	3,075 (0.5)	1,580 (0.6)
Gestational diabetes	300 (0.4)	11,495 (0.5)	2,705 (0.5)	1,660 (0.6)
Abruptio placentae in a current pregnancy	870 (1.2)	11,985 (0.5)	-	-
Placenta praevia in a current pregnancy	635 (0.9)	9,105 (0.4)	-	-
Gestational diabetes in a current pregnancy	925 (1.3)	27,265 (1.2)	-	-
Gestational age at delivery, weeks (median, 25-75 percentile)	39 (38-40)	40 (39-41)	-	-
Chronic conditions				
CVD, thrombosis, or diabetes ^b	1,850 (2.6)	55,975 (2.5)	11,450 (1.9)	7,085 (2.7)
Obesity diagnosis	2,760 (3.9)	109,170 (4.9)	12,600 (2.1)	6,975 (2.6)
PCOS	460 (0.6)	12,935 (0.6)	1,245 (0.2)	1,335 (0.5)
Thyroid disorders	1,215 (1.7)	36,105 (1.6)	6,980 (1.2)	3,950 (1.5)
Rheumatic disorders	45 (<0.1)	935 (<0.1)	260 (<0.1)	130 (<0.1)
COPD	725 (1.0)	18,820 (0.8)	5,020 (0.9)	2,250 (0.8)
Chronic kidney diseases	170 (0.2)	3,985 (0.2)	1,155 (0.2)	555 (0.2)
Chronic liver diseases	115 (0.2)	3,590 (0.2)	1,120 (0.2)	460 (0.2)
Cancer	315 (0.4)	9,675 (0.4)	2,460 (0.4)	1,165 (0.4)
Schizophrenia ^c	405 (0.6)	9,725 (0.4)	6,300 (1.1)	1,570 (0.6)
Autism spectrum disorders ^c	30 (<0.1)	855 (<0.1)	550 (<0.1)	105 (<0.1)
Neurotic disorders ^c	4,315 (6.1)	100,970 (4.5)	46,540 (7.9)	13,720 (5.2)
Eating disorders ^c	520 (0.7)	14,620 (0.7)	6,005 (1.0)	1,750 (0.7)
Personality disorder ^c	1,580 (2.2)	34,715 (1.6)	21,050 (3.6)	5,505 (2.1)
Intellectual disability ^c	35 (<0.1)	850 (<0.1)	685 (0.1)	140 (<0.1)
Behavioral disorder ^c	50 (<0.1)	1,360 (<0.1)	1,020 (0.2)	215 (<0.1)
Alcohol or drug abuse ^c	540 (0.8)	11,400 (0.5)	11,575 (2.0)	2,505 (0.9)
Any psychiatric condition ^c	6,020 (8.5)	153,160 (6.8)	67,350 (11.0)	20,195 (7.6)

^a All counts are rounded to the nearest 5 to prevent the identification of individuals and adhere to Statistics Denmark requirements. Percentages ≥10% are rounded to the nearest whole number and percentages <10% are rounded to the first decimal place.

^b Diabetes mellitus types 1 and 2, hypertension, deep vein thrombosis, pulmonary embolism, haemorrhagic or ischemic stroke, ischaemic heart disease, atrial fibrillation or flutter, heart failure or use of clopidogrel or statins (according to data availability).

^c Data on psychiatric hospital encounters and outpatient specialist clinic encounters were available from 1995.

COPD, chronic obstructive pulmonary disease; CVD, cardiovascular diseases; PCOS, polycystic ovary syndrome

Women's mortality following pregnancy affected by vaginal bleeding due to threatened miscarriage: a Danish cohort study

Table 2. Mortality rates following vaginal bleeding-affected and vaginal bleeding-unaffected pregnancies ending in childbirth and pregnancies ending in termination or miscarriage, 1979-2017/2018

	No. of events				Mortality rate per 10,000 PY (95% CI)			
	Exposure	Comparators			Exposure	Comparators		
	VB-affected pregnancy	VB-unaffected pregnancy	Termination	Miscarriage	VB-affected pregnancy	VB-unaffected pregnancy	Termination	Miscarriage
All identifiable pregnancies^a	N=70,835	N=2,236,360	N=589,700	N=265,430				
Distinct women	N=66,881	N=1,198,206	N=424,834	N=225,103				
All-cause mortality ^b	2,320	55,030	27,500	10,865	15.2 (14.6-15.9)	12.7 (12.6-12.8)	21.9 (21.6-22.1)	19.2 (18.8-19.6)
Natural causes ^c	1,545	37,250	17,830	7,160	10.6 (10.1-11.2)	9.0 (8.9-9.1)	14.8 (14.6-15.0)	13.2 (12.9-13.5)
Cancer	880	23,300	10,090	4,080	6.1 (5.7-6.5)	5.6 (5.6-5.7)	8.4 (8.2-8.6)	7.5 (7.3-7.8)
Overall CVD	210	4,835	2,425	940	1.4 (1.3-1.6)	1.2 (1.1-1.2)	2.0 (1.9-2.1)	1.7 (1.6-1.9)
CVD other than myocardial infarction and stroke	135	3,190	1,530	600	0.9 (0.8-1.1)	0.8 (0.7-0.8)	1.3 (1.2-1.3)	1.1 (1.0-1.2)
Myocardial infarction	35	780	410	140	0.2 (0.2-0.3)	0.2 (0.2-0.2)	0.3 (0.3-0.4)	0.3 (0.2-0.3)
Stroke	40	870	485	200	0.3 (0.2-0.4)	0.2 (0.2-0.2)	0.4 (0.4-0.4)	0.4 (0.3-0.4)
Respiratory disease	90	1,675	1,110	420	0.6 (0.5-0.8)	0.4 (0.4-0.4)	0.9 (0.9-1.0)	0.8 (0.7-0.9)
Endocrine, nutritional, metabolic conditions	35	705	390	190	0.2 (0.2-0.3)	0.2 (0.2-0.2)	0.3 (0.3-0.4)	0.4 (0.3-0.4)
Nervous system condition	50	1,180	655	225	0.4 (0.3-0.5)	0.3 (0.3-0.3)	0.5 (0.5-0.6)	0.4 (0.4-0.5)
Non-natural causes ^c	195	3,770	2,370	805	1.3 (1.2-1.5)	0.9 (0.9-0.9)	2.0 (1.9-2.1)	1.5 (1.4-1.6)
Motor vehicle accident	40	935	380	140	0.3 (0.2-0.4)	0.2 (0.2-0.2)	0.3 (0.3-0.3)	0.3 (0.2-0.3)
Non-motor vehicle accident or violence	85	1,450	1,125	380	0.6 (0.5-0.7)	0.4 (0.3-0.4)	0.9 (0.9-1.0)	0.7 (0.6-0.8)
Suicide	70	1,290	835	265	0.5 (0.4-0.6)	0.3 (0.3-0.3)	0.7 (0.6-0.7)	0.5 (0.4-0.6)
All other causes	275	5,640	3,195	1,325	1.9 (1.7-2.1)	1.4 (1.3-1.4)	2.7 (2.6-2.8)	2.4 (2.3-2.6)
First pregnancy of a woman	N=19,631	N=841,096	N=251,450	N=94,086				
Distinct women	N=19,631	N=841,096	N=251,450	N=94,086				
All-cause mortality ^b	530	17,935	13,385	4,440	12.9 (11.9-14.1)	10.9 (10.8-11.1)	22.5 (22.1-22.9)	20.4 (19.8-21.0)
Natural causes ^c	350	12,125	9,055	3,025	8.9 (8.1-9.9)	7.8 (7.6-7.9)	15.8 (15.5-16.2)	14.4 (13.9-14.9)
Cancer	200	7,555	5,165	1,730	5.1 (4.4-5.9)	4.8 (4.7-5.0)	9.0 (8.8-9.3)	8.3 (7.9-8.7)
Overall CVD	40	1,570	1,260	370	1.1 (0.8-1.4)	1.0 (1.0-1.1)	2.2 (2.1-2.3)	1.8 (1.6-1.9)
CVD other than myocardial infarction and stroke	30	1,045	785	220	0.7 (0.5-1.0)	0.7 (0.6-0.7)	1.4 (1.3-1.5)	1.0 (0.9-1.2)
Myocardial infarction	5	235	215	60	0.1 (0.0-0.3)	0.1 (0.1-0.2)	0.4 (0.3-0.4)	0.3 (0.2-0.4)
Stroke	10	285	260	90	0.2 (0.1-0.4)	0.2 (0.2-0.2)	0.4 (0.4-0.5)	0.4 (0.3-0.5)

Women's mortality following pregnancy affected by vaginal bleeding due to threatened miscarriage: a Danish cohort study

	No. of events				Mortality rate per 10,000 PY (95% CI)			
	Exposure		Comparators		Exposure		Comparators	
	VB-affected pregnancy	VB-unaffected pregnancy	Termination	Miscarriage	VB-affected pregnancy	VB-unaffected pregnancy	Termination	Miscarriage
Respiratory disease	20	490	610	200	0.5 (0.3-0.7)	0.3 (0.3-0.3)	1.1 (1.0-1.1)	0.9 (0.8-1.1)
Endocrine, nutritional, metabolic conditions	15	245	210	75	0.3 (0.2-0.6)	0.2 (0.1-0.2)	0.4 (0.3-0.4)	0.3 (0.3-0.4)
Nervous system conditions	10	395	325	115	0.3 (0.1-0.5)	0.2 (0.2-0.3)	0.6 (0.5-0.6)	0.6 (0.5-0.7)
Non-natural causes ^c	45	1,285	1,045	310	1.2 (0.9-1.6)	0.8 (0.8-0.9)	1.8 (1.7-1.9)	1.5 (1.3-1.6)
Motor vehicle accident	10	325	180	50	0.2 (0.1-0.4)	0.2 (0.2-0.2)	0.3 (0.3-0.4)	0.2 (0.2-0.3)
Non-motor vehicle accident or violence	20	470	440	130	0.5 (0.3-0.8)	0.3 (0.3-0.3)	0.8 (0.7-0.8)	0.6 (0.5-0.7)
Suicide	20	455	410	120	0.5 (0.3-0.7)	0.3 (0.3-0.3)	0.7 (0.6-0.8)	0.6 (0.5-0.7)
All other causes	65	1,905	1,505	545	1.7 (1.3-2.1)	1.2 (1.2-1.3)	2.6 (2.5-2.8)	2.6 (2.4-2.8)

^a All counts are rounded to the nearest 5 to prevent the identification of individuals

^b Data were available through 2018

^c Data were available through 2017

CI, Confidence interval; CVD, Cardiovascular diseases; VB, Vaginal bleeding; PY, person-years

Table 3. Hazard ratios with 95% confidence intervals for the associations between vaginal bleeding and all-cause and cause-specific mortality, 1979-2017/2018

		HRs (95% CI) ^a		
		VB-affected vs VB-unaffected pregnancy	VB-affected pregnancy vs termination	VB-affected pregnancy vs miscarriage
All-cause mortality^b	All identifiable pregnancies	1.14 (1.09-1.19)	0.85 (0.81-0.90)	0.85 (0.80-0.90)
	First pregnancy	1.19 (1.09-1.30)	0.83 (0.75-0.92)	0.88 (0.80-0.97)
Cause-specific mortality: natural causes^c	All identifiable pregnancies	1.15 (1.09-1.22)	0.86 (0.80-0.92)	0.88 (0.82-0.95)
	First pregnancy	1.17 (1.05-1.31)	0.80 (0.71-0.91)	0.86 (0.77-0.97)
Cancer	All identifiable pregnancies	1.07 (1.00-1.15)	0.82 (0.75-0.89)	0.90 (0.81-0.99)
	First pregnancy	1.09 (0.95-1.26)	0.73 (0.61-0.87)	0.85 (0.72-0.99)
Overall CVD	All identifiable pregnancies	1.15 (0.99-1.34)	0.84 (0.69-1.01)	0.82 (0.67-1.01)
	First pregnancy	1.04 (0.76-1.43)	0.70 (0.48-1.00)	0.80 (0.56-1.13)
CVD other than myocardial infarction and stroke	All identifiable pregnancies	1.11 (0.93-1.33)	0.83 (0.67-1.04)	0.83 (0.64-1.07)
	First pregnancy	1.06 (0.72-1.55)	0.77 (0.50-1.19)	0.90 (0.59-1.37)
Myocardial infarction	All identifiable pregnancies	1.15 (0.80-1.65)	0.97 (0.63-1.49)	0.98 (0.59-1.65)
	First pregnancy	0.85 (0.35-2.11)	0.74 (0.28-1.92)	0.79 (0.31-2.04)
Stroke	All identifiable pregnancies	1.29 (0.93-1.80)	0.73 (0.49-1.08)	0.70 (0.43-1.13)
	First pregnancy	1.15 (0.56-2.36)	0.42 (0.17-1.04)	0.54 (0.25-1.16)
Respiratory disease	All identifiable pregnancies	1.53 (1.22-1.92)	1.02 (0.78-1.34)	0.99 (0.72-1.36)
	First pregnancy	1.68 (1.03-2.72)	0.97 (0.59-1.60)	0.90 (0.54-1.49)
Endocrine, nutritional, metabolic conditions	All identifiable pregnancies	1.29 (0.89-1.86)	1.16 (0.77-1.77)	0.96 (0.61-1.52)
	First pregnancy	1.95 (1.11-3.44)	1.45 (0.75-2.79)	1.12 (0.60-2.12)
Nervous system condition	All identifiable pregnancies	1.19 (0.89-1.61)	0.75 (0.52-1.08)	1.06 (0.71-1.60)
	First pregnancy	0.97 (0.52-1.79)	0.66 (0.33-1.29)	0.66 (0.35-1.24)
Cause-specific mortality: non-natural causes^c	All identifiable pregnancies	1.27 (1.08-1.48)	0.86 (0.71-1.03)	0.90 (0.73-1.11)
	First pregnancy	1.37 (1.02-1.85)	1.09 (0.79-1.50)	1.10 (0.79-1.52)
Motor vehicle accident	All identifiable pregnancies	1.00 (0.71-1.41)	1.04 (0.70-1.56)	0.93 (0.57-1.50)
	First pregnancy	1.02 (0.51-2.03)	1.32 (0.65-2.70)	1.21 (0.58-2.53)
Non-motor vehicle accidents or violence	All identifiable pregnancies	1.43 (1.13-1.81)	0.83 (0.63-1.09)	0.81 (0.58-1.12)
	First pregnancy	1.52 (0.96-2.43)	1.11 (0.67-1.84)	1.14 (0.69-1.87)
Suicide	All identifiable pregnancies	1.36 (1.05-1.76)	0.84 (0.62-1.14)	1.10 (0.78-1.56)
	First pregnancy	1.58 (0.98-2.54)	1.00 (0.59-1.69)	1.08 (0.64-1.82)
All other causes	All identifiable pregnancies	1.35 (1.18-1.53)	0.91 (0.78-1.06)	0.78 (0.65-0.94)
	First pregnancy	1.39 (1.08-1.80)	1.00 (0.75-1.33)	0.94 (0.71-1.25)

^a Analyses were adjusted using IPTW for age at the pregnancy end, calendar year of pregnancy, reproductive history, and pre-existing comorbidities (obesity, thyroid disorders, chronic obstructive pulmonary disease, chronic liver and kidney disease, hyperlipidaemia, cardiovascular, metabolic diseases), and psychiatric conditions. Analyses of pregnancies ending in a childbirth were additionally adjusted for placenta-related conditions at the index pregnancy.

^b Data were available through 2018

^c Data were available through 2017

CI, Confidence interval; CVD, cardiovascular diseases; IPTW, inverse probability of treatment weighting

Women's mortality following pregnancy affected by vaginal bleeding due to threatened miscarriage: a Danish cohort study

Table 4. Hazard ratios with 95% confidence intervals for all-cause mortality and mortality from natural and non-natural causes among women with pregnancies ending in 1994-2017/2018

	Observations	HRs (95% CI) ^a		
		VB-affected vs VB-unaffected pregnancy	VB-affected pregnancy vs termination	VB-affected pregnancy vs miscarriage
All-cause mortality^b	All identifiable pregnancies	1.00 (0.90-1.12)	0.74 (0.64-0.86)	0.72 (0.62-0.85)
	First pregnancy	1.12 (0.89-1.40)	0.83 (0.61-1.13)	0.83 (0.65-1.08)
Cause-specific mortality: natural causes^c				
		0.98 (0.85-1.14)	0.78 (0.66-0.94)	0.78 (0.64-0.96)
	Cancer	0.90 (0.75-1.09)	0.68 (0.54-0.86)	0.69 (0.52-0.90)
	Overall CVD	1.08 (0.73-1.60)	0.95 (0.61-1.48)	0.85 (0.51-1.41)
	CVD other than myocardial infarction and stroke	1.24 (0.82-1.90)	1.16 (0.72-1.87)	1.10 (0.62-1.97)
	Myocardial infarction	0.34 (0.08-1.37)	0.46 (0.11-1.90)	0.28 (0.06-1.32)
	Stroke	0.98 (0.33-2.87)	0.50 (0.15-1.62)	0.33 (0.08-1.32)
	Respiratory disease	1.42 (0.67-3.00)	1.42 (0.64-3.17)	1.27 (0.45-3.58)
	Endocrine, nutritional, metabolic conditions	2.04 (0.89-4.67)	2.01 (0.78-5.18)	1.89 (0.69-5.20)
	Nervous system conditions	0.85 (0.34-2.12)	0.77 (0.29-2.06)	1.90 (0.63-5.77)
Cause-specific mortality: non-natural causes^c				
		1.04 (0.72-1.51)	0.77 (0.51-1.17)	0.90 (0.54-1.50)
	Motor vehicle accident	1.11 (0.59-2.11)	1.01 (0.49-2.07)	1.08 (0.43-2.74)
	Non-motor vehicle accident or violence	1.00 (0.54-1.84)	0.78 (0.42-1.45)	1.11 (0.50-2.49)
	Suicide	1.01 (0.54-1.90)	0.57 (0.26-1.21)	0.47 (0.21-1.01)
	All other causes	1.11 (0.78-1.58)	0.76 (0.50-1.16)	0.66 (0.41-1.05)

^a Analyses were adjusted for age at the pregnancy end, calendar year of pregnancy, reproductive history and pre-existing comorbidities (obesity, thyroid disorders, rheumatic conditions with heart involvement, chronic obstructive pulmonary disease, chronic liver and kidney disease, hyperlipidaemia, hypercholesterolemia, cardiovascular, metabolic diseases), psychiatric conditions, and medication use any time before 12 gestational weeks for pregnancies ending in a childbirth and any time before the index date for pregnancies ending in a termination or miscarriage. Medication dispensing data were available from the Danish National Prescription Registry starting from 1995. Analyses of pregnancies ending in childbirth were additionally adjusted for placenta-related conditions and women's smoking at the first prenatal visit of the index pregnancy.

^b Data were available through 2018

^c Data were available through 2017

CI, Confidence interval; CVD, Cardiovascular diseases; HR, Hazard ratio; VB, Vaginal bleeding

Supplementary data

Table 1 Definitions of the exposure, outcomes, and covariables (used ICD-8, ICD-10, and ATC codes)

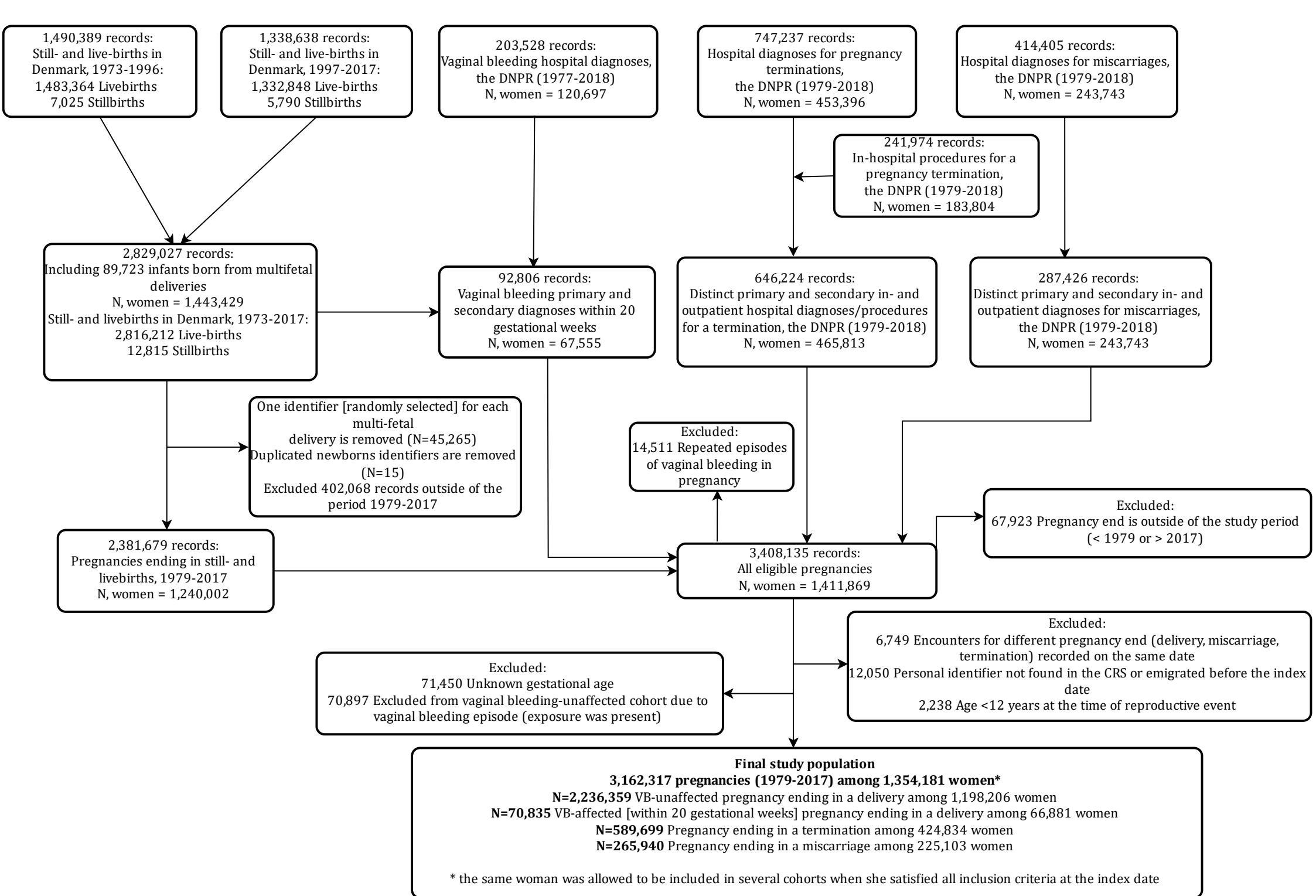
Figure 1 Directed acyclic graph (DAG) depicting the relationship between measured and unmeasured variables in the study

Table 2 Cumulative all-cause and cause-specific mortality at 5, 10, 20, 30, and 40 years since the start of the follow-up

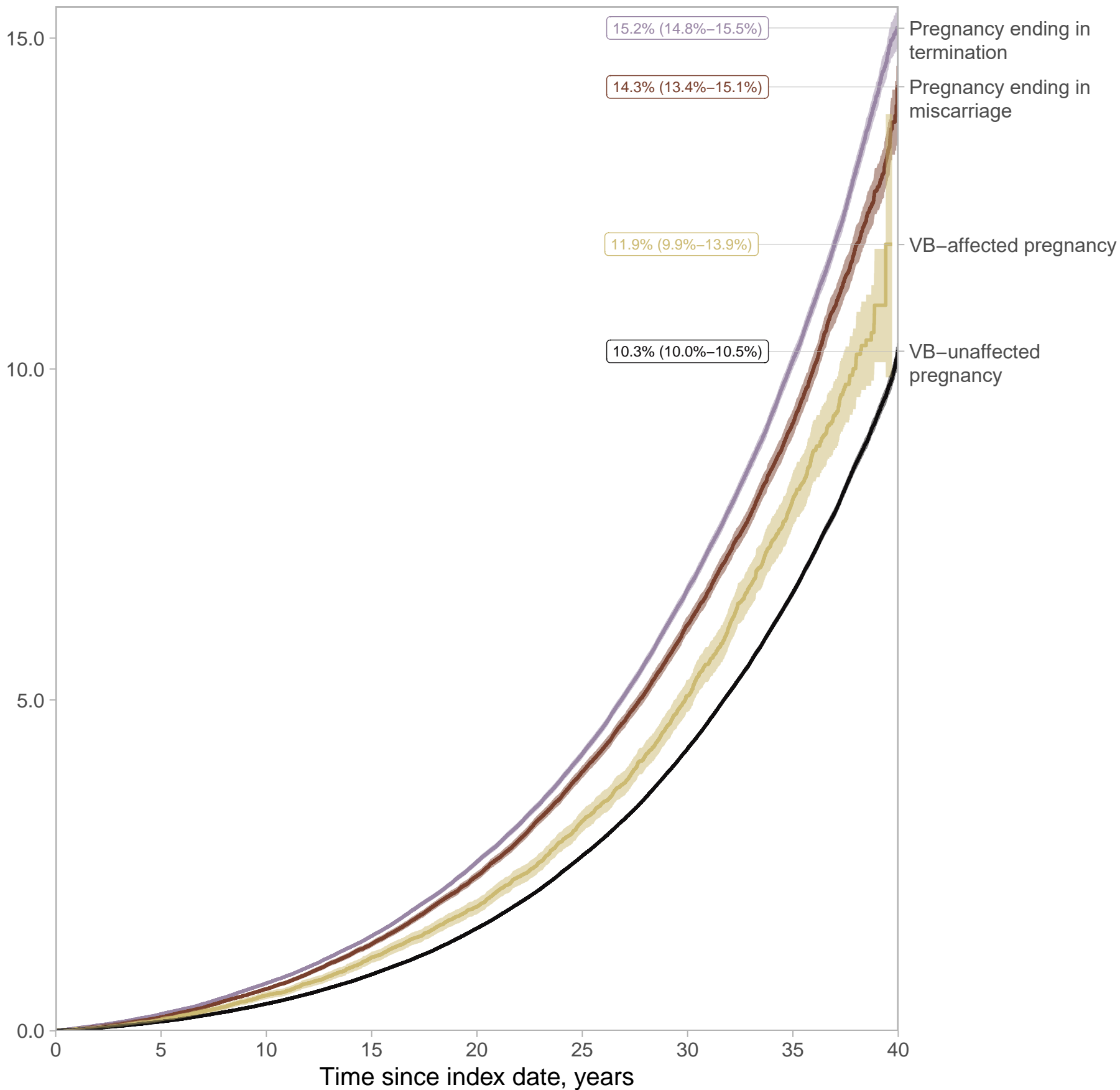
Table 3 Mortality rates and cumulative mortality following women with the last identifiable pregnancy at 35 years or later

Table 4 Adjusted hazard ratios (95% CIs) for the associations between vaginal bleeding and all-cause and cause-specific mortality using multivariable proportional hazards Cox regression, 1979-2018

Table 5 Adjusted hazard ratios (95% CIs) for the associations between vaginal bleeding and all-cause and cause-specific mortality following the last identifiable pregnancy at 35 years or later, Denmark, 1979-2018



Cumulative all-cause mortality, %



Computed using Kaplan–Meier estimator
VB, vaginal bleeding