



1 **The economic impact of premature mortality in Cabo** 2 **Verde: 2016 - 2020**

3 Ngibo Mubeta Fernandes^{1¶*}, Janilza Solange Gomes Silveira Silva^{1¶}, Domingos Veiga
4 Varela^{1&}, Edna Duarte Lopes^{2¶}, Janice de Jesus Xavier Soares^{2¶},

5 ¹National Health Observatory, National Public Health Institute, Praia, Cabo Verde

6 ² Department of research, science and innovation in health, National Public Health
7 Institute, Praia, Cabo Verde

8 * Corresponding author:

9 Email: ngibo.fernandes@insp.gov.cv_(NMF)

10 **Abstract**

11 Mortality analysis studies in Cabo Verde are rare and those that are available are limited
12 to short periods of analysis and to specific population groups. Traditionally used mortality
13 data does not quantify the burden resulting from premature mortality. This study focused
14 on the years of potential life lost (YPLL), years of potential productive life lost (YPPLL)
15 and the costs associated with them in Cabo Verde from 2016 to 2020 and aimed to
16 elucidate the patterns of early mortality in the period analyzed.

17 Mortality data were obtained from the Ministry of Health, Cabo Verde. Deaths that
18 occurred from 2016 to 2020, aged between one (1) and 73 years old, were analyzed by
19 sex, age group, municipality and cause of death. YPLL, YPPLL and cost of productivity
20 lost (CPL) were estimated using life expectancy and the human capital approach.

21 A total of 6100 deaths were recorded in the sample population and males represented
22 68.1% (n = 4,154) of the deaths. The total number of deaths verified corresponded to
23 145,544 YPLL, of which 69.0% (100,389) were attributed to males. There were 4,634
24 deaths of individuals of working age, and these resulted in 80 965 YPPLL, with males
25 contributing 72.1% (58,403) of the total YPPLL. The total estimated CPL due to
26 premature death was 98,659,153.23 USD with trauma accounting for the highest

27 estimated losses of 21 580 954.42 USD (21.9%), followed by diseases of the circulatory
NOTE: This preprint reports new research that has not been certified by peer review and should not be used to guide clinical practice.

28 system 18,843,260.42 USD (19.1%), and certain infectious and parasitic diseases
29 accounted for 16,633,842.70 USD (16.9%).

30 The study demonstrated the social and economic burden of premature mortality. The
31 YPLL, YPPLL and CPL measures can be used to complement measures traditionally used
32 to demonstrate the burden and loss of productivity due to premature mortality and to
33 support resource allocation and public health policies making in Cabo Verde.

34 **Keywords:** Cabo Verde; Premature Mortality; Economic Burden; Potential Life Lost;
35 Productivity Lost.

36 **Introduction**

37 Mortality and average life expectancy represent simple measures to assess the
38 health/disease process of a population. National mortality data help to know the
39 characteristics of the deceased and trends in relation to the causes and circumstances of
40 deaths [1]. They also make it possible to compare patterns within and between
41 populations, also serving as a basis for the evaluation and planning of public health
42 programs.

43 Crude mortality data, however, have important limitations, such as the fact that
44 they do not reflect the age composition of the population, do not report on preventable
45 deaths in certain age groups and do not quantify the burden of premature mortality [2].
46 To fill this gap, analysts have increasingly resorted to other measures, including the years
47 of potential life lost.

48 By definition, years of potential life lost (YPLL) represent an estimate of the
49 average time a person would have lived had they not died prematurely. As an impact
50 measure, YPLL seeks to quantify the socioeconomic burden of premature deaths [3].

51 To quantify economic loss due to early mortality, one can also calculate the years
52 of potential productive life lost (YPPLL) and cost of productivity lost (CPL). The YPPLL
53 use the lower and upper limits of the productive life period as age cut-off and serve as a
54 basis for calculating CPL [4].

55 Cost of illness studies are considered an essential evaluation technique in the
56 health sector. By measuring and comparing the economic burden of disease on society,
57 these studies can help health decision-makers establish and prioritize health policies and
58 interventions [5].

59 Despite significant socioeconomic and health improvements, Cabo Verde still has
60 a high burden of mortality in the 15 to 49 age group [6]. Knowing that this age group falls
61 within the productive life span in Cabo Verde (15 to 65 years) it is extremely important
62 to quantify and understand premature mortality in the archipelago.

63 Mortality analysis studies in Cabo Verde are scarce and those found are limited to
64 short periods of analysis and to specific population groups [7,8]. Through a rapid
65 literature review, no studies were identified evaluating YPLL and/or costs associated with
66 premature mortality in the archipelago. This study sought to fill this gap, calculating and
67 analyzing the years of potential life lost (YPLL), by municipality, sex and cause of death
68 in Cabo Verde in the period between 2016 and 2020, as well as the costs associated with
69 early mortality in the country.

70 The results of the study intend to elucidate the patterns of early mortality in the
71 analyzed period, being able to subsidize public policies, mainly at the sanitary level. This
72 work focused on the calculation of years of potential life lost, years of potential productive
73 life lost and the costs associated with these in Cabo Verde from 2016 to 2020.

74 **Methodology**

75 **General approach**

76 This is an observational, cross-sectional, quantitative and analytical study using
77 secondary data. For data analysis, all deaths that occurred in Cabo Verde from 2016 to
78 2020, aged between one (1) and 74 years old, were considered. Deaths that occurred in
79 the first year of life were excluded due to the specificity of mortality in this period and
80 due to the social and economic value that this loss represents [9,10].

81 In this study mortality data were presented by cause of death according to the
82 International Statistical Classification of Diseases and Related Health Problems 10th
83 Revision (ICD-10) [11].

84 **Data sources and data collection**

85 An anonymized database, provided by the National Health Directorate of the
86 Ministry of Health, containing information collected from death certificates of all deaths
87 that had occurred in Cabo Verde from 2016 to 2020 was used.

88 Quality control involved several aspects, at different levels. Standards of technical
89 quality requirement for the quality of the database were ensured by two elements of the
90 research team, technicians from the National Institute of Public Health (INSP). The entire
91 process of cleaning and structural analysis of the data (data cleaning) was conducted such
92 as identification of 'missing data', systematic errors in jumps and inadequate patterns of
93 filed data.

94 The statistical analysis of data was performed using the SPSS statistical software
95 (version 26) and Microsoft Excel.

96 **Estimation methods**

97 Statistical analysis of data started with descriptive statistics, calculating absolute
98 and relative frequencies of deaths that occurred in the period under analysis. Calculations
99 of YPLL, YPPLL and CPL, and their respective absolute and relative frequencies, rates
100 and means were determined. YPLL, YPPLL and CPL were estimated by sex, age group,
101 municipality and cause of death.

102 The Human Capital Approach was adapted, assuming that an individual would
103 earn a constant value throughout their productive life if it were not interrupted by
104 premature death [12].

105 YPLL were estimated by adapting the method proposed by Romeder and
106 Mcwhinnie [9]. The maximum age limit was 74 years, the average life expectancy at birth
107 for the Cabo Verdean population in 2019 [13]. The YPLL calculation method for a given
108 factor consisted of the sum of the number of deaths at each age (between 1 and 73 years
109 old) multiplied by the remaining years of life up to 74 years of age. The number of deaths
110 were distributed by age groups of five (5) years. In addition, the midpoint of each age
111 groups was calculated. Subsequently, the midpoint of each age group was subtracted from
112 74 years, and the difference was multiplied by the number of deaths in each age group.
113 The result represents the estimated number of years of life lost due to a specific cause of
114 death. Thus, the following formula was used to estimate YPLL [4]:

115

$$116 \quad APVP = \sum_{i=1}^{73} a_i d_i = \sum_{i=1}^{73} (74 - i - 0.5) d_i \quad (1)$$

117

118 Where: a_i – years remaining to reach the age corresponding to the upper limit
119 considered, when death occurs between the ages of i and $i + 1$ years, using the adjustment
120 of 0.5 assuming that all deaths occurred in the middle of the year and d_i – number of
121 deaths between age i and $i + 1$ years.

122 To determine the economic losses due to premature deaths during the study period
123 (2016-2020), the YPPLL and CPL method were used [4]:

124

$$125 \quad YPPLL = \sum_{j=1}^{64} w_j d_j = \sum_{j=1}^{64} (65 - j - 0.5) d_j \quad (2)$$

126

127 Where: w_j – number of years left to complete the age corresponding to the
128 upper limit considered when death occurs between age j and $j+1$ year; d_j – number of
129 deaths between the age of j and $j + 1$ year, using the adjustment of 0.5 when it is
130 assumed that all deaths occurred in the middle of the year; j – mean age in 5-year age
131 groups for the productive population (15 – 64 years); 65 – retirement age limit in Cabo
132 Verde [14] and 15 – minimum working age[15].

133

$$134 \quad CPL = \sum_{j=1}^j YPPLL \times GDP_{Per\ capita} \quad (3)$$

135

136 Where: the Gross Domestic Product (GDP) per capita for 2017, of 3 427,49
137 USD (321,945\$00 *Escudos Caboverdianos*) [14] and j as defined previously.

138 Future values were presented in present values by applying the discount rate of 4.5%
139 practiced by the Bank of Cabo Verde [16]. In addition, a sensitivity analysis was
140 performed applying rates of 3% and 6% to adjust for possible fluctuations in rates [12,17].
141 To determine the present value of the cost of productivity lost, the following formula was
142 used:

$$143 \quad VP = \sum_{t=0}^{T-1} CPL (1 + r)^{-t} \quad (4)$$

144 Where: VP – present value, CPL – future value, r – discount rate, t – mean
145 number of years remaining to reach the age corresponding to the upper limit
146 considered in each 5-year age group.

147 Ethical considerations

148 As this study analyzed existing secondary data provided by the National
 149 Directorate of Health and published in Annual Health Reports, submission to the National
 150 Ethics Committee for Health Research and to the National Commission for Data
 151 Protection was not required.

152 Results

153 Sociodemographic characterization of subjects

154 Sample characterization

155 The sample consisted of a total of 6100 deaths, aged between 1 and 73 years. The male
 156 represented 68.1% (4154) of deaths. Overall, 62.3% (3800) of deaths occurred in the age
 157 group between 35 to 64 years. The highest number of deaths occurred in the
 158 municipalities of Praia (27.7%; 1692) and São Vicente (17.6%; 1076) Table 1

159
 160 **Table 1: Characterization of the sample population, 2016 to 2020**

Variables	Sex				
	Male		Female		
	n	%	n	%	
Age group	1 to 14 years	136	2.2	119	2.0
	15 to 24 years	215	3.5	88	1.4
	25 to 34 years	394	6.5	137	2.2
	35 to 64 years	2658	43.6	1142	18.7
	65 and over	751	12.3	460	7.5
	Total	4154	68.1	1946	31.9
Marital status	Single	2924	52.5	1274	22.9
	Married / de facto union	780	14.0	328	5.9
	Divorced / Separated	79	1.4	34	0.6
	Widower	37	0.7	110	2.0
	Other	2	0.0	1	0.0
	Total	3822	68.6	1747	31.4
Municipality	Ribeira Grande	176	2.9	61	1.0
	Paul	74	1.2	28	0.5
	Porto Novo	142	2.3	43	0.7
	São Vincent	751	12.3	325	5.3
	Ribeira Brava	68	1.1	20	0.3
	Tarrafal de São Nicolau	55	0.9	20	0.3
	Sal	203	3.3	105	1.7
	Boavista	78	1.3	35	0.6
	Maio	47	0.8	24	0.4
	Tarrafal	128	2.1	103	1.7
	Santa Catarina	339	5.6	187	3.1
	Santa Cruz	200	3.3	107	1.8
	Praia	1147	18.8	545	8.9
	São Domingos	97	1.6	57	0.9
	São Miguel	103	1.7	63	1.0
São Salvador do Mundo	51	0.8	30	0.5	

São Lourenço dos Órgãos	52	0.9	17	0.3
Ribeira Grande de Santiago	51	0.8	30	0.5
Mosteiros	56	0.9	19	0.3
São Felipe	169	2.8	73	1.2
Santa Catarina do Fogo	34	0.6	16	0.3
Brava	63	1.0	23	0.4
Others	70	1.1	15	0.2
Total	4154	68.1	1946	31.9

161

162 During the period under analysis, diseases of the circulatory system, infectious
 163 and parasitic diseases, neoplasms, diseases of the respiratory system, external causes of
 164 morbidity and mortality and injuries, poisonings and certain other consequences of
 165 external causes were responsible for 81.7% (5064) of deaths. Diseases of the circulatory
 166 system were the main cause of death, accounting for 23.4% (1427) of deaths, followed
 167 by some infectious and parasitic diseases (15.4%; 940) and neoplasms (15.3%; 935). It
 168 should be noted that in 2020, 112 deaths recorded were due to COVID-19, included in
 169 the death group certain infectious and parasitic diseases, Table 2.

170 **Table 2: Number of deaths by sex and cause of death, 2016 to 2020.**

Cause of death	Sex			
	Male		Female	
	n	%	n	%
Certain conditions originating in the perinatal period	2	0.03	1	0.02
External causes of morbidity and mortality	497	8.1	72	1.2
Diseases of the genitourinary system	50	0.8	27	0.4
Diseases of the circulatory system	890	14.6	537	8.8
Diseases of the digestive system	228	3.7	88	1.4
Diseases of the respiratory system	435	7.1	191	3.1
Mental and behavioral disorders	148	2.4	13	0.2
Endocrine, nutritional and metabolic diseases	106	1.7	56	0.9
Diseases of the nervous system	83	1.4	32	0.5
Pregnancy, childbirth and puerperium	0	0.0	29	0.5
Certain infectious and parasitic diseases	571	9.4	369	6.0
Injury, poisoning and certain other consequences of external causes	414	6.8	71	1.2
Congenital malformations, deformations and chromosomal abnormalities	2	0.03	2	0.03
Diseases of the musculoskeletal system and connective tissue	3	0.05	1	0.02
Diseases of the skin and subcutaneous tissue	6	0.1	2	0.03
Diseases of the blood and blood-forming organs and certain disorders involving the immune mechanism	5	0.1	9	0.1
Symptoms, signs and abnormal clinical and laboratory findings, not elsewhere classified	150	2.5	75	1.2
Neoplasms [tumors]	564	9.2	371	6.1
Total	4154	68.1	1946	31.9

171

172 **Estimates of years of potential life lost in Cabo Verde, 2016 to**
173 **2020.**

174 Of the total number of deaths reported from 2016 to 2020, 42.9% (6100) occurred
175 in the age group from 1 to 73 years, which corresponded to 145,544 YPLL. In the study
176 period, the highest number of YPLL (21,978) were in 2020. The results obtained showed
177 that the total mean YPLL per death in the five-year period varied from 22.6 to 25.0, Table
178 3.

179 **Table 3: Years of potential life lost by sex, Cabo Verde, 2016 to 2020.**

YPLL by sex												
Year	Male				Female				Total			
	Deaths	YPLL	YPLL	Mean	Deaths	YPLL	YPLL rate	Mean	Deaths	YPLL	YPLL rate	Mean
2016	787	19920	78.4	25.3	379	9259	37.3	24.4	1166	29179	58.1	25.0
2017	723	17095	66.2	23.6	347	8552	34.0	24.6	1070	25647	50.4	24.0
2018	868	21513	82.1	24.8	425	9585	37.8	22.6	1293	31098	60.3	24.1
2019	818	19884	74.8	24.3	360	8228	32.1	22.9	1178	28111	53.8	23.9
2020	958	21978	81.5	22.9	435	9532	36.8	21.9	1393	31509	59.6	22.6

180

181 Results showed that the leading contributors to YPLL between 2016 and 2020
182 were diseases of the circulatory system, certain infectious and parasitic diseases, external
183 causes of morbidity and mortality and injuries, poisonings and certain other consequences
184 of external causes, which accounted for 71% (103,336) of the total, of YPLL Table 4 In
185 the study period, the highest number of YPLL (31,509) was 2020. In this year, diseases
186 of the circulatory system accounted for 5,913 YPLL, followed by certain infectious and
187 parasitic diseases (5,312), external causes of morbidity and mortality (4,298), neoplasms
188 (3,618), diseases of the respiratory system (3,287) and injuries, poisonings and certain
189 other consequences of external causes (3,077) which together represented 80.9% of
190 YPLL in that year, Table 4.

191

192

193

194

195 **Table 4: Evolution of years of potential life lost by cause of death, 2016 to 2020.**

Cause of death	Reference year				
	2016	2017	2018	2019	2020
Certain conditions originating in the perinatal period	71	0	71	71	0
External causes of morbidity and mortality	5229	3911	4020	3663	4298
Diseases of the genitourinary system	200	247	298	102	248
Diseases of the circulatory system	4820	4343	5003	4724	5913
Diseases of the digestive system	1523	1478	1250	1568	1460
Diseases of the respiratory system	2317	2154	3869	2848	3287
Mental and behavioral disorders	827	896	859	518	920
Endocrine, nutritional and metabolic diseases	671	682	691	930	609
Diseases of the nervous system	860	626	855	557	901
Pregnancy, childbirth and puerperium	83	203	156	452	291
Certain infectious and parasitic diseases	4697	4284	5734	4256	5312
Injury, poisoning and certain other consequences of external causes	3647	3042	3483	3344	3077
Congenital malformations, deformations and chromosomal abnormalities	71	57	0	138	0
Diseases of the musculoskeletal system and connective tissue	0	52	73	0	12
Diseases of the skin and subcutaneous tissue	22	43	7	2	26
Diseases of the blood and blood-forming organs and certain disorders involving the immune mechanism	0	42	169	171	60
Symptoms, signs and abnormal clinical and laboratory findings, not elsewhere classified	833	760	1258	1295	1483
Neoplasms [tumors]	3311	2831	3306	3476	3618
Total	29179	25647	31098	28111	31509

196

197 Males accounted for 69.0% (100,389) of the total estimated YPLL and the total
198 mean loss per death was 23.9 for both sexes, 24.2 for males and 23.2 for females. The
199 highest proportion of YPLL for females (22.1%; 9984) was attributable to certain
200 infectious and parasitic diseases, with an average of 27.1 YPLL per death. As for males,
201 the largest contributors to YPLL were deaths due to external causes of morbidity and
202 mortality (18.3%; 18394), with an average of 37 YPLL per death, Table 5.

Table 5: Years of potential life lost by sex and cause of death, 2016 to 2020.

Cause of death	Male			Female			Total		
	YPLL	%	YPLL per death	YPLL	%	YPLL per death	YPLL	%	YPLL per death
Certain conditions originating in the perinatal period	142	0.1	71.0	71.0	0.2	71.0	213.0	0.1	71.0
External causes of morbidity and mortality	18393.5	18.3	37.0	2726.5	6.0	37.9	21120.0	14.5	37.1
Diseases of the genitourinary system	746.0	0.7	14.9	347.5	0.8	12.9	1093.5	0.8	14.2
Diseases of the circulatory system	15921.0	15.9	17.9	8881.5	19.7	16.5	24802.5	17.0	17.4
Diseases of the digestive system	5118.0	5.1	22.4	2159.0	4.8	24.5	7277.0	5.0	23.0
Diseases of the respiratory system	9793.0	9.8	22.5	4681.0	10.4	24.5	14474.0	9.9	23.1
Mental and behavioral disorders	3664.0	3.6	24.8	354.5	0.8	27.3	4018.5	2.8	25.0
Endocrine, nutritional and metabolic diseases	2455.5	2.4	23.2	1126.0	2.5	20.1	3581.5	2.5	22.1
Diseases of the nervous system	2603.0	2.6	31.4	1195.5	2.6	37.4	3798.5	2.6	33.0
Pregnancy, childbirth and puerperium	NA*	NA*	NA*	1183.5	2.6	40.8	1183.5	0.8	40.8
Certain infectious and parasitic diseases	14297.5	14.2	25.0	9984.0	22.1	27.1	24281.5	16.7	25.8
Injury, poisoning and certain other consequences of external causes	13632.0	13.6	32.9	2959.5	6.6	41.7	16591.5	11.4	34.2
Congenital malformations, deformations and chromosomal abnormalities	137.5	0.1	68.8	127.5	0.3	63.8	265.0	0.2	66.3
Diseases of the musculoskeletal system and connective tissue	84.5	0.1	28.2	51.5	0.1	51.5	136.0	0.1	34.0
Diseases of the skin and subcutaneous tissue	60.5	0.1	10.1	38.0	0.1	19.0	98.5	0.1	12.3
Diseases of the blood and blood-forming organs and certain disorders involving the immune mechanism	142.5	0.1	28.5	298.0	0.7	33.1	440.5	0.3	31.5
Symptoms, signs and abnormal clinical and laboratory findings, not elsewhere classified	3730.5	3.7	24.9	1897.0	4.2	25.3	5627.5	3.9	25.0
Neoplasms [tumors]	9468.0	9.4	16.8	7072.5	15.7	19.1	16540.5	11.4	17.7
Total	100389.0	100	24.2	45154.0	100	23.2	145543.0	100.0	23.9

Legend for Table. 5 * NA – Not applicable



205 Overall, males contributed a higher number of YPLL throughout the study period
206 (2016–2020). The highest proportion of YPLL (62.2%; 62479) occurred in the age group
207 from 30 to 59 years for males. In the female population, the highest proportion of YPLL
208 corresponded to range 1 to 4 (11.3%; 5112) followed by 35 to 39 age group (10.5%; 4745)
209 (Fig 1).

210

211 **Figure 1. Distribution of Years of potential life lost by sex and age group, 2016 to**
212 **2020.** Legend for-Fig 1. A is the distribution of YPLL for males, B is the distribution of
213 YPLL for males and females, C and D represent the distribution of YPLL for both sexes.

214 Estimation of years of potential productive life lost

215 From 2016 to 2020, there was a total loss of 80,965 YPPLL in Cabo Verde
216 considering the 4,634 deaths occurred in the productive age group. There was a greater
217 loss of years of productive life among men (72.1%; 58403) when compared to women
218 (27.9%; 22563), configuring an annual average of 11680.8 YPPLL for men and 3926.2
219 for women, respectively, Table 6.

220

221 **Table 6: Years of potential productive life lost by sex, 2016 to 2020.**

Year	Male			Female			Total		
	YPPLL	YPPLL rate	Mean	YPPLL	YPPLL rate	Mean	YPPLL	YPPLL rate	Mean
2016	12095.0	68.1	19.3	4622.5	27.1	16.9	16717.5	48.0	18.6
2017	9847.5	54.4	17.0	4195.0	24.2	17.1	14042.5	39.6	17.0
2018	12565.0	68.1	18.2	4762.5	27.1	15.9	17327.5	48.1	17.5
2019	11502.5	61.2	18.0	4142.5	23.3	16.6	15645.0	42.8	17.6
2020	12392.5	64.8	17.0	4840.0	26.9	16.1	17232.5	46.5	16.7

222

223 Overall, the highest YPPLL values were recorded in 2018 and 2020, and YPPLL
224 in the study period varied from 14,043 to 17,328, Table 7. In the 5-year study period, the
225 largest contributors to YPPLL were external causes of morbidity and mortality,
226 responsible for 17.9% (14,525) of total YPPLL, certain infectious and parasitic diseases
227 16.8% (13,583), diseases of the circulatory system 15.9% (12,878), injuries, poisoning

228 and certain other consequences of external causes 11.2% (9,038), neoplasms [tumors]
229 10.6% (8,583) and diseases of the respiratory system 8.1% (6,528), Table 7.

230

231 **Table 7: Evolution of years of potential productive life lost, 2016 to 2020.**

Cause of death	YPPLL by cause group				
	Reference year				
	2016	2017	2018	2019	2020
External causes of morbidity and mortality	3723	2598	2845	2525	2835
Diseases of the genitourinary system	123	115	135	43	133
Diseases of the circulatory system	2548	2370	2580	2493	2888
Diseases of the digestive system	985	908	773	890	850
Diseases of the respiratory system	1030	1003	1675	1280	1540
Mental and behavioral disorders	550	595	540	328	603
Endocrine, nutritional and metabolic diseases	330	233	415	560	255
Diseases of the nervous system	543	265	425	345	385
Pregnancy, childbirth and puerperium	65	158	120	353	228
Certain infectious and parasitic diseases	2458	2233	3343	2355	3195
Injury, poisoning and certain other consequences of external causes	2158	1558	1915	1863	1545
Congenital malformations, deformations and chromosomal abnormalities	0	48	0	0	0
Diseases of the musculoskeletal system and connective tissue	0	43	55	0	3
Diseases of the skin and subcutaneous tissue	13	25	0	0	13
Diseases of the blood and blood-forming organs and certain disorders involving the immune mechanism	0	33	58	75	33
Symptoms, signs and abnormal clinical and laboratory findings, not elsewhere classified	478	425	768	773	750
Neoplasms [tumors]	1718	1438	1683	1765	1980
Total	16718	14043	17328	15645	17233

232

233 Males accounted for 72.1% (58,403) of YPPLL, with an average of 17.9 YPPLL
234 per death, compared to 27.9% (22,563) for females, with a mean of 16.5 per death.
235 Overall, external causes of morbidity and mortality were responsible for 14,525 (17.9%)
236 of YPPLL with an average of 27.9 YPPLL per death. Results demonstrated that the major
237 contributors to YPPLL for males were external causes of morbidity and mortality (22.0%;
238 12,843) with a mean of 28.1 per death in that specific population. As for the female
239 population, certain infectious and parasitic diseases were the principal contributors
240 (24.6%; 5,560), with an average of 18.7 YPPLL per death Table 8.

241

242 **Table 8: Years of potential productive life lost by cause of death, 2016 to 2020.**

Cause of death	Male			Female			Total		
	YPPLL	%	Mean	YPPLL	%	Mean	YPPLL	%	Mean
External causes of morbidity and mortality	12842.5	22.0	28.1	1682.5	7.5	26.7	14525	17.9	27.9
Diseases of the genitourinary system	397.5	0.7	12.8	150.0	0.7	9.4	547.5	0.7	11.6
Diseases of the circulatory system	8582.5	14.7	13.6	4295.0	19.0	12.9	12877.5	15.9	13.3
Diseases of the digestive system	3095.0	5.3	16.1	1310.0	5.8	18.7	4405	5.4	16.8
Diseases of the respiratory system	4747.5	8.1	15.4	1780.0	7.9	16.8	6527.5	8.1	15.7
Mental and behavioral disorders	2377.5	4.1	17.4	237.5	1.1	18.3	2615	3.2	17.4
Endocrine, nutritional and metabolic diseases	1285.0	2.2	16.5	507.5	2.2	13.0	1792.5	2.2	15.3
Diseases of the nervous system	1460.0	2.5	20.9	502.5	2.2	26.4	1962.5	2.4	22.1
Pregnancy, childbirth and puerperium	0.0	0.0	0.0	922.5	4.1	31.8	922.5	1.1	31.8
Certain infectious and parasitic diseases	8022.5	13.7	17.6	5560.0	24.6	18.7	13582.5	16.8	18.0
Injury, poisoning and certain other consequences of external causes	8135.0	13.9	22.7	902.5	4.0	21.0	9037.5	11.2	22.5
Congenital malformations, deformations and chromosomal abnormalities	0.0	0.0	0.0	47.5	0.2	47.5	47.5	0.1	47.5
Diseases of the musculoskeletal system and connective tissue	57.5	0.1	19.2	42.5	0.2	42.5	100	0.1	25.0
Diseases of the skin and subcutaneous tissue	27.5	0.0	9.2	22.5	0.1	22.5	50	0.1	12.5
Diseases of the blood and blood-forming organs and certain disorders involving the immune mechanism	97.5	0.2	19.5	100.0	0.4	16.7	197.5	0.2	18.0
Symptoms, signs and abnormal clinical and laboratory findings, not elsewhere classified	2340.0	4.0	20.2	852.5	3.8	17.4	3192.5	3.9	19.3
Neoplasms [tumors]	4935.0	8.4	11.8	3647.5	16.2	13.1	8582.5	10.6	12.3
Total	58402.5	100	17.9	22562.5	100	16.5	80965.0	100	17.5



244 The highest proportion of losses occurred in the 35-39 and 40-44 age groups and
245 represented 27.3% and 28.2% of the total YPPLL, in the male and female population,
246 respectively. The highest YPPLL recorded was in the range 35 to 39 years and
247 corresponded to 2255 YPPLL while the lowest YPPLL was 205 in the 60 to 64 years age
248 group, in the male population. For females, the range 35 to 39 registered the highest
249 number of YPPLL corresponded to 852 and the minimum record of productivity losses,
250 123, was in the range 60 to 64 years. (Fig 2).

251

252 **Figure 2. Distribution of Years of potential productive life lost by sex and age group,**
253 **2016 to 2020.** Legend for Fig 1. A is the distribution of YPPLL for males, B represents
254 the distribution of YPPLL for males and females, C and D – represent the distribution of
255 YPPLL for both sexes.

256

257 **Economic impact of premature death**

258 Premature mortality in the period from 2016 to 2020, resulted in a total of
259 98,659,153.23 USD of costs of productivity lost (CPL) with a mean of 21,290.28 USD
260 per death. The CPL varied from 17,285,109.09 USD to 21,463,604.36 USD, while the
261 leading contributors to CPL were circulatory system diseases (18,843,260.42 USD),
262 external causes of morbidity and mortality (12,316,441.51 USD), certain infectious and
263 parasitic diseases (16,633,842.70 USD), and neoplasms (13,580,684.86USD) and
264 accounted for 62.2% of the total CPL. Tables 9 and 10.

265 **Table 9: Cost of productivity lost (in USD) by cause of death, 2016 to 2020.**

Cause of death	2016	2017	2018	2019	2020
External causes of morbidity and mortality	3073925.23	2183315.84	2415893.49	2194716.16	2448590.80
Diseases of the genitourinary system	167764.42	229093.17	256334.60	75154.97	168204.78
Diseases of the circulatory system	3564620.47	3539694.15	3808255.25	3561628.71	4369061.84
Diseases of the digestive system	1270545.30	1168387.24	1024750.91	1160451.01	1090518.36
Diseases of the respiratory system	1258969.32	1423126.38	2138614.40	1655213.04	1989788.77
Mental and behavioral disorders	736558.73	765967.70	764596.89	445149.45	793331.30
Endocrine, nutritional and metabolic diseases	522626.14	357363.09	592988.95	614479.74	410955.22
Diseases of the nervous system	598385.81	269465.21	387155.30	379429.36	414897.85
Pregnancy, childbirth and puerperium	51912.59	131210.84	107709.77	286243.07	180295.36
Certain infectious and parasitic diseases	2909533.92	2760117.89	3961300.28	3107916.68	3894973.93
Injury, poisoning and certain other consequences of external causes	2114697.85	1474031.68	1999671.55	2010407.09	1665704.75
Congenital malformations, deformations and chromosomal abnormalities	0.00	19796.71	0.00	0.00	0.00
Diseases of the musculoskeletal system and connective tissue	0.00	22073.43	51587.90	0.00	7552.18
Diseases of the skin and subcutaneous tissue	24315.30	35735.31	0.00	0.00	24315.30
Diseases of the blood and blood-forming organs and certain disorders involving the immune mechanism	0.00	26213.63	107040.73	47437.97	66811.36
Symptoms, signs and abnormal clinical and laboratory findings, not elsewhere classified	626656.88	478989.03	788430.13	847065.51	958750.44
Neoplasms [tumors]	2726208.00	2400527.81	2784972.24	2689124.69	2979852.12
Total	19646719.95	17285109.09	21189302.39	19074417.45	21463604.36

266

267 Males accounted for 71.8% (70,818,833.31 USD) with a mean of 21,677.02 USD per death while females were responsible for 28.2%
 268 (27,840,319.93 USD) of the total CPL, and had an average of 20,366.00 USD per death, respectively. In general, the highest CPLs were recorded
 269 in the age groups between 35 and 59 years (73.7%; 72,715,770.69 USD) Table 10. Analysis showed that Pregnancy, childbirth and puerperium
 270 had the highest mean CPL per death of 26,116.26 USD, followed by the “external causes of morbidity and mortality” group, with an average CPL

271 of US\$ 23,685.46 and Mental and behavioral disorders with a mean of 23,370.69 USD per death, Table 10: **Cost of productivity lost by sex, age**
 272 **group, and cause.**

273

274 **Table 10: Cost of productivity lost by sex, age group, and cause of death, 2016 to 2020.**

Variables		Male			Female			Total		
		CPL	%	Mean	CPL	%	Mean	CPL	%	Mean
Age group	15 to 19	1266989.31	1.8	19796.71	772071.61	2.8	19796.71	2039060.92	2.1	19796.71
	20 to 24	3333087.37	4.7	22073.43	1081597.89	3.9	22073.43	4414685.25	4.5	22073.43
	25 to 29	4271753.73	6.0	24271.33	1432008.35	5.1	24271.33	5703762.09	5.8	24271.33
	30 to 34	5714570.29	8.1	26213.63	2044662.76	7.3	26213.63	7759233.06	7.9	26213.63
	35 to 39	8126531.09	11.5	27641.26	3593364.09	12.9	27641.26	11719895.17	11.9	27641.26
	40 to 44	9807727.50	13.8	28183.13	3494707.50	12.6	28183.13	13302435.01	13.5	28183.13
	45 to 49	11254425.90	15.9	27316.57	3769686.34	13.5	27316.57	15024112.24	15.2	27316.57
	50 to 54	12668268.80	17.9	24315.30	4692851.97	16.9	24315.30	17361120.77	17.6	24315.30
	55 to 59	10599388.33	15.0	18180.77	4708819.17	16.9	18180.77	15308207.51	15.5	18180.77
	60 to 64	3776090.99	5.3	7552.18	2250550.23	8.1	7552.18	6026641.22	6.1	7552.18
Total		70818833.31	100	21677.02	27840319.93	100	20366.00	98659153.23	100	21290.28
Cause of death	External causes of morbidity and mortality	10921623.04	15.4	23898.52	1394818.46	5.0	22139.98	12316441.51	12.5	23685.46
	Diseases of the genitourinary system	629666.70	0.9	20311.83	266885.24	1.0	16680.33	896551.94	0.9	19075.57
	Diseases of the circulatory system	12494202.84	17.6	19738.08	6349057.58	22.8	19009.15	18843260.42	19.1	19486.31
	Diseases of the digestive system	4223457.79	6.0	21997.18	1491195.04	5.4	21302.79	5714652.83	5.8	21811.65
	Diseases of the respiratory system	6361743.65	9.0	20588.17	2103968.27	7.6	19848.76	8465711.91	8.6	20399.31
	Mental and behavioral disorders	3203189.21	4.5	23380.94	302414.87	1.1	23262.68	3505604.08	3.6	23370.69
	Endocrine, nutritional and metabolic diseases	1769101.58	2.5	22680.79	729311.56	2.6	18700.30	2498413.15	2.5	21353.96

Diseases of the nervous system	1618362.17	2.3	23119.46	430971.36	1.5	22682.70	2049333.53	2.1	23026.22
Pregnancy, childbirth and puerperium	0.00	0.0	0.00	757371.63	2.7	26116.26	757371.63	0.8	26116.26
Certain infectious and parasitic diseases	10154650.54	14.3	22220.24	6479192.15	23.3	21742.26	16633842.70	16.9	22031.58
Injury, poisoning and certain other consequences of external causes	8370649.76	11.8	23381.70	893863.15	3.2	20787.52	9264512.91	9.4	23103.52
Congenital malformations, deformations and chromosomal abnormalities	0.00	0.0	0.00	19796.71	0.1	19796.71	19796.71	0.0	19796.71
Diseases of the musculoskeletal system and connective tissue	59140.08	0.1	19713.36	22073.43	0.1	22073.43	81213.50	0.1	20303.38
Diseases of the skin and subcutaneous tissue	56182.77	0.1	18727.59	28183.13	0.1	28183.13	84365.90	0.1	21091.47
Diseases of the blood and blood-forming organs and certain disorders involving the immune mechanism	108656.67	0.2	21731.33	138847.02	0.5	23141.17	247503.68	0.3	22500.33
Symptoms, signs and abnormal clinical and laboratory findings, not elsewhere classified	2706137.57	3.8	23328.77	993754.41	3.6	20280.70	3699891.98	3.8	22423.59
Neoplasms [tumors]	8142068.95	11.5	19478.63	5438615.92	19.5	19493.25	13580684.86	13.8	19484.48
Total	70818833.31	100	21677.02	27840319.93	100	20366.00	98659153.23	100	21290.28

275

276 The sensitivity analysis was performed and showed total CPL of 134,724,671.62 USD (mean = 29 073.08 USD /death) at a discount rate
277 of 3% and 74,517,897.02 USD (mean = 16,080.69 USD /death) at 6%. Diseases of the circulatory system had the highest CPL observed at a rate
278 of 3%, and accounted for 24,297,098.13 USD or 18.0% of total CPL, followed by certain infectious and parasitic diseases with 22,809,540.03 USD
279 (16.9%). At a rate of 6%, the same trend was observed, with the two main causes of death having highest CPL, Table 11.

280

281 **Table 11: Lost productivity cost using GDP per capita at 3% and 6% discount rate, 2016 to 2020.**

Cause of death	Present value (Total)					
	3%	%	Mean	6%	%	Mean
External causes of morbidity and mortality	19015041.77	14.1	36567.39	8250513.82	11.1	15866.37
Diseases of the genitourinary system	1122230.56	0.8	23877.25	729652.17	1.0	15524.51
Diseases of the circulatory system	24297098.13	18.0	25126.26	14990278.74	20.1	15501.84
Diseases of the digestive system	7694029.08	5.7	29366.52	4352584.69	5.8	16612.92
Diseases of the respiratory system	11334604.38	8.4	27312.30	6512545.57	8.7	15692.88
Mental and behavioral disorders	4703578.15	3.5	31357.19	2664327.91	3.6	17762.19
Endocrine, nutritional and metabolic diseases	3284790.53	2.4	28075.13	1946388.86	2.6	16635.80
Diseases of the nervous system	2939208.04	2.2	33024.81	1479318.09	2.0	16621.55
Pregnancy, childbirth and puerperium	1204568.78	0.9	41536.85	482418.45	0.6	16635.12
Certain infectious and parasitic diseases	22809540.03	16.9	30211.31	12456681.11	16.7	16498.92
Injury, poisoning and certain other consequences of external causes	13427871.31	10.0	33485.96	6598101.86	8.9	16454.12
Congenital malformations, deformations and chromosomal abnormalities	39626.72	0.0	39626.72	9988.34	0.0	9988.34
Diseases of the musculoskeletal system and connective tissue	126469.38	0.1	31617.35	54453.07	0.1	13613.27
Diseases of the skin and subcutaneous tissue	105874.72	0.1	26468.68	67948.23	0.1	16987.06
Diseases of the blood and blood-forming organs and certain disorders involving the immune mechanism	332274.62	0.2	30206.78	190714.50	0.3	17337.68
Symptoms, signs and abnormal clinical and laboratory findings, not elsewhere classified	5151758.37	3.8	31222.78	2737935.51	3.7	16593.55
Neoplasms [tumors]	17136107.06	12.7	24585.52	10994046.11	14.8	15773.38
Total	134724671.62	100	29073.08	74517897.02	100	16080.69



283 Discussion of results

284 The present study estimated the loss of productivity due to premature mortality in
285 Cabo Verde, from 2016 to 2020. For this, the Human Capital approach method was used
286 in the analysis of the cost of the disease and the productivity losses due to premature
287 mortality,[4,18]. The current study is the first conducted in Cabo Verde, assessing the
288 indirect costs due to all-causes of premature mortality.

289 The results of the present study point to a significant difference between the sexes, in
290 terms of productivity losses. Males accounted for 71.8% of the total CPL. This result was
291 higher than the results obtained in Tanzania and Iran, where the costs attributed to men
292 were around 58% and 67%, respectively,[4,18]. However, it is noteworthy that in the last
293 two studies, the authors evaluated only the main causes of death, while in the present
294 study, all causes of premature death were taken into account,[4,18]. Furthermore, the
295 Łyszczarz [19] reported costs attributed to males between 64.7% and 81.2% of the total
296 costs, in Europe, while Díaz-Jiménez et al.[20] revealed that the CPL for males was three
297 times higher for females. The predominance of males shown in the current analysis
298 reflected the burden of premature mortality in this population. In other economic studies
299 conducted by Menzin et al. and Carter et al.[17,21], the notable burden of lost productivity
300 attributed to males was associated with greater participation in economic activities and
301 disparity in income between the sexes.

302 In the present study, the estimated 8,965 YPPLL calculated resulted in a total loss
303 of 98,659,153.23 USD and an average 21,290.28 USD per death. Total estimated CPL
304 represented 5.3% of GDP (1,853,485,384.00 USD) in 2017,[14]. The value of CPL in
305 relation to the GDP in the current study was lower than that reported by Łyszczarz
306 [19],which showed potential losses between 0.6% and 3.2% of GDP in the evaluated
307 European countries. Díaz-Jiménez et al. [20] reported values between 1.6 and 3.0% while
308 Rumisha et al. [4] reported values equivalent to 0.3% of GDP.

309 In the present study, the mean CPL per death was 21,290.28 USD, a value higher
310 than the results of Rumisha et al.[4], and lower than the mean value per death reported by
311 Najafi et al.[18]. In the current analysis, the group “pregnancy, childbirth and

312 puerperium” represented the highest CPL average per death (26,116.26 USD) and only
313 0.8% of the estimated total CPL. In comparison, this group accounted for a total loss of
314 productivity of less than 0.1%, in a similar study [21] and 1% of lost productivity in the
315 African region [22].

316 When mortality data were analyzed from a productivity loss perspective, results
317 showed that the main drivers of CPL were trauma, external causes of morbidity and
318 mortality (12.5%) and Injury, poisoning and certain other consequences of external
319 causes (9.4%) represented 21.9% of the total CPL. Diseases of the circulatory system
320 accounted for (19.1%), certain infectious and parasitic diseases 16.7% and neoplasms
321 13.8%. When comparing with other studies evaluating costs of productivity loss from all
322 causes of premature death, Carter et al. [21] reported neoplasms (30%) as the biggest
323 driver of lost productivity, followed by cardiovascular diseases (19%), unintentional
324 injuries (15%) and intentional injuries (13%). Rumisha et al. [4] reported the
325 predominance of communicable diseases, followed by neoplasms and injuries among the
326 main contributors to CPL, and Diaz-Jimenez et al. [20] showed that injuries were
327 responsible for 61% of lost productivity in their study.

328 The 921 deaths verified related to trauma in this study, occurred mostly in the
329 young population and contributed to about 23562.5 YPPLL, which translated in
330 21,580,954.42 USD. For this cause of death, the age groups of 20 to 44 years represented
331 78% of YPPLL. In comparison, the 967 deaths due to diseases of the circulatory system,
332 which resulted in 12,877.5 YPPLL approximately 50% less than YPPLL due to trauma.
333 Showing that death due to trauma occurred in younger age groups. Diseases of the
334 circulatory system corresponded to a CPL of 18,843,260.42 USD, and these deaths
335 occurred mainly in the older age groups (age group 40 to 59 years represented 59.4% of
336 YPPLL due to this cause). The results of the present study corroborate the findings by
337 Delgado and Carter et al. [7,21] that demonstrated that death due to injuries often occur
338 in the young population.

339 The results of the present study showed that the highest productivity loss was due
340 to non-communicable diseases. For example, diseases of the circulatory system and
341 neoplasms represented 32.9% of the total CPL. This finding is in line with the results of
342 studies carried out in Iran [18] and in Australia [21], but differed from results in Tanzania
343 [4] which reported a predominance of communicable diseases. However, communicable
344 diseases continue to represent an important burden in the mortality profile of Cabo Verde.

345 For instance, certain infectious and parasitic diseases accounted for 16.7% of CPL,
346 showing that the country is still in epidemiological transition [23]. Interestingly, this
347 cause of death was the main driver of costs in the female population, accounting for 23.3%
348 of the total CPL in this group, while diseases of the circulatory system and neoplasms
349 contributed with 22.8% and 19.5%, respectively. Evidence available on the economic
350 burden of disease on the African Continent [22] indicated a near balance between non-
351 communicable diseases (37%) and communicable diseases (36%) as the main drivers of
352 productivity losses, and this represents a challenge for health systems that have
353 traditionally focused on communicable diseases [24]. It also emphasizes the need for
354 greater investment in health and demonstrates the need to implement robust public health
355 policies that address these issues [22].

356 Sensitivity analysis was performed according to the guidelines [25,26] for
357 economic studies. The discount rates of 3% and 6% were applied, which resulted in
358 present values of lost productivity of 134,724,671.62 USD and 74,517,897.02 USD,
359 respectively. These values correspond to 7.3% and 4.0% of 2017 GDP [14].

360 There is a limited number of studies that assess productivity loss due to all causes
361 of death, particularly on the African continent. In addition, most studies found analyzed
362 costs due to specific causes [17,27–33]. Furthermore, no studies were found that
363 addressed the issue of productivity loss in small island developing countries, such as Cabo
364 Verde. Thus, the present study will contribute to the construction of scientific knowledge
365 on the subject at national and regional level.

366 The present study had limitations that should be taken into account when
367 interpreting the results. Firstly, it was assumed that each individual of working age would
368 contribute equally to society if they did not die by the defined age limit using the Human
369 Capital approach. Although this method is often criticized as it tends to overestimate the
370 losses resulting from premature mortality [12,17,34], however, the method is widely used
371 in economic studies, due to its relatively easy application. Moreover, there is still no
372 consensus on the best methodology to assess the indirect costs of mortality [5,12,35].
373 Future economic studies evaluating the costs of premature death in Cabo Verde, could
374 apply other methods described in the literature [17,19,21].

375 Other limitations include that fact that other indirect productivity losses related to
376 mortality were not considered in the analysis, such as intangible costs, among others,
377 which could lead to underestimation of the economic burden of the analyzed causes. Cost

378 analysis was performed by group of causes. Therefore, the loss of productivity due to
379 specific deaths was not demonstrated. This may constitute a topic for future
380 investigations.

381 Finally, it was found that 4% of the calculated costs were attributed to the group
382 of “symptoms, signs and abnormal findings of clinical and laboratory tests, not classified
383 elsewhere”, which highlights the need to further improve the classification of causes of
384 death and registration in the country's health information system (SIS).

385 **Conclusion**

386 The study demonstrated the burden of premature mortality and associated costs in
387 Cabo Verde from 2016 to 2020 and elucidated patterns of early mortality in the period
388 analyzed. This study revealed that the main drivers of lost productivity in the period were
389 trauma, diseases of the circulatory system, certain infectious and parasitic diseases and
390 neoplasms. It also showed that a significant proportion of the costs of lost productivity
391 was attributable to males. Communicable diseases still represent an important burden
392 with regard to the costs of lost productivity in Cabo Verde, showing that the country is
393 still in an epidemiological transition.

394 The estimation of the burden of mortality and the cost of productivity lost for
395 society and the national economy can be another instrument for assessing the mortality
396 profile of the country, thus complementing the measures traditionally used to demonstrate
397 the profile of mortality and support decision-making and allocation of resources. The
398 implementation of policies aimed at reducing premature mortality, especially from
399 preventable causes, may result in reduced costs of lost productivity and improvements in
400 the well-being of the cabo-verdean population.

401 **Acknowledgments**

402 The authors would like to thank the staff in charge of compiling mortality data and the
403 National Health Directorate for authorizing the use of data.

404 **Author Contributions**

405 **Conceptualization:** Ngibo Mubeta Fernandes, Edna Duarte Lopes, Janilza Solange
406 Gomes Silveira Silva

407 **Data curation:** Janice de Jesus Xavier Soares, Domingos Veiga Varela

408 **Formal analysis:** Ngibo Mubeta Fernandes, Janice de Jesus Xavier Soares.
409 **Investigation:** Ngibo Mubeta Fernandes, Janice de Jesus Xavier Soares, Edna Duarte
410 Lopes, Janilza Solange Gomes Silveira Silva
411 **Methodology:** Ngibo Mubeta Fernandes, Janice de Jesus Xavier Soares
412 **Project administration:** Edna Duarte Lopes
413 **Supervision:** Edna Duarte Lopes
414 **Visualization:** Ngibo Mubeta Fernandes, Janice de Jesus Xavier Soares
415 **Writing – original draft:** Ngibo Mubeta Fernandes, Janice de Jesus Xavier Soares,
416 Janilza Solange Gomes Silveira Silva, Domingos Veiga Varela
417 **Writing – review & editing:** Ngibo Mubeta Fernandes, Edna Duarte Lopes, Janilza
418 Solange Gomes Silveira Silva

419 **References**

- 420 1. Sen A. Mortality as an indicator of economic success and failure. *Econ J*.
421 1998;108(446):1–25.
- 422 2. Martinez R, Soliz P, Caixeta R, Ordunez P. Reflection on modern methods: Years
423 of life lost due to premature mortality - A versatile and comprehensive measure for
424 monitoring non-communicable disease mortality. *Int J Epidemiol*.
425 2019;48(4):1367–76.
- 426 3. Gardner JW, Sanborn JS. Years of potential life lost (YPLL)—what does it
427 measure? *Epidemiology*. 1990;1(4):322–9.
- 428 4. Rumisha SF, George J, Bwana VM, Mboera LEG. Years of potential life lost and
429 productivity costs due to premature mortality from six priority diseases in
430 Tanzania, 2006-2015. Fischer F, editor. *PLoS One* [Internet]. 2020 Jun 9 [cited
431 2021 Feb 18];15(6):e0234300. Available from:
432 <https://dx.plos.org/10.1371/journal.pone.0234300>
- 433 5. Jo C. Cost-of-illness studies: concepts, scopes, and methods. *Clin Mol Hepatol*
434 [Internet]. 2014 Dec 1 [cited 2022 Mar 25];20(4):327. Available from:
435 [/pmc/articles/PMC4278062/](https://pubmed.ncbi.nlm.nih.gov/2578062/)
- 436 6. Ministério da Saúde e segurança Social. RELATÓRIO ESTATÍSTICO 2019

- 437 [Internet]. Praia; 2020. Available from:
438 [https://www.minsaude.gov.cv/index.php/documentosite/-/1/577-relatorio-](https://www.minsaude.gov.cv/index.php/documentosite/-/1/577-relatorio-estatico-de-2019/file)
439 [estatico-de-2019/file](https://www.minsaude.gov.cv/index.php/documentosite/-/1/577-relatorio-estatico-de-2019/file)
- 440 7. Delgado MSL. Transição Epidemiológica/Perfil de Mortalidade da População de
441 São Vicente, Cabo Verde, no Ano de 2010 [Internet]. 2013. Available from:
442 <http://www.portaldoconhecimento.gov.cv/handle/10961/4713>
- 443 8. Wessel H, Reitmaier P, Dupret A, Rocha E, Cnattingius S, Bergström S. Deaths
444 among women of reproductive age in Cape Verde: Causes and avoidability. *Acta*
445 *Obstet Gynecol Scand*. 1999 Jan;78(3):225–32.
- 446 9. Romeder JM, Mcwhinnie JR. Potential years of life lost between ages 1 and 70:
447 An indicator of premature mortality for health planning. *Int J Epidemiol*. 1977
448 Jun;6(2):143–51.
- 449 10. Šemerl JŠ, Šešok J. Years of potential life lost and valued years of potential life
450 lost in assessing premature mortality in Slovenia. *Croat Med J*. 2002;43(4):439–
451 45.
- 452 11. World Health Organization. ICD-10 Version:2019 [Internet]. International
453 Statistical Classification of Diseases and Related Health Problems 10th Revision
454 (ICD-10)-WHO Version for ;2019-covid-expanded. 2019 [cited 2022 Apr 28].
455 Available from: <https://icd.who.int/browse10/2019/en#/XVIII>
- 456 12. Olivera MJ, Palencia-Sánchez F, Riaño-Casallas M. The Cost of Lost Productivity
457 Due to Premature Chagas Disease-Related Mortality: Lessons from Colombia
458 (2010–2017). *Trop Med Infect Dis* [Internet]. 2021 Jan 27 [cited 2021 May
459 9];6(1):17. Available from: <https://pubmed.ncbi.nlm.nih.gov/33513668/>
- 460 13. WHO. GHO | By category | Life expectancy and Healthy life expectancy - Data by
461 country [Internet]. Global Health Observatory data repository. World Health
462 Organization; 2021 [cited 2022 Apr 28]. Available from:
463 <https://apps.who.int/gho/data/node.main.688?lang=en>
- 464 14. Instituto Nacional de Estatística Cabo Verde. Anuario Estatístico 2018 [Internet].
465 Praia; 2020 [cited 2021 Feb 19]. Available from: [http://ine.cv/wp-](http://ine.cv/wp-content/uploads/2020/10/aecv-2018.pdf)
466 [content/uploads/2020/10/aecv-2018.pdf](http://ine.cv/wp-content/uploads/2020/10/aecv-2018.pdf)
- 467 15. International Labour Organisation. Convention C138 - Minimum Age Convention,

- 468 1973 (No. 138) [Internet]. Geneva; 1973 [cited 2022 Jul 21]. Available from:
469 <https://www.ilo.org/dyn/normlex/en/f?p=NORMLEXPUB:12100:0::NO::P12100>
470 [_ilo_code:C138](https://www.ilo.org/dyn/normlex/en/f?p=NORMLEXPUB:12100:0::NO::P12100_ilo_code:C138)
- 471 16. Banco de Cabo Verde. RELATÓRIO ANUAL 2018 [Internet]. Praia; 2019 [cited
472 2021 Mar 13]. Available from: [https://www.bcv.cv/en/Estatisticas/Publicacoes e](https://www.bcv.cv/en/Estatisticas/Publicacoes_e_Intervencoes/Relatorios/Relatorio_Anuual/Documents/Annual_Report_2017_Inglês.pdf)
473 [Intervencoes/Relatorios/Relatorio Anual/Documents/Annual Report 2017](https://www.bcv.cv/en/Estatisticas/Publicacoes_e_Intervencoes/Relatorios/Relatorio_Anuual/Documents/Annual_Report_2017_Inglês.pdf)
474 [Inglês.pdf](https://www.bcv.cv/en/Estatisticas/Publicacoes_e_Intervencoes/Relatorios/Relatorio_Anuual/Documents/Annual_Report_2017_Inglês.pdf)
- 475 17. Menzin JAJ, Marton JP, Menzin JAJ, Willke RJ, Woodward RM, Federico V. Lost
476 productivity due to premature mortality in developed and emerging countries: An
477 application to smoking cessation. *BMC Med Res Methodol* [Internet]. 2012 Jun 25
478 [cited 2021 May 9];12(1):1–9. Available from:
479 [https://bmcmedresmethodol.biomedcentral.com/articles/10.1186/1471-2288-12-](https://bmcmedresmethodol.biomedcentral.com/articles/10.1186/1471-2288-12-87)
480 [87](https://bmcmedresmethodol.biomedcentral.com/articles/10.1186/1471-2288-12-87)
- 481 18. Najafi F, Karami-Matin B, Rezaei S, Khosravi A, Soofi M. Productivity costs and
482 years of potential life lost associated with five leading causes of death: Evidence
483 from Iran (2006-2010). *Med J Islam Repub Iran* [Internet]. 2016 [cited 2021 Feb
484 18];30(1):412. Available from: <http://mjiri.iiums.ac.ir>
- 485 19. Łyszczarz B. Production losses associated with premature mortality in 28
486 European Union countries. 2019 [cited 2022 Jul 18]; Available from:
487 www.jogh.org•
- 488 20. Díaz-Jiménez D, Castañeda-Orjuela C, Castillo-Rodríguez L, De la Hoz-Restrepo
489 F. Economic Costs Analysis of the Avoidable Mortality in Colombia 1998-2011.
490 *Value Heal Reg Issues*. 2015 Dec 1;8:129–35.
- 491 21. Carter HE, Schofield D, Shrestha R. The long-term productivity impacts of all
492 cause premature mortality in Australia. *Aust N Z J Public Health* [Internet]. 2017
493 Apr 1 [cited 2022 Jul 19];41(2):137–43. Available from:
494 <https://pubmed.ncbi.nlm.nih.gov/27868363/>
- 495 22. World Health Organization (WHO). A heavy burden: the productivity cost of
496 illness in Africa [Internet]. Brazaville; 2019 [cited 2021 Feb 18]. Available from:
497 <http://apps.who.int/iris>.
- 498 23. Ministério da Saúde de Cabo Verde. Política Nacional de Saúde- Horizonte 2020

- 499 [Internet]. Ministério da Saúde de Cabo Verde. 2007. Available from:
500 [http://www.governo.cv/documents/POLITINACIONALSAUDE_2020\(2\).pdf](http://www.governo.cv/documents/POLITINACIONALSAUDE_2020(2).pdf)
- 501 24. Gouda HN, Charlson F, Sorsdahl K, Ahmadzada S, Ferrari AJ, Erskine H, et al.
502 Burden of non-communicable diseases in sub-Saharan Africa, 1990–2017: results
503 from the Global Burden of Disease Study 2017. *Lancet Glob Heal* [Internet]. 2019
504 Oct 1 [cited 2022 Apr 30];7(10):e1375–87. Available from:
505 [https://www.thelancet.com/journals/langlo/article/PIIS2214-109X\(19\)30374-](https://www.thelancet.com/journals/langlo/article/PIIS2214-109X(19)30374-2/fulltext)
506 [2/fulltext](https://www.thelancet.com/journals/langlo/article/PIIS2214-109X(19)30374-2/fulltext)
- 507 25. Vanni T, Luz PM, Ribeiro RA, Novaes HMD, Polanczyk CA. [Economic
508 evaluation in health: applications in infectious diseases]. *Cad saúde pública /*
509 *Ministério da Saúde, Fundação Oswaldo Cruz, Esc Nac Saúde Pública.*
510 2009;25(12):2543–52.
- 511 26. Community Preventive Services Task Force. Economic Evaluation Abstraction
512 Form [Internet]. *The Community Guide*. 2010 [cited 2021 Jul 10]. p. 1–50.
513 Available from: <https://www.thecommunityguide.org/about/economic-reviews>
- 514 27. Darbà J, Marsà A. Evaluation of productivity losses due to premature mortality
515 from colorectal cancer. Fischer F, editor. *PLoS One* [Internet]. 2020 Dec [cited
516 2021 Feb 19];15:e0244375. Available from:
517 <https://doi.org/10.1371/journal.pone.0244375.t001>
- 518 28. Cardoso JP, Mota E LA, Ferreira LN, Rios PA. Custos de produtividade entre
519 pessoas envolvidas em acidentes de trânsito. *Cien Saude Colet* [Internet]. 2020 Feb
520 1 [cited 2021 Jul 15];25(2):749–60. Available from:
521 <https://pubmed.ncbi.nlm.nih.gov/32022214/>
- 522 29. Kirigia JM, Mburugu GN. The monetary value of human lives lost due to neglected
523 tropical diseases in Africa. *Infect Dis Poverty* [Internet]. 2017 Dec 18 [cited 2022
524 Apr 30];6(1):1–16. Available from:
525 <https://idpjournal.biomedcentral.com/articles/10.1186/s40249-017-0379-y>
- 526 30. Kirigia JM, Muthuri RDK. Productivity losses associated with tuberculosis deaths
527 in the World Health Organization African region. *Infect Dis Poverty*. 2016 Jun
528 1;5(1):43.
- 529 31. Kirigia JM, Muthuri RDK, Muthuri NG. The Monetary Value of Human Lives

- 530 Lost to Suicide in the African Continent: Beating the African War Drums.
531 Healthcare [Internet]. 2020 [cited 2022 Apr 30];8(84). Available from:
532 www.mdpi.com/journal/healthcare
- 533 32. Kirigia JM, Mwabu GM, Orem JN, Muthuri RK. Indirect cost of maternal
534 mortality in the WHO African Region, 2013. Int J Soc Econ [Internet]. 2016 May
535 9 [cited 2022 Apr 30];43(5):532–48. Available from:
536 [https://www.emerald.com/insight/content/doi/10.1108/IJSE-05-2014-](https://www.emerald.com/insight/content/doi/10.1108/IJSE-05-2014-0105/full/html)
537 [0105/full/html](https://www.emerald.com/insight/content/doi/10.1108/IJSE-05-2014-0105/full/html)
- 538 33. Carter HE, Schofield D, Shrestha R. Open access Productivity costs of
539 cardiovascular disease mortality across disease types and socioeconomic groups.
540 Heart [Internet]. 2019 [cited 2022 Apr 30];6:939. Available from:
541 <http://dx.doi.org/10.1136/openhrt-2018-000939>
- 542 34. Koopmanschap MA, Rutten FFH, Martin Van Ineveld B, Van Roijen L. The
543 friction cost method for measuring indirect costs of disease. J Health Econ
544 [Internet]. 1995 [cited 2021 Aug 27];14:171–89. Available from:
545 [https://www.sciencedirect.com/science/article/abs/pii/0167629694000445?via%3](https://www.sciencedirect.com/science/article/abs/pii/0167629694000445?via%3Dihub)
546 [Dihub](https://www.sciencedirect.com/science/article/abs/pii/0167629694000445?via%3Dihub)
- 547 35. Pike J, Grosse SD. Friction cost estimates of productivity costs in cost-of-
548 illness studies in comparison with human capital estimates: a review. Appl Health
549 Econ Health Policy [Internet]. 2018 Dec 1 [cited 2021 Aug 27];16(6):765.
550 Available from: [/pmc/articles/PMC6467569/](https://pubmed.ncbi.nlm.nih.gov/312646756/)

551 **Supporting information**

- 552 S1 Fig 1. Distribution of years of potential life lost by sex and age group, 2016 to 2020.
553 Legend for Fig 1. A is the distribution of YPLL for males; B is the distribution of YPLL
554 for females, C and D represent the distribution of YPLL for both sexes.
- 555 S2 Fig 2. Distribution of years of potential productive life lost by sex and age group, 2016
556 to 2020. Legend for Fig 2. A is the distribution of YPPLL for males; B is the distribution
557 of YPPLL for females, C and D represent the distribution of YPPLL for both sexes.
- 558 S12 Annex 1: Characterization of deaths from all causes, Cabo Verde, 2016 to 2020
- 559 S13 Annex 2: Causes of death in the population, Cabo Verde, 2016 to 2020

560 S14 Annex 3: Rates of years of potential life lost by municipality, Cabo Verde, 2016 to
561 2020

562 S15 Annex 4: Rates of years of potential productive life lost by municipality, Cabo Verde,
563 2016 to 2020

medRxiv preprint doi: <https://doi.org/10.1101/2022.11.21.22282604>; this version posted November 22, 2022. The copyright holder for this preprint (which was not certified by peer review) is the author/funder, who has granted medRxiv a license to display the preprint in perpetuity. It is made available under a [CC-BY 4.0 International license](https://creativecommons.org/licenses/by/4.0/).

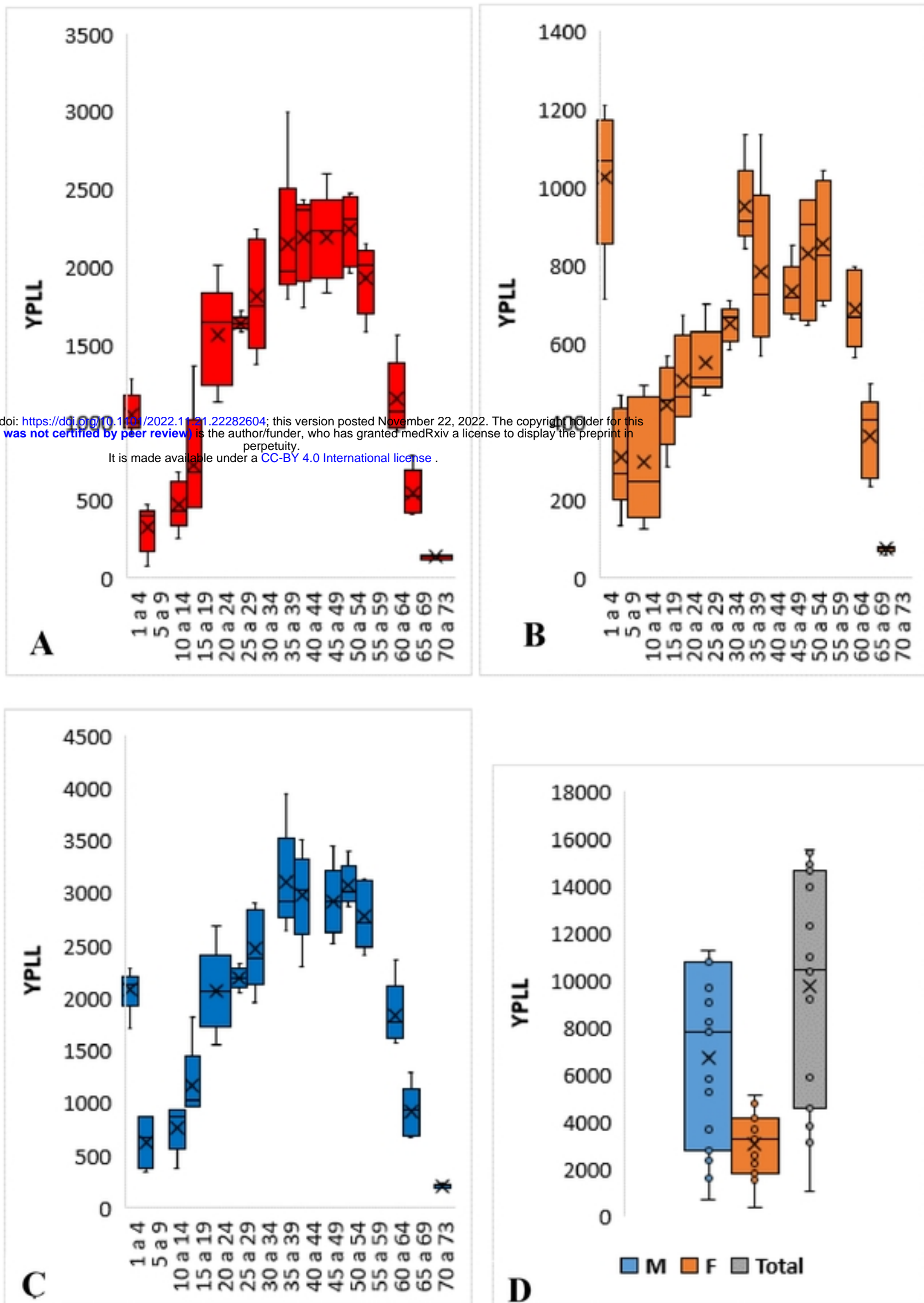


Figure 1. Distribution of Potential Years of Life Lost by sex and age group, 2016 to 2020. Legend for-Fig 1. A is the distribution of YPLL for males, B is a is the distribution of YPLL for males and females, C and D - distribution of YPLL for both sexes

medRxiv preprint doi: <https://doi.org/10.1101/2022.11.21.22282604>; this version posted November 22, 2022. The copyright holder for this preprint (which was not certified by peer review) is the author/funder, who has granted medRxiv a license to display the preprint in perpetuity. It is made available under a [CC-BY 4.0 International license](https://creativecommons.org/licenses/by/4.0/).

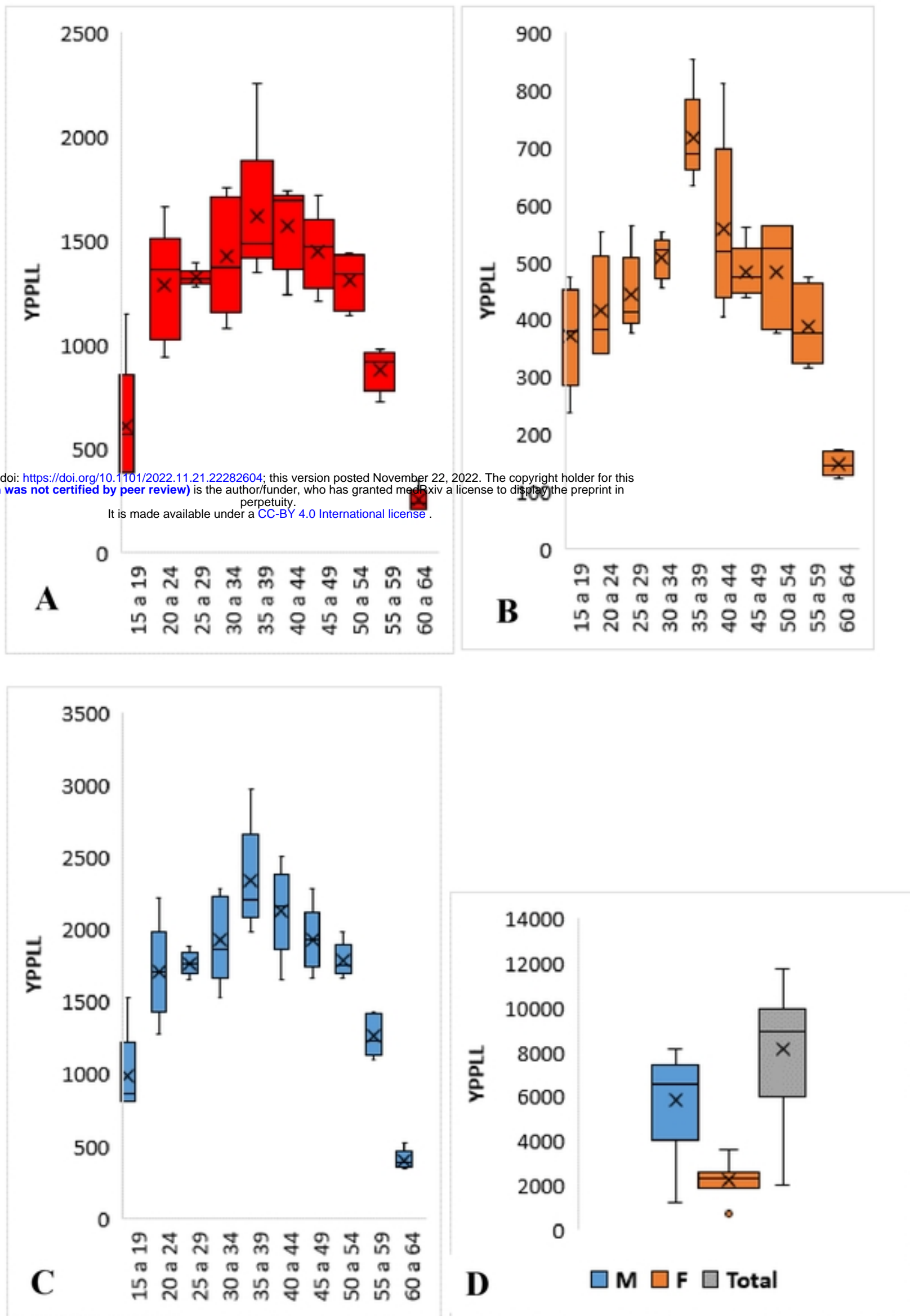


Figure 2. Distribution of years of potential productive life lost by sex and age group, 2016 to 2020. Legend for Fig 1. A is the distribution of YPPLL for males, B is a is the distribution of YPPLL for males and females, C and D - distribution of YPPLL for both sexes.