

1  
2 **Full title:** Impact of malaria diagnostic choice on monitoring of *Plasmodium falciparum*  
3 prevalence estimates in the Democratic Republic of the Congo and relevance to control programs  
4 in high-burden countries

5  
6 **Short Title:** Impact of assay choice on malaria prevalence estimates

7 Alpha Oumar Diallo<sup>1</sup>, Kristin Banek<sup>2</sup>, Melchior Mwandagalirwa Kashamuka<sup>3</sup>, Joseph Alexandre  
8 Mavungu Bala<sup>3</sup>, Marthe Nkalani<sup>3</sup>, Georges Kihuma<sup>3</sup>, Tommy Mambulu Nseka<sup>4</sup>, Joseph Losoma  
9 Atibu<sup>3</sup>, Georges Emo Mahilu<sup>3</sup>, Lauren McCormick<sup>1</sup>, Samuel J. White<sup>2</sup>, Rachel Sendor<sup>1</sup>, Cyrus  
10 Sinai<sup>5</sup>, Corinna Keeler<sup>1</sup>, Camelia Herman<sup>6</sup>, Michael Emch<sup>1,5</sup>, Eric Sompwe<sup>4</sup>, Kyaw Lay Thwai<sup>1</sup>,  
11 Rhoel R. Dinglasan<sup>7</sup>, Eric Rogier<sup>6</sup>, Jonathan J. Juliano<sup>1,2</sup>, Antoinette Kitoto Tshefu<sup>3a</sup>, Jonathan B.  
12 Parr<sup>2a\*</sup>

13  
14 <sup>1</sup> Department of Epidemiology, Gillings School of Global Public Health, University of North  
15 Carolina at Chapel Hill, Chapel Hill, North Carolina, USA

16 <sup>2</sup> Institute for Global Health and Infectious Diseases, University of North Carolina at Chapel Hill,  
17 Chapel Hill, North Carolina, USA

18 <sup>3</sup> Ecole de Santé Publique, Faculté de Médecine, University of Kinshasa, Kinshasa, Democratic  
19 Republic of the Congo

20 <sup>4</sup> Programme National de Lutte Contre Paludisme, Kinshasa, Democratic Republic of the Congo

21 <sup>5</sup> Department of Geography, University of North Carolina at Chapel Hill, Chapel Hill, North  
22 Carolina, USA

23 <sup>6</sup> Malaria Branch, Division of Parasitic Diseases and Malaria, Center for Disease Control and  
24 Prevention, Atlanta, Georgia, USA

25 <sup>7</sup> University of Florida Emerging Pathogens Institute, Department of Infectious Diseases &  
26 Immunology, College of Veterinary Medicine, Gainesville, Florida USA

27  
28 <sup>a</sup> Co-senior authors; \* Corresponding author: jonathan\_parr@med.unc.edu (JBP)

## 30 **Abstract**

31 Malaria programs rely upon a variety of diagnostic assays, including rapid diagnostic  
32 tests (RDTs), microscopy, polymerase chain reaction (PCR), and bead-based immunoassays  
33 (BBA), to monitor malaria prevalence and support control and elimination efforts. Data  
34 comparing these assays are limited, especially from high-burden countries like the Democratic  
35 Republic of the Congo (DRC). Using cross-sectional and routine data, we compared diagnostic  
36 performance and *Plasmodium falciparum* prevalence estimates across health areas of varying  
37 transmission intensity to illustrate the relevance of assay performance to malaria control  
38 programs. Data and samples were collected between March-June 2018 during a cross-sectional  
39 household survey across three health areas with low, moderate, and high transmission intensities  
40 within two health zones of Kinshasa province, DRC.

41 Samples from 1,431 participants were evaluated using RDT, microscopy, PCR, and BBA.  
42 *P. falciparum* parasite prevalence varied between diagnostic methods across all health areas,  
43 with the highest prevalence estimates observed in Bu (57.4-72.4% across assays), followed by  
44 Kimpoko (32.6-53.2%), and Voix du Peuple (3.1-8.4%). Using latent class analysis to compare  
45 these diagnostic methods against an “alloyed gold standard,” the most sensitive diagnostic  
46 method was BBA in Bu (high prevalence) and Voix du Peuple (low prevalence), while PCR  
47 diagnosis was most sensitive in Kimpoko (moderate prevalence). RDTs were consistently the  
48 most specific diagnostic method in all health areas. Among 9.0 million people residing in  
49 Kinshasa Province in 2018, the estimated *P. falciparum* prevalence by microscopy, PCR, and  
50 BBA were nearly double that of RDT.

51 Comparison of malaria RDT, microscopy, PCR, and BBA results confirmed differences  
52 in sensitivity and specificity that varied by endemicity, with PCR and BBA performing best for

53 detecting any *P. falciparum* infection. Prevalence estimates varied widely depending on assay  
54 type for parasite detection. Inherent differences in assay performance should be carefully  
55 considered when using community survey and surveillance data to guide policy decisions.

## 56 **Introduction**

57 Malaria programs rely upon various diagnostic assays to monitor malaria prevalence and  
58 to support control and elimination efforts. Though malaria rapid diagnostic tests (RDTs) and  
59 microscopy historically account for nearly all point-of-care clinical *Plasmodium falciparum*  
60 diagnoses and surveillance methods in endemic regions, high-throughput polymerase chain  
61 reaction (PCR) assays and bead-based immunoassays (BBA) are gaining traction in large surveys  
62 worldwide.

63 Unique features of each assay and the targets they detect are known to influence their  
64 performance characteristics in different settings. For example, microscopy or PCR detection is  
65 largely limited to the period of active infection, whereas RDT or immunoassay detection of *P.*  
66 *falciparum* histidine-rich protein 2 (HRP2) can extend weeks after clearance of infection because  
67 antigen often lingers in the blood [2]. These differences can be beneficial or serve as limitations  
68 depending on the question at hand and the epidemiological setting. Prior comparisons of RDT,  
69 microscopy, and PCR suggest that local malaria transmission intensity is an important  
70 determinant of their diagnostic performance [1]. However, data comparing all four assays –  
71 RDT, microscopy, PCR, and BBA is limited, especially from high-burden countries.

72 The World Health Organization recently called for renewed efforts to address malaria in  
73 high-burden countries. 70% of the world’s malaria cases are concentrated in only 11 countries,  
74 [3] 10 of which are in sub-Saharan Africa. All of these countries reported increases in malaria  
75 cases in 2020, continuing a trend that started well before the COVID-19 pandemic [4]. Efforts to  
76 move away from “one size fits all” approaches and toward interventions tailored to the local  
77 epidemiology are required to achieve sustained progress against malaria [3].

78 This is especially true in the Democratic Republic of the Congo (DRC), where  
79 approximately 12% of global malaria cases and 26 million annual infections occur across a

80 diverse landscape of malaria transmission intensities [4]. Leveraging samples collected during  
81 the baseline survey of a longitudinal malaria transmission study in Kinshasa Province [5,6], we  
82 sought to compare malaria diagnostic performance for surveillance in sites with low, moderate,  
83 and high *P. falciparum* parasite prevalence and across all ages. We observed differences in  
84 performance by test type and modeled the impact of diagnostic assay choice on monitoring  
85 province-level prevalence estimates, emphasizing the importance of local context when choosing  
86 or interpreting results of malaria diagnostic assays.

87

## 88 **Methods**

### 89 *Data source and study population*

90 We performed all four malaria diagnostic assays—RDT, microscopy, PCR, and BBA—on  
91 blood samples and data collected in March-June 2018 (rainy season) as part of a prospective,  
92 longitudinal study of malaria conducted in urban and rural communities in Kinshasa Province.  
93 The first phase of the cohort was conducted from 2015-2017 [5,6] followed by a second phase  
94 conducted from 2018-2022 (the Longitudinal Epidemiological and Entomological Study of  
95 Malaria and its Vectors in Kinshasa Province). This cross-sectional sub-study was conducted  
96 among samples from individuals during the second phase baseline household visit.

97 Detailed methods regarding participant sampling and enrollment have been described  
98 previously [5,6]. Briefly, two health zones within Kinshasa province were selected based on  
99 historic malaria prevalence, ecological diversity to cover the urban/rural gradient, and  
100 accessibility year-round by the research team. Bu and Kimpoko health areas, nested within  
101 Maluku 1 health zone (rural), were selected to represent high and moderate malaria endemicity  
102 settings, respectively (**Fig 1**). The Voix du Peuple health area, within Lingwala health zone  
103 (urban), serves as a low malaria endemicity setting and is located within the Kinshasa

104 metropolitan region, the DRC's capital and one of the world's largest and fastest-growing cities  
105 [7].

106

107 **Fig 1. Location of study sites by health area.** Three rural villages in Bu health area, three peri-  
108 urban villages in Kimpoko health area, and one urban neighborhood in Voix du Peuple health  
109 area were included, all located within Kinshasa Province.

110

111 All persons aged six months or older that normally lived in the household were eligible  
112 for inclusion. Eligible individuals provided informed consent or minor assent (individuals aged  
113 7-17 years) administered in Lingala or French before enrollment in the second phase. We  
114 restricted this analysis to participants with results from all four malaria diagnostic assays – RDT,  
115 microscopy, PCR, and BBA. Every participant provided informed consent for study participation  
116 and for collection, storage, and use of biological specimens. In addition to parental consent, all  
117 children 7-17 years old provided written assent to participate. The study was approved by the  
118 Ethical Committee of the Kinshasa School of Public Health (# ESP/CE/021/2017) and the  
119 University of North Carolina (UNC) Institutional Review Board (# 17-1588) and determined to  
120 be an activity not involving human subject research by the Human Subjects office of the Centers  
121 for Disease Control and Prevention (project 0900f3eb81bec92c).

122

### 123 *Data collection*

124 At the baseline visit of the second phase study, trained staff administered a questionnaire  
125 derived from the Demographic and Health Surveys (MEASURE-DHS, Rockville, MD).  
126 Household heads were asked questions on household characteristics to assess household wealth  
127 (i.e., housing materials, asset ownership, electrification, and water source). In addition,  
128 respondents were asked to provide individual demographic information, bednet ownership, age,  
129 and usage, and basic health information related to malaria, such as having a prior malaria  
130 diagnosis, medications received, and presence of a fever.

131

### 132 *Rapid diagnostic test (RDT) and microscopy diagnosis*

133           Following completion of the questionnaire, a laboratory technician collected whole blood  
134 by finger- or heel-prick from household participants for RDT, slide preparation, and dried blood  
135 spot (DBS) collection. During the household visit, whole blood was applied to an SD Bioline  
136 Malaria Ag P.f./Pan-pLDH RDT (05FK60, Alere, Gyeonggi-do, Republic of Korea), and results  
137 were interpreted on-site according to the manufacturer's protocol. This RDT detects *P.*  
138 *falciparum* histidine-rich protein 2 (HRP2) and pan-Plasmodium lactate dehydrogenase (pLDH)  
139 antigens. If positive by either RDT band, the participants were referred to their local health  
140 center and treated according to national guidelines. Next, a laboratory technician prepared a thick  
141 smear slide labeled with participant codes and the date and time of collection. In brief, a small  
142 drop of finger- or heel-prick blood was spread on glass slide and allowed to air dry and stained  
143 with 3% Giemsa (Merck, Rahway, NJ, USA; or VWR, Radnor, PA, USA) for 30 minutes. .  
144 Slides were transported to the study laboratory in Kinshasa, read once by expert microscopists,  
145 with review by a second microscopist any time the initial microscopist observed a form of  
146 parasite not clear or familiar to them. All slides were read until at least 200 white blood cells  
147 (WBCs) were counted. For slides with <100 asexual parasites observed after counting 200  
148 WBCs, review continued until 500 total WBCs had counted. Microscopy parasite densities were  
149 estimated using the equation: (number of counted parasites x 8,000)/(number of counted WBCs).

150

#### 151 *Sample processing and P. falciparum polymerase chain reaction (PCR)*

152           Dried blood spot samples (DBS) were collected onto Whatman filter paper (GE  
153 Healthcare, Chicago, IL, USA), dried at ambient temperature, and stored with desiccant at -20 °C  
154 in Kinshasa until shipment to UNC for processing and PCR testing. DNA used for PCR was  
155 extracted from three 6mm punches per subject using Chelex 100 resin and Tween, as previously



156 described [8]. The real-time PCR assay targets the *P. falciparum*-specific lactate dehydrogenase  
157 (*pfl dh*) gene with a lower limit of detection of 5–10 parasites/ $\mu$ l [9,10]. The quantitative PCR  
158 assay was performed using reaction conditions, primers, and quality control measures for high-  
159 throughput PCR as previously described, with the exception that assays were performed in  
160 singleton and amplification by 40 cycles was considered positive [5]. Primer sequences and  
161 reaction conditions are provided in **S1 Table**.

162

### 163 *Multiplex bead-based immunoassay*

164 A single 6mm DBS punch was subjected to a multiplex BBA for detecting *Plasmodium*  
165 antigens at the US Centers for Disease Control and Prevention (CDC) as described previously  
166 [17] and rehydrated in a buffer with PBS (pH 7.2), 0.3% Tween-20, 0.5% casein, 0.5% BSA,  
167 0.5% polyvinyl alcohol, 0.8% polyvinylpyrrolidone, 0.02% sodium azide, and 3  $\mu$ g/mL of *E.*  
168 *coli* lysate (to prevent nonspecific binding). Though only HRP2 antigen positivity is utilized for  
169 analysis here, the standard BBA multiplex panel was utilized for this sample set as described  
170 below. Magnetic microbeads (Luminex Corp., Austin, TX, USA) were conjugated to antigen  
171 capture antibodies by an antibody coupling kit (Luminex Corp.) according to manufacturer's  
172 instructions. For one milliliter of microbeads ( $12.5 \times 10^6$  beads) antibody coupling  
173 concentrations were: anti-pan-*Plasmodium* aldolase antibody (pAldolase, 12.5  $\mu$ g, Abcam); anti-  
174 pan-*Plasmodium* lactate dehydrogenase antibody (pLDH, 12.5  $\mu$ g of clone M1209063,  
175 Fitzgerald); anti-*P. vivax* LDH antibody (PvLDH, 12.5  $\mu$ g of clone M1709Pv2); anti-*P.*  
176 *falciparum* histidine-rich protein 2 (HRP2, 20  $\mu$ g, clone MPFG-55A, ICL Inc, Portland, OR,  
177 USA). Detection antibodies were also prepared in advance by biotinylating (EZ-link Micro  
178 Sulfo-NHS-Biotinylation Kit, Thermo Fisher Scientific, Waltham, MA) according to

179 manufacturer's instructions. Final prepared dilution of detection antibodies was 1.0 mg/mL and  
180 for anti-malarial antigen specific antibodies as follows: pAldolase (Abcam, Cambridge, UK),  
181 pLDH and PvLDH (1:1 antibody mixture of clones M1709Pv1 and M86550, Fitzgerald  
182 Industries, Acton, MA, USA), HRP2 (1:1 antibody mixture of MPFG-55A and MPFM-55A, ICL  
183 Inc). Upon conjugation or biotinylation, reagents were stored at 4 °C until use in the  
184 immunoassay.

185 BBA reagents were diluted in buffer: containing 0.1 M phosphate buffered saline (PBS)  
186 pH 7.2, 0.05% Tween-20, 0.5% bovine serum albumin (BSA), and 0.02% sodium azide. For all  
187 wash steps, assay plate was affixed to a handheld magnet (Luminex Corp), and gently tapped for  
188 2 min to allow bead magnetization before evacuation of liquid and washing with 150 µL PBS,  
189 0.05% Tween-20. The four bead regions were combined in dilution buffer (in a reagent trough)  
190 and pipetted onto a 96-well assay plate (BioPlex Pro, Bio-Rad, Hercules, CA, USA) at a quantity  
191 of approximately 800 beads/region. Plates were washed twice, and 50 µL of controls or samples  
192 pipetted into appropriate wells. Following 90-min gentle shaking at room temperature protected  
193 from light, plates were washed three times. A mixture of detection antibodies was prepared in  
194 dilution buffer (pAldolase at 1:2000, all others at 1:500), and 50 µL added to each well for a 45-  
195 min incubation. After three washes, 50 µL of streptavidin–phycoerythrin (at 1:200, Invitrogen)  
196 was added for a 30-min incubation. Plates washed three times, and 50 µL dilution buffer added to  
197 each well for 30-min incubation. Plates washed once and beads resuspended in 100 mL PBS.  
198 After brief shaking, plates were read on MAGPIX machine (R&D Systems, Minneapolis, MN,  
199 USA) with target of 50 beads per region. The median fluorescence intensity (MFI) value was  
200 generated for all beads collected for each region by assay well and subtracting the assay signal  
201 from wells with dilution buffer blank provides an MFI-background (MFI-bg) value used for

202 analyses. Positive and negative controls were included on each plate to ensure assay  
203 performance.

204

### 205 *Statistical analyses*

206 We estimated *P. falciparum* malaria prevalence and 95% confidence intervals (CIs)  
207 across health areas, age categories, sex, self-reported history of fever in the last seven days, and  
208 household membership size from RDT, microscopy, PCR, and BBA results based on predicted  
209 values using univariate Generalized Estimating Equations (GEE) logistic regression. The GEE  
210 yields population-average estimates while accounting for the potential influence of sharing a  
211 household with a malaria-infected person on other members' infection status [12]. To model the  
212 correlation between household members, we assumed an exchangeable working correlation  
213 structure [13].

214 We estimated sensitivity and specificity using the classical contingency table approach  
215 and latent class analysis (LCA) to evaluate the performance of the four diagnostic methods (i.e.,  
216 RDT, microscopy, PCR, and BBA) to detect *P. falciparum* malaria infection. In the contingency  
217 table approach, we used PCR or BBA as the reference (“gold standard”) because they are highly  
218 sensitive assays that detect different targets (nucleic acid and antigen) and outperform the  
219 traditional microscopy gold standard in most settings. Given that there is not a clear gold  
220 standard, we also used LCA to estimate sensitivity and specificity by combining results from the  
221 four diagnostic methods via a probabilistic model to define an internal reference standard, or  
222 “alloyed gold standard” [14–17].

223 To inform the potential impact of malaria diagnostic method choice on malaria control  
224 programs – for example, during decision-making about RDT or antimalarial medication

225 procurement – we estimated the number of individuals with *P. falciparum* malaria infection in  
226 Kinshasa Province during the phase two baseline data collection period (March-June 2018) using  
227 each diagnostic method: RDT, microscopy, *pfdh* real-time PCR, and BBA. First, we  
228 stratified health areas in Kinshasa Province into three malaria prevalence categories: prevalence  
229 of 15-24% (low), 25-34% (moderate), or  $\geq 35\%$  (high) using PCR-based prevalence estimates  
230 from the 2013-2014 Demographic and Health Survey (DHS) [18]. We modelled Kinshasa  
231 Province malaria prevalence by calculating the cluster-level malaria prevalence based on all  
232 samples for each DHS cluster. Then, we fit a thin plate spline model to the cluster-level  
233 prevalence values to spatially interpolate the malaria prevalence across Kinshasa province in  
234 areas without DHS clusters [19]. Finally, we used zonal statistics to estimate the mean malaria  
235 prevalence in each health area within Kinshasa province. While there are 416 health areas in  
236 Kinshasa Province, we could only estimate the mean malaria prevalence for 402 (96.6%) health  
237 areas, where health area population estimates from the Ministry of Health were able to be linked  
238 by name to corresponding health area boundaries from a publicly available geospatial dataset  
239 [20].

240 Second, each health area in Kinshasa Province was matched with the study health area  
241 with the most similar *P. falciparum* prevalence. Third, we estimated age-specific malaria  
242 prevalence estimates by RDT, microscopy, PCR, and BBA from the study health areas. For this  
243 analysis, we stratified age into two categories,  $<5$  and  $\geq 5$  years old, using age data provided by  
244 the DRC Ministry of Health. Fourth, we generated age-specific weights by multiplying the study  
245 age-specific prevalence estimates and age distribution ( $<5$  years: 18.9%;  $\geq 5$  years: 81.1%) used  
246 by the DRC Ministry of Health. Fifth, we multiplied the age-specific weights by the age-  
247 stratified population estimates provided by the DRC Ministry of Health for 2018 and obtained

248 from the DRC District Health Information System 2 (DHIS2) to calculate the age-specific  
249 number of individuals with malaria by diagnostic method for 402 health areas in Kinshasa  
250 province [21]. Finally, we summed the estimated number of cases by diagnostic method to obtain  
251 estimates for the entire province. See **S1 Appendix** for a detailed description of these methods.  
252 We conducted analyses in R Statistical Software (v4.1.2; [22]).  
253

254 **Results**

255 *Study participant description*

256           Samples from 1,431 participants with available results for four malaria diagnostic assays  
257 – RDT, microscopy, PCR, and BBA – were included in our analysis. Participants were  
258 distributed across the study health areas as follows: 491 (34.3%) in Bu (three rural villages), 521  
259 (36.4%) in Kimpoko (three peri-urban villages), and 419 (29.3%) in Voix du Peuple (one urban  
260 neighborhood) (**Table 1**). The median age of subjects was 20.0 years old (interquartile range:  
261 11.0, 39.5), most were female (55.3%), and they shared a household with 6-10 other study  
262 participants (59.0%).

263 **Table 1. Malaria prevalence by diagnostic method (RDT, microscopy, PCR, and BBA) for**  
 264 **the detection of *Plasmodium falciparum* (N=1,431).**

265

Characteristics	Study population N (%)	<i>P. falciparum</i> prevalence (95% CI)			
		RDT <sup>a</sup>	Microscopy <sup>b</sup>	PCR <sup>c</sup>	BBA <sup>d</sup>
Overall	1,431	33.7 (29.9-37.8)	43.3 (39.3-47.5)	46.1 (41.8-50.6)	48.4 (44.0-52.8)
Health area					
Bu					
Age (years)	491 (34.3)	57.4 (51.7-62.9)	59.7 (54.0-65.1)	66.2 (60.2-71.8)	72.4 (66.9-77.2)
<5	320 (22.4)	60.6 (50.3-70.0)	53.4 (43.2-63.4)	50.3 (39.9-60.6)	72.6 (62.4-80.9)
5-14	844 (59.0)	77.2 (69.9-83.1)	71.4 (63.0-78.6)	77.6 (69.5-84.0)	85.8 (78.1-91.1)
15-24	178 (12.4)	43.6 (29.9-58.3)	68.3 (54.3-79.6)	76.7 (64.2-85.7)	69.2 (54.0-81.1)
≥ 25	89 (6.2)	34.9 (27.3-43.4)	46.0 (37.9-54.4)	59.0 (50.3-67.2)	56.3 (47.7-64.4)
Kimpoko					
Age (years)	521 (36.4)	32.6 (28.2-37.4)	50.7 (45.5-55.9)	53.2 (47.8-58.5)	51.2 (45.8-56.6)
<5	61 (11.8)	16.3 (8.8-28.2)	38.5 (27.7-50.5)	29.6 (19.8-41.8)	32.3 (22.2-44.4)
5-14	190 (36.6)	52.5 (43.9-60.9)	60.6 (52.3-68.4)	66.4 (57.9-73.9)	61.4 (52.7-69.5)
15-24	98 (18.9)	38.6 (29.7-48.3)	59.7 (49.5-69.1)	68.1 (58.6-76.3)	59.4 (49.6-68.4)
≥ 25	170 (32.8)	14.0 (9.6-20.0)	39.8 (32.4-47.7)	39.2 (31.6-47.3)	42.0 (34.7-49.7)
Voix du Peuple					
Age (years)	419 (29.3)	3.1 (1.7- 5.5)	7.6 (5.1-11.2)	5.6 (3.5- 8.8)	8.4 (6.0-11.6)
<5	36 (8.6)	0.0 (0.0- 0.0)	16.3 (6.3-36.0)	2.1 (0.3-14.5)	0.0 (0.0- 0.0)
5-14	101 (24.1)	5.9 (2.5-13.5)	7.6 (3.4-16.1)	8.7 (4.2-17.2)	9.8 (5.3-17.5)
15-24	119 (28.4)	3.4 (1.3- 8.1)	9.1 (5.1-15.7)	8.1 (4.6-14.1)	10.9 (6.7-17.3)
≥ 25	163 (38.9)	2.5 (1.1- 5.2)	5.5 (3.2- 9.3)	3.0 (1.3- 6.9)	7.4 (4.2-12.9)
Sex <sup>f</sup>					
Male	648 (45.3)	34.7 (30.4-39.4)	44.7 (40.0-49.5)	48.4 (43.2-53.7)	48.3 (43.1-53.6)
Female	783 (54.7)	32.9 (28.6-37.4)	42.2 (37.5-47.0)	44.2 (39.6-48.9)	48.5 (43.7-53.3)
Self-reported fever in last seven days					
No	1,137 (83.7)	31.2 (27.3-35.4)	41.8 (37.5-46.2)	45.6 (41.0-50.2)	47.0 (42.3-51.7)
Yes	222 (16.3)	44.6 (37.3-52.1)	50.2 (42.2-58.2)	49.2 (41.4-57.0)	55.0 (47.4-62.4)
Household members enrolled					
1-5	320 (22.4)	35.8 (29.4-42.8)	49.5 (42.5-56.6)	51.4 (44.3-58.6)	55.0 (47.5-62.2)
6-10	844 (59.0)	35.0 (29.9-40.5)	41.8 (36.5-47.3)	46.1 (40.2-52.1)	47.1 (41.3-53.0)
11-15	178 (12.4)	25.3 (14.8-39.7)	37.5 (24.7-52.4)	33.3 (20.1-49.7)	40.1 (26.1-56.0)
16-20	89 (6.2)	9.1 (2.5-28.5)	16.8 (6.6-36.8)	15.7 (5.0-39.6)	13.5 (3.7-39.0)

266 Abbreviations: 95% CI, 95% confidence interval; BBA, bead-based immunoassay; PCR, polymerase chain reaction; RDT, rapid  
 267 diagnostic test.

268 <sup>a</sup> Used generalized estimating equation logistic regression to estimate prevalence and 95% CI

269 <sup>b</sup> HRP2-band positive, <sup>b</sup> Any *Plasmodium* species visualized, <sup>c</sup> *P. falciparum* lactate dehydrogenase PCR-positive, <sup>d</sup> *P.*  
 270 *falciparum* HRP2 antigen positive

271 <sup>f</sup> Self-reported at enrollment.

272 *P. falciparum* infection prevalence

273 *P. falciparum* parasite prevalence varied between diagnostic methods across all health  
274 areas, with the highest prevalence estimates observed in Bu (57.4-72.4% across assays), followed  
275 by Kimpoko (32.6-53.2%), and Voix du Peuple (3.1-8.4%), which we defined as “high,”  
276 “moderate,” and “low” prevalence areas, respectively (**Table 1, Fig 2A**). *P. falciparum*  
277 prevalence was consistently lowest by RDT (HRP2 band) and highest by BBA (HRP2 detection)  
278 and PCR (*pfdh* amplification). Across age categories, malaria prevalence was highest among  
279 school-aged children (5-14 years) and young adults (15-24 years), participants who self-reported  
280 experiencing a fever in the last seven days, and those who lived in households with 1-5 members  
281 enrolled.



282 **Fig 2. *P. falciparum* prevalence and diagnostic assay performance.**

283 (A) *P. falciparum* prevalence and 95% confidence intervals across diagnostic assays by health  
284 area. (B) Diagnostic assay performance compared to an alloyed gold standard by health area. A  
285 diagnostic assay with perfect sensitivity and specificity would fall in the top left corner of panel  
286 B.

287  
288 *Abbreviations:* RDT, rapid diagnostic test HRP2-band; Microscopy, thick-smear light microscopy; PCR, real-time polymerase  
289 chain reaction detecting the *pfdh* gene; BBA, bead-based immunoassay detecting HRP2 protein.  
290 <sup>a</sup>Error bars are 95% confidence intervals.

291

292 *Diagnostic performance for the detection of P. falciparum*

293           Diagnostic assay performance for the detection of *P. falciparum* varied by endemicity  
294 and gold standard choice (**Table 2**). In general, assay sensitivity decreased, and specificity  
295 increased for the detection of *P. falciparum* when moving from higher to lower prevalence health  
296 areas. Among the three diagnostic methods compared to PCR, BBA (sensitivity 79.5% [95% CI:  
297 76.1-82.6]; specificity 80.2% [95% CI: 77.3-82.9]) had the highest sensitivity but lower  
298 specificity than RDT and microscopy across all health areas with the exception of Voix du  
299 Peuple (low prevalence). Compared to the BBA, PCR (sensitivity 75.8% [95% CI: 73.2-79.6];  
300 specificity 83.0% [95% CI: 80.2-85.5]) had the highest sensitivity but a lower specificity than  
301 RDT.

302

303 **Table 2 Sensitivity and specificity of malaria diagnostic methods versus PCR, BBA, and LCA for the detection of *Plasmodium***  
 304 ***falciparum*, stratified by health area and malaria prevalence.**

305

Health area <i>prevalence</i>	Diagnostic test	Versus PCR		Versus BBA		LCA	
		Sensitivity (95% CI)	Specificity (95% CI)	Sensitivity (95% CI)	Specificity (95% CI)	Sensitivity (95% CI)	Specificity (95% CI)
Bu <i>high</i>	RDT	73.2 (68.0-77.9)	74.2 (66.9-80.7)	76.0 (71.2-80.3)	92.0 (86.1-95.9)	84.7 (80.3-89.8)	86.7 (79.8-93.1)
	Micro	78.1 (73.2-82.5)	75.4 (68.2-81.8)	73.4 (68.5-78.0)	75.2 (67.1-82.2)	84.4 (79.5-89.4)	78.8 (71.7-84.7)
	PCR	N/A	N/A	79.9 (75.4-84.0)	70.1 (61.7-77.6)	91.0 (87.4-95.1)	73.5 (65.6-80.9)
	BBA	87.3 (83.2-90.8)	57.5 (49.6-65.1)	N/A	N/A	98.4 (95.9-100.0)	69.4 (62.1-76.8)
Kimpoko <i>moderate</i>	RDT	57.7 (51.7-63.6)	95.4 (92.0-97.7)	55.0 (48.9-61.1)	90.5 (86.2-93.8)	79.2 (71.5-86.0)	97.8 (95.2-100.0)
	Micro	72.4 (66.8-77.6)	74.8 (68.8-80.1)	65.8 (59.8-71.4)	65.9 (59.7-71.7)	89.0 (83.2-93.9)	75.3 (70.0-79.9)
	PCR	N/A	N/A	65.8 (59.8-71.4)	65.9 (59.7-71.7)	96.7 (92.9-99.5)	75.3 (69.4-80.2)
	BBA	72.8 (67.1-77.9)	72.7 (66.7-78.2)	N/A	N/A	86.6 (81.1-90.9)	71.7 (65.5-76.5)
Voix du Peuple <i>low</i>	RDT	32.0 (14.9-53.5)	98.5 (96.7-99.4)	34.3 (19.1-52.2)	99.5 (98.1-99.9)	69.5 (38.2-99.9)	99.4 (98.7-100.0)
	Micro	44.0 (24.4-65.1)	94.2 (91.4-96.3)	37.1 (21.5-55.1)	94.5 (91.8-96.6)	74.3 (46.8-100.0)	94.7 (91.9-97.0)
	PCR	N/A	N/A	37.1 (21.5-55.1)	96.9 (94.6-98.4)	72.8 (44.4-100.0)	96.8 (95.3-98.7)
	BBA	52.0 (31.3-72.2)	94.4 (91.7-96.5)	N/A	N/A	100.0 (91.2-100.0)	95.5 (93.2-98.0)
All	RDT	64.7 (60.8-68.4)	92.5 (90.5-94.2)	65.2 (61.4-68.8)	95.2 (93.5-96.6)	77.8 (74.5-81.8)	99.0 (98.2-99.9)
	Micro	74.2 (70.6-77.6)	84.4 (81.7-86.9)	68.4 (64.7-71.9)	81.8 (78.8-84.4)	80.5 (76.5-84.0)	86.1 (82.9-88.4)
	PCR	N/A	N/A	75.8 (72.4-79.1)	83.3 (80.5-85.9)	88.8 (86.0-91.9)	87.5 (84.2-90.0)
	BBA	79.5 (76.1-82.6)	80.2 (77.3-82.9)	N/A	N/A	92.1 (89.6-94.6)	86.2 (83.2-88.9)

306 *Abbreviations:* 95% CI, 95% confidence interval; BBA, bead-based immunoassay; LCA, latent class analysis; Micro, microscopy; N/A, not applicable; PCR, polymerase chain  
 307 reaction; RDT, rapid diagnostic test.

308

309

310

311 Using LCA to compare all four diagnostic methods against an “alloyed gold standard,”  
 312 the best diagnostic performance varied by health area (**Figure 2B**). The most sensitive diagnostic  
 313 method was BBA in Bu (high prevalence) and Voix du Peuple (low prevalence), while PCR was  
 314 the most sensitive diagnostic method in Kimpoko (moderate prevalence). RDT was consistently  
 315 the most specific diagnostic method in all health areas, regardless of the gold standard (PCR,  
 316 BBA, or LCA). We did not observe a single, best-performing assay.

317

318 *Estimated P. falciparum infection in Kinshasa Province by diagnostic method*

319 *P. falciparum* infections were estimated to be 1,169,745 by BBA, 1,060,485 by PCR, and  
 320 1,089,525 by microscopy – all nearly double the 672,431 estimated cases by RDT (**Table 3**).  
 321 Though imprecise, these numbers approximate how diagnostic choice would influence  
 322 prevalence estimates across 402 health areas within 35 health zones in Kinshasa Province (**Fig**  
 323 **3**), with an assumed population of 9.0 million in 2018 based on DHIS2 data.

324 **Table 3. Estimated number of individuals infected with *P. falciparum* in Kinshasa Province**  
 325 in March-April 2018 by malaria diagnostic method, derived from Ministry of Health age  
 326 distribution and population estimates (8,993,453 people).

327

<b>Diagnostic method</b>	<b>Number of infections (%)</b>	<b>Lower 95% confidence limit</b>	<b>Upper 95% confidence limit</b>
RDT	672,431 (7.5)	515,265	918,597
Microscopy	1,089,525 (12.1)	885,581	1,364,353
PCR	1,060,485 (11.8)	869,752	1,326,532
BBA	1,169,745 (13.0)	1,090,512	1,246,787

328 *Abbreviations:* BBA, bead-based immunoassay; PCR, polymerase chain reaction; RDT, rapid diagnostic test.

329 **Fig 3. Distribution of health area malaria prevalence by PCR from the 2013-2014**  
330 **Demographic Health Survey across health zones in Kinshasa Province.** Representative  
331 health areas included in the Kinshasa Province study of four diagnostic assays are indicated by  
332 text. The 25% and 35% prevalence thresholds utilized in this study to designate low, moderate,  
333 or high prevalence are indicated by vertical hashed lines.

## 334 Discussion

335  
336 The performance of commonly used malaria diagnostic assays varied based on the  
337 epidemiological context in this cross-sectional household study comprising rural, peri-urban, and  
338 urban sites with a range of parasite prevalence in a high-burden setting. Compared to an alloyed  
339 gold standard, PCR and BBA had higher sensitivity for *P. falciparum* than RDT and microscopy.  
340 However, neither assay outperformed the other in all contexts. BBA had the best sensitivity low-  
341 and high-prevalence sites, while PCR had the best sensitivity in moderate-prevalence sites.  
342 Across all prevalence strata, RDT had the highest specificity but lowest sensitivity of all four  
343 assays.

344 Differences in prevalence estimates were evident across study sites and age strata.  
345 Among children younger than 15 years old in Bu health area's high prevalence sites, prevalence  
346 estimates were notably higher by BBA than by PCR. People living in these villages had more  
347 frequent infections than in other health areas and, as a result, were expected to be more likely to  
348 have lingering HRP2 antigenemia outside the window of acute infection. The highest proportion  
349 of recently cleared *P. falciparum* infections (assessed by BBA-positive, *pfdh* PCR-negative) was  
350 found in the high-prevalence villages of Bu health area. We also observed a high prevalence of  
351 *P. falciparum* infection in 5- to 14-year-olds, consistent with past findings from the DRC [23].  
352 These findings support the argument that older children and adolescents should be routinely  
353 included in malaria surveillance activities.

354 National malaria control programs and their partners rely upon routine data, as well as  
355 community-based and health facility surveys, to guide purchasing and forecasting decisions.  
356 Parasite prevalence and malaria incidence are usually estimated using the results of RDTs, the  
357 primary malaria diagnostic method used for case management in the DRC and across sub-

358 Saharan Africa. However, high-throughput molecular and serological assays are becoming more  
359 readily available throughout the region for surveillance [24]. Malaria programs will increasingly  
360 have access to results from advanced laboratory approaches and need empirical data to guide  
361 their decision-making.

362 To explore how diagnostic assay choice might impact real programmatic decisions, we  
363 modeled health area *P. falciparum* PCR prevalence using results from the national 2013-14  
364 Demographic and Health Survey and extrapolated results from our study sites to estimate  
365 prevalence across all of Kinshasa Province. Kinshasa Province is the DRC's most populous  
366 administrative region and includes rural, peri-urban, and urban zones, including the capital city  
367 Kinshasa. Its diverse health zones thus provide an opportunity to examine how differences in  
368 diagnostic assay performance across a variety of epidemiological contexts might impact malaria  
369 programs. Among nearly 9.0 million children and adults living across 402 health areas in  
370 Kinshasa Province in 2018, based on DHIS2 data, the parasite prevalence estimates ranged from  
371 672,431 (7.5%) to 1,169,745 (13.0%), depending on the diagnostic method.

372 In practical terms, the numbers used to guide RDT or artemisinin-combination therapy  
373 procurement choices could vary by nearly two-fold depending on whether they were derived  
374 from RDT or BBA results. While these differences may be self-evident to laboratory experts  
375 accustomed to interpreting differences between these assays, most programmatic staff are  
376 unaccustomed to interpreting these results. Our prevalence estimates are imprecise, but their  
377 wide range demonstrates the importance of considering the assay used and its performance  
378 characteristics when interpreting malaria survey results across different endemicities.

379 Our study has several limitations. First, our seven study sites provide valuable insights  
380 into malaria epidemiology across different transmission intensities and geographical contexts,  
381 but they are not representative of the whole country. The DRC is Africa’s second largest country  
382 by land mass and the fourth largest by population; it is bordered by nine other countries. For this  
383 reason, we restricted our modeling efforts to Kinshasa Province and did not attempt to generalize  
384 these findings to the entire country. Second, RDTs were developed for clinical diagnosis at the  
385 point-of-care, and their use for surveillance activities is off-label. This study’s household survey  
386 design did not allow us to evaluate assay performance during acute malaria infection. People sick  
387 with malaria tend to have higher parasite densities that are readily detected by all four assays  
388 evaluated. Nonetheless, individual-level data comparing RDT, microscopy, real-time PCR, and  
389 BBA results shed light on their relative strengths and weaknesses and can serve as useful data for  
390 future modeling efforts. Third, our latent class analysis approach to generate an “alloyed gold  
391 standard” assumes conditional independence, but both the RDTs and BBA detect HRP2. This  
392 assumption could bias LCA results in favor of both methods [14]. Fourth, survey data utilizing  
393 advanced laboratory methodologies may become less important as the DRC National Malaria  
394 Control Program, like other malaria programs in Africa, makes increasing use of routine data  
395 available through the DHIS2. However, rapid expansion of molecular and serological laboratory  
396 capacity across Africa will almost certainly translate to increased use of PCR and BBAs for  
397 malaria surveillance during large-scale surveys in the future.

398 Comparison of RDT, microscopy, real-time PCR, and BBA results confirmed differences  
399 in sensitivity and specificity that varied by study site, with PCR and BBA performing best for  
400 detecting *P. falciparum* infection. Using a model of the *P. falciparum* prevalence across all of  
401 Kinshasa Province and routine data, we found that the number of infections varied nearly two-



402 fold depending on which assay was used for parasite detection. Malaria control programs should  
403 carefully consider inherent differences in assay performance when using community survey and  
404 surveillance data to guide planning and implementation strategies.

405 **Acknowledgements:** The authors thank Steve Meshnick for conceptualizing the parent study  
406 and providing invaluable mentorship relevant to this project before his untimely death. They also  
407 thank study participants and the Kinshasa School of Public Health field research team who made  
408 this work possible.

409 **Funding:** This work was funded by NIH R01AI132547 to JJJ and RRD and R01AI129812 to  
410 AT, with partial support from NIH K24AI134990 to JJJ and T32AI070114 to KB and RS, and  
411 from the American Society of Tropical Medicine and Hygiene/Burroughs Wellcome Fund to  
412 JBP.

413 **Competing interests:** JBP reports financial support from Gilead Sciences and non-financial  
414 support from Abbott Diagnostics, both outside the scope of this work.

## References

1. Wu L, van den Hoogen LL, Slater H, Walker PGT, Ghani AC, Drakeley CJ, et al. Comparison of diagnostics for the detection of asymptomatic *Plasmodium falciparum* infections to inform control and elimination strategies. *Nature*. 2015;528: S86–93. doi:10.1038/nature16039
2. Iqbal J, Siddique A, Jameel M, Hira PR. Persistent histidine-rich protein 2, parasite lactate dehydrogenase, and panmalarial antigen reactivity after clearance of *Plasmodium falciparum* mono-infection. *J Clin Microbiol*. 2004;42: 4237–4241. doi:10.1128/JCM.42.9.4237-4241.2004
3. WHO Team: Global Malaria Programme. High burden to high impact: a targeted malaria response. World Health Organization; 2018.
4. WHO Team: Global Malaria Programme. World Malaria Report 2021. Geneva: World Health Organization; 2021.
5. Mwandagalirwa MK, Levitz L, Thwai KL, Parr JB, Goel V, Janko M, et al. Individual and household characteristics of persons with *Plasmodium falciparum* malaria in sites with varying endemicities in Kinshasa Province, Democratic Republic of the Congo. *Malar J*. 2017;16: 456. doi:10.1186/s12936-017-2110-7
6. Carrel M, Kim S, Mwandagalirwa MK, Mvuama N, Bala JA, Nkalani M, et al. Individual, household and neighborhood risk factors for malaria in the Democratic Republic of the Congo support new approaches to programmatic intervention. *Health Place*. 2021;70: 102581. doi:10.1016/j.healthplace.2021.102581
7. World City Populations 2021 [Internet]. [cited 2 Nov 2021]. Available: <https://worldpopulationreview.com/world-cities>
8. Teyssier NB, Chen A, Duarte EM, Sit R, Greenhouse B, Tessema SK. Optimization of whole-genome sequencing of *Plasmodium falciparum* from low-density dried blood spot samples. *Malar J*. 2021;20: 116. doi:10.1186/s12936-021-03630-4
9. Beshir KB, Hallett RL, Eziefula AC, Bailey R, Watson J, Wright SG, et al. Measuring the efficacy of antimalarial drugs in vivo: quantitative PCR measurement of parasite clearance. *Malar J*. 2010;9: 312. doi:10.1186/1475-2875-9-312
10. Tangpukdee N, Duangdee C, Wilairatana P, Krudsood S. Malaria diagnosis: a brief review. *Korean J Parasitol*. 2009;47: 93–102. doi:10.3347/kjp.2009.47.2.93
11. Deutsch-Feldman M, Brazeau NF, Parr JB, Thwai KL, Muwonga J, Kashamuka M, et al. Spatial and epidemiological drivers of *Plasmodium falciparum* malaria among adults in the Democratic Republic of the Congo. *BMJ Glob Health*. 2020;5. doi:10.1136/bmjgh-2020-002316
12. Hubbard AE, Ahern J, Fleischer NL, Van der Laan M, Lippman SA, Jewell N, et al. To GEE or not to GEE: comparing population average and mixed models for estimating the associations between neighborhood risk factors and health. *Epidemiology*. 2010;21: 467–474. doi:10.1097/EDE.0b013e3181caeb90
13. Wilson JR, Lorenz KA. Generalized estimating equations logistic regression. *Modeling Binary Correlated Responses using SAS, SPSS and R*. Cham: Springer International Publishing; 2015. pp. 103–130. doi:10.1007/978-3-319-23805-0\_6

14. Turechek WW, Webster CG, Duan J, Roberts PD, Kousik CS, Adkins S. The use of latent class analysis to estimate the sensitivities and specificities of diagnostic tests for Squash vein yellowing virus in cucurbit species when there is no gold standard. *Phytopathology*. 2013;103: 1243–1251. doi:10.1094/PHYTO-03-13-0071-R
15. Baughman AL, Bisgard KM, Cortese MM, Thompson WW, Sanden GN, Strebel PM. Utility of composite reference standards and latent class analysis in evaluating the clinical accuracy of diagnostic tests for pertussis. *Clin Vaccine Immunol*. 2008;15: 106–114. doi:10.1128/CVI.00223-07
16. van Smeden M, Naaktgeboren CA, Reitsma JB, Moons KGM, de Groot JAH. Latent class models in diagnostic studies when there is no reference standard--a systematic review. *Am J Epidemiol*. 2014;179: 423–431. doi:10.1093/aje/kwt286
17. Rogier E, Plucinski M, Lucchi N, Mace K, Chang M, Lemoine JF, et al. Bead-based immunoassay allows sub-picogram detection of histidine-rich protein 2 from *Plasmodium falciparum* and estimates reliability of malaria rapid diagnostic tests. *PLoS One*. 2017;12: e0172139. doi:10.1371/journal.pone.0172139
18. Deutsch-Feldman M, Aydemir O, Carrel M, Brazeau NF, Bhatt S, Bailey JA, et al. The changing landscape of *Plasmodium falciparum* drug resistance in the Democratic Republic of Congo. *BMC Infect Dis*. 2019;19: 872. doi:10.1186/s12879-019-4523-0
19. Nychka D, Furrer R, Paige J, Sain S. *fields: Tools for spatial data*. N/A; 2021.
20. Geo-Referenced Infrastructure and Demographic Data for Development 3 (GRID3). GRID3 DRC Health Area Boundaries - Haut-Katanga, Kasai, Kasai-Oriental, Kinshasa, and Lomami Provinces, Version 01. In: GRID3 DATA HUB [Internet]. [cited 22 Oct 2022]. Available: <https://data.grid3.org/datasets/GRID3::grid3-drc-health-area-boundaries-haut-katanga-kasa%C3%AF-kasa%C3%AF-oriental-kinshasa-and-lomami-provinces-version-01/about>
21. MEASURE Evaluation. Mapping the Stages of MEASURE Evaluation's Data Use Continuum to DHIS 2: An Example from the Democratic Republic of the Congo. Chapel Hill, NC, USA: MEASURE Evaluation; 2019.
22. R Core Team. R: A language and environment for statistical computing. Vienna, Austria: R Foundation for Statistical Computing; 2021.
23. Deutsch-Feldman M, Parr JB, Keeler C, Brazeau NF, Goel V, Emch M, et al. The burden of malaria in the democratic republic of the congo. *J Infect Dis*. 2021;223: 1948–1952. doi:10.1093/infdis/jiaa650
24. Beshir KB, Parr JB, Cunningham J, Cheng Q, Rogier E. Screening strategies and laboratory assays to support *Plasmodium falciparum* histidine-rich protein deletion surveillance: where we are and what is needed. *Malar J*. 2022;21: 201. doi:10.1186/s12936-022-04226-2

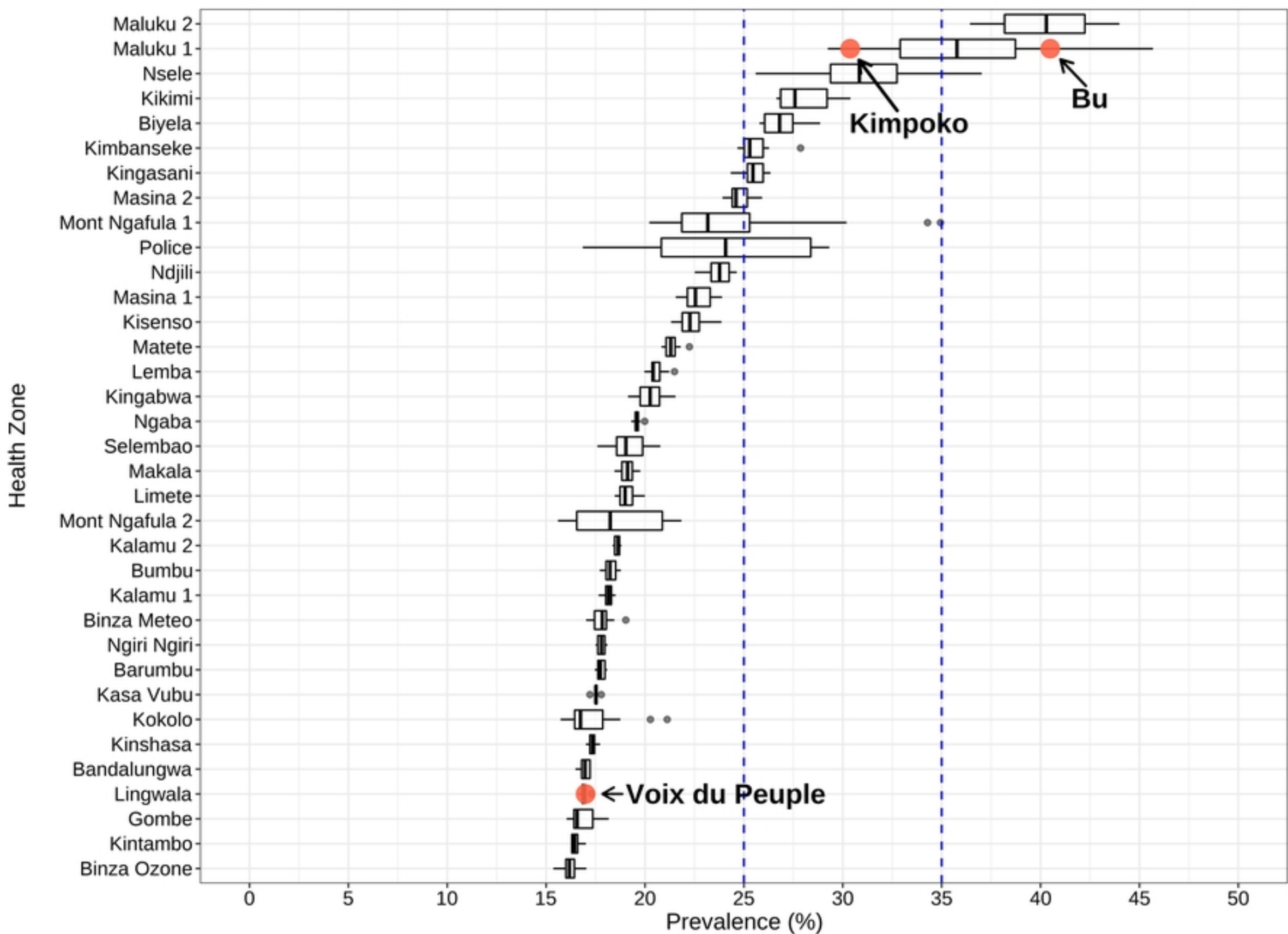


Fig-3\_DHS-Prevalence

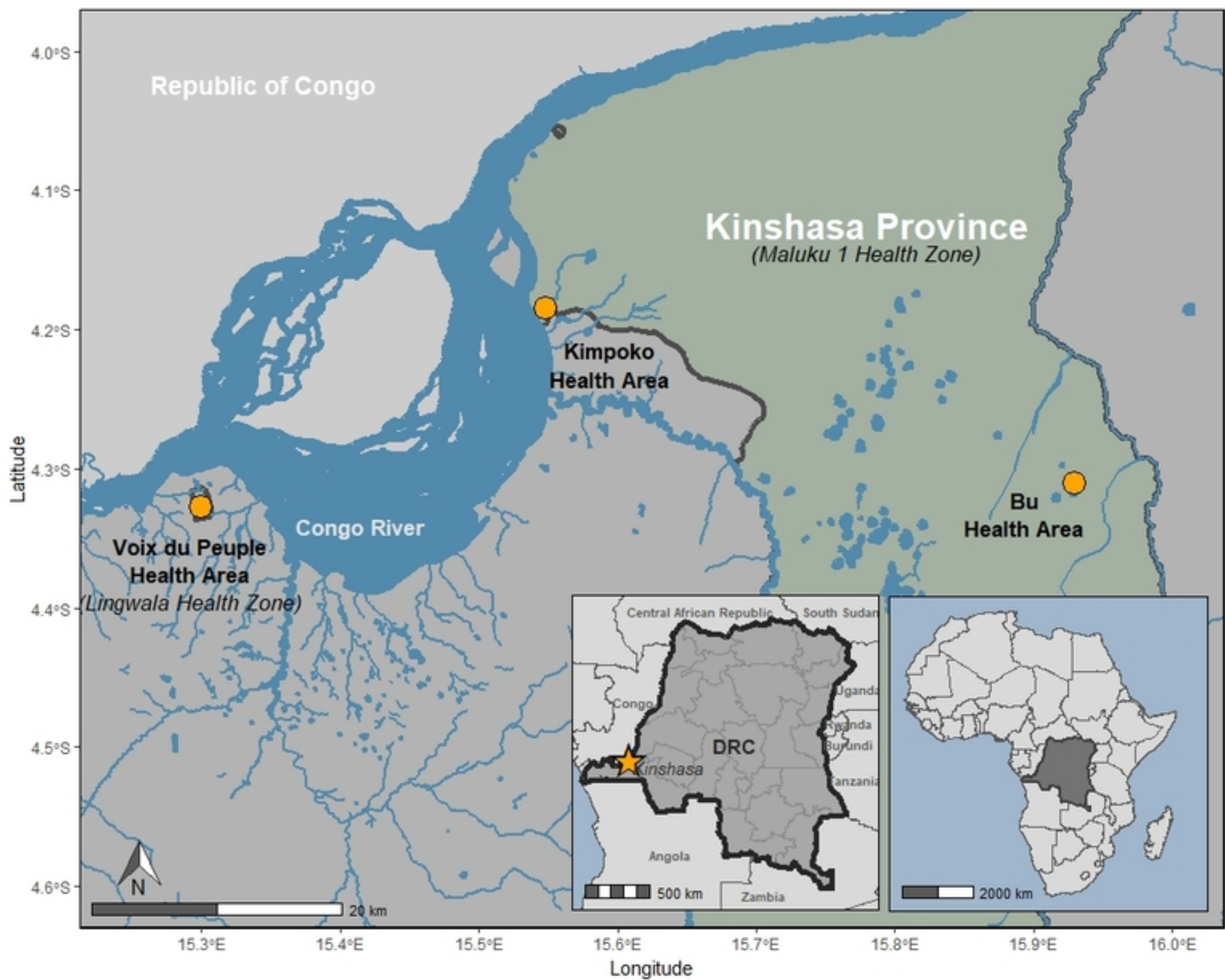


Fig-1\_Study-sites-map

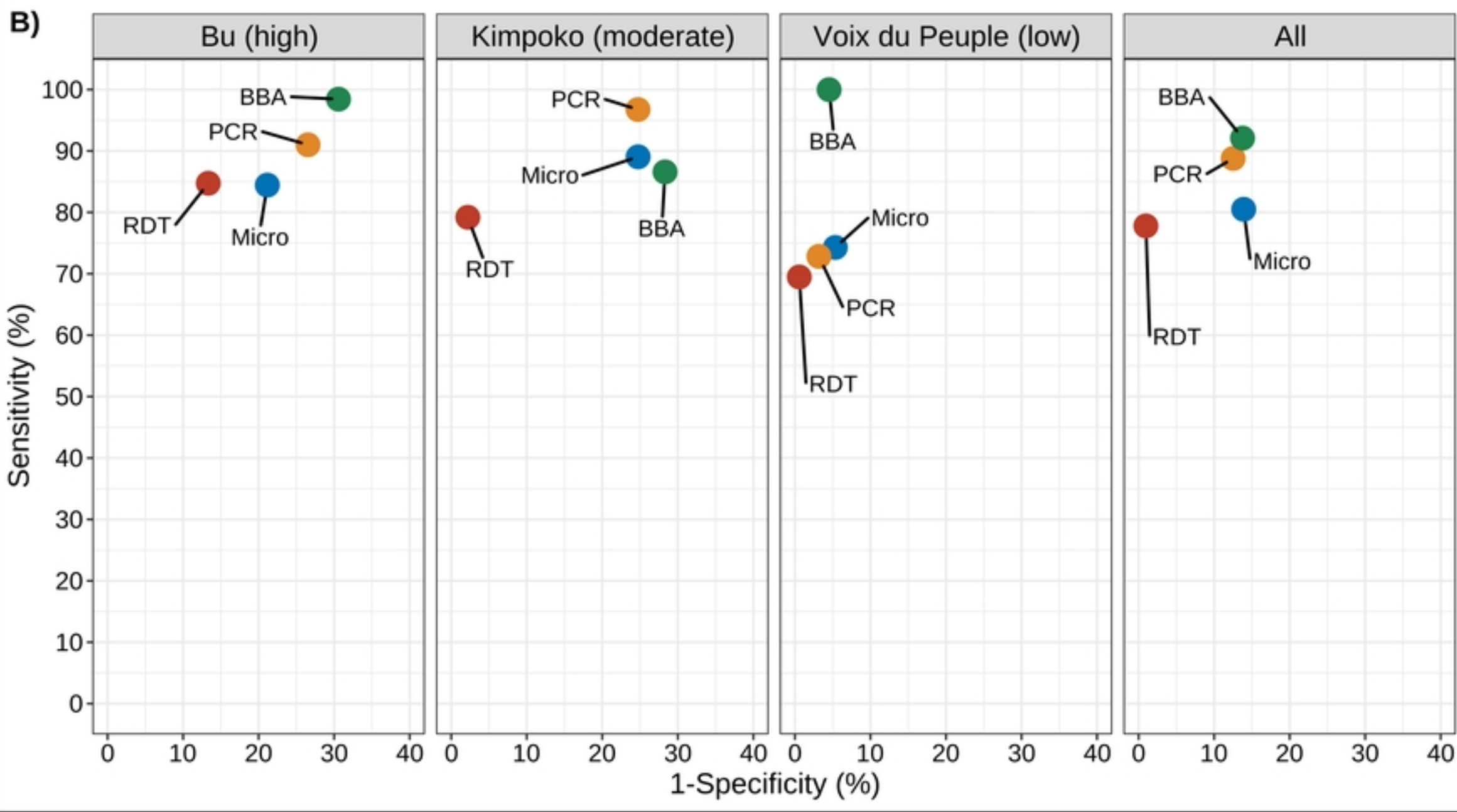
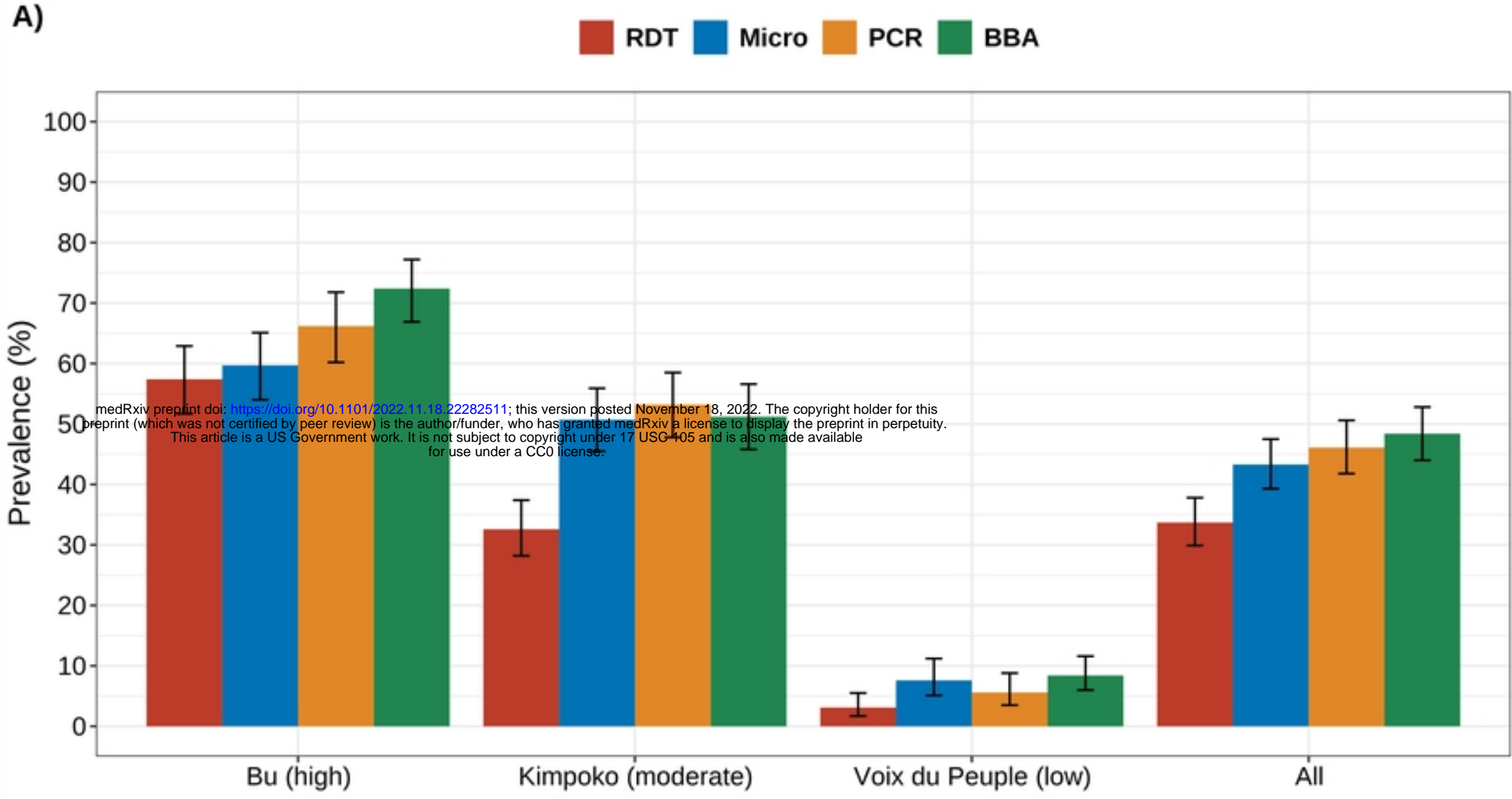


Fig-2\_study-prev\_diganostic-performance