

1 **The potential causal association of systemic lupus erythematosus with**  
2 **congestive heart failure in the East Asian population: A two-sample Mendelian**  
3 **randomization study**

4

5 Euijun Song, M.D.

6 *Lerner Research Institute, Cleveland Clinic, Cleveland, OH, USA.*

7

8 Correspondence: [drjunsong@gmail.com](mailto:drjunsong@gmail.com) (Euijun Song, M.D.)

9

10

11 **Article type:** Concise report (short article)

12 **Conflict of interest:** None.

13

14 **Abstract**

15 **Objective:** Systemic lupus erythematosus (SLE) is a systemic autoimmune disease that increases  
16 the risk of cardiovascular disease, but the causal relationship has remained unknown in the East  
17 Asian population. We aim to determine the causal relationship between SLE and congestive  
18 heart failure (CHF) in the East Asian population.

19 **Methods:** We conducted a two-sample Mendelian randomization (MR) study to examine the  
20 potential causal association of SLE with CHF, using the East Asian genome-wide association  
21 study datasets for SLE (4,222 cases, 8,431 controls) and CHF (9,413 cases, 203,040 controls).

22 **Results:** The MR analysis showed that genetic susceptibility to SLE was associated with the  
23 increased risk of CHF (odds ratio [OR] 1.032, 95% confidence interval [CI] 1.004–1.061,  
24  $P=0.023$ ). After excluding the human leukocyte antigen (HLA) regions, SLE was also associated  
25 with a higher risk of CHF (OR 1.034, 95% CI 1.007–1.062,  $P=0.015$ ). The multiple MR sensitivity  
26 analyses confirmed that this potential causal association was unlikely to be biased by horizontal  
27 pleiotropy.

28 **Conclusions:** The findings of this MR study suggest that SLE potentially increases the risk of CHF  
29 in the East Asian population. Genetic predisposition to SLE may play a significant role in  
30 developing CHF in the East Asian population.

31

32 **Keywords:** Systemic lupus erythematosus; Heart failure; Mendelian randomization; Genetic  
33 epidemiology; Cardio-rheumatology

34

### **What is already known on this topic**

- Patients with systemic lupus erythematosus (SLE) have a higher risk of congestive heart failure (CHF) in the European and East Asian populations.

### **What this study adds**

- The Mendelian randomization analysis suggests that genetic susceptibility to SLE was associated with a higher risk of CHF in the East Asian population.

- Non-human leukocyte antigen (HLA) variants associated with SLE were also associated with the increased risk of CHF.

### **How this study might affect research, practice, or policy**

- Genetic predisposition to SLE may be useful to understand CHF risk stratification and management in the East Asian population.

35

36

37 **1. Introduction**

38 Systemic lupus erythematosus (SLE) is a systemic autoimmune disease that can affect a variety  
39 of organs and systems in the human body, leading to rash, arthritis, lupus nephritis, anemia,  
40 and serositis. Patients with SLE have diverse autoantibodies against double-stranded DNA,  
41 cardiolipin, and ribonucleoproteins. Cardiovascular disease and infections are the leading  
42 causes of death in patients with SLE (1). Cardiovascular manifestation and complications of SLE  
43 include pericarditis, coronary artery disease, arrhythmias, valvular heart disease, and heart  
44 failure (2). Several retrospective cohort analyses and Mendelian randomization (MR) studies  
45 demonstrated that SLE increases the risk of coronary artery disease and heart failure, and  
46 worsens cardiovascular outcomes (3-6). However, most studies have been conducted in the  
47 European-dominant population, and the underlying mechanisms remain unclear.

48  
49 SLE and cardiovascular disease are complex diseases, and genetic predisposition plays an  
50 important role in both diseases (5). Here, we conduct a two-sample MR study to examine the  
51 potential causal association of SLE with congestive heart failure (CHF) in the East Asian  
52 population. We use large-scale summary-level genome-wide association study (GWAS) datasets  
53 for SLE and CHF in the East Asian population, and perform multiple MR methods to determine  
54 the potential causal effects of SLE on CHF. Since genetic variants within the human leukocyte  
55 antigen (HLA) region are not well understood and highly pleiotropic, we also performed our MR  
56 analysis after excluding the extended HLA region.

57

58

59

## 60 **2. Methods**

### 61 **2.1. GWAS datasets for SLE and CHF**

62 To perform the two-sample MR, we first recruited publicly available GWAS summary-level  
63 datasets for SLE and CHF in the East Asian population. For SLE, we used a Chinese GWAS  
64 summary-level dataset of 4,222 SLE cases and 8,431 controls from Wang et al (7). For CHF, we  
65 used the Biobank Japan GWAS summary statistics of 9,413 CHF cases and 203,040 controls  
66 (available from <https://gwas.mrcieu.ac.uk/>, dataset ID: bbj-a-109, accessed on Nov 6, 2022).

67

### 68 **2.2. MR and statistical analysis**

69 We constructed genetic instruments for SLE by extracting genome-wide significant variants  
70 ( $P < 5 \times 10^{-8}$ ) that were in low linkage disequilibrium ( $r^2 < 0.001$ ). The clumping was performed  
71 using the *clump\_data* function of the TwoSampleMR package based on the East Asian 1000  
72 Genomes Project reference panel. We only considered non-palindromic variants in both SLE  
73 and CHF GWAS datasets. The instrument strength was evaluated using the F-statistic as  $F =$   
74  $\left(\frac{n-k-1}{k}\right) \cdot \left(\frac{R^2}{1-R^2}\right)$ , where  $n$  is the sample size,  $k$  is the number of the genetic variants, and  $R^2$  is  
75 the proportion of variance explained by the genetic variants. The F-statistic greater than 10  
76 indicates valid instruments. To evaluate the putative causal effect, we performed the inverse-  
77 variance weighted (IVW), weighted median, maximum likelihood, MR-RAPS (8), MR-PRESSO (9),  
78 and radial MR (10) analyses. The heterogeneity between SNPs was evaluated by Cochran's Q  
79 test. The MR Steiger directionality test was also performed to determine the directionality of  
80 causality (11). To examine potential horizontal pleiotropy, we used the MR-Egger intercept test

81 (12) and MR-PRESSO method. We further performed the leave-one-out sensitivity analysis and  
82 radial MR to identify potential outlying variants. The  $P$ -value $<0.05$  was considered statistically  
83 significant. All MR analyses were performed with the TwoSampleMR, RadialMR, MR.RAPS, and  
84 MRPRESSO packages of R (version 4.1.2).

85

86

### 87 **3. Results**

#### 88 **3.1. The causal association of SLE with CHF**

89 We used 30 genome-wide significant variants ( $P<5\times 10^{-8}$ ) as SLE-associated instrumental  
90 variables (Table S1). The genetic instruments for SLE have an F-statistic of 81.8, indicating no  
91 significant weak instrument bias in our MR analysis. We performed a two-sample MR analysis  
92 to examine the putative causal effects of SLE on CHF in the East Asian population. As  
93 highlighted in Table 1 (left column), the IVW method showed that SLE potentially increased the  
94 risk of CHF (odds ratio [OR] 1.032, 95% confidence interval [CI] 1.004–1.061,  $P=0.023$ ). There  
95 was no evidence of heterogeneity (Cochran's Q-statistic=33.122,  $P=0.273$ ). The weighted  
96 median, maximum likelihood, radial IVW, and MR-RAPS methods also showed directionally  
97 similar results (Table 1). Moreover, the MR Steiger directionality test confirmed the direction of  
98 the causality ( $P<0.001$ ).

99

100 To examine potential horizontal pleiotropy, which could bias the MR analysis, we performed  
101 the MR-Egger intercept test and MR-PRESSO method. The MR-Egger intercept test showed no  
102 evidence of significant horizontal pleiotropy (intercept=0.01067,  $P=0.328$ ). The MR-PRESSO

103 global test further indicated no significant pleiotropy with no outlying genetic variants  
104 (P=0.451). The removing individual variants did not substantially alter the estimated causal  
105 effect (Figure S1A). The radial MR method identified the outlying variants (rs143821594 and  
106 rs4930642); however, the excluding that outlier also led to the concordant MR result (OR 1.032,  
107 95% CI 1.004–1.061, P=0.023; Figure S2A). Additionally, the MR-RAPS was used to test whether  
108 SLE affects CHF through weak instruments (OR 1.032, 95% CI 1.003–1.061, P=0.029). Multiple  
109 sensitivity analyses indicate no significant evidence for pleiotropic effects in our MR analysis.  
110

### 111 **3.2. Effects of non-HLA SLE-associated variants on CHF**

112 Since GWAS loci within the HLA region are difficult to finely map and are highly pleiotropic to  
113 complex diseases, we repeated our MR analysis after excluding the extended HLA region  
114 (chromosome 6: 27–34 Mb). Three genetic variants (rs2524058, rs6941112, and rs143821594)  
115 were excluded. Using IVW, we found that SLE was causally associated with the risk of CHF (OR  
116 1.034, 95% CI 1.007–1.062, P=0.015). The weighted median, maximum likelihood, radial IVW,  
117 and MR-RAPS methods showed directionally similar estimates (Table 1, right column). The MR-  
118 Egger intercept test (intercept=0.00930, P=0.385) and MR-PRESSO global test indicated no  
119 significant evidence of horizontal pleiotropy (P=0.689). The leave-one-out sensitivity analysis  
120 and the radial plot are presented in Figure S1B and Figure S2B, respectively. Furthermore, we  
121 also found that SLE was causally associated with CHF after excluding the entire chromosome 6  
122 (OR 1.037, 95% CI 1.004–1.072, P=0.030; Table S2). The overall results are concordant with  
123 those acquired from the whole SLE-associated variants.

124

125

126 **4. Discussion**

127 The causal relationship between SLE and CHF in the East Asian population has been largely  
128 unknown. In the present MR study, we discovered that SLE potentially increased the risk of CHF  
129 in the East Asian population. The non-HLA SLE-associated variants were also causally associated  
130 with CHF. The multiple MR sensitivity analyses confirmed that this potential causal association  
131 was unlikely to be biased by horizontal pleiotropy, indicating the robustness of effect estimates.

132

133 In the US retrospective studies, SLE was associated with a 2.7–3.17-fold increase in the risk of  
134 CHF (3, 4). Recently, European-dominant MR studies also revealed that SLE potentially  
135 increases the risk of CHF, coronary artery disease, ischemic stroke, and venous  
136 thromboembolism (5, 6). A Korean nationwide study found that patients with SLE had a 4.6-fold  
137 higher risk of CHF (13). In our MR study, the effect size of SLE on CHF (OR 1.032, 95% CI 1.004–  
138 1.061) was relatively smaller compared to previous retrospective studies. Therefore, developing  
139 CHF in patients with SLE may be attributed to other environmental factors and SLE medications,  
140 such as hydroxychloroquine and steroid, as well as the genetic predisposition for SLE *per se*.

141

142 Indeed, hydroxychloroquine and steroid, commonly used medications in SLE, increases the risk  
143 of diabetes mellitus, dyslipidemia, and cardiomyopathy (14, 15). These drug-induced risk  
144 factors for cardiovascular diseases may lead to bias in retrospective cohort studies. In contrast,  
145 we demonstrated that genetically predisposed SLE was associated with CHF in the East Asian



146 population using the MR analysis. Thus, MR approaches could identify potential causal  
147 associations without conducting prospective clinical trials.

148

149 There are several limitations of this study. There is limited availability of large-scale SLE GWAS  
150 datasets, especially for the East Asian population, restricting statistical power underlying the  
151 polygenic pathobiology of SLE. In our analysis, the weighted median method did not show  
152 significant results; however, IVW is more statistically powerful than other MR methods. We also  
153 did not perform replication analysis in other East Asian datasets, though large-sale SLE GWAS  
154 datasets are not currently available. The linkage disequilibrium score regression and  
155 pathway/network analyses would uncover potential pathobiological connections between SLE  
156 and CHF.

157

158

### 159 **Acknowledgements**

160 This research received no external funding. In the present work, we only used publicly available  
161 GWAS summary statistics datasets. The author would like to thank Dr. Cheng for his kind  
162 support.

163

## 164 **References**

- 165 1. Moghaddam B, Marozoff S, Li L, Sayre EC, Zubieta JAA. All-cause and cause-specific mortality in  
166 systemic lupus erythematosus: a population-based study. *Rheumatology*. 2022;61(1):367-76.
- 167 2. Dhakal BP, Kim CH, Al-Kindi SG, Oliveira GH. Heart failure in systemic lupus erythematosus.  
168 *Trends Cardiovasc Med*. 2018;28(3):187-97.
- 169 3. Kim CH, Al-Kindi SG, Jandali B, Askari AD, Zacharias M, Oliveira GH. Incidence and risk of heart  
170 failure in systemic lupus erythematosus. *Heart*. 2017;103(3):227-33.
- 171 4. Chen SK, Barbhaiya M, Fischer MA, Guan H, Yoshida K, Feldman CH, et al. Heart failure risk in  
172 systemic lupus erythematosus compared to diabetes mellitus and general medicaid patients. *Semin*  
173 *Arthritis Rheum*. 2019;49(3):389-95.
- 174 5. Kain J, Owen KA, Marion MC, Langefeld CD, Grammer AC, Lipsky PE. Mendelian randomization  
175 and pathway analysis demonstrate shared genetic associations between lupus and coronary artery  
176 disease. *Cell Rep Med*. 2022:100805.
- 177 6. Gao N, Kong M, Li X, Wei D, Zhu X, Hong Z, et al. Systemic Lupus Erythematosus and  
178 Cardiovascular Disease: A Mendelian Randomization Study. *Front Immunol*. 2022;13:908831.
- 179 7. Wang YF, Zhang Y, Lin Z, Zhang H, Wang TY, Cao Y, et al. Identification of 38 novel loci for  
180 systemic lupus erythematosus and genetic heterogeneity between ancestral groups. *Nat Commun*.  
181 2021;12(1):772.
- 182 8. Zhao Q, Wang J, Hemani G, Bowden J, Small DS. Statistical inference in two-sample summary-  
183 data Mendelian randomization using robust adjusted profile score. *The Annals of Statistics*.  
184 2020;48(3):1742-69.
- 185 9. Verbanck M, Chen CY, Neale B, Do R. Detection of widespread horizontal pleiotropy in causal  
186 relationships inferred from Mendelian randomization between complex traits and diseases. *Nat Genet*.  
187 2018;50(5):693-8.
- 188 10. Bowden J, Spiller W, Del Greco MF, Sheehan N, Thompson J, Minelli C, et al. Improving the  
189 visualization, interpretation and analysis of two-sample summary data Mendelian randomization via the  
190 Radial plot and Radial regression. *Int J Epidemiol*. 2018;47(4):1264-78.
- 191 11. Hemani G, Tilling K, Davey Smith G. Orienting the causal relationship between imprecisely  
192 measured traits using GWAS summary data. *PLoS Genet*. 2017;13(11):e1007081.
- 193 12. Burgess S, Thompson SG. Interpreting findings from Mendelian randomization using the MR-  
194 Egger method. *Eur J Epidemiol*. 2017;32(5):377-89.

- 195 13. Lim SY, Bae EH, Han KD, Jung JH, Choi HS, Kim HY, et al. Systemic lupus erythematosus is a risk  
196 factor for cardiovascular disease: a nationwide, population-based study in Korea. *Lupus*.  
197 2018;27(13):2050-6.
- 198 14. Ruiz-Arruza I, Ugarte A, Cabezas-Rodriguez I, Medina JA, Moran MA, Ruiz-Irastorza G.  
199 Glucocorticoids and irreversible damage in patients with systemic lupus erythematosus. *Rheumatology*  
200 (Oxford). 2014;53(8):1470-6.
- 201 15. Chatre C, Roubille F, Vernhet H, Jorgensen C, Pers YM. Cardiac Complications Attributed to  
202 Chloroquine and Hydroxychloroquine: A Systematic Review of the Literature. *Drug Saf*. 2018;41(10):919-  
203 31.
- 204
- 205

206 **Table 1.** Mendelian randomization (MR) analyses between systemic lupus erythematosus (SLE)  
207 and congestive heart failure (CHF).

	Whole SLE-associated SNP on CHF			Non-HLA SLE-associated SNP on CHF		
	OR (95% CI)	P-value	NSNP	OR (95% CI)	P-value	NSNP
IVW	1.032 (1.004–1.061)	0.023	30	1.034 (1.007–1.062)	0.015	27
Weighted median	1.024 (0.985–1.064)	0.233	30	1.024 (0.986–1.063)	0.223	27
Maximum likelihood	1.033 (1.006–1.060)	0.015	30	1.034 (1.007–1.063)	0.013	27
IVW (Radial)	1.032 (1.004–1.061)*	0.023	30	1.034 (1.007–1.062)**	0.015	27
MR-RAPS	1.032 (1.003–1.061)	0.029	30	1.032 (1.004–1.062)	0.024	27
MR Steiger directionality	-	<0.001	30	-	<0.001	27
MR-PRESSO <sup>†</sup>	-	0.451	30	-	0.689	27
MR-Egger intercept <sup>‡</sup>	0.01067 (0.01072)	0.328	30	0.00930 (0.01051)	0.385	27

208 OR, odds ratio; CI, confidence interval; SNP, single nucleotide polymorphism; NSNP, the number of SNPs;

209 IVW, inverse-variance weighted method; HLA, human leukocyte antigen.

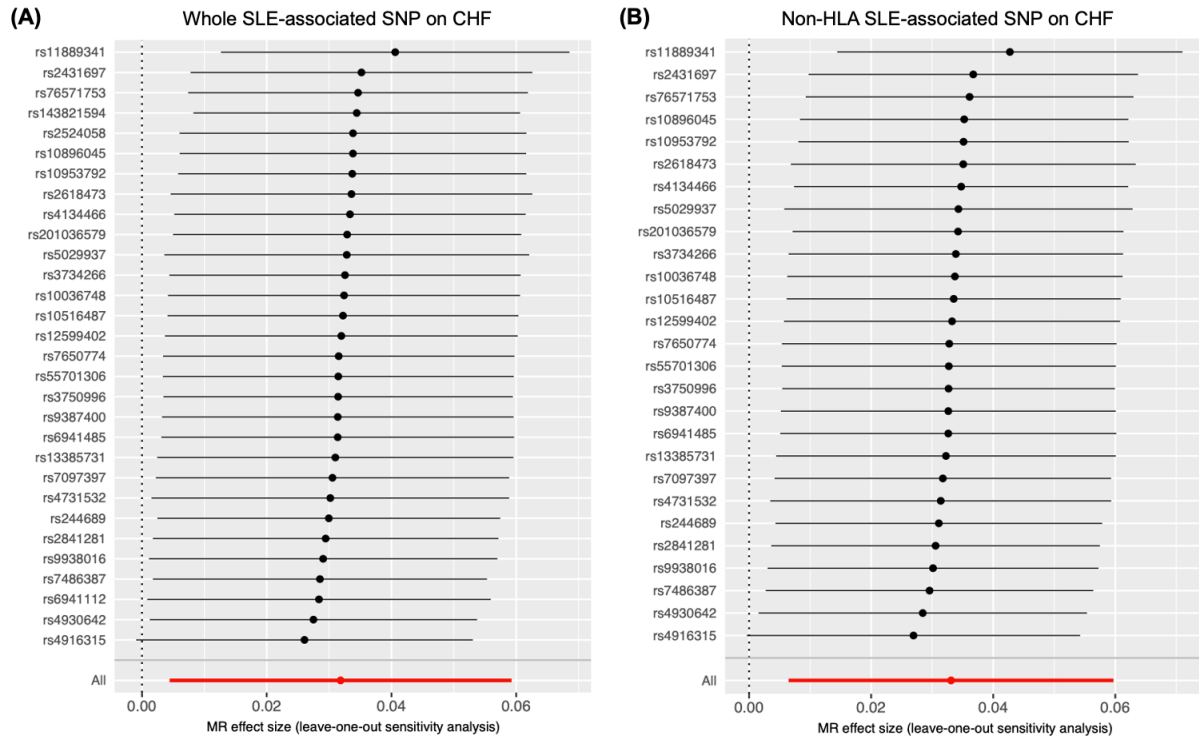
210 \*The outlying variants (rs143821594 and rs4930642) were detected.

211 \*\*The outlying variant (rs4930642) was detected.

212 <sup>†</sup>No outlying pleiotropic variants were detected.

213 <sup>‡</sup>The Egger intercept value and SE are presented. There was no evidence of significant horizontal  
214 pleiotropy.

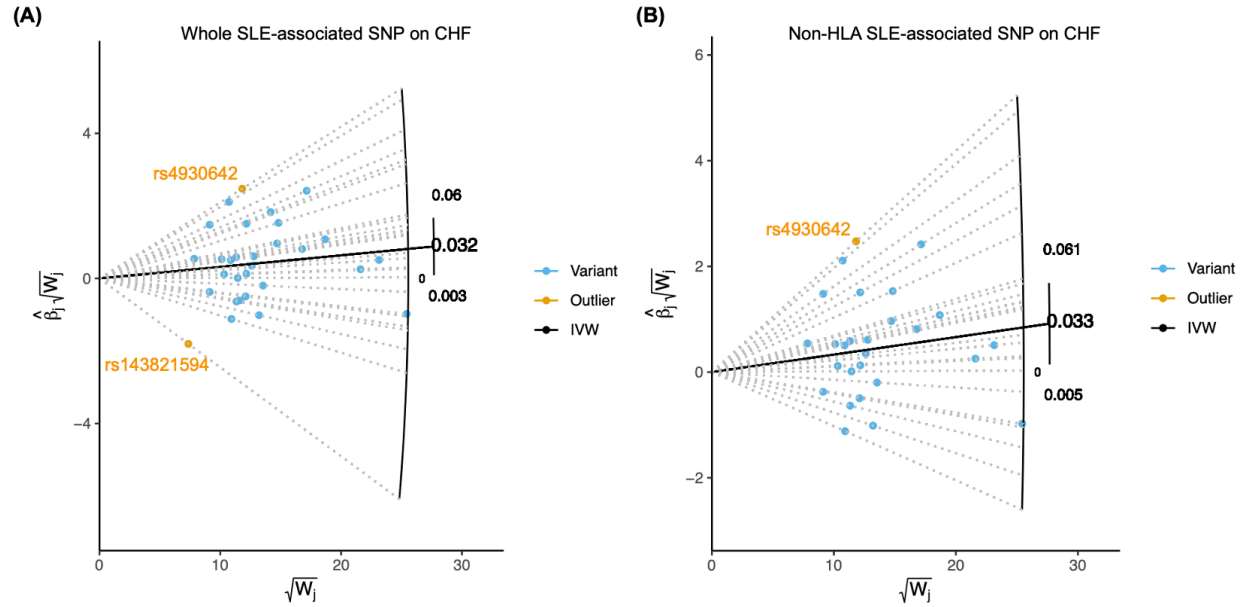
215



216

217 **Figure S1.** The leave-one-out sensitivity analysis for the causal association of systemic lupus  
218 erythematosus with congestive heart failure using the inverse-variance weighted method. (A)  
219 The whole genetic variants associated with SLE were used. (B) The only non-HLA genetic  
220 variants were used. SLE, systemic lupus erythematosus; CHF, congestive heart failure; HLA,  
221 human leukocyte antigen.

222



223

224 **Figure S2.** The radial Mendelian randomization plot. Blue and orange dots indicate valid genetic

225 variants and the outliers (rs143821594 and rs4930642), respectively. The estimated effect sizes

226 are presented. (A) The whole genetic variants associated with SLE were used. (B) The only non-

227 HLA genetic variants were used. IVW, inverse-variance weighted method; SLE, systemic lupus

228 erythematosus; CHF, congestive heart failure; HLA, human leukocyte antigen.

229

230 **Table S1.** Genetic instruments for systemic lupus erythematosus in the East Asian population  
231 ( $P < 5 \times 10^{-8}$ ).

SNP	Position (GRCh37)	EA/OA	Beta (SE)	P-value
rs201036579	chr1:157499390	C/T	-0.288 (0.053)	4.85E-08
rs4916315	chr1:173215372	T/C	0.336 (0.031)	4.12E-27
rs13385731	chr2:33701890	C/T	-0.365 (0.042)	4.19E-18
rs11889341	chr2:191943742	T/C	0.416 (0.03)	3.33E-45
rs7650774	chr3:119205050	C/T	-0.18 (0.031)	4.07E-09
rs10516487	chr4:102751076	A/G	-0.255 (0.04)	1.64E-10
rs244689	chr5:133422816	G/A	-0.16 (0.029)	4.29E-08
rs10036748	chr5:150458146	T/C	0.202 (0.034)	2.29E-09
rs2431697	chr5:159879978	C/T	-0.254 (0.045)	1.84E-08
rs6941485	chr6:250619	G/A	0.203 (0.031)	9.53E-11
rs2524058*	chr6:31251569	G/A	-0.186 (0.03)	5.31E-10
rs6941112*	chr6:31946614	A/G	0.222 (0.033)	1.01E-11
rs143821594*	chr6:32204017	C/T	-0.495 (0.055)	3.08E-19
rs3734266	chr6:34823187	C/T	0.334 (0.04)	6.09E-17
rs4134466	chr6:106577368	G/A	-0.214 (0.031)	3.09E-12
rs9387400	chr6:116694120	A/C	-0.297 (0.054)	3.14E-08
rs5029937	chr6:138195151	T/G	0.684 (0.068)	4.32E-24
rs76571753	chr7:73974915	T/G	0.279 (0.041)	1.46E-11
rs10953792	chr7:75172937	C/T	0.199 (0.032)	4.69E-10
rs4731532	chr7:128572766	A/G	0.372 (0.033)	8.15E-29
rs2618473	chr8:11344127	T/C	0.359 (0.034)	2.89E-26
rs7097397	chr10:50025396	A/G	-0.239 (0.031)	1.32E-14
rs3750996	chr11:4113200	G/A	-0.204 (0.037)	4.91E-08
rs10896045	chr11:65555524	G/A	-0.173 (0.029)	1.78E-09
rs4930642	chr11:68816370	G/A	-0.234 (0.034)	1.10E-11
rs7486387	chr12:12866911	A/G	-0.189 (0.031)	1.98E-09
rs2841281	chr14:105394669	T/C	0.193 (0.029)	3.56E-11
rs12599402	chr16:11189888	C/T	-0.198 (0.029)	1.02E-11
rs9938016	chr16:86002524	T/C	-0.397 (0.059)	1.78E-11
rs55701306	chr17:16842447	T/C	0.166 (0.029)	1.38E-08

232 SNP, single nucleotide polymorphism; EA, effect allele; OA, other allele; SE, standard error.

233 \*SNPs located in the extended HLA region (chromosome 6: 27–34 Mb).

234

235 **Table S2.** Mendelian randomization (MR) analyses between systemic lupus erythematosus (SLE)  
236 and congestive heart failure (CHF) after excluding the entire chromosome 6.

	<b>OR (95% CI)</b>	<b>P-value</b>	<b>NSNP</b>
IVW	1.037 (1.004–1.072)	0.030	22
Weighted median	1.031 (0.987–1.077)	0.170	22
Maximum likelihood	1.038 (1.007–1.070)	0.017	22
IVW (Radial)*	1.037 (1.004–1.072)	0.030	22
MR-RAPS	1.037 (1.002–1.074)	0.038	22
MR Steiger directionality	-	<0.001	22
MR-PRESSO <sup>†</sup>	-	0.439	22
MR-Egger intercept <sup>‡</sup>	0.01224 (0.01403)	0.393	22

237 OR, odds ratio; CI, confidence interval; SNP, single nucleotide polymorphism; NSNP, the number of SNPs;

238 IVW, inverse-variance weighted method.

239 \*The outlying variant (rs4930642) was detected.

240 <sup>†</sup>No outlying pleiotropic variants were detected.

241 <sup>‡</sup>The Egger intercept value and SE are presented. There was no evidence of significant horizontal  
242 pleiotropy.

243