

1 **EARLY ACQUISITION AND CARRIAGE OF GENETICALLY DIVERSE MULTI-**
2 **DRUG RESISTANT GRAM-NEGATIVE BACILLI IN HOSPITALISED SMALL**
3 **VULNERABLE NEWBORNS IN THE GAMBIA**

4
5 Bah Saikou Y^{1,2*}, Kujabi Mariama A^{2*}, Darboe Saffiatou², Kebbeh Ngange², Kebbeh Bunja
6 FK², Kanteh Abdoulie², Bojang Ramatouille², Lawn Joy Elizabeth³, Kampmann Beate^{2,4},
7 Sesay Abdul Karim², de Silva Thushan I^{1,2}, Brotherton Helen^{2,3}

8
9 1. The Florey Institute of Host-Pathogen Interactions, Department of Infection,
10 Immunity and Cardiovascular Disease, University of Sheffield, Sheffield, UK.

11 2. MRC Unit, The Gambia at LSHTM, Atlantic Road, Fajara, The Gambia, West Africa

12 3. Department of Infectious Disease Epidemiology, Faculty of Epidemiology &
13 Population Health London School of Hygiene & Tropical Medicine, London

14 4. Department of Clinical Research, Faculty of Infectious & Tropical Diseases, London
15 School of Hygiene & Tropical Medicine, London

16 * Contributed equally

17
18 Corresponding author: Dr Helen Brotherton, helen.brotherton@lshtm.ac.uk, Department of
19 IDE, London School of Hygiene & Tropical Medicine, Keppel Street, London, WC1E 7HT

20
21 Keywords: Neonatal, preterm, mothers, anti-microbial resistance, ESBL, gram-negative
22 bacilli, *Klebsiella pneumoniae*, *Escherichia coli*, Enterobacterales, carriage

23
24 Abstract

25 Aim: This detailed genomic study aimed to characterise multi-drug resistant-gram negative
26 bacilli (MDR-GNB) intestinal and skin carriage in small vulnerable newborns and their
27 paired mothers at a low-resource African hospital.

28
29 Methods: This cross-sectional cohort study was conducted at the only neonatal referral unit in
30 The Gambia with genomic analysis at MRC Unit The Gambia at LSHTM. Neonates <2kg
31 underwent skin and peri-anal carriage swab sampling weekly with paired maternal
32 rectovaginal swabs. Prospective bacteriological culture used MacConkey agar with species
33 identification by API20E and API20NE. All GNB isolates underwent whole genome
34 sequencing on Illumina Miseq platform. Multi-Locus Sequence Typing and SNP-distance
35 analysis were used to identify strain type and infer relatedness.

36
37 Findings: 135 carriage swabs were obtained from 34 neonates and 21 paired mothers (21
38 neonate-mother dyads), yielding 137 GNB isolates of which 112 were high quality de novo
39 assemblies. Neonatal MDR-GNB skin or intestinal carriage prevalence was 41% (14/34) at
40 admission with 85% (11/13) new acquisition occurring by 7 days. Multiple MDR and ESBL -
41 GNB species were carried by neonates at different timepoints, most frequently *K. pneumoniae*
42 and *E. coli*, with heterogeneous strain diversity, no evidence of clonality and 111 distinct
43 antibiotic resistance genes, mostly Beta-Lactams (*Bla*-AMPH, *Bla*-PBP, CTX-M-15, *Bla*-
44 TEM-105). 76% (16/21) and 62% (13/21) of mothers had recto-vaginal carriage of at least_1

45 MDR-GNB and ESBL-GNB respectively, most commonly MDR-*E. coli* (76%, 16/21) and
46 MDR-*K. pneumoniae* (24%, 5/21). Of 21 neonate-mother dyads only one had genetically
47 identical isolates (*E. coli* ST131 and *K. pneumoniae* ST3476).

48

49 Conclusion: Gambian hospitalised small vulnerable neonates exhibit high MDR and ESBL-
50 GNB carriage prevalence with acquisition between birth and 7 days. The heterogeneous strain
51 diversity and lack of matching isolates between mothers and newborns suggests multiple
52 environmental sources may be important in transmission. Larger genomic studies to confirm
53 these findings in similar resource limited settings is foundational to inform targeted
54 surveillance and infection prevention control policies.

55

56 What is known:

- 57 - MDR-GNB, especially *Klebsiella pneumoniae* and *Escherichia coli*, are important
58 causes of neonatal invasive infections and mortality in Africa, classified by WHO as
59 pathogens of high priority for research
- 60 - Neonatal MDR-GNB carriage is a pre-cursor for invasive infection, with preterm,
61 low-birth weight neonates (“Small Vulnerable Newborns”) at greatest risk
- 62 - Maternal MDR-GNB carriage is a risk factor for neonatal pathogen acquisition in
63 Europe and other well-resourced settings, but a priority evidence gap exists for
64 transmission pathways for small vulnerable African newborns

65

66 What this study adds:

- 67 - Hospitalised Gambian small vulnerable neonates have high carriage prevalence of
68 MDR- and ESBL-GNB with acquisition occurring between birth and 7 days
- 69 - Heterogeneous diversity of *K. pneumoniae* and *E. coli* strains suggests multiple
70 environmental sources with no evidence of clonal outbreak
- 71 - Beta-lactamase genes were most commonly identified with high rates of ESBL- and
72 AMP-C gene production
- 73 - Despite high maternal MDR-GNB carriage prevalence there is no genomic evidence
74 indicating widespread transmission from mother to newborn

75 **Introduction**

76 Neonatal mortality remains unacceptably high in many African and Asian countries,
77 accounting for 47% of deaths in children under 5yrs [1]. Invasive infections are an important
78 contributor to neonatal deaths, with a high burden in Africa and high relative risk of mortality
79 [2,3]. Small vulnerable neonates born either premature (<37 weeks gestation) and/or low
80 birth weight (LBW; <2.5kg) are at greatest risk of infections due to impaired innate and
81 adaptive immunity [4], prolonged hospital stay and invasive procedures [5]. Intestinal
82 carriage of pathogens with translocation across the gut wall is associated with late onset
83 infections and inflammatory disorders [6] and premature infant's skin integrity is typically
84 impaired, providing an additional route for invasive infection.

85

86 An estimated 31% of the 690,000 annual neonatal deaths associated with sepsis are
87 potentially attributable to antimicrobial resistance (AMR) [7]. Within gram negative bacteria
88 (GNB), Enterobacterales are the leading cause of severe bacterial infections in African
89 neonates [2,8,9], with *Klebsiella pneumoniae* and *Escherichia coli* most commonly
90 implicated. Multi-drug resistance (MDR) is seen in up to 82% of invasive neonatal GNB in
91 Africa [10,11], with prevalence increasing [11] and management challenges due to limited
92 diagnostics and therapeutic options [7]. Extended Spectrum Beta Lactamase (ESBL)-
93 producing GNB were listed as pathogens of high priority for research and antibiotic
94 development by the World Health Organisation in 2017 [12], and represent a neonatal public
95 health emergency which is critical to address if global targets to reduce neonatal mortality to
96 $\leq 12/1000$ livebirths are to be met by 2030 [13].

97

98 Neonatal MDR-GNB carriage is associated with invasive blood stream infections [14–16],
99 yet detailed understanding of how neonates acquire MDR-GNB within hospitals in resource
100 limited settings (RLS) is limited. LBW [17], prolonged hospital stay and antibiotic use are
101 risk factors [18] for neonatal MDR-GNB acquisition and an association between neonatal
102 ESBL-GNB carriage and premature delivery has been reported [19]. In addition, the
103 intestinal colonisation pattern of hospitalised premature neonates differs from that of healthy,
104 term, breastfed infants but there is a paucity of gestational age specific data from the lowest
105 resource settings and most data originates from HIC settings where the bacterial burden
106 differs. Environmental sources of MDR-GNB on African neonatal units have also been
107 described [20], with contaminated fluids, antibiotic vials, equipment and surfaces implicated
108 and linked to outbreaks [21,22]. Maternal colonization is a well-recognised risk factor for
109 neonatal acquisition and infection with gram-positive bacteria such as Group B Streptococcus
110 [23]. However, the role of maternal colonisation in neonatal MDR-GNB acquisition,
111 especially in Africa has not undergone rigorous scrutiny [24], and the relative contributions
112 of vertical versus horizontal transmission is not known [25]. This is an important gap to
113 address for development of targeted infection prevention control strategies to reduce neonatal
114 MDR-GNB carriage and subsequent invasive infection.

115

116 This study aimed to characterise MDR-GNB carriage in small vulnerable newborns at a low-
117 resource African neonatal unit (NNU), with exploration of acquisition in relation to maternal

118 carriage using whole genome sequencing (WGS). Objectives included: 1) Determine species
119 specific MDR-GNB and ESBL-GNB carriage prevalence for neonates and paired mothers; 2)
120 Describe strain-specific *K. pneumoniae* and *E. coli* carriage; 3) Describe antibiotic resistance
121 genes and 4) Explore relatedness of *K. pneumoniae* and *E. coli* isolates within neonate-
122 mother dyads

123 **Methods**

124 **Study Design**

125 This cross-sectional cohort study was conducted from April–August 2017 as part of a
126 feasibility study to inform the design of a clinical trial investigating the effect of kangaroo
127 mother care (KMC) on survival of small vulnerable newborns [26].

128

129 **Study setting**

130 Recruitment took place at Edward Francis Small Teaching Hospital (EFSTH) NNU, the
131 national neonatal referral unit in The Gambia. Approximately 1400 neonates are admitted per
132 year [27] from a mixed in-born (~6,000 births/year in hospital) and out-born (other health
133 facilities or home) population. Neonatal mortality in The Gambia declined from 49 to 26 per
134 1000 live births between 1990 and 2018 [1], but is still substantially higher than the SDG 3.2
135 target of 12 per 1000 live births. 12% of Gambian neonates are born preterm [28], 17% LBW
136 [1] and 28% of neonatal deaths are due to infections [29], with likely underestimation of the
137 contribution of infection to mortality of small vulnerable newborns.

138

139 The inpatient case fatality rate at EFSTH ranged from 35% (all admissions) to 48% for
140 neonates <2kg from 2010–2014, with prematurity or LBW accounting for 27% of all
141 admissions [27]. At the time of this study, WHO level 2 special newborn care was provided
142 with oxygen via concentrators, phototherapy, access to blood transfusion and intravenous
143 (IV) fluids. Empirical first line antibiotics were IV ampicillin and gentamicin (age <72h),
144 with ceftriaxone and flucloxacillin used for both community onset and suspected hospital
145 acquired infections (HAI) (age ≥72h). Ciprofloxacin was second line treatment with
146 carbapenems rarely available. Blood cultures were not routinely available. Admission rates
147 ranged from 80 – 100 neonates/month during the quieter dry season (January–August) to 140
148 -160 neonates/month during the rainy season (September–December)[27].

149

150 **Study population**

151 All neonates ≤2kg admitted during the study period (April–July 2017) were screened for
152 eligibility with inclusion criteria: weight <2kg and admission age <24h. Neonates were
153 excluded if death occurred before or during screening or in the absence of informed consent.
154 Specific exclusion criteria for skin swabs included topical antibiotics or steroids applied to
155 skin since birth, and generalized or local skin disorder within 4cm of swabbing site [30].
156 Exclusion criteria for peri-anal swabs included imperforate anus or anal stenosis, previous
157 gastrointestinal surgery or diarrhoea within preceding 24h [30]. Mothers were approached for
158 consent to provide rectovaginal swabs once they were available, with exclusion if known
159 HIV infection, major gastrointestinal surgery within previous 5 years, diarrhoea or

160 constipation within preceding 24h, or current sexually transmitted infection [30]. Participant
161 identification was pseudoanonymised using unique identification numbers, with identity
162 known only by the researchers.

163

164 [Data collection & procedures](#)

165 Neonatal swabs, anthropometric and clinical data, gestational age assessment (New Ballard
166 score [31]), antibiotic use and in-hospital outcomes were collected via direct observation,
167 parental interviews and medical record review as soon as possible after admission then
168 weekly (day 7, 14, 21, 28) until discharge or death. Data were recorded electronically using
169 REDCap™. Neonatal skin swabs were obtained by composite sampling from the
170 xiphisternum and peri-umbilical area. Peri-anal samples were taken in lieu of stool or rectal
171 samples for intestinal carriage [32] due to less invasive sampling. Rectovaginal (RV) swabs
172 were taken from mothers. All samples were taken by trained personnel with FLOQ® swabs
173 and stored in Amies transport medium at +4 to +8°C prior to transfer to the Medical Research
174 Council, The Gambia at London School of Hygiene & Tropical Medicine (MRCG) within 48
175 hrs.

176

177 [Microbiological processing](#)

178 Prospective bacteriological processing and storage of isolates occurred at MRCG, ISO-15189
179 accredited Clinical Laboratories. Samples were processed immediately by culture on
180 MacConkey agar plates incubated aerobically at 35-37°C, with identification of
181 Enterobacterales and other GNB using API 20E and API 20NE respectively.

182 [Molecular processing and bioinformatic analysis](#)

183 Whole genome sequencing was performed at the MRCG Genomics Facility.
184 Deoxyribonucleic acid (DNA) was extracted from cultures of all identified GNB, expanded
185 from single bacterial colonies using the QIAamp DNA extraction kit (Qiagen) following
186 manufacturer's instructions and Illumina Miseq sequenced to 250 cycles. Quality control and
187 trimming of raw sequence reads were done using FastQC (v0.11.8) and trimmomatic (v0.38)
188 respectively to remove low quality bases and sequencing adapters [33]. Whole genome *de*
189 *novo* assemblies were generated using SPAdes (kmers: 21,33,55 and 77) and quality checked
190 using Quast [34,35]. All draft assemblies greater than 500 contigs were removed from
191 downstream analyses. Multi locus sequence typing (MLST) was done using the
192 `get_sequence_type` from the `mlst_check` from the Sanger institute pathogen group
193 (https://github.com/sanger-pathogens/mlst_check). Genomes were annotated using Prokka and
194 core genomes analysed using Roary [36,37]. SNP-dist was used to calculate genetics
195 distances (single nucleotide polymorphisms [SNPs]) between isolates of the same species to
196 infer relatedness. Abricate was used to determine AMR gene carriage using the ARG-
197 ANNOT database setting a minimum coverage of 70% and identity of 75%
198 (<https://github.com/tseemann/abricat>). Genotypic MDR was defined as presence of 3 or more
199 AMR encoding genes, as classed using MEGARes database [38]. Isolates were defined as
200 ESBL producing if a recognised ESBL gene type was identified on whole genome
201 sequencing. Maximum likelihood phylogenetic trees were generated from aligned core SNPs
202 using RAxML with 100 bootstraps, visualized and annotated in iTOL [39,40].

203

204 **Ethics & consent:**

205 Ethical approval was obtained from LSHTM Observational Ethics Committee (Ref. 11887)
206 and Gambian Government/MRCG Joint Ethics Committee (Ref. 1503). Written informed
207 consent was sought from the neonates' first available relative prior to data collection with
208 separate consent for maternal sampling sought from the mother. Consent was sought for
209 future research on samples with exclusion from genomic analysis if not provided. Participants
210 were free to withdraw from the study at any time [26].

211

212 **Results**

213 **Enrolment & study participants**

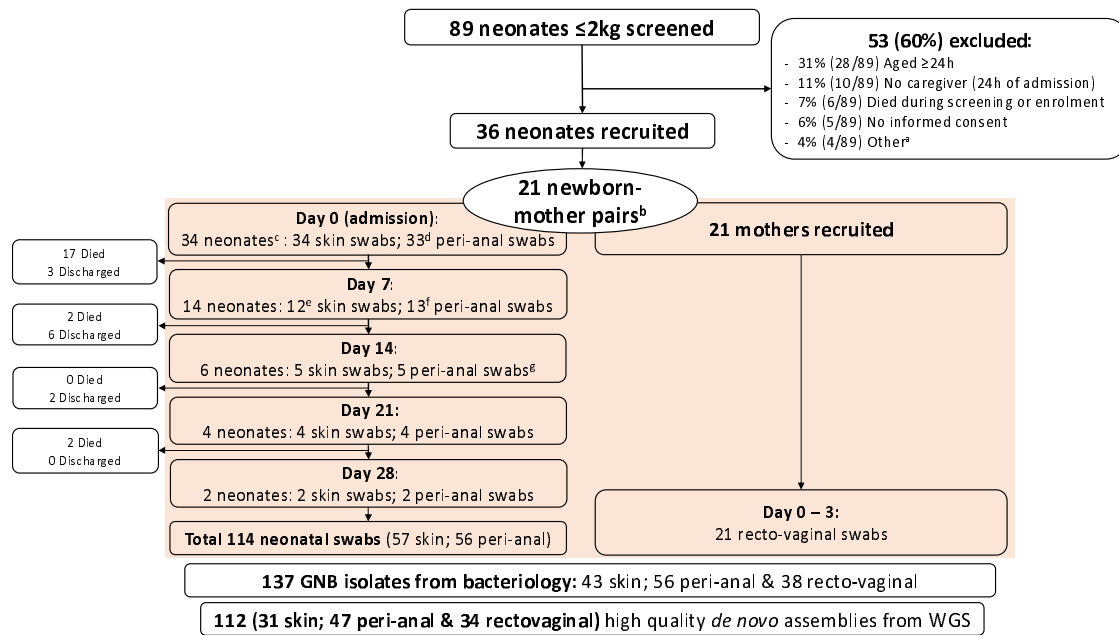
214 Of 89 neonates screened, 36 met eligibility criteria and 34 underwent sampling with 114
215 neonatal carriage swabs obtained (Figure 1). Twenty-one mothers were sampled, of which 19
216 were linked to sampled neonates. 21 neonate-mother dyads were included due to presence of
217 two twin-mother pairs. 76% of maternal recto-vaginal samples were taken within 24h of
218 neonatal admission (Table 1).

219 The median neonatal admission weight was 1330g (71% <1.5kg) and median gestational age
220 33 weeks, with 18% (6/34) twin pairs. 91% (32/34) were born in a health facility with a
221 combination of neonates born at the study site (inborn) and elsewhere (out-born) with
222 postnatal transfer. At least one septic risk factor (maternal fever, suspected chorioamnionitis
223 or prolonged rupture of membranes >18h) was present in 14% (3/21) of mothers with 19%
224 (4/21) receiving antibiotics 48h before delivery. The inpatient case fatality rate within 28
225 postnatal days was 62% (21/34), with median age at death 2.5 days. Reliable data on the
226 cause of death was not available (Table 1).

227

228 **Sampling and overview of Gram-Negative Bacilli isolates**

229 135 neonatal and maternal carriage swabs yielded 137 GNB isolates from conventional
230 bacteriology with 112 high quality *de novo* assemblies obtained (Figure 1).



231

232

Figure 1. Overview of screening, enrolment, sampling and isolate sequencing for neonatal and maternal participants

233

234

a) Other reasons for non-recruitment included weight >2kg on study scales (n=2) and no staff available to perform study procedures (n=2)

235

b) Two mothers were sampled in absence of neonatal paired swabs and two sets of twins were included

236

c) 36 neonates were enrolled but 2 were not sampled, due to rapid deterioration and death (n=1) and lack of consent for neonatal sampling (n=1)

237

d) One participant did not meet eligibility for peri-anal samples due to imperforate anus

238

e) Two neonates did not have skin swabs taken: One met exclusion criteria; One had consent withdrawn for repeat sampling

239

f) One neonate did not have peri-anal swabs taken as consent was withdrawn for repeat sampling

240

g) One newborn did not have skin or peri-anal samples taken due to error

241

GNB = Gram-negative bacilli; WGS = whole genome sequencing

242

243

244

245

246

Spectrum of Gram Negative Bacilli carriage and rates of genotypic Multi-Drug Resistance

247

Of 112 high quality *de novo* assemblies obtained, 70% (78/112) originated from neonates and 30% (34/112) from mothers. *E. coli* (40.2%, 45/112) and *K. pneumoniae* (33.0%, 37/112) were the most frequently identified species. Nearly three-quarters of isolates (73%, 82/112) exhibited genetic MDR (*K. pneumoniae* 76% (28/37) and *E. coli* 76% (34/46)). Half (23/45) of the *E. coli* isolates were derived from maternal rectovaginal samples. 76% (28/37) of the *K. pneumoniae* identified were neonatal in origin, with an equal contribution from skin and peri-anal swabs. 82% (23/28) of neonatal *K. pneumoniae* isolates were MDR, predominantly those identified from peri-anal isolates (81%, 17/21). 27% (3/11) of *Acinetobacter baumannii*, 100% (3/3) of *Citrobacter freundii* and 86% (6/7) of *Enterobacter cloacae* were MDR.

252

253

254

255

256

257

258

Neonatal & maternal MDR-Gram Negative Bacilli carriage during NNU admission

259

41% (14/34) of neonates carried ≥1 MDR-GNB and 38% (13/34) ≥1 ESBL-producing GNB at time of NNU admission. This was split equally between skin (26%) and peri-anal (24%)

260

261 (Table 2). All surviving neonates carried ≥ 1 MDR-GNB after one week, with 85% (11/13)
 262 colonised with at least one new MDR-GNB strain compared to admission (Table 2).

263

264 29% (10/34) of neonates were colonised with *E. coli* at admission, predominantly on the skin
 265 (21%, 7/34), with MDR and ESBL *E. coli* carriage present in 18% (6/34) and 15% (5/34) of
 266 neonates respectively. Comparatively less neonates carried *K. pneumoniae* at admission
 267 (21%, 7/34), with only three (9%) colonised with MDR *K. pneumoniae*, although 18% (6/34)
 268 carried ESBL-producing *K pneumoniae*. The carriage prevalence increased for both MDR
 269 and ESBL *E. coli* and *K. pneumoniae* during the first week of admission, with the greatest
 270 increase observed for *K. pneumoniae* (MDR from 9% to 54%; ESBL from 18% to 62%) and
 271 to a lesser extent *E. coli* (MDR from 18% to 31%; ESBL from 15% to 31%) (Table 2).
 272 Eleven neonates had 21 isolates identified from samples taken after day 7 of admission,
 273 mostly *K. pneumoniae* (57%, 12/21 isolates), identified predominantly from peri-anal swabs
 274 (83%, 10/12 neonates).

275

276 76% (16/21) of mothers carried ≥ 1 MDR-GNB in their recto-vaginum and 62% (13/21) had
 277 an ESBL-producing pathogen. *E. coli* was most commonly identified, with 76% (16/21) of
 278 mothers colonised with an MDR-*E. coli*. One quarter (24%, 5/21) of mothers had recto-
 279 vaginal carriage of MDR-*K. pneumoniae*.

280

281 **Table 2. Genotypic MDR-GNB and ESBL-GNB carriage amongst sampled neonates**
 282 **and mothers from admission to day 7 of hospital admission**

	Neonates						Maternal
	Total ^a		Peri-anal		Skin		Recto-vaginal
	D0 N=34	D7 N=13	D0 n=33	D7 n=13	D0 n=34	D7 n=12 ^b	D0 – D3 n=21
≥ 1 GNB isolated, N ^o (%)	19 ^c (56)	13 ^d (100)	12 (36)	12 (92)	15 (44)	5 (42)	17 (81)
≥ 1 MDR-GNB, N ^o (%)	14 ^c (41)	13 ^{d,e} (100)	8 (24)	12 (92)	9 (26)	4 (33)	16 (76)
≥ 1 ESBL-GNB, N ^o (%)	13 ^c (38)	12 ^{d,f} (92)	6 (18)	11 (85)	8 (24)	4 (33)	13 (62)
<i>Escherichia coli</i> , N ^o (%)	10 (29)	4 (31)	4 (12)	3 (23)	7 (21)	1 (8)	17 (81)
MDR- <i>E. coli</i> , N ^o (%)	6 (18)	4 (31)	3 (9)	3 (23)	3 (9)	1 (8)	16 (76)
ESBL- <i>E. coli</i> , N ^o (%)	5 (15)	4 (31)	2 (6)	3 (23)	3 (9)	1 (8)	10 (48)
<i>Klebsiella pneumoniae</i> , N ^o (%)	7 (21)	8 (62)	4 (12)	7 (54)	3 (9)	2 (17)	8 (38)
MDR- <i>K. pneumoniae</i> , N ^o (%)	3 (9)	7 (54) ^d	1 (3)	6 (46)	2 (6)	2 (17)	5 (24)
ESBL- <i>K. pneumoniae</i> , N ^o (%)	6 (18)	8 (62) ^f	3 (9)	7 (54)	3 (9)	2 (17)	6 (29)
<i>Acinetobacter</i> spp., N ^o (%)	5 (15)	2 (15)	4 (12)	2 (15)	4 (12)	1 (8)	0
MDR- <i>Acinetobacter</i> spp. N ^o (%)	1 (3)	2 (15)	1 (3)	2 (15)	0	0	0
ESBL- <i>Acinetobacter</i> spp. N ^o (%)	0	0	0	0	0	0	0

Other GNB^z N^o (%)	8 (24)	3 (23)	3 (9)	3 (23)	6 (18)	0	2 (10)
MDR-Other, N^o (%)	7 (21)	3 (23)	3 (9)	3 (23)	5 (15)	0	2 (10)
ESBL-Other, N^o (%)	4 (12)	2 (15)	1 (3)	2 (15)	3 (9)	0	0

283 ESBL = Extended Spectrum Beta Lactamase; GNB = Gram-Negative Bacilli; MDR = Multi-drug
284 resistant;

- 285 a. Neonates with either peri-anal or skin sample
286 b. 1 neonate underwent peri-anal sampling at day 7 but met clinical exclusion criteria for skin sampling
287 c. 8 neonates had a GNB identified from both peri-anal and skin samples at first sampling, 3 with a
288 MDR-GNB at both sites and 1 with ESBL-GNB at both sampling sites
289 d. 4 neonates had a GNB identified from both peri-anal and skin samples at day 7, with 3 neonates
290 carrying MDR and ESBL pathogens at both sampling sites
291 e. 85% (11/13) of surviving neonates who were sampled acquired a new MDR-GNB by day 7 of
292 admission with 12 isolates identified (*E. coli* n=2; *K. pneumoniae* n=6; *A. baumannii* n=2; *E. cloacae*
293 n=1; *Pseudomonas aeruginosa* n=1)
294 f. 69% (9/13) of surviving neonates who were sampled acquired a new ESBL-GNB by d7 of admission,
295 with 10 ESBL producing isolates identified (*E. coli* n=2, *K. pneumoniae* n= 6; *E. cloacae* n=1;
296 *Pseudomonas aeruginosa* n=1)
297 g. Other GNB: *Enterobacter cloacae* (n=5); *Citrobacter freundii* (n=2); *Cronobacter sakazakii* (n=3);
298 *Pseudomonas aeruginosa* (n=2); *Pseudomonas putida* (n=1); *Salmonella enterica* (n=1)

299 Genetic diversity of Gram-Negative Bacilli carriage isolates

300

301 *Klebsiella pneumoniae*

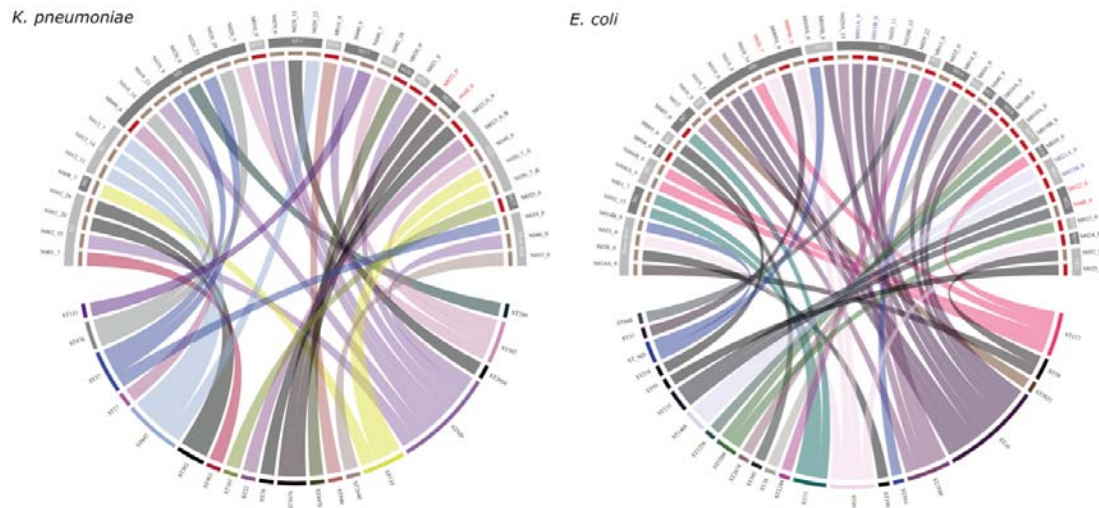
302 We obtained 37 quality *de novo* *K. pneumoniae* assemblies. Eighteen different sequence
303 types (STs) were determined. ST607 was the predominant ST (11%, 4/37), followed by
304 ST37, ST133 and ST307 (8%, 3/37 each), with 19% (7/37) of isolates not assigned a ST.
305 Seven neonates had multiple *K. pneumoniae* isolated at different time points, of whom four
306 had distinct STs: N019 (3 isolates), N020 (4 isolates), N029 (3 isolates) and N040 (2
307 isolates). Only two neonates carried a genetically identical *K. pneumoniae* at two or more
308 different time points: 1) A female neonate had *K. pneumoniae* ST502 peri-anal carriage at
309 20d and 28d (N002; SNP difference=11); 2) A male neonate had peri-anal carriage of *K.*
310 *pneumoniae* ST607 at 7d and 14d (N012; SNP distance=0). One set of twins carried the same
311 *K. pneumoniae* (ST37, SNP distance=0) on day 8 (N019, twin 1, peri-anal) and day 21
312 (N020, twin 2, skin). This twin pair also had peri-anal carriage of an identical *K. pneumoniae*
313 (ST476;SNP distance=17) on day 14 (N019) and day 29 (N020), which was not identified in
314 their mother (M009). Furthermore, there was only a single instance of a neonate-mother dyad
315 with identical *K pneumoniae* (ST3476; SNP distance=0), isolated from a neonatal d0 peri-
316 anal swab (N048) and maternal rectovaginal swab (M022)(Figure 2A). This involved a
317 female preterm singleton, admitted following vaginal delivery at another health centre. This
318 newborn died within 7 postnatal days, hence further samples weren't available.

319

320 *Escherichia coli*

321 45 high quality *E. coli* genomes were obtained with 21 different STs identified and two
322 isolates (4.4%) not assigned a ST. ST10 was most common (20%, 9/45), followed by ST69,
323 ST127 and ST3580 (8.8%, 4/45 each). The most common neonatal derived *E. coli* strains
324 were ST10 and ST3580 (18%, 4/22, each). Three neonates carried multiple *E. coli* isolates at
325 varying time-points: 1) A female singleton weighing 1500g had *E coli* on both skin and peri-

326 anal swabs at d0 (NST58 and unassigned ST; N014); 2) A female twin carried *E. coli* ST10
327 on day 0 (PA) and day 7 (skin and PA)(SNP distances=1–128; N019) and *E. coli* ST127 was
328 present on day 14 (PA); 3) A male singleton had four identical isolates of *E. coli* ST3580
329 (SNP distance=0-3; N029) on skin and peri-anal samples taken between day 7 and day 21,
330 with *E. coli* ST648 present on day 21 (Figure 2). *E. coli* ST10 was the most commonly
331 observed isolate in maternal rectovaginal samples (24%, 5/21). 14% (3/21) of mothers carried
332 >1 *E. coli* ST. Only one mother-neonate pair had identical *E. coli* carriage (ST131; SNP
333 distance=0), with neonatal peri-anal carriage at d0 (N048) and maternal recto-vaginal sample
334 (N022) which was obtained within 24h of admission. This mother-neonate pair also had
335 identical *K. pneumoniae* strains, as described above.



336
337 **Figure 2: Multilocus sequencing types and genetic relatedness of *K. pneumoniae* (A) and**
338 ***E. coli* (B).**

339 SNP-distance was used to determine genetic relatedness of isolates using the core-genome alignment obtained
340 from Roary. Sequence type (ST) were determine using the mlst package <https://github.com/tseemann/mlst>. SNP
341 distance were imported into R to generate the circus plots using the circlize package. In the top half of the
342 circus plot, the inner segments indicate whether the isolates were collected from a neonate (brown) or mother
343 (red), mothers' study ID (MXX) and day of sampling labelled on the outside separated by underscore (_).
344 Sample IDs highlighted with the red font are mother neonate pairs that have the ST. The bottom half indicates
345 the ST types of *K. pneumoniae* or *E. coli*. Connecting lines joining the upper and lower halves of the circus plot
346 indicates to which ST a particular an isolate belongs to.

347

348 **Antimicrobial resistance (AMR) gene carriage**

349 A total of 1,141 AMR genes were identified from 112 isolates, representing 111 distinct gene
350 types, and encoding resistance for 10 antibiotic classes. Beta-lactam resistance was the most
351 common (43.2%, 48/111), followed by resistance to Aminoglycosides (18.2%, 20/11)
352 (Supplementary Table 1 and Figure 2). All *K. pneumoniae* and *E. coli* isolates had ≥ 2 AMR
353 genes, with a median of 11 AMR genes per isolate for both bacteria (*K. pneumoniae* range [3
354 – 19]; *E. coli* range [5 – 15]).

355

It is made available under a [CC-BY 4.0 International license](https://creativecommons.org/licenses/by/4.0/).

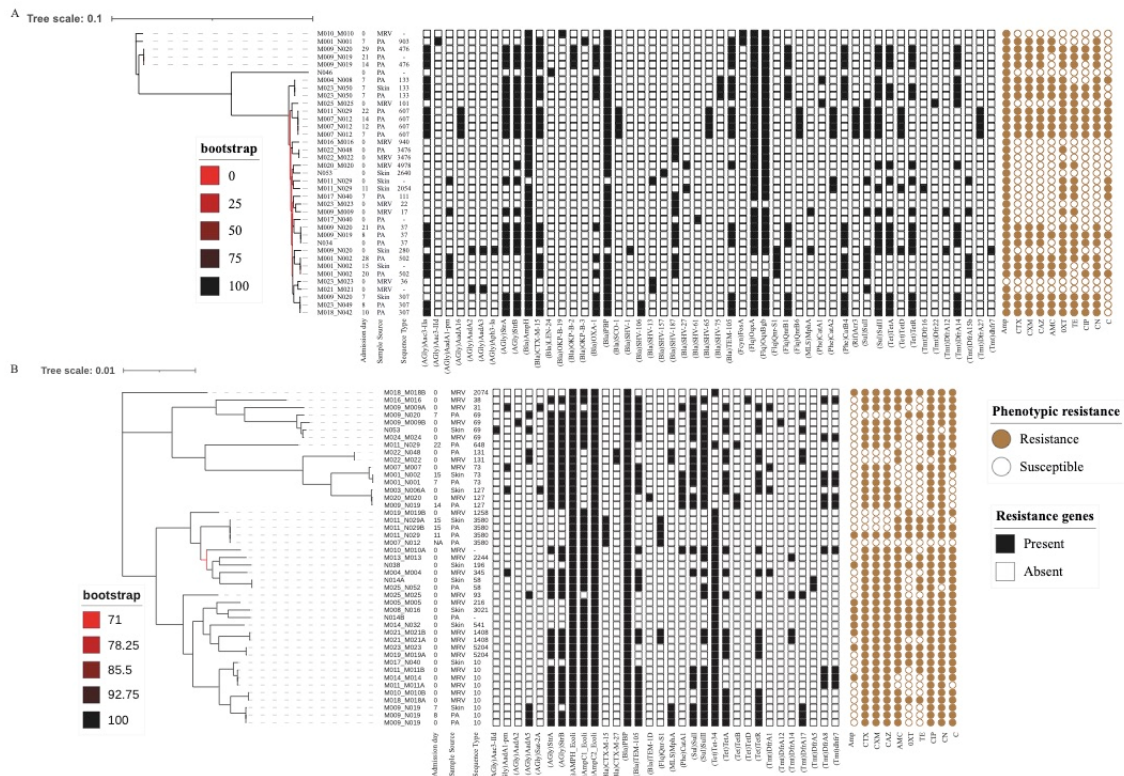
356 *K. pneumoniae* isolates had a total of 446 AMR genes (51 distinct gene types), encoding
 357 resistance to 10 antibiotic classes, most commonly beta-lactamases (35.9%, 160/446). 19
 358 distinct beta-lactamase genes were identified, most commonly *BlaAmpH* and *BlaPBP* (97%
 359 (36/37) and 94% (35/37) of isolates respectively). At least one ESBL genes was present in
 360 92% (34/37) of *K. pneumoniae* isolates, most commonly CTX-M-15 (20/37, 54%) and Bla-
 361 TEM-105 (18/37, 49%) (Figure 3, Supplementary Table 1).

362

363 *E. coli* isolates harboured 456 AMR genes (32 distinct gene types), encoding resistance to 8
 364 different antibiotic classes, most commonly beta lactamases (44.1%, 201/456). Eight types of
 365 beta-lactamase genes were present, with *BlaAmpH*, *BlaPBP* and *BlaAmpC2* carried by all
 366 isolates along with *BlaAmpC1* in 78% (35/45). Two-thirds (66.7%, 30/45) of *E. coli* isolates
 367 harboured an ESBL-gene, mostly Bla-TEM-105 (53%, 24/45) (Figure 3, Supplementary
 368 Table 1).

369 None of the major carbapenemase resistance genes (VIM-, IMP- and NDM-type metallo-
 370 beta-lactamases, KPC- nor OXA-48) were identified in *E. coli* and *K. pneumoniae*. However,
 371 91% (10/11) of *A. baumannii* isolates harboured *blaMbl*, a class B3 beta-lactamase, which
 372 has carbapenemase activity (Figure 3, Supplementary Table 1).

373



374

375 **Figure 3. Phylogeny of *K. pneumoniae* (A) and *E. coli* (B) isolates.** A maximum likelihood
 376 phylogenetic tree was constructed from core-genome SNPs using RAxML with 100 bootstraps. For both species
 377 isolates clustered by STs. Also shown are the presence (black-filled square) or absence (white empty-square) of
 378 antimicrobial resistance genes (AMR). AMR genes were determined using Abricate using the Argannot
 379 database. Phenotypic resistance is shown by closed brown circles and susceptibility denoted by the open
 380 circles.

381 Discussion

382 We identified high carriage prevalence of MDR- and ESBL-producing GNB in small
383 vulnerable neonates within 24h of NNU admission and extensive acquisition after 7d of
384 hospital stay. Multiple MDR and ESBL-GNB species were identified in individual neonates
385 at different time points, most commonly *K. pneumoniae* and *E. coli* with heterogeneous
386 diversity of strains, no evidence of clonality and a wide range of AMR genes, most
387 commonly Beta-Lactamase genes. Maternal carriage prevalence of MDR-GNB,
388 predominantly *E. coli* was very high, but only one newborn-mother dyad had evidence of
389 genetically identical strains for both *K. pneumoniae* and *E. coli*.

390

391 Our observed high rate of in-patient neonatal MDR-GNB acquisition is greater than in
392 European outbreak situations; 24% in Norway [41], middle-income NNUs such as Morocco
393 (58%) [21] and Malaysia (22% and 52%) [42]. Our findings are comparable to phenotypic
394 data from Ethiopia (74% prevalence of ESBL-GNB after 48h of admission)[43] and other
395 West African countries such as Ghana (65%) [44], although the proportion of ESBL-GNB
396 varies considerably within African regions and hospitals, as shown by large heterogeneity in
397 pooled prevalence from East Africa (12 – 89%) [45]. Our cohort of mixed inborn and out-
398 born neonates had high MDR-GNB carriage prevalence at time of NNU admission (44%),
399 suggesting that rapid colonisation occurs during the pre-admission period, although we are
400 unable to comment on precise timing and source of acquisition. Our observed 54% MDR *K.*
401 *pneumoniae* carriage prevalence after 7 days of admission (all harbouring an ESBL gene) is
402 similar to that reported from a tertiary NNU in Ghana in which 49.6% of neonates had
403 phenotypic MDR *K. pneumoniae* and 75.6% exhibited ESBL activity at median 3d of
404 admission [18]. The high carriage rates at both admission and after 7 days likely reflects
405 varying health system factors such as availability of WASH resources and optimal hand
406 hygiene, provision of sterilisation techniques, over-crowding and under-staffing [46], sub-
407 optimal infection prevention control systems and re-use of disposable consumables and
408 equipment. All these factors have been linked to MDR-GNB outbreaks in other African
409 NNUs [20] and were also observed at this site [22].

410

411 MLST identified substantial intraspecies diversity with 21 different *E. coli* sequence types
412 (most frequently ST10, ST69, ST127 and ST3580), and 18 *K. pneumoniae* strains (most
413 commonly ST607, ST37, ST133, ST307). *E. coli* strains range from harmless commensals to
414 pathogenic variants associated with invasive infections [47] and several strains colonising our
415 cohort have been linked to neonatal infections in Africa and Asia (ST10, ST69) [47]. We
416 identified *E.coli* ST131 in 4% (2/45) of *E.coli* isolates (one each in a neonate-mother dyad),
417 important as it is a highly virulent strain and major neonatal pathogenic variant [47]. This
418 finding is consistent with a community study in Guinea Bissau which identified ST131 in
419 only 4% of *E.coli* isolates from >400 children, including neonates [48]. Two of our most
420 frequently identified *K. pneumoniae* strains (ST37, ST307) are associated with invasive
421 neonatal infection and have been previously reported from Ethiopia (ST37), Rwanda (ST307)
422 and Nigeria (ST307) [47]. We did not identify any *K. pneumoniae* ST39 or ST31535 (*K*
423 *quasipneumoniae*), which were both implicated in contemporaneous outbreaks at the site one
424 year previous to our sampling period [22], suggesting that prior outbreaks were contained.

425 There are limited other African genomic data describing strain specific neonatal *E. coli* and
426 *K. pneumoniae* carriage and this is a priority research area.

427

428 Beta-lactamases were the most common AMR genes identified, with a predominance of
429 AmpH, penicillin binding protein (PBP), TEM and CTX-M gene types, conferring resistance
430 to ampicillin and 3rd generation cephalosporins (first and second line antibiotics) in 43% of
431 gram-negative isolates. The low prevalence of carbapenem resistance genes in our isolates
432 contrasts with higher levels reported from Ghana (15.6%) [49], and Thailand (64%) [50]
433 likely reflecting the limited availability of carbapenem antibiotics in our setting and thus
434 reduced selective pressure. However, nearly ubiquitous presence of *blaMbl* in *A. baumannii*
435 is of concern due to risk of inter-species transfer due to mobile genetic elements [51]. This is
436 an area of high priority for future genomic surveillance in The Gambia and elsewhere in West
437 Africa to help guide antimicrobial stewardship and AMR surveillance.

438

439 The high maternal MDR-GNB carriage prevalence (76%) is consistent with other African
440 studies [24] and contrasts with lower prevalence observed in Europe (France, 12.8%;) [24]
441 and the Middle East (Lebanon, 19.1%). As maternal samples were obtained within 72h of
442 NNU admission following delivery at different health facilities, we cannot speculate on the
443 source of maternal carriage which may reflect widespread community prevalence or health
444 facility related acquisition during labour. Dissemination of ESBL-GNB in African
445 communities is widespread, with outpatient cross-sectional studies indicating 32.6% carrier
446 prevalence for children in Guinea-Bissau [48], 21.1% prevalence for children in Madagascar
447 [52] and 63.3% carriage prevalence in adults and children in Egypt [53]. Maternal acquisition
448 of GNB temporally related to hospital admission has also been described with rectovaginal
449 carriage prevalence increasing from 18.8% pre-delivery to 41.5% at time of postnatal ward
450 discharge in Sri Lanka [54].

451

452 A key finding is that our neonatal cohort carried genetically different MDR-GNB isolates on
453 their skin and intestine compared to paired maternal rectovaginal carriage. We identified only
454 one newborn-mother pair with identical *E. coli* and *K. pneumoniae* strains, despite high
455 maternal and newborn carriage prevalence, suggesting that mothers do not play a prominent
456 role in newborn MDR-GNB acquisition during the perinatal and early post-natal period at
457 this site. This contrasts with evidence from HIC and MIC indicating that maternal MDR-
458 GNB carriage is a risk factor for neonatal acquisition, with estimated 19% (pooled from 5
459 studies) of neonatal colonisation associated with transmission from colonised mothers [24].
460 However, there is a lack of robust genomic research examining mother to newborn MDR-
461 GNB transmission in LIC settings, especially Africa [24] and extrapolation of findings from
462 other settings should be avoided, as neonatal MDR-GNB transmission is complex and
463 influenced by multiple context-specific health system factors [11]. A cross-sectional study of
464 Gambian newborns with clinical early onset sepsis reported low prevalence of vertical
465 transmission from maternal genital tract colonisation with only 14% transmission risk for *S*
466 *aureus* and no genotypically related GNB isolates from mother-newborn pairs [25]. A cohort
467 study in South Africa reported similarly low instances (1.1%) of clonal relatedness between
468 maternal and neonatal derived ESBL-producing *Enterobacter cloacae* [55] and a Sri Lankan

469 paired cohort study reported 0.6% maternal transfer rate for ESBL-producing
470 Enterobacterales [54]. A detailed genomic transmission study conducted in a similar low
471 resource NNU in Madagascar also reported no involvement of family members, including
472 mothers, in transmission [56].

473

474 We identified no clonal dissemination of *E. coli* and *K. pneumoniae*, suggesting multiple
475 sources. Environmental contamination of NNUs is well recognised [20] with MDR-GNB
476 able to survive prolonged periods on hands, [20] medical products such as gastric feeding
477 tubes, [57] suction machines [58] water supplies and sinks and on inanimate surfaces [18,59].
478 Endemic and epidemic MDR-GNB outbreaks occurred at our study site in the year preceding
479 this study, with *Burkholderia cepacia* and ESBL-*K. pneumoniae* isolated from IV fluid
480 preparations and antibiotic vials with genotypic linkage to invasive isolates [22]. As
481 environmental samples were not collected during our study we cannot comment on exact
482 sources of environmental acquisition. However, the absence of evidence for mother to
483 newborn transmission, extensive carriage of MDR-*K. pneumoniae* at 7 days and
484 heterogeneous diversity of strains identified is highly suggestive of multiple environmental
485 sources. This should be confirmed by future research, ideally with linked environmental
486 surveillance from the range of sites at which mother and newborn are managed during labour
487 and the early postnatal period, including place of delivery, referral site and tertiary NNUs.

488

489 Limitations of this study include sequencing of single bacterial colonies, which may not have
490 captured the extensive within-host diversity of intestinally carried GNB [60]. Samples were
491 collected over a short period during the dry season and MDR-GNB carriage may differ with
492 seasonality, as shown by other Gambian studies of bacterial infection and carriage [61].
493 Samples were limited from 14 days onwards due to high mortality and we are unable to
494 comment on the persistence or resolution of MDR-GNB carriage beyond 7 days nor timing of
495 acquisition of maternal carriage.

496

497 Further research is required to confirm our findings, with larger sample sizes and linkage to
498 clinical outcomes, including elucidation of the exact timing of acquisition, risk factors for
499 MDR-GNB carriage and association with invasive infections. Our findings suggest that
500 environmental sources play an important role in neonatal MDR-GNB transmission,
501 warranting further targeted study to delineate and identify reservoirs at each point along the
502 newborns' journey from labour ward to NNU. Exploration of maternal acquisition of MDR-
503 GNB carriage within both community and hospital settings is also needed to identify
504 interventions to interrupt the circulation of these important neonatal pathogens.

505 **Conclusion**

506 Gambian hospitalised small vulnerable neonates have high carriage prevalence of MDR- and
507 ESBL-GNB with acquisition between birth and 7d of admission. Despite high maternal
508 MDR-GNB carriage prevalence we identified only limited evidence supporting mother to
509 neonate transmission. Heterogeneous diversity of *E. coli* and *K. pneumoniae* strains and
510 extensive AMR gene presence indicates multiple environmental sources from delivery site to
511 neonatal unit. More comprehensive genomic studies of neonatal and maternal MDR-GNB

512 transmission are required to fully understand acquisition pathways in a variety of low
513 resource settings, to inform development of targeted infection prevention control
514 interventions for the most vulnerable newborns.

515 **Declarations**

516 Funding:

517 The Wellcome Trust (Ref.200116/Z/15/Z) funded collection of samples and microbiological
518 analysis as part of fellowship funding to HB. Grand challenges exploration grant
519 (Ref.OPP1211818) funded genomic analysis. The funders played no role in study design,
520 conduct, analysis or writing of this manuscript.

521

522 Availability of data:

523 Sequence data has been uploaded to the Sequence Read Archive accession number
524 PRJNA73082.

525

526 Competing interests & transparency declaration:

527 No author declared a conflict of interest about the submitted work. BK reports grants from:
528 the MRC UK Research & Innovation (UKRI), United Kingdom; Wellcome Trust, United
529 Kingdom; and Bill and Melinda Gates Foundation (BMGF), United States for a variety of
530 projects related to vaccines and maternal and newborn health. BK attended the Gates Global
531 Challenge Meeting in 2022, supported by BMGF, and is also on the Data Safety Monitoring
532 Board for a COVID producing vaccine company. The other authors declare they have no
533 competing interests.

534

535 Authors contributions:

536 HB and TdS conceptualised the study and obtained funding with input from JEL and BK.
537 Data and sample collection were conducted by BFCK and RB with oversight from HB and
538 JEL. NK and SD performed microbiological processing. MK conducted all DNA extraction
539 and sequencing procedures with input from AK, TdS and AKS. SYB performed all
540 bioinformatic analyses, including generation of phylogenetic trees and MLST analysis. SYB
541 and HB drafted the manuscript and generated the figures with input from MK, SD and TdS.
542 All authors provided input to the overall direction and content of the paper and have seen and
543 approved the final version. SYB and MK contributed equally to this work.

544

545 Acknowledgements:

546 The authors acknowledge the following persons at MRC Unit The Gambia at LSHTM:
547 Yusupha Njie, Binta Saidu and Bai Lamin Dondeh (Data Management); Alpha Jallow, Njilan
548 Johnson, Marie-Rose Thorpe, Elizabeth Baticilly (Research Support). We thank Buntung
549 Ceesay, Mamadou Jallow and Dawda Cham for laboratory contributions and support in
550 addition to Demba Sanneh and Mathurin Diatta (Biobank). In addition, we appreciate the
551 Gambian Government Ministry of Health and Medical Advisory Board at Edward Francis
552 Small Teaching Hospital, for facilitating the field work. Finally, we would like to thank the
553 newborns and their mothers for generously taking part in this study.

554

555 References:

- 556 [1] UN Inter-agency Group for Child Mortality. Levels & Trends in childhood mortality.
557 2020.
- 558 [2] Okomo U, Akpalu ENK, Le Doare K, Roca A, Cousens S, Jarde A, et al. Aetiology of
559 invasive bacterial infection and antimicrobial resistance in neonates in sub-Saharan
560 Africa: a systematic review and meta-analysis in line with the STROBE-NI reporting
561 guidelines. *Lancet Infect Dis* 2019;19. [https://doi.org/10.1016/S1473-3099\(19\)30414-1](https://doi.org/10.1016/S1473-3099(19)30414-1).
- 562 [3] Oza S, Lawn JE, Hogan DR, Mathers C, Cousens SN. Neonatal cause-of-death
563 estimates for the early and late neonatal periods for 194 countries: 2000–2013. *Bull*
564 *World Health Organ* 2015;93. <https://doi.org/10.2471/blt.14.139790>.
- 565 [4] Helmo FR, Alves EAR, Moreira RA de A, Severino VO, Rocha LP, Monteiro MLG
566 dos R, et al. Intrauterine infection, immune system and premature birth. *J Matern*
567 *Neonatal Med* 2018;31. <https://doi.org/10.1080/14767058.2017.1311318>.
- 568 [5] Li X, Xu X, Yang X, Luo M, Liu P, Su K, et al. Risk factors for infection and/or
569 colonisation with extended-spectrum β -lactamase-producing bacteria in the neonatal
570 intensive care unit: a meta-analysis. *Int J Antimicrob Agents* 2017;50.
571 <https://doi.org/10.1016/j.ijantimicag.2017.06.027>.
- 572 [6] Sanidad KZ, Zeng MY. Neonatal gut microbiome and immunity. *Curr Opin Microbiol*
573 2020;56. <https://doi.org/10.1016/j.mib.2020.05.011>.
- 574 [7] Laxminarayan R, Matsoso P, Pant S, Brower C, Røttingen JA, Klugman K, et al.
575 Access to effective antimicrobials: A worldwide challenge. *Lancet* 2016;387.
576 [https://doi.org/10.1016/S0140-6736\(15\)00474-2](https://doi.org/10.1016/S0140-6736(15)00474-2).
- 577 [8] Dramowski A, Madide A, Bekker A. Neonatal nosocomial bloodstream infections at a
578 referral hospital in a middle-income country: Burden, pathogens, antimicrobial
579 resistance and mortality. *Paediatr Int Child Health* 2015;35.
580 <https://doi.org/10.1179/2046905515Y.0000000029>.
- 581 [9] Huynh BT, Kermorvant-Duchemin E, Herindrainy P, Padget M, Rakotoarimanana
582 FMJ, Feno H, et al. Bacterial infections in neonates, madagascar, 2012-2014. *Emerg*
583 *Infect Dis* 2018;24. <https://doi.org/10.3201/eid2404.161977>.
- 584 [10] Doare K Le, Bielicki J, Heath PT, Sharland M. Systematic review of antibiotic
585 resistance rates among gram-negative bacteria in children with sepsis in resource-
586 limited Countries. *J Pediatric Infect Dis Soc* 2015;4.
587 <https://doi.org/10.1093/jpids/piu014>.
- 588 [11] Li G, Bielicki JA, Ahmed ASMNU, Islam MS, Berezin EN, Gallacci CB, et al.
589 Towards understanding global patterns of antimicrobial use and resistance in neonatal
590 sepsis: Insights from the NeoAMR network. *Arch Dis Child* 2020;105.
591 <https://doi.org/10.1136/archdischild-2019-316816>.
- 592 [12] World Health Organization. World health organization releases global priority list of
593 antibiotic-resistant bacteria to guide research, discovery, and development of new
594 antibiotics. WHO 2017 2017. https://doi.org/10.4103/jms.jms_25_17.
- 595 [13] Mason E, McDougall L, Lawn JE, Gupta A, Claeson M, Pillay Y, et al. From evidence
596 to action to deliver a healthy start for the next generation. *Lancet* 2014;384.
597 [https://doi.org/10.1016/S0140-6736\(14\)60750-9](https://doi.org/10.1016/S0140-6736(14)60750-9).
- 598 [14] Singh N, Patel KM, Léger MM, Short B, Sprague BM, Kalu N, et al. Risk of resistant

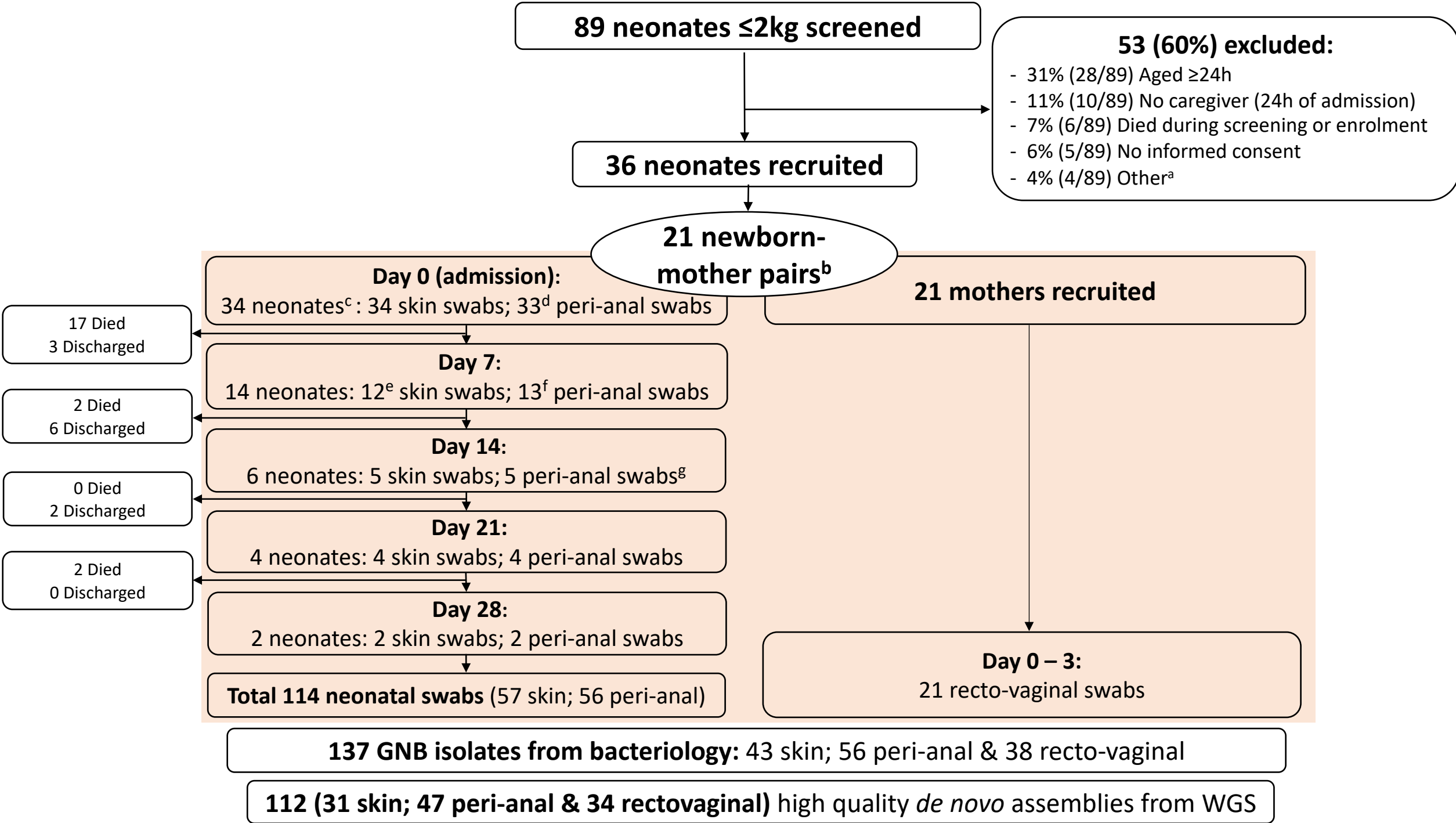
- 599 infections with enterobacteriaceae in hospitalized neonates. *Pediatr Infect Dis J*
600 2002;21. <https://doi.org/10.1097/00006454-200211000-00010>.
- 601 [15] Lukac PJ, Bonomo RA, Logan LK. Extended-spectrum β -lactamase-producing
602 enterobacteriaceae in children: Old foe, emerging threat. *Clin Infect Dis* 2015;60.
603 <https://doi.org/10.1093/cid/civ020>.
- 604 [16] Folgari L, Tersigni C, Hsia Y, Kortsalioudaki C, Heath P, Sharland M, et al. The
605 relationship between Gram-negative colonization and bloodstream infections in
606 neonates: a systematic review and meta-analysis. *Clin Microbiol Infect* 2018;24.
607 <https://doi.org/10.1016/j.cmi.2017.08.008>.
- 608 [17] Herindrainy P, Noah Rabenandrasana MA, Andrianirina ZZ, Jacob Rakotoarimanana
609 FM, Padget M, De Lauzanne A, et al. Acquisition of extended spectrum beta-
610 lactamase-producing enterobacteriaceae in neonates: A community based cohort in
611 Madagascar. *PLoS One* 2018;13. <https://doi.org/10.1371/journal.pone.0193325>.
- 612 [18] Labi A-K, Obeng-Nkrumah N, Dayie NTKD, Egyir B, Sampene-Donkor E, Newman
613 MJ, et al. Antimicrobial use in hospitalized patients: a multicentre point prevalence
614 survey across seven hospitals in Ghana. *JAC-Antimicrobial Resist* 2021;3.
615 <https://doi.org/10.1093/jacamr/dlab087>.
- 616 [19] Wolf MF, Shqara RA, Naskovica K, Zilberfarb IA, Sgayer I, Glikman D, et al.
617 Vertical transmission of extended-spectrum, beta-lactamase-producing
618 enterobacteriaceae during preterm delivery: A prospective study. *Microorganisms*
619 2021;9. <https://doi.org/10.3390/microorganisms9030506>.
- 620 [20] Dramowski A, Aucamp M, Bekker A, Mehtar S. Infectious disease exposures and
621 outbreaks at a South African neonatal unit with review of neonatal outbreak
622 epidemiology in Africa. *Int J Infect Dis* 2017;57.
623 <https://doi.org/10.1016/j.ijid.2017.01.026>.
- 624 [21] Arhoun B, Oumokhtar B, Hmami F, Barguigua A, Timinouni M, el Fakir S, et al.
625 Rectal carriage of extended-spectrum β -lactamase- and carbapenemase-producing
626 Enterobacteriaceae among hospitalised neonates in a neonatal intensive care unit in
627 Fez, Morocco. *J Glob Antimicrob Resist* 2017;8.
628 <https://doi.org/10.1016/j.jgar.2016.11.004>.
- 629 [22] Okomo U, Senghore M, Darboe S, Bojang E, Zaman SMA, Hossain MJ, et al.
630 Investigation of sequential outbreaks of Burkholderia cepacia and multidrug-resistant
631 extended spectrum β -lactamase producing Klebsiella species in a West African tertiary
632 hospital neonatal unit: a retrospective genomic analysis. *The Lancet Microbe*
633 2020;1:e119–29. [https://doi.org/10.1016/s2666-5247\(20\)30061-6](https://doi.org/10.1016/s2666-5247(20)30061-6).
- 634 [23] Sensini A, Tissi L, Verducci N, Orofino M, Von Hunolstein C, Brunelli B, et al.
635 Carriage of group B streptococcus in pregnant women and newborns: A 2-year study
636 at Perugia General Hospital. *Clin Microbiol Infect* 1997;3.
637 <https://doi.org/10.1111/j.1469-0691.1997.tb00621.x>.
- 638 [24] Bulabula ANH, Dramowski A, Mehtar S. Transmission of multidrug-resistant Gram-
639 negative bacteria from colonized mothers to their infants: a systematic review and
640 meta-analysis. *J Hosp Infect* 2020;104. <https://doi.org/10.1016/j.jhin.2019.10.001>.
- 641 [25] Okomo UA, Darboe S, Bah SY, Ayorinde A, Jarju S, Sesay AK, et al. Maternal
642 colonisation and early-onset neonatal bacterial sepsis in The Gambia, West Africa: a

- 643 genomic analysis of vertical transmission. *Clin Microbiol Infect* 2022;0.
644 <https://doi.org/10.1016/J.CMI.2022.10.012/ATTACHMENT/B473A164-52A8-4DDF->
645 [AAF8-54F8A0470C83/MMC1.DOCX](https://doi.org/10.1016/J.CMI.2022.10.012/ATTACHMENT/B473A164-52A8-4DDF-AAF8-54F8A0470C83/MMC1.DOCX).
- 646 [26] Brotherton H, Gai A, Tann CJ, Samateh AL, Seale AC, Zaman SMA, et al. Protocol
647 for a randomised trial of early kangaroo mother care compared to standard care on
648 survival of pre-stabilised preterm neonates in the Gambia (eKMC). *Trials* 2020;21.
649 <https://doi.org/10.1186/s13063-020-4149-y>.
- 650 [27] Okomo UA, Dibbasey T, Kassama K, Lawn JE, Zaman SMA, Kampmann B, et al.
651 Neonatal admissions, quality of care and outcome: 4 years of inpatient audit data from
652 the Gambia's teaching hospital. *Paediatr Int Child Health* 2015;35.
653 <https://doi.org/10.1179/2046905515Y.0000000036>.
- 654 [28] Chawanpaiboon S, Vogel JP, Moller AB, Lumbiganon P, Petzold M, Hogan D, et al.
655 Global, regional, and national estimates of levels of preterm birth in 2014: a systematic
656 review and modelling analysis. *Lancet Glob Heal* 2019;7.
657 [https://doi.org/10.1016/S2214-109X\(18\)30451-0](https://doi.org/10.1016/S2214-109X(18)30451-0).
- 658 [29] Liu. L, Oza. S, Hogan. D, Chu. Y, Perin. J, Zhu. Z, et al. Global, regional, and national
659 causes of under-5 mortality in 2000-15: an updated systematic analysis with
660 implications for the Sustainable Development Goals. *Lancet* 2016;388.
- 661 [30] The Human Microbiome Project Consortium. Structure, function and diversity of the
662 healthy human microbiome The Human Microbiome Project Consortium*. *Nature*
663 2012;486.
- 664 [31] Ballard JL, Khoury JC, Wedig K, Wang L, Eilers-Walsman BL, Lipp R. New Ballard
665 Score, expanded to include extremely premature infants. *J Pediatr* 1991;119.
666 [https://doi.org/10.1016/S0022-3476\(05\)82056-6](https://doi.org/10.1016/S0022-3476(05)82056-6).
- 667 [32] Rogers DS, Kundrapu S, Sunkesula VCK, Donskey CJ. Comparison of perirectal
668 versus rectal Swabs for detection of asymptomatic carriers of toxigenic clostridium
669 difficile. *J Clin Microbiol* 2013;51. <https://doi.org/10.1128/JCM.01418-13>.
- 670 [33] Bolger AM, Lohse M, Usadel B. Trimmomatic: A flexible trimmer for Illumina
671 sequence data. *Bioinformatics* 2014;30. <https://doi.org/10.1093/bioinformatics/btu170>.
- 672 [34] Bankevich A, Nurk S, Antipov D, Gurevich AA, Dvorkin M, Kulikov AS, et al.
673 SPAdes: A new genome assembly algorithm and its applications to single-cell
674 sequencing. *J Comput Biol* 2012. <https://doi.org/10.1089/cmb.2012.0021>.
- 675 [35] Gurevich A, Saveliev V, Vyahhi N, Tesler G. QUASt: Quality assessment tool for
676 genome assemblies. *Bioinformatics* 2013;29.
677 <https://doi.org/10.1093/bioinformatics/btt086>.
- 678 [36] Seemann T. Prokka: Rapid prokaryotic genome annotation. *Bioinformatics* 2014.
679 <https://doi.org/10.1093/bioinformatics/btu153>.
- 680 [37] Page AJ, Cummins CA, Hunt M, Wong VK, Reuter S, Holden MTG, et al. Roary:
681 Rapid large-scale prokaryote pan genome analysis. *Bioinformatics* 2015.
682 <https://doi.org/10.1093/bioinformatics/btv421>.
- 683 [38] Lakin SM, Dean C, Noyes NR, Dettenwanger A, Ross AS, Doster E, et al. MEGARes:
684 An antimicrobial resistance database for high throughput sequencing. *Nucleic Acids*
685 *Res* 2017;45. <https://doi.org/10.1093/nar/gkw1009>.
- 686 [39] Stamatakis A. RAxML version 8: A tool for phylogenetic analysis and post-analysis of

- 687 large phylogenies. *Bioinformatics* 2014. <https://doi.org/10.1093/bioinformatics/btu033>.
- 688 [40] Letunic I, Bork P. Interactive Tree of Life (iTOL) v4: Recent updates and new
689 developments. *Nucleic Acids Res* 2019;47. <https://doi.org/10.1093/nar/gkz239>.
- 690 [41] Rettedal S, Löhr IH, Natås O, Sundsfjord A, Øymar K. Risk factors for acquisition of
691 CTX-M-15 extended-spectrum beta-lactamase-producing *Klebsiella pneumoniae*
692 during an outbreak in a neonatal intensive care unit in Norway. *Scand J Infect Dis*
693 2013;45. <https://doi.org/10.3109/00365548.2012.713116>.
- 694 [42] Boo NY, Ng SF, Lim VKE. A case-control study of risk factors associated with rectal
695 colonization of extended-spectrum beta-lactamase producing *Klebsiella* sp. in newborn
696 infants. *J Hosp Infect* 2005;61. <https://doi.org/10.1016/j.jhin.2005.01.025>.
- 697 [43] Desta M, Ayenew T, Sitotaw N, Tegegne N, Dires M, Getie M. Knowledge, practice
698 and associated factors of infection prevention among healthcare workers in Debre
699 Markos referral hospital, Northwest Ethiopia. *BMC Health Serv Res* 2018;18.
700 <https://doi.org/10.1186/s12913-018-3277-5>.
- 701 [44] Obeng-Nkrumah N, Twum-Danso K, Krogfelt KA, Newman MJ. High levels of
702 extended-spectrum beta-lactamases in a major teaching hospital in Ghana: The need
703 for regular monitoring and evaluation of antibiotic resistance. *Am J Trop Med Hyg*
704 2013;89. <https://doi.org/10.4269/ajtmh.12-0642>.
- 705 [45] Sonda T, Kumburu H, van Zwetselaar M, Alifrangis M, Lund O, Kibiki G, et al. Meta-
706 analysis of proportion estimates of Extended-Spectrum-Beta-Lactamase-producing
707 Enterobacteriaceae in East Africa hospitals. *Antimicrob Resist Infect Control* 2016;5.
708 <https://doi.org/10.1186/s13756-016-0117-4>.
- 709 [46] Eckmanns T, Rath A, Rüden H, Gastmeier P, Daschner F. Outbreak of *Enterobacter*
710 *cloacae* Related to Understaffing, Overcrowding, and Poor Hygiene Practices . *Infect*
711 *Control Hosp Epidemiol* 2000;21. <https://doi.org/10.1086/503226>.
- 712 [47] Sands K, Carvalho MJ, Portal E, Thomson K, Dyer C, Akpulu C, et al.
713 Characterization of antimicrobial-resistant Gram-negative bacteria that cause neonatal
714 sepsis in seven low- and middle-income countries. *Nat Microbiol* 2021;6.
715 <https://doi.org/10.1038/s41564-021-00870-7>.
- 716 [48] Isendahl J, Turlej-Rogacka A, Manjuba C, Rodrigues A, Giske CG, Naucclér P. Fecal
717 Carriage of ESBL-Producing *E. coli* and *K. pneumoniae* in Children in Guinea-Bissau:
718 A Hospital-Based Cross-Sectional Study. *PLoS One* 2012;7.
719 <https://doi.org/10.1371/journal.pone.0051981>.
- 720 [49] Labi AK, Bjerrum S, Enweronu-Laryea CC, Ayibor PK, Nielsen KL, Marvig RL, et al.
721 High carriage rates of multidrug-resistant gram- negative bacteria in neonatal intensive
722 care units from Ghana. *Open Forum Infect Dis* 2020;7.
723 <https://doi.org/10.1093/OFID/OFAA109>.
- 724 [50] Crellen T, Turner P, Pol S, Baker S, Nguyen TNT, Stoesser N, et al. Transmission
725 dynamics and control of multidrug-resistant *klebsiella pneumoniae* in neonates in a
726 developing country. *Elife* 2019;8. <https://doi.org/10.7554/eLife.50468>.
- 727 [51] van Duin D, Doi Y. The global epidemiology of carbapenemase-producing
728 Enterobacteriaceae. *Virulence* 2017;8.
729 <https://doi.org/10.1080/21505594.2016.1222343>.
- 730 [52] Andriatahina T, Randrianirina F, Hariniana ER, Talarmin A, Raobijaona H, Buisson

- 731 Y, et al. High prevalence of fecal carriage of extended-spectrum β -lactamase-
732 producing *Escherichia coli* and *Klebsiella pneumoniae* in a pediatric unit in
733 Madagascar. *BMC Infect Dis* 2010;10. <https://doi.org/10.1186/1471-2334-10-204>.
- 734 [53] Abdul Rahman EM, El-Sherif RH. High rates of intestinal colonization with extended-
735 spectrum lactamase-producing Enterobacteriaceae among healthy individuals. *J*
736 *Investig Med* 2011;59. <https://doi.org/10.2310/JIM.0b013e318238748e>.
- 737 [54] Nanayakkara D, Liyanapathirana V, Kandauda C, Gihan C, Ekanayake A, Adasooriya
738 D. Maternal vaginal colonization with selected potential pathogens of neonatal sepsis
739 in the era of antimicrobial resistance, a single center experience from Sri Lanka. *BMC*
740 *Infect Dis* 2018;18. <https://doi.org/10.1186/s12879-018-3262-y>.
- 741 [55] Kaba M, Manenzhe RI, Moodley C, Zar HJ, Nicol MP. Epidemiology of extended-
742 spectrum beta-lactamase- and carbapenemase-producing bacteria in stool from
743 apparently healthy children, South Africa. *Int J Infect Dis* 2016;45.
744 <https://doi.org/10.1016/j.ijid.2016.02.254>.
- 745 [56] Bonneault M, Andrianoelina VH, Herindrainy P, Rabenandrasana MAN, Garin B,
746 Breurec S, et al. Transmission routes of extended-spectrum beta-lactamase-producing
747 enterobacteriaceae in a neonatology ward in Madagascar. *Am J Trop Med Hyg*
748 2019;100. <https://doi.org/10.4269/ajtmh.18-0410>.
- 749 [57] Berthelot P, Grattard F, Amerger C, Frery M-C, Lucht F, Pozzetto B, et al.
750 Investigation of a Nosocomial Outbreak Due to *Serratia marcescens* in a Maternity
751 Hospital. *Infect Control Hosp Epidemiol* 1999;20. <https://doi.org/10.1086/501617>.
- 752 [58] Pillay T, Pillay DG, Adhikari M, Pillay A, Sturm AW. An outbreak of neonatal
753 infection with *Acinetobacter* linked to contaminated suction catheters. *J Hosp Infect*
754 1999;43. [https://doi.org/10.1016/S0195-6701\(99\)90426-7](https://doi.org/10.1016/S0195-6701(99)90426-7).
- 755 [59] Kramer A, Schwebke I, Kampf G. How long do nosocomial pathogens persist on
756 inanimate surfaces? A systematic review. *BMC Infect Dis* 2006;6.
757 <https://doi.org/10.1186/1471-2334-6-130>.
- 758 [60] Stoesser N, Sheppard AE, Moore CE, Golubchik T, Parry CM, Nget P, et al. Extensive
759 within-host diversity in fecally carried extended-spectrum-beta-lactamase-producing
760 *Escherichia coli* Isolates: Implications for transmission analyses. *J Clin Microbiol*
761 2015;53. <https://doi.org/10.1128/JCM.00378-15>.
- 762 [61] Armitage EP, Senghore E, Darboe S, Barry M, Camara J, Bah S, et al. High burden
763 and seasonal variation of paediatric scabies and pyoderma prevalence in the Gambia:
764 A cross-sectional study. *PLoS Negl Trop Dis* 2019;13.
765 <https://doi.org/10.1371/journal.pntd.0007801>.

766
767
768



It is made available under a [CC-BY 4.0 International license](https://creativecommons.org/licenses/by/4.0/).

