

1 **Title: Evaluating the effectiveness of mindfulness alone**
2 **compared to exercise and mindfulness on fatigue in women**
3 **with gynaecology cancer (GEMS): Protocol for a randomised**
4 **feasibility trial**

5 **Running title: Gynaecology Exercise and Mindfulness Study**
6 **(GEMS).**

7 **Authors Names: Kairen McCloy^{1¶}, Ciara Hughes^{1¶}, Lynn Dunwoody^{2¶}, Joanne Marley^{1¶}, Ian**
8 **Cleland^{3¶}, Federico Cruciani^{3¶}, Catherine Saunders^{3¶}, Jackie Gracey^{1¶*}**

9 **Affiliations**

- 10 **1. Institute of Nursing and Health Research, Ulster University, Newtownabbey, UK**
11 **2. Psychology Research Institute, Ulster University, Coleraine, UK**
12 **3. School of Computing, Ulster University, Newtownabbey, UK**

13

14 ***Corresponding author: E-mail: jh.gracey@ulster.ac.uk (JH)**

15 **¶These authors contributed equally and approved the final manuscript.**

16

17 **Abstract**

18 **Background**

19 In 2020 Globocan reported nearly 1.4 million new cases of gynaecology cancer worldwide.
20 Cancer related fatigue has been identified as a symptom that can be present for gynaecology
21 cancer patients many years after treatment. The current evidence around the management of
22 this symptom suggests that exercise has the most positive outcome. However, some ambiguity
23 remains around the evidence and whether it can address all areas of fatigue effectively. More
24 recently, other interventions such as mindfulness have begun to show a favourable response to
25 the management of symptoms for cancer patients. To date there has been little research that
26 explores the feasibility of using both these interventions together in a gynaecology cancer
27 population. This study aims to explore the feasibility of delivering an intervention that involves
28 mindfulness and mindfulness and exercise and will explore the effect of this on fatigue, sleep,
29 mood and quality of life.

30 **Methods/Design**

31 This randomised control trial will assess the interventions outcomes using a pre and post
32 design and will also include a qualitative process evaluation. Participants will be randomised
33 into one of 2 groups. One group will undertake mindfulness only and the other group will
34 complete exercise and mindfulness. Both groups will use a mobile application to complete
35 these interventions over 8 weeks. The mobile app will be tailored to reflect the group the
36 participants have drawn during randomisation. Self-reported questionnaire data will be
37 assessed at baseline prior to commencing intervention and at post intervention. Feasibility
38 will be assessed through recruitment, adherence, retention and attrition. Acceptability and

39 participant perspective of participation (process evaluation), will be explored using focus
40 groups.

41 **Discussion**

42 This trial will hope to evidence and demonstrate that combination of two interventions such
43 as mindfulness and exercise will further improve outcomes of fatigue and wellbeing in
44 gynaecology cancer. The results of this study will be used to assess (i) the feasibility to deliver
45 this type of intervention to this population of cancer patients using a digital platform; (ii) assist
46 this group of women diagnosed with cancer to manage fatigue and other symptoms of sleep,
47 mood and impact their quality of life.

48 **Keywords:** cancer, exercise, fatigue, gynaecology, mindfulness, sleep, quality of life

49 **Trial registration:** NCT05561413

50

51

52

53

54

55

56

57 **Introduction**

58 Gynaecology cancer encompasses 5 main types , ovarian, endometrial, cervical, vaginal, and
59 vulva [1,2]. In the United Kingdom (UK) 21,493 new cases of gynaecological cancer are
60 diagnosed every year [2]. Treatment modalities such as surgery, chemotherapy or
61 radiotherapy can be effective in managing and treating these cancers but may lead to
62 unwanted long term side effects. One side effect is fatigue, the prevalence of which, for all
63 types of cancer, was identified as 52%. For the gynaecology cancer population, this varied
64 between 17-33%, with many women experiencing cancer related fatigue (CRF) years after
65 treatment [3,4]. CRF has been described not only as a physical sensation, but also has
66 emotional and cognitive symptoms suggesting that it is multi-dimensional [5]. To date, few
67 studies have evaluated interventions that target all dimensions of fatigue, suggesting a multi-
68 modal approach that addresses all aspects is required.

69

70 **Mechanisms.**

71 Risk factors for CRF, include depression and insomnia suggesting that the presence of these
72 are not only correlated but may also have an impact on the levels and severity of CRF [6].
73 Indeed, the term 'cluster symptom' has recently been adopted to describe this and the most
74 common symptoms in this cluster have been identified as depression, insomnia, and fatigue
75 [7]. This suggests that managing fatigue may require the incorporation of interventions that
76 deal with the multiple symptoms of depression, insomnia, and fatigue collectively [8,9].

77 Existing Knowledge

78 Research indicates that exercise can have a positive effects on CRF [10–15]. However, the
79 effect of exercise on CRF and quality of life (QoL) remains unclear [1,16] with some studies
80 having reported positive outcomes and others demonstrating no change [15,17,18]. This
81 ambiguity may suggest that exercise alone may not be enough to ameliorate CRF and improve
82 QoL and a multidimensional approach may be required.

83

84 Despite the evidence of the positive effect of exercise on CRF, adherence to exercise remains
85 a problem, with less than 20% of women with ovarian cancer exercising regularly following
86 treatment [19]. Barriers to exercise include time constraints, cost, weather, side effects of
87 treatment or exercise such as fatigue, social aspects, not being aware of physical activity
88 guidelines, fatigue, and psychological barriers, such as motivation [20,21]. In contrast, the
89 facilitators to exercise identified within the literature were improved physical and mental
90 wellbeing, decreased feelings of stress, enjoyment, satisfaction, improved levels of CRF and
91 control over health [22–24].

92

93 Research indicates that mindfulness can have a positive effects on both CRF and QoL [25–29].
94 Mindfulness involves being intentionally aware of the present moment and doing this without
95 judgement. Through practice participants develop an awareness of current emotions and
96 thoughts with compassion and kindness which in turn will lead to better control of cognition,
97 emotion and behaviour [30]. However, some of the effect sizes for mindfulness on
98 psychological and physical outcomes such as depression, anxiety, fatigue were small, and did
99 not reach minimal clinical significance. Despite this, it seems that mindfulness had positive

100 effects on psychological distress, which is defined as an emotion that is not pleasant [31–33].
101 This is of importance as psychological distress and particularly symptoms of anxiety,
102 depression, sleep, stress and quality of life have been shown to improve following the
103 introduction of mindfulness [34–36]. Some of these symptoms are also present within the
104 ‘cluster symptoms’ previously identified suggesting that there may also be an improvement
105 in CRF alongside these symptoms.

106

107 Digital interventions for health have grown in number with over 50,000 medical or healthcare
108 available on Google Play or the Apple Apps Store [37]. For cancer patients apps can have
109 various aims including to provide education, identify and manage symptoms, lifestyle
110 promotion and functional exercise [38]. A recent review identified how digital and interactive
111 health interventions had a positive effect on physical and psychological symptoms on women
112 with breast cancer. This review identified interventions such as music therapy, physical
113 training such as walking, swimming, resistance training, dance, support and education and
114 how they were delivered through a digital platform successfully and showed a favourable
115 response [39]. Mindfulness when delivered digitally has also been shown to be feasible and
116 result in a positive outcome [25,40,41]. Suggesting that the delivery of various interventions
117 for cancer patients can be achieved remotely increasing the scale and inclusivity of a wider
118 population.

119

120 **Need for a trial**

121 The majority of studies that involve exercise or mindfulness for the management of CRF and
122 psychological distress are in the breast cancer population making it difficult to generalise

123 findings to other cancer populations [42,43]. Both exercise and mindfulness have individually
124 as interventions demonstrated positive effects on CRF, anxiety, depression, and sleep.
125 Whether mindfulness and particularly adding mindfulness to an exercise regime for managing
126 fatigue in women with gynaecology cancer is of benefit, is yet to be explored. Therefore, the
127 aim of this study is to assess how feasible and acceptable the digital delivery of interventions
128 of, mindfulness, and exercise, will be and if there is any effect on CRF for those with
129 gynaecology cancer.

130

131 **Theoretical Model**

132 It has been suggested that for the successful development and implementation of complex
133 interventions a theoretical model should be used [44]. For the interventions within this study
134 the COM-B model [45] was used as to support engagement in exercise and/or mindfulness.
135 This model denotes that for behaviour to occur, three conditions must be met, the individual
136 must have the Capability (both physical and psychological), the Opportunity (social and
137 environmental) and the Motivation (reflective and automatic) to engage in the desired
138 behaviour(s). The COM-B model is a hub that sits within the Behaviour Change Wheel (BCW),
139 which was synthesised from previous frameworks and enhances the development of
140 behavioural interventions [46,47]. The second layer of the BCW includes nine intervention
141 functions (education, persuasion, incentivisation, coercion, training, enablement, modelling,
142 environment restructuring and restrictions), which are linked to the 93 behaviour change
143 techniques (BCTs), as described in the Behaviour Change Techniques version 2 [48]. BCTs are
144 the smallest active ingredients of an intervention, documenting them in a standardised way
145 can aid intervention description and replication [49]. The delivery of intervention functions is

146 supported by the outer layer of the BCW, which includes policy categories of
147 environment/social planning; communication/marketing, fiscal measures, legislation,
148 regulation, service provision and guidelines. The interventions within this study used a range
149 of intervention functions in combination which may then impact the constructs of capability,
150 opportunity and motivation and were linked to appropriate BCTs (Box 1).

Box 1 Description of intervention functions* and behaviour change techniques† used in the interventions

Exercise Intervention

Capability

Physical Capability

- *Training*: goal setting , reviewing progress and resetting goals, refining goals and (BCT group 1), guidance with the app and through phone calls on increasing difficulty of task and habit forming (BCT Group 8)
- *Education*: videos and written instructions through app will guide participation to perform the activities (BCT group 6).

Psychological capability

- *Training*: identifying problems and problem solving, problem solving strategies (BCT group 1), setting regular time for activities, getting environment ready in advance building habits (BCT group 8).
- *Education*: within the mobile app written and audio information on the health benefits and consequences (BCT group 5).

Opportunity

Physical opportunity

- *Enablement*: goal setting will be through the mobile app and via weekly phone contact (BCT group 1) and feedback and monitoring will be done via the weekly contact phone call and through the portal where reported data will be viewed by the research team.

Social opportunity

- *Environmental restructuring*: family support to enable participants to complete activities or buddy up with a family or friend to complete intervention (BCT group3).

Motivation

Automatic

- *Incentivisation*: given through feedback as praise and encouragement of activities and completion of goals (group 2). Encouraging self-belief through giving feedback at how well participants are progressing (BCT group 15)

Box 1 continued

163

Reflective

164

- *Education*: through app the information on the health consequences of exercise how may improve symptoms of fatigue, sleep, mood. The pros and cons of the activities (BCT group 5 and 9)

165

Mindfulness Intervention

166

Capability

167

- *Education*: audio and written instructions through app will guide participation to perform the activities (BCT group 6) and within the mobile app written and audio information on the health benefits and consequences (BCT group 5).
- *Training*: formal practices within the app along with weekly contact to enable an action plan to perform the practice (BCT group 1), enabling the regular practice which will then lead to habit forming (BCT group 8).

168

Opportunity

Social opportunity

- *Environmental restructuring*: family support to enable participants to complete activities along with finding an environment that is quite and suitable for practice (BCT group3).

169

Motivation

Automatic

- *Incentivisation*: given through feedback as praise and encouragement of activities and completion of goals (group 2).

170

Reflective

- *Education*: through app the information on the health consequences of exercise how may improve symptoms of fatigue, sleep, mood. The pros and cons of the activities (BCT group 5 and 9)

171

172

*Nine intervention functions identified in the Behaviour Change Wheel framework: education, persuasion, incentivisation, coercion, training, restriction, environmental restructuring, modelling, enablement. [45]

173

174

†Behaviour change techniques as grouped in BCT Taxonomy (v1): 93 hierarchically-clustered techniques [84]

175

Methods and Design

176

Primary Aim

177

To explore the feasibility of conducting an 8-week mindfulness and home-based walking and

178

strength training compared to a mindfulness only programme for the management of CRF in

179 women with gynaecology cancer delivered through an online application. The following
180 objectives will assess feasibility outcomes:

- 181 1. To assess participant intervention adherence, study retention and attrition rate.
- 182 2. Explore the acceptability of using an mobile application for the delivery and data
183 collection of the exercise and mindfulness programme.
- 184 3. Explore the perspectives of participants concerning satisfaction (e.g. intervention and
185 delivery) perceived value, barriers and facilitators of the digital programme.

186 **Hypotheses of efficacy**

187 Compared to active comparator of mindfulness, the combined intervention of mindfulness
188 and exercise will be superior in reducing fatigue and improving mood, sleep and quality of
189 life.

190 **Secondary aim**

191 To evaluate the effect of an 8 week exercise and mindfulness programme on cancer related
192 fatigue as a primary clinical outcome and the effect on anxiety, depression, sleep and QoL as
193 a secondary clinical outcome in an digital setting.

194 **Study design**

195 The Gynaecology Exercise Mindfulness Study (GEMS) will be a randomised controlled open
196 label study. Blinding to this type of study and intervention is not possible, as outcomes are
197 self-reported and in order to complete the programme participants will need to be aware of
198 the arm drawn. Randomisation will be performed as block randomisation using 1:1 ratio.

199 Participants will be randomised into the intervention group, mindfulness and exercise, or the
200 active comparator group mindfulness only. This will allow assessment of effectiveness of the
201 intervention for both groups on the outcome measures.

202 Following the intervention participants will be invited to join an online focus groups which
203 will form the qualitative evaluation.

204 **Study setting**

205 The GEMS trial will be conducted remotely through a mobile application interface allowing
206 recruitment across the UK and asynchronous delivery of the intervention. This app is a
207 prototype that has been developed in collaboration with the School of Computing at Ulster
208 University. Pilot testing of this app has taken place with the 5 user testers and adaptations to
209 the app have been made based on this.

210 **Measurements:**

211 Primary measures include the feasibility and acceptability of the study and will be assessed in
212 line with the MRC guidance on developing and evaluating complex interventions [44].
213 Participant reported outcome measures (PROMs) will be collected for secondary outcomes
214 through a battery of 6 validated questionnaires described below. Estimated completion time
215 of questionnaires is 15 to 20 minutes. See Fig. 1 for an overview of schedule of enrolment,
216 interventions and assessments. At baseline participants will also complete demographic
217 information such as age, cancer type, education, income, and education

218 **Fig. 1 Schedule of enrolment, interventions, and assessment**

219 **Primary outcome measures:**

220 Adherence:- interventions will run over 8 weeks. The completion of 4 weeks for mindfulness
221 and 30 minutes of home-based exercise weekly for two thirds (67%) of the duration of the
222 trial will be regarded as adherence to the program. These levels of adherence are based on
223 previous studies that have used the same levels [30,50]. This will be assessed through the
224 electronic logs that participants will be encouraged to complete along with the app data
225 information- on frequency and duration of participant engagement with each session.

226 Attrition:- Following a review of web-based mindfulness intervention studies, it is estimated
227 that the attrition rate will be approximately 20% with 10% to 15% of missing data [51,52].

228

229 Time to recruit, recruitment and retention rates will be gathered through administrative data
230 during (pre)screening, enrolment, allocation and follow-up. Reasons for non-participation,
231 intervention/study dropouts will be collected when possible. Acceptability of data collection
232 will be retrieved through missing data within questionnaires.

233

234 Acceptability of the programme will be assessed using focus groups this will include
235 participants experience on the virtual delivery and data collection along with their experience
236 and reflections on the exercise and mindfulness components of the intervention.

237

238 **Secondary outcome measures:**

239 Fatigue:- The Functional Assessment of Chronic Therapy- Fatigue (FACIT-F) subscale is a 13-
240 item questionnaire that uses a 5 point Likert scale and has been validated for use with various

241 types of cancer and treatments [52,53]. A lower score indicates a greater degree of fatigue,
242 with scores less than 20 representing severe fatigue and scores greater than 45 as normal [14]

243 Quality of life- The Functional Assessment of Cancer Therapy General (FACT-G) is a 28- item
244 scale. It assesses physical, social, emotional and functional wellbeing. [54]. Higher scores
245 indicate better quality of life [30]

246 Psychological outcomes will be assessed using the Hospital Anxiety and Depression Scale
247 (HADS) [55]. The HADS consists of 14 questions, 7 each for assessing anxiety and depression
248 [56]. A HADS score of greater than 11 is more defining of anxiety and depression, with a
249 reduction of 3 points indicating a clinical improvement [57].

250 Sleep- The Pittsburgh Sleep Quality Index (PSQI) is a 19 items questionnaire that measures 7
251 domains of sleep, scored on a 0-3 scale over 1 month [58]. PSQI scores can range from 0-21,
252 higher scores indicate poorer sleep quality [59].

253 Mindfulness- The 24 item Five Facet Mindfulness Questionnaire Short Form (FFMQ-SF) is a 5
254 point Likert Scale which assess mindfulness in daily life. It measures 5 sub-scales: observing,
255 describing, acting with awareness, non-judgement of inner experience and non-reacting to
256 inner experience. Higher scores indicate more mindful in everyday life [60,61]

257 Participants exercise behaviour will be assessed using the International physical activity
258 questionnaire short form (IPAR-Q -SF). This questionnaire has 7 questions which assess the
259 intensity, frequency and duration of exercise that participants engaged in over the last week.

260 **Data collection and procedure**

261 Data collection and procedure within the study are presented in the flow chart below (Fig
262 2).

263 **Fig 2. Flow chart of study logistics and data collection**

264 **Recruitment.**

265 Recruitment to the study will be facilitated through cancer charities who will reach out to
266 their service users via social media, forums and groups. The advert will have e-mail contact
267 details for the research team where potential participants can self-refer for further
268 information. When potential participants contact the research team for information the
269 participant information sheet can be e-mailed to them. Those who wish to take part in the
270 study will be screened for eligibility and those who meet the criteria will receive an e-mail link
271 to complete the consent form through Qualtrics® online software. Once consented
272 participants will receive a further Qualtrics® link, containing the online questionnaire
273 (PROMs) that must be filled out (once before randomisation at baseline and then at 8 weeks
274 post intervention).

275 **Allocation.**

276 Participants will be randomly allocated to either group through 1:1 allocation. Block
277 randomisation will be used with fixed block sizes of 10 to ensure an even distribution of
278 groups will be achieved. Study randomisation will be done through Study Randomizer (2017)
279 a web based randomisation service. One member of the research team (KMCC) will carry out
280 all randomisation. Once enrolled all baseline questionnaires (PROMs) have been completed

281 Study Randomizer will be used for allocation to groups [62]. Participants will be notified of
282 group via e-mail.

283 **Drop out and data retention**

284 If a participant no longer wishes to take part in the study, they can inform the research team
285 of their decision either through e-mail or phone. The study team will contact the participant
286 who has withdrawn either by e-mail or phone to ask if they are willing to provide a reason for
287 withdrawal. In line with institutional requirements, data will be retained for 10 years.

288 **Inclusion Criteria**

289 Participants must fulfil the following criteria to be eligible for inclusion in the study:

- 290 • Women diagnosed with gynaecology cancer
- 291 • Over the age of 18
- 292 • Still be experiencing fatigue at level 4 or above when assessed on a 10 point single-
293 item scale where 0='no fatigue' and 10='greatest possible fatigue' [63]

294 **Exclusion Criteria**

- 295 • Currently actively and regularly practising mindfulness
- 296 • Have a confirmed diagnoses of schizophrenia spectrum disorder, bipolar disorder,
297 post-traumatic stress disorder, or risk factors for psychosis (e.g. personality disorder)
- 298 • Have an existing medical condition that may inhibit safe participation in the exercise
299 part of the intervention study.

300 **Interventions**

301 **Exercise Intervention**

302 The exercise component of the study is based around home-based walking and strength and
303 conditioning exercise which have been shown to not only be effective for cancer-related
304 fatigue but also feasible and acceptable [64,65]. Indeed, the research team have
305 demonstrated the positive effects with women who have gynaecology cancer in a previous
306 study and this work will further progress these findings [15,22]. The overall aim of the
307 programme is to achieve a goal of 30 minutes of walking 3 times per week and 2-3 strength
308 sessions, with major muscle groups per week by the end of the 8-week intervention [15,66].
309 These goals are suggestions, and this programme will use an inductive approach to goal
310 setting which will be decided through collaboration with participants and individual goal
311 setting. A goal setting diary will be provided to participants to aid them to set and monitor
312 goals throughout the study. Alongside this participants can set goals within the mobile app.
313 This approach has been used in previous research conducted by this team in 'Back on Track'
314 and 'EXACT' trials [67,68].
315 All materials including audio, video and written information and demonstrations of individual
316 strength exercises, for the study will be delivered through the mobile app which participants
317 can download following randomisation. This programme is delivered asynchronously so
318 participants can commence the programme as soon as they download the app and choose
319 when they wish to complete the interventions. This also allows for rolling recruitment and no
320 requirement for a set number of participants to be recruited and randomised before any
321 participants can commence the study. Participants will be asked to report their activities daily
322 through the app, a daily reminder will be sent to aid reporting. Participants will be contacted

323 by the researcher every week at a mutually agreed time. Contact will be used to assess if there
324 are any issues, set goals for the following week and capture any missing data a standardised
325 questionnaire will be used to assess this. Engagement and usage of the app will be captured,
326 and this data will be analysed feasibility of delivering this type of intervention through this
327 digital medium.

328 **Mindfulness**

329 The mindfulness component of this study will be based on the mindfulness-based stress
330 reduction developed by Jon Kabat-Zinn [69]. This will involve 8 weeks of homebased formal
331 and informal mindfulness practice which will include body scan, sitting, walking, mountain
332 and loving-kindness practice [27,28,70]. Similar to the exercise interventions all mindfulness
333 practices and materials are within the app allowing participants to access these when it suits
334 them. Each week new materials and mindfulness practices will be added to the app allowing
335 participants to build the practice as the weeks progress. The estimated time to complete each
336 weekly online session will be between 1-2 hours with daily practices varying between 10
337 minutes in the initial weeks to up to 25 mins for 5-6 days per week by week 8, this can be
338 adapted to suit the individual schedule and goals which will be discussed with participants
339 during the weekly contact call. Logging of mindfulness practice will be encouraged through
340 the daily app reminder. All participants will be screened to ensure there are no
341 contraindications to undertaking mindfulness. Even though it is generally well tolerated,
342 there is a possibility of side effects such as increased anxiety, participants will be made aware
343 of this and encouraged to report any issues to the research team [71].

344 **Digital procedure**

345 Participants will be sent written detailed information on how to download the mobile app.
346 The first step involves registration via a portal which allows the secure collecting of app data.
347 This will generate an e-mail which gives a link to the downloading of the app dependent on
348 the device the participant uses [72]. Once app is downloaded, logged in and opened
349 participants will view a home page which will give a running total of activity/mindfulness
350 material accessed and walking/exercise goals achieved. The home tab also has a send report
351 feature where participants can upload reports of the activity for the day. The other tabs at
352 the top include activity and mindfulness which once clicked on will display the list of material
353 for these weeks and a visual graph which enables self-monitoring. Within the activity tab
354 participants can set their goals and also send reports via this area. The app is designed to take
355 into account randomisation so that participants will only be able to view the content relevant
356 to the group they drew during randomisation. The data entered by the participants will be
357 able to be viewed by the study team via an administration portal allowing for monitoring and
358 feedback to participants [72]. (Fig 3. screen shots of app).

359 **Fig 3. Mobile app screen shots**

360 **Process evaluation**

361 Following completion of the 8-week intervention, participants will be invited to take part in
362 focus groups to allow evaluation of acceptability and satisfaction of taking part in the study
363 from the participants perspective. As the whole intervention will be conducted remotely,
364 focus groups will be facilitated online via Microsoft Teams. This format for focus group has
365 certain reported advantages, such as reduced dropouts, more relaxing for participants
366 resulting in better communication, cost effectiveness, time saving in travel and the ability to

367 include participants who live in more remote areas from the study centre [73]. The number
368 and size of groups will be dependent on trial recruitment numbers and continue until data
369 saturation, which will be reached when no new information is generated [74]. Separate
370 groups will take place for each intervention group to ensure that each group can share and
371 reflect on their experience of the intervention they took part in. Probe open-ended questions
372 shaped by relevant literature and study objectives will be used to keep the discussion flowing.
373 All focus group discussion will be audio and video recorded, then transcribed verbatim for
374 analysis [75]
375 Focus groups data will be subjected to Thematic Analysis. This type of analysis is flexible in
376 that it allows for the in-depth identification and interpretation of themes [76,77]. The phases
377 of the analysis will include: familiarising with data, generating initial codes, searching for
378 themes, reviewing themes, defining and naming themes and integrating these themes into a
379 final report for publication [78].

380 **Sample size**

381 The sample size for this study is based upon feasibility and review of similar studies. The
382 literature indicates that feasibility studies of similar interventions and methodologies within
383 the cancer population recruit on average 40 participants in total [57,79,80]. Therefore, it is
384 anticipated that this study will recruit a total of 40 participants with 20 in each arm of the
385 study.

386 **Statistical analysis**

387 Descriptive statistics will be performed to produce mean values and standard deviations.

388 Groups will be compared at baseline using independent t-test (two independent samples) for

389 continuous data, and the chi-square test for independence for categorical data.

390 Primary analyses will be performed using the intention to treat on all data and using

391 imputation method where outcomes are missing. Alpha will be set a priori at a level of $p=$

392 0.05. Repeated-measures ANOVAs will then be used to determine the effects of exercise and

393 mindfulness and mindfulness intervention on changes in all outcomes of interest.

394 As this is a feasibility study and preliminary efficacy study, effect sizes (Cohen's d) will be

395 calculated by taking the mean difference and dividing by the pooled standard deviation to

396 better estimate the meaningfulness of change for each observed outcome following the

397 intervention. The values and meanings for effect size estimates are a small effect size ($d=0.2$),

398 a moderate effect size ($d=0.5$), and a large effect size ($d=0.8$).

399 Correlation analysis will be performed to determine whether changes in mindfulness/exercise

400 are associated with changes in fatigue, anxiety, depression or sleep.

401 Adherence will also be assessed via the app through the self-reports of activity that

402 participants complete and usage of the materials. Studies have suggested that dose may have

403 an impact on outcomes with greater adherence showing more favourable outcomes [81].

404 The relationship between app adherence, dose and outcomes will be explored in this study.

405 **Data management and protection**

406 Participants will be allocated a unique code so that anonymity is protected. All data will be
407 stored on a secure server at Ulster University. Databases will be encrypted, as will any
408 transferred data and held securely on an repository. The key to the participant IDs will be held
409 by the Chief Investigator. Data will be kept on password-protected computers that can only
410 be accessed by the research team. Access to the anonymised data will use authentication
411 and be traceable by login details. Participants will be made aware that confidentiality will be
412 maintained but the research team will be unable to prevent other members that participate
413 in online focus groups to adhere to this confidentiality agreement. Participants will also be
414 informed that if they withdraw from this part of the study that once data has been
415 anonymised it may be difficult to remove it.

416 **Ethics**

417 Ethical approval has been granted from Ulster University Research Ethics Committee
418 (REC.21.0076).

419 **Dissemination Policy**

420 The findings of the research will be communicated with those who participated in the study
421 either via email or a local event. The researcher will disseminate the projects findings and
422 outputs via oral and poster presentations at local, national and international conferences
423 and publications in peer reviewed journal papers.

424

425 **Discussion**

426 Fatigue continues to be a distressing symptom for many cancer patients either pre diagnosis,
427 diagnosis, during and post treatment. For some it continues to be a long term symptom that
428 effects all aspects of life including social, biological, financial and emotionally leading to
429 reduced quality of life. The current evidenced based advice and interventions offered for
430 managing this symptom include exercise, nutrition advice, sleep hygiene, or prioritising,
431 pacing and planning activities [82]. In recent years other interventions such as mindfulness,
432 have been shown to have a favourable responses for CRF, which in turn also demonstrated a
433 positive effect on stress and sleep all of which are identified as part of the cluster symptom
434 for fatigue [83]. However, there appears to be little research that examine the use of more
435 than one intervention simultaneously. This study will not only explore whether this is feasible
436 but also if the simultaneous delivery of interventions results in any additionally effect.
437 Furthermore, the use of an active comparator will be of value, as it has been suggested
438 previously that a usual care or wait list control can result in a greater result in the
439 experimental arm [35]. Additionally, it has been indicated that assessing the levels of fatigue
440 prior to entering a study can have an impact on the effectiveness of the intervention. This was
441 demonstrated in a meta-analysis that examined the effectiveness of physical activity on
442 fatigue for colorectal cancer patients. It found that levels of fatigue in some of the included
443 studies within this review were equivalent to the normal population which resulted in
444 participant outcome measures showing little improvement therefore described as a ceiling
445 effect for the interventions [42]. Therefore, this study has been designed around these
446 concepts and will be both assessing levels of fatigue as part of the screening process and
447 incorporating mindfulness as the active comparator arm.

448 This study will also use a digital platform for delivering this intervention. By exploring the
449 feasibility of delivering the intervention through this platform it may also make it feasible in
450 the future to diversify this app and its delivery for other types of cancer populations and
451 possibly management of other symptoms.

452 **Trial registration data:**

453 Primary registry and trial identifying number:NCT05561413

454 Date of registration in primary registry: September 20 2022

455 Secondary identifying numbers: CN-02467186

456 Source of monetary or material support: Department for the Economy Northern Ireland

457 Primary sponsor: Ulster University

458 Contact for public enquires: Dr Jackie Gracey

459 Contact for scientific enquires: Professor Ciara Hughes

460 Public Title: Gynaecology Exercise and Mindfulness Study (GEMS)

461 Scientific title: Randomised Controlled Feasibility Trial Evaluating the Effectiveness of
462 Mindfulness Compared to Exercise and Mindfulness on Fatigue in Women with Gynaecology
463 Cancer

464 Countries of recruitment: UK

465 Health condition or problems: Gynaecology cancer, cancer related fatigue

466 Intervention: Intervention: Mindfulness and exercise Active comparator: Mindfulness

467 Key inclusion and exclusion criteria: Ages eligible for study: > 18 years Inclusion: Women

468 diagnosed with gynaecology cancer, still experiencing fatigue > 4 on NRS scale Exclusion:

469 Currently practicing mindfulness, diagnosis of schizophrenia, bipolar, psychosis risk, existing

470 medical condition inhibits safe participation.

471 Study type: Interventional. Allocation: Randomised parallel 1:1 Primary purpose: feasibility

472 Date of first enrolment: June 2022

473 Target sample size: 40

474 Recruitment status: Recruiting

475 Primary outcomes: Feasibility: eligibility, retention, attrition and adherence

476 Key Secondary outcomes: Fatigue, quality of life, sleep, psychological outcome: anxiety,

477 depression, mindfulness and physical activity

478

479 **Author Contributions:**

480

| | KMCC | CH | LD | JM | IC | FC | CS | JG |
|---------------------|------|----|----|----|----|----|----|----|
| Conceptualisation | ✓ | ✓ | ✓ | ✓ | ✓ | ✓ | ✓ | ✓ |
| Funding Acquisition | | ✓ | ✓ | ✓ | | | | ✓ |
| Investigation | ✓ | | | | | | | ✓ |

| | | | | | | | | |
|-------------------------------|---|---|---|---|---|---|---|---|
| Methodology | ✓ | ✓ | ✓ | ✓ | ✓ | ✓ | ✓ | ✓ |
| Project Administration | ✓ | ✓ | | ✓ | | | | ✓ |
| Resources | ✓ | ✓ | ✓ | ✓ | | | | ✓ |
| Software | | | | | ✓ | ✓ | ✓ | |
| Supervision | | ✓ | ✓ | ✓ | | | | ✓ |
| Writing original draft | ✓ | | | | | | | |
| Writing reviewing and editing | ✓ | ✓ | ✓ | ✓ | ✓ | ✓ | | ✓ |

Reference List

- (1) Lin K, Frawley HC, Denehy L, Feil D, Granger CL. Exercise interventions for patients with gynaecological cancer: a systematic review and meta-analysis. *Physiotherapy* 2016;102(4):309-319.
- (2) Gynaecological Cancer Research Charity. 2020; Available at: <https://eveappeal.org.uk/>. Accessed Apr 22, 2021.
- (3) Sekse RJT, Hufthammer KO, Vika ME. Fatigue and quality of life in women treated for various types of gynaecological cancers: a cross-sectional study. *J Clin Nurs* 2015;24(3-4):546-555.
- (4) (Ma Y, He B, Jiang M, Yang Y, Wang C, Huang C, et al. Prevalence and risk factors of cancer-related fatigue: A systematic review and meta-analysis. *Int J Nurs Stud* 2020;111.
- (5) de Raaf PJ, de Klerk C, van der Rijt, C. C. D. Elucidating the behavior of physical fatigue and mental fatigue in cancer patients: a review of the literature. *Psychooncology* 2013;22(9):1919-1929.
- (6) Bower JE. Cancer-related fatigue—mechanisms, risk factors, and treatments. *Nature reviews Clinical oncology* 2014;11(10):597.
- (7) He X, Ng MS, Wang X, Guo P, Li L, Zhao W, et al. A Dance Program to Manage a Fatigue-Sleep Disturbance-Depression Symptom Cluster among Breast Cancer Patients Receiving Adjuvant Chemotherapy: A Feasibility Study. *Asia-Pacific Journal of Oncology Nursing* 2021;8(3):337-339.

Study Protocol V1.0 July 2022

- (8) Naraphong W, Lane A, Schafer J, Whitmer K, Wilson BRA. Exercise intervention for fatigue-related symptoms in Thai women with breast cancer: A pilot study. *Nursing and Health Sciences* 2015;17(1):33-41.
- (9) Poort H, de Rooij BH, Ezendam NPM, van de Poll-Franse L, Uno H, Weng S, et al. Patterns and predictors of cancer-related fatigue in ovarian and endometrial cancers: 1-year longitudinal study. *Cancer* 2020;126(15):3526-3533.
- (10) Cramp F, Byron-Daniel J. Exercise for the management of cancer-related fatigue in adults. *Cochrane Database of Systematic Reviews* 2012(11).
- (11) Tian L, Lu H, Lin L, Hu Y, Lu HJ. Effects of aerobic exercise on cancer-related fatigue: a meta-analysis of randomized controlled trials. *Support Care Cancer* 2016;24(2):969-983.
- (12) Juvet LK, Thune I, Elvsaa IKØ, Fors EA, Lundgren S, Bertheussen G, et al. The effect of exercise on fatigue and physical functioning in breast cancer patients during and after treatment and at 6 months follow-up: A meta-analysis. *The Breast* 2017;33:166-177.
- (13) Schuler MK, Hentschel L, Kisel W, Kramer M, Lenz F, Hornemann B, et al. Impact of Different Exercise Programs on Severe Fatigue in Patients Undergoing Anticancer Treatment—A Randomized Controlled Trial. *J Pain Symptom Manage* 2017;53(1):57-66.
- (14) Sheehan P, Denieffe S, Murphy NM, Harrison M. Exercise is more effective than health education in reducing fatigue in fatigued cancer survivors. *Support Care Cancer* 2020;28(10):4953-4962.
- (15) Donnelly CM, Blaney JM, Lowe-Strong A, Rankin JP, Campbell A, McCrum-Gardner E, et al. A randomised controlled trial testing the feasibility and efficacy of a physical activity behavioural change intervention in managing fatigue with gynaecological cancer survivors. *Gynecol Oncol* 2011;122(3):618-624.

Study Protocol V1.0 July 2022

- (16) Velthuis MJ, Agasi-Idenburg S, Aufdemkampe G, Wittink HM. The Effect of Physical Exercise on Cancer-related Fatigue during Cancer Treatment: a Meta-analysis of Randomised Controlled Trials. *Clin Oncol* 2010;22(3):208-221.
- (17) Al Maqbali M. Exercise Interventions to Manage Fatigue in Women With Gynecologic Cancer: A Systematic Review. *Oncol Nurs Forum* 2019;46(1):71-82.
- (18) Jiang M, Ma Y, Yun B, Wang Q, Huang C, Han L. Exercise for fatigue in breast cancer patients: An umbrella review of systematic reviews. *International Journal of Nursing Sciences* 2020;7(2):248-254.
- (19) Joly F, Ahmed-Lecheheb D, Kalbacher E, Heutte N, Clarisse B, Grellard JM, et al. Long-term fatigue and quality of life among epithelial ovarian cancer survivors: a GINECO case/control VIVROVAIRE I study. *ANNALS OF ONCOLOGY* 2019;30(5):845-852.
- (20) Hardcastle SJ, Maxwell-Smith C, Kamarova S, Lamb S, Millar L, Cohen PA. Factors influencing non-participation in an exercise program and attitudes towards physical activity amongst cancer survivors. *Support Care Cancer* 2018;26(4):1289-1295.
- (21) Lavallee JF, Abdin S, Faulkner J, Husted M. Barriers and facilitators to participating in physical activity for adults with breast cancer receiving adjuvant treatment: A qualitative metasynthesis. *Psychooncology* 2018;28(3):468-476.
- (22) Blaney JM, Lowe-Strong A, Rankin-Watt J, Campbell A, Gracey JH. Cancer survivors' exercise barriers, facilitators and preferences in the context of fatigue, quality of life and physical activity participation: a questionnaire-survey. *Psychooncology* 2013;22(1):186-194.

Study Protocol V1.0 July 2022

- (23) Gho SA, Munro BJ, Jones SC, Steele JR. Perceived Exercise Barriers Explain Exercise Participation in Australian Women Treated for Breast Cancer Better Than Perceived Exercise Benefits. *Phys Ther* 2014;94(12):1765-1774.
- (24) Clifford BK, Mizrahi D, Sandler CX, Barry BK, Simar D, Wakefield CE, et al. Barriers and facilitators of exercise experienced by cancer survivors: a mixed methods systematic review. *SUPPORTIVE CARE IN CANCER* 2018;26(3):685-700.
- (25) Lengacher, Reich, Ramesar, Alinat, Moscoso, Cousin, et al. Feasibility of the mobile mindfulness-based stress reduction for breast cancer (mMBSR(BC)) program for symptom improvement among breast cancer survivors. *Psychooncology* 2017;27(2):524-531.
- (26) Johns S, Brown L, Beck-Coon K, Talib T, Monahan P, Giesler R, et al. Randomized controlled pilot trial of mindfulness-based stress reduction compared to psychoeducational support for persistently fatigued breast and colorectal cancer survivors. *Support Care Cancer* 2016;24(10):4085-4096.
- (27) Johns SA, Brown LF, Monahan PO, Tong Y, Kroenke K, Beck-Coon K. Randomized controlled pilot study of mindfulness-based stress reduction for persistently fatigued cancer survivors. *Psychooncology* 2015;24(8):885-893.
- (28) Reich RR, Lengacher CA, Alinat CB, Kip KE, Paterson C, Ramesar S, et al. Mindfulness-Based Stress Reduction in Post-treatment Breast Cancer Patients: Immediate and Sustained Effects Across Multiple Symptom Clusters. *J Pain Symptom Manage* 2017;53(1):85-95.
- (29) Carlson LE. Mindfulness Meditation for Younger Breast Cancer Survivors: a Randomized Controlled Trial. *Breast diseases* 2015;26(4):294-296.

Study Protocol V1.0 July 2022

- (30) Park S, Sato Y, Takita Y, Tamura N, Ninomiya A, Kosugi T, et al. Mindfulness-Based Cognitive Therapy for Psychological Distress, Fear of Cancer Recurrence, Fatigue, Spiritual Well-Being, and Quality of Life in Patients With Breast Cancer—A Randomized Controlled Trial. *J Pain Symptom Manage* 2020;60(2):381-389.
- (31) Cramer H, Lauche R, Paul A, Dobos G. Mindfulness-based stress reduction for breast cancer-a systematic review and meta-analysis. *CURRENT ONCOLOGY* 2012;19(5):E343-E352.
- (32) Haller H, Winkler MM, Klose P, Dobos G, Kümmel S, Cramer H. Mindfulness-based interventions for women with breast cancer: an updated systematic review and meta-analysis. *Acta Oncol* 2017;56(12):1665-1676.
- (33) Cillessen L, Johannsen M, Speckens AEM, Zachariae R. Mindfulness-based interventions for psychological and physical health outcomes in cancer patients and survivors: A systematic review and meta-analysis of randomized controlled trials. *Psychooncology* 2019.
- (34) Lin L, Lin L, Tzeng G, Huang Y, Tai J, Chen Y, et al. Effects of Mindfulness-Based Therapy for Cancer Patients: A Systematic Review and Meta-analysis. *J Clin Psychol Med Settings* 2022.
- (35) Johns SA, Tarver WL, Secinti E, Mosher CE, Stutz PV, Carnahan JL, et al. Effects of mindfulness-based interventions on fatigue in cancer survivors: A systematic review and meta-analysis of randomized controlled trials. *Critical Reviews in Oncology / Hematology* 2021;160.
- (36) McCloy K, Hughes C, Dunwoody DL, Marley DJ, Gracey DJ. Effects of mindfulness-based interventions on fatigue and psychological wellbeing in women with cancer: A

Study Protocol V1.0 July 2022

- systematic review and meta-analysis of randomised control trials. *Psychooncology* 2022; 31(11): 1821- 1834.
- (37) Healthcare apps available Apple App Store 2022. Available at: <https://www.statista.com/statistics/779910/health-apps-available-ios-worldwide/>. Accessed Oct 24, 2022.
- (38) Cai T, Huang Y, Zhang Y, Lu Z, Huang Q, Yuan C. Mobile health applications for the care of patients with breast cancer: A scoping review. *International Journal of Nursing Sciences* 2021;8(4):470-476.
- (39) Obrero-Gaitan E, Cortes-Perez I, Calet-Fernandez T, Garcia-Lopez H, Lopez Ruiz M, del Carmen, Catalina Osuna-Perez M. Digital and Interactive Health Interventions Minimize the Physical and Psychological Impact of Breast Cancer, Increasing Women's Quality of Life: A Systematic Review and Meta-Analysis. *CANCERS* 2022;14(17):4133.
- (40) Compen F(1,2), Bisseling E(1,2), Schellekens M(1), Donders R(1), Speckens A(1), van der Lee, M. (2), et al. Face-to-face and internet-based mindfulness-based cognitive therapy compared with treatment as usual in reducing psychological distress in patients with cancer: A multicenter randomized controlled trial. *Journal of Clinical Oncology* 2018;36(23):2413; 2413-2421; 2421.
- (41) Bruggeman-Everts F, Wolvers MDJ, van de Schoot R, Vollenbroek-Hutten M, Van der Lee, Marije L. Effectiveness of Two Web-Based Interventions for Chronic Cancer-Related Fatigue Compared to an Active Control Condition: Results of the "Fitter na kanker" Randomized Controlled Trial. *JOURNAL OF MEDICAL INTERNET RESEARCH* 2015;19(10).

Study Protocol V1.0 July 2022

- (42) Brandenbarg D, Korsten JHWM, Berger MY, Berendsen AJ. The effect of physical activity on fatigue among survivors of colorectal cancer: a systematic review and meta-analysis. *SUPPORTIVE CARE IN CANCER* 2018;26(2):393-403.
- (43) Stelten S, Hoedjes M, Kenter GG, Kampman E, Huijsmans RJ, van Lonkhuijzen LR, et al. Rationale and study protocol of the Physical Activity and Dietary intervention in women with OVArian cancer (PADOVA) study: a randomised controlled trial to evaluate effectiveness of a tailored exercise and dietary intervention on body composition, physical function and fatigue in women with ovarian cancer undergoing chemotherapy. *BMJ Open* 2020;10(11):e036854.
- (44) Skivington K, Matthews L, Simpson S, Craig P, Baird J, Blazeby J, et al. A new framework for developing and evaluating complex interventions: update of Medical Research Council guidance. *BMJ* 2021;374:n2061:1-11.
- (45) Michie S. The behaviour change wheel: A new method for characterising and designing behaviour change interventions. *Implementation Science* 2011;6(1).
- (46) Cowdell F, Dyson J. How is the theoretical domains framework applied to developing health behaviour interventions? A systematic search and narrative synthesis. *BMC Public Health* 2019;19(1):1-10.
- (47) Howlett N, Schulz, J. (1), Trivedi, D. (1), Troop, N. (1), Chater, A. (1,2,3). A prospective study exploring the construct and predictive validity of the COM-B model for physical activity. *Journal of Health Psychology* 2019;24(10):1378-1391.
- (48) Abraham C(1), Michie S(2). A Taxonomy of Behavior Change Techniques Used in Interventions. *Health Psychology* 2008;27(3):379; 379-387; 387.

Study Protocol V1.0 July 2022

- (49) Howlett N, Trivedi D, Troop NA, Chater AM. What are the most effective behaviour change techniques to promote physical activity and/or reduce sedentary behaviour in inactive adults? A systematic review protocol. *BMJ Open* 2015 -08-05;5(8):e008573.
- (50) Kim JY, Lee MK, Min JH, Jeon JY, Lee DH, Kang DW, et al. Effects of a 12-week home-based exercise program on quality of life, psychological health, and the level of physical activity in colorectal cancer survivors: a randomized controlled trial. *Supportive Care in Cancer* 2019;27(8):2933-2940.
- (51) Subnis UB, Farb NAS, Piedalue K-L, Specca M, Lupichuk S, Tang PA, et al. A smartphone app-based mindfulness intervention for cancer survivors: Protocol for a randomized controlled trial. *JMIR Research Protocols* 2020;9(5).
- (52) Carlson LE, Subnis UB, Piedalue KL, Vallerand J, Specca M, Lupichuk S, et al. The ONE-MIND Study: rationale and protocol for assessing the effects of ONlinE MINDfulness-based cancer recovery for the prevention of fatigue and other common side effects during chemotherapy. *European journal of cancer care* 2019;28(4):N.PAG.
- (53) Al Maqbali M, Hughes C, Gracey J, Rankin J, Dunwoody L, Hacker E. Quality assessment criteria: psychometric properties of measurement tools for cancer related fatigue. *Acta Oncol* 2019;58(9):1286-1297.
- (54) Cella DF, Tulsky DS, Gray G, Sarafian B, Linn E, Bonomi A, et al. The Functional Assessment of Cancer Therapy scale: development and validation of the general measure. *J Clin Oncol* 1993;11(3):570-579.
- (55) Zigmond AS, Snaith RP. The hospital anxiety and depression scale. *Acta Psychiatr Scand* 1983;67(6):361-370.

Study Protocol V1.0 July 2022

- (56) Spahn G, Choi K, Kennemann C, Lüdtkke R, Franken U, Langhorst J, et al. Can a Multimodal Mind–Body Program Enhance the Treatment Effects of Physical Activity in Breast Cancer Survivors With Chronic Tumor-Associated Fatigue? A Randomized Controlled Trial. *INTEGR CANCER THER* 2013;12(4):291-300.
- (57) Eyles C, Leydon GM, Hoffman CJ, Copson ER, Prescott P, Chorooglou M, et al. Mindfulness for the Self-Management of Fatigue, Anxiety, and Depression in Women With Metastatic Breast Cancer: A Mixed Methods Feasibility Study. *INTEGR CANCER THER* 2015;14(1):42-56.
- (58) Buysse DJ, Reynolds III CF, Monk TH, Berman SR, Kupfer DJ. The Pittsburgh Sleep Quality Index: a new instrument for psychiatric practice and research. *Psychiatry Res* 1989;28(2):193-213.
- (59) Yu C-, Wang T-, Liang S-, Wu S-, Lu YY, Chang C-, et al. Healthy life styles, sleep and fatigue in endometrial cancer survivors: A cross-sectional study. *J Clin Nurs* 2020;29(7-8):1372-1380.
- (60) Johns, Von Ah D, Brown LF, Beck-Coon K, Talib TL, Alyea JM, et al. Randomized controlled pilot trial of mindfulness-based stress reduction for breast and colorectal cancer survivors: effects on cancer-related cognitive impairment. *Journal of cancer survivorship* 2016;10(3):437-448.
- (61) Compen FR, Bisseling EM(1,2), Speckens, A. E. M. (1), Van der Lee, M. L. (2), Adang, E. M. M. (3), Donders, A. R. T. (3). Study protocol of a multicenter randomized controlled trial comparing the effectiveness of group and individual internet-based Mindfulness-Based Cognitive Therapy with treatment as usual in reducing psychological distress in cancer patients: The BeMind study. *BMC Psychology* 2015;3(1).

Study Protocol V1.0 July 2022

- (62) Study Randomizer. 2017; Available from: <https://www.studyrandomizer.com>
Accessed 02/08/, 2022.
- (63) Schwartz AL, Meek PM, Nail LM, Fargo J, Lundquist M, Donofrio M, et al. Measurement of fatigue: determining minimally important clinical differences. *J Clin Epidemiol* 2002;55(3):239-244.
- (64) Payne JK, Held J, Thorpe J, Shaw H. Effect of exercise on biomarkers, fatigue, sleep disturbances, and depressive symptoms in older women with breast cancer receiving hormonal therapy. *Oncol Nurs Forum* 2008;35(4):635-642.
- (65) Yeo TP, Burrell SA, Sauter PK, Kennedy EP, Lavu H, Leiby BE, et al. A Progressive Postresection Walking Program Significantly Improves Fatigue and Health-Related Quality of Life in Pancreas and Periampullary Cancer Patients. *J Am Coll Surg* 2012;214(4):463-475.
- (66) Gokal K, Wallis D, Ahmed S, Boiangiu I, Kancherla K, Munir F. Effects of a self-managed home-based walking intervention on psychosocial health outcomes for breast cancer patients receiving chemotherapy: a randomised controlled trial. *Support Care Cancer* 2016;24(3):1139-1166.
- (67) Gracey, Payne C(1), Watson M(2), Rankin J(3), Dunwoody L(4). Translation research: 'Back on Track', a multiprofessional rehabilitation service for cancer-related fatigue. *BMJ Supportive and Palliative Care* 2016;6(1):94-96.
- (68) Gracey JH, McDermott L, Murphy M, Rankin J, McNeilly AM. The feasibility and acceptability of a home based exercise intervention for colorectal cancer survivors: 'EXACT' – EXercise And Colorectal Cancer Trial. *Physical Therapy and Rehabilitation* 2021;8(1):3.

Study Protocol V1.0 July 2022

- (69) Jon Kabat-Zinn TNH. Full Catastrophe Living: Using the Wisdom of your body and mind to face stress, pain and illness. Revised Edition ed. New York: Bantam; 2013.
- (70) Lengacher, Reich, Post-White, Moscoso, Shelton, Barta, et al. Mindfulness based stress reduction in post-treatment breast cancer patients: an examination of symptoms and symptom clusters. *J Behav Med* 2012;35(1):86-94.
- (71) Van Dam N,T., van Vugt M,K., Vago DR, Schmalzl L, Saron CD, Olendzki A, et al. Mind the Hype: A Critical Evaluation and Prescriptive Agenda for Research on Mindfulness and Meditation. *Perspect Psychol Sci* 2018;13(1):36-61.
- (72) A Reusable Software Platform for Delivery of Digital Interventions. 14th international conference on Ubiquitous Computing and Ambient Intelligence;; Wiley; 2022.
- (73) Halliday M, Mill D, Johnson J, Lee K. Let's talk virtual! Online focus group facilitation for the modern researcher. *Research in Social and Administrative Pharmacy* 2021.
- (74) Goei LPS, Lopez V, Klainin-Yobas P. Exploring the perceptions of cancer survivors of a mindfulness intervention at a tertiary hospital in Singapore: a descriptive qualitative study. *SUPPORTIVE CARE IN CANCER* 2020.
- (75) Barbour RS. *Doing Focus Groups*. London: SAGE Publications; 2008.
- (76) Holloway I, Galvin K. *Qualitative Research in Nursing and Healthcare*. Hoboken: John Wiley & Sons, Incorporated; 2016.
- (77) Castleberry A, Nolen A. Thematic analysis of qualitative research data: Is it as easy as it sounds? *Currents in Pharmacy Teaching and Learning* 2018;10(6):807-815.
- (78) Braun, Clarke. Using thematic analysis in psychology. *Qualitative Research in Psychology* 2006;3(2):77-101.

Study Protocol V1.0 July 2022

- (79) Victorson D, Hankin V, Burns J, Weiland R, Maletich C, Sufrin N, et al. Feasibility, acceptability and preliminary psychological benefits of mindfulness meditation training in a sample of men diagnosed with prostate cancer on active surveillance: results from a randomized controlled pilot trial. *Psychooncology* 2017;26(8):1155-1163.
- (80) Price-Blackshear M, Pratscher SD(1), Oyler DL(1), Ann Bettencourt B(1), Armer JM(2), Udmuangpia T(2), et al. Online couples mindfulness-based intervention for young breast cancer survivors and their partners: A randomized-control trial. *J Psychosoc Oncol* 2020;38(5):592-611.
- (81) Cillessen L, van de Ven, M. O., Compen FR, Bisseling EM, van der Lee, M. L., Speckens AEM. Predictors and effects of usage of an online mindfulness intervention for distressed cancer patients: Usability study. *Journal of Medical Internet Research* 2020;22(10).
- (82) Tiredness (fatigue) - Macmillan Cancer Support. 2018; Available at: <https://www.macmillan.org.uk/cancer-information-and-support/impacts-of-cancer/tiredness>. Accessed Jun 8, 2022.
- (83) Yuan Y, Lin L, Xie C, Lu Y, Liang J, Qi Y, et al. Effectiveness comparisons of various psychosocial therapies for cancer-related fatigue: A Bayesian network meta-analysis. *J Affect Disord* 2022.
- (84) BCT Taxonomy (v1): 93 hierarchically-clustered techniques. Available at: file:///C:/Users/B00766410/Downloads/BCTTv1_PDF_version.pdf. Accessed 02/10/, 2022.

Study Protocol V1.0 July 2022

Study Timeline



| | STUDY PERIOD | | | | | | | |
|----------------------------------|--------------|------------|---------------------------------------------------------------------------------------------------------------------------------------------------------------------------------------------------------------------------------------------------------------------------------------------------------------------------------------------------------------------------------------------------------------------------------------------------------------------------------------------------------------------------------------|--|--|--|-----------|-------|
| | Enrolment | Allocation | Post-allocation | | | | Close-out | |
| TIMEPOINT** | $-t_1$ | 0 | t_1 | | | | t_3 | t_x |
| ENROLMENT: | | | | | | | | |
| Eligibility screen | X | | | | | | | |
| Informed consent | X | | | | | | | |
| Allocation | | X | | | | | | |
| INTERVENTIONS: | | | | | | | | |
| <i>Mindfulness only</i> | | | <small>medRxiv preprint doi: https://doi.org/10.1101/2022.11.14.22282320; this version posted November 14, 2022. The copyright holder for this preprint (which was not certified by peer review) is the author/funder, who has granted medRxiv a license to display the preprint in perpetuity. It is made available under a CC-BY 4.0 International license.</small>  | | | | | |
| <i>Mindfulness and Exercise.</i> | | |  | | | | | |
| ASSESSMENTS: | | | | | | | | |
| Demographics | X | X | | | | | | |
| FACIT-F* | | X | | | | | | X |
| FACT-G** | | X | | | | | | X |
| PSQI*** | | X | | | | | | X |
| FFM-Q† | | X | | | | | | X |
| HADS†* | | X | | | | | | X |
| IPAQ-SF†† | | X | | | | | | X |

Fig 1 Schedule of enrolment, interventions, and assessment

* The Functional Assessment of Chronic Therapy- Fatigue (FACIT-F)

** The Functional Assessment of Cancer Therapy General (FACT-G)

*** Pittsburgh Sleep Quality Index (PSQI)

†Five Facet Mindfulness Questionnaire Short Form (FFMQ-SF)

†*Hospital Anxiety and Depression Score (HADS)

††International physical activity questionnaire short form (IPAR-Q -S)

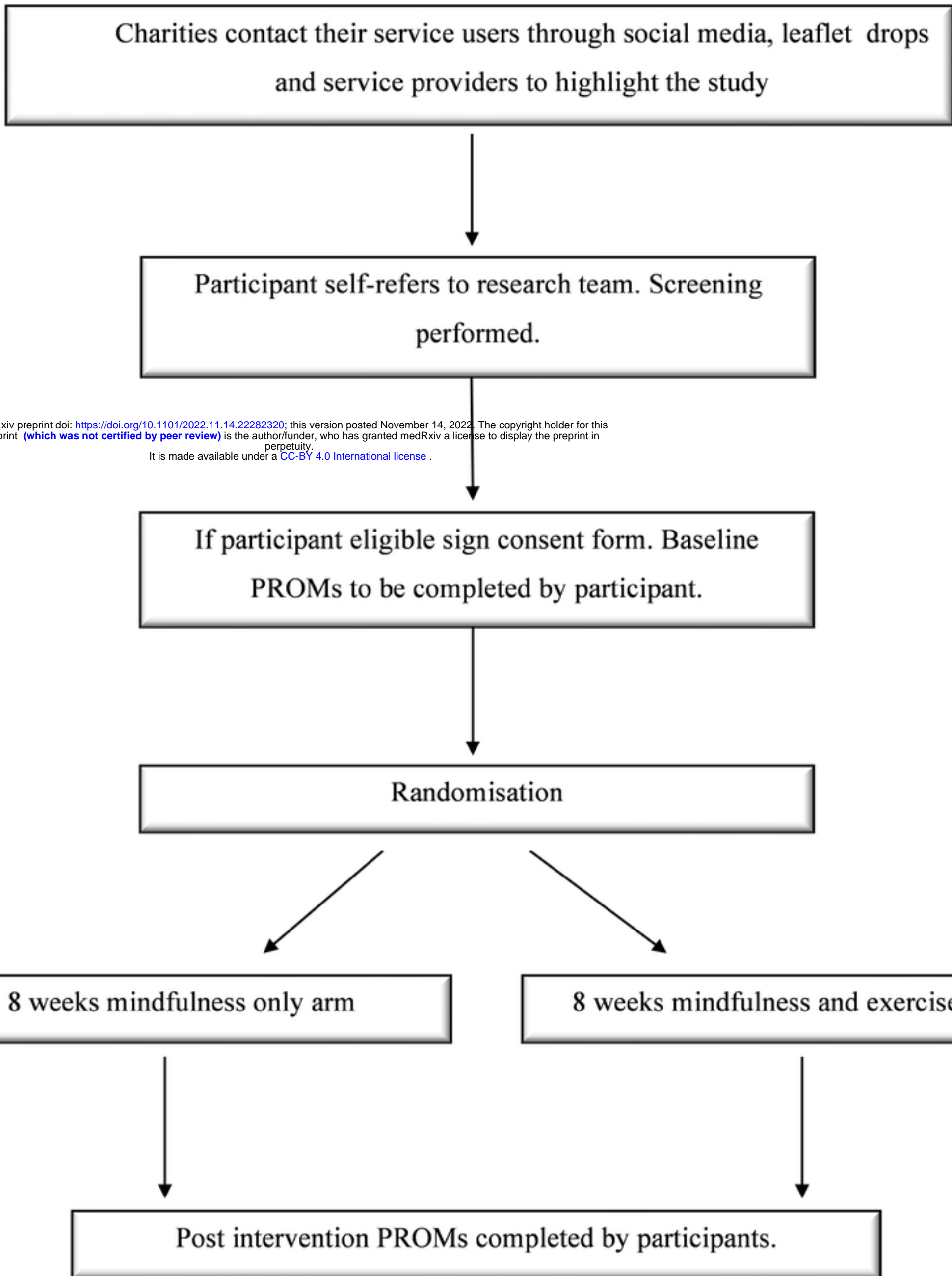


Fig 2 Flow chart of study logistics and data collection

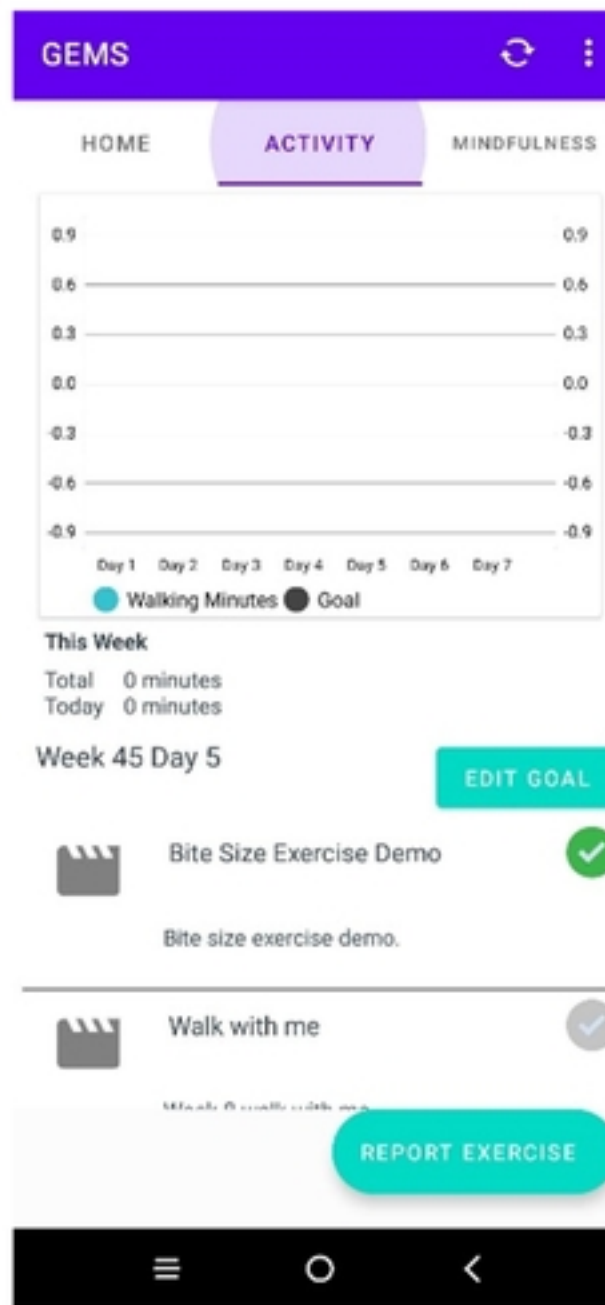
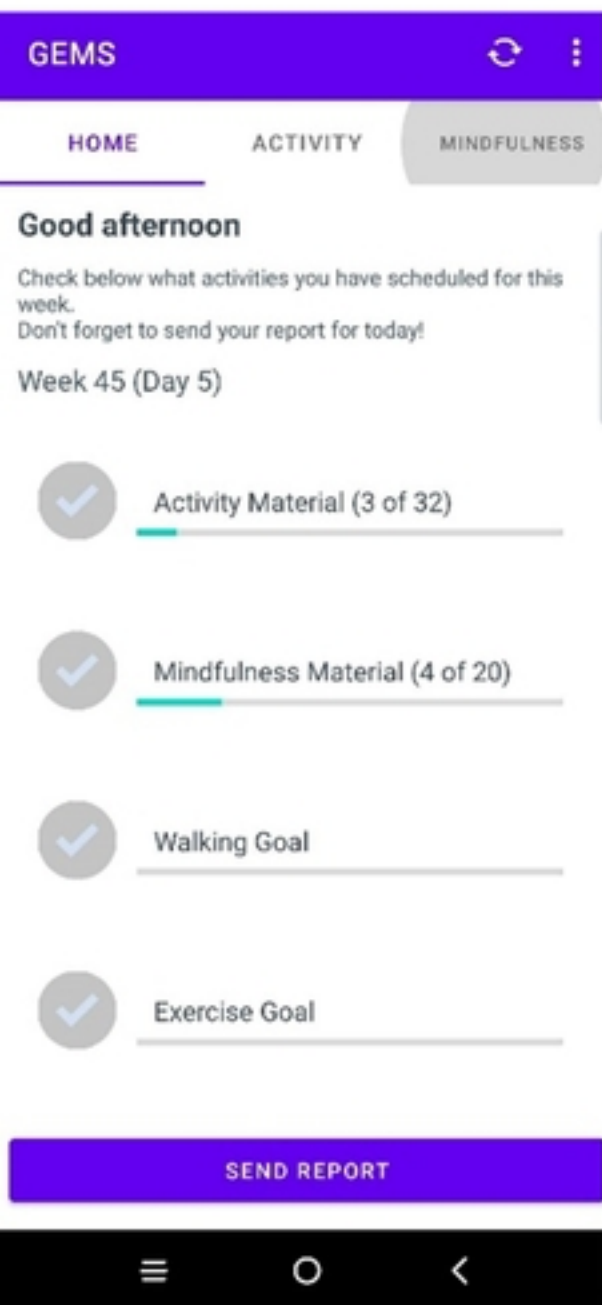


Fig 3. Mobile app screen shots

Figure