

1 **Networks of placental DNA methylation correlate with maternal serum** 2 **PCB concentrations and child neurodevelopment**

3
4 Julia S. Mouat^{1,2,3,4}, Xueshu Li⁵, Kari Neier^{1,2,3,4}, Yihui Zhu^{1,2,3,4}, Charles E. Mordaunt^{1,2,3,4},
5 Michele A. La Merrill^{2,6}, Hans-Joachim Lehmler⁵, Michael P. Jones⁷, Pamela J. Lein^{2,4,8},
6 Rebecca J. Schmidt^{2,4,9}, Janine M. LaSalle^{1,2,3,4}

7
8 ¹Department of Medical Microbiology and Immunology, School of Medicine, University of
9 California, Davis, CA USA

10 ²Perinatal Origins of Disparities Center, University of California, Davis, CA USA

11 ³Genome Center, University of California, Davis, CA USA

12 ⁴MIND Institute, University of California, Davis, CA USA

13 ⁵Department of Occupational and Environmental Health, College of Public Health, University of
14 Iowa, Iowa City, IA USA

15 ⁶Department of Environmental Toxicology, University of California, Davis, CA USA

16 ⁷Department of Biostatistics, College of Public Health, University of Iowa, Iowa City, IA USA

17 ⁸Department of Molecular Biosciences, School of Veterinary Medicine, University of California,
18 Davis, CA USA

19 ⁹Department of Public Health Sciences, School of Medicine, University of California, Davis, CA
20 USA

21
22 Corresponding author: Janine M. LaSalle, jmlasalle@ucdavis.edu

23 Postal address: Medical Microbiology and Immunology, One Shields Ave, Davis, CA 95616
24

25 **KEYWORDS**

26 Polychlorinated biphenyls, DNA methylation, placenta, autism spectrum disorders, WGCNA,
27 whole genome bisulfite sequencing
28

29 **ABBREVIATIONS**

30 PCB polychlorinated biphenyl; WGBS whole genome bisulfite sequencing; ASD autism
31 spectrum disorder; TD typical development; DMR differentially methylated region; PMD partially
32 methylated domain; WGCNA weighted gene correlation network analysis
33

34 **ABSTRACT**

35 **Background:**

36 Gestational exposure to polychlorinated biphenyls (PCBs) has been associated with elevated risk
37 for neurodevelopmental disorders. The mechanism of risk is unclear but may involve placental
38 epigenetics. Prior studies have associated differential placental DNA methylation with maternal
39 PCB exposure or with increased risk of autism spectrum disorder (ASD). However, sequencing-
40 based placental methylomes have not previously been tested for simultaneous associations with
41 maternal PCB levels and child neurodevelopmental outcomes.
42
43

44 **Objectives:**

45 We aimed to identify placental DNA methylation patterns associated with maternal PCB levels
46 and child neurodevelopmental outcomes in the high-risk ASD MARBLES cohort.
47

48 **Methods:**

49 We measured 209 PCB congeners in 104 maternal serum samples collected at delivery. We
50 identified networks of DNA methylation from 147 placenta samples using the Comethyl R

51 package, which performs weighted gene correlation network analysis for whole genome bisulfite
52 sequencing data. We tested placental DNA methylation modules for association with maternal
53 serum PCB levels, child neurodevelopment, and other participant traits.

54
55 **Results:**

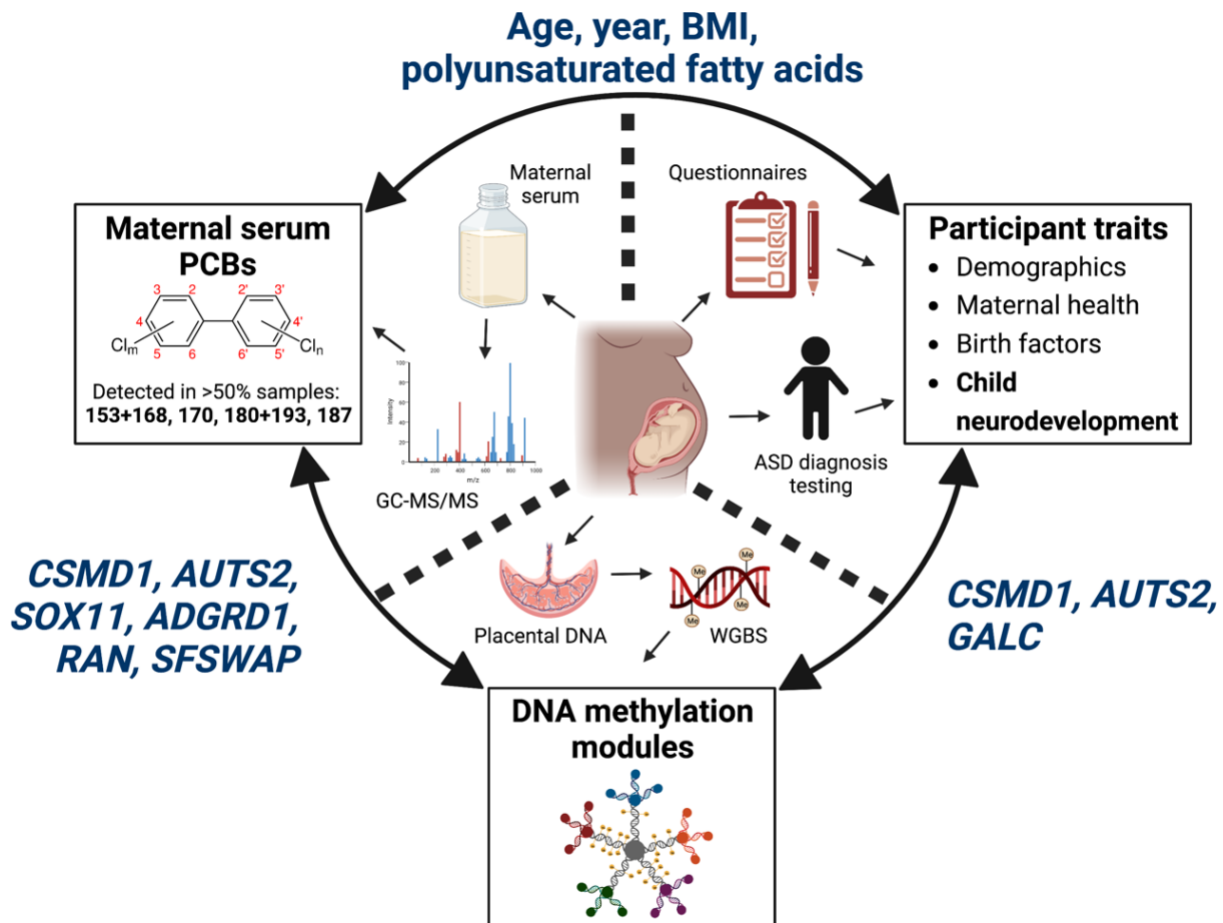
56 PCBs 153 + 168, 170, 180 + 193, and 187 were detected in over 50% of maternal serum samples
57 and were highly correlated with one another. Consistent with previous findings, maternal age was
58 the strongest predictor of serum PCB levels, alongside year of sample collection, pre-pregnancy
59 BMI, and polyunsaturated fatty acid levels. Twenty seven modules of placental DNA methylation
60 were identified, including five which significantly correlated with one or more PCBs, and four which
61 correlated with child neurodevelopment. Two modules associated with maternal PCB levels as
62 well as child neurodevelopment, and mapped to *CSMD1* and *AUTS2*, genes previously implicated
63 in ASD and identified as differentially methylated regions in mouse brain and placenta following
64 gestational PCB exposure.

65
66 **Conclusions:**

67 Placental DNA co-methylation modules were associated with maternal PCBs and child
68 neurodevelopment. Methylation of *CSMD1* and *AUTS2* could potentially be mechanistically
69 involved in ASD risk following maternal PCB exposure.

70
71 **GRAPHICAL ABSTRACT**

72
73



74 **1.INTRODUCTION**

75
76 Polychlorinated biphenyls (PCBs) are a class of 209 synthetic compounds that are ubiquitous in
77 the environment and harmful to human health. Prior to their international ban in 2001 (Stockholm
78 Convention, 2001), PCBs were commonly used in industrial processes and consumer products,
79 such as plastics, paint, and pesticides. Over 20 years later, PCBs continue to be released into
80 the environment from spills/improper disposal, degradation of PCB-containing materials, and
81 inadvertent production (Grimm et al., 2015; Hu & Hornbuckle, 2010), resulting in their presence
82 throughout our environment, from oceans (Wagner et al., 2019), soil (reviewed in (Wolska et al.,
83 2014)) and landfills (reviewed in (Gabryszewska & Gworek, 2021), to human food products
84 (Saktrakulkla et al., 2020) and indoor air, including air in schools (reviewed in (Herrick et al.,
85 2016)). PCBs are detectable and persistent in many marine (reviewed in (Domingo & Bocio,
86 2007)) and land animal species (reviewed in (Rhind, 2002)), as well as in humans, including
87 pregnant people (Granillo et al., 2019) and newborns (Berghuis et al., 2013; Mori et al., 2014; Yu
88 et al., 2019). Adult exposure to PCBs by inhalation, absorption through skin, or consumption of
89 contaminated foods such as dairy, meat and fish, increases risk for many diseases, including
90 cancer (reviewed in (Leng et al., 2016; Wan et al., 2022)), cardiovascular disease (reviewed in
91 (Gupta et al., 2018)) and reproductive abnormalities (reviewed in (Rattan et al., 2017)). Of
92 significant concern, fetal exposure to PCBs via maternal blood has been associated with adverse
93 health outcomes in the offspring, including increased risk of neurodevelopmental disorders such
94 as autism spectrum disorder (ASD) (Panesar et al., 2020; Pessah et al., 2019).

95
96 ASD is a group of neurodevelopmental disorders characterized by impairments in social
97 reciprocity and communication, restrictive interests, and repetitive behaviors. Risk for and
98 protection from ASD is influenced by a wide variety of genetic and environmental factors as well
99 as gene by environment interactions (reviewed in (Chaste & Leboyer, 2012; Cheroni et al., 2020;
100 Lyall, Croen, Daniels, et al., 2017)). Diagnoses of ASD have been increasing over the past several
101 decades and are currently estimated to affect approximately 1 in 44 children in the United States
102 (Maenner, 2021). These sobering statistics are a primary premise for the hypothesis that
103 gestational exposure to environmental chemicals influence individual risk for ASD. However, the
104 mechanisms by which environmental factors influence risk remain controversial (Lein, 2015).

105
106 Epigenetic marks are widely posited as one mechanism mediating gene by environment
107 interactions that confer ASD risk (Lein, 2015; Panesar et al., 2020) with the placental epigenome
108 functioning as a potential biological substrate (Zhu et al., 2022). The placenta is a fetal tissue
109 that invades the uterus and is responsible for providing nutrients and oxygen to the fetus as well
110 as removing waste. While the placenta filters out many toxic chemicals from the maternal
111 bloodstream, small lipophilic chemicals, such as PCBs, can cross the placental barrier and enter
112 the bloodstream of the fetus (Guvenius et al., 2003; Park et al., 2008; Soechitram et al., 2004).
113 Indeed, PCB levels in human placenta have been found to significantly correlate with those in
114 maternal blood and umbilical cord blood (Jeong et al., 2018). This placental exposure can alter
115 patterns of DNA methylation, a tissue-specific epigenetic mark that is influenced by both genetic
116 and environmental factors. DNA methylation marks are dynamic during development when they
117 are being established and then remain mostly stable, affecting gene expression throughout the
118 lifetime (Moore et al., 2013).

119
120 Recently, differential DNA methylation has been identified in human placenta and umbilical cord
121 blood of individuals later diagnosed with ASD (Mordaunt et al., 2020; Zhu et al., 2022). Moreover,
122 maternal PCB levels have been associated with altered DNA methylation in human placenta
123 (Ouidir et al., 2020) and in mouse placenta and fetal brain (Laufer et al., 2022). Both Ouidir et al.
124 and Laufer et al. found enrichment for pathways related to neurodevelopment and neuronal/brain

125 functions. However, no human study to date has examined associations between maternal PCB
126 exposure, whole-epigenome placenta DNA methylation, and offspring neurodevelopmental
127 outcomes.

128

129 In this study, we measured 209
130 PCB congeners from 104
131 samples of maternal serum
132 collected at delivery and
133 analyzed DNA methylation
134 networks from 147 placental
135 samples using weighted gene
136 correlation network analysis
137 (WGCNA) (Langfelder &
138 Horvath, 2008) (Figure 1). We
139 correlated placental DNA
140 methylation modules with
141 maternal serum PCB values, as
142 well as participant traits related
143 to child neurodevelopment,
144 maternal health, demographic
145 factors, and birth factors. Using
146 this approach, we identified
147 known ASD risk genes *CSMD1*
148 and *AUTS2* and other potential
149 biomarkers of PCB exposure
150 relevant to neurodevelopment.

151

152 2. METHODS

153

154 2.1. Study Population

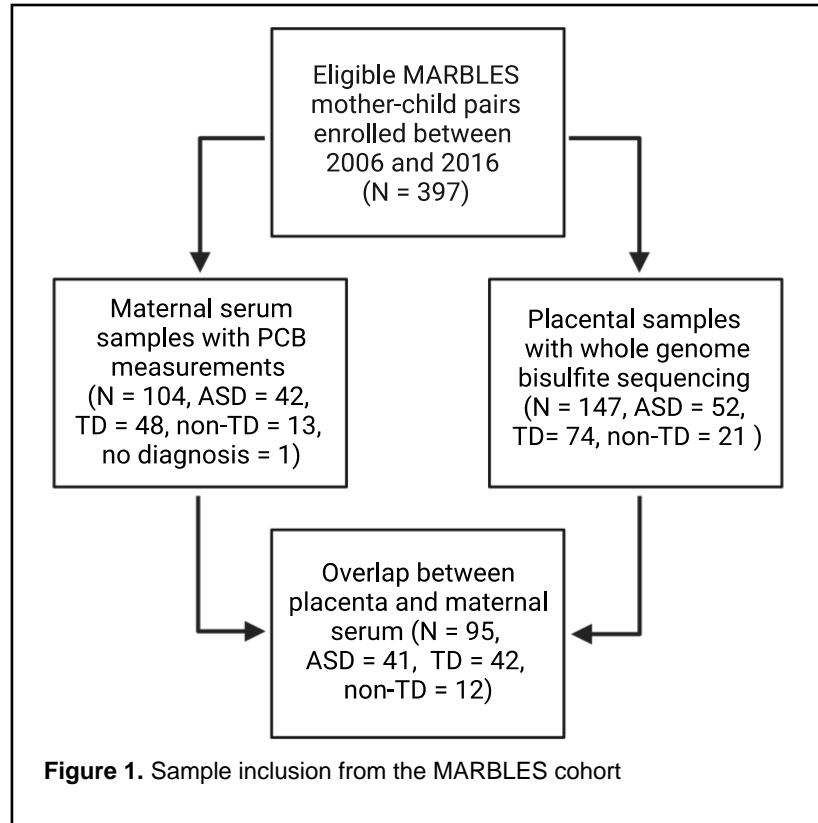
155

156 2.1.1. MARBLES and EARLI cohorts

157 This study included mother-child pairs that were enrolled in the Markers of Autism Risk in Babies
158 – Learning Early Signs (MARBLES) study from 2006-2016. As previously described (Hertz-
159 Picciotto et al., 2018), MARBLES enrolls mothers in northern California who already have a
160 biological child with ASD and are therefore at increased risk of delivering another child who will
161 develop ASD. Enrollment in the MARBLES study required families to meet the following criteria:
162 1) the mother or father already had a biological child diagnosed with ASD, and the mother was 2)
163 at least 18 years of age; 3) already pregnant or planning to become pregnant; 4) living within a 2-
164 hour drive of the Davis/Sacramento area; and 5) proficient in English. This study used 104
165 maternal serum samples from MARLBES for PCB analysis and 147 placentas (after quality
166 control) from MARBLES for DNA methylation analysis; 95 of the serum and placenta samples
167 came from a mother-fetus pair.

168

169 This study uses an independent replication cohort from the Early Autism Risk Longitudinal
170 Investigation (EARLI) to validate results from DNA methylation analysis. Similarly to MARBLES
171 and previously described elsewhere (Newschaffer et al., 2012), EARLI enrolls mothers who
172 already have a biological child with ASD. Families were recruited from Drexel/Children's Hospital
173 of Philadelphia, Johns Hopkins/Kennedy Krieger Institute, Kaiser Permanente Northern
174 California, and University of California, Davis. Enrollment in the EARLI study required families to
175 meet the following criteria: 1) the mother or father already had a biological child diagnosed with



176 ASD, and the mother was 2) at least 18 years of age; 3) less than 29 weeks pregnant; 4) living
177 within a 2-hour drive of the study site; and 5) proficient in English or Spanish. This study used 47
178 placentas from EARLI to confirm the preservation and quality of the DNA co-methylation modules.
179

180 **2.1.2. Diagnostic classification for autism spectrum disorder**

181 Children enrolled in MARBLES and EARLI were clinically assessed for autism spectrum disorder
182 (ASD) around 36 months of age by professional examiners. Diagnosis was based on the Autism
183 Diagnostic Observation Schedule (ADOS) (Lord et al., 2000), Autism Diagnostic Interview –
184 Revised (ADI-R) (Lord et al., 1994), and Mullen Scales of Early Learning (MSEL) (Mullen, 1995).
185 ADOS is a standardized assessment tool that uses structured and semi-structured activities that
186 allow the examiner to evaluate communication skills, social interaction, and imaginative use of
187 materials. The ADOS module 2 scores range from 0 to 28, with scores equal to or higher than 7
188 meeting the cut-off for ASD. ADI-R is a structured interview with a parent or caregiver to discuss
189 the developmental history and current behavior of the child; this interview can be useful to
190 distinguish ASD from other developmental disorders. MSEL is a standardized evaluation whereby
191 the child completes a set of motor, visual, and language tasks which are assessed by the
192 examiner. MSEL has four subscale scores (fine motor, expressive language, receptive language,
193 and visual reception) as well as an overall early learning composite score, which is referred to as
194 Mullen Score in this manuscript. The composite score range is 49 to 155, with scores below 70
195 indicating neurodevelopmental delays.
196

197 Based on ADOS and MSEL scores, children in MARBLES and EARLI were categorized into three
198 outcome groups: ASD, typical development (TD), and non-typical development (non-
199 TD)(Chawarska et al., 2014; Ozonoff et al., 2014; Schmidt et al., 2019). Children classified in the
200 ASD group had ADOS scores above the cut-off and met the *DSM-5* criteria for ASD. Children
201 classified in the TD group had MSEL scores that were all within 2 SD and no more than one MSEL
202 subscale score that was 1.5 SD below the normative mean, as well as ADOS scores that were 3
203 or more points below the cut-off score for ASD. Children that met the criteria for neither ASD nor
204 TD were classified as non-TD; these children had low MSEL scores (two or more MSEL subscale
205 scores more than 1.5 SD below the normative mean or at least one MSEL subscale score more
206 than 2 SD below the normative mean) and/or high ADOS scores (within 3 points of the cut-off
207 score for ASD).
208

209 **2.1.3. Participant traits**

210 MARBLES participants provided demographic, nutritional, environmental, pregnancy, and
211 medical information through telephone-assisted interviews and mailed questionnaires. We
212 selected particular traits of interest, coded them numerically for analysis, and grouped them into
213 four categories for ease of discussion: demographics, maternal health, birth factors, and child
214 neurodevelopment. Information on some traits was not available for all participants, in which case
215 the data were removed and statistical analyses performed on the data available.
216

217 Demographic traits evaluated include both parents' birthplace (California/not California), race
218 (white/non-white), ethnicity (Hispanic/non-Hispanic), education level (less than high school/high
219 school diploma or GED/some college/Bachelor's degree/graduate or professional degree), and
220 age at time of the child's birth, as well as home ownership (renter/owner), delivery payer
221 (public/private insurance at time of child delivery), and sex assigned at birth of the enrolled child
222 (male/female). Maternal health factors evaluated include diagnosis of gestational diabetes
223 (yes/no), pre-eclampsia (yes/no), or chronic hypertension (yes/no), as well as maternal BMI pre-
224 pregnancy (continuous; calculated from weight and height), maternal plasma polyunsaturated
225 fatty acid (PUFA) levels (DPA + DHA + EPA measured in maternal serum), maternal omega 3s
226 (high/low), prenatal vitamin use in month 1 of pregnancy (yes/no), and maternal smoking during

227 pregnancy (yes/no). PUFA and omega 3 data have been previously reported (Huang et al., 2020).
228 Birth factors evaluated include delivery method (vaginal/C-section), birth month, birth season (fall,
229 winter, spring, summer), birth year (2006-2016), parity (number of pregnancies over 20 weeks
230 gestation prior to this pregnancy), Apgar score at 5 minutes, Apgar score at 1 minute, birth weight
231 (grams), birth length (cm), and gestational age at delivery (number of weeks into pregnancy when
232 delivery occurs). Factors related to child neurodevelopment include age at which ADOS and
233 MSEL tests were performed, MSEL composite score, ADOS comparison score, and diagnosis of
234 ASD (ASD, TD, non-TD).

235
236 Participant traits were correlated with one another using Pearson and Spearman correlations and
237 *p*-values were corrected for multiple testing by FDR using the psych R package v2.2.5 corr.test
238 function (Revelle, 2022). Pearson measures linear correlation, whereas Spearman measures
239 monotonic correlation, providing less restrictive but also less powerful results. Given the structural
240 diversity of our data, we elected to use both correlation measures to capture as many potential
241 relationships as possible. We adjusted *p*-values by FDR due to its power to detect true positives
242 (Benjamini & Hochberg, 1995, 2000; Chen et al., 2010; Korthauer et al., 2019). GraphPad Prism
243 version 9.4.1, GraphPad Software, San Diego, California USA, www.graphpad.com, chi-squared
244 test was used to test if prenatal vitamin use differed among ASD, non-TD, and TD diagnostic
245 groups, while one-way ANOVA and Tukey's multiple comparisons test were used to test
246 differences in MSEL scores across diagnostic groups.

247

248 **2.2. PCB measurements and analysis**

249

250 **2.2.1. Serum collection and storage**

251 Maternal serum was collected in red-top serum-separator vacutainers at time of delivery and
252 processed with centrifugation within 4 hours if possible, and stored frozen at -80 degrees
253 Fahrenheit. For this analysis, specimen aliquots were selected based on: having a minimum of 6
254 mL at delivery, child diagnosis data available, and a placenta specimen available for WGBS.
255 Serum aliquots were de-identified and shipped to the Analytical Core of the Iowa Superfund
256 Research Program frozen on dry ice. A pooled serum specimen from samples with ample volume
257 was created and included in each analysis run for quality assurance purposes. In this paper, PCB
258 congeners are referred to by their Ballschmitter and Zell number (US EPA, 2015).

259

260 **2.2.2. Chemicals and materials**

261 ¹³C-labeled PCBs, including ¹³C₁₂-PCB 3, ¹³C₁₂-PCB 15, ¹³C₁₂-PCB 31, ¹³C₁₂-PCB 52, ¹³C₁₂-PCB
262 118, ¹³C₁₂-PCB 153, ¹³C₁₂-PCB 180, ¹³C₁₂-PCB 194, ¹³C₁₂-PCB 206, and ¹³C₁₂-PCB 209, were
263 purchased from Cambridge Isotope Laboratories Inc. (Andover, Massachusetts, USA).
264 Deuterated PCB 30 (d₅-PCB 30) was obtained from C/D/N Isotopes (Pointe-Claire, Quebec,
265 Canada). A calibration standard containing all 209 PCB congeners and PCB 204 (internal
266 standard) were purchased from AccuStandard, Inc. (New Haven, Connecticut, USA). Unique
267 chemical identifiers of all 209 PCB congeners have been reported previously (Li, Westra, et al.,
268 2022). Pesticide grade solvents, such as hexane and dichloromethane, were purchased from
269 Fisher Scientific (Pittsburgh, Pennsylvania, USA). The Standard Reference Material (SRM 1957)
270 was obtained from the National Institute of Standards and Technology (NIST, Gaithersburg,
271 Maryland, USA).

272 **2.2.3. Extraction of PCBs from maternal serum**

273 Serum samples were extracted and analyzed by gas chromatography-tandem mass spectrometry
274 (GC-MS/MS) analysis using published procedures (Li, Hefti, et al., 2022; Marek et al., 2014;
275 Milanowski et al., 2010) in the Analytical Core of the Iowa Superfund Research Program. Briefly,

276 tissue samples were homogenized in 3 mL isopropanol. One mL of diethyl ether was added, and
277 samples were spiked with isotope-labeled PCB (5 ng/each in hexane). The tubes were inverted
278 for 5 minutes and centrifuged at 1,378 g for 5 minutes. The organic layer was transferred to a new
279 tube. The residue was re-extracted with 1 mL of isopropanol and 2.5 mL of hexane and diethyl
280 ether (9:1, vol/vol). The combined organic extracts were washed with 5 mL of phosphoric acid
281 (0.1 M in 0.9% aqueous sodium chloride), and the aqueous phase was re-extracted with 1 mL of
282 hexane and diethyl ether (9:1, v/v). The combined extracts were concentrated to near dryness
283 under a gentle stream of nitrogen, reconstituted in 4 mL of hexane, and 2 mL of a potassium
284 hydroxide solution (0.5 M in water-ethanol, 1:1, v/v) was added. After inversion for 5 min and
285 centrifugation at 1,378 g for 3 min, the organic phase was separated, and the bottom aqueous
286 phase was re-extracted with 3 mL of hexane. The combined organic phase contained the PCBs.
287 The PCB fraction was concentrated to ~ 0.5 mL under a gentle stream of nitrogen and passed
288 through a glass cartridge filled with 2 g of acidified silica gel (silica gel and concentrated sulfuric
289 acid, 2:1, w/w) with 0.2 g activated silica gel at the bottom and prewashed with 3 mL of hexane.
290 PCBs were eluted from the cartridge with 14 mL of hexane. The eluent was concentrated to 4 mL
291 and treated with 2 mL of concentrated sulfuric acid. After inversion for 5 min and centrifugation at
292 1,378 g for 3 min, the organic phase was collected, and the sulfuric acid layer was re-extracted
293 with 3 mL of hexane. The combined organic extract was concentrated to about 50 μ L and
294 transferred to a glass autosampler vial with an insert. Before analysis, the sample was spiked with
295 the internal standards (d5-PCB 30 and PCB 204; 5 ng each in hexane).

296 **2.2.4. GC-MS/MS determination of PCBs**

297 PCB samples were analyzed on an Agilent GC system coupled with an Agilent 7000 Triple Quad
298 in the multiple reaction monitoring (MRM) mode on an SPB-Octyl capillary column (30 m length,
299 250 μ m inner diameter, 0.25 μ m film thickness; Sigma-Aldrich, St. Louis, Missouri, USA). The
300 following temperature program was used: 45 $^{\circ}$ C, hold for 2 min, 100 $^{\circ}$ C/min to 75 $^{\circ}$ C, hold for 5
301 min, 15 $^{\circ}$ C/min to 150 $^{\circ}$ C, hold for 1 min, 2.5 $^{\circ}$ C/min to 280 $^{\circ}$ C, and hold for 5 min. The injector
302 temperature program is as follows: start at 45 $^{\circ}$ C, hold for 0.06 min, 600 $^{\circ}$ C/min to 325 $^{\circ}$ C and
303 hold for 5 min. The transfer line temperature was 280 $^{\circ}$ C. Helium was used as a carrier gas with
304 a constant flow rate of 0.8 mL/min. The precursor-product ion transitions of all PCB analytes used
305 for the MS/MS analysis have been reported previously (Li, Hefti, et al., 2022).

306 **2.2.5. Quality assurance/quality control for the GC-MS/MS analysis**

307 Extraction efficiency, reproducibility, and accuracy were assessed using 13 C-labeled surrogate
308 standards, method blanks, and analysis of a standard reference material (SRM 1957, NIST).
309 Limits of quantification (LOQs) were calculated as $LOQ = \bar{x}_b + k \times s_b$, where \bar{x}_b indicates the
310 mean of method blank results, k indicates the Students' t -value appropriate for the single-tailed
311 99th percentile t statistic and a standard deviation estimate with $n-1$ degree of freedom, and s_b
312 indicates the sample standard deviation of the replicated method blank samples. The recovery
313 rates of the surrogate standards ranged from 70 \pm 10 % to 97 \pm 9 %.

314

315 **2.2.6. Statistical analysis of PCBs and PCB-participant trait relationships.**

316 PCB congeners were assessed for detection frequency, defined as the percent of the 104 maternal
317 serum samples with PCB values over the LOQ, and labeled as detected (non-censored) or non-
318 detected (censored) for each sample. Individual or co-eluting congeners that were detected in
319 \geq 50% ($n=52$) of samples were selected for further analysis due to the increased robustness of
320 statistical methods. PCBs 153+168, 170, 180+193, and 187 met this cutoff. All PCB congener
321 values (ng) were then adjusted by maternal serum weight (g), and these serum weight-adjusted
322 values were used in all remaining analyses. PCB analyses described in this section were

323 completed with the NADA R Package v1.6-1.1 using R v4.1.3, unless otherwise specified (Helsel,
324 2005). NADA is optimized for censored environmental data (Lee, 2020)

325
326 Summary statistics (mean, median, standard deviation) were estimated for PCBs 153+168, 170,
327 180+193, and 187 using the censtats function, which reports statistics from three methods:
328 reverse Kaplan-Meier (a non-parametric test that does not assume a normal distribution of the
329 data), Robust Regression on Order Statistics (ROS; a semi-parametric model that assumes the
330 detected data is normally distributed but makes no assumptions about the censored data), and
331 Maximum Likelihood Estimation (MLE; a parametric model that assumes a normal distribution of
332 all data). The data were log-transformed for ROS and MLE to attain normality, due to the right-
333 skew of the non-transformed data. All three models avoid removal, replacement, or imputation of
334 the nondetected values, instead estimating statistics using all data points.

335
336 PCBs 153+168, 170, 180+193, and 187 were correlated with one another using Kendall's tau for
337 left-censored data, a nonparametric correlation coefficient that measures the monotonic
338 association between two variables, one or both of which may include censored data. Both
339 detected and non-detected data were included in the correlations. MARBLES participant traits
340 (related to demographics, maternal health, birth factors, and child neurodevelopment) were
341 correlated with PCBs 153+168, 170, 180+193, and 187 values using Kendall's tau for left-
342 censored data, and p -values were corrected by FDR. To assess which participant traits most
343 contributed to the levels of PCBs in the maternal serum, we computed fitted multiple linear
344 regression models. First, trait-PCB congener pairs were filtered to those that were associated with
345 a raw p -value < 0.2 . If multiple trait-PCB congener pairs met this cut-off and the traits were
346 correlated with each other, $r > 0.5$, the trait-PCB pair with the less significant p -value was removed
347 from the analysis. This was done to remove multicollinearity and increase the reliability of the
348 model. With the remaining PCB-trait pairs, a fitted multiple linear regression equation for censored
349 data was computed using the cenmle function. We then assessed detection frequencies and
350 congener levels for all congeners across maternal age groups (>35 vs ≤ 35), offspring birth year
351 (2006-2011 vs 2012-2016), maternal BMI (>25 vs ≤ 25), offspring ASD diagnosis (ASD vs non-TD
352 vs TD), and offspring sex (male vs female) using coin R package v1.4.2, VGAM R package v1.1.6,
353 and censReg R package v0.5.34.

354
355 To further examine the relationship between maternal serum PCB levels and diagnosis of ASD in
356 the offspring, the Peto-Prentice non-parametric test was used to test the means of PCB values
357 between diagnostic groups (ASD/non-TD/TD). The Peto-Prentice test reports two-sided p -values
358 which were divided in two to produce one-sided p -values. To further examine the relationship
359 between maternal serum PCB levels and maternal pre-pregnancy BMI, we correlated PCB-BMI
360 tau with K_{ow} , the octanol-water partition coefficient, for each PCB: 153+168, 170, 180+193, and
361 187 (Hawker & Connell, 1988). For co-eluting PCB congeners (PCBs 153+168 and 180+193),
362 we averaged the K_{ow} of the two congeners.

363
364 **2.3. Placental DNA methylation analysis**

365
366 **2.3.1. Whole genome bisulfite sequencing (WGBS)**

367 The placental samples and WGBS data used in this study were previously described (Ladd-
368 Acosta et al., 2021; Zhu et al., 2022). Briefly, 157 MARBLES and 47 EARLI placental samples
369 were frozen within 4 hours of birth. DNA was extracted from the placental samples and treated
370 with sodium bisulfite. Following whole genome sequencing of bisulfite-treated DNA, sequencing
371 files were processed, aligned to the hg38 genome, and converted to CpG methylation count
372 matrices.

373

374 **2.3.2. Placental DNA co-methylation network analysis**

375 We analyzed placental DNA methylation using Comethyl, v1.1.1 with R v 4.1.0, a published R
376 package that performs weighted gene correlation network analysis (WGCNA) for whole-genome
377 bisulfite sequencing (WGBS) data (Mordaunt et al., 2022). Comethyl forms modules from groups
378 of genomic regions that have correlated methylation, meaning that the proportion of CpGs that
379 are methylated in a given region correlate with the proportion of CpGs methylated in other regions
380 across samples. Modules are biologically informative because regions with correlated methylation
381 tend to be part of the same biological pathways and are less susceptible to random variations in
382 methylation than are individual CpG sites. In order to build modules from genomic regions that
383 are particularly informative, we filter regions to include only those that have variable methylation
384 across samples and therefore, may contribute to differential phenotypes. Methylation of a given
385 module is represented by a single value for each sample, called the “eigennode”, where a more
386 positive eigennode value reflects higher methylation levels and a more negative value reflects
387 lower methylation.
388

389 Specifically, 157 individual placenta Bismark CpG reports were read into a single BSseq object
390 that was used to calculate the number of CpGs at different filtering options for both sequencing
391 coverage and number of samples. Ten samples were removed due to low sequencing coverage,
392 resulting in 147 samples being used for analysis. CpGs with at least 4x coverage in at least 80%
393 of the 147 samples were selected to form regions, resulting in 13,056,694 filtered CpGs (44% of
394 CpGs). Regions, defined as 3 or more CpGs separated by no more than 150 base pairs, were
395 filtered for those with at least 12x coverage and a methylation standard deviation of at least 5%,
396 resulting in 199,944 filtered regions. The methylation data was then adjusted for the top 26
397 principal components to adjust for potential confounding variables (Parsana et al., 2019). Using
398 the adjusted methylation data, scale-free topology with Pearson correlations was assessed to
399 evaluate fit and connectivity of the model. A soft power threshold of 15 was selected, meaning
400 that all correlations were raised to the power of 15 to increase the strength of strong correlations
401 and minimize weak correlations and background noise. Finally, modules were identified using a
402 two-phase clustering approach that reduces computational intensity: filtered regions were
403 grouped into 6 blocks using k-means clustering, then a full network analysis was performed for
404 each block. Modules were identified in each block through hierarchical clustering and adaptive
405 branch pruning, then were merged if their eigennode values were highly correlated ($r > 0.9$).
406 Eigennode values are a single value that summarizes the methylation of a module for each
407 sample. Regions not assigned to a module were assigned to the grey module.
408

409 **2.3.3. Co-methylation module, sample, and trait correlations**

410 Once modules were identified, we correlated module eigennode values with one another to
411 identify highly related pairs. Correlations were calculated by Bicolor, and p -values were derived
412 based on Fisher’s transformation.
413

414 We then correlated module eigennode values with MARBLES participant traits (related to
415 demographics, maternal health, birth factors, and child neurodevelopment) as well as measured
416 maternal serum PCB values. Module eigennode values were correlated with participant traits
417 using Bicolor, and with PCB values using Kendall’s tau for left-censored data (NADA R package).
418

419 **2.3.4. Co-methylation module annotation**

420 Module regions were annotated to genes using the Genomic Regions Enrichment of Annotations
421 Tool (GREAT) and the hg38 genome (McLean et al., 2010). A region assigned to a module was
422 annotated to a gene if its genomic coordinates fell within the gene’s regulatory domain, defined
423 as 5 kb upstream and 1 kb downstream from its transcription start site, or up to 1 Mb from the
424 transcription start site until the nearest gene’s regulatory domain. Regions can map to zero, one,

425 or multiple genes. Gene information was provided by BioMart while gene context and CpG context
426 were provided by annotatr (Cavalcante & Sartor, 2017). Genic features include promoters (<1kb
427 upstream of a transcription start site), 5'UTRs, exons, introns, 3'UTRs, enhancers, intergenic
428 regions, and regions 1kb-5kb upstream of a transcription start site (Cavalcante & Sartor, 2017).
429 CpG features include CpG islands (regions of the genome with a high frequency of CpG sites as
430 defined by UCSC Golden Path), CpG shores (the 2kb upstream and downstream of CpG island
431 boundaries), CpG shelves (the 2kb upstream and downstream of CpG shores), and the open sea
432 (beyond 4kb from CpG island boundaries) (Cavalcante & Sartor, 2017).

433
434 We analyzed the overlap between module regions and partially methylated domains (PMDs)
435 using placenta PMDs previously identified by a machine learning approach on the hg18 genome
436 (Schroeder et al., 2013). We used the UCSC liftover tool to lift the hg18 PMDs to hg38, then
437 compared regions assigned to modules to PMDs; a region was considered within a PMD if the
438 entire region fit in the PMD.

439

440 **2.3.5. Co-methylation module preservation**

441 To assess the consistency of modules generated by the MARBLES samples we performed
442 module preservation using an independent dataset from the EARLI study. We called modules from
443 the EARLI dataset using CpGs and regions restricted to those covered in the MARBLES dataset.
444 Methylation data was corrected for the top 16 principal components, and a soft power threshold
445 of 23 was selected to achieve a high fit for the model. Pearson correlation was then used to
446 identify associations between regions and to call modules. We evaluated the MARBLES and
447 EARLI modules through multiple statistics, assessing the quality, preservation, separability, and
448 accuracy of each module (Langfelder et al., 2011). Module assignments are permuted 100 times
449 to calculate Z-scores and P-values. Based on simulation studies by Langfelder et al., 2011, we
450 considered Z-scores over 10 to be strong evidence for module preservation and Z-scores
451 between 2 and 10 to be weak-moderate evidence.

452

453 **3. RESULTS and DISCUSSION**

454

455 **3.1. Highly chlorinated PCB congeners are most frequently detected in maternal serum**

456 We measured levels of all 209 PCB congeners in 104 MARBLES study samples of maternal
457 serum collected at time of delivery (**Figure 2A**) (**Supplemental Tables S1 and S2**) (Hertz-
458 Picciotto et al., 2018). While most human PCB studies use serum collected during pregnancy,
459 delivery serum provides a unique timepoint to study lipid-soluble PCBs because maternal plasma
460 free fatty acids have been found to double during labor (Kashyap et al., 1976). In 27 instances,
461 two-four PCB congeners co-eluted, resulting in 173 PCB measurements per sample. Each
462 sample had between zero and 41 PCB congeners detected, with a mean of 6.68 and a median of
463 4 congeners detected per sample. Eighty-one single or co-eluting PCB congeners were detected
464 in zero samples; 76 in 1-10% of samples; 5 in 11-20% of samples; 7 in 21-50% of samples; and
465 4 in $\geq 50\%$ of samples (**Supplemental Table S1**). These detection frequencies are lower than
466 those in postmortem human brain using similar methods (Li, Hefti, et al., 2022). In both studies,
467 highly chlorinated PCBs were more likely to be detected than lower chlorinated PCBs, despite the
468 decreased response of the instrument as the degree of chlorination increases. This may be
469 explained by highly chlorinated PCB congeners' resistance to metabolization, leading to
470 bioaccumulation in the body (Kato et al., 1980; Mathews & Anderson, 1975; Mills et al., 1985).

471

472 The four PCB congeners/congener pairs that were detected in $\geq 50\%$ ($n=52$) of samples were
473 selected for further analysis due to the increased robustness of statistical methods when censored
474 data points represent less than half the data: PCBs 153s + 168, 170, 180 + 193, and 187. These
475 PCB congeners were also detected in $\geq 50\%$ of postmortem brain samples (Li, Hefti, et al., 2022)

476 and found at high concentrations in maternal blood plasma, cord blood plasma, breast milk
477 (Gruenewald et al., 2003), and placenta (Naqvi et al., 2018). No PCB congeners were detected in
478 fewer than 50% of all samples but in greater than 50% of one of the ASD diagnostic groups
479 (ASD/non-TD/TD), indicating that we did not miss a congener that may discriminate between
480 diagnostic groups.

481
482 **3.2. Highly detected PCB congeners (153 + 168, 170, 180 + 193, and 187) have variable but**
483 **correlated levels in maternal serum**

484 We estimated summary statistics (mean, median, standard deviation) for PCBs 153 + 168, 170,
485 180 + 193, and 187 (**Table 1 and Supplemental Table S3**) using both the detected and non-
486 detected data in the models, which has been shown to be more effective than substituting or
487 replacing non-detected data points (Ahmadi et al., 2021; Canales et al., 2018). Inputted PCB
488 values were adjusted by serum weight, which did not differ significantly across ASD diagnostic
489 groups (ASD/non-TD/TD) (**Supplemental Figure S4**). PCBs 153 + 168 and 180 + 193 had higher
490 median and mean concentrations than PCBs 170 or 187. PCB 153 and PCB 180 have previously
491 been detected as among the 12 most abundant PCB congeners in maternal serum in the
492 MARBLES cohort (Sethi et al., 2019), as well as highly detected in brain tissue (Chu et al., 2003;
493 Corrigan et al., 1998; Dewailly et al., 1999; Li, Hefti, et al., 2022; Mitchell et al., 2012). Additionally,
494 PCB 153 + 168 are the least lipophilic of this group, meaning they are more readily released from
495 adipose tissue into the blood, potentially resulting in higher average serum levels (Louis et al.,
496 2016).

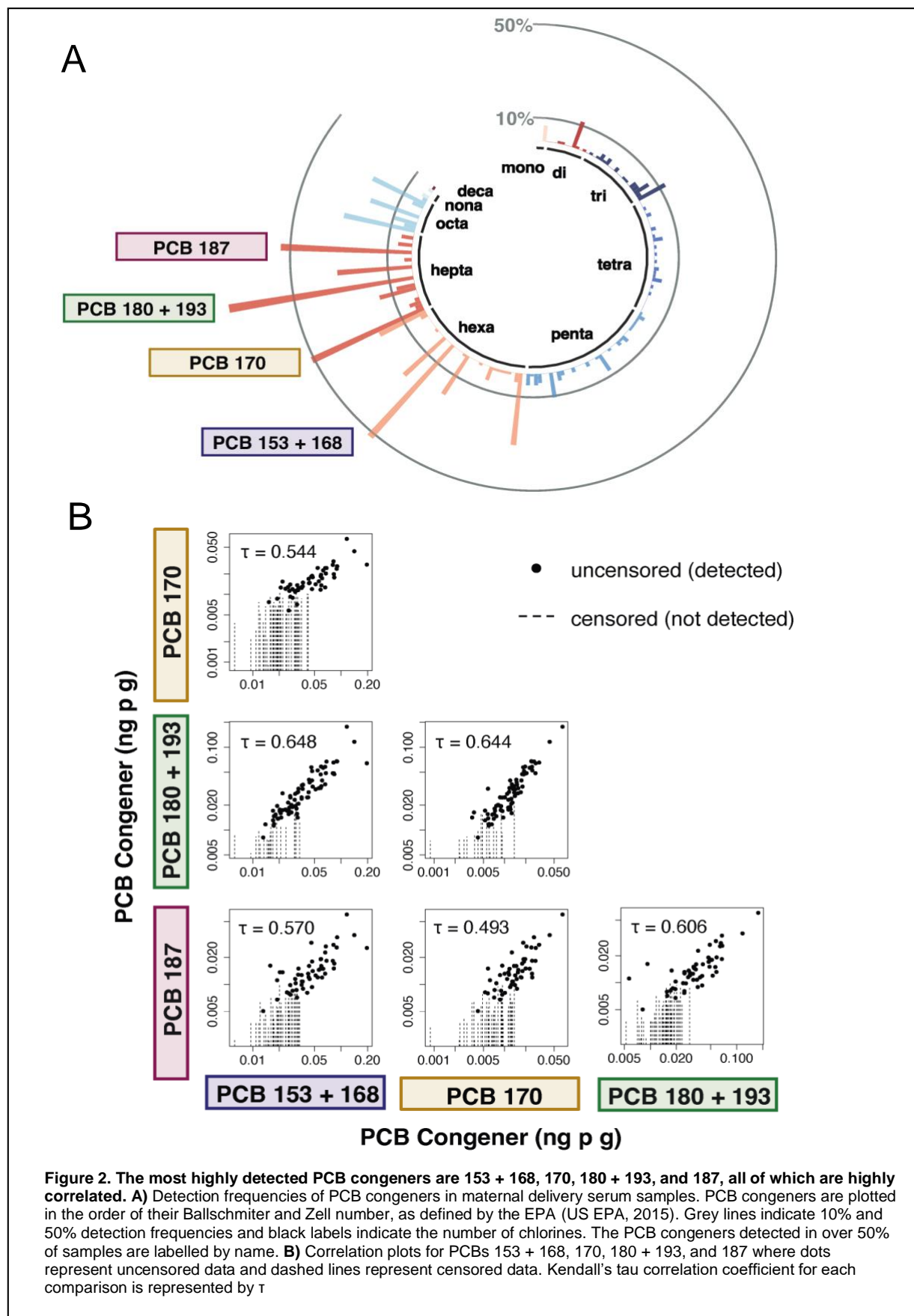
497
498 **Table 1. Estimated summary statistics for PCB congeners in maternal serum by**
499 **Regression on Order Statistics**

PCB Congener	Detected (n,%)	Median (ng/g)	Mean (ng/g)	SD (ng/g)
PCB 153 + 168	54 (51.9)	0.0283	0.0368	0.0301
PCB 170	53 (51.0)	0.0069	0.0114	0.0091
PCB 180 + 193	80 (76.9)	0.0192	0.0272	0.0240
PCB 187	56 (53.8)	0.0078	0.0104	0.0086

500
501 We next tested the hypothesis that measured values of PCB congeners in serum correlate with
502 one another. Confirming previous findings (DeVoto et al., 1997; Pauwels et al., 1999), PCBs 153
503 + 168, 170, 180 + 193, and 187 were all significantly correlated (tau correlation coefficients ranged
504 from 0.48 to 0.63, with all p -values $< 10^{-12}$), though correlation coefficients were lower than in
505 previous studies, likely due to our inclusion of non-detected data points (**Figure 2B**)
506 (**Supplemental Table S4**).

507
508 **3.3. Participant traits related to demographics, maternal health, birth factors, and child**
509 **neurodevelopment are correlated**

510 Next, we took advantage of the large volume of metadata collected within the MARBLES study to
511 explore relationships between traits related to demographics, maternal health, birth factors, and
512 child neurodevelopment (**Supplemental Tables S5 and S6**). To identify linear and monotonic
513 relationships, we correlated all numerically-coded participant traits using Pearson (linear) (**Figure**
514 **3A**) (**Supplemental Tables S7, S9**) and Spearman (monotonic) (**Supplemental Figure S2**)
515 (**Supplemental Tables S8, S10**) correlations. Spearman detected 54 significant trait-trait
516 correlations (FDR < 0.05), two of which were not detected by Pearson, while Pearson detected



518 55, three of which were not detected by Spearman, indicating the value of performing both
519 methods. Unsurprisingly, traits within a given category were often strongly correlated, including
520 demographic traits of parental ages, parental education levels, home ownership, and delivery
521 payer (public or private insurance), as well as paired demographic traits of the two parents such
522 as birthplace, race, ethnicity, age, and education. Birth factors, including birth weight and birth
523 length, as well as maternal health factors, including omega 3 and plasma PUFA levels, were also
524 strongly correlated (FDR < 0.05).

525
526 ASD diagnosis strongly correlated with ADOS comparison score (FDR = 0) and Mullen score
527 (FDR = 0), which are both used to diagnose ASD, as well as birth year (FDR < 0.01), with rates
528 of diagnosis increasing from 2006 to 2016. This aligns with previous findings that ASD is
529 increasing in prevalence and/or diagnostic rates (CDC, 2022). ADOS comparison score
530 correlated (FDR < 0.05) with prenatal vitamin use, which has previously been shown to be
531 protective for ASD (Levine et al., 2018; Schmidt et al., 2011, 2019). To further examine this
532 relationship in our cohort, we used chi-squared to test if prenatal vitamin use in month 1 of
533 pregnancy (yes/no) was significantly different for ASD diagnostic groups (TD/non-TD/ASD).
534 Aligning with previous findings, prenatal vitamin use was associated with ASD diagnosis in the
535 protective direction ($P = 0.0062$) (**Supplemental Figure S3**). Additionally, Mullen Score was
536 significantly associated with mom education (FDR = 0.02), with greater educational attainment as
537 child Mullen Score increased. Higher Mullen scores indicate greater cognitive development and
538 decreased likelihood of ASD diagnosis (**Supplementary Figure S4**). Low maternal education has
539 been associated with increased risk and severity of ASD in previous studies (Dong et al., 2022;
540 Leonard et al., 2005; Schoultz et al., 2010).

541 542 **3.4. PCB levels in maternal serum are correlated with participant traits, particularly** 543 **maternal age, but not child ASD diagnosis**

544 Next, we explored associations between participant traits and levels of PCBs 153 + 168, 170, 180
545 + 193, and 187 in maternal serum collected at delivery (**Figure 3B**). Based on existing literature,
546 we hypothesized that maternal serum PCB levels would be positively associated with diagnosis
547 of ASD in the offspring (Bernardo et al., 2019; Lyall, Croen, Sjödin, et al., 2017), negatively
548 associated with maternal BMI (Koh et al., 2016; Lan et al., 2021; Mullerova et al., 2008), and
549 negatively associated with child birth year (year of maternal serum sample collection), with the
550 latter prediction reflecting data indicating that environmental levels of highly chlorinated PCBs,
551 including PCBs 153 + 168, 170, 180 + 193, and 187, are decreasing over time (Brändli et al.,
552 2007; Jones et al., 1992).

553
554 Kendall's tau for left-censored data was estimated for each PCB-trait pair, and p -values were
555 adjusted by FDR (**Supplemental Table S11, S12, S13**). PCBs 153 + 168, 170, 180 + 193, and
556 187 were not significantly (FDR < 0.05) associated with ASD diagnosis, which we confirmed by
557 the Peto-Prentice test (**Supplemental Table S14**). At FDR < 0.05, PCBs 153+168 and 187 were
558 significantly associated with maternal and paternal ages, paternal education level, and home
559 ownership (renter/owner); PCB 170 with maternal and paternal ages; and PCB 180+193 with
560 maternal and paternal ages and education levels (**Supplemental Figure S5**). Because the
561 demographic variables of maternal and paternal age and education, home ownership, and
562 delivery payer are all highly correlated with one another (**Figure 3A**), it was difficult to identify
563 which traits were the most significant predictors of PCB levels in maternal serum.

564
565 To address this question, we computed fitted multiple linear regression models for censored data.
566 First, we identified all PCB-trait correlations with FDR < 0.2. This cut-off was purposely lenient to
567 include all traits that may be important in affecting PCB levels. To address multicollinearity, we
568 removed a PCB-trait pair from analysis if the trait was highly correlated with another trait ($r > 0.5$)

569 that was more strongly associated (lower FDR) with the PCB congener. With all PCB-trait pairs
570 that met these cut-offs, we performed multiple linear regression using a log scale to normalize the
571 left-censored PCB data. Though all congeners' multiple linear regression models shared
572 characteristics, each was distinct despite the high correlation between all four PCB
573 congeners/congener pairs (**Figure 2B**). Maternal age (MomAge) was the most significant
574 predictor ($P < 0.00001$) of maternal levels of PCBs 153 + 168, 170, 180 + 193, and 187, with
575 increasing age predicting increasing serum PCB levels. PCBs 153 + 168 ($P < 0.05$) and 180 +
576 193 ($P < 0.005$) were also strongly predicted by the child's birth year (year of maternal serum
577 sample collection), with decreasing levels of PCBs from 2006 to 2016. Higher maternal serum
578 levels of PCB 153 + 168 was also predicted by lower maternal BMI ($P < 0.05$), while higher
579 maternal serum levels of PCB 180 + 193 were predicted by higher levels of maternal plasma
580 polyunsaturated fatty acids ($P < 0.05$) (**Figure 3B**). Standard errors of the coefficients and other
581 regression model variables are reported in **Supplemental Table S14**.

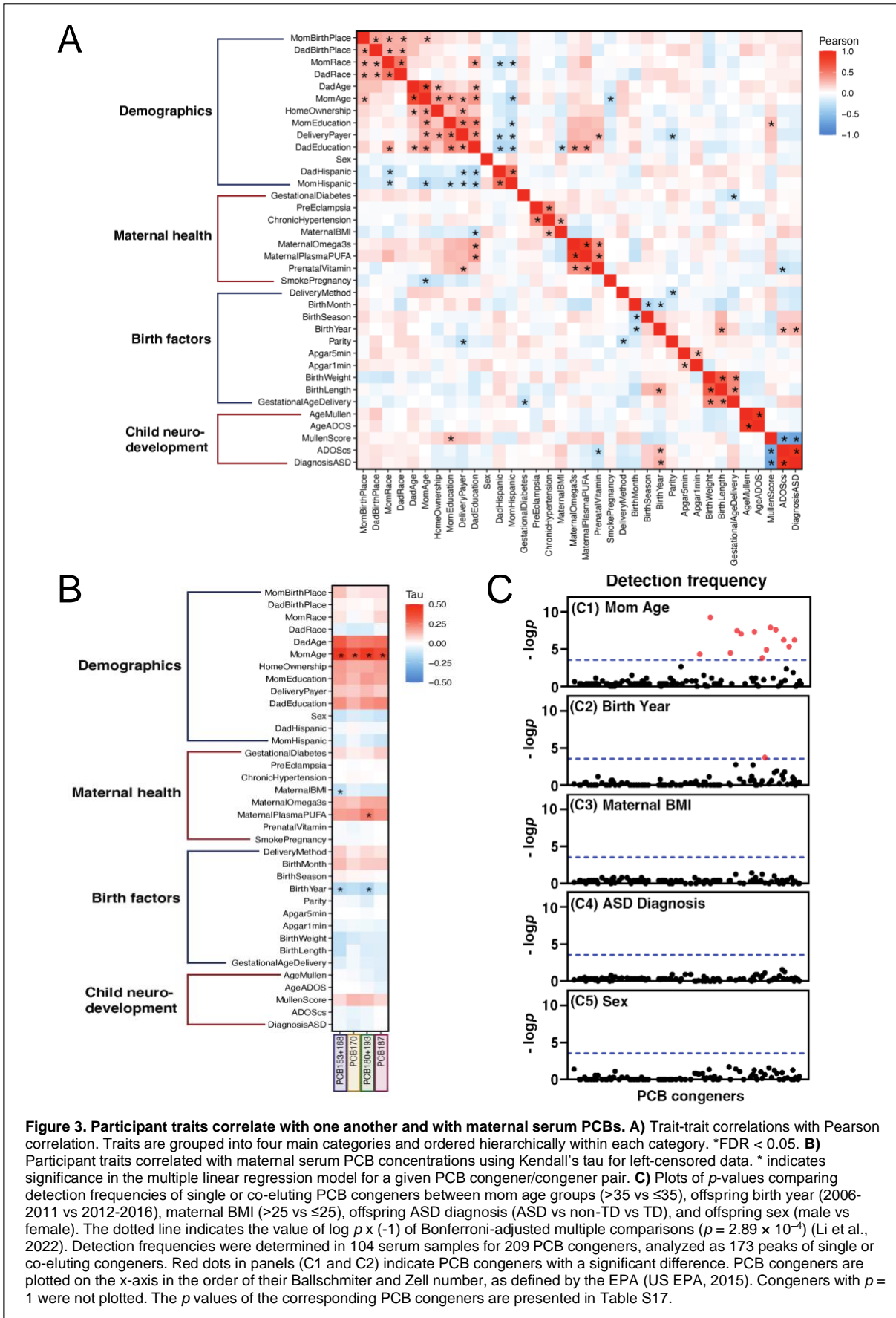
582
583 Fitted multiple linear regression models:

- 584 • $\ln\text{PCB } 153 + 168 = 211 + 0.134*\text{MomAge} - 0.0322*\text{MaternalBMI} - 0.109*\text{BirthYear}^a$
- 585
- 586 • $\ln\text{PCB } 170 = -8.9024 + 0.1127*\text{MomAge}$
- 587
- 588 • $\ln\text{PCB } 180 + 193 = 219.31014 + 0.09813*\text{MomAge} + 0.00588*\text{MaternalPlasmaPUFA} -$
589 $0.11286*\text{BirthYear}^a$
- 590
- 591 • $\ln\text{PCB } 187 = -10.1156 + 0.12414*\text{MomAge}$
- 592

593 ^aBirth year refers to child birth year which is also the year of maternal serum sample collection
594

595 The multiple linear regression models partially confirmed our hypotheses that child diagnosis of
596 ASD, year of sample collection, and maternal BMI would be significant predictors of maternal
597 serum PCB levels. PCBs 153 + 168, 170, 180 + 193, and 187 were not significantly predicted by
598 ASD diagnosis or ADOS score, which we confirmed by the Peto-Prentice test (**Supplemental**
599 **Table S15**). However, the negative associations between PCB levels and year of sample
600 collection as well as maternal BMI confirmed our hypotheses and aligned with previous
601 publications. Due to the negative association between BMI and PCBs, we decided to not lipid-
602 adjust our PCB values. Previous studies have indicated a potential causal effect of PCBs on
603 serum lipid levels (Hennig et al., 2005; Langer et al., 2003), and have found lipid standardization
604 to be prone to bias (Schisterman et al., 2005). Further, different groups of PCBs are differently
605 associated with total serum lipids, making lipid adjustment difficult for all 209 PCB congeners in
606 our study (Aminov et al., 2013).

607
608 To investigate why PCB 153 + 168 was more strongly negatively correlated with (and predicted
609 by) maternal BMI than the other three PCB congeners/congener pairs we correlated the BMI-PCB
610 tau value with the octanol-water partition coefficients (K_{ow}) for each PCB congener/pair
611 (**Supplemental Figure S6**) (**Supplemental Table S16**). K_{ow} represents the lipophilicity of a
612 compound, with more positive values representing increased lipophilicity and decreased water-
613 solubility. Of the four PCB congeners/congeners pairs, PCB 153 + 168 is the least lipophilic
614 (lowest K_{ow}) and has the strongest negative PCB-BMI correlation tau value. This inverse
615 relationship between BMI and serum levels of PCBs with lower lipophilicity is revealed among
616 individuals with lower fat stores (lower BMI) that have higher amounts of PCB 153 + 168 in their
617 bloodstream. This may occur with PCB 153 +168 more than the other congeners because its
618 lower lipophilicity, meaning PCB 153 +168 has lower propensity to stay in the fat stores and
619 greater solubility in the bloodstream (Bruno et al., 2021).



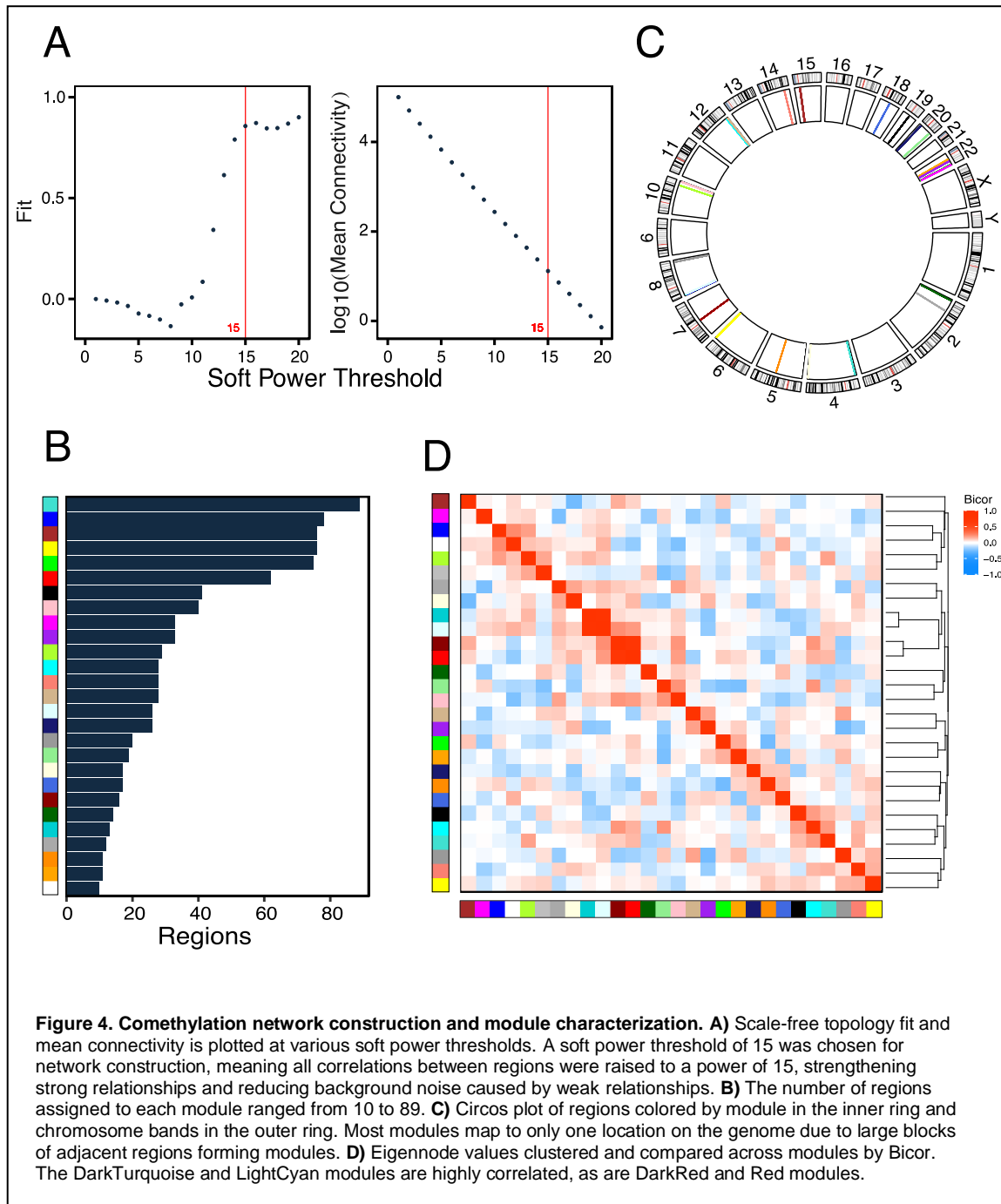
621 Lastly, the multiple linear regression models showed that PCB 180 + 193 serum levels are
622 predicted by maternal plasma polyunsaturated fatty acid levels. PCBs have previously been
623 associated with polyunsaturated fatty acids in human serum due to the high prevalence of both
624 PCBs and PUFAs in fish and fish oil (Ashley et al., 2013; Bourdon et al., 2010; Dellinger et al.,
625 2018; Ge et al., 2019; Tøttenborg et al., 2015). However, we did not include dietary information
626 in this study, so cannot validate a hypothesis for the association between PCB 180 + 193 and
627 dietary polyunsaturated fatty acid intake.

628
629 Based on our findings with participant traits and PCBs 153 + 168, 170, 180 + 193, and 187, we
630 assessed detection frequencies (**Figure 3C**) and levels (**Supplemental Figure S7**) of all PCB
631 congeners by offspring sex, offspring ASD diagnosis, maternal age, maternal BMI pre-pregnancy,
632 and offspring birth year (year of maternal serum sample collection) (**Supplemental Table S17**).
633 Overall, 18 congeners were more frequently detected in women who gave birth at over age 35
634 (and therefore had their serum collected at over age 35) than those who gave birth at age 35 or
635 younger. One congener was more frequently detected in women with pre-pregnancy BMI 25 or
636 under (PCB 169), while one congener was more frequently detected in women with TD offspring
637 compared to ASD/non-TD (PCB 194). Seven congeners were more frequently detected in those
638 with sample collection (child birth year) between 2006-2011 compared to 2012-2016.

639 **3.5. Placental DNA co-methylation modules map to large blocks of adjacent regions**

640 We next assessed DNA methylation patterns from placental samples in the MARBLES cohort to
641 analyze the relationships between DNA methylation, maternal serum PCB levels, and participant
642 traits including those related to child neurodevelopment. Although we did not see a significant
643 association between maternal serum PCB levels and child ASD diagnosis at the population level,
644 placental DNA methylation may act as a measurable intermediary at the level of the individual.
645 To identify patterns of DNA methylation, we used the Comethyl R package (Mordaunt et al., 2022),
646 which performs weighted gene correlation network analysis (WGCNA) with WGBS data. This
647 method allowed us to look at modules of co-methylated regions instead of individual CpG sites,
648 which are more susceptible to stochastic variation. Additionally, Comethyl module eigennodes
649 can be correlated with any number of traits of interest, using a statistical method of choice.

650
651 CpGs from 157 placental samples were grouped into regions from which modules were
652 constructed. Correlations between region methylation were all raised to the power of 15 to amplify
653 strong connections and decrease the background noise of weak connections (**Figure 4A**).
654 Regions formed 6 blocks (**Supplemental Figure S15**) from which 27 modules were identified,
655 plus a grey module, to which regions not assigned to another module were assigned. From
656 199,945 total filtered regions, 928 were assigned to a module (0.46%) while the remaining regions
657 (99.54%) were assigned to the grey module. Each of the 27 modules contained between 10 and
658 89 regions (**Figure 4B**), which is consistent with previous Comethyl findings using cord blood
659 samples (Mordaunt et al., 2022). However, the modules generated from placenta were unique
660 because most modules mapped to large blocks of adjacent regions (**Figure 4C**) (**Supplemental**
661 **Table S23**). This is in contrast to other tissues, where modules typically map to short regions
662 across several chromosomes (Mordaunt et al., 2022). This unique finding led us to investigate
663 where the modules mapped on the genome.
664



665
666
667
668
669
670
671
672

3.6. Placental DNA co-methylation modules annotate to gene introns and CpG open sea contexts

We tested the hypothesis that co-methylated modules mapped to partially methylated domains (PMDs), regions of the placental genome with reduced average methylation levels (approximately 40-45% methylated) that are highly variable across individuals (Schroeder et al., 2013). Because we selected for regions with a high standard deviation in methylation levels and found that filtered regions with the highest standard deviations had 40-60% mean methylation (**Supplemental**

673 **Figure S13**), we hypothesized that these regions would preferentially map to PMDs (Schroeder
674 et al., 2013). Of the 928 regions assigned to modules (excluding the grey module), 407 (43.86%)
675 mapped to PMDs (**Supplemental Table S23**). PMDs cover an average of 37% of the placental
676 genome (Schroeder et al., 2013), showing that PMDs are over-represented in modules compared
677 to the placental genome (chi-squared $P < 0.0001$) (**Supplemental Table S24**). Of the 27 modules,
678 11 consist of 100% regions that map onto PMDs; 9 consist of 100% regions that fall outside of
679 PMDs; and 7 consist of a mixture. The average mean methylation across the regions that do not
680 map to PMDs is 0.6628 (SD 0.1142), while the average mean methylation across the regions that
681 do map to PMDs is 0.6262 (SD 0.1124). These relatively high standard deviations indicate the
682 high variability in methylation levels across regions in both PMDs and non-PMDs.

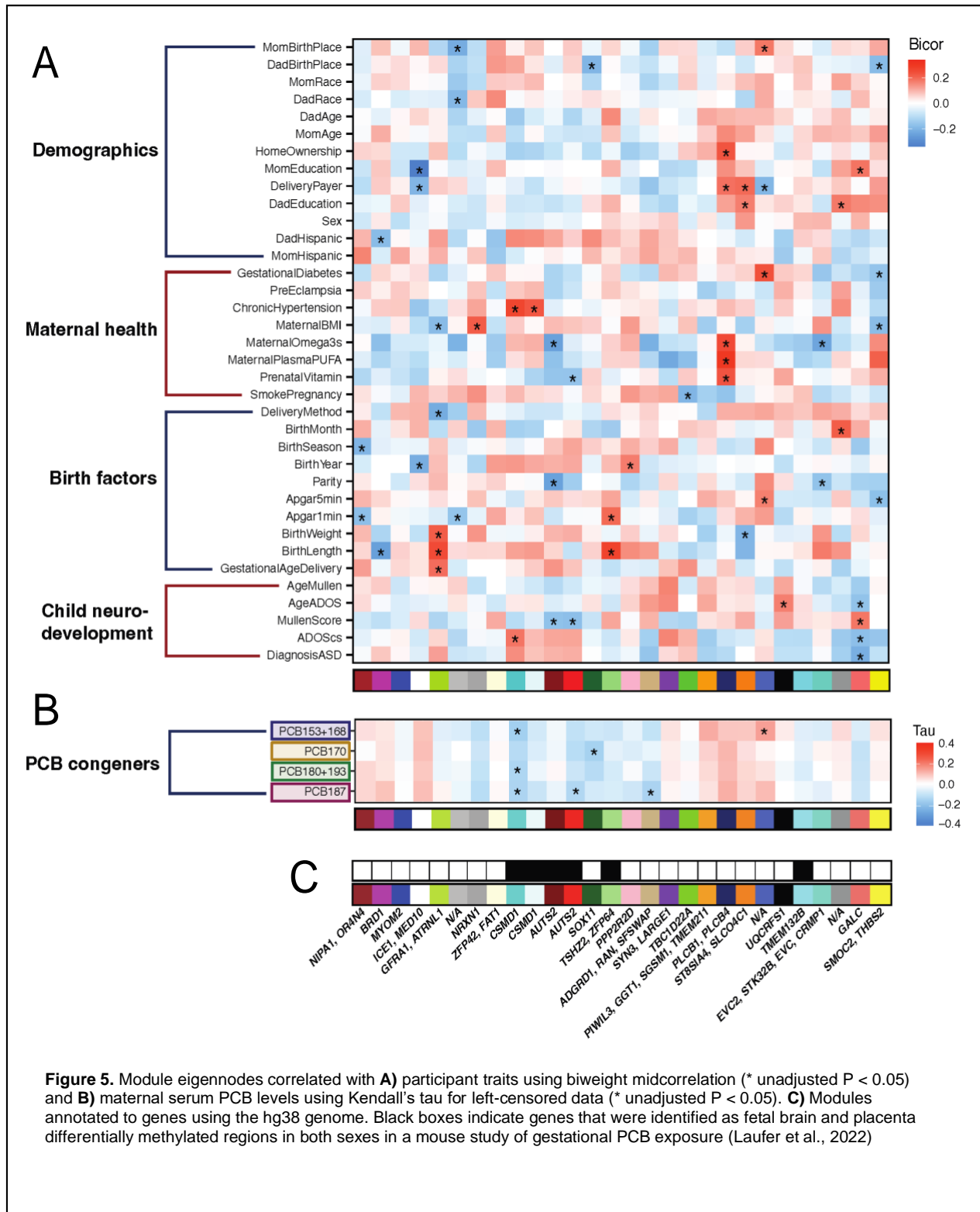
683
684 We then annotated regions within modules to genes, and identified regions' genic features (i.e.
685 promoter, exon, intron, UTR, enhancer, intergenic) and CpG features (i.e. island, shore, shelf,
686 open sea) (**Supplemental Table S23**). We found that 877/928 (94.5%) of regions within modules
687 mapped to open sea CpG contexts, supporting previous findings that most DMRs do not reside
688 at CpG islands (Visone et al., 2019). 700/928 (75.4%) of regions in modules mapped to introns
689 of genes, while only 116,878/199,944 (58.5%) of total filtered regions mapped to introns. This
690 indicates that introns are over-represented amongst regions that co-methylate in placenta,
691 compared to background regions (chi-squared $P < 0.0001$) (**Supplemental Table S24**). The
692 enrichment for introns is likely related to the finding that the entire gene body, including introns
693 and exons, is more highly methylated over active genes in placenta (Schroeder et al, 2016), and
694 introns cover a larger genomic territory than exons.

695
696 We also correlated module eigennodes with one another to identify highly similar modules and
697 explore whether they annotated to the same or different genes (**Figure 4D**) (**Supplemental**
698 **Figure S16**). The most highly correlated pairs of modules were DarkTurquoise with LightCyan
699 (Bicor = 0.792, p -value = 6.08E-33) and Red with DarkRed (Bicor = 0.718, p -value = 1.44E-24).
700 Though these modules are strongly correlated, they were not combined into a single module
701 because they did not meet the Bicor cut-off of 0.9. The DarkTurquoise and LightCyan modules
702 consist of large blocks of adjacent regions that map to *CSMD1*, a gene that codes for a
703 complement control protein. Nearly all of *CSMD1* lies within a placental PMD (Schroeder et al.,
704 2013). Regions in both modules map primarily to *CSMD1* introns with one region from each
705 module mapping to one of *CSMD1*'s 69 exons. The Red and DarkRed modules both consist of
706 large blocks of adjacent regions that map to *AUTS2*, activator of transcription and developmental
707 regulator. The DarkRed and Red regions lie approximately 396-526kb and 364kb-1Mb upstream
708 of *AUTS2*, respectively, showing that regions from the two modules overlap with one another on
709 the genome. Overall, these results highlight the complexity of DNA co-methylation in the placental
710 genome.

711 712 **3.7. Placental DNA co-methylation modules are correlated with child neurodevelopment** 713 **and map to genes previously associated with ASD, including *GALC*, *AUTS2*, and *CSMD1***

714 To explore potential relationships between placental DNA methylation and child
715 neurodevelopment, we correlated module eigennodes with participant traits using Bicor (**Figure**
716 **5A**). We also mapped regions within modules to genes in order to relate methylation in certain
717 genes to traits of interest (**Figure 5C**). Four modules significantly ($P < 0.05$) correlated with a child
718 neurodevelopmental trait (ASD diagnosis, Mullen Score, or ADOS comparison score): Salmon,
719 DarkRed, Red, and DarkTurquoise (**Figure 6 and Supplemental Figures S17-S19**). These
720 modules mapped, respectively, to *GALC*, *AUTS2*, *AUTS2*, and *CSMD1*, all of which have
721 previously been associated with ASD (Cukier et al., 2014; Hori et al., 2021, p. 2; Zhu et al., 2022).

722



724 The *GALC* Salmon module negatively correlated with ASD diagnosis ($P < 0.01$), as well as ADOS
725 comparison score ($P < 0.05$), but positively correlated with Mullen Score ($P < 0.05$). The Salmon
726 module also positively correlated with maternal education ($P < 0.05$), indicating that increased
727 placental DNA methylation at Salmon loci (*GALC* gene) correlates with more typical development
728 (and less ASD diagnosis) in the offspring and higher maternal education levels. This also fits with
729 the positive correlation of maternal education with the Mullen Score, for which higher values
730 reflect improved cognition and lower ASD diagnosis (**Figure 5A**). The Salmon module regions
731 map to *GALC*, a gene that encodes the enzyme galactosylceramidase, a component of myelin,
732 the protective coating around some nerve cells. These regions were previously identified as
733 placenta ASD hypomethylated DMRs in the MARBLES cohort using a DMR bioinformatic
734 approach (Zhu et al., 2022).

735
736 The *AUTS2* Red and DarkRed modules correlated negatively with Mullen Score, indicating higher
737 methylation at *AUTS2*, a known ASD risk gene, when Mullen Scores are lower and ASD is more
738 likely to be diagnosed. This study may be underpowered to detect a significant correlation
739 between these modules and ASD diagnosis (Red $P = 0.219$, DarkRed $P = 0.243$), a categorical
740 variable (ASD, non-TD, TD), despite their significance with Mullen Score, a continuous variable.
741 Additionally, the correlation with Mullen Score but not with ADOS Score may reflect that
742 methylation at this loci is associated with cognitive measures, as reflected by Mullen, but not with
743 social aspects of ASD, as reflected by ADOS. The *AUTS2* DarkRed module also correlated
744 negatively with maternal omega 3s, while the Red module correlated negatively with prenatal
745 vitamin use, suggesting that high omega 3s and taking prenatal vitamins are associated with lower
746 DNA methylation at this locus, in the expected protective direction for cognition.

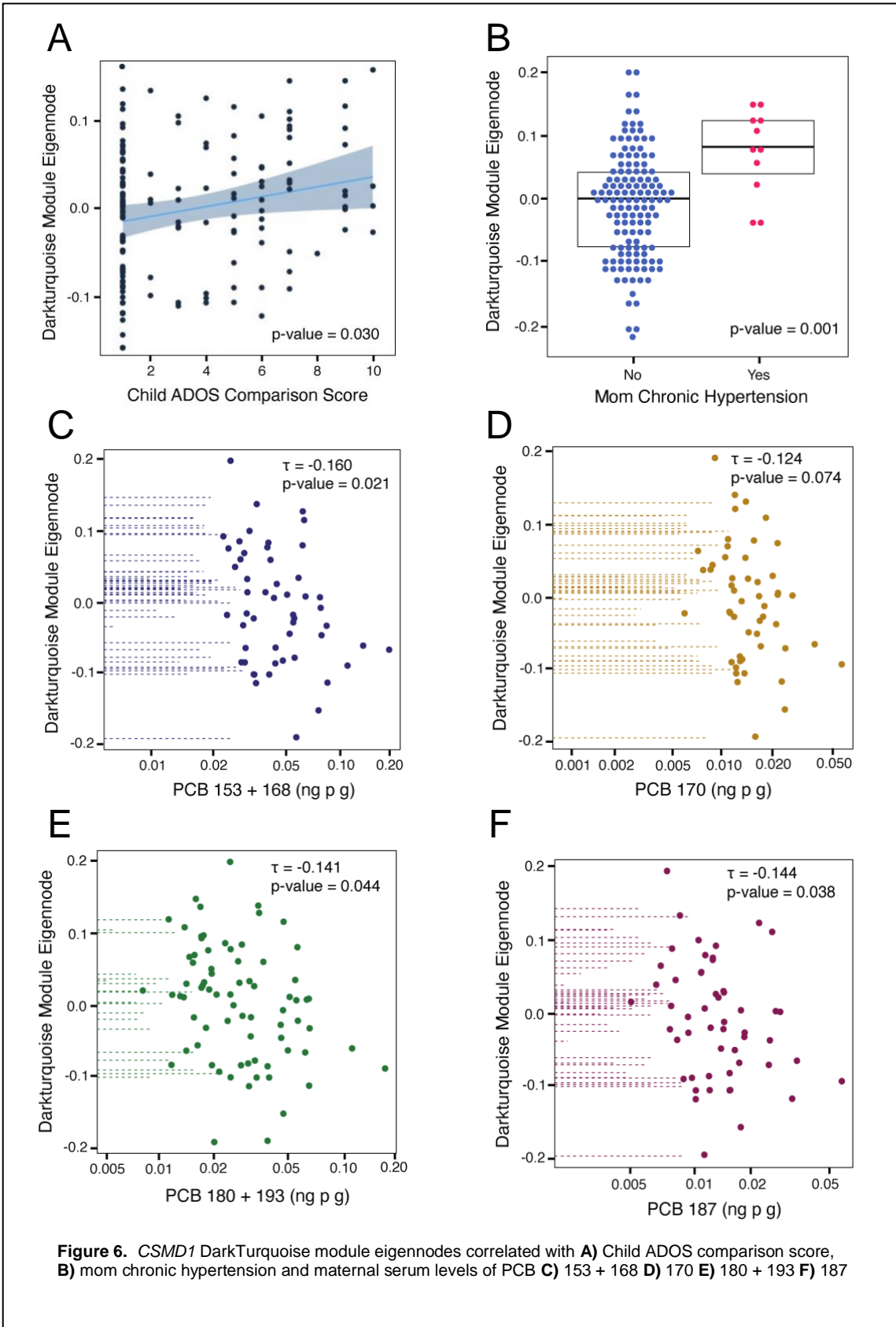
747
748 The *CSMD1* DarkTurquoise module negatively associated with both ADOS comparison score (P
749 < 0.05) and maternal chronic hypertension ($P < 0.005$) (**Figure 6A-B**). Again, a significant
750 correlation was not detected with ASD diagnosis ($P = 0.080$), potentially because it is a categorical
751 variable, or with Mullen Score, perhaps reflecting the sensitivity of *CSMD1* methylation to the
752 social aspects of ASD that are measured by ADOS rather than the cognitive aspects that are
753 measured by Mullen. Hypertensive disorders during pregnancy have been shown to potentially
754 increase risk of ASD in offspring (Curran et al., 2018) and common variants in *CSMD1* have
755 previously been associated with both hypertension (Hong et al., 2010) and ASD (Cukier et al.,
756 2014), as well as schizophrenia (Liu et al., 2017; Ripke et al., 2014). *CSMD1* has high expression
757 in brain, particularly in neurons (Baum et al., 2020), and was identified as a hypermethylated
758 differentially methylated gene in brain tissue from individuals with Dup15q (Dunaway et al., 2016),
759 a common CNV observed in ASD (Chaste et al., 2014; Hogart et al., 2010).

760

761 **3.8. Placental DNA co-methylation modules are correlated with maternal serum PCBs**

762 To investigate relationships between maternal serum PCBs and placenta DNA methylation, we
763 correlated module eigennodes with PCBs 153 + 168, 170, 180 + 193, and 187 using Kendall's
764 tau for left-censored data (**Figure 5B**). The *CSMD1* DarkTurquoise module negatively correlated
765 ($P < 0.05$) with PCBs 153+168, 180+193, and 187 (**Figure 6C-F**); the *AUTS2* Red ($P < 0.05$) and
766 *ADGRD1* Tan ($P < 0.05$) modules significantly negatively correlated with PCB 187; the *SOX11*
767 DarkGreen module significantly negatively correlated with PCB 170 ($P < 0.05$); and the RoyalBlue
768 module significantly positively correlated with PCB 153 + 168 ($P < 0.05$). Of the seven significant
769 module – PCB correlations, six were negative correlations, meaning that individuals with higher
770 serum PCB levels had lower methylation levels at those loci. These findings align with a mouse
771 model of gestational PCB exposure, in which placenta displayed global hypomethylation in both
772 sexes as well as a large skew in DMRs, where 81% of female and 85% of male DMRs were
773 hypomethylated in PCB-exposed mice compared to controls (Laufer et al., 2022).

774



776 Interestingly, the *CSMD1* DarkTurquoise and *AUTS2* Red modules correlated with maternal
777 PCBs as well as measurements of child neurodevelopment. In both modules, the methylation
778 change associated with elevated maternal serum PCB levels appears to be in the opposite
779 direction as ASD in the child, which is the inverse of our hypothesis but accompanies our finding
780 that ASD diagnosis was non-significantly negatively correlated with PCBs 153+168, 170,
781 180+193, and 187 (**Figure 3B**). A previous study using a mouse model of prenatal PCB exposure
782 identified DMRs that mapped to *CSMD1* as well as *AUTS2* in male and female placentas and
783 fetal brains (**Figure 5C**) (Laufer et al., 2022). Several DMRs mapped to each gene for both sexes
784 and tissues and were inconsistent in the direction of differential methylation, indicating that PCB
785 exposure may dysregulate DNA methylation at *CSMD1* and *AUTS2* in variable ways. Additionally,
786 methylation levels of *CSMD1* in sperm have been inversely correlated with serum DDE levels in
787 Faroese individuals who are exposed to high levels of organic pollutants (Maggio et al., 2021).
788 DDE and PCB exposures often occur together, and both chemicals contain phenyl groups and
789 chlorine molecules, indicating a potential convergent mechanism.

790
791 Additionally, it is notable that the *CSMD1* DarkTurquoise module correlated with maternal chronic
792 hypertension and serum PCB levels (**Figure 6 B-F**). Hypertension has previously been associated
793 with PCBs, though correlations in the positive (Raffetti et al., 2020) and the negative (Warembourg
794 et al., 2019) direction have both been found. Increases in systolic and diastolic blood pressure
795 have also been previously associated with high fish intake during pregnancy (Warembourg et al.,
796 2019), which is known to increase exposure to PCBs.

797
798 **3.9. Placental DNA co-methylation modules are highly preserved in an independent dataset**

799 Lastly, we assessed the placental DNA methylation module quality and preservation in an
800 independent WGBS ASD and TD placenta dataset from the EARLI study (Langfelder et al., 2011).
801 EARLI networks were constructed using the same set of CpGs and regions as were used in the
802 MARBLES dataset. The four types of features assessed were quality, preservation, accuracy,
803 and separability.

804
805 All 27 modules had strong evidence for quality and preservation as shown by all modules having
806 summary.qual and summary.pres Z-scores > 10. 19 modules had strong evidence for accuracy,
807 including two of our modules of interest (*CSMD1* DarkTurquoise and *GALC* Salmon). In contrast,
808 only eight modules showed evidence of separability in the reference set (MARBLES) and one
809 module in the test set (EARLI), which did not include our modules of interest. These results
810 suggest that the identified modules are of high quality and are consistent between multiple
811 placenta datasets (**Supplemental Figure S20**)(**Supplemental Table S25**).

812 813 **4. CONCLUSIONS**

814
815 We measured all PCB congeners in maternal serum collected at delivery from an ASD enriched
816 risk cohort and detected 4 congeners/congener pairs (PCBs 153 + 168, 170, 180 + 193, 187) in
817 more than 50% of samples. While we found maternal age, year of sample collection, pre-
818 pregnancy BMI, and polyunsaturated fatty acid levels to be predictive of maternal serum PCB
819 levels, we did not find an association between maternal PCBs and child ASD diagnosis. This
820 finding may be explained by the fact that PCB congener profiles in pregnant people are changing
821 over time and congeners that affect neurodevelopment may be less prevalent in our population
822 than those in previous studies. Additionally, PCBs may not alter neurodevelopment themselves,
823 but instead modify genetic risk through epigenetic marks such as DNA methylation.

824
825 To investigate this potential gene by environment interaction, we used a systems approach to
826 identify regions with correlated DNA methylation in placenta. We identified and replicated 27 co-

827 methylated modules, 4 of which correlated with child neurodevelopment measurements (ASD
828 diagnosis, ADOS comparison score, or Mullen score), and 5 of which correlated with PCB
829 congener levels, as well as other variables, including maternal hypertension and prenatal vitamin
830 use. DNA co-methylation patterns in the placenta identified 2 gene loci (*CSMD1* and *AUTS2*) that
831 were correlated with one or more PCB congeners and child neurodevelopment measures.
832 Interestingly, increased methylation at *CSMD1* and *AUTS2* correlated with higher rates of ASD
833 diagnosis but lower maternal serum PCB levels, indicating complex dysregulation at these loci
834 during development and the need for further investigation to clarify exact mechanisms. Together,
835 these results demonstrate the utility of comparing placental methylation patterns with multiple
836 variables to understand complex gene by environmental interactions in the etiology of ASD and
837 other neurodevelopmental disorders.

838

839 **USE OF HUMAN SUBJECTS DECLARATION**

840 This study was performed in accordance with the ethical principles for medical research involving
841 human subjects in the Declaration of Helsinki. The University of California, Davis Institutional
842 Review Board and the State of California Committee for the Protection of Human Subjects
843 approved this study and the MARBLES Study protocols (IRB# 225645). Human Subjects
844 Institutional Review Boards at each of the four sites in the EARLI Study approved this study and
845 the EARLI Study protocols (IRB# 214753). Neither data nor specimens were collected until written
846 informed consent to participate was obtained from the parents.

847

848 **AUTHOR CONTRIBUTIONS**

849 **Julia S. Mouat:** methodology, software, formal analysis, writing – original draft, visualization,
850 conceptualization **Xueshu Li:** investigation, resources, visualization, writing – review and editing
851 **Kari Neier:** methodology, software, formal analysis, writing – review and editing **Yihui Zhu:**
852 resources, writing – review and editing **Charles E. Mordaunt:** software, writing – review and
853 editing **Michele A. La Merrill:** methodology, writing – review and editing **Hans-Joachim**
854 **Lehmler:** investigation, resources, supervision, writing – review and editing **Michael P. Jones:**
855 conceptualization, writing – review and editing **Pamela J. Lein:** funding acquisition, supervision,
856 writing – review and editing **Rebecca J. Schmidt:** funding acquisition, supervision, data curation,
857 writing – review and editing **Janine M. LaSalle:** funding acquisition, supervision,
858 conceptualization, writing – review and editing, project administration

859

860 **COMPETING INTERESTS**

861 The authors declare they have no competing interests.

862

863 **FUNDING**

864 This work was supported by National Institutes of Health NIEHS R01 ES029213 (JML, RJS, P JL),
865 T32 ES00705 (JSM), the UC Davis Intellectual and Developmental Disabilities Research Center
866 (P50 HD103526), and the UC Davis Perinatal Origins of Disparities Center Graduate Student
867 Fellowship (JSM). The PCB analyses were performed in the Analytical Core of the Iowa
868 Superfund Research Program, which is supported by P42 ES013661.

869

870 **ACKNOWLEDGEMENTS**

871 We would like to thank Anthony E. Valenzuela, University of California, Davis, for joining
872 discussions about this paper and providing helpful background reading; Elizabeth Angel,
873 University of California, Davis, for quickly organizing MARBLES and EARLI metadata; Drs.
874 Rachel F. Marek and Keri C. Hornbuckle, University of Iowa, for supporting the congener specific
875 PCB analysis. The graphical abstract, Figure 1, and Figure 2B were made with BioRender.com.

876

877

878 **REFERENCES**

879

880 Ahmadi, H., Granger, D. A., Hamilton, K. R., Blair, C., & Riis, J. L. (2021). Censored data

881 considerations and analytical approaches for salivary bioscience data.

882 *Psychoneuroendocrinology*, *129*, 105274.

883 <https://doi.org/10.1016/j.psyneuen.2021.105274>

884 Aminov, Z., Haase, R. F., Pavuk, M., & Carpenter, D. O. (2013). Analysis of the effects of

885 exposure to polychlorinated biphenyls and chlorinated pesticides on serum lipid levels in

886 residents of Anniston, Alabama. *Environmental Health*, *12*, 108.

887 <https://doi.org/10.1186/1476-069X-12-108>

888 Ashley, J. T. F., Ward, J. S., Anderson, C. S., Schafer, M. W., Zaoudeh, L., Horwitz, R. J., &

889 Velinsky, D. J. (2013). Children's daily exposure to polychlorinated biphenyls from

890 dietary supplements containing fish oils. *Food Additives & Contaminants. Part A,*

891 *Chemistry, Analysis, Control, Exposure & Risk Assessment*, *30*(3), 506–514.

892 <https://doi.org/10.1080/19440049.2012.753161>

893 Baum, M. L., Wilton, D. K., Muthukumar, A., Fox, R. G., Carey, A., Crotty, W., Scott-Hewitt,

894 N., Bien, E., Sabatini, D. A., Lanser, T., Frouin, A., Gergits, F., Håvik, B., Gialeli, C.,

895 Nacu, E., Blom, A. M., Eggen, K., Johnson, M. B., McCarroll, S. A., & Stevens, B.

896 (2020). *CUB and Sushi Multiple Domains 1 (CSMD1) opposes the complement cascade*

897 *in neural tissues* (p. 2020.09.11.291427). bioRxiv.

898 <https://doi.org/10.1101/2020.09.11.291427>

899 Benjamini, Y., & Hochberg, Y. (1995). Controlling the False Discovery Rate: A Practical and

900 Powerful Approach to Multiple Testing. *Journal of the Royal Statistical Society: Series B*

901 *(Methodological)*, *57*(1), 289–300. <https://doi.org/10.1111/j.2517-6161.1995.tb02031.x>

- 902 Benjamini, Y., & Hochberg, Y. (2000). On the Adaptive Control of the False Discovery Rate in
903 Multiple Testing With Independent Statistics. *Journal of Educational and Behavioral*
904 *Statistics*, 25(1), 60–83. <https://doi.org/10.3102/10769986025001060>
- 905 Berghuis, S. A., Soechitram, S. D., Hitzert, M. M., Sauer, P. J. J., & Bos, A. F. (2013). Prenatal
906 exposure to polychlorinated biphenyls and their hydroxylated metabolites is associated
907 with motor development of three-month-old infants. *Neurotoxicology*, 38, 124–130.
908 <https://doi.org/10.1016/j.neuro.2013.07.003>
- 909 Bernardo, B. A., Lanphear, B. P., Venners, S. A., Arbuckle, T. E., Braun, J. M., Muckle, G.,
910 Fraser, W. D., & McCandless, L. C. (2019). Assessing the Relation between Plasma PCB
911 Concentrations and Elevated Autistic Behaviours using Bayesian Predictive Odds Ratios.
912 *International Journal of Environmental Research and Public Health*, 16(3), 457.
913 <https://doi.org/10.3390/ijerph16030457>
- 914 Bourdon, J. A., Bazinet, T. M., Arnason, T. T., Kimpe, L. E., Blais, J. M., & White, P. A. (2010).
915 Polychlorinated biphenyls (PCBs) contamination and aryl hydrocarbon receptor (AhR)
916 agonist activity of Omega-3 polyunsaturated fatty acid supplements: Implications for
917 daily intake of dioxins and PCBs. *Food and Chemical Toxicology: An International*
918 *Journal Published for the British Industrial Biological Research Association*, 48(11),
919 3093–3097. <https://doi.org/10.1016/j.fct.2010.07.051>
- 920 Brändli, R. C., Bucheli, T. D., Kupper, T., Mayer, J., Stadelmann, F. X., & Tarradellas, J. (2007).
921 Fate of PCBs, PAHs and their source characteristic ratios during composting and
922 digestion of source-separated organic waste in full-scale plants. *Environmental Pollution*,
923 148(2), 520–528. <https://doi.org/10.1016/j.envpol.2006.11.021>

- 924 Bruno, C. D., Harmatz, J. S., Duan, S. X., Zhang, Q., Chow, C. R., & Greenblatt, D. J. (2021).
925 Effect of lipophilicity on drug distribution and elimination: Influence of obesity. *British*
926 *Journal of Clinical Pharmacology*, 87(8), 3197–3205. <https://doi.org/10.1111/bcp.14735>
- 927 Canales, R. A., Wilson, A. M., Pearce-Walker, J. I., Verhougstraete, M. P., & Reynolds, K. A.
928 (2018). Methods for Handling Left-Censored Data in Quantitative Microbial Risk
929 Assessment. *Applied and Environmental Microbiology*, 84(20), e01203-18.
930 <https://doi.org/10.1128/AEM.01203-18>
- 931 Cavalcante, R. G., & Sartor, M. A. (2017). annotatr: Genomic regions in context. *Bioinformatics*,
932 33(15), 2381–2383. <https://doi.org/10.1093/bioinformatics/btx183>
- 933 CDC. (2022, March 2). *Data and Statistics on Autism Spectrum Disorder* | CDC. Centers for
934 Disease Control and Prevention. <https://www.cdc.gov/ncbddd/autism/data.html>
- 935 Chaste, P., & Leboyer, M. (2012). Autism risk factors: Genes, environment, and gene-
936 environment interactions. *Dialogues in Clinical Neuroscience*, 14(3), 281–292.
- 937 Chaste, P., Sanders, S. J., Mohan, K. N., Klei, L., Song, Y., Murtha, M. T., Hus, V., Lowe, J. K.,
938 Willsey, A. J., Moreno-De-Luca, D., Yu, T. W., Fombonne, E., Geschwind, D., Grice, D.
939 E., Ledbetter, D. H., Lord, C., Mane, S. M., Martin, D. M., Morrow, E. M., ... Kim, S.-J.
940 (2014). Modest impact on risk for autism spectrum disorder of rare copy number variants
941 at 15q11.2, specifically breakpoints 1 to 2. *Autism Research : Official Journal of the*
942 *International Society for Autism Research*, 7(3), 355–362.
943 <https://doi.org/10.1002/aur.1378>
- 944 Chawarska, K., Shic, F., Macari, S., Campbell, D. J., Brian, J., Landa, R., Hutman, T., Nelson, C.
945 A., Ozonoff, S., Tager-Flusberg, H., Young, G. S., Zwaigenbaum, L., Cohen, I. L.,
946 Charman, T., Messinger, D. S., Klin, A., Johnson, S., & Bryson, S. (2014). 18-month

- 947 predictors of later outcomes in younger siblings of children with autism spectrum
948 disorder: A baby siblings research consortium study. *Journal of the American Academy*
949 *of Child and Adolescent Psychiatry*, 53(12), 1317-1327.e1.
950 <https://doi.org/10.1016/j.jaac.2014.09.015>
- 951 Chen, J. J., Roberson, P. K., & Schell, M. J. (2010). The false discovery rate: A key concept in
952 large-scale genetic studies. *Cancer Control: Journal of the Moffitt Cancer Center*, 17(1),
953 58–62. <https://doi.org/10.1177/107327481001700108>
- 954 Cheroni, C., Caporale, N., & Testa, G. (2020). Autism spectrum disorder at the crossroad
955 between genes and environment: Contributions, convergences, and interactions in ASD
956 developmental pathophysiology. *Molecular Autism*, 11, 69.
957 <https://doi.org/10.1186/s13229-020-00370-1>
- 958 Chu, S., Covaci, A., & Schepens, P. (2003). Levels and chiral signatures of persistent
959 organochlorine pollutants in human tissues from Belgium. *Environmental Research*,
960 93(2), 167–176. [https://doi.org/10.1016/s0013-9351\(03\)00016-1](https://doi.org/10.1016/s0013-9351(03)00016-1)
- 961 Coletta, J. M., Bell, S. J., & Roman, A. S. (2010). Omega-3 Fatty Acids and Pregnancy. *Reviews*
962 *in Obstetrics and Gynecology*, 3(4), 163–171.
- 963 Corrigan, F. M., Murray, L., Wyatt, C. L., & Shore, R. F. (1998). Diorthosubstituted
964 polychlorinated biphenyls in caudate nucleus in Parkinson's disease. *Experimental*
965 *Neurology*, 150(2), 339–342. <https://doi.org/10.1006/exnr.1998.6776>
- 966 Cukier, H. N., Dueker, N. D., Slifer, S. H., Lee, J. M., Whitehead, P. L., Lalanne, E., Leyva, N.,
967 Konidari, I., Gentry, R. C., Hulme, W. F., Booven, D. V., Mayo, V., Hofmann, N. K.,
968 Schmidt, M. A., Martin, E. R., Haines, J. L., Cuccaro, M. L., Gilbert, J. R., & Pericak-
969 Vance, M. A. (2014). Exome sequencing of extended families with autism reveals genes

- 970 shared across neurodevelopmental and neuropsychiatric disorders. *Molecular Autism*, 5,
971 1. <https://doi.org/10.1186/2040-2392-5-1>
- 972 Curran, E. A., O’Keeffe, G. W., Looney, A. M., Moloney, G., Hegarty, S. V., Murray, D. M.,
973 Khashan, A. S., & Kenny, L. C. (2018). Exposure to Hypertensive Disorders of
974 Pregnancy Increases the Risk of Autism Spectrum Disorder in Affected Offspring.
975 *Molecular Neurobiology*, 55(7), 5557–5564. <https://doi.org/10.1007/s12035-017-0794-x>
- 976 Dellinger, M. J., Olson, J. T., Holub, B. J., & Ripley, M. P. (2018). MERCURY,
977 POLYCHORLINATED BIPHENYLS, SELENIUM, AND FATTY ACIDS IN TRIBAL
978 FISH HARVESTS OF THE UPPER GREAT LAKES. *Risk Analysis : An Official
979 Publication of the Society for Risk Analysis*, 38(10), 2029–2040.
980 <https://doi.org/10.1111/risa.13112>
- 981 DeVoto, E., Fiore, B. J., Millikan, R., Anderson, H. A., Sheldon, L., Sonzogni, W. C., &
982 Longnecker, M. P. (1997). Correlations among human blood levels of specific PCB
983 congeners and implications for epidemiologic studies. *American Journal of Industrial
984 Medicine*, 32(6), 606–613. [https://doi.org/10.1002/\(sici\)1097-
985 0274\(199712\)32:6<606::aid-ajim6>3.0.co;2-n](https://doi.org/10.1002/(sici)1097-0274(199712)32:6<606::aid-ajim6>3.0.co;2-n)
- 986 Dewailly, E., Mulvad, G., Pedersen, H. S., Ayotte, P., Demers, A., Weber, J. P., & Hansen, J. C.
987 (1999). Concentration of organochlorines in human brain, liver, and adipose tissue
988 autopsy samples from Greenland. *Environmental Health Perspectives*, 107(10), 823–828.
989 <https://doi.org/10.1289/ehp.99107823>
- 990 Domingo, J. L., & Bocio, A. (2007). Levels of PCDD/PCDFs and PCBs in edible marine species
991 and human intake: A literature review. *Environment International*, 33(3), 397–405.
992 <https://doi.org/10.1016/j.envint.2006.12.004>

- 993 Dong, H.-Y., Feng, J.-Y., Li, H.-H., Yue, X.-J., & Jia, F.-Y. (2022). Non-parental caregivers,
994 low maternal education, gastrointestinal problems and high blood lead level: Predictors
995 related to the severity of autism spectrum disorder in Northeast China. *BMC Pediatrics*,
996 22(1), 11. <https://doi.org/10.1186/s12887-021-03086-0>
- 997 Dunaway, K. W., Islam, M. S., Coulson, R. L., Lopez, S. J., Vogel Ciernia, A., Chu, R. G.,
998 Yasui, D. H., Pessah, I. N., Lott, P., Mordaunt, C., Meguro-Horike, M., Horike, S.-I.,
999 Korf, I., & LaSalle, J. M. (2016). Cumulative Impact of Polychlorinated Biphenyl and
1000 Large Chromosomal Duplications on DNA Methylation, Chromatin, and Expression of
1001 Autism Candidate Genes. *Cell Reports*, 17(11), 3035–3048.
1002 <https://doi.org/10.1016/j.celrep.2016.11.058>
- 1003 Gabryszewska, M., & Gworek, B. (2021). Municipal waste landfill as a source of
1004 polychlorinated biphenyls releases to the environment. *PeerJ*, 9, e10546.
1005 <https://doi.org/10.7717/peerj.10546>
- 1006 Ge, F., Wang, X., Zhang, K., Jin, X., Guo, R., Liu, Y., Qiao, X., Zhao, X., Zheng, B., & Zheng,
1007 X. (2019). The correlation study between PCBs and $\delta^{15}\text{N}$ values or FAs in fish collected
1008 from Dongting Lake. *Chemosphere*, 234, 763–768.
1009 <https://doi.org/10.1016/j.chemosphere.2019.06.094>
- 1010 Granillo, L., Sethi, S., Keil, K. P., Lin, Y., Ozonoff, S., Iosif, A.-M., Puschner, B., & Schmidt, R.
1011 J. (2019). Polychlorinated biphenyls influence on autism spectrum disorder risk in the
1012 MARBLES cohort. *Environmental Research*, 171, 177–184.
1013 <https://doi.org/10.1016/j.envres.2018.12.061>
- 1014 Grimm, F., Hu, D., Kania-Korwel, I., Lehmler, H., Ludewig, G., Hornbuckle, K., Duffel, M.,
1015 Bergman, A., & Robertson, L. (2015). Metabolism and metabolites of polychlorinated

- 1016 biphenyls (PCBs). *Critical Reviews in Toxicology*, 45(3), 245–272.
- 1017 <https://doi.org/10.3109/10408444.2014.999365>
- 1018 Gupta, P., Thompson, B. L., Wahlang, B., Jordan, C. T., Hilt, J. Z., Hennig, B., & Dziubla, T.
- 1019 (2018). The Environmental Pollutant, Polychlorinated Biphenyls, and Cardiovascular
- 1020 Disease: A Potential Target for Antioxidant Nanotherapeutics. *Drug Delivery and*
- 1021 *Translational Research*, 8(3), 740–759. <https://doi.org/10.1007/s13346-017-0429-9>
- 1022 Guvenius, D. M., Aronsson, A., Ekman-Ordeberg, G., Bergman, A., & Norén, K. (2003). Human
- 1023 prenatal and postnatal exposure to polybrominated diphenyl ethers, polychlorinated
- 1024 biphenyls, polychlorobiphenyls, and pentachlorophenol. *Environmental Health*
- 1025 *Perspectives*, 111(9), 1235–1241. <https://doi.org/10.1289/ehp.5946>
- 1026 Hawker, D. W., & Connell, D. W. (1988). Octanol-water partition coefficients of polychlorinated
- 1027 biphenyl congeners. *Environmental Science & Technology*, 22(4), 382–387.
- 1028 <https://doi.org/10.1021/es00169a004>
- 1029 Helsel, D. R. (2005). *Nondetects and data analysis: Statistics for censored environmental data*.
- 1030 John Wiley & Sons.
- 1031 Hennig, B., Reiterer, G., Toborek, M., Matveev, S. V., Daugherty, A., Smart, E., & Robertson,
- 1032 L. W. (2005). Dietary fat interacts with PCBs to induce changes in lipid metabolism in
- 1033 mice deficient in low-density lipoprotein receptor. *Environmental Health Perspectives*,
- 1034 113(1), 83–87. <https://doi.org/10.1289/ehp.7280>
- 1035 Herrick, R. F., Stewart, J. H., & Allen, J. G. (2016). Review of PCBs in US Schools: A Brief
- 1036 History, Estimate of the Number of Impacted Schools, and an Approach for Evaluating
- 1037 Indoor Air Samples. *Environmental Science and Pollution Research International*, 23(3),
- 1038 1975–1985. <https://doi.org/10.1007/s11356-015-4574-8>

- 1039 Hertz-Picciotto, I., Schmidt, R. J., Walker, C. K., Bennett, D. H., Oliver, M., Shedd-Wise, K. M.,
1040 LaSalle, J. M., Giulivi, C., Puschner, B., Thomas, J., Roa, D. L., Pessah, I. N., Van de
1041 Water, J., Tancredi, D. J., & Ozonoff, S. (2018). A Prospective Study of Environmental
1042 Exposures and Early Biomarkers in Autism Spectrum Disorder: Design, Protocols, and
1043 Preliminary Data from the MARBLES Study. *Environmental Health Perspectives*,
1044 *126*(11), 117004. <https://doi.org/10.1289/EHP535>
- 1045 Hogart, A., Wu, D., LaSalle, J. M., & Schanen, N. C. (2010). The Comorbidity of Autism with
1046 the Genomic Disorders of Chromosome 15q11.2-q13. *Neurobiology of Disease*, *38*(2),
1047 181–191. <https://doi.org/10.1016/j.nbd.2008.08.011>
- 1048 Hong, K.-W., Go, M. J., Jin, H.-S., Lim, J.-E., Lee, J.-Y., Han, B. G., Hwang, S.-Y., Lee, S.-H.,
1049 Park, H. K., Cho, Y. S., & Oh, B. (2010). Genetic variations in ATP2B1, CSK, ARSG
1050 and CSMD1 loci are related to blood pressure and/or hypertension in two Korean cohorts.
1051 *Journal of Human Hypertension*, *24*(6), 367–372. <https://doi.org/10.1038/jhh.2009.86>
- 1052 Hori, K., Shimaoka, K., & Hoshino, M. (2021). AUTS2 Gene: Keys to Understanding the
1053 Pathogenesis of Neurodevelopmental Disorders. *Cells*, *11*(1), 11.
1054 <https://doi.org/10.3390/cells11010011>
- 1055 Hu, D., & Hornbuckle, K. C. (2010). Inadvertent Polychlorinated Biphenyls in Commercial Paint
1056 Pigments. *Environmental Science & Technology*, *44*(8), 2822–2827.
1057 <https://doi.org/10.1021/es902413k>
- 1058 Huang, Y., Iosif, A.-M., Hansen, R. L., & Schmidt, R. J. (2020). Maternal polyunsaturated fatty
1059 acids and risk for autism spectrum disorder in the MARBLES high-risk study. *Autism:*
1060 *The International Journal of Research and Practice*, *24*(5), 1191–1200.
1061 <https://doi.org/10.1177/1362361319877792>

- 1062 Jeong, Y., Lee, S., Kim, S., Park, J., Kim, H.-J., Choi, G., Choi, S., Kim, S., Kim, S. Y., Kim, S.,
1063 Choi, K., & Moon, H.-B. (2018). Placental transfer of persistent organic pollutants and
1064 feasibility using the placenta as a non-invasive biomonitoring matrix. *The Science of the*
1065 *Total Environment*, 612, 1498–1505. <https://doi.org/10.1016/j.scitotenv.2017.07.054>
- 1066 Jones, K. C., Sanders, G., Wild, S. R., Burnett, V., & Johnston, A. E. (1992). Evidence for a
1067 decline of PCBs and PAHs in rural vegetation and air in the United Kingdom. *Nature*,
1068 356(6365), Article 6365. <https://doi.org/10.1038/356137a0>
- 1069 Kashyap, M. L., Sivasambo, R., Sothy, S. P., Cheah, J. S., & Gartside, P. S. (1976).
1070 Carbohydrate and lipid metabolism during human labor: Free fatty acids, glucose, insulin,
1071 and lactic acid metabolism during normal and oxytocin-induced labor for postmaturity.
1072 *Metabolism: Clinical and Experimental*, 25(8), 865–875. [https://doi.org/10.1016/0026-](https://doi.org/10.1016/0026-0495(76)90119-0)
1073 [0495\(76\)90119-0](https://doi.org/10.1016/0026-0495(76)90119-0)
- 1074 Kato, S., McKinney, J. D., & Matthews, H. B. (1980). Metabolism of symmetrical
1075 hexachlorobiphenyl isomers in the rat. *Toxicology and Applied Pharmacology*, 53(3),
1076 389–398. [https://doi.org/10.1016/0041-008x\(80\)90352-x](https://doi.org/10.1016/0041-008x(80)90352-x)
- 1077 Koh, W. X., Hornbuckle, K. C., Wang, K., & Thorne, P. S. (2016). Serum Polychlorinated
1078 Biphenyls and Their Hydroxylated Metabolites are Associated with Demographic and
1079 Behavioral Factors in Children and Mothers. *Environment International*, 94, 538–545.
1080 <https://doi.org/10.1016/j.envint.2016.06.014>
- 1081 Korthauer, K., Kimes, P. K., Duvall, C., Reyes, A., Subramanian, A., Teng, M., Shukla, C.,
1082 Alm, E. J., & Hicks, S. C. (2019). A practical guide to methods controlling false
1083 discoveries in computational biology. *Genome Biology*, 20(1), 118.
1084 <https://doi.org/10.1186/s13059-019-1716-1>

- 1085 Ladd-Acosta, C., Andrews, S. V., Bakulski, K. M., Feinberg, J. I., Tryggvadottir, R., Yao, R.,
1086 Croen, L. A., Hertz-Picciotto, I., Newschaffer, C. J., Salafia, C. M., Feinberg, A. P.,
1087 Hansen, K. D., & Daniele Fallin, M. (2021). *Placenta DNA methylation at ZNF300 is*
1088 *associated with fetal sex and placental morphology* [Preprint]. Genomics.
1089 <https://doi.org/10.1101/2021.03.05.433992>
- 1090 Lan, T., Liu, B., Bao, W., & Thorne, P. S. (2021). BMI modifies the association between dietary
1091 intake and serum levels of PCBs. *Environment International*, 156, 106626.
1092 <https://doi.org/10.1016/j.envint.2021.106626>
- 1093 Langer, P., Kocan, A., Tajtáková, M., Petřík, J., Chovancová, J., Drobná, B., Jursa, S., Pavúk,
1094 M., Koska, J., Trnovec, T., Seböková, E., & Klimes, I. (2003). Possible effects of
1095 polychlorinated biphenyls and organochlorinated pesticides on the thyroid after long-term
1096 exposure to heavy environmental pollution. *Journal of Occupational and Environmental*
1097 *Medicine*, 45(5), 526–532. <https://doi.org/10.1097/01.jom.0000058346.05741.b0>
- 1098 Langfelder, P., & Horvath, S. (2008). WGCNA: An R package for weighted correlation network
1099 analysis. *BMC Bioinformatics*, 9(1), 559. <https://doi.org/10.1186/1471-2105-9-559>
- 1100 Langfelder, P., Luo, R., Oldham, M. C., & Horvath, S. (2011). Is My Network Module Preserved
1101 and Reproducible? *PLoS Computational Biology*, 7(1), e1001057.
1102 <https://doi.org/10.1371/journal.pcbi.1001057>
- 1103 Laufer, B. I., Neier, K., Valenzuela, A. E., Yasui, D. H., Schmidt, R. J., Lein, P. J., & LaSalle, J.
1104 M. (2022). Placenta and fetal brain share a neurodevelopmental disorder DNA
1105 methylation profile in a mouse model of prenatal PCB exposure. *Cell Reports*, 38(9),
1106 110442. <https://doi.org/10.1016/j.celrep.2022.110442>

- 1107 Lee, L. (2020). *NADA: Nondetects and Data Analysis for Environmental Data*. R package
1108 *version 1.6-1.1*. <https://CRAN.R-project.org/package=NADA>
- 1109 Lein, P. J. (2015). Chapter 1—Overview of the Role of Environmental Factors in
1110 Neurodevelopmental Disorders. In M. Aschner & L. G. Costa (Eds.), *Environmental*
1111 *Factors in Neurodevelopmental and Neurodegenerative Disorders* (pp. 3–20). Academic
1112 Press. <https://doi.org/10.1016/B978-0-12-800228-5.00001-7>
- 1113 Leng, L., Li, J., Luo, X., Kim, J., Li, Y., Guo, X., Chen, X., Yang, Q., Li, G., & Tang, N. (2016).
1114 Polychlorinated biphenyls and breast cancer: A congener-specific meta-analysis.
1115 *Environment International*, 88, 133–141. <https://doi.org/10.1016/j.envint.2015.12.022>
- 1116 Leonard, H., Petterson, B., De Klerk, N., Zubrick, S. R., Glasson, E., Sanders, R., & Bower, C.
1117 (2005). Association of sociodemographic characteristics of children with intellectual
1118 disability in Western Australia. *Social Science & Medicine*, 60(7), 1499–1513.
1119 <https://doi.org/10.1016/j.socscimed.2004.08.014>
- 1120 Levine, S. Z., Kodesh, A., Viktorin, A., Smith, L., Uher, R., Reichenberg, A., & Sandin, S.
1121 (2018). Association of Maternal Use of Folic Acid and Multivitamin Supplements in the
1122 Periods Before and During Pregnancy With the Risk of Autism Spectrum Disorder in
1123 Offspring. *JAMA Psychiatry*, 75(2), 176–184.
1124 <https://doi.org/10.1001/jamapsychiatry.2017.4050>
- 1125 Li, X., Hefti, M. M., Marek, R. F., Hornbuckle, K. C., Wang, K., & Lehmler, H.-J. (2022).
1126 Assessment of Polychlorinated Biphenyls and Their Hydroxylated Metabolites in
1127 Postmortem Human Brain Samples: Age and Brain Region Differences. *Environmental*
1128 *Science & Technology*, acs.est.2c00581. <https://doi.org/10.1021/acs.est.2c00581>

- 1129 Li, X., Westra, B., Behan-Bush, R. M., Liszewski, J. N., Schrodtt, M. V., Vats, B., KlingelhutZ,
1130 A. J., Ankrum, J. A., & Lehmler, H.-J. (2022). *Dataset for synthesis and characterization*
1131 *of Cabinet Mixture—University of Iowa*.
1132 <https://iro.uiowa.edu/esploro/outputs/dataset/9984274149002771>
- 1133 Liu, W., Liu, F., Xu, X., & Bai, Y. (2017). Replicated association between the European GWAS
1134 locus rs10503253 at CSMD1 and schizophrenia in Asian population. *Neuroscience*
1135 *Letters*, 647, 122–128. <https://doi.org/10.1016/j.neulet.2017.03.039>
- 1136 Lord, C., Risi, S., Lambrecht, L., Cook, E. H., Leventhal, B. L., DiLavore, P. C., Pickles, A., &
1137 Rutter, M. (2000). The autism diagnostic observation schedule-generic: A standard
1138 measure of social and communication deficits associated with the spectrum of autism.
1139 *Journal of Autism and Developmental Disorders*, 30(3), 205–223.
- 1140 Lord, C., Rutter, M., & Le Couteur, A. (1994). Autism Diagnostic Interview-Revised: A revised
1141 version of a diagnostic interview for caregivers of individuals with possible pervasive
1142 developmental disorders. *Journal of Autism and Developmental Disorders*, 24(5), 659–
1143 685. <https://doi.org/10.1007/BF02172145>
- 1144 Louis, C., Covaci, A., Crocker, D. E., & Debier, C. (2016). Lipophilicity of PCBs and fatty acids
1145 determines their mobilisation from blubber of weaned northern elephant seal pups.
1146 *Science of The Total Environment*, 541, 599–602.
1147 <https://doi.org/10.1016/j.scitotenv.2015.09.094>
- 1148 Lyall, K., Croen, L., Daniels, J., Fallin, M. D., Ladd-Acosta, C., Lee, B. K., Park, B. Y., Snyder,
1149 N. W., Schendel, D., Volk, H., Windham, G. C., & Newschaffer, C. (2017). The
1150 Changing Epidemiology of Autism Spectrum Disorders. *Annual Review of Public Health*,
1151 38, 81–102. <https://doi.org/10.1146/annurev-publhealth-031816-044318>

- 1152 Lyall, K., Croen, Lisa. A., Sjödin, A., Yoshida, C. K., Zerbo, O., Kharrazi, M., & Windham, G.
1153 C. (2017). Polychlorinated Biphenyl and Organochlorine Pesticide Concentrations in
1154 Maternal Mid-Pregnancy Serum Samples: Association with Autism Spectrum Disorder
1155 and Intellectual Disability. *Environmental Health Perspectives*, 125(3), 474–480.
1156 <https://doi.org/10.1289/EHP277>
- 1157 Maenner, M. J. (2021). Prevalence and Characteristics of Autism Spectrum Disorder Among
1158 Children Aged 8 Years—Autism and Developmental Disabilities Monitoring Network,
1159 11 Sites, United States, 2018. *MMWR. Surveillance Summaries*, 70.
1160 <https://doi.org/10.15585/mmwr.ss7011a1>
- 1161 Maggio, A. G., Shu, H. T., Laufer, B. I., Hwang, H., Bi, C., Lai, Y., LaSalle, J. M., & Hu, V. W.
1162 (2021). *Impact of exposures to persistent endocrine disrupting compounds on the sperm*
1163 *methylome in regions associated with neurodevelopmental disorders* (p.
1164 2021.02.21.21252162). medRxiv. <https://doi.org/10.1101/2021.02.21.21252162>
- 1165 Marek, R. F., Thorne, P. S., DeWall, J., & Hornbuckle, K. C. (2014). Variability in PCB and
1166 OH-PCB Serum Levels in Children and Their Mothers in Urban and Rural U.S.
1167 Communities. *Environmental Science & Technology*, 48(22), 13459–13467.
1168 <https://doi.org/10.1021/es502490w>
- 1169 Mathews, H. B., & Anderson, M. W. (1975). Effect of chlorination on the distribution and
1170 excretion of polychlorinated biphenyls. *Drug Metabolism and Disposition: The*
1171 *Biological Fate of Chemicals*, 3(5), 371–380.
- 1172 McLean, C. Y., Bristor, D., Hiller, M., Clarke, S. L., Schaar, B. T., Lowe, C. B., Wenger, A. M.,
1173 & Bejerano, G. (2010). GREAT improves functional interpretation of cis-regulatory
1174 regions. *Nature Biotechnology*, 28(5), 495–501. <https://doi.org/10.1038/nbt.1630>

- 1175 Milanowski, B., Lulek, J., Lehmler, H.-J., & Kania-Korwel, I. (2010). Assessment of the
1176 Disposition of Chiral Polychlorinated Biphenyls in Female mdr 1a/b Knockout versus
1177 Wild-type Mice Using Multivariate Analyses. *Environment International*, 36(8), 884–
1178 892. <https://doi.org/10.1016/j.envint.2009.10.007>
- 1179 Mills, R. A., Millis, C. D., Dannan, G. A., Guengerich, F. P., & Aust, S. D. (1985). Studies on
1180 the structure-activity relationships for the metabolism of polybrominated biphenyls by rat
1181 liver microsomes. *Toxicology and Applied Pharmacology*, 78(1), 96–104.
1182 [https://doi.org/10.1016/0041-008x\(85\)90309-6](https://doi.org/10.1016/0041-008x(85)90309-6)
- 1183 Mitchell, M. M., Woods, R., Chi, L.-H., Schmidt, R. J., Pessah, I. N., Kostyniak, P. J., &
1184 LaSalle, J. M. (2012). Levels of select PCB and PBDE congeners in human post-mortem
1185 brain reveal possible environmental involvement in 15q11-q13 duplication autism
1186 spectrum disorder. *Environmental and Molecular Mutagenesis*, 53(8), 589–598.
1187 <https://doi.org/10.1002/em.21722>
- 1188 Moore, L. D., Le, T., & Fan, G. (2013). DNA Methylation and Its Basic Function.
1189 *Neuropsychopharmacology*, 38(1), 23–38. <https://doi.org/10.1038/npp.2012.112>
- 1190 Mordaunt, C. E., Jianu, J. M., Laufer, B. I., Zhu, Y., Hwang, H., Dunaway, K. W., Bakulski, K.
1191 M., Feinberg, J. I., Volk, H. E., Lyall, K., Croen, L. A., Newschaffer, C. J., Ozonoff, S.,
1192 Hertz-Picciotto, I., Fallin, M. D., Schmidt, R. J., & LaSalle, J. M. (2020). Cord blood
1193 DNA methylome in newborns later diagnosed with autism spectrum disorder reflects
1194 early dysregulation of neurodevelopmental and X-linked genes. *Genome Medicine*, 12.
1195 <https://doi.org/10.1186/s13073-020-00785-8>

- 1196 Mordaunt, C. E., Mouat, J. S., Schmidt, R. J., & LaSalle, J. M. (2022). Comethyl: A network-
1197 based methylome approach to investigate the multivariate nature of health and disease.
1198 *Briefings in Bioinformatics*, bbab554. <https://doi.org/10.1093/bib/bbab554>
- 1199 Mori, C., Kakuta, K., Matsuno, Y., Todaka, E., Watanabe, M., Hanazato, M., Kawashiro, Y., &
1200 Fukata, H. (2014). Polychlorinated biphenyl levels in the blood of Japanese individuals
1201 ranging from infants to over 80 years of age. *Environmental Science and Pollution*
1202 *Research International*, 21(10), 6434–6439. <https://doi.org/10.1007/s11356-013-1965-6>
- 1203 Mullen, E. M. (1995). *Mullen scales of early learning*. AGS Circle Pines, MN.
- 1204 Mullerova, D., Kopecky, J., Matejkova, D., Muller, L., Rosmus, J., Racek, J., Sefrna, F.,
1205 Opatrna, S., Kuda, O., & Matejovic, M. (2008). Negative association between plasma
1206 levels of adiponectin and polychlorinated biphenyl 153 in obese women under non-
1207 energy-restrictive regime. *International Journal of Obesity (2005)*, 32(12), 1875–1878.
1208 <https://doi.org/10.1038/ijo.2008.169>
- 1209 Naqvi, A., Qadir, A., Mahmood, A., Baqar, M., Aslam, I., Sajid, F., Mumtaz, M., Li, J., &
1210 Zhang, G. (2018). Quantification of polychlorinated biphenyl contamination using human
1211 placenta as biomarker from Punjab Province, Pakistan. *Environmental Science and*
1212 *Pollution Research*, 25(15), 14551–14562. <https://doi.org/10.1007/s11356-018-1535-z>
- 1213 Newschaffer, C. J., Croen, L. A., Fallin, M. D., Hertz-Picciotto, I., Nguyen, D. V., Lee, N. L.,
1214 Berry, C. A., Farzadegan, H., Hess, H. N., Landa, R. J., Levy, S. E., Massolo, M. L.,
1215 Meyerer, S. C., Mohammed, S. M., Oliver, M. C., Ozonoff, S., Pandey, J., Schroeder, A.,
1216 & Shedd-Wise, K. M. (2012). Infant siblings and the investigation of autism risk factors.
1217 *Journal of Neurodevelopmental Disorders*, 4(1), 7. [https://doi.org/10.1186/1866-1955-4-](https://doi.org/10.1186/1866-1955-4-7)
1218 7

- 1219 Ouidir, M., Mendola, P., Buck Louis, G. M., Kannan, K., Zhang, C., & Tekola-Ayele, F. (2020).
1220 Concentrations of persistent organic pollutants in maternal plasma and epigenome-wide
1221 placental DNA methylation. *Clinical Epigenetics*, *12*, 103.
1222 <https://doi.org/10.1186/s13148-020-00894-6>
- 1223 Ozonoff, S., Young, G. S., Belding, A., Hill, M., Hill, A., Hutman, T., Johnson, S., Miller, M.,
1224 Rogers, S. J., Schwichtenberg, A. J., Steinfeld, M., & Iosif, A.-M. (2014). The Broader
1225 Autism Phenotype in Infancy: When Does It Emerge? *Journal of the American Academy*
1226 *of Child & Adolescent Psychiatry*, *53*(4), 398-407.e2.
1227 <https://doi.org/10.1016/j.jaac.2013.12.020>
- 1228 Panesar, H. K., Kennedy, C. L., Keil Stietz, K. P., & Lein, P. J. (2020). Polychlorinated
1229 Biphenyls (PCBs): Risk Factors for Autism Spectrum Disorder? *Toxics*, *8*(3).
1230 <https://doi.org/10.3390/toxics8030070>
- 1231 Park, J.-S., Bergman, Å., Linderholm, L., Athanasiadou, M., Kocan, A., Petrik, J., Drobna, B.,
1232 Trnovec, T., Charles, M. J., & Hertz-Picciotto, I. (2008). Placental Transfer of
1233 Polychlorinated Biphenyls, Their Hydroxylated Metabolites and Pentachlorophenol in
1234 Pregnant Women from Eastern Slovakia. *Chemosphere*, *70*(9), 1676–1684.
1235 <https://doi.org/10.1016/j.chemosphere.2007.07.049>
- 1236 Parsana, P., Ruberman, C., Jaffe, A. E., Schatz, M. C., Battle, A., & Leek, J. T. (2019).
1237 Addressing confounding artifacts in reconstruction of gene co-expression networks.
1238 *Genome Biology*, *20*(1), 94. <https://doi.org/10.1186/s13059-019-1700-9>
- 1239 Pauwels, A., Covaci, A., Delbeke, L., Punjabi, U., & Schepens, P. J. C. (1999). The relation
1240 between levels of selected PCB congeners in human serum and follicular fluid.
1241 *Chemosphere*, *39*(14), 2433–2441. [https://doi.org/10.1016/S0045-6535\(99\)00170-8](https://doi.org/10.1016/S0045-6535(99)00170-8)

- 1242 Pessah, I. N., Lein, P. J., Seegal, R. F., & Sagiv, S. K. (2019). Neurotoxicity of Polychlorinated
1243 Biphenyls and Related Organohalogens. *Acta Neuropathologica*, *138*(3), 363–387.
1244 <https://doi.org/10.1007/s00401-019-01978-1>
- 1245 Raffetti, E., Donato, F., De Palma, G., Leonardi, L., Sileo, C., & Magoni, M. (2020).
1246 Polychlorinated biphenyls (PCBs) and risk of hypertension: A population-based cohort
1247 study in a North Italian highly polluted area. *The Science of the Total Environment*, *714*,
1248 136660. <https://doi.org/10.1016/j.scitotenv.2020.136660>
- 1249 Rattan, S., Zhou, C., Chiang, C., Mahalingam, S., Brehm, E., & Flaws, J. A. (2017). Exposure to
1250 endocrine disruptors during adulthood: Consequences for female fertility. *The Journal of*
1251 *Endocrinology*, *233*(3), R109–R129. <https://doi.org/10.1530/JOE-17-0023>
- 1252 Revelle, W. (2022). *psych: Procedures for Psychological, Psychometric, and Personality*
1253 *Research* (2.2.5). Northwestern University, Evanston, Illinois. [https://CRAN.R-](https://CRAN.R-project.org/package=psych)
1254 [project.org/package=psych](https://CRAN.R-project.org/package=psych)
- 1255 Rhind, S. M. (2002). Endocrine disrupting compounds and farm animals: Their properties,
1256 actions and routes of exposure. *Domestic Animal Endocrinology*, *23*(1–2), 179–187.
1257 [https://doi.org/10.1016/s0739-7240\(02\)00155-8](https://doi.org/10.1016/s0739-7240(02)00155-8)
- 1258 Ripke, S., Neale, B. M., Corvin, A., Walters, J. T., Farh, K.-H., Holmans, P. A., Lee, P., Bulik-
1259 Sullivan, B., Collier, D. A., Huang, H., Pers, T. H., Agartz, I., Agerbo, E., Albus, M.,
1260 Alexander, M., Amin, F., Bacanu, S. A., Begemann, M., Belliveau, R. A., ...
1261 O'Donovan, M. C. (2014). Biological Insights From 108 Schizophrenia-Associated
1262 Genetic Loci. *Nature*, *511*(7510), 421–427. <https://doi.org/10.1038/nature13595>

- 1263 Saktrakulkla, P., Lan, T., Hua, J., Marek, R. F., Thorne, P. S., & Hornbuckle, K. C. (2020).
1264 Polychlorinated Biphenyls in Food. *Environmental Science & Technology*, 54(18),
1265 11443–11452. <https://doi.org/10.1021/acs.est.0c03632>
- 1266 Schisterman, E. F., Whitcomb, B. W., Louis, G. M. B., & Louis, T. A. (2005). Lipid adjustment
1267 in the analysis of environmental contaminants and human health risks. *Environmental*
1268 *Health Perspectives*, 113(7), 853–857. <https://doi.org/10.1289/ehp.7640>
- 1269 Schmidt, R. J., Hansen, R. L., Hartiala, J., Allayee, H., Schmidt, L. C., Tancredi, D. J., Tassone,
1270 F., & Hertz-Picciotto, I. (2011). Prenatal vitamins, one-carbon metabolism gene variants,
1271 and risk for autism. *Epidemiology (Cambridge, Mass.)*, 22(4), 476–485.
1272 <https://doi.org/10.1097/EDE.0b013e31821d0e30>
- 1273 Schmidt, R. J., Iosif, A.-M., Guerrero Angel, E., & Ozonoff, S. (2019). Association of Maternal
1274 Prenatal Vitamin Use With Risk for Autism Spectrum Disorder Recurrence in Young
1275 Siblings. *JAMA Psychiatry*, 76(4), 391–398.
1276 <https://doi.org/10.1001/jamapsychiatry.2018.3901>
- 1277 Schoultz, P., Landoll, J., Coman, D., Gutierrez, A., Alessandri, M., Hume, K., Sperry, L., Boyd,
1278 B., & Odom, S. (2010, May 20). *The Role of Maternal Education and Stress On*
1279 *Developmental Rates for Preschool Children with Autism Spectrum Disorders*.
- 1280 Schroeder, D. I., Blair, J. D., Lott, P., Yu, H. O. K., Hong, D., Crary, F., Ashwood, P., Walker,
1281 C., Korf, I., Robinson, W. P., & LaSalle, J. M. (2013). The human placenta methylome.
1282 *Proceedings of the National Academy of Sciences of the United States of America*,
1283 110(15), 6037–6042. <https://doi.org/10.1073/pnas.1215145110>
- 1284 Sethi, S., Morgan, R. K., Feng, W., Lin, Y., Li, X., Luna, C., Koch, M., Bansal, R., Duffel, M.
1285 W., Puschner, B., Zoeller, R. T., Lehmler, H.-J., Pessah, I. N., & Lein, P. J. (2019).

- 1286 Comparative Analyses of the 12 Most Abundant PCB Congeners Detected in Human
1287 Maternal Serum for Activity at the Thyroid Hormone Receptor and Ryanodine Receptor.
1288 *Environmental Science & Technology*, 53(7), 3948–3958.
1289 <https://doi.org/10.1021/acs.est.9b00535>
- 1290 Soechitram, S. D., Athanasiadou, M., Hovander, L., Bergman, Å., & Sauer, P. J. J. (2004). Fetal
1291 Exposure to PCBs and Their Hydroxylated Metabolites in a Dutch Cohort.
1292 *Environmental Health Perspectives*, 112(11), 1208–1212.
1293 <https://doi.org/10.1289/ehp.6424>
- 1294 Stockholm Convention. (2001). *PCBs—Overview*.
1295 <http://chm.pops.int/implementation/pcbs/overview/tabid/273/default.aspx>
- 1296 Tøttenborg, S. S., Choi, A. L., Bjerve, K. S., Weihe, P., & Grandjean, P. (2015). Effect of
1297 seafood mediated PCB exposure on desaturase activity and PUFA profile in Faroese
1298 septuagenarians. *Environmental Research*, 140, 699–703.
1299 <https://doi.org/10.1016/j.envres.2015.06.001>
- 1300 US EPA, O. (2015, September 25). *Table of Polychlorinated Biphenyl (PCB) Congeners*
1301 [Overviews and Factsheets]. [https://www.epa.gov/pcbs/table-polychlorinated-biphenyl-](https://www.epa.gov/pcbs/table-polychlorinated-biphenyl-pcb-congeners)
1302 [pcb-congeners](https://www.epa.gov/pcbs/table-polychlorinated-biphenyl-pcb-congeners)
- 1303 Visone, R., Bacalini, M. G., Franco, S. D., Ferracin, M., Colorito, M. L., Pagotto, S.,
1304 Laprovitera, N., Licastro, D., Marco, M. D., Scavo, E., Bassi, C., Saccenti, E., Nicotra,
1305 A., Grzes, M., Garagnani, P., Laurenzi, V. D., Valeri, N., Mariani-Costantini, R., Negrini,
1306 M., ... Veronese, A. (2019). DNA methylation of shelf, shore and open sea CpG
1307 positions distinguish high microsatellite instability from low or stable microsatellite

- 1308 status colon cancer stem cells. *Epigenomics*, *11*(6), 587–604. <https://doi.org/10.2217/epi->
- 1309 2018-0153
- 1310 Wagner, C. C., Amos, H. M., Thackray, C. P., Zhang, Y., Lundgren, E. W., Forget, G.,
- 1311 Friedman, C. L., Selin, N. E., Lohmann, R., & Sunderland, E. M. (2019). A Global 3-D
- 1312 Ocean Model for PCBs: Benchmark Compounds for Understanding the Impacts of
- 1313 Global Change on Neutral Persistent Organic Pollutants. *Global Biogeochemical Cycles*,
- 1314 *33*(3), 469–481. <https://doi.org/10.1029/2018GB006018>
- 1315 Wan, M. L. Y., Co, V. A., & El-Nezami, H. (2022). Endocrine disrupting chemicals and breast
- 1316 cancer: A systematic review of epidemiological studies. *Critical Reviews in Food Science*
- 1317 *and Nutrition*, *62*(24), 6549–6576. <https://doi.org/10.1080/10408398.2021.1903382>
- 1318 Warembourg, C., Maitre, L., Tamayo-Uria, I., Fossati, S., Roumeliotaki, T., Aasvang, G. M.,
- 1319 Andrusaityte, S., Casas, M., Cequier, E., Chatzi, L., Dedele, A., Gonzalez, J.-R.,
- 1320 Gražulevičienė, R., Haug, L. S., Hernandez-Ferrer, C., Heude, B., Karachaliou, M., Krog,
- 1321 N. H., McEachan, R., ... Basagaña, X. (2019). Early-life environmental exposures and
- 1322 blood pressure in children: An exposome approach. *Journal of the American College of*
- 1323 *Cardiology*, *74*(10), 1317–1328. <https://doi.org/10.1016/j.jacc.2019.06.069>
- 1324 Wolska, L., Mechlińska, A., Rogowska, J., & Namieśnik, J. (2014). Polychlorinated biphenyls
- 1325 (PCBs) in bottom sediments: Identification of sources. *Chemosphere*, *111*, 151–156.
- 1326 <https://doi.org/10.1016/j.chemosphere.2014.03.025>
- 1327 Yu, D., Liu, X., Liu, X., Cao, W., Zhang, X., Tian, H., Wang, J., Xiong, N., Wen, S., Wu, Y.,
- 1328 Sun, X., & Zhou, Y. (2019). Polychlorinated Dibenzo-p-Dioxins, Polychlorinated
- 1329 Dibenzofurans, and Dioxin-Like Polychlorinated Biphenyls in Umbilical Cord Serum
- 1330 from Pregnant Women Living Near a Chemical Plant in Tianjin, China. *International*

- 1331 *Journal of Environmental Research and Public Health*, 16(12), E2178.
- 1332 <https://doi.org/10.3390/ijerph16122178>
- 1333 Zhu, Y., Gomez, J. A., Laufer, B. I., Mordaunt, C. E., Mouat, J. S., Soto, D. C., Dennis, M. Y.,
- 1334 Benke, K. S., Bakulski, K. M., Dou, J., Marathe, R., Jianu, J. M., Williams, L. A.,
- 1335 Gutierrez Fugón, O. J., Walker, C. K., Ozonoff, S., Daniels, J., Grosvenor, L. P., Volk, H.
- 1336 E., ... LaSalle, J. M. (2022). Placental methylome reveals a 22q13.33 brain regulatory
- 1337 gene locus associated with autism. *Genome Biology*, 23(1), 46.
- 1338 <https://doi.org/10.1186/s13059-022-02613-1>
- 1339