

1 **A Threshold Criteria for Seasonal Amplification and Outbreaks of Mosquito-**
2 **Borne Disease (MBD) Cases in Kerala using Climate Parameters**

3 **Rajib Chattopadhyay¹, Divya Surendran¹, Lekshmi, S¹, Pulak Guhathakurta¹, K.S.**
4 **Hosaliker¹, D.S. Pai^{1,2}, Manu M. S⁴ and M. Mohapatra³**

6
7 **Corresponding Author:**

8 **Rajib Chattopadhyay**

9 **India Meteorological Department, Pune**

10 **Email id: rajib.chattopadhyay@imd.gov.in**

11 1: India Meteorological Department, Pune

12 2: Institute for Climate Change Studies (ICCS), Kottayam

13 3: India Meteorological Department, New Delhi

14 4. Directorate of Health Services, Govt of Kerala, Thiruvananthapuram

15

16 **Abstract**

17 Modelling the dynamics of mosquito borne disease (MBD) cases is a challenging task. The
18 current study first proposes a generic dynamical model to qualitatively understand the
19 seasonality as well as outbreaks of malaria and dengue over the state of Kerala based on a
20 climate forced oscillator model, which is then supplemented by a data driven model for
21 quantitative evaluation. The proposed forced oscillator model is parametric and general in
22 nature which can be qualitatively used to understand the seasonality and outbreaks.
23 However, since parametric model-based estimation require estimation of multiple
24 parameters and several closure assumptions, we used the K-means clustering which is a data
25 driven clustering approach to understand the relationship between Malaria and Dengue cases
26 and climate forcing. The results showed a clear relationship of the MBD cases with the first
27 order and second order moments (i.e. mean and standard deviation) of the climate forcing
28 parameters. Based on this, we came up with an objective threshold criterion which relates
29 the climate parameters to the number of cases of malaria and dengue cases over Kerala.

30 Introduction

31 Temporal evolution of Mosquito borne disease (MBD) like malaria and dengue are known to
32 be related to local tropical humid climatic conditions. India report a large number of MBD
33 every year. These MBD cases show rapid seasonal peaks and sometimes cause severe
34 localized outbreaks leading to several fatalities. In the recent years, after the adoption of
35 National Framework for Malaria Elimination (NFME) and the National Strategic Plan for
36 Malaria Elimination (2017–22), there is a significant decrease in malaria cases in India(Narain
37 and Nath 2018; Mohan et al. 2021; NVDCP,,MoHFW 2022). However, local outbreaks of MBD
38 like malaria and dengue is commonly reported over different states of India and provide
39 several unique challenges for detection and elimination (Das et al. 2012; Gupta et al. 2012;
40 Singh et al. 2020; Ranjha and Sharma 2021; Paradkar et al. 2021). As per WHO world malaria
41 report 2021, India contributed 1.7% of malaria cases and 1.2% deaths globally during 2021
42 (WHO 2021) . Similarly, WHO reports that dengue spread over 128 countries across the globe
43 and affected ~5 million people during the year 2020.

44 India shows different state/regional gradation in terms of number of malaria and dengue
45 cases(Das et al. 2012; Gupta et al. 2012; Singh Parihar et al. 2019). Prevention of such localized
46 VBD outbreaks like malaria and dengue and timely intervention to reduce the disease burden
47 is important from community health practice perspective. Epidemiological modelling and
48 simulation studies often relate the vector growth and proliferation dynamics to the ambient
49 weather and climatic factors like temperature, humidity, rainfall etc. (Loevinsohn 1994; Craig
50 et al. 1999; Paaijmans et al. 2009; Laneri et al. 2010; Hii et al. 2012; Lunde et al. 2013; Singh
51 Parihar et al. 2019; Patil and Pandya 2021; Colón-González et al. 2021). The studies showed
52 that temporal evolution of these climate factors provides necessary “forcing” for temporal
53 evolution dynamics. Several studies also assume the environmental forcing as a driving factor

54 for a near future estimation/outlooks of such outbreaks using linear, non-linear, dynamical
55 as well as statistical forecasting models (Laneri et al. 2010; Hii et al. 2012; Zinszer et al. 2015;
56 Anwar et al. 2016; Sewe et al. 2017; Hussien 2019; Patil and Pandya 2021; Nkiruka et al. 2021).

57 Although, epidemiological model of malaria and dengue outbreaks relates several external
58 factors to the growth of the parasite/mosquito, temperature and other climate derived
59 factors are known to contribute to the growth of both the malarial parasite and mosquito.
60 Hence, such studies conclude that climatic factors are extremely important for MBD
61 outbreaks. In the context of climate change scenario and rise in global mean temperature,
62 studies reports frequent proliferation of the VBD outbreaks(Reiter P 2001; Caminade et al.
63 2014; Campbell et al. 2015; Ebi and Nealon 2016; Colón-González et al. 2021).

64 How do the climatic factors are related to seasonal evolution of MBD and its occasional
65 outbreaks i.e. increase in large number of cases over a particular location for a short period
66 of time? Do climate extremes force such outbreaks? The climatic fields such as temperature,
67 humidity, rainfall can be assumed to be the forcing, causing an increase or decrease in the
68 mosquito population or creating favourable condition for the development of the malarial
69 parasites. An Example is shown in **Fig.1a and 1b**, which shows the seasonal cycle (i.e. average
70 month wise distribution) of the number of reported malaria and dengue cases for all districts
71 of Kerala and accumulated rainfall over Kerala (**Fig.1c**) for the recent 12 years 2011-2021. The
72 clear summer season peak of both the time series is evident for all years. Such seasonal peaks
73 of malaria are reported in other states also and the monthly variations of malaria cases
74 resembles the rainfall variations. The outbreaks above the seasonal cycles, when there are
75 excess values in different months are also known to be related to climate factors in different
76 regions (Laneri et al. 2010). The power spectral plot of the malaria, dengue along with rainfall
77 and few other climatic variables for Kerala are shown in **Fig.2**. The plot shows an annual cycle
78 and other statistically significant peaks (>90% confidence) for different climatic variables

79 (spectral peaks above the green line is significant). **Fig.2** shows the similar frequency response
80 of malaria and climate variables (Rainfall, maximum temperature (Tmax), minimum
81 temperature (Tmin), Relative Humidity (RH) at 3UTC and at 12UTC) for the time period
82 considered in this study. **Fig.1** and **2**, thus represents the similar cyclical variability for both
83 the variables. Physically MBD seasonal evolution cycle can be linked to temperature or rainfall
84 cycle as the parasite growth and development are favoured by climatological condition. In
85 addition to such cyclical behaviour, how does the outbreak of disease (i.e. increase in the
86 number of Malaria/Dengue cases for few months relative to the expected or mean value)
87 relate to the climatic factors?

88 Based on a generic model, the current study reports a case study based on the malaria and
89 dengue data from Kerala and estimate the climatological conditions or thresholds related to
90 the malaria and dengue outbreaks during the period 2011-2021. This generic model would
91 first show the seasonal cycle evolution and then it will provide conditions when the outbreaks
92 can be forced by climatological components. The generic model is shown in **Fig.3**. It is a
93 coupled model relating the malaria/dengue cases with the vector number density. We
94 assume that the vector density is coupled to climate factors rather than the reported number
95 of malaria/dengue case. The dynamics of malaria or dengue cases ($M(t)$) can be given as:

96
$$\frac{dM}{dt} = -aM + bP \text{ -----(1)}$$

97 and, the number of vector ($P(t)$) forced by climate component (W) as:

98
$$\frac{dP}{dt} = -cP + rM + sW \text{ -----(2)}$$

99 In the above equations, the sign of the constants (a,b,c...etc.) are given to represent sign of
100 feedback. Negative feedbacks in an equation is represented by negative sign and the positive
101 feedbacks are represented by positive sign for that equation. Thus, the rhs terms $[-aM, +bP]$

102 in equation (1) represents the negative and positive feedbacks to $\frac{dM}{dt}$ leading to decrease or
 103 increase of the lhs term. Similarly, for the temporal change of parasite number ($\frac{dP}{dt}$ term, the
 104 positive and negative feedback terms are $[-cP, rM, sW]$ constructed. $[sW]$ represents the
 105 weather feedback term. Note that the weather feedback term impacts the parasite (i.e.
 106 equation 2), rather than the number of cases (equation 1). There could be other terms, but
 107 the simple coupled relationship is assumed for highlighting the impact of climatic factors. The
 108 medical interventions, genetic resistance against the MBD in the sample population are
 109 assumed in $[-aM]$ or $[-cP]$ terms. A combination of the terms leads to the following equation:

110 or, $\frac{d^2M}{dt^2} = -a \frac{dM}{dt} + b[-cP + rM + sW]$

111 or, $\frac{d^2M}{dt^2} = -a \frac{dM}{dt} - eP - qM + fW$ where, $e = bc, q = -br, f = bs$

112 $\frac{d^2M}{dt^2} + a \frac{dM}{dt} + qM = fW - eP$ ------(3)

113 The above equation represents a damped oscillator with a forcing term $F = fW - eP$ in the
 114 right-hand side. It is to be noted that the climate forcing is a function of multiple climate
 115 parameters, i.e. $W \equiv W(\text{rainfall, temperature, humidity, etc.})$. Clearly the climate
 116 component and the MBD cases are a periodic function as shown in **Fig.1** and there can be two
 117 situation **(I)**, case when $e=0$, and more general when **(II)** $e \neq 0$

118 **Case(I)**: If it is assumed that the parasitic forcing is negligible (due to control of mosquitos or
 119 other medical interventions), i.e. second term is close to zero, i.e. or $e=0$ ($e \neq 0$ in general),
 120 the equation 3 simplifies to:

121 $\frac{d^2M}{dt^2} + a \frac{dM}{dt} + qM = F \sin \omega t$ ------(4)

122 Assuming a periodic solution, $Re(Ae^{i(\omega t + \phi)})$, the amplitude and phase is given by

123
$$A = A(\omega) = \frac{F}{\sqrt{(q-\omega^2)^2+(a\omega)^2}} \text{-----(5a)}$$

124
$$\delta = \tan^{-1} \frac{a\omega}{q-\omega^2} \text{-----(5b)}$$

125 The solution of $M(t)$ is given by

126
$$M(t) = A \sin(\omega t - \delta) \text{-----(5c)}$$

127 The above solutions suggest two things: (a) the climate forcing can drive the seasonal cycle;
128 a periodic forced solution of $M(t)$ following the climate forcing sinusoidal, relate MBD annual
129 cyclical evolution to climate annual cycle as shown in **Fig.1**, and (b) the amplitude of the
130 seasonal cycle, A depends on Climate forcing amplitude F and the denominator of (5a). F is in
131 general a function of multiple climate variables (temperature, rainfall humidity etc), and the
132 denominator of (5a) is minimum when $\omega = q$ (*resonant criteria*). These two conditions as
133 mentioned above defines the amplitude of $M(t)$. Malaria/dengue outbreak or extreme values
134 of $M(t)$, thus, is related to climate factors F and a resonant interaction. '

135 **Case (II)** when $e \neq 0$: This is the more general case. Since the first and the second term in
136 the rhs side compete with each other (opposing sign), the net forcing is related to the
137 temporal evolution of malarial parasite at any time. If the net forcing is zero, i.e. $fW - eP =$
138 0 , the equation shows malaria cases decreasing with time (damped oscillator with no external
139 forcing). This can be the case, for example when there is strong biological or medical
140 intervention and climate action balance the parasite growth. The decreasing trend in malaria
141 cases intuitively suggest such situation. However, this does not mean climate forcing has
142 become less important. It simply means that the oscillator is not forced into action due to
143 human intervention. In the context of climate change, if the climate forcing changes in the
144 **(e,f)** parameter space, the cases would again increase. It may be also noticed that the second
145 term on the right-hand side of Eq.3, it adds stochastic noise depending on the amplitude of

146 the constants. Also, the amplitude of climate forcing can also be stochastic. So, it can be said
147 that the outbreaks of the MBD above the cyclical variation can be related to this stochastic
148 forcing. Thus equation (5) provides a basis for seasonal cycle and outbreak conditions both
149 for malaria and any other MBD. It also emphasizes the importance of climate change. In a
150 changed regime, climate forcing can in fact force the oscillator to increase the malaria cases.
151 The current study would not provide a mathematical solution for this outbreak conditions (i.e.
152 estimate e and f), rather it would explore under what climatological conditions (represented
153 by a set of climate variables described earlier) the severe outbreaks of MBD (represented by
154 number of reported cases) can occur in a non-parametric sense i.e. what climate forcing leads
155 to larger malaria/dengue cases. Parametric models describing vector dynamics deals with
156 large number of parameters (Taghikhani and Gumel 2018; Singh Parihar et al. 2019; Lee et al.
157 2021) and can be often sensitive to these parameters. The non-parametric relationship is
158 simplistic and data driven and would be useful as it is found that there is linear as well as noise
159 and non-linearity mixed relationship between malaria and several climate variables which
160 imparts non-stationarity in the data and hence can be less reliable. In fact, the forcing is
161 related to multiple climate variables as described earlier provides multiple source of
162 uncertainties in parasite dynamical model (i.e. equation 2). This is shown in **Fig.4**. The
163 variables are chosen based on previous studies (Guhathakurta et al. 2021; Patil and Pandya
164 2021; Dutta et al. 2021). It can be seen that many surface variables are correlated with the
165 malaria and dengue cases. Hence, there is a relationship between these variables and MBD
166 evolution and outbreaks. Thus, malaria/dengue outbreak could be traced by multivariate
167 clustering analysis. Clustering analysis would identify the severity thresholds associated with
168 the outbreaks. The severity threshold, thus identified, would help to derive large scale climate
169 conditions for the disease outbreak and hence its prediction.

170 **Data and Methods**

171 **(i) Data**

172 **Disease Data:** Monthly data of malaria and dengue cases over Kerala was collected from State
173 News bulletin on Integrated Disease Surveillance Project (ISDP) for the years 2011 to 2021
174 (132 months). <https://dhs.kerala.gov.in/data-on-communicable-diseases/>

175 **Meteorological Data:**

176 Climate variables (Rainfall, Tmax, Tmin and Relative Humidity at 3UTC & 12UTC) used for
177 clustering analysis has been calculated from the station wise data of Kerala obtained from
178 National Data Centre (NDC), Pune (<https://dsp.imdpune.gov.in/>).

179 For the analysis of the spatial evolution of the meteorological factors on the Malaria
180 outbreak pattern, the composite of variables such as daily maximum temperature (Tmax),
181 minimum temperature (Tmin), Skin (i.e earth's surface) Temperature, relative humidity (RH)
182 at 12 UTC and rainfall has been used. All the datasets except rainfall has been obtained from
183 the NCEP-NCAR Reanalysis-1 dataset (Kalnay et al. 1996) with a spatial resolution of 2.50° x
184 2.50°. The monthly mean surface Tmax and Tmin are obtained directly from the reanalysis
185 products. The daily mean skin temperature and the surface RH at 12 UTC are used to calculate
186 the respective monthly mean values. Similarly, the daily gridded rainfall data of spatial
187 resolution of 0.25° x 0.25° from India Meteorological Department (Pai et al. 2014) has been
188 used to obtain the monthly mean rainfall (mm/day) and all the variables are analysed for the
189 same period as above from 2011-2021 (132 months).

190 **(ii) Methods**

191 Clustering is a form of unsupervised learning whereby a set of observations (i.e., data points)
192 is partitioned into natural groupings or *clusters* of patterns in such a way that the measure of

193 similarity between any pair of observations assigned to each cluster minimizes a specified
194 cost function (Haykin 2009). K-Means clustering is one such method in which the Euclidean
195 distance between the points is used to aggregate the points into different clusters with the
196 target number of clusters (k) to be provided initially by the user. The imaginary or real location
197 representing the centre of any cluster is termed as *centroid*. Initially, we have to define the
198 number of clusters to be obtained (k). A random 'k' points or centroids are selected from the
199 dataset and each data point is assigned to their closest centroid, which will form the
200 predefined 'k' clusters. The k-Means algorithm computes the centroids and repeats until the
201 optimal centroid is found. The data points are assigned to clusters in such a way that the sum
202 of the squared distances between the datapoints and the centroid is as small as possible.

203 In this study, the monthly mean of six variables e.g. Tmax, Tmin, RH at 3 UTC and 12 UTC,
204 (accumulated) precipitation in Kerala and the number of reported Malaria/Dengue cases in
205 the state has been used to construct a vector space with the vector having six dimensions for
206 every month. The 132 monthly values (for the years 2011-2021) of this vector is used to
207 identify a set of 5 clusters using K-Means clustering algorithms using a standard scikit-learn
208 python module (<https://scikit-learn.org/stable/modules/generated/sklearn.cluster.KMeans.html>).
209 Here each month represent a point in the six-dimensional vector space and the points are
210 used to calculate the Euclidean distance for obtaining the optimized centroid of each cluster.
211 In general, the clustering analysis will help to aggregate these points into different clusters
212 based on the hidden patterns in the observed datasets representing a relation between the
213 climatic variables (Tmax, Tmin, skin temperature, relative humidity, precipitation) and the
214 vector borne disease (malaria/dengue) data.

215 **(iii) Outbreak criteria**

216 In this analysis we have used a simple criterion for deciding the outbreak (i.e. extreme event)
217 criteria in a month. For malaria cases considered, we have defined outbreaks when the
218 standardized anomaly of cases in a month is greater than 1 standard deviation. For dengue,
219 we have used 0.5 standard deviation criteria. **This criteria is not quantitative, is not used**
220 **quantitatively in**

221 **Results**

222 **(i) Clustering results**

223 Clustering for Malaria cases is shown in **Fig.5** from panel **(a)** to **(e)** for the clusters 1 to 5 along
224 with multiple climate variables used in the clustering. The variables (represented as bars) of
225 each cluster which are used for the clustering are plotted as a ratio of the corresponding time
226 series mean. Suppose the Tmax in one cluster is 1.75, it means that the value of Tmax of that
227 cluster is 1.75 times greater than the mean of Tmax time series. Similarly, the standard
228 deviation is plotted as a fraction of the standard deviation of time series. In cluster2, which
229 has a highlighted frame, the number of malaria cases are approximately two times greater
230 than the malaria time series mean. It shows that cluster 2 has a greater number of malaria
231 cases as compared to the other clusters. The climate variables in cluster 2 show some specific
232 values; like rainfall is 1.75 times greater than the rainfall time series mean and the Tmax, Tmin
233 and relative humidity are close to their corresponding time series mean. The mean and
234 standard deviation of all variables in actual time series along with that for each malaria cluster
235 are given in **Table-1**. So, it means that these specific combinations given in **Table-1** for the
236 cluster 2 have the potential to bring more malaria cases.

237 **Fig.5f** shows the monthly distribution of the frequency of cases projected in each cluster.
238 From the figure it can be seen that the cluster 2 and cluster 4 have maximum frequency
239 projections (%) during the monsoon months (June to September). Here, there is also a

240 seasonal splitting of cluster observed; i.e. higher values of frequencies lie in a particular
241 season. Maximum projections of cluster 3 are seen in winter months (December, January and
242 February) and the same for cluster 1 are in pre-monsoon (March, April and May) and post
243 monsoon (October, November and December) months. There is a lesser chance for random
244 projections, which means that the cluster which is projected maximum is not projected in
245 another season.

246 **Fig.5g.** shows the monthly distribution of average malaria cases in each cluster along with the
247 climatology of malaria cases. Here, it is observed that the cluster2 has maximum number of
248 malaria cases especially in the months from June to October, which is consistent with the
249 mean plot shown in **Fig.5b.** Similarly, in cluster4, all climate variables are near or above their
250 time series mean, however it has reported a smaller number of Malaria cases. Here the high
251 values of rainfall (almost twice the time series mean) and smaller standard deviation of other
252 climate variables are not conducive for the breeding of the vectors and malaria outbreak.
253 Earlier studies (Patz et al. 2000) ; (Kalluri et al. 2007) have shown that the increased amount
254 of rainfall helps to washout the mosquito larva and hence reduces the chances of malaria
255 outbreaks. So, it shows that the large number of malaria cases (204) in cluster 2 are associated
256 with the climate conditions mentioned in the **Table 1.** Hence the fulfilment of cluster2 criteria
257 can be considered as a threshold for malaria outbreaks.

258 Many times, there are some outbreaks happened in the months of October and November
259 even though their values are less than the other months (**Fig.1d and 5g**). So, malaria outbreaks
260 are not completely a climate derived problem, but many times the climate factors apart from
261 the parasite forcing can favour the disease outbreaks as the clustering analysis shows. The
262 intensity of those outbreaks, which are directly forced by the climate factors, can be reduced
263 by the proper climate surveillance and monitoring.

264 Similarly, from the cluster analysis performed for the Dengue cases (**Fig.6 (a) to (e)**), it
265 has been observed that the cluster1 Dengue cases are approximately 1.25 times greater than
266 the respective time series mean. The mean and standard deviation of all variables in actual
267 time series along with that for each dengue cluster are given in **Table-2**. The specific
268 combination of climate variables mentioned in cluster1 favour the breeding of mosquito and
269 outbreaks of dengue cases in Kerala. It can also be noticed that the cluster 4 shows the
270 maximum number of dengue cases (4784) however, the frequency of occurrence of cluster 4
271 is only 2.3% which is very much smaller than the other clusters. So, it may be considered as
272 an outlier cluster.

273 The monthly frequency distribution of the projections in each cluster for dengue has shown
274 in **Fig.6f**. It has been observed that the cluster 1 has the maximum projections during the
275 months (June to October). Similar to Malaria clusters, here also a seasonal splitting among
276 dengue clusters is observed. Higher values of frequencies of cluster 1 lie in the months from
277 June to September, followed by the cluster 2 with maximum projections in the pre-monsoon
278 (March, April and May) and post monsoon (October, November and December) months.

279 (ii) Large scale climate condition results

280 **Fig.7(a-d)** shows the composite of climate variables (Tmax, Tmin, RH and Rainfall) over the
281 spatial domain (10°S-50°N;40°E-120°E) in Malaria cluster 2 with a lag 0 to lag 5. In Tmax,
282 strong positive anomalies were observed over the northern parts especially near the Tibetan
283 plateau and negative anomalies over southern peninsular India and the northern parts of
284 Indian Ocean. The strong negative anomalies over the southern peninsular India were
285 observed reducing its intensity from lag5 to lag3, further becoming positive. In Tmin (**Fig.7b**),
286 similar positive anomaly pattern was observed near the Tibetan plateau from lag 0 to lag 5.
287 High temperature near the Tibetan anticyclone and lower temperature over the northern

288 Indian ocean (north-south temperature gradient) are some of the large-scale climate factors
289 which are known to impact the climate variability (Turner and Annamalai 2012),(You et al.
290 2020) over Indian region. Similarly, the spatial pattern of relative humidity (Fig.7c) and rainfall
291 (Fig.7d) show high values along the west coast of India and the north-eastern region. High
292 humidity is known to impact growth of mosquito growth (Li et al. 2013; Mohapatra et al.
293 2022). Hence the composite of climate factors of Malaria cluster2 are consistent with large-
294 scale climate factors during the monsoon months.

295 **Fig.8(a-d)** shows the composite of climate variables (Tmax, Tmin, RH and Rainfall) in Dengue
296 cluster 1 with a lag 0 to 5 (same spatial domain as shown for malaria cases in Fig.1). In both
297 Tmax and Tmin, strong negative anomalies were observed over the northern parts especially
298 near the Tibetan plateau for lag 0 to lag 5 and over peninsular India from lag 3 to lag5. Strong
299 positive anomalies were observed for both the temperatures over the central India and the
300 foot hills of Himalayas from lag0 to lag5. This shows the climate forcing required for the
301 dengue outbreaks are entirely different from the forcing favouring the malaria outbreaks. The
302 composite spatial pattern of relative humidity and rainfall of dengue cluster 1 is more or less
303 similar to the malaria cluster2 from lag 0 to lag5. So, it shows that high amount of relative
304 humidity and rainfall are conducive for both the disease outbreaks.

305 **Conclusion**

306 In the current analysis we have used the malaria and dengue data over Kerala and based on
307 a coupled system hypothesis, the outbreak of malaria and dengue are related to the
308 multivariate clusters of climatological variables. Also, it is shown how the cyclical seasonal
309 behaviour of the malaria and dengue cases can be explained using this model. The current
310 analysis identified two category criteria for malaria cases (when the malaria cases are larger
311 than the mean or when the malaria cases close to mean) which is tabulated in **Table-1**. It can

312 be seen that high malaria cases are driven by higher than mean rainfall values and near mean
313 values of temperature & relative humidity pattern. When the criteria is satisfied, there is a
314 strong possibility of increase in malaria cases. Similarly, cluster analysis for dengue cases,
315 identified one criterion (when the dengue cases are larger than the mean) which is given in
316 **Table-2**. The dengue cases identified in this cluster are also driven by higher than mean
317 rainfall and near mean values of temperature and relative humidity. Incidentally, an outlier
318 cluster can be identified with large number of dengue cases but are associated with near
319 mean values of climatic parameters (rainfall, RH etc.). However, the frequency of occurrence
320 of this cluster is very low (only 2%).

321 Based on the composite analysis of climate variables, it is shown that in some cases, both
322 malaria and dengue outbreaks over Kerala are driven by the climate forcing to some extent.
323 However, the forcing is different for both the diseases. High temperatures over the Tibetan
324 plateau and low temperature over the northern Indian ocean along with the high values of
325 relative humidity and rainfall over the west coast and north-eastern parts of India are found
326 to be allied with the malaria outbreaks over Kerala. At the same time, the out breaks of
327 dengue are seen to be associated with the low temperatures over the Tibetan plateau and
328 high temperatures over the central India and foot fills of Himalayas along with relative
329 humidity and rainfall similar to that of malaria outbreaks.

330 The number of Malaria cases and outbreaks reported over Kerala are found to
331 decrease in the recent years. As mentioned in the introduction, medical interventions can
332 counteract the climate forcing and it is seen for the recent trend in malaria cases over Kerala.
333 However, in the ongoing climate change scenario, intensity and frequency of extreme events
334 are increasing and it may favour the suitable conditions (heavy rainfall, extreme temperatures
335 etc.) for the outbreaks of mosquito borne diseases. In such conditions, the existing

336 intervention methods will not be sufficient to reduce the impacts caused by the outbreaks.
337 So, in a long-term planning perspective, along with improvements in intervention methods,
338 implementation of the climate positive actions is also important. Coherent climate action e.g.
339 reducing the emissions of fossil fuels and greenhouse gases, reduces the temperature
340 extremes; Proper drainage system in a place doesn't allow the rainwater to get stagnant over
341 time and become conducive for the proliferation of vectors. So, these precautionary steps will
342 not satisfy the cluster conditions which are responsible for the breeding of vector and hence
343 reduces the frequency and intensity of MBD outbreaks. Also, the analysis suggests that, the
344 threshold criteria has to be improved using more samples. Weekly data aggregation would
345 improve the understanding of climate link in the control and management of MBD.

346 **Acknowledgments**

347 Authors acknowledge support from Ministry of Earth Sciences, Govt of India and the State
348 Govt of Kerala, India for research and financial support.

349 **Competing Interest Statement**

350 Authors declare that there is no competing interest

351 **Data Availability Statement**

352 The disease data and the meteorological data are available in public domain. Appropriate
353 reference is placed in the text.

354 **References**

- 355 Anwar MY, Lewnard JA, Parikh S, Pitzer VE. 2016. Time series analysis of malaria in
356 Afghanistan: using ARIMA models to predict future trends in incidence. *Malar J.* 15(1):566.
357 <https://doi.org/10.1186/s12936-016-1602-1>
- 358 Caminade C, Kovats S, Rocklov J, Tompkins AM, Morse AP, Colón-González FJ, Stenlund H,
359 Martens P, Lloyd SJ. 2014. Impact of climate change on global malaria distribution. *Proc Natl*
360 *Acad Sci.* 111(9):3286–3291. <https://doi.org/10.1073/pnas.1302089111>
- 361 Campbell LP, Luther C, Moo-Llanes D, Ramsey JM, Danis-Lozano R, Peterson AT. 2015.
362 Climate change influences on global distributions of dengue and chikungunya virus vectors.
363 *Philos Trans R Soc B Biol Sci.* 370(1665):20140135. <https://doi.org/10.1098/rstb.2014.0135>
- 364 Colón-González FJ, Sewe MO, Tompkins AM, Sjödin H, Casallas A, Rocklöv J, Caminade C,
365 Lowe R. 2021. Projecting the risk of mosquito-borne diseases in a warmer and more
366 populated world: a multi-model, multi-scenario intercomparison modelling study. *Lancet*
367 *Planet Health.* 5(7):e404–e414. [https://doi.org/10.1016/S2542-5196\(21\)00132-7](https://doi.org/10.1016/S2542-5196(21)00132-7)
- 368 Craig MH, Snow RW, le Sueur D. 1999. A Climate-based Distribution Model of Malaria
369 Transmission in Sub-Saharan Africa. *Parasitol Today.* 15(3):105–111.
370 [https://doi.org/10.1016/S0169-4758\(99\)01396-4](https://doi.org/10.1016/S0169-4758(99)01396-4)
- 371 Das A, Anvikar AR, Cator LJ, Dhiman RC, Eapen A, Mishra N, Nagpal BN, Nanda N,
372 Raghavendra K, Read AF, et al. 2012. Malaria in India: The Center for the Study of Complex
373 Malaria in India. Tackling Malar End Game Reg Needs Chall Success *Malar Elimin.*
374 121(3):267–273. <https://doi.org/10.1016/j.actatropica.2011.11.008>
- 375 Dutta S, BALASUBRAMANIAM R, JAGTAP M, AWATE P, KULKARNI N, DANISH MD,
376 DESHPANDE S, SATPUTE U, WAYAL R, BHAGBAT P, et al. 2021. A pilot study on assessing the
377 effect of climate on the incidence of vector borne disease at Pune and Pimpri-Chinchwad
378 area, Maharashtra. *MAUSAM.* 72(2):399–414. <https://doi.org/10.54302/mausam.v72i2.611>
- 379 Ebi KL, Nealon J. 2016. Dengue in a changing climate. *Environ Res.* 151:115–123.
380 <https://doi.org/10.1016/j.envres.2016.07.026>
- 381 Guhathakurta P, Ratan R, Rajib C, Kulkarni, Deepa, Bile, Lalit L, Prasad A. 2021. Prediction of
382 Monthly Malaria Outbreaks in Districts of Odisha, India with Meteorological Parameters
383 using Statistical and Artificial Neural Network Techniques. *Clim Health.* 1(3):122–136.
- 384 Gupta N, Srivastava S, Jain A, Chaturvedi UC. 2012. Dengue in India. *Indian J Med Res.*
385 136(3):373–390.
- 386 Haykin S. 2009. *Neural Networks and Learning Machines.* 3rd ed. New Jersey: Prentice Hall.
- 387 Hii YL, Zhu H, Ng N, Ng LC, Rocklöv J. 2012. Forecast of Dengue Incidence Using Temperature
388 and Rainfall. *PLoS Negl Trop Dis.* 6(11):e1908.
389 <https://doi.org/10.1371/journal.pntd.0001908>

- 390 Hussien HH. 2019. Malaria's association with climatic variables and an epidemic early
391 warning system using historical data from Gezira State, Sudan. *Heliyon*. 5(3):e01375.
392 <https://doi.org/10.1016/j.heliyon.2019.e01375>
- 393 Kalluri S, Gilruth P, Rogers D, Szczur M. 2007. Surveillance of arthropod vector-borne
394 infectious diseases using remote sensing techniques: a review. *PLoS Pathog*. 3(10):e116.
- 395 Kalnay E, Kanamitsu M, Kistler R, Collins W, Deaven D, Gandin L, Iredell M, Saha S, White G,
396 Woollen J, et al. 1996. The NCEP/NCAR 40-Year Reanalysis Project. *Bull Am Meteorol Soc*.
397 77(3):437–472. [https://doi.org/10.1175/1520-0477\(1996\)077<0437:TNYRP>2.0.CO;2](https://doi.org/10.1175/1520-0477(1996)077<0437:TNYRP>2.0.CO;2)
- 398 Laneri K, Bhadra A, Ionides EL, Bouma M, Dhiman RC, Yadav RS, Pascual M. 2010. Forcing
399 Versus Feedback: Epidemic Malaria and Monsoon Rains in Northwest India. *PLOS Comput*
400 *Biol*. 6(9):e1000898. <https://doi.org/10.1371/journal.pcbi.1000898>
- 401 Lee C-H, Chang K, Chen Y-M, Tsai J-T, Chen YJ, Ho W-H. 2021. Epidemic prediction of dengue
402 fever based on vector compartment model and Markov chain Monte Carlo method. *BMC*
403 *Bioinformatics*. 22(5):118. <https://doi.org/10.1186/s12859-021-04059-x>
- 404 Li T, Yang Z, Wang M. 2013. Temperature, relative humidity and sunshine may be the
405 effective predictors for occurrence of malaria in Guangzhou, southern China, 2006–2012.
406 *Parasit Vectors*. 6(1):155. <https://doi.org/10.1186/1756-3305-6-155>
- 407 Loevinsohn ME. 1994. Climatic warming and increased malaria incidence in Rwanda. *Orig*
408 *Publ Vol 1 Issue 8899*. 343(8899):714–718. [https://doi.org/10.1016/S0140-6736\(94\)91586-5](https://doi.org/10.1016/S0140-6736(94)91586-5)
- 409 Lunde TM, Bayoh MN, Lindtjørn B. 2013. How malaria models relate temperature to malaria
410 transmission. *Parasit Vectors*. 6(1):20. <https://doi.org/10.1186/1756-3305-6-20>
- 411 Mohan A, Wara UU, Amjad SW, Rackimuthu S, Hunain R, Khan H, Carla dos Santos Costa A,
412 Ahmad S, Essar MY. 2021. Malaria amidst COVID-19 in India: Challenges, Efforts, and
413 Recommendations. *Clin Epidemiol Glob Health*. 12:100867.
414 <https://doi.org/10.1016/j.cegh.2021.100867>
- 415 Mohapatra P, Tripathi NK, Pal I, Shrestha S. 2022. Determining suitable machine learning
416 classifier technique for prediction of malaria incidents attributed to climate of Odisha. *Int J*
417 *Environ Health Res*. 32(8):1716–1732. <https://doi.org/10.1080/09603123.2021.1905782>
- 418 Narain JP, Nath LM. 2018. Eliminating malaria in India by 2027: The countdown begins!
419 *Indian J Med Res [Internet]*. 148(2).
420 [https://journals.lww.com/ijmr/Fulltext/2018/48020/Eliminating_malaria_in_India_by_2027](https://journals.lww.com/ijmr/Fulltext/2018/48020/Eliminating_malaria_in_India_by_2027___The.1.aspx)
421 [__The.1.aspx](https://journals.lww.com/ijmr/Fulltext/2018/48020/Eliminating_malaria_in_India_by_2027___The.1.aspx)
- 422 Nkiruka O, Prasad R, Clement O. 2021. Prediction of malaria incidence using climate
423 variability and machine learning. *Inform Med Unlocked*. 22:100508.
424 <https://doi.org/10.1016/j.imu.2020.100508>
- 425 NVDCP,,MoHFW. 2022. MAGNITUDE OF THE PROBLEM [Internet]. [accessed 2022 Jul 26].
426 <https://nvbdcp.gov.in/index4.php?lang=1&level=0&linkid=420&lid=3699>

- 427 Paaijmans KP, Read AF, Thomas MB. 2009. Understanding the link between malaria risk and
428 climate. *Proc Natl Acad Sci.* 106(33):13844–13849.
429 <https://doi.org/10.1073/pnas.0903423106>
- 430 Pai DS, Rajeevan M, Sreejith OP, Mukhopadhyay B, Satbha NS. 2014. Development of a new
431 high spatial resolution (0.25° × 0.25°) long period (1901–2010) daily gridded rainfall data set
432 over India and its comparison with existing data sets over the region. *MAUSAM.* 65(1):1–18.
433 <https://doi.org/10.54302/mausam.v65i1.851>
- 434 Paradkar PN, Sahasrabudhe PR, Ghag Sawant M, Mukherjee S, Blasdel KR. 2021. Towards
435 Integrated Management of Dengue in Mumbai. *Viruses.* 13(12):2436.
436 <https://doi.org/10.3390/v13122436>
- 437 Patil S, Pandya S. 2021. Forecasting Dengue Hotspots Associated With Variation in
438 Meteorological Parameters Using Regression and Time Series Models. *Front Public Health*
439 [Internet]. 9. <https://www.frontiersin.org/articles/10.3389/fpubh.2021.798034>
- 440 Patz JA, Graczyk TK, Geller N, Vittor AY. 2000. Effects of environmental change on emerging
441 parasitic diseases. *Themat Issue Emerg Parasite Zoonoses.* 30(12):1395–1405.
442 [https://doi.org/10.1016/S0020-7519\(00\)00141-7](https://doi.org/10.1016/S0020-7519(00)00141-7)
- 443 Ranjha R, Sharma A. 2021. Forest malaria: the prevailing obstacle for malaria control and
444 elimination in India. *BMJ Glob Health.* 6(5):e005391. [https://doi.org/10.1136/bmjgh-2021-](https://doi.org/10.1136/bmjgh-2021-005391)
445 [005391](https://doi.org/10.1136/bmjgh-2021-005391)
- 446 Reiter P. 2001. Climate change and mosquito-borne disease. *Environ Health Perspect.*
447 109(suppl 1):141–161. <https://doi.org/10.1289/ehp.01109s1141>
- 448 Sewe MO, Tozan Y, Ahlm C, Rocklöv J. 2017. Using remote sensing environmental data to
449 forecast malaria incidence at a rural district hospital in Western Kenya. *Sci Rep.* 7(1):2589.
450 <https://doi.org/10.1038/s41598-017-02560-z>
- 451 Singh LS, Singh RM, Singh HL. 2020. Epidemiological scenario of dengue in the state of
452 Manipur during the last 3 years. *PeerJ.* 8:e8518–e8518. <https://doi.org/10.7717/peerj.8518>
- 453 Singh Parihar R, Bal PK, Kumar V, Mishra SK, Sahany S, Salunke P, Dash SK, Dhiman RC. 2019.
454 Numerical Modeling of the Dynamics of Malaria Transmission in a Highly Endemic Region of
455 India. *Sci Rep.* 9(1):11903. <https://doi.org/10.1038/s41598-019-47212-6>
- 456 Taghikhani R, Gumel AB. 2018. Mathematics of dengue transmission dynamics: Roles of
457 vector vertical transmission and temperature fluctuations. *Infect Dis Model.* 3:266–292.
458 <https://doi.org/10.1016/j.idm.2018.09.003>
- 459 Turner AG, Annamalai H. 2012. Climate change and the South Asian summer monsoon. *Nat*
460 *Clim Change.* 2(8):587–595. <https://doi.org/10.1038/nclimate1495>
- 461 WHO. 2021. World Malaria Report 2021 [Internet]. [accessed 2022 Jul 26].
462 <https://www.who.int/india/health-topics/malaria/summary-of-world-malaria-report-2021>
- 463 You Q, Wu T, Shen L, Pepin N, Zhang L, Jiang Z, Wu Z, Kang S, AghaKouchak A. 2020. Review
464 of snow cover variation over the Tibetan Plateau and its influence on the broad climate
465 system. *Earth-Sci Rev.* 201:103043. <https://doi.org/10.1016/j.earscirev.2019.103043>

466 Zinszer K, Kigozi R, Charland K, Dorsey G, Brewer TF, Brownstein JS, Kanya MR, Buckeridge
467 DL. 2015. Forecasting malaria in a highly endemic country using environmental and clinical
468 predictors. Malar J. 14(1):245. <https://doi.org/10.1186/s12936-015-0758-4>

469

470

471

Table-1

472

Statistics of Climate variables and Malaria cases over Kerala during 2011-2021 for actual time series and different clusters. Cluster-2 (highlighted columns) represents the malaria outbreak clusters

473

474

475

Variables	Actual Time Series		Cluster1 (frequency 28.8%)		Cluster2 (frequency 25.8%)		Cluster3 (frequency 28.8%)		Cluster4 (frequency 15.2%)		Cluster5 (frequency 1.5%)	
	Mean	S.D	Mean	S.D	Mean	S.D	Mean	S.D	Mean	S.D	Mean	S.D
Tmax (°C)	31.73	2.40	33.88	1.21	29.93	1.65	32.02	1.58	31.03	0.91	22.76	4.40
Tmin (°C)	23.32	1.64	24.66	0.97	23.04	1.10	22.33	1.00	23.85	0.39	15.81	2.10
Rainfall(m)	2592	2520	1216	869	4597	2164	604	670	5680	1957	1526	1411
RH3UTC (%)	81.41	6.47	80.38	2.68	86.41	4.33	74.52	2.37	89.29	2.32	68.29	0.96
RH12UTC (%)	69.75	9.16	67.58	4.82	77.74	3.55	59.64	4.20	80.47	3.46	59.92	7.50
Malaria Case	105	71	64	37	204	41	83	44	60	34	50	39

476

477

478

Table-2

479
480
481

Statistics of Climate variables and Dengue cases over Kerala during 2011-2021 for actual time series and different clusters. Cluster-1 (highlighted columns) represents the dengue outbreak clusters

Variables	Actual Time Series		Cluster1 (frequency 27.3%)		Cluster2 (frequency 31.1%)		Cluster3 (frequency 11.4%)		Cluster4* (frequency 2.3%)		Cluster5 (frequency 28.0%)	
	Mean	S.D	Mean	S.D	Mean	S.D	Mean	S.D	Mean	S.D	Mean	S.D
Tmax (°C)	31.73	2.40	30.79	0.90	33.62	1.31	27.39	2.53	30.68	0.32	32.40	1.49
Tmin (°C)	23.32	1.64	23.75	0.41	24.61	0.97	20.62	2.06	23.73	0.19	22.52	1.01
Rainfall(m m)	2592	2520	5321	2301	1491	1042	3761	2108	4650	1910	515	630
RH3UTC (%)	81.41	6.47	89.47	2.03	80.88	2.66	78.65	5.19	90.53	0.92	74.54	2.40
RH12UTC (%)	69.75	9.16	80.25	3.15	69.07	4.84	70.79	6.35	80.25	2.93	59.01	3.78
Dengue Case	485	782	668	487	343	428	289	193	4784	782	196	181

482

* Cluster4 frequency is only 2.3

483

484 **Figure Caption:**

485 **Figure 1. (a).** Interannual variation of monthly Malaria Cases over Kerala. **(b).** Interannual
486 variation of Dengue Cases over Kerala. **(c).** Interannual variation of monthly Rainfall over
487 Kerala. **(d).** Monthly distribution of Outbreak frequency of Malaria Cases (Mean + 1 SD). **(e).**
488 Outbreak frequency of Malaria Cases (Mean + 1 SD). **(f).** Outbreak frequency of Dengue Cases
489 (Mean + 0.5 SD). **(g).** Outbreak frequency of Dengue Cases (Mean + 0.5 SD).

490 **Figure 2a to 2f:** Power spectrum for Malaria, Dengue, Maximum Temperature, Minimum
491 Temperature, Rainfall and Relative Humidity at 12 UTC.

492 **Figure 3:** A schematic model of Malaria dynamics with Climate Forcing.

493 **Figure 4:** Correlation of Malaria and Dengue cases with different climate parameters. **(a).**
494 Malaria and Rainfall **(b).** Malaria and Relative Humidity **(c).** Malaria and Maximum & Minimum
495 temperatures **(d).** Dengue and Rainfall **(e).** Dengue and Relative Humidity **(f).** Dengue and
496 Maximum & Minimum temperatures

497 **Figure 5(a-e).** Mean and standard deviation of malaria cluster 1 to cluster 5. **(f).** Monthly
498 variation of malaria frequencies in cluster4. **(g).** Monthly distribution of average malaria
499 cases in each cluster along with malaria climatology.

500 **Figure 6(a-e).** Mean and standard deviation of dengue cluster 1 to cluster 5. **(f).** Monthly
501 variation of dengue frequencies in cluster4. **(g).** Monthly distribution of average dengue cases
502 in each cluster along with dengue climatology.

503 **Figure 7:** Composite of Malaria and different climate parameters for cluster2 at different
504 lags **(a).** Maximum Temperature **(b).** Minimum Temperature **(c).** Relative Humidity at 12
505 UTC **(d).** Rainfall

506 **Figure 8:** Composite of Dengue and different climate parameters for cluster2 at different lags
507 **(a).** Maximum Temperature **(b).** Minimum Temperature. **(c).** Relative Humidity at 12 UTC **(d).**
508 Rainfall

509

510

511

512

513

514

515

516

517

518

519

520

521

522

523

524

525

526

527

528

529

530

531

532

533

534

535

536

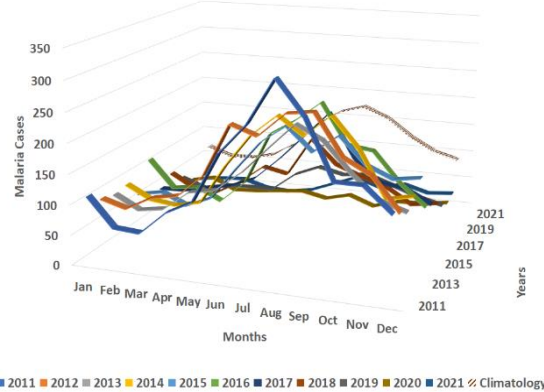
537

538

539

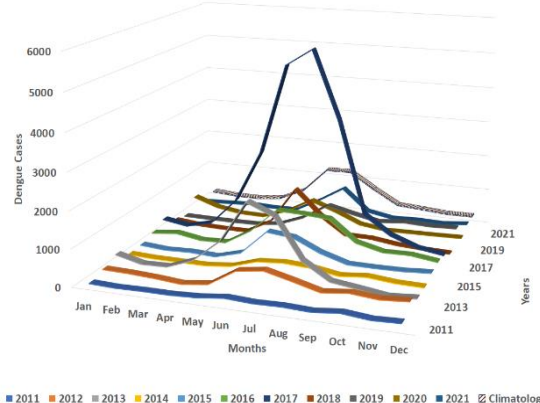
540

Interannual Variation of Monthly Malaria Cases Over Kerala



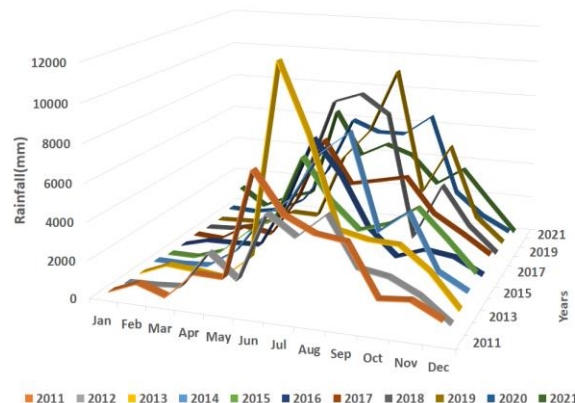
(a)

Interannual Variation of Monthly Dengue Cases Over Kerala

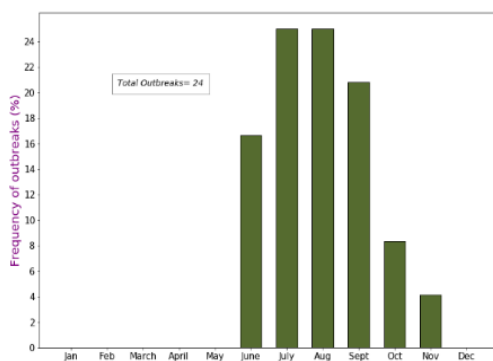


(b)

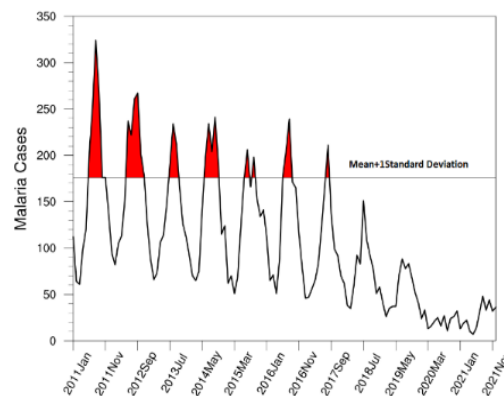
Interannual Variation of Monthly Rainfall over Kerala



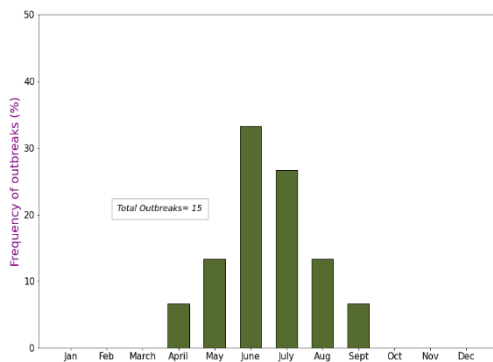
(c)



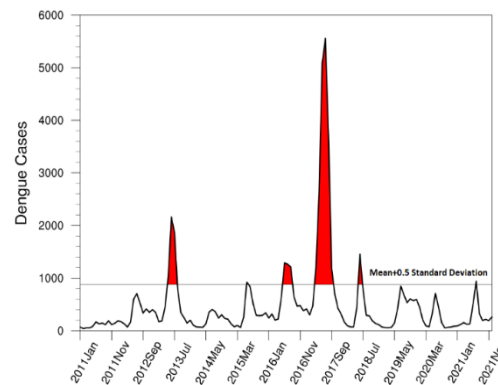
(d)



(e)



(f)

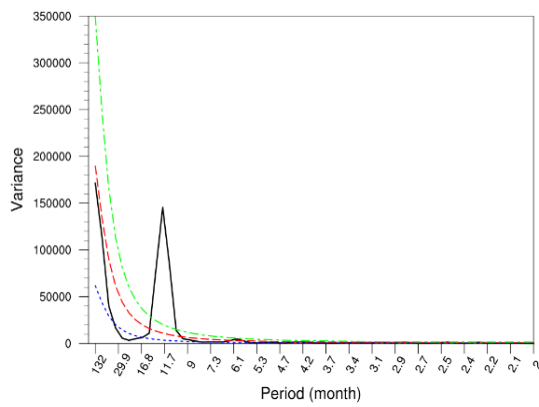


(g)

Figure 1. (a). Interannual variation of monthly Malaria Cases over Kerala. (b). Interannual variation of Dengue Cases over Kerala. (c). Interannual variation of monthly Rainfall over Kerala. (d). Monthly distribution of Outbreak frequency of Malaria Cases (Mean + 1 SD). (e). Outbreak frequency of Malaria Cases (Mean + 1 SD). (f). Outbreak frequency of Dengue Cases (Mean + 0.5 SD). (g). Outbreak frequency of Dengue Cases (Mean + 0.5 SD).

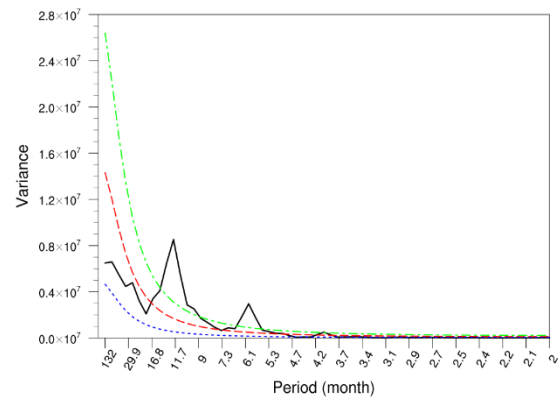
541

Malaria



(a)

Dengue



(b)

542

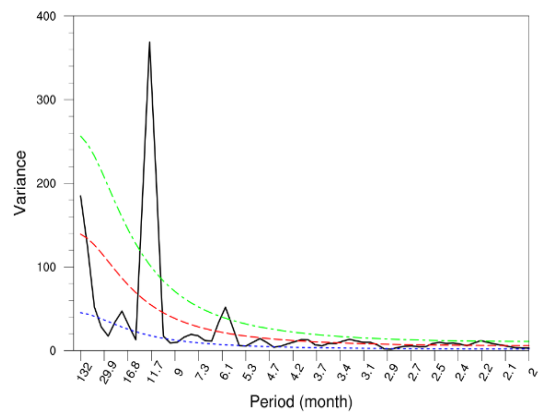
543

544

545

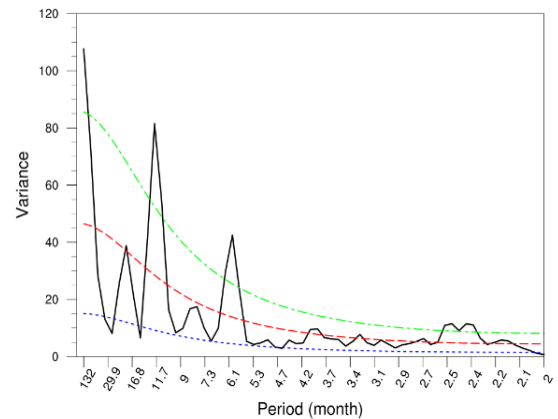
546

Maximum Temperature



(c)

Minimum Temperature



(d)

547

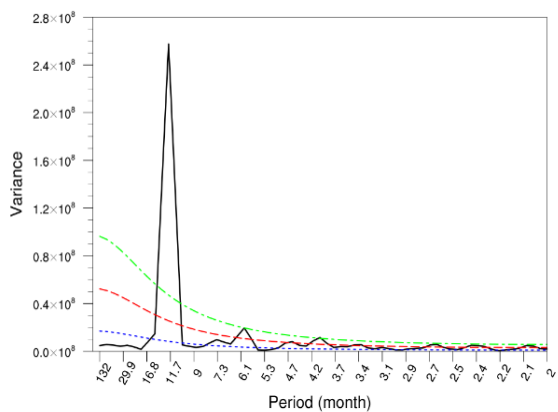
548

549

550

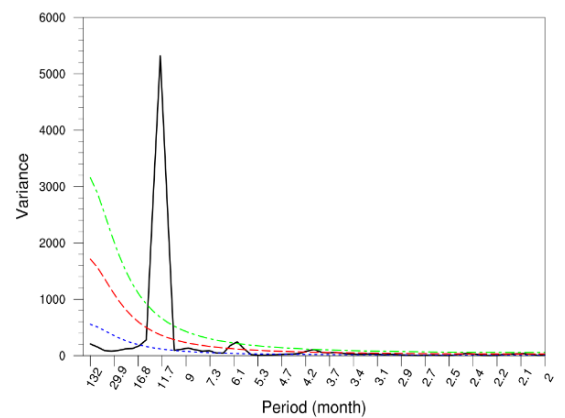
551

Rainfall



(e)

Relative Humidity at 12 UTC



(f)

552

553

554

555

556

557

Figure 2a to 2f: Power spectrum for Malaria, Dengue, Maximum Temperature, Minimum Temperature, Rainfall and Relative Humidity at 12 UTC.

558

559

560

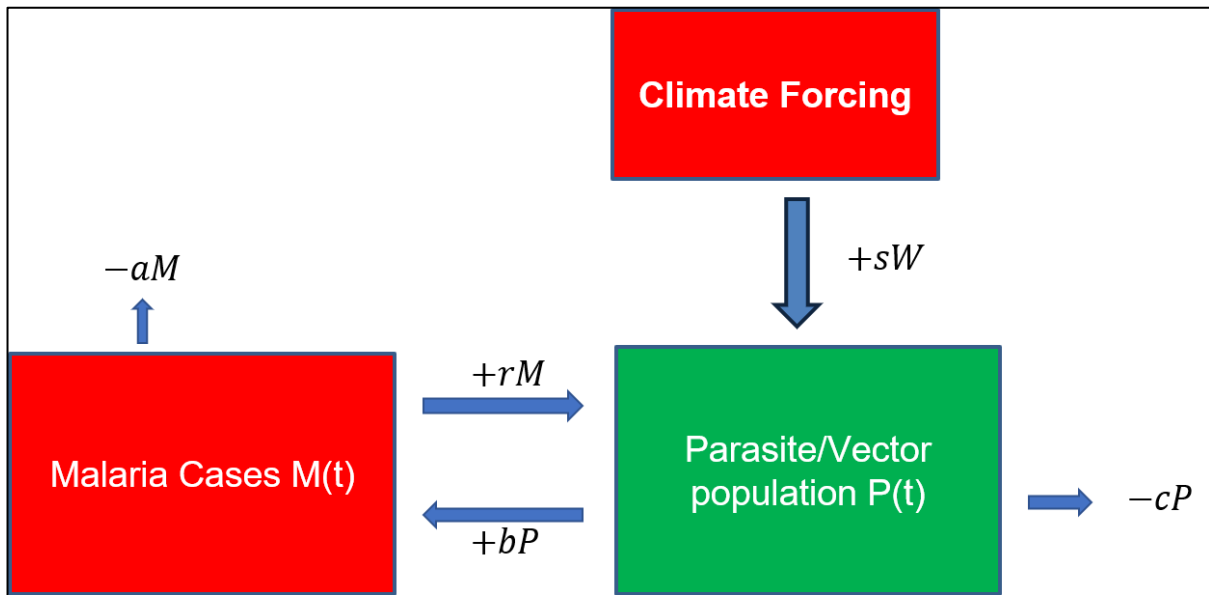


Figure 3: A schematic model of Malaria dynamics with Climate Forcing

561

562

563

564

565

566

567

568

569

570

571

572

573

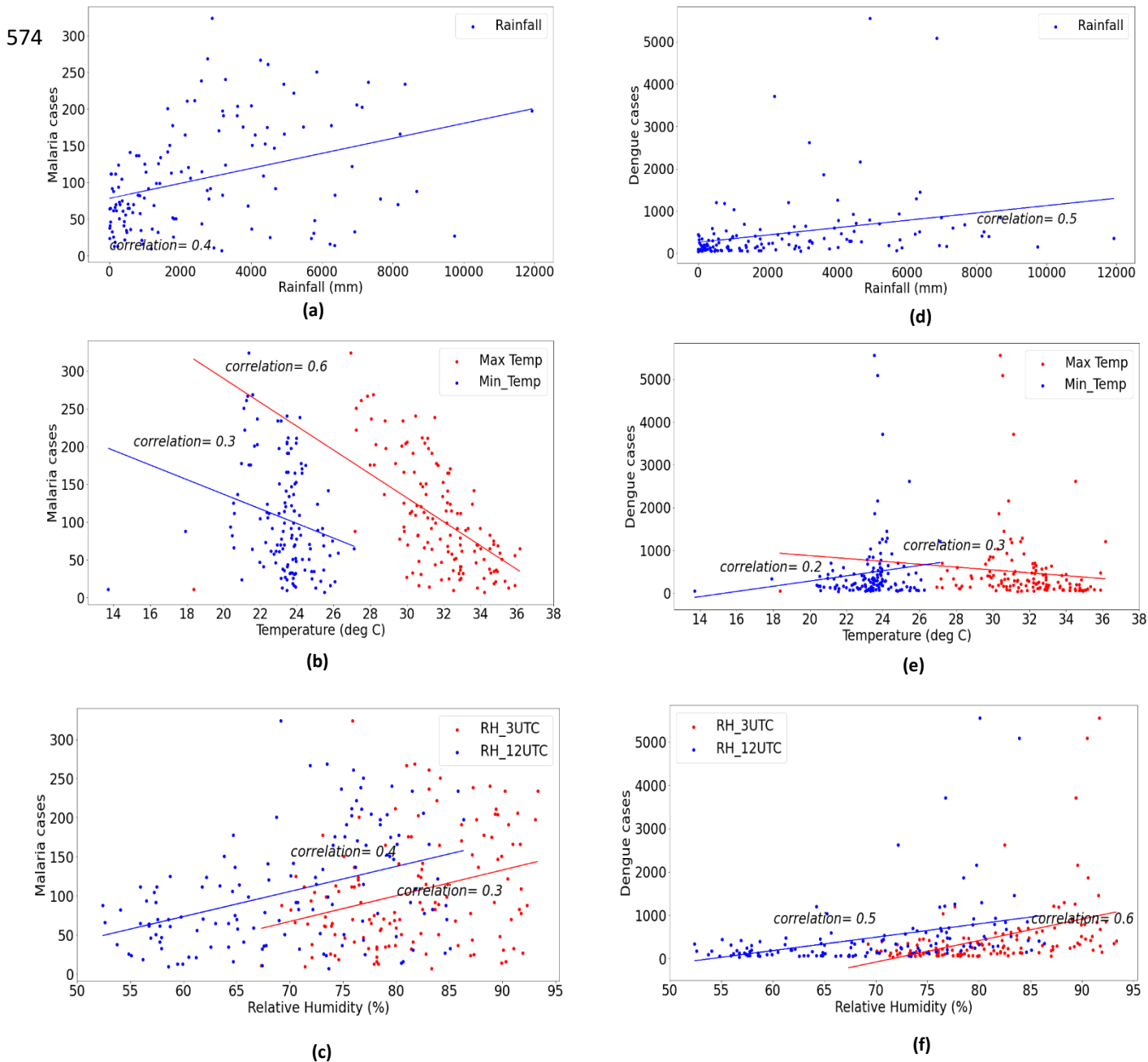


Figure 4: Correlation of Malaria and Dengue cases with different climate parameters. **(a).** Malaria and Rainfall **(b).** Malaria and Relative Humidity **(c).** Malaria and Maximum & Minimum temperatures **(d).** Dengue and Rainfall **(e).** Dengue and Relative Humidity **(f).** Dengue and Maximum & Minimum temperatures

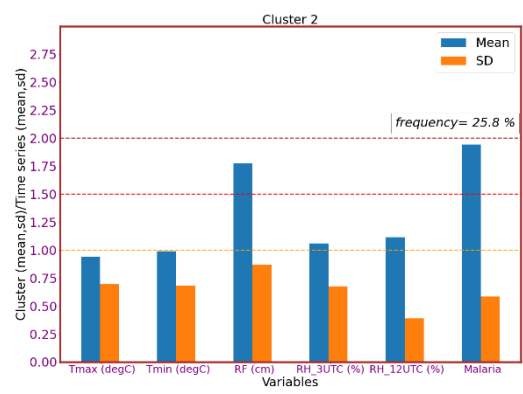
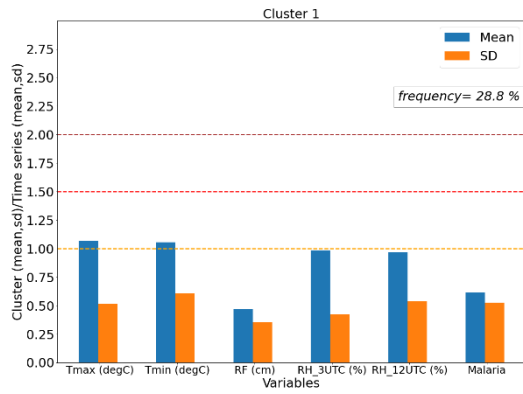
575

576

577

578

579



(a)

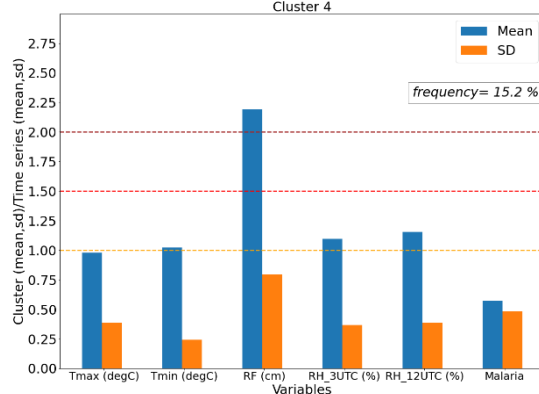
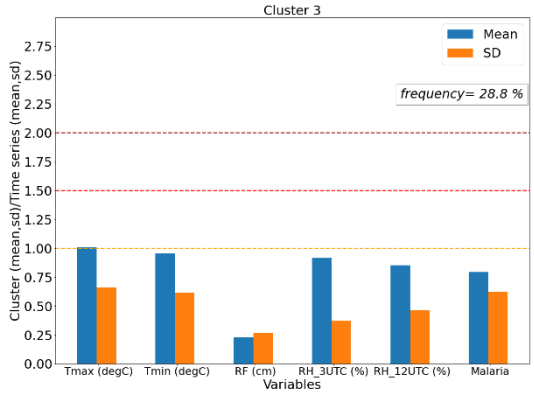
(b)

580

581

582

583



(c)

(d)

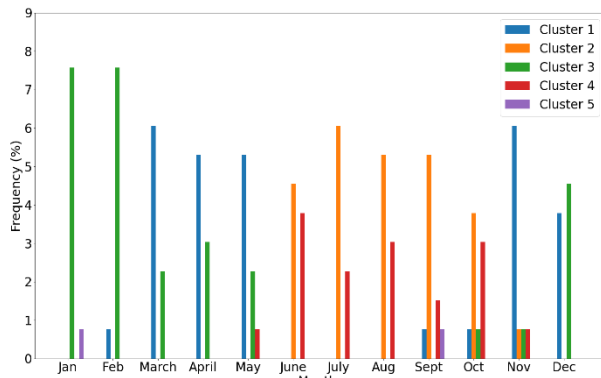
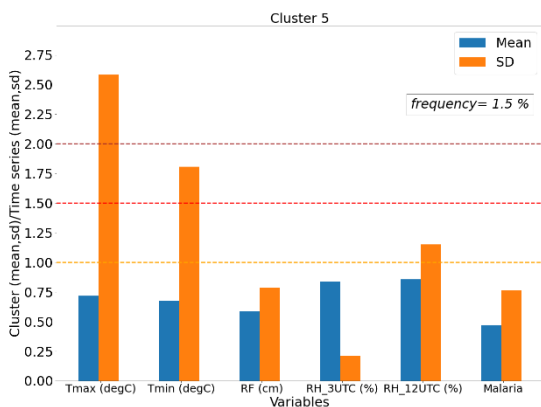
584

585

586

587

588



(e)

(f)

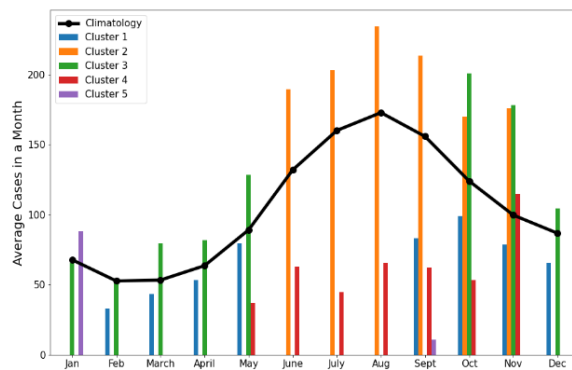
589

590

591

592

593



(g)

594 **Figure 5(a-e).** Mean and standard deviation of malaria cluster 1 to cluster 5. **(f).** Monthly variation of malaria frequencies in cluster 4. **(g).** Monthly distribution of average malaria cases in each cluster along with malaria climatology.

595

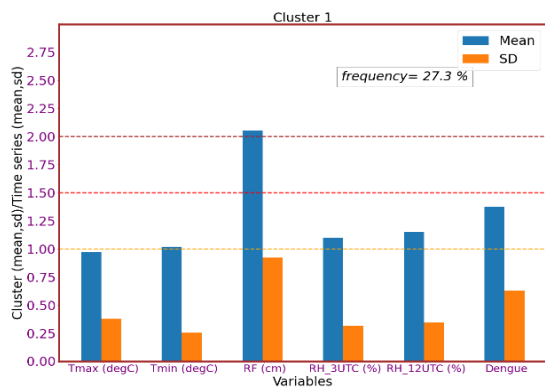
596

597

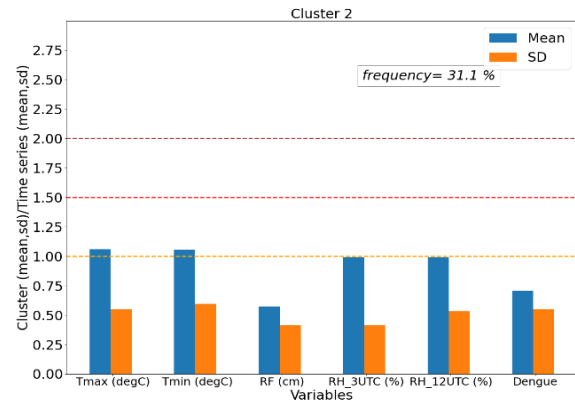
598

599

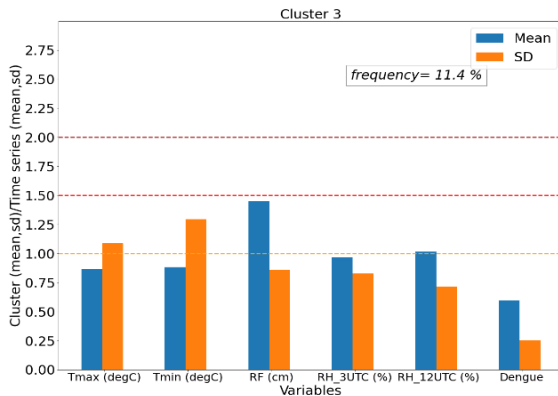
600



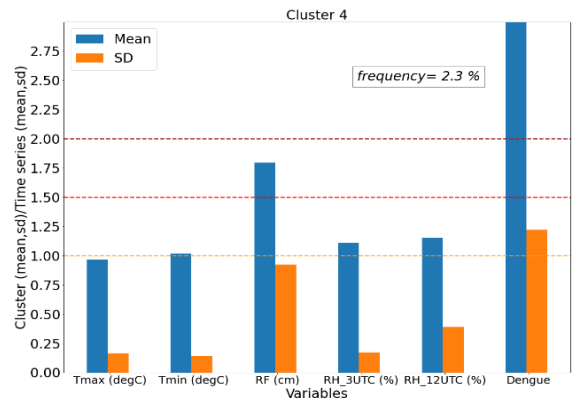
(a)



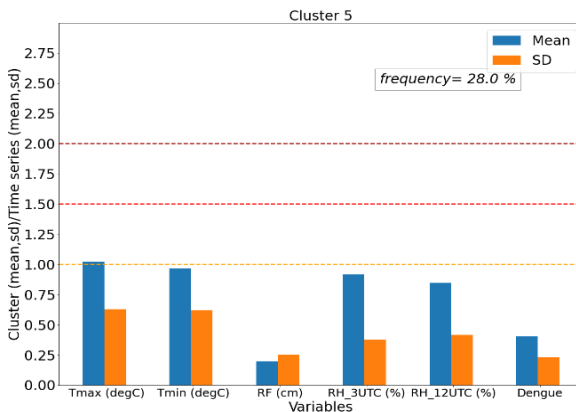
(b)



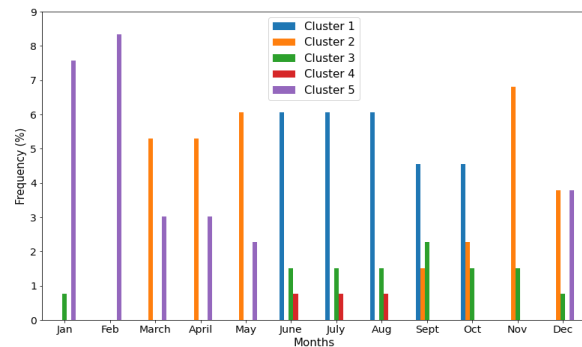
(c)



(d)



(e)



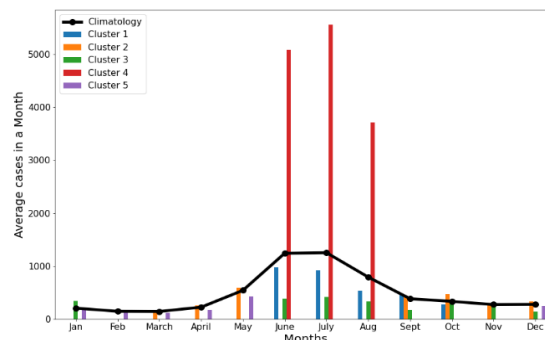
(f)

610

611

612

613



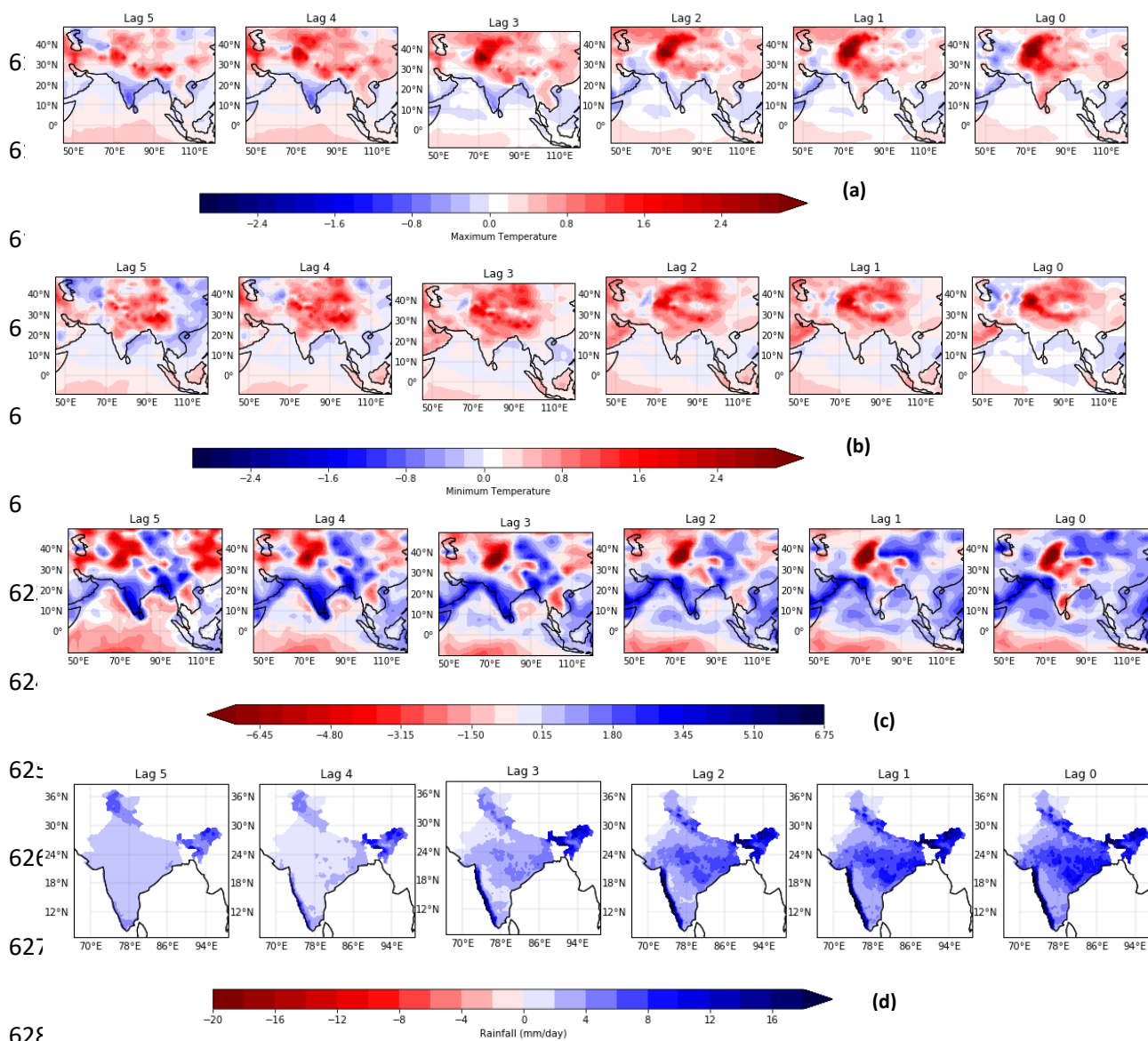
(g)

614

Figure 6(a-e). Mean and standard deviation of dengue cluster 1 to cluster 5. **(f).** Monthly variation of dengue frequencies in cluster 4. **(g).** Monthly distribution of average dengue cases in each cluster along with dengue climatology.

615

616



621 **Figure 7:** Composite of Malaria and different climate parameters for cluster2 at different lags (a) .
622 Maximum Temperature (b). Minimum Temperature (c). Relative Humidity at 12 UTC (d). Rainfall

630

631

632

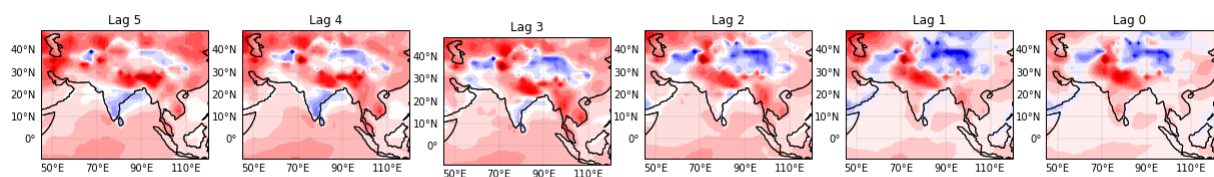
633

634

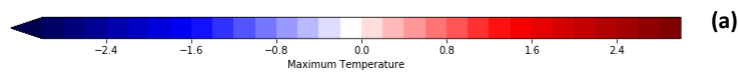
635

636

637

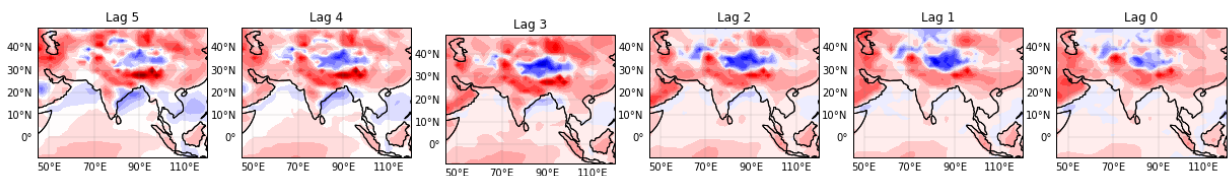


638

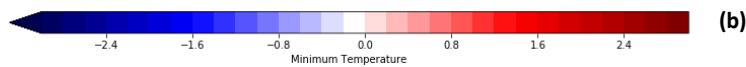


639

640

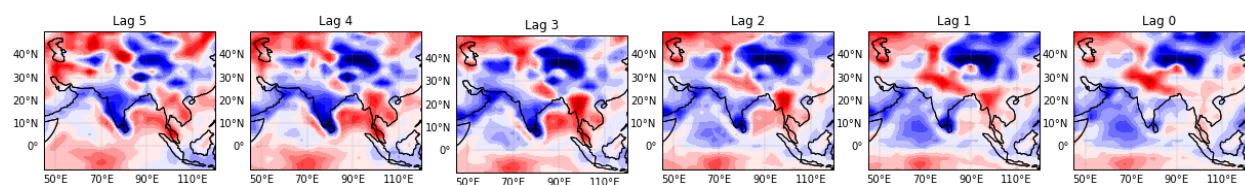


641

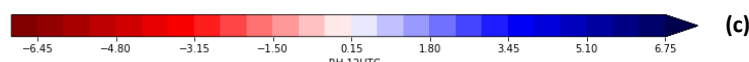


642

643

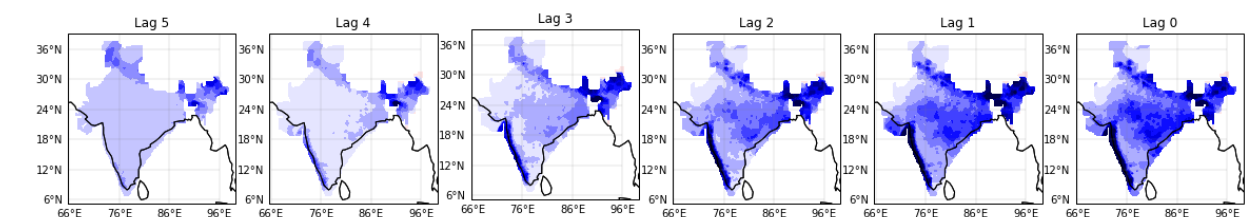


644

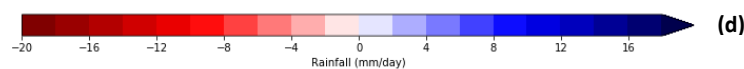


645

646



647



648

Figure 8: Composite of Dengue and different climate parameters for cluster2 at different lags (a).

649 Maximum Temperature (b). Minimum Temperature. (c). Relative Humidity at 12 UTC (d). Rainfall

650

651

652