

No changes in diffusion-weighted imaging-Alberta Stroke Program Early Computed Tomography score from before to after mechanical thrombectomy for anterior circulation occlusion are associated with good outcomes

Hiroaki Hashimoto, MD, Ph.D^{a, b*}, Tomoyuki Maruo, MD, Ph.D^a, Yuki Kimoto, MD^a, Masami

Nakamura, MD^a, Takahiro Fujinaga, MD^a, Hajime Nakamura, MD, Ph.D^c, Yukitaka Ushio, MD,

Ph.D^a

^a *Department of Neurosurgery, Otemae Hospital, Osaka, Osaka 540–0008, Japan*

^b *Department of Neurological Diagnosis and Restoration, Graduate School of Medicine, Osaka University, Suita, Osaka 565–0871, Japan*

^c *Department of Neurosurgery, Graduate School of Medicine, Osaka University, Suita, Osaka 565–0871, Japan*

Short title: No changes in DWI-ASPECTS from before to after MT

*Hiroaki Hashimoto

Neurosurgeon/Medical staff, Department of Neurosurgery, Otemae Hospital, Osaka, 540–0008, Japan

Corresponding Author's Email:h-hashimoto1986@otemae.gr.jp

Tel: +81-6-6941-0484, Fax:+81-6-6942-2848

Abstract

Background

Although preoperative diffusion-weighted imaging-Alberta Stroke Program Early Computed Tomography Score (DWI-ASPECTS) is well known as a predictor of outcomes after mechanical thrombectomy (MT) for large-vessel occlusion (LVO), assessment of changes in DWI-ASPECT from before to after MT is rare. Therefore, we clarified the relationship between the change in DWI-ASPECTS and clinical outcomes.

Methods

In this retrospective single-center study, we enrolled 63 cases of anterior LVOs treated with MT between April 2015 and March 2022. Preoperative and postoperative DWI-ASPECTSs were calculated. DWI-ASPECTSs were categorized into cortical-ASPECTSs (c-ASPECTSs) and subcortical ASPECTSs and assessed. Additionally, medical variables related to patients, such as sex, age, National Institutes of Health Stroke Scale (NIHSS) score, and premorbid modified Rankin Scale (mRS) score, were evaluated. A good outcome was defined as an mRS score of 0 or 2 at 3 months.

Results

Forty-five patients met the inclusion criteria. Among the patients, 9 (20%) had a good outcome. The good outcome group showed significantly higher postoperative DWI-ASPECTs (median 8 vs. 5, $p = 0.012$) and c-ASPECTs (median 4 vs. 3, $p = 0.020$) than the not-good outcome group. No changes in DWI-ASPECTs and c-ASPECTs from before to after MT were significantly associated with the good outcome ($p = 0.017$, $p = 0.016$, respectively). The cut-off values for the good outcome on receiver operating characteristic curve analysis for differences between DWI-ASPECTs and c-ASPECTs was 0 [area under the curve (AUC) 0.77, sensitivity 0.67, specificity 0.78] and 0 [AUC 0.74, sensitivity 0.44, specificity 1.00]. Logistic regression analyses showed that baseline NIHSS score (odds ratio, 0.69; 95% confidence interval 0.48–1.00; $p = 0.046$) and postoperative DWI-ASPECTs (odds ratio, 2.27; 95% confidence interval 1.02–5.04; $p = 0.039$) were independent factors for the good outcome.

Conclusions

The good outcome of patients with anterior LVO was not associated with any changes in DWI-ASPECTs and c-ASPECTs from before to after MT.

Key Words: Postoperative DWI-ASPECTS, DWI lesion volume, large-vessel occlusion, good outcome, stroke

Non-standard Abbreviations and Acronyms

ASPECTS, Alberta Stroke Program Early Computed Tomography Score; CCA, common carotid artery; DWI, diffusion-weighted imaging; ICA, internal carotid artery; IQR, interquartile range; MCA, middle cerebral artery; mRS, modified Rankin Scale; mTICI, modified Thrombolysis in Cerebral Infarction; NIHSS, National Institutes of Health Stroke Scale; SAH, subarachnoid hemorrhage; tPA, tissue plasminogen activator.

Introduction

Diffusion-weighted imaging (DWI)-Alberta Stroke Program Early Computed Tomography Score (ASPECTS) and DWI lesion volume (Vol_{DWI}) are negatively correlated^{1,2}, and in acute ischemic stroke (AIS) with large-vessel occlusion (LVO), DWI-ASPECTS 4 and Vol_{DWI} 71 mL were suggested as cut-off values for the prediction of a poor outcome³. Previous studies reported that mechanical thrombectomy (MT) was effective for LVO patients who were within 6–12 hours from the onset and showed ASPECTS ≥ 6 or 7/DWI-ASPECTS ≥ 6 ⁴⁻⁸, and recently, DAWN⁹ and DEFUSE 3¹⁰ trials suggested that even in LVO over 6 hours from the onset, MT was effective for patients whose ischemic core volume was less than 51 mL or 70 mL, respectively. Therefore, tissue-based evaluation of AIS is indispensable for the optimal indication of MT, and the correlation between ASPECTS and ischemic core volume was fair¹¹. Therefore, high ASPECTS/DWI-ASPECTS is reported to be a predictor of good outcomes among patients undergoing MT^{5,7,12}. In the American Heart Association (AHA)/American Stroke Association (ASA) guideline, MT is recommended for AIS-LVO based hours of symptom onset and ASPECTS, and MT is not recommended in AIS-LVO with ASPECTS < 6 ¹³. At our institution, MT has been chosen according to the guidelines, expecting good results. Unfortunately, although we adhered to these guidelines, some AIS patients undergoing MT showed poor outcomes. Additionally, we have frequently experienced DWI-ASPECTS worsening from before to after MT. Therefore, many studies focused on DWI-ASPECTS before MT to reveal factors to predict good or poor outcomes and to help physicians select AIS-LVO patients

who would benefit from MT ^{11,14-20}. However, studies investigating DWI-ASPECTS after MT are few, and it remains unclear how changing DWI-ASPECTS from before to after MT relates to the outcomes of AIS patients undergoing MT.

In this study, we enrolled patients with anterior circulation occlusion-related AIS who had MT treatment to clarify factors related to good outcomes after MT by investigating changes in DWI-ASPECTSs from before to after MT. Prediction of outcomes after MT is crucial for physicians to plan the treatment and rehabilitation for AIS patients.

Methods

Patients and study setting

In this retrospective study, we enrolled patients who underwent MT because of AIS at Otemae Hospital between April 2015 and March 2022. We referred to the AHA/ASA guideline ¹³, and the following criteria for patient enrollment were set: (1) underwent magnetic resonance imaging (MRI) both before and after MT and completion of postoperative MRI within 21 postoperative days; (2) occlusion of anterior circulation including common carotid artery (CCA), internal carotid artery (ICA), M1 and M2 segments of the middle cerebral artery (MCA); (3) MT within 24 hours of AIS onset; (4) preoperative DWI-ASPECTS ≥ 6 or preoperative DWI-ASPECTS < 6 within 6 hours of AIS onset; (5) patients with clinical outcomes obtained at 3 months after onset. If the symptom onset was unknown, the onset was defined as the time when patients were last known to be in wellness. The Ethics

Committee of the Otemae Hospital (Osaka, Japan, approval no. CT210421002) gave the ethical approval for this work, and it was conducted following the Declaration of Helsinki guidelines for experiments involving humans. Informed consent was obtained using the opt-out method from our center's website because of the retrospective and noninvasive nature of the study.

Data collection

We retrospectively collected and evaluated medical variables related to patients [sex, age, National Institutes of Health Stroke Scale (NIHSS) score²¹, and premorbid modified Rankin Scale (mRS) score²²]. Imaging findings (laterality of AIS and arterial occlusion site), treatment details [retrieval attempts, onset to reperfusion time, modified Thrombolysis in Cerebral Infarction (mTICI) scale grade, and combination with tissue plasminogen activator (tPA)], and outcomes [mRS score three months after onset, hemorrhagic infarction, and subarachnoid hemorrhage (SAH)] were included. We defined a good outcome as an mRS score 0 to 2 at 3 months²³ and successful reperfusion after MT as mTICI grade 2b or 3²⁴. Two stroke specialists certified by the Japan Stroke Society independently evaluated DWI-ASPECTS (H.H. and T.M.). The DWI-ASPECTS was categorized into subcortical ASPECTS (sc-ASPECTS) with five structures (the caudate, lentiform nucleus, internal capsule, insular ribbon, and white matter) and cortical ASPECTS (c-ASPECTS) with six structures in MCA cortical regions²³. For quantitative assessment of Vol_{DWI} , Digital Imaging and Communications in Medicine (DICOM) DWI-MRI data were imported to MATLAB R2020b (MathWorks, Natick, MA, USA), and

lesions identified by DWI were segmented manually using the image segmenter app in MATLAB (<https://www.mathworks.com/help/images/ref/imagesegmenter-app.html>). These procedures enabled us to calculate Vol_{DWI} .

Statistical analyses

Categorical data and continuous variables are presented as patients (percentages) or median (interquartile range (IQR)), respectively. Clinical differences between the good and not-good outcome groups were assessed using the chi-squared test for categorical variables. The two-tailed Wilcoxon rank-sum test was used for continuous variables. The correlation coefficient was calculated using Spearman correlation analysis. The receiver operating characteristic (ROC) curve was used to perform the sensitivity and specificity. The cut-off value (COV) was defined as the maximal Youden index (sensitivity + specificity – 1). A logistic regression model was used to calculate the odds ratios (OR) with 95% confidence intervals (CIs). The significance level was 0.05. All statistical analyses were performed using the Statistical and Machine Learning Toolbox of MATLAB R2020b (MathWorks, Natick, MA, USA).

Data availability

All data in this study are available from the corresponding authors upon reasonable request and after additional ethics approval.

Results

Baseline characteristics

Forty-five patients fulfilled the inclusion criteria of the 63 patients treated within the study period. The median (IQR) age was 76 years (62–86), and 47% were females. The frequency of preoperative DWI-ASPECTS < 6 was 7 (16%). The rate of good clinical outcomes was 20% (9/45 patients). Successful reperfusion, defined as mTICI grade 2b or 3, was achieved in 82%. Table 1 indicates the baseline characteristics, procedural variables, and complications between the good and not-good outcome groups. No significant differences were noted between the two groups regarding the sex distribution, premorbid mRS score, laterality, arterial occlusion site, retrieval attempts, onset to reperfusion time, mTICI grade, combination with tPA therapy, frequency of preoperative DWI-ASPECTS < 6, and incidence of SAH. However, in the good outcome group, the age and NIHSS scores were significantly lower than those in the not-good outcome group ($p = 0.00097$ and 0.00016 , respectively: Wilcoxon rank-sum test). Additionally, the percentage of good outcomes in hemorrhagic infarctions was statistically lower than that in no hemorrhagic infarctions (8% vs. 33%, $p = 0.036$: chi-squared test).

DWI-ASPECTS and Vol_{DWI}

There were significant negative correlations between DWI-ASPECTS and Vol_{DWI} before (correlation coefficients; -0.88 , $p = 1.8 \times 10^{-15}$) and after MT (correlation coefficients; -0.86 , $p = 2.6 \times 10^{-14}$).

Figure 1 indicates the box-and-whisker plot between DWI-ASPECTS and Vol_{DWI} before and after MT.

In the preoperation and postoperation, all Vol_{DWI} of DWI-ASPECTS ≥ 7 was less than 70 mL.

Preoperative DWI-ASPECTS ≥ 6 showed uneven distribution; however, in postoperation,

DWI-ASPECTS < 6 increased. In preoperation, DWI-ASPECTS, c-ASPECTS, and Vol_{DWI} values

showed no significant differences between the good and not-good outcome groups (Table 2). However,

postoperative DWI-ASPECTS and c-ASPECTS were significantly higher in the good outcome group

than in the not-good outcome group ($p = 0.012$ and 0.020 , respectively: Wilcoxon rank-sum test), and

postoperative Vol_{DWI} was significantly lower in the good outcome group than in the not-good outcome

group ($p = 0.0057$, Wilcoxon rank-sum test).

Next, we evaluated the differences between preoperative and postoperative values. In the good

outcome group, the difference obtained from the preoperative minus the postoperative

DWI-ASPECTS and c-ASPECTS was significantly lower than that in the not-good outcome group (p

$= 0.011$ and 0.013 , respectively: Wilcoxon rank-sum test). Moreover, in no changing groups, both

DWI-ASPECTS and c-ASPECTS showed a significantly higher rate of a good outcome than

worsening groups ($p = 0.017$ and 0.016 , respectively: chi-squared test). The difference from the

postoperative Vol_{DWI} minus the preoperative Vol_{DWI} in the good outcome group was significantly

smaller than that in the not-good outcome group ($p = 0.00086$: Wilcoxon rank-sum test). Figure 2

indicates that the good outcome group showed no worsening of DWI-ASPECTS, c-ASPECTS, and Vol_{DWI} from preoperation to postoperation. Although the results of c-ASPECTS were similar to those of DWI-ASPECTS, results obtained from sc-ASPECTS showed no significance in preoperation, postoperation, and the difference. Additionally, we assessed the statistical difference between the no-changing group and the worsening group of c-ASPECTS (Supplementary Table 1). In the worsening group of c-ASPECTS, the baseline NIHSS and the retrieval attempts were significantly high ($p = 0.032$ and 0.045 , respectively, Wilcoxon rank-sum test).

Factors for a good outcome

Table 3 indicates that NIHSS and postoperative DWI-ASPECTS were independent factors for a good outcome (OR = 0.69; 95% CI, 0.48 – 1.00; $p = 0.046$, OR = 2.27; 95% CI, 1.02 – 5.04; $p = 0.039$, respectively), as revealed by multivariate logistic regression analysis.

ROC analysis

The COV of age and NIHSS by ROC curve analysis for predicting good outcomes was 75 years old (area under the curve (AUC) 0.87; sensitivity 0.72, specificity 0.89) and 13 (AUC 0.92; sensitivity 0.92, specificity 0.78), respectively (Figure 3a). The ROC curves obtained from DWI-ASPECTS and c-ASPECTS showed similarities. The COV obtained from the differences of DWI-ASPECTS and c-ASPECTS were 0 (AUC 0.77; sensitivity 0.67, specificity 0.78) and 0 (AUC 0.74; sensitivity 0.44,

specificity 1.00), respectively (Figure 3b and 3c). In Vol_{DWI} , ROC curves showed high performance; the COV of postoperation and difference was 20 mL (AUC 0.83; sensitivity 0.78, specificity 0.78), and 8 mL (AUC 0.88; sensitivity 0.69, specificity 1.00), respectively (Figure 3d).

Discussion

We hypothesized that an assessment of changing DWI-ASPECTS from preoperation to postoperation would enable us to reveal a novel insight for predicting the outcome of AIS after MT. We could show that the good outcome group showed statistically no-changing DWI-ASPECTS and c-ASPECTS from before to after MT. Postoperative DWI-ASPECTS and c-ASPECTS and their differences showed good performance for predicting good outcomes through ROC analyses. The cut-off values for predicting good outcomes were 75 years old for age, 13 for NIHSS, and 0 for differences of DWI-ASPECTS and c-ASPECTS. Logistic regression analyses showed that postoperative DWI-ASPECTS and NIHSS were independent predictive factors for a good outcome.

In our institute, the AHA/ASA Guideline¹³ was referred for selecting AIS patients to provide proper treatment. The guideline recommends MT to AIS because of anterior circulation LVO patients who show (1) pre-stroke mRS score of 0 to 1; (2) age ≥ 18 years; (3) NIHSS score of ≥ 6 ; and (4) ASPECTS of ≥ 6 . However, a low score of DWI-ASPECTS before MT was associated with poor

outcome¹⁴ and a high score of that associated with good outcome²⁰, and the ESCAPE and REVASCAT trial excluded AIS patients with ASPECTS <6–7 or DWI-ASPECTS <6^{5,8}. Thus, MT is not commonly recommended for large-volume AIS, and our results showed that DWI-ASPECTS <6 indicated zero percent of a good outcome. In this study, we set the inclusion criteria using preoperative DWI-ASPECTS. Our results showed no significant difference in preoperative DWI-ASPECTS between the good and not-good groups and that the median values of preoperative DWI-ASPECTS were over 6 scores. Our inclusion criteria that excluded the large volume AIS influenced these results, representing a selection bias.

Although preoperative DWI-ASPECTS has frequently been assessed as a factor for predicting outcomes after reperfusion therapy for AIS^{1,3,12,16,18,19,25-27}, studies investigating a relationship between the change in DWI-ASPECTS and reperfusion therapy for AIS are rare. The ischemic brain lesion extension on 24 hours was reported to be associated with the outcome of LVO-AIS¹⁶. Our ROC analyses could add a novel insight that no-changing of DWI-ASPECTS from before to after MT distinguished good outcomes from the not-good outcomes. Moreover, we showed that the performance of the ROC curves in DWI-ASPECTS was similar to that in c-ASPECTS and that no change in c-ASPECTS was associated with a good outcome. A previous study showed a strong correlation between high c-ASPECTS and good outcomes in LVO-AIS, such as ASPECTS < 6²³. Therefore, while this study indicated that postoperative DWI-ASPECTS and c-ASPECTS were associated with

outcomes, we inferred that a true factor influencing the outcome after MT was c-ASPECTS. We propose that if physicians experience a worsening of c-ASPECTS after MT, they should be careful of poor outcomes.

While accuracy for identifying AIS was higher in DWI than in computed tomography (CT)²⁸, initial CT alone was reported to be non-inferior to initial CT plus additional MRI concerning outcomes²⁹. Moreover, since we showed that postoperative DWI-ASPECTS could distinguish good outcomes from not-good outcomes, we think an MRI examination before MT could be skipped to shorten the time from examination to treatment.

Recently, several studies demonstrated that MT was effective for even large-volume ischemic strokes, such as preoperative ASPECTS ≤ 5 ²³/DWI-ASPECTS ≤ 5 ^{25,30}. However, in large ischemic core stroke, older age²⁵ and large Vol_{DWI}²⁵ was associated with poor outcomes, and successful recanalization^{25,30-32} was associated with a good outcome. Moreover, even at ASPECTS <6, high c-ASPECTS were reported to be a positive factor for good outcomes²³. Therefore, in our institute, even though patients showed large ischemic volumes such as DWI-ASPECT <6, we treated them by MT to realize successful recanalization. However, while we could achieve approximately 80% successful recanalization in this study, no patients showed good outcomes in preoperative DWI-ASPECTS <6.

According to our results, the age of the not-good outcome group was significantly higher than that of the good outcome group. Patients aged ≥ 80 years after MT had worse functional outcomes and showed a lower percentage of successful recanalization³³. However, studies between 2017 and 2019 indicated better outcomes even in older patients³³, and the efficacy of MT for patients aged ≥ 80 years over standard care was demonstrated^{15,34}. A small infarct core and low NIHSS were associated with good outcomes in patients over 80 years of age²⁰. Although the efficacy of MT for AIS patients with low NIHSS scores is controversial, NIHSS was reported as a factor associated with outcomes after MT¹⁶. A low NIHSS score was related to successful recanalization³⁵. We also showed that NIHSS was an independent factor for predicting good outcomes by the multivariate logistic regression analysis. Another factor related to the outcome after MT was the first-pass effect of MT, which is related to a favorable outcome³⁶. A previous study indicated that the first three retrieval attempts were associated with improved clinical outcomes³⁷. Our study could achieve less than three retrieval attempts in both the good and not-good outcome groups.

We demonstrated a strong negative correlation between DWI-ASPECTS and Vol_{DWI} . All patients with DWI-ASPECTS ≥ 7 , both preoperation and postoperation, had $Vol_{DWI} < 70$ mL, in concordance with a previous study¹. Additionally, ASPECTS correlated with ischemic core volume¹¹, and Vol_{DWI} correlated strongly with final infarct volume²⁸. Therefore, DWI-ASPECTS and Vol_{DWI} are

well-known factors related to the outcome of reperfusion therapy^{3,19,27}. We added new results that both preoperative and postoperative DWI-ASPECTS ≥ 7 may be reliable surrogates of Vol_{DWI} <70 mL.

Regarding sites of occlusion arteries, the M2 segment of MCA was assessed by MR CLEAN³⁸, ESCAPE⁵, EXTEND-IA⁶, and SWIFT PRIME⁷ and was not assessed by REVASCAT⁸, DAWN⁹, and DEFUSE3¹⁰. Although the efficacy of MT for the M2 segment has been unclear¹⁵, some studies showed the effectiveness of MT for LVO of the M2 segment³⁹⁻⁴². AIS attributed to the M2 segment of the MCA is known as medium vessel occlusion (MeVO)⁴³. While randomized studies have proven the safety and efficacy of MT for LVO^{5-8,38}, MT for MeVO has had no high-level evidence. However, since MeVO was observed in 25%–40% AIS⁴⁴ and showed substantial morbidity and the safety and efficacy of MT for MeVO have been presented^{45,46}, MT is increasingly performed for AIS-MeVO⁴⁷ in actual clinical situations. Therefore, our study included M2 occlusion, and there was no significant difference in arterial occlusion site, while a low percentage of the good outcome was observed in the M2 occlusion.

This study has some limitations. First, a small amount of our data was retrospectively collected from a single center. No control group treated with conventional medical care was enrolled, and the study was nonrandomized. Second, we focused on only AIS because of the anterior circulation occlusion, including CCA, ICA, M1, and M2 segments. Therefore, our findings could not be applied to AIS

because of the posterior circulation occlusion. Third, we defined MRI obtained within 21 postoperation days as postoperative MRI. The number 21 was decided by our empirical experience, and it remains unclear how long after MT was useful for predicting outcomes. Finally, we did not measure the volume of the ischemic penumbra area before MT. While we revealed that the worsening of the c-ASPECTS group showed a statistically high score of NIHSS, it is possible that the worsening of c-ASPECTS is associated with the volume of the ischemic penumbra area because the volume of DWI-MRI and perfusion-weighted MRI correlated positively with NIHSS score⁴⁸.

In conclusion, an assessment of changes in DWI-ASPECTS from before to after MT revealed that the good outcome group showed no change in DWI-ASPECTS and c-ASPECTS. The independent factors for predicting a good outcome after MT were low NIHSS and high postoperative DWI-ASPECTS. The cut-off values for a good outcome were 75 years old, NIHSS of 13, and a difference in DWI-ASPECTS of 0.

Acknowledgments

We want to thank Dr. Masayuki Hirata at the Department of Neurological Diagnosis and Restoration at the Graduate School of Medicine, Osaka University, for his technical support and Dr. Haruhiko Kishima at the Department of Neurosurgery at Osaka University for his comment.

Author Contributions

HH conceived this study, collected the data, created the MATLAB program, analyzed the data, created all figures, and was primarily responsible for writing the manuscript. HH, TM, and HN discussed the interpretation of the results. TM supervised the study. All authors reviewed the manuscript.

Sources of Funding

The Japan Society for the Promotion of Science (JSPS) KAKENHI [JP21K16629 (Hiroaki Hashimoto)] supported this work.

Disclosures

The authors report no relevant financial or non-financial interests to disclose.

Supplemental Material

Table S1

References

1. de Margerie-Mellon C, Turc G, Tisserand M, Naggara O, Calvet D, Legrand L, Meder J-F, Mas J-L, Baron J-C, Oppenheim C. Can DWI-ASPECTS substitute for lesion volume in acute stroke? *Stroke*. 2013;44:3565-3567.
2. Schröder J, Cheng B, Ebinger M, Köhrmann M, Wu O, Kang D-W, Liebeskind DS, Tourdias T, Singer OC, Christensen S, et al. Validity of Acute Stroke Lesion Volume Estimation by Diffusion-Weighted Imaging; Alberta Stroke Program Early Computed Tomographic Score Depends on Lesion Location in 496 Patients With Middle Cerebral Artery Stroke. *Stroke*. 2014;45:3583-3588. doi: doi:10.1161/STROKEAHA.114.006694
3. Yoshimoto T, Inoue M, Yamagami H, Fujita K, Tanaka K, Ando D, Sonoda K, Kamogawa N, Koga M, Ihara M. Use of Diffusion-Weighted Imaging- Alberta Stroke Program Early Computed Tomography Score (DWI-ASPECTS) and Ischemic Core Volume to Determine the Malignant Profile in Acute Stroke. *J Am Heart Assoc*. 2019;8:e012558.
4. Yoo AJ, Berkhemer OA, Franssen PS, van den Berg LA, Beumer D, Lingsma HF, Schonewille WJ, Sprengers ME, van den Berg R, van Walderveen MA. Effect of baseline Alberta Stroke Program Early CT Score on safety and efficacy of intra-arterial treatment: a subgroup analysis of a randomised phase 3 trial (MR CLEAN). *Lancet Neurol*. 2016;15:685-694.
5. Goyal M, Demchuk AM, Menon BK, Eesa M, Rempel JL, Thornton J, Roy D, Jovin TG, Willinsky RA, Sapkota BL. Randomized assessment of rapid endovascular treatment of ischemic stroke. *N Engl J Med*. 2015;372:1019-1030.
6. Campbell BC, Mitchell PJ, Kleinig TJ, Dewey HM, Churilov L, Yassi N, Yan B, Dowling RJ, Parsons MW, Oxley TJ. Endovascular therapy for ischemic stroke with perfusion-imaging selection. *N Engl J Med*. 2015;372:1009-1018.
7. Saver JL, Goyal M, Bonafe A, Diener H-C, Levy EI, Pereira VM, Albers GW, Cognard C, Cohen DJ, Hacke W. Stent-retriever thrombectomy after intravenous t-PA vs. t-PA alone in stroke. *N Engl J Med*. 2015;372:2285-2295.
8. Jovin TG, Chamorro A, Cobo E, de Miquel MA, Molina CA, Rovira A, San Román L, Serena J, Abilleira S, Ribó M. Thrombectomy within 8 hours after symptom onset in ischemic stroke. *N Engl J Med*. 2015;372:2296-2306.
9. Nogueira RG, Jadhav AP, Haussen DC, Bonafe A, Budzik RF, Bhuva P, Yavagal DR, Ribo M, Cognard C, Hanel RA. Thrombectomy 6 to 24 hours after stroke with a mismatch between deficit and infarct. *N Engl J Med*. 2018;378:11-21.
10. Albers GW, Marks MP, Kemp S, Christensen S, Tsai JP, Ortega-Gutierrez S, McTaggart RA, Torbey MT, Kim-Tenser M, Leslie-Mazwi T. Thrombectomy for stroke at 6 to 16 hours with selection by perfusion imaging. *N Engl J Med*. 2018;378:708-718.
11. Haussen DC, Dehkharghani S, Rangaraju S, Rebello LC, Bousslama M, Grossberg JA, Anderson A, Belagaje S, Frankel M, Nogueira RG. Automated CT Perfusion Ischemic Core

- Volume and Noncontrast CT ASPECTS (Alberta Stroke Program Early CT Score) Correlation and Clinical Outcome Prediction in Large Vessel Stroke. *Stroke*. 2016;47:2318-2322.
12. Inoue M, Olivot J-M, Labreuche J, Mlynash M, Tai W, Albucher J-F, Meseguer E, Amarenco P, Mazighi M. Impact of Diffusion-Weighted Imaging Alberta Stroke Program Early Computed Tomography Score on the Success of Endovascular Reperfusion Therapy. *Stroke*. 2014;45:1992-1998. doi: doi:10.1161/STROKEAHA.114.005084
 13. Powers WJ, Rabinstein AA, Ackerson T, Adeoye OM, Bambakidis NC, Becker K, Biller J, Brown M, Demaerschalk BM, Hoh B. Guidelines for the early management of patients with acute ischemic stroke: 2019 update to the 2018 guidelines for the early management of acute ischemic stroke: a guideline for healthcare professionals from the American Heart Association/American Stroke Association. *Stroke*. 2019;50:e344-e418.
 14. Ohta T, Morimoto M, Okada K, Fukuda M, Onishi H, Masahira N, Matsuoka T, Tsuno T, Takemura M. Mechanical thrombectomy in anterior circulation occlusion could be more effective than medical management even in low DWI-ASPECTS patients. *Neurol Med-Chir*. 2018:oa. 2017-0203.
 15. Goyal M, Menon BK, van Zwam WH, Dippel DW, Mitchell PJ, Demchuk AM, Dávalos A, Majoie CB, van der Lugt A, De Miquel MA. Endovascular thrombectomy after large-vessel ischaemic stroke: a meta-analysis of individual patient data from five randomised trials. *Lancet*. 2016;387:1723-1731.
 16. Costalat V, Lobotesis K, Machi P, Mourand I, Maldonado I, Heroum C, Vendrell J, Milhaud D, Riquelme C, Bonafé A. Prognostic factors related to clinical outcome following thrombectomy in ischemic stroke (RECAST study). 50 patients prospective study. *Eur J Radiol*. 2012;81:4075-4082.
 17. Olive Gadea M, Martins N, Boned S, Carvajal J, Moreno MJ, Muchada M, Molina CA, Tomasello A, Ribo M, Rubiera M. Baseline ASPECTS and eASPECTS correlation with infarct volume and functional outcome in patients undergoing mechanical thrombectomy. *J Neuroimaging*. 2019;29:198-202.
 18. Danière F, Lobotesis K, Machi P, Eker O, Mourand I, Riquelme C, Aygnac X, Vendrell J, Gascou G, Fendeleur J. Patient selection for stroke endovascular therapy—DWI-ASPECTS thresholds should vary among age groups: insights from the RECAST study. *Am J Neuroradiol*. 2015;36:32-39.
 19. Singer OC, Kurre W, Humpich MC, Lorenz MW, Kastrup A, Liebeskind DS, Thomalla G, Fiehler J, Berkefeld J, Neumann-Haefelin T. Risk assessment of symptomatic intracerebral hemorrhage after thrombolysis using DWI-ASPECTS. *Stroke*. 2009;40:2743-2748.
 20. Barral M, Lassalle L, Dargazanli C, Mazighi M, Redjem H, Blanc R, Rodesch G, Lapergue B, Piotin M. Predictors of favorable outcome after mechanical thrombectomy for anterior circulation acute ischemic stroke in octogenarians. *J Neuroradiology*. 2018;45:211-216.

21. Meyer BC, Hemmen TM, Jackson CM, Lyden PD. Modified National Institutes of Health Stroke Scale for Use in Stroke Clinical Trials. *Stroke*. 2002;33:1261-1266. doi: doi:10.1161/01.STR.0000015625.87603.A7
22. Swieten JCv, Koudstaal PJ, Visser MC, Schouten HJ, Gijn Jv. Interobserver agreement for the assessment of handicap in stroke patients. *Stroke*. 1988;19:604-607. doi: doi:10.1161/01.STR.19.5.604
23. Xing P-f, Zhang Y-w, Zhang L, Li Z-f, Shen H-j, Zhang Y-x, Li H, Hua W-l, Liu P, Liu P, et al. Higher Baseline Cortical Score Predicts Good Outcome in Patients With Low Alberta Stroke Program Early Computed Tomography Score Treated with Endovascular Treatment. *Neurosurgery*. 2021;88:612-618. doi: 10.1093/neuros/nyaa472
24. Zaidat OO, Yoo AJ, Khatri P, Tomsick TA, Kummer Rv, Saver JL, Marks MP, Prabhakaran S, Kallmes DF, Fitzsimmons B-FM, et al. Recommendations on Angiographic Revascularization Grading Standards for Acute Ischemic Stroke. *Stroke*. 2013;44:2650-2663. doi: doi:10.1161/STROKEAHA.113.001972
25. Panni P, Gory B, Xie Y, Consoli A, Desilles J-P, Mazighi M, Labreuche J, Piotin M, Turjman F, Eker OF, et al. Acute Stroke With Large Ischemic Core Treated by Thrombectomy. *Stroke*. 2019;50:1164-1171. doi: doi:10.1161/STROKEAHA.118.024295
26. Terasawa Y, Kimura K, Iguchi Y, Kobayashi K, Aoki J, Shibazaki K, Kaji R. Could clinical diffusion-mismatch determined using DWI ASPECTS predict neurological improvement after thrombolysis before 3 h after acute stroke? *J Neurol Neurosur Ps*. 2010;81:864-868.
27. Aoki J, Kimura K, Shibazaki K, Sakamoto Y. DWI-ASPECTS as a predictor of dramatic recovery after intravenous recombinant tissue plasminogen activator administration in patients with middle cerebral artery occlusion. *Stroke*. 2013;44:534-537.
28. Lansberg MG, Albers GW, Beaulieu C, Marks MP. Comparison of diffusion-weighted MRI and CT in acute stroke. *Neurology*. 2000;54:1557-1561.
29. Frade HC, Wilson SE, Beckwith A, Powers WJ. Comparison of outcomes of ischemic stroke initially imaged with cranial computed tomography alone vs computed tomography plus magnetic resonance imaging. *JAMA Netw*. 2022;5:e2219416-e2219416.
30. Manceau PF, Soize S, Gawlitza M, Fabre Ga, Bakchine S, Durot C, Serre I, Metaxas GE, Pierot L. Is there a benefit of mechanical thrombectomy in patients with large stroke (DWI-ASPECTS \leq 5)? *Eur J Neurol*. 2018;25:105-110.
31. Desilles J-P, Consoli A, Redjem H, Coskun O, Ciccio G, Smajda S, Labreuche J, Preda C, Ruiz Guerrero C, Decroix J-P. Successful reperfusion with mechanical thrombectomy is associated with reduced disability and mortality in patients with pretreatment diffusion-weighted imaging-alberta Stroke Program Early Computed Tomography Score \leq 6. *Stroke*. 2017;48:963-969.

32. Cagnazzo F, Derraz I, Dargazanli C, Lefevre P-H, Gascou G, Riquelme C, Bonafe A, Costalat V. Mechanical thrombectomy in patients with acute ischemic stroke and ASPECTS \leq 6: a meta-analysis. *J Neurointerv Surg*. 2020;12:350-355.
33. Zhao W, Ma P, Zhang P, Yue X. Mechanical thrombectomy for acute ischemic stroke in octogenarians: a systematic review and meta-analysis. *Front Neurol*. 2020;10:1355.
34. Campbell BC, Hill MD, Rubiera M, Menon BK, Demchuk A, Donnan GA, Roy D, Thornton J, Dorado L, Bonafe A. Safety and efficacy of solitaire stent thrombectomy: individual patient data meta-analysis of randomized trials. *Stroke*. 2016;47:798-806.
35. Aoki J, Suzuki K, Kanamaru T, Kutsuna A, Katano T, Takayama Y, Nishi Y, Takeshi Y, Nakagami T, Numao S. Association between initial NIHSS score and recanalization rate after endovascular thrombectomy. *J Neurol Sci*. 2019;403:127-132.
36. Nikoubashman O, Dekeyser S, Riabikin A, Keulers A, Reich A, Mpotsaris A, Wiesmann M. True First-Pass Effect. *Stroke*. 2019;50:2140-2146. doi:doi:10.1161/STROKEAHA.119.025148
37. Flottmann F, Brekenfeld C, Broocks G, Leischner H, McDonough R, Faizy TD, Deb-Chatterji M, Alegiani A, Thomalla G, Mpotsaris A. Good clinical outcome decreases with number of retrieval attempts in stroke thrombectomy: beyond the first-pass effect. *Stroke*. 2021;52:482-490.
38. Berkhemer OA, Fransen PS, Beumer D, Van Den Berg LA, Lingsma HF, Yoo AJ, Schonewille WJ, Vos JA, Nederkoorn PJ, Wermer MJ. A randomized trial of intraarterial treatment for acute ischemic stroke. *N Engl J Med*. 2015;372:11-20.
39. Sarraj A, Sangha N, Hussain MS, Wisco D, Vora N, Elijovich L, Goyal N, Abraham M, Mittal M, Feng L. Endovascular therapy for acute ischemic stroke with occlusion of the middle cerebral artery M2 segment. *JAMA Neurol*. 2016;73:1291-1296.
40. Sweid A, Head J, Tjoumakaris S, Xu V, Shivashankar K, Alexander TD, Dougherty JA, Gooch MR, Herial N, Hasan D. Mechanical thrombectomy in distal vessels: revascularization rates, complications, and functional outcome. *World Neurosurg*. 2019;130:e1098-e1104.
41. Menon BK, Hill MD, Davalos A, Roos YB, Campbell BC, Dippel DW, Guillemin F, Saver JL, van der Lugt A, Demchuk AM. Efficacy of endovascular thrombectomy in patients with M2 segment middle cerebral artery occlusions: meta-analysis of data from the HERMES Collaboration. *J Neurointerv Surg*. 2019;11:1065-1069.
42. Wang J, Qian J, Fan L, Wang Y. Efficacy and safety of mechanical thrombectomy for M2 segment of middle cerebral artery: a systematic review and meta-analysis. *J Neurol*. 2021;268:2346-2354.
43. Ospel JM, Menon BK, Demchuk AM, Almekhlafi MA, Kashani N, Mayank A, Fainardi E, Rubiera M, Khaw A, Shankar JJ. Clinical course of acute ischemic stroke due to medium vessel occlusion with and without intravenous alteplase treatment. *Stroke*. 2020;51:3232-3240.

44. Saver JL, Chapot R, Agid R, Hassan AE, Jadhav AP, Liebeskind DS, Lobotesis K, Meila D, Meyer L, Raphaeli G, et al. Thrombectomy for Distal, Medium Vessel Occlusions. *Stroke*. 2020;51:2872-2884. doi: doi:10.1161/STROKEAHA.120.028956
45. Pérez-García C, Moreu M, Rosati S, Simal P, Egido JA, Gomez-Escalonilla C, Arrazola J. Mechanical Thrombectomy in Medium Vessel Occlusions. *Stroke*. 2020;51:3224-3231. doi: doi:10.1161/STROKEAHA.120.030815
46. Haussen DC, Al-Bayati AR, Eby B, Ravindran K, Rodrigues GM, Frankel MR, Nogueira RG. Blind exchange with mini-pinning technique for distal occlusion thrombectomy. *J Neurointerv Surg*. 2020;12:392-395.
47. Ospel JM, Goyal M. A review of endovascular treatment for medium vessel occlusion stroke. *J Neurointerv Surg*. 2021;13:623-630.
48. Tong D, Yenari M, Albers G, O'brien M, Marks M, Moseley M. Correlation of perfusion-and diffusion-weighted MRI with NIHSS score in acute (< 6.5 hour) ischemic stroke. *Neurology*. 1998;50:864-869.

Tables

Table. 1 Descriptive statistics regarding baseline, procedural, and outcome parameters.

Characteristics	Patients n (%)	Good outcome (% or IQR)	Not-Good outcome (% or IQR)	<i>p</i> -value
Sex				
Male	24 (53)	6 (25)	18 (75)	0.37
Female	21 (47)	3 (14)	18 (86)	
Age (years)		61 (49 – 71)	83 (76 – 89)	*0.00097
NIHSS		12 (6 – 14)	19 (17 – 22)	*0.00016
Premorbid mRS score		0 (0 – 1)	1 (0 – 3)	0.18
Laterality				
Left	25 (56)	4 (16)	21 (84)	0.45
Right	20 (44)	5 (25)	15 (75)	
Arterial occlusion site				
CCA + ICA + MCA-M1	32 (71)	8 (25)	24 (75)	0.19
MCA-M2	13 (29)	1 (8)	12 (92)	
Retrieval attempts		1 (1-3)	2 (1-2)	0.98
Onset to reperfusion time (hours)		8 (4-11)	5 (4-8)	0.25
mTICI grade				
2b + 3	37 (82)	7 (19)	30 (81)	0.70
Others	8 (18)	2 (25)	6 (75)	
tPA therapy				
Yes	18 (40)	2 (11)	16 (89)	0.22
No	27 (60)	7 (26)	20 (74)	
Preoperative DWI-ASPECTS				
≥6	38 (84)	9 (24)	29 (76)	0.15
<6	7 (16)	0 (0)	7 (100)	
Hemorrhagic infarction				
Yes	24 (53)	2 (8)	22 (92)	*0.036
No	21 (47)	7 (33)	14 (67)	
SAH				
Yes	13 (29)	1 (8)	12 (92)	0.19
No	32 (71)	8 (25)	24 (75)	

Patients (%) or median (IQR) are demonstrated for categorical data or continuous variables, respectively. *P* values were calculated using the chi-squared test for categorical variables and the Wilcoxon rank-sum test for continuous variables. Statistically significant *p* values are flagged with an asterisk.

ASPECTS indicates Alberta Stroke Program Early Computed Tomography Score; CCA, common carotid artery; DWI, diffusion-weighted imaging; ICA, internal carotid artery; IQR, interquartile range; MCA-M1, middle cerebral artery-M1 segment; MCA-M2, middle cerebral artery-M2 segment; mRS, modified Rankin Scale; mTICI, modified Thrombolysis in Cerebral Infarction; NIHSS, National Institutes of Health Stroke Scale; SAH, subarachnoid hemorrhage; and tPA, tissue plasminogen activator.

Table. 2 Pre- and postoperative DWI-ASPECTS

Characteristics	Patients n (%)	Good outcome (%)	Not-good outcome (%)	<i>p</i> -value
Days of postoperative MRI (days)		1 (1 – 6)	1 (1 – 5)	0.95
Preoperation				
DWI-ASPECTS		8 (7 – 9)	7 (6 – 9)	0.47
sc-ASPECTS		4 (3 – 4)	3 (2 – 4)	0.64
c-ASPECTS		4 (4 – 6)	5 (2 – 6)	0.56
Vol_{DWI} (mL)		9 (6.3 – 35.0)	27 (4.6 – 59.4)	0.31
Postoperation				
DWI-ASPECTS		8 (7 – 9)	5 (3 – 8)	*0.012
sc-ASPECTS		3 (3 – 4)	2 (1 – 4)	0.097
c-ASPECTS		4 (4 – 6)	3 (0 – 4)	*0.020
Vol_{DWI} (mL)		13 (6.8 – 23.4)	57 (21.8 – 123.2)	*0.0057
Differences				
Pre - Postoperative DWI-ASPECTS		0 (0 – 0)	1 (0 – 3)	*0.011
No changes (differences = 0)	16 (36)	6 (37.5)	10 (62.5)	*0.017
Worsening (differences > 0)	26 (58)	2 (8)	24 (92)	
Pre - Postoperative sc-ASPECTS		0 (0 – 0)	0 (0 – 1)	0.20
Pre - Postoperative c-ASPECTS		0 (0 – 0)	0 (0 – 2)	*0.013
No changes (differences = 0)	27 (60)	8 (30)	19 (70)	*0.016
Worsening (differences > 0)	16 (36)	0 (0)	16 (100)	
Post - Preoperative Vol_{DWI} (mL)		1 (-2.7 – 3.1)	18 (4.8 – 55.0)	*0.00086

Patients (%) or median (IQR) are demonstrated for categorical data or continuous variables, respectively. *P* values were calculated using the chi-squared test for categorical variables and the Wilcoxon rank-sum test for continuous variables. Statistically significant *p* values are flagged with an asterisk.

ASPECTS indicates Alberta Stroke Program Early Computed Tomography Score; c-ASPECTS, cortical ASPECTS; DWI, diffusion-weighted imaging; IQR, interquartile range; MRI, magnetic resonance imaging; sc-ASPECTS, subcortical ASPECTS; and Vol_{DWI}, DWI lesion volume.

Table. 3 Multivariate logistic regression analysis for predictors of good outcomes (mRS 0 to 2).

Characteristics	OR (95% CI)	<i>p</i>-value
Age (years)	0.91 (0.81 – 1.01)	0.077
NIHSS	0.69 (0.48 – 1.00)	*0.046
Postoperative DWI-ASPECTS	2.27 (1.02 – 5.04)	*0.039

Statistically significant *p* values are flagged with an asterisk.

ASPECTS indicates Alberta Stroke Program Early Computed Tomography Score; CI, confidence interval; DWI, diffusion-weighted imaging; NIHSS, National Institutes of Health Stroke Scale; and OR, odds ratio

Figure Legends

Fig. 1 Box-and-whisker plot of DWI-ASPECTS and DWI lesion volume (Vol_{DWI})

a. Values at preoperation. b. Values at postoperation. Broken horizontal lines indicate 70 mL of Vol_{DWI} .

Boxes indicate interquartile range; whiskers, extreme values; horizontal lines in each box, median; and a circle, outlier.

DWI indicates diffusion-weighted imaging; and ASPECTS, Alberta Stroke Program Early Computed Tomography Score.

Fig. 2 Beeswarm plot between the good and not-good groups

The distribution patterns of differences between preoperation and postoperative values are shown.

Differences obtained from preoperation minus postoperative values were used in DWI-ASPECTS (a),

and c-ASPECTS (b). Differences obtained from postoperative minus preoperative values were used in

DWI lesion volumes (c).

ASPECTS indicates Alberta Stroke Program Early Computed Tomography Score; c-ASPECTS,

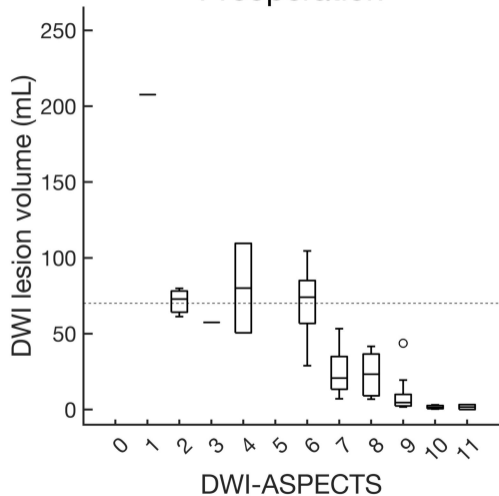
cortical ASPECTS; and DWI, diffusion-weighted imaging.

Fig. 3 Receiver operating characteristic (ROC) curves

ROC curves for predicting good outcomes (mRS: 0 or 2) are indicated and calculated from age and NIHSS (a), DWI-ASPECTS (b), c-ASPECTS (c), and Vol_{DWI} (d). Cut-off values (COV) and area under the curve (AUC) are shown.

ASPECTS indicates Alberta Stroke Program Early Computed Tomography Score; c-ASPECTS, cortical ASPECTS; Diff, differences; DWI, diffusion-weighted imaging; mRS, modified Rankin Scale; NIHSS, National Institutes of Health Stroke Scale; Post, postoperation; and Vol_{DWI}, DWI lesion volume.

a Preoperation



b Postoperation

