

1 **Title: Community carriage of ESBL-producing *Escherichia coli* and *Klebsiella***
2 ***pneumoniae*: A cross-sectional study of risk factors and comparative genomics of**
3 **carriage and clinical isolates**

4 **Authors:** Niclas Raffelsberger (ORCID 0000-0002-9463-8915)^{a,b*}, Dorota Julia Buczek
5 (ORCID 0000-0002-2282-6298)^b, Kristian Svendsen (ORCID 0000-0003-3481-3539)^c, Lars
6 Småbrekke (ORCID 0000-0001-6475-3368)^c, Anna Kaarina Pöntinen (ORCID 0000-0002-
7 3160-2042)^{d,e}, Iren H. Löhr (ORCID 0000-0002-8847-0044)^f, Lotte Leonore Eivindsdatter
8 Andreassen^a, Gunnar Skov Simonsen (ORCID 0000-0003-0043-7045)^{a,b}, Norwegian *E. coli*
9 ESBL Study Group^g, Arnfinn Sundsfjord (ORCID 0000-0002-3728-2270)^{b,d}, Kirsten
10 Gravningen (ORCID 0000-0002-8194-3208)^{a,h,i#}, Ørjan Samuelsen (ORCID 0000-0002-
11 5525-2614)^{c,d#}

12 ^a*Department of Microbiology and Infection Control, University Hospital of North Norway,*
13 *Tromsø, Norway*

14 ^b*Department of Medical Biology, Faculty of Health Sciences, UiT The Arctic University of*
15 *Norway, Tromsø, Norway*

16 ^c*Department of Pharmacy, Faculty of Health Sciences, UiT The Arctic University of Norway,*
17 *Tromsø, Norway*

18 ^d*Norwegian National Advisory Unit on Detection of Antimicrobial Resistance, Department of*
19 *Microbiology and Infection Control, University Hospital of North Norway, Tromsø, Norway*

20 ^e*Department of Biostatistics, University of Oslo, Oslo, Norway*

21 ^f*Department of Medical Microbiology, Stavanger University Hospital, Stavanger, Norway*

22 ^g*Collaborators forming the Norwegian E. coli ESBL Study Group are listed in the*
23 *Acknowledgement.*

24 ^h*Department of Microbiology and Infection Control, Akershus University Hospital,*
25 *Nordbyhagen, Norway*

26 ⁱ*Division of Medicine and Laboratory Sciences, Institute of Clinical Medicine, University of*
27 *Oslo, Oslo, Norway*

28 # equal contribution

29 *Corresponding author: Niclas Raffelsberger, Correspondence address: Department of
30 Microbiology and Infection Control, University Hospital of North Norway, N-9038 Tromsø,
31 Norway E-mail: niclas.raffelsberger@unn.no

32

33

34

35

36

37

38

39

40

41

42

43

44

45 **Abstract**

46 The global prevalence of infections caused by ESBL-producing Enterobacterales (ESBL-E) is
47 increasing and for *Escherichia coli* observations indicate that this is partly driven by
48 community-onset cases. The ESBL-E population structure in the community is scarcely
49 described and data on risk factors for carriage are conflicting. Here, we report the prevalence
50 and population structure of fecal ESBL-producing *E. coli* and *Klebsiella pneumoniae* (ESBL-
51 Ec/Kp) in a general adult population, examine risk factors, and compare carriage isolates with
52 contemporary clinical isolates.

53 Fecal samples obtained from 4999 participants (54% women) ≥ 40 years in the seventh survey
54 of the population-based Tromsø Study, Norway (2015-2016) were screened for ESBL-Ec/Kp.
55 In addition, we included 118 ESBL-Ec clinical isolates from the Norwegian surveillance
56 program in 2014. All isolates were whole-genome sequenced. Risk factors associated with
57 carriage were analyzed using multivariable logistic regression.

58 ESBL-Ec gastrointestinal carriage prevalence was 3.3% (95% CI 2.8-3.9%, no sex difference)
59 and 0.08% (0.02-0.20%) for ESBL-Kp. For ESBL-Ec, travel to Asia was the only
60 independent risk factor (AOR 3.47, 95% CI 2.18-5.51). *E. coli* ST131 was most prevalent in
61 both collections. However, the ST131 proportion was significantly lower in carriage (24%)
62 vs. clinical isolates (58%, $p < 0.001$). Carriage isolates were genetically more diverse with a
63 higher proportion of phylogroup A (26% vs. 5%, $p < 0.001$), indicating that ESBL gene
64 acquisition occurs in a variety of *E. coli* lineages colonizing the gut. STs commonly related to
65 extra-intestinal infections were more frequent in clinical isolates also carrying a higher
66 prevalence of antimicrobial resistance, which could indicate clone associated pathogenicity.

67 **Keywords:** *Escherichia coli*, *Klebsiella pneumoniae*, Extended-spectrum β -lactamase,
68 antimicrobial resistance, carriage, risk factors, general population, bacterial genomics

69 **Importance**

70 ESBL-producing *E. coli* (ESBL-Ec) and *K. pneumoniae* (ESBL-Kp) are major pathogens in
71 the global burden of antimicrobial resistance. However, there is a gap in knowledge
72 concerning the bacterial population structure of human ESBL-Ec/Kp carriage isolates in the
73 community. We have examined ESBL-Ec/Kp isolates from a population-based study and
74 compared these to contemporary clinical isolates. The large genetic diversity of carriage
75 isolates indicates frequent ESBL gene acquisition, while those causing invasive infections are
76 more clone dependent and associated with a higher prevalence of antibiotic resistance. The
77 knowledge of factors associated with ESBL carriage helps to identify patients at risk to
78 combat the spread of resistant bacteria within the healthcare system. Particularly, previous
79 travel to Asia stands out as a major risk factor for carriage and should be considered in
80 selecting empirical antibiotic treatment in critically ill patients.

81

82 **Introduction**

83 Extended spectrum β -lactamase (ESBL) producing *Escherichia coli* (ESBL-Ec) and
84 *Klebsiella pneumoniae* (ESBL-Kp) are major contributors to the global burden of disease due
85 to antibiotic resistant bacteria.¹ The prevalence of infections caused by ESBL-Ec or ESBL-Kp
86 is increasing, even in countries with low antibiotic use and availability on prescription only,
87 like Norway.² The mortality of invasive infections with ESBL-producing Enterobacterales
88 (ESBL-E) ranges from 10-35%, depending on bacterial species, host factors, severity of
89 disease and initial antibiotic therapy.^{3,4} Consequently, ESBL-Ec/Kp are high-priority
90 pathogens when developing new drugs to combat the threat from antibiotic resistant bacteria.⁵
91 ESBL-Ec/Kp colonization precedes invasive infections⁶⁻⁸ and recent reviews report an
92 increasing global prevalence of human ESBL-E carriage in the community, with an 8-fold rise
93 over the past two decades.^{9,10} The highest prevalence is detected in Asian and African regions
94 (20-70%), the lowest in Europe and the Americas (<10%).^{9,10} A study from the USA shows
95 that the increased incidence of ESBL-Ec infections was driven by an increase in community-
96 onset cases¹¹, and human-to-human transmission was the attributable source to 60% of
97 community-acquired gastrointestinal ESBL-Ec carriage in the Netherlands¹².

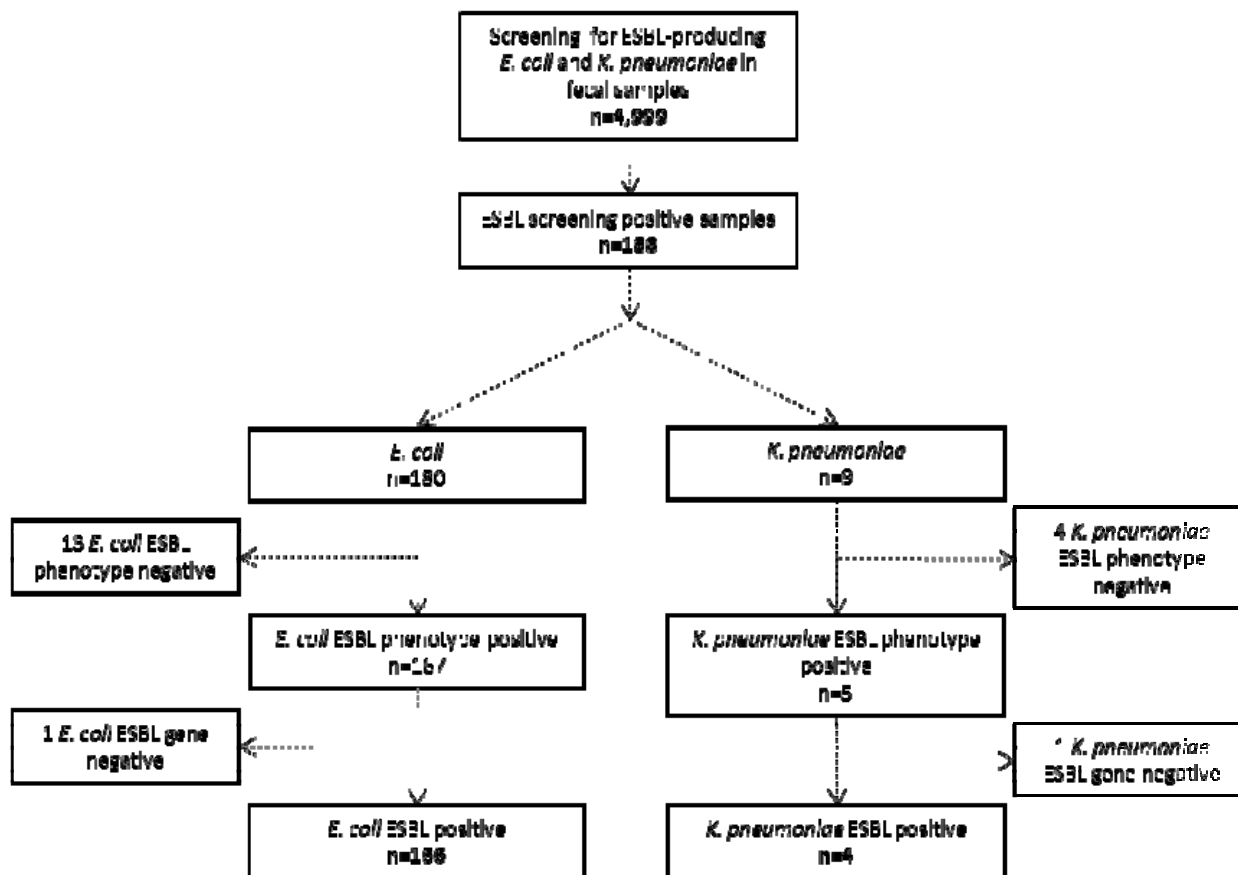
98 Several risk factors for ESBL-E gastrointestinal carriage have been described. However, these
99 have, with a few exceptions^{13,14}, mainly been investigated in small and/or selected study
100 populations, such as international travelers¹⁵, patients with gastroenteritis¹⁶, patients recruited
101 by general practitioners¹⁷, persons with recent healthcare contact¹⁸, pregnant women¹⁹,
102 children²⁰ or persons living in a livestock-dense area²¹. Many studies have identified
103 international travel as a risk factor for ESBL acquisition, whilst the significance of sex, age,
104 antibiotic or proton pump inhibitor use, hospitalization and diet are conflicting.^{13-15,17,18,22-24}

105 We have comprehensive knowledge of the prevalence and population structure of clinical
106 ESBL-E isolates showing a dominance of CTX-M-group ESBL enzymes and the association
107 with specific extraintestinal pathogenic *E. coli* (ExPEC) and multidrug-resistant *K.*
108 *pneumoniae* high-risk clones.²⁵⁻²⁸ Large-scale genomic studies have identified specific
109 subclades of *E. coli* sequence type (ST) 131 and *K. pneumoniae* ST307 as major contributors
110 to the increasing prevalence of ESBL infections.^{25,27,29,30} Community-based studies from the
111 Netherlands and Sweden also observed a predominance of ST131, but a high genetic diversity
112 within the ESBL-Ec population.^{13,14}

113 Improved knowledge of risk factors for ESBL-E carriage and their population structure in the
114 general human population may provide information for risk stratification and targeted
115 infection control measures. It is important to consider ESBL-E carriage in critically ill septic
116 patients with respect to the choice of empirical antibiotic treatment. The aims of this study
117 were to examine the prevalence of, and risk factors associated with, ESBL-Ec/Kp
118 gastrointestinal carriage in a general adult population in Norway, and to compare the ESBL-
119 Ec population structure with a national collection of clinical isolates.

120 **Results**

121 We detected gastrointestinal carriage of putative ESBL-Ec/Kp in 188 of 4,999 randomly
122 selected participants who provided fecal samples in the seventh survey of the population-
123 based Tromsø study (Tromsø7)³¹ (Suppl. Table 1, Figure 1). Overall, 87% of participants
124 receiving a sampling kit returned a fecal sample. In total, 180 Ec and nine Kp putative ESBL-
125 positive isolates were isolated from the 188 ESBL screening-positive fecal samples. Both
126 ESBL-Ec and -Kp were detected in one sample.



127

128 **Figure 1.** Flowchart and results of fecal sample screening for gastrointestinal carriage of
 129 ESBL-producing *E. coli* and *K. pneumoniae* in 4,999 participants in Tromsø7, 2015-2016.

130 Pheno- and genotypic analyses showed that 14 putative ESBL-Ec isolates were either pheno-
 131 and/or genotypically ESBL-negative. Of these, one isolate harbored plasmid-mediated AmpC
 132 (*bla_{CMY-2}*). After exclusion of the ESBL-negative isolates, prevalence of ESBL-Ec
 133 gastrointestinal carriage was 3.3% (95% confidence interval (CI) 2.8-3.9%, 166 of 4,999
 134 participants); 3.1% (2.5-3.9%) in women and 3.5% (2.8-4.4%) in men.

135 Among the nine screening ESBL-positive Kp isolates, one harbored *bla_{CMY-2}* and four did not
 136 express an ESBL phenotype. Consequently, four samples were considered positive for ESBL-
 137 producing Kp, corresponding to a prevalence of 0.08% (0.02-0.20%), all among male
 138 participants.

139 **Factors associated with gastrointestinal carriage of ESBL-*E. coli***

140 We analyzed data from 4,996 participants, excluding those three who were positive for
 141 ESBL-Kp only (Suppl. Table 1). Median age was 65 years (interquartile range 58-70 years,
 142 no sex difference). In multivariable logistic regression analyses adjusted for all explanatory
 143 variables, only travel to Asia the past 12 months was associated with ESBL-Ec
 144 gastrointestinal carriage with an adjusted odds ratio (AOR) of 3.47 (2.18-5.51) (Table 1).
 145 Among participants reporting hospitalization in the past year, or recent use of antibiotics or
 146 acid suppressive medication, we observed a non-significant increase in prevalence of ESBL-
 147 Ec.

148 **Table 1.** ESBL-producing *E. coli* gastrointestinal carriage and associated factors among 4,996
 149 participants in Tromsø7.

Characteristics	% (ESBL- <i>E. coli</i>)	n (ESBL- <i>E. coli</i>)	N	AOR	95% CI	p-value
Age (years)						0.236
40-49	3.6	22	605	1.00		
50-59	4.1	33	814	1.15	0.66-2.01	
60-69	3.2	68	2,127	0.81	0.49-1.33	
70-84	3.0	43	1,450	0.73	0.42-1.26	
Hospitalization past 12 months						0.128
No	3.3	142	4,341	1.00		
Yes	4.0	24	593	1.43	0.90-2.27	
Antibiotic use past 14 days ^a						0.258
No	3.3	158	4,831	1.00		
Yes	5.2	8	153	1.58	0.72-3.47	
Acid suppressive medication past 4 weeks						0.951
Not used	3.3	123	3,760	1.00		
≤weekly	3.2	13	402	1.02	0.57-1.83	
Every week, but not daily	3.5	9	260	1.10	0.55-2.20	
Daily	3.7	11	297	1.20	0.63-2.26	
Travel abroad past 12 months ^b						<0.001
No	2.5	53	2,145	1.00		
Other regions (excl. Asia)	3.2	70	2,212	1.36	0.93-1.98	
Asia exclusively or Asia + other regions	8.2	38	461	3.47	2.18-5.51	
Traveler's diarrhea past 12 months ^c						0.972
No	3.3	156	4,721	1.00		
Yes	4.8	8	166	1.01	0.48-2.16	

150 ESBL, extended spectrum β-lactamase; N, denominator; AOR, adjusted odds ratio; CI, confidence interval; AOR adjusted for
 151 age, hospitalization past 12 months, antibiotic use past 14 days, acid suppressive medication past 4 weeks, travel abroad past
 152 12 months and traveler's diarrhea past 12 months.

153 The multivariable model includes 4,488 participants with complete information on all variables.

154 ^a Have you taken any antibiotics (tablets or oral suspensions, nasal ointments, eye drops or eye ointment) during the past 14
 155 days?

156 ^b Traveled outside the Nordic countries >1 week duration in the past 12 months.

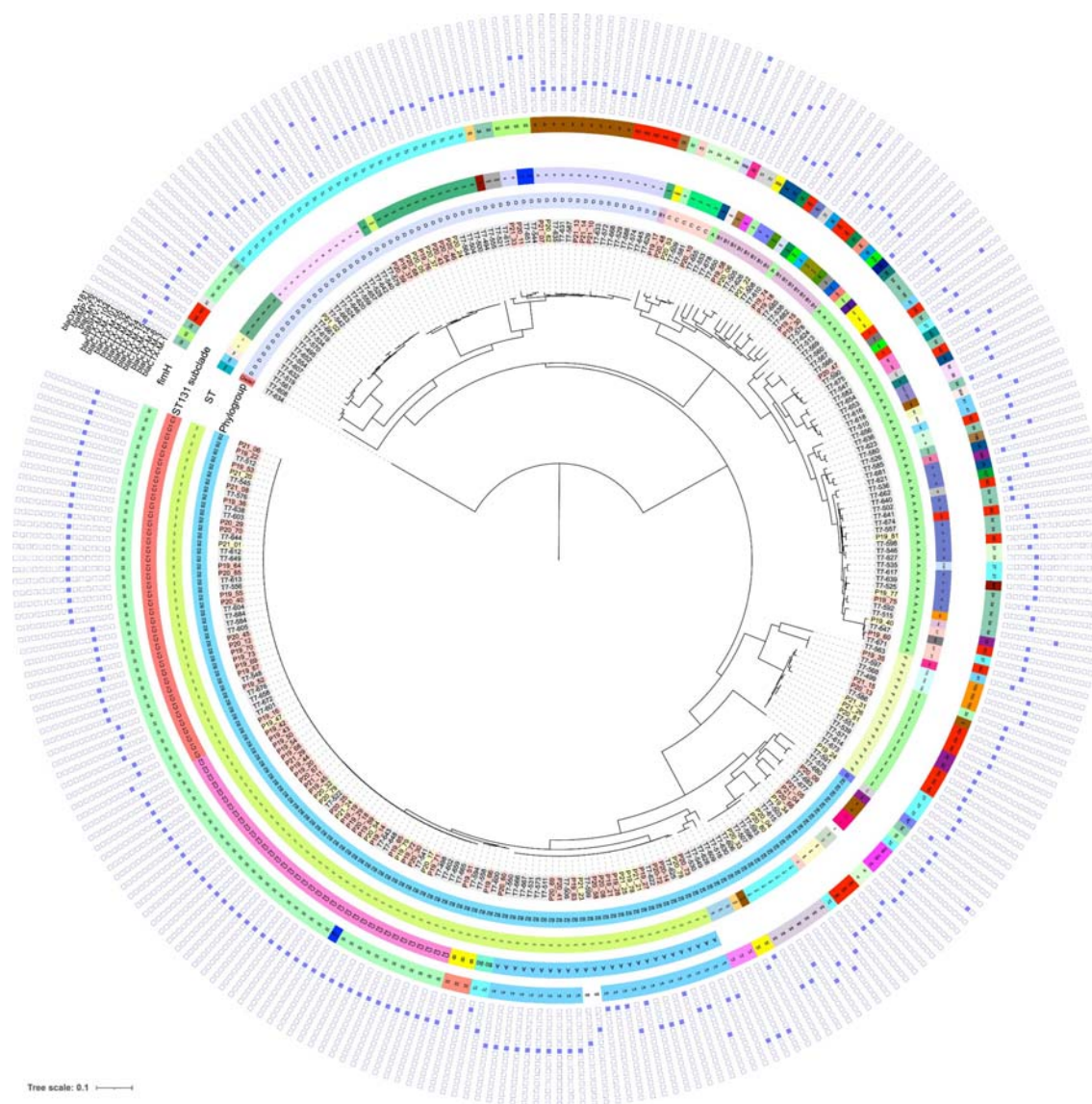
157 ^c For each travel abroad the past 12 months, the participants were asked if they had experienced diarrhea in connection with
 158 the travel.

159
 160

161 Both in the literature and in our previous study³², we identified several factors associated with
162 Kp gastrointestinal carriage, overlapping with those associated with ESBL-Ec
163 carriage.^{15,22,33,34} Thus, in 2,972 participants (of the total 4,996 participants in this current
164 study) previously screened for Kp, we performed a multivariable logistic regression analysis
165 including Kp carriage as an additional explanatory variable (Suppl. Table 2). Prevalence of
166 ESBL-Ec gastrointestinal carriage was 2.7% among participants without Kp carriage and
167 4.8% (p=0.016) among those with Kp carriage. In the full model, AOR was 1.66 (0.99-2.79,
168 p=0.055), indicating a possible association between Kp and ESBL-Ec carriage.

169 *Comparative analysis of ESBL-E. coli carriage and clinical isolates*

170 To explore the population structure and genomic characteristics of ESBL-Ec in community
171 carriage we whole-genome sequenced (WGS) all 166 isolates. Furthermore, we sequenced a
172 contemporary national collection of 118 clinical ESBL-Ec isolates (NORM 2014) for
173 comparative analysis (Figure 2, Suppl. Table 3).



174

175 **Figure 2.** Maximum-likelihood phylogenetic tree based on core genome alignment of the

176 genomes of ESBL-*E. coli* carriage isolates from Tromsø7 (labeled grey, n=166) and clinical

177 isolates from NORM 2014 (blood isolates labeled with red and urine isolates with yellow,

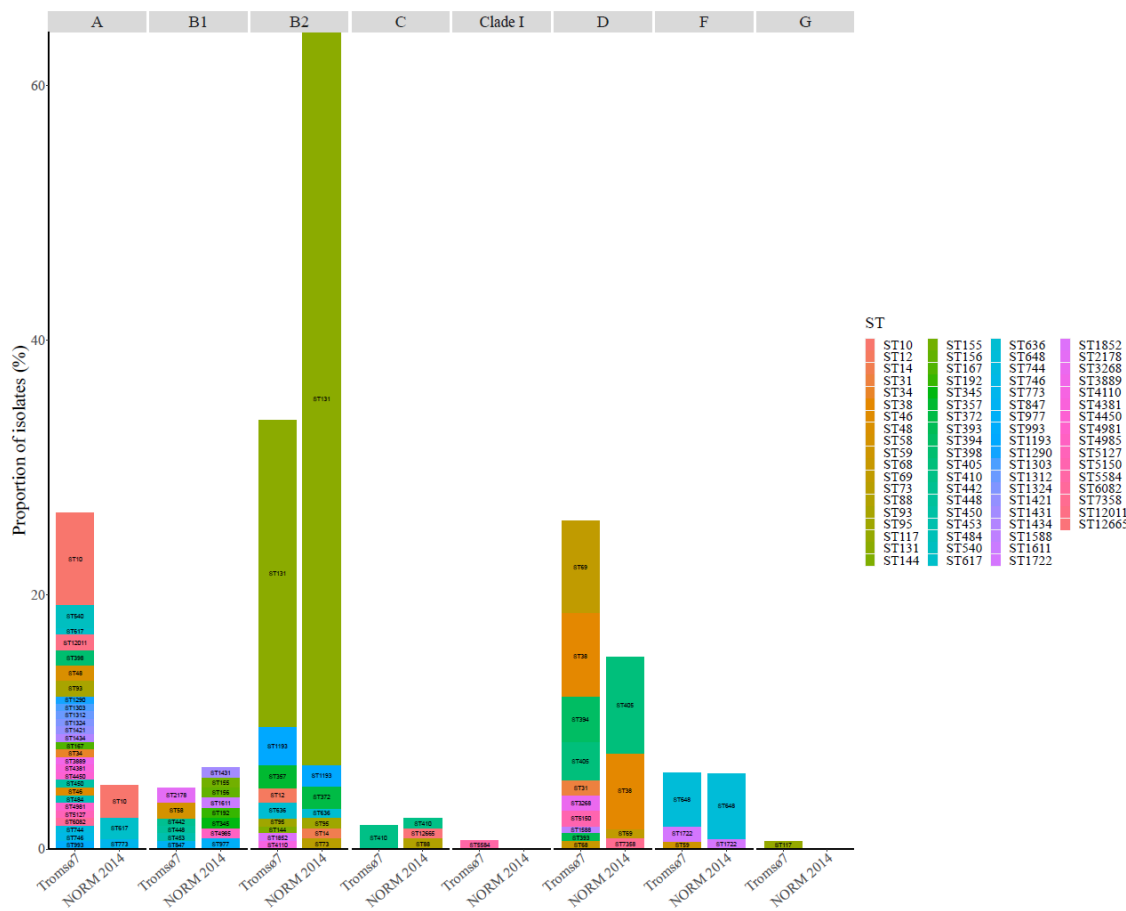
178 n=118). The innermost ring illustrates phylogroups, followed by a ring with sequence types

179 (STs), a ring with ST131 subclades, and a ring with *fimH* types (ND, not detected). The

180 heatmap shows presence (blue color) or absence (white) of ESBL gene variants.

181

182 At the phylogroup level, 52.4% of the ESBL-Ec carriage isolates belonged to either
 183 phylogroup A (26.5%) or D (25.9%), and 33.7% belonged to phylogroup B2 (Figure 2 and
 184 Figure 3, Suppl. Table 3). This contrasts with the clinical isolates where 64.4% ($p<0.001$) of
 185 the isolates belonged to phylogroup B2 and only 20.4% ($p<0.001$) belonged to phylogroup A
 186 (5.1%) and D (15.3%) combined.



187

188 **Figure 3.** Phylogroup (labeled on the top) and sequence type (ST) distribution of ESBL-*E.*

189 *coli* carriage isolates from Tromsø7 (n=166) and clinical isolates from NORM 2014 (n=118).

190 Carriage isolates had higher ST diversity (Figure 2 and 3, Suppl. Table 3) with Simpson's
191 diversity index 92.4% compared to clinical isolates (65.9%, $p<0.001$). We identified 58
192 different STs among the carriage isolates while the clinical isolates included 27 STs (Figure 2
193 and 3, Suppl. Table 3). ST131 (phylogroup B2) was the dominant ST in both collections,
194 however, more prevalent among clinical isolates (57.6%, $n=68$) than carriage isolates (24.1%,
195 $n=40$, $p<0.001$). Comparison of prevalence of ESBL-producing ST131 colonization vs.
196 infection in our study results in a crude odds ratio (OR) for infection of 4.3 (2.57-7.13,
197 $p<0.001$).

198 Within ST131, the multidrug resistant subclades C1 (alternatively referred to as *H30-R*) and
199 C2 (*H30-Rx*) accounted for 67.5% in carriage and 73.5% clinical isolates (Figure 2, Suppl.
200 Figure 1, Suppl. Table 3). The subclade C1 (47.5%, $n=19$) was the most prevalent among
201 carriage isolates and C2 (42.6%, $n=29$) among clinical isolates. The difference in the
202 proportion of C2 between clinical and carriage isolates was statistically significant (20.0%,
203 $n=8$, $p=0.017$). For the overall ESBL-Ec population, crude OR for infection among C2 was
204 6.44 (2.82-14.68, $p<0.001$) (Suppl. Table 4).

205 Although non-significant, a higher proportion of subclades A, B and B0, less associated with
206 antibiotic resistance, was observed among ST131 carriage isolates (32.5%) than clinical
207 isolates (26.5%, $p=0.508$) (Suppl. Figure 1). However, with regard to the overall ESBL-Ec
208 population, subclade A was associated with infection (carriage 6.0% vs. clinical 13.6%, OR
209 2.45, 1.07-5.60, $p=0.034$) (Suppl. Table 4).

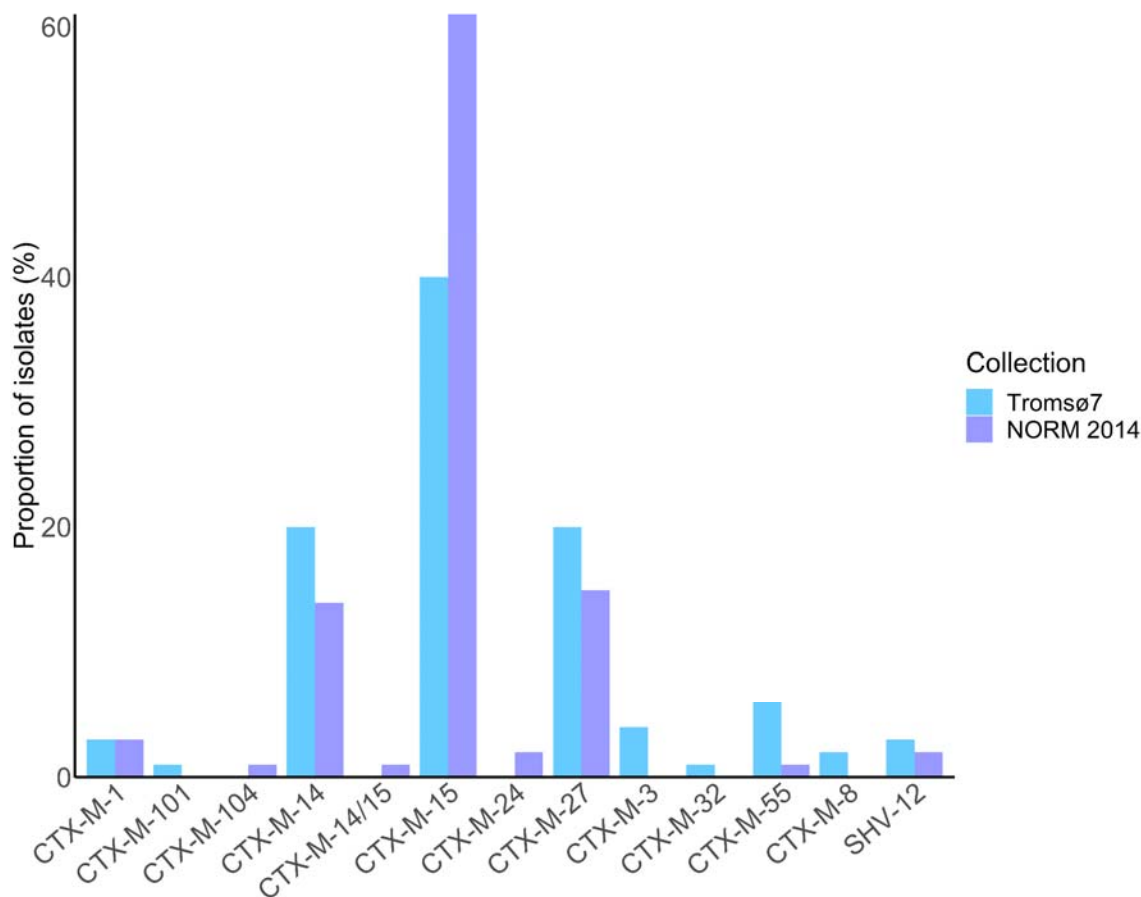
210 The most prevalent STs in carriage isolates following ST131 were ST10 (7.2%, $n=12$,
211 phylogroup A), ST69 (7.2%, $n=12$) and ST38 (6.6%, $n=11$, both phylogroup D) compared to
212 ST405 (7.6%, $n=9$), ST38 (5.9%, $n=7$, both phylogroup D), and ST648 (5.1%, $n=6$,
213 phylogroup F) in clinical isolates (Figure 2 and 3, Suppl. Table 3). We did not identify the

214 common ExPEC lineage ST73^{25,29} among the carriage isolates but found one ST95^{25,29} (0.6%)
215 and five isolates of the emerging ST1193^{35,36} (3.0%).

216 Using a single nucleotide polymorphism (SNP) cut-off of ≤ 17 ³⁷, we detected two putative
217 clusters (Suppl. Table 5) among five of 284 isolates. All five were carriage isolates. One
218 ST357 cluster (6-9 SNP differences) consisted of three isolates and the other cluster of two
219 ST131 isolates (4 SNP difference). We detected no clusters among the clinical isolates.

220 *Antimicrobial resistance and plasmid replicon content*

221 CTX-M enzymes accounted for at least 97.0% of the ESBL phenotypes in both collections
222 (Figure 2 and Figure 4, Suppl. Table 3). The most prevalent ESBL genes among both carriage
223 and clinical isolates were *bla*_{CTX-M-15} (40.4%, n=67 vs. 61.0%, n=72, p=0.001), *bla*_{CTX-M-14}
224 (20.5%, n=34 vs. 14.4%, n=17, p=0.188), and *bla*_{CTX-M-27} (19.9%, n=33 vs. 15.3%, n=18,
225 p=0.321). One clinical isolate of ST38 harbored both *bla*_{CTX-M-15} and *bla*_{CTX-M-14}. *Bla*_{CTX-M-3},
226 *bla*_{CTX-M-8}, *bla*_{CTX-M-32} and *bla*_{CTX-M-101} were exclusively detected in carriage isolates, whereas
227 *bla*_{CTX-M-24} and *bla*_{CTX-M-104} were present only in clinical isolates. The remaining ESBL
228 producers contained *bla*_{SHV-12} in 3.0% of the carriage and 1.7% of the clinical isolates. *Bla*_{TEM}
229 ESBL genes were not detected.



230

231 **Figure 4.** ESBL gene prevalence in ESBL-*E. coli* carriage isolates from the Tromsø7 study

232 (n=166) and clinical isolates from NORM 2014 (n=118).

233 The clinical isolates showed an overall higher proportion of phenotypic resistance compared

234 to the carriage isolates (Table 2, Suppl. Table 3). Only 2.4% of carriage isolates were

235 phenotypically resistant to piperacillin-tazobactam compared to 31.8% ($p<0.001$) of clinical

236 isolates. We also detected a high prevalence of phenotypic co-resistance to non- β -lactam

237 antibiotics such as gentamicin, ciprofloxacin and trimethoprim-sulfamethoxazole both in

238 clinical and carriage isolates. Isolates co-resistant to all these three antibiotic classes,

239 accounted for 10.2% (17/166) of carriage and 33.1% (39/118, $p<0.001$) of clinical isolates.

240

241 **Table 2.** Susceptibility profile of ESBL-*E. coli* carriage isolates from Tromsø7 (n=166) and
 242 clinical isolates from NORM 2014 (n=118).

	Carriage			Clinical		
	%S	%I	%R	%S	%I	%R
Amoxicillin-clavulanic acid i.v.	57.2	-	42.8	25.4	-	74.6
Amoxicillin-clavulanic acid*	90.4	-	9.6	54.2	-	45.8
Piperacillin-tazobactam	97.6	-	2.4	68.2†	-	31.8†
Cefuroxime*	0.6	-	99.4	1.7	-	98.3
Ceftazidime	20.5	32.5	47.0	10.2	11.0	78.8
Cefotaxime	0.0	2.4	97.6	0.8	0.8	98.4
Cefepime	7.8	54.8	37.3	4.7†	5.9†	89.4†
Ceftazidime-avibactam	100.0	-	0.0	NA	NA	NA
Ertapenem	100.0	-	0.0	NA	NA	NA
Meropenem	100.0	0.0	0.0	99.2	0.8	0.0
Aztreonam	5.4	23.5	71.1	NA	NA	NA
Amikacin	100.0	-	0.0	NA	NA	NA
Gentamicin	80.1	-	19.9	48.3	-	51.7
Tobramycin	76.5	-	23.5	NA	NA	NA
Ciprofloxacin	49.4	13.9	36.7	14.4	8.5	77.1
Trimethoprim-sulfamethoxazole	48.8	0.6	50.6	27.1	0.0	72.9
Nitrofurantoin	99.4	-	0.6	93.9‡	-	6.1‡
Fosfomycin	99.4	-	0.6	NA	NA	NA
Fosfomycin*	96.4	-	3.6	NA	NA	NA
Colistin	98.8	-	1.2	NA	NA	NA
Tigecycline	100.0	-	0.0	100.0†	-	0.0†

243 S, susceptible; I, susceptible, increased exposure; R, Resistant; i.v. intravenous; NA, not available; *Breakpoints
 244 for uncomplicated urinary tract infections; †available for blood culture isolates only (n=85); ‡available for urine
 245 culture isolates only (n=33)

246

247 Phenotypic ciprofloxacin resistance was different for ST131 (70.0%) vs. non-ST131 (26.2%,
 248 $p < 0.001$) among carriage isolates (Suppl. Table 6) in contrast to the clinical isolates (Suppl.
 249 Table 7). Two carriage isolates of ST484 and ST1324 (both phylogroup A) were
 250 phenotypically resistant to colistin and harbored *mcr-1.1* and *mcr-3.5*, respectively. No
 251 isolates expressed clinical resistance against carbapenems. However, two clinical isolates of
 252 ST95 (phylogroup B2) and ST410 (phylogroup C) harbored *bla_{IMP-26}* and *bla_{OXA-181}*,
 253 respectively. All isolates were susceptible to tigecycline.

254 Despite the overall higher proportion of phenotypic resistance among clinical isolates, the
 255 average number of different plasmid replicon-types per isolate (both 3.1/isolate) did not differ

256 between the carriage and clinical collections. We identified 43 and 39 different plasmid
257 replicon types among 97.1% (162/166) carriage and 95.0% (112/118) clinical isolates (Suppl.
258 Table 3, Suppl. Figure 2). The most prevalent were IncFIB(AP001918) (carriage 22.7% vs.
259 clinical 22.3%) followed by Col156 (carriage 11.1% vs. clinical 11.5%) and IncFIA (carriage
260 10.9% vs. clinical 17.7%, $p=0.101$). Replicon type Col156 and IncFIA were mainly detected
261 in globally disseminated ExPEC clones (ST131, ST1193, ST648, ST69, ST405), whereas
262 IncFIB(AP001918) was additionally frequently spread among other STs (Suppl. Table 3).

263 *ESBL-K. pneumoniae carriage isolates*

264 We detected only four ESBL-Kp, each of a different ST (ST29, ST211, ST261 and ST2459)
265 harboring *bla*_{CTX-M-15} (n=2), *bla*_{CTX-M-14} (n=1), or *bla*_{SHV-12} (n=1). None of the isolates were
266 genomically assigned as hypervirulent.

267 **Discussion**

268 Our study contributes to the knowledge of prevalence of, and factors associated with, ESBL-
269 Ec/Kp gastrointestinal carriage in a general adult population, and the bacterial population
270 structure of carriage isolates. The comparison to a contemporary collection of clinical ESBL-
271 Ec isolates revealed differences in the population structure and the prevalence of phenotypic
272 resistance between carriage and clinical isolates. Travel to Asia was identified as a major risk
273 for ESBL-Ec gastrointestinal carriage.

274 An ESBL-Ec carriage prevalence of 3.3% (2.8-3.9) is lower but comparable to previous
275 community-based data from Europe including Sweden 4.4% (3.5-5.3, n=2,134, data collected
276 2012-2013)¹³, the Netherlands 4.5% (3.9-5.1, n=4,177, 2014-2016)¹⁴ and a Norwegian study
277 4.9% (2.7-8.1, n=284, 2014-2016)¹⁷ using similar screening approaches.

278 We identified significant differences in the ESBL-Ec population structure between the
279 community and clinical isolates. The globally disseminated phylogroup B2 clone ST131 has

280 been identified as a key contributor to the increase in ESBL prevalence³⁸ and in a longitudinal
281 study of *E. coli* bloodstream isolates we identified ST131 to be the single largest contributor
282 to the increase in prevalence of ESBL-Ec in Norway.²⁵ We also observed the predominance
283 of ST131 in both our collections. However, the proportion is significantly lower in carriage
284 isolates due to lower numbers of the multidrug resistant subclade C2. Moreover, the carriage
285 population had a higher proportion of phylogroup A, associated with asymptomatic intestinal
286 carriage in humans^{39,40} and a significantly greater ST diversity overall, compared to the
287 clinical isolates. These observations indicate that acquisition of ESBL genes frequently occur
288 in a variety of *E. coli* lineages colonizing the gut. However, there are differences in the
289 colonization potential of *E. coli* lineages and the risk of invasive infection by ESBL-Ec which
290 seems to be clone dependent.^{38,41} The higher odds for infection that we detected for ST131 is
291 similar to that of the Swedish study (AOR 3.4, 1.8-6.4) indicating a higher pathogenicity
292 potential of ST131 compared to commensal *E. coli* lineages of phylogroup A, such as ST10.¹³
293 Moreover, we found that ST131 subclade A, previously reported with less resistance, and the
294 multidrug resistant subclade C2 had higher odds for infection, and this may contribute to the
295 sustained establishment of these subclades among bloodstream infections in Norway.²⁵

296 Assuming a 100% colonization rate of *E. coli*, the large proportion of STs notorious as
297 common causes of extra-intestinal clinical infections (e.g. ST131, ST405, ST38 and
298 ST648)^{25,27,28} could at least partly explain the higher prevalence of ESBL among *E. coli*
299 causing bloodstream infections in Norway (5.8% in 2016)⁴² compared to the carriage
300 prevalence of 3.3% identified here. We also observed emerging clones such as ST1193 which
301 appears to have disseminated rapidly worldwide over the last decade.^{35,36} The low prevalence
302 of ESBL-Kp gastrointestinal carriage (0.08%) is consistent with previous community based
303 reports.^{9,14,17}

304 The identification of clusters with closely related isolates could indicate putative clonal
305 spread. This could include within-household and social network transmission or nosocomial
306 spread. However, we did not have access to epidemiological data to examine this further.

307 In line with other studies, we found a strong association between ESBL-Ec carriage and travel
308 to Asian regions.^{13-15,17,22} This supports the current patient screening recommendations for
309 ESBL-producing gram-negative bacteria after hospital stay abroad in the past year before
310 hospital admission in Norway.⁴³ In contrast to a Swedish and a Dutch study,^{15,44} we did not
311 identify travelers' diarrhea as a risk factor for ESBL-Ec carriage. However, our study was not
312 designed to specifically investigate international travelers but rather focused on risk factors in
313 the general adult population.

314 We found no association between ESBL-Ec gut carriage and factors such as hospitalization,
315 antibiotic use, and acid suppressive medication, and conflicting results have been detected in
316 previous studies.^{22,45} Hospitalization as a risk factor has mainly been reported from studies
317 investigating patients with ESBL-E infections.^{23,46} In line with most studies that assessed risk
318 factors regarding ESBL-E carriage in individuals in the community, we did not identify
319 hospitalization as an independent risk factor.^{13,22,44} This may be due to the increased ESBL
320 prevalence not only in hospitals, but also in the community over the last decades and implies
321 that boundaries have become blurred between those two settings.^{9,22,47,48}

322 The nonsignificant effect of antibiotic use is mainly due to limitations of the drug variable in
323 our study which is based on self-reported data, including topical antibiotics and covers only
324 the last two weeks before self-sampling. As antibiotic use has been found as a risk factor for
325 resistance in many other studies,^{14,15,22} we cannot rule out that antibiotic use plays a role in
326 ESBL-E carriage. There are reports identifying an association between the use of gastric acid
327 suppressive medication and intestinal colonization or infections with ESBL-E.^{18,21,23,33,34,46}

328 However, a Dutch study comparable to ours did not find an association between proton pump
329 inhibitor use and ESBL-E carriage in the overall analysis.¹⁴

330 Interestingly, we found a possible association between Kp and ESBL-Ec carriage. An
331 association between ESBL-E carriage and vancomycin-resistant enterococci (VRE) has been
332 described previously^{7,49}, and also that VRE colonization is significantly associated with Kp
333 colonization among intensive care unit patients.⁵⁰ These associations warrant further
334 investigations to assess if a common set of risk factors for carriage of different clinically
335 important pathogens can be identified.

336 An important strength of our study is the non-selective recruitment from the official
337 population-registry, and the high participation (87%) compared to 18.3% and 18.8% in
338 comprehensive studies from the Netherlands¹⁴ and Sweden¹³, respectively. It is a limitation
339 that we only captured the general population 40 years and older. However, other studies have
340 not found an association between age and ESBL-E carriage.^{13,14} Moreover, more extensive
341 data on drug use would have strengthened the analyses. Additionally, the genomic diversity of
342 carriage isolates is likely to be underestimated due to the isolation and sequencing of only one
343 colony per fecal sample. Although, we compared local carriage isolates with a national
344 collection of clinical ESBL-Ec, there was no discernible spatiotemporal spread or
345 phylogenetic structure within Norway according to a nationwide genomic study on *E. coli*
346 causing bloodstream infections.²⁵

347 **Conclusions**

348 The prevalence of ESBL-Ec carriage in a general adult urban Norwegian population was low
349 reflecting the relatively low prevalence of ESBL-Ec in clinical isolates. Travel to Asia was
350 the only independent risk factor for ESBL-Ec carriage and should be considered in terms of
351 screening recommendations before hospital admission. The differences in ESBL-Ec

352 populations between carriage and clinical isolates indicating a higher risk of infection
353 dependent on the ESBL-Ec clone warrants further investigations to elucidate if risk
354 stratification should include determination of the bacterial genetic background.

355 **Subjects and Methods**

356 *Study population and design*

357 Our study sample was drawn from Tromsø7, the last of seven cross-sectional health surveys
358 conducted between 1974 and 2016 in Tromsø municipality, Norway
359 (<https://uit.no/research/tromsostudy>). Tromsø is representative of a Northern European, urban
360 population.³¹ Tromsø7 (March 2015- October 2016) included questionnaires and two clinical
361 visits (<https://uit.no/research/tromsostudy/project?pid=708909>). Unique national identity
362 numbers from the official population-registry were used to invite all citizens ≥ 40 years
363 (n=32,591). Sixty-five percent (n=21,083, 11,074 women) attended the first clinical visit in
364 the study (Figure 5).

365

366

367

368

369

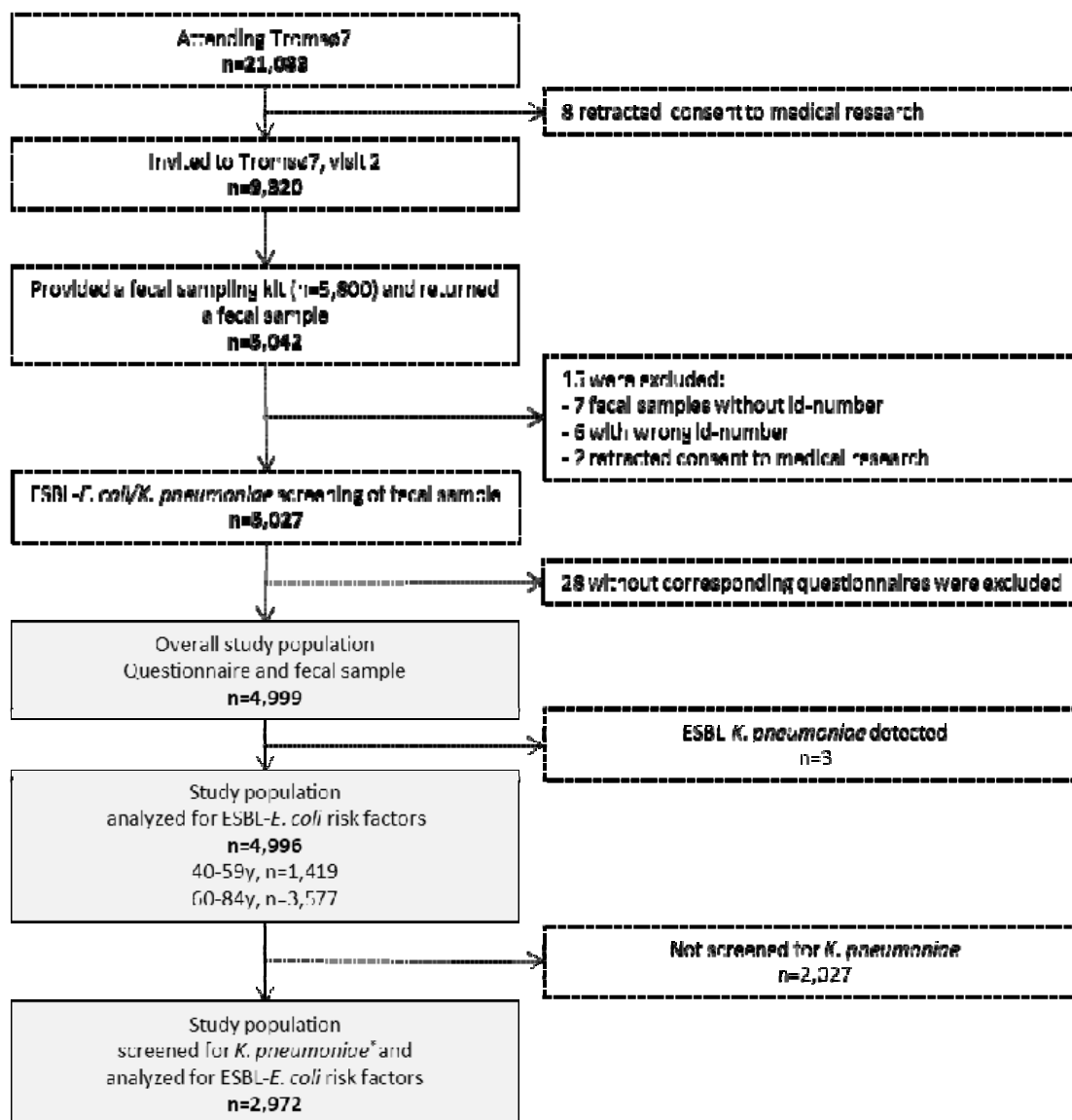
370

371

372

373

374



375

376 **Figure 5.** Flow diagram of the study population, Tromsø7, 2015-2016. *Study population
377 screened for *K. pneumoniae* carriage is described in.³²

378 A selection of 9,320 persons attending the first visit, were invited for a second visit, also
379 including 3,154 former Tromsø Study participants not already included in the random
380 selection process, which was required for other clinical research purposes. From March 2015
381 to March 2016, 5,800 participants at the first visit were consecutively provided a fecal self-
382 sampling kit. Participants collected fecal material using nylon-flocked ESwab 490CE.A

383 (Copan, Brescia, Italy). In total, 87% (n=5,042) returned a sample either at the second visit, or
384 by mail to the laboratory.

385 All 5,042 fecal samples were screened for the presence of ESBL-producing Ec and Kp via
386 selective culture (see below). All participants completed two self-administered structured
387 questionnaires on socio-demographics, smoking, alcohol use, hospitalization, drug use, and
388 travel abroad. We excluded 13 participants with wrong or missing sample identification
389 number, two retracting consent to medical research, and 28 with incomplete questionnaires
390 for a final study population of 4,999 participants (Figure 5). We analyzed the association
391 between ESBL-Ec gastrointestinal carriage and different risk factors in 4,996 participants
392 (Figure 5 and Table 1). Next, we investigated the association between ESBL-Ec carriage and
393 Kp gastrointestinal carriage among 2,972 participants additionally screened for Kp in our
394 previous study,³² irrespective of resistance (Figure 5, Supplementary Table 2).

395 ***Isolation of ESBL-producing E. coli and K. pneumoniae***

396 We added 200 µl 85% glycerol to the ESwab tubes upon arrival at the local microbiological
397 laboratory, and stored the samples at -80°C. From the thawed media, 100 µl were plated onto
398 CHROMagarTM ESBL (CHROMagar, Paris, France) and incubated for 48 hours at 37°C.
399 Pink, purple and blue colonies suspected of being ESBL-producing Ec or *Klebsiella* spp. were
400 identified using mass spectrometry (MALDI-TOF, Bruker Daltonics, Bremen, Germany). The
401 first colony identified as either Ec, *K. pneumoniae* or *K. variicola* from each sample was kept
402 and further analyzed. All samples were plated on cysteine lactose electrolyte deficient agar
403 (MAST Group, Bootle, UK) to assess growth of fecal flora and validity of the samples.

404 ***K. pneumoniae isolation***

405 The screening strategy and isolation procedure for Kp, is described in detail elsewhere³².
406 Briefly, we plated and screened the fecal samples onto the selective SCAI (Simons citrate

407 agar with inositol; both Sigma-Aldrich, Darmstadt, Germany) medium and identified
408 suspected colonies using MALDI-TOF.

409 ***Antimicrobial susceptibility testing and phenotypic ESBL-identification***

410 Susceptibility testing was performed according to the EUCAST broth microdilution method
411 for carriage isolates, disc diffusion method⁵¹ for the clinical isolates and both interpreted
412 using the EUCAST 2023 breakpoint table (<https://eucast.org/>). For the confirmation of ESBL-
413 producing Ec and Kp, we followed the EUCAST algorithm for phenotypic detection of
414 ESBLs using the BD BBLTM combination disk test (Becton Dickinson and Company, Sparks,
415 USA).

416 ***Genomic sequencing and bioinformatic analysis***

417 Genomic DNA from 166 Ec of the Tromsø7 collection was extracted with the MagNA Pure
418 96 system (Roche Applied Science, Mannheim, Germany) and sequencing libraries were
419 prepared according to the Nextera Flex sample preparation protocol (Illumina, San Diego,
420 CA, USA). Samples were sequenced on the Illumina MiSeq platform to generate 300 bp
421 paired-end reads. All reads were trimmed with TrimGalore v0.6.4 and assembled with
422 Unicycler v0.4.8 including SPAdes v3.13.0.⁵²⁻⁵⁴ STs were assigned using the multi locus
423 sequence type (MLST) software *E.coli* scheme v2.19.0 and Enterobase.⁵⁵⁻⁵⁷ AMRFinderPlus
424 v3.10.16 was used to determine resistance genes among the Ec isolates.⁵⁸ Plasmid replicons
425 were identified using Abricate v1.0.1 including the PlasmidFinder 2021-Mar-27 database.^{59,60}
426 Phylogroup assignment was based on ClermonTyping v20.03 (Mar. 2020).⁶¹ The *fimH* type
427 was identified using FimTyper v1.0 and BLAST+ v2.12.0.^{62,63} Regarding the *Klebsiella*
428 isolates, Kleborate v2.0.0 was used to determine species identification, ST and acquired genes
429 encoding virulence or antibiotic resistance.^{64,65}

430 The clinical ESBL-producing Ec included 118 isolates out of 123 representing all ESBL-Ec
431 isolates collected in 2014⁶⁶, as part of the yearly surveillance program in NORM. Genome
432 sequencing of five isolates were unsuccessful. Before sequencing, the NORM 2014 isolates
433 were stored at -80°C and then sent to GATC Biotech AG (part of Eurofins
434 Genomics/Eurofins Scientific) in Germany for DNA isolation and WGS. Raw reads were
435 trimmed using Trimmomatic v0.39 and assembled with SPAdes v3.15.0.^{67,68} Contigs shorter
436 than 200 bp were discarded. The genomic data were analyzed as described above.

437 *Phylogenetic and population structure analysis of ESBL-E. coli*

438 We used Prokka v.1.14.6⁶⁹ to annotate genomes and snippy v.4.6.0⁷⁰ to map the sequence
439 reads to the ST131 Ec EC958 chromosome [HG941718.1]
440 (<https://www.ncbi.nlm.nih.gov/nuccore/HG941718.1>) to create the core genome alignment.
441 We used snp-dists v.0.8.2, (<https://github.com/tseemann/snp-dists/>) to create the SNP distance
442 matrix from the core genome alignment. We used a 17 SNP cut-off to define similarity
443 between two genomes and to identify probable ESBL-Ec transmission events among cases.³⁷
444 To assess the phylogenetic relatedness, we used the core SNP alignment to infer a maximum-
445 likelihood tree using RAxML v.8.2.8 with the GTR + Gamma rate model and 100 rapid
446 bootstraps visualized in iTol (v6.5.2).^{71,72} ST131 subclades were determined based on
447 subclade specific SNPs and *fimH* alleles, subclade membership was corrected when
448 assignment based on SNP profile of sporadic isolates did not fit with the phylogenetic
449 distribution of clades.^{25,30,62,73}

450 *Statistical analysis*

451 Our primary analyses were multivariable logistic regression models, performed in two
452 overlapping study populations with outcome variable ESBL-Ec gastrointestinal carriage using
453 SPSS v.26.0 (SPSS, Inc., Chicago, IL, USA). First, we analyzed factors associated with

454 ESBL-Ec gastrointestinal carriage among 4,996 participants (Table 1). Next, in 2,972
455 participants also screened for Kp,³² we performed a multivariable logistic regression analysis
456 including Kp carriage as an additional explanatory variable (Suppl. Table 2). Explanatory
457 variables were selected with the help of a directed acyclic graph constructed using DAGitty
458 v3.0 (Suppl. Figure 3 and 4).⁷⁴ All explanatory variables were kept in the fully adjusted
459 models. Multicollinearity between the entered variables was assessed calculating the variance
460 inflation factor (VIF) and tolerance statistic. Multicollinearity was not a problem with VIF>10
461 and tolerance statistic <0.2.⁷⁵ The strength of the associations was examined by calculating
462 AORs with 95% CI. Two-sided p-values <0.05 were considered statistically significant. The
463 prevalence of ST131 among carrier and clinical isolates was compared calculating the OR
464 with 95% CI using logistic regression in SPSS. The comparison of proportions was assessed
465 using χ^2 -test.

466 **Ethics**

467 The study was approved by the Regional Committee for Medical and Health Research Ethics,
468 North Norway (REC North reference: 2016/1788 and 2014/940) and the Data Protection
469 Officer at University Hospital of North Norway (reference: 2019/4264). The study complied
470 with the Declaration of Helsinki. All participants in Tromsø⁷ signed an informed consent
471 form prior to participation.

472 **Acknowledgements**

473 We are grateful for technical assistance from Bjørg Haldorsen, Bettina Aasnæs and Ellen
474 Josefsen in organizing the collection of fecal samples in the laboratory, Eva Bernhoff and
475 Ragna-Johanne Bakksjø for performing WGS, Marit Andrea Kløkkhammer Hetland for initial
476 sequence analysis of carriage isolates. Rod Wolstenholme for figure editing. We thank

477 Sigma2, the national provider of e-infrastructure, for access to High-Performance Computing
478 and large-scale data storage (Project ID: NN9794K).

479 Collaborators forming the Norwegian *E. coli* ESBL Study Group include: Nina Handal
480 (Akershus University Hospital), Elisabeth Sirnes (Førde Hospital), Liv Jorunn Hafne
481 (Haugesund Hospital), Paul Christoffer Lindemann (Haukeland University Hospital), Lovise
482 Marie Norgaard (Innlandet Hospital), Kyriakos Zaragkoulias (Levanger Hospital), Einar
483 Nilsen (Molde and Ålesund Hospital), Hege Elisabeth Larsen (Nordland Hospital), Marcela
484 Pino (Oslo University Hospital, Rikshospitalet), Nils Olav Hermansen (Oslo University
485 Hospital, Ullevål), Iren H. Löhr (Stavanger University Hospital), Aleksandra Jakovljevic (St.
486 Olav University Hospital), Ståle Tofteland (Sørlandet Hospital), Kristina Papp (Unilabs
487 Telelab), Gunnar Skov Simonsen (University Hospital of North Norway), Åshild Marvik
488 (Vestfold Hospital), Nadine Durema Pullar (Vestre Viken, Bærum Hospital), Roar Magne
489 Bævre-Jensen (Vestre Viken, Drammen Hospital), Anita Kanestrøm (Østfold Hospital).

490 **Author contributions:**

491 ØS conceptualized and acquired funding for the study in collaboration with AS, KG and IHL.
492 ØS was responsible for organizing the collection of fecal samples. LLEA did the screening of
493 fecal samples and phenotypic testing. NR, KS, LS and KG conceptualized and conducted the
494 epidemiological analysis of risk factors. IHL organized WGS of carriage isolates. GSS and
495 the Norwegian *E. coli* ESBL Study Group provided data and clinical isolates. DJB, AKP, NR
496 and ØS analyzed the WGS data. NR, ØS, KS and KG prepared first manuscript draft. All
497 authors contributed to review and editing of the manuscript and approved the final version.

498 **Declaration of interests:**

499 All authors report no conflicts of interest.

500 **Role of funding source**

501 This study was supported by grants from the Northern Norway Regional Health Authority
502 (HNF1415-18) and the Trond Mohn Foundation (TMF2019TMT03). The funders of the study
503 played no role in study design, data collection, data analysis, data interpretation, or writing of
504 the report.

505 **Data Availability**

506 Bacterial genome data (raw Illumina reads) are publicly available in NCBI under BioProject
507 PRJEB53319 (NORM 2014 collection) and PRJEB57251 (Tromsø7 collection). This study is
508 based on data owned by a third party (The Tromsø Study, Department of Community
509 Medicine, UiT The Arctic University of Norway). Confidentiality requirements according to
510 Norwegian law prevents sharing of individual patient level data in public repositories.
511 Application of legal basis and exemption from professional secrecy requirements for the use
512 of personal health data in research may be sent to a regional committee for medical and health
513 research ethics (<https://rekportalen.no/>). The authors gained access to the data through the
514 Tromsø Study's application process. Guidelines on how to access the data are available at the
515 website <https://uit.no/research/tromsostudy>. All enquiries about the Tromsø Study should be
516 sent by e-mail to tromsous@ism.uit.no. All the questionnaire variables are published in the
517 NESSTAR program system and results can be viewed online:
518 <http://tromsundersokelsen.uit.no/tromso/>.

519 **References**

- 520 1. Antimicrobial Resistance C. Global burden of bacterial antimicrobial resistance in 2019: a
521 systematic analysis. *Lancet*. 2022 Feb 12;399(10325):629-655.
- 522 2. NORM/NORM-VET 2021. Usage of antimicrobial agents and occurrence of antimicrobial
523 resistance in Norway. Tromsø/Oslo/Ås; 2022. ISSN: 1502-2307 (print)/1890- 9965
524 (electronic).
- 525 3. Schwaber MJ, Carmeli Y. Mortality and delay in effective therapy associated with
526 extended-spectrum beta-lactamase production in Enterobacteriaceae bacteraemia: a
527 systematic review and meta-analysis. *J Antimicrob Chemother*. 2007 Nov;60(5):913-20.

- 528 4. Scheuerman O, Schechner V, Carmeli Y, et al. Comparison of predictors and mortality
529 between bloodstream infections caused by ESBL-producing *Escherichia coli* and ESBL-
530 producing *Klebsiella pneumoniae*. *Infect Control Hosp Epidemiol*. 2018 Jun;39(6):660-667.
- 531 5. Tacconelli E, Carrara E, Savoldi A, et al. Discovery, research, and development of new
532 antibiotics: the WHO priority list of antibiotic-resistant bacteria and tuberculosis. *Lancet*
533 *Infect Dis*. 2018 Mar;18(3):318-327.
- 534 6. Prevel R, Boyer A, M'Zali F, et al. Extended spectrum beta-lactamase producing
535 Enterobacterales faecal carriage in a medical intensive care unit: low rates of cross-
536 transmission and infection. *Antimicrob Resist Infect Control*. 2019 Jul 10;8:112.
- 537 7. Wyres KL, Hawkey J, Mirceta M, et al. Genomic surveillance of antimicrobial resistant
538 bacterial colonisation and infection in intensive care patients. *BMC Infect Dis*. 2021 Jul
539 14;21(1):683.
- 540 8. Denkel LA, Maechler F, Schwab F, et al. Infections caused by extended-spectrum beta-
541 lactamase-producing Enterobacterales after rectal colonization with ESBL-producing
542 *Escherichia coli* or *Klebsiella pneumoniae*. *Clin Microbiol Infect*. 2020 Aug;26(8):1046-
543 1051.
- 544 9. Woerther PL, Burdet C, Chachaty E, Andremont A. Trends in human fecal carriage of
545 extended-spectrum beta-lactamases in the community: toward the globalization of CTX-M.
546 *Clin Microbiol Rev*. 2013 Oct;26(4):744-58.
- 547 10. Bezabih YM, Sabiiti W, Alamneh E, et al. The global prevalence and trend of human
548 intestinal carriage of ESBL-producing *Escherichia coli* in the community. *J Antimicrob*
549 *Chemother*. 2021 Jan 1;76(1):22-29.
- 550 11. Jernigan JA, Hatfield KM, Wolford H, et al. Multidrug-Resistant Bacterial Infections in
551 U.S. Hospitalized Patients, 2012-2017. *N Engl J Med*. 2020 Apr 2;382(14):1309-1319.
- 552 12. Mughini-Gras L, Dorado-Garcia A, van Duijkeren E, et al. Attributable sources of
553 community-acquired carriage of *Escherichia coli* containing beta-lactam antibiotic resistance
554 genes: a population-based modelling study. *Lancet Planet Health*. 2019 Aug;3(8):e357-e369.
- 555 13. Ny S, Lofmark S, Borjesson S, et al. Community carriage of ESBL-producing
556 *Escherichia coli* is associated with strains of low pathogenicity: a Swedish nationwide study.
557 *J Antimicrob Chemother*. 2017 Feb;72(2):582-588.
- 558 14. van den Bunt G, van Pelt W, Hidalgo L, et al. Prevalence, risk factors and genetic
559 characterisation of extended-spectrum beta-lactamase and carbapenemase-producing
560 Enterobacteriaceae (ESBL-E and CPE): a community-based cross-sectional study, the
561 Netherlands, 2014 to 2016. *Euro Surveill*. 2019 Oct;24(41):1800594.
- 562 15. Arcilla MS, van Hattem JM, Haverkate MR, et al. Import and spread of extended-
563 spectrum beta-lactamase-producing Enterobacteriaceae by international travellers (COMBAT
564 study): a prospective, multicentre cohort study. *Lancet Infect Dis*. 2017 Jan;17(1):78-85.
- 565 16. Jorgensen SB, Samuelsen O, Sundsfjord A, et al. High prevalence of faecal carriage of
566 ESBL-producing Enterobacteriaceae in Norwegian patients with gastroenteritis. *Scand J*
567 *Infect Dis*. 2014 Jun;46(6):462-5.
- 568 17. Ulstad CR, Solheim M, Berg S, Lindbaek M, Dahle UR, Wester AL. Carriage of
569 ESBL/AmpC-producing or ciprofloxacin non-susceptible *Escherichia coli* and *Klebsiella* spp.
570 in healthy people in Norway. *Antimicrob Resist Infect Control*. 2016 Dec 15;5:57.
- 571 18. Kohler P, Seiffert SN, Kessler S, et al. Molecular Epidemiology and Risk Factors for
572 Extended-Spectrum beta-Lactamase-Producing Enterobacterales in Long-Term Care
573 Residents. *J Am Med Dir Assoc*. 2022 Mar;23(3):475-481.e5.
- 574 19. Rettedal S, Lohr IH, Bernhoff E, Natas OB, Sundsfjord A, Oymar K. Extended-spectrum
575 beta-lactamase-producing Enterobacteriaceae among pregnant women in Norway: prevalence
576 and maternal-neonatal transmission. *J Perinatol*. 2015 Nov;35(11):907-12.

- 577 20. Birgy A, Cohen R, Levy C, et al. Community faecal carriage of extended-spectrum beta-
578 lactamase-producing Enterobacteriaceae in French children. *BMC Infect Dis*. 2012 Nov
579 21;12:315.
- 580 21. Wielders CCH, van Hoek A, Hengeveld PD, et al. Extended-spectrum β -lactamase- and
581 pAmpC-producing Enterobacteriaceae among the general population in a livestock-dense
582 area. *Clin Microbiol Infect*. 2017 Feb;23(2):120.e1-120.e8.
- 583 22. Karanika S, Karantanos T, Arvanitis M, Grigoras C, Mylonakis E. Fecal colonization with
584 extended-spectrum beta-lactamase-producing Enterobacteriaceae and risk factors among
585 healthy individuals: A systematic review and metaanalysis. *Clin Infect Dis*. 2016 Aug
586 1;63(3):310-8.
- 587 23. Richelsen R, Smit J, Laxsen Anru P, Schønheyder HC, Nielsen H. Risk factors of
588 community-onset extended-spectrum β -lactamase *Escherichia coli* and *Klebsiella*
589 *pneumoniae* bacteraemia: an 11-year population-based case-control-control study in
590 Denmark. *Clin Microbiol Infect*. 2021 Jun;27(6):871-877.
- 591 24. Leistner R, Meyer E, Gastmeier P, et al. Risk factors associated with the community-
592 acquired colonization of extended-spectrum beta-lactamase (ESBL) positive *Escherichia coli*.
593 an exploratory case-control study. *PLoS One*. 2013 Sep 11;8(9):e74323.
- 594 25. Gladstone RA, McNally A, Pontinen AK, et al. Emergence and dissemination of
595 antimicrobial resistance in *Escherichia coli* causing bloodstream infections in Norway in
596 2002-17: a nationwide, longitudinal, microbial population genomic study. *Lancet Microbe*.
597 2021 Jul;2(7):e331-e341.
- 598 26. Fostervold A, Hetland MAK, Bakksjø R, et al. A nationwide genomic study of clinical
599 *Klebsiella pneumoniae* in Norway 2001-2015: Introduction and spread of ESBL facilitated by
600 CG15 and CG307. *J Antimicrob Chemother*. 2022 Feb 23;77(3):665-674.
- 601 27. Dunn SJ, Connor C, McNally A. The evolution and transmission of multi-drug resistant
602 *Escherichia coli* and *Klebsiella pneumoniae*: the complexity of clones and plasmids. *Curr*
603 *Opin Microbiol*. 2019 Oct;51:51-56.
- 604 28. Manges AR, Geum HM, Guo A, Edens TJ, Fibke CD, Pitout JDD. Global extraintestinal
605 pathogenic *Escherichia coli* (ExPEC) lineages. *Clin Microbiol Rev*. 2019 Jun
606 12;32(3):e00135-18.
- 607 29. Kallonen T, Brodrick HJ, Harris SR, et al. Systematic longitudinal survey of invasive
608 *Escherichia coli* in England demonstrates a stable population structure only transiently
609 disturbed by the emergence of ST131. *Genome Res*. 2017 Jul 18;27(8):1437-1449.
- 610 30. Ben Zakour NL, Alsheikh-Hussain AS, Ashcroft MM, et al. Sequential acquisition of
611 virulence and fluoroquinolone resistance has shaped the evolution of *Escherichia coli* ST131.
612 *mBio*. 2016 Apr 26;7(2):e00347-16.
- 613 31. Hopstock LA, Grimsgaard S, Johansen H, Kanstad K, Wilsgaard T, Eggen AE. The
614 seventh survey of the Tromsø Study (Tromsø7) 2015-2016: study design, data collection,
615 attendance, and prevalence of risk factors and disease in a multipurpose population-based
616 health survey. *Scand J Public Health*. 2022 Nov;50(7):919-929.
- 617 32. Raffelsberger N, Hetland MAK, Svendsen K, et al. Gastrointestinal carriage of *Klebsiella*
618 *pneumoniae* in a general adult population: a cross-sectional study of risk factors and bacterial
619 genomic diversity. *Gut Microbes*. 2021 Jan-Dec;13(1):1939599.
- 620 33. Willems RPJ, van Dijk K, Ket JCF, Vandenbroucke-Grauls C. Evaluation of the
621 association between gastric acid suppression and risk of intestinal colonization with
622 multidrug-resistant microorganisms: A systematic review and meta-analysis. *JAMA Intern*
623 *Med*. 2020 Apr 1;180(4):561-571.
- 624 34. Reuland EA, Al Naiemi N, Kaiser AM, et al. Prevalence and risk factors for carriage of
625 ESBL-producing Enterobacteriaceae in Amsterdam. *J Antimicrob Chemother*. 2016
626 Apr;71(4):1076-82.

- 627 35. Johnson JR, Johnston BD, Porter SB, et al. Rapid emergence, subsidence, and molecular
628 detection of *Escherichia coli* sequence type 1193-fimH64, a new disseminated multidrug-
629 resistant commensal and extraintestinal pathogen. *J Clin Microbiol.* 2019 Apr
630 26;57(5):e01664-18.
- 631 36. Tchesnokova V, Radey M, Chattopadhyay S, et al. Pandemic fluoroquinolone resistant
632 *Escherichia coli* clone ST1193 emerged via simultaneous homologous recombinations in 11
633 gene loci. *Proc Natl Acad Sci U S A.* 2019 Jul 16;116(29):14740-14748.
- 634 37. Ludden C, Coll F, Gouliouris T, et al. Defining nosocomial transmission of *Escherichia*
635 *coli* and antimicrobial resistance genes: a genomic surveillance study. *Lancet Microbe.* 2021
636 Sep;2(9):e472-e480.
- 637 38. Nicolas-Chanoine MH, Bertrand X, Madec JY. *Escherichia coli* ST131, an intriguing
638 clonal group. *Clin Microbiol Rev.* 2014 Jul;27(3):543-74.
- 639 39. Tenaillon O, Skurnik D, Picard B, Denamur E. The population genetics of commensal
640 *Escherichia coli*. *Nat Rev Microbiol.* 2010 Mar;8(3):207-17.
- 641 40. Denamur E, Clermont O, Bonacorsi S, Gordon D. The population genetics of pathogenic
642 *Escherichia coli*. *Nat Rev Microbiol.* 2021 Jan;19(1):37-54.
- 643 41. Marin J, Clermont O, Royer G, et al. The population genomics of increased virulence and
644 antibiotic resistance in human commensal *Escherichia coli* over 30 years in France. *Appl*
645 *Environ Microbiol.* 2022 Aug 9;88(15):e0066422.
- 646 42. NORM/NORM-VET 2016. Usage of antimicrobial agents and occurrence of antimicrobial
647 resistance in Norway. Tromsø/Oslo; 2017. ISSN: 1502-2307 (print)/1890- 9965 (electronic).
- 648 43. Health NIO. ESBL-holdige gramnegative stavbakterier - smitteverntiltak i
649 helseinstitusjoner. 2015. [https://www.fhi.no/sv/forebygging-i-helsetjenesten/smittevern-i-
650 institusjoner/tiltak/esbl-holdige-gramnegative-stavbakte/](https://www.fhi.no/sv/forebygging-i-helsetjenesten/smittevern-i-institusjoner/tiltak/esbl-holdige-gramnegative-stavbakte/).
- 651 44. Ostholm-Balkhed A, Tarnberg M, Nilsson M, et al. Travel-associated faecal colonization
652 with ESBL-producing Enterobacteriaceae: incidence and risk factors. *J Antimicrob*
653 *Chemother*
654 . 2013 Sep;68(9):2144-53.
- 655 45. Nicolas-Chanoine MH, Gruson C, Bialek-Davenet S, et al. 10-Fold increase (2006-11) in
656 the rate of healthy subjects with extended-spectrum β -lactamase-producing *Escherichia coli*
657 faecal carriage in a Parisian check-up centre. *J Antimicrob Chemother.* 2013 Mar;68(3):562-8.
- 658 46. Søgaaard M, Heide-Jørgensen U, Vandenbroucke JP, Schønheyder HC, Vandenbroucke-
659 Grauls C. Risk factors for extended-spectrum β -lactamase-producing *Escherichia coli* urinary
660 tract infection in the community in Denmark: a case-control study. *Clin Microbiol Infect.*
661 2017 Dec;23(12):952-960.
- 662 47. Vihta K-D, Stoesser N, Llewelyn MJ, et al. Trends over time in *Escherichia coli*
663 bloodstream infections, urinary tract infections, and antibiotic susceptibilities in Oxfordshire,
664 UK, 1998–2016: a study of electronic health records. *Lancet Infect Dis.* 2018
665 Oct;18(10):1138-1149.
- 666 48. Thaden JT, Fowler VG, Sexton DJ, Anderson DJ. Increasing incidence of extended-
667 spectrum β -lactamase-producing *Escherichia coli* in community hospitals throughout the
668 Southeastern United States. *Infect Control Hosp Epidemiol.* 2016 Jan;37(1):49-54.
- 669 49. Reddy P, Malczynski M, Obias A, et al. Screening for extended-spectrum β -lactamase-
670 producing Enterobacteriaceae among high-risk patients and rates of subsequent bacteremia.
671 *Clin Infect Dis.* 2007 Oct 1;45(7):846-52.
- 672 50. Collingwood A, Blostein F, Seekatz AM, et al. Epidemiological and microbiome
673 associations between *Klebsiella pneumoniae* and vancomycin-resistant *Enterococcus*
674 colonization in intensive care unit patients. *Open Forum Infect Dis.* 2020 Jan 12;7(1):ofaa012.

- 675 51. Matuschek E, Brown DF, Kahlmeter G. Development of the EUCAST disk diffusion
676 antimicrobial susceptibility testing method and its implementation in routine microbiology
677 laboratories. *Clin Microbiol Infect.* 2014 Apr;20(4):O255-66.
- 678 52. Krueger F. TrimGalore. 2019. <https://github.com/FelixKrueger/TrimGalore> (accessed
679 August 2019).
- 680 53. Wick RR, Judd LM, Gorrie CL, Holt KE. Unicycler: Resolving bacterial genome
681 assemblies from short and long sequencing reads. *PLoS Comput Biol.* 2017 Jun
682 8;13(6):e1005595.
- 683 54. Bankevich A, Nurk S, Antipov D, et al. SPAdes: a new genome assembly algorithm and
684 its applications to single-cell sequencing. *J Comput Biol.* 2012 May;19(5):455-77.
- 685 55. Jolley KA, Bray JE, Maiden MCJ. Open-access bacterial population genomics: BIGSdb
686 software, the PubMLST.org website and their applications. *Wellcome Open Res.* 2018 Sep
687 24;3:124.
- 688 56. Seemann T. mlst Github. 2021. <https://github.com/tseemann/mlst2021>).
- 689 57. Zhou Z, Alikhan NF, Mohamed K, Fan Y, Achtman M. The Enterobase user's guide, with
690 case studies on *Salmonella* transmissions, *Yersinia pestis* phylogeny, and *Escherichia* core
691 genomic diversity. *Genome Res.* 2020 Jan;30(1):138-152.
- 692 58. Feldgarden M, Brover V, Gonzalez-Escalona N, et al. AMRFinderPlus and the reference
693 gene catalog facilitate examination of the genomic links among antimicrobial resistance,
694 stress response, and virulence. *Sci Rep.* 2021 Jun 16;11(1):12728.
- 695 59. Carattoli A, Zankari E, Garcia-Fernandez A, et al. In silico detection and typing of
696 plasmids using PlasmidFinder and plasmid multilocus sequence typing. *Antimicrob Agents
697 Chemother.* 2014 Jul;58(7):3895-903.
- 698 60. Seemann T. *Abricate*, Github. 2019. <https://github.com/tseemann/abricate>.
- 699 61. Beghain J, Bridier-Nahmias A, Le Nagard H, Denamur E, Clermont O. ClermonTyping:
700 an easy-to-use and accurate in silico method for *Escherichia* genus strain phylotyping. *Microb
701 Genom.* 2018 Jul;4(7):e000192.
- 702 62. Roer L, Tchesnokova V, Allesøe R, et al. Development of a web tool for *Escherichia coli*
703 subtyping based on *fimH* alleles. *J Clin Microbiol.* 2017 Aug;55(8):2538-2543.
- 704 63. Madden T. The BLAST sequence analysis tool. in: McEntyre J OJ, editor.
705 <http://www.ncbi.nlm.nih.gov/books/NBK21097/>: The NCBI Handbook. Bethesda (MD):
706 National Center for Biotechnology Information (US); 2002-. Chapter 16.; 2002.
- 707 64. Lam MM, Wick RR, Wyres KL, Holt KE. A genomic surveillance framework and
708 genotyping tool for *Klebsiella pneumoniae* and its related species complex *Nat Commun.*
709 2021 Jul 7;12(1):4188.
- 710 65. Lam MMC, Wyres KL, Judd LM, et al. Tracking key virulence loci encoding aerobactin
711 and salmochelin siderophore synthesis in *Klebsiella pneumoniae*. *Genome Med.* 2018 Oct
712 29;10(1):77.
- 713 66. NORM/NORM-VET 2014. Usage of antimicrobial agents and occurrence of antimicrobial
714 resistance in Norway. Tromsø/Oslo; 2015. ISSN: 1502-2307 (print)/1890- 9965 (electronic).
- 715 67. Bolger AM, Lohse M, Usadel B. Trimmomatic: a flexible trimmer for Illumina sequence
716 data. *Bioinformatics.* 2014 Aug 1;30(15):2114-20.
- 717 68. Prjibelski A, Antipov D, Meleshko D, Lapidus A, Korobeynikov A. Using SPAdes *de
718 novo* assembler. *Curr Protoc Bioinformatics.* 2020 Jun;70(1):e102.
- 719 69. Seemann T. Prokka: rapid prokaryotic genome annotation. *Bioinformatics.* 2014 Jul
720 15;30(14):2068-9.
- 721 70. Seemann T. snippy: fast bacterial variant calling from NGS reads. 2015.
722 <https://github.com/tseemann/snippy>.
- 723 71. Stamatakis A. RAxML version 8: a tool for phylogenetic analysis and post-analysis of
724 large phylogenies. *Bioinformatics* 2014 May 1;30(9):1312-3.

- 725 72. Letunic I, Bork P. Interactive tree of life (iTOL) v5: an online tool for phylogenetic tree
726 display and annotation. *Nucleic Acids Res.* 2021 Jul 2;49(W1):W293-W296.
- 727 73. Price LB, Johnson JR, Aziz M, et al. The epidemic of extended-spectrum-beta-lactamase-
728 producing *Escherichia coli* ST131 is driven by a single highly pathogenic subclone, H30-Rx.
729 *mBio.* 2013 Dec 17;4(6):e00377-13.
- 730 74. Textor J, van der Zander B, Gilthorpe MS, Liskiewicz M, Ellison GT. Robust causal
731 inference using directed acyclic graphs: the R package 'dagitty'. *Int J Epidemiol.* 2016 Dec
732 1;45(6):1887-1894.
- 733 75. Field A. Discovering statistics using IBM SPSS statistics: SAGE Publications Ltd; 2017.
- 734