

1 **The interface between SARS-CoV-2 and non-communicable diseases (NCDs) in a**
2 **high HIV/TB burden district level hospital setting, Cape Town, South Africa**

3

Authors: Ayanda Trevor Mnguni^{1,2}, Denzil Schietekat², Nabilah Ebrahim², Nawhaal Sondag², Nicholas Boliter², Nesdaad Schrueder¹, Shiraaz Gabriels¹, Annibale Cois^{3,5}, Jacques L. Tamuzi³, Yamanya Tembo⁵, Mary-Ann Davies^{4,5}, Rene English³, Peter S. Nyasulu^{3,6*} for the COVID-19 Research Response Collaboration.

Affiliations

¹Department of Medicine, Faculty of Medicine and Health Sciences, Stellenbosch University, Cape Town, South Africa

²Khayelitsha District Hospital, Cape Town, South Africa

³Department of Global Health, Faculty of Medicine and Health Sciences, Stellenbosch University, Cape Town, South Africa

⁴Health Impact Assessment Directorate, Western Cape Government, Cape Town, South Africa

⁵School of Public Health and Family Medicine, University of Cape Town, South Africa

⁶Division of Epidemiology & Biostatistics, School of Public Health, Faculty of Medicine and Health Sciences, University of the Witwatersrand, Johannesburg, South Africa

*Corresponding authors: Peter S Nyasulu <pnyasulu@sun.ac.za> and Ayanda Trevor Mnguni <trevormnguni@sun.ac.za>

4 **Abstract**

5 **Background:** COVID-19 experiences on noncommunicable diseases (NCDs) from
6 district-level hospital settings during waves I and II are scarcely documented. The aim of
7 this study is to investigate the NCDs associated with COVID-19 severity and mortality in
8 a district-level hospital with a high HIV/TB burden.

9
10 **Methods:** This was a retrospective observational study that compared COVID-19 waves
11 I and II at Khayelitsha District Hospital in Cape Town, South Africa. COVID-19 adult
12 patients with a confirmed SARS-CoV-2 polymerase chain reaction (PCR) or positive
13 antigen test were included. In order to compare the inter wave period, clinical and
14 laboratory parameters on hospital admission of noncommunicable diseases, the Student
15 t-test or Mann-Whitney U for continuous data and the X² test or Fishers' Exact test for
16 categorical data were used. The role of the NCD subpopulation on COVID-19 mortality
17 was determined using latent class analysis (LCA).

18 **Findings:** Among 560 patients admitted with COVID-19, patients admitted during wave
19 II were significantly older than those admitted during wave I. The most prevalent
20 comorbidity patterns were hypertension (87%), diabetes mellitus (65%), HIV/AIDS (30%),
21 obesity (19%), Chronic Kidney Disease (CKD) (13%), Congestive Cardiac Failure (CCF)
22 (8.8%), Chronic Obstructive Pulmonary Disease (COPD) (3%), cerebrovascular
23 accidents (CVA)/stroke (3%), with similar prevalence in both waves except HIV status
24 [(23% vs 34% waves II and I, respectively), $p = 0.022$], obesity [(52% vs 2.5%, waves II
25 and I, respectively), $p < 0.001$], previous stroke [(1% vs 4.1%, waves II and I, respectively),
26 $p = 0.046$]. In terms of clinical and laboratory findings, our study found that wave I patients

27 had higher haemoglobin and HIV viral loads. Wave II, on the other hand, had statistically
28 significant higher chest radiography abnormalities, fraction of inspired oxygen (FiO₂), and
29 uraemia. The adjusted odds ratio for death vs discharge between waves I and II was
30 similar (0.94, 95%CI: 0.84-1.05). Wave I had a longer average survival time (8.0 vs 6.1
31 days) and a shorter average length of stay among patients discharged alive (9.2 vs 10.7
32 days). LCA revealed that the cardiovascular phenotype had the highest mortality, followed
33 by diabetes and CKD phenotypes. Only Diabetes and hypertension phenotypes had the
34 lowest mortality.

35 **Conclusion:** Even though clinical and laboratory characteristics differed significantly
36 between the two waves, mortality remained constant. According to LCA, the
37 cardiovascular, diabetes, and CKD phenotypes had the highest death probability.

38

39 **Keywords:** COVID-19, noncommunicable diseases, mortality, HIV, TB, district hospital,
40 South Africa

41

42 **Introduction**

43 The Coronavirus disease 2019 (COVID-19) pandemic continues to accelerate with South
44 Africa at the time of writing experiencing its 4th wave of COVID-19 infections. As of 29th
45 October 2022, official statistics report 4,027,157 cumulative confirmed cases of COVID-
46 19, including 102,311 reported deaths in South Africa [1]. South Africa is a middle-income
47 country with coinciding epidemics of non-communicable diseases (NCDs) and chronic
48 infectious diseases including a high prevalence of human immunodeficiency virus (HIV)
49 and tuberculosis (TB). Demographic and Health Survey found that 41% of adult women
50 and 11% of men were obese, 46% of women and 44% of men were hypertensive, and
51 13% of women and 8% of men had diabetes [2], and estimated overall HIV prevalence is
52 13,7% [3] with 852 cases (95% CI 679–1026) per 100 000 population of TB [4]. Evidence
53 suggests that COVID-19 patients with NCDs and chronic infectious diseases such as
54 diabetes, hypertension, cardiovascular disease, chronic kidney diseases (CKD), HIV, and
55 TB are at an increased risk of disease severity and mortality [5-7]. The most common
56 comorbidities reported in high HIV/TB burden settings among patients with severe
57 COVID-19 are hypertension, heart failure, diabetes, cancer in the previous 5 years,
58 chronic pulmonary disease, obesity, CKD, HIV and TB [7-10]. While high-income
59 countries have vaccinated many of their populations, low-middle income countries lag
60 due to a combination of factors such as vaccine inequity, slow vaccine rollout programs
61 due to poor administration, and vaccine hesitancy. These comorbidities are still an urgent
62 threat to COVID-19 severity and mortality in high HIV/TB and under-resourced health
63 settings such as district hospitals. The Beta variant was identified as the primary cause
64 of the rapid increase in infections during Wave II in South Africa [11, 12]. The increased

65 disease severity, the ability to escape previously acquired immunity as evidenced by
66 increased hospitalizations and case fatality rate were attributed to the various mutations
67 in the Beta variant when compared to its predecessors such as the Alpha variant and the
68 original wild-type Wuhan strain [12-14], and the ability to escape previously acquired
69 immunity [12, 15]. This contributed to the severity and mortality of COVID-19 in wave II.
70 District level hospital experiences provide a unique opportunity to study the effects of the
71 pandemic at the 'grassroots' level, which informs the success or failure of public health
72 interventions. According to a review of the literature, there is no study describing the
73 effects of NCDs on COVID-19 outcomes at a high burden HIV/TB district level hospital
74 setting. The aim of this study is to investigate the comorbidities that are linked to COVID-
75 19 severity and mortality between waves I and II.

76 **Methods**

77 **Study Design**

78 This was a retrospective observational study on the epidemiological and clinical
79 characteristics of COVID-19 at Khayelitsha District Hospital, Cape Town, South Africa
80 from March 2020 – January 2021.

81 **Study Population**

82 We included all consecutive patients, 18 years and older with COVID-19 as confirmed by
83 a positive antigen test or severe acute respiratory syndrome coronavirus 2 (SARS-CoV-
84 2) reverse transcriptase polymerase chain reaction (RT-PCR) result requiring hospital
85 admission from March 2020 until January 2021. The main indication for hospitalization
86 was COVID-19 pneumonia requiring oxygen therapy. Patients were followed up until

87 completed hospital course (either discharge, transfer to tertiary or field hospital or death).
88 Patients with incomplete outcome data were excluded.

89 **Setting**

90 South Africa has a dual health system that includes a publicly funded district health
91 system that serves approximately 84% of the population nationally and a private health
92 system that is primarily funded by private health insurance schemes [16]. The district level
93 healthcare system, along with the primary healthcare system, are the primary points of
94 contact for COVID-19 patients and oversee providing healthcare to the vast majority of
95 South Africans. Khayelitsha District Hospital is a 330-bed hospital in Mandela Park,
96 Khayelitsha that opened in 2012. Khayelitsha is a township in South Africa, south-east of
97 Cape Town (Figure 1). Most of the people (98.6%) are black Africans [17]. It was
98 constructed during the Apartheid era to enforce the Group Areas Act. Khayelitsha was
99 intended to be isolated, situated on dune land with a high risk of seasonal flooding, and
100 entirely residential, with no designated commercial or industrial zones [18]. Most of the
101 population (55.6%) live in informal housing. Khayelitsha has South Africa's highest
102 concentration of poverty and unemployment rate. Furthermore, Khayelitsha has the worst
103 health indicators in Cape Town, with the highest rates of mortality for stroke,
104 hypertension, and diabetes mellitus [19, 20].

105

106 **Data Collection**

107 We collected baseline, the demographic, clinical, laboratory and outcome data on hospital
108 admission, from digital registries, with additional data were captured from electronic
109 medical records.

110 The baseline and clinical data collected included demographic information such as age
111 and sex, symptoms on admission to hospital, presence of comorbidities including,
112 hypertension, diabetes, overweight or obesity [defined as a body mass index (BMI) ≥ 25 or
113 ≥ 30 kg/m² respectively or as documented by treating clinicians as the BMI was not
114 captured for all patients, cardiac disease, chronic kidney disease, and active or previous
115 history of TB.

116 Baseline arterial blood gas and laboratory values including severity indices were also
117 captured. These included the partial pressure of arterial oxygen to fraction of inspired
118 oxygen (P/F Ratio), the white cell count (WCC), the neutrophil to lymphocyte ratio (N/L
119 ratio), serum creatine (Cr), glycated haemoglobin (HbA1c) and the C-Reactive protein
120 (CRP), hemo glucose test (HGT), uremia, CD4 count, and viral load were captured if they
121 were done up to a year prior to admission. The main outcome of the study was in-hospital
122 death or survival to discharge.

123 **Statistical Methods**

124 Data were imported into R Statistical Software v. 4.0.5 (R Core Team, Vienna, Austria)
125 for pre-processing and analysis. Sample characteristics were described as mean and
126 standard deviation (SE) or median and interquartile ranges (IQR) for continuous
127 variables, and frequency for categorical measures. Student t test and or Mann–Whitney

128 U test were used to investigate differences in the distribution of continuous variables
129 between sub-groups of patients. X^2 test or Fishers' Exact test were used to investigate
130 differences in the distribution of categorical variables. Latent Class Analysis (LCA) was
131 used to identify latent subpopulations with similar NCD patterns [21]. The Aalen-Johansen
132 method was used to assess the competing risks of in-hospital mortality and discharge
133 [22].

134 Uncertainty in the estimates was quantified by reporting their 95% confidence intervals
135 (CI) or standard error (SE). To define statistical significance, a p-value of 0.05 was used
136 as a cut-off. To deal with missing data, a pairwise deletion method was used.

137 **Ethical approval**

138 Ethical approval for the study was obtained from the Stellenbosch University health
139 research ethics committee (Ethics reference number: N20/05/020_COVID-19).

140

141 **Results**

142 **Sample Characteristics**

143 A total of 580 patients with SARS-CoV-2 infection were admitted to the hospital during
144 the study period. From those, we excluded the 19 cases with missing triage and/or
145 outcome (death/discharge) date, and a case with missing age at admission. Of the
146 remaining 560, 367 patients were admitted during the first wave of the pandemic (April-
147 July 2020 in South Africa), and 193 during the second (November 2020 – January 2021).

148 The distribution of admissions by triage date is shown in Figure 2. Demographic, lifestyle,
 149 and clinical characteristics of the sample are summarised in Table1, separately by wave.

150 *Table 1: Demographic, lifestyle, and clinical characteristics of the sample*

151

Variable	N	Wave			p-value (1)
		Overall, N = 560	Wave I, N = 367	Wave II, N = 193	
Gender	560				0.2
Female		374 (67%)	238 (65%)	136 (70%)	
Male		186 (33%)	129 (35%)	57 (30%)	
Age	560	58 (50, 66)	57 (50, 66)	59 (51, 68)	0.092
Age class	560				0.032
14-39		34 (6.1%)	29 (7.9%)	5 (2.6%)	
40-59		273 (49%)	179 (49%)	94 (49%)	
60-79		228 (41%)	140 (38%)	88 (46%)	
>80		25 (4.5%)	19 (5.2%)	6 (3.1%)	
Current smoking	560	17 (3.0%)	9 (2.5%)	8 (4.1%)	0.3
Current drug use	560	1 (0.2%)	0 (0%)	1 (0.5%)	0.3
Current alcohol use	560	14 (2.5%)	5 (1.4%)	9 (4.7%)	0.023
HIV/AIDS	428	130 (30%)	96 (34%)	34 (23%)	0.022
Current/Previous TB	560	24 (4.3%)	15 (4.1%)	9 (4.7%)	0.7
Hypertension	560	485 (87%)	318 (87%)	167 (87%)	>0.9
Diabetes	560	362 (65%)	232 (63%)	130 (67%)	0.3
Obesity	560	109 (19%)	9 (2.5%)	100 (52%)	<0.001
Dyslipidemia	560	12 (2.1%)	6 (1.6%)	6 (3.1%)	0.4
CKD	560	75 (13%)	47 (13%)	28 (15%)	0.6
Asthma	560	10 (1.8%)	8 (2.2%)	2 (1.0%)	0.5
COPD	560	17 (3.0%)	9 (2.5%)	8 (4.1%)	0.3
CCF	560	49 (8.8%)	26 (7.1%)	23 (12%)	0.054
IHD	560	10 (1.8%)	9 (2.5%)	1 (0.5%)	0.2
Mitral Valve Disease	560	6 (1.1%)	4 (1.1%)	2 (1.0%)	>0.9
Stroke	560	17 (3.0%)	15 (4.1%)	2 (1.0%)	0.046
Cancers	560	6 (1.1%)	4 (1.1%)	2 (1.0%)	>0.9
Psychiatric disorders	560	15 (2.7%)	11 (3.0%)	4 (2.1%)	0.5
Epilepsy	560	8 (1.4%)	7 (1.9%)	1 (0.5%)	0.3
Other comorbidities	560	66 (12%)	28 (7.6%)	38 (20%)	<0.001

n (%)

(1) Pearson's Chi-squared test; Fisher's exact test

152
 153 Abbreviations: CKD: chronic kidney disease, CCF: congestive cardiac failure, COPD: Chronic Obstructive Pulmonary
 154 Disease, HIV/AIDS: human immunodeficiency virus/ acquired immune deficiency syndrome, IHD: Ischaemic Heart
 155 Disease, TB: tuberculosis

156

157 Patients admitted during wave II were significantly older than those admitted during wave
 158 I (2.6% vs 7.9% of subjects under 40, 45% vs 38% of subjects aged 60-69 years), and
 159 were 3 times more likely to be current drinkers. The comorbidity patterns were overall
 160 similar, with the notable exception of higher prevalence of HIV positive status (34% vs
 161 23%) and previous stroke (4.1% vs 1.0 %) in wave I. In contrast, a higher prevalence of
 162 obesity was observed in wave II (52% vs 2.5%).

163 The most frequent presenting complaint was shortness of breath (71% of patients across
 164 the two waves), cough (69%), fever (37%), myalgia (21%), sore throat (14%) and chest
 165 pain (11%). Shortness of breath and myalgia were significantly more frequent in wave II,
 166 and chest pain more common in wave I (Table A3: Additional Material).

167 Table 2 summarises the data collected at triage and the results of the laboratory tests.
 168 Subjects in wave II had more frequently CXR abnormalities (55% vs 10%, $p < 0.001$),
 169 higher median (IQR) temperature [36.80(36.10 - 37.10) vs 36.60(36.30 - 37.20), $p =$
 170 0.014] and FiO_2 [21(21-21) vs 21(21-80), $p < 0.001$] and lower systolic and diastolic BP
 171 [124 (117, 151) vs 133(108, 137), $p < 0.001$] and [76(68-83) vs 80(71-90), $p < 0.001$] and
 172 pulse rate [97(88, 107) vs 102(88-114), $p = 0.004$]. Laboratory results differed with higher
 173 mean uraemia in wave II [8(5, 13) vs 7(4-12), $p = 0.033$]. In contrast the median (IQR)
 174 haemoglobin and HIV viral load were higher in wave I [13.30(12.00 -14.30) vs 12.70(11.50
 175 - 13.90), $p = 0.003$] and [(20(20-28) vs 20(20-20), $p = 0.045$)], respectively.

176

Table 2: Triage data and laboratory results

177

Variable	N	Wave		p-value (1)
		Overall, N = 560	Wave I, N = 367 Wave II, N = 193	

CXR abnormality	560	145 (26%)	38 (10%)	107 (55%)	<0.001
Respiratory Rate	545	20 (18, 28)	20 (18, 28)	20 (19, 26)	0.4
Pulse rate	549	100 (88, 112)	102 (88, 114)	97 (88, 107)	0.004
Systolic BP	547	129 (113, 148)	133 (117, 151)	124 (108, 137)	<0.001
Diastolic BP	547	79 (70, 87)	80 (71, 90)	76 (68, 83)	<0.001
Hypertension	547	208 (38%)	160 (44%)	48 (26%)	<0.001
Temperature	529	36.70 (36.20, 37.10)	36.60 (36.10, 37.10)	36.80 (36.30, 37.20)	0.014
SPO2	549	92 (85, 96)	92 (85, 96)	92 (84, 96)	0.7
PaO2	310	7.70 (6.10, 9.50)	7.50 (6.10, 9.20)	7.70 (6.30, 10.30)	0.5
FiO2	210	21 (21, 40)	21 (21, 21)	21 (21, 80)	<0.001
HGT	492	12 (7, 20)	12 (7, 21)	12 (8, 17)	0.4
Uremia	553	7 (5, 13)	7 (4, 12)	8 (5, 13)	0.033
Creatinine	553	93 (69, 145)	94 (69, 143)	93 (73, 158)	0.5
C-reactive protein	491	148 (76, 229)	146 (71, 231)	154 (94, 224)	0.3
WCC	552	9.2 (6.9, 11.8)	9.2 (6.8, 12.1)	9.4 (7.1, 11.5)	0.8
Haemoglobin	551	13.10 (11.80, 14.15)	13.30 (12.00, 14.30)	12.70 (11.50, 13.90)	0.003
PLTS	551	281 (220, 367)	280 (215, 364)	282 (225, 368)	0.7
Lymphocytes	435	1.64 (1.25, 2.14)	1.63 (1.19, 2.08)	1.65 (1.29, 2.16)	0.2
Neutrophils	434	6.7 (4.7, 8.9)	6.6 (4.5, 9.0)	6.8 (5.0, 8.6)	0.8
CD4	101	336 (212, 480)	306 (228, 460)	410 (147, 558)	0.4
Viral Load	90	20 (20, 23)	20 (20, 28)	20 (20, 20)	0.045

Median (IQR)

(1) Wilcoxon rank sum test

Abbreviations: BP; blood pressure, CD4: cluster of differentiation 4, HGT: Hemo Glucose Test, PLTS: Platelets, SpO2: Oxygen saturation, PaO2: Partial Pressure of Oxygen, FiO2: fraction of inspired oxygen, WCC: White Cell Count

178 Interventions and complications

179 Table 3 shows the frequency of various interventions in the two waves, while Table 4
180 summarises the reported complications.

181

182

183

Table 3: Interventions

Variable	N	Wave			p-value (1)
		Overall, N = 560	Wave I, N = 367	Wave II, N = 193	
Co-trimoxazole	560	6 (1.1%)	3 (0.8%)	3 (1.6%)	0.4
O ₂	560	425 (76%)	263 (72%)	162 (84%)	0.001
Corticosteroids	281	220 (78%)	53 (51%)	167 (94%)	<0.001
Ceftriaxone	560	93 (17%)	40 (11%)	53 (27%)	<0.001
Azithromycin	560	73 (13%)	35 (9.5%)	38 (20%)	<0.001
Amoxicillin + Clavulanic Acid	560	13 (2.3%)	6 (1.6%)	7 (3.6%)	0.15
Unspecified antibiotic	560	323 (58%)	278 (76%)	45 (23%)	<0.001

n (%)

(1) Pearson's Chi-squared test; Fisher's exact test

184

185

186

Table 4: Reported complications

187

Variable	N	Wave			p-value (1)
		Overall, N = 560	Wave I, N = 367	Wave II, N = 193	
AKI	560	126 (22%)	69 (19%)	57 (30%)	0.004
Shock	560	10 (1.8%)	10 (2.7%)	0 (0%)	0.018
ARDS	560	45 (8.0%)	5 (1.4%)	40 (21%)	<0.001
HAP	560	6 (1.1%)	4 (1.1%)	2 (1.0%)	>0.9
DIC	560	2 (0.4%)	2 (0.5%)	0 (0%)	0.5

n (%)

(1) Pearson's Chi-squared test; Fisher's exact test

Abbreviations: AKI: Acute kidney injury, ARDS: Acute respiratory distress syndrome, DIC: Disseminated intravascular coagulation, HAP: Hospital-acquired pneumonia

188

189

Interventions and complications

190 Table 3 shows the frequency of various interventions in the two waves, while Table 4

191 summarises the reported complications.

192 Most subjects had O₂ and corticosteroids administered during their hospital stay, and in
193 both cases, the frequency of the intervention was significantly higher in wave II. The
194 between-waves comparison of the type of antibiotics administered was partly hindered by
195 the substantial number of cases where the type is unspecified. Overall, data suggests
196 significantly higher use of oxygen (72% vs 84%, P<0.001), corticosteroids (51% vs 94%,
197 p<0.001), ceftriaxone (11% vs 27%, p<0.001), Azithromycin (9.5% vs 20%, p<0.001) in
198 the second wave compared to the first. Acute Kidney Injury (19% vs 30%, p = 0.004) and
199 ARDS (1.4% vs 21%, p<0.001) were more common complications in wave II, while shock
200 (2.7% vs 0%, p = 0.018) was predominant in wave I.

201 **Outcomes**

202 The proportion of subjects dead as a function of the number of days after triage is shown
203 in Figure 3. The figure indicates a slightly higher risk of mortality in wave II, consistent
204 over time. However, the differences were not statistically significant, and disappeared
205 completely after adjustment for age and comorbidities at baseline. The odds ratio for
206 death vs discharge between wave I and wave II were 1.3 (95% CI: 0.76-2.19) in the
207 unadjusted analyses, and 0.94 (0.84-1.05) after adjustment.

208 The average survival time was 8 days in wave I (ranging from 0 to 58 days) and 6.1 days
209 in wave II (1 to 25 days). The average length of stay of patients discharged alive was 9.2
210 days in wave I (ranging from 0 to 89 days) and 10.7 days in wave II (0 to 68 days).

211

212 **NCD patterns**

213 Latent class analysis suggests the presence in the population of 4 latent classes (see
214 Additional Material for modelling details). The comorbidity patterns observed in each class
215 are shown in Figure 4. Phenotype 1 (*'Cardiovascular'*) is characterised by high prevalence
216 of cardiovascular diagnoses (IHD, mitral valve disease, CCF, stroke, accompanied by
217 significant prevalence of diabetes and CKD). Phenotype 2 (*'CKD'*) is characterised by the
218 highest prevalence of diabetes and CKD, but minimal prevalence of other diseases
219 (excluding hypertension, which is highly prevalent across the four phenotypes).
220 Phenotype 3 (*'Diabetes'*) shows high prevalence of diabetes but no CKD and the lowest
221 prevalence of obesity. Phenotype 4 (*'Hypertension'*), finally, shares with the remaining
222 groups a high prevalence of hypertension but has a relatively 'healthy' comorbidity profile
223 regarding the other disease considered. Tables A2, A3 and A4 in Additional Material
224 summarise the characteristics of the four phenotypes in terms of presenting complaints,
225 triage variables and laboratory results, respectively.

226 Figure 5 shows the probability of deaths by time from triage, separately by latent
227 phenotypes. It clearly indicated that individuals with phenotype 1 and 2 (Cardiovascular
228 and CKD) have the highest risk of death at any point in time. Phenotype 3 and 4 (diabetes
229 and hypertension) have the best probability of survival. The risk of death is similar for the
230 two groups in the first two weeks from triage. Afterwards, phenotype "diabetes" had a
231 slightly better prognosis.

232

233

234 **Discussion**

235 This retrospective cohort study of 560 patients focused on the interactions between
236 SARS-CoV-2 infection and NCDs during two COVID-19 waves in a district level hospital
237 in South Africa. The median (IQR) age was 58 (50- 66) years and females (67%) were
238 more prevalent than males (33%). The cohort included patients with hypertension (87%),
239 diabetes (65%) and obesity (30%). A third of the cohort was HIV infected. The target
240 organ damage associated with NCDs included CKD (13%), CCF (8.8%) and
241 cerebrovascular accidents (3%). In comparison to wave II, wave I had a statistically
242 significant higher proportion of patients with HIV/AIDS and stroke. In contrast, wave II had
243 a statistically significant higher proportion of old age, current alcohol use, dyslipidemia,
244 and CCF and obesity. The higher proportion of obesity in wave II should be interpreted
245 with caution because there was little emphasis on capturing BMI in the first wave as
246 obesity was not recognized as a marker of disease severity. Obesity/increased BMI was
247 found to be associated with poor outcomes as the pandemic evolved. In terms of clinical
248 and laboratory findings, our study found that wave I had a statistically significant higher
249 pulse rate, systolic BP, diastolic BP, hypertension, haemoglobin, and HIV viral load.
250 However, wave II had statistically significant higher CXR abnormalities, temperature,
251 FiO₂, and uremia. In the latent class, our study found that cardiovascular disease,
252 diabetes mellitus, and CKD had a higher mortality rate after triage than diabetes without
253 CKD and hypertension. In wave I, the average survival time was 8.0 days, and in wave
254 II, it was 6.1 days. Our findings were consistent with previous research that found shorter
255 survival times in wave II [8, 11]. Lalla et al. demonstrated that the probability of intensive
256 care unit (ICU) survival was higher during the second wave than the first [12]. This could
257 be explained by evidence-based and effective available interventions such as High-flow

258 nasal oxygen (HFNO) and steroids in the ICU setting. The average length of stay for
259 discharged alive patients was 9.2 days in wave I and 10.7 days in wave II. The data
260 showed a slightly higher risk of mortality in wave II, but the difference was not statistically
261 significant.

262 HIV was independently associated with increased COVID-19 mortality in a large cohort
263 study conducted in the Western Cape [6]. Furthermore, people with HIV who had a history
264 of unsuppressed viral load were more likely to die in a hospital than suppressed HIV
265 patients [11]. Tenofovir disoproxil fumarate (TDF), which is used in the first-line
266 antiretroviral therapy (ART) regimen in South Africa, has been linked to new or worsening
267 renal failure [11, 23], and other antiretroviral drugs have been linked to hyperlipidaemia,
268 cardiac disease, and diabetes [11, 24]. The presence of comorbidities among PLWH was
269 linked to an increased risk of COVID-19 mortality [11]. Thus, HIV may play a significant
270 role in the emergence of NCDs in high-burden settings like the one studied here.
271 Additionally, higher HIV rates in wave I may be associated with non-communicable
272 diseases, increasing the mortality rate in wave I as the adjusted odds ratio for death vs
273 discharge between wave I and wave was 0.94. (0.84-1.05). In comparison to a large
274 cohort that stated that current/previous TB were predictors of COVID-19 in-hospital
275 mortality, the small number of current/previous TB cases (24/560, 4.3%) had no effect on
276 the study findings [6, 7].

277 In our study, latent class analysis revealed that stroke was included in the cardiovascular
278 (4.1%), CKD (3.7%), hypertension (3.5%), and diabetes mellitus (2.1%) phenotypes.
279 Psychiatric disorders were also prevalent in the hypertension phenotype (1.8%). The
280 presence of comorbidities was associated increased with severity of COVID-19 infection

281 (Honardoost et al., 2020). Cerebrovascular disease had the strongest association,
282 followed by cardiovascular diseases (CVDs), chronic lung disease, diabetes, and
283 hypertension [25]. Even though hypertension is associated with an up to 2.5-fold
284 increased risk of severe or fatal COVID 19, particularly in older individuals (Lippi et al.,
285 2020) compared to other comorbidities such as COPD (over 5-fold higher risk) [26, 27]
286 and CKD (over 3-fold higher risk), it still has important clinical implications [27].
287 Hypertension is also associated with a pro-inflammatory state, as evidenced by increased
288 levels of Angiotensin II, chemokines, cytokines, Interleukin-6 (IL-6) and tumour necrosis
289 factor (TNF) [28]. According to one study, the risks of adverse heart failure outcomes
290 increased significantly in patients with high systolic blood pressure, but this trend was
291 less obvious in patients with high diastolic blood pressure [29]. Our findings were also
292 consistent with a study that found high blood pressure to be a significant predictor of an
293 unfavourable COVID-19 prognosis [29]. High SBP/DBP variability, on the other hand, was
294 associated with a high risk of mortality, implying that maintaining stable in-hospital BP in
295 COVID-19 patients is critical [29].

296 As previously discussed, evidence suggests that patients with noncommunicable
297 diseases such as diabetes, hypertension, cardiovascular disease, and chronic kidney
298 disease have increased Angiotensin-Converting Enzyme 2 (ACE2) receptor expression,
299 which facilitates SARS-CoV-2 entry in the host and thus increases disease severity and
300 mortality [5]. Obesity, metabolic complications, and COVID-19 severity were all linked,
301 with a focus on fat mass distribution and insulin resistance [30]. This is well established
302 in our latent analysis, where CCF (100%), diabetes mellitus (67.3%), CKD (40.8%), IHD
303 (12.2%), and dyslipidaemia (6.1%) contributed to the highest cardiovascular phenotype

304 mortality rate. Similarly, the phenotypes diabetes mellitus and CKD had a high mortality
305 rate. Diabetic patients have an increased risk of COVID-19 due to increased expression
306 of a type one protease called Furin [31]. Furin facilitates the attachment of the SARS-
307 CoV-2 spike protein to the ACE-2 receptor in diabetic patients, which is associated with
308 a dysregulated host immune response with increased ACE2 receptors and Furin levels,
309 which may be associated with lower insulin levels and worsening inflammation [31].
310 Similarly, low-grade systemic inflammation associated with obesity is associated with
311 poor outcomes in COVID-19 patients [32]. This low-grade inflammation is linked to a
312 hyperimmune inflammatory state known as the cytokine storm [33]. The cytokine storm
313 that occurs during SARS-CoV-2 infection may also contribute to the high prevalence of
314 anaemia found in our study. Haemoglobin levels decreased with age, as did the
315 percentage of subjects with diabetes, hypertension, and other comorbidities [34].

316 In this study, we also found that COVID-19 patients in wave II were older, had a higher
317 rate of abnormal CXR, dyslipidemia, CCF, and FIO₂. Increasing age, underlying
318 cardiovascular diseases, and lower PaO₂/FiO₂ ratio values comprised the Brixia score;
319 when this score was higher, it was a significant predictor of COVID-19 death [35]. Brixia
320 score on initial CXR predicts fatal outcome in COVID-19 patients (based on in-hospital
321 and out-of-hospital deaths) [35]. The higher proportion of CXR abnormality in wave II may
322 be due to more disease severity than in wave I. This is supported by Figure 3, which
323 compares mortality between waves I and II. This also is consistent with studies that found
324 a new strain of the virus caused more severe infections, as evidenced by abnormal CXR
325 [36-39]. This cohort included patients with moderate to severe COVID-19, with 76% being
326 oxygen dependent and 78% receiving corticosteroid therapy. The cohort had a

327 PaO₂/FiO₂ ratio of 276mmHg, which is consistent with mild acute respiratory distress
328 syndrome, and 22% of the cohort had acute kidney injury.

329 A meta-analysis revealed that AKI was a common and serious complication of COVID-19
330 [40]. AKI was associated with older age and having severe COVID-19 [40]. In patients
331 with COVID-19 complicated by AKI, the risk of dying in the hospital was significantly
332 increased [40, 41]. According to one study, nearly half of COVID-19 patients with ARDS
333 had AKI during their hospital stay [41]. This could explain the high rate of AKI and ARDS
334 complications during wave II, indicating that the Beta variant was associated with
335 increased severity and cytokine storm [12]. Currently, the mechanism of AKI in COVID-
336 19 patients is thought to involve SARS-CoV-2 directly attacking intrinsic renal cells [40].
337 High ACE2 expression in proximal tubular epithelial cells could be a target for kidney
338 damage. As previously described, high-load SARS-CoV-2 infection causes a cytokine
339 storm in which various inflammatory mediators are released, resulting in ischaemia,
340 hypoxia, fibrosis, and kidney damage [42-47]. Furthermore, COVID-19 that is
341 accompanied by high temperature, shock, dehydration, and hypoxemia, and is managed
342 with antibiotics and other potentially nephrotoxic drugs which may cause AKI [44].
343 Increased age, diabetes mellitus, and hypertension were also found to cause or worsen
344 the occurrence and progression of AKI in our study. This is consistent with other studies
345 that show an association between AKI and the parameters [28, 48]. AKI and increasing
346 age are also plausible explanations for the uricemia observed in wave II. In addition,
347 Moledina et al. found that AKI in COVID-19 may be caused by a combination of some
348 typical AKI risk factors, such as hypotension and volume depletion [47]. AKI could also
349 cause hypotension, volume depletion, and shock, as seen in wave I, where shock was

350 predominant. However, viral septic shock is frequently overlooked in clinical diagnosis;
351 studies have shown that COVID-19 patients developed sepsis, leading to subsequent
352 multiple organ dysfunction [34, 44, 49]. We hypothesize that the high rate of shock
353 described in wave I could be hypovolemic and or sepsis related.

354 Despite emerging evidence that treatment with empirical administration of antibiotics such
355 as azithromycin and ceftriaxone does not reduce the risk of death in hospitalized COVID-
356 19 patients [50], our study found that antibiotics were used more frequently in wave II
357 than in wave I in the district hospital. This could be attributed to the severity of illness
358 associated with wave II, the level of clinical experience of clinicians in the district hospital
359 (often juniors) combined with the delay in turnaround time in obtaining a positive
360 COVID19 result in patients with a syndrome of a pneumonia requiring oxygen. Clinicians
361 in this setting felt more comfortable in commencing empiric antibiotics. A meta-analysis
362 of 18 RCTs enrolling 2826 patients found that higher use of corticosteroids may reduce
363 mortality in patients with ARDS [51]. Patients who received a longer course of
364 corticosteroids lived longer than those who received a shorter course [51]. The landmark
365 RECOVERY trial found that there was a 28-day mortality reduction in patients
366 hospitalized with COVID-19 who received corticosteroid therapy [52]. However, in
367 patients who are immunocompromised such as HIV, diabetes mellitus, CKD, and Obesity
368 which is associated with low grade inflammation, high doses and a prolonged course of
369 corticosteroids render COVID-19 patients susceptible to active and latent TB [53]. This
370 could also lead to hypoinflammation and delayed viral clearance, resulting in increased
371 SARS-CoV-2 viral shedding in the lungs and kidneys, explaining ARDS and AKI in wave
372 II. The use of high-flow oxygen through a nasal cannula significantly reduced the need

373 for mechanical ventilation support and the time to clinical recovery in patients with severe
374 COVID-19 when compared to conventional low-flow oxygen therapy [54]. It is worth noting
375 that patients admitted with severe COVID-pneumonia were not given mechanical
376 ventilation or high flow nasal oxygen at the district hospital setting due to limited human
377 and infrastructure resources.

378 To the best of our knowledge, this is the first relatively large retrospective cohort that
379 provides precise information about the characteristics of noncommunicable disease in
380 waves I and II in terms of demographics, clinical characteristics, triage data and laboratory
381 results, interventions, and complications patterns, including a latent analysis in a high
382 HIV/TB district hospital. This study used data from routine clinical practice; thus, data
383 could be incomplete or incorrect, leading to potential misclassification. To mitigate the
384 impact of incompleteness, we have selectively reported database-specific outcomes.
385 Patients who required mechanical ventilation or high flow nasal oxygen were transferred
386 to our referral centre due to limited resources.

387

388 **Conclusion**

389 In conclusion, this study compares demographic, clinical, laboratory, complications, and
390 phenotype differences between COVID-19 waves I and II individuals with NCDs admitted
391 to a district hospital with a high HIV/TB burden. Hypertension, diabetes, HIV/AIDS,
392 obesity, CKD, CCF, COPD, and stroke were the most common comorbidity patterns.
393 Except for HIV status, obesity, and previous stroke, all of them were similar between the
394 two waves. In terms of clinical and laboratory findings, our study found that wave I had

395 statistically significant higher haemoglobin and HIV viral load. However, wave II had
396 statistically significant higher CXR abnormalities, FIO₂, and uraemia. The average
397 survival time was longer in wave I, and the average length of stay of patients discharged
398 alive was shorter. The adjusted odds ratio for death vs discharge between waves I and II
399 was not statistically different. LCA revealed that the cardiovascular phenotype was the
400 most likely to die, followed by the diabetes and CKD phenotypes. Diabetes and
401 hypertension phenotypes had the lowest mortality rate. This study, conducted in a district
402 level hospital in South Africa, demonstrates the impact of COVID-19 in low-resource
403 settings. NCDs continue to play a significant role in the outcomes of COVID-19 patients.
404 Additional interventions are required in the treatment of COVID-19 associated with NCDs
405 because this association may cause elevated risk of complications and death among
406 patients attending care at the district hospital level.

407 **Abbreviations**

408 AIDS: acquired immunodeficiency syndrome; AKI: Acute kidney injury; ARDS: Acute
409 respiratory distress syndrome; ACE2: Angiotensin-Converting Enzyme 2; ART:
410 antiretroviral therapy; BMI: body mass index; COVID-19: CCF: congestive cardiac failure;
411 Coronavirus disease 2019; Cr: creatine; CRP: C-Reactive protein; COPD: Chronic
412 obstructive pulmonary disease; CXR: chest x-ray; CVDs: cardiovascular diseases; DIC:
413 Disseminated intravascular coagulation; FIO₂: fraction of inspired oxygen; HAP: Hospital-
414 acquired; pneumonia HIV: human immunodeficiency virus; HGT: hemo glucose test; ICU:
415 intensive care unit; IHD: ischemic heart disease; IL-6: Interleukin-6; IQR: interquartile
416 ranges; JHU: John Hopkin University; CHD: chronic heart disease; CKD: chronic kidney
417 diseases; LCA: Latent Class Analysis; NCDs: non-communicable diseases; RT-PCR:

418 reverse transcriptase polymerase chain reaction SARS-CoV-2: severe acute respiratory
419 syndrome coronavirus 2; SE: standard deviation; SPO2: Oxygen saturation; TB:
420 tuberculosis; TDF: Tenofovir disoproxil fumarate; TNF: tumor necrosis factor; WCC: white
421 cell count

422 **Declarations**

423 Contributions: Conception: ATM and PSN; Study design: ATM, PSN, DS, NE and JLT;

424 Data collection: ATM, DS, NE, NS, and NB; Data analysis: AC; Writing and Editing:

425 ATM, DS, NE, NS, NB, NS, SG, AC, JLT, YT, MAD, RE, and PSN

426 Ethics approval: Ethical approval for the study was obtained from the Stellenbosch

427 University health research ethics committee (Ethics reference number:

428 N20/05/020_COVID-19).

429 Consent for publication: Not applicable.

430 Competing interests: The authors declare that they have no competing interests.

431 Funding: No funding was obtained for the study

432 Availability of data and materials: Data and materials for this study are provided as

433 supplementary information.

434

435 **References**

436 1. JHU. Coronavirus resources centre/Global Map, 2022.

437 <https://coronavirus.jhu.edu/map.html>

- 438 2. Statistics South Africa. South African Demographic and Health Survey 2016: Key
439 Indicator, 2016. <https://dhsprogram.com/pubs/pdf/SR248/SR248.pdf>
- 440 3. Statistics South Africa. Mid-year population estimates 2021,
441 <https://www.statssa.gov.za/publications/P0302/P03022021.pdf>
- 442 4. Moyo S, Ismail F, Van der Walt M, Ismail N, Mkhondo N, Dlamini S, Mthiyane T,
443 Chikovore J, Oladimeji O, Mametja D, Maribe P, Seocharan I, Ximiya P, Law I,
444 Tadolini M, Zuma K, Manda S, Sismanidis C, Pillay Y, Mvusi L. Prevalence of
445 bacteriologically confirmed pulmonary tuberculosis in South Africa, 2017-19: a
446 multistage, cluster-based, cross-sectional survey. *Lancet Infect Dis.*
447 *2022;22(8):1172-1180.*
- 448 5. Singh AK, Gupta R, Ghosh A, Misra A. Diabetes in COVID-19: Prevalence,
449 pathophysiology, prognosis, and practical considerations. *Diabetes Metab Syndr.*
450 *2020;14(4):303-310.*
- 451 6. Western Cape Department of Health in collaboration with the National Institute
452 for Communicable Diseases, South Africa. Risk Factors for Coronavirus Disease
453 2019 (COVID-19) Death in a Population Cohort Study from the Western Cape
454 Province, South Africa. *Clin Infect Dis.* *2021;73(7): e2005-e2015*
- 455 7. Jassat W, Cohen C, Tempia S, Masha M, Goldstein S, Kufa T, Murangandi P,
456 Savulescu D, Walaza S, Bam JL, Davies MA, Prozesky HW, Naude J, Mnguni
457 AT, Lawrence CA, Mathema HT, Zamparini J, Black J, Mehta R, Parker A,
458 Chikobvu P, Dawood H, Muvhango N, Strydom R, Adelekan T, Mdlovu B,
459 Moodley N, Namavhandu EL, Rheeder P, Venturas J, Magula N, Blumberg L;
460 DATCOV author group. Risk factors for COVID-19-related in-hospital mortality in

- 461 a high HIV and tuberculosis prevalence setting in South Africa: a cohort study.
462 Lancet HIV. 2021;8(9): e554-e567
- 463 8. Docherty AB, Harrison EM, Green CA, Hardwick H, Pius R, Norman L, Holden
464 KA, Read JM, Dondelinger F, Carson G, Merson L. Features of 16,749
465 hospitalised UK patients with COVID-19 using the ISARIC WHO Clinical
466 Characterisation Protocol,
467 2020.<https://www.medrxiv.org/content/10.1101/2020.04.23.20076042v1>
- 468 9. Jalili M, Payandemehr P, Saghaei A, Sari HN, Safikhani H, Kolivand P.
469 Characteristics and Mortality of Hospitalized Patients With COVID-19 in Iran: A
470 National Retrospective Cohort Study. *Ann Intern Med.* 2021;174(1):125-127
- 471 10. Polak SB, Van Gool IC, Cohen D, von der Thüsen JH, van Paassen J. A
472 systematic review of pathological findings in COVID-19: a pathophysiological
473 timeline and possible mechanisms of disease progression. *Mod Pathol.*
474 2020;33(11):2128-2138.
- 475 11. Jassat W, Mudara C, Ozougwu L, Tempia S, Blumberg L, Davies MA, Pillay Y,
476 Carter T, Morewane R, Wolmarans M, von Gottberg A, Bhiman JN, Walaza S,
477 Cohen C; DATCOV author group. Difference in mortality among individuals
478 admitted to hospital with COVID-19 during the first and second waves in South
479 Africa: a cohort study. *Lancet Glob Health.* 2021;9(9): e1216-e1225.
- 480 12. Lalla U, Koegelenberg CFN, Allwood BW, Sigwadhi LN, Irusen EM, Zemlin AE,
481 Masha TE, Erasmus RT, Chapanduka ZC, Prozesky H, Taljaard J, Parker A,
482 Decloedt EH, Retief F, Jalavu TP, Ngah VD, Yalew A, Tamuzi JL, Baines N,
483 McAllister M, Zumla A, Nyasulu PS. Comparison of patients with severe COVID-

- 484 19 admitted to an intensive care unit in South Africa during the first and second
485 wave of the COVID-19 pandemic. *Afr J Thorac Crit Care Med*.
486 2021;27(4):10.7196/AJTCCM. 2021.v27i4.185.
- 487 13. Davies NG, Abbott S, Barnard RC, et al. Estimated transmissibility, and impact of
488 SARSCoV-2 lineage B..1.1.7 in England. *medRxiv*. 2020 doi: 10.1126/science.
489 abg3055.
- 490 14. Centers for Disease Control. SARS-CoV-2 Variant Classifications and
491 Definitions. 2021 [https://www.cdc.gov/coronavirus/2019-ncov/variants/variant-](https://www.cdc.gov/coronavirus/2019-ncov/variants/variant-info.html)
492 [info.html](https://www.cdc.gov/coronavirus/2019-ncov/variants/variant-info.html)
- 493 15. Are EB, Colijn CB. Projected spread of COVID-19's second wave in South Africa
494 under different levels of lockdown 2021. doi: 10.1101/2021.01.22.21250308.
- 495 16. Naidoo S. The South African national health insurance: a revolution in health-
496 care delivery! *J Public Health (Oxf)*. 2012;34(1):149-50.
- 497 17. Strategic Development Information and GIS Department. City of Cape Town -
498 2011 Census Suburb Khayelitsha, 2013.
499 [http://www.capetown.gov.za/en/stats/2011CensusSuburbs/2011_Census_CT_Su-](http://www.capetown.gov.za/en/stats/2011CensusSuburbs/2011_Census_CT_Suburb_Khayelitsha_Profile.pdf)
500 [burb_Khayelitsha_Profile.pdf](http://www.capetown.gov.za/en/stats/2011CensusSuburbs/2011_Census_CT_Suburb_Khayelitsha_Profile.pdf)
- 501 18. Maylam P. The rise and decline of urban apartheid in South Africa. *African*
502 *Affairs*. 1990;89(354):57-84
- 503 19. Groenewald P, Bradshaw D, Daniels J, Zinyakatira N, Matzopoulos R, Bourne D,
504 Shaikh, N, Naledi, T. Surveillance de la mortalité au niveau local dans des pays
505 disposant de ressources limitées: Mise en lumière des disparités en matière de

- 506 santé par une étude de cas menée dans la ville du Cap. Bulletin of the World
507 Health Organization 2010, 88(6): 444–451.
- 508 20. Smit W, de Lannoy A, Dover RVH, Lambert E V, Levitt N, Watson V. Making
509 unhealthy places: The built environment and non-communicable diseases in
510 Khayelitsha, Cape Town. Health and Place 2016; 39: 196–203.
- 511 21. Lanza ST, Rhoades BL. Latent class analysis: an alternative perspective on
512 subgroup analysis in prevention and treatment. Prev Sci. 2013;14(2):157-68.
- 513 22. Borgan, Ø. Aalen–Johansen Estimator. In Encyclopaedia of Biostatistics (eds P.
514 Armitage and T. Colton), 2005. <https://doi.org/10.1002/0470011815.b2a11001>
- 515 23. United States Department of Health and Human Services Tenofovir disoproxil
516 fumarate. April 27, 2020. [https://aidsinfo.nih.gov/drugs/290/tenofovir-disoproxil-](https://aidsinfo.nih.gov/drugs/290/tenofovir-disoproxil-fumarate/0/patient)
517 [fumarate/0/patient](https://aidsinfo.nih.gov/drugs/290/tenofovir-disoproxil-fumarate/0/patient)
- 518 24. United States Department of Health and Human Services Side effects of HIV
519 medicines. Sept 24, 2020. [https://hivinfo.nih.gov/understanding-hiv/fact-](https://hivinfo.nih.gov/understanding-hiv/fact-sheets/hiv-medicines-and-side-effects)
520 [sheets/hiv-medicines-and-side-effects](https://hivinfo.nih.gov/understanding-hiv/fact-sheets/hiv-medicines-and-side-effects)
- 521 25. Honardoost M, Janani L, Aghili R, Emami Z, Khamseh ME. The Association
522 between Presence of Comorbidities and COVID-19 Severity: A Systematic
523 Review and Meta-Analysis. Cerebrovasc Dis. 2021;50(2):132-140.
- 524 26. Lippi G, Henry BM. Chronic obstructive pulmonary disease is associated with
525 severe coronavirus disease 2019 (COVID-19). Respir Med. 2020 Jun;
526 167:105941.

- 527 27. Lippi G, Wong J, Henry BM. Hypertension in patients with coronavirus disease
528 2019 (COVID-19): a pooled analysis. *Pol Arch Intern Med.* 2020 Apr
529 30;130(4):304-309
- 530 28. De Miguel C, Rudemiller NP, Abais JM, Mattson DL. Inflammation and
531 hypertension: new understandings and potential therapeutic targets. *Curr*
532 *Hypertens Rep.* 2015;17(1):507.
- 533 29. Ran J, Song Y, Zhuang Z, Han L, Zhao S, Cao P, Geng Y, Xu L, Qin J, He D, Wu
534 F, Yang L. Blood pressure control and adverse outcomes of COVID-19 infection
535 in patients with concomitant hypertension in Wuhan, China. *Hypertens Res.* 2020
536 ;43(11):1267-1276.
- 537 30. Martínez-Rueda AJ, Álvarez RD, Méndez-Pérez RA, Fernández-Camargo DA,
538 Gaytan-Arocha JE, Berman-Parks N, Flores-Camargo A, Comunidad-Bonilla RA,
539 Mejia-Vilet JM, Arvizu-Hernandez M, Ramirez-Sandoval JC, Correa-Rotter R,
540 Vega-Vega O. Community- and Hospital-Acquired Acute Kidney Injury in COVID-
541 19: Different Phenotypes and Dismal Prognosis. *Blood Purif.* 2021;50(6):931-941
- 542 31. Fernandez C, Rysä J, Almgren P, Nilsson J, Engström G, Orho-Melander M,
543 Ruskoaho H, Melander O. Plasma levels of the proprotein convertase furin and
544 incidence of diabetes and mortality. *J Intern Med.* 2018;284(4):377-387.
- 545 32. Chiappetta S, Sharma AM, Bottino V, Stier C. COVID-19 and the role of chronic
546 inflammation in patients with obesity. *Int J Obes (Lond).* 2020;44(8):1790-1792.
- 547 33. Azar WS, Njeim R, Fares AH, Azar NS, Azar ST, El Sayed M, Eid AA. COVID-19
548 and diabetes mellitus: how one pandemic worsens the other. *Rev Endocr Metab*
549 *Disord.* 2020;21(4):451-463.

- 550 34. Taneri PE, Gómez-Ochoa SA, Llanaj E, Raguindin PF, Rojas LZ, Roa-Díaz ZM,
551 Salvador D Jr, Groothof D, Minder B, Kopp-Heim D, Hautz WE, Eisenga MF,
552 Franco OH, Glisic M, Muka T. Anemia, and iron metabolism in COVID-19: a
553 systematic review and meta-analysis. *Eur J Epidemiol.* 2020;35(8):763-773.
- 554 35. Balbi M, Caroli A, Corsi A, Milanese G, Surace A, Di Marco F, Novelli L, Silva M,
555 Lorini FL, Duca A, Cosentini R, Sverzellati N, Bonaffini PA, Sironi S. Chest X-ray
556 for predicting mortality and the need for ventilatory support in COVID-19 patients
557 presenting to the emergency department. *Eur Radiol.* 2021;31(4):1999-2012.
- 558 36. Brakohiapa EKK, Sarkodie BD, Botwe BO, Dzefi-Tettey K, Anim DA, Edzie EKM,
559 Goleku PN, Jimah BB, Amankwa AT. Comparing radiological presentations of
560 first and second strains of COVID-19 infections in a low-resource country.
561 *Heliyon.* 2021;7(8): e07818.
- 562 37. Au-Yong I, Higashi Y, Giannotti E, Fogarty A, Morling JR, Grainge M, Race A,
563 Juurlink I, Simmonds M, Briggs S, Cruikshank S, Hammond-Pears S, West J,
564 Crooks CJ, Card T. Chest Radiograph Scoring Alone or Combined with Other
565 Risk Scores for Predicting Outcomes in COVID-19. *Radiology.* 2022;302(2):460-
566 469
- 567 38. Firdose SR, Mattoo P, Malik AH, Viqar A. HRCT Chest in Patients Suffering from
568 COVID-19: Experience from a Tertiary Care Centre in India During Second Wave
569 of the Pandemic. *Imaging,* 2022.
570 <https://doi.org/10.1556/1647.2022.00067>

- 571 39. Moodley S, Sewchuran T. Chest radiography evaluation in patients admitted with
572 confirmed COVID-19 infection, in a resource limited South African isolation
573 hospital. SA J Radiol. 2022;26(1):2262.
- 574 40. Lin L, Wang X, Ren J, Sun Y, Yu R, Li K, Zheng L, Yang J. Risk factors and
575 prognosis for COVID-19-induced acute kidney injury: a meta-analysis. BMJ
576 Open. 2020;10(11): e042573.
- 577 41. Wang F, Ran L, Qian C, Hua J, Luo Z, Ding M, Zhang X, Guo W, Gao S, Gao W,
578 Li C, Liu Z, Li Q, Ronco C. Epidemiology and Outcomes of Acute Kidney Injury in
579 COVID-19 Patients with Acute Respiratory Distress Syndrome: A Multicenter
580 Retrospective Study. Blood Purif. 2021;50(4-5):499-505.
- 581 42. Chen X, Zhao B, Qu Y, Chen Y, Xiong J, Feng Y, Men D, Huang Q, Liu Y, Yang
582 B, Ding J, Li F. Detectable Serum Severe Acute Respiratory Syndrome
583 Coronavirus 2 Viral Load (RNAemia) Is Closely Correlated with Drastically
584 Elevated Interleukin 6 Level in Critically Ill Patients with Coronavirus Disease
585 2019. Clin Infect Dis. 2020;71(8):1937-1942.
- 586 43. Huang C, Wang Y, Li X, Ren L, Zhao J, Hu Y, Zhang L, Fan G, Xu J, Gu X,
587 Cheng Z, Yu T, Xia J, Wei Y, Wu W, Xie X, Yin W, Li H, Liu M, Xiao Y, Gao H,
588 Guo L, Xie J, Wang G, Jiang R, Gao Z, Jin Q, Wang J, Cao B. Clinical features of
589 patients infected with 2019 novel coronavirus in Wuhan, China. Lancet.
590 2020;395(10223):497-506.
- 591 44. Lin GL, McGinley JP, Drysdale SB, Pollard AJ. Epidemiology and Immune
592 Pathogenesis of Viral Sepsis. Front Immunol. 2018; 9:2147.

- 593 45. Li WX, Xu W, Huang CL, Fei L, Xie XD, Li Q, Chen L. Acute cardiac injury, and
594 acute kidney injury associated with severity and mortality in patients with COVID-
595 19. *Eur Rev Med Pharmacol Sci.* 2021;25(4):2114-2122
- 596 46. Zumla A, Hui DS, Azhar EI, Memish ZA, Maeurer M. Reducing mortality from
597 2019-nCoV: host-directed therapies should be an option. *Lancet.*
598 2020;395(10224): e35-e36.
- 599 47. Moledina DG, Simonov M, Yamamoto Y, Alausa J, Arora T, Biswas A, Cantley
600 LG, Ghazi L, Greenberg JH, Hinchcliff M, Huang C, Mansour SG, Martin M,
601 Peixoto A, Schulz W, Subair L, Testani JM, Ugwuowo U, Young P, Wilson FP.
602 The Association of COVID-19 With Acute Kidney Injury Independent of Severity
603 of Illness: A Multicenter Cohort Study. *Am J Kidney Dis.* 2021;77(4):490-499.e1.
- 604 48. Ronco C, Reis T. Kidney involvement in COVID-19 and rationale for
605 extracorporeal therapies. *Nat Rev Nephrol.* 2020;16(6):308-310.
- 606 49. Liu D, Wang Q, Zhang H, Cui L, Shen F, Chen Y, Sun J, Gan L, Sun J, Wang J,
607 Zhang J, Cai Q, Deng J, Jiang J, Zeng L. Viral sepsis is a complication in
608 patients with Novel Corona Virus Disease (COVID-19). *Med Drug Discov.* 2020;
609 8:100057.
- 610 50. Popp M, Stegemann M, Riemer M, Metzendorf MI, Romero CS, Mikolajewska A,
611 Kranke P, Meybohm P, Skoetz N, Weibel S. Antibiotics for the treatment of
612 COVID-19. *Cochrane Database Syst Rev.* 2021;10(10):CD015025.
- 613 51. Chaudhuri D, Sasaki K, Karkar A, Sharif S, Lewis K, Mammen MJ, Alexander P,
614 Ye Z, Lozano LEC, Munch MW, Perner A, Du B, Mbuagbaw L, Alhazzani W,
615 Pastores SM, Marshall J, Lamontagne F, Annane D, Meduri GU, Rochweg B.

- 616 Corticosteroids in COVID-19 and non-COVID-19 ARDS: a systematic review and
617 meta-analysis. *Intensive Care Med.* 2021;47(5):521-537.
- 618 52. RECOVERY Collaborative Group, Horby P, Lim WS, Emberson JR, Mafham M,
619 Bell JL, Linsell L, Staplin N, Brightling C, Ustianowski A, Elmahi E, Prudon B,
620 Green C, Felton T, Chadwick D, Rege K, Fegan C, Chappell LC, Faust SN, Jaki
621 T, Jeffery K, Montgomery A, Rowan K, Juszczak E, Baillie JK, Haynes R,
622 Landray MJ. Dexamethasone in Hospitalized Patients with Covid-19. *N Engl J*
623 *Med.* 2021;384(8):693-704.
- 624 53. Tamuzi JL, Ayele BT, Shumba CS, Adetokunboh OO, Uwimana-Nicol J, Haile
625 ZT, Inugu J, Nyasulu PS. Implications of COVID-19 in high burden countries for
626 HIV/TB: A systematic review of evidence. *BMC Infect Dis.* 2020;20(1):744.
- 627 54. Ospina-Tascón GA, Calderón-Tapia LE, García AF, Zarama V, Gómez-Álvarez
628 F, Álvarez-Saa T, Pardo-Otálvaro S, Bautista-Rincón DF, Vargas MP, Aldana-
629 Díaz JL, Marulanda Á, Gutiérrez A, Varón J, Gómez M, Ochoa ME, Escobar E,
630 Umaña M, Díez J, Tobón GJ, Albornoz LL, Celemín Flórez CA, Ruiz GO,
631 Cáceres EL, Reyes LF, Damiani LP, Cavalcanti AB; HiFLo-Covid Investigators.
632 Effect of High-Flow Oxygen Therapy vs Conventional Oxygen Therapy on
633 Invasive Mechanical Ventilation and Clinical Recovery in Patients with Severe
634 COVID-19: A Randomized Clinical Trial. *JAMA.* 2021;326(21):2161-2171.
- 635
636
637
638
639

640

641

642

643

644

645

646

Map of Cape Town/ Khayelitsha District

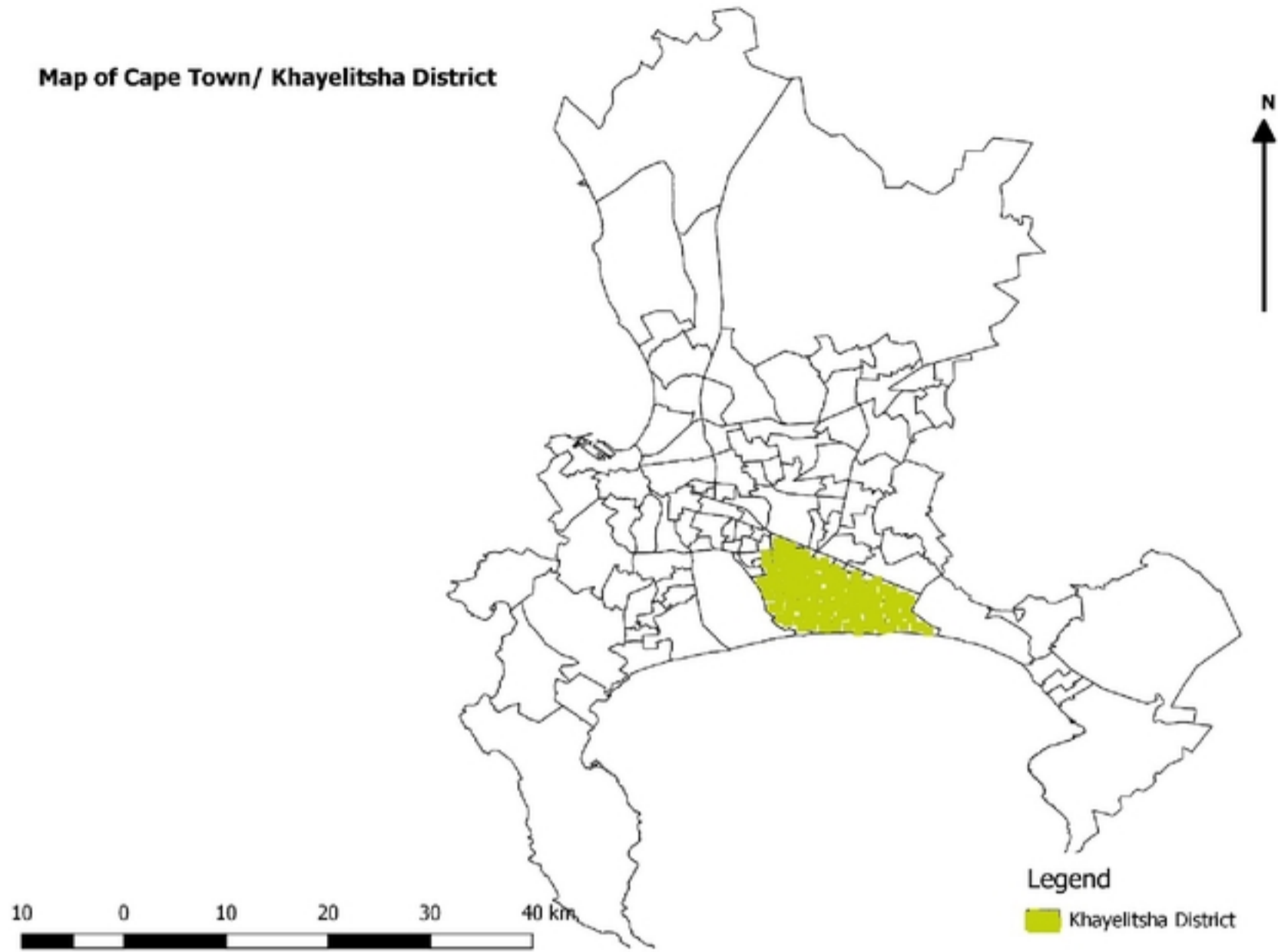


Figure 1: Khayelitsha District in Cape Town/South Africa

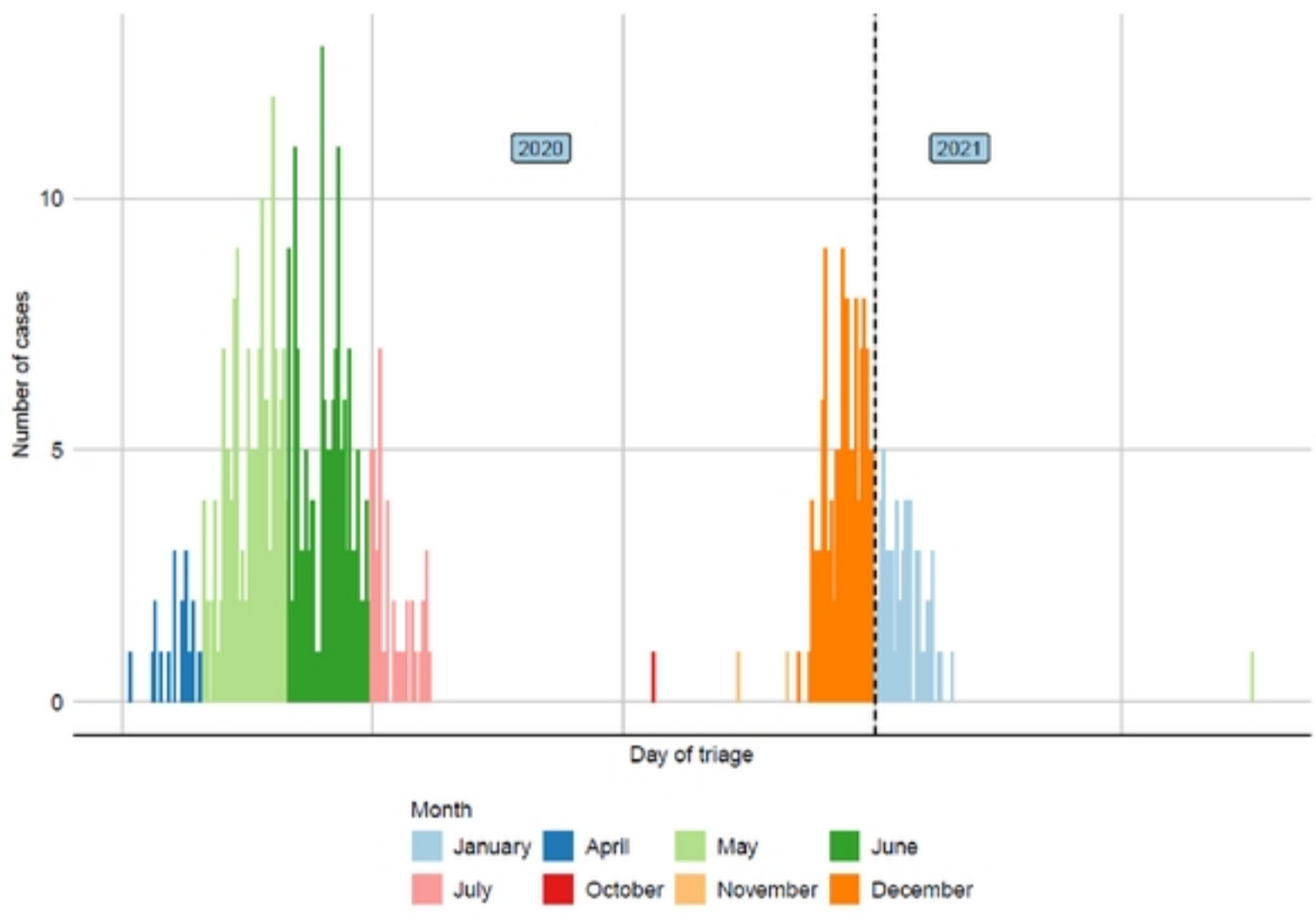


Figure 2: Distribution of hospital admission by triage date

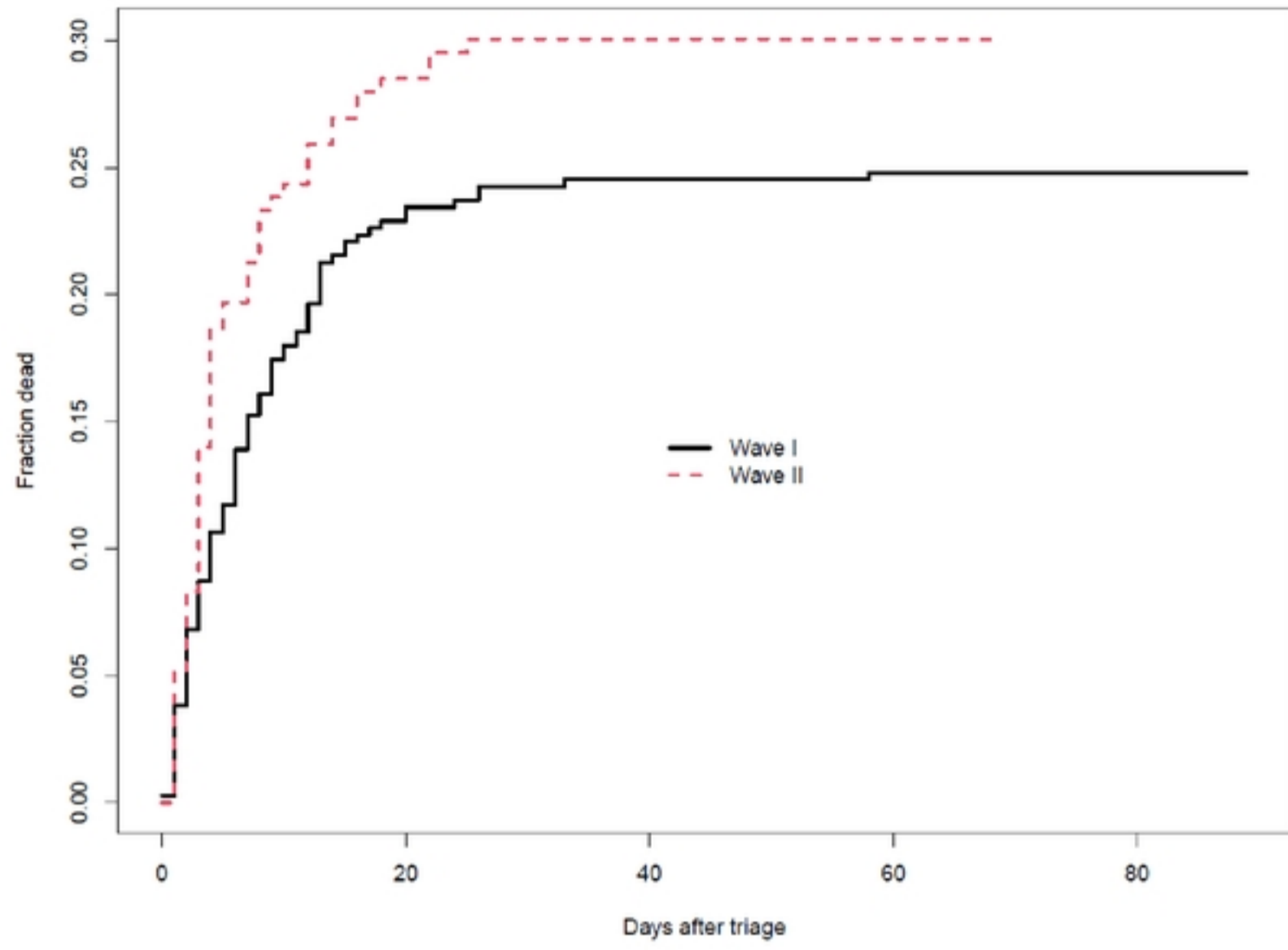


Figure 3: Fraction dead vs. time from triage, by wave

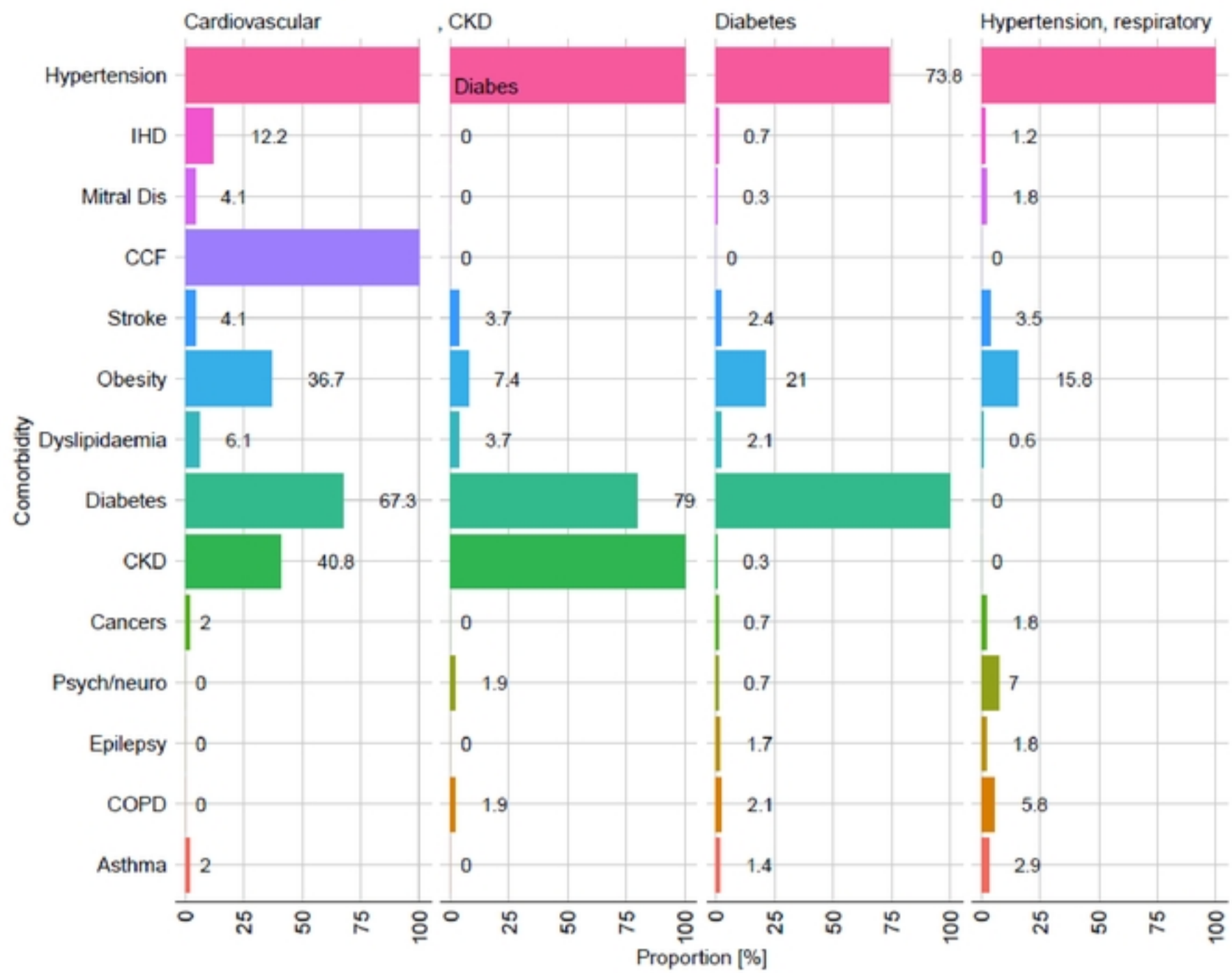


Figure 4: Comorbid patterns by latent disease class

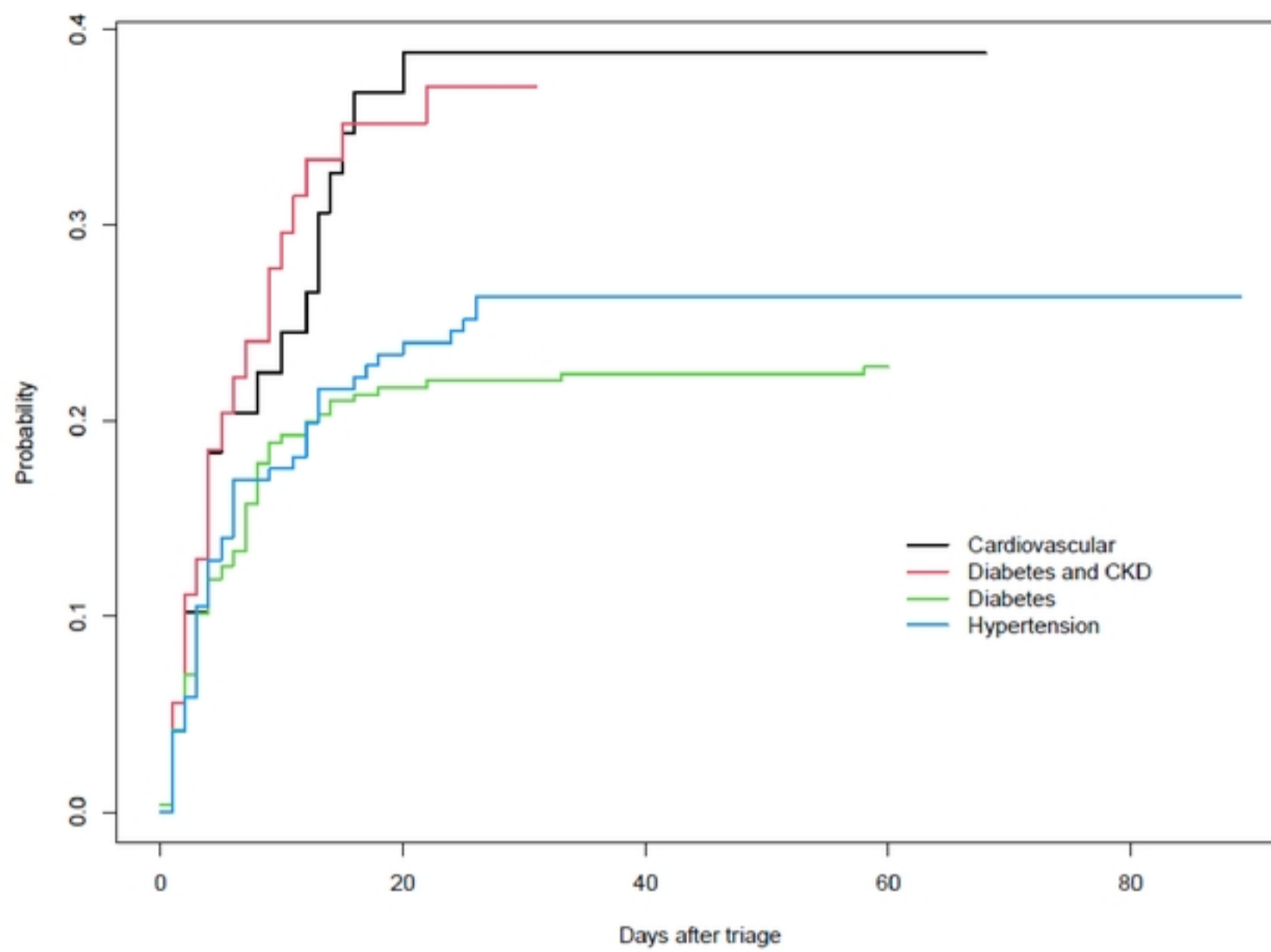


Figure 5: Fraction dead vs time from triage, by latent class