

**Title:** The projected prevalence of comorbidities and multimorbidity in people with HIV in the United States through the year 2030

**Authors:** Keri N Althoff<sup>1</sup>, Cameron Stewart<sup>1</sup>, Elizabeth Humes<sup>1</sup>, Lucas Gerace<sup>1</sup>, Cynthia Boyd<sup>1,2,3</sup>, Kelly Gebo<sup>4</sup>, Amy C Justice<sup>5,6</sup>, Emily Hyle<sup>7,8</sup>, Sally Coburn<sup>1</sup>, Raynell Lang<sup>9</sup>, Michael J Silverberg<sup>10,11</sup>, Michael Horberg<sup>12</sup>, Viviane D Lima<sup>13</sup>, M John Gill<sup>9</sup>, Maile Karris<sup>14</sup>, Peter F Rebeiro<sup>15</sup>, Jennifer Thorne<sup>16</sup>, Ashleigh J Rich<sup>17</sup>, Heidi Crane<sup>18</sup>, Mari Kitahata<sup>18</sup>, Anna Rubtsova<sup>19</sup>, Cherise Wong<sup>20</sup>, Sean Leng<sup>2</sup>, Vincent C Marconi<sup>21,22</sup>, Gypsyamber D'Souza<sup>1</sup>, Hyang Nina Kim<sup>18</sup>, Sonia Napravnik<sup>23</sup>, Kathleen McGinnis<sup>6</sup>, Gregory D Kirk<sup>1,4</sup>, Timothy R Sterling<sup>24,25</sup>, Richard D Moore<sup>26</sup>, and Parastu Kasaie<sup>1</sup>

1. Department of Epidemiology, Johns Hopkins Bloomberg School of Public Health, Baltimore, MD, USA
2. Division of Geriatric Medicine and Gerontology, Department of Medicine, Johns Hopkins School of Medicine, Baltimore, MD, USA
3. Department of Health Policy and Management, Johns Hopkins Bloomberg School of Public Health, Baltimore, MD, USA
4. Division of Infectious Diseases, Department of Medicine, Johns Hopkins School of Medicine, Baltimore, MD, USA
5. Yale Schools of Medicine and Public Health, New Haven, Connecticut, USA
6. Veterans Affairs Connecticut Healthcare System, West Haven, CT, USA
7. Harvard Medical School and the Division of Infectious Diseases, Massachusetts General Hospital, Boston, MA, USA
8. Harvard University Center for AIDS Research, Boston, MA, USA
9. Department of Medicine, University of Calgary, Calgary, Alberta, Canada
10. Division of Research, Kaiser Permanente Northern California, Oakland, CA, USA and Department of Health Systems Science, Kaiser Permanente Bernard J. Tyson School of Medicine, Pasadena, CA, USA
11. Department of Epidemiology and Biostatistics, University of California San Francisco, San Francisco, CA, USA
12. Mid-Atlantic Permanente Research Institute, Kaiser Permanente Mid-Atlantic Permanente Medical Group, Rockville, MD USA
13. Epidemiology and Population Health Program, British Columbia Centre for Excellence in HIV/AIDS, Vancouver, British Columbia, Canada
14. Department of Medicine, University of California San Diego, San Diego, CA, USA
15. Departments of Medicine and Biostatistics, Vanderbilt University School of Medicine, Nashville, TN, USA
16. Department of Ophthalmology, Wilmer Eye Institute, Johns Hopkins University School of Medicine, Baltimore, MD, USA
17. Department of Social Medicine, University of North Carolina, Chapel Hill, NC, USA
18. Division of Allergy and Infectious Diseases, Departments of Medicine and Epidemiology, University of Washington, Seattle, Washington, USA
19. Department of Behavioral, Social, and Health Education Sciences, Emory University Rollins School of Public Health, Atlanta, GA, USA
20. Division of Worldwide Research and Development, Pfizer Inc., New York, NY, USA
21. Division of Infectious Disease, Emory School of Medicine, Atlanta, GA, USA
22. Atlanta Veterans Affairs Health Care System, Decatur, GA, USA
23. Department of Medicine, University of North Carolina at Chapel Hill, Chapel Hill, NC, USA
24. Vanderbilt Tuberculosis Center, Vanderbilt University School of Medicine, Nashville, Tennessee, USA
25. Division of Infectious Diseases, Department of Medicine, Vanderbilt University School of Medicine, Nashville, Tennessee, USA
26. Division of General Internal Medicine, Department of Medicine, Johns Hopkins School of Medicine, Baltimore, MD, USA

**Corresponding author:**

Keri N Althoff, PhD, MPH  
Associate Professor  
Department of Epidemiology  
Johns Hopkins Bloomberg School of Public Health  
615 N Wolfe St., Rm E7142

Baltimore, MD, 21205  
kalthoff@jhu.edu

### **Funding Statement:**

This research was supported by R01 AG053100 (PI: KN Althoff) from the National Institute on Aging, National Institutes of Health (NIH). PK was supported through the National Institution of Allergy and Infectious Diseases, NIH (Career development award, K01AI138853). EPH was supported through the National Institute on Aging, NIH (R01AG069575) and the Jerome and Celia Reich Endowed Scholar Award.

The NA-ACCORD is supported by National Institutes of Health grants U01AI069918, F31AI124794, F31DA037788, G12MD007583, K01AI093197, K01AI131895, K23EY013707, K24AI065298, K24AI118591, K24DA000432, KL2TR000421, N01CP01004, N02CP055504, N02CP91027, P30AI027757, P30AI027763, P30AI027767, P30AI036219, P30AI050409, P30AI050410, P30AI094189, P30AI110527, P30MH62246, R01AA016893, R01DA011602, R01DA012568, R01AG053100, R24AI067039, R34DA045592, U01AA013566, U01AA020790, U01AI038855, U01AI038858, U01AI068634, U01AI068636, U01AI069432, U01AI069434, U01DA036297, U01DA036935, U10EY008057, U10EY008052, U10EY008067, U01HL146192, U01HL146193, U01HL146194, U01HL146201, U01HL146202, U01HL146203, U01HL146204, U01HL146205, U01HL146208, U01HL146240, U01HL146241, U01HL146242, U01HL146245, U01HL146333, U24AA020794, U54GM133807, UL1RR024131, UL1TR000004, UL1TR000083, UL1TR002378, Z01CP010214 and Z01CP010176; contracts CDC-200-2006-18797 and CDC-200-2015-63931 from the Centers for Disease Control and Prevention, USA; contract 90047713 from the Agency for Healthcare Research and Quality, USA; contract 90051652 from the Health Resources and Services Administration, USA; the Grady Health System; grants CBR-86906, CBR-94036, HCP-97105 and TGF-96118 from the Canadian Institutes of Health Research, Canada; Ontario Ministry of Health and Long Term Care, and the Government of Alberta, Canada. Additional support was provided by the National Institute Of Allergy And Infectious Diseases (NIAID), National Cancer Institute (NCI), National Heart, Lung, and Blood Institute (NHLBI), Eunice Kennedy Shriver National Institute Of Child Health & Human Development (NICHD), National Human Genome Research Institute (NHGRI), National Institute for Mental Health (NIMH) and National Institute on Drug Abuse (NIDA), National Institute On Aging (NIA), National Institute Of Dental & Craniofacial Research (NIDCR), National Institute Of Neurological Disorders And Stroke (NINDS), National Institute Of Nursing Research (NINR), National Institute on Alcohol Abuse and Alcoholism (NIAAA), National Institute on Deafness and Other Communication Disorders (NIDCD), and National Institute of Diabetes and Digestive and Kidney Diseases (NIDDK).

These data were collected by cancer registries participating in the National Program of Cancer Registries (NPCR) of the Centers for Disease Control and Prevention (CDC).

The content is solely the responsibility of the authors and does not necessarily represent the official views of the National Institutes of Health, or the US Center for Disease Control and Prevention, or Regeneron Pharmaceuticals Inc.

### NA-ACCORD Collaborating Cohorts and Representatives

AIDS Clinical Trials Group Longitudinal Linked Randomized Trials: Constance A. Benson and Ronald J. Bosch

AIDS Link to the IntraVenous Experience: Gregory D. Kirk

Emory-Grady HIV Clinical Cohort: Vincent Marconi and Jonathan Colasanti

Fenway Health HIV Cohort: Kenneth H. Mayer and Chris Grasso

HAART Observational Medical Evaluation and Research: Robert S. Hogg, Viviane Lima, Zabrina Brumme, Julio SG Montaner, Paul Sereda, Jason Trigg, and Kate Salters

HIV Outpatient Study: Kate Buchacz and Jun Li

HIV Research Network: Kelly A. Gebo and Richard D. Moore

Johns Hopkins HIV Clinical Cohort: Richard D. Moore

John T. Carey Special Immunology Unit Patient Care and Research Database, Case Western Reserve University: Jeffrey Jacobson

Kaiser Permanente Mid-Atlantic States: Michael A. Horberg

Kaiser Permanente Northern California: Michael J. Silverberg

Longitudinal Study of Ocular Complications of AIDS: Jennifer E. Thorne  
MACS/WIHS Combined Cohort Study: Todd Brown, Phyllis Tien, and Gypsyamber D'Souza  
Maple Leaf Medical Clinic: Graham Smith, Mona Loutfy, and Meenakshi Gupta  
The McGill University Health Centre, Chronic Viral Illness Service Cohort: Marina B. Klein  
Multicenter Hemophilia Cohort Study-II: Charles Rabkin  
Ontario HIV Treatment Network Cohort Study: Abigail Kroch, Ann Burchell, Adrian Betts, and Joanne Lindsay  
Parkland/UT Southwestern Cohort: Ank Nijhawan  
Retrovirus Research Center, Universidad Central del Caribe, Bayamon Puerto Rico: Angel M. Mayor  
Southern Alberta Clinic Cohort: M. John Gill and Raynell Lang  
Study of the Consequences of the Protease Inhibitor Era: Jeffrey N. Martin  
Study to Understand the Natural History of HIV/AIDS in the Era of Effective Therapy: Jun Li and John T. Brooks  
University of Alabama at Birmingham 1917 Clinic Cohort: Michael S. Saag, Michael J. Mugavero, and Greer Burkholder  
University of California at San Diego: Laura Bamford and Maile Karris  
University of North Carolina at Chapel Hill HIV Clinic Cohort: Joseph J. Eron and Sonia Napravnik  
University of Washington HIV Cohort: Mari M. Kitahata and Heidi M. Crane  
Vanderbilt Comprehensive Care Clinic HIV Cohort: Timothy R. Sterling, David Haas, Peter Rebeiro, and Megan Turner  
Veterans Aging Cohort Study: Kathleen McGinnis and Amy Justice  
NA-ACCORD Study Administration:  
Executive Committee: Richard D. Moore, Keri N. Althoff, Stephen J. Gange, Mari M. Kitahata, Jennifer S. Lee, Michael S. Saag, Michael A. Horberg, Marina B. Klein, Rosemary G. McKaig, and Aimee M. Freeman  
Administrative Core: Richard D. Moore, Keri N. Althoff, and Aimee M. Freeman  
Data Management Core: Mari M. Kitahata, Stephen E. Van Rompaey, Heidi M. Crane, Liz Morton, Justin McReynolds, and William B. Lober  
Epidemiology and Biostatistics Core: Stephen J. Gange, Jennifer S. Lee, Brenna Hogan, Elizabeth Humes, Sally Coburn, Lucas Gerace

### **Competing interests**

KN Althoff serves on the scientific review board for TrioHealth Inc and as a consultant to the *All of Us Research Program*.  
MJ Gill has been an Hoc member on national HIV Advisory Boards of Merck, Gilead and ViiV.  
C Wong is currently employed by Regeneron Pharmaceuticals Inc and contributed to this article as a prior trainee of Johns Hopkins University.

The following co-authors report no competing interests:

1. Cameron Stewart
2. Elizabeth Humes
3. Lucas Gerace
4. Cynthia Boyd
5. Kelly Gebo
6. Amy C Justice
7. Emily Hyle
8. Sally Coburn
9. Raynell Lang
10. Michael J Silverberg
11. Michael Horberg
12. Viviane Lima
13. Maile Karris
14. Peter F Rebeiro
15. Jennifer Thorne
16. Ashleigh J Rich
17. Heidi Crane
18. Mari Kitahata

19. Anna Rubtsova
20. Sean Leng
21. Vincent C Marconi
22. Gypsyamber D'Souza
23. Hyang Nina Kim
24. Sonia Napravnik
25. Kathleen McGinnis
26. Gregory D Kirk
27. Timothy R Sterling
28. Richard D Moore
29. Parastu Kasaie

**Keywords:** HIV, aging, comorbidities, multimorbidity, agent-based simulation model

## KEY POINTS

**Question:** How will the prevalence of multimorbidity change among people with HIV (PWH) using antiretroviral therapy in the US from 2020 to 2030?

**Findings:** In this agent-based simulation study using data from the NA-ACCORD and the CDC, multimorbidity ( $\geq 2$  mental/physical comorbidities other than HIV) will increase from 58% in 2020 to 63% in 2030. The composition of comorbidities among multimorbid PWH vary by race/ethnicity, gender, and HIV acquisition risk group.

**Meaning:** HIV clinical programs and policy makers must act now to identify resources and care models to meet the increasingly complex medical needs of PWH over time, particularly mental healthcare needs.

## ABSTRACT

**Importance:** Estimating the medical complexity of people aging with HIV can inform clinical programs and policy to meet future healthcare needs.

**Objective:** To project the prevalence of comorbidities and multimorbidity among people with HIV (PWH) using antiretroviral therapy (ART) in the US through 2030.

**Design:** Agent-based simulation model

**Setting:** HIV clinics in the United States in the recent past (2020) and near future (2030)

**Participants:** In 2020, 674,531 PWH were using ART; 9% were men and 4% women with history of injection drug use; 60% were men who have sex with men (MSM); 8% were heterosexual men and 19% heterosexual women; 44% were non-Hispanic Black/African American (Black); 32% were non-Hispanic White (White); and 23% were Hispanic.

**Exposure(s):** Demographic and HIV acquisition risk subgroups

**Main Outcomes and Measures:** Projected prevalence of anxiety, depression, stage  $\geq 3$  chronic kidney disease (CKD), dyslipidemia, diabetes, hypertension, cancer, end-stage liver disease (ESLD), myocardial infarction (MI), and multimorbidity ( $\geq 2$  mental or physical comorbidities, other than HIV).

**Results:** We projected 914,738 PWH using ART in the US in 2030. Multimorbidity increased from 58% in 2020 to 63% in 2030. The prevalence of depression and/or anxiety was high and increased from 60% in 2020 to 64% in 2030. Hypertension and dyslipidemia decreased, diabetes and CKD increased, MI increased steeply, but there was little change in cancer and ESLD. Among Black women with history of injection drug use (oldest demographic subgroup in 2030), CKD, anxiety, hypertension, and depression were most prevalent and 93% were multimorbid. Among Black MSM (youngest demographic subgroup in 2030), depression was highly prevalent, followed by hypertension and 48% were multimorbid. Comparatively, 67% of White MSM were multimorbid in 2030 (median age in 2030=59 years) and anxiety, depression, dyslipidemia, CKD, and hypertension were highly prevalent.

**Conclusion and relevance:** The distribution of multimorbidity will continue to differ by race/ethnicity, gender, and HIV acquisition risk subgroups, and be influenced by age and risk factor distributions that reflect the impact of social disparities of the health on women, people of color, and people who use drugs. HIV clinical care models and funding are urgently required to meet the healthcare needs of people with HIV in the next decade.

## INTRODUCTION

People with HIV (PWH) survive to older ages with effective antiretroviral treatment but have fewer comorbidity-free life years compared to people without HIV.<sup>1</sup> Projecting the magnitude of mental and physical comorbidity, and multimorbidity, is critical for quantifying the medical complexity of PWH and allocating sufficient resources to systems and programs caring for people aging with HIV.

Many risk factors for comorbidities in the general population have a higher prevalence among people with HIV, including tobacco and substance use, higher body mass index (BMI), and hepatitis C virus (HCV) co-infection.<sup>2-5</sup> The increased risk profile results in a higher prevalence of major depressive disorder (depression), generalized anxiety disorder (anxiety), hypertension, dyslipidemia, chronic kidney disease (CKD), diabetes, liver disease, cancer, and cardiovascular disease (CVD) in people with (vs. without) HIV.<sup>6-15</sup> Other factors contributing to the increased burden of comorbidities in people with HIV include: 1) HIV-induced chronic immune activation and inflammation,<sup>16,17</sup> 2) specific antiretroviral drugs and regimens,<sup>18,19</sup> and 3) social determinants of health (SDoH).<sup>20,21</sup> The disproportionate burdens of comorbidities and subsequent multimorbidity (i.e.,  $\geq 2$  comorbidities not including HIV) pose persistent challenges in ensuring adequate healthcare for people with HIV.<sup>22,23</sup> Multimorbidity is a function of the comorbidities included in the definition and estimates among PWH in the US have a wide range.<sup>24-26</sup>

Disparities persist in the comorbidity and multimorbidity among PWH. People of color with HIV have greater comorbidity burden, which is accentuated in women of color.<sup>27,28</sup> Age-stratified incidence rates and risk of hypertension, diabetes, CKD, myocardial infarction (MI), and certain cancers are particularly high among non-Hispanic Black/African American (Black/AA) PWH, as are risk factors common to many comorbidities, including smoking, obesity, and SDoH.<sup>11,29-31</sup> People with injection drug use as their HIV acquisition risk factor have the greatest burden of comorbidity and multimorbidity among PWH.<sup>32,33</sup> To better assess future healthcare needs and address health inequities among PWH, clinical and policy decision-makers need projections of future multimorbidity burden in PWH subgroups.<sup>34,35</sup> The objective of this study is to project the prevalence of future comorbidities and multimorbidity among PWH using ART in the US through the year 2030, overall and within 15 demographic subgroups.

## METHODS

The ProjEcting Age, multimoRbidity, and poLypharmacy (PEARL) model is an agent-based computer simulation model of PWH who have initiated ART in the US, including those who disengage from HIV care (**Figure 1**). The simulated population is comprised of fifteen subgroups: (1 & 2) men and women with history of injection drug use as an HIV acquisition risk factor, including those who have injection drug use and any additional HIV acquisition risk category specified (MWID and WWID respectively); (3) men who have sex with men (MSM); and (4 & 5) heterosexual men and women. These five groups were further stratified into non-Hispanic White, non-Hispanic Black/AA, and Hispanic. Race and ethnicity defined subgroups that compose the PEARL simulation model due to the disproportionate burden of HIV by race and ethnicity in the US. Asian and American Indian/Alaskan Native participants are not included in this analysis due to limited input parameters and functions within the 5 HIV acquisition risk groups.

Briefly, agents enter the model at ART initiation, and experience aging, disengagement and re-engagement in care, changing CD4 counts, and mortality via mathematical functions and parameters that are informed by observed data from the North American AIDS Cohort Collaboration on Research and Design (NA-ACCORD) and Centers for Disease Control and Prevention's (CDC) HIV surveillance reports.<sup>36,37</sup> All mathematical functions and parameters in PEARL are estimated separately for each of the 15 subgroups. Further methodological details regarding the model structure, parameterizations, standards for collapsing subgroups to ensure adequate sample size, and estimated functions and values are available at [PEARLHIVMODEL.org/method\\_details.html](https://PEARLHIVMODEL.org/method_details.html).<sup>36,38</sup>

### **Comorbidities parameterization**

First, we characterized the prevalence of clinical risk factors that are highly prevalent in PWH, linked to numerous comorbidities, and measured in the NA-ACCORD (namely smoking status, obesity, and HCV co-infection status) for the simulated population in 2009 and those starting ART over time. Smoking and HCV co-infection status were determined at ART initiation (i.e., the simulated person's entry to the model) and were time-fixed. Obesity (BMI  $\geq 30$  kg/m<sup>2</sup>) status was determined at ART initiation and at 24 months after ART initiation. Next, we estimated the prevalence (at ART initiation) and incidence (in the years after ART initiation) of highly prevalent comorbidities in PWH for simulated persons within the 15 subgroups via mathematical functions derived from observed NA-ACCORD data from 2009-2017; NA-ACCORD definitions for risk factors and comorbidities using electronic health record data are



available in **Supplement Table S1**. The prevalence of having depression, anxiety, stage  $\geq 3$  CKD, dyslipidemia, type 2 diabetes, hypertension, cancer (all types), myocardial infarction (MI), and ESLD (at or prior to ART initiation) was estimated at the time the simulated person initiated ART (**Figure 1**).<sup>24,30,39–41</sup> Incidence of each comorbidity was estimated as a function of age, CD4 at ART initiation (cells/ $\mu$ L), time since ART initiation, disengagement from care, change in BMI in the first 2 years after ART initiation, BMI 2 years after ART initiation, smoking, HCV co-infection, and the presence of the other comorbidities for simulated persons in the years after ART initiation (**Supplement Table S2**). Finally, mortality was estimated for simulated persons as a function of individual-level attributes, existing risk factors, and present comorbidities, and was estimated separately for those (1) engaged and (2) disengaged from care ( $\geq 2$  years without CD4 or HIV RNA measurement) and in each of the 15 sub-groups using observed NA-ACCORD data from 2009–2017 (**Supplement Table S3**).

### Primary outcomes

While prior multimorbidity studies in PWH were restricted to physical comorbidities, we chose the following non-mutually exclusive definitions to produce findings comparable to prior studies and to expand the scope of multimorbidity to include the presence of mental health conditions:

- a) physical multimorbidity ( $\geq 2$  physical comorbidities)
- b) depression and/or anxiety diagnosis (mental comorbidities)
- c) mental *or* physical multimorbidity ( $\geq 2$  mental *or* physical comorbidities), and
- d) mental comorbidity *and* physical multimorbidity ( $\geq 1$  mental health comorbidity *and*  $\geq 2$  physical comorbidities).

Given the association of age with comorbidities of interest, and heterogeneities in projected age distributions by subgroup, we report the projected median age in 2020 and 2030 within the 15 subgroups, as well as, the projected prevalence of each mental and physical comorbidity, overall and within subgroups. To navigate temporal trends, we also report the absolute percentage point change [ppc] in the prevalence of each mental and physical comorbidity from 2020 to 2030 within the 15 subgroups.

Simulations were replicated for 200 runs and projected outcomes are presented as median values and 95%

uncertainty ranges (95%UR).

## Validation

To ensure the model's ability to project realistic comorbidity patterns, we compared the observed annual incidence and prevalence of each comorbidity from observed NA-ACCORD data with respective projections from PEARL between 2009-2017 (calibration period) within each subgroup. Within each subgroup, we flagged the comorbidities with <75% of projections within the larger of two ranges surrounding the observed mean incidence and prevalence: (a) +/-5% of the observed mean incidence and prevalence or (b) the observed 95% confidence interval (**Supplement Figures S1-S2**).

## Robustness of projected comorbidity incidence

In the PEARL model, projected multimorbidity is a function of the comorbidities that arise from estimated probabilities for the incidence of each comorbidity within each subgroup. To assess the influence of the estimated probabilities for the incidence of each comorbidity on projected physical multimorbidity, we increased and decreased the probabilities for the incidence of each comorbidity by 25% for each simulated person in the model (i.e., the increase and decrease scenarios). We estimated the relative difference in the projected physical multimorbidity in 2030 in each scenario compared to the baseline scenario (i.e., no change in the estimated probabilities for the incidence of each comorbidity). We chose physical multimorbidity as the outcome for the robustness checks to allow for comparability to other estimates of physical multimorbidity in PWH in the US.<sup>24-26</sup> The robustness of the prevalence and mortality estimates was similar, and results can be found at [PEARLHIVMODEL.org/method\\_details.html](https://PEARLHIVMODEL.org/method_details.html).

## RESULTS

Using the PEARL model, we simulated a median population of 674,531 [95%UR 667,269–680,808] PWH using ART in 2020 in the US, of whom 52% were ≥50 years, 11% were age ≥65 years, 32% White, 44% Black/AA, 23% Hispanic, 60% MSM, 19% heterosexual women, 9% MWID, 8% heterosexual men, and 4% WWID, (**Table 1, Supplement Table S4**). In 2020, the prevalence of anxiety and depression were 36% and 47%, respectively, with 23% of simulated agents having

both diagnoses. Applying our non-mutually exclusive definitions of multimorbidity among ART users, 31% were physically multimorbid, 58% had mental *or* physical multimorbidity, and 21% had mental comorbidity *and* physical multimorbid. Of the physical conditions included in the model, hypertension was the most prevalent (36%), followed by dyslipidemia (27%), CKD (17%), diabetes (16%) and cancer (11%); MI and ESLD had a prevalence of <5%.

In 2030, the projected population of PWH using ART increased by almost a quarter of a million people (36% increase from 2020), and the proportion  $\geq 65$  years more than doubled to 23%; race/ethnicity and HIV acquisition risk group distributions changed by <5 percentage points from 2020 to 2030. The prevalence of hypertension and dyslipidemia decreased slightly by 5 and 1 percentage points (respectively) 2020 to 2030, the prevalence of CKD and diabetes increased by 8 percentage points, the prevalence of MI increased by 5 percentage points, and the prevalence of ESLD remained constant.

Validity of the mental and physical comorbidity projections was confirmed by comparing the observed comorbidity incidence and prevalence of PWH using ART from 2010–2017 in NA-ACCORD with the simulated outcomes, suggesting no significant pattern of bias in projections from the model among 15 subgroups over time (**Supplement Figures S1, S2**).

### **Projections of multimorbidity**

Overall, the prevalence of physical multimorbidity increased from 2020 to 2030 (**Figure 2a**), and in each subgroup (**Figure 2b**). The number of Black/AA MWID and WWID using ART did not decrease from 2020 to 2030, but the physical multimorbidity prevalence was high and increased throughout the decade (**Table 1, Supplement Table S5**). Black/AA MSM and heterosexual women had patterns of increasing number of ART users and physical comorbidity prevalence that were similar to the White and Hispanic subgroups.

Overall, the prevalence of depression and/or anxiety was higher than any physical comorbidity in 2020 (60%) and in 2030 (65%, **Figure 2a**). The prevalence with depression and/or anxiety in 2030 was greatest in Hispanic MWID (**Supplement Table S5**). The increase in physical multimorbidity burden from 2020 to 2030 was greatest in Hispanic heterosexual women (**Supplement Table S5**). The proportion of PWH using ART with physical *or* mental multimorbidity was 58% in 2020 and 63% in 2030 (**Figure 2a**). The prevalence with mental comorbidities *and* physical multimorbidity

increased from 21% in 2020 to 25% in 2030 (**Figure 2a**).

### Projections of each comorbidity

Among all PWH using ART from 2020 to 2030 projected by the PEARL model, depression had the highest prevalence over the 10-year period (49% [95%UR 48-49%] in 2030), and anxiety increased from 37% [95%UR 36-37%] in 2020 to 47% [95%UR 46-48%] in 2030 (**Figure 3a, Supplement Table S6**). Hypertension and dyslipidemia prevalence declined slightly (<4 ppc), and diabetes and CKD increased (>7 ppc), over this decade; prevalence for these four physical comorbidities ranged from 24% [95%UR 24-25%] for diabetes to 31% [95%UR 31-32%] for hypertension in 2030. Cancer and ESLD had little change in prevalence; however, cancer had a higher prevalence in 2030 (11% [95%UR 11-12%]) than ESLD (2% [95%UR 1-2%]). In comparison, MI was projected to increase steeply from 3% [95%UR 3-3%] in 2020 to 8% [95%UR 8-8%] in 2030.

There were differences in the change in comorbidity burdens from 2020 to 2030 across the 15 subgroups (**Figure 3b**). The subgroup with the oldest median age (66 [95%UR 65-68] years) in 2030 was Black/AA WWID, and Black MSM had the youngest median age in 2030 (42 [95%UR 41-43] years). Among Black/AA WWID, CKD, anxiety, hypertension, and depression were the most prevalent comorbidities in 2030, and diabetes and MI had lower but increasing prevalence from 2020-2030 (**Figure 3c**). Hyperlipidemia, cancer, and ESLD had little change in prevalence and declined slightly at the end of the study period. Among Black MSM, depression had the highest prevalence in 2030 followed by hypertension which decreased from 2020 to 2030 (**Figure 3d**). Anxiety, diabetes, CKD, and MI all increased during the two decades, whereas dyslipidemia prevalence decreased and cancer and ESLD did not change. Larger depictions of comorbidity prevalence estimates in each subgroup are available in **Supplement Figures S3a-o**.

The ppc from 2020 to 2030 in the prevalence of each physical and mental comorbidity is shown in **Figure 4**, stratified by the 15 subgroups of PWH using ART. The prevalence of anxiety and MI increased in all 15 subgroups and overall, by 10 ppc and 5 ppc (respectively). Diabetes and CKD prevalence increased by 8 ppc overall, and an increase was experienced in each subgroup for both comorbidities. Conversely, dyslipidemia and hypertension decreased in all but 4 and 5 subgroups and by 2 ppc and 4 ppc overall, respectively. There was <2 ppc change for depression, cancer, and ESLD.

## Robustness of each projected comorbidity incidence

The relative differences from analyzing the effect of decreasing or increase increasing comorbidity incidence probability (vs. baseline scenario) showed a <5% relative difference in the projected prevalence of physical multimorbidity, demonstrating the robustness of this estimate of projected multimorbidity to the variability in the estimated incidence of each comorbidity.

## DISCUSSION

We project an increasing prevalence of multimorbidity in PWH using ART in the US through the year 2030, with different compositions of contributing comorbidities by race/ethnicity, gender, and HIV acquisition risk. Among the comorbidities included in the PEARL model, the projections suggest the greatest contributors to multimorbidity are two common mental health diagnoses that occur throughout the lifespan: depression and anxiety. The prevalence of these mental comorbidities was projected to increase in nearly all the subgroups by the year 2030; anxiety had the steepest increase. The prevalence of mental *or* physical multimorbidity is projected to be 63% and 1 in 4 PWH using ART will have mental comorbidity *and* physical multimorbidity by 2030; these estimates are a lower limit due to the inclusion of only 2 mental and 7 physical comorbidities in the PEARL model. HIV clinical program and policy decision-makers must modify current care models and payor capabilities (e.g., the Ryan White HIV/AIDS Program funding) to meet the growing healthcare needs, in particular the mental healthcare needs, of PWH using ART. Furthermore, our findings show the most prevalent comorbidities in the next decade will differ by gender, HIV acquisition risk group, race, and ethnicity, suggesting the clinical population composition is important when adapting current HIV care models.

Our findings underscore the role of mental health comorbidities in PWH. For example, PWH are three times more likely to currently be experiencing a major depressive episode as compared to people without HIV.<sup>42</sup> Not only has depression been linked to missed HIV clinical care visits, virologic failure, and all-cause mortality in PWH, but depression has also been linked to similar mechanisms of immune suppression and inflammation.<sup>43,44</sup> Mental health services are allowable costs for PWH eligible for Ryan White HIV/AIDS Program support; funding the establishment of mental health services associated with HIV clinics and ensuring adequate staffing will be necessary to meet the projected burden of

mental health comorbidity.

Our findings corroborate estimates of increasing multimorbidity among PWH (overall and in subgroups) in the US and provide the opportunity to project future multimorbidity and comorbidity. A study comparing multimorbidity prevalence in PWH ages 45-to-89-years-old attending one visit at a Ryan White HIV/AIDS Program clinic in 2016 vs 2006 observed an increase in multimorbidity prevalence among those of similar age and an increase in women (vs. men).<sup>45</sup> A study of physical multimorbidity in the NA-ACCORD noted the common comorbidity combinations included hypercholesterolemia, hypertension, and CKD in 2009.<sup>24</sup> Over the next decade, these metabolic and vascular diseases may drive the PEARL-projected increases in diabetes, CKD, and MIs. Importantly, the prevalence of hypertension and dyslipidemia are projected to stabilize, perhaps due to increases in younger, healthier adults entering HIV care through successful test-and-treat (without delay) initiatives and the “Treat All” clinical guidelines, the reduced use of protease inhibitors (which have been linked to metabolic disorders), or the greater likelihood of a plateau or decrease when prevalence is high.<sup>18,46</sup> Although hypertension and dyslipidemia stabilize, the incidence of MIs are projected to increase, which is influenced by an increasing number of PWH at older ages in the next decade.<sup>30,47</sup>

Within each subgroup, the PEARL-estimated comorbidity combinations were influenced by the age distribution, physical and behavioral risk factors, and SDoH through the stratification by gender, HIV acquisition risk, race, and ethnicity. Subgroup stratification is essential due to the heterogeneity of PWH. For example, Black/AA WWID are projected to have the oldest age distribution in 2030, which is likely a function of gender differences in life expectancy, a survivor effect of these women who had injected drugs during the period they acquired HIV, and the national reduction in new HIV infections (which typically happen in young adults) due to injection drug use.<sup>48,49</sup> Higher food insecurity, space for physical activity, and access to healthcare (influenced by structural racism persistent healthcare provider implicit bias/racism) can lead to higher rates of diabetes (estimated to be 28.9% in Black/AA WWID in 2020 in the PEARL output) and hypertension (estimated to be 59.1% prevalence in Black/AA WWID in 2020 in the PEARL output) which subsequently increases the risk of progression to renal failure, which is more prevalent in Black/AA (vs. White) individuals in the US.<sup>50-52</sup> We projected CKD prevalence increased from 68.6% in 2020 to 90.7% in 2030 among Black/AA WWID. Through shared pathways of inflammatory mediators, reactive oxygen species (ROS), oxidative stress, and renin-angiotensin system [RAS] components, the 13 ppc increase in anxiety is also influencing the projected increase in CKD.<sup>53</sup>

These comorbidities also influence the 13 ppc increase in MI among Black/AA WWID in 2030. Implementing clinical program interventions that are tailored to Black/AA women and focused on prevention and management of diabetes, hypertension, and anxiety may prove beneficial in slowing future multimorbidity growth among Black/AA WWID.

Our study has limitations. PEARL includes nine highly prevalent comorbidities that necessitate clinical management, but it does not include arthritis, stroke, fractures, which were found to be among the top comorbidities noted in a recent UK analysis of 304 physical and mental health conditions in PWH; the PEARL-projected multimorbidity prevalence is likely an underestimate.<sup>54</sup> PEARL models clinically-diagnosed conditions, which is beneficial for projecting the needed clinical care resources but does not include undiagnosed conditions. Given the higher risk of COVID in HIV-infected individuals and potential of long COVID to induce similar comorbidities, it may be that our estimates will be a lower bound to future comorbidity estimates. We did not compare the comorbidities and multimorbidity projections to similar people without HIV. Although this comparison would be useful, our goal was to provide future morbidity predictions to inform HIV clinical directors' planning and direct HIV policy decision-making. Finally, as with all agent-based simulation models, the accuracy of the output is dependent upon the quality of the mathematical functions that compose the model. We utilized observed data from the NA-ACCORD to estimate the mathematical functions as it is the largest collaboration of PWH in the US and Canada and has similar demographics to all persons living with HIV in the US (according to the CDC's HIV surveillance data).<sup>55</sup>

## CONCLUSIONS

Although the gap in life expectancy has narrowed in some subgroups of people with (compared to without) HIV, multimorbidity is common in PWH in the US and will increase in prevalence over the next decade.<sup>48</sup> Robust, sustainable, multidisciplinary care models (with appropriate funding) are urgently needed to meet the medically-complex healthcare needs of PWH in the US, in particular, access to affordable mental healthcare should be a priority. Predominant comorbidities differ by subgroups of PWH, which must be considered when planning for necessary resources and adapting care models. HIV clinical program and policy decision-makers must act now to identify effective multidisciplinary care models and funding to prevent and manage comorbidities and multimorbidity among the growing population of PWH using ART in the US.

## REFERENCES

1. Marcus JL, Leyden WA, Alexeeff SE, et al. Comparison of overall and comorbidity-free life expectancy between insured adults with and without HIV infection, 2000-2016. *JAMA Netw Open*. 2020;3(6):e207954. doi:10.1001/jamanetworkopen.2020.7954
2. Mdodo R, Frazier EL, Dube SR, et al. Cigarette smoking prevalence among adults with HIV compared with the general adult population in the United States: Cross-sectional surveys. *Ann Intern Med*. 2015;162:335-344. doi:10.7326/M14-0954
3. Koethe JR, Jenkins CA, Lau B, et al. Rising obesity prevalence and weight gain among adults starting antiretroviral therapy in the United States and Canada. *AIDS Res Hum Retroviruses*. 2016;32(1):50-58. doi:10.1089/aid.2015.0147
4. Bailin SS, Gabriel CL, Wanjalla CN, Koethe JR. Obesity and weight gain in persons with HIV. *Curr HIVAIDS Rep*. 2020;17:138-150. doi:10.1007/s11904-020-00483-5
5. Rosenberg ES, Rosenthal EM, Hall EW, et al. Prevalence of Hepatitis C Virus Infection in US States and the District of Columbia, 2013 to 2016. *JAMA Netw Open*. 2018;1(8):e186371. doi:10.1001/jamanetworkopen.2018.6371
6. Ronel J, Dinkel A, Wolf E, et al. Anxiety, depression, and health-related quality of life in aging people living with HIV compared to diabetes patients and patients with minor health conditions: a longitudinal study. *Psychol Health Med*. Published online 2018. doi:10.1080/13548506.2018.1437276
7. Brandt C, Zvolensky MJ, Woods SPD, Gonzalez A, Safren SA, O'Cleirigh CM. Anxiety symptoms and disorders among adults living with HIV and AIDS: A critical review and integrative synthesis of the empirical literature. *Clin Psychol Rev*. 2017;51:164-184. doi:10.1016/j.cpr.2016.11.005
8. Bigna JJ, Tankeu AT, Kaze AD, Noubiap JJ, Nansseu JR. Prevalence and incidence of hypertension in the global HIV-infected population: A systematic review and meta-analysis protocol. *BMJ Open*. 2017;7(10):e016531. doi:10.1136/bmjopen-2017-016531
9. Park J, Zuñiga JA. Chronic kidney disease in persons living with HIV: A systematic review. *J Assoc Nurses AIDS Care*. 2018;29(5):655-666. doi:10.1016/j.jana.2018.04.004
10. Pinato DJ, Pria AD, Sharma R, Bower M. Hepatocellular carcinoma: An evolving challenge in viral hepatitis and HIV coinfection. *AIDS*. 2017;31(5):603-611. doi:10.1097/QAD.0000000000001422
11. Robbins HA, Pfeiffer RM, Shiels MS, Li J, Hall HI, Engels EA. Excess cancers among HIV-infected people in the United States. *J Natl Cancer Inst*. 2015;107(4):dju503. doi:10.1093/jnci/dju503
12. Brown TT. Antiretroviral therapy and the prevalence and incidence of diabetes mellitus in the Multicenter AIDS Cohort Study. *Arch Intern Med*. 2005;165:1179-1184. doi:10.1001/archinte.165.10.1179
13. Shah ASV, Stelzle D, Lee KK, et al. Global burden of atherosclerotic cardiovascular disease in people living with the Human Immunodeficiency Virus: A systematic review and meta-analysis. *Circulation*. 2018;138(11):1100-1112. doi:10.1161/CIRCULATIONAHA.117.033369
14. Drozd DR, Kitahata MM, Althoff KN, et al. Increased risk of myocardial infarction in HIV-infected individuals in North America compared with the general population. *J Acquir Immune Defic Syndr*. 2017;75(5):568-576. doi:10.1097/QAI.0000000000001450
15. Önen N, Overton ET, Seyfried W, et al. Aging and HIV infection: A comparison between older HIV-infected persons and the general population. *HIV Clin Trials*. 2010;11(2):100-109. doi:10.1310/hct1102-100



16. Wada NI, Jacobson LP, Margolick JB, et al. The effect of HAART-induced HIV suppression on circulating markers of inflammation and immune activation. *AIDS*. 2015;29:463-471. doi:10.1097/QAD.0000000000000545
17. Hsue PY, Deeks SG, Hunt PW. Immunologic basis of cardiovascular disease in HIV-infected adults. *J Infect Dis*. 2012;205:S375-82. doi:10.1093/infdis/jis200
18. Carr A, Samaras K, Burton S, et al. A syndrome of peripheral lipodystrophy, hyperlipidaemia and insulin resistance in patients receiving HIV protease inhibitors. *AIDS*. 1998;12:F51-F58. doi:10.1097/00002030-199807000-00003
19. Friis-Møller N, Weber R, Reiss P, et al. Cardiovascular disease risk factors in HIV patients – association with antiretroviral therapy: Results from the D:A:D study. *AIDS*. 2003;17(8):1179-1193. doi:10.1097/01.aids.0000060358.78202.c1
20. US Centers for Disease Control and Prevention. *Social Determinants of Health among Adults with Diagnosed HIV Infection, 2018*. Vol 25.; 2020.
21. Nydegger LA, Hill MJ. Examining COVID-19 and HIV: The impact of intersectional stigma on short-and long-term health outcomes among African Americans. *Int Soc Work*. 2020;63(5):655-659. doi:10.1177/0020872820940017
22. Lerner AMA, Eisinger RRW, Fauci AS, Fauci A. Comorbidities in persons with HIV: The lingering challenge. *JAMA*. 2020;323(1):19-20. doi:10.1001/jama.2019.19775
23. Deeks SG, Lewin SR, Havlir D V. The end of AIDS: HIV infection as a chronic disease. *Lancet*. 2013;382(9903):1525-1533. doi:10.1016/S0140-6736(13)61809-7
24. Wong C, Gange SJ, Moore RD, et al. Multimorbidity among persons living with Human Immunodeficiency Virus in the United States. *Clin Infect Dis*. 2018;66(8):1230-1238. doi:10.1093/cid/cix998
25. Kim DJ, Westfall AO, Chamot E, et al. Multimorbidity patterns in HIV-infected patients: The role of obesity in chronic disease clustering. *J Acquir Immune Defic Syndr*. 2012;61(5):600-605. doi:10.1097/QAI.0b013e31827303d5
26. Goulet JL, Fultz SL, Rimland D, et al. Do patterns of comorbidity vary by HIV status, age, and HIV severity? *Clin Infect Dis*. 2007;45(12):1593-1601. doi:10.1086/523577
27. Collins LF, Sheth AN, Mehta CC, et al. The prevalence and burden of non-AIDS comorbidities among women living with or at risk for Human Immunodeficiency Virus infection in the United States. *Clin Infect Dis*. 2021;72(8):1301-1311. doi:10.1093/cid/ciaa204
28. Palella F, Hart R, Armon C, et al. Non-AIDS comorbidity burden differs by sex, race, and insurance type in aging adults in HIV care. *AIDS*. 2019;33(15):2327-2335. doi:10.1097/QAD.0000000000002349
29. Wong C, Gange SJ, Buchacz K, et al. First occurrence of diabetes, chronic kidney disease, and hypertension among north American HIV-infected adults, 2000-2013. *Clin Infect Dis*. 2017;64:45-67. doi:10.1093/cid/ciw804
30. Drozd DR, Kitahata MM, Althoff KN, et al. Increased risk of myocardial infarction in HIV-infected individuals in North America compared with the general population. *J Acquir Immune Defic Syndr*. 2017;75(5):568-576. doi:10.1097/QAI.0000000000001450
31. Buchacz K, Baker RK, Palella FJ, et al. Disparities in prevalence of key chronic diseases by gender and race/ethnicity among antiretroviral-treated HIV-infected adults in the US. *Antivir Ther*. 2013;18:65-75. doi:10.3851/IMP2450
32. Salter ML, Lau B, Go VF, Mehta SH, Kirk GD. HIV infection, immune suppression, and uncontrolled viremia are associated with increased multimorbidity among aging injection drug users. *Clin Infect Dis*. 2011;53(12):1256-1264.

doi:10.1093/cid/cir673

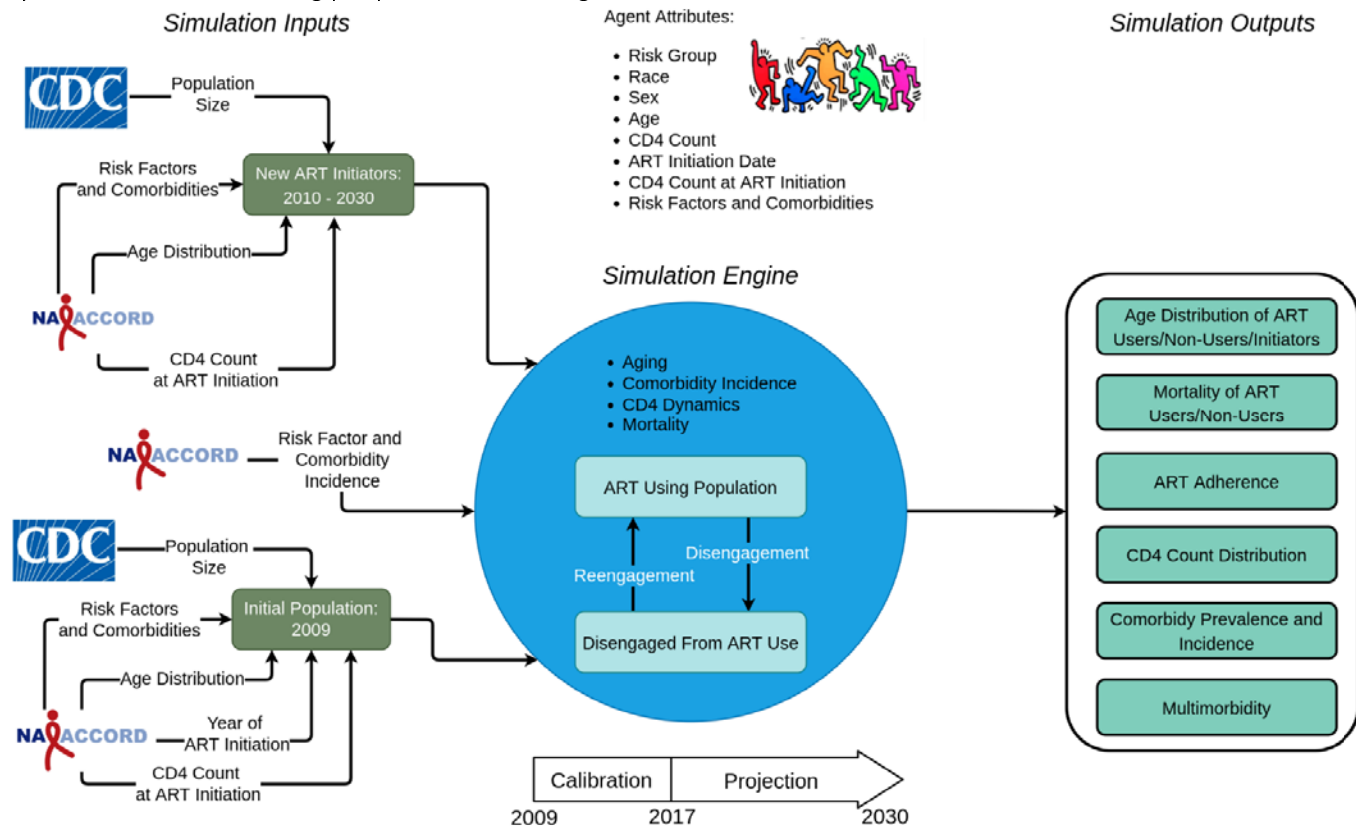
33. Lesko CR, Moore RD, Tong W, Lau B. Association of injection drug use with incidence of HIV-associated non-AIDS-related morbidity by age, 1995-2014. *AIDS*. 2016;30(9):1447-1455. doi:10.1097/QAD.0000000000001087
34. Burch JB, Augustine AD, Frieden LA, et al. Advances in geroscience: Impact on healthspan and chronic disease. *J Gerontol - Ser Biol Sci Med Sci*. 2014;69(Suppl 1):S1-3. doi:10.1093/gerona/glu041
35. Damarell RA, Morgan DD, Tieman JJ. General practitioner strategies for managing patients with multimorbidity: a systematic review and thematic synthesis of qualitative research. *BMC Fam Pract*. 2020;21(1):131. doi:10.1186/s12875-020-01197-8
36. Kasaie P, Stewart C, Humes E, et al. Projecting the age-distribution of men who have sex with men receiving HIV treatment in the United States. *Ann Epidemiol*. 2022;65:46-55. doi:10.1016/j.annepidem.2021.08.021
37. Althoff K, Stewart C, Humes E, et al. The shifting age distribution of people with HIV using antiretroviral therapy in the United States, 2020 to 2030. *AIDS Lond Engl*. Published online 2021:Online ahead of print. doi:10.1097/QAD.0000000000000312
38. Althoff KN, Stewart CN, Humes E, et al. The shifting age distribution of people with HIV using antiretroviral therapy in the United States. *AIDS*. 2022;36(3):459-471. doi:10.1097/QAD.00000000000003128
39. Lang R, Hogan B, Zhu J, et al. The prevalence of mental health disorders in people with HIV and the effects on the HIV Care Continuum. *medRxiv*. Published online 2022. doi:10.1101.2022.04.19.22273931
40. Silverberg MJ, Lau B, Achenbach CJ, et al. Cumulative Incidence of Cancer among HIV-infected Individuals in North America.
41. Klein MB, Althoff KN, Jing Y, et al. Risk of end-stage liver disease in HIV-viral hepatitis coinfecting persons in North America from the early to modern antiretroviral therapy eras. *Clin Infect Dis*. 2016;63(9):1160-1167. doi:10.1093/cid/ciw531
42. Do AN, Rosenberg ES, Sullivan PS, et al. Excess burden of depression among HIV-infected persons receiving medical care in the United States: Data from the medical monitoring project and the behavioral risk factor surveillance system. *PLoS ONE*. Published online 2014. doi:10.1371/journal.pone.0092842
43. Pence BW, Mills JC, Bengtson AM, et al. Association of increased chronicity of depression with HIV appointment attendance, treatment failure, and mortality among HIV-infected adults in the United States. *JAMA Psychiatry*. 2018;75(4):379-385. doi:10.1001/jamapsychiatry.2017.4726
44. Havlik RJ, Brennan M, Karpiak SE. Comorbidities and depression in older adults with HIV. *Sex Health*. Published online 2011. doi:10.1071/SH11017
45. Arant EC, Harding C, Geba M, Targonski PV, McManus KA. Human Immunodeficiency Virus (HIV) and Aging: Multimorbidity in Older People With HIV in One Nonurban Southeastern Ryan White HIV/AIDS Program Clinic. *Open Forum Infect Dis*. 2021;8(1):ofaa584. doi:10.1093/ofid/ofaa584
46. Carr A, Samaras K, Chisholm DJ, Cooper DA. Pathogenesis of HIV-1-protease inhibitor-associated peripheral lipodystrophy, hyperlipidaemia, and insulin resistance. *Lancet*. Published online 1998. doi:10.1016/S0140-6736(98)03391-1
47. Lang R, Humes E, Hogan B, et al. Evaluating the Cardiovascular Risk in an Aging Population of People With HIV: The Impact of Hepatitis C Virus Coinfection. *J Am Heart Assoc*. 2022;11(19):e026473. doi:10.1161/JAHA.122.026473

48. Althoff KN, Chandran A, Zhang J, et al. Life-expectancy disparities among adults with HIV in the United States and Canada: The impact of a reduction in drug- and alcohol-related deaths using the lives saved simulation model. *Am J Epidemiol*. 2019;188(12):2097-2109. doi:10.1093/aje/kwz232
49. US Centers for Disease Control and Prevention. HIV Surveillance Report, 2019. Accessed August 4, 2021. <http://www.cdc.gov/hiv/library/reports/hiv-surveillance.html>
50. Hill-Briggs F, Adler NE, Berkowitz SA, et al. Social Determinants of Health and Diabetes: A Scientific Review. *Diabetes Care*. 2020;44(1):258-279. doi:10.2337/dci20-0053
51. Commodore-Mensah Y, Turkson-Ocran RA, Foti K, Cooper LA, Himmelfarb CD. Associations Between Social Determinants and Hypertension, Stage 2 Hypertension, and Controlled Blood Pressure Among Men and Women in the United States. *Am J Hypertens*. 2021;34(7):707-717. doi:10.1093/ajh/hpab011
52. Chronic Kidney Disease Surveillance System website. Accessed October 19, 2022. <https://nccd.cdc.gov/CKD>
53. Simões e Silva AC, Miranda AS, Rocha NP, Teixeira AL. Neuropsychiatric Disorders in Chronic Kidney Disease. *Front Pharmacol*. 2019;10. Accessed July 25, 2022. <https://www.frontiersin.org/articles/10.3389/fphar.2019.00932>
54. Morales DR, Moreno-Martos D, Matin N, McGettigan P. Health conditions in adults with HIV compared with the general population: A population-based cross-sectional analysis. *eClinicalMedicine*. 2022;47. doi:10.1016/j.eclinm.2022.101392
55. Althoff KN, Buchacz K, Irene Hall H, et al. U.S. Trends in Antiretroviral Therapy Use, HIV RNA Plasma Viral Loads, and CD4 T-Lymphocyte Cell Counts Among HIV-Infected Persons, 2000 to 2008. *Ann Intern Med*. 2012;157(5):325-335. doi:10.7326/0003-4819-157-5-201209040-00005

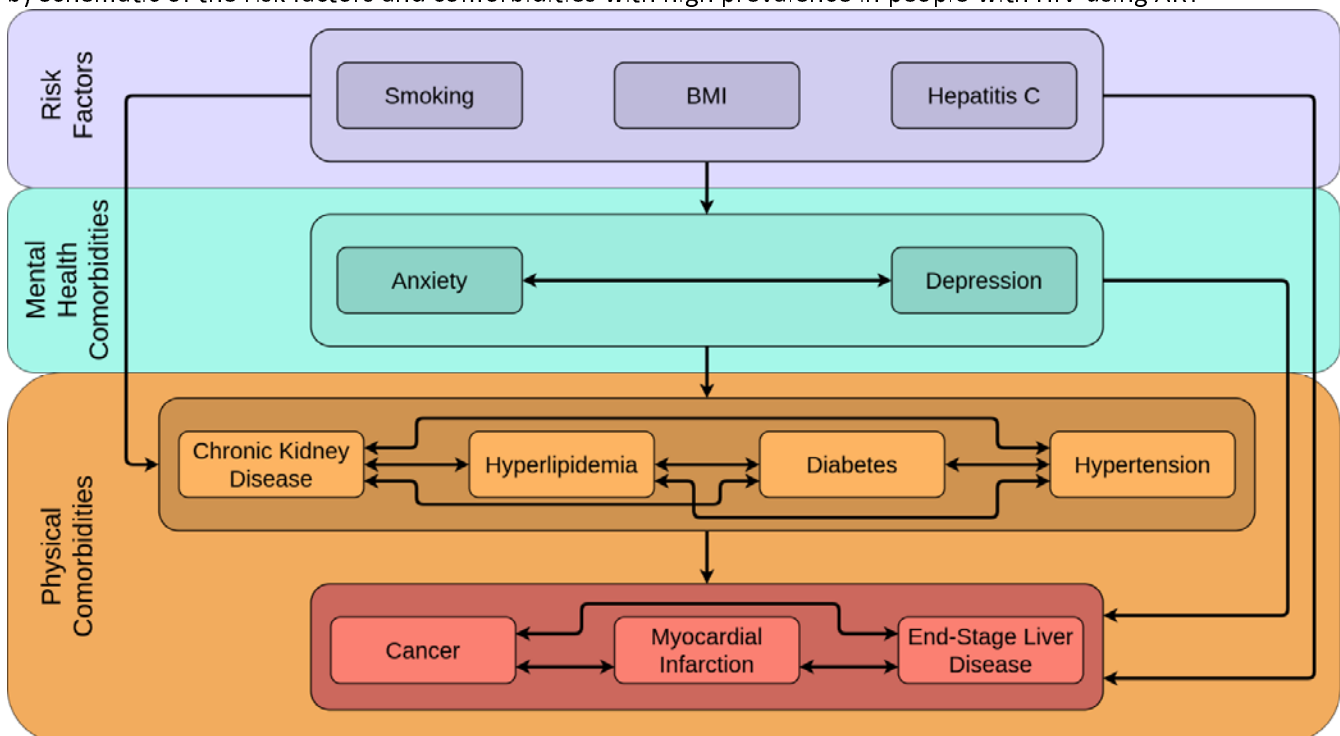
## TABLES AND FIGURES

**Figure 1:** Schematic representation of a) the PEARL model and b) the risk factors and comorbidities with high prevalence in people with HIV using ART

a) PEARL model simulating people with HIV using ART in the United States



b) Schematic of the risk factors and comorbidities with high prevalence in people with HIV using ART



Footnotes:

ART=antiretroviral therapy (HIV treatment)

CD4=CD4 T-lymphocyte cell count

Details on the mathematical functions represented by the arrows between the risk factors and mental and physical comorbidities can be found at [PEARLHIVmodel.org](http://PEARLHIVmodel.org).

**Table 1:** Characteristics of the PEARL-simulated agents using ART in 2010, 2020 and 2030

Characteristics	2010		2020 (Projected)		2030 (Projected)	
	PEARL <sup>a</sup>		PEARL <sup>a</sup>		PEARL <sup>a</sup>	
	N=	395,050	N =	674,531	N =	914,738
	n	% <sup>b</sup>	n	% <sup>b</sup>	n	% <sup>b</sup>
<b>Age (in years)</b>						
<20	695	0%	699	0%	1,210	0%
20-24	8,434	2%	11,452	2%	12,238	1%
25-29	20,049	5%	40,556	6%	40,794	4%
30-34	30,854	8%	66,908	10%	78,542	9%
35-39	47,940	12%	63,128	9%	101,300	11%
40-44	67,573	17%	61,290	9%	102,383	11%
45-49	78,964	20%	80,046	12%	85,847	9%
50-54	66,239	17%	98,716	15%	81,764	9%
55-59	42,424	11%	101,289	15%	95,226	10%
60-64	20,650	5%	76,974	11%	103,896	11%
65-69	7,820	2%	44,785	7%	95,728	10%
70-74	2,472	1%	19,800	3%	65,606	7%
≥75	916	0%	8,969	1%	48,778	5%
<b>Male sex at birth</b>	289,993	73%	518,620	77%	714,764	78%
<b>Race</b>						
White	145,688	37%	218,290	32%	261,230	29%
Black/AA	167,442	42%	298,157	44%	395,170	43%
Hispanic	81,908	21%	157,923	23%	256,343	28%
<b>Sub-groups, n % (median age) [IQR]</b>						
<b>MSM</b>	210,646	53%	406,590	60%	587,148	64%
	(45)	[37, 51]	(48)	[35, 57]	(47)	[37, 61]
White MSM	102,916	26%	156,942	23%	180,206	20%
	(47)	[41, 53]	(54)	[44, 60]	(59)	[46, 67]
Black/AA MSM	63,098	16%	144,577	21%	218,374	24%
	(42)	[33, 49]	(41)	[32, 53]	(42)	[35, 56]
Hispanic MSM	44,620	11%	104,670	16%	188,080	21%
	(41)	[35, 47]	(44)	[34, 52]	(43)	[36, 56]
<b>Men who injected drugs (MWID)<sup>c</sup></b>	49,860	13%	59,818	9%	65,672	7%
	(52)	[47, 57]	(58)	[49, 64]	(58)	[39, 69]
White MWID	17,539	4%	23,652	4%	29,460	3%
	(50)	[44, 55]	(56)	[47, 62]	(57)	[40, 67]
Black/AA MWID	20,536	5%	21,163	3%	17,748	2%
	(54)	[50, 58]	(61)	[55, 66]	(63)	[34, 72]
Hispanic MWID	11,783	3%	15,000	2%	18,506	2%
	(52)	[45, 57]	(57)	[47, 64]	(56)	[41, 69]
<b>Women who injected drugs (WWID)</b>	25,817	7%	27,804	4%	31,149	3%
	(49)	[43, 54]	(57)	[50, 63]	(62)	[51, 70]
White WWID	7,463	2%	9,592	1%	13,401	1%
	(46)	[39, 51]	(53)	[44, 59]	(56)	[47, 65]
Black/AA WWID	14,570	4%	14,222	2%	12,936	1%
	(50)	[45, 54]	(59)	[53, 64]	(66)	[58, 72]

Hispanic WWID	3,786	1%	3,994	1%	4,820	1%
	(49)	[44, 54]	(58)	[51, 63]	(63)	[53, 70]
Heterosexual men	29,505	7%	52,364	8%	62,334	7%
	(47)	[40, 53]	(53)	[44, 60]	(58)	[47, 67]
White heterosexual men	3,486	1%	6,840	1%	9,369	1%
	(49)	[43, 55]	(55)	[46, 62]	(61)	[48, 69]
Black/AA heterosexual men	19,166	5%	34,418	5%	39,848	4%
	(47)	[41, 53]	(53)	[45, 60]	(58)	[46, 66]
Hispanic heterosexual men	6,852	2%	11,108	2%	12,998	1%
	(44)	[37, 52]	(52)	[43, 60]	(58)	[49, 67]
Heterosexual women	79,226	20%	128,017	19%	167,442	18%
	(44)	[36, 51]	(51)	[42, 59]	(57)	[47, 65]
White heterosexual women	14,288	4%	21,160	3%	28,882	3%
	(45)	[38, 52]	(52)	[44, 59]	(59)	[50, 67]
Black/AA heterosexual women	50,071	13%	83,713	12%	106,270	12%
	(43)	[36, 51]	(50)	[42, 58]	(56)	[47, 65]
Hispanic heterosexual women	14,864	4%	23,094	3%	31,992	3%
	(43)	[36, 51]	(50)	[41, 59]	(55)	[42, 66]
<b>Mental Comorbidities</b>						
Anxiety	95,047	24%	246,192	36%	428,545	47%
Depression	157,590	40%	317,676	47%	445,518	49%
Anxiety and/or depression	209,578	53%	405,332	60%	589,178	64%
<b>Physical Comorbidities</b>						
Stage $\geq 3$ Chronic Kidney Disease	39,678	10%	111,940	17%	227,423	25%
Dyslipidemia	119,246	30%	184,860	27%	234,910	26%
Diabetes	45,510	12%	105,239	16%	219,064	24%
Hypertension	145,030	37%	239,688	36%	287,116	31%
Cancer	37,688	10%	75,944	11%	104,010	11%
End-Stage Liver Disease	4,704	1%	9,062	1%	13,334	1%
Myocardial Infarction	6,276	2%	21,934	3%	72,294	8%
<b>Physical Multimorbidity</b>						
No physical comorbidities	126,168	32%	237,779	35%	314,013	34%
1 physical comorbidity	164,476	42%	226,742	34%	275,250	30%
$\geq 2$ physical comorbidities	104,420	26%	209,865	31%	325,266	36%
<b>Mental and physical multimorbidity</b>						
$\geq 2$ mental or physical comorbidities	205,456	52%	393,150	58%	579,564	63%
$\geq 1$ mental and $\geq 2$ physical comorbidities	56,352	14%	139,335	21%	232,310	25%
<b>ART status</b>						
PWH using ART	395,050		674,531		914,738	
ART initiators	25,104		32,963		33,324	
Disengaged from ART use <sup>d</sup>	42,290		41,884		33,208	

Footnotes:

AA=African American

ART=antiretroviral therapy for HIV treatment

PEARL=Projecting Age, Multimorbidity, and Polypharmacy in Adults with HIV

PWH=people with HIV

MSM=men who have sex with men

<sup>a</sup>Values represent the median for each simulated outcome across 200 random simulation replications (See **Supplement Table S4** for 95% interquartile ranges).



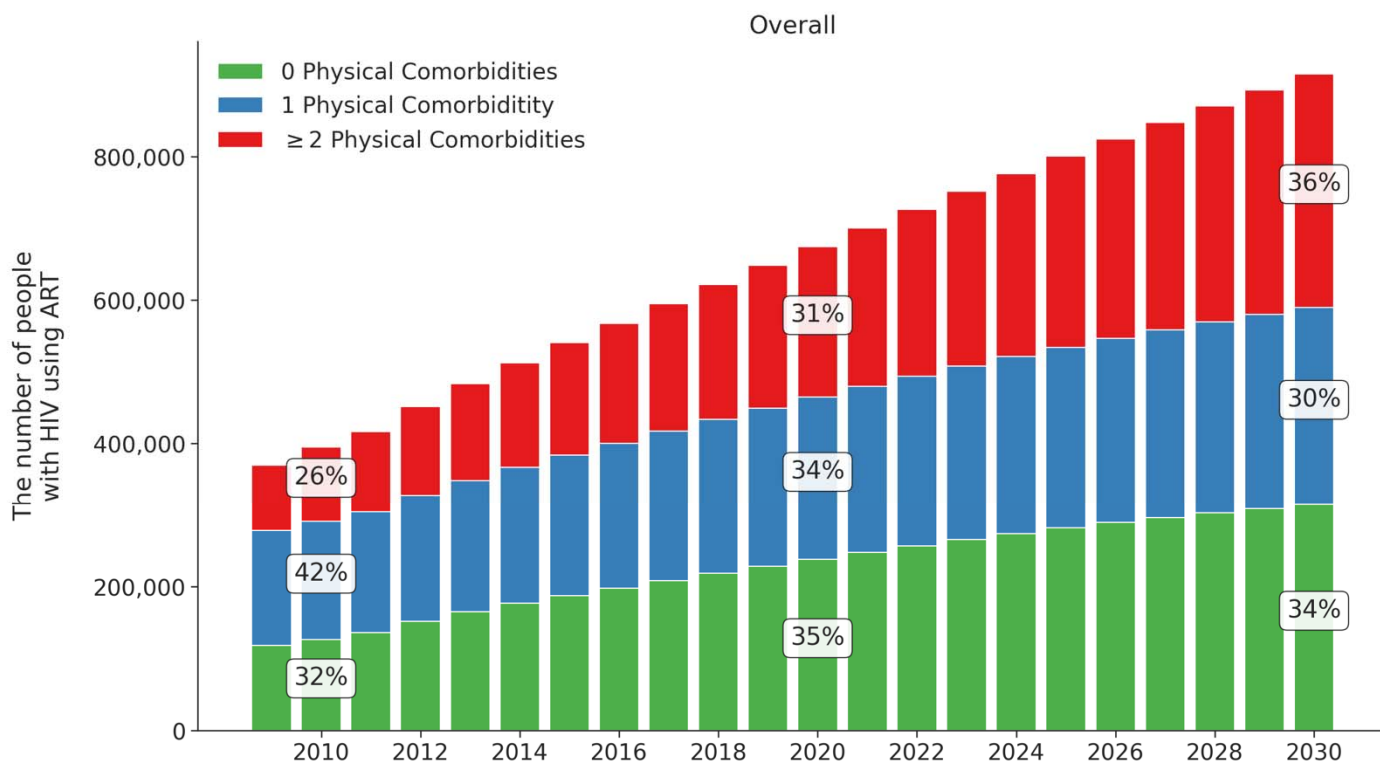
<sup>b</sup>Percentages in this table are calculated using the median numerator (n) and median denominator (N) from 200 replications of the PEARL model; for each characteristic, percentages will sum to 100%.

<sup>c</sup>MSM who also have MWID as their HIV acquisition risk factor were included in the MWID HIV acquisition risk group.

<sup>d</sup>PEARL projections of PWH using ART do not include 41,884 and 33,208 people who initiated ART but were disengaged from care and not using ART in 2020 and 2030 (respectively) and people of race and ethnicities other than non-Hispanic White, non-Hispanic Black/AA, and Hispanic.

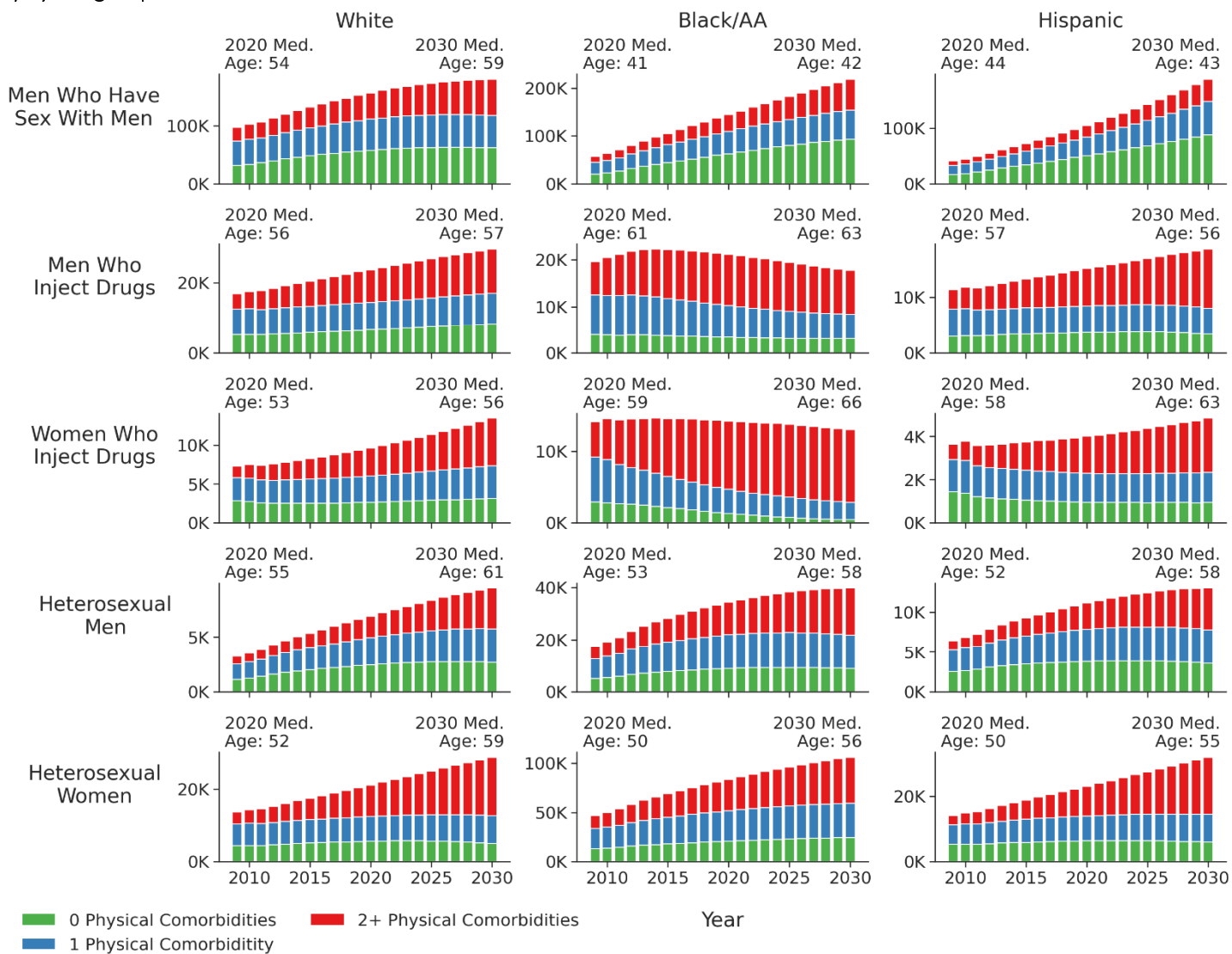
**Figure 2:** Projected<sup>a</sup> number of PWH using ART in the US and projected prevalence of mental and physical comorbidities and multimorbidity among PWH using ART in the US a) overall and b) by subgroup<sup>b</sup>

a) Overall



	Year											
≥ 1 Ment.	53%	55%	56%	58%	59%	60%	61%	62%	63%	64%	64%	
≥ 2 Phys.	26%	27%	28%	29%	30%	31%	32%	33%	34%	35%	36%	
≥ 2 Any	52%	53%	55%	56%	57%	58%	59%	60%	61%	62%	63%	
≥ 1 Ment. & ≥ 2 Phys.	14%	16%	17%	19%	20%	21%	22%	23%	23%	24%	25%	

b) By subgroup<sup>b</sup>



Footnotes:

≥1 Ment. = anxiety and/or depression (i.e., ≥1 of the mental comorbidities included)

≥2 Phys. = physical multimorbidity, defined as ≥2 physical comorbidities

≥2 Any = mental or physical multimorbidity, defined as ≥2 physical or mental comorbidities

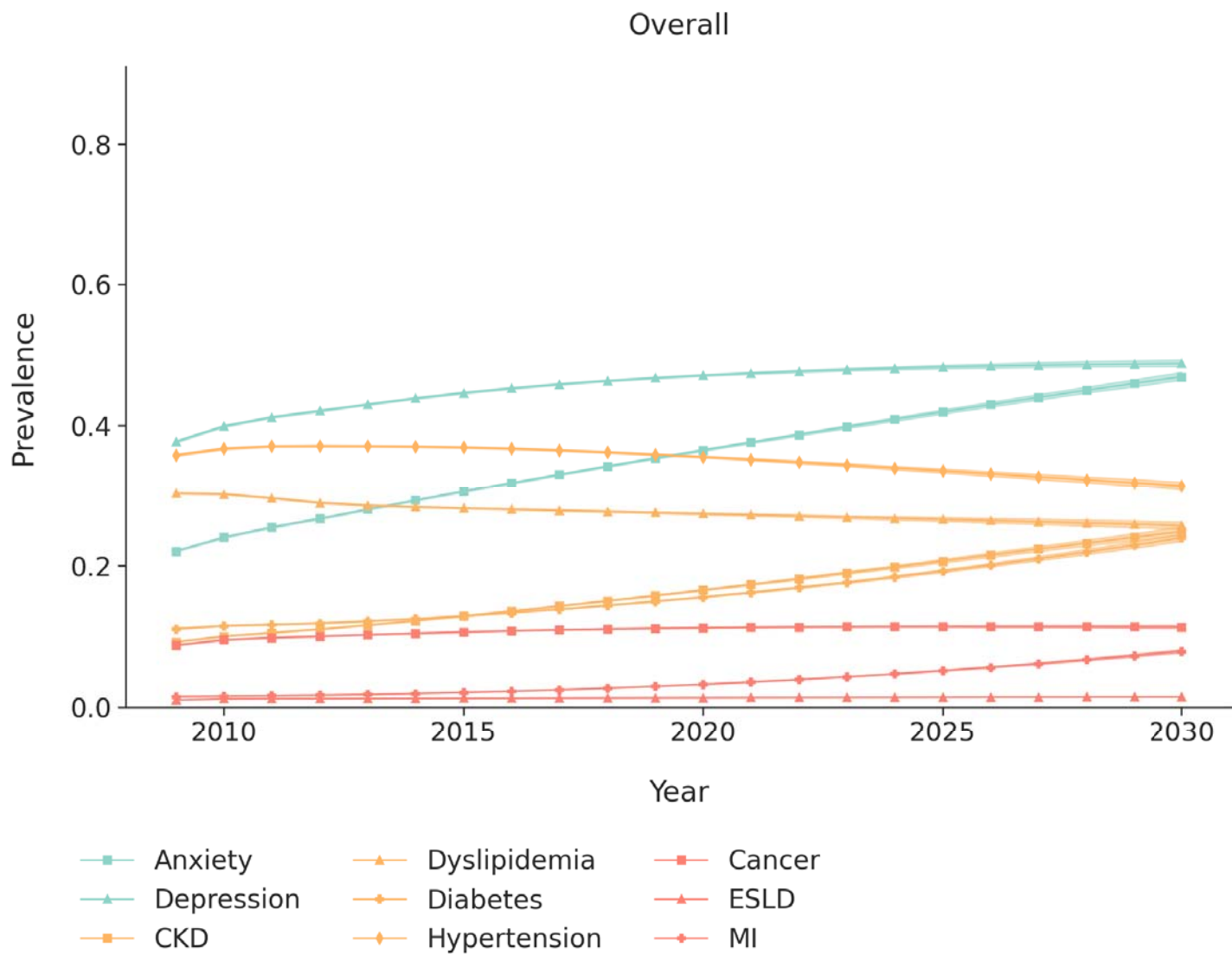
≥1 Ment. & 2 Phys. = mental comorbidity and physical multimorbidity, defined as ≥1 mental comorbidity and ≥2 physical comorbidities

<sup>a</sup>Although these estimates are all PEARL projections, 2010 was during the calibration period (where observed NA-ACCORD data were available to inform the estimates) and 2020 and 2030 were projection periods (without observed NA-ACCORD data).

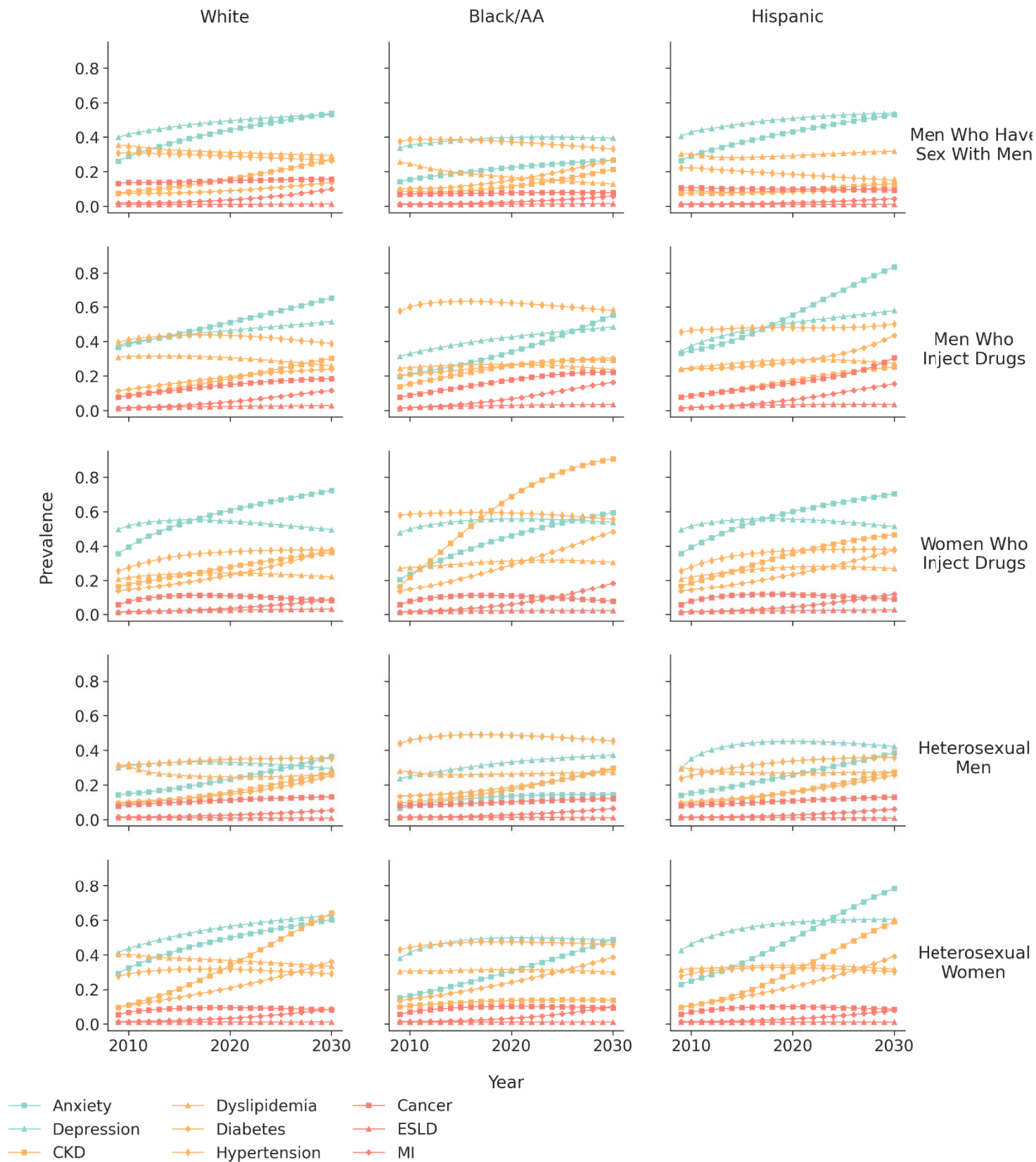
<sup>b</sup>Note that the y axes are different across the subgroups to allow visualization of the number of comorbidities within each year

**Figure 3:** Projected prevalence (and shaded 95% interquartile ranges) of individual comorbidities among PWH using ART a) overall, b) among the 15 subgroups, c) among the subgroup with the oldest median age in 2030, and c) among the subgroup with the youngest median age in 2030

a) Projected prevalence (and shaded 95% interquartile ranges) of comorbidities among all PWH to the year 2030



b) Projected prevalence (and shaded 95% interquartile ranges) of individual comorbidities, within the 15 subgroups



Footnotes:

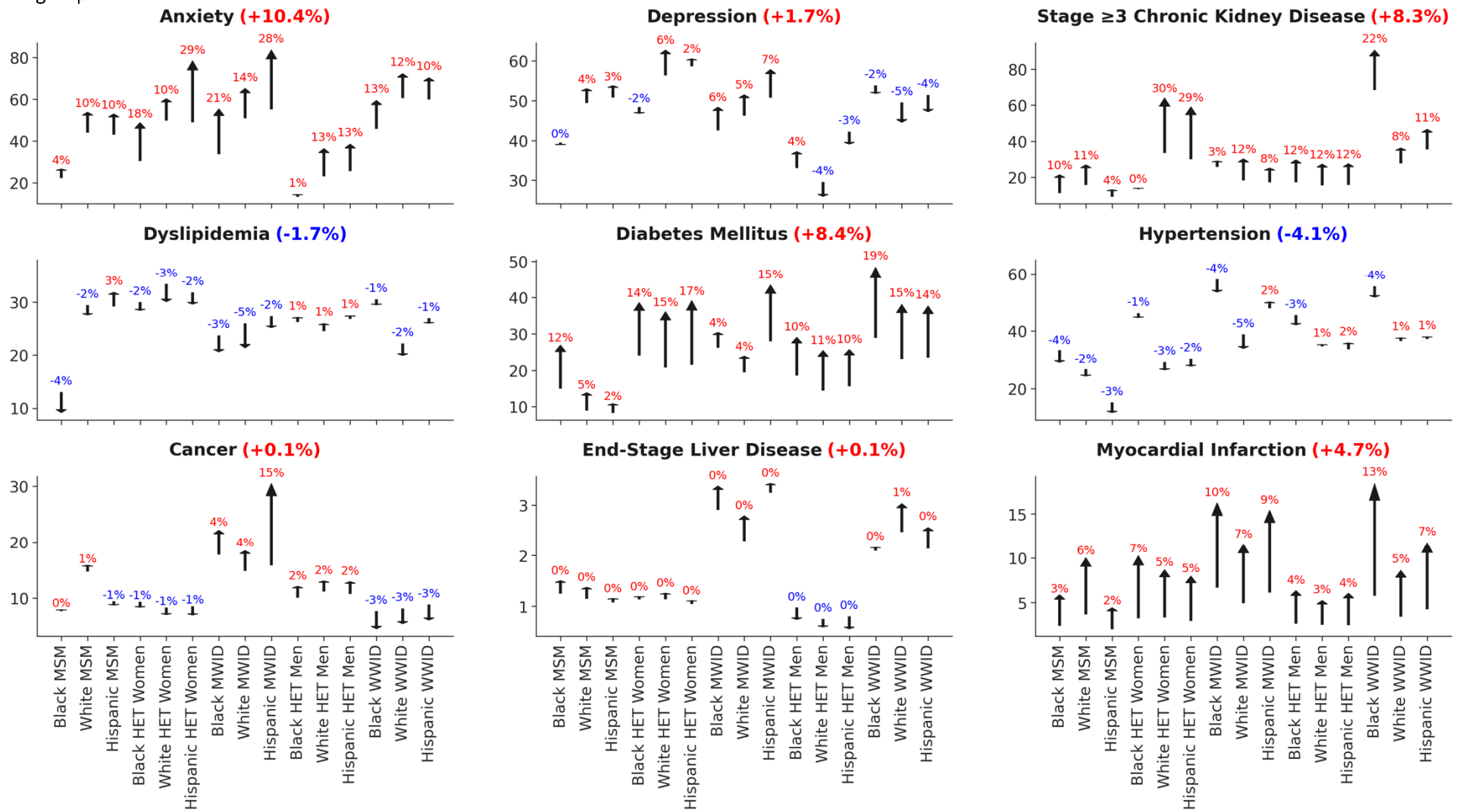
CKD=stage  $\geq 3$  chronic kidney disease

ESLD=end-stage renal disease

MI=myocardial infarction

The 95% credibility interval is estimated as the 2.5% and 97.5% range of results from running the simulation 200 times.

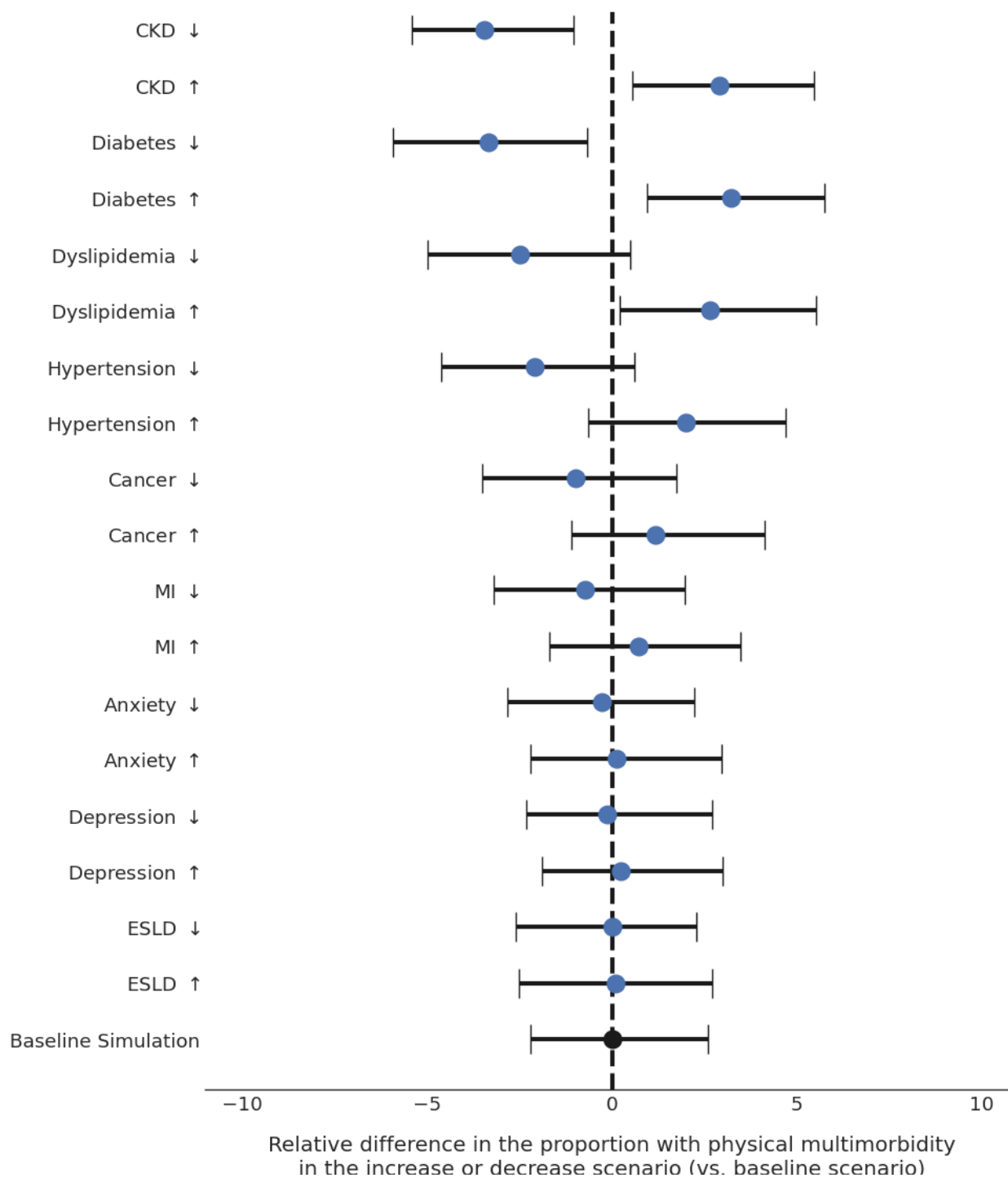
**Figure 4:** Projected absolute percentage point change (blue=decrease, red=increase) in the prevalence of individual comorbidities from 2020 to 2030, by subgroup



**Footnotes:**

<sup>b</sup>The y axes are different across the subgroups to allow visualization of the number of comorbidities within each year.

**Figure 5:** The relative difference of the proportion with physical multimorbidity in 2030 [outcome] comparing scenarios in which comorbidity incidence was decreased by 25% (down arrow scenario) and increased by 25% (up arrow scenario) to assess the influence of estimated probabilities on prevalence estimates. Relative difference when probability of the incidence of a comorbidity was decreased by 25% and increased by 25%, compared to the baseline scenario (no modification to the probability of the incidence of a comorbidity)



Footnotes:

$$\uparrow \text{relative difference} = \frac{(\% \text{ with physical multimorbidity}_{\text{increase scenario}} - \% \text{ with physical multimorbidity}_{\text{baseline scenario}})}{\% \text{ with physical multimorbidity}_{\text{baseline scenario}}}$$

$$\downarrow \text{relative difference} = \frac{(\% \text{ with physical multimorbidity}_{\text{decrease scenario}} - \% \text{ with physical multimorbidity}_{\text{baseline scenario}})}{\% \text{ with physical multimorbidity}_{\text{baseline scenario}}}$$

Physical multimorbidity =  $\geq 2$  physical comorbidities