

# **Title: Impact of SARS-CoV-2 infection on disease trajectory in youth with T1D: An EHR-based cohort study from the RECOVER program**

**Authors:** Priya Prahalad, MD, MPH<sup>1</sup>, Vitaly Lorman, PhD<sup>2</sup>, Qiong Wu, PhD<sup>3</sup>, Hanieh Razzaghi<sup>2</sup>, MPH, Yong Chen PhD<sup>3</sup>, Nathan Pajor, MD<sup>4</sup>, Abigail Case, MD<sup>3</sup>, Seuli Bose-Brill, MD<sup>4</sup>, Jason Block, MD, MPH<sup>5</sup>, Payal B Patel, MD<sup>6</sup>, Suchitra Rao, MBBS, MSCS<sup>7</sup>, Asuncion Mejias, MD, PhD, MsCS<sup>8</sup>, Christopher B. Forrest, MD, PhD<sup>2</sup>, L. Charles Bailey, MD, PhD<sup>2</sup>, Ravi Jhaveri, MD<sup>9</sup>, Deepika Thacker, MD<sup>10</sup>, Dimitri A. Christakis, MD, MPH<sup>11</sup>, Grace M. Lee, MD MPH<sup>12</sup> on behalf of the RECOVER Consortium

## **Institutions/Affiliations**

<sup>1</sup>Department of Pediatrics (Endocrinology), Stanford University School of Medicine, Stanford, CA

<sup>2</sup>Applied Clinical Research Center, Children's Hospital of Philadelphia, Philadelphia, PA

<sup>3</sup>Department of Biostatistics, Epidemiology and Informatics, the University of Pennsylvania

<sup>4</sup>Division of Pulmonary Medicine, Cincinnati Children's Hospital Medical Center and University of Cincinnati College of Medicine, Cincinnati, OH

<sup>4</sup>Combined Internal Medicine Section, Department of Internal Medicine, Ohio State University College of Medicine, Columbus, OH

<sup>5</sup>Division of Chronic Disease Research Across the Lifecourse, Department of Population Medicine, Harvard Pilgrim Health Care Institute, Harvard Medical School, Boston, MA

<sup>6</sup>Department of Neurology, University of Washington, Seattle, WA

<sup>7</sup>Department of Pediatrics, University of Colorado School of Medicine and Children's Hospital of Colorado, Aurora, CO

<sup>8</sup>Division of Infectious Diseases, Department of Pediatrics, Nationwide Children's Hospital and The Ohio State University, Columbus, OH

<sup>9</sup>Division of Infectious Diseases, Ann & Robert H. Lurie Children's Hospital of Chicago, Chicago, IL

<sup>10</sup>Nemours Cardiac Center, Nemours Children's Health, Wilmington, DE

<sup>11</sup>Center for Child Health, Behavior and Development, Seattle Children's Hospital, Seattle, WA

<sup>12</sup>Department of Pediatrics (Infectious Diseases), Stanford University School of Medicine, Stanford, CA

## **Abstract:**

**Background:** Post-acute sequelae of SARS-CoV-2 infection (PASC) is associated with worsening diabetes trajectory. It is unknown whether PASC in children with type 1 diabetes (T1D) manifests as worsening diabetes trajectory.

**Objective:** To explore the association between SARS-CoV-2 infection (COVID-19) and T1D-related healthcare utilization (for diabetic ketoacidosis [DKA] or severe hypoglycemia [SH]) or Hemoglobin (Hb) A1c trajectory.

**Methods:** We included children <21 years with T1D and ≥1 HbA1c prior to cohort entry, which was defined as COVID-19 (positive diagnostic test or diagnosis code for COVID-19, multisystem inflammatory syndrome in children, or PASC) or a randomly selected negative test for those who were

negative throughout the study period (Broad Cohort). A subset with  $\geq 1$  HbA1c value from 28-275 days after cohort entry (Narrow Cohort) was included in the trajectory analysis. Propensity score-based matched cohort design followed by weighted Cox regression was used to evaluate the association of COVID-19 with healthcare utilization  $\geq 28$  days after cohort entry. Generalized estimating equation models were used to measure change in HbA1c in the Narrow cohort.

**Results:** From 03/01/2020-06/22/2022, 2,404 and 1,221 youth met entry criteria for the Broad and Narrow cohorts, respectively. The hazard ratio for utilization was (HR 1.45 [95%CI,0.97,2.16]). In the Narrow Cohort, the rate of change (slope) of HbA1c increased 91-180 days after cohort entry for those with COVID-19 (0.138 vs. -0.002,  $p=0.172$ ). Beyond 180 days, greater declines in HbA1c were observed in the positive cohort (-0.104 vs. 0.008 per month,  $p=0.024$ ).

**Conclusion:** While a trend towards worse outcomes following COVID-19 in T1D patients was observed, these findings were not statistically significant. Continued clinical monitoring of youth with T1D following COVID-19 is warranted.

**Authorship Statement:** Authorship has been determined according to ICMJE recommendations

**Disclaimer:** The content is solely the responsibility of the authors and does not necessarily represent the official views of the RECOVER Program, the NIH or other funders.

**Funding Source:** This research was funded by the National Institutes of Health (NIH) Agreement OT2HL161847-01 as part of the Researching COVID to Enhance Recovery (RECOVER) program of research.

## Introduction

Early in the COVID-19 pandemic, diabetes was prognostic of worse outcome (1; 2). Several reports from hospitalized patients have shown increased hyperglycemia in people with and without diabetes during the acute phase of infection with Severe Acute Respiratory Syndrome Coronavirus 2 (SARS-CoV-2) (3-5). The risk of developing long-term sequelae following infection with SARS-CoV-2 is also increased in adults with chronic medical conditions, including diabetes (6). Post-acute sequelae of SARS-CoV-2 infection (PASC) is defined as new, continuing, or recurring symptoms that occur 4 or more weeks after initial coronavirus infection(7). In adults, symptoms of PASC can manifest as fatigue or symptoms affecting the cardiovascular, respiratory, neurologic, gastrointestinal, or musculoskeletal systems(8; 9). Reports suggest that 4.5% to 50% of adults with prior SARS-CoV-2 infection may develop symptoms of PASC(10-12). A similarly wide range of estimates have been noted for children (2% to 66%), though likely closer to ~4% based on large population-based studies(13-16).

In children, a recent analysis of electronic health record (EHR) data suggests that PASC features can include symptoms such as changes in smell/taste, hair loss, and chest pain, and the most commonly associated conditions included myocarditis, respiratory distress and myositis(17). Prior data from the NIH RECOVER electronic health record (EHR) database shows that children with chronic medical conditions had higher rates of healthcare utilization 28 days or more after SARS-CoV-2 infection, compared to children without infection (18). However, the reasons for increased utilization were not well understood. Increased utilization may be due to symptoms associated with PASC (i.e., unrelated to their pre-existing conditions) or may be attributable to worsening of underlying chronic conditions (19).

Much of the previous data on PASC and diabetes has been focused on the incidence of new onset diabetes as a feature of PASC. Data from the Centers for Disease Control and US Department of Veterans Affairs show an increase in the incidence of new diabetes diagnoses in people with a history of COVID-19 infection(20; 21). However, these reports do not differentiate between type 1 and type 2 diabetes. Internationally, there have been mixed reports on increased incidence of diabetes, specifically type 1 diabetes (T1D in children, during the COVID-19 pandemic(22-25). A recent study of international EHR records showed an increase in the incidence of T1D in youth with a history of SARS-CoV-2 infection(26) while an international registry study showed no change in the rate of rise of T1D(27). Since the SARS-CoV-2 virus is thought to infect beta cells(28; 29), new onset diabetes or worsening of disease trajectory in people with preexisting diabetes may both be features of PASC. In adults, there is data to suggest that SARS-CoV-2 infection can worsen dysglycemia in those with pre-existing diabetes(30).

In this manuscript, we report on the impact of SARS-CoV-2 infection on disease trajectory in children with preexisting type 1 diabetes (T1D). We selected T1D since it is associated with an increased risk of severe disease in children with COVID-19 infection (3-5; 31) and also thought to be a feature of PASC itself(20; 21). We focused on T1D since it is more common in the pediatric age group than type 2 diabetes (32-35). Using the NIH Researching COVID to Enhance Recovery (RECOVER) EHR database, we evaluated the impact of SARS-CoV-2 infection on T1D disease trajectory as measured by rates of

hospital and emergency department utilization due to diabetes complications as well as changes in HbA1c trajectory, in youth with established type 1 diabetes.

## Materials and Methods

### *Study Population*

This study is part of the NIH RECOVER initiative which seeks to understand, treat, and prevent the post-acute sequelae of SARS-CoV-2 infection (PASC). Electronic health record (EHR) data was obtained from participating institutions in PEDSnet, a national network of pediatric healthcare systems that share clinical data to conduct observational research, clinical trials, and population surveillance. EHR data from inpatient, outpatient, emergency department, and administrative encounters within each participating health system were standardized to the PEDSnet common data model, an extension of the Observational Medical Outcomes Partnership common data model. Participating institutions for this study included Children's Hospital of Philadelphia, Cincinnati Children's Hospital Medical Center, Children's Hospital of Colorado, Ann & Robert H. Lurie Children's Hospital of Chicago, Nationwide Children's Hospital, Nemours Children's Health System (includes sites in Delaware and Florida), Seattle Children's Hospital, and Stanford Children's Health. Annually, these institutions provide service to 3.3% of the nation's children. The RECOVER COVID-19 Database Version 2022-07-21 was used.

The Children's Hospital of Philadelphia's institutional review board designated this study as not human subjects research and the need for consent was waived.

### *Study Design*

In this retrospective, observational, matched cohort study, we included patients in the PEDSnet database who had a test, vaccine, or respiratory illness starting in January 1, 2020. Inclusion criteria were: <21 years of age with a diagnosis of T1D, presence of  $\geq 1$  HbA1C measurement in the 7 days to 3 years before cohort entry, and the presence of SARS-CoV-2 diagnostic testing or a diagnosis code for COVID-19, multi-system inflammatory syndrome in children (MIS-C), or PASC between March 1, 2020, and December 22, 2021. We defined a cohort of T1D patients with incident SARS-CoV-2 infection by presence of a positive SARS-CoV-2 PCR or antigen test performed in an outpatient, emergency department (ED), or inpatient setting, presence of a diagnosis term for multi-system inflammatory syndrome in children (MIS-C) or post-acute sequelae of COVID-19 at an outpatient, ED, or inpatient setting, or presence of any specific diagnosis term for COVID-19 associated with an inpatient or ED encounter. The cohort entry date was defined as the date of the earliest positive test or diagnosis. The comparison cohort was defined by presence of a negative SARS-CoV-2 viral test result, with no positive test result or diagnosis over the study period. In the comparison cohort, the cohort entry date was defined as the date of a randomly selected negative test for patients who had multiple negative tests ("Broad Cohort"). Patients with at least 6 months of follow-up time were included in our analyses.

To account for potential confounders, for both cohorts we used subclassification matching which grouped patients into 6 subclasses by propensity score and assigned weights to each subclass to balance age group, sex, race/ethnicity, HbA1c group (< 7%, 7-9%,  $\geq 9\%$ ), insurance class, center, testing

location, and cohort entry month in the two cohorts(36). After assigning patients the subclassification weights aweighted standardized mean differences (wSMDs) were computed to assess covariate balance.

### *Calculation of Worsening Disease Trajectory*

We examined worsening disease trajectory in two different ways. First, we developed a composite outcome to evaluate worsening disease trajectory in pediatric patients with T1D. In the Broad Cohort, the composite outcome was defined as an emergency department visit or hospitalization for diabetic ketoacidosis (DKA) or severe hypoglycemia (SH). Conditional hazard ratios were calculated using a Cox proportional hazards model (with weights from subclassification matching used to fit a weighted regression) to assess whether SARS-CoV-2 infection is associated with an increased hazard of hospitalization or emergency department visits for diabetic ketoacidosis or hypoglycemia. The adjusted hazard ratio (marginal estimate) quantifies the effect of infection of COVID-19 averaged in the weighted population. We also conducted a sensitivity analysis that did not require 6 months of follow-up time to explore whether time period of cohort entry (pre-Omicron compared to during the Omicron wave) modified the effect of COVID-positivity on our outcomes. Employing the same subclassification matching approach as above, we ran a proportional hazards model regressing on SARS-CoV-2 positivity, Omicron period, and an interaction term between SARS-CoV-2 positivity and the Omicron period (defined as cohort entry on or after January 1, 2021).

Next, to further characterize whether disease trajectory following SARS-CoV-2 infection was altered in patients with T1D, we also evaluated the trajectory of HbA1c measurements using a “Narrow Cohort” of patients who had an additional HbA1c values from 28 days to 275 days after cohort entry. A longer time window was used to assess longer term effects on HbA1c outcomes. The propensity score model was fitted with the same variables described above, and 6 subclasses were created with covariate balance achieved. Within each propensity score stratum, a longitudinal regression model using the generalized estimating equation with autoregressive correlation structure was fitted to measure the change of HbA1c in positive and negative groups. The nonlinear change of HbA1c measurements was characterized by dividing the evaluation period into linear segments (i.e., prior to -90 days, -90 to -7 days, 28 to 90 days, 91 to 180 days, and later than 180 days). We further included SARS-CoV-2 positivity and its interactions with time segments after cohort entry as covariates. A fixed-effect meta-analysis was then used to aggregate effect sizes across propensity score strata (i.e., inverse-variance weighting). Unlike traditional longitudinal data, HbA1c measurements are not consistently observed for all subjects at set intervals, which results in an imbalanced data structure. In addition, the observation times may be associated with the underlying outcomes (HbA1c). For example, patients with HbA1c measurements available every 3 months may be more likely to have well-controlled diabetes compared to patients who do not have HbA1c data available. Hence, we conducted a sensitivity analysis to confirm the robustness of our findings. Specifically, the irregular visiting times were firstly modeled, and the generalized estimating equation (GEE) is then fitted with inverse-intensity-of-visit-process weighting (22; 23). The effect sizes in propensity score strata were then

aggregated using fixed-effect meta-analysis. This sensitivity analysis is referred to as "Weighted GEE" (37; 38).

## Results

### *Participant Characteristics*

During the evaluation period (March 1, 2020, to June 22, 2022), there were a total of 2,404 youth in the Broad Cohort with at least 6 months of follow-up after cohort entry (Table 1a). Among patients in the Broad Cohort, 15.2% had a positive COVID-19 test at the time of cohort entry. A total of 1,221 individuals met criteria for inclusion in the Narrow Cohort (Table 1b). Similar to the Broad Cohort, 15.8% had a positive COVID-19 test at the time of cohort entry.

### *COVID-19 Infection and Outcomes*

We used subclassification matching to balance age group, sex, race/ethnicity, HbA1c group ( $< 7\%$ ,  $7-9\%$ ,  $\geq 9\%$ ), insurance class, center, testing location, and cohort entry month in the two cohorts. The Broad cohort was well-balanced across all covariates after matching ( $|SMD| < 0.1$  for all covariates in the Broad cohort, except one month of cohort entry during which the  $|SMD|$  was  $< 0.2$ , Figure 1).

The hazard ratio for our composite outcome in the Broad cohort, an emergency department visit or hospitalization for diabetic ketoacidosis or severe hypoglycemia  $\geq 28$  days after cohort entry, is 1.45 [95%CI: 0.97, 2.16]. This shows a trend towards increasing healthcare utilization for severe complications of T1D occurring  $\geq 28$  days after cohort entry, but it does not reach statistical significance. Kaplan Meier estimates of event-free survival are shown in Figure 2. In our sensitivity analysis, we did not require 6 months of follow-up time in order to capture information on patients with Omicron infection. The hazard ratio of our composite outcome occurring prior to the Omicron period (cohort entry 03/01/2020 to 12/31/2021) was 1.62 [95%CI: 1.1, 2.39] and during the Omicron period (01/01/2022) it decreased to 0.64 [95%CI (0.22, 1.85)].

### *HbA1c Trajectory Following COVID-19 Infection*

Based on the aggregated regression coefficients, HbA1c trajectory was plotted starting from 6 months prior to cohort entry to 9 months after cohort entry for both positive and negative groups (Table 2, Figure 3). After propensity score stratification, the baseline HbA1c measures (at cohort entry) were similar for the two groups (i.e., the marginal effect of COVID-19 positivity is insignificant at the time of cohort entry). In those with a positive COVID-19 test or diagnosis, the rate of change (i.e., slope) of HbA1c values increased at day 90 after cohort entry (slope changed from -0.039 to 0.138 per month), however the increase of slope was not significant compared to the negative cohort ( $p=0.172$ ). Beyond 180 days, HbA1c values had a greater rate of decline in the positive cohort (slope as -0.104 per month), and this change in trend at day 180 was statistically significant ( $p$ -value 0.024). The results from weighted GEE also showed a similar trajectory pattern with a statistically significant change in trend on day 180, which confirms the robustness of our findings.

## Discussion

This is one of the first studies in pediatrics examining the impact of COVID-19 infection on long term diabetes trajectory and outcomes for children with preexisting T1D. There was an increased risk of our composite outcome (worsening disease severity defined by increased utilization of the emergency department or hospitalization) in our Broad Cohort. While this did not reach statistical significance, this may be clinically significant for the population, since it DKA and SH both have serious health risks. The hazard ratio for the worsening composite outcome was higher prior to the Omicron wave, which mirrors findings from other studies demonstrating less severe disease and possibly lower risk of PASC following infection with omicron compared to alpha or delta variants(12; 39; 40).

Among those with HbA1c values 6 months to 7 days prior to cohort entry and a follow up A1c 28 days to 275 days after cohort entry, individuals positive for COVID-19 experienced a notable rise in HbA1c in the 3-to-6-month period after cohort entry. Also, the rate of decline of HbA1c > 6 months after cohort entry was steep when comparing our positive cohort to our negative cohort. This rise and fall could reflect sustained increases in glucose level after COVID-19 infection, and a return to baseline following recovery, which may also be due to dose adjustments at a clinical diabetes visit. Since HbA1c measurements reflect glucose control over the prior 3 months, acute illness following infection may also have contributed to these findings. However, the peak was noted in the later part of the 3- to 6-month window, consistent with the risk window for PASC, suggesting that glucose control remains challenging beyond the acute infection period. These findings extend our understanding of the longer-term impact of SARS-CoV-2 infection on glycemic control. Other studies have focused on the impact of infection during the acute illness, or in the immediate weeks after(41). However, we believe this is the first large-scale study to examine the direct impact of SARS-CoV-2 infection on glycemic control during the PASC risk window.

Our findings may have implications for understanding the long-term impact of COVID-19 in children with other chronic medical conditions. While most of the attention has been focused on “classic” symptoms of PASC that have been well described in adults, such as intermittent or prolonged respiratory, cardiac, or neurologic symptoms in individuals who were previously healthy, other potential manifestations of PASC are less well understood. Defining PASC in children is particularly challenging since PASC is often based on a lack of return to a usual state of health following acute COVID-19 illness. Children may be too young to articulate a change from baseline, and developmental baselines are ever-changing in children and youth. By widening the lens of PASC to include a broader range of manifestations, such as worsening disease trajectory following COVID-19 infection among children with chronic medical conditions, particularly given the variety of cells that can be infected by the SARS Co-V-2 virus(42), we may discover the burden of PASC in children is far greater than initially anticipated.

The strength of this work is the PEDsnet database which has multiple sites representing a diverse population around the country. PEDsnet derives its data from EHR rather than claims data which makes the data more complete. This is one of the largest studies examining PASC in children with type 1 diabetes with a well-matched comparison population. There are some limitations to this work. Since this data is based on EHR data, individuals diagnosed with COVID-19 outside of the participating

centers may not be reflected. Similarly, health care utilization patterns for type 1 diabetes may have been altered by the pandemic, and there may have been residual differences between COVID-19 positive and negative cohorts despite balance on the observed covariates. We were also unable to accurately identify youth who had been vaccinated for COVID-19 prior to COVID-19 infection, which may be relevant if vaccination also provides protection against conditions associated with PASC. The decreased incidence of our composite outcome during the Omicron wave could indicate protection by vaccination or reflect a change in the severity of Omicron compared to original strains. Finally, given the relatively small number of youth with type 1 diabetes and COVID-19, our study may not be powered to detect significant differences.

## Conclusion

Children with type 1 diabetes diagnosed with COVID-19 were observed to have a transient increase in HbA1c in the 3 to 6 months following infection compared to COVID-19 negative cohorts, with substantial HbA1c declines after 6 months. As COVID-19 continues to circulate in the population, it is important to monitor the long-term disease trajectory in children with pre-existing T1D.

## Disclosures:

Dr Brill received support from Novartis and Regeneron Pharmaceuticals within in the last year

Dr. Chen receives consulting support from GSK.

Dr. Patel reports funding from the National Institute of Health and Bayer Pharmaceuticals

Dr. Rao reports prior grant support from GSK and Biofire and is a consultant for Seqirus.

Dr. Mejias reports funding from Janssen and Merck for research support; Janssen, Merck and Sanofi-Pasteur for Advisory Board participation, and Sanofi-Pasteur and AstraZeneca for CME lectures.

Dr. Jhaveri is a consultant for AstraZeneca, Seqirus, Dynavax, receives an editorial stipend from Elsevier and Pediatric Infectious Diseases Society and royalties from Up To Date/Wolters Kluwer.

Dr. Lee serves on the PASC Advisory Board for United Health Group.

All other authors have nothing to disclose.

**Acknowledgments:** The authors gratefully acknowledge the contributions of Miranda Higginbotham, and we would like to thank the National Community Engagement Group(NCEG), all patient, caregiver and community Representatives, all patient, caregiver and community Representatives, and all the participants enrolled in the RECOVER Initiative.

## References

1. Hartmann-Boyce J, Rees K, Perring JC, Kerneis SA, Morris EM, Goyder C, Otunla AA, James OA, Syam NR, Seidu S, Khunti K. Risks of and From SARS-CoV-2 Infection and COVID-19 in People With Diabetes: A Systematic Review of Reviews. *Diabetes Care* 2021;44:2790-2811
2. Kastora S, Patel M, Carter B, Delibegovic M, Myint PK. Impact of diabetes on COVID-19 mortality and hospital outcomes from a global perspective: An umbrella systematic review and meta-analysis. *Endocrinol Diabetes Metab* 2022:e338



3. Bode B, Garrett V, Messler J, McFarland R, Crowe J, Booth R, Klonoff DC. Glycemic Characteristics and Clinical Outcomes of COVID-19 Patients Hospitalized in the United States. *J Diabetes Sci Technol* 2020;14:813-821
4. Li H, Tian S, Chen T, Cui Z, Shi N, Zhong X, Qiu K, Zhang J, Zeng T, Chen L, Zheng J. Newly diagnosed diabetes is associated with a higher risk of mortality than known diabetes in hospitalized patients with COVID-19. *Diabetes Obes Metab* 2020;22:1897-1906
5. Sathish T, Kapoor N, Cao Y, Tapp RJ, Zimmet P. Proportion of newly diagnosed diabetes in COVID-19 patients: A systematic review and meta-analysis. *Diabetes Obes Metab* 2021;23:870-874
6. Jessica L. Harding MKA, Jennifer C. Gander, Rachel E. Patzer. Diabetes as a Risk Factor for Long-COVID-19—A Scoping Review. In *American Diabetes Association 82nd Scientific Sessions* Association AD, Ed. New Orleans, LA, Diabetes, 2022
7. Available from <https://recovercovid.org/>. Accessed July 13 2022
8. Hope AA, Evering TH. Postacute Sequelae of Severe Acute Respiratory Syndrome Coronavirus 2 Infection. *Infect Dis Clin North Am* 2022;36:379-395
9. Yoo SM, Liu TC, Motwani Y, Sim MS, Viswanathan N, Samras N, Hsu F, Wenger NS. Factors Associated with Post-Acute Sequelae of SARS-CoV-2 (PASC) After Diagnosis of Symptomatic COVID-19 in the Inpatient and Outpatient Setting in a Diverse Cohort. *J Gen Intern Med* 2022;37:1988-1995
10. Groff D, Sun A, Ssentongo AE, Ba DM, Parsons N, Poudel GR, Lekoubou A, Oh JS, Ericson JE, Ssentongo P, Chinchilli VM. Short-term and Long-term Rates of Postacute Sequelae of SARS-CoV-2 Infection: A Systematic Review. *JAMA Netw Open* 2021;4:e2128568
11. Long COVID or Post-COVID Conditions [article online], 2022. Accessed August 2 2022
12. Antonelli M, Pujol JC, Spector TD, Ourselin S, Steves CJ. Risk of long COVID associated with delta versus omicron variants of SARS-CoV-2. *Lancet* 2022;399:2263-2264
13. Say D, Crawford N, McNab S, Wurzel D, Steer A, Tosif S. Post-acute COVID-19 outcomes in children with mild and asymptomatic disease. *Lancet Child Adolesc Health* 2021;5:e22-e23
14. Radtke T, Ulyte A, Puhon MA, Kriemler S. Long-term Symptoms After SARS-CoV-2 Infection in Children and Adolescents. *JAMA* 2021;
15. Erol N, Alpinar A, Erol C, Sari E, Alkan K. Intriguing new faces of Covid-19: persisting clinical symptoms and cardiac effects in children. *Cardiol Young* 2021;1-7
16. Buonsenso D, Munblit D, De Rose C, Sinatti D, Ricchiuto A, Carfi A, Valentini P. Preliminary evidence on long COVID in children. *Acta Paediatr* 2021;110:2208-2211
17. Rao S, Lee GM, Razzaghi H, Lorman V, Mejias A, Pajor NM, Thacker D, Webb R, Dickinson K, Bailey LC, Jhaveri R, Christakis DA, Bennett TD, Chen Y, Forrest CB. Clinical features and burden of post-acute sequelae of SARS-CoV-2 infection in children and adolescents: an exploratory EHR-based cohort study from the RECOVER program. *medRxiv* 2022;
18. Nathan M. Pajor VL, Hanieh Razzaghi, Priya Prahalad, Seuli Bose Brill, Qiong Wu, Yong Chen, Jason Block, Payal B. Patel, Suchitra Rao, Asuncion Mejias, Deepika Thacker, Ravi Jhaveri, L. Charles Bailey, Christopher B. Forrest, Grace M. Lee. Healthcare utilization following SARS-CoV-2 infection in children and adolescents with chronic conditions: An EHR-based Cohort Study from the RECOVER Program. *medRxiv* 2022;
19. Bailey LC, Razzaghi H, Burrows EK, Bunnell HT, Camacho PEF, Christakis DA, Eckrich D, Kitzmiller M, Lin SM, Magnusen BC, Newland J, Pajor NM, Ranade D, Rao S, Sofela O, Zahner J, Bruno C, Forrest CB. Assessment of 135794 Pediatric Patients Tested for Severe Acute Respiratory Syndrome Coronavirus 2 Across the United States. *JAMA Pediatr* 2021;175:176-184
20. Xie Y, Al-Aly Z. Risks and burdens of incident diabetes in long COVID: a cohort study. *Lancet Diabetes Endocrinol* 2022;10:311-321
21. Barrett CE, Koyama AK, Alvarez P, Chow W, Lundeen EA, Perrine CG, Pavkov ME, Rolka DB, Wiltz JL, Bull-Otterson L, Gray S, Boehmer TK, Gundlapalli AV, Siegel DA, Kompaniyets L, Goodman AB, Mahon BE, Tauxe RV, Remley K, Saydah S. Risk for Newly Diagnosed Diabetes >30 Days After SARS-CoV-2 Infection Among Persons Aged <18 Years - United States, March 1, 2020-June 28, 2021. *MMWR Morb Mortal Wkly Rep* 2022;71:59-65

22. Kamrath C, Rosenbauer J, Eckert AJ, Siedler K, Bartelt H, Klose D, Sindichakis M, Herrlinger S, Lahn V, Holl RW. Incidence of Type 1 Diabetes in Children and Adolescents During the COVID-19 Pandemic in Germany: Results From the DPV Registry. *Diabetes Care* 2022;
23. McKeigue PM, McGurnaghan S, Blackburn L, Bath LE, McAllister DA, Caparrotta TM, Wild SH, Wood SN, Stockton D, Colhoun HM. Relation of Incident Type 1 Diabetes to Recent COVID-19 Infection: Cohort Study Using e-Health Record Linkage in Scotland. *Diabetes Care* 2022;
24. Tittel SR, Rosenbauer J, Kamrath C, Ziegler J, Reschke F, Hammersen J, Monkemoller K, Pappa A, Kapellen T, Holl RW, Initiative DPV. Did the COVID-19 Lockdown Affect the Incidence of Pediatric Type 1 Diabetes in Germany? *Diabetes Care* 2020;43:e172-e173
25. Unsworth R, Wallace S, Oliver NS, Yeung S, Kshirsagar A, Naidu H, Kwong RMW, Kumar P, Logan KM. New-Onset Type 1 Diabetes in Children During COVID-19: Multicenter Regional Findings in the U.K. *Diabetes Care* 2020;43:e170-e171
26. Kendall EK, Olaker VR, Kaelber DC, Xu R, Davis PB. Association of SARS-CoV-2 Infection With New-Onset Type 1 Diabetes Among Pediatric Patients From 2020 to 2021. *JAMA Netw Open* 2022;5:e2233014
27. Reschke F, Lanzinger S, Herczeg V, Prahalad P, Schiaffini R, Mul D, Clapin H, Zabeen B, Pelicand J, Phillip M, Limbert C, Danne T, Group SS. The COVID-19 Pandemic Affects Seasonality, With Increasing Cases of New-Onset Type 1 Diabetes in Children, From the Worldwide SWEET Registry. *Diabetes Care* 2022;
28. Tonon F, Candido R, Toffoli B, Tommasi E, Cortello T, Fabris B, Bernardi S. Type 1 diabetes is associated with significant changes of ACE and ACE2 expression in peripheral blood mononuclear cells. *Nutr Metab Cardiovasc Dis* 2022;32:1275-1282
29. Liu F, Long X, Zhang B, Zhang W, Chen X, Zhang Z. ACE2 Expression in Pancreas May Cause Pancreatic Damage After SARS-CoV-2 Infection. *Clin Gastroenterol Hepatol* 2020;18:2128-2130 e2122
30. Pal R, Joshi A, Bhadada SK, Banerjee M, Vaikkakara S, Mukhopadhyay S. Endocrine Follow-up During Post-Acute COVID-19: Practical Recommendations Based on Available Clinical Evidence. *Endocr Pract* 2022;28:425-432
31. Zhan K, Zhang X, Wang B, Jiang Z, Fang X, Yang S, Jia H, Li L, Cao G, Zhang K, Ma X. Short- and long-term prognosis of glycemic control in COVID-19 patients with type 2 diabetes. *QJM* 2022;115:131-139
32. O'Malley G, Ebekozi O, Desimone M, Pinnaro CT, Roberts A, Polsky S, Noor N, Aleppo G, Basina M, Tansey M, Steenkamp D, Vendrame F, Lorincz I, Mathias P, Agarwal S, Golden L, Hirsch IB, Levy CJ. COVID-19 Hospitalization in Adults with Type 1 Diabetes: Results from the T1D Exchange Multicenter Surveillance Study. *J Clin Endocrinol Metab* 2021;106:e936-e942
33. Demeterco-Berggren C, Ebekozi O, Rompicherla S, Jacobsen L, Accacha S, Gallagher MP, Todd Alonso G, Seyoum B, Vendrame F, Haw JS, Basina M, Levy CJ, Maahs DM. Age and Hospitalization Risk in People With Type 1 Diabetes and COVID-19: Data From the T1D Exchange Surveillance Study. *The Journal of Clinical Endocrinology & Metabolism* 2021;107:410-418
34. Gallagher MP, Rompicherla S, Ebekozi O, Wilkes M, Antal Z, Feuer AJ, Rioles N, Noor N, Gabriel L, O'Malley G, Golden L, Alonso T, Ospelt E, Odugbesan O, Lyons SK, Mungmode A, Prahalad P, Clements M, Neyman A, Demeterco-Berggren C, Rapaport R. Differences in COVID-19 Outcomes Among Patients With Type 1 Diabetes: First vs Later Surges. *Journal of Clinical Outcomes Management* 2022;29:27-31
35. Ebekozi O, Agarwal S, Noor N, Albanese-O'Neill A, Wong JC, Seeherunvong T, Sanchez J, DeSalvo D, Lyons SK, Majidi S, Wood JR, Acharya R, Aleppo G, Sumpter KM, Cymbaluk A, Shah NA, Van Name M, Cruz-Aviles L, Alonso GT, Gallagher MP, Sanda S, Feuer AJ, Cossen K, Rioles N, Jones NY, Kamboj MK, Hirsch IB. Inequities in Diabetic Ketoacidosis Among Patients With Type 1 Diabetes and COVID-19: Data From 52 US Clinical Centers. *J Clin Endocrinol Metab* 2021;106:e1755-e1762
36. Hong G. Marginal mean weighting through stratification: a generalized method for evaluating multivalued and multiple treatments with nonexperimental data. *Psychol Methods* 2012;17:44-60
37. Lin H, Scharfstein, D.O., Rosenheck, R.A. Analysis of longitudinal data with irregular, outcome-dependent follow-up. *Journal of the Royal Statistical Society: Series B (Statistical Methodology)* 2004;66:791-813

38. Pullenayegum EM. Analysis of longitudinal data with irregular observation times. In *R*, 03.4 ed., 2022
39. Luring AS, Tenforde MW, Chappell JD, Gaglani M, Ginde AA, McNeal T, Ghamande S, Douin DJ, Talbot HK, Casey JD, Mohr NM, Zepeski A, Shapiro NI, Gibbs KW, Files DC, Hager DN, Shehu A, Prekker ME, Erickson HL, Exline MC, Gong MN, Mohamed A, Johnson NJ, Srinivasan V, Steingrub JS, Peltan ID, Brown SM, Martin ET, Monto AS, Khan A, Hough CL, Busse LW, Ten Lohuis CC, Duggal A, Wilson JG, Gordon AJ, Qadir N, Chang SY, Mallow C, Rivas C, Babcock HM, Kwon JH, Halasa N, Grijalva CG, Rice TW, Stubblefield WB, Baughman A, Womack KN, Rhoads JP, Lindsell CJ, Hart KW, Zhu Y, Adams K, Schrag SJ, Olson SM, Kobayashi M, Verani JR, Patel MM, Self WH, Influenza, Other Viruses in the Acutely Ill N. Clinical severity of, and effectiveness of mRNA vaccines against, covid-19 from omicron, delta, and alpha SARS-CoV-2 variants in the United States: prospective observational study. *BMJ* 2022;376:e069761
40. Morioka S, Tsuzuki S, Suzuki M, Terada M, Akashi M, Osanai Y, Kuge C, Sanada M, Tanaka K, Maruki T, Takahashi K, Saito S, Hayakawa K, Teruya K, Hojo M, Ohmagari N. Post COVID-19 condition of the Omicron variant of SARS-CoV-2. *J Infect Chemother* 2022;28:1546-1551
41. Nimri R, Rachmiel M, Yackobovitch-Gavan M, Brener A, de Vries L, Fisch Shvalb N, Lazar L, Oren A, Jacobi-Polishook T, Shefer Averbuch N, Tenenbaum A, Mel E, Krepel Volsky S, Mouler M, Demol S, Shalitin S, Bello R, Phillip M, Lebenthal Y. Symptoms and Glycemic Control in Young People With Type 1 Diabetes Following SARS-CoV-2 Infection: An Observational Study. *J Clin Endocrinol Metab* 2022;107:e3264-e3272
42. Jackson CB, Farzan M, Chen B, Choe H. Mechanisms of SARS-CoV-2 entry into cells. *Nat Rev Mol Cell Biol* 2022;23:3-20

**Table 1.** Participant Characteristics in the (A) Broad Cohort and (B) Narrow cohort prior to matching (A)

	<b>Overall</b>	<b>Negative Cohort</b>	<b>Positive Cohort</b>
<b>n</b>	2,404	2,039	365
<b>Age at Cohort Entrance, n (%)</b>			
< 5 years	127 (5.2)	115 (5.6)	12 (3.3)
5-11 years	664 (27.6)	591 (29.0)	73 (20.0)
12-15 years	808 (33.6)	669 (32.8)	139 (38.1)
16-20 years	805 (33.5)	664 (32.6)	141 (38.6)
<b>Sex, n (%)</b>			
Female	1224 (50.9)	1044 (51.2)	180 (49.3)
Male/Other/Unknown	1,180 (49.0)	995 (48.7)	186 (50.7)
<b>Race/Ethnicity, n(%)</b>			
White Non-Hispanic	1,484 (61.7)	1,283 (62.9)	201 (55.1)
Black Non-Hispanic	361 (15.0)	286 (14.0)	75 (20.5)
Hispanic	340 (14.1)	281 (13.8)	59 (16.2)
Other/Unknown	219 (9.1)	189 (9.2)	30 (8.2)
<b>Insurance class, n(%)</b>			
Public	1,082 (45.0)	901 (44.2)	181 (49.6)
Private	775 (32.2)	685 (33.6)	90 (24.7)
Other/Unknown	547 (22.8)	453 (22.2)	94 (25.8)
<b>Cohort Entry Period*</b>			
Original strain (Mar 2020-Apr 2021)	1,429 (59.4)	1,208 (59.2)	221 (60.5)
Alpha (May-Jul 2021)	276 (11.5)	258 (12.7)	18 (4.9)
Delta (Aug-Dec 2021)	699 (29.1)	573 (28.1)	126 (34.5)
<b>Test Location, n(%)</b>			
Emergency Department	667 (27.7)	520 (25.5)	147 (40.3)
Inpatient	540 (22.5)	486 (23.8)	54 (14.8)
Outpatient Office	436 (18.1)	380 (18.6)	56 (15.3)
Outpatient: Test Only	761 (31.7)	653 (32.0)	108 (29.6)

\*Our primary analyses required at least 6 months of follow-up after cohort entry.

**(B)**

	<b>Overall</b>	<b>Negative Cohort</b>	<b>Positive Cohort</b>
<b>n</b>	1,221	1,028	193
<b>Age at Cohort Entrance, n(%)</b>			
< 5 years	70 (5.8)	64 (6.2)	6 (3.1)
5-11 years	371 (30.4)	331 (32.2)	40 (20.7)
12-15 years	434 (35.5)	347 (33.8)	87 (45.1)
16-20 years	346 (28.3)	286 (27.8)	60 (31.1)

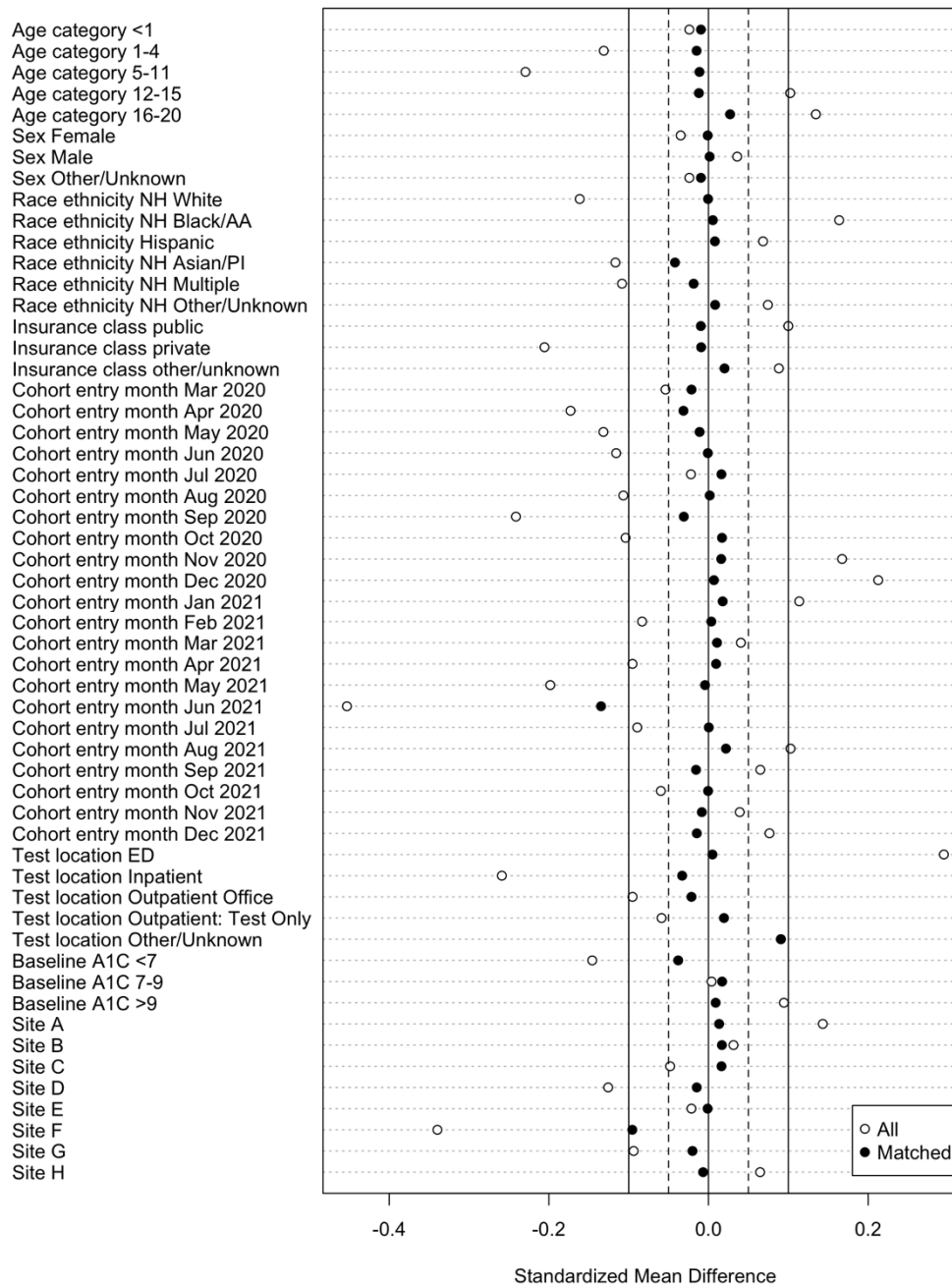
<b>Sex, n(%)</b>			
Female	605 (49.5)	513 (49.9)	92 (47.7)
Male	616 (50.5)	515 (50.1)	101 (52.3)
<b>Race/Ethnicity, n(%)</b>			
Non-Hispanic White	774 (63.4)	663 (64.5)	111 (57.5)
Non-Hispanic Black	184 (15.1)	146 (14.2)	38 (19.7)
Hispanic	168 (13.8)	138 (13.4)	30 (15.5)
Other/Unknown	95 (12.2)	81 (7.9)	14 (7.3)
<b>Insurance class, n(%)</b>			
Public	541 (44.3)	449 (43.7)	92 (47.7)
Private	356 (29.2)	315 (30.6)	41 (21.2)
Other/unknown	324 (26.5)	264 (25.7)	60 (31.1)
<b>Cohort Entry Period</b>			
Original strain (Mar 2020-Apr 2021)	708 (58.0)	597 (58.1)	111 (57.5)
Alpha (May-Jul 2021)	140 (11.5)	133 (12.9)	7 (3.6)
Delta (Aug-Dec 2021)	373 (30.5)	298 (29.0)	75 (38.9)
<b>Test Location, n(%)</b>			
Emergency Department	349 (28.6)	277 (26.9)	72 (37.3)
Inpatient	238 (19.5)	211 (20.5)	27 (14.0)
Outpatient Office	232 (19.0)	197 (19.2)	35 (18.1)
Outpatient: Test Only	402 (32.9)	343 (33.4)	59 (30.6)

**Table 2.** HbA1c trajectories measured as slopes during time periods before and after cohort entry.

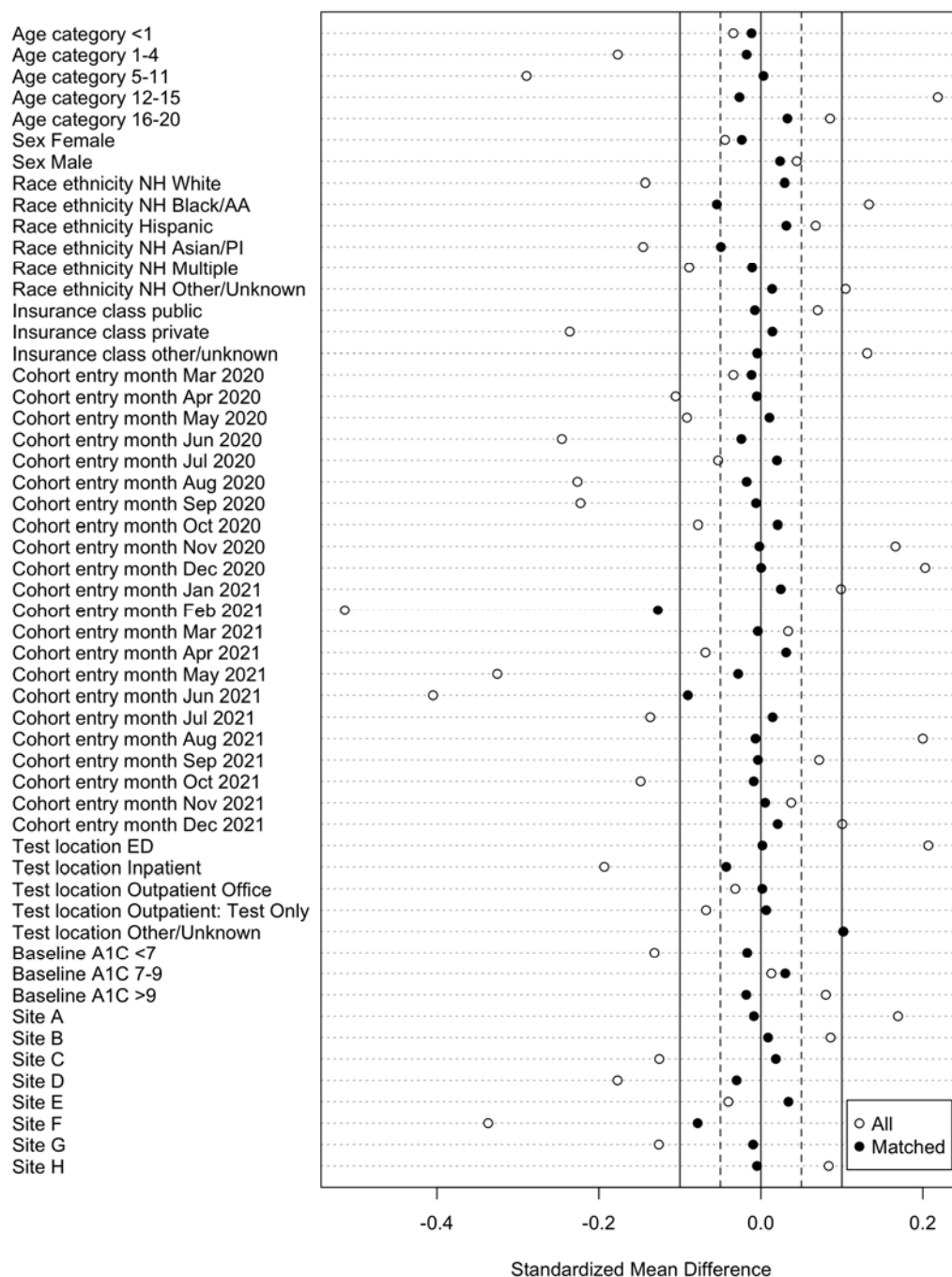
	Time periods	Negative cohort	Positive cohort	p-value*
Intercept at cohort entry		8.773	8.841	
Slopes per 30 days	Prior to -90 days	-0.090		
	-90 to -7 days	-0.030		
	28 to 90 days	-0.075	-0.051	
	91 to 180 days	-0.003	0.102	
	Later than 180 days	0.009	-0.213	0.024

\*p-value for interaction term between time period and infection status

(A)

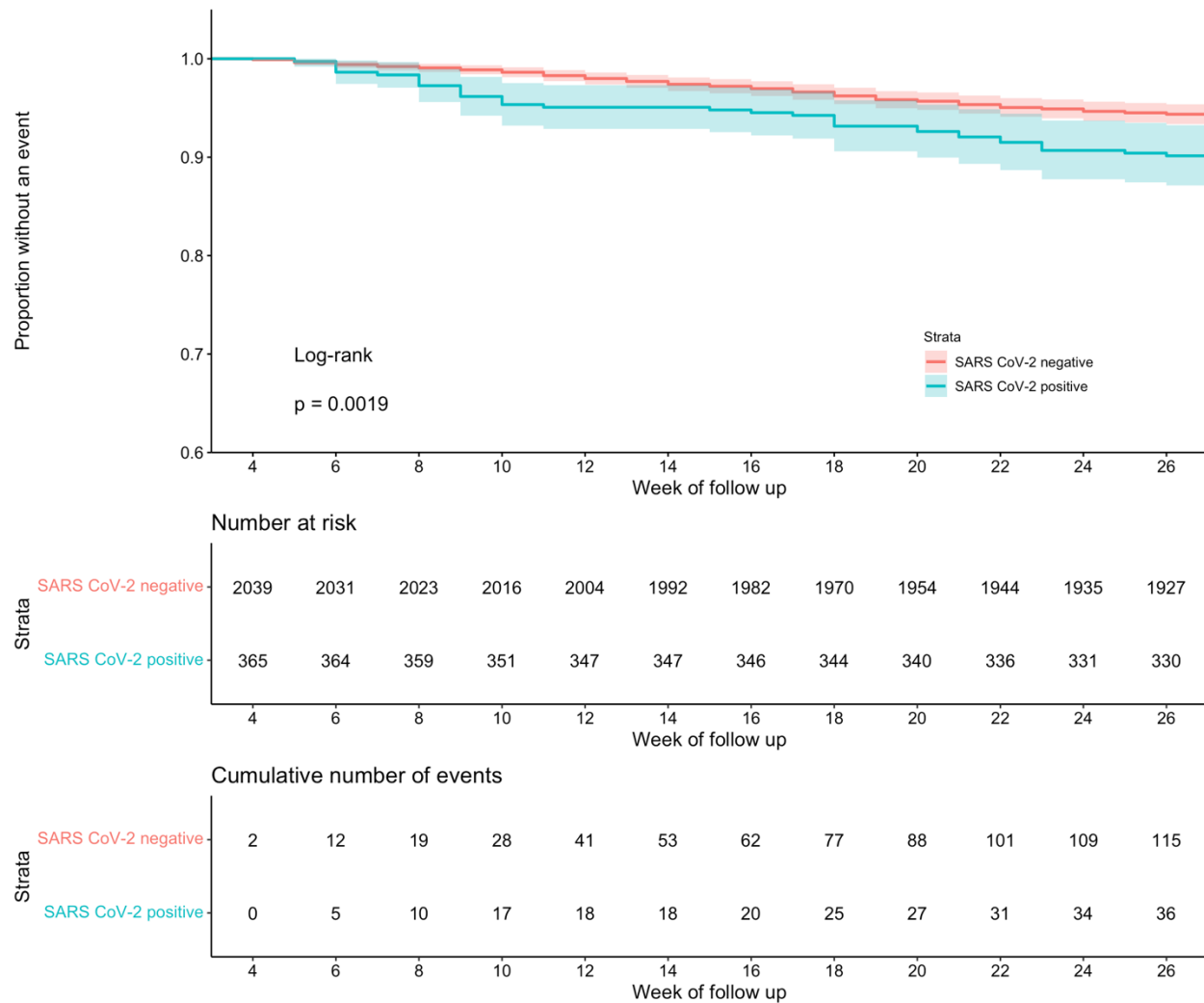


(B)

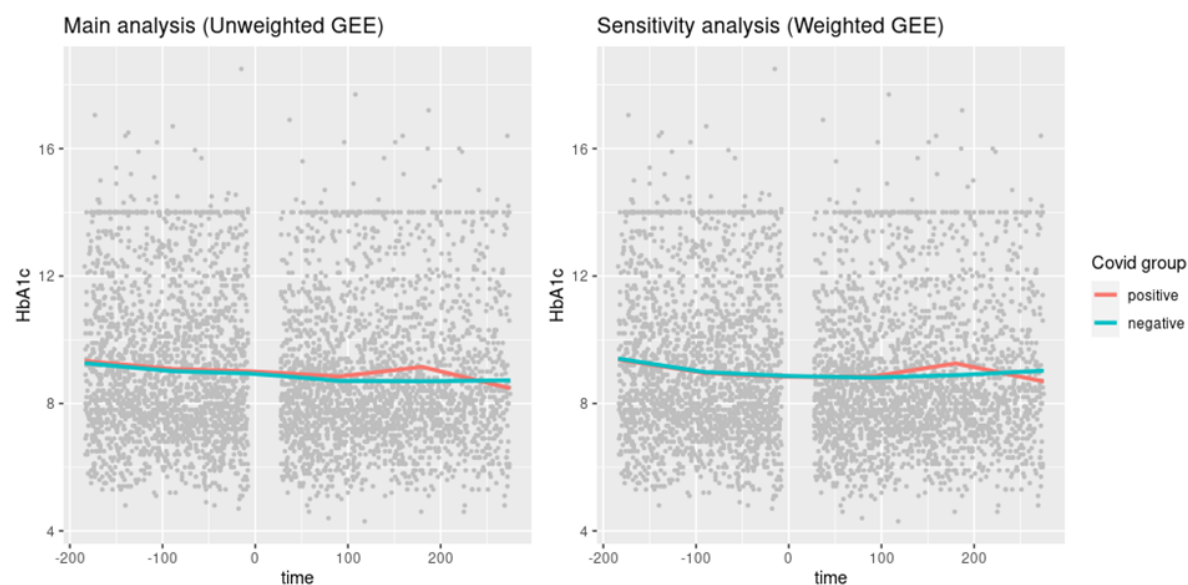


**Figure 1.** Propensity-score subclassification matching in the (A) broad and (B) narrow cohorts





**Figure 2.** Kaplan Meier estimates of event-free survival for ED visit or hospitalization for diabetic ketoacidosis (DKA) or severe hypoglycemia (SH).



**Figure 3.** HbA1c trajectories before and after cohort entry in youth who tested positive or negative for COVID-19 from both main and sensitivity analysis.