

1 Responsiveness to pulmonary rehabilitation in people with COPD is associated with 2 changes in microbiota

3 Sara Melo-Dias^{1,2,3}, Msc, Miguel Cabral^{1,3}, Bsc, Andreia Furtado^{1,3}, Msc, Sara Souto-Miranda^{2,4}, Msc, Maria Aurora
4 Mendes^{3,5}, MD, João Cravo⁵, MD, Catarina R. Almeida^{1,3}, PhD, Alda Marques^{2,3}, PhD‡ and Ana Sousa^{1,3}, PhD‡

5 Affiliations:

6 ¹Department of Medical Sciences, University of Aveiro, Aveiro, Portugal; ²Lab3R – Respiratory Research and Rehabilitation
7 Laboratory, School of Health Sciences (ESSUA), University of Aveiro, Aveiro, Portugal; ³Institute of Biomedicine (iBiMED),
8 University of Aveiro, Aveiro, Portugal; ⁴Department of Respiratory Medicine, Maastricht University Medical Centre, NUTRIM
9 School of Nutrition and Translational Research in Metabolism, Faculty of Health, Medicine and Life Sciences, Maastricht
10 University, Maastricht, The Netherlands.; ⁵Department of Pulmonology of the Hospital Center of Baixo Vouga
11 ‡These authors contributed equally to this study.

12 **Correspondence:** Ana Sousa, Department of Medical Sciences, Institute of Biomedicine, University of Aveiro,
13 3810-193 Aveiro, Portugal (amsousa@ua.pt)

14 Abstract

15 **Rationale:** Pulmonary Rehabilitation (PR) is one of the most cost-effective therapies for
16 chronic obstructive pulmonary disease (COPD) management. There are, however, people who
17 do not respond to PR and reasons for non-response are mostly unknown. PR is likely to change
18 the airway microbiota and this could play a role in its responsiveness.

19 **Objectives:** In this study we have explored the association between PR effectiveness and
20 specific alterations in oral microbiota and inflammation.

21 **Methods:** A prospective longitudinal study was conducted. Data on exercise capacity,
22 dyspnoea, impact of disease and 418 saliva samples were collected from 76 patients, half of
23 whom participated in a 12-weeks PR programme. Responders and non-responders to PR
24 (dyspnoea, exercise-capacity and impact of disease) were defined based on minimal clinically
25 important differences.

26 **Measurements and Main Results:** Changes in microbiota, including *Prevotella*
27 *metabolica* and *Streptococcus* were observed upon PR. *Prevotella*, previously found to be

28 depleted in severe COPD, increased during the first month of PR in responders. This increase
29 was negatively correlated with *Streptococcus* and *Lautropia*, known to be enriched in severe
30 cases of COPD. Simultaneously, an anti-inflammatory commensal of the respiratory tract,
31 *Rothia*, correlated strongly and negatively with several pro-inflammatory markers, whose
32 levels were generally boosted by PR.

33 Conversely, in non-responders, the observed decline in *Prevotella* correlated negatively with
34 *Streptococcus* and *Lautropia* whose fluctuations co-occurred with several pro-inflammatory
35 markers.

36 **Conclusions:** PR is associated with changes in oral microbiota. Consistent patterns of
37 bacteria/pro-inflammatory markers among responders and non-responders were unraveled,
38 which may contribute to explain the success of PR.

39 **Key words:** oral microbiota; inflammation; COPD; pulmonary rehabilitation; responsiveness

40

41 Introduction

42 Chronic obstructive pulmonary disease (COPD) is heterogenous and complex and therefore,
43 difficult to treat and manage. Pulmonary rehabilitation (PR) is a grade A non-pharmacological
44 therapy and one of the most cost-effective approaches for the management of COPD (1).
45 Compared to pharmacological treatment, PR is three to five times more effective in improving
46 exercise capacity, dyspnoea, and quality of life (2). Response to PR is however
47 multidimensional and heterogeneous, which means that for the same outcome patients are
48 not equally responsive (3). Reasons behind non-response are mostly unknown (3, 4).

49 An association between the airway microbiota, including the oral microbiota (5), and disease
50 severity has been extensively established in people with COPD (6–8). However, the impact of
51 PR on the airway microbiota has not yet been investigated, mainly because of the difficulty in
52 collecting airway samples, such as sputum and bronchoalveolar lavage (BAL), routinely.
53 Considering that only around 30% of people with COPD have productive cough (1), induce
54 sputum production becomes the only viable alternative. Unfortunately, this is challenging to
55 collect outside the hospital context and requires both specialized personnel and equipment.
56 The acquisition of BAL samples is even more challenging, as it is limited to hospital centres
57 and bronchoscopy in patients with COPD carries a significantly higher risk of complications
58 such as pneumonia, respiratory failure and desaturation compared with those with normal
59 lung function (9). In this scenario, saliva emerges as a viable non-invasive alternative to
60 sampling the airway microbiota, which collection is simple and can be performed in different
61 settings, namely at-home. Moreover, the oral and lower microbiotas are highly correlated
62 (10), given the topological continuity between the niches, implying oral bacteria as the major
63 colonizers of the lungs through aspiration (10–12).

64 An additional reason to choose saliva to evaluate the effect of PR in the airway microbiota, is
65 the role of oral bacteria in nitrate metabolism. Exercise training, one of the main components
66 of PR, stimulates the synthesis of nitric oxide by the human body, which is a key regulator of
67 skeletal muscle blood flow, contractility, and mitochondrial function (13). Oral microbiota has
68 been strongly implicated in exercise performance, mainly due to its essential role in nitrate-
69 nitrite-nitric oxide pathway (14, 15), with recent studies showing nitrate oral supplementation
70 to enhance PR effectiveness (16). The oral microbiota although acknowledged as essential for
71 this positive effect, was never studied.

72 On the other hand, microbiota modifications are frequently connected with an inflammatory
73 response, which is well known to be modulated by exercise (17) and affected by PR, although
74 with inconsistent results (18–20).

75 Here, we have explored the association between PR and changes in oral microbiota and
76 inflammatory markers of people with COPD to propose that PR effectiveness could be related,
77 at least partially, with bacterial-driven immune regulation.

78 Some of the results of this study have been previously reported in the form of abstracts (21–
79 23).

80

81 Methods

82 A prospective longitudinal cohort study was conducted. Ethical approvals were obtained from
83 Administração Regional de Saúde Centro (64/2016), Centro Hospitalar do Baixo Vouga
84 (including Estarreja's Hospital; 08-03-17) and Agrupamento dos Centros de Saúde do Baixo
85 Vouga. Written informed consent was obtained from all participants.

86 The study was reported following the "Strengthening the Reporting of Observational Studies
87 in Epidemiology" statement (24). Participants were identified and referenced by clinicians
88 who briefly explained the purposes of the study. Participants were eligible if diagnosed with
89 COPD according to the Global Initiative for Chronic Obstructive Lung Disease (GOLD) criteria
90 (25) and stable with no acute exacerbations in the month prior to enrolment. Exclusion criteria
91 were presence of severe cardiac, musculoskeletal, or neuromuscular diseases, signs of
92 cognitive impairment, active neoplasia or immune diseases, that could hinder their
93 participation in PR.

94 The opportunity to be integrated in the PR programme was offered to all participants. Those
95 who did not accept to participate in the intervention but agreed with being monitored during
96 the 5-month period were included in the control group. The intervention group (n=38)
97 undertook a 12-week community-based PR program, whereas the control group (n=38) did
98 not.

99 Sociodemographic (age, sex), anthropometric (height and weight) and general clinical
100 (smoking habits; medication, long-term oxygen use; number of acute exacerbations and
101 hospitalizations in the past year and comorbidities - Charlson Comorbidity Index) data were
102 collected with a structured questionnaire. Lung function was assessed with spirometry as
103 recommended (26). Exercise capacity was assessed with the six-minute walk test (6MWT), a
104 self-paced test of walking capacity (27). Impact of the disease was assessed with the COPD
105 assessment test (CAT), a 8-item questionnaire, each assessed with a 6-point Likert scale (28,

106 29). Dyspnoea at rest was assessed with the modified Borg Scale (mBorg), a 10-item scale.
107 Clinical data and saliva samples were collected with a structured protocol adapted from the
108 team published work (30).

109 Response/non-response to PR was determined based on published minimal clinical
110 importance differences (MCIDs), i.e., -1 point for mBorg (31); 25m for 6MWT (32) and -2
111 points for CAT (33).

112 Deep sequencing of the V4 hypervariable region of 16S rRNA gene (F515/R806 primer pair)
113 was performed for all samples. The bead assay LEGENDplex™ Human Inflammation Panel 1
114 (13-plex) (BioLegend, San Diego, CA, USA) was used to quantify inflammatory markers (IL-1 β ,
115 IFN- α 2, IFN- γ , TNF- α , MCP-1, IL-6, IL-8, IL-10, IL-12p70, IL-17A, IL-18, IL-23, and IL-33) in both
116 groups in three timepoints, M0, M1 and M3. QIIME2 2020.8 (34, 35) was used to perform
117 microbiota analyses. All statistical analyses were performed in GraphPad Prism 8 (36) and R
118 software v 3.6.1 (37). Longitudinal models (*lme4* package (38)) and repeated-measures
119 correlations (*rncorr* package (39)) were performed in R software v 3.6.1 (37). The full
120 description of the methodology used, including all steps of data collection, processing, and
121 data analyses, are available in Supplementary file 1.

122

123

124 Results

125 Cohort characterisation

126 Seventy-six individuals with COPD were included in this study, 38 (29 male, 72 \pm 9y, BMI:
127 26 \pm 4kg/m², FEV₁pp 49.2 \pm 16 % predicted, GOLD A-8, B-20, C-0, D-10) in the intervention group
128 and the remaining 38 patients (31 male, 70 \pm 8y, BMI: 26.4 \pm 4.8kg/m², FEV₁pp 52.3 \pm 19.8 %

129 predicted, GOLD A-17, B-12, C-1, D-8) in the control group. Table 1 summarizes the baseline
130 characteristics of the two groups. No significant differences were found between groups (see
131 Table 1), and therefore, no adjustment for confounding factors was performed.

132 Oral microbiota was similar between groups, being composed by two major phyla, Firmicutes
133 (~43%) and Bacteroidetes (~24%), followed by Proteobacteria, Fusobacteria, Actinobacteria
134 and ten low abundant phyla (<2%) (Supplementary figure 1).

135 [Changes in oral microbiota and inflammatory response are associated with PR](#)

136 We followed the temporal dynamics of beta-diversity (global rate of change (grc) of Weighted-
137 Unifrac distance) in patients for a period of five months, including the 12 weeks of PR, to
138 understand the impact of PR in microbiota composition. As a control for steady-state
139 microbiota fluctuations, an independent cohort of patients who did not undergo PR, was
140 surveyed for an equivalent amount of time.

141 The dynamics of microbiota composition was significantly different between patients
142 undergoing PR and controls (Figure 1A) (lmer on Weighted-Unifrac distance (grc), Group:Time-
143 point, $F=7.58$, $p<0.001$).

144 Principal coordinate analysis of pairwise distances (Weighted Unifrac) between groups in each
145 timepoint showed significant differences in microbiota composition between groups upon
146 one month of PR (Figure 1B) (PERMANOVA, $F=2.3$, $p=0.038$). The top four amplicon sequence
147 variants (ASVs) responsible for individual's separation after the first month of PR were
148 identified as *Veillonella*, *Prevotella melaninogenica*, *Haemophilus parainfluenzae* and
149 *Streptococcus*.

150 Regarding microbiota diversity within individuals (alpha diversity), no significant changes were
151 observed upon PR (Figure 1C) (Wilcoxon test on phylogenetic diversity: $W = -85$, $p = 0.48$;
152 Wilcoxon test on Shannon diversity: $W = -1$, $p > 0.99$).

153 Next, we compared the microbiota composition of the intervention group at baseline with
154 that at M1, M2 and M3, to identify which taxa could have been affected by PR. PERMANOVA
155 (M0vsM1: $F = 0.6$, $p_{adjust} > 0.99$; M0vsM2: $F = 1.3$, $p_{adjust} > 0.99$; M0vsM3: $F = 1.2$, $p_{adjust} > 0.99$;
156 M0vsM4: $F = 1$, $p_{adjust} > 0.99$; M0vsM5: $F = 1.4$, $p_{adjust} = > 0.99$), ANCOM and LEfSe detected no
157 significant differences between pre- and post-PR microbiota composition. This is compatible
158 with the inherent correlation among the groups (composed by the same individuals) being
159 stronger than differences introduced by PR.

160 To overcome this limitation, given the longitudinal design of the experiment, we next tested
161 for differences in taxa dynamics between the intervention and control group. This was
162 performed using linear mixed-effect models. The temporal dynamics of the phylum
163 Fusobacteria (lmer, Group:Time-point, $F = 5.9$, $p = 0.02$) and several oral genera, such as
164 *Fusobacterium*, *Streptococcus*, *Dialister* and *Selenomonas* were observed to be associated
165 with PR (Table 2). Target testing for the top four ASVs distinguishing patients on M1 was also
166 performed. Remarkably, significant alterations in the relative abundances of *Prevotella*
167 *melaninogenica* and *Streptococcus*, two ASVs previously associated with disease severity in
168 people with COPD (5), were also found (lmer, *P. melaninogenica*: Group:Time-point, $F = 4.34$,
169 $p = 0.04$; lmer, *Streptococcus*: Group:Time-point, $F = 4.96$, $p = 0.03$).

170 Considering that changes in microbiota are expected to be related with the inflammatory
171 response, we further quantified a panel of 13 cytokines in three time points: M0, M1 and M3
172 in both intervention and control groups (Figure 2 and Supplementary figure 2). Significant

173 changes in the inflammatory profile of patients undergoing PR were observed (Figure 2).
174 Specifically, upon one month of PR (M1) significant increases in the amounts of IL-10 and IL-
175 18 were observed (Wilcoxon signed-rank: IL-10, $W=163$ $p_{adjust}=0.038$; IL-18, $W=165$
176 $p_{adjust}=0.035$). No significant changes were observed in the same period in control group. After
177 three months of PR (M3), TNF- α , IL-1 β , IL-18, IL-10 and IL-6 were also significantly higher than
178 at baseline (M0) (Wilcoxon signed-rank: IL-1 β , $W=205$ $p_{adjust}=0.016$; TNF- α , $W=251$
179 $p_{adjust}=0.002$; IL-10, $W=263$ $p_{adjust}=0.0008$; IL-6, $W=189$ $p_{adjust}=0.03$; IL-18, $W=233$ $p_{adjust}=0.004$).
180 IL-10 and IL-6 also increased in the control group over the same time interval (Wilcoxon
181 signed-rank: IL-10, $W=225$ $p_{adjust}=0.018$; IL-6, $W=224$ $p_{adjust}=0.019$), suggesting that these
182 cytokines may be less stable.

183 Regarding comparisons between the groups, shifts in IL-10 and IL-18 were significantly higher
184 after 1 month of PR than the equivalent shifts in the control group (Mann-Whitney U-test, IL-
185 10, $U=180$ $p=0.043$; IL-18, $U=173$ $p=0.03$). Over 3 months of PR, TNF- α , IL-18 and IL-10 had
186 significantly higher shifts in the intervention than in the control group (Mann-Whitney U-test,
187 TNF- α , $U=246$ $p=0.04$; IL-10, $U=196$ $p=0.0004$; IL-18, $U=249$ $p=0.046$). No additional significant
188 differences were found in both groups (Supplementary figure 2).

189 Interestingly, the variance associated with cytokine shifts over time was generally higher in
190 the intervention than in the control group (Supplementary table 2). This is compatible with PR
191 generally influencing cytokine levels.

192 [Oral microbiota and inflammatory response vary differentially among responders and non-](#) 193 [responders during PR](#)

194 PR improved all outcomes significantly (Wilcoxon test, $p < 0.05$), except for BMI ($W=-114$,
195 $p=0.31$) and mBorg ($W=37$, $p=0.5$) (Supplementary table 3). Mean improvements only
196 exceeded the MCID for exercise capacity (6MWT, mean-diff: 45.43; Cohen's $d=0.34$)

197 (Supplementary table 2). Supplementary figure 3 represents the overlap between responders
198 (R) and non-responders (NR) to PR in exercise capacity (6MWT), impact of disease (CAT) and
199 dyspnoea (mBorg). From 38 patients, 9 responded in dyspnoea (NR: n=29), 24 responded in
200 exercise capacity (NR: n=14) and 24 responded in the impact of disease (NR: n=14). Six patients
201 responded simultaneously to all three domains and six failed to respond to any domain.

202 We analysed differences in microbiota composition among R and NR at M0 to query for a
203 possible relationship between microbiota composition before PR and its effectiveness (Figure
204 3A). Principal coordinate analysis of pairwise distances (Weighted-Unifrac) showed significant
205 differences between R and NR to dyspnoea (PERMANOVA $p = 0.04$) and captured 66% of total
206 diversity (Figure 3B). Furthermore, the ASV responsible for the biggest separation between
207 individuals in this analysis, was *P. melaninogenica*, whose frequency was below average in
208 75% of R. In accordance, the differential abundance analysis (LEfSe) showed that *Prevotella*
209 (Figure 3C) was significantly enriched in NR to dyspnoea, with an effect-size of 9. No significant
210 differences were observed for the other domains.

211 Next, we used linear mixed effect models to compare the microbiota temporal dynamics
212 between R and NR. Despite being differentially represented in R and NR (to dyspnoea) before
213 PR, the frequency trajectory of *P. melaninogenica* was not significantly different among the
214 two sets of patients during the intervention. Instead, several other taxa were found to have
215 significantly different trajectories between the groups (Table 3 and Supplementary figure 4).
216 Regarding the exercise capacity, the frequency trajectory of *Lautropia* (family
217 *Burkholderiaceae*) was significantly different between R and NR (lmer, Group:Time-point, $F =$
218 2.9, $p=0.02$), reaching higher values in NR by the end of PR (Supplementary figure 3). The

219 dynamics of *P. melaninogenica* was distinct among R and NR (lmer, Group:Time-point, $F= 2.6$,
220 $p=0.03$) to impact of disease (Supplementary figure 4).

221 We compared the salivary levels of cytokines present in R and NR to question whether
222 responsiveness to PR was related with the inflammatory response. Distinct patterns of
223 inflammatory response were observed between R and NR, in all domains (Supplementary
224 figure 5). Significant shifts during PR were always towards values higher than the baseline and
225 occurred mainly in NR patients. Specifically, after PR, levels of $TNF\alpha$, $IL-1\beta$, $IL-18$ and $IL-10$
226 were higher in NR of all domains, whereas only $TNF-\alpha$ and $IL-10$ showed significant changes in
227 R patients (please see Supplementary figure 5 for details on the statistical tests results).
228 Interestingly, the variance in cytokine shifts after PR was also mostly higher in NR than in R
229 (Supplementary tables 4–6).

230 PR effectiveness is related with specific bacteria-inflammation correlation signatures

231 Independent analyses revealed an association between PR effectiveness and either changes
232 in oral microbiota or inflammatory markers. We explored the patterns of longitudinal
233 correlation between the two to understand in what extent PR effectiveness is linked with
234 specific bacteria-inflammation associations. Figure 4 represents the network of significant
235 correlations between inflammatory markers and bacterial genera inferred for the three
236 domains. Remarkably, R and NR presented distinct patterns of bacteria-cytokine correlation
237 (Figure 4).

238 In all groups of NR, *Lautropia* showed a strong positive correlation with several pro-
239 inflammatory cytokines, being the strongest with $TNF-\alpha$ in NR to exercise capacity ($rmcorr =$
240 0.65 , $p=0.002$) and impact of the disease ($rmcorr = 0.63$, $p=0.002$). Conversely, *Rothia*
241 presented a negative correlation with several pro-inflammatory markers in all groups of R,

242 with the strongest correlation with TNF- α (rmcorr = -0.73, $p=0.007$). Furthermore,
243 *Gemellaceae*, was also negatively correlated with several inflammatory markers (strongest
244 with IL-8, rmcorr = -0.69, $p<0.0001$) in R to exercise capacity and impact of the disease.
245 Strikingly, except for a positive correlation between *Haemophilus* and IFN- $\alpha 2$ in R to impact of
246 the disease (rmcorr = 0.43, $p=0.03$), all significant correlations with Proteobacteria were found
247 in NR.

248 We then performed a longitudinal correlation analysis between bacterial frequencies to gain
249 further insight on bacterial interactions that might be related with PR responsiveness but are
250 not necessarily linked with the immune response (Figure 5). In an effort to be conservative,
251 since compositional data are intrinsically correlated, we chose a subset of taxa for this
252 analysis. We included the major hubs found in the correlation between bacteria and
253 inflammatory markers (*Lautropia*, *Rothia*, *Gemellaceae* and *Kingella*), plus five other oral taxa
254 previously associated (5) with severity (*Prevotella*, *P. melaninogenica*, *Streptococcus*,
255 *Streptococcus* sp., *Haemophilus* and *Porphyromonas*).

256 In this analysis, *Prevotella*, whose frequency drops during PR in all NR (Supplementary figure
257 6 A-C), was negatively correlated with *Haemophilus* (rmcorr = -0.46, $p=0.005$), *Streptococcus*
258 (rmcorr = -0.37, $p=0.03$) and *Lautropia* (rmcorr = -0.41, $p=0.01$) in NR to dyspnoea and with
259 *Haemophilus* (rmcorr = -0.73, $p=0.0004$) in NR to exercise capacity. Conversely, during the first
260 month of PR, the frequency of *P. melaninogenica* increased in all R (Supplementary figure 6A-
261 C) and was negatively correlated with *Kingella* (R to dyspnoea, rmcorr = -0.59, $p=0.04$),
262 *Lautropia* (R to exercise capacity, rmcorr = -0.52, $p=0.004$; R to impact of the disease, rmcorr
263 = -0.43, $p=0.03$) and *Streptococcus* (R to impact of the disease, rmcorr = -0.41, $p=0.04$).

264 *Gemellaceae* and *Rothia* were strongly positively correlated in all R (strongest in dyspnoea,
265 $\text{rmcorr} = 0.9, p < 0.0001$).

266

267

268 Discussion

269 We show, for the first time, that oral microbiota changes with PR and that shifts in specific
270 taxa appear to be strongly related with its effectiveness. By tracking two independent groups
271 of patients for almost half a year we were able to discriminate between steady-state
272 microbiota fluctuations and those possibly induced by PR. Contrary to the simple expectation
273 that a well-established therapy should positively impact on patients' microbiota, a more
274 complex reality was unravelled. Overall, PR was not able to boost microbiota diversity within
275 patients, a hallmark of dysbiosis, causing only low magnitude changes in a few taxa, and
276 elicited the secretion of several pro-inflammatory cytokines.

277 However, when considering separately R and NR, taxa potentially related with responsiveness
278 emerges and a differential inflammatory response becomes apparent. Previously, we have
279 observed that low frequency of *Prevotella*, and in particular *P. melaninogenica*, was associated
280 with a recent history of severe exacerbation (5). Here we observed that in the first month of
281 PR *Prevotella* was boosted in R of all domains. We hypothesize that this boost could be directly
282 or indirectly related with the ability to respond. For example, by directly inducing the
283 reduction of lung epithelial cell permeability (by modulating expression of tight junction
284 proteins) (40), or indirectly by promoting lung innate immune responses, particularly against
285 *Streptococcus pneumoniae* (41) and *Lautropia*, to which it was negatively correlated.

286 In fact, it has been recently observed that *P. melaninogenica* is able to promote *S. pneumoniae*
287 rapid clearance from the lung via TLR2 activation, recruitment of neutrophils and upregulation
288 of TNF α and IL-10 (42). Interestingly, it was also observed that the aspiration of a mixture of 3
289 species of human oral commensals in mice, including *P. melaninogenica*, decreased host's
290 susceptibility to *S. pneumoniae* (41).

291 Supporting the hypothesis that, by counteracting *Lautropia*, *Prevotella* could be positively
292 associated with PR effectiveness, is the observation that *Lautropia* is enriched in the oral
293 microbiota of more severe cases of COPD (5) and co-occur with high levels of inflammatory
294 markers in the eosinophilic COPD (43), an endotype that has been suggested to be predictive
295 of worse outcome upon PR (44) .

296 Conversely, in NR to dyspnoea and exercise capacity, the opposite scenario was observed, that
297 is, a clear decline in *Prevotella* upon PR, negatively correlated with *Haemophilus* (exercise
298 capacity) and with *Streptococcus* and *Lautropia* (dyspnoea). A pro-inflammatory role in COPD
299 has been repeatedly attributed to the first two taxa (45) which could likely contribute to the
300 lack of response to this therapy. Besides this, *Lautropia* positively correlated with several pro-
301 inflammatory markers in all groups of NR.

302 Another striking observation, possibly related with the success of PR across the three domains,
303 was the co-occurrence of *Rothia* and *Gemellacea* (in R) and its negative correlation with
304 several pro-inflammatory markers during PR. *Rothia mucilaginoso* (the most abundant species
305 of *Rothia* genus in our dataset) has been identified as an anti-inflammatory bacterium when
306 present in the lungs (even in low abundance) of people with chronic respiratory diseases (46).
307 This has been attributed to its ability to reduce the levels of several pro-inflammatory

308 cytokines and NF- κ B activation in response to immune stimulation by pathogenic bacteria like
309 *Pseudomonas aeruginosa* and *Staphylococcus aureus* (46).

310 Considering the impact of PR on individual species, this was significant on the longitudinal
311 dynamics of two particular ASVs, *P. melaninogenica* and *Streptococcus*, previously suggested
312 to be associated with COPD severity (5). Moreover, the longitudinal dynamics of *P.*
313 *melaninogenica* was distinct among R and NR to impact of the disease, supporting its
314 importance to PR effectiveness.

315 Besides its immunomodulatory properties, *P. melaninogenica* could have an additional role in
316 PR effectiveness, since it belongs to the most prevalent genus of oral nitrate-reducing bacteria
317 (47). These are essential for the nitrate nitric oxide pathway which is implicated in exercise
318 performance and recovery (14, 15). Coherently, it has been shown that nitrate oral
319 supplementation increased the beneficial effects of PR (16).

320 Some limitations of our study need to be acknowledged. First, the use of saliva for COPD
321 assessment is still exploratory. Although the microbiota of upper and lower airways is highly
322 correlated, with oral bacteria being the major colonizers of the lungs through microaspiration
323 (10–12), more studies, besides Melo-Dias et al (5) validating its biological relevance in the
324 context of COPD are needed. Additionally, despite longitudinal studies including PR being very
325 resource demanding, further works with similar design should be carried out, ideally including
326 multicentric trials with larger cohorts to assess the robustness of the findings. Second,
327 multiple confounders such as occurrence of exacerbations, treatment with inhaled-
328 corticosteroids and/or antibiotics are present. Therefore, future studies should try to
329 disentangle its effects from the PR-induced microbiota modulation.

330 Overall, besides responsiveness to PR being multidimensional and heterogeneous, giving rise
331 to a moderate overlap in individuals response across domains, PR-induced changes in
332 microbiota revealed surprisingly consistent patterns among R and NR. Furthermore, our
333 findings suggest that PR effectiveness could be associated with a controlled inflammatory
334 response to exercise, *i.e.*, the inflammatory response to exercise occurs accompanied by
335 efficient regulatory mechanisms. These mechanisms can be mediated by bacteria and could
336 be tested *in vitro*.

337 Future studies should address the implications and stability of these findings, clarifying the
338 role of oral microbiota both as a biomarker of PR responsiveness and as a therapeutic target.

339 **Acknowledgements:**

340 **Author contributions:**

341 S. Melo-Dias and A. Sousa had full access to all data in the study and take responsibility for the
342 integrity of the data and the accuracy of the data analysis. A. Marques was responsible for
343 ethical approval. A. Marques and A. Sousa were responsible for obtaining the funding,
344 conceiving and designing the study. M. A. Mendes, J. Cravo and S. Souto-Miranda provided a
345 substantial contribution for clinical data acquisition. S. Melo-Dias A. Furtado conducted
346 sample processing, DNA extraction procedures and inflammatory markers quantification. S.
347 Melo-Dias, M. Cabral, A. Furtado, C. R. Almeida and A. Sousa conducted bioinformatics and
348 statistical analyses. S. Melo-Dias and A. Sousa drafted the manuscript. All authors critically
349 revised the manuscript, ensured accuracy and integrity of the work and approved the final
350 version to be published.

351 **Funding:**

352 This study is integrated in "PRIME – Pulmonary Rehabilitation and microbiota in exacerbations
353 of COPD", "GENIAL – Genetic and Clinical markers of COPD trajectory", and "MicroAgeing -
354 The role of microbiota in ageing", funded by Programa Operacional de Competitividade e
355 Internacionalização - COMPETE, through Fundo Europeu de Desenvolvimento Regional -
356 FEDER (POCI-010145-FEDER-028806 and POCI-01-0145-FEDER-007628), Fundação para a
357 Ciência e Tecnologia - FCT (PTDC/DTP-PIC/2284/2014, PTDC/SAU-SER/28806/2017 and
358 PTDC/BIA-EVL/30212/2017) and under the project UIDB/04501/2020. S. Melo-Dias was
359 supported by Grant SFRH/BD/140908/2018 from FCT. A. Sousa was funded from national
360 funds through FCT – Fundação para a Ciência e a Tecnologia, I.P., under the Scientific
361 Employment Stimulus - Institutional Call - reference CEECINST/00026/2018.

362 **Availability of data and materials:**

363 The dataset supporting the conclusions of this article is included within the article (and its
364 additional file(s)). Furthermore, raw sequencing data was deposited in National Centre for
365 Biotechnology Information's (NCBI) Sequence Read Archive (SRA) (BioProject PRJNA872131).
366 Scripts for data analyses are provided in supplementary file 1.

367 **Ethics approval and consent to participate:**

368 A cross-sectional study was conducted. Ethical approvals were obtained from Administração
369 Regional de Saúde Centro (64/2016) and from Centro Hospitalar do Baixo Vouga (08-03-17).
370 Written informed consent was obtained from all participants.

371 **Consent for publication:**

372 Not applicable.

373 **Competing interests:**

374 S. Melo-Dias has nothing to disclose. M. Cabral has nothing to disclose. A. Furtado has nothing
375 to disclose. S. Souto-Miranda has nothing to disclose. M. A. Mendes has nothing to disclose.
376 J. Cravo has nothing to disclose. C. R. Almeida has nothing to disclose. A. Marques has nothing
377 to disclose. A. Sousa has nothing to disclose.

378 **Acknowledgements:**

379 We are grateful to all people with COPD who accepted to participate in this study and to the
380 team of Respiratory Research and Rehabilitation Laboratory, School of Health Sciences
381 (Lab3R-ESSUA) for their support.

382 References

- 383 1. 2022 GOLD Reports. *Global Initiative for Chronic Obstructive Lung Disease - GOLD* at
384 <<https://goldcopd.org/2022-gold-reports-2/>>.
- 385 2. Casaburi R. Pulmonary Rehabilitation: Where We've Succeeded and Where We've Failed. *COPD: Journal of Chronic Obstructive Pulmonary Disease* 2018;15:219–222.
- 387 3. Augustin IML, Franssen FME, Houben-Wilke S, Janssen DJA, Gaffron S, Pennings H-J, Smeenk
388 FWJM, Pieters WR, Hoogerwerf A, Michels A-J, Merode F van, Wouters EFM, Spruit MA.
389 Multidimensional outcome assessment of pulmonary rehabilitation in traits-based clusters of
390 COPD patients. *PLOS ONE* 2022;17:e0263657.
- 391 4. Spruit MA, Augustin IML, Vanfleteren LE, Janssen DJA, Gaffron S, Pennings H-J, Smeenk F, Pieters
392 W, van den Bergh JJAM, Michels A-J, Groenen MTJ, Rutten EPA, Wouters EFM, Franssen FME,
393 CIRO+ Rehabilitation Network. Differential response to pulmonary rehabilitation in COPD:
394 multidimensional profiling. *Eur Respir J* 2015;46:1625–1635.
- 395 5. Melo-Dias S, Valente C, Andrade L, Marques A, Sousa A. Saliva as a non-invasive specimen for
396 COPD assessment. *Respiratory Research* 2022;23:16.
- 397 6. Budden KF, Shukla SD, Rehman SF, Bowerman KL, Keely S, Hugenholtz P, Armstrong-James DPH,
398 Adcock IM, Chotirmall SH, Chung KF, Hansbro PM. Functional effects of the microbiota in chronic
399 respiratory disease. *The Lancet Respiratory Medicine* 2019;7:907–920.
- 400 7. Marsland BJ, Gollwitzer ES. Host–microorganism interactions in lung diseases. *Nat Rev Immunol*
401 2014;14:827–835.
- 402 8. Ubags NDJ, Marsland BJ. Mechanistic insight into the function of the microbiome in lung
403 diseases. *European Respiratory Journal* 2017;50:.
- 404 9. Rand IAD, Blaikley J, Booton R, Chaudhuri N, Gupta V, Khalid S, Mandal S, Martin J, Mills J, Navani
405 N, Rahman NM, Wrightson JM, Munavvar M, Group on behalf of the BTSBG. British Thoracic
406 Society guideline for diagnostic flexible bronchoscopy in adults: accredited by NICE. *Thorax*
407 2013;68:i1–i44.

- 408 10. Gaeckle NT, Pragman AA, Pendleton KM, Baldomero AK, Criner GJ. The Oral-Lung Axis: The
409 Impact of Oral Health on Lung Health. *Respir Care* 2020;65:1211–1220.
- 410 11. Mammen MJ, Scannapieco FA, Sethi S. Oral-lung microbiome interactions in lung diseases.
411 *Periodontology 2000* 2020;83:234–241.
- 412 12. Huffnagle GB, Dickson RP, Lukacs NW. The respiratory tract microbiome and lung inflammation:
413 a two-way street. *Mucosal Immunol* 2017;10:299–306.
- 414 13. Dyakova EY, Kapilevich LV, Shylko VG, Popov SV, Anfinogenova Y. Physical exercise associated
415 with NO production: signaling pathways and significance in health and disease. *Front Cell Dev*
416 *Biol* 2015;3:19.
- 417 14. Bescos R, Brookes ZLS, Belfield LA, Fernandez-Sanjurjo M, Casas-Agustench P. Modulation of oral
418 microbiota: A new frontier in exercise supplementation. *PharmaNutrition* 2020;14:100230.
- 419 15. Cutler C, Kiernan M, Willis JR, Gallardo-Alfaro L, Casas-Agustench P, White D, Hickson M,
420 Gabaldon T, Bescos R. Post-exercise hypotension and skeletal muscle oxygenation is regulated by
421 nitrate-reducing activity of oral bacteria. *Free Radical Biology and Medicine* 2019;143:252–259.
- 422 16. Pavitt MJ, Tanner RJ, Lewis A, BATTERY S, Mehta B, Jefford H, Curtis KJ, Banya WAS, Husain S,
423 Satkunam K, Shrikrishna D, Man W, Polkey MI, Hopkinson NS. Oral nitrate supplementation to
424 enhance pulmonary rehabilitation in COPD: ON-EPIC a multicentre, double-blind, placebo-
425 controlled, randomised parallel group study. *Thorax* 2020;75:547–555.
- 426 17. Clauss M, Gérard P, Mosca A, Leclerc M. Interplay Between Exercise and Gut Microbiome in the
427 Context of Human Health and Performance. *Frontiers in Nutrition* 2021;8:.
- 428 18. Gammal AIE, O’Farrell R, O’Mahony L, Shanahan F, Killian K, O’Connor TM. Systemic
429 Inflammatory Markers and Disease Severity in Chronic Obstructive Pulmonary Disease—The
430 Effect of Acute Exercise and Pulmonary Rehabilitation. *Open Journal of Respiratory Diseases*
431 2015;5:19–31.
- 432 19. van der Vlist J, Janssen TWJ. The potential anti-inflammatory effect of exercise in chronic
433 obstructive pulmonary disease. *Respiration* 2010;79:160–174.

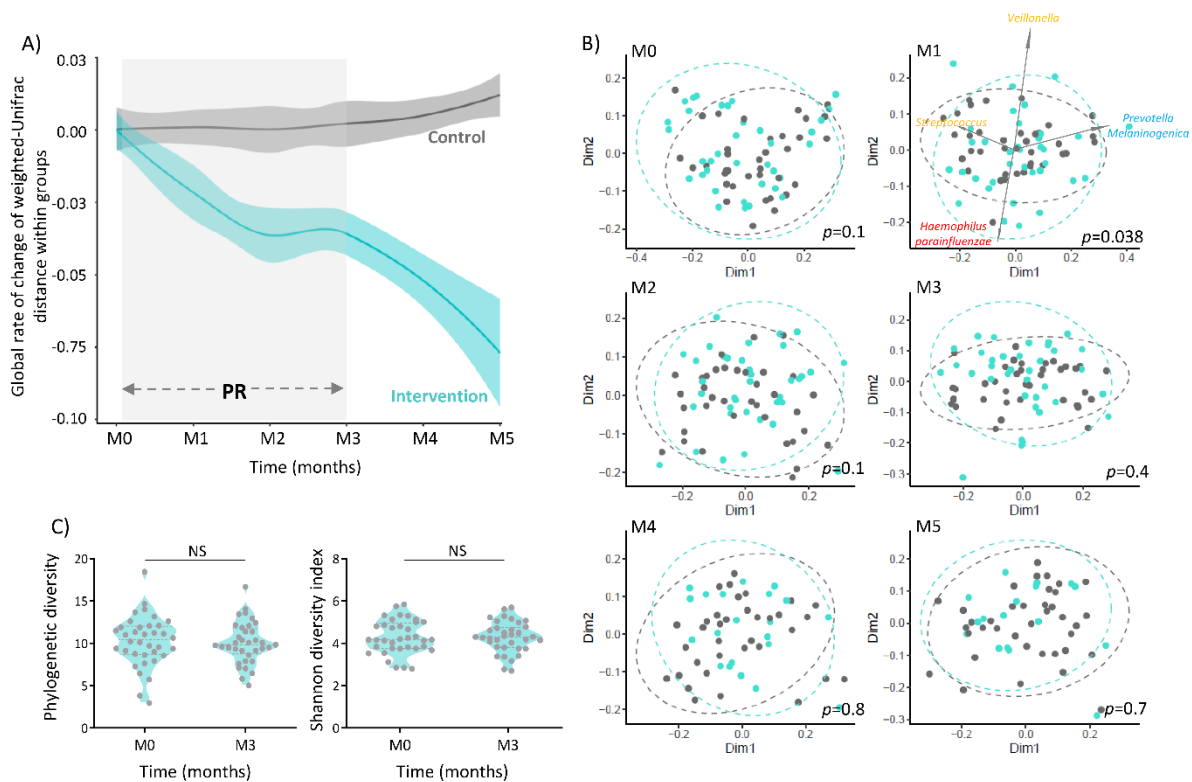
- 434 20. Gigliotti F, Coli C, Lombardelli L, Romagnoli I, Logiodice F, Lanini B, Kullolli O, Binazzi B, Parronchi
435 P, Maggi E, Piccinni M-P. Effect of pulmonary rehabilitation (PR) on inflammation status in
436 patients with COPD. *European Respiratory Journal* 2015;46:.
- 437 21. Melo-Dias S, Cabral, Miguel, Furtado, Andreia, Souto-Miranda, Sara, Mendes, Maria Aurora,
438 Cravo, João, Almeida, Catarina Rodrigues, Marques, Alda, Sousa, Ana A. The effect of pulmonary
439 rehabilitation in salivary microbiota of people with chronic obstructive pulmonary disease: A
440 longitudinal study. 2022;
- 441 22. Furtado, Andreia, Melo-Dias S, Cabral, Miguel, Marques A, Sousa A. The effect of pulmonary
442 rehabilitation in salivary microbiota of people with chronic obstructive pulmonary disease: A
443 longitudinal study. 2021;
- 444 23. Melo-Dias S, Cabral, Miguel, Furtado, Andreia, Souto-Miranda, Sara, Almeida, Catarina
445 Rodrigues, Marques A, Sousa A. The Effectiveness of pulmonary rehabilitation in COPD is
446 associated with specific shifts in oral microbiota. 2022;
- 447 24. Elm E von, Altman DG, Egger M, Pocock SJ, Gøtzsche PC, Vandenbroucke JP. Strengthening the
448 reporting of observational studies in epidemiology (STROBE) statement: guidelines for reporting
449 observational studies. *BMJ* 2007;335:806–808.
- 450 25. GOLD - Global Strategy for Diagnosis, Management, and prevention of chronic obstructive
451 pulmonary disease 2020 report. 2020. 1–141.
- 452 26. Standardization of Spirometry 2019 Update. An Official American Thoracic Society and European
453 Respiratory Society Technical Statement | American Journal of Respiratory and Critical Care
454 Medicine. at <<https://www.atsjournals.org/doi/full/10.1164/rccm.201908-1590ST>>.
- 455 27. Holland AE, Spruit MA, Troosters T, Puhan MA, Pepin V, Saey D, McCormack MC, Carlin BW,
456 Scirba FC, Pitta F, Wanger J, MacIntyre N, Kaminsky DA, Culver BH, Revill SM, Hernandez NA,
457 Andrianopoulos V, Camillo CA, Mitchell KE, Lee AL, Hill CJ, Singh SJ. An official European
458 Respiratory Society/American Thoracic Society technical standard: field walking tests in chronic
459 respiratory disease. *European Respiratory Journal* 2014;44:1428–1446.

- 460 28. Jones PW, Harding G, Berry P, Wiklund I, Chen W-H, Kline Leidy N. Development and first
461 validation of the COPD Assessment Test. *European Respiratory Journal* 2009;34:648–654.
- 462 29. Jones PW, Tabberer M, Chen W-H. Creating scenarios of the impact of COPD and their
463 relationship to COPD Assessment Test (CAT™) scores. *BMC Pulm Med* 2011;11:42.
- 464 30. Marques A, Jácome C, Rebelo P, Paixão C, Oliveira A, Cruz J, Freitas C, Rua M, Loureiro H,
465 Peguinho C, Marques F, Simões A, Santos M, Martins P, André A, De Francesco S, Martins V,
466 Brooks D, Simão P. Improving access to community-based pulmonary rehabilitation: 3R protocol
467 for real-world settings with cost-benefit analysis. *BMC Public Health* 2019;19:676.
- 468 31. Jones PW, Beeh KM, Chapman KR, Decramer M, Mahler DA, Wedzicha JA. Minimal clinically
469 important differences in pharmacological trials. *Am J Respir Crit Care Med* 2014;189:250–255.
- 470 32. Holland AE, Hill CJ, Rasekaba T, Lee A, Naughton MT, McDonald CF. Updating the minimal
471 important difference for six-minute walk distance in patients with chronic obstructive pulmonary
472 disease. *Arch Phys Med Rehabil* 2010;91:221–225.
- 473 33. Kon SSC, Canavan JL, Jones SE, Nolan CM, Clark AL, Dickson MJ, Haselden BM, Polkey MI, Man
474 WD-C. Minimum clinically important difference for the COPD Assessment Test: a prospective
475 analysis. *Lancet Respir Med* 2014;2:195–203.
- 476 34. Bolyen E, Rideout JR, Dillon MR, Bokulich NA, Abnet CC, Al-Ghalith GA, Alexander H, Alm EJ,
477 Arumugam M, Asnicar F, Bai Y, Bisanz JE, Bittinger K, Brejnrod A, Brislawn CJ, Brown CT, Callahan
478 BJ, Caraballo-Rodríguez AM, Chase J, Cope EK, Da Silva R, Diener C, Dorrestein PC, Douglas GM,
479 Durall DM, Duvallet C, Edwardson CF, Ernst M, Estaki M, *et al.* Reproducible, interactive, scalable
480 and extensible microbiome data science using QIIME 2. *Nat Biotechnol* 2019;37:852–857.
- 481 35. QIIME 2. at <<https://qiime2.org/>>.
- 482 36. Prism - GraphPad. at <<https://www.graphpad.com/scientific-software/prism/>>.
- 483 37. R: The R Project for Statistical Computing. at <<https://www.r-project.org/>>.
- 484 38. Bates D, Mächler M, Bolker B, Walker S. Fitting Linear Mixed-Effects Models Using lme4. *Journal*
485 *of Statistical Software* 2015;67:1–48.

- 486 39. Bakdash JZ, Marusich LR. Repeated Measures Correlation. *Frontiers in Psychology* 2017;8:.
- 487 40. Ramsheh MY, Haldar K, Esteve-Codina A, Purser LF, Richardson M, Müller-Quernheim J, Greulich
488 T, Nowinski A, Barta I, Stendardo M, Boschetto P, Korzybski D, Prasse A, Parr DG, Hohlfeld JM,
489 Döme B, Welte T, Heath S, Gut I, Morrissey JA, Ziegler-Heitbrock L, Barer MR, Singh D, Brightling
490 CE. Lung microbiome composition and bronchial epithelial gene expression in patients with
491 COPD versus healthy individuals: a bacterial 16S rRNA gene sequencing and host transcriptomic
492 analysis. *The Lancet Microbe* 2021;2:e300–e310.
- 493 41. Wu BG, Sulaiman I, Tsay J-CJ, Perez L, Franca B, Li Y, Wang J, Gonzalez AN, El-Ashmawy M,
494 Carpenito J, Olsen E, Sauthoff M, Yie K, Liu X, Shen N, Clemente JC, Kapoor B, Zangari T, Mezzano
495 V, Loomis C, Weiden MD, Korolov SB, D’Armiento J, Ahuja SK, Wu X-R, Weiser JN, Segal LN.
496 Episodic Aspiration with Oral Commensals Induces a MyD88-dependent, Pulmonary T-Helper Cell
497 Type 17 Response that Mitigates Susceptibility to *Streptococcus pneumoniae*. *Am J Respir Crit*
498 *Care Med* 2021;203:1099–1111.
- 499 42. Horn KJ, Schopper MA, Drigot ZG, Clark SE. Airway Prevotella promote TLR2-dependent
500 neutrophil activation and rapid clearance of *Streptococcus pneumoniae* from the lung. *Nat*
501 *Commun* 2022;13:3321.
- 502 43. Wang Z, Locantore N, Haldar K, Ramsheh MY, Beech AS, Ma W, Brown JR, Tal-Singer R, Barer MR,
503 Bafadhel M, Donaldson GC, Wedzicha JA, Singh D, Wilkinson TMA, Miller BE, Brightling CE.
504 Inflammatory Endotype-associated Airway Microbiome in Chronic Obstructive Pulmonary
505 Disease Clinical Stability and Exacerbations: A Multicohort Longitudinal Analysis. *Am J Respir Crit*
506 *Care Med* 2021;203:1488–1502.
- 507 44. Blood Eosinophils and Pulmonary Rehabilitation in COPD - PubMed. at
508 <<https://pubmed.ncbi.nlm.nih.gov/34777651/>>.
- 509 45. Celli BR, Wedzicha JA. Update on Clinical Aspects of Chronic Obstructive Pulmonary Disease. *N*
510 *Engl J Med* 2019;381:1257–1266.

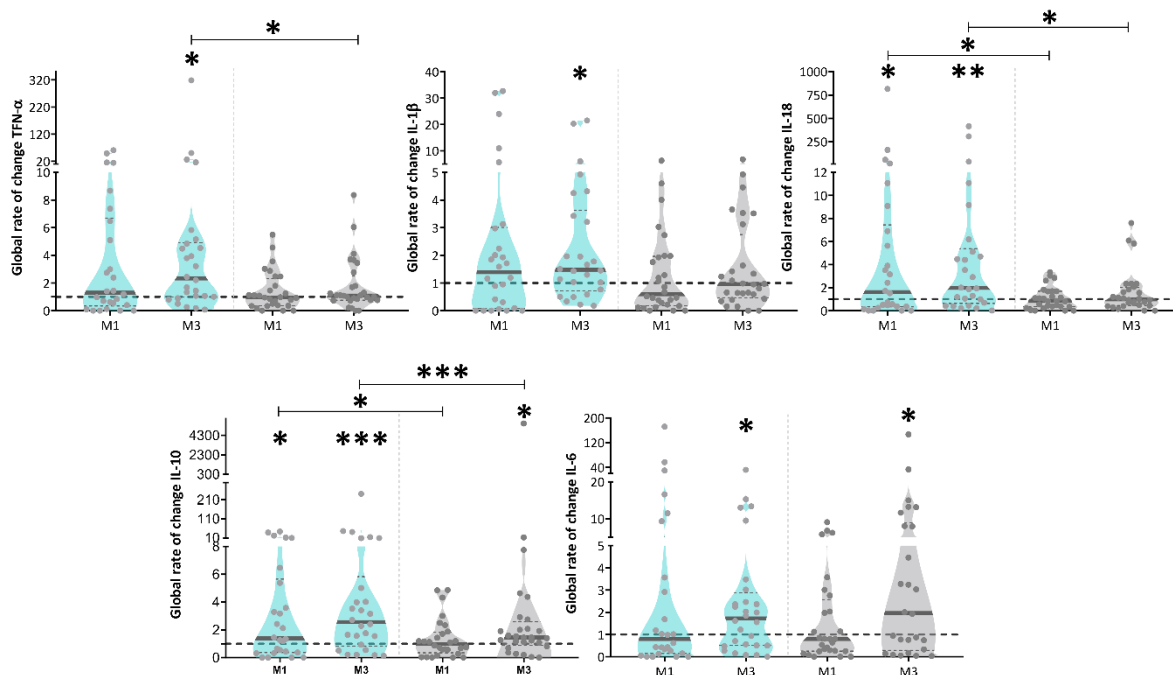
- 511 46. *Rothia mucilaginosa* is an anti-inflammatory bacterium in the respiratory tract of patients with
512 chronic lung disease | European Respiratory Society. at
513 <<https://erj.ersjournals.com/content/early/2021/09/16/13993003.01293-2021>>.
- 514 47. Burleigh MC, Liddle L, Monaghan C, Muggeridge DJ, Sculthorpe N, Butcher JP, Henriquez FL, Allen
515 JD, Easton C. Salivary nitrite production is elevated in individuals with a higher abundance of oral
516 nitrate-reducing bacteria. *Free Radic Biol Med* 2018;120:80–88.
- 517
- 518

519 **Figures**

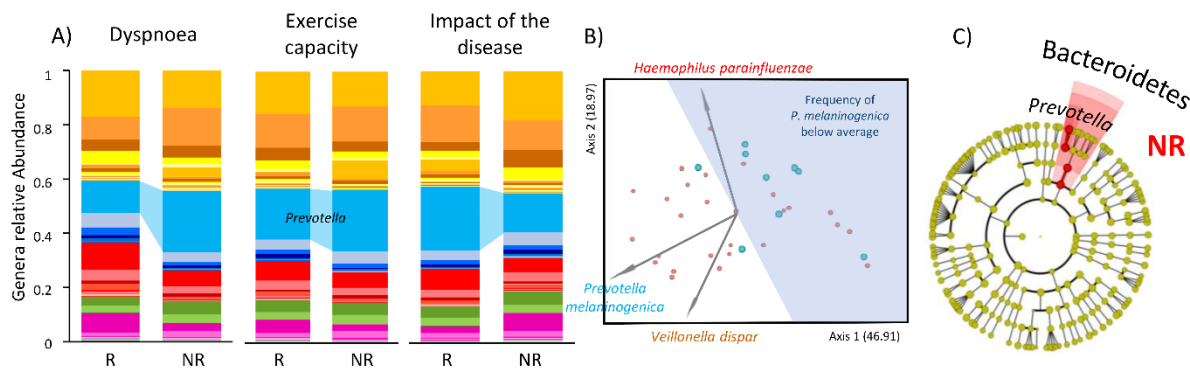


520
521 **Figure 1. Pulmonary rehabilitation modulates the microbiota composition of people with COPD, but**
522 **does not affect alpha diversity. A)** Global rate of change of beta diversity was estimated by subtraction
523 of baseline values at all timepoints. Blue and grey loess lines were fitted over the data points
524 representing beta-diversity relative to baseline along time in the intervention and control groups,
525 respectively. The blue and grey areas represent the 0.95 confidence intervals. (M0=immediately prior
526 PR; M1, M2, M3= 1,2,3 months after initiating PR; M4, M5=1 and 2 months after finishing PR).
527 Intervention and control group presented different microbiota dynamics over the 5-month follow-up
528 (LMER on Weighted Unifrac distance matrix, Group:Time-Point, $p < 0.001$). The grey rectangle indicates
529 the time interval spanning PR. **B)** Principal coordinate analysis of Weighted Unifrac distance between
530 groups in each timepoint. (M0, M1, M2, M3, M4 and M5). Significant differences in microbiota
531 composition between groups were observed in M1 (PERMANOVA, $F = 2.27$, $p = 0.038$). Blue and grey
532 dots and ellipses represent intervention and control groups, respectively. The biplot represented in
533 M1 show the top ASVs contributing for sample segregation (*5608c3e6c9de9ceb79610e7786bd0ac4*:
534 *Veillonella*, *d0b698c7298bf04110a6d2f220879bfb*: *Prevotella melaninigenica*,

535 *e27680d4009f98f30248d823bc17fb8e: Haemophilus parainfluenzae,*
536 *a5189f77a2cfeab3bc1602ff5c8ac3e9: Streptococcus).* **C)** No pre-post differences were observed in
537 alpha diversity (Phylogenetic index and Shannon diversity index) in the Intervention group (Wilcoxon
538 test: phylogenetic diversity: $W = -85$. $p = 0.48$; Shannon diversity index: $W = -1$ $p > 0.99$). $*p < 0.05$,
539 $**p < 0.01$, $***p < 0.001$



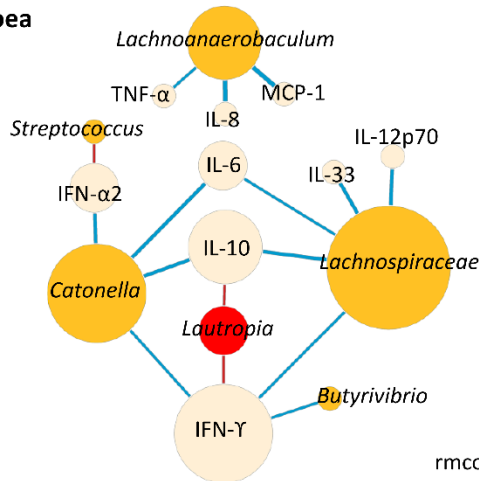
540
541 **Figure 2. The inflammatory profile of people with COPD changes upon pulmonary rehabilitation.**
542 Global rate of change represents the ratio between cytokine values measured at baseline and M1 or
543 M3 (*i.e.* M1/M0 and M3/M0). Differences between M1 and the baseline and between M3 and the
544 baseline were assessed by Wilcoxon signed-rank, in each group (intervention (blue) and control (grey)).
545 Differences between groups at M1 and M3 were assessed by Mann-Whitney U-test. $p < 0.05$, $**p < 0.01$,
546 $**p < 0.001$. All cytokines for which a significant shift was observed are represented in this figure.
547 Supplementary figure 2 shows the data for the remaining 8 cytokines.



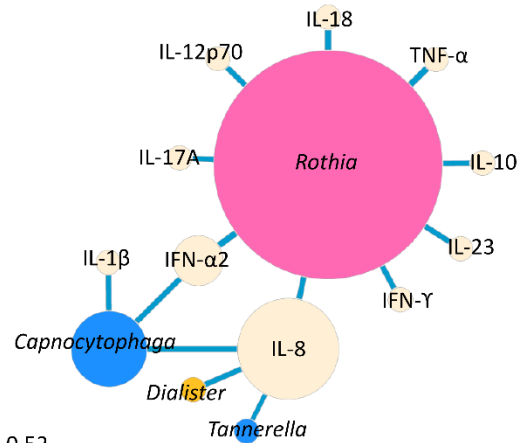
548

549 **Figure 3. Responders and non-responders present distinct microbiota profiles prior to pulmonary**
550 **rehabilitation. A)** Mean frequency of phyla and genera of bacteria present in Responders (R) and non-
551 responders (NR) to dyspnoea, exercise capacity and impact of the disease. **B)** R and NR to dyspnoea
552 showed distinct microbiota composition prior to PR (PERMANOVA, $p=0.04$). PCoA analysis using
553 Emperor on Weighted UniFrac distance. The biplot (grey arrows) represent the 3 most relevant ASVs
554 for R and NR segregation. *Prevotella melaninogenica* (ASV: d0b698c7298bf04110a6d2f220879bfb) was
555 the major contributor for segregation of R and NR followed by *Veillonella dispar* (ASV:
556 5608c3e6c9de9ceb79610e7786bd0ac) and *Haemophilus parainfluenzae* (ASV:
557 e27680d4009f98f30248d823bc17fb8e). In blue is represented the area where samples presented a
558 mean frequency of *P. melaninogenica* below the average of the dataset. 78% of R showed reduced
559 mean frequencies of *P. melaninogenica* prior to PR while only 37% of NR followed the same trend. **C)**
560 Cladogram highlighting differentially abundant genera between R and NR to dyspnoea prior to PR,
561 inferred by linear discriminant analysis (LEfSe) at a significance cut-off of 3. *Prevotella* is significantly
562 enriched in NR to dyspnoea, with an effect-size of 9.

Dyspnoea
NR

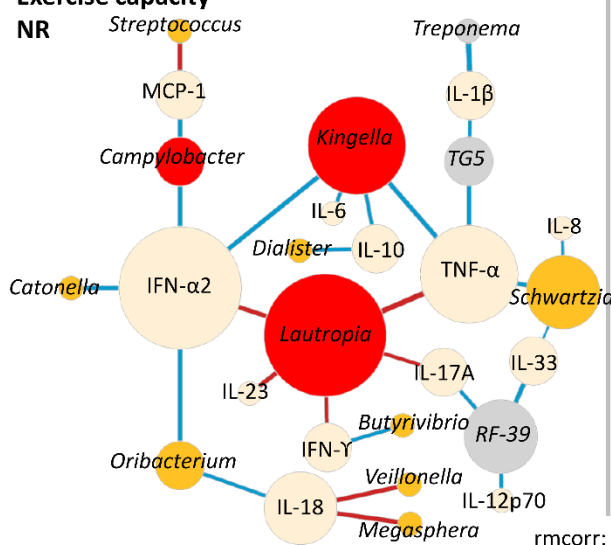


R

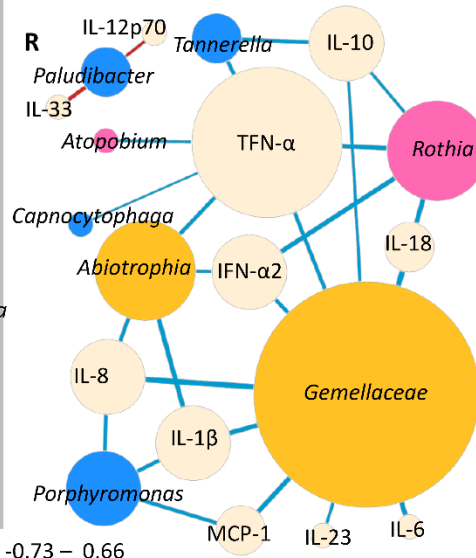


rmcorr: -0.75 – 0.52

Exercise capacity
NR

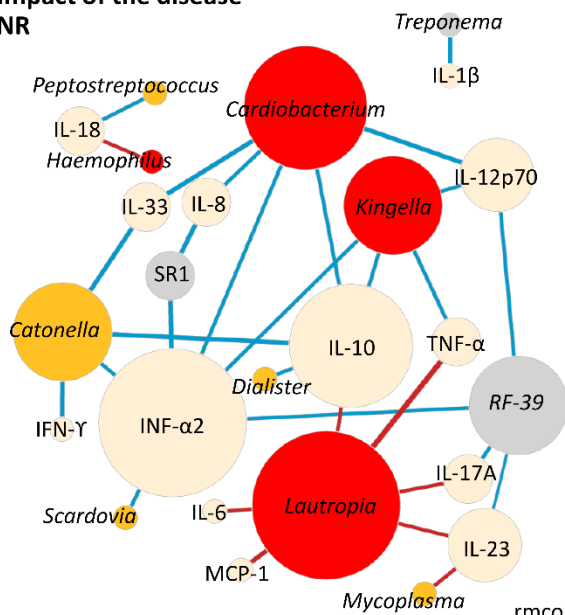


R

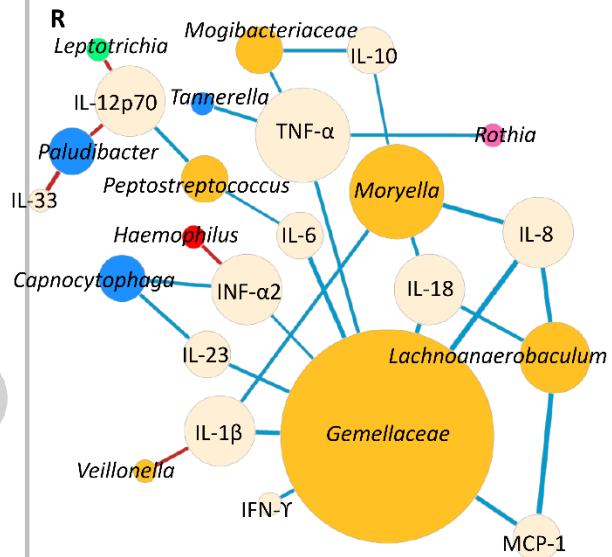


rmcorr: -0.73 – 0.66

Impact of the disease
NR

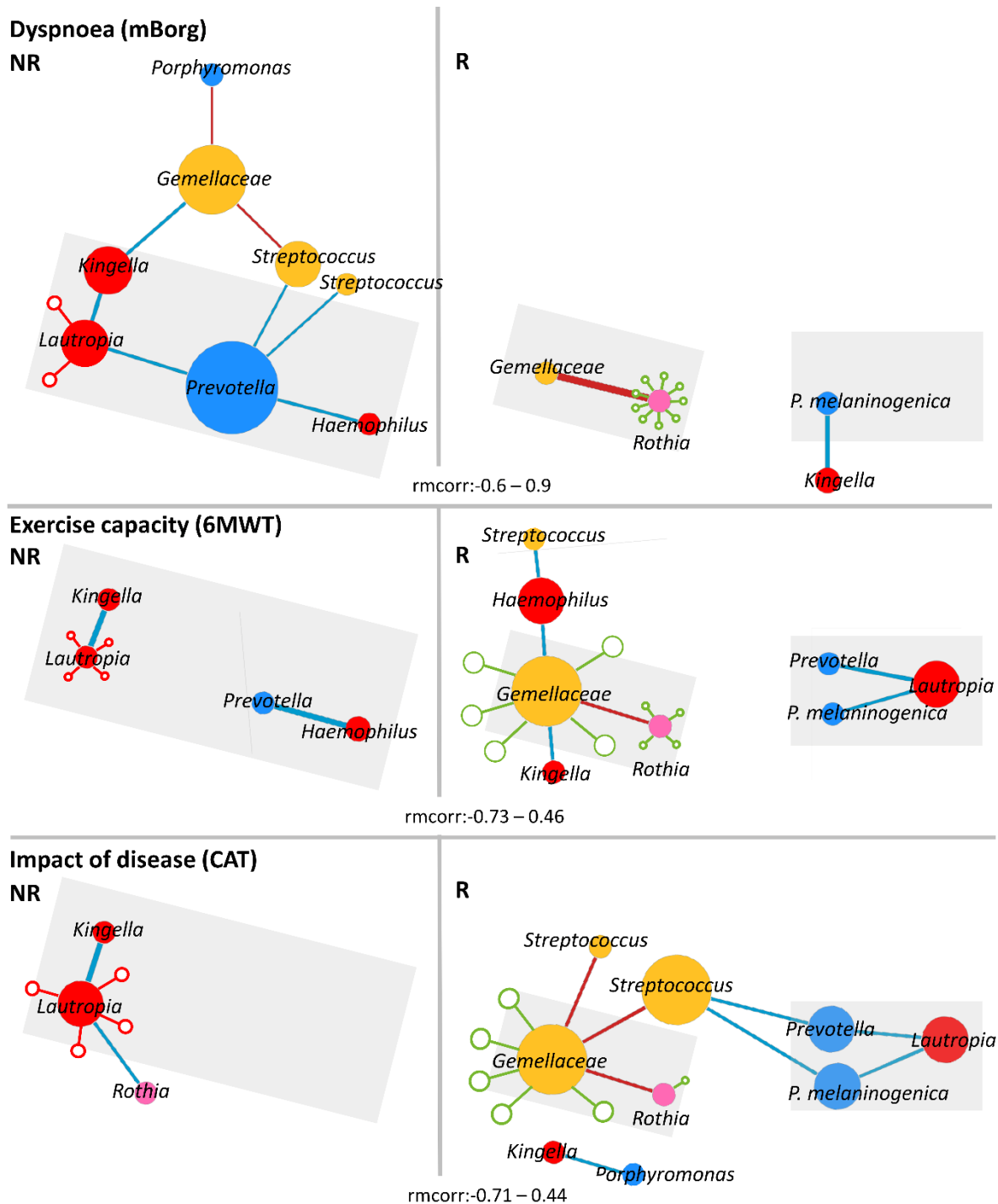


R



rmcorr: -0.72 – 0.63

564 **Figure 4. Responders and non-responders to dyspnoea, exercise capacity and impact of the disease**
565 **present distinct patterns of longitudinal bacteria-inflammatory markers' correlation.** Correlation
566 networks representing the repeated-measures correlations between bacteria and inflammatory
567 markers in non-responders and responders to **A**) dyspnoea (rmcorr: [-0.75 – 0.52]) **B**) exercise capacity
568 (rmcorr: [-0.73 – 0.66]) and **C**) impact of the disease (rmcorr: [-0.72 – 0.63]). Prior to the analysis,
569 genera and ASVs: *d0b698c7298bf04110a6d2f220879bfb* and *a5189f77a2cfeab3bc1602ff5c8ac3e9*
570 relative frequencies were transformed with arcsine square root transformation and inflammatory
571 markers' concentration was transformed with \log_{10} . The diameter of the nodes is proportional to the
572 number of connections. Bacterial nodes are coloured with the colour code of each bacterial phyla
573 (Firmicutes: yellow, Bacteroidetes: blue; Proteobacteria: red; Fusobacteria: green Actinobacteria: pink;
574 Other phyla: grey). Inflammatory markers' nodes are represented in beige. Positive correlations are
575 represented in red, while negative correlations are represented in blue. The width of edges is
576 proportional to the correlation coefficient.



577

578 **Figure 5. Responders and non-responders to dyspnoea, exercise capacity and impact of the disease**
 579 **present distinct patterns of longitudinal bacteria-bacteria correlation.** Correlation networks
 580 representing the longitudinal correlations between a subset of bacterial genera and ASVs:
 581 *d0b698c7298bf04110a6d2f220879bfb* and *a5189f77a2cfeab3bc1602ff5c8ac3e9* non-responders and
 582 responders to **A) dyspnoea** (rmcorr: [-0.6 – 0.9]), **B) exercise capacity** (rmcorr: [-0.73 – 0.46]), and **C)**

583 impact of the disease (rmcorr: [-0.71 – 0.44]). Grey triangles highlight common patterns of bacterial
584 correlations between domains. Empty blue and red circles represent cytokines with which the
585 correspondent taxon negatively and positively correlates, respectively. These correlations were
586 inferred through the correlation analysis between bacteria-inflammatory markers and are represented
587 here to facilitate the interpretation of the bacteria-bacteria correlation network.

588 Prior to the analysis, genera and ASVs: *d0b698c7298bf04110a6d2f220879bfb* and
589 *a5189f77a2cfeab3bc1602ff5c8ac3e9* relative frequencies were transformed with arcsine square root
590 transformation. The diameter of the nodes is proportional to the number of connections. Bacterial
591 nodes were coloured according to the colour code of each bacterial phyla (Firmicutes: yellow,
592 Bacteroidetes: blue; Proteobacteria: red; Fusobacteria: green Actinobacteria: pink; Other phyla: grey).
593 Positive correlations were represented in red, while negative correlations were represented in blue.
594 The width of edges is proportional to the correlation coefficient.

595

596 **Tables**

597 **Table 1** – Sociodemographic, anthropometric, and clinical characteristics of individuals with
598 chronic obstructive pulmonary disease at beginning of the study (n=76).

Characteristics	Intervention group (n=38)	Control group (n=38)	p-value
Age (years), mean±SD	72±9	70±7.60	0.19 ¹
Gender, n (%)			0.57 ²
Male	29 (76%)	31 (82%)	
Female	9 (24%)	7 (18%)	
BMI (kg/m ²), mean±SD	26±4	26.4±4.8	0.72 ³
FEV _{1PP} , mean±SD	49.2±16.0	52.3±19.8	0.53 ¹
FVC _{PP} , mean±SD	77.8±17.3	76.9±27.9	0.68 ¹
Pack-years, mean±SD	42.4±43.0	53.0±51.2	0.27 ¹
Comorbidities (CCI), mean±SD	4.2±1.4	3.8±1.3	0.10 ¹
GOLD grade, n (%)			0.22 ⁴
1	3 (8%)	6 (16%)	
2	14 (37%)	12 (32%)	
3	20 (53%)	15 (39%)	
4	1 (3%)	5 (13%)	
GOLD group, n (%)			0.069 ⁴
A	8 (21%)	17 (45%)	
B	20 (53%)	12 (32%)	
C	0 (0%)	1 (3%)	
D	10 (26%)	8 (21%)	
Medication, n (%)			
ICS	21 (55%)	19 (50%)	0.8 ⁴
LABA	33 (87%)	30 (79%)	0.36 ⁴
LAMA	24 (63%)	25 (66%)	>0.99
LTRA	2 (5%)	2 (5%)	>0.99 ⁴
SABA	9 (24%)	5 (13%)	0.37 ⁴
SAMA	2 (5%)	0 (5%)	0.49 ⁴
Macrolides in stability	0 (0%)	0 (0%)	>0.99
Number of exacerbations in the last year, n (%)			0.60 ²
0 or 1	27 (71%)	29 (76%)	
≥2 or 1 with a hospitalisation	11 (29%)	9 (24%)	
Number of hospitalisations in the last year due to COPD, n (%)			0.67 ⁴
0	32 (84%)	34 (89%)	
1	2 (5%)	3 (8%)	
2	3 (8%)	1 (3%)	
Missing values	1 (3%)	0 (0%)	
mBORG, mean±SD	0.8±1.3	0.5±1.0	0.3 ¹
CAT, mean±SD	17.1±8.1	11.7±7.4	0.003 ¹
Walked distance in 6MWT, mean±SD	389.0±133.9	457.5±82.8	0.045 ¹

SD: standard deviation, n (%): absolute and relative frequency, respectively; BMI: body mass index, FEV_{1pp}: forced expiratory volume in 1 second percent predicted, CCI: charlson comorbidity index, GOLD: global initiative for chronic obstructive lung disease, ICS: inhaled corticosteroids, LABA: long-acting beta agonists, LAMA: long-acting muscarinic agonists, LTRA: leukotriene receptor antagonists, SABA: short-acting beta agonists, SAMA: short-acting muscarinic agonists, ¹ p-value obtained with Mann Whitney U-test, ² p-value obtained with Chi-square test, ³ p-value obtained with unpaired t-test with Welch's correction, ⁴ p-value obtained with Fisher's exact test.

599

600 **Table 2** – Summary table of significant linear mixed effect models established to assess
601 differences in microbiota dynamics between intervention and control groups.

OTUs/ASVs longitudinal dynamics	test's statistics	p-value (TP:Group)
<i>Fusobacteria</i>	5.86	0.016
<i>Atopobium</i>	5.51	0.019
<i>Streptococcus</i>	5.03	0.026
<i>Dialister</i>	6.39	0.012
<i>Parvimonas</i>	4.75	0.030
<i>Fusobacterium</i>	7.00	0.009
<i>a5189f77a2cfeab3bc1602ff5c8ac3e9: Streptococcus</i>	4.96	0.027
<i>d0b698c7298bf04110a6d2f220879bfb: Prevotella melaninogenica</i>	4.34	0.038
<i>e27680d4009f98f30248d823bc17fb8e: Haemophilus parainfluenzae</i>	0.18	0.673
<i>5608c3e6c9de9ceb79610e7786bd0ac4: Veillonella</i>	3.30	0.070

Models were produced based on the longitudinal relative frequencies of phyla, genera, and ASVs *a5189f77a2cfeab3bc1602ff5c8ac3e9*, *d0b698c7298bf04110a6d2f220879bfb*, *e27680d4009f98f30248d823bc17fb8e* and *5608c3e6c9de9ceb79610e7786bd0ac4*. Data upon relative frequencies was transformed with arcsine and square root transformation. TP: time-point

602

603 **Table 3** – Summary table of significant linear mixed effect models established to assess
604 differences in microbiota dynamics between responders and non-responders to dyspnoea,
605 exercise capacity and impact of the disease.

OTUs/ASVs longitudinal dynamics	test's statistics	p-value (TP:Group)
Response to dyspnoea during exercise (Borg Modified Scale of Dyspnoea) MCID: -1 point		
<i>Spirochaetes</i>	2.33	0.046
TM7	5.40	0.000
<i>Oribacterium</i>	2.68	0.024
<i>Dialister</i>	2.69	0.023

<i>Schwartzia</i>	2.55	0.036
[<i>Mogibacteriaceae</i>]	2.45	0.036
<i>Bulleidia</i>	3.08	0.011
<i>Treponema</i>	2.33	0.046
<hr/>		
Response to exercise capacity (6-minute walk test) MCID: +25m		
<hr/>		
<i>Lautropia</i>	2.87	0.017
<hr/>		
Response to impact of the disease (COPD assessment test) MCID: -2 points		
<hr/>		
<i>d0b698c7298bf04110a6d2f220879bfb: Prevotella melaninogenica</i>	2.58	0.029
<hr/>		

Models were produced based on the longitudinal relative frequencies of phyla, genera, *a5189f77a2cfeab3bc1602ff5c8ac3e9* and *d0b698c7298bf04110a6d2f220879bfb*. Data upon relative frequencies was transformed with arcsine and square root transformation. TP: time-point