

1 **Frequent shedding of multi-drug resistant pneumococci among adults living with**
2 **HIV on suppressive antiretroviral therapy in Malawi**

3
4 Lusako Sibale^{1,2†}, Joseph Phiri^{1,2†}, Ndaona Mitole¹, Newton Kalata¹, Tinashe Nyazika²,
5 Alice Kalirani¹, Mercy Khwiya¹, Gift Sagawa¹, Deus Thindwa¹, Todd D Swarthout³, Neil
6 French⁴, Ken Malisita⁵, Arox Kamng'ona⁶, Daniela M Ferreira^{2,7}, Robert S. Heyderman³,
7 Brenda A. Kwambana-Adams^{1,2,3}, Kondwani Jambo^{1,2*}.

- 8
9 1. Malawi-Liverpool-Wellcome Programme, Blantyre, Malawi
10 2. Department of Clinical Sciences, Liverpool School of Tropical Medicine, Liverpool,
11 UK
12 3. NIHR Global Health Research Unit on Mucosal Pathogens, Division of Infection
13 and Immunity, University College London, WC1E 6JF, London, UK
14 4. Institute of Infection Veterinary & Ecological Science, University of Liverpool, L69
15 3GE, Liverpool, UK
16 5. Lighthouse-Queens Elizabeth Hospital and Gateway Health Centre, Blantyre,
17 Malawi
18 6. School of Life Science and Allied Health Professions, Kamuzu University of Health
19 Sciences, Blantyre, Malawi
20 7. Oxford Vaccine Group, University of Oxford, Oxford, UK

21
22 ***Corresponding author**

23 **Email:** Kondwani.Jambo@lstmed.ac.uk or kjambo@mlw.mw (KCJ)

24
25 **† Contributed equally to this manuscript**

26
27 **Running title:** PLHIV shed multi-drug resistant pneumococci

28 **Keywords:** HIV, ART, *Streptococcus pneumoniae*, carriage, AMR

29 **Word count:** 3735 words

NOTE: This preprint reports new research that has not been certified by peer review and should not be used to guide clinical practice.

30 **Abstract**

31 People living with human immunodeficiency virus (PLHIV) on antiretroviral therapy
32 (ART) are reported to have three times higher carriage of *Streptococcus pneumoniae*
33 than their HIV-uninfected counterparts in point prevalence studies. Using a
34 longitudinal cohort study design, we assessed pneumococcal carriage density,
35 shedding and antibiotic resistance profiles, as well as nasal mucosal immunity, in
36 otherwise healthy PLHIV on ART for at least one year, compared to HIV-uninfected
37 participants in Malawi. Pneumococcal carriage density was higher among PLHIV
38 compared to HIV-uninfected participants. Moreover, PLHIV were twice more likely to
39 shed pneumococci than HIV-uninfected participants. In PLHIV, aerosol shed
40 pneumococci were more often multi-drug resistant (MDR) than nasopharyngeal
41 carried isolates recovered from the same individual. Consistent with high shedding,
42 PLHIV exhibited heightened neutrophil-mediated nasal mucosa inflammation. We
43 propose that PLHIV should be considered in intervention strategies, such as
44 vaccination, as they could be an important reservoir for transmission of MDR *S.*
45 *pneumoniae*.

46

47

48

49

50

51

52

53

54

55

56 **Word count:** 149 words

57

58

59 Introduction

60 *Streptococcus pneumoniae* has at least 100 distinct serotypes^{1, 2} and is a common
61 coloniser of the human nasopharynx. Pneumococcal carriage is a prerequisite for life-
62 threatening invasive pneumococcal disease (IPD) including pneumonia, meningitis,
63 and bacteraemia³, and is critical for transmission⁴. In high- and middle-income
64 countries, infant pneumococcal conjugate vaccine (PCV) programmes have resulted
65 in a significant reduction in pneumococcal carriage and IPD in both vaccinated
66 children (direct protection) and unvaccinated older children and adults (indirect
67 protection)^{5, 6, 7, 8}. However, in low-income countries such as Malawi, where the 13-
68 valent PCV (PCV13) was introduced into the infant immunisation programme in 2011,
69 there is limited indirect protection among unvaccinated older children and adults
70 despite evidence of substantial direct protection against IPD among vaccinated
71 children⁹.

72
73 Moreover, pneumococcal carriage prevalence has been reported to be over two-fold
74 higher in PLHIV on antiretroviral therapy (ART) (40-60%) than in those HIV-
75 uninfected (8-15%) or ART-naïve PLHIV (18-25%)^{10, 11}. Residual carriage of all PCV13
76 serotypes (VTs) among Malawian adults living with HIV on ART has remained
77 relatively high^{7, 11}, with low socioeconomic status having been shown to exacerbate
78 overall carriage prevalence¹².

79
80 Emergence of pneumococcal antimicrobial resistance (AMR) is associated with
81 carriage and antibiotic usage^{13, 14, 15}. *S. pneumoniae* is among the priority bacterial
82 pathogens due to its increased resistance to penicillin according to World Health
83 Organisation (WHO) Global Antimicrobial Resistance and Use Surveillance System
84 (GLASS)¹⁶. It has been shown that PLHIV are more likely to take antibiotics, including
85 cotrimoxazole prophylaxis to prevent opportunistic bacterial infections^{17, 18}.
86 Moreover, PLHIV are also at increased risk of disease caused by respiratory viruses
87 compared to the general population^{19, 20}. Common viral co-infections^{21, 22, 23},

88 including Respiratory Syncytial Virus (RSV) and Influenza ²⁴, have been shown to
89 promote high pneumococcal carriage density that in turn drives increased bacterial
90 shedding ^{21, 25, 26}, a surrogate for transmission potential ^{27, 28}. Furthermore, high
91 pneumococcal carriage density has been shown to associate with invasive
92 pneumococcal disease ^{29, 30}. Together, this may suggest that in addition to being at
93 increased risk of invasive pneumococcal disease, PLHIV could be an
94 underappreciated reservoir driving transmission of antimicrobial resistant
95 pneumococci in the community, calling for an in-depth evaluation of this population.

96
97 Using a longitudinal cohort study, we investigated pneumococcal carriage density
98 and shedding, as well as nasal immunity, in otherwise healthy PLHIV on ART for more
99 than one year and HIV-uninfected participants. We show that PLHIV exhibit higher
100 density pneumococcal carriage and more commonly shed antimicrobial resistant
101 pneumococci. These findings have broader implications in the development of
102 interventions to curb AMR pneumococcal disease and transmission.

103

104 **Results**

105 *Clinical and demographic characteristics*

106 Between July 2019 and August 2021, we screened 512 adults among whom 28%
107 (144/512) had confirmed pneumococcal carriage and thus eligible for recruitment
108 (Fig. 1). Of these, 37.5% (54/144) were HIV-uninfected and 62.5% (90/144) were
109 PLHIV on ART for more than 1 year (median 5.5 years [IQR 2.8-10.1]) (Table S1). Due
110 to Coronavirus disease (COVID-19) pandemic restrictions, 37.5% (54/144) did not
111 complete the study follow-up period of 5 months (Fig. 1). Therefore, the final analysis
112 is restricted to the 35 HIV-uninfected participants and 55 PLHIV that completed the 5
113 months follow-up period. PLHIV, compared to HIV-uninfected participants were
114 older, with 44% (24/55) and 20% (7/35) >36 years old, respectively (p=0.049).
115 Likewise, compared to HIV-uninfected participants, PLHIV had a lower socioeconomic
116 status as measured by asset ownership index ¹² (median 4 [IQR 2.0-5.0] vs. 6 [3.5-

117 7.50], $p=0.005$), and a lower CD4 count (median 514 cells/ μl [IQR 652-927] vs. 760
118 cells/ μl [IQR [332-750], $p<0.001$) (Table 1).

119

120 *Higher NVT carriage positivity in PLHIV than HIV-uninfected participants*

121 Overall (VT + non-VT [NVT]) pernasal swab pneumococcal positivity was higher
122 among PLHIV compared to HIV-uninfected participants (72% [95% CI 68.2–76.2] vs.
123 59% [53.7–64.8] $p<0.001$) (Fig. 2a). Furthermore, NVT pernasal swab pneumococcal
124 positivity was higher in PLHIV (55.5% [51.2–59.7] vs. 44.9% [39.6–50.2], $p=0.002$) (Fig.
125 2b). In contrast, VT pernasal swab pneumococcal positivity was similar between
126 PLHIV and HIV-uninfected participants: 19.6% [16.4–23.2] and 18.6% [14.6-23.0],
127 $p=0.5777$ (Fig. 2a). The dominant VT carriage isolates among both PLHIV, and HIV-
128 uninfected participants were serotype 3 (49.1% and 43.1%) and serotype 19F (19.4%
129 and 29.2%) respectively (Fig. 2c). Using a multivariable logistic regression model
130 (adjusting for age, gender, season, socioeconomic status and HIV status), showed
131 that PLHIV were more likely to carry NVT than HIV-uninfected participants (adjusted
132 odds ratio (aOR) 1.4, (95% CI 1.1-1.9, $p=0.015$)) (Table S2a). In contrast, the likelihood
133 of having VT carriage was similar between PLHIV and HIV-uninfected participants
134 (aOR 1.0, (95% CI 0.7-1.5, $p>0.9$) (Table S2b). Together, these data show that high
135 pneumococcal carriage prevalence in PLHIV is mostly driven by NVT, but also
136 highlight high residual VT carriage of serotype 3 and 19F in both PLHIV and HIV-
137 uninfected participants.

138

139 *Higher density pneumococcal carriage in PLHIV than HIV-uninfected participants*

140 The overall median pneumococcal carriage density was higher among PLHIV
141 (40,738.03CFU/ml [95% CI 16218.1-104712.9] vs. 10,000.00CFU/ml [4466.84-
142 22908.68], $p<0.001$) (Fig. 3). In a multivariable logistic regression model (adjusting for
143 sex, age, carriage density, season, and socioeconomic status), PLHIV were more likely
144 to harbour higher density carriage than HIV-uninfected participants (aOR 1.6, 1.1-2.5,

145 p=0.027) (Table 2). Collectively, these findings show high propensity for high-density
146 carriage in PLHIV.

147

148 *Higher proportion of pneumococcal shedding in PLHIV than HIV-uninfected*
149 *participants*

150 Considering the high-density carriage in PLHIV, we sought to determine whether
151 they were also more likely to shed pneumococci than HIV-uninfected participants.
152 The overall proportion of adults shedding pneumococci using either sampling
153 technique was significantly higher among PLHIV than HIV-uninfected participants
154 (57.6% [95% CI 48.4-66.4] vs. 27.3% [18.3-45.4], $p < 0.001$) (Fig. 3a). Further analysis
155 revealed that NVT were shed more frequently in PLHIV than HIV-uninfected
156 participants (31.6% [25.9-37.8] vs. 11.2% [5.7-19.2], $p < 0.001$) (Fig. 3b). However, VT
157 shedding was similar between PLHIV on ART and HIV-uninfected participants (6%
158 [3.4-9.7] vs. 5.1% [1.7-11.5], $p = 0.946$) (Fig. 3b). Among the shed VT isolates, serotype
159 3 (73.3% and 40%) and serotype 19F (13.3% and 60%) were dominant among both
160 the PLHIV and HIV-uninfected participants, respectively (Fig. 3c). Moreover, the
161 overall proportion of adults shedding pneumococci were significantly higher in both
162 the mechanical (40.3% [95% CI 31.6-49.5] vs. 18.4% [8.8-32], $p = 0.010$) and aerosol
163 (36% [95% CI 27.6-45.1] vs. 14.3% [95% CI 5.9-27.2], $p = 0.009$) samples in PLHIV than
164 HIV-uninfected participants (Fig 3d-e).

165

166 To identify factors influencing pneumococcal shedding, we performed a multivariable
167 logistic regression analysis that included age, gender, socioeconomic status, season,
168 pneumococcal carriage density, and HIV status. HIV status and pneumococcal
169 carriage density were significantly associated with pneumococcal shedding (Table 3).
170 Specifically, PLHIV were twice more likely to shed any pneumococci than HIV-
171 uninfected participants (aOR 2.4, 95% CI 1.04-5.7, $p = 0.039$), while individuals with
172 high-density pneumococcal carriage, irrespective of HIV status, were greater than
173 three times more likely to shed any pneumococci than those with low-density

174 carriage (aOR 3.37, 1.56-7.29, p=0.002) (Table 3). Together, these findings show that
175 high proclivity for pneumococcal shedding in PLHIV, and in individuals with high
176 density carriage (irrespective of HIV status).

177

178 *PLHIV shed antimicrobial resistant pneumococci*

179 Next, we sought to assess the antimicrobial susceptibility profile of the carried and
180 shed isolates from PLHIV and HIV-uninfected participants. Overall, the antimicrobial
181 susceptibility profile of nasopharyngeal carriage isolates was similar between PLHIV
182 compared and HIV-uninfected participants (Table 5). However, the proportion of co-
183 trimoxazole resistant isolates was significantly higher in PLHIV (98% [95% CI 88%-
184 100%] vs. 76% [58%-89%], p=0.002) (Table 4). The overall proportion of non-
185 susceptible tetracycline (Tet), benzylpenicillin (PenG), as well as multi-drug resistant
186 isolates were significantly higher in aerosol shed isolates compared to
187 nasopharyngeal carriage isolates in PLHIV for samples collected from the same
188 individual (Tet, 61% [95% CI 46%-75%] vs. 26% [14%-41%], p<0.001; PenG, 61%
189 [46%-75%] vs. 32% [19%-48%], p=0.010; MDR, 64% [48%-77%] vs. 30% [CI 17%-
190 45%], p=0.001) (Table 5). In contrast, the AMR profile of mechanical shed isolates
191 were similar to the nasopharyngeal carriage isolates (Table 6). Among HIV-uninfected
192 participants, no differences were observed in the antimicrobial susceptibility profile
193 between shed and carriage isolates, irrespective of the shedding route (Table S3).
194 Together, these data show that PLHIV shed multi-drug resistant pneumococci,
195 especially via the aerosol route.

196

197 *PLHIV exhibit neutrophil-mediated inflammation in the nasal mucosa*

198 Lastly, we sought to determine whether PLHIV have a more inflamed nasal mucosa
199 than HIV-uninfected adults, as inflammation has been shown to play a significant
200 role in pneumococcal shedding^{31, 32, 33}. To do this, we recruited PLHIV on ART for
201 more than 1 year, and age- and gender-matched HIV-uninfected adult controls,
202 irrespective of pneumococcal carriage status, from whom nasal cells and nasal lining

203 fluid samples were collected weekly for 5 weeks (Fig. S1). Using flow cytometry-
204 based immunophenotyping, we characterised the immune cell composition in the
205 nasal mucosa, a representative gating strategy is shown in Fig 5a. The abundance of
206 CD14⁺ monocytes (median ratio 0.01 [95% CI 0.001-0.011] vs 0.01 [95% CI 0-0.014],
207 p=0.55) and CD3⁺ T cells (median ratio 0.04 [95% CI 0.01-0.07] vs 0.05 [95% CI 0.02-
208 0.08], p=0.66) was similar between the two study groups (Fig 5b-c). In contrast, the
209 abundance of neutrophils (median ratio 0.30 [95% CI 0.17-0.43] vs. 0.17 [95% CI 0.06-
210 0.28], p=0.018) was higher in PLHIV than HIV-uninfected participants (Fig 5d).

211

212 To get further understanding of the phenotype of neutrophils, we measured the
213 expression of CD62L, which is down regulated during neutrophil activation ^{34, 35}.
214 Neutrophils from PLHIV had lower expression of CD62L than those from HIV-
215 uninfected participants (Median fluorescent intensity (MFI) 310 [95% CI 264-356] vs.
216 399 [95% CI 345-453], p=0.017) (Fig 5e). Furthermore, PLHIV had higher
217 concentrations of neutrophil pro-inflammatory markers in their nasal lining fluid
218 including neutrophil extracellular traps (NETs) (3.9 ng/ml [95% CI 0-31.7] vs 1.2 ng/ml
219 [95% CI 0-2.76], p=0.042) and myeloperoxidase (MPO) (393500 pg/ml [95% CI
220 311066-475934] vs 43425 pg/ml [95% CI 2008-84842], p=0.066), compared to HIV-
221 uninfected participants (Fig 5f-g). Together, these findings show heightened
222 inflammation in the nasal mucosa of PLHIV.

223

224 Discussion

225 We assessed pneumococcal carriage dynamics in otherwise healthy PLHIV on ART for
226 more than 1 year compared to HIV-uninfected adults. We found that PLHIV had
227 high-density pneumococcal carriage and shed antimicrobial resistant *S. pneumoniae*.
228 Moreover, PLHIV exhibited heightened neutrophil-associated inflammation in the
229 nasal mucosa. These data highlight this vulnerable HIV-affected population as a
230 potentially important reservoir for transmission of antimicrobial resistant
231 pneumococci.

232

233 It is postulated that pneumococcal transmission is primarily through respiratory
234 droplets³⁶ but direct contact through hands as a vehicle has also been implicated^{27,}
235²⁸. Consistent with this, we observed pneumococcal shedding in adults through nose
236 poking and coughing. Unlike isolates obtained from the nose poking samples
237 (nasopharyngeal niche), aerosol shed *S. pneumoniae* (likely from the oropharyngeal
238 niche) from PLHIV were more frequently penicillin-resistant and multidrug-resistant.
239 *Streptococcus mitis* and *Streptococcus oralis*, commensals of the human oropharynx,
240 have been implicated as a potential source of antibiotic resistance genes for *S.*
241 *pneumoniae*^{37, 38, 39, 40}, through horizontal gene transfer (HGT) of penicillin-binding
242 protein (*pbp*) genes that drive emergence of β -lactam resistance^{41, 42}. An analysis of
243 publicly available pneumococcal genomes has highlighted that *S. mitis* as a more
244 frequent donor of genetically diverse *pbp* gene fragments to *S.*
245 *pneumoniae* compared with *S. oralis*, with horizontal acquisition mostly confined to
246 pneumococcal serotypes associated with prolonged nasopharyngeal carriage
247 duration⁴⁰. These findings suggest that proximity between *S. pneumoniae* and other
248 closely-related streptococci species harboring antibiotic resistance genes facilitates
249 their transfer to pneumococci, and this could in part explain the predominance of
250 penicillin-resistant pneumococci in the aerosol shed isolates.

251

252 On the other hand, it has been recently shown that there is an elevated risk of both
253 the acquisition and persistent carriage of multi-drug resistant pneumococci following
254 antimicrobial treatment⁴³. The mechanism of persistence of multi-drug resistant
255 pneumococci was attributed to reduced within-host competition following
256 antimicrobial treatment, indicating that in the absence of treatment, susceptible
257 lineages outcompete resistant lineages⁴³. In Malawi, as part of standard HIV clinical
258 management, PLHIV are put on daily co-trimoxazole prophylaxis^{17, 18}. Consistent
259 with purifying selection and in agreement with previous studies^{44, 45}, there was
260 higher prevalence of co-trimoxazole resistant carriage isolates in PLHIV than HIV-

261 uninfected participants. Considering that co-trimoxazole is a broad-spectrum
262 antimicrobial and its resistance is associated with penicillin resistance^{45, 46}, it could
263 differentially alter the microbiota in the oropharyngeal and nasopharyngeal
264 compartments, resulting in stronger selection for multi-drug resistant pneumococci.
265
266 Consistent with their increased propensity for pneumococcal shedding, PLHIV
267 exhibited neutrophil-driven nasal inflammation. Neutrophil factors including NETs
268 and MPO contribute to clearance of pneumococcal infection^{47, 48}, but also promote
269 excessive inflammation^{25, 49}. Host inflammation has been shown to drive
270 pneumococcal shedding^{31, 32, 33 50}. In mice models, pneumococcal virulence factors,
271 such as pneumolysin and pneumococcal surface protein K (PspK), induce upper
272 respiratory tract (URT) inflammation resulting in pneumococcal shedding^{32, 33, 51}.
273 Furthermore, uncontrolled inflammation has been shown to promote pneumococcal
274 persistence via nutrient provision arising from increased mucus secretion^{52 53, 54}, and
275 through reduced mucociliary clearance of pneumococci due to altered ciliary
276 beating⁵⁵. Together, this suggests that uncontrolled nasal inflammation in PLHIV,
277 likely due to impaired nasal immunity^{10, 56} or driven by altered URT microbiota,
278 perpetuates nasal inflammation leading to increased pneumococcal shedding, a
279 surrogate of transmission potential.
280
281 Despite the strengths of this study, including a comprehensive assessment of
282 carriage dynamics in a relevant population and setting, there are important
283 limitations. First, the standard microbiological assay used in this study were biased
284 towards isolating single isolates following culture, hence missing any potential
285 multiple serotype carriage episodes or pneumococci carried at low densities. Second,
286 we did not directly measure pneumococcal transmission. Although pneumococcal
287 shedding is regarded as a surrogate for transmission potential^{27, 28}, it is not clear
288 how often shed pneumococci result in successful transmission. However, this does
289 not discount our suggestion that PLHIV on ART for more than 1 year contribute to

290 transmission of multi-drug resistant pneumococci, which is of public health
291 importance.

292

293 In conclusion, our study demonstrates that PLHIV on ART for more than 1 year could
294 be an important reservoir for transmission of multi-drug resistant *S. pneumoniae*.
295 This has potential to derail the success of the infant PCV programme and our fight
296 against antimicrobial resistance in high HIV prevalence and high pneumococcal
297 carriage settings such as Malawi, especially now that there is an HIV test and treat
298 strategy⁵⁷. Considering that PCV was shown to be efficacious against recurrent IPD
299 among PLHIV in Malawi⁵⁸, consideration should be given to re-evaluating the
300 provision of pneumococcal vaccination to this vulnerable adult population.

301

302 **Methods**

303 *Study design and recruitment*

304 We recruited asymptomatic PLHIV on ART for more than 1 year and HIV-uninfected
305 adults in Blantyre, Malawi. Participants were recruited on day 3 after screening and
306 then followed up on day 7, 14, 21 and 28 for the first month, and then every month
307 for 5 months. All participants were recruited from the ART clinics and Voluntary
308 Counselling and Testing (VCT) centres at Lighthouse-Queen Elizabeth Central
309 Hospital and Gateway Health Centre in Blantyre. Briefly, participants were screened
310 for pneumococcal carriage, using WHO recommendations for nasopharyngeal
311 sampling and microbiological culture for pneumococcal detection⁵⁹. Inclusion
312 criteria included confirmed pneumococcal carriage, in adults aged 18 to 45 years,
313 living with a child aged under-5-years and providing written informed consent.
314 Exclusion criteria included receiving antibiotics in the previous 4 weeks (apart from
315 co-trimoxazole prophylaxis as all PLHIV on ART receive daily co-trimoxazole
316 prophylaxis as per national guidelines¹⁷), hospitalization for pneumonia in the
317 previous 4 weeks, having respiratory tract Kaposi's sarcoma or a terminal illness (e.g.,
318 metastatic malignancy, terminal AIDS). All PLHIV were on standardised ART regimen

319 according to Malawi Ministry of Health 2018 Clinical Management of HIV guidelines
320 ⁶⁰.

321

322 The study was conducted in accordance with good clinical practice (GCP) guidelines
323 and the Declaration of Helsinki. Ethical approval was obtained from the College of
324 Medicine Research Ethics Committee (COMREC) (P.11/18/2532) and Liverpool School
325 of Tropical Medicine Research Ethics Committee (LSTMREC) (19-033).

326

327 *Sample collection*

328 Nasopharyngeal swabs were collected at all time points, and a peripheral blood
329 sample was collected at recruitment (day 3) from PLHIV on ART for measuring CD4
330 count. In addition, respiratory secretions were collected at day 3, 21, and 28, using a
331 modified polyvinyl acetate (PVA) facemask device ^{61, 62, 63}, direct coughing onto an
332 agar plate (coughing), and inserting the participants clean index finger into the front
333 of the nose (nose poking). Further details of these methods are discussed in the
334 supplementary section.

335

336 Nasal cells were collected weekly (5 visits) by scraping the inferior turbinate using
337 nasal curette (Rhino-probe, Arlington Scientific, UK) as previously described ⁶⁴. Per
338 individual and timepoint, two cures were collected from each nostril. Briefly, the
339 four curette samples were immediately placed in a 15-ml falcon tube (Corning)
340 containing 8-ml of precooled transport media (RPMI-1640 [Thermo Fisher Scientific
341 Inc.] supplemented with 10% Fetal Bovine Saline [FBS], antibiotic/antimycotic [Sigma,
342 USA], L-glutamine, non-essential amino acids, HERPES buffer and sodium pyruvate
343 (all from Gibco, USA)).

344

345 Nasal-lining fluid was collected weekly (5 visits) using a non-invasive method that
346 uses a synthetic absorptive matrix (SAM) strip (Hunts Development Ltd, UK). Briefly,
347 the nasosorption strip was advanced up the lumen of the nasal cavity and held inside

348 the nostril for up to three minutes until soaked. The strip was then removed and
349 placed in a microcentrifuge tube for storage at -80°C until processing.

350

351 *Microbiological culture and density quantification*

352 Standard microbiologic culture was used to determine the presence of *S.*
353 *pneumoniae* from the nasal swab, nose poke swab, cough onto an agar plate and
354 modified PVA facemask^{61, 62, 63}. For modified PVA facemask processing, four PVA
355 strips were removed from the mask using sterile technique and then dissolved in
356 10ml Todd Hewitt broth with 5% yeast (THY) and then plated. We identified *S.*
357 *pneumoniae* by their morphology and optochin sensitivity on a gentamicin-sheep
358 blood agar plate (SBG; 5% sheep blood agar, 5µL gentamicin/mL) after an overnight
359 incubation at 37 °C in 5% CO₂. The bile solubility test was used on isolates with no or
360 intermediate (zone diameter < 14mm) optochin susceptibility. Plates showing no *S.*
361 *pneumoniae* growth were incubated for a further 24 hours before being reported as
362 negative. A single colony of confirmed pneumococcus was selected and grown on a
363 new SBG plate as before. Growth from this second plate was used for serotyping by
364 latex agglutination (ImmuLex™ 23-valent Pneumotest; Statens Serum Institute,
365 Denmark). This kit allows for differential identification of each PCV13 vaccine
366 serotypes (VT) but not for differential identification of PCV13 non-vaccine serotypes
367 (NVT); NVT and non-typeable isolates were, therefore, reported as NVT.

368 Pneumococcal density was quantified using microbiological culture serial dilutions⁶⁵
369 on a gentamicin-sheep blood agar plate (SBG; 5% sheep blood agar, 5µL
370 gentamicin/mL) and results reported as colony forming units per millilitre (CFU/ml).

371

372 *AMR profiling*

373 Pure pneumococcal isolates were cultured on sheep blood agar without antibiotics
374 (SBA), using an overnight incubation at 37 °C in 5% CO₂. Growth from the SBA were
375 emulsified in normal saline to match 0.5 McFarland turbidity standard and plated on
376 sheep blood Muller Hinton agar plate without antibiotics (MHB) using a sterile cotton

377 swab. The antimicrobial susceptibility of pneumococcal isolates was assessed by the
378 disk diffusion method (Oxoid, USA) for beta lactams antibiotic (oxacillin 1µg),
379 macrolide-lincosamide-streptogramin (MLS) antibiotic (erythromycin 15µg),
380 tetracycline antibiotic (tetracycline 30µg) and Trimethoprim/sulfamethoxazole (co-
381 trimoxazole 1.25–23.75µg).

382

383 Beta lactams antibiotic susceptibility was confirmed by benzylpenicillin E-test
384 minimum inhibitory concentration (MIC). E-test MICs were determined by
385 suspending colonies from an overnight culture (incubation at 37 °C in 5% CO₂) on
386 SBA in saline, and the organism density was matched to a 0.5 McFarland turbidity
387 standard. Using a sterile cotton swab, the organism suspension was plated onto
388 MHB. E-test strips were applied to the surface of the plates according to the
389 manufacturer's recommendations. Agar plates were incubated overnight at 37 °C in
390 5% CO₂. The MIC was defined as the lowest concentration of drug where the zone
391 edge intersected the E-test strip.

392

393 Interpretation of results followed European Committee on Antimicrobial
394 Susceptibility Testing (EUCAST) guidelines⁶⁶. *Streptococcus pneumoniae* ATCC
395 49619 was used as quality control. Multidrug resistance (MDR) was defined as non-
396 susceptibility to agents in three or more above chemical classes of antibiotic.

397

398 *Flow cytometry analysis*

399 For immunophenotyping, nasal cells were dislodged from currettes by repeated
400 pipetting and stained with far-red fluorescent amine reactive dye (34973A, 1:1000)
401 from Invitrogen, and incubated for 15 minutes followed by the addition of a cocktail
402 of BV605 anti-human CD326 (9C4, 324224, 1:50), PerCp-Cy5.5 anti-human CD45
403 (HI30, 304028, 1:40), FITC anti-human CD66b (G10F5, 305104, 1:40), PE-Cy7 anti-
404 human CD14 (M5E2, 301814, 1:40), APC-Cy7 anti-human CD3 (SK7, 344818, 1:40) and
405 PE-eFlour® 610 anti-human CD62L (DREG-56, 61062942, 1:40), all from Bio legend

406 (UK). Samples were acquired on LSR FORTESSA flow cytometer equipped with
407 FACSDIVA version 8.0.1 (BD Biosciences, UK) and analysed using Flowjo Version
408 10.8.1 (BD Biosciences, USA). Abundance of immune cells was normalised as immune
409 cell to epithelial cell ratio as previously reported ⁶⁷. All flow cytometry data are
410 available.

411

412 *Neutrophil-extracellular traps (NETs) enzyme linked-immunosorbent assay*

413 Nasosorption samples were eluted from stored nasosorption filters (Mucosal
414 Diagnostics, Hunt Development (UK) Ltd, Midhurst, UK) using 200µL of elution buffer
415 (Millipore) by centrifugation at 1500g for 10 minutes as previously described ⁶⁸. The
416 eluate was cleared by further centrifugation at 1595g for 10 minutes. The eluate was
417 then stored at -80°C until the day of the assay. The detection of NETs was performed
418 by combining two commercial ELISA kits; ROCHE cell death ELISA kit (Sigma Aldrich,
419 11920685001) and Human Elastase ELISA Kit (Hycult®Biotech, HK319). In-house
420 developed PMA NETs were serially diluted (1:2) and used as standards, while
421 nasosorption samples were diluted (1:4) using 1X dilution buffer from the Elastase
422 ELISA Kit (Hycult®Biotech, HK319).

423

424 *Myeloperoxidase (MPO) enzyme linked-immunosorbent assay*

425 Myeloperoxidase (MPO) enzyme linked immunosorbent assay was performed on
426 eluted -80°C frozen nasal lining fluid samples as described in the manufacturer's user
427 guide (Invitrogen, UK, BMS2038INST).

428

429 *Statistical analysis*

430 Descriptive statistics are reported as numbers and proportions for categorical
431 variables, and median and confidence interval for continuous data. Categorical
432 variables were compared using χ^2 test, and continuous variables were compared
433 using Mann-Whitney test. We fitted a univariate and multivariable regression model,
434 accounting for multiple sampling (generalized linear mixed model), covariables used

435 for each model are detailed in the supplementary section. All data analyses were
436 done in RStudio (Version 4.1.3, R Development Core Team, Vienna, Austria). Figures
437 and tables were produced in R (v4.1.3), RStudio (v2022.02. 2+485.pro2 Prairie Trillium
438 - April 27, 2022), ggplot2 (v3.3.5), lme4 (v1.1-28), and gtsummary (v1.5.2)⁶⁹.
439 Statistical significance level was reported at a p value of <0.05.

440

441 **Data availability**

442 All data supporting these findings are available upon reasonable request.

443

444 **References**

445

- 446 1. Ganaie, F. *et al.* A new pneumococcal capsule type, 10D, is the 100th serotype
447 and has a large cps fragment from an oral streptococcus. *MBio* **11**, e00937-00920
448 (2020).
- 449 2. Ganaie, F. *et al.* Structural, genetic, and serological elucidation of
450 *Streptococcus pneumoniae* serogroup 24 serotypes: Discovery of a new serotype,
451 24C, with a variable capsule structure. *Journal of Clinical Microbiology, JCM*. 00540-
452 00521 (2021).
- 453 3. O'Brien, K.L. *et al.* Burden of disease caused by *Streptococcus pneumoniae* in
454 children younger than 5 years: global estimates. *The Lancet* **374**, 893-902 (2009).
- 455 4. Weiser, J.N., Ferreira, D.M. & Paton, J.C. *Streptococcus pneumoniae*:
456 transmission, colonization and invasion. *Nat Rev Microbiol* **16**, 355-367 (2018).
- 457 5. Waight, P.A. *et al.* Effect of the 13-valent pneumococcal conjugate vaccine on
458 invasive pneumococcal disease in England and Wales 4 years after its introduction:
459 an observational cohort study. *The Lancet Infectious Diseases* **15**, 535-543 (2015).
- 460 6. Moore, M.R. *et al.* Effect of use of 13-valent pneumococcal conjugate vaccine
461 in children on invasive pneumococcal disease in children and adults in the USA:
462 analysis of multisite, population-based surveillance. *The Lancet Infectious Diseases*
463 **15**, 301-309 (2015).
- 464 7. Swarthout, T.D. *et al.* High residual carriage of vaccine-serotype *Streptococcus*
465 *pneumoniae* after introduction of pneumococcal conjugate vaccine in Malawi. *Nature*
466 *Communications* **11** (2020).
- 467 8. Usuf, E. *et al.* Pneumococcal carriage in rural Gambia prior to the introduction
468 of pneumococcal conjugate vaccine: a population-based survey. *Trop Med Int Health*
469 **20**, 871-879 (2015).
- 470 9. Bar-Zeev, N. *et al.* Impact and effectiveness of 13-valent pneumococcal
471 conjugate vaccine on population incidence of vaccine and non-vaccine serotype
472 invasive pneumococcal disease in Blantyre, Malawi, 2006–18: prospective

- 473 observational time-series and case-control studies. *The Lancet Global Health* **9**, e989-
474 e998 (2021).
- 475 10. Glennie, S.J. *et al.* Defective Pneumococcal-Specific Th1 Responses in HIV-
476 Infected Adults Precedes a Loss of Control of Pneumococcal Colonization. *Clinical*
477 *Infectious Diseases* **56**, 291-299 (2013).
- 478 11. Heinsbroek, E. *et al.* Persisting high prevalence of pneumococcal carriage
479 among HIV-infected adults receiving antiretroviral therapy in Malawi. *AIDS* **29**, 1837-
480 1844 (2015).
- 481 12. Thindwa, D. *et al.* Risk factors for pneumococcal carriage in adults living with
482 HIV on antiretroviral therapy in the infant pneumococcal vaccine era in Malawi.
483 *medRxiv* (2022).
- 484 13. Lehtinen, S. *et al.* Evolution of antibiotic resistance is linked to any genetic
485 mechanism affecting bacterial duration of carriage. *Proceedings of the National*
486 *Academy of Sciences* **114**, 1075-1080 (2017).
- 487 14. Tonkin-Hill, G. *et al.* Pneumococcal within-host diversity during colonisation,
488 transmission and treatment. Cold Spring Harbor Laboratory; 2022.
- 489 15. Chaguza, C. *et al.* Recombination in *Streptococcus pneumoniae* lineages
490 increase with carriage duration and size of the polysaccharide capsule. *MBio* **7**,
491 e01053-01016 (2016).
- 492 16. Organization, W.H. World Health Organization. Global antimicrobial resistance
493 and use surveillance system (GLASS) report. (2021).
- 494 17. Organization, W.H. *Guidelines on post-exposure prophylaxis for HIV and the*
495 *use of co-trimoxazole prophylaxis for HIV-related infections among adults,*
496 *adolescents and children: recommendations for a public health approach: December*
497 *2014 supplement to the 2013 consolidated guidelines on the use of antiretroviral*
498 *drugs for treating and preventing HIV infection.* World Health Organization, 2014.
- 499 18. Laurens, M.B. *et al.* Revisiting Co-Trimoxazole Prophylaxis for African Adults in
500 The Era of Antiretroviral Therapy: A Randomized Controlled Clinical Trial. *Clinical*
501 *Infectious Diseases* (2021).
- 502 19. Ho, A. *et al.* Epidemiology of Severe Acute Respiratory Illness and Risk Factors
503 for Influenza Infection and Clinical Severity among Adults in Malawi, 2011–2013. *The*
504 *American Journal of Tropical Medicine and Hygiene* **99**, 772-779 (2018).
- 505 20. Ho, A. *et al.* Impact of Human Immunodeficiency Virus on the Burden and
506 Severity of Influenza Illness in Malawian Adults: A Prospective Cohort and Parallel
507 Case-Control Study. *Clinical Infectious Diseases* **66**, 865-876 (2018).
- 508 21. Manna, S. *et al.* Synergism and Antagonism of Bacterial-Viral Coinfection in
509 the Upper Respiratory Tract. *mSphere* **7**, e0098421 (2022).
- 510 22. Karppinen, S. *et al.* Acquisition and Transmission of *Streptococcus*
511 *pneumoniae* Are Facilitated during Rhinovirus Infection in Families with Children. *Am*
512 *J Respir Crit Care Med* **196**, 1172-1180 (2017).
- 513 23. Peterson, I. *et al.* Respiratory Virus–Associated Severe Acute Respiratory Illness
514 and Viral Clustering in Malawian Children in a Setting With a High Prevalence of HIV

- 515 Infection, Malaria, and Malnutrition. *Journal of Infectious Diseases* **214**, 1700-1711
516 (2016).
- 517 24. Zawłocka, E., Czajkowska, M., Wrotek, A. & Jackowska, T. P388 RSV and
518 influenza co-infections in children in three consecutive influenza epidemic seasons.
519 *Archives of Disease in Childhood* **104**, A311 (2019).
- 520 25. Jochems, S.P. *et al.* Inflammation induced by influenza virus impairs human
521 innate immune control of pneumococcus. *Nat Immunol* **19**, 1299-1308 (2018).
- 522 26. Murakami, D. *et al.* Exposure to Cigarette Smoke Enhances Pneumococcal
523 Transmission Among Littermates in an Infant Mouse Model. *Front Cell Infect*
524 *Microbiol* **11**, 651495 (2021).
- 525 27. Connor, V. *et al.* Hands are vehicles for transmission of Streptococcus
526 pneumoniae in novel controlled human infection study. *European Respiratory Journal*
527 **52**, 1800599 (2018).
- 528 28. Smith-Vaughan, H., Crichton, F., Beissbarth, J., Morris, P.S. & Leach, A.J.
529 Survival of pneumococcus on hands and fomites. *BMC Research Notes* **1**, 112 (2008).
- 530 29. Wolter, N. *et al.* High Nasopharyngeal Pneumococcal Density, Increased by
531 Viral Coinfection, Is Associated With Invasive Pneumococcal Pneumonia. *The Journal*
532 *of Infectious Diseases* **210**, 1649-1657 (2014).
- 533 30. Carr, O.J.J. *et al.* Nasopharyngeal Pneumococcal Colonization Density Is
534 Associated With Severe Pneumonia in Young Children in the Lao People's
535 Democratic Republic. *The Journal of Infectious Diseases* **225**, 1266-1273 (2021).
- 536 31. Zangari, T., Ortigoza, M.B., Lokken-Toyli, K.L. & Weiser, J.N. Type I Interferon
537 Signaling Is a Common Factor Driving Streptococcus pneumoniae and Influenza A
538 Virus Shedding and Transmission. *mBio* **12** (2021).
- 539 32. Zafar, M.A. *et al.* Identification of Pneumococcal Factors Affecting
540 Pneumococcal Shedding Shows that the *dlt* Locus Promotes Inflammation and
541 Transmission. *mBio* **10** (2019).
- 542 33. Zafar, M.A., Wang, Y., Hamaguchi, S. & Weiser, J.N. Host-to-Host Transmission
543 of Streptococcus pneumoniae Is Driven by Its Inflammatory Toxin, Pneumolysin. *Cell*
544 *Host Microbe* **21**, 73-83 (2017).
- 545 34. Ekstedt, S., Larsson, O., Kumlien Georén, S. & Cardell, L.O. CD16(high)
546 CD62L(dim) neutrophils induce nerve-mediated airway hyperreactivity. *Clin Exp*
547 *Allergy* **50**, 756-759 (2020).
- 548 35. Ivetic, A., Hoskins Green, H.L. & Hart, S.J. L-selectin: A Major Regulator of
549 Leukocyte Adhesion, Migration and Signaling. *Front Immunol* **10**, 1068 (2019).
- 550 36. Hodges, R.G. & Macleod, C.M. Epidemic Pneumococcal Pneumonia. II. The
551 Influence of Population Characteristics and Environment. *American journal of hygiene*
552 **44**, 193-206 (1946).
- 553 37. Hohwy, J., Reinholdt, J. & Kilian, M. Population dynamics of Streptococcus
554 mitis in its natural habitat. *Infection and immunity* **69**, 6055-6063 (2001).
- 555 38. Jensen, A., Valdórrson, O., Frimodt-Møller, N., Hollingshead, S. & Kilian, M.
556 Commensal streptococci serve as a reservoir for β -lactam resistance genes in

- 557 Streptococcus pneumoniae. *Antimicrobial agents and chemotherapy* **59**, 3529-3540
558 (2015).
- 559 39. Ready, D., Bedi, R., Spratt, D., Mullany, P. & Wilson, M. Prevalence, proportions,
560 and identities of antibiotic-resistant bacteria in the oral microflora of healthy
561 children. *Microbial Drug Resistance* **9**, 367-372 (2003).
- 562 40. Kalizang'oma, A. *et al.* Streptococcus pneumoniae serotypes that frequently
563 colonise the human nasopharynx are common recipients of penicillin-binding protein
564 gene fragments from Streptococcus mitis. *Microb Genom* **7** (2021).
- 565 41. Jensen, A., Valdórsson, O., Frimodt-Møller, N., Hollingshead, S. & Kilian, M.
566 Commensal streptococci serve as a reservoir for β -lactam resistance genes in
567 Streptococcus pneumoniae. *Antimicrob Agents Chemother* **59**, 3529-3540 (2015).
- 568 42. Sauerbier, J., Maurer, P., Rieger, M. & Hakenbeck, R. Streptococcus
569 pneumoniae R6 interspecies transformation: genetic analysis of penicillin resistance
570 determinants and genome-wide recombination events. *Mol Microbiol* **86**, 692-706
571 (2012).
- 572 43. Tonkin-Hill, G. *et al.* Pneumococcal within-host diversity during colonization,
573 transmission and treatment. *Nature Microbiology* (2022).
- 574 44. Pemba, L. *et al.* Impact of cotrimoxazole on non-susceptibility to antibiotics in
575 Streptococcus pneumoniae carriage isolates among HIV-infected mineworkers in
576 South Africa. *Journal of Infection* **56**, 171-178 (2008).
- 577 45. Seid, M. *et al.* Does cotrimoxazole prophylaxis in HIV patients increase the
578 drug resistance of pneumococci? A comparative cross-sectional study in southern
579 Ethiopia. *PLOS ONE* **15**, e0243054 (2020).
- 580 46. Liñares, J., Perez, J., Garau, J., Murgui, L. & Martin, R. Comparative
581 susceptibilities of penicillin-resistant pneumococci to co-trimoxazole, vancomycin,
582 rifampicin and fourteen β -lactam antibiotics. *Journal of Antimicrobial Chemotherapy*
583 **13**, 353-359 (1984).
- 584 47. Monteith, A.J., Miller, J.M., Maxwell, C.N., Chazin, W.J. & Skaar, E.P. Neutrophil
585 extracellular traps enhance macrophage killing of bacterial pathogens. *Sci Adv* **7**,
586 eabj2101 (2021).
- 587 48. Nikolaou, E. *et al.* Experimental Human Challenge Defines Distinct
588 Pneumococcal Kinetic Profiles and Mucosal Responses between Colonized and Non-
589 Colonized Adults. *mBio* **12** (2021).
- 590 49. Dong, Y. *et al.* TLR4 regulates ROS and autophagy to control neutrophil
591 extracellular traps formation against Streptococcus pneumoniae in acute otitis media.
592 *Pediatr Res* **89**, 785-794 (2021).
- 593 50. Weiser, J.N., Ferreira, D.M. & Paton, J.C. Streptococcus pneumoniae:
594 transmission, colonization and invasion. *Nature Reviews Microbiology* **16**, 355-367
595 (2018).
- 596 51. Sakatani, H. *et al.* A Novel Pneumococcal Surface Protein K of
597 Nonencapsulated Streptococcus pneumoniae Promotes Transmission among
598 Littermates in an Infant Mouse Model with Influenza A Virus Coinfection. *Infect*
599 *Immun* **90**, e0062221 (2022).

- 600 52. Siegel, S.J., Roche, A.M. & Weiser, J.N. Influenza promotes pneumococcal
601 growth during coinfection by providing host sialylated substrates as a nutrient
602 source. *Cell Host Microbe* **16**, 55-67 (2014).
- 603 53. Hammond, A.J. *et al.* Neuraminidase B controls neuraminidase A-dependent
604 mucus production and evasion. *PLoS Pathog* **17**, e1009158 (2021).
- 605 54. Wu, M. *et al.* Epithelium-derived IL17A Promotes Cigarette Smoke-induced
606 Inflammation and Mucus Hyperproduction. *Am J Respir Cell Mol Biol* **65**, 581-592
607 (2021).
- 608 55. Sender, V., Hentrich, K. & Henriques-Normark, B. Virus-Induced Changes of
609 the Respiratory Tract Environment Promote Secondary Infections With *Streptococcus*
610 *pneumoniae*. *Front Cell Infect Microbiol* **11**, 643326 (2021).
- 611 56. Jambo, K.C. *et al.* Bronchoalveolar CD4+ T cell responses to respiratory
612 antigens are impaired in HIV-infected adults. *Thorax* **66**, 375-382 (2011).
- 613 57. Ministry of Health and Population , M. Malawi Clinical HIV Guidelines. In:
614 Ministry of Health and Population , M., editor.; 2018.
- 615 58. French, N. *et al.* A trial of a 7-valent pneumococcal conjugate vaccine in HIV-
616 infected adults. *N Engl J Med* **362**, 812-822 (2010).
- 617 59. Satzke, C. *et al.* Standard method for detecting upper respiratory carriage of
618 *Streptococcus pneumoniae*: Updated recommendations from the World Health
619 Organization Pneumococcal Carriage Working Group. *Vaccine* **32**, 165-179 (2013).
- 620 60. Ministry of Health, M. Clinical management of HIV in Children and Adults;
621 2011.
- 622 61. Al-Taie, A. *et al.* 3-D printed polyvinyl alcohol matrix for detection of airborne
623 pathogens in respiratory bacterial infections. *Microbiological research* **241**, 126587
624 (2020).
- 625 62. Williams, C.M. *et al.* Exhaled SARS-CoV-2 quantified by face-mask sampling in
626 hospitalised patients with COVID-19. *Journal of Infection* **82**, 253-259 (2021).
- 627 63. Hu, B. Recent advances in facemask devices for in vivo sampling of human
628 exhaled breath aerosols and inhalable environmental exposures. *TrAC Trends in*
629 *Analytical Chemistry*, 116600 (2022).
- 630 64. Jochems, S.P. *et al.* Novel analysis of immune cells from nasal microbiopsy
631 demonstrates reliable, reproducible data for immune populations, and superior
632 cytokine detection compared to nasal wash. *PloS one* **12**, e0169805 (2017).
- 633 65. Miles, A.A., Misra, S.S. & Irwin, J.O. The estimation of the bactericidal power of
634 the blood. *Epidemiology and Infection* **38**, 732-749 (1938).
- 635 66. Testing, T.E.C.o.A.S. Breakpoint tables for interpretation of MICs and zone
636 diameters; 2022.
- 637 67. Roukens, A.H.E. *et al.* Prolonged activation of nasal immune cell populations
638 and development of tissue-resident SARS-CoV-2-specific CD8+ T cell responses
639 following COVID-19. *Nature Immunology* **23**, 23-32 (2022).
- 640 68. Morton, B. *et al.* Distinct clinical and immunological profiles of patients with
641 evidence of SARS-CoV-2 infection in sub-Saharan Africa. *Nat Commun* **12**, 3554
642 (2021).

643 69. Larmarange, D.D.S.a.K.W.a.M.C.a.J.A.L.a.J. Reproducible Summary Tables with
644 the gtsurvey Package. *The R Journal* **13**, 570-580 (2021).

645

646

647 **Acknowledgements**

648 The authors thank all study participants, and the staff of the Queen Elizabeth Central
649 Hospital (QECH) Lighthouse and Gateway Clinic, for their support and co-operation
650 during the study. This work was supported by the National Institute for Health
651 Research (NIHR) [16/136/46]. KCJ is supported by an MRC African Research Leader
652 award [MR/T008822/1]. RSH is a NIHR senior investigator. The views expressed in this
653 publication are those of the authors and not necessarily those of the NIHR or the UK
654 government. A Wellcome Strategic award number 206545/Z/17/Z supports MLW.
655 The funders were not involved in the design of the study; in the collection, analysis,
656 and interpretation of the data; and in writing the manuscript. The findings and
657 conclusions in this report are those of the authors and do not necessarily represent
658 the official position of the funders.

659

660 **Author contributions**

661 The author contributions were as follows: Methodology: K.C.J., R.S.H. and N.F.
662 Investigation: L.S., J.P., N.M., N.K., T.N., A.K., M.K., and G.S. Data analysis: K.C.J., L.S.,
663 and J.P. Interpretation: K.C.J., L.S., J.P., R.S.H., B.K.A, T.D.S., and N.F. Data curation: L.S.
664 and J.P. Project administration: N.M., N.K. and K.C.J. Sample collection: A.K., M.K., and
665 G.S. Writing: L.S., J.P., and K.C.J. Conceptualisation and supervision: K.C.J., R.S.H., B.K.A,
666 and N.F. All authors read and approved the final manuscript.

667

668 *Corresponding author*

669 Correspondence to Kondwani C. Jambo

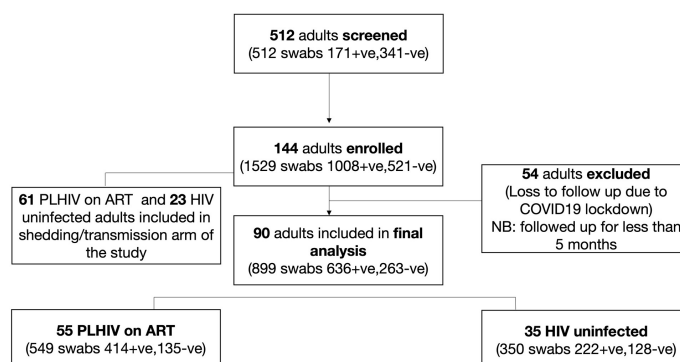
670

671 **Competing interests**

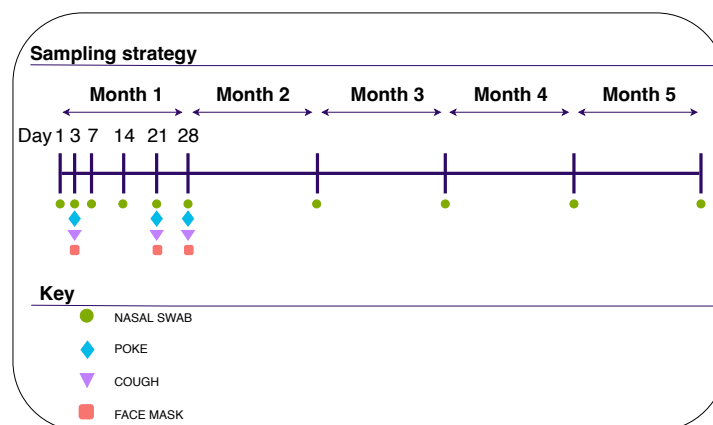
672 The authors declare no competing interests

673 **Figures**

A.

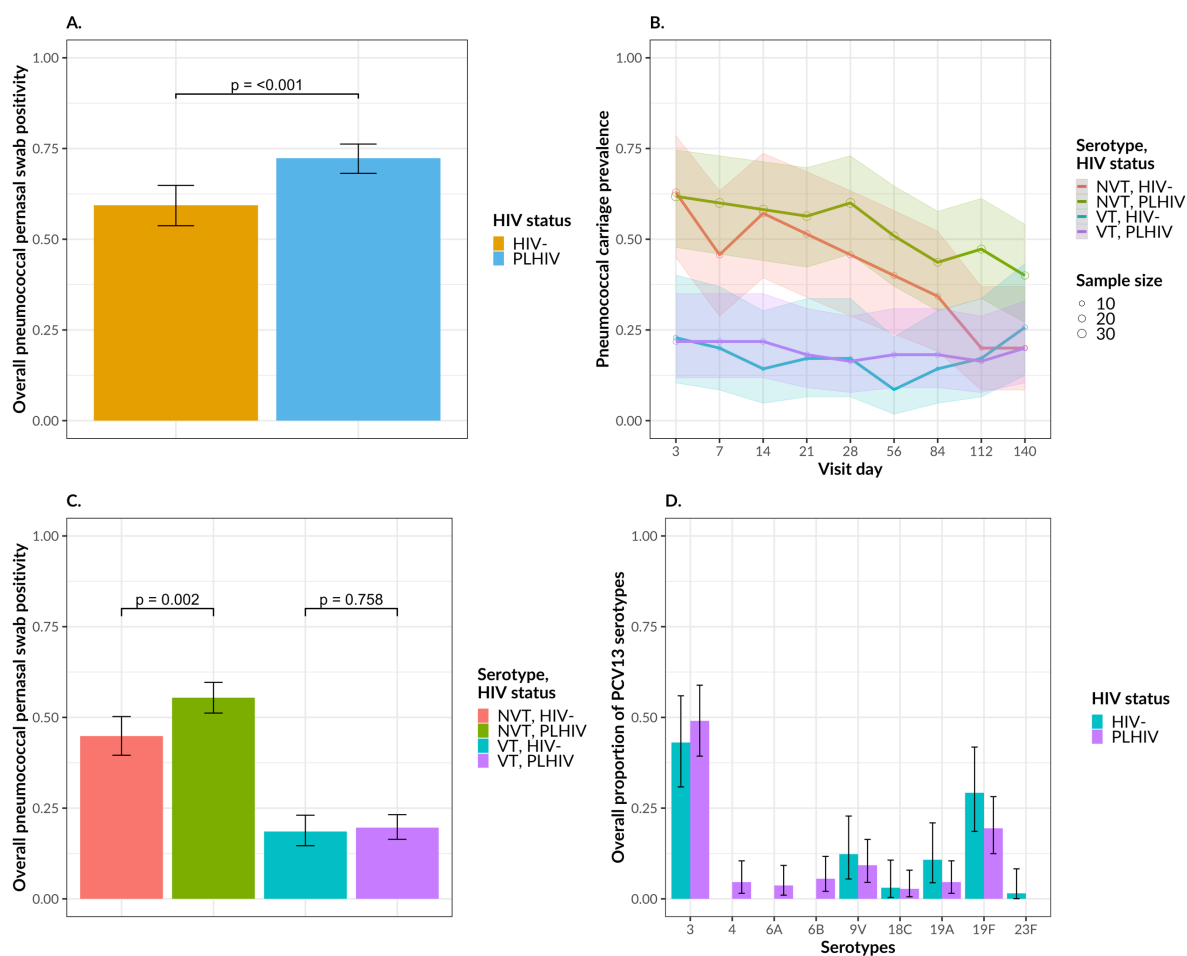


B.



674
675
676
677
678
679
680
681

Figure 1. Recruitment flow diagram and study design. A) Flow diagram showing the number of adults and pneumococcal samples included in the analysis among PLHIV on ART and HIV uninfected participants. B) Sampling strategy, showing longitudinal follow up of study participants and sample collection points.

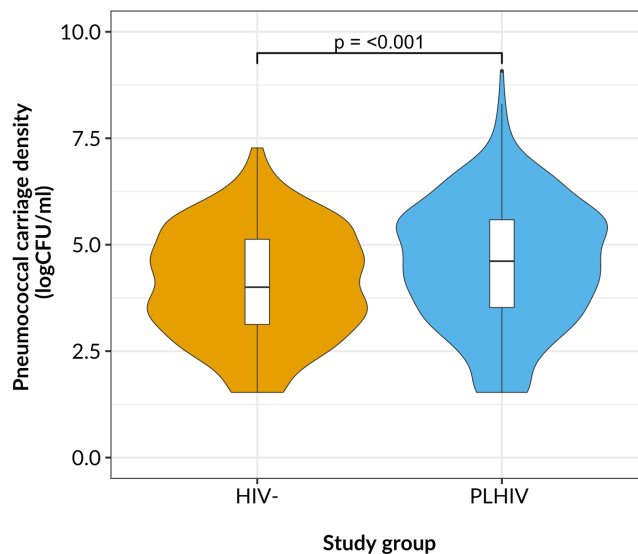


682

683 **Figure 2. Overall (VT+NVT) pneumococcal swab positivity among PLHIV and HIV-**
 684 **uninfected adults.** A) HIV-stratified pneumococcal swab positivity. B) HIV and
 685 serogroup stratified pneumococcal swab positivity by different nasopharyngeal
 686 sampling visits. C) HIV and serogroup stratified pneumococcal swab positivity. D)
 687 HIV-stratified proportion of PCV13 serotypes. The denominator for each serotype is
 688 the total PCV13 serotypes in each group. Black vertical lines represent 95%
 689 confidence intervals. Data were analysed using Chi-square test (HIV-uninfected:
 690 $n=35$, PLHIV: $n=55$). Source data are provided as a Source Data file. PCV13,
 691 pneumococcal conjugated vaccine 13; ART, antiretroviral therapy; NVT non-PCV13
 692 serotype; VT, PCV13 serotypes

693

694



695

696 **Figure 3. Pneumococcal carriage density among PLHIV and HIV-uninfected**
697 **participants.** Log median carriage density stratified by HIV status for 5 months study
698 follow-up time. For all boxplots, box boundaries correspond to 25th and 75th
699 percentiles; whiskers extend to a maximum of 1.5x the inter-quartile range, with
700 values outside the box and whiskers being outliers. Data were analysed using
701 Wilcoxon test (HIV-uninfected: n=35, PLHIV: n=55). Source data are provided as a
702 Source Data file. ART, antiretroviral therapy; CFU, colony forming units

703

704

705

706

707

708

709

710

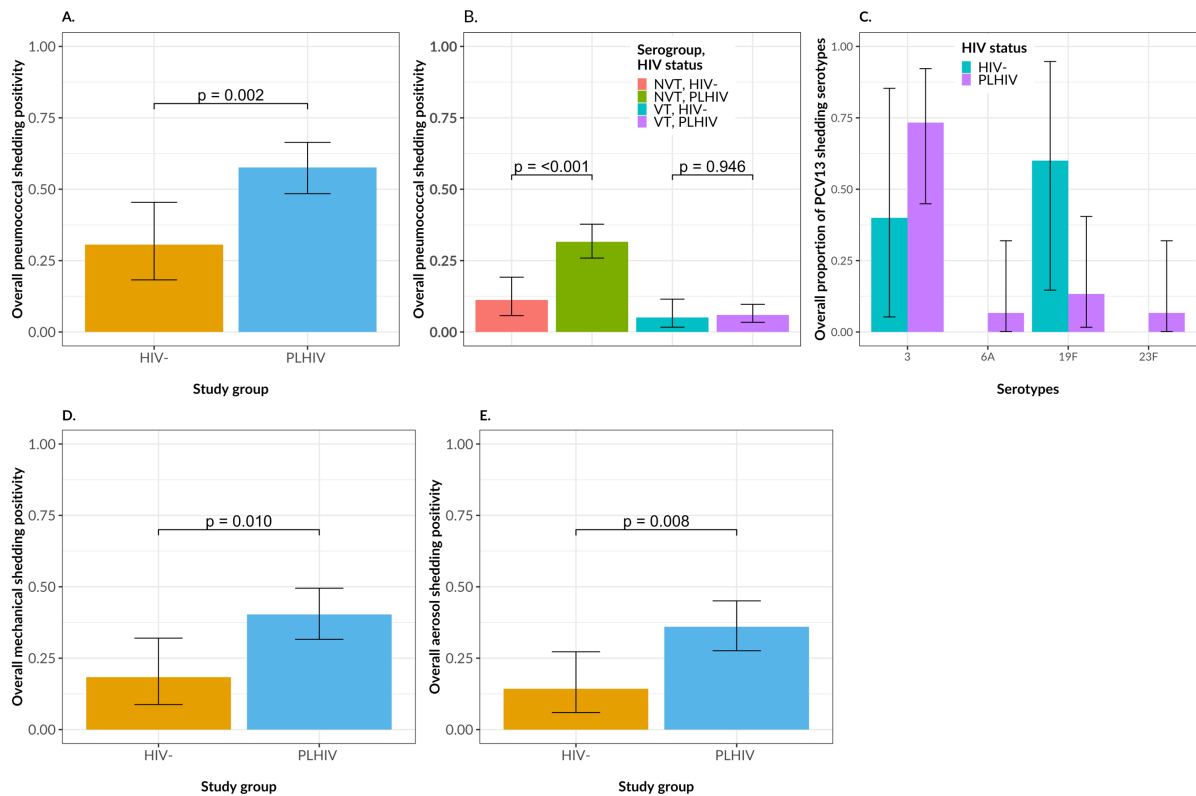
711

712

713

714

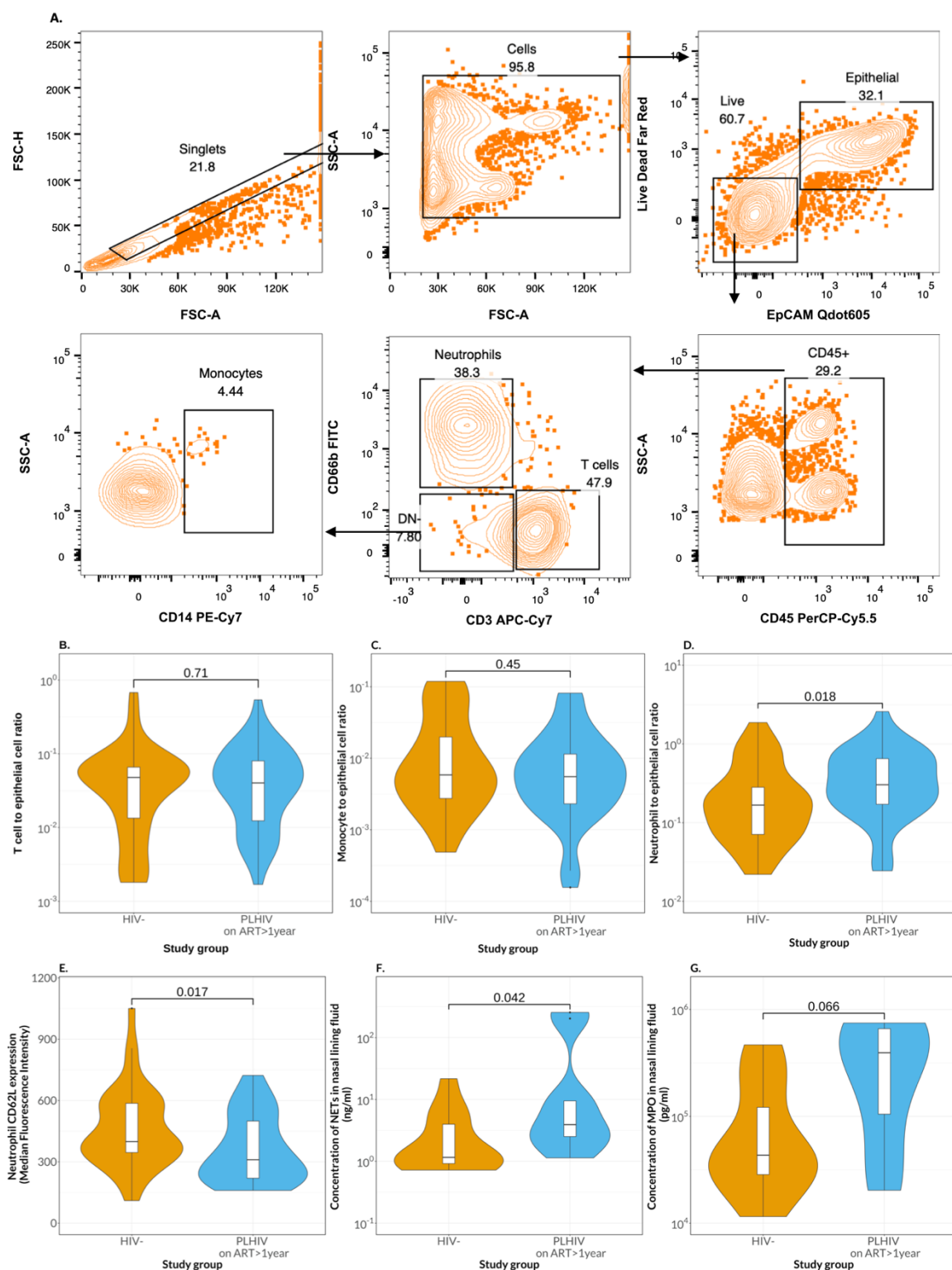
715



716
717

718 **Figure 4. Pneumococcal shedding among PLHIV and HIV-uninfected adults.**
 719 Pneumococcal shedding was defined as presence of viable pneumococci following
 720 microbiological culture of samples collected through nose poking (mechanical) and
 721 coughing or facemask sampling (aerosol). A) Overall pneumococcal shedding
 722 positivity stratified by HIV status. B). Overall pneumococcal shedding positivity
 723 stratified by HIV status and serogroup. C). Overall pneumococcal shedding positivity
 724 stratified by HIV status and PCV13 serotypes, the denominator for each serotype is
 725 the total PCV13 serotypes in each group. D). Pneumococcal mechanical shedding
 726 positivity stratified by HIV status E). Pneumococcal aerosol shedding positivity
 727 stratified by HIV status. The vertical bars represent median and horizontal lines
 728 represent confidence intervals (CI) (black lines). Data were analysed using Chi-square
 729 test (HIV-uninfected: n=23, PLHIV: n=61). Source data are provided as a Source Data
 730 file. ART, antiretroviral therapy

731
732
733
734
735
736



737

738 **Figure 5. Nasal immune responses in adults with or without HIV.** Immune cell
 739 profiling was done on nasal curette-collected mucosa cells using flow cytometry-
 740 based immunophenotyping, while concentration of NETs and MPO were measured in
 741 nasal lining fluid using ELISAs, in HIV-uninfected adults and PLHIV. Samples were
 742 collected weekly for 4 weeks in all participants. A) Representative flow cytometry plot
 743 from an HIV-uninfected participant showing a gating strategy for the identification of
 744 immune cells in the nasal mucosa. B-D) Plots showing abundance of immune cell

745 subsets at all time points in the nasal mucosa of HIV-uninfected and PLHIV. Data was
746 normalised as immune cell to epithelial cell ratio. E) Median fluorescence Intensity
747 (MFI) of CD62L expression on neutrophils between HIV-uninfected and PLHIV at all
748 time points. For all boxplots, box boundaries correspond to 25th and 75th percentiles;
749 whiskers extend to a maximum of 1.5x the inter-quartile range, with values outside
750 the box and whiskers being outliers. Data were analysed using Wilcoxon test (HIV-
751 uninfected: n=10, PLHIV: n=9). Source data are provided as a Source Data file. ART,
752 antiretroviral therapy

753

754

755

756

757

758

759

760

761

762

763

764

765

766

767

768

769

770

771

772

773

774

775

776

777 Tables

778 Table 1

Table 1. Baseline characteristics			
Characteristic	HIV-, N = 35 ¹	PLHIV, N = 55 ¹	p-value ²
Sex			0.7
Female	25 (71%)	41 (75%)	
Male	10 (29%)	14 (25%)	
Age group			0.049
18-25	12 (34%)	10 (18%)	
26-35	16 (46%)	21 (38%)	
36-45	7 (20%)	24 (44%)	
Number of U5 children per household			0.7
1	26 (74%)	45 (82%)	
2	8 (23%)	9 (16%)	
3	1 (2.9%)	1 (1.8%)	
Socioeconomic status³			0.005
Median (IQR)	6.00 (3.50, 7.50)	4.00 (2.00, 5.00)	
CD4 count (Cells/μl)			<0.001
Median (IQR)	760 (652, 927)	514 (332, 750)	
ART duration (Years)			
Median (IQR)	NA (NA, NA)	5.8 (3.4, 11.3)	
HIV viral load (Copies/ml)⁴			
Median (IQR)	NA (NA, NA)	39 (39, 18,928)	

¹ n (%)

² Pearson's Chi-squared test; Fisher's exact test; Wilcoxon rank sum test

³ Socioeconomic status score based a possession index which is calculated as a sum of positive responses for household ownership of each of the fifteen different functioning items such as watch, radio, bank account, iron (charcoal), sewing machine (electric), mobile phone, CD player, fan (electric), bednet, mattress, bed, bicycle, motorcycle, car, and television

⁴ i.e. Only 10 PLHIV on ART>1yr had a detectable Viral load

779

780

781

782

783

784

785

786

787

788

789

790

791

792 **Table 2**

Table 2. Pneumococcal density ≤ 2010 CFU/ml vs Pneumococcal density > 2010 CFU/ml

Characteristic	Univariate			Multivariable		
	OR ¹	95% CI ¹	p-value	OR ¹	95% CI ¹	p-value
HIV status						
HIV-	—	—		—	—	
PLHIV	1.55	1.04, 2.31	0.030	1.62	1.06, 2.49	0.027
Sex						
Female	—	—		—	—	
Male	0.92	0.59, 1.43	0.7	0.85	0.53, 1.36	0.5
Age group						
18-25	—	—		—	—	
26-35	0.84	0.50, 1.40	0.5	0.69	0.40, 1.20	0.2
36-45	0.94	0.56, 1.59	0.8	0.69	0.38, 1.25	0.2
Season						
Cooldry	—	—		—	—	
Hotwet	0.82	0.55, 1.23	0.3	0.78	0.52, 1.17	0.2
Socioeconomic status²						
Medium/high ses (> 3)	—	—		—	—	
Low ses (≤ 3)	1.21	0.81, 1.80	0.4	1.19	0.78, 1.83	0.4

¹ OR = Odds Ratio, CI = Confidence Interval

² Socioeconomic status score based a possession index which is calculated as a sum of positive responses for household ownership of each of the fifteen different functioning items such as watch, radio, bank account, iron (charcoal), sewing machine (electric), mobile phone, CD player, fan (electric), bednet, mattress, bed, bicycle, motorcycle, car, and television. Middle and high SES were combined

793
794
795
796
797
798
799
800
801
802
803
804
805
806
807

808 **Table 3**

Table 3. Factors associated with pneumococcal shedding						
Characteristic	Univariate			Multivariable		
	OR ¹	95% CI ¹	p-value	OR ¹	95% CI ¹	p-value
HIV status						
HIV-	—	—		—	—	
PLHIV	2.24	1.22, 4.13	0.010	2.44	1.04, 5.69	0.039
Sex						
Female	—	—		—	—	
Male	0.89	0.52, 1.52	0.7	1.24	0.61, 2.53	0.6
Age group						
18-25	—	—		—	—	
26-35	1.85	0.90, 3.80	0.093	1.62	0.64, 4.13	0.3
36-45	2.13	1.01, 4.46	0.046	2.01	0.76, 5.34	0.2
Nasalswab carriage density (CFU/ml)						
Low density <=2010	—	—		—	—	
Medium/High density >2010	3.42	1.75, 6.67	<0.001	3.37	1.56, 7.29	0.002
Season						
Cold/dry	—	—		—	—	
Hot/wet	1.42	0.83, 2.43	0.2	1.18	0.58, 2.39	0.6
Socioeconomic status²						
Medium/high ses (> 3)	—	—		—	—	
Low ses (<= 3)	0.59	0.34, 1.00	0.052	0.64	0.31, 1.31	0.2

¹ OR = Odds Ratio, CI = Confidence Interval

² Socioeconomic status score based a possession index which is calculated as a sum of positive responses for household ownership of each of the fifteen different functioning items such as watch, radio, bank account, iron (charcoal), sewing machine (electric), mobile phone, CD player, fan (electric), bednet, mattress, bed, bicycle, motorcycle, car, and television. Middle and high SES were combined

809

810 * Pneumococcal shedding was defined as presence of viable pneumococci following microbiological
 811 culture of samples collected through nose poking (mechanical) and coughing or facemask sampling
 812 (aerosol).

813

814

815

816

817

818

819

820

821

822

823

824

825

826 Table 4

Table 4. Baseline pneumococcal carriage isolates antibiogram

Characteristic	HIV-, N = 35 ¹	PLHIV, N = 57 ¹	p-value ²
Cotrimoxazole			0.002
Susceptible	8 (24%)	1 (2.0%)	
non-susceptible	26 (76%)	50 (98%)	
Oxacillin			0.5
Susceptible	15 (43%)	26 (51%)	
non-susceptible	20 (57%)	25 (49%)	
Tetracycline			0.2
Susceptible	16 (47%)	32 (63%)	
non-susceptible	18 (53%)	19 (37%)	
Erythromycin			0.058
Susceptible	21 (62%)	41 (80%)	
non-susceptible	13 (38%)	10 (20%)	
MDR³			0.5
non MDR	26 (76%)	42 (82%)	
MDR ³	8 (24%)	9 (18%)	

¹ n (%)
² Fisher's exact test; Pearson's Chi-squared test
³ i.e. Oxacillin is excluded from MDR definition

827
828
829
830
831
832
833
834
835
836
837
838
839
840
841
842
843

844 Table 5

Table 5. Pneumococcal shedding isolates antibiogram among PLHIV

Characteristic	Aerosol shedding vs Nasopharyngeal carriage			Mechanical shedding vs Nasopharyngeal carriage		
	Aerosol shedding, N = 44 ¹	Nasopharyngeal carriage, N = 44 ¹	p-value ²	Mechanical shedding, N = 50 ¹	Nasopharyngeal carriage, N = 50 ¹	p-value
Tetracycline	27 (61%)	11 (26%)	<0.001	16 (32%)	15 (30%)	0.8
Erythromycin	19 (43%)	12 (28%)	0.14	14 (28%)	16 (32%)	0.7
Cotrimoxazole	41 (93%)	41 (95%)	>0.9	47 (94%)	46 (92%)	>0.9
Benzylpenicillin³	27 (61%)	14 (32%)	0.010	19 (38%)	14 (28%)	0.4
MDR	28 (64%)	13 (30%)	0.001	15 (30%)	15 (30%)	>0.9

¹ n (%)
² Pearson's Chi-squared test; Fisher's exact test
³ i.e. Minimum inhibitory concentration

845
846
847
848
849
850
851
852
853
854
855
856
857
858
859
860
861