

1 **Title:** Low back pain care pathways – is the last provider seen more important than the first: A
2 retrospective cohort study

3

4 **Authors:**

5 David Elton, DC, Optum Labs, Eden Prairie, Minnesota USA

6 Meng Zhang, PhD, Optum Labs, Eden Prairie, Minnesota USA

7

8 **Corresponding author:**

9 David Elton

10 Optum Labs

11 11000 Optum Circle, Eden Prairie, MN 55343

12 Phone: (952) 562-1349

13 david.elton@optum.com

14 **Declarations**

15 **Ethics approval and consent to participate**

16 Because the data was de-identified or a Limited Data Set in compliance with the Health Insurance
17 Portability and Accountability Act and customer requirements, the UnitedHealth Group Office of Human
18 Research Affairs determined that this study was exempt from Institutional Review Board review.

19 **Consent for publication**

20 Not applicable

21 **Availability of data and materials**

22 The data are proprietary and are not available for public use but, under certain conditions, may be made
23 available to editors and their approved auditors under a data-use agreement to confirm the findings of
24 the current study.

25 **Competing interests**

26 At the time of manuscript submission **DE and MZ** are UnitedHealth Group employees and UNH
27 stockholders. No other potential conflicts of interest or competing interests exist.

28 **Funding**

29 None

30 **Authors' contributions**

31 Study conception and design; **DE**. Data acquisition; **DE, MZ**. Data analysis and interpretation; **DE, MZ**.
32 Draft or substantially revise manuscript; **DE, MZ**.

33 **Acknowledgements**

34

35 **Abstract**

36 **Background:** The associations between the type of health care provider (HCP) initially contacted by an
37 individual with low back pain (LBP), guideline concordance, and cost of care are well understood. Less is
38 known about types of HCP that become involved after the initial HCP, particularly the last HCP. The
39 purpose of this retrospective cohort study was to examine sequence patterns in the types of HCP
40 involved in an episode of LBP, exposure to 13 types of services, and total cost.

41 **Methods:** A US national sample of commercially insured individuals with a single episode of non-surgical
42 LBP occurring in 2017-2019 was analyzed using episode of care unit of analysis. The primary
43 independent variable was the type of initial contact HCP. Dependent measures included types of
44 subsequent HCPs involved in an episode of LBP, rate of use of 13 types of health care services, and total
45 cost.

46 **Results:** 503,958 individuals aged 18 years and older initially contacted 196,522 different HCPs for an
47 episode of non-surgical LBP. 30.2% of individuals saw a second HCP, 11.8% a third, 5.2% a fourth and
48 2.5% a fifth. Compared to primary care providers (PCP) (71.0% of episodes), when chiropractors (DC)
49 were the initial contact HCP they were the most likely to be the only and last HCP seen (84.0% of
50 episodes) (risk ratio 1.18, 95% confidence interval 1.18-1.19). DCs were also the most likely to be the last
51 HCP seen when the second HCP in an episode (72.7%) (1.10, 1.09-1.12), the third HCP (67.7%) (1.10,
52 1.08-1.13), or the fourth HCP (61.6%) (1.13, 1.08-1.17). Physical therapists (PT), while less likely than
53 PCPs to be the only and last HCP seen (60.0%) (0.84, 0.83-0.86), were more likely than PCPs to be the
54 last HCP when the second (70.9%) (1.08, 1.06-1.09), third (63.2%) (1.03, 1.00-1.06), or fourth HCP
55 (60.7%) (1.11, 1.06-1.16) seen during an episode. PTs were the only type of HCP involved in more
56 episodes as the second HCP (7,344) than as the initial HCP (5,114).

57 **Conclusions:** DCs are the most likely to be the last HCP seen for an episode of non-surgical LBP. PTs are
58 as likely as DCs to be the last HCP seen except when initially contacted by an individual with LBP. There
59 are numerous potential confounders and limitations to consider when interpreting this novel finding.

60

61 **Keywords:** Low back pain; pathway; guideline; initial contact; first provider; last provider; utilization;

62 cost; value

63 **Background**

64

65 Low back pain (LBP) clinical practice guidelines (CPG) recommended a stepped approach to
66 management with an emphasis on non-pharmaceutical and non-interventional first-line approaches for
67 most LBP.^{1,2} The type of health care provider (HCP) initially contacted by an individual with LBP, and
68 associated subsequent service use and CPG concordance, is the subject of a growing body of research.³⁻

69 ⁸ A high proportion of individuals with LBP initially seek treatment from primary care providers (PCP) and
70 physician specialists with management emphasizing second- and third-line approaches.³ Non-prescribing
71 HCPs, like chiropractors (DC), physical therapists (PT), or licensed acupuncturists (LAc) are more likely to
72 have episodes associated with an emphasis on first-line therapies, with less use of second- and third-line
73 services.^{3,6} A variety of confounders impact the interpretation and translation of findings associated with
74 the type of HCP initially contacted by an individual with LBP.^{4,6,7}

75

76 Relatively little is known about longitudinal patterns of all types of HCPs involved in an episode of LBP
77 and association with guideline concordance and total cost. Research into the sequence of types of HCPs
78 involved in an episode of LBP has tended to focus on service use rather than types of HCPs involved, and
79 has often focused on a single type of initial contact HCP such as PCP^{9,10}, physiatry¹¹, emergency
80 medicine (EM)^{12,13}, and PT.^{5,8,14} These studies identified variation in approaches to LBP, yet have not
81 provide comprehensive insights into patterns of HCP involvement in LBP. A PubMed.gov search for key
82 terms “last provider seen” and “back pain” returned no results.

83

84 The aim of this study was to examine patterns in the types of HCP involved in a single episode of non-
85 surgical LBP and associated total episodic use of 13 types of health care services and total cost, with a
86 specific focus on the type of HCP seen last. The hypothesis was types of HCP emphasizing CPG

87 concordant first-line approaches, like DCs, PTs, LAcS, and doctors of osteopathy (DO), would be
88 commonly seen as the last HCP during an episode of LBP even if becoming involved later in an episode.

89

90 **Methods**

91

92 *Study design, population, setting and data sources*

93

94 This is a retrospective cohort study of individuals with a single episode of non-surgical LBP during the
95 2017-2019 study period. An analytic database was created which included de-identified enrollment
96 records, administrative claims data for all inpatient and outpatient services, and pharmacy prescriptions,
97 for commercially insured enrollees from a single national commercial insurer. De-identified HCP
98 demographic information and professional licensure status was included in an HCP database. ZIP code
99 level population race and ethnicity data was extracted from the US Census Bureau ¹⁵, socioeconomic
100 status (SES) Area Deprivation Index (ADI) data, from the University of Wisconsin Neighborhood Atlas ¹⁶,
101 and household adjusted gross income (AGI) from the Internal Revenue Service.¹⁷

102

103 A review was performed to assess compliance with de-identification requirements and as it was
104 determined the data was de-identified or a Limited Data Set in compliance with the Health Insurance
105 Portability and Accountability Act and customer requirements, the UnitedHealth Group Office of Human
106 Research Affairs determined that this study was exempt from Institutional Review Board review. The
107 study was conducted and reported based on the Strengthening the Reporting of Observational Studies
108 in Epidemiology (STROBE) guidelines.¹⁸ [Supplement 1 – STROBE Checklist]

109

110 The analysis does not include an adjustment for typical confounders such as individual age, sex and co-
111 morbidities^{19,20} using common yet potentially inadequate approaches such as propensity score
112 matching²¹ due to the inability to control for important considerations of individuals with LBP initially
113 contacting different types of HCP, and subsequent HCPs involved in an episode. Examples of
114 considerations not available include: HCP options convenient to an individual's home, workplace or daily
115 travel routes including public transportation if used, individual preference for specific services or type of
116 HCP including gender or racial concordance, recommendations from family or friends and influence of
117 HCP marketing efforts, perceived LBP severity, anticipated potential out of pocket costs and willingness
118 to pay for services, time availability to participate in multiple visits, and appointment availability within
119 an individual's timing expectations meeting these and other criteria.²² As an alternative to blurring the
120 line between association and causality through a process that simultaneously introduces distortion and
121 complexity into results, actual measures of individual demographic and episodic characteristics, and
122 unadjusted associations, are reported for each type of HCP seen initially, or subsequently, during an
123 episode of LBP.

124
125 To partially address potential confounders, sub analyses were performed for episodes where an
126 individual initially contacted a PCP, orthopedic surgeon (OS), or EM physician. To examine the influence
127 of population factors on results, the flow of episodes between types of HCP, and the of % of episodes
128 where each type of HCP was the last HCP seen were calculated for individuals living in zip codes with 75-
129 100 ADI and 0-25% non-Hispanic white (NHW) population, 50-75 ADI and 50-75% NHW population, and
130 0-25 ADI and 75-100% NWH population.

131
132 *Cohort selection and unit of analysis*

133

134 The cohort included individuals aged 18 years and older with a single complete episode of non-surgical
135 LBP commencing and ending during the calendar years 2017-2019. This timeframe was selected to
136 follow the release of the American College of Physicians (ACP) LBP CPG ² in 2017 and before the
137 influence of the COVID-19 epidemic on care patterns in early 2020. All individuals had continuous
138 medical and pharmacy commercial insurance coverage during the entire study period.

139
140 Episode of care was selected as the unit of analysis. This approach has been shown to be a valid way to
141 organize all administrative claims data associated with a condition.²³ The *Symmetry*[®] *Episode Treatment*
142 *Groups*[®] (*ETG*[®]) and *Episode Risk Groups*[®] (*ERG*[®]) version 9.5 methodologies and definitions were used to
143 translate administrative claims data into episodes of care, which have been reported as a valid
144 measurement for comparison of HCPs based on cost of care.²⁴ A previous analysis of the same
145 underlying data indicates a low risk of misclassification bias associated with using episode of care as the
146 unit of analysis.³ Using episode of care unit of measurement has potential translational benefits in
147 supporting the transition from fee for service to value-based episodic bundled payment arrangements,
148 something particularly relevant when examining episodes with multiple HCPs involved.

149
150 The analysis included complete episodes defined as having at least 91-day pre- and 61-day post-episode
151 clean periods during which no services were provided by any HCP for any LBP diagnosis. LBP episodes
152 including a surgical procedure, or associated with diagnoses of malignant and non-malignant neoplasms,
153 fractures and other spinal trauma, infection, congenital deformities and scoliosis, autoimmune
154 disorders, osteoporosis, and advanced arthritis were excluded from the analysis. Individuals with
155 multiple LBP episodes during the study period were also excluded. These exclusions were made to
156 address a potential study limitation of individuals with more complex conditions confounding study

157 results examining the type of HCP initially contacted, and subsequent types of HCP seen during an
158 episode of LBP.

159

160 *Variables*

161

162 Data preprocessing, table generation, and initial analyses were performed using Python (*Python*
163 *Language Reference, Version 3.7.5.*, n.d.). To evaluate whether measures were derived from a normally
164 distributed sample we conducted a goodness-of-fit measure using D'Agostino's K-squared test. Non-
165 normally distributed data are reported using the median and interquartile range (IQR). Odds (OR) and
166 risk (RR) ratios, and associated 95% confidence intervals (CI), were calculated for select measures. RR
167 were reported as this is the measure more widely understood in associational analyses and due to the
168 tendency for ORs to exaggerate risk in situations where an outcome is relatively common.²⁵

169

170 The primary independent variable was 17 types of HCP initially contacted by an individual experiencing a
171 single episode of non-surgical LBP during the study period. All types of HCP could be accessed directly
172 without a referral. The primary dependent variables were types of HCP involved after the initial HCP, the
173 number of days into an episode when subsequent HCP types were involved, the rate of use of 13 types
174 of health care services and total cost. Service utilization reflects services provided by any type of HCP an
175 individual saw during the complete episode of LBP. Total cost included costs associated with all services
176 provided for LBP during an episode, including those not specifically identified in the 13 categories used
177 in the analyses. Costs for services for which an insurance claim was not submitted were not available.

178

179 With 97.5% of episodes involving five or fewer HCPs, the analyses focused on the first five types of HCP
180 seen during an episode. This resulted in 1,419,925 possible HCP sequence combinations. [Figure 1] Rate

181 (%) and timing (days), median and IQR, and RR and 95% CI results for cohort demographics, HCP
182 involvement, episodic service use, and total cost were calculated for all HCP sequence combinations.
183 Total episode cost and percent of episodes including an MRI or prescription opioid were calculated for
184 episodes where a PCP, DC, PT or OS was the last HCP seen.

185

186 **Results**

187

188 The cohort consisted of 503,958 individuals, associated with 503,958 complete non-surgical LBP
189 episodes for which 196,522 different HCPs were initially contacted. There were \$387,867,096 in
190 reimbursed health care expenditures. The median pre- (646 days) and post-episode (405 days) clean
191 periods were substantially longer than the *ETG*[®] clean period definitions. Primary care physicians (PCP)
192 (35.2% of episodes), DCs (25.9%), nurse practitioners (7.5%), radiologists (6.0%) and OSs (5.5%) were
193 the most common types of HCP initially contacted. [Supplement 1] [Supplement 2] There were
194 potentially meaningful differences in individual and population factors between types of HCP seen at
195 different points in an episode. [Supplement 3]

196

197 30.2% of episodes involved 2 HCPs, 11.8% involved 3 HCPs, 5.2% involved 4 HCPs and 2.5% of episodes
198 involved 5 HCPs. All types of HCP were involved in progressively fewer episodes when moving from
199 initial to second, third, fourth or fifth HCP, except PTs who participated in more episodes as a second
200 HCP (7,344) than as an initial HCP (5,114). [Table 1]

201

202 When initially contacted by individuals with LBP, and compared to the PCP reference (71.0%), DCs
203 (84.0%, risk ratio 1.18, 95% confidence interval 1.18-1.19), LAcS (81.7%, 1.15, 1.13-1.17) and DOs
204 (80.2%, 1.13, 1.08, 1.18) were most likely to be the last and only HCP seen during an episode. [Table 2]

205 [Figure 2] When seen as a second, third or fourth HCP during an episode, DCs and PTs were the only
206 HCPs more likely than a PCP to be the last HCP seen. Neurosurgeons and radiologists were the least
207 likely to be the last HCP seen. Sub analyses of the 75-100 ADI 0-25% NHW, 50-75 50-75% NHW, and 0-25
208 ADI 75-100% NHW segments revealed nearly identical results. [Supplement 4] When the initial HCP
209 contacted, DCs were more likely than PCPs to be the last HCP seen in each segment. LAcS were more
210 likely than PCPs to be the last HCP seen in the 75-100 ADI 0-25% NHW and 0-25 ADI 75-100% NHW
211 segments. [Figure 3] When positioned as the second HCP involved in an episode, DCs were more likely
212 than PCPs to be the last HCP seen in each segment. PTs were more likely than PCPs to be the last HCP
213 seen in the 50-75 50-75% NHW and 0-25 ADI 75-100% NHW segments. [Figure 4]

214
215 The sub-analyses of individuals initially contacting a PCP, OS, or EM had similar last HCP seen results. For
216 individuals initially contacting a PCP, and when seen as a second HCP, DCs (76.2%, risk ratio 1.15, 95%
217 confidence interval 1.13-1.18) and PTs (76.1%, 1.15, 1.12-1.18) were the most likely to be the last only
218 HCP seen. For individuals initially contacting an OS, and when seen as a second HCP, DCs (69.5%, 1.12,
219 1.05-1.19) and PTs (71.2%, 1.14, 1.09-1.20) were the most likely to be the last only HCP seen. For
220 individuals initially contacting EM, and when seen as a second HCP DCs (76.5%, 1.12, 1.05-1.20) were
221 the most likely to be the last only HCP seen. [Figure 5] This was also the case when a DC or PT was the
222 third or fourth provider seen for individuals initially contacting a PCP. DCs and PTs were also the most
223 likely to be the last HCP seen when the second, third or fourth HCP for individuals initially contacting an
224 OS or EM. [Table 3]

225
226 Whether seen as the initial, second, third or fourth HCP, when the last HCP seen during an episode the
227 rate of MRI and opioid exposure progressively increased the later in an episode a PCP, DC, PT or OS
228 became involved. Compared to both PCPs and OSs, DCs and PTs were associated with a lower rate of

229 opioid exposure at any time during an episode. DCs were associated with a lower rate of MRI exposure
230 than PCPs, PTs, or OSs. [Figure 6] Similarly, when the last HCP seen, total episode cost progressively
231 increased later in an episode a PCP, DC, PT or OS became involved. When the last HCP seen, PCPs and
232 DCs were associated with lower median total episode cost with PTs and OSs associated with higher
233 median total episode cost. [Figure 7] [Table 4]

234

235 **Discussion**

236

237 As a novel measure with many potential confounders and in the absence of clinical outcomes data it is
238 important not to over interpret the finding that non-prescribing HCPs, particularly DCs and PTs, are most
239 likely to be the last HCP seen for an episode of LBP. When coupled with the growing body of evidence
240 demonstrating high levels of CPG concordance when these same types of HCP are initially contacted by
241 individuals with LBP, additional exploration of attributes of the last HCP seen is warranted to more
242 thoroughly understand the role these types of HCP play in managing LBP. While non-prescribing HCPs
243 are most likely to be the last HCP seen for an episode of LBP, the rate of use of second- and third-line
244 services and total episode cost increases the later non-prescribing HCPs are involved in an episode. This
245 may provide additional support for positioning non-prescribing HCPs early in an episode of LBP as a
246 strategy for improving CPG concordance and value.

247

248 This study has several limitations including its retrospective design and those associated with the use of
249 administrative databases. The cohort had continuous highly uniform commercial insurance coverage
250 and the processing of administrative claims data included extensive quality and actuarial control
251 measures, nonetheless, data errors, variability in benefit plan design, variability in enrollee cost-sharing
252 responsibility, and missing information were potential sources of confounding or bias. Although the

253 commercial insurer HCP database is under continual validation it may have included errors or missing
254 information. Summarizing total episode cost has potential limitations associated with insurance
255 coverage, nature of network participation, and alternative reimbursement models. While individuals
256 from all 50 states and most US territories were included, providing a measure of generalizability, the
257 cohort did not describe a U.S representative sample.

258
259 Another important limitation was the risk of confounding and bias associated with the limited ability to
260 control for individual preference for types of HCP seen during an episode of LBP, individual expectations,
261 or requests for specific health care services, and potentially meaningful differences in clinical complexity
262 of individuals contacting or being referred to different types of HCP. This limitation was partially
263 addressed by narrowing the study population with several exclusions. The study excluded LBP
264 associated with serious pathology, individuals with multiple episodes of LBP, and episodes involving a
265 surgical procedure. Sub analyses were conducted to provide insight into to the degree to which
266 individual and population factors may have influenced results.

267
268 While this study focused on individuals with a single episode of LBP, without the availability of clinical
269 outcomes or patient self-report data, the last HCP seen cannot be assumed to be associated with, or a
270 proxy for, resolution of LBP. Individuals may have been dissatisfied with care and discontinued all
271 treatment, may have paid for additional treatment on a self-pay basis, or elected to pursue self-
272 management. With the cohort having continuous insurance coverage during the study period and a
273 median post-episode clean period of 401 days (Q1 248, Q3 638, minimum 61) during which there was no
274 treatment of any type for LBP, it is highly unlikely that after the last HCP seen there was a worsening of
275 LBP symptoms. In future analyses, expanding the cohort to include individuals with multiple episodes of
276 LBP will be important.

277

278 The volume of data involved in exploring associations in the 1.4 million possible HCP combinations
279 presented another limitation. This will be addressed through subsequent analyses of cohort
280 characteristics and differing rates of exposure to the types of health care services.

281

282 With this study of the last HCP seen for LBP being novel, it is challenging to corroborate previous studies.

283 When involved in an episode of LBP as either the initial or subsequent HCP, the finding that DCs are
284 more likely to be the last HCP seen, and associated with the lowest total cost, of any type of HCP is

285 consistent with DCs emphasis on CPG concordant non-pharmaceutical and non-interventional services.³

286 The finding that PTs, are more frequently contacted as a second HCP than as an initial HCP is consistent
287 with PTs historically being positioned as referral recipients rather than initial contact HCPs.^{26,27} When

288 contacted as a second, third or fourth HCP PTs are as likely as a DC to be the last HCP seen which makes
289 sense given the similar emphasis on CPG recommended first-line services.³ The finding of PTs being

290 infrequently contacted as the initial HCP is consistent with a previous study³, however when contacted

291 as the initial HCP, PTs are less likely than PCPs to be the last HCP seen which indicates the potential for
292 less practice autonomy than DCs and warrants further study. A possible interpretation of these findings

293 is that DCs and PTs possess similar knowledge, skills and training to effectively resolve LBP, with DCs

294 positioned as portal of entry autonomous HCPs and PTs positioned as a referral recipient from and
295 referral source to other types of HCPs.

296

297 **Conclusions**

298

299 The last HCP seen by an individual with LBP is a novel area of investigation and further exploration is
300 warranted to understand whether this study's findings can be replicated and whether the approach

301 provides meaningful insights into the types of HCP that are most helpful in resolving LBP. Whether seen
302 initially, or later in an episode, DCs are most likely to be the last HCP seen by an individual with LBP. PTs
303 are similar, except when they are the initial HCP contacted by an individual with LBP. While DCs and PTs
304 are most likely to be the last HCP seen during an episode of LBP the later in an episode a DC or PT is seen
305 associated beneficial attributes such as opioid avoidance are lost, and total episode cost increases. This
306 adds additional support to the growing body of literature advocating for positioning these types of HCPs
307 earlier in an episode of LBP.

308 References

- 309 1. Meroni R, Piscitelli D, Ravasio C, et al. Evidence for managing chronic low back pain in primary
310 care: a review of recommendations from high-quality clinical practice guidelines. *Disabil Rehabil.* Apr
311 2021;43(7):1029-1043. doi:10.1080/09638288.2019.1645888
- 312 2. Qaseem A, Wilt TJ, McLean RM, et al. Noninvasive Treatments for Acute, Subacute, and Chronic
313 Low Back Pain: A Clinical Practice Guideline From the American College of Physicians. *Ann Intern Med.*
314 Apr 4 2017;166(7):514-530. doi:10.7326/M16-2367
- 315 3. Elton D, Kosloff TM, Zhang M, et al. Low back pain care pathways and costs: association with the
316 type of initial contact health care provider. A retrospective cohort study. *medRxiv.*
317 2022:2022.06.17.22276443. doi:10.1101/2022.06.17.22276443
- 318 4. Fritz JM, Kim J, Dorius J. Importance of the type of provider seen to begin health care for a new
319 episode low back pain: associations with future utilization and costs. *Journal of Evaluation in Clinical*
320 *Practice.* 2016;22(2):247-252. doi:<https://doi.org/10.1111/jep.12464>
- 321 5. Frogner BK, Harwood K, Andrilla CHA, Schwartz M, Pines JM. Physical Therapy as the First Point
322 of Care to Treat Low Back Pain: An Instrumental Variables Approach to Estimate Impact on Opioid
323 Prescription, Health Care Utilization, and Costs. *Health Services Research.* 2018;53(6):4629-4646.
324 doi:<https://doi.org/10.1111/1475-6773.12984>
- 325 6. Harwood KJ, Pines JM, Andrilla CHA, Frogner BK. Where to start? A two stage residual inclusion
326 approach to estimating influence of the initial provider on health care utilization and costs for low back
327 pain in the US. *BMC Health Serv Res.* May 23 2022;22(1):694. doi:10.1186/s12913-022-08092-1
- 328 7. Kazis LE, Ameli O, Rothendler J, et al. Observational retrospective study of the association of
329 initial healthcare provider for new-onset low back pain with early and long-term opioid use. *BMJ Open.*
330 Sep 20 2019;9(9):e028633. doi:10.1136/bmjopen-2018-028633
- 331 8. Liu X, Hanney WJ, Masaracchio M, et al. Immediate Physical Therapy Initiation in Patients With
332 Acute Low Back Pain Is Associated With a Reduction in Downstream Health Care Utilization and Costs.
333 *Physical Therapy.* 2018;98(5):336-347. doi:10.1093/ptj/pzy023
- 334 9. Murphy C, French H, McCarthy G, Cunningham C. Clinical pathways for the management of low
335 back pain from primary to specialised care: a systematic review. *Eur Spine J.* Jul 2022;31(7):1846-1865.
336 doi:10.1007/s00586-022-07180-4
- 337 10. Coeckelberghs E, Verbeke H, Desomer A, et al. International comparative study of low back pain
338 care pathways and analysis of key interventions. *Eur Spine J.* Apr 2021;30(4):1043-1052.
339 doi:10.1007/s00586-020-06675-2
- 340 11. Magel J, Hansen P, Meier W, et al. Implementation of an Alternative Pathway for Patients
341 Seeking Care for Low Back Pain: A Prospective Observational Cohort Study. *Phys Ther.* Dec 1
342 2018;98(12):1000-1009. doi:10.1093/ptj/pzy105
- 343 12. Magel J, Suslavich K, Roper K, Fritz J, Madsen T. Emergency department evaluation, treatment,
344 and functional outcomes among patients presenting with low back pain. *Am J Emerg Med.* Sep
345 2022;59:37-41. doi:10.1016/j.ajem.2022.06.048
- 346 13. Davidson SR, Bolsewicz K, Kamper SJ, et al. Perspectives of emergency department clinicians on
347 the challenges of addressing low back pain in the emergency setting: A qualitative study. *Emerg Med*
348 *Australas.* Apr 2022;34(2):199-208. doi:10.1111/1742-6723.13854
- 349 14. Ojha HA, Wyrsta NJ, Davenport TE, Egan WE, Gellhorn AC. Timing of Physical Therapy Initiation
350 for Nonsurgical Management of Musculoskeletal Disorders and Effects on Patient Outcomes: A
351 Systematic Review. *J Orthop Sports Phys Ther.* Feb 2016;46(2):56-70. doi:10.2519/jospt.2016.6138

- 352 15. Bureau USC. ACS Demographic and Housing Estimates. Accessed July 8, 2020.
353 <https://data.census.gov/cedsci/table?q=United%20States&g=0100000US&y=2018&tid=ACSDP1Y2018.D>
354 [P05&hidePreview=true](https://data.census.gov/cedsci/table?q=United%20States&g=0100000US&y=2018&tid=ACSDP1Y2018.D).
- 355 16. Kind AJH, Buckingham WR. Making Neighborhood-Disadvantage Metrics Accessible - The
356 Neighborhood Atlas. *N Engl J Med*. Jun 28 2018;378(26):2456-2458. doi:10.1056/NEJMp1802313
- 357 17. Service IR. US Department of Treasury SOI tax stats - individual income tax statistics - 2017 ZIP
358 code data. Accessed July 20, 2020. [https://www.irs.gov/statistics/soi-tax-stats-individual-income-tax-](https://www.irs.gov/statistics/soi-tax-stats-individual-income-tax-statistics-2017-zip-code-data-soi)
359 [statistics-2017-zip-code-data-soi](https://www.irs.gov/statistics/soi-tax-stats-individual-income-tax-statistics-2017-zip-code-data-soi).
- 360 18. von Elm E, Altman DG, Egger M, et al. The Strengthening the Reporting of Observational Studies
361 in Epidemiology (STROBE) Statement: guidelines for reporting observational studies. *Int J Surg*. Dec
362 2014;12(12):1495-9. doi:10.1016/j.ijsu.2014.07.013
- 363 19. Hernan MA. The C-Word: Scientific Euphemisms Do Not Improve Causal Inference From
364 Observational Data. *Am J Public Health*. May 2018;108(5):616-619. doi:10.2105/AJPH.2018.304337
- 365 20. Smith GD, Ebrahim S. Data dredging, bias, or confounding. *BMJ*. Dec 21 2002;325(7378):1437-8.
366 doi:10.1136/bmj.325.7378.1437
- 367 21. King G NR. Why Propensity Scores Should Not Be Used for Matching. *Political Analysis*.
368 2019;27(4):435-454. doi:10.1017/pan.2019.11
- 369 22. National Academies of Sciences E, and Medicine. *Health-Care Utilization as a Proxy in Disability*
370 *Determination*. 2 Factors That Affect Health-Care Utilization. National Academies Press 2018.
- 371 23. Peterson C, Grosse SD, Dunn A. A practical guide to episode groupers for cost-of-illness analysis
372 in health services research. *SAGE Open Med*. 2019;7:2050312119840200.
373 doi:10.1177/2050312119840200
- 374 24. Insight O. Symmetry episode treatment groups: measuring health care with meaningful episodes
375 of care. 2012.
- 376 25. Viera AJ. Odds ratios and risk ratios: what's the difference and why does it matter? *South Med J*.
377 Jul 2008;101(7):730-4. doi:10.1097/SMJ.0b013e31817a7ee4
- 378 26. Clark B, Clark L, Showalter C, Stoner T. A call to action: direct access to physical therapy is highly
379 successful in the US military. When will professional bodies, legislatures, and payors provide the same
380 advantages to all US civilian physical therapists? *J Man Manip Ther*. Aug 2022;30(4):199-206.
381 doi:10.1080/10669817.2022.2099893
- 382 27. Hon S, Ritter R, Allen DD. Cost-Effectiveness and Outcomes of Direct Access to Physical Therapy
383 for Musculoskeletal Disorders Compared to Physician-First Access in the United States: Systematic
384 Review and Meta-Analysis. *Phys Ther*. Jan 4 2021;101(1)doi:10.1093/ptj/pzaa201

385

386 **List of Abbreviations:**

387 LBP – Low back pain

388 US – United States

389 CPG – Clinical practice guideline

390 PCP – Primary care provider

391 DC – Doctor of Chiropractic

392 PT – Physical Therapist

393 LAc – Licensed acupuncturist

394 HCP – Health care provider

395 ADI – Area Deprivation Index

396 WTP – Willingness to pay

397 STROBE – Strengthening the Reporting of Observational Studies in Epidemiology

398 ETG[®] – Episode Treatment Group[®]

399 ERG[®] – Episode Risk Group[®]

400 ACP – American College of Physicians

401 RR – Risk ratio

402 OR – Odds ratio

403 CI – Confidence interval

404 CMT – Chiropractic manipulative treatment

405 AC – Active care

406 MT – Manual therapy

Table 1 - Non-surgical low back pain episode count by type of health care provider (HCP) and episode sequence position

HCP type		# of Unique HCPs					# of Episodes					% of Episodes				
		First HCP	Second HCP	Third HCP	Fourth HCP	Fifth HCP	First HCP	Second HCP	Third HCP	Fourth HCP	Fifth HCP	First HCP	Second HCP	Third HCP	Fourth HCP	Fifth HCP
Primary Care	PCP	68888	28730	11787	4889	2301	177265	40767	13766	5239	2364	35.2%	26.8%	23.2%	20.0%	18.5%
	Nurse	21226	9897	4101	1919	1049	37857	12820	4749	2108	1031	7.5%	8.4%	8.0%	8.0%	8.1%
	PA	12787	6746	2955	1373	781	25350	9418	3542	1545	718	5.0%	6.2%	6.0%	5.9%	5.6%
	DO	121	45	30	9	7	469	64	42	11	10	0.1%	0.0%	0.1%	0.0%	0.1%
Non-Prescriber	DC	21644	9953	4396	1735	739	130520	18586	5823	2011	797	25.9%	12.2%	9.8%	7.7%	6.2%
	PT	3019	4143	2769	1601	776	5114	7344	4076	2077	1135	1.0%	4.8%	6.9%	7.9%	8.9%
	LAc	1430	397	159	67	36	2634	486	175	73	30	0.5%	0.3%	0.3%	0.3%	0.2%
Specialist	OS	8590	5241	3048	1740	1120	27799	10867	4971	2362	1152	5.5%	7.1%	8.4%	9.0%	9.0%
	PMR	2966	2127	1622	1120	767	12496	5501	3236	1817	1009	2.5%	3.6%	5.5%	6.9%	7.9%
	PM	2497	1888	1561	1126	782	9013	4280	2884	1757	1031	1.8%	2.8%	4.9%	6.7%	8.1%
	NS	1373	1164	894	650	441	3058	2084	1322	817	432	0.6%	1.4%	2.2%	3.1%	3.4%
	Neuro	2352	1321	709	371	194	3917	1729	843	410	224	0.8%	1.1%	1.4%	1.6%	1.8%
	Rheum	1642	998	558	304	158	3354	1463	667	332	166	0.7%	1.0%	1.1%	1.3%	1.3%
	MD Oth	9230	5122	2332	1259	723	13877	6716	2963	1539	840	2.8%	4.4%	5.0%	5.9%	6.6%
Emergency /Urgent Care	EM	8365	3658	1313	511	301	15760	4838	1463	544	233	3.1%	3.2%	2.5%	2.1%	1.8%
	Rad	10098	8613	4763	2468	2039	30393	23828	8454	3475	1551	6.0%	15.7%	14.3%	13.3%	12.2%
	UC	1120	517	186	73	43	5082	1358	272	87	39	1.0%	0.9%	0.5%	0.3%	0.3%
Total		177348	90560	43183	21215	12257	503958	152149	59248	26204	12762	100.0%	100.0%	100.0%	100.0%	100.0%
% of Total Episodes												100.0%	30.2%	11.8%	5.2%	2.5%

PCP=primary care provider, DO=doctor of osteopathy, DC=doctor of chiropractic, PT=physical therapist, LAc=licensed acupuncturist, OS=orthopedic surgeon, PMR=physical medicine & rehabilitation, PM=pain medicine, NS=neurosurgeon, Neuro=neurologist, Rheum=rheumatologist, MD Oth = other medical physician, EM=emergency medicine, Rad=radiologist, UC=urgent care

Table 2 - % of non-surgical low back pain episodes where health care provider (HCP) type was the last HCP seen

HCP type		% where no follow-up HCP				Risk Ratio and 95% confidence interval compared to PCP			
		First No Second	Second No Third	Third No Fourth	Fourth No Fifth	First No Second	Second No Third	Third No Fourth	Fourth No Fifth
Primary Care	PCP	71.0%	65.9%	61.4%	54.7%	Reference			
	Nurse	62.1%	60.2%	53.4%	48.3%	0.87 (0.87, 0.88)	0.91 (0.90, 0.93)	0.87 (0.84, 0.90)	0.88 (0.84, 0.93)
	PA	58.8%	56.4%	51.8%	47.5%	0.83 (0.82, 0.84)	0.86 (0.84, 0.87)	0.84 (0.81, 0.87)	0.87 (0.82, 0.92)
	DO	80.2%	64.1%	66.7%	36.4%	1.13 (1.08, 1.18)	0.97 (0.81, 1.17)	1.09 (0.88, 1.35)	0.67 (0.30, 1.45)
Non-Prescriber	DC	84.0%	72.7%	67.7%	61.6%	1.18 (1.18, 1.19)	1.10 (1.09, 1.12)	1.10 (1.08, 1.13)	1.13 (1.08, 1.17)
	PT	60.0%	70.9%	63.2%	60.7%	0.84 (0.83, 0.86)	1.08 (1.06, 1.09)	1.03 (1.00, 1.06)	1.11 (1.06, 1.16)
	LAc	81.7%	62.3%	62.9%	50.7%	1.15 (1.13, 1.17)	0.95 (0.88, 1.01)	1.02 (0.91, 1.15)	0.93 (0.74, 1.16)
Specialist	OS	63.2%	56.8%	52.8%	49.8%	0.89 (0.88, 0.90)	0.86 (0.85, 0.88)	0.86 (0.83, 0.88)	0.91 (0.87, 0.95)
	PMR	64.0%	58.5%	56.5%	55.7%	0.90 (0.89, 0.91)	0.89 (0.87, 0.91)	0.92 (0.89, 0.95)	1.02 (0.97, 1.07)
	PM	61.5%	54.7%	55.3%	52.9%	0.87 (0.85, 0.88)	0.83 (0.81, 0.85)	0.90 (0.87, 0.93)	0.97 (0.92, 1.02)
	NS	51.6%	47.6%	43.9%	45.4%	0.73 (0.70, 0.75)	0.72 (0.69, 0.76)	0.71 (0.67, 0.76)	0.83 (0.77, 0.90)
	Neuro	57.1%	56.6%	55.2%	51.7%	0.80 (0.78, 0.83)	0.86 (0.82, 0.90)	0.90 (0.84, 0.96)	0.95 (0.86, 1.04)
	Rheum	62.0%	57.8%	54.1%	52.1%	0.87 (0.85, 0.90)	0.88 (0.84, 0.92)	0.88 (0.82, 0.95)	0.95 (0.86, 1.06)
Emergency /Urgent Care	MD Oth	55.9%	59.8%	55.3%	52.0%	0.79 (0.78, 0.80)	0.91 (0.89, 0.93)	0.90 (0.87, 0.93)	0.95 (0.90, 1.00)
	EM	60.4%	56.0%	52.4%	43.2%	0.85 (0.84, 0.86)	0.85 (0.83, 0.87)	0.85 (0.81, 0.90)	0.79 (0.72, 0.87)
	Rad	49.0%	49.5%	42.0%	38.3%	0.69 (0.68, 0.70)	0.75 (0.74, 0.76)	0.68 (0.67, 0.70)	0.70 (0.67, 0.74)
	UC	62.6%	65.3%	55.5%	50.6%	0.88 (0.86, 0.90)	0.99 (0.95, 1.03)	0.90 (0.81, 1.01)	0.93 (0.75, 1.14)

Cells in red have risk ratio 95% confidence interval crossing the PCP reference of 1

Cells highlighted with bold font have at least 20 episodes and risk ratio 95% plus confidence interval greater than the PCP reference of 1 indicating greater likelihood to be the last HCP seen

PCP=primary care provider, DO=doctor of osteopathy, DC=doctor of chiropractic, PT=physical therapist, LAc=licensed acupuncturist, OS=orthopedic surgeon, PMR=physical medicine & rehabilitation, PM=pain medicine, NS=neurosurgeon, Neuro=neurologist, Rheum=rheumatologist, MD Oth = other medical physician, EM=emergency medicine, Rad=radiologist, UC=urgent care

Table 3 - Non-surgical low back pain episodes initially contacting a primary care provider (PCP), orthopedic surgeon (OS) or emergency medicine physician (EM), subsequent health care providers (HCP) seen, and % of episodes where the subsequent HCP was the last HCP seen

	Initial HCP Contacted For First Episode - PCP						Initial HCP Contacted For First Episode - OS						Initial HCP Contacted For First Episode - EM					
	Second HCP		Third HCP		Fourth HCP		Second HCP		Third HCP		Fourth HCP		Second HCP		Third HCP		Fourth HCP	
	Episodes	No 3rd	Episodes	No 4th	Episodes	No 5th	Episodes	No 3rd	Episodes	No 4th	Episodes	No 5th	Episodes	No 3rd	Episodes	No 4th	Episodes	No 5th
PCP	11709	66.1%	6762	63.4%	2055	53.7%	1645	62.2%	564	52.3%	232	48.3%	1614	68.4%	571	66.7%	256	56.2%
Nurse	4787	62.3%	1147	52.5%	570	50.9%	441	51.0%	168	50.0%	81	43.2%	541	65.1%	199	60.8%	72	41.7%
PA	3340	60.7%	933	49.8%	456	45.0%	755	48.6%	187	49.7%	104	44.2%	541	59.9%	166	54.8%	66	59.1%
DO	16	68.8%	9	100.0%	1	100.0%	6	83.3%	3	0.0%	0		3	100.0%	3	66.7%	1	100.0%
DC	6824	76.2%	1189	69.6%	529	62.2%	699	69.5%	200	64.5%	98	54.1%	362	76.5%	132	73.5%	51	64.7%
PT	2660	76.1%	1270	65.2%	683	61.1%	1573	71.2%	491	62.3%	238	63.9%	78	62.8%	113	70.8%	56	71.4%
LAc	128	69.5%	49	51.0%	6	66.7%	18	66.7%	4	75.0%	4	100.0%	11	45.5%	6	50.0%	3	33.3%
OS	3589	57.7%	1329	52.7%	689	50.2%	1148	54.1%	1273	54.2%	437	51.3%	274	60.9%	164	62.2%	80	57.5%
PMR	1772	60.4%	836	53.9%	553	50.8%	564	60.6%	258	59.3%	155	56.1%	126	65.1%	93	58.1%	43	65.1%
PM	1293	59.7%	604	57.5%	446	59.4%	400	60.5%	194	60.3%	160	56.2%	62	58.1%	40	57.5%	31	54.8%
NS	701	48.1%	437	43.9%	272	44.1%	99	45.5%	67	41.8%	42	57.1%	63	58.7%	49	51.0%	38	50.0%
Neuro	580	58.4%	221	55.2%	144	44.4%	138	53.6%	51	31.4%	23	60.9%	31	61.3%	22	54.5%	7	57.1%
Rheum	471	56.9%	151	57.6%	74	55.4%	90	55.6%	39	66.7%	23	47.8%	20	50.0%	7	42.9%	7	71.4%
MD Oth	2009	63.4%	753	56.0%	396	54.5%	487	60.4%	206	58.7%	120	46.7%	317	64.0%	98	58.2%	46	47.8%
EM	1224	53.1%	433	49.9%	175	40.0%	109	53.2%	38	60.5%	27	37.0%	535	56.6%	284	58.1%	70	54.3%
Rad	9814	52.8%	2863	41.5%	1188	40.1%	2039	47.4%	538	42.9%	221	35.3%	1606	51.6%	442	43.2%	159	34.6%
UC	555	66.3%	88	50.0%	22	45.5%	20	45.0%	10	70.0%	4	75.0%	58	58.6%	19	47.4%	6	33.3%

Risk ratio and 95% confidence interval compared to the PCP reference

	1			1			1		
PCP									
Nurse	0.94 (0.92, 0.97)	0.83 (0.78, 0.88)	0.95 (0.87, 1.04)	0.82 (0.74, 0.90)	0.96 (0.81, 1.13)	0.90 (0.67, 1.19)	0.95 (0.89, 1.02)	0.91 (0.80, 1.03)	0.74 (0.55, 0.99)
PA	0.92 (0.89, 0.95)	0.79 (0.73, 0.84)	0.84 (0.75, 0.93)	0.78 (0.72, 0.85)	0.95 (0.81, 1.12)	0.92 (0.71, 1.18)	0.88 (0.81, 0.95)	0.82 (0.71, 0.95)	1.05 (0.84, 1.32)
DO	1.04 (0.75, 1.45)	1.58 (1.55, 1.61)	1.86 (1.79, 1.94)	1.34 (0.93, 1.92)	N/A	N/A	1.46 (1.41, 1.51)	1.00 (0.45, 2.23)	1.78 (1.60, 1.98)
DC	1.15 (1.13, 1.18)	1.10 (1.05, 1.14)	1.16 (1.07, 1.25)	1.12 (1.05, 1.19)	1.23 (1.08, 1.40)	1.12 (0.89, 1.40)	1.12 (1.05, 1.20)	1.10 (0.98, 1.24)	1.15 (0.91, 1.45)
PT	1.15 (1.12, 1.18)	1.03 (0.98, 1.07)	1.14 (1.06, 1.22)	1.14 (1.09, 1.20)	1.19 (1.07, 1.32)	1.32 (1.12, 1.56)	0.92 (0.77, 1.09)	1.06 (0.93, 1.21)	1.27 (1.04, 1.55)
LAc	1.05 (0.94, 1.18)	0.80 (0.61, 1.06)	1.24 (0.70, 2.19)	1.07 (0.77, 1.49)	1.43 (0.81, 2.54)	2.07 (1.81, 2.37)	0.66 (0.35, 1.27)	0.75 (0.34, 1.67)	0.59 (0.12, 2.95)
OS	0.87 (0.85, 0.90)	0.83 (0.79, 0.88)	0.94 (0.86, 1.02)	0.87 (0.81, 0.93)	1.04 (0.94, 1.14)	1.06 (0.90, 1.25)	0.89 (0.81, 0.99)	0.93 (0.82, 1.06)	1.02 (0.82, 1.27)
PMR	0.91 (0.88, 0.95)	0.85 (0.80, 0.91)	0.95 (0.86, 1.04)	0.97 (0.90, 1.05)	1.13 (1.00, 1.29)	1.16 (0.96, 1.41)	0.95 (0.83, 1.09)	0.87 (0.73, 1.04)	1.16 (0.91, 1.48)
PM	0.90 (0.86, 0.95)	0.91 (0.84, 0.97)	1.11 (1.02, 1.21)	0.97 (0.89, 1.06)	1.15 (1.00, 1.32)	1.17 (0.96, 1.41)	0.85 (0.69, 1.05)	0.86 (0.66, 1.13)	0.97 (0.70, 1.37)
NS	0.73 (0.67, 0.79)	0.69 (0.62, 0.77)	0.82 (0.71, 0.95)	0.73 (0.59, 0.91)	0.80 (0.60, 1.07)	1.18 (0.88, 1.59)	0.86 (0.70, 1.06)	0.76 (0.58, 1.01)	0.89 (0.64, 1.24)
Neuro	0.88 (0.83, 0.95)	0.87 (0.77, 0.98)	0.83 (0.69, 1.00)	0.86 (0.73, 1.01)	0.60 (0.40, 0.91)	1.26 (0.89, 1.80)	0.90 (0.68, 1.19)	0.82 (0.56, 1.20)	1.02 (0.53, 1.95)
Rheum	0.86 (0.80, 0.93)	0.93 (0.82, 1.04)	0.96 (0.84, 1.07)	0.86 (0.73, 1.01)	0.60 (0.40, 0.91)	1.27 (1.01, 1.61)	0.99 (0.63, 1.55)	0.73 (0.47, 1.13)	0.64 (0.27, 1.51)
MD Oth	0.96 (0.91, 0.99)	0.94 (0.88, 0.99)	0.94 (0.84, 1.04)	0.97 (0.89, 1.05)	1.12 (0.98, 1.29)	0.97 (0.77, 1.22)	0.94 (0.86, 1.02)	0.87 (0.73, 1.04)	0.85 (0.62, 1.17)
EM	0.80 (0.76, 0.85)	0.79 (0.71, 0.87)	0.75 (0.62, 0.90)	0.85 (0.71, 1.02)	1.16 (0.88, 1.51)	0.77 (0.46, 1.28)	0.83 (0.76, 0.90)	0.87 (0.78, 0.98)	0.97 (0.76, 1.23)
Rad	0.80 (0.78, 0.82)	0.65 (0.62, 0.69)	0.75 (0.69, 0.81)	0.76 (0.72, 0.81)	0.82 (0.72, 0.93)	0.73 (0.59, 0.91)	0.75 (0.71, 0.80)	0.65 (0.57, 0.73)	0.61 (0.48, 0.78)
UC	1.00 (0.94, 1.07)	0.79 (0.64, 0.97)	0.85 (0.53, 1.34)	0.72 (0.44, 1.18)	1.34 (0.89, 2.02)	1.55 (0.87, 2.78)	0.86 (0.69, 1.07)	0.71 (0.44, 1.14)	0.59 (0.19, 1.85)

Cells in red have risk ratio 95% confidence interval crossing the PCP reference of 1

Cells highlighted with bold font have at least 20 episodes and risk ratio 95% plus confidence interval greater than the PCP reference of 1 indicating greater likelihood to be the last HCP seen

PCP=primary care provider, DO=doctor of osteopathy, DC=doctor of chiropractic, PT=physical therapist, LAc=licensed acupuncturist, OS=orthopedic surgeon, PMR=physical medicine & rehabilitation, PM=pain medicine, NS=neurosurgeon, Neuro=neurologist, Rheum=rheumatologist, MD Oth = other medical physician, EM=emergency medicine, Rad=radiologist, UC=urgent care

Table 4 - Non-surgical low back pain service use and total cost for select health care providers (HCP) positioned as the last HCP seen

	Primary care provider (PCP)				Doctor of Chiropractic (DC)				Physical Therapist (PT)				Orthopedic Surgeon (OS)			
Episode Sequence	1st	2nd	3rd	4th	1st	2nd	3rd	4th	1st	2nd	3rd	4th	1st	2nd	3rd	4th
	No 2nd	No 3rd	No 4th	No 5th	No 2nd	No 3rd	No 4th	No 5th	No 2nd	No 3rd	No 4th	No 5th	No 2nd	No 3rd	No 4th	No 5th
Episodes	88980	24766	8251	2835	107340	13409	3928	1235	3030	5177	2572	1261	15314	5965	2593	1172
% of episodes including service																
Manipulation- Chiropractic	4.1%	20.7%	18.4%	20.9%	93.6%	91.6%	94.8%	93.9%	7.8%	6.6%	10.1%	12.5%	3.1%	11.6%	13.5%	14.9%
Active Care	9.8%	15.1%	21.2%	28.3%	30.9%	35.5%	43.4%	47.9%	96.6%	97.2%	97.3%	97.9%	20.1%	27.6%	35.2%	42.2%
Passive Therapy	4.5%	10.3%	11.9%	14.8%	36.8%	38.9%	46.3%	50.3%	28.7%	26.5%	28.5%	30.3%	6.7%	11.0%	14.3%	14.2%
Manual Therapy	7.3%	10.3%	14.0%	18.8%	17.9%	21.0%	27.3%	33.2%	77.4%	74.2%	73.8%	74.8%	14.1%	18.8%	24.0%	28.5%
Acupuncture	0.3%	0.6%	0.7%	0.7%	0.5%	1.2%	1.9%	2.3%	1.2%	0.6%	0.9%	1.0%	0.2%	0.5%	0.6%	0.7%
Manipulation - Osteopathic	2.5%	1.3%	1.6%	1.5%	0.1%	0.4%	0.5%	0.4%	0.3%	0.4%	0.7%	0.6%	0.7%	0.4%	0.8%	0.5%
Imaging - Radiography	21.1%	31.6%	45.7%	51.5%	18.8%	29.5%	43.0%	53.6%	16.3%	42.7%	57.7%	63.4%	73.6%	68.7%	71.9%	73.5%
Rx - NSAID	44.2%	42.7%	49.5%	52.6%	4.0%	20.1%	24.0%	30.9%	9.9%	22.4%	30.8%	33.0%	25.8%	39.0%	44.2%	50.1%
Rx - Skeletal Muscle Relaxant	47.5%	43.3%	46.7%	47.9%	2.3%	16.1%	22.3%	27.0%	9.3%	22.8%	29.2%	32.8%	15.8%	26.6%	33.2%	36.3%
Imaging - MRI	4.9%	6.5%	13.3%	24.8%	1.2%	3.7%	8.8%	16.8%	9.6%	11.4%	22.2%	33.0%	18.5%	27.8%	40.2%	50.5%
Rx-Opioid	26.4%	26.9%	35.9%	39.9%	3.4%	11.4%	15.6%	21.1%	6.6%	8.6%	13.7%	19.2%	12.5%	20.0%	28.1%	33.4%
Spinal Injection	2.5%	2.7%	4.6%	7.9%	0.6%	2.0%	3.8%	5.4%	3.4%	3.3%	5.4%	10.2%	7.0%	8.8%	12.3%	18.2%
Imaging-CT	1.1%	2.2%	4.3%	6.0%	0.2%	0.6%	1.4%	3.4%	0.8%	0.9%	1.4%	2.5%	1.3%	2.7%	4.3%	5.5%
Total Episode Cost - Median (Q1, Q3)																
Total Episode Cost	\$106 (30, 220)	\$218 (97, 537)	\$455 (202, 1131)	\$835 (364, 1926)	\$165 (68, 397)	\$320 (149, 658)	\$573 (293, 1071)	\$877 (488, 1661)	\$528 (250, 1041)	\$688 (418, 1172)	\$1,012 (592, 1693)	\$1,333 (818, 2297)	\$229 (121, 597)	\$504 (236, 1205)	\$920 (429, 1867)	\$1,343 (719, 2473)

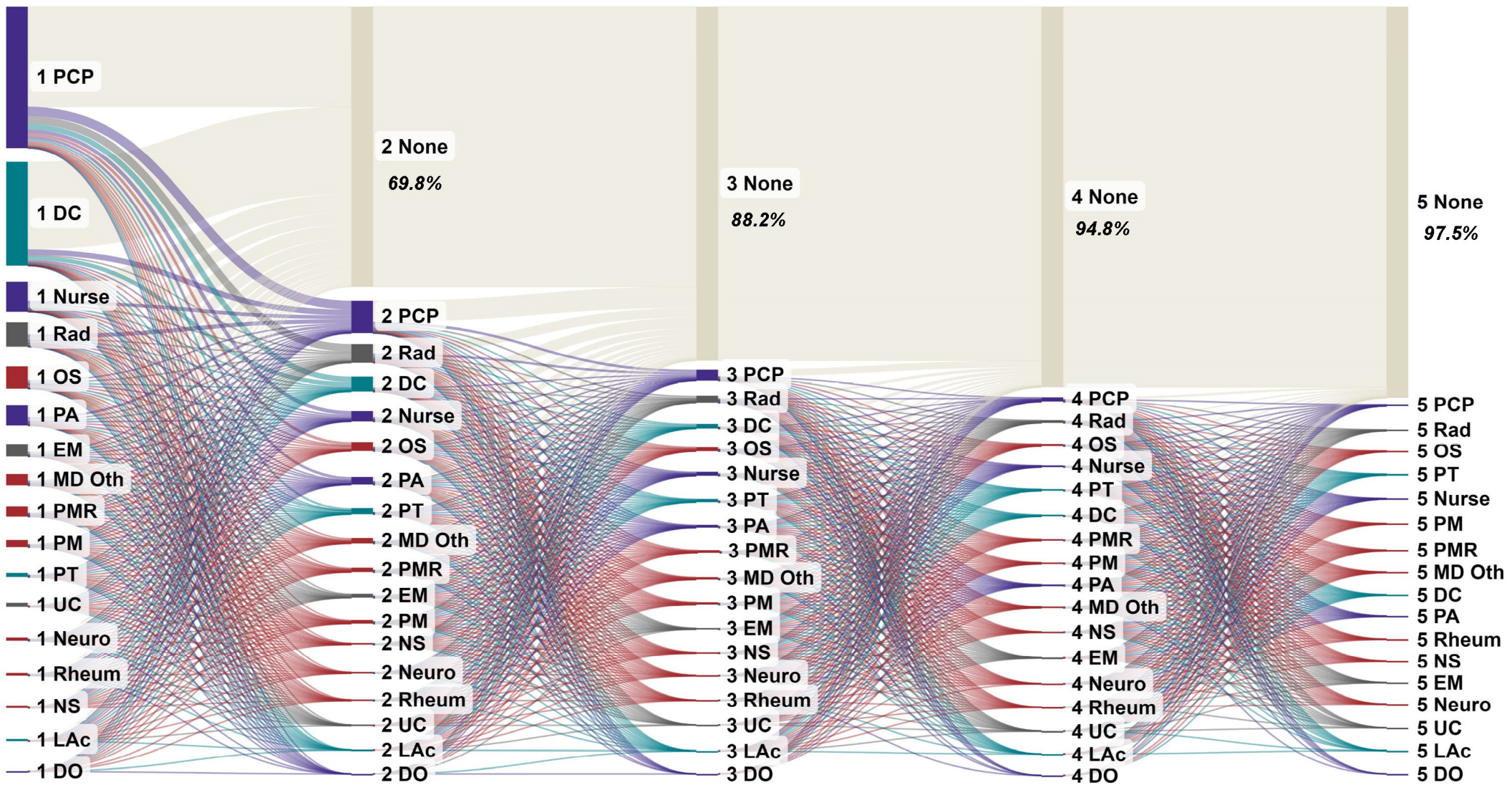


Figure 1. Flow of episodes from initial (1) to second (2) to third (3) to fourth (4) to fifth (5) type of health care provider (HCP) seen during an episode. PCP=primary care provider, DC=doctor of chiropractic, Rad=radiologist, OS=orthopedic surgeon, PA=physician's assistant, EM=emergency medicine, Oth=other, PMR=physical medicine & rehabilitation, PM=pain medicine, PT=physical therapist, UC=urgent care, Neuro=neurologist, Rheum=rheumatologist, NS=neurosurgeon, LAc=license acupuncturist, DO=doctor of osteopathy, None=no next HCP seen (previous HCP was the last HCP)

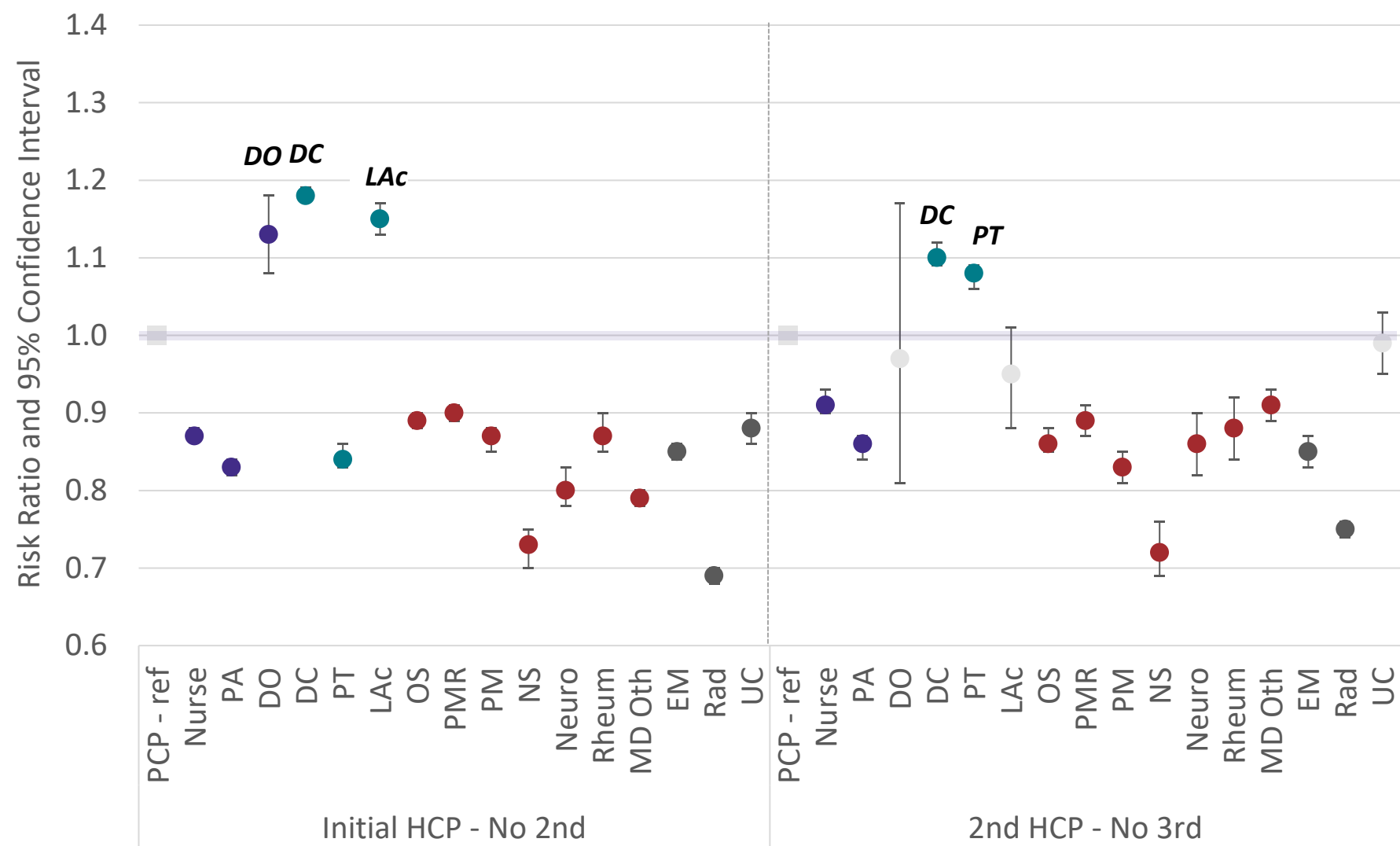


Figure 2. Risk ratio and 95% confidence interval compared to primary care provider (PCP) reference for % of episodes where HCPs with at least 20 episodes were the initial and last or 2nd and last HCP . PA=physician's assistant, DO=doctor of osteopathy, DC=doctor of chiropractic, PT=physical therapist, LAc=licensed acupuncturist, OS=orthopedic surgeon, PMR=physical medicine & rehabilitation, PM=pain management, NS=neurosurgeon, Neuro=neurologist, Rheum=rheumatologist, Oth=other, EM=emergency medicine, Rad=radiologist, UC=urgent care

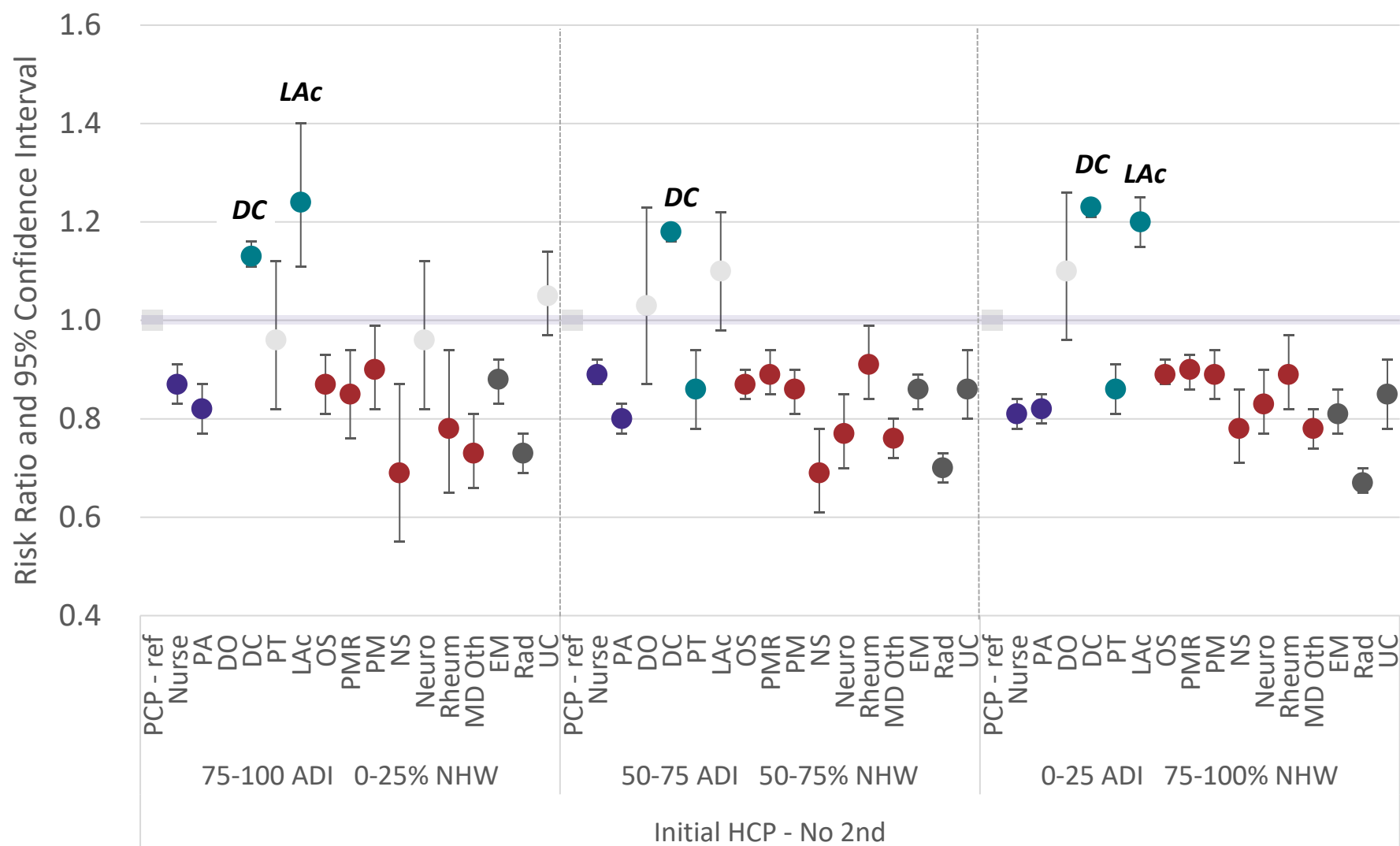


Figure 3. Risk ratio and 95% confidence interval compared to primary care provider (PCP) reference for % of episodes where HCPs with at least 20 episodes were the initial and last HCP seen segmented by population Area Deprivation Index (ADI) and % of the population that is non-Hispanic white (NHW). PA=physician's assistant, DO=doctor of osteopathy, DC=doctor of chiropractic, PT=physical therapist, LAc=licensed acupuncturist, OS=orthopedic surgeon, PMR=physical medicine & rehabilitation, PM=pain management, NS=neurosurgeon, Neuro=neurologist, Rheum=rheumatologist, Oth=other, EM=emergency medicine, Rad=radiologist, UC=urgent care

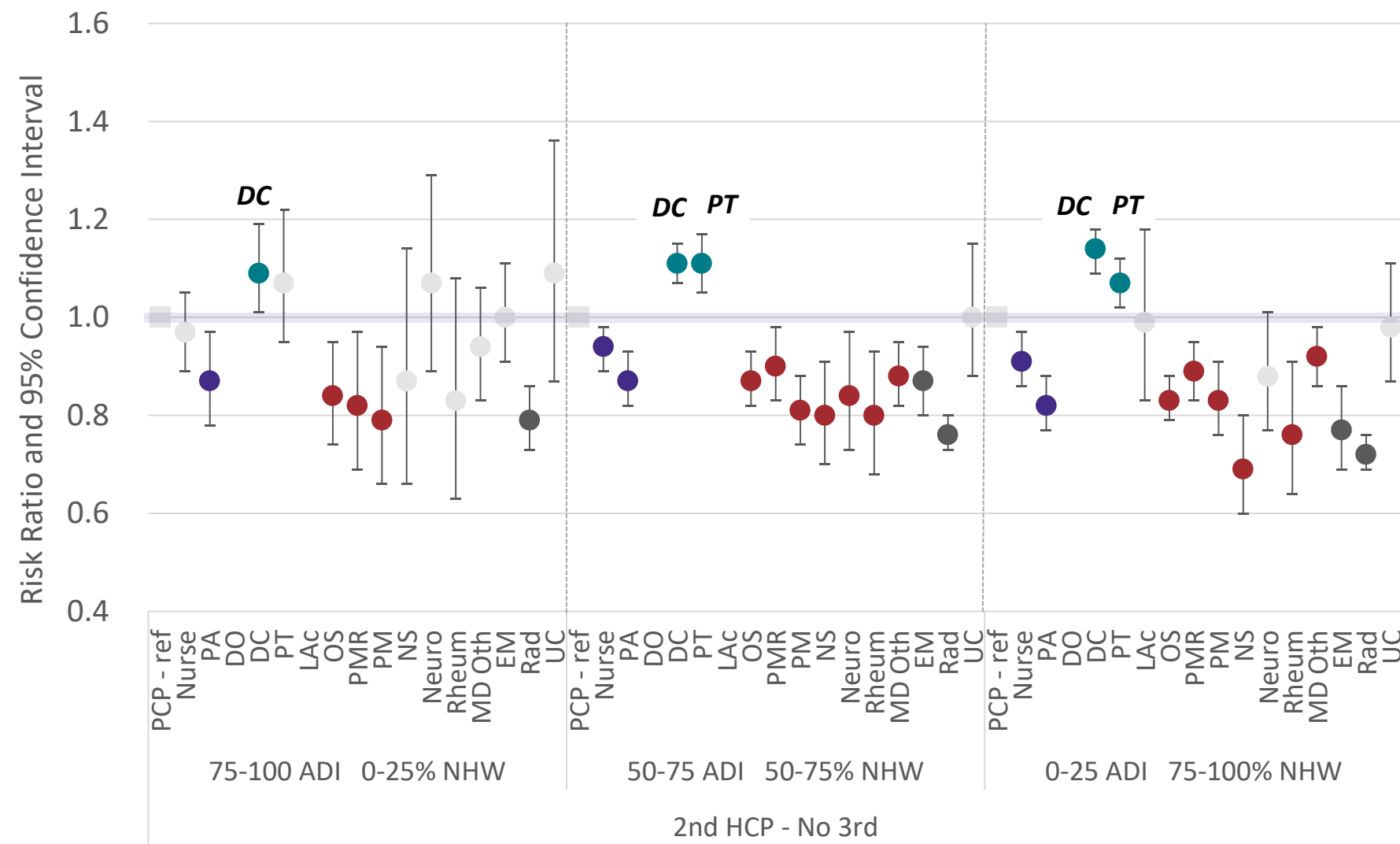


Figure 4. Risk ratio and 95% confidence interval compared to primary care provider (PCP) reference for % of episodes where HCPs with at least 20 episodes were the second and last HCP seen segmented by population Area Deprivation Index (ADI) and % of the population that is non-Hispanic white (NHW). PA=physician's assistant, DO=doctor of osteopathy, DC=doctor of chiropractic, PT=physical therapist, LAc=licensed acupuncturist, OS=orthopedic surgeon, PMR=physical medicine & rehabilitation, PM=pain management, NS=neurosurgeon, Neuro=neurologist, Rheum=rheumatologist, Oth=other, EM=emergency medicine, Rad=radiologist, UC=urgent care

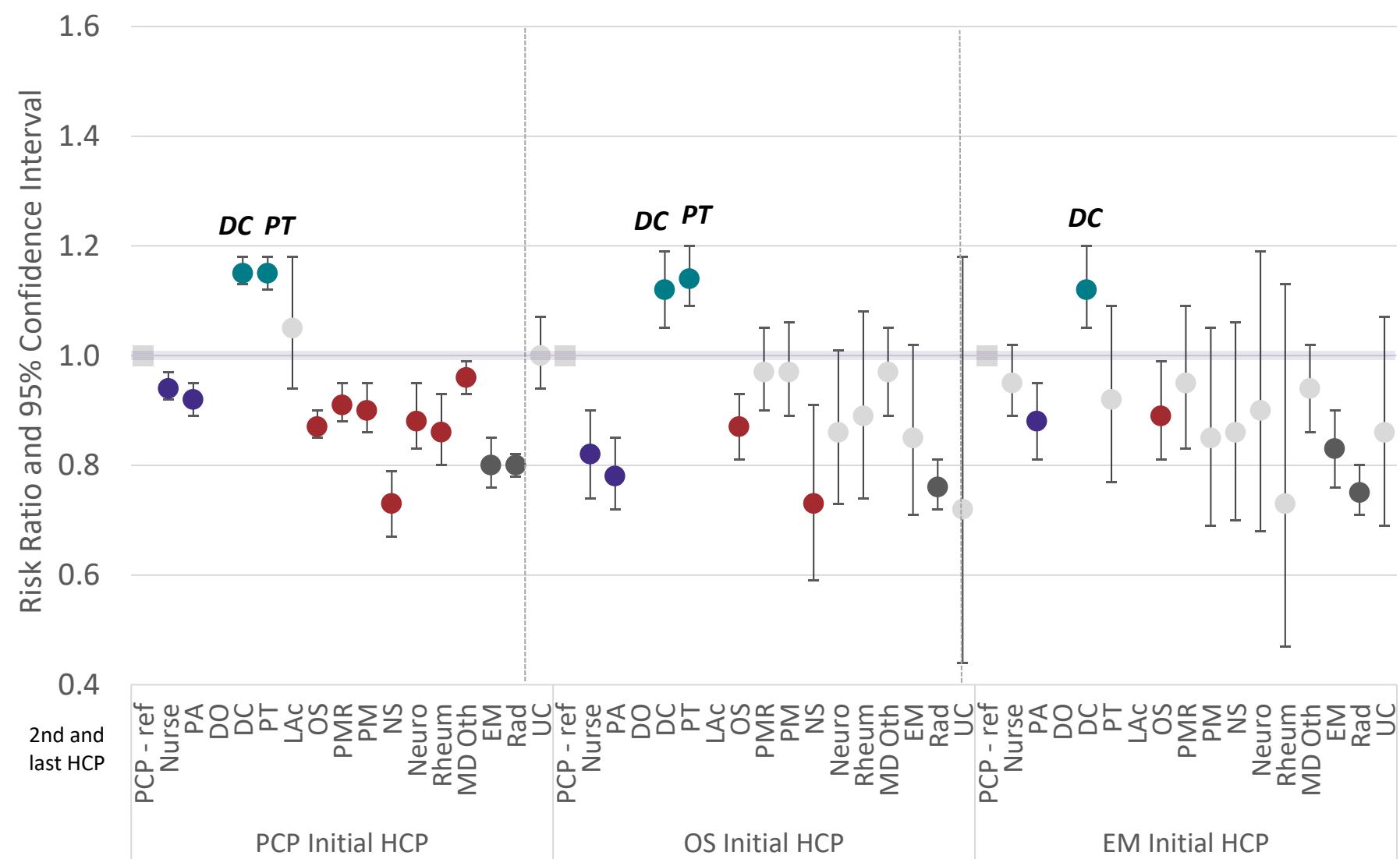


Figure 5. - Risk ratio and 95% confidence interval compared to primary care provider (PCP) reference for % of episodes where for health care providers with at least 20 episodes the type of second HCP seen was also the last HCP seen. PA=physician's assistant, DO=doctor of osteopathy, DC=doctor of chiropractic, PT=physical therapist, LAC=licensed acupuncturist, OS=orthopedic surgeon, PMR=physical medicine & rehabilitation, PM=pain management, NS=neurosurgeon, Neuro=neurologist, Rheum=rheumatologist, Oth=other, EM=emergency medicine, Rad=radiologist, UC=urgent care

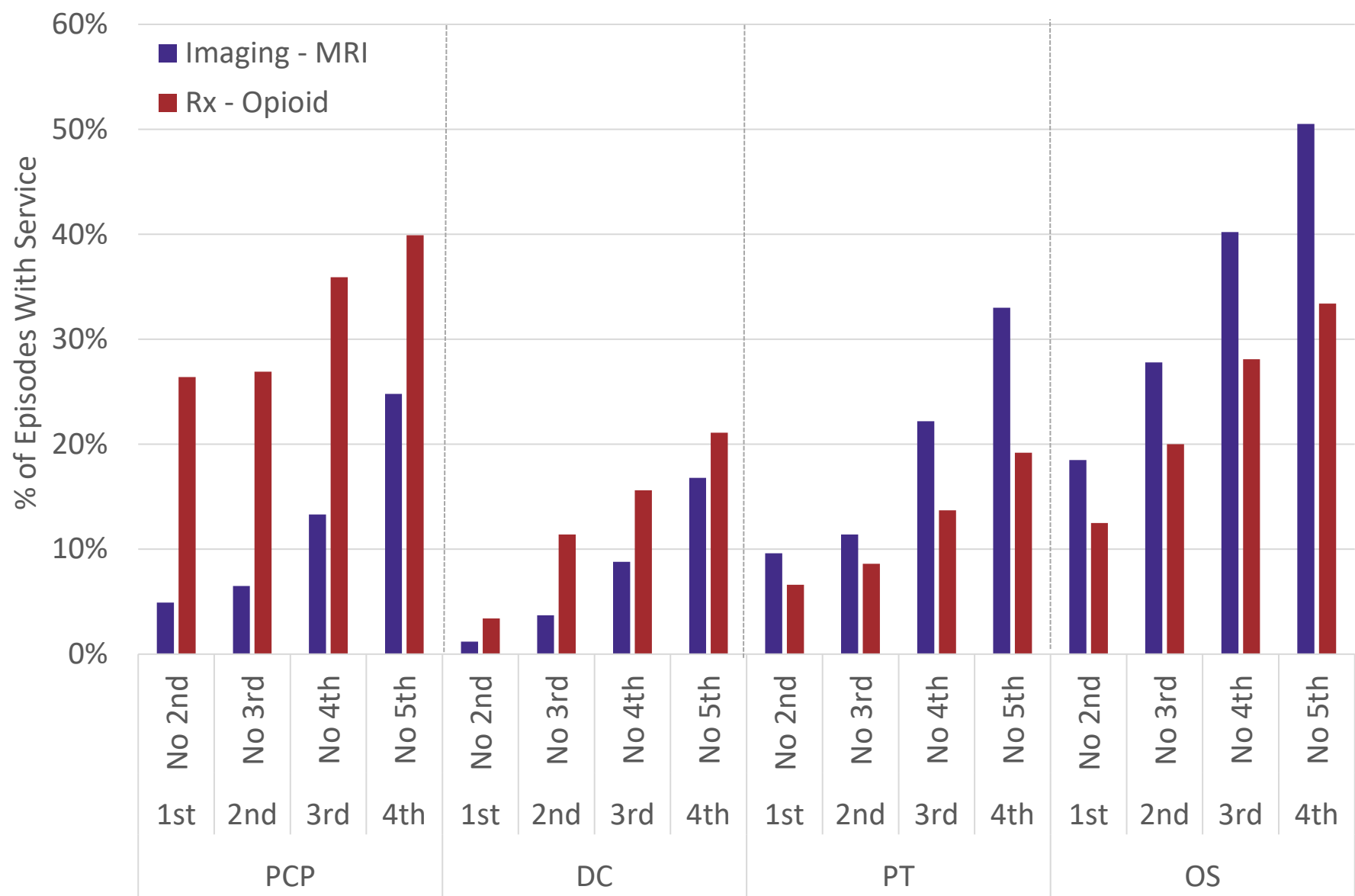


Figure 6. % of episodes with an MRI scan or prescription opioid for episodes where a primary care physician (PCP), chiropractor (DC), physical therapist (PT) or orthopedic surgeon (OS) was the last health care provider seen based on whether the PCP, DC, PT, or OS were the 1st, 2nd, 3rd or 4th HCP seen during an episode

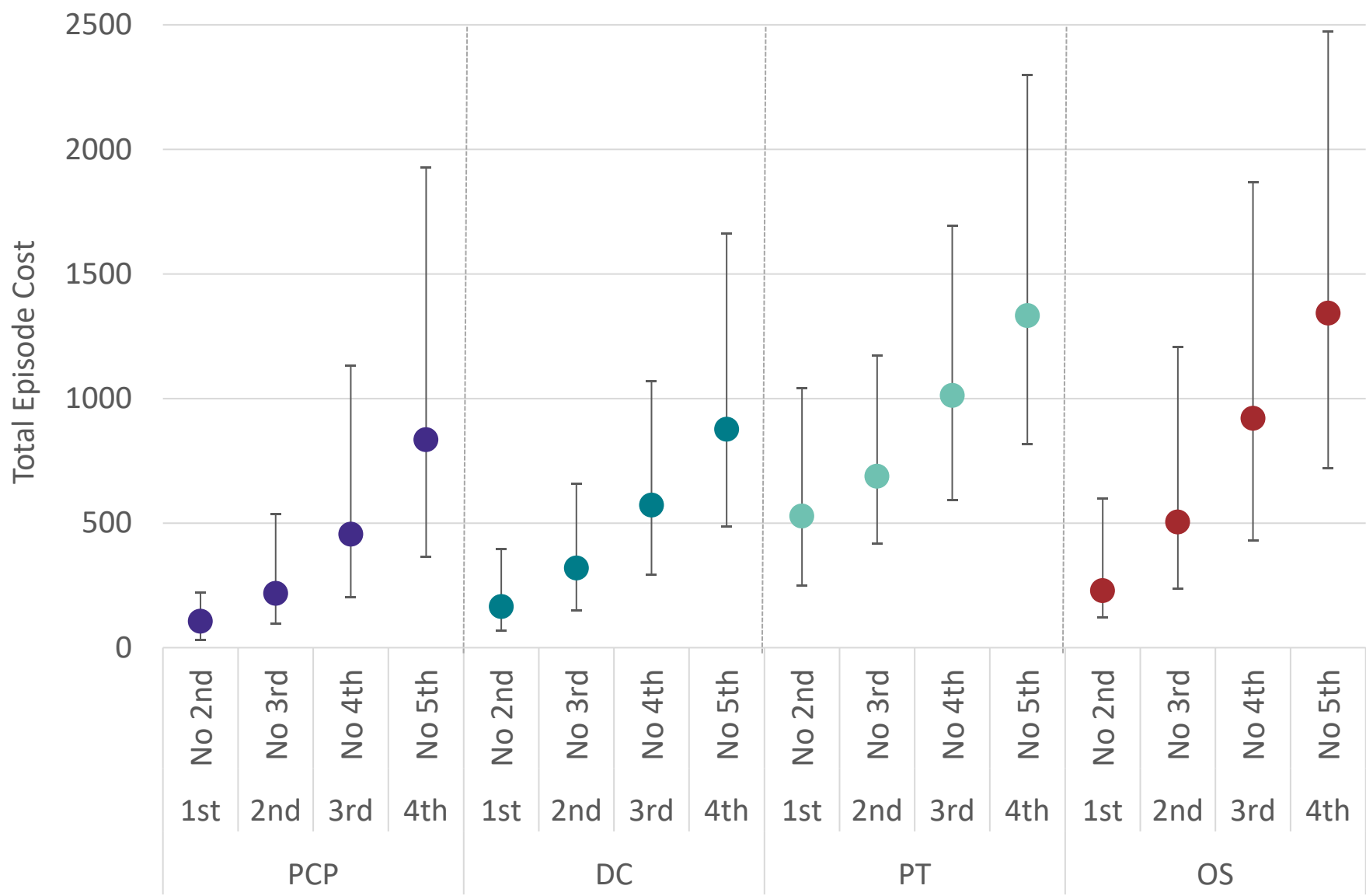


Figure 7. Median total episode cost and interquartile range (Q1, Q3) for episodes where a primary care physician (PCP), chiropractor (DC), physical therapist (PT) or orthopedic surgeon (OS) was the last health care provider seen based on whether the PCP, DC, PT, or OS was the 1st, 2nd, 3rd or 4th HCP seen during an episode