

1 Genes associated with depression and coronary artery disease are enriched for  
2 inflammation and cardiomyopathy-associated pathways.

3 Kritika Singh<sup>1,2</sup>, Hyunjoon Lee<sup>3,4,5\*</sup>, Julia M Sealock<sup>1,2\*</sup>, Tyne Miller-Flemming<sup>1,2</sup>, Peter  
4 Straub<sup>1,2</sup>, Nancy J. Cox<sup>1,2</sup>, Quinn S. Wells<sup>6</sup>, Jordan M. Smoller<sup>3,4,5</sup>, Emily C. Hodges<sup>2,7</sup>, Lea  
5 K. Davis<sup>1,2,8,9,10</sup>

6 \*These authors contributed equally

7 #Corresponding author

8 <sup>1</sup>Division of Genetic Medicine, Department of Medicine  
9 Vanderbilt University Medical Center  
10 Nashville, TN, 37232, USA

11  
12 <sup>2</sup>Vanderbilt Genetics Institute  
13 Vanderbilt University Medical Center  
14 Nashville, TN, 37232, USA

15  
16 <sup>3</sup>Psychiatric and Neurodevelopmental Genetics Unit  
17 Center for Genomic Medicine  
18 Massachusetts General Hospital  
19 Boston, MA, 02114, USA

20  
21 <sup>4</sup>Center for Precision Psychiatry  
22 Department of Psychiatry  
23 Massachusetts General Hospital  
24 Boston, MA, 02114, USA

25  
26 <sup>5</sup>Stanley Center for Psychiatric Research  
27 Broad Institute of Harvard and MIT  
28 Cambridge, MA, 02114, USA

29  
30 <sup>6</sup>Division of Cardiovascular Medicine, Department of Medicine,  
31 Vanderbilt University Medical Center,  
32 Nashville, TN, 37232, USA

33  
34 <sup>7</sup>Department of Biochemistry,  
35 Vanderbilt University School of Medicine,

36 Nashville, TN, 37232, USA

37

38 <sup>8</sup>Department of Molecular Physiology and Biophysics

39 Vanderbilt University Medical Center

40 Nashville, TN, 37232, USA

41

42 <sup>9</sup>Department of Psychiatry and Behavioral Sciences

43 Vanderbilt University Medical Center

44 Nashville, TN, 37232, USA

45

46 <sup>10</sup>Departments of Medicine and Biomedical Informatics

47 Vanderbilt University Medical Center

48 Nashville, TN, 37232, USA

49

50 **Total word count of manuscript: 4,656 Words**

51

52 Short Title: Genes shared between depression and CAD

53

54 Abstract (140 words)

55 Background: Depression and Coronary Artery Disease (CAD) are highly comorbid conditions.

56 Approximately 40% of individuals who have one diagnosis will also develop the other within  
57 their lifetime. Prior research indicates that polygenic risk for depression increases the odds of  
58 developing CAD even in the absence of clinical depression. However, the specific genes and  
59 pathways involved in comorbid depression-CAD remain unknown.

60 Results: We identified genes that are significantly associated with both depression and CAD,  
61 and are enriched for pathways involved in inflammation and for previous association with  
62 cardiomyopathy. We observed increased rate of prevalent, but not incident, cardiomyopathy  
63 cases in individuals with comorbid depression-CAD compared to those with CAD alone in three  
64 electronic large health record (EHR) datasets.

65 Conclusions: The results of our study implicate genetically regulated inflammatory mechanisms  
66 in depression-CAD. Our results also raise the hypothesis that depression-associated CAD may be  
67 enriched for cardiomyopathy.

68

69 Clinical Perspective

70 A. *What's New?*

71 1. Gene associations shared between depression and CAD are enriched for prior  
72 association with cardiomyopathy phenotypes.

73 2. Cardiomyopathy is significantly more prevalent in individuals with comorbid  
74 depression-CAD than in CAD or depression alone.

75 B. *What are the Clinical Implications?*

76 1. Our work suggests that individuals with comorbid depression-CAD may benefit from  
77 screening for cardiomyopathy.

78

79 Non-Standard Abbreviations and Acronyms

---

Abbreviation	Definition
CAD	Coronary artery disease
CI	Confidence interval
CAD	Coronary Artery Disease
CVD	Cardiovascular disease
EHR	Electronic health record
GWAS	Genome-wide association study
ICD	International Classification of Diseases
LD	Linkage disequilibrium
MD	Major depression
MDD	Major depressive disorder
MHC	Major histocompatibility complex
MR	Mendelian randomisation
OR	Odds ratio
PGS	Polygenic score
SNP	Single nucleotide polymorphism
VUMC	Vanderbilt University Medical Center

---

80

## 81 Introduction

82 Chronic complex diseases such as cardiovascular disease (CVD) are the primary drivers  
83 of premature death among individuals with psychiatric disorders. Approximately 17 to 44  
84 percent of patients with coronary artery disease (CAD), the most common type of CVD, also  
85 have a diagnosis of major depression (MDD), a common mental health diagnosis<sup>1</sup>. Several  
86 studies suggest that these two conditions are biologically related. A diagnosis of major  
87 depression is associated with increased 18-month cardiac mortality among CAD patients; and  
88 CAD with comorbid MDD reduces lifespan by 15-20 years<sup>2-5</sup>. However, despite the frequency  
89 and high mortality rate of comorbid CAD with depression and/or MDD, hereafter referred to as  
90 (major) depressive CAD or (m)dCAD, the biological relationship between these conditions  
91 remains poorly understood.

92 Previously, we demonstrated that common genetic risk for depression identified by  
93 genome-wide association studies (GWAS) and quantified in the form of polygenic risk scores  
94 (PRS), is associated with a diagnosis of CAD and myocardial infarction in a healthcare-based  
95 clinical population<sup>6</sup>. High genetic liability to MDD was associated with increased risk of  
96 cardiovascular disease even among patients with no history of psychiatric illness and after  
97 accounting for cardiovascular disease risk factors<sup>6</sup>. Shared inflammatory processes provide one  
98 possible explanation for these findings<sup>7,8</sup>. Studies show that as CAD progresses, changes in the  
99 levels of inflammatory biomarkers such as C-Reactive protein (CRP), leukocytes, monocytes and  
100 inflammation associated prothrombotic markers including platelets, can be observed<sup>9-11</sup>.  
101 Similarly, onset and severity of depression is associated with changes in the levels of immune  
102 and inflammatory factors including leukocytes, CRP, and platelets<sup>12-22</sup>. Neuroinflammation and

103 peripheral inflammation are hypothesized to play an important role in both MDD and CAD  
104 respectively, providing a potential common biological pathway that may link  
105 neuroinflammation in depression together with atherosclerotic inflammation in CAD<sup>7,8</sup>.

106 Consortium efforts over the past decade have yielded results from large genome-wide  
107 association studies of depression, and independently, CAD<sup>23,24</sup>. These studies provide a map of  
108 statistical associations between common single nucleotide polymorphisms (SNPs) and each  
109 diagnosis, respectively. However, the genes that are implicated by these SNP associations must  
110 also be identified to define the biological pathways that might be shared between these  
111 conditions. Transcriptome wide association scans (TWAS) employ functional data to map SNPs  
112 to genes based on their ability to regulate gene expression<sup>25</sup>. In this study, we first used the  
113 TWAS method S-MultiXcan to map depression and CAD SNP-associations to the genes they  
114 regulate using cross-tissue expression quantitative trait loci (eQTL) annotations<sup>25</sup>. We then  
115 performed a series of enrichment and pathway analyses to characterize the gene set that was  
116 significantly associated with both depression and CAD. Our findings suggest that genes  
117 associated with both CAD and depression are enriched for both inflammatory pathways and  
118 genes previously associated with cardiomyopathy.

119 Next, we developed a clinical hypothesis based on these findings and tested it in three  
120 separate large electronic health records (EHR) data sets –Vanderbilt University Medical Center  
121 EHR, All of Us Research Program, and Mass-General Brigham EHR. At each site, we find that the  
122 rate of prevalent cardiomyopathy is significantly higher in subjects with (m)dCAD compared to  
123 those with CAD alone. Taken together, results of our study link depression and CAD through

124 genetically controlled inflammatory mechanisms, and further suggest a relationship between  
125 (m)dCAD and cardiomyopathy.

## 126 **Materials and Methods**

### 127 *Genome-wide Association Study Data – Coronary Artery Disease*

128 We utilized publicly available summary statistics from a recently published GWAS of  
129 CAD as the foundation for our MetaXcan and S-MultiXcan analyses<sup>23</sup>. This study included a  
130 genome-wide meta-analysis of CAD cases and controls from the UK Biobank (UKBB) and  
131 CARDIoGRAMplusC4D<sup>23</sup>. CAD was defined in the UKBB by ICD10 codes (I21 – I25), procedural  
132 codes (K40-K46, K49, K50 and K75), and self-report of heart attack/myocardial infarction,  
133 coronary angioplasty +/- stent, coronary artery bypass graft surgery, or triple heart bypass.  
134 Controls were defined by the absence of features used to define cases and the absence of any  
135 family history of “heart disease”. Application of these criteria resulted in 34,541 CAD cases and  
136 261,984 controls. The second sample used in this meta-analysis was the CARDIoGRAMplusC4D  
137 GWAS which itself was a meta-analysis of twenty-eight studies of European or South Asian  
138 descent populations. CAD was operationally defined differently across the cohorts, but all  
139 definitions relied on clinical or procedural markers of CAD, evidence of myocardial infarction, or  
140 imaging data consistent with a CAD diagnosis ([PMC3679547](#)). The CARDIoGRAMplusC4D GWAS  
141 included 63,746 CAD cases and 130,681 controls. The meta-analysis of UKBB and  
142 CARDIoGRAMplusC4D totaled 122,733 CAD cases and 424,528 controls.

143

### 144 *Genome-wide Association Study Data – Depression*



145 We used summary statistics from the PGC and UKBB as the base for the MetaXcan  
146 analysis of depression<sup>24</sup>. The genome-wide association meta-analysis for depression included  
147 170,756 cases and 329,443 controls. These results included summary statistics from a meta-  
148 analysis of the 33 cohorts of the Psychiatric Genomics Consortium as described in Wray et al.  
149 (2018), (<https://doi.org/10.1038/s41588-018-0090-3>) and the broad depression phenotype in  
150 the full release of the UKBB as described in (Howard et al. (2018),  
151 <https://doi.org/10.1038/s41467-018-03819-3>). The broad depression phenotype in UKBB  
152 included self-reported help-seeking behavior for “nerves, anxiety, tension or depression (once  
153 at any visit)” from a general practice physician or a psychiatrist. Secondly, a subject was defined  
154 as a case if there was a primary or secondary diagnosis of a depressive mood disorder from  
155 linked hospital admission records (UK Biobank fields: 41202 and 41204; ICD codes: F32—Single  
156 episode depression, F33—Recurrent depression, F34—Persistent mood disorders, F38—Other  
157 mood disorders and F39—Unspecified mood disorders). The remaining respondents were  
158 classed as controls if they answered “No” to both questions on all assessments. For the PGC  
159 sample, cases were those who met international consensus criteria (DSM-IV, ICD-9, or ICD-10)  
160 for a lifetime diagnosis of MDD established using structured diagnostic instruments from  
161 assessments by trained interviewers, clinician-administered checklists, or medical record  
162 review. Controls in most samples were screened for the absence of lifetime MDD (22/29  
163 samples) or randomly selected from the population.

164

165 Statistical Analysis of Genetic Data

166 *S-MultiXcan Analysis of Depression and CAD GWAS Summary Statistics*

167 Predicted expression models of 22,207 genes across 49 tissues were developed  
168 (supplementary materials) as previously described using data from the Genotype Tissue  
169 Expression Project<sup>25,26</sup>. These models were then used to train gene-based predicted  
170 associations for each set of summary statistics described above<sup>25,26</sup>. The subsequent  
171 associations with CAD and depression were tested using a multivariate regression model  
172 (Summary-MultiXcan or S-MultiXcan) which uses cross-tissue eQTL information<sup>25</sup>. S-MultiXcan  
173 infers the gene-level MultiXcan association results, using univariate S-PrediXcan results and LD  
174 information from a reference panel (i.e., the GTEx data set). Correlations between tissues are  
175 accounted for using a pseudo-inverse approach which applies a singular value decomposition  
176 (SVD) of the covariance matrix to keep only the components of large variation.

177 We used a Bonferroni correction to adjust the statistical significance threshold for  
178 20,971 gene-based tests in the CAD MetaXcan analysis ( $p < 2.38e-06$ ) and 20,945 gene-based  
179 tests in the depression MetaXcan analysis ( $p < 2.38e-06$ ).

180

#### 181 *Enrichment Analysis of Gene-based Association Results (Depression and CAD)*

182 After identifying genes associated with either depression or CAD, we determined  
183 whether genes associated with both CAD and depression ( $n=185$ ) were more abundant than  
184 expected by chance, based on the number of genes significantly associated with each  
185 phenotype independently. We performed a hypergeometric test using the hyper R package and  
186 the publicly available website [http://nemates.org/MA/progs/overlap\\_stats.html](http://nemates.org/MA/progs/overlap_stats.html).

187

#### 188 *Gene Set Enrichment Analyses (GSEA)*

189 We used the Gene Set Enrichment Analysis Web-based Tool ([http://www.gsea-  
190 msigdb.org/gsea/msigdb/annotate.jsp](http://www.gsea-<br/>190 msigdb.org/gsea/msigdb/annotate.jsp)) to functionally annotate the pathways for the 185 genes  
191 associated with *both* depression and CAD. We restricted our analysis to the ‘canonical  
192 pathways’ class with FDR q-values less than 0.05 and the GTEx compendium expression profiles.  
193 There were 2,982 pathways, composed of 40,786 genes, tested in the null ‘background’ set,  
194 provided by GSEA.

195

#### 196 Description of Clinical Populations

##### 197 *Vanderbilt University Medical Center (VUMC) Electronic Health Record (EHR)*

198 Vanderbilt University Medical Center (VUMC) is a tertiary care center that provides  
199 inpatient and outpatient care in middle Tennessee and surrounding communities. The VUMC  
200 electronic health record (EHR) system was established in 1990 and includes data on billing  
201 codes from the International Classification of Diseases, 9th and 10th editions (ICD-9 and ICD-  
202 10), Current Procedural Terminology (CPT) codes, laboratory values, reports, and clinical  
203 documentation. A fully de-identified mirror image of the EHR, called the Synthetic Derivative, is  
204 available to Vanderbilt faculty for research purposes<sup>27</sup>.

205

##### 206 *Massachusetts General Brigham (MGB) EHR*

207 Mass General Brigham (MGB) is a hospital network that includes Massachusetts General  
208 Hospital, Brigham and Women’s hospital, and other community and specialty hospitals in  
209 Boston area. The data source of MGB EHR is MGB Research Patient Data Registry (RPDR;  
210 <https://rpdrrsl.partners.org>), an EHR database which spans more than 20 years of data from

211 over 6.5 million patients and includes data on diagnoses (billing codes; ICD-9 and ICD-10 codes),  
212 procedures (CPT codes), laboratory values, and clinical notes. Data floors were applied to the  
213 MGB RPDR to include only patients with at least one clinical note and three visits since 2005  
214 with visit more than 30 days apart.

215

#### 216 *All of Us Research Program*

217 We used data from the *All of Us* Research Program, a multi-ancestry population-based cohort  
218 that contains various forms of information on individuals<sup>28</sup>. This data repository enrolls  
219 participants 18 years of age or older and contains their demographic and medical record-based  
220 information. The data for disease diagnosis was collected using billing codes and was the  
221 converted to phecodes.

222

#### 223 *Phenotypic analysis in the Synthetic Derivative*

224 Informed by results of the genomic analyses, we first investigated the prevalence of  
225 cardiomyopathy in three mutually exclusive groups of patients in the VUMC-EHR including  
226 those who had a diagnosis of (1) depression or major depression *without* comorbid CAD (dep),  
227 (2) CAD *without* comorbid depression (CAD), and (3) CAD *with* comorbid depression or major  
228 depression ((m)dCAD)(Table S1). To reduce missingness of clinical data and enrich the sample  
229 for patients who receive their primary care at VUMC, we applied a simple “medical home”  
230 heuristic requiring the presence of any five codes on different days over a period of at least  
231 three years. We selected the cohort of individuals meeting these criteria who also had not been  
232 included in the VUMC BioBank which resulted in a total of 988,002 individuals. The genotyped

233 sample was held out of this analysis to maintain its independence for future related research  
234 studies including genomic data.

235 We defined dep-only, CAD-only, and (m)dCAD using phecodes which are higher order  
236 combinations of at least two related ICD codes, occurring on two different days, using the R  
237 PheWAS package. Specifically, “CAD-only” cases required the presence of phecode 411.4 and  
238 absence of 296.2 phecode (N = 47,351), “dep-only” cases included phecode 296.2 and absence  
239 of 411.4 phecode (N = 57,069) and (m)dCAD required the presence of a phecode for both CAD  
240 and depression (N = 6,725). We next calculated the prevalence of cardiomyopathy, indicated by  
241 the presence of one or more of the following phecodes "425.1", "425.11", "425.12", "425.8",  
242 "425". We then compared the prevalence of cardiomyopathy diagnoses between each  
243 diagnostic group using Pearson’s Chi-squared test and Fisher’s exact T-test.

244 We then used a logistic regression model to determine whether cardiomyopathy was  
245 indeed more prevalent among patients with (m)dCAD, compared to CAD alone, after controlling  
246 for potential confounding. Cases were defined as those with cardiomyopathy, controls were  
247 those without cardiomyopathy. The exposure was defined as depression, and features known  
248 to associate with both depression and cardiomyopathy, age, race, sex, record median BMI, type  
249 2 diabetes (T2D; Phecode = 250.2), tobacco use disorder (TUD; Phecode = 318) and  
250 hypertension (Phecodes = 401, 415.21, 453), were included as covariates.

251 Next, we used the same regression-based approach to test whether *incident*  
252 cardiomyopathy was increased among individuals with (m)dCAD compared to CAD alone. All  
253 individuals with cardiomyopathy coded prior to depression or CAD (N = 14,583) were excluded.  
254 Hence the cardiomyopathy exposure was required to be coded after both depression and CAD.

255 This resulted in a total of 2,345 cardiomyopathy cases and 45,330 cardiomyopathy controls. We  
256 then fitted two multivariable logistic regression models to test whether depression increased  
257 the odds of incident cardiomyopathy among patients with (m)dCAD compared to patients with  
258 CAD alone, after adjusting for the same previously described confounders.

259

#### 260 Sensitivity analyses using Severe Depression.

261 Previous literature points towards progression and worsening of CAD with increasing  
262 depression severity. To test whether cardiomyopathy more commonly co-occurred with severe  
263 depression, we redefined our exposure using a stricter MDD definition requiring the presence  
264 of 296.22 phecode and ICD9/10 codes (Table S8) which dropped the sample size from 57,069  
265 depression-exposed patients to 41,423 MDD-exposed patients. The same regression models  
266 described above were fitted to the data.

267

#### 268 Phenotypic Replication in MGB and *All of Us* Data

269 We replicated the EHR analyses in two external cohorts, *All of Us* and MGB. We used the  
270 same phecode based definitions to define our inclusion and exclusion criteria, case and control  
271 labels, and exposures. Sensitivity analyses were similarly performed in these data by restricting  
272 the exposure definition to include individuals with only severe depression.

273

274

275

276 Results

## 277 Genes Associated with Both Depression and CAD

278 We intersected the 22,207 predicted expression gene models with the summary  
279 statistics of CAD and depression phenotypes as described above. While the tissues that best  
280 predicted gene expression differed between CAD and depression (Figure S4); the mean  
281 (Spearman's rank = 0.433), standard deviation (Spearman's rank = 0.565), minimum  
282 (Spearman's rank = 0.389), and maximum (Spearman's rank = 0.373) association Z-score  
283 statistics demonstrated strong correlation between depression and CAD across all tissues  
284 tested (Figure S3).

285 Results from the 20,971 gene-based tests of association with CAD, and 20,945 gene-  
286 based tests of association with depression are available in Table S2 and Table S3,  
287 respectively<sup>23,24</sup>. We identified a total of 1,455 genes significantly associated with CAD ( $p <$   
288  $2.38e-06$ ) and 928 genes significantly associated with depression ( $p < 2.38e-06$ ) illustrated in  
289 Figures S1 and S2, respectively. We next identified the genes that were significantly associated  
290 with *both* depression and CAD. A total of 20,944 genes were tested in common between  
291 depression and CAD, and of these, 185 genes identified by their gene names were significantly  
292 associated with *both* CAD and depression (Figure 2; Table S4). The genes associated with both  
293 depression and CAD were distributed across the genome (Figure 2).

294

## 295 Enrichment and Pathway Analysis of 185 Genes Associated with Both Depression and CAD

296 We found that there were three times more genes associated with both CAD and  
297 depression than expected by chance given the number of genes significantly associated with  
298 each phenotype independently (hypergeometric test,  $p < 1.718e-43$ ) (Figure 3). Inflammatory

299 (FDR q-value < 0.05) and cardiomyopathy-associated pathways (FDR q value < 0.05) were  
300 overrepresented among genes associated with both CAD and depression (Table 1). Five genes  
301 from the shared set of 185 (2.7%) were annotated to cardiomyopathy-associated pathways.  
302 Four of the 5 genes (*ATP2A2*, *ITGB4*, *SGCD*, and *CACNB4*) were annotated to all three  
303 cardiomyopathy pathways (Table S4). Thirteen additional genes (7%) were annotated to  
304 adaptive immune pathways (Table S4).

305

### 306 Clinical Cardiomyopathy in (m)dCAD

307 Analyses performed in the EHR returned significant differences in the prevalence of  
308 cardiomyopathy between depression-only, CAD-only and (m)dCAD cohorts (Chisq  $P < 2.2e-16$ )  
309 (Table S5). Almost 15% of individuals with (m)dCAD had a cardiomyopathy diagnosis, compared  
310 to 11.2% in the CAD cohort and only 1.59 % in the depression cohort. The results remained  
311 significant when we compared only the (m)dCAD group to the CAD group (Fisher's exact test  $p <$   
312  $2.2e-16$ ) (Table S5). We then replicated these findings in the MGH EHR and the All of Us Data.  
313 We next restricted the depression phenotype to major depression (phecode 296.22) and  
314 observed the same pattern in the prevalence of cardiomyopathy between the groups (Table  
315 S6).

316

### 317 Prevalence of Clinical Cardiomyopathy after Adjusting for known Confounders

318 Results of the multivariable logistic model indicate that there is a 27% increase in the  
319 odds of prevalent cardiomyopathy with a diagnosis of (m)dCAD compared to CAD after  
320 adjusting for age, race, sex, hypertension diagnosis, smoking status, type-2-diabetes and BMI



321 (see Methods for details) ( $p$ -value =  $3.6e-09$ , OR = 1.27, 95% CI = 1.17-1.3). This finding was  
322 replicated in the *All of Us* ( $p$ -value = 0.012, OR = 1.16, 95%CI = 1.03-1.30) and MGH ( $p$ -value <  
323  $2e-16$ , OR = 1.32, 95%CI = 1.28-1.37) data sets.

324 Sensitivity analyses restricting the criteria for depression to “major depression”  
325 preserved the effect estimate and significance of the original finding (OR = 1.14, 95%CI = 1.06-  
326 1.26,  $p$  =  $6.5e-03$ )(Figure 4). This finding was again replicated in the MGH cohort (OR = 1.23,  
327 95%CI = 1.13-1.18,  $p$  <  $2e-16$ ). While the effect estimate was similar in the *All of Us* data set, the  
328 finding did not reach statistical significance likely due to a reduced sample size (OR = 1.13,  
329 95%CI = 0.97-1.32,  $p$ -value = 0.12)

330

### 331 Rate of Incident Cardiomyopathy in (m)dCAD compared to CAD

332 Lastly, we tested the hypothesis that (m)dCAD is a risk factor for the development of  
333 *subsequent* cardiomyopathy. Using a multivariable logistic regression model, we found no  
334 increase in the odds of incident cardiomyopathy among (m)dCAD patients compared to CAD  
335 patients, after adjusting for known confounders in the VUMC EHR (OR = 0.96, 95% CI = 0.84-  
336 1.09,  $p$ -value = 0.53) (Figure 5) and in the *All of Us* data (OR = 0.864, 95%C.I. = 0.730-1.021,  $p$ -  
337 value = 0.086). In the MGH data, not only did we observe a lack of evidence for increased  
338 incident cardiomyopathy subsequent to (m)dCAD, in fact we observed that (m)dCAD cases were  
339 significantly *less* likely to be diagnosed with new onset cardiomyopathy compared to CAD alone  
340 (OR = 0.783, 95%C.I. = 0.743-0.825,  $p$ -value <  $2e-16$ ).

341 After restricting the definition of depression to “major depression” in the VUMC data,  
342 the odds of incident cardiomyopathy were elevated but not significantly so (OR = 1.16, 95% C.I.

343 = 1.00-1.34, p-value = 0.04). However, again, in the *All of Us* (OR = 0.66, 95% C.I. = 0.51-0.84, p-  
344 value = 9e-4) and MGH (OR = 0.54, 95% C.I. = 0.50-0.58, p-value < 2 e-16) data, the rate of  
345 incident cardiomyopathy was lower in (m)dCAD than in CAD alone.

346

347

## 348 Discussion

349 Depression and CAD are highly comorbid conditions and the molecular mechanisms  
350 underlying this common comorbidity remain understudied. Here we present an integrative  
351 genotypic approach to identify genes that map to SNP associations for each condition, followed  
352 by a phenotypic analysis to test a hypothesis motivated by the genetic findings. By performing a  
353 cross-tissue transcriptome-wide association scan using large scale GWAS data for depression  
354 and CAD, we identified 185 genes (three time more than expected by chance) that were  
355 significantly associated with both depression and CAD. Interestingly, the genes associated with  
356 both phenotypes were not necessarily those most strongly associated with depression or CAD  
357 independently. On balance, these results suggest that comorbid (m)dCAD may have a partially  
358 unique genetic architecture which overlaps a subset of genes associated with depression and  
359 CAD.

360 Pathway analyses indicate that the genes involved in (m)dCAD are enriched for  
361 inflammatory and cardiomyopathy-associated pathways. Specifically, we observed an  
362 enrichment for adaptive immune system genes which can be understood in the context of  
363 previous studies that have highlighted immune dysfunction in both depression and CAD<sup>15,29-36</sup>.  
364 Moreover, research has shown that depression is associated with low-grade chronic

365 inflammation whereas CAD has phases of both, acute and chronic inflammation<sup>36–38</sup>. Hence the  
366 enrichment of adaptive immune system genes suggests that depression and CAD could be  
367 linked through exposure to low-grade chronic inflammation.

368         There were six genes *ATP2A2*, *ITGB4*, *SGCD*, *CACNB4*, *ACTN2*, and *TGFB1* associated with  
369 both CAD and depression, which are known to be involved in cardiomyopathy (Table S4).  
370 Differential expression of *ATP2A*, which encodes a Ca<sup>2+</sup> pump on the endoplasmic reticulum, is  
371 associated with cardiac phenotypes including dilated cardiomyopathy<sup>39,40</sup>; and heterozygous  
372 conditional knockout mice demonstrate an essential role for *ATP2A* in neuronal calcium  
373 homeostasis resulting in behavioral phenotypes<sup>41</sup>. Similarly, *CACNB4* is the one of the most  
374 abundant voltage-gated calcium channel subunits expressed in the brain where it is critical for  
375 presynaptic signaling, and co-located in the heart where early data suggests it may be involved  
376 in cardiac contraction<sup>42–44</sup>. The gene locus was also recently implicated in idiopathic  
377 cardiomyopathy in individuals of African-American ancestry<sup>45</sup>. *ACTN2*, a cardiac-specific  
378 structural protein, is classically involved in familial hypertrophic, dilated, and arrhythmogenic  
379 cardiomyopathy<sup>46–48</sup> while *TGFB1* is a cytokine with a variety of cellular functions implicated in  
380 cardiac hypertrophy and hypertrophic cardiomyopathy along with congenital heart disease<sup>49,50</sup>.  
381 Mutations in delta-sarcoglycan (*SGCD*) result in severe neuromuscular disease in humans and  
382 knockout mice develop early progressive cardiomyopathy and dilated cardiomyopathy<sup>51,52</sup>.  
383 However, less is known about the impact of differences in expression of these genes (*ACTN2*,  
384 *TGFB1*, and *SGCD*) on depression.

385         Interpreted in the context of previous studies, our genetic findings suggest that  
386 depression and CAD could share low grade chronic inflammation<sup>36,53–55</sup>. Moreover, genetic

387 results of our study raised the hypothesis that a predisposition to both depression and CAD  
388 (clinically observed as (m)dCAD) may further predispose individuals to cardiomyopathy.  
389 Canonically, viral infections are considered the most common trigger and cause of  
390 inflammatory cardiomyopathy thus leading to immune mechanisms which potentially damage  
391 the myocardial function<sup>56-63</sup>. However, an alternative model consistent with our findings could  
392 position chronic low-grade inflammation as a shared risk factor for depression, CAD, and  
393 cardiomyopathy. We investigated the hypothesis that cardiomyopathy co-occurs more  
394 commonly with (m)dCAD than with CAD, by harnessing the power of large-scale electronic  
395 health record data at VUMC, MGB, and *All of Us*. These three systems represent both hospital  
396 ascertainment (VUMC and MGB) and volunteer ascertainment (*All of Us*). Results of these  
397 analyses suggest that while prevalent cardiomyopathy does in fact co-occur more frequently  
398 with (m)dCAD than with CAD alone, the order of events remains unclear. For example, it  
399 remains possible that (a) cardiomyopathy increases the risk of co-morbid depression in CAD, (b)  
400 treatment for depression provides some protection against subsequent cardiomyopathy, or (c)  
401 both cardiomyopathy and (m)dCAD share additional risk factors. While our work demonstrating  
402 the clinical co-occurrence suggests that cardiomyopathy patients may benefit from depression  
403 screening, future work is needed to disentangle their precise relationship and inform clinically  
404 translatable mitigation strategies.

405         Despite its strengths, our study is limited by the well-established caveats of EHR based  
406 phenotyping which itself suffers from individual bias of the clinician. TWAS analyses rely on  
407 SNP-based predictive models of mRNA trained using mostly European-ancestry individuals in  
408 GTEx v8 and assumes additivity of SNP effects on gene expression, which ignores the possibility

409 of epistatic and gene-environment interactions. Online pathway tools are prone to knowledge  
410 bias in selection of the “validated” genes annotated to pathways.

411 Nevertheless, these analyses highlight the unique genetic and phenotypic architecture  
412 of (m)dCAD compared to CAD and depression alone. We add to the literature the observation  
413 that prevalent, but perhaps not incident cardiomyopathy, is also more common in patients with  
414 (m)dCAD compared to CAD alone. Importantly, this hypothesis was motivated by genetic  
415 findings suggesting that the genes associated with both depression and CAD are enriched for  
416 pathways with a known role in immune and cardiomyopathy-associated biological processes.  
417 This data-driven approach highlights the power of *in silico* transcriptome-wide studies to  
418 motivate hypotheses that can be tested in large EHR databases.

419

420 Acknowledgements

421

## 422 **Funding**

423 KS is funded by the American Heart Association Fellowship AHA827137. LKD is supported by  
424 R56MH120736. JWS and LKD are supported in part by NIMH R01 H118233. JMS is funded by  
425 1F31MH124306-01A1. QSW was supported by NIH 1R01HL140074.

426

## 427 CTSA (SD, Vanderbilt Resources)

428 The deidentified EHR used at VUMC was supported by the National Center for Research  
429 Resources, Grant UL1 RR024975-01, and is now at the National Center for Advancing

430 Translational Sciences, Grant 2 UL1 TR000445-06. The content is solely the responsibility of the  
431 authors and does not necessarily represent the official views of the NIH.

432

#### 433 BioVU

434 The dataset(s) used for the analyses described were obtained from Vanderbilt University  
435 Medical Center's BioVU which is supported by numerous sources: institutional funding, private  
436 agencies, and federal grants. These include the NIH funded Shared Instrumentation Grant  
437 S10RR025141; and CTSA grants UL1TR002243, UL1TR000445, and UL1RR024975. Genomic data  
438 are also supported by investigator-led projects that include U01HG004798, R01NS032830,  
439 RC2GM092618, P50GM115305, U01HG006378, U19HL065962, R01HD074711; and additional  
440 funding sources listed at <https://victr.vumc.org/biovu-funding/>.

441 The *All of Us* Research Program is supported by grants through the National Institutes of  
442 Health, Office of the Director: Regional Medical Centers: 1 OT2 OD026549; 1 OT2 OD026554;  
443 1 OT2 OD026557; 1 OT2 OD026556; 1 OT2 OD026550; 1 OT2 OD026552; 1 OT2 OD026553;  
444 1 OT2 OD026548; 1 OT2 OD026551; 1 OT2 OD026555; IAA#: AOD 16037; Federally Qualified  
445 Health Centers: HHSN 263201600085U; Data and Research Center: 5 U2C OD023196;  
446 Biobank: 1 U24 OD023121; The Participant Center: U24 OD023176; Participant Technology  
447 Systems Center: 1 U24 OD023163; Communications and Engagement: 3 OT2 OD023205; 3  
448 OT2 OD023206; and Community Partners: 1 OT2 OD025277; 3 OT2 OD025315; 1 OT2  
449 OD025337; 1 OT2 OD025276. In addition to the funded partners, the *All of Us Research*  
450 *Program* would not be possible without the contributions made by its participants.

451

#### 452 **Declarations**

453 Contributions

454 K.S. and L.K.D. conceptualized and designed the work. K.S, J.M.S, and H.L. implemented the  
455 computational procedures and performed data analysis. N.J.C, Q.S.W., and E.C.H provided  
456 important clinical and intellectual insights. All authors read, edited, and approved the final  
457 manuscript.

458

459 Corresponding author

460 Correspondence to Lea K. Davis at [lea.k.davis@vumc.org](mailto:lea.k.davis@vumc.org)

461

462 **Ethics declarations**

463 Ethics approval and consent to participate

464 This study was reviewed by the VUMC IRB and designated as non-human subjects research  
465 because of the use of fully de-identified data (IRB# 190418 and IRB# 201609).

466

467 Competing interests

468 JWS is a member of the Scientific Advisory Board of Sensorium Therapeutics (with equity), and  
469 has received an honorarium for an internal seminar Tempus Labs. He is PI of a collaborative  
470 study of the genetics of depression and bipolar disorder sponsored by 23andMe for which  
471 23andMe provides analysis time as in-kind support but no payments.

472 **Supplementary Materials**

473 Supplementary Methods

474 Supplementary Figure 1

475 Supplementary Figure 2

476 Supplementary Figure 3

477 Supplementary Figure 4

478 Supplementary Table 1

479 Supplementary Table 2

480 Supplementary Table 3

481 Supplementary Table 4

482 Supplementary Table 5

483 Supplementary Table 6

484



485 **References**

- 486 1. Kendler, K. S., Gardner, C. O., Fiske, A. & Gatz, M. Major depression and coronary artery  
487 disease in the Swedish twin registry: phenotypic, genetic, and environmental sources of  
488 comorbidity. *Arch. Gen. Psychiatry* **66**, 857–863 (2009).
- 489 2. Glassman, A. H. Depression and cardiovascular comorbidity. *Dialogues Clin. Neurosci.* **9**, 9–17  
490 (2007).
- 491 3. Sullivan, M. *et al.* Depression in coronary heart disease. What is the appropriate diagnostic  
492 threshold? *Psychosomatics* **40**, 286–292 (1999).
- 493 4. O’Neil, A. *et al.* Depression is a risk factor for incident coronary heart disease in women: An  
494 18-year longitudinal study. *J. Affect. Disord.* **196**, 117–124 (2016).
- 495 5. Weeke, A., Juel, K. & Vaeth, M. Cardiovascular death and manic-depressive psychosis. *J.*  
496 *Affect. Disord.* **13**, 287–292 (1987).
- 497 6. Dennis, J. *et al.* Genetic risk for major depressive disorder and loneliness in sex-specific  
498 associations with coronary artery disease. *Mol. Psychiatry* **26**, 4254–4264 (2021).
- 499 7. Mazereeuw, G. *et al.* Platelet activating factors in depression and coronary artery disease: a  
500 potential biomarker related to inflammatory mechanisms and neurodegeneration. *Neurosci.*  
501 *Biobehav. Rev.* **37**, 1611–1621 (2013).
- 502 8. McCaffery, J. M. *et al.* Common genetic vulnerability to depressive symptoms and coronary  
503 artery disease: a review and development of candidate genes related to inflammation and  
504 serotonin. *Psychosom. Med.* **68**, 187–200 (2006).
- 505 9. Upadhyay, R. K. Emerging risk biomarkers in cardiovascular diseases and disorders. *J. Lipids*  
506 **2015**, 971453 (2015).

- 507 10. Shimokawa, H., Aarhus, L. L. & Vanhoutte, P. M. Porcine coronary arteries with  
508 regenerated endothelium have a reduced endothelium-dependent responsiveness to  
509 aggregating platelets and serotonin. *Circ. Res.* **61**, 256–270 (1987).
- 510 11. Brydon, L., Magid, K. & Steptoe, A. Platelets, coronary heart disease, and stress. *Brain.*  
511 *Behav. Immun.* **20**, 113–119 (2006).
- 512 12. Huang, M. *et al.* Longitudinal association of inflammation with depressive symptoms: A  
513 7-year cross-lagged twin difference study. *Brain. Behav. Immun.* **75**, 200–207 (2019).
- 514 13. Beydoun, M. A. *et al.* White blood cell inflammatory markers are associated with  
515 depressive symptoms in a longitudinal study of urban adults. *Transl. Psychiatry* **6**, e895  
516 (2016).
- 517 14. Kim, J.-M. *et al.* Changes in pro-inflammatory cytokine levels and late-life depression: A  
518 two year population based longitudinal study. *Psychoneuroendocrinology* **90**, 85–91 (2018).
- 519 15. Bränn, E. *et al.* Inflammatory markers in late pregnancy in association with postpartum  
520 depression-A nested case-control study. *Psychoneuroendocrinology* **79**, 146–159 (2017).
- 521 16. Bremner, M. A. *et al.* Inflammatory markers in late-life depression: results from a  
522 population-based study. *J. Affect. Disord.* **106**, 249–255 (2008).
- 523 17. Martínez-Cengotitabengoa, M. *et al.* Peripheral Inflammatory Parameters in Late-Life  
524 Depression: A Systematic Review. *Int. J. Mol. Sci.* **17**, E2022 (2016).
- 525 18. Gheysarzadeh, A. *et al.* Serum-based microRNA biomarkers for major depression: MiR-  
526 16, miR-135a, and miR-1202. *J. Res. Med. Sci. Off. J. Isfahan Univ. Med. Sci.* **23**, 69 (2018).

- 527 19. Schmidt, H. D., Shelton, R. C. & Duman, R. S. Functional biomarkers of depression:  
528 diagnosis, treatment, and pathophysiology. *Neuropsychopharmacol. Off. Publ. Am. Coll.*  
529 *Neuropsychopharmacol.* **36**, 2375–2394 (2011).
- 530 20. Nurden, A. T. The biology of the platelet with special reference to inflammation, wound  
531 healing and immunity. *Front. Biosci. Landmark Ed.* **23**, 726–751 (2018).
- 532 21. Tsao, C.-W., Lin, Y.-S., Chen, C.-C., Bai, C.-H. & Wu, S.-R. Cytokines and serotonin  
533 transporter in patients with major depression. *Prog. Neuropsychopharmacol. Biol. Psychiatry*  
534 **30**, 899–905 (2006).
- 535 22. Pandey, G. N. *et al.* Hyperactive phosphoinositide signaling pathway in platelets of  
536 depressed patients: effect of desipramine treatment. *Psychiatry Res.* **105**, 23–32 (2001).
- 537 23. van der Harst, P. & Verweij, N. Identification of 64 Novel Genetic Loci Provides an  
538 Expanded View on the Genetic Architecture of Coronary Artery Disease. *Circ. Res.* **122**, 433–  
539 443 (2018).
- 540 24. Howard, D. M. *et al.* Genome-wide meta-analysis of depression identifies 102  
541 independent variants and highlights the importance of the prefrontal brain regions. *Nat.*  
542 *Neurosci.* **22**, 343–352 (2019).
- 543 25. Barbeira, A. N. *et al.* Integrating predicted transcriptome from multiple tissues improves  
544 association detection. *PLOS Genet.* **15**, e1007889 (2019).
- 545 26. Lonsdale, J. *et al.* The Genotype-Tissue Expression (GTEx) project. *Nat. Genet.* **45**, 580–  
546 585 (2013).
- 547 27. Bowton, E. *et al.* Biobanks and Electronic Medical Records: Enabling Cost-Effective  
548 Research. *Sci. Transl. Med.* **6**, (2014).

- 549 28. The All of Us Research Program Investigators. The “All of Us” Research Program. *N. Engl.*  
550 *J. Med.* **381**, 668–676 (2019).
- 551 29. McCaffery, J. M. *et al.* Common genetic vulnerability to depressive symptoms and  
552 coronary artery disease: a review and development of candidate genes related to  
553 inflammation and serotonin. *Psychosom. Med.* **68**, 187–200 (2006).
- 554 30. Upadhyay, R. K. Emerging risk biomarkers in cardiovascular diseases and disorders. *J.*  
555 *Lipids* **2015**, 971453 (2015).
- 556 31. Shimokawa, H., Aarhus, L. L. & Vanhoutte, P. M. Porcine coronary arteries with  
557 regenerated endothelium have a reduced endothelium-dependent responsiveness to  
558 aggregating platelets and serotonin. *Circ. Res.* **61**, 256–270 (1987).
- 559 32. Brydon, L., Magid, K. & Steptoe, A. Platelets, coronary heart disease, and stress. *Brain.*  
560 *Behav. Immun.* **20**, 113–119 (2006).
- 561 33. Huang, M. *et al.* Longitudinal association of inflammation with depressive symptoms: A  
562 7-year cross-lagged twin difference study. *Brain. Behav. Immun.* **75**, 200–207 (2019).
- 563 34. Beydoun, M. A. *et al.* White blood cell inflammatory markers are associated with  
564 depressive symptoms in a longitudinal study of urban adults. *Transl. Psychiatry* **6**, e895  
565 (2016).
- 566 35. Kim, J.-M. *et al.* Changes in pro-inflammatory cytokine levels and late-life depression: A  
567 two year population based longitudinal study. *Psychoneuroendocrinology* **90**, 85–91 (2018).
- 568 36. Sealock, J. M. *et al.* Use of the PsycheMERGE Network to Investigate the Association  
569 Between Depression Polygenic Scores and White Blood Cell Count. *JAMA Psychiatry* **78**, 1365  
570 (2021).

- 571 37. Twig, G. *et al.* White Blood Cell Count and the Risk for Coronary Artery Disease in Young  
572 Adults. *PLoS ONE* **7**, e47183 (2012).
- 573 38. Zebrack, J. S., Muhlestein, J. B., Horne, B. D. & Anderson, J. L. C-reactive protein and  
574 angiographic coronary artery disease: independent and additive predictors of risk in subjects  
575 with angina. *J. Am. Coll. Cardiol.* **39**, 632–637 (2002).
- 576 39. Lu, Q. *et al.* Intranuclear cardiac troponin I plays a functional role in regulating Atp2a2  
577 expression in cardiomyocytes. *Genes Dis.* S2352304221000611 (2021)  
578 doi:10.1016/j.gendis.2021.04.007.
- 579 40. Alimadadi, A., Munroe, P. B., Joe, B. & Cheng, X. Meta-Analysis of Dilated  
580 Cardiomyopathy Using Cardiac RNA-Seq Transcriptomic Datasets. *Genes* **11**, 60 (2020).
- 581 41. Nakajima, K. *et al.* Brain-specific heterozygous loss-of-function of ATP2A2, endoplasmic  
582 reticulum Ca<sup>2+</sup> pump responsible for Darier’s disease, causes behavioral abnormalities and a  
583 hyper-dopaminergic state. *Hum. Mol. Genet.* **30**, 1762–1772 (2021).
- 584 42. Coste de Bagneaux, P. *et al.* A homozygous missense variant in CACNB4 encoding the  
585 auxiliary calcium channel beta4 subunit causes a severe neurodevelopmental disorder and  
586 impairs channel and non-channel functions. *PLOS Genet.* **16**, e1008625 (2020).
- 587 43. Andrade, A. *et al.* Genetic Associations between Voltage-Gated Calcium Channels and  
588 Psychiatric Disorders. *Int. J. Mol. Sci.* **20**, 3537 (2019).
- 589 44. Kanehisa, M. *et al.* KEGG for linking genomes to life and the environment. *Nucleic Acids*  
590 *Res.* **36**, D480–D484 (2007).
- 591 45. Xu, H. *et al.* A Genome-Wide Association Study of Idiopathic Dilated Cardiomyopathy in  
592 African Americans. *J. Pers. Med.* **8**, 11 (2018).

- 593 46. Good, J.-M. *et al.* ACTN2 variant associated with a cardiac phenotype suggestive of left-  
594 dominant arrhythmogenic cardiomyopathy. *Hear. Case Rep.* **6**, 15–19 (2020).
- 595 47. Haywood, N. J. *et al.* Hypertrophic cardiomyopathy mutations in the calponin-homology  
596 domain of ACTN2 affect actin binding and cardiomyocyte Z-disc incorporation. *Biochem. J.*  
597 **473**, 2485–2493 (2016).
- 598 48. Tiso, N. Identification of mutations in the cardiac ryanodine receptor gene in families  
599 affected with arrhythmogenic right ventricular cardiomyopathy type 2 (ARVD2). *Hum. Mol.*  
600 *Genet.* **10**, 189–194 (2001).
- 601 49. Patel, R. *et al.* Variants of Trophic Factors and Expression of Cardiac Hypertrophy in  
602 Patients with Hypertrophic Cardiomyopathy. *J. Mol. Cell. Cardiol.* **32**, 2369–2377 (2000).
- 603 50. Yadav, M. L., Bhasker, A. N., Kumar, A. & Mohapatra, B. Identification and  
604 characterization of genetic variants of TGFB1 in patients with congenital heart disease. *Meta*  
605 *Gene* **31**, 100987 (2022).
- 606 51. Bauer, R., MacGowan, G. A., Blain, A., Bushby, K. & Straub, V. Steroid treatment causes  
607 deterioration of myocardial function in the  $\delta$ -sarcoglycan-deficient mouse model for dilated  
608 cardiomyopathy. *Cardiovasc. Res.* **79**, 652–661 (2008).
- 609 52. Rutschow, D. *et al.* S151A  $\delta$ -sarcoglycan mutation causes a mild phenotype of  
610 cardiomyopathy in mice. *Eur. J. Hum. Genet.* **22**, 119–125 (2014).
- 611 53. Lynall, M.-E. *et al.* Peripheral Blood Cell–Stratified Subgroups of Inflamed Depression.  
612 *Biol. Psychiatry* **88**, 185–196 (2020).
- 613 54. McNally, L., Bhagwagar, Z. & Hannestad, J. Inflammation, Glutamate, and Glia in  
614 Depression: A Literature Review. *CNS Spectr.* **13**, 501–510 (2008).

- 615 55. Troubat, R. *et al.* Neuroinflammation and depression: A review. *Eur. J. Neurosci.* **53**,  
616 151–171 (2021).
- 617 56. Eitel, I. *et al.* Inflammation in takotsubo cardiomyopathy: insights from cardiovascular  
618 magnetic resonance imaging. *Eur. Radiol.* **20**, 422–431 (2010).
- 619 57. Adamo, L., Rocha-Resende, C., Prabhu, S. D. & Mann, D. L. Reappraising the role of  
620 inflammation in heart failure. *Nat. Rev. Cardiol.* **17**, 269–285 (2020).
- 621 58. Maisch, B., Ristic, A. D. & Pankuweit, S. [Inflammatory cardiomyopathy and  
622 myocarditis]. *Herz* **42**, 425–438 (2017).
- 623 59. Krejci, J., Mlejnek, D., Sochorova, D. & Nemeč, P. Inflammatory Cardiomyopathy: A  
624 Current View on the Pathophysiology, Diagnosis, and Treatment. *BioMed Res. Int.* **2016**,  
625 4087632 (2016).
- 626 60. Tschöpe, C. *et al.* Myocarditis and inflammatory cardiomyopathy: current evidence and  
627 future directions. *Nat. Rev. Cardiol.* **18**, 169–193 (2021).
- 628 61. Eitel, I. *et al.* Clinical characteristics and cardiovascular magnetic resonance findings in  
629 stress (takotsubo) cardiomyopathy. *JAMA* **306**, 277–286 (2011).
- 630 62. Scally, C. *et al.* Myocardial and Systemic Inflammation in Acute Stress-Induced  
631 (Takotsubo) Cardiomyopathy. *Circulation* **139**, 1581–1592 (2019).
- 632 63. Rroku, A., Grahl, S., Landmesser, U. & Heidecker, B. A case report of myocardial  
633 inflammation in takotsubo syndrome. A chicken-or-the-egg phenomenon. *Int. J. Cardiol.*  
634 *Heart Vasc.* **39**, 100958 (2022).
- 635

636 **Figures and Tables**  
637

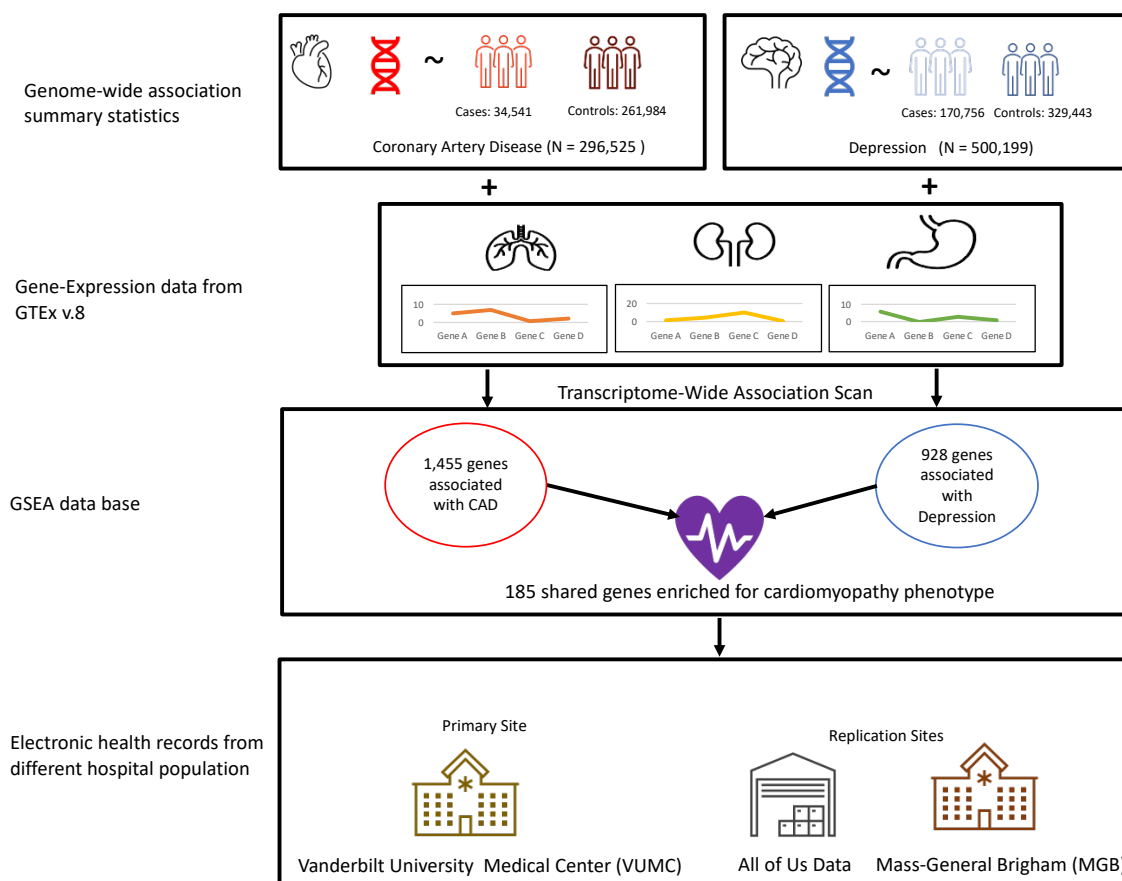


Figure 1

Title: Overall Schematic of the Study

Legend : We performed a transcriptome-wide association study (TWAS) of genetically regulated expression (GReX) using the GTEx v.8 database and genome-wide summary statistics of Depression and Coronary Artery Disease separately. We derived genes that were shared between Depression and CAD, we performed pathway and enrichment analyses. Our results show that genes associated with both depression and CAD are associated with cardiomyopathy associated phenotypes.





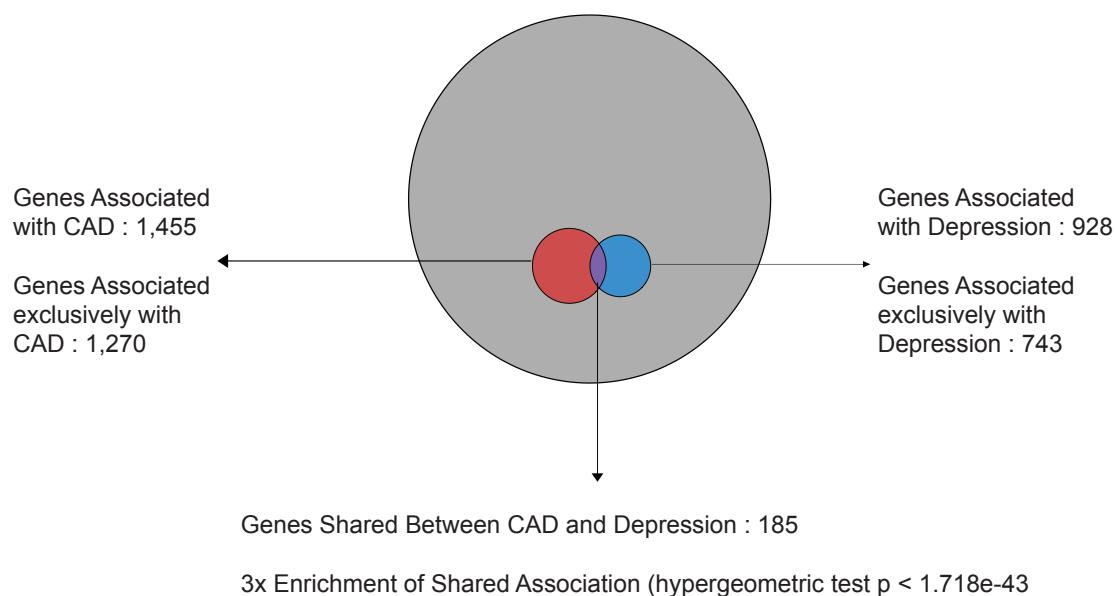


Figure 3

Title : Enrichment test of the genes shared between Depression and CAD

Legend: Euler Plot to highlight the results of enrichment test of the genes associated with both depression and CAD. The grey circle represents the set of 20,944 genes that were tested for association with both phenotypes. The red portion represents the 1,270 genes significantly associated with CAD only. The blue portion represents the 743 genes significantly associated with depression only. The purple portion represents the 185 genes associated with both depression and CAD. Red + purple represents all CAD associated genes (1455) and blue + purple represents all genes associated with depression (928).

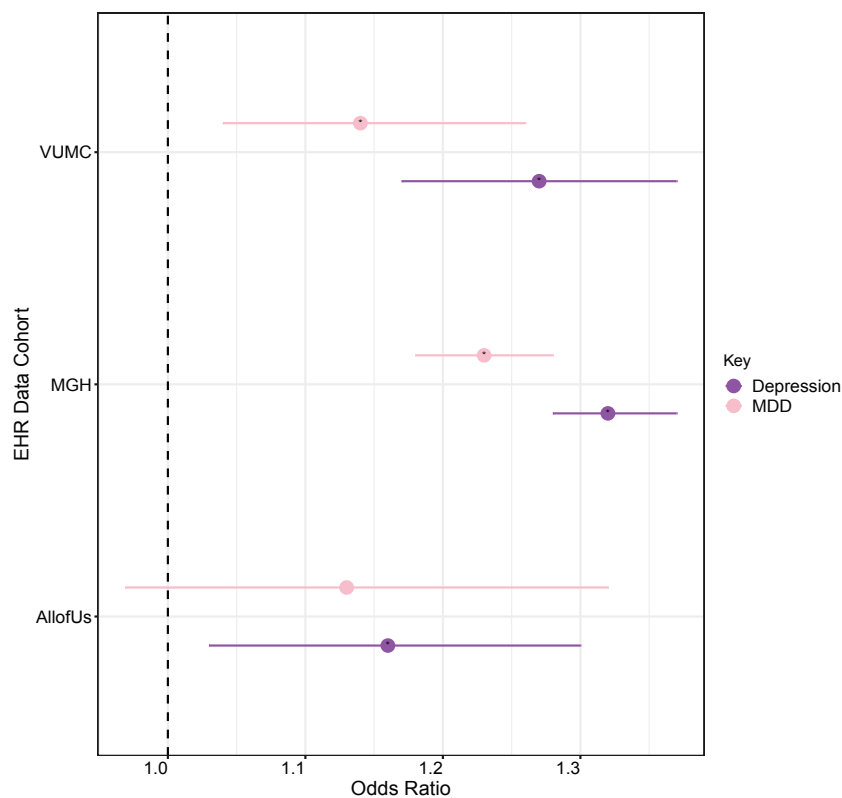


Figure 4

Title: Forest plot illustrating odds of prevalent cardiomyopathy in (m)dCAD compared to CAD

Legend: The association between (m)dCAD vs CAD and prevalent cardiomyopathy after controlling for race, median age across the medical record, sex, T2D, hypertension, and smoking (ever/never) at each of the three sites (VUMC, MGB, and All of Us). Purple represents results from an analysis in which depression was broadly defined while light pink represents results from an analysis restricted to major depression. Whiskers indicate 95% CIs.

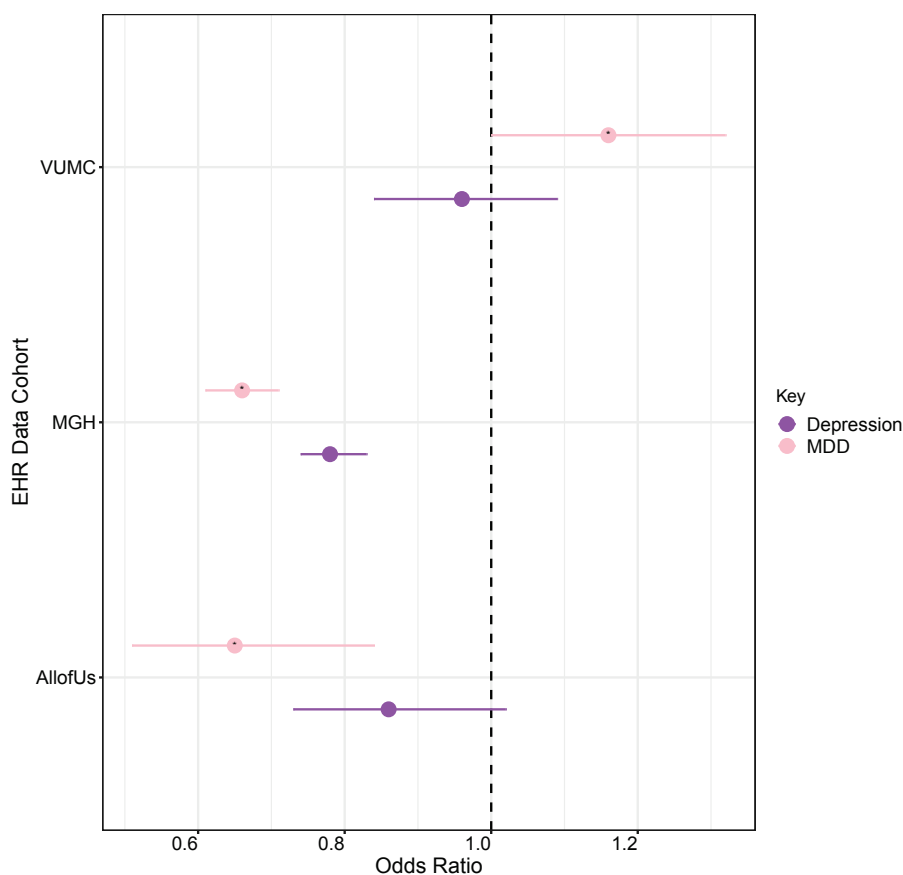


Figure 5

Title: Forest plot illustrating odds of incident cardiomyopathy in (m)dCAD compared to CAD

Legend: The association between (m)dCAD vs CAD and incident cardiomyopathy after controlling for race, median age across the medical record, sex, T2D, hypertension, and smoking (ever/never) at each of the three sites (VUMC, MGB, and All of Us). Purple represents results from an analysis in which depression was broadly defined while light pink

643

Gene Set Name	No. of Genes in the set (K)	Number of Genes in Overlap (k)	k/K	FDR Value
Post-translational protein modification	1435	22	0.0152	1.39e-03
Arrhythmogenic right ventricular cardiomyopathy (ARCV)	76	5	0.0657	1.87e-02
Transport of small molecules	728	13	0.0179	1.87e-02
Hypertrophic cardiomyopathy (HCM)	83	5	0.0602	2.13e-02
Dilated cardiomyopathy	90	5	0.0556	2.62e-02
Adaptive Immune System	825	13	0.0158	3.79e-02

644

645

646

647 Table 1: Gene Set Enrichment Analysis of the Shared Genes

648

649 Legend: We used the 185 genes shared between Depression and CAD as the input for GESA (Canonical Pathways)

650 browser and identified that the shared genes are associated with immune and cardiomyopathy associated

651 phenotypes. K refers to the number of genes in the GSEA database for that particular pathway. k refers to the

652 number of genes from our shared 185 gene-set in the particular pathway

653

654

	Depression (broad)	Major Depression	CAD	Depression and CAD	Major Depression and CAD
<i>Sample sizes</i>					
Total (N)	57,069	41,423	47,349	6,725	4,175
Cardiomyopathy	809 (1.41%)	537 (1.29%)	5,314 (11.22%)	1,001 (14.88%)	589 (14.10%)
<i>Demographics</i>					
Female (%)	68.64	69.1	32.86%	48.91%	47.04%
Median Age, years (IQR)	41(24.5 – 65.5)	39 (22.5 – 55.5)	68 (60 – 76)	65 (56.5-72.5)	64 (56 – 72)
Median BMI (IQR)	27.34	27.28	28.81	29.29	29.68
Underweight	2,071 (3.63%)	1,655 (4.0%)	377 (0.79%)	64 (0.95%)	39 (0.93%)
Normal	17,437 (30.56%)	12,964 (31.3%)	8,673 (18.31%)	1,320 (19.62%)	794 (19.02%)
Overweight	14,154 (24.80%)	10,204 (24.63%)	15,520 (32.77%)	1,979 (29.43%)	1,291 (30.93%)
Obese	19,247 (33.73%)	14,203 (34.28%)	17,423 (36.8%)	2,812 (41.81%)	1,951 (46.73%)
Unknown	4,160 (7.29%)	2,397 (5.78%)	5,356 (11.31%)	550 (8.18%)	100 (2.4%)
<i>Cardiovascular Comorbidities</i>					
Hypertension (N, %)	19,784 (34.66%)	13,513 (32.62%)	38,905 (82.17%)	6,200 (92.2%)	3,837 (91.9%)
Type 2 Diabetes (N, %)	7,452 (13.06%)	5,116 (12.35%)	15,207 (32.11%)	3,227 (47.99%)	2,062 (49.39%)
Tobacco Use Disorder (N, %)	8,363 (14.65%)	6,555 (15.82%)	8,482 (17.91%)	2,399 (35.67%)	1,816 (43.5%)

Table 2: Demographic table for Phenotypes in VUMC

This table describes the demographics for Depression, Major Depression, CAD, Comorbid Depression-CAD and Comorbid Major Depression-CAD in VUMC EHR data.



689 Nashville, TN, 37232, USA

690

691 <sup>7</sup>Department of Biochemistry,  
692 Vanderbilt University School of Medicine,  
693 Nashville, TN, 37232, USA

694

695 <sup>8</sup>Department of Molecular Physiology and Biophysics  
696 Vanderbilt University Medical Center  
697 Nashville, TN, 37232, USA

698

699 <sup>9</sup>Department of Psychiatry and Behavioral Sciences  
700 Vanderbilt University Medical Center  
701 Nashville, TN, 37232, USA

702

703 <sup>10</sup>Departments of Medicine and Biomedical Informatics  
704 Vanderbilt University Medical Center  
705 Nashville, TN, 37232, USA

706



707 Description of Clinical Populations

708 *Vanderbilt University Medical Center (VUMC) Electronic Health Record (EHR)*

709 Vanderbilt University Medical Center (VUMC) is a tertiary care center that provides  
710 inpatient and outpatient care in middle Tennessee and surrounding communities. The VUMC  
711 electronic health record (EHR) system was established in 1990 and includes data on billing  
712 codes from the International Classification of Diseases, 9th and 10th editions (ICD-9 and ICD-  
713 10), Current Procedural Terminology (CPT) codes, laboratory values, reports, and clinical  
714 documentation. A fully de-identified mirror image of the EHR, called the Synthetic Derivative, is  
715 available to Vanderbilt faculty for research purposes. A data floor (i.e., “medical home”)  
716 heuristic of any five codes on different days over a period of at least three years was imposed  
717 to enrich the sample for primary care.

718

719 *Massachusetts General Hospital (MGH)*

720 Mass General Brigham (MGB) is a hospital network that includes Massachusetts General  
721 Hospital, Brigham and Women’s hospital, and other community and specialty hospitals in  
722 Boston area. The data source of MGB EHR is MGB Research Patient Data Registry (RPDR;  
723 <https://rpdrssl.partners.org>), an EHR database which spans more than 20 years of data from  
724 over 6.5 million patients and includes data on diagnoses (billing codes; ICD-9 and ICD-10 codes),  
725 procedures (CPT codes), laboratory values, and clinical notes. Data floors were applied to the  
726 MGB RPDR to include only patients with at least one clinical note and three visits since 2005  
727 with visit more than 30 days apart.

728

729 *All of Us Research Program*

730 All of Us Research Program, a population-based cohort that contains demographic, EHR,  
731 and survey information on participants. Participants enroll digitally through the All of Us  
732 website. After completion of the consent modules and enrollment, participants are given  
733 several health-measuring surveys to be completed. As of July 2019, the All of Us program had  
734 enrolled more than 175,000 core participants and more than 230,000 total participants.

735

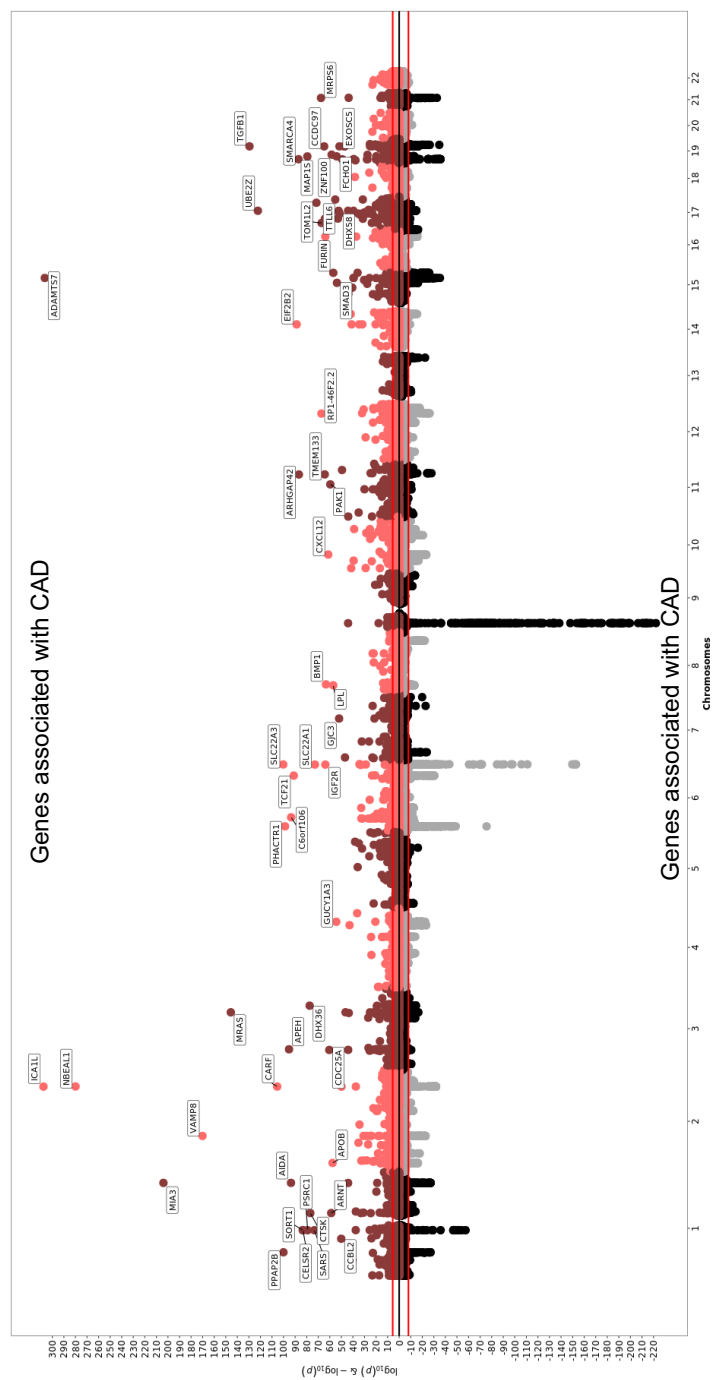


Figure S1

Title: Genes associated with CAD using S-MultiXcan

Legend: A Miami plot of genes and SNPs associated with CAD via S-MultiXcan. Above the x-axis, each data point represents a gene grouped by chromosome (x-axis) and p value (y-axis) of the association with the phenotype. The light red and dark red are alternating colors for genes on odd and even chromosomes. Below the x-axis, each data point represents the SNPs associated with CAD from the input GWAS. Genes with  $-\log(p \text{ values})$  greater than 50 are alternating colors for SNPs on odd and even chromosomes

739  
740

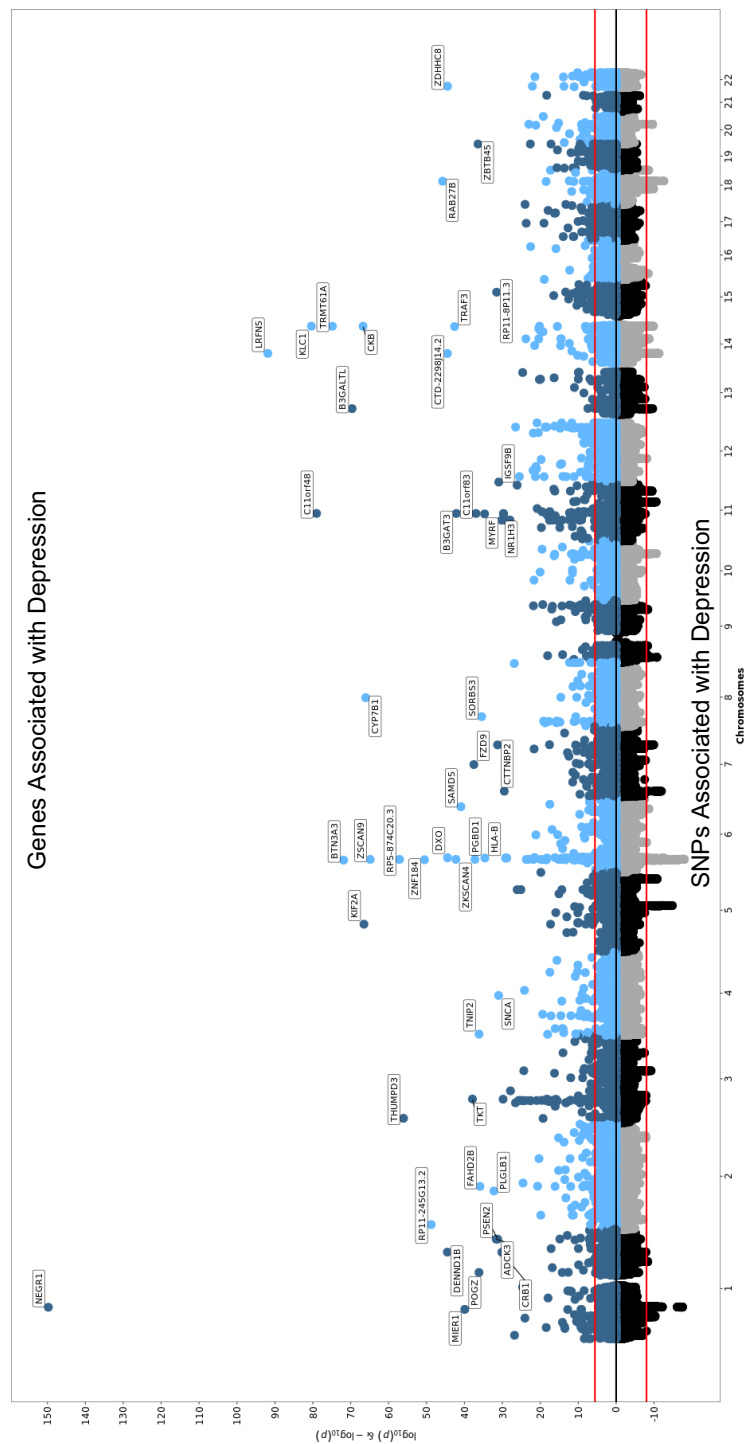


Figure S2

Title: Genes associated with Depression using S-MultiXcan

Legend: A Miami plot of genes and SNPs associated with Depression via S-MultiXcan. Above the x-axis, each data point represents a gene grouped by chromosome (x-axis) and p value (y-axis) of the association with the phenotype. The light red and dark blue are alternating colors for genes on odd and even chromosomes. Below the x-axis, each data point represents the SNPs associated with Depression from the input GWAS. Genes with  $-\log(p \text{ values})$  greater than 50 are labeled. The black and grey are alternating colors for SNPs on odd and even chromosomes.

741

742

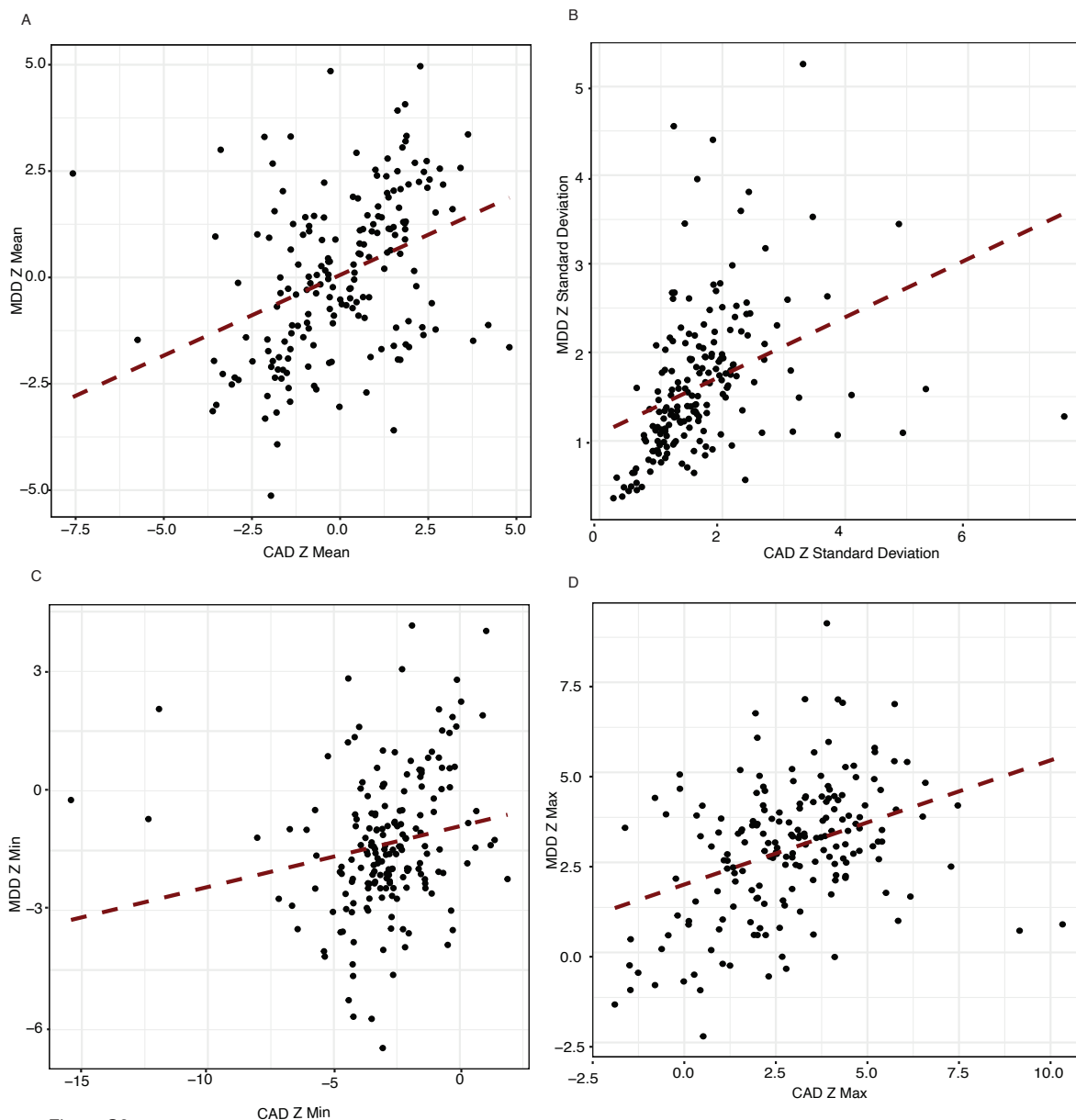


Figure S3

Title: Correlation plots between the test statistics of Depression and CAD for the 185 genes associated with both the phenotypes

Legend: (a) Correlation Plot of Z Mean of Depression and CAD for the 185 genes shared between both the phenotypes (Spearman's coefficient = 0.433)

(b) Correlation Plot of Z Standard Deviation of Depression and CAD for the 185 genes shared between both the phenotypes (Spearman's coefficient = 0.565)

(c) Correlation Plot of Z Min of Depression and CAD for the 185 genes shared between both the phenotypes (Spearman's coefficient = 0.389)

(d) Correlation Plot of Z Max of Depression and CAD for the 185 genes shared between both the phenotypes (Spearman's coefficient = 0.373)

743

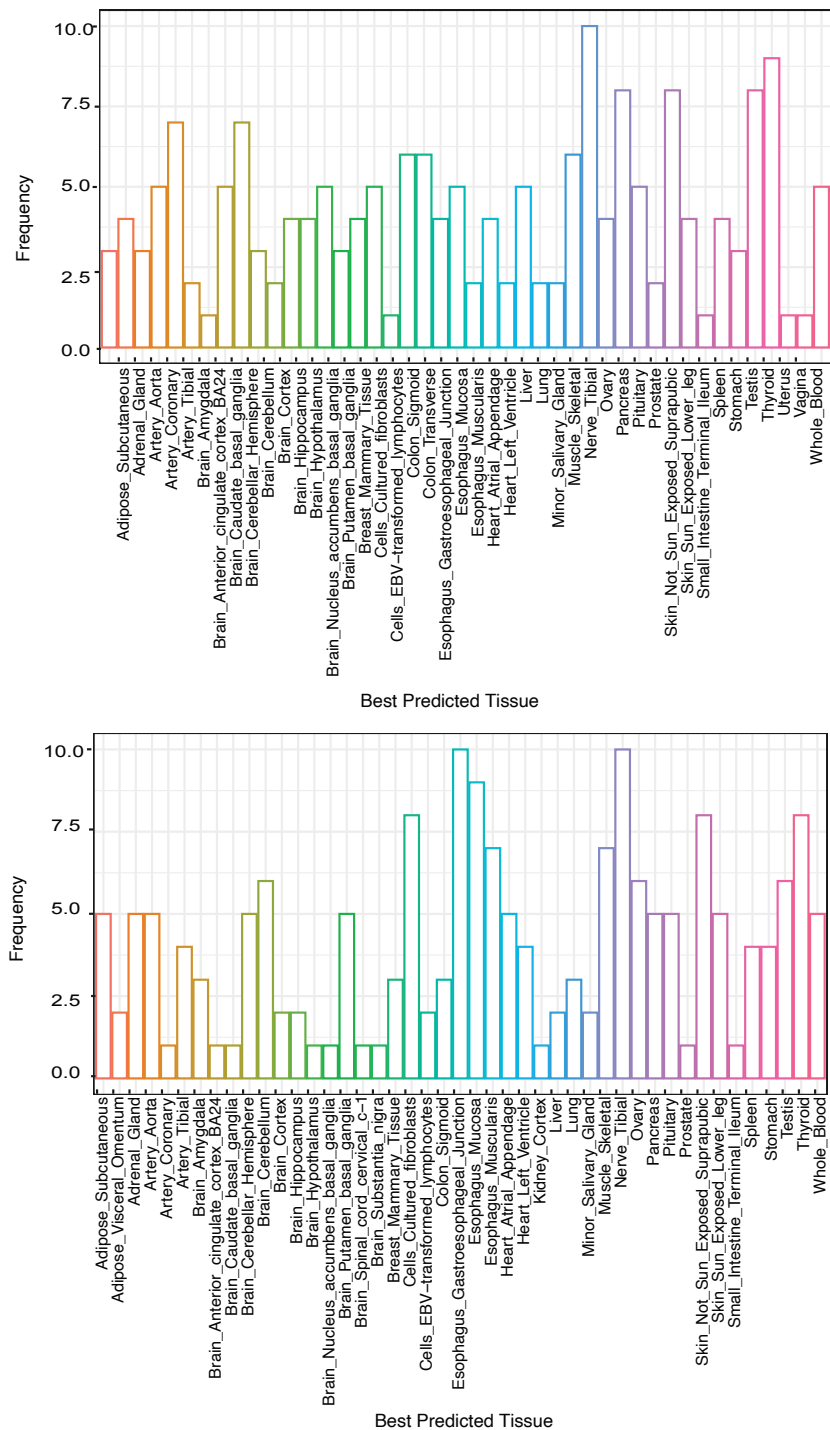


Figure S4

Title: Best Predicted Tissue Distribution of Genes Associated between Depression and CAD

Legend: (a) Tissue distribution of Best Predicted Tissue for genes associated with both Depression and CAD using SMultiXcan Results of CAD  
 (b) Tissue distribution of Best Predicted Tissue for genes associated with both Depression and CAD using SMultiXcan Results of Depression

744  
745