

1 **Genotypic Characterization of Urinary Tract Infections causing bacteria isolates among Adults at**
2 **Kiambu Level 5 Hospital, Kenya: Selected Extended Spectrum β -Lactamase genes and Biofilm**
3 **Formation**

4 **Fredrick Kimunya Wanja^{1*}, Eric Omori Omwenga², Caroline Wangare Ngugi¹, John Ndemi Maina³,**
5 **John Ndemi Kiiru³**

6 ¹*Department of Medical Microbiology, Jomo Kenyatta University of Agriculture and Technology, P.O. Box 6200-00200 Nairobi, Kenya.*

7 ²*Department of Medical Microbiology & Parasitology, Kisii University, P.O. Box 408-40202, Kisii, Kenya.*

8 ³*Centre of Microbiology Research, Kenya medical Research Institute, P.O. Box 43640-00100 Nairobi, Kenya.*

9

10 ***Corresponding author email: - wanjakimunya@gmail.com; Mobile number: +254 724 089245**

11

12

13

14

15

16

17

18

19

20

21

NOTE: This preprint reports new research that has not been certified by peer review and should not be used to guide clinical practice.

22 Abstract

23 The menace of antimicrobial resistance to public health is constantly arising globally. Many pathogenic
24 bacteria use mechanisms such as mutations and biofilm formation, which significantly reduces efficacy of
25 antimicrobial agents. In this cross-sectional study, we aimed at determining the prevalence of selected
26 extended spectrum β -lactamase (ES β Ls) genes and analyse the possible biofilm formation abilities of the
27 isolated bacteria causing urinary tract infection among adult patients seeking medicare at Kiambu Level 5
28 hospital, Kenya. The double-disk synergy test was used for phenotypic identification of ES β Ls producing
29 isolates, while microtiter plate assays with some modifications were used to test biofilm formation analysis. A
30 total of 10 isolates were bioassayed for ES β L genes presence out of 57 bacteria isolates obtained from urine
31 samples. From this study, the *bla*_{TEM} genes were found to be the most prevalent ES β Ls genes (100%),
32 followed by *bla*_{OXA} and *bla*_{SHV} genes at 40% and 30% respectively. In addition, the co-carriage of *bla*_{TEM} and
33 *bla*_{SHV} was revealed at 50% lower than that of *bla*_{TEM} + *bla*_{OXA} genes at 66.7% among the study *E. coli*
34 isolates. Biofilm formation finding disclosed that most of the isolates form biofilms 36 (63.2%), with Gram-
35 negatives being the most biofilm formers 25 (69.4%) compared to the Gram-positive 11 (30.6%). *E. coli*
36 15(41.7 %), *Klebsiella sp.* 7(19.4%) and *S. aureus* 7(19.4%) were the most common biofilm formers. Further
37 analysis showed no significant difference in biofilm formation among all tested isolates with a p-value of
38 more than 0.05. However, overall Gram-positive isolates had a significant P-value of 0.056. Although biofilm
39 formation's impact on urinary tract infections is not fully recognized, the carriage of ES β Ls resistance genes
40 and the biofilm formation ability negatively impact effectiveness of UTI treatment. Therefore, we advocate
41 for surveillance studies to map ES β Ls distribution and biofilm formation genes among UTI etiological agents
42 to halt UTI treatment failure.

43 **Keywords:** Antimicrobial resistance (AMR), Resistance genes, Biofilm formation, Antibiofilm inhibitory
44 effects, Extended Spectrum β - Lactamase (ES β Ls)

45

46 **1.0 Introduction**

47 Bacterial UTIs continue to be a major public health concern that affects both the genders and age groups
48 globally (1). These infections can easily be treated with existing antimicrobials, but treatment options are
49 becoming fewer with the ever-increasing, (re)-emergence and spread of antimicrobial resistance (AMR) (2).
50 The situation has been made worse with the emergence of multi drug and extra drug resistant strains with
51 projections of reaching soon an antibiotic free world in the horizon (1). This has been attributed to the lack of or
52 poor regulation implementation and widespread use/misuse of antibiotics globally; hence the resistance patterns
53 of bacteria causing UTIs are changing drastically. This has been worsened by the emergence and spread of
54 AMR, which has become more rampant in developing countries, Kenya included, with minimal strategies being
55 employed to curb this menace (2). The change in AMR patterns has been attributed to various strategies being
56 employed by bacteria, like the hydrolyzing activities of extended-spectrum β -lactamase (ES β L) and biofilm
57 formation abilities of the UTIs causing pathogen which ends up shielding the bacteria from potent antimicrobial
58 agents amongst many (3). For instance, the carriage of ES β Ls genes by bacteria causing UTIs has been cited for
59 mediating resistance to extended spectrum Cephalosporins (3). This is despite the fact that most β -lactam
60 antibiotics have been reported to be potent against both Gram-positive and Gram-negative bacteria. The recent
61 noted resistance cases against this class of antibiotics are actually of immense clinical significance (4). With
62 this knowledge and many more, there is a pressing need to build up amicable antimicrobial stewardship to
63 better our understanding of the changing antibiotic resistance trends.

64 Various studies done at the global level have documented enormous and ever-increasing distribution levels of
65 ES β L producing bacteria, a trend that should be of great concern globally (5). For example, a study done in Iran
66 indicated the mass prevalence of the presence of β -lactamase genes (96.3%) amongst the study isolates (6).
67 Almost similar results were documented in a recent study conducted in the Philippines, where the prevalence
68 and distribution of ES β Ls-encoding genes was 66.6% (5). This could be attributed to the fact that ES β Ls are
69 mostly located on plasmids and transposons, which easily facilitates the transmission dynamics of these

70 resistance traits amongst pathogens within and between species presenting an infection control risk, particularly
71 within hospitals (7).

72 However, regionally, and particularly in Kenya, the knowledge of carriage of E β SLs among urinary tract
73 infection etiological agents is still a normal challenge beyond most clinicians reach (4). In addition, the
74 limited knowledge and the rising AMR among bacterial agents causing UTIs due to the carriage of E β SLs can
75 be associated with the poor epidemiological surveys, phenotypic and genotypic characterization of multi-drug
76 resistance micro-organisms in developing countries. As a result, UTIs caused by pathogens possessing E β SLs
77 genes have proved difficult to treat due to limited antibiotic treatment options that are not readily available in
78 these poor resource-limited settings (7).

79 Biofilms are exopolysaccharide polymers formed on a mass of bacterial cells that then houses them as they
80 keep on multiplying and producing more virulence traits (8). Even though pathogenic and non-pathogenic
81 bacteria can form biofilms, some of the most common bacteria causing UTIs have been identified to be good
82 biofilm formers (8). Among the most common UTI causing bacterial isolates includes; *E. coli*, *S. aureus* and
83 *P. aeruginosa*, even though *E. coli* has been singled out as the most notorious biofilm former (8). According
84 to a prior study, bacteria that exist in biofilms exhibit extraordinary resistance to conventional biocides,
85 antimicrobial treatments and host immune response compared to their planktonic (non-adherent) counterparts
86 (9). Once micro-organisms form biofilms, they alter their phenotypic characteristics, reducing their
87 susceptibility to antibiotics (10). This influences microbial responses to stimuli in medical and non-medical
88 settings, especially the responses towards antimicrobial agents and the host immune system. The observed
89 phenotypic changes are associated with the microbe genetic diversity since the expression of genes within the
90 said community leads to biofilm formation (11). To succeed in UTI treatment and halt recurrency, more
91 research on biofilm formation and the impact association to resistance of UTI causative agents to commonly
92 used antibiotics will help tailor prudent treatment solutions.

93 This ability to form biofilms by most UTI etiological agents, the contribution of the biofilms to uropathogens
94 resistance to antibiotics needs to be well understood. Furthermore, our understanding of the interplay between
95 biofilm and AMR among bacteria causing urinary tract infections worldwide and how to best treat these
96 infections is limited (10). Again, the distribution of biofilm formation genes among bacteria causing UTIs is
97 under-investigated. However, microbes that live closely in biofilms are said to embrace cellular signaling
98 communication mechanisms to ensure all collaboration for optimum benefits. Future studies on the
99 association between biofilm formation and AMR should be seen as a greater way of understanding biofilm
100 processes, leading to novel, effective antibiofilm inhibitory strategies and improving patient management (11).
101 The clinical effect of these biofilms and how they afford pathogens a favorable environment to thrive should
102 be seen a scientific gap that needs to be elucidated. These biofilms also give pathogens more time to escape
103 the tidal/ static activities of antimicrobials (12)(13), meaning more genetic and molecular advances will also
104 better our understanding of these bacterial communities, boosting treatment.

105 To assist halt biofilm establishment and dissolution of the already existing ones, long-term solutions with
106 significant antibiofilm inhibitory effects are paramount (14). More so, because the interplay between antibiotic
107 resistance and biofilm formation remains unclear and has a significant impact on the cost of medical treatment
108 and prevention of infectious diseases (15)(16). The use of drugs with antibiofilm inhibitory effects will
109 therefore aid in unmasking the biofilm exopolysaccharide matrix allowing efficient penetration of antibiotics
110 and host immune responses into biofilms, which will result in minimum resistance and hampering of
111 antibiotic therapy (17). This current study finding therefore sheds light on the prevalence of EβSLs and
112 possible abilities to biofilm formation among bacterial isolates causing UTI among adult patients seeking
113 medicare at Kiambu Level 5 hospital, Kenya. The revealed finding also equips health caregivers with crucial
114 information that will diagnose and probable potential treatment solutions for urinary tract infections.

117 **Materials and Methods**

118 **2.1 Study design, site and ethical approval**

119 This cross-sectional study was done in Kiambu level 5 Hospital, Kiambu County – Kenya (1°10'S36°50'E).
120 The study's ethical approval was sought from the Kenyatta National Hospital-University of Nairobi Ethical
121 Research Committee (Reference no: KNH-ERC/A/470) and National Commission for Science, Technology,
122 and Innovation (NACOSTI) (Reference no: 619853).

123 **2.1.1 Ethics Statement**

124 The principal investigator was at the laboratory reception all the time and explained the goal of the study to
125 each adult patient into details to ensure smooth recruitment exercise. After the detailed explanation, consent of
126 the participant was sought, which required him/her to fill in and sign the consent form (Supplementary data
127 S1).

129 **2.2 Sample size**

130 This present study involved isolates from our previous study by Wanja *et al.* (18) where 57 significant
131 bacterial isolates and 31 non-significant growths below the $\geq 100,000$ CFU/ml (10^5) threshold were obtained.
132 Therefore, the 57 UTI-positive isolates were used as our sample size to determine the possibility of biofilm
133 formation. On the other hand, isolates resistant to 3rd generation cephalosporins (Ceftriaxone, Cefotaxime
134 and/or Ceftazidime) and ampicillin were screened for the E β SLs genes carriage (18).

135 **2.3. Molecular detection of E β SLs**

136 ***i. Phenotypic detection of E β SLs***

137 A double-disk synergy test to detect the likelihood of isolates carriage of E β SLs was performed using disks of
138 3rd generation Cephalosporins and Cephalosporin-inhibitor (Clavulanic acid) antimicrobial disk as previously
139 described (19) (20). The test disks of 3rd generation Cephalosporins and Ceftazidime/Clavulanic acid were
140 used. On inoculated Mueller-Hinton agar, the disks were kept 30mm apart, centre to centre. A clear extension
141 of the edge of the inhibition zone of Cephalosporin towards the Augmentin disk was observed was interpreted
142 as a positive for E β SL production as done before (18). All tests were independent of each other.

144 *ii. DNA extraction*

145 The DNA template for the PCR test was obtained using the boiling method as previously described (21).
146 Briefly, a loopful of pure bacterial inoculum was immersed into 1mL of PCR grade water (Invitrogen,
147 DNase/RNase free) in a 2mL Eppendorf tube. Lysis of the bacterial cell membrane was done by boiling at
148 95°C for 15 minutes in a thermal block (Twin incubator, DG 210). The separation of DNA from other cell
149 extracts was done by centrifuging (BioSan LMC- 3000 Centrifuge; Serial no; 90804012, CHINA) at 1400 rpm
150 for 5 minutes. The supernatant containing extracted DNA was transferred to another Eppendorf tube and
151 stored at -20°C (21).

152 *iii. Genotypic Identification of E β SLs Genes*

153 Molecular screening was done by PCR method to determine the carriage of selected E β SLs genes (*bla*_{CTX-M},
154 *bla*_{SHV}, *bla*_{TEM} and *bla*_{OXA}) as described by previous studies (22) (23) (24) . The final volume in each PCR
155 tube was 25 μ l which included 10 μ l of Qiagen master mix, 1 μ l butane, 2 μ l DNA, 10 μ l PCR water, and 2 μ l
156 forwards and reverse primer (specific to each target gene). Amplification was done using a thermal cycler
157 (GeneAmp® PCR system 9700) under the following conditions; initial denaturation at 95 °C for 2 min,
158 annealing at 50 - 60 °C (depending on the primer) for 1 min, extension at 65 °C for 8 min and a single final

159 extension step at 65 °C for 8 min for 30 cycles. Amplified PCR products were separated in 1.5% gel and
 160 banding patterns were visualized under a UV gel imager.

161 **Table 2.1:** PCR Amplification primers used

PCR Amplification primers used					
AMR gene	Primer name	Primer sequence	Annealing T(°C)	Product size	Reference
<i>bla_{TEM}</i>	TEM-F	5'-ATGAGTATTCAACATTTTC CG-3'	50	867 bp	(22)
	TEM-R	5'-CCAATGCTTAATCAGTGA CG-3'			
<i>bla_{SHV}</i>	SHV-F	5'-TTCGCCTGTGTATTATCTCCCTG-3'	50	854 bp	(23)
	SHV-R	5'-TTAGCGTTGCCAGTGYTCG-3'			
<i>bla_{OXA}</i>	OXA-F	5'-ATGAAAAACACAATACATATCAACTTCGC-3'	62	280 bp	(24)
	OXA-R	5'-GTGTGTTTAGAATGGTGATCGCAT T-3'			
<i>bla_{CTX-M}</i>	CTX-M-F	5'-ATGTGCAGYAACAGTAARRGTKATGGC-3'	60	593 bp	(23)
	CTX-M-R	5'-TGGGTRAARTARGTSAACAGAAAYCAGCGG-3'			

162 **Keyword:** *bla-* β lactamase genes; **bp-** molecular weight in base pairs

163 *iv. Genetic analysis of E. coli Isolates*

164 Resistance to either of the tested expanded spectrum cephalosporin was used as a basis for selection of six *E.*
 165 *coli* isolates for repetitive tandem repeats analysis. This analysis was done using the GTG 5-PCR method
 166 using published strategies and primers indicated in **Table 2.1**. PCR amplification of the target DNA sequence
 167 was done at an initial step of denaturing for about 1 minutes at 95°C, then the second fold of annealing at 40°C
 168 temperature and finally the third fold of the final extension at 72°C. Amplified products were separated by
 169 running in 1% agarose gel for 1 hour. Visualization of banding patterns was done using a Gelmax® UV
 170 imager. Banding patterns were analyzed using bionumerics Gelcompar®2 software versions 6.6, with the
 171 cluster analysis done using the dice method based on UPGMA arithmetic mean. As previously described, a

172 correlation of $\geq 80\%$ among bacterial species was regarded as strong evidence of genetic relatedness among
173 isolates (25).

179 **2.4. Biofilm formation Assay**

180 The study test isolates' ability to form biofilm was determined using 96 well microtiter plate assays with some
181 modifications as described before (26). The isolates stored at -80°C in vials were first thawed, 10 μl picked
182 and inoculated into 190 μl Tryptone Soya Broth (TSB-OXOID, UK) and incubated in a microtiter plate for 48
183 hours at 37°C without shaking. By use of a parafilm, the flat-bottomed 96 well microtiter plates were sealed
184 for purposes of preventing medium evaporation. After the incubation, the microtiter plates were rinsed gently
185 2-3 times with double-distilled water 200 μl to remove loosely attached cells/planktonic cells. The microtiter
186 plate was then air-dried for 1 hour before adding 200 μl per well of 0.4% crystal violet solution to the adhered
187 cells in the microtiter plates and left at room temperature for 15min. Excess stain was removed by rinsing the
188 microtiter plates gently with 200 μl of distilled water per well three times. These microtiter plates were then
189 air-dried again for 1 hour and then 200 μl of absolute ethanol was added to solubilize the dye. The intensity
190 was measured at optical density ($\text{OD}_{630\text{nm}}$) using a Safire Tecan-F129013 Micro Plate Reader (Tecan,
191 Crailsheim, Germany). Background staining of each experiment was corrected by subtracting the crystal violet
192 bound to un-inoculated controls from those of the samples using the formula by Omwenga *et al* (27).
193 Antibiofilm formation inhibitory activity was carried out using the selected eight bacteria isolates (*E.coli*

194 3323, *E.coli* 5810, *Klebsiella spp* 3306, *Klebsiella spp* 3063, *Staphylococcus spp* 3309, *Staphylococcus spp*
195 3328, *Proteus spp* 3346, and *Proteus spp* 3268) that were obtained from our previous study (18). The
196 treatment drugs used for the antibiofilm formation inhibitory activity assay were in different
197 dosages/concentrations as follows; Ampicillin (AMP)-500mg/ml, 250mg/ml, 125mg/ml and 62.5mg/ml:
198 Ciprofloxacin (CIP)-500mg/ml, 250mg/ml, 125mg/ml and 62.5mg/ml: Sulfamethoxazole (SXT) -960mg/ml,
199 480mg/ml, 240mg/ml and 120mg/ml: Ceftriaxone (CRO)-1000mg/ml,500mg/ml,250mg/ml and 125mg/ml.

200 To estimate the antibiofilm activity (Abf A) of a given antibiotic, the following equation was used (27).

201 *Antibiofilm formation ability (Abf A) (%) = (1-(OD_{Test sample} - OD_{Blank})/ (OD_{Untreated sample} - OD*
202 *Blank) ×100.*

203 All these tests were carried out in triplicates independent of each other and *Pseudomonas aeruginosa* (ATCC-
204 27853) was used as the study reference strain.

205 **2.5. Data Analysis**

206 The study findings were later entered into excels spread sheets for analysis using graph pad prism version.
207 ANOVA Dunnett's multiple comparisons test was applied to determine the antibiofilm formation inhibitory
208 assays. Binary logistic regression analysis was carried out to generate the adjusted odds ratio with a 95%
209 confidence interval. An alpha of less than 0.05 (P<0.05) was considered statistically significant.

210 **3.0 Results**

211 **3.1 Study population and sample size**

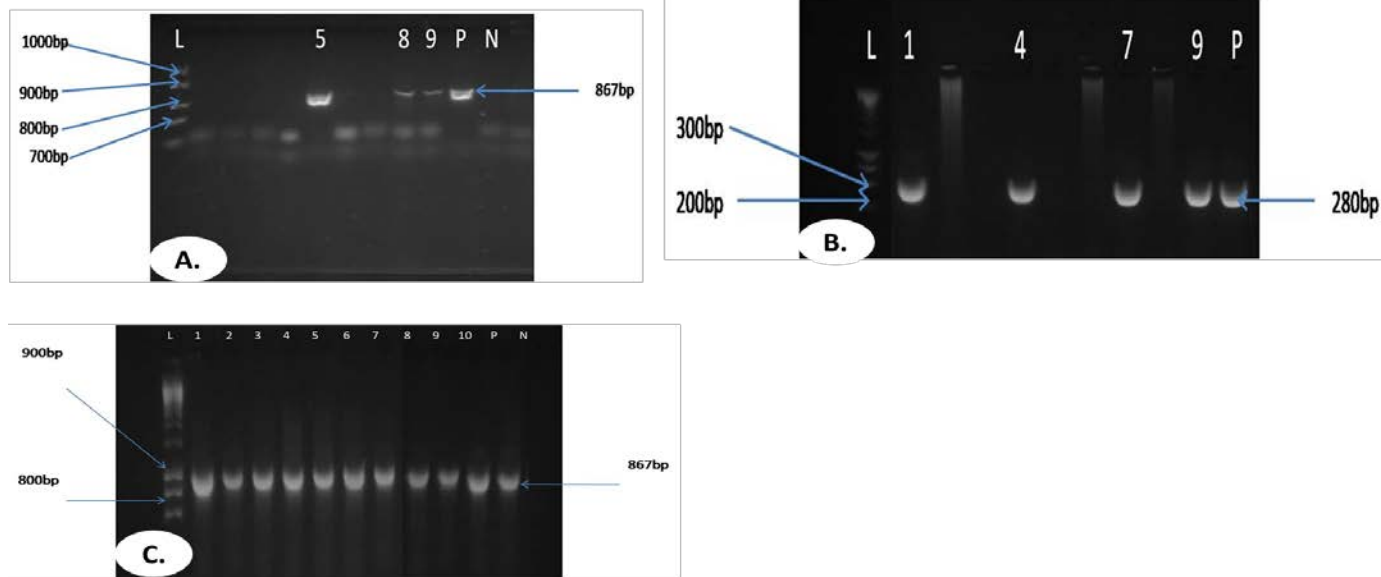
212 From the outpatient department, 174 (84.5%) were recruited, while inpatient 32 (15.5 %) were from the
213 inpatients [18]. The overall age mean among study participants was 31.8 years. Out of the two hundred and
214 six (206) midstream urine samples collected from the participants, only 57 had significant urinary tract
215 infection growth, which translates to a prevalence of 27.6%. Therefore, the 57 significant isolates were used
216 as the sample size of this current study and were subjected to E β SL and biofilm formation analysis (18).

217 **3.2.1 Prevalence of β -lactamase Phenotypes**

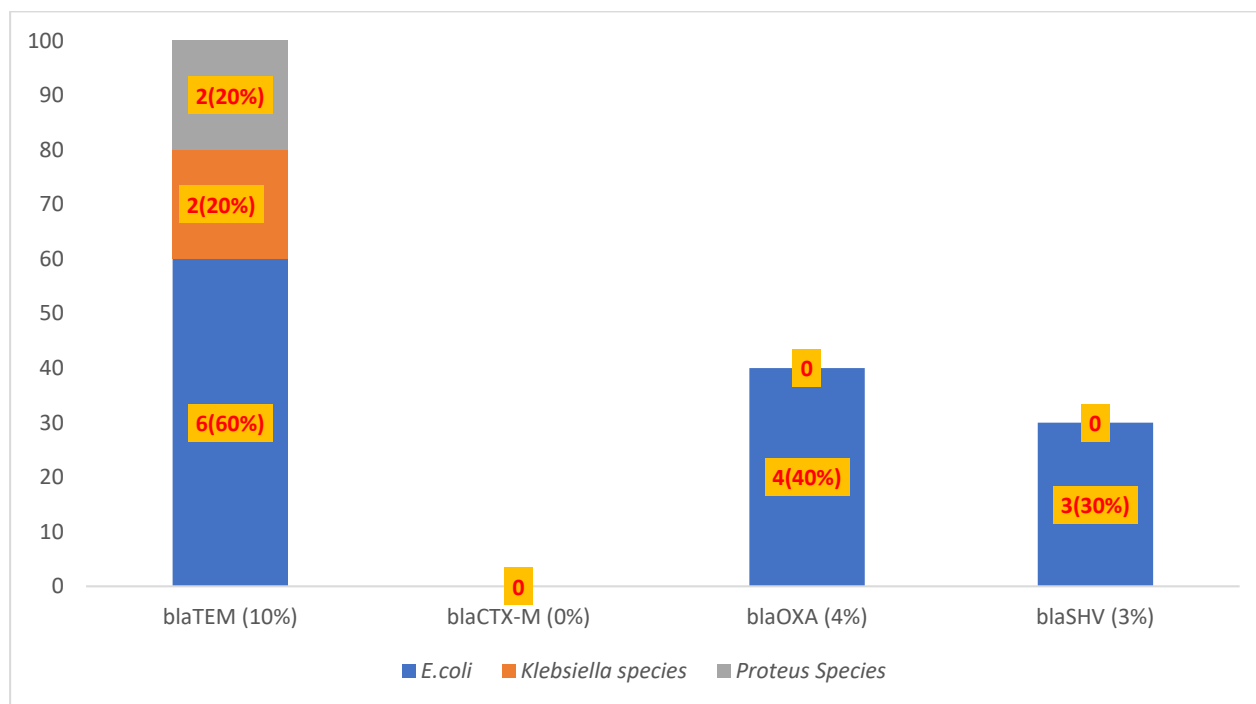
218 From the 57 isolates that met the threshold for significant UTI, 14 (24.6%) were resistant to Ceftriaxone,
219 Cefotaxime or Ceftazidime and were regarded as possible ESBL producers. However, only 10 (17.5%) were
220 confirmed as ESBL producers by the double disk method (4).

221 Further screening for genotypic carriage of selected *bla* genes showed that TEM was present in all the 10
222 (100%) screened isolates revealing readings more than 867 bp, as demonstrated in **figure 3.2-C and Table**
223 **3.1** below. In addition, **Figure 3.2-A** demonstrates that E β SLs *bla_{OXA}* genes were detected 30% findings
224 more than 854 bp among *E. coli* isolates while in **Figure 3.2-B** the prevalence of E β SLs genotype *bla_{SHV}* is
225 demonstrated at 40% with findings more than 280 bp among *E. coli* isolates.

226 Analysis based on the co-carriage of E β SLs genes revealed the co-carriage of *bla_{TEM}* and *bla_{OXA}* among *E.*
227 *coli* isolates at 66.7% and the co-carriage of *bla_{TEM}* + *bla_{SHV}* at (50%) as demonstrated on **Table 3.1** below.



228
229 **Figure 3.2: Electrophoresis gel results for *bla_{SHV}* genes (A), *bla_{OXA}* genes (B) and *bla_{TEM}* genes (C).**



230
231 **Figure 3.1: EβSLs genes results of the obtained bacterial isolates**

232 **Key word: *bla-* β lactamase genes; % - percentage**

Table 3.1 E β SL genes co-carriage results and biofilm formation results.

E β SL genes co-carriage (n)					
Organism	N	<i>bla</i> _{TEM} + <i>bla</i> _{SHV} + <i>bla</i> _{OXA}	<i>bla</i> _{TEM} + <i>bla</i> _{OXA}	<i>bla</i> _{TEM} + <i>bla</i> _{SHV}	
<i>E. coli</i>	6	3(6)	4(6)	3(6)	
<i>Klebsiella species</i>	2	0(2)	0(2)	0(2)	
<i>Proteus species</i>	2	0(2)	0(2)	0(2)	
All	10	3	4	3	

Organism	Biofilm former	Non-biofilm formers	OR	95% CI	P-value
<i>E. coli</i>	15	9	1.03	0.384-2.758	0.9554
<i>Klebsiella species</i>	7	3	0.74	0.171-3.15	0.6781
<i>Proteus species</i>	3	3	1.71	0.317-9.276	0.5315
<i>S. aureus</i>	7	4	0.98	0.256-3.746	0.976
<i>Enterococcus species</i>	0	1	5.09	0.199-130.659	0.3254
<i>S. saprophyticus</i>	4	1	0.43	0.045-4.093	0.4617
Gram- negative	25	15	1.03	0.446-2.374	0.9474
Gram-positive	11	6	2.49	0.976-6.368	0.0561*
Department	Biofilm former-36(63.2%)	Non-biofilm former-21(36.8%)	Total (%)		
Out patient	32	17	49(85.9%)		

In patient	4	4	8(14 %)
Odds ratio			1.860542
P-value			0.4053425
95% CI	0.3057786	11.36315	
Gender	Biofilm former (%)	Non-biofilm former (%)	Total (%)
Men	2(5.6%)	1(4.7%)	3(5.3%)
Female	34(94.4%)	20(95.2%)	54(94.7%)
odds ratio			1.173229
95% CI	0.05763235	72.80199	0.8970091

235 **Keyword:** *bla- β lactamase genes*; % - percentage; N–number of cases

236 **3.3 Genetic diversity of *E. coli* isolates causing UTIs**

237 The six isolates: Ec1- *E.coli* 5806; Ec2- *E.coli* 3352; Ec3- *E.coli* 3323; Ec4- *E.coli* 3177; Ec5- *E.coli* 3318
 238 and Ec6- *E.coli* 3350 did not cluster based on similarities in antimicrobial resistance profiles or β -lactamases
 239 genes carriage. For instance, Isolates *E.coli* 5806 and *E.coli* 3350 had identical resistance profiles (AMP,
 240 CRO, CAZ, CTX) yet clustered in different clades. This was also similar to isolates *E.coli* 3352 and *E.coli*
 241 3323 that also had identical antimicrobial resistance (AMP, ATM, CRO, CAZ, CTX) and clustered into two
 242 different clades. Therefore, the six isolates could be grouped into four clades with similarities of between 65
 243 – 86%, which could reflect no indication of similar strain expansion in the Kiambu region, **Figure 3.3.**

244

245

246

247

248

249

250

251

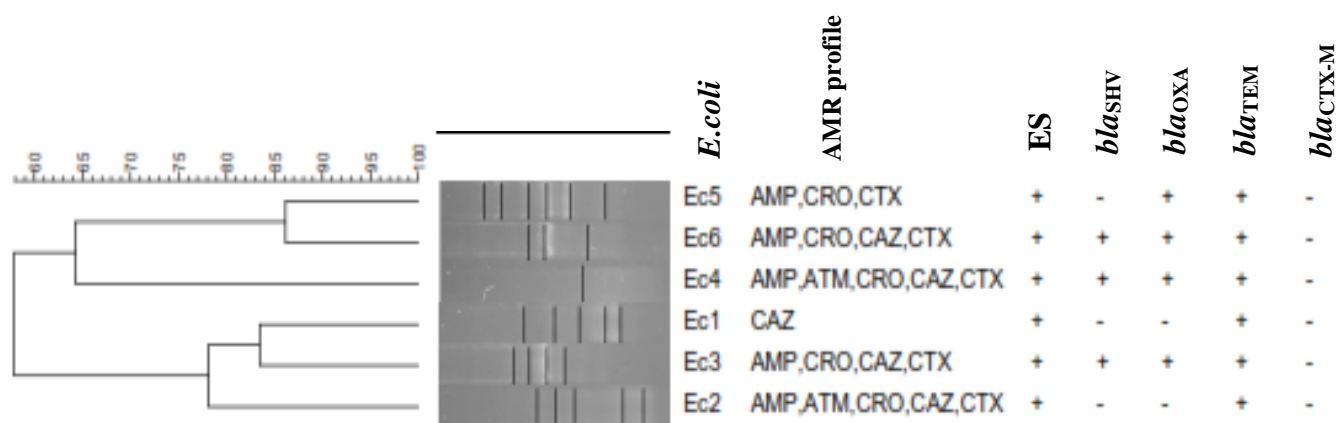
252

253

254

255

256



249 Figure 3.3.3 Dendrogram showing the genetic diversity of *E. coli* isolates.

250 **Figure 3.3:** *Escherichia coli* dendrogram

251 **Key:** The figure shows phylogeny analysis of *Escherichia coli* isolates that were positive for the carriage of
 252 E β SLs genes. Description of various acronyms on this figure is as follows; ***E. coli***: *Escherichia coli*, AMR:
 253 Antimicrobial resistance, *bla*_{TEM}: Temoneria β -lactamase, *bla*_{CTX-M}: Cefotaxime Munich β -lactamase,
 254 *bla*_{SHV}: Sulhydryl variant β -lactamase, *bla*_{OXA}: *bla*_{OXA}-type β -lactamases

255

256

3.4.1 UTIs isolate Biofilm formation assay

The biofilm formation assays revealed that majority of the screened study isolates were biofilm formers - 63.2% (36/57) to non- biofilm formers at 36.8% (21/57). Gram-negative isolates had the highest biofilm formation prevalence at 69.5% (25/36) compared to the Gram-positive 30.5% (11/36). With *E. coli* 15(41.6%), *Klebsiella sp.* 7 (19.5%) and *S. aureus* 7 (19.5%) respectively being the most common biofilm formers as demonstrated in **Table 3.1 above**.

Further analysis based on significance of the results, showed no significant difference in biofilm formation among the tested isolates with a p-value of more than 0.05 recorded across board. However, analysis based on bacteria classification revealed that Gram positive isolates yielded significant biofilm formation ability with a notable P-value of 0.0561 **Table 3.1 above**.

From the 57 analysed isolates the outpatient department had 49 (85.9%), a prevalence of 88.9% (32/36) biofilm formers compared to the inpatient 11.1% (4/36). Non- biofilm formers prevalence findings were also similar with the outpatient biofilm formation prevalence at 80.9 % (17/21) to 19.1 % (4/21) of the in-patient department. In addition, biofilm formation was prevalent in women's urine isolates at 62.9 % (34/57) compared to men's at 5.6 % (2/57) as summarized in **Table 3.1 above**

3.4.2 Antibiofilm formation inhibitory activity assay

Antibiofilm formation activity assay was carried out for eight bacteria isolates that were selected based on their antimicrobial resistance activity against test antibiotics in our previous study (18). The revealed data demonstrated that the biofilm formation inhibitory effects varied differently between the study isolates species and the various antibiotic dosages in comparison to the positive control as demonstrated in **Figure 3.5.1; 3.5.2, 3.5.3 and 3.5.4**. Ceftriaxone had the best antibiofilm inhibitory effects at all dosages compared to the rest of the test treatment antibiotics. On the other hand, Sulfamethoxazole yielded the least observed antibiofilm inhibitory effects across the four dosages as demonstrated in figure 3.5.3 below. Further analysis also revealed that Gram-negative isolates had the most antibiofilm inhibitory effects compared to the Gram-

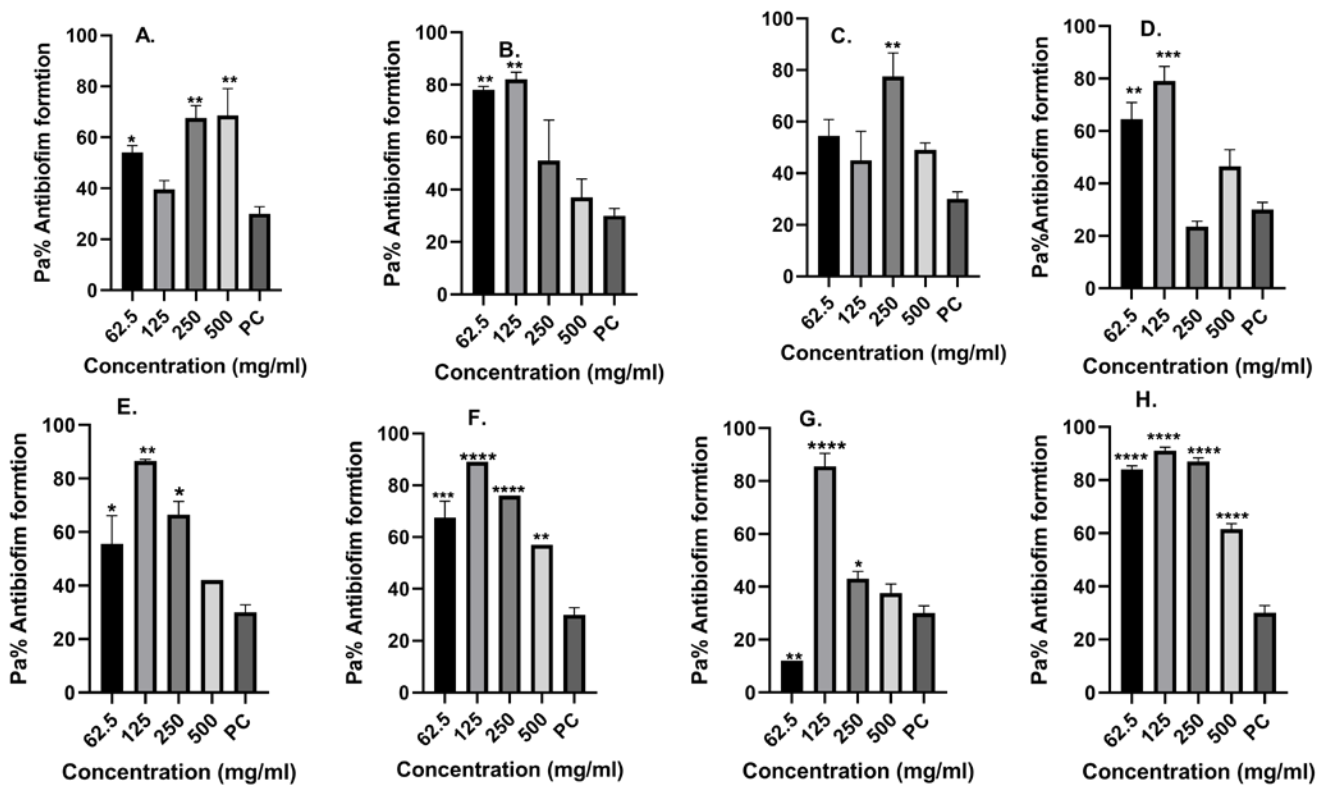
281 positive *Staphylococcus species*. In addition, analysis based on how each species were affected show
282 *Proteus spp* were more susceptible to treatment drugs at various dosages compared to the rest of the isolates
283 **Figure 3.5.1 to Figure 3.5.4.**

284 **3.4.2.1: Ampicillin antibiofilm effect/activity**

285 The antibiofilm effects findings against ampicillin revealed huge variation more so amongst isolates of the
286 same species. For instance, among the *E. coli* isolates; *E. coli* 3323 isolate yielded moderate antibiofilm
287 inhibitory effects especially when subjected to ampicillin 500mg/ml and 250mg/ml dosages when compared
288 to that of *E. coli* 5810 isolate against the same 500mg/ml and 250mg/ml dosages **Figure 3.5.1 below.**

289 In addition, *Staphylococcus spp* 3328 and *Proteus spp* 3268 isolates in the various test drug dosages yielded
290 significant antibiofilm formation inhibition activity ($P= *** = 0.001$; $**** = 0.0001$). However, across all
291 the ampicillin dosages, *Klebsiella spp* 3306 yielded the least antibiofilm inhibition effect recording p value
292 of $** = 0.01$ against the dosage of 250 mg/ml. The revealed ampicillin antibiofilm inhibition findings are
293 therefore promising and demonstrate that even though most of the isolates were resistant to ampicillin, it's
294 still a good antibiofilm formation drug.

295 Further analysis based on the ampicillin dosages inhibitory effects also demonstrated huge variations. The
296 low dosages of 62.5 mg/ml and 125 mg/ml had significant differences on the antibiofilm inhibition activity
297 compared to the higher dosages 250 mg/ml and 500mg/ml Figure 3.5.1 below. This observation may be
298 explained by the fact at high concentrations sometimes aggregation of the drug can occur at the point of
299 entry unto the bacteria cell and hence not much of the drug enters the target site.



300

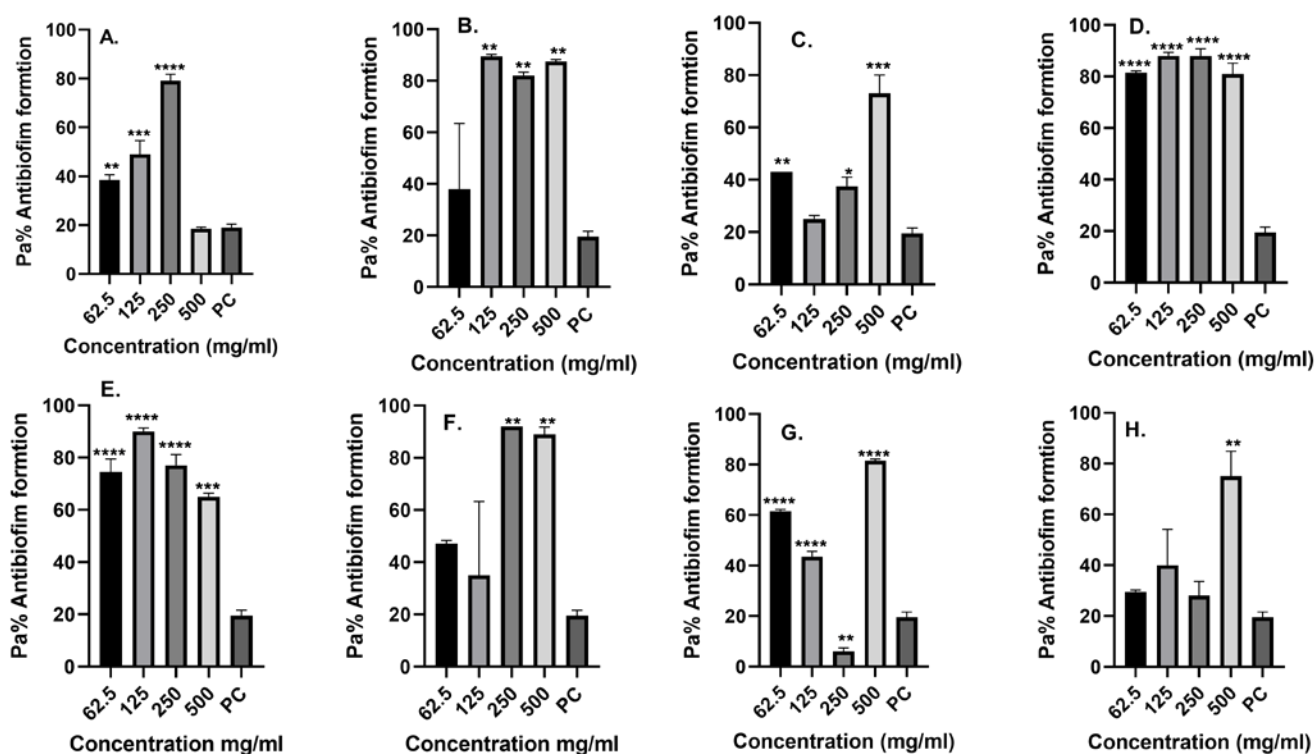
301 **FIG: 3.5.1** Ampicillin antibiofilm formation activity against (A) *E. coli* 3323 Isolate (B) *E. coli* 5810 Isolate (C)
 302 *Klebsiella spp* 3306 Isolate (D) *Klebsiella spp* 3063 Isolate (E) *Staphylococcus spp* 3309 Isolate (F)
 303 *Staphylococcus spp* 3328 Isolate (G) *Proteus spp* 3346 Isolate and (H) *Proteus spp* 3268 Isolate; PC=P.
 304 *aeruginosa* – Positive control (n=3, ANOVA Dunnett’s multiple comparisons test; *P=0.05; **P=0.01; ***P=0.001;
 305 ****P=0.0001).

306 **3.4.2.2: Ciprofloxacin antibiofilm effect/activity**

307 The antibiofilm inhibitory finding against ciprofloxacin showed majority of the isolates being significantly
 308 affected when subjected to the various ciprofloxacin dosages. For instance, *Klebsiella spp* 3063 and
 309 *Staphylococcus spp* isolates were greatly affected revealing significant antibiofilm inhibitory effects in
 310 presence of the different ciprofloxacin test dosages (p value of **** = 0.0001). However, moderately
 311 antibiofilm inhibitory activities were yielded among isolates *E. coli* 3323; *E. coli* 5810 and *Klebsiella spp*
 312 3306 recording p value of ** = 0.01 and *** = 0.001 respectively.

313 The least affected isolates were the *Proteus spp* isolates with *Proteus spp* 3268 isolate yielding no inhibitory effect
 314 when subjected to 62.5mg/ml, 125 mg/ml and 250 mg/ml ciprofloxacin dosages as compared to its counterpart
 315 *Proteus spp* 3346 isolate that was highly affected **Figure 3.5.2** below.

316 Further antibiofilm inhibitory findings based on the actual inhibitory impact among the different
 317 ciprofloxacin dosages also revealed the 250mg/dl dosage having the highest inhibitory effects. This was
 318 closely followed by 62.5mg/ml and 125 mg/ml dosages respectively, while the 500mg/ml dosage had the
 319 least inhibitory effects.



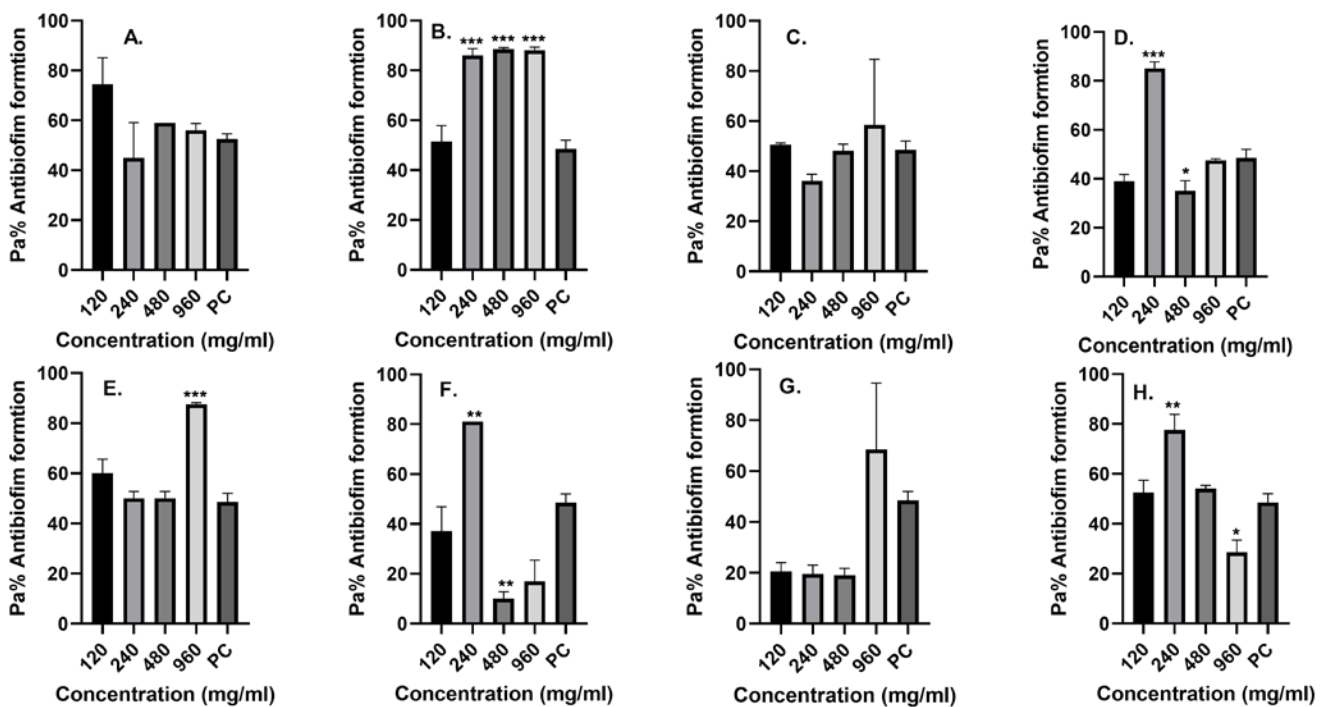
320
 321 **FIG: 3.5.2** Ciprofloxacin antibiofilm formation activity against (A) *E. coli* 3323 Isolate (B) *E. coli* 5810 Isolate
 322 (C) *Klebsiella spp* 3306 Isolate (D) *Klebsiella spp* 3063 Isolate (E) *Staphylococcus spp* 3309 Isolate (F)
 323 *Staphylococcus spp* 3328 Isolate (G) *Proteus spp* 3346 Isolate and (H) *Proteus spp* 3268 Isolate; PC=*P.*
 324 *aeruginosa* – Positive control ($n=3$, ANOVA Dunnett's multiple comparisons test; * $P=0.05$; ** $P=0.01$; *** $P=0.001$;
 325 **** $P=0.0001$).

326

327 **3.4.2.3: Sulfamethoxazole antibiofilm effect/activity**

328 The inhibitory analysis of sulfamethoxazole dosages against the study isolates yielded the least of inhibitory
 329 effect overall compared to the rest of the study test drugs as demonstrated in **Figure 3.5.3 below**. However,
 330 sulfamethoxazole inhibitory effect analysis based on how the isolate species were affected revealed the *E.*
 331 *coli* isolates as the most affected species. *E. coli* 5810 isolate particularly was the most affected and recorded
 332 the highest antibiofilm formation activity especially when subjected to sulfamethoxazole dosages of 240
 333 mg/ml, 480 mg/ml and 960 mg/ml; p value of *** = 0.001. In addition, the study *Klebsiella* 3063 isolate
 334 yielded moderate inhibitory effects compared to *Klebsiella spp* 3306 isolate that had no inhibitory effects recorded at
 335 all. Moderate inhibitory activity was also revealed by *Proteus spp* 3268 isolates with a p value of * = 0.05
 336 compared to the other *Proteus* isolate *Proteus spp* 3346 that had no inhibitory effects.

337 More analysis based on the various test drugs dosages inhibitory performance also revealed the lower
 338 dosages performed better than the higher dosages. However, over all the 240mg/ml dosage performed better
 339 than the rest of the Sulfamethoxazole dosages as demonstrated in **Figure 3.5.3 below**.



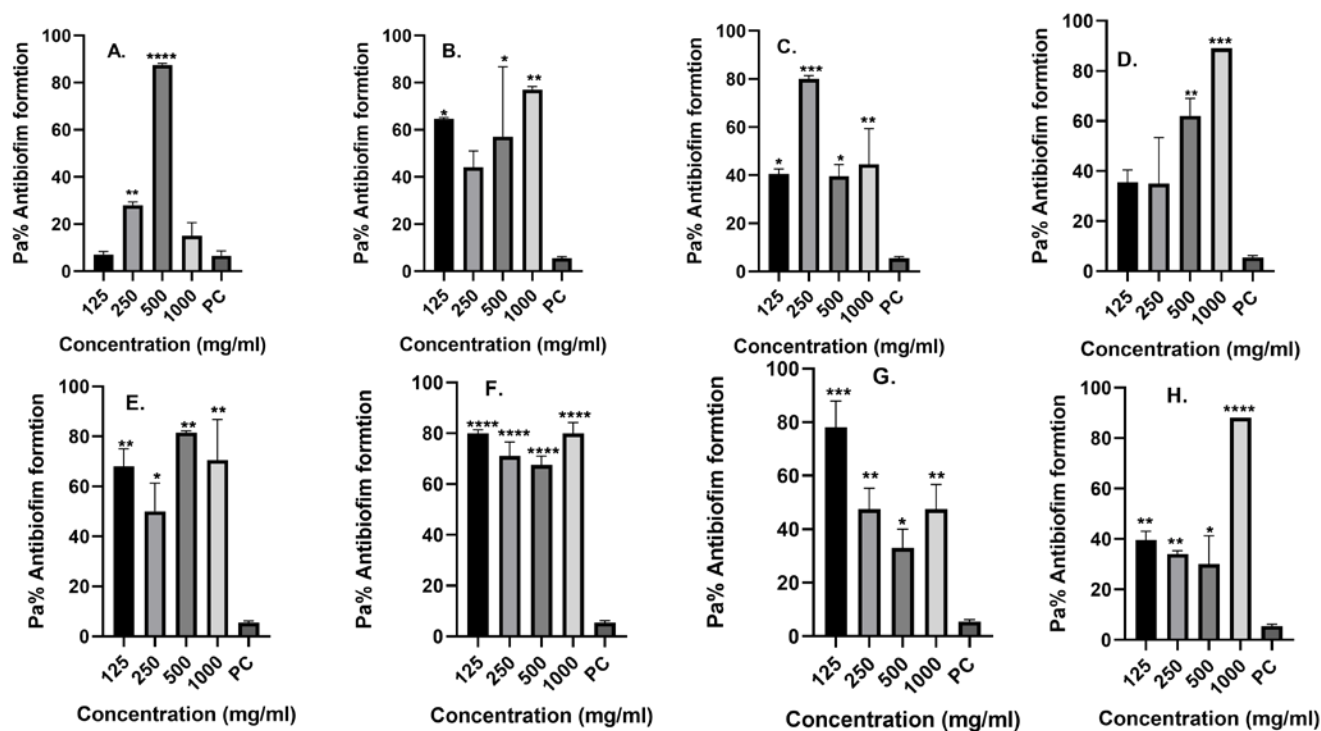
340

341 **FIG: 3.5.3** Sulfamethoxazole antibiofilm formation activity against (A) *E. coli* 3323 Isolate (B) *E. coli* 5810
342 Isolate (C) *Klebsiella spp* 3306 Isolate (D) *Klebsiella spp* 3063 Isolate (E) *Staphylococcus spp* 3309 Isolate (F)
343 *Staphylococcus spp* 3328 Isolate (G) *Proteus spp* 3346 Isolate and (H) *Proteus spp* 3268 Isolate; PC=*P. aeruginosa* – Positive control ($n=3$, ANOVA Dunnett’s multiple comparisons test; $*P=0.05$; $**P=0.01$; $***P=0.001$;
344 $****P=0.0001$).

346 3.4.2.4: Ceftriaxone antibiofilm effect/activity

347 Ceftriaxone was the most effective test drug according to our study antibiofilm inhibitory activity analysis.
348 All the ceftriaxone dosages had high or moderate inhibitory effects against all the eight study isolates.
349 However, analysis based on how individual isolate was affected revealed *Staphylococcus species* were the
350 most affected compared to the rest of the study isolates species. *Staphylococcus spp* 3328 isolate was the
351 most highly affected yielding an antibiofilm inhibitory activity of a p value of $**** = 0.0001$ compared to
352 the other *Staphylococcus spp* 3309 isolate that had been moderately affected. Further analysis based on how
353 also demonstrated that most of the other isolates had moderately antibiofilm formation activity with the only
354 significant variation seen being that of *Klebsiella spp* 3063 that recorded no significant inhibitory effect
355 when subjected to 125mg/ml and 250 mg/ml dosages.

356 In concurrence to the rest of the study test drugs, ceftriaxone dosages also had minimum inhibitory effect
357 yielded by the very high test dosages of 500mg/ml and 1000mg/ml dosages at p values of $** = 0.01$ and p
358 value of $*P=0.05$ respectively compared to the lower dosages of 125mg/ml and 250 mg/ml **Figure 3.5.4 below.**



359

360 **FIG: 3.5.4** Ceftriaxone antibiofilm formation activity against (A) *E. coli* 3323 Isolate (B) *E. coli* 5810 Isolate (C)
 361 *Klebsiella spp* 3306 Isolate (D) *Klebsiella spp* 3063 Isolate (E) *Staphylococcus spp* 3309 Isolate (F)
 362 *Staphylococcus spp* 3328 Isolate (G) *Proteus spp* 3346 Isolate and (H) *Proteus spp* 3268 Isolate; PC=*P.*
 363 *aeruginosa* – Positive control ($n=3$, ANOVA Dunnett’s multiple comparisons test; * $P=0.05$; ** $P=0.01$; *** $P=0.001$;
 364 **** $P=0.0001$).

365

366

367

368

369

370

371

4.0 Discussion

Bacterial biofilms and carriage of resistance genes may be the basis of most established and persistent urinary tract infections cases. Though scientific research has indicated that there is an ever-increasing antimicrobial resistance and biofilm formation in most infectious diseases causing pathogens including the urinary tract infection causative agents, more studies are needed to tackle this public health issue. Findings from the present study demonstrated the landscape of the interplay between biofilm formation and antimicrobial resistance among the study's isolates. Considering the high UTI prevalence rate of 27.6% and the phenotypic resistance profiles to commonly used antibiotics reported in our previous study (18). It is plausible that the carriage of E β SLs genes may be the major driving factor that influenced resistance of the study isolates against the test antibiotics. The carriage of *bla*_{TEM} was the most prevalent, detected at 100% (10/10) closely followed by *bla*_{OXA} genes at 40% (4/10) and *bla*_{SHV} at 30% (3/10) respectively. This signals a clear indication that *bla*_{TEM} genes may have greatly impacted the isolates resistance profiles as this gene is responsible for resistance towards important classes of β -lactams antibiotics like Cefuroxime, Cefotaxime and Ceftriaxone as reported in previous studies (28)(29).

Findings from our previous study on the presence of *bla*_{TEM} genes seemed to imply that the genes enhanced the ability of obtained bacteria isolates to inactivate ampicillin at a range of 17% to 67%, Cefotaxime at 18% to 50 and Ceftriaxone at 18% to 29% (18). Moreover, the carriage of *bla*_{TEM} genes among *Klebsiella* and *Proteus* species was recorded at 20% respectively; an observation that may be afflicted to the revealed high resistance profiles of *Klebsiella* and *Proteus* species against Sulfamethoxazole and Ampicillin at range between 50% - 85% (18). The revealed *bla*_{TEM} finding therefore concurs with other findings from related studies that documented *bla*_{TEM} genes being responsible for increasing bacteria pathogen's hydrolysing activity against penicillin and first-generation Cephalosporin (28)(29).

On the other hand, the carriage of *bla*_{SHV} and *bla*_{OXA} genotypes among *E. coli* and *Klebsiella pneumoniae* isolates was also revealed at 40% and 30 % respectively, a confirmation that the distribution of these E β SL genes have spread across most of the commonly known bacteria of medical importance. These two E β SL genotypes have in the recent past been documented to being able to confer drug and multidrug resistance

398 (29), with the most commonly reported significant resistance being noticed against extended-spectrum
399 cephalosporins, a class of antibiotics that are of immense clinical significance (29). This observation
400 therefore underpins the role of the carriage of *bla_{SHV}* and *bla_{OXA}* E β SL genotypes as major contributors of
401 the rising treatment failure. However, going by this study data, more surveillance program to monitor the
402 carriage of new mutant *bla_{SHV}* and *bla_{OXA}* genes that are emerging is urgent (30). This is so because *bla_{SHV}*
403 genes are often encoded by self-transmissible plasmids and can easily be transmitted along with other
404 resistance genes leading to significant clinical challenges (4). Furthermore, the current epidemiology of
405 *bla_{SHV}* genes have also shown that their prevalence among members of the Enterobacteriaceae have been on
406 the rise in the last decade, and that the genes have evolved from a narrow to an extended-spectrum of
407 hydrolyzing activity, especially against monobactams and carbapenems antibiotic classes (31).

408 In the current study, the carriage of *bla_{OXA}* gene was actually common among the study *E. coli* isolates, and
409 going by past reported findings this *bla_{OXA}* genotype is associated with wide range of difficult-to-treat
410 infections owing to their hydrolyzing activity towards a variety of antibiotics (32). This therefore may have
411 influenced the revealed findings where most of the *E. coli* obtained isolates expressed drug and multidrug
412 resistance trends towards test antibiotics that are commonly used in the Kenyan health facilities to treat UTI.
413 This included resistance towards ceftazidime, cefepime, nitrofurantoin and much more against ampicillin at
414 a range between 60-75% (33). However, the occurrence of strains that did express co-carriage of resistance
415 genes still raises lots of health concerns more so if they are implicated in infections, since there will be very
416 minimal available treatment options.

417 The carriage of *bla_{CTX-M}* E β SL genotype among uropathogens have been recorded to have led to major
418 health challenges in the treatment of community acquired UTIs (4), this study however differs a lot with the
419 others studies since the presence of carriage *bla_{CTX-M}* E β SL genotype was not detected. The *bla_{CTX-M}* genes
420 have been documented as the most commonly known ES β SLs genotype obtained among uropathogens that is
421 easily acquired via horizontal gene transfer (29)(34). In addition, these *bla_{CTX-M}* genes are known to be of
422 significant medical challenge as they enable bacterial pathogens to easily hydrolyze Cefotaxime one of the
423 many commonly used antibiotic to treat UTIs (29). Even so, the lack of *bla_{CTX-M}* isolation in the study

424 demonstrates there might be a new dynamic of the distribution of resistance genes among uropathogens and
425 based on that our data, we advocate for routine screening of the carriage of E β SL genes to help inform and
426 guide the periodic revision of UTI management. Furthermore, the obtained genotypic characterization
427 finding of uropathogens will also be needed to obtain data that will aid in reducing the rate of spread and
428 emergence of new resistance genes. Though the total cessation of emergence and spread of AMR genes still
429 seems to be impossible, it's upon the health stakeholders to accelerate education campaigns on UTIs as a
430 prophylactic measure to enlighten the society and assist halt UTI contraction.

431 This study phylogeny analysis showed significant similarity among the *E. coli* isolates at more than 70%.
432 The *E. coli* strains had the same identical resistance phenotypes and shared more than 75% genetic
433 similarity. Though previously documented finding reported a positive correlation between genetic diversity
434 and acquisition of antimicrobial resistance among bacteria uropathogens (35), this study finding is different
435 and varies with that of a previous study where *E. coli* isolates exhibited high rates of genetic change as well
436 as exhibition of high resistance rates against test antibiotics (34). However, the finding is of significant
437 clinical importance since it reveals how some strains of the same genetic similarity can possess drug and
438 multi-drug resistance genes. Close monitoring, and screening of genetic similarity among uropathogens is
439 therefore paramount to aid in management and halt spread of pathogens that have become more notorious to
440 treat by a range of clinically known antimicrobial agents (35).

441 In addition, the formation of biofilms by pathogenic bacteria and the contribution of these biofilms to AMR
442 is also another situation that is complex and causes a significant health dilemma. For example, the gains and
443 losses of resistance genes and the ability to form biofilms by bacteria especially those causing urinary tract
444 infection need to be known to shed light on more crucial knowledge of the dynamics that occur within the
445 said biofilms. According to the past documented findings, positive correlation between biofilm-related genes
446 and antibiotic resistance genes is a largely notable impact that affects the static/cidal actions of antibiotics
447 (10),(12),(36). Microbes inside these said biofilms are protected from attack by the host immune system or
448 even the administered antibiotics leading to disease establishment and enhanced treatment failure (10), (12),
449 (36). From this study majority of the isolates had the ability to form biofilm- at 63.2% and although our data

450 analysis showed no significant difference in biofilm formation among all tested isolates with the p-values
451 being more than 0.05, it is worth noting that overall, the Gram-positive isolates had significant P-value of
452 0.0561 **Table 3.1**. Gram-negative isolates were the most prevalent in forming biofilms at 69.5% (25/36)
453 compared to the Gram-positive 30.5% (11/36). An observation that may be afflicted to the high resistance
454 profiles finding shown by Gram-negative isolates against test drugs; Ampicillin, Cefotaxime, Cefepime and
455 Ciprofloxacin at range of more than 40 % (18). Further analysis based on our comparative biofilm formation
456 between Gram-negatives and Gram-positives isolates, revealed *E. coli* isolates still as the most prevalent
457 biofilm formers at 41.7 % (14). The biofilm reduces the microbes' susceptibility to antibiotics due to the
458 biofilm exopolysaccharide polymers formed by the mass of bacterial cells that houses them. This allows the
459 microbes more time to keep on multiplying and producing more virulence traits. The biofilm ability
460 observation seen among this study *E. coli* isolates coupled with the carriage of *bla_{TEM}*, *bla_{SHV}* and *bla_{OXA}*
461 E β SL genotypes underpins the exemplary high antimicrobial and multidrug resistance trends revealed
462 among the *Escherichia coli* isolates towards Sulfamethoxazole, Nalidixic acid and Ampicillin of 64%, 50%
463 and 27% respectively (18). This may be a revelation as to why *E. coli* in particular is becoming more lethal
464 and more difficult pathogen to treat. The finding is in agreement with a related study that termed *E. coli*, *S.*
465 *aureus* and *P. aeruginosa* as the most notorious biofilm formers isolated from hospital and community-
466 based infections (8). The other Gram-negative biofilm formers from the current study included *Klebsiella*
467 and *Proteus* isolates at 19.4% (6) and 8.3% (9) respectively.

468 For the Gram-positive study isolates, *S. aureus* isolates was the most prevalent biofilm formers at 19.4% (6),
469 followed by *S. saprophyticus* at 11.1% (10). The overall findings on biofilm formation ability by both
470 Gram-negatives and Gram-positives isolates therefore revealed a logical explanation that most uropathogens
471 are able form biofilms, that in return enable them to easily proliferate in the urinary tract since the biofilm
472 protect them from the acidic environment and the potent effects of the host immune responses and other
473 antimicrobials. Additionally, these biofilms allow easy transfer of resistance genes by the cells that are
474 closely placed and eventually may be playing an important role of facilitating plasmid horizontal gene
475 exchange between closely positioned microbes and enhancing the spread of resistance genes (37).

476 Our biofilm formation analysis based on gender also revealed isolates obtained from women samples being
477 more of biofilm formers at 62.9% (35) compared to men at 5.6% (4). This finding is of significant
478 importance and could be attributed to several factors like women's anatomy and indwelling intrauterine
479 contraceptive device that partly enhances the establishment of biofilms by being instrumentation harbour or
480 act as reservoirs of uropathogens. These provide anchorage support for microbial biofilm formation and also
481 hinder easy flushing out of the attached uropathogens by urine (35); however, more research should be done
482 to ascertain this assumption.

483 In the current study, the ability of test drugs to inhibit biofilm formation activity was also analyzed. This was
484 done using selected eight bacterial isolates: *E. coli* 3323, *E. coli* 5810, *Klebsiella spp* 3306, *Klebsiella spp*
485 3063, *Staphylococcus spp* 3309, *Staphylococcus spp* 3328, *Proteus spp* 3346, and *Proteus spp* 3268 based
486 on their antimicrobial resistance trends in our previous study (18). The antibiofilm formation activity
487 revealed significant findings of antibiofilm inhibitory effects across the different antibiotic's dosages;
488 Ampicillin, Ceftriaxone, Ciprofloxacin and Sulfamethoxazole **Figure; 3.5.1; 3.5.2; 3.5.3 and 3.5.4**. These
489 results are in tandem with those from a past study (27) and are still in agreement to the antimicrobial
490 susceptibility profiles in our previously conducted study (18). We can therefore anticipate that use of this
491 drugs as a prophylactic measure against uropathogens may be a future solution to counter uropathogens
492 microbial biofilm formation and eventually halt spread of resistance genes that have largely led to the rising
493 AMR. However, this suggestion needs a feasibility study to be fully validated.

494 Further antibiofilm inhibitory activity analysis revealed that test treatment drugs; Ampicillin, Ciprofloxacin
495 and Ceftriaxone dosages yielded the most significant antibiofilm inhibitory effects against the screened
496 isolates recording p values above 0.05 (*). On the other hand, Sulfamethoxazole had the least antibiofilm
497 inhibitory effects, an observation that concurs with the observed antimicrobial susceptibility test result
498 where most the isolates exhibited high resistance trends against Sulfamethoxazole at a range between 40%
499 and 80% (18). Ceftriaxone had the highest antibiofilm inhibitory effects which may be afflicted to the drugs
500 mode of action since it inhibits the mucopeptide synthesis of bacteria cell wall thus preventing bacteria cell
501 wall and cell division (10). However, Sulfamethoxazole mode of action is different as it involves inhibition

502 of dihydropteroate synthesis enzyme to prevent for bacterial synthesis of purines and DNA. This mode of
503 action cannot prevent the initial bacteria growth hence affords the bacteria ample time to form biofilms (28).
504 Even though understanding how antibiotics may inhibit biofilm formation is crucial, it should also be seen
505 starting point to understanding the interplay between biofilm formation and the AMR. Health stake holders
506 should therefore fund more health campaign rallies and give out handouts on biofilm education to enlighten
507 the public domain on the ease of spread and acquisition of antimicrobial resistance genes within biofilms.
508 This will increase the limited knowledge in the society and enlighten people on how easily resistance genes
509 are transferred specifically those attributed to plasmid-borne integrons that is able to assemble genes in
510 cassettes resulting to compromised disease treatment (15)(38).

511 Further analysis based on the antibiofilm inhibitory effects demonstrated that in most of the test antibiotics,
512 less inhibitory effects were seen at high dosages as compared to lower ones. This is not an abnormal finding
513 as it has been documented that at high dosages sometimes aggregation can occur of the drug at the point of
514 entry unto the bacteria cell and hence not much of the drug enters the target site. This for instance, was
515 documented by Omwenga *et al.*, (27), when they were working with nanoencapsulated flavonoids against
516 quorum sensing and Awour *et al.*, (39) when they were working with antibiofilm formation of *V. cholerae*
517 isolates against selected antibiotics. Nevertheless, several solutions have been identified to counteract
518 biofilms formation such as rifampicin for Gram-positive bacteria and fluoroquinolones for Gram-negative
519 bacteria (40), the available anti-biofilms options are however still limited and leave a huge health concern
520 gap. More options are needed to increase the available choices and intensify the fight against antimicrobial
521 resistance trends since most of the antibiofilm compounds are not bacteria cidal and only render the cells in
522 a planktonic growth state, which are more susceptible to antibiotics and more easily cleared by the immune
523 system (20). Scientists should lobby and embrace more biofilm research work to open up more channels for
524 exploring new anti-biofilm formation inhibitory strategies and curb the contribution of biofilms in microbial
525 survival, persistence and encouragement antibiotic resistance.

5.0 Conclusion

According to the current study, the ultimate goal to achieve amicable antimicrobial stewardship and curb the rising treatment failure of urinary tract infection could be via a holistic campaign of mapping the carriage of resistance genes and biofilm formation. This will help revise the existing empiric treatment regimens now informed by the data of the prevailing resistance phenotypes. Besides, the data will assist in preserving the potency of β -lactam antibiotics and improve success of chemotherapy. The public domain will again be reassured the of a health solution, since there is limited hope of new novel drugs.

However, this study was only able to screen a few selected ESBLs genes and the possibility of biofilm formation among the screened bacteria etiological agents. Future studies that will focus more on detection of other AMR genes against other class antibiotics and biofilm genes are encouraged. The development of novel antibiotics, biofilm formation inhibitory compounds and vaccines against bacteria causing urinary tract infections will also be a milestone achievement for the modern medicine.

6.0 Study Limitations

This study had a number of shortcomings that can be addressed in future surveillance studies;

1. We were only able to for a few E β SLs genotypes. Future studies to determine the carriage of other β -lactamase genes are fundamental. We were also not able to screen the carriage of other classes of resistance genes that are associated to resistance to other classes of antimicrobial agents like fluoroquinolones and aminoglycosides.
2. We were only able to determine the possibility of biofilm formation among the screened isolates. However, future studies can therefore involve the screening of carriage of genes associated with biofilms to shed lighter on bacterial host invasion and pathogenesis.

Acknowledgements

To the study participants, thank you for agreeing to take part in this study. The authors wish to further express heartfelt gratitude to all KEMRI/CMR (molecular biology) staff members particularly Susan

552 Wambui Kiiru for their invaluable support. We are also grateful to the clinicians, laboratory technologists,
553 and the administration Kiambu level 5 Hospital for their guidance and assistance. This study was funded by
554 HATUA (Holistic Approach to Unravel Antimicrobial resistance in East Africa) research funds. The funders
555 had no role in study design, data collection and analysis, decision to publish, or manuscript preparation.

556 **Conflict of Interests**

557 There is no conflict of interests.

558 **Author's Contribution**

559 Fredrick Wanja (FW) was the principal investigator and came up with the study concept. FW designed,
560 carried out the lab work, data analysis and drafted the manuscript. John Maina participated in sample
561 collection, lab work and drafting of the manuscript. Dr. Caroline Ngugi and Dr. Eric Omwenga assisted in
562 preparation and harmonization of the manuscript. Dr. John Kiiru took part in the study design and
563 supervised the lab bench work. All authors read and endorsed the manuscript.

564 **Author's Information**

565 Fredrick Kimunya (FK) is a master's student in Kenya studying Infectious Diseases and Vaccinology at
566 Jomo Kenyatta University of agriculture and technology. John Maina (JM) is a scientific researcher at the
567 Centre of Microbiology Research, Kenya Medical Research Institute, Nairobi, Kenya. Dr. Caroline Ngugi
568 (CN) is the Chairperson Department of Medical Microbiology, Jomo Kenyatta University of agriculture and
569 technology who possess vast experience in proposal development. Dr. Eric Omwenga (EO) is the
570 Chairperson Department of Microbiology & Parasitological, Kisii University. He assisted in coming up with
571 the study concept and revision of the content of the manuscript. Dr. John Kiiru (JK) a senior researcher at
572 the Centre of Microbiology Research, Kenya Medical Research Institute, Nairobi, Kenya and the Head of
573 Laboratory Ministry of Health, Nairobi, Kenya who have vast knowledge in infectious diseases and
574 microbiology took part in the study design and actualization of the content of the manuscript.

576 **Ethical Approval**

577 Approved (Supplementary data S 1 and Supplementary data S 2)

578

579

580

581

582

583

584

585

586

587

588

589

590

REFERENCES

1. V. M. Lema. Urinary Tract Infection In Young Healthy Women Following Heterosexual Anal Intercourse: Case Reports | Lema | African Journal of Reproductive Health [Internet]. African journal of reproductive health. 2015 [cited 2022 Sep 26]. Available from: <https://www.ajrh.info/index.php/ajrh/article/view/844>
2. Saha S, Rahman S, Hassan FMN, Sarkar S, Islam K, Saha P, et al. Antimicrobial Resistance in Uropathogen Isolates from Patients with Urinary Tract Infections. Biomedical Research and Therapy 2015 2:5 [Internet]. 2015 May 28 [cited 2022 Sep 27];2(5):1–7. Available from: <https://link.springer.com/article/10.7603/s40730-015-0011-3>
3. Lim YK, Lee MK, Kim TH. Management of Extended-Spectrum Beta-Lactamase-Positive Gram-Negative Bacterial Urologic Infections. undefined. 2015;10(2):84.
4. Kiiru J, Kariuki S, Goddeeris BM, Butaye P. Analysis of β -lactamase phenotypes and carriage of selected β -lactamase genes among Escherichia coli strains obtained from Kenyan patients during an 18-year period. BMC Microbiol [Internet]. 2012 [cited 2022 Sep 27];12. Available from: <https://pubmed.ncbi.nlm.nih.gov/22838634/>
5. Gundran RS, Cardenio PA, Villanueva MA, Sison FB, Benigno CC, Kreausukon K, et al. Prevalence and distribution of bla CTX-M, bla SHV, bla TEM genes in extended- spectrum β - Lactamase-producing E. coli isolates from broiler farms in the Philippines. BMC Vet Res [Internet]. 2019 Jul 5 [cited 2022 Sep 27];15(1):1–8. Available from: <https://bmcvetres.biomedcentral.com/articles/10.1186/s12917-019-1975-9>
6. Kargar M, Jahromi MZ, Najafi A, Ghorbani-Dalini S, Kargar M. Molecular detection of ESBLs production and antibiotic resistance patterns in Gram negative bacilli isolated from urinary tract infections. Indian J Pathol Microbiol [Internet]. 2014 [cited 2022 Sep 27];57(2):244. Available from: <https://www.ijpmonline.org/article.asp?issn=0377-4929;year=2014;volume=57;issue=2;spage=244;epage=248;aulast=Kargar>

- 616 7. Wilmore SMS, Kranzer K, Williams A, Makamure B, Nhidza AF, Mayini J, et al. Carriage of
617 extended-spectrum beta-lactamase-producing Enterobacteriaceae in HIV-infected children in
618 Zimbabwe. *J Med Microbiol* [Internet]. 2017 May 1 [cited 2022 Sep 27];66(5):609–15. Available
619 from: <https://pubmed.ncbi.nlm.nih.gov/28513417/>
- 620 8. Kalita A, Hu J, Torres AG. Recent advances in adherence and invasion of pathogenic *Escherichia*
621 *coli*. *Curr Opin Infect Dis* [Internet]. 2014 [cited 2022 Sep 27];27(5):459–64. Available from:
622 <https://pubmed.ncbi.nlm.nih.gov/25023740/>
- 623 9. Sauer K. The genomics and proteomics of biofilm formation. *Genome Biol* [Internet]. 2003 May 27
624 [cited 2022 Sep 27];4(6):1–5. Available from:
625 <https://genomebiology.biomedcentral.com/articles/10.1186/gb-2003-4-6-219>
- 626 10. Chen M, Yu Q, Sun H. Novel Strategies for the Prevention and Treatment of Biofilm Related
627 Infections. *Int J Mol Sci* [Internet]. 2013 Sep 6 [cited 2022 Sep 27];14(9):18488. Available from:
628 </pmc/articles/PMC3794791/>
- 629 11. Donlan RM. Biofilms: microbial life on surfaces. *Emerg Infect Dis* [Internet]. 2002 [cited 2022 Sep
630 27];8(9):881–90. Available from: <https://pubmed.ncbi.nlm.nih.gov/12194761/>
- 631 12. Choong S, Whitfield H. Biofilms and their role in infections in urology. *BJU Int* [Internet]. 2000
632 [cited 2022 Sep 27];86(8):935–41. Available from: <https://pubmed.ncbi.nlm.nih.gov/11069430/>
- 633 13. Reiter KC, da Silva Paim TG, de Oliveira CF, D’Azevedo PA. High biofilm production by invasive
634 multiresistant staphylococci. *APMIS* [Internet]. 2011 Nov [cited 2022 Sep 27];119(11):776–81.
635 Available from: <https://pubmed.ncbi.nlm.nih.gov/21995631/>
- 636 14. Soto SM, Smithson A, Martinez JA, Horcajada JP, Mensa J, Vila J. Biofilm Formation in
637 Uropathogenic *Escherichia coli* Strains: Relationship With Prostatitis, Urovirulence Factors and
638 Antimicrobial Resistance. *J Urol* [Internet]. 2007 Jan [cited 2022 Sep 27];177(1):365–8. Available
639 from: <https://www.auajournals.org/doi/10.1016/j.juro.2006.08.081>

- 640 15. Cepas V, López Y, Muñoz E, Rolo D, Ardanuy C, Martí S, et al. Relationship Between Biofilm
641 Formation and Antimicrobial Resistance in Gram-Negative Bacteria. *Microb Drug Resist* [Internet].
642 2019 Jan 1 [cited 2022 Sep 27];25(1):72–9. Available from:
643 <https://pubmed.ncbi.nlm.nih.gov/30142035/>
- 644 16. Huynh BT, Passet V, Rakotondrasoa A, Diallo T, Kerleguer A, Hennart M, et al. *Klebsiella*
645 *pneumoniae* carriage in low-income countries: antimicrobial resistance, genomic diversity and risk
646 factors. *Gut Microbes* [Internet]. 2020 Sep 2 [cited 2022 Sep 27];11(5):1287–99. Available from:
647 <https://pubmed.ncbi.nlm.nih.gov/32404021/>
- 648 17. Zhang L, Mah TF. Involvement of a Novel Efflux System in Biofilm-Specific Resistance to
649 Antibiotics. *J Bacteriol* [Internet]. 2008 Jul [cited 2022 Sep 27];190(13):4447. Available from:
650 </pmc/articles/PMC2446775/>
- 651 18. Wanja F, Ngugi C, Omwenga E, Maina J, Kiiru J, Wanja F, et al. Urinary Tract Infection among
652 Adults Seeking Medicare at Kiambu Level 5 Hospital, Kenya: Prevalence, Diversity, Antimicrobial
653 Susceptibility Profiles and Possible Risk Factors. *Adv Microbiol* [Internet]. 2021 Jul 29 [cited 2022
654 Sep 27];11(8):360–83. Available from:
655 <http://www.scirp.org/journal/PaperInformation.aspx?PaperID=111014>
- 656 19. Kinnari TJ. The role of biofilm in chronic laryngitis and in head and neck cancer. *Curr Opin*
657 *Otolaryngol Head Neck Surg* [Internet]. 2015 [cited 2022 Sep 27];23(6):448–53. Available from:
658 <https://pubmed.ncbi.nlm.nih.gov/26371604/>
- 659 20. Bernardes E van T, Lewenza S, Reckseidler-Zenteno S. Current Research Approaches to Target
660 Biofilm Infections. *Postdoc J* [Internet]. 2015 Jun 18 [cited 2022 Sep 27];3(6). Available from:
661 <https://pubmed.ncbi.nlm.nih.gov/28748199/>
- 662 21. de Oliveira CF, Paim TG da S, Reiter KC, Rieger A, D’Azevedo PA. Evaluation of four different
663 DNA extraction methods in coagulase-negative staphylococci clinical isolates. *Rev Inst Med Trop*

- 664 Sao Paulo [Internet]. 2014 Jan [cited 2022 Sep 27];56(1):29–33. Available from:
665 <https://pubmed.ncbi.nlm.nih.gov/24553605/>
- 666 22. Gootz TD, Lescoe MK, Dib-Hajj F, Dougherty BA, He W, Della-Latta P, et al. Genetic organization
667 of transposase regions surrounding blaKPC carbapenemase genes on plasmids from Klebsiella strains
668 isolated in a New York City hospital. Antimicrob Agents Chemother [Internet]. 2009 May [cited 2022
669 Sep 27];53(5):1998–2004. Available from: <https://pubmed.ncbi.nlm.nih.gov/19258268/>
- 670 23. Hasman H, Mevius D, Veldman K, Olesen I, Aarestrup FM. beta-Lactamases among extended-
671 spectrum beta-lactamase (ESBL)-resistant Salmonella from poultry, poultry products and human
672 patients in The Netherlands. J Antimicrob Chemother [Internet]. 2005 Jul [cited 2022 Sep
673 27];56(1):115–21. Available from: <https://pubmed.ncbi.nlm.nih.gov/15941775/>
- 674 24. Ibrahim DR, Dodd CER, Stekel DJ, Ramsden SJ, Hobman JL. Multidrug resistant, extended spectrum
675 β -lactamase (ESBL)-producing Escherichia coli isolated from a dairy farm. FEMS Microbiol Ecol
676 [Internet]. 2016 Apr 1 [cited 2022 Sep 27];92(4). Available from:
677 <https://academic.oup.com/femsec/article/92/4/fiw013/2197676>
- 678 25. M. MOGHOOFEI HFFP and EN. Effects of environmental conditions on the morphologic change of
679 ...: Ingenta Connect [Internet]. 2015 [cited 2022 Sep 27]. Available from:
680 [https://www.ingentaconnect.com/content/doi/23225173/2015/00000004/00000015/art00003?crawler](https://www.ingentaconnect.com/content/doi/23225173/2015/00000004/00000015/art00003?crawler=true)
681 [=true](https://www.ingentaconnect.com/content/doi/23225173/2015/00000004/00000015/art00003?crawler=true)
- 682 26. Kadurugamuwa JL, Sin L, Albert E, Yu J, Francis K, DeBoer M, et al. Direct continuous method for
683 monitoring biofilm infection in a mouse model. Infect Immun. 2003 Feb 1;71(2):882–90.
- 684 27. Omwenga EO, Hensel A, Pereira S, Shitandi AA, Goycoolea FM. Antiquorum sensing, antibiofilm
685 formation and cytotoxicity activity of commonly used medicinal plants by inhabitants of Borabu sub-
686 county, Nyamira County, Kenya. PLoS One [Internet]. 2017 Nov 1 [cited 2022 Sep 27];12(11).
687 Available from: <https://pubmed.ncbi.nlm.nih.gov/29091715/>

- 688 28. Sharma M, Pathak S, Srivastava P. Prevalence and antibiogram of Extended Spectrum β -Lactamase
689 (ESBL) producing Gram negative bacilli and further molecular characterization of ESBL producing
690 *Escherichia coli* and *Klebsiella* spp. *J Clin Diagn Res* [Internet]. 2013 Oct 5 [cited 2022 Sep
691 27];7(10):2173–7. Available from: <https://pubmed.ncbi.nlm.nih.gov/24298468/>
- 692 29. Bowler P, Murphy C, Wolcott R. Biofilm exacerbates antibiotic resistance: Is this a current oversight
693 in antimicrobial stewardship? *Antimicrob Resist Infect Control* [Internet]. 2020 Dec 1 [cited 2022 Sep
694 27];9(1). Available from: <https://pubmed.ncbi.nlm.nih.gov/33081846/>
- 695 30. Abrar S, Ain NU, Liaqat H, Hussain S, Rasheed F, Riaz S. Distribution of bla CTX-M, bla TEM, bla
696 SHV and bla OXA genes in Extended-spectrum- β -lactamase-producing Clinical isolates: A three-year
697 multi-center study from Lahore, Pakistan. *Antimicrob Resist Infect Control* [Internet]. 2019 May 22
698 [cited 2022 Sep 27];8(1):1–10. Available from:
699 <https://aricjournal.biomedcentral.com/articles/10.1186/s13756-019-0536-0>
- 700 31. Liakopoulos A, Mevius D, Ceccarelli D. A review of SHV extended-spectrum β -lactamases:
701 Neglected yet ubiquitous. *Front Microbiol*. 2016 Sep 5;7(SEP):1374.
- 702 32. C. Hou and F. Yang. Drug-resistant gene of blaOXA-23, blaOXA-24, blaOXA-51 and blaOXA-58 in
703 *Acinetobacter baumannii* - PubMed [Internet]. 2015 [cited 2022 Sep 27]. Available from:
704 <https://pubmed.ncbi.nlm.nih.gov/26550338/>
- 705 33. Durante-Mangoni E, Zarrilli R. Global spread of drug-resistant *Acinetobacter baumannii*: molecular
706 epidemiology and management of antimicrobial resistance. *Future Microbiol* [Internet]. 2011 Apr
707 [cited 2022 Sep 27];6(4):407–22. Available from: <https://pubmed.ncbi.nlm.nih.gov/21526942/>
- 708 34. Bush K, Fisher JF. Epidemiological expansion, structural studies, and clinical challenges of new β -
709 lactamases from gram-negative bacteria. *Annu Rev Microbiol* [Internet]. 2011 [cited 2022 Sep
710 27];65:455–78. Available from: <https://pubmed.ncbi.nlm.nih.gov/21740228/>
- 711 35. Touchon M, Hoede C, Tenailon O, Barbe V, Baeriswyl S, Bidet P, et al. Organised genome
712 dynamics in the *Escherichia coli* species results in highly diverse adaptive paths. *PLoS Genet*

- 713 [Internet]. 2009 [cited 2022 Sep 27];5(1). Available from:
714 <https://pubmed.ncbi.nlm.nih.gov/19165319/>
- 715 36. Yousefi M, Pourmand MR, Fallah F, Hashemi A, Mashhadi R, Nazari-Alam A. Characterization of
716 *Staphylococcus aureus* Biofilm Formation in Urinary Tract Infection. Iran J Public Health [Internet].
717 2016 Apr 27 [cited 2022 Sep 27];45(4):485. Available from: [/pmc/articles/PMC4888176/](https://pubmed.ncbi.nlm.nih.gov/34888176/)
- 718 37. Watnick P, Kolter R. Biofilm, city of microbes. J Bacteriol [Internet]. 2000 May [cited 2022 Sep
719 27];182(10):2675–9. Available from: <https://pubmed.ncbi.nlm.nih.gov/10781532/>
- 720 38. P. A. White CJM and WDR. White, P.A., McIver, C.J. and Rawlinson, W.D. (2001) Integrons and
721 Gene Cassettes in the Enterobacteriaceae. Antimicrobial Agents and Chemotherapy, 45, 2658-2661. -
722 References - Scientific Research Publishing [Internet]. 2001 [cited 2022 Sep 27]. Available from:
723 [https://www.scirp.org/%28S%28351jmbntvnsjt1aadkposzje%29%29/reference/referencespapers.aspx](https://www.scirp.org/%28S%28351jmbntvnsjt1aadkposzje%29%29/reference/referencespapers.aspx?referenceid=2526317)
724 [?referenceid=2526317](https://www.scirp.org/%28S%28351jmbntvnsjt1aadkposzje%29%29/reference/referencespapers.aspx?referenceid=2526317)
- 725 39. Awuor SO, Omwenga EO, Mariita RM, Daud II. Cholera outbreak: antibiofilm activity, profiling of
726 antibiotic-resistant genes and virulence factors of toxigenic *Vibrio cholerae* isolates reveals
727 concerning traits. Access Microbiol [Internet]. 2022 Mar 23 [cited 2022 Sep 27];4(3). Available from:
728 <https://pubmed.ncbi.nlm.nih.gov/35693465/>
- 729 40. Kinnari TJ. The role of biofilm in chronic laryngitis and in head and neck cancer. Curr Opin
730 Otolaryngol Head Neck Surg [Internet]. 2015 [cited 2022 Sep 27];23(6):448–53. Available from:
731 <https://pubmed.ncbi.nlm.nih.gov/26371604/>

732

733

734

735

736

737 **Supplementary Data S1**

738 **Research consent form**

739 **Title: Genotypic Characterization of Urinary Tract Infections causing bacteria isolates among Adults**
740 **at Kiambu Level 5 Hospital, Kenya: Selected Extended Spectrum β -Lactamase genes and Biofilm**
741 **Formation**

742 **Purpose of the research study?**

743 Dear participant you are requested to take part in this study. The study aims to obtain information about the
744 genotypic characterization and biofilm formation of isolated uropathogens among adult patients attending
745 Kiambu level 5 hospital. Kindly read through the following information and also listen as I explain to you
746 all that the study entails. In case of any words, terms, or sections that are not clearly understood, you are
747 highly encouraged to seek further explanation. Ask any question about the study that you feel it concerns
748 you. If you accept to take part in the study, please fill in this form and keep your copy for personal records.
749 The form has important information about the names and physical address which you can use in the future to
750 make any inquiries about the study.

751 **You are invited to consent or decline to consent to do the following:**

- 752 1. Provide a urine sample
- 753 2. Allow us to keep the urine specimen obtained from you by freezing or any other means of long term
754 preservation.
- 755 3. Allow storage and use of bacterial isolate strains from this study for future studies related to UTI
756 investigations or further analysis.

757 **I would also like to disclose to you the following information involving the study:**

- 758 • Some of the questions you are about to be asked may be uncomfortable or personally, however, you
759 are assured that optimum privacy and confidentiality before consenting, during and post the study
760 exercises will be observed.

- 761 • Data collected will only be accessed by the study relevant authorities and only used for the purposes
762 of this study.
- 763 • You may find it a bit challenging or embarrassing to collect urine sample but I will explain to you
764 the best and most comfortable manner to do so.
- 765 • The main purpose of obtaining a urine sample from you is to determine whether you have developed
766 a UTI or not. Isolated uropathogens will further be subjected to antimicrobial susceptibility test to
767 determine appropriate drug of choice. Genetic relatedness of the isolates will also be determined to
768 make good informed study conclusions.
- 769 • There are no incentives or monetary gains for participating in this study.
- 770 • Participation in this study is on a voluntary basis and one can decline to continue to answer or
771 participate if you feel like.
- 772 • One can also withdraw from the study any time you feel like and this will not draw any penalties or
773 discrimination in the future.
- 774 • My role as the principal investigator is to provide all the information about the study and the findings
775 data to the clinicians at Kiambu level 5 hospital to aid in treating you. However, you will be required
776 to cater for bills that will arise from your sickness like purchasing the prescribed antibiotics.

777 **Your role as the participant in this research study.**

778 You will be required to provide a urine sample that will be used for investigation of UTI causing bacteria.
779 For the purpose of the study, you are also required to consent on your behalf, after which you will now
780 obtain a urine sample. The urine sample will not be stored after culture is performed but disposed according
781 to KEMRI biosafety procedures immediately. Please note that the isolated biological samples may be used
782 for future studies and you are therefore requested to consent to allow their use as and when required.

783 **Additional procedure for patients who will participate in this study**

784 For urine samples taken and found to be positive of UTI, the participant results will be shared with the
785 clinicians who will then treat you. Sample collection will be on sterile universal container and you will be

786 given instructions on how to best collect and pack the clean catch mid- stream urine sample. You will collect
787 the urine sample within the hospital compound and provide it to the lab immediately. Only samples provided
788 to the lab within two hours will be accepted.

789 **What will happen after the study?**

790 Data obtained from this study will be used to determine the various bacterial species prevalence,
791 antimicrobial susceptibility profiles, biofilm formation ability and carriage of ESBLs genes by the isolated
792 bacterial uropathogens among adult patients attending Kiambu level 5 hospital. This data will also provide
793 critical information that will enhance the diagnosis of these infections in the facility and aid in treatment of
794 participants found to be positive of UTI. The data will help to enlighten the facility administration if there is
795 need to revise and improve policies on how to manage UTI among patients visiting the facility. This is in
796 regard to conducting routine urine culture and prescription of antibiotics.

797 **What happens in case the participant has a change of mind?**

798 If you had agreed to take part in the study and with time you happen to change your mind, you are free to
799 withdraw at any time with no penalties. You will also not be discriminated in any way in the future due to
800 your decision to withdraw.

801 **Who will read or hear about information collected from the participant.**

802 The information collected from the participant will be stored using the assigned study number/ code since no
803 name will be indicated. The coded information will also be stored in soft copy format on computers
804 protected by passwords only known by the study relevant authorities.

805 **Do you have any questions about the study that you feel was left out, was not addressed or was not**
806 **well understood?**

807 Feel free to ask and I will answer you now. If you would like to inquire more details about the research
808 study or have any issues about your rights to participate that need to be discussed in the future, you can
809 contact any of the following people;

- 810 **1. The Secretary, KNH-UoN Ethics and Research Committee. College of Health Sciences P.O Box**
- 811 **19676-00202, Nairobi Tel. (254-0200) 2726300-9 Ext 44355.**
- 812 **2. Fredrick Kimunya Wanja (Principal Investigator) - +254724089245.**
- 813 **3. Dr. John N Kiiru, CMR- KEMRI - +254721805285**
- 814 **4. Dr. Caroline Ngugi, Dept. of Medical Microbiology, JKUAT - +254722556790**
- 815 **5. Dr. Eric Omwenga, Dept. of Bio & Nanotechnology, Kisii University- +254725806875**

816 **Laboratory number.....**

817 **Telephone number.....**

818 I have read the above information to the best of my knowledge and have had the opportunity to ask
819 questions which were all answered to my satisfactory. I consent to participate in the study as has been
820 explained and as I have understood it.

821 **Signature**

822 **Date**

824 Right or Left hand thumb print for those who cannot sign

826 **Name of principle investigator.....**

828 **Signature.....**

Date.....

829