

1 **Epigenetic contributions to clinical risk prediction of cardiovascular disease**

2 Aleksandra D Chybowska¹, Danni A Gadd¹, Yipeng Cheng¹, Elena Bernabeu¹, Archie
3 Campbell¹, Rosie M Walker², Andrew M McIntosh³, Nicola Wrobel⁴, Lee Murphy⁴, Paul
4 Welsh⁵, Naveed Sattar⁵, Jackie F Price⁶, Daniel L McCartney¹, Kathryn L Evans¹, Riccardo E
5 Marioni^{1,*}

6

7 ¹ Centre for Genomic and Experimental Medicine, Institute of Genetics and Cancer,
8 University of Edinburgh, EH4 2XU, UK.

9 ² School of Psychology, University of Exeter, Perry Road, Exeter, EX4 4QG, UK.

10 ³ Division of Psychiatry, University of Edinburgh, Royal Edinburgh Hospital, Edinburgh,
11 EH10 5HF, UK.

12 ⁴ Edinburgh Clinical Research Facility, University of Edinburgh, Western General Hospital,
13 Edinburgh, EH4 2XU, UK.

14 ⁵ Institute of Cardiovascular and Medical Sciences, BHF Glasgow Cardiovascular Research
15 Centre, University of Glasgow, 126 University Place, Glasgow G12 8TA, UK.

16 ⁶ Usher Institute, University of Edinburgh, Old Medical School, Teviot Place, Edinburgh,
17 EH8 9AG, UK.

18

19 *Corresponding author:

20 Name: Riccardo Marioni

21 Contact Details: riccardo.marioni@ed.ac.uk

1 **Abstract**

2 **Background and Aims**

3 Cardiovascular disease (CVD) is among the leading causes of death worldwide. Discovery of
4 new omics biomarkers could help to improve risk stratification algorithms and expand our
5 understanding of molecular pathways contributing to the disease. Here, ASSIGN – a
6 cardiovascular risk prediction tool recommended for use in Scotland – was examined in tandem
7 with epigenetic and proteomic features in risk prediction models in $\geq 12,657$ participants from
8 the Generation Scotland cohort.

9 **Methods**

10 Previously generated DNA methylation-derived epigenetic scores (EpiScores) for 109 protein
11 levels were considered, in addition to both measured levels and an EpiScore for cardiac
12 troponin I (cTnI). The associations between individual protein EpiScores and the CVD risk
13 were examined using Cox regression ($n_{\text{cases}} \geq 1,274$; $n_{\text{controls}} \geq 11,383$) and visualised in a tailored
14 R application. Splitting the cohort into independent training ($n=6,880$) and test ($n=3,659$)
15 subsets, a composite CVD EpiScore was then developed.

16 **Results**

17 Sixty-five protein EpiScores were associated with incident CVD independently of ASSIGN
18 and the measured concentration of cTnI ($P < 0.05$), over a follow up of up to 16 years of
19 electronic health record linkage. The most significant EpiScores were for proteins involved in
20 metabolic, immune response and tissue development/regeneration pathways. A composite
21 CVD EpiScore (based on 45 protein EpiScores) was a significant predictor of CVD risk
22 independent of ASSIGN and the concentration of cTnI (Hazard Ratio $HR=1.32$, $P=3.7 \times 10^{-3}$,
23 0.3% increase in C-statistic).

24 **Conclusions**

1 EpiScores for circulating protein levels are associated with CVD risk independent of traditional
2 risk factors and may increase our understanding of the aetiology of the disease.

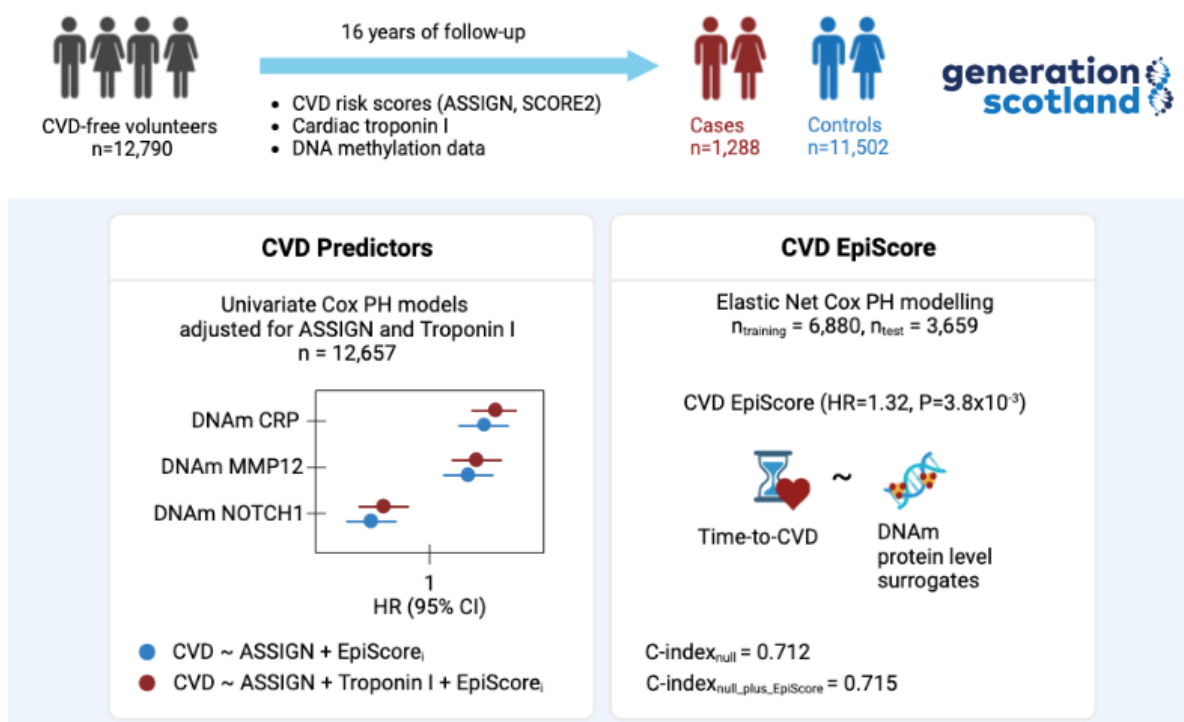
3

4 **Keywords**

5 ASSIGN, SCORE2, epigenetics, EpiScores, multi-omics, CVD prediction

6

7 **Graphical abstract**



8

9 **Structural graphical abstract.** ASSIGN – a cardiovascular risk prediction tool recommended
10 for use in Scotland – was examined in tandem with epigenetic and proteomic features in risk
11 prediction models in $\geq 12,657$ participants from the Generation Scotland cohort. Cox regression
12 was used to model the association between individual predictors and CVD hospitalisation
13 events ascertained over 16 years of follow-up. Finally, a composite protein EpiScore was
14 developed (based on the protein EpiScores) and its predictive performance was tested. CVD –
15 Cardiovascular Disease, EpiScore – Epigenetic Score, Cox PH – Cox Proportional Hazards
16 Regression, DNAm – DNA methylation.

1 **Introduction**

2 For the past 20 years, cardiovascular disease (CVD) has been among the leading causes of
3 mortality and morbidity worldwide. Given that many CVD cases are preventable, it is
4 important to identify at-risk individuals early, when an intervention is most likely to be
5 effective, and translate this knowledge into preventative strategies ^{1,2}. Although there are many
6 CVD risk prediction algorithms, currently they have a limited predictive performance. It may
7 be possible to improve on that by discovering novel factors strongly associated with the disease,
8 for example the type and the concentrations of proteins expressed as a response to the damage
9 of the cardiovascular system.

10

11 An established and a highly sensitive marker of myocardial damage is cardiac troponin ³. It is
12 a complex of three proteins, namely cardiac troponin I (cTnI), cardiac troponin T (cTnT), and
13 cardiac troponin C (cTnC) regulating the contraction of the cardiac muscle. Cardiac forms of
14 troponin T^{4,5} and I are expressed almost exclusively in the heart ⁶. Following myocyte damage,
15 cardiac troponin enters the circulation and can be detected in blood samples. A high-sensitivity
16 cardiac troponin test plays a role in a rapid diagnosis of myocardial infarction³. Low-grade
17 elevations in cardiac troponin are associated with increased risk of CVD³.

18

19 Individual differences in protein concentration can be well-captured by DNA methylation
20 (DNAm). DNAm is a type of epigenetic modification characterised by the addition of methyl
21 groups to DNA. Typically, the methyl group is added at cytosine-phosphate-guanine (CpG)
22 dinucleotides, which are found mostly (but not exclusively) in gene promoters ⁷. Blocking
23 promoters, to which activating transcription factors should bind in order to initiate
24 transcription, is one of the mechanisms by which DNA methylation can precisely regulate gene
25 expression ⁸.

1 DNAm-based proxies for protein levels are referred to as protein EpiScores and are broadly
2 analogous to polygenic risk scores. These methylation scores can be derived from penalised
3 linear regression models of protein concentrations. Due to their temporal stability, protein
4 EpiScores may exhibit stronger associations with disease outcomes than singular protein
5 measurements, which are known to fluctuate between measurements⁹⁻¹². We have shown that
6 EpiScores for 109 circulating protein levels are associated with the time-to-diagnosis for a host
7 of leading causes of morbidity and mortality, including cardiovascular outcomes¹³. Protein
8 EpiScores are therefore useful biomarker tools for disease risk stratification.

9
10 Here, we examine whether protein EpiScores, calculated for $\geq 12,657$ participants of the
11 Generation Scotland (GS), study can augment predictions made by a CVD risk calculator
12 developed for use in Scotland (ASSIGN¹⁴). We first run individual Cox proportional hazards
13 (PH) models to discover relationships between individual protein EpiScores and incident CVD.
14 We then create a CVD EpiScore (based on the protein EpiScores) and test the additional
15 predictive performance offered by it for CVD risk stratification.

1 **Methods**

2

3 **Generation Scotland (GS)**

4 Generation Scotland is a population-based and family-structured cohort study of individuals
5 from Scotland ¹⁵. Between 2006 and 2010, patients at collaborating general medical practices
6 in Scotland aged 35-65 years were invited to join the study. Subsequently, participants were
7 asked to identify first-degree relatives aged 18 and over who were then invited to participate.
8 24,088 participants, aged 18-99 years, completed a health survey. Clinical and physical
9 characteristics of 21,521 individuals who attended a clinic were measured using a standardized
10 protocol. Fasting blood samples were obtained in clinic using a standard operating procedure.

11

12 **Measurement of high-sensitivity troponin**

13 The concentrations of high sensitivity cTnI (Abbott Diagnostics) were measured in 19,130 GS
14 individuals. Before the assay, samples were spun for 5 minutes at 2000g. The measurements
15 were taken using i1000SR and Cobas e411 devices using the manufacturers' quality controls
16 and calibrators. The limit of detection set by manufacturers of these devices is 1.2 ng/L.
17 Anything below this limit is reported as a blank value. Correcting for blank values consisted
18 of reporting results below the threshold of blank as 0.6 ng/L ³.

19

20 **DNA Methylation**

21 DNAm was profiled in blood samples using the Illumina EPIC array. Quality control details
22 have been described previously ¹⁶. Filtering for poorly detected probes and samples, non-blood
23 (e.g., saliva) samples and outliers was performed. Subsequently, non-CpG probes as well as
24 probes on the X and Y chromosomes were removed. Missing CpG values were mean-imputed.
25 To ensure any signatures generalise to as many cohorts as possible, the sites were subset to

1 those also present on the older Illumina 450k array (n=453,093 CpGs). The full quality-
2 controlled dataset contained 18,413 individuals.

3

4 Methylation profiling was carried out in three sets. Set 1 contained 5,087 individuals, Set 2
5 contained 4,450 individuals and Set 3 contained 8,876 individuals. Participants in Set 2 were
6 genetically unrelated to each other and to those in Set 1 (genetic relationship matrix (GRM)
7 threshold <0.05) while more complex relationship structures were present within and between
8 Sets 1 and 3.

9

10 The 109 protein EpiScores described by Gadd *et al.*¹³ were projected into the cohort via the
11 publicly available MethylDetectR Shiny App¹⁷. A short tutorial on MethylDetectR is available
12 at <https://youtu.be/65Y2Rv-4tPU>. Prior to calculating the scores, methylation level at each site
13 was scaled within set to have a mean of zero and standard deviation (SD) of one.

14

15 **ASSIGN and SCORE2 scores**

16 ASSIGN scores were calculated for 16,366 GS individuals with complete information about
17 the component parts (age, sex, smoking status, systolic blood pressure, total cholesterol, high
18 density lipoprotein cholesterol, family history of premature CVD, diagnosis of rheumatoid
19 arthritis, diagnosis of diabetes, and a deprivation score). Variables were adjusted as per official
20 guidance (*FAQs - ASSIGN Score*, 2022). This included modifying the number of cigarettes
21 smoked per day in recent quitters, adding 20mmHg to systolic blood pressure in individuals on
22 blood pressure medications, and adding 10 to the number of cigarettes smoked per day in
23 rheumatoid arthritis patients. The ASSIGN score was calculated in R using publicly available
24 coefficients and formulae¹⁹. A subset of the obtained scores was validated against the scores
25 produced by the online tool¹⁴.

1 SCORE2 values were calculated for 16,934 GS individuals using external coefficients²⁰. The
2 estimates were calibrated according to region-specific scaling factors and validated against the
3 online tool²¹. The R scripts used to derive ASSIGN and SCORE2 are available at
4 https://github.com/aleksandra-chybowska/troponin_episcores.

6 **Cardiovascular disease events**

7 CVD cases were ascertained through data linkage to NHS Scotland hospital records.
8 Participants were followed to the end of September 2021. A composite CVD outcome was
9 defined as per Welsh *et al.*³ and included the following *International Classification of*
10 *Diseases, 10th Revision codes*: I20–25, G45, I60–69, I00–I99, L29.5, L31.1, K40–46, K49,
11 K75. A total of 2,265 incident CVD cases were observed over a follow up period of up to 16
12 years (**Supplementary Figure 1**).

14 **Statistical analysis for risk associations**

15 Cox proportional hazards (PH) models were used to investigate the relationship between the
16 CVD outcome and the following potential biomarkers: measured cardiac troponin, troponin
17 EpiScores, and 109 protein EpiScores. All models were adjusted for ASSIGN. Protein
18 EpiScore models were additionally adjusted for the corrected concentration of cTnI (see
19 **Methods - Measurement of high-sensitivity troponin**). The levels of protein EpiScores as
20 well as troponin concentrations were rank-based inverse normalised prior to the analyses. CVD
21 cases comprised individuals diagnosed after baseline who subsequently died as well as of those
22 who remained alive after receiving a diagnosis. Controls were censored at the end of the follow
23 up period (September 2021) or at time of death (CVD-free survival). Models based on data
24 from merged Sets 1, 2, and 3 were generated using *coxme* library (v 2.2.16) with a kinship
25 matrix fitted as a random effect to adjust for relatedness. Cox model assumptions were checked

1 by running the `cox.zph` function from the survival library (v. 3.2.7) ²² was used to examine
2 Schoenfeld residuals (local and global tests with significance threshold $P < 0.05$). These models
3 were not adjusted for relatedness. Survival, forest, and hazard-over-time plots were generated
4 using a custom shiny application available at
5 <https://shiny.igc.ed.ac.uk/3d2c8245001b4e67875ddf2ee3fcbad2/>.

6

7 **Composite CVD EpiScore**

8 An epigenetics-based CVD score referred to as the CVD EpiScore was generated. It considered
9 the 109 DNAm scores reflecting the concentrations of plasma proteins (protein EpiScores)
10 from Gadd *et al* ¹³ as potentially informative features ($n_{\text{training}}=6,880$, $n_{\text{test}}=3,659$,
11 **Supplementary Figure 2**). The score was derived using two different modelling techniques:
12 Cox PH Elastic Net and Random Survival Forest. While Elastic Net models were trained using
13 `glmnet` (v 4.0.2) ²³, Random Survival Forest models were trained using `randomForestSRC` (v
14 3.2.0). Protein EpiScores were rank-based inverse normalised prior to training.

15 Elastic Net models were trained with the L1-L2 mixing parameter set to $\alpha=0.5$ and with
16 ten-fold cross-validation. The features with non-zero coefficients were used to generate
17 composite score. Random Forest models were trained using ten-fold cross-validation. The 10-
18 year onset probabilities were calculated and used as a composite CVD EpiScore.

19

20 Finally, to test whether the CVD EpiScore improved prediction of CVD over and above
21 ASSIGN, the following Cox PH models were fit to the test set: a null model adjusted for age,
22 sex, and ASSIGN, then full models, which included age, sex, ASSIGN score and 1) the CVD
23 EpiScore, 2) the concentration of rank-based inverse normalised cTnI and 3) the CVD EpiScore
24 + the concentration of cTnI.

25

1 *Evaluating Performance of the Composite Scores*

2 Cox PH analysis can be used model the risk of incident CVD for different prediction periods.

3 As the ASSIGN score estimates the risk of developing CVD over 10 years, we used 10-year

4 CVD incidence to evaluate the classification performance of our models. To calculate the

5 binary CVD outcome, time-to-event was truncated at 10-years. Prediction probabilities were

6 obtained in the test set for each model by calculating the cumulative baseline hazard using the

7 Breslow estimator²⁴. Prediction metrics (Area Under the receiver operator characteristic Curve

8 (AUC), Precision-Recall AUC and C-index) were then generated using the pROC package²⁵.

1 **Results**

2 *Clinical risk prediction tools*

3 ASSIGN scores were calculated for 16,366 individuals with non-missing risk factor data. To
4 meet the proportional hazards assumption of the Cox model, the dataset was filtered to
5 individuals between 30 and 70 years old (results split by decade are presented in
6 **Supplementary Table 1**) and trimmed of outliers (points beyond 3 SDs of the mean, n=181).
7 This left a cohort of 12,790 individuals, which was further filtered to records with non-missing
8 concentrations of cTnI (n = 12,657). **Table 1** summarises the training, test, and full datasets.

9
10 We observed that ASSIGN risk scores were strongly positively correlated with estimates
11 produced by SCORE2 – an algorithm validated to predict 10-year CVD risk in European
12 populations. In a sample of GS individuals within the recommended SCORE2 age range (40-
13 69 years old, n=11,348), the Spearman’s correlation coefficient of ASSIGN and SCORE2 was
14 0.89 (**Supplementary Figure 3**). Given that the ASSIGN score was tailored to Scottish
15 population, we decided to use it as the primary CVD risk measure, with SCORE2 used in
16 sensitivity analyses.

17

18 *Incremental model using cardiac troponin and cardiac troponin EpiScores*

19 We tested whether concentrations of cardiac troponin were associated with CVD risk over and
20 above ASSIGN. While measured concentration of cTnI was associated with an HR of 1.20 per
21 SD increase (95% CI 1.13, 1.29; $P=1.9 \times 10^{-8}$), an EpiScore generated for cTnI (see
22 **Supplementary Methods** for details) was weakly associated with the measured concentrations
23 (incremental $R^2=0.10\%$, $P=0.03$) and did not predict CVD risk in Cox models adjusted for
24 ASSIGN ($P=0.97$). For that reason, it was not considered as a feature in the generation of the
25 composite CVD score.

1 **Table 1. Summary of training, test, and full datasets.** For continuous variables with normal distributions, summary values are reported as mean
2 (SD). Median [Q1, Q3] are given for continuous variables which do not follow a normal distribution. A number and a percentage of samples are
3 reported for categorical variables. SIMD – Scottish Index of Multiple Deprivation, CHD – Coronary Heart Disease.

	Training		Test		Full	
	Cases	Controls	Cases	Controls	Cases	Controls
n	658	6222	337	3322	1274	11383
Time-to-event (Years to Onset or Censoring)	7.0 [4.1, 9.9]	11.8 [11.1, 13.0]	4.8 [2.6, 7.6]	11.8 [11.0, 13.6]	6.8 [3.7, 9.8]	11.8 [11.1, 13.2]
Age (Years)	58.3 [50.8, 62.6]	50.0 [40.8, 58.8]	56.6 [51.6, 60.0]	51.5 [43.9, 57.6]	57.4 [51.0, 62.2]	50.4 [41.5, 58.2]
Sex (Male)	345 (52.4%)	2452 (39.4%)	165 (49.0%)	1219 (36.7%)	655 (51.4%)	4399 (38.6%)
SIMD (score/10)	41.6 [22.2, 53.3]	45.3 [26.3, 55.1]	45.1 [20.2, 54.9]	44.5 [22.6, 54.8]	41.8 [21.6, 54.0]	44.9 [25.5, 54.9]
Family history of CHD/Stroke (Yes)	443 (67.3%)	3171 (51.0%)	224 (66.5%)	1781 (53.6%)	862 (67.7%)	5881 (51.7%)
Diabetes (Yes)	19 (2.9%)	63 (1.0%)	16 (4.7%)	72 (2.2%)	43 (3.4%)	165 (1.4%)
Rheumatoid arthritis (Yes)	29 (4.4%)	140 (2.3%)	23 (6.8%)	110 (3.3%)	71 (5.6%)	281 (2.5%)
Non-smoker (Yes)	534 (81.2%)	5306 (85.3%)	280 (83.1%)	2752 (82.8%)	1044 (81.9%)	9623 (84.5%)
Systolic blood pressure (mmHg)	142.1 (16.7)	130.8 (16.9)	140.3 (17.6)	130.3 (16.5)	141.5 (17.2)	130.6 (16.8)
Total cholesterol (mmol/l)	5.4 (1.1)	5.2 (1.0)	5.3 (1.1)	5.3 (1.1)	5.4 (1.1)	5.2 (1.0)
HDL cholesterol (mmol/l)	1.3 [1.1, 1.6]	1.4 [1.2, 1.7]	1.4 [1.1, 1.6]	1.5 [1.2, 1.8]	1.3 [1.1, 1.6]	1.4 [1.2, 1.7]
ASSIGN score	19 [12, 29]	9 [4, 18]	18 [11, 28]	10 [5, 17]	18 [11, 28]	9 [4, 17]

4

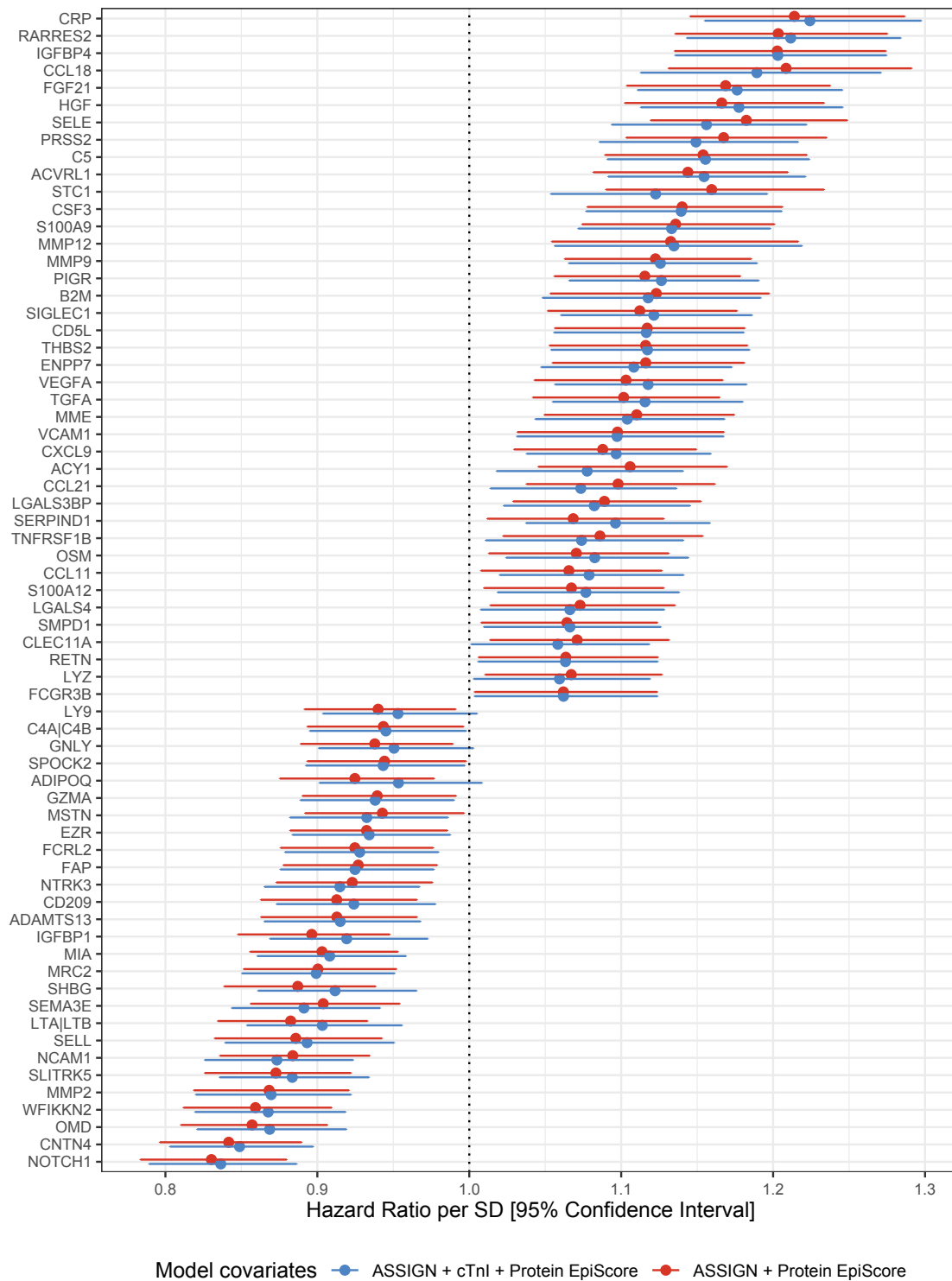
1 *Incremental model using EpiScores for plasma protein levels*

2 We then tested whether 109 protein EpiScores generated by Gadd *et al.* (protein description
3 available in **Supplementary Table 2**)¹³ were associated with CVD risk over 16 years of
4 follow-up .

5
6 Firstly, we generated 109 Cox PH CVD risk models adjusted for ASSIGN. Each model was
7 additionally adjusted for a different protein EpiScore. Eight EpiScores failed to satisfy the
8 proportional hazards assumption (Schoenfeld residual test $P > 0.05$). Of the remaining 101
9 protein EpiScores, 67 were significantly associated with CVD risk ($P < 0.05$). After applying a
10 conservative Bonferroni threshold for multiple testing ($P < 0.05/101 = 5.0 \times 10^{-4}$), 36 associations
11 remained statistically significant.

12
13 Secondly, to understand whether protein EpiScores were associated with CVD risk beyond
14 established biomarkers such as cardiac troponin, we included the concentration of cTnI as a
15 covariate in the model along with ASSIGN and we repeated the analysis. Of the 101
16 aforementioned protein EpiScores, 65 associated with CVD over and above the ASSIGN score
17 and the concentration of cTnI ($P < 0.05$, **Figure 1**). 33 associations remained significant after
18 correcting for multiple testing.

19

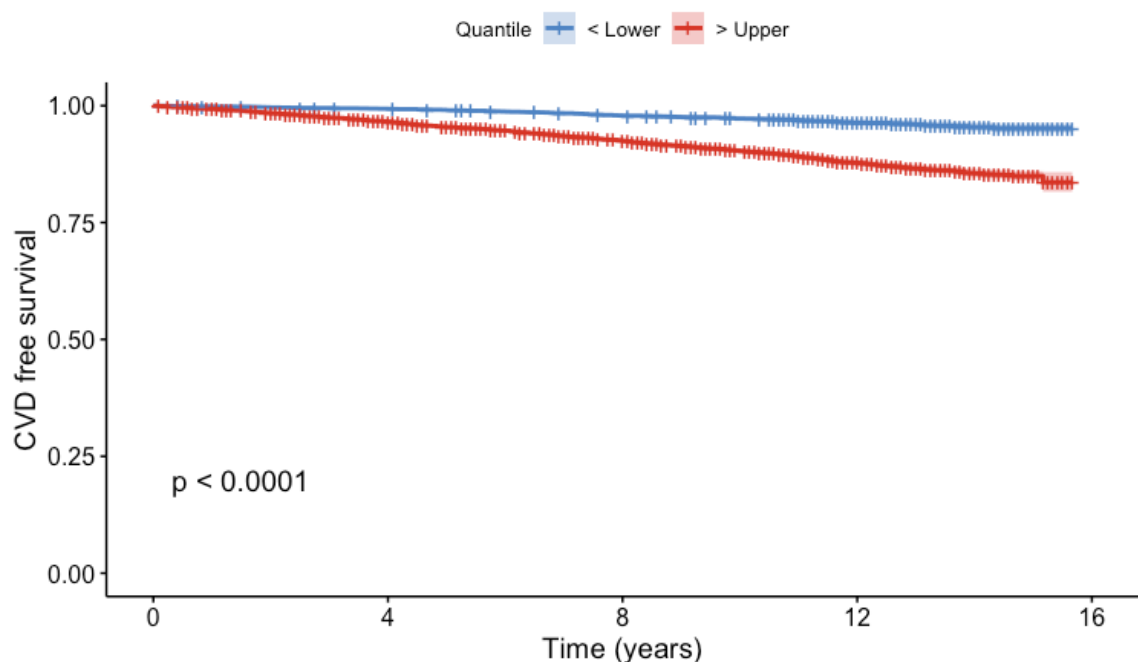


1

Figure 1. Associations between protein EpiScores and incident CVD. Hazard ratios are plotted for the 67 significant associations ($P < 0.05$) with 95% confidence interval limits. Basic models were adjusted for ASSIGN (blue), whereas full models included the ASSIGN score and concentration of cTnI as covariates (red).

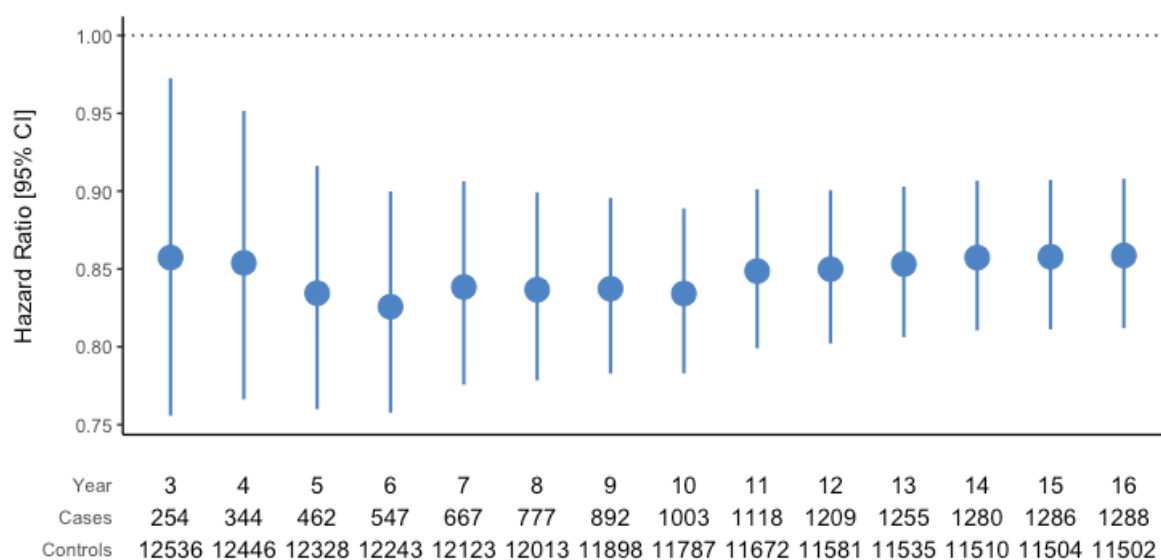
1 In models adjusted for ASSIGN and the concentration of cTnI, higher levels of 41 protein
2 EpiScores were associated with an increased hazard of CVD (HR>1 and P<0.05). For example,
3 elevated levels of *CRP* and *MMP12* were associated with HR of 1.23 (95% CI 1.16, 1.30;
4 P=9.2x10⁻¹²) and 1.13 (95% CI 1.06, 1.22, P=5.4x10⁻⁴) (**Figure 2, A**), respectively. In contrast,
5 higher levels of 24 protein EpiScores were associated with a decreased hazard of CVD (HR<1
6 and P<0.05). Examples of protein EpiScores belonging to this group include *NOTCH1* (HR per
7 SD of 0.84, 95% CI 0.79, 0.89; P=1.6x10⁻⁹) and *OMD* (HR per SD of 0.87, 95% CI 0.82, 0.92;
8 P=1.0x10⁻⁶). The relationships between individual EpiScores and CVD risk have been
9 visualised in a form of risk-over-time (**Figure 2, B**), forest, and Kaplan Meier plots in an online
10 R application: <https://shiny.igc.ed.ac.uk/3d2c8245001b4e67875ddf2ee3fcbad2/>.

1 A. MMP12



2

3 B. OMD



4

Figure 2. Changes in CVD free survival (A) and CVD risk (B) plotted for two selected protein EpiScores. A. Individuals with higher levels of MMP12 (>75th percentile) had shorter CVD free survival when compared to those with higher level of this EpiScore (<25th percentile). B. Hazard ratios (HR) and 95% confidence intervals associated with the levels of OMD EpiScore plotted over time. At all examined time points the association with CVD risk was significant ($P<0.05$).

1 Finally, to learn whether individual protein EpiScore can augment CVD prediction beyond
2 established biomarkers and clinical risk prediction tools, we calculated C-statistics for null and
3 full models. While the null model was adjusted for ASSIGN and the concentration of cTnI (C-
4 stat=0.728), the full model also contained the studied protein EpiScore. **Table 2** lists top 10
5 associations that result in the greatest improvement of CVD risk prediction.
6

Table 2. C-statistics calculated for null and full protein EpiScore models. Risk was ascertained over 16 years of follow-up. The null model was adjusted for ASSIGN and the concentration of cardiac troponin I, while the full model also included a studied EpiScore.

7

EpiScore	C_{full}-C_{null}	Function
IGFBP4	0.0050	Metabolic / Growth promoter
CRP	0.0050	Immune response
NTRK3	0.0046	Neural development / Cell signalling
FGF21	0.0042	Metabolic
CSF3	0.0039	Immune response
HGF	0.0035	Growth factor / tissue regeneration
ACVRL1	0.0035	Vascular
CNTN4	0.0035	Cell adhesion / maintenance
PIGR	0.0034	Immune response
RARRES2	0.0032	Metabolic

8

1 *Composite EpiScore for CVD- risk prediction*

2 To understand whether the above-mentioned protein EpiScores can be used as biomarkers that
3 add additional predictive value over-and-above typically used clinical risk scores (ASSIGN
4 and SCORE2) and the concentration of cTnI, we generated a composite CVD EpiScore – a
5 weighted linear combination of individual protein EpiScores. The score was trained using two
6 modelling techniques: Cox PH Elastic Net and Random Survival Forest. There were 6,880
7 records in the training set and 3,659 records in the test set. The Elastic Net assigned non-zero
8 coefficients to 45 of 109 protein EpiScores (**Supplementary Table 3**).

9
10 In 10-year Elastic Net prediction analysis, the null model (containing age, sex, and ASSIGN)
11 had an AUC of 0.719. The model with the CVD EpiScore increased the AUC to 0.723. The
12 addition of cTnI to the null model resulted in an AUC of 0.721. The full model (null model +
13 cTnI + CVD EpiScore) AUC was 0.724. Full output for the CVD models including C-statistics
14 and a comparison with SCORE2 can be found in **Supplementary Table 4** and **Supplementary**
15 **Table 5**. The CVD EpiScore remained statistically significant after adjusting for the
16 concentration of cTnI in models incorporating ASSIGN and SCORE2 (HR=1.32, $P=3.7 \times 10^{-3}$
17 and HR=1.36, $P=1.4 \times 10^{-3}$, respectively).

18
19 Random Survival Forest–based analysis (see **Methods**) yielded similar results. The null model
20 (as above) had an AUC of 0.719. Adding the CVD EpiScore to the null model increased the
21 AUC to 0.721. The full model adjusted for CVD EpiScore and the concentration of cardiac
22 troponin had an AUC of 0.723.

23

1 **Discussion**

2 In this study, we describe 65 novel epigenetic biomarkers that associate with long-term risk of
3 CVD independently of a clinical risk prediction tool (ASSIGN) and the concentration of an
4 established protein biomarker (cTnI). The most statistically significant EpiScores reflected
5 concentrations of proteins involved in metabolic, immune, and developmental pathways. A
6 weighted linear combination of protein EpiScores (the composite protein CVD EpiScore) was
7 significantly associated with CVD risk in models adjusted for ASSIGN. Although the score
8 may be a useful addition to other omic features in future CVD risk prediction tools, at present
9 it is unlikely to be measured in a clinical setting ²⁶.

10

11 One previous study focused on how DNAm biomarkers improve CVD risk prediction ²⁷. Using
12 time-to-event data and a panel of 60 blood DNAm biomarkers measured in an Italian cohort of
13 1803 individuals (295 cases), Cappozzo *et al.* trained a composite score for predicting short-
14 term risk of CVD. In comparison, we focused on a more extensive panel of DNAm protein
15 markers in addition to measured troponin levels. We also ran univariate analyses to identify
16 individual proteins and protein classes that associate with CVD. Furthermore, we developed
17 10-year prediction models (the prediction window for which both ASSIGN and SCORE2 are
18 recommended) trained on more than double the number of cases.

19

20 Our findings suggest that individual protein EpiScores capture disease-specific biomarker
21 signals relevant to CVD risk prediction. The relationships found between 65 protein EpiScores
22 and incident CVD mirrored previously reported associations between CVD and measured
23 protein concentrations. For example, elevated levels of *CRP*, a marker for systemic low-grade
24 inflammation, have been associated with multiple age-related morbidities, including CVD ²⁸.
25 *MMP12* and *OMD*, in turn, are involved in maintaining the stability of atherosclerotic plaques.

1 While *MMP12* contributes to the growth and destabilisation of plaques²⁹, increased levels of
2 *OMD* have been observed in macro-calcified plaques from asymptomatic patients³⁰. Finally,
3 multiple studies have demonstrated that *NOTCH1* signalling protects the heart from CVD-
4 induced myocardial damage. The Notch1 pathway is involved in neo-angiogenesis and
5 revascularisation of failing heart³¹. It limits the extent of ischemic injury³¹, reduces fibrosis³²
6 and improves cardiac function³³. Several of the protein EpiScores associated with CVD in our
7 study, such as *SELE* and *C5*, have also been shown to associate with stroke and ischemic heart
8 disease in our previous work¹³.

9
10 In contrast, the protein EpiScore we trained for cTnI was not associated with the incidence of
11 CVD. Therefore, we excluded it from composite CVD score generation. This highlights an
12 important consideration in the development of multi-omics biomarkers, as there are unlikely to
13 be DNAm differences that associate with every blood protein. For example, the 109 protein
14 EpiScores generated by Gadd *et al* that we make use of in our study were extracted as the best-
15 performing EpiScores from a total set of 953 proteins tested as potential outcomes¹³. It is
16 therefore not always possible to generate a meaningful protein EpiScore that reflects the protein
17 biology. In the case of cardiac troponins, the elevations in circulating cTnI and cTnT are a
18 result of a leakage of these proteins from the damaged heart muscle into the bloodstream³⁴. As
19 opposed to transcription, this process is not regulated by DNA methylation. Therefore, the
20 methylation signal underlying increased concentration of cardiac troponin in the bloodstream
21 may too weak to enable generation of a meaningful EpiScore.

22
23 Strengths of this study include the precise timing of the CVD event through the electronic
24 health records, the ability to generate a clinical risk predictor in a population cohort, and the

1 very large sample size for DNAm, which also permitted the splitting of the data into train/test
2 sets to formally examine the improvement in risk prediction from our omics biomarkers.

3

4 Limitations to this work include the generalisability beyond a Scottish population. In this study,
5 we trained and tested predictors in a Scottish cohort to augment the ASSIGN score. However,
6 many of the protein EpiScores were trained in a German cohort (KORA) and projected to
7 Generation Scotland ¹³. Although the ASSIGN score is tailored to the Scottish population, we
8 observed similar findings across all models when replacing it with SCORE2, which is widely
9 used across Europe.

10

11 In conclusion, we identified novel epigenetic signals that were associated with the incidence of
12 CVD independently of ASSIGN and the concentration of cardiac troponin. The exploration of
13 associations between protein EpiScores and CVD shed light on the aetiology and molecular
14 biology of the disease. As DNAm and proteins are assessed in increasingly large cohort
15 samples, it will be possible to evaluate more precisely the potential gains in risk prediction,
16 disease prevention and any associated health economic benefits.

17

18 **Acknowledgements**

19 We are grateful to all the families who took part, the general practitioners and the Scottish
20 School of Primary Care for their help in recruiting them, and the whole Generation Scotland
21 team, which includes interviewers, computer and laboratory technicians, clerical workers,
22 research scientists, volunteers, managers, receptionists, healthcare assistants and nurses. We
23 would also like to thank Dr Robert Hillary for helpful feedback on the manuscript and analyses.

1 **Funding**

2 This research was funded in whole, or in part, by the Wellcome Trust (104036/Z/14/Z,
3 108890/Z/15/Z, 220857/Z/20/Z, and 216767/Z/19/Z). For the purpose of open access, the
4 author has applied a CC BY public copyright licence to any Author Accepted Manuscript
5 version arising from this submission. A.D.C is supported by a Medical Research Council PhD
6 Studentship in Precision Medicine with funding by the Medical Research Council Doctoral
7 Training Programme and the University of Edinburgh College of Medicine and Veterinary
8 Medicine.

9 D.A.G. is funded by the Wellcome Trust 4-year PhD in Translational Neuroscience–training
10 the next generation of basic neuroscientists to embrace clinical research (108890/Z/15/Z).

11 E.B. and R.E.M. are supported by the Alzheimer’s Society major project grant AS-PG-19b-
12 010.

13 Generation Scotland received core support from the Chief Scientist Office of the Scottish
14 Government Health Directorates (CZD/16/6) and the Scottish Funding Council (HR03006).
15 Genotyping and DNA methylation profiling of the GS samples was carried out by the Genetics
16 Core Laboratory at the Clinical Research Facility, University of Edinburgh, Scotland and was
17 funded by the Medical Research Council UK and the Wellcome Trust (Reference
18 104036/Z/14/Z, 220857/Z/20/Z, and 216767/Z/19/Z). The DNA methylation profiling and
19 analysis was supported by Wellcome Investigator Award 220857/Z/20/Z and Grant
20 104036/Z/14/Z (PI: AM McIntosh) and through funding from NARSAD (Ref: 27404; awardee:
21 Dr DM Howard) and the Royal College of Physicians of Edinburgh (Sim Fellowship; Awardee:
22 Dr HC Whalley). All components of GS:SFHS, including the protocol and written study
23 materials, have received formal, national ethical approval from NHS Tayside Research Ethics
24 Committee (REC reference number 05/S1401/89). In addition local approval has been obtained

1 from NHS Glasgow Research Ethics Committee, and from NHS Glasgow and NHS Tayside
2 Research and Development Offices, as is required.

3

4 **Author contributions**

5 R.E.M., and A.D.C. were responsible for the conception and design of the study. A.D.C carried
6 out the data analyses. D.A.G, Y.C and E.B. contributed to the analyses and methodology.
7 R.E.M. and A.D.C. drafted the article. A.C. facilitated data linkage. K.L.E. and J.F.P. were
8 involved in conceptualisation and provided consultation on the methodology. S.W.M.,
9 R.M.W., N.W., L.M., C.S., A.W.M., K.L.E contributed to data collection and preparation. All
10 authors read and approved the final manuscript.

11

1 **Conflict of interest**

2 R.E.M. and L.M. have received a speaker fee from Illumina. R.E.M. is an advisor to the
3 Epigenetic Clock Development Foundation. D.A.G. and R.E.M. have received consultancy
4 fees from Optima partners. All other authors declare no competing interests.

5

6 **Data availability**

7 All code used in the analyses is available with open access at the following Gitlab repository:
8 https://github.com/aleksandra-chybowska/troponin_episcores. The source datasets analysed
9 during the current study are not publicly available due to them containing information that
10 could compromise participant consent and confidentiality. Data can be obtained from the data
11 owners. Instructions for accessing Generation Scotland data can be found here:
12 <https://www.ed.ac.uk/generation-scotland/for-researchers/access>; the 'GS Access Request
13 Form' can be downloaded from this site. Completed request forms must be sent to
14 access@generationscotland.org to be approved by the Generation Scotland access committee.
15 Videos introducing the 109 protein EpiScores and MethylDetectR application are available at
16 <https://www.youtube.com/channel/UCxQrFFtItF25YKfJTXuumQ>.

17

1 **References**

2

- 3 1. Hippisley-Cox J, Coupland C, Brindle P. Development and validation of QRISK3 risk
4 prediction algorithms to estimate future risk of cardiovascular disease: prospective cohort
5 study. *BMJ* 2017;357:j2099. doi:10.1136/bmj.j2099.
- 6 2. Staa T-P van, Gulliford M, Ng ES-W, Goldacre B, Smeeth L. Prediction of
7 Cardiovascular Risk Using Framingham, ASSIGN and QRISK2: How Well Do They
8 Predict Individual Rather than Population Risk? *PLOS ONE* 2014;9:e106455.
9 doi:10.1371/journal.pone.0106455.
- 10 3. Welsh P, Preiss D, Hayward C, Shah ASV, McAllister D, Briggs A, et al. Cardiac
11 Troponin T and Troponin I in the General Population. *Circulation* 2019;139:2754–2764.
12 doi:10.1161/CIRCULATIONAHA.118.038529.
- 13 4. Fridén V, Starnberg K, Muslimovic A, Ricksten S-E, Bjurman C, Forsgard N, et al.
14 Clearance of cardiac troponin T with and without kidney function. *Clinical Biochemistry*
15 2017;50:468–474. doi:10.1016/j.clinbiochem.2017.02.007.
- 16 5. Michielsen ECHJ, Wodzig WKWH, Van Dieijen-Visser MP. Cardiac Troponin T
17 Release after Prolonged Strenuous Exercise. *Sports Med* 2008;38:425–435.
18 doi:10.2165/00007256-200838050-00005.
- 19 6. Wu AHB. Release of cardiac troponin from healthy and damaged myocardium. *Frontiers*
20 in Laboratory Medicine 2017;1:144–150. doi:10.1016/j.flm.2017.09.003.
- 21 7. Deaton AM, Bird A. CpG islands and the regulation of transcription. *Genes &*
22 *Development* 2011;25:1010. doi:10.1101/gad.2037511.
- 23 8. Suzuki MM, Bird A. DNA methylation landscapes: provocative insights from
24 epigenomics. *Nat Rev Genet* 2008;9:465–476. doi:10.1038/nrg2341.

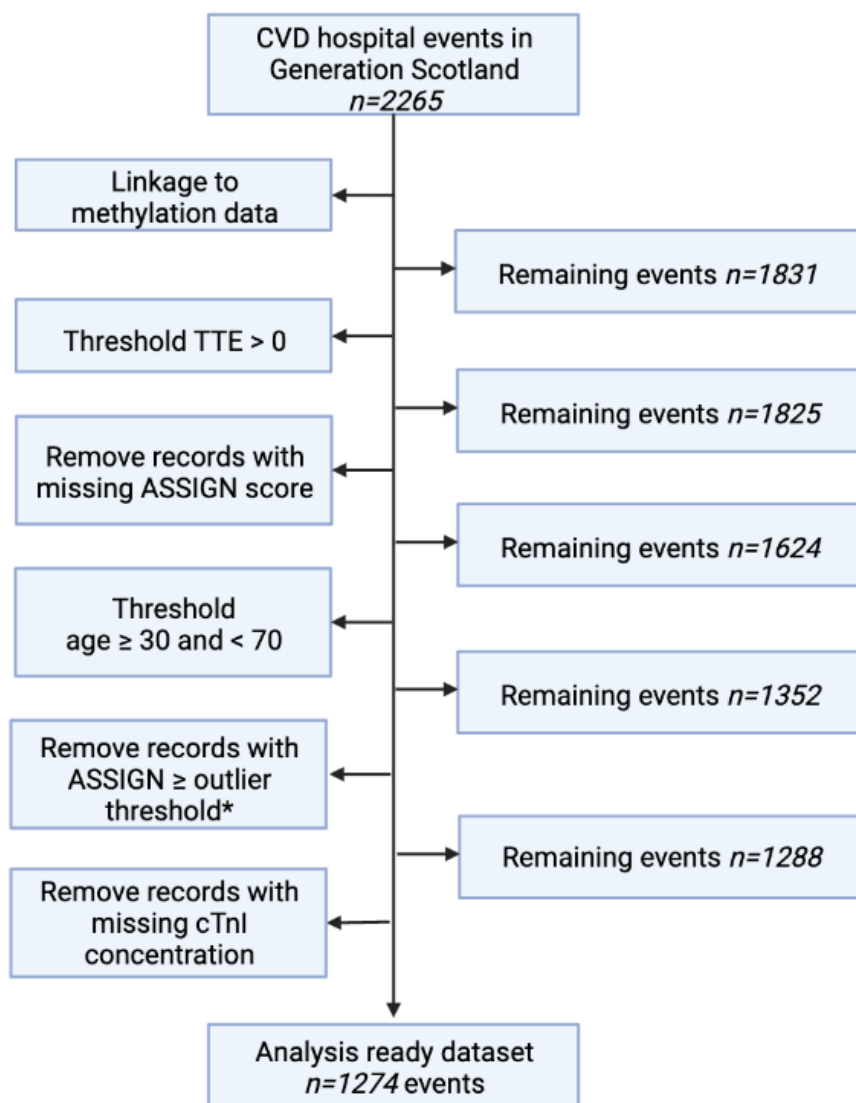
- 1 9. Moldoveanu AI, Shephard RJ, Shek PN. Exercise elevates plasma levels but not gene
2 expression of IL-1 β , IL-6, and TNF- α in blood mononuclear cells. *Journal of Applied*
3 *Physiology* 2000;89:1499–1504. doi:10.1152/jappl.2000.89.4.1499.
- 4 10. Koenig W, Sund M, Fröhlich M, Löwel H, Hutchinson WL, Pepys MB. Refinement of
5 the Association of Serum C-reactive Protein Concentration and Coronary Heart Disease
6 Risk by Correction for Within-Subject Variation over Time: The MONICA Augsburg
7 Studies, 1984 and 1987. *American Journal of Epidemiology* 2003;158:357–364.
8 doi:10.1093/aje/kwg135.
- 9 11. Liu Y, Buil A, Collins BC, Gillet LCJ, Blum LC, Cheng L-Y, et al. Quantitative
10 variability of 342 plasma proteins in a human twin population. *Mol Syst Biol*
11 2015;11:786. doi:10.15252/msb.20145728.
- 12 12. Stevenson AJ, McCartney DL, Hillary RF, Campbell A, Morris SW, Bermingham ML, et
13 al. Characterisation of an inflammation-related epigenetic score and its association with
14 cognitive ability. *Clinical Epigenetics* 2020;12:113. doi:10.1186/s13148-020-00903-8.
- 15 13. Gadd DA, Hillary RF, McCartney DL, Zaghlool SB, Stevenson AJ, Cheng Y, et al.
16 Epigenetic scores for the circulating proteome as tools for disease prediction. *ELife*
17 2022;11:e71802. doi:10.7554/eLife.71802.
- 18 14. Estimate the risk - ASSIGN Score 2022. [https://www.assign-score.com/estimate-the-](https://www.assign-score.com/estimate-the-risk/visitors/)
19 [risk/visitors/](https://www.assign-score.com/estimate-the-risk/visitors/) (accessed April 14, 2022).
- 20 15. Smith BH, Campbell A, Linksted P, Fitzpatrick B, Jackson C, Kerr SM, et al. Cohort
21 Profile: Generation Scotland: Scottish Family Health Study (GS:SFHS). The study, its
22 participants and their potential for genetic research on health and illness. *International*
23 *Journal of Epidemiology* 2013;42:689–700. doi:10.1093/ije/dys084.
- 24 16. Cheng Y, Gadd DA, Gieger C, Monterrubio-Gómez K, Zhang Y, Berta I, et al.
25 Development and validation of DNA Methylation scores in two European cohorts

- 1 augment 10-year risk prediction of type 2 diabetes 2022:2021.11.19.21266469.
- 2 doi:10.1101/2021.11.19.21266469.
- 3 17. Hillary RF, Marioni RE. MethylDetectR: a software for methylation-based health
- 4 profiling. *Wellcome Open Res* 2020;5:283. doi:10.12688/wellcomeopenres.16458.2.
- 5 18. Faqs - ASSIGN Score 2022. <https://www.assign-score.com/faqs/> (accessed April 14,
- 6 2022).
- 7 19. Woodward M, Brindle P, Tunstall-Pedoe H, for the SIGN group on risk estimation*.
- 8 Adding social deprivation and family history to cardiovascular risk assessment: the
- 9 ASSIGN score from the Scottish Heart Health Extended Cohort (SHHEC). *Heart*
- 10 2005;93:172–176. doi:10.1136/hrt.2006.108167.
- 11 20. SCORE2 working group and ESC Cardiovascular risk collaboration. SCORE2 risk
- 12 prediction algorithms: new models to estimate 10-year risk of cardiovascular disease in
- 13 Europe. *European Heart Journal* 2021;42:2439–2454. doi:10.1093/eurheartj/ehab309.
- 14 21. SCORE2 risk calculator for low-risk regions 2022.
- 15 <https://heartscore.escardio.org/Calculate/quickcalculator.aspx?model=low> (accessed
- 16 October 6, 2022).
- 17 22. Therneau TM, Grambsch PM. *Modeling survival data: extending the Cox model*. New
- 18 York: Springer; 2000.
- 19 23. Friedman JH, Hastie T, Tibshirani R. Regularization Paths for Generalized Linear
- 20 Models via Coordinate Descent. *Journal of Statistical Software* 2010;33:1–22.
- 21 doi:10.18637/jss.v033.i01.
- 22 24. Lin DY. On the Breslow estimator. *Lifetime Data Anal* 2007;13:471–480.
- 23 doi:10.1007/s10985-007-9048-y.

- 1 25. Robin X, Turck N, Hainard A, Tiberti N, Lisacek F, Sanchez J-C, et al. pROC: an open-
2 source package for R and S+ to analyze and compare ROC curves. *BMC Bioinformatics*
3 2011;12:77. doi:10.1186/1471-2105-12-77.
- 4 26. Wagner W. How to Translate DNA Methylation Biomarkers Into Clinical Practice.
5 *Frontiers in Cell and Developmental Biology* 2022;10.
- 6 27. Cappozzo A, McCrory C, Robinson O, Freni Sterrantino A, Sacerdote C, Krogh V, et al.
7 A blood DNA methylation biomarker for predicting short-term risk of cardiovascular
8 events. *Clinical Epigenetics* 2022;14:121. doi:10.1186/s13148-022-01341-4.
- 9 28. Sharif S, Van der Graaf Y, Cramer MJ, Kapelle LJ, de Borst GJ, Visseren FLJ, et al.
10 Low-grade inflammation as a risk factor for cardiovascular events and all-cause mortality
11 in patients with type 2 diabetes. *Cardiovascular Diabetology* 2021;20:220.
12 doi:10.1186/s12933-021-01409-0.
- 13 29. Goncalves I, Bengtsson E, Colhoun HM, Shore AC, Palombo C, Natali A, et al. Elevated
14 Plasma Levels of MMP-12 Are Associated With Atherosclerotic Burden and
15 Symptomatic Cardiovascular Disease in Subjects With Type 2 Diabetes. *Arteriosclerosis,*
16 *Thrombosis, and Vascular Biology* 2015;35:1723–1731.
17 doi:10.1161/ATVBAHA.115.305631.
- 18 30. Gonçalves I, Oduor L, Matthes F, Rakem N, Meryn J, Skenteris N-T, et al. Osteomodulin
19 Gene Expression Is Associated With Plaque Calcification, Stability, and Fewer
20 Cardiovascular Events in the CPIP Cohort. *Stroke* 2022;53:e79–e84.
21 doi:10.1161/STROKEAHA.121.037223.
- 22 31. Li Y, Hiroi Y, Ngoy S, Okamoto R, Noma K, Wang C-Y, et al. Notch1 in Bone Marrow–
23 Derived Cells Mediates Cardiac Repair After Myocardial Infarction. *Circulation*
24 2011;123:866–876. doi:10.1161/CIRCULATIONAHA.110.947531.

- 1 32. Ferrari R, Rizzo P. The Notch pathway: a novel target for myocardial remodelling
2 therapy? *European Heart Journal* 2014;35:2140–2145. doi:10.1093/eurheartj/ehu244.
- 3 33. Gude NA, Emmanuel G, Wu W, Cottage CT, Fischer K, Quijada P, et al. Activation of
4 Notch-Mediated Protective Signaling in the Myocardium. *Circulation Research*
5 2008;102:1025–1035. doi:10.1161/CIRCRESAHA.107.164749.
- 6 34. Daubert MA, Jeremias A. The utility of troponin measurement to detect myocardial
7 infarction: review of the current findings. *Vasc Health Risk Manag* 2010;6:691–699.
8
9

1 Supplement

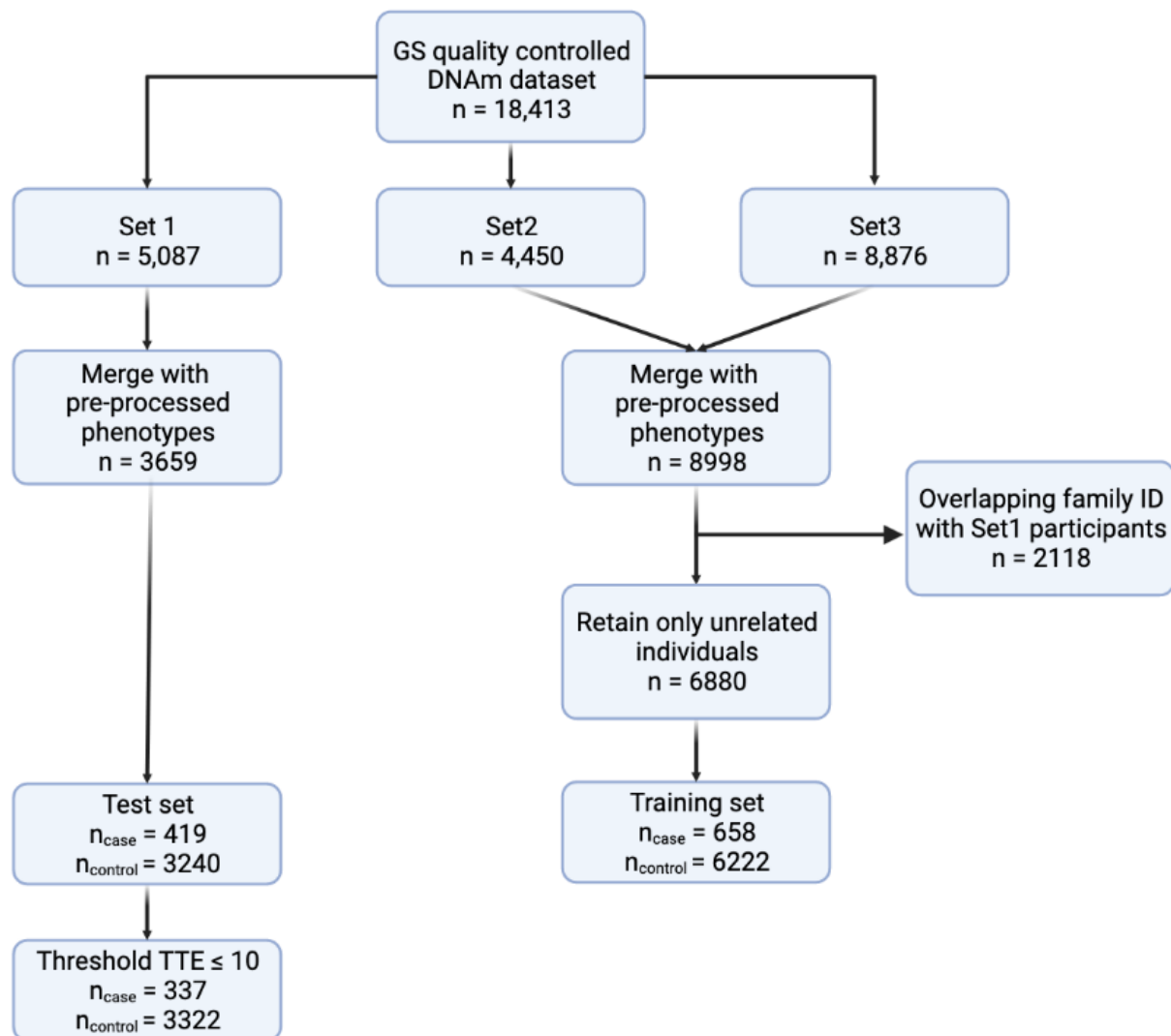


2

Supplementary Figure 1. Pre-processing of the full dataset. This pipeline was used to prepare data for Cox PH models aimed at the identification of potential predictors of CVD.

*Outlier threshold – an ASSIGN value that is more than 3 SD from the mean. Created with BioRender.com.

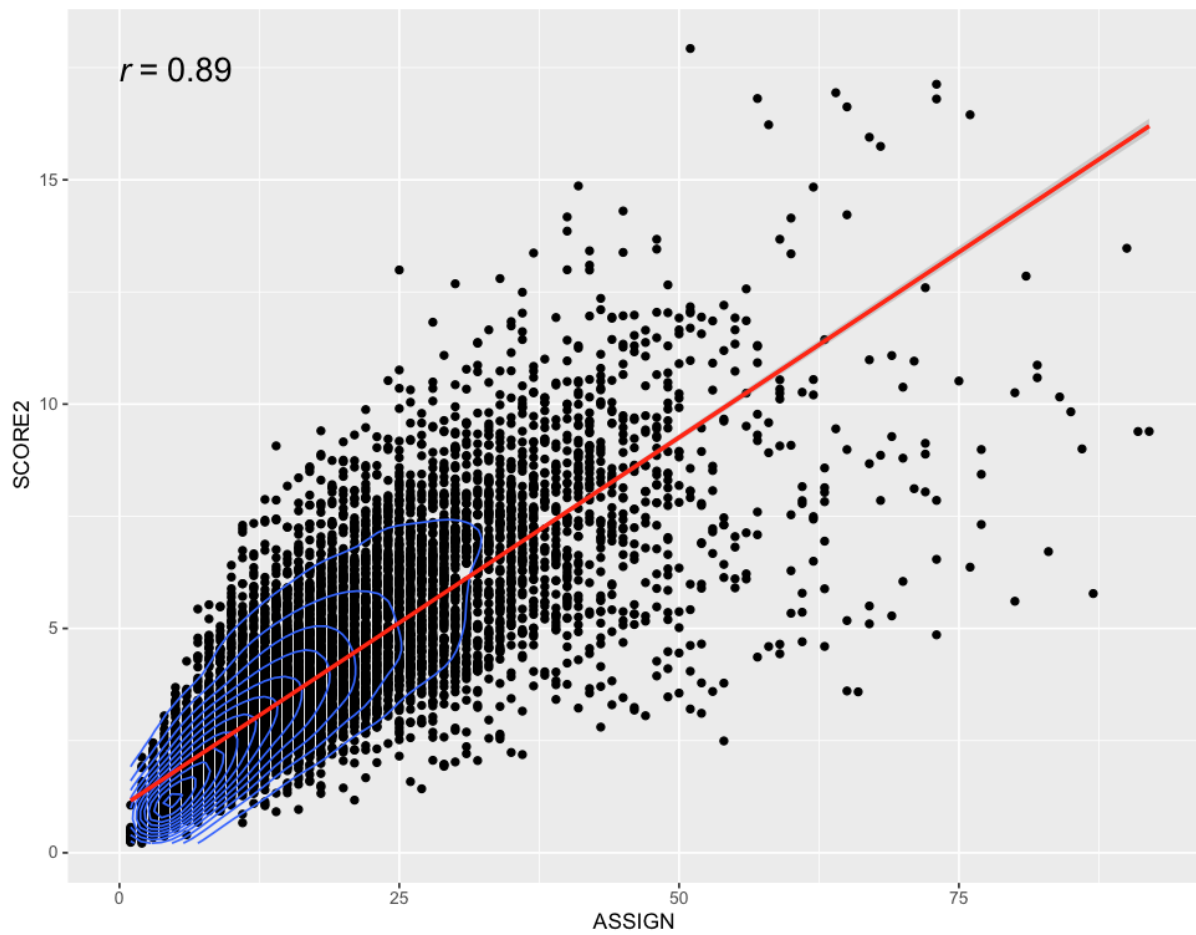
3



1

Supplementary Figure 2. Pre-processing of the training and test sets. While Set 1 was the test set, the training set consisted of Sets 2 and 3 combined. Pre-processing phenotypes (ASSIGN components, composite CVD event status and time-to-event) consisted of filtering out records with time-to-event ≤ 0 , removing records with a missing ASSIGN score, thresholding age of participants to 30-70 years and removing outliers (ASSIGN value that is more than 3 SD from the mean). To ensure that there were no individuals with overlapping family ids across the training and the test set, any individuals in the training set associated with the same family id as individuals from the test set were excluded from further analyses. Created with BioRender.com.

1



2
3

Supplementary Figure 3. Strongly correlated 10-year CVD risk estimates produced by ASSIGN and SCORE2.

4
5

Supplementary Table 1. Hazard ratio (HR) of ASSIGN estimated by Cox proportional hazards CVD model adjusted for relatedness using kinship matrix where the ASSIGN score is the only predictor.

Age category	HR_{ASSIGN}	95% CI	P_{ASSIGN}	<i>n</i>_{cases}	<i>n</i>_{controls}
<30	2.42	[1.43, 4.10]	9.4 x 10 ⁻⁴	20	2560
30 - 40	1.87	[1.48, 2.37]	2.0 x 10 ⁻⁷	64	2436
40 - 50	1.97	[1.74, 2.22]	<2.2 x 10 ⁻¹⁶	232	3153
50 - 60	1.67	[1.55, 1.81]	<2.2 x 10 ⁻¹⁶	526	3763
60 - 70	1.54	[1.42, 1.67]	<2.2 x 10 ⁻¹⁶	530	2267
≥70	1.27	[1.12, 1.44]	2.3 x 10 ⁻⁴	252	551

1

2

3

Supplementary Table 2. Description of the 109 proteins for which Gadd et al. generated robust EpiScores. Table adapted from Gadd *et. al*¹³.

Identifier (SOMAscan SeqId or Olink name)	Protein Panel	Gene Name	Target
4407-10	SomaScan	MST1	MSP
4435-66	SomaScan	ENPP7	ENPP7
4148-49	SomaScan	PAPPA	PAPP-A
3617-80	SomaScan	HGFAC	HGFA
3440-7	SomaScan	GZMA	granzyme A
3403-1	SomaScan	TPSB2	TPSB2
3291-30	SomaScan	FCER2	CD23
3195-50	SomaScan	GNLY	Granulysin
5124-69	SomaScan	ICAM5	sICAM-5
3216-2	SomaScan	PIGR	PIGR
5339-49	SomaScan	S100A9	calgranulin B
3175-51	SomaScan	ADAMTS13	ATS13
3311-27	SomaScan	FCGR3B	FCG3B
4500-50	SomaScan	CLEC11A	SCGF-alpha
2948-58	SomaScan	GHR	Growth hormone receptor
2950-57	SomaScan	IGFBP4	IGFBP-4
2966-65	SomaScan	CLEC11A	SCGF-beta
4337-49	SomaScan	CRP	CRP
2579-17	SomaScan	MMP9	MMP-9
4498-62	SomaScan	NCAM1	NCAM-120
3184-25	SomaScan	F7	Coagulation Factor VII
3324-51	SomaScan	LY9	LY9
5034-79	SomaScan	PRSS2	Trypsin 2
3343-1	SomaScan	ACY1	Aminoacylase-1
5358-3	SomaScan	OMD	OMD
3046-31	SomaScan	RETN	resistin
4568-17	SomaScan	SLITRK5	SLIK5
3448-13	SomaScan	INSR	IR
5028-59	SomaScan	CD163	sCD163
2658-27	SomaScan	NTRK3	TrkC
3292-75	SomaScan	CD48	CD48
4929-55	SomaScan	SHBG	SHBG
4924-32	SomaScan	MMP1	MMP-1
2580-83	SomaScan	MPO	Myeloperoxidase
4831-4	SomaScan	SELL	sL-Selectin

3152-57	SomaScan	TNFRSF1B	TNF sR-II
2967-8	SomaScan	VCAM1	VCAM-1
5000-52	SomaScan	LGALS3BP	LG3BP
3038-9	SomaScan	CXCL11	I-TAC
3169-70	SomaScan	IDUA	IDUA
3060-43	SomaScan	C9	C9
2665-26	SomaScan	TNFRSF17	BCMA
2516-57	SomaScan	CCL21	6Ckine
2780-35	SomaScan	LTF	Lactoferrin
4763-31	SomaScan	AFM	Afamin
3485-28	SomaScan	B2M	b2-Microglobulin
2771-35	SomaScan	IGFBP1	IGFBP-1
4481-34	SomaScan	C4A C4B	C4
3505-6	SomaScan	LTA LTB	Lymphotoxin a1/b2
3041-55	SomaScan	MRC2	MRC2
3470-1	SomaScan	SELE	sE-Selectin
3554-24	SomaScan	ADIPOQ	Adiponectin
4990-87	SomaScan	GP1BA	GP1BA
4920-10	SomaScan	LYZ	Lysozyme
2851-63	SomaScan	C5	C5a
3293-2	SomaScan	CD5L	CD5L
4496-60	SomaScan	MMP12	MMP-12
2687-2	SomaScan	MIA	MIA
3316-58	SomaScan	SERPIND1	Heparin cofactor II
3473-78	SomaScan	MPL	Thrombopoietin Receptor
2982-82	SomaScan	LGALS4	Galectin-4
3298-52	SomaScan	CNTN4	Contactin-4
3044-3	SomaScan	CCL18	PARC
5107-7	SomaScan	NOTCH1	Notch 1
4153-11	SomaScan	SERPINA3	alpha-1-antichymotrypsin complex
3805-16	SomaScan	ESM1	Endocan
3339-33	SomaScan	THBS2	TSP2
4160-49	SomaScan	MMP2	MMP-2
3079-62	SomaScan	RARRES2	TIG2
3519-3	SomaScan	CCL17	TARC
3035-80	SomaScan	IL19	IL-19
5363-51	SomaScan	SEMA3E	Semaphorin 3E
3235-50	SomaScan	WFIKKN2	WFKN2
2705-5	SomaScan	CCL25	TECK
3600-2	SomaScan	CHIT1	Chitotriosidase-1

4141-79	SomaScan	CXCL10	IP-10
3348-49	SomaScan	BMP1	BMP-1
3029-52	SomaScan	CD209	DC-SIGN
3508-78	SomaScan	CCL22	MDC
2816-50	SomaScan	BCAM	BCAM
2826-53	SomaScan	EDA	EDA
5491-12	SomaScan	SPOCK2	Testican-2
5029-3	SomaScan	FAP	SEPR
4930-21	SomaScan	STC1	Stanniocalcin-1
CRTAM	Olink Neurology	CRTAM	N/A
EZR	Olink Neurology	EZR	N/A
FcRL2	Olink Neurology	FCRL2	N/A
G.CSF	Olink Neurology	CSF3	N/A
GDF.8	Olink Neurology	MSTN	N/A
GZMA	Olink Neurology	GZMA	N/A
NEP	Olink Neurology	MME	N/A
N.CDase	Olink Neurology	ASAH2	N/A
NMNAT1	Olink Neurology	NMNAT1	N/A
NTRK3	Olink Neurology	NTRK3	N/A
SKR3	Olink Neurology	ACVRL1	N/A
SIGLEC1	Olink Neurology	SIGLEC1	N/A
SMPD1	Olink Neurology	SMPD1	N/A
CCL11	Olink Inflammatory	CCL11	N/A
CD6	Olink Inflammatory	CD6	N/A
CXCL10	Olink Inflammatory	CXCL10	N/A
CXCL11	Olink Inflammatory	CXCL11	N/A
CXCL9	Olink Inflammatory	CXCL9	N/A
EN.RAGE	Olink Inflammatory	S100A12	N/A
TGF.alpha	Olink Inflammatory	TGFA	N/A
FGF.21	Olink Inflammatory	FGF21	N/A
HGF	Olink Inflammatory	HGF	N/A
OSM	Olink Inflammatory	OSM	N/A
VEGFA	Olink Inflammatory	VEGFA	N/A
MMP.1	Olink Inflammatory	MMP1	N/A

1

2

Supplementary Table 3. Predictor weights for the 45 protein EpiScores included in the composite protein EpiScore.

1

<i>Variable</i>	<i>Coefficient</i>
<i>GZMA</i>	-0.1070275
<i>N.CDase</i>	-0.0013707
<i>NTRK3</i>	-0.0105284
<i>SKR3</i>	0.02292682
<i>CCL11</i>	0.01486593
<i>CXCL11</i>	-0.0363625
<i>FGF.21</i>	0.05884652
<i>HGF</i>	0.05611636
<i>MMP.1</i>	-0.0528479
<i>2705-5</i>	0.0411362
<i>2851-63</i>	0.07807877
<i>2948-58</i>	0.03807306
<i>2967-8</i>	0.08372915
<i>3029-52</i>	-0.0004437
<i>3038-9</i>	-0.0062101
<i>3044-3</i>	0.2568256
<i>3060-43</i>	-0.078839
<i>3079-62</i>	0.1024936
<i>3152-57</i>	0.01995523
<i>3175-51</i>	0.02976706
<i>3291-30</i>	0.03575731
<i>3292-75</i>	-0.0045541
<i>3293-2</i>	0.04389995
<i>3339-33</i>	0.04065941
<i>3348-49</i>	0.02393257
<i>3403-1</i>	-0.0070861
<i>3448-13</i>	0.02739967
<i>3470-1</i>	0.10485373
<i>3485-28</i>	0.05615907
<i>3505-6</i>	-0.0178471
<i>3519-3</i>	-0.0543479
<i>3600-2</i>	0.03783531
<i>3617-80</i>	0.03982561
<i>4160-49</i>	-0.0499596
<i>4407-10</i>	0.03860081

<i>4435-66</i>	0.01144093
<i>4481-34</i>	-0.0549405
<i>4496-60</i>	0.10710256
<i>4763-31</i>	0.03997106
<i>4831-4</i>	-0.0265954
<i>4920-10</i>	-8.29E-05
<i>4924-32</i>	0.0123399
<i>5000-52</i>	0.00608975
<i>5124-69</i>	0.00134476
<i>5363-51</i>	-0.0156491

1

2

Supplementary Table 4. Summary of CVD risk models based on ASSIGN. N – null model (adjusted for age + sex + ASSIGN), E – CVD

EpiScore, T – cardiac troponin I

3

Model	HR _{age}	P _{age}	HR _{sex}	P _{sex}	HR _{ASSIGN}	P _{ASSIGN}	HR _E	P _E	HR _T	P _T	AUC	PRAUC	C-index
N	1.01	0.54	1.13	0.23	2.05	<2.2x10 ⁻¹⁶	-	-	-	-	0.719	0.198	0.712
N+E	1.00	0.99	1.05	0.64	1.94	1.10x10 ⁻¹⁶	1.3	5.6x10 ⁻³	-	-	0.723	0.201	0.715
N+T	1.00	0.83	1.04	0.71	2.02	<2.2x10 ⁻¹⁶	-	-	1.16	1.1x10 ⁻²	0.721	0.202	0.714
N+E+T	1.00	0.65	0.96	0.71	1.91	6.70x10 ⁻¹⁶	1.32	3.7x10 ⁻³	1.17	7.1x10 ⁻³	0.724	0.205	0.717

4

Supplementary Table 5. Summary of CVD risk models based on SCORE2. N – null model (adjusted for age + sex + ASSIGN), E – CVD

EpiScore, T – cardiac troponin I

5

Model	HR _{age}	P _{age}	HR _{sex}	P _{sex}	HR _{SCORE2}	P _{SCORE2}	HR _E	P _E	HR _T	P _T	AUC	PRAUC	C-index
N	1.02	0.05	0.96	0.75	1.79	1.8x10 ⁻¹¹	-	-	-	-	0.699	0.174	0.696
N+E	1.01	0.15	0.92	0.50	1.64	5.4x10 ⁻⁸	1.34	2.4x10 ⁻³	-	-	0.704	0.179	0.699
N+T	1.01	0.14	0.88	0.32	1.77	6.3x10 ⁻¹¹	-	-	1.18	4.8x10 ⁻³	0.701	0.175	0.698
N+E+T	1.01	0.37	0.84	0.16	1.61	1.8x10 ⁻⁷	1.36	1.4 x10 ⁻³	1.19	2.7 x10 ⁻³	0.707	0.182	0.702

6

1 **Supplementary Methods**

2

3 **EpiScores for cardiac troponin**

4 We generated an EpiScore for cTnI. The training set consisted of Sets 2 and 3 combined,
5 whereas Set 1 was the test set. To minimise information from shared environments and
6 relatedness leaking between the training and test sets, any individuals in the training set
7 associated with the same family ID as individuals from the test set were excluded from further
8 analyses. After this step, there were 9,754 individuals in the training set and 5,003 individuals
9 in the test set.

10 As part of data pre-processing, all variables were trimmed of outliers (points beyond 3 SDs of
11 the mean). The measured concentrations of cTnI underwent rank-based inverse normal
12 transformation. Using linear mixed effects models, age, age² and sex were regressed out of the
13 transformed variable, with a pedigree-based kinship matrix fitted as a random effect. The
14 subsequent model residuals were saved and entered as the outcome of elastic net regression
15 models. Methylation levels were treated as the independent variables. Elastic net models were
16 run using biglasso (version 1.5.0) in R (version 4.0.3). The L1-L2 mixing parameter was set to
17 alpha=0.5, and ten-fold cross-validation was applied. Non-zero coefficients/weights from the
18 models were extracted. To calculate the EpiScore, CpG methylation values were multiplied by
19 these coefficients and summed for each individual in the test set. The proportion of variance
20 explained by the EpiScore was estimated by comparing R² estimates from the null and full
21 linear regression models. Null models were adjusted for age, sex, and cTnI whereas full models
22 accounted for age, sex, cTnI and the EpiScore.

23

24

25

26

1 **EpiScores for 109 circulating proteins**

2 We have previously generated 109 EpiScores for plasma protein levels ¹³. Briefly, elastic net
3 penalised regression models were run with 953 possible protein levels as outcomes and up to
4 428,489 DNAm measurements from the Illumina 450k array as input features. Protein levels
5 were adjusted for genetic effects (protein quantitative trait loci – pQTLs) prior to training
6 EpiScores. Protein EpiScores were trained in two cohorts: the Lothian Birth Cohort of 1936
7 (training set contained between 725 and 875 individuals for 160 Olink inflammatory and
8 neurology proteins) and the German cohort, KORA (944 individuals, 793 SOMAscan
9 proteins). 109 scores (84 trained in KORA and 25 trained in the Lothian Birth Cohort 1936)
10 explained between 1% and 58% of the variance in protein levels (with $r > 0.1$ and $P < 0.05$) in
11 independent test cohorts. In this study, the 109 protein EpiScores were projected into
12 Generation Scotland (n = 18,413) through the publicly available MethylDetectR Shiny App.
13 Before applying weights, DNAm level at each site was scaled to have a unit SD and mean of
14 zero. This procedure was performed separately in each set.

15