

33 **Abstract**

34 **Introduction** Suicide is the cause of death of approximately 800'000 people a year. Despite the
35 relevance of this behaviour, risk assessment tools rely on clinician experience and subjective
36 ratings.

37 **Methods** Given that previous suicide attempts are the single strongest predictors of future attempts,
38 we designed a systematic review and coordinate-based meta-analysis to evince if any neuroimaging
39 features can help distinguish individuals who attempted suicide from subjects who did not. Out of
40 5659 publications from PubMed, Scopus and Web of Science, we summarised 102 experiments and
41 meta-analysed 23 of them.

42 **Results** A cluster in the right Superior Temporal Gyrus, a region implicated in emotional
43 processing, might be functionally hyperactive in individuals who attempted suicide. Furthermore,
44 we used JuSpace and the Human Brain Connectome dataset to show that this cluster is enriched in
45 5-HT_{1A} heteroreceptors, and its connectivity with the left central operculum is significantly
46 correlated with loneliness scores.

47 **Conclusions** This evidence provides a putative neural substrate for suicidal thought-to-attempt
48 transition as hypothesised by Joiner's Interpersonal Theory of Suicide. Heterogeneity in the
49 analytical techniques and weak or absent power analysis of the studies included in this review
50 currently limit the applicability of the findings, the replication of which should be prioritised.

51

52

53

54

55

56

57

58

59

60 **Keywords:** fMRI; transdiagnostic; thwarted belongingness.

61

62

63

64

65

66

67

68

69

70

71

72

73

74

75

76

77

78

79

80

81

82

83

84

85

86 **Introduction**

87 Suicide is a behaviour that leads to the premature death of approximately 800'000 people a year
88 (*WHO / Suicide data, 2020*). It is estimated that for each death by suicide there are approximately
89 10 to 25 non-fatal suicide attempts (SAs) (*Stone et al., 2021; Wasserman, 2016*). However, the SA
90 to death ratio might be higher in specific age ranges, like adolescence (*Maris, 2002*). In light of the
91 epidemiological relevance of suicidal behaviours, the importance of recognising people who are at
92 risk of death by suicide cannot be overstated. Despite the enormous amount of published literature
93 on lifetime (*Haney et al., 2012; Masango et al., 2008; Mościcki, 1997*) and proximate risk factors
94 (*Berman, 2018*) of suicide, we are nowhere close to predicting suicidal behaviour with accuracy, to
95 the extent that some authors stated that "suicide is easier to prevent than to predict" (*Rihmer et al.,*
96 *2018*), at least for specific groups of people. Among the myriad of factors associated with an
97 increased risk of death by suicide, the most relevant is previous SAs (*Christiansen & Frank Jensen,*
98 *2007; Owens et al., 2002*). A recent systematic review and meta-analysis pooling data from 41
99 previous reports estimated that the death by suicide rate sits at 2.8% (2.2-3.5) one year, 5.6% (3.9-
100 7.9) five years, and 7.4% (5.2-10.4) ten years after a nonfatal suicide attempt (*Demesmaeker et al.,*
101 *2022*). Indeed, people who acted on their thoughts of death once are more likely to further attempt,
102 as this dramatic solution to the mental pain they experienced has become cognitively more
103 accessible (*R. C. O'Connor & Portzky, 2018*), and the bridge between ideation and action has
104 already been crossed once (*Ken Norton, 2018; R. O'Connor, 2021*). There are several factors, or
105 "bridges", that make the ideation to action transition more likely (*O'Connor & Kirtley, 2018*), that
106 can be grouped into four clusters, and are typically investigated to assess the suicide risk of an
107 individual: past experiences (previous (own) SAs and exposure to (family member/friends) suicidal
108 behaviour); acquired capability (*Chu et al., 2017; Joiner & Jr, 2005*) (encompassing fearlessness
109 about death and increased physical pain endurance); access to means and plans for suicide (*Jobes,*
110 *2016; Stanley & Brown, 2012*); impulsivity (*Gvion & Apter, 2011*). In our opinion, mental imagery

111 could be grouped with past experiences (if the individual visualisation of dying is influenced by
112 previous attempts or exposure), access to means and plans (when the visualisation of dying or death
113 relates to a plan) or it might pertain to intrusive thoughts. The previous factors are pivotal in
114 ascertaining if an individual is at risk of death. However, they can be identified only through a
115 thorough suicidal risk assessment. Mostly, this procedure is subjective and dependent on the
116 patient's expected consequences of their statements and the patient-interviewer therapeutic alliance.
117 Thus, it is of utmost importance to investigate if any objective finding can aid the interviewer in
118 distinguishing which patients are more likely to attempt suicide. One step in this direction could be
119 taken by examining if any neuroimaging findings can distinguish the people who attempted suicide
120 from those who did not. Then, if any difference emerged, it would be easier to test prospectively if
121 said diversity can be leveraged to aid the suicidal risk assessment. Brain imaging and connectivity
122 data had been used to train and test predictive models that could identify people with or without
123 suicidal ideation (Stumps et al., 2021); Previous studies also showed that brain regions implicated
124 in decision-making (e.g., frontal areas) or emotion regulation (e.g., temporal cortex, insula) might
125 help discern people with a history of suicidal behaviour from those without it with good accuracy
126 (Aguilar et al., 2008; Stange et al., 2020; Zhu et al., 2020), thus indicating that an imaging-based
127 approach could be leveraged to increase the accuracy of suicidal risk assessment. One aspect that is
128 as crucial as frequently overlooked is that any diversity between people who attempted suicide and
129 people who did not should be transdiagnostic, i.e., shared across the different mental health
130 conditions that the individual might be suffering from. The reasons are twofold: although mental
131 disorders are known risk factors for death by suicide (Moitra et al., 2021), mental health conditions
132 are not a prerequisite nor sufficient to explain suicidal behaviours. Most people who die by suicide
133 have no history of any mental health disorders (Too et al., 2019). Moreover, a large proportion of
134 people who died had no mental health condition identifiable through psychological autopsy
135 (Cavanagh et al., 2003). A similar picture emerges when considering the individuals who survived
136 the first SA (Nock et al., 2009). Secondly, the suicidal risk assessment usually takes place at first

137 contact, so this usually happens well before reaching a diagnosis of mental disorder. Most research
138 on the neuroimaging features of suicidal behaviours has been conducted on participants who
139 suffered from mood disorders (Campos et al., 2021; Duarte et al., 2017; S. Fan et al., 2019; for the
140 ENIGMA-Major Depressive Disorder Working Group et al., 2017; Johnston et al., 2017; S.-G.
141 Kang et al., 2020; Lee et al., 2016; Zhu et al., 2020). However, it was suggested that some brain
142 regions, such as the temporal lobe, might be shared hubs of dysfunction associated with suicidal
143 behaviours across different mental health conditions (Domínguez-Baleón et al., 2018). To our
144 knowledge, this hypothesis has not been meta-analytically investigated so far. Two previously
145 published reviews addressed the issue of common features of suicidality across mental health
146 conditions but either included non-suicidal self-harm in the analysis (X. Huang et al., 2020) or
147 included studies that did not look for brain-wise differences (Jollant et al., 2018) but that instead
148 focused on specific areas of the brain (Soloff et al., 2012) thus producing a sampling bias.
149 Therefore, we conducted this systematic review and meta-analysis to summarise the published
150 literature to explore whether people with a history of SA have structural or functional brain
151 differences with respect to people without such history (NSA). Subsequently, we performed spatial
152 correlation analysis with neurotransmitter receptor maps (based on PET scans) to evince if any of
153 the meta-analytically identified brain regions is significantly associated with a particular receptor
154 expression. Lastly, we applied seed-based functional connectivity (FC) analysis to a sample of
155 healthy subjects to investigate the resting-state FC of the brain areas identified from the meta-
156 analysis of resting-state fMRI studies.

157

158 **Methods**

159 *Protocol and search strategy*

160 This systematic review and coordinate-based meta-analysis followed a pre-defined protocol
161 published at (<https://osf.io/fvr dx>) and adhered to the procedures of the Preferred Reporting Items for
162 Systematic Reviews and Meta-Analyses (PRISMA) statement (Page et al., 2021)) (see

163 Supplementary materials for details and PRISMA Checklist (Title, 2009)). A comprehensive
164 literature search was performed in PubMed, Scopus, and Web of Science databases, with the
165 following keywords: (("suicide" OR "suicidal" OR "suicidality" OR "self-harm" OR "self-injury"
166 OR "self-directed" OR "self-mutilation") AND ("MRI" OR "magnetic resonance" OR "magnetic
167 resonance imaging" OR "brain imaging" OR "neuroimaging" OR "functional MRI" OR "fMRI" OR
168 "functional magnetic resonance imaging")) from inception until May 19, 2022. A manual search
169 was conducted on the reference list of the included studies, relevant review articles, International
170 Clinical Trials Registry Platform. Commentaries, editorials, and reviews were excluded. No
171 language or publication status restriction was applied.

172

173 *Eligibility*

174 Experimental, cross-sectional, case-control and prospective magnetic resonance imaging (MRI)
175 studies were considered eligible. Studies were included if 1) they reported the results of structural,
176 or resting-state, or task-based functional MRI, or FC, or cortical thickness (CT) of SA and NSA
177 (aged > 18 years); 2) the two groups of people being compared were homogeneous in terms of
178 mental health condition (MHC; i.e., people with schizophrenia (SCZ) that attempted suicide (+AS)
179 were compared to people with SCZ who did not attempt suicide at the time of scanning). In the case
180 that a study reported two heterogeneous groups (i.e., people with SCZ + AS compared with
181 otherwise healthy controls), the study was excluded; 3) the primary mental health condition had to
182 be assessed with a semi-structured or structured interview and diagnosed according to the criteria
183 listed in the Diagnostic and Statistical Manual (DSM) or the International Classification of Diseases
184 (ICD); 4) the structural and/or functional studies reported the stereotaxic coordinates of the
185 significant clusters of MHC+AS vs MHC-AS as well as full details on imaging acquisition to allow
186 an unequivocal assessment of the extent of brain coverage. In particular, the field of view (or the
187 matrix and voxel volume), slice number, and slice thickness had to be reported. If the product of
188 (slice thickness + gap) times slice number was less than 93mm (the average axial diameter – height

189 – of the brain excluding the cerebellum), the study probably did not cover the whole brain. It thus
190 was flagged and considered together with studies with similar brain coverage. If the product was
191 less than the average brain + cerebellum height (average 105mm), the study was regarded as likely
192 covering the entire brain except for the cerebellum. Nonetheless, it was considered and eventually
193 meta-analysed with other studies with overlapping brain coverage. In the case that a study acquired
194 images of the entire brain (including the cerebellum) but did not consider the cerebellum or other
195 volumes in the statistical analysis, it was regarded as "brain coverage only" (i.e., excluding the
196 cerebellum) or partial brain coverage (i.e., if it excluded the occipital lobe). A statement that the
197 "whole brain" was covered was deemed insufficient, and NM proceeded to contact the authors of
198 the study, requesting further details. In the case that NM did not receive a reply in two weeks (after
199 a second solicitation), the study was excluded from the meta-analysis; 5) studies that regarded *a*
200 *priori*-defined regions-of-interest (ROI) were excluded. Studies that applied small volume
201 corrections (SVC) were excluded unless there was the possibility to include those clusters that
202 reached statistical significance with whole-brain-level correction; 6) studies on task-based
203 functional neuroimaging were grouped according to the task administered or, in case of high
204 heterogeneity of tasks, on the cognitive domain investigated; 7) studies regarding CT were analysed
205 separately from the structural and functional studies; 8) studies regarding seed-based FC were
206 grouped according to seed localisation. Studies that investigated FC with Independent Component
207 Analysis (ICA) were separated from the studies employing a seed-based approach. In general, the
208 following guidelines (Müller et al., 2018; Tahmasian et al., 2019) for conducting a neuroimaging
209 meta-analysis were followed.

210

211 *Data extraction*

212 Duplicate records were excluded. Two authors (NM, AM) independently extracted each eligible
213 study characteristics and outcome data. Any disagreement was solved by a third author (FS). The
214 following variables were extracted: DOI, first author, year of publication, study design, country

215 where the research took place, primary diagnosis of the participants, DSM version used for
216 psychiatric assessment, sample size per group, demographics (sex, age, education, illness duration),
217 neuroimaging analysis methods (e.g., for structural studies: VBM; resting-state index studies:
218 amplitude of low-frequency fluctuations (ALFF) (static, dynamic, normalised); for FC: seed
219 localisation or if the authors employed ICA; for task-based investigations: task characteristics and
220 cognitive domain), medication, comorbid substance abuse (e.g., alcohol, drugs), weeks since last
221 SA to scan, rating scales (e.g., Hamilton Depression Rating Scale, Beck Depression Inventory-II or
222 others), scanner magnetic field strength, software used for the analysis (e.g., SPM5, SPM8),
223 stereotaxic coordinate system (MNI, Talairach), the direction of contrast, coordinates, statistical
224 correction. Studies that did not report any significant differences in brain volumes between the two
225 groups (i.e., that could not pinpoint any coordinates that differentiated people with SA from NSA)
226 could not be included in the coordinate-based meta-analysis due to methodological reasons
227 explained elsewhere (Müller et al., 2018; Tahmasian et al., 2019). However, these studies are
228 acknowledged in Supplementary Appendix.

229

230 *Data analysis*

231 A tailored version (see Supplementary Appendix and (Cattarinussi et al., 2019)) of the Imaging
232 Methodology Quality Assessment Checklist (Shepherd et al., 2012) was used to assess a quality
233 score for each study included in the coordinate-based meta-analysis (reported in Table 1), and both
234 reviewers (NM, AM) independently assessed each study for the risk of bias.

235 We performed an exploratory coordinate-based meta-analysis (CBMA) using the activation
236 likelihood estimation program GingerALE (version 3.0.2) (Eickhoff et al., 2009, pag.). The
237 program, when supplied with the coordinates identified by the single studies, identifies commonly
238 activated regions (clusters) of the brain across groups. CBMAs were performed for both voxel-
239 based morphometry and resting-state index experiments that compared SA and NSA. The analysis
240 was conducted using a cluster-level inference $p < 0.05$, 1000 thresholding permutations, and a

241 cluster-forming threshold $p < 0.001$. The more dilated (i.e., less conservative) masking option was
242 used. To evince any clusters that did not reach statistical significance after a cluster-level family-
243 wise error (FWE) correction, we also conducted exploratory CBMAs without correcting for
244 multiple comparisons (no FWE) with a cluster-forming threshold of $p < 0.0001$. Images were
245 produced with BrainNet Viewer (Xia et al., 2013). Furthermore, we used JuSpace (Dukart et al.,
246 2021) to correlate receptor spatial localization maps based on PET scans with the brain clusters
247 identified in this meta-analysis. In this case, we implemented the default settings of the tool and
248 compared one brain cluster with fourteen receptor maps by setting statistical significance for
249 correlations at $p < 0.0035$ (Bonferroni correction).

250

251 *Functional connectivity analysis*

252 To test the seed-based functional connectivity at rest of the areas that showed a statistically
253 significant difference in the meta-analysis of resting-state fMRI studies, we used data from the
254 database Human Connectome Project Young Adult (available online at
255 <https://www.humanconnectome.org/study/hcp-young-adult> (Feinberg et al., 2010; Moeller et al.,
256 2010; Setsompop et al., 2012; Van Essen et al., 2012; Xu et al., 2012)). Briefly, we selected 151
257 subjects (age range 22-36, 62 males) for which resting-state fMRI images were acquired with a 7
258 Tesla scan. Rs-fMRI data were acquired in four runs (frames per run = 900) of approximately 16
259 minutes each, each at the beginning of each of the four 7T imaging sessions, with eyes open with
260 relaxed fixation on a projected bright cross-hair on a dark background (and presented in a darkened
261 room). For the purpose of our analysis, we used data from a single run of 600 frames. Imaging
262 parameters are: sequence = Gradient-echo EPI, TR = 1000 ms, TE = 22.2 ms, flip angle = 45 deg,
263 FOV = 208 x 208 mm, matrix = 130 x 130, slice thickness = 1.6 mm; 85 slices; 1.6 mm isotropic
264 voxels, multiband factor = 5, echo spacing = 0.64 ms.

265 Resting-state fMRI data were preprocessed using the Connectivity Toolbox (CONN) (Whitfield-
266 Gabrieli & Nieto-Castanon, 2012) running in Matlab R2022a (The Mathworks Inc, USA).

267 Functional images were realigned, slice-time corrected, spatially normalized to stereotactic space
268 of the Montreal Neurological Institute (MNI) with a voxel size of $2 \times 2 \times 2$ mm and spatially
269 smoothed with a 4 mm full-width half-maximum Gaussian kernel. The Artifact Removal Tools
270 (ART) were used to remove outlier volumes with excessive motion using liberal settings, excluding
271 1% of the data. Structural images were segmented into grey matter, white matter and cerebrospinal
272 fluid and spatially normalized to MNI space. Preprocessed resting-state fMRI data were then
273 analyzed using the CONN toolbox. Blood-oxygen-level-dependent (BOLD) data were bandpass
274 filtered (0.008–0.09 Hz) to denoise the signal. The spatial coordinates that resulted from the meta-
275 analysis (Talairach space – x; y; z = 53; -20; 4) were used to create a 10 mm diameter seed.
276 Individual correlation maps were created by extracting the mean BOLD timecourse from the seed
277 and calculating correlation coefficients with BOLD timecourse of each brain voxel. The value of
278 each voxel represents the relative degree of resting-state FC with the seed region (Whitfield-
279 Gabrieli et al., 2011). The resulting correlation map was then used for second-level analyses of FC
280 using a one sample t-test to investigate seed-to-voxel connectivity in the group of subjects.
281 Moreover, we explored the correlations between the connectivity maps and scores of the relevant
282 scales of the NIH Toolbox (life satisfaction, loneliness, friendship, purpose of life) (Hodes et al.,
283 2013). We performed a voxel-wise statistical analysis over the entire brain using an uncorrected
284 level ($p < 1 \times 10^{-6}$) and then family-wise error (FWE) correction was applied at the cluster level ($p <$
285 0.05). Permutation test (1000 simulations) was applied to test if the correlation coefficient obtained
286 by the regression model was significantly higher than that of a random guess.

287

288 **Results**

289 *Selected studies*

290 A total of 5659 studies were identified from Scopus, Pubmed, and Web of Science. After duplicate
291 removal, 3451 abstracts were screened at the title and abstract level, and 229 full-texts were
292 retrieved for in-depth assessment. We thus excluded a total of 147 reports after full-text assessment

293 (Figure 1), based on methodological reasons or target population (reasons for exclusion were
294 reported in the Supplementary Appendix). Overall, we extracted data for 98 reports that met the
295 inclusion criteria (see Methods section for further details). Some studies reported using multiple
296 imaging modalities (e.g., VBM and rs-fMRI), and each modality accounts for a single experiment.
297 Thus, the number of experiments considered in this systematic review and coordinate-based meta-
298 analysis is higher ($k=102$) than the number of reports analysed. Six experiments focused on altered
299 cortical thickness (CT), while 16 experiments used voxel-based morphometry to evince cortical,
300 subcortical, or cerebellar structural differences. Seventy-eight experiments investigated functional
301 differences in the target populations: twelve experiments used rs-fMRI index, 29 used fMRI while
302 participants were performing a task, and 39 experiments investigated FC differences. Due to
303 methodological reasons of the retrieved studies, not all experiments were considered in an
304 exploratory CBMA. The reasons for exclusion are reported in the appropriate experiment section
305 below. We extracted and meta-analyzed data from 22 experiments investigating the structural
306 differences between SA and NSA. The quality of the included studies, according to an adapted
307 version of the Imaging Methodology Quality Assessment Checklist (Supplementary Appendix and
308 [\(Cattarinussi et al., 2019; Shepherd et al., 2012\)](#)), is reported in Table 1.

309

310 *All-effects (Functional imaging + Morphometry) coordinate-based meta-analysis*

311 First of all, we pooled all the resting-state fMRI, voxel-based morphometry and cortical thickness
312 studies. Then, we meta-analysed them to identify any brain cluster of neural abnormalities across
313 the neuroimaging modalities. We excluded the task-based studies due to the heterogeneity of tasks
314 being adopted by the single reports, and the FC investigations for methodological reasons (eligible
315 connectivity indexes were seed-based and thus incomparable to whole-brain indexes). A total of 18
316 experiments were pooled and 93 brain foci meta-analysed. This analysis comprised 1034
317 participants, 497 with a history of previous SA(s) and 537 NSA. However, no brain clusters were
318 significantly different between SA and NSA in terms of neural activity at the multimodal level.

319 Significant brain differences between SA and NSA, according to the single imaging modality, are
320 summarised in the following section. Table 2 recapitulates the non-statistically significant results
321 from the CBMAs for each brain imaging modality, which are also extensively reported and
322 discussed in the Supplementary Appendix.

323

324 *Voxel-based morphometry findings*

325 We extracted data for the meta-analysis from nine eligible studies, all published between 2008 and
326 2020, that used voxel-based morphometry. No significant spatial overlap between the reported brain
327 regions could be identified at a $p < 0.0001$ with a cluster-volume of 200 mm^3 without any statistical
328 correction. Noteworthy, seven eligible studies (Cao et al., 2016; Duarte et al., 2017; S. Fan et al.,
329 2019; Jia et al., 2010; Kim et al., 2015; Lippard et al., 2019; Rüsçh et al., 2008) did not find any
330 significant GMV differences between SA and NSA.

331

332 *Cortical thickness findings*

333 Three studies that analysed CT differences between people with and without SA were eligible to be
334 included in an exploratory CBMA. As for the CBMA based on the brain morphometry, also in this
335 case, no significant spatial overlap between the coordinates of the CT differences could be
336 identified at a $p < 0.0001$ with a cluster-volume of 200 mm^3 (and without applying any statistical
337 correction for multiple comparisons). Moreover, all the clusters ($n= 7$) identified by these three
338 studies reported reduced CT in SA.

339

340 *Task-based fMRI findings*

341 None of the task-based fMRI studies ($k=29$) retrieved could be compared, as per methodology, to
342 each other, not even when pooling studies that investigated the same cognitive domain with
343 different tasks (i.e., ignoring if the tasks employed were different – see Supplementary Appendix
344 for reasons for exclusion of each study).

345

346 *Resting-state fMRI findings*

347 A total of eleven studies were assessed for possible pooling in the meta-analysis. We excluded five
348 studies due to the target population of the investigations (See Supplementary Appendix for full
349 details). Five of the remaining six studies were conducted in China (Cao et al., 2015, 2016; T. Fan
350 et al., 2013; Gong et al., 2020; Tian et al., 2021), only one (Wagner et al., 2021) was a multi-centre
351 study conducted across Western countries (Canada, USA, Germany). Three studies (Cao et al.,
352 2016; T. Fan et al., 2013; Wagner et al., 2021) included people with MDD, two studies (Gong et al.,
353 2020; Tian et al., 2021) individuals with BD type II, and one (Cao et al., 2015) people with a
354 history of SAs and no recognizable mental health condition. A total of 196 individuals with a
355 history of SA(s) and of 179 diagnosis-matched patient controls were included in this exploratory
356 meta-analysis, with a mean age ranging from 19.8 to 38.4 years old and a percentage of females in
357 the samples ranging from 51.4 to 85%. Five studies used the ALFF as a measure of spontaneous
358 brain activity, while one study employed regional homogeneity (ReHo) to explore local FC. A total
359 of 37 foci coordinates were retrieved and meta-analysed: 15 foci related to spontaneous hyperactive
360 regions in individuals with a history of suicidal behaviour, and 22 related to regions of spontaneous
361 hypoactivation. A cluster of 520mm³ belonging to the right superior temporal gyrus (rSTG)
362 (Brodmann Area 22; Talairach space coordinates – x; y; z = 53; -20; 4; Figure 2) survived FWE
363 correction and was thus considered to be statistically significant. No brain clusters of regional
364 hypoactivation in SA could be identified. We implemented JuSpace (Dukart et al., 2021) to
365 correlate the coordinates of the aforementioned brain cluster with receptor spatial localisation maps
366 based on PET scans. We found that the cluster in the rSTG was significantly correlated ($R = 0.35$, p
367 $= 0.003$; Figure 2) with the 5-HT_{1A} receptor localisation evidenced in (Savli et al., 2012).

368

369 *Resting-state and task-based FC findings*

370 Of the studies ($k=39$) investigating whole-brain FC that could have been considered in a CBMA,
371 only two pairs of studies could be compared, as per methodology, to each other (see Supplementary
372 Appendix for reasons for exclusion). However, no significant spatial overlap between the
373 coordinates of the clusters identified from the previously cited studies could be identified at a $p <$
374 0.0001 with a cluster volume of 200 mm^3 (and without applying any statistical correction for
375 multiple comparisons).

376 Five studies used the bilateral amygdalae as seed regions. However, none could be compared to one
377 another in an exploratory CBMA due to methodological reasons (see Supplementary Appendix).

378

379 *Seed-based connectivity*

380 By leveraging the dataset from the Human Connectome Project Young Adult, we performed seed-
381 based connectivity analyses to study the functional connections of the right STG. We observed an
382 increase in the FC between the right STG and a bilateral set of regions spanning across fronto-
383 insulo-temporal-occipital regions (see Supplementary Appendix for details, all p-FWE's < 0.001).
384 A decrease in the FC was instead observed between the right STG and the bilateral cerebellum (p-
385 FWE $< 1 \times 10^{-7}$). The mean BOLD signal of the right STG presented a positive correlation with
386 loneliness scores as measured by the NIH toolbox scales ($R = 0.193$, $p = .018$; Figure 3) and a
387 negative correlation at trend level with friendship and purpose in life scores ($R = -0.154$, $p = 0.059$
388 and $R = -0.147$, $p = 0.071$, respectively). In addition, the FC of the right STG with left central
389 operculum (MNI coordinates $[x;y;z] = [-66,-1616]$, p-FWE = 0.02) displayed a positive correlation
390 with the loneliness scores. Further corollary results are reported in the Supplementary Appendix and
391 also discussed below.

392

393 **Discussion**

394 SAs are preventable behaviours that usually emerge when individuals think of death as the only
395 option to escape unbearable suffering (Pompili et al., 2008). Although several public health

396 interventions can be put in place to prevent suicide at the population level (Hofstra et al., 2020; Hou
397 et al., 2022; Mann et al., 2021), and psychotherapeutic (Brown et al., 2005; Büscher et al., 2020;
398 Stanley & Brown, 2012) or pharmacological approaches (Baldessarini et al., 2006a; Zalsman et al.,
399 2016) can be successfully implemented at the individual level, clinical tools to predict who is more
400 likely to attempt suicide are somewhat limited, and mainly subject-dependent (Haney et al., 2012).
401 In this context, neuroimaging markers bear the essential properties of representing fruitful objective
402 measures of one's risk of death by suicide (Sudol & Mann, 2017). Thus, this systematic review and
403 exploratory CBMA aimed at investigating brain markers potentially associated with suicide
404 attempts. We assessed for eligibility approximately 180 studies and reviewed 100 experiments
405 regarding differences in brain morphology or function between individuals who attempted suicide
406 and people who did not. Despite a large number of eligible studies, most results could not be
407 compared due to methodological reasons, especially studies regarding FC and task-based fMRI.
408 Almost all of the literature retrieved for this meta-analysis adopted a case-control study design:
409 neuroimaging indexes of individuals who attempted suicide (SA) in the past were compared to
410 patient controls (i.e., people that shared the same mental health condition with individuals with SA
411 but never attempted suicide) or healthy controls ((Cao et al., 2015) in the case that no mental health
412 condition could be identified in people with SA). The low likelihood of retrieving neuroimaging
413 studies that prospectively investigated the neuroimaging markers of SAs is swiftly explained: SAs
414 are rare events; this extreme behaviour is frequently the cause of first psychiatric assessment;
415 neuroimaging studies need to have sufficient power to yield clinically meaningful results. All these
416 factors implicate that the sample sizes required for predicting the first suicidal behaviour based on
417 neuroimaging markers are prohibitive (larger sample sizes need to be scanned to include people
418 who will attempt suicide).
419 Nonetheless, knowing if SA in the past differs from controls in neuroimaging features could inform
420 prediction strategies. Moreover, localising such regions of difference could provide fruitful entry
421 points to understanding the neurophysiological pathways to suicide. Lastly, a history of previous

422 SAs is the single strongest predictor of future SAs (Berman, 2018; Christiansen & Frank Jensen,
423 2007; Nordström et al., 1995). This epidemiological evidence supports the view that the
424 identification of neuroimaging markers in individuals who have already attempted suicide might
425 become clinically helpful for objectively assessing the risk of further attempts.

426

427 *The right superior temporal gyrus as a region of interest in understanding suicidal behaviour*

428 Our exploratory CBMA, based on 23 experiments, did not highlight any brain morphological
429 differences among the groups of interest. However, we identified one cluster of regional
430 hyperactivity during resting-state fMRI in the right superior temporal gyrus (rSTG) in SA. This
431 brain region is implicated in emotion perception (Chen et al., 2021; Robins et al., 2009), spatial
432 processing (Gharabaghi et al., 2006; Shah-Basak et al., 2018), and prediction of goal-directed
433 movements of objects (Schultz et al., 2004) in healthy subjects, and its activity can be modulated by
434 the antidepressant bupropion (Hama et al., 2021). In line with the evidence pinpointing this region
435 as a hub for goal prediction, a magnetoencephalography study highlighted the possible role of the
436 rSTG in sustaining working memory activity (Park et al., 2011). On the other hand, studies
437 involving subjects with mental health conditions evidenced that the rSTG might play a role in
438 illness insight (J. Fan et al., 2017) or could be a key region functionally connected to the default
439 mode network, mediating metabolic dysfunction and mood across the lifespan (Portugal-Nunes et
440 al., 2021). When considering those individuals who acted on their thoughts of suicide, there were
441 also reports of morphometric differences in the rSTG (McLellan et al., 2018; Pan et al., 2015;
442 Sarkinaite et al., 2021), whose volume can be influenced by lithium treatment (Benedetti et al.,
443 2011; Eugene et al., 2014). Some studies eligible for this systematic review also identified
444 volumetric reductions in the rSTG in SA compared to NSA (Benedetti et al., 2011; Canal-Rivero et
445 al., 2020, pag.; Peng et al., 2014). However, the foci were too spatially segregated to be meta-
446 analytically considered as belonging to the same cluster.

447 Similarly, two of the three eligible studies investigating CT (Besteher et al., 2016; Taylor et al.,
448 2015) pinpointed the rSTG as a region with a statistically significant reduction of CT in SA. When
449 considering the survivors of suicide loss, Jollant and colleagues (Jollant et al., 2018, pag. 201)
450 highlighted a reduced volume of the temporal gyri in people with a family history of suicide,
451 possibly indicating a neural substrate of susceptibility to transitioning from thoughts to suicidal
452 behaviour (R. O'Connor, 2021). Regarding functional indexes of brain activation, there was another
453 report that identified a cluster of hyperactivation in the STG of patients with a history of SAs (T.
454 Fan et al., 2013). Yet, this regional activation was spatially distant from the two foci (Cao et al.,
455 2016; Gong et al., 2020) composing the cluster identified by this exploratory CBMA. Moreover,
456 there were reports of altered activation of the rSTG in individuals with non-suicidal self-injury –
457 NSSI (Q. Huang et al., 2021; Osuch et al., 2014) and altered connectivity of this region with other
458 brain regions during conflict and prediction errors (Harms et al., 2019; Minzenberg et al., 2015).
459 Pertaining the involvement of the rSTG in non-suicidal self-injury, we believe that the role of this
460 region in the acquisition of capability to attempt suicide (i.e., transitioning from ideation – or NSSI
461 – to SAs, as theorised in the Interpersonal Theory of Suicide (Joiner & Jr, 2005)) is a hypothesis
462 worth of further investigation. Joiner hypothesised that the transition from suicidal ideation to a
463 suicide attempt might also occur through physical pain insensitivity or enhanced endurance to pain
464 (Joiner & Jr, 2005). This condition is more likely to happen as chronic self-injurious behaviours
465 become less capable of regulating negative emotions (Grandclerc et al., 2016).

466

467 *The rSTG is enriched in 5-HT_{1A} receptors.*

468 We used JuSpace to evince the most represented receptors in the brain cluster belonging to the
469 rSTG. We highlighted a significant spatial overlap between the localisation of 5-HT_{1A} receptors and
470 the cluster we identified. 5-HT_{1A} can either be auto- or hetero-receptors. Autoreceptor activation
471 plays a pivotal role in limiting the release of serotonin via a negative-feedback mechanism (Garcia-
472 Garcia et al., 2014). In contrast, the function of heteroreceptors is less clear, although they are

473 widely expressed in key brain regions for emotion regulation (Riad et al., 2000). It had previously
474 been reported that people with depression who died by suicide had lower expression of 5-HT_{1A}
475 autoreceptors in the midbrain (Boldrini et al., 2008) and were more likely to yield a polymorphism
476 in the promoter region of the receptor gene (Lemondé et al., 2003). In the case of the localisation of
477 this brain cluster, the spatial correlation we evidenced is more likely due to the expression of 5-
478 HT_{1A} heteroreceptors (typically expressed in the neocortex) in the rSTG rather than autoreceptors
479 (which are usually expressed in the midbrain – dorsal raphe nuclei). Taking these pieces of evidence
480 together, we hypothesise that it is more likely that the putative role of the 5-HT_{1A} in this region
481 might be dissociated from depression or anxiety severity (we would consider this alternative
482 hypothesis if the implicated region was localised in the midbrain), but rather be associated with SA-
483 specific dimensions, such as emotion regulation. However, to our knowledge, the role of 5-HT_{1A}
484 heteroreceptors in suicide has not been investigated yet. Their role might have been overshadowed
485 by the association of 5-HT_{1A} autoreceptors with depression and thus by the misconception that
486 every person who died by suicide might have been suffering from MDD (R. O'Connor, 2021).
487 Given the above-mentioned and further evidence of the role of serotonergic receptors in suicide and
488 affective disorders (i), the fact that we evidenced a spatial clustering of 5-HT_{1A} receptors in the
489 rSTG (ii), a brain region with a role in emotion regulation, goal-directed activity (iii), and the
490 volume of which is associated with lithium therapy (an element with potential anti-suicidal
491 properties (Baldessarini et al., 2006b)) (iv), these four instances point at a higher likelihood that this
492 meta-analytical finding might not be incidental. Thus, the study of 5-HT_{1A} heteroreceptors role,
493 specifically of those expressed in the rSTG, in people who attempted suicide should be prioritised
494 as it might inform therapeutic strategies for secondary, and hopefully primary, prevention of
495 suicidal behaviours.

496

497 *Functional connectivity of the rSTG*

498 The seed-based FC analysis that we conducted showed an increased FC between the right STG and
499 several cortical and subcortical areas, suggesting that, in healthy subjects, the right STG is
500 connected to brain regions involved in a variety of functions (see also Supplementary Appendix),
501 spanning from visual processing (i.e. lingual gyrus, lateral occipital cortex (Clarke & Miklossy,
502 1990)) to motor functions (i.e. supplementary motor area (Sheets et al., 2021)), somatosensory
503 integration (i.e. parietal operculum (Eickhoff et al., 2006)), cognitive abilities (DLPFC (Murty et
504 al., 2011), precentral, postcentral gyri, central operculum, hippocampus (Eichenbaum, 2000;
505 Humphreys & Lambon Ralph, 2015; Padmala & Pessoa, 2010)) and emotion regulation (i.e. insula,
506 hippocampus (Roxo et al., 2011)). In addition, we found that resting-state activity of the rSTG
507 presented a positive correlation with loneliness scores of the NIH toolbox and a negative correlation
508 at the trend level with friendship and purpose in life scores. Notably, the STG is involved in several
509 social processes, including regulation of emotional arousal, empathy and simulating the states of
510 mind of others (i.e., theory of mind (Tholen et al., 2020)). In line with our results, altered activation
511 of the STG has been reported in recent fMRI studies exploring neural correlates of social exclusion
512 in association with feelings of aloneness and abandonment in individuals with borderline
513 personality disorder (Bernheim et al., 2022). Moreover, we also observed a positive correlation
514 between the correlation map of the right STG with the left central operculum and loneliness scores.
515 This finding is in line with recent evidence regarding the neural correlates of the construct of
516 perceived isolation (Spreng et al., 2020). The superior temporal regions (in particular the posterior
517 part of the superior temporal sulcus), belonging to the default mode network (which has been linked
518 to the subjective feeling of connection between self and others (Courtney & Meyer, 2020; Kanai et
519 al., 2012)), and the central operculum, a hub of the cingulo-opercular network (also named the
520 salience network), are structurally and functionally inter-related and associated with the feeling of
521 thwarted belongingness (Layden et al., 2017). This state of loneliness can itself alter the previous
522 brain area functions related to impulse control and vigilance against social threats (Layden et al.,
523 2017).

524 Also, the correlation map of the right STG with the DLPFC displayed a positive correlation with
525 friendship scores. Interestingly, besides its well-known role in executive functions, the DLPFC
526 seems to be also implicated in empathic happiness (Taiwo et al., 2021) and prosocial behaviours,
527 (Bellucci et al., 2020), so we can hypothesise that the co-activation of the right STG and the DLPFC
528 might result in positive social functioning of the subjects and the ability to create meaningful bonds.
529 Oppositely, a negative correlation between friendship scores and the correlation map of the right
530 STG with the right precentral gyrus, SMA and postcentral gyrus was observed, suggesting a link
531 between poor mentalising strategies lessened prosocial behaviours and the functional connectivity
532 of this area (Schreuders et al., 2018).

533 Lastly, we found a positive correlation between the correlation map of the right STG with the right
534 precuneus and the right DLPFC and self-efficacy scores. Interestingly, the effective rs-FC between
535 the precuneus and the DLPFC has been proposed as a mechanism underlying social cognition
536 (Kumar et al., 2020), a social ability in which also the STG plays a key role (Patriquin et al., 2016).
537 In addition, an increase in rs-FC between the precuneus and the DLPFC has been proposed as the
538 neural mechanism underlying rumination and low self-esteem in depressed patients (Cheng et al.,
539 2018). Taken together, this evidence suggests that the rs-FC between right STG, precuneus and
540 DLPC might be involved in social cognitive processes, and their co-activation could be associated
541 with the development of beliefs of success in specific situations.

542

543 *Convergence of findings in light of a leading theory of suicide*

544 As the reader might have acknowledged, we tried to contextualise the evidence that emerged from
545 the systematic review, CBMA and functional connectivity study in light of one of the leading
546 theories of suicide, namely Joiner's interpersonal theory of suicide. Given the bulk of the
547 information presented throughout the text, let us briefly recall here the main points of convergence
548 that we found supporting the theory mentioned above. Pertinent to the results presented herein, this
549 theory posits that the desire for suicide emerges through **thwarted belongingness** and/or perceived

550 burdensomeness. These two prevailing ideas are commonly experienced during **depressive mental**
551 **states**. The right superior temporal gyrus (rSTG), a region that we identified as possibly
552 functionally altered in people who attempted suicide, is (i) implicated in **emotion perception** and
553 (ii) functionally connected to the **default mode network**, which is deemed to mediate metabolic
554 dysfunction and **mood** across the lifespan. (iii) Its volume is influenced by **lithium** treatment (the
555 medication with the highest number of observational studies evidencing a possible anti-suicidal
556 property), (iv). At the same time, its activity is modulated by the antidepressant **bupropion**.
557 Coherently with the role of depression in increasing the risk of suicide, and the serotonergic
558 pathophysiological theory for this mental health condition, we found that (v) the rSTG is
559 significantly enriched in **5-HT_{1A} receptors**, thus further decreasing the likelihood of the statistical
560 significance of this region being an incidental finding. With the above-reported evidence in mind, it
561 stands out the putative role of this region in depression. Moreover, (vi) the **resting-state activity of**
562 **the rSTG correlates with loneliness**, a construct strictly related to thwarted belongingness (thus
563 showing the possible relevance of this brain area in the transition from suicidal ideation to attempt).
564 A seed-based (rSTG-based) functional connectivity analysis evidenced that this region is
565 functionally connected with several areas, particularly those implicated in (vii) **emotion regulation,**
566 **somatosensory processing and executive functioning**. We also observed (viii) a positive
567 correlation between the strength of the **rSTG-left central operculum connectivity and loneliness**
568 **scores**, in line with the previous associations between these two areas and perceived social
569 connection. Further supporting this finding, (ix) the strength of the **functional connection between**
570 **the rSTG and DLPFC** – a region implicated in empathic happiness and social cognition –
571 displayed a positive correlation with **self-efficacy** and **friendship** scores (a construct symmetrical to
572 social isolation). An additional control to the latter finding is (x) the observed negative correlation
573 between friendship scores and the connectivity of the rSTG with the motor control regions,
574 suggesting a link to **poor mentalising** and lessened prosocial behaviour, features that undermine
575 efficacious coping strategies.

576

577 *Limitations*

578 Several factors limit the results of this study. Despite using a pre-defined protocol that led to the
579 inclusion of methodologically sound studies, there were multiple sources of heterogeneity: some
580 studies compared brain function or morphometry of individuals who attempted suicide with
581 individuals who did not, irrespective of current suicidal ideation, whereas other studies compared
582 people who attempted suicide and have current suicidal ideation with people with only suicidal
583 ideation but who did not act on their thoughts. The scanners employed to acquire the brain images
584 differed across the locations (in the manufacturer, the number of head coils, and magnetic field
585 strength), and so did the pipelines of analysis that the authors applied. Moreover, the time from
586 suicide attempts to scan varied across the studies (although most articles did not report this
587 information): this could be why some studies did not identify differences in brain functionality of
588 people who attempted suicide in their lifetime with respect to patient controls. Regarding the
589 heterogeneity in the demographics of the samples being studied, mean age varied greatly (and
590 accordingly to the population of reference, i.e., younger patients with first-episode psychoses and
591 older patients with major depressive disorders were included in this meta-analysis), as well as the
592 criteria of inclusion/exclusion of individuals with active or past alcohol/substance use disorders
593 (AUD/SUD, most of the studies enrolled individuals with a history of AUD/SUD as long as the
594 subjects had been unexposed to substances for the last 1-6 months before scan). Lastly, a
595 consideration on the survival bias needs to be mentioned: half of the individuals who die by suicide
596 lose their life at their first attempt. Thus, it is impossible to know if the population that loses their
597 lives at the first attempt differs in brain functionality from those who survive.

598

599 *Conclusions*

600 Taken together, this meta-analysis pinpoints a cluster in the rSTG, enriched with 5-HT_{1A} receptors,
601 the activity of which differs between individuals with a history of suicide attempts and those

602 without. This cluster of the rSTG needs to be replicated by further studies, as it derives from the
603 analysis of individuals from East Asia, for whom differences in the morphometry of the right
604 superior temporal gyrus have been reported (D. W. Kang et al., 2020). Furthermore, we evidenced
605 that the activity of this area and its functional connectivity strength with the left central operculum
606 is significantly correlated with the perceived loneliness score as measured by the NIH Toolbox, thus
607 providing a putative neural substrate mediating the sense of thwarted belongingness, which entails a
608 stronger desire for death as postulated by Joiner's Interpersonal Theory of Suicide. Moreover, this
609 systematic review highlighted that the rSTG could represent a brain region with reduced grey matter
610 volume in people who attempted suicide. However, the foci of morphological difference identified
611 by the single studies are too spatially distant to be included in the same brain cluster. Future
612 research should consider the presence of suicidal ideation and its severity, apply statistical
613 corrections at the whole-brain level, employ reproducible and verified pipelines of analysis, and be
614 based on a pre-registered protocol with a detailed power analysis.

615

616 **References**

- 617 Aguilar, E. J., García-Martí, G., Martí-Bonmatí, L., Lull, J. J., Moratal, D., Escartí, M. J., Robles,
618 M., González, J. C., Guillamón, M. I., & Sanjuán, J. (2008). Left orbitofrontal and superior
619 temporal gyrus structural changes associated to suicidal behavior in patients with
620 schizophrenia. *Progress in Neuro-Psychopharmacology and Biological Psychiatry*, 32(7),
621 1673–1676. <https://doi.org/10.1016/j.pnpbp.2008.06.016>
- 622 Baldessarini, R. J., Tondo, L., Davis, P., Pompili, M., Goodwin, F. K., & Hennen, J. (2006a).
623 Decreased risk of suicides and attempts during long-term lithium treatment: A meta-analytic
624 review. *Bipolar Disorders*, 8(5p2), 625–639. [https://doi.org/10.1111/j.1399-
625 5618.2006.00344.x](https://doi.org/10.1111/j.1399-5618.2006.00344.x)
- 626 Baldessarini, R. J., Tondo, L., Davis, P., Pompili, M., Goodwin, F. K., & Hennen, J. (2006b).
627 Decreased risk of suicides and attempts during long-term lithium treatment: A meta-analytic

- 628 review. *Bipolar Disorders*, 8(5p2), 625–639. <https://doi.org/10.1111/j.1399->
629 5618.2006.00344.x
- 630 Bellucci, G., Camilleri, J. A., Eickhoff, S. B., & Krueger, F. (2020). Neural signatures of prosocial
631 behaviors. *Neuroscience & Biobehavioral Reviews*, 118, 186–195.
632 <https://doi.org/10.1016/j.neubiorev.2020.07.006>
- 633 Benedetti, F., Radaelli, D., Poletti, S., Locatelli, C., Falini, A., Colombo, C., & Smeraldi, E. (2011).
634 Opposite effects of suicidality and lithium on gray matter volumes in bipolar depression.
635 *Journal of Affective Disorders*, 135(1–3), 139–147.
636 <https://doi.org/10.1016/j.jad.2011.07.006>
- 637 Berman, A. L. (2018). Risk Factors Proximate to Suicide and Suicide Risk Assessment in the
638 Context of Denied Suicide Ideation. *Suicide and Life-Threatening Behavior*, 48(3), 340–
639 352. <https://doi.org/10.1111/sltb.12351>
- 640 Bernheim, D., Buchheim, A., Domin, M., Mentel, R., & Lotze, M. (2022). Neural Correlates of
641 Attachment Representation in Patients With Borderline Personality Disorder Using a
642 Personalized Functional Magnet Resonance Imaging Task. *Frontiers in Human*
643 *Neuroscience*, 16, 810417. <https://doi.org/10.3389/fnhum.2022.810417>
- 644 Besteher, B., Wagner, G., Koch, K., Schachtzabel, C., Reichenbach, J. R., Schlösser, R., Sauer, H.,
645 & Schultz, C. C. (2016). Pronounced prefronto-temporal cortical thinning in schizophrenia:
646 Neuroanatomical correlate of suicidal behavior? *Schizophrenia Research*, 176(2–3), 151–
647 157. <https://doi.org/10.1016/j.schres.2016.08.010>
- 648 Boldrini, M., Underwood, M. D., Mann, J. J., & Arango, V. (2008). Serotonin-1A autoreceptor
649 binding in the dorsal raphe nucleus of depressed suicides. *Journal of Psychiatric Research*,
650 42(6), 433–442. <https://doi.org/10.1016/j.jpsychires.2007.05.004>
- 651 Brown, G. K., Ten Have, T., Henriques, G. R., Xie, S. X., Hollander, J. E., & Beck, A. T. (2005).
652 Cognitive Therapy for the Prevention of Suicide Attempts: A Randomized Controlled Trial.
653 *JAMA*, 294(5), 563. <https://doi.org/10.1001/jama.294.5.563>

- 654 Büscher, R., Torok, M., Terhorst, Y., & Sander, L. (2020). Internet-Based Cognitive Behavioral
655 Therapy to Reduce Suicidal Ideation: A Systematic Review and Meta-analysis. *JAMA*
656 *Network Open*, 3(4), e203933. <https://doi.org/10.1001/jamanetworkopen.2020.3933>
- 657 Campos, A. I., Thompson, P. M., Veltman, D. J., Pozzi, E., van Veltzen, L. S., Jahanshad, N.,
658 Adams, M. J., Baune, B. T., Berger, K., Brosch, K., Bülow, R., Connolly, C. G.,
659 Dannlowski, U., Davey, C. G., de Zubicaray, G. I., Dima, D., Erwin-Grabner, T., Evans, J.
660 W., Fu, C. H. Y., ... Rentería, M. E. (2021). Brain Correlates of Suicide Attempt in 18,925
661 Participants Across 18 International Cohorts. *Biological Psychiatry*, 90(4), 243–252.
662 <https://doi.org/10.1016/j.biopsych.2021.03.015>
- 663 Canal-Rivero, M., Tordesillas-Gutiérrez, D., Ruiz-Veguilla, M., Ortiz-García de la Foz, V., Cuevas-
664 Esteban, J., Marco de Lucas, E., Vázquez-Bourgon, J., Ayesa-Arriola, R., & Crespo-
665 Facorro, B. (2020). Brain grey matter abnormalities in first episode non-affective psychosis
666 patients with suicidal behaviours: The role of neurocognitive functioning. *Progress in*
667 *Neuro-Psychopharmacology and Biological Psychiatry*, 102, 109948.
668 <https://doi.org/10.1016/j.pnpbp.2020.109948>
- 669 Cao, J., Chen, J., Kuang, L., Ai, M., Fang, W., Gan, Y., Wang, W., Chen, X., Xu, X., Wang, H., &
670 Lv, Z. (2015). Abnormal regional homogeneity in young adult suicide attempters with no
671 diagnosable psychiatric disorder: A resting state functional magnetic imaging study.
672 *Psychiatry Research: Neuroimaging*, 231(2), 95–102.
673 <https://doi.org/10.1016/j.pscychresns.2014.10.011>
- 674 Cao, J., Chen, X., Chen, J., Ai, M., Gan, Y., Wang, W., Lv, Z., Zhang, S., Zhang, S., Wang, S.,
675 Kuang, L., & Fang, W. (2016). Resting-state functional MRI of abnormal baseline brain
676 activity in young depressed patients with and without suicidal behavior. *Journal of Affective*
677 *Disorders*, 205, 252–263. <https://doi.org/10.1016/j.jad.2016.07.002>

- 678 Cattarinussi, G., Di Giorgio, A., Wolf, R. C., Balestrieri, M., & Sambataro, F. (2019). Neural
679 signatures of the risk for bipolar disorder: A meta-analysis of structural and functional
680 neuroimaging studies. *Bipolar Disorders*, *21*(3), 215–227. <https://doi.org/10.1111/bdi.12720>
- 681 Cavanagh, J. T. O., Carson, A. J., Sharpe, M., & Lawrie, S. M. (2003). Psychological autopsy
682 studies of suicide: A systematic review. *Psychological Medicine*, *33*(3), 395–405.
683 <https://doi.org/10.1017/S0033291702006943>
- 684 Chen, S., Ding, N., Wang, F., Li, Z., Qin, S., Biswal, B. B., & Yuan, J. (2021). Functional
685 Decoupling of Emotion Coping Network Subsides Automatic Emotion Regulation by
686 Implementation Intention. *Neural Plasticity*, *2021*, 1–12.
687 <https://doi.org/10.1155/2021/6639739>
- 688 Cheng, W., Rolls, E. T., Qiu, J., Yang, D., Ruan, H., Wei, D., Zhao, L., Meng, J., Xie, P., & Feng,
689 J. (2018). Functional Connectivity of the Precuneus in Unmedicated Patients With
690 Depression. *Biological Psychiatry: Cognitive Neuroscience and Neuroimaging*, *3*(12),
691 1040–1049. <https://doi.org/10.1016/j.bpsc.2018.07.008>
- 692 Christiansen, E., & Frank Jensen, B. (2007). Risk of Repetition of Suicide Attempt, Suicide or all
693 Deaths after an Episode of Attempted Suicide: A Register-Based Survival Analysis.
694 *Australian & New Zealand Journal of Psychiatry*, *41*(3), 257–265.
695 <https://doi.org/10.1080/00048670601172749>
- 696 Chu, C., Buchman-Schmitt, J. M., Stanley, I. H., Hom, M. A., Tucker, R. P., Hagan, C. R., Rogers,
697 M. L., Podlogar, M. C., Chiurliza, B., Ringer, F. B., Michaels, M. S., Patros, C. H. G., &
698 Joiner, T. E. (2017). The interpersonal theory of suicide: A systematic review and meta-
699 analysis of a decade of cross-national research. *Psychological Bulletin*, *143*(12), 1313–1345.
700 <https://doi.org/10.1037/bul0000123>
- 701 Clarke, S., & Miklossy, J. (1990). Occipital cortex in man: Organization of callosal connections,
702 related myelo- and cytoarchitecture, and putative boundaries of functional visual areas. *The*

- 703 *Journal of Comparative Neurology*, 298(2), 188–214.
- 704 <https://doi.org/10.1002/cne.902980205>
- 705 Courtney, A. L., & Meyer, M. L. (2020). Self-Other Representation in the Social Brain Reflects
- 706 Social Connection. *The Journal of Neuroscience*, 40(29), 5616–5627.
- 707 <https://doi.org/10.1523/JNEUROSCI.2826-19.2020>
- 708 Demesmaeker, A., Chazard, E., Hoang, A., Vaiva, G., & Amad, A. (2022). Suicide mortality after a
- 709 nonfatal suicide attempt: A systematic review and meta-analysis. *Australian & New Zealand*
- 710 *Journal of Psychiatry*, 56(6), 603–616. <https://doi.org/10.1177/00048674211043455>
- 711 Domínguez-Baleón, C., Gutiérrez-Mondragón, L. F., Campos-González, A. I., & Rentería, M. E.
- 712 (2018). Neuroimaging Studies of Suicidal Behavior and Non-suicidal Self-Injury in
- 713 Psychiatric Patients: A Systematic Review. *Frontiers in Psychiatry*, 9, 500.
- 714 <https://doi.org/10.3389/fpsy.2018.00500>
- 715 Duarte, D. G. G., Neves, M. de C. L., Albuquerque, M. R., Turecki, G., Ding, Y., de Souza-Duran,
- 716 F. L., Busatto, G., & Correa, H. (2017). Structural brain abnormalities in patients with type I
- 717 bipolar disorder and suicidal behavior. *Psychiatry Research: Neuroimaging*, 265, 9–17.
- 718 <https://doi.org/10.1016/j.psychres.2017.04.012>
- 719 Dukart, J., Holiga, S., Rullmann, M., Lanzenberger, R., Hawkins, P. C. T., Mehta, M. A., Hesse, S.,
- 720 Barthel, H., Sabri, O., Jech, R., & Eickhoff, S. B. (2021). JUSPACE: A tool for spatial
- 721 correlation analyses of magnetic resonance imaging data with nuclear imaging derived
- 722 neurotransmitter maps. *Human Brain Mapping*, 42(3), 555–566.
- 723 <https://doi.org/10.1002/hbm.25244>
- 724 Eichenbaum, H. (2000). A cortical-hippocampal system for declarative memory. *Nature Reviews.*
- 725 *Neuroscience*, 1(1), 41–50. <https://doi.org/10.1038/35036213>
- 726 Eickhoff, S. B., Laird, A. R., Grefkes, C., Wang, L. E., Zilles, K., & Fox, P. T. (2009). Coordinate-
- 727 based activation likelihood estimation meta-analysis of neuroimaging data: A random-

- 728 effects approach based on empirical estimates of spatial uncertainty. *Human Brain Mapping*,
729 30(9), 2907–2926. <https://doi.org/10.1002/hbm.20718>
- 730 Eickhoff, S. B., Schleicher, A., Zilles, K., & Amunts, K. (2006). The human parietal operculum. I.
731 Cytoarchitectonic mapping of subdivisions. *Cerebral Cortex (New York, N.Y.: 1991)*, 16(2),
732 254–267. <https://doi.org/10.1093/cercor/bhi105>
- 733 Eugene, A. R., Masiak, J., Masiak, M., & Kapica, J. (2014). Isolating the Norepinephrine Pathway
734 Comparing Lithium in Bipolar Patients to SSRIs in Depressive Patients. *Brain*: broad
735 research in artificial intelligence and neuroscience, 5(1–4), 5–15.
- 736 Fan, J., Zhong, M., Gan, J., Liu, W., Niu, C., Liao, H., Zhang, H., Tan, C., Yi, J., & Zhu, X. (2017).
737 Spontaneous neural activity in the right superior temporal gyrus and left middle temporal
738 gyrus is associated with insight level in obsessive-compulsive disorder. *Journal of Affective*
739 *Disorders*, 207, 203–211. <https://doi.org/10.1016/j.jad.2016.08.027>
- 740 Fan, S., Lippard, E. T. C., Sankar, A., Wallace, A., Johnston, J. A. Y., Wang, F., Pittman, B.,
741 Spencer, L., Oquendo, M. A., & Blumberg, H. P. (2019). Gray and white matter differences
742 in adolescents and young adults with prior suicide attempts across bipolar and major
743 depressive disorders. *Journal of Affective Disorders*, 245, 1089–1097.
744 <https://doi.org/10.1016/j.jad.2018.11.095>
- 745 Fan, T., Wu, X., Yao, L., & Dong, J. (2013). Abnormal baseline brain activity in suicidal and non-
746 suicidal patients with major depressive disorder. *Neuroscience Letters*, 534, 35–40.
747 <https://doi.org/10.1016/j.neulet.2012.11.032>
- 748 Feinberg, D. A., Moeller, S., Smith, S. M., Auerbach, E., Ramanna, S., Glasser, M. F., Miller, K.
749 L., Ugrubil, K., & Yacoub, E. (2010). Multiplexed Echo Planar Imaging for Sub-Second
750 Whole Brain fMRI and Fast Diffusion Imaging. *PLoS ONE*, 5(12), e15710.
751 <https://doi.org/10.1371/journal.pone.0015710>
- 752 for the ENIGMA-Major Depressive Disorder Working Group, Rentería, M. E., Schmaal, L., Hibar,
753 D. P., Couvy-Duchesne, B., Strike, L. T., Mills, N. T., de Zubicaray, G. I., McMahon, K. L.,

- 754 Medland, S. E., Gillespie, N. A., Hatton, S. N., Lagopoulos, J., Veltman, D. J., van der Wee,
755 N., van Erp, T. G. M., Wittfeld, K., Grabe, H. J., Block, A., ... Hickie, I. B. (2017).
756 Subcortical brain structure and suicidal behaviour in major depressive disorder: A meta-
757 analysis from the ENIGMA-MDD working group. *Translational Psychiatry*, 7(5), e1116–
758 e1116. <https://doi.org/10.1038/tp.2017.84>
- 759 Garcia-Garcia, A. L., Newman-Tancredi, A., & Leonardo, E. D. (2014). P5-HT1A receptors in
760 mood and anxiety: Recent insights into autoreceptor versus heteroreceptor function.
761 *Psychopharmacology*, 231(4), 623–636. <https://doi.org/10.1007/s00213-013-3389-x>
- 762 Gharabaghi, A., Fruhmann Berger, M., Tatagiba, M., & Karnath, H.-O. (2006). The role of the right
763 superior temporal gyrus in visual search—Insights from intraoperative electrical stimulation.
764 *Neuropsychologia*, 44(12), 2578–2581.
765 <https://doi.org/10.1016/j.neuropsychologia.2006.04.006>
- 766 Gong, J., Chen, G., Zhou, M., Jia, Y., Zhong, S., Chen, F., Lai, S., Luo, Z., Wang, J., Xu, H., Wang,
767 L., Huang, L., & Wang, Y. (2020). Characteristics of temporal dynamics of intrinsic brain
768 activity in unmedicated bipolar disorder with suicidality. *Australian & New Zealand Journal*
769 *of Psychiatry*, 54(11), 1115–1124. <https://doi.org/10.1177/0004867420948960>
- 770 Grandclerc, S., De Labrouhe, D., Spodenkiewicz, M., Lachal, J., & Moro, M.-R. (2016). Relations
771 between Nonsuicidal Self-Injury and Suicidal Behavior in Adolescence: A Systematic
772 Review. *PLOS ONE*, 11(4), e0153760. <https://doi.org/10.1371/journal.pone.0153760>
- 773 Gvion, Y., & Apter, A. (2011). Aggression, Impulsivity, and Suicide Behavior: A Review of the
774 Literature. *Archives of Suicide Research*, 15(2), 93–112.
775 <https://doi.org/10.1080/13811118.2011.565265>
- 776 Hama, T., Koeda, M., Ikeda, Y., Tateno, A., Kawara, T., Suzuki, H., & Okubo, Y. (2021).
777 Bupropion increases cerebral activation in auditory affective processing: A randomized
778 controlled fMRI study. *Neuroscience Letters*, 749, 135716.
779 <https://doi.org/10.1016/j.neulet.2021.135716>

- 780 Haney, E. M., O'Neil, M. E., Carson, S., Low, A., Peterson, K., Denneson, L. M., Oleksiewicz, C.,
781 & Kansagara, D. (2012). *Suicide Risk Factors and Risk Assessment Tools: A Systematic*
782 *Review*. Department of Veterans Affairs (US).
783 <http://www.ncbi.nlm.nih.gov/books/NBK92671/>
- 784 Harms, M. B., Casement, M. D., Teoh, J. Y., Ruiz, S., Scott, H., Wedan, R., & Quevedo, K. (2019).
785 Adolescent suicide attempts and ideation are linked to brain function during peer
786 interactions. *Psychiatry Research: Neuroimaging*, 289, 1–9.
787 <https://doi.org/10.1016/j.psychresns.2019.05.001>
- 788 Hodes, R. J., Insel, T. R., Landis, S. C., & On behalf of the NIH Blueprint for Neuroscience
789 Research. (2013). The NIH Toolbox: Setting a standard for biomedical research. *Neurology*,
790 80(Issue 11, Supplement 3), S1–S1. <https://doi.org/10.1212/WNL.0b013e3182872e90>
- 791 Hofstra, E., van Nieuwenhuizen, C., Bakker, M., Özgül, D., Elfeddali, I., de Jong, S. J., & van der
792 Feltz-Cornelis, C. M. (2020). Effectiveness of suicide prevention interventions: A
793 systematic review and meta-analysis. *General Hospital Psychiatry*, 63, 127–140.
794 <https://doi.org/10.1016/j.genhosppsy.2019.04.011>
- 795 Hou, X., Wang, J., Guo, J., Zhang, X., Liu, J., Qi, L., & Zhou, L. (2022). Methods and efficacy of
796 social support interventions in preventing suicide: A systematic review and meta-analysis.
797 *Evidence Based Mental Health*, 25(1), 29–35. [https://doi.org/10.1136/ebmental-2021-](https://doi.org/10.1136/ebmental-2021-300318)
798 300318
- 799 Huang, Q., Xiao, M., Ai, M., Chen, J., Wang, W., Hu, L., Cao, J., Wang, M., & Kuang, L. (2021).
800 Disruption of Neural Activity and Functional Connectivity in Adolescents With Major
801 Depressive Disorder Who Engage in Non-suicidal Self-Injury: A Resting-State fMRI Study.
802 *Frontiers in Psychiatry*, 12, 571532. <https://doi.org/10.3389/fpsy.2021.571532>
- 803 Huang, X., Rootes-Murdy, K., Bastidas, D. M., Nee, D. E., & Franklin, J. C. (2020). Brain
804 Differences Associated with Self-Injurious Thoughts and Behaviors: A Meta-Analysis of

- 805 Neuroimaging Studies. *Scientific Reports*, 10(1), 2404. [https://doi.org/10.1038/s41598-020-](https://doi.org/10.1038/s41598-020-59490-6)
806 59490-6
- 807 Humphreys, G. F., & Lambon Ralph, M. A. (2015). Fusion and Fission of Cognitive Functions in
808 the Human Parietal Cortex. *Cerebral Cortex*, 25(10), 3547–3560.
809 <https://doi.org/10.1093/cercor/bhu198>
- 810 Jia, Z., Huang, X., Wu, Q., Zhang, T., Lui, S., Zhang, J., Amatya, N., Kuang, W., Chan, R. C. K.,
811 Kemp, G. J., Mechelli, A., & Gong, Q. (2010). High-Field Magnetic Resonance Imaging of
812 Suicidality in Patients With Major Depressive Disorder. *American Journal of Psychiatry*,
813 167(11), 1381–1390. <https://doi.org/10.1176/appi.ajp.2010.09101513>
- 814 Jobes, D. A. (2016). *Managing Suicidal Risk, Second Edition: A Collaborative Approach*. Guilford
815 Publications.
- 816 Johnston, J. A. Y., Wang, F., Liu, J., Blond, B. N., Wallace, A., Liu, J., Spencer, L., Cox Lippard,
817 E. T., Purves, K. L., Landeros-Weisenberger, A., Hermes, E., Pittman, B., Zhang, S., King,
818 R., Martin, A., Oquendo, M. A., & Blumberg, H. P. (2017). Multimodal Neuroimaging of
819 Frontolimbic Structure and Function Associated With Suicide Attempts in Adolescents and
820 Young Adults With Bipolar Disorder. *American Journal of Psychiatry*, 174(7), 667–675.
821 <https://doi.org/10.1176/appi.ajp.2016.15050652>
- 822 Joiner, T. E., & Jr, T. R. O. L. D. P. T. J. (2005). *Why People Die by Suicide*. Harvard University
823 Press.
- 824 Jollant, F., Wagner, G., Richard-Devantoy, S., Köhler, S., Bär, K.-J., Turecki, G., & Pereira, F.
825 (2018). Neuroimaging-informed phenotypes of suicidal behavior: A family history of
826 suicide and the use of a violent suicidal means. *Translational Psychiatry*, 8(1), 120.
827 <https://doi.org/10.1038/s41398-018-0170-2>
- 828 Kanai, R., Bahrami, B., Duchaine, B., Janik, A., Banissy, M. J., & Rees, G. (2012). Brain Structure
829 Links Loneliness to Social Perception. *Current Biology*, 22(20), 1975–1979.
830 <https://doi.org/10.1016/j.cub.2012.08.045>

- 831 Kang, D. W., Wang, S.-M., Na, H.-R., Park, S. Y., Kim, N. Y., Lee, C. U., Kim, D., Son, S.-J., &
832 Lim, H. K. (2020). Differences in cortical structure between cognitively normal East Asian
833 and Caucasian older adults: A surface-based morphometry study. *Scientific Reports*, *10*(1),
834 20905. <https://doi.org/10.1038/s41598-020-77848-8>
- 835 Kang, S.-G., Cho, S.-E., Na, K.-S., Lee, J. S., Joo, S. W., Cho, S.-J., Son, Y.-D., & Lee, Y. J.
836 (2020). Differences in brain surface area and cortical volume between suicide attempters
837 and non-attempters with major depressive disorder. *Psychiatry Research: Neuroimaging*,
838 *297*, 111032. <https://doi.org/10.1016/j.psychresns.2020.111032>
- 839 Ken Norton. (2018, aprile 20). Rory O'Connor-The 8 hallmarks that bridge suicidal thoughts &
840 actions: Access to means; Planning; Social factors; Impulsivity; Capability; Mental imagery;
841 Past behavior. It's only through connectedness & working together we can change these
842 factors & save people's lives #AAS18 <https://t.co/9UDKi0OBCe> [Tweet]. @kennnaminh.
843 <https://twitter.com/kennnaminh/status/987404512829861889>
- 844 Kim, B., Oh, J., Kim, M.-K., Lee, S., Suk Tae, W., Mo Kim, C., Kiu Choi, T., & Lee, S.-H. (2015).
845 White matter alterations are associated with suicide attempt in patients with panic disorder.
846 *Journal of Affective Disorders*, *175*, 139–146. <https://doi.org/10.1016/j.jad.2015.01.001>
- 847 Kumar, J., Iwabuchi, S. J., Völlm, B. A., & Palaniyappan, L. (2020). Oxytocin modulates the
848 effective connectivity between the precuneus and the dorsolateral prefrontal cortex.
849 *European Archives of Psychiatry and Clinical Neuroscience*, *270*(5), 567–576.
850 <https://doi.org/10.1007/s00406-019-00989-z>
- 851 Layden, E. A., Cacioppo, J. T., Cacioppo, S., Cappa, S. F., Dodich, A., Falini, A., & Canessa, N.
852 (2017). Perceived social isolation is associated with altered functional connectivity in neural
853 networks associated with tonic alertness and executive control. *NeuroImage*, *145*(Pt A), 58–
854 73. <https://doi.org/10.1016/j.neuroimage.2016.09.050>
- 855 Lee, Y. J., Kim, S., Gwak, Ah. R., Kim, S. J., Kang, S.-G., Na, K.-S., Son, Y.-D., & Park, J. (2016).
856 Decreased regional gray matter volume in suicide attempters compared to suicide non-

- 857 attempters with major depressive disorders. *Comprehensive Psychiatry*, 67, 59–65.
858 <https://doi.org/10.1016/j.comppsy.2016.02.013>
- 859 Lemonde, S., Turecki, G., Bakish, D., Du, L., Hrdina, P. D., Bown, C. D., Sequeira, A., Kushwaha,
860 N., Morris, S. J., Basak, A., Ou, X.-M., & Albert, P. R. (2003). Impaired Repression at a 5-
861 Hydroxytryptamine 1A Receptor Gene Polymorphism Associated with Major Depression
862 and Suicide. *The Journal of Neuroscience*, 23(25), 8788–8799.
863 <https://doi.org/10.1523/JNEUROSCI.23-25-08788.2003>
- 864 Lippard, E. T. C., Johnston, J. A. Y., Spencer, L., Quatrano, S., Fan, S., Sankar, A., Weathers, J.,
865 Pittman, B., Oquendo, M. A., & Blumberg, H. P. (2019). Preliminary examination of gray
866 and white matter structure and longitudinal structural changes in frontal systems associated
867 with future suicide attempts in adolescents and young adults with mood disorders. *Journal*
868 *of Affective Disorders*, 245, 1139–1148. <https://doi.org/10.1016/j.jad.2018.11.097>
- 869 Mann, J. J., Michel, C. A., & Auerbach, R. P. (2021). Improving Suicide Prevention Through
870 Evidence-Based Strategies: A Systematic Review. *American Journal of Psychiatry*, 178(7),
871 611–624. <https://doi.org/10.1176/appi.ajp.2020.20060864>
- 872 Maris, R. W. (2002). Suicide. *The Lancet*, 360(9329), 319–326. <https://doi.org/10.1016/S0140->
873 [6736\(02\)09556-9](https://doi.org/10.1016/S0140-6736(02)09556-9)
- 874 Masango, S., Rataemane, S., & Motojesi, A. (2008). Suicide and suicide risk factors: A literature
875 review. *South African Family Practice*, 50(6), 25–29.
876 <https://doi.org/10.1080/20786204.2008.10873774>
- 877 McLellan, Q., Wilkes, T. C., Swansburg, R., Jaworska, N., Langevin, L. M., & MacMaster, F. P.
878 (2018). History of suicide attempt and right superior temporal gyrus volume in youth with
879 treatment-resistant major depressive disorder. *Journal of Affective Disorders*, 239, 291–294.
880 <https://doi.org/10.1016/j.jad.2018.07.030>
- 881 Minzenberg, M. J., Lesh, T., Niendam, T., Yoon, J. H., Cheng, Y., Rhoades, R., & Carter, C. S.
882 (2015). Conflict-related anterior cingulate functional connectivity is associated with past

- 883 suicidal ideation and behavior in recent-onset schizophrenia. *Journal of Psychiatric*
884 *Research*, 65, 95–101. <https://doi.org/10.1016/j.jpsychires.2015.04.002>
- 885 Moeller, S., Yacoub, E., Olman, C. A., Auerbach, E., Strupp, J., Harel, N., & Uğurbil, K. (2010).
886 Multiband multislice GE-EPI at 7 tesla, with 16-fold acceleration using partial parallel
887 imaging with application to high spatial and temporal whole-brain fMRI. *Magnetic*
888 *Resonance in Medicine*, 63(5), 1144–1153. <https://doi.org/10.1002/mrm.22361>
- 889 Moitra, M., Santomauro, D., Degenhardt, L., Collins, P. Y., Whiteford, H., Vos, T., & Ferrari, A.
890 (2021). Estimating the risk of suicide associated with mental disorders: A systematic review
891 and meta-regression analysis. *Journal of Psychiatric Research*, 137, 242–249.
892 <https://doi.org/10.1016/j.jpsychires.2021.02.053>
- 893 Mościcki, E. K. (1997). IDENTIFICATION OF SUICIDE RISK FACTORS USING
894 EPIDEMIOLOGIC STUDIES. *Psychiatric Clinics of North America*, 20(3), 499–517.
895 [https://doi.org/10.1016/S0193-953X\(05\)70327-0](https://doi.org/10.1016/S0193-953X(05)70327-0)
- 896 Müller, V. I., Cieslik, E. C., Laird, A. R., Fox, P. T., Radua, J., Mataix-Cols, D., Tench, C. R.,
897 Yarkoni, T., Nichols, T. E., Turkeltaub, P. E., Wager, T. D., & Eickhoff, S. B. (2018). Ten
898 simple rules for neuroimaging meta-analysis. *Neuroscience & Biobehavioral Reviews*, 84,
899 151–161. <https://doi.org/10.1016/j.neubiorev.2017.11.012>
- 900 Murty, V. P., Sambataro, F., Radulescu, E., Altamura, M., Iudicello, J., Zolnick, B., Weinberger, D.
901 R., Goldberg, T. E., & Mattay, V. S. (2011). Selective updating of working memory content
902 modulates meso-cortico-striatal activity. *NeuroImage*, 57(3), 1264–1272.
903 <https://doi.org/10.1016/j.neuroimage.2011.05.006>
- 904 Nock, M. K., Hwang, I., Sampson, N., Kessler, R. C., Angermeyer, M., Beautrais, A., Borges, G.,
905 Bromet, E., Bruffaerts, R., de Girolamo, G., de Graaf, R., Florescu, S., Gureje, O., Haro, J.
906 M., Hu, C., Huang, Y., Karam, E. G., Kawakami, N., Kovess, V., ... Williams, D. R.
907 (2009). Cross-National Analysis of the Associations among Mental Disorders and Suicidal

- 908 Behavior: Findings from the WHO World Mental Health Surveys. *PLoS Medicine*, 6(8),
909 e1000123. <https://doi.org/10.1371/journal.pmed.1000123>
- 910 Nordström, P., Samuelsson, M., & Åsberg, M. (1995). Survival analysis of suicide risk after
911 attempted suicide. *Acta Psychiatrica Scandinavica*, 91(5), 336–340.
912 <https://doi.org/10.1111/j.1600-0447.1995.tb09791.x>
- 913 O'Connor, R. (2021). *When It Is Darkest: Why People Die by Suicide and What We Can Do to*
914 *Prevent It*. Random House.
- 915 O'Connor, R. C., & Kirtley, O. J. (2018). The integrated motivational–volitional model of suicidal
916 behaviour. *Philosophical Transactions of the Royal Society B: Biological Sciences*,
917 373(1754), 20170268. <https://doi.org/10.1098/rstb.2017.0268>
- 918 O'Connor, R. C., & Portzky, G. (2018). Looking to the Future: A Synthesis of New Developments
919 and Challenges in Suicide Research and Prevention. *Frontiers in Psychology*, 9, 2139.
920 <https://doi.org/10.3389/fpsyg.2018.02139>
- 921 Osuch, E., Ford, K., Wrath, A., Bartha, R., & Neufeld, R. (2014). Functional MRI of pain
922 application in youth who engaged in repetitive non-suicidal self-injury vs. Psychiatric
923 controls. *Psychiatry Research: Neuroimaging*, 223(2), 104–112.
924 <https://doi.org/10.1016/j.psychresns.2014.05.003>
- 925 Owens, D., Horrocks, J., & House, A. (2002). Fatal and non-fatal repetition of self-harm:
926 Systematic review. *British Journal of Psychiatry*, 181(3), 193–199.
927 <https://doi.org/10.1192/bjp.181.3.193>
- 928 Padmala, S., & Pessoa, L. (2010). Interactions between cognition and motivation during response
929 inhibition. *Neuropsychologia*, 48(2), 558–565.
930 <https://doi.org/10.1016/j.neuropsychologia.2009.10.017>
- 931 Page, M. J., McKenzie, J. E., Bossuyt, P. M., Boutron, I., Hoffmann, T. C., Mulrow, C. D.,
932 Shamseer, L., Tetzlaff, J. M., Akl, E. A., Brennan, S. E., Chou, R., Glanville, J., Grimshaw,
933 J. M., Hróbjartsson, A., Lalu, M. M., Li, T., Loder, E. W., Mayo-Wilson, E., McDonald, S.,

- 934 ... Moher, D. (2021). The PRISMA 2020 statement: An updated guideline for reporting
935 systematic reviews. *Journal of Clinical Epidemiology*, *134*, 178–189.
936 <https://doi.org/10.1016/j.jclinepi.2021.03.001>
- 937 Pan, L. A., Ramos, L., Segreti, A., Brent, D. A., & Phillips, M. L. (2015). Right superior temporal
938 gyrus volume in adolescents with a history of suicide attempt. *British Journal of Psychiatry*,
939 *206*(4), 339–340. <https://doi.org/10.1192/bjp.bp.114.151316>
- 940 Park, H., Kang, E., Kang, H., Kim, J. S., Jensen, O., Chung, C. K., & Lee, D. S. (2011). Cross-
941 Frequency Power Correlations Reveal the Right Superior Temporal Gyrus as a Hub Region
942 During Working Memory Maintenance. *Brain Connectivity*, *1*(6), 460–472.
943 <https://doi.org/10.1089/brain.2011.0046>
- 944 Patriquin, M. A., DeRamus, T., Libero, L. E., Laird, A., & Kana, R. K. (2016). Neuroanatomical
945 and neurofunctional markers of social cognition in autism spectrum disorder: Social Brain in
946 Autism. *Human Brain Mapping*, *37*(11), 3957–3978. <https://doi.org/10.1002/hbm.23288>
- 947 Peng, H., Wu, K., Li, J., Qi, H., Guo, S., Chi, M., Wu, X., Guo, Y., Yang, Y., & Ning, Y. (2014).
948 Increased suicide attempts in young depressed patients with abnormal temporal–parietal–
949 limbic gray matter volume. *Journal of Affective Disorders*, *165*, 69–73.
950 <https://doi.org/10.1016/j.jad.2014.04.046>
- 951 Pompili, M., Lester, D., Leenaars, A. A., Tatarelli, R., & Girardi, P. (2008). Psychache and Suicide:
952 A Preliminary Investigation. *Suicide and Life-Threatening Behavior*, *38*(1), 116–121.
953 <https://doi.org/10.1521/suli.2008.38.1.116>
- 954 Portugal-Nunes, C., Reis, J., Coelho, A., Moreira, P. S., Castanho, T. C., Magalhães, R., Marques,
955 P., Soares, J. M., Amorim, L., Cunha, P. G., Santos, N. C., Costa, P., Palha, J. A., Sousa, N.,
956 & Bessa, J. M. (2021). The Association of Metabolic Dysfunction and Mood Across
957 Lifespan Interacts With the Default Mode Network Functional Connectivity. *Frontiers in*
958 *Aging Neuroscience*, *13*, 618623. <https://doi.org/10.3389/fnagi.2021.618623>

- 959 Riad, M., Garcia, S., Watkins, K. C., Jodoin, N., Doucet, Dith, Langlois, X., El Mestikawy, S.,
960 Hamon, M., & Descarries, L. (2000). Somatodendritic localization of 5-HT1A and
961 preterminal axonal localization of 5-HT1B serotonin receptors in adult rat brain. *The*
962 *Journal of Comparative Neurology*, 417(2), 181–194. [https://doi.org/10.1002/\(SICI\)1096-](https://doi.org/10.1002/(SICI)1096-9861(20000207)417:2<181::AID-CNE4>3.0.CO;2-A)
963 9861(20000207)417:2<181::AID-CNE4>3.0.CO;2-A
- 964 Rihmer, Z., Gonda, X., Döme, P., Serafini, G., & Pompili, M. (2018). Suicid risk in mood
965 disorders—Can we better prevent suicide than predict it? *Psychiatria Hungarica: A Magyar*
966 *Pszichiatriai Tarsasag Tudomanyos Folyoirata*, 33(4), 309–315.
- 967 Robins, D. L., Hunyadi, E., & Schultz, R. T. (2009). Superior temporal activation in response to
968 dynamic audio-visual emotional cues. *Brain and Cognition*, 69(2), 269–278.
969 <https://doi.org/10.1016/j.bandc.2008.08.007>
- 970 Roxo, M. R., Franceschini, P. R., Zubarán, C., Kleber, F. D., & Sander, J. W. (2011). The Limbic
971 System Conception and Its Historical Evolution. *The Scientific World JOURNAL*, 11, 2427–
972 2440. <https://doi.org/10.1100/2011/157150>
- 973 Rüsç, N., Spoletini, I., Wilke, M., Martinotti, G., Bria, P., Trequatrini, A., Bonaviri, G.,
974 Caltagirone, C., & Spalletta, G. (2008). Inferior frontal white matter volume and suicidality
975 in schizophrenia. *Psychiatry Research: Neuroimaging*, 164(3), 206–214.
976 <https://doi.org/10.1016/j.psychresns.2007.12.011>
- 977 Sarkinaite, M., Gleizniene, R., Adomaitiene, V., Dambrauskiene, K., Raskauskiene, N., &
978 Steibliene, V. (2021). Volumetric MRI Analysis of Brain Structures in Patients with History
979 of First and Repeated Suicide Attempts: A Cross Sectional Study. *Diagnostics*, 11(3), 488.
980 <https://doi.org/10.3390/diagnostics11030488>
- 981 Savli, M., Bauer, A., Mitterhauser, M., Ding, Y.-S., Hahn, A., Kroll, T., Neumeister, A., Haeusler,
982 D., Ungersboeck, J., Henry, S., Isfahani, S. A., Rattay, F., Wadsak, W., Kasper, S., &
983 Lanzenberger, R. (2012). Normative database of the serotonergic system in healthy subjects

- 984 using multi-tracer PET. *NeuroImage*, 63(1), 447–459.
- 985 <https://doi.org/10.1016/j.neuroimage.2012.07.001>
- 986 Schreuders, E., Klapwijk, E. T., Will, G.-J., & Güroğlu, B. (2018). Friend versus foe: Neural
987 correlates of prosocial decisions for liked and disliked peers. *Cognitive, Affective, &*
988 *Behavioral Neuroscience*, 18(1), 127–142. <https://doi.org/10.3758/s13415-017-0557-1>
- 989 Schultz, J., Imamizu, H., Kawato, M., & Frith, C. D. (2004). Activation of the Human Superior
990 Temporal Gyrus during Observation of Goal Attribution by Intentional Objects. *Journal of*
991 *Cognitive Neuroscience*, 16(10), 1695–1705. <https://doi.org/10.1162/0898929042947874>
- 992 Setsompop, K., Gagoski, B. A., Polimeni, J. R., Witzel, T., Wedeen, V. J., & Wald, L. L. (2012).
993 Blipped-controlled aliasing in parallel imaging for simultaneous multislice echo planar
994 imaging with reduced g -factor penalty: Blipped-CAIPI for Simultaneous Multislice EPI.
995 *Magnetic Resonance in Medicine*, 67(5), 1210–1224. <https://doi.org/10.1002/mrm.23097>
- 996 Shah-Basak, P. P., Chen, P., Caulfield, K., Medina, J., & Hamilton, R. H. (2018). The role of the
997 right superior temporal gyrus in stimulus-centered spatial processing. *Neuropsychologia*,
998 113, 6–13. <https://doi.org/10.1016/j.neuropsychologia.2018.03.027>
- 999 Sheets, J. R., Briggs, R. G., Young, I. M., Bai, M. Y., Lin, Y.-H., Poologaindran, A., Conner, A. K.,
1000 O’Neal, C. M., Baker, C. M., Glenn, C. A., & Sughrue, M. E. (2021). Parcellation-based
1001 modeling of the supplementary motor area. *Journal of the Neurological Sciences*, 421,
1002 117322. <https://doi.org/10.1016/j.jns.2021.117322>
- 1003 Shepherd, A. M., Matheson, S. L., Laurens, K. R., Carr, V. J., & Green, M. J. (2012). Systematic
1004 Meta-Analysis of Insula Volume in Schizophrenia. *Biological Psychiatry*, 72(9), 775–784.
1005 <https://doi.org/10.1016/j.biopsych.2012.04.020>
- 1006 Soloff, P. H., Pruitt, P., Sharma, M., Radwan, J., White, R., & Diwadkar, V. A. (2012). Structural
1007 brain abnormalities and suicidal behavior in borderline personality disorder. *Journal of*
1008 *Psychiatric Research*, 46(4), 516–525. <https://doi.org/10.1016/j.jpsychires.2012.01.003>

- 1009 Spreng, R. N., Dimas, E., Mwilambwe-Tshilobo, L., Dagher, A., Koellinger, P., Nave, G., Ong, A.,
1010 Kernbach, J. M., Wiecki, T. V., Ge, T., Li, Y., Holmes, A. J., Yeo, B. T. T., Turner, G. R.,
1011 Dunbar, R. I. M., & Bzdok, D. (2020). The default network of the human brain is associated
1012 with perceived social isolation. *Nature Communications*, *11*(1), 6393.
1013 <https://doi.org/10.1038/s41467-020-20039-w>
- 1014 Stange, J. P., Jenkins, L. M., Pocius, S., Kreutzer, K., Bessette, K. L., DelDonno, S. R., Kling, L.
1015 R., Bhaumik, R., Welsh, R. C., Keilp, J. G., Phan, K. L., & Langenecker, S. A. (2020).
1016 Using resting-state intrinsic network connectivity to identify suicide risk in mood disorders.
1017 *Psychological Medicine*, *50*(14), 2324–2334. <https://doi.org/10.1017/S0033291719002356>
- 1018 Stanley, B., & Brown, G. K. (2012). Safety Planning Intervention: A Brief Intervention to Mitigate
1019 Suicide Risk. *Cognitive and Behavioral Practice*, *19*(2), 256–264.
1020 <https://doi.org/10.1016/j.cbpra.2011.01.001>
- 1021 Stone, D., Jones, C., & Mack, K. (2021). *Changes in Suicide Rates—United States, 2018–2019*. *70*,
1022 261–268. <http://dx.doi.org/10.15585/mmwr.mm7008a1>
- 1023 Stumps, A., Jagger-Rickels, A., Rothlein, D., Amick, M., Park, H., Evans, T., Fortenbaugh, F. C.,
1024 Fortier, C. B., Fonda, J. R., Lee, D., Milberg, W., McGlinchey, R., DeGutis, J., & Esterman,
1025 M. (2021). Connectome-based functional connectivity markers of suicide attempt. *Journal*
1026 *of Affective Disorders*, *283*, 430–440. <https://doi.org/10.1016/j.jad.2020.11.061>
- 1027 Sudol, K., & Mann, J. J. (2017). Biomarkers of Suicide Attempt Behavior: Towards a Biological
1028 Model of Risk. *Current Psychiatry Reports*, *19*(6), 31. [https://doi.org/10.1007/s11920-017-](https://doi.org/10.1007/s11920-017-0781-y)
1029 [0781-y](https://doi.org/10.1007/s11920-017-0781-y)
- 1030 Tahmasian, M., Sepehry, A. A., Samea, F., Khodadadifar, T., Soltaninejad, Z., Javaheripour, N.,
1031 Khazaie, H., Zarei, M., Eickhoff, S. B., & Eickhoff, C. R. (2019). Practical
1032 recommendations to conduct a neuroimaging meta-analysis for neuropsychiatric disorders.
1033 *Human Brain Mapping*, *40*(17), 5142–5154. <https://doi.org/10.1002/hbm.24746>

- 1034 Taiwo, Z., Bezdek, M., Mirabito, G., & Light, S. N. (2021). Empathy for joy recruits a broader
1035 prefrontal network than empathy for sadness and is predicted by executive functioning.
1036 *Neuropsychology*, 35(1), 90–102. <https://doi.org/10.1037/neu0000666>
- 1037 Taylor, W. D., Boyd, B., McQuoid, D. R., Kudra, K., Saleh, A., & MacFall, J. R. (2015).
1038 Widespread white matter but focal gray matter alterations in depressed individuals with
1039 thoughts of death. *Progress in Neuro-Psychopharmacology and Biological Psychiatry*, 62,
1040 22–28. <https://doi.org/10.1016/j.pnpbp.2015.05.001>
- 1041 Tholen, M. G., Trautwein, F., Böckler, A., Singer, T., & Kanske, P. (2020). Functional magnetic
1042 resonance imaging (fMRI) item analysis of empathy and theory of mind. *Human Brain
1043 Mapping*, 41(10), 2611–2628. <https://doi.org/10.1002/hbm.24966>
- 1044 Tian, S., Zhu, R., Chattun, M. R., Wang, H., Chen, Z., Zhang, S., Shao, J., Wang, X., Yao, Z., &
1045 Lu, Q. (2021). Temporal dynamics alterations of spontaneous neuronal activity in anterior
1046 cingulate cortex predict suicidal risk in bipolar II patients. *Brain Imaging and Behavior*,
1047 15(5), 2481–2491. <https://doi.org/10.1007/s11682-020-00448-7>
- 1048 Title, T. (2009). PRISMA 2009 Checklist PRISMA 2009 Checklist. *PLoS Medicine*.
1049 <https://doi.org/10.1371/journal.pmed1000097>
- 1050 Too, L. S., Spittal, M. J., Bugeja, L., Reifels, L., Butterworth, P., & Pirkis, J. (2019). The
1051 association between mental disorders and suicide: A systematic review and meta-analysis of
1052 record linkage studies. *Journal of Affective Disorders*, 259, 302–313.
1053 <https://doi.org/10.1016/j.jad.2019.08.054>
- 1054 Van Essen, D. C., Ugurbil, K., Auerbach, E., Barch, D., Behrens, T. E. J., Bucholz, R., Chang, A.,
1055 Chen, L., Corbetta, M., Curtiss, S. W., Della Penna, S., Feinberg, D., Glasser, M. F., Harel,
1056 N., Heath, A. C., Larson-Prior, L., Marcus, D., Michalareas, G., Moeller, S., ... Yacoub, E.
1057 (2012). The Human Connectome Project: A data acquisition perspective. *NeuroImage*,
1058 62(4), 2222–2231. <https://doi.org/10.1016/j.neuroimage.2012.02.018>

- 1059 Wagner, G., Li, M., Sacchet, M. D., Richard-Devantoy, S., Turecki, G., Bär, K.-J., Gotlib, I. H.,
1060 Walter, M., & Jollant, F. (2021). Functional network alterations differently associated with
1061 suicidal ideas and acts in depressed patients: An indirect support to the transition model.
1062 *Translational Psychiatry*, 11(1), 100. <https://doi.org/10.1038/s41398-021-01232-x>
- 1063 Wasserman, D. (2016). *Suicide: An unnecessary death*. Oxford University Press.
- 1064 Whitfield-Gabrieli, S., Moran, J. M., Nieto-Castañón, A., Triantafyllou, C., Saxe, R., & Gabrieli, J.
1065 D. E. (2011). Associations and dissociations between default and self-reference networks in
1066 the human brain. *NeuroImage*, 55(1), 225–232.
1067 <https://doi.org/10.1016/j.neuroimage.2010.11.048>
- 1068 Whitfield-Gabrieli, S., & Nieto-Castanon, A. (2012). *Conn*: A Functional Connectivity Toolbox for
1069 Correlated and Anticorrelated Brain Networks. *Brain Connectivity*, 2(3), 125–141.
1070 <https://doi.org/10.1089/brain.2012.0073>
- 1071 WHO | *Suicide data*. (2020, settembre 20).
1072 https://www.who.int/mental_health/prevention/suicide/suicideprevent/en/
- 1073 Xia, M., Wang, J., & He, Y. (2013). BrainNet Viewer: A Network Visualization Tool for Human
1074 Brain Connectomics. *PLoS ONE*, 8(7), e68910.
1075 <https://doi.org/10.1371/journal.pone.0068910>
- 1076 Xu, J., Moeller, S., Strupp, J., Auerbach, E., Feinberg, D., Ugurbil, K., & Yacoub, E. (2012). *Highly*
1077 *accelerated whole brain imaging using aligned-blipped-controlled-aliasing multiband EPI*.
- 1078 Zalsman, G., Hawton, K., Wasserman, D., van Heeringen, K., Arensman, E., Sarchiapone, M.,
1079 Carli, V., Höschl, C., Barzilay, R., Balazs, J., Purebl, G., Kahn, J. P., Sáiz, P. A., Lipsicas,
1080 C. B., Bobes, J., Cozman, D., Hegerl, U., & Zohar, J. (2016). Suicide prevention strategies
1081 revisited: 10-year systematic review. *The Lancet Psychiatry*, 3(7), 646–659.
1082 [https://doi.org/10.1016/S2215-0366\(16\)30030-X](https://doi.org/10.1016/S2215-0366(16)30030-X)
- 1083 Zhu, R., Tian, S., Wang, H., Jiang, H., Wang, X., Shao, J., Wang, Q., Yan, R., Tao, S., Liu, H.,
1084 Yao, Z., & Lu, Q. (2020). Discriminating Suicide Attempters and Predicting Suicide Risk

1085 Using Altered Frontolimbic Resting-State Functional Connectivity in Patients With Bipolar
1086 II Disorder. *Frontiers in Psychiatry, 11*, 597770. <https://doi.org/10.3389/fpsyt.2020.597770>

1087

1088 **Acknowledgements** We wish to thank Prof. Rory O'Connor for the publication of his book "When
1089 it is darkest – Why people die by suicide and what we can do to prevent it" (R. O'Connor, 2021).

1090 Data were provided [in part] by the Human Connectome Project, WU-Minn Consortium (Principal

1091 Investigators: David Van Essen and Kamil Ugurbil; 1U54MH091657), funded by the 16 NIH

1092 Institutes and Centers that support the NIH Blueprint for Neuroscience Research; and by the

1093 McDonnell Center for Systems Neuroscience at Washington University.

1094

1095 **Funding** None

1096

1097 **Author contributions**

1098 Conceptualisation: NM

1099 Methodology: NM, AM, GC, FS

1100 Investigation: NM, AM, GC, FS

1101 Formal analysis: NM, GC, FS

1102 Visualisation: NM, GC

1103 Supervision: FS

1104 Writing – original draft: NM, AM

1105 Writing – review & editing: NM, AM, GC, FS

1106

1107 **Competing interests** None

1108

1109 **Data and materials availability** All data can be retrieved from the manuscript or supplementary
1110 appendix.

1111 **Figure Legends**

1112

1113 **Figure 1. PRISMA flowchart**

1114 SA = Suicide Attempt; SI = Suicidal Ideation; MHC = Mental Health Condition; ROI = Region-of-
1115 Interest; SVC = Small Volume Correction; MTI = Magnetization Transfer Imaging; VBM = Voxel-
1116 based Morphometry; rs-fMRI = resting-state functional Magnetic Resonance Imaging.

1117

1118 **Figure 2. Hyperactive cluster belonging to the right superior temporal gyrus in people who**

1119 **attempted suicide.** ALFF = Amplitude of Low-Frequency Fluctuations; 5-HT_{1A} = serotonergic
1120 (hetero)receptor 1A. A) Bottom view; B) Frontal view; C) Lateral (right) view. The signal peak
1121 belongs to Brodmann Area 22; stereotaxic Talairach coordinates – x; y; z – of the peak = [53;-
1122 20;4]) D) Correlation between 5-HT_{1A} and ALFF signal change localisation.

1123

1124 **Figure 3. Left central operculum – right superior temporal gyrus functional connectivity**

1125 **correlates with loneliness scores.** A) Frontal view; B) Axial view; C) Lateral view; D) Correlation
1126 plot between left central operculum to right superior temporal gyrus functional connectivity and
1127 loneliness scores as measured with NIH Toolbox.

1128

1129

1130

1131

1132

1133

1134

1135

1136

| Type of analysis | Study | N (SA/NSA) | Age (mean±sd, SA/NSA) | Female % (SA/NSA) | MHC | Diagnostic Criteria | Time from SA to scan | Quality Score |
|------------------|-----------------------|------------|-------------------------|-------------------|-----------|---------------------|----------------------|---------------|
| VBM | Wang et al., 2020 | 70/128 | 27.5±9.6/ 27.1±8.3 | 78.5/ 72.6 | BD or MDD | DSM-IV | NA | 8 |
| | Peng et al., 2014 | 20/18 | 27.7±7.2/ 31±7.4 | 65/66 | MDD | DSM-IV | NA | 8.5 |
| | Johnston et al., 2017 | 26/42 | 20.5±3/ 20.6±3.2 | 77/55 | BD | DSM-IV | NA | 9.5 |
| | Lee et al., 2016 | 19/19 | 41.9±10.8/ 41.1±15.1 | 57.9/47.4 | MDD | DSM-IV | NA | 9 |
| | Aguilar et al., 2008 | 13/24 | 37.1±10/ 42.6±10.1 | 0 | SCZ | DSM-IV | NA | 8 |
| | Jollant et al., 2018 | 32/34 | 37.2±11.8/ 35.7±11.9 | 71.9/73.5 | MDD | DSM-IV | NA | 9.5 |
| | Benedetti et al., | 38/19 | 46±11.1/ | 71/57.8 | BD | DSM-IV | NA | 9 |

1137

1138

| | | | | | | | | |
|---------|---------------------------|--------|-------------------------|-----------|-----------|-----------|----------------|-----|
| | 2011 | | 44.5±10.5 | | | | | |
| | Canal-Rivero et al., 2020 | 23/122 | 28.4±7.7/ 29.4±8.3 | 39.1/37.7 | FEP | DSM-IV | NA | 9.5 |
| | Wagner et al., 2011 | 10/15 | NR | NR | MDD | DSM-IV | NA | 8 |
| CT | Besteher et al., 2016 | 14/23 | 34.4±12.1/ 28.8±9.7 | 57/56 | SCZ | DSM-IV | NA | 8.5 |
| | Wagner et al., 2012 | 15/15 | 41±12.5/ 34.1±10.5 | 41/34.1 | MDD | DSM-IV | NA | 8.5 |
| | Taylor et al., 2015 | 21/53 | 33.5±9.1/ 37.5±8.9 | 33.5/37.5 | MDD | DSM-IV | NA | 9 |
| rs-fMRI | Cao et al., 2016 | 35/18 | 20.6±3.6/ 21.4±3 | 71.4/55 | MDD | DSM-IV | 1-6 months | 9.5 |
| | Tian et al., 2021 | 42/57 | 27.3±8.3/ 29.3±9.3 | 66.6/56.1 | BD-II | DSM-IV-TR | During episode | 9 |
| | Cao et al., 2015 | 19/20 | 19.8±1.6/ 20.3±1.7 | 52.6/60 | None | DSM-IV | During episode | 9.5 |
| | Fan et al., 2013 | 27/9 | 34.4±12.9/ 38.4±12.5 | 59.2/55.5 | MDD | DSM-IV | NA | 9.5 |
| | Wagner et al., 2021 | 53/40 | 38±11.1/ 37±12.2 | 85/77.5 | MDD | DSM-IV | NA | 9.5 |
| | Gong et al., 2020 | 20/35 | 27.3±8.3/ 23.7±7 | 65/51.4 | BD-II | DSM-IV | NA | 9 |
| FC | Kang et al., 2017 | 19/19 | 42±10.8/ 41.1±15.2 | 57.9/47.4 | MDD | DSM-IV | NA | 9.5 |
| | Zhang R et al., 2021 | 88/113 | 26.1±9.5/ 28.2±9.4 | 78.4/71.7 | BD or MDD | DSM-IV | NA | 8.5 |
| | Cheng X et al., 2020 | 30/82 | 23.5±5.3/ 24.3±8.8 | 63.3/63.4 | BD-I | DSM-IV | NA | 8.5 |
| | Chen Z et al., 2021 | 15/35 | 34±14/ 35±13 | 66.6/42.8 | MDD | DSM-IV | 1 month | 8.5 |

1139

1140 **Table 1. Characteristics of the studies included in the coordinate-based meta-analysis and**
 1141 **quality score.** BD = Bipolar Disorder; CBMA = coordinate-based meta-analysis; CT = Cortical
 1142 Thickness; DSM = Diagnostic and Statistical Manual of Mental Disorders; FC = functional
 1143 connectivity; FEP = First-episode psychosis; FEW = Family-wise error; GMV = grey matter
 1144 volume; MDD = Major Depressive Disorder; MHC = mental health condition; NSA = Non-suicide
 1145 attempt; rs-fMRI = resting-state functional magnetic resonance imaging; SA = Suicide attempts;
 1146 SCZ = Schizophrenia; VBM = Voxel-based morphometry.

1147

| Imaging modality | No. studies eligible | No. studies included in CBMA | Sample size (SA/NSA) | Statistical Significance | Other comments |
|------------------|----------------------|------------------------------|----------------------|--------------------------|--|
| VBM | 16 | 9 | 251/421 | N | All the significant volumetric differences except for two foci, identified smaller regional volumes in SA. Seven eligible studies did not find any significant |

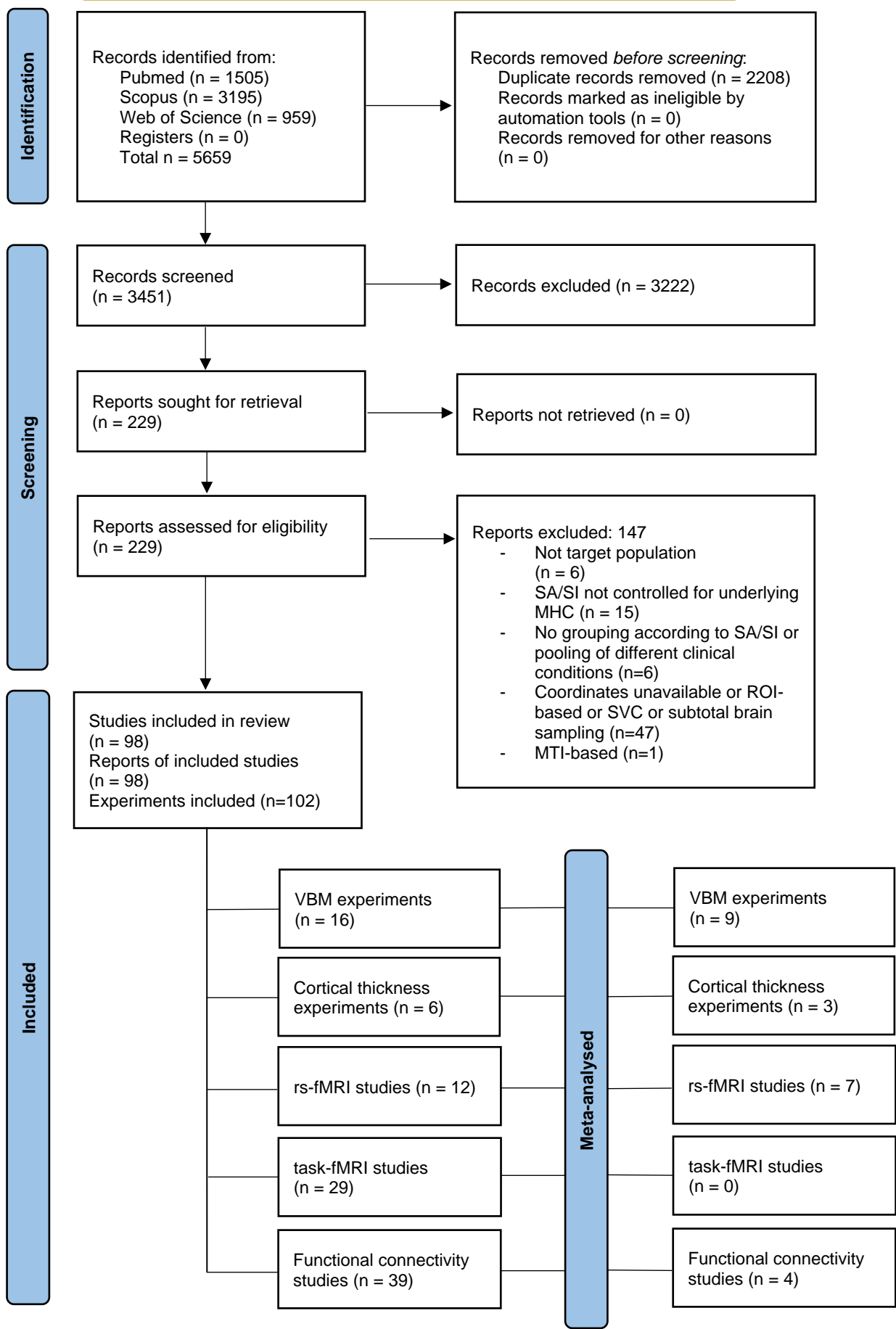
| | | | | | |
|-----------------|----|-----|---------|----|--|
| | | | | | GMV differences between SA and NSA. |
| CT | 6 | 3 | 40/91 | N | Two studies did not find significant differences between the two groups after correction for multiple comparisons. All the clusters (n= 7) identified by these three eligible studies reported reduced CT in SA. |
| Task-based fMRI | 29 | 0 | NA | NA | None of the task-based fMRI studies retrieved could be compared, as per methodology, to each other. |
| rs-fMRI | 11 | 6 | 196/179 | Y | A cluster belonging to the right superior temporal gyrus survived FWE correction |
| FC | 39 | 2+2 | 45/117 | N | Two studies used amygdalae as seed regions (but one found significant connectivity differences related to the left amygdala, the other one regarding the right amygdala. Thus, they could not be meta-analysed together) |

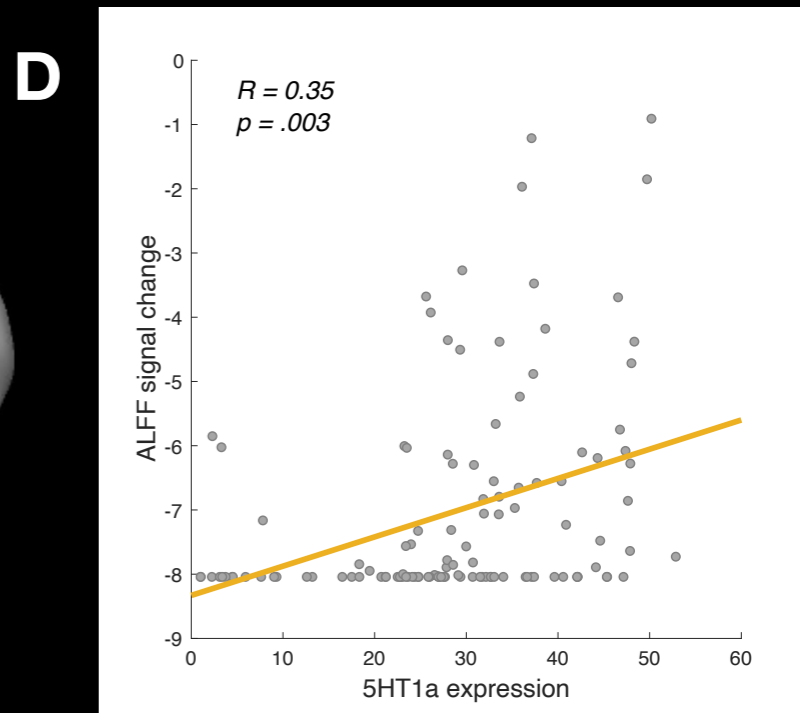
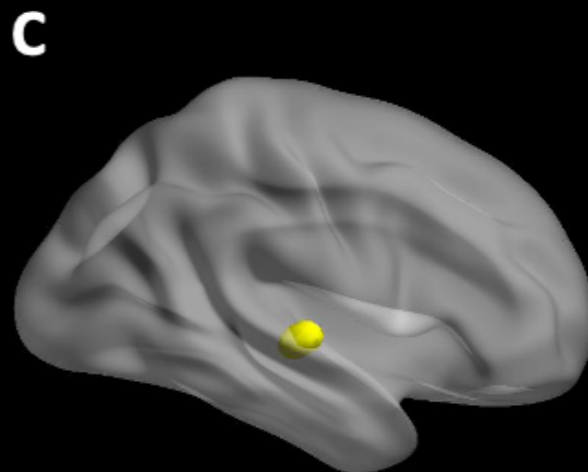
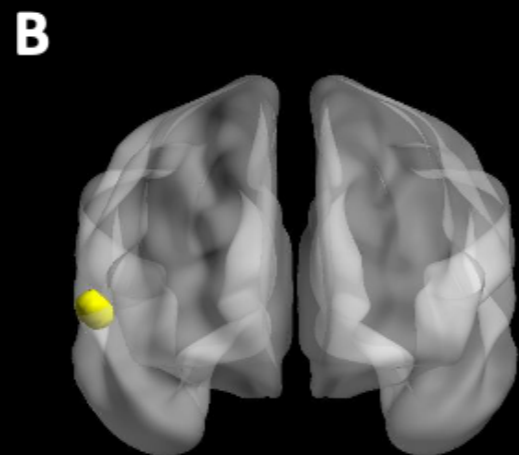
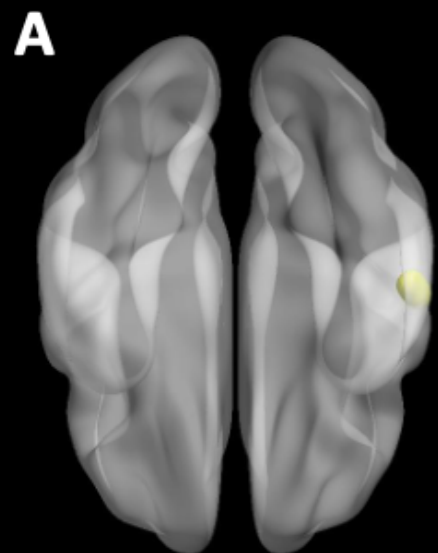
1148

1149 **Table 2. Summary of single imaging modality CBMAs findings.** CBMA = coordinate-based
 1150 meta-analysis; CT = Cortical Thickness; FC = functional connectivity; FEW = Family-wise error;
 1151 GMV = grey matter volume; NSA = Non-suicide attempt; rs-fMRI = resting-state functional
 1152 magnetic resonance imaging; SA = Suicide attempts; VBM = Voxel-based morphometry.

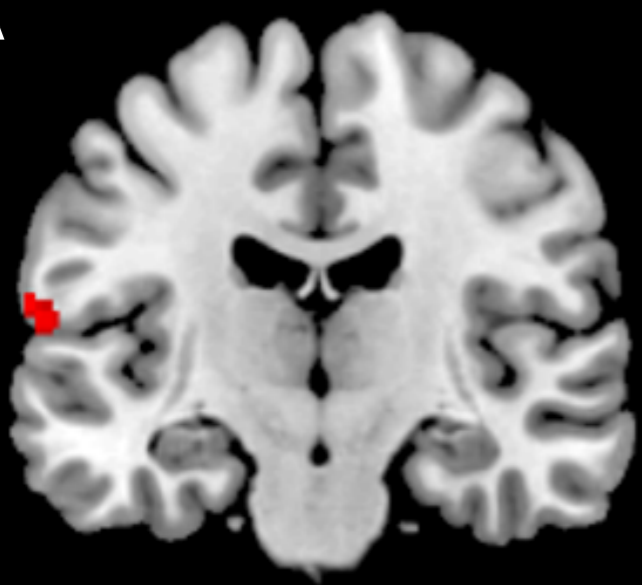
1153

Identification of studies via databases and registers





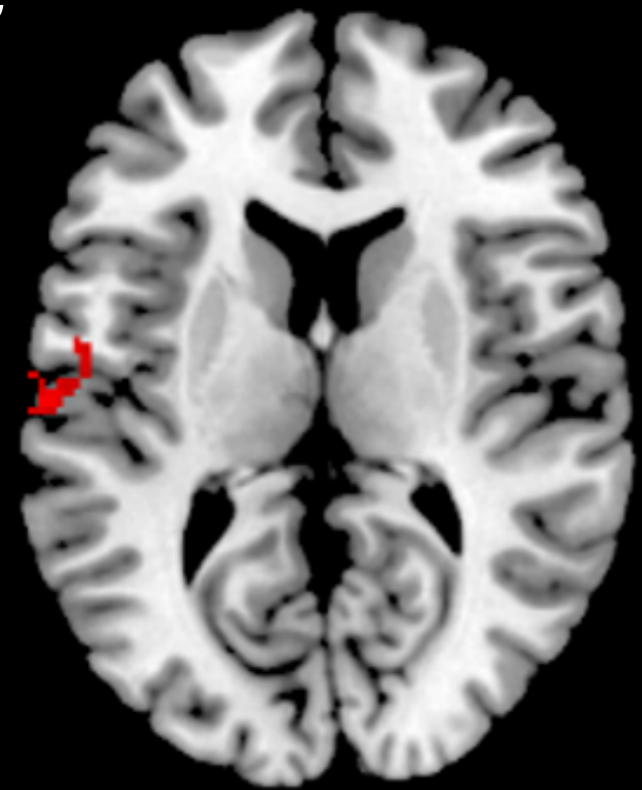
A



B



C



D

