

1 Meta-analysis of genotype-phenotype
2 associations in Alström syndrome.

3

4 Brais Bea-Mascato^{1,2}, Diana Valverde^{1,2*}

5

6 ¹ CINBIO, Universidad de Vigo, 36310, Spain.

7 ² Grupo de Investigación en Enfermedades Raras y Medicina Pediátrica, Instituto de
8 Investigación Sanitaria Galicia Sur (IIS Galicia Sur), SERGAS-UVIGO, Vigo, Spain

9

10 *Correspondence: Diana Valverde

11 CINBIO Facultad de Biología, Universidad de Vigo, Campus As Lagoas-Marcosende s/n,
12 36310 Vigo, Spain

13 Tel +34 986 811 953

14 Email dianaval@uvigo.es

15

16

17 **Abstract:**

18 **Introduction:** Alström syndrome (ALMS, #203800) is an ultra-rare monogenic recessive
19 disease. This the syndrome is associated with mutations in the *ALMS1* gene, which codes
20 for a centrosome structural protein responsible for centrosome cohesion. The type of
21 mutation associated with ALMS is mostly cLOF (97%) and they are mainly located in
22 exons 8, 10 and 16 of the gene. Other studies in the literature have tried to establish a
23 genotype-phenotype correlation in this syndrome with little success. The difficulty in
24 recruiting a large cohort in rare diseases is the main barrier to conducting this type of
25 study.

26 **Methods:** In this study we have collected all cases published to date for ALMS. We have
27 created a database with those patients who had a genetic diagnosis and an
28 individualised clinical history. Finally, we have attempted to establish a genotype-
29 phenotype correlation using the truncation site of the patient's longest allele as a
30 grouping criterion.

31 **Results:** We collected a total of 357 patients of which 227 had complete clinical
32 information, complete genetic diagnosis and meta information regarding sex and age.
33 We have seen that there are 5 variants in high frequency with p.(Arg2722Ter) being the
34 most common variant with 28 alleles. There are no gender differences in disease
35 progression. Finally, truncating mutations in exon 10 seem to be correlated with a higher
36 prevalence of liver disorders in patients with ALMS.

37 **Conclusion:** The location of the mutation in the *ALMS1* gene does not have a major
38 impact on the phenotype developed by the patient. Only mutations in exon 10 of the
39 *ALMS1* gene were associated with a higher prevalence of liver disease.

40

41 **Keywords:** ALMS, Alström syndrome, ciliopathy, genotype-phenotype, metabolic
42 disease, obesity, meta-analysis, rare disease.

43

44 Introduction:

45 Alström syndrome (ALMS, #203800) is an ultrarare monogenic disease caused by
46 mutations in the *ALMS1* gene. It is an autosomal recessive disorder with an estimated
47 incidence of 1-9 cases per-1,000,000 inhabitants and currently there are an estimated
48 1000 cases described worldwide (Orphanet; 03-05-2022).

49 Most of mutations associated with this disease are complete loss-of-function (cLOF)
50 mutations that generate a stop codon either at the same site as the mutation or result
51 in a frameshift alteration leading to a stop codon (Marshall et al., 2015). There are
52 currently 388 loss-of-function variants reported in ClinVar and 253 in gnomAD. These
53 pathogenic variants have a uniform distribution along the gene and are mainly located
54 in coding regions. Whole exome sequencing (WEG) is a standard practice for the genetic
55 testing of rare diseases, which implies that intronic regions are poorly studied,
56 explaining why most pathogenic variants are detected in coding regions (Sawyer et al.,
57 2016). Exons 8, 10 and 16 are considered mutation hotspots, but this seems to be due
58 to their large size rather than a specific regulatory correlation. Exon 8 (6,108bp) for
59 example covers 50% of the total gene sequence (12,844bp).

60 ALMS presents a very heterogeneous phenotype in which symptoms can be aggregates
61 into two main groups (Marshall et al., 2007a, 2011). A first group includes the presence
62 of retinal dystrophy from early life, various metabolic disorders (obesity,
63 hypertriglyceridemia or type 2 diabetes mellitus), hearing loss, liver and kidney
64 dysfunction and cardiac disorders such as dilated cardiomyopathy (DCM) (Marshall et
65 al., 2005, 2007b, 2007a). The second group of symptoms would include short stature,
66 recurrent pulmonary infections, mental and cognitive impairment and various
67 endocrine disorders affecting the thyroid and reproductive system (Marshall et al.,
68 2007a). This second group would also include other very rare symptoms, such as
69 alterations in the fingers, alopecia and spinal abnormalities (Marshall et al., 2007a).

70 ALMS is characterised by high intra- and inter-familial phenotypic heterogeneity
71 (Marshall et al., 2005, 2007a, 2007b, 2011). This means that siblings with the same
72 genotype may have different phenotypes, which complicates the establishment of a
73 genotype-phenotype correlation (Hollander et al., 2017).

74 Several studies have attempted to establish a genotype-phenotype correlation without
75 success using cohorts with 12-18 patients (Bond et al., 2005; Minton et al., 2006).
76 Studies in larger cohorts, 58 patients, have shown that there is correlation between
77 disease-causing variants in exon 16 and the presence of retinal degeneration before one
78 year of age , the occurrence of urological dysfunction, DCM and diabetes (Marshall et
79 al., 2007b). Moreover, this study found a significant correlation between disease-
80 causing variants in exon 8 and the absent, mild or delayed kidney disease.

81 Premature termination codon (PTC) mutations are often classified as cLOF and are
82 associated with the activation of nonsense-mediated mRNA decay (NMD), which results
83 in the elimination of the expression of the mutated gene (Supek et al., 2021) . However,
84 it has been shown that NMD is not 100% efficient when nonsense mutations are located
85 in the last exons of genes (Kerr et al., 2001; Lindeboom et al., 2016; Supek et al., 2021).
86 In the case of ALMS, there are patients who continue to express the *ALMS1* protein even
87 when carrying two cLOF variants (Chen et al., 2017). In that study of 23 patients where
88 the clinical manifestations were related to the expression or non-expression of the
89 *ALMS1* gene, it was observed that those patients with residual *ALMS1* gene expression
90 presented milder phenotypes (Chen et al., 2017).

91 Although there are several databases that list the mutations described in the *ALMS1*
92 gene (GnomAD, ClinVar), only one, LOVD, offers a register with 140 patients but the
93 clinical data is absent or incomplete in many cases (Fokkema et al., 2011; Landrum et
94 al., 2018; Karczewski et al., 2020). There is still no open patient registry that collects
95 clinical and genetic information in a comprehensive way. In this study, we have reviewed
96 112 publications related to ALMS and compiled all available clinical and genetic
97 information. We have collected a total of 357 patients, manually curated, on which
98 various analyses have been performed to look for a genotype-phenotype correlation.
99 Finally, we have made this dataset available to the scientific community in a single public
100 access database (<http://genesandfunctions.uvigo.es/alms-db/>).

101

102 **Methods:**

103 Preferred reporting items for systematic reviews and 104 meta-analyses (PRISMA) guidelines:

105 This meta-analysis was performed following the PRISMA guidelines, as described in
106 Niederlova et al. (Niederlova et al., 2019), for Bardet Biedl syndrome (BBS). In this case,
107 the main PICO question our study sought to address was: Do ALMS patients have
108 different phenotypes depending on where in the gene, the stop mutation occurs?.
109 Similar studies have been conducted in smaller cohorts grouping patients by major
110 mutational hotspots in the *ALMS1* gene. (Marshall et al., 2005, 2007b; Astuti et al.,
111 2017).

112 **Search strategy:**

113 The PubMed and Google Scholar databases were searched in January 2022 using the
114 following keyword combination: ("Alström syndrome" OR ALMS) AND ("genotype
115 phenotype" OR "cohort" OR "case report"). The screening of the search results was
116 carried out by BB-M by initially examining the title and abstract to determine whether it
117 corresponded to the subject of the analysis. Some of the articles analysed in this study
118 were not initially found by the database search but were detected by the
119 recommendations and bibliography of other more relevant works. The search was
120 conducted in English only, covering a period between the origin of the databases and
121 the date of the search (January 2022).

122 **Study selection:**

123 All articles selected in a first search were carefully reviewed to meet the criteria for
124 inclusion in the meta-analysis. After a thorough reading of the article, the study was
125 included if the following characteristics were met: the cohort of the article included a
126 patient with a diagnosis of ALMS, and the diagnosis had a genetic and clinical
127 characterisation. Articles whose diagnosis of ALMS was based solely on phenotype were

128 discarded, (Charles et al., 1990; Holder et al., 1995; Russell-Eggitt et al., 1998; Koray et
129 al., 2001; Worthley and Zeitz, 2001; Benso et al., 2002; Satman et al., 2002; Paisey et al.,
130 2004; Hoffman et al., 2005; Hamamy et al., 2006; Koç et al., 2006; Gogi et al., 2007; Silan
131 et al., 2013; Bronson et al., 2015; Boerwinkle et al., 2017; Davies et al., 2018) , as well as
132 those that simply presented or reported the patient's mutations without giving an
133 complete (Lazar et al., 2015) or individualised clinical history (Patel et al., 2006; Marshall
134 et al., 2007b, 2015; Redin et al., 2012; Kilpinen et al., 2017; Gao et al., 2019; Baig et al.,
135 2020). From an initial selection of 108 studies, 31 (Millay et al., 1986; Charles et al., 1990;
136 Holder et al., 1995; Russell-Eggitt et al., 1998; Koray et al., 2001; Worthley and Zeitz,
137 2001; Benso et al., 2002; Satman et al., 2002; Wu et al., 2003; Iannello et al., 2004; Paisey
138 et al., 2004; Hoffman et al., 2005; Marshall et al., 2005, 2007b, 2015; Koç et al., 2006;
139 Patel et al., 2006; Hamamy et al., 2006; Gogi et al., 2007; Hitz et al., 2008; Catrinoiu et
140 al., 2009; Redin et al., 2012; Silan et al., 2013; Lazar et al., 2015; Bronson et al., 2015;
141 Ahmad et al., 2016; Huang et al., 2016; Lindsey et al., 2017; Boerwinkle et al., 2017; Gao
142 et al., 2019; Baig et al., 2020) were discarded and 76 (Titomanlio et al., 2004; Bond et
143 al., 2005; Minton et al., 2006; Joy et al., 2007; Özgül et al., 2007; Malm et al., 2008;
144 Aldahmesh et al., 2009; Khoo et al., 2009; Liu et al., 2009; Kocova et al., 2011; Wang et
145 al., 2011, 2016a, 2016b, 2021; Aliferis et al., 2012; Jatti et al., 2012; Piñeiro-Gallego et
146 al., 2012; Taokesen et al., 2012; Corbetti et al., 2013; Katagiri et al., 2013; Kuburović et
147 al., 2013; Liang et al., 2013; Mahamid et al., 2013; Taşdemir et al., 2013; Kaya et al.,
148 2014; Bahmad et al., 2014; Louw et al., 2014; Ozantürk et al., 2014; Sanyoura et al.,
149 2014; Casey et al., 2014; Khan et al., 2015; Kim et al., 2015; Long et al., 2015; Sathya
150 Priya et al., 2015; Chakroun et al., 2016; Laxer et al., 2016; Nikopoulos et al., 2016; Xu et
151 al., 2016; Zmyslowska et al., 2016; Chen et al., 2017; Cruz-Aguilar et al., 2017; Das
152 Bhowmik et al., 2017; Hollander et al., 2017; Astuti et al., 2017; Jinda et al., 2017; Bakar
153 et al., 2017; Wicher et al., 2017; Brofferio et al., 2017; Yang et al., 2017; Castro-Sánchez
154 et al., 2017; Dotan et al., 2018; Kilinc et al., 2018; Kvarnung et al., 2018; Maltese et al.,
155 2018; Nasser et al., 2018; Sanchez-Navarro et al., 2018; Tsai et al., 2018; Waldman et al.,
156 2018; Shurygina et al., 2019; Weiss et al., 2019; Gatticchi et al., 2020; Hirano et al., 2020;
157 Hull et al., 2020; Kamal et al., 2020; Lombardo et al., 2020; Muring et al., 2020;
158 Rethanavelu et al., 2020; Spinelli et al., 2020; Torkamandi et al., 2020; Zhou et al., 2020;

159 Bea-Mascato et al., 2021; Saadah et al., 2021; Srikrupa et al., 2021; Zhang et al., 2021)
160 were selected for information extraction and subsequent analyses.

161 Data extraction and curation:

162 For the extraction of information, three main groups were defined: metadata, genetic
163 information, and clinical information.

164 The metadata refers to the: ID of each patient within the dataset, the ID of the family to
165 which they belong (patients with the same family ID are siblings) and the reference from
166 where the information of that patient has been extracted.

167 In the case of genetic information, whenever possible, the following should be
168 extracted: the original allele reference, the nomenclature of the mutation for the cDNA
169 and protein sequence, the exon/intron where the mutation is located and the genotype
170 of the patient (homozygote or compound heterozygote). All reported mutations were
171 named following the HGVS guidelines with the transcript NM_015120.4 and validated
172 with the name checker of the mutalyzer software (Lefter et al., 2021). The back
173 translator tool of the mutalyzer software was also used to determine the mutation
174 nomenclature at the cDNA level when only the protein annotation of the mutation was
175 provided in the article. In these cases, only nonsense and stop mutations could be
176 determined, as the algorithm does not work with frameshift mutations.

177 With regard to the clinical information, sex, age and ethnicity were extracted (whenever
178 possible), the diagnostic criteria named by Marshall et al., (Marshall et al., 2007a) were
179 used to try to homogenise it: vision impairments (history of nystagmus in
180 infancy/childhood, legal blindness, cone and rod dystrophy by ERG); obesity and/or
181 insulin resistance and/or T2DM; history of DCM/CHF; hearing loss; hepatic dysfunction;
182 renal failure; pulmonary dysfunction; short stature; males: hypogonadism; females:
183 irregular menses and/or hyperandrogenism; thyroid disorders; mental retarded;
184 abnormal appearance of a finger, Intestinal problems, scoliosis/flat wide feet, epilepsy
185 and alopecia (**Table 1**). Initially, the full information reported in the article was noted for
186 each individual symptom and the age of onset if this was reported. This was then
187 converted into a binary matrix to simplify and homogenise the subsequent analysis.

188 **Table 1.** Abbreviations used in the analysis, full name of the phenotypic categories, phenotypes aggregated in each category, prevalence of each phenotypic
 189 category in the study cohort and representative HPO terms for each category.

Abbrev.	Complete name	Phenotype	Prevalence (%)	HPO terms added in each category
VI	Vision impairments	History of nystagmus in infancy/childhood, legal blindness, cone and rod dystrophy by ERG	96.54	HP:0000556 (Retinal dystrophy) HP:0000639 (Nystagmus) HP:0000618 (Blindness)
MT	Metabolic anomalies	Obesity and/or insulin resistance and/or Type 21 diabetes mellitus (T2DM)	85.88	HP:0001513 (Obesity) HP:0005978 (T2DM)
HL	Hearing anomalies	Hearing loss	62.54	HP:0000365 (Hearing loss)
HRT	Heart anomalies	History of Dilated cardiomyopathy/congestive heart failure (DCM/CHF)	49.86	HP:0001644 (DCM) HP:0001635 (CHF)
LIV	Liver anomalies	Hepatic dysfunction	34.58	HP:0001410 (Decreased liver function)
REN	Renal anomalies	Renal failure	29,68	HP:0000077 (Renal anomaly)
MEND	Mental anomalies	Mental disability	22.48	HP:0001249 (Intellectual disability)
REP	Reproductive system anomalies	Males: hypogonadism; Females: irregular menses and/or hyperandrogenism	15.56	HP:0000026 (Male hypogonadism) HP:0000858 (Irregular menstruation)
PUL	Pulmonary anomalies	Pulmonary dysfunction	14.99	HP:0002795 (Impaired pulmonary function)
SCO	Spine/feet anomalies	Scoliosis/flat wide feet	14.12	HP:0002650 (Scoliosis) HP:0001763 (Pes planus)
TYD	Thyroid metabolism anomalies	Thyroid disorders	11.53	HP:0000820 (Abnormality of the thyroid gland)
SHS	Stature anomalies	Short stature	7.78	HP:0004322 (Short stature)
ALO	Alopecia	Alopecia	4.61	HP:0001596 (Alopecia)
NER	Nervous system anomalies	Epilepsy	3.75	HP:0001250 (Seizure)
ABFING	Finger anomalies	Abnormal appearance of a finger	1.15	HP:0001155 (Abnormality of the hand)
INT	Intestine anomalies	Intestinal problems	1.15	HP:0011024 (Abnormality of the gastrointestinal tract)

191 Statistical frequency analysis:

192 To determine the existence of a genotype-phenotype correlation in our patient registry,
193 we selected a sub-cohort of 227 patients who met the following criteria: **I)** complete
194 genetic information (Detection of two mutated alleles with complete notation at the
195 cDNA and protein level), **II)** complete clinical information (Sex, age and presence or
196 absence of the 5 most prevalent clinical manifestations used in these patients: vision
197 impairments, metabolic anomalies, hearing anomalies, heart anomalies and liver
198 anomalies). The heterogeneity of the clinical notation associated with these 5 categories
199 was summarised in a binary matrix (1=presence, 0=absence) which was used for
200 frequency calculations to determine the prevalence of each symptom in the cohort and
201 the different subgroups.

202 Following the methodology described by Niederlova et al., (Niederlova et al., 2019) a
203 syndromic score between 0 and 1 was calculated. This syndromic score gives an estimate
204 of how many of the 5 most prevalent clinical manifestations described above are present
205 in each patient.

206 In this study the lack of race was not considered to exclude a patient from being included
207 in the study cohort. Due to the high heterogeneity of this characteristic and the small
208 cohort size, correlations with enough statistical power could not be established.

209 Patient ages were initially aggregated into 10-year age intervals: 0-9, 10-19, 20-29, 30-
210 39, 40-49, 50-59. After studying the evolution of the syndromic score in the different
211 age intervals, it was found that the number of patients above 39 years was very small.
212 This is consistent with the life expectancy of patients with ALMS, which is usually not
213 more than 50 years. For this reason, a regrouping of the last 3 intervals in patients over
214 30 years of age was made for the subgroup analysis.

215 Following the methodology used by Marshall et al., (Marshall et al., 2007b) patients
216 were genotypically grouped according to the different mutational hotspots: exon 8 (E8),
217 exon 10 (E10) and exon 16 (E16). For compound heterozygous patients this aggregation
218 was performed based on the patient's longest allele. Since ALMS is an autosomal
219 recessive disease, it is expected that a single functional copy of the gene is sufficient to

220 prevent the appearance of the symptoms of the disease (Collin et al., 2002; Hearn,
221 2018). In this way, it would be expected that a protein truncated in exon 16-20 could
222 have more possibilities of maintaining a certain functionality than if it is truncated in
223 exon 5.

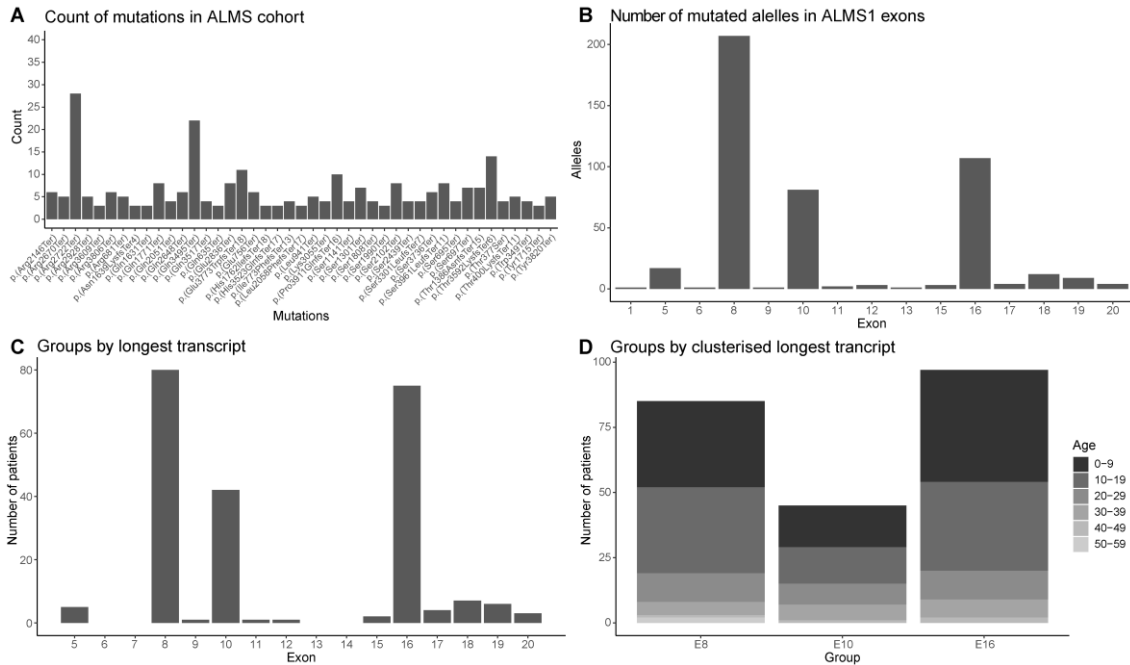
224 Approximately 90% of the mutations were found in the mutation hotspots (E8, E10, and
225 E16), but to include the remaining % in the study, 3 intervals were defined: longest allele
226 truncated before exon 9 (E8), longest allele truncated between exon 9 and 14 (E10),
227 longest allele truncated after exon 14 (E16).

228 In cases where only two groups were compared, a Wilcoxon test was used. In trials
229 where comparisons were made between several groups (more than 2), an overall p-
230 value calculation was performed using the non-parametric Kruskal-Wallis test, followed
231 by a comparison of means by groups of two using the Wilcoxon test with correction for
232 FDR, with corrected p-values of less than 0.05 being considered significant.

233 For the analysis of the prevalence of symptoms in the different genetic groups,
234 contingency tables were created showing the number of positive/negative cases within
235 each patient group. Differences in the prevalence of phenotypes in the different patient
236 groups were assessed using pairwise Fisher's exact test. Statistical significance of
237 differences between individual groups was determined with the FDR correction for
238 multiple comparisons.

239 Results:

240 Cohort description:



241

242 **Figure 1.** Cohort Description of 227 ALMS1 patients. **(A)** Counting of the different alleles
 243 in the cohort. Alleles with more than 2 copies in the cohort are represented. **(B)** Number
 244 of alleles per exon in the study cohort. **(C)** Patients grouped by their copy of the *ALMS1*
 245 gene with the later truncation mutation. **(D)** Age composition in the subgroups with the
 246 latest truncation site in the *ALMS1* gene in exon 8 (E8), exon 10 (E10) and exon 16 (E16).

247 A total of 357 patients were collected from a total of 76 scientific publications that
 248 passed the initial screening. Only patients with information on sex, age and a complete
 249 genetic characterisation (description of two non-functional alleles; **methods**) were used
 250 for further analysis. Only mutations in coding regions were considered in the study. This
 251 reduced the initial cohort to a total of 227 patients, 128 (56.38%) males and 99 females
 252 (43.61%). This study cohort contained a total of 176 variants where 168 were cLOF and
 253 8 missense mutations (**Figure S1**). Most of them were private mutations, but 5
 254 mutations were shown to have a high frequency: p.(Arg2722Ter) (28 alleles),
 255 p.(Gln3495Ter) (22 alleles), p.(Thr3592LysfsTer6) (14 alleles), p.(Glu3773TrpfsTer18) (11
 256 alleles) and p.(Pro3911GlnfsTer16) (10 alleles) (**Figure 1A**). The number of alleles

257 described for these mutations shows certain inconsistencies with the gnomAD database
258 and in some cases the variant does not even appear in gnomAD database (**Table 2**).

259 **Table 2.** Differences in the number of alleles reported in gnomAD and in our database for the
260 most recurrent mutations.

261

Pathogenic variant	ALMSDB	gnomAD
p.(Arg2722Ter)/p.(Arg2720Ter)	28	4
p.(Gln3495Ter)/p.(Gln3493Ter)	22	11
p.(Thr3592LysfsTer6)/p.(Thr3590LysfsTer6)	14	14
p.(Glu3773TrpfsTer18)/p.(Glu3771TrpfsTer18)	11	6
p.(Pro3911GlnfsTer16)	10	0

262

263 Patients were initially grouped into age ranges by decades (from 0 to 59 years) but due
264 to the low number of patients in the age ranges 40-49 and 50-59 years, they were added
265 to the 30-39 years group and reclassified as over 30 years for further analysis.

266 Out of a total of 454 alleles, 207 (45.59%) were in exon 8, 107 (23.57%) in exon 16 and
267 81 (17.84%) in exon 10 (**Figure 1B**). Making these exons the main mutation hotspots in
268 our cohort, consistent with the literature.

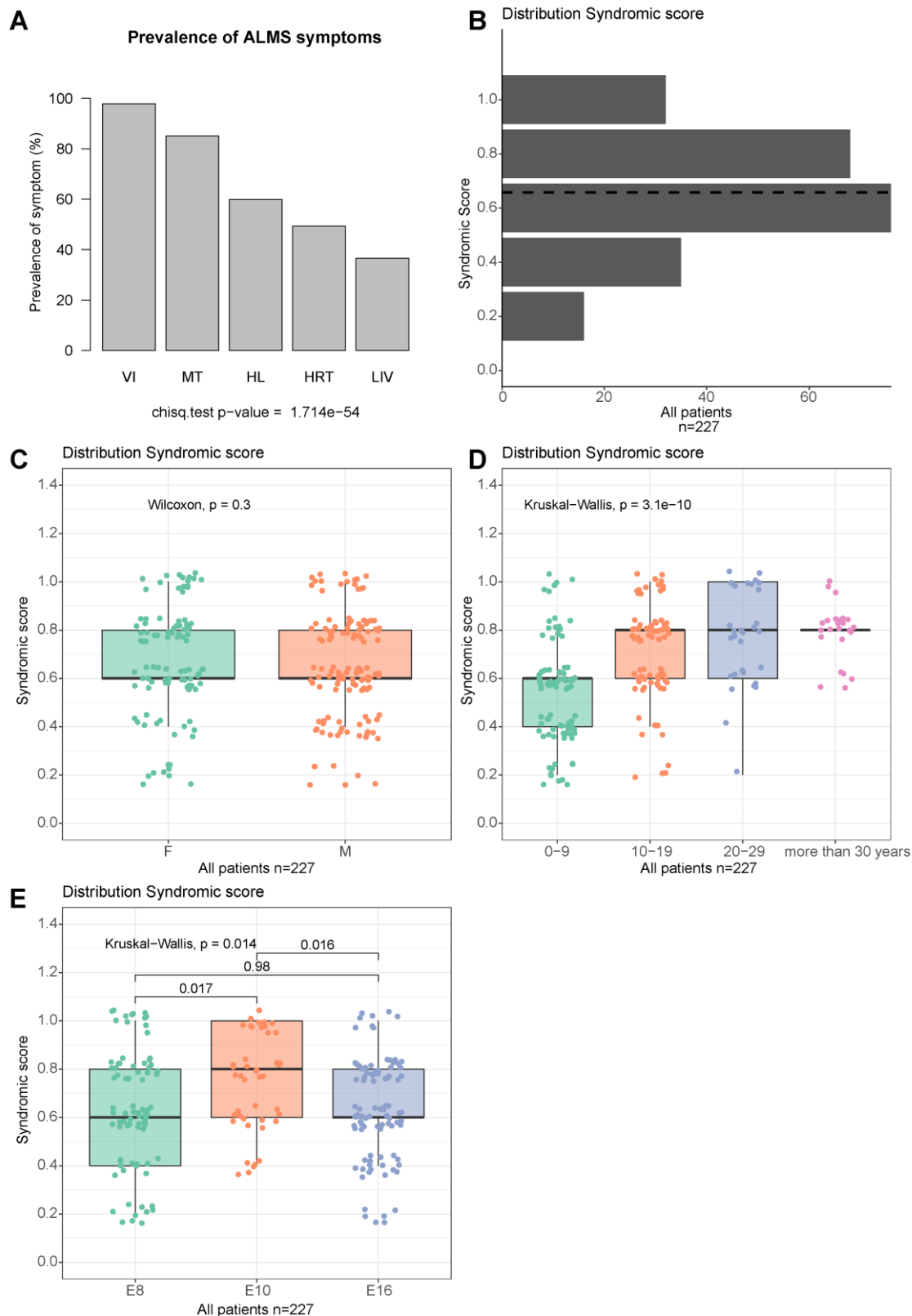
269 Due to the recessive nature of ALMS, we decided to define the characteristic allele of
270 each patient according to the mutation furthest from the origin of the gene (**Figure 1C**).
271 Many of the patients carrying mutations in exon 8 were compound heterozygotes with
272 mutations in exon 16. After this regrouping we saw that 80 (35.34%) patients had the
273 largest allele truncated in exon 8, 42 (18.50%) in exon 10 and 75 (33.03%) in exon 16.

274 In accordance with other similar study (Marshall et al., 2007b) we used the mutation
275 hotspots (exons 8, 10 and 16) to subdivide the patients into genetic groups E8, E10 and
276 E16 respectively. Due to the low frequency of mutations in other exons of the *ALMS1*
277 gene we decided to add patients with truncated alleles in adjacent exons to these
278 mutation hotspots. Group E8 includes all patients with the longest truncated allele
279 before exon 9. Group E10 includes patients with the longest truncated allele between
280 exon 9 and exon 13. Finally group E16 included patients with the longest truncated allele
281 from exon 14 to exon 20. As a result, groups E8, E10 and E16 contained 85, 45 and 97
282 patients respectively (**Figure 1D**).

283 Patients with mutations in exon 10 have a higher
284 syndromic score than the other subgroups:

285 For the strategy of collecting phenotypic manifestations, 16 syndromic groups
286 **(methods)** were initially defined. In the genotype-phenotype correlation analysis, a
287 minimum prevalence threshold of 15% (n=33) was established in the cohort **(Figure S2)**.
288 This reduced the initial phenotypic manifestations to 9 groups: visual impairments (VI,
289 97.80%), metabolic anomalies (MT, 85.02%), hearing anomalies (HL, 59.91%), heart
290 anomalies (HRT, 49.34%), liver anomalies (LIV, 36.56%), renal anomalies (REN, 29.52%),
291 mental anomalies (MEND, 24.67%), reproductive system anomalies (REP, 17.62%),
292 pulmonary anomalies (RES, 19.38%).

293 Following the methodology developed by Niederlova et al., (Niederlova et al., 2019), the
294 5 main disease conditions (VI, MT, HL, HRT and LIV; **methods**) were used to create a
295 discrete syndromic score ranging from 0 to 1 **(Figure 2A)**. The mean of this syndromic
296 score in the total cohort is around 0.7, with the most common values being 0.6 (3 of the
297 5 symptoms) and 0.8 (4 of the 5 symptoms) **(Figure 2B)**. No significant differences in
298 syndromic score were observed between sexes. However, the syndromic score
299 increased significantly in the different age ranges of the patients (p-value = 3.1 e-10;
300 **Figure 2C-D**). This is consistent with the progressive worsening that these patients
301 undergo throughout their lives (Marshall et al., 2005, 2007a). Finally, we observed how
302 the syndromic score was distributed in the different groups defined according to their
303 largest transcript. Patients whose longest transcript was truncated around exon 10 (E10)
304 had a higher syndromic score compared to the E8 (p-value = 0.017) and E16 (p-value =
305 0.016) groups **(Figure 2E)**.



306

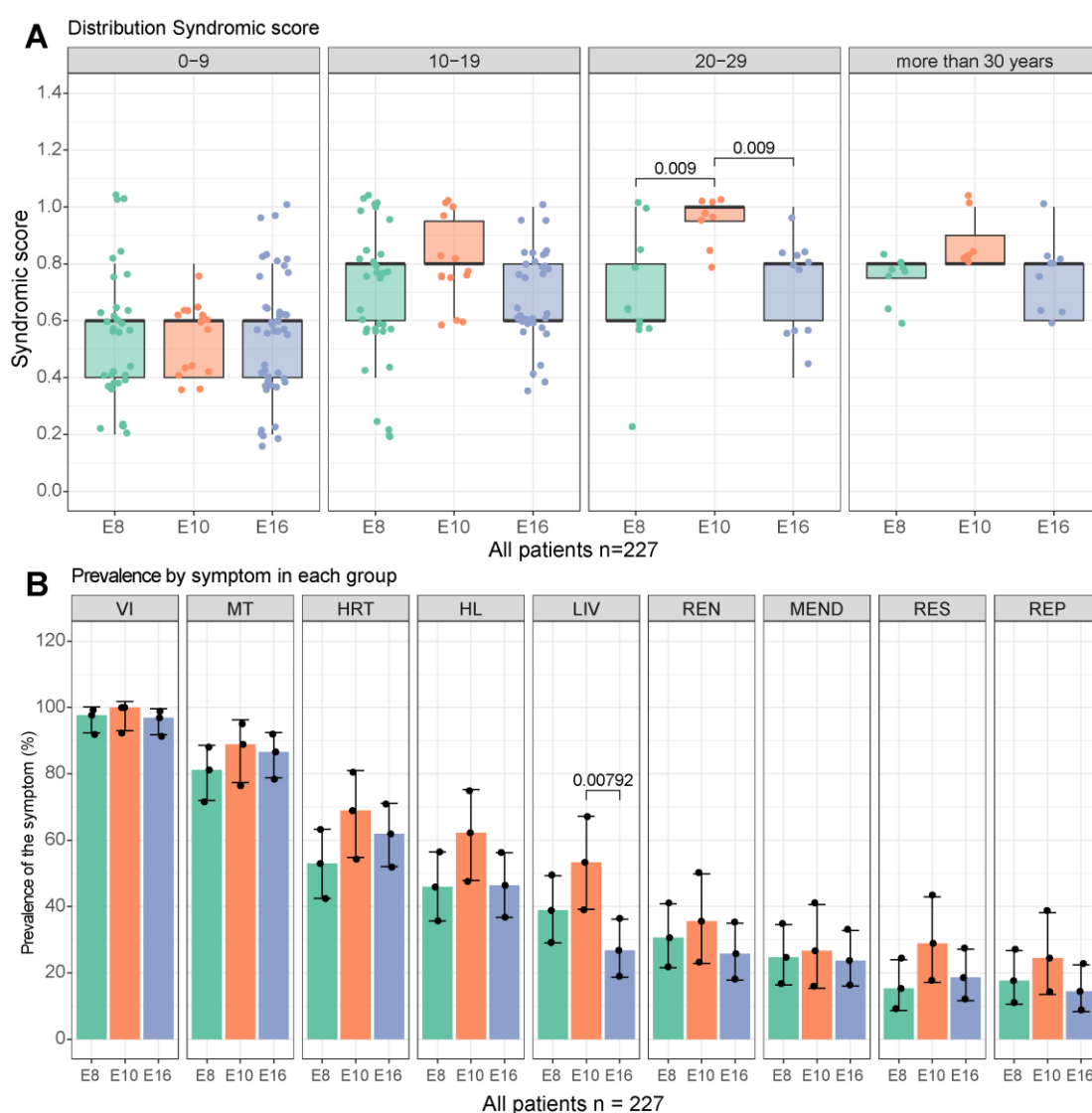
307 **Figure 2.** Study of the phenotypic impact on different subgroups of the study cohort. **(A)**

308 Prevalence of the 5 main phenotypic groups in the cohort: visual impairments (VI),

309 metabolic anomalies (MT), hearing anomalies (HL), heart anomalies (HRT) and liver

310 anomalies (LIV). **(B)** Distribution of syndromic scores calculated from the presence or
311 absence of the 5 most relevant phenotypic groups. **(C)** Gender comparison of syndromic
312 scores. **(D)** Comparison of the syndromic scores between age groups. **(E)** Comparison of
313 the syndromic scores between subgroups created from the longest copy of the *ALMS1*
314 gene.

315 Patients with truncation variants around exon 10
316 have a higher prevalence of liver disease:



317

318 **Figure 3** Correlation study between symptoms prevalence and the truncation site of the
319 *ALMS1* gene. **(A)** Evolution of the syndromic score among the subgroups by the longest

320 copy of the *ALMS1* gene in the different age groups. **(B)** Prevalence of the different
321 symptom clusters in the subgroups by the longest copy of the *ALMS1* gene.

322 To determine whether the differences between the E8, E10 and E16 groups were due to
323 an unequal composition between the different age ranges in each group, the syndromic
324 score was studied by combining both parameters (age and genetic group) **(Figure 3A)**.
325 In the first decade of life, no significant differences in syndromic score were observed
326 between the groups. Between the ages of 10 to 19 years, a higher syndromic score was
327 observed in the E10 group compared to the E16 group (FDR = 0.061). From 20-29 years
328 of age, a higher syndromic score was observed in the E10 group compared to the E8 and
329 E16 groups (FDR = 0.009, in both cases). Finally, in patients over 30 years of age, no
330 significant differences were observed between the genetic groups.

331 After concluding that the differences observed between the groups were not due to an
332 unequal age composition between them, the prevalence of the 9 phenotypic
333 manifestations in each of these groups was studied **(Figure 3B)**. Patients within the E10
334 group were found to have a higher prevalence of liver disorders compared to patients
335 in the E8 and E16 groups. For the remaining 8 syndromic manifestations no significant
336 differences were found between the genetic groups.

337 **Discussion:**

338 Meta-analyses are a useful tool to address one of the main limitations when attempting
339 to establish a genotype-phenotype correlation in a rare disease, the inability to recruit
340 a large cohort to draw robust and statistically significant conclusions. Although meta-
341 analyses mainly focus on the aggregation of several studies with well-defined and well-
342 studied cohorts, this is often not possible in rare diseases. Alternatively, one can try to
343 aggregate information obtained from case reports in the literature. However, the lack
344 of uniform criteria in how authors describe their patients is one of the main biases of
345 this approach. In this paper we adapt and apply the methodology described by
346 Niederlova et al (Niederlova et al., 2019) from a polygenic disease such as BBS to a
347 monogenic disease such as ALMS.

348 Despite the fact that ALMS is a monogenic disease (Hearn et al., 2002), to date several
349 studies have already discussed the possible existence of several tissue-specific isoforms
350 for the *ALMS1* gene, which may have different regulatory roles that explain the high
351 symptomatic heterogeneity (Collin et al., 2002, 2012; Hearn et al., 2002; Braune et al.,
352 2017). Although this is an interesting approach, the isolated nature of the data published
353 in the case reports does not allow validation it. In order to validate this hypothesis, the
354 recruitment of a large cohort is necessary. Different cohorts have been described in the
355 literature, the largest being Marshall et al. (Marshall et al., 2007b), followed by Ozantürk
356 et al. (Ozantürk et al., 2014), the NIH clinical centre cohort (Brofferio et al., 2017;
357 Waldman et al., 2018), Chen et al. (Chen et al., 2017) and Rethanavelu et al.
358 (Rethanavelu et al., 2020) with 58, 44, 38, 23 and 21 ALMS patients, respectively.
359 Significant genotype-phenotype correlations were only detected in Marshall et al
360 (Marshall et al., 2007b), highlighting the importance of the sample size used in this type
361 of study.

362 The causal mutations of ALMS are mainly of the cLOF type (generating a PTC) (Marshall
363 et al., 2015). These types of mutations activate nonsense-mediated decay (NMD),
364 preventing the translation of the sequence from mRNA to protein (Supek et al., 2021).
365 However, certain situations have been described, such as PTC mutations in the last
366 exons of a gene, in which NMD can be prevented or incompletely produced (Lindeboom
367 et al., 2016; Supek et al., 2021). Chen et al., have detected *ALMS1* gene expression in
368 patients carrying two cLOF mutations leading to PTC (Chen et al., 2017). That study has
369 also correlated residual *ALMS1* gene expression with the development of milder
370 phenotypes (Chen et al., 2017). Taking this into account, it could happen that cLOF
371 mutations in the terminal exons of the *ALMS1* gene do not activate NMD, generating a
372 partially functional protein or a non-functional misfolded protein. Under this hypothesis,
373 we grouped the patients in our study according to the longest transcript they had. Three
374 different groups related to the main mutational hotspots of the *ALMS1* gene, exons 8,
375 10 and 16, were defined. A similar approach has already been used on a cohort of 58
376 ALMS patients by Marshall et al. (Marshall et al., 2007b). Subsequently, a syndromic
377 score was created by adding the 5 clinical manifestations more prevalent of ALMS. This
378 methodology was adapted from Niederlova et al, (Niederlova et al., 2019).

379 The results showed that the syndromic score increases with age (**Figure 2D**), which was
380 consistent with the gradual worsening that these patients suffer throughout their lives
381 (Marshall et al., 2005, 2007a). This helped us to validate the effectiveness of the
382 syndromic score in measuring the severity of the patient symptoms. When comparing
383 the syndromic scores of the different genetic groups by age groups, it was observed that
384 patients with truncation mutations in exon 10 (E10) evolve more unfavourably than the
385 rest (**Figure 3A**). The fact that these differences are not appreciable after the age of 30
386 years could be due to a higher mortality in this group in the second and third decades of
387 life. This supposed higher mortality after 30 years could be correlated with the greater
388 prevalence of liver problems that patients with truncation mutations at exon 10 (E10)
389 appear to have (**Figure 3B**). This correlation was not detected in previous genotype-
390 phenotype analyses (Bond et al., 2005; Minton et al., 2006; Patel et al., 2006; Marshall
391 et al., 2007b). Marshall et al., (Marshall et al., 2007b) described disease-causing variants
392 in exon 16 as leading to urological dysfunction, DCM and diabetes. In our study, we did
393 not look for correlations in urological dysfunction due to the lack of data reported in the
394 literature, leading to a low prevalence of these types of symptoms. In the case of DCM
395 and diabetes the prevalence was the same among the established genetic groups.
396 Marshall et al., (Marshall et al., 2007b) also found a significant association between
397 alterations in exon 8 and absent, mild or delayed kidney disease; findings that were not
398 observed in our analysis.

399 The explanation for this event could be related to the residual expression of *ALSM1*
400 gene. Mutations in exon 10 could prevent NMD activation and give rise to a misfolded
401 protein that causes greater hepatotoxicity. In the case of mutations in exon 16 or
402 adjacent, perhaps the NMD is not activated either, but the generated protein, despite
403 not being functional, could have a semi-normal conformation that prevents the
404 formation of aggregates. This hypothesis could be easily tested if these protein isoforms
405 can be simulated by homology, but unfortunately the protein structure of the *ALMS1*
406 gene remains unknown and cannot be simulated using the artificial intelligence models
407 such as AlphaFold (van Breugel et al., 2022).

408 Finally, the *ALMS1* sequence has already described the presence of a lncRNA, *ALMS1-*
409 *IT1*, with a role in regulating proliferation in various types of cancers and

410 neuroinflammation and a pseudo gene, *ALMS1P1*, whose function is still unknown (Lu
411 et al., 2021; Luan et al., 2021; Mei et al., 2021). Due to the large length of the *ALMS1*
412 gene, the presence of more of these elements would not be uncommon and could
413 explain why the localisation of the cLOF variant can lead to different phenotypes. These
414 events could be of help understanding the regulation of *ALMS1* in the different tissues
415 involved in the disease, and the great heterogeneity observed for the clinical symptoms.

416 **Conclusion:**

417 In conclusion, 5 highly prevalent mutations were detected in our cohort. Not all of these
418 variants appear in public databases. There are no gender differences in the prevalence
419 of the different symptoms of ALMS. Patients' symptoms worsen with age, and the site
420 of the *ALMS1* gene mutation does not influence the worsening of symptoms in most
421 cases. Only truncation of the ALMS1 protein at exon 10 level correlated with a higher
422 prevalence of liver problems in these patients.

423 **Author Contributions:** BB-M, DV designed the study. BB-M selected, reviewed, collected and
424 curated data from the scientific articles. BB-M designed and executed the analysis pipeline. BB-
425 M created the publicly accessible online database. BB-M and DV drafted the article. All authors
426 wrote the manuscript and provided approval for publication.

427 **Funding:** This work was funded by Instituto de Salud Carlos III de Madrid FIS project PI15/00049
428 and PI19/00332, Xunta de Galicia (Centro de Investigación de Galicia CINBIO 2019-2022) Ref.
429 ED431G-2019/06, Consolidación e estruturación de unidades de investigación competitivas e
430 outras accións de fomento (ED431C-2018/54). Brais Bea-Mascato (FPU17/01567) was
431 supported by graduate studentship awards (FPU predoctoral fellowship) from the Spanish
432 Ministry of Education, Culture and Sports.

433 **Informed Consent Statement:** Not Apply.

434 **Data Availability Statement:** Data are available via [https://github.com/BreisOne/meta-](https://github.com/BreisOne/meta-analysis_ALMS)
435 [analysis_ALMS](https://github.com/BreisOne/meta-analysis_ALMS) or <http://genesandfunctions.uvigo.es/alms-db/>.

436 **Code Availability Statement:** The code used in this study can be consulted on the GitHub
437 repository https://github.com/BreisOne/meta-analysis_ALMS.

438 **References:**

- 439 Ahmad, A., D'Souza, B., Yadav, C., Agarwal, A., Kumar, A., Nandini, M., et al. (2016).
440 Metabolic Syndrome in Childhood: Rare Case of Alstrom Syndrome with Blindness.
441 *Indian J. Clin. Biochem.* 31, 480–482. doi: 10.1007/s12291-015-0543-8.
- 442 Aldahmesh, M. A., Abu-Safieh, L., Khan, A. O., Al-Hassnan, Z. N., Shaheen, R., Rajab, M.,
443 et al. (2009). Allelic heterogeneity in inbred populations: The Saudi experience with
444 Alström syndrome as an illustrative example. *Am. J. Med. Genet. Part A* 149, 662–
445 665. doi: 10.1002/ajmg.a.32753.
- 446 Aliferis, K., Hellé, S., Gyapay, G., Duchatelet, S., Stoetzel, C., Mandel, J. L., et al. (2012).
447 Differentiating Alström from Bardet-Biedl syndrome (BBS) using systematic
448 ciliopathy genes sequencing. *Ophthalmic Genet.* 33, 18–22. doi:
449 10.3109/13816810.2011.620055.
- 450 Astuti, D., Sabir, A., Fulton, P., Zatyka, M., Williams, D., Hardy, C., et al. (2017).
451 Monogenic diabetes syndromes: Locus-specific databases for Alström, Wolfram,
452 and Thiamine-responsive megaloblastic anemia. *Hum. Mutat.* 38, 764–777. doi:
453 10.1002/humu.23233.
- 454 Bahmad, F., Costa, C. S. A., Teixeira, M. S., de Barros Filho, J., Viana, L. M., and Marshall,
455 J. (2014). Síndrome de Alström familiar: Uma rara causa de perda auditiva
456 progressiva bilateral. *Braz. J. Otorhinolaryngol.* 80, 99–104. doi: 10.5935/1808-
457 8694.20140023.
- 458 Baig, S., Paisey, R., Dawson, C., Barrett, T., Maffei, P., Hodson, J., et al. (2020). Defining
459 renal phenotype in Alström syndrome. *Nephrol. Dial. Transplant* 35, 994–1001. doi:
460 10.1093/ndt/gfy293.
- 461 Bakar, A. A., Kamal, N. M., Alsaedi, A., Turkistani, R., and Aldosari, D. (2017). Alström
462 syndrome. *Med. (United States)* 96, 4–7. doi: 10.1097/MD.0000000000006192.
- 463 Bea-Mascato, B., Solarat, C., Perea-Romero, I., Jaijo, T., Blanco-Kelly, F., Millán, J. M., et
464 al. (2021). Prevalent *alms1* pathogenic variants in spanish alström patients. *Genes*
465 (*Basel*). 12, 1–12. doi: 10.3390/genes12020282.

- 466 Benso, C., Hadjadj, E., Conrath, J., and Denis, D. (2002). Three new cases of Alström
467 syndrome. *Graefe's Arch. Clin. Exp. Ophthalmol.* 240, 622–627. doi:
468 10.1007/s00417-002-0479-6.
- 469 Boerwinkle, C., Marshall, J. D., Bryant, J., Gahl, W. A., Olivier, K. N., and Gunay-Aygun,
470 M. (2017). Respiratory manifestations in 38 patients with Alström syndrome.
471 *Pediatr. Pulmonol.* 52, 487–493. doi: <https://doi.org/10.1002/ppul.23607>.
- 472 Bond, J., Flintoff, K., Higgins, J., Scott, S., Bennet, C., Parsons, J., et al. (2005). The
473 importance of seeking ALMS1 mutations in infants with dilated cardiomyopathy. *J.*
474 *Med. Genet.* 42, 1–3. doi: 10.1136/jmg.2004.026617.
- 475 Braune, K., Volkmer, I., and Staeger, M. S. (2017). Characterization of Alstrom Syndrome
476 1 (ALMS1) Transcript Variants in Hodgkin Lymphoma Cells. *PLoS One* 12, e0170694.
477 Available at: <https://doi.org/10.1371/journal.pone.0170694>.
- 478 Brofferio, A., Sachdev, V., Hannoush, H., Marshall, J. D., Naggert, J. K., Sidenko, S., et al.
479 (2017). Characteristics of cardiomyopathy in Alström syndrome: Prospective single-
480 center data on 38 patients. *Mol. Genet. Metab.* 121, 336–343. doi:
481 10.1016/J.YMGME.2017.05.017.
- 482 Bronson, S. C., Anand Moses, C. R., Periyandavar, I., Dharmarajan, P., Suresh, E.,
483 Shanmugam, A., et al. (2015). Diabetes in the young – A case of Alström syndrome
484 with myopathy. *J. R. Coll. Physicians Edinb.* 45, 33–37. doi:
485 10.4997/JRCPE.2015.108.
- 486 Casey, J., McGettigan, P., Brosnahan, D., Curtis, E., Treacy, E., Ennis, S., et al. (2014).
487 Atypical Alstrom syndrome with novel ALMS1 mutations precluded by current
488 diagnostic criteria. *Eur. J. Med. Genet.* 57, 55–59. doi: 10.1016/j.ejmg.2014.01.007.
- 489 Castro-Sánchez, S., Álvarez-Satta, M., Tohamy, M. A., Beltran, S., Derdak, S., and
490 Valverde, D. (2017). Whole exome sequencing as a diagnostic tool for patients with
491 ciliopathy-like phenotypes. *PLoS One* 12, 1–16. doi:
492 10.1371/journal.pone.0183081.
- 493 Catrinoiu, D., Mihai, C. M., Tuta, L., Stoicescu, R., and Simpetru, A. (2009). Rare case of
494 Alstrom syndrome with empty sella and interfamilial presence of Bardet-Biedl

- 495 phenotype. *J. Med. Life* 2, 98–103.
- 496 Chakroun, A., Ben Said, M., Ennouri, A., Achour, I., Mnif, M., Abid, M., et al. (2016). Long-
497 term clinical follow-up and molecular testing for diagnosis of the first Tunisian
498 family with Alström syndrome. *Eur. J. Med. Genet.* 59, 444–451. doi:
499 10.1016/J.EJMG.2016.08.004.
- 500 Charles, S. J., Moore, A. T., Yates, J. R. W., Green, T., and Clark, P. (1990). Alstrom's
501 syndrome: Further evidence of autosomal recessive inheritance and
502 endocrinological dysfunction. *J. Med. Genet.* 27, 590–592. doi:
503 10.1136/jmg.27.9.590.
- 504 Chen, J.-H., Geberhiwot, T., Barrett, T. G., Paisey, R., and Semple, R. K. (2017). Refining
505 genotype-phenotype correlation in Alström syndrome through study of primary
506 human fibroblasts. *Mol. Genet. genomic Med.* 5, 390–404. doi: 10.1002/mgg3.296.
- 507 Collin, G. B., Marshall, J. D., Ikeda, A., So, W. V., Russell-Eggitt, I., Maffei, P., et al. (2002).
508 Mutations in ALMS1 cause obesity, type 2 diabetes and neurosensory degeneration
509 in Alström syndrome. *Nat. Genet.* 31, 74–8. doi: 10.1038/ng867.
- 510 Collin, G. B., Marshall, J. D., King, B. L., Milan, G., Maffei, P., Jagger, D. J., et al. (2012).
511 The Alström syndrome protein, ALMS1, interacts with α -actinin and components of
512 the endosome recycling pathway. *PLoS One* 7, e37925–e37925. doi:
513 10.1371/journal.pone.0037925.
- 514 Corbetti, F., Razzolini, R., Bettini, V., Marshall, J. D., Naggert, J., Tona, F., et al. (2013).
515 Alström Syndrome: Cardiac Magnetic Resonance findings. *Int. J. Cardiol.* 167, 1257–
516 1263. doi: 10.1016/j.ijcard.2012.03.160.
- 517 Cruz-Aguilar, M., Galaviz-Hernández, C., Hiebert-Froese, J., Sosa-Macías, M., and
518 Zenteno, J. C. (2017). A nonsense ALMS1 mutation underlies alström syndrome in
519 an extended menonite kindred settled in north Mexico. *Genet. Test. Mol.*
520 *Biomarkers* 21, 397–401. doi: 10.1089/gtmb.2016.0391.
- 521 Das Bhowmik, A., Gupta, N., Dalal, A., and Kabra, M. (2017). Whole exome sequencing
522 identifies a homozygous nonsense variation in ALMS1 gene in a patient with
523 syndromic obesity. *Obes. Res. Clin. Pract.* 11, 241–246. doi:

- 524 10.1016/j.orcp.2016.09.004.
- 525 Davies, G., Lam, M., Harris, S. E., Trampush, J. W., Luciano, M., Hill, W. D., et al. (2018).
526 Study of 300,486 individuals identifies 148 independent genetic loci influencing
527 general cognitive function. *Nat. Commun.* 9, 2098. doi: 10.1038/s41467-018-
528 04362-x.
- 529 Dotan, G., Khetan, V., Marshall, J. D., Affel, E., Armiger-, D., Naggert, J. K., et al. (2018).
530 Alström syndrome. 38, 440–445. doi: 10.1080/13816810.2016.1257029.Spectral-
531 domain.
- 532 Fokkema, I. F. A. C., Taschner, P. E. M., Schaafsma, G. C. P., Celli, J., Laros, J. F. J., and den
533 Dunnen, J. T. (2011). LOVD v.2.0: the next generation in gene variant databases.
534 *Hum. Mutat.* 32, 557–563. doi: 10.1002/HUMU.21438.
- 535 Gao, F. J., Li, J. K., Chen, H., Hu, F. Y., Zhang, S. H., Qi, Y. H., et al. (2019). Genetic and
536 Clinical Findings in a Large Cohort of Chinese Patients with Suspected Retinitis
537 Pigmentosa. *Ophthalmology* 126, 1549–1556. doi: 10.1016/j.ophtha.2019.04.038.
- 538 Gatticchi, L., Miertus, J., Maltese, P. E., Bressan, S., De Antoni, L., Podracká, L., et al.
539 (2020). A very early diagnosis of Alström syndrome by next generation sequencing.
540 *BMC Med. Genet.* 21, 1–6. doi: 10.1186/s12881-020-01110-1.
- 541 Gogi, D., Bond, J., Long, V., Sheridan, E., and Woods, C. G. (2007). Exudative retinopathy
542 in a girl with Alström syndrome due to a novel mutation. *Br. J. Ophthalmol.* 91, 983–
543 984. doi: 10.1136/bjo.2005.088781.
- 544 Hamamy, H., Barham, M., Alkhaldeh, A. E. K., Cockburn, D., Snowden, H., and Ajlouni,
545 K. (2006). Alstrom syndrome in four sibs from northern Jordan. *Ann. Saudi Med.* 26,
546 480–483. doi: 10.5144/0256-4947.2006.480.
- 547 Hearn, T. (2018). ALMS1 and Alström syndrome: a recessive form of metabolic,
548 neurosensory and cardiac deficits. *J. Mol. Med.* doi: 10.1007/s00109-018-1714-x.
- 549 Hearn, T., Renforth, G. L., Spalluto, C., Hanley, N. A., Piper, K., Brickwood, S., et al. (2002).
550 Mutation of ALMS1, a large gene with a tandem repeat encoding 47 amino acids,
551 causes Alström syndrome. *Nat. Genet.* 31, 79. Available at:

- 552 <https://doi.org/10.1038/ng874>.
- 553 Hirano, M., Satake, W., Moriyama, N., Saida, K., Okamoto, N., Cha, P. C., et al. (2020).
554 Bardet–Biedl syndrome and related disorders in Japan. *J. Hum. Genet.* 65, 847–853.
555 doi: 10.1038/s10038-020-0778-y.
- 556 Hitz, M. P., Bertram, H., Köditz, H., Görler, H., Happel, C. M., Wessel, A., et al. (2008).
557 Levosimendan for bridging in a pediatric patient with Alström syndrome awaiting
558 heart-lung transplantation. *Clin. Res. Cardiol.* 97, 846–848. doi: 10.1007/s00392-
559 008-0691-4.
- 560 Hoffman, J. D., Jacobson, Z., Young, T. L., Marshall, J. D., and Kaplan, P. (2005). Familial
561 variable expression of dilated cardiomyopathy in Alström syndrome: A report of
562 four sibs. *Am. J. Med. Genet.* 135 A, 96–98. doi: 10.1002/ajmg.a.30688.
- 563 Holder, M., Hecker, W., and Gilli, G. (1995). Impaired glucose tolerance leads to delayed
564 diagnosis of Alström syndrome. *Diabetes Care* 18, 698–700. doi:
565 10.2337/diacare.18.5.698.
- 566 Hollander, S. A., Alsaleh, N., Ruzhnikov, M., Jensen, K., Rosenthal, D. N., Stevenson, D.
567 A., et al. (2017). Variable clinical course of identical twin neonates with Alström
568 syndrome presenting coincidentally with dilated cardiomyopathy. *Am. J. Med.*
569 *Genet. Part A* 173, 1687–1689. doi: 10.1002/ajmg.a.38200.
- 570 Huang, L., Xiao, X., Li, S., Jia, X., Wang, P., Sun, W., et al. (2016). Molecular genetics of
571 cone-rod dystrophy in Chinese patients: New data from 61 probands and mutation
572 overview of 163 probands. *Exp. Eye Res.* 146, 252–258. doi:
573 10.1016/j.exer.2016.03.015.
- 574 Hull, S., Kiray, G., Chiang, J. P. W., and Vincent, A. L. (2020). Molecular and phenotypic
575 investigation of a New Zealand cohort of childhood-onset retinal dystrophy. *Am. J.*
576 *Med. Genet. Part C Semin. Med. Genet.* 184, 708–717. doi: 10.1002/ajmg.c.31836.
- 577 Iannello, S., Bosco, P., Camuto, M., Cavaleri, A., Milazzo, P., and Belfiore, F. (2004). A
578 mild form of Alstrom disease associated with metabolic syndrome and very high
579 fasting serum free fatty acids: Two cases diagnosed in adult age. *Am. J. Med. Sci.*
580 327, 284–288. doi: 10.1097/00000441-200405000-00031.

- 581 Jatti, K., Paisey, R., and More, R. (2012). Coronary artery disease in Alström syndrome.
582 *Eur. J. Hum. Genet.* 20, 117–118. doi: 10.1038/ejhg.2011.168.
- 583 Jinda, W., Taylor, T. D., Suzuki, Y., Thongnoppakhun, W., Limwongse, C., Lertrit, P., et al.
584 (2017). Whole exome sequencing in eight Thai patients with leber congenital
585 amaurosis reveals mutations in the CTNNA1 and CYP4V2 genes. *Investig.*
586 *Ophthalmol. Vis. Sci.* 58, 2413–2420. doi: 10.1167/iovs.16-21322.
- 587 Joy, T., Cao, H., Black, G., Malik, R., Charlton-Menys, V., Hegele, R. A., et al. (2007).
588 Alstrom syndrome (OMIM 203800): a case report and literature review. *Orphanet*
589 *J. Rare Dis.* 2, 49. doi: 10.1186/1750-1172-2-49.
- 590 Kamal, N. M., Sahly, A. N., Banaganapalli, B., Rashidi, O. M., Shetty, P. J., Al-Aama, J. Y.,
591 et al. (2020). Whole exome sequencing identifies rare biallelic ALMS1 missense and
592 stop gain mutations in familial Alström syndrome patients. *Saudi J. Biol. Sci.* 27,
593 271–278. doi: 10.1016/j.sjbs.2019.09.006.
- 594 Karczewski, K. J., Francioli, L. C., Tiao, G., Cummings, B. B., Alföldi, J., Wang, Q., et al.
595 (2020). The mutational constraint spectrum quantified from variation in 141,456
596 humans. *Nat.* 2020 5817809 581, 434–443. doi: 10.1038/s41586-020-2308-7.
- 597 Katagiri, S., Yoshitake, K., Akahori, M., Hayashi, T., Furuno, M., Nishino, J., et al. (2013).
598 Whole-exome sequencing identifies a novel ALMS1 mutation (p.Q2051X) in two
599 Japanese brothers with Alström syndrome. *Mol. Vis.* 19, 2393–2406. Available at:
600 <https://www.ncbi.nlm.nih.gov/pubmed/24319333>.
- 601 Kaya, A., Orbak, Z., Çayır, A., Doñeray, H., Taşdemir, Ş., Ozanürk, A., et al. (2014).
602 Combined occurrence of Alström syndrome and bronchiectasis. *Pediatrics* 133. doi:
603 10.1542/peds.2013-0284.
- 604 Kerr, T. P., Sewry, C. A., Robb, S. A., and Roberts, R. G. (2001). Long mutant dystrophins
605 and variable phenotypes: evasion of nonsense-mediated decay? *Hum. Genet.* 109,
606 402–407. doi: 10.1007/s004390100598.
- 607 Khan, A. O., Bifari, I. N., and Bolz, H. J. (2015). Ophthalmic Features of Children Not Yet
608 Diagnosed with Alstrom Syndrome. *Ophthalmology* 122, 1726-1727.e2. doi:
609 10.1016/j.ophtha.2015.03.001.

- 610 Khoo, E. Y. H., Risley, J., Zaitoun, A. M., El-Sheikh, M., Paisey, R. B., Acheson, A. G., et al.
611 (2009). Alström syndrome and cecal volvulus in 2 siblings. *Am. J. Med. Sci.* 337, 383–
612 385. doi: 10.1097/MAJ.0b013e3181926594.
- 613 Kilinc, S., Yucel-Yilmaz, D., Ardagil, A., Apaydin, S., Valverde, D., Ozgul, R. K., et al. (2018).
614 Five novel ALMS1 gene mutations in six patients with Alstrom syndrome. *J. Pediatr.*
615 *Endocrinol. Metab.* 31, 681–687. doi: 10.1515/jpem-2017-0418.
- 616 Kilpinen, H., Goncalves, A., Leha, A., Afzal, V., Alasoo, K., Ashford, S., et al. (2017).
617 Common genetic variation drives molecular heterogeneity in human iPSCs. *Nature*
618 546, 370–375. doi: 10.1038/nature22403.
- 619 Kim, M. K., Kwak, S. H., Kang, S., Jung, H. S., Cho, Y. M., Kim, S. Y., et al. (2015).
620 Identification of two cases of ciliopathy-associated diabetes and their mutation
621 analysis using whole exome sequencing. *Diabetes Metab. J.* 39, 439–443. doi:
622 10.4093/dmj.2015.39.5.439.
- 623 Koç, E., Bayrak, G., Suher, M., Ensari, C., Aktas, D., and Ensari, A. (2006). Rare case of
624 Alstrom syndrome without obesity and with short stature, diagnosed in adulthood.
625 *Nephrology* 11, 81–84. doi: 10.1111/j.1440-1797.2006.00443.x.
- 626 Kocova, M., Sukarova-Angelovska, E., Kacarska, R., Maffei, P., Milan, G., and Marshall, J.
627 D. (2011). The unique combination of dermatological and ocular phenotypes in
628 Alström syndrome: severe presentation, early onset and two novel ALMS1
629 mutations. *Br. J. Dermatol.* 164, 878–880. doi: 10.1111/j.1365-2133.2010.10157.x.
- 630 Koray, F., Dorter, C., Benderli, Y., Satman, I., Yilmaz, T., Dinccag, N., et al. (2001). Alstrom
631 syndrome: a case report. *J. Oral Sci.* 43, 221–224. doi: 10.2334/josnusd.43.221.
- 632 Kuburović, V., Marshall, J. D., Collin, G. B., Nykamp, K., Kuburović, N., Milenković, T., et
633 al. (2013). Differences in the clinical spectrum of two adolescent male patients with
634 Alström syndrome. *Clin. Dysmorphol.* 22, 7–12. doi:
635 10.1097/MCD.0b013e32835b9017.
- 636 Kvarnung, M., Taylan, F., Nilsson, D., Anderlid, B. M., Malmgren, H., Lagerstedt-
637 Robinson, K., et al. (2018). Genomic screening in rare disorders: New mutations and
638 phenotypes, highlighting ALG14 as a novel cause of severe intellectual disability.

- 639 *Clin. Genet.* 94, 528–537. doi: 10.1111/cge.13448.
- 640 Landrum, M. J., Lee, J. M., Benson, M., Brown, G. R., Chao, C., Chitipiralla, S., et al. (2018).
641 ClinVar: improving access to variant interpretations and supporting evidence.
642 *Nucleic Acids Res.* 46, D1062–D1067. doi: 10.1093/NAR/GKX1153.
- 643 Laxer, C., Rahman, S. A., Sherif, M., Tahir, S., Cayir, A., Demirbilek, H., et al. (2016). A
644 novel ALMS1 homozygous mutation in two Turkish brothers with Alström
645 syndrome. *J. Pediatr. Endocrinol. Metab.* 29, 585–589. doi: 10.1515/jpem-2015-
646 0249.
- 647 Lazar, C. H., Kimchi, A., Namburi, P., Mutsuddi, M., Zelinger, L., Beryozkin, A., et al.
648 (2015). Nonsyndromic Early-Onset Cone-Rod Dystrophy and Limb-Girdle Muscular
649 Dystrophy in a Consanguineous Israeli Family are Caused by Two Independent yet
650 Linked Mutations in ALMS1 and DYSF. *Hum. Mutat.* 36, 836–841. doi:
651 10.1002/humu.22822.
- 652 Lefter, M., Vis, J. K., Vermaat, M., den Dunnen, J. T., Taschner, P. E. M., and Laros, J. F. J.
653 (2021). Mutalyzer 2: next generation HGVS nomenclature checker. *Bioinformatics*
654 37, 2811–2817. doi: 10.1093/bioinformatics/btab051.
- 655 Liang, X., Li, H., Li, H., Xu, F., Dong, F., and Sui, R. (2013). Novel ALMS1 mutations in
656 Chinese patients with alström syndrome. *Mol. Vis.* 19, 1885–1891.
- 657 Lindeboom, R. G. H., Supek, F., and Lehner, B. (2016). The rules and impact of nonsense-
658 mediated mRNA decay in human cancers. *Nat. Genet.* 2016 4810 48, 1112–1118.
659 doi: 10.1038/ng.3664.
- 660 Lindsey, S., Brewer, C., Stakhovskaya, O., Kim, H. J., Zalewski, C., Bryant, J., et al. (2017).
661 Auditory and otologic profile of Alström syndrome: Comprehensive single center
662 data on 38 patients. *Am. J. Med. Genet. Part A* 173, 2210–2218. doi:
663 10.1002/ajmg.a.38316.
- 664 Liu, L., Dong, B., Chen, X., Li, J., and Li, Y. (2009). Identification of a novel ALMS1 mutation
665 in a Chinese family with Alström syndrome. *Eye* 23, 1210–1212. doi:
666 10.1038/eye.2008.235.

- 667 Lombardo, B., D'Argenio, V., Monda, E., Vitale, A., Caiazza, M., Sacchetti, L., et al. (2020).
668 Genetic analysis resolves differential diagnosis of a familial syndromic dilated
669 cardiomyopathy: A new case of Alström syndrome. *Mol. Genet. Genomic Med.* 8,
670 1–7. doi: 10.1002/mgg3.1260.
- 671 Long, P. A., Evans, J. M., Olson, T. M., Gartstein., M. A., Putnam., S., and Kliever., R.
672 (2015). Exome sequencing establishes diagnosis of Alström syndrome in an infant
673 presenting with non-syndromic dilated cardiomyopathy. *Am. J. Med. Genet. A* 176,
674 886–890. doi: 10.1002/ajmg.a.36994.Exome.
- 675 Louw, J. J., Corveleyn, A., Jia, Y., Iqbal, S., Boshoff, D., Gewillig, M., et al. (2014).
676 Homozygous loss-of-function mutation in ALMS1 causes the lethal disorder
677 mitogenic cardiomyopathy in two siblings. *Eur. J. Med. Genet.* 57, 532–535. doi:
678 10.1016/j.ejmg.2014.06.004.
- 679 Lu, P., Zhang, Y., Niu, H., and Wang, Y. (2021). Upregulated Long Non-coding RNA
680 ALMS1-IT1 Promotes Neuroinflammation by Activating NF-κB Signaling in Ischemic
681 Cerebral Injury. *Curr. Pharm. Des.* 27, 4270–4277. doi:
682 10.2174/1381612827666210827104316.
- 683 Luan, T., Zhang, T. Y., Lv, Z. H., Guan, B. X., Xu, J. Y., Li, J., et al. (2021). The lncRNA ALMS1-
684 IT1 may promote malignant progression of lung adenocarcinoma via AVL9-
685 mediated activation of the cyclin-dependent kinase pathway. *FEBS Open Bio* 11,
686 1504–1515. doi: 10.1002/2211-5463.13140.
- 687 Mahamid, J., Lorber, A., Horovitz, Y., Shalev, S. A., Collin, G. B., Naggert, J. K., et al. (2013).
688 Extreme clinical variability of dilated cardiomyopathy in two siblings with alström
689 syndrome. *Pediatr. Cardiol.* 34, 455–458. doi: 10.1007/s00246-012-0296-6.
- 690 Malm, E., Ponjavic, V., Nishina, P. M., Naggert, J. K., Hinman, E. G., Andréasson, S., et al.
691 (2008). Full-field electroretinography and marked variability in clinical phenotype
692 of Alström syndrome. *Arch. Ophthalmol.* 126, 51–57. doi:
693 10.1001/archophthalmol.2007.28.
- 694 Maltese, P. E., Iarossi, G., Ziccardi, L., Colombo, L., Buzzonetti, L., Crinò, A., et al. (2018).
695 A Next Generation Sequencing custom gene panel as first line diagnostic tool for

- 696 atypical cases of syndromic obesity: Application in a case of Alström syndrome. *Eur.*
697 *J. Med. Genet.* 61, 79–83. doi: 10.1016/j.ejmg.2017.10.016.
- 698 Marshall, J. D., Beck, S., Maffei, P., and Naggert, J. K. (2007a). Alström Syndrome. *Eur. J.*
699 *Hum. Genet.* 15, 1193. doi: 10.1038/sj.ejhg.5201933.
- 700 Marshall, J. D., Bronson, R. T., Collin, G. B., Nordstrom, A. D., Maffei, P., Paisey, R. B., et
701 al. (2005). New Alström syndrome phenotypes based on the evaluation of 182
702 cases. *Arch. Intern. Med.* 165, 675–83. doi: 10.1001/archinte.165.6.675.
- 703 Marshall, J. D., Hinman, E. G., Collin, G. B., Beck, S., Cerqueira, R., Maffei, P., et al.
704 (2007b). Spectrum of ALMS1 variants and evaluation of genotype-phenotype
705 correlations in Alström syndrome. *Hum. Mutat.* 28, 1114–23. doi:
706 10.1002/humu.20577.
- 707 Marshall, J. D., Maffei, P., Collin, G. B., and Naggert, J. K. (2011). Alström syndrome:
708 genetics and clinical overview. *Curr. Genomics* 12, 225–235. doi:
709 10.2174/138920211795677912.
- 710 Marshall, J. D., Muller, J., Collin, G. B., Milan, G., Kingsmore, S. F., Dinwiddie, D., et al.
711 (2015). Alström Syndrome: Mutation Spectrum of ALMS1. *Hum. Mutat.* 36, 660–
712 668. doi: 10.1002/humu.22796.
- 713 Muring, L., Porter, L. F., Pelletier, V., Riehm, A., Leuvrey, A. S., Gouronc, A., et al. (2020).
714 Atypical Retinal Phenotype in a Patient With Alström Syndrome and Biallelic Novel
715 Pathogenic Variants in ALMS1, Including a de novo Variation. *Front. Genet.* 11. doi:
716 10.3389/fgene.2020.00938.
- 717 Mei, J., Cao, G., He, H., Chang, J., Zhang, B., and Mei, Y. (2021). Effects of long non-coding
718 RNA ALMS1-IT1 on the proliferation and migration of colorectal cancer cells via
719 regulating the expressions of miRNA-889-3p and ATAD2. *Cancer Res. Clin.* 33, 818–
720 823. doi: 10.3760/CMA.J.CN115355-20210601-00242.
- 721 Millay, R. H., Weleber, R. G., and Heckenlively, J. R. (1986). Ophthalmologic and systemic
722 manifestations of Alström’s disease. *Am. J. Ophthalmol.* 102, 482–490. doi:
723 10.1016/0002-9394(86)90078-4.

- 724 Minton, J. A. L., Owen, K. R., Ricketts, C. J., Crabtree, N., Shaikh, G., Ehtisham, S., et al.
725 (2006). Syndromic obesity and diabetes: Changes in body composition with age and
726 mutation analysis of ALMS1 in 12 United Kingdom kindreds with Alström syndrome.
727 *J. Clin. Endocrinol. Metab.* 91, 3110–3116. doi: 10.1210/jc.2005-2633.
- 728 Nasser, F., Weisschuh, N., Maffei, P., Milan, G., Heller, C., Zrenner, E., et al. (2018).
729 Ophthalmic features of cone-rod dystrophy caused by pathogenic variants in the
730 ALMS1 gene. *Acta Ophthalmol.* 96, e445–e454. doi: 10.1111/aos.13612.
- 731 Niederlova, V., Modrak, M., Tsyklauri, O., Huranova, M., and Stepanek, O. (2019). Meta-
732 analysis of genotype-phenotype associations in Bardet-Biedl syndrome uncovers
733 differences among causative genes. *Hum. Mutat.* 40, 2068–2087. doi:
734 10.1002/HUMU.23862.
- 735 Nikopoulos, K., Butt, G. U., Farinelli, P., Mudassar, M., Domènech-Estévez, E., Samara,
736 C., et al. (2016). A large multiexonic genomic deletion within the ALMS1 gene
737 causes Alström syndrome in a consanguineous Pakistani family. *Clin. Genet.* 89,
738 510–511. doi: 10.1111/cge.12645.
- 739 Ozantürk, A., Marshall, J. D., Collin, G. B., Düzenli, S., Marshall, R. P., Candan, Ş., et al.
740 (2014). The phenotypic and molecular genetic spectrum of Alström syndrome in 44
741 Turkish kindreds and a literature review of Alström syndrome in Turkey. *J. Hum.*
742 *Genet.* 60, 1–9. doi: 10.1038/jhg.2014.85.
- 743 Özgül, R. K., Satman, I., Collin, G. B., Hinman, E. G., Marshall, J. D., Kocaman, O., et al.
744 (2007). Molecular analysis and long-term clinical evaluation of three siblings with
745 Alström syndrome. *Clin. Genet.* 72, 351–356. doi: 10.1111/j.1399-
746 0004.2007.00848.x.
- 747 Paisey, R. B., Carey, C. M., Bower, L., Marshall, J., Taylor, P., Maffei, P., et al. (2004).
748 Hypertriglyceridaemia in Alström’s syndrome: Causes and associations in 37 cases.
749 *Clin. Endocrinol. (Oxf).* 60, 228–231. doi: 10.1111/j.1365-2265.2004.01952.x.
- 750 Patel, S., Minton, J. A. L., Weedon, M. N., Frayling, T. M., Ricketts, C., Hitman, G. A., et
751 al. (2006). Common variations in the ALMS1 gene do not contribute to susceptibility
752 to type 2 diabetes in a large white UK population. *Diabetologia* 49, 1209–1213. doi:

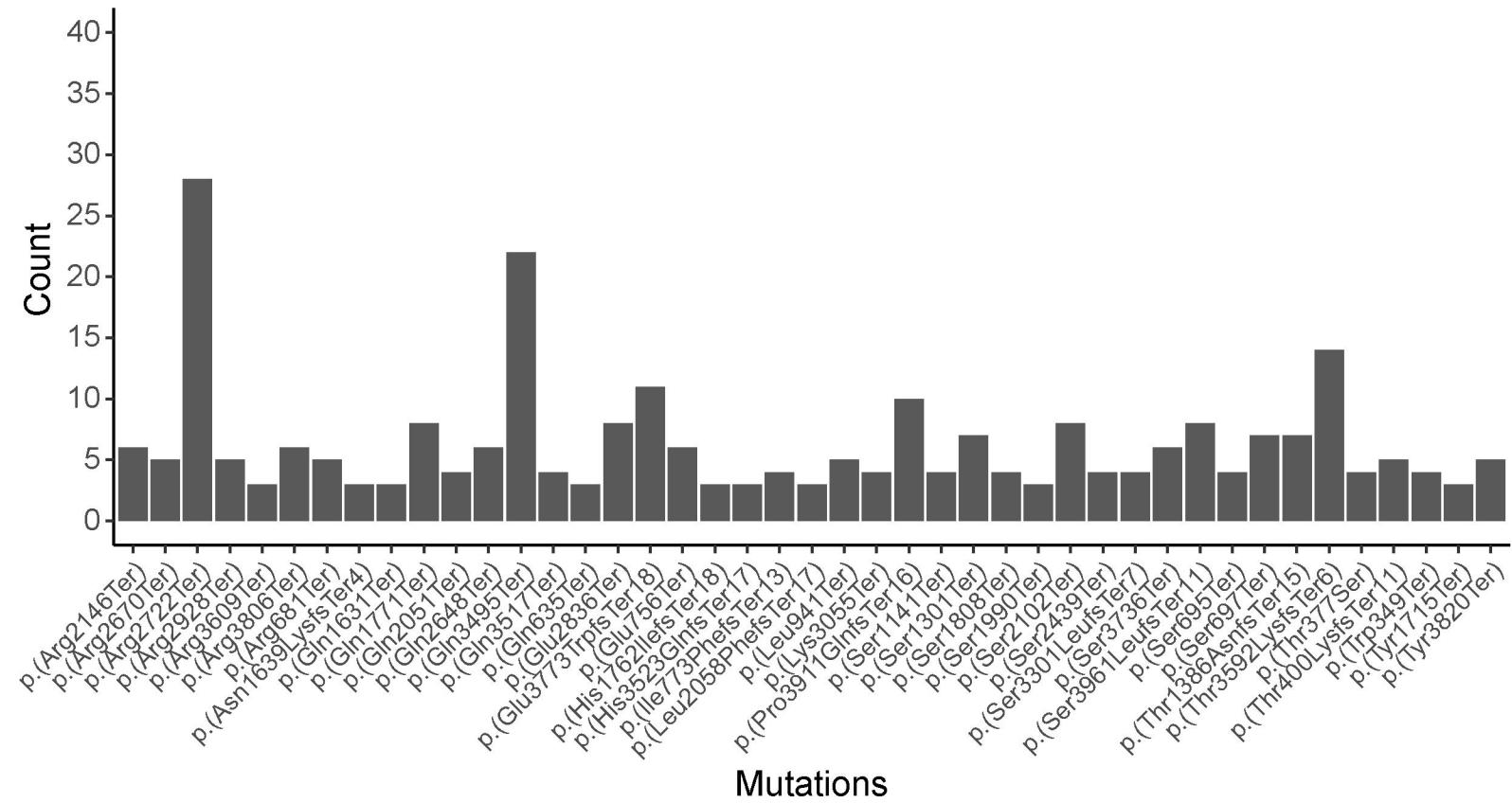
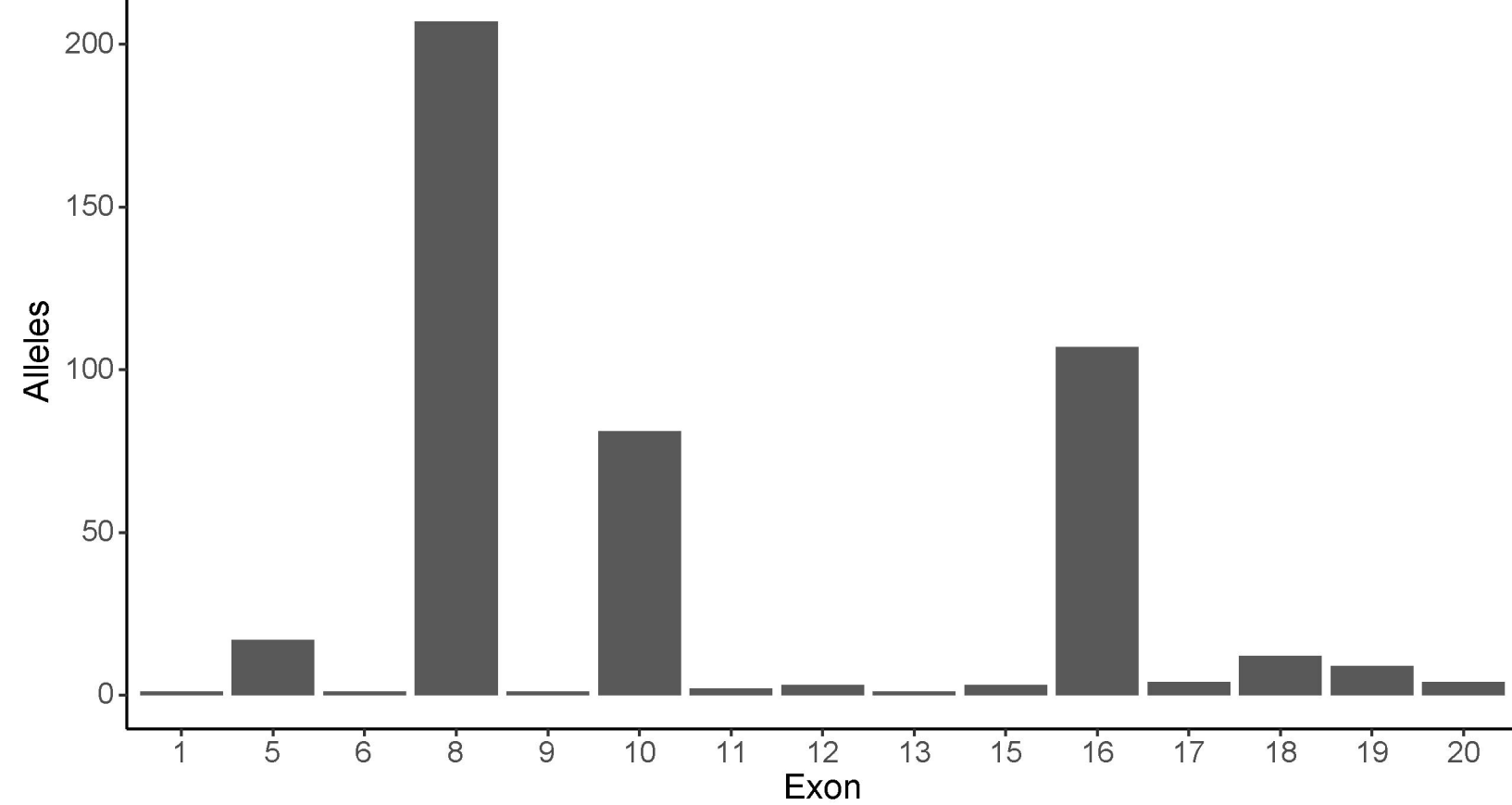
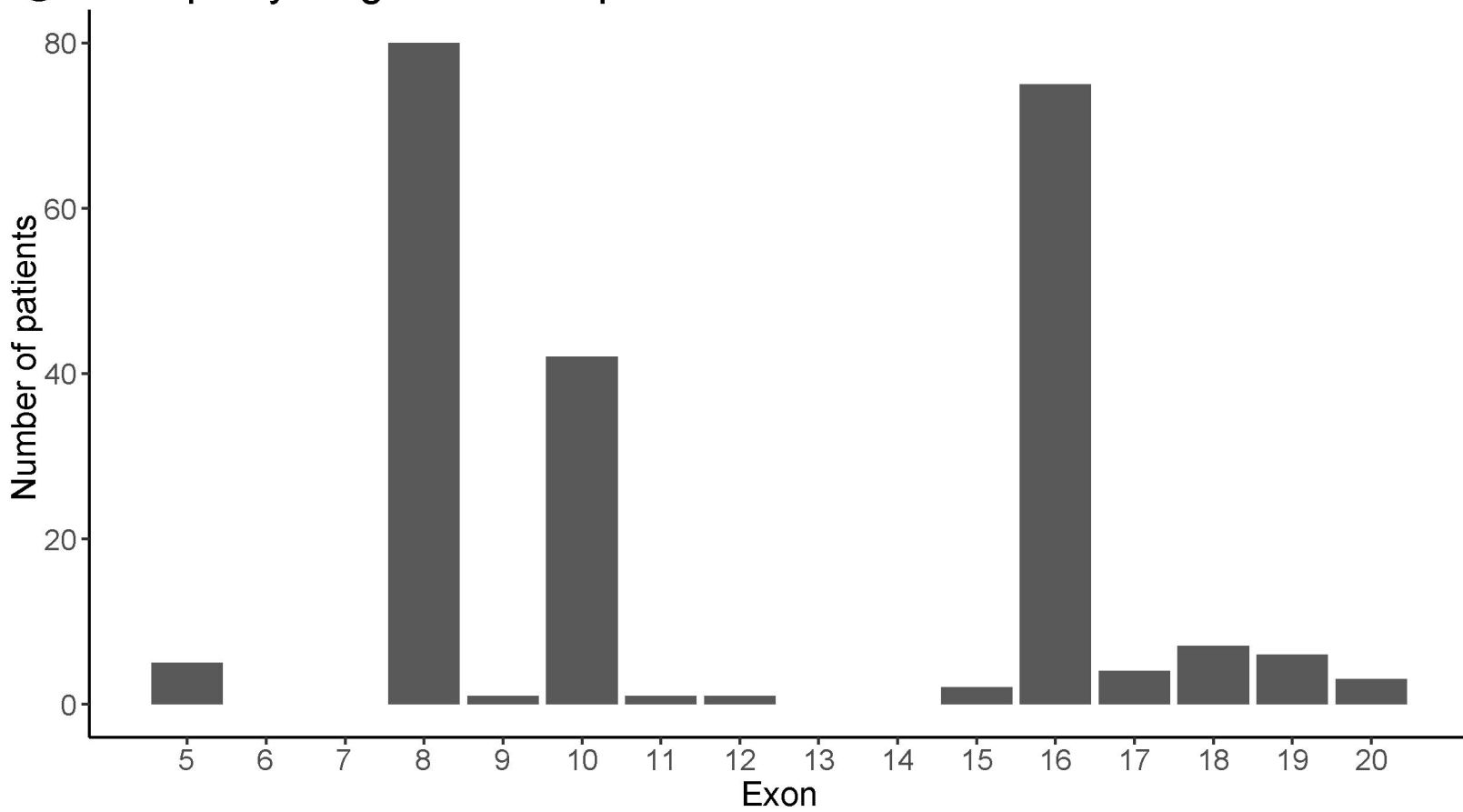
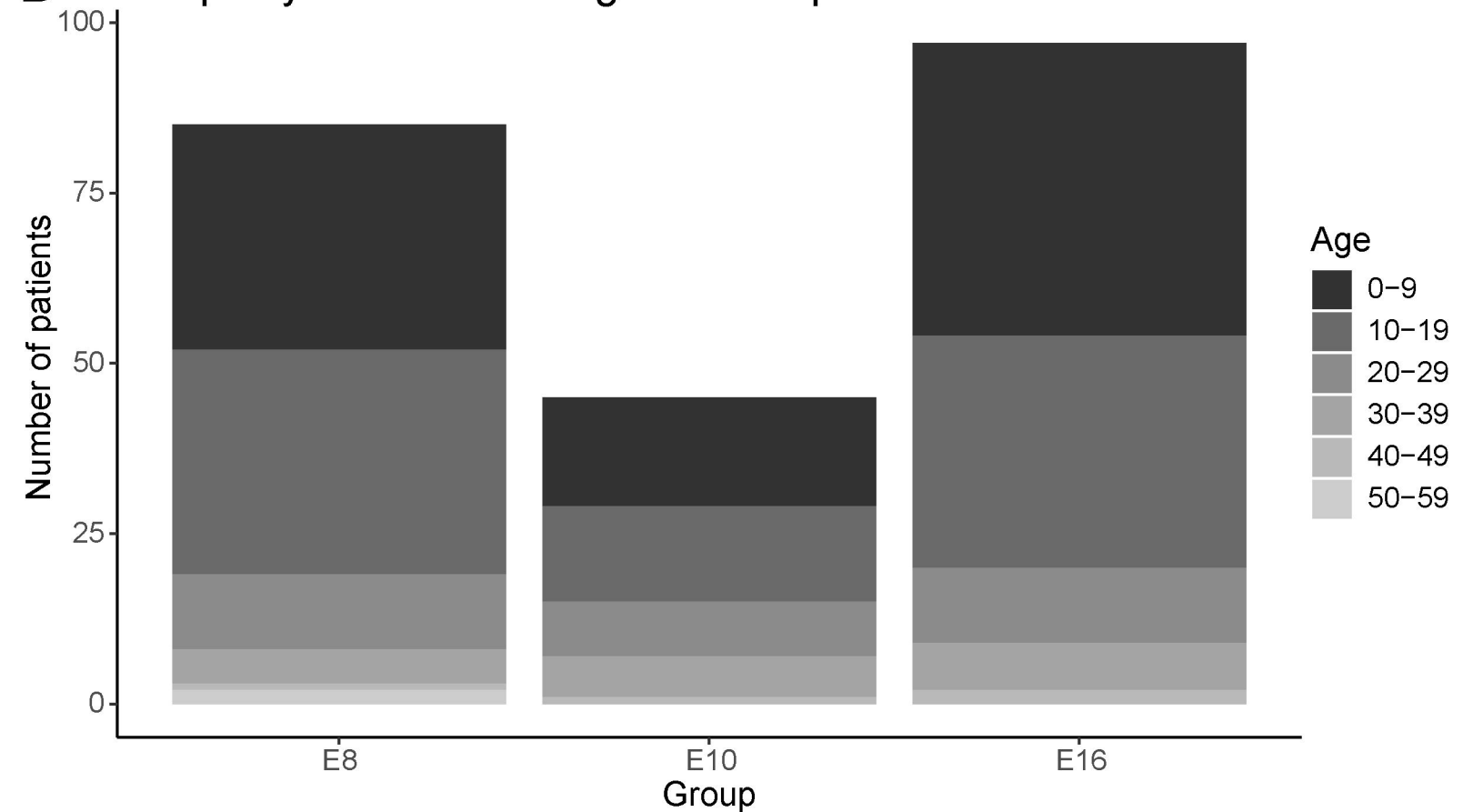
- 753 10.1007/s00125-006-0227-2.
- 754 Piñeiro-Gallego, T., Cortón, M., Ayuso, C., Baiget, M., and Valverde, D. (2012). Molecular
755 approach in the study of Alström syndrome: analysis of ten Spanish families. *Mol.*
756 *Vis.* 18, 1794–1802. Available at:
757 <https://www.ncbi.nlm.nih.gov/pubmed/22876109>.
- 758 Redin, C., Le Gras, S., Mhamdi, O., Geoffroy, V., Stoetzel, C., Vincent, M. C., et al. (2012).
759 Targeted high-throughput sequencing for diagnosis of genetically heterogeneous
760 diseases: Efficient mutation detection in Bardet-Biedl and Alström Syndromes. *J.*
761 *Med. Genet.* 49, 502–512. doi: 10.1136/jmedgenet-2012-100875.
- 762 Rethanavelu, K., Fung, J. L. F., Chau, J. F. T., Pei, S. L. C., Chung, C. C. Y., Mak, C. C. Y., et
763 al. (2020). Phenotypic and mutational spectrum of 21 Chinese patients with
764 Alström syndrome. *Am. J. Med. Genet. Part A* 182, 279–288. doi:
765 10.1002/ajmg.a.61412.
- 766 Russell-Eggitt, I. M., Clayton, P. T., Coffey, R., Kriss, A., Taylor, D. S. I., and Taylor, J. F. N.
767 (1998). Alstrom syndrome: Report of 22 cases and literature review.
768 *Ophthalmology* 105, 1274–1280. doi: 10.1016/S0161-6420(98)97033-6.
- 769 Saadah, O. I., Banaganapalli, B., Kamal, N. M., Sahly, A. N., Alsufyani, H. A., Mohammed,
770 A., et al. (2021). Identification of a Rare Exon 19 Skipping Mutation in ALMS1 Gene
771 in Alström Syndrome Patients From Two Unrelated Saudi Families. *Front. Pediatr.*
772 9, 1–9. doi: 10.3389/fped.2021.652011.
- 773 Sanchez-Navarro, I., R. J. da Silva, L., Blanco-Kelly, F., Zurita, O., Sanchez-Bolivar, N.,
774 Villaverde, C., et al. (2018). Combining targeted panel-based resequencing and
775 copy-number variation analysis for the diagnosis of inherited syndromic
776 retinopathies and associated ciliopathies. *Sci. Rep.* 8, 5285. doi: 10.1038/s41598-
777 018-23520-1.
- 778 Sanyoura, M., Woudstra, C., Halaby, G., Baz, P., Senée, V., Guillausseau, P. J., et al.
779 (2014). A novel ALMS1 splice mutation in a non-obese juvenile-onset insulin-
780 dependent syndromic diabetic patient. *Eur. J. Hum. Genet.* 22, 140–143. doi:
781 10.1038/ejhg.2013.87.

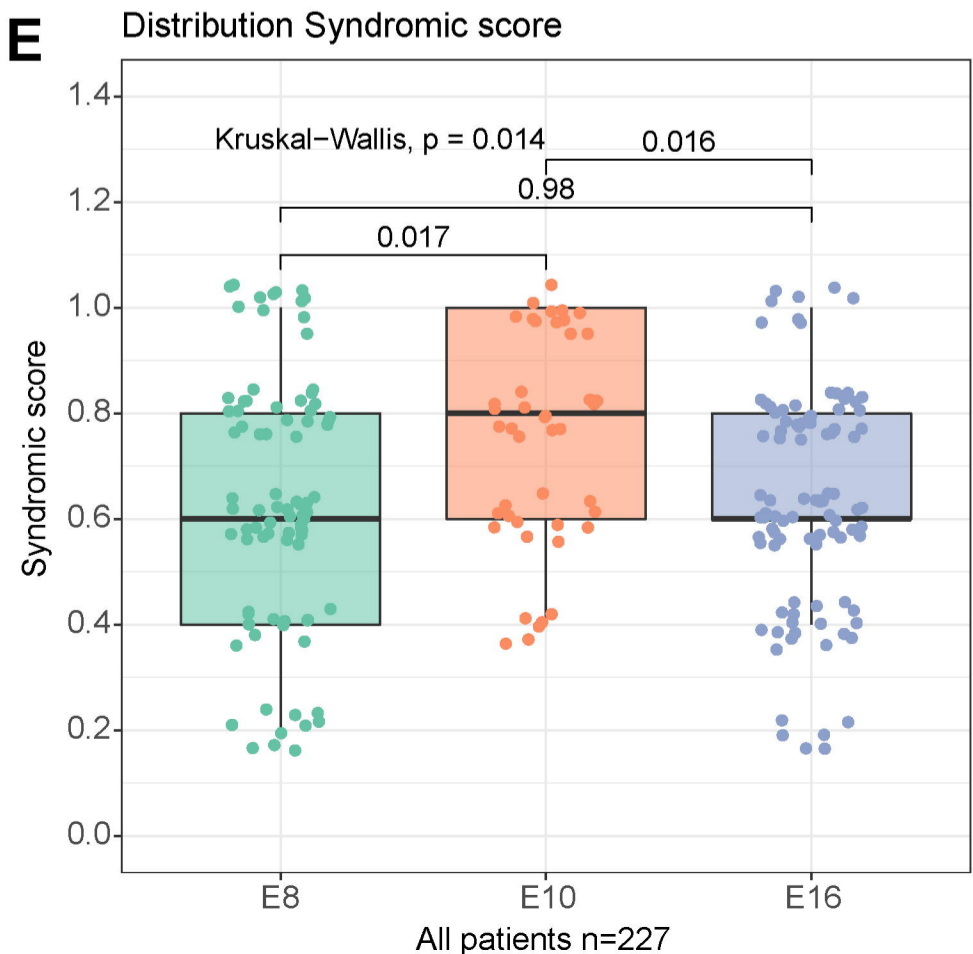
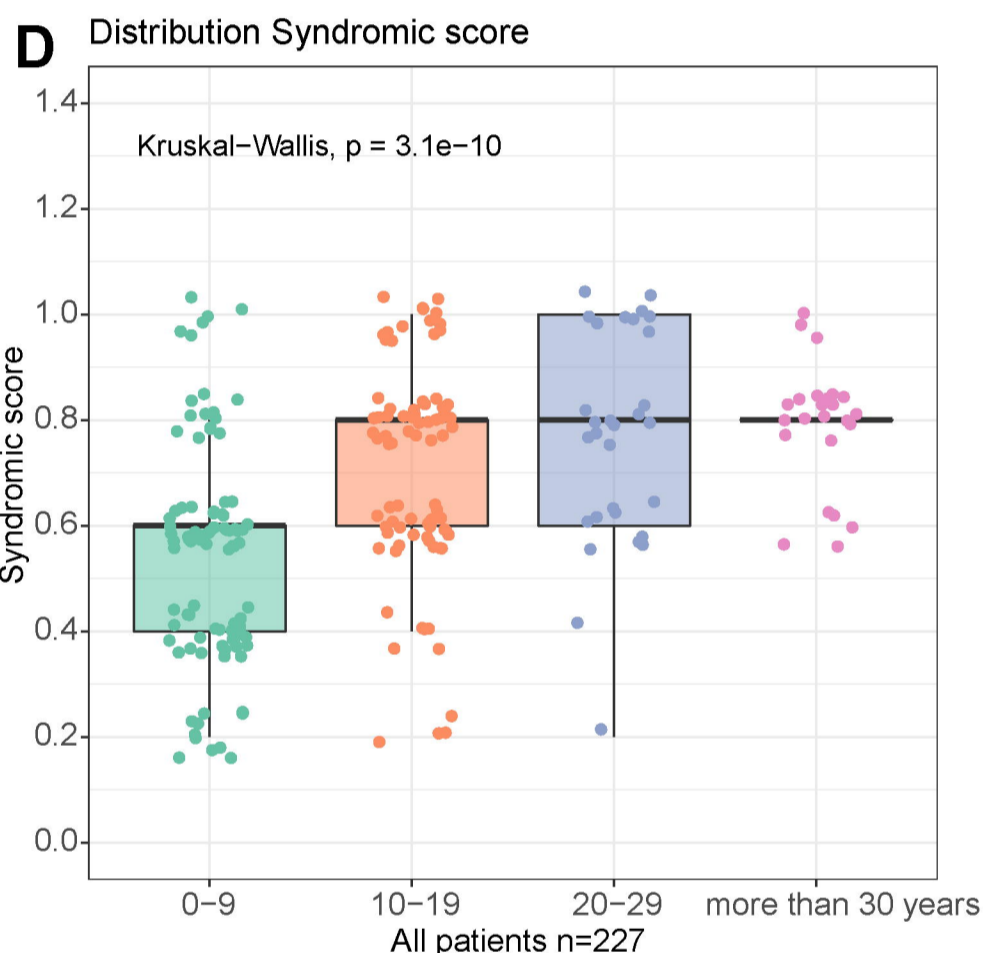
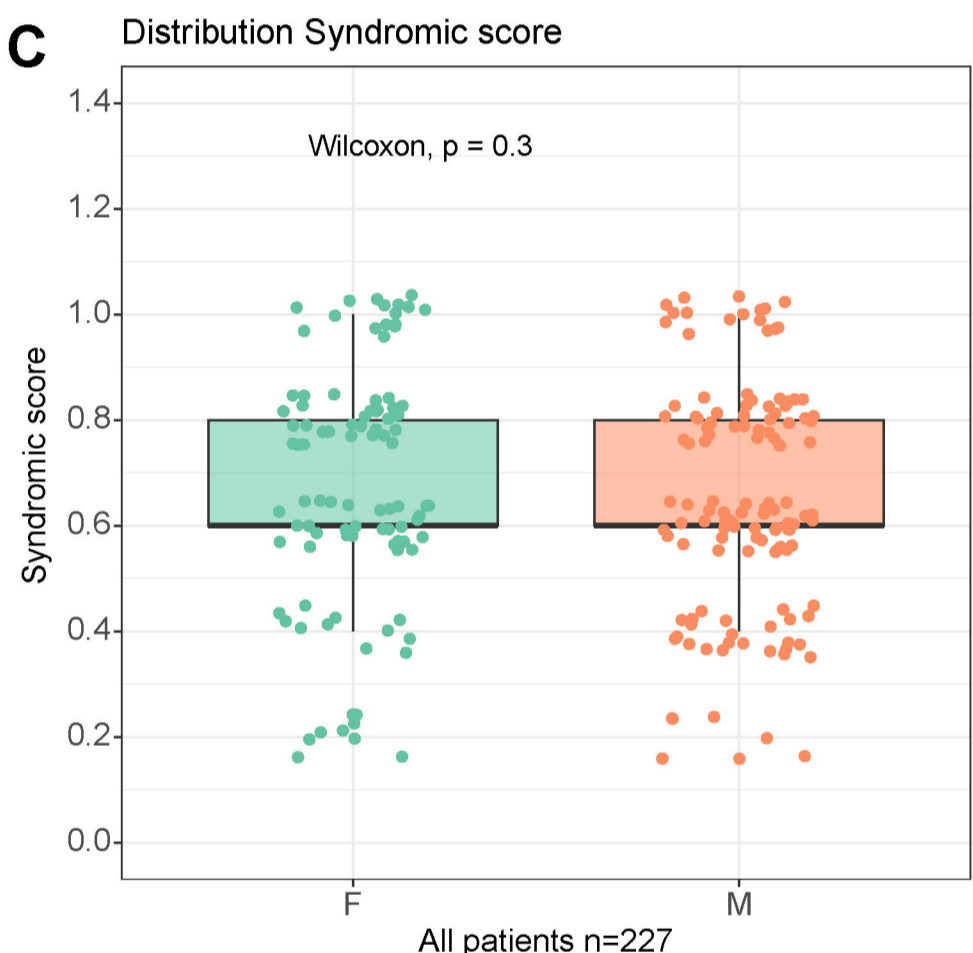
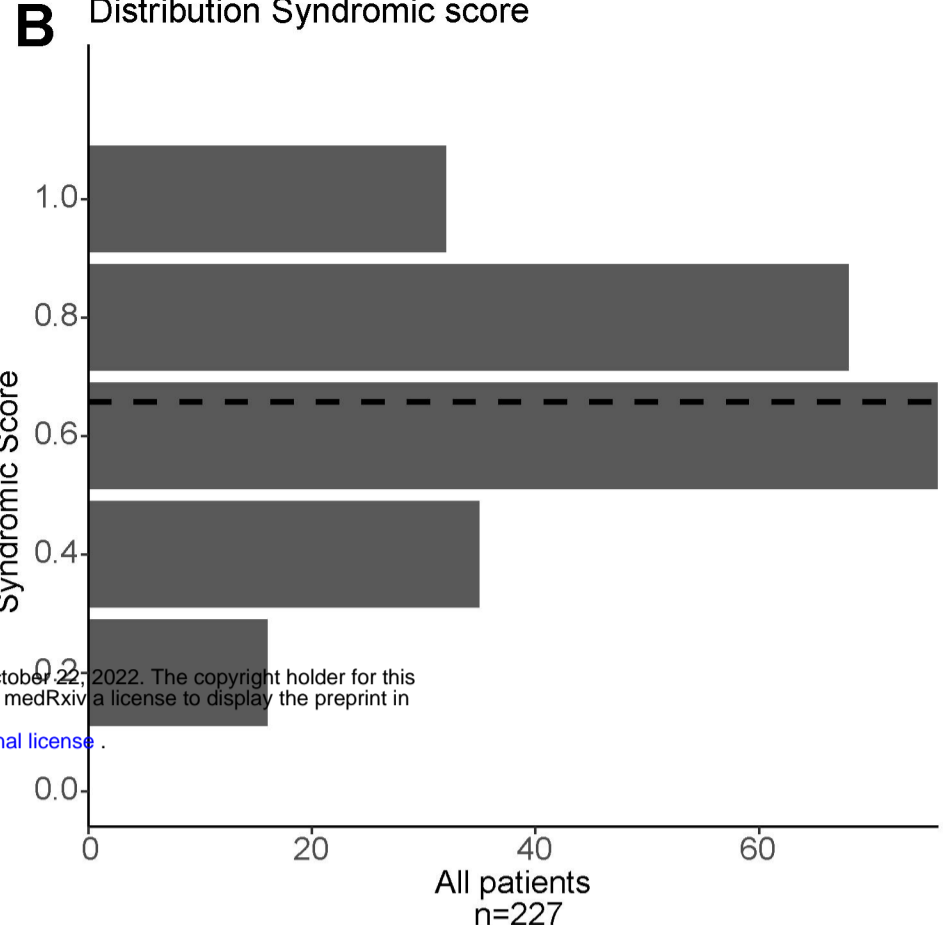
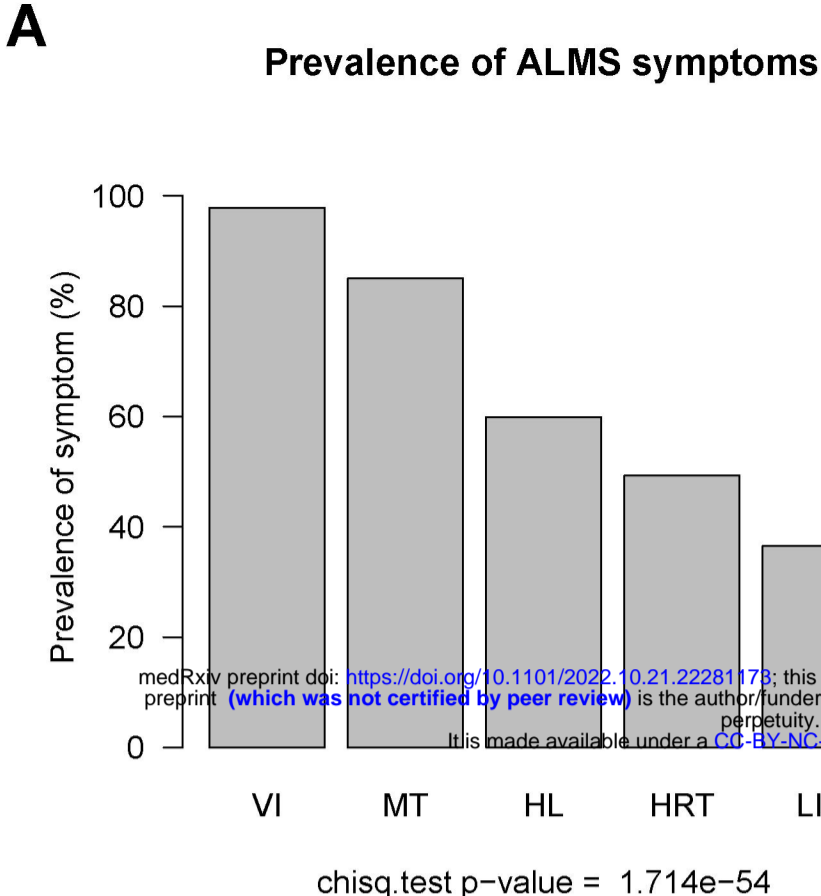
- 782 Sathya Priya, C., Sen, P., Umashankar, V., Gupta, N., Kabra, M., Kumaramanickavel, G.,
783 et al. (2015). Mutation spectrum in BBS genes guided by homozygosity mapping in
784 an Indian cohort. *Clin. Genet.* 87, 161–166. doi: 10.1111/cge.12342.
- 785 Satman, I., Yilmaz, M. T., Gürsoy, N., Karşıdağ, K., Dinççağ, N., Ovalı, T., et al. (2002).
786 Evaluation of insulin resistant diabetes mellitus in Alström syndrome: A long-term
787 prospective follow-up of three siblings. *Diabetes Res. Clin. Pract.* 56, 189–196. doi:
788 10.1016/S0168-8227(02)00004-9.
- 789 Sawyer, S. L., Hartley, T., Dymont, D. A., Beaulieu, C. L., Schwartzentruber, J., Smith, A.,
790 et al. (2016). Utility of whole-exome sequencing for those near the end of the
791 diagnostic odyssey: time to address gaps in care. *Clin. Genet.* 89, 275–284. doi:
792 10.1111/CGE.12654.
- 793 Shurygina, M. F., Parker, M. A., Schlechter, C. L., Chen, R., Li, Y., Weleber, R. G., et al.
794 (2019). A case report of two siblings with Alstrom syndrome without hearing loss
795 associated with two new ALMS1 variants. *BMC Ophthalmol.* 19, 1–9. doi:
796 10.1186/s12886-019-1259-y.
- 797 Silan, F., Gur, S., Kadioglu, L. E., Yalcintepe, S. A., Ukinc, K., Uludag, A., et al. (2013).
798 Characteristic findings of alstrom syndrome with a case report. *Open J. Clin.*
799 *Diagnostics* 03, 75–77. doi: 10.4236/ojcd.2013.33014.
- 800 Spinelli, V., Girolami, F., Marrone, C., Consigli, V., Iascone, M., Passantino, S., et al.
801 (2020). A rare case of pediatric cardiomyopathy: Alström syndrome identified by
802 gene panel analysis. *Clin. Case Reports* 8, 3369–3373. doi: 10.1002/ccr3.3327.
- 803 Srikrupa, N. N., Sripriya, S., Pavithra, S., Sen, P., Gupta, R., and Mathavan, S. (2021).
804 Whole-exome sequencing identifies two novel ALMS1 mutations in Indian patients
805 with Leber congenital amaurosis. *Hum. Genome Var.* 8. doi: 10.1038/s41439-021-
806 00143-z.
- 807 Supek, F., Lehner, B., and Lindeboom, R. G. H. (2021). To NMD or Not To NMD:
808 Nonsense-Mediated mRNA Decay in Cancer and Other Genetic Diseases. *Trends*
809 *Genet.* 37, 657–668. doi: 10.1016/J.TIG.2020.11.002.
- 810 Taokesen, M., Collin, G. B., Evsikov, A. V., Güzel, A., Özgül, R. K., Marshall, J. D., et al.

- 811 (2012). Novel Alu retrotransposon insertion leading to Alström syndrome. *Hum.*
812 *Genet.* 131, 407–413. doi: 10.1007/s00439-011-1083-9.
- 813 Taşdemir, S., Güzel-Ozantürk, A., Marshall, J., Collin, G., Özgül, R., Narin, N., et al. (2013).
814 Atypical presentation and a novel mutation in ALMS1: implications for clinical and
815 molecular diagnostic strategies for Alström syndrome. *Clin. Genet.* 83, 96–98. doi:
816 10.1111/J.1399-0004.2012.01883.X.
- 817 Titomanlio, L., De Brasi, D., Buoninconti, A., Sperandeo, M. P., Pepe, A., Andria, G., et al.
818 (2004). Alström syndrome: Intrafamilial phenotypic variability in sibs with a novel
819 nonsense mutation of the ALMS1 gene [3]. *Clin. Genet.* 65, 156–157. doi:
820 10.1111/j.0009-9163.2004.00204.x.
- 821 Torkamandi, S., Rezaei, S., Mirfakhraei, R., Askari, M., Piltan, S., and Gholami, M. (2020).
822 Whole exome sequencing identified two homozygous ALMS1 mutations in an
823 Iranian family with Alström syndrome. *Gene* 727, 144228. doi:
824 10.1016/j.gene.2019.144228.
- 825 Tsai, M. C., Yu, H. W., Liu, T., Chou, Y. Y., Chiou, Y. Y., and Chen, P. C. (2018). Rare
826 compound heterozygous frameshift mutations in ALMS1 gene identified through
827 exome sequencing in a Taiwanese patient with Alström syndrome. *Front. Genet.* 9,
828 1–5. doi: 10.3389/fgene.2018.00110.
- 829 van Breugel, M., Rosa e Silva, I., and Andreeva, A. (2022). Structural validation and
830 assessment of AlphaFold2 predictions for centrosomal and centriolar proteins and
831 their complexes. *Commun. Biol.* 5, 1–10. doi: 10.1038/s42003-022-03269-0.
- 832 Waldman, M., Han, J. C., Reyes-Capo, D. P., Bryant, J., Carson, K. A., Turkbey, B., et al.
833 (2018). Alström syndrome: Renal findings in correlation with obesity, insulin
834 resistance, dyslipidemia and cardiomyopathy in 38 patients prospectively
835 evaluated at the NIH clinical center. *Mol. Genet. Metab.* 125, 181–191. doi:
836 10.1016/j.ymgme.2018.07.010.
- 837 Wang, C., Luo, X., Wang, Y., Liu, Z., Wu, S., Wang, S., et al. (2021). Novel mutations of
838 the ALMS1 gene in patients with alström syndrome. *Intern. Med.* 60, 3721–3728.
839 doi: 10.2169/internalmedicine.6467-20.

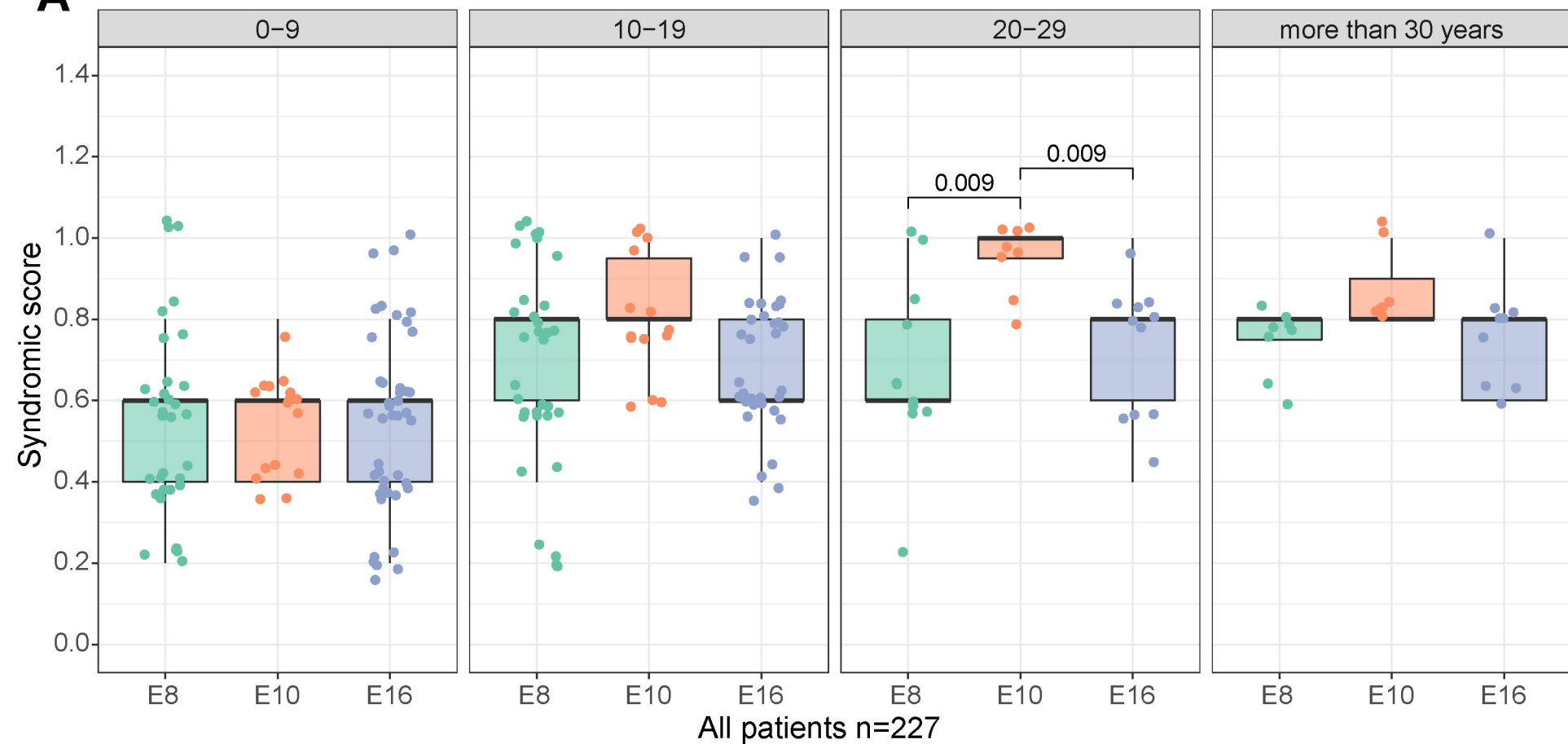
- 840 Wang, S., Zhang, Q., Zhang, X., Wang, Z., and Zhao, P. (2016a). Clinical and genetic
841 characteristics of Leber congenital amaurosis with novel mutations in known genes
842 based on a Chinese eastern coast Han population. *Graefe's Arch. Clin. Exp.*
843 *Ophthalmol.* 254, 2227–2238. doi: 10.1007/s00417-016-3428-5.
- 844 Wang, X., Feng, Y., Li, J., Zhang, W., Wang, J., Lewis, R. A., et al. (2016b). Retinal diseases
845 caused by mutations in genes not specifically associated with the clinical diagnosis.
846 *PLoS One* 11, 1–12. doi: 10.1371/journal.pone.0165405.
- 847 Wang, X., Wang, H., Cao, M., Li, Z., Chen, X., Patenia, C., et al. (2011). Whole-exome
848 sequencing identifies ALMS1, IQCB1, CNGA3, and MYO7A mutations in patients
849 with Leber congenital amaurosis. *Hum. Mutat.* 32, 1450–1459. doi:
850 10.1002/humu.21587.
- 851 Weiss, S., Cohen, L., Ben-Yosef, T., Ehrenberg, M., and Goldenberg-Cohen, N. (2019).
852 Late diagnosis of Alstrom syndrome in a Yemenite-Jewish child. *Ophthalmic Genet.*
853 40, 7–11. doi: 10.1080/13816810.2018.1561900.
- 854 Wicher, K., Bajon, T., Wawrocka, A., Skorczyk-Werner, A., Niedziela, M., and
855 Krawczynski, M. R. (2017). Alström syndrome: A case report of the Polish family and
856 a brief review of the differential diagnosis. *Pediatr. Pol.* 92, 781–785. doi:
857 10.1016/j.pepo.2017.07.003.
- 858 Worthley, M. I., and Zeitz, C. J. (2001). Case of Alström syndrome with late presentation
859 dilated cardiomyopathy. *Intern. Med. J.* 31, 569–570. doi: 10.1046/j.1445-
860 5994.2001.00140.x.
- 861 Wu, W. C., Chen, S. C., Dia, C. Y., Yu, M. L., Hsieh, M. Y., Lin, Z. Y., et al. (2003). Alström
862 syndrome with acute pancreatitis: A case report. *Kaohsiung J. Med. Sci.* 19, 358–
863 360. doi: 10.1016/s1607-551x(09)70438-3.
- 864 Xu, Y., Guan, L., Xiao, X., Zhang, J., Li, S., Jiang, H., et al. (2016). ALMS1 null mutations: A
865 common cause of Leber congenital amaurosis and early-onset severe cone-rod
866 dystrophy. *Clin. Genet.* 89, 442–447. doi: 10.1111/cge.12617.
- 867 Yang, L., Li, Z., Mei, M., Fan, X., Zhan, G., Wang, H., et al. (2017). Whole genome
868 sequencing identifies a novel ALMS1 gene mutation in two Chinese siblings with

- 869 Alström syndrome. *BMC Med. Genet.* 18, 1–6. doi: 10.1186/s12881-017-0418-3.
- 870 Zhang, J. J., Wang, J. Q., Sun, M. Q., Xu, D., Xiao, Y., Lu, W. L., et al. (2021). Alström
871 syndrome with a novel mutation of ALMS1 and Graves' hyperthyroidism: A case
872 report and review of the literature. *World J. Clin. Cases* 9, 3200–3211. doi:
873 10.12998/wjcc.v9.i13.3200.
- 874 Zhou, C., Xiao, Y., Xie, H., Liu, S., and Wang, J. (2020). A novel variant in ALMS1 in a
875 patient with Alström syndrome and prenatal diagnosis for the fetus in the family: A
876 case report and literature review. *Mol. Med. Rep.* 22, 3271–3276. doi:
877 10.3892/mmr.2020.11398.
- 878 Zmyslowska, A., Borowiec, M., Antosik, K., Ploski, R., Ciechanowska, M., Iwaniszewska,
879 B., et al. (2016). Genetic evaluation of patients with Alström syndrome in the Polish
880 population. *Clin. Genet.* 89, 448–453. doi: 10.1111/cge.12656.
- 881

A Count of mutations in ALMS cohort**B** Number of mutated alleles in ALMS1 exons**C** Groups by longest transcript**D** Groups by clusterised longest transcript



medRxiv preprint doi: <https://doi.org/10.1101/2022.10.21.22281173>; this version posted October 22, 2022. The copyright holder for this preprint (which was not certified by peer review) is the author/funder, who has granted medRxiv a license to display the preprint in perpetuity. It is made available under a [CC-BY-NC-ND 4.0 International license](#).

A Distribution Syndromic score**B** Prevalence by symptom in each group