

1 ***ADRA2A* and *IRX1* are putative risk genes for Raynaud’s phenomenon**

2 Sylvia Hartmann<sup>1</sup>, Summaira Yasmeen<sup>1</sup>, Benjamin M Jacobs<sup>2</sup>, Spiros Denaxas<sup>3,4,5,6</sup>, Munir  
3 Pirmohamed<sup>7</sup>, Eric R. Gamazon<sup>8</sup>, Mark J. Caulfield<sup>9</sup>, Genes & Health Research Team\*, Harry  
4 Hemingway<sup>3,4,6</sup>, Maik Pietzner<sup>1,10,11,a</sup>, Claudia Langenberg<sup>1,10,11,a</sup>

5 <sup>1</sup>Computational Medicine, Berlin Institute of Health at Charité – Universitätsmedizin Berlin, Berlin,  
6 Germany

7 <sup>2</sup>Preventive Neurology Unit, Wolfson Institute of Population Health, Queen Mary University of  
8 London, London, UK

9 <sup>3</sup>Institute of Health Informatics, University College London, London, UK

10 <sup>4</sup>Health Data Research UK, London, UK

11 <sup>5</sup>British Heart Foundation Data Science Centre, London, UK

12 <sup>6</sup>National Institute of Health Research University College London Hospitals Biomedical Research  
13 Centre, London, UK

14 <sup>7</sup>Department of Pharmacology and Therapeutics, The Wolfson Centre for Personalised Medicine,  
15 University Liverpool, Liverpool, UK, Liverpool, UK

16 <sup>8</sup>Division of Genetic Medicine and Vanderbilt Genetics Institute, Vanderbilt University Medical  
17 Center, Nashville, TN 37232, USA

18 <sup>9</sup>William Harvey Research Institute, Queen Mary University of London, London, UK

19 <sup>10</sup>MRC Epidemiology Unit, University of Cambridge, Cambridge, UK

20 <sup>11</sup> Precision Healthcare University Research Institute, Queen Mary University of London, London, UK

21 \*A list of authors and their affiliations appears at the end of the paper

22 <sup>a</sup>these authors jointly supervised the work

23 **Correspondence**

24 Prof Claudia Langenberg ([claudia.langenberg@bih-charite.de](mailto:claudia.langenberg@bih-charite.de))

25 Dr Maik Pietzner ([maik.pietzner@bih-charite.de](mailto:maik.pietzner@bih-charite.de) )

26

27

28

29 **Abstract**

30 Raynaud’s phenomenon (RP) is a common vasospastic disorder that causes severe pain and ulcers, but  
31 despite its high reported heritability, no causal genes have been robustly identified. We conducted a  
32 genome-wide association study including 5,147 RP cases and 439,294 controls, based on diagnoses  
33 from electronic health records, and identified three unreported genomic regions associated with the  
34 risk of RP ( $p < 5 \times 10^{-8}$ ). We prioritized *ADRA2A* (rs7090046, odds ratio (OR) per allele: 1.26; 95%-CI: 1.20-  
35 1.31;  $p < 9.6 \times 10^{-27}$ ) and *IRX1* (rs12653958, OR: 1.17; 95%-CI: 1.12-1.22,  $p < 4.8 \times 10^{-13}$ ) as candidate causal  
36 genes through integration of gene expression in disease relevant tissues. We further identified a likely  
37 causal detrimental effect of low fasting glucose levels on RP risk ( $r_G = -0.21$ ;  $p\text{-value} = 2.3 \times 10^{-3}$ ), and  
38 systematically highlighted drug repurposing opportunities, like the antidepressant mirtazapine. Our  
39 results provide the first robust evidence for a strong genetic contribution to RP and highlight a so far  
40 underrated role of  $\alpha_{2A}$ -adrenoreceptor signalling, encoded at *ADRA2A*, as a possible mechanism for  
41 hypersensitivity to catecholamine-induced vasospasms.

42

43

## 44 Introduction

45 Raynaud's phenomenon (RP) is a common episodic, vasospastic disorder that affects 2-5% of the  
46 population and can severely affect an individual's quality of life by causing pain or even ulcers<sup>1-3</sup>. RP  
47 typically manifests with bi- or triphasic colour change in fingers and toes because of vasospasms in  
48 arteriovenous anastomoses responsible for thermoregulation, that can be triggered by cold or  
49 emotional stress<sup>4</sup>. The causes for the more common form of primary RP are largely unknown<sup>4,5</sup>, while  
50 secondary RP is diagnosed as a consequence of connective tissue diseases, like systemic lupus  
51 erythematosus (SLE) or systemic sclerosis (SSc), or triggered by use of drugs such as beta-blockers.  
52 Management of RP is predominantly limited to the avoidance of triggers and evidence for medical  
53 treatment is generally weak. Repurposed vasodilators are the first line treatment if pharmacological  
54 intervention is required due to progressive frequency of vasospastic attacks<sup>6</sup>, although only calcium  
55 channel blockers have so far been shown to lead to a significant and reproducible reduction in the  
56 frequency of vasospastic attacks<sup>7</sup>. However, use of systemic drugs for localized symptoms puts patients  
57 at risk of generalised adverse effects, such as hypotension. While there are now trials investigating  
58 local application of botulinum toxin to mitigate vasospastic effects with early promising results<sup>8</sup>, a  
59 better understanding of the underlying mechanisms is needed to develop safe and effective  
60 treatments.

61 RP is highly heritable with estimates of 55-64% being reported<sup>9,10</sup>, but previous candidate gene  
62 studies<sup>11,12</sup>, like at serotonin receptors<sup>13</sup>, and an early, small (n=640 cases) genome-wide association  
63 study (GWAS)<sup>14</sup> failed to provide evidence for any robustly associated regions or genes. In-depth  
64 investigation and integration of detailed information from primary and secondary healthcare records  
65 with genetic array data now provides the opportunity to study under-investigated diseases with  
66 diagnostic specificity at unprecedented scale.

67 Here, we present the so far largest GWAS for RP including 5,147 cases in the UK Biobank cohort<sup>15</sup> and  
68 report two robust and strong ( $p < 4.8 \times 10^{-13}$ ) novel loci. We highlight two independent disease  
69 mechanisms supported by those loci that challenge and advance our current understanding of primary  
70 RP, with *ADRA2A* highlighting the role of  $\alpha_{2A}$ -adrenoreceptors and *IRX1* as a putative regulator of  
71 vasodilation by altering prostaglandin and/or bradykinin responsiveness.

72

## 73 Results

74 We identified a total of 5,147 RP cases and 439,294 controls of European descent included in the  
75 genetic analyses (**Supplementary Tab. 1** and **Supplementary Fig. 1**) based on collation and evidence  
76 of absence or presence of diagnostic codes from electronic health records (ICD-10 codes: I73.0, I73.00,  
77 I73.01; CTV3/Read2: G730., G7300, G7301, G730z, XE0VQ), including 2,185 prevalent cases and 2,962  
78 incident cases. We followed the recommendation by Wigley *et al.*<sup>4</sup> to summarize all patients with a  
79 relevant code under the term RP (Raynaud’s phenomenon) rather than Raynaud’s syndrome.

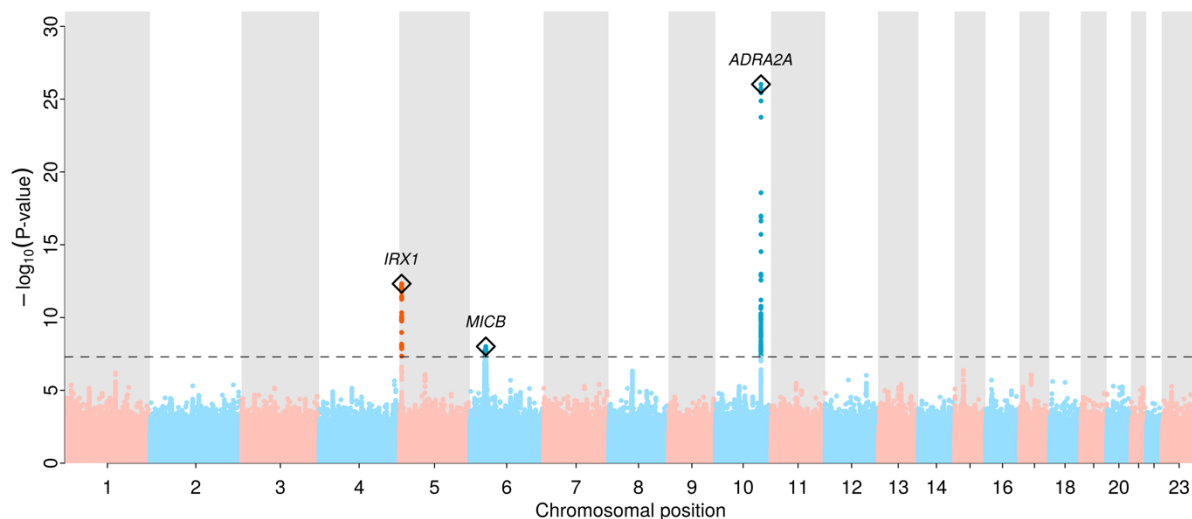
### 80 Genome-wide association analysis

81 We identified a total of three genome-wide significant novel loci ( $p < 5.0 \times 10^{-8}$ , minor allele frequency  
82 (MAF) 14.3%-31.1%) associated with RP (**Fig. 1** and **Tab. 1**; regional association plots in **Supplementary**  
83 **Fig. 2**). Two of which met a more stringent significance threshold ( $p < 1.0 \times 10^{-9}$ ; **Tab. 1**), which we  
84 consider as tier 1 findings of which one had previously been shown to increase the risk of myocardial  
85 infarction (rs12653958). All lead variants increased the risk for RP by ~20% per copy of the minor allele  
86 (**Tab. 1**) and resided in intergenic regions with no obvious functional variants in linkage disequilibrium  
87 (LD;  $r^2 > 0.6$ ) and were of low predicted impact (range: 0.36 – 3.41). Despite the established sex-  
88 difference of RP, we did not find evidence that effects of any of the identified lead signals differed  
89 between men and women (all p-values for interaction  $> 0.05$ ; **Supplementary Tab. 2**). We estimated a  
90 single nucleotide polymorphism (SNP)-based heritability on the liability scale of 7.7% (95%-CI: 4.8-  
91 10.6%,  $p < 2.4 \times 10^{-7}$ ) with little evidence of genomic inflation (LD-score intercept 1.01; **Supplementary**  
92 **Fig. 3**).

Tier	SNP	Chr	Position	Alleles	MAF	OR (95%-CI)	P value	Closest gene*
1	rs7090046	10	112860930	A/G	0.31	1.26 (1.20, 1.31)	$9.58 \times 10^{-27}$	<i>ADRA2A</i>
1	rs12653958	5	4032849	A/G	0.30	1.16 (1.12, 1.22)	$4.76 \times 10^{-13}$	<i>IRX1</i>
2	rs3094013	6	31434366	G/A	0.14	1.17 (1.11, 1.24)	$9.73 \times 10^{-9}$	<i>MICB</i>

93 **Table 1 Regional lead variants for the 8 loci significantly associated with Raynaud’s phenomenon** Tier =  
94 categorization whether genetic loci met a stringent Bonferroni threshold for significance (tier 1;  $p < 1.0 \times 10^{-9}$ ) or  
95 the standard genome-wide significance threshold (tier 2;  $p < 5.0 \times 10^{-8}$ ). N = 444,441, 5,147 cases and 439,294  
96 controls. Chr = Chromosome; MAF = minor allele frequency; OR = odds ratio from logistic regression models;  
97 Alleles are given as effect allele/non-effect allele; \*protein coding gene in italics

98 To evaluate whether genetic findings were specific for the development of RP or driven by associations  
99 with diseases leading to secondary RP, we performed sensitivity analyses based on a more stringent  
100 definition of primary RP (3,505 cases, 68.1%) that excluded potential secondary cases (see **Methods**).  
101 Effect estimates for both tier 1 loci were highly consistent in size and direction (**Supplementary Tab.**  
102 **3**) and remained genome-wide significant ( $p < 1.4 \times 10^{-12}$  for both), indicating their potential role in the  
103 idiopathic origin of primary RP, whereas the association within the MHC region was attenuated.



104

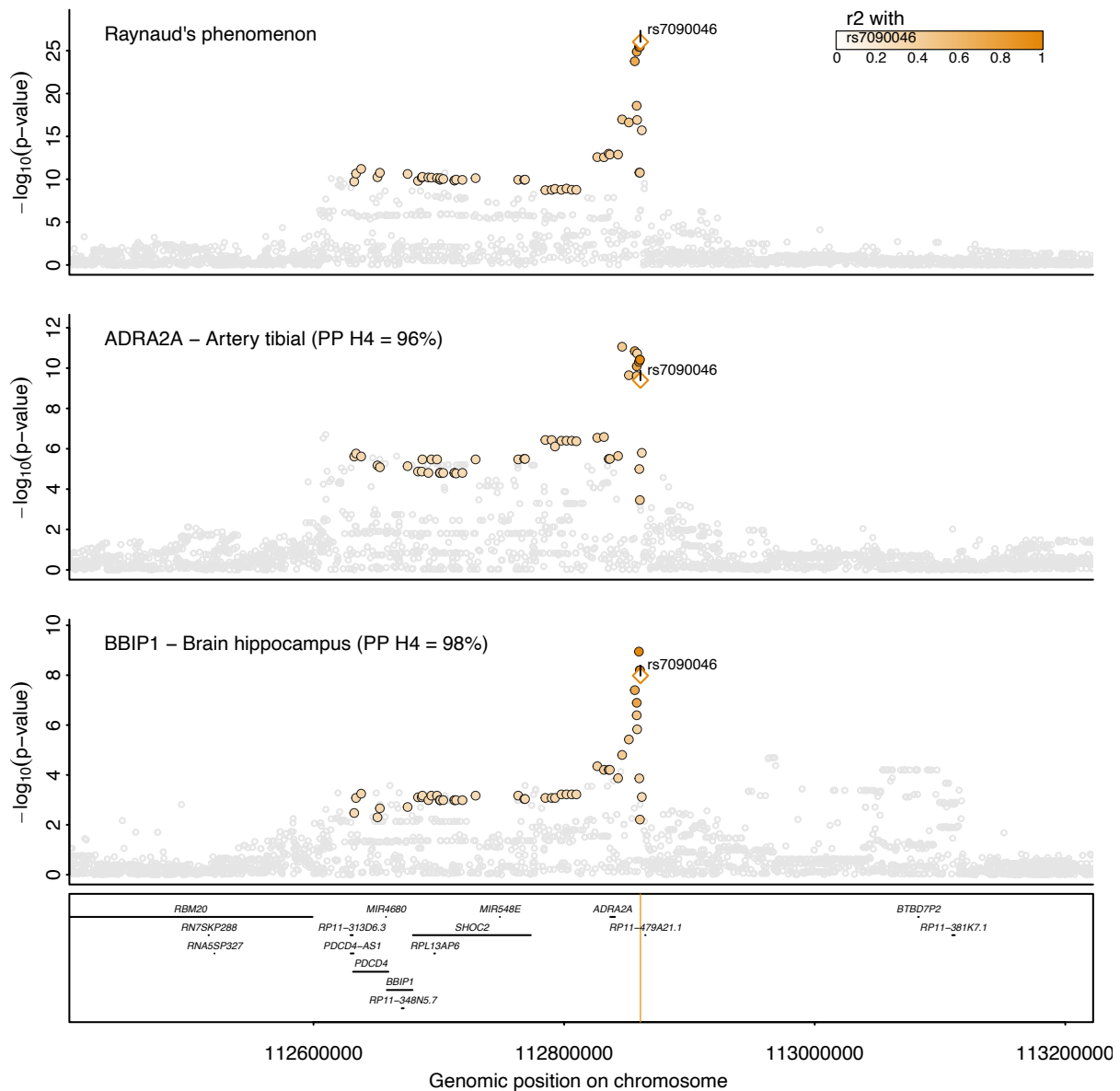
105 **Figure 1 Manhattan plot of genome-wide association results for Raynaud's phenomenon (5,147 RP cases and**  
106 **439,294 controls)** Distribution of RP-associated single nucleotide polymorphisms across the genome,  $-\log_{10}(P$ -  
107 **values)** from logistic regression models are plotted for each variant. The grey dashed line indicates the genome-  
108 **wide significant threshold at  $p=5 \times 10^{-8}$ .** Regional sentinel variants at significant loci are highlighted with a diamond  
109 **and the closest gene, if any, is annotated.**

110 *ADRA2A* and *BBIP1* are likely effector genes at 10q25.2

111 The lead variant at this strongest locus, rs7090046, is located 24.1k bp downstream to *ADRA2A* and  
112 181.9k bases downstream from *BBIP1* (**Fig. 2**) and Bayesian fine-mapping identified a 95%-credible set  
113 of only 4 variants (see **Methods**), comprising rs7090046, rs1343449, rs1343451, and rs7084501 with  
114 posterior inclusion probabilities (PIP) of 48.6%, 23.6%, 12.5% and 12.6% of the GWAS signal,  
115 respectively. Variant rs1343449 is a reported gene expression quantitative trait locus (cis-eQTL) for  
116 *ADRA2A* in artery tissue and statistical colocalization confirmed a shared genetic signal with RP with  
117 high confidence (tibial artery, posterior probability (PP) > 96%; **Fig. 2**), with the RP risk-increasing A-  
118 allele of rs7090046 being associated with higher *ADRA2A* expression ( $\beta=0.28$ ,  $p=1.0 \times 10^{-9}$ ). We also  
119 observed evidence of colocalization with *BBIP1* expression in the brain hippocampus and colon (PP>  
120 98%; **Fig. 2** and **Supplementary Data 1**), with the A-allele being associated with lower *BBIP1* expression  
121 in brain hippocampus ( $\beta=-0.37$ ,  $p=9.1 \times 10^{-9}$ ), raising the possibility that variants in the credible set  
122 have pleiotropic, tissue-dependent effects in different directions.

123 *ADRA2A* encodes  $\alpha_{2A}$ -adrenoreceptors, responsible for mediating response to stress in the central and  
124 peripheral autonomous nervous system<sup>16</sup>, and vasoconstriction in response to catecholamine release  
125 in the small arteries and arterioles<sup>17</sup>. Our finding may imply that overstimulation or increased  
126 expression of  $\alpha_{2A}$ -adrenergic receptors contributes to the vasospastic effects characteristic of RP and  
127 its symptoms, also in line with RP being an adverse effect of  $\alpha_2$ -adrenergic agonists such as  
128 clonidine<sup>4,18,19</sup>. A possible role of *BBIP1*, in contrast, is less obvious. *BBIP1* encodes for a protein in the  
129 BBSome complex, which is involved in the signalling from and to cilia.

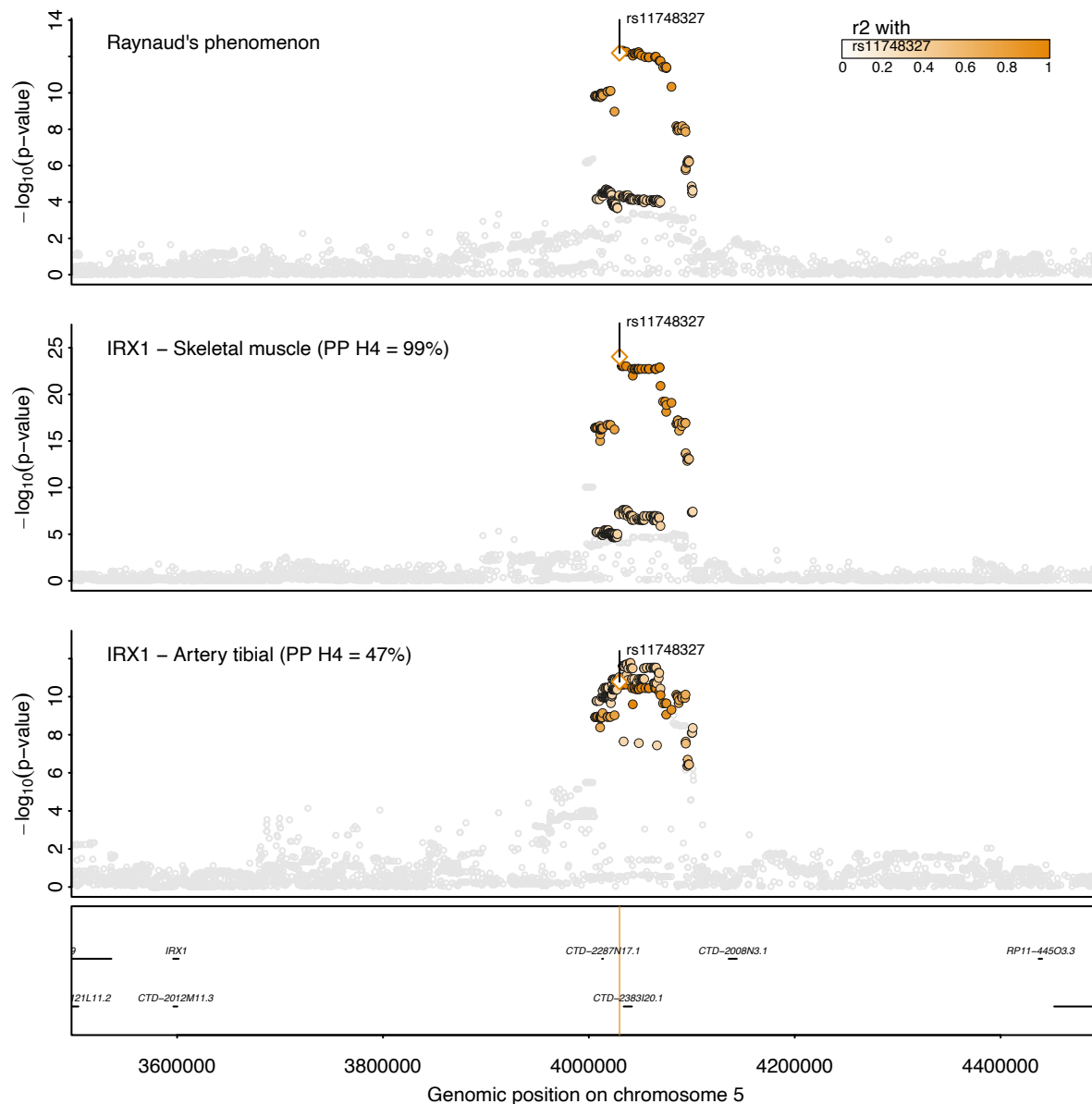
130 Investigating thousands of other outcomes from the GWAS catalog<sup>20</sup> and the Open Targets platform<sup>21</sup>  
 131 in addition to phenome-wide analyses of UK Biobank ( $p < 10^{-6}$ , see **Methods**), we observed no other  
 132 significant associations for rs7090046 or its proxies ( $r^2 > 0.6$ ), except for “specified peripheral vascular  
 133 disease” in UK Biobank (OR 1.18,  $p$ -value  $4.5 \times 10^{-11}$ ), a non-specific code that comprises, among other  
 134 diseases, RP. These results suggest specificity of the mechanism underlying the genetic signal at  
 135 10q25.2 on RP.



136  
 137 **Figure 2 Regional association plot at *ADRA2A/BBIP1*.** Regional association plot for Raynaud’s phenomenon  
 138 (top), gene expression of *ADRA2A* in tibial artery (middle), and gene expression of *BBIP1* in hippocampus  
 139 (bottom). *ADRA2A* and *BBIP1* have been prioritised as candidate causal genes based on statistical colocalization.  
 140 Summary statistics from logistic regression models for RP are from the present study whereas summary statistics  
 141 from linear regression models were obtained from GTEx v8<sup>22</sup>. Colouring of SNPs is based on linkage disequilibrium  
 142 with the lead RP variant (rs7090046) at this locus. Numbers in brackets indicate posterior probabilities (PP) for a  
 143 shared genetic signal with RP based on statistical colocalization.

144 *IRX1* is the likely effector gene at 5p15.33 and links to cardiovascular outcomes

145 We fine-mapped the second strongest signal at 5p15.33 to 24 variants with rs12653958 as the lead  
146 SNP with a PIP of 6.4%. The credible set also covered rs11748327 (PIP=4.7%) that has been reported  
147 as a cis-eQTL for *IRX1* in skeletal muscle<sup>22</sup>. Statistical colocalization further confirmed a shared genetic  
148 signal between RP and *IRX1* expression in skeletal muscle and tibial artery with high (PP=99%) and  
149 moderate (PP=47%) confidence, respectively (**Fig. 3**). The RP-increasing effect-allele of rs11748327 was  
150 associated with higher expression of *IRX1* in skeletal muscle ( $\beta=0.57$ ,  $p=1.1 \times 10^{-22}$ ) and tibial artery  
151 ( $\beta=0.42$ ,  $p=5.7 \times 10^{-11}$ ), suggesting that higher gene expression confers a higher risk for RP. *IRX1*  
152 encodes for members of the homeobox containing genes which have been shown to be involved in  
153 embryonic development and cellular differentiation<sup>23</sup>. The lead variant, rs12653958, at this locus tags  
154 a cluster of variants ( $r^2=0.7-1.0$ ) that has previously been reported to be associated with myocardial  
155 infarction (MI)<sup>24,25</sup> and coronary artery disease (CAD)<sup>26</sup> among East Asian populations and is further a  
156 cross-ancestral signal for red blood cell phenotypes<sup>27,28</sup>. In detail, the RP risk-increasing G-allele was  
157 also associated with an increased risk for coronary artery disease ( $\beta=-0.06$ ;  $p<1.8 \times 10^{-8}$ ) in data from  
158 the BioBank Japan<sup>26</sup>. The fact that this common variant ( $MAF_{EUR}=30.0\%$ ;  $MAF_{EAS}=22.3\%$ ) has not yet  
159 been identified for MI or CAD in Europeans ( $p=1.61 \times 10^{-7}$ ) despite much larger sample sizes  
160 ( $n=181,522$ )<sup>29</sup>, might point to the possibility of a yet to be identified gene-environment interaction or  
161 other characteristics distinct to the East Asian cohorts that account for this observation.



162

163 **Figure 3 Regional association plot at *IRX1*.** Regional association plot for Raynaud's phenomenon (top), gene  
 164 expression of *IRX1* in skeletal muscle (middle), and gene expression of *IRX1* in tibial artery (bottom). Summary  
 165 statistics from logistic regression models for RP are from the present study whereas summary statistics from  
 166 linear regression models were obtained from GTEx v8<sup>22</sup>. Colouring of SNPs is based on linkage disequilibrium  
 167 with the lead RP variant (rs12653958) at this locus. Numbers in brackets indicate posterior probabilities (PP) for  
 168 a shared genetic signal with RP based on statistical colocalization.

### 169 *RP in individuals of South Asian ancestry*

170 We aimed to test for replication and transferability of our European-centric results in 401 RP cases of  
 171 British Bangladeshi and Pakistani ancestry from the Genes & Health cohort<sup>30</sup> (n=40,532), and observed  
 172 directionally concordant results (rs11748327; OR=1.16, 95%-CI=0.99-1.37, p-value=0.06; *IRX1*) for one  
 173 of the two strongest loci, while for the second one, rs7090046 (*ADRA2A*), the lead variant or suitable  
 174 genetic proxies were not available. While we were underpowered to replicate the remaining signals  
 175 due to low number of cases, we noted that the rare European variant rs7601792 (MAF=0.16%) was  
 176 common among people of British Bangladeshi and Pakistani descent (MAF=12.7%) possibly indicating



177 an ancestry-specific signal. However, further studies with comparable numbers of RP cases are needed  
178 to establish trans-ethnic and ethnic-specific risk variants for RP.

#### 179 Genetic correlation between RP and other traits

180 We next tested for a shared genetic architecture (genetic correlation:  $r_G$ ) between RP and known or  
181 suspected risk factors and comorbidities with a vascular or immune origin/component like peripheral  
182 artery disease (PAD) or COVID-19 (**Supplementary Data 2**). We observed that possible causes or  
183 related disorders for RP, like migraine ( $r_G=0.21$ ,  $p=9.0 \times 10^{-3}$ ), PAD ( $r_G=0.38$ ,  $p=2.1 \times 10^{-3}$ ), or SLE ( $r_G=0.33$   
184  $p=1.0 \times 10^{-3}$ ) significantly (false discovery rate < 5%) correlated when considering all RP patients, but  
185 were strongly attenuated once we computed genetic correlations restricted to patients with primary  
186 RP (**Supplementary Fig. 5, Supplementary Data 3**). In contrast, other significant correlations persisted  
187 ( $p < 0.05$ ) when we restricted genetic correlation analysis to results based on patients with primary RP  
188 (to which we refer to as *robust* in the following). This included significant inverse correlations with type  
189 2 diabetes ( $r_G = -0.14$ ,  $p=2.7 \times 10^{-3}$ ), fasting glucose ( $r_G = -0.21$ ,  $p=2.3 \times 10^{-3}$ ), and a positive correlation  
190 with HDL-cholesterol levels ( $r_G=0.13$ ,  $p=9.2 \times 10^{-4}$ ) (**Supplementary Fig. 5**).

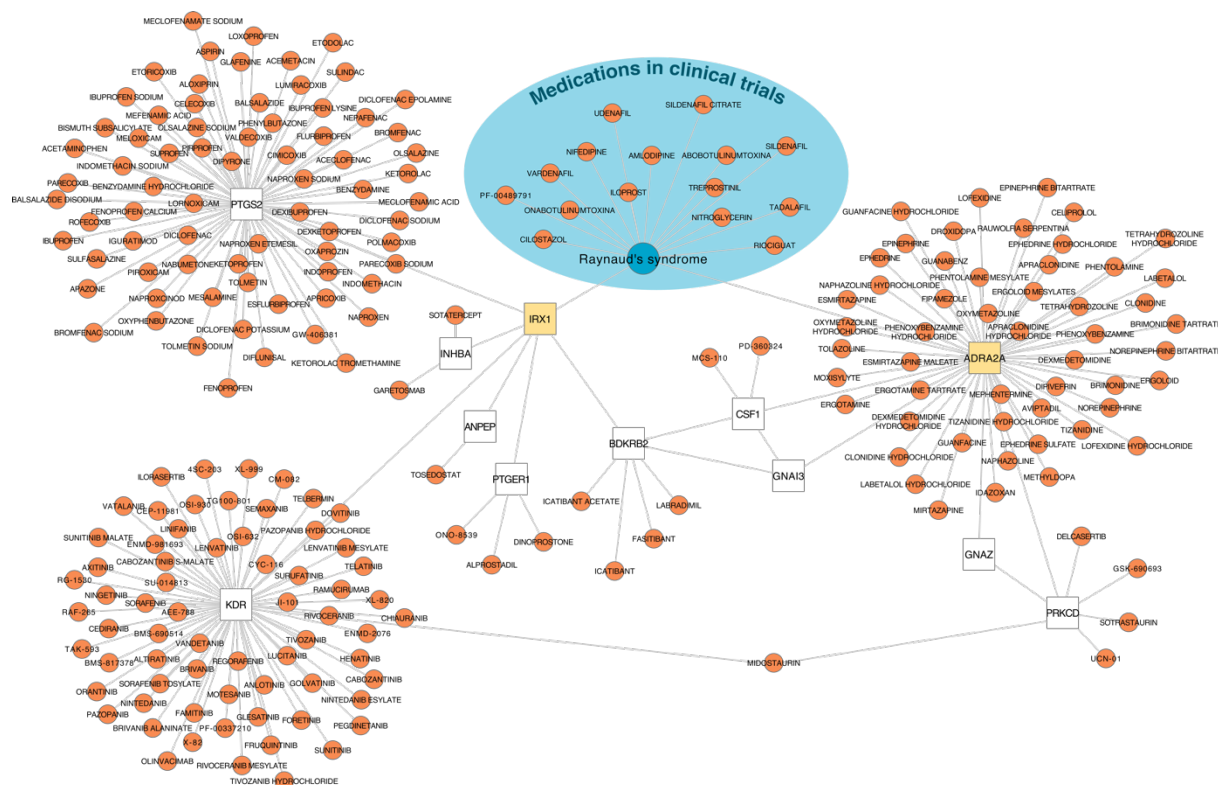
191 To distinguish whether genetic correlations represent causal directions from versus towards RP or are  
192 due to shared risk factors that likely act independently on RP and correlated traits, we performed latent  
193 causal variable analysis<sup>31</sup> (see **Methods**). Out of a total of six phenotypes with evidence for significant  
194 genetic correlations, only SLE (genetic causality proportion (GCP)=0.75;  $p < 1.7 \times 10^{-4}$ ) and fasting glucose  
195 (GCP=0.77;  $p < 5.21 \times 10^{-15}$ ) showed strong evidence for a causal genetic effect on RP risk, of which fasting  
196 glucose but not SLE persisted in analyses considering only patients with primary RP (GCP=0.80;  
197  $p < 1.3 \times 10^{-16}$ ). These results indicate that low fasting glucose levels may causally increase the risk for RP,  
198 while frequent comorbidities of RP, like migraine, are likely explained by shared risk factors.

199 We then extended the targeted analysis by computing genetic correlations with 185 medical concepts  
200 – ‘phecodes’, to gain a more comprehensive view on possible diseases that share a genetic architecture  
201 with RP (see **Methods; Supplementary Data 4**). We observed 8 phecodes with significant, although  
202 moderate, genetic correlations with RP (**Supplementary Data 4**), of which only the significant genetic  
203 correlation with osteoporosis persisted when we restricted the analysis to patients with primary RP  
204 ( $r_G=0.35$ ,  $p < 8.7 \times 10^{-5}$ ). However, none of the phenotypes showed evidence of a direct causal link  
205 towards or from RP in latent causal variant analysis (see **Methods; Supplementary Tab. 4**).

#### 206 From genes to druggable targets

207 We finally searched for putative druggable targets for RP based on the identified loci by cross-  
208 referencing high-confidence gene assignments and functional interaction partners thereof<sup>32</sup> in the  
209 Open Targets database<sup>21</sup> (see **Methods**). While we identified no link for drugs with known (genetic)  
210 targets currently or previously in clinical trials for RP (e.g., phosphodiesterase inhibitors), we identified

211 a total of 211 drugs that target either directly (e.g., *ADRA2A*) or indirectly (e.g., *PTGS2*) gene products  
 212 identified in our study (**Fig. 4** and **Supplementary Data 5**). More than 50 drugs had at least some affinity  
 213 to  $\alpha_{2A}$ -adrenergic receptors, although none did so specifically. Since we identified increased expression  
 214 of  $\alpha_{2A}$ -adrenergic receptors as a possible disease-causing mechanism, partially selective antagonists,  
 215 such as the widely used antidepressant mirtazapine, might be promising candidates for repurposing.  
 216 Among the drugs indirectly linked to RP-associated gene products, those counteracting  
 217 vasoconstriction or promoting vasodilation have greatest repurposing potential. For example, drugs  
 218 promoting prostaglandin (via *PTGER1* but not *PTGS2*) or bradykinin signalling (via *BDKRB2*) such as  
 219 dinoprostone or labradimil, respectively, might exert beneficial effects. However, the indirect nature  
 220 of the gene-drug-disease link for the latter (via altered *IRX1* expression) requires further functional  
 221 follow-up to establish the precise underlying mechanism and effect directions.



222  
 223 **Figure 4 Gene-Drug-Disease network for Raynaud's phenomenon.** The network displays drug target information  
 224 obtained from Open Targets<sup>21</sup> for 1) Raynaud's Phenomenon (RP; blueish area), 2) genes associated with RP in  
 225 the present study (yellow), and 3) interacting genes (white) based on functional work<sup>32</sup>.

226 **Discussion**

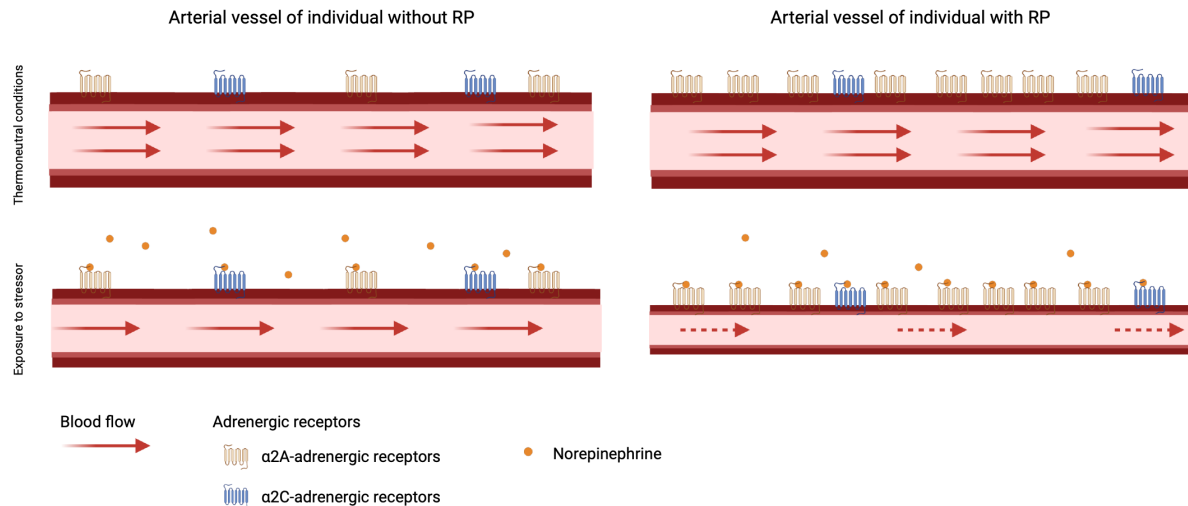
227 RP is a common but understudied disease with a high heritable component and identifying responsible  
 228 genes can advance our understanding of the aetiology and eventually guide the development of  
 229 treatment strategies. We identified, for the first time, two robust susceptibility loci. Through  
 230 integration with gene expression data, we demonstrated that the strongest locus likely acts via  
 231 increased expression of  $\alpha_{2A}$ -adrenoreceptors in arterial tissue, augmenting the current concept of

232 predominantly  $\alpha_{2C}$ -adrenoreceptors mediating the vasospasms seen in RP patients<sup>4</sup>. Increased  
233 expression of the transcription factor *IRX1* in muscle, and possibly arterial tissue, may further alter  
234 genes involved in prostaglandin and/or bradykinin sensing and production, providing a putative second  
235 novel mechanism identified in our genetic study. We lastly observed no strong evidence for a shared  
236 genetic architecture with suspected cardiovascular comorbidities for primary RP but did observe a  
237 novel detrimental effect of low fasting plasma glucose that might help to guide primary RP  
238 management.

239 Vasospastic attacks in RP have been repeatedly attributed to cold-induced activation of  $\alpha_{2C}$ -  
240 adrenoreceptors<sup>4,18,33,34</sup>, but attacks also occur under thermoneutral conditions and selective,  
241 pharmacological blocking of  $\alpha_{2C}$ -adrenoreceptors did not mitigate symptoms in clinical trials<sup>35</sup>. An  
242 observation that aligns with the absence of an effect of a strong cis-eQTL for *ADRA2C* (rs35729104),  
243 encoding for  $\alpha_{2C}$ -adrenoreceptors, on RP risk (OR=1.02, p=0.29) in our study. We, in contrast, provide  
244 genetically anchored evidence that  $\alpha_{2A}$ -adrenoreceptors play an underrated role further supported by  
245 adverse drug reactions seen with  $\alpha_{2A}$ -adrenoreceptor agonists (**Fig. 5**). More specifically,  $\alpha_{2A}$ -  
246 adrenoreceptors mediate arterial vasoconstriction, thrombus stabilization, and hypothermic effects  
247 on body temperature<sup>36,37</sup>. Our results are in line with a vasoconstrictive role of  $\alpha_{2A}$ -adrenoreceptors  
248 under thermoneutral conditions<sup>17</sup> and subsequent RP risk and further support findings of a quantitatively  
249 stronger role of  $\alpha_2$ -adrenoreceptors compared to  $\alpha_1$ -adrenoreceptors during cold stress in RP  
250 patients<sup>38,39</sup>. However, it might still be conceivable that both  $\alpha_2$ -adrenoreceptors act in a context-  
251 specific manner to induce vasospastic effects<sup>19</sup> or another mechanism partakes in cold-induced RP  
252 attacks, since pharmacological inhibition of  $\alpha_2$ -adrenergic receptors did blunt but not eliminate cold-  
253 induced vasoconstriction<sup>38</sup>.

254

255



256

257 **Figure 5 Scheme of the key finding.** In people without Raynaud's phenomenon (RP) stimulation of  $\alpha_{2A}$ - and  $\alpha_{2C}$ -  
 258 adrenergic receptors contributes to vasoconstriction and lower blood flow. In patients with RP, blood flow is further  
 259 reduced due to overexpression of  $\alpha_{2A}$ -adrenergic receptors creating a state of hypersensitivity to catecholamine-  
 260 release. Created with BioRender.com

261 Currently, RP is treated depending on its severity. For mild cases, avoidance of triggers like cold or  
 262 emotional stress might be sufficient, but severe vasospastic attacks require pharmacological  
 263 interventions with calcium channel blockers as first line response<sup>6</sup>. However, overall effectiveness of  
 264 calcium channel blockers<sup>5</sup> or alternative vasodilatory medications such as angiotensin receptor  
 265 blockers, selective serotonin reuptake inhibitors, or phosphodiesterase-5 inhibitors is limited<sup>6,7</sup>.  
 266 Negative findings that overall align well with the absence of genetic evidence for those targets in our  
 267 study. A staggering characteristic of the *ADRA2A* locus was the specificity in phenome-wide screens  
 268 and comprehensive database lookups, which indicated a RP-specific effect. Such a characteristic may  
 269 make the inhibition of the gene product,  $\alpha_{2A}$ -adrenergic receptors, an interesting pharmacological target.  
 270 This does not rule out that systemically administered antagonists might exert adverse effects, but  
 271 inhibiting  $\alpha_{2A}$ -adrenergic receptor activity in disease-relevant tissue, for example using topical solutions,  
 272 might provide a safe and effective treatment option. There are already approved medications that  
 273 target  $\alpha_2$ -adrenergic receptor antagonistically like the widely prescribed antidepressant mirtazapine, but  
 274 they lack specificity for  $\alpha_{2A}$ -adrenergic receptor<sup>36</sup> and case reports described the occurrence or worsening  
 275 of RP in two male patients under yohimbine treatment, another  $\alpha_2$ -adrenergic receptor antagonist, for  
 276 erectile dysfunction<sup>40,41</sup>. Clinical trials are needed to test whether treatment with mirtazapine, or  
 277 topical solutions thereof, can indeed mitigate vasospastic attacks in patients with primary RP, also  
 278 because an early study described relieved symptoms under methyldopa, a  $\alpha_2$ -adrenergic agonist<sup>42</sup>.

279 In addition to hypersensitivity to vasoconstrictive stimuli, missing vasodilation is the primary cause of  
 280 persistent vasospasms in RP. We identified overexpression of *IRX1*, the second strongest signal for RP,  
 281 in muscle cells and possibly tibial artery as a putative RP risk increasing mechanism. While little is

282 known about *IRX1* in general, a transfection study in gastric cancer cell lines identified several putative  
283 target genes of *IRX1* with a role in vasoconstriction and vasodilation<sup>43</sup>. This included downregulation  
284 of *PTGER1*, encoding the prostaglandin E2 receptor 1 (EP1) and upregulation of *PTGS2*, encoding  
285 prostaglandin G/H synthase 2, as well as downregulation of *BDKRB2*, encoding bradykinin receptor B2.  
286 Prostaglandin E2 (PGE<sub>2</sub>) can induce both vasodilation and vasoconstriction depending on receptor  
287 binding, with binding to EP1 inducing vasoconstriction in smooth muscle cells<sup>44,45</sup>. Downregulation of  
288 *BDKRB2* in endothelial and smooth muscle cells, in turn, may blunt the vasodilative function of  
289 bradykinin<sup>46</sup>, in line with observations in RP patients treated with bradykinin<sup>47,48</sup>. A putative role of the  
290 *IRX1* locus in vasodilation/vasoconstriction might also explain its association with cardiovascular  
291 disease as described among people of East Asian descent<sup>24-26</sup>. Further experimental work will help  
292 clarify this, and might also help to refine the application of prostaglandin or bradykinin analogues, as  
293 vasodilators in RP<sup>4</sup>.

294 Little is known about the causes of primary RP, and we provided evidence that genetic liability towards  
295 low fasting glucose levels increases RP risk. A putative mechanism, however, remains elusive and we  
296 did not observe evidence that other metabolic risk factors were causally associated with RP risk,  
297 including BMI (**Supplementary Data 3**). Overexpression of  $\alpha_{2A}$ -adrenoreceptors in pancreatic islet cells  
298 has been postulated as a mechanism for diminished insulin secretion and postprandial hyperglycaemia  
299 among carriers of risk alleles in *ADRA2A*<sup>49</sup>. However, the reported risk allele, rs553668, is only weakly  
300 correlated ( $r^2=0.15$ ) with our RP lead signal at the same locus and the same applies for the more  
301 recently identified genome-wide significant finding<sup>50</sup>. Although likely via distinct genetic variants, both  
302 diseases seem to share overexpression of *ADRA2A* as a common, but tissue-specific, disease  
303 mechanism, and it is unclear whether overexpression of *ADRA2A* in pancreatic beta-cells also  
304 contributes to fasting glucose levels. Conversely, hypoglycaemia exerts profound changes on the  
305 vasculature, including vasoconstriction via increased adrenal catecholamine release to maintain blood  
306 flow to the brain<sup>51</sup>, that may in turn exaggerate hypersensitivity to catecholamines of arteriovenous  
307 anastomoses in fingers and toes. However, a drop in body temperature following hypoglycaemia is  
308 caused by cutaneous vasodilation, which might itself be a trigger for vasospastic effects in RP patients.  
309 Even a role of  $\beta$ -adrenergic receptors might be conceivable, since beta-blockers can cause both,  
310 hypoglycaemia<sup>52</sup> and RP<sup>4</sup>. A pragmatic consequence for people at RP risk, or even RP patients, might  
311 be to avoid episodes of low plasma glucose levels.

312 While we identify eight loci robustly associated with RP, we did not find support for genes highlighted  
313 by previous smaller scale and candidate gene studies. This included subthreshold findings from an  
314 earlier GWAS<sup>14</sup> (*NOS1*, smallest p-value in *NOS1* region  $\pm$  500kb ( $p_{\min}$ ) =  $2.6 \times 10^{-3}$ ) as well as candidate  
315 gene studies for serotonin 1B (*HTR1B*;  $p_{\min}=6.8 \times 10^{-4}$ ) and 1E (*HTR1E*;  $p_{\min}=1.2 \times 10^{-5}$ ) receptors and the  
316 beta subunit of the muscle acetylcholine receptor (*CHRN1*;  $p_{\min}=1.3 \times 10^{-3}$ )<sup>13</sup>. Our results therefore

317 highlight the need for large sample sizes, which are only now possible with the increased availability  
318 of electronic health record linkage.

319 Our study has limitations that need to be considered in the interpretation of the results. Firstly, we  
320 defined patients with RP based on billing codes from medical records of various sources which might  
321 have missed patients with milder presentations and suffers from potential misclassification if patient  
322 symptoms have been wrongly assigned to RP, in particular in the presence of disease that cause RP as  
323 a secondary phenomenon. However, our conservative sensitivity analysis, excluding all patients with  
324 potential known causes of RP revealed congruent findings and the associated loci have a clear  
325 biological link towards RP pathology. Secondly, our study was exclusively comprised of participants of  
326 European descent and low case numbers and poor imputation quality of the main locus did not permit  
327 robust analysis in other ancestries, which is needed to achieve fair representation of different  
328 ancestries in genomic studies and may reveal additional findings. Thirdly, while we were able to  
329 replicate the association between *ADRA2A* expression in tibial artery and risk of RP in a small,  
330 independent cohort (n=124 RP patients; OR=1.27; p = 0.0039) from the BioVU study<sup>53</sup>, additional  
331 efforts in large biobanks with linked primary care data are needed to further consolidate our findings.  
332 Finally, while we assign putative candidate genes at two loci, more work is needed to improve gene  
333 assignment pipelines to elucidate possible mechanism at other loci including rare variants with strong  
334 effect sizes.

335 Our results advance the understanding of RP pathology by shifting the focus from a merely cold-  
336 induced phenomenon to a clinical entity in its own right with a distinct genetic architecture. The  
337 identification of *ADRA2A* and *IRX1* as candidate causal genes will further inform the development and  
338 refinement of treatment strategies although more experimental work is needed.

339



## 340 Methods

### 341 United Kingdom Biobank (UKBB)

342 UK Biobank is a prospective cohort study from the UK which contains more than 500,000 volunteers  
343 between 40 and 69 years of age at inclusion. The study design, sample characteristics and genome-  
344 wide genotype data have been described in Sudow et al. and Bycroft et al.<sup>15,54</sup>. The UKBB was approved  
345 by the National Research Ethics Service Committee North West Multi-Centre Haydock and all study  
346 procedures were performed in accordance with the World Medical Association Declaration of Helsinki  
347 ethical principles for medical research. We included 444,441 individuals in the GWAS for whom  
348 inclusion criteria (given consent to further usage of the data, availability of genetic data and passed  
349 quality control of genetic data) applied. Data from the UKBB were linked to death registries, hospital  
350 episode statistics (HES) and primary care data.

### 351 RP case ascertainment

352 We used all available electronic health records, including primary (~45% of the population) and  
353 secondary care, death certificates as well as participant's self-report to define RP cases. We manually  
354 curated relevant codes for RP based on the different coding systems used (ICD-10 codes: I73.0, I73.00,  
355 I73.01; CTV3/Read2: G730., G7300, G7301, G730z, XE0VQ) and flagged the first occurrence of a related  
356 code in the records of a participant as the incidence date. We compared the date of the very first  
357 record related to RP with the date of the baseline examination of the same participant to distinguish  
358 between prevalent and incident RP. We followed the criteria from Wigley et al.<sup>4</sup> to differentiate  
359 between primary and secondary RP. In detail, we classified each RP case as 'secondary' when patients  
360 were either under beta-blocker treatment or had been diagnosed with one of the following diseases  
361 prior or at the same time of their RP diagnosis: arteriosclerosis, carpal tunnel syndrome, systemic lupus  
362 erythematosus, systemic sclerosis, polymyositis, dermatomyositis, Sjögren syndrome, hypothyroidism,  
363 cryoglobulinemia, frostbite or other connective tissues diseases (**Supplementary Data 6**).

### 364 UKBB medication classification/ beta-blocker usage

365 During the baseline assessment self-reported regular medication use was recorded. Medication data  
366 were categorized into 6,745 groups (Data field: 20003). 38 categories of the medication data were  
367 identified manually to represent medication containing beta-blocker substances.

### 368 Demographic analysis

369 We performed  $\chi^2$ -tests and analysis of variance to test for statistically significant differences in  
370 demographic characteristics between controls and RP cases using standard implementations in R  
371 (v4.1.2).

## 372 Genotyping, quality control and participant selection

373 Details on genotyping for UKBB have been reported in detail by Bycroft et al.<sup>15</sup>. Briefly, we used data  
374 from the ‘v3’ release of UKBB containing the full set of Haplotype Reference Consortium (HRC) and  
375 1000 Genomes imputed variants. We applied recommended sample exclusions by UKBB including low  
376 quality control values, sex mismatch, and heterozygosity outliers. We defined a subset of ‘white  
377 European’ ancestry by clustering participants based on the first four genetic principal component  
378 derived from the genotyped data using a k-means clustering approach with k=5. We classified all  
379 participants who belonged to the largest cluster and self-identified as of being ‘white,’ ‘British,’ ‘Any  
380 other white background’, or ‘Irish’ as ‘white European’. After application of quality control criteria and  
381 dropping participants who have withdrawn their consent, a total of 444,441 UKBB participants were  
382 available for analysis with genotype and phenotype data.

383 We used only called or imputed genotypes and short insertions/deletions (here commonly referred to  
384 as SNPs for simplicity) with a minor allele frequency (MAF) > 0.001%, imputation score >0.4 for  
385 common (MAF≥0.5%) and >0.9 for rare (MAF<0.5%), within Hardy-Weinberg equilibrium ( $p_{HWE}>10^{-15}$ ),  
386 and minor allele count (MAC) > 10. This left us with 15,519,342 autosomal and X-chromosomal variants  
387 for statistical analysis. GRCh37 was used as reference genome assembly.

## 388 Genome-wide association study

389 We performed genome-wide association studies for RP and primary RP using REGENIE v2.2.4 via a two-  
390 step procedure to account for population structure as described in detail elsewhere<sup>55</sup>. We used a set  
391 of high-quality genotyped variants (MAF>1%, MAC>100, missingness <10%,  $p_{HWE}>10^{-15}$ ) in the first step  
392 for individual trait predictions using the leave one chromosome out (LOCO) scheme. These predictions  
393 were used in the second step as offset to run logistic regression models with saddle point  
394 approximation to account for case/control imbalance and rare variant associations. Models were  
395 adjusted for age, sex, genotyping batch, assessment centre, and the first ten genetic principal  
396 components. We used a tier system to classify genome-wide significant loci. Given the absence of a  
397 substantial replication cohort, we consider loci meeting a stringent p-value threshold of  $p<1.0\times 10^{-9}$  as  
398 robust findings (tier 1) and further considered loci meeting the standard genome-wide significance  
399 threshold of  $p<5.0\times 10^{-8}$  as strongly suggestive loci (tier 2).

## 400 LD score regression and genetic correlation to other common diseases

401 We tested for genomic inflation and calculated the SNP-based heritability using LD-score regression  
402 (LDSC v1.0.1)<sup>56</sup>. We further used LDSC to compute genetic correlation between RP as well as primary  
403 RP and a set of 20 preselected traits and diseases (**Supplementary Data 2**). P-values were corrected  
404 for multiple testing by controlling the false-discovery rate at 5% according to the Benjamini-Hochberg  
405 procedure. To explore genetic correlation with other common diseases, we computed genetic



406 correlation to a set of 185 phecodes (see below; **Supplementary Data 4**) with at least 1% SNP-based  
407 heritability derived from the UKBB.

#### 408 [Signal selection and fine-mapping](#)

409 We used regional clumping ( $\pm 500\text{kb}$ ) to select independent genomic regions associated with RP  
410 treating the extended MHC region as a whole (chr6:25.5-34.0Mb) and collapsed neighbouring regions  
411 using BEDtools v1.5.

412 Within each region, apart from the MHC region, we performed statistical fine-mapping using “Sum of  
413 single effects” model (SuSiE)<sup>57</sup> as implemented in the R package *susieR* (v.0.11.92). Briefly, SuSiE  
414 employs a Bayesian framework for variable selection in a multiple regression problem with the aim to  
415 identify sets of independent variants each of which likely contains the true causally underlying genetic  
416 variant. We implemented the workflow using default prior and parameter settings, apart from the  
417 minimum absolute correlation, which we set to 0.1. Since SuSiE is implemented in a linear regression  
418 framework, we used the GWAS summary statistics with a matching correlation matrix of dosage  
419 genotypes instead of individual level data to implement fine-mapping (*susie\_rss()*) as recommended  
420 by the authors<sup>57</sup>. We computed the correlation matrix with LDstore v1.0.

#### 421 [Sex-specific SNP effect](#)

422 We tested for a potential modulating effect of sex on SNP – RP association using an additional  
423 interaction term in logistic regression models with the same adjustment set as described above. We  
424 implemented this analysis in R v.4.1.2 using a set of 361,781 unrelated white European individuals.

#### 425 [Replication in East London Genes & Health](#)

426 We performed a genome-wide association analysis of RP in the Genes & Health cohort of British  
427 individuals of South Asian ancestry. We defined RP status using electronic health records and using the  
428 same code list as for the European-ancestry cohort. We identified 401 RP cases and 40,131 controls  
429 with complete covariate and genetic data passing quality control<sup>30</sup> (mean age at recruitment: 41.2 yrs  
430 [s.d.D:14.2], 55.6% females).

431 Genotyping and quality control for Genes & Health is described in the Supplemental File 1. Briefly,  
432 genotyping was done using the Illumina Infinium Global Screening Array v3 with additional multi-  
433 disease variants and imputed to TopMed version 3 using the Michigan Imputation Server. We used  
434 REGENIE<sup>55</sup> for association testing with age, sex, age<sup>2</sup>, and the first twenty genetic principal components  
435 as covariates. We included only autosomal genetic variants with a MAF>1% (in this cohort), INFO score  
436 >0.7 for imputed variants,  $p_{\text{HWE}} > 10^{-10}$ , and missingness < 10%. To allow for comparison with the results  
437 from UK Biobank, we used the liftOver tool (v.2.0) to map between hg19 and hg38.

#### 438 eQTL mapping to tissues/ Functional annotation

439 We systematically tested for a shared genetic signal between RP loci and gene expression levels (eQTL)  
440 in 49 tissues from the GTEx project (v8)<sup>22</sup>. Briefly, we considered all protein coding genes or processed  
441 transcripts encoded in a 1Mb window around RP loci and performed statistical colocalization<sup>58</sup> to test  
442 for a shared genetic signal between RP and gene expression, as implemented in the R *coloc* package  
443 (v.2.0). We only report RP loci – gene – tissue triplets with a posterior probability >80% for a shared  
444 genetic signal as candidate causal genes. We adopted a recently recommended prior setting<sup>59</sup> with  
445  $p_{12}=5 \times 10^{-6}$ . All GTEx variant-gene cis-eQTL associations from each tissue were downloaded in January  
446 2020 from <https://console.cloud.google.com/storage/browser/gtex-resources>.

447 We further used the PrediXcan software<sup>60</sup> to associate genetically predicted expression levels of  
448 *ADRA2A* with the risk of RP in 124 RP cases and 16,965 controls of the BioVU cohort<sup>53</sup>.

#### 449 Phenome wide association studies and variant look-up

450 We performed phenome-wide association studies for each RP locus identified using the  
451 comprehensive electronic health record linkage to generate a set of 1,448 ‘phecodes’, from which we  
452 used 1,155 ‘phecodes’ with a case number of more than 200. To generate phecode-based outcome  
453 variables, we mapped ICD-10, ICD-9, Read version 2, Clinical Terms Version 3 (CTV3) terms codes from  
454 self-report or medical health records, including cancer registry, death registry, hospitalization (e.g.,  
455 Hospital Episode Statistics for England), and primary care, to a set of summarized clinical entities called  
456 phecodes<sup>61,62</sup>. For example, more than 90 ICD-10 codes can indicate participants with type 1 diabetes  
457 that are here collectively summarized under the phecode ‘type 1 diabetes’<sup>63</sup>. We used any code that  
458 was recorded, irrespective if it contributed to the primary cause of death or hospital admission, to  
459 define phecodes. We adjusted all analyses for test centre to account for regional differences in coding  
460 systems and case ascertainment. For each participant and phecode, we kept only the first entry  
461 irrespective of the original data set, generating a first occurrence data set. We dropped codes that  
462 were before or in the participants’ birth year to minimize coding errors from electronic health  
463 records. We implemented the same logistic regression framework used for sex-interaction testing  
464 among unrelated individuals of White European ancestry. We applied a stringent Bonferroni correction  
465 to account for multiple testing ( $p < 3.7 \times 10^{-5}$ ).

466 We further performed look-ups for all independent lead variants and proxies ( $r^2 > 0.6$ ) associated with  
467 RP in the OpenTargets database<sup>21</sup> and the GWAS catalog<sup>20</sup> ([download: 27/04/2022](#)) to search for  
468 possibly previously reported traits and to establish novelty.

#### 469 LCV analysis

470 To assess the evidence for a causal relationship between RP and each of the genetically correlated  
471 phenotypes (**Supplementary Data 3 and 4**) we implemented a latent causal variable (LCV) model<sup>31</sup>.  
472 The LCV model estimates a parameter termed genetic causality proportion (GCP). The values of GCP  
473 ranges from -1 to 1, quantifying both magnitude and direction of genetic causality between two traits.  
474 Briefly, the LCV model fits an unobserved latent variable, L, which mediates the genetic correlation  
475 between two traits, and compares the correlation of each trait with L to estimate the GCP. A |GCP|  
476 value of one indicates full genetic causality (suggestive for vertical pleiotropy) whereas a GCP value of  
477 zero implies no evidence for genetic causality (suggesting that the genetic correlation between two  
478 traits is likely to be mediated by horizontal pleiotropy or shared risk factors) and |GCP| < 1 indicates  
479 partial genetic causality between two traits. Negative values of GCP estimate suggest that RP lies  
480 downstream of the other trait and interventions on the other trait are likely to affect RP, while positive  
481 GCP values indicate that the other trait lies downstream of RP. We implemented LCV analysis using  
482 standard parameters with version 1.0. We used the same LD-scores as in the genetic correlation  
483 analysis and excluded the extended MHC regions from any calculations. We considered the number of  
484 significant genetic correlation as testing burden for LCV results.

#### 485 Drug target annotation

486 To identify putative druggable targets for RP and test for evidence for drugs already in clinical trials,  
487 we queried the Open Target database<sup>21</sup> for all genes likely linked to GWAS loci (i.e., evidence from  
488 eQTL annotation or intronic). We augmented this gene list by functionally validated interaction  
489 partners from the SIGNOR network<sup>32</sup> and retained all matching drugs for further investigation. We  
490 lastly manually screened all prioritized drugs to match mechanisms to signs and symptoms of RP.

#### 491 Data availability

492 All individual level data is publicly available to bona fide researchers from the UK Biobank  
493 (<https://www.ukbiobank.ac.uk/>) or Genes & Health study (<https://www.genesandhealth.org/>). GWAS  
494 summary statistics have been deposited at the GWAS Catalog (accession codes: GCST90271713 and  
495 GCST90271714). Lookups and druggable targets were derived from the GWAS Catalog  
496 <https://www.ebi.ac.uk/gwas/> and the OpenTargets Genetics data base  
497 (<https://genetics.opentargets.org/>).

#### 498 Code availability

499 Associated code and scripts for the analysis are available on Github<sup>64</sup>  
500 ([https://github.com/pietznernm/gwas\\_rp](https://github.com/pietznernm/gwas_rp)).

501

502

503 **References**

- 504 1. Hughes, M. *et al.* Prediction and impact of attacks of Raynaud’s phenomenon, as judged by  
505 patient perception. *Rheumatol. (United Kingdom)* **54**, 1443–1447 (2015).
- 506 2. De Angelis, R., Salaffi, F. & Grassi, W. Health-Related Quality of Life In Primary Raynaud  
507 Phenomenon. *JCR J. Clin. Rheumatol.* **14**, 206–210 (2008).
- 508 3. Fábíán, B., Csiki, Z. & Bugán, A. Raynaud-szindrómás betegek életminőségének jellemzői. *Orv.*  
509 *Hetil.* **159**, 636–641 (2018).
- 510 4. Wigley, F. M. & Flavahan, N. A. Raynaud’s Phenomenon. *N. Engl. J. Med.* **375**, 556–565 (2016).
- 511 5. Rirash, F. *et al.* Calcium channel blockers for primary and secondary Raynaud’s phenomenon.  
512 *Cochrane Database Syst. Rev.* **2017**, (2017).
- 513 6. Belch, J. *et al.* ESVM guidelines – the diagnosis and management of Raynaud’s phenomenon.  
514 *Vasa* **46**, 413–423 (2017).
- 515 7. Su, K. Y. C. *et al.* Vasodilators for primary Raynaud’s phenomenon. *Cochrane Database Syst.*  
516 *Rev.* **2021**, (2021).
- 517 8. Ennis, D., Ahmad, Z., Anderson, M. A. & Johnson, S. R. Botulinum toxin in the management of  
518 primary and secondary Raynaud’s phenomenon. *Best Pract. Res. Clin. Rheumatol.* **35**, 101684  
519 (2021).
- 520 9. Cherkas, L. F. *et al.* Heritability of Raynaud’s phenomenon and vascular responsiveness to  
521 cold: A study of adult female twins. *Arthritis Care Res.* **57**, 524–528 (2007).
- 522 10. Hur, Y. M. *et al.* Feeling of cold hands and feet is a highly heritable phenotype. *Twin Res. Hum.*  
523 *Genet.* **15**, 166–169 (2012).
- 524 11. Smyth, A. E., Hughes, A. E., Bruce, I. N. & Bell, A. L. A case-control study of candidate  
525 vasoactive mediator genes in primary Raynaud’s phenomenon. *Rheumatology* **38**, 1094–1098  
526 (1999).
- 527 12. Shemirani, A. H. *et al.* Polymorphism of clotting factors in Hungarian patients with Raynaud’s.  
528 *Blood Coagul. Fibrinolysis* **22**, 56–59 (2011).
- 529 13. Susol, E. *et al.* A two-stage, genome-wide screen for susceptibility loci in primary Raynaud’s  
530 phenomenon. *Arthritis Rheum.* **43**, 1641–1646 (2000).
- 531 14. Munir, S., Freidin, M. B., Brain, S. & Williams, F. M. K. Association of raynaud’s phenomenon  
532 with a polymorphism in the NOS1 gene. *PLoS One* **13**, 1–8 (2018).
- 533 15. Bycroft, C. *et al.* The UK Biobank resource with deep phenotyping and genomic data. *Nature*  
534 **562**, 203–209 (2018).
- 535 16. Zhang, X. & Sun, Y. The predictive role of adra2a rs1800544 and htr3b rs3758987  
536 polymorphisms in motion sickness susceptibility. *Int. J. Environ. Res. Public Health* **18**, (2021).
- 537 17. Chotani, M. A., Flavahan, S., Mitra, S., Daunt, D. & Flavahan, N. A. Silent  $\alpha(2C)$ -adrenergic  
538 receptors enable cold-induced vasoconstriction in cutaneous arteries. *Am. J. Physiol. - Hear.*  
539 *Circ. Physiol.* **278**, 1075–1083 (2000).
- 540 18. Freedman, R. R., Sabharwal, S. C., Desai, N., Wenig, P. & Mayes, M. Increased  $\alpha$ -Adrenergic  
541 responsiveness in idiopathic raynaud’s disease. *Arthritis Rheum.* **32**, 61–65 (1989).
- 542 19. Freedman, R. R., Moten, M., Migaly, P. & Mayes, M. Cold-induced potentiation of  $\alpha 2$ -  
543 adrenergic vasoconstriction in primary raynaud’s disease. *Arthritis Rheum.* **36**, 685–690  
544 (1993).

- 545 20. Buniello, A. *et al.* The NHGRI-EBI GWAS Catalog of published genome-wide association  
546 studies, targeted arrays and summary statistics 2019. *Nucleic Acids Res.* **47**, D1005–D1012  
547 (2019).
- 548 21. Ochoa, D. *et al.* Open Targets Platform: Supporting systematic drug-target identification and  
549 prioritisation. *Nucleic Acids Res.* **49**, D1302–D1310 (2021).
- 550 22. Consortium, G. The GTEx Consortium atlas of genetic regulatory effects across human tissues  
551 The GTEx Consortium\* Downloaded from. (2021).
- 552 23. Küster, M. M. *et al.* Epigenetic inactivation of the tumor suppressor IRX1 occurs frequently in  
553 lung adenocarcinoma and its silencing is associated with impaired prognosis. *Cancers (Basel).*  
554 **12**, 1–20 (2020).
- 555 24. Aoki, A. *et al.* SNPs on chromosome 5p15.3 associated with myocardial infarction in Japanese  
556 population. *J. Hum. Genet.* **56**, 47–51 (2011).
- 557 25. Sakaue, S. *et al.* A cross-population atlas of genetic associations for 220 human phenotypes.  
558 *Nat. Genet.* **53**, 1415–1424 (2021).
- 559 26. Koyama, S. *et al.* Population-specific and trans-ancestry genome-wide analyses identify  
560 distinct and shared genetic risk loci for coronary artery disease. *Nat. Genet.* **52**, 1169–1177  
561 (2020).
- 562 27. Vuckovic, D. *et al.* The Polygenic and Monogenic Basis of Blood Traits and Diseases. *Cell* **182**,  
563 1214-1231.e11 (2020).
- 564 28. Chen, M. H. *et al.* *Trans-ethnic and Ancestry-Specific Blood-Cell Genetics in 746,667 Individuals*  
565 *from 5 Global Populations.* *Cell* vol. 182 (2020).
- 566 29. Aragam, K. G. *et al.* Discovery and systematic characterization of risk variants and genes for  
567 coronary artery disease in over a million participants. *medRxiv* 2021.05.24.21257377 (2021)  
568 doi:10.1101/2021.05.24.21257377.
- 569 30. Finer, S. *et al.* Cohort Profile: East London Genes & Health (ELGH), a community-based  
570 population genomics and health study in British Bangladeshi and British Pakistani people. *Int.*  
571 *J. Epidemiol.* **49**, 20-21i (2020).
- 572 31. O’Connor, L. J. & Price, A. L. Distinguishing genetic correlation from causation across 52  
573 diseases and complex traits. *Nat. Genet.* **50**, 1728–1734 (2018).
- 574 32. Licata, L. *et al.* SIGNOR 2.0, the SIGnaling Network Open Resource 2.0: 2019 update. *Nucleic*  
575 *Acids Res.* **48**, D504–D510 (2020).
- 576 33. Edwards, J. M., Phinney, E. S., Taylor, L. M., Keenan, E. J. & Porter, J. M.  $\alpha$ 2-Adrenergic  
577 receptor levels in obstructive and spastic Raynaud’s syndrome. *J. Vasc. Surg.* **5**, 38–45 (1987).
- 578 34. Flavahan, N. A. A vascular mechanistic approach to understanding Raynaud phenomenon.  
579 *Nat. Rev. Rheumatol.* **11**, 146–158 (2015).
- 580 35. Herrick, A. L. *et al.* A double-blind, randomized, placebo-controlled crossover trial of the  $\alpha$ 2c-  
581 adrenoceptor antagonist orm-12741 for prevention of cold-induced vasospasm in patients  
582 with systemic sclerosis. *Rheumatol. (United Kingdom)* **53**, 948–952 (2014).
- 583 36. Gyires, K., Zádori, Z. S., Török, T. & Mátyus, P.  $\alpha$ 2-Adrenoceptor subtypes-mediated  
584 physiological, pharmacological actions. *Neurochem. Int.* **55**, 447–453 (2009).
- 585 37. Hunter, J. C. *et al.* Assessment of the role of  $\alpha$ 2-adrenoceptor subtypes in the antinociceptive,  
586 sedative and hypothermic action of dexmedetomidine in transgenic mice. *Br. J. Pharmacol.*  
587 **122**, 1339–1344 (1997).

- 588 38. Cooke, J. P. *et al.* Role of digital artery adrenoceptors in Raynaud's disease. *Vasc. Med.* **2**, 1–7  
589 (1997).
- 590 39. Freedman, R. R., Baer, R. P. & Mayes, M. D. Blockade of vasospastic attacks by alpha 2-  
591 adrenergic but not alpha 1-adrenergic antagonists in idiopathic Raynaud's disease. *Circulation*  
592 **92**, 1448–51 (1995).
- 593 40. Johnson, S., Iazzetta, J. & Dewar, C. Severe Raynaud's Phenomenon with Yohimbine Therapy  
594 for Erectile Dysfunction. *J. Rheumatol.* **30**, 2503–2505 (2003).
- 595 41. Sandler, B. & Aronson, P. Yohimbine-induced cutaneous drug eruption, progressive renal  
596 failure, and lupus-like syndrome. *Urology* **41**, 343–345 (1993).
- 597 42. Varadi, D. P. & Lawrence, A. M. Suppression of Raynaud's Phenomenon by Methyldopa. *Arch.*  
598 *Intern. Med.* **124**, 13–18 (1969).
- 599 43. Guo, X. *et al.* Homeobox gene IRX1 is a tumor suppressor gene in gastric carcinoma. *Oncogene*  
600 **29**, 3908–20 (2010).
- 601 44. Gomez, I., Foudi, N., Longrois, D. & Norel, X. The role of prostaglandin E2 in human vascular  
602 inflammation. *Prostaglandins Leukot. Essent. Fat. Acids* **89**, 55–63 (2013).
- 603 45. Ren, J., Karpinski, E. & Benishin, C. G. Prostaglandin E2 contracts vascular smooth muscle and  
604 inhibits potassium currents in vascular smooth muscle cells of rat tail artery. *J. Pharmacol.*  
605 *Exp. Ther.* **275**, 710–9 (1995).
- 606 46. Marceau, F. & Regoli, D. Bradykinin receptor ligands: therapeutic perspectives. *Nat. Rev. Drug*  
607 *Discov.* **3**, 845–52 (2004).
- 608 47. Freedman, R. R., Girgis, R. & Mayes, M. D. Abnormal responses to endothelial agonists in  
609 Raynaud's phenomenon and scleroderma. *J. Rheumatol.* **28**, 119–21 (2001).
- 610 48. Bedarida, G., Kim, D., Blaschke, T. F. & Hoffman, B. B. Venodilation in Raynaud's disease.  
611 *Lancet (London, England)* **342**, 1451–4 (1993).
- 612 49. Rosengren, A. H. *et al.* Overexpression of alpha2A-adrenergic receptors contributes to type 2  
613 diabetes. *Science* **327**, 217–20 (2010).
- 614 50. Vujkovic, M. *et al.* Discovery of 318 new risk loci for type 2 diabetes and related vascular  
615 outcomes among 1.4 million participants in a multi-ancestry meta-analysis. *Nat. Genet.* **52**,  
616 680–691 (2020).
- 617 51. Morrison, S. F. Differential control of sympathetic outflow. *Am. J. Physiol. Regul. Integr. Comp.*  
618 *Physiol.* **281**, R683–98 (2001).
- 619 52. Carnovale, C. *et al.* Beta-blocker-associated hypoglycaemia: New insights from a real-world  
620 pharmacovigilance study. *Br. J. Clin. Pharmacol.* **87**, 3320–3331 (2021).
- 621 53. Gamazon, E. R. *et al.* Using an atlas of gene regulation across 44 human tissues to inform  
622 complex disease- and trait-associated variation. *Nat. Genet.* **50**, 956–967 (2018).
- 623 54. Sudlow, C. *et al.* UK Biobank: An Open Access Resource for Identifying the Causes of a Wide  
624 Range of Complex Diseases of Middle and Old Age. *PLoS Med.* **12**, 1–10 (2015).
- 625 55. Mbatchou, J. *et al.* Computationally efficient whole-genome regression for quantitative and  
626 binary traits. *Nat. Genet.* **53**, 1097–1103 (2021).
- 627 56. Bulik-sullivan, B. K. *et al.* LD Score regression distinguishes confounding from polygenicity in  
628 genome-wide association studies. *Nat. Publ. Gr.* **47**, (2015).



- 629 57. Wang, G., Sarkar, A., Carbonetto, P. & Stephens, M. A simple new approach to variable  
630 selection in regression, with application to genetic fine mapping. *J. R. Stat. Soc. Ser. B Stat.*  
631 *Methodol.* **82**, 1273–1300 (2020).
- 632 58. Giambartolomei, C. *et al.* Bayesian Test for Colocalisation between Pairs of Genetic  
633 Association Studies Using Summary Statistics. *PLoS Genet.* **10**, (2014).
- 634 59. Wallace, C. Eliciting priors and relaxing the single causal variant assumption in colocalisation  
635 analyses. *PLoS Genet.* **16**, 1–20 (2020).
- 636 60. Gamazon, E. R. *et al.* A gene-based association method for mapping traits using reference  
637 transcriptome data. **47**, (2015).
- 638 61. Denaxas, S. *et al.* Mapping the Read2/CTV3 controlled clinical terminologies to Phecodes in  
639 UK Biobank primary care electronic health records: implementation and evaluation. *AMIA ...*  
640 *Annu. Symp. proceedings. AMIA Symp.* **2021**, 362–371 (2021).
- 641 62. Wu, P. *et al.* Mapping ICD-10 and ICD-10-CM Codes to phecodes: Workflow development and  
642 initial evaluation. *JMIR Med. Informatics* **7**, 1–13 (2019).
- 643 63. Bastarache, L. Using Phecodes for Research with the Electronic Health Record: From PheWAS  
644 to PheRS. *Annu. Rev. Biomed. Data Sci.* **4**, 1–19 (2021).
- 645 64. Hartmann, S. *et al.* ADRA2A and IRX1 are putative risk genes for Raynaud’s phenomenon.  
646 *Zenodo* (2023) doi:10.5281/zenodo.8082736.
- 647
- 648

## 649 Acknowledgement

650 All research related to UK Biobank has been done under the application number 44448. Mu. P. wishes  
651 to thank the MRC (MR/L006758/1, MR/V033867/1) and NIHR (NIHR202349) for support. This  
652 collaboration is part of the National Institute For Health Barts Biomedical Research Centre portfolio.  
653 BMJ is funded by a Medical Research Council (MRC) Clinical Research Training Fellowship (CRTF) jointly  
654 supported by the UK MS Society (BMJ; grant reference MR/V028766/1), and by Barts Charity.

655 The authors acknowledge the Scientific Computing of the IT Division at the Charité -  
656 Universitätsmedizin Berlin for providing computational resources that have contributed to the  
657 research results reported in this paper  
658 ([https://www.charite.de/en/research/research\\_support\\_services/research\\_infrastructure/science\\_it](https://www.charite.de/en/research/research_support_services/research_infrastructure/science_it/#c30646061)  
659 [#c30646061](https://www.charite.de/en/research/research_support_services/research_infrastructure/science_it/#c30646061)).

660 Genes & Health is/has recently been core-funded by Wellcome (WT102627, WT210561), the Medical  
661 Research Council (UK) (M009017, MR/X009777/1), Higher Education Funding Council for England  
662 Catalyst, Barts Charity (845/1796), Health Data Research UK (for London substantive site), and research  
663 delivery support from the NHS National Institute for Health Research Clinical Research Network (North  
664 Thames). Genes & Health is/has recently been funded by Alnylam Pharmaceuticals, Genomics PLC; and  
665 a Life Sciences Industry Consortium of Astra Zeneca PLC, Bristol-Myers Squibb Company,  
666 GlaxoSmithKline Research and Development Limited, Maze Therapeutics Inc, Merck Sharp & Dohme  
667 LLC, Novo Nordisk A/S, Pfizer Inc, Takeda Development Centre Americas Inc.

668 We thank Social Action for Health, Centre of The Cell, members of our Community Advisory Group,  
669 and staff who have recruited and collected data from volunteers. We thank the NIHR National  
670 Biosample Centre (UK Biocentre), the Social Genetic & Developmental Psychiatry Centre (King's College  
671 London), Wellcome Sanger Institute, and Broad Institute for sample processing, genotyping,  
672 sequencing and variant annotation. We thank: Barts Health NHS Trust, NHS Clinical Commissioning  
673 Groups (City and Hackney, Waltham Forest, Tower Hamlets, Newham, Redbridge, Havering, Barking  
674 and Dagenham), East London NHS Foundation Trust, Bradford Teaching Hospitals NHS Foundation  
675 Trust, Public Health England (especially David Wyllie), Discovery Data Service/Endeavour Health  
676 Charitable Trust (especially David Stables), NHS Digital - for GDPR-compliant data sharing backed by  
677 individual written informed consent. Most of all we thank all of the volunteers participating in Genes  
678 & Health.

## 679 Author contributions

680 Conceptualization: Ma. P, CL  
681 Data curation/Software: SH, SY, BMJ, SD, Ma. P  
682 Formal Analysis: SH, SY, BMJ, EG, Ma. P



683 Methodology: SD, Ma. P  
684 Visualization: SH, SY, Ma. P  
685 Funding acquisition: CL, HH  
686 Project administration: CL, HH  
687 Supervision: Ma. P, CL  
688 Writing – original draft: SH, Ma. P, CL  
689 Writing – review & editing: SY, BMJ, SD, HH, Mu. P, MC  
690

## 691 [Competing Interests](#)

692 Mu. P. has received partnership funding for the following: MRC Clinical Pharmacology Training Scheme  
693 (co-funded by MRC and Roche, UCB, Eli Lilly and Novartis); and a PhD studentship jointly funded by  
694 EPSRC and Astra Zeneca. Mu. P. also has unrestricted educational grant support for the UK  
695 Pharmacogenetics and Stratified Medicine Network from Bristol-Myers Squibb. Mu. P. has developed  
696 an HLA genotyping panel with MC Diagnostics, but does not benefit financially from this. He is part of  
697 the IMI Consortium ARDAT ([www.ardat.org](http://www.ardat.org)). None of the funding outlined above is related to the  
698 current paper. None of the other authors have a competing interests.

699

700 **Genes & Health Research Team**

701 Jacobs Benjamin M<sup>2</sup>

702 <sup>2</sup>Preventive Neurology Unit, Wolfson Institute of Population Health, Queen Mary University of  
703 London, London, UK