

Electrochemical-biosensor Microchip Based on Gold Nanoparticles as a Point-of-Care Test (POCT) for Quantitative Determination of Glycated Hemoglobin (HbA1c)

Kanyarat Boonprasert¹, Thipaporn Tharavani², Chiravoot Pechyen³, Khanittha Ponsanti⁴, Benchamaporn Tangnorawich⁴, Vithoon Viyanant¹, Kesara Na-Bangchang^{1*}

¹Graduate Program in Bioclinical Sciences, Chulabhorn International College of Medicine, Thammasat University, Pathum Thani, Thailand

²Department of Medicine, Faculty of Medicine, Thammasat University, Pathum Thani, Thailand

³Department of Materials and Textile Technology, Faculty of Science and Technology, Thammasat University, Pathum Thani, Thailand

⁴Department of Physics, Faculty of Science and Technology, Thammasat University, Pathum Thani, Thailand

*** Correspondence:**

Kesara Na-Bangchang

Email address: kesaratmu@yahoo.com

Keywords: biosensor, diabetes, diagnosis, HbA1c, point-of-care test

Abbreviations: (HbA1c) Glycated hemoglobin, (POCT) Point-of-Care Test, (DM) Diabetes mellitus, (POCT-HbA1c^{MWCNTs/AuNPs}) Nanoparticle-based electrochemical biosensor – multiwalled nanotubes incorporated with gold nanoparticles

Word counts: for abstract: 182; **for the text:** 3,178

Total number of pages: 13

Total number of figures: 5

Total number of tables: 2

1 **Abstract**

2 Monitoring the level of glycated hemoglobin (HbA1c) has become the gold
3 standard measure of diabetes mellitus diagnosis and control in conjunction with
4 FBG and oral glucose tolerance test. The study aimed to investigate the
5 applicability of the newly developed nanoparticle-based electrochemical
6 biosensor – multiwalled nanotubes incorporated with gold nanoparticles (POCT-
7 HbA1cMWCNTs/AuNPs) as a routine POCT for detection of HbA1c for the
8 diagnosis of diabetes mellitus (DM). Finger-prick and venous blood samples were
9 collected 108 DM and 98 non-DM subjects for determination of HbA1c and total
10 hemoglobin by POCT-HbA1cMWCNTs/AuNPs in comparison with standard
11 HPLC method. The performance of the POCT-HbA1cMWCNTs/AuNPs was
12 evaluated using the standard cut-off HbA1c level of >6.5%. The sensitivity,
13 specificity, positive predictive value, and negative predictive value of the test
14 were 100.00%, 90.32%, 87.23%, and 100.00%, respectively. The probability of
15 DM diagnosis in a subject with HbA1c >6.5 (positive predictive value) was
16 87.23% (82/94). The accuracy of the POCT-HbA1cMWCNTs/AuNPs was
17 94.18%, with %DMV (deviation of the mean value) of 0.25%. The results
18 indicate satisfactory assay performance and applicability of the POCT-
19 HbA1cMWCNTs/AuNPs for diagnosis of DM using the cut-off criteria of HbA1c
20 >6.5.

21

22

Electrochemical-biosensor for determination of HbA1c

23 Introduction

24 Diabetes mellitus (DM) is a chronic metabolic disorder categorized by
25 elevated levels of plasma glucose due to defects in insulin secretion (type I),
26 insulin action (type II), or both. A series of metabolic diseases follows, which
27 may lead to permanent and irreparable damage, including amputation,
28 retinopathy, neuropathy, and cardiovascular diseases [1]. The growing prevalence
29 of DM is a global concern. Approximately 541 million people are at increased
30 risk for developing type 2 DM. About half of the patients are unaware of their
31 state of illness, and this may lead to delay in proper diagnosis and management
32 [2]. While there is no definitive remedy for DM, disease progression and
33 complications could be minimized by rapid diagnosis and closely monitoring their
34 blood glucose levels [3]. However, fasting plasma glucose concentrations only
35 provide a snapshot of blood glucose at one point in time of blood sample
36 collection and do not provide a long-term vision for disease management [4]. In
37 addition, the level is affected by many different factors and it is not the most
38 effective biomarker for DM diagnosis and control [5]. Monitoring the level of
39 glycated hemoglobin (HbA1c) has become the gold standard measure of DM
40 diagnosis and control in conjunction with FBG and oral glucose tolerance test [6].
41 HbA1c is hemoglobin HbA glucose, which is a typical glycosylated protein in the
42 body that has nonenzymatic covalent attachment of glucose to the *N*-terminal
43 valine of the beta-globin chain [7]. Its concentration depends on the erythrocyte
44 lifespan and the blood glucose level. The term HbA1c refers to the ratio of HbA1c
45 to total hemoglobin (Hb) concentration, and the normal range of HbA1c is 5 to

Electrochemical-biosensor for determination of HbA1c

46 20% of total Hb. The cut-off value of HbA1c $\geq 6.5\%$ is recommended for the
47 diagnosis of DM according to American Diabetes Association and World Health
48 Organization guidelines [8]. Pre-DM is defined as HbA1c of 5.7-6.4%, and non-
49 DM is defined as HbA1c of 4.0-5.6% [9, 10]. Furthermore, HbA1c is also a useful
50 biomarker of long-term glycemia and a good predictor of lipid profile. Monitoring
51 glycaemic control could, thus, benefit DM patients with the risk of cardiovascular
52 disease [11]. Accurate and precise methods for HbA1c measurement are therefore
53 required for better glycaemic control.

54 Currently, there are various methods available for measurement of HbA1c
55 levels in the blood [12]. These methods are based on separation according to ionic
56 charge (ion-exchange chromatography, electrophoresis) [13, 14], affinity binding
57 (affinity chromatography for HbA1c) [15], enzymatic assays [16], colorimetric
58 assays [17], or immunoassays [18, 19]. HPLC is considered as one of the gold
59 standard for HbA1c analysis due to its accuracy in simultaneous quantification of
60 both HbA1c and Hb concentrations in whole blood to obtain the HbA1c
61 percentage [20, 21]. Nevertheless, these methods have limitations such as
62 complexity, availability, requirement for experienced and skilled personnel, cost,
63 time consuming, and interference from endogenous and exogenous compounds
64 [22, 23]. Point-of-care testing (POCT) of HbA1c appears to be a user-friendly
65 approach to timely and accurately diagnose DM compared to the standard
66 method. A number of biosensor-based POCTs for the quantitative determination
67 of HbA1c concentration in blood have been developed. Biosensor for HbA1c
68 detection offers potential analytical and testing device design with regard to test

Electrochemical-biosensor for determination of HbA1c

69 sensitivity, cost, simplicity, robustness and miniaturization [24, 25]. Among these,
70 electrochemical biosensors respond to biological samples rapidly and are suitable
71 for miniaturization ability, rapid and on-site detection, portability, and flexibility
72 [26].

73 In the present study, the applicability of the newly developed nanoparticle-
74 based electrochemical biosensor – multiwalled nanotubes incorporated with gold
75 nanoparticles (POCT-HbA1c^{MWCNTs/AuNPs}) as a routine POCT for detection of
76 HbA1c for the diagnosis purpose was investigated [27]. Green synthesis (green
77 chemistry), instead of the conventional approach using toxic chemicals, was
78 applied for the preparation of the gold nanoparticles. The performance of the test
79 was validated in blood samples obtained from patients with confirmed DM and
80 non-DM subjects.

81

82 **Materials and Methods**

83 **Electrochemical-Biosensor Microchip**

84 The development of electrochemical-biosensor microchip based on multi-
85 walled carbon nanotubes/gold-nanoparticles (MWCNTs/AuNPs) modified screen-
86 printed carbon electrode (SPCE) for measurement of HbA1c, and total Hb in
87 blood samples has previously been described in detail [27]. In brief, sensor based
88 on the gold nanoparticles (AuNPs) was synthesized from passion fruit (*Passiflora*
89 *edulis*) peel extracts. The prepared AuNPs (2 ml) were mixed with multiwalled
90 carbon nanotubes (MWCNTs, 5 mg) in various ratios (1:1, 1:2, and 2:1) to form
91 MWCNTs/AuNPs composites. The prepared MWCNTs/AuNPs were

Electrochemical-biosensor for determination of HbA1c

92 characterized for morphology (Transmission electron microscope: TEM), particle
93 size (Dynamic light scattering), crystallinity (X-ray diffraction), functional groups
94 (Fourier transform infrared spectra), UV-absorbance (UV-vis-spectrophotometry),
95 and elemental composition (Energy-dispersive X-ray spectrometry). The
96 nanoparticles are spherical with a diameter of approximately 18 nm, with the
97 crystal structure of face-centred cubic and maximum UV-vis peak at 550 nm. The
98 small AuNPs and the intermeshing of the MWCNTs improve conductivity of
99 composite material. This property, in conjunction with the carbon nanotubes
100 result in good stability and good supports on the fabrication of an electrochemical
101 sensing system. The MWCNTs/AuNPs composite was drop-casted on the SPCE
102 for MWCNTs/AuNPs/SPCE working electrode preparation. The working
103 electrode was air-dried to remove all solvents. The electrochemical response of
104 modified electrodes to WMCNTs:AuNPs (1:1, 1:2, 2:1) was measured using
105 cyclic voltammetry (CV) by PalmSens4 Potentiostat/Galvanostat/Impedance
106 Analyzer (PalmSens, Netherlands). The electrochemical cells consisted of a
107 MWCNTs/AuNPs electrode (working electrode), Ag/AgCl (reference electrode),
108 and platinum electrode (counter electrode). The format of POCT-
109 HbA1c^{MWCNTs/AuNPs} is shown in Fig 1.

110

111 **Fig 1.** The format of POCT-HbA1c^{MWCNTs/AuNPs} (Adapted from ref.27).

112

113 The responses of MWCNTs/AuNPs/SPCE electrodes to different
114 concentrations of total Hb and HbA1c were investigated by square wave

Electrochemical-biosensor for determination of HbA1c

115 voltammetry (SWV) over the concentration range 5-13 g/dl and 0.186-2.044 g/dl,
116 respectively to construct the calibration curves. The percentage of HbA1c was
117 calculated according to DCCT/NGSP: $HbA1c (\%) = (HbA1c/Hb) \times 91.5 + 2.15$ [28,
118 29].

119

120 Patients

121 The study was approved by the Ethics Committee, Faculty of Medicine,
122 Thammasat University (approval number 157/2564, project number MTU-EC-00-
123 4-062/64). The study was conducted at Thammasat Chalermprakiet Hospital and
124 Thammasat University Center of Excellence in Pharmacology and Molecular
125 Biology of Malaria and Cholangiocarcinoma, following the guidelines outlined in
126 the Declaration of Helsinki. Written informed consents were obtained from all
127 subjects before study participation. A minimum of 138 study subjects (69 each for
128 DM and non-DM subjects) were recruited for the study. The sample size was
129 estimated using the formula:

$$130 \quad n = \frac{\left[\left(\frac{Z_{\alpha}}{2} \right)^2 \times (1 - P) \right]}{d^2}$$

131 Where n = sample size, Z = 95% confidence interval (1.96), and d
132 (%error) = 5%. P is the sensitivity (0.96) and specificity (0.90) of the POCTs
133 reported in previous studies [30].

134 Inclusion criteria for the DM group were (i) clinically and laboratory-
135 confirmed DM of all types and stages (ii) males or females (non-pregnant or non-
136 lactating), (iii) aged between 20 and 70 years, and (iv) willing to participate in the

Electrochemical-biosensor for determination of HbA1c

137 study. Exclusion criteria were those with (i) significant abnormality on physical
138 examination, (ii) presence of significant diseases that may affect the study, (iii)
139 abnormal coagulation or concurrent use of anticoagulant/antiplatelet agents, or
140 (vi) participation in any other study within the past 90 days.

141 Inclusion criteria for the non-DM group were (i) males or females (non-
142 pregnant or non-lactating), (ii) aged between 20 and 70 years, (iii) body mass
143 index (BMI) between 18 and 25 kg/m², (iv) non-smokers and non-alcoholic
144 drinkers, and (vii) willing to participate in the study. Exclusion criteria were those
145 with (i) significant abnormality on physical examination, (ii) history of or having
146 hepatitis B or hepatitis C virus or HIV infection, (v) abnormal coagulation or
147 concurrent use of anticoagulant/antiplatelet agents, or (vi) participation in any
148 other clinical study within the past 90 days.

149 Blood samples were collected from all volunteers after overnight fasting
150 (8-10 hours). Venous blood samples (3 ml each) were collected in EDTA tubes
151 and transferred to the Bangkok Pathology-Laboratory Co. Ltd. for determination
152 of HbA1c (Automated HbA1c, BioRad D-10 HPLC), total Hb, red blood cell
153 count (RBC), hematocrit, mean cell volume (MCV), mean cell hemoglobin
154 (MCH), mean cell hemoglobin concentration (MCHC), red blood cell distribution
155 width (RDW), platelet count, white blood cell count (WBC). The cut-off value of
156 DM diagnosis is HbA1c \geq 6.5%.

157

158 **Measurement of HbA1c and Total Hb Concentrations in Blood Samples**

Electrochemical-biosensor for determination of HbA1c

159 Twenty microliters (20 μ l) of finger-prick blood were mixed with 50 μ l of
160 hemolyzing reagent (consisting of 0.9% tetradecylammonium bromide 26.5
161 mmol/l), and an aliquot of cell suspension (5 μ l) was dropped onto a
162 MWCNTs/AuNPs/SPCE electrode. Electrochemical response was measured
163 using SWV by PalmSens4 Potentiostat/Galvanostat/Impedance Analyzer
164 (PalmSens, Netherlands).

165

166 **Evaluation of the performance of POCT-HbA1c^{MWCNTs/AuNPs}**

167 *POCT-HbA1c^{MWCNTs/AuNPs} performance:* The performance (sensitivity,
168 specificity, positive and negative predictive values, and accuracy) of the POCT-
169 HbA1c^{MWCNTs/AuNPs} was evaluated by comparing the measured HbA1c values
170 with those measured by the reference laboratory method using the standard cut-
171 off HbA1c level of $\geq 6.5\%$ [9]. The test performances were estimated as follows:

172 Sensitivity (%) = $TP/(TP+FN)$

173 Specificity (%) = $TN/(TN+FP)$

174 Positive predictive value (%) = $TN/(TN+FN)$

175 Negative predictive value (%) = $TP/(TP+FP)$

176 Accuracy (%) = $(TP+TN)/(TP+TN+FP+FN)$

177 False-positive (%) = Number of misdiagnosed DM cases by POCT/Total
178 number of negative cases by reference method

179 False-negative (%) = Number of misdiagnosed non-DM cases by
180 POCT/Total number of positive cases by reference method

Electrochemical-biosensor for determination of HbA1c

181 Where TP = True positive, TN = True negative, FP = False positive, FN =
182 False negative.

183 *Test agreement analysis:* The 95% confidence interval and the mean
184 relative error were estimated by the Bland-Altman plot and PasinggeBablok
185 regression analysis (MedCalc Software, Mariakerke, Belgium) to determine the
186 consistency of the HbA1c values measured by POCT-HbA1c^{MWCNTs/AuNPs} and
187 those measured by the reference laboratory method.

188

189 **Statistics**

190 The statistical analysis was performed using SPSS 17.0 software.
191 Quantitative variables are summarized as median (range) and mean (SD) values
192 for variables with non-normal and normal distribution, respectively. Deviation of
193 the mean HbA1c value measured by POCT test from the value measured by the
194 reference laboratory method was expressed as %DMV (% deviation from mean
195 value). The correlation between the concentrations of the two quantitative
196 variables was determined using Spearman's or Pearson's correlation test for
197 variables with non-normal or normal distribution, respectively. Statistical
198 significance was set at $\alpha=0.05$.

199

200 **Results**

201 **Electrochemical Detection of Total Hb**

202 The responses of MWCNTs/AuNPs/SPCE electrodes (SWV) to different
203 total Hb concentrations are shown in **Fig 2**. The MWCNTs/AuNPs/SPCE

Electrochemical-biosensor for determination of HbA1c

204 electrodes generated an oxidation peak at -0.3 V. The intensity of the peak current
205 was proportional to the concentration of total Hb over the concentration range of
206 5-13.8 g/dl. The position of the oxidation peak remained unchanged with the
207 increased concentrations of total Hb. The limit of detection was 5 g/dl. The
208 equation for linear regression was: $IP (\mu A) = 1.228C + 21.287$, with a correlation
209 coefficient (r) of 0.9004 (Fig 2).

210

211 **Fig 2.** (A) SWV voltammograms for detection of total Hb with
212 MWCNTs/AuNPs/SPCE electrodes, and (B) Plot of current vs total Hb
213 concentration (Adapted from ref.27).

214

215 Electrochemical Detection of HbA1c

216 For SWV, the peak current was increased with increased Hb1Ac
217 concentrations (0.186-2.044 g/dl) (Fig 3). The relationship between the current
218 and Hb1Ac concentration was linear: $I_p (\mu A) = 8.6488C + 11.122$, $r=0.9645$). The
219 limit of detection was 0.186 g/dl. The specificity test for HbA1c was carried out
220 against Hb, BSA and glucose under identical experimental conditions.

221

222 **Fig 3.** (A) SWV voltammograms for detection of HbA1c with
223 MWCNTs/AuNPs/SPCE electrodes, and (B) Plot of current vs HbA1c
224 concentration (Adapted from ref.27).

225

226 Analysis of the Performance of POCT-HbA1c^{MWCNTs/AuNPs}

Electrochemical-biosensor for determination of HbA1c

227 Analysis of the performance of the POCT-HbA1c compared with the
228 reference laboratory method was performed in 108 DM and 98 non-DM subjects.
229 Median (range) HbA1c concentrations measured by POCT-HbA1c^{MWCNTs/AuNPs} in
230 DM patients were 0.64 (0.36-0.93) and 0.48 (0.22-0.64) g/dl, respectively
231 [corresponding to 7.19 (5.18-11.89) and 6.03 (4.10-6.40) % of total Hb,
232 respectively]. The corresponding HbA1c concentrations measured by the
233 reference method were 0.70 (0.39-1.78) and 0.45 (0.25-0.66) g/dl, respectively
234 [corresponding to 7.10 (4.80-14.00) and 5.30 (4.30-6.40) % of total Hb,
235 respectively]. Median (range) total Hb concentrations measured by POCT-
236 HbA1c^{MWCNTs/AuNPs} in DM patients were 12.65 (10.26-14.71) and 11.46 (9.65-
237 12.58) g/dl, respectively. The corresponding total Hb concentrations measured by
238 the reference method were 13.10 (10.50-15.50) and 13.00 (8.80-15.20) g/dl,
239 respectively.

240 *POCT-HbA1c^{MWCNTs/AuNPs} performance:* To evaluate the clinical
241 applicability of the POCT-HbA1c^{MWCNTs/AuNPs}, the HbA1c values measured by the
242 POCT-HbA1c^{MWCNTs/AuNPs} were compared with that measured by the reference
243 laboratory method using the cut-off value of 6.5% (Table 1). The sensitivity and
244 specificity of the POCT-HbA1c were 100.00% (82/82) and 90.32% (112/124),
245 respectively. The probability of DM diagnosis in a subject with HbA1c ≥ 6.5
246 (positive predictive value) was 87.23% (82/94). The probability of misdiagnosis
247 in a subject with HbA1c < 6.5 (negative predictive value) was 100.00% (112/112).
248 The accuracy of the POCT-HbA1c^{MWCNTs/AuNPs} expressed as a proportion of true

Electrochemical-biosensor for determination of HbA1c

249 positives and true negatives (correctly classified by POCT-HbA1c^{MWCNTs/AuNPs}) in
250 all subjects was 94.18%, with %DMV of 0.25%.

251

252 **Table 1.** Analysis of HbA1c levels using POCT-HbA1c^{MWCNTs/AuNPs} based on the
253 6.5% cut-off value. Data are presented as the number of subjects (n=206).

HbA1c measured by POCT (%)	HbA1c measured by reference laboratory method (%)	
	HbA1c \geq 6.5	HbA1c $<$ 6.5
HbA1c \geq 6.5	82	12
HbA1c $<$ 6.5	0	112
Total	82	124

254

255 *Test agreement analysis:* Bland-Altman plot analysis of the HbA1c
256 analyzed by POCT-HbA1c^{MWCNTs/AuNPs} and the reference methods was performed,
257 and results showed that only 12 subjects had values outside the 95% CI
258 (confidence interval) of the range of agreement limit (-1.65614 to 1.36814),
259 suggesting that 94.18% of the value measured by POCT-HbA1c^{MWCNTs/AuNPs} was
260 in agreement with that measured by the standard method (Fig 4).

261

262 **Fig 4.** Bland-Altman plot analysis for accuracy of HbA1c measured by POCT-
263 HbA1c compared with the reference method in 206 blood samples collected from
264 DM and non-DM subjects.

265

266 **Clinical Application of POCT-HbA1c^{MWCNTs/AuNPs}**

Electrochemical-biosensor for determination of HbA1c

267 Clinical application of the POCT-HbA1c^{MWCNTs/AuNPs} was evaluated in
 268 108 DM and 98 non-DM subjects. The demographic and laboratory data of the
 269 DM and non-DM subjects are summarized in **Table 2**. Excellent linear correlation
 270 ($p < 0.0001$, $Y = 2.25 + 0.69 * X$, $r = +0.874$) was found between the HbA1c values
 271 measured by POCT-HbA1c and the reference laboratory method (**Fig 5**). There
 272 was a moderate linear correlation between FPG and HbA1c levels measured by
 273 the standard methods in DM and non-DM subjects ($r = 0.552$, $p < 0.0001$).

274

275 **Table 2.** Demographic, glucose level and hematological data of DM and non-DM
 276 subjects. Data are presented as number (%) or mean (SD) and median (range) values.

Parameter		DM	Non-DM
Gender (n, %)	Male	37 (33.90%)	14 (14.03%)
	Female	71 (65.10%)	84 (85.70%)
Age (yr)	Mean (SD)	59.8 (12.7)	32.6 (9.1)
	Median (range)	60.9 (20.5-86.3)	31.0 (15.9-57.8)
Body weight (kg)	Mean (SD)	70.5 (15.7)	59.0 (11.8)
	Median (range)	68.0 (37.3-130.0)	56.0 (38.5-88.0)
BMI	Mean (SD)	27.13 (5.28)	22.76 (4.19)
	Median (range)	25.95 (16.56-48.93)	21.67 (15.13-34.38)
Glucose (mg/dl)	Mean (SD)	179.3 (79.8)	108.0 (22.2)
	Median (range)	156.0 (68.0-442.0)	101.0 (79.0-222.0)

Electrochemical-biosensor for determination of HbA1c

Parameter		DM	Non-DM
Hemoglobin (g/dl)	Mean (SD)	13.0 (1.2)	12.9 (1.2)
	Median (range)	13.1 (10.5-15.5)	13.0 (9.8-15.2)
Hematocrit (%)	Mean (SD)	40.0 (3.8)	40.2 (3.9)
	Median (range)	39.9 (31.6-48.5)	40.0 (32.2-48.8)
Platelet (x10³/μl)	Mean (SD)	264.80 (71.18)	290.92 (59.30)
	Median (range)	2604.00 (69.00-507.00)	282.00 (152.00-450.00)
RBC (x10⁶/μl)	Mean (SD)	4.69 (0.59)	4.77 (0.59)
	Median (range)	4.58 (3.76-6.84)	4.73 (3.78-6.77)
HbA1c (g/dl)	Mean (SD)	0.77 (0.27)	0.45 (0.08)
	Median (range)	0.70 (0.39-1.78)	0.45 (0.25-0.66)
HbA1c (%)	Mean (SD)	7.57 (1.80)	5.33 (0.42)
	Median (range)	7.10 (4.80-14.00)	5.30 (4.30-6.40)
MCV (fl)	Mean (SD)	85.94 (7.87)	85.01 (9.07)
	Median (range)	87.30 (60.4-98.9)	87.90 (63.00-97.10)
MCH (pg)	Mean (SD)	28.60 (2.80)	27.34 (3.22)
	Median (range)	28.60 (20.10-32.60)	27.90 (19.40-32.40)
MCHC (g/dl)	Mean (SD)	.3263.0) 87(32.12 (1.03)
	Median (range)	.328 0(30.10-35.10)	32.20 (27.90-33.60)

Electrochemical-biosensor for determination of HbA1c

Parameter		DM	Non-DM
RDW (%)	Mean (SD)	12.93 (1.02)	13.06 (1.35)
	Median (range)	12.70 (11.00-16.60)	12.80 (11.00-18.00)
WBC (x10³/μl)	Mean (SD)	7.43 (2.04)	6.52 (1.48)
	Median (range)	7.36 (3.76-15.76)	6.55 (2.49-10.58)
Neutrophil (%)	Mean (SD)	59.65 (8.56)	54.31 (9.12)
	Median (range)	59.10 (34.70-41.80)	54.50 (23.80-73.30)
Lymphocyte (%)	Mean (SD)	32.55 (8.17)	38.18 (8.68)
	Median (range)	32.60 (17.10-56.70)	36.50 (16.60-68.70)
Monocyte (%)	Mean (SD)	3.60 (1.71)	2.85 (1.09)
	Median (range)	2.90 (1.00-9.00)	2.50 (1.00-6.10)
Eosinophil (%)	Mean (SD)	3.56 (2.64)	3.96 (1.92)
	Median (range)	2.90 (0.50-19.70)	3.60 (1.00-10.00)
Basophil (%)	Mean (SD)	0.57 (0.29)	0.71 (0.35)
	Median (range)	0.50 (0.0-1.6)	0.60 (0-2)

277

278 **Fig 5.** Correlation between HbA1C concentrations measured by POCT-HbA1c

279 ^{MWCNTs/AuNPs} and the reference laboratory methods in 206 subjects (108 DM and

280 98 non-DM subjects). ($p < 0.0001$, $r=+0.874$).

281

Electrochemical-biosensor for determination of HbA1c

282 Correlation analysis of the HbA1c values measured by POCT-
283 HbA1c^{MWCNTs/AuNPs} and hematological parameters (Hb, Hct, MCV, MCHC, and
284 RDW) was performed to determine hematological factors that could influence the
285 measurement of HbA1c by POCT-HbA1c^{MWCNTs/AuNPs}. Only two parameters were
286 found to be significantly correlated with the measured HbA1c by POCT-
287 HbA1c^{MWCNTs/AuNPs}. Total Hb concentration (measured by POCT-
288 HbA1c^{MWCNTs/AuNPs} and reference method) was weakly ($r=+0.310$) but
289 significantly ($p<0.0001$) correlated with the HbA1c measured by POCT-
290 HbA1c^{MWCNTs/AuNPs}. On the other hand, a negative correlation ($r=-0.214$, $p=0.002$)
291 was found between MCHC and HbA1c values measured by POCT-
292 HbA1c^{MWCNTs/AuNPs}.

293

294 Discussion

295 The glycosylated Hb is formed *via* a spontaneous non-enzymatic reaction
296 between glucose and the *N*-terminal residues of beta-globin chain in Hb to
297 generate unstable Schiff base intermediates. Then, the intermediate goes through
298 an irreversible Amadori rearrangement to synthesize the stable ketoamine [31].
299 The accomplishment of quantitative HbA1c provides in-depth and accurate
300 detection for clinical application. A number of HbA1c POCT devices are
301 currently available in clinical settings, of which the detection method is either
302 affinity-based separation or immunoassay techniques. Biosensor with
303 electrochemical detection has also been developed as POCT for HbA1c. Each has
304 some limitations, *e.g.*, test complications requiring multi-steps of sample

Electrochemical-biosensor for determination of HbA1c

305 preparation [32], and the requirement of large blood sample volume [33].

306 Furthermore, most are subject to interferences from Hb variants (HbC, HbE, HbS,

307 and others) and modified Hb (carbamylated and acetylated Hb, or labile HbA1c)

308 [34]. The analysis showed that most of the HbA1c POCT devices have a mean

309 negativity bias compared to laboratory assays, as well as a high variability among

310 the bias value within devices. Recently, gold nanoflowers modified

311 electrochemical biosensor based on 4-mercaptophenylboronic acid was developed

312 for the quantitative determination of HbA1c [35]. In this study, we investigated

313 the clinical applicability of the POCT-HbA1c^{MWCNTs/AuNPs} previously developed

314 in our laboratory [27] for the accurate diagnosis of DM. The test was sensitive

315 and specific for the determination of HbA1c in the blood (from both venipuncture

316 and finger-prick), exploiting the catalytic property of HbA1c for the reduction

317 reaction of H₂O₂ to produce the electrochemical signal. The biosensor was

318 prepared from gold nanoparticles (AuNPs) in multiwalled carbon nanotubes

319 (MWCNTs) as MWCNTs/AuNPs composites. The obvious advantage of the test

320 is the use of green synthesis (green chemistry) for the synthesis of AuNPs from

321 passion fruit peel instead of toxic chemicals. In addition, it is the label-free

322 method that assures rapid detection. AuNPs were electrochemically deposited

323 onto the SPCE. The starch composition in the passion fruit peel with different

324 amylose pectins acts as a reducing agent in the electrochemical reaction [36]. This

325 label-free method could assure rapid detection with as small a volume as 20 µl of

326 blood. Only a single step pre-treatment of blood samples is required to remove

327 plasma interference, followed by lysis of the RBC. The POCT-

Electrochemical-biosensor for determination of HbA1c

328 HbA1c^{MWCNTs/AuNPs} provides simultaneous determination of both HbA1c and total
329 Hb concentrations in a single reaction. This feature not only reduces the testing
330 time but also reduces the errors from the use of different reactions.

331 To demonstrate the clinical applicability of the developed POCT-
332 HbA1c^{MWCNTs/AuNPs} electrochemical biosensor, the concentrations of HbA1c in
333 blood samples from DM and non-DM subjects measured by the POCT-
334 HbA1c^{MWCNTs/AuNPs} and the reference laboratory methods were compared. Results
335 show high sensitivity (100%), specificity (90.32%), accuracy (94.18%), and
336 excellent application prospects in clinical practice. The probability of a diagnosis
337 of DM in subjects with HbA1c level $\geq 6.5\%$ (positive predictive value) was
338 87.23%, while the probability of misdiagnosis of DM in subjects with HbA1c
339 level $< 6.5\%$ (negative predictive value) was 100.00%. The agreement of the
340 values measured by both methods was excellent ($r=+0.874$). The Bland-Altman
341 plot suggested that 94.18% of the value measured by POCT-HbA1c^{MWCNTs/AuNPs}
342 was in agreement with that measured by the standard method. The HbA1c level
343 was correlated with FPG as previously reported [11]. The measurement of HbA1c
344 as a percentage of total Hb relies on the accuracy of measurement of both HbA1c
345 and total Hb concentrations. A weak linear correlation was found between total
346 Hb concentration (measured by standard and POCT-HbA1c^{MWCNTs/AuNPs} methods)
347 and HbA1c concentration measured by POCT-HbA1c^{MWCNTs/AuNPs} ($r=+0.32$). This
348 suggests little influence of the total Hb on HbA1c concentration measured by
349 POCT-HbA1c^{MWCNTs/AuNPs}, and the POCT-HbA1c^{MWCNTs/AuNPs} could have wide
350 clinical applicability in patients regardless of the Hb concentration. The influence

Electrochemical-biosensor for determination of HbA1c

351 of total Hb concentration on HbA1c determination has been reported in patients
352 with hemoglobinopathies such as thalassemia. The hematocrit varies among
353 individuals, which leads to differences in total Hb. The low level of hematocrit
354 could be due to the following reasons: the amounts of RBC and Hb in RBC are
355 not enough to completely fill the surface of the sensor, and/or HbA1c does not
356 reflect an actual ratio. On the other hand, the MCHC value, which relates to the
357 volume of RBC, affected the HbA1c level measured by POCT-
358 HbA1c^{MWCNTs/AuNPs} in a reverse direction; the higher the MCHC concentration,
359 the lower the HbA1c concentration measured by POCT-HbA1c^{MWCNTs/AuNPs} ($r=-$
360 0.214 , $p=0.002$). Falsely high HbA1c level has been reported with conditions that
361 prolong the life-span of RBC (*e.g.*, iron deficiency anemia), severe
362 hypertriglyceremia ($>1,750$ mg/dl), severe albuminemia (>20 mg/dl), alcohol
363 intake and administration of some drugs (*e.g.*, salicylate, opioids) [37]. On the
364 other hand, falsely low HbA1c level has been reported in conditions that shorten
365 the life-span of RBCs and splenomegaly, pregnancy, and administration of some
366 drugs (*e.g.*, ribavirin, cephalosporin, and levofloxacin).

367 In conclusion, the results of the study indicate satisfactory assay
368 performance and applicability of the POCT-HbA1c^{MWCNTs/AuNPs} based on gold
369 nanoparticles modified screen-printed carbon electrode for diagnosis of DM using
370 the cut-off criteria of HbA1c $\geq 6.5\%$. The POCT-HbA1c^{MWCNTs/AuNPs} is an
371 accurate and easy-to-use tool that provides the test results on the spot and become
372 an effective tool in establishing the DM diagnosis, especially in vulnerable or
373 hard-to-reach populations. It does not require fasting before measurement, and the

Electrochemical-biosensor for determination of HbA1c

374 sample can be stored at 4 C° for at least two weeks in the case when measurement
375 cannot be performed immediately [38, 39]. The user-friendly format in
376 smartphone application (MyA1c) is being developed for clinical use in routine
377 diagnosis of DM. The implication of using POCT-HbA1c^{MWCNTs/AuNPs} in medical
378 treatment decision-making to control DM patients and patient outcomes needs to
379 be further evaluated.

380

381 **Acknowledgments**

382 We thank Dr. Panida Kongjam (Clinical Coordination, WHO collaborating
383 Center, Thammasat University) for statistical analysis and Miss Akkaracha
384 Hanwattanakul (Faculty of Science and Technology, Thammasat University) for
385 data collection.

386

387 **Author contributions**

388 Conceptualization: Kesara Na-Bangchang, Kanyarat Boonprasert, Chiravoot

389 Pechyen

390 Data Curation: Kesara Na-Bangchang, Kanyarat Boonprasert, Thipaporn

391 Tharavanij

392 Formal Analysis: Kesara Na-Bangchang, Kanyarat Boonprasert

393 Funding Acquisition: Kesara Na-Bangchang, Kanyarat Boonprasert

394 Investigation: Kanyarat Boonprasert, Khanittha Ponsanti

395 Methodology: Kesara Na-Bangchang, Kanyarat Boonprasert, Chiravoot Pechyen,

396 Benchamaporn Tangnorawich

Electrochemical-biosensor for determination of HbA1c

397 Project Administration: Kesara Na-Bangchang, Kanyarat Boonprasert

398 Resources: Kesara Na-Bangchang, Chiravoot Pechyen, Thipaporn Tharavanij

399 Software: Kanyarat Boonprasert, Chiravoot Pechyen, Khanittha Ponsanti,

400 Benchamaporn Tangnorawich

401 Supervision: Kesara Na-Bangchang, Thipaporn Tharavanij, Vithoon Viyanant,

402 Benchamaporn Tangnorawich

403 Validation: Kesara Na-Bangchang, Kanyarat Boonprasert, Vithoon Viyanant

404 Visualization: Kanyarat Boonprasert, Chiravoot Pechyen, Khanittha Ponsanti

405 Writing – Original Draft Preparation: Kesara Na-Bangchang, Kanyarat

406 Boonprasert,

407 Writing – Review & Editing: Kanyarat Boonprasert, Thipaporn Tharavanij,

408 Chiravoot Pechyen, Khanittha Ponsanti, Benchamaporn Tangnorawich,

409 Vithoon Viyanant, Kesara Na-Bangchang

410

411 **Declaration of Conflict Interest**

412 The authors declare that they have no known competing financial interests

413 or personal relationships or affiliations that could have appeared to influence the

414 work reported in this paper.

415

416 **Funding**

417 The study was supported by the National Research Council of Thailand

418 (Genetic markers and Point-of-care test for Healthy Aging: 169/2563), and a

419 Ph.D. scholarship from Thammasat University.

Electrochemical-biosensor for determination of HbA1c

420

421 **References**

- 422 1. American Diabetes Association. Diagnosis and classification of diabetes
423 mellitus. *Diabetes Care*. 2009;32(Suppl 1):S62–7.
- 424 2. Ogurtsova K, da Rocha Fernandes JD, Huang Y, Linnenkamp U, Guariguata
425 L, Cho NH, et al. IDF Diabetes Atlas: Global estimates for the prevalence of
426 diabetes for 2015 and 2040. *Diab Res Clin Prac*. 2017;128:40–50.
- 427 3. Mousavi SM, Hashemi SA, Gholami A, Mazraedoost S, Chiang W-H,
428 Arjmand O, et al. Precise blood glucose sensing by nitrogen-doped graphene
429 quantum dots for tight control of diabetes. *J Sensor*. 2021;2021:14.
- 430 4. Gupta S, Jain U, Chauhan N. Laboratory diagnosis of HbA1c: a review. *J*
431 *Nanomed Res*. 2017;5(4):00120.
- 432 5. Vashist P, Singh S, Gupta N, Saxena R. Role of early screening for diabetic
433 retinopathy in patients with diabetes mellitus: an overview. *Indian J Comm*
434 *Med*. 2011;36(4):247–52.
- 435 6. Adeyoyibi T, Weigl B, Greb H, Neogi T, McGuire H. New screening
436 technologies for type 2 diabetes mellitus appropriate for use in tuberculosis
437 patients. *Publ Hlth Act*. 2013;3(Suppl 1):S10–7.
- 438 7. Lenters-Westra E, Schindhelm RK, Bilo HJ, Slingerland RJ. Haemoglobin
439 A1c: historical overview and current concepts. *Diab Res Clin Pract*.
440 2013;99(2):75–84.

Electrochemical-biosensor for determination of HbA1c

- 441 8. International Expert Committee. International Expert Committee report on the
442 role of the A1C assay in the diagnosis of diabetes. *Diabetes Care*.
443 2009;32(7):1327–34.
- 444 9. American Diabetes Association. Standards of medical care in diabetes-2018
445 Abridged for primary care providers. *Clin Diabetes*. 2018;36(1):14–37.
- 446 10. World Health Organization. Use of glycosylated haemoglobin (HbA1c) in the
447 diagnosis of diabetes mellitus: abbreviated report of a WHO consultation.
448 Geneva: World Health Organization; 2011.
- 449 11. Khan HA, Sobki SH, Khan SA. Association between glycaemic control and
450 serum lipids profile in type 2 diabetic patients: HbA1c predicts dyslipidaemia.
451 *Clin Exp Med*. 2007;7(1):24–9.
- 452 12. Chandalia HB, Krishnaswamy PR. Glycated Haemoglobin. *Curr Sci*.
453 2002;83(12):1522–32.
- 454 13. Thienpont LM, Van Uytendaele K, De Leenheer AP. Reference measurement
455 systems in clinical chemistry. *Clin Chim Acta*. 2002;323(1–2):73–87.
- 456 14. Pundir CS, Chawla S. Determination of glycosylated hemoglobin with special
457 emphasis on biosensing methods. *Anal Biochem*. 2014;444:47–56.
- 458 15. Stöllner D, Stöcklein W, Scheller F, Warsinke A. Membrane-immobilized
459 haptoglobin as affinity matrix for a hemoglobin-A1c immunosensor. *Anal*
460 *Chim Acta*. 2002;470(2):111–9.
- 461 16. Liu L, Hood S, Wang Y, Bezverkov R, Dou C, Datta A, et al. Direct
462 enzymatic assay for %HbA1c in human whole blood samples. *Clin Biochem*.
463 2008;41(7–8):576–83.

Electrochemical-biosensor for determination of HbA1c

- 464 17. Parker KM, England JD, Costa JD, Hess RL, Goldstein DE. Improved
465 colorimetric assay for glycosylated hemoglobin. *Clin Chem.* 1981;27(5):669–
466 72.
- 467 18. Chopra A, Tuteja S, Sachdeva N, Bhasin KK, Bhalla V, Suri CR. CdTe
468 nanobioprobe based optoelectrochemical immunodetection of diabetic marker
469 HbA1c. *Biosens Bioelectron.* 2013;44:132–5.
- 470 19. Chen HH, Wu CH, Tsai ML, Huang YJ, Chen SH. Detection of total and A1c-
471 glycosylated hemoglobin in human whole blood using sandwich
472 immunoassays on polydimethylsiloxane-based antibody microarrays. *Anal*
473 *Chem.* 2012;84(20):8635–41.
- 474 20. Kaiser P, Akerboom T, Molnar P, Reinauer H. Modified HPLC-electrospray
475 ionization/mass spectrometry method for HbA1c based on IFCC reference
476 measurement procedure. *Clin Chem.* 2008;54(6):1018–22.
- 477 21. Kaur J, Jiang C, Liu G. Different strategies for detection of HbA1c
478 emphasizing on biosensors and point-of-care analyzers. *Biosens Bioelectron.*
479 2019;123:85–100.
- 480 22. Cork J, Jones RM, Sawyer J. Low cost, disposable biosensors allow detection
481 of antibodies with results equivalent to ELISA in 15 min. *J Immunol Methods.*
482 2013;387(1–2):140–6.
- 483 23. Parkash O, Shueb RH. Diagnosis of dengue infection using conventional and
484 biosensor based techniques. *Viruses.* 2015;7(10):5410–27.
- 485 24. Mehrabi F, Vafaei A, Ghaedi M, Ghaedi AM, Alipanahpour Dil E, Asfaram
486 A. Ultrasound assisted extraction of Maxilon Red GRL dye from water

Electrochemical-biosensor for determination of HbA1c

- 487 samples using cobalt ferrite nanoparticles loaded on activated carbon as
488 sorbent: Optimization and modeling. *Ultrason Sonochem.* 2017;38:672–80.
- 489 25. Alipanahpour Dil E, Ghaedi M, Asfaram A, Mehrabi F, Bazrafshan AA.
490 Optimization of process parameters for determination of trace Hazardous dyes
491 from industrial wastewaters based on nanostructures materials under
492 ultrasound energy. *Ultrason Sonochem.* 2018;40:238–48.
- 493 26. Salek-Maghsoudi Vakhshiteh AF, Torabi R, Hassani S, Ganjali MR, Norouzi
494 P, Hosseini M, et al. Recent advances in biosensor technology in assessment
495 of early diabetes biomarkers. *Biosens Bioelectron.* 2018;99:122–35.
- 496 27. Ponsanti K, Ngernyang N, Tangnorawich B, Na-Bangchang K, Boonprasert
497 K, Tasanarong A, et al. A novel electrochemical-biosensor microchip based
498 on MWCNTs/AuNPs for detection of glycated hemoglobin (HbA1c) in
499 diabetes patients. *J Electrochem Soc.* 2022;169(3):11.
- 500 28. Diabetes Control in Clinical Practice. The effect of intensive treatment of
501 diabetes on the development and progression of longterm complications in
502 insulin-dependent diabetes mellitus. *N Engl J Med.* 1993;329(14):977–86.
- 503 29. NGSP. IFCC Standardization of HbA1c; 2010 [cited 21 October 2021]. In:
504 National Glycohemoglobin Standardization Program [Internet]. Available
505 from: <http://www.ngsp.org/ifcc.asp>.
- 506 30. Wang Y, Peng W, Tang J, Dong L, Gu C, Zhang X, et al. Verification of a
507 novel point-of-care HbA1c device in real world clinical practice by
508 comparison to three high performance liquid chromatography instruments.
509 *Biochem Med (Zagreb).* 2018;28(2):020705.

Electrochemical-biosensor for determination of HbA1c

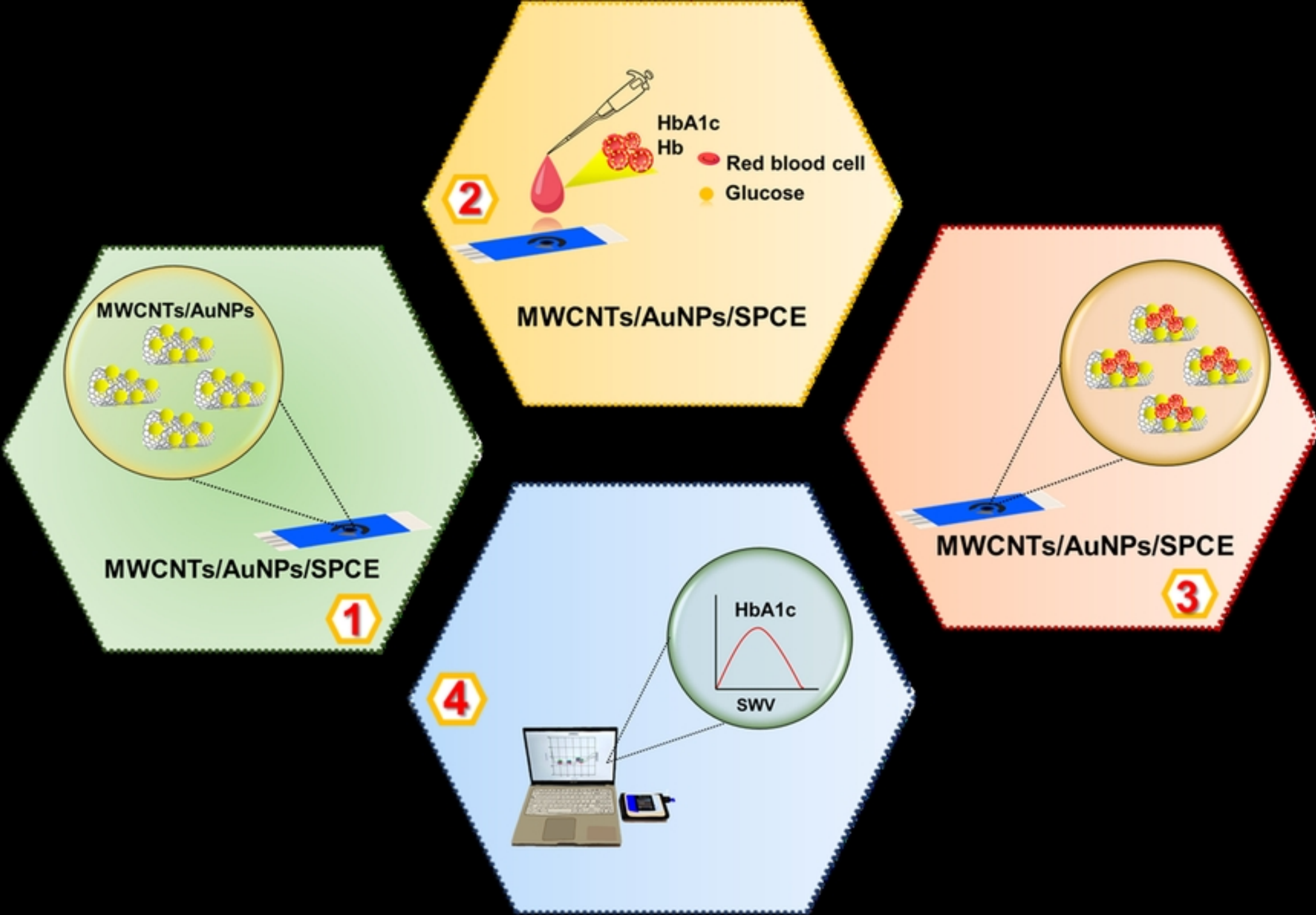
- 510 31. Bunn HF, Haney DN, Gabbay KH, Gallop PM. Further identification of the
511 nature and linkage of the carbohydrate in hemoglobin A1c. *Biochem Biophys*
512 *Res Commun.* 1975;67(1):103–9.
- 513 32. Kim DM, Shim YB. Disposable amperometric glycated hemoglobin sensor
514 for the finger prick blood test. *Anal Chem.* 2013;85(13):6536–43.
- 515 33. Chopra A, Rawat S, Bhalla V, Suri CR. Point-of-Care amperometric testing of
516 diabetic marker (HbA1c) using specific electroactive antibodies. *Electroanal.*
517 2014;26(3):469–72.
- 518 34. Jeppsson JO, Kobold U, Barr J, Finke A, Hoelzel W, Hoshino T, et al.
519 Approved IFCC reference method for the measurement of HbA1c in human
520 blood. *Clin Chem Lab Med.* 2002;40(1):78–89.
- 521 35. Wang X, Su J, Zeng D, Liu G, Liu L, Xu Y, et al. Gold nano-flowers (Au
522 NFs) modified screen-printed carbon electrode electrochemical biosensor for
523 label-free and quantitative detection of glycated hemoglobin. *Talanta.*
524 2019;201:119–25.
- 525 36. Ponsanti K, Tangnorawich B, Ngernyuang N, Pechyen C. A flower shape-
526 green synthesis and characterization of silver nanoparticles (AgNPs) with
527 different starch as a reducing agent. *J Mater Res Tech.* 2020;9(5):11003–12.
- 528 37. Radin MS. Pitfalls in hemoglobin A1c measurement: when results may be
529 misleading. *J Gen Intern Med.* 2014;29(2):388–94.
- 530 38. Little RR, Rohlfing CL, Tennill AL, Connolly S, Hanson S. Effects of sample
531 storage conditions on glycated hemoglobin measurement: evaluation of five

Electrochemical-biosensor for determination of HbA1c

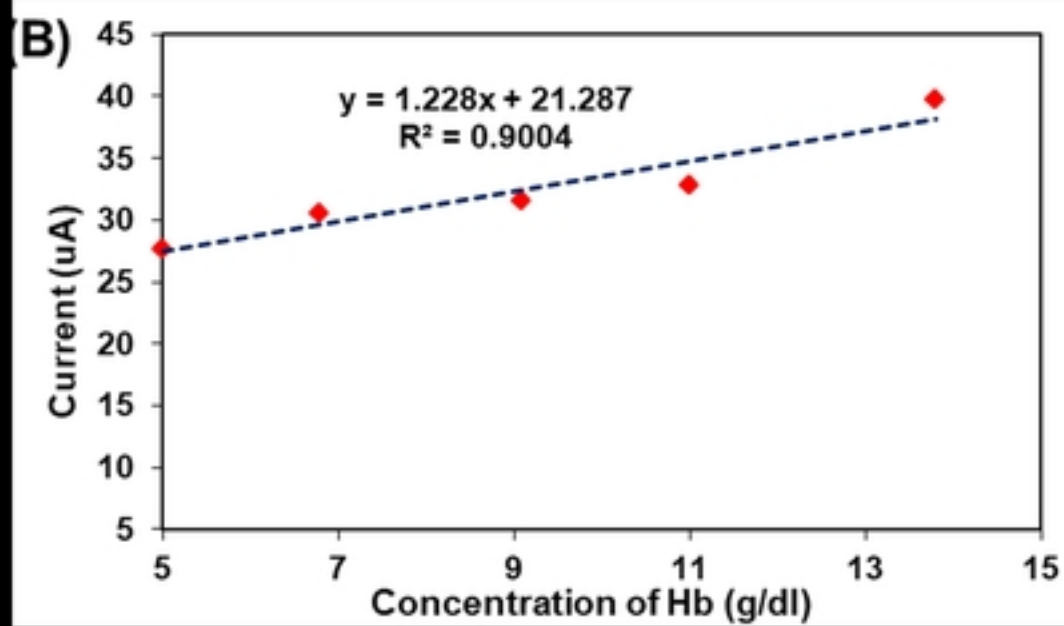
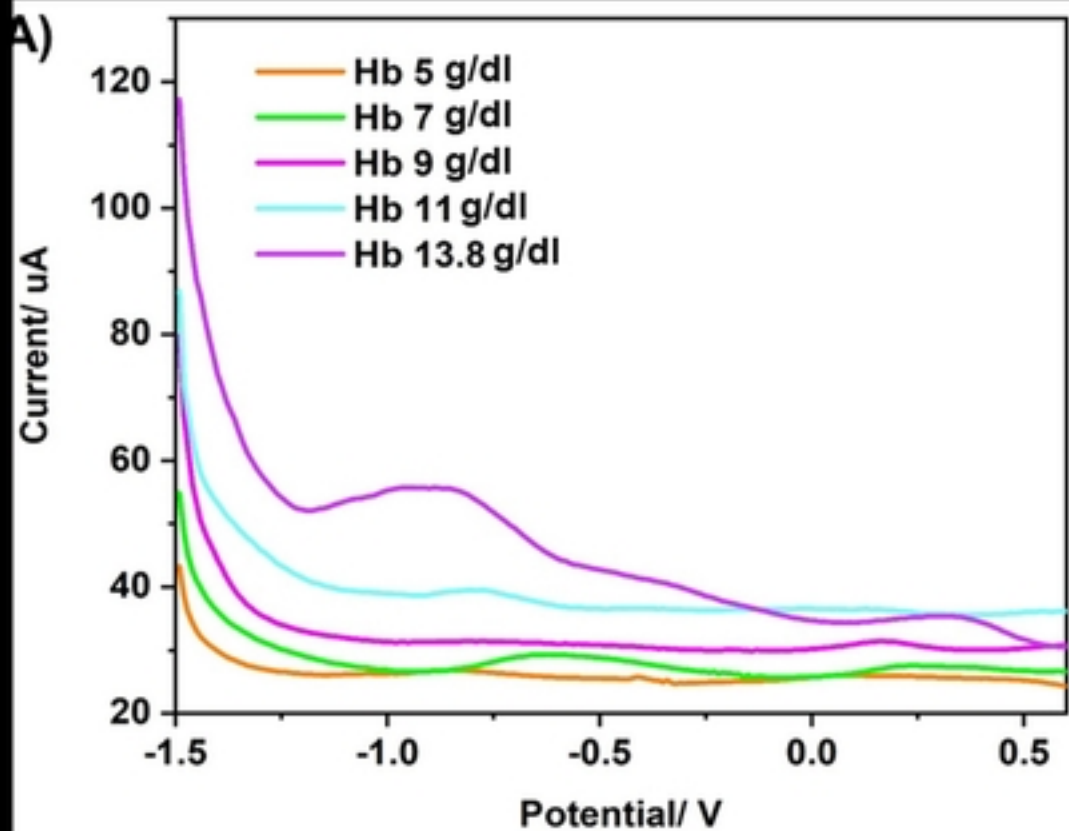
532 different high performance liquid chromatography methods. Diabetes Technol
533 Ther. 2007;9(1):36–42.

534 39. Ezenwaka CE, Seales D, Surujlal R, Mathura RP. Glycated haemoglobin A1c
535 measurement in stored whole blood sample is reliable for clinical use. West
536 Indian Med J. 2009;58(1):17–20.

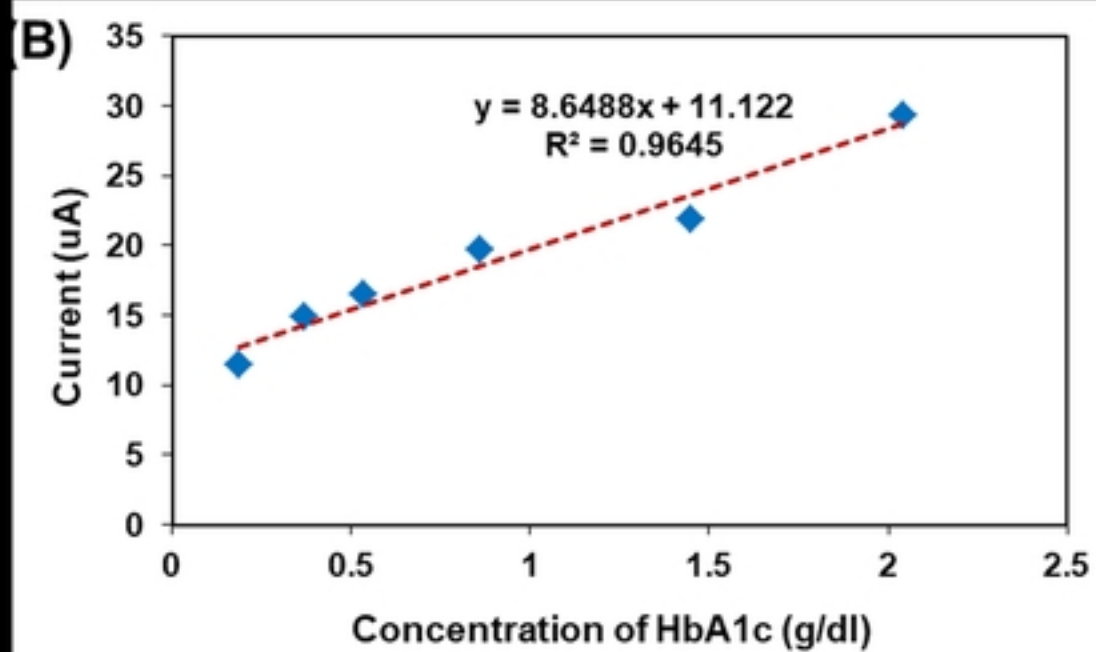
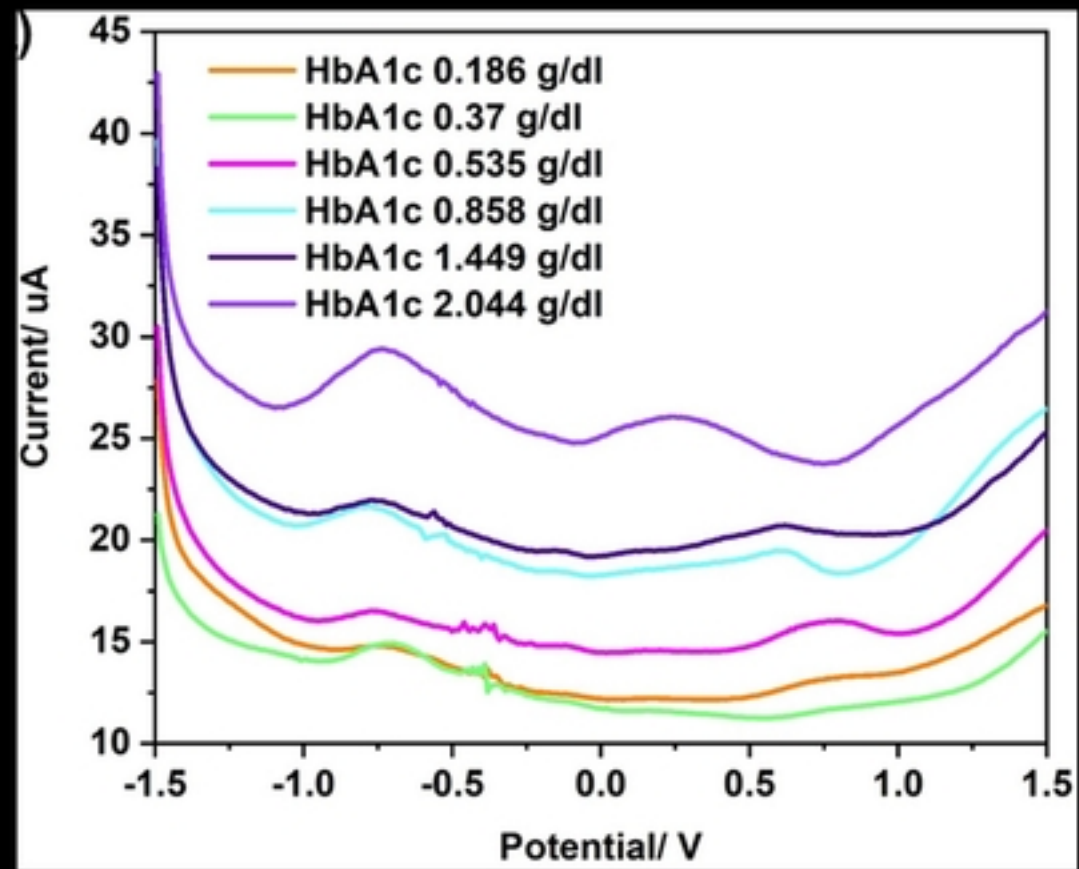
537



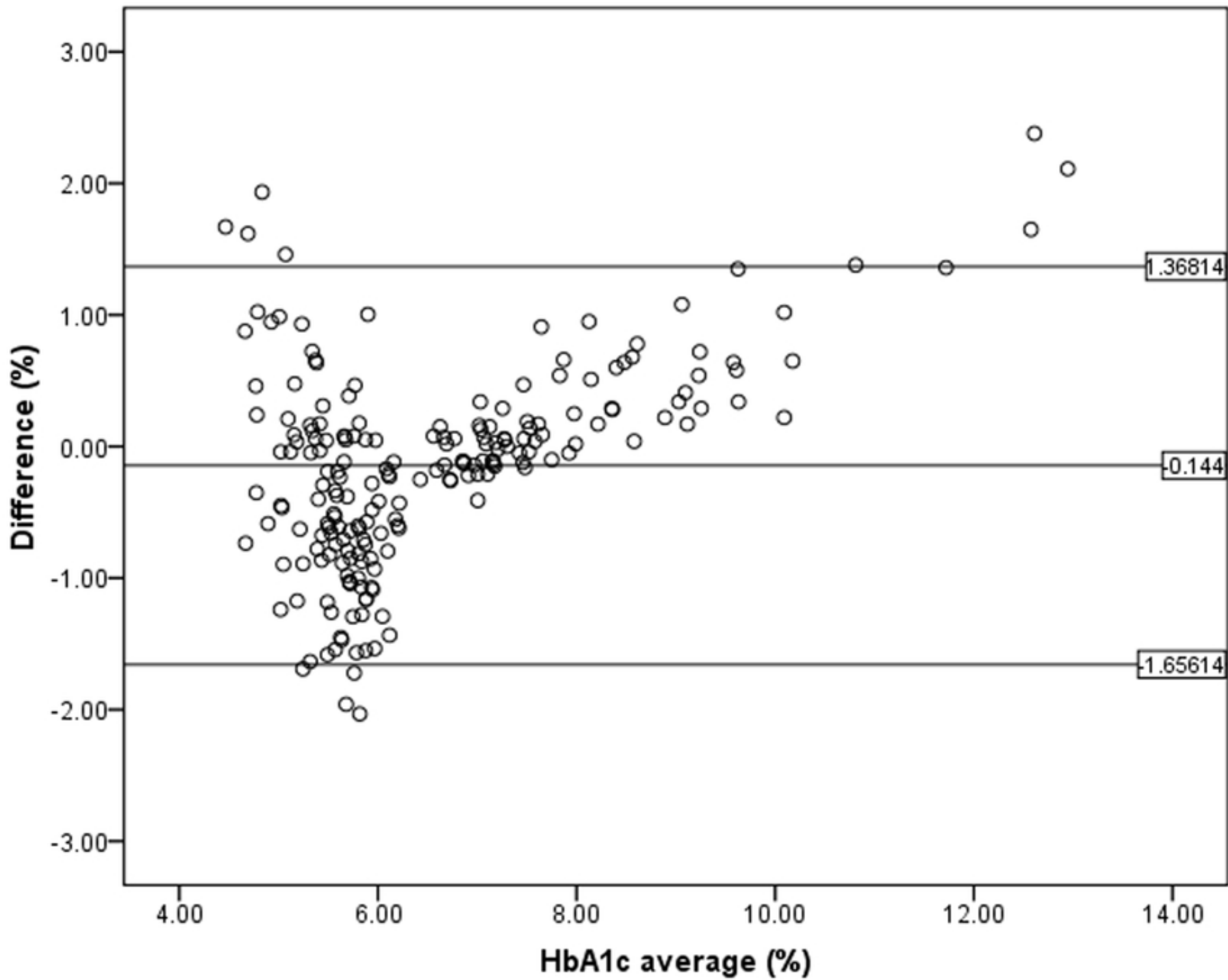
Figure



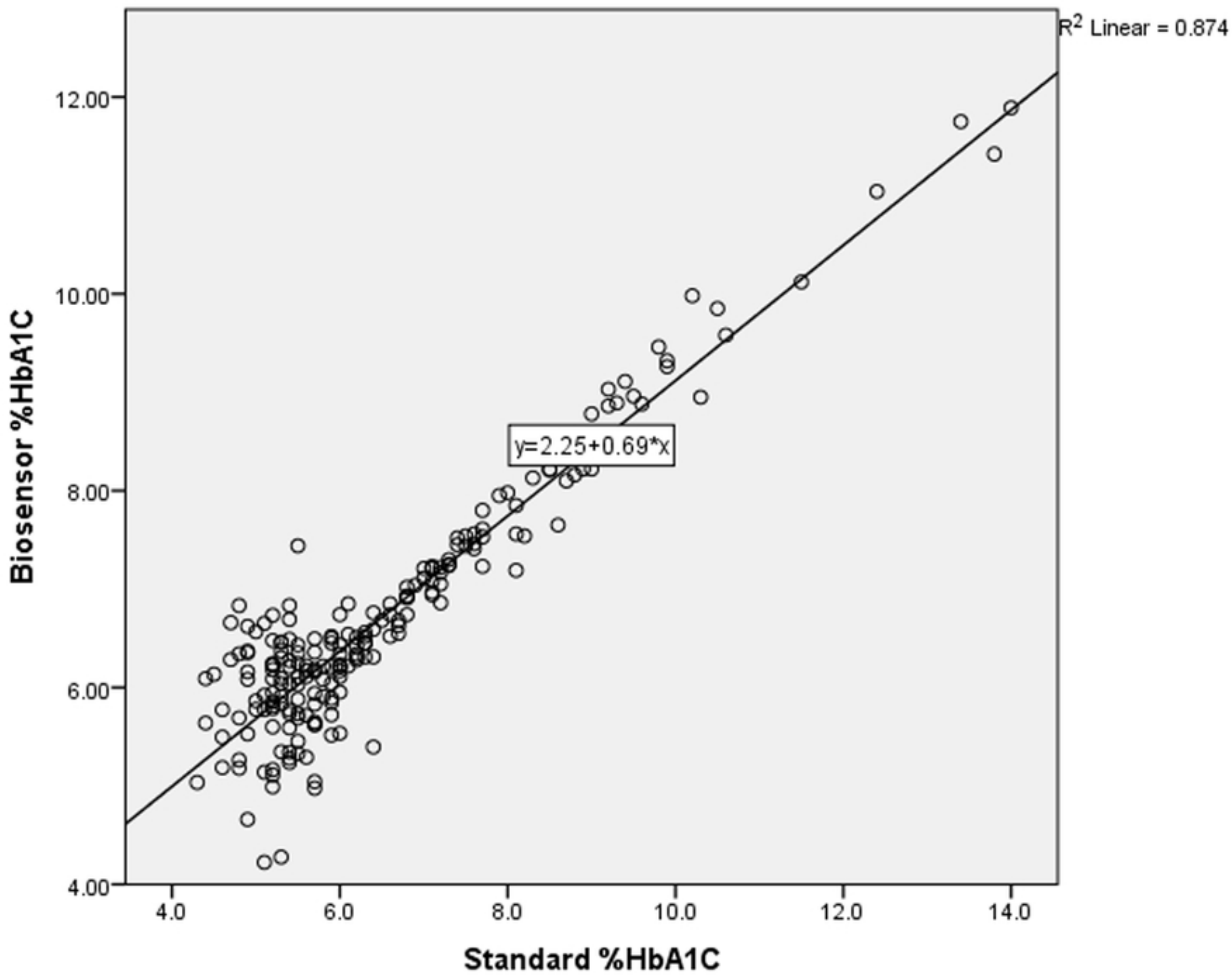
Figure



Figure



Figure



Figure