

## Immuno-epigenetic signature derived in saliva associates with the encephalopathy of prematurity and perinatal inflammatory disorders

**Authors:** Eleanor L.S. Conole<sup>1,2,3\*</sup>, Kadi Vaher<sup>4</sup>, Manuel Blesa Cabez<sup>4</sup>, Gemma Sullivan<sup>4</sup>, Anna J. Stevenson<sup>2</sup>, Jill Hall<sup>4</sup>, Lee Murphy<sup>5</sup>, Michael J. Thrippleton<sup>3,5</sup>, Alan J. Quigley<sup>6</sup>, Mark E. Bastin<sup>1,3</sup>, Veronique E. Miron<sup>4</sup>, Heather C. Whalley<sup>3</sup>, Riccardo E. Marioni<sup>2</sup>, James P. Boardman<sup>4,3</sup>, Simon R. Cox<sup>1\*</sup>

<sup>1</sup> Lothian Birth Cohorts group, Department of Psychology, University of Edinburgh, Edinburgh EH8 9JZ, UK.

<sup>2</sup> Centre for Genomic and Experimental Medicine, Institute of Genetics and Cancer, University of Edinburgh, Edinburgh EH4 2XU, UK

<sup>3</sup> Centre for Clinical Brain Sciences, University of Edinburgh, Edinburgh EH16 4SB, UK

<sup>4</sup> MRC Centre for Reproductive Health, Queen's Medical Research Institute, Edinburgh BioQuarter, University of Edinburgh, Edinburgh, EH16 4TJ

<sup>5</sup> Edinburgh Clinical Research Facility, University of Edinburgh, Edinburgh EH4 2XU, UK

<sup>6</sup> Imaging Department, Royal Hospital for Children and Young People, Edinburgh, EH16 4TJ

**\*Correspondence to:**

Simon. R. Cox  
Email: [simon.cox@ed.ac.uk](mailto:simon.cox@ed.ac.uk)

Eleanor. L. S. Conole  
Email: [eleanor.conole@ed.ac.uk](mailto:eleanor.conole@ed.ac.uk)

---

## Abstract

**Background:** Preterm birth is closely associated with a phenotype that includes brain dysmaturation and neurocognitive impairment, commonly termed Encephalopathy of Prematurity (EoP), of which systemic inflammation is considered a key driver. DNA methylation (DNAm) signatures of inflammation from peripheral blood associate with poor brain imaging outcomes in adult cohorts. However, the robustness of DNAm inflammatory scores in infancy, their relation to comorbidities of preterm birth characterised by inflammation, neonatal neuroimaging metrics of EoP, and saliva cross-tissue applicability are unknown.

**Methods:** Using salivary DNAm from 258 neonates (n = 155 preterm, gestational age at birth 23.28 – 34.84 weeks, n = 103 term, gestational age at birth 37.00 – 42.14 weeks), we investigated the impact of a DNAm surrogate for C-reactive protein (DNAm CRP) on brain structure and other clinically defined inflammatory exposures. We assessed i) if DNAm CRP estimates varied between preterm infants at term equivalent age and term infants, ii) how DNAm CRP related to different types of inflammatory exposure (maternal, fetal and postnatal) and iii) whether elevated DNAm CRP associated with poorer measures of neonatal brain volume and white matter connectivity.

**Results:** Higher DNAm CRP was linked to preterm status ( $-0.0107 \pm 0.0008$ , compared with  $-0.0118 \pm 0.0006$  among term infants;  $p < 0.001$ ), as well as perinatal inflammatory diseases, including histologic chorioamnionitis, sepsis, bronchopulmonary dysplasia, and necrotising enterocolitis (OR range |2.00 | to |4.71|,  $p < 0.01$ ). Preterm infants with higher DNAm CRP scores had lower brain volume in deep grey matter, white matter, and hippocampi and amygdalae ( $\beta$  range |0.185| to |0.218|). No such associations were observed for term infants. Association magnitudes were largest for measures of white matter microstructure among preterms, where elevated epigenetic inflammation associated with poorer global measures of white matter integrity ( $\beta$  range |0.206| to |0.371|), independent of other confounding exposures.

**Conclusions:** Epigenetic biomarkers of inflammation provide an index of innate immunity in relation to neonatal health. Such DNAm measures complement biological and clinical metrics when investigating the determinants of neurodevelopmental differences.

## Key words

Perinatal; Inflammation; DNA methylation; Epigenetics; Encephalopathy of Prematurity; White Matter; Preterm Birth; Necrotizing Enterocolitis; Neonatal Sepsis; Diffusion Tensor Imaging; Neurodevelopment; Multiomics

## 1. Introduction

Preterm infants are at an increased risk of elevated inflammation, related health complications, and adverse neurodevelopment compared to infants born at term (1–8). While the aetiology of these outcomes is multifactorial, inflammation is considered to be a key component linking preterm birth and poor neurodevelopmental and mental health outcomes via its effects on cerebral maturational processes (9–12). Neonatal neuroimaging has identified neurostructural hallmarks of preterm birth commonly referred to as Encephalopathy of Prematurity (EoP), including dysmaturation of cortical and deep grey matter, atypical white matter development and disrupted connectivity (13). Recent advances in epigenetics may permit new ways to characterise sustained inflammation and reveal new insights into the relationship between inflammatory exposures, inflammation and neonatal brain and health outcomes.

Preterm infants are more susceptible to sustained inflammation than term infants and can be subject to multiple inflammatory stimuli during the perinatal period (14,15). Alongside maternal lifestyle-related exposures (16), various complications during pregnancy such as preeclampsia and histologic chorioamnionitis (17,18) can induce both maternal and fetal inflammatory responses and increase the risk of a sustained pro-inflammatory state postnatally (17–22). Preterm infants are additionally at higher risk for developing severe inflammatory conditions in the first few weeks of life, which may in turn perpetuate inflammation (8) – including bronchopulmonary dysplasia (BPD), necrotizing enterocolitis (NEC), severe retinopathy of prematurity (ROP) and episodes of sepsis (23). Preterm infants often present with multiple chronic conditions at once (24), putting them at higher risk of a greater allostatic load of inflammation (14,24–26).

Though numerous studies report associations between inflammation and cognitive outcomes in preterm populations (8,27–31), research linking inflammatory biomarkers with neurostructural measures yield inconsistent findings (4,6,11,19,21,32–37). Gaining a clearer understanding of the pathways via which sustained inflammation in very early life may precipitate well characterised cognitive and neurostructural outcomes requires novel approaches. The relative inconsistency of work to date is likely due to heterogeneity in study design: there is substantial variation in the demographic characteristics of study samples; the degree to which residual confounding factors are controlled; and the presence or absence of term control groups. Moreover, the relative nascency of the neonatal neuroimaging field (38) contributes to substantial variation in the acquisition and selection of brain outcome measures, and there is marked anatomic variation in early life, which can confound investigation of structure-function relationships (39).

Above these factors, we argue that the measures used to characterise inflammation in the first place may account for the greatest source of ambiguity in the inflammation-brain structure literature. In both clinical and research settings, there is a historical reliance on sampling phasic inflammation-related protein measures from blood to signpost inflammation. Of these, C-Reactive Protein (CRP) is the most widely adopted (40), although there are criticisms of this approach (41,42), particularly in newborn populations (40,43) where the CRP response to inflammation is variable owing to an immature immune system (15). Accurate characterisation of sustained (and not transient or acute) inflammation arguably requires repeated sampling or follow up examinations, which few studies endeavour to profile (44). This, alongside uncertainty of what exactly constitutes sustained inflammation in the preterm infant (15) calls for alternative, more stable biomarkers which can accurately reflect baseline inflammation levels. There is a clear precedent to identify tools to both circumvent the practical limitations of conventional inflammatory measurement in the neonate, alongside study designs that necessitate detailed brain and clinical information with adequate statistical power to detect small to moderate effect sizes.

Our previous work demonstrated that DNA methylation (DNAm) markers of inflammation may provide more stable readouts of cumulative inflammatory exposure (45,46) and shed greater insight into the consequences of inflammation on brain structure (47,48). DNAm is an epigenetic mechanism that can act as an interface by which environmental exposures influence gene function. DNAm is dynamic during fetal development, both in terms of the developing immune system (49) and brain (50–52) and may mediate the impact of maternal, fetal and postnatal exposures on brain development (53–55). In the context of preterm birth, only a limited number of studies have investigated DNAm changes (53,56–65) – of these, few examine DNAm in relation to neonatal neuroimaging metrics (59,62,63). Additionally, though some of these studies have examined DNAm in relation to postnatal health outcomes (53,65), no study to date has examined inflammation, DNAm, and neuroimaging concurrently in the neonatal period. This study is the first time an epigenetic measure of inflammation has been examined in a neonatal cohort in relation to brain health outcomes.

Here, using a cohort of 258 infants (103 term, 155 preterm), we examine (1) how a salivary DNAm signature of the inflammatory marker C-reactive protein (DNAm CRP) relates to preterm birth (2) how this signature associates with maternal, fetal and postnatal inflammatory exposures both individually and in aggregate, and (3) how variance in this measure relates to global measures of MRI brain volume, diffusion MRI (dMRI) correlates of connectivity, and regional variation in individual white matter tracts.

## 2. Methods

### 2.1 Study population

Preterm (gestational age at birth < 37 weeks) and term born infants delivered at the Royal Infirmary of Edinburgh, UK were recruited to the Theirworld Edinburgh Birth Cohort, a longitudinal study designed to investigate the effect of preterm birth on brain development (66). Cohort exclusion criteria were major congenital malformations, chromosomal abnormalities, congenital infection, overt parenchymal lesions (cystic periventricular leukomalacia, hemorrhagic parenchymal infarction) or post-hemorrhagic ventricular dilatation. Ethical approval has been obtained from the National Research Ethics Service, South East Scotland Research Ethics Committee (11/55/0061, 13/SS/0143 and 16/SS/0154). Informed consent was obtained from a person with parental responsibility for each participant. DNAm data were available from 258 neonates, 214 of whom also had successful structural and diffusion MRI acquisition.

### 2.2 Study variables

Inflammatory exposures were coded as binary variables (1 = present, 0 = absent) and were grouped as follows: maternal (pertaining to mother / maternal exposure), fetal (affecting placenta or fetus) or neonatal (affecting infant after birth). **Table 1** presents participant characteristics of these categories. Histologic chorioamnionitis (HCA) was defined via placental histopathology, as reported previously (17,21). Incidence of any neonatal sepsis (either late onset or early onset sepsis) was defined as detection of bacterial pathogen from blood culture, or physician decision to treat for  $\geq 5$  days in the context of growth of coagulase negative staphylococcus from blood or a negative culture. Necrotising enterocolitis (NEC) was defined as stages two or three according to the modified Bell's staging for NEC (67). Bronchopulmonary dysplasia (BPD) was defined by the requirement for supplemental oxygen at 36 weeks gestational age. Birthweight z-scores were calculated according to International Fetal and Newborn Growth Consortium for the 21st Century (INTERGROWTH-21st) standards (68).

### 2.3 DNA extraction and methylation measurement and pre-processing

Saliva obtained at term equivalent age was collected in Oragene OG-575 Assisted Collection kits, by DNA Genotek, and DNA extracted using prepIT.L2P reagent (DNA Genotek, Ontario, Canada). DNA was bisulfite converted and methylation levels were measured using Illumina HumanMethylationEPIC BeadChip (Illumina, San Diego, CA, USA) at the Edinburgh Clinical Research Facility (Edinburgh, UK). The arrays were imaged on the Illumina iScan or HiScan platform and genotypes were called automatically using GenomeStudio Analysis software

version 2011.1 (Illumina). Infants' saliva samples were taken (for DNAm analysis) around the same time as MRI acquisition. Details of DNAm pre-processing have been outlined previously (63); for full details, refer to **supplementary methods**.

## 2.4 Inflammatory-related methylation signature

For each individual ( $n = 258$ ), a weighted linear signature (DNAm CRP) was obtained by multiplying the methylation proportion at a given CpG by the effect size from a previous epigenome wide association study (EWAS) of CRP (69) (**supplementary table 1**), and then summing these values. This method has been described previously (46–48,70).

## 2.5 MRI acquisition

This study incorporates data from two phases of MRI acquisition which is reflected in the flowchart of the study sample (**supplementary figure 2**). The data acquisition of this study has been reported previously (63,66).

In the first phase ( $n = 93$ ), structural and dMRI were performed in neonates using a MAGNETOM Verio 3T clinical MRI scanner (Siemens Healthcare GmbH, Erlangen, Germany) and 12-channel phased-array head coil. For dMRI, A protocol consisting of 11 baseline volumes ( $b = 0 \text{ s/mm}^2$  [ $b_0$ ]) and 64 diffusion-weighted ( $b = 750 \text{ s/mm}^2$ ) single-shot spin-echo echo planar imaging (EPI) volumes acquired with 2 mm isotropic voxels (TR/TE 7300/106 ms) was used; 3D T1-weighted (T1w) MPRAGE (TR/TE 1650/2.43 ms) with 1 mm isotropic voxels was acquired.

For the second phase ( $n=121$ ), structural and dMRI were performed neonates using a MAGNETOM Prisma 3T clinical MRI scanner (Siemens Healthcare GmbH, Erlangen, Germany) and 16-channel phased-array pediatric head and neck coil. This was used to acquire dMRI in two separate acquisitions: the first consisted of 8  $b_0$  and 64 volumes with  $b = 750\text{s/mm}^2$ ; the second consisted of 8  $b_0$ , 3 volumes with  $b = 200 \text{ s/mm}^2$ , 6 volumes with  $b = 500\text{s/mm}^2$  and 64 volumes with  $b = 2500 \text{ s/mm}^2$ . An optimal angular coverage for the sampling scheme was applied (71). In addition, an acquisition of 3  $b_0$  volumes with an inverse phase encoding direction was performed. All dMRI volumes were acquired using single-shot spin-echo planar imaging (EPI) with 2-fold simultaneous multi-slice and 2-fold in-plane parallel imaging acceleration and 2 mm isotropic voxels; all three diffusion acquisitions had the same parameters (TR/TE 3500/78.0ms). Images affected by motion artifact were re-acquired multiple times as required; dMRI acquisitions were repeated if signal loss was seen in 3 or more volumes. 3D T2-weighted SPACE images (T2w) (TR/TE 3200/409 ms) with 1 mm isotropic voxels and 3D T1w MPRAGE (TR/TE 1970/4.69 ms) with 1 mm isotropic voxels were also acquired.

Infants were fed and wrapped and allowed to sleep naturally in the scanner without sedation. Pulse oximetry, electrocardiography and temperature were monitored. Flexible earplugs and neonatal earmuffs (MiniMuffs, Natus) were used for acoustic protection. All scans were supervised by a doctor or nurse trained in neonatal resuscitation. Structural images were reported by an experienced pediatric radiologist (A.J.Q), and each acquisition was inspected contemporaneously for motion artefact and repeated if there had been movement while the baby was still sleeping; dMRI acquisitions were repeated if signal loss was seen in 3 or more volumes.

As details on dMRI pre-processing have been previously outlined (72) please refer to **supplementary methods** for specifics. T2w images from phase 2 were processed using the dHCP pipeline (73). The T1w images from phase 1 were processed using specific software for brain skull-stripping and tissue segmentation (74). The phase 1 pipeline relies on some atlases, for these purposes, 10 subjects from the phase 2 that have both T1w and T2w were selected. The volumes extracted include cortical grey matter, deep grey matter, white matter, hippocampi and amygdalae, cerebellum, brainstem, cerebrospinal fluid (CSF) and ventricles.

From the diffusion images we calculated the tensor – fractional anisotropy (FA), mean diffusivity (MD), axial diffusivity (AD), and radial diffusivity (RD) – and the NODDI (intracellular volume fraction [NDI] maps) (75,76). All the subjects were registered to the Edinburgh Neonatal Atlas (ENA50) using DTI-TK (75,77). The diffusion tensor derived maps of each subject (FA and MD) were calculated after registration; NDI was then propagated to the template space using the previously calculated transformations. The data was skeletonized using the ENA50 skeleton and then multiplied by a custom mask. Finally, the peak width of the histogram of values computed within the skeletonized maps was calculated as the difference between the 95th and 5th percentiles (78). Global values of white matter microstructure reported in this study are the peak width of skeletonised metrics (PSFA, PSMD, PSRD, PSAD, PSNDI), which have been derived from the same pipeline previously used to characterise brain structural differences between preterm and term infants (77).

## 2.6 Tract segmentation and extraction of tract-averaged dMRI metrics

As above, details of individual white matter tract segmentation and subsequent extract of tract-averaged dMRI metrics have been outlined previously from infants from this study sample (79). Briefly, FA and MD were derived for the left and right hemispheric tracts of the arcuate fasciculus (AF), anterior thalamic radiation (ATR), cingulum cingulate gyrus (CCG), corticospinal tracts (CST), inferior fronto-occipital fasciculus (IFOF), inferior longitudinal fasciculus (ILF), uncinate fasciculus (UNC) and genu and splenium of the corpus callosum (CC).

## 2.7 Statistical Analysis

All statistical analyses were performed in R (version 4.0.5) (R Core Team, 2020).

### 2.7.1 Selection of covariates and confounding variables

In comparing participant demographics between term infants ( $n = 103$ ) and preterm infants ( $n = 155$ ),  $p$ -values derived from the  $t$ -test (for continuous variables) and Chi-square test or Fischer's Exact test if the count was below 5 (categorical variables) (**Table 1**) (80). In all models examining the association between DNAm CRP with health outcomes and brain MRI metrics, we adjusted for infant sex, gestational age at birth, gestational age at scan, and birthweight Z score. Scanner variable was included when data included two phases of MRI acquisition. We also tested for an interaction between gestational age  $\times$  DNAm CRP and infant sex  $\times$  DNAm CRP in sensitivity analyses, where a significant interaction would indicate differences in association magnitudes at different gestational ages / between males and females. To quantify the amount of variance in each brain imaging biomarker accounted for by DNAm CRP, for all neuroimaging associations we report both the adjusted  $R^2$  and the incremental  $R^2$  (81), the latter of which was calculated by comparing the  $R^2$  of each model with that from a baseline model (reported as **Model H<sub>0</sub>**)  $R^2$  in which the MRI measure was modelled with covariates only (e.g., *Model H<sub>0</sub> = MRI metric ~ sex + birthweight + gestational age age + gestational age at scan + scanner*).

After examining global associations, we wanted to control for variables that could either cause the raised DNAm CRP (the exposure), variance in MRI metrics (the outcome), or both. We ran bivariate correlations and from these we included all common correlates of the exposure and the outcome in our second regression model (Model H<sub>2</sub>) to eliminate alternative explanations of the outcome due to confounding (**supplementary figure 1**). In these models, neither antenatal treatment of corticosteroids and MgSO<sub>4</sub> for anticipated preterm birth were included to circumvent issues of multicollinearity, since they were given to the majority of mothers (96% and 72% respectively) in the preterm group and were highly correlated with preterm status ( $r = 0.71 - 0.93$ ,  $p < 0.001$ ). The magnitude of effects are classified as small, medium, or large when the standardized coefficients are 0.1, 0.3, or 0.5, respectively as classified by Cohen (82).

Finally, accounting for the fact that inflammatory risk factors are positively correlated, we included all inflammatory risk factors in one multiple linear regression alongside DNAm CRP signature for each MRI variable of interest. This allowed us to account for unique contribution of DNAm CRP in the context of inflammatory-related exposures to variance in brain structural outcomes.



### 2.7.2 Multiple inflammatory hits and DNAm CRP

We next performed investigations to assess whether DNAm was related to number of inflammatory episodes experienced. Due to small numbers of individual inflammatory risk factors and the frequent overlap of episodes experienced in the preterm group, we created binary outcome measures based on combinations of inflammatory risk factors or conditions experienced, combining infants that experienced three or more morbidities into a single group, resulting in four possible levels for the risk score of 0, 1, 2, or 3 + alongside a term control reference (0 inflammatory episodes). Results are presented firstly unadjusted (model H<sub>1</sub>), then adjusted for gestational age at birth, infant sex and birthweight z-score (model H<sub>2</sub>), and then adjusted for gestational age at birth, infant sex and birthweight z-score as well as administration of MgSO<sub>4</sub> and corticosteroids in pregnancy (model H<sub>3</sub>), given these have been identified as potential confounders of the relationship between inflammation and health outcomes in previous studies (83–85). Results are presented as odds ratios (OR) and 95% confidence intervals (CI) for categorical outcome measures.

### 2.7.3 DNAm CRP and global brain structure associations

To determine the effect of inflammation (DNAm CRP) on neuroimaging outcomes, data were analysed using regression models, controlling for gestational age at birth, gestational age at scan, infant sex, MRI scanner, and birthweight Z score. We aimed to contextualise these associations with clinical health data. Inflammatory risk factors were added simultaneously as covariates into a second model (model H<sub>2</sub>) in addition to the standard covariates of gestational age at birth, gestational age at scan, birthweight Z score and sex (model H<sub>1</sub>). As no term infants had postnatal inflammatory episodes (sepsis, NEC, ROP, BPD), analyses were stratified according to term or preterm status. In models testing global brain structural metrics such as brain volumes and PSMD and PSFA, MRI scanner was included as a binary covariate as MRI data from both phases of data collection were included (refer to **supplementary figure 2**, study sample flowchart). All continuous variables were standardised using z-score scaling to obtain standardised effect sizes ( $\beta$ ). P-values were corrected for multiple testing using the false discovery rate (FDR) method and significance was deemed FDR corrected p-value ( $p_{FDR}$ ) < 0.05. 95% CIs are reported throughout.

### 2.7.4 DNAm CRP and dMRI White matter tract associations

dMRI measures of white matter appear to be highly correlated (e.g. high FA in an individual tract such as the arcuate fasciculus is often accompanied by high FA across all other white matter tracts in that individual), a property that persists from early infancy through to older age (79,86,87). As a result of this, it is common to derive general factors (g-factors) of white matter

microstructure to characterise global white matter microstructure. One PCA was conducted for FA and MD parameters across the 16 tracts to quantify the proportion of shared variance between them; in each analysis, each subject was described by 16 features, computed as the tract-averaged values of FA or MD across each tract (**supplementary figure 5**). The first unrotated principal component (PC) scores were extracted as the single-metric g-factors, gFA and gMD (scree plot and PCA variable contributions illustrated in **supplementary figure 6**).

As with global brain structural metrics, two models were used:

1. **Model H<sub>1</sub>**: dMRI metric ~ DNAm CRP + gestational age at scan + gestational age at birth + infant sex + birthweight.
2. **Model H<sub>2</sub>**: dMRI metric ~ DNAm CRP + gestational age at scan + gestational age at birth + infant sex + birthweight + all inflammatory risk factors

In comparison to global MRI volumetric metrics and PSFA, PSMD, PSAD and PSRD, all individual tract associations, gFA, gMD and PSNDI were limited to neuroimaging data from phase 2 of the study, hence no scanner variable was included in these analyses.

## 2.8 Data and code availability

Requests for original image and anonymised data will be considered through the BRAINS governance process ([www.brainsimagebank.ac.uk](http://www.brainsimagebank.ac.uk)). Raw DNAm data are available upon request from Theirworld Edinburgh Birth Cohort, University of Edinburgh (<https://www.tebc.ed.ac.uk/2019/12/data-access-and-collaboration>), while DNAm and metadata are not publicly available, generated DNAm CRP signatures are included alongside scripts for data analysis. All brain volumetric metrics were obtained using the scripts provided in <https://github.com/amakropoulos/structural-pipeline-measures>. The segmented tracts in the ENA50 template space are available online: <https://git.ecdf.ed.ac.uk/jbrl/ena>. Code for primary data analysis and figures are available at [https://github.com/EleanorSC/TEBC\\_DNAmCRP](https://github.com/EleanorSC/TEBC_DNAmCRP) and code for tract propagation and average calculation are available at <https://git.ecdf.ed.ac.uk/jbrl/neonatal-gfactors>.

### 3. Results

#### 3.1 Participant characteristics

The study group consisted of 258 neonates: 155 participants were preterm and 103 were controls born at full term, see Table 1 for participant characteristics and **supplementary figure 1** for a flowchart of data acquisition. Among the preterm infants, 48 (31%) had bronchopulmonary dysplasia, 10 (6%) developed necrotising enterocolitis, 8 (5%) developed ROP, 49 had HCA (32%), 22 (15%) were born to women whose pregnancy was complicated by preeclampsia, and 36 (23%) had an episode of postnatal sepsis. Of the 258 participants with DNAm data, 214 also had MRI data.

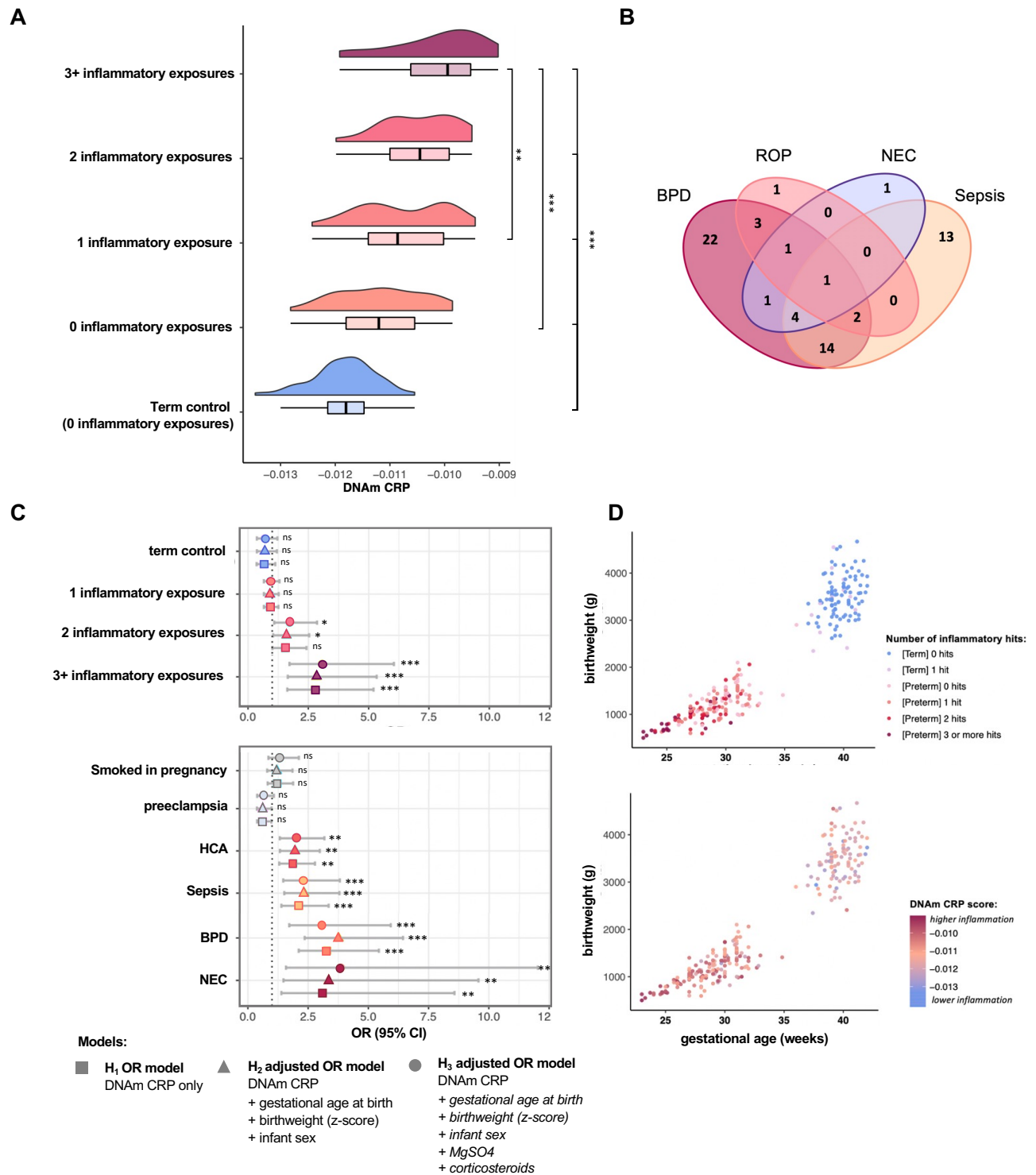
Characteristics & clinical features	Term infants (n=103)	Preterm infants (n=155)	P value
Sex: Female (%)	44 (43)	75 (48)	0.2166
Gestational age at birth/weeks (range)	39.7 (37.00 – 42.14)	28.84 (23.28 – 34.84)	<0.001
Gestational age at scan/weeks (range)	42.27 (39.84 – 47.14)	40.56 (37.70 – 45.14)	<0.001
Birth weight/g (range)	3482 (2346 – 4670)	1177 (500 – 2100)	<0.001
Birth weight z-score (range)	0.43 (-2.30 – 2.96)	-0.19 (-3.13 – 1.58)	<0.001
DNAm CRP (mean, SD)	-0.012 (0.001)	-0.011 (0.001)	<0.001
<b>Maternal / fetal</b>			
Maternal age (years)	33.7 (19–48)	31.1 (17–44)	<0.001
Antenatal corticosteroid administration in pregnancy, n (%)	2 (0.02)	148 (95.5)	<0.001
MgSO4 administration in pregnancy, n (%)	0 (0)	112 (72)	<0.001
Smoked during pregnancy (%)	2 (2)	29 (19)	<0.001
Histologic chorioamnionitis, n (%)	6 (0.06)	49 (31.6)	<0.001
Preeclampsia, n (%)	7 (0.07)	22 (14.2)	<0.001
<b>Neonatal</b>			
Necrotizing enterocolitis, n (%)	0 (0)	10 (6)	N/A
Bronchopulmonary dysplasia, n (%)	0 (0)	48 (31)	N/A
Retinopathy of prematurity, n (%)	0 (0)	8 (5)	N/A
Sepsis, n (%)	0 (0)	36 (23)	N/A

**Table 1. Demographic and clinical features of study sample (n=258).** P values denote significant difference between term and preterm groups.

### 3.2 Multiple inflammatory hits increase risk of elevated epigenetic inflammation

Preterm Infants in the sample for whom DNAm data and composite neonatal inflammatory risk scores were available (n = 155), had high prevalence (n = 112, 72%) of experiencing at least one of the documented inflammatory exposures (Figure 1B), which included incidence of smoking during pregnancy, preeclampsia, HCA, sepsis, BPD, NEC or ROP. A small subset of these infants experienced three or more of these exposures (n = 24, 15%).

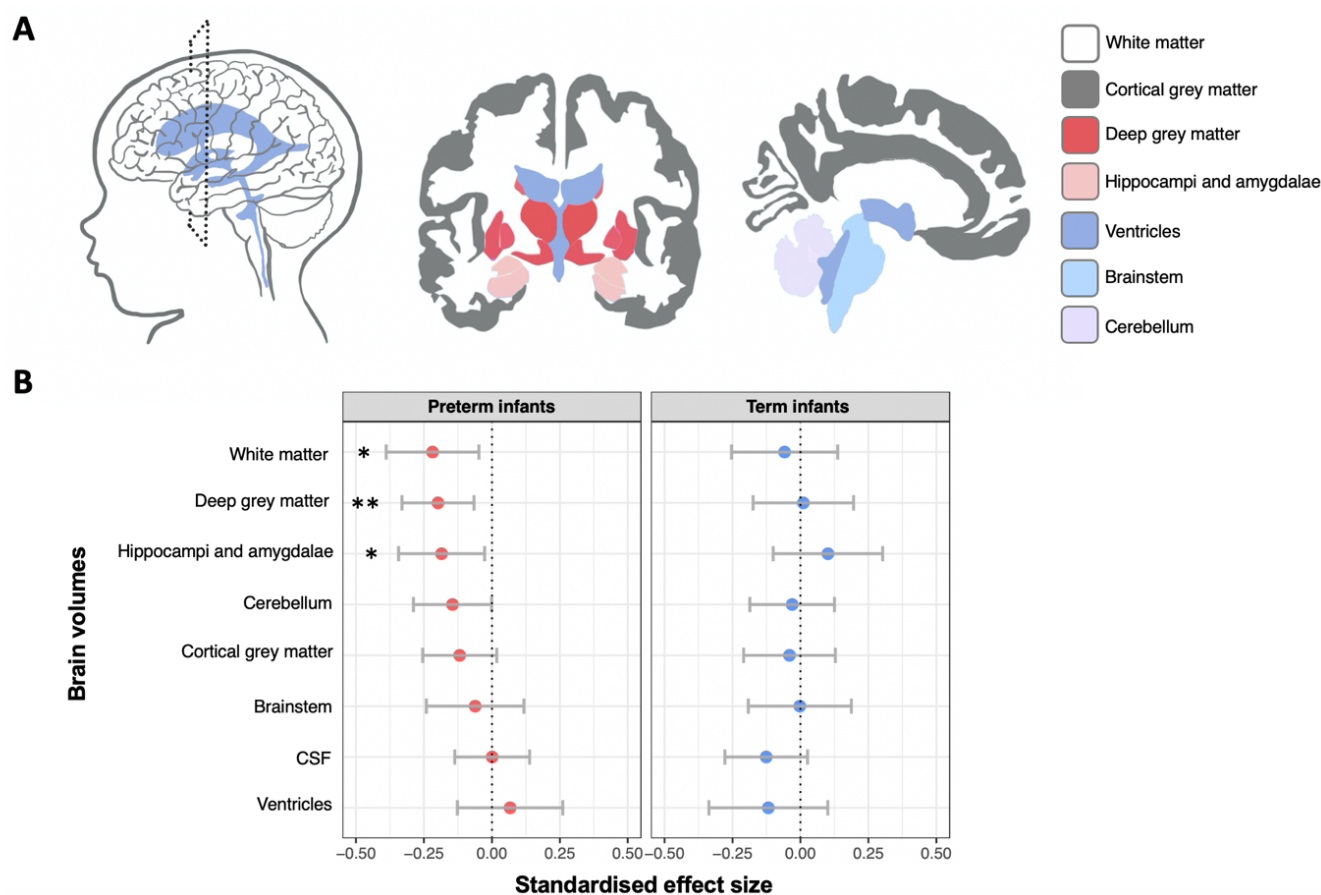
There was an association between number of inflammatory episodes and the epigenetic inflammation signature, with higher DNAm CRP in infants who had experienced greater exposure to inflammation. DNAm CRP was associated with higher odds of several perinatal morbidities including HCA, sepsis, BPD, and NEC. These relationships remained significant following adjustment for gestational age at birth, birthweight, and infant sex as well as perinatal variables of administration of corticosteroids and MgSO<sub>4</sub> in pregnancy (Figure 1C, **supplementary table 3**). The association of DNAm CRP with ROP was no longer significant after controlling for MgSO<sub>4</sub> and corticosteroid administration (model H<sub>3</sub>). DNAm CRP was also associated with three or more inflammatory episodes. There was no significant association of DNAm CRP with maternal smoking in pregnancy or preeclampsia. Infants with increasing numbers of complications were more likely to have shorter gestational ages at birth and lower birthweights (**Figure 1D**). Furthermore, preterm infants had significantly higher DNAm CRP (Table 1, p < 0.001). When examining DNAm CRP alongside clinical inflammatory exposures (**supplementary table 4**), there was no significant difference between term infants with no inflammatory episodes vs those with one. The largest difference was found between term infants with no inflammatory episodes and preterm infants with 3 or more inflammatory risk-factors (p < 0.001).



**Figure 1. Multiple inflammatory hits associate with raised DNAm CRP** (A) distributions of DNAm CRP according to number of inflammatory episodes experienced by infant (B) Venn diagram showing the overlap postnatal inflammatory morbidities in study sample (C) Odds ratios and 95% confidence intervals for contribution of DNAm CRP to inflammatory exposures, asterisks (\*) indicate statistically significant (FDR-corrected  $p < 0.05$ ) (D) Scatter plots of the relationships between gestational age and birthweight, coloured according to number of inflammatory episodes/exposures (top panel) and DNAm CRP (bottom panel).

### 3.3 DNAm CRP and brain volumes

Overall, magnitudes of associations between DNAm CRP and global MRI brain volumes were modest, explaining a small amount of additional variance beyond covariates (of infant sex, gestational age at birth, birthweight z-score, gestational age at scan, scanner variable). After examining inflammation-brain structure associations across all infants ( $n = 214$ ; **supplementary table 5**), we stratified analyses into term ( $n = 87$ ) and preterm ( $n = 127$ ) subgroups to examine group differences (Figure 2B). The incremental  $R^2$  upon adding DNAm CRP to a null model varied by trait: global white matter volume = 3.7%, deep grey matter volume = 3.0%, hippocampi and amygdalae volume = 2.7% and cerebellar volume = 1.6%. Visual inspection of diagnostic plots suggested no regression assumptions were violated (an example is given in **supplementary figure 4**). Term infants displayed no significant brain structural associations with DNAm CRP, whereas preterm infants with higher DNAm CRP displayed brain volume reductions in deep grey matter, white matter, and hippocampi and amygdalae (Figure 2B).

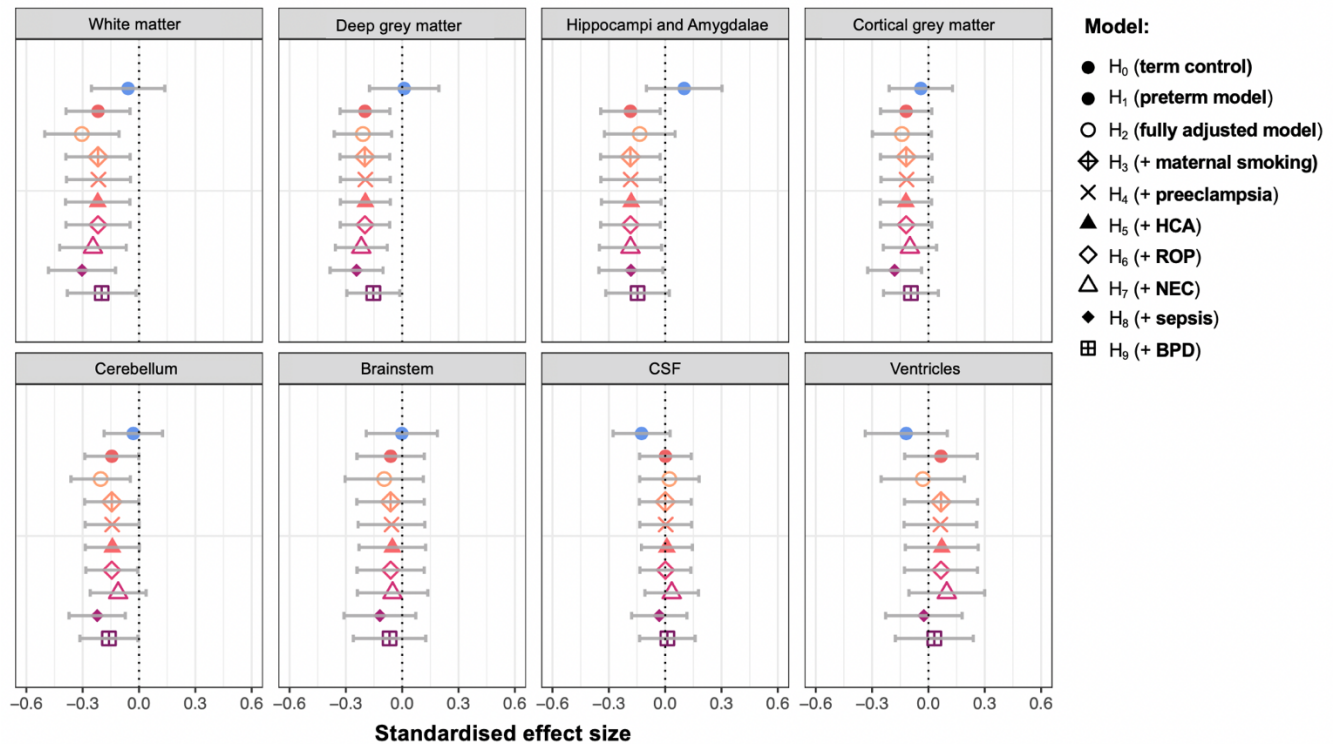


**Figure 2. Association of DNAm CRP with brain volumes** (A) schematic drawn by ggseg package (Mowinckel & Vidal-Piñeiro, 2020) of reconstructed MRI brain volumetric measures (B) Standardized regression coefficients for DNAm CRP associations between brain volumetric measures for preterm infants (red circles) and preterm infants (blue circles). Points show

standardized coefficients and 95% confidence intervals. Asterisks (\*) indicate statistically significant (FDR-corrected  $p < 0.05$ ). All models are controlled for infant sex, gestational age at birth, gestational age at scan and birthweight Z score and scanner variable.

Analyses were repeated to include interactions between DNAm CRP and both sex and gestational age (**supplementary tables 6-9**). While null findings were observed with the former ( $p > 0.05$ ; **supplementary table 7**), within the preterm cohort there was evidence for interactions with gestational age at birth (**supplementary table 8**). Higher DNAm CRP was consistently associated with lower brain volume in infants of lower gestational ages (i.e. extremely preterm infants tended to have higher DNAm CRP and correspondingly smaller global brain volume measures). In contrast, there was no significant interaction between gestational age and DNAm CRP within the term sub-group ( $p > 0.05$ ; **supplementary table 9**).

In fully adjusted models (Figure 3, **supplementary table 10**), there remained a significant association of DNAm CRP with deep grey matter volume ( $\beta = -0.209$ ,  $p = 0.008$ ), white matter volume ( $\beta = -0.304$ ,  $p = 0.003$ ), and cerebellum volume ( $\beta = -0.204$ ,  $p = 0.013$ ). For most brain metrics, the strength of the association between DNAm CRP and MRI metric was increased when additional inflammatory covariates were included in the model (percentage increase for deep grey matter volume = 6%, white matter volume = 39%, and cerebellum volume = 27%). Individually modelling risk factors revealed that this increase was mostly driven by controlling for incidence of sepsis, whereas brain structural associations were most attenuated by controlling for incidence of BPD (Figure 3).



**Figure 3. Associations between DNAm CRP and brain volumes and the impact of inflammatory risk factors on associations;** Standardized regression coefficients for DNAm CRP associations between brain volumetric measures for preterm infants (red circles) and term infants (blue circles). Points show standardized coefficients and 95% confidence intervals. All models are controlled for infant sex, gestational age at birth, gestational age at scan and birthweight Z score and scanner variable; additional shapes show standardised regression coefficients for different models ( $H_2$ - $H_9$ , corresponding with supplementary table 10).



### 3.4 Global white matter microstructure associations with DNAm CRP

Preterm infants with higher DNAm CRP had poorer measures of white matter tract integrity. This was seen at the global level for all peak width of skeletonised white matter microstructure metrics (**Table 2**); PSFA, PSMD, PSRD, PSAD;  $\beta$  range |0.186| to |0.341|, incremental  $R^2$  2.7 – 9%). In term infants, there were no significant associations (**supplementary table 10**).

As with global brain volumetric measures, there were significant interactions between gestational age and DNAm CRP across measures of white matter integrity excepting PSRD: PSFA (interaction  $\beta = 0.225$ ; main effect  $\beta = -0.212$ ), PSMD (interaction  $\beta = -0.257$ ; main effect  $\beta = 0.371$ ) and PSAD (interaction  $\beta = -0.271$ ; main effect  $\beta = 0.232$ ), indicating infants at younger gestational ages were more likely to have poor white matter integrity with high DNAm CRP. When controlling for inflammatory risk factors, DNAm CRP associations between PSRD and PSAD were no longer significant.

Within a smaller subgroup of this sample, individual tract FA and MD as well as neurite density index data was available (Phase 2, refer to **supplementary figure 2** for study flow diagram). PCA-derived single-metric g-factors, gFA and gMD (scree plot and PCA variable contributions illustrated in **supplementary figure 6**) were almost exactly correlated with those previously reported in a larger sample of Theirworld Edinburgh Birth cohort infants (79). When examining the association between DNAm CRP and global white matter measures in this subsample, the most striking association was seen with differences in a general factor of fractional anisotropy, gFA ( $\beta = -0.52$  [95% CI -0.304, -0.736],  $p = 1.48 \times 10^{-5}$ , incremental  $R^2 = 22\%$ ) and mean diffusivity, gMD ( $\beta = 0.423$  [95% CI 0.661, 0.191],  $p = 7.79 \times 10^{-4}$ , incremental  $R^2 = 14\%$ ). These effect sizes were attenuated by controlling for additional inflammatory risk factors (model H<sub>2</sub>) but remained significant ( $\beta$  range |0.35| to |0.37|,  $p < 0.05$ ). No significant associations were found between DNAm CRP with PSNDI.

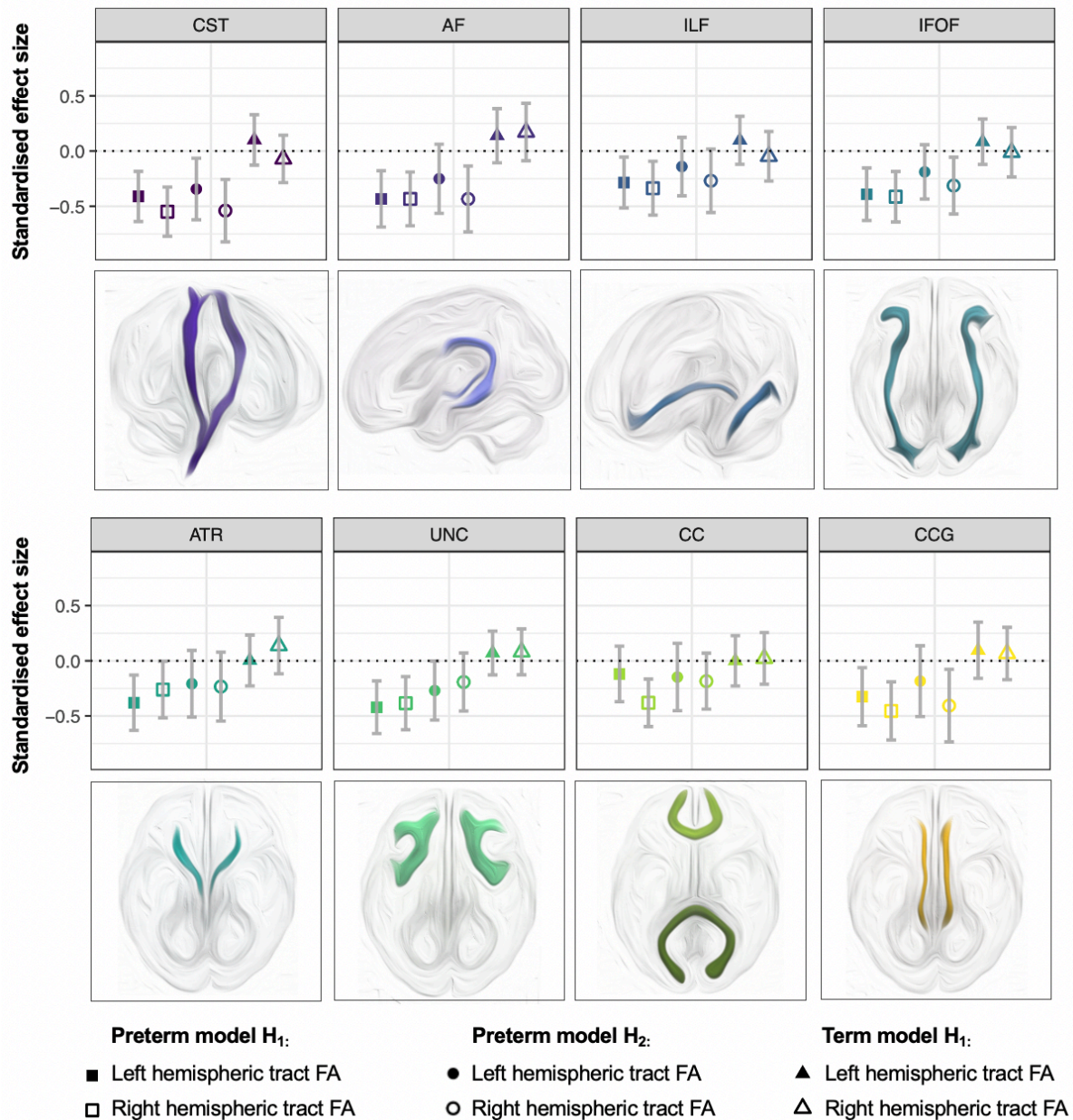
		beta	lower CI	upper CI	p	r <sup>2</sup>	additional r <sup>2</sup>	n
<b>Model H<sub>1</sub></b>	<b>PSFA</b>	<b>-0.186</b>	-0.324	-0.048	<b>0.009</b>	0.540	0.027	127
	<b>PSMD</b>	<b>0.341</b>	0.166	0.517	<b>2.17E-04</b>	0.256	0.090	127
	<b>PSRD</b>	<b>0.312</b>	0.122	0.501	<b>0.002</b>	0.130	0.075	127
	<b>PSAD</b>	<b>0.201</b>	0.030	0.372	<b>0.023</b>	0.294	0.031	127
	<b>gFA*</b>	<b>-0.520</b>	-0.736	-0.305	<b>1.48E-05</b>	0.441	0.216	64
	<b>gMD*</b>	<b>0.426</b>	0.191	0.661	<b>0.001</b>	0.333	0.145	64
	<b>PSNDI*</b>	-0.089	-0.321	0.142	0.452	0.354	0.006	64
<b>Model H<sub>2</sub></b>	<b>PSFA</b>	<b>-0.215</b>	-0.375	-0.055	<b>0.009</b>	0.577	0.026	127
	<b>PSMD</b>	<b>0.206</b>	0.009	0.403	<b>0.042</b>	0.357	0.024	127
	<b>PSRD</b>	0.175	-0.041	0.392	0.115	0.222	0.017	127

<b>PSAD</b>	0.093	-0.095	0.280	0.336	0.414	0.005	127
<b>gFA*</b>	<b>-0.371</b>	-0.617	-0.124	<b>0.005</b>	0.573	0.073	64
<b>gMD*</b>	<b>0.355</b>	0.082	0.627	<b>0.014</b>	0.477	0.067	64
<b>PSNDI*</b>	-0.123	-0.419	0.173	0.420	0.385	0.008	64

**Table 2. Associations between DNAm CRP and global white matter microstructure and the impact of inflammatory risk factors on associations in preterm infants;** standardized regression coefficients for DNAm CRP associations between global white matter microstructure metrics for preterm infants. Betas (standardized coefficients) and 95% confidence intervals are reported. Bold text indicate statistically significant association (FDR-corrected  $p < 0.05$ ). Model H<sub>1</sub> controls for infant sex, gestational age at birth, gestational age at scan birthweight Z score and scanner variable; model H<sub>2</sub> additionally controls for inflammatory risk factors and associated morbidities (maternal smoking in pregnancy, preeclampsia, HCA, sepsis, BPD, NEC and ROP) \*scanner variable is controlled for when examining PS metrics but not gFA, gMD and PSNDI (single-scanner sample).

### 3.5 Individual white matter tract associations with DNAm CRP

We next examined associations between DNAm CRP and individual tract-averaged FA and MD. In all models, term infants displayed no significant tract associations with DNAm CRP (**supplementary figure 7**). In preterm infants, altered FA was present in both hemispheric tracts of the AF, CST, IFOF, ILF, UNC and CCG (**Figure 4** shows tract-averaged fractional anisotropy for each of the 16 tracts for the term and preterm neonates). Some tract associations were specific to hemisphere such as decreased FA in the left (but not right) ATR. Equally, altered FA and MD was present in only the genu (and not splenium) of the corpus callosum. A breakdown of all dMRI results is reported in **supplementary table 11**. However, after adjusting for additional inflammatory risk factors, (in order of effect size) only FA in the right corticospinal tract (15.4%), right AF (10%), and right CCG (8.7%) remained significant. For tract MD, bilateral increases in MD were observed in the AF, CST, IFOF, ATR and CCG. Hemispheric specific associations were found for the left ILF, left ATR and genu of the corpus callosum. Of these associations, AF and ILF were no longer significant when accounting for additional inflammatory exposures.



**Figure 4. DTI-tract associations with DNAm CRP.** Standardized regression coefficients for DNAm CRP associations between tract fractional anisotropy (FA) for preterm infants (squares), preterm infants in models controlling for additionally inflammatory risk factors (circles) and term infants (triangles). Filled shapes are left tracts and open shapes are right hemispheric tracts, except in the case of the CC where filled shapes are the splenium and open shapes are the genu of the corpus callosum. Points show standardized coefficients and 95% confidence intervals. All models are controlled for sex, gestational age at birth, gestational age at scan and birthweight Z score. Model H<sub>2</sub> (circles) additionally controls for inflammatory risk factors (maternal smoking during pregnancy, preeclampsia, HCA, neonatal sepsis, BPD, NEC, ROP). For MD associations see **supplementary figure 7**.

## 4. Discussion

In this study, we integrated data from placenta, saliva and brain MRI in a large cohort of 258 infants to characterise the association of inflammation with brain structure. We demonstrate that a composite buccal-cell DNA methylation measure of inflammation trained in adult peripheral blood samples associates with comorbidities of preterm birth that are characterised by a pro-inflammatory state and widespread differences in brain structure among preterm infants. The epigenetic signature was particularly associated with white matter dysmaturation at term-equivalent age both globally and at the level of individual white matter tract microstructure, associations that largely remained significant when accounting for inflammatory exposures. Using this epigenetic signature which has previously tracked with inflammation and brain structural alterations in older age human cohorts, these data motivate further research into the potential of immune-DNA methylation markers for translational medicine in the neonatal period as diagnostic tools for identifying those at risk for inflammatory-related morbidities and neurodevelopmental impairment.

### 4.1 Inflammatory-related DNAm biomarkers

There has been increasing interest in using methylation data to advance our understanding of the causes and consequences of preterm birth as outlined in several reviews (10,88–91). Only recently has attention turned to exposures in the perinatal period, the role of epigenetics *in utero* for neurodevelopment, and the potential of peripherally sampled DNAm to capture the impact of environmental exposure in relation to brain and cognitive outcomes (92). Among these developments are the use of poly-epigenetic scores of exposure, which integrate information from multiple CpG sites to provide a record of exposure or to capture a complex trait (93). This approach has been used to examine maternal smoking (94–97) glucocorticoid, and prenatal folate exposure during pregnancy (55,98), alongside environmental exposures such as pollution (98). Examining DNAm proxies of inflammation is uncommon, but given the health associations with inflammatory-related DNAm in adult cohorts (47,48,99), and the shared nature of epigenetic changes between mother and infants (64,100), we hypothesised that variance in the neonatal methylome could reflect a convergence of amassed inflammatory burden from different perinatal origins.

### 4.2 DNAm CRP associates with gestational age and multiple inflammatory exposures

Our findings suggest that epigenetics offers a solution to the traditional limitations of assessing inflammatory burden in infancy. Preterm infants displayed higher DNAm CRP than term infants, and associations between DNAm CRP and postnatal health and brain outcomes were restricted

to the preterm infants. This novel finding that gestational age at birth correlates strongly with epigenetic inflammation ( $r = -0.62$ ,  $p < 0.001$ ) aligns with previous observations of elevated inflammatory protein concentrations with lower gestational ages and prematurity (8,15), lending further weight to the validity of this measure for carrying clinical significance. Equally, finding that inflammation-related alterations in brain structure were reserved to preterm infants (and no trends were seen in term infants) is likely because of the rapid developmental changes during the second and third trimester of pregnancy for both the developing innate immune system and brain – in particular, the disruptive impact of inflammation on neurogenesis, neuronal migration, synaptogenesis and myelination (3). As these processes are highly dynamic during these periods and early postnatal life, preterm infants are both more susceptible to sustained inflammation and neurodevelopmental disruption – the mechanisms of which we outline below.

Our finding that multiple inflammatory hits contributed to higher DNAm CRP strengthens the hypothesis that DNAm may index the allostatic load of inflammation during neonatal intensive care. In both preclinical studies and cohort groups, preterm infants with multiple inflammatory episodes or morbidities display an increased risk for brain structural abnormalities compared to infants who had only one inflammatory episode or condition recorded (101–103). The multi-hit hypothesis of sustained inflammation (14,26,101) suggests that postnatal health complications related to preterm birth can perpetuate a chronic inflammatory state, with timing of insults a key factor for why preterm infants are more susceptible than term infants to sustained inflammation (104). This could affect DNA methylation in the immune system, with studies demonstrating that lower birthweight infants go on to display higher concentrations of CRP in adolescence and adulthood (105,106), and that adversity-related changes in immune cell DNAm are related to raised plasma inflammatory mediators (107). Epigenetic modifications are an essential mechanism by which inflammatory risk factors could lead to long-term disruptions in both immune and brain development (54,108), and this work highlights the utility of profiling such changes alongside other clinical and biological data.

#### 4.3 White and deep grey matter dysmaturation in preterms with elevated inflammation

The most striking finding from this study is the association of DNAm CRP with widespread variances in brain structure in preterm but not term infants (Figures 2-4). We observe larger effect sizes for associations of DNAm CRP with global white matter microstructure (gFA and gMD) than white matter volume in a sub-population of these infants. This may be because diffuse white matter injury antedates overall reductions in white matter volume, with DNAm CRP-DTI associations capturing a more subtle dysmaturation of programmed development (109). Both global white matter volume, microstructure and regional white matter integrity were lower in preterms with elevated DNAm CRP, with infants at younger gestational ages more prone to

elevated inflammation and related poor white matter integrity. These findings echo the results of prior studies (25,33,110,111), and are overall consistent with the theory that alterations in white matter microstructure are largely a consequence of dysregulation of white matter development driven by inflammation (111).

In addition to white matter, volume reductions were observed in the hippocampi and amygdale and deep grey matter with increased DNAm CRP, though the former did not remain significant after accounting for additional inflammatory risk factors (**supplementary table 10**). The association of elevated DNAm CRP with lower deep grey matter volume is consistent with previous research that finds that preterms infants exhibit deep grey matter loss relative to term infants (112–114). Given the relationship we outline here between preterm birth and inflammatory load, inflammation may be a key driver of these differences, both via its direct effects on brain structure and its contribution to related damage such as sensitisation to hypoxia ischaemia, excitotoxic insults and other early-life stressors (2,115). These widespread alterations in brain structure are particularly interesting given the evidence base for inflammation relating to cognitive impairment, as studies have shown that both hippocampal volume and thalamic volume loss accompanying white matter microstructural alterations are linked to neurodevelopmental outcomes in early childhood (116–118). Inflammation-related grey matter loss is considered a consequence of dysregulated neuronal development, with inflammatory mediators disrupting processes such as dendritic arborization and cortico-thalamic connectivity (110). As consolidation of thalamocortical connections happens in the third trimester of pregnancy, deep grey matter structures may be vulnerable to inflammatory stimuli (119).

We also observed regional variance in how DNAm CRP associates with white matter tracts, a finding consistent with previous studies that indicate that certain white matter tracts are more vulnerable to inflammatory-adjacent events such as hypoxia ischemia (120,121) traumatic brain injury (9), intraventricular haemorrhage (122) and cerebral palsy (5). Different white matter tracts develop at different rates *in utero* and display distinct transient growth periods of increased axonal development. These windows of plasticity have been outlined as particularly vulnerable to perturbation (123,124), with inflammation disrupting the developmental lineage of oligodendrocytes, resulting in hypomyelinated axons (1,110,125,126). Developmental growth periods of certain white matter tracts may therefore underscore regional vulnerability to elevated inflammation, with younger tracts likely to have higher proportions of pre-myelinating oligodendrocytes vulnerable to inflammatory mediators. However, we caution that we lack the statistical power to reliably detect differences between the magnitude of associations in regional white matter structure, and instead interpret these findings as evidence of the pervasive and widespread impact of inflammation on the development of white matter. Correspondingly, though there were differences between the association significance for the left and right hemispheres for

several of the delineated tracts, these unilateral findings are in keeping with previous studies of similar sample size (4,127); as the magnitudes were similar (with overlapping confidence intervals), this did not indicate a strong basis for laterality of effects.

#### 4.4 Strengths and limitations

To our knowledge, this is the first time an epigenetic measure of inflammation has been examined in a preterm cohort in relation to brain health outcomes. The effect sizes reported in this study are consistent with that of previous epidemiologic studies of DNAm and early life outcomes (128). The sample size ( $n = 258$  for inflammatory exposure, and  $n = 121$ -214 for neuroimaging associations), is akin to that of previous work examining inflammation and brain structure in preterm infant populations (6,11,36,37,129–131), and in many cases more substantial, with the vast majority of prior work conducted in sample sizes of less than 100 infants (4,19,21,32–35,127,132). There is a distinct scarcity of detailed methylation alongside multi-modal neuroimaging data (133,134), particularly in neonatal cohorts (61,62,135), making this a valuable contribution to the DNAm-neuroimaging field.

Although the weights for the predictor were trained in adult blood samples, we observed similar associations between DNAm CRP and brain structural outcomes to those in previous studies of adults (47,48). Given we have now applied this method to buccal-cell DNAm, it is encouraging to see similar associations between DNAm CRP and brain structural outcomes, especially given that DNAm is highly tissue specific (136), and previous research has reported on cross-tissue differences in magnitude and direction of effects for other traits (137). This cross-tissue approach (where weights were originally created from blood-based DNAm, and later applied to saliva-based composite signatures) has also been adopted in other studies (98,138). While future studies would ideally measure CRP directly from serum or blood spots in infants to enable direct cross-tissue comparisons, saliva has the advantage of being one of the most accessible tissue samples for infant populations, and may be more suitable than other peripheral samples (such as blood) when examining brain and cognitive outcomes owing to the brain and buccal cell shared ectodermal origins (139–142). In the absence of direct comparison with inflammatory mediators from blood samples, the strong correlates with clinical inflammatory conditions (both fetal and postnatal) is affirming, and we have taken steps to account for possible sources of confounding (**supplementary figure 1**).

Neuroimaging studies are notoriously heterogenous in their design given the array of different MRI acquisition techniques, processing pipelines and chosen outcome measures. The choice of neuroimaging features is even more relevant in the context of preterm birth to adequately address the motivating research questions (38). Here, our choice of neuroimaging features was

guided by established characterizations of EoP in preterm infants, namely water content and dendritic/axonal complexity and dysmaturation within the white matter, and grey matter volume (77,124). While we consider this comprehensive characterisation of brain structure from NODDI and dMRI data a significant strength of this study, we acknowledge that microstructure measures such as FA and MD in older cohorts are commonly considered surrogates of white matter integrity or myelination, the white-matter pathways in this study are still developing at the time of gestational age at scan (range 37.70 - 45.14 weeks), and as such may not reflect permanent differences. Longitudinal follow up is therefore encouraged for future studies designed to examine the implications of sustained inflammation in preterms for neurodevelopmental outcomes and lifecourse brain health.

We do not attempt to discuss the causality of the relationship between DNAm CRP with brain structure, though the causality of such associations is a persistent topic of debate in epigenetic epidemiological research and has been discussed in depth in reviews (143). Future work examining transcriptomic changes on the same peripheral samples from which DNAm data is collected, as well as statistical approaches like two-step mendelian randomization, are important developments to unpick causality of these relationships. Studies investigating whether these differences in DNAm remain, amplify, or attenuate with age are advised, as well as how sensitive these signatures are in the context of intervention (anti-inflammatory medications and treatments, as well as lifestyle interventions such as the cessation of smoking in pregnancy). There is also precedent to examine whether composite methylation proxies of inflammation differ across psychopathology (144) or specific neurological cases such as Cerebral Palsy or neurodevelopmental disorders such as Fragile X syndrome, autism and ADHD, given examples of other poly-epigenetic signatures of psychiatric disorders (145). Future work that focuses on such DNAm dynamics in relation to these outcomes in ongoing longitudinal studies of infants born preterm is therefore of interest, as well as replication in different population samples.

Finally, DNAm was sampled in neonates postnatally. While this is rational when examining variances in DNAm and brain structural differences in infants, future studies that examine both maternal and infant DNAm could examine the degree to which exposures are shared or specific to parent and offspring. Equally, multiple DNAm sampling during pregnancy could elucidate key critical periods of susceptibility to inflammation by parsing out exposures specific to trimester or months of pregnancy, affording new insights into the spatiotemporal patterning of brain development in relation to dynamic immune changes in the perinatal period.



## 5. Conclusion

Inflammatory-related DNAm is associated with risk of postnatal health outcomes and brain dysmaturation. Our results indicate that multiple inflammatory-related hits from different origins (pertaining to maternal, fetal, and postnatal exposures) may be captured by changes to the DNA methylation profiles of infants and may help to explain variances in brain structure in preterm populations, circumventing limitations of traditional measures of inflammation. As early birth is associated with sudden change in immune-related risks, which coincide with the developing immune system and windows of neurodevelopmental plasticity, it is theorised that preterm infants are at greater risk of inflammation-related disruption of white matter. Our work here provides new layers to this theory, with epigenetic inflammation associating with diffuse and global brain – and particularly white matter – alterations in preterm but not term infants, indicating that sustained inflammation may be a key driver of neurodevelopmental disruption. In summary, the association of an epigenetic signature with inflammatory outcomes, and inflammation-relevant neural phenotypes, supports the use of methylation data in integrative, multimodal approaches toward disease stratification in the perinatal period.

## 6. Funding

This research was funded in whole, or in part, by the Wellcome Trust (grant numbers 108890/Z/15/Z and 221890/Z/20/Z). For the purpose of open access, the authors have applied a CC BY public copyright licence to any Author Accepted Manuscript version arising from this submission.

## 7. Acknowledgements

Some of the participants were scanned in the University of Edinburgh Imaging Research MRI Facility at the Royal Infirmary of Edinburgh which was established with funding from The Wellcome Trust, Dunhill Medical Trust, Edinburgh and Lothians Research Foundation, Theirworld, The Muir Maxwell Trust and other sources. We thank Thorsten Feiweier at Siemens Healthcare for collaborating with dMRI acquisitions (Works-in-Progress Package for Advanced EPI Diffusion Imaging). The authors are grateful to the families who consented to take part in the study and to all the University's imaging research staff for providing the infant scanning.

## 8. Declaration of interests

R.E.M has received a speaker fee from Illumina and is an advisor to the Epigenetic Clock Development Foundation and Optima Partners

## 9. References

1. Back SA. Brain injury in the preterm infant: new horizons for pathogenesis and prevention. *Pediatric neurology*. 2015;53(3):185–92.
2. Bennet L, Dhillon S, Lear CA, van den Heuvel L, King V, Dean JM, et al. Chronic inflammation and impaired development of the preterm brain. *Journal of Reproductive Immunology*. 2018 Feb 1;125:45–55.
3. Hagberg H, Mallard C, Ferriero DM, Vannucci SJ, Levison SW, Vexler ZS, et al. The role of inflammation in perinatal brain injury. *Nature Reviews Neurology*. 2015;11(4):192–208.
4. Inomata K, Mizobuchi M, Tanaka S, Iwatani S, Sakai H, Yoshimoto S, et al. Patterns of increases in interleukin-6 and C-reactive protein as predictors for white matter injury in preterm infants. *Pediatrics International*. 2014;56(6):851–5.
5. Lin C, Chang Y, Wang S, Lee T, Lin C, Huang C. Altered inflammatory responses in preterm children with cerebral palsy. *Annals of neurology*. 2010;68(2):204–12.
6. Shah DK, Doyle LW, Anderson PJ, Bear M, Daley AJ, Hunt RW, et al. Adverse neurodevelopment in preterm infants with postnatal sepsis or necrotizing enterocolitis is mediated by white matter abnormalities on magnetic resonance imaging at term. *The Journal of pediatrics*. 2008;153(2):170–5.
7. Stoll BJ, Hansen NI, Adams-Chapman I, Fanaroff AA, Hintz SR, Vohr B, et al. Neurodevelopmental and growth impairment among extremely low-birth-weight infants with neonatal infection. *Jama*. 2004;292(19):2357–65.
8. Humberg A, Fortmann I, Siller B, Kopp M, Herting E, Göpel W, et al. Preterm birth and sustained inflammation: consequences for the neonate. *Seminars in Immunopathology*. 2020; 42(4): 451–468.
9. Malaeb S, Dammann O. Fetal inflammatory response and brain injury in the preterm newborn. *Journal of child neurology*. 2009;24(9):1119–26.
10. Reiss JD, Peterson LS, Nesamoney SN, Chang AL, Pasca AM, Marić I, et al. Perinatal infection, inflammation, preterm birth, and brain injury: A review with proposals for future investigations. *Experimental Neurology*. 2022 May 1;351:113988.
11. Kelly CE, Cheong JLY, Gabra Fam L, Leemans A, Seal ML, Doyle LW, et al. Moderate and late preterm infants exhibit widespread brain white matter microstructure alterations at term-equivalent age relative to term-born controls. *Brain Imaging and Behavior*. 2016 Mar 1;10(1):41–9.
12. Favrais G, Van De Looij Y, Fleiss B, Ramanantsoa N, Bonnin P, Stoltenburg-Didinger G, et al. Systemic inflammation disrupts the developmental program of white matter. *Annals of neurology*. 2011;70(4):550–65.
13. Boardman JP, Counsell SJ. Invited Review: Factors associated with atypical brain development in preterm infants: insights from magnetic resonance imaging. *Neuropathology and Applied Neurobiology*. 2020 Aug 1;46(5):413–21.
14. Leviton A, Fichorova RN, O'Shea TM, Kuban K, Paneth N, Dammann O, et al. Two-hit model of brain damage in the very preterm newborn: small for gestational age and postnatal systemic inflammation. *Pediatr Res*. 2012/12/07 ed. 2013 Mar;73(3):362–70.
15. Dammann O, Leviton A. Intermittent or sustained systemic inflammation and the preterm brain. *Pediatric research*. 2014;75(3):376–80.

16. Chahal N, McLain AC, Ghassabian A, Michels KA, Bell EM, Lawrence DA, et al. Maternal Smoking and Newborn Cytokine and Immunoglobulin Levels. *Nicotine Tob Res.* 2017 Jul 1;19(7):789–96.
17. Sullivan G, Galdi P, Borbye-Lorenzen N, Stoye DQ, Lamb GJ, Evans MJ, et al. Preterm Birth Is Associated With Immune Dysregulation Which Persists in Infants Exposed to Histologic Chorioamnionitis. *Frontiers in Immunology [Internet].* 2021;12. Available from: <https://www.frontiersin.org/articles/10.3389/fimmu.2021.722489>
18. Dammann O, Allred EN, Fichorova RN, Kuban K, O'Shea TM, Leviton A, et al. Duration of Systemic Inflammation in the First Postnatal Month Among Infants Born Before the 28th Week of Gestation. *Inflammation.* 2016 Apr 1;39(2):672–7.
19. Yoon BH, Jun JK, Romero R, Park KH, Gomez R, Choi JH, et al. Amniotic fluid inflammatory cytokines (interleukin-6, interleukin-1 $\beta$ , and tumor necrosis factor- $\alpha$ ), neonatal brain white matter lesions, and cerebral palsy. *American journal of obstetrics and gynecology.* 1997;177(1):19–26.
20. Backes CH, Markham K, Moorehead P, Cordero L, Nankervis CA, Giannone PJ. Maternal Preeclampsia and Neonatal Outcomes. Lewis DF, editor. *Journal of Pregnancy.* 2011 Apr 4;2011:214365.
21. Anblagan D, Pataky R, Evans MJ, Telford EJ, Serag A, Sparrow S, et al. Association between preterm brain injury and exposure to chorioamnionitis during fetal life. *Scientific Reports.* 2016 Dec 1;6:37932.
22. Han X, Ghaemi MS, Ando K, Peterson LS, Ganio EA, Tsai AS, et al. Differential dynamics of the maternal immune system in healthy pregnancy and preeclampsia. *Frontiers in immunology.* 2019;1305.
23. Bassler D, Stoll BJ, Schmidt B, Asztalos EV, Roberts RS, Robertson CM, et al. Using a count of neonatal morbidities to predict poor outcome in extremely low birth weight infants: added role of neonatal infection. *Pediatrics.* 2009;123(1):313–8.
24. Singh JK, Wymore EM, Wagner BD, Thevarajah TS, Jung JL, Kinsella JP, et al. Relationship between severe bronchopulmonary dysplasia and severe retinopathy of prematurity in premature newborns. *Journal of American Association for Pediatric Ophthalmology and Strabismus.* 2019;23(4):209-e1.
25. Korzeniewski SJ, Romero R, Cortez J, Pappas A, Schwartz AG, Kim CJ, et al. A 'multi-hit' model of neonatal white matter injury: cumulative contributions of chronic placental inflammation, acute fetal inflammation and postnatal inflammatory events. *J Perinat Med.* 2014 Nov;42(6):731–43.
26. Barnett ML, Tusor N, Ball G, Chew A, Falconer S, Aljabar P, et al. Exploring the multiple-hit hypothesis of preterm white matter damage using diffusion MRI. *NeuroImage: Clinical.* 2018;17:596–606.
27. Suleri A, Blok E, Durkut M, Rommel AS, Witte L de, Jaddoe V, et al. The long-term impact of elevated C-reactive protein levels during pregnancy on brain morphology in late childhood. *Brain, Behavior, and Immunity.* 2022 Jul 1;103:63–72.
28. Andrews WW, Cliver SP, Biasini F, Peralta-Carcelen AM, Rector R, Aliksson-Schmidt AI, et al. Early preterm birth: association between in utero exposure to acute inflammation and severe neurodevelopmental disability at 6 years of age. *American Journal of Obstetrics & Gynecology.* 2008 Apr 1;198(4):466.e1-466.e11.
29. Dubner SE, Dodson CK, Marchman VA, Ben-Shachar M, Feldman HM, Travis KE. White matter microstructure and cognitive outcomes in relation to neonatal inflammation in 6-year-old children born preterm. *NeuroImage: Clinical.* 2019;23:101832.

30. Kuban KCK, Joseph RM, O'Shea TM, Heeren T, Fichorova RN, Douglass L, et al. Circulating Inflammatory-Associated Proteins in the First Month of Life and Cognitive Impairment at Age 10 Years in Children Born Extremely Preterm. *The Journal of Pediatrics*. 2017 Jan 1;180:116-123.e1.
31. O'Shea TM, Shah B, Allred EN, Fichorova RN, Kuban KC, Dammann O, et al. Inflammation-initiating illnesses, inflammation-related proteins, and cognitive impairment in extremely preterm infants. *Brain, behavior, and immunity*. 2013;29:104–12.
32. Travis KE, Adams JN, Ben-Shachar M, Feldman HM. Decreased and Increased Anisotropy along Major Cerebral White Matter Tracts in Preterm Children and Adolescents. *PLOS ONE*. 2015 Nov 11;10(11):e0142860.
33. Dubner SE, Dodson CK, Marchman VA, Ben-Shachar M, Feldman HM, Travis KE. White matter microstructure and cognitive outcomes in relation to neonatal inflammation in 6-year-old children born preterm. *NeuroImage: Clinical*. 2019 Jan 1;23:101832.
34. Lee ES, Kim EK, Shin S han, Choi YH, Jung YH, Kim SY, et al. Factors associated with neurodevelopment in preterm infants with systematic inflammation. *BMC Pediatrics*. 2021 Mar 8;21(1):114.
35. Basu S, Agarwal P, Anupurba S, Shukla R, Kumar A. Elevated plasma and cerebrospinal fluid interleukin-1 beta and tumor necrosis factor-alpha concentration and combined outcome of death or abnormal neuroimaging in preterm neonates with early-onset clinical sepsis. *Journal of Perinatology*. 2015;35(10):855–61.
36. Sullivan G, Galdi P, Cabezas MB, Borbye-Lorenzen N, Stoye DQ, Lamb GJ, et al. Interleukin-8 dysregulation is implicated in brain dysmaturation following preterm birth. *Brain, Behavior, and Immunity*. 2020 Nov 1;90:311–8.
37. Wu Y, Zhang H, Wang C, Broekman BFP, Chong YS, Shek LP, et al. Inflammatory modulation of the associations between prenatal maternal depression and neonatal brain. *Neuropsychopharmacology*. 2021 Jan 1;46(2):470–7.
38. Korom M, Camacho MC, Filippi CA, Licandro R, Moore LA, Dufford A, et al. Dear reviewers: Responses to common reviewer critiques about infant neuroimaging studies. *Developmental Cognitive Neuroscience*. 2022 Feb 1;53:101055.
39. Dimitrova R, Pietsch M, Christiaens D, Ciarrusta J, Wolfers T, Batalle D, et al. Heterogeneity in Brain Microstructural Development Following Preterm Birth. *Cerebral Cortex*. 2020 Jul 30;30(9):4800–10.
40. Brown J, Meader N, Cleminson J, McGuire W. C-reactive protein for diagnosing late-onset infection in newborn infants. *Cochrane Database of Systematic Reviews [Internet]*. 2019;(1). Available from: <https://doi.org/10.1002/14651858.CD012126.pub2>
41. Bower JK, Lazo M, Juraschek SP, Selvin E. Within-Person Variability in High-Sensitivity C-Reactive Protein. *Archives of Internal Medicine*. 2012 Oct 22;172(19):1519–21.
42. DeGoma EM, French B, Dunbar RL, Allison MA, Mohler ER 3rd, Budoff MJ. Intraindividual variability of C-reactive protein: the Multi-Ethnic Study of Atherosclerosis. *Atherosclerosis*. 2012/07/20 ed. 2012 Sep;224(1):274–9.
43. Chiesa C, Natale F, Pascone R, Osborn JF, Pacifico L, Bonci E, et al. C reactive protein and procalcitonin: Reference intervals for preterm and term newborns during the early neonatal period. *Clinica Chimica Acta*. 2011 May 12;412(11):1053–9.
44. Macallister K, Smith-Collins A, Gillet H, Hamilton L, Davis J. Serial C-Reactive Protein Measurements in Newborn Infants without Evidence of Early-Onset Infection. *Neonatology*. 2019;116(1):85–91.

45. Stevenson AJ, McCartney DL, Harris SE, Taylor AM, Redmond P, Starr JM, et al. Trajectories of inflammatory biomarkers over the eighth decade and their associations with immune cell profiles and epigenetic ageing. *Clin Epigenetics*. 2018 Dec 20;10(1):159–159.
46. Stevenson AJ, McCartney DL, Hillary RF, Campbell A, Morris SW, Bermingham ML, et al. Characterisation of an inflammation-related epigenetic score and its association with cognitive ability. *Clinical Epigenetics*. 2020 Jul 27;12(1):113.
47. Conole ELS, Stevenson AJ, Muñoz Maniega S, Harris SE, Green C, Valdés Hernández M del C, et al. DNA Methylation and Protein Markers of Chronic Inflammation and Their Associations With Brain and Cognitive Aging. *Neurology*. 2021 Dec 7;97(23):e2340.
48. Green C, Shen X, Stevenson AJ, Conole ELS, Harris MA, Barbu MC, et al. Structural brain correlates of serum and epigenetic markers of inflammation in major depressive disorder. *Brain, Behavior, and Immunity*. 2021 Feb 1;92:39–48.
49. Martino DJ, Tulic MK, Gordon L, Hodder M, Richman TR, Metcalfe J, et al. Evidence for age-related and individual-specific changes in DNA methylation profile of mononuclear cells during early immune development in humans. *Epigenetics*. 2011;6(9):1085–94.
50. Spiers H, Hannon E, Schalkwyk LC, Smith R, Wong CC, O'Donovan MC, et al. Methylomic trajectories across human fetal brain development. *Genome research*. 2015;25(3):338–52.
51. Takizawa T, Nakashima K, Namihira M, Ochiai W, Uemura A, Yanagisawa M, et al. DNA methylation is a critical cell-intrinsic determinant of astrocyte differentiation in the fetal brain. *Developmental cell*. 2001;1(6):749–58.
52. Fagiolini M, Jensen CL, Champagne FA. Epigenetic influences on brain development and plasticity. *Current opinion in neurobiology*. 2009;19(2):207–12.
53. Massaro AN, Bammler TK, MacDonald JW, Perez KM, Comstock B, Juul SE. Whole genome methylation and transcriptome analyses to identify risk for cerebral palsy (CP) in extremely low gestational age neonates (ELGAN). *Scientific reports*. 2021;11(1):1–10.
54. Ozanne SE, Constância M. Mechanisms of disease: the developmental origins of disease and the role of the epigenotype. *Nature clinical practice Endocrinology & metabolism*. 2007;3(7):539–46.
55. Suarez A, Lahti J, Lahti-Pulkkinen M, Girchenko P, Czamara D, Arloth J, et al. A polyepigenetic glucocorticoid exposure score at birth and childhood mental and behavioral disorders. *Neurobiology of Stress*. 2020 Nov 1;13:100275.
56. Konwar C, Price EM, Wang LQ, Wilson SL, Terry J, Robinson WP. DNA methylation profiling of acute chorioamnionitis-associated placentas and fetal membranes: insights into epigenetic variation in spontaneous preterm births. *Epigenetics & Chromatin*. 2018 Oct 29;11(1):63.
57. Liu Y, Hoyo C, Murphy S, Huang Z, Overcash F, Thompson J, et al. DNA methylation at imprint regulatory regions in preterm birth and infection. *American journal of obstetrics and gynecology*. 2013;208(5):395-e1.
58. Merid SK, Novoloaca A, Sharp GC, Küpers LK, Kho AT, Roy R, et al. Epigenome-wide meta-analysis of blood DNA methylation in newborns and children identifies numerous loci related to gestational age. *Genome Medicine*. 2020 Mar 2;12(1):25.
59. Sparrow S, Manning JR, Cartier J, Anblagan D, Bastin ME, Piyasena C, et al. Epigenomic profiling of preterm infants reveals DNA methylation differences at sites associated with neural function. *Translational Psychiatry*. 2016 Jan 1;6(1):e716–e716.
60. Winchester P, Nilsson E, Beck D, Skinner MK. Preterm birth buccal cell epigenetic biomarkers to facilitate preventative medicine. *Scientific Reports*. 2022 Mar 1;12(1):3361.

61. Fumagalli M, Provenzi L, De Carli P, Dessimone F, Sirgiovanni I, Giorda R, et al. From early stress to 12-month development in very preterm infants: Preliminary findings on epigenetic mechanisms and brain growth. *PloS one*. 2018;13(1):e0190602.
62. Chen L, Pan H, Tuan TA, Teh AL, MacIsaac JL, Mah SM, et al. Brain-derived neurotrophic factor (BDNF) Val66Met polymorphism influences the association of the methylome with maternal anxiety and neonatal brain volumes. *Development and psychopathology*. 2015;27(1):137–50.
63. Wheeler ENW, Galdi P, McCartney DL, Blesa M, Sullivan G, Stoye DQ, et al. DNA methylation in relation to gestational age and brain dysmaturation in preterm infants. *Brain Communications*. 2022 Apr 1;4(2):fcac056.
64. Camerota M, Graw S, Everson TM, McGowan EC, Hofheimer JA, O'Shea TM, et al. Prenatal risk factors and neonatal DNA methylation in very preterm infants. *Clinical Epigenetics*. 2021 Sep 10;13(1):171.
65. Everson TM, O'Shea TM, Burt A, Hermetz K, Carter BS, Helderman J, et al. Serious neonatal morbidities are associated with differences in DNA methylation among very preterm infants. *Clinical Epigenetics*. 2020 Oct 19;12(1):151.
66. Boardman JP, Hall J, Thrippleton MJ, Reynolds RM, Bogaert D, Davidson DJ, et al. Impact of preterm birth on brain development and long-term outcome: protocol for a cohort study in Scotland. *BMJ Open*. 2020 Mar 4;10(3):e035854–e035854.
67. Bell MJ, Ternberg JL, Feigin RD, Keating JP, Marshall R, Barton L, et al. Neonatal necrotizing enterocolitis. Therapeutic decisions based upon clinical staging. *Annals of surgery*. 1978;187(1):1.
68. Villar J, Ismail LC, Victora CG, Ohuma EO, Bertino E, Altman DG, et al. International standards for newborn weight, length, and head circumference by gestational age and sex: the Newborn Cross-Sectional Study of the INTERGROWTH-21st Project. *The Lancet*. 2014;384(9946):857–68.
69. Ligthart S, Marzi C, Aslibekyan S, Mendelson MM, Conneely KN, Tanaka T, et al. DNA methylation signatures of chronic low-grade inflammation are associated with complex diseases. *Genome biology*. 2016;17(1):255.
70. Barker ED, Cecil CAM, Walton E, Houtepen LC, O'Connor TG, Danese A, et al. Inflammation-related epigenetic risk and child and adolescent mental health: A prospective study from pregnancy to middle adolescence. *Development and Psychopathology*. 2018;30(3):1145–56.
71. Caruyer E, Lenglet C, Sapiro G, Deriche R. Design of multishell sampling schemes with uniform coverage in diffusion MRI. *Magnetic resonance in medicine*. 2013;69(6):1534–40.
72. Blesa M, Galdi P, Cox SR, Sullivan G, Stoye DQ, Lamb GJ, et al. Hierarchical Complexity of the Macro-Scale Neonatal Brain. *Cerebral Cortex*. 2021 Apr 1;31(4):2071–84.
73. Makropoulos A, Counsell SJ, Rueckert D. A review on automatic fetal and neonatal brain MRI segmentation. *NeuroImage*. 2018;170:231–48.
74. Doshi J, Erus G, Ou Y, Gaonkar B, Davatzikos C. Multi-Atlas Skull-Stripping. *Academic Radiology*. 2013 Dec 1;20(12):1566–76.
75. Zhang H, Schneider T, Wheeler-Kingshott CA, Alexander DC. NODDI: practical in vivo neurite orientation dispersion and density imaging of the human brain. *Neuroimage*. 2012;61(4):1000–16.

76. Tariq M, Schneider T, Alexander DC, Gandini Wheeler-Kingshott CA, Zhang H. Bingham–NODDI: Mapping anisotropic orientation dispersion of neurites using diffusion MRI. *NeuroImage*. 2016 Jun 1;133:207–23.
77. Blesa M, Galdi P, Sullivan G, Wheeler EN, Stoye DQ, Lamb GJ, et al. Peak width of skeletonized water diffusion MRI in the neonatal brain. *Frontiers in neurology*. 2020;11.
78. Baykara E, Gesierich B, Adam R, Tuladhar AM, Biesbroek JM, Koek HL, et al. A novel imaging marker for small vessel disease based on skeletonization of white matter tracts and diffusion histograms. *Annals of neurology*. 2016;80(4):581–92.
79. Vaher K, Galdi P, Blesa Cabez M, Sullivan G, Stoye DQ, Quigley AJ, et al. General factors of white matter microstructure from DTI and NODDI in the developing brain. *NeuroImage*. 2022 Jul 1;254:119169.
80. Kim HY. Statistical notes for clinical researchers: Chi-squared test and Fisher's exact test. *Restor Dent Endod*. 2017 May;42(2):152–5.
81. Tzoulaki I, Liberopoulos G, Ioannidis JP. Assessment of claims of improved prediction beyond the Framingham risk score. *Jama*. 2009;302(21):2345–52.
82. Cohen J. A power primer. *Psychological Bulletin*. 1992;112(1):155–9.
83. Lingam I, Robertson NJ. Magnesium as a Neuroprotective Agent: A Review of Its Use in the Fetus, Term Infant with Neonatal Encephalopathy, and the Adult Stroke Patient. *Developmental Neuroscience*. 2018;40(1):1–12.
84. Odufalu FD, Long M, Lin K, Mahadevan U. Exposure to corticosteroids in pregnancy is associated with adverse perinatal outcomes among infants of mothers with inflammatory bowel disease: results from the PIANO registry. *Gut*. 2022 Sep 1;71(9):1766.
85. Schmidt AF, Kannan PS, Bridges J, Presicce P, Jackson CM, Miller LA, et al. Prenatal inflammation enhances antenatal corticosteroid-induced fetal lung maturation. *JCI Insight* [Internet]. 2021 Jan 20;5(24). Available from: <https://doi.org/10.1172/jci.insight.139452>
86. Cox SR, Lyall DM, Ritchie SJ, Bastin ME, Harris MA, Buchanan CR, et al. Associations between vascular risk factors and brain MRI indices in UK Biobank. *European Heart Journal*. 2019 Mar 11;40(28):2290–300.
87. Telford EJ, Cox SR, Fletcher-Watson S, Anblagan D, Sparrow S, Pataky R, et al. A latent measure explains substantial variance in white matter microstructure across the newborn human brain. *Brain Structure and Function*. 2017 Dec 1;222(9):4023–33.
88. Menon R, Conneely KN, Smith AK. DNA methylation: an epigenetic risk factor in preterm birth. *Reprod Sci*. 2012 Jan;19(1):6–13.
89. Parets SE, Bedient CE, Menon R, Smith AK. Preterm birth and its long-term effects: methylation to mechanisms. *Biology (Basel)*. 2014 Aug 21;3(3):498–513.
90. Perera F, Herbstman J. Prenatal environmental exposures, epigenetics, and disease. *Reproductive toxicology*. 2011;31(3):363–73.
91. Zuccarello D, Sorrentino U, Brasson V, Marin L, Piccolo C, Capalbo A, et al. Epigenetics of pregnancy: looking beyond the DNA code. *Journal of Assisted Reproduction and Genetics*. 2022 Apr 1;39(4):801–16.
92. Barker ED, Walton E, Cecil CAM. Annual Research Review: DNA methylation as a mediator in the association between risk exposure and child and adolescent psychopathology. *Journal of Child Psychology and Psychiatry*. 2018 Apr 1;59(4):303–22.

93. Bakulski KM, Fallin MD. Epigenetic epidemiology: Promises for public health research. *Environmental and Molecular Mutagenesis*. 2014 Apr 1;55(3):171–83.
94. Odintsova VV, Rebattu V, Hagenbeek FA, Pool R, Beck JJ, Ehli EA, et al. Predicting Complex Traits and Exposures From Polygenic Scores and Blood and Buccal DNA Methylation Profiles. *Frontiers in Psychiatry* [Internet]. 2021;12. Available from: <https://www.frontiersin.org/articles/10.3389/fpsy.2021.688464>
95. Reese SE, Zhao S, Wu MC, Joubert BR, Parr CL, Håberg SE, et al. DNA methylation score as a biomarker in newborns for sustained maternal smoking during pregnancy. *Environmental health perspectives*. 2017;125(4):760–6.
96. Richmond RC, Simpkin AJ, Woodward G, Gaunt TR, Lyttleton O, McArdle WL, et al. Prenatal exposure to maternal smoking and offspring DNA methylation across the lifecourse: findings from the Avon Longitudinal Study of Parents and Children (ALSPAC). *Human molecular genetics*. 2015;24(8):2201–17.
97. Richmond RC, Suderman M, Langdon R, Relton CL, Davey Smith G. DNA methylation as a marker for prenatal smoke exposure in adults. *International Journal of Epidemiology*. 2018 Aug 1;47(4):1120–30.
98. Bakulski KM, Fisher JD, Dou JF, Gard A, Schneper L, Notterman DA, et al. Prenatal Particulate Matter Exposure Is Associated with Saliva DNA Methylation at Age 15: Applying Cumulative DNA Methylation Scores as an Exposure Biomarker. *Toxics*. 2021;9(10).
99. Sominen HK, Venkateswaran S, Kilaru V, Marigorta UM, Mo A, Okou DT, et al. Blood-Derived DNA Methylation Signatures of Crohn's Disease and Severity of Intestinal Inflammation. *Gastroenterology*. 2019 Jun 1;156(8):2254–2265.e3.
100. Sasaki A, Murphy KE, Briollais L, McGowan PO, Matthews SG. DNA methylation profiles in the blood of newborn term infants born to mothers with obesity. *PLOS ONE*. 2022 May 2;17(5):e0267946.
101. Yanni D, Korzeniewski SJ, Allred EN, Fichorova RN, O'Shea TM, Kuban K, et al. Both antenatal and postnatal inflammation contribute information about the risk of brain damage in extremely preterm newborns. *Pediatric Research*. 2017 Oct 1;82(4):691–6.
102. Fleiss B, Tann CJ, Degos V, Sigaut S, Van Steenwinkel J, Schang A, et al. Inflammation-induced sensitization of the brain in term infants. *Developmental Medicine & Child Neurology*. 2015;57:17–28.
103. Glass TJ, Chau V, Grunau RE, Synnes A, Guo T, Duerden EG, et al. Multiple postnatal infections in newborns born preterm predict delayed maturation of motor pathways at term-equivalent age with poorer motor outcomes at 3 years. *The Journal of pediatrics*. 2018;196:91–7.
104. Ophelders DRMG, Gussenhoven R, Klein L, Jellema RK, Westerlaken RJJ, Hütten MC, et al. Preterm Brain Injury, Antenatal Triggers, and Therapeutics: Timing Is Key. *Cells*. 2020;9(8).
105. Tzoulaki I, Jarvelin MR, Hartikainen AL, Leinonen M, Pouta A, Paldanius M, et al. Size at birth, weight gain over the life course, and low-grade inflammation in young adulthood: northern Finland 1966 birth cohort study. *European Heart Journal*. 2008 Apr 1;29(8):1049–56.
106. McDade TW, Metzger MW, Chyu L, Duncan GJ, Garfield C, Adam EK. Long-term effects of birth weight and breastfeeding duration on inflammation in early adulthood. *Proceedings of the Royal Society B: Biological Sciences*. 2014 Jun 7;281(1784):20133116.
107. McDade TW, Ryan C, Jones MJ, Maclsaac JL, Morin AM, Meyer JM, et al. Social and physical environments early in development predict DNA methylation of inflammatory genes in young adulthood. *Proceedings of the National Academy of Sciences*. 2017 Jul 18;114(29):7611–6.



108. Fleiss B, Gressens P. Tertiary mechanisms of brain damage: a new hope for treatment of cerebral palsy? *The Lancet Neurology*. 2012 Jun 1;11(6):556–66.
109. Skiöld B, Horsch S, Hallberg B, Engström M, Nagy Z, Mosskin M, et al. White matter changes in extremely preterm infants, a population-based diffusion tensor imaging study. *Acta paediatrica*. 2010;99(6):842–9.
110. Volpe JJ. Dysmaturation of Premature Brain: Importance, Cellular Mechanisms, and Potential Interventions. *Pediatric Neurology*. 2019 Jun 1;95:42–66.
111. Favrais G, Van De Looij Y, Fleiss B, Ramanantsoa N, Bonnin P, Stoltenburg-Didinger G, et al. Systemic inflammation disrupts the developmental program of white matter. *Annals of neurology*. 2011;70(4):550–65.
112. Padilla N, Alexandrou G, Blennow M, Lagercrantz H, Ådén U. Brain Growth Gains and Losses in Extremely Preterm Infants at Term. *Cerebral Cortex*. 2015 Jul 1;25(7):1897–905.
113. Inder TE, Warfield SK, Wang H, Hüppi PS, Volpe JJ. Abnormal Cerebral Structure Is Present at Term in Premature Infants. *Pediatrics*. 2005 Feb 1;115(2):286–94.
114. Boardman JP, Counsell SJ, Rueckert D, Kapellou O, Bhatia KK, Aljabar P, et al. Abnormal deep grey matter development following preterm birth detected using deformation-based morphometry. *NeuroImage*. 2006 Aug 1;32(1):70–8.
115. Lammertink F, van den Heuvel MP, Hermans EJ, Dudink J, Tataranno ML, Benders MJNL, et al. Early-life stress exposure and large-scale covariance brain networks in extremely preterm-born infants. *Translational Psychiatry*. 2022 Jun 18;12(1):256.
116. Boardman JP, Craven C, Valappil S, Counsell SJ, Dyet LE, Rueckert D, et al. A common neonatal image phenotype predicts adverse neurodevelopmental outcome in children born preterm. *Neuroimage*. 2010;52(2):409–14.
117. Beauchamp MH, Thompson DK, Howard K, Doyle LW, Egan GF, Inder TE, et al. Preterm infant hippocampal volumes correlate with later working memory deficits. *Brain*. 2008 Nov 1;131(11):2986–94.
118. Ball G, Boardman JP, Aljabar P, Pandit A, Arichi T, Merchant N, et al. The influence of preterm birth on the developing thalamocortical connectome. *Cortex*. 2013;49(6):1711–21.
119. Volpe JJ, Kinney HC, Jensen FE, Rosenberg PA. The developing oligodendrocyte: key cellular target in brain injury in the premature infant. *International Journal of Developmental Neuroscience*. 2011 Jun 1;29(4):423–40.
120. Kostović I, Kostović-Srzić M, Benjak V, Jovanov-Milošević N, Radoš M. Developmental dynamics of radial vulnerability in the cerebral compartments in preterm infants and neonates. *Frontiers in neurology*. 2014;5:139.
121. Volpe JJ. Brain injury in premature infants: a complex amalgam of destructive and developmental disturbances. *The Lancet Neurology*. 2009 Jan 1;8(1):110–24.
122. Leviton A, Allred EN, Dammann O, Engelke S, Fichorova RN, Hirtz D, et al. Systemic Inflammation, Intraventricular Hemorrhage, and White Matter Injury. *J Child Neurol*. 2013 Dec 1;28(12):1637–45.
123. Leviton A, Gressens P. Neuronal damage accompanies perinatal white-matter damage. *Trends in Neurosciences*. 2007 Sep 1;30(9):473–8.
124. Ment LR, Hirtz D, Hüppi PS. Imaging biomarkers of outcome in the developing preterm brain. *The Lancet Neurology*. 2009 Nov 1;8(11):1042–55.

125. Back SA, Luo NL, Borenstein NS, Levine JM, Volpe JJ, Kinney HC. Late oligodendrocyte progenitors coincide with the developmental window of vulnerability for human perinatal white matter injury. *Journal of Neuroscience*. 2001;21(4):1302–12.
126. Majnemer A, Riley P, Shevell M, Birnbaum R, Greenstone H, Coates AL. Severe bronchopulmonary dysplasia increases risk for later neurological and motor sequelae in preterm survivors. *Developmental medicine and child neurology*. 2000;42(1):53–60.
127. Alexandrou G, Mårtensson G, Skiöld B, Blennow M, Ådén U, Vollmer B. White matter microstructure is influenced by extremely preterm birth and neonatal respiratory factors. *Acta paediatrica*. 2014;103(1):48–56.
128. Breton CV, Marsit CJ, Faustman E, Nadeau K, Goodrich JM, Dolinoy DC, et al. Small-magnitude effect sizes in epigenetic end points are important in children’s environmental health studies: the children’s environmental health and disease prevention research center’s epigenetics working group. *Environmental health perspectives*. 2017;125(4):511–26.
129. Glass HC, Bonifacio SL, Chau V, Glidden D, Poskitt K, Barkovich AJ, et al. Recurrent postnatal infections are associated with progressive white matter injury in premature infants. *Pediatrics*. 2008;122(2):299–305.
130. Wilson S, Pietsch M, Cordero-Grande L, Price AN, Hutter J, Xiao J, et al. Development of human white matter pathways in utero over the second and third trimester. *Proceedings of the National Academy of Sciences*. 2021 May 18;118(20):e2023598118.
131. Chau V, Brant R, Poskitt KJ, Tam EW, Synnes A, Miller SP. Postnatal infection is associated with widespread abnormalities of brain development in premature newborns. *Pediatric research*. 2012;71(3):274–9.
132. Nist MD, Shoben AB, Pickler RH. Early Inflammatory Measures and Neurodevelopmental Outcomes in Preterm Infants. *Nursing Research [Internet]*. 2020;69(5S). Available from: [https://journals.lww.com/nursingresearchonline/Fulltext/2020/09001/Early\\_Inflammatory\\_Measures\\_and\\_Neurodevelopmental.3.aspx](https://journals.lww.com/nursingresearchonline/Fulltext/2020/09001/Early_Inflammatory_Measures_and_Neurodevelopmental.3.aspx)
133. Wheeler ENW, Stoye DQ, Cox SR, Wardlaw JM, Drake AJ, Bastin ME, et al. DNA methylation and brain structure and function across the life course: A systematic review. *Neurosci Biobehav Rev*. 2020/03/06 ed. 2020 Jun;113:133–56.
134. Lancaster K, Morris JP, Connelly JJ. Neuroimaging epigenetics: Challenges and recommendations for best practices. *Neuroscience*. 2018;370:88–100.
135. Sparrow S, Manning J, Cartier J, Anblagan D, Bastin M, Piyasena C, et al. Epigenomic profiling of preterm infants reveals DNA methylation differences at sites associated with neural function. *Translational psychiatry*. 2016;6(1):e716–e716.
136. Davies MN, Volta M, Pidsley R, Lunnon K, Dixit A, Lovestone S, et al. Functional annotation of the human brain methylome identifies tissue-specific epigenetic variation across brain and blood. *Genome Biology*. 2012 Jun 15;13(6):R43.
137. Walton E, Hass J, Liu J, Roffman JL, Bernardoni F, Roessner V, et al. Correspondence of DNA methylation between blood and brain tissue and its application to schizophrenia research. *Schizophrenia bulletin*. 2016;42(2):406–14.
138. Blostein FA, Fisher J, Dou J, Schneper L, Ware EB, Notterman DA, et al. Polymethylation scores for prenatal maternal smoke exposure persist until age 15 and are detected in saliva in the Fragile Families and Child Wellbeing cohort. *Epigenetics*. 2022 Aug 18;1–18.
139. Berko ER, Suzuki M, Beren F, Lemetre C, Alaimo CM, Calder RB, et al. Mosaic epigenetic dysregulation of ectodermal cells in autism spectrum disorder. *PLoS genetics*. 2014;10(5):e1004402.

140. Lin X, Teh AL, Chen L, Lim IY, Tan PF, Maclsaac JL, et al. Choice of surrogate tissue influences neonatal EWAS findings. *BMC medicine*. 2017;15(1):1–13.
141. Lowe R, Gemma C, Beyan H, Hawa MI, Bazeos A, Leslie RD, et al. Buccals are likely to be a more informative surrogate tissue than blood for epigenome-wide association studies. *Epigenetics*. 2013;8(4):445–54.
142. Braun PR, Han S, Hing B, Nagahama Y, Gaul LN, Heinzman JT, et al. Genome-wide DNA methylation comparison between live human brain and peripheral tissues within individuals. *Translational psychiatry*. 2019;9(1):1–10.
143. Birney E, Smith GD, Greally JM. Epigenome-wide association studies and the interpretation of disease-omics. *PLoS genetics*. 2016;12(6):e1006105.
144. Luo M, Meehan AJ, Walton E, Röder S, Herberth G, Zenclussen AC, et al. Neonatal DNA methylation and childhood low prosocial behavior: An epigenome-wide association meta-analysis. *American Journal of Medical Genetics Part B: Neuropsychiatric Genetics*. 2021 Jun 1;186(4):228–41.
145. Chen J, Zang Z, Braun U, Schwarz K, Harneit A, Kremer T, et al. Association of a reproducible epigenetic risk profile for schizophrenia with brain methylation and function. *JAMA psychiatry*. 2020;77(6):628–36.