

1        **Development of Loop-mediated Isothermal Amplification (LAMP) Assays**  
2        **Using Five Primers Reduces the False-positive Rate in COVID-19 Diagnosis**

3  
4                    **Galyah Alhamid<sup>1,2</sup>, Huseyin Tombuloglu<sup>2\*</sup>, Ebtessam Al-Suhaimi<sup>3</sup>**

5  
6  
7                    <sup>1</sup>Master Program of Biotechnology, Institute for Research and Medical Consultations, Imam  
8                    Abdulrahman Bin Faisal University, Dammam, Saudi Arabia

9                    <sup>2</sup>Department of Genetics Research, Institute for Research and Medical Consultations (IRMC), Imam  
10                    Abdulrahman Bin Faisal University, 31441, Dammam, Saudi Arabia

11                    <sup>3</sup>Biology Department, College of Science and Institute of Research and Medical Consultations (IRMC),  
12                    Imam Abdulrahman Bin Faisal University, Dammam 31441, Saudi Arabia

13  
14  
15                    \*Corresponding author: [htoglu@iau.edu.sa](mailto:htoglu@iau.edu.sa)

16  
17  
18                    **Declaration of competing interest:**

19                    The authors declare that they have no known competing financial interests or personal  
20                    relationships that could have appeared to influence the work reported in this paper.

21

22 **Statements and Declarations**

23 **Ethical approval.** The study was approved by the Institutional Review Board (IRB) at Imam  
24 Abdulrahman bin Faisal University (IAU), with IRB number IRB-2020-13-406. All methods  
25 were carried out in accordance with current guidelines and regulations. De-identified samples  
26 left over after completion of diagnostic tests were used; hence, this study requires no consenting,  
27 as per institutional ethics committee regulations and informed consent.

28

29 **Acknowledgements**

30 This study is funded by Institute for Research and Medical Consultations (IRMC) under the  
31 project number 2020-IRMC-S-3 and the Deanship of Scientific Research (DSR) of Imam  
32 Abdulrahman Bin Faisal University (IAU) Fast track fund of COVID-19 (COVID19-2020-026-  
33 IRMC). Huseyin Tombuloglu received the awards.

34

35 **Competing interests** The authors have declared that no competing interests exist.

36

37 **Abstract**

38 The reverse-transcription loop-mediated isothermal amplification (RT-LAMP) is a cheaper and  
39 faster testing alternative for detecting SARS-CoV-2. However, high false-positive rate due to  
40 misamplification is one of the major limitations. To overcome misamplifications, we developed  
41 colorimetric and fluorometric RT-LAMP assays. The assay performances was verified by the  
42 gold-standard RT-qPCR technique on 150 clinical samples. Compared to other primer sets with  
43 six primers (*N*, *S*, and *RdRp*), E-ID1 primer set, including five primers, performed superbly on  
44 both colorimetric and fluorometric assays, yielding sensitivities of 89.5% and 100%,  
45 respectively, with a limit of detection of 20 copies/ $\mu$ L. The colorimetric RT-LAMP had a  
46 specificity of 97.2% and an accuracy of 94.5%, while the fluorometric RT-LAMP obtained  
47 96.9% and 98%, respectively. No misamplification was evident even after 120 minutes, which is  
48 crucial for the success of this technique. These findings are important to support the use of RT-  
49 LAMP in the healthcare systems in fighting COVID-19.

50

51 **Keywords**— SARS-CoV-2; RT-LAMP; colorimetric; fluorometric; diagnosis; misamplification.

## 52 **Introduction**

53 The coronavirus disease (COVID-19), caused by the severe acute respiratory syndrome  
54 coronavirus 2 (SARS-CoV-2), continues to cause rapid infections and deaths since its emergence  
55 over two years ago, reaching up to 604 million cases and over 6.4 million deaths worldwide as of  
56 August 2022, according to world health organization (WHO) (*COVID Live - Coronavirus*  
57 *Statistics - Worldometer*, 2022). Efforts to control the spread of this disease are continuous.  
58 However, the emergence of new variants with high mutation rates that cause increased infectivity  
59 and decreased effectiveness of vaccines, such as Omicron (B.1.1.529), hinders the efficient  
60 control of this pandemic. Reverse-transcription quantitative polymerase chain reaction (RT-  
61 qPCR) is the accepted gold standard technique to diagnose this disease. However, it requires  
62 sophisticated equipment, a laboratory environment, and expert personnel to perform the tests.  
63 These requirements prevent rapid and expanded testing, especially in regions with lower  
64 resources. Therefore, researchers are investigating alternative and affordable point-of-care (POC)  
65 testing methods that can diagnose COVID-19 with high sensitivity. One of the molecular  
66 techniques that meet these criteria is reverse-transcription loop-mediated isothermal  
67 amplification (RT-LAMP), which uses four to six primers to target and amplify a specific gene  
68 region. The amplification reaction in this technique takes place isothermally in a single tube  
69 without requiring bulky instruments and provides simple detection techniques, being also  
70 cheaper and faster than the gold standard (Notomi, 2000, Notomi et al., 2015; (Alhamid and  
71 Tombuloglu, 2022). The efficiency of RT-LAMP in COVID-19 diagnosis was demonstrated by  
72 many researchers (Aoki et al., 2021, Bokelmann et al., 2021, Dao Thi, 2020, de Oliveira Coelho  
73 et al., 2021, Lu et al., 2020; Alhamid et al., 2022), and many validated the performance of FDA-  
74 approved colorimetric RT-LAMP kits for emergency use authorization (Baba et al., 2021,

75 Promlek et al., 2022, *Color SARS-CoV-2 RT-LAMP Diagnostic Assay - EUA Summary*, 2021).  
76 However, because of the number of primers, the most common limitation of the RT-LAMP  
77 technique is the misamplifications that arise from unwanted secondary structures. Even with the  
78 careful primer design and the availability of programs that check for dimer and hairpin  
79 structures, there is no guarantee that these structures will not be formed practically. In particular,  
80 current protocols recommend that the reaction time not exceed 30 minutes to avoid misleading  
81 results (Amaral et al., 2021, Aoki et al., 2021, de Oliveira Coelho et al., 2021). This makes it  
82 challenging to detect samples with low copy numbers and reduces the efficiency of the RT-  
83 LAMP technique.

84 To address this issue, we hypothesize that a lower number of LAMP primers will reduce  
85 the false positivity rate, which is the most common limitation of the LAMP technique (Meagher  
86 et al., 2018, Odiwuor et al., 2022). The slower amplification rate can be improved by optimizing  
87 the performance of the developed colorimetric and fluorometric assays via increasing the  
88 enzyme's concentration or adding primer binding enhancers like guanidine hydrochloride, as  
89 shown elsewhere (Dudley et al., 2020, Lu et al., 2022, Zhang, 2020b). In this work, we  
90 demonstrate the efficiency of using five primers to reduce misamplifications by comparing them  
91 with five primer sets targeting different genes such as *RdRP*, *S*, and *N*. The optimized protocol  
92 using five primers (E-ID1) eliminates the misamplifications, thus improving the detection's  
93 sensitivity and efficacy. By the time of writing this manuscript, there were no studies that  
94 discussed the efficiency of primer sets with five primers in the colorimetric and fluorometric  
95 detection of SARS-CoV-2, which will be comprehensively addressed here.

96

## 97 **Materials and methods**

### 98 **Alignment of SARS-CoV-2 genome sequences and RT-LAMP primer design**

99 Genomic sequences of all SARS-CoV-2 types that have been sequenced worldwide were  
100 downloaded from the database of GISAID (Global Initiative on Sharing All Influenza Data,  
101 <<https://www.gisaid.org>>) and NCBI GenBank <<https://www.ncbi.nlm.nih.gov/genbank/>>. At  
102 the time of writing, 12,848,795 hCoV-19 genomes were submitted worldwide. The downloaded  
103 genome sequence information was sampled from different continents and included the globally  
104 dominant variants such as alpha (B.1.1.7, Q.1-Q.8), beta (B.1.351, B.1.351.2, B.1.351.3), gamma  
105 (P.1, P.1.1, P.1.2), delta (B.1.617.2), and Omicron (B.1.1.529) to identify the most conserved  
106 regions for RT-LAMP primer design. This way, the designed assay would target the viral gene as  
107 sensitive, specific, and accurate as possible, regardless of the variant. Also, whole genome  
108 sequences of other SARS-CoV like AY278491.2, AY502924.1, AY502927.1, AY559094.1,  
109 AY613947.1, and NC\_004718.3 were downloaded from the NCBI database. Then, a  
110 comparative analysis was made by aligning the multiple sequences at the base level with the  
111 bioinformatics program Clustal Omega <<https://www.ebi.ac.uk/Tools/msa/clustalo/>>. Afterward,  
112 the viral target regions were selected in conformity with COVID-19 testing directives of the  
113 CDC, WHO, and EU Commission. The mutation sites were identified using JalView (v2.11.1.3)  
114 program (Waterhouse et al., 2009). The Conserved regions specific for SARS-CoV-2 but not for  
115 the other SARS-COV species were selected for primers' binding sites. All RT-LAMP primer  
116 sets, each containing five to six primers, were designed using PrimerExplorer V5 program  
117 <<https://primerexplorer.jp/e>> that target the conserved region in the *N*, *S*, *RdRp*, and *E* genes. In  
118 addition, the OligoAnalyzer tool from Integrated DNA Technologies (IDT)  
119 <<https://eu.idtdna.com/pages/tools/oligoanalyzer>> was used to check that each primer set would

120 not form unwanted secondary structures like homodimer, hetero-dimer, and hairpins. The  
121 selected primers were synthesized by Alpha DNA (Montreal, Canada)  
122 <<http://www.alphadna.com>>. These primers were lyophilized and desalted. All the designed  
123 primer sets were tested on SARS-CoV-2 positive control (PC)—a mixture of verified high  
124 SARS-CoV-2-loaded specimens—and non-template control (NTC)—distilled water—and the  
125 ones that showed the best performance were chosen for further testing and analysis. In 25  $\mu$ L  
126 reaction volume, 10x primers' concentrations in a primer mix were as follows: 2  $\mu$ M for F3 and  
127 B3, 4  $\mu$ M for LF and LB, and 16  $\mu$ M for FIP and BIP. Sequences of all primer sets are shown in  
128 Table 1.

129

130 **Table 1.** Sequences of each RT-LAMP primer set used in this study.

Primer set	Sequence (5' – 3')
<b>N-ID15</b>	F3: AGATCACATTGGCACCCG B3: CCATTGCCAGCCATTCTAGC FIP: TGCTCCCTTCTGCGTAGAAGCCAATGCTGCAATCGTGCTAC BIP: GGCGGCAGTCAAGCCTCTCCCTACTGCTGCCTGGAGTT LF: GGCAATGTTGTTTCCTTGAGGAAGTT LB: CACGTAGTCGCAACAGTTCAA
<b>N-ID15n1L*</b>	F3: AGATCACATTGGCACCCG B3: CCATTGCCAGCCATTCTAGC FIP: TGCTCCCTTCTGCGTAGAAGCCAATGCTGCAATCGTGCTAC BIP: GGCGGCAGTCAAGCCTCTCCCTACTGCTGCCTGGAGTT LF: GCAATGTTGTTTCCTTGAGGAAGTT LB: GTTCCTCATCACGTAGTCGCAACA
<b>S-ID17</b>	F3: TCTTTCACACGTGGTGTT B3: GTACCAAAAATCCAGCCTC FIP: CATGGAACCAAGTAACATTGGAAAACCTGACAAAGTTTTTCAGATCC BIP: CTCTGGGACCAATGGTACTAAGAGGACTTCTCAGTGGAAGCA LF: GGTAAGAACAAGTCCTGAGTTGAA LB: GTTTGATAACCCTGTCCTACCATT

---

<b>S-ID24</b>	F3: GGTGTTTATTACCCTGACAAAG B3: GTACCAAAAATCCAGCCTC FIP: CATGGAACCAAGTAACATTGGAAAATTTTCAGATCCTCAGTTTTACATTC BIP: CTCTGGGACCAATGGTACTAAGAGGACTTCTCAGTGGGAAGCA LF: GAAAGGTAAGAACAAGTCCTGAGT LB: GTTTGATAACCCTGTCCTACCATT
<b>E-ID1*</b>	F3: TCATTTCGTTTCGGAAGAGA B3: AGGAACTCTAGAAGAATTCAGAT FIP: TGTAAGTACTAGCAAGAATACCACGAAACAGGTACGTTAATAGTTAATAGCG BIP: GCTTCGATTGTGTGCGTACTCGAGAGTAAACGTAAAAAGAAGG LB: GCTGCAATATTGTTAACGTGAGTC
<b>RdRp-ID37</b>	F3: ACAAAGCCTTACATTAAGTGG B3: CACCATCAACAAATATTTTTCTCAC FIP: TGGGTGGTATGTCTGATCCCAATAGATTTGTTAAAATATGACTTCACGG BIP: TGTGTTAACTGTTTGGATGACAGATTGTAAGTGGGAACACTGT LF: ACGGTCAAAGAGTTTTAACCTCTCT LB: GCATTCTGCATTGTGCAAAC

---

131 Abbreviations: F3, forward outer; FIP, forward inner; LF, loop forward; B3, backward outer; BIP,  
132 backward inner; LB, loop backward. \*The primers were designed using PrimerExplorer program,  
133 (Jamwal et al., 2021) used the same primer set.

134

### 135 **Fluorometric RT-LAMP reaction**

136 The Fluorometric RT-LAMP reactions were carried out in 25  $\mu$ L reaction volume. Two brands  
137 were tested in the fluorometric observation to choose the most compatible reagents that show the  
138 best performance: WarmStart<sup>®</sup> (New England BioLabs) and LavaLAMP<sup>™</sup> (Lucigen). Unless  
139 otherwise stated, a LavaLAMP<sup>™</sup> master mix contained 2.5  $\mu$ L 10x LavaLAMP<sup>™</sup> RNA buffer,  
140 1.25  $\mu$ L 100 mM MgSO<sub>4</sub>, 2  $\mu$ L 10 mM dNTP solution, 1  $\mu$ L 20x Green Fluorescent Dye, 1  $\mu$ L  
141 LavaLAMP<sup>™</sup> RNA enzyme (Lucigen), 2.5  $\mu$ L primer mix, 5  $\mu$ L template (or dH<sub>2</sub>O for NTC),  
142 and dH<sub>2</sub>O up to 25  $\mu$ L. In the fluorometric assay using WarmStart<sup>®</sup> reagents, the master mix  
143 included 2.5  $\mu$ L 10x isothermal amplification buffer, 1.5  $\mu$ L 100 mM MgSO<sub>4</sub>, 3.5  $\mu$ L 10 mM  
144 deoxynucleotide (dNTP) solution, 0.5  $\mu$ L 50x LAMP fluorescent dye, 8000 U/mL Bst 2.0



145 WarmStart<sup>®</sup> DNA polymerase, 0.5  $\mu$ L WarmStart<sup>®</sup> RTx reverse transcriptase (New England  
146 BioLabs), 2.5  $\mu$ L primer mix, 2  $\mu$ L template (or dH<sub>2</sub>O for NTC), and dH<sub>2</sub>O up to 25  $\mu$ L.  
147 Reactions were performed in a 7500 Fast Real-Time PCR System, Thermo Fisher Scientific  
148 (Waltham, MA, USA) <<https://www.thermofisher.com>>, at 65 °C for Warmstart<sup>®</sup> and 70 °C for  
149 LavaLAMP<sup>™</sup> for 80 cycles, 45-60 seconds using FAM filter as the reporter dye channel.

150

### 151 **Colorimetric RT-LAMP detection**

152 For a 25  $\mu$ L total reaction volume, unless otherwise specified, the colorimetric RT-LAMP  
153 mixture is composed of 12.5  $\mu$ L WarmStart<sup>®</sup> Colorimetric LAMP 2x master mix with UDG  
154 (New England BioLabs), 2.5  $\mu$ L 10x primer mix, 2  $\mu$ L template (or dH<sub>2</sub>O for NTC), and dH<sub>2</sub>O  
155 up to 25  $\mu$ L. The mixture is incubated in a water bath, Thermo Fisher Scientific (Waltham, MA,  
156 USA) <<https://www.thermofisher.com>>, set at 65 °C for 60 minutes or until a distinguishable  
157 color change is observed.

158

### 159 **Agarose gel electrophoresis**

160 Positive or negative amplifications upon RT-LAMP reactions were validated by loading RT-  
161 LAMP products in 2% agarose gel prepared with VisualaNA (A) DNA Stain from Molecule-On  
162 (Auckland, New Zealand) <<http://molecule-on.com>> and run in electrophoresis unit (Analytik  
163 Jena) for 45 minutes operating at 100 V. Then, the gel is visualized under a UV-trans illuminator  
164 (ChemiDoc<sup>™</sup> XRS+ System with Image Lab<sup>™</sup> Software, Bio-Rad, USA). Successful  
165 amplifications in positive samples were visualized as ladder-type DNA bands.

166

## 167 **Collection of samples and validation of results**

168 Multiple validations were conducted on real clinical specimens in collaboration with the  
169 Microbiology Department of King Fahd University Hospital (KFUH), Dammam, which is  
170 authorized to store and analyze SARS-CoV-2 samples from patients. A sufficient number of  
171 samples (150 validated SARS-CoV-2 positive or negative RNA samples) were simultaneously  
172 tested and validated with the herein developed colorimetric RT-LAMP assay, fluorometric RT-  
173 LAMP assay, and other commercially or in-house developed RT-qPCR kits (Tombuloglu et al.,  
174 2021, Tombuloglu et al., 2022). The limit of detection (LoD) was determined using serial  
175 dilutions of synthetic SARS-CoV-2 RNA control (Twist synthetic RNA control 51  
176 (EPI\_ISL\_7718520), Twist Bioscience, USA). The specificity was determined by testing other  
177 respiratory viruses' RNA extracted from clinical samples, including parainfluenza virus 3,  
178 enterovirus, rhinovirus, human metapneumovirus A+B, parainfluenza virus 4, bocavirus, and  
179 coronavirus 229 E. Eventually, the following results for further validation were obtained: 1) RT-  
180 qPCR results from the abovementioned hospitals, 2) RT-qPCR results from *in situ* lab, 3)  
181 fluorescent RT-LAMP, 4) the colorimetric RT-LAMP, and 5) agarose gel electrophoresis.

182

## 183 **RT-qPCR assay**

184 Since RT-qPCR assay is accepted as the gold standard method, the positivity or negativity of the  
185 collected specimens was tested to verify the RT-LAMP results. RNA samples were used as  
186 template by targeting at least two viral genes (*RdRp*, *N*, and *E*) and a human *RP* gene as the  
187 internal control, as described earlier (Tombuloglu et al., 2021, Tombuloglu et al., 2022). In  
188 addition, no-template control (NTC) was used to detect any possible misamplifications. The  
189 reactions were run in a real-time PCR instrument (Applied Biosystems™ real-time PCR 7500).

190 The samples having a threshold cycle (Ct or Cq) score over 37 (Ct > 37) were considered  
191 negative. The SARS-CoV-2 positive specimens were identified if the Ct number was  $\leq 37$  with a  
192 sigmoidal amplification curve.

193

#### 194 **Ethical approval**

195 The study is approved by the Institutional Review Board (IRB) at Imam Abdulrahman bin Faisal  
196 University (IAU) with an IRB number of IRB-2020-13-406. All methods were carried out in  
197 accordance with relevant guidelines and regulations. The de-identified samples left over after  
198 completion of diagnostic tests were used; hence this study requires no consenting as per  
199 institutional ethics committee regulations and informed consent.

200

#### 201 **Statistical analysis**

202 For the colorimetric quantification, the difference between the positive and negative samples'  
203 color development was determined spectrophotometrically by the mean values of the optical  
204 density ( $\Delta OD$ ). This was done by transferring equal amounts of five positive and five negative  
205 clinical samples in a 96-well cell culture plate (ThermoFisher Scientific) and reading absorbance  
206 values at wavelengths 434 and 560 nm using a plate reader (BioTek Synergy HTX microplate  
207 reader, Agilent). The difference in optical densities was considered statistically significant if the  
208  $p$ -value  $< 0.05$  in an unpaired  $t$ -test performed using GraphPad Prism 9.0 (GraphPad Software,  
209 USA).

210

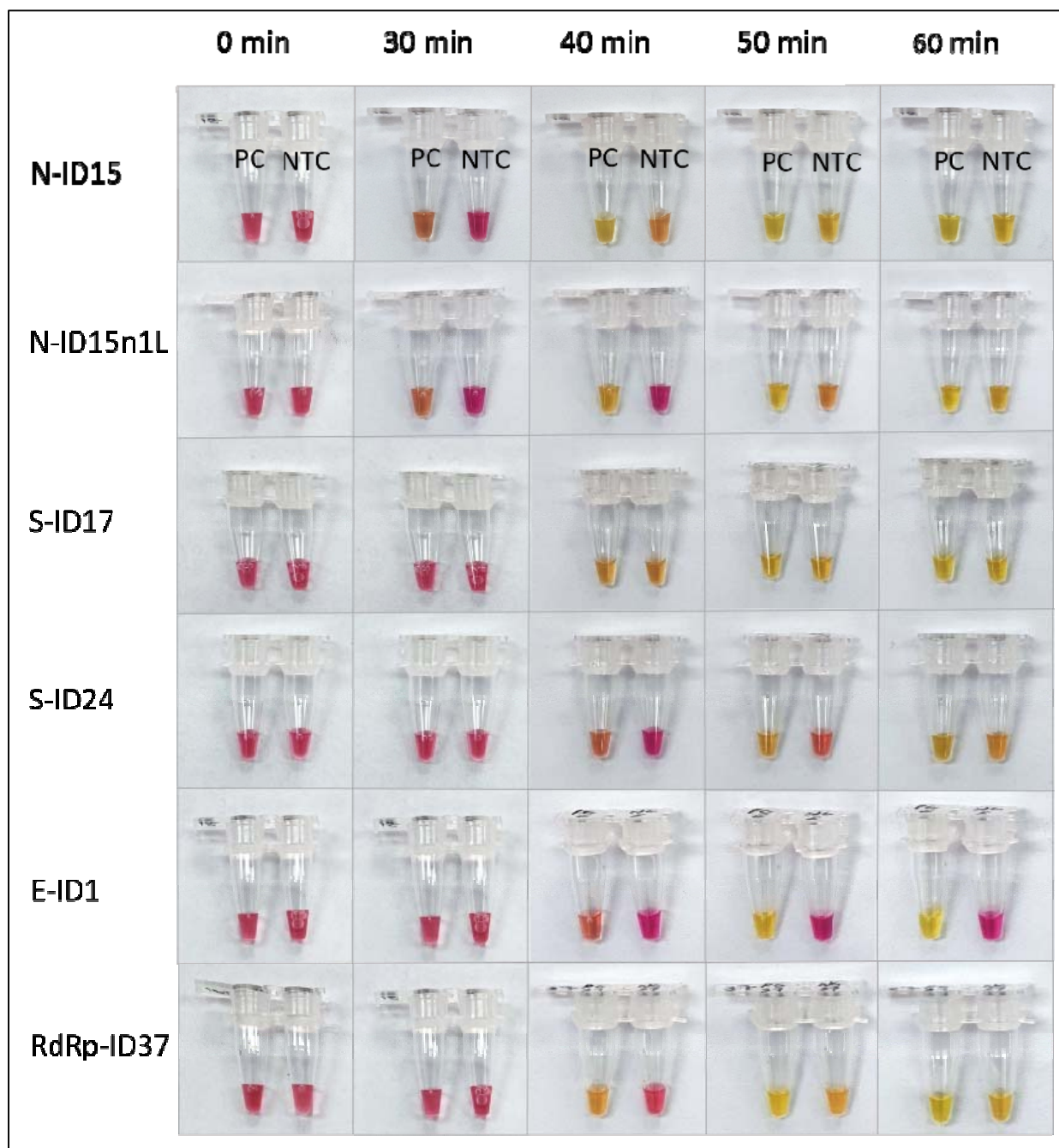
## 211 **Results**

### 212 **RT-LAMP primers performance**

213 The performance of the five primer sets targeting *N*, *E*, *S*, or *RdRp* genes was tested on positive  
214 (PC) and non-template controls (NTC). In the colorimetric identification, the color in all tubes  
215 was observed at 0 minutes (before reaction) and then subsequently every ten minutes. According  
216 to the results shown in Figure 1, primer sets N-ID15n1L and RdRp-ID37 showed a red-to-yellow  
217 color difference in positive reactions at 40 minutes. Primer set E-ID1 started to develop a color  
218 change at 50 min (without optimization), while most primer sets started to show  
219 misamplifications in NTC at this time. The reaction was terminated after 60 minutes due to  
220 developing false positivity in NTC in all the sets except E-ID1.

221 Depending on the primer set, the appearance time of false-positive results differs. Since  
222 misamplification is evident in the NTC tubes of N-ID15 and S-ID17 for around 40 min, it is not  
223 recommended to incubate the reaction for longer than 40 minutes. However, extending the time  
224 over 120 minutes did not lead to misamplifications for the E-ID1 set harboring five primers.  
225 Therefore, the E-ID1 primer set was selected for further testing.

226



227

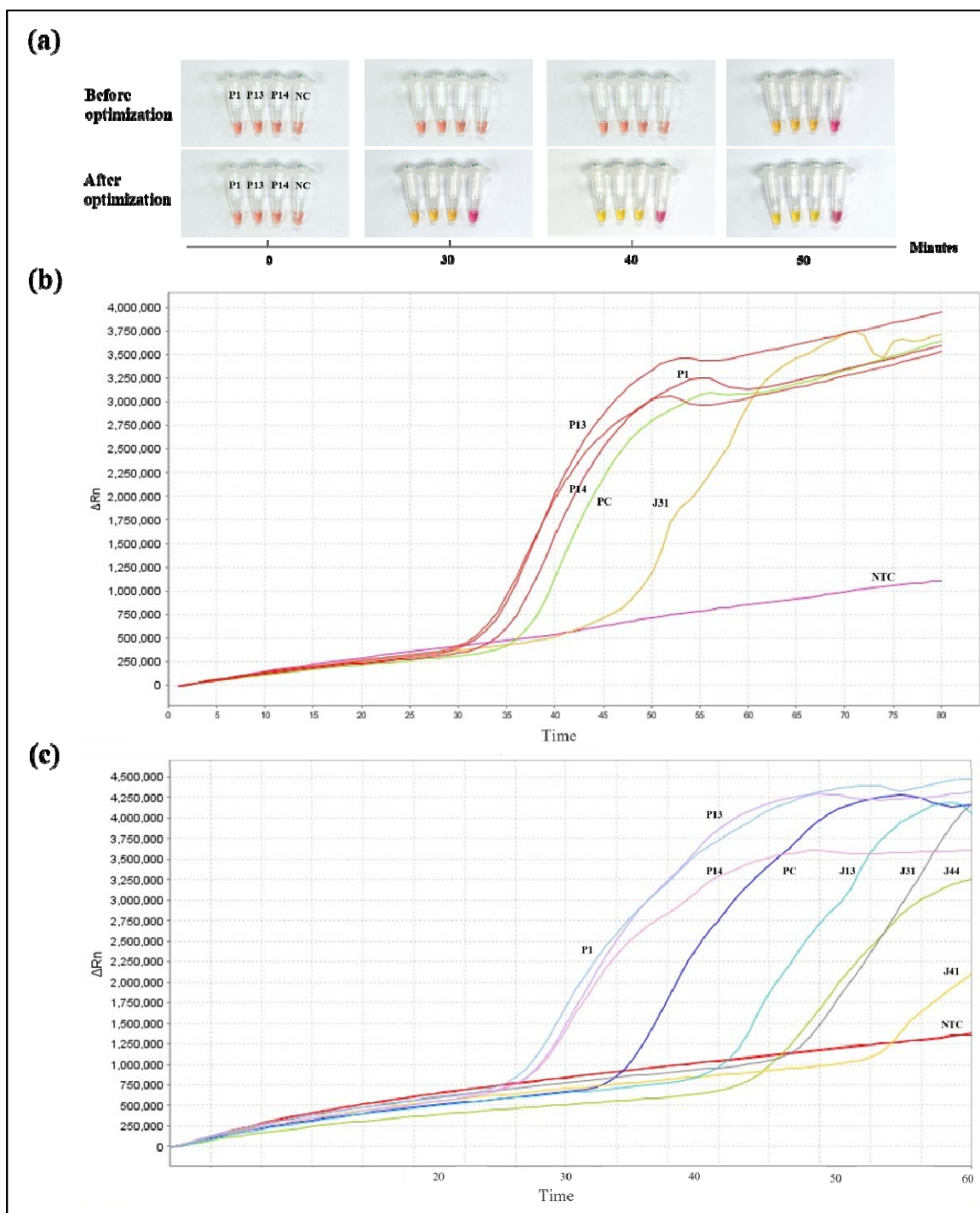
228 **Figure 1** Colorimetric test using all primer sets on positive controls (PC) and non-template  
229 controls (NTC). A visible color change from red to yellow develops in PC tubes in the  
230 colorimetric identification, and negatives remain red.

231

232 **Optimization of the colorimetric and fluorometric RT-LAMP assays**

233 Colorimetric and fluorometric RT-LAMP assays were developed and optimized to enhance the  
234 performance of the *E* gene primers. The optimization includes addition of guanidine  
235 hydrochloride, testing different DNA polymerases (Bst 2.0 vs Bst 3.0 versions), and adjusting the  
236 optimum reaction temperature. In contrast to the detection time before optimization, the  
237 colorimetric assay showed an earlier color change within 30 minutes (Figure 2(a)). Also, this  
238 improvement was seen in the fluorometric RT-LAMP assay, where it detected all positive  
239 samples in less than 60 minutes, an average of around 40 min, compared to its performance  
240 before optimization (Figure 2 (b, c)). Supplementary Table S1 compares of the assay's detection  
241 speed and sensitivity on different clinical samples.

242



243

244 **Figure 2 (a)** Colorimetric RT-LAMP using E-ID1 primer set on clinical samples before and after  
245 optimization. This colorimetric assay started to detect the positive samples within 30 minutes  
246 compared to 50 minutes before optimization. **(b)** Fluorometric RT-LAMP before and **(c)** after  
247 optimized using LavaLAMP™ reagents on different clinical samples, where the detection  
248 enhancement can be evident.

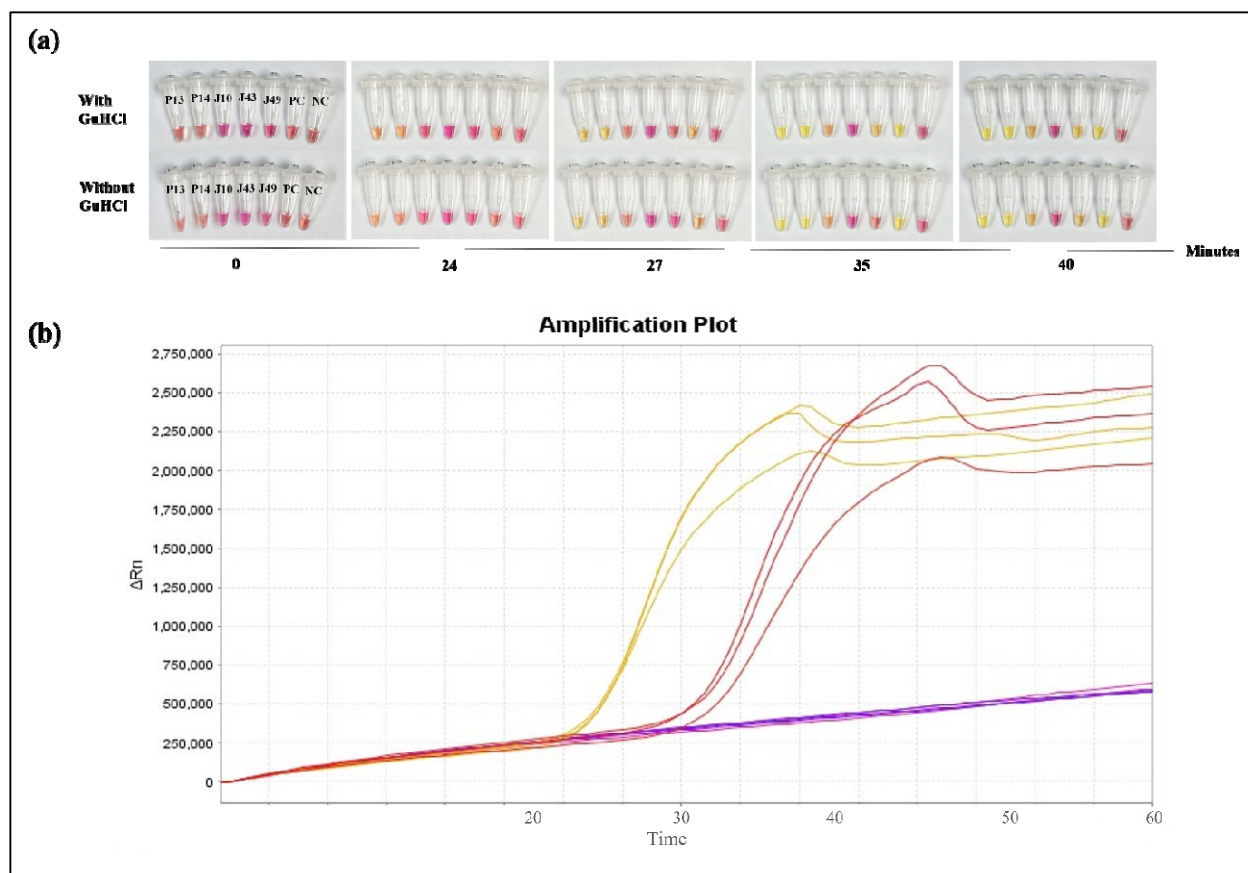
249

250 Bst 3.0 enzyme demonstrates improvements in amplification performance and high  
251 reverse transcriptase activity, allowing single enzyme RT-LAMP reactions. By comparing with  
252 Bst 2.0 DNA polymerase in the fluorometric RT-LAMP, the enzyme that shows the best  
253 performance with the E-ID1 primer set was chosen for further analysis. Both enzymes were  
254 added at the same concentration on PC and NTC triplicates. However, positive amplifications  
255 appeared around 17 minutes using Bst 2.0 enzyme, while with Bst 3.0, PC amplified after 21  
256 minutes (Figure S1).

257 The effect of guanidine hydrochloride (GuHCl) on the performance of E-ID1 primer set  
258 in both colorimetric and fluorometric RT-LAMP reactions was tested since it was reported to  
259 enhance the detection speed and efficiency (Dudley et al., 2020, Lu et al., 2022, Zhang, 2020b).  
260 Figure 3 (a) shows two sets of colorimetric RT-LAMP with and without the addition of GuHCl  
261 (40 mM) on positive clinical specimens, in addition to PC and NTC. The colors started to  
262 develop in the positive samples after 24-27 minutes. In reactions with GuHCl, the sample J49  
263 started to show a color change after 27 minutes, and the light-yellow color fully developed after  
264 30 minutes. On the other hand, this sample's color started to change after 35 minutes without  
265 adding GuHCl, which fully developed after 40 minutes (Figure 3 (b)). The effect of GuHCl was  
266 also tested fluorometrically on PC and NTC triplicates, and it indeed improved the detection  
267 speed. No misamplification in either test was evident upon 120 min.

268





269

270 **Figure 3** Testing the effect of adding 40 mM guanidine hydrochloride (GuHCl) in (a)  
271 colorimetric RT-LAMP reaction on positive clinical samples (P13, P14, J10, J49) and an  
272 inconclusive sample (J43). This addition improved the detection speed in one sample, where it  
273 started to change color eight minutes earlier compared to reactions without GuHCl. The  
274 inconclusive sample J43, however, remained negative in both. (b) Fluorometric RT-LAMP PC  
275 and NTC triplicate test with (yellow) and without GuHCl (red). All PC triplicates with GuHCl  
276 amplified earlier than those without. There were no amplifications in NTC in both colorimetric  
277 and fluorometric tests, suggesting that GuHCl indeed increases the detection speed without  
278 causing misamplification in NTC.

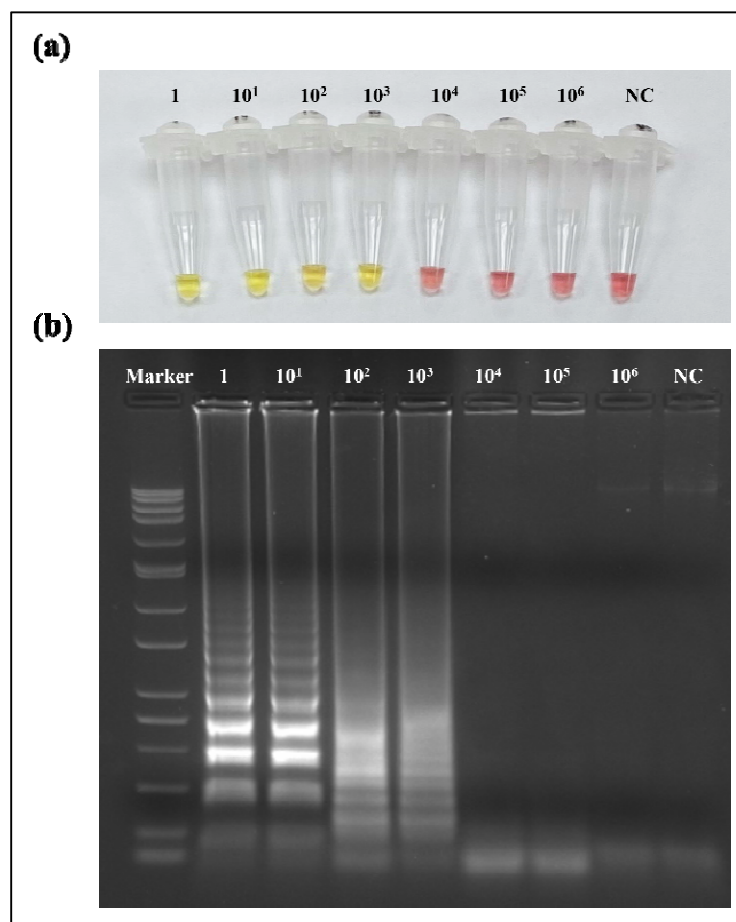
279

### 280 **Limit of detection of *E* gene primers**

281 SARS-CoV-2 synthetic RNA control (Twist synthetic RNA control 51 (EPI\_ISL\_7718520),  
282 Twist Bioscience, USA) was serially diluted (1,  $10^1$ ,  $10^2$ ,  $10^3$ ,  $10^4$ ,  $10^5$ , and  $10^6$  times) to

283 determine the limit of detection (LoD) of RT-LAMP reactions. Figure 4 (a) shows the LoD of  
284 the colorimetric RT-LAMP assay targeting the *E* gene. The color development to yellow is  
285 prominent in 1,  $10^1$ ,  $10^2$ , and  $10^3$ -times dilutions, corresponding to 500 copies/reaction volume  
286 (25  $\mu$ L) or 20 copies/  $\mu$ L for the  $10^3$ -times dilution. After the reaction, the reaction mixture of  
287 each dilution was loaded in 2% agarose and visualized under a UV trans-illuminator to further  
288 check if band-pattern intensities decreased with reduced viral loads (Figure 4 (b)). The results  
289 indicate a ladder-type banding pattern in the detected dilutions, while no bands appeared in the  
290 others. Agarose gel electrophoresis and the colorimetric identification are in line.

291



292

293 **Figure 4** The limit of detection (LoD) of *E* gene primers tested in the colorimetric RT-LAMP  
294 assay on serially diluted SARS-CoV-2 synthetic RNA control (a). The assay detected up to 10<sup>3</sup>  
295 dilutions, which correspond to 500 copies/reaction volume (25 μL) or 20 *copies/μL*. (b)  
296 Validation of the colorimetric LoD results via loading the RT-LAMP product post-reaction in  
297 2% agarose gel showing band patterns of the detected diluted samples.

298

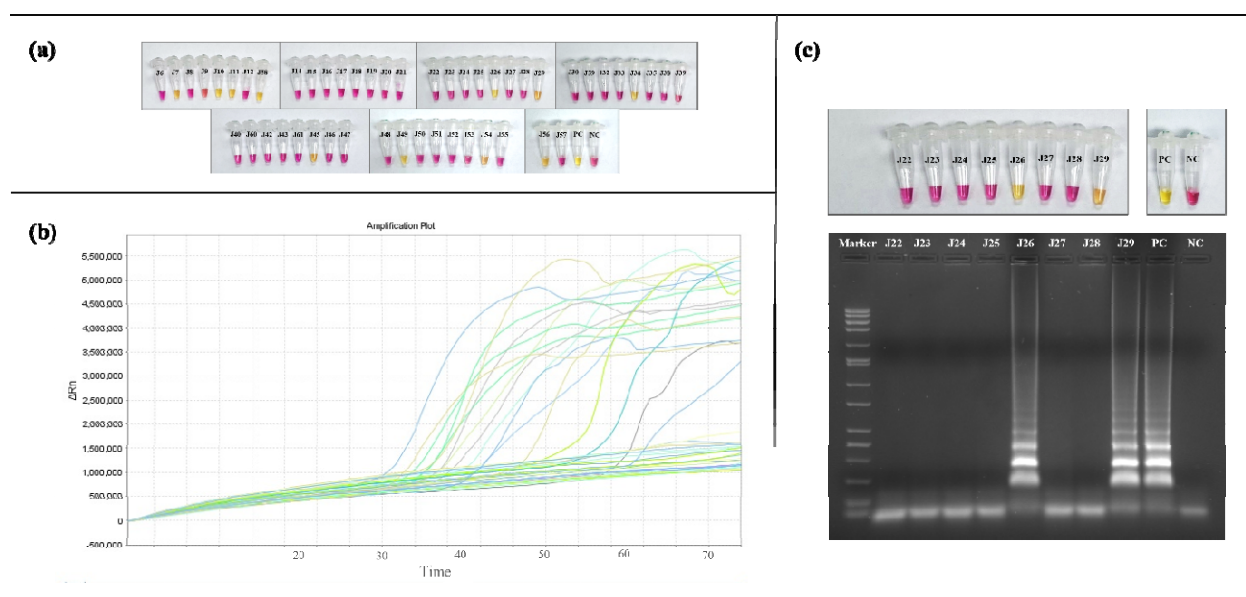
### 299 **RT-LAMP assays on clinical samples**

300 The performance of the E-ID1 primer set was colorimetrically and fluorometrically tested on  
301 clinical specimens, as depicted in Figure 5 (a). These results were then validated using agarose  
302 gel electrophoresis (Figure 5 (c)). In the colorimetric RT-LAMP reaction, the tubes were  
303 incubated in a thermal block set at 65 °C, and the positive clinical specimens started to show a  
304 color change after 20 minutes, while the color difference between positives and negatives was

305 the clearest after 30 minutes. The reaction was then terminated after 40 minutes. Eventually,  
306 there was 94.5% agreement between the colorimetric RT-LAMP and RT-qPCR results.

307 Similarly, clinical samples were fluorometrically tested using the optimized RT-LAMP  
308 protocol (Figure 5(b)). The reaction was placed at 70 °C in a thermal cycler for 75 minutes. This  
309 fluorometric assay had 98% agreement with RT-qPCR results.

310



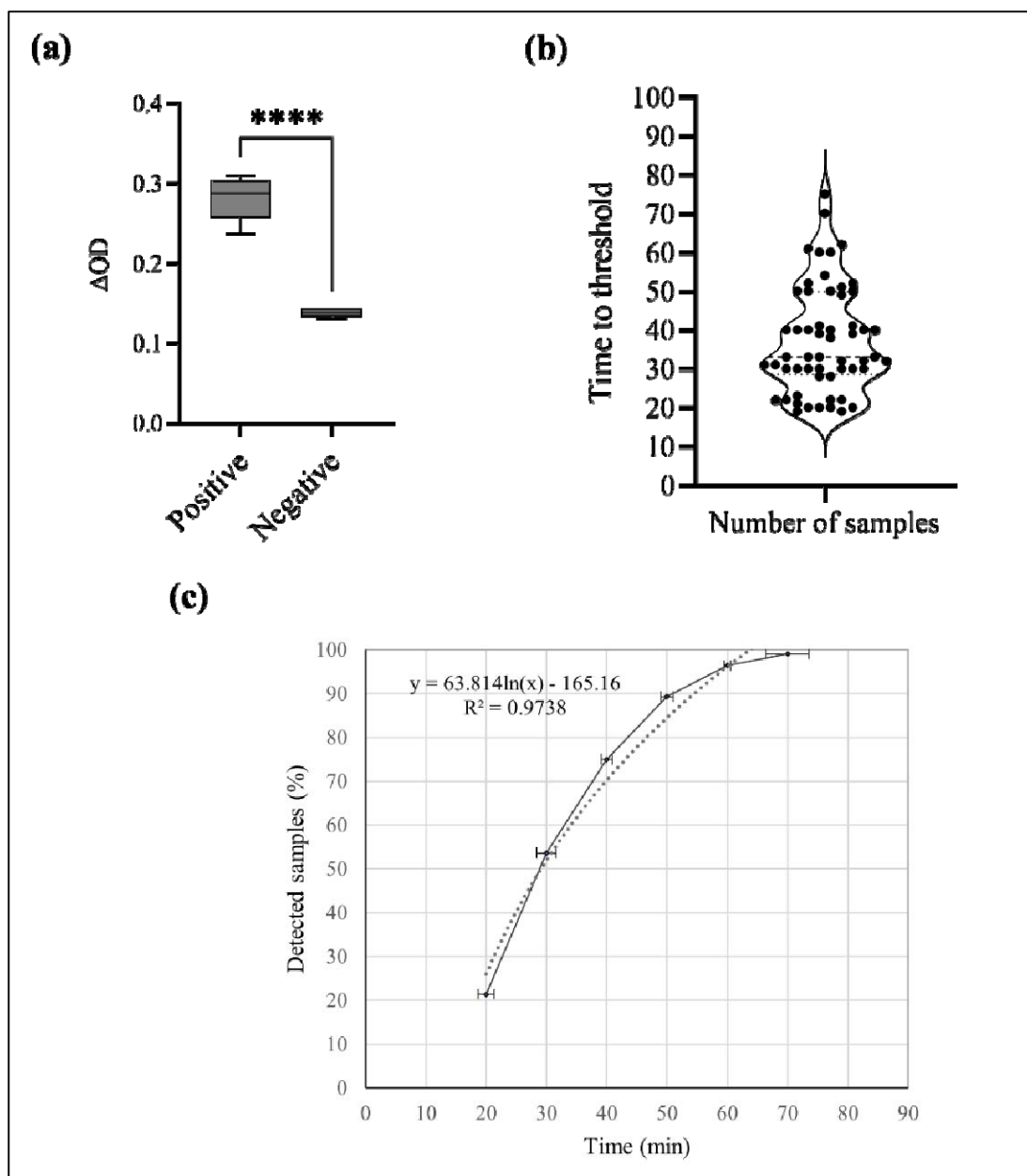
311  
312 **Figure 5** Optimized (a) colorimetric and (b) fluorometric RT-LAMP assays tested on SARS-  
313 CoV-2 clinical samples show agreement in the detection sensitivity. (c) Loading eight samples in  
314 2% agarose stained with a DNA stain, a 0.05-10 Kb DNA ladder was used as a marker, where  
315 positive samples show DNA bands under UV transilluminator.

316  
317 **Sensitivity and specificity of RT-LAMP Assays**

318 A total of 150 clinical specimens were tested in both assays. Accordingly, the colorimetric RT-  
319 LAMP assay had a sensitivity of 89.5%, specificity of 97.2%, and accuracy of 94.5%. The  
320 positive percent agreement (PPA) with the RT-qPCR was calculated to be 94.4%, while the

321 negative percent agreement (NPA) was 94.6%. In the fluorometric detection, the results revealed  
322 100% sensitivity, 96.9% specificity, and 98% accuracy. The fluorometric RT-LAMP assay had a  
323 PPA of 94.7% and an NPA of 100%.

324 The color development in the positive and negative samples was quantified post-reaction  
325 using the spectrophotometer by measuring the absorbance at 434 and 560 nm wavelengths.  
326 Figure 6 (a) shows that the difference in optical densities ( $\Delta OD$ ) between the positive yellow and  
327 negative red samples is statistically significant ( $p < 0.0001$ , 95% CI). Among the tested samples,  
328 the samples having high viral loads were detected in ~20 minutes, while those with low viral  
329 loads took up to 75 minutes (Figure 6 (b, c)). On average, the detection time was calculated as 37  
330 minutes. Besides, 90% of SARS-CoV-2 positive samples were detected within 50 minutes  
331 (Figure 6 (c)).



332

333 **Figure 6 (a)** Quantification of the color change between positive and negative samples by the  
334 spectrophotometric measurement of optical density ( $\Delta OD$ ) at 434 and 560 nm. The line inside  
335 the box represents the median and the whiskers extend to the maximum and minimum values.  
336 The four asterisks (\*) correspond to  $p < 0.0001$ , which is a statistically significant difference  
337 (unpaired t-test,  $p < 0.05$ , 95% CI). **(b)** Time to detection threshold of all positive samples. The  
338 dash line indicates the mean (37 minutes) and the dotted line represents the median (33 minutes).  
339 **(c)** Percentage of total positive samples detected plotted against time.

340

341 In addition, the inclusivity of the E-ID1 primer set was tested *in-silico* by aligning the  
342 five VOC with other SARS viruses. These primers bind to the conserved regions in all SARS-  
343 CoV-2 variants, including the recent Omicron but are uncommon for the other SARS (Figure  
344 S3). In addition, the cross-reactivity of E-ID1 primers was tested *in-vitro* against the most  
345 common respiratory viruses, including parainfluenza virus 3, enterovirus, rhinovirus, human  
346 metapneumovirus A+B, parainfluenza virus 4, bocavirus, and coronavirus 229 E. The  
347 colorimetric assay only detected SARS-CoV-2 but none of the other respiratory viruses, which  
348 indicates high specificity against the diagnosis of COVID-19 infection (Figure S4).

349

## 350 **Discussion**

351 Diagnostic tests are the first line of defense against the uncontrolled spread of pandemics. Such  
352 tests must be accessible, fast, and simple with high diagnostic accuracy to be used for POC in  
353 resource-limited areas. Aside from the gold standard RT-qPCR, alternative molecular and  
354 serological techniques are being widely investigated to develop fast, accurate, and cost-effective  
355 tests to efficiently diagnose pathogenic diseases, including the recent COVID-19. The  
356 colorimetric RT-LAMP technique's simplicity allows for its use as a POC testing alternative for  
357 large-scale screening. In this work, two RT-LAMP assays were developed to target and detect  
358 the *E* gene of SARS-CoV-2. The colorimetric RT-LAMP holds the advantage of simple and  
359 cost-effective reaction conditions, in addition to the visual interpretation of the results. Its  
360 diagnostic accuracy, however, must be comparable to the gold standard RT-qPCR to consider  
361 this technique reliable to avoid false results and their undesired consequences. In the colorimetric

362 detection, 94.5% of the results were found to be consistent with RT-qPCR, and three samples  
363 contradicted it, hence were considered inconclusive. We also monitored the rate of color change  
364 in positive specimens throughout incubation times at 0, 20, 30, and 40 minutes to detect the  
365 minimum time when the color between positives and negatives is distinguishable. It was  
366 observed that the color in high viral load samples started to change after 20 minutes, and lower  
367 viral load samples began to change to yellow after 30-40 minutes. Over 50% of positive samples  
368 changed to yellow at 30 minutes (Figure 6). This color difference between the positive and  
369 negative color was statistically significant ( $p < 0.0001$ , 95% CI) as the  $\Delta OD$  of both were  
370 measured spectrophotometrically. Overall, the sensitivity of the colorimetric RT-LAMP reaction  
371 greatly depends on the assay's LoD, sample quality, viral load, and time of sample collection  
372 from the disease onset (Promlek et al., 2022).

373 The fluorometric RT-LAMP assay also showed a great performance when testing the  
374 clinical samples, where 98% of the results agreed with RT-qPCR. The fluorometric and  
375 colorimetric results agree in all tested samples except the inconclusive samples—namely J20,  
376 which was fluorometrically negative but colorimetrically positive; and J43, which was  
377 fluorometrically positive but colorimetrically negative— (Figure S2). This difference in the  
378 results is due to the low viral load in these samples ( $Ct > 30$ ). It can also be caused by insufficient  
379 pH reduction to cause a color change to yellow. The solution's pH is also affected by the elution  
380 buffer used during the sample's RNA extraction process (Aoki et al., 2021). It should be noted  
381 that one clinical specimen (J15) was detected in both colorimetric and fluorometric RT-LAMP  
382 but was negative in RT-qPCR. Accordingly, both assays had higher sensitivity than RT-qPCR in  
383 detecting SARS-CoV-2 in this specimen.



384           Among the designed primer sets, the *E* gene primers target conserved, non-mutated  
385 regions of the most recent VOC but are uncommon for other SARS, based on our *in-silico*  
386 analysis. So, this assay is expected to detect any SARS-CoV-2 variant, including the heavily  
387 mutated Omicron. Indeed, even with Omicron specific point mutation (C/T) at FIP binding site,  
388 this primer set efficiently detected Omicron-infected samples along with the synthetic copy of  
389 Omicron (Twist Bioscience). The five primers in this set caused a delayed detection time in  
390 positive specimens compared to other primer sets composed of six primers, as demonstrated in  
391 Figure 1. However, other primer sets (N-ID15, N-ID15n1L, S-ID17, S-ID24, and RdRp-ID37)  
392 had non-specific amplification in NTC appeared in 40 minutes (N-ID15 and S-ID17). The  
393 misamplification was clear in all tested primer sets within 50-60 minutes, except the E-ID1 set.  
394 Regardless of the late color development, the E-ID1 primer set showed high stability at a longer  
395 reaction time when the incubation lasted up to two hours (data not shown). For this reason, we  
396 tested tripling the concentration of Bst 2.0 DNA polymerase to compensate for the smaller  
397 number of primers. Increasing the enzyme concentration up to three times normally causes non-  
398 specific amplification in NTC due to the number of primers and high polymerase activity;  
399 however, this was not seen with E-ID1. This increase in the enzyme's concentration would  
400 increase the assay's cost as well; nonetheless, the developed assays are expected to be more  
401 accurate in eliminating false-positive results.

402           A study by (Jamwal et al., 2021) designed the same primers' sequences, which is  
403 expected because the size of targeted *E* gene is small (228 bases), and the same primer designing  
404 program was used. However, this is the first study to test this primer set using the colorimetric  
405 and fluorometric RT-LAMP methods. Also, the performance of this primer set was improved by  
406 optimizing the enzyme concentration and adding reaction enhancers like guanidine

407 hydrochloride. Indeed, after optimization, the detection time of the colorimetric assay was over  
408 ten minutes earlier than pre-optimization when testing the same positive samples. It also detected  
409 the clinical samples (i.e., J13, J31, J41, and J44) that were previously undetected before  
410 increasing the enzyme's concentration, confirming its effectiveness (Table S1). We tested the  
411 effect of Bst 3.0 DNA polymerase compared to the widely used Bst 2.0 DNA polymerase to  
412 choose the enzyme that better matches the primers and brings about their best performance. Bst  
413 3.0 DNA polymerase enzyme enhances amplification performance and has a high reverse  
414 transcriptase activity, allowing single enzyme RT-LAMP reactions  
415 [https://international.neb.com/products/m0374-bst-3-0-dna-](https://international.neb.com/products/m0374-bst-3-0-dna-polymerase#Product%20Information)  
416 [polymerase#Product%20Information](https://international.neb.com/products/m0374-bst-3-0-dna-polymerase#Product%20Information)>. However, the results in Figure S1 indicate that Bst 2.0  
417 enzyme was faster than Bst 3.0 in detecting positive sample triplicates, concluding that this assay  
418 has a faster and more efficient detection when Bst 2.0 enzyme is used. Furthermore, the addition  
419 of guanidine hydrochloride (GuHCl) to the RT-LAMP reaction has been reported to enhance the  
420 speed and sensitivity of SARS-CoV-2 detection. For instance, Zhang et al. reported up to a ten-  
421 fold increase in sensitivity and speed in low viral RNA samples; this addition did not increase  
422 misamplification in NTC. It is hypothesized that GuHCl enhances base pairing between primers  
423 and their targets, significantly improving detection speed and sensitivity (Zhang, 2020b).  
424 Another study by Dudley et al. revealed that this addition had lowered the LoD in their assay  
425 (Dudley et al., 2020). The improvement was evident with final concentrations between 40-60  
426 mM in a 25  $\mu$ L reaction volume, with 40 mM being the optimum recommended concentration  
427 <https://international.neb.com>>(Zhang et al., 2020b). Most studies reported this enhancement  
428 from GuHCl on RNA-extracted clinical samples but not in direct ones (Dudley et al., 2020, Lu et  
429 al., 2022). Based on that, we used 40 mM GuHCl in the colorimetric and fluorometric RT-

430 LAMP reactions; both resulting in 3–7-minute earlier amplifications in positive reactions with  
431 GuHCl. Adding GuHCl enhanced the detection speed in this reaction, but it did not improve the  
432 sensitivity in detecting the inconclusive sample J43 (positive in RT-qPCR and fluorometric RT-  
433 LAMP but negative in colorimetric RT-LAMP). In general, the effect of GuHCl varies  
434 depending on the primers used in the reaction. After optimizing the reaction conditions, our  
435 assay detects down to 20 copies/ $\mu$ L, or 500 copies/reaction. A study designed an *E* gene primer  
436 set that is composed of four primers and had a detection limit of 2000 copies/reaction, which  
437 signifies the role of loop primer addition in improving sensitivity. Our LoD is comparable to the  
438 one obtained by Zhang et al. (2020a), who designed primer sets that detected down to 480  
439 copies/reaction. Also, another study detected lower copy numbers (10 copies/ $\mu$ L) using primers  
440 that target the *ORF1ab* gene (Yu et al., 2020). In general, the LoD depends on the assays'  
441 reaction conditions and the primers' binding sites.

442 Generally, the reaction conditions of our developed colorimetric RT-LAMP assay agree  
443 with the previous studies that used the same reagents from WarmStart® (New England  
444 BioLabs), being 30 minutes incubation time at 65 °C (Amaral et al., 2021, Aoki et al., 2021,  
445 Chow et al., 2020, Dao Thi, 2020, de Oliveira Coelho et al., 2021, Huang et al., 2020, Lalli et al.,  
446 2021, Luo et al., 2022, Nawattanapaiboon et al., 2021, Promlek et al., 2022). In the fluorometric  
447 RT-LAMP assay, we used LavaLAMP™ RNA enzyme (Lucigen), which has an activation  
448 temperature of 68-74 °C. Accordingly, based on primers' melting temperature ( $T_m$ ) and after  
449 optimizing reaction conditions, 40-60 minutes at 70 °C were the optimum settings.

450 Both colorimetric and fluorometric assays showed excellent performance in diagnosing  
451 COVID-19, being also highly selective against SARS-CoV-2 variants since the primers showed  
452 no cross-reactivity against other respiratory viruses *in-silico* and *in-vitro*. The primer set E-ID1

453 was only used in one study to diagnose SARS-CoV-2 using densitometry and agarose gel  
454 electrophoresis to detect RT-LAMP amplification products. However, this primer set did not  
455 perform well in their study, so they did not test it further (Jamwal et al., 2021). In addition, their  
456 study used Bst 3.0 enzyme for showing the fastest amplification among the other tested enzymes,  
457 while our primers performed best when Bst 2.0 enzyme was used. Hence, our optimization to  
458 enhance E-ID1 performance in the colorimetric and fluorometric RT-LAMP assay is novel. The  
459 assays can be improved by testing alternative enzymes with high strand displacement activity or  
460 developing homemade reagents to reduce cost. We found that this assay successfully detected  
461 SARS-CoV-2 within 20 minutes. The reaction can be extended up to 120 minutes –without  
462 misamplification– in particular for patients with low viral loads. In that regard, the current RT-  
463 LAMP test recommends the use of five primers that are rapid and sensitive in detecting COVID-  
464 19 infection, especially in symptomatic individuals.

465

## 466 **Conclusion**

467 The purpose of this study is to improve one of the limiting factors of the RT-LAMP technique,  
468 which is the non-specific amplifications leading to false-positive results. In general, false-  
469 positive results begin to occur within 30 minutes, even after critical primer design. Therefore,  
470 current protocols do not recommend exceeding the reaction time over 30 minutes, leading to  
471 difficulties in detecting particularly low viral load samples. In order to eliminate the  
472 misamplifications, we designed a primer set, namely E-ID1, consisting of five primers that  
473 exclude the loop forward (LF) primer. Results showed that the five-primer design provides stable  
474 primer targeting and avoids misamplification for 120 minutes. Optimizing the colorimetric and  
475 fluorometric RT-LAMP assays decreased the detection time to 20-30 minutes. The colorimetric

476 technique uses only a heating block, without any bulky or expensive instruments, and the test  
477 results can be visually interpreted through a simple color change from red to yellow in SARS-  
478 CoV-2-infected specimens. Besides, the fluorometric RT-LAMP assay shows a sigmoid (S-  
479 shaped) amplification curve in COVID-19-infected samples within 30 minutes. The primers used  
480 in this study were originally designed to target a conserved region in the SARS-CoV-2 *E* gene  
481 regardless of the variant, and the assays were optimized according to the primer set's  
482 performance. The colorimetric assay yielded 89.5% sensitivity and 97.2% specificity, while  
483 sensitivity of 100% and specificity of 96.9 % were obtained in the fluorometric assay when  
484 tested on 150 clinical samples. Both assays performed remarkably, making them successful  
485 candidates for replacing the conventional RT-qPCR, thereby greatly contributing to improving  
486 the economy. The future work would include improving the accuracy and cost of the assays by  
487 further optimization or using homemade reagents. Also, the colorimetric RT-LAMP assay has  
488 the potential to be developed for in-home use for self-diagnosis. This technique reduces time and  
489 abundance on healthcare workers, making it suitable for POC testing in local screening centers,  
490 emergency departments, and airports.

491

## 492 **References**

493 Alhamid, G., Tombuloglu, H., Motabagani, D., Motabagani, D., Rabaan, A. A., Unver,  
494 K., Dorado, G., Al-Suhaimi, E., Unver, T. (2022) Colorimetric and fluorometric reverse-  
495 transcription loop-mediated isothermal amplification (RT-LAMP) assay for diagnosis of  
496 SARS-COV-2. MedRxiv.  
497 <https://doi.org/10.1101/2022.08.30.22279408>

- 498 Alhamid, G., Tombuloglu, H. (2022). Perspective Chapter: Recent Progressions on the  
499 Colorimetric Diagnosis of SARS-CoV-2 by Loop-Mediated Isothermal Amplification  
500 (LAMP) Assay. In (Ed.), SARS-CoV-2 Variants - Two Years After. IntechOpen.  
501 <https://doi.org/10.5772/intechopen.105911>
- 502 Amaral, C., Antunes, W., Moe, E., Duarte, A. G., Lima, L. M. P., Santos, C., Gomes, I. L.,  
503 Afonso, G. S., Vieira, R., Teles, H. S. S., Reis, M. S., da Silva, M. A. R., Henriques, A.  
504 M., Fevereiro, M., Ventura, M. R., Serrano, M., & Pimentel, C. (2021). A molecular test  
505 based on RT-LAMP for rapid, sensitive and inexpensive colorimetric detection of SARS-  
506 CoV-2 in clinical samples. *Scientific Reports*, *11*(1), 16430.  
507 <https://doi.org/10.1038/s41598-021-95799-6>
- 508 Aoki, M. N., de Oliveira Coelho, B., Góes, L. G. B., Minoprio, P., Durigon, E. L., Morello, L.  
509 G., Marchini, F. K., Riediger, I. N., do Carmo Debur, M., Nakaya, H. I., & Blanes, L.  
510 (2021). Colorimetric RT-LAMP SARS-CoV-2 diagnostic sensitivity relies on color  
511 interpretation and viral load. *Scientific Reports*, *11*(1), 9026.  
512 <https://doi.org/10.1038/s41598-021-88506-y>
- 513 Baba, M. M., Bitew, M., Fokam, J., Lelo, E. A., Ahidjo, A., Asmamaw, K., Beloumou, G. A.,  
514 Bulimo, W. D., Buratti, E., Chenwi, C., Dadi, H., D'Agaro, P., De Conti, L., Fainguem,  
515 N., Gadzama, G., Maiuri, P., Majanja, J., Meshack, W., Ndjolo, A., ... Marcello, A.  
516 (2021). Diagnostic performance of a colorimetric RT -LAMP for the identification of  
517 SARS-CoV-2: A multicenter prospective clinical evaluation in sub-Saharan Africa.  
518 *EClinicalMedicine*, *40*, 101101. <https://doi.org/10.1016/j.eclinm.2021.101101>
- 519 Bokelmann, L., Nickel, O., Maricic, T., Pääbo, S., Meyer, M., Borte, S., & Riesenber, S.  
520 (2021). Point-of-care bulk testing for SARS-CoV-2 by combining hybridization capture

521 with improved colorimetric LAMP. *Nature Communications*, 12(1), 1467.  
522 <https://doi.org/10.1038/s41467-021-21627-0>

523 Chow, F. W.-N., Chan, T. T.-Y., Tam, A. R., Zhao, S., Yao, W., Fung, J., Cheng, F. K.-K., Lo,  
524 G. C.-S., Chu, S., Aw-Yong, K. L., Tang, J. Y.-M., Tsang, C.-C., Luk, H. K.-H., Wong,  
525 A. C.-P., Li, K. S.-M., Zhu, L., He, Z., Tam, E. W. T., Chung, T. W.-H., ... Lau, S. K.-P.  
526 (2020). A Rapid, Simple, Inexpensive, and Mobile Colorimetric Assay COVID-19-  
527 LAMP for Mass On-Site Screening of COVID-19. *International Journal of Molecular*  
528 *Sciences*, 21(15), 5380. <https://doi.org/10.3390/ijms21155380>

529 *Color SARS-CoV-2 RT-LAMP Diagnostic Assay—EUA Summary*. (2021). 25.

530 *COVID Live—Coronavirus Statistics—Worldometer*. (2022). Retrieved May 12, 2022, from  
531 <https://www.worldometers.info/coronavirus/>

532 Dao Thi, V. L., Herbst, K., Boerner, K., Meurer, M., Kremer, L. P., Kirrmaier, D., Freistaedter,  
533 A., Papagiannidis, D., Galmozzi, C., Stanifer, M. L., Boulant, S., Klein, S., Chlanda, P.,  
534 Khalid, D., Barreto Miranda, I., Schnitzler, P., Kräusslich, H.-G., Knop, M., & Anders, S.  
535 (2020). A colorimetric RT-LAMP assay and LAMP-sequencing for detecting SARS-  
536 CoV-2 RNA in clinical samples. *Science Translational Medicine*, 12(556), eabc7075.  
537 <https://doi.org/10.1126/scitranslmed.abc7075>

538 de Oliveira Coelho, B., Sanchuki, H. B. S., Zanette, D. L., Nardin, J. M., Morales, H. M. P.,  
539 Fornazari, B., Aoki, M. N., & Blanes, L. (2021). Essential properties and pitfalls of  
540 colorimetric Reverse Transcription Loop-mediated Isothermal Amplification as a point-  
541 of-care test for SARS-CoV-2 diagnosis. *Molecular Medicine*, 27(1), 30.  
542 <https://doi.org/10.1186/s10020-021-00289-0>

- 543 Dudley, D. M., Newman, C. M., Weiler, A. M., Ramuta, M. D., Shortreed, C. G., Heffron, A. S.,  
544 Accola, M. A., Rehrauer, W. M., Friedrich, T. C., & O'Connor, D. H. (2020). Optimizing  
545 direct RT-LAMP to detect transmissible SARS-CoV-2 from primary nasopharyngeal  
546 swab samples. *PLOS ONE*, *15*(12), e0244882.  
547 <https://doi.org/10.1371/journal.pone.0244882>
- 548 Huang, C., Wen, T., Shi, F.-J., Zeng, X.-Y., & Jiao, Y.-J. (2020). Rapid Detection of IgM  
549 Antibodies against the SARS-CoV-2 Virus via Colloidal Gold Nanoparticle-Based  
550 Lateral-Flow Assay. *ACS Omega*, *5*(21), 12550–12556.  
551 <https://doi.org/10.1021/acsomega.0c01554>
- 552 Jamwal, V. L., Kumar, N., Bhat, R., Jamwal, P. S., Singh, K., Dogra, S., Kulkarni, A., Bhadra,  
553 B., Shukla, M. R., Saran, S., Dasgupta, S., Vishwakarma, R. A., & Gandhi, S. G. (2021).  
554 Optimization and validation of RT-LAMP assay for diagnosis of SARS-CoV2 including  
555 the globally dominant Delta variant. *Virology Journal*, *18*(1), 178.  
556 <https://doi.org/10.1186/s12985-021-01642-9>
- 557 Lalli, M. A., Langmade, J. S., Chen, X., Fronick, C. C., Sawyer, C. S., Burcea, L. C., Wilkinson,  
558 M. N., Fulton, R. S., Heinz, M., Buchser, W. J., Head, R. D., Mitra, R. D., & Milbrandt,  
559 J. (2021). Rapid and Extraction-Free Detection of SARS-CoV-2 from Saliva by  
560 Colorimetric Reverse-Transcription Loop-Mediated Isothermal Amplification. *Clinical  
561 Chemistry*, *67*(2), 415–424. <https://doi.org/10.1093/clinchem/hvaa267>
- 562 Lu, R., Wu, X., Wan, Z., Li, Y., Jin, X., & Zhang, C. (2020). A Novel Reverse Transcription  
563 Loop-Mediated Isothermal Amplification Method for Rapid Detection of SARS-CoV-2.  
564 *Int. J. Mol. Sci.*, *10*.



- 565 Lu, S., Duplat, D., Benitez-Bolivar, P., León, C., Villota, S. D., Veloz-Villavicencio, E.,  
566 Arévalo, V., Jaenes, K., Guo, Y., Cicek, S., Robinson, L., Peidis, P., Pearson, J. D.,  
567 Woodgett, J., Mazzulli, T., Ponce, P., Restrepo, S., González, J. M., Bernal, A., ...  
568 Bremner, R. (2022). Multicenter international assessment of a SARS-CoV-2 RT-LAMP  
569 test for point of care clinical application. *PLOS ONE*, *17*(5), e0268340.  
570 <https://doi.org/10.1371/journal.pone.0268340>
- 571 Luo, Z., Ye, C., Xiao, H., Yin, J., Liang, Y., Ruan, Z., Luo, D., Gao, D., Tan, Q., Li, Y., Zhang,  
572 Q., Liu, W., & Wu, J. (2022). Optimization of loop-mediated isothermal amplification  
573 (LAMP) assay for robust visualization in SARS-CoV-2 and emerging variants diagnosis.  
574 *Chemical Engineering Science*, *251*, 117430. <https://doi.org/10.1016/j.ces.2022.117430>
- 575 Meagher, R. J., Priye, A., Light, Y. K., Huang, C., & Wang, E. (2018). Impact of primer dimers  
576 and self-amplifying hairpins on reverse transcription loop-mediated isothermal  
577 amplification detection of viral RNA. *Analyst*, *143*(8), 1924–1933.  
578 <https://doi.org/10.1039/C7AN01897E>
- 579 Nawattanapaiboon, K., Pasomsub, E., Prombun, P., Wongbunmak, A., Jenjitwanich, A.,  
580 Mahasupachai, P., Vetcho, P., Chayrach, C., Manatjaroenlap, N., Samphaongern, C.,  
581 Watthanachockchai, T., Leedorkmai, P., Manopwisedjaroen, S., Akkarawongsapat, R.,  
582 Thitithanyanont, A., Phanchana, M., Panbangred, W., Chauvatcharin, S., & Sriksirin, T.  
583 (2021). Colorimetric reverse transcription loop-mediated isothermal amplification (RT-  
584 LAMP) as a visual diagnostic platform for the detection of the emerging coronavirus  
585 SARS-CoV-2. *The Analyst*, *146*(2), 471–477. <https://doi.org/10.1039/D0AN01775B>
- 586 Notomi, T. (2000). Loop-mediated isothermal amplification of DNA. *Nucleic Acids Research*,  
587 *28*(12), 63e–663. <https://doi.org/10.1093/nar/28.12.e63>

- 588 Notomi, T., Mori, Y., Tomita, N., & Kanda, H. (2015). Loop-mediated isothermal amplification  
589 (LAMP): Principle, features, and future prospects. *Journal of Microbiology*, *53*(1), 1–5.  
590 <https://doi.org/10.1007/s12275-015-4656-9>
- 591 Odiwuor, N., Xiong, J., Ogolla, F., Hong, W., Li, X., Khan, F. M., Wang, N., Yu, J., & Wei, H.  
592 (2022). A point-of-care SARS-CoV-2 test based on reverse transcription loop-mediated  
593 isothermal amplification without RNA extraction with diagnostic performance same as  
594 RT-PCR. *Analytica Chimica Acta*, *1200*, 339590.  
595 <https://doi.org/10.1016/j.aca.2022.339590>
- 596 Promlek, T., Thanunchai, M., Phumisantiphong, U., Hansirisathit, T., Phuttanu, C.,  
597 Dongphooyao, S., Thongsopa, W., & Nuchnoi, P. (2022). Performance of colorimetric  
598 reverse transcription loop-mediated isothermal amplification as a diagnostic tool for  
599 SARS-CoV-2 infection during the fourth wave of COVID-19 in Thailand. *International*  
600 *Journal of Infectious Diseases*, *116*, 133–137. <https://doi.org/10.1016/j.ijid.2021.12.351>
- 601 Tombuloglu, H., Sabit, H., Al-Khallaf, H., Kabanja, J. H., Alsaeed, M., Al-Saleh, N., & Al-  
602 Suhaimi, E. (2022). Multiplex real-time RT-PCR method for the diagnosis of SARS-  
603 CoV-2 by targeting viral N, RdRP and human RP genes. *Scientific Reports*, *12*(1), 2853.  
604 <https://doi.org/10.1038/s41598-022-06977-z>
- 605 Tombuloglu, H., Sabit, H., Al-Suhaimi, E., Al Jindan, R., & Alkharsah, K. R. (2021).  
606 Development of multiplex real-time RT-PCR assay for the detection of SARS-CoV-2.  
607 *PLOS ONE*, *16*(4), e0250942. <https://doi.org/10.1371/journal.pone.0250942>
- 608 Waterhouse, A. M., Procter, J. B., Martin, D. M. A., Clamp, M., & Barton, G. J. (2009). Jalview  
609 Version 2—A multiple sequence alignment editor and analysis workbench.  
610 *Bioinformatics*, *25*(9), 1189–1191. <https://doi.org/10.1093/bioinformatics/btp033>

- 611 Yu, L., Wu, S., Hao, X., Dong, X., Mao, L., Pelechano, V., Chen, W.-H., & Yin, X. (2020).  
612 Rapid Detection of COVID-19 Coronavirus Using a Reverse Transcriptional Loop-  
613 Mediated Isothermal Amplification (RT-LAMP) Diagnostic Platform. *Clinical*  
614 *Chemistry*, 66(7), 975–977. <https://doi.org/10.1093/clinchem/hvaa102>
- 615 Zhang, Y., Odiwuor, N., Xiong, J., Sun, L., Nyaruaba, R. O., Wei, H., & Tanner, N. A. (2020a).  
616 *Rapid Molecular Detection of SARS-CoV-2 (COVID-19) Virus RNA Using Colorimetric*  
617 *LAMP* (p. 2020.02.26.20028373). medRxiv.  
618 <https://doi.org/10.1101/2020.02.26.20028373>
- 619 Zhang, Y., Ren, G., Buss, J., Barry, A. J., Patton, G. C., & Tanner, N. A. (2020b). Enhancing  
620 colorimetric loop-mediated isothermal amplification speed and sensitivity with guanidine  
621 chloride. *BioTechniques*, 69(3), 178–185. <https://doi.org/10.2144/btn-2020-0078>  
622