

Assessment of the Feasibility of Remote Training, At-Home Testing, and Test-Retest

Variability of Clustered Virtual Reality Perimetry

Zer Keen Chia¹, Alan W. Kong¹, Marcus L. Turner¹, Murtaza Saifee¹, Bertil E. Damato¹, Benjamin T. Backus², James J. Blaha², Joel S. Schuman³⁻⁷, Michael Deiner¹, Yvonne Ou¹

Affiliations:

1. Department of Ophthalmology, UCSF School of Medicine, San Francisco, CA, United States
2. Vivid Vision, Inc., San Francisco, CA, United States
3. Department of Ophthalmology, NYU Langone Health, NYU Grossman School of Medicine, New York, NY, United States
4. Departments of Biomedical Engineering and Electrical and Computer Engineering, New York University Tandon School of Engineering, Brooklyn, NY, United States
5. Center for Neural Science, NYU, New York, NY, United States
6. Neuroscience Institute, NYU Langone Health, New York, NY, United States
7. Department of Electrical and Computer Engineering, Pratt School of Engineering, Duke University, Durham, NC, United States

Corresponding Author:

Yvonne Ou, MD

10 Koret Way, San Francisco, CA, 94143, USA.

Phone: 415-476-0779

Fax: 415-476-0336

Financial Support: This work was made possible, in part, by UCSF Resource Allocation Program award (YO and MD), NEI P30 EY002162 - Core Grant for Vision Research, and by an unrestricted grant from Research to Prevent Blindness, New York, NY.

Conflict of Interest: Benjamin T. Backus and James J. Blaha have employment, equity, and IP in Vivid Vision, Inc. The other authors have no other relevant conflicting relationships.

Abbreviations:

SAP: Static Automated Perimetry; HVF: Humphrey Visual Field; VVP: Vivid Vision Perimetry; MD: Mean Deviation; MS: Mean Sensitivity; SD-OCT: Spectral-Domain Optical Coherence Tomography; GCC: Ganglion Cell Complex; SE: Standard Error of the mean

Key Words:

Glaucoma; Visual Field Testing; Virtual Reality; Feasibility; Remote Training

Running Head: Remote Training and Variability of Clustered VR Perimetry

1 **Abstract**

2 **Objective:** To assess the feasibility of remotely training glaucoma patients to take a ten-session
3 clustered virtual reality (VR) visual field test (VVP-10) at home, analyze results for test-retest
4 variability, and assess correspondence with conventional perimetry.

5 **Design:** Cross-sectional study.

6 **Subjects:** 21 subjects with glaucoma were enrolled and included in the feasibility assessment of
7 remote training. 36 eyes were used for test-retest analysis and determination of concordance with
8 Humphrey Visual Field (HVF) testing.

9 **Methods:** Subjects were provided with a mobile VR headset containing the VVP-10 test
10 software and trained remotely via video conferencing. Subjects were instructed to complete ten
11 sessions over a 14-day period.

12 **Main Outcome Measures:** Feasibility was determined by the number of subjects who were able
13 to independently complete VVP-10 over the 14-day period after one remote training session.

14 Intraclass correlation coefficient (ICC) of average fraction seen across ten sessions and standard
15 error (SE) for the mean were primary outcome measures for assessing test-retest variability.

16 Correlation with HVF mean sensitivity (MS) across eyes, was a secondary outcome measure.

17 **Results:** 20 subjects (95%) successfully completed the VVP-10 test series after one training
18 session. ICC of VVP-10 was 0.95 (95% CI [0.92, 0.97]). Mean SE in units of fraction seen was
19 0.012. The Spearman correlations of VVP-10 average fraction seen versus HVF MS were 0.88
20 (95% CI [0.66, 0.99]) for moderate to advanced glaucoma eyes, and decreased to 0.68 (95% CI
21 [0.29, 0.94]) when all eyes were included.

22 **Conclusions:** Remote training of patients at home is feasible and subsequent remote clustered
23 visual field testing using VVP-10 by patients on their own without any further interactions with

24 caregivers or study staff was possible. At-home VVP-10 results demonstrated low test-retest
25 variability. Future studies must be conducted to determine if VVP-10, taken at home as
26 convenient for the patient, may be a viable supplement to provide equivalent or complementary
27 results to that of standard in-clinic assessment of visual function in glaucoma.

28 **Introduction**

29 Visual function is routinely evaluated in glaucoma patients with conventional static
30 automated perimetry (SAP), for example with Humphrey Visual Field (HVF) testing. However,
31 patients dislike taking the test and report feeling pressured to do well.¹ Additional challenges
32 include variable testing environments, long clinic wait times, and the need to schedule
33 appointments and travel to clinic.¹ Furthermore, visual field tests have high inherent variability
34 due to their short duration which limits the amount of data collected. Variability is also
35 influenced by factors including the testing environment and technician instructions,^{2,3} and the
36 need for patients to maintain prolonged fixation throughout the test can cause fixation losses,
37 fatigue, and discomfort.^{1,4} Current tests also require significant clinic infrastructure and resources.

38 Studies have demonstrated that time to detection of progression using standard visual
39 field testing regimens can range from 2 to 7 years or more depending on frequency of testing and
40 rate of progression of disease,⁵ with factors such as ethnicity and socioeconomic status affecting
41 the frequency of visual field testing,⁶ time to detection of progression,^{7,8} and severity of disease
42 at first presentation.⁹ Chauhan et al. and the European Glaucoma Society therefore recommend
43 performing six visual field examinations within the first 2 years of diagnosis to identify rapid
44 progressors and establish patients' baseline data,^{10,11} but a study by Fung et al. revealed that most
45 patients with newly-diagnosed glaucoma received less than 3 visual fields in the first 2 years
46 following diagnosis.¹² Furthermore, while the American Academy of Ophthalmology
47 recommends at least yearly visual field evaluations in patients with primary open-angle
48 glaucoma,¹³ Stagg et al. found that more than 75% of patients with open-angle glaucoma across
49 the United States receive less than one visual field test per year and thus do not meet guideline-
50 adherent monitoring.¹⁴ Given the challenge of obtaining consistent visual field tests, especially

51 during the COVID-19 pandemic, there is an unmet need for accessible, patient-friendly visual
52 field testing that would not only enhance the patient experience but also provide physicians with
53 additional data to help deliver the best care possible. One logical alternative to in-clinic visual
54 field testing is at-home testing which patients are amenable to because it enables closer
55 monitoring of their visual function through clustered testing and allows them to undergo testing
56 at their convenience.^{15,16}

57 Vivid Vision Perimetry (VVP, Vivid Vision Inc., San Francisco, CA) has designed a
58 variety of portable and mobile virtual reality-based visual field tests that are configured to run on
59 off-the-shelf head mounted displays using the principle of multi-fixation,^{17,18} multiple-choice
60 perimetry. The patient's task during VVP was designed to reduce fatigue as compared to the
61 button-press task in conventional in-clinic perimetry, with the aim of collecting more data and
62 thus more precise measurements of sensitivity in patients with moderate to severe loss. Briefly,
63 with VVP testing, patients are not required to fixate on a stationary central target for the duration
64 of the test but are instead allowed to move their eyes and head during the test. A fixation task is
65 used to control the retinal positions of the stimuli, although VVP is not a form of eye-movement
66 perimetry and eye position is not monitored. Visual field testing is one of the least popular tests
67 done in clinic,⁴ possibly in part due to the need for patients to suppress their foveation reflex, and
68 multi-fixation perimetry may provide a more comfortable testing experience for patients. Indeed,
69 patients report that tests that do not require constant fixation are more comfortable than SAP.^{15,19}

70 In this study, we introduce VVP-10, a test with suprathreshold stimuli comprising ten
71 identical sessions that patients complete over a 14-day period at home after remote training. The
72 previously reported suprathreshold screening version of the test, VVP Swift, demonstrated good
73 test-retest reliability, but only two tests per subject were included in the study.¹⁷ The precision of

74 patients' visual field measurements is limited both by the number of tests they receive each year
75 and by the number of stimuli presented per test, so we sought to increase precision by increasing
76 the number of sessions per patient and by using a new version of the test that presents stimuli
77 more often at each location.

78 The purpose of this study was to demonstrate the feasibility of remote training of
79 glaucoma patients to complete VVP-10 at home, to assess their at-home test results for test-retest
80 variability using measurements obtained from the series of sessions, and to assess patient
81 discomfort and fatigue. A secondary aim was to determine concordance between the visual field
82 results obtained from VVP-10 and from HVF.

83 **Methods**

84 Participants for this cross-sectional study were recruited from the patient cohort of the
85 Glaucoma Clinic at the University of California, San Francisco (UCSF), from May 2020 to
86 August 2020. Informed consent was obtained from all participants either in clinic or over Zoom
87 (San Jose, CA). All methods were approved by the UCSF Institutional Review Board, and all
88 research adhered to the tenets of the Declaration of Helsinki and the Health Insurance Portability
89 and Accountability Act.

90 *Subject Characteristics*

91 Inclusion criteria included subjects aged 18-85 with a diagnosis of primary open-angle
92 glaucoma or secondary forms of glaucoma including steroid-induced, mixed-mechanism, and
93 pseudoexfoliation glaucoma. A diagnosis of glaucoma was made by either optic disc or retinal
94 nerve fiber layer (RNFL) structural abnormalities, reliable and reproducible visual field
95 abnormalities consistent with RNFL damage defined as persistent scotomas on at least 2
96 consecutive HVF tests, or both. Structural abnormalities included neuroretinal rim thinning,

97 localized or diffuse RNFL defects, disc hemorrhages, or progressive narrowing of the
98 neuroretinal rim with increased cupping, observed with slit-lamp biomicroscopy and a handheld
99 lens or with spectral-domain OCT imaging (Optovue Inc., Fremont, CA). Subjects who met our
100 inclusion criteria were identified prior to each clinic day, and they were recruited in the order of
101 their visits until our team ran out of Oculus devices; we did not seek to recruit subjects who were
102 younger or otherwise potentially more technologically literate.

103 Exclusion criteria included best-corrected visual acuity (BCVA) worse than 20/80 or
104 concurrent retinal disease including retinal vein occlusion, wet age-related macular degeneration,
105 or proliferative diabetic retinopathy. Subjects with a history of epilepsy or issues with neck strain
106 or head movement were also excluded from enrollment. Subjects who were unable to complete
107 individual VVP-10 sessions within the allotted maximum time of 30 minutes after training were
108 excluded from test-retest and correlation analyses.

109 *VVP-10 Remote Training of Patients in Their Homes*

110 Subjects were given a mobile VR headset (Oculus Go, Facebook, Menlo Park, CA) either
111 in-clinic (if they happened to be in clinic) or else shipped via mail. Once at home with the device,
112 each subject was individually trained over Zoom by the investigators (ZKC, MLT) on how to
113 take VVP-10. During the training session, the investigators helped each the subject connect the
114 device to WiFi and discussed each step of the test (Figure 1) and the protocol for repeat testing.
115 Patients were instructed on how the test works. Before each stimulus presentation, the test-taker
116 performed a fixation task: they controlled a dot (the “pointer”) by moving their head, and the
117 first step of each trial was to connect (partially overlap) this pointer with a fixation point. 0.10
118 seconds after successful connection, the stimulus flashed in the periphery and the subject moved
119 the pointer towards the location of the stimulus, again by moving their head. If the subject did

120 not see the stimulus, they could remain still until the next fixation task, resulting in a miss due to
121 a “skipped” stimulus. Moving to the wrong location ($> 30^\circ$ away in polar angle) was also
122 counted as a “miss.” This cycle of fixation task followed by stimulus task continued until all
123 stimuli had been presented at which point the test was complete. After these instructions were
124 given to each subject, they completed a training module within the VR testing environment
125 during which the investigators were available online to troubleshoot. After successful completion
126 of the training module and demonstration of an understanding of how to take the test, determined
127 by having subjects explain the steps of the test back to the investigators, subjects were asked to
128 complete 10 identical tests (or sessions) over 14 days. Subjects were allowed to complete up to
129 two sessions per day, but these sessions had to take place at least 30 minutes apart to minimize
130 fatigue from prolonged testing. At the end of the 14-day period, the investigators asked subjects
131 to rate the levels of discomfort and fatigue they experienced from the VVP-10 test using a 5-
132 point Likert scale (1 = no discomfort or fatigue, 5 = extremely high discomfort or fatigue).
133 Subjects were also asked to rate the levels of discomfort and fatigue they experienced from their
134 prior in-clinic HVF testing.

135 *Visual Field Technical Details*

136 The current study used VVP’s “24-2-M-FC” test, a fixed-contrast test in which all stimuli
137 had the same suprathreshold contrast. Ten sessions of this 24-2-M-FC test comprised the VVP-
138 10 testing strategy. Preliminary data collected using fixed-contrast stimuli demonstrated an
139 approximately linear relationship between VVP-10 average fraction seen and HVF mean
140 sensitivity in dB, with an average fraction seen of 50% approximately equivalent to a mean
141 sensitivity of 15 dB. The test presented a black-on-white, blurred stimulus that was 0.43° in
142 diameter at half-height, lasting 0.30 seconds. This stimulus was presented at 54 points on a 24-2

143 grid, four times per location, in a random order, and at a canonical blind spot location of (+/-14.0,
144 -1.5 deg) seven times in each eye (total of 2 eyes x 54 locations/eye x 4 stimuli/location = 432
145 stimuli per test, plus 14 blind-spot stimuli). Background luminance was 25 cd/m². Fraction seen
146 was the dependent variable; the graded (shallow-slope) nature of the psychometric function
147 causes fraction seen at a given location to vary as a function of stimulus intensity^{20,21}; it likewise
148 causes fraction seen for a fixed-intensity stimulus to vary from 0 to 1 depending on sensitivity.
149 Because the stimuli were presented at an optical distance of ~1.4 m (0.7 D), subjects were
150 instructed to continue wearing any distance correction if applicable. All such subjects were able
151 to wear their distance correcting contact lenses or glasses during testing. Progressive lenses were
152 allowed because the test uses pattern-blurred stimuli that make it robust to small amounts of
153 optical blur.²² When subjects were in clinic, their visual fields were also assessed using
154 conventional SAP testing with the HVF 24-2 SITA-Standard test (Carl Zeiss, Meditec, Inc.
155 Dublin, CA). These tests were not necessarily done on the same day as study enrollment, in
156 which case data from the most recent HVF was obtained via chart review.

157 The fraction seen was measured at each location in each session, and average fraction
158 seen for each eye for each session was computed. Average fraction seen was also computed for
159 each eye across VVP-10 as a whole (across the 10 sessions). Point sensitivity and mean
160 sensitivity (MS) for each eye in dB were the outcome measures for HVF. The cutoffs for
161 reliability indices of HVF were set at a 15% false-positive response rate, a 30% false-negative
162 response rate, and 30% fixation loss rate. VVP-10 does not utilize the same reliability indices
163 and does not incorporate eye-tracking technology to determine fixation losses, but instead uses a
164 fixation task.^{23,24} It also measures a “blind spot seen (BSS) rate,” which is the rate at which
165 stimuli presented at the canonical blind spot, that should be missed, are seen.

166 *Statistical Analysis*

167 Test-retest variability of VVP-10 was determined using the following methods. The
168 intraclass correlation coefficient (ICC) estimate for average fraction seen, across ten VVP
169 sessions, and its 95% confidence interval, were calculated based on a mean rating ($k = 10$),
170 absolute-agreement, two-way mixed effects model. The ICC is one measure of how similar the
171 10 sessions were to one another. The standard error (SE) for the mean across all 10 sessions was
172 calculated. For a given eye, the SE estimated the test-retest variability (SD) in units of the
173 dependent variable, namely fraction seen, for the 10-session VVP-10 test as a whole.

174 Comparison between HVF sensitivity in dB and VVP-10 fraction seen was evaluated by
175 calculating the Spearman correlation coefficient across an eye's tested locations, along with its
176 95% confidence interval using a non-parametric bootstrap that resampled at the individual level
177 with replacement (1,000 iterations). A separate correlation was done across eyes, using MS for
178 HVF and average fraction seen for VVP-10. Comparison of the discomfort and fatigue that
179 subjects experienced during VVP-10 versus HVF were calculated using the Mann-Whitney test.
180 Significance was defined as $P < 0.05$. Data analyses were performed with R version 4.0.4 (R
181 Foundation for Statistical Computing, Vienna, Austria).

182 **Results**

183 A total of 21 unique subjects and 41 eyes were enrolled in the study. Six subjects
184 received the headset via mail and the rest were given the headset in clinic during a regular care
185 follow-up visit. Fifty-two percent of subjects identified as male, the rest as female, and subjects
186 identified as either Caucasian (62%) or Asian (38%). Of the 21 subjects who were enrolled and
187 trained remotely, one subject was considered to have failed remote training due to their inability
188 to progress past the training module during the training session and consequent inability to

189 complete the VVP-10 sessions. All other subjects (95%) were able to independently complete the
190 individual sessions within the allotted time limit and successfully completed 10 sessions within
191 14 days after one remote training session. Figure 2 shows the grayscale maps from one subject's
192 10 sessions and for the VVP-10 test as a whole, alongside their HVF grayscale maps.

193 Of the 39 eyes from the 20 subjects who completed VVP-10, three eyes were excluded
194 posthoc from analyses as they did not meet inclusion criteria due to the presence of concurrent
195 ocular disease (N = 1) or BCVA worse than 20/80 (N = 2). A total of 36 eyes from 19 subjects
196 were included in the test-retest analyses. Group characteristics of included eyes are described in
197 Table 1. The mean time elapsed between HVF and VVP-10 testing was 32 days. On average, the
198 response time to “seen” stimuli on VVP-10 was 0.62 seconds compared to 1.00 seconds for
199 “missed” stimuli when the patient responded incorrectly ($P < 0.001$). The average response time
200 for no-response “skipped” stimuli was 2.3 seconds due to the setting of the test's time-out
201 parameter. All eyes except one had VVP-10 blind spot seen rate $< 30\%$.

202 For this set of glaucomatous eyes, the mean average fraction seen was 0.74 ± 0.21 (range
203 0.32 to 0.99). The intraclass correlation coefficient (ICC) of average fraction seen across the ten
204 sessions was 0.95 (95% CI [0.92 – 0.97]) and the SE in units of fraction seen was 0.012 on
205 average. The SE for the 10 sessions estimates the SD of their mean or the test-retest variability of
206 VVP-10.

207 For comparison between HVF and VVP-10, one additional eye was excluded due to
208 having an HVF false-positive response rate $> 15\%$ for a total of 35 eyes used in concordance
209 analysis. Because the version of VVP-10 in this study employed a suprathreshold stimulus, it
210 could not measure sensitivity at locations with early loss. Indeed, when correlations between
211 HVF point sensitivity and VVP fraction seen in each eye were plotted against HVF MD (Figure

212 3), there was an inverse relationship between correlation and HVF MD for eyes with MD values
213 better than -6 dB. We therefore examined the correlation between VVP-10 average fraction seen
214 versus HVF MS for the 16 eyes that had HVF MD of -6 dB or worse. The correlation was 0.88
215 (95% CI [0.66, 0.99], $P < 0.001$, Figure 4A). Including all 35 eyes, the correlation between VVP-
216 10 average fraction seen versus HVF MS was, as expected, worse at 0.68 (95% CI [0.29, 0.94]),
217 $P < 0.05$, Figure 4B).

218 When comparing one session of HVF to the ten-session VVP-10 test, patients on average
219 felt that the tests were similarly uncomfortable (average Likert score of 2.0/5 and 1.8/5,
220 respectively; $P = 0.51$) and similarly fatiguing (average Likert score of 2.2/5 and 1.7/5,
221 respectively; $P = 0.09$).

222 Discussion

223 In this study, we demonstrated the feasibility of training subjects remotely in their homes
224 to take a new at-home VR-based visual field test, VVP-10, and the feasibility of their completing
225 its ten sessions over a 14-day period. We estimated the test-retest variability (SD) of the mean
226 VVP-10 test result to be 0.012, and we interpret this value as demonstrating low test-retest
227 variability. In Figure 4A, VVP-10 average fraction seen ranged from 0.3 to 0.8. Thus, our
228 observed test-retest variation of 0.012 was 2.4% of the range of the data. For the same eyes, HVF
229 MS ranged from 8 to 24 dB. If it could be measured with an equivalent precision of 2.4% within
230 this comparable range, its test-retest variability would be only 0.38 dB, which is lower than the
231 1.0 dB expected for glaucoma patients who are moderately reliable test takers.²⁵ There is also a
232 strong correlation between VVP-10 average fraction seen and HVF MS when subjects with mild
233 glaucoma are excluded, which was appropriate because VVP-10 stimuli were suprathreshold.

234 SAP is routinely used in clinic to detect and monitor visual field defects, but many
235 patients do not undergo the recommended frequency of testing and many dislike the testing
236 experience. As a result, various groups have developed alternative tests that can be completed by
237 patients at home for improved monitoring of glaucomatous changes, including Eyecatcher and
238 Virtual Field. In studies of those tests, most patients completed tests remotely, noted the
239 advantages of greater accessibility, and reported feeling that they were playing an active role in
240 their healthcare.^{16,26} Patients enrolled in a study using the tablet-based Melbourne Rapid Fields
241 test had good compliance to weekly monitoring over a 12 month period, with 32% of enrolled
242 subjects completing the trial.²⁷ To the best of our knowledge, our study is the first to demonstrate
243 the feasibility of training subjects using video conferencing so that the entire process of training
244 and data collection can be completed remotely.

245 Only one subject in our study was unable to progress past the training session, suggesting
246 that remote training of select patients is feasible and that most patients may not need to undergo
247 in-clinic training prior to being given a device for home testing. The reason for failure in this one
248 subject remains unclear but likely involves some combination of challenges with the technology
249 and a poor understanding of utilizing multi-fixation perimetry to register responses with head
250 movement; this subject's age at testing was 83 compared to the average age of 62.2 years.
251 Nevertheless, the low test-retest variability of VVP-10 coupled with successful completion of the
252 VVP-10 test series in all other subjects highlights the potential for remote training and
253 administration of a portable visual field test. The overall correlation of 0.88 between VVP-10
254 average fraction seen and HVF MS in subjects with moderate to advanced glaucoma is similar to
255 correlations obtained using other virtual reality-based head-mounted devices²⁸⁻³¹ as well as
256 tablet-based perimeters.^{32,33} Finally, although VVP-10 contained 10 sessions, subjects on average

257 did not rate VVP-10 as more fatiguing or uncomfortable than a single HVF test. The finding that
258 patients are amenable to taking tests more regularly has previously been described by various
259 groups,^{15,16,34,35} but we consider it extraordinary, and an indication of our success in devising a
260 usable test, that 95% of patients successfully completed the training and that all trained patients
261 completed their 10 sessions without further prompting.

262 Strengths of this study include the remote training of subjects in their homes by two
263 different investigators, suggesting that successful remote training does not require superior
264 instruction by an exceptional trainer. That subjects required only one training session indicates
265 the practical application and feasibility of remote training. We enrolled subjects who met our
266 inclusion criteria in the order of their clinic visits and did not seek to recruit younger, potentially
267 more technologically literate subjects.

268 Limitations of this study include a relatively small sample size and that all subjects
269 identified as either Caucasian or Asian. Additionally, although we did not intentionally recruit
270 younger subjects, the average age of our study population was 62.2 years, so our subjects may
271 have been more comfortable using video conferencing for training than the average glaucoma
272 patient would be. Future studies examining the utility of remote training should therefore seek to
273 recruit older patients who may not be as familiar with video technology. VVP testing time per
274 eye per session was also roughly double that of HVF testing. One qualitative study found that
275 patients are willing to undergo increased duration of testing if it leads to more accurate
276 information about their vision,³⁵ but it cannot be assumed that all patients would be amenable to
277 such prolonged testing. On the other hand, the overall effort and time to take all 10 sessions of
278 VVP-10 at home may be similar to the time required to schedule a clinic appointment, travel to
279 and from the clinic, and wait in the clinic.

280 In summary, we have demonstrated the feasibility of remote training and at-home testing,
281 and the low test-retest variability, of VVP-10, a suprathreshold virtual reality-based visual field
282 test. Results correlated well with in-clinic visual field testing in eyes with moderate to severe
283 visual field loss from glaucoma. Future work should address the feasibility of remote training in
284 older and more ethnically diverse subjects and also focus on the development of a testing
285 strategy for longitudinal visual field monitoring. Should these studies prove VVP-10 effective
286 for meeting those clinical needs, patients could in the future receive a testing device via mail,
287 undergo remote training, and complete the VVP-10 test series without the burden of coming to
288 clinic. At-risk patients who would otherwise forfeit coming to clinic in order to limit exposure to
289 COVID-19, and those living in remote locations, could utilize VVP-10 to assess their visual
290 function, potentially providing equivalent or complementary data to in-clinic visual field testing.

291 References:

- 292 1. Glen FC, Baker H, Crabb DP. A qualitative investigation into patients' views on visual field
293 testing for glaucoma monitoring. *BMJ Open*. 2014;4(1):e003996. doi:10.1136/bmjopen-
294 2013-003996
- 295 2. Montolio FGJ, Wesselink C, Gordijn M, Jansonius NM. Factors That Influence Standard
296 Automated Perimetry Test Results in Glaucoma: Test Reliability, Technician Experience,
297 Time of Day, and Season. *Invest Ophthalmol Vis Sci*. 2012;53(11):7010-7017.
298 doi:10.1167/iovs.12-10268
- 299 3. Kutzko KE, Brito CF, Wall M. Effect of instructions on conventional automated perimetry.
300 *Invest Ophthalmol Vis Sci*. 2000;41(7):2006-2013.
- 301 4. Gardiner SK, Demirel S. Assessment of Patient Opinions of Different Clinical Tests Used
302 in the Management of Glaucoma. *Ophthalmology*. 2008;115(12):2127-2131.
303 doi:10.1016/j.ophtha.2008.08.013
- 304 5. Wu Z, Saunders LJ, Daga FB, Diniz-Filho A, Medeiros FA. Frequency of Testing to Detect
305 Visual Field Progression Derived Using a Longitudinal Cohort of Glaucoma Patients.
306 *Ophthalmology*. 2017;124(6):786-792. doi:10.1016/j.ophtha.2017.01.027
- 307 6. Stein JD, Talwar N, LaVerne AM, Nan B, Lichter PR. Racial Disparities in the Use of
308 Ancillary Testing to Evaluate Individuals With Open-Angle Glaucoma. *Archives of*
309 *Ophthalmology*. 2012;130(12):1579-1588. doi:10.1001/archophthalmol.2012.1325

- 310 7. Gracitelli CPB, Zangwill LM, Diniz-Filho A, et al. Detection of Glaucoma Progression in
311 Individuals of African Descent Compared With Those of European Descent. *JAMA*
312 *Ophthalmology*. 2018;136(4):329-335. doi:10.1001/jamaophthalmol.2017.6836
- 313 8. Stagg B, Mariottoni EB, Berchuck S, et al. Longitudinal visual field variability and the
314 ability to detect glaucoma progression in black and white individuals. *British Journal of*
315 *Ophthalmology*. Published online May 12, 2021. doi:10.1136/bjophthalmol-2020-318104
- 316 9. Sukumar S, Spencer F, Fenerty C, Harper R, Henson D. The influence of socioeconomic
317 and clinical factors upon the presenting visual field status of patients with glaucoma. *Eye*.
318 2009;23(5):1038-1044. doi:10.1038/eye.2008.245
- 319 10. Chauhan BC, Garway-Heath DF, Goñi FJ, et al. Practical recommendations for measuring
320 rates of visual field change in glaucoma. *British Journal of Ophthalmology*.
321 2008;92(4):569-573. doi:10.1136/bjo.2007.135012
- 322 11. European Glaucoma Society Terminology and Guidelines for Glaucoma, 4th Edition -
323 Chapter 2: Classification and terminology Supported by the EGS Foundation. *Br J*
324 *Ophthalmol*. 2017;101(5):73-127. doi:10.1136/bjophthalmol-2016-EGSguideline.002
- 325 12. Fung SSM, Lemer C, Russell RA, Malik R, Crabb DP. Are practical recommendations
326 practiced? A national multi-centre cross-sectional study on frequency of visual field testing
327 in glaucoma. *British Journal of Ophthalmology*. 2013;97(7):843-847.
328 doi:10.1136/bjophthalmol-2012-302903
- 329 13. Gedde SJ, Vinod K, Wright MM, et al. Primary Open-Angle Glaucoma Preferred Practice
330 Pattern®. *Ophthalmology*. 2021;128(1):P71-P150. doi:10.1016/j.ophtha.2020.10.022
- 331 14. Stagg BC, Stein JD, Medeiros FA, et al. The Frequency of Visual Field Testing in a US
332 Nationwide Cohort of Individuals with Open-Angle Glaucoma. *Ophthalmology Glaucoma*.
333 Published online May 20, 2022. doi:10.1016/j.ogla.2022.05.002
- 334 15. Jones L, Callaghan T, Campbell P, et al. Acceptability of a home-based visual field test
335 (Eyecatcher) for glaucoma home monitoring: a qualitative study of patients' views and
336 experiences. *BMJ Open*. 2021;11(4):e043130. doi:10.1136/bmjopen-2020-043130
- 337 16. Hu GY, Prasad J, Chen DK, Alcantara-Castillo JC, Patel VN, Al-Aswad LA. Home
338 Monitoring of Glaucoma Using a Home Tonometer and a Novel Virtual Reality Visual
339 Field Device: Acceptability and Feasibility. *Ophthalmol Glaucoma*. Published online May
340 14, 2022:S2589-4196(22)00081-3. doi:10.1016/j.ogla.2022.05.001
- 341 17. Greenfield JA, Deiner M, Nguyen A, et al. Virtual Reality Oculokinetic Perimetry Test
342 Reproducibility and Relationship to Conventional Perimetry and OCT. *Ophthalmology*
343 *Science*. 2022;2(1). doi:10.1016/j.xops.2021.100105
- 344 18. Deiner MS, Damato BE, Ou Y. Implementing and Monitoring At-Home Virtual Reality
345 Oculo-kinetic Perimetry During COVID-19. *Ophthalmology*. 2020;127(9):1258.
346 doi:10.1016/j.ophtha.2020.06.017

- 347 19. McTrusty AD, Cameron LA, Perperidis A, et al. Comparison of Threshold Saccadic Vector
348 Optokinetic Perimetry (SVOP) and Standard Automated Perimetry (SAP) in Glaucoma.
349 Part II: Patterns of Visual Field Loss and Acceptability. *Transl Vis Sci Technol.* 2017;6(5).
350 doi:10.1167/tvst.6.5.4
- 351 20. Wall M, Kutzko KE, Chauhan BC. Variability in patients with glaucomatous visual field
352 damage is reduced using size V stimuli. *Invest Ophthalmol Vis Sci.* 1997;38(2):426-435.
- 353 21. Wall M, Woodward KR, Doyle CK, Artes PH. Repeatability of Automated Perimetry: A
354 Comparison between Standard Automated Perimetry with Stimulus Size III and V, Matrix,
355 and Motion Perimetry. *Investigative Ophthalmology & Visual Science.* 2009;50(2):974-979.
356 doi:10.1167/iovs.08-1789
- 357 22. Dul MW, Backus B, Haimowitz C, Blaha J. Effects of Optical Defocus on Decrement
358 Perimetric Stimuli with Pattern Blur. *Investigative Ophthalmology & Visual Science.*
359 2019;60(9):2490.
- 360 23. Yu HJ, Kiernan DF, Eichenbaum D, Sheth VS, Wykoff CC. Home Monitoring of Age-
361 Related Macular Degeneration: Utility of the ForeseeHome Device for Detection of
362 Neovascularization. *Ophthalmol Retina.* 2021;5(4):348-356. doi:10.1016/j.oret.2020.08.003
- 363 24. Chew EY, Clemons TE, Bressler SB, et al. Randomized trial of the ForeseeHome
364 monitoring device for early detection of neovascular age-related macular degeneration. The
365 HOme Monitoring of the Eye (HOME) study design - HOME Study report number 1.
366 *Contemp Clin Trials.* 2014;37(2):294-300. doi:10.1016/j.cct.2014.02.003
- 367 25. Chauhan BC, Johnson CA. Test-retest variability of frequency-doubling perimetry and
368 conventional perimetry in glaucoma patients and normal subjects. *Invest Ophthalmol Vis
369 Sci.* 1999;40(3):648-656.
- 370 26. Jones PR, Campbell P, Callaghan T, et al. Glaucoma Home Monitoring Using a Tablet-
371 Based Visual Field Test (Eyecatcher): An Assessment of Accuracy and Adherence Over 6
372 Months. *American Journal of Ophthalmology.* 2021;223:42-52.
373 doi:10.1016/j.ajo.2020.08.039
- 374 27. Prea SM, Vingrys AJ, Kong GYX. Test Reliability and Compliance to a Twelve-Month
375 Visual Field Telemedicine Study in Glaucoma Patients. *J Clin Med.* 2022;11(15):4317.
376 doi:10.3390/jcm11154317
- 377 28. Razeghinejad R, Gonzalez-Garcia A, Myers JS, Katz LJ. Preliminary Report on a Novel
378 Virtual Reality Perimeter Compared With Standard Automated Perimetry. *Journal of
379 Glaucoma.* 2021;30(1):17-23. doi:10.1097/IJG.0000000000001670
- 380 29. Stapelfeldt J, Kucur ŞS, Huber N, Höhn R, Sznitman R. Virtual Reality–Based and
381 Conventional Visual Field Examination Comparison in Healthy and Glaucoma Patients.
382 *Translational Vision Science & Technology.* 2021;10(12):10. doi:10.1167/tvst.10.12.10

- 383 30. Mees L, Upadhyaya S, Kumar P, et al. Validation of a Head-mounted Virtual Reality
384 Visual Field Screening Device. *Journal of Glaucoma*. 2020;29(2):86-91.
385 doi:10.1097/IJG.0000000000001415
- 386 31. Ahmed Y, Pereira A, Bowden S, et al. Multicenter Comparison of the Toronto Portable
387 Perimeter with the Humphrey Field Analyzer: A Pilot Study. *Ophthalmol Glaucoma*.
388 2022;5(2):146-159. doi:10.1016/j.ogla.2021.07.011
- 389 32. Jones PR, Lindfield D, Crabb DP. Using an open-source tablet perimeter (Eyecatcher) as a
390 rapid triage measure for glaucoma clinic waiting areas. *British Journal of Ophthalmology*.
391 2021;105(5):681-686. doi:10.1136/bjophthalmol-2020-316018
- 392 33. Schulz AM, Graham EC, You Y, Klistorner A, Graham SL. Performance of iPad-based
393 threshold perimetry in glaucoma and controls. *Clinical & Experimental Ophthalmology*.
394 2018;46(4):346-355. doi:10.1111/ceo.13082
- 395 34. Prea SM, Kong GYX, Guymer RH, Vingrys AJ. Uptake, Persistence, and Performance of
396 Weekly Home Monitoring of Visual Field in a Large Cohort of Patients With Glaucoma.
397 *American Journal of Ophthalmology*. 2021;223:286-295. doi:10.1016/j.ajo.2020.10.023
- 398 35. Muthusamy V, Turpin A, Nguyen BN, Denniss J, McKendrick AM. Patients' views of
399 visual field testing and priorities for research development and translation into practice.
400 *Ophthalmology Glaucoma*. Published online October 14, 2021.
401 doi:10.1016/j.ogla.2021.10.003

402

403

404 **Figure Legends**

405
406 Figure 1: Schematic describing the steps of the test. Subjects control a pointer with their head-
407 movement and must connect this pointer to a fixation point (fixation task). Upon connection of
408 the head-pointer with the fixation point, a stimulus will flash in the periphery (stimulus task) and
409 subjects must move the head-pointer in the direction of the stimulus. This cycle repeats until all
410 points of a 24-2 grid have been tested.

411 Figure 2: VVP-10 and HVF grayscale maps for one subject. A) Example of ten VVP-10 session
412 results (top two rows, right eye; bottom two rows, left eye). Each location is represented by one
413 of 5 gray levels, depending how many stimuli were seen from 0 (black) to 4 (white). B) VVP-10
414 grayscale map with 41 gray levels after averaging results from ten individual sessions (left
415 column). The corresponding HVF grayscale maps for these eyes is shown in the right column.
416 Data are from OD (top) and OS (bottom).

417 Figure 3: Relationship between the correlation of HVF point sensitivity (dB) versus VVP
418 fraction seen and HVF mean deviation (dB). Each data point represents an eye.

419 Figure 4: Correlation between VVP-10 average fraction seen versus HVF MS (dB) including A)
420 only eyes with MD -6 dB or worse (16 eyes total) and B) all 35 eyes included in the correlation
421 analysis.

422

STEP 1: Fixation task (varied locations)

“Connect the orange dots by moving your head.”



STEP 2: Stimulus

At completion of STEP 1, (i.e. when dark orange head-pointer reaches light orange fixation point), a black stimulus spot briefly flashes on.



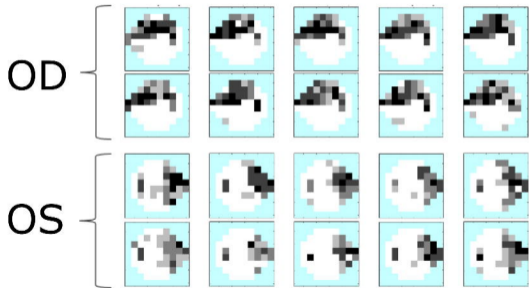
STEP 3: Response task

“Move the orange dot toward the location of where you saw a black spot, if you saw one.”

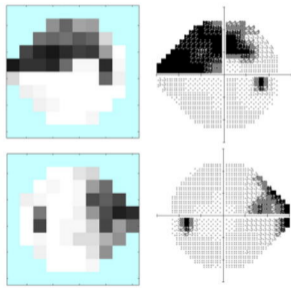


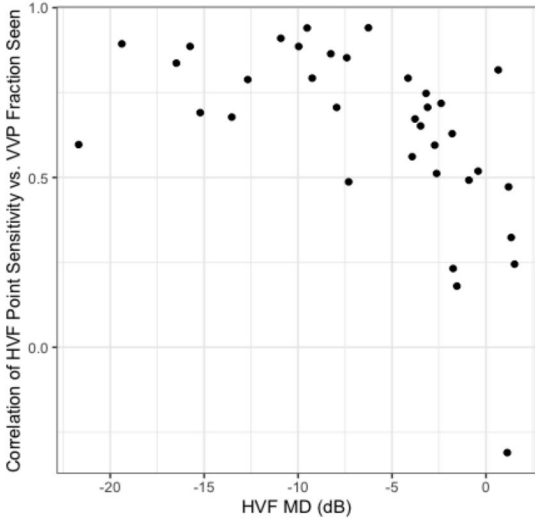
After Step 3 (regardless of outcome), repeat Steps 1-3, for all stimuli points, until all tested.

A)

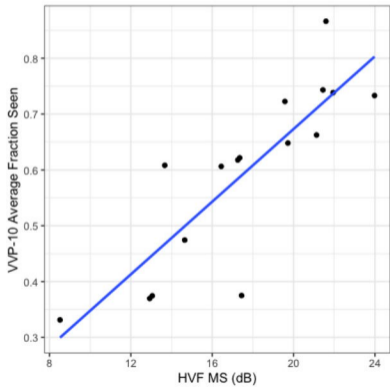


B)





A)



B)

