

1 **Evaluation of the Abbott Panbio™ COVID-19 antigen detection rapid diagnostic test**
2 **among healthcare workers in elderly care**

3
4 Andrea Eikelenboom-Boskamp^{1*}, Martijn den Ouden¹, Theun de Groot¹, Tim Stobernack²,
5 Heiman Wertheim², Andreas Voss^{1,2,3}

6
7
8 ¹ Canisius-Wilhelmina Hospital (CWZ), Department of Medical Microbiology and Infectious
9 Diseases, Nijmegen, The Netherlands

10 ² Radboudumc, Department of Medical Microbiology, Nijmegen, The Netherlands

11 ³ Groningen University Medical Centre, Department of Medical Microbiology and Infection
12 Control, Groningen, The Netherlands

13
14
15 * Corresponding Author

16 Andrea Eikelenboom-Boskamp

17 E-mail: eikelenboomandrea@gmail.com (AEB)

18
19
20
21
22
23
24
25
26
27
28
29
30
31
NOTE: This preprint reports new research that has not been certified by peer review and should not be used to guide clinical practice.

32 **Abstract**

33 **Background:** Coronavirus disease 2019 (COVID-19) has been especially dangerous
34 for elderly people. To reduce the risk of transmission from healthcare workers to elderly
35 people, it is of utmost importance to detect possible severe acute respiratory syndrome
36 coronavirus 2 (SARS-CoV-2) positive healthcare workers as early as possible. We aimed to
37 determine whether the Abbott Panbio™ COVID-19 antigen detection rapid diagnostic test
38 (Ag-RDT) could be used as an alternative to reverse transcription-quantitative polymerase
39 chain reaction (RT-qPCR). The second aim was to compare the cycle threshold (Ct) in RT-
40 qPCR with the results of the Ag-RDT.

41 **Methods:** A prospective diagnostic evaluation of the Abbott Panbio™ COVID-19 Ag-
42 RDT among healthcare workers across three elderly care facilities as well as home-based
43 elderly care workers who met clinical criteria for COVID-19 during the second wave of the
44 COVID-19 pandemic. Per healthcare worker, the first nasopharyngeal swab was obtained to
45 perform the Ag-RDT and the second swab for RT-qPCR. A Ct-value of < 40 was interpreted
46 as positive, ≥ 40 as negative.

47 **Results:** A total of 683 healthcare workers with COVID-19 symptoms were sampled for
48 detection of SARS-CoV-2 by both Ag-RDT and RT-qPCR. Sixty-three healthcare workers
49 (9.2%) tested positive for SARS-CoV-2 by RT-qPCR. The overall sensitivity of Ag-RDT was
50 81.0% sensitivity (95%CI: 69.6-88.8%) and 100% specificity (95%CI: 99.4-100%). Using a
51 cut-off Ct-value of 32, the sensitivity increased to 92.7% (95% CI: 82.7-97.1%). Negative Ag-
52 RDT results were moderately associated with higher Ct-values ($r = 0.62$) compared to
53 positive Ag-RDT results.

54 **Conclusion:** The Panbio™ COVID-19 Ag-RDT can be used to quickly detect positive
55 SARS-CoV-2 healthcare workers. Negative Ag-RDT should be confirmed by RT-qPCR. In

56 case of severe understaffing and with careful consideration, fully vaccinated healthcare
57 workers with Ag-RDT negative results could work with a mask pending PCR results.

58

59 **Keywords**

60 COVID-19, SARS-CoV-2, Panbio, Rapid antigen test, Elderly care, Healthcare workers

61

62 **INTRODUCTION**

63 Elderly care facilities are high-risk settings for transmission of COVID-19 to and among
64 residents and healthcare workers. Residents are at a higher risk of developing severe
65 infection due to age and comorbidities. Early detection of SARS-CoV-2 among healthcare
66 workers and vulnerable residents and rapid contact tracing are critical to reduce the risk of
67 SARS-CoV2 transmission and COVID-19-associated morbidity and mortality.(1,2)

68

69 Given the epidemiology of the COVID-19 epidemic and changes in guidelines for elderly-care
70 facilities (3), there is a strongly increasing test demand for SARS-CoV-2. Therefore, antigen
71 detection rapid diagnostic tests (Ag-RDTs) with fast results may be an inexpensive, scalable
72 solution. The ministry of Health, Welfare and Sport (VWS) and National Institute for Public
73 Health and the Environment (RIVM) have selected five Ag-RDTs for clinical validation based
74 on the technical validation and potential availability (4). The Panbio™ COVID-19 Ag rapid
75 test is one of the selected Ag-RDTs and generates a result within 15 minutes. This Ag-RDT
76 was ordered by the elderly care facilities when it became available within the regular ordering
77 system. The manufacturer of the Panbio™ COVID-19 Ag rapid test reported 93.3%
78 sensitivity and 99.4% specificity in asymptomatic people with high viral load. The diagnostic
79 performance of this test among healthcare workers is not known.

80

81 Our objective was to determine whether the Panbio™ COVID-19 Ag-RDT can be used as an
82 alternative to reverse transcription-quantitative polymerase chain reaction (RT-qPCR) among
83 healthcare workers working in elderly care. Moreover, the cycle threshold (Ct) in RT-qPCR,
84 which is needed to detect virus and inversely proportional to the viral load, was determined.

85

86 **METHODS**

87 **Study design and population**

88 Between November 2020 and January 2021, we conducted a prospective diagnostic
89 evaluation of the Panbio™ COVID-19 Ag rapid test determined against RT-qPCR, which is
90 considered as the ‘golden standard’, among healthcare workers working in elderly care
91 facilities as well as in home-based elderly care who met clinical criteria for COVID-19 (5).
92 Written information about this study was provided by email to all healthcare workers of the
93 organization and verbal information was given on the spot when healthcare workers came to
94 test. The reasons of healthcare workers who did not want to participate were not registered
95 given the extra workload.

96

97 **Procedures**

98 **Training of personnel**

99 Prior to the start of the study, personnel of the elderly care organization were trained to
100 perform the Ag-RDT in accordance with the manufacturer’s protocol.

101

102 **Nasopharyngeal swabs**

103 Per healthcare worker, two nasopharyngeal swabs were obtained consecutively by dedicated
104 personnel of the organizations themselves wearing personal protective equipment. The first
105 nasopharyngeal swab was taken to perform the Ag-RDT and the second nasopharyngeal
106 swab for RT-qPCR by the laboratory.

107 **Panbio™ COVID-19 Ag rapid test**

108 Panbio™ COVID-19 Ag rapid test device by Abbott (Lake Country, IL, U.S.A) is a membrane-
109 based immunochromatography assay which detects the nucleocapsid protein of SARS-CoV-
110 2 in nasopharyngeal samples. Collected swabs were transferred into dedicated sample
111 collection tubes containing a lysis buffer provided with the test kit. Samples were processed
112 on site, directly after collection. After 15 minutes of assay initiation, tests were interpreted.
113 The test results were documented on the questionnaire as well as the image of the result
114 window on the test device for processing and analysing the data by the researcher. The
115 laboratory analysts involved in doing RT-qPCR were not informed about the result of the Ag-
116 RDTs.

117

118 **RT-qPCR**

119 Nasopharyngeal swabs were collected using Σ -Transwab® in 1 ml liquid Amies medium and
120 PCR was conducted in a certified clinical laboratory with procedures validated in accordance
121 with the NEN-EN-ISO 15189 standard. Nucleic acid (NA) extraction was performed using
122 MagNA Pure 96 DNA and Viral NA Small Volume Kit and MagNA Pure 96 Instrument (Roche
123 Diagnostics GmbH, Mannheim, Germany) by following the manufacturer's instructions.
124 Before NA extraction, the internal control phocine distemper virus (PhDV) was added to the
125 sample via Xiril robotic workstations (Roche), while another Xiril workstation was used for
126 PCR setup by pipetting 10 μ l of NA with 10 μ l of master mix containing 5 μ l TaqMan® Fast
127 Virus 1 Master Mix (Thermofisher Scientific) and 5 μ l of primers and probes (Supplementary
128 Table 1), targeting SARS-CoV-2 E-gene and PhDV. Thermal cycling was performed in a
129 LC480-II instrument (Roche) with 1 cycle of reverse transcription at 50°C for 5 min followed
130 by 1 cycle of PCR activation at 95°C for 20 sec, followed by 45 cycles of 95°C for 3 sec and
131 60°C for 30 sec. Data analysis was performed using Roche FLOW software (Roche) and a
132 Ct-value of < 40 was used to interpret results as positive.

133

134 **Survey**

135 Healthcare workers were asked to fill out a questionnaire regarding (onset of) symptoms, risk
136 of exposure to SARS-CoV-2 and history of SARS-CoV-2 positivity. Dedicated personnel who
137 performed the Ag-RDT completed the questionnaire with the result of the Ag-RDT.

138

139 **Scenarios for test results**

140 In addition to current local guidelines for prevention of COVID-19, scenarios were described
141 for testing either positive or negative Ag-RDT as illustrated in Figure 1.

142

143 **Statistical analysis**

144 Categorical variables were expressed as counts and percentages. Continuous variables
145 were expressed as mean, median, interquartile range (IQR) and/or minimum-maximum (min
146 - max). Difference testing for comparisons of groups was performed with Fisher's exact tests
147 for categorical variables and Mann-Whitney U tests for non-normally distributed continuous
148 variables. Two-sided p-values less than or equal to 0.05 were considered statistically
149 significant for all variables, with the exception of duration of symptoms and Ct-values for
150 which a one-sided test was applied. Risk ratios were calculated to determine effect sizes of
151 symptoms for positive SARS-CoV-2 results by RT-qPCR.

152

153 A Ct-value < 32 for E-gene, which is associated with culturable virus in nasopharyngeal
154 specimen and therefore considered as infectious (6), was applied to the analysis mentioned
155 below.

156 Association (r) between Ag-RDT results and Ct-values was calculated from the z-score of the
157 Mann-Whitney U test. Association between COVID-19 symptoms and Ct-values was
158 determined using Spearman's Rho (ρ). Sensitivity, specificity and predicted values of the Ag-
159 RDT were calculated with 95% confidence intervals (CI) using the RT-qPCR as the 'gold

160 standard'. The level of agreement between the tests was evaluated using Cohen's kappa
161 score.

162

163 Analyses were performed with SPSS statistics 27 (IBM), whereby 95% CI were calculated
164 using OpenEpi version 3.0.3 (<http://www.openepi.com/>).

165

166 **Ethical approval**

167 The study was reviewed (File number CMO: 2020-7083) by the ethics committee of the
168 Radboud University Medical Centre, which decided that the study is not subject to the
169 Medical Research Involving Human Subjects Act and did not require full review by an
170 accredited Medical Research Ethics Committee. All participants have provided written
171 informed consent.

172

173 **RESULTS**

174 **Healthcare workers' characteristics**

175 A total of 683 healthcare workers with COVID-19 symptoms were sampled for detection of
176 SARS-CoV-2 by both Ag-RDT and RT-qPCR. Based on RT-qPCR, 63 healthcare workers
177 (9.2%) tested positive for SARS-CoV-2 from 11 November 2020 to 15 January 2021. The
178 mean age of the respondents was 43.2 years (median 46.0; IQR 24.0, min – max: 16-65
179 years) of which 641 (93.9%) were female.

180 Six (9.5%) of the 63 SARS-CoV-2 positive healthcare workers reported to have tested
181 SARS-CoV-2 positive previously. Results of the samples from these six healthcare workers
182 were included in the diagnostic performance of the Ag-RDT. The reported symptoms were
183 excluded from analyses.

184

185 Compared to negative healthcare workers, SARS-CoV-2 positive healthcare workers
186 reported the following significantly more often: fever, flu-like symptoms (headache, muscle
187 pain and/or fatigue), loss of taste or smell, exposure to SARS-CoV-2 positive household and
188 close contact with SARS-CoV-2 positive person. The mean number of days between
189 symptom(s) onset and tests among SARS-CoV-2 positive and negative healthcare workers
190 by RT-qPCR were 2.0 and 2.2 days, respectively. Median days were equal in both groups,
191 namely 1.0 days. These data are shown in Table 1.

192

193 Among SARS-CoV-2 positive healthcare workers, there was a statistically significant
194 association between the presence of fever and Ct values < 32 ($p = 0.0044$); however, the
195 association was considered as weak ($p = 0.27$). For other reported symptoms, no significant
196 differences in Ct-values were identified. Data not shown.

197

198 **Diagnostic performance of the Ag-RDT**

199 As presented in Table 2, 51 healthcare workers tested positive both by RT-qPCR as well as
200 by Ag-RDT. Twelve healthcare workers had negative Ag-RDT results but positive RT-qPCR
201 results, leading to an overall sensitivity of 81.0% (95%CI: 69.6-88.8%). When using a cut-off
202 Ct-value of 32 instead of 40, the sensitivity of the Ag-RDT increased to 92.7% (95% CI: 82.7-
203 97.1%). False-positive Ag-RDT results were not found, resulting in a specificity of 100%
204 (95%CI: 99.4-100%).

205

206 As illustrated in Figure 3, the median Ct-value was significantly lower among the group of 51
207 healthcare workers with both positive Ag-RDT and PCR results compared to the group of 12
208 healthcare workers with negative Ag-RDT and positive PCR results, 20.61 and 32.34
209 respectively ($p < 0.001$). Negative Ag-RDT results were moderately associated with higher
210 Ct-values ($r = 0.62$) compared to positive Ag-RDT results. The minimum and maximum Ct-
211 value among the group with negative Ag-RDT and positive PCR results were 23.73 and

212 36.00, respectively. The particular Ct-values from the four healthcare workers with negative
213 Ag-RDT and positive PCR result with Ct-value < 32 were 23.73, 24.11, 27.08 and 30.64.
214 Among healthcare workers with both positive Ag-RDT and PCR results, minimum and
215 maximum values were 15.00 and 29.75, respectively.
216
217 The positive predicted value (PPV) and negative predicted value (NPV) in this study cohort
218 with a prevalence of 9.2% were 100% (95%CI: 93.0-100) and 98.1% (95%CI: 96.7-98.9),
219 respectively. Using a cut-off Ct-value of 32, the PPV and NPV were 100% (95%CI: 93.0-100)
220 and 99.4% (95%CI: 98.4-99.8), respectively. The overall negative predicted values for
221 different prevalence are shown in Figure 2. An almost perfect agreement (Cohen's kappa
222 score = 0.885) was found between the two tests ($p < 0.001$), and when working with a cut-off
223 Ct-value of 32 the Cohen's kappa increased to 0.959.

224

225 **DISCUSSION**

226 Our findings have shown that the Panbio™ COVID-19 Ag rapid test can be considered a
227 useful Ag-RDT among healthcare workers. Positive results become quickly available and do
228 not need to be confirmed by RT-qPCR. Contact tracing could be started appropriately and
229 immediately. Negative Ag-RDT results should be confirmed by RT-qPCR even with a
230 reduced prevalence of SARS-CoV-2 in this setting where healthcare workers take care of
231 residents who are at risk of developing severe infection.

232

233 In our study, the overall agreement between RT-qPCR and the Ag-RDT was almost perfect
234 ($\kappa = 0.885$) and increased when using a cut-off Ct-value of 32 ($\kappa = 0.959$). Positive Ag-RDT
235 results were found in 81% of positive RT-qPCRs. In 19% of cases, false-negative results
236 were found; however, by considering Ct-values of ≥ 32 as not infectious, false-negative
237 results were decreased to less than 8%.

238

239 Several studies have evaluated Panbio Ag-RDT as a useful test in different settings using
240 different cut-off Ct-values as a measure for infectiousness (7-10). In our laboratory, primer
241 sets targeting SARS-CoV-2 E-gene were used. Hence, we applied a cut-off Ct-value of 32 as
242 measure for infectiousness based on a study from Huang et al. (6) to gain insight into the
243 effect of using this cut-off value to the diagnostic performance of our Ag-RDT and to
244 determine associations with COVID-19 symptoms. Unfortunately, SARS-CoV-2 positive
245 healthcare workers were still prohibited from working because an (inter)national consensus
246 on cut-off Ct-values has not yet been defined. In view of the results of our study, the
247 probability of being infectious when having a negative Ag-RDT result is still low. Therefore, in
248 cases of severe understaffing and pending the PCR results, it may be appropriate to allow
249 fully vaccinated healthcare workers with a negative Ag-RDT, to work as long as they wear a
250 face mask for the entire shift (including during breaks separate from colleagues). Given the
251 vulnerability of the patients in this setting, these policies should be carefully considered. In
252 addition, new SARS-CoV-2 variants may be more contagious than previous variants and
253 vaccination may be less effective against new variants. For example, the delta variant
254 seemed to be more than twice as contagious as previous variants (11), and vaccination was
255 less effective at preventing transmission of the delta variant by vaccinated people than it was
256 with the alpha variant. (12)

257

258 An important drawback of this Ag-RDT is that in case of a negative result a second
259 nasopharyngeal swab is needed for RT-qPCR. In our study, all participants provided written
260 consent; however, we do not know if the healthcare workers who did not provide written
261 consent refused to participate in the study because it involved the double-swab method. It
262 does not seem to be deterrent, given the number of participants in the study period. We think
263 that the advantage of obtaining a positive SARS-CoV-2 result rapidly could outweigh the
264 inconvenience and discomfort using a second swab. Despite the user-friendliness of the Ag-
265 RDT, we recommend that this test be performed by trained and dedicated personnel to
266 achieve a high level of accuracy. high performance.

267 An important point to note is that our study was carried out in the common-cold/flu(-like)
268 season, during which many healthcare workers have respiratory symptoms, as well as in a
269 period with a high prevalence of SARS-CoV-2. In such a situation and also in a local
270 outbreak setting, it could be beneficial, in close cooperation with a medical microbiology lab,
271 to establish or maintain a test lane or a local test-team that uses Ag-RDTs. An additional
272 advantage is that results can be easily tracked in order to keep an overview of SARS-CoV-2
273 infections on an organization-wide level. However, to determine whether this test policy could
274 be beneficial, it is important to take into account the turnaround time for SARS-CoV-2 results
275 by PCR when testing at the Municipal Public Health Services (in Dutch: GGD).

276

277 **ACKNOWLEDGEMENTS**

278 The authors would like to thank all participating healthcare workers from ZZG Zorggroep,
279 Zorggroep Maas & Waal and Gasthuis Millingen as well as the healthcare workers who
280 helped with data collection, took the samples and performed the AG-RDTs. We also thank
281 the healthcare workers from the medical microbiology laboratory of Canisius Wilhelmina
282 Hospital for the laboratory work.

283

284 **CONFLICT OF INTEREST STATEMENT**

285 We declare no competing interests.

286

287 **FUNDING SOURCES**

288 None.

289

290

291

292 REFERENCES

- 293 1. World Health Organization. Contact tracing in the context of COVID-19 (Interim
294 guidance). (2021, February 1). Retrieved from: <https://www.who.int/>.
- 295 2. World Health Organization. Infection prevention and control guidance for long-term
296 care facilities in the context of COVID-19 (Interim guidance). (2020, March 21). Retrieved
297 from: <https://www.who.int/>.
- 298 3. Dutch Association of Elderly Care Physicians. Treatment advice COVID-19 (in
299 Dutch). (2020). Retrieved from: www.verenso.nl.
- 300 4. Ministry of Health, Welfare and Sport. Advice antigen (rapid) tests. (2020). Retrieved
301 from: [https://www.rijksoverheid.nl/documenten/rapporten/2020/10/14/advies-
302 antigeensneltesten](https://www.rijksoverheid.nl/documenten/rapporten/2020/10/14/advies-antigeensneltesten).
- 303 5. National Institute for Public Health and the Environment. Guideline COVID-19. (2020)
304 Retrieved from: <https://lci.rivm.nl/richtlijnen/covid-19>.
- 305 6. Huang C, Lee K, Hsiao M, Yang S, Huang P, Gong Y, et al. Culture-based virus
306 isolation to evaluate potential infectivity of clinical specimens tested for COVID-19. J Clin
307 Microbiol. 2020 Aug; 58 (8): e01068=20. doi: 10.1128/JCM.01068-20.
- 308 7. Winkel B, Schram E, Gremmels H, Debast S, Schuurman R, Wensing A, et al.
309 Screening for SARS-CoV-2 infection in asymptomatic individuals using the PanbioTM
310 COVID-19 Antigen Rapid Test (Abbott) compared to RT-qPCR. MedRxiv. 2020 Dec 4. doi:
311 10.1101/2020.12.03.20243311.
- 312 8. Gremmels H, Winkel B, Schuurman R, Rosingh A, Rigter N, Rodriguez O, et al. Real-
313 life validation of the Panbio COVID-19 antigen rapid test (Abbott) in community-dwelling
314 subjects with symptoms of potential SARS-CoV-2 infection. EClinicalMedicine 31. 2021. doi:
315 10.1016/j.eclinm.2020.100677;31:100677.
- 316 9. Merino P, Guinea J, Muñoz-Gallego I, González-Donapetry P, Galán J, Anona N, et
317 al. Multicenter evaluation of the PanbioTM COVID-19 rapid antigen- detection test for the

318 diagnosis of SARS-CoV-2 infection. *Clinical Microbiology & Infection*. 2021 Feb 16. doi:
319 10.1016/j.cmi.2021.02.001.

320 10. Landaas E, Storm M, Ollånes M, Barlinn R, Kran A, Bragstad K, et al. Diagnostic
321 performance of a SARS-CoV-2 rapid antigen test in a large, Norwegian cohort. *J Clin Virol*.
322 2021 Apr;137:104789. doi: 10.1016/j.jcv.2021.104789.

323 11. Centers for Disease Control and Prevention (CDC). What we know about the science.
324 (2021). Retrieved from: <https://www.cdc.gov/>

325 12. Eyre DW, Taylor D, Purver M, Chapman D, Fowler T, Pouwels KB, et al. Effect of
326 Covid-19 Vaccination on Transmission of Alpha and Delta Variants. *N Engl J Med*.
327 2022;386(8):744-56.

328

329

330

331

332

333

334

335

336

337

338

339

340

341

342

343

344

345

346 **Table 1.** Healthcare workers characteristics

347

	Total N (%)	SARS-CoV-2 positive by RT-qPCR, N (%)	SARS-CoV-2 negative by RT-qPCR ¹ , N (%)	Risk ratio for cohort positive by RT-qPCR (95%CI)	P value ^a
COVID-19 symptoms	683				
Fever	94 (13.8)	21 (22.3)	73 (77.7)	3.1 (1.9-5.0)	<0.001
Shortness of breath	70 (10.3)	9 (12.9)	61 (87.1)	1.5 (0.8-2.8)	0.276
Respiratory symptoms	530 (77.8)	43 (8.1)	487 (91.9)	0.6 (0.4-1.0)	0.078
Headache, muscle pain, fatigue	376 (55.2)	47 (12.5)	329 (87.5)	2.4 (1.4-4.1)	0.001
Loss of taste or smell	45 (6.6)	11 (24.4)	34 (75.6)	3.0 (1.7-5.3)	0.001
Diarrhea	61 (9.0)	3 (4.9)	58 (95.1)	0.5 (0.2-1.6)	0.351
Hayfever	36 (5.3)	3 (8.3)	33 (91.7)	0.9 (0.3-2.7)	1.000
Unknown	2 (0.3)	0	2 (100)	N/A	N/A
Exposed to SARS-CoV-2 positive person					
Household	27 (4.0)	9 (33.3)	18 (66.7)	4.0 (2.2-7.3)	<0.001
Close contact ^b	132 (19.3)	20 (15.2)	112 (84.8)	1.9 (1.2-3.2)	0.018
Other contact ^c	63 (9.2)	8 (12.7)	55 (87.3)	1.4 (0.7-2.8)	0.359
Other reason for quarantine	48 (7.0)	1 (2.1)	47 (97.9)	0.2 (0.03-1.5)	0.115
Mean days between symptoms onset and both tests [median, SD]	2.2 [1.0 (2.6)]	2.0 [1.0 (2.3)]	2.2 [1.0 (2.6)]	N/A	N/A

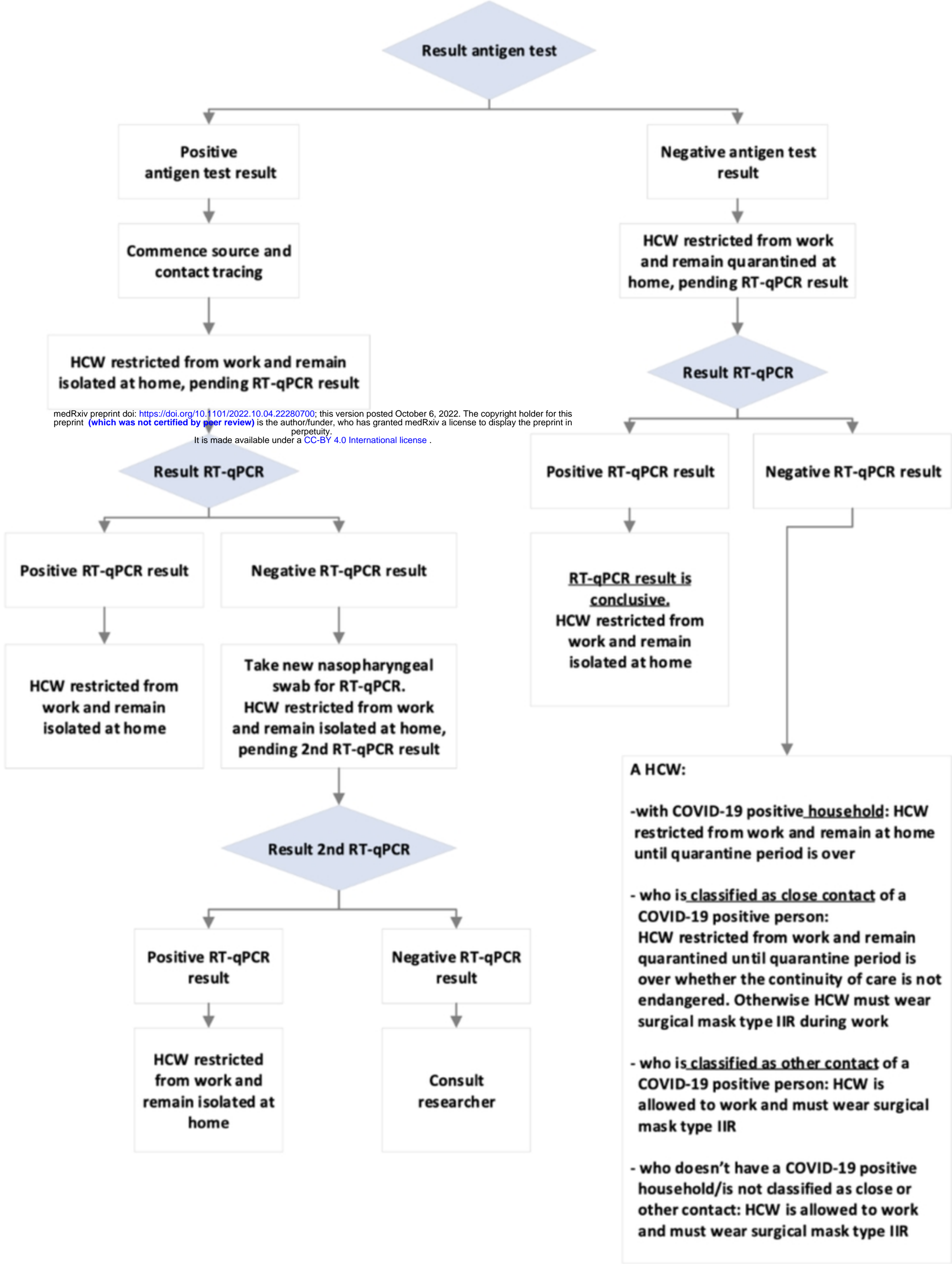
- 348 a. Fisher's exact test, two-sided
 349 b. Close contact: any individual within 1,5m distance of an infected person for at least 15 minutes or high-risk
 350 exposure less then 15 minutes
 351 c. Other contact: any individual at a distance of more than 1,5m of an infected person in the same room for at
 352 least 15 minutes
 353

354
 355
 356 **Table 2.** Diagnostic performance of Panbio™ COVID-19 Ag-RDT

357
 358

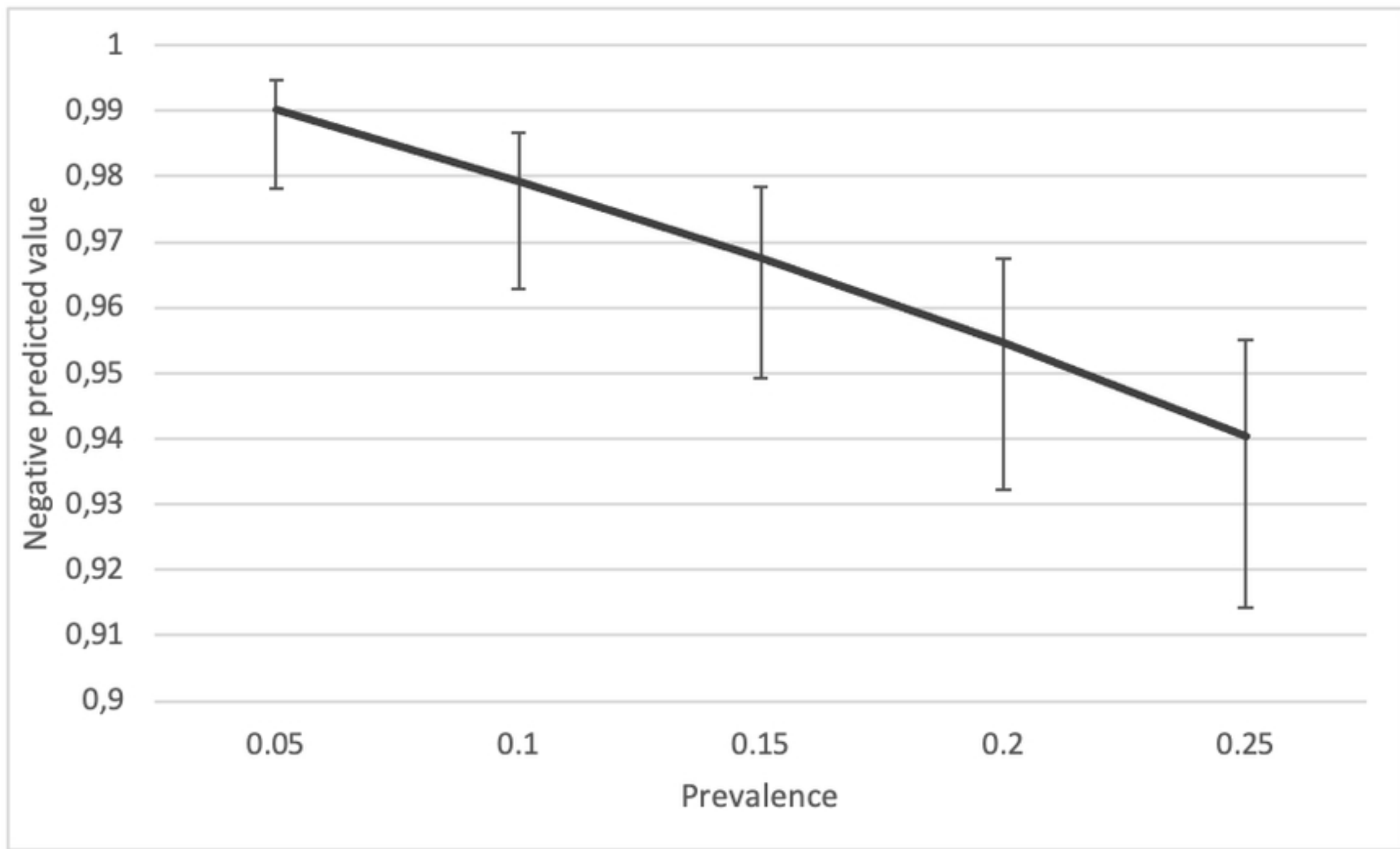
	RT-qPCR result			Sensitivity	Specificity	PPV*	NPV**
	Positive (Ct <32)	Positive (Ct ≥32)	Negative				
LFA result positive	N=51	N=0	0	Overall: 81.0% (95% CI: 69.6-88.8)	Overall: 100% (95% CI: 99.4-100)	Overall: 100 (95%CI: 93.0-100)	Overall: 98.1 (95% CI: 96.7-98.9)
LFA result negative	N=4	N=8	N=620	Ct < 32: 92.7% (95% CI: 82.7-97.1)	Ct < 32: (95% CI: 99.4-100)	Ct < 32: 100 (95% CI: 93.0-100)	Ct < 32: 99.4 (95% CI: 98.4-99.8)

- 359 * PPV= Positive predictive value
 360 **NPV= Negative predicted value
 361



medRxiv preprint doi: <https://doi.org/10.1101/2022.10.04.22280700>; this version posted October 6, 2022. The copyright holder for this preprint (which was not certified by peer review) is the author/funder, who has granted medRxiv a license to display the preprint in perpetuity. It is made available under a [CC-BY 4.0 International license](https://creativecommons.org/licenses/by/4.0/).

Figure



Figure

Independent-Samples Mann-Whitney U Test

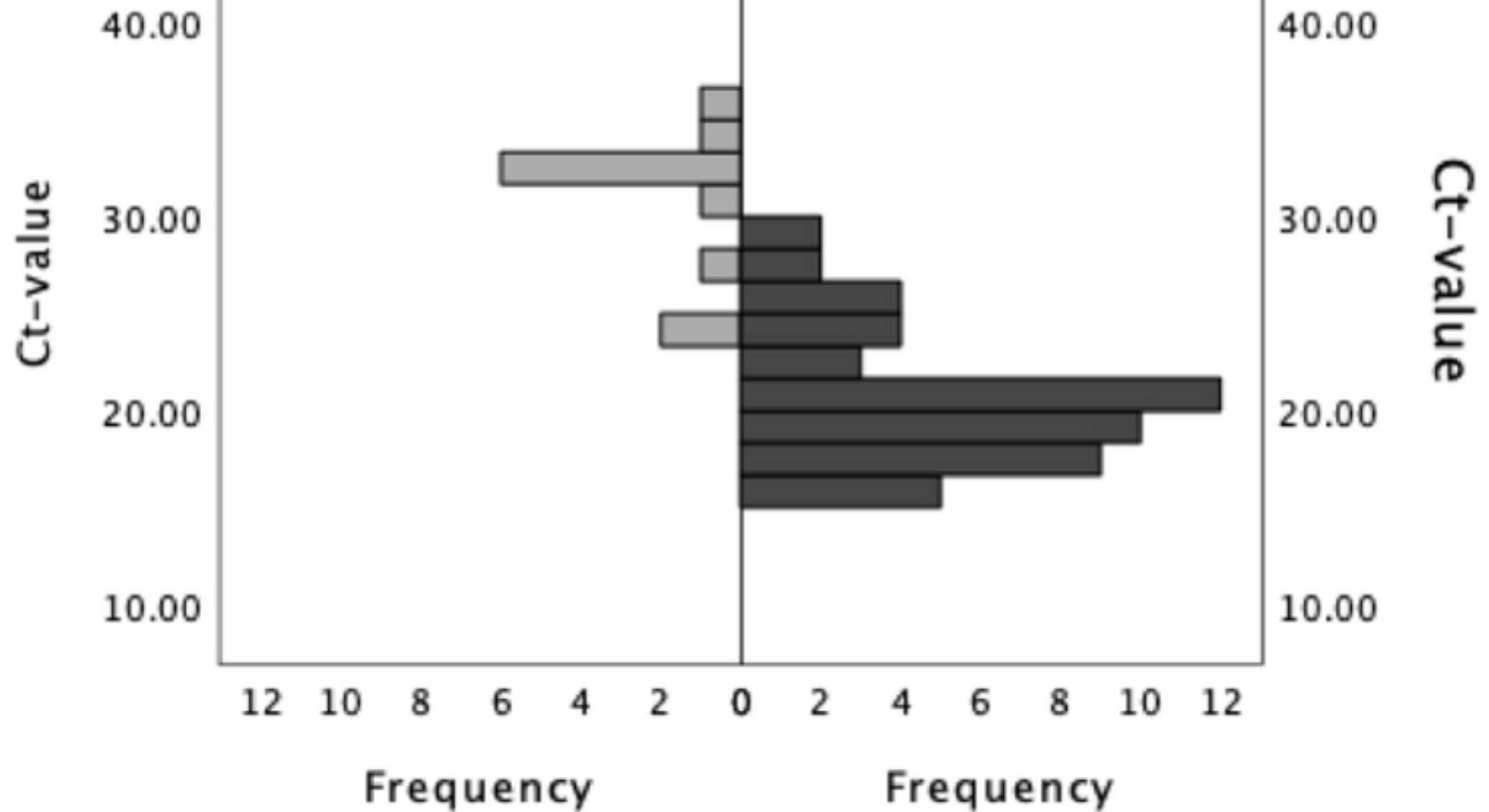
$P < 0.001$

LFA-, PCR+

LFA+, PCR+

N = 12
Mean Rank = 55.42

N = 51
Mean Rank = 26.49



Figure