

1 **Title: Sex Difference in Causes and Timing of One-Year Outcomes Among Young Acute**
2 **Myocardial Infarction Patients; Results from the VIRGO Study**

3

4 **Short title: Sex Difference in Young AMI Outcomes**

5

6 **Authors**

7 1. Mitsuaki Sawano, MD, PhD

8 2. Yuan Lu, ScD

9 3. Cesar Caraballo, MD

10 4. Shiwani Mahajan, MBBS, MHS

11 5. Rachel Dreyer, PhD

12 6. Judith H. Lichtman, PhD, MPH

13 7. Gail D’Onofrio, MD, MS

14 8. Erica Spatz, MD, MHS

15 9. Rohan Khera, MBBS, MS

16 10. Oyere Onuma, MD

17 11. Karthik Murugiah, MBBS

18 12. John A. Spertus, MD, MPH

19 13. Harlan M. Krumholz, MD, SM

20

21 Correspondence to: Harlan M. Krumholz, MD, SM

22 195 Church Street, 5th Floor

23 New Haven, CT 06510

24 203-497-1246

25 Email: harlan.krumholz@yale.edu

26 @hmkyale

27

28 Total word count: 4,566 words

29

30 **Abstract**

31 Background: Younger women have higher recurrent hospitalization rates and worse health status
32 than men after their index episode of acute myocardial infarction (AMI). However, whether
33 women have a higher risk of cardiovascular events in the year after discharge is unknown.

34 Methods: We used data from the VIRGO (Variation in Recovery: Role of Gender on Outcomes
35 of Young AMI Patients) study, which enrolled young AMI patients aged 18 to 55 years across
36 103 US hospitals. Sex differences in all-cause and cause-specific hospitalizations were compared
37 by calculating incidence rates (IR, per 1,000 person-years) and incidence rate ratios (IRRs) with
38 95% confidence intervals (CIs). We then performed sequential modeling to evaluate the sex
39 difference by calculating sub-distribution hazard ratios (SHR) accounting for deaths.

40 Results: Among 2,007 women and 972 men, at least one all-cause hospitalization occurred
41 among 905 (30.4%) participants in the year after discharge. The leading causes of hospitalization
42 were MI-related (IR 171.8, 95% CI, 153.6-192.2 among women vs. IR 117.8, 95% CI, 97.3-
43 142.6 among men), followed by non-cardiac (IR 145.8, 95% CI, 129.2-164.5 among women vs.
44 IR 69.6, 95% CI, 54.5-88.9 among men) and other cardiac or stroke hospitalizations (IR 58.8,
45 95% CI, 48.8-70.7 among women vs. IR 53.8, 95% CI, 40.8-71.0 among men). Competing risk
46 analysis showed that the sex difference was present for MI-related hospitalizations (SHR 1.33,
47 95%CI 1.04-1.70; P=0.02) and non-cardiac hospitalizations (SHR 1.51, 95%CI 1.13-2.07;
48 P=0.01).

49 Conclusions: Young women with AMI have more adverse outcomes compared with men in the
50 year after discharge. MI-related hospitalizations were the most common cause of
51 hospitalizations, but non-cardiac hospitalizations showed the most significant sex disparity.

52 Further studies to better understand the underlying mechanisms of non-cardiac hospitalizations
53 are warranted.

54

55 Keywords: myocardial infarction; sex difference; prognosis; hospitalization

56

57 **Non-standard Abbreviations and Acronyms**

58 ACEi, angiotensin-converting enzyme inhibitor

59 AMI, acute myocardial infarction

60 ARB, angiotensin receptor blocker

61 ARIC, Atherosclerosis Risk in Communities

62 CABG, coronary artery bypass graft

63 CCB, Calcium channel blocker

64 CI, confidence interval

65 COPD, chronic obstructive pulmonary disease

66 CVD, cardiovascular disease

67 EQ-5D, Euro QoL 5D

68 ESSi, ENRICH Social Support Inventory

69 ICD, intracardiac defibrillator

70 IR, incidence rate

71 IRR, incidence rate ratio

72 MI, myocardial infarction

73 MINOCA, myocardial infarction with nonobstructive coronary arteries

74 NSTEMI, non-ST myocardial infarction

- 75 PCI, Percutaneous coronary intervention
- 76 PHQ-9, Patient Health Questionnaire
- 77 POBA, plain old balloon angioplasty
- 78 SAQ, Seattle Angina Questionnaire
- 79 SD, standardized difference
- 80 SF-12, Short Form-12
- 81 SHR, sub-distribution hazard ratio
- 82 STEMI, ST-elevated myocardial infarction
- 83 VIRGO, Variation in Recovery: Role of Gender on Outcomes of Young AMI Patients
- 84

85 **Introduction**

86 Young women hospitalized for acute myocardial infarction have higher in-hospital mortality^{1 2}
87 compared with similarly aged men, and this disparity may be worsening over time.³ Moreover,
88 after the index episode of AMI, prior work has shown that younger women have higher recurrent
89 hospitalization rates and worse health status than men.⁴ What is not yet established is the pattern
90 of sex differences in adverse events that occur in the year after discharge. ^{5,6}

91
92 A key question is whether women have an increased risk for certain cardiovascular events,
93 complications of treatments, or non-related non-cardiovascular events. The pattern of these
94 events can reveal opportunities to improve care, strengthen preventive strategies, and promote
95 better health. Prior studies have indicated that young women with AMI have more comorbidity
96 and lower health status than men.^{7,8} Consequently, acute events in the subsequent year could be
97 more related to comorbidity than to cardiac events related to the AMI. Conversely, it is possible
98 that recurrent, related cardiovascular events are the most common acute events for young women
99 with AMI. This information has relevance to prevention efforts for these patients.

100
101 Accordingly, we used data from the prospective, multicenter VIRGO (Variation in Recovery:
102 Role of Gender on Outcomes of Young AMI Patients) study to determine sex differences in
103 causes and timing of one-year adverse events after AMI in people under 55 years to identify
104 targets for interventions and mitigate sex-disparities in cardiovascular care and outcomes. The
105 VIRGO study has recently completed full adjudication of the cause of acute events in the year
106 after discharge and is now ideally positioned to investigate sex differences in one-year
107 hospitalization events after an AMI.

108

109 **Methods**

110 **Study population**

111 The design of the VIRGO study has been described in detail elsewhere.⁹ In brief, the VIRGO
112 study is an observational study of the presentation, treatment, and outcomes of young women
113 and men with AMI aged 18 to 55. The study included patients with AMI in 103 geographically
114 diverse hospitals in the United States from August 2008 to January 2012 using a strict 2:1
115 enrollment ratio of women to men. The study also included patients from Spain and Australia,
116 but outcomes adjudication could only be performed in the US cohort. Institutional review board
117 approval was obtained at each participating institution, and patients provided informed consent
118 for their study participation, including baseline hospitalization and follow-up interviews. For the
119 current study, 2,985 US patients (N=2,009 women, N=976 men) hospitalized for AMI were
120 included. After excluding in-hospital deaths (N=6), this resulted in a cohort of 2,979 participants.

121

122 **Definitions of Key Variables**

123 Race and ethnicity were self-reported by study participants, as non-Hispanic American Indian or
124 Alaska Native, non-Hispanic Asian or Pacific Islander, Hispanic or Latino, non-Hispanic Black,
125 non-Hispanic White, or a combination of these. AMI was defined as (1) an increase in cardiac
126 biomarkers (troponin I or T or creatine kinase-MB) with at least 1 value >99th percentile of the
127 upper reference limit within 24 hours of admission and (2) supporting evidence of acute
128 myocardial ischemia, including symptoms or ECG changes. Type of MI were classified using the
129 VIRGO taxonomy.¹⁰ Health status included the Short Form-12 score (Physical and mental
130 component scores), Euro-QoL Scale (EQ-5D) score, Seattle Angina Questionnaire (overall and

131 individual domain scores), Patient Health Questionnaire (PHQ)-9, ENRICHD Social Support
132 Instrument (ESSI), Perceived stress scale (PSS) and were evaluated at three independent time-
133 points: baseline, 1-month post discharge, and 12 months after discharge. We collected
134 information on procedures performed during initial hospitalization and after discharge that
135 included performance of coronary catheterization, angioplasty, stent placement, coronary artery
136 bypass graft surgery, pacemaker insertion, or intracardiac defibrillator placement.

137

138 **Study Data Adjudication and Outcome Definitions**

139 As described previously, mortality events were ascertained through interviews with family
140 members and verified with death certificates, hospital records, or obituaries. All hospitalizations
141 records were collected through a two-stage process.⁸ First, the research coordinator at the local
142 site reviewed the records within their hospital network to identify hospitalization records. In
143 addition, the study participants were asked to self-report any hospitalizations during their 1-year
144 post-AMI interviews. Second, the Yale Coordinating Center reconciled the hospital records with
145 participants' self-reported events to ensure that no hospitalizations were missed. The Yale
146 Coordinating Center requested the missing records from hospitals outside of the site networks
147 when necessary. Further, event adjudications were completed by 5 physicians and an advanced
148 practice registered nurse. The first 253 hospitalizations were double adjudicated, and subsequent
149 hospitalizations underwent single adjudication. Discrepancies between adjudicators were
150 resolved by consensus including an additional physician when necessary.

151 The primary outcomes of this study were all-cause and cause-specific acute events
152 requiring hospitalization, defined as any hospital or observation stay greater than 24 hours within
153 1 year of discharge. These events were categorized into three groups: MI-related hospitalization,

154 other cardiac or stroke hospitalization, and non-cardiac hospitalization. MI-related events were
155 defined as a composite of hospitalizations due to recurrent AMI and stable/unstable angina.
156 Other cardiac or stroke events were defined as a composite of heart failure, other cardiac causes
157 (pericarditis, valvular disease, arrhythmias) and stroke. Non-cardiac hospitalizations included
158 any cause of hospitalization or visit that was not classified as cardiac or hospitalizations due to
159 diabetic complications.

160

161 **Statistical analysis**

162 We compared baseline variables between women and men using Chi-square or Fisher's exact
163 test for categorical variables and student's t-tests for continuous variables. Categorical variables
164 are presented as number (%) and continuous variables are presented as mean (standard deviation
165 [SD]) or median (interquartile range). Incidence rates (IR) and incidence rate ratios (IRRs) with
166 95% confidence intervals (CIs) were calculated and compared between sexes. IR was calculated
167 per 1,000 person-years and IRR was calculated with men as the reference, Kaplan–Meier
168 survival probability estimates, and Log-rank tests were calculated from the discharge date to
169 365 days for 1-year outcomes. Variables with missing values were imputed using the multiple
170 imputation method with 10 imputations.¹¹ The actual missing values ranged from 0.03% (history
171 of depression) to 10.1% (type of AMI).

172 We aimed to quantify the sex differences in 1-year outcomes, and then explore the factors
173 contributing to such sex differences. Thus, we fit a set of Cox models by sequential adjustment
174 for potential confounders and calculated the subdistribution hazard ratio¹² (SHR) of sex upon 1-
175 year outcomes (all-cause hospitalizations, MI-related, other cardiac/stroke, and non-cardiac
176 hospitalizations). Specifically, Model 1 included only sex, Model 2 included Model 1 variable

177 and demographic and comorbidity variables, Model 3 included Model 2 variables and
178 psychosocial factors and health status, Model 4 included Model 3 and AMI presentation and
179 treatment factors, Model 5 included Model 4 and pre-discharge status and prescriptions
180 (Supplemental Table 1). Variables were selected based on clinical importance and previous
181 studies studying long-term outcomes of patients with AMI. Presence of interaction for sex and
182 age (below the median age 49) and sex and non-Hispanic black group were tested in Model 2. In
183 all the models, deaths before a hospitalization were accounted for using the Fine and Gray
184 method for competing risks.¹² We used the Schoenfeld residuals to assess the proportional
185 hazards assumption (Supplemental Table 2).¹³ Explained variation statistic R^2 for survival data
186 was calculated for each Model.¹⁴ All analyses were performed with Stata/IC 15.1 for Mac
187 (StataCorp, 4905 Lakeway Dr, College Station, TX 77845). P-values were 2-sided and values
188 <0.05 were considered statistically significant.

189

190 **Results**

191 **Characteristics of Study Cohort**

192 Overall, there were 2,007 women and 972 men included in the final cohort of young AMI
193 patients (Supplemental Table 3). The mean age was 47.1 ± 6.2 , 2.5% were non-Hispanic
194 American Indian or Alaska Native, 1.5% were non-Hispanic Asian or Pacific Islander, 7.9%
195 were Hispanic or Latino, 17.5% were non-Hispanic Black and 70% were non-Hispanic White.
196 As compared with men, women had a higher proportion of non-Hispanic Black individuals
197 (women vs men, 20.6% vs 10.9%; $P < 0.001$), and higher prevalence of comorbidities including
198 obesity (55.2% vs 47.7%; $P < 0.001$), chronic obstructive lung disease (14.2% vs 6.4%; $P < 0.001$),
199 congestive heart failure (5.7% vs 2.3%; $P < 0.001$), prior stroke (4.1% vs 1.9%; $P = 0.001$) and

200 renal disease (12.7% vs 8.6%; $P<0.001$). Furthermore, young women had a higher proportion of
201 low-income (47.6% vs 31.4%; $P<0.001$), history of depression at baseline (48.7% vs 24.2%;
202 $P<0.001$) and significantly worse health status (Supplemental Table 4). Upon hospital
203 presentation, women were less likely to present with chest pain (86.3% vs 89.2%; $P=0.03$) and
204 experienced longer delays in hospital arrival from symptom onset (47.6% vs 38.0%; $P<0.001$)
205 (Supplemental Table 5). Non ST-elevated myocardial infarction presentation (54.2% vs 42.1%;
206 $P<0.001$) and myocardial infarction with nonobstructive coronary arteries (MINOCA) (12.8% vs
207 2.9%; $P<0.001$) were more prevalent among women. At the time of discharge, the total length of
208 stay was longer for women, and women received lower rates of guideline-recommended medical
209 therapies including aspirin (92.6% vs 95.0%; $P<0.02$), statins (67.5% vs 71.7%; $P<0.001$), beta-
210 blockers (89.6% vs 94.1%; $P<0.001$), and angiotensin-converting enzyme inhibitors
211 (ACEi)/angiotensin receptor blockers (ARBs) (61.2% vs 70.6%; $P<0.001$).

212

213 **Sex difference in 1-year events**

214 The observed rates (95% CI) of all-cause hospitalizations within 1-year after discharge were
215 34.8% (95% CI, 32.7%-36.9%) and 23.0% (95% CI, 20.4%-25.8%) for women and men,
216 respectively. The leading cause of these acute events among women were MI-related with an
217 incidence rate of 171.8 (95% CI, 153.6-192.2) per 1,000 person-years that included AMI
218 hospitalizations (IR=30.9 [95% CI, 24.0-39.8] per 1,000 person-years) and stable or unstable
219 angina hospitalizations (IR=135.2 [95% CI, 119.4-153.2] per 1,000 person-years) , followed by
220 non-cardiac at 145.8 (95% CI, 129.2-164.5) per 1,000 person-years and other cardiac or stroke
221 hospitalization at 58.8 (95% CI, 48.8-70.7) per 1,000 person-years that included heart failure
222 hospitalization (IR=25.7 (95% CI, 19.5-33.9) per 1,000 person-years) and other cardiac (IR=26.2

223 (95% CI, 19.9-34.6) per 1,000 person-years) (Table 1). The leading cause of the acute events
224 among men were MI-related with an incidence rate of 117.8 (95% CI, 97.3-142.6) per 1,000
225 person-years that included AMI (IR=25.3 (95% CI, 17.0-37.8) per 1,000 person-years) and stable
226 or unstable angina (IR=89.3 (95% CI, 71.8-111.0) per 1,000 person-years), followed by non-
227 cardiac at 69.6 (95% CI, 54.5-88.9) per 1,000 person-years and other cardiac or stroke at 53.8
228 (95% CI, 40.8-71.0) per 1,000 person-years that included heart failure (IR=16.8 (95% CI, 10.3-
229 27.4) per 1,000 person-years) and other cardiac cause (IR=17.2 (95% CI, 10.5-28.1) per 1,000
230 person-years). When compared with men, women had significantly higher IRRs for MI-related
231 (IRR 1.46, 95%CI 1.16-1.84; $P<0.001$) and for non-cardiac events (IRR 2.10, 95%CI 1.59-2.80;
232 $P<0.001$), with similar rates for other cardiac or stroke hospitalizations (IRR 1.09, 95%CI 0.78-
233 1.56; $P<0.61$). Of note, the timing of hospitalizations (Supplemental Table 6) nor invasive
234 procedures (Supplemental Table 7) performed during the hospitalizations did not greatly differ
235 between sex. Unadjusted Kaplan-Meier survival curves showed that all-cause hospitalizations,
236 MI-related and non-cardiac hospitalizations peaked at the first month after discharge and
237 gradually declined to reach a steady state after 3 months after discharge for both sexes (Figures
238 1& 2).

239

240 **Factors contributing to 1-year outcomes**

241 Competing risk analysis adjusting for confounders demonstrated that women were consistently at
242 significantly higher risk for 1-year all-cause, MI-related, and non-cardiac events (Figure 3). The
243 SHRs for sex difference upon MI-related events were Model 1 (SHR 1.44, 95%CI 1.15-1.80;
244 $P<0.001$, $R^2=0.02$), Model 2 (SHR 1.43, 95%CI 1.13-1.80; $P<0.001$, $R^2=0.06$), Model 3 (SHR
245 1.29, 95%CI 1.01-1.64; $P=0.04$, $R^2=0.11$), Model 4 (SHR 1.33, 95%CI 1.04-1.64; $P=0.02$,

246 $R^2=0.13$) and Model 5 (SHR 1.33, 95%CI 1.04-1.70; $P=0.02$, $R^2=0.15$). Of note, the addition of
247 psychosocial factors led to an attenuation in the SHR for sex difference, while the addition of
248 AMI presentation and predischarge treatment variables lead to minimal to no change. The SHR
249 for sex difference non-cardiac events were Model 1 (SHR 2.06, 95%CI 1.57-2.71; $P<0.001$,
250 $R^2=0.06$), Model 2 (SHR 1.88, 95%CI 1.88-1.43; $P<0.001$, $R^2=0.11$), Model 3 (SHR 1.56,
251 95%CI 1.17-2.07; $P<0.001$, $R^2=0.24$), Model 4 (SHR 1.52, 95%CI 1.14-2.07; $P<0.001$,
252 $R^2=0.25$), and Model 5 (SHR 1.51, 95%CI 1.13-2.07; $P=0.01$, $R^2=0.29$). The addition of
253 demographics and comorbidities as well as psychosocial factors lead to attenuation in SHR for
254 sex difference while the addition of AMI presentation and predischarge treatment variables lead
255 to minimal to no change. No significant interactions were found for the prespecified interaction
256 terms in any of the four outcomes.

257

258 **Discussion**

259 Young women who survive an AMI have significantly more adverse events in the year after
260 discharge compared with men. MI-related events followed by non-cardiac events were the most
261 common cause for hospitalizations for both women and men. Further, higher risks among young
262 women were consistently observed for all-cause, MI-related, and non-cardiac events after
263 adjustment for potential confounders. Notably, non-cardiac events remained with greatest
264 disparity between sex, suggesting the need for in-depth research into the causes and
265 preventability of these non-cardiac hospitalizations to mitigate for sex differences in outcomes
266 after an AMI.

267 This study extends the existing literature in several important ways. First, this is the first
268 comprehensive assessment of sex differences in 1-year incidence of clinically important

269 cardiovascular events including all-cause deaths and cause-specific acute events within this
270 population of young patients with AMI. We previously reported that health status was
271 persistently worse over the time course of 1-year among women, however, were not able to
272 report 1-year hospitalizations since event adjudication had not been complete at the time of
273 publication.¹⁵ The majority of prior studies evaluating sex difference in post-discharge AMI
274 outcomes were conducted among older patients derived from clinical trials or administrative
275 databases and were not primarily designed to assess young patients' outcomes.^{16, 17} Of note, the
276 incidence of all-cause deaths in the 1 year of discharge was low and comparable to the findings
277 in the Partners YOUNG MI Registry¹⁸ but lower than those reported from the community-based
278 surveillance conducted within the Atherosclerosis Risk in Communities (ARIC) Surveillance
279 study.³ The higher rate of 1-year mortality observed in ARIC may be due to their retrospective
280 design for collecting outcome data that may have allowed higher risk patients to be included in
281 their study population compared to the prospectively enrolled VIRGO population.

282 Second, reports on specific causes of hospitalizations have been limited among patients
283 experiencing AMI at a young age. In a study of young AMI patients with commercial health
284 insurance collected in MarketScan, the incidence of recurrent AMI was found to be 28.4 (per
285 1,000 person-years) among women and 19.0 (per 1,000 person-years) among men aged between
286 21 to 54 years old which was lower than those observed in our registry. The difference in
287 observed outcomes may have been due to large convenience sampling¹⁹ in the MarketScan
288 dataset and due to the low to moderate sensitivity for outcome events often confronted when
289 using administrative databases.²⁰ Our ability to conduct a two-stepped event data collection
290 process strengthened with full event adjudication is likely to have contributed to making better
291 estimates on true post-discharge events.⁹

292 Third, based on rigorous adjustments for confounders, we found a consistently higher risk
293 for MI-related and non-cardiac hospitalizations among young women. Previous VIRGO study
294 identified sex difference and 9 other factors associated with all-cause hospitalizations but did not
295 describe cause-specific events.⁸ Importantly, sex differences were greatest in non-cardiac
296 hospitalizations that are consistent with a young AMI California state inpatient database showing
297 high risk of non-cardiac hospitalizations within 30-days after discharge described as post-
298 hospital syndrome^{21,4} In our study, this increased risk was observed prolonging over one-month
299 and up to one year with young women at 51% greater risk compared to men. Moreover, in the
300 sequential model, a large proportion of non-cardiac hospitalizations were explained by
301 demographics, comorbidities, and psychosocial factors. These findings suggest the need for a
302 greater attention to cardiac, non-cardiac, and mental health issues to mitigate this sex disparity in
303 young women recovering from an AMI. Future research should develop and test strategies,
304 which may include intensification of post-discharge management through in-person or virtual
305 sessions to improve health literacy, patient motivation and address socioeconomic that may
306 cause barriers to reach satisfactory levels of adherence to evidence-based secondary prevention
307 strategies.²²

308

309 **Limitations**

310 The findings of this study should be interpreted in the context of several limitations. First, details
311 on non-cardiac hospitalizations were not collected. Second, due to a relatively sample size, our
312 results may not be generalizable to population groups that were underrepresented in the study.
313 Despite this limitation it is important to note that this is the largest subset of young patients with
314 AMI in the United States, and the composition of our cohort and prevalence of comorbidities and

315 risk factors is consistent with other studies of younger patients with AMI.²³ Third, only patients
316 hospitalized with AMI who survived through acute care and provided consent were selected in
317 this study. Selection bias towards lower risk AMI patients may have resulted in lower burden of
318 comorbidities and lower one-year outcomes than the real-world.

319

320 **Conclusions**

321 Young women with AMI have persistently worse outcomes compared to men immediately and
322 1-year after discharge. MI-related hospitalizations were the most common cause of
323 hospitalizations, nonetheless, non-cardiac hospitalizations showed the greatest sex disparity
324 among young patients after an AMI. Further studies to better understand the underlying
325 mechanisms of non-cardiac hospitalizations are warranted.

326

327 **Acknowledgments**

328 We thank Dr. Yun Wang, Section of Cardiovascular Medicine, Department of Internal Medicine,
329 Yale School of Medicine, New Haven, Connecticut, for his valuable comments on the statistical
330 analysis

331

332 **Sources of Funding**

333 The VIRGO study (NCT00597922) was supported by grant R01 HL081153 from the National
334 Heart, Lung, and Blood Institute.

335

336 **Disclosures**

337 In the past three years, Harlan Krumholz received expenses and/or personal fees from
338 UnitedHealth, Element Science, Aetna, Reality Labs, Tesseract/4Catalyst, F-Prime, the Siegfried
339 and Jensen Law Firm, Arnold and Porter Law Firm, and Martin/Baughman Law Firm. He is a
340 co-founder of Refactor Health and HugoHealth, and is associated with contracts, through Yale
341 New Haven Hospital, from the Centers for Medicare & Medicaid Services and through Yale
342 University from Johnson & Johnson.

343

344 **Supplemental Materials**

345 Supplemental Table 1-7

346 Supplemental Figure 1

347

348 **References**

- 349 1. Lehto H-R, Lehto S, Havulinna AS, Ketonen M, Lehtonen A, Kesäniemi YA, Airaksinen
350 KJ, Salomaa V. Sex differences in short- and long-term case-fatality of myocardial
351 infarction. *Eur J Epidemiol.* 2011;26:851–861.
- 352 2. Vaccarino V, Parsons L, Peterson ED, Rogers WJ, Kiefe CI, Canto J. Sex differences in
353 mortality after acute myocardial infarction: changes from 1994 to 2006. *Arch Intern Med.*
354 2009;169:1767–1774.
- 355 3. Arora S, Stouffer GA, Kucharska-Newton AM, Qamar A, Vaduganathan M, Pandey A,
356 Porterfield D, Blankstein R, Rosamond WD, Bhatt DL, Caughey MC. Twenty Year
357 Trends and Sex Differences in Young Adults Hospitalized With Acute Myocardial
358 Infarction. *Circulation.* 2019;139:1047–1056.

- 359 4. Dreyer RP, Ranasinghe I, Wang Y, Dharmarajan K, Murugiah K, Nuti S V, Hsieh AF,
360 Spertus JA, Krumholz HM. Sex Differences in the Rate, Timing, and Principal Diagnoses
361 of 30-Day Readmissions in Younger Patients with Acute Myocardial Infarction.
362 *Circulation*. 2015;132:158–166.
- 363 5. Dharmarajan K, Hsieh AF, Lin Z, Bueno H, Ross JS, Horwitz LI, Barreto-Filho JA, Kim
364 N, Bernheim SM, Suter LG, Drye EE, Krumholz HM. Diagnoses and timing of 30-day
365 readmissions after hospitalization for heart failure, acute myocardial infarction, or
366 pneumonia. *JAMA*. 2013;309:355–363.
- 367 6. Khot UN, Johnson MJ, Wiggins NB, Lowry AM, Rajeswaran J, Kapadia S, Menon V,
368 Ellis SG, Goepfarth P, Blackstone EH. Long-Term Time-Varying Risk of Readmission
369 After Acute Myocardial Infarction. *J Am Heart Assoc*. 2018;7:e009650.
- 370 7. Dreyer RP, Dharmarajan K, Kennedy KF, Jones PG, Vaccarino V, Murugiah K, Nuti S V,
371 Smolderen KG, Buchanan DM, Spertus JA, Krumholz HM. Sex Differences in 1-Year
372 All-Cause Rehospitalization in Patients After Acute Myocardial Infarction: A Prospective
373 Observational Study. *Circulation*. 2017;135:521–531.
- 374 8. Dreyer RP, Raparelli V, Tsang SW, D’Onofrio G, Lorenze N, Xie CF, Geda M, Pilote L,
375 Murphy TE. Development and Validation of a Risk Prediction Model for 1-Year
376 Readmission Among Young Adults Hospitalized for Acute Myocardial Infarction. *J Am*
377 *Heart Assoc*. 2021;10:e021047.
- 378 9. Lichtman JH, Lorenze NP, D’Onofrio G, Spertus JA, Lindau ST, Morgan TM, Herrin J,
379 Bueno H, Mattera JA, Ridker PM, Krumholz HM. Variation in recovery: Role of gender
380 on outcomes of young AMI patients (VIRGO) study design. *Circ Cardiovasc Qual*
381 *Outcomes*. 2010;3:684–693.

- 382 10. Spatz ES, Curry LA, Masoudi FA, Zhou S, Strait KM, Gross CP, Curtis JP, Lansky AJ,
383 Soares Barreto-Filho JA, Lampropulos JF, Bueno H, Chaudhry SI, D’Onofrio G, Safdar
384 B, Dreyer RP, Murugiah K, Spertus JA, Krumholz HM. The Variation in Recovery: Role
385 of Gender on Outcomes of Young AMI Patients (VIRGO) Classification System: A
386 Taxonomy for Young Women With Acute Myocardial Infarction. *Circulation*.
387 2015;132:1710–1718.
- 388 11. Sterne JAC, White IR, Carlin JB, Spratt M, Royston P, Kenward MG, Wood AM,
389 Carpenter JR. Multiple imputation for missing data in epidemiological and clinical
390 research: potential and pitfalls. *BMJ*. 2009;338:b2393.
- 391 12. Fine JP, Gray RJ. A Proportional Hazards Model for the Subdistribution of a Competing
392 Risk. *J Am Stat Assoc* [Internet]. 1999;94:496–509. Available from:
393 <https://www.tandfonline.com/doi/abs/10.1080/01621459.1999.10474144>
- 394 13. Schoenfeld D. Partial Residuals for The Proportional Hazards Regression Model.
395 *Biometrika* [Internet]. 1982;69:239–241. Available from:
396 <http://www.jstor.org/stable/2335876>
- 397 14. Royston P. Explained Variation for Survival Models. *Stata J* [Internet]. 2006;6:83–96.
398 Available from: <https://doi.org/10.1177/1536867X0600600105>
- 399 15. Bucholz EM, Strait KM, Dreyer RP, Lindau ST, D’Onofrio G, Geda M, Spatz ES,
400 Beltrame JF, Lichtman JH, Lorenze NP, Bueno H, Krumholz HM. Editor’s Choice-Sex
401 differences in young patients with acute myocardial infarction: A VIRGO study analysis.
402 *Eur Hear journal Acute Cardiovasc care*. 2017;6:610–622.
- 403 16. Gabani R, Spione F, Arevalos V, Grima Sopesens N, Ortega-Paz L, Gomez-Lara J,
404 Jimenez-Diaz V, Jimenez M, Jiménez-Quevedo P, Diletti R, Pineda J, Campo G, Silvestro

- 405 A, Maristany J, Flores X, Oyarzabal L, Bastos-Fernandez G, Iñiguez A, Serra A, Escaned
406 J, Ielasi A, Tespili M, Lenzen M, Gonzalo N, Bordes P, Tebaldi M, Biscaglia S, Al-
407 Shaibani S, Romaguera R, Gomez-Hospital JA, Rodes-Cabau J, Serruys PW, Sabaté M,
408 Brugaletta S. Gender Differences in 10-Year Outcomes Following STEMI: A Subanalysis
409 From the EXAMINATION-EXTEND Trial. *JACC Cardiovasc Interv.* 2022;
- 410 17. O'Brien C, Valsdottir L, Wasfy JH, Strom JB, Secemsky EA, Wang Y, Yeh RW.
411 Comparison of 30-Day Readmission Rates After Hospitalization for Acute Myocardial
412 Infarction in Men Versus Women. *Am J Cardiol.* 2017;120:1070–1076.
- 413 18. DeFilippis EM, Collins BL, Singh A, Biery DW, Fatima A, Qamar A, Berman AN, Gupta
414 A, Cawley M, Wood MJ, Klein J, Hainer J, Gulati M, Taqueti VR, Di Carli MF, Nasir K,
415 Bhatt DL, Blankstein R. Women who experience a myocardial infarction at a young age
416 have worse outcomes compared with men: the Mass General Brigham YOUNG-MI
417 registry. *Eur Heart J.* 2020;41:4127–4137.
- 418 19. Peters SAE, Colantonio LD, Dai Y, Zhao H, Bittner V, Farkouh ME, Dlugniewski P,
419 Poudel B, Muntner P, Woodward M. Trends in Recurrent Coronary Heart Disease After
420 Myocardial Infarction Among US Women and Men Between 2008 and 2017. *Circulation.*
421 2021;143:650–660.
- 422 20. Faridi KF, Tamez H, Butala NM, Song Y, Shen C, Secemsky EA, Mauri L, Curtis JP,
423 Strom JB, Yeh RW. Comparability of Event Adjudication Versus Administrative Billing
424 Claims for Outcome Ascertainment in the DAPT Study: Findings From the EXTEND-
425 DAPT Study. *Circ Cardiovasc Qual Outcomes.* 2021;14:e006589.
- 426 21. Krumholz HM. Post-hospital syndrome--an acquired, transient condition of generalized
427 risk. *N Engl J Med.* 2013;368:100–102.

- 428 22. Choudhry NK, Glynn RJ, Avorn J, Lee JL, Brennan TA, Reisman L, Toscano M, Levin R,
429 Matlin OS, Antman EM, Shrank WH. Untangling the relationship between medication
430 adherence and post-myocardial infarction outcomes: medication adherence and clinical
431 outcomes. *Am Heart J*. 2014;167:51-58.e5.
- 432 23. Gupta A, Wang Y, Spertus JA, Geda M, Lorenze N, Nkonde-Price C, D’Onofrio G,
433 Lichtman JH, Krumholz HM. Trends in acute myocardial infarction in young patients and
434 differences by sex and race, 2001 to 2010. *J Am Coll Cardiol*. 2014;64:337–345.
435

Table 1. Incidence rates and incidence rate ratios for 1-year outcomes among young women and men

	Women	Men	IRR (95% CI)	<i>P</i> value
	IR* (95% CI)	IR* (95% CI)		
All-cause deaths	25.3 (19.2-33.4)	11.4 (6.3-20.5)	2.22 (1.14-4.73)	0.01
All-cause hospitalizations	444.3 (412.1-478.9)	269.5 (236.0-307.7)	1.65 (1.41-1.93)	<0.001
MI-related	171.8 (153.6-192.2)	117.8 (97.3-142.6)	1.46 (1.16-1.84)	<0.001
AMI	30.9 (24.0-39.8)	25.3 (17.0-37.8)	1.22 (0.75-2.05)	0.41
Stable/unstable angina	135.2 (119.4-153.2)	89.3 (71.8-111.0)	1.51 (1.17-1.97)	<0.001
Other cardiac/stroke	58.8 (48.8-70.7)	53.8 (40.8-71.0)	1.09 (0.78-1.56)	0.61
Heart failure	25.7 (19.5-33.9)	16.8 (10.3-27.4)	1.53 (0.86-2.88)	0.13
Other cardiac	26.2 (19.9-34.6)	17.2 (10.5-28.1)	1.52 (0.85-2.87)	0.14
Non-cardiac	145.8 (129.2-164.5)	69.6 (54.5-88.9)	2.10 (1.59-2.80)	<0.001

Abbreviations: IR; incidence rate, CI; confidence interval, MI: myocardial infarction, IRR: incidence rate ratios.

*IR calculated per 1,000 person-years, †IRRs calculated with men as the reference.

Figure Legends

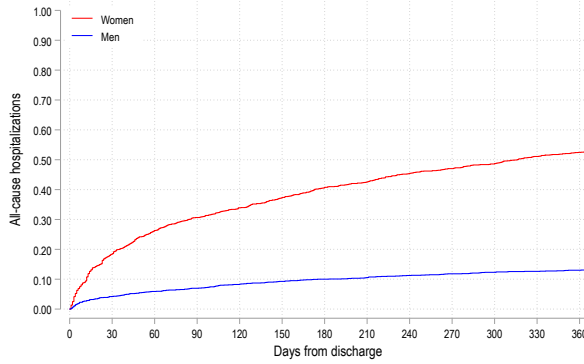
Figure 1. Age-adjusted Kaplan Meier curves showing 1-year all-cause hospitalizations, and cause-specific hospitalizations

Figure 2. Event rate stacked bar graph depicting the change in the incidence of repeat hospitalizations after AMI for different reasons over 1-month follow-up time frames among young women and men

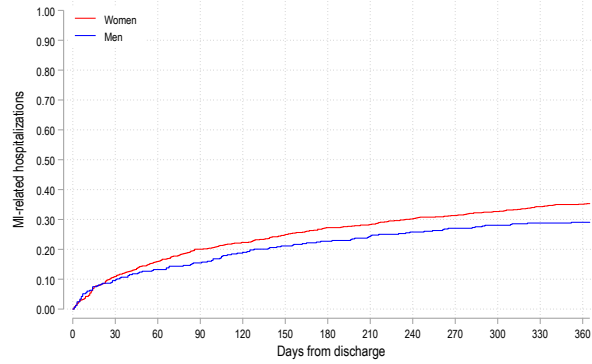
Figure 3. Sequential competing risk analysis for the effect of sex on 1-year outcomes

Figure 1. Age-adjusted Kaplan Meier curves showing 1-year all-cause hospitalizations, and cause-specific hospitalizations

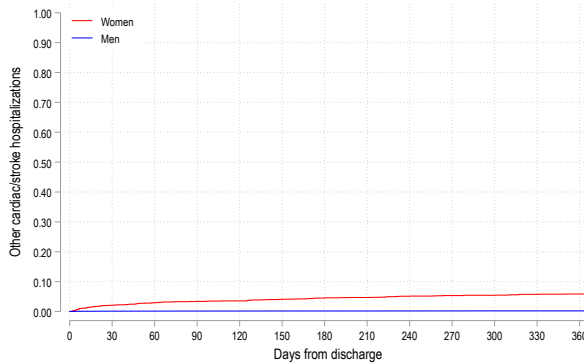
A. All-cause hospitalizations



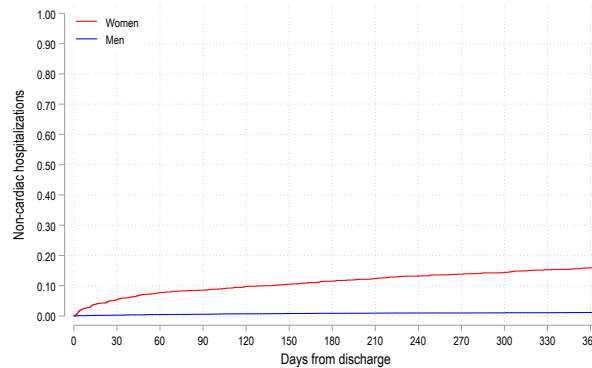
B. MI-related hospitalizations



C. Other cardiac/stroke

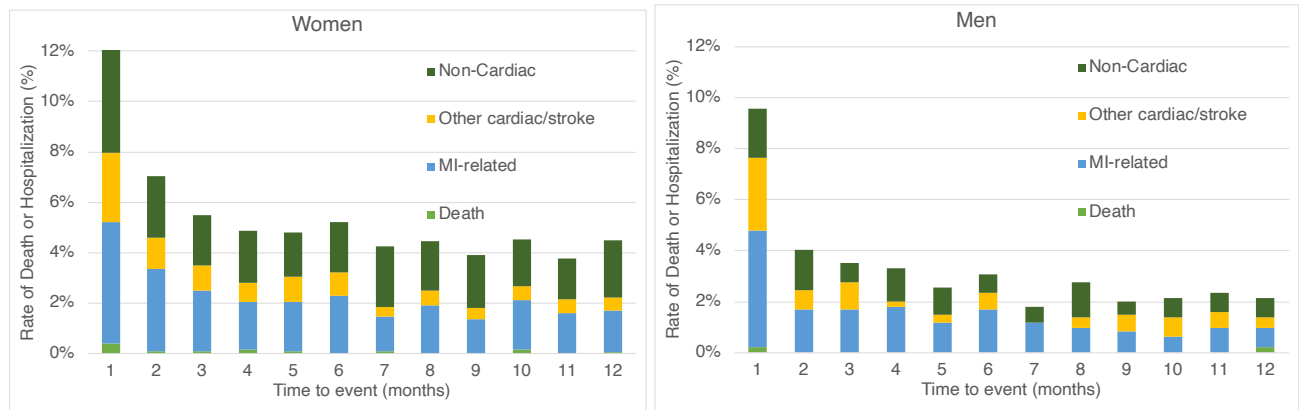


D. Non-cardiac hospitalizations



A, All-cause hospitalizations. B, myocardial infarction (MI) related hospitalizations. C, other cardiac/stroke hospitalizations. D, non-cardiac hospitalizations.

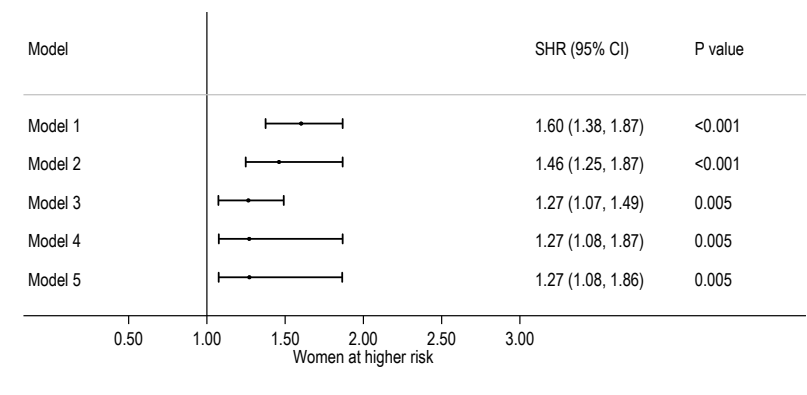
Figure 2. Event rate stacked bar graph depicting the change in the incidence of repeat hospitalizations after AMI for different reasons over 1-month follow-up time frames among young women and men



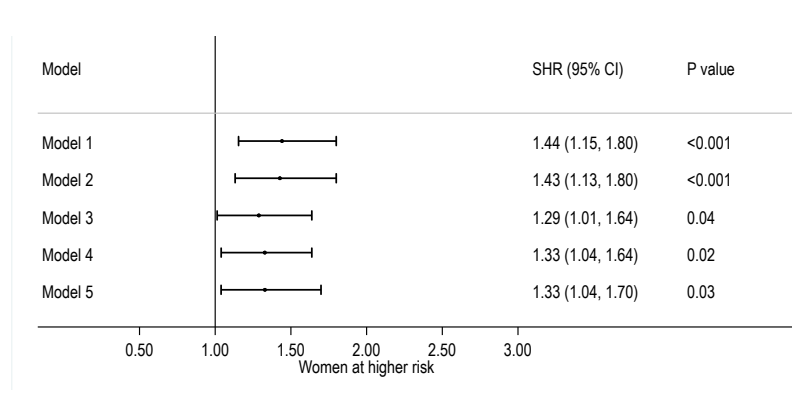
Abbreviations: MI: myocardial infarction

Figure 3. Sequential competing risk analysis for the effect of sex on 1-year outcomes

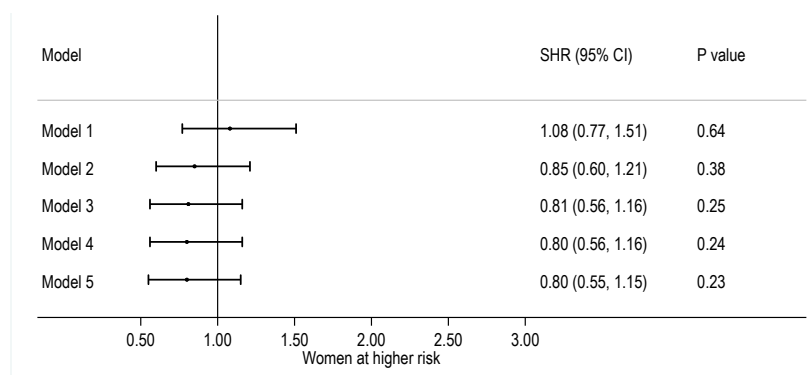
A. All-cause hospitalizations



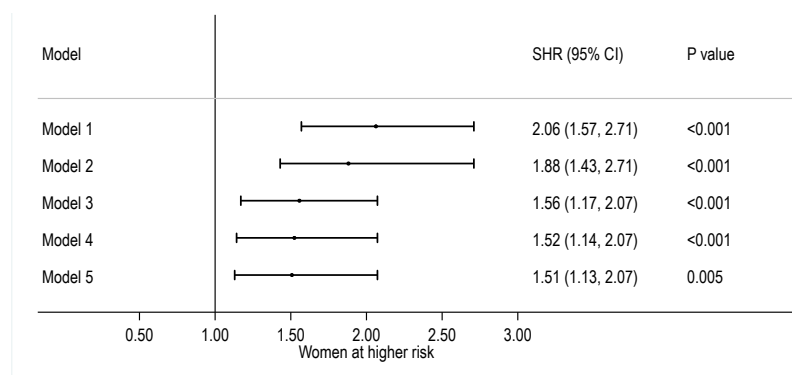
B. MI-related hospitalizations



C. Other cardiac/stroke hospitalizations



D. Non-cardiac hospitalizations



A, All-cause hospitalizations. B, myocardial infarction (MI) related hospitalizations. C, other cardiac/stroke hospitalizations. D, non-cardiac hospitalizations.