

SYSTEMATIC REVIEW PSYCHOEDUCATION OF ELDERLY WITH DEPRESSION IN PUBLIC HEALTH: PHILOSOPHICAL STUDY

Tri Nurhidayati^{1,3}, Moses Glorino Rumambo Pandin¹, Cindy Nadya³

¹ Doctoral Program Faculty of Nursing Universitas Airlangga Surabaya

² Department of English Literature, Faculty of Humanities, Universitas Airlangga³

Department of Nursing FIKKES Universitas Muhammadiyah Semarang

Email: tnh@unimus.ac.id

ABSTRACT

Introduction: The increasing number of elderly is a new challenge for the government and health care. The elderly can experience psychological disorders, one of which is depression. The phenomenon of depression that occurs can make sadness and affect the risk of suicide in the elderly. The lack of integration between mental health and primary healthcare services and the shortage of mental health specialists in the public health system contribute to underdiagnosis and undertreatment of depression. One of the strategy to reduce depression is psychoeducation. The purpose of this study was to describe appropriate psychoeducation for elderly people with depression in public health.

Methodology, this research design is a literature review, and article using 4 databases, science direct, ProQuest, PubMed, and CINHALL. 16 Article reviewed from 2018 to 2022. The keywords used in the literature search were: 1) psychoeducation AND depression AND elderly OR geriatric 2) Depression AND elderly OR geriatric. Protocol and evaluation of literature review using PRISMA checklist and Joanna Briggs Institute Guideline.

Results Psychoeducation can be carried out with various themes, namely providing health information for the elderly such as hypertension and diabetes mellitus, maintaining daily routines, stress management, solving depression problems, social skills, breathing exercises, and information on drug side effects. Psychoeducation is more effective with involving friends, family, and the community.

Conclusion Depression among the elderly will become the world's problem in the future. Therefore, the quality of elderly depression care needs to be improved. Psychoeducation is more effective by involving family, friends and social environment. Hence, specific psychoeducation for elderly depression can be one of the standards in nursing competencies.

Keywords: Literature review, psychoeducation, elderly, depression.

INTRODUCTION

Aging is a natural process in every human and makes physical and psychosocial changes [1]. The prevalence of depression in the elderly in the world is around 8- 15% in women, which is twice as many as in men with a ratio of 14.1: 8.6. In Indonesia, according to the National Commission for the Protection of Older Persons (2010), the prevalence of depression in the elderly is around 30% [1]. Psychosocial disorders that occur in the elderly include depression [2]. Depression in the elderly is characterized by sadness, little interest in activities, and the inability to feel happiness, thus affecting the risk of suicide. The onset of depression in the elderly is often associated with psychological factors, including personality type and interpersonal relationships, including social support. One of the latest

therapeutic findings for depressed patients is family psychoeducation which has been proven to be effective and cost-effective for the treatment of patients with major depression in a relatively long period of time [3].

For depression problems experienced by the elderly, the intervention given to the elderly who are depressed is by providing psychoeducation[2]. Psychoeducation is health education aimed at helping people with physical or mental disorders overcome their mental problems. The therapy can be in the form of passive psychoeducation such as providing information that can be given in brochures, emails, or websites and can also be in the form of active psychoeducation in the form of counseling or personal or community health education. Therefore, it is important for individuals and groups as well as families to be able to design care and treatment.[4]

In terms of psychological health, these interventions play an important role as a preventative measure and should be involved with current mental health service delivery[5]. There have been various studies focused on the setting of psychoeducation as an antidote to depression that have previously been carried out [3]. Depression in the elderly requires serious treatment because it can significantly affect health and life.[6] Depression in the elderly will affect the physical activity and personal satisfaction of the elderly. Depression in the elderly can cause physical, mental, emotional, and social changes. [7]. With long goals will generally experience a decrease in personal satisfaction. Thus, researchers are interested in conducting research to address the problem of depression in the elderly. The purpose of this study was to use a literature review approach, namely to understand psychoeducation for depression in the elderly.

METHODS

The design of this study is a literature review of psychoeducation for elderly people with depression

Study Protocol

The protocol and evaluation of the literatur review used PRISMA checklist, and the assessment guide used Joanna Briggs Institute Guideline (JBI) to determine the quality of the articles according to the theme

Article Search Strategy

The data used in this study is based on previous research data. The literature search was carried out from using four databased: Proquest, Pubmed, CINAHL and Science Direct

Inclusion Criteria

The literature studied were articles published 2018-2022 The article search strategy was developed trough keywords terms in the relevant abstract and title. Keywords in this literature review are adjusted to the Medical Subject Heading (MesSH) which consist psychoeducation, elderly, depression. The keywords used in the literature search were: 1)psychoeducation AND Depression AND elderly OR geriatric 2) Depression And elderly OR geriatric. The strategy used to find articles is using the PICOS framework. Inclusion criteria determined based on articles published in 2018 to 2022, article used in English, access full text, both quantitative and qualitative research.

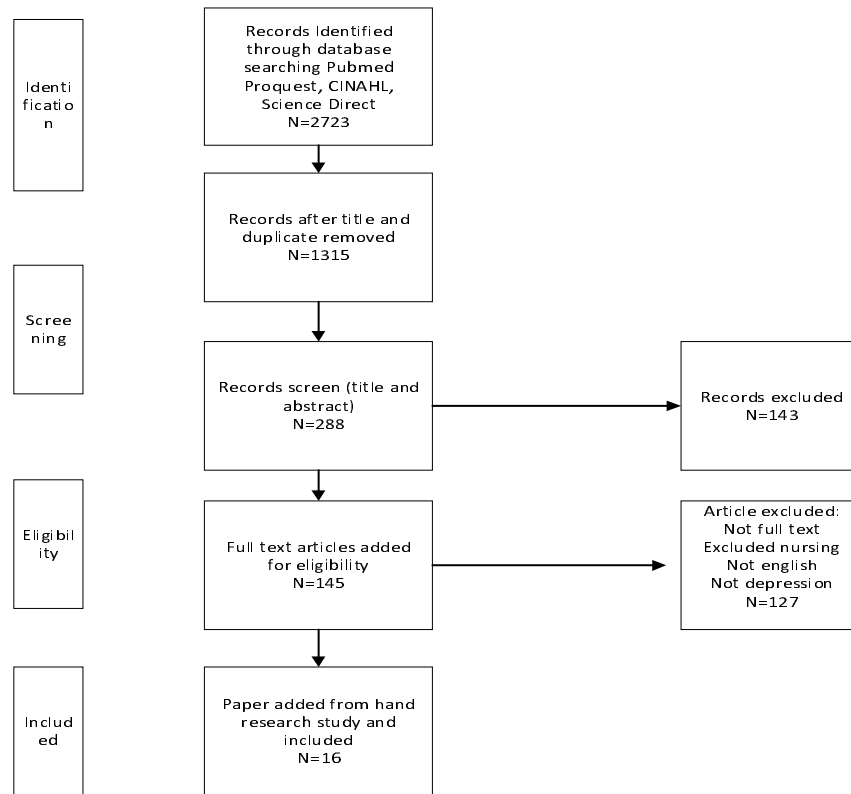


Fig 1. PRISMA Flow Diagram

Table 1 Data Synthesis

No	Title/Researcher	Methods DSVIA	Research Results
1	Comparison of the effects of reminiscence therapy alone and in combination with psychoeducation therapy on depression level of elderly in Indonesia : A Quasi-Experimental Study [1]	D: quasy eksperimen S: 72 V: Depression level I: GDS Scale A: Dependend an Independen t test	This finding is an input for the Indonesian government to provide a combination of reminiscence therapy and psychoeducation in the elderly program. This study provides new knowledge for geriatric nurses to provide new interventions, especially to reduce depression levels in the elderly
2	Effect of digital psychoeducation and peer support on the mental health of family carers supporting individuals with psychosis in England (COPE-support): a randomised clinical	D: RCT S: 174,172 V: Family carers supporting, peer support I: Family questinairre, COpeer support A: CACE	The results show that for caregivers support individuals with psychosis, COPe support providing online psychoeducation and support from professionals and peers is not superior to high quality

No	Title/Researcher	Methods DSVIA	Research Results
	trial [3]		
3	Empowering older Chinese immigrant volunteers: A pilot study of a psychoeducational intervention for foster grandparents [4]	D: mix method S: 18 V: family empowerment I: family empowerment skill, Caregiving skill, Coping skill, A: wilcoxon	This study uses a mixed methods experimental design that first conducts qualitative focus groups to inform the design and development of psychoeducational interventions and then collects before and after survey to examine how this intervention will empower Chinese people, FG immigrants and improve their mental health. This study, to our knowledge, is the first to develop, implement, and evaluate a psychoeducational intervention tailored for adult Chinese immigrants who volunteer for FG. This study showed FG experienced improvements in grandparent empowerment, mastery of parenting skills, perceived social support, negative social interactions, as well as life satisfaction.
4	Taking care of older caregivers who lose control: The association between mastery and psychopathology [5]	D: crosssectional S: 2663 V: psikologis pressure I: the Pearlin Mastery Scale dan essler psychological distress scale A: multivariate regression analysis	The prevalence of psychological distress was 41.9% among elderly informal caregivers, compared with 52.6% among younger informal caregivers. Among older informal caregivers there is a relationship between inadequate reasoning of mastery and psychological difficulties
5	Effectiveness of family connections intervention for family members of persons with personality disorders in two different formats: Online vs face-to-face[6]	D: quasy eksperimen non random pilot study S: 40 family V: depression, burden, family functioning I: Burden scale, DASS 21, family empowerment scale, family functioning, QoL A: MANOVAs	This study provides relevant data on the possible implementation of the intervention in the sample family members with PD in an online format without losing its effectiveness
6	A cross-sectional evaluation of the Dutch RHAPSODY program: online	D: crosssectional study and qualitative S: 26 V: support caregiver	The Dutch RHAPSODY program demonstrates good user acceptance, usability and user satisfaction. It the program meets the need for

No	Title/Researcher	Methods DSVIA	Research Results
7	information and support for caregivers of persons with young-onset dementia[7]	I: Technology Acceptance Mode A: deskriptif statistic dan deduktif analisis	customized information and support on YOD and adds value to what is available support for YOD caregivers. Raising awareness of the program's existence among health professionals can help caregivers to find appropriate post-diagnostic information. This program also provides educational opportunities for health workers
7	Balneotherapy with a psychoeducation program for the promotion of a balanced care in family caregivers of older adults[8]	D: quasy eksperimen S: 124 dan 76 (K) V: Depresion, anxiety, burden, adaptation I: Zarit Caregiver Burden Interview, The Profile of Mood States, Beck Depression Inventory, Revised Caregiving Satisfaction Scale, Maladjustment Scale A: ANOVA	Results showed less burden and more satisfaction with care for primary and secondary caregivers participating in the BT-PE program after the intervention. The primary caregiver also showed a lower rate of adjustment error in the experimental group at post-intervention. Although depressive and anxiety symptoms decreased significantly in both intervention groups, the BT-PE did not show a lower score than the single BT application. The relevance of caregiver psychoeducation to the balanced care model and its combination with balneotherapy is highlighted
8	Improvement of Family Care Ability for Elderly with Depression trough Psychoeducation Intervention Program [9]	D: quasy eksperimen with control S: 136 V: functioning family. I: GDS-SF A: dependent t test, independent t test and manova	Psychoeducational interventions have been proven to be effective in increasing the knowledge, attitudes, and behavior of families as nurses in caring for the elderly. Therefore, it is hoped that psychoeducation can be used as an intervention for family empowerment in the setting of community nursing services.
9	Effectiveness of the psychoeducation module for screened positive cases of depression among elderly females in rural South India [10]	D: quasy eksperimen S: 218 V: Depresi I: Beck Depression A: multivariate analisis	The study showed that 31.7% of study participants (69/218) were categorized as borderline, moderate or severe depression using the Beck's Depression Inventory. an estimated one-third of depression administration psychoeducation appears to reduce stigma and improve health-seeking behavior as this stigma is so pervasive in geriatric women in rural South India, population-specific interventions need to be identified to improve health-seeking

No	Title/Researcher	Methods DSVIA	Research Results
10	Effectiveness of psycho-educational intervention on psychological distress and self-esteem among resident elderly: A study from old age homes of Punjab, India[11]	D: quasy eksperimen one group pre test post test design S: 80 V: depression, anxiety, self esteem I: DASS 21, Rosenberg self esteem scale A: descriptive statistic dan inferensial statistic	knowledge and behavior Psychoeducation training was very effective in increasing self-esteem ($t = 19.64$, $p = <0.001$) and reducing depression ($t = 37.79$ $p = <0.001$), anxiety ($t = 34.62$, $p = <0.001$) in the elderly. one-month follow-up experimental group
11	Effect of interpersonal psychotherapy on the depression and loneliness among th elderly residing in residential homes[12]	D: quasy eksperimen S: 85 V: .depression, loneliness I: GDS, Berlin social support, ADL KATZ akpom A: chi square test	The research findings showed that depression, loneliness, social interaction, ADL and sleep patterns significantly improved after the application of interpersonal psychotherapy one month and three months thereafter. There is a statistically significant positive correlation between depression and sleep
12	Effectiveness of Case Management with Problem-Solving Therapy for Rural Older Adults with Depression[13]	D: study comparative S: 56 rural dan 84 urban V: self efficacy, reliens scale. I: self efficacy, reliens scale, hopelessness, A: mann whitney	CM-PST in rural locations has proven to be as effective as CMPST in urban locations in improving depression and reducing disability, despite additional gaps and challenges to accessing services.
13	The Thai group cognitive behavior therapy intervention program for depressive symptoms among older women: A Randomized Controlled Trial[14]	D: RCT S: 234 V: .Depression I: DASS 21 A: ANOVA	Results showed that the mean depression score in the CBT condition at each point was significantly lower than at baseline and also statistically lower than in the usual care condition after completion of the program. Thus, the Thailand Group CBT Intervention Program proved to be efficacious in reducing depression
14	Effect of psychoeducation on short-term outcome in patients with late life depression : A randomized control trial-Protocol[2]	D: RCT S: 154 V: Depresi I: GDS A: Uji T sampel independen, ANOVA	This intervention has a positive impact on patients because it is one of the holistic approaches to the treatment of depression. The trial also included a variety of depressed elderly patients.

No	Title/Researcher	Methods DSVIA	Research Results
15	A collaborative care psychosocial intervention to improve late life depression in socioeconomically deprived areas of Guarulhos, Brazil: the PROACTIVE cluster randomised controlled trial protocol[15]	D: RCT S: 1440 (72 cluster) V: depression I: PHQ-9 A: multivariate	Both groups showed lower mean PHQ-9 scores about 30 weeks after inclusion, but there was a substantial improvement in depressive symptoms at the UBS intervention.
16	Mindfulness mechanisms and psychological effects for Amci patients: A comparison with psychoeducation[16]	D: RCT S: 48 V: depression, anxiety, quality of life I: QOL, DASS A: ANOVA	This study confirmed the potential of MBI and PBI to reduce symptoms of depression and anxiety and to increase arQOL in older adults with aMCI. No effect found for gQOL and memory

RESULTS AND DISCUSSION

1. Theme of a Depression Psychoeducation Program in the Elderly

This psychoeducational program focuses on implementing interventions that teach the elderly about 1) Health education about: personal hygiene; 2) Information on measures to enhance immunity and management; 3) How to maintain a daily routine; 4) How to maintain health, fun activities, social skills; 5) Health education about Sleep Hygiene; 6) Self-esteem; 7) The role of physical activity and diet in stress management; 8) Diabetes management; 9) Pain management; 10) Breathing exercises; 11) Depression problem solving, behavioral activity, and behavioral cognitive perspective on depression; 12) Management of acidity; 13) Management of Hypertension; 14) Side effects of self-medication. Psychoeducation programs provide the information and skills needed by the elderly to assist them in maintaining physical, mental, social, and emotional health as they age [20]. The psychoeducation intervention program is a form of family empowerment, a strategy to provide information to families about illness and how to treat it by training in coping skills, controlling tension and stress, and interpersonal communication skills. The results show that the psychoeducational intervention program has been shown to be effective in increasing self-esteem, increasing family knowledge, attitudes, and behavior in caring for the elderly, and then

reducing the level of depression and loneliness [17][20][15][23]. The following are some of the psychoeducation carried out in the research conducted by the review:

a. Interpersonal psychotherapy

Interpersonal Psychotherapy Program (IPT) shows individual interpersonal relationships and current social conditions, for example, problem management to solve problems, encourage and support social support such as building trusting relationships, expressing feelings, increasing self-esteem, and increasing social interaction and interpersonal relationships, increasing independence, and reduce feelings of loneliness and depression. The results of the study showed that the biopsychosocial condition of the elderly in the form of ADL, sleep patterns, social interactions, feelings of depression, and loneliness of the elderly living in orphanages improved after the application of interpersonal psychotherapy.[1]

b. Reminiscence therapy and psychoeducational therapy

Program for giving effect to reminiscence therapy and psychoeducational therapy. Memory therapy that focuses on remembering positive aspects and events that were important to parents in the past, so that the elderly can feel the satisfaction of their lives. While psychoeducational therapy focuses on teaching health education to increase knowledge, and take good care of the elderly. After that, the elderly were given reminiscence therapy and psychoeducational therapy, then a comparison of the two effects of the two therapies was compared. The results showed that reminiscence therapy alone or in combination with psychoeducational therapy had a significant effect on depression rates in older adults.[8]

c. Case management with problem solving therapy (CM-PST)

Research on case management with problem solving therapy conducted by (Hollister et al., 2022) in this study focuses on solving a problem. This problem-solving therapy addresses life's challenges, reduces stress, and facilitates adaptation. This treatment was applied to two groups, the rural elderly group and the urban elderly group. The therapy is given through three stages, the first is psychoeducation, the second is the acquisition of problem solving skills, and the third is the prevention of relapse. The results of this study indicate that CM-PST intervention is an effective intervention for older adults in rural areas, and has been shown to be potentially more effective than CM-PST for older urban adults in improving depression and reducing disability.[18]

d. CBT (Cognitive Behavioral Therapy) intervention program

This intervention program consists of: psychoeducation to help understand the causes of depression, case formulation to help describe and explain the problem in a way that is theoretically informed, coherent, meaningful, and leads to effective interventions. The results of the study showed that the CBT intervention program led to a significant reduction in depressive symptoms among older women with mild depression. Participants of the Thailand Group CBT Intervention Program had significantly lower rates of post-intervention depression symptoms than those who received usual care.[19]

2. Program Design Equations

Searching articles from 16 journals found programs that can be applied at home to treat the elderly with depression, namely the Psychoeducation Intervention program, Interpersonal Psychotherapy (IPT), case management with problem solving therapy (CM-PST), and the CBT intervention program (Cognitive Behavioral Therapy) from The four programs have something in common, namely involving the family of the elderly, peers, and the social community. In implementing the program, approaches from various aspects that play a role in the success of the program are carried out. This program cannot be effective if one of the parties does not play a role in preventing depression in the elderly and the duration of the intervention is 30 weeks.

3. Differences in Program Design

The difference found in the search for 16 journals is the method used. The psychoeducational intervention program focuses on teaching the elderly how to prevent depression with psychoeducational therapy. In providing interpersonal psychotherapy, it shows individual interpersonal relationships and current social conditions, for example, problem management to solve problems, encourage and support social support such as building trusting relationships, expressing feelings, increasing self-esteem, and increasing social interaction and interpersonal relationships, increasing independence, and reduce feelings of loneliness and depression. Meanwhile, case management with problem therapy teaches how to overcome various life challenges, reduce stress, and facilitate life. And for the CBT (Cognitive Behavioral Therapy) intervention program which focuses on cognitive-awareness training programs to help understand the causes of depression, case formulation to help describe and explain the problem in a theoretically informed, coherent, meaningful way, and leads to effective interventions.

CONCLUSION

Based on research that has been reviewed as many as 16 research journals, it shows that psychoeducation of depression in the elderly has proven to be effective in reducing depression levels in the elderly. Psychoeducation is more effective by involving family, friends and social environment.

REFERENSI

- [1] M. A. El-Bilsha, 'Effect of Interpersonal Psychotherapy on the Depression and Loneliness among the Elderly Residing in Residential Homes', *Middle East Journal of Age and Ageing*, vol. 16, no. 1, pp. 14–25, 2019, doi: 10.5742/mejaa.2019.93620.
- [2] L. Lidyana, S. Shelly, and N. Fitria, 'Pendidikan Kesehatan mengenai Deteksi Dini Depresi dan Penurunan Fungsi Kognitif pada lansia', *Jurnal Abdimas BSI: Jurnal Pengabdian Kepada Masyarakat*, vol. 3, no. 1, pp. 12–24, 2020, doi: 10.31294/jabdimas.v3i1.5130.
- [3] C. Indriani, Y. S. Hayati, and T. A. Wihastuti, 'Family Psychoeducation in Reducing the Occurrence of Depression in Elderly: A Systematic Review', *International Journal of Science and Society*, vol. 2, no. 3, p. 2020, 2020, [Online]. Available: <http://ijsoc.goacademica.com>.
- [4] D. BPS, 'Umur Harapan Hidup Saat Lahir (UHH) Tahun 2020-2021', *Badan Pusat Statistik*, 2021. .
- [5] M. R. Alligood, *Nursing Theory Utilization & Application*, 5th Editio. Elsevier Mosby, 2014.
- [6] E. Zheng *et al.*, 'Health-Related Quality of Life and Its Influencing Factors for Elderly Patients With Hypertension: Evidence From Heilongjiang Province, China', *Frontiers in Public Health*, vol. 9, no. March, pp. 1–8, 2021, doi: 10.3389/fpubh.2021.654822.
- [7] M. A. Perez-Sousa, P. R. Olivares, J. L. Gonzalez-Guerrero, and N. Gusi, 'Effects of an exercise program linked to primary care on depression in elderly: fitness as mediator of the improvement', *Quality of Life Research*, vol. 29, no. 5, pp. 1239–1246, 2020, doi: 10.1007/s11136-019-02406-3.
- [8] Sutinah, 'COMPARISON of the EFFECTS of REMINISCENCE THERAPY ALONE and in COMBINATION with PSYCHOEDUCATION THERAPY on DEPRESSION LEVEL of ELDERLY in INDONESIA: A QUASI-EXPERIMENTAL STUDY', *Belitung Nursing Journal*, vol. 6, no. 1, pp. 1–7, 2020, doi: 10.33546/BNJ.1048.
- [9] J. Sin *et al.*, 'Effect of digital psychoeducation and peer support on the mental health of family carers supporting individuals with psychosis in England (COPE-support): a randomised clinical trial', *The Lancet Digital Health*, vol. 4, no. 5, pp. e320–e329, 2022, doi: 10.1016/S2589-7500(22)00031-0.
- [10] L. Xu, N. L. Fields, B. C. Tonui, and T. Vasquez-White, 'Empowering older Chinese immigrant volunteers: A pilot study of a psychoeducational intervention for foster grandparents', *SSM - Mental Health*, vol. 2, no. March, p. 100111, 2022, doi: 10.1016/j.ssmmh.2022.100111.
- [11] F. M. Kabia, F. el Fakiri, M. Heus, and T. Fassaert, 'Taking care of older caregivers

- who lose control: The association between mastery and psychopathology’, *Archives of Gerontology and Geriatrics*, vol. 101, no. March, p. 104687, 2022, doi: 10.1016/j.archger.2022.104687.
- [12] V. Guillén *et al.*, ‘Effectiveness of family connections intervention for family members of persons with personality disorders in two different formats: Online vs face-to-face’, *Internet Interventions*, vol. 28, no. March, 2022, doi: 10.1016/j.invent.2022.100532.
- [13] M. Daemen *et al.*, ‘A cross-sectional evaluation of the Dutch RHAPSODY program: online information and support for caregivers of persons with young-onset dementia’, *Internet Interventions*, vol. 28, no. March, p. 100530, 2022, doi: 10.1016/j.invent.2022.100530.
- [14] C. Noriega, M. D. Ortiz, M. T. Martínez, and J. López, ‘Balneotherapy with a psychoeducation program for the promotion of a balanced care in family caregivers of older adults’, *International Journal of Biometeorology*, vol. 65, no. 2, pp. 193–203, 2021, doi: 10.1007/s00484-020-02018-4.
- [15] N. M. Riasmini, ‘Improvement of Family Care Ability for Elderly with Depression through Psychoeducation Intervention Program’, *Jurnal Ilmu dan Teknologi Kesehatan*, vol. 8, no. 1, pp. 80–89, 2020, doi: 10.32668/jitek.v8i1.440.
- [16] A. Puttur and C. Rao, ‘Effectiveness of the psychoeducation module for screened positive cases of depression among elderly females in rural South India, a Quasi experimental study’, pp. 1–22, 2019.
- [17] S. K. Maheshwari, R. Chaturvedi, and P. Sharma, ‘Effectiveness of psycho-educational intervention on psychological distress and self-esteem among resident elderly: A study from old age homes of Punjab, India’, *Clinical Epidemiology and Global Health*, vol. 11, no. April, p. 100733, 2021, doi: 10.1016/j.cegh.2021.100733.
- [18] B. Hollister, R. Crabb, S. Kaplan, M. Brandner, and P. Areán, ‘Effectiveness of Case Management with Problem-Solving Therapy for Rural Older Adults with Depression’, *American Journal of Geriatric Psychiatry*, vol. 10, no. October, pp. 1083–1092, 2022, doi: 10.1016/j.jagp.2022.03.001.
- [19] C. Longchoopol, D. Thapinta, R. Ross, and W. Lertwatthanawilat, ‘The Thai group cognitive behavior therapy intervention program for depressive symptoms among older women: A randomized controlled trial’, *Pacific Rim International Journal of Nursing Research*, vol. 22, no. 1, pp. 74–85, 2018.
- [20] W. Osman Abd El-Fatah, H. Osama Elborie, and O. Ezzat Mahmoud, ‘Psychoeducational and Rehabilitation Intervention guideline for Late-Life Anxiety and Depression among the Older Adults at Geriatric Home’, *Egyptian Journal of Health Care*, vol. 13, no. 2, pp. 1382–1395, 2022, doi: 10.21608/ejhc.2022.243491.
- [21] M. Scazufca *et al.*, ‘Correction to: A collaborative care psychosocial intervention to improve late life depression in socioeconomically deprived areas of Guarulhos, Brazil: the PROACTIVE cluster randomised controlled trial protocol (Trials, (2020), 21, 1, (914), 10.1186/s1306’, *Trials*, vol. 21, no. 1, pp. 1–14, 2020, doi: 10.1186/s13063-020-04957-0.
- [22] E. Larouche, C. Hudon, and S. Goulet, ‘Mindfulness mechanisms and psychological effects for aMCI patients: A comparison with psychoeducation’, *Complementary Therapies in Clinical Practice*, vol. 34, no. October 2018, pp. 93–104, 2019, doi: 10.1016/j.ctcp.2018.11.008.
- [23] A. A. H. Bin Shafie, M. R. B. M. Jailani, N. A. B. A. Miskam, F. A. B. Elias, and H. B. A. Wahab, ‘The Impact of Integrated Psychospiritual Module among the Drug

Addicts in Malaysia in Elevating the Psychospiritual and Drug-Related Locus Of Control Level towards the decrease of Relapse Rate', *International Journal of Academic Research in Business and Social Sciences*, vol. 8, no. 3, 2018, doi: 10.6007/ijarbss/v8-i3/3929.

