

Impact of the COVID-19 restrictions on the epidemiology of *Cryptosporidium* spp. in England and Wales, 2015-2021

A time-series analysis

Authors

Adamson JP^{*1,3}, Chalmers R M.^{2,4}, Thomas D Rh¹, Elwin K², Robinson G^{2,4}, Barrasa A³

*Corresponding author

James Adamson

CDSC Public Health Wales, Cardiff, Wales, UK

james.adamson2@wales.nhs.uk

[0044] (0)29 2022 7744

Author affiliations

1. Communicable Disease Surveillance Centre, Public Health Wales, Cardiff
2. Cryptosporidium reference unit, Public Health Wales, Swansea
3. UK Field epidemiology training programme, UK Health Security Agency, London
4. Swansea University Medical School, Swansea University, Swansea, UK

1 Abstract

2 Background

3 In England and Wales, cryptosporidiosis cases peak in spring and autumn, usually
4 associated with zoonotic and environmental exposures (*Cryptosporidium parvum*,
5 spring/autumn) and with overseas travel and water-based activities (*Cryptosporidium*
6 *hominis*, autumn). Restrictions to control the COVID-19 pandemic prevented social mixing
7 and access to swimming pools and restaurants for many months. Foreign travel from the UK
8 also reduced by 74% in 2020. However, these restrictions potentially increased
9 environmental exposures as people sought alternative countryside activities locally. To
10 inform and strengthen surveillance programmes, we investigated the impact of COVID-19
11 restrictions on the epidemiology of *C. hominis* and *C. parvum* cases.

12 Methods

13 *Cryptosporidium*-positive stools, with case demographic data, are referred routinely for
14 genotyping to the national Cryptosporidium Reference Unit (CRU). Cases were extracted
15 from the CRU database (01 January 2015 to 31 December 2021). We defined two periods
16 for pre- and post-COVID-19 restrictions implementation corresponding to the first UK-wide
17 lockdown on 23 March 2020: “pre-restrictions” between week 1, 2015 and week 12, 2020,
18 and “post restrictions-implementation” between week 13, 2020 and week 52, 2021. We
19 conducted an interrupted time-series analysis, assessing differences in *C. parvum* and *C.*

NOTE: This preprint reports new research that has not been certified by peer review and should not be used to guide clinical practice.

20 *hominis* incidence, trends and periodicity between these periods using negative binomial
21 regression with linear-splines and interactions.

22 **Results**

23 There were 21,304 cases between 01 January 2015 and 31 December 2021 (*C. parvum* =
24 12,246; *C. hominis* = 9,058). Post restrictions-implementation incidence of *C. hominis*
25 dropped by 97.5% (95%CI: 95.4%-98.6%; $p < 0.001$). The decreasing incidence-trend
26 observed pre-restrictions (IRR=0.9976; 95%CI: 0.9969-0.9982; $p < 0.001$) was not observed
27 post restrictions-implementation (IRR=1.0081; 95%CI: 0.9978-1.0186; $p = 0.128$) due to lack
28 of cases. No periodicity change was observed post restrictions-implementation. Where
29 recorded, 22% of *C. hominis* cases had travelled abroad. There was also a strong social
30 gradient, with those who lived in deprived areas experiencing a higher proportion of cases.
31 This gradient did not exist post restrictions-implementation, but the effect was exacerbated
32 for the most deprived: 27.2% of cases from the most deprived decile compared to 12.7% in
33 the pre-restrictions period. For *C. parvum*, post restrictions-implementation incidence fell by
34 49.0% (95%CI: 38.4%-58.3%; $p < 0.001$). There was no pre-restrictions incidence-trend
35 (IRR=1.0003; 95%CI: 0.9997-1.0009; $p = 0.322$) but a slight increasing incidence-trend
36 existed post restrictions-implementation (IRR=1.0071; 95%CI: 1.0038-1.0104; $p < 0.001$). A
37 periodicity change was observed for *C. parvum* post restrictions-implementation, peaking
38 one week earlier in spring and two weeks later in autumn. Where recorded, 8% of *C. parvum*
39 cases had travelled abroad. The social gradient observed for *C. parvum* was inverse to that
40 for *C. hominis*, and was stable pre-restrictions and post restrictions-implementation.

41 **Conclusion**

42 *C. hominis* cases were almost entirely arrested post restrictions-implementation, reinforcing
43 that foreign travel is a major driver of seeding infections. Increased hand-hygiene, reduced
44 social mixing, limited access to swimming pools and limited foreign travel affected incidence
45 of most gastrointestinal (GI) pathogens, including *Cryptosporidium*, in the same period. *C.*
46 *parvum* incidence fell sharply but recovered throughout the post restrictions-implementation
47 period, back to pre-restrictions levels by the end of 2021; this is consistent with relaxation of
48 restrictions, reduced compliance and increased countryside use. The effect on our results of
49 changes in health-seeking behaviours, healthcare access and diagnostic laboratory
50 practices post restrictions-implementation is uncertain, but it is likely that access to GPs and
51 specimen referral rate to CRU decreased. Future exceedance reporting for *C. hominis*
52 should exclude the post restrictions-implementation period but retain it for *C. parvum* (except
53 the first six weeks post restrictions-implementation where the incidence fell sharply). Advice
54 on infection prevention and control should be improved for people with GI symptoms,
55 including returning travellers, to ensure hand hygiene and appropriate swimming pool
56 avoidance.

57 **Nomenclature**

- 58 AIC - Akaike information criterion
59 *C. hominis* – *Cryptosporidium hominis*
60 *C. parvum* – *Cryptosporidium parvum*
61 CI – confidence interval
62 GI – gastrointestinal illness
63 IPC – infection prevention and control
64 IRR – incidence rate ratio
65 PCR – polymerase chain reaction
66 CRU - *Cryptosporidium* Reference Unit
67 MLVA - multi-locus variable number of tandem repeats analysis
68 UK – United Kingdom
69 TSA – time series analysis

70

71 **Word count**

72 3,527 excluding abstract

73

74 **Data summary**

75 *Cryptosporidium* is a notifiable agent in the UK which diagnostic laboratories must
76 report to local health protection teams. Submission of *Cryptosporidium*-positive
77 stools to the CRU is voluntary, but allows characterisation of the species. We used
78 these data, where the specimen originated from English and Welsh diagnostic
79 laboratories, to describe the epidemiology of *Cryptosporidium* spp. between 2015
80 and 2021.

81 **Impact statement**

82 *Cryptosporidium* infections in industrialised countries can cause serious disease and
83 lead to complicated and lasting sequelae, especially in the immunocompromised.
84 Even in the general population, as well as long term gastrointestinal upset, joint pain,
85 headache and eye pain have also been identified more frequently following
86 cryptosporidiosis (1). There is an established association between cryptosporidiosis
87 and colorectal cancer, although no conclusive evidence regarding causality in either
88 direction (2–5). There has never been such a dramatic reduction in international
89 travel in the modern era than during the COVID-19 pandemic, which is a key driver
90 of *C. hominis* infections. Conversely, pressure on outdoor amenities has rarely been

91 higher, which posed an increase in the likelihood of infection and cross-
92 contamination for *C. parvum* infections. There have been few time-series analyses of
93 cryptosporidiosis; in order to inform and strengthen surveillance programmes, we
94 aimed to assess if there was a significant change to the epidemiology of *C. parvum*
95 and *C. hominis* during the COVID-19 pandemic.

96

97 **Introduction**

98 Cryptosporidiosis is a zoonotic disease caused primarily by the protozoan parasites
99 *Cryptosporidium hominis* and *Cryptosporidium parvum*. It is most common in
100 children aged between one and five years (6–8). People with weak immune systems,
101 especially severe T-cell deficiencies, are usually more seriously affected (9,10). The
102 most common symptom is mild to severe watery diarrhoea, often accompanied by
103 abdominal cramps, nausea/vomiting, low-grade fever, weight loss and dehydration
104 (7).

105 Symptoms begin three to 12 days (average five to seven days) after infection. In
106 healthy people, symptoms usually last about one to two weeks but can persist for up
107 to a month. The symptoms may be cyclical, where patients seem to get better for a
108 few days, then feel worse again before the illness ends. In the immunocompromised,
109 illness can be severe and protracted and sometimes fatal. There is an association
110 with previous infection and developing colorectal cancer, although no causative proof
111 (2–5). Long-term sequelae such as diarrhoea, abdominal pain, nausea, fatigue and
112 headache are common (1) and infection can cause cognitive deficit and failure to
113 thrive in malnourished young children in moderate-to-low income countries (11).

114 Diagnosis is performed by microscopy (acid-fast or fluorescent staining) or
115 immunoassay to detect oocyst antigens or PCR to detect DNA. Genotyping by PCR
116 is used as a reference test to differentiate species; *C. parvum* and *C. hominis* may
117 be further sub-typed by sequencing part of the *gp60* gene (12,13) at the national
118 *Cryptosporidium* Reference Unit (CRU) in Swansea, Wales. A multi-locus variable
119 number of tandem repeats analysis (MLVA) (14) by fragment sizing has been
120 validated and recently implemented by the CRU (15).

121 *C. parvum* also affects ruminants (mainly sheep and cattle in the UK) and is zoonotic
122 while *C. hominis* is predominantly anthroponotic (transmitted directly or indirectly
123 from person-to-person) (6–8). Household transmission is important, especially for *C.*
124 *hominis* (8). Outbreaks of cryptosporidiosis have been linked to drinking or swimming

125 in and ingesting contaminated water, contact with infected lambs and calves during
126 visits to open or commercial farms, person to person spread in institutional settings
127 and consumption of contaminated food items (7,16,17). The parasites are resistant
128 to chlorine but large enough to be captured by appropriate water filtration systems
129 (18). The majority of outbreaks in England and Wales are linked to animal contact at
130 open/petting farms (exclusively *C. parvum*) and swimming pools (vast majority *C.*
131 *hominis*) (13).

132 UK cryptosporidiosis cases display a seasonal trend: a late spring peak for *C.*
133 *parvum* (often associated with greater countryside activities, opening of farm-based
134 leisure activities and the lambing season) and an early autumn peak for *C. hominis*
135 (often associated with overseas travel and summer activities such as swimming)
136 (19,20).

137 COVID-19 greatly limited foreign travel for most UK residents in 2020; official figures
138 show a 74% reduction in visits abroad for any reason (21), whereas the previous
139 decade had seen a steady growth in foreign travel. There was a more than 500%
140 increase in the number of people seeking holidays or leisure activities within the UK
141 in 2020 (22) and also an increase in the number of people using outdoor spaces in
142 the UK in 2020-21, including walking, cycling or “wild” swimming (23–25).
143 Furthermore, people might have undertaken these activities in areas new to them
144 and where they were unaware of locally understood health risks. People were also
145 more likely to wash their hands and less likely to use swimming pools and
146 restaurants because of COVID-19 restrictions (26,27). Reductions in GI illness were
147 observed across all surveillance indicators as COVID-19 started to peak. Compared
148 with the 5-year average (2015–2019), there was a 52% reduction in GI outbreaks
149 reported during the first 6 months of the COVID-19 response (28). We aimed to
150 assess if COVID-19 restrictions caused a significant change to the epidemiology of
151 *C. parvum* and *C. hominis*.

152

153 **Methods**

154 **Study design**

155 To estimate the impact of COVID-19 restrictions on *C. hominis* and *C. parvum*, we
156 conducted a retrospective observational study using interrupted time-series analysis
157 with generalised linear modelling.

158

159 **Study population and data source**

160 We analysed all confirmed cases of all *Cryptosporidium* species (29) extracted from
161 the CRU database for the period between 01 January 2015 to 31 December 2021.
162 Date of case was defined as the date the specimen was received by the CRU.
163 Records were imported into Stata V14 and cleaned to remove quality control
164 specimen data and duplicate reports. We retained only cases with *C. hominis* and *C.*
165 *parvum* infections who were resident in England and Wales or, if the case's address
166 was not known, where the specimen had been sent to the CRU from a laboratory in
167 England and Wales. We merged the CRU data using case's resident postcode with
168 Office for National Statistics (ONS) data for deprivation (30) and rural/urban
169 classification (31). We used the date of the first UK-wide lockdown on 23 March
170 2020 (week 13) to create a pre-restrictions period and a post restrictions-
171 implementation period (COVID=0 between week 1, 2015 and week 12, 2020 and
172 COVID=1 between week 13, 2020 and week 52, 2021).

173

174 **Statistical analysis**

175 We stratified results by age, sex, deprivation, rural/urban assignment and foreign
176 travel. Foreign travel is often poorly recorded on stool specimen forms. Those with
177 foreign travel indicated are considered reliable data by the CRU but those with "no",
178 "null" or missing are not considered reliable. Here, proportion with foreign travel was
179 calculated as total indicating yes to foreign travel for that subgroup, divided by the
180 total number of cases. Time series analysis uses regression methods to illustrate
181 trends in the data. It incorporates information from past observations and past errors
182 in those observations into the estimation of predicted values (32–34). We conducted
183 an interrupted time-series analysis for *C. hominis* and *C. parvum* cases using
184 negative binomial regression to account for over dispersion and secular trend.
185 Models included linear splines to test for differences in incidence between the pre-
186 and post-restriction periods, and Fourier analysis to adjust for underlying periodicity.
187 Selection of the final model was informed by the Akaike information criterion
188 (AIC)(35).

189 A separate model, following the same principles as above, was built for *C. hominis*
190 and *C. parvum* cases up to week 13, 2020 and then extended to week 52, 2021 to
191 forecast the number of cases expected had COVID-19 not occurred.

192

193 **Results**

194 Descriptive epidemiology

195 There were 21,304 cases between 01 January 2015 to 31 December 2021 (*C.*
196 *hominis*=9,058; *C. parvum*=12,246). There were 8,991 cases of *C. hominis* pre-
197 restrictions and 67 post restrictions-implementation compared to 9,732 cases of *C.*
198 *parvum* pre-restrictions and 2,514 post restrictions-implementation. For *C. hominis*,
199 weekly case-total variation was between zero to 180 cases pre-restrictions and zero
200 to four cases post restrictions-implementation. For *C. parvum*, the range was zero to
201 162 pre-restrictions and six to 63 post restrictions-implementation. A periodicity of 52
202 weeks was observed for *C. hominis* and of 26 and 52 weeks for *C. parvum*.

203 Age data was complete but sex classification was unknown for 0.4% of *C. hominis*
204 (n=35) and 0.2% (n=29) of *C. parvum* cases. Age distribution was similar pre- and
205 post- restrictions for *C. hominis* (SI figure 1) and *C. parvum* (SI figure 2), with
206 children aged 0-9 years experiencing a higher proportion of cases.

207 Cases of *C. hominis* were more likely to be female pre-restrictions but male post
208 restrictions-implementation(SI figures 3). For *C. parvum*, cases were more likely to
209 be female pre-restrictions and post restrictions-implementation (SI figure 4).

210 Postcodes were not recorded for approximately 10% of cases (*C. hominis* n=858; *C.*
211 *parvum* n=1,139), meaning that deprivation and rural/urban ranking could not be
212 assigned. There was a social gradient observed for *C. hominis* cases pre-
213 restrictions, where the proportion of cases increased with deprivation. This social
214 gradient didn't remain post restrictions-implementation but there was a large
215 increase in the proportion of cases from the most deprived decile (SI figure 5), where
216 27.2% of *C. hominis* cases were from the most deprived decile compared to 12.7%
217 pre-restrictions. For *C. parvum* cases, the social gradient was the inverse of *C.*
218 *hominis* but remained stable pre- and post restrictions-implementation, with at 7.6%
219 and 6.7% respectively in the most deprived decile (SI figure 6).

220 Cases were more likely to live in an urban area for both species pre-restrictions and
221 post restrictions-implementation. The protective nature of rural residence was more
222 pronounced for *C. hominis* cases (SI figure 7) than for *C. parvum* cases (SI figure 8).
223 Foreign travel status was missing for most cases (*C. hominis* missing=65%,
224 n=5,865; *C. parvum* missing=75%, n=9,137). Where recorded, 65% of *C. hominis*
225 cases (n=1,980 pre-restrictions [63%]; n=22 post restrictions-implementation [76%])
226 and 33% of *C. parvum* cases (n=970 pre-restrictions [34%]; n=41 post restrictions-
227 implementation [14%]) had travelled abroad. For *C. hominis* cases, the most

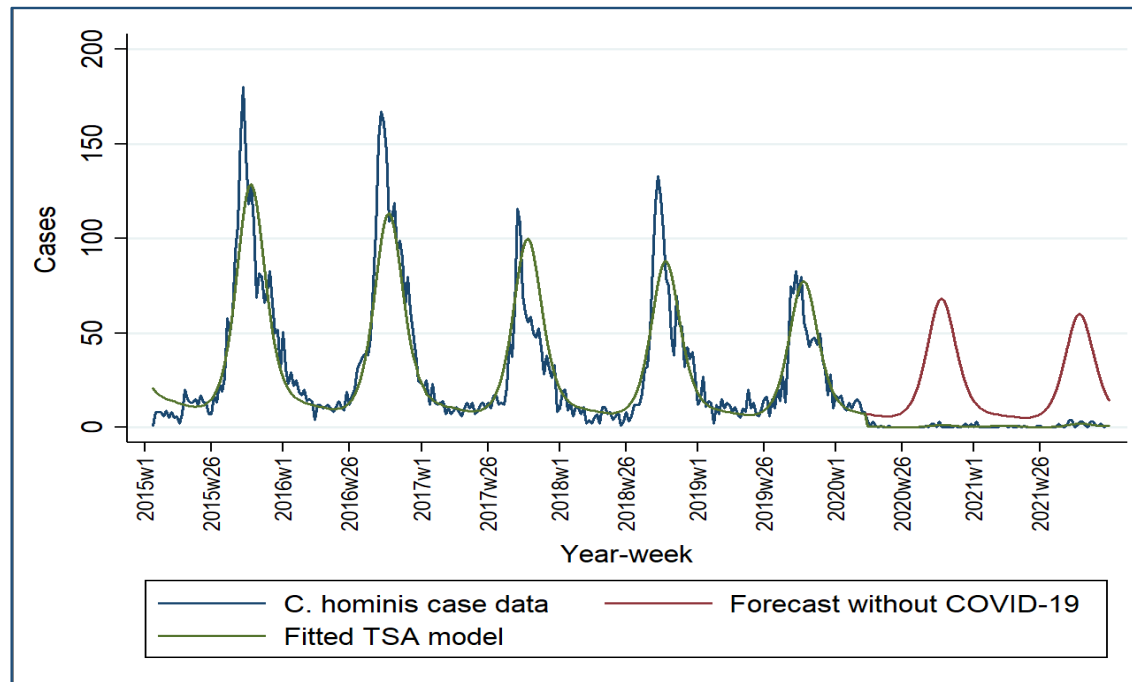
228 common travel destinations pre-restrictions were Spain (n=296), Turkey (n=149),
229 Pakistan (n=135), India (n=124) and Egypt (n=98). These cases were distributed
230 fairly evenly across all deprivation deciles with the exception of Pakistan where 67%
231 were from cases in deciles one to three. Post restrictions-implementation, 22 *C.*
232 *hominis* cases had travelled to Pakistan and half of these cases were in deprivation
233 deciles one to three. For *C. parvum* cases, the most common travel destinations pre-
234 restrictions were Portugal (n=69), Spain (n=65), Turkey (n=64), France (n=63),
235 Pakistan (n=51) and India (n=35). These cases were again distributed fairly evenly
236 across all deprivation deciles with the exception of those who had been to Pakistan,
237 with 63% (n=32) of cases ranked in deciles one to three.

238

239 **Time series analysis**

240 For both species, our final TSA model was improved by using Fourier transforms for
241 26 week and 52 week periodicity, based on the AIC test results. A negative binomial
242 regression model provided a better fit than a Poisson model. The time-series data for
243 *C. hominis* had a main periodicity of 52 weeks, with annual peaks clearly visible in
244 autumn. An interaction was found between our COVID variable and both Fourier
245 waves so these were retained in our final model. Comparing the two models (full
246 dataset and forecasted data based on the previous five years' data to predict cases
247 had COVID-19 not occurred) highlighted the extreme reduction of *C. hominis* cases
248 post restrictions-implementation (figure 1).

249



250

251 **Fig 1. *C. hominis* model including forecast had COVID-19 not occurred,**
 252 **England & Wales, 2015-2021**

253

254 Post restrictions-implementation, the incidence of *C. hominis* dropped by 97.5%
 255 (95%CI: 95.4%-98.6%; $p < 0.001$) (table 1). A decreasing incidence-trend pre-
 256 restrictions ($n=8,991$; IRR=0.9976; 95%CI: 0.9969-0.9982; $p < 0.001$) of 0.24%
 257 reduction in cases per week was not observed post restrictions-implementation
 258 ($n=67$; IRR=1.0081; 95%CI: 0.9978-1.0186; $p=0.128$). Whilst a periodicity change
 259 was observed post restrictions-implementation for *C. hominis* (based on the
 260 COVID#c.sin52 interaction term; table 1), the forecast model did not show a change
 261 in peak incidence by week number (week 41).

262

263 **Table 1. Time-series analysis model results for *C. hominis***

<i>C. hominis</i> TSA model	IRR	p-value	95% CI
Pre COVID period	0.997579	<0.001	(0.9969615, 0.9981975)
Post COVID period	1.0081	0.128	(0.9976892, 1.01862)
Post vs. pre period	0.024829	<0.001	(0.0135401, 0.0455293)
sin52*	0.308177	<0.001	(0.2878808, 0.329904)
COVID#c.sin52 ⁺	2.616494	<0.001	(1.822834, 3.755715)
cos52*	1.291586	<0.001	(1.204945, 1.384458)
COVID#c.cos52 ⁻	1.279372	0.321	(0.7864356, 2.081279)

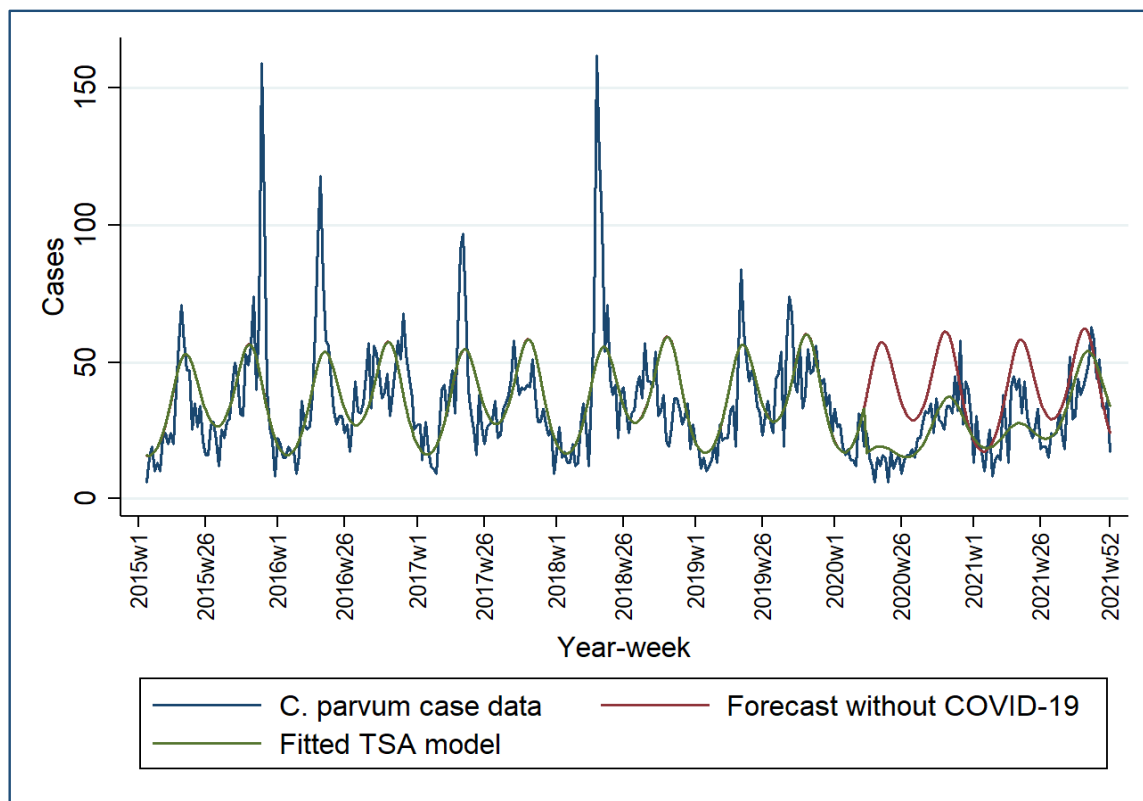
sin26*	0.994242	0.867	(0.9295001, 1.063493)
COVID#c.sin26 [⊥]	1.026261	0.899	(0.6880788, 1.530657)
cos26*	0.732617	<0.001	(0.6842376, 0.784418)
COVID#c.cos26 [⊥]	0.674863	0.057	(0.4503512, 1.0113)

264
265
266

*sin26&cos26 and sin52&cos52 are Fourier transforms. These are part of the same waveform.
Interaction terms measuring the effect of COVID-19 on the periodicity of cases.

267 The time-series data for *C. parvum* had a periodicity of 26 and 52 weeks, with
268 biannual peaks visible in spring and in autumn. An interaction was found between
269 our COVID variable and both Fourier waves so these were retained in our final
270 model. In the forecast model of the previous five years' time-series data beyond
271 week 13, 2020 for *C. parvum*, we observed a larger number of cases than predicted
272 had COVID-19 not occurred, but not in the same order of magnitude as predicted for
273 *C. hominis* (figure 2). Incidence of *C. parvum* had recovered to pre-restrictions levels
274 by the end of 2021.

275



276

277 **Fig 2. *C. parvum* model including forecast had COVID-19 not occurred,**
278 **England and Wales, 2015-2021**

279

280 Post restrictions-implementation incidence of *C. parvum* dropped by 49.0% (95%CI:
 281 38.4%-58.3%; $p < 0.001$) (table 2). There was no pre-restrictions incidence-trend
 282 ($n=9,732$; IRR=1.0003; 95%CI: 0.9997-1.0009; $p=0.322$) but a slight increasing
 283 incidence-trend existed post restrictions-implementation of 0.71% increase in cases
 284 per week ($n=2,514$; IRR=1.0071; 95%CI: 1.0038-1.0104; $p=0.001$). A periodicity
 285 change was observed for *C. parvum* post restrictions-implementation, peaking one
 286 week earlier in spring (week 18 as opposed to week 19) and two weeks later in
 287 autumn (week 44 as opposed to week 42) (figure 3).

288

289

290

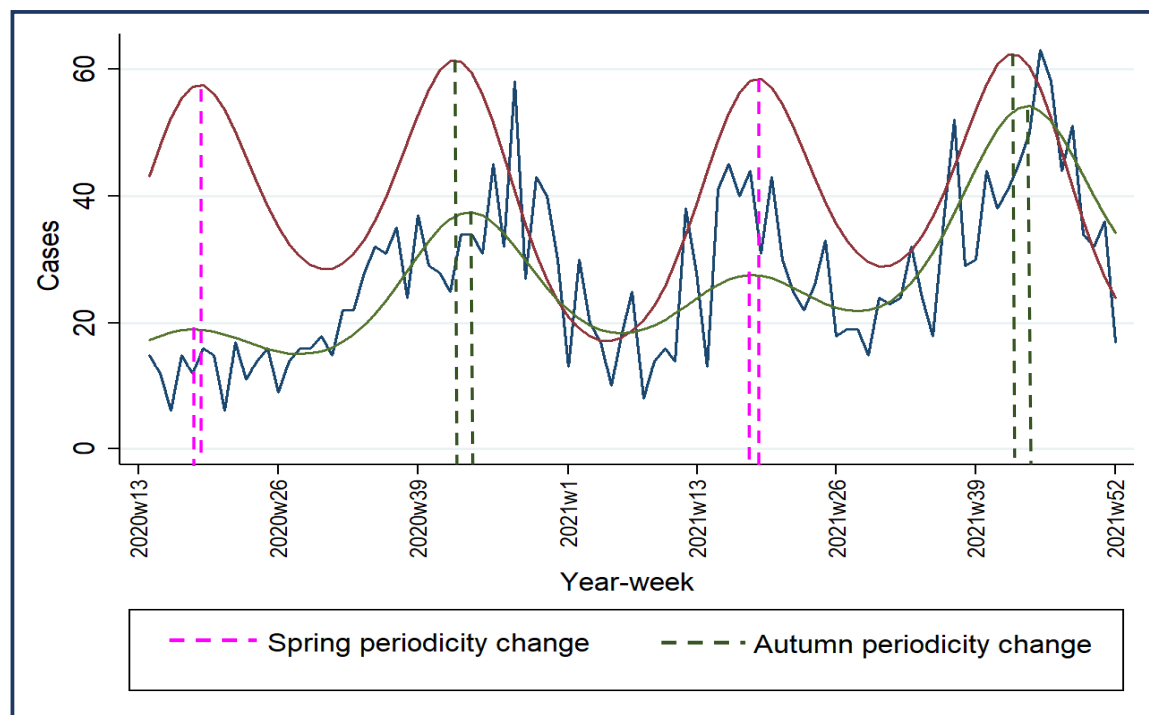
291

292

293 **Table 2. Time-series analysis model results for *C. parvum***

<i>C. parvum</i> TSA model	IRR	p-value	95% CI	
Pre COVID period	1.000301	0.322	(0.9997063,	1.000895)
Post COVID period	1.007118	<0.001	(1.003844,	1.010402)
Post vs. pre period	0.5067641	<0.001	(0.4169558,	0.6159162)
sin52*	0.8763961	<0.001	(0.8227561,	0.9335333)
COVID#c.sin52 ^L	0.9076778	0.153	(0.7946875,	1.036733)
cos52*	0.801548	<0.001	(0.7508416,	0.8556787)
COVID#c.cos52 ^L	1.367283	<0.001	(1.191219,	1.569369)
sin26*	0.6928407	<0.001	(0.6505466,	0.7378845)
COVID#c.sin26 ^L	1.186179	0.012	(1.037695,	1.355909)
cos26*	0.7253185	<0.001	(0.679221,	0.7745444)
COVID#c.cos26 ^L	1.153636	0.033	(1.011625,	1.315583)

294 *sin26&cos26 and sin52&cos52 are Fourier transforms. These are part of the same waveform.
 295 Interaction terms measuring the effect of COVID-19 on the periodicity of cases
 296



297
298

Fig 3. *C. parvum* model including forecast had COVID-19 not occurred and spring and autumn periodicity changes, England and Wales, 2020 week 13 to 2021 week 52

301

302

303

304

305 Discussion

306 COVID-19 restrictions had a significant effect on the number of cases of
307 gastrointestinal illness (GI) in England and Wales including *Cryptosporidium*(28), and
308 in this study we have identified that they impacted both *C. hominis* and *C. parvum*.
309 Whilst *C. parvum* cases were reduced by around half, *C. hominis* cases were almost
310 entirely arrested. Whilst our model for *C. hominis* detected a change in periodicity
311 (table 1: COVID#c.sin52 IRR=2.616494, 95%CI 1.822834-3.755715; p<0.001),
312 inspection of the pre- and post restrictions-implementation modelled-data showed
313 the autumn peak occurred at the same point in 2020 and 2021 as in the preceding
314 five years (week 41). With just 67 cases in the entire 62-week post restrictions-
315 implementation period, the impact of small numbers effected the precision of our
316 model. Where we would expect tens of cases in each week, there were just a
317 handful and often none at all post restrictions-implementation. Had these samples

318 been submitted to the CRU a few days either side of the date received, the results
319 could have swung significantly in either direction.

320 It is not possible to quantify exactly the extent to which COVID-19 restrictions
321 reduced social mixing or any commensurate effect on person-to-person
322 transmission, which is a limitation. *C. hominis* cases had been declining in the five
323 years leading to COVID, despite foreign travel increasing. It is possible that other
324 interventions were influencing these data, such as improved compliance and
325 awareness in swimming pool filtration and avoidance with GI symptoms. We do
326 know that public venues were closed for much of our post restrictions-
327 implementation period, including known sources of *Cryptosporidium* infection such
328 as open/petting farms, restaurants and swimming pools. Similarly, we cannot
329 quantify how much use of the countryside increased post restrictions-implementation
330 regardless of UK-based holiday figures, although anecdotally there were many news
331 stories covering this phenomenon, particularly involving parties and swimming in
332 rivers. Despite the large reduction in international travel post restrictions-
333 implementation, there remains a strong association between infection and travel
334 abroad, especially for *C. hominis*, which confirms other studies' findings that it is a
335 principal driver of new infections in England and Wales (19,36). More should be
336 done to prevent returning travellers with GI symptoms infecting others through
337 improved IPC advice about hand hygiene and exclusion / voluntary avoidance from
338 swimming pools until two weeks after symptoms have resolved. This itself relies on
339 people seeking healthcare with GI symptoms.

340 Another limitation in our analysis is the effect that reduced healthcare provision and
341 health-seeking behaviours had on specimen submission post restrictions-
342 implementation, particularly at the start of the COVID-19 pandemic. There is
343 international evidence showing that people sought help less often, and those who
344 were only mildly ill did not seek help at all (37). There was genuine fear about being
345 infected with SARS-CoV-2 in health care settings early on when lack of an effective
346 vaccination or definitive therapy were at the forefront of many people's minds
347 (38,39). This might have attenuated people's opinion of diarrhoea and vomiting
348 symptoms, or decisions to seek medical care. Likewise, there might have been
349 disruptions in access to, and application of, the stool specimen and diagnostic
350 process, resulting in fewer cases being detected.

351 The fact that people living in the most deprived areas experienced the highest
352 proportion of *C. hominis* cases both pre-restrictions and post restrictions-

353 implementation highlights potential opportunities for public health interventions. Of
354 those in the most deprived decile where travel information was available post
355 restrictions-implementation, 83% had surnames suggestive of a non-white ethnic
356 background (n=5). This, coupled with the fact that in 36% of all cases where there
357 had been foreign travel involved Pakistan, provides a compelling opportunity to
358 target interventions to outgoing and returning travellers. However, the limited data
359 available for travel history and ethnicity means we cannot draw absolute
360 conclusions, despite the length of our study period. Ethnicity is often poorly reported
361 for many diseases and this reduces the ability to understand the true impact of
362 cryptosporidiosis in specific communities. Promotion of accurate ascertainment of
363 ethnicity and travel history should be sought at the point of specimen collection to
364 improve future surveillance. This would require a change to the sample submission
365 form sent to the laboratory and training for clinicians taking history. The fact that
366 cases of both species were more likely to live in an urban residence should be
367 interpreted with caution. Our data, being laboratory-based, did not include details of
368 recent trips to the countryside, occupation or contact with animals and its relevance
369 is diminished further where foreign travel is indicated.

370 Our results also demonstrate the need to improve rates of specimen submission to
371 the CRU where there is currently under-representation, especially from areas that
372 serve large clusters of ethnic minority communities. A submission bias exists in that
373 of the approximately 4,500 human *Cryptosporidium* cases a year in England and
374 Wales (40), only around half are submitted to the CRU for genotyping on average.
375 This proportion is much higher in Wales and the north west of England, while some
376 parts of England (notably London, the South East, South West and parts of
377 Yorkshire) are under-represented. Diagnostic laboratories have been reminded by
378 the CRU in May 2022 to send *Cryptosporidium* positive stools for genotyping, and
379 that the service is free to users.

380 This was a natural experiment which reinforced existing knowledge about
381 transmission pathways for *C. hominis* and *C. parvum*. It also provides insight into
382 where to focus public health efforts to reduce the risk of infection and increase the
383 consistency of specimen submission to the CRU. National surveillance was
384 historically of the genus *Cryptosporidium*, without species identification. Although the
385 CRU has been genotyping from *Cryptosporidium*-positive stools submitted by
386 laboratories throughout England and Wales since 2000, capture of these data by the
387 UK Health Security Agency's (UKHSA) "second-generation surveillance system"

388 (SGSS) database commenced in 2015. These show the location of infection, case-
389 demographics and species typing. This systematic surveillance of species typing
390 allows outbreaks to be more clearly delineated and can track the spread of *C.*
391 *parvum* as well as *C. hominis* in humans. This, and additional subtyping by gp60
392 sequencing, can also improve outbreak management by indicating possible
393 exposures and strengthen epidemiological links (13). Multi-locus genotyping, or next
394 generation sequencing (NGS), can add further detail about the genetic relationship
395 between cases and the plausibility of infection sources (14); an MLVA scheme has
396 been implemented for *C. parvum*, following validation (15) and a pilot in 2021(41)
397 and a process for the consideration of NGS for *Cryptosporidium* surveillance and
398 outbreaks has been commenced.

399 Most gastrointestinal infections reduced dramatically during the COVID-19 pandemic
400 (37) as childcare and educational settings were closed and eating establishments'
401 opening hours and social / leisure activities were curtailed. Our hypothesis was that
402 the COVID-19 restrictions might have altered the epidemiology of cryptosporidiosis
403 by infecting species and by time, place and person. This hypothesis was upheld
404 insofar as we saw a massive reduction in *C. hominis* cases (likely due to reduced
405 foreign travel, reduced person-to-person contact, swimming pool closure and
406 increased hand hygiene) and observed *C. parvum* cases decline sharply then
407 gradually return to pre-restrictions levels by the end of 2021 (mirroring relaxation in
408 restrictions and more participation in outdoor activities). We did not analyse case
409 exposure data because in many areas this was not collected during the post
410 restrictions-implementation period; at the time of writing is still not routinely collected
411 consistently throughout England and Wales. Public health practice has varied
412 historically in relation to *Cryptosporidium* cases data collection (42). For example,
413 official public health guidance for the management of cryptosporidiosis cases still
414 refers to the "Standard Gastrointestinal Disease Questionnaire" (SI figure 9). Whilst
415 this template contains the necessary fields to collect the required case information to
416 document cases of cryptosporidiosis (43), it is almost certainly no longer widely used
417 in paper format. This surveillance form template has not been updated since 2004
418 and the ethnicity categories no longer match the current ONS designations. It would
419 be a worthwhile exercise to investigate how case reports are made, the questions
420 used and how these are recorded.

421

422 **Recommendations**

- 423 1. Future exceedance reporting for *C. hominis* should exclude the post
424 restrictions-implementation period but retain it for *C. parvum* (except first six
425 weeks post restrictions-implementation)
- 426 2. Public health advice should be given to people travelling abroad about generic
427 gastrointestinal pathogen infection prevention and control (particularly
428 handwashing, water consumption and food hygiene) to reduce the number of
429 cases and person-to-person spread. Returning travellers with GI symptoms
430 should have IPC advice about hand hygiene and swimming pool avoidance to
431 reduce onward transmission
- 432 3. Regions with low sample-referral rates to the CRU should be encouraged to
433 increase their submission rate in order to better quantify infections by region
434 and to help ascertain the impacts on their population.
- 435 4. Investigate how case details are recorded by laboratories in each region and
436 encourage better recording of travel and ethnicity data at the point of sample
437 collection. This will help better understand the full impact of imported cases of
438 *C. hominis* and decide when, where and how best to target public health
439 interventions. This would serve as a quality improvement project for other GI
440 diseases.
- 441 5. Specific research should be conducted in deprived and ethnic minority
442 communities in relation to activities and habits at home and whilst abroad.
443 Findings should be used to tailor public health messaging about how to
444 reduce risk of infection whilst away and on return home.
- 445 6. Repeat a time-series analysis for CRU data (ideally every few years) to
446 assess the impact of the end in COVID-19 restrictions, recovery of public
447 health systems, and any changes to the epidemiology of cryptosporidiosis by
448 species, time, place and person.

449

450 **References**

- 451 1. Carter BL, Chalmers RM, Davies AP. Health sequelae of human cryptosporidiosis in
452 industrialised countries: a systematic review. *Parasit Vectors* [Internet]. 2020;13(1):443.
453 Available from: <https://doi.org/10.1186/s13071-020-04308-7>
- 454 2. Kalantari N, Gorgani-Firouzjaee T, Ghaffari S, Bayani M, Ghaffari T, Chehrizi M. Association
455 between *Cryptosporidium* infection and cancer: A systematic review and meta-analysis.
456 *Parasitol Int* [Internet]. 2020;74:101979. Available from:
457 <https://www.sciencedirect.com/science/article/pii/S1383576919303307>

- 458 3. Sawant M, Baydoun M, Creusy C, Chabé M, Viscogliosi E, Certad G, et al. Cryptosporidium
459 and Colon Cancer: Cause or Consequence? *Microorganisms* [Internet]. 2020 Oct
460 27;8(11):1665. Available from: <https://pubmed.ncbi.nlm.nih.gov/33121099>
- 461 4. Sulżyc-Bielicka V, Kołodziejczyk L, Jaczewska S, Bielicki D, Safranow K, Bielicki P, et al.
462 Colorectal cancer and *Cryptosporidium* spp. infection. *PLoS One* [Internet]. 2018 Apr
463 19;13(4):e0195834–e0195834. Available from: <https://pubmed.ncbi.nlm.nih.gov/29672572>
- 464 5. Zhang N, Yu X, Zhang H, Cui L, Li X, Zhang X, et al. Prevalence and Genotyping of
465 *Cryptosporidium parvum* in Gastrointestinal Cancer Patients. *J Cancer* [Internet].
466 2020;11(11):3334–9. Available from: <https://www.jcancer.org/v11p3334.htm>
- 467 6. Perry S, Sanchez M de la L, Hurst P, Parsonnet J. Household Transmission of Gastroenteritis.
468 *Emerg Infect Dis J* [Internet]. 2005;11(7):1093. Available from:
469 https://wwwnc.cdc.gov/eid/article/11/7/04-0889_article
- 470 7. CHALMERS RM, SMITH R, ELWIN K, CLIFTON-HADLEY FA, GILES M. Epidemiology of
471 anthroponotic and zoonotic human cryptosporidiosis in England and Wales, 2004–2006.
472 *Epidemiol Infect* [Internet]. 2010/07/12. 2011;139(5):700–12. Available from:
473 [https://www.cambridge.org/core/article/epidemiology-of-anthroponotic-and-zoonotic-human-](https://www.cambridge.org/core/article/epidemiology-of-anthroponotic-and-zoonotic-human-cryptosporidiosis-in-england-and-wales-20042006/997A2C96463C3CB3F147DF6D02D026A7)
474 [cryptosporidiosis-in-england-and-wales-20042006/997A2C96463C3CB3F147DF6D02D026A7](https://www.cambridge.org/core/article/epidemiology-of-anthroponotic-and-zoonotic-human-cryptosporidiosis-in-england-and-wales-20042006/997A2C96463C3CB3F147DF6D02D026A7)
- 475 8. McKerr C, Chalmers RM, Elwin K, Ayres H, Vivancos R, O'Brien SJ, et al. Cross-sectional
476 household transmission study of *Cryptosporidium* shows that *C. hominis* infections are a key
477 risk factor for spread. *BMC Infect Dis* [Internet]. 2022;22(1):114. Available from:
478 <https://doi.org/10.1186/s12879-022-07086-y>
- 479 9. Abdou AG, Harba NM, Afifi AF, Elnaidany NF. Assessment of *Cryptosporidium parvum*
480 infection in immunocompetent and immunocompromised mice and its role in triggering
481 intestinal dysplasia. *Int J Infect Dis* [Internet]. 2013;17(8):e593–600. Available from:
482 <https://www.sciencedirect.com/science/article/pii/S1201971212013161>
- 483 10. Hunter PR, Nichols G. Epidemiology and clinical features of *Cryptosporidium* infection in
484 immunocompromised patients. *Clin Microbiol Rev*. 2002 Jan;15(1):145–54.
- 485 11. Khalil IA, Troeger C, Rao PC, Blacker BF, Brown A, Brewer TG, et al. Morbidity, mortality, and
486 long-term consequences associated with diarrhoea from *Cryptosporidium* infection in children
487 younger than 5 years: a meta-analysis study. *Lancet Glob Heal*. 2018 Jul;6(7):e758–68.
- 488 12. Rojas-Lopez L, Elwin K, Chalmers RM, Enemark HL, Beser J, Troell K. Development of a
489 gp60-subtyping method for *Cryptosporidium felis*. *Parasit Vectors* [Internet]. 2020;13(1):39.
490 Available from: <https://doi.org/10.1186/s13071-020-3906-9>
- 491 13. Chalmers RM, Robinson G, Elwin K, Elson R. Analysis of the *Cryptosporidium* spp. and gp60
492 subtypes linked to human outbreaks of cryptosporidiosis in England and Wales, 2009 to 2017.
493 *Parasit Vectors* [Internet]. 2019;12(1):95. Available from: [https://doi.org/10.1186/s13071-019-](https://doi.org/10.1186/s13071-019-3354-6)
494 [3354-6](https://doi.org/10.1186/s13071-019-3354-6)
- 495 14. Nadon CA, Trees E, Ng LK, Møller Nielsen E, Reimer A, Maxwell N, et al. Development and

- 496 application of MLVA methods as a tool for inter-laboratory surveillance. *Euro Surveill Bull Eur*
497 *sur les Mal Transm = Eur Commun Dis Bull*. 2013 Aug;18(35):20565.
- 498 15. Robinson G, Pérez-Cordón G, Hamilton C, Katzer F, Connelly L, Alexander CL, et al.
499 Validation of a multilocus genotyping scheme for subtyping *Cryptosporidium parvum* for
500 epidemiological purposes. *Food Waterborne Parasitol* [Internet]. 2022;27:e00151. Available
501 from: <https://www.sciencedirect.com/science/article/pii/S2405676622000087>
- 502 16. Lake IR, Harrison FCD, Chalmers RM, Bentham G, Nichols G, Hunter PR, et al. Case-control
503 study of environmental and social factors influencing cryptosporidiosis. *Eur J Epidemiol*
504 [Internet]. 2007;22(11):805. Available from: <https://doi.org/10.1007/s10654-007-9179-1>
- 505 17. PINTAR KDM, POLLARI F, WALTNER-TOEWS D, CHARRON DF, McEWEN SA, FAZIL A, et
506 al. A modified case-control study of cryptosporidiosis (using non-*Cryptosporidium*-infected
507 enteric cases as controls) in a community setting. *Epidemiol Infect* [Internet]. 2009/06/16.
508 2009;137(12):1789–99. Available from: [https://www.cambridge.org/core/article/modified-](https://www.cambridge.org/core/article/modified-casecontrol-study-of-cryptosporidiosis-using-noncryptosporidiuminfected-enteric-cases-as-controls-in-a-community-setting/D41B4DC8FAEA4000BA4CD6A82D2F7934)
509 [casecontrol-study-of-cryptosporidiosis-using-noncryptosporidiuminfected-enteric-cases-as-](https://www.cambridge.org/core/article/modified-casecontrol-study-of-cryptosporidiosis-using-noncryptosporidiuminfected-enteric-cases-as-controls-in-a-community-setting/D41B4DC8FAEA4000BA4CD6A82D2F7934)
510 [controls-in-a-community-setting/D41B4DC8FAEA4000BA4CD6A82D2F7934](https://www.cambridge.org/core/article/modified-casecontrol-study-of-cryptosporidiosis-using-noncryptosporidiuminfected-enteric-cases-as-controls-in-a-community-setting/D41B4DC8FAEA4000BA4CD6A82D2F7934)
- 511 18. Betancourt WQ, Rose JB. Drinking water treatment processes for removal of *Cryptosporidium*
512 and *Giardia*. *Vet Parasitol*. 2004 Dec;126(1–2):219–34.
- 513 19. Hunter PR, Hughes S, Woodhouse S, Syed Q, Verlander NQ, Chalmers RM, et al. Sporadic
514 cryptosporidiosis case-control study with genotyping. *Emerg Infect Dis*. 2004;10(7):1241–9.
- 515 20. Chalmers RM, Smith R, Elwin K, Clifton-Hadley FA, Giles M. Epidemiology of anthroponotic
516 and zoonotic human cryptosporidiosis in England and Wales, 2004 to 2006. *Epidemiol Infect*.
517 2011 May;139(5):700–12.
- 518 21. Osborn A. Overseas residents in the UK and UK residents abroad: 2020 [Internet]. 2021.
519 Available from:
520 <https://www.ons.gov.uk/peoplepopulationandcommunity/leisureandtourism/datasets/oversear>
521 [esidentsintheukandukresidentsabroad](https://www.ons.gov.uk/peoplepopulationandcommunity/leisureandtourism/datasets/oversear)
- 522 22. Statista. Holiday-related search terms with the highest year-over-year growth following the
523 COVID-19 lockdown in the United Kingdom (UK) in July 2020 [Internet]. 2021 [cited 2021 Oct
524 8]. Available from: [https://www.statista.com/statistics/1175666/growth-in-holiday-search-terms-](https://www.statista.com/statistics/1175666/growth-in-holiday-search-terms-uk/)
525 [uk/](https://www.statista.com/statistics/1175666/growth-in-holiday-search-terms-uk/)
- 526 23. Burnett H, Olsen JR, Nicholls N, Mitchell R. Change in time spent visiting and experiences of
527 green space following restrictions on movement during the COVID-19 pandemic: a nationally
528 representative cross-sectional study of UK adults. *BMJ Open* [Internet]. 2021 Mar
529 1;11(3):e044067. Available from: <http://bmjopen.bmj.com/content/11/3/e044067.abstract>
- 530 24. Natural England. People and Nature Survey: How has COVID-19 changed the way we engage
531 with nature? [Internet]. 2022. Available from:
532 [https://naturalengland.blog.gov.uk/2022/05/18/people-and-nature-survey-how-has-covid-19-](https://naturalengland.blog.gov.uk/2022/05/18/people-and-nature-survey-how-has-covid-19-changed-the-way-we-engage-with-nature/)
533 [changed-the-way-we-engage-with-nature/](https://naturalengland.blog.gov.uk/2022/05/18/people-and-nature-survey-how-has-covid-19-changed-the-way-we-engage-with-nature/)

- 534 25. Office for National Statistics. How has lockdown changed our relationship with nature?
535 [Internet]. London; 2021. Available from:
536 <https://www.ons.gov.uk/economy/environmentalaccounts/articles/howhaslockdownchangedour>
537 [relationshipwithnature/2021-04-26](https://www.ons.gov.uk/economy/environmentalaccounts/articles/howhaslockdownchangedourrelationshipwithnature/2021-04-26)
- 538 26. Alzyood M, Jackson D, Aveyard H, Brooke J. COVID-19 reinforces the importance of
539 handwashing. Vol. 29, *Journal of clinical nursing*. 2020. p. 2760–1.
- 540 27. Barrett C, Cheung KL. Knowledge, socio-cognitive perceptions and the practice of hand
541 hygiene and social distancing during the COVID-19 pandemic: a cross-sectional study of UK
542 university students. *BMC Public Health* [Internet]. 2021;21(1):426. Available from:
543 <https://doi.org/10.1186/s12889-021-10461-0>
- 544 28. Love NK, Elliot AJ, Chalmers RM, Douglas A, Gharbia S, McCormick J, et al. Impact of the
545 COVID-19 pandemic on gastrointestinal infection trends in England, February–July 2020. *BMJ*
546 *Open* [Internet]. 2022 Mar 1;12(3):e050469. Available from:
547 <http://bmjopen.bmj.com/content/12/3/e050469.abstract>
- 548 29. Robinson G, Elwin K, Chalmers RM. Cryptosporidium Diagnostic Assays: Molecular Detection
549 BT - Cryptosporidium: Methods and Protocols. In: Mead JR, Arrowood MJ, editors. New York,
550 NY: Springer New York; 2020. p. 11–22. Available from: https://doi.org/10.1007/978-1-4939-9748-0_2
- 552 30. Office for National Statistics. Mapping income deprivation at a local authority level [Internet].
553 2019. Available from:
554 <https://www.ons.gov.uk/peoplepopulationandcommunity/personalandhouseholdfinances/incom>
555 [eandwealth/datasets/mappingincomedeprivationatalocalauthoritylevel](https://www.ons.gov.uk/peoplepopulationandcommunity/personalandhouseholdfinances/incomeandwealth/datasets/mappingincomedeprivationatalocalauthoritylevel)
- 556 31. Office for National Statistics. Rural/urban classifications [Internet]. 2011. Available from:
557 <https://www.ons.gov.uk/methodology/geography/geographicalproducts/ruralurbanclassification>
558 [s](https://www.ons.gov.uk/methodology/geography/geographicalproducts/ruralurbanclassifications)
- 559 32. Bhaskaran K, Gasparri A, Hajat S, Smeeth L, Armstrong B. Time series regression studies in
560 environmental epidemiology. *Int J Epidemiol* [Internet]. 2013 Aug 1;42(4):1187–95. Available
561 from: <https://doi.org/10.1093/ije/dyt092>
- 562 33. Kim H, Lee J-T, Fong KC, Bell ML. Alternative adjustment for seasonality and long-term time-
563 trend in time-series analysis for long-term environmental exposures and disease counts. *BMC*
564 *Med Res Methodol* [Internet]. 2021;21(1):2. Available from: [https://doi.org/10.1186/s12874-](https://doi.org/10.1186/s12874-020-01199-1)
565 [020-01199-1](https://doi.org/10.1186/s12874-020-01199-1)
- 566 34. You C, Lin DKJ, Young SS. Time series smoother for effect detection. *PLoS One*.
567 2018;13(4):e0195360.
- 568 35. Cavanaugh JE, Neath AA. The Akaike information criterion: Background, derivation,
569 properties, application, interpretation, and refinements. *WIREs Comput Stat* [Internet]. 2019
570 May 1;11(3):e1460. Available from: <https://doi.org/10.1002/wics.1460>
- 571 36. Chalmers RM, Elwin K, Thomas AL, Guy EC, Mason B. Long-term *Cryptosporidium* typing

572 reveals the aetiology and species-specific epidemiology of human cryptosporidiosis in England
573 and Wales, 2000 to 2003. *Eurosurveillance*. 2009;14(2):2.

574 37. Love NK, Elliot AJ, Chalmers RM, Douglas A, Gharbia S, McCormick J, et al. The impact of
575 the COVID-19 pandemic on gastrointestinal infection trends in England, February – July 2020.
576 medRxiv [Internet]. 2021 Jan 1;2021.04.06.21254174. Available from:
577 <http://medrxiv.org/content/early/2021/04/08/2021.04.06.21254174.abstract>

578 38. Mertens G, Gerritsen L, Duijndam S, Salemink E, Engelhard IM. Fear of the coronavirus
579 (COVID-19): Predictors in an online study conducted in March 2020. *J Anxiety Disord*
580 [Internet]. 2020;74:102258. Available from:
581 <https://www.sciencedirect.com/science/article/pii/S0887618520300724>

582 39. Rodríguez-Hidalgo AJ PY, D DI and F. Fear of COVID-19, Stress, and Anxiety in University
583 Undergraduate Students: A Predictive Model for Depression. *Front Psychol* [Internet].
584 2020;11:1–9. Available from: <https://doi.org/10.3389/fpsyg.2020.591797>

585 40. Public Health England. *Cryptosporidium* data 2008 to 2017 [Internet]. London; 2019. Available
586 from: [https://www.gov.uk/government/publications/cryptosporidium-national-laboratory-
587 data/cryptosporidium-data-2008-to-2017#cryptosporidium-data-2008-to-2017](https://www.gov.uk/government/publications/cryptosporidium-national-laboratory-data/cryptosporidium-data-2008-to-2017#cryptosporidium-data-2008-to-2017)

588 41. Gopfert A, Chalmers RM, Whittingham S, Wilson L, van Hove M, Ferraro CF, et al. An
589 outbreak of *Cryptosporidium parvum* linked to pasteurised milk from a vending machine in
590 England – a descriptive study, March 2021. *Epidemiol Infect*. 2022;

591 42. Chalmers RM, McCarthy N, Barlow KL, Stiff R. An evaluation of health protection practices for
592 the investigation and management of *Cryptosporidium* in England and Wales. *J Public Heal*.
593 2016 Mar 1;388(1):1291–301.

594 43. Health Protection Agency. Standard Gastrointestinal Disease Questionnaire [Internet]. 2004 p.
595 2–4. Available from:
596 [https://assets.publishing.service.gov.uk/government/uploads/system/uploads/attachment_data/
597 file/327958/gast_StandardGastro.pdf](https://assets.publishing.service.gov.uk/government/uploads/system/uploads/attachment_data/file/327958/gast_StandardGastro.pdf)

598

599

600 **Author contributions**

601 James P. Adamson undertook the data cleaning, ran the time-series analysis, undertook
602 statistical tests, produced the tables and figure, and drafted and edited the manuscript.

603 Rachel Chalmers helped set the research question, provided background on
604 *Cryptosporidium* spp., helped resolve data queries and helped edit the manuscript.

605 Kristin Elwin and Guy Robinson developed, validated and ran the laboratory processes that
606 produced the typing results at the CRU and provided background on *Cryptosporidium* spp.

607 Daniel Thomas critically appraised the manuscript, helped to redraft and format it, and
608 provided project supervision and quality assurance.

609 Alicia Barrasa supervised the time-series analysis, advising with coding and providing script
610 quality assurance support. She also critically appraised the manuscript and provided project
611 supervision.

612 All authors read the manuscript and suggested various revisions.

613 **Acknowledgements**

614 Heather Ayres, Lead Biomedical Scientist, Cryptosporidium Reference Unit, Public Health
615 Wales, Swansea, UK for specimen management and PCR testing.

616 Jonathan Goss, Biomedical Support Worker, Cryptosporidium Reference Unit, Public Health
617 Wales, Swansea, UK for specimen reception and DNA extraction.

618 **Conflicts of interest**

619 None

620 **Ethics**

621 Ethical oversight of the project was provided by the Public Health Wales Research and
622 Development Division. As this work was carried out using routinely collected surveillance
623 data, PHW Research and Development Division advised that NHS research ethics approval
624 was not required. Data were held and processed under PHW's information governance
625 arrangements, in compliance with the Data Protection Act, Caldicott Principles and PHW
626 guidance on the release of small numbers. No data identifying protected characteristics of an
627 individual were released outside of the project team.

628 **Funding**

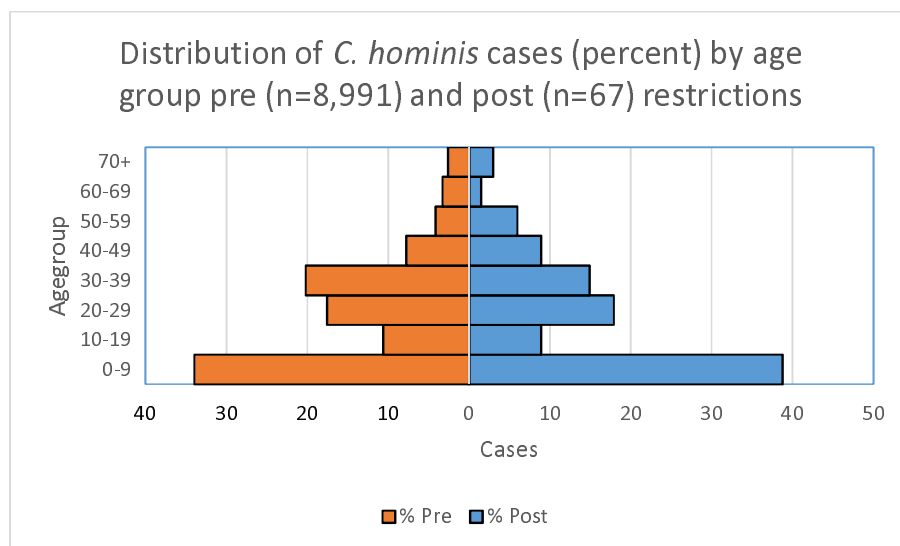
629 No additional funding was received to undertake this time-series analysis; *Cryptosporidium*
630 genotyping is part of the core service of the Cryptosporidium Reference Unit and
631 surveillance represents part of the core duties of the Communicable Disease Surveillance
632 Centre. Both teams are part of Public Health Wales' Health Protection and Microbiology
633 Division.

634 **Data Availability Statement**

635 The data used in this analysis contained personal identifiable information. Anonymised
636 information, including that contained in the supplementary information, is reported by Public
637 Health Wales and the UKHSA and published on the UK Government website. Datasets and
638 coding scripts required to reproduce these results are available from the corresponding
639 author on reasonable request.

640

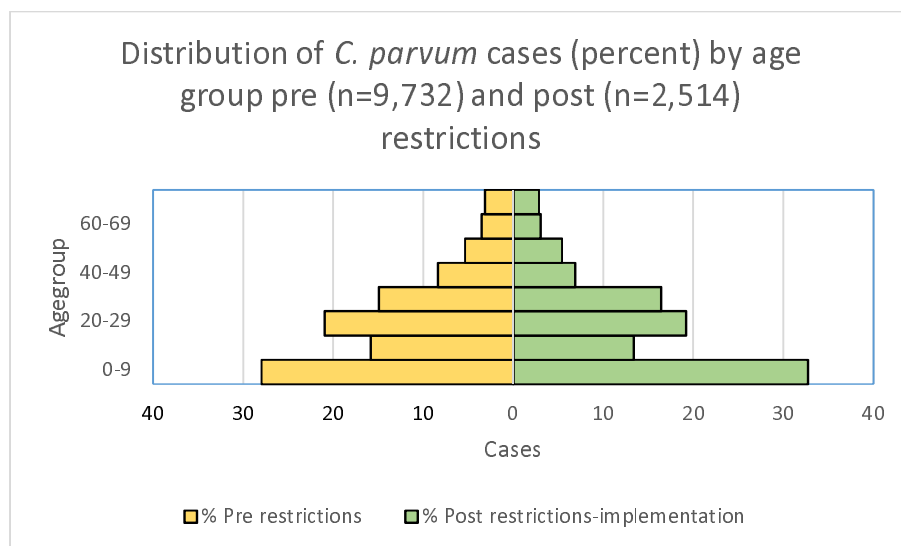
Supplementary information



641

642 **SI Figure 1. Distribution of *C. hominis* cases (percent) by age group pre**
643 **(n=8,991) and post (n=67) restrictions-implementation**

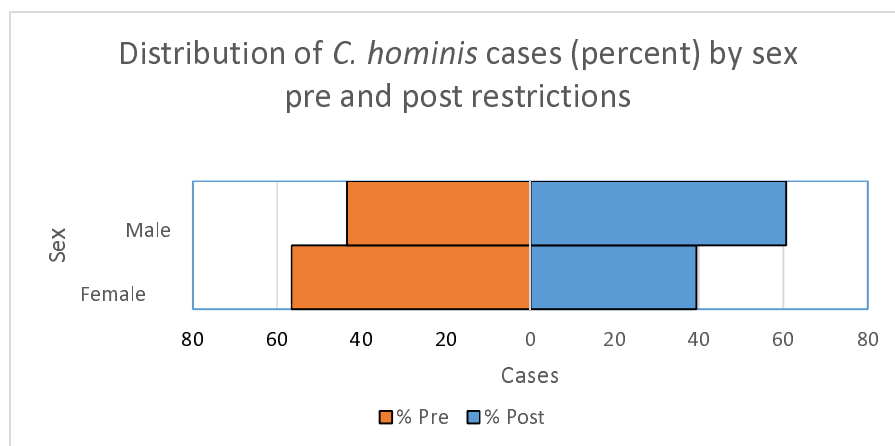
644



645

646 **SI Figure 2. Distribution of *C. parvum* cases (percent) by age group pre**
647 **(n=9,732) and post (n=2,514) restrictions-implementation**

648

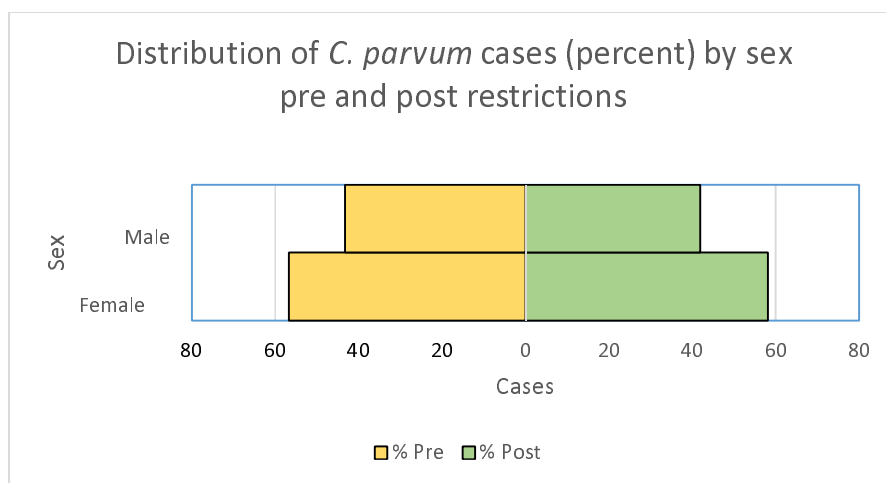


649

650 **SI Figure 3. Distribution of *C. hominis* cases (percent) by sex pre (n=8,957) and**
651 **post (n=66) restrictions-implementation**

652

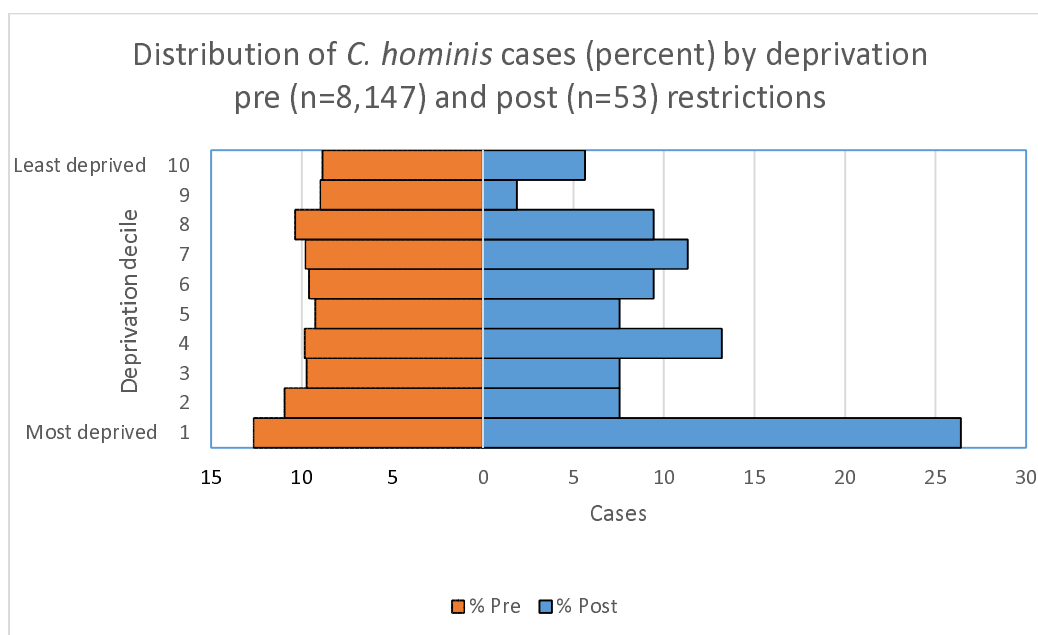
653



654

655 **SI Figure 4. Distribution of *C. parvum* cases (percent) by sex pre (n=9,710) and**
656 **post (n=2,507) restrictions-implementation**

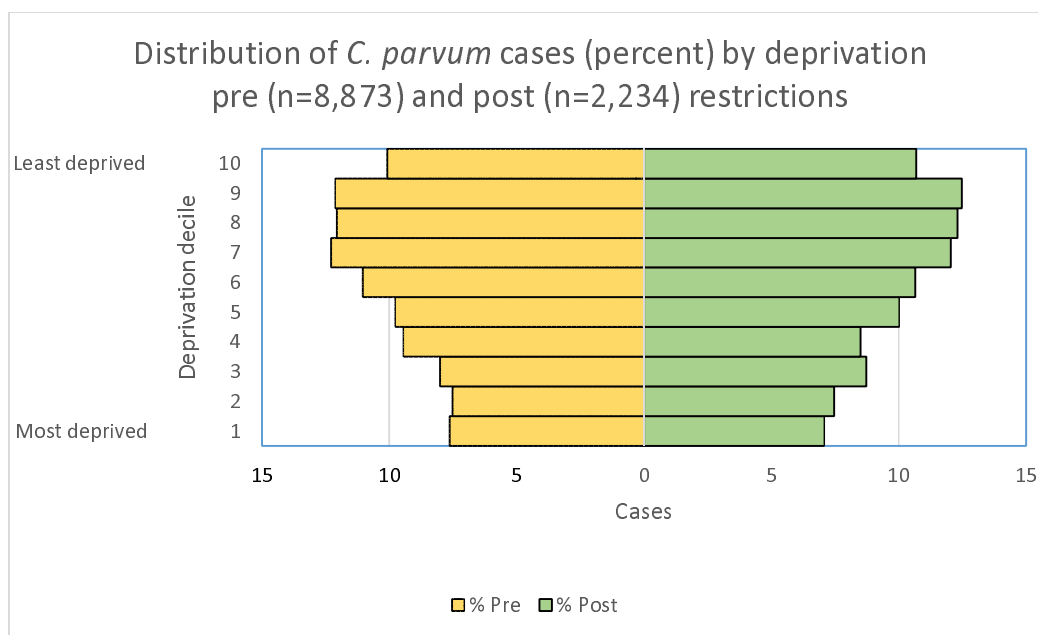
657



658

659 **SI Figure 5. Distribution of *C. hominis* cases (percent) by deprivation pre**
660 **(n=8,147) and post (n=53) restrictions-implementation**

661

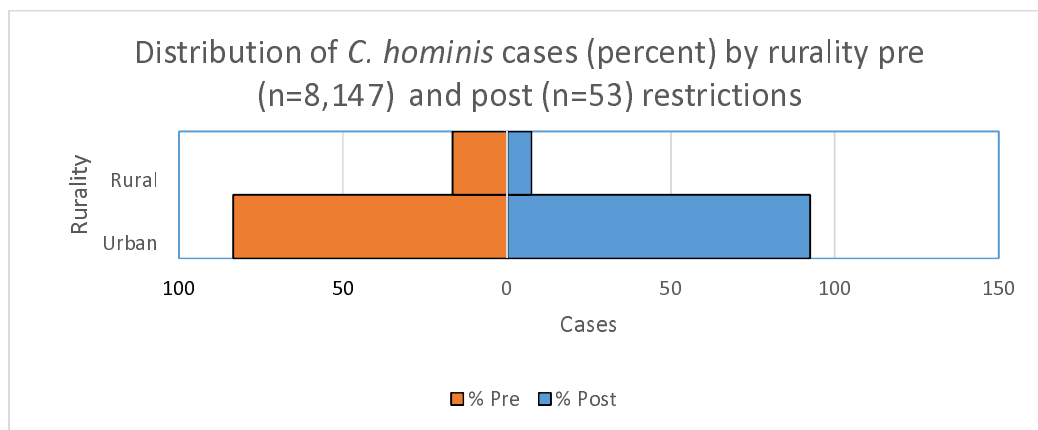


662

663 **SI Figure 6. Distribution of *C. parvum* cases (percent) by deprivation pre**
664 **(n=8,873) and post (n=2,234) restrictions-implementation**

665

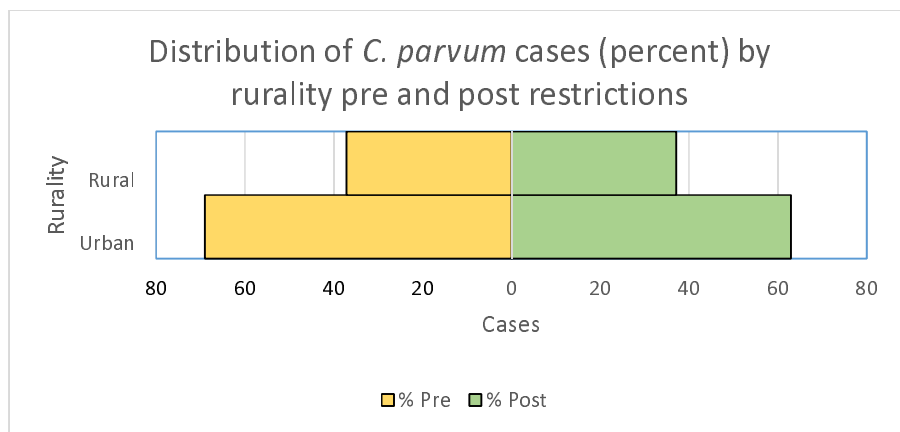
666



667

668 **SI Figure 7. Distribution of *C. hominis* cases (percent) by residence rurality pre**
669 **(n=8,147) and post (n=53) restrictions-implementation**

670



671

672 **SI Figure 8. Distribution of *C. parvum* cases (percent) by residence rurality pre**
 673 **(n=8,873) and post (n=2,273) restrictions-implementation**

674

PERSONAL DETAILS

1.1 Forename Surname

1.2 Address

.....

Postcode

Telephone numbers Home Daytime

1.3 Sex: Male Female 1.4 Date of Birth/...../.....
 dd/mm/yy

1.5 GP's name

Surgery address

1.6 Describe your cultural background (please choose one):

White: British Irish Other please state

Mixed: White and Black Caribbean White and Black African White and Asian
 Other please state

Black or Black British: Caribbean African Other please state

IN CONFIDENCE

2

Chinese or other ethnic group: Chinese Any other please state

675

TRAVEL HISTORY

5.1 Did you spend any nights **OUTSIDE** the UK in the **5 DAYS** before you became ill?

Yes No

If **YES** give details:

Dates of travel departure . . . J . . . J return . . . J . . . J

Name of hotel(s)/campsite(s) visited

Town(s)/resort(s) visited

Country(ies) visited

Name of tour operator

5.2 Did you spend any nights away from home but **WITHIN** the UK in the **5 DAYS** before you became ill? (Includes staying at friends/relatives, recreational/business trips etc)

Yes No

If **YES** give details:

Dates of travel departure . . . J . . . J return . . . J . . . J

Place visited (Hotel, friend's house etc).....

Town(s)/village(s) visited

676

677 **SI Figure 9. UKHSA Standard Gastrointestinal Disease Questionnaire (2004)**

678 **extract containing categories for ethnicity and travel history data collection**