

Impact of the COVID-19 restrictions on the epidemiology of *Cryptosporidium* spp. in England and Wales, 2015-2021

A time-series analysis

Authors

Adamson JP^{*1,3}, Chalmers R M.^{2,4}, Thomas D Rh¹, Elwin K², Robinson G^{2,4}, Barrasa A³

*Corresponding author

James Adamson

CDSC Public Health Wales, Cardiff, Wales, UK

james.adamson2@wales.nhs.uk

[0044] (0)29 2022 7744

Author affiliations

1. Communicable Disease Surveillance Centre, Public Health Wales, Cardiff
2. Cryptosporidium reference unit, Public Health Wales, Swansea
3. UK Field epidemiology training programme, UK Health Security Agency, London
4. Swansea University Medical School, Swansea University, Swansea, UK

1 Abstract

2 Background

3 In England and Wales, cryptosporidiosis cases peak in spring and autumn, usually
4 associated with zoonotic and environmental exposures (*Cryptosporidium parvum*,
5 spring/autumn) and with overseas travel and water-based activities (*Cryptosporidium*
6 *hominis*, autumn). Restrictions to control the COVID-19 pandemic prevented social mixing
7 and access to swimming pools and restaurants for many months. Foreign travel from the UK
8 also reduced by 74% in 2020. However, these restrictions potentially increased
9 environmental exposures as people sought alternative countryside activities locally. To
10 inform and strengthen surveillance programmes, we investigated the impact of COVID-19
11 restrictions on the epidemiology of *C. hominis* and *C. parvum* cases.

12 Methods

13 *Cryptosporidium*-positive stools, with case demographic data, are referred routinely for
14 genotyping to the national Cryptosporidium Reference Unit (CRU). Cases were extracted
15 from the CRU database (01 January 2015 to 31 December 2021). We defined two periods
16 for pre- and post-COVID-19 restrictions implementation corresponding to the first UK-wide
17 lockdown on 23 March 2020: “pre-restrictions” between week 1, 2015 and week 12, 2020.

18 and “post restrictions-implementation” between week 13, 2020 and week 52, 2021. We
19 conducted an interrupted time-series analysis, assessing differences in *C. parvum* and *C.*

20 *hominis* incidence, trends and periodicity between these periods using negative binomial
21 regression with linear-splines and interactions.

22 **Results**

23 There were 21,304 cases between 01 January 2015 and 31 December 2021 (*C. parvum* =
24 12,246; *C. hominis* = 9,058). Post restrictions-implementation incidence of *C. hominis*
25 dropped by 97.5% (95%CI: 95.4%-98.6%; $p < 0.001$). The decreasing incidence-trend
26 observed pre-restrictions (IRR=0.9976; 95%CI: 0.9969-0.9982; $p < 0.001$) was not observed
27 post restrictions-implementation (IRR=1.0081; 95%CI: 0.9978-1.0186; $p = 0.128$) due to lack
28 of cases. No periodicity change was observed post restrictions-implementation. Where
29 recorded, 22% of *C. hominis* cases had travelled abroad. There was also a strong social
30 gradient, with those who lived in deprived areas experiencing a higher proportion of cases.
31 This gradient did not exist post restrictions-implementation, but the effect was exacerbated
32 for the most deprived: 27.2% of cases from the most deprived decile compared to 12.7% in
33 the pre-restrictions period. For *C. parvum*, post restrictions-implementation incidence fell by
34 49.0% (95%CI: 38.4%-58.3%; $p < 0.001$). There was no pre-restrictions incidence-trend
35 (IRR=1.0003; 95%CI: 0.9997-1.0009; $p = 0.322$) but a slight increasing incidence-trend
36 existed post restrictions-implementation (IRR=1.0071; 95%CI: 1.0038-1.0104; $p < 0.001$). A
37 periodicity change was observed for *C. parvum* post restrictions-implementation, peaking
38 one week earlier in spring and two weeks later in autumn. Where recorded, 8% of *C. parvum*
39 cases had travelled abroad. The social gradient observed for *C. parvum* was inverse to that
40 for *C. hominis*, and was stable pre-restrictions and post restrictions-implementation.

41 **Conclusion**

42 *C. hominis* cases were almost entirely arrested post restrictions-implementation, reinforcing
43 that foreign travel is a major driver of seeding infections. Increased hand-hygiene, reduced
44 social mixing, limited access to swimming pools and limited foreign travel affected incidence
45 of most gastrointestinal (GI) pathogens, including *Cryptosporidium*, in the same period. *C.*
46 *parvum* incidence fell sharply but recovered throughout the post restrictions-implementation
47 period, back to pre-restrictions levels by the end of 2021; this is consistent with relaxation of
48 restrictions, reduced compliance and increased countryside use. The effect on our results of
49 changes in health-seeking behaviours, healthcare access and diagnostic laboratory
50 practices post restrictions-implementation is uncertain, but it is likely that access to GPs and
51 specimen referral rate to CRU decreased. Future exceedance reporting for *C. hominis*
52 should exclude the post restrictions-implementation period but retain it for *C. parvum* (except
53 the first six weeks post restrictions-implementation where the incidence fell sharply). Advice
54 on infection prevention and control should be improved for people with GI symptoms,
55 including returning travellers, to ensure hand hygiene and appropriate swimming pool
56 avoidance.

57 **Nomenclature**

58 AIC - Akaike information criterion

59 *C. hominis* – *Cryptosporidium hominis*

60 *C. parvum* – *Cryptosporidium parvum*

61 CI – confidence interval

62 GI – gastrointestinal illness

63 IPC – infection prevention and control

64 IRR – incidence rate ratio

65 PCR – polymerase chain reaction

66 CRU - *Cryptosporidium* Reference Unit

67 MLVA - multi-locus variable number of tandem repeats analysis

68 UK – United Kingdom

69 TSA – time series analysis

70

71 **Word count**

72 3,527 excluding abstract

73

74 **Data summary**

75 *Cryptosporidium* is a notifiable agent in the UK which diagnostic laboratories must
76 report to local health protection teams. Submission of *Cryptosporidium*-positive stools
77 to the CRU is voluntary, but allows characterisation of the species. We used these
78 data, where the specimen originated from English and Welsh diagnostic laboratories,
79 to describe the epidemiology of *Cryptosporidium* spp. between 2015 and 2021.

80 **Impact statement**

81 *Cryptosporidium* infections in industrialised countries can cause serious disease and
82 lead to complicated and lasting sequelae, especially in the immunocompromised.
83 Even in the general population, as well as long term gastrointestinal upset, joint pain,
84 headache and eye pain have also been identified more frequently following
85 cryptosporidiosis (1). There is an established association between cryptosporidiosis
86 and colorectal cancer, although no conclusive evidence regarding causality in either
87 direction (2–5). There has never been such a dramatic reduction in international travel
88 in the modern era than during the COVID-19 pandemic, which is a key driver of *C.*
89 *hominis* infections. Conversely, pressure on outdoor amenities has rarely been higher,
90 which posed an increase in the likelihood of infection and cross-contamination for *C.*

91 *parvum* infections. There have been few time-series analyses of cryptosporidiosis; in
92 order to inform and strengthen surveillance programmes, we aimed to assess if there
93 was a significant change to the epidemiology of *C. parvum* and *C. hominis* during the
94 COVID-19 pandemic.

95

96 **Introduction**

97 Cryptosporidiosis is a zoonotic disease caused primarily by the protozoan parasites
98 *Cryptosporidium hominis* and *Cryptosporidium parvum*. It is most common in children
99 aged between one and five years (6–8). People with weak immune systems, especially
100 severe T-cell deficiencies, are usually more seriously affected (9,10). The most
101 common symptom is mild to severe watery diarrhoea, often accompanied by
102 abdominal cramps, nausea/vomiting, low-grade fever, weight loss and dehydration (7).

103 Symptoms begin three to 12 days (average five to seven days) after infection. In
104 healthy people, symptoms usually last about one to two weeks but can persist for up
105 to a month. The symptoms may be cyclical, where patients seem to get better for a
106 few days, then feel worse again before the illness ends. In the immunocompromised,
107 illness can be severe and protracted and sometimes fatal. There is an association with
108 previous infection and developing colorectal cancer, although no causative proof (2–
109 5). Long-term sequelae such as diarrhoea, abdominal pain, nausea, fatigue and
110 headache are common (1) and infection can cause cognitive deficit and failure to thrive
111 in malnourished young children in moderate-to-low income countries (11).

112 Diagnosis is performed by microscopy (acid-fast or fluorescent staining) or
113 immunoassay to detect oocyst antigens or PCR to detect DNA. Genotyping by PCR
114 is used as a reference test to differentiate species; *C. parvum* and *C. hominis* may be
115 further sub-typed by sequencing part of the *gp60* gene (12,13) at the national
116 *Cryptosporidium* Reference Unit (CRU) in Swansea, Wales. A multi-locus variable
117 number of tandem repeats analysis (MLVA) (14) by fragment sizing has been validated
118 and recently implemented by the CRU (15).

119 *C. parvum* also affects ruminants (mainly sheep and cattle in the UK) and is zoonotic
120 while *C. hominis* is predominantly anthroponotic (transmitted directly or indirectly from
121 person-to-person) (6–8). Household transmission is important, especially for *C.*
122 *hominis* (8). Outbreaks of cryptosporidiosis have been linked to drinking or swimming
123 in and ingesting contaminated water, contact with infected lambs and calves during
124 visits to open or commercial farms, person to person spread in institutional settings

125 and consumption of contaminated food items (7,16,17). The parasites are resistant to
126 chlorine but large enough to be captured by appropriate water filtration systems (18).
127 The majority of outbreaks in England and Wales are linked to animal contact at
128 open/petting farms (exclusively *C. parvum*) and swimming pools (vast majority *C.*
129 *hominis*) (13).

130 UK cryptosporidiosis cases display a seasonal trend: a late spring peak for *C. parvum*
131 (often associated with greater countryside activities, opening of farm-based leisure
132 activities and the lambing season) and an early autumn peak for *C. hominis* (often
133 associated with overseas travel and summer activities such as swimming) (19,20).

134 COVID-19 greatly limited foreign travel for most UK residents in 2020; official figures
135 show a 74% reduction in visits abroad for any reason (21), whereas the previous
136 decade had seen a steady growth in foreign travel. There was a more than 500%
137 increase in the number of people seeking holidays or leisure activities within the UK in
138 2020 (22) and also an increase in the number of people using outdoor spaces in the
139 UK in 2020-21, including walking, cycling or “wild” swimming (23–25). Furthermore,
140 people might have undertaken these activities in areas new to them and where they
141 were unaware of locally understood health risks. People were also more likely to wash
142 their hands and less likely to use swimming pools and restaurants because of COVID-
143 19 restrictions (26,27). Reductions in GI illness were observed across all surveillance
144 indicators as COVID-19 started to peak. Compared with the 5-year average (2015–
145 2019), there was a 52% reduction in GI outbreaks reported during the first 6 months
146 of the COVID-19 response (28). We aimed to assess if COVID-19 restrictions caused
147 a significant change to the epidemiology of *C. parvum* and *C. hominis*.

148

149 **Methods**

150 **Study design**

151 To estimate the impact of COVID-19 restrictions on *C. hominis* and *C. parvum*, we
152 conducted a retrospective observational study using interrupted time-series analysis
153 with generalised linear modelling.

154

155 **Study population and data source**

156 We analysed all confirmed cases of all *Cryptosporidium* species (29) extracted from
157 the CRU database for the period between 01 January 2015 to 31 December 2021.
158 Date of case was defined as the date the specimen was received by the CRU. Records

159 were imported into Stata V14 and cleaned to remove quality control specimen data
160 and duplicate reports. We retained only cases with *C. hominis* and *C. parvum*
161 infections who were resident in England and Wales or, if the case's address was not
162 known, where the specimen had been sent to the CRU from a laboratory in England
163 and Wales. We merged the CRU data using case's resident postcode with Office for
164 National Statistics (ONS) data for deprivation (30) and rural/urban classification (31).
165 We used the date of the first UK-wide lockdown on 23 March 2020 (week 13) to create
166 a pre-restrictions period and a post restrictions-implementation period (COVID=0
167 between week 1, 2015 and week 12, 2020 and COVID=1 between week 13, 2020 and
168 week 52, 2021).

169

170 **Statistical analysis**

171 We stratified results by age, sex, deprivation, rural/urban assignment and foreign
172 travel. Foreign travel is often poorly recorded on stool specimen forms. Those with
173 foreign travel indicated are considered reliable data by the CRU but those with "no",
174 "null" or missing are not considered reliable. Here, proportion with foreign travel was
175 calculated as total indicating yes to foreign travel for that subgroup, divided by the total
176 number of cases. Time series analysis uses regression methods to illustrate trends in
177 the data. It incorporates information from past observations and past errors in those
178 observations into the estimation of predicted values (32–34). We conducted an
179 interrupted time-series analysis for *C. hominis* and *C. parvum* cases using negative
180 binomial regression to account for over dispersion and secular trend. Models included
181 linear splines to test for differences in incidence between the pre- and post-restriction
182 periods, and Fourier analysis to adjust for underlying periodicity. Selection of the final
183 model was informed by the Akaike information criterion (AIC)(35).

184 A separate model, following the same principles as above, was built for *C. hominis*
185 and *C. parvum* cases up to week 13, 2020 and then extended to week 52, 2021 to
186 forecast the number of cases expected had COVID-19 not occurred.

187

188 **Results**

189 **Descriptive epidemiology**

190 There were 21,304 cases between 01 January 2015 to 31 December 2021 (*C.*
191 *hominis*=9,058; *C. parvum*=12,246). There were 8,991 cases of *C. hominis* pre-
192 restrictions and 67 post restrictions-implementation compared to 9,732 cases of *C.*
193 *parvum* pre-restrictions and 2,514 post restrictions-implementation. For *C. hominis*,

194 weekly case-total variation was between zero to 180 cases pre-restrictions and zero
195 to four cases post restrictions-implementation. For *C. parvum*, the range was zero to
196 162 pre-restrictions and six to 63 post restrictions-implementation. A periodicity of 52
197 weeks was observed for *C. hominis* and of 26 and 52 weeks for *C. parvum*.

198 Age data was complete but sex classification was unknown for 0.4% of *C. hominis*
199 (n=35) and 0.2% (n=29) of *C. parvum* cases. Age distribution was similar pre- and
200 post- restrictions for *C. hominis* (SI figure 1) and *C. parvum* (SI figure 2), with children
201 aged 0-9 years experiencing a higher proportion of cases.

202 Cases of *C. hominis* were more likely to be female pre-restrictions but male post
203 restrictions-implementation(SI figures 3). For *C. parvum*, cases were more likely to be
204 female pre-restrictions and post restrictions-implementation (SI figure 4).

205 Postcodes were not recorded for approximately 10% of cases (*C. hominis* n=858; *C.*
206 *parvum* n=1,139), meaning that deprivation and rural/urban ranking could not be
207 assigned. There was a social gradient observed for *C. hominis* cases pre-restrictions,
208 where the proportion of cases increased with deprivation. This social gradient didn't
209 remain post restrictions-implementation but there was a large increase in the
210 proportion of cases from the most deprived decile (SI figure 5), where 27.2% of *C.*
211 *hominis* cases were from the most deprived decile compared to 12.7% pre-restrictions.
212 For *C. parvum* cases, the social gradient was the inverse of *C. hominis* but remained
213 stable pre- and post restrictions-implementation, with at 7.6% and 6.7% respectively
214 in the most deprived decile (SI figure 6).

215 Cases were more likely to live in an urban area for both species pre-restrictions and
216 post restrictions-implementation. The protective nature of rural residence was more
217 pronounced for *C. hominis* cases (SI figure 7) than for *C. parvum* cases (SI figure 8).
218 Foreign travel status was missing for most cases (*C. hominis* missing=65%, n=5,865;
219 *C. parvum* missing=75%, n=9,137). Where recorded, 65% of *C. hominis* cases
220 (n=1,980 pre-restrictions [63%]; n=22 post restrictions-implementation [76%]) and
221 33% of *C. parvum* cases (n=970 pre-restrictions [34%]; n=41 post restrictions-
222 implementation [14%]) had travelled abroad. For *C. hominis* cases, the most common
223 travel destinations pre-restrictions were Spain (n=296), Turkey (n=149), Pakistan
224 (n=135), India (n=124) and Egypt (n=98). These cases were distributed fairly evenly
225 across all deprivation deciles with the exception of Pakistan where 67% were from
226 cases in deciles one to three. Post restrictions-implementation, 22 *C. hominis* cases
227 had travelled to Pakistan and half of these cases were in deprivation deciles one to

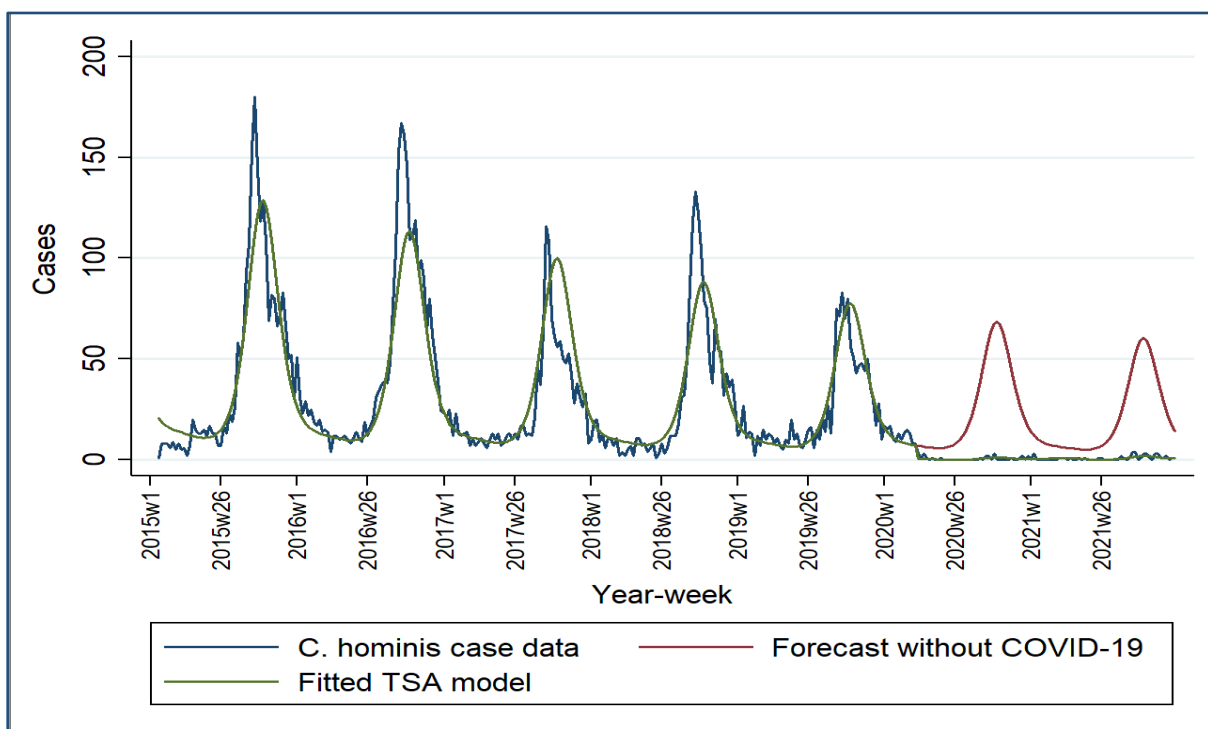
228 three. For *C. parvum* cases, the most common travel destinations pre-restrictions were
229 Portugal (n=69), Spain (n=65), Turkey (n=64), France (n=63), Pakistan (n=51) and
230 India (n=35). These cases were again distributed fairly evenly across all deprivation
231 deciles with the exception of those who had been to Pakistan, with 63% (n=32) of
232 cases ranked in deciles one to three.

233

234 Time series analysis

235 For both species, our final TSA model was improved by using Fourier transforms for
236 26 week and 52 week periodicity, based on the AIC test results. A negative binomial
237 regression model provided a better fit than a Poisson model. The time-series data for
238 *C. hominis* had a main periodicity of 52 weeks, with annual peaks clearly visible in
239 autumn. An interaction was found between our COVID variable and both Fourier
240 waves so these were retained in our final model. Comparing the two models (full
241 dataset and forecasted data based on the previous five years' data to predict cases
242 had COVID-19 not occurred) highlighted the extreme reduction of *C. hominis* cases
243 post restrictions-implementation (figure 1).

244



245

246 **Fig 1. *C. hominis* model including forecast had COVID-19 not occurred, England**
247 **& Wales, 2015-2021**

248

249 Post restrictions-implementation, the incidence of *C. hominis* dropped by 97.5%
 250 (95%CI: 95.4%-98.6%; $p < 0.001$) (table 1). A decreasing incidence-trend pre-
 251 restrictions ($n=8,991$; IRR=0.9976; 95%CI: 0.9969-0.9982; $p < 0.001$) of 0.24%
 252 reduction in cases per week was not observed post restrictions-implementation ($n=67$;
 253 IRR=1.0081; 95%CI: 0.9978-1.0186; $p=0.128$). Whilst a periodicity change was
 254 observed post restrictions-implementation for *C. hominis* (based on the
 255 COVID#c.sin52 interaction term; table 1), the forecast model did not show a change
 256 in peak incidence by week number (week 41).

257

258 **Table 1. Time-series analysis model results for *C. hominis***

| <i>C. hominis</i> TSA model | IRR | p-value | 95% CI |
|-----------------------------|----------|---------|------------------------|
| Pre COVID period | 0.997579 | <0.001 | (0.9969615, 0.9981975) |
| Post COVID period | 1.0081 | 0.128 | (0.9976892, 1.01862) |
| Post vs. pre period | 0.024829 | <0.001 | (0.0135401, 0.0455293) |
| sin52* | 0.308177 | <0.001 | (0.2878808, 0.329904) |
| COVID#c.sin52 [†] | 2.616494 | <0.001 | (1.822834, 3.755715) |
| cos52* | 1.291586 | <0.001 | (1.204945, 1.384458) |
| COVID#c.cos52 [†] | 1.279372 | 0.321 | (0.7864356, 2.081279) |
| sin26* | 0.994242 | 0.867 | (0.9295001, 1.063493) |
| COVID#c.sin26 [†] | 1.026261 | 0.899 | (0.6880788, 1.530657) |
| cos26* | 0.732617 | <0.001 | (0.6842376, 0.784418) |
| COVID#c.cos26 [†] | 0.674863 | 0.057 | (0.4503512, 1.0113) |

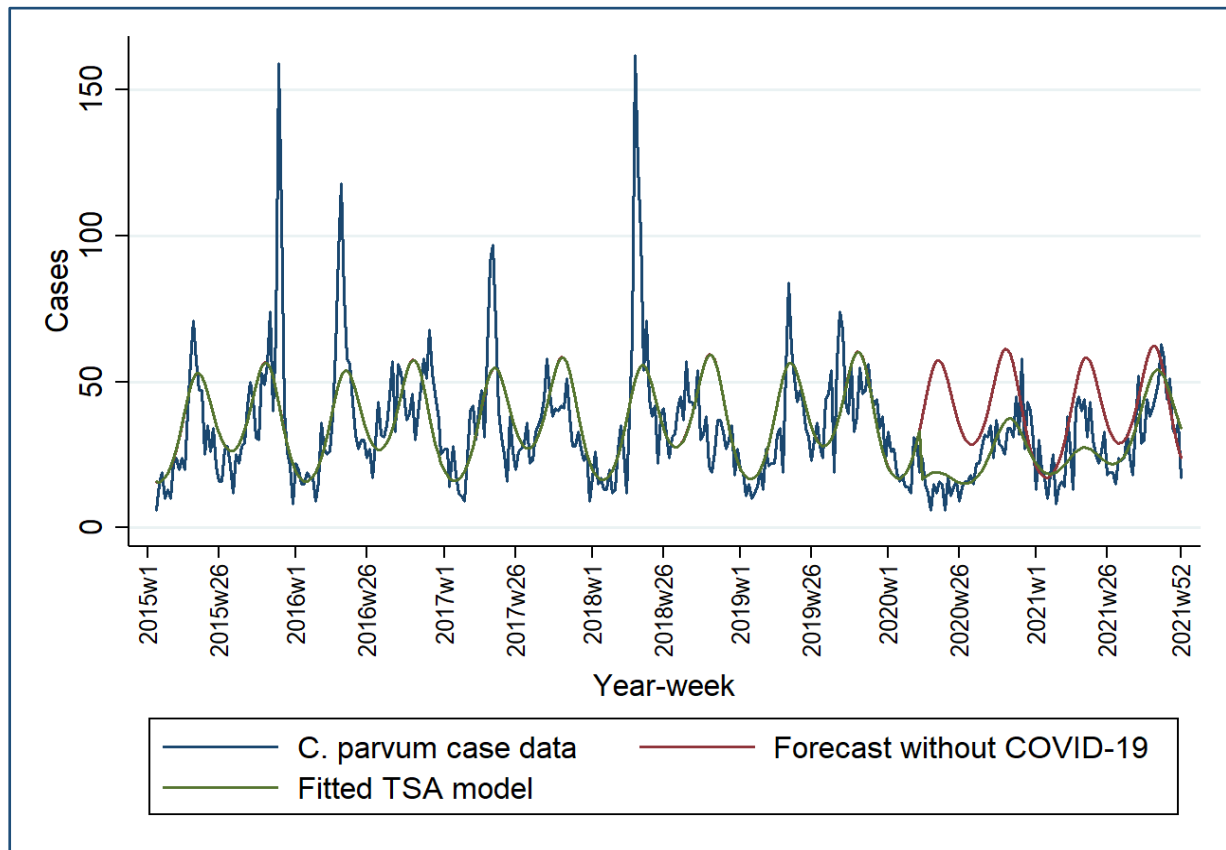
259 *sin26&cos26 and sin52&cos52 are Fourier transforms. These are part of the same waveform.

260 [†]Interaction terms measuring the effect of COVID-19 on the periodicity of cases.

261

262 The time-series data for *C. parvum* had a periodicity of 26 and 52 weeks, with biannual
 263 peaks visible in spring and in autumn. An interaction was found between our COVID
 264 variable and both Fourier waves so these were retained in our final model. In the
 265 forecast model of the previous five years' time-series data beyond week 13, 2020 for
 266 *C. parvum*, we observed a larger number of cases than predicted had COVID-19 not
 267 occurred, but not in the same order of magnitude as predicted for *C. hominis* (figure
 268 2). Incidence of *C. parvum* had recovered to pre-restrictions levels by the end of 2021.

269



270

271 **Fig 2. *C. parvum* model including forecast had COVID-19 not occurred, England**
272 **and Wales, 2015-2021**

273

274 Post restrictions-implementation incidence of *C. parvum* dropped by 49.0% (95%CI:
275 38.4%-58.3%; $p < 0.001$) (table 2). There was no pre-restrictions incidence-trend
276 ($n=9,732$; IRR=1.0003; 95%CI: 0.9997-1.0009; $p=0.322$) but a slight increasing
277 incidence-trend existed post restrictions-implementation of 0.71% increase in cases
278 per week ($n=2,514$; IRR=1.0071; 95%CI: 1.0038-1.0104; $p=0.001$). A periodicity
279 change was observed for *C. parvum* post restrictions-implementation, peaking one
280 week earlier in spring (week 18 as opposed to week 19) and two weeks later in
281 autumn (week 44 as opposed to week 42) (figure 3).

282

283

284

285

286

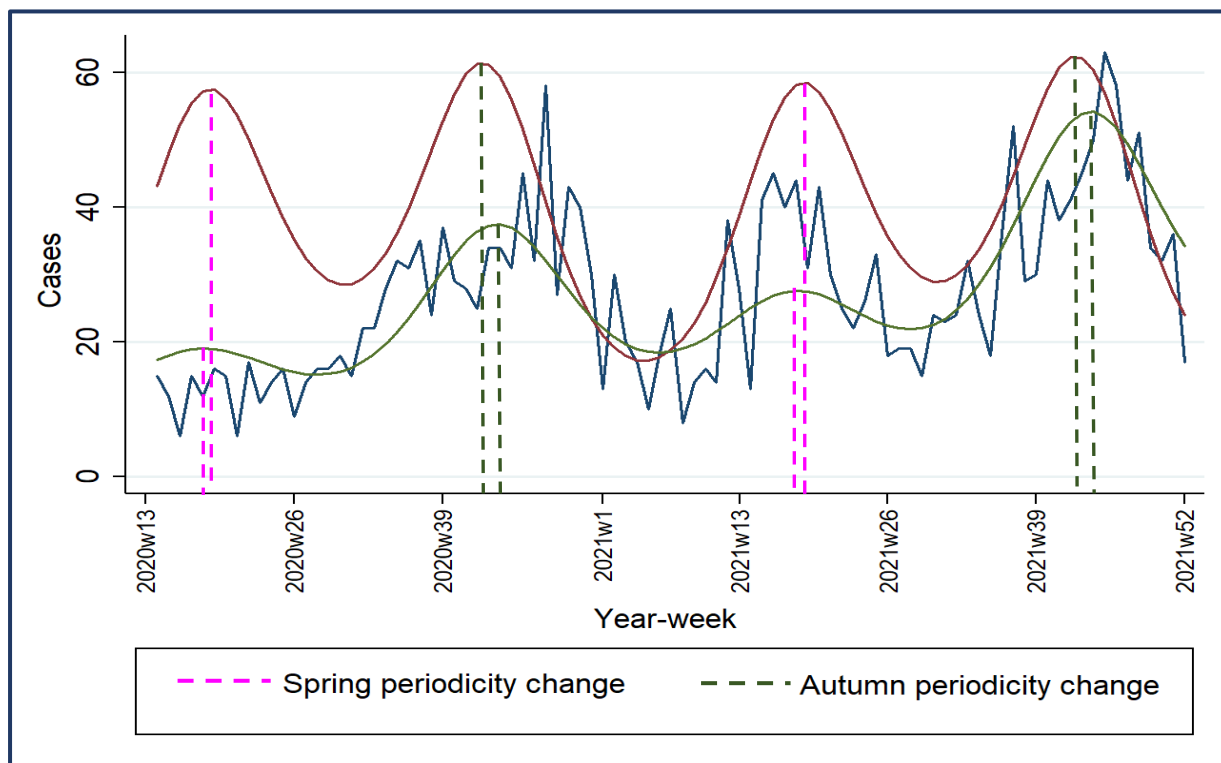
287 **Table 2. Time-series analysis model results for *C. parvum***

| <i>C. parvum</i> TSA model | IRR | p-value | 95% CI |
|----------------------------|-----------|---------|------------------------|
| Pre COVID period | 1.000301 | 0.322 | (0.9997063, 1.000895) |
| Post COVID period | 1.007118 | <0.001 | (1.003844, 1.010402) |
| Post vs. pre period | 0.5067641 | <0.001 | (0.4169558, 0.6159162) |
| sin52* | 0.8763961 | <0.001 | (0.8227561, 0.9335333) |
| COVID#c.sin52 [†] | 0.9076778 | 0.153 | (0.7946875, 1.036733) |
| cos52* | 0.801548 | <0.001 | (0.7508416, 0.8556787) |
| COVID#c.cos52 [†] | 1.367283 | <0.001 | (1.191219, 1.569369) |
| sin26* | 0.6928407 | <0.001 | (0.6505466, 0.7378845) |
| COVID#c.sin26 [†] | 1.186179 | 0.012 | (1.037695, 1.355909) |
| cos26* | 0.7253185 | <0.001 | (0.679221, 0.7745444) |
| COVID#c.cos26 [†] | 1.153636 | 0.033 | (1.011625, 1.315583) |

288 *sin26&cos26 and sin52&cos52 are Fourier transforms. These are part of the same waveform.

289 [†]Interaction terms measuring the effect of COVID-19 on the periodicity of cases

290



291
 292 **Fig 3. *C. parvum* model including forecast had COVID-19 not occurred and**
 293 **spring and autumn periodicity changes, England and Wales, 2020 week 13 to**
 294 **2021 week 52**

295

296

297

298

299 Discussion

300 COVID-19 restrictions had a significant effect on the number of cases of
301 gastrointestinal illness (GI) in England and Wales including *Cryptosporidium*(28), and
302 in this study we have identified that they impacted both *C. hominis* and *C. parvum*.
303 Whilst *C. parvum* cases were reduced by around half, *C. hominis* cases were almost
304 entirely arrested. Whilst our model for *C. hominis* detected a change in periodicity
305 (table 1: COVID#c.sin52 IRR=2.616494, 95%CI 1.822834-3.755715; p<0.001),
306 inspection of the pre- and post restrictions-implementation modelled-data showed the
307 autumn peak occurred at the same point in 2020 and 2021 as in the preceding five
308 years (week 41). With just 67 cases in the entire 62-week post restrictions-
309 implementation period, the impact of small numbers effected the precision of our
310 model. Where we would expect tens of cases in each week, there were just a handful
311 and often none at all post restrictions-implementation. Had these samples been
312 submitted to the CRU a few days either side of the date received, the results could
313 have swung significantly in either direction.

314 It is not possible to quantify exactly the extent to which COVID-19 restrictions reduced
315 social mixing or any commensurate effect on person-to-person transmission, which is
316 a limitation. *C. hominis* cases had been declining in the five years leading to COVID,
317 despite foreign travel increasing. It is possible that other interventions were influencing
318 these data, such as improved compliance and awareness in swimming pool filtration
319 and avoidance with GI symptoms. We do know that public venues were closed for
320 much of our post restrictions-implementation period, including known sources of
321 *Cryptosporidium* infection such as open/petting farms, restaurants and swimming
322 pools. Similarly, we cannot quantify how much use of the countryside increased post
323 restrictions-implementation regardless of UK-based holiday figures, although
324 anecdotally there were many news stories covering this phenomenon, particularly
325 involving parties and swimming in rivers. Despite the large reduction in international
326 travel post restrictions-implementation, there remains a strong association between
327 infection and travel abroad, especially for *C. hominis*, which confirms other studies'
328 findings that it is a principal driver of new infections in England and Wales (19,36).
329 More should be done to prevent returning travellers with GI symptoms infecting others
330 through improved IPC advice about hand hygiene and exclusion / voluntary avoidance
331 from swimming pools until two weeks after symptoms have resolved. This itself relies
332 on people seeking healthcare with GI symptoms.

333 Another limitation in our analysis is the effect that reduced healthcare provision and
334 health-seeking behaviours had on specimen submission post restrictions-
335 implementation, particularly at the start of the COVID-19 pandemic. There is
336 international evidence showing that people sought help less often, and those who were
337 only mildly ill did not seek help at all (37). There was genuine fear about being infected
338 with SARS-CoV-2 in health care settings early on when lack of an effective vaccination
339 or definitive therapy were at the forefront of many people's minds (38,39). This might
340 have attenuated people's opinion of diarrhoea and vomiting symptoms, or decisions
341 to seek medical care. Likewise, there might have been disruptions in access to, and
342 application of, the stool specimen and diagnostic process, resulting in fewer cases
343 being detected.

344 The fact that people living in the most deprived areas experienced the highest
345 proportion of *C. hominis* cases both pre-restrictions and post restrictions-
346 implementation highlights potential opportunities for public health interventions. Of
347 those in the most deprived decile where travel information was available post
348 restrictions-implementation, 83% had surnames suggestive of a non-white ethnic
349 background (n=5). This, coupled with the fact that in 36% of all cases where there had
350 been foreign travel involved Pakistan, provides a compelling opportunity to target
351 interventions to outgoing and returning travellers. However, the limited data available
352 for travel history and ethnicity means we cannot draw absolute conclusions, despite
353 the length of our study period. Ethnicity is often poorly reported for many diseases and
354 this reduces the ability to understand the true impact of cryptosporidiosis in specific
355 communities. Promotion of accurate ascertainment of ethnicity and travel history
356 should be sought at the point of specimen collection to improve future surveillance.
357 This would require a change to the sample submission form sent to the laboratory and
358 training for clinicians taking history. The fact that cases of both species were more
359 likely to live in an urban residence should be interpreted with caution. Our data, being
360 laboratory-based, did not include details of recent trips to the countryside, occupation
361 or contact with animals and its relevance is diminished further where foreign travel is
362 indicated.

363 Our results also demonstrate the need to improve rates of specimen submission to the
364 CRU where there is currently under-representation, especially from areas that serve
365 large clusters of ethnic minority communities. A submission bias exists in that of the
366 approximately 4,500 human *Cryptosporidium* cases a year in England and Wales (40),
367 only around half are submitted to the CRU for genotyping on average. This proportion

368 is much higher in Wales and the north west of England, while some parts of England
369 (notably London, the South East, South West and parts of Yorkshire) are under-
370 represented. Diagnostic laboratories have been reminded by the CRU in May 2022 to
371 send *Cryptosporidium* positive stools for genotyping, and that the service is free to
372 users.

373 This was a natural experiment which reinforced existing knowledge about transmission
374 pathways for *C. hominis* and *C. parvum*. It also provides insight into where to focus
375 public health efforts to reduce the risk of infection and increase the consistency of
376 specimen submission to the CRU. National surveillance was historically of the genus
377 *Cryptosporidium*, without species identification. Although the CRU has been
378 genotyping from *Cryptosporidium*-positive stools submitted by laboratories throughout
379 England and Wales since 2000, capture of these data by the UK Health Security
380 Agency's (UKHSA) "second-generation surveillance system" (SGSS) database
381 commenced in 2015. These show the location of infection, case-demographics and
382 species typing. This systematic surveillance of species typing allows outbreaks to be
383 more clearly delineated and can track the spread of *C. parvum* as well as *C. hominis*
384 in humans. This, and additional subtyping by gp60 sequencing, can also improve
385 outbreak management by indicating possible exposures and strengthen
386 epidemiological links (13). Multi-locus genotyping, or next generation sequencing
387 (NGS), can add further detail about the genetic relationship between cases and the
388 plausibility of infection sources (14); an MLVA scheme has been implemented for *C.*
389 *parvum*, following validation (15) and a pilot in 2021(41) and a process for the
390 consideration of NGS for *Cryptosporidium* surveillance and outbreaks has been
391 commenced.

392 Most gastrointestinal infections reduced dramatically during the COVID-19 pandemic
393 (37) as childcare and educational settings were closed and eating establishments'
394 opening hours and social / leisure activities were curtailed. Our hypothesis was that
395 the COVID-19 restrictions might have altered the epidemiology of cryptosporidiosis by
396 infecting species and by time, place and person. This hypothesis was upheld insofar
397 as we saw a massive reduction in *C. hominis* cases (likely due to reduced foreign
398 travel, reduced person-to-person contact, swimming pool closure and increased hand
399 hygiene) and observed *C. parvum* cases decline sharply then gradually return to pre-
400 restrictions levels by the end of 2021 (mirroring relaxation in restrictions and more
401 participation in outdoor activities). We did not analyse case exposure data because in
402 many areas this was not collected during the post restrictions-implementation period;

403 at the time of writing is still not routinely collected consistently throughout England and
404 Wales. Public health practice has varied historically in relation to *Cryptosporidium*
405 cases data collection (42). For example, official public health guidance for the
406 management of cryptosporidiosis cases still refers to the “Standard Gastrointestinal
407 Disease Questionnaire” (SI figure 9). Whilst this template contains the necessary fields
408 to collect the required case information to document cases of cryptosporidiosis (43), it
409 is almost certainly no longer widely used in paper format. This surveillance form
410 template has not been updated since 2004 and the ethnicity categories no longer
411 match the current ONS designations. It would be a worthwhile exercise to investigate
412 how case reports are made, the questions used and how these are recorded.

413

414 **Recommendations**

- 415 1. Future exceedance reporting for *C. hominis* should exclude the post
416 restrictions-implementation period but retain it for *C. parvum* (except first six
417 weeks post restrictions-implementation)
- 418 2. Public health advice should be given to people travelling abroad about generic
419 gastrointestinal pathogen infection prevention and control (particularly
420 handwashing, water consumption and food hygiene) to reduce the number of
421 cases and person-to-person spread. Returning travellers with GI symptoms
422 should have IPC advice about hand hygiene and swimming pool avoidance to
423 reduce onward transmission
- 424 3. Regions with low sample-referral rates to the CRU should be encouraged to
425 increase their submission rate in order to better quantify infections by region
426 and to help ascertain the impacts on their population.
- 427 4. Investigate how case details are recorded by laboratories in each region and
428 encourage better recording of travel and ethnicity data at the point of sample
429 collection. This will help better understand the full impact of imported cases of
430 *C. hominis* and decide when, where and how best to target public health
431 interventions. This would serve as a quality improvement project for other GI
432 diseases.
- 433 5. Specific research should be conducted in deprived and ethnic minority
434 communities in relation to activities and habits at home and whilst abroad.
435 Findings should be used to tailor public health messaging about how to reduce
436 risk of infection whilst away and on return home.

437 6. Repeat a time-series analysis for CRU data (ideally every few years) to assess
438 the impact of the end in COVID-19 restrictions, recovery of public health
439 systems, and any changes to the epidemiology of cryptosporidiosis by species,
440 time, place and person.

441

442 References

- 443 1. Carter BL, Chalmers RM, Davies AP. Health sequelae of human cryptosporidiosis in
444 industrialised countries: a systematic review. *Parasit Vectors* [Internet]. 2020;13(1):443.
445 Available from: <https://doi.org/10.1186/s13071-020-04308-7>
- 446 2. Kalantari N, Gorgani-Firouzjaee T, Ghaffari S, Bayani M, Ghaffari T, Chehrazi M. Association
447 between *Cryptosporidium* infection and cancer: A systematic review and meta-analysis.
448 *Parasitol Int* [Internet]. 2020;74:101979. Available from:
449 <https://www.sciencedirect.com/science/article/pii/S1383576919303307>
- 450 3. Sawant M, Baydoun M, Creusy C, Chabé M, Viscogliosi E, Certad G, et al. *Cryptosporidium* and
451 Colon Cancer: Cause or Consequence? *Microorganisms* [Internet]. 2020 Oct 27;8(11):1665.
452 Available from: <https://pubmed.ncbi.nlm.nih.gov/33121099>
- 453 4. Sulżyc-Bielicka V, Kołodziejczyk L, Jaczewska S, Bielicki D, Safranow K, Bielicki P, et al.
454 Colorectal cancer and *Cryptosporidium* spp. infection. *PLoS One* [Internet]. 2018 Apr
455 19;13(4):e0195834–e0195834. Available from: <https://pubmed.ncbi.nlm.nih.gov/29672572>
- 456 5. Zhang N, Yu X, Zhang H, Cui L, Li X, Zhang X, et al. Prevalence and Genotyping of
457 *Cryptosporidium parvum* in Gastrointestinal Cancer Patients. *J Cancer* [Internet].
458 2020;11(11):3334–9. Available from: <https://www.jcancer.org/v11p3334.htm>
- 459 6. Perry S, Sanchez M de la L, Hurst P, Parsonnet J. Household Transmission of Gastroenteritis.
460 *Emerg Infect Dis J* [Internet]. 2005;11(7):1093. Available from:
461 https://wwwnc.cdc.gov/eid/article/11/7/04-0889_article
- 462 7. CHALMERS RM, SMITH R, ELWIN K, CLIFTON-HADLEY FA, GILES M. Epidemiology of
463 anthroponotic and zoonotic human cryptosporidiosis in England and Wales, 2004–2006.
464 *Epidemiol Infect* [Internet]. 2010/07/12. 2011;139(5):700–12. Available from:
465 [https://www.cambridge.org/core/article/epidemiology-of-anthroponotic-and-zoonotic-human-](https://www.cambridge.org/core/article/epidemiology-of-anthroponotic-and-zoonotic-human-cryptosporidiosis-in-england-and-wales-20042006/997A2C96463C3CB3F147DF6D02D026A7)
466 [cryptosporidiosis-in-england-and-wales-20042006/997A2C96463C3CB3F147DF6D02D026A7](https://www.cambridge.org/core/article/epidemiology-of-anthroponotic-and-zoonotic-human-cryptosporidiosis-in-england-and-wales-20042006/997A2C96463C3CB3F147DF6D02D026A7)
- 467 8. McKerr C, Chalmers RM, Elwin K, Ayres H, Vivancos R, O'Brien SJ, et al. Cross-sectional
468 household transmission study of *Cryptosporidium* shows that *C. hominis* infections are a key
469 risk factor for spread. *BMC Infect Dis* [Internet]. 2022;22(1):114. Available from:
470 <https://doi.org/10.1186/s12879-022-07086-y>
- 471 9. Abdou AG, Harba NM, Afifi AF, Elnaidany NF. Assessment of *Cryptosporidium parvum* infection
472 in immunocompetent and immunocompromised mice and its role in triggering intestinal
473 dysplasia. *Int J Infect Dis* [Internet]. 2013;17(8):e593–600. Available from:

- 474 <https://www.sciencedirect.com/science/article/pii/S1201971212013161>
- 475 10. Hunter PR, Nichols G. Epidemiology and clinical features of *Cryptosporidium* infection in
476 immunocompromised patients. *Clin Microbiol Rev.* 2002 Jan;15(1):145–54.
- 477 11. Khalil IA, Troeger C, Rao PC, Blacker BF, Brown A, Brewer TG, et al. Morbidity, mortality, and
478 long-term consequences associated with diarrhoea from *Cryptosporidium* infection in children
479 younger than 5 years: a meta-analysis study. *Lancet Glob Heal.* 2018 Jul;6(7):e758–68.
- 480 12. Rojas-Lopez L, Elwin K, Chalmers RM, Enemark HL, Beser J, Troell K. Development of a gp60-
481 subtyping method for *Cryptosporidium felis*. *Parasit Vectors [Internet].* 2020;13(1):39. Available
482 from: <https://doi.org/10.1186/s13071-020-3906-9>
- 483 13. Chalmers RM, Robinson G, Elwin K, Elson R. Analysis of the *Cryptosporidium* spp. and gp60
484 subtypes linked to human outbreaks of cryptosporidiosis in England and Wales, 2009 to 2017.
485 *Parasit Vectors [Internet].* 2019;12(1):95. Available from: [https://doi.org/10.1186/s13071-019-](https://doi.org/10.1186/s13071-019-3354-6)
486 3354-6
- 487 14. Nadon CA, Trees E, Ng LK, Møller Nielsen E, Reimer A, Maxwell N, et al. Development and
488 application of MLVA methods as a tool for inter-laboratory surveillance. *Euro Surveill Bull Eur*
489 *sur les Mal Transm = Eur Commun Dis Bull.* 2013 Aug;18(35):20565.
- 490 15. Robinson G, Pérez-Cordón G, Hamilton C, Katzer F, Connelly L, Alexander CL, et al. Validation
491 of a multilocus genotyping scheme for subtyping *Cryptosporidium parvum* for epidemiological
492 purposes. *Food Waterborne Parasitol [Internet].* 2022;27:e00151. Available from:
493 <https://www.sciencedirect.com/science/article/pii/S2405676622000087>
- 494 16. Lake IR, Harrison FCD, Chalmers RM, Bentham G, Nichols G, Hunter PR, et al. Case-control
495 study of environmental and social factors influencing cryptosporidiosis. *Eur J Epidemiol*
496 *[Internet].* 2007;22(11):805. Available from: <https://doi.org/10.1007/s10654-007-9179-1>
- 497 17. PINTAR KDM, POLLARI F, WALTNER-TOEWS D, CHARRON DF, McEWEN SA, FAZIL A, et
498 al. A modified case-control study of cryptosporidiosis (using non-*Cryptosporidium*-infected
499 enteric cases as controls) in a community setting. *Epidemiol Infect [Internet].* 2009/06/16.
500 2009;137(12):1789–99. Available from: [https://www.cambridge.org/core/article/modified-](https://www.cambridge.org/core/article/modified-casecontrol-study-of-cryptosporidiosis-using-noncryptosporidiuminfected-enteric-cases-as-controls-in-a-community-setting/D41B4DC8FAEA4000BA4CD6A82D2F7934)
501 [casecontrol-study-of-cryptosporidiosis-using-noncryptosporidiuminfected-enteric-cases-as-](https://www.cambridge.org/core/article/modified-casecontrol-study-of-cryptosporidiosis-using-noncryptosporidiuminfected-enteric-cases-as-controls-in-a-community-setting/D41B4DC8FAEA4000BA4CD6A82D2F7934)
502 [controls-in-a-community-setting/D41B4DC8FAEA4000BA4CD6A82D2F7934](https://www.cambridge.org/core/article/modified-casecontrol-study-of-cryptosporidiosis-using-noncryptosporidiuminfected-enteric-cases-as-controls-in-a-community-setting/D41B4DC8FAEA4000BA4CD6A82D2F7934)
- 503 18. Betancourt WQ, Rose JB. Drinking water treatment processes for removal of *Cryptosporidium*
504 and *Giardia*. *Vet Parasitol.* 2004 Dec;126(1–2):219–34.
- 505 19. Hunter PR, Hughes S, Woodhouse S, Syed Q, Verlander NQ, Chalmers RM, et al. Sporadic
506 cryptosporidiosis case-control study with genotyping. *Emerg Infect Dis.* 2004;10(7):1241–9.
- 507 20. Chalmers RM, Smith R, Elwin K, Clifton-Hadley FA, Giles M. Epidemiology of anthroponotic and
508 zoonotic human cryptosporidiosis in England and Wales, 2004 to 2006. *Epidemiol Infect.* 2011
509 May;139(5):700–12.
- 510 21. Osborn A. Overseas residents in the UK and UK residents abroad: 2020 [Internet]. 2021.

- 511 Available from:
512 <https://www.ons.gov.uk/peoplepopulationandcommunity/leisureandtourism/datasets/overseas>
513 [residentsintheukandukresidentsabroad](https://www.ons.gov.uk/peoplepopulationandcommunity/leisureandtourism/datasets/overseasresidentsintheukandukresidentsabroad)
- 514 22. Statista. Holiday-related search terms with the highest year-over-year growth following the
515 COVID-19 lockdown in the United Kingdom (UK) in July 2020 [Internet]. 2021 [cited 2021 Oct
516 8]. Available from: [https://www.statista.com/statistics/1175666/growth-in-holiday-search-terms-](https://www.statista.com/statistics/1175666/growth-in-holiday-search-terms-uk/)
517 [uk/](https://www.statista.com/statistics/1175666/growth-in-holiday-search-terms-uk/)
- 518 23. Burnett H, Olsen JR, Nicholls N, Mitchell R. Change in time spent visiting and experiences of
519 green space following restrictions on movement during the COVID-19 pandemic: a nationally
520 representative cross-sectional study of UK adults. *BMJ Open* [Internet]. 2021 Mar
521 1;11(3):e044067. Available from: <http://bmjopen.bmj.com/content/11/3/e044067.abstract>
- 522 24. Natural England. People and Nature Survey: How has COVID-19 changed the way we engage
523 with nature? [Internet]. 2022. Available from:
524 [https://naturalengland.blog.gov.uk/2022/05/18/people-and-nature-survey-how-has-covid-19-](https://naturalengland.blog.gov.uk/2022/05/18/people-and-nature-survey-how-has-covid-19-changed-the-way-we-engage-with-nature/)
525 [changed-the-way-we-engage-with-nature/](https://naturalengland.blog.gov.uk/2022/05/18/people-and-nature-survey-how-has-covid-19-changed-the-way-we-engage-with-nature/)
- 526 25. Office for National Statistics. How has lockdown changed our relationship with nature? [Internet].
527 London; 2021. Available from:
528 [https://www.ons.gov.uk/economy/environmentalaccounts/articles/howhaslockdownchangedour](https://www.ons.gov.uk/economy/environmentalaccounts/articles/howhaslockdownchangedourrelationshipwithnature/2021-04-26)
529 [relationshipwithnature/2021-04-26](https://www.ons.gov.uk/economy/environmentalaccounts/articles/howhaslockdownchangedourrelationshipwithnature/2021-04-26)
- 530 26. Alzyood M, Jackson D, Aveyard H, Brooke J. COVID-19 reinforces the importance of
531 handwashing. *Vol. 29, Journal of clinical nursing*. 2020. p. 2760–1.
- 532 27. Barrett C, Cheung KL. Knowledge, socio-cognitive perceptions and the practice of hand hygiene
533 and social distancing during the COVID-19 pandemic: a cross-sectional study of UK university
534 students. *BMC Public Health* [Internet]. 2021;21(1):426. Available from:
535 <https://doi.org/10.1186/s12889-021-10461-0>
- 536 28. Love NK, Elliot AJ, Chalmers RM, Douglas A, Gharbia S, McCormick J, et al. Impact of the
537 COVID-19 pandemic on gastrointestinal infection trends in England, February–July 2020. *BMJ*
538 *Open* [Internet]. 2022 Mar 1;12(3):e050469. Available from:
539 <http://bmjopen.bmj.com/content/12/3/e050469.abstract>
- 540 29. Robinson G, Elwin K, Chalmers RM. Cryptosporidium Diagnostic Assays: Molecular Detection
541 BT - Cryptosporidium: Methods and Protocols. In: Mead JR, Arrowood MJ, editors. New York,
542 NY: Springer New York; 2020. p. 11–22. Available from: [https://doi.org/10.1007/978-1-4939-](https://doi.org/10.1007/978-1-4939-9748-0_2)
543 [9748-0_2](https://doi.org/10.1007/978-1-4939-9748-0_2)
- 544 30. Office for National Statistics. Mapping income deprivation at a local authority level [Internet].
545 2019. Available from:
546 [https://www.ons.gov.uk/peoplepopulationandcommunity/personalandhouseholdfinances/incom](https://www.ons.gov.uk/peoplepopulationandcommunity/personalandhouseholdfinances/incomeandwealth/datasets/mappingincomedeprivationatalocalauthoritylevel)
547 [eandwealth/datasets/mappingincomedeprivationatalocalauthoritylevel](https://www.ons.gov.uk/peoplepopulationandcommunity/personalandhouseholdfinances/incomeandwealth/datasets/mappingincomedeprivationatalocalauthoritylevel)
- 548 31. Office for National Statistics. Rural/urban classifications [Internet]. 2011. Available from:

- 549 <https://www.ons.gov.uk/methodology/geography/geographicalproducts/ruralurbanclassification>
550 s
- 551 32. Bhaskaran K, Gasparrini A, Hajat S, Smeeth L, Armstrong B. Time series regression studies in
552 environmental epidemiology. *Int J Epidemiol* [Internet]. 2013 Aug 1;42(4):1187–95. Available
553 from: <https://doi.org/10.1093/ije/dyt092>
- 554 33. Kim H, Lee J-T, Fong KC, Bell ML. Alternative adjustment for seasonality and long-term time-
555 trend in time-series analysis for long-term environmental exposures and disease counts. *BMC*
556 *Med Res Methodol* [Internet]. 2021;21(1):2. Available from: [https://doi.org/10.1186/s12874-020-](https://doi.org/10.1186/s12874-020-01199-1)
557 01199-1
- 558 34. You C, Lin DKJ, Young SS. Time series smoother for effect detection. *PLoS One*.
559 2018;13(4):e0195360.
- 560 35. Cavanaugh JE, Neath AA. The Akaike information criterion: Background, derivation, properties,
561 application, interpretation, and refinements. *WIREs Comput Stat* [Internet]. 2019 May
562 1;11(3):e1460. Available from: <https://doi.org/10.1002/wics.1460>
- 563 36. Chalmers RM, Elwin K, Thomas AL, Guy EC, Mason B. Long-term *Cryptosporidium* typing
564 reveals the aetiology and species-specific epidemiology of human cryptosporidiosis in England
565 and Wales, 2000 to 2003. *Eurosurveillance*. 2009;14(2):2.
- 566 37. Love NK, Elliot AJ, Chalmers RM, Douglas A, Gharbia S, McCormick J, et al. The impact of the
567 COVID-19 pandemic on gastrointestinal infection trends in England, February – July 2020.
568 medRxiv [Internet]. 2021 Jan 1;2021.04.06.21254174. Available from:
569 <http://medrxiv.org/content/early/2021/04/08/2021.04.06.21254174.abstract>
- 570 38. Mertens G, Gerritsen L, Duijndam S, Saleminck E, Engelhard IM. Fear of the coronavirus
571 (COVID-19): Predictors in an online study conducted in March 2020. *J Anxiety Disord* [Internet].
572 2020;74:102258. Available from:
573 <https://www.sciencedirect.com/science/article/pii/S0887618520300724>
- 574 39. Rodríguez-Hidalgo AJ PY, D DI and F. Fear of COVID-19, Stress, and Anxiety in University
575 Undergraduate Students: A Predictive Model for Depression. *Front Psychol* [Internet].
576 2020;11:1–9. Available from: <https://doi.org/10.3389/fpsyg.2020.591797>
- 577 40. Public Health England. *Cryptosporidium* data 2008 to 2017 [Internet]. London; 2019. Available
578 from: [https://www.gov.uk/government/publications/cryptosporidium-national-laboratory-](https://www.gov.uk/government/publications/cryptosporidium-national-laboratory-data/cryptosporidium-data-2008-to-2017#cryptosporidium-data-2008-to-2017)
579 [data/cryptosporidium-data-2008-to-2017#cryptosporidium-data-2008-to-2017](https://www.gov.uk/government/publications/cryptosporidium-national-laboratory-data/cryptosporidium-data-2008-to-2017#cryptosporidium-data-2008-to-2017)
- 580 41. Gopfert A, Chalmers RM, Whittingham S, Wilson L, van Hove M, Ferraro CF, et al. An outbreak
581 of *Cryptosporidium parvum* linked to pasteurised milk from a vending machine in England – a
582 descriptive study, March 2021. *Epidemiol Infect*. 2022;
- 583 42. Chalmers RM, McCarthy N, Barlow KL, Stiff R. An evaluation of health protection practices for
584 the investigation and management of *Cryptosporidium* in England and Wales. *J Public Heal*.
585 2016 Mar 1;388(1):1291–301.

586 43. Health Protection Agency. Standard Gastrointestinal Disease Questionnaire [Internet]. 2004 p.
587 2–4. Available from:
588 [https://assets.publishing.service.gov.uk/government/uploads/system/uploads/attachment_data/](https://assets.publishing.service.gov.uk/government/uploads/system/uploads/attachment_data/file/327958/gast_StandardGastro.pdf)
589 [file/327958/gast_StandardGastro.pdf](https://assets.publishing.service.gov.uk/government/uploads/system/uploads/attachment_data/file/327958/gast_StandardGastro.pdf)

590

591

592 **Author contributions**

593 James P. Adamson undertook the data cleaning, ran the time-series analysis, undertook
594 statistical tests, produced the tables and figure, and drafted and edited the manuscript.

595 Rachel Chalmers helped set the research question, provided background on *Cryptosporidium*
596 spp., helped resolve data queries and helped edit the manuscript.

597 Kristin Elwin and Guy Robinson developed, validated and ran the laboratory processes that
598 produced the typing results at the CRU and provided background on *Cryptosporidium* spp.

599 Daniel Thomas critically appraised the manuscript, helped to redraft and format it, and
600 provided project supervision and quality assurance.

601 Alicia Barrasa supervised the time-series analysis, advising with coding and providing script
602 quality assurance support. She also critically appraised the manuscript and provided project
603 supervision.

604 All authors read the manuscript and suggested various revisions.

605 **Acknowledgements**

606 Heather Ayres, Lead Biomedical Scientist, Cryptosporidium Reference Unit, Public Health
607 Wales, Swansea, UK for specimen management and PCR testing.

608 Jonathan Goss, Biomedical Support Worker, Cryptosporidium Reference Unit, Public Health
609 Wales, Swansea, UK for specimen reception and DNA extraction.

610 **Conflicts of interest**

611 None

612 **Ethics**

613 Ethical oversight of the project was provided by the PHW Research and Development Division.

614 As this work was carried out using routinely collected surveillance data, PHW Research and

615 Development Division advised that NHS research ethics approval was not required. Data were
616 held and processed under PHW's information governance arrangements, in compliance with
617 the Data Protection Act, Caldicott Principles and PHW guidance on the release of small
618 numbers. No data identifying protected characteristics of an individual were released outside
619 of the project team.

620 **Funding**

621 No additional funding was received to undertake this time-series analysis; *Cryptosporidium*
622 genotyping is part of the core service of the Cryptosporidium Reference Unit and surveillance
623 represents part of the core duties of the Communicable Disease Surveillance Centre. Both
624 teams are part of Public Health Wales' Health Protection and Microbiology Division.

625 **Data Availability Statement**

626 The data used in this analysis contained personal identifiable information. Anonymised
627 information, including that contained in the supplementary information, is reported by Public
628 Health Wales and the UKHSA and published on the UK Government website. Datasets and
629 coding scripts required to reproduce these results are available from the corresponding author
630 on reasonable request.