

1 **Influence of temperature and precipitation on the effectiveness of water, sanitation, and**  
2 **handwashing interventions against childhood diarrheal disease in rural Bangladesh: a re-**  
3 **analysis of a randomized control trial**

4  
5 Anna T. Nguyen<sup>1</sup>, Jessica A. Grembi<sup>2</sup>, Marie Riviere<sup>1</sup>, Gabriella Barratt Heitmann<sup>1</sup>, William D.  
6 Hutson<sup>3</sup>, Tejas S. Athni<sup>1,4</sup>, Arusha Patil<sup>1</sup>, Ayse Ercumen<sup>5</sup>, Audrie Lin<sup>6</sup>, Yoshika Crider<sup>7</sup>, Andrew  
7 Mertens<sup>8</sup>, Leanne Unicomb<sup>9</sup>, Mahbubur Rahman<sup>9</sup>, Stephen P. Luby<sup>2</sup>, Benjamin F. Arnold<sup>10</sup>, Jade  
8 Benjamin-Chung<sup>1,11</sup>

9  
10 <sup>1</sup> Department of Epidemiology and Population Health, Stanford University, Stanford, CA, United  
11 States

12 <sup>2</sup> Division of Infectious Diseases and Geographic Medicine, Stanford University, Stanford, CA,  
13 United States

14 <sup>3</sup> Brown School, Washington University in St. Louis, St. Louis, MO, USA.

15 <sup>4</sup> Harvard Medical School, Boston, MA, United States

16 <sup>5</sup> Department of Forestry and Environmental Resources, North Carolina State University,  
17 Raleigh, NC, United States

18 <sup>6</sup> Department of Microbiology and Environmental Toxicology, University of California, Santa  
19 Cruz, Santa Cruz, CA, United States

20 <sup>7</sup> King Center on Global Development, Stanford University, Stanford, CA, United States

21 <sup>8</sup> Division of Epidemiology and Biostatistics, University of California, Berkeley, Berkeley, CA,  
22 United States

23 <sup>9</sup> Environmental Health and WASH, Health System and Population Studies Division, icddr,b,  
24 Mohakhali, Dhaka -1212, Bangladesh

25 <sup>10</sup> Francis I. Proctor Foundation, University of California, San Francisco, San Francisco, CA,  
26 United States

27 <sup>11</sup> Chan Zuckerberg Biohub, San Francisco, CA 94158

28  
29 **Corresponding Author:** Anna T. Nguyen. [annatnguyen@stanford.edu](mailto:annatnguyen@stanford.edu). 300 Pasteur Drive, Palo  
30 Alto, California 94305

31  
32 **Conflicts of Interest Statement:** The authors declare they have nothing to disclose.

33 **Abstract**

34 *Background:* Diarrheal disease is a leading cause of childhood morbidity and mortality globally.

35 Household water, sanitation, and handwashing (WASH) interventions can reduce exposure to

36 diarrhea-causing pathogens, but climatic factors may impact their effectiveness. Information

37 about effect heterogeneity under different weather conditions is critical to intervention targeting.

38 *Methods:* We analyzed data from a trial in rural Bangladesh that compared child diarrhea

39 prevalence between clusters that were randomized to different WASH interventions between

40 2012-2016 (NCT01590095). We matched temperature and precipitation measurements to

41 households by geographic coordinates and date. We estimated prevalence ratios (PR) using

42 generative additive models and targeted maximum likelihood estimation to assess the

43 effectiveness of each WASH intervention under different environmental conditions.

44 *Findings:* Generally, WASH interventions most effectively prevented diarrhea during monsoon

45 season, particularly following weeks with heavy rain or high temperatures. Compared to the

46 control arm, WASH interventions reduced diarrhea by 51% (95% CI 33%-64%) following

47 periods with heavy rainfall vs. 13% (95% CI -26%-40%) following periods without heavy

48 rainfall. Similarly, WASH interventions reduced diarrhea by 40% (95% CI 16%-57%) following

49 above-median temperatures vs. 17% (95% CI -38%-50%) following below-median temperatures.

50 The influence of precipitation and temperature varied by intervention type; for precipitation, the

51 largest differences in effectiveness were for the sanitation and combined WASH interventions.

52 *Interpretation:* WASH intervention effectiveness was strongly influenced by precipitation and

53 temperature, and nearly all protective effects were observed during the rainy season. Future

54 implementation of these interventions should consider local environmental conditions to

55 maximize effectiveness.

56 *Funding:* Bill & Melinda Gates Foundation; National Institute of Allergy and Infectious  
57 Diseases; National Heart, Lung, And Blood Institute; National Institute of General Medical  
58 Sciences; Stanford University School of Medicine; Chan Zuckerberg Biohub  
59

60 **Research in Context Panel**

61 Evidence before this study

62 We searched Google Scholar using the search terms “sanitation” OR “hygiene” OR “WASH”  
63 OR “water quality”; AND “heterogen\*” OR “effect modif\*”; AND “temperature” OR  
64 “precipitation” OR “rain\*” OR “climate” OR “environmental”; AND “diarrhea” OR “enteric  
65 infection”; AND “risk” AND/OR “factors”. In general, the effect modification of WASH  
66 interventions on diarrhea by weather is not well studied. One study in Ecuador investigated  
67 different relationships between rainfall, diarrhea, and unimproved sanitation and water sources.  
68 They found that unimproved sanitation was most strongly associated with elevated diarrhea after  
69 low rainfall, whereas unimproved water sources were most strongly associated with elevated  
70 diarrhea after heavy rainfall. In a similar setting in Ecuador, a separate study found that drinking  
71 water treatments reduced increases in diarrhea after heavy rainfall that followed dry periods,  
72 while sanitation and hygiene had no impact on the relationship between heavy rainfall and  
73 diarrhea. One study in Rwanda also found that high levels of runoff were protective against  
74 diarrhea only in households with unimproved toilets. In Bangladesh, one study found that access  
75 to tubewells was most effective at reducing childhood diarrhea in non-flood controlled areas.  
76 High heat can accelerate the inactivation of enteric pathogens by water chlorination, but no  
77 studies have examined how temperature influences the effectiveness of sanitation or hygiene  
78 interventions. No prior studies have estimated differences in WASH effectiveness under varying  
79 weather conditions within a randomized trial.

80 Added value of this study

81 To our knowledge, this is the first study to assess differences in household-level WASH  
82 intervention effectiveness by weather conditions in a randomized trial. We spatiotemporally

83 matched individual-level data from a trial in rural Bangladesh to remote sensing data on  
84 temperature and precipitation and estimated differences in the effectiveness of WASH  
85 interventions to prevent childhood diarrhea under varying levels of these environmental factors.

86 *Implications of all the available evidence*

87 We found that WASH interventions were substantially more effective following periods with  
88 higher precipitation or higher temperatures. We observed the largest effect modification by  
89 precipitation for a sanitation intervention. This may be because compared to water and  
90 handwashing interventions, the sanitation intervention blocked more pathways through which  
91 enteric pathogens reach water, soil, and flies following heavy rainfall. In regions like  
92 Bangladesh, extreme weather is expected to become more common under climate change but  
93 WASH interventions might mitigate increases in childhood diarrhea due to climate change.

## 94 **Background**

95           In 2019, over 500,000 under-5 child deaths were caused by diarrheal disease.<sup>1</sup> Children  
96 that suffer from repeated diarrheal episodes are at high risk of malnutrition, stunted growth, and  
97 impaired cognitive development.<sup>2</sup> The World Health Organization estimates that over half of  
98 diarrhea deaths are directly attributable to inadequate water safety, sanitation, and/or  
99 handwashing (WASH).<sup>3</sup> Low-cost, household level WASH interventions may prevent the spread  
100 diarrhea-causing pathogens, leading to improvements in child growth and development.<sup>2</sup>  
101 However, randomized controlled trials of WASH interventions in rural Kenya and Bangladesh  
102 found surprisingly modest effects on diarrhea; in Bangladesh, there was a 39% reduction in  
103 diarrhea prevalence among children who received a combined water, sanitation, and hygiene  
104 intervention, and in Kenya there was no reduction.<sup>4,5</sup>

105           Diarrheal disease is associated with temperature<sup>6-10</sup> and precipitation<sup>7-11</sup> across many  
106 different settings, and there are multiple pathways through which environmental conditions  
107 might influence the relationship between WASH interventions and diarrhea. Each type of WASH  
108 intervention prevents different subsets of enteric pathogen transmission pathways, and each may  
109 be distinctly influenced by weather.<sup>12</sup> Heavy rainfall may result in damage to latrines, causing  
110 feces to contaminate the household environment and nearby food and water sources.<sup>13</sup> During  
111 heavy rainfall events, it may be more difficult for parents to use child potties and to scoop child  
112 feces and place them in latrines. Under higher temperatures, the survival of certain pathogens on  
113 surfaces and in water sources may be higher<sup>14</sup>, and low-cost handwashing interventions and  
114 water chlorination and safe storage may be insufficient to prevent diarrhea.

115           Yet, few studies have examined how climate and environmental factors modify the effect  
116 of WASH interventions on diarrhea. There is some evidence that the relationships between

117 diarrhea prevalence and unimproved water sources and sanitation systems changed under  
118 different levels of precipitation and runoff<sup>11,15</sup>, but that water treatment could mitigate increases  
119 in diarrhea following heavy rainfall in some conditions.<sup>16</sup> In Bangladesh, one study found that  
120 tubewells were most effective in non-flood controlled areas.<sup>17</sup> Another study found that  
121 reductions in diarrhea from sanitation interventions occurred exclusively during the rainy season  
122 in Bangladesh.<sup>18</sup> However, most prior studies used observational designs, and estimates of  
123 WASH intervention effectiveness were likely to be confounded by household wealth.

124 Our objective was to assess whether temperature and precipitation modified the effect of  
125 water, sanitation, and handwashing interventions on child diarrhea prevalence in a randomized  
126 trial in rural Bangladesh. We merged individual-level outcome data with granular weather  
127 measurements from remote sensors to model how environmental conditions influence  
128 intervention effectiveness. Understanding the impact of weather on intervention effects may help  
129 guide the targeted implementation of future WASH interventions.

## 130 **Methods**

### 131 Study Data

132 The WASH Benefits Bangladesh trial (NCT01590095) delivered low-cost, household-  
133 level WASH interventions and estimated their effects on diarrheal disease.<sup>5,19</sup> The trial enrolled  
134 pregnant women in their second or third trimester between 2012-2013 in the Gazipur,  
135 Kishoreganj, Mymensingh, and Tangail districts of rural Bangladesh. Village clusters were  
136 block-randomized to one of the following arms: chlorinated drinking water (W); upgraded  
137 sanitation (S); promotion of handwashing with soap (H); nutrition education with lipid-based  
138 supplement (Nutrition); combined water, sanitation, and handwashing (WSH); combined water,  
139 sanitation, handwashing, and nutrition (WSH + Nutrition); or control. In total, there were 720

140 village clusters included in the trial; 90 clusters were randomized to each intervention arm and  
141 180 clusters were randomized to a double-sized control arm. Here, we excluded the Nutrition  
142 arm from this analysis since the effectiveness of nutrition alone is unlikely to depend on  
143 environmental factors. For similar reasons, we merged the WSH and WSH + Nutrition groups to  
144 a single “combined WASH” group.

145 The water intervention included a lidded storage container and regular supply of sodium  
146 dichloroisocyanurate tablets. The sanitation intervention included the installation of a double-pit  
147 pour-flush latrine compared to the more common single-pit pour-flush latrine. Fecal matter can  
148 be diverted to a secondary chamber for compost in the double-pit latrine, while waste needs to be  
149 manually removed from the single-pit latrine. The handwashing intervention included numerous  
150 handwashing stations and a regular supply of detergent sachets to make soapy water. All  
151 interventions were delivered by community promoters who provided instruction for proper use.

152 There were 4,747 children born to the enrolled mothers (“index children”). In the study  
153 region, children lived within compounds shared by their extended family that consist of their  
154 own household (the “index household”) and an average of 1.5 other households (range 0-10).  
155 The water and handwashing interventions were only implemented in the index household, while  
156 the sanitation intervention was provided to all households in the compound.

157 Additional details on enrollment criteria and intervention details have been reported  
158 elsewhere.<sup>5</sup>

### 159 Outcome Data

160 Diarrhea was measured for index children and children living in the same compound who  
161 were under the age of three at enrollment. Measurements were taken approximately 1 and 2 years



162 after intervention delivery through caregiver report of at least three loose stools in 24-hours or a  
163 bloody stool within the past 7 days.

#### 164 Environmental Data

165 We assessed pre-specified measures of precipitation and temperature as possible effect  
166 modifiers. We matched precipitation and temperature values from spatiotemporal remote sensing  
167 data to each trial measurement by household coordinates and the date of outcome assessment.  
168 We calculated distances between sensor measurements and study coordinates using the haversine  
169 formula.

#### 170 *Precipitation*

171 We obtained precipitation data from the Multi-Source Weighted-Ensemble Precipitation  
172 dataset from GloH20 (daily temporal resolution, 0.1° spatial resolution), which merges numerous  
173 gauge, satellite, and reanalysis precipitation data sources and corrects for bias.<sup>20</sup> We calculated  
174 the total weekly precipitation, and created binary indicators of whether these sums exceeded the  
175 median weekly total precipitation across the study period. To measure heavy rain, we created  
176 binary indicators for at least one day in the week in which total precipitation was above the 80<sup>th</sup>  
177 percentile of all daily totals.

178 We defined the rainy season as the continuous period during which the 5-day rolling  
179 average of daily precipitation was over 10 mm, and constructed variables to indicate if diarrhea  
180 measurements were taken during the rainy season.

#### 181 *Temperature*

182 We obtained daily near surface air temperature data from the Famine Early Warning  
183 Systems Network Land Data Assimilation System (FLDAS) Central Asia dataset (daily temporal  
184 resolution, 0.01° spatial resolution) from the National Aeronautics and Space Administration

185 (NASA).<sup>21</sup> We computed the minimum, maximum, and average temperatures. We also  
186 constructed binary indicators for whether the minimum, maximum, and average temperatures  
187 exceeded the median value across the study period.

### 188 *Lag Periods*

189 Our primary analysis used weekly measures of temperature and precipitation with a 1-  
190 week lag (capturing the 8-14 day period prior to date of caregiver reported illness) to account for  
191 the period of time in which weather conditions could influence enteric pathogen transmission in  
192 the environment and the short incubation period of common enteric pathogens.<sup>22</sup> We conducted  
193 sensitivity analyses using alternative lag periods: 0 weeks (1-7 days prior), 2 weeks (8-21 days  
194 prior), and 3 weeks (22-28 days prior).

### 195 Statistical Analysis

196 Intervention adherence was high in the trial<sup>5</sup>, so we conducted an intention-to-treat-  
197 analysis, we estimated the effect of WASH interventions on diarrhea prevalence under different  
198 environmental conditions. We compared diarrhea prevalence in the control group to those  
199 receiving the following interventions: (1) water only, (2) sanitation only, (3) handwashing only,  
200 (4) combined WASH (WSH or WSH + Nutrition), and (5) any WASH intervention (water,  
201 sanitation, hygiene, combined WSH, or combined WSH + Nutrition arms).

202 To allow for potential non-linear relationships between continuous weather measures and  
203 intervention effects, we fit generalized additive models (GAMs) to model the outcomes as a  
204 function of the intervention and an environmental variable (as a spline). We specified a binomial  
205 family with logit link functions and used restricted maximum likelihood estimation to select  
206 smoothing parameters. We estimated simultaneous confidence intervals using a parametric  
207 bootstrap of the variance-covariance matrix under a multivariate normal distribution.

208 Additionally, we estimated prevalence ratios for any intervention vs. control at the 10<sup>th</sup> and 90<sup>th</sup>  
209 percentile of the observed environmental variables and calculated the corresponding 95%  
210 confidence intervals using a non-parametric bootstrap with resampling at the cluster level.  
211 We estimated intervention effectiveness under categorical weather measures using targeted maximum likeli  
212 estimated the prevalence ratios and corresponding confidence intervals for intervention vs.  
213 control for each weather variable stratum. We used cluster-level influence curve-based standard  
214 errors to account for dependence within village clusters.

215 We adjusted the models to consider the relationships between temperature and  
216 precipitation. In models where temperature was the effect modifier, we controlled for total  
217 weekly precipitation. In models where precipitation was the effect modifier, we controlled for  
218 average weekly temperature.

219 To check for possible misclassification of reported diarrhea, we conducted a negative  
220 control analysis using caregiver-reported bruising in the past 7 days.

221 Analyses were conducted in R (version 4.1.3). The pre-analysis plan and replication  
222 scripts are available through the Open Science Framework (<https://osf.io/yt67k/>). We note  
223 deviations from the pre-analysis plan in Appendix 1.

#### 224 Role of the Funding Source

225 The funders of the study had no role in study design, data analysis, interpretation, writing  
226 of the manuscript, or the decision to submit the manuscript for publication.

#### 227 **Results**

228 Our analysis included 12,440 total diarrhea measurements for 6,921 children between 0.5  
229 and 5.5 years of age (mean 2.0, SD 1.2) during the period between February 03, 2013 and

230 October 31, 2015. (Figure 1) We report additional participant characteristics and the distribution  
231 of environmental factors by group in Table 1.

### 232 Precipitation

233 During the study, the total weekly precipitation ranged from 0 to 295 mm with a median  
234 of 13 mm. Precipitation was highly concentrated during the rainy season, which fell between  
235 April 29-October 9 in 2013, May 27-September 27 in 2014, and April 1-September 26 in 2015.  
236 In the control arm, we observed increases in diarrhea prevalence during the rainy seasons,  
237 particularly in 2014. In households that received any WASH intervention, diarrhea prevalence  
238 remained relatively constant over time. (Figure 1A). We saw that increases in diarrhea coincided  
239 with periods that experienced the most rainfall, with annual precipitation being highly  
240 concentrated in the rainy season. (Figure 1B)

241 In weeks with total precipitation over 50 mm, diarrhea prevalence was higher in the  
242 control arm than in the intervention arms, and prevalence in the control arm increased with  
243 precipitation (Figure 2). The prevalence ratio associated with any WASH intervention vs. control  
244 was 1.36 (95% CI 1.06-1.72) at the 10<sup>th</sup> percentile of total rainfall (0 mm) vs 0.66 (95% CI 0.4-  
245 1.22) at the 90<sup>th</sup> percentile (125 mm).

246 First, we examined effect modification of precipitation pooling across any WASH  
247 intervention. In measurements with above median weekly total rainfall, we estimated a  
248 prevalence ratio of 0.56 (95% CI 0.44-0.72) for any WASH intervention compared to 0.85 (95%  
249 CI 0.42-1.70) in measurements with below median total rainfall. (Figure 3, Table A1) The  
250 prevalence ratio for the pooled WASH intervention was 0.49 (95% CI 0.40-0.61) during the  
251 rainy season compared to 1.06 (95% CI 0.75-1.51) during the dry season (Figure 3, Table A1).  
252 The prevalence ratio associated with any WASH intervention was lower following weeks when

253 there was at least one day of heavy rainfall (0.49, 95% CI 0.35-0.68) compared to when there  
254 were no days with heavy rainfall (0.86, 95% CI 0.60-1.25) (Figure 3, Table A1).

255 Next, we assessed effect modification by precipitation for each intervention type (Figure  
256 3). During the rainy season, the sanitation, handwashing, combined WSH interventions reduced  
257 diarrhea prevalence by 54% to 61%, while the water intervention reduced it by 30% (Figure 3).  
258 For all intervention arms, there was no decrease in diarrhea prevalence in the dry season.  
259 Intervention-specific trends were similar for total precipitation and heavy rainfall, with stronger  
260 effect modification for heavy rain than for total weekly precipitation. However, for the  
261 handwashing intervention, there was no evidence of effect modification by total weekly  
262 precipitation or heavy rainfall.

### 263 Temperature

264 During the study, the weekly average temperature ranged from 18 to 32°C (median =  
265 27°C), the minimum temperature ranged from 17 to 31°C (median = 25°C), and the maximum  
266 temperature ranged from 18 to 34°C (median = 28°C). Temperatures reached their peak in May,  
267 immediately preceding or at the start of the annual rainy season. (Figure 1C)

268 We found that as average temperature increased, diarrhea prevalence increased slightly in  
269 the intervention arms but increased rapidly in the control arm (Figure 4A). At an average  
270 temperature of 20°C (10<sup>th</sup> percentile), the prevalence ratio for any WASH intervention was 1.76  
271 (95% CI 0.96-3) compared to 0.84 (95% CI 0.47-1.18) at an average temperature of 30°C (90<sup>th</sup>  
272 percentile). We saw similar increases in intervention effectiveness under higher minimum  
273 temperatures (10<sup>th</sup> percentile PR = 1.72, 95% CI 0.96-2.92 at 19°C vs 90<sup>th</sup> percentile PR = 0.84,  
274 95% CI 0.46-1.16 at 29°C) and maximum temperatures (10<sup>th</sup> percentile PR = 1.90, 95% CI 1.05-  
275 3.30 at 22°C vs 90<sup>th</sup> percentile PR = 0.90, 95% CI 0.59-1.28 at 32°C). We saw similar trends

276 when comparing above median versus below median measurements and estimated prevalence  
277 ratios of 0.59 (95% CI 0.48-0.74) versus 0.91 (95% CI 0.60-1.36) for average temperatures, 0.63  
278 (95% CI 0.50-0.79) vs 0.84 (95% CI 0.40-1.76) for minimum temperatures, and 0.60 (95% CI  
279 0.47-0.75) vs 0.91 (95% CI 0.62-1.33) for maximum temperatures (Figure 4B).

280 Temperature appeared to have a larger influence on the effectiveness of the sanitation,  
281 handwashing, and combined WSH interventions compared to the water intervention. (Figure 4B,  
282 Table A2) During periods in which there were above median weekly average temperatures, we  
283 estimated between a 41% to 46% reduction in diarrhea under the sanitation, handwashing, and  
284 combined WSH interventions compared to a 17% reduction under the water intervention. We  
285 found no difference in effectiveness of the water, sanitation, or handwashing interventions by  
286 minimum of maximum temperatures, though the below median temperature effects were null and  
287 the above median effects were not. However, our estimates have low precision.

#### 288 Other analyses

289 We did not observe any significant differences in intervention effect estimates by climate  
290 or environment on caregiver-reported bruising, a negative-control outcome. (Appendix 2)

291 We conducted sensitivity analyses under different lag periods for precipitation and  
292 temperature. Estimates of intervention effect across different precipitation (Figure A1) and  
293 temperature (Figure A2) conditions were consistent across all lag periods we assessed.

#### 294 **Discussion**

295 WASH interventions in rural Bangladesh more effectively prevented child diarrhea under  
296 high temperatures and precipitation. We found that receipt of any WASH intervention reduced  
297 diarrhea prevalence by 51% following heavy rainfall and 41% after above-median temperatures  
298 compared to the overall 34% reduction observed in the original trial. We observed no effect of

299 interventions on diarrhea in the dry season or following below-median temperature or  
300 precipitation. Effect modification varied by intervention type; precipitation had the strongest  
301 influence on the effectiveness of the sanitation and combined WASH interventions while  
302 temperature had the strongest influence on the sanitation, handwashing, and combined WASH  
303 interventions.

304       Prior studies have found that diarrhea prevalence in low- and middle-income countries  
305 follows a concentration-dilution pattern in which heavy rainfall following dry periods is  
306 associated with increased diarrhea risk because pathogens that become concentrated during dry  
307 periods are flushed into the environment.<sup>23</sup> One study also found that drinking water treatments,  
308 but not sanitation or hygiene interventions, reduced spikes in diarrhea due to heavy rain  
309 following dry periods.<sup>16</sup> However, during the WASH Benefits trial, there were very few heavy  
310 rainfall events preceded by dry periods, and diarrhea prevalence in the control arm was higher  
311 following heavy rainfall events, regardless of preceding conditions. Compared to other settings,  
312 the annual monsoon in Bangladesh is characterized by higher precipitation intensity and higher  
313 total precipitation that is heavily concentrated during the season. Differences in hydrogeology  
314 between regions could also impact pathogen transport after rainfall. A study conducted in Indore,  
315 India and Kolkata, India found that wells near latrines surrounded by alluvial formations  
316 (consisting of loose silt, clay, and sand) had significantly lower fecal coliform and nitrate  
317 concentrations compared to wells near latrines with fractured rocks.<sup>24</sup> In Bangladesh, alluvial  
318 sediments are common in flood plains and may have provided a protective barrier that prevented  
319 pathogens from being flushed to the surface by heavy rainfall.<sup>25,26</sup> Additionally, an analysis of  
320 environmental contamination in the WASH Benefits trial found that *E. coli* concentrations in  
321 food, stored water, and ponds were elevated following heavy rainfall compared to other periods,

322 but that there was no impact on groundwater quality. (Ercumen A, North Carolina State  
323 University, personal communication) These findings suggest that the concentration-dilution  
324 pattern does not hold in this setting and increases in diarrhea after heavy rainfall are likely  
325 attributed to the contamination of stored water and food supplies.

326 Interventions were generally more effective under higher temperatures, which might be  
327 attributed to increased enteric pathogen transmission in warm conditions. Generally, high  
328 temperature in storage containers have been linked to the growth of enteropathogens in food and  
329 drinking water supplies.<sup>27,28</sup> Ambient temperature may also influence the survival, distribution,  
330 and virulence of enteric pathogens in surface water, soil, food, or on surfaces, but few studies  
331 have investigated these relationships empirically. An analysis of environmental contamination in  
332 the WASH Benefits trial provides evidence that both ambient temperature and higher  
333 temperature in storage containers are associated with higher pathogen concentrations: during or  
334 following extreme heat, *E. coli* concentrations in food, stored water, ponds, and soil were  
335 elevated 1.25-2 fold compared to cooler periods. (Ercumen A, North Carolina State University,  
336 personal communication) A prior meta-analysis found that increased temperatures were strongly  
337 associated with increased all-cause and bacterial diarrhea, but not viral diarrhea.<sup>6</sup> Bacterial  
338 pathogens are a common cause of diarrhea in children <2 years in Bangladesh,<sup>29</sup> and it is  
339 possible that associations between diarrhea and temperature in this study were due to increased  
340 transmission of bacterial but not viral enteropathogens. However, we did not investigate diarrhea  
341 etiology in this study.

342 Bangladesh is projected to experience rapidly increasing temperatures and precipitation  
343 under climate change, which may increase the burden of childhood diarrhea in rural  
344 communities. Our findings suggest that WASH interventions will be particularly impactful for



345 preventing diarrhea under more extreme weather conditions and may be resistant to damages  
346 during typical monsoon season. As communities brace for the impacts of climate change,  
347 investment into WASH interventions may increase the resilience of vulnerable populations  
348 against diarrhea. We found that the sanitation intervention more effectively mitigated increases  
349 in diarrhea prevalence following precipitation and higher temperatures, and the water  
350 intervention had the smallest preventive effect on diarrhea in these conditions. This may be  
351 because the sanitation intervention interrupts multiple upstream pathways of enteric pathogen  
352 transmission through flies, water, or soil, while the handwashing and water interventions  
353 interrupt fewer pathways that are more downstream. To mitigate the impacts of climate change  
354 on diarrhea, interventions that address multiple pathways of enteric pathogen transmission may  
355 be necessary.

356 Our study is subject to several limitations. We measured caregiver-reported diarrhea,  
357 which is susceptible to courtesy bias. However, our negative control analysis using an alternative  
358 caregiver-reported outcome suggested that there was no evidence of misclassification. Second,  
359 we were not able to investigate the influence of flooding due to a lack of available data, and we  
360 could not investigate the interaction between heavy rain preceded by dry periods due to data  
361 sparsity. Third, the hottest temperatures during the study coincided with the end of the dry  
362 season, so the impact of temperature was difficult to disentangle from that of season. Finally,  
363 because higher temperature and higher precipitation mostly coincided during the study period, it  
364 was difficult to fully isolate the influence of each on WASH intervention effectiveness.

## 365 **Conclusion**

366 Here, we rigorously assessed the influence of temperature and precipitation on WASH  
367 intervention effectiveness using data from randomized trial with high adherence and high-

368 resolution weather data. Low-cost, household level WASH interventions more effectively  
369 reduced diarrhea prevalence following periods of higher temperatures, higher precipitation, and  
370 heavy rainfall. Effect modification varied by intervention type, and we observed the largest  
371 differences in diarrhea reductions following heavy rainfall under the sanitation intervention. In  
372 regions with similar climates, WASH interventions may increase community resilience against  
373 extreme weather under climate change by preventing environmentally mediated enteric  
374 infections.  
375

376 **Acknowledgements**

377           This study was supported by the Gates Foundation (grant number OPPGD759 to the  
378 University of California, Berkeley). The original trial was implemented by icddr,b, and we  
379 greatly appreciate the contributions of the study participants and field workers who delivered the  
380 interventions and led data collection. Research reported in this publication was supported in part  
381 by the National Institute of Allergy And Infectious Diseases of the National Institutes of Health  
382 under Award Numbers K01AI141616 (PI: Benjamin-Chung) and R01AI166671 (PI: Arnold), the  
383 National Heart, Lung, And Blood Institute of the National Institutes of Health under award  
384 number T32HL151323 (Nguyen), the National Institute of General Medical Sciences of the  
385 National Institutes of Health under award number T32GM144273 (Athni), and a Stanford  
386 University School of Medicine Dean’s Postdoctoral Fellowship (Grembi). The content is solely  
387 the responsibility of the authors and does not necessarily represent the official views of the  
388 National Institutes of Health. Jade Benjamin-Chung is a Chan Zuckerberg Biohub Investigator.  
389 We also acknowledge the Stanford Research Computing Center for computational resources at  
390 the Sherlock high-performance cluster.

391 **Data Sharing**

392           Individual participant data and metadata for this study will be made available at the time  
393 of publication and posted here: <https://osf.io/yt67k/> The pre-analysis plan and ancillary results  
394 are also available at the same URL. To protect participant privacy, household geocoordinates are  
395 not included in the public dataset.

## References

- 1 Institute for Health Metrics and Evaluation (IHME). GBD Results. Seattle WA IHME Univ. Wash. 2020. <https://vizhub.healthdata.org/gbd-results> (accessed Sept 20, 2022).
- 2 Global Diarrhea Burden | Global Water, Sanitation and Hygiene | Healthy Water | CDC. 2018; published online Nov 9. <https://www.cdc.gov/healthywater/global/diarrhea-burden.html> (accessed Dec 18, 2021).
- 3 Diarrhoeal disease. <https://www.who.int/news-room/fact-sheets/detail/diarrhoeal-disease> (accessed Dec 18, 2021).
- 4 Null C, Stewart CP, Pickering AJ, *et al.* Effects of water quality, sanitation, handwashing, and nutritional interventions on diarrhoea and child growth in rural Kenya: a cluster-randomised controlled trial. *Lancet Glob Health* 2018; **6**: e316–29.
- 5 Luby SP, Rahman M, Arnold BF, *et al.* Effects of water quality, sanitation, handwashing, and nutritional interventions on diarrhoea and child growth in rural Bangladesh: a cluster randomised controlled trial. *Lancet Glob Health* 2018; **6**: e302–15.
- 6 Carlton EJ, Woster AP, DeWitt P, Goldstein RS, Levy K. A systematic review and meta-analysis of ambient temperature and diarrhoeal diseases. *Int J Epidemiol* 2016; **45**: 117–30.
- 7 Levy K, Woster AP, Goldstein RS, Carlton EJ. Untangling the Impacts of Climate Change on Waterborne Diseases: a Systematic Review of Relationships between Diarrheal Diseases and Temperature, Rainfall, Flooding, and Drought. *Environ Sci Technol* 2016; **50**: 4905–22.
- 8 Nijhawan A, Howard G. Associations between climate variables and water quality in low- and middle-income countries: A scoping review. *Water Res* 2022; **210**: 117996.
- 9 Mellor JE, Levy K, Zimmerman J, *et al.* Planning for climate change: The need for mechanistic systems-based approaches to study climate change impacts on diarrheal diseases. *Sci Total Environ* 2016; **548–549**: 82–90.
- 10 Hashizume M, Armstrong B, Hajat S, *et al.* Association between climate variability and hospital visits for non-cholera diarrhoea in Bangladesh: effects and vulnerable groups. *Int J Epidemiol* 2007; **36**: 1030–7.
- 11 Bhavnani D, Goldstick JE, Cevallos W, Trueba G, Eisenberg JNS. Impact of Rainfall on Diarrheal Disease Risk Associated with Unimproved Water and Sanitation. *Am J Trop Med Hyg* 2014; **90**: 705–11.
- 12 Wagner EG, Lanoix JN, Organization WH. Excreta disposal for rural areas and small communities. World Health Organization, 1958 <https://apps.who.int/iris/handle/10665/41687> (accessed June 30, 2023).
- 13 Howard G, Calow R, Macdonald A, Bartram J. Climate Change and Water and Sanitation: Likely Impacts and Emerging Trends for Action. *Annu Rev Environ Resour* 2016; **41**: 253–76.

- 14Liang M, Ding X, Wu Y, Sun Y. Temperature and risk of infectious diarrhea: a systematic review and meta-analysis. *Environ Sci Pollut Res* 2021; **28**: 68144–54.
- 15Mukabutera A, Thomson D, Murray M, *et al.* Rainfall variation and child health: effect of rainfall on diarrhea among under 5 children in Rwanda, 2010. *BMC Public Health* 2016; **16**: 731.
- 16Carlton EJ, Eisenberg JNS, Goldstick J, Cevallos W, Trostle J, Levy K. Heavy Rainfall Events and Diarrhea Incidence: The Role of Social and Environmental Factors. *Am J Epidemiol* 2014; **179**: 344–52.
- 17Wu J, Yunus M, Streatfield PK, *et al.* Impact of tubewell access and tubewell depth on childhood diarrhea in Matlab, Bangladesh. *Environ Health* 2011; **10**: 109.
- 18Contreras JD, Islam M, Mertens A, *et al.* Evaluation of an on-site sanitation intervention against childhood diarrhea and acute respiratory infection 1 to 3.5 years after implementation: Extended follow-up of a cluster-randomized controlled trial in rural Bangladesh. *PLOS Med* 2022; **19**: e1004041.
- 19Arnold BF, Null C, Luby SP, *et al.* Cluster-randomised controlled trials of individual and combined water, sanitation, hygiene and nutritional interventions in rural Bangladesh and Kenya: the WASH Benefits study design and rationale. *BMJ Open* 2013; **3**: e003476.
- 20Beck HE, Wood EF, Pan M, *et al.* MSWEP V2 Global 3-Hourly 0.1° Precipitation: Methodology and Quantitative Assessment. *Bull Am Meteorol Soc* 2019; **100**: 473–500.
- 21McNally A, Jacob J, Arsenault K, *et al.* A Central Asia hydrologic monitoring dataset for food and water security applications in Afghanistan. *Earth Syst Sci Data* 2022; **14**: 3115–35.
- 22Lee RM, Lessler J, Lee RA, *et al.* Incubation periods of viral gastroenteritis: a systematic review. *BMC Infect Dis* 2013; **13**: 446.
- 23Kraay ANM, Man O, Levy MC, Levy K, Ionides E, Eisenberg JNS. Understanding the Impact of Rainfall on Diarrhea: Testing the Concentration-Dilution Hypothesis Using a Systematic Review and Meta-Analysis. *Environ Health Perspect* 2020; **128**: 126001.
- 24Pujari PR, Padmakar C, Labhasetwar PK, Mahore P, Ganguly AK. Assessment of the impact of on-site sanitation systems on groundwater pollution in two diverse geological settings—a case study from India. *Environ Monit Assess* 2012; **184**: 251–63.
- 25Ahmed KM, Bhattacharya P, Hasan MA, *et al.* Arsenic enrichment in groundwater of the alluvial aquifers in Bangladesh: an overview. *Appl Geochem* 2004; **19**: 181–200.
- 26Ercumen A, Naser AM, Arnold BF, Unicomb L, Colford JM, Luby SP. Can Sanitary Inspection Surveys Predict Risk of Microbiological Contamination of Groundwater Sources? Evidence from Shallow Tubewells in Rural Bangladesh. *Am J Trop Med Hyg* 2017; **96**: 561–8.

27Chauret C. Survival and control of Escherichia coli O157:H7 in foods, beverages, soil and water. *Virulence* 2011; **2**: 593–601.

28Semenza JC, Herbst S, Rechenburg A, *et al.* Climate Change Impact Assessment of Food- and Waterborne Diseases. *Crit Rev Environ Sci Technol* 2012; **42**: 857–90.

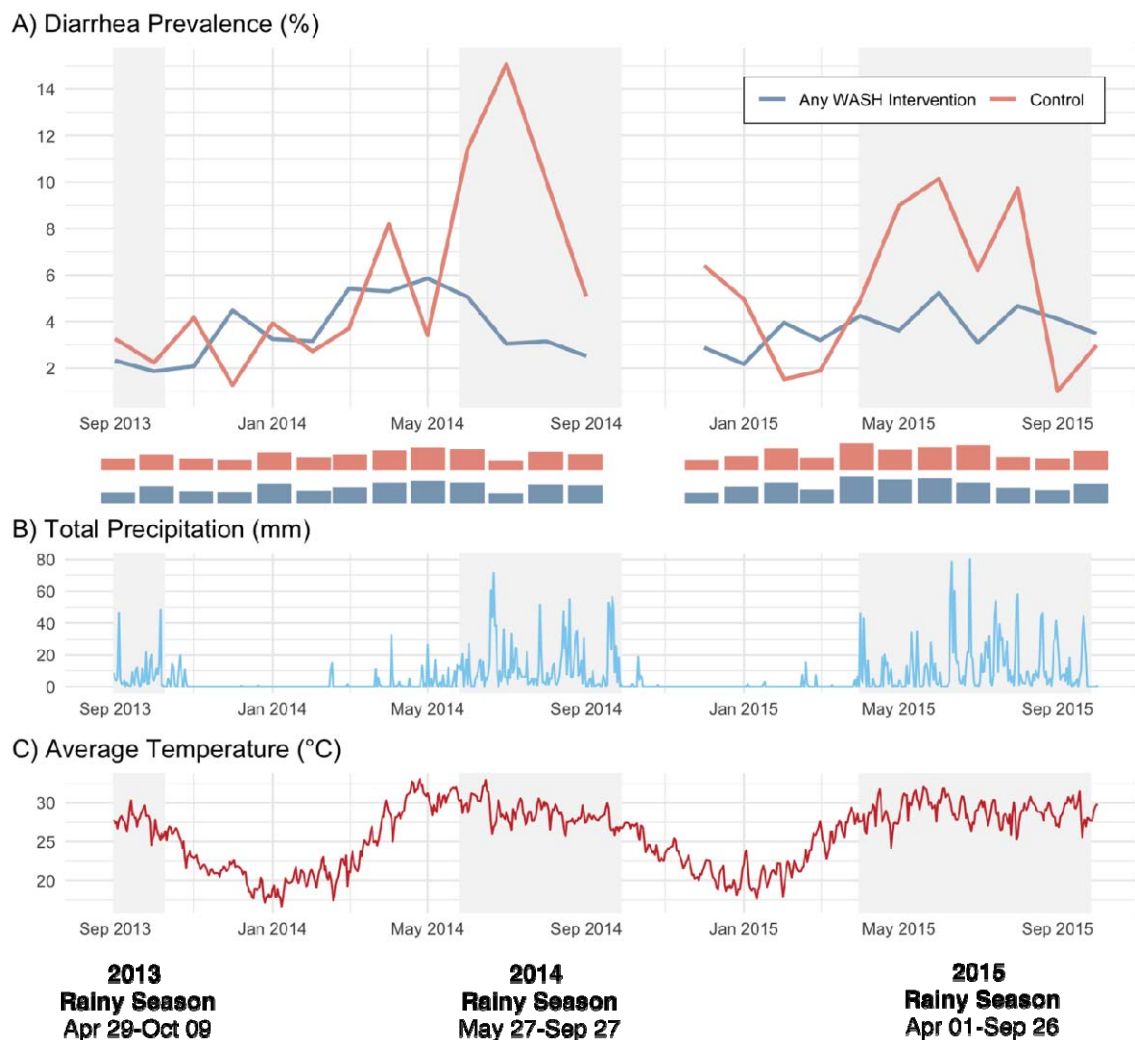
29Kotloff KL, Nasrin D, Blackwelder WC, *et al.* The incidence, aetiology, and adverse clinical consequences of less severe diarrhoeal episodes among infants and children residing in low-income and middle-income countries: a 12-month case-control study as a follow-on to the Global Enteric Multicenter Study (GEMS). *Lancet Glob Health* 2019; **7**: e568–84.

**Table 1: Population characteristics by intervention group**

<b>Variable</b>	<b>Any WASH Intervention</b>	<b>Control</b>
<b>Sample Characteristics</b>		
Children	1,956	4,965
Observations	3,466	8,974
Households	1,203	3,051
Children per household	1.63 (1.57 - 1.68)	1.63 (1.59 - 1.66)
Age at first measurement (years)	1.63 (1.58 - 1.68)	1.59 (1.55 - 1.62)
Age at second measurement (years)	2.52 (2.47 - 2.58)	2.53 (2.5 - 2.57)
Diarrhea Prevalence	197 (10.1%)	343 (6.9%)
<b>Temperature Variables</b>		
Mean weekly temperature (°C)	23.5 (23.1 - 23.9)	23.5 (23.3 - 23.8)
Minimum weekly temperature (°C)	15.8 (15.4 - 16.2)	15.7 (15.5 - 16)
Maximum weekly temperature (°C)	30.6 (30.3 - 31)	30.6 (30.4 - 30.8)
<b>Precipitation Variables</b>		
Measured during rainy season	1772 (51.13%)	4578 (51.01%)
Mean weekly total precipitation (mm)	41.5 (32.4 - 50.7)	41.7 (36.1 - 47.4)
Heavy rain (1+ days ≥ 80th percentile)	1531 (44.17%)	3942 (43.93%)

Sample sizes, child demographics, diarrhea prevalence, and environmental risk factor distributions, by treatment arm. For categorical variables, the number of occurrences and percentages are reported. For continuous variables, the mean and 95% confidence interval are reported. All environmental variables are reported for the 8-14 day period prior to outcome assessment (1-week lag), with the exception of rainy season.

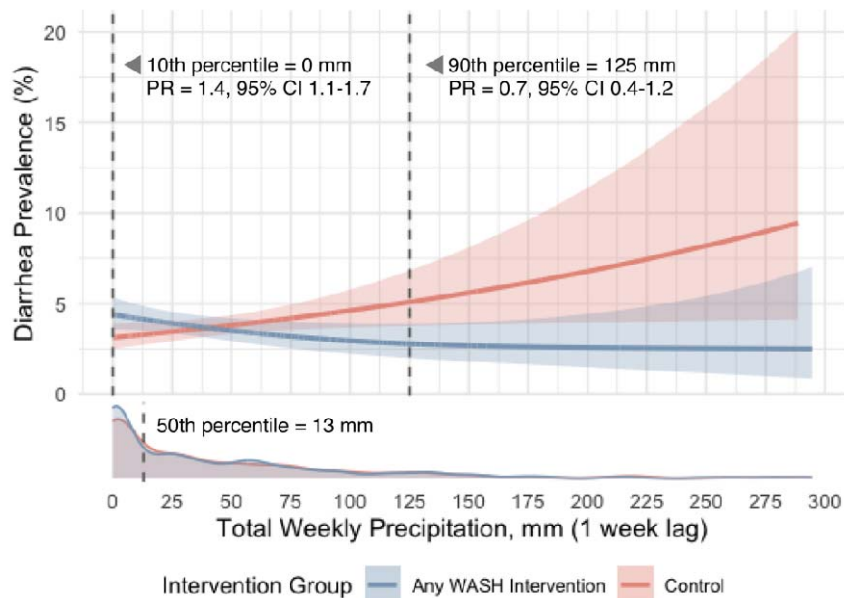
**Figure 1: Diarrhea prevalence, precipitation, and temperature over time**



- A) Prevalence of caregiver-reported diarrhea over time, by intervention group. Rainy season is shaded in gray. Rug plots show the number of diarrhea measurements made per month during the trial. Plot is left-truncated at September 2013, such that the figure omit two measurements taken in March 2013 that are included in subsequent analyses.
- B) Daily total precipitation over time, averaged across the study area
- C) Daily average temperature over time, averaged across the study area

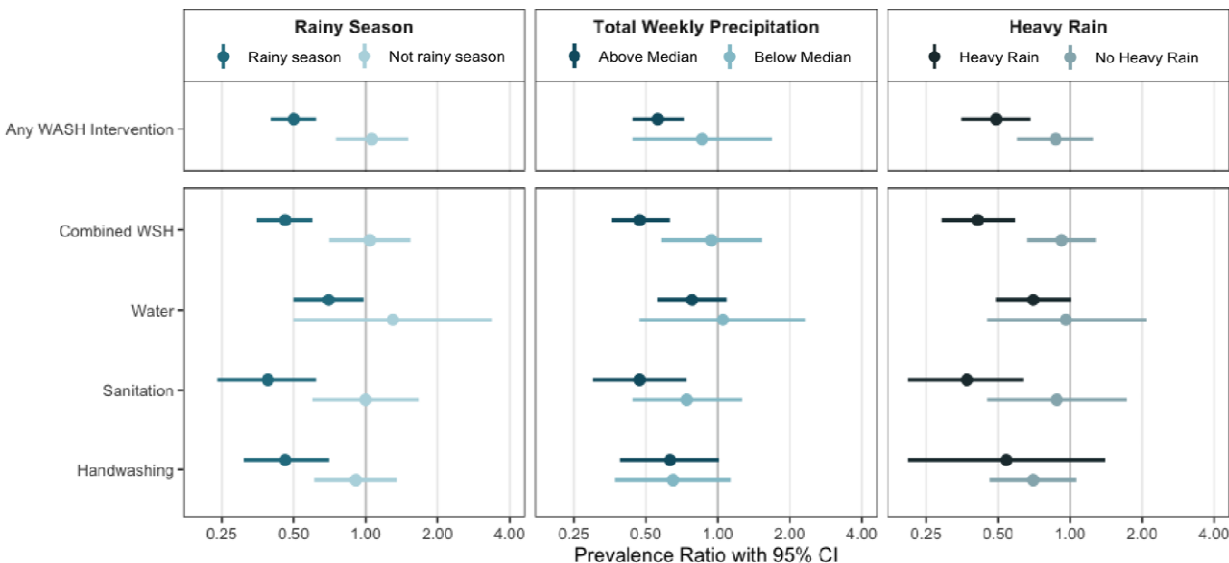


**Figure 2: Diarrhea prevalence by total precipitation and intervention group**



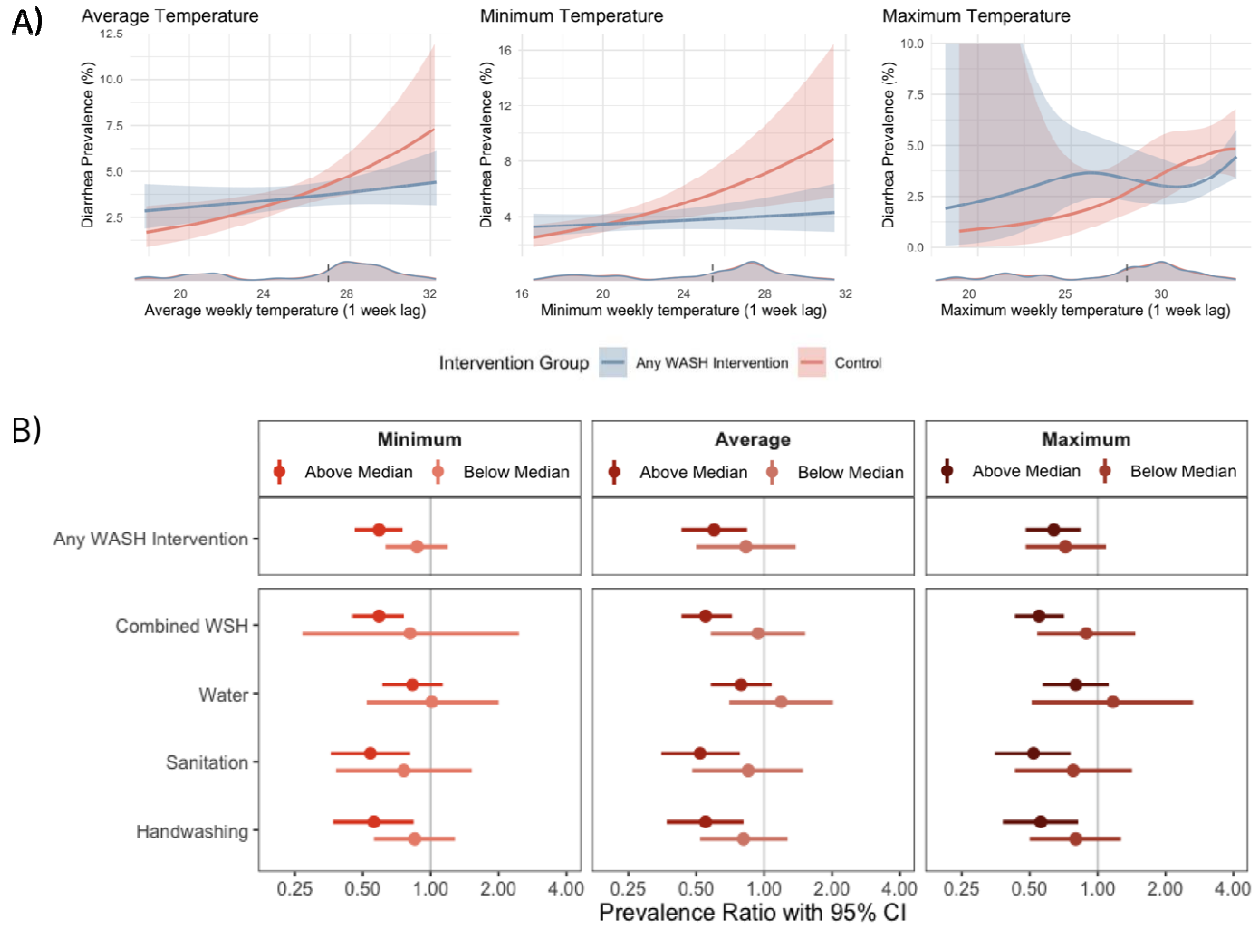
Predicted diarrhea prevalence by total precipitation in the 8-14 day period prior to outcome assessment, controlled for average temperature and stratified by intervention group. Prevalence ratios for the intervention are calculated at the 10th and 90th percentile of total weekly precipitation using a non-parametric bootstrap with 1,000 resamples taken at the cluster level. The density plot shows the distribution of measurements over values of weekly total precipitation, with a dashed line marking the median.

**Figure 3: Differences in diarrhea prevalence under varying precipitation conditions, by intervention group**



Prevalence ratios for caregiver-reported diarrhea in the intervention vs control groups. Heavy rain describes whether there is at least 1 day with over 80<sup>th</sup> percentile daily rainfall in the 8-14 day period prior to outcome assessment. Total precipitation is also measured for the 8-14 day period prior to outcome assessment, with a median value of 13 mm. All effect estimates have controlled for average weekly temperature.

**Figure 4: Differences in diarrhea prevalence under varying temperature conditions, by intervention group**



(A) Predicted diarrhea prevalence by average, minimum, and maximum temperatures in the 8-14 day period prior to outcome assessment, controlled for total weekly precipitation. Density plots show the distribution of measurements over values of total temperature, with a dashed line marking the median.

(B) Prevalence ratios for caregiver-reported diarrhea in the intervention vs control groups. All effect estimates have controlled for total weekly precipitation. The median values were 27°C for average temperature, 25°C for minimum temperature, and 28°C for maximum temperature.