

1 **Consideration of within-patient diversity highlights transmission pathways and**  
2 **antimicrobial resistance gene variability in vancomycin resistant *Enterococcus faecium***

3

4 **Martin P McHugh,<sup>1,2\*</sup> Kerry A Pettigrew,<sup>1+</sup> Surabhi Taori,<sup>2</sup> Thomas J Evans,<sup>3</sup> Alistair**  
5 **Leanord,<sup>3,4</sup> Stephen H Gillespie,<sup>1</sup> Kate E Templeton,<sup>2</sup> Matthew TG Holden<sup>1</sup>**

6

7 <sup>1</sup> School of Medicine, University of St Andrews, St Andrews, UK

8 <sup>2</sup> Medical Microbiology, Department of Laboratory Medicine, Royal Infirmary of Edinburgh,  
9 Edinburgh, UK

10 <sup>3</sup> School of Infection and Immunity, University of Glasgow, Glasgow, UK

11 <sup>4</sup> Scottish Microbiology Reference Laboratories, Glasgow, UK

12

13 <sup>+</sup>Current affiliation: School of Health and Life Sciences, Teesside University, Middlesbrough, UK

14

15 \*Corresponding author: Martin McHugh

16 Email: [mpm20@st-andrews.ac.uk](mailto:mpm20@st-andrews.ac.uk)

17 Telephone: (+44)131 242 6025

18

19 Short title: Investigating the diversity of VREfm within patients

20

21

22

23

24

25

26

## 27 **Synopsis**

28 Background: Whole genome sequencing (WGS) is increasingly applied to healthcare-  
29 associated vancomycin-resistant *Enterococcus faecium* (VREfm) outbreaks. Within-patient  
30 diversity could complicate transmission resolution if single colonies are sequenced from  
31 identified cases.

32 Objectives: Determine the impact of within-patient diversity on transmission resolution of VREfm

33 Methods: Fourteen colonies were collected from VREfm positive rectal screens, single colonies  
34 were collected from clinical samples, and Illumina WGS performed. Two isolates were selected  
35 for Oxford Nanopore sequencing and hybrid genome assembly to generate lineage-specific  
36 reference genomes. Mapping to closely related references was used to identify genetic  
37 variations and closely related genomes. A transmission network was inferred for the entire  
38 genome set using PhyloScanner.

39 Results: In total, 229 isolates from 11 patients were sequenced. Carriage of 2-3 sequence types  
40 was detected in 27% of patients. Presence of antimicrobial resistance genes and plasmids was  
41 variable within genomes from the same patient and sequence type. We identified two dominant  
42 sequence types (ST80 and ST1424), with two putative transmission clusters of two patients  
43 within ST80, and a single cluster of six patients within ST1424. We found transmission  
44 resolution was impaired using fewer than 14 colonies.

45 Conclusions: Patients can carry multiple sequence types of VREfm, and even within related  
46 lineages the presence of mobile genetic elements and antimicrobial resistance genes can vary.  
47 VREfm within-patient diversity should be considered to ensure accurate resolution of  
48 transmission networks.

49

50

51

52 **INTRODUCTION**

53  
54 *Enterococcus faecium* is a leading nosocomial pathogen causing opportunistic infections mostly  
55 in immunocompromised hosts. Antimicrobial resistance is a key concern, particularly against  
56 front-line anti Gram-positive agents amoxicillin and vancomycin.<sup>1</sup> Vancomycin-resistant *E.*  
57 *faecium* (VREfm) infections lead to increased length of stay, cost an estimated USD200 per  
58 case per day, and confer mortality of 23-47%.<sup>2-7</sup> In 2020, vancomycin resistance of 45.6% was  
59 reported among all *E. faecium* bloodstream isolates in Scotland, among the highest rates in  
60 Europe.<sup>8</sup>

61 In healthcare institutions asymptomatic intestinal carriage of VREfm can lead to  
62 shedding into the environment and transfer to other patients or staff, challenging efforts to limit  
63 the incidence of nosocomial infections.<sup>9</sup> Whole genome sequencing (WGS) is increasingly  
64 applied to investigate transmission networks and identify control measures.<sup>10,11</sup> Many WGS  
65 based analyses of bacterial outbreaks, however, rely on analysing single colony picks from  
66 clinical samples assuming that this represents the entire infecting or colonizing population within  
67 individual patients.<sup>12</sup> It is increasingly recognised that within-patient diversity of bacterial  
68 populations can be significant and can influence transmission network resolution.<sup>13-19</sup> Several  
69 studies have identified that individual patients can carry multiple strains of *E. faecium*  
70 concurrently, but few have applied this to transmission resolution.<sup>20-24</sup>

71 In this study, we aimed to identify within-patient diversity of VREfm from rectal screening  
72 swabs and determine how this impacts transmission inference in a 1-month snapshot on a  
73 haematology unit. We designed a sampling strategy to reliably detect within-patient diversity  
74 and supplemented short-read and long-read sequencing to generate high-quality reference  
75 genomes to identify genomic variants in the isolate collection.

76

## 77 **MATERIALS AND METHODS**

78

79 *Isolates*

80 Rectal swabs were collected at admission and on all inpatients on the haematology unit  
81 developing febrile neutropenia (neutrophils  $<0.9 \times 10^9/l$  or  $<1.0 \times 10^9/l$  and falling after  
82 chemotherapy, plus body temperature  $\geq 38^\circ\text{C}$ ). Swabs were plated to CHROMID® VRE agar  
83 (bioMérieux, Marcy-l'Étoile, France), species identification and vancomycin resistance were  
84 confirmed with MALDI-TOF (Microflex instrument, Bruker, Billerica, USA) and VITEK-2  
85 (bioMérieux) with EUCAST breakpoints. All purple colonies from VREfm positive plates were  
86 stored at  $-80^\circ\text{C}$  in a Microbank cryovial (Pro-Lab Diagnostics, Birkenhead, UK). Any VREfm  
87 isolated from clinical samples within 60 days of a rectal positive were also stored. Patient  
88 metadata was retrieved from electronic records and movements visualised with HALviz v0.3  
89 (<https://haiviz.beatsonlab.com/>). This work was approved by the NHS Scotland BioRepository  
90 Network (Ref TR000126) and the University of St Andrews Research Ethics Committee (Ref  
91 MD12651).

92

93 *Genome Sequencing*

94 Cryovials were re-plated on CHROMID® VRE agar, and fourteen random purple colonies were  
95 incubated overnight in 5 ml brain heart infusion broth (Oxoid). Cells were pelleted and DNA  
96 extracted using the DNA Mini kit on a QiaSymphony instrument (Qiagen).

97 Short read libraries were prepared using the Nextera XT kit (Illumina, San Diego, USA)  
98 and sequenced with a MiSeq instrument (Illumina) using 300 bp paired-end reads on a 600-  
99 cycle v3 reagent kit.

100 For long read sequencing, isolates VRED06-02 (ST1424) and VRED06-10 (ST80) were  
101 selected at random from the first sample with multiple sequence types detected (sample  
102 VRED06 from patient P49). Long read libraries were generated with the LSK109 Ligation  
103 Sequencing Kit (Oxford Nanopore Technologies, Oxford, UK) and sequenced for 8h using an

104 R9.4 flow cell on a GridION sequencer (Oxford Nanopore Technologies) with high accuracy  
105 basecalling in MinKNOW v19.12.6 (Oxford Nanopore Technologies).

106 Sequence data from this study have been deposited in the NCBI under BioProject  
107 accession number PRJNA877253 (<https://www.ncbi.nlm.nih.gov/bioproject/PRJNA877253>).

108

### 109 *Sequence Assembly and Mapping*

110 Short reads were quality trimmed with Trimmomatic v0.32.<sup>25</sup> MLSTs were determined with  
111 SRST2 v0.2.0<sup>26</sup> and the *E. faecium* pubMLST database.<sup>27</sup> A core alignment was generated by  
112 mapping short reads to the reference genome(s) with Snippy v4.6.0 default settings  
113 (<https://github.com/tseemann/snippy>) and masking all putative transposases, prophage regions,  
114 and recombination blocks. Recombination blocks were identified with Gubbins v2.4.1.<sup>28</sup> Non-  
115 ACGT bases were converted to N with snippy-clean and a core SNP alignment generated with  
116 snp-sites v2.5.1.<sup>29</sup> The 130 ST80 genomes mapped to VRED06-10 generated an initial  
117 alignment of 2,814,943 bases, 202,738 bases were masked, and the final alignment contained  
118 96 variant sites; the 97 ST1424 genomes mapped to VRED06-02 generated an initial alignment  
119 of 2,945,113 bases, 227,540 bases were masked, and 13 variant sites remained. Maximum-  
120 likelihood phylogenies were constructed with IQTree v2.0.3 with automatic model selection and  
121 1000 ultrafast bootstraps.<sup>30–32</sup> Phylogenies were visualised with iTOL.<sup>33</sup> Short read assemblies  
122 were generated with Unicycler v0.4.8<sup>34</sup> and searched for antimicrobial resistance genes using  
123 Abricate v1.0.1 (<https://github.com/tseemann/abricate>) with default settings and the ResFinder  
124 database.<sup>35</sup>

125 Long reads <1000 bp were removed with Nanofilt v2.7.1<sup>36</sup> and adapters trimmed and  
126 chimaeras split with Porechop v0.3.2 (<https://github.com/rrwick/Porechop>). Reads were split into  
127 12 subsamples and three assemblies made with four different assemblers: Flye v2.8.1,  
128 Redbean v2.5, Raven v1.1.10, and Miniasm v0.1.3,<sup>37–40</sup> giving 12 assemblies in total. A  
129 consensus assembly was generated with Tricycler v0.3.3<sup>41</sup> and polished with Medaka v0.11.5

130 (<https://github.com/nanoporetech/medaka>) and 2-3 cycles of Pilon v1.23.<sup>42</sup> Assembly quality  
131 was assessed with assembly-stats v1.0.1 ([https://github.com/sanger-pathogens/assembly-](https://github.com/sanger-pathogens/assembly-stats)  
132 [stats](https://github.com/sanger-pathogens/assembly-stats)), Ideel (<https://github.com/phiweger/ideel>), and Busco v4.1.4.<sup>43</sup>

133 Polished assemblies were annotated with Prokka v1.14.6<sup>44</sup> using the Aus0004 reference  
134 genome (Accession CP003351) with the --proteins option. Abricate identified matches to  
135 ResFinder, VirulenceFinder, and PlasmidFinder databases<sup>45-48</sup> and putative prophages were  
136 identified with PHASTER.<sup>49</sup> Plasmid copy numbers were estimated using short reads and  
137 Snippy: average depth for each plasmid was divided by the average depth of the chromosome.

138 Plasmids in the polished assemblies were compared to each other with Mash v2.2.2.<sup>50</sup>  
139 To detect plasmids, those present in the two polished assemblies were used as references  
140 against all short read sets in Snippy and considered present if  $\geq 85\%$  bases were called with  $< 20$   
141 SNPs/1000 bp.<sup>51</sup>

142

### 143 *Transmission Network Inference*

144 All short reads were mapped to the VRED06-10 ST80 reference chromosome with Snippy, the  
145 V24 *E. faecium* ST80 genome (Accession CP036151) was included as an outgroup. An  
146 alignment of 2,814,943 bases was generated and 1,418,409 bases masked as above. A  
147 posterior set of phylogenies were generated with MrBayes v3.2.7.<sup>52</sup> Two MCMC runs of four  
148 coupled chains were run for 5,000,000 generations, sampling every 5000. The final standard  
149 deviation of split frequencies was 0.013, the log-likelihood was stable, and the effective sample  
150 size of all parameters was  $> 800$ . A random sample of 100 posterior trees was input to  
151 PhyloScanner v1.6.6.<sup>53</sup> Sankoff parsimony reconstruction was performed with  $k$  parameter of  
152 281494.5, equivalent to a within-patient diversity threshold of 10 SNPs as used in other  
153 studies.<sup>54</sup> A transmission network was constructed in Cytoscape v3.9.0<sup>55</sup> showing edges with  
154 complex or transmission state and  $> 0.5$  probability. The role of smaller numbers of colony picks

155 on transmission resolution was investigated by repeating the above with the first 3, 5, and 10  
156 genomes per sample.

157

### 158 *Statistical Analysis*

159 To determine the optimal number of colonies to analyse for within-sample diversity a power  
160 calculation was performed as described by Huebner et al.<sup>56</sup>

161

$$q ^ n = (1 - P)$$

162

163 Where  $q = 1 -$  concentration of organisms,  $\wedge$  = exponentiation operator,  $n$  = number of colonies  
164 sequenced, and  $P$  = probability of finding one or more variants.

165 Population variants were considered distinct if they differed by >10 chromosomal  
166 SNPs.<sup>54</sup> Moradigaravand *et al*<sup>20</sup> show rectal VREfm populations harbour minority variants at 20-  
167 50% of the total population based on sequencing ~5 colonies. However, no minor population  
168 variants were identified in blood cultures based on sequencing ~10 colonies.<sup>20</sup> For rectal  
169 samples, we determined 14 colonies per sample would detect a variant at 20% of the population  
170 with 95% confidence, and for blood cultures we sequenced single colonies to identify the  
171 sequence type causing invasive disease.

172 Presence/absence matrices of antimicrobial resistance (AMR) genes were generated in  
173 R v4.0.5 using ggplot2 and patchwork packages.<sup>57-59</sup>

174

## 175 **RESULTS AND DISCUSSION**

176

### 177 *Epidemiological Context*

178 This study was performed over one month in 2017 on an inpatient unit for haematological  
179 malignancies, split into two wards (A and B). VREfm rectal screening was performed on all new

180 admissions and any inpatients with febrile episodes to inform patient placement and  
181 antimicrobial administration. There was significant overlap between patient stays with some  
182 patients moving between the two study wards or to other wards in the hospital (Figure 1).  
183 Patients were cohorted or placed in single rooms when colonised with VREfm or other alert  
184 pathogens. However, not all rooms had ensuite bathroom facilities so risk of VREfm  
185 transmission remained. At the time of the study, surveillance systems in the hospital had not  
186 detected any suspected VREfm outbreak within the study population.

187

### 188 *Results of VREfm Screening*

189 In total, 45 rectal swabs from 27 patients were screened for VREfm. Of these, 18 samples from  
190 13 patients were VREfm positive (Table 1). Three (23.1%) colonised patients developed VREfm  
191 bacteraemia 9, 24, or 46 days after being identified as VREfm carriers. We applied our sampling  
192 strategy to 16 rectal screens generating 224 isolates from 11 patients, and five blood cultures  
193 (five isolates) from two patients yielding a total of 229 isolates. Two rectal swabs and one blood  
194 culture were not available for further study. Most patients were female, the median age was 66  
195 years, and a range of primary diagnoses were present (Table 1). Most colonised patients had  
196 received antibiotics in the preceding six months and 30% had received vancomycin (Table 1).

197

### 198 *Simultaneous carriage of multiple VREfm strains*

199 *In silico* MLST typing using short reads from all 229 genomes showed ST80 (n=130), ST1424  
200 (n=97), ST789 (n=1), and ST1659 (n=1) from the hospital-associated clade A1<sup>60</sup> were present  
201 (Table 2). Multiple STs were detected in three (27%) samples. Sample VRED06 from patient  
202 P49 contained 10 (71.4%) ST80, three (21.4%) ST1424, and one (7.1%) ST789 isolate; sample  
203 VRED07 from P14 contained 10 (71.4%) ST1424 and four (28.6%) ST80 isolates; sample  
204 VRED11 from P50 contained 13 (92.9%) ST1424 and one (7.1%) ST1659 isolate. A further  
205 rectal swab sample from P49 collected two days after VRED06 contained only ST1424, and a



206 blood culture collected nine days later also contained ST1424. P9 had three rectal swab  
207 samples collected over 11 days and had positive blood cultures one month later, all samples  
208 contained ST80 only. Our finding of multiple strains in 27% of patients is in line with recent  
209 studies showing up to half of patients carry 2-4 different *E. faecium* strains, and within-patient  
210 diversity varies over time.<sup>20,24,61,62</sup>

211

### 212 *Genomic population structure of VREfm suggests recent transmission events*

213 The chromosomes of the two strain-specific genome assemblies (Table S1) were used  
214 as references for short-read mapping within each sequence type. Within-patient diversity was  
215 low when genomes of the same sequence type were compared, generally differing by zero  
216 SNPs and a maximum pairwise difference of 3 SNPs (Table 2). Similarly, insertions, deletions,  
217 and plasmids were usually shared in genomes from the same patient. However, the presence of  
218 DEL3 (12 bp non-coding deletion) and DEL4 (11 bp deletion in a solute binding protein) were  
219 variable within 24 ST80 genomes from P20 with 0-2 differentiating SNPs (Figure 2). In genomes  
220 from P9 p1\_VRED06-10 and p3\_VRED06-10 were variably detected despite most genomes  
221 having no differentiating SNPs (Figure 2). Where multiple samples from the same patient were  
222 collected over time we found low (0-3 SNPs) accumulation of SNPs and no pattern in the  
223 prevalence of other genomic variants. Estimates of diversification rates in *E. faecium* from single  
224 colony sampling of national isolate collections suggest 7 mutations per year,<sup>63</sup> other studies of  
225 longitudinal within-patient diversification have estimated higher rates of 12.6 – 128 mutations  
226 per year.<sup>20,22,23</sup> The low SNP diversity identified in our one-month collection of carriage isolates  
227 is in keeping with these estimated mutation rates.

228 The ST80 genomes formed a well-structured population with five clear clusters each  
229 separated by >10 SNPs (Figure 2). Clustered genomes differed by 0-2 SNPs and were mostly  
230 from individual patients although two clusters included genomes from two different patients  
231 (patients P7 and P33, and P2 and P9). All the reference plasmids were detected in the P7 and

232 P33 genomes and there were two insertions detected in three genomes. There was variation in  
233 detection of p1\_VRED06-10 and p3\_VRED06-10 plasmids within P9 genomes, although in P2  
234 genomes all plasmids were detected.

235 Mapping of the ST1424 genomes showed a much more homogeneous population than  
236 in ST80 (Figure 3). Of the 97 ST1424 genomes, 69 had no SNPs and the remaining 28 had 1-2  
237 SNPs differentiating them from the rest of the collection. The SNPs that were detected did not  
238 lead to any clear clustering of genomes, except for the 14 genomes from P6 which all carried a  
239 SNP in a penicillin-binding protein which differentiated them from the other ST1424 genomes.  
240 Two of the P6 genomes had further independent SNPs (one each) and another genome had  
241 lost p1\_VRED06-02. No insertions were detected in the ST1424 collection, and of the six  
242 deletions found five were only in genomes from P49. p6\_VRED06-02 was not detected in 14  
243 P24, 14 P50, and two P49 genomes, while p1\_VRED06-02 was not detected in five genomes  
244 from three patients.

245

#### 246 *Analysis of multiple VREfm colonies supports transmission resolution*

247 A transmission network was constructed considering the phylogenetic placement of all 14  
248 colony picks in each sample (Figure 4). The network supports transmission of ST80 between P2  
249 and P9, and between P7 and P33, with P20 not linked to transmission. Epidemiological data  
250 supports transmission from P33 to P7 on Ward B, as P33 screened negative early in their  
251 admission and then screened positive six days after P7 (Figure 1, Figure 4). P9 and P2  
252 screened positive on the same day - no shared rooms or bed spaces were identified as this was  
253 P2's first day on Ward B so it is unclear where or when transmission may have occurred (Figure  
254 1, Figure S1). P20 had two admissions during the study period, was negative at the end of first  
255 admission then screened positive on re-admission suggesting they may have become colonised  
256 outside of the hospital.

257 All ST1424 patients clustered together with P34 strongly linked to all patients and likely  
258 direct transmission to P6 (Figure 4). P34 was the first ST1424 identified on Ward B, P49 was  
259 positive six days later (having been negative earlier in admission), P14 was positive two days  
260 after that, and P24 was positive 9 days subsequently (Figure 1). P14 and P49 had ST1424 and  
261 ST80 in carriage samples, we did not identify sharing of the ST80 lineages in these patients  
262 suggesting there was no direct transmission between these two patients. On Ward A, P50  
263 screened positive with ST1424 and ST1659 on day two of admission and P6 screened positive  
264 for ST1424 on day six. The ST1424 populations in P6 and P50 may derive from different hosts  
265 with P6 genomes all having a single SNP and P50 genomes having multiple different SNPs and  
266 lack the p6\_VRED06-02 plasmid (Figures 3 and 4). P34 and P50 shared time on Ward A early  
267 in the study before either were known to be VREfm positive, but there is very limited overlap in  
268 time between P34 and P6 while both were in different wards (Figure 1). None of the patients  
269 with ST1424 shared a room or used a bed space previously used by an identified ST1424-  
270 positive carrier during their stay (Figure S1).

271 Analysing less than 14 colonies per sample produced fewer transmission links and lower  
272 confidence (Table S2, Figure S2). Sequencing more than 14 colonies would improve the  
273 detection of minor variants while increasing costs and turnaround time. There was low within-  
274 patient diversity in most patients in our study so this approach may not be required in every  
275 case. Alternatively, strain-resolved metagenomics directly on clinical samples or sweeps of  
276 selective culture growth may be more feasible.<sup>64–66</sup> Further work is required to determine the  
277 optimum sampling strategy to support infection prevention and control investigations in  
278 healthcare settings.

279

280 *Plasmids were mostly ST-specific*

281 VRED06-02 (ST1424 reference) contained seven plasmids, and VRED06-10 (ST80 reference)  
282 contained five plasmids. Plasmids in the two genomes were generally distinct, suggesting  
283 limited sharing between STs within P49 (Table S3).

284 We sought to identify carriage of similar plasmids in the entire collection by short read  
285 mapping (Table S4). Most plasmids were ST-specific with few examples of ST1424 genomes  
286 carrying plasmids from the ST80 reference, and *vice versa*. However, all ST80 genomes from  
287 P7 and P33 carried p7\_VRED06-02 from ST1424, and almost all genomes appeared to carry  
288 p4\_VRED06-10. We believe the hits against the ST1424 genomes are due to cross-mapping of  
289 reads from the related p4\_VRED06-02 (Table S3). P7\_VRED06-02 is unrelated to others in the  
290 collection (Table S3), but no close links to any ST1424-positive patients were identified for P7  
291 and P33 (Figure 4).

292

### 293 *AMR gene load differs between closely related genomes*

294 We next sought to determine the variability of AMR genes within the collection (Table 3 and  
295 Figure 5). In total 13 AMR genes were detected with three (*aac(6')-II*, *msr(C)*, and *vanA*) present  
296 in all genomes, two (*aph(3')-III* and *erm(B)*) in all but one genome, four (*ant(9)-Ia*, *dfrG*, *erm(A)*,  
297 and *tet(M)*) only in ST1424 or ST1659 genomes, two genes (*ant(6)-Ia* and *tet(S)*) found only in  
298 ST80 and ST789 genomes, and *tet(L)* found in a single ST1659 genome. The aminoglycoside  
299 resistance gene *aac(6')-aph(2'')* was variably present, found in 69.9% of all genomes.

300 Tetracycline resistance gene *tet(M)* was identified on the chromosome of VRED06-02 as  
301 part of Tn6944 (Figure S3A). *tet(M)* was identified in 62.2% of ST1424 and ST1659 genomes,  
302 excision of Tn6944 may be responsible for this variable presence. We identified variable within-  
303 patient presence of *tet(M)* and no other tetracycline resistance genes (Figure 5), phenotypic  
304 susceptibility pattern would therefore differ based on which colony was picked. However,  
305 tetracyclines are not generally used for treatment of enterococcal human infections so the  
306 clinical impact may be limited. Similar variable presence of the vancomycin resistance element

307 within patients has been described elsewhere and could lead to inappropriate use of  
308 vancomycin when the patient harbours a resistant subpopulation.<sup>20,21,67,68</sup> Our study only  
309 included vancomycin resistant isolates, so cannot resolve the potential role of variable  
310 vancomycin resistance carriage within patients or in transmission networks. Gain and loss of  
311 vancomycin resistance has been described in regional networks over periods of years<sup>63</sup>.

312 *aac(6')-aph(2'')* was present on p1\_VRED06-02 (ST80) and p1\_VRED06-10 (ST1424).  
313 *aac(6')-aph(2'')* was not detected in any ST80 genomes that were p1\_VRED06-02 negative,  
314 although only 39.8% (n=43) of genomes that carried this plasmid also carried *aac(6')-aph(2'')*. In  
315 p1\_VRED06-02, two copies of *aac(6')-aph(2'')* were surrounded by insertion sequences IS256,  
316 IS1216, and IS3, providing multiple mechanisms of excision. In ST1424 *aac(6')-aph(2'')* was  
317 detected in 97.8% (n=90) genomes with p1\_VRED06-10. In p1\_VRED06-10, *aac(6')-aph(2'')*  
318 was surrounded by two copies of IS256 similarly to Tn6218, although the transposition  
319 machinery was missing (Figure S3B).<sup>69</sup> Another four ST1424 genomes carried *aac(6')-aph(2'')*  
320 but not p1\_VRED06-10 (Table 3 and Figure 5). Short read assemblies could not resolve the  
321 environment of *aac(6')-aph(2'')*, but in three cases *aac(6')-aph(2'')* co-located with an IS3 gene  
322 suggesting mobilisation to another transposable element. The impact on phenotype is unclear –  
323 all genomes carried *aac(6')-li* and *aph(3')-III* which together confer high-level resistance to the  
324 clinically relevant aminoglycosides amikacin and gentamicin, so the loss of *aac(6')-aph(2'')* may  
325 be more efficient for the cell without an overt change in antibiotic susceptibility. Both Tn6994  
326 and Tn6218 were first characterised in *C. difficile*, highlighting transmission of AMR elements  
327 between nosocomial pathogens as recently described.<sup>70</sup>

328 The tetracycline resistance gene *tet(L)* was identified in a single ST1659 genome, the  
329 gene was co-located with *tet(M)* on a 30 kb contig that was similar to Tn6248 from *E. faecium*  
330 over ~19 kb (Figure S3C).

331

332 We recognise some limitations. Around 60% of *E. faecium* carriers can be linked to nosocomial  
333 transmission from other patients or reservoirs in the hospital environment.<sup>61,71-74</sup> Our study did  
334 not include environmental samples, and although patients were mostly located in individual  
335 rooms bathroom facilities were shared posing a significant environmental reservoir for VREfm.  
336 Also, we relied on direct plating to solid VREfm screening agar for inclusion in our study.  
337 Previous studies have shown a sensitivity of 58-96% for this approach, rising to 97-100% with a  
338 pre-enrichment step.<sup>75-77</sup>

339 A proactive sequence-based surveillance approach should avoid large infection  
340 outbreaks, and reduce ward closure costs and the clinical impact of invasive disease.<sup>78-81</sup> In our  
341 setting, an outbreak of VREfm was suspected 3 weeks after the study collection period when P9  
342 and P49 developed bloodstream infection concurrently but this was many weeks after VREfm  
343 transmission had likely occurred (Figure 1 and Figure 4). Due to our study's retrospective  
344 nature, we could not use the findings from sequencing to directly influence patient care.

345 To conclude, by taking account of within-patient diversity in VREfm carriage populations  
346 we identified transmission links between patients that could supplement efforts to control  
347 transmission within hospitals. We also show that diversity exists not just at the level of SNPs –  
348 AMR gene presence/absence, indels, and plasmid presence all vary within and between  
349 patients. Accounting for within-patient diversity is important for resolving VREfm transmission  
350 using WGS-based investigations.

351

## 352 **ACKNOWLEDGEMENTS**

353

354 The authors would like to thank all staff at the Department for Medical Microbiology, Royal  
355 Infirmary of Edinburgh for supporting this study. The authors acknowledge the  
356 Research/Scientific Computing teams at The James Hutton Institute and NIAB for providing  
357 computational resources and technical support for the “UK’s Crop Diversity Bioinformatics HPC”

358 (BBSRC grant BB/S019669/1), use of which has contributed to the results reported within this  
359 paper. Bioinformatics and Computational Biology analyses were further supported by the  
360 University of St Andrews Bioinformatics Unit which is funded by a Wellcome Trust ISSF award  
361 [grant 105621/Z/14/Z].

362

## 363 **FUNDING**

364

365 This work was funded by the Chief Scientist Office (Scotland) through the Scottish Healthcare  
366 Associated Infection Prevention Institute (Reference SIRN/10).

367

## 368 **TRANSPARENCY DELCARATIONS**

369

370 The authors declare no competing interests.

371

## 372 **REFERENCES**

- 373 1. Arias CA, Murray BE. The rise of the Enterococcus: beyond vancomycin resistance. *Nat Rev*  
374 *Microbiol* 2012; **10**: 266–78.
- 375 2. WHO. WHO publishes list of bacteria for which new antibiotics are urgently needed. 2017.  
376 Available at: [https://www.who.int/news/item/27-02-2017-who-publishes-list-of-bacteria-for-](https://www.who.int/news/item/27-02-2017-who-publishes-list-of-bacteria-for-which-new-antibiotics-are-urgently-needed)  
377 [which-new-antibiotics-are-urgently-needed](https://www.who.int/news/item/27-02-2017-who-publishes-list-of-bacteria-for-which-new-antibiotics-are-urgently-needed). Accessed April 26, 2022.
- 378 3. CDC. *Antibiotic Resistance Threats in the United States, 2019*. Atlanta, GA: U.S. Department of  
379 Health and Human Services, CDC; 2019.
- 380 4. Ong DSY, Bonten MJM, Safdari K, *et al*. Epidemiology, management, and risk-adjusted  
381 mortality of ICU-acquired enterococcal bacteremia. *Clin Infect Dis* 2015; **61**: 1413–20.
- 382 5. Billington EO, Phang SH, Gregson DB, *et al*. Incidence, Risk Factors, and Outcomes for  
383 Enterococcus spp . Blood Stream Infections: A Population-Based Study. *Int J Infect Dis* 2014; **26**:  
384 76–82.
- 385 6. Dik JWH, Dinkelacker AG, Vemer P, *et al*. Cost-analysis of seven nosocomial outbreaks in an  
386 academic hospital. *PLoS ONE* 2016; **11**: 1–7.

- 387 7. Lloyd-Smith P, Younger J, Lloyd-Smith E, Green H, Leung V, Romney MG. Economic analysis of  
388 vancomycin-resistant enterococci at a Canadian hospital: Assessing attributable cost and length  
389 of stay. *J Hosp Infect* 2013; **85**: 54–9.
- 390 8. ARHAI Scotland. *Scottish One Health Antimicrobial Use and Antimicrobial Resistance in 2020*.  
391 ARHAI Scotland; 2021.
- 392 9. Zhou X, Willems RJL, Friedrich AW, Rossen JWA, Bathoorn E. Enterococcus faecium: from  
393 microbiological insights to practical recommendations for infection control and diagnostics.  
394 *Antimicrob Resist Infect Control* 2020; **9**: 130.
- 395 10. Quainoo S, Coolen JPM, van Hijum SAFT, *et al*. Whole-Genome Sequencing of Bacterial  
396 Pathogens: the Future of Nosocomial Outbreak Analysis. *Clin Microbiol Rev* 2017; **30**: 1015–63.
- 397 11. Pinholt M, Lerner-Svensson H, Littauer P, *et al*. Multiple hospital outbreaks of vanA  
398 Enterococcus faecium in Denmark, 2012–13, investigated by WGS, MLST and PFGE. *J Antimicrob*  
399 *Chemother* 2015; **70**: 1–9.
- 400 12. Croucher NJ, Didelot X. The application of genomics to tracing bacterial pathogen  
401 transmission. *Curr Opin Microbiol* 2015; **23**: 62–7.
- 402 13. Bryant JM, Grogono DM, Greaves D, *et al*. Whole-genome sequencing to identify  
403 transmission of Mycobacterium abscessus between patients with cystic fibrosis: a retrospective  
404 cohort study. *The Lancet* 2013; **381**: 1551–60.
- 405 14. Worby CJ, Lipsitch M, Hanage WP. Within-Host Bacterial Diversity Hinders Accurate  
406 Reconstruction of Transmission Networks from Genomic Distance Data. *PLoS Comput Biol* 2014;  
407 **10**: e1003549.
- 408 15. Snitkin ES, Zelazny AM, Thomas PJ, *et al*. Tracking a Hospital Outbreak of Carbapenem-  
409 Resistant Klebsiella pneumoniae with Whole-Genome Sequencing. *Sci Transl Med* 2012; **4**:  
410 148ra116.
- 411 16. Hall MD, Holden MT, Srisomang P, *et al*. Improved characterisation of MRSA transmission  
412 using within-host bacterial sequence diversity. *eLife* 2019; **8**: e46402.
- 413 17. Harris SR, Cartwright EJ, Török ME, *et al*. Whole-genome sequencing for analysis of an  
414 outbreak of meticillin-resistant Staphylococcus aureus: a descriptive study. *Lancet Infect Dis*  
415 2013; **13**: 130–6.
- 416 18. Okoro CK, Kingsley RA, Quail MA, *et al*. High-Resolution Single Nucleotide Polymorphism  
417 Analysis Distinguishes Recrudescence and Reinfection in Recurrent Invasive Nontyphoidal  
418 Salmonella Typhimurium Disease. *Clin Infect Dis* 2012; **54**: 955–63.



- 419 19. Paterson GK, Harrison EM, Murray GGR, *et al.* Capturing the cloud of diversity reveals  
420 complexity and heterogeneity of MRSA carriage, infection and transmission. *Nat Commun* 2015;  
421 **6**.
- 422 20. Moradigaravand D, Gouliouris T, Blane B, *et al.* Within-host evolution of *Enterococcus*  
423 *faecium* during longitudinal carriage and transition to bloodstream infection in  
424 immunocompromised patients. *Genome Med* 2017; **9**: 119.
- 425 21. Raven KE, Gouliouris T, Parkhill J, Peacock SJ. Genome-Based Analysis of *Enterococcus*  
426 *faecium* Bacteremia Associated with Recurrent and Mixed-Strain Infection Carroll KC, ed. *J Clin*  
427 *Microbiol* 2018; **56**: e01520-17.
- 428 22. Dubin KA, Mathur D, McKenney PT, *et al.* Diversification and evolution of vancomycin-  
429 resistant *Enterococcus faecium* during intestinal domination. *Infect Immun* 2019; **87**: e00102-  
430 19.
- 431 23. Bayjanov JR, Baan J, Rogers MRC, Troelstra A, Willems RJL, van Schaik W. *Enterococcus*  
432 *faecium* genome dynamics during long-term asymptomatic patient gut colonization. *Microb*  
433 *Genomics* 2019; **5**.
- 434 24. Both A, Kruse F, Mirwald N, *et al.* Population dynamics in colonizing vancomycin-resistant *E.*  
435 *faecium* isolated from immunosuppressed patients. *J Glob Antimicrob Resist* 2022; **28**: 267–73.
- 436 25. Bolger AM, Lohse M, Usadel B. Trimmomatic: A flexible trimmer for Illumina sequence data.  
437 *Bioinforma Oxf Engl* 2014; **30**: 2114–20.
- 438 26. Inouye M, Dashnow H, Raven L-A, *et al.* SRST2: Rapid genomic surveillance for public health  
439 and hospital microbiology labs. *Genome Med* 2014; **6**: 1–16.
- 440 27. Jolley KA, Bray JE, Maiden MCJ. Open-access bacterial population genomics: BIGSdb  
441 software, the PubMLST.org website and their applications. *Wellcome Open Res* 2018; **3**.
- 442 28. Croucher NJ, Page AJ, Connor TR, *et al.* Rapid phylogenetic analysis of large samples of  
443 recombinant bacterial whole genome sequences using Gubbins. *Nucleic Acids Res* 2015; **43**:  
444 e15.
- 445 29. Page AJ, Taylor B, Delaney AJ, *et al.* SNP-sites: Rapid efficient extraction of SNPs from multi-  
446 FASTA alignments. *Microb Genomics* 2016; **2**: e000056.
- 447 30. Minh BQ, Schmidt HA, Chernomor O, *et al.* IQ-TREE 2: New Models and Efficient Methods  
448 for Phylogenetic Inference in the Genomic Era. *Mol Biol Evol* 2020; **37**: 1530–4.
- 449 31. Hoang DT, Chernomor O, von Haeseler A, Minh BQ, Vinh LS. UFBoot2: Improving the  
450 Ultrafast Bootstrap Approximation. *Mol Biol Evol* 2018; **35**: 518–22.

- 451 32. Kalyaanamoorthy S, Minh BQ, Wong TKF, von Haeseler A, Jermini LS. ModelFinder: fast  
452 model selection for accurate phylogenetic estimates. *Nat Methods* 2017; **14**: 587–9.
- 453 33. Letunic I, Bork P. Interactive Tree Of Life (iTOL) v5: an online tool for phylogenetic tree  
454 display and annotation. *Nucleic Acids Res* 2021; **49**: W293–6.
- 455 34. Wick RR, Judd LM, Gorrie CL, Holt KE. Unicycler: Resolving bacterial genome assemblies  
456 from short and long sequencing reads. *PLoS Comput Biol* 2017; **13**: e1005595.
- 457 35. Zankari E, Hasman H, Kaas RS, *et al.* Genotyping using whole-genome sequencing is a  
458 realistic alternative to surveillance based on phenotypic antimicrobial susceptibility testing. *J*  
459 *Antimicrob Chemother* 2013; **68**: 771–7.
- 460 36. De Coster W, D’Hert S, Schultz DT, Cruts M, Van Broeckhoven C. NanoPack: visualizing and  
461 processing long-read sequencing data. *Bioinformatics* 2018; **34**: 2666–9.
- 462 37. Kolmogorov M, Yuan J, Lin Y, Pevzner PA. Assembly of long, error-prone reads using repeat  
463 graphs. *Nat Biotechnol* 2019; **37**: 540–6.
- 464 38. Ruan J, Li H. Fast and accurate long-read assembly with wtdbg2. *Nat Methods* 2020; **17**:  
465 155–8.
- 466 39. Vaser R, Šikić M. Time- and memory-efficient genome assembly with Raven. *Nat Comput Sci*  
467 2021; **1**: 332–6.
- 468 40. Li H. Minimap and miniasm: fast mapping and de novo assembly for noisy long sequences.  
469 *Bioinformatics* 2016; **32**: 2103–10.
- 470 41. Wick RR, Judd LM, Cerdeira LT, *et al.* Tricycler: consensus long-read assemblies for bacterial  
471 genomes. *Genome Biol* 2021; **22**: 266.
- 472 42. Bruce J Walker, Thomas Abeel, Terrance Shea, *et al.* Pilon: An Integrated Tool for  
473 Comprehensive Microbial Variant Detection and Genome Assembly Improvement | PLOS ONE.  
474 *PLOS ONE* 2014; **9**: e112963.
- 475 43. Simão FA, Waterhouse RM, Ioannidis P, Kriventseva EV, Zdobnov EM. BUSCO: assessing  
476 genome assembly and annotation completeness with single-copy orthologs. *Bioinformatics*  
477 2015; **31**: 3210–2.
- 478 44. Seemann T. Prokka: Rapid prokaryotic genome annotation. *Bioinformatics* 2014; **30**: 2068–  
479 9.
- 480 45. Bortolaia V, Kaas Rs, Ruppe E, *et al.* ResFinder 4.0 for predictions of phenotypes from  
481 genotypes. *J Antimicrob Chemother* 2020; **75**: 3491–500.

- 482 46. Zankari E, Allesøe R, Joensen KG, Cavaco LM, Lund O, Aarestrup FM. PointFinder: a novel  
483 web tool for WGS-based detection of antimicrobial resistance associated with chromosomal  
484 point mutations in bacterial pathogens. *J Antimicrob Chemother* 2017; **72**: 2764–8.
- 485 47. Joensen Kg, Scheutz F, Lund O, *et al.* Real-time whole-genome sequencing for routine  
486 typing, surveillance, and outbreak detection of verotoxigenic Escherichia coli. *J Clin Microbiol*  
487 2014; **52**.
- 488 48. Carattoli A, Zankari E, Garcíá-Fernández A, *et al.* In Silico detection and typing of plasmids  
489 using plasmidfinder and plasmid multilocus sequence typing. *Antimicrob Agents Chemother*  
490 2014; **58**: 3895–903.
- 491 49. Arndt D, Grant JR, Marcu A, *et al.* PHASTER: a better, faster version of the PHAST phage  
492 search tool. *Nucleic Acids Res* 2016: 1–6.
- 493 50. Ondov BD, Treangen TJ, Melsted P, *et al.* Mash: fast genome and metagenome distance  
494 estimation using MinHash. *Genome Biol* 2016; **17**: 132.
- 495 51. Pinholt M, Bayliss SC, Gumpert H, *et al.* WGS of 1058 Enterococcus faecium from  
496 Copenhagen, Denmark, reveals rapid clonal expansion of vancomycin-resistant clone ST80  
497 combined with widespread dissemination of a vanA-containing plasmid and acquisition of a  
498 heterogeneous accessory genome. *J Antimicrob Chemother* 2019; **74**: 1776–85.
- 499 52. Ronquist F, Teslenko M, van der Mark P, *et al.* MrBayes 3.2: Efficient Bayesian Phylogenetic  
500 Inference and Model Choice Across a Large Model Space. *Syst Biol* 2012; **61**: 539–42.
- 501 53. Wymant C, Hall M, Ratmann O, *et al.* PHYLOSCANNER: Inferring Transmission from Within-  
502 and Between-Host Pathogen Genetic Diversity. *Mol Biol Evol* 2018; **35**: 719–33.
- 503 54. Higgs C, Sherry NL, Seemann T, *et al.* Optimising genomic approaches for identifying  
504 vancomycin-resistant Enterococcus faecium transmission in healthcare settings. *Nat Commun*  
505 2022; **13**: 509.
- 506 55. Shannon P, Markiel A, Ozier O, *et al.* Cytoscape: A Software Environment for Integrated  
507 Models of Biomolecular Interaction Networks. *Genome Res* 2003; **13**: 2498–504.
- 508 56. Huebner RE, Dagan R, Porath N, Wasas AD, T M, Klugman KP. Lack of Utility of Serotyping  
509 Multiple Colonies for Detection of Simultaneous Nasopharyngeal Carriage of Different  
510 Pneumococcal Serotypes. *Pediatr Infect Dis J* 2000; **19**: 1017–20.
- 511 57. R Core Team. *R: A Language and Environment for Statistical Computing*. Vienna, Austria: R  
512 Foundation for Statistical Computing; 2021. Available at: <https://www.R-project.org/>.
- 513 58. Wickham H. *ggplot2: Elegant Graphics for Data Analysis*. Springer-Verlag New York; 2016.  
514 Available at: <https://ggplot2.tidyverse.org>.

- 515 59. Pedersen TL. *patchwork: The Composer of Plots*. 2020. Available at: [https://CRAN.R-](https://CRAN.R-project.org/package=patchwork)  
516 [project.org/package=patchwork](https://CRAN.R-project.org/package=patchwork).
- 517 60. Lebreton F, Schaik W van, McGuire AM, *et al*. Emergence of Epidemic Multidrug-Resistant  
518 *Enterococcus faecium* from Animal and Commensal Strains. *mBio* 2013; **4**: e00534-13.
- 519 61. Gouliouris T, Coll F, Ludden C, *et al*. Quantifying acquisition and transmission of  
520 *Enterococcus faecium* using genomic surveillance. *Nat Microbiol* 2021; **6**: 103–11.
- 521 62. Brodrick HJ, Raven KE, Harrison EM, *et al*. Whole-genome sequencing reveals transmission  
522 of vancomycin-resistant *Enterococcus faecium* in a healthcare network. *Genome Med* 2016; **8**:  
523 4.
- 524 63. Raven KE, Gouliouris T, Brodrick H, *et al*. Complex Routes of Nosocomial Vancomycin-  
525 Resistant *Enterococcus faecium* Transmission Revealed by Genome Sequencing. *Clin Infect Dis*  
526 2017; **64**: 886–93.
- 527 64. Mäklin T, Kallonen T, David S, *et al*. High-resolution sweep metagenomics using fast  
528 probabilistic inference. *Wellcome Open Res* 2021; **5**.
- 529 65. Anyansi C, Straub TJ, Manson AL, Earl AM, Abeel T. Computational Methods for Strain-Level  
530 Microbial Detection in Colony and Metagenome Sequencing Data. *Front Microbiol* 2020; **11**.
- 531 66. Mu A, Kwong JC, Isles NS, *et al*. Reconstruction of the Genomes of Drug-Resistant Pathogens  
532 for Outbreak Investigation through Metagenomic Sequencing. *mSphere* 2019; **4**: e00529-18.
- 533 67. Xanthopoulou K, Wille J, Zweigner J, *et al*. Characterization of a vancomycin-resistant  
534 *Enterococcus faecium* isolate and a vancomycin-susceptible *E. faecium* isolate from the same  
535 blood culture. *J Antimicrob Chemother* 2020; **76**: 883–6.
- 536 68. Cárdenas AM, Andreacchio KA, Edelstein PH. Prevalence and detection of mixed-population  
537 enterococcal bacteremia. *J Clin Microbiol* 2014; **52**: 2604–8.
- 538 69. Dingle KE, Elliott B, Robinson E, *et al*. Evolutionary History of the *Clostridium difficile*  
539 Pathogenicity Locus. *Genome Biol Evol* 2014; **6**: 36–52.
- 540 70. Smith AB, Jenior ML, Keenan O, *et al*. Enterococci enhance *Clostridioides difficile*  
541 pathogenesis. *Nature* 2022; **611**: 780–6.
- 542 71. Lee AS, White E, Monahan LG, Jensen SO, Chan R, van Hal SJ. Defining the Role of the  
543 Environment in the Emergence and Persistence of vanA Vancomycin-Resistant *Enterococcus*  
544 (VRE) in an Intensive Care Unit: A Molecular Epidemiological Study. *Infect Control Hosp*  
545 *Epidemiol* 2018: 1–8.
- 546 72. Ford CD, Lopansri BK, Gazdik MA, *et al*. Room contamination, patient colonization pressure,  
547 and the risk of vancomycin-resistant *Enterococcus* colonization on a unit dedicated to the

- 548 treatment of hematologic malignancies and hematopoietic stem cell transplantation. *Am J*  
549 *Infect Control* 2016; **44**: 1110–5.
- 550 73. McDermott H, Skally M, O'Rourke J, Humphreys H, Fitzgerald-Hughes D. Near-patient  
551 environmental contamination of an intensive care unit with Vancomycin-resistant Enterococci  
552 (VRE) and Extended-Spectrum Beta-Lactamase–Producing Enterobacteriaceae (ESBL-E) before  
553 and after the introduction of chlorhexidine bathing for patients. *Infect Control Hosp Epidemiol*  
554 2018: 1–2.
- 555 74. Bonten MJM, Hayden MK, Nathan C, *et al.* Epidemiology of colonisation of patients and  
556 environment with vancomycin-resistant enterococci. *Lancet* 1996; **348**: 1615–9.
- 557 75. Gouliouris T, Blane B, Brodrick HJ, *et al.* Comparison of two chromogenic media for the  
558 detection of vancomycin-resistant enterococcal carriage by nursing home residents. *Diagn*  
559 *Microbiol Infect Dis* 2016; **85**: 409–12.
- 560 76. D'Agata EMC, Gautam S, Green WK, Tang Y-W. High rate of false-negative results of the  
561 rectal swab culture method in detection of gastrointestinal colonization with vancomycin-  
562 resistant enterococci. *Clin Infect Dis* 2002; **34**: 167–72.
- 563 77. Linfield RY, Campeau S, Injean P, *et al.* Practical methods for effective vancomycin-resistant  
564 enterococci (VRE) surveillance: experience in a liver transplant surgical intensive care unit.  
565 *Infect Control Hosp Epidemiol* 2018; **39**: 1178–82.
- 566 78. Gordon LG, Elliott TM, Forde B, *et al.* Budget impact analysis of routinely using whole-  
567 genomic sequencing of six multidrug-resistant bacterial pathogens in Queensland, Australia.  
568 *BMJ Open* 2021; **11**: e041968.
- 569 79. Torok E, Brodrick H, Khokhar F, *et al.* Prospective Surveillance and Rapid Whole-Genome  
570 Sequencing Detects Two Unsuspected Outbreaks of Carbapenemase-Producing *Klebsiella*  
571 *pneumoniae* in a UK Teaching Hospital. *Open Forum Infect Dis* 2017; **4**: S43–4.
- 572 80. Sherry NL, Gorrie CL, Kwong JC, *et al.* Multi-site implementation of whole genome  
573 sequencing for hospital infection control: A prospective genomic epidemiological analysis.  
574 *Lancet Reg Health - West Pac* 2022; **23**: 100446.
- 575 81. Forde BM, Bergh H, Cuddihy T, *et al.* Clinical Implementation of Routine Whole-genome  
576 Sequencing for Hospital Infection Control of Multi-drug Resistant Pathogens. *Clin Infect Dis*  
577 2023; **76**: e1277–84.

578  
579  
580  
581

582

583 **Table 1** – Characteristics of patients with rectal VREfm colonisation (n = 13)

<b>Demographics</b>	<b>N (%)</b>
Female	8 (61.5)
Age, median (range) years	66 (37-77)
Primary diagnosis	
Acute myeloid leukaemia	3 (23.1)
Diffuse large B cell lymphoma	3 (23.1)
Multiple myeloma	3 (23.1)
Myelodysplasia	2 (15.4)
Chronic lymphocytic leukaemia	1 (7.7)
Mantle cell lymphoma	1 (7.7)
Antimicrobial administration	
Any antibiotics in the 7d prior to positive screen	12 (92.3)
Any antibiotics in the 6m prior to positive screen	12 (92.3)
Vancomycin in the 7d prior to positive screen	1 (7.7)
Vancomycin in the 6m prior to positive screen <sup>a</sup>	3 (30.0)
Outcomes within 60d of VREfm positive screen	
VREfm bloodstream infection	3 (23.1)
ICU admission	1 (7.7)
Death	0 (0)

584 <sup>a</sup> Information available for 10 patients

585

586 **Table 2** – MLST Sequence Types Detected

Patient ID	Sample ID	Sample Type	Sample Date (days from start of study)	STs detected (n, %)	Maximum pairwise SNP distance within sample	Median (IQR) pairwise SNP distance within sample
P2	VRED01	Rectal	6	80 (14, 100)	2	0 (0 - 1)
P6	VRED16	Rectal	27	1424 (14, 100)	2	0 (0 - 1)
P7	VRED10	Rectal	18	80 (14, 100)	2	0 (0 - 1)
P9	VRED02	Rectal	6	80 (14, 100)	2	0 (0 - 0)
P9	VRED03	Rectal	8	80 (14, 100)	0	0 (0 - 0)
P9	VRED09	Rectal	17	80 (14, 100)	0	0 (0 - 0)
P9	VRED18	Blood	52	80 (1, 100)	NA	NA
P9	VRED19	Blood	52	80 (1, 100)	NA	NA
P9	VRED20	Blood	52	80 (1, 100)	NA	NA
P9	VRED21	Blood	52	80 (1, 100)	NA	NA
P14	VRED07	Rectal	17	1424 (10, 71.4) 80 (4, 26.6)	2 2	1 (0-1) 2 (1-2)
P20	VRED15	Rectal	27	80 (14, 100)	3	0 (0 - 2)
P20	VRED17	Rectal	30	80 (14, 100)	3	1 (0 - 1)
P24	VRED13	Rectal	26	1424 (14, 100)	0	0 (0 - 0)
P33	VRED12	Rectal	24	80 (14, 100)	1	0 (0 - 0)
P34	VRED04	Rectal	9	1424 (14, 100)	0	0 (0 - 0)
P34	VRED05	Rectal	14	1424 (14, 100)	1	0 (0 - 0)
P49	VRED06	Rectal	15	80 (10, 71.4) 1424 (3, 21.4) 789 (1, 7.1)	2 1 NA	0 (0 - 1) 0 (0 - 0) NA
P49	VRED08	Rectal	17	1424 (14, 100)	2	0 (0 - 1)
P49	VRED14	Blood	30	1424 (1, 100)	NA	NA
P50	VRED11	Rectal	23	1424 (13, 92.9) 1659 (1, 7.1)	3 NA	1 (0 - 2) NA

587  
588



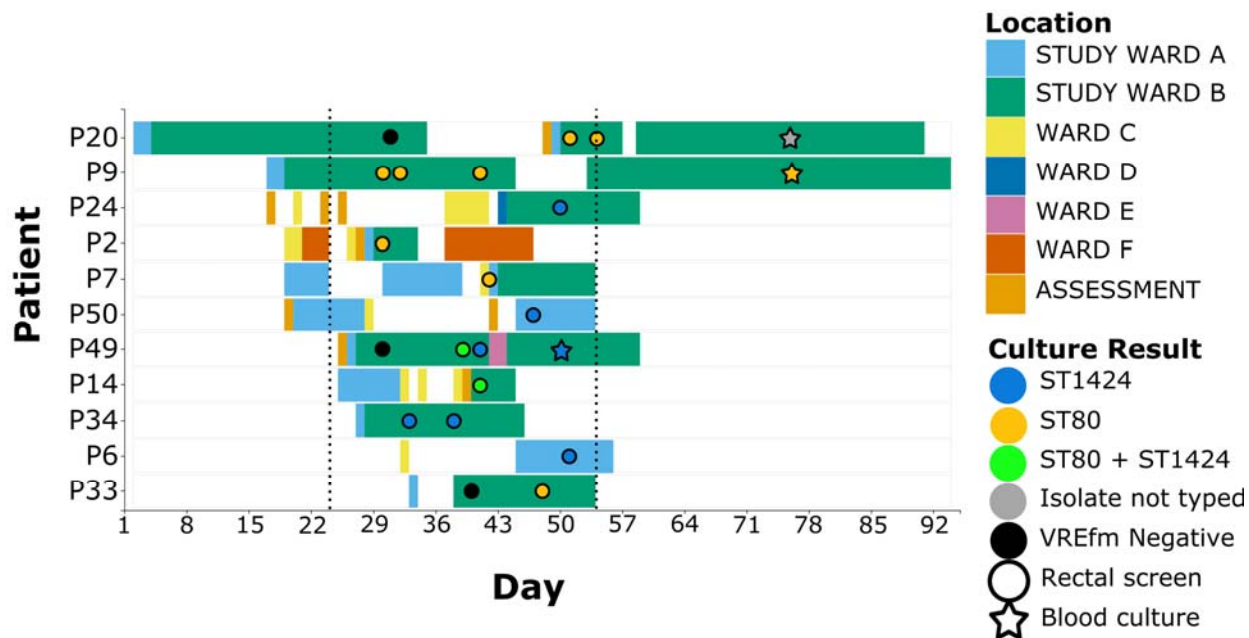
589 **Table 3** – Presence of AMR Genes

Gene	Phenotypic resistance	ST80, n = 130		ST1424, n = 97		All Genomes, n = 229	
		n (%)	Genetic element	n (%)	Genetic element	n (%)	Summary
<i>aac(6')-aph(2'')</i>	Amikacin, Gentamicin, Kanamycin, Streptomycin, Tobramycin	65 (50.0)	p1_VRED06-10	94 (96.9)	p1_VRED06-02	160 (69.9)	Variable in ST80/ST1424/ST789
<i>aac(6')-li</i>	Gentamicin, Tobramycin	130 (100)	Chromosome	97 (100)	Chromosome	229 (100)	All genomes
<i>ant(6)-la</i>	Streptomycin	130 (100)	p3_VRED06-10	0 (0)	NA	131 (57.2)	All ST80/ST789
<i>ant(9)-la</i>	Spectinomycin	0 (0)	NA	97 (100)	Chromosome	97 (42.4)	All ST1424
<i>aph(3')-III</i>	Amikacin, Kanamycin, Neomycin	130 (100)	p3_VRED06-10	97 (100)	p2_VRED06-02	228 (99.6)	All ST80/ST789/ST1424
<i>dfrG</i>	Trimethoprim	0 (0)	NA	97 (100)	Chromosome	97 (42.4)	All ST1424
<i>erm(A)</i>	Clindamycin, Erythromycin, Quinupristin	0 (0)	NA	97 (100)	Chromosome	97 (42.4)	All ST1424
<i>erm(B)</i>	Clindamycin, Erythromycin, Quinupristin	129 (99.2)	p1_VRED06-10, p3_VRED06-10	97 (100)	p2_VRED06-02	228 (99.6)	All except one ST80 genome
<i>msr(C)</i>	Erythromycin, Quinupristin	130 (100)	Chromosome	97 (100)	Chromosome	229 (100)	All genomes
<i>tet(L)</i>	Doxycycline, Tetracycline	0 (0)	NA	0 (0)	NA	1 (0.4)	Only ST1659
<i>tet(M)</i>	Doxycycline, Minocycline, Tetracycline	0 (0)	NA	60 (61.9)	Chromosome	61 (26.6)	Variable in ST1424/ST1659
<i>tet(S)</i>	Doxycycline, Minocycline, Tetracycline	130 (100)	p3_VRED06-10	0 (0)	NA	131 (57.2)	All ST80/ST789
<i>VanA</i>	Teicoplanin, Vancomycin	97 (100)	p2_VRED06-02	97 (100)	p2_VRED06-02	229 (100)	All genomes

590

591

592



593

594 **Figure 1** – Patient timeline. Each row denotes the location of a patient during admission, blocks

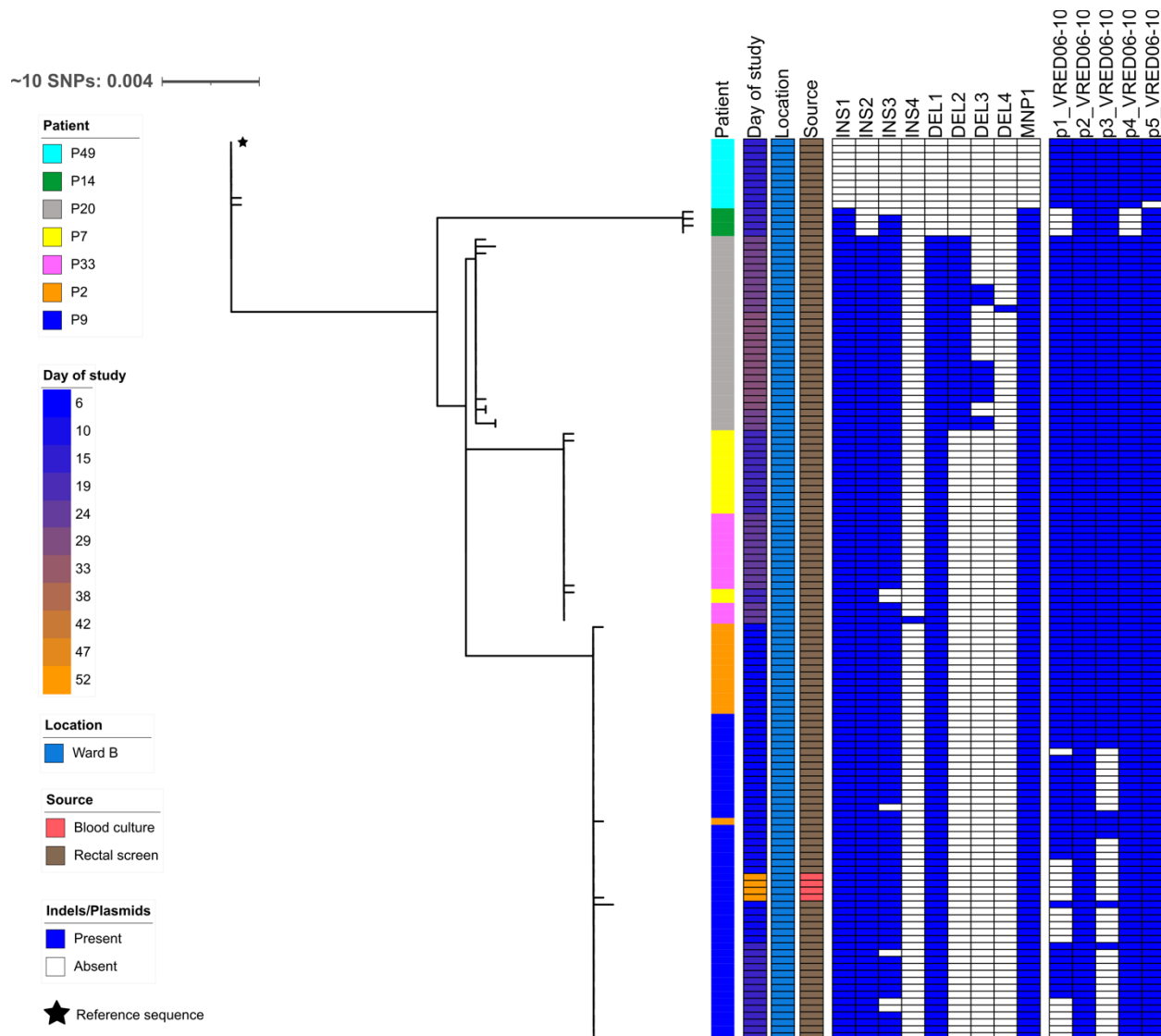
595 denote hospital stay, circles denote VREfm cultures, stars denote bloodstream isolates, dotted

596 lines indicate the start and end of prospective collection of screening isolates for this study. This

597 study was undertaken mainly within Wards A and B, although patients were moved to different

598 wards within the hospital during their stay and were often admitted through the assessment unit.

599



600

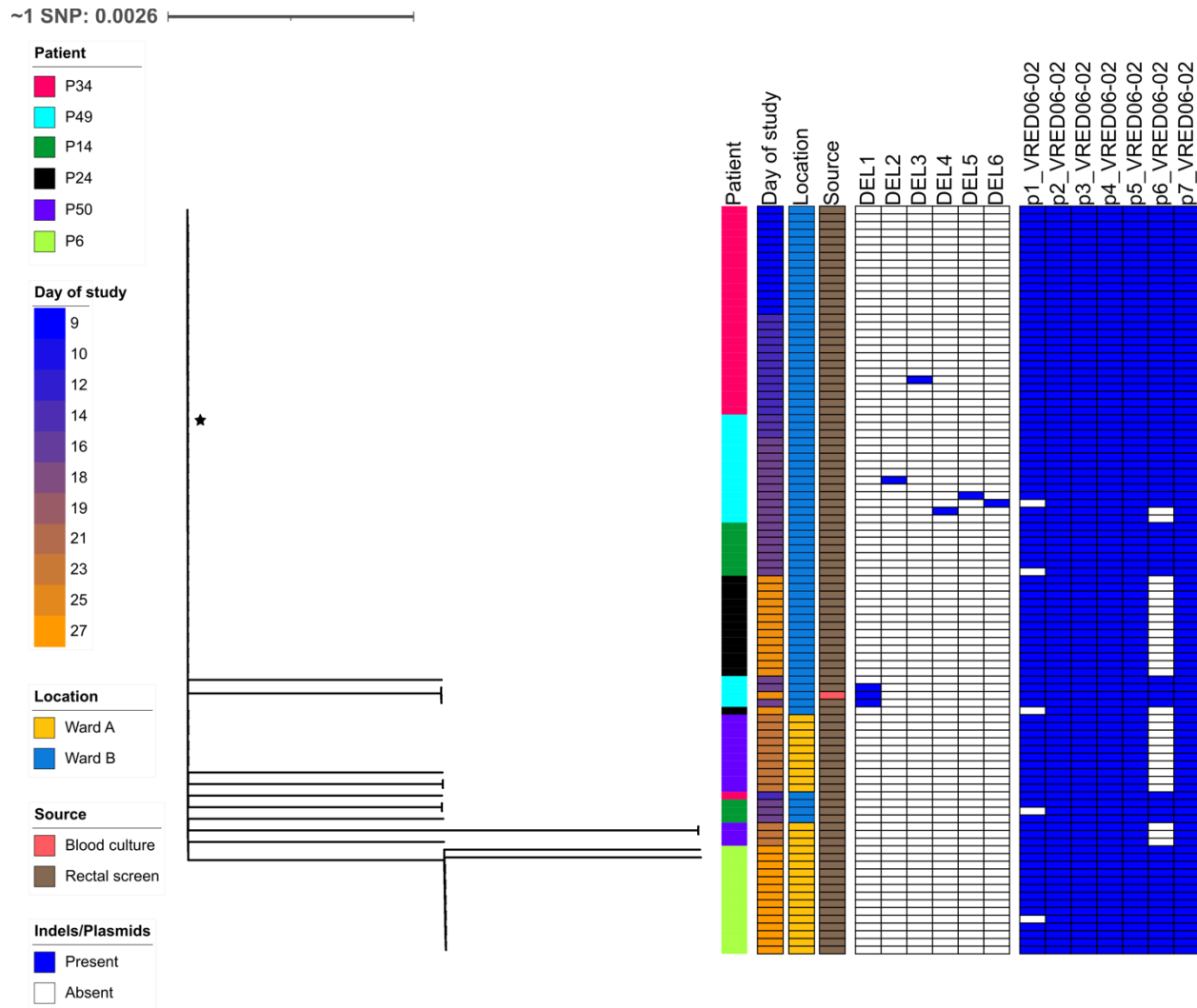
601 **Figure 2** – Phylogeny of ST80 isolates showing structured population with three patient specific

602 clusters and two clusters indicating putative patient-patient transmission of VREfm. All ST80

603 isolates (n=130) mapped to VRED06-10 chromosome and phylogeny built on SNP sites (n=96)

604 after removal of putative transposable and recombinant regions. Tree unrooted.

605



606 ★ Reference sequence

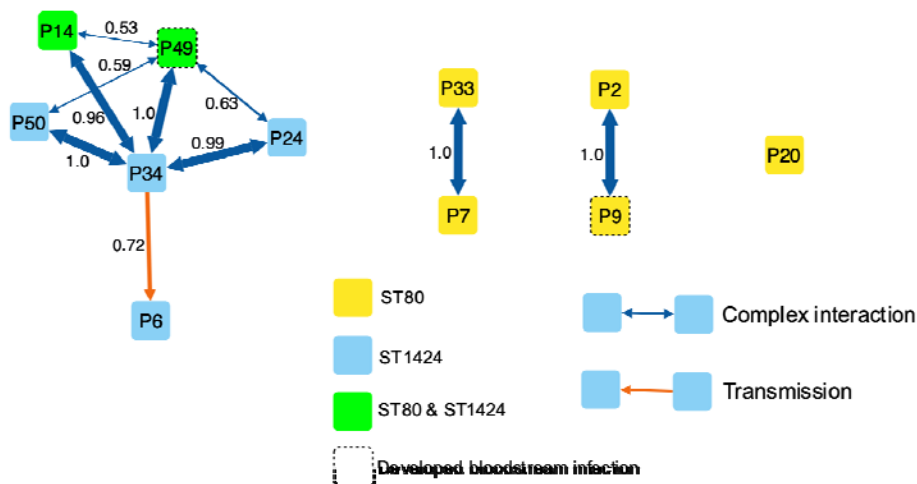
607 **Figure 3** – Unrooted phylogeny of ST1424 genomes showing homogeneous population

608 suggestive of recent transmission outbreak. ST1424 genomes (n=97) mapped to VRED06-02

609 chromosome and phylogeny built on SNP sites (n=13) after removal of putative transposable

610 and recombinant regions. Tree unrooted.

611



612

613

614 **Figure 4** – Phyloscanner transmission network. Each patient is represented by a node coloured

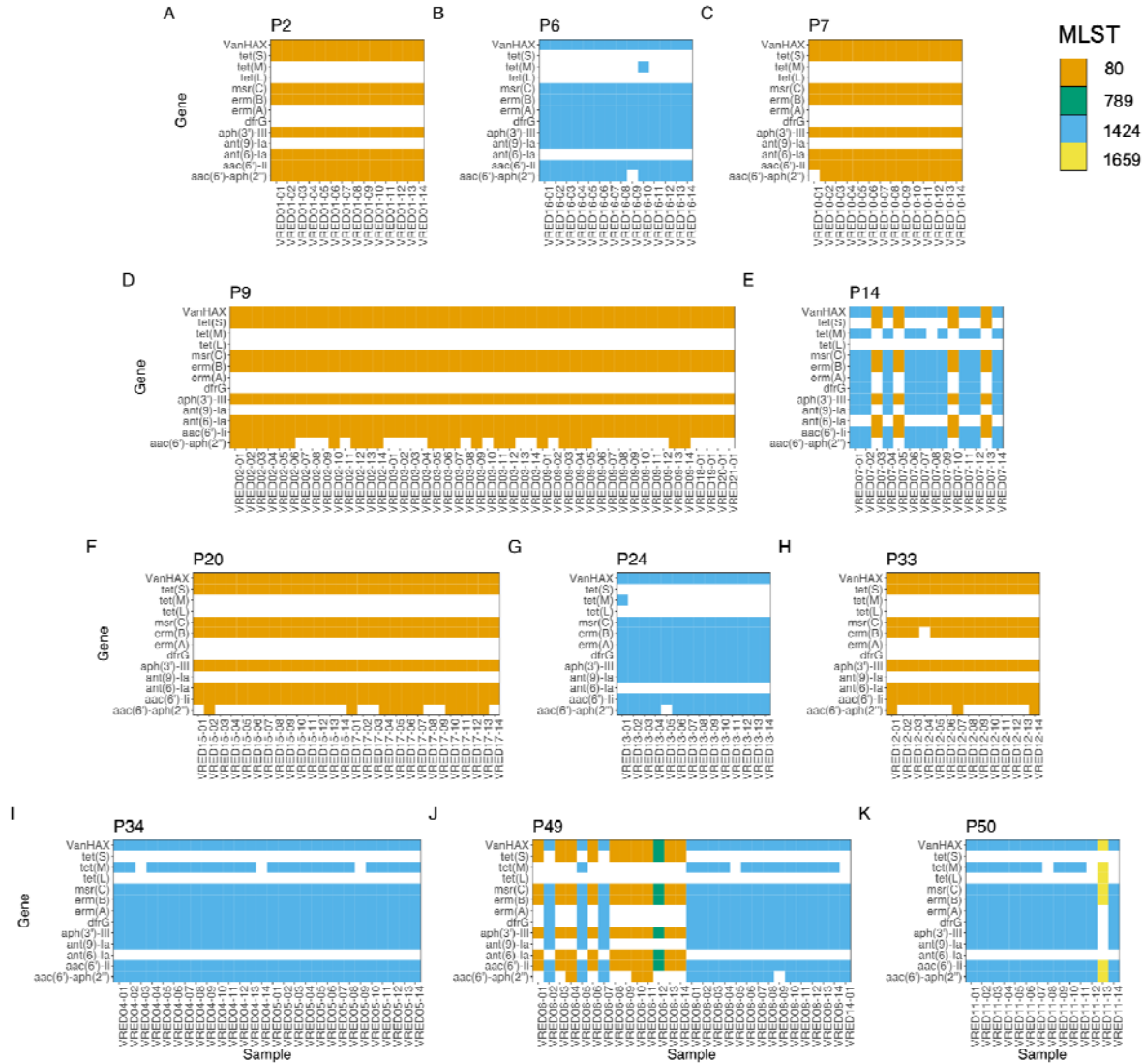
615 by detection of the two outbreak STs. Edge thickness corresponds to fraction of Phyloscanner

616 trees with given relationship, relationship fraction is printed alongside each edge, and edge

617 colour based on type of relationship (orange, direct transmission; blue, transmission but

618 direction unclear).

619



620

621 **Figure 5** – Detection of antimicrobial resistance genes. Panels represent different patients;

622 resistance genes are plotted on the y-axis and isolates on the x-axis. Presence of a gene is

623 represented by a filled square and coloured based on the MLST of the genome.

624