

## Genomic sequencing tests generate less uncertainty and higher diagnostic yield compared to multi-gene panel-based tests: Results of over 1.5 million tests

Heidi L Rehm, PhD<sup>1,2,3</sup>, Joseph T Alaimo, PhD<sup>4,5,6</sup>, Swaroop Aradhya, PhD<sup>7,8</sup>, Pinar Bayrak-Toydemir, PhD<sup>9,10</sup>, Hunter Best, PhD<sup>9,10</sup>, Rhonda Brandon, MS<sup>11</sup>, Jillian G Buchan, PhD<sup>12</sup>, Elizabeth C Chao, MD<sup>13</sup>, Elaine Chen, PhD<sup>7</sup>, Jacob Clifford, PhD<sup>14</sup>, Ana S Cohen, PhD<sup>4,5,6</sup>, Laura K Conlin, PhD<sup>15</sup>, Soma Das, PhD<sup>16</sup>, Kyle W Davis, MA<sup>17</sup>, Daniela del Gaudio, PhD<sup>16</sup>, Florencia Del Viso, PhD<sup>4</sup>, Christina DiVincenzo, BS<sup>18</sup>, Marcia Eisenberg, PhD<sup>19</sup>, Lucia Guidugli, PhD<sup>20</sup>, Monia B Hammer, PhD<sup>20</sup>, Steven M Harrison, PhD<sup>21</sup>, Kathryn E Hatchell, PhD<sup>7</sup>, Lindsay Havens Dyer, MS<sup>22</sup>, Lily U Hoang, BA<sup>14</sup>, James M Holt, PhD<sup>23</sup>, Vaidehi Jobanputra, PhD<sup>24</sup>, Izabela D Karbassi, PhD<sup>18</sup>, Hutton M Kearney, PhD<sup>25</sup>, Melissa A Kelly, PhD<sup>23</sup>, Jacob M Kelly, BS<sup>23</sup>, Michelle L Kluge, MS<sup>25</sup>, Timothy Komala, BS<sup>13</sup>, Paul Kruszka, MD<sup>26</sup>, Lynette Lau, MSc<sup>27</sup>, Matthew S Lebo, PhD<sup>28,29,3</sup>, Christian R Marshall, PhD<sup>27,30</sup>, Dianalee McKnight, PhD<sup>7</sup>, Kirsty McWalter, MS<sup>26</sup>, Yan Meng, PhD<sup>31</sup>, Narasimhan Nagan, PhD<sup>32</sup>, Christian S Neckelmann, BA<sup>31</sup>, Nir Neerman, BS<sup>33</sup>, Zhiyv Niu, PhD<sup>25</sup>, Vitoria K Paolillo, PhD<sup>4</sup>, Sarah A Paolucci, MS<sup>12</sup>, Denise Perry, MS<sup>34</sup>, Tina Pesaran, MA, MS<sup>13</sup>, Kelly Radtke, PhD<sup>21</sup>, Kristen J Rasmussen, MS<sup>25</sup>, Kyle Retterer, MS<sup>22</sup>, Carol J Saunders, PhD<sup>4,35,6</sup>, Elizabeth Spiteri, PhD<sup>36</sup>, Christine Stanley, PhD<sup>37</sup>, Anna Szuto, MSc<sup>38</sup>, Ryan J Taft, PhD<sup>39</sup>, Isabelle Thiffault, PhD<sup>4,5,6</sup>, Brittany C Thomas, MS<sup>39</sup>, Amanda Thomas-Wilson, PhD<sup>24</sup>, Erin Thorpe, MS<sup>39</sup>, Timothy J Tidwell, PhD<sup>9</sup>, Meghan C Towne, MS<sup>13</sup>, Hana Zouk, PhD<sup>28,40</sup>, on behalf of the Medical Genome Initiative<sup>41</sup>

<sup>1</sup>Center for Genomic Medicine, Massachusetts General Hospital, Boston, MA, USA, <sup>2</sup>Medical and Population Genetics, Broad Institute of MIT and Harvard, Cambridge, MA, USA, <sup>3</sup>Pathology, Harvard Medical School, Boston, MA, USA, <sup>4</sup>Department of Pathology and Laboratory Medicine, Children's Mercy Hospital, Kansas City, MO, USA, <sup>5</sup>Department of Pediatrics, School of Medicine, University of Missouri, Kansas City, MO, USA, <sup>6</sup>Center for Pediatric Genomic Medicine, Children's Mercy Hospital, Kansas City, MO, USA, <sup>7</sup>Global Medical Affairs, Invitae, San Francisco, CA, USA, <sup>8</sup>Department of Pathology, Stanford University School of Medicine, Palo Alto, CA, USA, <sup>9</sup>ARUP Laboratories, Salt Lake City, UT, USA, <sup>10</sup>Department of Pathology, University of Utah School of Medicine, Salt Lake City, UT, USA, <sup>11</sup>Informatics, GeneDx, LLC, Gaithersburg, MD, USA, <sup>12</sup>Genetics Division, Laboratory Medicine and Pathology, University of Washington, Seattle, WA, USA, <sup>13</sup>Medical Sciences, Ambry Genetics, Aliso Viejo, CA, USA, <sup>14</sup>Advanced Analytics, Ambry Genetics, Aliso Viejo, CA, USA, <sup>15</sup>Genomic Diagnostics, Pathology and Laboratory Medicine, Children's Hospital of Philadelphia, Philadelphia, PA, USA, <sup>16</sup>Human Genetics, University of Chicago, Chicago, IL, USA, <sup>17</sup>Marketing, Variantyx, Framingham, MA, USA, <sup>18</sup>Quest Diagnostics, Marlborough, MA, USA, <sup>19</sup>Womens Health and Genetics/Labcorp, Research Triangle Park, NC, USA, <sup>20</sup>Rady Children's Institute for Genomic Medicine, San Diego, CA, USA, <sup>21</sup>Clinical Operations, Ambry Genetics, Aliso Viejo, CA, USA, <sup>22</sup>GeneDx, LLC, Gaithersburg, MD, USA, <sup>23</sup>HudsonAlpha Clinical Services Lab, LLC, Huntsville, AL, USA, <sup>24</sup>Molecular Diagnostics, New York Genome Center, New York, NY, USA, <sup>25</sup>Division of Laboratory Genetics and Genomics, Department of Laboratory Medicine and Pathology, Mayo Clinic, Rochester, MN, USA, <sup>26</sup>Medical Affairs, GeneDx, LLC, Gaithersburg, MD, USA, <sup>27</sup>Division of Genome Diagnostics, Department of Paediatric Laboratory Medicine, The Hospital for Sick Children, Toronto, ON, Canada, <sup>28</sup>Laboratory for Molecular Medicine, Mass General Brigham, Cambridge, MA, USA, <sup>29</sup>Pathology, Brigham and Women's Hospital, Boston, MA, USA, <sup>30</sup>Department of Laboratory Medicine and Pathobiology, University of Toronto, Toronto, ON, Canada, <sup>31</sup>Curation, Fulgent Genetics, Temple City, CA, USA, <sup>32</sup>Molecular Genetics and Genomics, Women's Health and Genetics/Labcorp, Westborough, MA, USA, <sup>33</sup>Bioinformatics, Variantyx, Framingham, MA, USA,

<sup>34</sup>Medical Genomics Research Dept, Illumina, Inc, San Diego, CA, USA, <sup>35</sup>Department of Pediatrics and Pathology, School of Medicine, University of Missouri, Kansas City, MO, USA, <sup>36</sup>Clinical Genomics, Department of Pathology, Stanford Medicine, Palo Alto, CA, USA, <sup>37</sup>Clinical Genomics, Variantyx, Framingham, MA, USA, <sup>38</sup>Clinical and Metabolic Genetics, The Hospital for Sick Children, Toronto, ON, Canada, <sup>39</sup>Medical Genomics Research, Illumina, Inc, San Diego, CA, USA, <sup>40</sup>Pathology, Harvard Medical School, Massachusetts General Hospital, Boston, MA, USA, <sup>41</sup><https://medgenomeinitiative.org>

## Abstract

### BACKGROUND

Genetic testing frequently identifies variants of uncertain significance (VUSs). Providers, however, are often ill-prepared or too time-constrained to manage these findings, and insurers are concerned about impacts on clinical care and cost. Here we compared the contribution of panel-based and genomic (exome and genome) testing to the generation of inconclusive results due to VUSs.

### METHODS

Rates of inconclusive results due to VUS and diagnostic yield were determined from over 1.5 million sequencing test results from 19 clinical laboratories in North America from 2020 - 2021.

### RESULTS

We found a lower rate of inconclusive test results due to VUSs from genomic tests (22.5%) compared to multi-gene panel tests (32.6%;  $p < 0.001$ ) and a higher diagnostic yield (17.5% vs 10.3%;  $p < 0.001$ ). For panel tests, the rate of inconclusive results correlated with panel size. The use of trios improved yield (19.5% vs 15.2%;  $p < 0.001$ ) and reduced inconclusive rates (18.9% vs 27.6%;  $p < 0.001$ ). The use of genome sequencing compared to exome improved yield (25.1% vs 16.6%;  $p < 0.001$ ) without increasing the rate of inconclusive results (22.2% vs 22.6%).

### CONCLUSION

Genomic sequencing demonstrated reduced uncertainty and higher molecular diagnostic yield compared to panel testing. This difference is best explained by obligatory reporting of all VUSs in panel-based testing compared to genomic testing where correlation with phenotype is used to constrain variant reporting. These results may inform future genetic testing practices and heighten appreciation for the professional skills involved in genomic test interpretation.

A growing percentage of the population receives genetic testing, yet DNA sequencing often uncovers variants of uncertain significance (VUSs) that pose challenges for patients as well as providers who are sometimes ill-prepared or too time-constrained to manage these findings. Furthermore, insurers are concerned about downstream costs from possible follow-up of VUSs. The ClinVar database contains submissions from over 2000 submitters, with over 80% coming from clinical laboratories and the largest fraction classified as uncertain significance due to the high rate of extremely rare and unique variation in the human population. These data represent unique variants but do not account for case-level data to assess how many individuals are actually receiving results of uncertainty during genetic testing.

The likelihood of receiving a VUS is influenced by a variety of factors: 1) Indication for testing - tests with a high prior probability of identifying a causal variant (e.g., testing the single *CFTR* gene in a patient with cystic fibrosis) will yield less uncertainty than a test with a lower prior probability (e.g., a large panel test in an individual with muscle weakness). In addition, VUSs are generally not reported for tests performed for screening purposes, often performed on ostensibly healthy individuals, whereas VUSs are reported if uncovered in tests performed on symptomatic individuals for diagnostic purposes, consistent with professional practice guidelines (Miller et al. 2021); 2) Ancestry - individuals whose genomic DNA is more ancestrally distinct compared to the human genome reference and existing population databases will have higher rates of VUSs (Gudmundsson et al., 2022); 3) Testing platform - the size of the test (including the number of genes) and the type of variants detected will influence the rate of VUSs; 4) Laboratory reporting practices - inclusive of laboratory specific rubrics for VUS inclusion and reporting; 5) Family structure - the use of additional family members in support of the proband analysis can both rule in and out variants and affect VUS reporting. Additionally, while genomic sequencing interrogates the full genome and therefore has the potential to generate the highest rate of VUSs for any test, professional judgment is applied to decide which variants to report, potentially yielding a lower rate of VUSs. We sought to explore this question through analysis of testing data with the primary goal to understand which test type (panels versus genomic testing) leads to more uncertainty in results due to VUSs, while also examining the diagnostic yield. We were able to analyze the effects of testing platform, indication and family structure, though we did not collect individual level ancestry data to confirm the impact of ancestry on VUS rate. Furthermore, we did not directly analyze individual laboratory reporting practices, though by collecting a large enough fraction of testing data from a recent two year period we feel this data reflects actual practice in the US.

## Methods

### LABORATORIES AND TIME PERIOD

Data from diagnostic (symptomatic) testing was collected from 19 clinical laboratories in North America including Ambry Genetics (Aliso Viejo, CA), ARUP Laboratories (Salt Lake City, UT), Children's Hospital of Philadelphia (Philadelphia, PA), Children's Mercy Hospital (Kansas City, MO), Fulgent Genetics (Temple City, CA), GeneDx (Gaithersburg, MD), HudsonAlpha Clinical Services Lab (Huntsville, AL), Illumina Clinical Services Laboratory (San Diego, CA), Invitae (San Francisco, CA), Mass General Brigham Laboratory for Molecular Medicine (Cambridge, MA), Mayo Clinic (Rochester, MN), New York Genome Center (New York, NY), Quest Diagnostics (Secaucus, NJ), Rady Children's Institute for Genomic Medicine (San Diego, CA), Stanford Medicine (Palo Alto, CA), The Hospital for Sick Children (SickKids) Genome Diagnostics Laboratory (Toronto, ON, Canada), The University of Chicago Genetic Services Laboratory (Chicago, IL), University of Washington (Seattle, WA), and Variantyx (Framingham, MA). Results were

limited to a two-year period spanning from January 1<sup>st</sup>, 2020 through December 31<sup>st</sup>, 2021. Three laboratories reported all (panel, exome, and genome) test results, nine reported panel and exome, two reported panel and genome, four reported genome only, and one reported panel only, as their exome platform was strictly interpreted based on predefined panels of genes selected at the ordering step (Supplemental Table 1).

## DATA COLLECTION

Deidentified summary data was collected (see Supplemental Material) and aggregate statistics were calculated for inconclusive cases with at least one VUS and positive cases in which causal variant(s) were identified. Inconclusive cases without a VUS (e.g., cases with a single heterozygous variant pathogenic for a phenotypically consistent recessive disease) were not included in the inconclusive rates and VUSs present in positive reports were also not included. Panel-based test results were grouped by panel size (2-10, 11-25, 26-50, 51-100, 101-200, >200 genes). Genomic sequencing tests were categorized by exome versus genome and by parent-child trio versus less-than-trio (e.g., proband only, single parent with proband, multiple siblings, etc.). For some laboratories, test results were further categorized by disease area across twelve broad indications (Cardiovascular, Hereditary Cancer/Cancer Syndrome, Neurodevelopmental/Intellectual Disability/Autism, Neurological/Muscular/Neuromuscular, Retinal Disease, Hearing Loss, Renal/Gastrointestinal, Endocrine, Metabolic, Dysmorphic/Skeletal, Hematologic/Rheumatologic/Immunologic, Dermatologic) or Other. Average panel size for each disease area was computed by taking the midpoint in the panel range (e.g., 6 for 2-10) or 201 for >200, and multiplying the midpoint panel size by the volume of each panel, summing across lab panels and then dividing the aggregate sum by the total volume of tests. Panel tests performed on an exome or genome backbone were categorized as panel tests as long as the test was limited to interpretation of the panel-defined gene content. Laboratories had the option to delineate VUS results by sub-tiers mapped to VUS-High, VUS-Mid, VUS-Low; however, only two laboratories used sub-tiers. Laboratories were asked to provide race/ethnicity/ancestry information if available. Detailed summary data can be found in Supplemental Table 3.

## DATA QUALITY CONTROL AND EXCLUSIONS

Single-gene test data were collected but excluded from the analysis given that these tests are often performed as follow-up to carrier screening and not offered as diagnostic tests, and this distinction was not tracked in laboratory systems. One laboratory offered custom add-on options for their tests (i.e., a provider could select one or more genes to add to a panel) but these results were not aggregated with the primary panel result; therefore, this data was excluded from analysis. One laboratory offered customizable panel orders but did not track exact panel size and these data were excluded. Also, one laboratory allowed providers to opt-out of VUS reporting for neurodevelopmental/neurological panels and as such, only cases in which the provider did not opt out for VUS reporting were included. In some cases, if a patient had multiple tests ordered, only the largest panel was counted to avoid double-counting overlapping genes.

## STATISTICAL ANALYSIS

All statistical analyses were performed using Chi-square analysis with Yates correction. A p-value below 0.001 was considered statistically significant.

## Results

Data from 1,512,306 genetic and genomic sequencing tests were collected from 19 clinical laboratories in North America. The data spanned 1,463,812 multi-gene panel tests (96.8%), 42,165 exome tests (2.8%) and 6329 genome tests (0.4%); the latter two categories are collectively referred to as genomic tests. Race/ancestry/ethnicity data was provided for approximately half of the tests (770,403 individuals) with 59% White, 10% Hispanic, 8% Black, 4% Asian, 12% Mixed/Other and 8% Not Specified (see Supplemental Table 2).

The rate of inconclusive test results (due to the presence of at least one VUS in the absence of a causal etiology) was lower for genomic tests (22.5%; 10,933/48,494) than the rate from panel tests (32.6%; 477,617/1,463,812;  $p < 0.001$ ) (Fig. 1A). For panel tests, the rate of inconclusive results correlated with panel size (number of genes) ranging from 6.0% for 287,811 panel tests of 2-10 genes to 76.2% for 84,316 panel tests  $> 200$  genes (Fig. 1B,C). Diagnostic yield (17.5%) from genomic testing was higher than that from panel testing (10.3%;  $p < 0.001$ ; Fig. 3A).

All laboratories were able to differentiate genomic sequencing results by parent-child trio versus less-than-trio (one or both parents missing). When examining method (genome versus exome) and samples (trio versus less-than-trio) for genomic testing, the use of trios led to higher yield (19.5% vs 15.2%;  $p < 0.001$ ) and lower inconclusive rates (18.9% vs 27.6%;  $p < 0.001$ ) (Table 1). In contrast, the use of genome sequencing compared to exome led to higher yield (25.1% vs 16.6%;  $p < 0.001$ ) but did not increase the rate of inconclusive results (22.2% vs 22.6%) (Table 1).

One of twelve disease areas representing broad indications for testing were specified for 50.2% of panel tests and 13.4% of genomic tests. Only six disease areas had  $> 25$  cases and were used to compare differences in yield and VUS rates between panels and genomic tests (Fig. 2&3; Supp. Table 3). This analysis showed higher diagnostic yield and reduced VUS inconclusive rates for genomic tests as compared to panels in cardiovascular, neurologic/muscular, and neurodevelopmental/intellectual disability/autism. Metabolic disease showed no difference in yield and a reduction in VUS inconclusive rate. Hematologic/rheumatologic/immunologic showed a marginal increase in diagnostic yield and VUS inconclusive rate with genomic testing. The diagnostic yield for and dysmorphic/skeletal was higher for panels and showed no difference in VUS rate.

Two laboratories (Mass General Brigham LMM and Quest) reported VUSs in sub-tiers allowing analysis of the rate of inconclusive results by further subdivisions of VUS evidence. Sub-tier results were mapped to three categories: VUS-High, VUS-Mid, VUS-Low. In this dataset, the sub-tier rate was 22% VUS-High, 56% VUS-Mid, 22% VUS-Low for panels and 40% VUS-High, 60% VUS-Mid, 0% VUS-Low for genomic tests (Fig. 4).

## Discussion

In this study, we observed that genomic (exome and genome) sequencing demonstrated reduced uncertainty and higher molecular diagnostic yield compared to panel testing. The increased yield was generally expected given the ability to interrogate all genes in genomic analyses. However, it is unknown what fraction of individuals who received genomic testing had already received a negative panel-based

test and/or cytogenomic microarray, potentially biasing the population tested. Assuming an appreciable fraction, we anticipate genomic testing yield to be even higher than reported here as clinical practice moves towards genomic testing as a primary test.

The increased yield of genome sequencing compared to exome sequencing was also expected, based on improved quality and evenness of coding sequence coverage and increased detection of structural variation (Mattick et al., 2018). Nevertheless, we express caution in overinterpreting this result given that genome testing represented a much smaller fraction of testing (0.4%) and therefore the results could more easily be impacted by lab specific pipelines, ordering practices and patient populations.

In contrast, the observation of higher inconclusive test rates due to VUSs from multi-gene panel-based testing compared to genomic testing may be more of a surprise to many. However, when one considers the reporting practices of genetic testing laboratories based on current guidelines (Rehder *et al.*, 2021), which is to report all VUSs when performing diagnostic (symptomatic) panel-based testing, such results are less surprising. The long-standing rationale has been that VUS reporting allows providers the ability to follow-up on VUS results with additional testing that can inform the pathogenicity of variants. For example,  $\alpha$ -galactosidase enzyme activity testing in an individual with a VUS in the *GLA* gene can provide evidence to inform pathogenicity. Likewise, family member testing may identify *de novo* occurrence, *cis/trans* configurations of variants, or segregation with disease, all informing pathogenicity.

However, as panels have increased in gene content and therefore the range of included phenotypes broadened (e.g., pan-cardiac panel as opposed to a hypertrophic cardiomyopathy panel), the correlation between the phenotype in the patient and what is known about the disease associated with the gene harboring a VUS may range from weak to strong. In genomic testing, in which the same variants seen on panels would also be detected, but where the large quantity of identified VUSs cannot be reported, laboratories use different reporting rules where professional judgment is often required to determine which VUSs, if any, will be reported. These rules and judgments involve several factors, including: 1) if a clear genetic etiology is identified, VUSs in other genes are unlikely to be reported; 2) VUSs will be reported only if there is a plausible correlation of the gene's associated phenotype(s) with the patient's phenotype, with weaker correlation requiring more variant-level evidence of pathogenicity to report the variant; and 3) for variants identified in genes associated with recessive disease, lesser evidence for the VUS and the phenotype correlation is tolerated if variants are identified on both alleles (more informative through trio testing), whereas more evidence (at the phenotype and/or variant-level) is required if only a single heterozygous variant is identified on one allele. Some laboratories use sub-tiers of VUS to aid in this decision-making (Karbassi et al., 2017; Zouk et al., 2021), and this is reflected in the sub-tier results from the two laboratories reporting this data. No VUS-Low results were reported from genomic testing whereas 22% of VUSs were in this category for panel-based testing. In summary, detailed phenotyping is typically required for genomic analysis and allows for a comprehensive yet specific analysis of the genome and at the same time limits reporting of unrelated VUSs findings.

While the utility of reporting VUSs is clear in many circumstances, the high rate of VUSs observed in current multi-gene panel-based testing suggests that an examination of current practices is warranted, with a potential for changes in practice for both the laboratory and the ordering provider. For example, a general practice that could be altered is that for large multi-gene panels with broad indications, VUSs might only be reported if there is a strong correlation with phenotype, similar to how genomic testing reports are currently interpreted. This would necessitate improvements in the provision of patient

phenotype information for panel-based testing by ordering providers, as well as more time for report generation given that clinical expertise would be required to review the patient's phenotype and correlate it with the gene's associated disease(s). Also, given the significant beneficial impact of trio-based genomic testing to both yield and a reduction of inconclusive results due to VUSs, it is worth considering whether trio-based testing should become standard practice for panel testing despite being rarely, if ever, offered currently (and not reimbursed), particularly for large panels with substantial genetic heterogeneity and phenotypic variability in disease presentation. And finally, the applications of algorithms to rank variants by gene-phenotype correlation, that are increasingly used in genomic analyses, may also prove beneficial for panel-based testing.

Another approach is to allow healthcare professionals ordering tests to opt-out of receiving any VUSs or only a sub-tier of VUS (VUS-High) at the time of ordering. This decision might be based on the ability to follow up on VUSs for a given patient, with providers considering: Do any genes on the test have clinical follow-up tests that can inform pathogenicity? Are parents or affected family members available for segregation testing? Does the patient want VUSs to be reported? What downstream costs might be incurred with follow-up? As an example of this practice, some laboratories now allow opt out of VUS reporting for large neurodevelopmental panels. It is also important to note that patients may have preferences about the receipt of VUSs, in part based upon the balance of distress versus future value, as experienced by patients (Skinner et al., 2018; Culver et al., 2013), and providers should ideally engage patients, where possible, in making these decisions.

Furthermore, wider use of VUS sub-tiers could allow more nuanced reporting practices and enable providers to direct follow-up to only those variants with the highest probability of pathogenicity. Given the amount of effort expended by physicians and potential costs to the healthcare system if physicians follow-up on all VUSs, restriction of VUS to only those variants with higher likelihood of becoming pathogenic would likely be welcomed by payors, providers and patients. Finally, VUS reporting guidance from professional organizations would likely improve the consistency of VUS reporting across laboratories.

In summary, this study identified the largest source of inconclusive results from multi-gene panel tests, whereas the use of genomic sequencing tests both reduced the inconclusive rate while improving diagnostic yield. This is best explained by the current laboratory practice for the reporting of all VUSs in panel-based testing, based on societal guidelines, compared to genomic testing where correlation with phenotype is used to constrain and limit the reporting of VUS. These results set the basis for future reporting practices and guidelines, may guide payor coverage in genetic and genomic testing, and provide a heightened appreciation for the professional skills deployed during genomic test interpretation.

## REFERENCES

- Culver JO, Brinkerhoff CD, Clague J, Yang K, Singh KE, Sand SR, Weitzel JN. Variants of uncertain significance in BRCA testing: evaluation of surgical decisions, risk perception, and cancer distress. *Clin Genet*. 2013 Nov;84(5):464-72.
- Gudmundsson S, Singer-Berk M, Watts NA, Phu W, Goodrich JK, Solomonson M; Genome Aggregation Database Consortium, Rehm HL, MacArthur DG, O'Donnell-Luria A. Variant interpretation using population databases: Lessons from gnomAD. *Hum Mutat*. 2022 Aug;43(8):1012-1030.
- Karbassi I, Maston GA, Love A, DiVincenzo C, Braastad CD, Elzinga CD, Bright AR, Previte D, Zhang K, Rowland CM, McCarthy M, Lapierre JL, Dubois F, Medeiros KA, Batish SD, Jones J, Liaquat K, Hoffman CA, Jaremko M, Wang Z, Sun W, Buller-Burckle A, Strom CM, Keiles SB, Higgins JJ. A Standardized DNA Variant Scoring System for Pathogenicity Assessments in Mendelian Disorders. *Hum Mutat*. 2016 Jan;37(1):127-34.
- Mattick JS, Dinger M, Schonrock N, Cowley M. Whole genome sequencing provides better diagnostic yield and future value than whole exome sequencing. *Med J Aust*. 2018 Aug 3;209(5):197-199.
- Miller DT, Lee K, Gordon AS, Amendola LM, Adelman K, Bale SJ, Chung WK, Gollob MH, Harrison SM, Herman GE, Hershberger RE, Klein TE, McKelvey K, Richards CS, Vlangos CN, Stewart DR, Watson MS, Martin CL; ACMG Secondary Findings Working Group. Recommendations for reporting of secondary findings in clinical exome and genome sequencing, 2021 update: a policy statement of the American College of Medical Genetics and Genomics (ACMG). *Genet Med*. 2021;23(8):1391-1398.
- Rehder C, Bean LJH, Bick D, Chao E, Chung W, Das S, O'Daniel J, Rehm H, Shashi V, Vincent LM; ACMG Laboratory Quality Assurance Committee. Next-generation sequencing for constitutional variants in the clinical laboratory, 2021 revision: a technical standard of the American College of Medical Genetics and Genomics (ACMG). *Genet Med*. 2021 Aug;23(8):1399-1415.
- Skinner D, Roche MI, Weck KE, Raspberry KA, Foreman AKM, Strande NT, Berg JS, Evans JP, Henderson GE. "Possibly positive or certainly uncertain?": participants' responses to uncertain diagnostic results from exome sequencing. *Genet Med*. 2018 Mar;20(3):313-319.
- Zouk H, Yu W, Oza A, Hawley M, Vijay Kumar PK, Koch C, Mahanta LM, Harley JB, Jarvik GP, Karlson EW, Leppig KA, Myers MF, Prows CA, Williams MS, Weiss ST, Lebo MS, Rehm HL. Reanalysis of eMERGE phase III sequence variants in 10,500 participants and infrastructure to support the automated return of knowledge updates. *Genet Med*. 2022 Feb;24(2):454-462.



**Table 1. Comparison of Genomic Sequencing Diagnostic Yield and Inconclusive Rates by Method**

	Volume	Inconclusives due to VUS (n)	Inconclusives due to VUS (%)	p value	Positives (n)	Positives (%)	p value
<Trio	20170	5568	27.6%		3070	15.2%	
Trio	28324	5365	18.9%	<0.001	5518	19.5%	<0.001
Exome	42165	9528	22.6%		6999	16.6%	
Genome	6329	1405	22.2%	ns	1589	25.1%	<0.001
<b>Total</b>	<b>48494</b>	<b>10933</b>	<b>22.5%</b>		<b>8588</b>	<b>17.7%</b>	

#### FIGURE LEGENDS

**Figure 1. Comparison of Rates of Inconclusive Results due to VUS by Multi-Gene Panel versus Genomic Testing.** Panel A shows a statistically significant reduction in inconclusive rates due to VUSs in genomic sequencing compared to panels. Panel B shows a breakdown in rates by panel size. Panel C shows test volume for each bin.

**Figure 2. Rate of Inconclusive Results due to VUS by Test Type and Disease Area.** Rates generally correlate with multi-gene panel size. Use of genomic testing reduces VUS rate escalation seen with panel size increases. Note: Genomic results are plotted according to corresponding panel size for the same disease area but actual number of genes analyzed are not captured per genomic test. Disease areas (except “not specified”) are labeled when both panel and genomic data were available. Open circles represent disease areas with no corresponding genomic data. For detailed data for all disease areas, see supplemental Table 3.

**Figure 3. Diagnostic Yield by Test Type and Disease Area.** Diagnostic yield was higher for genomic testing compared to panel testing ( $p < 0.001$ ) (A) but showed limited correlation to panel size (B). Use of genomic testing increased yield in all disease areas where both data types were available except Dysmorphic/Skeletal. Note: Genomic results are plotted according to corresponding panel size for the same disease area but actual number of genes analyzed are not captured per genomic test. Disease areas (except “not specified”) are labeled when both panel and genomic data were available. Open circles represent disease areas with no corresponding genomic data. For detailed data for all disease areas, see supplemental Table 3.

**Figure 4. Testing Results Broken down by VUS Sub-tier and Test Type.** Two laboratories (Quest and Mass General Brigham) use VUS sub-tiers and these data show the breakdown of VUS reported in panel and genomic testing.

Figure 1

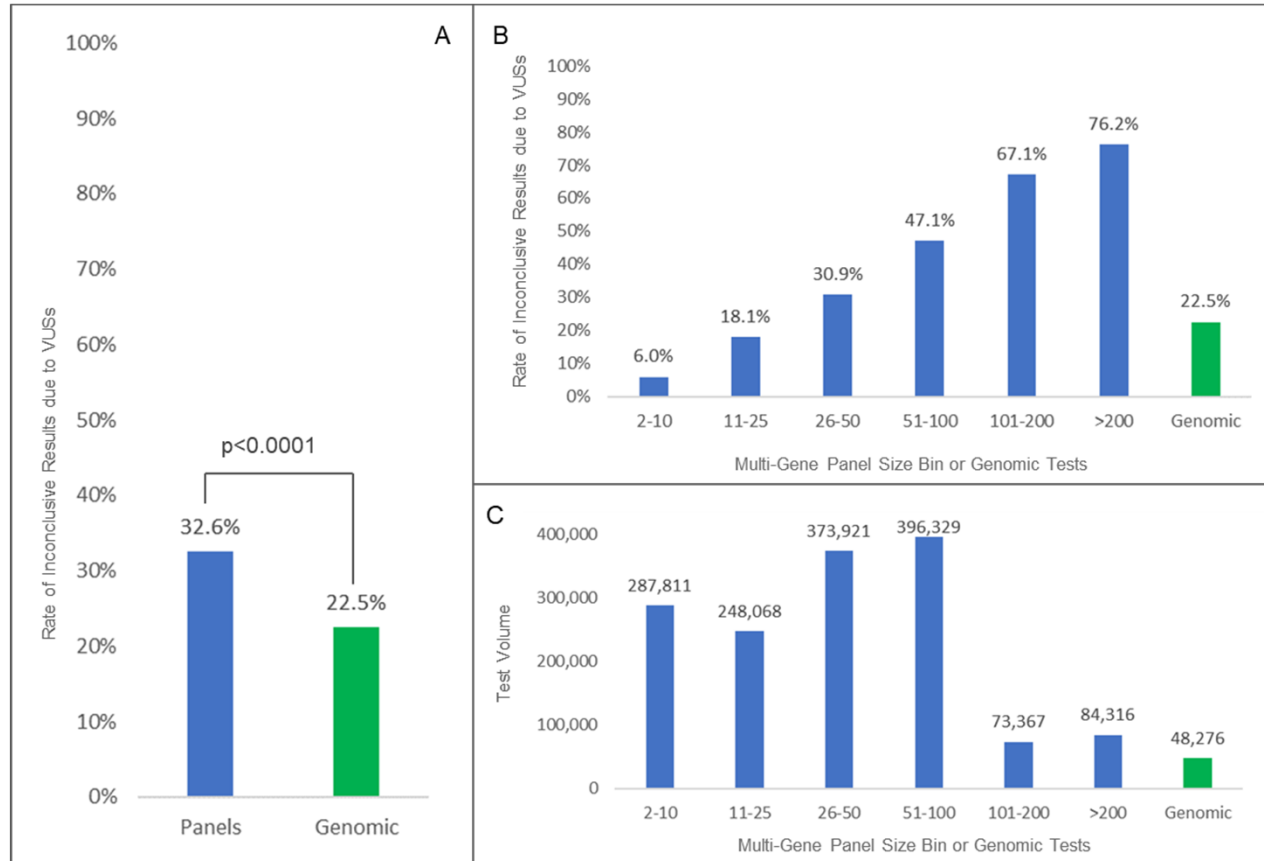


Figure 2

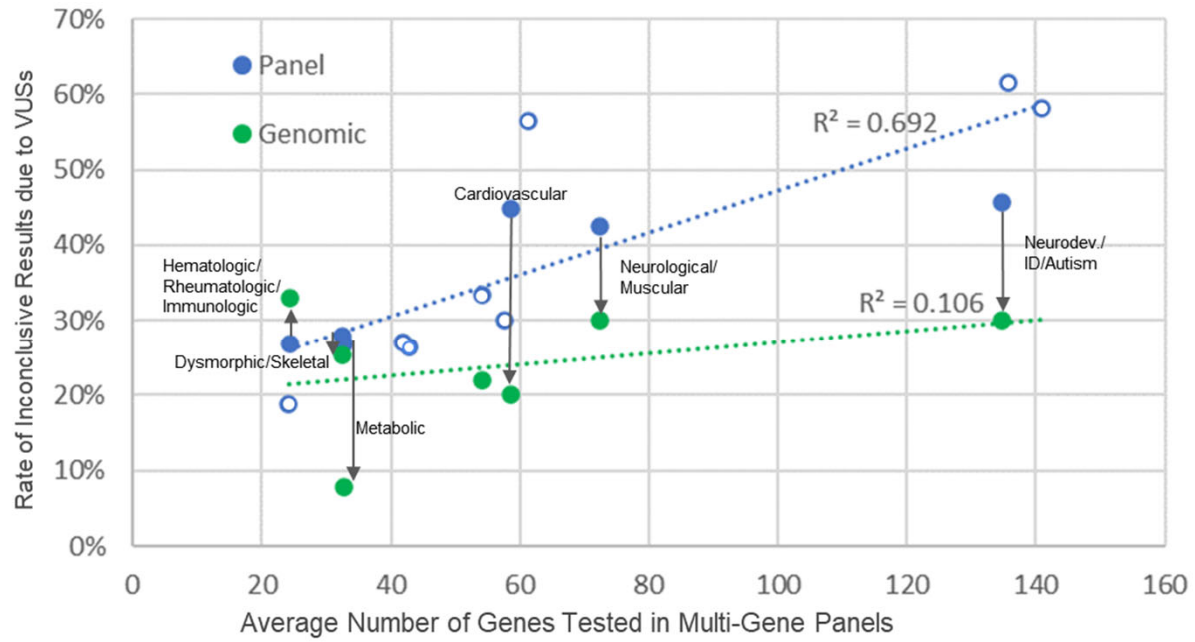


Figure 3

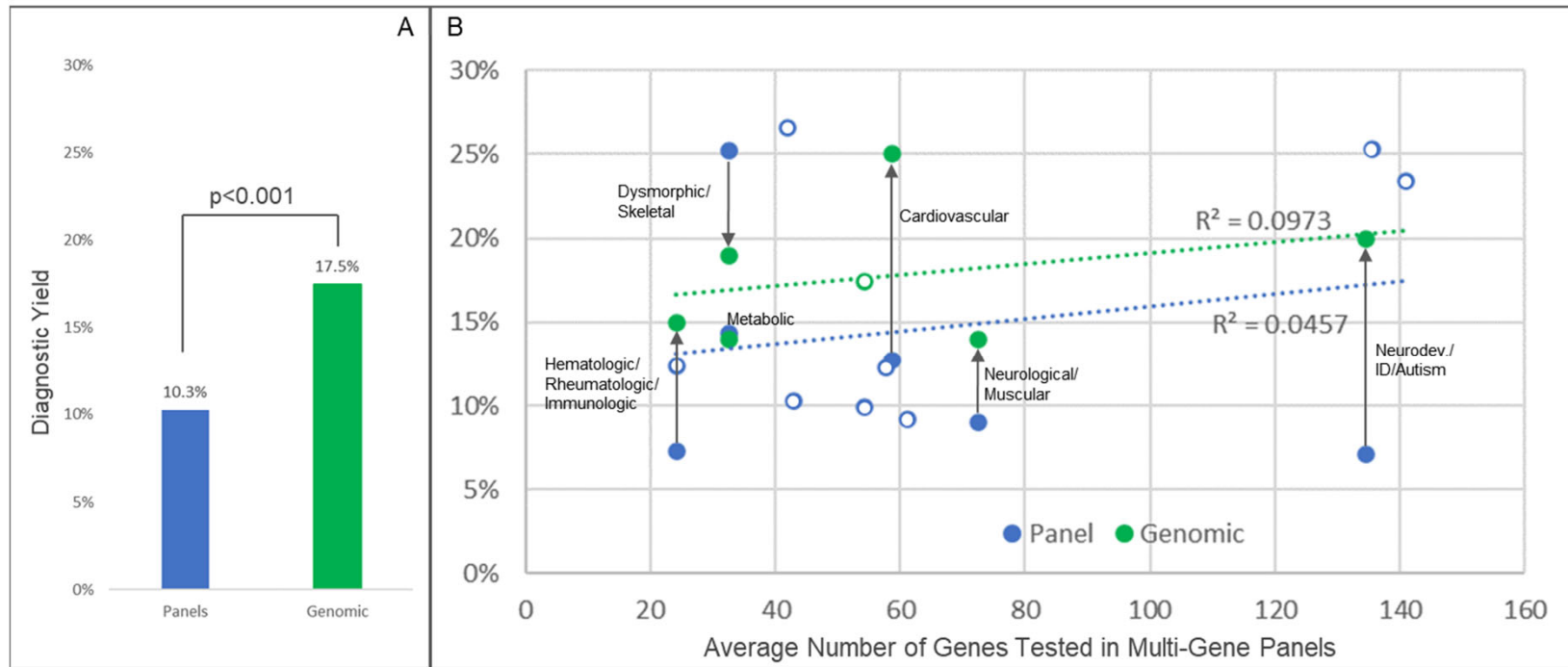


Figure 4

