

1 **TITLE PAGE**

2 **Title:** The impact of prior COVID-19 on vaccine response and the resultant hybrid

3 immunity are age-dependent

4 **Running Title:** Age-dependent impact of prior COVID-19 on vaccine response

5 **Keywords:** SARS-CoV-2 infection, vaccination, humoral immunity, antibody, hybrid

6 immunity

7 **Authors:** Sachie Nakagama,^{a,b} Yu Nakagama,^{a,b,#} Yuko Komase,^c Masaharu Kudo,^d

8 Takumi Imai,^d Yuko Nitahara,^{a,b} Natsuko Kaku,^{a,b} Evariste Tshibangu-Kabamba,^{a,b}

9 Yasutoshi Kido^{a,b}

10 **Affiliations:**

11 ^a Department of Virology & Parasitology, Graduate School of Medicine, Osaka

12 Metropolitan University, 1-4-3 Asahi-machi, Abeno-ku, Osaka, 545-8585, Japan

13 ^b Research Center for Infectious Disease Sciences, Graduate School of Medicine,

14 Osaka Metropolitan University, 1-4-3 Asahi-machi, Abeno-ku, Osaka, 545-8585, Japan

15 ^c Department of Respiratory Internal Medicine, St.Marianna University, Yokohama

16 Seibu Hospital, 1197-1 Yasashi-cho, Asahi-ku, Yokohama, 241-0811, Japan

17 ^d Department of Medical Statistics, Graduate School of Medicine, Osaka Metropolitan

18 University, 1-4-3 Asahi-machi, Abeno-ku, Osaka, 545-8585, Japan

NOTE: This preprint reports new research that has not been certified by peer review and should not be used to guide clinical practice.

19 # Corresponding author

20 **Type of manuscript:** Major article

21 **Address for correspondence:** Yu Nakagama, MD, PhD, Department of Virology &

22 Parasitology, Graduate School of Medicine, Osaka Metropolitan University, 1-4-3

23 Asahi-machi, Abeno-ku, Osaka 545-8585, Japan; E-mail: nakagama.yu@omu.ac.jp;

24 Phone: +81-06-6645-3761, Fax: +81-06-6645-3762

25 **Word counts:** Abstract 200, Text 2671

26

27 **ABSTRACT**

28 Background

29 More people with a history of prior infection are receiving SARS-CoV-2 vaccines.

30 Understanding the magnitude of protectivity granted by 'hybrid immunity', the combined
31 response of infection- and vaccine-induced immunity, may impact vaccination
32 strategies.

33 Methods

34 A total of 36 synchronously infected ('prior infection') and, 33 SARS-CoV-2 naïve
35 ('naïve') individuals participated. Participants provided sera six months after completing
36 a round of BNT162b2 vaccination, to be processed for anti-spike antibody
37 measurements and neutralization assays. The relationships between antibody titer,
38 groups and age were explored.

39 Results

40 Anti-spike antibody titers at 6 months post-vaccination were significantly higher,
41 reaching 13- to 17-fold, in the 'prior infection' group. Linear regression models showed
42 that the enhancement in antibody titer attributable to positive infection history increased
43 from 8.9- to 9.4- fold at age 30 to 19- to 32-fold at age 60. Sera from the 'prior infection'

44 group showed higher neutralizing capacity against all six analyzed strains, including the

45 Omicron variant.

46 Conclusions

47 Prior COVID-19 led to establishing enhanced humoral immunity at 6 months after

48 vaccination. Antibody fold-difference attributed to positive COVID-19 history increased

49 with age, possibly because older individuals are prone to symptomatic infection

50 accompanied by potentiated immune responses. Durable protection of hybrid immunity

51 deserves reflection in vaccination campaigns.

52

53 **TEXT**

54 **Introduction**

55 As the cumulative incidence of COVID-19 increases worldwide, more people
56 with a history of prior infection are now receiving SARS-CoV-2 vaccines. With the
57 infection-induced and vaccine-induced immune responses having different protective
58 characteristics,¹ the acquisition of such a combined immune response is drawing
59 attention as ‘hybrid immunity’. Understanding the magnitude of protectivity against
60 SARS-CoV-2 granted by hybrid immunity and its role in the establishment of herd
61 immunity may impact future vaccination strategies.

62 With immunopotentiality through repeat vaccinations becoming a pivotal
63 strategy, a consensus ought to be reached on the target population, optimal interval,
64 and dosing regimen for the repeated boosters. To accomplish this, it is becoming
65 increasingly important to understand the longitudinal evolution of the antibody response
66 and the resulting ‘residual immunity’ following vaccination dose(s). The impact of prior
67 infection on the acquisition of protective immunity in vaccinated individuals has been
68 actively studied since the introduction of the SARS-CoV-2 vaccines.² However,
69 possibly due partly to adherence challenges, many studies have focused on the
70 differences in the early-phase post-vaccine response between naïve and previously

71 infected individuals,^{3,4} whereas fewer studies have described this in the mid- to long-
72 term.

73 We previously carried out a SARS-CoV-2 seroprevalence survey targeting
74 healthcare workers (HCWs) from a tertiary care hospital in Japan. This revealed a
75 nosocomial cluster infection of which the burden had been underestimated,
76 accumulating up to 15.5% overall seroprevalence.^{5,6} Through longitudinal follow-up and
77 further serological description of the cohort of HCWs,⁷ we took advantage of the
78 opportunity to investigate a uniformly conditioned population endowed with hybrid
79 immunity: those synchronously infected through a nosocomial cluster infection, and
80 again synchronously administered the BNT162b2 vaccine through the nation's mass
81 vaccination campaign. The incremental effect of hybrid immunity on an individual's
82 long-term residual antibody titers was analyzed. These observations suggest the need
83 to rethink our vaccination campaign strategies that currently recruit and treat those with
84 prior infections and those without equally.

85

86 **Materials and Methods**

87 Participants and serum sampling

88 The participants in this study were HCWs at the St.Marianna University,
89 Yokohama Seibu Hospital, Kanagawa, Japan, where we previously conducted an anti-
90 SARS-CoV-2 seroprevalence survey.⁵ In the previous study, 64 COVID-19-affected
91 HCWs and 350 non-infected individuals were identified following an outbreak having
92 occurred in the hospital during April–May 2020. From the cohort, 36 individuals who
93 had tested positive (‘prior infection’) and 33 individuals who had tested negative
94 (‘naïve’) on Roche Elecsys anti-SARS-CoV-2 (Roche Diagnostics, Rotkreuz,
95 Switzerland) antibody testing agreed to participate in this follow-up study. The ‘naïve’
96 individuals were further confirmed to have negative anti-nucleocapsid serology upon
97 study entry. Those categorized as the ‘prior infection’ group, as HCWs, were kept
98 under continuous health monitoring and were confirmed to have had no signs or
99 symptoms indicative of COVID-19 re-infection since completion of the previous survey
100 until their enrollment in this present study.

101 All participants received two doses of the BNT162b2 vaccine at the standard
102 three-week interval, according to the recommended vaccination schedule in Japan.
103 Participants provided their sera six months after completion of their second BNT162b2
104 dose, during the period of November 15-24, 2021 (with only two exceptions, each

105 providing their sera four and five months after completion). The donated sera were
106 processed for anti-spike antibody titer measurements and neutralization assays.

107 The study was approved by the Osaka Metropolitan University Institutional
108 Ethics Committee [#2020-003]. Written consent for participation was obtained from
109 every participant.

110

111 Assessment of anti-spike humoral immunity

112 The anti-spike antibody titer was measured using two fully automated,
113 commercially available immunoassay platforms. The chemiluminescence
114 immunoassay, Abbott SARS-CoV-2IgG II Quant (Abbott Laboratories, IL, USA), was
115 designed to detect serum IgG antibodies targeting the spike protein of SARS-CoV-2.
116 The electrochemiluminescence (ECL) immunoassay, Roche Elecsys anti-SARS-CoV-2
117 S (Roche Diagnostics, Rotkreuz, Switzerland), was designed to detect serum total
118 antibodies targeting the spike protein. The assays were performed according to the
119 manufacturers' instructions.

120

121 Evaluation of the neutralizing capacity of anti-SARS-CoV-2 antibodies

122 1:10 diluted serum samples were tested with the Meso Scale Discovery
123 neutralization assay, an ECL-labeled competition immunoassay. The V-PLEX SARS-
124 CoV-2 Panel 22 (ACE2) Kit (K15562U) (Meso Scale Diagnostics LLC, MD, USA),
125 containing spots coated with Wuhan, Alpha, Beta, Delta, Gamma, and Omicron
126 antigens, evaluated the capacity of serum anti-SARS-CoV-2 antibodies to inhibit the
127 receptor binding domain-ACE2 binding. The ECL signal, negatively proportional to the
128 concentration of neutralizing antibodies in the sample, was read on the MESO
129 QuickPlex SQ 120MM instrument (Meso Scale Diagnostics LLC). Neutralizing capacity
130 was calculated from the following formula and was expressed as 'Inhibition rate
131 (%Inhibition)': $\%Inhibition = \{1 - (ECL \text{ signal of sample}) / (ECL \text{ signal of blank})\} \times 100$
132 [%].

133

134 Statistical Analysis

135 Participants' demographics were described as numbers (and/or percentages)
136 for categorical variables and as means \pm standard deviation for continuous variables,
137 and were compared between 'naïve' and 'prior infection' groups by the chi-square test
138 or the Mann-Whitney's U test. The antibody titer was expressed as geometric mean
139 titer (GMT) [95% confidence interval] and compared between groups by the t-test on a

140 logarithmic scale. The relationships between antibody titer, groups ('naïve' and 'prior
141 infection') and age were explored using linear regression models. The age-specific
142 ratios of GMT were estimated based on t-distribution. The dimorphism of age effect on
143 the log-transformed post-vaccination antibody titer was examined by ANCOVA, testing
144 for interaction between groups and age. The distributions of %Inhibition in 'naïve' and
145 'prior infection' groups were expressed as medians [interquartile ranges] and compared
146 by the Mann-Whitney's U test. P-values less than 0.05 were considered statistically
147 significant.

148

149 **Results**

150 A total of 69 participants (33 categorized as the 'naïve' group and 36 as the
151 'prior infection' group) were included in the analysis (Table 1). The cohort had a sex
152 ratio of 87% female (88% in naïve vs. 86% in 'prior infection'; $P = 0.83$) and a mean
153 age of 42 ± 12 years (47 ± 9 years in 'naïve' vs. 37 ± 12 years in 'prior infection'; $P =$
154 0.0005). Participants self-reported no pre-existing medical conditions known to critically
155 affect antibody response towards any vaccine (i.e. diabetes mellitus, malignant
156 disease, chronic kidney disease). Within the 'prior infection' group, the previous
157 COVID-19 diagnosis was often a mild-to-moderate illness, except for a single case of

158 severe disease. Anti-nucleocapsid antibodies remained negative in all 'naïve'
159 throughout and remained above the positivity threshold in all of those with 'prior
160 infection' except one who sero-reverted during the 20-month follow-up period.

161 Compared with the 'naïve' group, anti-spike antibody titers at 6 months post-
162 vaccination were significantly higher in the 'prior infection' group (Figure 1) (Abbott
163 Architect anti-spike IgG titer 710 [537–939] vs. 9123 [6982–11921] AU/mL; $P < 0.0001$,
164 Roche Elecsys anti-spike total antibody titer 480 [345–669] vs. 8168 [5945–11222]
165 U/mL; $P < 0.0001$). For each immunoassay, there was an approximate 13- and 17-fold
166 change, respectively, in the GMT ratio between groups.

167 Age was negatively associated with post-vaccination antibody titer in the
168 'naïve' group, whereas it was positively associated in the 'prior infection' group
169 (Spearman's correlation coefficients for Abbott and Roche titers, respectively: -0.20
170 and -0.25 in 'naïve', 0.38 and 0.52 in 'prior infection'). Therefore, the impact of age on
171 the differences in post-vaccination antibody titers was compared between the groups.
172 Evaluated from linear regression models (Figure 2), the dimorphic effect of age on the
173 log-transformed post-vaccination antibody titer was significant ($P = 0.049$ and 0.007 ,
174 for Abbott and Roche titers, respectively). Interpolation from the regression models
175 showed that the fold change in the GMT ratio increased from 8.9-fold at age 30 years

176 to 19-fold at age 60 years for the Abbott IgG titer, and 9.4-fold at age 30 years to 32-
177 fold at age 60 years for the Roche total antibody titer (Table 2).

178 In the neutralization assay (Figure 3), sera of participants from the ‘prior
179 infection’ group showed higher neutralizing capacity against all six strains, including the
180 wild type (81.1 [61.1–91.5] vs. 99.8 [99.7–99.9] %; $P < 0.0001$), and the Alpha (68.1
181 [54.4–84.8] vs. 99.8 [99.6–99.8] %; $P < 0.0001$), Beta (38.4 [6.9–55.1] vs. 99.2 [97.0–
182 99.5] %; $P < 0.0001$), Gamma (51.1 [38.1–68.7] vs. 99.6 [98.4–99.8] %; $P < 0.0001$),
183 Delta (78.2 [57.8–83.9] vs. 99.8 [99.7–99.9] %; $P < 0.0001$), and Omicron variants (0.0
184 [0.0–18.3] vs. 74.1 [39.4–84.9] %; $P < 0.0001$).

185

186 **Discussions**

187 The present study showed that prior infection was predictive of enhanced and
188 durable residual immunity against SARS-CoV-2 at 6 months after vaccination. The
189 magnitude of the difference in the antibody titer between the ‘prior infection’ and ‘naïve’
190 groups was age-specific and increased with older age. The superiority of ‘prior
191 infection’ maximized at age 60 years, showing 19- and 32-fold higher Abbott and
192 Roche antibody titers, respectively.

193 The IgG response following SARS-CoV-2 BNT162b2 vaccination (i) peaks
194 rapidly within the first 2 months from the initial dose and then (ii) enters a subsequent
195 stage of gradual decay.⁸ The initial studies reporting the effect of prior infection on
196 BNT162b2 post-vaccination antibody titers had often targeted the peak response. At 2
197 months and 3 months after the initial dose, 3.7-fold and 2.7-fold increases,
198 respectively, were observed in vaccinees with prior COVID-19 infection compared with
199 the naïve group.^{3,4} While potentiation of the peak response to BNT162b2 vaccination
200 by 'prior infection' has been well supported by abundant real-world data, the stage of
201 IgG decay has been less addressed. Recently, a modeling study of post-vaccination
202 'waning immunity' showed that the anti-SARS-CoV-2 IgG levels of vaccinees with prior
203 infection decreased at a slower rate compared to the non-previously infected.⁹ Another
204 study also suggested a slower decay of antibody titers in the prior-infection group,
205 resulting in a further exaggerated fold change in titer during the decay phase of
206 antibodies.¹⁰ The here observed unexpectedly large 13- to 17-fold change in antibody
207 titers, attributed to prior infection status, is thus fully interpretable considering the
208 biphasic kinetics of the post-vaccination immune evolution.

209 Interestingly, age had dimorphic effects on post-vaccination immune evolution
210 depending on prior infection status. Older age was associated with a higher level of IgG

211 in previously infected individuals, whereas it was associated with a lower level of IgG in
212 the naïve group. This can be explained by the fact that older individuals are more prone
213 to symptomatic, and possibly more severe, SARS-CoV-2 infection, which in turn is
214 often accompanied by a potentiated circulating IgG response.⁵ To support this idea, the
215 present cohort of vaccinees with prior infection showed a strong positive correlation
216 between the peak anti-spike antibody response following their COVID-19 diagnosis (at
217 2 months' convalescence) and the residual antibody titer at 6 months post-vaccination
218 (Pearson's correlation coefficient: 0.71 and 0.77 for Abbott and Roche titers,
219 respectively).

220 Immunopotential through repeated boosters is an affordable strategy only
221 when the risk-benefit balance is optimized and deemed favorable. For the influenza
222 vaccine, prior-year vaccination has shown to have negative effects on the current
223 year's vaccine effectiveness.¹¹ Further, a frequent vaccination history was associated
224 with 41% and 27% decreases in vaccine effectiveness against type A influenza and
225 type B influenza, respectively.¹² This phenomenon has been explained as 'antibody
226 feedback'.¹³ Potential 'antibody feedback' has also been suggested with the SARS-
227 CoV-2 vaccines.¹⁴ An extended 3-month interval regimen has resulted in, on average,
228 3.5-fold higher IgG titers.¹⁵ A longer interval between prior infection and boosting of the

229 immune response with a vaccine has been associated with more enhanced and
230 durable immune responses.¹⁶ As shown in the present study, the evolution of post-
231 vaccine immune responses is not even remotely close between those having
232 experienced prior infection and the naïve. Non-stratified strategies for repeated
233 boosters may lead to unexpected harms or attenuated performance through the
234 ‘antibody feedback’ mechanism. Thus, when and whom to target with the repeated
235 booster vaccinations remains a crucial question to all future vaccination campaigns. As
236 long as rather young and/or healthy HCWs are targeted, it was shown in a preceding
237 study from Israel that a third-dose vaccine was sufficient enough for totally preventing
238 severe disease. The evidence here provided, that a fourth dose was only associated
239 with a scaled-down additive protection of 39% reduction in infection risk, further
240 prompts addressing this impending issue.¹⁷

241 The limitation of the study is the limited number of individuals evaluated. The
242 observed immune response may not represent that of the overall population. The
243 immune response of individuals from older age categories and at utmost risk of severe
244 disease would have been highly intriguing, although not covered in the present study.
245 The extreme elderly and multi-morbid population has been shown to exhibit aberrant
246 immune responses.¹⁸

247 Hybrid immunity is becoming increasingly common. The benefits of boosting
248 the infection-acquired immunity by vaccination has been shown ‘clinically’ to enhance
249 the degree and duration of protection (protection rate persistently above 90% for 18
250 months or longer).¹⁶ The present study, in turn with robust indices of protective
251 antibody response, further enriches the evidence for and provides an immunological
252 basis to this highest and most durable protection achieved by those vaccinated on top
253 of a primary infection. With hybrid immunity becoming increasingly prevalent, delayed
254 boosters or reduced dosing regimens may become a realistic consideration when
255 reshaping the future SARS-CoV-2 vaccination campaigns.

256

257 **Acknowledgments**

258 The authors would like to thank all HCWs participating in the study. We would
259 also like to thank Mrs. Mika Oku and Mrs. Takako Kobayashi from the Department of
260 Virology & Parasitology, Graduate School of Medicine, Osaka Metropolitan University,
261 for technical assistance in analyzing the specimens. Tomoyo Tominaga, Hiroko
262 Tanaka, Tomoaki Yokoya, and Minako Hosokawa, from the Department of Health
263 Management, St.Marianna University, Yokohama Seibu Hospital, integrally supported
264 the sample and data collection. Data acquisition with the microplate reader was

265 performed at the Research Support Platform, Graduate School of Medicine, Osaka

266 Metropolitan University.

267

268 **Funding**

269 This research was supported by the Japan Agency for Medical Research and

270 Development [JP20jk0110021, JP20he1122001, and JP20wm0125003], Japan Society

271 for the Promotion of Science KAKENHI [21K09078 and 22K15927], Osaka City

272 University Strategic Research Grant [OCU-SRG2021_YR09], and the Osaka

273 Metropolitan University Special Reserves Fund for COVID-19.

274

275 **Conflicts of Interest**

276 Yu Nakagama and Yasutoshi Kido have received financial support from Abbott

277 Japan LLC, Japan, outside the work.

278

279 **References**

- 280 1. Nitahara Y, Nakagama Y, Kaku N, Candray K, Michimuko Y, Tshibangu-Kabamba
281 E, et al. High-resolution linear epitope mapping of the receptor binding domain of
282 SARS-CoV-2 spike protein in COVID-19 mRNA vaccine recipients. *Microbiol Spectr*
283 2021; 9: e0096521.
- 284 2. Ebinger JE, Fert-Bober J, Printsev I, Wu M, Sun N, Prostko JC, et al. Antibody
285 responses to the BNT162b2 mRNA vaccine in individuals previously infected with
286 SARS-CoV-2. *Nat Med* 2021; 27: 981–4.
- 287 3. Ontañón J, Blas J, de Cabo C, Santos C, Ruiz-Escribano E, García A, et al.
288 Influence of past infection with SARS-CoV-2 on the response to the BNT162b2
289 mRNA vaccine in health care workers: Kinetics and durability of the humoral
290 immune response. *EBioMedicine* 2021; 73: 103656.
- 291 4. Havervall S, Marking U, Greilert-Norin N, Gordon M, Ng H, Christ W, et al. Impact
292 of SARS-CoV-2 infection on vaccine-induced immune responses over time. *Clin*
293 *Transl Immunology* 2022; 11: e1388.
- 294 5. Nakagama Y, Komase Y, Candray K, Nakagama S, Sano F, Tsuchida T, et al.
295 Serological testing reveals the hidden COVID-19 burden among health care

- 296 workers experiencing a SARS-CoV-2 nosocomial outbreak. *Microbiol Spectr* 2021;
297 9: e0108221.
- 298 6. Nakagama Y, Komase Y, Kaku N, Nitahara Y, Tshibangu-Kabamba E, Tominaga T,
299 et al. Detecting waning serological response with commercial immunoassays: 18-
300 month longitudinal follow-up of anti-SARS-CoV-2 nucleocapsid antibodies.
301 *Microbiol Spectr* 2022; 10: e0098622.
- 302 7. Tsuchida T, Nitahara Y, Suzuki S, Komase Y, Candray K, Kido Y, et al. Back to
303 normal; serological testing for COVID-19 diagnosis unveils missed infections. *J*
304 *Med Virol* 2021; 93: 4549–52.
- 305 8. Matsuura T, Fukushima W, Nakagama Y, Kido Y, Kase T, Kondo K, et al. Kinetics
306 of anti-SARS-CoV-2 antibody titer in healthy adults up to 6 months after BNT162b2
307 vaccination measured by two immunoassays: A prospective cohort study in Japan.
308 *Vaccine* 2022; 40: 5631–40.
- 309 9. Pérez-Alós L, Armenteros JJA, Madsen JR, Hansen CB, Jarlhelt I, Hamm SR, et al.
310 Modeling of waning immunity after SARS-CoV-2 vaccination and influencing
311 factors. *Nat Commun* 2022; 13: 1614.
- 312 10. Dyer AH, Noonan C, McElheron M, Batten I, Reddy C, Connolly E, et al. Previous
313 SARS-CoV-2 infection, age, and frailty are associated with 6-month vaccine-

- 314 induced anti-spike antibody titer in nursing home residents. *J Am Med Dir Assoc*
- 315 2022; 23: 434–9.
- 316 11. Ohmit SE, Thompson MG, Petrie JG, Thaker SN, Jackson ML, Belongia EA, et al.
- 317 Influenza vaccine effectiveness in the 2011-2012 season: protection against each
- 318 circulating virus and the effect of prior vaccination on estimates. *Clin Infect Dis*
- 319 2014; 58: 319–27.
- 320 12. McLean HQ, Thompson MG, Sundaram ME, Meece JK, McClure DL, Friedrich TC,
- 321 et al. Impact of repeated vaccination on vaccine effectiveness against influenza
- 322 A(H3N2) and B during 8 seasons. *Clin Infect Dis* 2014; 59: 1375–85.
- 323 13. McNamara HA, Idris AH, Sutton HJ, Vistein R, Flynn BJ, Cai Y, et al. Antibody
- 324 feedback limits the expansion of B Cell responses to malaria vaccination but drives
- 325 diversification of the humoral response. *Cell Host Microbe* 2020; 28: 572–85.e7.
- 326 14. Garg AK, Mittal S, Padmanabhan P, Desikan R, Dixit NM. Increased B cell
- 327 selection stringency in germinal centers can explain improved COVID-19 vaccine
- 328 efficacies with low dose prime or delayed boost. *Front Immunol* 2021; 12: 776933.
- 329 15. Parry H, Bruton R, Stephens C, Bentley C, Brown K, Amirthalingam G, et al.
- 330 Extended interval BNT162b2 vaccination enhances peak antibody generation. *NPJ*
- 331 *Vaccines* 2022; 7: 14.

- 332 16. Hall V, Foulkes S, Insalata F, Kirwan P, Saei A, Atti A, et al. Protection against
333 SARS-CoV-2 after Covid-19 vaccination and previous infection. *N Engl J Med*
334 2022; 386: 1207–20.
- 335 17. Cohen MJ, Oster Y, Moses AE, Spitzer A, Benenson S; Israeli-Hospitals 4th
336 Vaccine Working Group. Association of receiving a fourth dose of the BNT162b
337 vaccine with SARS-CoV-2 infection among health care workers in Israel. *JAMA*
338 *Netw Open* 2022; 5: e2224657.
- 339 18. Takita M, Yoshida T, Tsuchida T, Nakagama Y, Kido Y, Suzuki S, et al. Low SARS-
340 CoV-2 antibody titers may be associated with poor clinical outcomes for patients
341 with severe COVID-19. *Sci Rep* 2022; 12: 9147.
- 342
- 343

344 **Tables**

345 Table 1. Descriptive characteristics of participants

Variable	Naïve (n = 33)		Prior infection (n = 36)	
Age, y [SD] ^a	47	[9]	37	[12]
Sex, female [%]	29	[88]	31	[86]
Medical history, n [%]	0	[0]	0	[0]
Previous COVID-19, n [%]				
Mild	-	[-]	30	[83]
Moderate	-	[-]	5	[14]
Severe	-	[-]	1	[3]

346 ^a standard deviation

347

348 Table 2. Age-specific differences in Abbott Architect anti-spike IgG titers attributable to
349 prior infection status

Age, y	Ratio of GMT ^a , 'prior infection' to 'naïve'	[95% CI] ^b	P-value
Overall	12.8	[8.7–18.9]	< 0.001
30	8.9	[4.7–16.8]	< 0.001
40	11.5	[6.2–21.3]	< 0.001
50	14.8	[7.6–29.2]	< 0.001
60	19.1	[8.7–42.3]	< 0.001

350 ^a geometric mean of titer

351 ^b confidence interval

352

353 Table 3. Age-specific differences in Roche Elecsys anti-spike total antibody titer

354 attributable to prior infection status

Age, y	Ratio of GMT ^a , 'prior infection' to 'naïve'	[95% CI] ^b	P-value
Overall	17.0	[10.8–26.9]	< 0.001
30	9.4	[4.6–19.5]	< 0.001
40	14.1	[7.0–28.6]	< 0.001
50	21.1	[9.7–45.7]	< 0.001
60	31.5	[12.7–78.0]	< 0.001

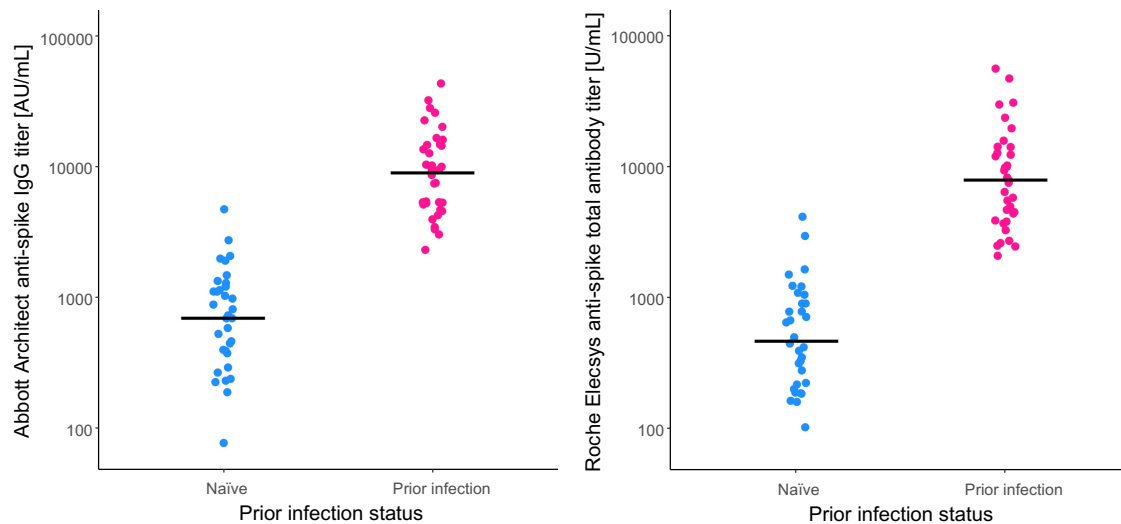
355 ^ageometric mean of titer

356 ^bconfidence interval

357

358 **Figure Legends**

359



360

361

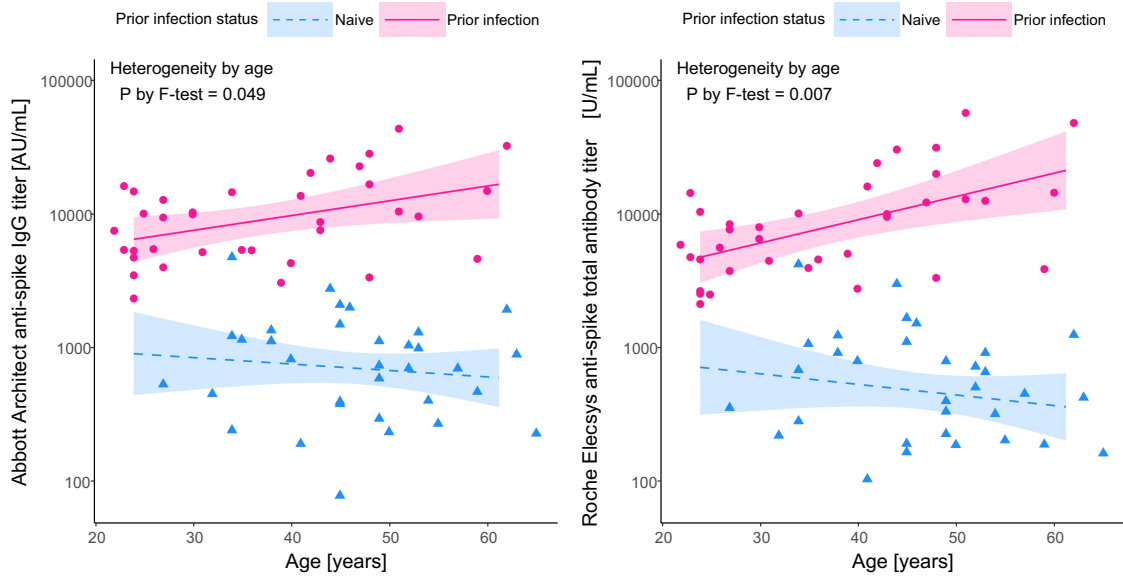
362 Figure 1. Anti-spike antibody titers after BNT162b2 vaccination. For comparison by

363 prior infection status, the (A) Abbott Architect anti-spike IgG titers, and the (B) Roche

364 Elecsys anti-spike total antibody titers at 6 months post-vaccination are shown with

365 their respective geometric means (Solid lines).

366



367

368

369 Figure 2. Age-dependent increase in the between-group ('prior infection' vs. 'naïve')

370 differences in post-vaccination anti-spike antibody titer. The impact of age on the log-

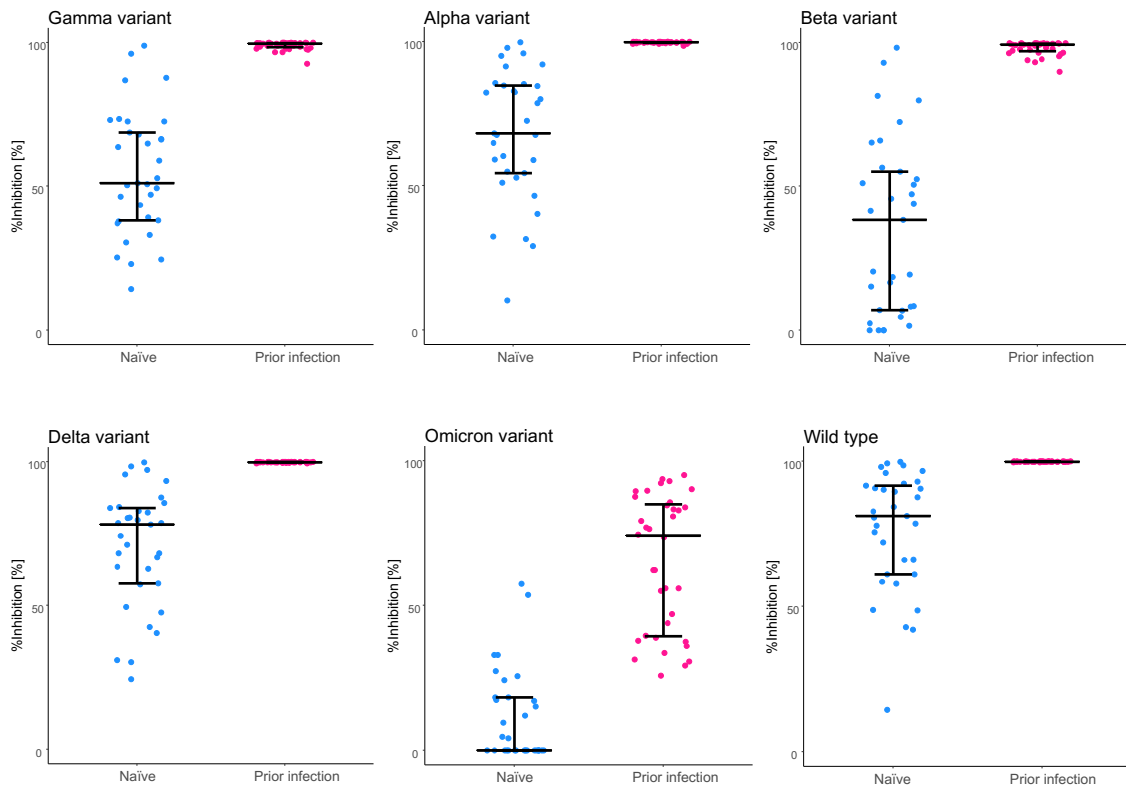
371 transformed anti-spike antibody titer is fitted with linear regression models. Solid and

372 dashed lines represent the predicted anti-spike antibody titer calculated by the model

373 for the (A) Abbott Architect anti-spike IgG assay and the (B) Roche Elecsys anti-spike

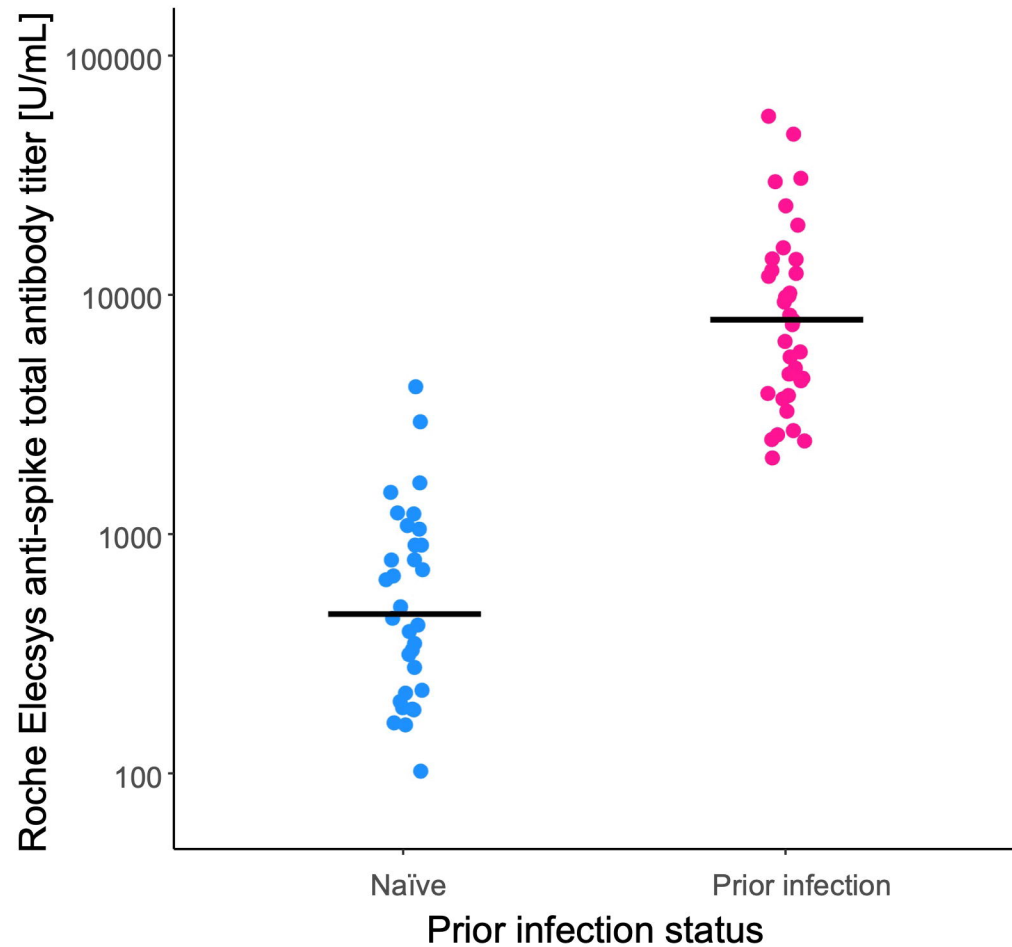
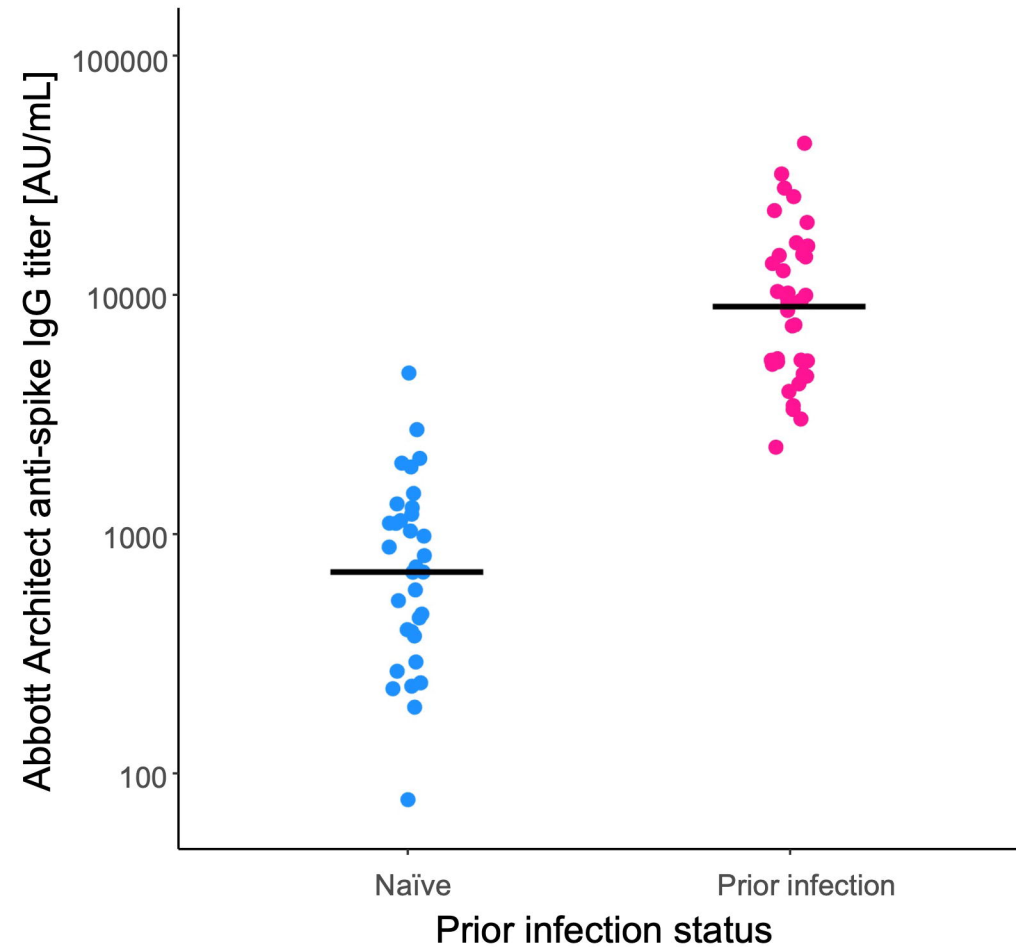
374 total antibody assay. Shadowed areas represent the 95% confidence interval.

375

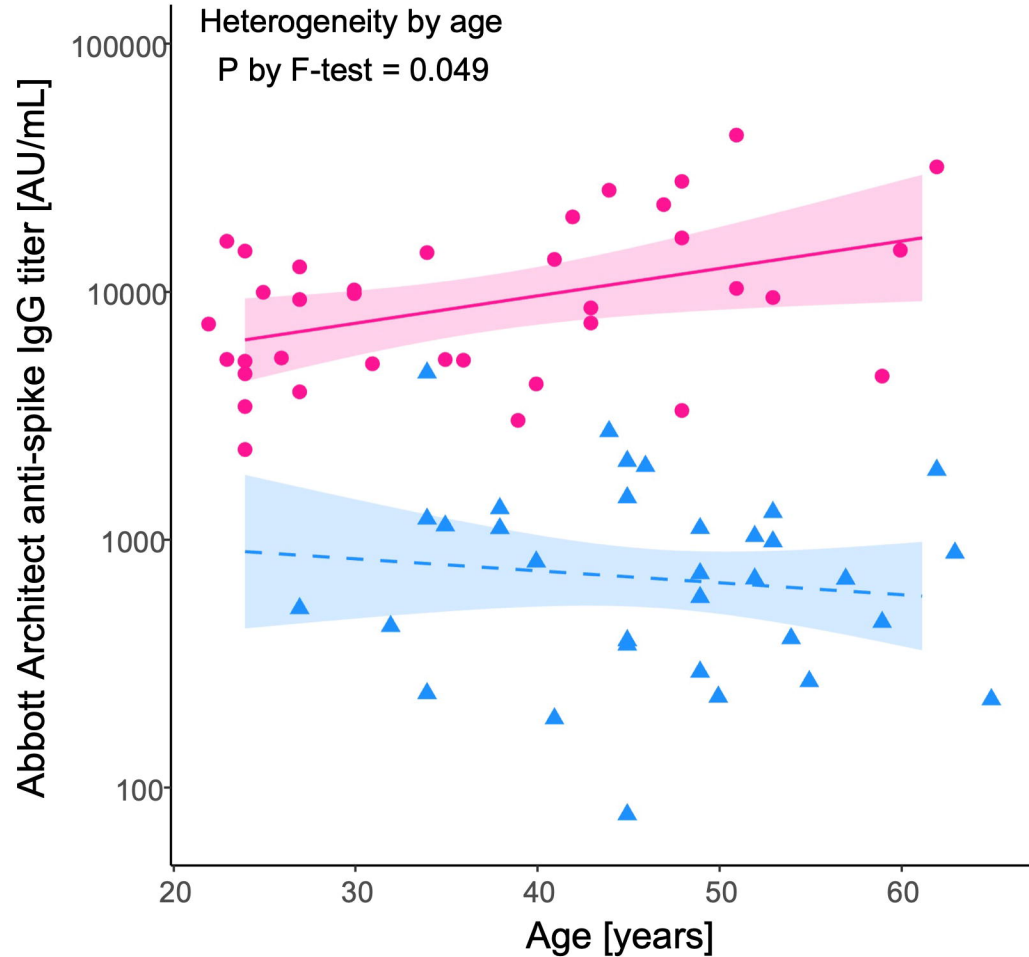


376

377 Figure 3. Neutralizing capacity of serum antibodies after BNT162b2 vaccination. For
 378 comparison of the variable level of protection granted depending on prior infection
 379 status, neutralizing capacity against the wild type and the variant SARS-CoV-2 spike
 380 antigen was assessed at 6 months post-vaccination. The bars (error bars) indicate
 381 medians (interquartile ranges). %Inhibition, inhibition rate.



Prior infection status Naive Prior infection



Prior infection status Naive Prior infection

